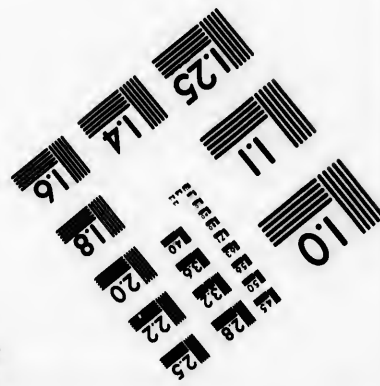
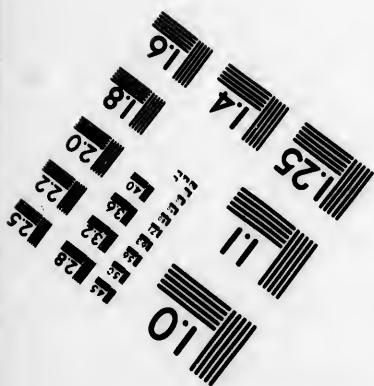
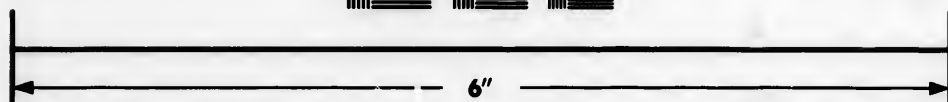
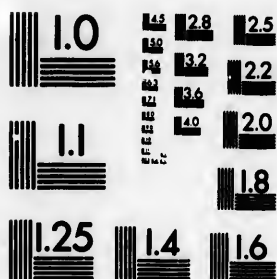


**IMAGE EVALUATION  
TEST TARGET (MT-3)**



**Photographic  
Sciences  
Corporation**

23 WEST MAIN STREET  
WEBSTER, N.Y. 14580  
(716) 872-4503

1.8  
2.0  
2.2  
2.5  
2.8  
3.2  
3.6  
4.0

**CIHM/ICMH  
Microfiche  
Series.**

**CIHM/ICMH  
Collection de  
microfiches.**



Canadian Institute for Historical Microreproductions / Institut canadien de microreproductions historiques

1.8  
2.0  
2.2  
2.5  
2.8  
3.2  
3.6  
4.0

**© 1985**

Technical and Bibliographic Notes/Notes techniques et bibliographiques

The Institute has attempted to obtain the best original copy available for filming. Features of this copy which may be bibliographically unique, which may alter any of the images in the reproduction, or which may significantly change the usual method of filming, are checked below.

L'Institut a microfilmé le meilleur exemplaire qu'il lui a été possible de se procurer. Les détails de cet exemplaire qui sont peut-être uniques du point de vue bibliographique, qui peuvent modifier une image reproduite, ou qui peuvent exiger une modification dans la méthode normale de filmage sont indiqués ci-dessous.

- Coloured covers/  
Couverture de couleur
- Covers damaged/  
Couverture endommagée
- Covers restored and/or laminated/  
Couverture restaurée et/ou pelliculée
- Cover title missing/  
Le titre de couverture manque
- Coloured maps/  
Cartes géographiques en couleur
- Coloured ink (i.e. other than blue or black)/  
Encre de couleur (i.e. autre que bleue ou noire)
- Coloured plates and/or illustrations/  
Planches et/ou illustrations en couleur
- Bound with other material/  
Relié avec d'autres documents
- Tight binding may cause shadows or distortion along interior margin/  
Le reliure serrée peut causer de l'ombre ou de la distorsion le long de la marge intérieure
- Blank leaves added during restoration may appear within the text. Whenever possible, these have been omitted from filming/  
Il se peut que certaines pages blanches ajoutées lors d'une restauration apparaissent dans le texte, mais, lorsque cela était possible, ces pages n'ont pas été filmées.
- Additional comments: /  
Commentaires supplémentaires: Copy has manuscript annotations.

- Coloured pages/  
Pages de couleur
- Pages damaged/  
Pages endommagées
- Pages restored and/or laminated/  
Pages restaurées et/ou pelliculées
- Pages discoloured, stained or foxed/  
Pages décolorées, tachetées ou piquées
- Pages detached/  
Pages détachées
- Showthrough/  
Transparence
- Quality of print varies/  
Qualité inégale de l'impression
- Includes supplementary material/  
Comprend du matériel supplémentaire
- Only edition available/  
Seule édition disponible
- Pages wholly or partially obscured by errata slips, tissues, etc., have been refilmed to ensure the best possible image/  
Les pages totalement ou partiellement obscurcies par un feuillet d'errata, une pelure, etc., ont été filmées à nouveau de façon à obtenir la meilleure image possible.

This item is filmed at the reduction ratio checked below/  
Ce document est filmé au taux de réduction indiqué ci-dessous.

10X	14X	18X	22X	26X	30X
<input type="checkbox"/>	<input type="checkbox"/>	<input checked="" type="checkbox"/>	<input type="checkbox"/>	<input type="checkbox"/>	<input type="checkbox"/>
12X	16X	20X	24X	28X	32X

The copy filmed here has been reproduced thanks to the generosity of:

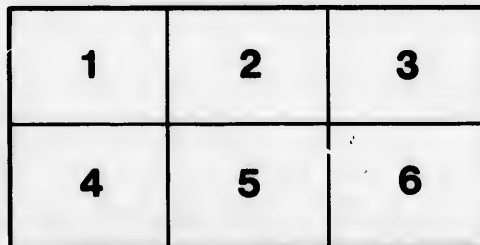
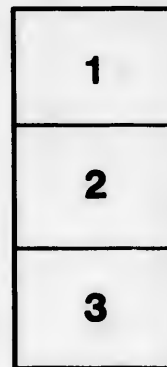
Izaak Walton Killam Memorial Library  
Dalhousie University

The images appearing here are the best quality possible considering the condition and legibility of the original copy and in keeping with the filming contract specifications.

Original copies in printed paper covers are filmed beginning with the front cover and ending on the last page with a printed or illustrated impression, or the back cover when appropriate. All other original copies are filmed beginning on the first page with a printed or illustrated impression, and ending on the last page with a printed or illustrated impression.

The last recorded frame on each microfiche shall contain the symbol  $\rightarrow$  (meaning "CONTINUED"), or the symbol  $\nabla$  (meaning "END"), whichever applies.

Maps, plates, charts, etc., may be filmed at different reduction ratios. Those too large to be entirely included in one exposure are filmed beginning in the upper left hand corner, left to right and top to bottom, as many frames as required. The following diagrams illustrate the method:



L'exemplaire filmé fut reproduit grâce à la générosité de:

Izaak Walton Killam Memorial Library  
Dalhousie University

Les images suivantes ont été reproduites avec le plus grand soin, compte tenu de la condition et de la netteté de l'exemplaire filmé, et en conformité avec les conditions du contrat de filmage.

Les exemplaires originaux dont la couverture en papier est imprimée sont filmés en commençant par le premier plat et en terminant soit par la dernière page qui comporte une empreinte d'impression ou d'illustration, soit par le second plat, selon le cas. Tous les autres exemplaires originaux sont filmés en commençant par la première page qui comporte une empreinte d'impression ou d'illustration et en terminant par la dernière page qui comporte une telle empreinte.

Un des symboles suivants apparaîtra sur la dernière image de chaque microfiche, selon le cas: le symbole  $\rightarrow$  signifie "A SUIVRE", le symbole  $\nabla$  signifie "FIN".

Les cartes, planches, tableaux, etc., peuvent être filmés à des taux de réduction différents. Lorsque le document est trop grand pour être reproduit en un seul cliché, il est filmé à partir de l'angle supérieur gauche, de gauche à droite, et de haut en bas, en prenant le nombre d'images nécessaire. Les diagrammes suivants illustrent la méthode.

errata  
to

pelure,  
on à



32X

T. H. E.

# Nova-Scotia Calender,

Or an

# ALMANACK

For the Year of the Christian *Æræ*, 1772; and from the Creation of the World according to Chronology, 5721, being Biffexile or Leap-Year; and in the Twelfth Year of the Reign of his Majesty's King *George*, the Third, confifing of 366 Days:

*Wherein is contained*

The Eclipses of the Luminaries, Sun and Moon's Riling and Setting, Moon's Place, Time of High-Water; Lunations, Aspects, Spring Tides, Judgment of the Weather, Feasts and Fasts of the Church, Sittings of the feveral Courts and Sessions in the Province of *Nova-Scotia*, &c.

*To which is added,*

Prognosticks, of the Weather. Infallible Signs of Rain, &c. taken by observations of the Planets. Signs of the Wind's shifting, Storms ceasing, &c. A Collection of select Aphorisms. The Art of Printing a Poem. On the liberty of the Press. On the Death of an amiable Child. On Night and Sleep. Advice to a Cham of Tartary, for which, he got a hundred Pieces of Gold. An authentic History of *Catherine Alexowna*, &c. Sundry useful Receipts. Names of the Governor, Lieut. Governor, Members of his Majesty's Council, and House of Assembly, and other Officers of Government, &c. &c.

Calculated for the Meridian of *Halifax*, in *Nova-Scotia*, Lat. 44° 44' North, and 4 Hours, 13 Minutes & 20 Seconds West Long. from London, but will serve without sensible Error for any Part of *Nova-Scotia*.

By A. L I L I U S.

HALIFAX: Printed and Sold by *Anthony Henry* and Mr. *Fletcher's* on the Parade.

Courteous READER,

**M**R. CARLUS, having made some sort of Apology, for his request of the 24th May 1770, seems to insist on my performing my promise, by giving him an Answer. I have therefore taken the liberty of this vacant Page, (which I am sensible might have been put to a much better Use) to satisfy his curiosity. And altho' I have been very carefull in my Calculation, and spared no pains in pointing out to him the true time of the Anniversary of his birth agreeable to his Request, yet I am much mistaken, if he does not find himself as much in the dark hereafter, as ever he was.

Mr. CARLUS,

**Y**OU tell me you were born on the Eleventh Day of December 1729 old Stile, at nine o'Clock in the Morning, I suppose you mean precisely, but that you are at a loss for the true Anniversary of your Birth according to the New-Stile. You therefore request to know the Day, Hour and Minute of the Day, in December 1770, that you will be 41 Years of Age; this is the Tenor of your Letter.

The Stile, which seems to puzzle you so much, was changed by Act of Parliament, in the 25th Year of His late Majesty's Reign, viz. 1751, all over the Dominions of Great-Britain, and the Year fixed the same as at the NICENE COUNCIL. Yet it is certain that true time is not exactly adjusted thereby, there being an error of almost three whole Days; which happened thro' the Inadvertency of a certain great Astronomer, who was one of the principal Mathematicians in correcting the Stile. But as this Error happened between the Julian reformation and the NICENE COUNCIL, it cannot effect the matter in which you are to be resolved. Observe then Mr. Carlus, that on the 22d Day of December 1770 new-Stile at 8h. 33m. 9f. in the Evening, you were precisely 41 Years of Age according to the true Computation of Time. But you are not to infer from hence, that the true Anniversary of your Birth will constantly recur at the same time of the Day, but will vary every Year, and in some certain Years will extend to the Morning of the Day next following the 22d, and cannot be restored to it's first Agreement, in less than a Cycle of near 6000 Years, which period I am pretty well assured you will not live to see.

And now I imagine, notwithstanding I have answered your Demand, that you will be as much at a loss in future as you have been, in any Year past, for the true Anniversary of your Birth, since you must have it to a minute; but that is no fault of mine; you asked for the true time of it's recurring in one Year only, I have given it; and if you should still be curious in this matter, so far as to desire a Rule for performing the Operation in future, you must go to school and study for it as I have done.

Yours &c.

A. LILIUS.

16

17

18

19

20

21

22

23

24

25

26

27

28

29

30

31

32

33

34

35

36

37

38

39

40





An EPHEMERIS of the PLANETS Places, for the 1st, 7th, 13th, 19th, and 25th Days of every Month in the Year, 1772.

Mo.	Days	☉	♃	♄	♅	♆	♇	Mo.	Days	☉	♃	♄	♅	♆	♇
		Place	Ω	♈	♉	♊	♋			Place	Ω	♈	♉	♊	♋
January.	1	10 <sup>h</sup> 56 <sup>m</sup> 29 <sup>s</sup>	3	128	29			July	1	10 <sup>h</sup> 14 <sup>m</sup> 27 <sup>s</sup>	3	20	22	25	
	7	17 <sup>h</sup> 3 <sup>m</sup> 29 <sup>s</sup>	4	5			7		15 <sup>h</sup> 57 <sup>m</sup> 27 <sup>s</sup>	2	24	25			
	13	23 <sup>h</sup> 10 <sup>m</sup> 29 <sup>s</sup>	6	10	12	9	13		21 <sup>h</sup> 42 <sup>m</sup> 23 <sup>s</sup>	2	21	27	20		
	19	29 <sup>h</sup> 17 <sup>m</sup> 28 <sup>s</sup>	7	14	21	6	19		27 <sup>h</sup> 24 <sup>m</sup> 29 <sup>s</sup>	1	11	28	Ω		
	25	5 <sup>h</sup> 22 <sup>m</sup> 28 <sup>s</sup>	9	19	28	♃	25		3 <sup>h</sup> 8 <sup>m</sup> 29 <sup>s</sup>	1	6	28	♄	5	
February.	1	12 <sup>h</sup> 29 <sup>m</sup> 27 <sup>s</sup>	10	24	♃	24		August	1	9 <sup>h</sup> 50 <sup>m</sup> 0 <sup>s</sup>	11	26	27		
	7	18 <sup>h</sup> 34 <sup>m</sup> 27 <sup>s</sup>	12	9	14	24	7		15 <sup>h</sup> 35 <sup>m</sup> 1 <sup>s</sup>	15	26	♃			
	13	24 <sup>h</sup> 38 <sup>m</sup> 27 <sup>s</sup>	15		12	28	13		21 <sup>h</sup> 22 <sup>m</sup> 29 <sup>s</sup>	20	20	16			
	19	0 <sup>h</sup> 41 <sup>m</sup> 26 <sup>s</sup>	15	8	29	♃	19		27 <sup>h</sup> 7 <sup>m</sup> 28 <sup>s</sup>	23	16	23			
	25	6 <sup>h</sup> 4 <sup>m</sup> 26 <sup>s</sup>	16	13	♃	12	25		2 <sup>h</sup> 55 <sup>m</sup> 3 <sup>s</sup>	27	18	14			
March	1	11 <sup>h</sup> 42 <sup>m</sup> 25 <sup>s</sup>	17	17	12	19		September	1	9 <sup>h</sup> 41 <sup>m</sup> 4 <sup>s</sup>	26	Ω	12		
	7	17 <sup>h</sup> 43 <sup>m</sup> 25 <sup>s</sup>	19	21	20	28	7		15 <sup>h</sup> 31 <sup>m</sup> 5 <sup>s</sup>	4	12				
	13	23 <sup>h</sup> 42 <sup>m</sup> 24 <sup>s</sup>	20	26	27	♃	13		21 <sup>h</sup> 22 <sup>m</sup> 6 <sup>s</sup>	5	14				
	19	29 <sup>h</sup> 39 <sup>m</sup> 24 <sup>s</sup>	21	♃	8	18	19		27 <sup>h</sup> 13 <sup>m</sup> 6 <sup>s</sup>	24	12	16			
	25	5 <sup>h</sup> 36 <sup>m</sup> 24 <sup>s</sup>	22	6	11	29	25		3 <sup>h</sup> 6 <sup>m</sup> 7 <sup>s</sup>	24	15	20			
April	1	2 <sup>h</sup> 30 <sup>m</sup> 23 <sup>s</sup>	24	11	20	♃		October	1	9 <sup>h</sup> 5 <sup>m</sup> 8 <sup>s</sup>	23	18	25		
	7	18 <sup>h</sup> 22 <sup>m</sup> 23 <sup>s</sup>	25	16	27	25	7		14 <sup>h</sup> 56 <sup>m</sup> 8 <sup>s</sup>	23	21	29			
	13	24 <sup>h</sup> 16 <sup>m</sup> 23 <sup>s</sup>	26	20	11	8	13		20 <sup>h</sup> 53 <sup>m</sup> 9 <sup>s</sup>	24	11				
	19	0 <sup>h</sup> 8 <sup>m</sup> 7 <sup>s</sup>	27	25	11	8	19		26 <sup>h</sup> 51 <sup>m</sup> 10 <sup>s</sup>	23	27	11			
	25	5 <sup>h</sup> 57 <sup>m</sup> 23 <sup>s</sup>	29	28	26		25		2 <sup>h</sup> 59 <sup>m</sup> 10 <sup>s</sup>	23	29	10	24		
May	1	11 <sup>h</sup> 46 <sup>m</sup> 23 <sup>s</sup>	29	♃	24	11		November	1	9 <sup>h</sup> 11 <sup>m</sup> 23 <sup>s</sup>	Ω	24			
	7	17 <sup>h</sup> 34 <sup>m</sup> 23 <sup>s</sup>	29	9	26	5	7		15 <sup>h</sup> 52 <sup>m</sup> 11 <sup>s</sup>	23	8	16			
	13	23 <sup>h</sup> 22 <sup>m</sup> 24 <sup>s</sup>	♃	13	7	4	13		21 <sup>h</sup> 55 <sup>m</sup> 12 <sup>s</sup>	24	7	7	25		
	19	29 <sup>h</sup> 9 <sup>m</sup> 24 <sup>s</sup>	1	18	14	1	19		27 <sup>h</sup> 58 <sup>m</sup> 12 <sup>s</sup>	25	8	12	2		
	25	4 <sup>h</sup> 53 <sup>m</sup> 24 <sup>s</sup>	2	23	20	8	25		4 <sup>h</sup> 3 <sup>m</sup> 12 <sup>s</sup>	25	9	20	4		
June	1	11 <sup>h</sup> 33 <sup>m</sup> 24 <sup>s</sup>	28	27	26		December	1	10 <sup>h</sup> 8 <sup>m</sup> 13 <sup>s</sup>	26	10	27	23		
	7	17 <sup>h</sup> 20 <sup>m</sup> 25 <sup>s</sup>	28	♃	27			7	16 <sup>h</sup> 14 <sup>m</sup> 13 <sup>s</sup>	27	11	11	22		
	13	23 <sup>h</sup> 4 <sup>m</sup> 25 <sup>s</sup>	3	7	8	11		13	22 <sup>h</sup> 20 <sup>m</sup> 13 <sup>s</sup>	28	11	12	11		
	19	28 <sup>h</sup> 47 <sup>m</sup> 26 <sup>s</sup>	3	11	13	7		19	28 <sup>h</sup> 27 <sup>m</sup> 13 <sup>s</sup>	29	11	19			
	25	4 <sup>h</sup> 31 <sup>m</sup> 26 <sup>s</sup>	3	15	18	15		25	4 <sup>h</sup> 34 <sup>m</sup> 13 <sup>s</sup>	29	9	26			

ECLIPSES in the Year 1772.

**T**HERE will be six Eclipses this Year, four of the Sun, and two of the Moon, in the following Order. The first will be of the Sun, April the Third, about one o'Clock in the Morning, Invisible. The Second will be of the Moon, April 17th, about forty Minutes after 11 o'Clock, in the forenoon, Invisible. The Third will be of the Sun, May the 2d, about 24 minutes after Five in the afternoon, Invisible, by reason of the Moon's South Latitude. The Fourth will be of the Sun, Sept. 26th, about 8 o'Clock in the Evening, Invisible. The Fifth will be of the Moon, October the 11th, about 10 minutes after one o'Clock, at noon, Invisible. The Sixth will be of the Sun, October 26th, about 20 minutes after Five o'Clock, in the morning, Invisible.

The Planet Venus (♀) will be Evening-Star to the 12th Day of August, and Morning Star to the End of the Year.

VULGAR NOTES for the Year, 1772.

Dominical Letter - E D \* Fall Moon before Easter, April 17.  
 Golden Number - - 6 \*  
 Epact - - - - - 25 \* Easter Sunday April 19.  
 Cycle of the Sun - 17 \* Rogation Sunday, May 24.  
 Roman Indiction - - 5 \* Ascension Day May - 28.  
 Sundays after Epiphany 5 \* Sundays after Trinity - 23.  
 Septuagesim. Sunday Feb. 16 \* Advent Sunday, Nov. 29.  
 Ash-Wednesday, March 4 \* Whitsunday, June - 7.

Time of the SUN's entrance into the Twelve Signs, for the Year 1772.

	h. m.		h. m.
♈ January 19th,	16 53	♋ July 21st,	17 24
♉ February 18th,	7 45	♌ August 21st,	23 17
♊ March 19th,	8 16	♍ September 21st,	20 3
♋ April 18th,	21 7	♎ October 22d,	3 51
♌ May 19th,	21 50	♏ November 20th,	23 59
♍ June 20th,	6 35	♐ December 20th,	12 16



28.

29.

S 28. Ho  
m. 29. ja  
T. 30. fl  
w 31. m

Feb. Continued

28. windy still WNW & cold freezing weather —  
29. soft weather cloudy & rainy S.S.W.

---

March Continued

28. heavy weather — n. fine night  
m. 29. fine moderate weather wind E.N.E.  
light frost last night —  
2. 30. fair weather cool E. wind —  
w 31. moderate weather wind n.

10.  
9.  
8.  
7.  
6.  
5.  
4.  
3.  
2.  
1.

- Jan. 1. very fine day & evening  
 Th: 2. snow very thick. Calm  
 Th: 3. moderate good weather for the season  
 S. 4. snow very thick at 10 rain, showery all day. thaw. E & S.E.  
 S. 5. thick weather fleet n. (snow well settled)  
 M. 6. moderate frost n. n. w. (Ev: w.)  
 at 10 squally with small snow at times  
 T. 7. cold but fair  
 W 8. ditto  
 Th: 9. ditto fine day  
 T. 10. ditto Ev: cloudy, in the night  
 S. 11. snow drifts much - squally n. fine Ev:  
 S. 12. fair E. Ev: cloudy  
 M 13. snow n. E.  
 T 14. fine morn: afternoon: squally S. W } frosty  
 W 15. fair fine day S. W } night  
 Th: 16. cloudy at times. - S. W - at night, fleet  
 T. 17. blows hard n. n. w fine Ev:  
 S 18. cold but fair Ev: small snow  
 S. 19. squally & fleet at times  
 M 20. snow storm at N. E.  
 T. 21. very cold & stormy at n.  
 W 22. clear fine weather but cold n. w  
 Th: 23. fine mild day calm -  
 Th: 24. fine weather continues cloudy Ev:  
 S. 25. about no snow, but snow over  
 S. 26. fine weather n. cold  
 M. 27. windy & cold but fair  
 T. 28. ditto - ditto  
 W. 29. ditto . . . fine for the season  
 Th: 30. - ditto, cloudy Ev:  
 T. 31. rain & hail

I  
 N  
 F  
 M  
 D  
 10  
 11  
 12  
 13  
 14  
 15  
 16  
 17  
 18  
 19  
 20  
 21  
 22  
 23  
 24  
 25  
 26  
 27  
 28  
 29  
 30  
 31

I. January hath XXXI Days, 1772.

Now all amidst the Rigours of the Year,  
 In the wild Depth of Winter, while without  
 The ceaseless Winds blow Ice, be my retreat  
 A rural sheltered solitary Scene;  
 Where ruddy Fire, and beaming Tapers join,  
 To cheer the Gloom.

New D 4th 7h. 10m. aft. } Full ● 20th, 6h. 37m. Mo.  
 F. Q. 12th, 10h. 27m. aft. } Last Q. 26th 10h. 10m. Af.

M	W	D	Remarkable Days, Aspects, Aspects, Weather, &c.	r. ☉ s.			D's place.	r. ● s.			F. sea.	
				H	M	H		H.	M.	H.	M.	
		14	CIRCUM. Very cold,	7	40	5	thighs	3	56	4	28	
		25	with snow or rain.	7	59	5	14	4	57	5	13	
		36	clo f. 5m. 2f. 7*s f. 8h. 30.	7	39	5	28	5	53	6	0	
		47	Ss. h ♀	7	38	5	knees.	6	50	6	50	
		5E	Sunday past Circumcision.	7	38	5	23	5	46	7	35	
		62	Epiphan. clo. f. 6m. 2zf.	7	37	5	legs.	6	48	9	20	
		73	High Winds with	7	37	5	18	7	45	10	5	
		84	rain and hail.	7	36	5	feet.	8	42	10	50	
		95	Moderate Weather.	7	35	5	12	9	38	11	35	
		106	clo. f. 8m. 6 f. ● Apog.	7	34	5	24	10	33	0	20	
		117	h sou. 2 h.	7	33	5	head.	11	33	1	5	
		12E	1st. sund. p. Epi. Ω ♀ ♀	7	32	5	17	morn.	1	50		
		132	Great quantity	7	31	5	29	0	30	2	35	
		143	of snow about	7	30	5	neck.	1	27	3	20	
		154	these days.	7	29	5	24	2	26	4	5	
		165	Twilight ends 6h. 10m.	7	28	5	arms.	3	24	4	50	
		176	More snow or rain.	7	27	5	20	4	20	5	37	
		187	7*s f. 7h. 30m. ♂ ♀ ♀	7	26	5	breast.	5	16	6	22	
		19E	2d. past Epiphany.	7	25	5	18	6	4	7	8	
		202	clo. f. 11m. 4zf.	7	24	5	heart.	rises.	7	55		
		213	Pretty full tides.	7	23	5	18	6	42	8	38	
		224	♂ ☉ ♀	7	22	5	belly.	7	58	9	23	
		235	● Perigee.	7	21	5	18	9	0	10	8	
		246	More moderate with rain.	7	20	5	reins.	10	16	10	53	
		257	Conver. St. PAUL.	7	19	5	17	11	26	11	38	
		26E	3d. sund. past Ep. 8 h ♀	7	18	5	secrets	morn.	0	23		
		272	Cold freezing weather,	7	17	5	15	0	34	1	10	
		283	♂ ☉ ♀ which continues	7	16	5	27	1	42	1	55	
		294	clo. fast 13m. 46f. to the	7	15	5	thighs	2	40	2	38	
		305	K. CHAR. 1st beheaded	7	14	5	23	3	41	3	23	
		316	1648.) end of this month.	7	13	5	knees.	4	26	4	8	

season very all  
 all felt  
 at times  
 night  
 fine  
 frosty  
 night  
 night  
 n.w  
 E:  
 ver  
 season  
 E:

February hath **XXIX** Days, 1772.

—Dread Winter spreads his lateit Gloom,  
 And reigns tremendous o'er the conquer'd Year.  
 How dead the vegetable Kingdom lies!  
 How dumb the tuneful! Horror wide extends  
 His melancholy Empire. Here fond Man!  
 Behold thy pictur'd Life; pass some few Years.  
 Thy flowering Spring, thy Summer's ardent Strength,  
 Thy sober Autumn fading into Age,  
 And pale concluding Winter comes at last,  
 And shuts the Scene.

N. D 3d, at oh. 45m. Mo. } } Ful. ● 18th. 5h. Aft.  
 P. Q. 11th, 5h. 40m. Afte. } } L. Q. 25th. 9h. 10m. Mo.

M	W	Remarkable Days, Aspects and Weather &c.	r. ○ s.	D's	r. ● s.	F. sea.
D	D		H	place.	H	M. H. M.
17		clo. f. 14m. 13h.	7	12	5	12 4 53
28	E	Pu. V. MARY. 4th p. Epi.	7	11	5	legs. 5 53 5 40
32		6 D 4 Thick weather with	7	10	5	14 ferts. 6 20
43		fogg some small rains	7	9	5	26 6 20 7 5
54		about these Days.	7	8	5	feet. 7 20 7 50
65		7's fo. 6h. 15m.	7	6	5	20 8 18 8 40
76		● Apog. Clears off very cold	7	5	5	head. 9 16 9 25
87		more snow.	7	3	5	14 10 13 10 10
98	E	5th past Epiphany.	7	1	5	26 11 10 10 55
102		clo. f. 14m. 49f.	6	59	6	neck. morn. 11 40
113		A warm room and a good	6	57	6	21 0 8 1 25
124		fire an excellent accommo-	6	55	6	arms. 1 5 2 10
135		tion about these days.	6	53	6	16 2 4 2 55
146		Valentine B. More snow or	6	57	6	29 2 56 3 40
157		rain then clears off something	6	49	6	breast. 3 47 4 25
168	E	Sept. 6 ☉ more moderate.	6	48	6	27 4 36 5 10
172		If the winds should be S. E.	5	47	6	heart. 5 16 5 55
183		we may expect pretty full	6	46	6	28 rise. 6 40
194		tides for several days together.	6	45	6	belly. 6 42 7 30
205		clo. f. 14m. 15f.	6	44	6	27 7 57 8 18
216		● Perigee.	6	44	6	reins. 9 9 9 3
227		Cloudy, windy and squally	6	41	6	27 10 20 9 51
238	E	Sexagesima. weather.	6	39	6	secrets 11 30 10 35
242		St. Matthias.	6	38	6	26 morn. 11 20
253		More calm and moderate	6	36	6	thighs 0 35 0 5
264		7's s. 12h. 30m. with rain.	6	34	6	21 1 34 1 0
275		Cold freezing weather is most	6	33	6	knees. 2 26 1 50
286		clock fast 13m. likely.	6	32	6	17 3 11 2 35
297		6 4 8	6	31	6	28 3 55 3 20

Feb 1.  
 S. 2  
 m. 3  
 J. 4  
 w. 5  
 Th. 6  
 J. 7.  
 S. 8.  
 J. 9.  
 m 10.  
 J. 11.  
 w. 12  
 Th. 13  
 J. 14  
 S. 15.  
 J. 16.  
 m. 17.  
 J. 18.  
 w 19.  
 Th. 20  
 J. 21  
 S. 22  
 J. 23.  
 m 24  
 J. 25  
 w 26  
 Th. 27



Feb! 1. fair but windy W. cloudy E: frost  
 S. 2. fine weather wind N  
 M. 3. very fine day & warm for the season. N  
 T. 4. Early this morn: hard rain continued  
 till 9 S.E. blow hard. then at 10  
 fair sunshine very warm  
 W. 5. this morn: blow hard S. Squally with snow  
 at 8 S.W. then W. continues squally &  
 snow at times — at night windy N. W  
 Th: 6. continues to blow hard & cold N.W.  
 but clear sunshine  
 F. 7. snowy air & squally at S.W.  
 S. 8. fine day & moderate N. at night snow  
 S. 9. thick weather wind S. there fall last  
 night pinches snow — at 11 rain S. W  
 & blow hard, in the Ev: a storm till 10,  
 in the night N. blow hard & froze —  
 M. 10. very cold N. but fine day  
 T. 11. cloudy weather blow hard all day S.  
 Ev: Snow S.E. in the night blow  
 hard at W. then N.W with squalls of  
 snow  
 W. 12. Blows a storm at N. or N.W. very cold  
 Th: 13. very cold & mist. W. at 10 blows fresh  
 F. 14. ~~cloudy~~ misty morn:  
 at 10 snow 2 to N.E. all day  
 S. 15. moderate weather N. Ev: rain  
 T. 16. rain very hard last night, & frost  
 mild heavy day. Ev: rain in the  
 night stormy at S.W.  
 M. 17. blows hard at W. & squally with snow  
 cold. at times  
 T. 18. dull morn: but moderate fine day  
 W. 19. fine morn: Moderate, moist weather  
 Th: 20. moist heavy weather & very warm  
 F. 21. rainy morn: at noon blow hard from  
 Ev: clear & fine  
 S. 22. then continues cloudy & rainy  
 S. 23. cold & windy  
 M. 24. fine weather N.  
 T. 25. cloudy & thaw Ev: Snow then rain  
 & in the night a storm S.E. & rain  
 W. 26. thaw S.W. ground bare in many  
 places in the night snow then W.  
 Th: 27. cold & frost W. wind (to 1<sup>st</sup> leaf)

Or.  
 Aft.  
 Jan.  
 M.  
 4 10  
 4 55  
 5 40  
 6 25  
 7 15  
 8  
 8 5  
 9 4  
 0 1  
 1  
 0 1  
 1  
 1 5  
 2 4  
 3 7  
 3 5  
 4 4  
 5 3  
 6 1  
 7 10  
 8 5  
 8 55  
 9 4  
 10 2  
 11  
 11 5  
 0 35  
 1 20  
 2 0  
 2 30  
 3 3

1. cold freezing weather W. cloudy evening
- 2 m. fine weather for the season W.
- 3 T. Ditto — white frost — in the night  
blow hard N.E.
- 4 W. blows hard N. E. of snow
- 5 Th: cloudy N. E. Ev: stormy in the night  
snow then wind S. S. W blow hard
- 6 T. continues to blow hard at S. S. W & thaw  
Ev: frost & blow hard at all night.
- 7 S. cold W. wind blows & squally with  
snowy clouds — frost at night
- 8 S. blows hard at S. W. squally at times  
with snow — fine evening frost
- 9 m. sharp cold W. W. at 10 P.M. at 3  
thick snowy air snow Ev:
- 10 T. cold N. W. ground covered again
- 11 W. snowy air W. — Ev: hail & rain &  
blow hard — stormy S. S. W
- 12 Th: storm continues S. S. W. hail at  
times — squally — frost at night
- 13 fr: fair — heavy in the forenoon — Ev: snow  
& blow hard all night S.
- 14 S. blow hard all day W. to N. W. cold
- 15 S. clear weather but blow hard N. W. cold
- 16 m. a great mist this morning. fine <sup>morning</sup> day  
good sledding — a snow run cold  
S. W. — Ev: cloudy
- 17 T. fine morning S. W. tolerable day  
wind fr. to N. in evening cold
- 18 W. cold N. N. W but fair.
19. fine moderate weather N. W. <sup>W. B. S. S. W.</sup>  
<sub>can't</sub>
- 20 fine & warm till noon then cloudy  
wind E. Ev: snow
21. thawing rainy & flat N. E. Ev: fine
- 22 Ditto. Snow & thaw —
23. Snow thick weather but not cold (1/2 sun)
- 24 mild weather — thaw
- 25 S. E. Snow thick weather — fair after.
26. moderate. Ev: rain ~~in the night~~
27. this morn: a snow storm N. E  
bad travelling (turn back)

N. D  
 F. Q  
 M. W  
 D. D  
 17  
 2 E  
 3 2  
 4 3  
 5 4  
 6 5  
 7 6  
 8 7  
 9 E  
 10 2  
 11 3  
 12 4  
 13 5  
 14 6  
 15 7  
 16 E  
 17 2  
 18 3  
 19 4  
 20 5  
 21 6  
 22 7  
 23 E  
 24 2  
 25 3  
 26 4  
 27 5  
 28 6  
 29 7

# III. March hath XXXI Days, 1772.

— Borrow part of Winter for thy corn;  
 And early with thy Team the Glebe in Furrows turn;  
 That while the Turf lies open, and unbound,  
 Succeeding Suns may take the mellow Ground:  
 But if the Soil be barren, only fear  
 The Surface, and but lightly print the Share.

New D<sup>4</sup>th, 6h. 56m. Mor. } F. ● 19th, 2h. 45m. Mor.  
 F. Q. 12th, 9h. 35m. Mor. } L. Q. 25th, 10h. 16m. Afr.

M.	W.	Remarkable Days, Aspects, Weather, &c.	r. ☉ s.	D's	r. ● s.	F. sea.
D.	D.		H M H	place.	H M H	H. M.
1	D	Quinq. St. DAVID.	6 30 6	legs.	4 42	4 10
2	2	rainy foggy & heavy	6 29 6	23	5 5	4 55
3	3	Sh. Tuesday. weather.	6 27 6	feet.	5 35	5 40
4	4	Ash Wednesday. pleasant.	6 25 6	17	fetts,	6 25
5	5	● Apogee. windy &	6 24 6	29	7 11	7 15
6	6	clo. f. 11m. 41f. cold about	6 22 6	head.	8 8	8 8
7	7	8 1/2 & this time.	6 20 6	23	9 8	8 5
8	D	18. in Lent. more pleasant	6 19 6	neck.	10 4	9 4
9	2	for several days, then plenty	6 17 6	17	11 0	10 1
10	3	of rain.	6 15 6	29	11 56	11
11	4	♀ sets 8h. 30m.	6 14 6	arms.	morn.	0 1
12	5	7's set 11h. 25m. Δ 1/2 ♀	6 13 6	25	0 52	1
13	6	some cold & raw weather	6 11 6	breast.	1 40	1 5
14	7	about these days,	6 9 6	21	2 30	2 4
15	D	2d in L. pleasant showers	6 8 6	heart.	3 14	3 1
16	2	clo. f. 8m. 58f. moderate	6 7 6	21	3 58	3 5
17	3	St. PATRICK. weather.	6 5 6	belly.	4 34	4 4
18	4	St. Act rep. 1766. ● Peri.	6 4 6	20	5 12	5 3
19	5	Full Tides.	6 2 6	reins.	rife,	6 1
20	6	Snow or rain with	6 0 6	20	8 2	7 10
21	7	hail.	5 58 7	secrets	9 14	8 5
22	D	3d in Lent. fs. 1/4 ♀	5 57 7	21	10 22	8 55
23	2	More pleasant	5 56 7	thighs	11 28	9 4
24	3	weather.	5 54 7	18	morn.	10 20
25	4	Lady Day.	5 53 7	knees.	0 28	11 0
26	5	clock fast 5m. 54f.	5 52 7	14	1 20	11 50
27	6	fs. ☉ ♂ 7's set 10h 30m.	5 50 7	26	2 4	0 35
28	7	Light Snow and warm.	5 48 7	legs.	2 42	1 20
29	D	4th in Lent. Freezing	5 46 7	20	3 20	2 0
30	2	7's set 10h. nights.	5 45 7	feet.	3 45	2 30
31	3	cl. fast 4m. 20f. fs. ♂ ♀	5 43 7	14	4 18	3 3

ning  
 w. 8  
 night  
 hand 28  
 night  
 hand  
 & show  
 night  
 ally with  
 night  
 times  
 lost  
 at 3  
 u:  
 in  
 rain &  
 S. S. W  
 hail at  
 night  
 w: snow  
 to S.  
 cold  
 W. W. C. D.  
 Monday  
 a day  
 raw cold  
 day  
 y cold  
 W. B. C. D.  
 camel  
 ydy  
 snow  
 in  
 in of  
 night

IV. April hath XXX Days, 1772.

The penetrative Sun  
 His Force deep-darting to the dark Retreat.  
 Of Vegetation, sets the steaming Power  
 At large, to wander o'er the verdant Earth.  
 From the moist Meadow to the wither'd Hill  
 Led by the Breeze, the vivid Verdure runs  
 And swells, and deepens, to the cherish'd Eye.

New D 3d, at 1h. Morn. } } F. ● 17th, at 8h. 55m. Mo.  
 F. Q. 10th, at 8h. 45m. Af. } } L. Q. 24th, 1h. 8m. Aft.

M	W	Remarkable Days, Aspects, Weather, &c.	r. ☉ s.			D's place.	r. ☉ s.		F sea.	
			H	M	H		H	M.	H.	M.
1	4	● Apogee. April showers.	5	42	7	feet 26	4	50	4	25
2	5	No very high Tides	5	40	7	head	5	18	5	16
3	6	this change,	5	38	7	20		setts	6	10
4	7	St. Ambrose. Raw winds	5	37	7	neck	8	2	7	5
5	D	5th in Leut. & unpleasant	5	36	7	14	9	0	7	55
6	2	clock fast 2m. 30f. weather	5	34	7	26	10	0	8	40
7	3	Snow or	5	32	7	arms	10	54	9	28
8	4	rain.	5	31	7	21	11	51	10	16
9	5	Cold and unpleasant	5	29	7	breast	morn		11	5
10	6	weather.	5	27	7	17	0	34	0	53
11	7	Cloudy and wet weather;	5	26	7	heart	1	20	1	41
12	D	PALM-SUNDAY,	5	25	7	15	2	0	2	10
13	2	Flying clouds;	5	23	7	29	2	43	3	5
14	3	clock fast 16f.	5	21	7	belly	3	18	3	53
15	4	cl. & Sun together; ● Per.	5	20	7	28	3	55	4	42
16	5	♀ sets 10h, 4m,	5	18	7	reins	4	26	5	15
17	6	GOOD FRIDAY; full tides.	5	17	7	28		rises	6	3
18	7	7°s sets 9h, 10m.	5	16	7	secrets	8	6	7	0
19	D	EASTER SUNDAY; warm	5	14	7	29	9	14	7	58
20	2	showers & pleasant	5	13	7	thighs	10	16	8	46
21	3	clo. slow 1m, 24f. weather.	5	11	7	26	11	12	9	34
22	4	□ ♃ ♄	5	9	7	knees	morn		10	22
23	5	St. GEORGE;	5	8	7	22	0	4	11	10
24	6	fair and clear.	5	7	7	legs	0	45	0	0
25	7	St. MARK, Evang.	5	5	7	17	1	20	0	50
26	D	1st Sunday past Easter,	5	4	7	29	1	54	1	38
27	2	Victory of Culloden, 1746,	5	2	7	feet	2	27	2	26
28	3	Some rain, but warm	5	1	7	23	2	56	3	14
29	4	● Apogee; weather,	5	0	7	head	3	25	4	12
30	5	clock slow 3m.	4	59	8	15	3	54	5	5

W1. v. v.  
 22. 7  
 3. 2  
 4. 9  
 5. 7  
 6. 7  
 7. 9  
 8. 10  
 9. 11  
 10. 12  
 11. 13  
 12. 14  
 w. 15  
 16  
 17  
 18  
 19  
 20  
 21  
 22  
 23  
 24  
 25  
 26  
 27  
 28  
 29  
 30

W1. very fine day wind n. ground dried  
 W2. ditto —  
 3. lowry weather & cold n. & wind  
 left home a little before 8  
 arrived at Sams at 12.  
 & at progers 1/2 after 5.  
 blows hard.  
 a brig from England arrived the 1<sup>st</sup>  
 she left the Downs the 2<sup>nd</sup> March  
 4 I arrived at M. B. plans at 1/2 after 10  
 fine weather but cool  
 W5. fine weather cool n. n. E  
 W6. ditto  
 W7. ditto  
 Th: 8. ditto till noon then cloudy S.E.  
 at night rain  
 W9. rainy & easterly wind. W: n. E.  
 S. 10. fair blows fresh n. W: fine E.  
 S. 11. fine morn: afternoon: lowry. S.E.  
 W. rain  
 M 12. rainy S.E. foggy —  
 W. 13. rain continues till noon then cleared  
 up fine afternoon S. S. W  
 W. 14. cloudy. (letter from Boston). "Dartmouth"  
 Th: 15. cool. S. wind cloudy  
 S. 16. cloudy (swan floop). at 3 rain  
 S. 17. showery at times n. w.  
 S. 18. fine morn: n. fine day cool  
 M 19. cloudy morn: at noon fleet & snow  
 afternoon: hail & rain blows hard S. E  
 W 20. wind n. w. showery blows hard  
 W. 21. fair morn: & all day n.  
 Th: 22. S. lowry warm morn: rainy windy  
 sunny —  
 W 23. cloudy till 10 then clear. S. W.  
 S. 24. fair S. W  
 S. 25. ditto  
 M 26. ditto  
 W 27. ditto 28. cloudy & showery fine E:  
 left Halifax at 11  
 W. 29. fine weather arrived home at 1/2 past 10  
 Th 30. fine weather

n.  
 sea.  
 M  
 58  
 48  
 36  
 25  
 10  
 0  
 50  
 38  
 26  
 15  
 5  
 55  
 43  
 34  
 24  
 12  
 5  
 0  
 50  
 38  
 26  
 14  
 5  
 55  
 43  
 32  
 20  
 5  
 53  
 41  
 29

- J. 1. fine morning - afternoon weather all day  
 J. 2. fine weather - but winds -  
 J. 3. cool weather - variable winds  
 M. 4. fine weather - but cool wind N.  
 J. 5. very cold w. wind blows hard E. cloudy  
 W. 6. rain <sup>to 5 P.M.</sup> - E. fair  
 Th. 7. White frost & ice as thick as a dollar  
 but fine morning & day cool - wind S. E.  
 J. 8. frosty cool morning windy E. but fair  
 E. cool & cloudy -  
 J. 9. last night a very heavy storm at S. E.  
 with great rain blown down roofs & small  
 old buildings - at noon fair but blows  
 hard at S. S. W. & S. -  
 J. 10. rain this morn: at noon fair S. E. cloudy  
 M. 11. blows hard N. W. cool -  
 J. 12. snow very cold stormy N. N. E.  
 W. 13. cool cloudy weather N. E.  
 Th. 14. clear but cool, N. fine afternoon  
 J. 15. fine weather calm wind S. to E.  
 S. 16. cloudy morn: variable wind N. W. & S. W.  
 S. 17. fine warm morn: at 11. wind N. W. & S. W.  
 but fine weather  
 M. 18. fine weather very warm wind N. in morn  
 S. in afternoon  
 J. 19. cloudy N. E. aftern: S. E. but fair  
 W. 20. cloudy S. & cool - at 5 aftern rain  
 Th. 21. N. W. fair but cool & windy E. cool  
 J. 22. very fine pleasant morn: warm day  
 S. 23. fair but windy at 7 - E. thunder  
 lightning & rain  
 J. 24. foggy drily weather N. E. (aftern: fair N.  
 M. 25. foggy morn: at 10 cleared up - wind E.  
 J. 26. cool weather E. W. 27. with  
 Th. 28. fine morn: but cool afternoon  
 cool E. in morning then variable wind  
 J. 29. but fine day -  
 S. 30. lowry morn: S. E. changeable weather  
 flying clouds  
 J. 31. fine till 10 then windy N. W. lowry  
 afternoon warm windy W.

At once array'd  
 In all the Colours of the flushing Year  
 By Nature's switt, and secret working Hand,  
 The Garden glows, and fills the lib'ral Air  
 With lavin' Fragrance; while the promis'd Fruit  
 Lies yet a little Embri'd, unperceiv'd  
 Within its crimson Folds.

New D 2d, 5h. 20m. Aft. } F. ● 16th, 6h. 35m.  
 First Q. 10th, 4h 42m. M. } Lait Q. 24th, 5h. 10m. Worn.

MW	Remarkable Days, Aspects, r.	○ s.	D s.	F. sea.
DD	Weather &c.	H M H	place.	H M
16	St. PHIL. & JA. * h ♀	4 57 8	h. 29	4 20 3 58
27	pleasant showers ☽	4 56 8	neck	setts 6 48
3D	2d past Easter, warm wea-	4 55 8	23	8 0 7 36
42	St. JOHN Evang. ther.	4 54 8	arms	8 50 8 25
53	weather continues pleasant.	4 52 8	18	9 50 9 10
64	clock slow 3m, 42f.	4 51 8	breast	10 40 10 0
75	more rain with thunder	4 50 8	15	11 3r 10 50
86	and lightning	4 48 8	28	morn 11 38
97	St. ASPINQUID now plea-	4 47 8	heart	0 6 0 26
10D	3d past Easter. sant.	4 46 8	25	0 45 1 15
112	more rain with hail thunder	4 45 8	belly	1 21 2 5
123	and lightning. □ ○ ♀	4 44 8	23	1 56 3 55
134	clo. fl. 4m, 5f. ● Peri.	4 42 8	reins	2 33 4 43
145	pleasant growing	4 41 8	23	3 0 5 34
156	weather.	4 40 8	secrets	3 42 6 24
167	Q. CHARLOTTE bo. 1744	4 39 8	22	rises 7 12
17D	4th past Easter.	4 38 8	thighs	8 4 8 5
182	pleasant showers	5 37 8	21	9 2 9 0
193	of rain.	4 36 8	knees	10 0 9 50
204	clock fl. 3m, 58f. ♂ ○ ♀	4 35 8	18	10 40 10 38
215	He that will not work now,	4 34 8	legs	11 20 11 26
226	must not expect to eat next	4 33 8	14	11 55 0 14
237	winter.	4 32 8	25	morn 1 5
24D	Rog. Sund. Pr. Fred. W.	4 31 8	feet	0 28 1 55
252	born 1750.)	4 30 8	19	0 58 2 43
263	clock fl. 3m, 30f. ● Apo.	4 29 8	head	1 25 3 32
274	fine weather, Δ ♂ h	4 28 8	13	1 55 4 20
285	Ascension day,	4 27 8	25	2 20 5 5
296	K. Ch. 2d restoration.	4 27 8	neck	2 50 5 53
307	more rain, * ♀ ♀	4 26 8	19	3 24 6 41
31D	Sund. past Ascen.	4 25 8	arms	4 7 7 29



I. June hath XXX Days, 1772.

All swell the Woods, there every music wakes,  
 Mixt in wild Concert, with the warbling Brooks  
 Increas'd, the distant Bleatings of the Hills,  
 The hollow Lows responsive from the Vale.  
 Can Man forbear to join the general Smile,  
 Of Nature? can fierce Passions vex his Breast,  
 While every Gale is Peace, and every Grove is melody.

New D 1st, 7h. 16m. Mo. } Lait Q. 22d, 10h 20m Aft  
 First Q. 8th, 10h. 16m. Mo. } New D 30th, 5h 58m Aft  
 Full ● 15d; 5h. 18m. Att: }

M. W	Remarkable Days, Aspects and Weather, &c.	r. ● s.	D's	r. ● s.	F. sea.
D D.		H M H	place.	H M H.	M.
1 2	clock flow 2m, 47l.	4 24 8	ar. 14	setts	8 15
2 3	rain with thunder and	4 24 8	28	8 30	9 3
3 4	lightning	4 23 8	breast	9 20	9 52
4 5	K. GEORGE 3d, bo. 1738;	4 23 8	24	10 21	10 40
5 6	7*s rise 3h.	4 22 8	heart	10 45	11 8
6 7	clock fl. 1m, 59f. * 2 3	4 21 8	22	11 10	11 56
7 D	WHITSUNDAY;	4 21 8	belly	11 52	0 44
8 2	more rain;	4 20 8	20	morn	1 32
9 3	● Perigee;	4 20 9	reins	0 30	2 20
10 4	P. AMELIA born 1711;	4 20 8	18	1 2	3 8
11 5	hot weather for several	4 19 8	secrets	1 38	4 0
12 6	♀ sets 10h, 27m. ♀ 26 △	4 19 8	17	2 19	4 50
13 7	days together;	4 19 8	thighs	3 5	5 38
14 D	Trinity Sunday;	4 19 8	15	3 55	6 26
15 2		4 18 8	29	rises	7 14
16 3	clo. flow 13f. * ○ h	4 18 8	knees	8 25	8 10
17 4	clo. and Sun together.	4 18 8	25	9 5	9 0
18 5	fine growing	4 18 8	legs	9 49	9 50
19 6	weather about	4 18 8	21	10 23	10 38
20 7	this time	4 18 8	feet	10 54	11 26
21 D	1st past Trinity;	4 18 8	15	11 18	0 15
22 2	pleasant showers;	4 18 8	27	11 50	1 5
23 3	cl. f. 1m, 29f. ● Apogee.	4 18 8	head	morn	1 55
24 4	St. JOHN Baptist; △ ○ 2	4 18 8	22	0 18	2 43
25 5	warm and pleasant;	4 18 8	neck	0 48	3 32
26 6	♀ sets 9h, 50m,	4 18 8	15	1 17	4 20
27 7	7*s rise 1h, 30m,	4 18 8	27	2 0	5 10
28 D	2d past Trinity;	4 18 8	arms	2 40	6 0
29 2	St. Peter Apostle; * ♀ 3	4 19 8	23	3 24	6 55
30 3	clock fast 2m, 56f,	4 19 8	breast	setts	7 50

Jun  
 1. m  
 2. J  
 3 W  
 4 W  
 5 J  
 6 Sat  
 7 S.  
 8 m  
 9 7.  
 10 W  
 12 f  
 13 S  
 14 J  
 15 m  
 16 J  
 17 W  
 18 J  
 19 f  
 20 S  
 21 J  
 22 W  
 23 J  
 24 W  
 25 J  
 26 J  
 27 J  
 28 J  
 29 J  
 30



June

1. m. very fine morn: W. at 9 windy N.W. oftern:   
 max moderate
2. T. dry weather wind N.W. rises & lowers with   
 the tide, cool & black flying clouds
- 3 W. cool weather wind N. to N.E. Park land   
 m. P. Dranklin arrived from England
- 4 Th: fine weather warm N. - (Betsy D. born)
- 5 F. very warm N. to N.W.
- 6 Sat: warm dry weather continues
- 7 S. cloudy inclining to rain - (m. P. Dranklin sails)   
 fair afternoon 2.
- 8 m. at 9 left home fair but at 9 raining   
 & continued till evening
- 9 T. fair - arrived in town at 9
- 10 W. fair but cool, 11 Th: cloudy &   
 drisy E. cold
- 12 f. cloudy & foggy. - cool.
- 13 S. fine day & warmer
- 14 S. windy at S. but fair
- 15 m. fine warm morning -
- 16 T. cloudy & windy at S.
- 17 W. rainy all day S.E.
- 18 Th: rain continues
- 19 fr rainy morn: but fair afternoon
- 20 S. rainy & foggy all day
21. S. cloudy morn: - & cool S. wind.
- 22 m. very cold E. wind -
- 23 T. ditto - & rain E.
- 24 W. ditto - showery S. S.E.
- 25 Th: cool - S. cloudy. at 10 fair
26. F. at 10 rainy & cloudy S. rain all day
- 27 S. blows hard at S. cloudy fine afternoon
- 28 S. fine warm weather
- 29 m. ditto - W.
- 30 T. ditto - W.

	At
	Mor.
	F. Sea.
	H. M.
8	38
9	28
10	18
11	9
11	0
1	1
2	2
3	3
4	4
5	5
5	5
6	6
7	7
8	8
9	9
10	10
10	10
11	11
11	0
1	1
1	1
2	2
3	3
4	4
5	5
6	6
7	7
8	8

July

- 1 ~~very~~ warm  
2 ~~f. ditto~~  
3 ~~f. ditto~~  
4 S. cloudy & inclining to rain rainy till 2  
5 S. fair n. w.  
6 m. - ditto -  
7 ~~f. cloudy~~  
8 w. fair  
9 Th: fair  
10 J. - fair L. W. Campbell arrived  
11 J. fair -  
12 J. fair  
13 m. fair  
14 J. fair  
15 W. foggy  
16 Th: rainy morn: left Halifax. -  
rains hard at 8 & continued till 12  
17 J. fair afternoon arrived home at 8  
18 S. Ditto - n. w. Mr. T. also at noon  
19 J. Ditto - variable n. to S. w.  
20 m. foggy morn: Mr. T. went for Cumberland  
at 1 had showers - drizzly rainy after  
21 J. cool n. wind  
22 w. fair & warm w.  
23 Th: fair weather continued  
24 J. ditto -  
25 J. ditto  
26 J. - ditto - G. T. went to town  
27 m. very warm Dr. Thompson arrived  
at Halifax  
28 J. ditto  
29 w. ditto  
30 Th: ditto for these 4 or 5 days past  
exceptive hot, a great drought  
31 J. at noon began to rain hard &  
continued all the afternoon & all  
night

VII. July hath XXXI Days,

17

—All,  
From Pole to Pole is undistinguished Blaze.

—Hot ascending Streams,  
And keen Reflection pain.—The Mower sinking heaps  
O'er him the humid Hay, with Flowers perfum'd,  
And scarce a chirping Grass-hopper is heard  
Thro' the dumb Meid. Distressful nature pants.

First Q. 7th, 2h. 30m. Aft. } } Last Q. 22d, 2h. 45m, Aft.  
Full ☽ 14th, 4h. 8m, Aft. } } N. ● 30th, 4h. 16m, Mor.

M	W	Remakable Days, Aspects, D. D. Weather, &c.	r. ○ s.			D's place.	r. ○ s.			F. Sea. H. M. M.
			H	M	H		H	M	H.	
1	4	heat increases w <sup>it</sup> h thunder	4	19	8	br. 20	7	54	8	38
2	5	V. Vir. M. showers; * ♀	4	20	8	heart	8	35	9	28
3	6	thick foggy weather;	4	20	8	18	9	12	10	18
4	7	clock fast 3m, 42f.	4	21	8	belly	9	56	11	8
5	D	3d past Trinity; ● Perig.	4	21	8	16	10	4	11	8
6	2	7*s rise 1h. Δ ♀	4	22	8	reins	11	0	0	8
7	3	refreshing showers with	4	22	8	15	11	35	1	8
8	4	thunder & lightning;	4	23	8	29	morn	2	8	8
9	5	growing weather;	4	23	8	secrets	0	15	3	8
10	6	clock fast 4m, 40f	4	24	8	27	0	58	4	8
11	7	more rain but warm &	4	25	8	thighs	1	45	5	8
12	D	4th past Trinity; pleasant.	4	25	8	24	2	34	5	8
13	2	very hot;	4	26	8	knees	3	30	6	8
14	3		4	27	8	21	rises	7	8	8
15	4	♀ sets 8h, 53m. □ ♀	4	28	8	legs	7	39	8	8
16	5	clock fast 5m, 23f.	4	29	8	17	8	13	9	8
17	6	sultry hot and	4	29	8	29	8	48	10	8
18	7	dry;	4	30	8	feet	9	18	10	8
19	D	5th past Trinity; * ♂ ♀	4	31	8	23	9	50	11	8
20	2	● Apog. heavy showers	4	32	8	head	10	14	0	8
21	3	with thunder & lightning.	4	33	8	17	10	47	1	8
22	4	clock f. 5m, 50f. Ss. ○ ♀	4	34	8	29	11	15	1	8
23	5	a growing	4	35	8	neck	11	50	1	8
24	6	season;	4	36	8	22	mo: n	2	8	8
25	7	St. JAMES. Dog Days beg.	4	37	8	arms	0	28	3	8
26	D	6th past Trinity;	4	38	8	18	1	11	4	8
27	2		4	39	8	breast	2	2	5	8
28	3	clock fast 5m, 54f.	4	40	8	14	3	1	6	8
29	4	hot, sultry,	4	41	8	29	4	3	6	8
30	5	foggy, and thick	4	42	8	heart	sets	7	8	8
31	6	weather; ♂ ♀	4	43	8	27	7	46	8	8

2

ill 12  
8 - 1  
at noon

land  
y of

mind

ant  
thi

ll

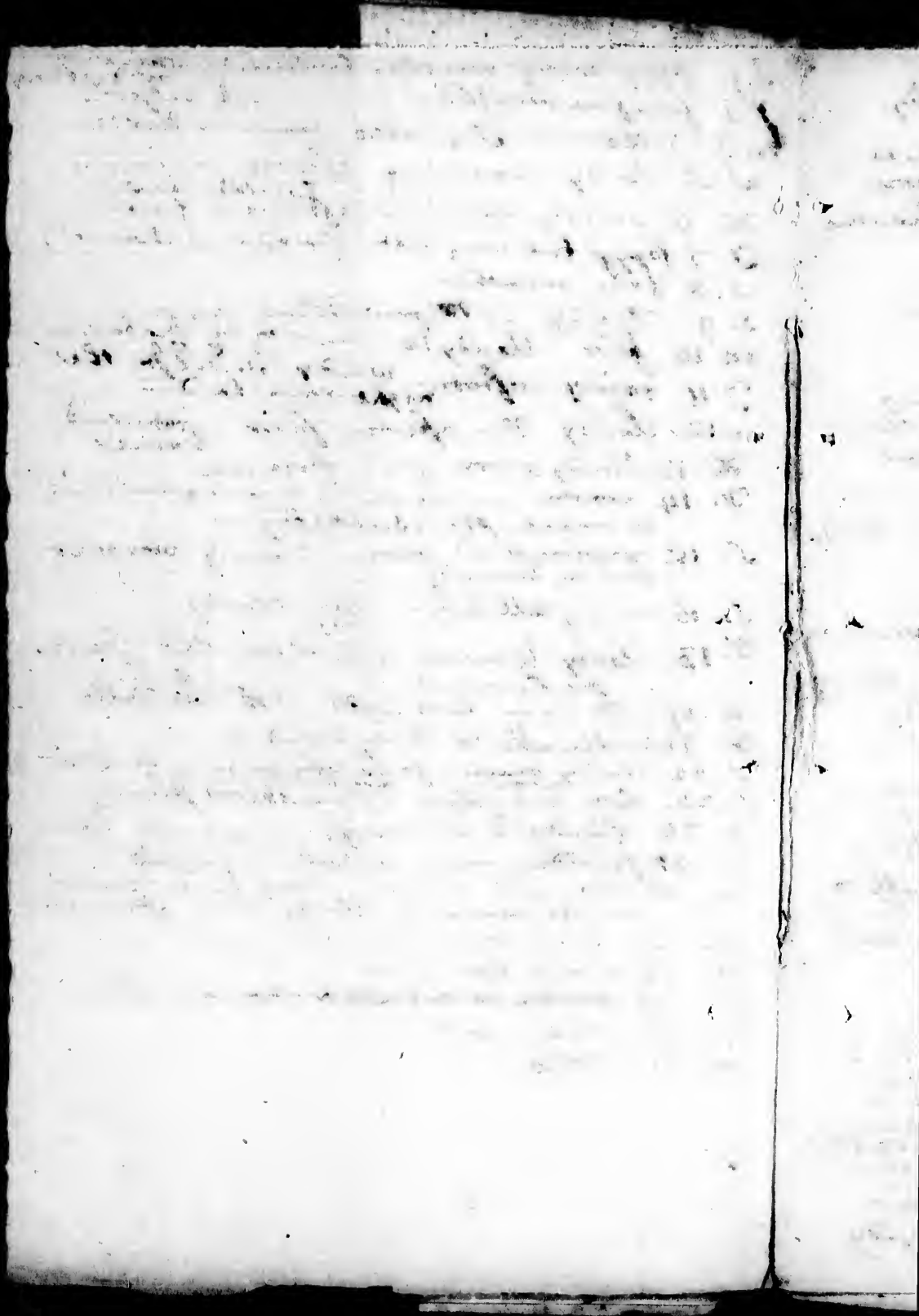
What'er the Wintry Frost  
Nitrous prepar'd ; the various blossom'd Spring,  
Put in white, promise forth ; the Summer Suns  
Concocted strong, rush boundless now to view,  
Full perfect all.

First Q. 5th, 7h. 40m. Aft. } } Last Q. 21st, 8h. 32m. Mo.  
Full D 13th, 4h. 25m. Mo. } } New ● 28th, 11h. 45m. M.

MW Remarkable Days, Aspects, r. ● s D's r. ● s F sea.  
D D Weather, &c, H M H place. H M H M

1	7	Lammas Day. }	4	44	8	belly	8	25	9	25
2	D	7th past Trinity, 8 ♀	4	45	8	27	9	0	10	13
3	2	● Perigee, 6 ♀	4	47	8	reins	9	38	11	5
4	3	cl. f. 5m, 33f. 7* <sup>s</sup> rise 11h.	4	48	8	26	10	16	11	51
5	4	growing weather the most	4	49	8	secrets	10	56	0	20
6	5	♀ rises 11h, 50m. of this	4	50	8	23	11	40	1	10
7	6	month.	4	52	8	thighs	morn		2	0
8	7		4	53	8	21	0	31	2	50
9	D	8th p. Trinity. cl. f. 5m,	4	54	8	knees	1	26	3	38
10	2	St. LAWRENCE,	4	56	8	17	2	20	4	26
11	3		4	57	8	legs	3	20	5	16
12	4	P. WALES born 1762,	4	58	8	13	4	18	6	8
13	5		5	0	7	25	rises		6	58
14	6	clock fast 4m, 13f.	5	1	7	feet	7	20	7	46
15	7		5	2	7	18	7	50	8	36
16	D	9th past Trinity.	5	4	7	head	8	16	9	24
17	2	● Apogee. * ♂ ♀	5	5	7	13	8	37	10	12
18	3	a dry hot season about this	5	7	7	25	9	17	11	5
19	4	time, 8 ○ ♀	5	8	7	neck	9	51	0	0
20	5	clock fast 2m, 59f.	5	9	7	19	10	28	0	55
21	6	heat some what	5	11	7	arms	11	10	1	48
22	7	abates,	5	12	7	13	11	58	2	36
23	D	10th past Trinity,	5	13	7	26	morn		3	24
24	2	St. Bartholomew, plentiful	5	15	7	breast	0	49	4	12
25	3	refreshing showers	5	17	7	23	1	48	5	5
26	4	clock fast 1m, 28f. the	5	18	7	heart	2	52	6	0
27	5	latter end of this month.	5	20	7	21	3	50	6	50
28	6	St. Augustine. 6 ○ ♀	5	21	7	belly	sets		7	40
29	7	St. John Bap. beheaded,	5	22	7	21	7	4	8	8
30	D	11th p. Tri. ● Per. fs. ♀	5	23	7	reins	7	48	8	56
		Sun and Clock together.	5	24	7	21	8	25	9	46

- S. 1. foggy drizzly weather continued <sup>came to</sup> ~~with the~~ <sup>Mr. De la Barr</sup>
- W. 2. fair fine weather ~~with the~~ <sup>Mr. De la Barr</sup>
- m. 3. ditto — Th. 4. ditto came to Boston
- W. 5. cloudy morning afternoon: rainy
- Th. 6. misty weather <sup>to: then</sup> afternoon fine
- F. 7. foggy but very hot (returned home)
- S. 8. fine weather
- S. 9. cloudy — <sup>then</sup> rain
- m. 10. fair, cloudy <sup>to: went to Mr. De la Barr</sup>
- Th. 11. rainy, afternoon: windy S. S. <sup>at the</sup> night rain hard
- W. 12. cloudy N. — afternoon: fair — returned home
- Th. 13. cloudy noon: fair afternoon
- F. 14. warm — went to Montgomery's to meet Mr. Bulkeley —
- S. 15. returned <sup>at 8 in evening</sup> warm cloudy weather
- S. 16. rainy all day & m. cloudy
- Th. 17. cloudy & moist weather bad season <sup>for harvest</sup>
- W. 19. ditto rain continued Th. 20. ditto
- F. 21. inclinable to clear wind N.
- S. 22. cloudy, noon: fair <sup>afternoon: went to</sup>
- S. 23. low weather & much rain plenty
- m. 24. cloudy & showery, — returned home
- F. 25. fine day, went to Col. Benson's
- W. 26. cloudy & rainy — very hard rain all the morning, cloudy drizzly afternoon
- Th. 27. rain continued till noon
- F. 28. clear up fair
- S. 29. ~~cloudy~~ fair
- S. 30. fine weather —
- m. 31. ditto —



*[Faint, illegible handwritten text, likely bleed-through from the reverse side of the page.]*

n. Aft.		. Aft.		F. sea.	
H.	M.	H.	M.	H.	M.
4	10	30			
0	11	24			
7	0	12			
8	1	2			
	1	58			
	2	46			
	3	34			
	4	22			
	5	10			
	6	5			
	7	4			
	8	3			
	9	2			
	10	1			
	11	0			
	11	0			
	0	1			
	2				
	3				
	3				
	4				
	5				
	6				
	7				
	7				
	8				
	9				
	9				

Sept.

- 1. very hot smoky air. Mr. Bulkeley went to town.
- 2. hot weather & smoky air continues
- Th. 3. cloudy & falling, went to Norway in Capt's boat, raining in showers
- F. 4. rainy & hot - Ev: fair
- S. 5. fair wind S.W. - returned home.
- S. 6. cool m. Mr. Bulkeley came from Halifax with his wife
- m. 7. fair & pleasant Ev: cloudy
- T. 8. cloudy at times, warm. Ev: rainy
- w. 9. cloudy till 9. then clear, at noon cloudy again at 3 rain & till midnight  
Dr. Wood arrived
- Th. 10. variable weather cloudy & clear at times
- F. 11. white frost then fair day - Ev: cloudy  
G. D. arrived
- S. 12. rain hard all day N.E.
- S. 13. cloudy & fleet continues N.E. rain & blow very hard in afternoon  
Ev: cleared up
- m. 14. fair fine weather S.W. Ev: cloudy in the night rain & windy
- T. 15. blow hard & squally at N.W.
- w. 16. fair but cool N.W.
- Th. 17. fair morning but cloudy at noon rainy after Ev:
- F. 18. fair but windy at N. Mr. Bulkeley went to town
- S. 19. fair - 20. fair - aftern: inclinable to m. 21. wind cloudy wind from S. to W then S.E.
- m. 21. cloudy in the night N.E. & rain hard
- 22. blow hard N. N.E. & cloudy -
- 23. cloudy weather S. S. E
- 24. Th: hard rain in showers S. S. E
- 25. Th. cloudy drizzly weather continues N. E.
- 26. S. fair cool N. ~~fine afternoon~~ fair afternoon
- 27. fine weather S. in morn: N. afternoon cloudy misty foggy  
very high tides at sun rise -
- 28. m. ditto - ditto -
- 29. T. fair fine warm weather - ditto -  
Ev: cloudy
- 30. w. rain (Mr. Fletcher married)



IX. September hath XXX Days, 1772.

— Let us tread the Maze  
 Of Autumn no nfin'd; and taste, reviv'd  
 The Breath of Orchard, big with bending Fruit,  
 Obedient to the Breeze, and beating Way,  
 From the deep-loaded Bough, a mellow Shower  
 Incessant melts away. The juicy Pear,  
 — The downy Peach, the shining Plum,

F. Q. 4th, a. 20. 40m. Mo. } } L. Q. 19th, 11h. 38m. Aft.  
 F. Q. 11th, 6h. 44m. Aft. } } New D. 26th, 8h. 5m. Aft.

M	W	Remarkable Days, Aspects, Weather, &c.	r. ☉ s.			D's place.	r. ☉ s. F sea.			
			H	M	H		H	M	H	M
1	3	clo. flow 18l.	5	20	7	secret.	9	4	10	36
2	4	pleasant weather about	5	28	7	19	9	50	11	24
3	5	DOG DAYS end; this time	5	30	7	chighs	10	37	0	12
4	6	7*s rise 9h.	5	31	7	18	11	28	1	2
5	7	clock flow 1m. 34f.	5	33	7	knees	morn	1	5	8
6	D	12th Sund. past Trin.	5	35	7	14	0	24	2	46
7	2	more rain, then	5	36	7	27	1	22	3	34
8	3	Nati. Virg. MARY.	5	38	7	legs	2	24	4	27
9	4	pleasant again.	5	39	7	22	3	20	5	1
10	5	clock flow 3m. 4f.	5	41	7	feet	4	20	6	5
11	6	High Winds with rain.	5	43	7	16	rises	6	5	5
12	7	☐ ♂ ♀	5	44	7	28	6	32	7	4
13	D	13th past Trin. ● Apogee.	5	45	7	head	7	4	8	3
14	2	Holy Cross.	5	47	7	22	7	34	9	2
15	3	Now pleasant and good	5	48	7	neck	8	6	10	1
16	4	weather for the en-	5	50	7	16	8	41	11	5
17	5	Lamb. B. gathering of	5	52	7	27	9	19	11	5
18	6	clo. flow 6m. 11. harvest.	5	53	7	arms	10	2	0	1
19	7	More rain, then clears off	5	55	7	23	10	50	1	1
20	D	14th p. Trin. pleasant,	5	56	7	breast	11	44	2	1
21	2	St. Math. ♂ ☉ ♀ followed	5	58	7	17	morn	2	1	1
22	3	K. Geo. 3d crown, 1761.	5	59	7	heart	0	44	3	1
23	4	Equal day & night. with	6	0	6	15	1	50	4	1
24	5	clo. flo. 8m. 45f. cool morn-	6	1	6	29	2	58	5	1
25	6	ings and evenings.	6	3	6	belly	3	58	6	1
26	7	St. Cyprian.	6	5	6	29	ictts	7	1	1
27	D	15th p. T. ● Per. 8 2 ♀	6	6	6	reins	6	24	7	1
28	2	Pretty full Tides, if wind	6	8	6	29	7	6	8	1
29	3	St. Michael. (S. E.	6	9	6	secrets	7	52	9	1
30	4	clo. flow 10m. 4f.	6	11	6	29	8	40	10	1

Handwritten notes in the left margin, including words like "cloudy", "times", "rain", "morn", "E.", "S.", "day", "night", "morn", "day", "night", "morn", "day", "night".

October hath XXXI Days, 1772.

Some Cyders have, by art or Age, unlearn'd  
 Their genuine Relish, & of sundry Vines—Assum'd the Flavour  
 —A German oft has swill'd his Throat, and sworn,  
 Deluded, that imperial Rhine bestow'd  
 The generous Rummer, whilst the Owner pleas'd  
 Laughs only at his Guests, thus entertain'd  
 With foreign Vintage from his Cyder-Cask.

First Q. 3d, 1h. Afternoon. } L. Q. 19th, 1h. Afternoon  
 F. ● 11th, 5om. Afternoon. } New D 26th, 5h. 2om. M.

M.	W.	Remarkable Days, Aspects, Weather, &c.	r. ☉ s.			D's			r. ● s. F. sea.		
			H	M	H	place.	H	M	H.	M.	
1	5	very pleasant	6	12	0	thighs	9	30	11	10	
2	6	weather for the season;	6	14	6	27	10	26	0	0	
3	7		6	16	6	knees.	11	26	0	50	
4	D	16th past Trinity, clo. slow 11m. 36f.	6	18	6	22	morn.	1	40		
5	2	serene Air;	6	19	6	legs.	0	28	2	28	
6	3	7*s rise 7h.	6	21	6	19	1	28	3	16	
7	4	now a storm; but soon over;	6	22	6	feet.	2	27	4	5	
8	5	St. Den. B.	6	24	6	13	3	24	4	58	
9	6	pleasant weather;	6	25	6	25	4	20	5	46	
10	7	17th past Trin. ● Apog.	6	26	6	head	5	18	6	34	
11	D	high winds and blustering	6	28	6	19	rises	7	25		
12	2	clock slow 13m. 42f.	6	30	6	neck.	6	10	8	15	
13	3	weather about these days;	6	31	6	12	6	48	9	0	
14	4	frosty mornings & evenings; Δ ☉ ♃	6	33	6	24	7	22	9	50	
15	5		6	35	6	arms.	8	5	10	40	
16	6		6	36	6	19	8	52	11	30	
17	7		6	38	6	breast.	9	44	0	20	
18	D	18 p. Trin. ☌ ♃ ♀	6	39	6	14	10	40	1	10	
19	2		6	40	6	26	11	40	2	0	
20	3	clo. slow 15m. 6f.	6	42	6	heart	morn.	2	50		
21	4	I am much mistaken if this month ends before a long storm begins;	6	43	6	24	0	45	3	38	
22	5	Δ ♃ ♀	6	45	6	belly.	1	50	4	26	
23	6		6	46	6	23	3	0	5	14	
24	7		6	48	6	reins.	4	12	6	0	
25	D	19th p. T. K. Ge. 3d beg.	6	49	6	23	5	22	6	50	
26	2	Crispin Ma. (to reign, 1760	6	51	6	secrets	setts,	7	38		
27	3	● Perigee. full tides;	6	52	6	23	6	34	8	26	
28	4	St. Simon and Jude;	6	54	6	thighs	7	26	9	14	
29	5	clock slow 16m. 6f.	6	55	6	21	8	25	10	2	
30	6	7*s rise 16m. 6f. □ ♂ ♀	6	56	6	knees	9	24	10	55	
31	7	cold nights come on apace.	6	58	6	20	10	20	11	45	

Oct  
 17:7  
 32  
 m. 4  
 7. 6  
 w. 7  
 9  
 f. 10  
 J. 18  
 m. 14  
 7. 2  
 w. 2  
 7h.  
 f. 2  
 L. 2  
 J. 2  
 m.  
 7.  
 w.  
 7h.  
 7.  
 L.  
 the

1<sup>st</sup>. rainy & foggy. 2<sup>d</sup>. Ditto till noon  
 then cleared up wind n. w. -  
 Ev: Squally & showery  
 3<sup>rd</sup>. fair weather cool. n. f. ditto  
~~4<sup>th</sup>. fair weather cool. n. f. ditto~~ got out at 2  
 for Halifax <sup>arrived</sup> at 6.  
 m. 5. arrived in town at 3. very fine day S  
 7. 6. fine weather continued S.  
 w. 7. cloudy & showery E. Th. 8 rain all day  
 E S. E  
 9. cleared up wind still S. E. -  
 Sat: 10. fair E. S. E. S. 11. fair m 12 fair  
 13. fair w. 14. fair w. Th: 15 fair f. w  
 f. 16. fair (Sat: 17. fair) (returned home)  
 S. 18. morn: lowry but fine day S.  
 m 19. morn: lowry. fine day.  
 T. 20. fine warm day Ev: cloudy in the  
 night showery S.  
 w. 21. morn: cloudy. afternoon showery & windy  
 S. to S. E.  
 Th. 22. showery weather & stormy from S. E  
 Ev: w.  
 f. 23. w. squally & showery -  
 24 windy but fair w.  
 S. 25 cloudy & windy at S. E.  
 m. 26. fine day but windy n. w very high tide  
 T. 27. cloudy wind n. to n. E  
 w. 28. ditto E. afternoon showery  
 Ev: hard rain -  
 Th: 29 continued foggy & drizzly -  
 30. fair tolerable weather for the season  
 S. 31. this morn: rained hard, then blow hard  
 at f. & fair, Ev: n. E. & continued  
 all night -

the Diligent sailed the 29<sup>th</sup>.

2.  
 ur  
 on  
 1.  
 sea.  
 M.  
 10  
 0  
 50  
 40  
 28  
 16  
 5  
 58  
 46  
 34  
 25  
 15  
 0  
 50  
 40  
 30  
 20  
 10  
 0  
 50  
 38  
 26  
 14  
 0  
 50  
 38  
 26  
 14  
 2  
 55  
 45

sea  
 M.  
 30  
 20  
 10  
 0  
 50  
 40  
 30  
 20  
 10  
 0  
 45  
 35  
 25  
 15  
 50  
 40  
 30  
 18  
 8  
 58  
 48  
 38  
 28  
 16  
 8  
 9 58  
 0 46  
 1 36  
 0 24

F  
 E  
 M  
 D  
 1  
 2  
 3  
 4  
 5  
 6  
 7  
 8  
 9  
 10  
 11  
 12  
 13  
 14  
 15  
 16  
 17  
 18  
 19  
 20  
 21  
 22  
 23  
 24  
 25  
 26  
 27  
 28  
 29  
 30  
 31

1. wind n. E. stormy, continues. n. E. to n. w.
- 2 m. stormy weather n. n. w. —  
m. Franklin arrived
- 3 T. misty calm weather S. E. at 11 blows  
afternoon hard rain & windy fresh
- 4 W. fine day. (wind n.) to S. W in afternoon  
morning
- 5 Th. cloudy rainy day. E. W. a storm n. E  
flurry hard rain, blow hard all  
night (Sheffield Isld)
- 6 F. continues misty weather, wind moderate  
n. E
- 7 S. continues squally & windy n. misty  
at times —
- 8 S. 8. Ditto —
- 9 m. 9. easterly in morning at noon n. n. w  
variable, fine afternoon
- 10 T. 10 cloudy S. E. to S. W: blow hard at  
f. stormy & rainy
- 11 W. 11 fine morning n. w. afternoon stormy  
& cold at night frost
- 12 Th. 12. cold blustering weather n. n. w.
- 13 F. 13. morn: calm then S. W to S. E blow hard  
all night & rain. —
- 14 S. 14 wind n. n. w. blows hard squalls of  
rain & cold — at night frost
- 15 J. 15. frost at 11 snow & sleet S. W. snow  
at several times with high wind  
squally. at night hard frost
- 16 m. 16. S. W. cool — a storm: W. & blows hard
- 17 T. 17. hard frost n. w. fine day
- 18 W. 18. fine weather S. to n. w. —
- 19 Th. 19. ditto — n. w. Franklin arrived
- 20 F. 20. ditto — calm. & warm
- 21 J. 21. n. E blows fresh & cold
- 22 S. 22 cloudy little air E. put pickle to beef
- 23 m. 23. cloudy morn: at 9 clear & fine weather  
wind n. w.
- 24 T. 24. fine weather S. W. 25. cloudy at times  
f. —
- 25 Th. 26. rain hard N. E & drizzly all day  
in the night thunder & heavy rain
- 26 F. 27. foggy wind S. E. rain to 10 at 9 wind W.  
then n. w. snow
- 27 S. 28. blows fresh n. w. squally. snow & sleet
- 28 J. 29. S. E. cloudy 30 S. E. cloudy & rainy  
W. very hard rain

XI. November hath XXX Days, 1772.

See Winter comes, to rule the vary'd Year,  
 Sullen and sad with all his rising Train;  
 —Vapours, and Clouds, and Storms—  
 Hang o'er the farthest Verge of Heaven,—the Sun  
 Scarce spreads o'er Ether the dejected Day.

F. Q. 2d, zh. 5om. Morn. } } L. Q. 17th, 11h, 5om. Aft.  
 Ful. ● 10th, 7h. 34m. M. } } N. D 24th, 3h. 5om. Aft.

M	W	Remarkable Days, Aspects and Weather &c.	r. ● s.	D's	r. ● t.	F. sea
D	D.		H M H	place.	H M.	H. M.
1	D	20th p.T. AllSaints ♂ D 24	6 59 6	legs	11 20	0 30
2	2	All Souls.	7 1 5	5	morn	1 20
3	3	clo. fl. 16m. 13f.	7 2 5	28	0 20	2 10
4	4	rain about these days;	7 4 5	feet	1 20	3 0
5	5	Gunpow. Treason. * ♀ ♀	7 5 5	24	2 18	3 50
6	6	The best way of dealing	7 6 5	head	3 16	4 40
7	7	Pr. Fred. bo. 1745. with	7 8 5	15	4 15	5 30
8	D	21st p. T. ● Ap. an honest	7 9 5	27	5 12	6 20
9	2	man is, to deal with him	7 10 5	neck	6 8	7 10
10	3	cl. fl. 15m. 48f. * ♂ ♀	7 11 5	21	rises	8 0
11	4	St. Mart. B. as tho' he were	7 12 5	arms	6 6	8 45
12	5	a rogue, and by that means	7 13 5	16	6 50	9 35
13	6	perhaps you may keep him	7 14 5	28	7 44	10 25
14	7	* ♂ ♀ honest.	7 15 5	breast	8 35	11 15
15	D	22d past Trinity; II ○ 24	7 16 5	24	9 38	0 5
16	2		7 18 5	heart	10 38	0 50
17	3	clo. fl. 14m. 43f.	7 19 5	19	11 40	1 40
18	4	perhaps a fall of	7 21 5	belly	morn	2 30
19	5	snow soon.	7 22 5	17	0 48	3 18
20	6	△ ♀ ♀	7 23 5	reins	1 54	4 8
21	7	● Perig. 7*s.f. 11h. 30m.	7 24 5	16	3 6	4 58
22	D	23d past Trinity. △ ♂ ♀	7 25 5	secrets	4 16	5 48
23	2	II ♀ ♀	7 26 5	17	5 24	6 38
24	3	clo. fl. 12m. 56f. It is	7 27 5	thighs	setts	7 28
25	4	♂ D ♀ time to lay in your	7 28 5	16	6 0	8 16
26	5	winter's fring if you have	7 29 5	knees	6 58	9 8
27	6	not done it yet, as there is	7 30 5	14	8 0	9 58
28	7	but few days to come before	7 31 5	28	9 0	10 46
29	D	Adv. Sun. II 24 ♀ winter	7 32 5	legs	10 11	11 36
30	2	St. And. will be upon you,	7 33 5	23	11 3	0 24

to n.  
 n. w.  
 blows  
 fresh  
 showers  
 n. n. e.  
 hard all  
 moderate  
 misty  
 n. n. w.  
 hard at  
 stormy  
 n. w.  
 blow had  
 all of  
 at  
 snow  
 had  
 blows had  
 in arrived  
 to Beef  
 weather  
 times  
 f.  
 rain  
 w.  
 & flees  
 many

December hath XXXI Days, 1772.

— Descending to the long dark Night,  
Wide shading all, the prostrate World resigns.  
Nor is the Night unwill'd; while vital Heat,  
Light, Life, and Joy, the dubious Day forsake.

— The cherish'd Fields  
Put on their Winter Robes of purest White,

F. Q. 11th, 8h. 45m. After. } New D 24th, 3h. 55m. M.  
Full ● 10th, 1h. 30m. M. } F. Q. 31st, 5h. 35m. After.  
Last Q. 17th, 9h. 30m. M. }

M	W	Remarkable Days, Aspects, D   P Aspects, Weather, &c.	r. ☉ s.			D's place.	r. ☉ s.			F. sea.	
			H	M	H		H.	M.	H.	M.	
1	3	clo. fl. 10m. 32l. pleasant	7	33	5	feet	11	50	1	12	
2	4	for December; * 2 ♀	7	34	5	18	morn.	2	0		
3	5	7*s f. 12h. 34m. Δ ⊙ ♂	7	35	5	head	0	58	2	50	
4	6	clo. fl. 9m. 20f.	7	36	5	12	1	52	3	38	
5	7	Apogee ●	7	36	5	24	2	50	4	26	
6	D	3d Sund. in Adv. Nich. B.	7	37	5	neck	3	48	5	14	
7	2	a great fall of snow about	7	38	5	18	4	40	6	2	
8	3	these days, then a space of	7	38	5	arms	5	40	6	55	
9	4	close cold frosty weather	7	39	5	13	6	36	7	43	
10	5	clo. fl. 6m. 42f. which will	7	39	5	25	rises	8	32		
11	6	continue for many days or	7	40	5	breast	6	21	9	20	
12	7	I am mistaken;	7	40	5	20	7	20	10	8	
13	D	3d Sunday in Advent.	7	41	5	heart	8	19	10	56	
14	2	more snow;	7	42	5	17	9	23	11	46	
15	3	clo. fl. 4m. 19f. this hard	7	42	5	belly	10	30	0	34	
16	4	* 2 ♀ Δ 2 ♀ freezing	7	42	5	14	11	35	1	24	
17	5	7*s so. 9h. 44m. weather,	7	42	5	28	morn.	2	12		
18	6	makes Jack and Jill lye	7	42	5	reins	0	40	3	0	
19	7	clo. fl. 2m, 21f. ● Peri.	7	42	5	26	1	48	3	50	
20	D	4th Sun. in Adv. close	7	42	5	secrets	2	50	4	38	
21	2	St. Thomas; together;	7	42	5	25	4	12	5	26	
22	3	perhaps a little rain about	7	42	5	thighs	5	10	6	14	
23	4	these days, and then very	7	42	5	25	6	12	7	2	
24	5	Sun & Clock together. cold	7	42	5	knees	setts	7	54		
25	6	Christ born; again.	7	42	5	23	6	45	8	42	
26	7	St. Stephen:	7	42	5	legs	7	35	9	30	
27	D	sun. after Chr. St. J. Evan	7	42	5	20	8	36	10	17	
28	2	Inocents, II 2 ♀	7	41	5	feet	9	38	11	5	
29	3	clo. fast 2m. 39f.	7	41	5	14	10	36	11	55	
30	4	Cold freezing and	7	40	5	26	11	34	0	44	
31	5	blustering weather.	7	40	5	head	morn	1	32		

72.  
M.  
ter.  
sea.  
M.  
12  
0  
50  
38  
26  
14  
2  
55  
43  
32  
20  
8  
56  
46  
34  
24  
12  
0  
3  
50  
38  
26  
14  
2  
54  
42  
30  
17  
5  
55  
44  
32

1st. Fair w. fair fine w: till 10 then cloudy  
 2d. Chilly & heavy snow on ground. 22 rain  
 3d. cloudy & squally S.W. continued all night  
 4th. fair w. Sat: cloudy  
 5th. Variable Sunshine & hail at times N.W  
 6m. Snowy air & Sunshine variable N.W.  
 7th. fine weather for the season. Frost  
 8th. ditto — W. to S.W.  
 9th. ditto — N.  
 10th. ditto — N.  
 11th. Snow high wind N. feel sharp  
 till 11 then  
 12th. S. cold wind N. inclinable to Snow.  
 (the red cow colored) fine evening  
 13th. S. fine morn: S.E. afternoon cloudy  
 Ev: small rain  
 14m. light frost wind W. then N.W Ev: (Lyon  
 At night Snow wind N. (very little Snow)  
 15th. wind N. & cold but fair  
 16th. ditto — ditto — Ev: cloudy  
 in the night rain.  
 17th. rain continues till noon afternoon:  
 wind W. then N.  
 18th. wind N. fine weather — white frost  
 19th. fair warm weather for the season W.  
 20th. fair but cool wind N. N.W Ev: cloudy  
 in the night snow hail & rain  
 21m. rain & hail N.E. Snow at times  
 22th. thaw & warm — 23th. W. thick heavy  
 weather than.  
 24th. dull heavy weather continues N.E.  
 25th. morn: N.E. misty at 10 small Snow N.  
 and frost  
 26th. S. cold N.W. but fine weather  
 27th. S. S.E. hail rain & thick weather  
 at noon small rain & blows hard S.E.  
 blowed hard all night & rained.  
 28m. blows hard W. & squally at times  
 with showers  
 29th. fine morn: W. & afternoon fine also  
 30th. W. cloudy S.W. Sunshine at times  
 hazy just like October In the night N.E.  
 31st. Th: very cold N.W. squally with  
 snow — Ev: very fine

