

Historic, Archive Document

Do not assume content reflects current scientific knowledge, policies, or practices.

62.61

1904

U.S. Department of Agriculture
LIBRARY
Washington, D.C.

WHOLESALE CATALOGUE OF PLANTS For Forcing and Planting Fall and Winter, 1904

Nurseries and Trial Grounds
S P A R K I L L
ROCKLAND COUNTY
NEW YORK

Visitors Welcome



Long Distance Telephone

Cable Address
"Manxman Newyork"
"ABC" Code Used

B U L B S



NEW ORCHID CALLA
"A Child Can Grow It"

SEE PAGE 16

SEEDS, &c.

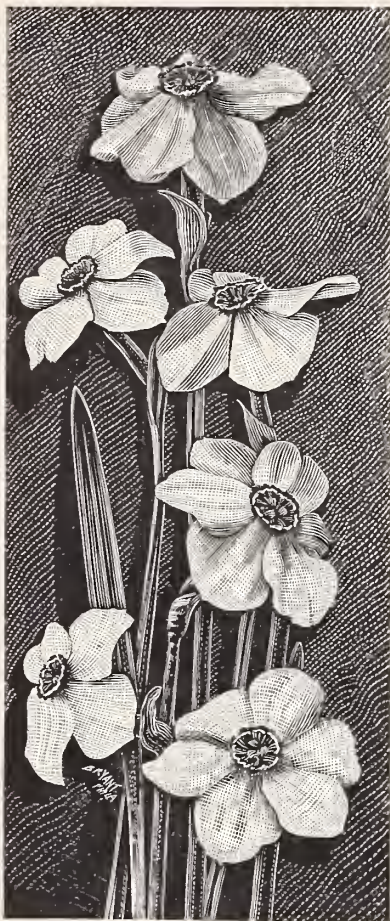
CLUCAS & BODDINGTON CO.

812-814 Greenwich Street

Corner Jane Street

NEW YORK

Terms and Manner in Which We Do Business



Narcissus Pœticus Ornatus.
(See page 15).

¶ **TERMS.** Prices named herein are subject to the following discounts: **Five per cent. allowed, to be deducted when cash accompanies order.** To customers of approved credit, accounts are payable 60 days from date of invoice, except where special prices and terms are arranged for. Grass, Grain, Clover and Bird Seed, Implements, Fertilizers and Insecticides, are subject to no discount whatever, but are strictly net cash.

¶ **ORDERS** are filled promptly upon receipt or a reason given with acknowledgment of same. Note below when the different kinds are ready.

¶ **PRICES.** As it is impossible to predict our exact demand, our prices are made subject to change without notice, and goods being unsold when order reaches us. We, however, carry very large stocks, and if orders reach us in good season, full satisfaction may always be expected.

¶ **C. O. D.** orders can be sent only by express. Such orders should be accompanied by a remittance in part payment, to guarantee charges.

20 Per Cent. Reduction in Express Rates

¶ Under the ruling of the leading express companies, Plants, Bulbs and Seeds, packed in closed boxes or baskets, will now be carried at the "GENERAL SPECIALS" rate. This rate means a reduction of 20 per cent. from the regular merchandise rates to all points where no "General Specials" exists. To points where a "General Specials" rate is in force, the companies make a special reduction. Shipments weighing less than 100 lbs. receive the benefit of the rate per 100 lbs., but the minimum charge is 35c. For instance, where the regular merchandise rate is \$4.00 per 100 lbs., a box of plants or bulbs weighing 100 lbs. will be carried for \$3.20, a saving of 80c. on one shipment.

¶ **IMPORTANT.** While we exercise the greatest care to have all seeds and bulbs pure and reliable, we do not give any warranty, express or implied. If the purchaser does not accept the seeds and bulbs on these terms and conditions, they must be returned at once, and the money that has been paid for same will be refunded.

¶ When comparing prices of Bulbs remember our figures include Ocean Freight, Duty, Packing and Delivery to the Transportation Companies in New York City. Packing and Boxing Plants and Trees charged at cost.

¶ Months of the year at which the different bulbous Stocks are ready for shipment and delivery

JULY

Black Callas, Harrisii, Freesias.

AUGUST

Roman Hyacinths, Paper White Narcissus, White Callas and Buttercup Oxalis.

SEPTEMBER

Lilium Candidum, Hyacinths, Tulips, and other Dutch Bulbs.

OCTOBER

Lilium Longiflorum and other Japan Lilies.

NOVEMBER

Spiræa, Lily of the Valley.

DECEMBER

New crop of Tuberoses, Begonias, Gloxinias, Cannas, etc.

I N D E X

	PAGE		PAGE
A Little Bulb Talk	1	Insecticides	3d cover
Amaryllis	18	Iris	20, 21
Bulbs and Roots, Fall Forcing and Planting	2 to 25	Lilies	2, 3, 4
" for Spring Planting	48	Lily of the Valley	18
Callas	16	Miscellaneous Fall Bulbs	22, 23, 24, 25
Conifers and Evergreens	32 to 35	Miscellaneous Stock	47
Crocus	17	Mushroom Spawn	3d cover
Cycas Stems	29	Narcissus	14, 15
Extract from Florists' Exchange	30, 31	Nursery Department	32 to 47
Fern Ball, Japanese	29	Plant Department	28, 29
Fertilizers	3d cover	Oxalis	24
Flowering Shrubs, Outdoor	35, 36, 37	Rhododendrons, Hardy	41
Flower Seeds	26, 27	Roses, etc.	38, 39, 40
Freesias	17	Shrubs for Fall Delivery, Forcing	28, 29
Gladiolus	19, 48	Spiræa, Forcing	17
Grass Seed, Lawn	Outside cover	Terms	2d cover
Hardy Perennial Plants	42, 43, 44, 45, 46	Trees and Shrubs, Standards	34
Hardy Climbers	47	" " Hardy and Ornamental	32 to 37
Hyacinths	5, 6, 7, 8, 9, 10, 11	Tulips	12, 13

Easter Sunday (Very Late), 1905, is on April 23

¶ NURSERIES AND TRIAL GROUNDS—SPARKILL, ROCKLAND CO., NEW YORK.

A LITTLE BULB TALK

Some of the Reasons Why You Should Buy Bulbs From Us

- ¶ 1st. We are on the SEABOARD and at the door of the largest PORT OF ENTRY in the UNITED STATES.
 - ¶ 2nd. We are the LARGEST HANDLERS of a general line of BULBS in the UNITED STATES.
 - ¶ 3rd. We are the largest DIRECT IMPORTERS of Bulbs (not agents) in the UNITED STATES.
 - ¶ 4th. We can quote the LOWEST and BEST prices on Bulbs in the UNITED STATES.
 - ¶ 5th. The BULB BUSINESS is our BUSINESS and we make it our BUSINESS.
- ¶ Our position in the Bulb trade has been acquired by many years of training and experience—saving on expense in securing the best stocks only—by visiting the growing crops annually in the different sections of the world, which enables us to give the buyer assurance of early delivery at lowest possible prices and of highest grade and best quality.

When comparing prices of Bulbs REMEMBER our figures include ocean freight, duty, packing and delivery to the transportation companies in New York City

☞ Do not confuse our FIRM with others of similar sounding names. Note our only New York address, 812 & 814 Greenwich St., N. Y.

OUR SPECIALTY



One of Our Fields of Three-Leg-Brand Liliun Harrisii (True).

[Unsolicited]

Gents: We wish to inform you that the Liliun Harrisii we had from you last year were very satisfactory indeed. They were the "true" Harrisii, with very large flowers; perfectly healthy plants. They were also very early and even—so even that we cut a 100-foot house between November 15th and January 10th—all clean, with scarcely any waste. We shall surely increase our order the coming season.

Randolph, Mass., February 24, 1904.

(Signed) MANN BROTHERS.

Bermuda Easter Lily or Liliun Harrisii



Liliun Harrisii. Three-leg type.

FLORHAM FARMS, MADISON, N. J., Jan. 26, 1903.

Gentlemen:—The bulbs and other stock that you have supplied for this place have always proved highly satisfactory, and of the best quality. The Easter Lilies supplied last year surpasses any that you have heretofore sent us.

(Signed) A. HERRINGTON, Supt. to H. McKay Twombly, Esq.

Worth Reading.

GEDDIS & BLIND BROS., LTD
Florists and Decorators,
30 FIFTH STREET,
1713 CARSON STREET,
PITTSBURG, PA.

Dec 1st 1903

*Clucas & Boddington Co.,
New York City*

RECEIVED DEC. 2, 1903

Dear Sirs

We are pleased to advise you that recent consignment of Harrisii Lilies of July 30/03. were cut on the 9th ult. and prove very satisfactory. Loss is exceedingly small and we ask you to enter an additional order for 2000 of same variety.

Truly yours,

*A. L. Blind & Bros.,
Per A. L. B.*

This order applies on recent order to Mr. Buryard and is in the nature of a confirmation

THREE-LEG BRAND

Or the True and Tried Stock L. Harrisii

¶ For many years this brand of Liliun Harrisii has clearly demonstrated itself to be superior to any other on the market. We would caution our friends and customers against purchasing bulbs shipped by irresponsible Bermuda jobbers, whose stocks may consist largely of spurious types, diseased and poorly ripened bulbs.

¶ The Best is the Cheapest. We are continuing our policy of paying our grower a bonus above the market price to ship us only true Harrisii—sound, healthy, thoroughly ripened bulbs and unmixed with spurious types.

	Each	Doz.	100	1000
5 to 7 inch bulbs (400 in a box)	\$0 10	\$0 75	\$5 00	40 00
6 to 7 inch bulbs (335 in a box)	15	1 00	6 00	50 00
7 to 9 inch bulbs (200 in a box)	20	1 50	9 00	80 00
9 to 11 inch bulbs (100 in a box)	40	3 50	18 00	160 00
11 inches and over (50 in a box)	60	6 00	35 00	

ORDINARY BRAND

Or as Usually Sold L. Harrisii

¶ We also have the regular grades of Liliun Harrisii offered by other dealers. The bulbs are up to size and perfectly sound, the same as sold by many houses as selected stock. The difference is that the bulbs are purchased in the open market without knowledge of the grower, while our "Three-Leg Brand" is not only grown especially for us but carefully selected and packed specially for our own trade.

Prices on Liliun Harrisii, regular grades (Ordinary Stock):

	Doz.	100	1000
5 to 7 inch bulbs (400 in a box)	\$0 40	\$4 00	\$35 00
6 to 7 inch bulbs (335 in a box)	75	5 00	45 00
7 to 9 inch bulbs (200 in a box)	1 00	8 50	77 50
9 to 11 inch bulbs (100 in a box)	2 00	15 50	150 00
11 inches and over (50 in a box)	5 00	25 00	

Bermuda-Grown Liliun Longiflorum

¶ In some sections of the United States these bulbs are in greater demand than Harrisii for Easter. They usually give flowers of better quality and in greater abundance than the Japan-grown Longiflorum and flower earlier.

	Doz.	100	1000
5 to 7 inch bulbs (400 in a box)	\$0 60	\$4 00	\$35 00
7 to 9 inch bulbs (200 in a box)	1 00	8 00	70 00
9 to 11 inch bulbs (100 in a box)	3 00	20 00	180 00

¶ NURSERIES AND TRIAL GROUNDS—SPARKILL, ROCKLAND CO., NEW YORK.

LILIUM LONGIFLORUM JAPAN-GROWN

Selected Stock "Special"

¶ For five years past we have received direct from our grower in Japan a **Special Stock of Japan Liliium Longiflorum**, which has given, in every instance, more than usual satisfaction. This "**SPECIAL STOCK**" flowers simultaneously, and grows an even height of about 3 feet, with abundant foliage. It can be flowered by Easter, even when planted as late as November. The flowers are of good substance, and more prolific than ordinary stocks of Liliium Longiflorum. We have a limited supply of this **SPECIAL STOCK** of Liliium Longiflorum and parties wishing any quantity should order promptly.

Lincoln, Ill., March 7, 1903.

Dear Sirs: Your late delivered Longiflorums (Special Stock) have proved healthier and earlier than any other stock we had.
(Signed) W. H. GULLETT & SONS.

Lincoln, Ill., February 13, 1904.

Gentlemen: Your late delivered "Special Stock" Longiflorums are again surpassing any other stock we got, both in forwardness and healthiness.
(Signed) W. H. GULLETT & SONS.



Williamsville,
N. Y.,
February 26,
1903.

Sirs:

The Longiflorum Lilies (Special stock) that you sent me are extra fine, and for health and uniformness excel anything I have seen in this section (Buffalo) this season.

(Signed)

C. B. SHISLER.

Bench of Liliium Longiflorum Special Stock.

Prices of Our Special Stock of Liliium Longiflorum

	Doz.	100	1000		Doz.	100	1000
5 to 7 inch Bulbs—500 in a box	\$0 50	\$2 50	\$20 00	7 to 9 inch Bulbs—300 in a box	\$1 00	\$5 50	\$50 00
6 to 8 inch Bulbs—400 in a box	75	3 50	30 00	9 to 10 inch Bulbs—200 in a box	1 50	9 00	80 00
10 to 12 inch Bulbs—150 in a box. Doz., \$2.50; per 100, \$15.00; per 1000, \$125.00.							

LILIUM LONGIFLORUM GIGANTEUM (Dark Stem, True)

¶ Easter coming as it does, so late next year, April 23, we have made special arrangements to secure a large stock of this Lily, as it is the **best and only late variety**, and will come in just right without undue forcing, **for next Easter**. This is also the only variety to put into cold storage for summer and late fall flowering. It is a great improvement on the old Longiflorum. A more robust grower, producing large flowers, of better substance, and in greater numbers. We carry these in cold storage.

	Doz.	100	1000		Doz.	100	1000
5 to 7 inch Bulbs—500 in a box	\$0 60	\$4 00	\$32 50	7 to 9 inch Bulbs—300 in a box	\$1 00	\$6 25	\$55 00
6 to 8 inch Bulbs—400 in a box	85	4 50	40 00	9 to 10 inch Bulbs—200 in a box	2 50	12 50	100 00

LILIUM LONGIFLORUM MULTIFLORUM

¶ This is an early variety of Longiflorum and a most desirable sort for Easter flowering.

	In Box	Each	Doz.	100	1000
5 to 7 inch Bulbs, } selected 500		\$0 05	\$0 50	\$2 00	\$17 50
6 to 8 inch Bulbs, } single 400		8	75	3 50	30 00
7 to 9 inch Bulbs, } crown 300		10	1 00	5 00	42 50
9 to 10 inch Bulbs, } bulbs 200		15	1 25	7 50	72 50

LILIUM LONGIFLORUM—Original Type

¶ Our stock is as good as ever—sound, fully developed, thoroughly ripened, late dug bulbs.

	Each	Doz.	100	1000
5 to 7 inch Bulbs—500 in a box	\$0 50	\$1 75	\$15 00	
6 to 8 inch Bulbs—400 in a box	60	3 00	23 50	
7 to 9 inch Bulbs—300 in a box	\$0 10	1 00	4 00	36 00
9 to 10 inch Bulbs—200 in a box	0 15	1 25	7 25	65 00

One whole box of all the above lily bulbs sold at 1000 rate.

¶ NURSERIES AND TRIAL GROUNDS—SPARKILL, ROCKLAND CO., NEW YORK.

LILIES Japan and Others, for Spring and Fall Planting



Lilium Auratum.

	Each	Doz.	100	1000
Lilium Auratum. Gold Banded Lily. 8 to 9 inch bulbs . . .	\$0 10	\$0 75	\$4 25	\$38 00
9 to 11 inch bulbs	15	1 25	7 50	67 00
11 to 13 " "	25	2 50	15 00	
Lilium Speciosum Rubrum. 8 to 9 inch bulbs	10	1 00	6 00	50 00
9 to 11 inch bulbs	15	1 50	7 50	70 00
11 to 13 " "	20	2 00	10 00	
Lilium Speciosum Album. 8 to 9 inch bulbs	15	1 25	7 00	60 00
9 to 11 inch bulbs	25	2 00	12 00	
11 to 13 " "	30	3 00	18 00	
Lilium Roseum or Melpomene. 8 to 9 inch bulbs	10	1 00	6 50	55 00
9 to 11 inch bulbs	15	1 50	9 00	80 00
Lilium Tigrinum Splendens (single) } Imported Japan grown,	10	75	4 50	40 00
Lilium Tigrinum fl. pl. (double) } very large bulbs.	10	90	5 25	47 50
Lilium Canadense. Native Hardy Lily	Each \$0 10	Doz. \$0 75	100 \$5 00	
Lilium Tenuifolium. Brightest red of all Lilies. Very early. Fine for cutting		10	1 00	7 50
Lilium Elegans. Colors mixed		10	75	5 50
Lilium Superbum. Three to six feet high		10	75	5 50
Lilium Wallacei. Apricot color. Very desirable		10	50	4 00
Lilium Henryi. New and very rare. Tall, strong growing apricot yellow color		75	7 50	
Lilium Humboldtii. Of a splendid reddish-orange color, segments copiously purple-veined	20	2 00	15 00	
Lilium Washingtonianum. White, tinged with purple or lilac	20	2 00	15 00	
Lilium Pardilanum	20	2 00	15 00	

LILIUM CANDIDUM OR ANNUNCIATION LILY

¶ Northern-grown bulbs are far superior to those of Southern origin—better adapted for forcing. We have a liberal supply of both kinds. **Northern-Grown Mammoth Bulbs**, 10 cts. each; 75 cts. per doz.; \$4.50 per 100; \$40.00 per 1000. **Southern-Grown Mammoth Bulbs**, 10 cts. each; 60 cts. per doz.; \$4.00 per 100; \$35.00 per 1000.



LILIUM SPECIOSUM

¶ If potted now will flower just between times.
¶ We keep a quantity at all times in storage in perfectly dormant condition, and nothing more useful for design work.

	Case	Per Case	Per 100
Lilium Speciosum Album. Case containing 160 7 to 9 in. bulbs, for		\$10 00	\$7 50
Lilium Speciosum Rubrum. Case containing 120 8 to 10 in. bulbs for		10 00	9 00
Lilium Speciosum Rubrum. Case containing 100 9 to 11 in. bulbs for		10 00	

25, 50 and 75 sold at 100 rates.

¶ All above as sound as a bell, and as dormant as when first placed in cold storage last winter. Cold Storage Lilium Longiflorums sold out.

ALSO IN COLD STORAGE

Spiraea Compacta Multiflora
\$1.50 per doz.; \$10.00 per 100.

Spiraea Washington
\$2.50 per doz.

Cold Storage Lily of the Valley, see page 18.



Lilium Speciosum Rubrum.

HYACINTHS

¶ No competitor excels us in EARLY DELIVERY of ripened Bulbs.

¶ Inspection in Europe of all goods before shipment is made insures the quality of our Bulbs.

Early French Roman Hyacinths

¶ Owing to unfavorable and excessive drought in the vicinity where French bulbs are grown, the crop has not developed the usual percentage of bulbs over 12 ctms.

¶ Florists requiring large bulbs should order at once to prevent disappointment, as the quantity harvested is much below normal and are certain to be scarce as the season advances.

White Roman Hyacinths

	Doz.	100	1000
White, 11 to 12 ctms. 2800 in a case	\$0 40	\$2 25	\$20 00
" 11 to 15 ctms. 2500 " "	50	2 50	23 00
" 12 to 15 ctms. 2000 " "	60	2 75	25 50
" 13 to 15 ctms. 1800 " "	70	3 75	32 50

Colored French Roman Hyacinths

	Per Doz.	Per 100	Per 1000
Dark Rose, 12 to 15 ctms.	\$0 45	\$2 25	\$20 00
Light Rose, 12 to 15 ctms.	45	2 50	22 00
Light Blue, 12 to 15 ctms.	45	2 50	22 00
Dark Blue, 12 to 15 ctms.	45	2 25	20 00

White Italian (pink skin), 12 to 15 ctms. ¶ Superior to the Early White Roman Hyacinths for late forcing, producing larger spikes of individual flowers in greater profusion. ¶ These will be "great" for Easter, 1905, coming as it

does so late, April 23. ¶ You can hold these back when you cannot hold Romans. ¶ Try some and be convinced

45	2 50	22 00
----	------	-------



COPYRIGHTED
1893
BY A.B.&CO.

Rose, Blue and White.



Dutch Roman Hyacinths

Dutch Romans or Miniature Hyacinths

¶ Consisting of the best NAMED SORTS, suitable for forcing, 12 ctms. and over, [in the following varieties:

White—La Grandesse, Blanchard, Baroness van Thuyll, l'Innocence, Grandeur a Merveille,

Red—Robt. Steiger, Gen'l Pelissier, Roi des Belges.

Rose—Gr. Vainqueur, Chas. Dickens, M. Cornelia, Gigantea, Gertrude.

Blue—Czar Peter, Grand Maitre, King of Blues, Regulus.

Yellow—Alida Jacoba, Tamerlane.

	Above Named Sorts.				Unnamed Separate Colors.		
	Each	Per Doz.	Per 100	Per 1000	Per Doz.	Per 100	Per 1000
Single, Pure White	\$0 05	\$0 50	\$2 50	\$21 50	\$0 35	\$1 75	\$16 00
" Cream White	05	40	2 00	17 50	35	1 75	15 50
" Yellow	05	50	2 25	20 00	40	2 00	17 50
" Bright Red	05	40	2 00	18 50	35	1 75	15 00
" Rosy Pink	05	40	2 00	19 00	40	1 85	16 00
" Dark Blue	05	40	2 00	17 50	35	1 75	15 00
" Light Blue	05	40	2 00	18 50	35	1 75	15 50
In equal quantities		40	2 00	18 50	35	1 75	15 50

¶ NURSERIES AND TRIAL GROUNDS—SPARKILL, ROCKLAND CO., NEW YORK.

DUTCH HYACINTHS



Robert Steiger, Single Red Hyacinth.

¶ While our prices, upon comparison with those of other dealers, will be found much more favorable to the customer, we give every assurance that these Bulbs will be found first-class in every particular, and under good treatment, can be relied upon giving the best possible results.



L'Innocence, Single White Hyacinth.

Mixed Dutch Hyacinths to Color

¶ The following mixtures of Dutch Hyacinths to color contain the leading named varieties, and while the bulbs are smaller in proportion to the named sorts, they are all flowering bulbs and will make an excellent showing either for forcing in pots and pans, or both.

¶ For bedding, too, they are unexcelled, and as the varieties contained in the mixtures are selected so as to flower evenly and at about the same time, customers will find them excellent for this purpose. Bulbs measure 15 centimeters and over.

SINGLE MIXED HYACINTHS

To Color

	Each	Per doz.	Per 100	Per 1000
Pure White	\$0 05	\$0 40	\$2 50	\$23 50
Blush White	05	40	2 50	23 50
White, all shades	05	40	2 50	23 50
Dark Blue	05	40	2 50	23 50
Light Blue	05	40	2 50	23 50
Blue, all shades	05	40	2 50	23 50
Dark Red	05	40	2 50	23 50
Pink and Rose	05	40	2 50	23 50
Red, all shades	05	40	2 50	23 50
Yellow	05	40	2 50	23 50
Mixed, all colors	05	40	2 50	22 50

DOUBLE MIXED HYACINTHS

To Color

	Each	Per doz.	Per 100	Per 1000
Pure White	\$0 05	\$0 45	\$2 85	\$27 50
Blush White	05	45	2 85	27 50
White, all shades	05	45	2 85	27 50
Dark Blue	05	45	2 85	27 50
Light Blue	05	45	2 85	27 50
Blue, all shades	05	45	2 85	27 50
Dark Red	05	45	2 85	27 50
Pink and Rose	05	45	2 85	27 50
Red, all shades	05	45	2 85	27 50
Yellow	05	45	2 85	27 50
Mixed, all colors	05	45	2 75	25 00

¶ NURSERIES AND TRIAL GROUNDS—SPARKILL, ROCKLAND CO., NEW YORK.

DUTCH HYACINTHS

Named
Very Large Exhibition Bulbs

¶ These have been selected by a member of our firm in Holland, and those wishing to secure selected bulbs, suitable for growing in competition, or for prize winning, should buy these, as they bear massive "spikes" of bloom.

Single Varieties—Exhibition Bulbs

Selected Specially for Pot Culture

¶ When selection is left to us—
\$60.00 per 1000; \$6.50 per 100; \$1.00 per doz.

SINGLE RED AND ROSE VARIETIES

	Each.	Per Doz.	Per 100
Baron van Thuyll , very early, deep flesh, compact spike	\$0 10	\$0 90	\$6 50
Gen. Pelissier , brilliant carmine, compact spike, early	10	90	6 50
Gertrude , rosy pink, large compact truss	10	90	6 50
Gigantea , blush rose, splendid broad truss	10	90	6 50
Lord Macaulay , bright rosy carmine, splendid truss, light eye	10	90	6 25
Norma , pale waxy pink	10	90	5 75
Robert Steiger , deep bright crimson	10	90	6 25
Fabiola , pink carmine striped, large truss	10	90	6 50
Chas. Dickens , fine rose, grand truss, splendid	10	1 00	7 00
Roi des Belges , fine deep red, good truss	10	90	6 25
Sultan's Favorite , rose, red, striped, early	10	1 00	7 00
Moreno , waxy pink, gigantic flower, new, fine for exhibition	10	1 00	7 00



Single Pink Hyacinth
Gigantea.



Double Blue Hyacinth
Blocksberg

SINGLE PURE AND TINTED WHITE

	Each	Per Doz.	Per 100
Baroness van Thuyll , pure white, large truss, very early	\$0 10	\$0 90	\$6 50
Grandeur a Merveille , large truss, rosy white	10	90	6 25
Grande Vedette , large bells, pure white	10	1 00	7 00
Mme. Van der Hoop , pure white, splendid large bells	10	1 10	8 00
Queen Victoria , pure white, large truss	10	1 10	8 00
Alba Superbissima , pure white, fine truss	10	1 00	7 00
La Grandesse , the purest white, splendid bells and grand truss	15	1 20	8 00
La Belle Blanchisseuse , pure white, fine	10	1 00	7 00
Voltaire , large bells and fine truss, cream color	10	90	6 00
Paix de l'Europe , pure white, good spike, loose bells	10	95	6 75
L'Innocence , purest white, very fine spike	10	1 10	7 00
La Franchise , waxy white, good spike	10	1 00	7 00
Mina , pure white, very large bells	15	1 20	9 50

SINGLE BLUE, PURPLE AND PORCELAIN

	Each	Per Doz.	Per 100
Baron Van Thuyll , dark blue, large truss, very early	\$0 10	\$0 90	\$6 50
Charles Dickens , blue, tinted lilac, large truss, fine flower.	10	90	6 50

SINGLE BLUE, PURPLE AND PORCELAIN—

Continued

	Each	Per Doz.	Per 100
King of the Blues , rich dark blue, splendid compact truss	\$0 10	\$1 00	\$6 50
La Peyrouse , clear porcelain blue	10	85	5 50
Leonidas , fine truss, splendid porcelain blue	10	1 00	7 00
Pleneman , broad truss, immense bells, porcelain blue	10	1 10	8 00
Queen of Blues , splendid clear blue, large truss	10	1 10	7 00
Grand Maitre , deep porcelain blue, very large truss and bulb	10	1 00	6 50
Marie , dark blue, large fine spike.	10	90	6 00
Regulus , large bells, light porcelain	10	90	6 50
Czar Peter , finest light porcelain blue	10	1 25	8 00
Blondin , beautiful silvery porcelain blue	10	1 10	8 00
William I , very dark purple, excellent spike of flowers	10	1 10	8 00

SINGLE YELLOW AND ORANGE SHADE

	Each	Per Doz.	Per 100
Gen'l Gordon , very fine, canary yellow	\$0 10	\$1 10	\$7 00
La Pluie d'Or , pale yellow, early	10	1 00	7 00
Herman , orange yellow	10	1 00	7 00
Ida , the best yellow, very early	10	1 05	7 25
King of the Yellows , very fine, bright yellow	10	1 00	7 00
Sonora , buff color, long bells and spike	10	1 00	7 00

H
Y
A
C
I
N
T
H
S



D
U
T
C
H
N
A
M
E
D

A Window Box Idea.

VERY LARGE EXHIBITION BULBS—Continued

Double Varieties—Exhibition Bulbs

DOUBLE RED AND ROSE

† When selection is left to us—

\$60.00 per 1000; \$6.50 per 100; \$1.00 per doz.

	Each	Per Doz.	Per 100
Alida Catharina, pink, very early . . .	\$0 10	\$1 00	\$7 00
Bouquet Royal, rosy salmon, red center	10	90	6 00
Regina Victoria, fine salmon rose, good bells,	10	1 00	7 00
Bouquet Tendre, dark carmine red . .	10	1 00	6 25
Czar Nicholas, Blush pink, good . . .	10	90	6 50
Lord Wellington, the finest of dark pinks	10	1 10	6 25
Noble Par Merite, deep rose, very fine spike	10	1 10	8 00
Prince of Orange, rosy pink, fine spike .	10	1 00	7 00

DOUBLE BLUE, PURPLE AND PORCELAIN

	Each	Per Doz.	Per 100
Albion, purplish blue, late	10	90	6 50
Blocksborg, good truss, bright porcelain	10	1 00	7 00
Othello, dark blue, dwarf	10	1 00	7 00
Chas. Dickens, violet blue, very large	10	1 00	7 00

DOUBLE BLUE, PURPLE AND PORCELAIN—

Continued

	Each	Per Doz.	Per 100
Garrick, dark blue, very early	\$0 10	\$0 90	\$6 50
Prince of Saxe Weimar, deep purple and splendid flower	10	90	6 50
Rembrant, light blue, very pretty . . .	10	90	6 50
DOUBLE PURE AND TINTED WHITE			
Blanchard, pure white, fine bells, dark center	10	90	6 75
Duchesse de Bedford, pure white . . .	10	1 00	7 00
La Tour d'Auvergne, pure white, large truss, earliest for forcing	10	1 00	7 00
Anna Maria, blush white	10	1 00	7 00
Bouquet Royal, pure white, one of the best	10	90	6 00
La Virginite, blush white, fine	10	90	6 25
Prince of Waterloo, pure white, extra .	10	1 10	8 00

DOUBLE YELLOW AND ORANGE

	Each	Per Doz.	Per 100
Bouquet d'Orange, orange salmon . . .	10	90	6 50
Goethe, pale yellow, fine bells	10	90	6 50
Jaune Supreme, bright yellow	10	1 10	8 00
Ophir d'Or, deep yellow	15	1 20	9 50

Dear Sirs: The named Exhibition Dutch Hyacinths purchased from you last Fall have proved all you claimed for them. The selection was good. The colors embrace all that I suppose are possible in the Hyacinth family. You will surely hear from us again next Fall.

Oconomowoc, Wis., April 11, 1904.

Yours very truly,

H. WILLIAM OLSEN.

† NURSERIES AND TRIAL GROUNDS—SPARKILL, ROCKLAND CO., NEW YORK.

DUTCH HYACINTHS—Continued

FIRST SIZE BULBS

SINGLE VARIETIES

For Pot Culture

When selection of varieties is left to us we will send a portion of all the best kinds, double or single, or both, at—

\$42.50 per 1000; \$4.50 per 100; 70c. per doz.

SINGLE RED AND ROSE VARIETIES

	Each	Per doz.	Per 100
Baron van Thuyll , very early, deep flesh color, compact spike	\$0 07	\$0 60	\$4 50
Gen Plissier , brilliant carmine, compact spike, early	07	60	4 50
Gertrude , rosy pink, large compact truss . .	08	70	4 75
Gigantea , blush rose, splendid broad truss .	08	70	4 50
Lord Macaulay , bright rosy carmine, splendid truss, light eye	08	75	4 50
Norma , pale waxy pink	06	60	4 25
Robert Steiger , deep bright crimson . . .	07	60	4 50
Fabiola , pink, carmine striped, large truss .	08	75	5 00
Chas. Dickens , fine rose, grand truss, splendid	08	75	4 50
Roi des Belges , fine deep red, good truss . .	07	60	4 25
Sultan's Favorite , rose, red striped, early .	08	75	5 50
Moreno , waxy pink, gigantic flower (new), fine for exhibition	09	85	5 00

SINGLE PURE AND TINTED WHITE

	Each	Per doz.	Per 100
Baroness van Thuyll , pure white, large truss, very early	\$0 07	\$0 65	\$4 50
Grandeur a Merveille , large truss, rosy white	07	65	5 00
Grand Vedette , large bells, pure white . . .	07	65	5 00
Madame Van der Hoop , pure white, splendid large bells	08	85	6 00
Queen Victoria , pure white, large truss . .	07	65	5 00
Alba Superbissima , pure white, fine truss .	08	75	5 50
La Grandesse , the purest white, splendid bells and grand truss	10	90	6 00
L'Innocence , purest white, very fine spike .	10	90	5 50
La Franchise , waxy white, good spike . . .	07	75	4 75
Mina , pure white, very large bells	10	90	6 50
La Belle Blanchisseuse , pure white, fine .	07	75	5 50
Voltaire , large bells and fine truss, cream color	07	75	5 00
Paix de l'Europe , pure white good spike, loose bells	07	75	4 50

SINGLE BLUE, PURPLE AND PORCELAIN

	Each	Per doz.	Per 100
Baron van Thuyll , dark blue, large truss, very early	\$0 07	\$0 60	\$4 25
Charles Dickens , blue, tinged lilac, large truss, fine flower	07	65	5 00

SINGLE BLUE, PURPLE AND PORCELAIN—Continued

	Each	Per doz.	Per 100
King of the Blues , rich dark blue, splendid compact truss	\$0 08	\$0 75	\$4 50
La Peyrouse , clear porcelain blue	07	60	4 00
Leonidas , fine truss, splendid porcelain blue	07	60	4 25
Pieneman , broad truss, immense bells, porcelain blue	07	60	4 50
Queen of Blues , splendid clear blue, large truss	07	75	5 00
Grand Maitre , deep porcelain blue, very large truss and bulb	07	75	5 00
Marie , dark blue, large fine spike	07	60	4 25
Regulus , large bells, light porcelain	07	60	4 25
Czar Peter , finest light porcelain blue . . .	07	75	5 50
Blondin , beautiful silvery porcelain blue . .	08	80	4 50
William I. , very dark purple, excellent . . .	08	80	6 00

SINGLE YELLOW AND ORANGE SHADE

	Each	Per doz.	Per 100
Gen'l Gordon , very fine, canary yellow . . .	\$0 07	\$0 75	\$5 50
La Pluie d'Or , pale yellow, early	07	60	4 50
Herman , orange yellow	07	75	5 50
Ida , the best yellow, very early	07	65	4 50
King of the Yellows , very fine, bright yellow	08	80	5 00
Sonora , buff color, large bells and spike . .	08	80	6 00



Single La Grandesse Hyacinth.

DUTCH HYACINTHS—Continued



FIRST SIZE BULBS DOUBLE VARIETIES

When selection is left to us—

\$42.50 per 1000; \$4.50 per 100; 70c. per doz.

DOUBLE RED AND ROSE

	Each	Per doz.	Per 100
Alida Catharina , pink, very early	\$0 07	\$0 75	\$5 50
Bouquet Royal , rosy salmon, red center	07	60	4 50
Regina Victoria , fine salmon rose, good bells	07	75	5 50
Bouquet Tendre , dark carmine red	07	75	4 50
Czar Nicholas , blush pink, good	07	75	4 50
Lord Wellington , the finest of dark pinks	09	80	5 00
Noble par Merite , deep rose, very fine spike	09	80	6 00
Prince of Orange , rosy pink, fine spike	07	75	5 50

DOUBLE BLUE, PURPLE AND PORCELAIN

	Each	Per doz.	Per 100
Albion , purplish blue, late	\$0 07	\$0 75	\$5 50
Blocksburg , good truss, bright porcelain	07	75	5 00
Othello , dark blue, dwarf	07	75	5 50
Charles Dickens , violet blue, very large	07	75	5 50
Garrick , dark blue, very early	07	65	4 50
Prince of Saxe Wiemar , deep purple, splendid flower	07	65	4 50
Rembrant , light blue, very pretty	09	80	6 50

DOUBLE PURE AND TINTED WHITE

	Each	Per doz.	Per 100
Blanchard , pure white, fine bells dark center	\$0 75	\$0 75	\$5 50
Duchesse de Bedford , pure white	07	65	5 00
La Tour d'Avergne , pure white, large truss, earliest for forcing	09	90	6 00
Anna Marie , blush white	07	75	5 50
Bouquet Royal , pure white, one of the best	07	75	5 50
La Virginite , blush white, fine	07	65	5 00
Prince of Waterloo , pure white, extra	09	80	6 00

DOUBLE YELLOW AND ORANGE

	Each	Per doz.	Per 100
Bouquet d'Orange , orange salmon	\$0 07	\$0 75	\$5 50
Goethe , pale yellow, fine bells	07	75	5 50
Minerva , orange yellow, fine bells	09	80	6 00
Jaune Supreme , bright yellow	09	80	6 00
Ophir d'Or , deep yellow	10	90	6 50

SECOND SIZE BULBS SINGLE VARIETIES

Our Selection of Varieties, Double or Single or Both, 60c. per doz.; \$3.50 per 100; \$32.50 per 1000.

SINGLE RED AND ROSE

	Each	Per doz.	Per 100
Baron van Thuyll , very early, deep flesh, compact spike	\$0 06	\$0 55	\$4 00
Gen. Pellissier , brilliant carmine, compact	06	55	4 00
Gertrude , rosy pink, large compact truss	06	55	4 00
Gigantea , blush rose, splendid broad truss	07	60	4 50
Lord Macaulay , bright rosy carmine, splendid truss, light eye	07	60	4 50
Norma , pale, waxy pink	06	55	4 00
Moreno , waxy pink, gigantic flower, new	07	65	5 00
Robert Steiger , deep bright crimson	06	55	4 00
Fabiola , pink, carmine striped, large truss	07	60	4 50
Chas. Dickens , fine rose, grand truss	07	60	4 50
Roi des Belges , fine deep red, good truss	06	55	4 00
Sultan's Favorite , rose, red striped, early	07	60	4 50

SINGLE PURE AND TINTED WHITE

	Each	Per doz.	Per 100
Baroness van Thuyll , pure white, large truss, very early	\$0 07	\$0 60	\$4 50
Grandeur a l'erveille , large truss, rosy white	07	60	4 50
Grande Vedette , large bells, pure white	07	60	4 50
Mme Van der Hoop , pure white, splendid large bells	07	65	5 00
Queen Victoria , pure white, large truss	07	60	4 50
Alba Superbissima , pure white, fine truss	07	60	4 50
La Grandesse , the purest white, splendid bells and grand truss	07	65	5 00
La Belle Blanchisseuse , pure white, fine	07	65	5 00
Voltaire , large bells, fine cream color	07	65	5 00
Paix de l'Europe , pure white, good spike	07	65	5 00
L'Innocence , pure white, very fine spike	08	75	5 00
La Franchise , waxy white, good spike	07	65	5 00
Mina , pure white, very large bells	07	75	5 00

SINGLE BLUE, PURPLE AND PORCELAIN

	Each	Per doz.	Per 100
Baron van Thuyll , dark blue, large truss	\$0 06	\$0 55	\$4 00
Charles Dickens , blue, tinged lilac, large truss, fine flower	06	55	4 00
King of the Blues , rich dark blue, splendid compact truss	07	60	4 50
La Peyrouse , clear porcelain blue	07	60	4 50
Leonidas , fine truss, splendid porcelain	06	55	3 75
Pieneman , broad truss, immense bells, porcelain blue	06	55	4 00
Queen of Blues , splendid clear blue, large truss	07	60	4 50
Grand Maitre , deep porcelain blue, very large truss and bulb	07	60	4 50
Marie , dark blue, large fine spike	06	55	4 00
Regulus , large bells, light porcelain	06	55	4 00
Czar Peter , finest light porcelain blue	07	60	4 50
Blondin , beautiful silvery porcelain blue	07	65	5 00
William I , very dark purple, excellent	07	65	5 00

SINGLE YELLOW AND ORANGE SHADE

	Each	Per doz.	Per 100
Gen'l Gordon , very fine, canary yellow	\$0 07	\$0 60	\$4 50
La Pluie d'Or , pale yellow, early	06	55	4 00
Herman , orange yellow	07	60	4 50
King of the Yellows , bright yellow	07	65	5 00
Sonora , buff color, large bells and spike	07	65	5 00
Ida , the best yellow, very early	07	60	4 50

B
E
D
D
I
N
G

H
Y
A
C
I
N
T
H
S



F
O
R
C
I
N
G

H
Y
A
C
I
N
T
H
S

Ideal Bed of Hyacinths, from second size named kinds, consisting of 100 bulbs, in 5 varieties. Costs \$3 50.

DUTCH HYACINTHS—Continued

SECOND SIZE BULBS

DOUBLE VARIETIES

Our selection of varieties—

60c. per doz.; \$3.50 per 100; \$32.50 per 1000.

DOUBLE RED AND ROSE

	Each	Per doz.	Per 100
Alida Catharina , pink, very early	\$0 07	\$0 65	\$5 00
Bouquet Royal , rosy salmon, red center . . .	6	55	4 00
Regina Victoria , fine salmon rose, good bells	7	60	4 50
Bouquet Tendre , dark carmine red	7	65	5 00
Czar Nicholas , blush pink, good	7	65	5 00
Lord Wellington , the finest of dark pinks . . .	7	65	5 00
Noble par Merite , deep rose, very fine spike	7	65	5 00
Prince of Orange , rosy pink, fine spike	7	65	5 00

DOUBLE BLUE, PURPLE AND PORCELAIN

	Each	Per doz.	Per 100
Albion , purplish blue, late	\$0 7	\$0 65	\$5 00
Blocksberg , good truss, bright porcelain . . .	7	65	5 00
Othello , dark blue, dwarf	7	65	5 00
Chas. Dickens , violet blue, very large	7	65	5 00
Garrick , dark blue, very early	7	60	4 50

DOUBLE BLUE, PURPLE AND PORCELAIN—Continued

	Each	Per doz.	Per 100
Prince of Saxe Weimar , deep purple, splendid flower	\$0 07	\$0 60	\$4 50
Rembrant , light blue, very pretty	7	75	5 50

DOUBLE PURE AND TINTED WHITE

	Each	Per doz.	Per 100
Blanchard , pure white, fine bells, dark center	\$0 07	\$0 65	\$5 00
Duchesse de Bedford , pure white	7	60	4 50
La Tour d'Auvergne , pure white, large truss, earliest for forcing	7	65	5 00
Anna Maria , blush white	7	65	5 00
Bouquet Royal , pure white, one of the best	7	65	5 00
La Virginite , blush white, fine	7	60	4 50
Prince of Waterloo , pure white, extra	7	65	5 00

DOUBLE YELLOW AND ORANGE

	Each	Per doz.	Per 100
Bouquet d'Orange , orange salmon	\$0 07	\$0 65	\$5 00
Goethe , pale yellow, fine bells	7	65	5 00
Minerva , orange yellow, fine bulb	7	65	5 00
Jaune Supreme , bright yellow	7	75	5 50
Ophir d'Or , deep yellow	7	75	5 50



COPYRIGHTED
1893
BY A.B.R.C.

TULIPS

Single Named Varieties

FIRST SIZE FLOWERING BULBS

	Doz.	Per 100	Per 1000
Artus , red	\$0 25	\$1 25	\$10 50
Belle Alliance , scarlet	35	2 25	19 00
Cardinal's Hat , dark red	15	75	6 50
Chrysolora , golden yellow	18	1 00	7 50
Couleur Ponceau , cherry red, bordered white	18	1 00	7 00
Cottage Maid , rose, white striped	18	1 00	7 75
Couleur Cardinal , crimson	50	3 00	27 00
Crimson King , scarlet	20	1 25	10 50
Duc von Thol , rose	30	2 25	19 00
" " scarlet	20	1 25	9 50
" " white	30	2 00	16 00
" " yellow	35	2 25	19 00
" " gold striped	20	1 00	8 00
" " crimson	10	75	6 00
Duchesse de Parma , brown and orange	15	90	7 25
Jacht van Delft , white. Doz., 20 cents; per 100, \$1.00; per 1000, \$7.00.			
King of the Yellows , deep golden yellow, splendid forcer. Doz., 35 cents; per 100, \$2.00; per 1000, \$17.50.			
Keizerskroon , red, gold bordered. Doz., 25 cents; per 100, \$1.20; per 1000, \$10.50.			

Best for
Early
forcing

SINGLE NAMED TULIPS—Continued

	Doz.	Per 100	Per 1000
La Reine , white, rose border, fine for forcing	\$0 15	\$0 75	\$6 25
L'Immaculee , pure white	20	90	6 50
Mon Tresor , yellow	40	2 50	21 00
Pottebakker , white	25	1 25	11 50
" scarlet	25	1 50	14 00
" yellow	25	1 25	10 50
Princess Mariana , large flower, white shaded rose	20	1 10	8 00
Prince of Austria , dark apricot orange	50	3 00	27 50
Proserpine , cherry red	50	3 00	26 00
Rachel Ruisch , rose	20	1 10	9 00
Rose Gris de Lin , soft rose	30	1 50	12 50
Rose Luisante , dark silky rose	50	3 00	27 00
Rosamundi Huikman , rose and white	15	80	6 50
Standard (Royal Silver) , red and white	25	1 25	12 00
VAN GOOYEN , an excellent rosy pink for forcing; equal to any	20	1 35	12 00
Vermillion Brilliant	50	3 00	27 00
Wapen van Leiden , rose and white	15	85	7 50
Wouwerman , dark violet	35	2 00	17 00
Yellow Prince , pure yellow	20	85	7 50

Single Mixed Tulips

SUPERFINE MIXED , all colors	\$0 15	\$0 75	\$6 50
1st Quality, Mixed , all colors	12	65	5 00



TULIPA
GREIGI

TULIPA GREIGI

† An exceptionally handsome and distinct early-flowering species. The beautifully formed flowers are of large size and of a gorgeous orange-scarlet color, so brilliant as to at once attract the attention. The plant is quite ornamental on account of its broad, spotted foliage; very choice. Each, 15 cents; per doz., \$0.80; per 100, \$6.00.

TULIPS—Continued

FOR
FORCING



OUTDOOR
PLANTING

Tulips, Double Varieties.

Double Named Varieties

	Per Doz.	Per 100	Per 1000
Alba Maxima, white	\$0 20	\$1 15	\$9 00
Couronne d'Or, yellow, fine for forcing	60	3 50	31 50
Duc von Thol, red and yellow	15	75	6 50
Imperator Rubrorum, scarlet	35	2 25	21 00
Duke of York, carmine rose, edged white	15	80	7 50
Gloria Solis, red, gold bordered	15	2 00	10 75
La Candeur, pure white	15	1 15	10 00
Murillo, blush white, handsome flower	40	2 25	19 00
Marriage de Ma Fille, red and white	35	2 00	17 00
Purple Crown, dark red	20	1 00	9 00
Rex Rubrorum, scarlet	20	1 25	11 25
Rosine, rose	20	1 35	12 00
Rubra Maxima, dark scarlet	25	2 00	17 00
Rose Blanch, white	20	1 00	7 50
Salvator Rosa, rose, flamed white	75	4 00	35 00
Tournesol, red and yellow	35	1 60	14 50
Yellow Rose, pure yellow	15	1 00	7 00

Double Mixed Tulips

	Per Doz.	Per 100	Per 1000
Superfine Mixed, all colors	\$0 20	\$1 00	\$8 00
1st Quality Mixed, all colors	15	75	6 30
Double Late Superfine, mixed	20	1 00	7 50

Single Late or May Flowering Tulips

Sometimes Called Decoration Day Tulip

† Tall-growing, brilliant varieties, specially suitable for bedding; will be found invaluable for Garden work, being cheap and effective, and blooming all at the same time; most useful for bedding out in parks and cemeteries. Besides, the fact of their not coming into bloom until fine spring weather has set in makes them, in many cases, to be more satisfactory than the early flowering varieties. Fifteen thousand of these beautiful Tulips were exhibited recently at a Continental Exhibition, and met with great admiration. They have clearly shown their usefulness for effective bedding, and as we have large stocks of all the best and most distinct varieties, we can offer these at special low rates. (See illustration.)

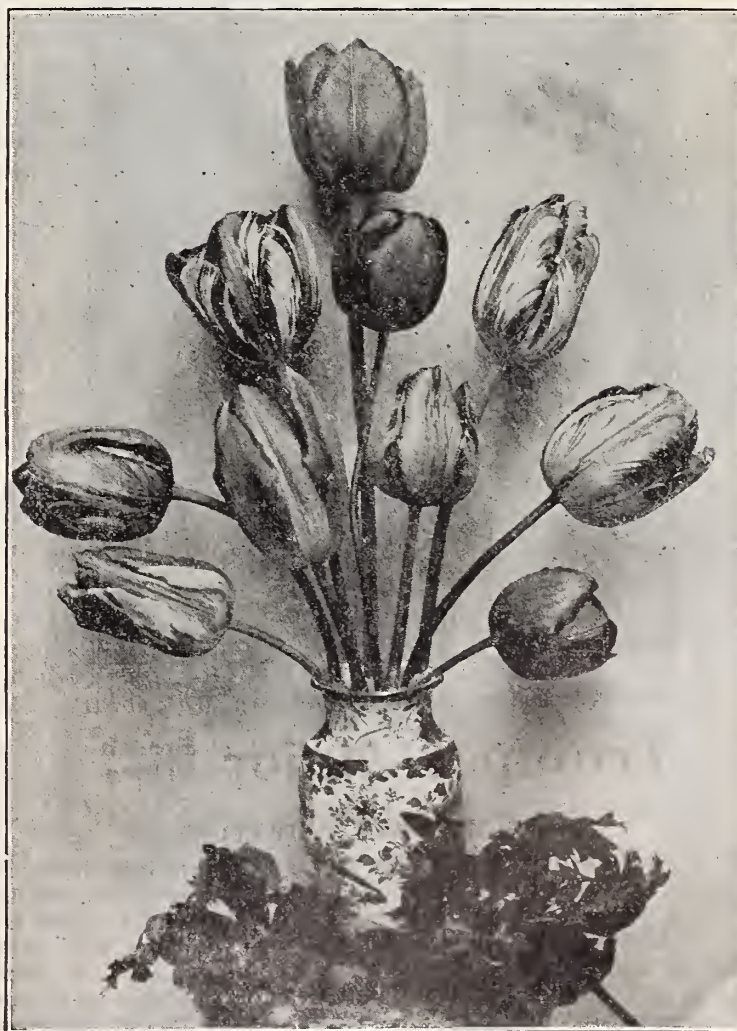
Single Late Flowering Tulips

Plant Some Outside for Easter, April 23d, 1905

	Doz.	Per 100	Per 1000
Byblooms, with white ground, superfine mixed	\$0 20	\$1 00	\$8 50
Bizards, with yellow ground, superfine mixed	15	85	7 00
Darwin, superfine mixed	25	1 50	14 00
Gesneriana, scarlet, black center	20	1 25	9 00
Maiden's Blush, cream-white with pink border, pointed and reflexed petals, useful for designs	30	1 80	16 00
Bridesmaid, brilliant scarlet, white striped, very distinct and late	25	1 75	15 00
Beauty of America, pale yellow	50	3 00	28 00
Bouton d'Or, yellow	20	1 10	9 50
Golden Crown, deep yellow edged, red	20	1 00	7 50
Isabella, crimson variegated	50	2 50	21 50
Single Late Mixed Tulips	20	80	7 00

Parrot Tulips

	Doz.	Per 100	Per 1000
Admiral of Constantinople, red	\$0 20	\$1 15	\$9 50
Cramoise, brilliant deep crimson	20	1 25	11 00
Cardinal Red	20	1 15	9 50
Lutea Major, yellow	20	1 15	9 50
Perfecta, yellow and red	20	1 25	10 00
Superfine Mixed	15	75	6 50



Collection of Single Late or May Flowering Tulips.

NARCISSUS AND DAFFODILS

Paper Whites

Paper White Grandiflora Multiflora

¶ This is a much improved type of the Grandiflora, as the stalk contains larger trusses of flowers, and the individual florets are of better substance. Sometimes sold as "Giants."

Per doz., 20c.; per 100, \$1.40; per 1000, \$12.00

Paper White Grandiflora

¶ Bulbs measuring 13 ctms. and over, each, 5c.; per doz., 20c.; per 100, \$1.25; per 1000, \$10.00. On account of drought in France, very scarce.

12 ctms. and over, per doz., 15c.; per 100, 85c.; per 1000, \$7.00.

Double Roman

Yellow and white, per doz., 15c.; per 100, \$1.00; per 1000, \$9.00.



Narcissus Paper White Grandiflora Multiflora.

Trumpet Major French Grown

For Christmas Flowering

¶ The possibility of bringing Single Daffodils into flower for Christmas is doubted by many florists, but before recommending this stock we tested it several years, both for purity, color and forcing qualities. For the past five years we have sold large quantities to the leading florists of this country, who, in every instance, have engaged larger quantities for the coming season, which goes to prove it is no longer an experiment, but a success, and a very profitable bulb to grow.

Per doz., 20c.; per 100, \$1.25; per 1000, \$10.00.

Von Sions

¶ Too well known for description—it is yet the most popular forcing variety.

¶ Easter, however, coming so late, bulbs planted out this fall will bloom in ample time for Easter at practically any point south of the Great Lakes. We would recommend the smaller sized bulbs for this purpose. Special price on 5000 lots.

	Per doz.	Per 100	Per 1000
Von Sion , golden yellow, large double-nose bulbs, extra selected for forcing . . .	\$0 30	\$2 00	\$18 50
Von Sion , large double, golden yellow, 1st size, for forcing	25	1 35	12 50
Von Sion , 2d size, all flowering bulbs	20	1 10	9 50

Daffodils or Narcissus

OTHER DOUBLE VARIETIES

	Per doz.	Per 100	Per 1000
Albus Plenus Odoratus , sweet-scented	\$0 15	\$0 75	\$5 50
Incomparabilis Plenus , yellow	15	75	6 50
Orange Phoenix , white and orange	20	1 00	8 50
Silver Phoenix , sulphur white	40	2 50	22 50
Double Mixed	15	75	6 50



Narcissus Von Sion.

JONQUILS, or Rush-Leaf Narcissus

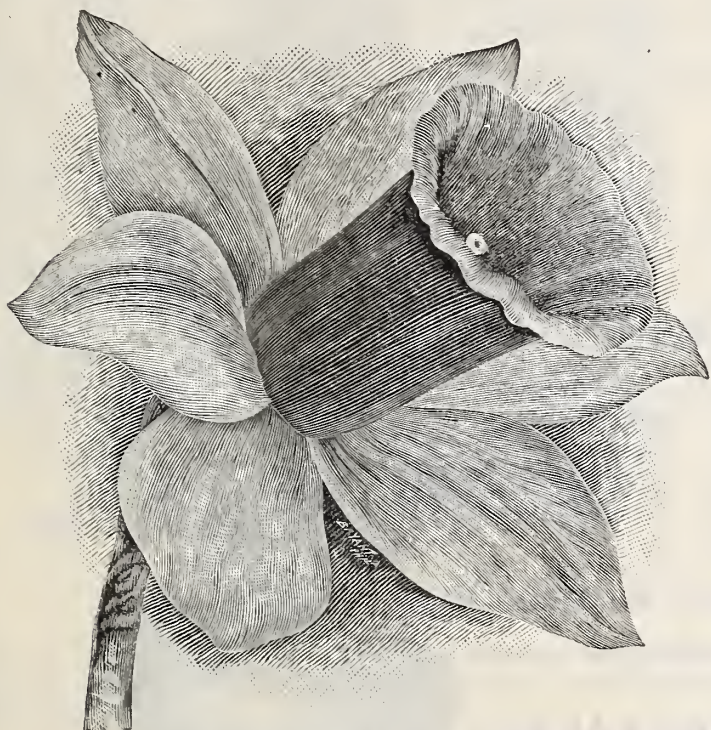
¶ These are much in demand for early flowering and are excellent forcers. All varieties are deliciously scented, especially the Single, which is most in demand. They are also excellent for planting out and for acclimatization.

	Per doz.	Per 100	Per 1000
Single Sweet-Scented	\$0 10	\$0 50	\$4 00
Double Sweet-Scented	20	1 00	8 50
Campernelle Rugulosis	15	75	5 50
Campernelle Ordinary	15	50	4 50

Single Daffodils and Polyanthus Narcissus

Single Varieties of Hardy Narcissus

¶ The following varieties are the "cream" of all the most useful kinds, whether for forcing or for planting out—or acclimating; potted up 5 to 9 bulbs in a pan, they make a grand showing, and are quick sellers at Easter, in fact at most any time after Christmas. American-grown Narcissus bulbs will do equally as well as European-grown for planting outside, and they can also be forced with some success.



Type of Trumpet Daffodil var. Emperor.

	Per Doz.	Per 100	Per 1000
Sir Watkin , large flower, sulphur-yellow cup stained orange	\$0 35	\$2 25	\$20 00
Sir Watkin , American grown	35	1 75	15 00
Empress, Bicolor , pure white perianth, with yellow trumpet	40	2 50	22 50
Empress , American grown	40	2 00	17 50
Bicolor Horsfieldii , pure white perianth, with yellow trumpet	30	1 75	16 00
Golden Spur , deep yellow trumpet	35	2 00	17 25
Golden Spur , American grown	30	1 60	14 00
Poeticus (Pheasant's Eye), pure white, orange center. (See illustration on index page)	10	45	3 50
Poeticus , American grown	10	35	2 50
Poeticus Ornatus , pure white, orange center, very early, will force	15	75	6 00
Poeticus Ornatus , American grown	15	60	5 00
Princeps (Ajax Princeps), sulphur-white perianth, yellow trumpet	15	75	6 50
Trumpet Major , deep yellow trumpet and perianth. Dutch grown	15	1 00	8 00
Emperor , Flowers of great size and substance, primrose perianth, yellow trumpet. (See illustration.)	40	2 25	20 00
Emperor , American grown	35	1 75	15 00
Ard Righ (Irish King), golden yellow trumpet, large flower, one of the finest for forcing	75	5 00	
Henry Irving , large golden yellow, excellent for cutting and all purposes	35	2 00	17 00

SINGLE VARIETIES—Continued

	Doz.	Per 100	Per 1000
Maximus , grand golden yellow flower	\$0 60	\$3 50	
Rugilobus , like Emperor, but not so large, sulphur perianth, yellow trumpet	25	1 50	\$12 50
Albicans , perianth white, yellow trumpet, changing to white	40	2 50	22 00
Barri Conspicuus , yellow, large orange cup	20	85	7 00
Bicolor Grandee , flowers very large, white petals, yellow trumpet	25	1 50	12 50
Burbidgei , white cup, margined scarlet	15	70	5 00
Incomparabilis Stella , very fine yellow	15	75	5 00
Leedsii , white, pure orange cup	15	75	5 50
Obvalaris , yellow, very early	25	1 50	12 50
Bulbocodium Conspicuus , an excellent yellow	75	4 00	

Polyanthus Narcissus

¶ The Polyanthus varieties of Narcissus should be better known and more generally used. Pans of these are excellent for all purposes. They are all very sweet scented and usually sell at sight.

	Per Doz.	Per 100	Per 1000
Grand Monarque , white	\$0 30	\$2 00	\$17 50
Grand Soliel d'Or , yellow	30	2 00	17 50
Staten General , white	30	1 85	16 00
Grand Primo , yellow	30	2 00	18 00

Chinese Sacred Narcissus

First Size, or so-called "Mammoth Bulbs," packed in mats each containing four baskets or 120 bulbs. We do not stock anything smaller, as they do not flower satisfactorily. (See illustration.)

Per Basket of 30 bulbs, 1.25; per doz. bulbs, 60c.; each, 10c.
Per Mat containing 4 baskets, 120 bulbs, for \$4.25; per 1000, \$33.00



Chinese Sacred Lily, or Narcissus.

CALLAS

NEW ORCHID CALLA (*Arum Aristatum*) "A CHILD CAN GROW IT"

¶ "This wonderful bulb from South Africa, under certain conditions, grows without soil or water."

¶ "The corm or bulb can be placed upon a bench or a table in a living room and within a short time will start to grow and develop a long green shoot which grows very quickly, from which a large and wonderful flower, nearly 18 inches in height, unfolds; the color of the flower outside is greenish yellow, inside dark purple and spotted."

¶ "After the plant has flowered the bulb can be planted in the garden or in a pot and placed in a greenhouse or living room; it will then develop immense foliage measuring nearly 3 feet in circumference."

¶ "When the bulb has been harvested and thoroughly ripened it can again be developed in the preceding manner either in a room or greenhouse, and soon the marvelous flower will again appear." (See illustration.)

Prices on Orchid Calla Bulbs

		(July and August Delivery)			
		Each	Per Doz.	Per 100	Per 1000
3 to 4½ in. around or 1 to 1½ in. diam.		\$0 10	\$0 80	\$5 50	\$50 00
5 to 6 " " " 1½ to 2 " "		20	1 75	12 50	100 00
6 to 7½ " " " 2 to 2½ " "		40	4 00	25 00	

WHITE CALLA LILY (*Calla Æthiopica*)

(July and August Delivery.) Supply of large bulbs very short

¶ Too well-known to require any description. Large well-ripened bulbs all with center shoots. (See illustration.)

	Each	Per Doz.	Per 100	Per 1000
3 to 4½ in. around or 1 to 1½ in. diam.	\$0 10	\$0 75	\$4 50	\$40 00
4½ to 6 " " " 1½ to 2 " "	15	1 00	6 50	60 00
6 to 7½ " " " 2 to 2½ " "	20	1 50	10 00	90 00
7½ to 9 " " " 2½ to 3 " "	25	2 00	12 00	
Mammoth Bulbs	30	3 00	20 00	

SPOTTED CALLA LILY (*Richardia Alba Maculata*)

(Fall Delivery)

¶ Deep green leaves spotted with white; flowers pure white with black center. Free flowering. Large bulbs, 50c. per doz.; \$3.00 per 100; \$25.00 per 1000.



Calla Æthiopica or White Calla Lily.

BLACK CALLA LILY

(*Arum Sanctum*)

¶ The plant produces one large flower the *New Orchid Calla* (*Arum Aristatum*). shape of a calla, but from 14 to 18 inches long and 4 inches broad, and of a rich, dark purple color and green underneath. The spathe rising from the center of the flower is about 10 inches long, velvet-like and quite black. The leaves are large and of a rich green color, and resemble those of the *Calla Æthiopica*.
"A child can grow it."

	Each	Per Doz.	Per 100	Per 1000
1¼ to 1½ in. in diam	\$0 05	\$0 35	\$2 00	\$17 50
1½ to 2 " " "	08	50	3 50	30 00
2 to 2½ " " "	10	75	4 00	35 00

YELLOW CALLA LILY

(Fall Delivery)

CALLA HASTATA

¶ Strong bulbs; when planted start growth at once and commence blooming in a short time, sending up numerous flowers which are a bright, golden yellow with black center. \$1.00 per doz.; \$7.00 per 100; \$65.00 per 1000.

CALLA ELLIOTTIANA

¶ This is the great new Yellow Calla of marvelous beauty. Plants are large, rich, dark golden yellow, often 4 to 5 inches across the mouth. Leaves beautifully spotted with white. Bulbs of this variety are very scarce. 75c. each; \$6.50 per doz.; \$50.00 per 100.

LITTLE GEM CALLA

(Fall Delivery)

¶ Rarely exceeds 12 inches in height and blooms most abundantly. The flowers are not more than half the size of the common variety. Fine for small pots. 50c. per doz.; \$3.00 per 100; \$25.00 per 1000.

CORNUTUM, or Red Calla

(Fall Delivery)

¶ A very handsome Calla with red flowers, spotted with black. Stems curiously mottled green and white. Flowers palm-like and very handsome. A showy pot plant for winter decoration. \$1.00 per doz.; \$7.00 per 100; \$65.00 per 1000.





Spiraea Superbe.

SPIRÆAS

Ready in November, packed in cases of 250 clumps. Orders for case lots will be furnished at the thousand rate.

¶ We offer *two new Spiræas*, which, when their qualities become better known, are bound to supersede the older sorts. No grower can afford to miss giving them a trial. They are easy forcers.

Gladstone. The finest Spiræa of recent introduction, superior to all other varieties. Its immense spikes of pure white flowers are carried on a strong stem of about 24 inches high. This is truly the florist's ideal Spiræa. \$1.50 per doz.; \$10.00 per 100.

Superbe. New. Makes a perfect plant for decorative purposes. Is an early and abundant flowerer, of a beautiful, symmetrical shape. The flowers are pure white, borne on stiff stems; 1½ to 2 feet high. \$1.00 per doz.; \$6.00 per 100.

Japonica. Large imported clumps; specially grown for forcing. 75c. per doz.; \$4.00 per 100; \$38.00 per 1000.

Compacta Multiflora. More compact than Japonica; an extra fine variety for forcing. 75c. per doz.; \$5.00 per 100; \$45.00 per 1000.

Astilboides Floribunda. A very strong grower, and preferred by many for Easter forcing. Flowers pure white, very large and feathery. 75c. per doz.; \$5.00 per 100; \$45.00 per 1000.

Spiræa Palmata. Pink, very pretty for late Easter forcing. \$1.00 per doz.; \$6.00 per 100.

FREESIAS

¶ These are indispensable for florists' use, and we have in stock large, solid, well-formed bulbs bound to produce large snow-white flowers. If you have not grown Freesias before, start now. Our bulbs are French and Bermuda stocks, which have proven to be the best forcing and purest grown.

FREESIA REFRACTA ALBA (White)

	Per Doz.	Per 100	Per 1000		Per Doz.	Per 100	Per 1000
Monster or Mammoth Bulbs , very scarce	\$0 25	\$1 50	\$10 00	Large Bulbs	\$0 10	\$0 65	\$5 50
Large Selected Bulbs	15	90	7 00	Small Bulbs , ⅔ to ½ inch	08	40	3 00

FREESIA LEICHTLINII, OR YELLOW FREESIA

Freesia Leichtlinii Major Per doz., \$0.25; per 100, \$1.25; per 1000, \$10.00

CROCUS

Selected Large Bulbs Named Varieties

Albion, purple					
Baron van Brunow, dark blue					
David Rizzio, dark blue					
La Majestueuse, striped					
Caroline Chisholm, pure white	Per Doz.	Per 100	Per 1000		
Mme. Mina, striped	\$0 10	\$0 45	\$3 50		
Sir Walter Scott, variegated					
Mont Blanc, large white					
Queen Victoria, pure white					
Large Yellow, 1st size					

MIXED CROCUS

Yellow					
Blue					
Striped	Per Doz.	Per 100	Per 1000		
White	\$0 8	\$0 25	\$1 75		
All Colors, Mixed					



Crocus in variety.

LILY OF THE VALLEY

Cold Storage Lily of the Valley Ready for Delivery Every Day in the Year

"VALLEY BELLS" for "WEDDING BELLES"

¶ Forcing **COLD STORAGE** or **Retarded Lily of the Valley** is no experiment; when you have the right "**PIPS**" really no forcing required. They mature naturally in twenty to twenty-five days, with ordinary plant treatment.

¶ The **VALLEY** we offer is **Our Own Stock**, selected and packed specially for us in Germany—the same we have sold for many years—not "bought in" stock. We know our "**BRAND.**"

¶ There are many **brands** of Valley—some good, others not so good—**OURS** is the **BEST**. This is necessary for **results** from Cold Storage "**PIPS.**" Per 100, \$2.00; 250, \$3.75; 1000, \$12.50; case of 2500 "Pips" for \$30.00. Shipped as wanted. You will need some from now on previous to new crop arriving.

Import Lily of the Valley Ready in December

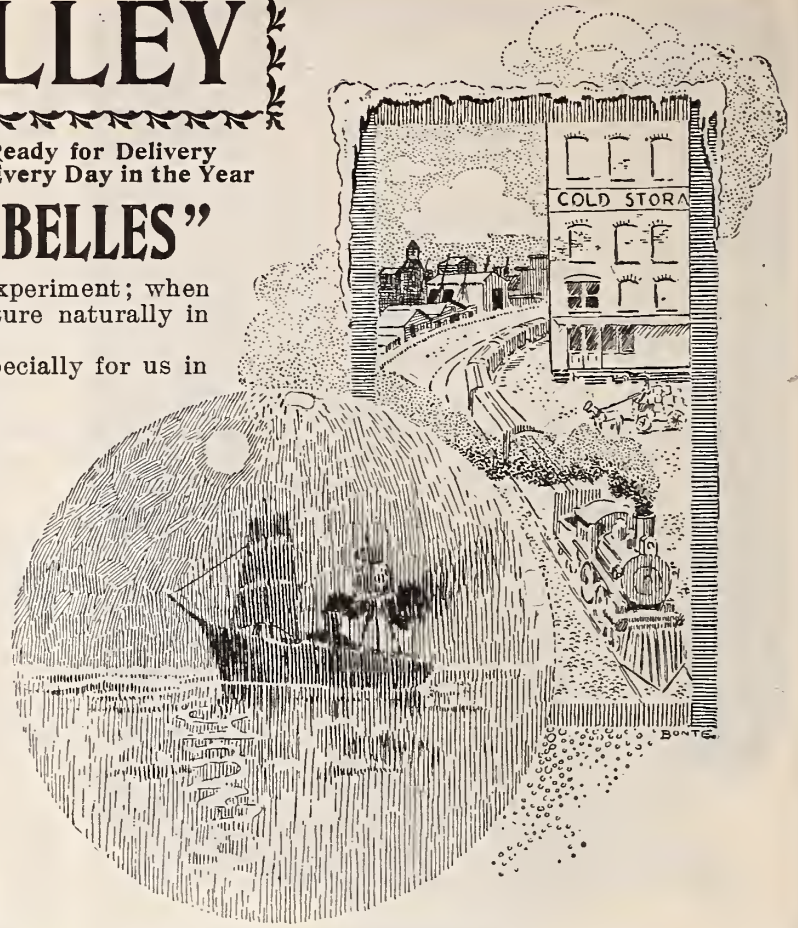
"**RIP VAN WINKLE**" ¶ Our Best Brand has convinced the largest growers of Valley that none can approach it for earliest forcing, abundance of foliage and size of flowers.

Per 100, \$1.60; per 1000, \$13.50; per case of 2500, \$32.50.

BERLIN PIPS Strong 3-year-old, \$1.25 per 100, \$11.00 per 1000, or \$25.00 per case of 2500.

HAMBURG PIPS Strong 3-year-old, \$1.15 per 100, \$10 per 1000, or \$22.50 per case of 2500.

CLUMPS for outdoor planting, each, 30c.; per doz., \$2.50; per 100, \$15.00.



"ONE OF MANY."

LENOX, MASS., January 23, 1903.
Gentlemen:—Will you please ship me at earliest convenience, by express, another case of Lily of the Valley, same as last. We have had remarkably good results from those you sent us before and would like to be able to repeat it.
(Signed) GEO. T. PHILCOX, Manager,
ELM COURT FARM (W. D. Sloan, Esq.)



Lily of the Valley.

AMARYLLIS Ready in October

Extremely ornamental greenhouse plants, with large, fragrant, beautifully colored flowers. The growing season is from early spring until about September, when the plants should be kept cool and allowed to rest until February. Frequent disturbance of the roots is to be avoided. Established bulbs in large pots should have a top-dressing each year.

	Each	Per Doz.	Per 100	Per 1000
Aulica Platypetala (Lily-of-the-Palace). Very large, handsome flowers; crimson, shaded with green	\$1 00	\$10 00		
Belladonna . Violet and white; flowers in large umbels	10	1 00	\$6 00	
Belladonna Major . An improved form of the preceding	15	1 50	7 50	
Conspicua . Large bulbs	50	5 00		
Formosissima (Jacobæan Lily). Pretty scarlet flowers; may be planted outside in the spring	60	3 50		
Johnsonii (Spice Lily). Very large, exceedingly beautiful flowers; crimson, striped white, large bulbs, 7 in. or over	20	1 60	12 00	\$100 00
Johnsonii (Spice Lily). 9 to 11 in. or over	25	2 25	17 00	
Longifolia rosea . Rose; hardy	15	1 25	8 00	75 00
Longifolia alba . White; hardy	15	1 25	8 00	75 00
Rosea . Large bulbs, 9 to 13 cms. around		50	3 00	25 00
Vittata Hybrids . Beautifully colored hybrids; large bulbs	50	5 00		
Williamsii . European hybrid, brilliant crimson.	75	7 50		

¶ NURSERIES AND TRIAL GROUNDS—SPARKILL, ROCKLAND CO., NEW YORK.

GLADIOLUS

Special Offer for Planting in the Greenhouse During the Fall and Winter

By doing so you will secure a crop for *Easter*, coming as it does so late next year—April 23d.
¶ These can be planted among the carnations, or in a bench where you have cut and moved your chrysanthemums.

GLADIOLUS AUGUSTA

Pure White (See illustration)

¶ This is a variety worthy of every florist's attention. It is as white as "Snow White" (having only a small tinge of pink in neck or throat), but in every other way its superior. First size bulbs can be depended upon throwing two or three spikes of bloom; most of the spikes with two and three branches.

¶ The individual flower is very large, has much substance and lays close to the stems when cut, which makes it an excellent variety for shipping to market, as they can be packed closely without injury to the flower.

¶ It will stand slow forcing and if the flowers are brought in before outdoor Gladiolus are ready, they command very high prices. We have watched the variety for a number of years, but have only been able in recent years to get a sufficient quantity of bulbs to offer it to the commercial grower at a reasonable price. It is a sure money-maker and no florist will be disappointed who gives it a trial.

Prices—Selected bulbs: Doz., \$1.00; 100, \$4.00; 1000, \$35.00.

First size bulbs: Doz., 75c.; 100, \$3.00; 1000, \$25.00.

Other Good Varieties for Indoor Forcing

Shakespeare. White and rose.	\$45.00 per 1000	Each	Per doz.	Per 100
May. White, flaked bright rosy	Selected bulbs. \$15.00 per 1000	\$0 10	\$0 75	\$5 00
crimson. Superb spike.		First size bulbs. \$12.00 per 1000	05	40
			35	1 75



Gladiolus Augusta (Pure White.)

GLADIOLUS IN MIXTURE

¶ Our Gladiolus bulbs are all Eastern grown and are not to be confused with cheap Western stock.

Except where noted, our Gladiolus bulbs are extra selected size, measuring 5 to 8 inches in circumference.

(Special prices on large quantities.)

American Hybrids. Special Mixed. This mixture is grown especially for us and can be recommended for florists' use. The bulbs are all selected and contain at least 50 per cent. white and light types \$0 20 \$1 00 \$8 50

White and Light Varieties. Mixed. There is no better mixture of white and light Gladiolus than this sold. The bulbs are all selected and the varieties the best and most suitable for florists' use 30 2 00 18 00

Groff's Hybrids, Originator's Strain 50 3 00 25 00

GLADIOLUS COLVILLEI

November Delivery

¶ These make a good crop planted among your carnations and do not interfere with their growth, but rather absorb any superfluous moisture in your benches.

Colvillei Alba. (The Bride.) Very useful for early work; will stand gentle forcing; flowers pure white. 10c. per doz.; 75c. per 100; \$5.50 per 1000.

Colvillei Rubra. Red. 10c. per doz.; 75c. per 100; \$5.50 per 1000.

COLVILLEI BLUSHING BRIDE

(New)

¶ This variety of recent introduction is a splendid forcer, coming into flower quite six weeks earlier than Alba. Flowers of good substance are pure white with rosy blotches; unique for cutting. Per doz., 35c.; per 100, \$2.00; per 1000, \$17.50.

Gladiolus Colvillei Types.

¶ NURSERIES AND TRIAL GROUNDS—SPARKILL, ROCKLAND CO., NEW YORK



IRISES

(FLEUR-DE-LIS)

SPANISH IRIS

¶ This is a most useful and economical bulb, which we believe has escaped the attention of many American florists. In all the European cities it is grown in very large quantities for market. With very light protection it will withstand our most severe American winters when planted outside, and will stand toward the end of May, and can be made specially useful for Decoration Day purposes, either as a cut flower or in pots. The flowers are large, on long stalks, and very showy. Will flower in time for Easter, April 23d next year.

¶ We offer seven distinct varieties. Our selection was made from at least fifty sorts when seen growing in Europe. We offer large, selected bulbs.

¶ Small bulbs quoted elsewhere at lower prices do not flower freely.

Alexander Von Humboldt, dark blue.

Belle Chinoise, pure yellow.

Blanche Superbe, pure white.

Chrysolora, large bright yellow, early.

Defiance, blue and bronze.

Lilaceus, light blue.

Prince of Orange, pure dark yellow.

LARGE SELECTED BULBS

Price—Named Varieties, 5c. each; 15c. per doz.; 75c. per 100; \$5.00 per 1000.

Mixed, all colors . . . 10c. per doz.; 50c. per 100; \$3.00 per 1000.

FIRST SIZE BULBS

Mixed 5c. per doz.; 20c. per 100; \$1.50 per 1000.

ENGLISH IRIS Or Flag

In 10 Best Named Varieties, 25c per doz.; \$1.75 per 100.
MIXED Varieties, 20c. per doz.; \$1.25 per 100.



Iris Germanica.



Spanish Iris.

GERMAN IRIS

(IRIS GERMANICA)

Named Varieties, in 10 Distinct Kinds

Mont Blanc, white, tinted blue, extra.

Beauty, grayish white, flowers slightly veined and shaded with blue.

L'Interressante, pale lilac, blotched with purple-violet.

Geris, pale blue, veined with blue.

Minerva, creamy white, veined and blotched with deep purple.

Goliath, pale lilac, veined and shaded with dark blue.

Hector, dark blue, with purple-blue blotched on the falls.

Thasveris, pale lilac, falls blotched and veined with purple-blue.

Jenny Lind, pure yellow, with deep purplish-violet. Very fine.

Bacchus, satiny white, edged with blue. Very fine.

L'Innocence, ivory white.

	Each	Per Doz.	Per 100	Per 1000
Large Roots Named Varieties . . .	\$0 05	\$0 30	\$1 75	\$15 00
All Colors, Mixed	05	20	1 25	10 00

MOURNING IRIS

(Iris Susiana)

¶ In that wonderful combination of form and coloring of the rare sweet flower we call the Iris (eye of heaven) there is none so peculiarly beautiful as Susiana. It stands out in its own right as the grandest of all species. The groundwork of the flower is silvery gray, so mottled and veined and lined with dark chocolate and black as to leave one under the impression that it is only a silver lining showing through. It is hardy with slight protection in winter, blooming early in spring. No description can do it justice. (See illustration.) 20c. each; \$2.00 per doz.; \$15.00 per 100.



Iris Susiana.

IRISES—Continued

JAPAN IRIS (IRIS KÆMPFERI)

¶ We offer clumps grown from imported Japan stock, single and double varieties, in 25 choice named sorts. There is no hardy plant more popular at the present time, and extravagantly grand for permanent effect.

¶ The following collection contains the best varieties in existence, and were selected whilst in flower in Japan by an expert:



Japan Iris (*Iris Kæmpferi*). A field of several acres grown for us on Long Island.

DOUBLE VARIETIES

- Blue Danube.** Deep indigo blue, with violet tint and yellow center; dwarf.
- Blue Jay.** Sky blue, with distinct white lines in each petal.
- Eclairé.** A new white; very fine and extra large flowers.
- Frate.** Silvery white; veined and shaded lilac; deep lilac center.
- Gold Bound.** Pure white. One of the very best; tall growing.
- Hannibal.** White ground, veined and suffused with purple; light purple center.
- General Kouroki.** Pure white; very large flower; dwarf.
- Mahogany.** Dark red, shaded maroon.
- Mr. Fell.** Silver white, marked with violet veins and violet center.
- Mount Hood.** Fine deep blue; one of the best.
- Oriole.** Reddish purple color; extra large flower.
- Othello.** The finest of all; reddish maroon, veined violet toward center.
- Paragon.** Rich velvet purple, center marked with bright orange; dwarf.
- Pyramid.** Lilac blue, center veined with white on each petal; very fine; tall.
- Robert Craig.** French gray, with violet grain marks.
- St. Ogg.** Deep violet color, with fine blue tint, and marked orange center. Very fine variety.

DOUBLE VARIETIES—Continued

- T. S. Ware.** Violet red, veined white; white center.
- Victor.** Violet purple, with white vein marks, and violet-purple center.

SINGLE VARIETIES

- Anna Christ.** Sky blue; very fine.
- Conde.** Violet-purple, with deep violet tint, purple and yellow center, each petal with a silvery white edge.
- Gunfaton.** Crimson-violet, veined and mottled white; large flower.
- Norane.** Fine violet color, with gray vein marks, darker toward the center.
- Plum.** Light blue, veined darker toward center.
- Porcelain Sceptre.** Bluish white, with fine pink center.
- Tortoise.** Magenta color, with flaked and dotted white marks, and dull pink color.

Price of the above single and double-named sorts :
15c. each, \$1.25 per doz., \$7.00 per 100.
MIXED, all colors, 75c. per doz., \$5.00 per 100, \$45.00 per 1000.



Iris Kæmpferi (Double Types).

¶
Remember
You
May
Deduct
5% if Cash
accompanies
orders.

Miscellaneous Bulbs and Roots

ANEMONES

¶ These charming hardy spring flowers are becoming better known and more popular as a garden flower. Both double and single are equally desirable, and no garden should be without them. They are suitable for pot or border culture, and when planted in masses are most effective. Plant in October or November, or as soon as the ground can be worked in the spring. If planted in the autumn, they should be covered with leaves, straw, or long manure on the approach of winter. (See illustration.)

DOUBLE CORONARIA ANEMONES

Celeste, blue; **Lord Derby**, rose; **Josephine**, scarlet; **Rosette**, dark rose; **Reine des Pays Bas**, white.

Price of above named varieties	Each	Doz.	100	1000
	\$0 05	\$0 40	\$2 00	
Double Mixed, all colors		15	75	\$6 00

SINGLE CORONARIA ANEMONES

Helena Marie, blue; **The Bride**, white; **Brilliant**, scarlet.

Price of above named varieties	Each	Doz.	100	1000
	\$0 05	\$0 30	\$1 50	
Single Mixed, all colors		10	50	\$4 00

For other Anemones see Herbaceous' list, page 42.

ANEMONE FULGENS

¶ The Anemone fulgens is one of the most attractive and desirable flowers for winter forcing or early spring blooming. Its dazzling vermilion flowers are very pretty, and are borne in profusion. Each 5 cts., doz. 30 cts., 100 \$1.60, 1000 \$14.50.



Anemone Coronaria (Types)

ALLIUMS

Allium neapolitanum. Fine for forcing, bears large heads of pure white flowers. (See illustration)	Doz.	100	1000	Allium azureum , Blue	Each	Doz.	100
	\$0 10	\$0 45	\$4 00		" luteum , Yellow	\$0 05	\$ 50
				" roseum , Pink	05	20	1 00
					05	40	2 00

ACHIMENES

(Ready in December)

¶ Very fine tropical plant for summer flowering, containing all shades of blue, pink and white. Ten distinct varieties. Each 5 cts., doz. 40 cts., 100 \$2.00.

AGAPANTHUS

¶ Splendid ornamental plants, with large heads of flowers like Alliums but individual florets much larger.

Umbellatus , Blue	Each	Doz.	100
	\$0 10	\$0 75	\$5 00
" White	20	1 50	10 00
" Fol. var. argentea. Beautiful silvery variegated foliage	30	3 00	20 00

ANTHERICUM

Liliastrum (St. Bruno's Lily)	Each	Doz.	100
	\$0 05	\$0 40	\$2 00
Liliago (St. Bernard's Lily)	05	40	2 00

ALSTROMERIA CHILENSIS

(Chilian Lily)

Mixed , Rosy white to deep orange and red	Each	Doz.	100
	\$0 20	\$1 75	\$12 00

ANOMATHECA

Cruenta	05	30	1 50
--------------------------	----	----	------

ANTHOLYZA

Mixed varieties	10	75	5 00
----------------------------------	----	----	------



Allium Neapolitanum.

Miscellaneous Bulbs and Roots—Continued

BABIANAS

¶ A genus of very ornamental bulbous roots from the Cape of Good Hope. Flowers fragrant, and color varying blue, red, yellow.

Mixed varieties	Each \$0 05	Doz. \$0 40	100 \$2 00
---------------------------	-------------	-------------	------------

BRODIÆAS

(Ready in September.)

¶ Very pretty, hardy, bulbous plants from the Pacific coast. They have narrow, grassy leaves, slender stems, and a head or umbel of lily-like flowers. Suitable for forcing or outdoor culture.

Brodiaea Coccinea (Floral Fire-Cracker). Rich blood-crimson, tipped, white	Each \$0 05	Doz. \$0 50	100 \$3 00
Mixed varieties		25	1 50

DIELYTRA SPECTABILIS (or Bleeding Heart)

Forcing clumps (Imported)	Each \$0 15	Doz. \$1 00	100 \$6 50
-------------------------------------	-------------	-------------	------------

ERANTHIS

Hyemalis (Winter Aconite)	05	30	1 50
--	----	----	------



Chionodoxa Lucillae.

CROWN IMPERIALS or FRITILLARIAS

¶ A stately-growing plant, with dark green foliage, and flowers of all intermediate shades between yellow and crimson; effective for centers of beds; hardy and permanent, and not so generally planted as they should be. Their flowers are produced quite early in spring, and are very ornamental and decorative in the center of a bed of other bulbous plants. The old, dull red variety, while handsome, does not give anything like the effect that the newer sorts do.

Superfine Mixture. Each, 10c.; dozen, 75c.; 100, \$5.00.



Dielytra Spectabilis (or Bleeding Heart).

CHIONODOXAS

(Glory of the Snow)

¶ They flower among the melting snow in their habitats.

Chionodoxa Lucillae. Intense Blue. (See illustration.)

	Doz.	100	1000
Selected bulbs .	\$0 15	\$0 60	\$4 75

Sardensis. Blue.

	Doz.	100	1000
Selected bulbs .	\$0 10	\$0 50	\$4 00

Gigantea. Large spike, soft lavender blue flowers with white center.

	Doz.	100	1000
Selected bulbs .	\$0 15	\$0 70	\$5 50

COLCHICUMS (Autumn-Flowering Crocus)

Colchicum autumnale. Mixed varieties Each, 10c.; dozen, 90c.; 100, \$5.00



GRAPE AND FEATHERED HYACINTHS

(or Muscarias)

¶ Very pretty, hardy, bulbous plants, well adapted for mixed borders and for naturalizing in sunny spots among short grass. They succeed in almost any soil and situation, and require little care. Also suitable for growing in pots in the house, 5 or 6 bulbs in a pot. (See illustration.)

	Doz.	100	1000
Muscaria Botryoides alba. White Grape Hyacinth .	\$0 10	\$0 55	\$4 25
“ “ cœrulea. Purple Grape Hyacinth .	10	30	2 00
Muscaria plumosum. Large feathered Hyacinth .	25	1 25	
Muscaria racemosum. Blue Starch Hyacinth . . .	25	1 25	

Miscellaneous Bulbs and Roots—Continued

IXIAS (Ready in October)

¶ The Named Hybrid Ixias are so beautiful and rich in tints that no lover of growers should be without them. They are equally adapted for pots or the open ground, exceedingly free flowering, and invaluable for cutting. If planted out, they require rather more covering during winter than hyacinths. By reason of their curious forms and strange coloring, the Ixias attract much attention. (See illustration.)

	Each	Doz.	100
Azurea. Blue, with purple center; very beautiful	\$0 05	\$0 20	\$1 00
Bucephalus Major. Rich crimson; very fine	05	20	1 00
Crateroides. Bright crimson	05	20	1 00
Favorite. Sulphur-yellow	05	20	1 00
Galathea. White, with blue eye	05	20	1 00
Lady Slade. Light rose	05	20	1 00
In Splendid Mixture per 1000, \$2.25		10	35



Ixia Mixtae var.



Oxalis, Grand Duchesse.

OXALIS

¶ These are profuse bloomers, and very attractive in the greenhouse or conservatory during the winter. Plant 3 or 4 bulbs in a pot; the pot should be kept near the glass to prevent the foliage from growing too long.

BERMUDA BUTTERCUP

¶ Greatly improved selection from *Oxalis Cernua*, grown in the congenial soil and climate of Bermuda until the bulbs have attained great strength, producing plants and flowers larger and more luxuriant than the common variety. It is one of the finest of winter-flowering plants for pot culture, of strong, luxuriant growth; one bulb is sufficient for a six-inch pot. The flowers are of the purest bright buttercup yellow.

	Doz.	100	1000
Bermuda Buttercup. Large bulbs	\$0 15	\$0 75	\$6 50

Bermuda Buttercup.

Mammoth bulbs	20	1 00	8 00
Bowiei. Pink	15	75	5 00
Alba Multiflora. White	15	75	6 00
Hirta Rosea	10	55	4 50
Simplex Cernua. Yellow	10	60	4 00
Versicolor. Striped	10	60	4 00
Mixed Colors	10	50	3 50

OXALIS GRAND DUCHESSE

¶ Of recent introduction; larger flowers, more floriferous and luxuriant in growth; grand companions for variety Buttercup. **Grand Duchesse, white,** doz., 15c.; 100, \$1.15; 1000, \$10.00. **Bright pink,** doz., 15c.; 100, \$1.15; 1000, \$10.00. **Lavender,** doz., 15c.; 100, \$1.15; 1000, \$10.00. (See illustration.)

Ornithogalum Arabicum

Too well known for description. Doz., 25 cts.; 100, \$1.50; 1000, \$12.00.

RANUNCULUS

¶ These beautiful dwarf-flowering bulbs delight in a cool, moist atmosphere and will repay extra care in cultivation. They are also desirable for pot culture and for growing in frames in the spring. (See illustration.)

Persian Mixed. Rose-shaped flowers; very double. Per doz., 8 cts.; per 100, 40 cts.; per 1000, \$2.50.

Turban Mixed. Paeony-formed flowers; large and vivid colors. Per doz., 10 cts.; per 100, 50 cts.; per 1000, \$4.00.

French Mixed. Rare flowers of gorgeous color. Per doz., 8 cts.; per 100, 25 cts.; per 1000, \$2.00.



Ranunculus (Persian).

LEUCOJUM VERNUM

(Spring Snowflake)

¶ Pretty bulbous plants allied to the Snowdrop, but of much stronger and bolder habit, growing in rich soil from 1 to 2 feet high, and producing freely beautiful large white flowers distinctly tipped with green, excellent for cutting. When once planted they take care of themselves, and should have a place in all hardy collections; can also be grown in pots.

LEUCOJUM Vernum, Doz. 100 1000			
(Spring Snowflake)	\$0 20	\$0 75	\$5 00
LEUCOJUM Aesti-			
vum	20	75	5 00

MONTBRETIAS

¶ One of the most free-blooming and showy Summer flowering bulbs. Throws up numerous flower stalks loaded with slightly drooping spikes of gladiolus-like flowers. Perfectly hardy.

- Crocsmæflora.** Deep golden orange. The best variety.
- Gerbe d'Or.** Splendid golden yellow.
- Rosea.** Soft pink.
- Rayon d'Or.** Yellow and brown.
- Pottsii.** Golden orange, outside bright red.

Five distinct varieties. Per doz., 15 cts.; per 100, \$1.00; per 1000, \$7.50.

SCILLA SIBIRICA

	Doz.	100	1000
Large, selected bulbs	\$0 15	\$0 75	\$5 50

Miscellaneous Bulbs and Roots—Continued

SNOWDROPS (*Galanthus Nivalis*)

¶ The charming Snowdrop is the first of all flowers to herald the approach of spring. It can frequently be seen in bloom when the ground is white with snow, as it takes every advantage, and hastens to display its graceful snow-white bells before the winter has disappeared. In conjunction with *Chionodoxas* and *Scillas*, a matchless effect can be produced. As the bulbs are small, they should be planted liberally in order to obtain immediate results. (See illustration.)

	Doz.	100	1000
Snowdrops, single, English grown (True).	\$0 10	\$0 60	\$4 50
“ double, “ “ “	20	1 00	8 50
“ <i>Elwesii</i> (Giant Snowdrops).	10	50	4 00



SPARAXIS

¶ A beautiful class of bulbs, allied to the *Ixias*, and requiring the same treatment, producing spikes of flowers of the most exquisite and brilliant colors. Mixed varieties.

	Doz.	100	1000
Sparaxis, mixed colors (see illustration)	\$0 10	\$0 35	2 50



Sparaxis

STERNBERGIA

	Doz.	100	1000
<i>Sternbergia lutea</i> , Fall blooming Amaryllis	\$0 25	\$1 00	\$9 00

SCHIZOSTYLIS

	Each	Doz.	100
<i>Schizostylis coccinea</i> , scarlet gladiolas-like flowers and spikes	\$0 05	\$0 50	\$2 00

TRITELEIA

	Doz.	100	1000
<i>Uniflora</i> (Spring Star Flower). ¶ A pretty little plant, suitable either for pot culture or open border, grows about 6 inches high and bears star-shaped flowers of a delicate blue-white; fragrant	\$0 10	\$0 30	\$2 00

TIGRIDIAS

Bulbs ready for shipment in the spring.

¶ These very handsome summer-flowering bulbs should be planted in the spring. They will flower profusely all summer. The plants grow about 2 feet high, with large and finely colored flowers. (See illustration.)

	Each	Doz.	100
Burbank's New Hybrids. Giant flowers of red, white, yellow, orange, rose, crimson and gold, with shades and combinations of color never shown before by Tigridias	\$0 20	\$1 50	\$10 00
Canariensis. Very handsome light yellow, with brown spots	08	60	4 00
Cœlestis. Beautiful light blue	08	75	5 00
Conchiflora. Rich yellow, spotted red	08	60	3 50
Immaculata alba. Pure white; unspotted	08	60	4 00
Speciosa pavonia. Bright crimson, mottled yellow	08	60	3 50
Grandiflora alba. Large-flowered; white, spotted crimson	08	60	3 50

VALLOTA

Purpurea (<i>Scarborough Lily</i>). ¶ A valuable free-flowering summer and autumn blooming Amaryllis; color rich red. It does well planted in the open ground in May, and when in bud can be potted and removed to conservatory. (<i>Ready in October</i>)	25	2 00	16 00
Zephyranthes Atamasco. Pure white	05	30	2 00
“ candida. Pure white	05	30	2 00
“ Mixed (<i>Zephyr Flower</i>)	05	30	2 00



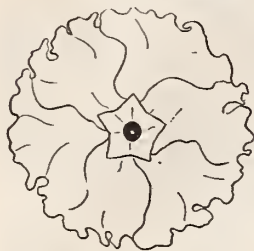
¶ NURSERIES AND TRIAL GROUNDS—SPARKILL, ROCKLAND CO., NEW YORK.

VIRGIN FLOWER SEEDS

FOR IMMEDIATE AND LATER SOWING

¶ For a number of years we have carefully watched our "stocks" of "choice" flower seeds, have seen the results, and made a special study of the best source of supply, more especially as to color, size of flower and "breeding."

CHINESE PRIMULAS Best Florists' Types



PRIMULA (Snowball)

Snowball. In offering this new pure white primula, we can recommend it as the best and purest yet introduced. The flowers are very large, of great substance, perfect in shape and very free flowering, being pure white, without any tinge of flesh, so generally found in white primulas. Per trade pkt. of 500 seeds, \$1.00; ½ pkt., 60c.

Giant Pink. The finest primula of all, extremely large, and of great substance. The delicate carmine pink color is particu-

larly valuable. Per trade pkt. of 500 seeds, \$1.00; ½ pkt., 60c.
Crimson King. "The darkest primula in existence." Blooms early in the season and maintains a continuous display during the autumn months, if sown early, or is fine as an Easter plant if sown in late summer or fall. Color deep rich crimson, intensified by an almost black band surrounding the eye. Per trade pkt., \$1.00; ½ pkt., 60c.

The White House. New. "One of the most distinct and beautiful primulas yet raised." Large, pure white flower with a unique zone of bright rosy carmine surrounding a clear yellow eye. It is simply unapproachable in its beauty. Per trade pkt., \$1.00; ½ pkt., 60c.

Giant Blue. Produces fine upright trusses of magnificent flowers. Per trade pkt. of 500 seeds, \$1.00; ½ pkt., 60c.

Giant Royal Red. A bright and attractive primula; new; very good. Per trade pkt. of 500 seeds, \$1.00; ½ pkt., 60c.

Pure White Fern-Leaved. Elegant pure white flowers, having a conspicuous deep brown eye. Very free-flowering, and its fern-leaved foliage adds to their attractiveness. Per trade pkt. of 500 seeds, \$1.00; ½ pkt., 60c.

Single Mixed. Containing a mixture of all the above varieties. Per trade pkt. of 500 seeds, \$1.00; ½ pkt., 60c.

Double Mixed. A careful selection of all the best double sorts of white, pink and scarlet. Per trade pkt., \$1.00; ½ pkt., 60c.

PRIMULA STELLATA

(Star Primula)

¶ The Star Primula has attracted much attention and attained a high position in popular favor. Each, per trade pkt. of 500 seeds, \$1.00; ½ pkt., 60c.

Giant White Star. Improved pure white flowers, produced in abundance, relieved by dark foliage.

Pink Star. Same as preceding, except in color of flower.

King of the Stars (new). Deep carmine-crimson; one of the finest of the type.

Miss Agnes Clucas (new). A very pretty shade of salmon-pink; foliage dark green.

Mixed Star. Includes various shades of red, pink, lavender, etc.

CINERARIA HYBRIDA



CINERARIA (Hyb.)

Grandiflora, Tall. Choicest hybrids. Mixed, prize varieties. Per trade pkt. of 500 seeds, \$1.00; retail pkt., 25c.

Grandiflora, Dwarf. Large flowering, splendid mixed. Per trade pkt. of 500 seeds, \$1.00; retail pkt., 25c.

Grandiflora, Alba. Pure white; very useful as a plant or as cut flower. Per trade pkt., \$1.00; ½ pkt., 60c.

CINERARIA STELLATA

(Star Cineraria)

¶ A favorite wherever grown. Per trade pkt. of 500 seeds, \$1.00; ½ pkt., 60c.

PANSY

(Non Plus Ultra)

¶ This renowned strain consists entirely of the newest, choicest and best shaped flowers, with an immense variety of brilliant colors. Per trade pkt. of 1000 seeds, 50c.; per oz., \$8.00.

Home Grown (American) Seed

¶ Grown for us exclusively by a pansy specialist. Contains all the most desirable colors. The flowers are of mammoth size, great substance and perfect form. Trade pkt., 25c.; per oz., \$5.00.



PANSY (Snow Queen)

	Tr. pkt.	Per oz.
All Nations. Mixed	\$0 30	\$4 00
Bugnot's Large Stained Parisian. Mixed	50	4 00
Cassier's Five-Blotched, or Odier. Mixed; all colors	50	3 00
English Fancy. Mixed	15	1 00
Giant Trimardeau. Mixed color	15	1 50
New Fancy French. Mixed, including red shades.	15	1 50
German. Finest mixed	15	60
Good Mixed. \$4.00 per lb	10	40
Azure Blue. Lavender, shaded dark blue	10	75
Emperor William. Deep blue, black blotches	10	75
Lord Beaconsfield. Lavender and Violet	10	75
Purple. Violet	10	75
Snow Queen. Pure snow white, no blotches	10	75
Striped. Chocolate, white, lilac and scarlet	10	75
White, Violet Eyes (White Treasure)	10	75
Yellow Gem. Pure bright yellow, profuse; blotches	10	75
Yellow with Dark Eyes	20	75

CALCEOLARIA



Hybrida Perfection. A very choice selection from isolated plants of the most distinct varieties; spotted and mottled. Trade pkt., \$1.00; ½ pkt., 60c.

Self Colors. Choicest mixture. Trade pkt., \$1.00; ½ pkt., 60c.

CYCLAMEN PERSICUM GIGANTEUM

Algburth Strain

¶ Never before have we sent out any new strain of seed that has given more universal satisfaction, and elicited more deserving complimentary comment from our customers than has our Cyclamen.

¶ This magnificent strain of Cyclamen produces flowers of extraordinary size and substance. The leaves are proportionately large and very beautifully marked with silver gray.



CYCLAMEN (Alba Perfecta)

Alba Perfecta. Pure white, very large.

Algburth Crimson. Rich self crimson.

Crimson King. Splendid crimson.

Charming Bride. Pure white.

Giganteum. Pure white, tipped rose.

Purple King. Intense purple crimson.

Peach Blossom. Delicate pale lilac.

Rosea. Pretty light rose.

Rosy Florn. Fine, rosy purple.

Choice Mixed. Containing all above sorts. Retail pkt., 25c.; 100 seeds, \$1.25; 1000 seeds, \$10.00.

FLOWER SEEDS For Fall Sowing

SWEET PEAS

For Winter Flowering Under Glass

CHRISTMAS

Not only the earliest to flower in the open ground, but is also the most desirable for forcing under glass for winter cutting, as it is very dwarf in habit, permitting of close planting, and from seed sown the latter part of August flowers can be cut during the holidays. The standards are of a bright rich pink, and the wings nearly pure white; and, whereas the flowers are as large as Extra Early Blanche Ferry, they come into bloom much earlier. This is the florist's ideal Sweet Pea. Price, 5c. per oz., 15c. per ¼ lb., 50c. per lb.

MONT BLANC

This is a companion to our Christmas Sweet Pea, of dwarf growth and extremely early flowering habit. It begins to bloom when only twelve inches high, while the plants grown in the open ground seldom attain more than two feet in height. The flowers are a pure paper white, slightly smaller than those of Emily Henderson, but the standard is much broader and more rounded in form, slightly notched in the center. This is decidedly the best white for forcing under glass during the winter months. Price, 5c. per oz., 15c. per ¼ lb., 50c. per lb.



Mont Blanc and Christmas Sweet Peas growing under glass.



Stock, "Cut-and-Come-Again."

Asparagus Plumosus Nanus Seed WE ARE HEADQUARTERS

The seed we offer is all grown under glass and is the pure Plumosus Nanus which germinates freely, producing large plants quickly. Price, new crop seed, per 100, 75c.; 250 for \$1.50, \$5.00 per 1000; 500 seeds at 1000 rate. 5000 seeds for \$22.50; 10,000 seeds for \$40.00.

- ASPARGUS SPRENGERI, trailing, 30c. per 100 seeds; \$2.00 per 1000 seeds.
- BELLIS. Double Giant Rose (Longfellow), \$2.50 per oz.; 20c. per 1000 seeds.
- " Giant Snowball, white, \$3.00 per oz.; 20c. per 1000 seeds.
- CANDYTUFT. Empress, white, long spikes, 15c. per oz.
- " White Rocket, large spikes of white flowers, 10c. per oz.; 50c. per lb.
- DIANTHUS Plumarius (Pheasant's Eye), mixed, per oz., 15c.
- " " Double, mixed, trade pkt., 20c.
- " Barbatus (Sweet William), mixed, per oz., 10c.
- " " Double, mixed, trade pkt., 15c.
- DRACÆNA Indivisa. In husk, \$2.25 per lb; 20c. per oz.
- GREVILLEA ROBUSTA. Silk Oak, beautiful foliage, 50c. per oz.; 15c. per pkt. of 500 seeds.
- HOLLYHOCKS. Choicest strains. Extra choice, mixed or separate colors, 1000 seeds, 50c.; per oz., \$1.00.

MIGNONETTE

- Allen's Defiance (Original stock). Splendid for florists.
- ¶ Saved from selected spikes only, under glass. Originator's stock in sealed packets. \$1.00 for pkt. of 2000 seeds.
- Machet's Perfection, fine for florists' forcing. 50c. per oz.; 15c. for 1000 seeds.
- C. & B. Special Stock. The finest strain for New York market. Saved from selected spikes, under glass. \$1.00 per trade pkt.; ½ trade pkt., 60c.
- VERBENA Mammoth. Mixed colors, choicest strains, \$1.00 per oz.; 25c. per 2000 seeds.
- Mammoth. Separate colors, 25c. per trade pkt.; per oz., \$1.50.
- VINCA Rosea, rose, darker eye, per oz., 50c.; trade pkt. 15c.
- " Alba, white, rose eye, per oz., 50c.; trade pkt., 15c.
- " Alba Pura, pure white, per oz., 50c.; trade pkt., 15c.
- Mixed colors, per oz., 50c.; trade pkt., 15c.

- MYOSOTIS Semperflorens (Forget-Me-Not), trade pkt., 20c.; \$1.50 per oz.
- SMILAX. Largely used for festooning, \$3.50 per lb.; 25c. per oz.; 15c. per 1000 seeds.
- STOCKS. Ten Weeks.
- Cut-and-Come-Again (Princess Alice), white, pot seed, \$3.00 per oz.; 35c. per 1000 seeds.

PLANT DEPARTMENT

AZALEAS

¶ N. B. Customers to secure the varieties they desire for *certain* must place orders for such named varieties as they require before September 1, 1904, otherwise we cannot guarantee delivery of the varieties ordered.

¶ In making up an order, it will be as well to state what varieties can be substituted.

¶ In any event, if the assortment of varieties is left to us, we will use our best endeavors and experience to send only useful and good forcing varieties. State if wanted for late or early work.

AZALEA INDICA

¶ Fine bushy plants best sorts, on grafted stems, with compact crowns, well set with buds.

Fall Delivery. Prices F.O.B. New York

	Per 100
10 to 12 inches diameter \$4 50 per dozen	\$35 00
12 to 14 " " 6 00 "	45 00
14 to 16 " " 7 50 "	50 00
16 to 18 " " 12 00 "	90 00
19 to 20 " " 34 00 "	200 00
20 to 24 " " 35 00 "	300 00

Specimens from \$5.00 to \$50.00 each.



Azalea Indica—Var. Vervœncana.

AZALEA MOLLIS

¶ Used extensively for early forcing; greatly in demand on account of their brilliant colors; perfectly hardy. Strong plants, 1½ feet high, about 30 buds, 75c. each; \$6.50 per doz.; \$50.00 per 100. 15 inches high, 20 buds, 35c. each; \$3.75 per dozen; \$30.00 per 100.

DEUTZIAS

Gracilis. White, pot-grown, from 6 in. pots, for forcing. \$1.50 per doz.; \$12.00 per 100.

Lemoinei. Double light pink, pot-grown, from 6 in. pots, \$2.50 per doz.; \$18.00 per 100.

RHODODENDRONS

(For Forcing)

¶ In the best varieties. Strong plants. Named sorts.

	Each	Doz.	100
5 to 7 buds, 15 inches high	\$1 00	\$10 00	\$75 00
8 to 10 buds, 18 inches high	1 25	12 00	90 00
10 to 15 buds, 20 inches high	1 50	15 00	125 00

Japanese Dwarf Cherry Trees

(Pot Grown for Forcing)

¶ For Easter work they are found to be a desirable novelty. The flowers appear before the foliage, in great profusion, and are sweetly scented. They are in large demand in New York for Easter decoration. Twisted and trained in pyramidal form.

Selected large plants, pot grown, suitable for 7 and 8 inch pots, \$1.00 each; \$10.00 per doz.; \$80.00 per 100. **Smaller size**, 75c. each; \$7.50 per doz.; \$60.00 per 100.

Naturally grown, 65c. each; \$6.50 per doz.; \$50.00 per 100.

HYDRANGEA OTAKSA

¶ Field-grown plants, ready for 6 inch pots, will throw from 6 to 10 heads of bloom. \$4.00 per doz.; \$25.00 per 100.

Hydrangea Hortensis Rosea

¶ The sensational new Pink Hydrangea which was sold in New York last Easter. A great improvement over the older varieties. 50c. each; \$5.00 per dozen; \$35.00 per 100.

LILACS FOR FORCING

(Pot-Grown)

¶ Strong plants, finely set with buds, extra selected, ready for delivery in November. Do not confound this stock with the cheap grades so largely shipped on consignment to dealers and auctioneers in this country.

Marie Legraye. Single white, 75c. each; \$6.50 per doz.; \$45.00 per 100.

Charles X. Single mauve, 75c. each; \$6.50 per doz.; \$45.00 per 100.

Madame Cassimir Perier. Double white, \$1.00 each; \$9.00 per doz.; \$60.00 per 100.

Madame Lemoine. Double white, 75c. each; \$6.50 per doz.



Lilac Chas. X.

For Forcing Hybrid Roses and Crimson Ramblers, see pages 34 and 35.

¶ NURSERIES AND TRIAL GROUNDS—SPARKILL, ROCKLAND CO., NEW YORK.

PLANT DEPARTMENT—Continued



Cyclamen (Aigburth Strain.)

CYCLAMEN

(Aigburth Strain)

	Each	Doz.	100
Good stocky plants from 4-in. pots .	\$0 20	\$2 00	\$20 00
“ “ “ “ 5 and 6-in. pots, 50c. to \$1.00 each			

¶ State if wanted shipped in or out of pots.
¶ For Cyclamen seed see page 26.

METROSIDEROS

Floribunda (Bottle Brush). A greenhouse shrub, producing long cylindrical spikes of bright red flowers, 75 cts. to \$3.00 each.

BEGONIA “GLOIRE DE LORRAINE”

¶ This is decidedly one of the most beautiful and profitable plants introduced in many years. It attains a height of 15 to 18 inches, bears pea-green foliage and is fairly smothered with a profusion of soft pink flowers. It is naturally of compact, bushy form, and blossoms continuously from October to April, making an ideal plant for Christmas decoration. No establishment, large or small, is complete without this Begonia. Grown specially for us.

From 2¼-in. pots, \$2.50 per doz., \$15.00 per 100, \$140.00 per 1000.

DRACÆNA CANES

¶ We offer, for October or November delivery, strong, fresh Dracæna Canes, packed in moist material, direct from our collectors in the tropics. Varieties as follows:

Terminalis, Fragens, Metallica, Braziliensis, Stricta Grandis, \$3.00 for 10 ft.; \$25.00 per 100 ft.

Shepperdii, Amabilis, Massangeana, Gracilis, Regina, Tetsworthii, \$5.00 for 10 ft.; \$40.00 per 100 ft.

Knerkii (rare), Imperialis, Norwoodienseis, Baptistii, Lady Hume, Lindenii, \$6.00 for 10 ft.; \$50.00 per 100 ft.



Begonia Gloire de Lorraine.

ASPARAGUS PLUMOSUS NANUS PLANTS

¶ We have this fall a limited quantity of this most useful plant for filling Fern pans, growing on to sell as pot plants, or planting out for strings. Strong transplanted plants from benches, ready for 3-inch pots, \$3.00 per 100; \$25.00 per 1000.

¶ For seed see page 26.



Japanese Fern Ball.

JAPANESE FERN BALLS

Fall Delivery

Fern Balls, 7 to 9 inches in diameter, 25c. each; \$2.50 per doz.; \$20.00 per 100.
Smaller Sized Fern Ball, suitable for mail trade, 5 in., 15c. each; \$1.25 per doz.; \$10.00 per 100.

CYCAS REVOLUTA DRY STEMS

(CYCAS OR SAGO PALM)

¶ Fresh imported, true long leaf variety. Original cases contain about 350 lbs. each; 75 per cent. of the stems ½ lb. to 3 lbs. each; 25 per cent. 3 to 6 lbs. each; or we will repack the cases on arrival, with stems of any size suitable to the customer's requirements. Delivery March and April.

Per 10 lbs., 10c. per lb.; 100 lbs., 8c. per lb; whole or original case, 7½c. per lb.

¶ NURSERIES AND TRIAL GROUNDS—SPARKILL, ROCKLAND CO., NEW YORK.

Views in our Palisades Nurseries, Sparkill, N. Y.

Reproduced from *The Florists' Exchange*, Issue of July 23, 1904



Field of Crimson Ramblers and Rudbeckia "Golden Glow"



Hardy Perennials and Hydrangea Paniculata Grandiflora



Conifers and Standard Grown Golden Privet, Etc.



Japanese Maples and Deciduous Shrubs



Picea Pungens Glauca (Koster's), *Sciadopitys Verticillata*, Pyramid Box, Etc.



Abies Nordmanniana, *Abies Concolor* and Other Specimen Conifers

Clucas & Boddington's Nurseries

Extract from *The Florists' Exchange*, Issue of July 23, 1904

LOCATED at Palisades, near Sparkill, N. Y., about 25 miles from the city of New York, the nucleus of what is to become in the future an important nursery for herbaceous and decorative stock, has been put into operation by the energetic foresight of R. W. Clucas. The property referred to is a handsome estate of thirty-five acres, upon which is a substantial dwelling, together with all the necessary stables and other out-buildings seen in a well-equipped country estate. The soil is of the best, and particularly well suited to the growing of all kinds of nursery and herbaceous stock.

In the spacious dwelling house live Mr. and Mrs. Clucas and family, and all of them, from the prattling youngster to the eldest, seem to enjoy thoroughly the delights of living in such a beautiful spot. Mr. Clucas was fortunate, indeed, in securing this ideal place, where he could at once combine his commercial and domestic interests under such comfortable, and at the same time favorable, conditions.

We may mention here that it is but one year since the property was purchased, and in the establishment of such a nursery as this is to eventually become a single year does not give time to accomplish a great deal. An able superintendent has been secured, however, in the person of Herbert Green-smith, whose writings on herbaceous plants have appeared from time to time in the columns of *The Florists' Exchange* and have been read with the greatest interest. He has accomplished wonders since he took hold of the place, early this Spring, and rapid progress is making along all lines. The coming season will find an almost endless supply of herbaceous plants.

We might also state that the retiring recently of one of the members from the corporation has made no change in the business; the concern is an incorporated stock company; it has built up a splendid business since its foundation, and will continue to serve its patrons with the best that is to be had as heretofore.

We were privileged recently to spend a few hours going over the various fields. After enjoying a beautiful drive from Sparkill station, one finds, on first entering the grounds, plantations of conifers, trained box trees, *sciadopityx*, *kalmias*, Golden privet, the silver-leaved dogwood, Japanese maples, *Catalpa Bungei*, *Hydrangea paniculata* and a fair-sized block of blue spruce. Some photographs were made of this part of the nursery, showing the plantings of the several subjects mentioned, reproductions of which appear in this issue.

Approaching the herbaceous grounds, we are met with long rows of that fine yellow favorite, *Oenothera Youngii*, a mass of yellow from end to end, and forming a golden barrier to the special sections of gladiolus and peonies that are planted beyond. Funkias in all the best varieties occupy quite a large area, and next to these we see an immense patch of seedling hollyhocks. Then comes the section of anemones, the three best varieties being represented in Queen Charlotte, pink; Honorine Joubert, double white, and the well-known Whirlwind. *Pyrethrum uliginosum* and *aquilegias* are also represented in large quantities, while phlox is planted extensively, both of the *decussata* and the *suffruticosa* types.

The spiræa family is well represented by a block of Anthony Waterer, adjoining which is a plantation of deutzias of the *gracilis* type, embracing the best varieties. From the extensive areas devoted to roses, it is evident that a special drive is being made on this line. The white and pink Maman Cochet, Kaiserin Augusta Victoria, Crimson Rambler, and own root stock of other well-known H. P. and H. T. roses occupy a number of acres of land. The soil suits the plants exactly; they are thriving and making luxuriant growth.

A field of dahlias shows magnificent progress; the showery weather of late has proved ideal for these and the growth made is remarkable. We might say in passing that dahlias are a specialty here; the collection embraces all the types, such as cactus, pompon, decorative, show, collarette, and the singles.

The best varieties are represented and at digging time there will be a yield of 25,000 tubers, at the lowest estimate.

Iris is another staple of which a great many are being grown. We also noticed quite a large block of wistaria in one field. A field of young clematis was passed, after which we came to an extensive plantation of *Incarvillea Delavayi*, a plant that is becoming more of a favorite every year, and which was just beginning to flower profusely at the time of our visit. The platycodons were also just coming into bloom; there is a large block of these, and they rank among the best as a Midsummer flowering plant for the border.

As yet there is only one greenhouse on the premises, but this Summer will see several new ones erected, to be used for propagating purposes. The greenhouse is at present supplemented by an extensive area of cold frames, however, filled with hundreds of thousands of seedlings, among which are pentstemons of the best types, collections of papaver, *gypsophila*, *Heuchera sanguinea*, platycodons, *agrostemma*, *lychnis*, of the *chalcedonica* and *viscaria* types; hollyhocks, *dianthus* in variety, *aquilegias*, *eryngium*, *coreopsis*, *veronicas* in variety, *Stokesia cyanea* and *Primula veris superba* are also being grown in quantity.

The peony collection is to be further augmented during the coming Fall by the importation of all the leading novelties from Europe. The collection of gladiolus includes the famous Augusta and May; also the very best seedlings of American origin. This crop is not grown here, but is being grown especially for the firm on Long Island. Cannas also are not grown here; of these the Clucas & Boddington Company grow twenty-five acres on their farm in North Carolina. Mr. Clucas has just returned from that point, where he went to inspect the cannas, and he reports that they are in first-rate condition.

Besides the nurseries the firm has large offices, storehouse and packing-room at 812 and 814 Greenwich street, New York, where the handling and shipping and receiving of bulbs and seeds is carried on.

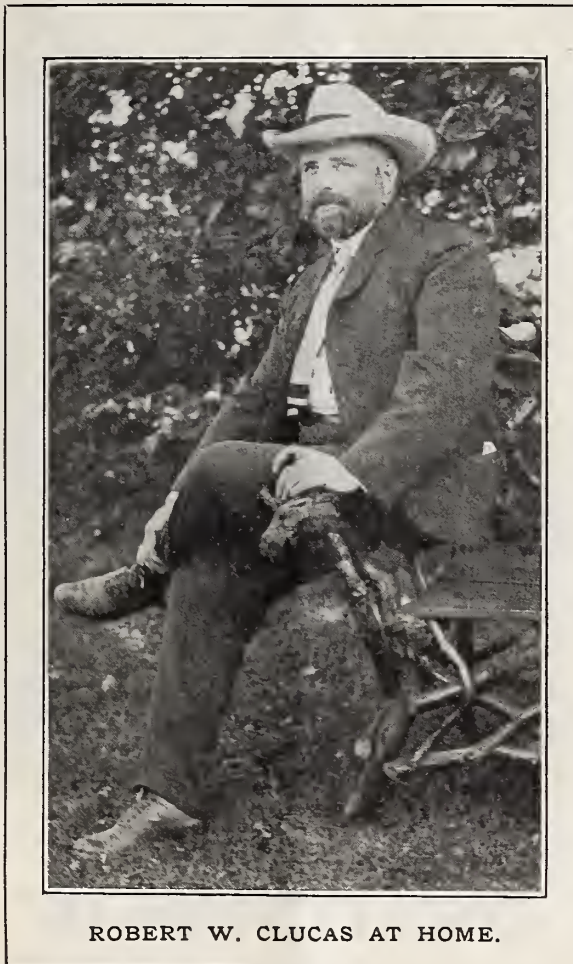
The firm has correspondents in all parts of the world and so keeps in touch with novelties, prices and crops, and is able to procure at first hand practically everything that is grown in the way of bulbs, roots and seeds. Consignments are coming constantly from all points of the compass—from the two hemispheres—France, Italy, Holland, Germany, Great Britain, Japan, Bermuda, Asia and South America, besides stock from the bulb and root producing states of North America.

The exports of tuberose, gladiolus and other American bulbs, seeds and plants are quite an item in the business of this concern. Their "Three-legged" brands of *Harrisii* and other bulbs are now famous, and are a house-

hold word among growers. And while talking of the "three-legs," which is well known by the appearance of their trademark, we have gathered together a few facts with regard to the crest of the Isle of Man, of which Mr. Clucas is a native, and the reason for the adoption of this unique and striking composition.

The "three legs" was probably originally a sign or symbol and may have come from Sicily, as the "sign" has been found on coins two thousand years old. It is supposed the ancient Vikings, who were great seafaring men and wanderers, carried this means of exchange from the Mediterranean island to the Isle of Man.

The most interesting of the early representation of the "three legs" is on a beautiful pillar near the Manghold churchyard in the Isle of Man, which belongs to the latter part of the fourteenth century; the motto symbolical of the Manx history, which surrounded the three legs, "Quocunque jaceris stabit," freely translated is "Whichever way you upset it it will stand," which evidently refers to the tri-legged crest or symbol.



ROBERT W. CLUCAS AT HOME.

NURSERY DEPARTMENT

C
O
N
I
F
E
R
S



E
V
E
R
G
R
E
E
N
S

SPECIMEN PICEA PUNGENS GLAUCA (KOSTER'S)
In our Pallisades Nurseries

A CHOICE COLLECTION OF CONIFERS

Our collection of Ornamental Conifers is rather a list of the best varieties than a collection of names. The stock has all been transplanted, is clean, strong and vigorous. Every plant is a specimen, as the plants have been grown with plenty of room and not crowded; they have been selected, too, in all respects as to their perfect hardiness in the United States.

Abies Concolor (Concolor Spruce). Very hardy, broad silvery green foliage, one of the most beautiful Evergreens.

SEEDLINGS—2 ft., \$1.00 ea.; 3 ft., \$1.50 ea.; 4 ft., \$3.50 ea.; 5 ft., \$7.50 ea.

GRAFTED—4 ft., \$5.00 ea.; 5 ft., \$7.50 ea.

Abies Nobilis Glauca. Foliage blue; a fit companion for *Picea pungens*. 1½ ft., \$1.00 ea.; 2 ft., \$3.00 ea.; 3 ft., \$4.50 ea.; 4 ft., \$6.00 ea.

Abies Nordmaniana (Nordman's Silver Fir). This is one of the finest and most distinct varieties of conifers with its large massive dark green foliage, silvery beneath the "needles." Our stock is exceptionally clean and well-grown. 1 ft., 75c. ea.; 1½ ft., \$1.50 ea.; 2 ft., \$2.00 ea.; 3 ft., \$3.00 ea.

Abies Veitchii (Veitch's Silver Fir). Combining the appearance of *Nobilis* and *Nordmaniana*. 1½ ft., \$1.25 ea.; 2 ft., \$3.00 ea.

Picea Alcockiana (Alcock's Fir). One of the handsomest conifers. Dark green foliage, light blue beneath. 2 ft., \$1.50 ea.; 3 ft., \$2.50 ea.; 4 to 5 ft., \$5.00 and \$6.00 ea.

Picea Excelsa (Christmas Tree). Selected plants. 1½ to 2 ft., 50c. ea.; 2 to 3 ft., \$1.00 ea.; 4 to 5 ft., \$2.50 ea.

Picea Excelsa Inverta (Weeping Christmas Tree). Same as above, but drooping habit. 2 ft., \$1.25 ea.

Picea Orientalis (Oriental Spruce). Dark, shining green foliage; very attractive. 2 ft., \$1.00 ea.; 3 ft., \$2.00 ea.

Picea Pungens Glauca (Koster's) (Colorado Blue Spruce). **Our Specialty.** Our stock of Koster's Blue Spruce (see illustration) is from the originator of this handsome variety. Ours are GRAFTED PLANTS, not seedlings so generally sold as Koster's; and are the "TRUE BLUE." Good symmetrical plants, clean, healthy, transplanted and well-grown. 1½ to 2 ft., \$3.00 ea.; 2½ to 3 ft., \$5.00 ea.; 3 to 3½ ft., \$7.50 ea.; 3½ to 4 ft., \$12.00 to \$15.00 ea.

NURSERIES AND TRIAL GROUNDS—SPARKILL, ROCKLAND CO., NEW YORK.

NURSERY DEPARTMENT

CONIFERS AND EVERGREENS—Continued.

Sciadopitys Verticillata

Japanese Umbrella or Needle Pine

¶ This is one of the hardest and most distinct conifers of this grand family, and as a specimen on lawn or isolated position makes a fine picture and attractive feature.

¶ Every season we make a large importation of these beautiful evergreens, which, having been dug with a ball of earth, arrive in splendid condition.

¶ We have on hand a fine stock of established plants, and can also import to order any size up to 20 feet in height. We recommend, however, the established stock, as it is well acclimated and can be shipped in perfect safety.

¶ Description.—Hardy evergreen, with dark glossy needle-like foliage arranged in umbrella-like whorls.

Price of Handsome, Well Furnished Specimens

3 ft. high, \$3.50 each; 4 ft. high, \$5.00 each; 5 ft. high, \$7.50 each; 5½ ft., \$9.00 each; 6 ft., \$14.00 each; 8 ft., \$20.00 each; 12 ft. \$40.00 each.

Price of specimens, 15 feet and upward, on application.

TSUGA canadensis (Common Hemlock). Transplanted stock, 50c. and up. 2½ ft., 50c. each; \$4.50 per doz.; \$30.00 per 100.

Hookeriana (Hooker's California Spruce). Very hardy, resembling the Hemlock; pale blue-green foliage; very compact. 3 ft., \$5.00 each.

CEDRUS atlantica aurea (Golden Cedar). Small foliage like a larch; very graceful. 1 ft., \$3.00 each.

CEDRUS atlantica glauca (Blue Cedar). Foliage of light glaucous tint. \$1.00, \$2.00, \$3.00 each; 5-5½ ft., \$7.50 each.

JUNIPERUS chinensis (Chinese Juniper). Handsome, dense growth; branches pendulous; dark green foliage. 2½-3 ft., \$1.25; 3½-4 ft., \$2.00 each.

chinensis argento (Silver Chinese Juniper). Beautiful silver marked foliage. 2 ft., \$1.00; 2½-3 ft., \$1.50 each.

virginiana (Red Cedar). Will grow in poorest soil. 2-3 ft., 50c. each; \$5.00 per dozen; \$30.00 per 100.

virginiana glauca (Silvery Red Cedar). Cone-shaped; of a peculiar whitish color. 2-3 ft., \$1.50; 4 ft., \$2.00 each.

PINUS austriaca (Austrian Pine). Valuable for general planting. 2-3 ft., 50c. each; \$4.50 per dozen; \$30.00 per 100.

Cembra (Swiss Stone Pine). Bluish foliage. 2 ft., \$1.25 each; \$12.50 per dozen.

Mugho (Dwarf Mountain Pine). Low, spreading habit. 12 to 18 inch; 40c. each; \$4.00 per dozen.

Strobus (White, or Weymouth Pine). Hardy and reliable. 2-3 ft., 50c. each; \$5.00 per dozen; \$30.00 per 100.

sylvestris (Scotch Pine). Short, stiff, green-bluish foliage. 2-3 ft., 50c. each; \$3.00 per dozen; \$15.00 per 100.

RETINISPORA filifera. Central shoot is upright; branches horizontal, with drooping fringe; foliage soft light green. 2½ ft., \$1.00 each; \$10.00 per dozen; \$75.00 per 100.

RETINISPORA filifera aurea. Young growth profusely marked with yellow. 2 ft., \$5.00 each.

obtusa gracilis. Beautiful, with delicate masses of feathery foliage. 2 ft., \$1.25 each; \$12.50 per dozen.

obtusa nana aurea. Rich golden-yellow foliage. 1-2 ft., \$1.50 each.

pisifera. Tall-growing; horizontal, dark green feathery foliage. 3 ft., \$1.00 each.

aurea Youngii. 3 to 4 ft., \$1.25 each; \$12.50 per dozen.

plumosa. Small foliage of soft plumes of clear, light green, 2 ft., 50c.; 3 ft., \$1.00; 4 ft., \$2.50 each.

plumosa aurea. One of the few really golden evergreens. 1½-2 ft., 75c.; 2½-3 ft., \$1.50; 4 ft., \$3.50 to \$5.00 each.

squarrosa Veitchii. Light, bluish green foliage, 2-2½ ft., 75c.; 3-3½ ft., \$2.00; 4 ft., \$3.50.

TAXUS adpressa (Japanese Yew). Leaves short and dark green, bushy and spreading. 2 ft., \$1.50 each.

THUYA occidentalis (Arbor Vitæ). Erect, conical, hardy; flat, light green leaves. 2 ft., 25c. each; \$2.50 per dozen; \$12.00 per 100. 3-4 ft., 35c. each; \$3.00 per dozen; \$20.00 per 100. 4-5 ft., 75c. each; \$7.50 per dozen.

globosa. Forms a round, dense bush without any pruning. 2 ft., 75c. each; \$6.00 per dozen; \$40.00 per 100.

Hoveyi, American seedling, with leaves of a rich golden green. 2 ft., \$1.50 each; \$15.00 per dozen.

pyramidalis. Compact, columnar growth. 3 ft., \$1.00 each.

lutea. Clean, yellow foliage in its terminal branches. 2 ft., \$1.00; 3 ft., \$1.50; 3½-4 ft., \$5.00 each.

Standishii. A rare and valuable species with massive pendulous habit; handsome specimens, 2 ft. high, \$1.25 each; \$12.50 per dozen.

THUYOPSIS dolabrata. Flat leaves, pendulous, horizontal branches. 2 ft. high, \$1.50 each.



Sciadopitys Verticillata.

¶ WE HAVE A VERY FINE COLLECTION OF SMALL CONIFERS FOR POTS AND WINDOW BOXES, 35c. EACH; \$3.50 PER DOZEN; \$25.00 PER 100.

Prices furnished on application for all other sizes and varieties not mentioned.

¶ NURSERIES AND TRIAL GROUNDS—SPARKILL, ROCKLAND CO., NEW YORK.

Nursery Department

BOX TREES STANDARDS and PYRAMIDS

¶ Our collection of **Box Trees** are the best types of *Buxus sempervirens* (evergreen) and must not be confounded with the cheap unshapely plants sometimes offered. Ours are selected specially for the florist trade, and we carry an unusually large and comprehensive stock.

PYRAMIDS

STANDARDS

PYRAMIDS		STANDARDS	
Each	Each	Each	Each
10-12 ins. high \$0 30	3 ft. high \$1 50	12 to 16 ins. diameter, 2 ft. stems	\$1 00
15-18 ins. high 50	3½ ft. high 1 75	15-18 ins. diameter, fine specimens, 3 ft. stems	1 50
18-24 ins. high 75	4 ft. high 2 50	18-20 ins. " " " " "	2 00
2 ft. high 1 00	4½ ft. high 3 00	2 ft. " " " " "	4 00
2½ ft. high 1 25	5 ft. high 4 00	2½ ft. " " " " "	5 00

Pyramids, 5 to 6 ft. high, nicely shaped, per pair, \$10.00 to \$15.00

Dwarf Box for edging, 8 inches high, \$25.00 per 1000.

Price for larger specimens and specially trained Box Trees on application.

JAPANESE MAPLES ACER JAPONICUM POLYMORPHUM

¶ Japanese Maples are still very popular and owing to the war are seemingly liable to become more so, as everything "Japanesque" seems to have the call. Last spring we imported a large stock and have established them in our Nurseries, so that they are now thoroughly acclimated and in excellent condition for moving.

¶ Our collection contains the following tested varieties as to hardiness, all of excellent merit (see extract from *Florists' Exchange*, pages 30 and 31, **this catalogue** :)

- A. J. atropurpureum.** An elegant shrub, bushy and compact in habit, with delicately cut, deep purple or claret-colored leaves.
- A. J. a. aureum.** Broad leaves of golden yellow; very bright.
- A. J. a. dissectum.** A notably handsome variety of this class, with graceful, weeping shoots, forming a mass of exquisitely colored fern-like foliage. The young leaves gradually change from bright rose to a deep and constant purple.
- A. J. a. p. aureum.** Deep-lobed, sharp-pointed leaves, suffused with bright yellow.
- A. J. a. sanguineum.** Blood-leaved Japan Maple. Perhaps the most charming of all varieties and very striking in color; the leaves are five-lobed, serrated and of rich color, reddish crimson, being especially bright in June.
- A. J. atrosanguineum.** Rich blood-red foliage, very handsome and striking.

Above varieties can be supplied in plants, 1 to 1½ ft. high, 50c. each; \$4.50 per dozen; \$30.00 per 100. 2½ to 3½ ft. high, 75c. each; \$7.50 per dozen; \$50.00 per 100.

Evergreen Flowering Shrubs

- ANDROMEDA Catesbœi.** 35c. each; \$3.50 per dozen.
- ANDROMEDA floribunda.** Low, shrubby growth, and abundant white flowers. 18 to 24 inches. 25c. each; \$2.50 per dozen; \$17.50 per 100.
- ANDROMEDA japonica.** Called the Lily of the Valley Shrub. 12 to 15 inches high. 15c. each; \$1.50 per dozen; \$10.00 per 100.
- AZALEA amœna.** See next page.
- MAHONIA aquifolia.** Shining, prickly leaves, and bright yellow flowers. 9 to 12 inches high. 25c. each; \$2.00 per dozen; \$15.00 per 100.
- OSMANTHUS aquifolius.** Dwarf, holly-like evergreen shrub; perfectly hardy. 50c. and 75c. each; \$5.00 per dozen.
- KALMIA latifolia.** A magnificent plant; flower buds of a delicate pink; an abundant bloomer. Fine cultivated plants, well set with buds. 2 to 3 feet high. 75c. each; \$7.50 per doz.; \$60.00 per 100. These make handsome pot plants forced for Easter. For prices on collected plants see page 41. (See illustration.)



Kalmia Latifolia (Pot-grown).

Nursery Department

DECIDUOUS FLOWERING SHRUBS

AMYGDALUS (Flowering Almond). Double, pink and white flowers appearing before the leaves. 1½ to 2½ ft., 30c. each; \$3.00 per dozen; \$20.00 per 100.

ALTRÆA (Rose of Sharon).

Lady Stanley. Double, white.

Boule de Feu. Very double, large red flowers. 2 to 3 ft.

carnea plena. Double, flesh color.

Pompon rouge. Dark red flowers.

Duchesse de Brabant. Large, double, reddish lilac flowers.

elegantissima plena. Double, white shaded with rose.

folia variegata. Variegated-leaved variety. double purple. 2 to 3 ft., 15c. each; \$1.50 per dozen; \$10.00 per 100.

AZALEA amœna. Very dwarf and bushy foliage, brownish bronze in winter; covered in May with masses of dark red flowers. Very useful for edging beds of taller Azaleas and Rhododendrons. 9 to 12 in., 50c. each; \$5.00 per dozen; \$35.00 per 100; 12 to 15 in., 75c. each; \$7.50 per dozen; 15 in., \$1.50 each; \$15.00 per dozen.

pontica. (Ghent Azalea). 20-30 buds, 75c. each, \$7.50 per dozen, \$60.00 per 100. 30-40 buds, \$1.00 each, \$10.00 per dozen, \$85.00 per 100.

AZALEA MOLLIS

Exceedingly useful either for florist forcing or outdoor planting. Perfectly hardy in all sections, and is one of the showiest of all shrubs. Plants well covered with buds.

15 in. high, 20 buds, 35c. each; \$3.75 per dozen; \$30 per 100; 18 in. high, 30 buds, 75c. each; \$6.50 per dozen; \$50.00 per 100; 20 in. high, 40 buds, \$1.50 each; \$12.50 per doz.; \$100.00 per 100.

For forcing varieties see page 28.

Azalea Mollis Standards see page 34.

AMORPHA fruticosa (False Indigo). A strong growing shrub, with finger-like spikes of indigo-colored flowers. June. 2 to 3 ft., 15c. each; \$1.25 per dozen; \$10.00 per 100.

BERBERIS vulgaris (Common Berberry). Erect growth, with prickly stem, bearing pretty yellow flowers in May; fruit purplish red. 2 to 3 ft., 15c. each; \$1.50 per doz.; \$10.00 per 100.

vulgaris purpurea. Identical with above, except that the foliage is purple. 2-3 ft., 15c. ea.; \$1.50 per doz.; \$10.00 per 100.

Thunbergii (Japanese Berberry). Very dense, dwarf, spreading habit; abundant foliage, colored gorgeously in fall; scarlet fruit. Very bushy, 18 to 24 in., 25c. each; \$2.50 per dozen; \$15.00 per 100.

CALYCANTHUS floridus (Strawberry Shrub). Double, purple flowers, very fragrant. June. 2 to 3 ft., 15c. each; \$2.50 per dozen; \$25.00 per 100.

CARYOPTERIS mastacanthus (Blue Spiræa). A late-blooming dwarf shrub, bearing in the axils of each leaf a bunch of bright blue flowers. September, October. Strong plants. 15c. each; \$1.50 per dozen; \$10.00 per 100.

CHIONANTHUS virginica (White Fringe). Very desirable, large-growing shrub, with racemes of fringe-like white flowers. May. 2 to 3 ft. high, 15c. each; \$1.25 per doz.; \$10.00 per 100.

CLETHRA alnifolio (Sweet Pepper Bush). Native shrub, bearing spikes of yellowish white, scented flowers in August. 2 to 3 ft., 15c. each; \$1.50 per dozen; \$10.00 per 100.

CERCIS japonica (Red Bud, or Japan Judas Tree). Very showy, when all the branches are covered with a mass of small pink flowers before leaves appear. 4 to 5 ft., \$1.00 each.

COLUTEA arborescens (Bladder Senna). Large-growing shrub, with yellow pea-shaped flowers. June, followed by reddish pods or bladders. 2 to 3 ft. high, 15c. each; \$1.50 per dozen; \$10.00 per 100.

CORCHORUS japonica (Kerria). Spreading habit; abundant yellow flowers in May. 15c. ea.; \$1.50 per doz.; \$10.00 per 100.

CORYLUS americana (American Hazel Nut). 2 to 3 ft. high, 25c. each; \$2.50 per dozen; \$12.50 per 100.

Avellana purpurea (Purple-leaved Hazel Nut). 2 to 3 ft., 35c. each; \$3.50 per dozen; \$20.00 per 100.

CORNUS (Flowering Dogwood).

florida. White flowers. 2 to 2½ ft. high, 15c. each; \$1.25 per dozen; \$8.00 per 100.

sibirica (Red Siberian). Bright red bark in winter. 2 to 2½ ft. high, 15c. each; \$1.25 per dozen; \$10.00 per 100.

Spaethi. Golden-leaved. 18 to 24 in., 35c. each; \$3.50 per doz.

sanguinea. Red-branched; very conspicuous in winter, when branches are blood-red. 2 ft. high, 15c. each; \$1.50 per dozen; \$10.00 per 100.

CYDONIA japonica (Japan Quince). Showy, popular shrub; blooms profusely in early spring; dazzling red flowers; good hedge plant. 2 to 3 ft. high, 15c. each; \$1.25 per dozen; \$10.00 per 100.

DAPHNE Mezereum album. Beautiful and sweet-scented flowering shrub; white flowers very early in spring. 12 to 18 in. high, 25c. each; \$2.00 per dozen; \$15.00 per 100.

DEUTZIA. Elegant species of strong, erect-growing shrubs, bearing numerous clusters of white and pinkish white flowers in May.



Deutzia Gracilis.

DEUTZIA crenata flore plena. Double pink Deutzia. 2 to 3 ft. high, 15c. each; \$1.50 per dozen; \$10. per 100.

candidissima. Double white Deutzia; very double and snowy white. 2 to 3 ft., 15c. each; \$1.50 per dozen; \$10.00 per 100.

gracilis. Pure white, drooping flowers; spreading habit; fine transplanted bushy plants; for forcing. (See page 28.) 15c. each; \$1.25 per dozen; \$7.50 per 100.

Lemoinei. Field-grown, 2 to 2½ ft. Fine double pink, 25c. each; \$2 per dozen; \$15 per 100.

Pride of Rochester. Very double; floriferous; the petals only faintly tinged with rose. 2 to 3 ft. high, 15c. each; \$1.50 per dozen; \$10.00 per 100.

Forcing stock see page 28.

ELÆAGNUS longipes (Silver Thorn). Dwarf, spreading habit; leaves dark green above, silvery beneath; flowers yellow; fruit bright red. 3-year, strong, 15c. each; \$1.00 per dozen; \$6.50 per 100.

EUONYMUS europæus (European Burning Bush). 2 to 3 ft. high, 15c. each; \$1.25 per dozen; \$10.00 per 100.

EXOCHORDA grandiflora. Fine shrub, producing large white flowers in May. 2 to 3 ft. high, 15c. each; \$1.50 per dozen; \$15.00 per 100.

FORSYTHIA Fortunei (Golden Bell). Bears golden yellow flowers in great abundance in early spring; pendant habit. 3 to 4 ft. high, 15c. each; \$1.50 per dozen; \$10.00 per 100.

Nursery Department

FLOWERING SHRUBS—Continued

HYDRANGEA PANICULATA GRANDIFLORA. Perhaps one of the most useful and beautiful of all shrubs. Fine, bushy plants, 2 to 3 ft. high, each, 10c.; per dozen, \$1.00; per 100, \$8.00. 3 to 4 ft., 3 to 4 branches, bushy, 25c. each; \$2.00 per dozen; \$12.00 per 100.

Hydrangea Paniculata, standards, see page 34.

OTAKSA, AMERICAN FIELD-GROWN. Will throw from 10 to 20 heads of flowers. Per dozen, \$6.00; per 100, \$40.00.

HYPERICUM Moserianum. Shrub of dwarf habit; valuable for its persistent and beautiful bloom; flowers very large, rich yellow. 10c. each; \$1.00 per dozen; \$8.00 per 100.

JASMINUM nudiflorum. Small, slender shrub, bearing yellow flowers in March or April. 2 to 2½ ft., 15c. each; \$1.50 per dozen; \$10.00 per 100.

MAGNOLIA Alexandriana. Very large white and red flowers. One of the finest Chinese Magnolias. Large plants, 4 ft. high, numerous branches and buds, \$1.25 each; \$12.50 per dozen.

Soulangeana. White and purple. 3½ ft., \$1.25 each; \$12.50 per dozen.

MYRICA cerifera (Candleberry, or Wax Myrtle). Handsome, dense-growing shrub of rounded habit, with rich, dark-green foliage. 2 to 2½ ft., 40c. each; \$4.00 per dozen; \$30.00 per 100.

PHILADELPHUS coronarius (Mock Orange). Valuable for its sweet-scented white flowers in June. 2 to 3 ft., 15c. each; \$1.50 per dozen; \$10.00 per 100.

PRUNUS Pissardi (Purple-leaved Plum). Foliage reddish purple, very marked; white flowers. 2 ft. high, 15c. each; \$1.50 per dozen; \$10.00 per 100.

triloba (Double flowering Plum). Planted for its large, double pink flowers; early in May. 35c. each; \$3.50 per dozen.

PTELEA trifoliata (Hop Tree). Foliage golden-leaved; very showy. 3 to 4 ft., 25c. each; \$2.50 per dozen.

RIBES aureum (Yellow Flowering Currant). Flowers yellow, with pink stamens and sweet-scented. 2 ft., 15c. each; \$1.50 per dozen; \$10.00 per 100.

Gordonianum. Bright pink, almost carmine flowers. 3 to 4 ft., 20c. each; \$2.00 per dozen; \$15.00 per 100.

RHUS cotinus (Purple Fringe). Smoke tree, or Mist shrub; sumach. 2 to 2½ ft., 15c. each; \$1.50 per dozen; \$10 per 100.

SAMBUCUS canadensis (Common Elder). Snowy cymes of white flowers in June and July, and black purple fruit. 2 ft. high, 15c. each; \$1.50 per dozen; \$10.00 per 100.

nigra aurea (Golden Elder). Foliage bright golden yellow. 2 to 2½ ft., 20c. each; \$2.00 per dozen; \$15.00 per 100.

SPIRÆA arguta. Dwarf habit; clear white flowers. Early. 25c. each; \$2.50 per dozen.

Billardi. Bright rosy pink flowers. July, October. 2 to 2½ ft., 20c. each; \$2.00 per dozen; \$12.00 per 100.

Anthony Waterer. Deep pink flowers. Very popular. Fine bushy plants. 2 ft., 25c. each; \$2.25 per dozen; \$15.00 per 100.

opulifolia. Vigorous, upright shrub; white flowers in May. 2 to 3 ft. high, 15c. each; \$1.50 per dozen; \$8.00 per 100.

Reevesii (Bridal Wreath). White flowers. 2 to 3 ft. high, 15c. each; \$1.50 per dozen; \$10.00 per 100.

Thunbergii. Graceful habit; very early; single white. 1½ to 2 ft., 15c. each; \$1.50 per dozen; \$10.00 per 100.

Van Houttei. One of the best; late May, white. (See illustration.) 2 to 3 ft., 15c. each; \$1.50 per doz.; \$15.00 per 100.

SYMPHORICARPUS racemosus (Snowberry). Valued for its abundant white berries in the fall. 2 to 2½ ft., 15c. each; \$1.50 per dozen; \$10.00 per 100.

SYRINGA (Lilac). For forcing plants. (See page 28.)

Charles X. Large, reddish-purple flower trusses.

Marie Legraye. Beautiful creamy-white flowers.

Ime, Casimir Perrier. Finest double white lilac.

Persian. Common purple-flowering lilac. 2 to 2½ ft. high, 15c. each; \$1.50 per dozen; \$10.00 per 100.

President Grevy. Very large and double, blue pinnacles.

Souvenir de Louis Spaeth. Deep rosy purple; very choice. Plants of above named sorts. New French Lilacs, 18 to 24 inches high, 30c. each; \$3.00 per dozen; \$22.50 per 100.

TAMARIX africana. Upright grower; blooms in May. 3 to 4 ft., 15c. each; \$1.50 per dozen; \$10.00 per 100.

gallica. Delicate pink plum-like flowers. 2 to 3 ft., 15c. each; \$1.50 per dozen; \$10.00 per 100.

tetandra. A stronger-growing variety; irregular, feathery foliage; small, delicate pink flowers. 35c. each; \$3.50 per doz.

TEPHANANDRA flexuosa. Leaves finely and delicately cut. white flowers in June. 2 to 3 ft., 20c. each; \$2.00 per dozen; \$15.00 per 100.

VIBURNUM Lantana (Snowball). 1½ to 2 ft., 15c. each; \$1.50 per dozen; \$10.00 per 100.

opulis sterilis. Clusters of pure white flowers. 1½ to 2 ft., 15c. each; \$1.50 per dozen; \$10.00 per 100.

plicatum. White flowers; most beautiful and useful of all. 3 to 4 ft., 20c. each; \$2.00 per dozen; \$15.00 per 100.

Standard plants of Plicatum and Opulis, 4 to 5 feet high, 75c. each; \$7.50 per dozen.

WEIGELIA amabilis. Attractive, white pink flowers. 3 ft., 35c. each; \$3.00 per dozen.

amabilis variegata. Leaves variegated yellow. 2 to 3 ft. high, 15c. each; \$1.50 per dozen; \$10.00 per 100.

candida (White Weigelia). Creamy white flowers. 35c. each; \$3.00 per dozen. 2 to 3 ft. high, 15c. each; \$1.50 per dozen; \$10.00 per 100.

Eva Rathke. Crimson flowers; blooms all summer. Very strong bushes. 35c. each; \$3.50 per dozen; \$25.00 per 100.

California Privet for Hedging

We can supply a fine lot of this in first-class transplanted stock.

	Per 100	Per 1000
15 to 18 inches	\$2 00	\$15 00
18 to 24 inches	2 50	20 00
2 to 2½ ft. high	3 50	30 00
3 to 4 ft. high	7 00	60 00

For standard plants see page 34.

I L E X

I L E X CRENATA (Japanese Holly). The new Hedge Plant. Perfectly hardy. The small, deep, green, glabrous, lanceate leaves retain their color through the most trying winter. Invaluable for formal gardening and for hedging or edging. Nice bushy plants, 1 to 1½ ft. high, 50c. each; \$5.00 per doz.; \$40 00 per 100.



Spiraea Van Houttei.

HYBRID PERPETUALS
CRIMSON RAMBLERS

ROSES

HYBRID TEAS
And Other Dormant Hardy Roses

Hybrid Perpetual Selected Large Two-Year-Old Roses Low-Budded

DORMANT ROSES Having no soil on the roots and being dormant, they are of little weight and can be sent cheaply by freight or express. We can supply these from November to April. The great value of budded Roses lies in the fact that they produce better flowers and make stronger plants in a shorter period.

- ¶ There being a demand for **OWN ROOT ROSES**, we are growing considerable quantity of the leading kinds in our Nurseries.
- ¶ Varieties marked (*) we can supply upon their own roots. Our roses are made up in bundles of 5 each.
- ¶ Varieties marked (†) we can supply as "Standard" grown.
- ¶ The following are the "best" of the many varieties now in cultivation.
- ¶ Plants required for Easter forcing should be potted in the Fall.



Clio.

- *Abel Carriere. Crimson, bright center.
- Alfred Colomb. Carmine-crimson; a grand rose in every way.
- *Anna de Diesbach. Bright carmine.
- Anna Alexieff. Rosy pink, large flower.
- Ball of Snow (Boule de Neige). Large globular, pure white.
- *Baron de Bonstetten. Blackish crimson, with vivid red shading.
- †Baroness Rothschild. An exquisite shade of satiny pink.
- Capt. Christy. Delicate flesh color.
- Cheshunt Hybrid. Red, shaded violet.
- *Clio. (New). Satin blush; very fine in every way (own root only).
- Coquette des Alpes. White, tinged with blush, medium-sized flower, semi-cupped in form; a fine variety.
- Duke of Connaught. Large, rosy crimson.

- Duke of Edinburgh. Bright vermilion, extra large and full; a distinct and splendid variety.
- Duke of Teck. Bright crimson.
- Eugene Verdier. Superb flower, crimson violet.
- Fisher Holmes. Finely shaped flowers, dark velvety crimson.
- Gloire de Margottin. Dazzling red.
- †*Gen. Jacqueminot. Brilliant crimson; the most popular rose.
- *Gen. Washington. Red, shaded crimson and carmine.
- Geant des Batailles. Deep, fiery crimson.
- *John Hopper. Bright rose, with carmine center, large and full; esteemed by all who grow it as of the highest order.
- *Jules Margottin. Carmine rose.
- *La France. Peach-blossom pink, the model garden rose.
- *Louis Van Houtte. Crimson-maroon.
- Mabel Morrison. Pure white, large, massive, perfectly formed.
- Mme. Charles Wood. Bright carmine, full and free.
- *Margaret Dickson. White, with pale flesh center; extra large flowers, of fine substance; strong, vigorous growth.
- Marshall P. Wilder. Cherry rose and carmine.
- †*Magna Charta. Dark pink; one of the easiest roses to grow.
- †*Mme. Gabriel Luizet. Light, satiny pink; an attractive sort.
- †*Mrs. John Laing. Rich, satiny pink, delicious fragrance; blooms constantly.
- Pæonia. Very large red.
- †*Paul Neyron. Flowers 5 inches across; lovely dark pink.
- †Perle des Blanches. White.
- Persian Yellow. Hardy yellow rose; best of its color.
- *Prince Camille de Rohan. Dark crimson maroon.
- †*Ulrich Brunner. Cherry red; a grand rose; free blooming.

PRICES OF ABOVE SORTS: Dormant plants, own root or grafted, purchaser's selection, \$100.00 per 100; \$11.00 per 10; 65c. for bundle of 5. Not less than 5 of any one variety sold. Not less than 25 of one variety sold at 100 rate, 250 at 1000 rate.

Tea and Other Dormant Roses

Every florist should plant a quantity of these roses outdoors for summer flowering. The flowers command high prices in the summer months, when greenhouse roses are out of the market. Low-budded, 2-year-old and own root, American-grown.

- | | |
|--------------------------------------|-------------------------------|
| *American Beauty | } 90c. for 5; \$15.00 per 100 |
| *Clothilde Soupert | |
| *Kaiserin Augusta Victoria | |
| Caroline Testout | |
| *President Carnot | |
| Malmaison | } 75c. for 5; \$13.00 per 100 |
| Gloire Lyonnaise | |
| †Gloire de Dijon | |
| *Hermosa | |

Well-Known Climbing Roses

- | | |
|---|--|
| *Mme. Plantier | } Dormant plants from open ground,
5 for 65c.; \$11.00 per 100. |
| *Baltimore Belle | |
| *Prairie Queen | |
| *Seven Sisters | |
| Paul's Carmine Pillar, 5 for \$1.50; \$20.00 per 100. | |

ENGLISH MOSS ROSES

Assorted White, Pink, Red. Large dormant plants, from open ground, 5 for 1.00; 15.00 per 100.

ROSES—Continued

† * **Crimson Ramblers**

¶ The **Crimson Rambler** has lost none of its popularity, either for outdoor decoration or for Easter forcing in pots. We have grown this year a much larger quantity than usual to meet the increased demand, and can offer large own-root American-grown plants at the following very low prices. Plants potted in autumn and forced gently for Easter always command a ready sale at good prices. Don't try imported stock for forcing—you'll fail to flower them if you do.

Large Dormant Plants, American-Grown

2-year-old, 4 to 6 ft. long, with many branches	Ea. \$0 25	Per 5 \$1 00	Per 100 \$15 00
Second Size, 2½ to 4 ft. long	20	75	12 00
* White Rambler Thalia	} Similar to Crimson Rambler , except in color.		
* Pink Rambler (Euphrosyne)			
* Yellow Rambler (Aglia)			
Extra strong 2-year-old plants, 20c. each; 75c. per doz.; \$12 per 100.			



Rose *Mme. Norbert Levavasseur*.
("Dwarf Crimson Rambler.")

New Dwarf Crimson Rambler (The Sensation of Europe) *Mme. Norbert Levavasseur*

¶ This new Rose has been the sensation among Roses this year in Europe, where it originated and was awarded a first-class certificate by the Royal Horticultural Society of Great Britain (the highest honors attainable) and many others. It is practically a "pocket edition" of the **Crimson Rambler**, attaining a height of only 2½ feet—in color a deeper rose—and remains practically free from mildew. Field-grown stock. Each, 75c.; per doz., \$6.50; per 100, \$50.00.

A WRITER SAYS:

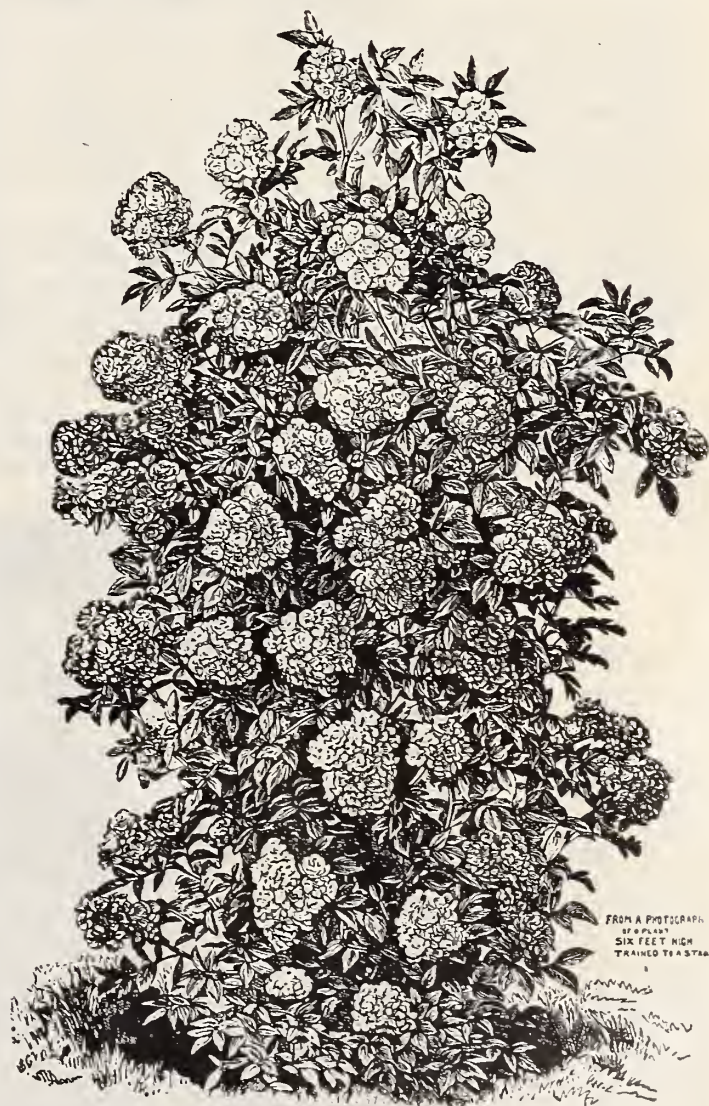
"If the plants were cut down to induce the breaking up of young shoots they all went quickly to bloom, as if the prime business of the plant is to flower. It also appears to be a perpetual bloomer, or nearly so. Evidently this is one of the most valuable introductions in the way of Roses in recent years."—ARGUS.

The New Rambler Rose **DOROTHY PERKINS**

¶ This valuable variety has been produced from seed of *Rosa Wichuraiana* crossed with pollen from that fine old Rose, *Mme. Gabriel Luizet*. It is of quite upright habit of growth, but retains the remarkable vigor of the seed parent, often making a growth of from ten to fifteen feet in a single season. In the important point of hardiness, nothing more could be desired. In its foliage, growth, and habit of blooming in immense clusters, it is remarkably like **Crimson Rambler**, but the flowers are more double and of a beautiful shell-pink color and hold a long time without fading. Each, 20c.; per doz., \$2.00; per 100, \$15.00.

¶ NURSERIES AND TRIAL GROUNDS—SPARKILL, ROCKLAND CO., NEW YORK.

OUR SPECIALTY



Crimson Rambler.

ROSA RUGOSA

Strong bushes, red or white, 5 for 65c., \$10.00 per 100.
Extra strong bushes, 5 for 90c., \$15.00 per 100.

* **ROSA WICHURAIANA**

¶ (The Memorial Rose.) Strong 2-year-old plants, \$10 per 100.
* **Wichuraiana Hybrids**, strong two-year-old, \$12.00 per 100.

STANDARD OR TREE ROSES

For varieties, see page 38, marked †. 75c. ea.; 5 for \$3.00; \$37 a 100.

ROSES—Continued.

MAMAN COCHET ROSES

American-Grown, on Own Roots

C
O
C
H
E
T



P
I
N
K

Indispensable for Summer Flowering and Cutting

¶ The two varieties of *Cochet* Roses, *Maman Cochet* (White) and *Maman Cochet* (Pink), should be better known by the trade in general; they are perfectly hardy where the *Hybrid Perpetual* will grow, and require no protection.

¶ For outdoor or indoor flowering in the summer months they are unsurpassed, and are the counterpart of the "Bride" and "Bridesmaid," which are still the leaders pre-eminently for winter cutting and flowering.

¶ Florists who have tried and are growing these two summer flowering varieties are more than pleased and repaid for their enterprise, and speak very highly of their quality as summer roses, and state that they fill a long-felt want, as they can throw out their winter flowering roses earlier, and plant much sooner, since they can depend on these two *Cochets* for a supply of blooms during the summer.

¶ They are free and vigorous in their growth, making good lengthy stems for cutting, and are free from mildew and other disease. The flowers, which are exquisitely tinted, are of good substance and the shape (pure tea) is all that can be desired. We have secured an excellent stock of the two following varieties, and offer them as follows:

Maman Cochet (Pink). On own roots; extra strong, 2-year-old, field-grown. A heavy and constant bloomer; color a clear, rich pink changing to silvery rose, very double and fragrant, and as to size the largest perfect Tea Rose we are acquainted with; the buds are long, firm and full, exquisitely moulded and pointed, and when open are equally attractive. Per bundle of 10, \$1.50; \$12.50 per 100; \$110.00 per 1000.

Maman Cochet (White). On own roots; extra strong, 2-year-old, field-grown. A sport from the above valuable variety, with all its characteristics as to flowering and foliage; color a beautiful snow white, at times tinted with the faintest suggestion of blush, the same as you often find in the "Bride." Per bundle of 10, \$1.50; \$12.50 per 100; \$110.00 per 1000.

W
H
I
T
E

C
O
C
H
E
T



P
E
R
F
E
C
T
L
Y

H
A
R
D
Y

HARDY RHODODENDRONS

COLLECTED RHODODENDRON Maximum and Catawbiense and KALMIA LATIFOLIA

¶ The use of collected Rhododendrons and Kalmias for quickly and permanently producing fine landscape effects is now well established and, with reasonable expenditure, there is no other possible way to obtain the results to be had by the use of these magnificent hardy broad-leaved evergreens.

¶ Our supply and advantages being unlimited, we are prepared to accept orders for fall or spring delivery, with an assurance of prompt service and satisfactory material that must give good results.

¶ In carload lots we collect sizes from 2 feet to 10 feet in height, with corresponding diameter; the number to the car—say forty or fifty to three or four hundred—depends entirely on the size.

Price, Rhododendron Maximum and Kalmia Latifolia, in carload lots, \$150.00 per carload.

Specimen plants, from \$1.00 to \$2.50 each.

Rhododendron Maximum.

RHODODENDRON CATAWBIENSE

¶ These coming from such favorable local conditions as do ours, transplant with even greater success than do Rhododendron Maximum, which have quite a reputation for the facility with which they can be moved from their native haunts, provided, of course, they are given the common care of shading and watering during the first season.

Various sizes in carload lots, prices according to size of plants required, from \$150.00 to \$500.00 per 100.

Nice specimen plants, good form and well furnished with buds, about 2 ft. high, \$2.00 each; \$20.00 per doz.

Named Varieties of Hardy Hybrid Rhododendrons

¶ The following varieties were among those specified by T. D. Hatfield, in American Gardening, June 11, 1904, as being perfectly hardy in the New England States and as having passed through the severe winter of 1903 and 1904.

- Album elegans**—Very large white.
- Album grandiflorum**—White and blush.
- Charles Dickens**—Dark Scarlet.
- Everestianum**—Rosy lilac crimped.
- Henry W. Sargent**—Crimson, large truss.
- Roseum grandiflorum**—Purplish rose.
- Caractacus**—Rich purplish-crimson.
- Delicatessunum**—White and blush.
- Mrs. Milner**—Dark red.
- Purpureum grandiflorum**—Purplish rose.
- Roseum elegans**—Fine rose.
- Lady Clermont**—Rosy scarlet, fine shape.
- H. H. Hunnewell**—Rich crimson.

(All the above well set with buds).

	Each	Per Doz.	Per 100
5 to 7 buds, 15 in. high . .	\$1 00	\$10 00	\$75 00
8 to 10 " 18 " . .	1 25	12 00	90 00
10 to 15 " 20 " . .	1 75	17 50	125 00

Standard Grown Rhododendrons

¶ In hardy American varieties only, straight stems 4 to 5 feet high, strong crowns well set with buds. \$5.00 each; \$50.00 per doz.



Rhododendron (10 to 15 Buds).

¶ NURSERIES AND TRIAL GROUNDS—SPARKILL, ROCKLAND CO., NEW YORK.

Hardy Perennial Plants

Peonies, Phloxes, Hollyhocks, Iris, &c.

† Our herbaceous nursery, which was inaugurated last year, now contains thousands of the best commercial and ornamental varieties, all in a vigorous, healthy and splendid condition. The size of the plant, quality of the stock and price will compare favorably with that of other growers. No expense has been spared to secure only the worthy types and species and the best information with regard to hardiness and adaptability. If selection is left to us, we will use our knowledge—if information is given us for what purposes the plants are to be used, either as cut flowers, borders or landscape effects.

Varieties marked with a * best for cut flowers.

* ACHILLEA Ptermca fl. pl. "The Pearl," (Achillea Yarrow Millfoil), 3-in.-pot	Doz.	100	
	Per 1000, \$35.00 . . .	\$0 60	\$4 00
* ACHILLEA Fillpendula (Divisions)		75	6 00
" Millefolium Roseum , 3-in pot		60	4 00
* ACTEA Spicata Alba (Baneberry), field-grown		1 00	8 00
" Rubra		1 25	10 00
* AGROSTEMMA Coronaria (Mullein Pink or Rose Campian)		60	5 00
* AGROSTEMMA Flos Jovis		60	5 00
AEGOPODIUM Podagraria Variegata (Bishops' Weed), 3-in. pot		1 00	8 00
AJUGA Genevensis (Bugle Weed)		1 00	8 00
ANCHUSA Italica (Alkanet), field-grown		60	5 00
ALYSSUM Saxatile Compactum (Madwort or Gold Dust), 3-in pot		75	6 00

† The Anemone Japonica and varieties are excellent as a Fall decorative plant in the border; for cutting it is unexcelled.

* ANEMONE Japonica Rubra (Wind Flower), field-grown	Doz.	100	
	Per 1000, \$60.00 . . .	\$1 00	\$7 00
* ANEMONE Japonica Rosea . Per 1000, \$70.00		1 00	8 00
* " " Alba (Honorine Joubert)		1 00	7 00
	Per 1000, \$60.00 . . .	1 00	7 00
* " " Whirlwind . Per 1000, \$65.00		1 00	7 00
* " Queen Charlotte . Per 1000, \$65.00		1 00	7 00
* " Sylvestris . . . Per 1000, \$50.00		75	6 00
* " Pennsylvanica , 3-in pot. Per 1000, \$50.00		75	6 00
* AQUILEGIA Chrysantha (Columbine), 1 yr., field grown		60	5 00
* AQUILEGIA Chrysantha Alba		75	6 00
* " Cœrulea (True)		75	6 00
* " Hybrida		75	6 00
* " Canadensis		60	5 00
* " Nivea Grandiflora		75	6 00
* " Skinneri		75	6 00
* " Vulgaris		60	5 00
* ARABIS Alpina (Rock Cress), strong divisions		75	6 00
ARTEMISIA Abrotanum (Southerwood) field-grown		75	6 00



Japanese Anemone Queen Charlotte.

* ASCLEPIAS Tuberosa (Butterfly Weed)	Doz.	100	
	\$0 60	\$5 00	
" Incarinata	60	4 00	
* ASTER Amellus Elegans (Michaelmas Daisies), strong division	1 00	8 00	
* ASTER Amethystinus	1 00	8 00	
* " Horizontalis	1 00	8 00	
* " Novæ Angliæ	1 00	8 00	
* " " Rubra	1 00	8 00	
* " " Mrs. F. W. Rayner	1 00	8 00	
* BAPTISIA Australis (False Indigo), field-grown	1 00	8 00	
" Tinctoria	60	5 00	
* BELLIS Perennis Snowflake (Double English Daisies), strong plants	50	4 00	
BOCCONIA Cordata (Plume Poppy), divisions	60	5 00	
BOLTONIA Asteroides (False Starwort)	75	6 00	
* " Latisquama	75	6 00	

† Campanulas are too well known for description. They are, however, among the most valuable herbaceous plants for all purposes.

CAMPANULA Carpatca (Bellflower), strong field-grown	Doz.	100	
	\$1 00	8 00	
CAMPANULA Media	75	6 00	
* " Persicifolia , 3-in. pots	75	6 00	
* " " Alba	75	6 00	
" Muralis	1 25	10 00	
" Punctata	75	6 00	
* " Pyramidalis	1 00	8 00	
" Rotundifolia	75	6 00	
CALLIRHOE Involucrata (Poppy Mallow), 1 yr., field-grown	50	4 00	
CARYOPTERIS Mastacanthus (Blue Spiræa), 1 yr., field-grown	75	5 00	
CATANANCHE Cœrulea (Cupid's Dart), 1 yr., field-grown	50	4 00	
CATANANCHE Cœrulea Bicolor , 1 yr., field-grown	50	4 00	
* CENTAUREA Montana Alba (Knapweed), 1 yr., field-grown	1 00	8 00	
CENTRANTHUS (See VALERIANA)			
CEPHALARIA Alpina (Roundheads), 1 yr., field-grown	1 50	12 00	
CHELONE Glabra (Turtlehead), strong field-grown	60	5 00	
" Lyonii , divisions	1 00	8 00	
* CHRYSANTHEMUM (Shasta Daisy), 3-in. pot	75	6 00	



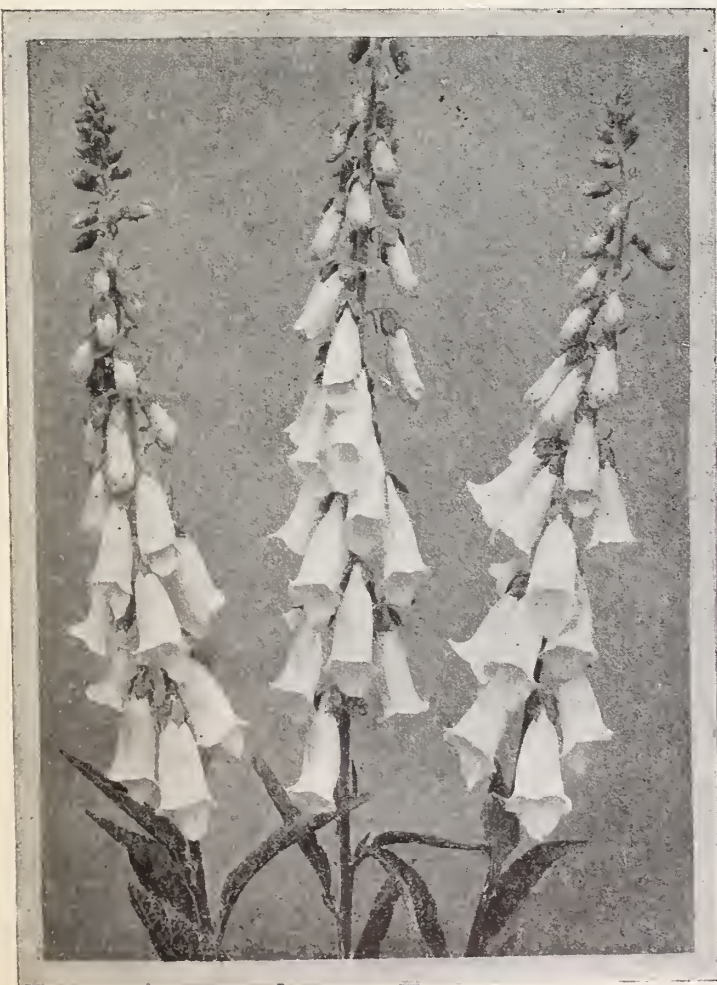
Shasta Daisy.

Hardy Perennial and Herbaceous Plants—Continued

		Doz.	100
CIMICIFUGA Racemosa (Bugwort)	\$50.00 per 1000	\$0 75	\$6 00
CLAYTONIA Virginica (Spring Beauty), collected stock		50	4 00
*COREOPSIS Lanceolata (Tickseed Sunflower), 4-in. pots	\$35.00 per 1000	60	4 00
CYPRIPEDIUM Acaule (Moccasin Flower), collected stock		1 00	8 00
" Reginæ or Spectabilis, (Ladies' Slipper)		3 00	25 00
DODECATHEON Media (American Cowslip or Shooting Star)		75	6 00
*DELPHINIUM Cashmerianum (Larkspur), 3-in. pots		1 00	8 00
* " Chinensis Album	\$50.00 per 1000	75	6 00
* " Azureum	50.00 " "	75	6 00
* " Formosum field-grown		75	6 00
* " Pumilum Album	\$50.00 per 1000	75	6 00
* " " Cœruleum	50.00 " "	75	6 00
* " Elatum Hybridum		1 00	8 00
*DIANTHUS Barbatus, Single White (Sweet William)	\$35.00 per 1000	50	4 00
* " " Double " " "	35.00 " "	50	4 00
* " " Double Red " " "	35.00 " "	50	4 00
* " " Mixed " " "	35.00 " "	50	4 00
* " Latifolius		60	4 00
* " Plumarius (Scotch Pink)	\$40.00 per 1000	60	5 00
* " Her Majesty, pink. The best large double white Hardy Garden Pink		75	6 00
DIGITALIS Gloxiniaeflora (Foxglove), Pink, White and Rose, from field		75	6 00
DIGITALIS Grandiflora		60	4 00
ECHINOPS Ritro (Globe Thistle), field-grown		1 25	10 00
ERYNGIUM Planum (Sea Holly)		1 00	8 00
*EUPATORIUM Ageratoides (White Snake Root)	\$40.00 per 1000	60	5 00
" Cœlestinum (Mist Flower)		75	6 00
*EUPHORBIA Corollata (White Flowering Spurge)		60	4 00
FUNKIA Aurea (Plantain Lily)	\$35.00 per 1000	60	4 00
" Albo-marginata	\$55.00 " "	75	6 00
" Japonica		60	4 00
" Subcordata Grandiflora	\$75.00 per 1000	1 00	8 00
" Undulata Media Variegata, the best variegated variety	\$55.00 per 1000	75	6 00
*HOLLYHOCK Allegheny. † Our stock of Hollyhocks are all field-grown and will flower the coming season. They contain the best named vars., besides those to color.		1 25	10 00
HOLLYHOCK Sunrise. Flowers of largest size and finest form; straw-yellow, shading to coppery yellow	\$80.00 per 1000	1 25	10 00



Double Hollyhocks.



Digitalis Gloxinoides Alba.

		Doz.	100
HOLLYHOCK Sunset. Immense perfectly double flowers of a most charming shade of carmine-pink		\$1 25	\$10 00
HOLLYHOCK Flamingo. Close petaled double flowers of gigantic size and intense deep carmine color. Plants grow five and one-half to six feet high		1 25	10 00
HOLLYHOCK Pink		1 25	10 00
" White		1 25	10 00
" Red		1 25	10 00
*GAILLARDIA Grandiflora (Blanket Flower), 4-in. pots		75	6 00
GALEGA Officinalis (Goat's Rue), field-grown		75	5 00
" Alba		75	5 00
GENTIANA Andrewsii (Gentian), collected stock		1 00	8 00
" Saponaria		1 00	8 00
GERANIUM Sanguineum (Crane's Bill) field-grown		75	6 00
" Maculatum collected stock		50	4 00
GILLENIA Trifoliata (Indian Physic), field-grown		1 00	8 00
*GYPSOPHILA Paniculata		75	6 00
" Repens		60	4 00
GOODYERA Pubescens (Rattlesnake Plantain), collected stock		1 00	8 00
*HELENIUM Autumnale Superbum (Sneezewort), strong division		1 00	8 00
*HELENIUM Grandicephalum Striatum		1 00	8 00
* " Pumilum		1 25	10 00
*HELIOPSIS Pitcherianus (Ox-Eye), 1-year, field-grown		75	6 00
*HELIANTHUS Divaricatus (Sunflower)		75	6 00
* " Multiflorus fl. pl., strong division		75	6 00
* " Maximilliana		60	5 00
* " Orgyalis		75	6 00
*HEMEROCALLIS Dumortieri (Day Lily), field-grown. \$55.00 per 1000		75	6 00
* " Flava		60	4 00
* " Fulva		60	4 00
* " Kwanso	\$35.00 per 1000	60	4 00
HEPATICA Triloba (Liver Leaf), collected stock		75	6 00
HESPERIS Matronalis (Sweet Rocket), field-grown		60	4 00
" Alba		60	4 00
*HEUCHERA Sanguinea (Satin Leaf or Alum Root), 1 year	\$70.00 per 1000	1 00	8 00

Hardy Perennials and Herbaceous Plants—Continued



Hibiscus Crimson Eye.

	Doz.	100
NEPETA Glechoma Hederacea Variegata (Cat Mint), 2¼-in. pots	\$0 60	\$5 00
GENOTHERA Fruticosa (Evening Primrose), 1-yr., field-grown	75	6 00
GENOTHERA Speciosus , 1-yr., field-grown	75	6 00
" Youngi , 1-yr., field-grown	75	6 00
PACHYSANDRA Terminalis (Mountain Spurge) 1	1 00	8 00
* PAPAVER Orientalis (Poppy), 3-in. pots	75	6 00
* PARDANTHUS Sinensis (Blackberry Lily), strong plants	75	6 00
* PENTSTEMON Barbatus Torreyi (Beard Tongue), divisions	1 00	8 00
* PHYSOSTEGIA Virginica (Obedient Flower)	75	6 00
" " Alba	75	6 00
* PLATYCODON Grandiflorum (Baloon Flower), blue, strong 2-yr. plants	75	6 00
* PLATYCODON Grandiflorum , White	75	6 00
PLUMBAGO Larpentæ (Leadwort), field-grown	1 00	8 00
POLEMONIUM Reptans (Jacob's Ladder), 3-in. pots	1 00	8 00
POLYGONATUM Majus (Solomon's Seal), extra strong	1 50	15 00
POLYGONUM Cuspidatum (Knotweed), strong division	1 00	8 00
* PRIMULA Courtusoides (Primrose), Queen of Whites	1 00	8 00
* PRIMULA Veris Superba	1 00	8 00
PULMONARIA Saccharata Maculata (Lungwort) 1	1 50	12 00

¶ Pyrethrums are getting more popular in this country every day—both double and single. We have the choicest.

* PYRETHRUM Roseum , Choice Mixed, 3-in. pots	1 00	8 00
--	------	------

	Doz.	100
* HIBISCUS Crimson Eye (Mallows), field-grown	\$0 75	\$5 00
" Moscheutos	75	5 00
" Miltaris , strong collected stock	75	6 00
HYPERICUM Moserianum (Gold Flower), field-grown	1 00	8 00
* INCARVILLEA Delavayi (Hardy Gloxinia), extra strong per 1000, \$135.00	2 00	15 00

¶ One of the most striking of herbaceous plants, with its gloxinia-shaped flowers of a lovely rose color rising 18 inches above the beautiful tessellated foliage.

* IBERIS Sempervirens (Candytuft), field-grown	75	6 00
LIATRIS Graminæfolia (Blazing Star), collected stock	60	4 00
LIATRIS Pycnostachya	75	6 00
LINUM Perenne (Flax), field-grown	60	5 00
* LOBELIA Cardinalis (Cardinal Flower)	75	5 00
" Syphilitica	75	5 00
LYSIMACHIA Clethroides (Loose Strife), strong division	75	6 00
LYSIMACHIA Nummularia , 3-in pots	60	4 00
LYTHRUM Roseum Superbum (Purple Loose Strife), 1-year, field-grown	60	4 00
* LYCHNIS Chalcedonica (Lamp Flower) ex. strong	75	6 00
* " " Alba	75	6 00
* " Semperflorens Plenissima , 2½-in. pots	1 00	8 00
* " Viscaria Splendens fl. pl., strong plants	1 00	8 00
MENTHA Viridis (Mint), 3-in. pots	60	4 00
MERTENSIA Virginica (Lungwort), ex. strong plants	75	6 00
* MYOSOTIS Alpestris	60	4 00
* " " Victoria	60	4 00
* " " Palustris Semperflorens , 3-in. pots	60	4 00



Lychnis Plenissima Semperflorens.

Hardy Perennials and Herbaceous Plants—Continued

PHLOXES

In making up our collection of Phloxes of the Decussata and Suffruticosa sections, we have avoided all the "off colors" and purples, and the selection now contains only the best whites, crimsons, reds, etc., in self colors, with perhaps a few with tinged eyes. There are larger collections, but the following are the gems of them all.

- ***PHLOX Suffruticosa** *Md. Lingard*—White, very free flowering; flowers in June and July.
- " " *Indian Chief*—Crimson. [September.]
- " **Decussata** *Mrs. E. E. Jenkins*—Very fine white and excellent habit.
- " " *Coquelicot*—Geranium, orange scarlet, carmine eye, \$1.00 per doz., \$8.00 per 100.
- " " *Lord Rayleigh*—Bluish crimson, large truss, extra fine.
- " " *Jean Barth*—Light pink, with cherry red center, extra fine.
- " " *Jeanne d'Arc*—Very fine late white.
- " " *Champs Elysee*—Fine rich crimson.
- " " *Pantheon*—Deep salmon rose, free flowering.
- " " *Boule de Feu*—Bright red.
- " " *Therbaide*—Salmon red, with crimson eye.
- " " *Eclairer*—Purplish crimson; very large.

Strong plants from field, except where noted, 75c. per doz.; \$5.00 per 100; \$45.00 per 1000.

PHLOX subulata lilacina. Per doz., 50c.; per 100, \$4.00; per 1000, \$35.00.

PÆONIAS

* PÆONY OFFICINALIS —Earliest flowering of all Pæonies.	Each	Doz.	100
<i>Rubra</i> , rich deep crimson	\$0 15	\$1 25	\$8 00
<i>Rosea</i> , bright rose	25	1 50	12 00
<i>Alba plena mutabilis</i> —White	30	2 00	15 00

* PÆONY CHINENSIS —Sweet-scented.	Each	Doz.	100
Red Varieties	\$0 15	\$1 25	\$8 00
Pink Varieties	20	1 50	9 50
White Varieties	25	2 00	12 00
All colors—Mixed	15	1 25	10 00

Special Low Offer. One case containing 67 Double White, 66 Double Red, 67 Double Pink Peonies, strong roots, 200 plants in all, for \$20.00; 3 cases, (600 plants) for \$55.00.

PÆONIA SINENSIS (Chinese Pæonies) NAMED VARIETIES

The List of named sorts we offer under this head includes **The Best** of a very large collection, consisting of more than **Fifty Varieties** and are recommended by several specialists as being the **Cream**, embracing as they do the best forms and all colors known to this plant, and are all worthy of cultivation, either for private or commercial use.



Pæonia Sinensis Var.

*RUDBECKIA

- ***Fulgida** (Coneflower) 1-year, field-grown. Per doz., 75c.; per 100, \$6.00.
- ***Newmanni**, strong division. Per doz., 75c.; per 100, \$6.00.
- ***Golden Glow**, strong plants. Per doz., 50c.; per 100, \$4.00; per 1000, \$30.00.
- ***Golden Glow**, clumps. Per doz., \$1.00; 100, \$10.00; per 1000, \$75.00.
- ***Purpurea**. Per doz., \$1.00; per 100, \$8.00.
- ***Subtomentosa**. Per doz., 1.00; 100, \$8.00.
- ***Triloba**, 1-year, field-grown. Per doz., 75c.; per 100, \$6.00.



Phlox Decussata Var. *Coquelicot*.

P
Æ
O
N
I
A
S

- Alba plena*, white, good form.
- Beaute Francaise*, delicate rose, very full flower.
- Chrysanthemiflore rosea*, fine rose, extra form.
- Fideline*, purplish red, very good.
- Festiva alba*, very fine white.
- ***Festiva Maxima**, true. The best all-round white. 50c. each; \$5.00 per dozen; \$40.00 per 100.
- Laius*, silvery rose, with short petals, fine.
- Lutetiana*, light rose, center salmon.
- Monsieur Rousselon*, rose, center white.
- Officinalis Mutabilis*, earliest double white.
- Queen Victoria*, white, very free-flowering variety.
- Rubens*, dark red, semi-double.

Price of the above named sorts, except where noted, 20c. each; \$2.00 per dozen; \$15.00 per 100.

Collection consisting of one each of the above 12 named varieties, including **Festiva Maxima**, \$2.50, or three collections for \$7.00.

*Japanese Tree Pæonies

Extra strong plants, 10 distinct double varieties. 75c. each; \$6.00 per doz.; \$45.00 per 100.

Hardy Perennials and Herbaceous Plants—Continued

	Doz.	100
SALVIA <i>Argentea</i> (Sage), 1-yr. field-grown . . .	\$1 00	\$8 00
" <i>Pratense</i>	1 00	8 00
" <i>Officinalis</i> , the common or true broad- leaved Sage, 2½-in. pots	60	4 00
SANTOLINA <i>Incana</i> (Lavender Cotton)	50	4 00
SAPONARIA <i>Ocyroides Splendens</i> (Soapwort)	75	6 00
*SCABIOSA <i>Caucasica</i> (Scabious), field-grown	1 25	10 00
SEDUM <i>Telephium</i> (Stonecrop)	60	4 00
" <i>Spectabilis</i>	75	6 00
SMILACINA <i>Racemosa</i> (False Solomon's Seal)	75	6 00
*SOLIDAGO <i>Odora</i> (Goldenrod)	75	6 00
" <i>Rigida</i>	75	6 00
*SPIREA <i>Aruncus</i> (Goat's Beard)	1 00	8 00
" " <i>Kneiffi</i> 35c. each	4 00	
" <i>Chinensis</i>	1 00	8 00
* " <i>Filipendula fl. pl.</i>	60	4 00
* " <i>Palmata</i> (Pink)	75	6 00
" <i>Ulmaria Aurea</i>	1 00	8 00
" <i>Venusta</i>	75	6 00
STACHYS <i>Lanata</i> (Woundwort), 1-yr. field-grown	1 00	8 00
STOKESIA <i>Cyanea</i> (Cornflower Aster). A hardy bedding plant that will have an unprecedented demand. Grows from 18 to 24 inches high, and produces Centaurea-like lavender blue flowers from early in July until late in October, even after frost has destroyed nearly all other outdoor flowers. It is of easiest culture, suc- ceeding in any open, sunny position. They enjoy plenty of moisture, but in the North precaution should be taken to prevent water and ice covering them in winter. Strong field- grown clumps \$55.00 per 1000	75	6 00



Tritoma Pfitzeri.

*TRITOMA PFITZERI (Red Hot Poker)

¶ A most important addition to the list of bedding plants. Unsurpassed for its attractiveness and brilliancy and blooms continuously from June until December, regardless of frost. The plants throw from 6 to 20 flower-stalks all the time, about 3 to 4 feet high, great clusters of rich orange-scarlet flowers.

Strong, field-grown roots, \$1.00 per doz.; \$7.50 per 100; \$60.00 per 1000.

	Doz.	100
SYMPHYTUM <i>Aspernum Aureum Variegatum</i> (Comfrey)	\$1 50	\$12 00
THALICTRUM <i>Aquilegifolium Purpurascens</i> (Meadow Rue)	75	6 00
THYMUS <i>Languinosus</i> (Thyme), 3-in. pots	1 00	8 00
" <i>Serpyllum Aureum</i> , 2¼-in. pots	75	6 00
TRADESCANTIA <i>Virginica</i> , Blue, (Spiderwort), strong division	60	4 00
TRADESCANTIA <i>Virginica Alba</i>	60	4 00
TRICYRTIS <i>Hirta</i> (Toad Lily), Strong Plants	1 00	8 00
*TRILLIUM <i>Grandiflorum</i> (Wake Robbin)	60	4 00
" <i>Rosemary</i>	75	6 00
*TRITOMA <i>Corallina</i>	1 00	8 00
TROLLIUS <i>Europæus</i> (Globe-Flower)	75	6 00
*VERONICA <i>Longifolia Subsessilis</i> (Speedwell)	1 25	10 00
* " <i>Spicata</i>	1 00	8 00
* " " <i>Rosea</i> . per 1000, \$75.00	1 00	8 00
" <i>Virginica</i> , field-grown	1 00	8 00
VINCA <i>Minor</i> (Myrtle or Periwinkle) \$35.00 per 1000	60	4 00
VIOLA <i>pedata bicolor</i> per 1000, \$35.00	60	4 00
YUCCA <i>Filamentosa</i> (Spanish Bayonet)	1 25	10 00

¶ Quotations on large quantities made upon application on all herbaceous and perennial stock.



Stokesia Cyanea, or Cornflower Aster

¶ NURSERIES AND TRIAL GROUNDS—SPARKILL, ROCKLAND CO., NEW YORK.

HARDY VINES AND CLIMBERS

ALL LARGE IMPORTED
HOLLAND GROWN PLANTS
(EXCEPT WHERE NOTED)

ACTINIDIDA POLYGAMA

† White, sweet-scented flowers resembling the Hawthorne; these are followed by bunches of edible berries. Extra strong plants, \$1.00 each; \$10.00 per dozen.

CLEMATIS

Duchess of Edinburgh. Double white.

Henryi. Large single white, very large flower.

Jackmanni. Dark, royal purple, most popular single var.

Mme. Baron Veillard. Light rose.

Sieboldia. Lavender.

The Gem. Deep lavender, blue, very fine.

Gypsy Queen. Fine dark single purple.

Three-year-old open-ground roots. 50c. each; \$4.00 per dozen; \$30.00 per 100.

Two-year-old pot-grown. 40c. ea.; \$3.00 per doz.; \$20.00 per 100.

We have also a large stock of one-year-old American-grown field roots. \$2.00 per dozen; \$15.00 per 100; \$125.00 per 1000.

Clematis Paniculata. Strong four-year-old field-grown plants. 20c. each; \$1.50 per dozen; \$10.00 per 100.

Strong one to two-year-old roots: 90c. per doz.; \$6.00 per 100.

Clematis Coccinea. A handsome variety, producing an abundance of large rosy-scarlet, bell-shaped flowers, which are exceedingly handsome and most useful for all sorts of decoration. Blooms from June until frost. Quite hardy. 10c. each; \$1.00 per dozen; \$7.00 per 100.

Clematis Crispa. Much like Coccinea, but producing very fragrant, lavender flowers, tipped white. 10c. each; \$1.00 per dozen; \$7.00 per 100.

Clematis Davidiana. Dwarf herbaceous sort, growing about 2 to 3 ft. high, covered with deep blue flowers in clustered heads; also singly in leaf axils. 1-year-old, 2½ inch pots, 8c. each; 65c. per dozen; \$4.00 per 100; \$30.00 per 1000. 2-year-old, open-ground, 10c. each; 75c. per dozen; \$5.50 per 100; \$50.00 per 1000.

Ornamental Grasses

Arundo Donax Variegata. 20c. each; \$2.00 per dozen; \$15.00 per 100.

Eulalia Gracillima Univittata. 15c. each; \$1.25 per dozen; \$8.00 per 100.

Eulalia Japonica Variegata. 15c. each; \$1.25 per dozen; \$8.00 per 100.

Eulalia Japonica Zebrina. 15c. each; \$1.25 per dozen; \$8.00 per 100.

GYNERIUM ARGENTEUM ELEGANS

(Pampas Grass)

Plumes silvery white, upon very long stems. Blooms early. A graceful new variety that is bound to become popular. The large plumes, when dried, make a splendid addition to a bouquet of dried grasses.

Strong plants, 4 inch pots, 40c. each; \$3.00 per dozen; \$20.00 per 100.

MANETTI STOCKS FOR GRAFTING

† Good Manetti stocks for grafting of a suitable size are extremely scarce this season. Orders should reach us early. Our shipments will be selected with great care. Our stock is well worth the prices we ask and is not to be compared with cheap consignment lots sold by many dealers. December delivery.

Selected French Stock, \$1.50 per 100; \$11.00 per 1000.

Selected English Stock, the best, \$2.00 per 100; \$14.00 per 1000.

BIGNONIA (Trumpet Creeper)

Grandiflora. Strong plants, 25c. each; \$2.50 per dozen.

Radicans. Strong plants, 20c. each; \$2.00 per dozen.

WISTARIA SINENSIS

Pot-grown plants for forcing. These make magnificent plants for Easter trade, which fact is known only to a few of the principal florists. Long, flowering variety, 2 ft. high, \$1.25 each; \$14.00 per dozen.

Blue. Open-grown, extra strong, 4-ft. plants, 40c. each; \$3.50 per dozen; \$25.00 per 100.

White. Open-grown, extra strong, 4-ft. plants, 50c. each; \$5.00 per dozen; \$40.00 per 100.

HONEYSUCKLES

Extra strong field-grown plants, in variety, 50c. each; \$4.00 per dozen; \$30.00 per 100.

HARDY ENGLISH IVIES

2 to 3 ft. high, 20c. each; \$1.50 per dozen; \$10.00 per 100.

AMPELOPSIS VEITCHII

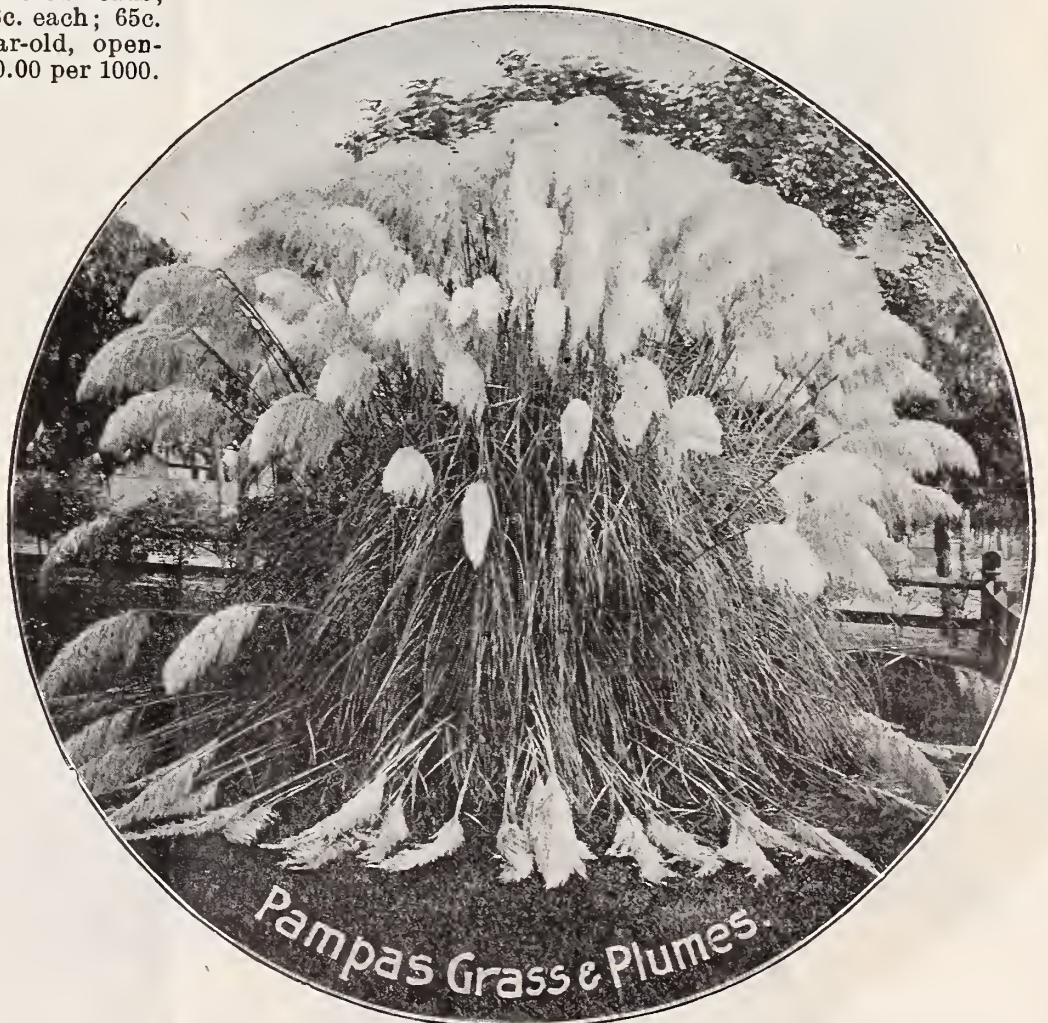
Sometimes called Boston Ivy and Japan Ivy

3 to 4 ft. high; extra strong; imported. 20c. each; \$1.50 for 10; \$12.50 per 100.

2 to 3 ft. high, strong roots, \$1.25 for 10; \$10.00 per 100.

ARISTOLOCHIA SIPHO (Dutchman's Pipe Vine)

We offer an extra fine stock of this most useful hardy climber in extra strong vines. 4 to 5 ft., 40c. each; \$3.50 per dozen; \$30.00 per 100.



BULBS FOR SPRING PLANTING

Prices Named for these Bulbs are Very Special

To induce customers to place with us their advance orders for delivery in Spring, 1905.

It will better enable us to determine our wants and at same time assure customers of securing their supplies in the proper season and avoid disappointment from short crops.

These prices are void after December first. See Spring catalogue for varieties not mentioned here.

BEGONIAS

Tuberous Rooted, 1 1/4 inches and up. 150,000 sold by us last year.

	Doz.	Per 100	Per 1000
Single Flowers, red and crimson, white, dark pink, light pink, yellow, orange and salmon, colors separate.....	\$0 30	\$2 00	\$18 50
Double Flowers, red and crimson, pink and rose, white, orange and salmon, yellow, copper bronze, colors separate	60	4 00	35 00

CANNAS

We grow upward of twenty-five acres representing at least 500,000 roots of these valuable plants, and offer large dormant pieces with two to three eyes of the following standard kinds for delivery after December 1st on orders placed before this date, at the uniform price of \$17.50 per 1000; \$2.00 per 100. Special prices for larger quantities.



Canna Roots

What ours look like—about 1/2 natural size

Austria, Burbank, Paul Marquant, Alphonse Bouvier, Flamingo, Chas. Henderson, Florence Vaughan, Queen Charlotte, Madame Crozy, Peachblow, Morning Star, Italia, Shenandoah, Martha Washington, Beate Poitevine, Robusta, Souv. de Antoine Crozy, Virginia, Parsons' Premier.

Black Beauty, we can offer at \$5.00 per 100; 75c. per doz.

See Spring Catalogue for other Sorts

CALADIUMS

	Doz.	Per 100	Per 1000
Fancy Leaved Named Sorts, 10 varieties.	\$1 25	9 00	
Fancy Leaved Mixed Sorts.....	75	5 50	50 00

NURSERIES AND TRIAL GROUNDS—SPARKILL, ROCKLAND CO., NEW YORK.

Caladium Esculentum

(ELEPHANT'S EAR)

	Doz.	Per 100	Per 1000
Bulbs measuring 6 to 8 inches in circumference.....	\$0 25	\$1 50	\$12 50
Bulbs measuring 8 to 10 inches in circumference.....	50	3 00	25 00
Bulbs measuring 10 to 12 inches in circumference.....	75	5 00	45 00
Monster Bulbs measuring 12 inches and upward.....	1 25	10 00	

CINNAMON VINE

	Doz.	Per 100	Per 1000
Largest size Bulbs.....	\$0 50	\$2 50	\$20 00
First Size Bulbs.....	35	2 00	15 00

DAHLIAS

	Doz.	Per 100	Per 1000
Large field-grown roots to name or in separate colors, best varieties.....	\$0 70	\$5 50	\$50 00
Mixed, all colors.....	60	4 50	40 00

GLADIOLUS

	Doz.	Per 100	Per 1000
Groff's Hybrids, Originator's strain, selected stock, picked bulbs.....	\$0 50	\$3 00	\$25 00
Groff's Hybrids, Originator's strain, first size bulbs.....	40	2 50	20 00
American Hybrids, mixed, picked bulbs, 5 to 8 inches.....	20	1 00	8 50
American Hybrids, mixed, first size, 4 1/2 to 6 inches.....	15	75	6 50
White and Light Varieties.....	30	2 00	15 00
Scarlets, Brenchleyensis and others....	15	75	6 00
Agusta. The best florists' white gladiolus in existence; picked bulbs 5 to 8 inches in circumference.....	1 00	4 00	35 00
1st size, 4 1/2 to 6 inches in circumference	75	3 00	25 00

For other varieties see Spring Catalogue

GLOXINIAS

	Doz.	Per 100	Per 1000
Colors Separate or Mixed, Bulbs 1 1/2 to 3 inches.....	\$0 60	\$3 50	\$30 00

Hyacinthus Candicans

	Doz.	Per 100	Per 1000
Large Bulbs.....	\$0 25	\$1 25	\$10 00

MADEIRA VINES

Per dozen, 25 cents; per 100, \$1.25; per 1000, \$10.00

TUBEROSES

	Doz.	Per 100	Per 1000
Double Pearl, first size bulbs, measuring 3 to 4 inches in circumference.....	\$0 10	\$0 40	\$4 50
Double Pearl, selected bulbs, 4 to 6 inches in circumference.....	15	75	7 50
Double Pearl, extra selected, 6 to 8 inches in circumference.....	25	1 75	15 00
Albino, single, white branching variety...	20	1 25	10 00
Silver Leaf, striped foliage, single flowers	20	1 25	10 00

VIRGIN MUSHROOM SPAWN

¶ The merits of this particular make of Mushroom Spawn have only recently come to our attention, and we were so impressed by the many substantial and unsolicited testimonials from large and practical growers of mushrooms for market, that we concluded to bring it before the notice of our customers.

¶ Every brick is made from **Virgin Spawn**, which produces quick and heavy crops, and lasts long in bearing.

PRICE OF VIRGIN MUSHROOM SPAWN

Per lb.....\$0.08
 Per bush. of 16 bricks (about 25 lbs.)..... 1.75
 100 lbs..... 6.00
 1000 lbs.....55.00
 250 lbs. at 1000 lb. rate.



House of Mushrooms grown from our Virgin Spawn.

A FEW OF THE MANY TESTIMONIALS:

The English Mushroom Spawn which I purchased from you this winter has given most excellent results. The mushrooms are of a superior quality, and the spawn quick to develop. Every bed planted with your spawn came up thick with mushrooms. The same cannot be said of other beds.

W. G. GOMERSALL,
 Gardener to Winthrop Sargent, Esq.,
 Fishkill-on-Hudson, N. Y.

Jan. 20, 1903.

"GREYROCK,"
 Port Chester, N. Y., March 25, 1903.

CLUCAS & BODDINGTON CO.

GENTLEMEN—The Mushroom Spawn I had from you last autumn was the best I ever grew. My beds have produced a heavy and continuous crop since early in January, and the end is not yet.

ERNEST TOWNSEND,
 Gardener to Chas. A. Gould, Esq.

INSECTICIDES

NICOTICIDE.—Fumigating compound for killing all kinds of insects on plants in greenhouses and frames.

1 pint, sufficient for 32,000 cubic feet of space.....\$2 50
 1/2 pint, sufficient for 16,000 cubic feet of space..... 1 25
 4 ozs., sufficient for 8,000 cubic feet of space..... 70

FUMIGATOR for above. Each..... 50

NIKOTEEN. A liquid Insecticide. Specially prepared for use in greenhouses and conservatories.

Pint.....\$1 50 | 3 Pints.....\$4 50

ROSE LEAF INSECTICIDE (Extract of Tobacco).—This insecticide has been now most thoroughly tested and has been proven one of the most effectual articles ever used, that did not injure in some degree the affected plants, for the destruction of all insects and scale on plants.

Prices: Pint can, 25c.; quart can, 50c.; gallon can, \$1.25;
 5-gallon can.....\$4 25

Aphis Punk, per box, 1 doz. rolls, 60c., case of 12 boxes.....\$6 50

Fir Tree Oil, per 1/2 pint, 35c.; pint, 65c.; quart, \$1.25; 1/2 gallon, \$2.25; 1 gallon..... 4 00

Fir Tree Oil Soap, 1/2-lb. tin, 25c.; 2-lb., 70c.; 5-lb., \$1.65; 10-lb., \$3.00; 20-lb..... 5 50

Persian Powder, 1/4 lb., 8c.; 1 lb..... 30

Tobacco Dust, per lb., 8c.; 5-lb. package, 25c.; 10-lb. package, 45c.; 100-lb. bag..... 1 75

Whale-Oil Soap, 1-lb. box, 12c.; 2-lb. box, 20c.; 5-lb. box, 45c.; 25 lbs. and over, 7c. per lb. 100 lbs..... 6 50

Tobacco Stems, 50-lb. bale, 75c.; 100-lb. bale, \$1.25; per ton, 2000 lbs.....18 00

Flour of Sulphur, per lb., 8c.; 10 lbs., 65c.; 25 lbs. and over at 5c. per lb.

FERTILIZERS

"Three-Leg" Brand Sheep Manure

¶ Pulverized and prepared by special process by which the ammonia is retained and all weed seeds killed, making it specially useful either for florists' use or top dressing.

¶ During the months of October and November the sheep are brought in from Dakota and Montana and collected in covered barns and fattened prior to killing. They are fed upon screenings from the grain elevators of the Northwest. The droppings are taken to a drying plant and exposed to a moist heat of 350 degrees, long enough to kill the germ of any seeds which they may contain, and afterward dried and passed through a 20-mesh sieve, which insures a uniform product.

The article in commerce usually sold elsewhere is ordinarily dried by being exposed to the sun and air and allowed to ferment, by which



process it loses most of its fertilizing qualities and ammonia. By the method used in preparing the manure we send out, the ammonia is retained, making it a much more valuable article.

The grain upon which the sheep are fed is rich in nitrogen, and therefore the product we sell has a larger value than what has heretofore been sold under the same name.

Price of our Pulverized Sheep Manure: 2 lbs., 12c.; 10 lbs.; 40c.; 100-lb. bag, \$1.50; ton of 2000 lbs., \$25.00.

Fertilizer, for house plants, 1/2-lb. pkg., 10c.; 1-lb. pkg., 18c.

Garden Fertilizer, for flowers and vegetables. 100-lb. 200-lb. Ton of
 5-lb. pkg., 20c.; 10-lb., 40c.; 25-lb. bag, 90c.; bag. bag. 2000 lbs.
 50-lb. bag, \$1.60.....\$2 75 \$4 50 \$43 00

Bone Meal, raw ground, pure, 1-lb. pkg., 8c.;
 5-lb., 25c.; 10-lb., 40c.; 25-lb., 85c.; 50-lb., \$1.25.. 2 25 4 00 36 00

Ground Bone, raw ground, pure..... 2 00 3 50 33 00

Crushed Bone, raw, pure..... 2 25 4 25 40 90

Bone Superphosphate..... 1 85 3 25 31 00

Cotton Seed Meal..... 2 00 3 50 33 00

Ashes, Canada hardwood, unleached..... 1 25 2 00 17 00

Kainit (German Potash Salts)..... 1 75 3 25 28 00

Nitrate of Soda, 5-lb. pkg., 25c.; 10-lb., 45c.;
 25-lb., \$1.10; 50-lb., \$1.85..... 3 25 6 00 53 00

Land Plaster, 250-lb. barrel, net weight, \$1.50... '10 00

¶ NURSERIES AND TRIAL GROUNDS—SPARKILL, ROCKLAND CO., NEW YORK.

Grass Seeds for Autumn Sowing

¶ Autumn sowing is recommended from the latter part of August to the end of September, so that the young grass may become well rooted before winter sets in. Our new-crop seed of the leading sorts is ready now.

¶ Suitable either for **LAWNS, GOLF LINKS, CROQUET GROUNDS, CRICKET FIELDS** or **TENNIS COURTS.**

¶ As a result of exhaustive experiments, conducted for many successive years, we are now able to offer a mixture of seeds consisting exclusively of those varieties which will produce a dense growth of the finest possible herbage under frequent mowing.

¶ Our Mixtures of the **FINEST LAWN GRASS SEEDS**, offered below, consist of varieties which can be established on any well-prepared seed bed, at less than one-tenth of the ordinary cost of turf.

Madison, N. J.
Jan. 26, 1903.

Dear Sirs:

You may be interested to know the Lawn Grass Seed you supplied me with proved very satisfactory, being free from weeds and superior in every way.

(Signed)

WM. DUCKHAM,
Supt. to D. Willis
James, Esq.



Iuxedo, N. Y.
Jan. 15, 1903.

Gentlemen:

Allow me to say for your Lawn Grass Seed that it has given me fine results. A beautiful velvety sward, composed of grasses of fine but firm texture, with just enough White Clover to hold over and keep the whole green in the extra dry and scorching spells of July and August, is the result of one season's growth. I applied the seed to an average soil.

(Signed)

THOMAS MURRAY,
Supt. to Pierre
Lorrillard, Esq.

Anglo-American Lawn Grass Seed Mixture

¶ We guarantee our mixture of this brand to be equal to any mixture or brand offered by other firms.

¶ The formula used in the preparation of the Anglo-American mixture is based upon that used in England for making the celebrated lawns of that country. The knowledge of this formula was acquired by ourselves after many years of experiment in Europe and the United States. Grasses in the English formula found unsuitable for the American climate are eliminated and replaced by other more desirable sorts.

¶ Lawn Grass is sometimes quoted by the standard bushel of 14 lbs., which is confusing and which should be borne in mind when comparing prices, as 14 lbs. of our Lawn Grass Seed would cost but **\$2.45.**

THE ANGLO-AMERICAN LAWN-GRASS SEED is put up in one-quart and four-quart carton boxes, $\frac{1}{4}$ bushel, $\frac{1}{2}$ bushel and one bushel canvas bags. Wholesale Price: Per quart, 15c.; 4 quarts, 55c.; $\frac{1}{4}$ bushel of 5 lbs., \$1.00; 1 bushel of 20 lbs., \$3.50. One-half bushel at bushel rates. To dealers who wish to sell our Lawn Grass we will supply it in quart packages at \$12.50 per 100 quarts, but no less than 25 quarts at this rate.

Grass Seed for Golf Links

¶ A special combination of Grasses only. Specially suitable for Golf Courses. Per bushel of 14 lbs., \$2.50.

Grass Seeds for Croquet Lawns

¶ A combination of fine Grasses and Clovers, proved by long experience to be suitable for the creation of an elastic, velvety turf. Sow 4 bushels per acre for a new lawn; 1 bushel per acre to improve a thin lawn. Per bushel of 20 lbs., \$4.50, or 75c. per gallon.

Grass Seeds for Tennis Lawns

¶ A formula of strictly perennial Grasses without Clovers, specially adapted to produce a close, fine, enduring sward. Sow 4 bushels per acre for a new lawn; 1 bushel per acre to improve existing turf. Per bushel of 20 lbs., \$5.00, or 75c. per gallon.

Grass Seeds for Shaded Lawns

¶ A selection of the fine Grasses which thrive naturally under the shade trees or buildings. Sow 4 bushels of seed per acre to make a new lawn, or one bushel per acre on thin grass. Per bushel of 20 lbs., \$4.50, or 75c. per gallon.

Special Grass Mixtures for Hay and Permanent Pastures

WILL LAST MANY YEARS WITHOUT RENEWAL

¶ Consisting of the following varieties: Orchard Grass, Meadow Foxtail, Sheep's Fescue, Rhode Island or Creeping Bent, Hard Fescue, Sweet-scented Vernal (True Perennial), Meadow Fescue, English Rye Grass, Italian Rye Grass, Red Top, etc. Three bushels of this mixture is sufficient to seed an acre, but where the land is poor a larger quantity will be necessary.

For Hay and Permanent Pasture for Light Soils..	}	\$2.50 per bushel of 14 lbs.
“ “ “ “ “ “ Medium Soils		20 bushel lots, \$2.45 per bushel.
“ “ “ “ “ “ Heavy Soils.		50 “ “ 2.40 “ “
“ Orchards and Shady Places.....		100 “ “ 2.35 “ “

¶ **NURSERIES AND TRIAL GROUNDS—SPARKILL, ROCKLAND CO., NEW YORK.**