

Historic, Archive Document

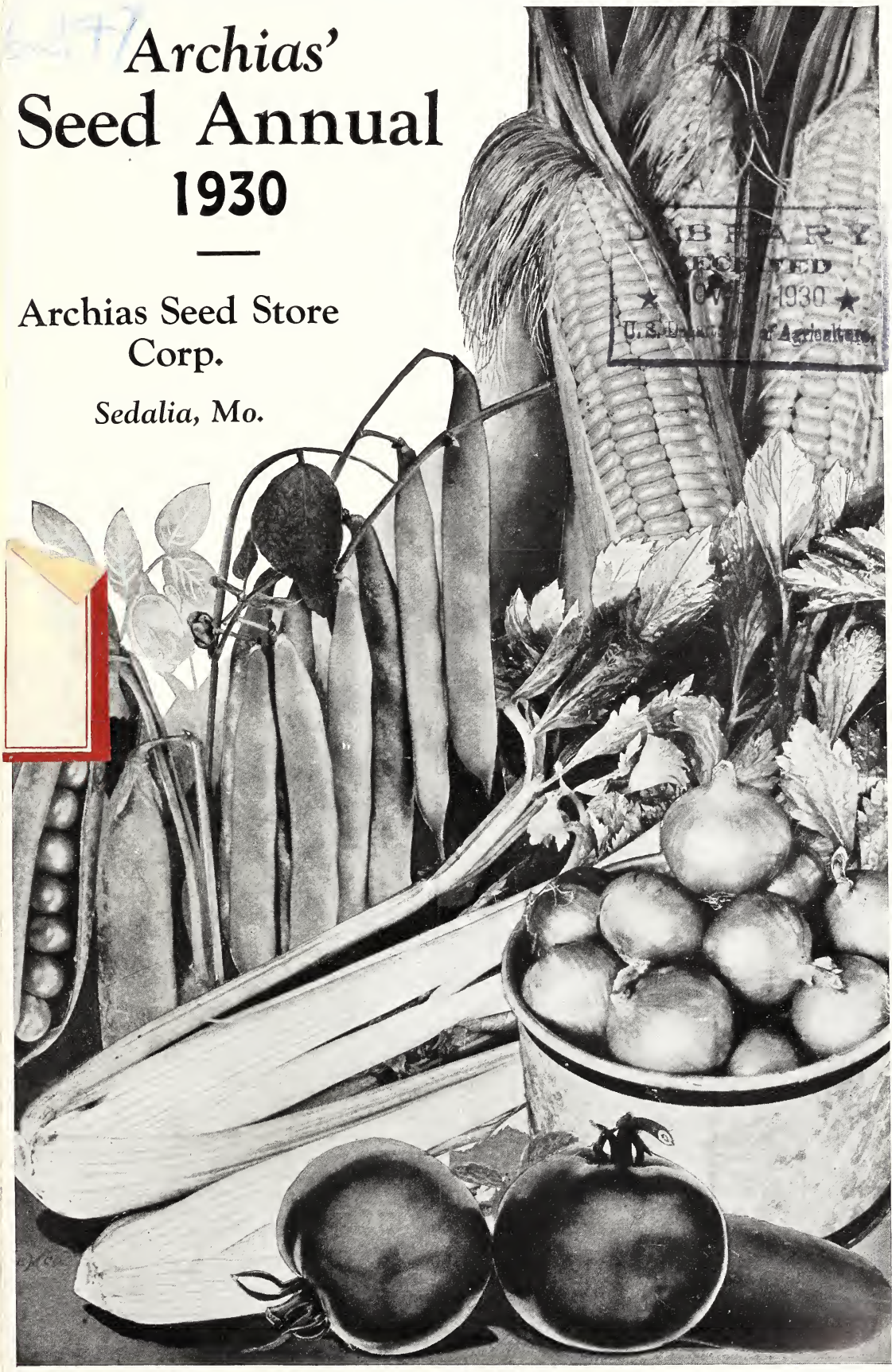
Do not assume content reflects current scientific knowledge, policies, or practices.



Archias' Seed Annual 1930

Archias Seed Store Corp.
Sedalia, Mo.

LIBRARY RECEIVED OCT 1930 U.S. Department of Agriculture



Archias' Home Garden Collection

\$1.45 VALUE, ONLY **76c**

Pkt.	Price	Pkt.	Price
1 Beets, Crimson Globe	\$0.10	1 Melon, Sweetheart	\$0.05
1 Beans, Kentucky Wonder10	1 Mustard, Chinese Curled05
1 Beans, Red Valentine10	1 Parsnip, Hollow Crown05
1 Cabbage, All Head Early10	1 Radish, New Scarlet Globe05
1 Carrot, Orange Danvers05	1 Radish, Long Bright Scarlet05
1 Celery, Giant Pascal05	1 Squash, Early White Bush05
1 Cucumber, New Everbearing05	1 Tomato, New Stone05
1 Dill, for Pickles10	1 Turnip, Purple Top Globe05
1 Lettuce, New York Market10	3 Flower Seed, Popular Var.30
		20 Pkts., value	\$1.45

COLLECTION—20 Pkts.

Postpaid, Only 76c

2 COLLECTIONS, \$1.38

Archias' Gilt Edge Warranty Your Protection

Upon receipt of our seeds, examine them, test them in any way you wish and if found unsatisfactory return in ten days and money will be refunded. We give no warranty, express or implied, as to the description, quality, productiveness or any other matter of any seeds, bulbs or plants we send out. If the purchaser does not accept the goods on these terms, they are to be returned at once.

How to Send Money

Money can be sent safely either by Post Office Order, Bank Draft, Express Order or Registered Letter. We receive postage stamps the same as cash. No mail orders accepted or filled for less than 25c.

We Ship by Parcel Post Anywhere

Seeds, Plants and Bulbs can be mailed, the rate being one cent for each two ounces up to eight ounces. All packages over eight ounces take pound rates as per table below. In ordering a pound, remit postage for two pounds, as packing will increase weight.

The weight limit in zones one and two is 70 pounds; in all others, 50 pounds.

Bulk limit (measurement around package both ways), in all zones, 72 inches.

Liquids and goods packed in glass must go by express.

Parcel Post Rates

	1 lb.	Each additional lb. or fraction
First zone, up to fifty miles	7c	1c
Second zone, 50 to 150 miles	7c	1c
Third zone, 150 to 300 miles	8c	2c
Fourth zone, 300 to 600 miles	8c	4c
Fifth zone, 300 to 600 miles	9c	6c
Sixth zone, 1000 to 1400 miles	10c	8c
Seventh zone, 1400 to 1800 miles	12c	10c
Eighth zone, over 1800 miles	13c	12c

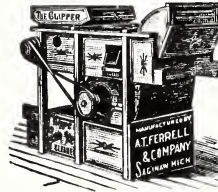
Ask your Postmaster what zone you are in, making note of it and use this table.

"Clipper" Grain and Seed Cleaner No. 1B

The screens are so arranged as to be in plain view and of easy access to the operator while the machine is in operation.

Capacity, 40 bushels of wheat or 12 bushels of clover per hour.

We will deliver this mill at your nearest railroad station, freight paid, for only \$36.50.



Every "Clipper Mill" is guaranteed, both as to material and workmanship; will clean all kinds of seed and grain faster and better than any other mill on earth.

The No. 1-B Clipper Cleaner, with twelve screens, is the best all-around mill made. Give it a trial and you will use no other. Endorsed and used by state and governmental stations.

Glass Cloth

In many ways superior to glass for hotbeds, cold frames, chicken houses, scratch sheds, for covering window openings and for making a screen porch into a sun parlor.

It is much cheaper than glass. Lighter to handle. Does not break. Is almost as transparent as glass. Does not burn the plants in a hotbed and lets through more of the beneficial ultra-violet rays than does glass.

The cloth is a medium weight white muslin treated with a special preparation which makes it water-proof, translucent, weather-proof and long lived. It comes in one width only, 36 inches or a trifle less, and in standard size bolt of 15 yards. Can also be had in 6-yard and 10-yard bolts. Try to order these regular sizes if possible.

Special Prices—Glass Cloth

15-yard bolt (135 sq. feet) postpaid	\$5.00
10-yard bolt (90 sq. feet) postpaid	3.50
6-yard bolt (64 feet) postpaid	2.25

This figures out less than 4c per square foot in full bolts, or one-fourth to one-eighth the cost of glass.

We Guarantee

All goods ordered of us to reach the purchaser safely and in good condition. If lost or damaged we will refill the order. While we exercise great care in selecting all seeds, bulbs, plants and trees, and having them reliable and true-to-name, we give no warranty, expressed or implied, as to purity or germination, and will not hold ourselves responsible for any failure thereof. If not accepted on these conditions they must be returned at once.

ARCHIAS' SEED STORE CORP.

Better Homes and Gardens

For Home Lovers in Cities, Towns and Suburbs

This fine garden and home improvement magazine, formerly known as Fruit, Garden and Home, in two years attracted to itself 500,000 subscribers. Every family having a house and garden needs it.

It gives definite plans for making homes more comfortable and more attractive. In it you will find just the information you want regarding Flower and Vegetable Gardening, Shrubbery, Landscaping, Lawn Improvement, Building, Interior and Exterior Decoration, Cooking, Canning and Housekeeping.

Better Homes and Gardens has four color covers, is printed on extra good paper and is beautifully illustrated. It is the only national magazine of its kind with so reasonable subscription rates—only \$1 for 2 years, 60c for 1 year. Published monthly, 52 to 100 pages. Single copy 10c. Satisfaction guaranteed or money refunded



For Special Introductory Offer, See Other Side

Successful Farming Two years—People's Popular Monthly One Year



Use Money-Saving Coupon on Other Side

Both Papers 50c

SUCCESSFUL FARMING

Will bring to you during the two years at least 1,800 articles on Farmers' Organizations, Cooperative Marketing, Ways to Get Better Prices for Farm Products, Livestock Breeding, Feeds and Feeding, Crops and Soils, Poultry, Practical Farm Suggestions, etc. Large Dressmaking, Household, and Boys' and Girls' Departments. 52 to 184 pages each issue.

PEOPLE'S POPULAR MONTHLY

A splendid Family Magazine. Every issue filled with the best of Stories—the intense, gripping kind, clean and wholesome; lots of Recipes, Fashions, Fancy Work, Patterns. Many Special Departments. Every number will be of interest and value to each member of your family. Eight Big Serial Stories during the year; three to five complete Short Stories every month.



The Best of Good Reading for Every Member of the Family

Cut or Tear Off at Dotted Line

THE DAIRY FARMER

For Folks Who Milk Cows: You and your family will appreciate The Dairy Farmer's "Big H" program—the Home, the Herd, the Hog, the Hen. Every copy is chock-full of articles on home decoration, recipes, etc., for mother and the girls; and "brass tacks" information for you regarding the dairy cow, and profitable hog and poultry raising.

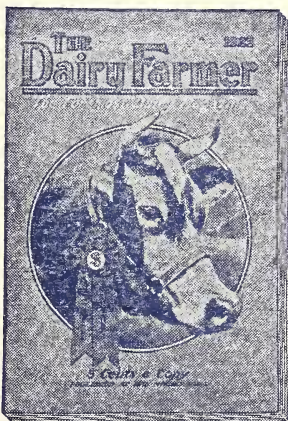
Published the first and fifteenth of each month—42 to 64 pages each issue.

People's Popular Monthly

A Splendid Family Magazine: Every issue filled with the best of Stories—the intense, gripping kind, clean and wholesome; lots of Recipes, Fashions, Fancy Work, Patterns. Many special Departments. Every number will be of interest and value to every member of your family. Eight Big Serial Stories during the year; three to five complete Short Stories every month.

The American Needlewoman

A Help to Plain and Fancy Sewing: Covers its field thoroly. New ideas for garments of every description. Suggestions for bed spreads, table covers, handkerchiefs, gift articles, etc. Everything that's new in crocheting, knitting, embroidering, and other forms of art needlework. Published monthly. Every home should have it.



See Special Bargain Coupon on Other Side

Important: Please send your order to Archias Seed & Floral Co., Sedalia, Mo.



"Bulb Gardening" and Valuable Reprint Free

Anyone who has a bit of ground, however tiny, can successfully engage in bulb gardening.

Our book on "Bulb Gardening" contains 36 pages, on the various phases of bulb culture, such as "Laying Out a Bulb Garden," "Kinds of Bulbs," "Planting," "When to Plant Table," "How to Plant," etc.

Printed on good paper, profusely illustrated, this book is of great interest and value to all who love the beautiful blooms produced by bulbs.

Our Special Introductory Offer: Return this coupon promptly, with \$1 for a 2-year subscription, or 60c for a 1-year subscription to Better Homes and Gardens, and we will send you, postpaid, a copy of "Bulb Gardening," and in addition, a reprint of three special articles from previous numbers of Better Homes and Gardens, entitled "How to Eradicate the Dandelion," "Planning the Backyard Fence," and "Perfect Privacy With Lattice Fences." Use blanks below and mail Coupon NOW. You will be pleased. (Offer good in U. S. only.)

BETTER HOMES and GARDENS, E. T. Meredith, Publisher, Des Moines, Iowa:
 Enclosed is \$_____ in acceptance of your Special Introductory Offer. Please send Better Homes and Gardens for _____ years, also the book "Bulb Gardening" and Reprint. It is understood I am to have free service from your Subscribers' Information Bureau.

Name _____ Street No. _____
 Post Office _____ Box No. _____ State _____

See Other Side for Description of Better Homes and Gardens 89-A. S. S.

[CUT OR TEAR OFF AT DOTTED LINE]

Bargain Clubbing Offer

For Immediate Acceptance *Better Send Your Order NOW*

Successful Farming, 2 full years } All for Only
 People's Popular Monthly, 1 full year } 50 Cents
 Free use of Successful Farming's Subscribers' Information Bureau } You Save 25c

(This offer good in United States proper only)

SUCCESSFUL FARMING, Des Moines, Iowa. Date _____

Gentlemen: Enclosed find 50 cents for which send me Successful Farming two full years and People's Popular Monthly one full year. It is understood that Successful Farming's Subscriber's Information Bureau will furnish me, without charge, during the term of my subscription, any special information I request about any branch of farming or marketing.

My Name _____ R. F. D. _____ Box No. _____

Post Office _____ State _____

[See Other Side] 89-A. S. S.

These THREE Will SATISFY YOU!

The Best---at a Money-Saving Bargain!

The Dairy Farmer, - - - 2 years } All THREE for
 The American Needlewoman, 1 year } Only \$1
 People's Popular Monthly, - 1 year } —You SAVE 45c—
 Free Use of The Dairy Farmer's Subscribers' Information Bureau. This offer good in United States proper only.

E. T. MEREDITH, Publisher, Des Moines, Iowa.

Dear Mr. Meredith: I accept the Money-Saving Offer above. Enclosed find \$1 for my subscription to all three magazines. It is understood that The Dairy Farmer's Subscribers' Information Bureau will furnish me, without charge, during the term of my subscription, any special information I request upon dairying or other subjects.

My Name _____ R. F. D. _____ Box No. _____

Post Office _____ State _____

[This Offer Is for Prompt Acceptance. Send Coupon NOW] 89-A. S. S.

Archias' Superior Garden Seeds

Vegetable Plants and Roots

- ASPARAGUS ROOTS.** Barr's Mammoth. 2-year, 25 for 50c; 100 for \$1.50; 500 for \$6.75, prepaid.
- NEW WASHINGTON ASPARAGUS ROOTS.** 25 for 75c; 50 for \$1.25; 100 for \$2.25, postpaid.
- HORSERADISH SETS.** 25 for 25c; 100 for 75c; 1000 for \$6.50, postpaid.
- RHUBARB ROOTS.** Mammoth Victoria. Large roots. 3 for 35c; \$1.00 per doz., postpaid. 25 for \$1.50; 100 for \$5.25, not prepaid.
- SAGE PLANTS.** Holt's Mammoth. The largest variety grown; plants are strong. 20c each; 2 for 35c; 5 for 75c; \$1.50 per doz., postpaid.
- CABBAGE PLANTS.** Frostproof. 45c per 100; \$3.50 per 1000, postpaid.
- CAULIFLOWER PLANTS.** Snowball and Extra Early Erfurt. 35c per doz.; 25 for 60c; 50 for \$1.00; 100 for \$1.75, postpaid.
- SWEET POTATO PLANTS.** 100 for 50c; 500 for \$2.25; 1000 for \$4.25, postpaid.
Potato Plants are in season only from May 1st to July 1st.
- CELERY PLANTS.** Field grown and transplanted. 100 for 75c; 1000 for \$6.50 postpaid.
- PEPPER PLANTS.** Doz., 20c; 50 for 75c; 100 for \$1.25, postpaid.
- TOMATO PLANTS.** Transplanted. Doz., 25c; 50 for 75c; 100 for \$1.25; 1000 for \$10.00, postpaid.
- CHIVES.** Small plants of the onion family, used for seasoning. Clumps, 15c each; 2 for 25c; 5 for 60c, postpaid.

Giant Washington Asparagus

\$100.00 to \$600.00 Per Acre Growing the New Rust Resistant Variety.

- PEDIGREED WASHINGTON RUSTPROOF.** Pkt., 10c; oz., 15c; ¼ lb., 40c; lb., \$1.45, postpaid.
- COLUMBIAN MAMMOTH WHITE.** Pkt., 5c; oz., 10c; ¼ lb., 25c; lb., 75c, postpaid.
- BARR'S MAMMOTH.** Superior flavor and tender. Pkt., 5c; oz., 10c; ¼ lb., 25c.

Garden Beans

Archias' Green Podded Bush Beans

One pound will plant 50 to 100 feet of drill.
If wanted by mail add 7c first pound and 1c additional pound for postage.

- BURPEE'S STRINGLESS GREEN POD.** Earliest and absolutely stringless. Pkt., 10c; lb., 35c.
- IMPROVED RED VALENTINE.** Popular green pod, productive. Pkt., 10c; lb., 35c.
- ARCHIAS' BOSTON NAVY BEAN.** Wonderfully productive. Pkt., 10c; lb., 25c.

Archias' Wax Bush Beans

- ARCHIAS' IMPROVED RUST-PROOF GOLDEN WAX.** Pkt., 10c; lb., 35c.
- PENCIL POD BLACK WAX.** A popular variety. Pkt., 10c; lb., 35c.

Bush Lima Beans

- BURPEE'S BUSH LIMA.** Grows 10 to 30 inches; handsome large pods. Pkt., 10c; lb., 40c.
- HENDERSON'S BUSH LIMA.** Produces enormous crops. Pkt., 10c; lb., 35c.

Archias' Pole Lima Beans

- SMALL WHITE LIMA or SIEVA.** Productive, pods short, beans white. Pkt., 10c; lb., 35c.
- KING OF THE GARDEN LIMA.** Most productive of the Limas. Pkt., 10c; lb., 35c.
- JACKSON WONDER.** Ripens early, beans spotted red; very prolific. Pkt., 10c; ¼ lb., 15c; lb., 35c.

Pole and Cornfield Beans

- One pound will plant 200 hills.
- ARCHIAS' MISSOURI WONDER.** Originated in Missouri; stringless if picked young. Large pkt., 15c; lb., 35c.
- KENTUCKY WONDER.** Pkt., 10c; lb., 35c.
- CUT SHORT RED SPECKLED.** Good cornfield variety. Pkt., 10c; lb., 35c.
- CREASEBACK or FAT HORSE.** Pkt., 10c; lb., 35c.
- LAZY WIFE.** Pods medium dark green, produced in great abundance. Pkt., 10c; lb., 35c.
- For larger and better yield, Beans should be inoculated with Nitragin, see page 11.

Use NITRAGIN on Beans

Archias' Superior Beet Seed

CULTURE. Beets should be planted on a deep, rich, sandy loam, sowing in rows 18 inches apart, covering about ½ inch deep, pressing the soil firmly over the seed. When plants are well established, thin to 4 to 6 inches in the row. About 60 days in maturing, according to variety. One ounce to 50 feet of row; 6 to 8 lbs. to an acre.

ALL GARDEN SEEDS POSTPAID.

- ARCHIAS' CRIMSON GLOBE BEET.** The Money Maker for Market Gardeners. Smooth skinned, slightly oblong, deep crimson color, and of the very finest quality. Pkt., 10c; oz., 15c; ¼ lb. 30c; lb., 85c.
- EARLY WONDER.** A very Fine Extra Early Market and Table Beet. Pkt., 10c; oz., 15c; ¼ lb., 35c; lb., \$1.25.
- ARCHIAS' IMPROVED BLOOD TURNIP.** Medium early, and when sown late desirable for Winter. Pkt., 5c; oz., 10c; ¼ lb., 25c; lb., 75c.
- DETROIT DARK RED.** One of the best red turnip-shaped varieties. Pkt., 5c; oz., 10c; ¼ lb., 35c; lb., \$1.25.
- CROSBY'S EGYPTIAN.** Improved strain of the Egyptian beet. Pkt., 10c; oz., 15c; ¼ lb., 30c; lb., 85c.
- SWISS CHARD or SPINACH BEET, FORDHOOK GIANT.** Pkt., 10c; oz., 15c; ¼ lb., 35c.

MANGELS OR STOCK BEETS

FARMERS AND STOCK RAISERS ATTENTION. Sow 5 pounds to the acre, in rows 2½ feet apart.

- ARCHIAS' JUMBO LONG RED MANGEL.** Immense cropper, yielding 1,500 bushels to the acre. Oz., 10c; ¼ lb., 20c; 1 lb., 75c.
- GOLDEN TANKARD MANGEL WURZEL.** One of the best stock beets. Oz., 10c; ¼ lb., 20c; 1 lb., 75c.
- IMPERIAL WHITE SUGAR.** Good for making sugar and stock feeding. Oz., 10c; ¼ lb., 25c; 1 lb., 65c. Special prices to parties raising large quantities of beets for stock.



Pencil Pod Black Wax Beans.



Archias' Late Flat Dutch.

Archias' Sure Cabbage Seed

One ounce will produce about 2,000 plants; ¼ lb. seed in beds will produce plants for 1 acre.

GOLDEN ACRE. Similar to Copenhagen Market, but several days earlier. Pkt., 10c; oz., 50c; ¼ lb., \$1.75.

ARCHIAS' ALL HEAD EARLY CABBAGE. All head and always sure to head. Pkt., 10c; oz., 20c; ¼ lb., 65c.

SELECT EARLY JERSEY WAKEFIELD (True American). Very early. Pkt., 5c; oz., 20c; ¼ lb., 65c.

CHARLESTON or LARGE WAKEFIELD. Large, solid heads of good quality. Pkt., 5c; oz., 25c; ¼ lb., 75c.

COPENHAGEN MARKET CABBAGE. Largest of the early round-headed varieties. Pkt., 10c; oz., 35c; ¼ lb., \$1.25.

ARCHIAS' SELECTED WORLD BEATER. Best and largest winter Cabbage. Pkt., 10c; oz., 35c; ¼ lb., \$1.00.

ARCHIAS' SELECTED TRUE ALLSEASONS. Second early, reliable header. Pkt., 5c; oz., 25c; ¼ lb., 75c.

ARCHIAS' SELECTED LATE FLAT DUTCH. Superior strain, grown exclusively for us. Pkt., 5c; oz., 20c; ¼ lb., 65c.

GLORY OF ENKHUIZEN. Ready for market in 90 days. Pkt., 5c; oz., 25c; ¼ lb., 75c.

ARCHIAS' SELECTED SURE HEAD. A grand and popular cabbage. Pkt., 5c; oz., 25c; ¼ lb., 75c.



Chinese Cabbage.

New Chinese Cabbage Pe-Tsai

Not hardy to frost, but does best in cool weather. Pkt., 5c; oz., 25c; ¼ lb., 75c.

NITRATE OF SODA

1,000 pounds of Nitrate of Soda will furnish more nitrogen to plants early in Spring than 100 tons of well-rotted manure. The stable manure may help furnish nitrate for later crops, but for his early crops the gardener who fails to use Nitrate of Soda is blind to his own interest. It is usually applied at the rate of 100 to 200 pounds per acre on land previously dressed with barnyard manure. To secure an even distribution mix the Nitrate well with from 3 to 5 parts of loam or sand. We will be glad to furnish you free books on the use of Nitrate of Soda. Price per 100 lbs., \$7.50, f. o. b. Sedalia.

Cauliflower

Cauliflowers delight in a rich, moist soil, and in dry seasons should be abundantly watered, especially when heading. Sow the seed early in the hotbed and transplant the plants 2 to 3 inches apart in boxes or in another hotbed until such time as they are safe to be planted in the open ground, which in this latitude is usually the 10th of April. Set the plants in the field 15x24 inches apart.

ARCHIAS' SELECT EARLY SNOWBALL. An extremely early dwarf variety, grown for us by the best Cauliflower specialists in Denmark, producing magnificent white heads of fine quality. Pkt., 15c; 2 pkts., 25c; ¼ oz., 60c; oz., \$2.00.



Early Snowball Cauliflower.

Sweet or Garden Corn

One pound to 100 hills; 15 pounds to the acre.

CULTURE. Plant in hills 18 inches apart with rows 3 feet apart. Three or four seeds may be planted in each hill but not more than two plants allowed to stand. As suckers or excess shoots appear they should be removed, as they take strength from the mother plant.

EXTRA EARLY ADAMS. Hardest and earliest variety, but not a Sweet Corn. Pkt., 10c; lb., 20c.

ADAMS' EARLY. Popular with gardeners. Pkt., 10c; lb., 20c.

EARLY MINNESOTA. Eight rows of quite large sweet grains. Pkt., 10c; lb., 20c.

GOLDEN BANTAM. Height, 4 feet, bearing 2 or more ears. Pkt., 10c; lb., 30c.

COUNTRY GENTLEMAN. An old time favorite. Pkt., 10c; lb., 30c.

STOWELL'S EVERGREEN. Large ears and long, deep kernels. Pkt., 10c; lb., 25c.

EVERGREEN FODDER CORN. Excellent for early feed. 10 lbs., \$1.00.

FIELD CORN. See Field Seeds.

Archias' Selected Pop Corn

MONARCH WHITE RICE. Produces 1,500 to 2,000 lbs. per acre. Pkt., 10c; lb., 20c; 2 lbs., 35c.

ARCHIAS' GOLDEN SEAL. A new yellow pop corn that is ahead of all others. Pkt., 10c; 1 lb., 20c; 2 lbs., 35c.

JAPANESE HULLESS or DWARF RICE. Very tender and almost hullless. Pkt., 10c; lb., 25c; 2 lbs., 45c.

HAND THIS CATALOG TO YOUR FRIENDS

—but do not do so until you have sent in your own order. Your friends will thank you for loaning them this catalog for it contains much valuable information. Do this and we will thank you. Another catalog will be sent you free on request.

Celery

One-fourth ounce to 100 feet of row; 4 ounces to the acre.

CULTURE. Celery is slow to germinate and ample time must be given. Sow thinly, cover lightly and keep constantly moist. When seedling plants are three inches high, clip for stocky growth or else transplant.

GOLDEN SELF-BLANCHING. Perfectly solid, of fine flavor. Pkt., 5c; oz., 45c; ¼ lb., \$1.25.

WHITE PLUME. Naturally white, requires very little banking to bleach. Pkt., 5c; oz., 30c; ¼ lb., 95c.

GIANT PASCAL. A mammoth variety growing in favor. Pkt., 5c; oz., 25c; ¼ lb., 75c.

CELERY PLANTS. Field grown and transplanted. 100 for 75c; 1,000 for \$6.50, prepaid.

Archias' Select Table Carrots

One ounce will sow 100 feet of drill.

CULTURE. The land should be thoroughly manured the previous season. Sow the early sorts in March and April, in drills 1 inch deep and 14 inches apart; thin out to 4 inches. For main crop sow in May or beginning of June. Care should be taken at all times to see that the soil is firm over the seeds, either by means of feet, roller or garden drill. Slug-Shot dusted over the ground will prevent maggots.

RED ST. VALERY. Rich, deep orange color, large and handsome. Pkt., 5c; oz., 10c; ¼ lb., 25c; lb., 85c.

OXHEART (Stump Rooted). Bright orange; fine grained and sweet; very productive. Pkt., 5c; oz., 10c; ¼ lb., 25c; lb., 85c.

DANVERS HALF LONG SCARLET. Smooth and handsome; excellent market variety. Pkt., 5c; oz., 10c; ¼ lb., 25c; lb., 85c.

LONG ORANGE. Large, popular variety for winter use. Pkt., 5c; oz., 10c; ¼ lb., 25c; lb., 85c.

LARGE WHITE BELGIAN. Flesh and skin white. Old favorite stock carrot. Oz., 10c; ¼ lb., 35c; lb., \$1.00.

YELLOW BELGIAN. Oz., 10c; ¼ lb., 35c; lb., \$1.00.

EARLY SCARLET HORN. Finest quality for table; forces well. Pkt., 5c; oz., 10c; ¼ lb., 25c.

Archias' Prolific Cucumbers

Carefully Selected Strains, True to Name and Very Best for Table and Pickling.

One ounce will plant about 50 hills.

CULTURE. Do not plant cucumbers before danger of frost has passed, as the plants are very tender and the least frost will damage them or kill them. Plant in hills or rows 4 feet apart, 10 to 15 seeds to each hill; make soil very rich. For pickles, plant from June 1st to middle of July.

ARCHIAS' SELECTED EARLY WHITE SPINE. Fruit uniformly straight and handsome, dark green. Pkt., 5c; oz., 15c; ¼ lb., 35c; lb., \$1.25.

DAVIS' PERFECT CUCUMBER. A sure money maker for those growing Cucumbers. Pkt., 5c; oz., 15c; ¼ lb., 35c; lb., \$1.25.

ARCHIAS' NEW EVERBEARING. Very early, enormously productive. Pkt., 5c; oz., 15c; ¼ lb., 35c; lb., \$1.25.

GHERKIN or BURE. Oval shaped, prickly; for pickling only. Pkt., 10c; ¼ lb., 50c.

IMPROVED EXTRA LONG GREEN. Grows very long, very productive. Excellent for pickles. Pkt., 5c; oz., 15c; ¼ lb., 35c; lb., \$1.25.

NEW JAPANESE CLIMBING CUCUMBER. Grown on trellises, fences, etc., saving valuable space. Pkt., 5c; oz., 15c; ¼ lb., 45c; lb., \$1.50.

Archias' Superb Lettuce Seed

Two ounces will sow 150 feet of drill; 4 to 5 pounds to acre.

CULTURE. Lettuce seed should be sown very early in the Spring and at intervals of 15 days for a succession, sow the seed in shallow drills, being careful to firm the soil well over the seed and thin to 4 inches apart in row.

ARCHIAS' NEW YORK MARKET. The largest heading lettuce of all. Produces immense heads 15 to 18 inches across and as solid as cabbage; blanches beautifully; crisp, tender and delicious; absolutely free from bitterness. Pkt., 10c; oz., 30c; ¼ lb., 75c; lb., \$2.50.

IMPROVED LARGE HANSON. Heads very solid, beautifully blanched, crisp, mild and tender. Pkt., 5c; oz., 15c; ¼ lb., 35c; lb., \$1.25.

PRIZE HEAD or SATISFACTION. Dark reddish brown color; heads large. Pkt., 5c; oz., 15c; ¼ lb., 35c; lb., \$1.25.

BLACK SEEDED SIMPSON. Archias' Selected Stock. Standard for early Spring planting and growing under glass. Pkt., 5c; oz., 15c; ¼ lb., 35c; lb., \$1.25.

ARCHIAS' EXTRA SELECTED BIG BOSTON LETTUCE. Popular variety for every purpose on the market. Large pkt., 5c; oz., 15c; ¼ lb., 45c; lb., \$1.50.

ARCHIAS' NEW ICEBERG. A beautiful Lettuce, worthy of universal cultivation. Pkt., 5c; oz., 20c; ¼ lb., 45c; lb., \$1.50.

GRAND RAPIDS FORCING. Especially adapted for greenhouse culture. Pkt., 5c; oz., 15c; ¼ lb., 45c; lb., \$1.50.

Mustard

Make repeated sowings in shallow drills a foot apart; of easy cultivation. Cut when not over 3 inches high.

WHITE. Best for salad. Pkt., 5c; oz., 10c; ¼ lb., 20c; lb., 65c.

BROWN or BLACK. Stronger than the white. Pkt., 5c; oz., 10c; ¼ lb., 25c; lb., 75c.

SOUTHERN GIANT CURLED. Highly esteemed for salads, leaves very curly. Pkt., 5c; oz., 10c; ¼ lb., 25c; lb., 75c.

Vine Peach

Vegetable Orange or Mango Melon. Fruit size and color of medium orange—vines much like muskmelons and require same care. Fruits used for pickles, pies and preserving. Cut fruit in halves and cook in syrup. Easily grown and wonderfully prolific. Pkt., 10c; oz., 25c; ¼ lb., 75c.

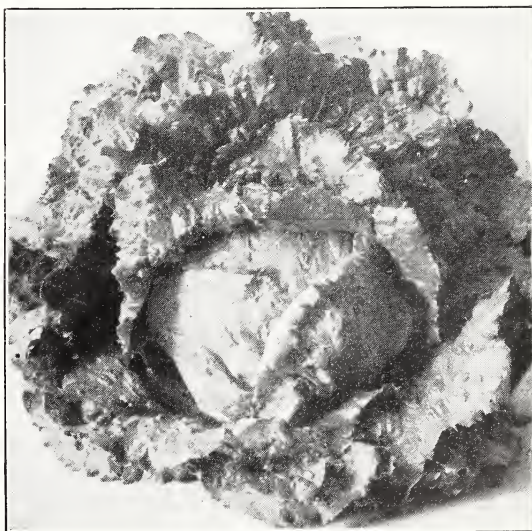
Mushroom Spawn

Large White Mushrooms may easily be grown where a fresh supply of horse manure and a cellar or tight shed are available and where a temperature of 50 to 75 degrees can be maintained.

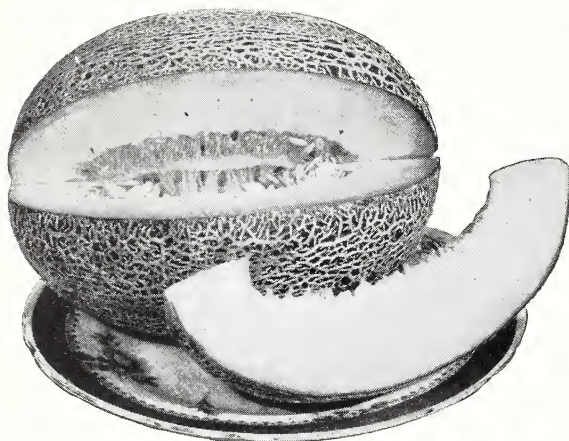
AMERICAN PURE CULTURE SPAWN. Produced by a new method from virgin spores. Pure Culture Spawn is far superior to spawn that is imported, and when once used no other is wanted. The results show it is by far the cheaper. A brick weighs 1¼ pounds, and is sufficient for a bed 2x4 feet. We receive fresh spawn every few weeks direct from the best makers. Cultural directions free with every order. One brick, 35c; 3 bricks, \$1.00, postpaid.

Book on Mushroom Culture

Tells how to prepare beds, plant spawn, care. Gathering, marketing, cooking recipes, etc. Just the thing for the amateur gardener. Sent postpaid for only 35c, or given free with any order for spawn. Don't fail to get it.



Improved Large Hanson.



Archias' Delicious Muskmelon

CULTURE. Late in the Spring drop 20 seeds in hills 5 feet apart. When up large enough thin out to three or four plants; work the same as watermelons. The following list contains none but choice varieties.

SLUG SHOT KILLS MELON BUGS. See page 19.

ARCHIAS' SELECTED POLLOCK No. 10-25. The most desirable type of the Rocky Ford melons. Pkt., 10c; oz., 15c; ¼ lb., 35c; lb., \$1.25.

EDWARDS' PERFECTO. Deliciously sweet, deep flesh with very small seed cavity. Pkt., 10c; oz., 15c; ¼ lb., 35c; lb., \$1.25.

BURRELL'S GEM. Salmon flesh of unusual thickness. The melons grow to an average size of 6 inches. Pkt., 5c; oz., 10c; ¼ lb., 35c; lb., \$1.00.

ROCKY FORD MELON. Small seed cavity, thick, luscious flesh, high flavor. Pkt., 5c; oz., 10c; ¼ lb., 35c; lb., \$1.00.

BANANA. The flesh is rich salmon color, very sweet and melting. Pkt., 10c; oz., 15c; ¼ lb., 50c; lb., \$1.50.

HONEY DEW MELON. The green flesh is thick and is of a peculiar sweet flavor. Pkt., 10c; oz., 15c; ¼ lb., 35c; lb., \$1.25.

IMPROVED EARLY HACKENSACK. Pkt., 5c; oz., 10c; ¼ lb., 35c; lb., \$1.00.

HONEY BALL. Resembles in appearance the Honey Dew and the flavor is blended with the popular Texas Cannonball. Pkt., 10c; oz., 15c; ¼ lb., 45c; lb., \$1.50.

Endive

One ounce will sow about 200 feet of drill.

GREEN CURLED. Crisp, dark green leaves; the hardiest. Pkt., 5c; oz., 10c; ¼ lb., 35c.

WHITE CURLED. Leaves pale green. Pkt., 5c; oz., 10c; ¼ lb., 35c.

Archias' Eggplant Seed

CULTURE. A very delicious vegetable that gives decided change in diet. Sow seed in hotbeds early in the Spring and transplant to the open after all danger of frost is over. Transplant 2 feet apart each way and cultivate frequently. One ounce of seed for 2,000 plants; eight ounces of seed for an acre.

BLACK BEAUTY. This is a very early, large Eggplant, usually maturing in about 120 days. The fruit is jet black, the average weight being about 2 to 3 pounds; very dwarf in growing habit, bearing its fruit close to the main stem; excellent for truckers. Pkt., 10c; oz., 45c; ¼ lb., \$1.25, postpaid.

NEW YORK IMPROVED SPINELESS. This type is very early and entirely spineless, bearing extra large fruits of a deep purple color; very smooth with white, delicious flesh. Pkt., 10c; oz., 45c; ¼ lb., \$1.25, postpaid.

WE SHALL BE PLEASED TO SEND YOUR FRIENDS A COPY OF OUR CATALOG. ASK THEM TO WRITE.

Archias' Sure Watermelon Seed

One ounce will plant about 25 hills, 4 to 5 pounds to an acre.

CULTURE. Treat same as muskmelon, except that they should be planted 8 to 10 feet apart according to variety.

KLECKLEY SWEET or MONTE CRISTO. Oblong in shape, skin dark green, flesh bright red. Pkt., 5c; oz., 15c; ¼ lb., 30c; lb., \$1.00.

NEW "IRISH GREY." Yellowish grey. Flesh is very sweet and firm. Pkt., 5c; oz., 15c; ¼ lb., 35c; lb., \$1.00.

REUTERS WONDER MELON. It is the sweetest flavored of all melons. Pkt., 10c; oz., 15c; ¼ lb., 35c; lb., \$1.00.

NEW STONE MOUNTAIN WATERMELON. The greatest Watermelon in existence. Pkt., 10c; oz., 20c; ¼ lb., 50c; lb., \$1.50.

SWEETHEART WATERMELON. Magnificent shipping melon, large size and fine quality. Pkt., 5c; oz., 10c; ¼ lb., 25c; lb., 85c.

PORTO RICAN IMPROVED GOLDEN HONEY. Sweet as Honey. Color of Gold. Pkt., 10c; oz., 20c; ¼ lb., 45c; lb., \$1.50.

HALBERT HONEY. One of the finest watermelons for the home garden; uniform in color and shape, being free from any tendency to "neck." Skin dark glossy green; flesh beautiful crimson. Pkt., 5c; oz., 15c; ¼ lb., 35c; lb., \$1.00.

THE TOM WATSON. Best quality, fine shape, large size, good shipper. Extra long melon of attractive appearance, uniform in shape and quality; the luscious crimson flesh is "as sweet as honey." The average melon will weigh 50 to 60 lbs. and measure about 28 inches long and about 12 inches in diameter. Skin dark green, with thick netting. Our choice seed was grown under the most painstaking care and selection. Pkt., 5c; oz., 15c; ¼ lb., 35c; ½ lb., 60c; lb., \$1.00.

SPECIAL OFFER. One ounce each of the above wonderful melons, postpaid, for only 50c.

Kale or Borecole

DWARF GREEN. Sow in Autumn for sprouts of green; desirable in every garden. Height, 8 inches. Pkt., 5c; oz., 15c; ¼ lb., 35c; lb., \$1.00.

TALL GREEN SCOTCH. Pkt., 5c; oz., 15c; ¼ lb., 35c; lb., \$1.00.

Herbs

Every kitchen garden should have a few herbs. They are easily grown and are always pleasant and desirable for flavoring, perfuming and medical purposes. Varieties marked with (*) are perennial.

BASIL. Pkt., 10c; oz., 20c.

***CARAWAY.** Pkt., 10c; oz., 15c.

DILL. Pkt., 10c; oz., 20c.

***THYME.** Pkt., 10c; oz., 25c.

***SAGE.** Pkt., 10c; oz., 35c.

Kohl-rabi

Kohl-rabi is grown for its turnip-shaped bulb, which is formed above ground. The bulb should be used while young and tender. Set plants 8 inches apart.

EARLIEST WHITE VIENNA. Greenish white outside, with clear, white flesh within. Smooth, short leaf; good for forcing; fine quality. Pkt., 10c; oz., 15c; ¼ lb., 45c.

EARLIEST PURPLE VIENNA. Same in every respect as Earliest White Vienna, except in the outside color. Pkt., 10c; oz., 15c; ¼ lb., 45c.



Black Beauty Eggplant.



White Vienna Kohl-rabi.

Archias' Pedigreed Onion Seed

**Celebrated for Purity, Quality, Size and Productiveness—
Mcney Makers and Prize Winners**
One ounce will sow 100 feet of drill; 4 to 5 pounds per acre for large onions.

CULTURE. Sow in rich sandy loam in drills 1 foot apart, as early as possible in Spring; cover with fine soil; when plants are strong, thin out to 3 or 4 inches. Have ground thoroughly cultivated, free from weeds and well fertilized.

MAMMOTH PRIZE-TAKER. Mild and delicate in flavor; excellent for Fall and early Winter. Pkt., 5c; oz., 20c; ¼ lb., 65c; lb., \$2.00.

ARCHIAS' LARGE RED WETHERS FIELD. Grandest Red Onion grown. Very productive and fine keeper. Pkt., 5c; oz., 15c; ¼ lb., 55c; lb., \$2.00.

SELECT YELLOW GLOBE DANVERS. Large size, early and abundant cropper. Pkt., 5c; oz., 20c; ¼ lb., 65c.

SOUTHPORT WHITE GLOBE. Bulbs are of good size, splendid globe shape, pure white. Pkt., 5c; oz., 25c; ¼ lb., 75c.

SOUTHPORT RED GLOBE. Large size, mild and tender. Pkt., 5c; oz., 25c; ¼ lb., 75c.

SILVERSKIN or WHITE PORTUGAL. The standard White Onion for market. Pkt., 5c; oz., 25c; ¼ lb., 75c.

BERMUDA ONION SEED FROM TENERIFE—WHITE BERMUDA. Onion is really straw yellow color; large size, very mild and easy to grow. Pkt., 10c; oz., 25c; ¼ lb., 85c; lb., \$3.00.

SELECT ONION SETS

Our prices are based on the present market rates and are subject to market changes. It is impossible for us to make fixed prices. Lowest market prices on large or small quantities will be given on application at any time. We handle Onion Sets in large quantities.

YELLOW BOTTOM ONION SETS. Qt., 20c; gal., 50c; pk., 90c.

WHITE BOTTOM ONION SETS. Qt., 25c; gal., 65c; pk., \$1.25.

RED BOTTOM ONION SETS. Qt., 20c; gal., 50c; pk., \$1.00.

Ask for special prices in quantities of one bushel or over. Add 7c per quart or 15c per gallon for postage if ordered by mail. Bushel, peck and half peck prices, buyer pays the Express or Freight charge.

Bermuda Onion Plants



Bermuda Onion Plants.

These plants give you two months' start over seed, maturing onions of the highest quality. The Bermuda is a good keeper.

Now you may have large, delicious, tender Bermuda Onions right from your own garden.

Hundreds of millions of these plants are now used by professional gardeners. They produce the same fine results wherever used.

Order your plants now and grow your own big Bermuda in your own garden.

100 plants for 20c; 500 for 85c; 1,000 for \$1.50, post-paid. Crate of 6000 for \$6.50, by express.



Red Wethersfield



Archias' Select Early.

Archias' Select Garden Peas

Add 7c for first pound and 1c each additional pound for postage.

ARCHIAS' SELECT EARLY SURPRISE PEAS. One of the earliest wrinkled varieties. Vines about 24 inches high. Pkt., 10c; lb., 30c; 5 lbs., \$1.35; 10 lbs., \$2.50.

ARCHIAS' SELECT EXTRA EARLY. It ripens in about 40 days, grows about 18 inches high, pods well filled and of good quality. Pkt., 10c; lb., 25c; 5 lbs., \$1.00.

ALASKA EXTRA EARLY. The earliest blue pea; height, 2 feet. Pkt., 10c; lb., 25c; 5 lbs., \$1.00.

PREMIUM GEM. Seeds green, wrinkled, height 1 foot. Second early. Pkt., 10c; lb., 25c; 5 lbs., \$1.00.

NOTT'S EXCELSIOR PEA. The pods are filled with 7 to 9 large peas of superior tenderness and flavor. Height, 1 foot. Pkt., 10c; lb., 25c; 5 lbs., \$1.00.

LANTONIAN. A large-podded, dwarf variety. Height, 1½ feet. Large pkt., 10c; lb., 30c; 5 lbs., \$1.25.

ARCHIAS' SELECTED FIRST AND BEST. Standard early white seeded, splendid quality. Two feet high. Pkt., 10c; lb., 25c; 5 lbs., \$1.00.

AMERICAN WONDER. One of the earliest wrinkled sorts; about 9 inches high. Pkt., 10c; lb., 25c; 5 lbs., \$1.00.

Medium Early or Main Crop Peas

ARCHIAS' SELECT EVERBEARING. Two and one-half feet high. The peas are very large and wrinkled. Pkt., 10c; lb., 25c; 5 lbs., \$1.00.

IMPROVED STRATAGEM. A splendid pea for main crop; exceedingly productive. Pkt., 10c; lb., 25c; 5 lbs., \$1.00.

HORSFORD'S MARKET GARDEN. The great second early Sweet Wrinkled Pea for truckers' and home use. 24 inches. Pkt., 10c; lb., 25c; 5 lbs., \$1.00.

IMPROVED CHAMPION OF ENGLAND. Very rich, wrinkled, fine flavor; long, large pods. 4 feet. Pkt., 10c; lb., 25c; 5 lbs., \$1.00.

MAMMOTH MELTING SUGAR. The wonderful Edible Podded Pea. Height five feet. Pkt., 10c; lb., 30c; 5 lbs., \$1.25.

Okra or Gumbo

CULTURE. Sow in May and June after the ground is warm, in drills 3 feet apart, and thin to 10 inches apart in rows. An ounce of seed to 100 feet of row.

KLECKLEY'S FAVORITE. Pods 6 inches in length, carrying the thickness well throughout the length. Plant grows 3 feet high. Pkt., 5c; oz., 10c; ¼ lb., 20c; lb., 50c.

WHITE VELVET. Pods are round and smooth. Superior flavor and tenderness. It is very productive. Pkt., 5c; oz., 10c; ¼ lb., 20c; lb., 50c.

DWARF GREEN. Low growing variety. Pkt., 5c; oz., 10c; ¼ lb., 20c; lb., 50c.

We Will Send Your Friends a Catalog.
Send in Their Names.

The Best Parsnips

Spade the soil deep and sow in shallow drills 15 inches apart early in the Spring in rich soil. Hoe often and deep.

HOLLOW CROWN, LONG SMOOTH. Smooth, large, tender and sugary; one of the best. Our stock is very fine. Pkt., 5c; oz., 10c; ¼ lb., 25c; lb., 65c.

The Finest Peppers

An ounce of seed will produce 1,250 plants; ½ lb. per acre.

CULTURE. The pepper plant is tender, and must be started under glass, like eggplant. The plants should be set 1½ feet apart in rows 2 to 3 feet apart. A warm, moist soil is best, with plenty of rotted manure plowed under.

NEW CHINESE GIANT. Immensely productive, a profitable variety both for market gardeners and amateurs. Pkt., 10c; oz., 35c; ¼ lb., \$1.25.

NEW RUBY KING. Wonderful yielder, peppers 3 to 4 inches in diameter, very desirable for mangoes. Pkt., 5c; oz., 25c; ¼ lb., \$1.00.

CELESTIAL. Pods are borne upright; conical in shape. Pkt., 5c; oz., 25c; ¼ lb., \$1.00.

CAYENNE. Very hot, long and slim; for seasoning. Pkt., 5c; oz., 25c.

CHERRY. Round, small, good bearer, fine for fancy pickles. Pkt., 5c; oz., 25c.

PIMENTO. The sweetest pepper grown. Popular for canning. Pkt., 10c; oz., 35c.

TABASCO. Used exclusively for the famous Tabasco Sauce. Extremely hot. Pkt., 10c; oz., 35c.

FINEST MIXED PEPPERS. A mixture which you will find very desirable for pickling, mangoes, relishes, etc. Price, 5c per pkt., oz., 25c.

Parsley

A Flavoring Herb of the Highest Culinary Value.

CULTURE. Soak seed for several hours and sow in border or frame. Thin the rows or transplant to another bed. If to be carried late into the Fall, set 8 inches both ways, and cover with litter. It will go through the Winter with moderate protection. Use 1 ounce of seed to 150 feet of drill. Make open air sowing in April.

CHAMPION MOSS CURLED. Beautifully crimped, curled leaves. Pkt., 5c; oz., 15c; ¼ lb., 35c.

DOUBLE CURLED. Compact; very curly. Bright green. Pkt., 5c; oz., 15c; ¼ lb., 35c.

Archias' Northern Grown Seed Potatoes

CERTIFIED STOCK. Minnesota grown certified by the grower. Inspected and found free from serious diseases and varietal mixture and is from vigorous fields.

ARCHIAS' NEW EARLY SIX WEEKS.

BLISS TRIUMPH or BERMUDA.

EARLY OHIO (Certified Seed).

IRISH COBBLER (Certified Seed).

ARCHIAS' SELECTED CHICAGO MARKET.

For Prices on Seed Irish Potatoes, see our Weekly Price List or write for prices, stating quantity and variety wanted.

Archias' Potato Fertilizer 3-8-6

Greatly increases your yield and improves the quality by using 400 lbs. of this fertilizer per acre. Specially prepared for potatoes and onions. 50 lbs., \$1.90; 100 lbs., \$3.50; 500 lbs., \$16.50.

For soils where Potash is not needed and where a liberal supply of manure is available we recommend **Acid Phosphate** at the rate of 600 lbs. per acre drilled in the furrows and mixed with soil before seed is planted. 50 lbs., \$1.00; 100 lbs., \$1.75; 500 lbs., \$8.00.

SEED POTATOES BY MAIL

For those who desire to test the merits of any of these varieties of potatoes we furnish whole tubers by mail at 25c per lb., or 3 lbs. for 55c.



Chinese Giant Pepper.

Sweet Potatoes

Varieties: Red Nansemond, Cuban Yam, Yellow Nansemond, Southern Queen, Jersey Yellow, Red Jersey, Nancy Hall, and Red Bermuda.

Carefully packed in barrels or crates free.

Prices furnished on application in bedding season, March 10th to April 25th. Potatoes shipped at owner's risk of rotting or freezing.

Sweet Potato Plants, 100 for 50c; 500 for \$2.25; 1,000 for \$4.25, postpaid.

Potato plants are in season only from May 1st to July 1st.

Archias' Prolific Pumpkins

For Bugs on Squashes and Pumpkins Use "Slug-Shot." See page 19.

KENTUCKY FIELD. Best for field culture in corn. Oz., 5c; ¼ lb., 15c; lb., 50c.

JAPANESE PIE. Flesh very thick, solid, fine grained, dry and sweet. Pkt., 5c; oz., 10c; ¼ lb., 30c; lb., \$1.00.

TENNESSEE SWEET POTATO. Excellent for pies. Good keeper. Pkt., 5c; oz., 10c; ¼ lb., 25c; lb., 85c.

KING OF MAMMOTHS. Bright golden yellow. One of the best pie pumpkins. Pkt., 5c; oz., 10c; ¼ lb., 35c; lb., \$1.00.

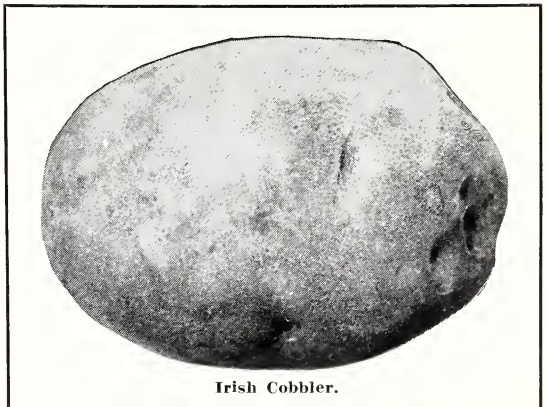
LARGE CHEESE. Yellow flesh, sweet, brittle and thick. Oz., 10c; ¼ lb., 20c; lb., 60c.

SUGAR PUMPKIN. Orange-yellow; small; keeps well; prolific. Pkt., 5c; oz., 10c; ¼ lb., 25c; lb., 75c.

GREEN STRIPED, CROOKNECK CUSHAW. Very prolific. Pkt., 5c; oz., 10c; ¼ lb., 35c; lb., \$1.00.

MAMMOTH WHITE CUSHAW. Crookneck. One of the very best. Pkt., 5c; oz., 10c; ¼ lb., 35c; lb., \$1.00.

CONNECTICUT FIELD or YANKEE PIE. Large size; red; ribbed. Oz., 5c; ¼ lb., 15c; lb., 50c.



Irish Cobbler.

Archias' Best Squashes

Cream of the Squash Family. Acknowledged the Very Best.

CULTURE. About the same as melons. A good sandy rich loam is best. The Squashes are all tender, and the seed should not be planted until warm weather. Allow 4x4 feet for the bush squashes and 8x8 feet or more for the running varieties. Three plants to the hill; 2 to 3 pounds of seed to the acre. For Summer squashes estimate 4 ounces to 100 hills; winter sorts, 8 ounces. Use Slug-Shot for the bugs.

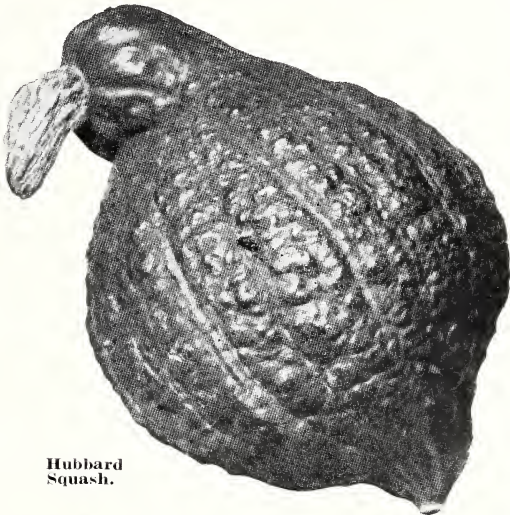
EARLY WHITE BUSH SCALLOPED. Light cream color. Pkt., 5c; oz., 10c; ¼ lb., 25c; lb., 85c.

GOLDEN SUMMER CROOKNECK. Early, warty, yellow variety of good quality. Pkt., 5c; oz., 10c; ¼ lb., 25c; lb., 85c.

MAMMOTH CHILL. Largest of all Squashes. Pkt., 5c; oz., 10c; ¼ lb., 35c; lb., \$1.00.

GOLDEN HUBBARD. Good Fall and Winter variety. Pkt., 5c; oz., 10c; ¼ lb., 35c; lb., \$1.00.

HUBBARD (Chicago Warted). For Fall and Winter use. Pkt., 5c; oz., 10c; ¼ lb., 35c; lb., \$1.00.



Hubbard Squash.

Salsify (Vegetable Oyster)

Sow early in Spring in drills 15 inches apart, and thin to 2 inches apart. Cultivate like carrots or parsnips.

MAMMOTH SANDWICH ISLAND. The roots grow to double the size of the old sort, are very smooth, of superior quality. Pkt., 10c; oz., 20c; ¼ lb., 50c; lb., \$1.50.

Archias' Radishes

Radishes must be grown quickly in rich, loose soil, and gathered before reaching full size to prevent becoming soft and pithy. Frequent plantings should be made for succession, to insure a supply of fresh, tender Radishes for table use at all times.

Early Turnip-Shaped Varieties

COOPER'S SPARKLER (Scarlet Turnip White-Tip). Very crisp and of good quality. Pkt., 10c; oz., 15c; ¼ lb., 35c; lb., \$1.00.

EARLY SCARLET ERFURT TURNIP. Particularly adapted to forcing. It has a very small top, and will bear close planting. Pkt., 5c; oz., 10c; ¼ lb., 25c; lb., 75c.

ARCHIAS' NEW SCARLET GLOBE. Best Radish for forcing in the greenhouse or outdoors. Pkt., 5c; oz., 10c; ¼ lb., 25c; lb., 75c.

EARLIEST WHITE TURNIP (White Box). Of quick growth; leaves short. Pkt., 5c; oz., 10c; ¼ lb., 25c; lb., 75c.

MIXED EARLY TURNIP RADISH SEED. A select mixture of the most desirable Turnip sorts. Pkt., 5c; oz., 10c; ¼ lb., 25c; lb., 65c.

Long Radishes—Spring and Summer

ARCHIAS' LONG WHITE ICICLE. About six inches in length. Matures in 20 to 28 days. Pkt., 5c; oz., 10c; ¼ lb., 25c; lb., 75c.

LONG SCARLET, SHORT TOP. The standard long variety for market and home. Pkt., 5c; oz., 10c; ¼ lb., 25c; lb., 75c.

NEW BRIGHTEST LONG SCARLET. Fiery scarlet, tipped white; early. Pkt., 5c; oz., 10c; ¼ lb., 25c; lb., 75c.

WHITE VIENNA or LADY FINGER. Pure white, long fine grain, tender. Pkt., 5c; oz., 10c; ¼ lb., 25c; lb., 75c.

CHARTIER or SHEPHERD. Does not become pithy or hollow. Pkt., 5c; oz., 10c; ¼ lb., 25c; lb., 75c.

WHITE STRASBURG. Oblong, tapering shape; firm, brittle and tender. Best variety for Summer use. Pkt., 5c; oz., 10c; ¼ lb., 30c; lb., \$1.00.

FRENCH BREAKFAST. Bright red, tipped with white. Oblong in shape. Pkt., 5c; oz., 15c; ¼ lb., 35c; lb., \$1.00.

Winter Varieties

LONG BLACK SPANISH. Very hardy and a good keeper; sow with your turnips. Pkt., 5c; oz., 10c; ¼ lb., 25c; lb., 75c.

CHINESE ROSE WINTER. Very smooth, bright rose color; large. Pkt., 5c; oz., 10c; ¼ lb., 25c; lb., 75c.

CALIFORNIA WHITE MAMMOTH. Eight to twelve inches long, and about 2½ inches thick; solid. Pkt., 5c; oz., 10c; ¼ lb., 25c; lb., 75c.

MIXED WINTER RADISHES. A mixture of the best Fall and Winter varieties; sow broadcast with turnips; sure to please. Pkt., 5c; oz., 10c; ¼ lb., 25c.

Spinach

Should be planted in very rich ground, the richer the better. For early Spring use sow early in Autumn and protect the plants with a light covering of leaves or straw. In the South Spinach can be grown without covering.

It requires about 20 pounds to sow an acre broadcast; 5 to 8 pounds per acre in drills; 1 ounce to 30 or 35 feet of drill.

KING OF DENMARK. The large leaves are very thick, rounded, dark green and curled. Pkt., 5c; oz., 10c; ¼ lb., 20c; lb., 50c.

LONG STANDING BLOOMSDALE. An improved strain of excellent quality; a favorite with the market gardeners. Pkt., 5c; oz., 10c; ¼ lb., 20c; lb., 50c.

Rhubarb or Pieplant

Rhubarb is very highly esteemed for use in pies, tarts, jelly and marmalade. Sow in drills one foot apart early in the Spring. In the Fall or next Spring transplant 3 feet apart in deeply dug, very rich soil.

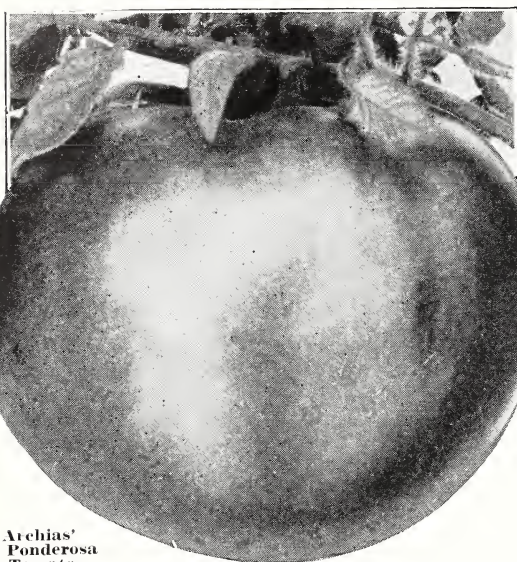
ARCHIAS' MAMMOTH VICTORIA. The largest and most productive variety known. Large pkt., 10c; oz., 20c; ¼ lb., 65c.

RHUBARB ROOTS. Set in Spring, they will furnish leaf stalks the following season. Large roots, 3 for 35c; doz., \$1.00, by mail, postpaid. By express at purchaser's expense, 25 for \$1.50; 100 for \$5.25.

RHUBARB CLUMPS. We can also supply extra large clumps at 75c each; 2 for \$1.25. These clumps are extra large and heavy, and will be sent by express or freight (at buyer's expense).



Early Scarlet Globe Radish.



Archias' Ponderosa Tomato.

The Best Tomatoes

CULTURE. Sow seed in March and April in the hotbed, or in pots in a sunny exposure in the house. If it is desired to make very stocky plants they may be transplanted when about 2 to 3 inches high. When 5 or 6 inches high, if the ground has become warm, transplant to the open ground, on a rainy or cloudy day. Set the plants 4 feet apart each way; the dwarf sorts may be planted closer.

Archias' Selected Ponderosa Tomato

This is the largest and one of the most popular of all Tomatoes. Pkt., 10c; 2 pkts., 15c; oz., 45c; 4 ozs., \$1.50.

ARCHIAS' MISSOURI GIANT. The "Jumbo" of All Tomatoes. The largest fruited of the Climbing Tomatoes, bearing enormous crops from early harvest until killed by frost. Bright red fruit, ripening well up to the stem; unexcelled for keeping, shipping, canning, preserving or prepared fresh for the table. Well cultivated plants have attained the height of 9 feet and 10 feet across. Pkt., 10c; 2 pkts. for 15c; ¼ oz., 35c; oz., 55c.

DWARF CHAMPION. Dwarf, compact, upright growth; fruit smooth, solid. Pkt., 5c; oz., 35c; ¼ lb., \$1.00.

RED HEAD. Fine, large, bright red variety, early as Chalk's Jewel. Pkt., 10c; oz., 35c; ¼ lb., \$1.00.

STONE. Late or main-crop, yielding a good crop. Large, smooth, solid, deep scarlet. Pkt., 5c; oz., 25c; 4 ozs., 75c.

JOHN BAER. Early and productive; not unlike Chalk's Jewel in size, form and color. A heavy yielder. Pkt., 5c; oz., 25c; 4 ozs., 75c.

MARGLOBE. Wilt resistant. New midseason sort. A hybrid from Marvel and Livingston's Globe. Entirely immune from rust and wilt. Pkt., 15c; ½ oz., 25c; oz., 45c; 4 ozs., \$1.50.

BONNY BEST. Large, smooth red. Very prolific. Pkt., 5c; oz., 25c; ¼ lb., 75c.

LIVINGSTON'S BEAUTY TOMATO. Its size, shape, and productiveness make it desirable for all purposes. Pkt., 5c; oz., 25c; ¼ lb., 75c.

GOLDEN QUEEN. Handsome large yellow, very solid and smooth. Pkt., 10c; oz., 35c; ¼ lb., \$1.00.

JUNE PINK TOMATO. Earliest and most productive pink fruited Tomato. Pkt., 5c; oz., 35c; ¼ lb., \$1.00.

CRIMSON CUSHION or BEEFSTEAK. Remarkable size; crimson-scarlet; very solid. Pkt., 10c; oz., 45c; ¼ lb., \$1.50.

Preserving Tomatoes

Yellow Pear, Red or Yellow Peach, Strawberry or Husk Tomato. Price, either variety, pkt., 10c; 3 pkts., 25c.

You Can Not Go Wrong on Ponderosa.

Archias' Table Turnips

CULTURE. For Spring crop, sow early as the ground can be worked, and no later than early varieties. For Fall crop, sow middle of Summer. Sow 1 to 2 lbs. seed per acre.

EXTRA EARLY RED TOP MILAN. The earliest in cultivation. Oz., 10c; ¼ lb., 25c; lb., 75c.

PURPLE TOP, STRAP LEAF. For Spring and Fall use. Oz., 5c; ¼ lb., 15c; lb., 50c.

LARGE EARLY RED TOP GLOBE. Very large, globe-shaped. Oz., 5c; ¼ lb., 15c; lb., 50c.

LARGE WHITE GLOBE. Good for table and stock. Oz., 5c; ¼ lb., 15c; lb., 50c.

GOLDEN BALL. Globe shaped, amber colored and sweet. Oz., 5c; ¼ lb., 15c; lb., 50c.

AMERICAN YELLOW PURPLE-TOP RUTABAGA. Requires a longer season in which to grow than do the turnips, the seed should be sown about the first to middle of July. Oz., 10c; ¼ lb., 25c; lb., 75c.

Pedigreed Tobacco Seeds

HAVANA. Grown from seed imported from Vuelta de Abajo. Per pkt., 10c; oz., 40c.

CONNECTICUT SEED LEAF. An old, well known variety. Per pkt., 10c; oz., 30c; ¼ lb., \$1.00; lb., \$3.25, postpaid.

IMPROVED WHITE BURLEY. A popular sort. Per pkt., 10c; oz., 40c; ¼ lb., \$1.25.

YELLOW PRIOR. Good variety. Pkt., 10c; oz., 30c; ¼ lb., \$1.00.

BIG YELLOW ORONOKO. Favorite Virginia variety. Pkt., 10c; oz., 30c; ¼ lb., \$1.00.

Slug Shot



Kills the currant worms, potato bug, cabbage worm, slugs on roses, caterpillars, aphids on roses, bugs on melons and bugs on asters, cut worms, sow bugs, lice on fowls, curculio on plum, tobacco worms, etc. 1 lb., 15c; 2 lbs., 25c; 5 lbs., 60c; 10 lbs., \$1.10.

Gladiolus Bulbets

We have a large quantity of choice Gladiolus Bulbets which we are offering at special prices. You'll enjoy a nice bed of these beautiful flowers. They last longer than any other flower, are easy to grow and very hardy.

Per 50	\$0.45
Per 10075
Per 200	1.25
Per 500	2.50

Postpaid. Order early as stock is limited.

Umbrella Catalpa

(Catalpa Bungei)

The large, heart-shaped leaves and umbrella-like top of this little tree make it a favorite for lawn planting and formal setting. 1-yr. heads, \$2.00 each; 2-yr. heads, \$2.50 each; 3-yr. heads, \$3.00 each.

Pussy Willow

(Salix Discolor)

Easily grown, highly prized for its downy buds, which appear early in the Spring, followed by a grand crop of golden yellow blossoms. We have the genuine stock—try one. Each, 35c; 3 for \$1.00. Large plants, 50c to 75c each.

Archias' Seed Corn and Forage Crops

Golden Mortgage Lifter

This wonderful variety, first introduced by us in 1893, has gained great favor among the corn growers everywhere. The large amount of corn produced on so small a cob surprises everyone.

Price of Archias' Golden Mortgage Lifter, postpaid—big package, 15c; pint, 30c; quart, 50c. By freight or express, one bushel, \$1.25; one bushel, \$1.00; two bushels, \$7.75; five bushels, \$18.50. Sacked free. Our supply is limited. Order early.

Early Red Snow Cap

The earliest red corn of all. Matures in 80 to 85 days. Kernels are of a bright cherry-red color, with yellowish cap—the result of a cross between a red flint and a yellow dent. This corn often matures in less than 80 days. Price, by mail, postpaid, lb., 25c. By freight or express, pk., 90c; 1 bu., \$3.25; 2 bu., \$6.25; 5 bu., \$15.00. Sacked free.

Certified Special Reid's Yellow Dent

This is the highest type of this most popular and wonderful variety. Reid's Yellow Dent won more prizes at the many corn shows than all others combined. Pkt., 10c; lb., 25c; 3 lbs., 60c, postpaid. By freight or express, per qt., 25c; pk., \$1.25; ½ bu., \$2.25; bu., \$4.00; 2 bus., \$7.75; 5 bus., \$18.50. Sacked free.

Early Yellow Rose

The stalks grow 8 to 10 feet high, full dark foliage, setting its ears low, usually maturing two good sound ears 8 to 12 inches long. 90 to 100 days. By mail, postpaid, 1 lb., 25c. By freight or express, qt., 25c; pk., 90c; 1 bu., \$3.25; 2 bus., \$6.25; 5 bus., \$15.00. Sacked free.

Boone County White

Good on strong land and a heavy yielder. White cob of medium size. Matures in 115 to 120 days. By mail, postpaid, 1 lb., 20c. By freight or express, qt., 25c; pk., 90c; 1 bu., \$3.25; 2 bus., \$6.25; 5 bus., \$15.00. Sacked free.

St. Charles White

A pure white variety with small red cob; ears 8 to 11 inches long, 16 to 18 rows of medium deep, broad kernels. By mail, postpaid, 1 lb., 20c; 3 lbs., 50c. By freight or express, qt., 25c; pk., 90c; 1 bu., \$3.25; 2 bus., \$6.25; 5 bus., \$15.00. Sacked free.

Iowa Silver Mine

It is a pure white corn, with large ears, often measuring 10 to 11 inches in length. Matures in about 100 days. By mail, postpaid, 1 lb., 25c. By freight, qt., 25c; pk., 90c; 1 bu., \$3.25; 2 bus., \$6.25; 5 bus., \$15.00. Sacked free.

Can also furnish Golden Cartner, Improved Leaming, Iowa Gold Mine, Golden Beauty, Johnson C. White, Hickory King, Speckled Beauty. Ask for prices.

Japanese Buckwheat

This is the most productive of all buckwheat. Bes. for bees. Per lb., 15c; pk., 75c; bu., \$2.50.

Broom Corn

ARCHIAS' IMPROVED EVERGREEN. Grows about 8 to 10 feet high, stands up well, entirely free from crooked brush. The fiber is long and fine. Lb., 15c; 5 lbs., 45c; pk., 75c; bu., \$2.25.

BLACK SPANISH. An excellent standard variety. Lb., 15c; 5 bu., 45c; pk., 75c; bu., \$2.50.

Barley

SCOTCH (Six-rowed). It is good for feeding, not having as long beard as some other kinds. Lb., 15c; 2 lbs., 25c; pk., 50c; 1 bu., \$1.75; 2 bus., \$3.25.

Cane Seed for Fodder

Cane seed is also largely grown for stock feeding. It yields heavily. It can be raised anywhere and is sown extensively in dry sections where tame grasses can not be grown. For forage sow 50 to 100 pounds broadcast to the acre. We sell many carloads of Cane Seed annually for fodder, and will be pleased to name special prices on application. State quantity wanted.

Cane Seed for Sorghum

GOLDEN DRIP or HONEY CANE. Makes the finest sorghum. 25c per lb., 5 lbs., \$1.00, postpaid. By express or freight, 5 lbs., 75c; 1 pk., \$1.25.

EARLY ORANGE CANE. Stalk heavier and a little later than Amber. Best seed, 20c per lb., postpaid. By express or freight, 5 lbs., 45c; 1 pk., 75c.

EARLY AMBER CANE. The earliest. Best seed, Lb., 20c, postpaid. By express or freight, 5 lbs., 45c; pk., 75c.

Rye

May be sown in either Fall or Spring. Makes fine pasture. Sow 1¼ to 1½ bushels per acre. Pk., 50c; bu., \$1.75.

Kaffir Corn

One of the best forage plants. Makes an excellent food for poultry, horses and cattle. Grows on land too poor for corn.

WHITE. The best variety, postpaid, per lb., 15c. Not prepaid, pk., 45c; bu., \$1.45.

Feterita

Feterita is recommended especially for its earliness and its ability to withstand dry weather. Chinch bugs do attack it but they seem to prefer other crops. The grain is white, large and softer than that of Kaffir. It should not be planted too early nor too deeply. Lb., 15c; pk., 65c; bu., \$2.00.

Seed Disinfectants

SEMESAN JR. or BAYER DUST. A dust disinfectant for seed corn. 4-oz. tin, 50c; 1-lb. tin, \$1.75; 5-lb. tin, \$8.00.

CERESAN. A dust disinfectant for wheat, oats, barley and certain other cereals. 8-oz. tin, 50c; 1-lb., tin, 75c; 5-lb. tin, \$3.00.

SEMESAN. A general disinfectant for many vegetable and flower seeds or bulbs, and certain plant diseases. 2-oz. tin, 50c; 1-lb. tin, \$2.75; 5-lb. tin, \$13.00.

SEMESAN BEL. An instantaneous dip disinfectant for seed potatoes. 4-oz. tin, 50c; 1-lb. tin, \$1.75; 5-lb. tin, \$8.00.

Du Bay Seed Disinfectants are poisonous and owing to present Postal Regulations cannot be sent through the mails but must be sent by express or freight.

INOCULATE WITH NITRAGIN

Alfalfa, Sweet Clover, All Clovers, Soy Beans, Vetch, Peas, Beans, and all other legumes should always be inoculated. The lack of necessary bacteria in the soil is often the cause of a poor crop or a total failure.

PRICES OF NITRAGIN POSTPAID

For all legumes except Soy Beans, Garden Peas and Beans:

¼ bu. size, inoculates 15 lbs. seed, 40c.

½ bu. size, inoculates 30 lbs. seed, 60c.

1 bu. size, inoculates 60 lbs. seed, \$1.00.

5 bu. size, inoculates 300 lbs. seed, \$4.75.

Important: When ordering always name the seed you wish to inoculate.

The same can be used for Alfalfa and Sweet Clover.

PRICES GREATLY REDUCED FOR SOY BEANS.

1 bu. size, inoculates 60 lbs. Soy Beans, 40c.

2 bu. size, inoculates 120 lbs. soy beans, 70c.

5 bu. size, inoculates 300 lbs., \$1.50.

NITRAGIN FOR PEAS, SWEET PEAS AND BEANS. Garden size combination package, 20c. Inoculates up to 8 pounds of seed.

"NITRAGIN" has served the American farmer since 1898—over 30 years. The GERM COUNT plus the DATE on cover of every "NITRAGIN" can guarantee a liberal supply of fresh legume germs, and profitable results. "NITRAGIN" is easy to mix with seed.

Improved Virginia Jumbo Peanuts

Pods large and well filled, of finest quality. The vines make excellent forage.

This peanut does best in light, sandy soil, tolerably high. They should be planted in rows 3½ feet apart in the row. Drop two or three good peas in each hill, cover about two inches. 6 to 8 quarts shelled nuts to an acre.

Per lb., 30c; 5 lbs., \$1.25, postpaid.

Prices on this page subject to market changes. Write for special prices stating kind and quantity wanted.

Archias' Hay and Pasture Grasses

Archias' Northern Grown Alfalfa or Lucerne (Medicago Sativa)

"There is no state in the Union in which Alfalfa cannot be successfully grown."

Alfalfa produces 3 to 7 tons of hay to the acre. "Its long, branching roots penetrate far down, and thus constitute a gigantic subsoiler. These become an immense magazine of fertility. As soon as cut they begin to decay and liberate the vast reservoir of fertilizing matter below the plow, to be drawn upon by other crops for years to come."

Prepare the land thoroughly and sow seed at the rate of 15 to 20 pounds per acre, with a broadcaster or grass seeder. Cover with a brush or light harrow. Young plants are quite tender, and the land must be free from weeds until they become established. **Lb., 45c; 5 lbs., \$2.00; 10 lbs., \$3.50.** See page 11 for Nitragin for inoculating.

ARCHIAS' SELECTED AND RECLEANED Grass and Clover Seed

ALL NEW CROP.

Clover, Red, fancy.	Timothy, fancy.
Clover, Red, choice.	Timothy, choice.
Clover, Red, prime.	Timothy, prime.
Clover, Mammoth, fancy.	Red Top, fancy.
Clover, Alsike, fancy.	Red Top, choice.
Clover, Alsike, choice.	Ky. Blue Grass, fancy.
Clover, Alsike and Timothy.	Ky. Blue Grass, choice.
Clover, Sweet, White Blossom, hulled.	English Blue Grass, fancy.
Clover, Sweet, Yellow Blossom, hulled.	Ky. Orchard Grass, fancy.
Clover, White Dutch, fancy.	Ky. Orchard Grass, prime.
Alfalfa, Grimm, Dakota grown.	Archias' Evergreen Lawn Grass.
	Hubam Sweet Clover.

Write for prices on Grass and Clover Seeds, state kind and quantity wanted.

Cow Peas

Do not plant until ground becomes warm. Cow Peas and Soja Bean Hay is fully equal to Red Clover or Wheat Bran. Write for special prices on bushel lots or over.

WHIP-POOR-WILL. Brown speckled pea, bushy variety. **Lb., 15c; 5 lbs., 60c; 10 lbs., \$1.00.**

NEW ERA. An extra early Whip-poor-will. Price same as Whips.

ARCHIAS' NEW DIXIE or MAMMOTH BLACK EYE. An improved variety, valuable for table use. **Pkt., 10c; lb., 25c; 5 lbs., \$1.00; 10 lbs., \$1.85.**

LADY PEAS. Splendid for table use; great yielder. **Pkt., 10c; lb., 40c; 2 lbs., 75c; 10 lbs., \$3.25.**

Inoculation of this seed is absolutely necessary for the best results from this crop. See page 11.

Archias' Hardy Flowering Shrubs

Hedges, Vines and Shade Trees Will Make Your House a Home

Hardy two-year-old field grown shrubs, well branched, that will bloom the first season after planting. Many have already bloomed in the nursery row. The selection of shrubs we offer has been chosen for a wide range of height, color and type of bloom.

Note sizes offered vary considerably with the different varieties, due to the habits of growth. For instance, a 12- to 18-inch Crimson Spirea is as strong and healthy a plant as a 2- to 3-ft. Syringa.

For Spring shipment February 15th to May 1st.

Shrubs

Prices Prepaid

	Each	Per 5
Almond, Pink Flowering	\$.55	\$0.45
Althea or Rose of Sharon. Pink, white or red.		
2 to 3 ft.	.55	.45
Barberry, Japanese. 18 to 24 in.	.40	.30
Bechtel Double Flowering Crab. 2 to 3 ft.	.95	.90
Carolina Allspice. Sweet scented. 18 to 24 in.	.65	.55
Coralberry or Indian Currant. 2 to 3 ft.	.45	.40
Cydonia, Japan Quince	.55	.45
Deutzia, Pride of Rochester. 2 to 3 ft.	.45	.35
Golden Bell, Upright. 2 to 3 ft.	.55	.45
Golden Bell, Weeping. 2 to 3 ft.	.65	.55
High Bush Cranberry. 18 to 24 in.	.65	.55
Honeysuckle, Japan Bush. 2 to 3 ft.	.45	.40
Honeysuckle, Fragrant. 2 to 3 ft.	.55	.50
Hydrangea Arbor. Grandiflora. 18 to 24 in.	.65	.55
Hydrangea Pan. Grandiflora. 18 to 24 in.	.65	.55
Lilac, Budded. Dark purplish red, double white, double blue. 2 to 3 ft.	.95	.85

Archias' Big Yielding Millet

Sow 30 to 40 pounds to the acre. **ARCHIAS' GOLDEN or GERMAN MILLET.** It is sown in the Spring, and after harvesting leaves the ground in the finest condition for wheat. **10 lbs., 60c.**

Soy or Soja Beans

Soy Beans should be planted in May or June. They withstand drought to an extraordinary degree. One-third to one-half bushel of seed is planted per acre, with a drill, in rows 30 inches apart.

MIDWEST or MONGOL YELLOW. An early bunch variety, very prolific, a popular sort. **1 lb., 15c; 5 lbs., 50c; 10 lbs., 85c.**

EARLY MORSE. A leading variety, grows 2 to 4 feet high, produces a good crop of hay and a heavy seeder. **Lb., 10c; 5 lbs., 50c; 10 lbs., 85c.**

WILSON. Matures in 120 days. A black bean, upright in growth. It is popular for hay. **1 lb., 15c; 5 lbs., 50c; 10 lbs., 85c.**

VIRGINIA. The best Bean for hay or ensilage. It attains a height of 50 inches. Brown seeds. **1 lb., 15c; 5 lbs., 50c; 10 lbs., 85c.**

Red Rust-Proof or Texas Red Seed Oats

Yields enormous crops of heavy golden grain.

IOWA BLACK OATS.

KANOTA OATS. Earlier than Red Texas and a heavy yielder.

Write for prices stating quantity wanted.

Dwarf Essex Rape

True Stock, the Very Best; Yields Immense Crops.

Sow in Summer for Fall and Winter pasture. It is especially good for sheep, but all kinds of stock and chickens are fond of it and do well on it. Sow 5 pounds to the acre broadcast. **Pkt., 10c; lb., 25c, prepaid. Not prepaid, lb., 15c; 5 lbs., 65c; 10 lbs., \$1.15; 25 lbs., \$2.50.**

Sudan Grass

A New Forage Crop of Immense Value to the Middle West.

Sudan is 3 ft. tall, annual grass, reaching a height of from 7 to 9 feet when planted in rows and allowed to mature for a seed crop; broadcasted and cut "in the bloom" for hay, about 4 feet.

For a seed crop plant 2 pounds seed per acre in rows 36 inches apart. For hay crop broadcast or drill 12 to 20 pounds to acre. Price, 20c per lb., prepaid. Not prepaid, lb., 15c; 5 lbs., 60c; 10 lbs., \$1.00. Special price on 100-lb. lots.

Mammoth Russian Sunflower Seed

One of the best egg-producing foods known for poultry. It can be planted any time until July and will bring a large crop. Just what you need to fill up the vacant spots in your garden. **1 lb., 15c; 5 lbs., 60c; 10 lbs., \$1.00; 25 lb., \$2.25.**

	Each	Per 5
Lilac, Persian Purple. 2 to 3 ft.	\$.80	\$0.70
Lilac, Common Purple. 2 to 3 ft.	.55	.45
Snowball. 12 to 18 in.	.70	.60
Snowberry. 2 to 3 ft.	.55	.45
Spirea, Crimson. 12 to 18 in.	.55	.45
Spirea, Billiard's. Pink. 2 to 3 ft.	.55	.45
Syringa or Mock Orange. 2 to 3 ft.	.45	.40
Syringa, Virginal. New double	.65	.55
Tamarix. Pink flower. 2 to 3 ft.	.45	.40
Weigela. Pink. 2 to 3 ft.	.55	.45
Weigela Hybrid (Eva Rathke). Red. 18 to 24 in.	.75	.65

EVERBLOOMING BUTTERFLY BUSH (Deciduous Shrub, *Buddleia Variabilis Magnifica*). Blooms all Summer. It produces long, graceful stems of beautiful lilac colored flowers that are borne by the hundreds. **Nice plants, 35c each; 3 for 98c; \$2.50 per doz. Two-year plants, 55c each; 3 for \$1.35; \$3.98 per doz., prepaid.**

Hedge Plants

Hedges are of course more beautiful though less expensive than fences.

Prices Prepaid

	Each	5	25	100
Privet (Amoor River North).				
Hardy. 12 in.	\$.15	\$0.60	\$2.50	\$8.00
Amoor River. 18 to 24 in.	.20	.89	3.26	10.56
Japanese Barberry. 12 to 18 in.	.35	1.12	3.97	12.46
Spirea Van Houttei. 12 to 18 in.	.35	1.12	3.97	12.46
Spirea Van Houttei. 18 to 24 in.	.60	2.50	8.75	25.00
Spirea Van Houttei. 2 to 3 ft.	.75	3.00	10.00	35.00

Prices on this page subject to market changes. Write for special prices stating kind and quantity wanted.

Archias Select Flower Seeds

Containing the most popular varieties and choicest strains from the best growers in America and Europe. Adapted for cultivation in the conservatory, greenhouse and garden. Our seeds are fresh and germinate readily. OUR AIM IS TO SUPPLY NOTHING BUT THE BEST AND SUREST TO PLEASE.

All Flower Seeds Delivered Postpaid at Prices Given.

Archias' American Late Branching Asters

A splendid American strain, producing handsome double flowers on long stems. Plants from 2 to 3 feet in height, and branch freely. Any of the following: Per pkt., 10c; 3 pkts., 25c; ¼ oz., 45c; ½ oz., 75c.

- HEART OF FRANCE.** Deep ruby red.
DARK BLUE. A fine shade of deep violet-blue.
LAVENDER. Light lavender; large and double.
INVINCIBLE PINK. Deep rose-pink.
MARY SEMPLE or SHELL-PINK. Soft, rosy flesh.
WHITE. Large, double white.
SPECIAL OFFER—One packet each of the six named American Branching Asters for only 45c, postpaid.
AMERICAN LATE BRANCHING MIXED. Pkt., 10c; ¼ oz., 35c; ½ oz., 65c.
QUEEN OF THE MARKET (Mixed). A class of asters characterized by extreme earliness and the profusion of their flowers. Pkt., 10c; 1 oz., 85c.

Five Most Gorgeous Asters

- Any of the following five "Gorgeous" Asters, large pkt., 10c; 3 for 25c; ¼ oz., 40c; ½ oz., 75c.
DAYBREAK ASTER. Delicate sea-shell pink.
LAVENDER GEM ASTER. Charming shade of lavender.
PURITY ASTER. A snow-white aster.
LADY ROOSEVELT. Magnificent rose-pink.
VIOLET KING ASTER. Soft violet-lilac. Pkt., 10c; oz., 75c.
SPECIAL OFFER—One packet each of the five new asters, Daybreak, Lavender Gem, Purity, Lady Roosevelt and Violet King, for only 40c; two collections for 75c.

Two New Asters

- ARCHIAS' ENCHANTRESS PINK.** Vigorous, upright habit with a profusion of large, long, strong-stemmed flowers, the color of Pink Enchantress Carnations. Extremely pleasing. Pkt., 15c; 2 pkts., 25c.
ARCHIAS' CRIMSON GIANT ASTER. This variety has all the good qualities of our Superb Late Branching type, but is of upright growth. Extra large. Color a very rich blood-crimson, full of fire. Pkt., 15c; 2 pkts., 25c.
 One packet each Archias' Enchantress Pink and Archias' Crimson Giant Aster, for 25c.

AGERATUM. Excellent for cut flowers and fine for large beds in Summer, and as pot plants in Winter. Height, 2 ft. Finest colors, mixed. Pkt., 5c; oz., 35c.

ALYSSUM (Madwort). (Little Gem, or "Carpet of Snow"). A dwarf, very compact growing variety, only six inches high. Pkt., 5c; ½ oz., 25c; oz., 45c.

AMARANTHUS, tricolor (Joseph's Coat). Pkt., 5c.

ARCHIAS' BALSAM or LADY SLIPPER (Double Camellia-Flowered). Finest mixed. Pkt., 5c; ¼ oz., 20c; ½ oz., 35c; oz., 75c.

CALENDULA (Pot Marigold). Orange King (New). Pkt., 5c; ¼ oz., 15c.

Lemon Queen. Sulphur-yellow color. Pkt., 5c; ¼ oz., 10c.

Ball's Orange. Florists strain of bright orange. Pkt., 15c; ¼ oz., 35c; 1 oz., \$1.00.

CASTOR BEANS (Ricinus). Giant Zanzibar. Pkt., 5c; oz., 15c; 2 ozs., 25c.
 Mixed Sorts. Pkt., 5c; oz., 10c; lb., 70c.

CANDYTUFT.

Giant Empress. Hyacinth-flowered, large, pure white. Pkt., 5c; ¼ oz., 15c; oz., 45c.
Dwarf Hybrids. Mixed. Pkt., 5c; ¼ oz., 20c.
All Colors Mixed. Pkt., 5c; ½ oz., 15c; oz., 25c.

CAMPANULA (Canterbury Bell).

Medium. Single, separate colors, white, blue and rose. Pkt., 10c.
Medium. Single, mixed colors. Pkt., 10c; ¼ oz., 25c.
Archias' Prize Mixture. A fine mixture of the best classes and colors, single, double and "Cup and Saucer" varieties. Pkt., 10c; 2 pkts., 15c.



Archias' Enchantress Pink Aster.

CLEVELAND CHERRY. Very beautiful and useful pot plant for Winter. 1 foot. Pkt., 15c; 2 pkts., 25c.

COLUMBINE (Aquilegia). Double Variegated Mixed. Pkt., 10c.

Single Variegated Mixed. All the best sorts. Pkt., 5c.

ARCHIAS' NEW MARGUERITE CARNATIONS. The most magnificent of all the pink family. Flowers of perfect form large and very sweet scented. Mixed colors, pkt., 10c; ¼ oz., 20c; ½ oz., 35c.

CHINENSIS or CHINA PINK. Double mixed. Pkt., 5c; ¼ oz., 25c.

DOUBLE CLOVE PINKS (Plumarius Flore Pleno). Hardy Pkt., 10c.

HEDEWIGI, MIXED. Flowers three inches across; rich, beautiful colors. Pkt., 5c.

ARCHIAS' SPECIAL MIXTURE. Of single Dianthus Pinks, of easy culture. Pkt., 5c; ¼ oz., 25c; ½ oz., 40c; oz., 75c.

ARCHIAS' MIXTURE OF DOUBLE PINKS. All the double varieties, including the clove pinks. Large pkt., 10c.

CENTAUREA IMPERIALIS (Giant Sweet Sultan). Mixed colors, pkt., 10c; ¼ oz., 25c; 1 oz., 85c.

CENTAUREA CYANUS (Bachelor's Button). Finest mixed colors. Pkt., 5c; ¼ oz., 15c; oz., 25c.

CANNAS, FROM SEED. Large Flowering French. Large pkt., 5c; oz., 25c.

CANNA ROOTS. See Summer Flowering Bulbs.

CHINESE WOOLFLOWER. Flower heads of purplish crimson color. Pkt., 10c; 3 pkts., 25c.

COXCOMB (Celosia). Glasgow Prize. Pkt., 10c.
Finest Dwarf. A choice mixture of all sorts. Pkt., 5c.

COREOPSIS. Large, golden yellow flowers borne in great profusion during the Summer. Pkt., 5c; oz., 50c.

DAISIES, SHASTA. Originated by Burbank. Pkt., 10c.

DIGITALIS (Foxglove). Ornamental; hardy. Mixed colors, 5c.

EUPHORBIA VARIEGATA (Snow-on-the-Mountain). 3 ft. Pkt., 10c; ¼ oz., 25c.

EUPHORBIA HETEROPHYLLA (Annual Poinsettia). Also called Mexican Fire Plant. Easily grown. Pkt., 10c.

JOB'S TEARS. Hardy Annual. Ornamental grass. Pkt., 5c; oz., 15c.

HARDY LARKSPUR, Belladonna (Everblooming Hardy Larkspur). Pkt., 10c; 3 for 25c.

Gold Medal Hybrids. Finest strain of Mixed Hybrids. Pkt., 10c; 3 for 25c.

LARKSPUR (Annual Varieties). Double dwarf. Mixed, pkt., 5c; oz., 15c.

MIGNONETTE, Sweet Grandiflora (Reseda Odorata). Pkt., 5c; oz., 20c.

ARCHIAS' MAMMOTH COSMOS.

Early Flowering. Mixed. Large varieties, a grand assortment. Pkt., 5c; oz., 50c.

Giant Late Flowering. Mixed. Pkt., 5c; oz., 30c.

Double-Crested. This is wonderfully beautiful. Mixed. Pkt., 15c.

EVERLASTINGS or STRAWFLOWERS, *Acroclinium*. Mixed, pkt., 10c; ¼ oz., 25c.

Globe Amaranth. Mixed, pkt., 5c; oz., 25c.

Helichrysum. All colors. Mixed, pkt., 5c.

Mixed Everlastings. All colors. Pkt., 5c; oz., 40c.

FORGET-ME-NOT, *Myosotis*. Many colors, mixed. Pkt., 10c; ¼ oz., 20c.

FOUR O'CLOCK (Marvel of Peru). Mixed, all colors. Pkt., 5c; ¼ oz., 15c; oz., 25c.

DAHLIAS, FROM SEED. Large flowering choicest double mixed. Pkt., 10c; ¼ oz., 30c; ½ oz., 50c.

Giant Perfection. Single mixed. Pkt., 10c; ¼ oz., 25c.

ESCHSCHOLTZIA (California Poppies). **Finest Single Mixed**. Pkt., 5c; oz., 25c.

HIBISCUS (Mallow Marvel). This is popular for backgrounds or foundation plantings. Has immense white, pink or red hollyhock-shaped blossoms. Mixed colors Pkt., 10c.

HOLLYHOCKS. **Fine Double Mixed**. This is an especially good assortment of double flowering. Pkt., 5c; ¼ oz., 25c.

MARIGOLD, African Tall Double Mixed. Pkt., 5c; ½ oz., 30c.

French Dwarf Double Mixed. Many striped and blotched. Pkt., 5c; ½ oz., 30c.

Legion of Honor. Single golden yellow blossoms marked with red. Pkt., 10c; ½ oz., 30c.

Dwarf African. Lemon-qualified. Pkt., 10c.

Dwarf African (Orange). Pride of the Garden. Pkt., 10c.

MEXICAN FIRE BUSH (Kochia). This beautiful plant forms regular pyramids from 2 to 3 feet in height. Stays green all during the Summer and in the Fall turns fiery red.

CHILDSE IMPROVED. This is the latest type of Kochia. Pkt., 10c; ¼ oz., 25c.

Imperial Japanese Morning Glory

These grand New Morning Glories from Japan are remarkable for their large size and exquisite colors. Pkt., 5c; oz., 35c.

Moonflowers or Evening Glory

A beautiful rapid climber, having large flowers from 4 to 6 inches in diameter, that open in the evening.

GIANT WHITE. Pkt., 10c.

GIANT PINK. Pkt., 10c.

HEAVENLY BLUE. Flowers 4 to 5 inches across; color, sky-blue. Pkt., 10c.

SPECIAL OFFER. One packet each of the above three Grand Ipomoeas for 25c.

Miscellaneous Climbers

CARDINAL CLIMBER. Very beautiful, with clusters of fiery scarlet flowers. Pkt., 10c.

CYPRESS VINE. Mixed. Scarlet and white. Pkt., 5c; oz., 25c.

COBAEA VINE. Large, bell-shaped purple flowers. Pkt., 10c.

KUDZU VINE ROOTS. Strong two-year roots. Grows more rapidly than from seeds, as seeds germinate very slowly. Each, 35c; 3 for \$1.00; 6 for \$1.75.

HYACINTH BEAN. Tender, ornamental climber. Mixed, pkt., 5c; oz., 20c.

BALSAM APPLE AND PEAR. Very curious, rapid and dense climbers, with ornamental foliage and golden yellow fruit, which open when ripe, showing the seed and blood-red interior. Pkt., 5c; oz., 35c.

WILD CUCUMBER. Quick growing Climber. Pkt., 10c; ½ oz., 15c; oz., 25c.

Gourds

HERCULES CLUB. Grows six feet long. Pkt., 5c.

SUGAR TROUGH. Often used for buckets. Pkt., 5c.

DISH CLOTH or CHINESE SPONGE (Luffa). Pkt., 10c.

JAPANESE NEST EGG. White egg-like fruits. Pkt., 5c.

DIPPER GOURD. Used for dippers. Pkt., 5c.

Archias' Nasturtiums

ARCHIAS' SPECIAL MIXTURE OF NAMED DWARF NASTURTiums. Many pretty showy colors. Pkt., 5c; oz., 15c; 2 ozs., 25c; ¼ lb., 35c; lb., \$1.25.

ARCHIAS' FINEST MIXED TALL NASTURTiums. Composed of the finest and most distinct varieties in this grand free-flowering type. Planted in masses it will produce most gorgeous and showy effects. Pkt., 5c; oz., 15c; 2 ozs., 25c; ¼ lb., 35c; lb., \$1.25.

Archias' Sweet Peas

NEW SPENCER HYBRIDS. This Special Mixture, as improved, will give a rare treat to lovers of true "Spencer" Sweet Peas. Contains some of the most superb seedlings that have been introduced. Pkt., 10c; oz., 20c; 2 ozs., 35c; ¼ lb., 65c; lb., \$2.25, postpaid.

ARCHIAS' PRIZE MIXTURE. This is the finest mixture out, containing not only the most highly improved varieties from Eckford, put also many of the choicest varieties of recent introduction. Pkt., 5c; oz., 15c; 2 ozs., 25c; ¼ lb., 40c; lb., \$1.25, postpaid.

HARDY or EVERLASTING PEAS. Climbers, growing 6 to 8 feet. Flowers red, white and flesh colored. The roots penetrate the ground to a great depth and survive our Winters. Mixed colors, pkt., 10c; ½ oz., 35c; oz., 65c.

Archias' Superb Poppies

DOUBLE CARNATION FLOWERED. Of large size and variety of colors. Pkt., 5c; ½ oz., 15c.

ARCHIAS' PEONY FLOWERED, Double mixed. Pkt., 5c.

THE SHIRLEY POPPY. Colors from purest white, rose, pink, carmine and crimson. Very interesting. Pkt., 5c.

FLANDERS FIELD POPPIES. Cherished by the American Legion boys. Pkt., 10c; 3 pkts., 25c.

ARCHIAS' SPECIAL MIXTURE of above, and many other choice poppies. Pkt., 10c; ¼ oz., 15c.

ORIENTAL POPPY. This is the large perennial Poppy with the blossoms at least six inches across. It is very easily grown from seed planted in the early Spring, or after the first of September in the Fall. Transplant them only during August and early September when dormant. Pkt., 10c.

SPECIAL OFFER—One packet each of the six varieties including the Hardy Oriental for only 35c.



Archias Mammoth Cosmos.

Archias' Fairy Brand Plant Food

Archias' Fairy Brand Plant Food assures house plants a healthy growth, makes them quick flowering, gives the foliage a deeper, richer green. A pinch in a vase of cut flowers preserves them bright and fresh a much longer time. Make home beautiful by securing the best results with your plants. Everyone can do so by using Fairy Brand Plant Food according to simple directions on every package.

With each package we send free the book, "How to Make the Window Garden a Success."
PRICE PER CAN (feeds 25 plants 6 months), 25c, postpaid. 2 cans for 45c. Order a can today.

ARCHIAS' FAIRY BRAND PLANT FOOD



PREPARED FOR
ARCHIAS' SEED STORE CORP
 SEDALIA, MO

SWEET WILLIAM. Mammoth. Mixed single varieties. Pkt., 10c.

Mammoth. Mixed, double varieties. Pkt., 10c.

Double Dahlia-Flowered Zinnias

Flowers of mammoth size and in form like a perfect decorative dahlia. They are just as easy to grow as the Mammoth Zinnias, and the large flowers with their beautiful range of colors are simply indescribable.

SPECIAL MIXTURE. Pkt., 15c; 2 pkts., 25c, postpaid.

New Giants of California

This is the largest flowering of all Zinnias, growing 3 to 4 feet tall. The flowers differ from the Giant Mammoth type in having smaller flat centers and more loosely placed petals.

LEMON QUEEN. Canary-yellow.

PURITY. Pure white flowers.

ORANGE KING. Glistening orange.

ROSE QUEEN. Bright rose.

SCARLET GEM. Pure scarlet.

ENCHANTRESS. Rose-pink.

MISS WILLMOTT. Soft pink.

Any of the above. Pkt., 15c; 1/16 oz., 50c; 1/4 oz., 85c.

MIXED. This is a complete mixture of all the colors in this type. Pkt., 15c; 1/16 oz., 50c; 1/4 oz., 85c.

Lilliput Zinnias

A beautiful border plant, 18 inches tall, with small, double, symmetrical flowers.

GOLDEN GEM.

SALMON-ROSE.

CANARY-YELLOW.

WHITE GEM.

SCARLET GEM.

Any of the above. Pkt., 10c; 1/4 oz., 45c; 1/2 oz., 75c.

DOUBLE LILLIPUT. Mixed. Contains all colors. Pkt., 10c; 1/4 oz., 30c; 1/2 oz., 50c.

Verbenas

Our Mammoths are truly large and beautiful. The following named varieties are furnished separate:

ARCHIAS' NEW MAMMOTH MIXED. Embracing all sorts, including the eyed and variegated verbenas. Pkt., 5c; 1/4 oz., 40c; oz., \$1.50.

PORTULACA (Rose Moss). Large Flowering Single. Pkt., 10c; 1/4 oz., 15c.

Double Varieties. Mixed. Pkt., 10c; 2 pkts., 15c.

SCABIOSA (Mourning Bride). Mixed double flowering sorts. Pkt., 5c.

SNAPDRAGON (Antirrhinum). Dwarf Varieties. Finest mixed. Pkt., 10c.

New Large Flowering Tall Mixed. Pkt., 10c.

SUNFLOWER (Helianthus). Cut-and-Come-Again. Small yellow flowers with black center. Blossoms all Summer. Pkt., 5c.

California. Double, orange colored flowers; free bloomer. Pkt., 5c.

Giant Russian. Flowers 20 inches across. Pkt., 5c.

Salvia (Flowering Sage)

BONFIRE (Fireball). New. Best scarlet, 18 to 20 inches. Pkt., 10c; 1/4 oz., 60c.

Archias' Giant Pansies

ARCHIAS GIANT FLORIST'S MIXTURE. Richest, hand-sown and largest Pansies known. Profitable for florists. Pkt., 15c; 1/4 oz., 75c; 1/2 oz., \$1.25; oz., \$1.50.

GIANT TRIMARDEAU. Mixed, pkt., 10c; 1/4 oz., 30c.

LIBERTY PARK MIXTURE. Finest mixed, large, fine colors. Pkt., 10c; 1/4 oz., 30c; 1/2 oz., 50c.

Archias' Gorgeous Petunias

BLOTCHED AND STRIPED SINGLE. Beautiful large flowered, striped and blotched Petunias of the most symmetrical shape and form; sure to please. Pkt., 10c; 3 pkts., 25c.

FLUFFY RUFFLES. The petals are waved and frilled and curled and twisted, giving an extremely dainty and pretty flower. Pkt., 25c.

ROSY MORN. Soft rose-pink with white throat; very dainty. Pkt., 10c; 3 pkts., 25c.

ELK'S PRIDE. Plain, edged black-purple. Pkt., 15c; 2 pkts., 25c.

FINE MIXED SINGLE. A splendid mixture of single varieties, beautifully striped, blotched and mottled. For borders and massing. Pkt., 5c; 1/4 oz., 25c.

Archias' Large Flowering Phlox

PHLOX DRUMMONDI MIXED. The popular small-flowering sorts; all colors. Pkt., 10c; 1/4 oz., 30c.

DWARF PHLOX. Valuable for low beds, edgings and pot culture, of compact growth, 8 inches high. Mixed colors. Pkt., 10c; 1/4 oz., 30c.



Double Dahlia-Flowered Zinnia.

Summer Flowering Bulbs All Bulbs Under This Heading Are Prepaid

Amaryllis

Wonderfully showy plants for growing in the house. The blooms are large, trumpet-shaped, and of vivid color. When planting, leave the neck of the bulb above the soil, and keep in a cool room.

JOHNSONI. This Giant Amaryllis has large, trumpet-shaped, crimson flowers, marked with broad white stripes. **75c each; 3 for \$2.05.**

GIANT AMERICAN HYBRIDS. A remarkably fine assortment of large-flowering varieties, including many beautiful shades. **65c each; 3 for \$1.75.**

Angel's Lily - Ismene Calathina

Summer and Winter flowering. Produces with freedom, giant Amaryllis-like pure white fragrant blossoms. Can be taken up in Fall, and, after a few weeks' rest, potted for Winter blooms or kept over for planting another season. **35c each; 3 for \$1.00; 12 for \$3.50. Largest size 48c each.**

Calla Lilies - Calla Aethiopica

Large, beautiful, pure white flowers, easy culture. **25c each; 45c per two, postpaid. Larger bulbs, 40c each; \$1.00 per three.**

NEW YELLOW CALLA (Mrs. Roosevelt). Flowers light clear yellow, foliage blotched white. **40c each; \$1.00 per three, postpaid.**

Caladium Esculentum - Elephant Ear

Good Sized Bulbs. Six to eight inches around. **10c each; 3 for 25c; doz., 75c.**

Medium Bulbs. Eight to ten inches around. **15c each; 2 for 25c; doz., \$1.25.**

Mammoth Bulbs. Ten to twelve inches around. **35c each; 3 for \$1.00.**

Orchid-Flowering Cannas

Price—Your choice, **10c each; 3 for 40c; doz., \$1.00; 25 for \$1.75, postpaid.**

QUEEN HELEN ("Yellow King Humbert") Leaves green instead of bronze; immense flower, brilliant yellow spotted with red. **4 to 4½ feet.**

CITY OF PORTLAND. Bright rosy pink. **3½ feet.**

KING HUMBERT. Bronze-leaved; flowers are bright orange-scarlet. Height, **5 feet.**

FIREFLAME (Green Foliage). Flowers are a rich flaming scarlet. **6 to 7 inches across. 4 feet.**

THE PRESIDENT. Green foliage. Color bright glistening scarlet. Height, **5 feet.**

HUNGARIA. Color, purest La France pink with satin sheen. The most delicate pink in Cannas. **3½ feet.**

MIXED LARGE FLOWERING CANNAS

Every season we have a considerable number of unnamed large flowering Cannas, which we offer at low price of **10c each; doz., 85c; 25 for \$1.50; 100 for \$4.50, postpaid.**

Archias' Fancy Show Dahlias

ARCHIAS' GIANT PINK BEAUTY. Beautiful soft, yet lively color, a glowing rose-pink.

ARCHIAS' AMERICAN BEAUTY. The best red Dahlia known.

ARCHIAS' YELLOW SHOW. A beautiful rich, deep sulphur-yellow.

ARCHIAS' PURITY. A beautiful pure white variety of large size; extra fine.

Price of above, **25c each; 5 for \$1.00; 12 for \$2.00, postpaid.**

MIXED DOUBLE DAHLIAS. Over 100 choice and valuable sorts, including many of last year's novelties in mixture and unnamed. **10c each; 6 for 45c; doz., 75c, postpaid. By express, at purchaser's expense, doz., 60c; 100, \$4.75.**

SPECIAL OFFER

One each of the six elegant Japan and other hardy Lilies listed above, including the Day Lily and the Regal Lily, for only **\$2.15, postpaid.**

Six Gorgeous Decorative Dahlias For \$1.35

JACK ROSE. Unquestionably the grandest crimson decorative Dahlia.

SYLVIA. Flowers 4 to 6 inches; color white shaded soft pink; a good one.

YELLOW DUKE. Decorative. Canary yellow, quilled petals; giant flowers.

HENRY PATRICK. A fine white. Flowers large; good bloomer.

MINA BURGIE. Producing flowers of gigantic size and remarkable beauty; brilliant scarlet. Flowers are decorative type.

MISS MINNIE McCULLOUGH. Color soft yellow, overlaid with bronze.

Price of above, **25c each; 5 for \$1.00; 12 for \$2.00, postpaid**

Three Best Decorative Dahlias

1 each (value \$2.25) for\$2.00
3 each (value \$6.75) for 5.75

JERSEY'S BEAUTY. This is certainly a beauty and should be in every garden on account of its wonderful color and stem—in a class by itself—a beautiful pink. **50c each.**

MRS. I. DE VER WARNER. The queen of the garden—a most charming color of deep mauve-pink. True type and very fine form on wonderful stem. **50c each.**

SAGAMORE. Bright amber-gold, with just a ray of warm salmon-rose and orange-buff. It is one of those lovely Autumn shades. **\$1.25 each.**

The Six Best Gladioli

ARCHIAS' NEW PRIZE WINNING SORTS

ANNA EBERIUS. Dark velvety purple, very dark throat. **10c each; doz., \$1.25; 100, \$5.50.**

EVELYN KIRTLAND. A beautiful large salmon-pink, darker at edges, with a sparkling luster. **9c each; doz., 90c; 100, \$6.00.**

FLORA. Beautiful canary-yellow. The best yellow. **10c each; doz., \$1.00; 100, \$7.00.**

MRS. FRANCIS KING. In color, a light scarlet, which attracts attention at once.

AMERICA. A beautiful soft shell pink color, tinged lavender.

PURITY. Very large, pure white, with carmine markings on lower petals.

CHOICE GLADIOLUS MIXTURES

ARCHIAS' PRIZE MIXTURE. A superb mixture of the standard type of Gladiolus composed of strictly first-size bulbs. A great variety of shades and colors are included, many of the newer varieties. They will please you. **Doz., 40c; 25 for 75c; 100 for \$2.75.**

SPECIAL OFFER

1 bulb of each (6 bulbs) for 45c; 6 bulbs of each (30 bulbs) for \$1.80; 12 bulbs of each (60 bulbs) for \$3.50, prepaid.

Archias' Hardy Lilies

THE QUEEN OF FLOWERS

AURATUM (Golden Banded Lily of Japan). Extra large. **45c each; \$4.50 per doz.**

SPECIOSUM RUBRUM. White shaded deep rose and spotted red. Extra large bulbs. **45c each; \$4.50 per doz.**

CANDIDUM (St. Joseph's or Annunciation Lily). **45c each; \$4.50 per doz.**

WHITE DAY LILY (Funkia). Beautiful white flowers, blooms in clusters. **35c each; \$1.00 per three, postpaid.**

YELLOW DAY LILY (Hemerocallis flava or Lemon Lily). Very bright, pleasing color. **20c each; 50c per three; \$1.60 per doz.**

REGALE. A grand new Lily from China. White with yellow center. **3 to 4 feet high; very fragrant flower; perfectly hardy. 45c each; 3 for \$1.25; 12 for \$4.00.**

Archias' Selected Fruit Stock

Hardy, thrifty, vigorous trees and plants grown on our famous Ozark Mountain soil. The kind that make profitable, productive orchards. Every shipment carries State Nursery Inspection Certificate and is guaranteed by us to be free from injurious insects or disease; to be full of vitality; to reach you in good condition and to meet your approval on arrival.

For Fall shipment—October 25th to December 10th. For Spring shipment—February 15th to May 15th.

Pear - Standard

VARIETIES

Bartlett, Seckel, Lincoln, Kieffer.

Prepaid Prices

	Each	3	10	25
2 yr., 4 to 6 ft., branched	\$.75	\$2.10	\$6.48	\$12.50
1 yr., 3 to 4 ft.	.60	1.32	3.66	7.80

You are buying production, not trees. The best is the cheapest in the long run.

Plum

Bears abundantly at an early age.

VARIETIES

Abundance, America, Burbank, Endicott, Shropshire, Damson, Red June, Wild Goose, Compass Cherry-Plum.

Prepaid Prices

	Each	3	10	25
4 to 5 ft.	\$.75	\$1.98	\$5.26	\$10.56
3 to 4 ft.	.60	1.51	3.72	7.96

Though our prices are reasonable we offer only quality stock.

Apple

EAT APPLES FOR HEALTH

Prepaid Prices

	Each	3	10	25
2 yr., 5 to 6 ft., well branched	\$.50	\$1.35	\$3.80	\$8.90
1 yr., 3 to 5 ft.	.40	1.10	3.10	6.98

VARIETIES

Summer: Yellow Transparent, Duchess, Wealthy and Crabapple.

Fall: Jonathan, Grimes Golden, King David.

Winter: Delicious, Stayman, Black Ben, Winesap, York Imperial, Rome Beauty.

The varieties offered here have been carefully selected for their particular adaptability to soil and climatic conditions of Missouri, Kansas, Illinois, Arkansas and Oklahoma. They are proven varieties selected for their quality and productiveness and desirable for both home use or market.

Archias' Missouri Pride Peach

THE WORLD'S BEST PEACH

Resembles Elberta in color and flavor, but tree is hardier; a strong grower and productive. Bears when Elberta fails.

Averages one-third to one-half larger than Elberta. Round uniform shape.

Color—Rich, golden yellow, overlaid with carmine. Colors up ten days before maturity.

Flesh—Solid and meaty. Texture of a cling, yet perfect freestone. Without grain or stringiness.

Smooth, thick skin, tightly drawn.

Most delicious flavor, seldom found in a yellow peach. Far surpasses Elberta.

Shipping—So firm it ships almost like apples. Unusually long keeper.

Price of Archias' Missouri Pride, 2-yr.-old extra choice trees, each 65c; 3 for \$1.75; 10 for \$4.85. Order early.

Other Good Peaches

Every garden should contain a few Peaches—no fruit is more luscious and pleasing than a ripe, juicy Peach. Plant 16 feet apart; much in Spring.

Fill your fruit jars with **Home Grown Peaches.**

VARIETIES

Early: Early Rose, Carman.

Midseason: Champion, Belle of Georgia, J. H. Hale, Elberta, Early Elberta.

Late: Crosby, Late Elberta, Heath Cling.

Prepaid Prices

	Each	3	10	25
4 to 5 ft.	\$.50	\$1.35	\$3.80	\$8.06
3 to 4 ft.	.35	1.00	3.18	6.61



Wealthy Apple.

Cherry

VARIETIES

Early Richmond, Montmorency; midseason, highest quality. English Morella, late.

Prepaid Prices

	Each	3	10	25
Well branched, 3½ to 4½ ft.	\$.75	\$2.10	\$6.48	\$12.50
Budded trees, 2 to 3 ft.		1.47	3.68	7.76

Archias' reputation of 44 years of square dealing is back of your purchase.

These trees and plants have thriftiness and vitality grown into them, carefully preserved by proper handling and are delivered to you in A-1 condition.

Special Large Quantity Wholesale Rates will be quoted on application to those who are planting commercial orchards. Give list of varieties desired, number of each and size preferred.

We guarantee all trees and plants to be true-to-name, but in no event do we stand liable for more than the purchase price.

Mastodon Everbearing Strawberries

This new everbearer has proven itself to be all that has been claimed for it. You have read some apparently extravagant stories about it. The results you will get from it will prove they are true. Mastodon will produce three large crops within 18 months after planting and big, fine berries, too. Try a patch this year—you will be pleasantly surprised. 25 plants, 85c; 50 for \$1.50; 100 for \$2.50; 500 for \$11.00, postpaid.

Standard Strawberries

A FEW OF THE BEST ONES

Those marked (P) are pistillate varieties. They are the most productive, but a row of (S), a staminate or perfectly formed sort, should be planted every 10 or 12 feet to pollinize the flowers.

CLYDE. (S). Large and showy; early.

CRESCENT. (P). Early; bears profusely.

EXCELSIOR. (S). Exceedingly prolific; extra early; bright shining red; excellent.

SENATOR DUNLAP. (S). Large size; medium late.

AROMA. (S). The best late.

GLEN MARY. (P). Bright, deep red; medium.

Prices, 25 for 35c; 100 for 85c; 200 for \$1.50; 500 for \$3.50; 1000 for \$6.50. By mail, add 10c per 100 for postage.

Latham Raspberry

(Minnesota No. 4)

Yields Twice as Much as Other Red Raspberries

Here is a new red Raspberry that was originated in Minnesota and acclaimed for its hardiness in that state. During the past few years its merits have spread with its planting throughout the middle and eastern states. The high yielding ability of the Latham is due largely to its resistance to Mosaic and other Red Raspberry diseases; wherever tried, reports have been most favorable. It possesses the hardiness of "King" and produces very strong, vigorous, thornless canes; very productive. Berries are large, of highest quality, ripen evenly and hold up well throughout the season. The canes do not need covering even in severe locations. We have a fine stock of this splendid new variety and hope you will give it a thorough trial, as we are sure it will prove a money-maker for you, especially in a season when other standard varieties freeze out. Each, 15c; 3 for 40c; 12 for \$1.00; 25 for \$1.65; 100 for \$4.50, postpaid.

Other Good Raspberries

Prepaid Prices

	10	25	100
Cumberland and Kansas, Black	\$0.60	\$1.10	\$3.50
Cuthbert, Red	.60	1.10	3.50
St. Regis, Red. (Evearbearing)	.70	1.39	4.36

Blackberries

Prepaid Prices

	10	25	100
Eldorado and Early Harvest	\$0.60	\$1.25	\$4.00
McDonald and Lucretia Dewberry	.60	1.25	4.00

(McDonald must be interplanted with some other variety to properly pollinize).

Archias' Prolific Currants

We are pleased to announce that the embargo on Currant and Gooseberry bushes has been lifted so that we can now ship our plants into every state.

We have a fine supply of heavily rooted, vigorous, disease-free, two-year plants and have priced them very low.

No garden is complete without them. Easy to grow and sure to bear. Our list comprises only the very best in cultivation. Plant 3 x 6 feet. Use Arsenate of Lead or Slug Shot for worms.

FAY'S PROLIFIC. The leading red market variety.

RED DUTCH. The old, well known red Currant.

WHITE GRAPE. Very productive; excellent quality.

Price, 2-year-old, 20c each; 3 for 50c; 10 for \$1.50; 100 for \$8.00, prepaid.

PERFECTION CURRANT. Color a beautiful bright red; a great bearer, with rich, sub-acid flavor, plenty of pulp and a few seeds. Best Currant lately introduced. Won the gold medal of the Western New York Horticultural Society in competition with all the old leading varieties; also gold medal at St. Louis World's Fair. 25c each; 3 for 65c; 10 for \$2.25.

Gooseberries

Gooseberries like a cool, moist loam in partial shade, and good mulch. Gooseberries are one of the most useful of all small fruits for the middle western territory.

DOWNING. Downing is a large, handsome, pale green berry and of splendid quality. Good for both cooking and table use. No. 1, strong plants, 20c each; \$1.50 per 10.

HOUGHTON. Medium, rounding oval. Pale red, very sweet and tender. Prolific. This berry does not mildew. No. 1 strong plants, 15c each; \$1.20 per 10.

JOSSELYN. A wonderful cropper, with bright crimson, healthy foliage. Large size, and prolific. No. 1, strong plants, 25c each; \$2.25 per 10.

Special Currant and Gooseberry Collection

This is a real bargain and will give you a fine assortment of this fine fruit.

- 3 Perfection Currants
- 3 Fay's Prolific Currants
- 3 Downing Gooseberry
- 3 Josselyn Gooseberry

\$2.15

Twelve strong, 2-year plants, only

All Blackberries, Raspberries, Currants, Gooseberries and Dewberries are postpaid or express prepaid in zones 1, 2, 3 and 4; zones beyond add 10 per cent for postage.

Archias' Delicious Table Grapes

Every home should have a dozen or more Grape vines planted on an arbor or along the garden fence. They are delicious to eat fresh from the vines; can be made into the most health producing grape juice; and jelly—well who doesn't like Grape jelly? Once planted the Grape vines will continue to yield for years with practically no special attention. Our Grapes are strong, well rooted plants that are sure to grow for you.

Worden (Blue)

A valuable blue Grape ripening from three days to a week before Concord. Berry large, of good quality; thin skin; very productive; vine a strong grower. The most popular blue Grape grown today. It comes in early enough to avoid the rush of Concord, thus brings from one to three cents per pound more.

Moore's Early (Blue)

A large blue Grape, ripening a week earlier than Concord; good grower; berries large, good quality, and makes a moderate yield; very valuable as an early Grape.

Niagara (White)

The most popular white Grape in existence. Fruit large and very productive; a good grower; ripening same season as Concord; equally good; valuable in every way.

Brighton (Red)

One of the best red Grapes in cultivation. Bunch large and compact; a strong grower and very productive; quality good.

Agawam (Deep Red)

Deep red, large bunch, berries large, meaty, with rich, aromatic flavor. Ripens a little after Concord.

Concord (Black)

An old variety; does well wherever planted; good size; productive.

Moore's Diamond (White)

The color is a delicate greenish white, with a rich yellow tinge when ripe. Very few seeds, juicy, and almost transparent. Berry size of Concord and two weeks earlier.

Extra Select Grapes—Prepaid Prices

	Strong 2-yr. vines			
	Each	3	10	25
Concord	\$0.20	\$0.45	\$1.35	\$2.50
Moore's Early	.20	.45	1.35	2.50
Worden	.25	.65	1.98	4.00
Diamond	.25	.65	1.98	4.00
Niagara	.25	.65	1.98	4.00
Agawam	.25	.65	1.98	4.00
Brighton	.25	.65	1.98	4.00

Special Offer on Table Grapes

- 2 Concord
- 2 Worden
- 1 Niagara
- 2 Moore's Early
- 1 Diamond
- 1 Agawam
- 1 Brighton

10 vines, 2-year-old, as above, postpaid, for **\$1.83**

We Guarantee All goods ordered of us to reach the purchaser safely and in good condition. If lost or damaged we will refill the order. While we exercise great care in selecting all seeds, bulbs, plants and trees, and having them reliable and true-to-name, we give no warranty, expressed or implied, as to purity or germination, and will not hold ourselves responsible for any failure thereof. If not accepted on these conditions they must be returned at once.

ARCHIAS SEED STORE CORP.

Insecticides—Poisonous Insecticides CANNOT be sent by mail—Express only.

TOBACCO DUST. Kills green and black lice, beetles, fleas, etc. Dust the plants with it. Lb., 10c; 10 lbs., 75c; 25 lbs., \$1.50; 100 lbs., \$5.00.

PARIS GREEN. ½ lb., 35c; 1 lb., 60c.

SLUG-SHOT. lb., 15c; 2 lbs., 25c; 5 lbs., 60c; 10 lbs., \$1.10.

INSECT POWDER GUN. Holds about 3 ounces of powder. 15c each; 3 for 35c.

Dry Lime-Sulphur



For dormant spray use 12 to 15 lbs. to each 50 gals. of water. For Summer spray, 3 to 4 lbs. to each 50 gals. of water.

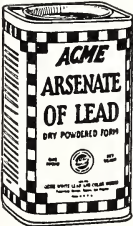
Lime-Sulphur Powder. Lb., 35c; 5 lbs., \$1.20.

Lime-Sulphur Solution. Qt., 50c; gal., \$1.00; 5 gals., \$4.50; 10 gals., \$8.50.

Arsenate of Lead

(Dry). For dusting and spraying.

Solves the problem of controlling practically all leaf-eating insects in an efficient manner. 1 lb., 30c; 4 lbs., 95c.



Bordeaux Mixture

(Dry). The best fungicide for curing and preventing black rot, mildew, blight, leaf curl, scab or other fungoid diseases on fruits and plants. 1 lb. will make 5 gallons liquid. Lb., 30c; 4 lbs., 95c.



Carbon Disulphide

For ants and cut worms. 1 lb., 50c.

Tree Tanglefoot

Perfect safeguard for trees. Lb., 60c; 5 lbs., \$2.75; 10 lbs., \$5.25.

Sulpho-Tobacco Soap

Nicotine, Sulphur and Soap—three well known insecticides, are all combined in this soap. Much more effective than a simple nicotine spray against black and green aphids, mealy bug, red spider and many other sucking insects.

Invaluable for spraying plants, shrubs, trees, vines; especially recommended for roses. Just dissolve in water. Simple directions with each cake.

A 3-oz. cake (makes 1½ gallons of prepared solution) mailed for 15c; 8-oz. cake (makes 4 gallons of solution), mailed for 30c; 1 lb., 45c; 10 lbs., \$3.75, postpaid.



Germo Insecticide

The greatest disinfectant, germ and insect killer. Will not stain. Small bottle, 35c; large bottle, 65c; 1-gal. jug, \$2.75.

Eureka Mole Exterminator

Kills moles instantly—guaranteed. Price, 50c per can.

Terro Ant Killer

Guaranteed to rid any place of ants in 24 hours or money refunded. Full directions with each package. 50c per bottle.

Nikoteen

Nikoteen (30 per cent)—An economical and powerful nicotine extract. Death to aphids or green fly, spider, mealy bug, thrip, and many other forms of flower, fruit and vegetable lice. Small bottles, 30c and 50c; ½ lb., \$1.25; 1 lb., \$2.25. Full directions on each bottle.

Black Leaf 40

is a solution of Nicotine Sulphate. It is highly recommended by Experiment Stations throughout the United States as a spray for soft bodied sucking insects. For spraying only. Directions must be followed carefully. 1-oz., bottle, 35c; ¼-lb. can, \$1.25, (makes 40 to 100 gallons); 2-lb. can, \$3.50, (makes 200 to 500 gallons.)



Cyanogas Calcium Cyanide "G"

Greenhouse fumigant. Aphis, white fly, thrips, soft scale, and mealy bug and control for crop destroying rodents. Lb., 60c; 5 lbs., \$2.50; 25 lbs., \$8.50; 100 lbs., \$25.00. Write for leaflet.



Volck

The scientific insecticide for nursery, greenhouse and garden. Controls scale insects, mealy bug, white flies, red spiders, rust mites, aphids and thrips. ¼ pt., 50c; pt., 75c; qt., \$1.00; gal can, \$3.00; 5-gal can, \$12.50.

Fairy Brand Plant Food

Will make your house plants and garden flowers more vigorous and beautiful. Price per can (feeds 25 plants for six months) for only 25c, postpaid. See page —

Rat Corn

Will exterminate rats, mice and gophers from your premises in a safe, sane and sanitary manner. It mummifies them. No matter where they die, they simply DRY UP. Positively do not smell.

Rat corn is a new scientific discovery, and without a doubt the greatest rat destroyer in the world. The only one that kills rats without any bad, dangerous or disagreeable effects. A trial will convince you. 25c, 50c and \$1.00 per can. 6-lb. pail, \$5.00. Add 5c for postage.

Booklet "How to Destroy Rats" free with each can.

The Auto Spray

Eight to ten strokes of plunger in air chamber compresses enough air to discharge entire contents, making continuous spray for nine minutes. "Auto Spray" is improved by addition of the "Auto Pop" shown in illustration.

Price, galvanized iron reservoir, with "Auto Pop," \$6.50. Solid brass reservoir, with "Auto Pop," \$9.00.

Extension rods, 2-foot lengths. 50c. Two row attachment, \$1.50.



Archias' Faultless Sprayer

Capacity one quart. The best sprayer made. Throws a spray as fine as mist, rendering the use of strong solutions safe on tender foliage plants. Price, 48c, postpaid.

Archias' Continuous Sprayer

The only sprayer on the market that can be used as a fire maker, pipe thawer, flame sterilizer and oil generator, besides being a perfect sprayer for insecticides, disinfectants, lubricating oil, paints and lacquers. Holds one quart.

No. 1—135-lb. IX tin, brass atomizing head. \$1.24 each, postpaid.

No. 2—All brass. \$1.98 each, postpaid.

Star Force and Spraying Pump

Throws a stream 40 feet and makes a spray as fine as mist, all with one nozzle. Has no equal for spraying trees, flowers, lawns, gardens or bath houses. Spray your cattle, hog or poultry houses with it.

The "Star" is all solid brass except handle, foot and hose. Has double-acting piston. Agitator at bottom. Has non-clogging spraying device. Price, only \$4.75.

Archias' Selected Canary Birds

Hartz Mountain Canary Birds

These are the Most Popular of all Birds as Well as the Most Satisfactory Songsters.

These birds were bred high up among the Hartz Mountains of Germany, are very hardy, perfectly happy in the little cages, and are famous for their clear, beautiful song. Each bird is tested and known to be in full song before leaving the store, and we guarantee every one.

Price, \$5.00 to \$7.50 each; females, \$1.25 to \$1.50 each; crested females, \$1.50 each.



St. Andreasberg Roller Canaries

No instruments, no matter how sweet the tone, can blend the harmonious melody that comes from their little throats.

Price, \$8.00 to \$10.00 each; females, \$3.50 each. No extra charge for shipping cages.

Supplies and Accessories

Three Valuable Bird Books

FEATHERED PETS. By Chas. N. Page. A most complete new book on Canaries, Parrots, and all kinds of cage birds. 140 pages; paper cover. 35c each.

CANARY BREEDING AND TRAINING. By Chas. N. Page. Tells the whole story. 30 pages. 35c each.

CANARIES AND OTHER CAGE BIRDS. Carefully prepared to give accurate information concerning feathered pets. 96 pages, illustrated with forty-eight drawings and half-tone engravings, picturing the Japanese Robin, the Brillian Cardinal, and a Canary in natural colors. Best and most practical book on the market. 40c postpaid.

Bird Seeds

Our Bird Seed is strictly fresh and clean and our packages contain more seed than any other brand.

	Lb.	5 lbs.	10 lbs.
MIXED BIRD SEED	\$0.15	\$0.60	\$1.00
HEMP SEED	.15	.60	1.00
CANARY	.15	.60	1.00
MILLET. (Recleaned)	.15	.50	.90
RAPE, Large German	.15	.60	1.00
SUNFLOWER SEED. For Parrots	.15	.60	1.00
MIXED SEED. For Parrots	.15	.60	
CUTTLEFISH BONE	Oz., 5c.	.45	

If wanted by mail, add postage at zone rate.

BIRD MANNA. Great moulting season food; birds are very fond of it; a feed and a medicine combined. Pkg., 15c; 2 for 25c, postpaid.

BIRD BITTERS. Bottle, 25c; postpaid, 35c.

CAYENNE PEPPER. 4 ozs., 15c; 1 lb., 50c, postpaid.

MOULTING PEPPERS. Pkg., 25c, postpaid, 30c.

INSECT OR MITE POWDER FOR BIRDS. Pkg., 25c, postpaid.

INSECT POWDER BELLOWS. 15c each; 2 for 25c.

NESTLING FOOD. An egg food for young birds which will keep indefinitely, and which is cheaper than eggs. Box, 25c; 3 for 65c, postpaid.

BIRD NESTING. Prepared of hair moss and other material for birds to build their nests. Pkg., 15c; 3 for 35c, postpaid.

WIRE BIRD NESTS. 15c each; 3 for 35c, postpaid.

HALLER'S CANARY BIRD PIE. A treat. Pkg., 15c, postpaid.

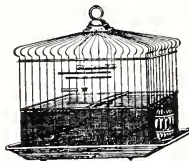
HALLER'S CANARY COLOR FOOD. Pkg., 25c, postpaid.

HALLER'S DUTCH SONG RESTORER. Never fails. Pkg., 15c, postpaid.

HALLER'S HEALTH FOOD. A builder. Pkg., 25c, postpaid.

COD LIVER OIL NESTLING FOOD. Pkg., 15c.

Elegant Brass Canary Cages



With Wire Bird Guard

to prevent birds spilling seeds.

No. 2470—9x6 in.	\$3.00
No. 2471—9½x6½ in.	3.75
No. 2472—10½x7½ in.	4.50
No. 2473—10¾x7¾ in.	5.00
No. 2474—11¾x8 in.	5.50
No. 2475—12x9 in.	6.25

(By mail, add 25c for postage and packing).

Brass Canary Cages

Without seed guards.

(By mail, add 25c for postage and packing).

No. 470—9x6 in.	\$2.35	No. 473—10¾x7¾ in.	\$4.00
No. 471—9½x6½ in.	2.75	No. 474—11¾x8 in.	4.75
No. 472—10½x7½ in.	3.25	No. 475—12x9 in.	5.75

Japanned Canary Cages

Elegant new patterns, painted in bright colors, and the Japan is thoroughly burnt on.

Same as shown in cut, without seed guards.

No.	Each	No.	Each
270—9x6 in.	\$1.75	2172—10x7 in.	\$3.25
271—9½x6½ in.	2.00	2173—10½x7½ in.	3.50
272—10x7 in.	2.25	2174—11x8 in.	3.75
273—10½x7½ in.	2.50	2175—11¾x8¾ in.	4.00
274—11x8 in.	2.75		
275—11¾x9¾ in.	3.00		

(By mail, add 25c for postage and packing).

Our Cages are the best made and guaranteed to please.

Seed Cups for Bird Cages

SEED OR WATER CUPS

We have them in any style, either glass or opal. Each, 10c. Postage 3c extra.

BIRD BATH DISHES

Give your bird a bath and watch him enjoy himself. Each, 15c. Postage 3c extra.

Parrot Food

A preparation made of spices, dried fruits, etc.

This diet will keep the parrot in brilliant plumage and health. Pkg., 25c.

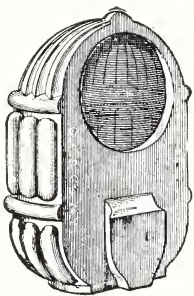
WHITE BIRD GRAVEL. Pkg., 15c; 2 for 25c.

RED GRAVEL. The finest and best on the market. 2-lb. pkg., 15c; 2 for 25c.

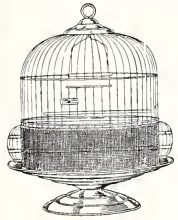
BIRD SAND WITH CHARCOAL. Pkg., 15c; 2 for 25c.

CRUSHED PEARL SHELL. Lb., 5c; 6 lbs., 25c.

BIRD TONIC. A valuable medicine for colds and other disorders of birds. Simply put it in the drinking cup. Large bottle, 35c; postpaid, 45c.



All Brass Bee Hive Style Bird Cages



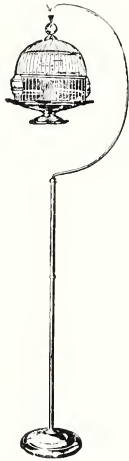
Round Dome with Brass Wire Guard, Flange Base.

No. 2366—A round brass cage that can be used on a stand or set on a table; a beautiful cage. 11 inches in diameter. **\$4.00 each.**

CAGE STAND NO. 41. Height 5 ft.

10 1/2 in. Polished brass. **\$3.50 each.** By mail, add 35c for postage and packing.

Complete with Cage No. 2366 (like cut), for **\$7.00.** By mail, add 40c for postage and packing.



Archias' Favorite Cage and Stand

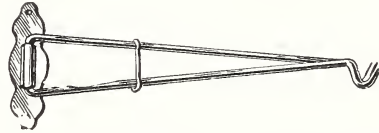
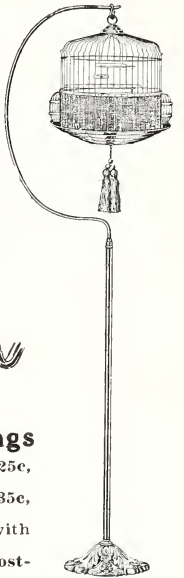
Japanned in colors (Brass Guards). No. 2045. 10 1/4 inches diam. **Red only, \$4.25.**

No. 2046. 11 inches diam. **Green only, \$4.50.**

No. 2047. 11 1/4 inches diam. **Blue only, \$4.75.**

All the above Cages have Gold Tassels.

Stands to Match Above Cages in Colors (like cut), only **\$2.25 each.**



Cage Brackets and Springs

BRACKET. Brass, 10-inch. Each, 25c, postpaid.

BRACKET. Brass, 12-inch. Each, 35c, postpaid.

CAGE SPRINGS. Single heavy brass with chain. Each, 25c, postpaid.

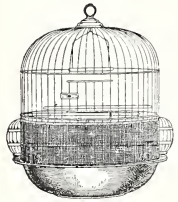
CAGE SPRINGS. Short. Each, 15c, postpaid.

WIRE BIRD NESTS. 15c each; 2 for 25c, postpaid.

BIRD NESTING. Prepared of hair moss and other material for birds to build their nests. Pkg., 15c; 3 for 35c, postpaid.

"Yamato" Bird Cages

Imported from Japan. Made of natural bamboo and reed as illustrated. New, attractive and durable. A large, roomy, happy home for canaries, finches or nightingales. Size 11x11x12 in., **\$2.98, postpaid.**



Japanese Lantern Cages

Something new. Like cut. A beauty and just what you want.

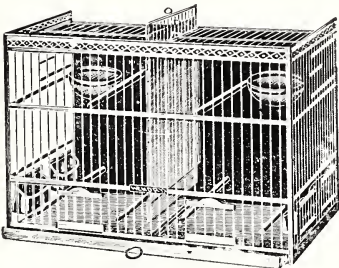
No. 2536—11 in., all brass. **\$3.25 each.**

No. 2236—11 in., two-toned Japanned. **\$3.95 each.**

By mail, add 25c for packing and postage.

Breeding Cages

Japanned cages with solid and wire partitions, metal drawer and closed back. Comes complete with four glass cups, six perches and two nests. These cages are all metal and are absolutely vermin proof.



	Long	Wide	High	
No. 86.	19 1/2 in.	10 in.	14 3/4 in.	\$5.75
No. 87.	22 in.	11 in.	16 1/4 in.	6.50
No. 88.	24 1/2 in.	12 1/2 in.	17 in.	7.25

Round Parrot Cages

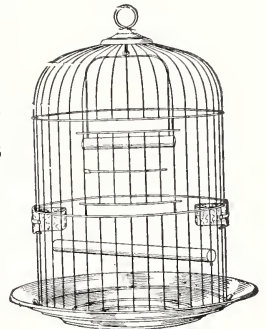
Tinned steel rails, top and bottom zinc. Rails and upright wires riveted. Fitted with swing, perch and cup. Cage 14 1/2 x 22 in., **\$6.75 each;** 16 x 23 1/2 in., **\$7.75 each.** By mail, add 35c for postage.

Square Parrot Cages

Collapsible—Something new. No. 135—15x15 1/2 x 12 in. high. Complete with cups and perches. **\$6.00 each.** By mail, add 35c for postage.

IMPORTED WOODEN SHIPPING CAGES

These Cages come with birds from Germany. Just the thing for shipping canaries. **Only 25c each.**



Dog and Cat Foods and Supplies Postage extra if by mail.

SPRATT'S PUPPY BISCUITS. A perfect food for puppies of all breeds. Puppies should be started on these biscuits when about one month old and they should be continued until such time as their teeth become sound and strong, usually when they are about six months o.d. Follow directions on each package. **30-oz. carton, 40c; 5-lb. carton, 90c.**

SPRATT'S FIBO—An Appetizing Granulated Food. For puppies or growing dogs, shy feeders or those recovering from sickness, or as a change of food at any time for all dogs. **2-lb. carton, 45c; 5-lb. carton, 90c.**

SPRATT'S MEAT FIBRINE "TERRIER" CAKES. Specially prepared for terriers and other active dogs. Eaten with avidity; they are easily digested, make bone and muscle, not fat, thus insuring the true terrier energy and action. **26-oz. carton, 45c; 5-lb. carton, 95c.**

SPRATT'S MEAT "FIBRINE" VEGETABLE DOG CAKES. The standard dog food. Used at the leading kennels and dog shows throughout the world. A staple and constant food for all breeds of dogs. **26-oz. carton, 45c; 5-lb. carton, 95c.**

SPRATT'S PATENT DOG SOAP. Kills fleas, prevents mange and other skin diseases. Used in preparing dogs for exhibition. It leaves the coat smooth and glossy. **50c per cake, by mail.**

SPRATT'S PATENT DISTEMPER CURE. **75c per box.**

SPRATT'S PATENT MANGE CURE. **75c per box.**

SPRATT'S PATENT WORM REMEDY. **50c per box.**

SULPHO-TOBACCO SOAP. An excellent soap for washing dogs and cats. **Pkg., 15c and 30c, postpaid.**

SPRATT'S OVALS—The Pocket Dog Biscuit. A small Meat-Fibrine Dog Biscuit, suitable as a staple diet for small dogs and toys. **26-oz. carton, 40c; 5-lb. carton, 85c.**

SPRATT'S CAT FOOD. A complete food for cats. Used at the leading cateries throughout the world and daily becoming more popular among the fancy. **24-oz. carton, 35c; 5-lb. carton, 85c.**

PERFECTION DOG FOOD. A

Balanced Meat-Cereal Food for Puppies and Grown Dogs. Endorsed and used as a dog and puppy food by the leading dog and kennel owners throughout the United States. **Price, 5 lbs., 60c; 10 lbs., \$1.00; 25 lbs., \$1.75; 50 lbs., \$3.00; 100 lbs., \$6.00; 500 lbs., \$27.50.**

CATNIP MICE — Exercising Toys for Cats.

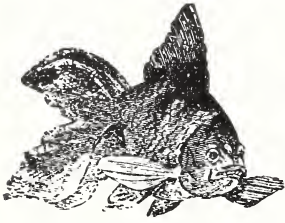
They can't let it alone, ridiculously amusing; positively beneficial; will last a lifetime. Catnip and other herbs, Nature's own



remedy for cats. **Price complete, 15c; postpaid, 18c.**



Archias' Goldfish and Supplies



Our Goldfish season closes March 15

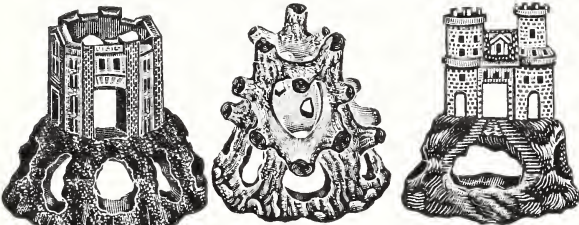
Book on Goldfish

"THE AQUARIA." A new 64-page book, which illustrates and describes the varieties of Goldfish and gives full instructions for their breeding and care. Price, 20c, postpaid.

Price List of Goldfish

- Fish must travel by express only, customer paying express charges.
- CHINESE GOLDFISH.** Small size, 20c each; 4 for 75c; \$2.00 per dozen. Medium size, 25c each; 3 for 65c; \$2.25 per dozen. Large size, 45c to 75c each.
 - SILVER FISH.** Darker than goldfish, and nice for a variety. 25c each; 2 for 45c. Larger ones, 40c to 75c each.
 - ORIOLE FISH.** Beautifully variegated golden red and clear black. 35c each; 3 for \$1.00. Larger size, 40c to 75c each.
 - PEARL FISH.** Clear, pearly white color, or the white is variegated with gold markings. 35c each; 3 for \$1.00. Extra large, 50c to 75c each.
 - JAPANESE FANTAIL FISH.** Imported Japanese fish; very handsome. Price, according to shape and color, 50c to 75c each. Some extra choice, 75c to \$1.25 each.
 - TADPOLES.** Used to keep the water pure. 10c each; 3 for 25c.

FISH BUCKETS. For shipping fish. 25c extra.



No. 277. No. 199. No. 253-A.

Aquarium Castles

- No. 277. **ROUND CASTLE.** 4 in. high. 30c each.
 - No. 256. **ARCH CASTLE.** 5 in. high. 45c each.
 - No. 199. **OPEN GROTTTO.** 2½ in. high, 20c each; 3 in. high, 25c each; 4 in. high, 35c each.
 - No. 222. **LIGHTHOUSE.** 5 in. high. 45c each.
 - No. 234. **CLOSED GROTTTO.** 3 in. high, 15c each; 6 in. high, 25c each.
 - No. 253-A. **OPEN CASTLE.** 5½ in. high. 50c each.
 - No. 224. **OPEN CASTLE.** 6 in. high, 75c each; 4 in. high, 50c each.
 - No. 199. **OPEN GROTTTO.** 7 in. high, 75c each; 6 in. high, 45c each.
- Many other elegant castles at low prices.

DIP NETS. For handling fish. 35c each, postpaid.

Archias' Boss Aquariums—Slate Bottoms

- No. 10. Holds about 3 gallons\$4.95
- No. 11. Holds about 5 gallons 5.95
- No. 12. Holds about 8 gallons 6.95
- No. 13. Holds about 12 gallons 7.95

Fish Food

ARCHIAS' CELEBRATED WAFER FISH FOOD. The best food for all kinds of goldfish. This we import from Europe, where they make the best quality and of the purest materials. 10c per box; 3 for 25c, postpaid.

NATURAL FISH FOOD. Keeps fish in good health and color. Especially good for young fish. Box, 15c; 2 for 25c, postpaid.

CRUSHED PEARL AQUARIUM SHELL. Lb., 5c; 6 lbs., 25c.

PURE WHITE SAND. Desirable for putting in the bottom of fish globes and aquariums. Pkg., 10c; 2 for 15c.

AQUARIUM SHELLS. A nice mixture of small seashells and pebbles in bulk. 25c to 50c per pint.

Plants for Aquariums and Globes



Moss.

AQUARIUM MOSS (Cacombia). Per bunch, 15c; 2 bunches for 25c, postpaid.



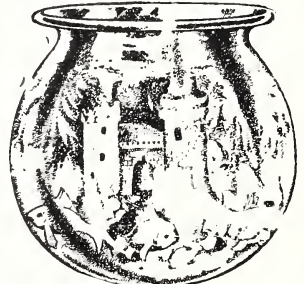
Cyperus.

CYPERUS (Umbrella Plant). 15c each; 2 for 25c. Postage, 5c extra.

Our Great Offer, \$2.75

This beautiful "Parlor Collection," consisting of one 8-qt. globe, 2 fancy silver fish, 1 fancy silver fish, 1 tadpole, 1 fancy castle, 1 pkg. mixed shells, 1 box fish food, 1 bunch water plant, 1 pail for shipping fish and a 64-page book on care of goldfish.

Boxed and packed complete ready for shipment, only \$2.75. Just the thing for the school room, library or office.



Fish Globes

1 qt., 15c; 2 qt., 30c; 4 qt., 50c; 8 qt., 95c; 12 qt., \$1.50.

SQUAT FISH GLOBES at same price.

The above globes are made of the best glass and elegant designs.



AQUARIUM CEMENT. 4-oz. pkg., 25c; 8-oz. pkg., 45c; 16-oz. pkg., 65c, postpaid. Full directions with each package.

Bargain Aquarium Collection, \$9.45



One No. 11 Aquarium, 1 No. 8 Botanic Arch, 6 Goldfish, 1 Pearl Fish, 1 Oriole Fish, 1 Silver Fish, 2 Tadpoles, bunch of water plants, 1 package aquarium sand, 1 package aquarium shells, 1 Book on Goldfish, 1 package Fish Food, 1 pail for shipping fish. This grand collection (worth \$12.50), packed and delivered to express office at Sedalia for only \$9.45.

Just what you want for your home, office or store window.

Archias' Wholesale Prices 1930

For Market Gardeners, Florists
Large Planters and Dealers

Our Gilt Edge Warranty is Your Protection

These special, very low prices do not include delivery. If wanted by mail, add postage as per schedule, zone rates.

ASPARAGUS. See Page 3.

Giant Washington Rust-Proof	1 lb.	\$1.35
Barr's Mammoth	1 lb.	.75

BEANS—DWARF. See Page 3.

Stringless Green Pod, Burpee's	10 lbs.	\$3.50	25 lbs.	\$7.60
Improved Red Valentine, Green Pod	10 lbs.	3.50	25 lbs.	8.00
Golden Wax	10 lbs.	2.25	25 lbs.	5.50
Pencil Pod Black Wax	10 lbs.	2.25	25 lbs.	5.50
Burpee's Bush Lima	10 lbs.	3.00	25 lbs.	6.50
Henderson's Bush Lima	10 lbs.	2.75	25 lbs.	6.25
Jackson Wonder Bush Lima	10 lbs.	2.50	25 lbs.	5.00

BEANS—POLE. See Page 3.

Kentucky Wonder	10 lbs.	\$2.25	25 lbs.	\$5.00
Lazy Wife	10 lbs.	2.25	25 lbs.	5.00
King of the Garden Lima	10 lbs.	2.50	25 lbs.	5.50

BEETS—For Table Use. Page 3.

Crimson Globe	1 lb.	\$0.85	5 lbs.	\$4.00
Detroit Dark Red	1 lb.	1.25	5 lbs.	5.50
Crosby's Egyptian	1 lb.	.85	5 lbs.	3.75
Early Eclipse	1 lb.	.85	5 lbs.	3.75
Early Wonder	1 lb.	.85	5 lbs.	3.75
Swiss Chard	1 lb.	1.15	5 lbs.	5.00

BEETS—For Stock Feed. Page 3.

Golden Tankard Mangel	5 lbs.	\$3.50
Mammoth Red Jumbo	5 lbs.	3.00

CABBAGE. See Page 4.

Golden Acre	1 lb.	\$5.00
Archias' Allhead Early	1 lb.	2.50
Archias' Surehead	1 lb.	2.50
Early Jersey Wakefield	1 lb.	2.50
Copenhagen Market, Danish	1 lb.	2.90
Glory of Enkhuizen, Danish	1 lb.	2.90
Premium Late Flat Dutch	1 lb.	2.00
Chinese Celery Cabbage	1 lb.	3.25

CARROTS. See Page 5.

Oxheart or Guerande	1 lb.	\$0.75	5 lbs.	\$3.25
Early Scarlet Horn	1 lb.	.75	5 lbs.	3.25
Danvers	1 lb.	.70	5 lbs.	3.00
White Belgian, For stock	1 lb.	.75	5 lbs.	3.50

CELERY. See Page 5.

Giant Pascal, French	1/4 lb.	\$0.50	1 lb.	\$1.50
White Plume, French	1/4 lb.	.90	1 lb.	2.50
Golden Self-Blanching	1/4 lb.	1.10	1 lb.	4.00

SWEET CORN. See Page 4.

Golden Bantam	10 lbs.	\$1.75	25 lbs.	\$4.00
Early Adams (Not Sweet)	10 lbs.	1.00	25 lbs.	2.25
Early Minnesota	10 lbs.	1.50	25 lbs.	3.50
Country Gentleman	10 lbs.	1.75	25 lbs.	4.00
Stowell's Evergreen	10 lbs.	1.40	25 lbs.	3.00

CUCUMBERS See Page 5.

Davis' Perfect	1 lb.	\$1.10	5 lbs.	\$5.00
Improved Long Green	1 lb.	1.10	5 lbs.	5.00
White Spine Improved	1 lb.	1.10	5 lbs.	5.00
New Everbearing	1 lb.	1.10	5 lbs.	5.00

LETTUCE. See Page 5.

New York Market	1 lb.	\$2.25	5 lbs.	\$10.50
Improved Big Boston	1 lb.	1.25	5 lbs.	5.00
Grand Rapids	1 lb.	1.25	5 lbs.	5.00
Hanson	1 lb.	1.15	5 lbs.	4.50
Black-Seeded Simpson	1 lb.	1.15	5 lbs.	4.50
Prize Head	1 lb.	1.15	5 lbs.	4.50

MUSKMELON. See Page 6.

Pollock's 10-25 Salmon Tint, Selected Seed	1 lb.	\$1.00	5 lbs.	\$4.50
Rocky Ford Cantaloupe	1 lb.	.90	5 lbs.	4.00
Burrell's Gem	1 lb.	.90	5 lbs.	4.00
Hackensack	1 lb.	.75	5 lbs.	3.25
Honey Ball	1 lb.	1.25	5 lbs.	5.00
Honey Dew	1 lb.	1.00	5 lbs.	4.50

WATERMELON. See Page 6.

Kleckley's Sweet	1 lb.	\$0.90	5 lbs.	\$4.00
Tom Watson	1 lb.	.75	5 lbs.	3.50
New Wonder Melon	1 lb.	.90	5 lbs.	3.50
New Stone Mountain	1 lb.	1.25	5 lbs.	5.50
Irish Grey	1 lb.	.90	5 lbs.	4.00
Halbert Honey	1 lb.	.75	5 lbs.	3.50

ONION. See Page 7.

Danvers Yellow Globe	1 lb.	\$1.75	5 lbs.	\$8.00
Southport Red Globe	1 lb.	2.00	5 lbs.	8.75
Large Red Wethersfield	1 lb.	1.50	5 lbs.	7.00
Prizetaker	1 lb.	1.75	5 lbs.	8.00
Silverskin	1 lb.	2.00	5 lbs.	8.75
Southport White Globe	1 lb.	2.00	5 lbs.	8.75

PARSNIPS. See Page 8.

Hollow Crown	1 lb.	\$0.55	5 lbs.	\$2.00
Market Garden	1 lb.	.55	5 lbs.	2.00

PEAS. See Page 7.

Alaska, Very early	10 lbs.	\$1.80	25 lbs.	\$3.75
Archias' Extra Early	10 lbs.	1.80	25 lbs.	3.75
Laxtonian	10 lbs.	1.80	25 lbs.	4.40
American Wonder	10 lbs.	1.80	25 lbs.	3.75
Premium Gem	10 lbs.	1.80	25 lbs.	3.75
Market Garden	10 lbs.	1.75	25 lbs.	3.75
Archias' Select Everbearing	10 lbs.	1.75	25 lbs.	3.75

PEPPER. See Page 8.

Ruby King	1/4 lb.	\$0.90	1 lb.	\$3.25
Chinese Giant	1/4 lb.	1.00	1 lb.	3.50
Long Red Cayenne	1/4 lb.	.90	1 lb.	3.25
Pimiento	1/4 lb.	1.00	1 lb.	3.50

PUMPKIN. See Page 8.

Large Cheese—Kentucky Field	1 lb.	\$0.50	5 lbs.	\$1.75
Large Yellow Cornfield	1 lb.	.40	5 lbs.	1.75

RADISHES. See Page 9.

Archias' Globe, Danish Forcing	1 lb.	\$0.60	5 lbs.	\$2.50
Early Scarlet Turnip, White Tipped	1 lb.	.60	5 lbs.	2.50
Early Scarlet Turnip	1 lb.	.60	5 lbs.	2.50
French Breakfast	1 lb.	.60	5 lbs.	2.50
Chartier	1 lb.	.60	5 lbs.	2.50
Long Scarlet Short Top	1 lb.	.60	5 lbs.	2.50
Icicle Long White	1 lb.	.65	5 lbs.	3.00
China Rose Winter	1 lb.	.65	5 lbs.	3.00
Long Black Spanish	1 lb.	.65	5 lbs.	3.00

RUTABAGA See page 10.

Purple Top Yellow	1 lb.	\$0.60	5 lbs.	\$2.50
-------------------	-------	--------	--------	--------

SPINACH See Page 9.

Long Standing Bloomsdale	1 lb.	\$0.40	5 lbs.	\$1.75
King of Denmark	1 lb.	.40	5 lbs.	1.75

SQUASH. See Page 9.

Yellow Summer Crookneck	1 lb.	\$0.75	5 lbs.	\$3.50
White Bush Scalloped	1 lb.	.75	5 lbs.	3.50
Hubbard	1 lb.	.90	5 lbs.	4.00

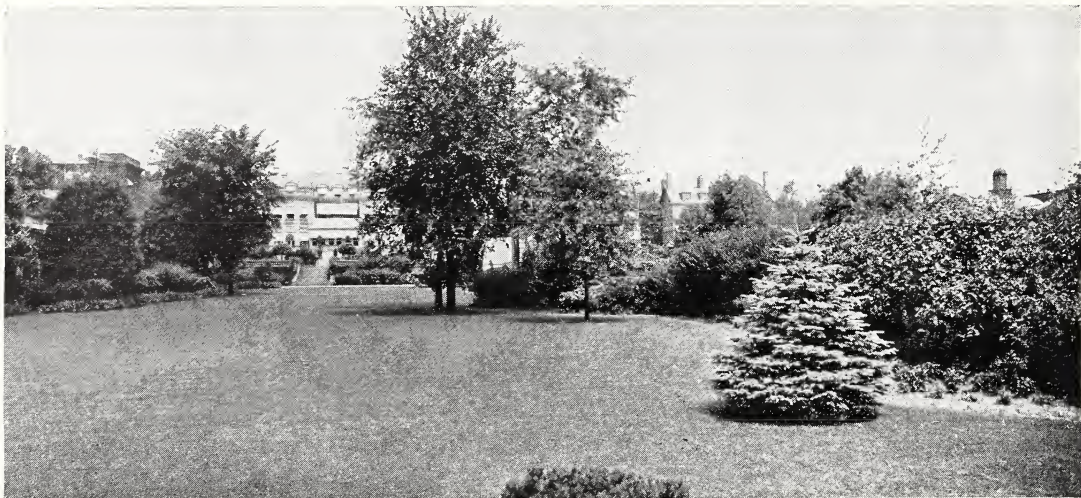
TOMATO. See page 10.

John Baer	1/4 lb.	\$0.70	1 lb.	\$2.50
Earliana	1/4 lb.	.70	1 lb.	2.50
Beauty	1/4 lb.	.70	1 lb.	2.50
Ponderosa	1/4 lb.	1.25	1 lb.	4.50
Dwarf Champion	1/4 lb.	.90	1 lb.	3.50
Archias' Missouri Giant	1/4 lb.	1.75	1 lb.	6.00
Stone	1/4 lb.	.70	1 lb.	2.50
Marglobe—Wilt Resistant	1/4 lb.	1.25	1 lb.	4.50

TURNIP. See page 10.

Extra Early Purple Top Milan	1 lb.	\$0.65	5 lbs.	\$2.90
Purple Top Strap Leaf	1 lb.	.40	5 lbs.	1.90
Early White Flat Dutch	1 lb.	.40	5 lbs.	1.90
White Egg	1 lb.	.40	5 lbs.	1.90
Red or Purple Top Globe	1 lb.	.40	5 lbs.	1.90
Amber Globe	1 lb.	.40	5 lbs.	1.90
Large White Globe	1 lb.	.40	5 lbs.	1.90

If wanting varieties in quantities that are not named in this list, please write us.



Archias' Evergreen Lawn Grass Seed

This is a mixture of celebrated Kentucky Blue Grass and other soft-bladed grasses that will withstand the heat and dry weather of our Summer and our most severe Winters, and insure a permanent evergreen lawn. Archias' Evergreen Lawn Grass Seed is as pure and reliable as can be found anywhere. We highly recommend this mixture for general purposes. Lb., 50c; 3 lbs., \$1.35; 10 lbs., \$4.25, prepaid.

Archias' "Shady Nook" Lawn Mixture

A mixture of grasses that will thrive in a shady situation, under trees or close to walls where there is little sun. Lb., 60c; 3 lbs., \$1.50; 10 lbs., \$4.50.

Archias' Terrace Sod Lawn Grass

Best mixture for terraces, railroad embankments and side hills, preventing heavy rains from washing. Will withstand drought and produce a rich, velvety green turf throughout the season. Lb., 60c; 3 lbs., \$1.50; 10 lbs., \$4.50.

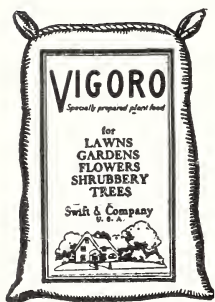
To Produce a Good Lawn

Plow or dig up the surface thoroughly to a depth of 12 inches and mix the soil with well rotted manure or our Archias' Sure Lawn Fertilizer, the latter being at all times preferable, as it is more durable in its effect and free from weed seeds, which are always contained in more or less quantities in stable manure.

The soil should be well pulverized before sowing, and the lawn kept free from weeds the first season. The quantity of seed required is one pound to every 300 square feet.

Fertilizers for Farm, Lawn, Garden, Greenhouses

No Land is so Good But It Will Pay a Good Profit on a Judicious Use of Fertilizer.



Vigoro

Specially Prepared Plant Food
VIGORO produces velvety lawns, more and prettier flowers, full foliated shrubbery, delicious vegetables and leafy trees. It is the ideal plant food for whatever you grow. For top dressing 100 lbs. will cover lawn 40x100 feet. 5 lbs., 50c; 25 lbs., \$1.75; 50 lbs., \$2.75; 100 lbs., \$5.00.

Bone Meal

For Roses, Grapes, Fruit and Ornamental Trees
1 lb., 10c; 3 lbs., 25c; 10 lbs., 65c; 25 lbs., \$1.25.

Wizard Brand Sheep Manure

Pulverized Sheep Guano is the ideal dressing for cemetery or private lawns, golf courses, or wherever a strong, luxuriant growth of grass is needed. Market gardeners and tuckers will find sheep guano extremely profitable to use on all crops. Carnations, roses, chrysanthemums and violets are particularly benefited by its liberal use. 25-lb. bag, 75c; 50-lb. bag, \$1.25; 100-lb. bag, \$2.25.

Potting Soil

For repotting ferns and all house plants. Specially prepared and ready for use. Pk., 35c; 1/2 bu., 50c; bu., 85c; 2 bus., \$1.50, not prepaid.

Nitrate of Soda

For vegetables use 300 lbs. to acre. For lawns and pot plants use in liquid form. 1 lb. to 25 gals. water. Price, 1 lb., 15c; 10 lbs., \$1.25; 25 lbs., \$2.00; 100 lbs., \$7.50.

Sulphate of Ammonia

Increases plant growth on farms, gardens, orchards, vineyards, greens, lawns and shrubs. Lb., 15c; 5 lbs., 50c; 10 lbs., 85c; 25 lbs., \$2.00; 100 lbs., \$6.30.

Armour's Reliable Fertilizer

	Per Bag	2 Bags or Over
Big Crop Fertilizer, 4-16-4	\$3.25	\$3.15
Big Crop Fertilizer, 2-10-2	2.75	2.65
Big Crop Fertilizer, 2-12-2	2.35	2.25
Big Crop Steamed Bone Meal, 3-24	3.35	3.25
Big Crop Raw Bone Meal, 4 1/2-22	3.75	3.65
Big Crop Acid Phosphate, 0-20-0	2.25	2.15
Big Crop Acid Phosphate, 0-16-0	1.85	1.75

Lime for Lawns and Gardens

This is an excellent tonic—sweetens the soil, stimulates growth, deepens color, improves quality, releases nitrogen for plant food and aids blooming. Flowers in pots, boxes or in the garden, vegetables and also fruit and ornamental trees and shrubs show marked increase in growth and beauty by a liberal application of lime. Apply about a pound to every 30 square feet surface and rake in gently. This may be done before planting or after plants are several inches high. 10-lb. bag, 25c; 50 lbs., 65c; 100 lbs., \$1.00. Delivered in Sedalia.