


F 73

.5

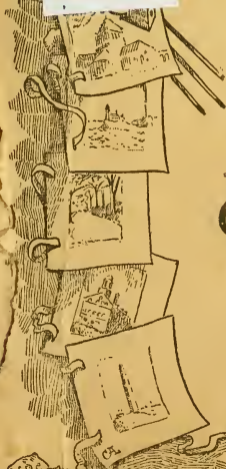
.B82

Copy 1

Boston in Half a Day

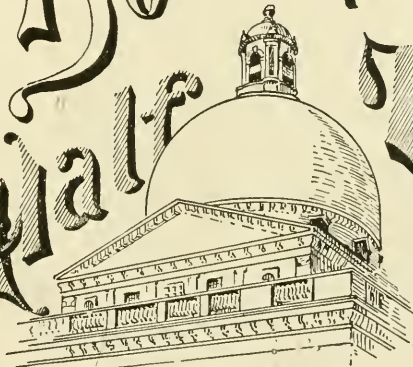
A detailed illustration of the Massachusetts State House dome, showing its classical architecture with a pediment and a small cupola on top. The dome is rendered in a dark, textured style.

SOUVENIR PUBLISHING COMPANY
LYNN MASS.

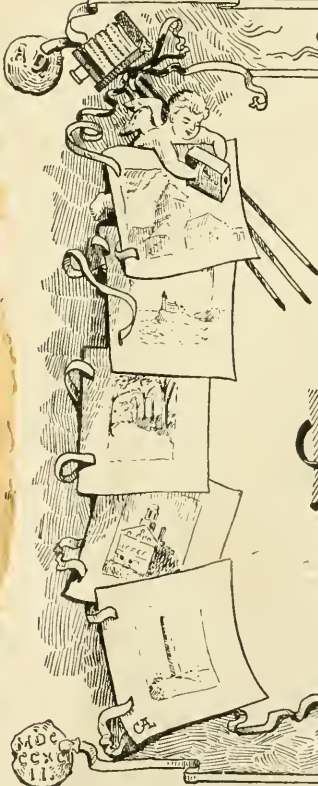
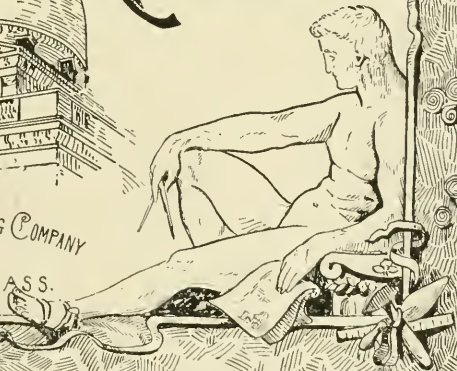


18
402994

Boston in Half Pound



✓ SOUVENIR PUBLISHING COMPANY
LYNN MASS.

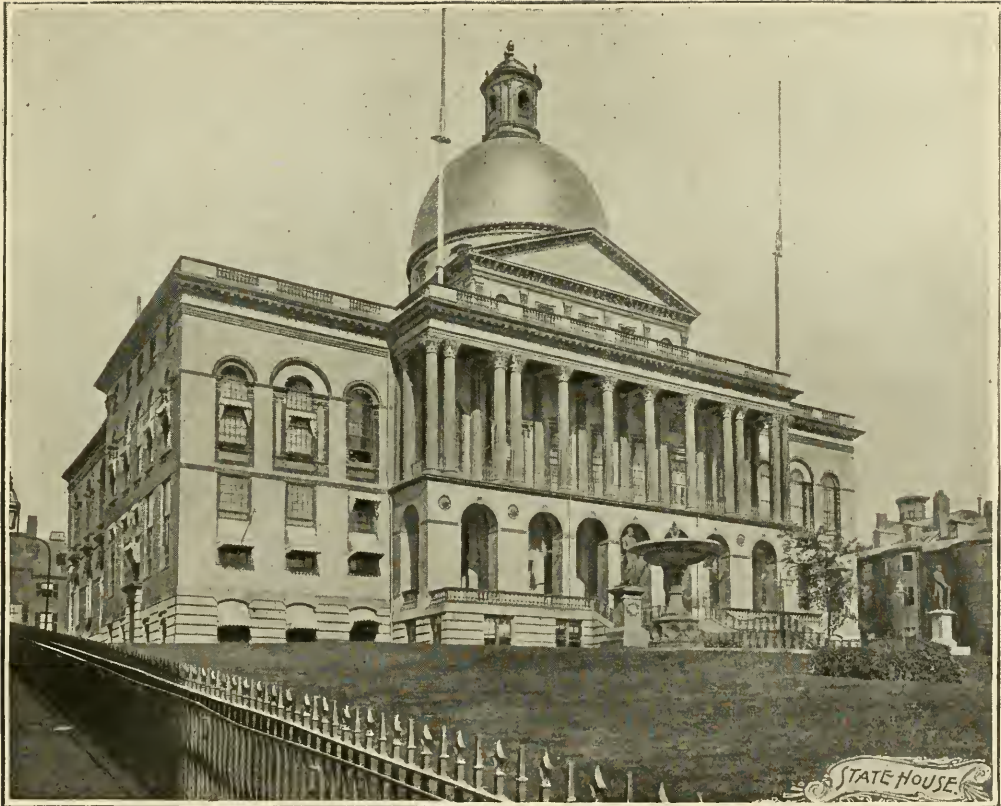


MDC
CCXC
11.

* * * * *

Entered, according to Act of Congress, in the year 1892, by
SOUVENIR PUBLISHING CO.,
In the Office of the Librarian of Congress at Washington, D. C.

* * * * *



STATE HOUSE



ATTUCKS MONUMENT





BOSTON POST OFFICE.



HOTEL VENDÔME



STATUE OF
JOSIAH QUINCY



CITY HALL



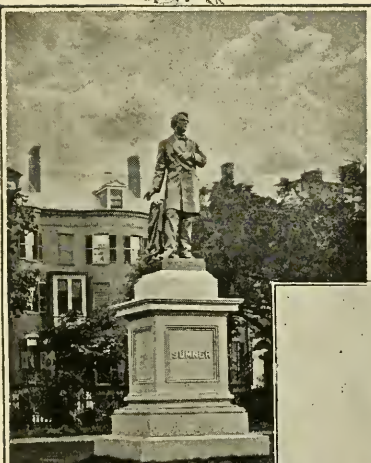
SOLDIERS MONUMENT
BY THE COMMONS '76



BOSTON HARBOR, TOWARDS CHARLESTOWN.



THE COMMON BEACON STREET MALL



STATUE OF CHARLES SUMNER



QUINCY MARKET

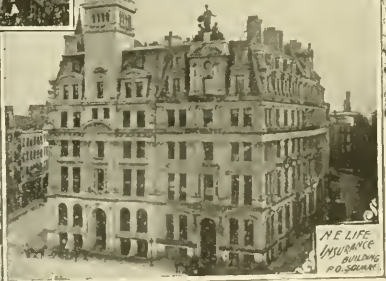


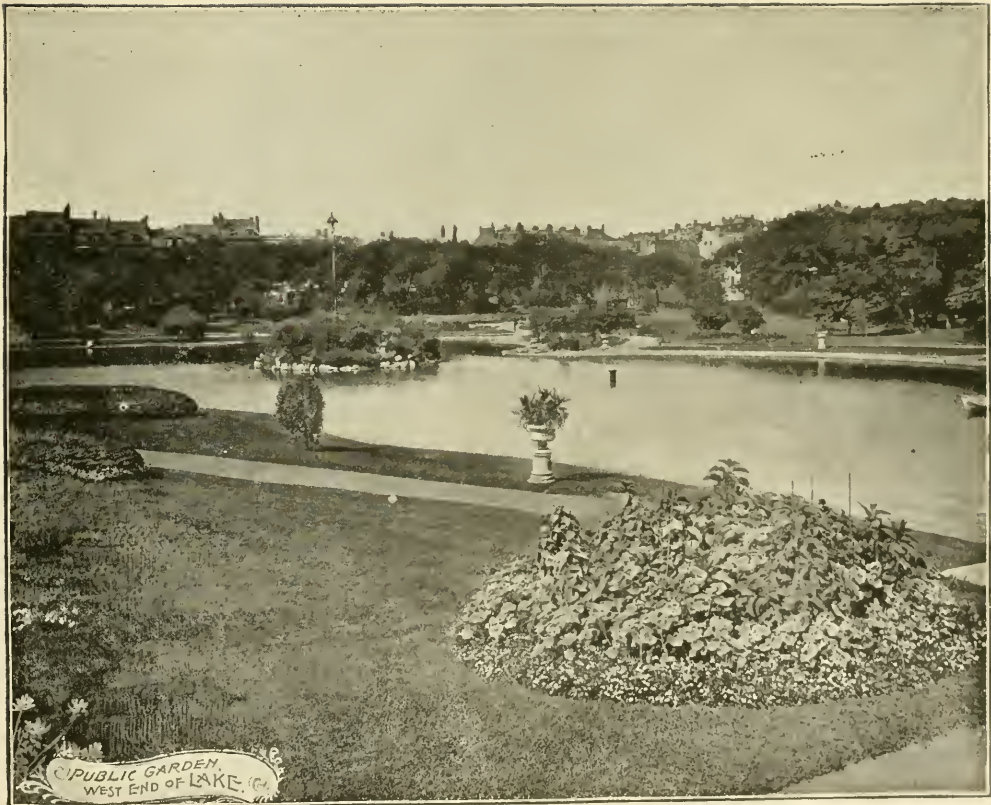
FANEUIL HALL





MAID OF THE MIST AND WASHINGTON STATUE.





PUBLIC GARDEN,
WEST END OF LAKE.



ALGONQUIN CLUB HOUSE



LIBERTY SQUARE
FROM MILK ST.



CHAMBER OF COMMERCE



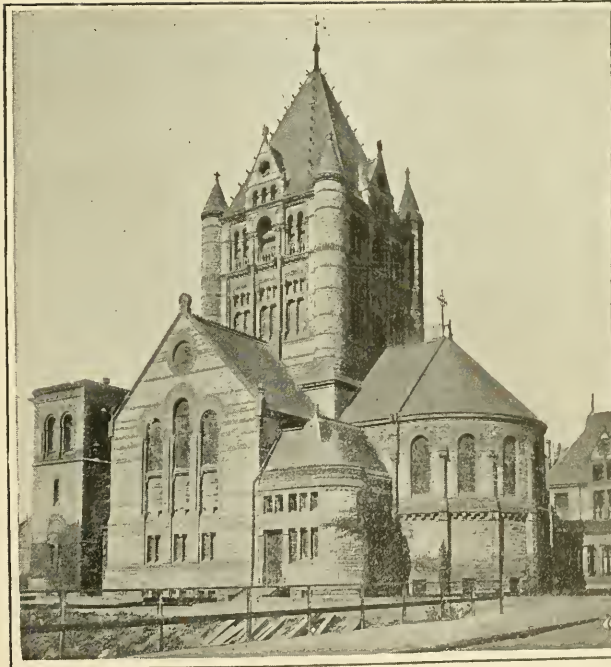
PUBLIC GARDEN
LOOKING EAST.



HOTEL
BRUNSWICK.



© DOCK SQUARE AND ADAMS STATUE.



OLD SOUTH CHURCH.

TRINITY CHURCH.



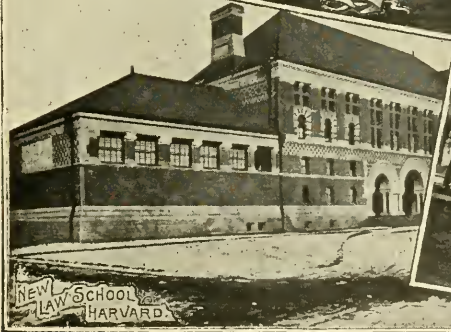
MUSEUM OF FINE ARTS



COMMONWEALTH
AVENUE.



HARVARD LIBRARY



NEW LAW SCHOOL HARVARD



HASTINGS HALL HARVARD



HARVARD
MEMORIAL HALL.



BUNKER HILL MONUMENT.



View of BOSTON 1767 by GOV. POWELL

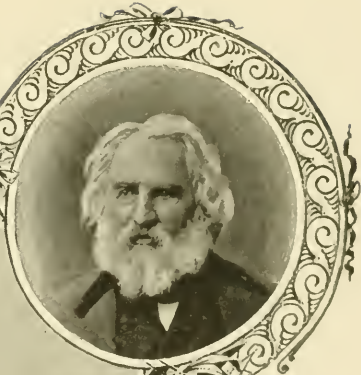


STATUE OF ALEXANDER BURNETT





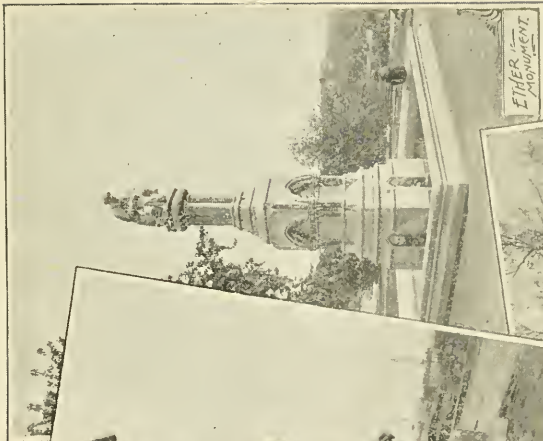
NAVY YARD FROM BUNKER HILL MONUMENT



LONGFELLOW AND HIS HOME



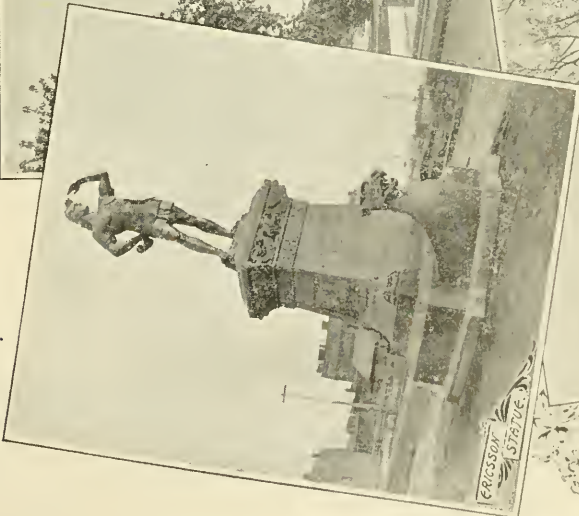
THE WASHINGTON ELM.



ETHER MONUMENT



ENTRANCE TO COLBURN PARK

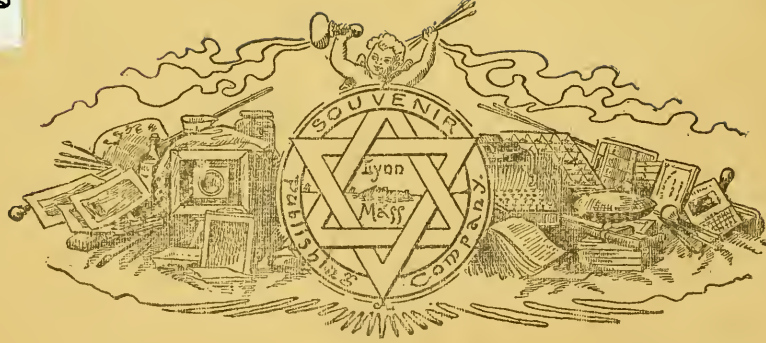


ERICSSON STATUE

LIBRARY OF CONGRESS



0 014 078 155 1



LIBRARY OF CONGRESS



0 014 078 155 1

