

Historic, Archive Document

Do not assume content reflects current scientific knowledge, policies, or practices.

62.23

LIBRARY
JUN 1937
U.S. Department of Agriculture

IRIS

1937

**QUALITY
GARDENS**

FREEPORT
ILLINOIS

HEMEROCALLIS



SPRING COMES TO QUALITY GARDENS

Fine New and Rare

IRIS and HEMEROCALLIS

MRS. DOUGLAS PATTISON

Owner of Quality Gardens

871 W. STEPHENSON STREET, FREEPORT, ILLINOIS

FOREWORD . .

QUANTITY GARDENS again takes great pride in presenting its 1937 list of irises—the cream of this race, the most modern collection obtainable, as well as the selection of the older varieties that have held on by their sheer beauty and excellence.

The greatest progress has been made in improving and developing the race of bearded irises in the last twenty years that had been made in any Plant genus—we believe the most rapid ever made in any garden plant. Plant breeding has been placed on a thoroughly scientific basis with reasonably predictable results and with the breeder having a definite goal.

The result is there has been a flood of new varieties of irises, the development of new color ranges among the blends and the vast improvement of the selfs and bicolors, both in purity of tone, size, height and best of all in the iris, always fragile, substance.

Because of the rapidity of producing new seedlings and the establishment of higher standards speed has proved its own corrective and the selection of worthwhile new irises becomes easier because all breeders now know that an iris must have real outstanding quality to compete with those already in commerce.

The great hosts of new varieties that have been introduced in the last few years have proved puzzling, and perhaps discouraging to gardeners seeking plants to improve their garden. We have endeavored by making our lists selective of the best there is in the iris world, avoiding listing those which are practically identical, to print a catalogue of real value to a gardener. Every iris we list is first class and well worth growing.

It sometimes happens that we can't see the woods for the trees. It has occurred to us after visiting many gardens all over the country, that we have been so interested in the production of new irises and the discussion of their relative merits and points, that we have neglected to get the better irises into the gardens. It is possible, as has been suggested to us, that we have seared the rank and file away from the iris to some extent because we have made them too much of

a connoisseur's flower. When you start a cult for a flower, new varieties and their inspection take away from the main idea, garden value, of the ones we already have.

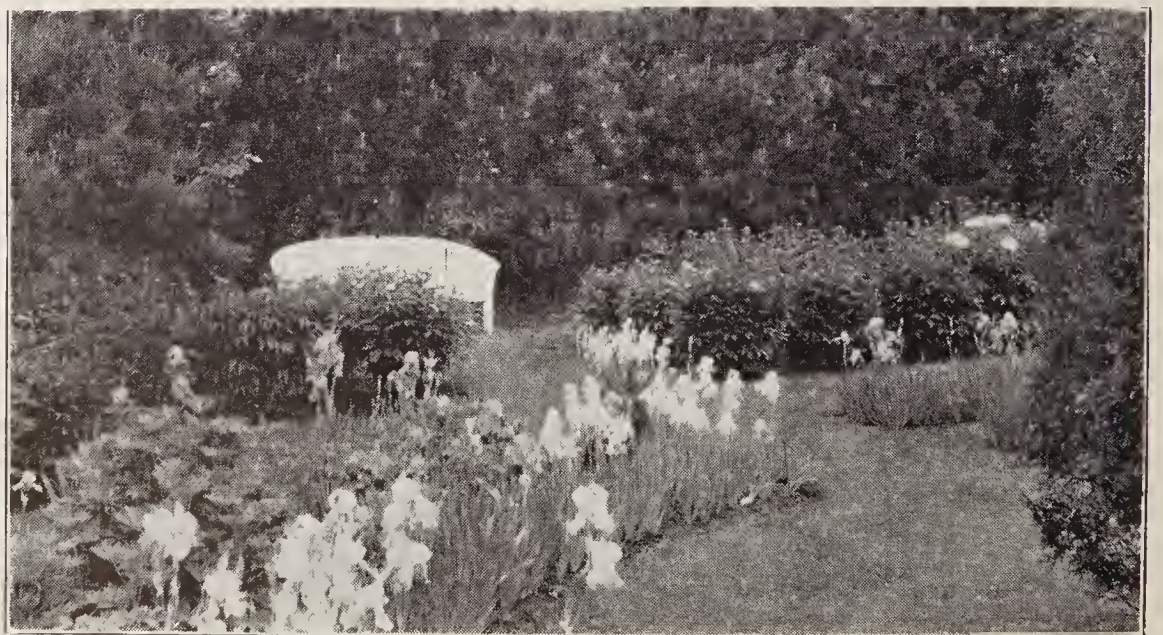
The proved and tested irises should be used lavishly in the gardens of the country because they produce the effect of beauty and lavish bloom at a season that is peculiarly their own and when there is nothing to compete with them in stately and entrancing beauty.

There has been much improvement in the variegatas—those with yellow standards and contrasting falls. The older King Juba, Vision and the new Deseret, are among the top-notchers, the first two of tried value through several years. Deseret is a stunning plant, tall and large flowered with clear rich yellow standards and dark velvety falls.

The yellows have been stabilized on as high a plane as had previously been attained in other classes, the yellows being the last to yield to the hybridizer's art. We now have them as big as the biggest and with stems as tall as the tallest.

Crysooro and Golden Bow, intermediates of superlative beauty of form and coloring; Desert Gold, early and medium tall; Alta California, a tall deep yellow; Chromylla, exquisite in coloring and lovely and smooth of finish, and the trimly chiseled Phebus, another soft yellow of fine quality, are among the standbys.

Happy Days is a giant for size and of good color and California Gold is one of the richest and deepest yellows. Eilah, a large flaring flower of beautiful form and coloring, is indeed a beauty. The very new Jasmania is, all things considered, perhaps the most satisfactory yellow we have grown. Tall, widely branched, it carries a candelabra of large, perfectly formed golden yellow flowers and it is very hardy and a fast grower. Golden Hind is of gorgeous coloring, of medium height and size. Alice Harding, a peculiarly soft and beautiful yellow well worth a place. Lady Paramount, a lighter yellow, is of good coloring and a consistent bloomer. Naranja, a deep yellow with an orange tone, is stunning; one of the most beautiful introductions in recent years.



The reds have become one of the gorgeous creations of the plant world. Ella Winechester, a beautiful velvety red of unusually fine form is constantly growing in favor. Garden Magic, new last year and one we were proud to offer, is, we think, the best red we have seen, notwithstanding the idiosyncrasies of rating judges. Red Douglas, a darker red, has been widely praised. The late Mr. Thomas of Salt Lake City gave us a fine red in Piute, a self, similar in form to Numa Roumestan, but much richer, a clear deep red. Junaluska, a soft toned red, makes instant friends. Burning Bronze, so aptly named, is the best of the dusky reds.

The whites are striking examples of the great development in irises. Gudrun is one of the whites that causes arguments. We grow it well and it is greatly admired. Easter Morn and Venus de Milo, wonderful whites, are now low in price and there are none better. Every garden needs them. Purissima is ideal where it grows well. It flourishes with us and in other midwest gardens and its early reputation for tenderness has not been altogether born out. When it consents to flourish, it is the ideal white.

Snow King is a magnificent iris and well named. Crystal Beauty, even whiter, is also descriptively named. Of different form but equally fine is Our Lady of the Snows which we are introducing for Dr. A. E. Waller of Ohio State University.

For years hybridists have been trying to breed the purple tints out of the so-called blue irises and they are making a fine approach to clear blues. Sierra Blue, 1935 Dykes medalist, and Shining Waters, are two of the best, the latter of exquisite tone. Missouri stands out as the best all-around medium toned velvety blue. It's a beauty. Blue Triumph, on the lighter side of the color range, is a magnificent flower on widely branched stalks with blooms of very heavy texture. Narain and Dymia are burning dark shades of the tones used by the old masters. They are splendid and needed additions to the dark side of the blues with fine height and branching. Television Blue, of the lovely old Corrida coloring, is being introduced this year.

Wasatch and Seduction are striking examples of the plieata type, Rosy Wings a lovely rose-colored flower, and Siegfried, the new peach-toned plieata introduced by Hans P. Sass last year, is perhaps the most outstanding iris of the past decade.

The iris that caused the most comment in our garden last year because of its unusual coloring was a fascinating pink blend with dainty pink standards. We have named it Morocco Rose. The color plate hardly does it justice, but it is extremely difficult to reproduce the subtle gradations of color in these delicate blends. This came from the garden of Dr. P. A. Loomis, who consents all too seldom to the introduction of his beautiful seedlings.

We wish to call attention at this time to the remarkable and beautiful developments in an old time garden favorite, the hemerocallis, commonly known as lemon lilly, corn lilly, yellow day lilly.

This plant has been the subject of vast improvement at the hands of the hybridists quite similar to the strides made

in irises for several years past. In the other days we knew only two species, the old lemon lilly, *Hemerocallis flava*, blooming in mid-May, and the tawny day lilly, the reddish one that blooms in July and August, spreads mightily and lustily, and has escaped and naturalized along roadsides.

The color range now, thanks to wedding the tawny day lilly with yellow species ranges from creamy pale yellow to brilliant reds. Where formerly there were only the two commonly known, we now have scores of varieties with a blooming season ranging from May until September. The yellows in great varieties are particularly fine companions for the iris and there are a number of them bloom with the iris. The newer varieties do not spread by underground stolons as do the old lemon and tawny day lillies. They stay where they are put, the clumps merely enlarging. They are remarkably free bloomers.

The day lillies are the hardiest kind of perennials, do well in any soil, even dry, sandy soil, thrive in sun or shade, range in height from 2 to 4 feet. The foliage is curving, ornamental and always fresh and green.

The plant is known as a day lilly because each bloom endures for only a day, but the stems bear a great many buds which open successively, so there is always a display. Among the later season varieties are some that are evening bloomers and particularly effective at the close of sultry afternoons. Most of the varieties have a delightful fragrance.

We believe that you will find new beauty and garden pleasure in planting hemerocallis with your irises, and by selection according to their season, have a continuous display of them all summer. Later they are fine specimens with the globe thistles, delphiniums, hardy salvias and other blue perennials. Once planted, you needn't bother more with them for a number of years; a most convenient and beautiful plant.

The Freeport Iris Show will be held this year on June 5th and 6th, unless it is necessary to change the dates because of weather conditions. We shall have on display in Quality Gardens some fine American seedlings. You are invited to visit our gardens to see them and the many other fine varieties on display.

We are particularly thrilled at the prospect of seeing in bloom the seedlings exhibited by Mr. Howard Glutzbeek, of Lynbrook, New York, at Rockefeller Center Horticultural Hall last season, one of which, a huge and colorful variegata, won the silver medal. Mr. Glutzbeek has complimented us by sending them here for our judgment and for that of the many judges who come here to see the newest things. We have a fine set of seedlings from Mr. Sam Graham, of Rome, Ga., whose good taste in iris is unquestioned. Mr. Cahoon, of Birmingham, Ala., has also sent us some to judge. We have a splendid lot from the gardens of Mr. Hans P. Sass, of Elkhorn, Neb., and Mr. Jacob Sass, of Benson Station, Neb. We also have the new yellow iris exhibited by Mr. Pilkington at Chelsea last year, and highly commended by the English Iris Society Bulletin. We have single plants from many hybridizers all eager to try their luck with the judges.

Visit Quality Gardens at Iris time.

Mrs. Douglas Pattison

Novelties and Rare Iris for 1937

CHLORIS (Knorr 1937) M. 42". The award winner in the large seedling class in the Freeport Iris Show in 1935. The stalk is very tall and widely branched and the flowers large and semi-flaring. The ground color is a luminous moonlight yellow, with a delicate orchid and blue blended overlay. The only Freeport origination in our catalogue, but a very worthy one. **\$15.00**

JUBILESTRA (Grinter 1937) M. 38". A perfect yellow self. The texture resembles pure yellow taffeta, seemingly frail but stands up better than most of the heavy textured kinds. The beard is the same shade as the flower. The branching is good and the flowers well placed. (Originator's note: "A Pluie D'Or seedling, but the pollen parent is not of the iris family. A close observation of the blossom discloses that the texture, stamens, etc., are different. Jubilestra is only part iris.") **\$20.00**

MOROCCO ROSE (Loomis 1937) M. 38". The most admired iris in our display garden last season because of its great delicacy and fresh pink coloring. The flower is large, almost 5½ inches long. The standards are a lustrous pale pink, flushed deeper pink with a soft yellow flush at the base. The falls are long and semi-flaring, of deep rosalene pink. The garden effect is a glowing rich pink. **\$20.00**

OUR LADY OF THE SNOWS (Waller 1937) M. 38". A magnificent new white of very pure coloring. The standards are broad and arching, the falls wide and flaring and the substance unusually good. The delicate beard gives the flower an exquisite finish. The stalk is tall and straight and well branched and the flowers large and well placed. **\$20.00**

PIUTE (Thomas 1937) M. 38". One of the best irises we flowered last year. It is the nearest approach to real red that we have seen. It is a pure rich red self with no trace of blue or purple in it. The flower is well rounded and flares in a manner similar to Numa Roumestan, but it is of very heavy texture and smooth finish and more brilliant in color. A truly beautiful iris. **\$20.00**

TELEVISION BLUE (Shuber 1937) M. 40". A clear blue self similar in coloring to the lovely old Corrida, but the flowers are much larger and the stalk is taller and carries many flowers. The shape of the flower is very good and the poise jaunty. Its name was suggested by the new shades in spring fabrics. It's a modern streamlined beauty. Very vigorous and free blooming. **\$15.00**

RED SAILS (Lapham 1937) M. 38". A brilliant reddish iris with tawny chestnut shading. Something about it is strongly suggestive of autumn coloring; it has a glowing quality like the rich coloring of a frosted maple or a late October sunset. S. chestnut with red flush; F. same shade overlaid velvety red. The flower is of good size and the stalk moderately branched. **\$20.00**

BEOWULF (Sehreiner 1936) E. 32". A large early blooming deep maroon self. S. solid maroon with brown shading. F. velvety maroon margined brown. A heavy gold beard gives a glowing center to the flower. **\$12.50**

CHRISTABEL (Lapham 1936) M. 40". The outstanding new iris at the 1935 Chicago Iris Show. A well shaped flower with domed standards and flaring falls. S. deep wine red; F. same shade overlaid blackish purple, giving a brilliant red effect. B. dark yellow with yellow style arms. The texture is good and it withstands heat and moisture. **\$20.00**

CREOLE BELLE (Nicholls 1935). A large flowered Bishop's violet self of lustrous finish and splendid form and substance. The standards are eupp'd, falls flaring and the beard a soft brown. A remarkably beautiful flower. **\$3.50**

DESERET » Thorup 1936





SAHARA » Pilkington 1936

*Blue Flags, yellow Flags, Flags all freckled,
Which will you take? Yellow, blue, speckled?
Take which you will, speckled, blue, yellow,
Each in its way, has not a fellow.*

CHRISTINA ROSETTI: *The Months.*

FAR WEST (Kleinsorge 1936) M. 40". An exquisite blend of salmon and golden sand, flushed coral with a soft yellow glow at the center. The standards are arching and softly ruffled and the standards have a soft blue blaze near the golden beard. **\$15.00**

FIESTA (White 1936) M. 36". A very large copper-toned flower of great charm. The standards are honey yellow, flushed golden brown and mauve. F. cinnamon brown, with orange undertone, with a flush of mauve in the center. Beard brilliant gold. Will undoubtedly be very popular when distributed. **\$15.00**

GOLDEN TREASURE (Schreiner 1936) M. 40". A dainty new shimmering cream colored iris that eludes any description we can give it. The standards and falls are like cream colored silk; the center is deep golden yellow which fades and blends into the falls. The flower has excellent substance, fine form and size and a well branched stem. My fellow grower has produced an iris which we are all proud to list. **\$17.50**

LUCRE (White 1936) M. 40". A rich lemon chrome self of rich and brilliant color. S. deep yellow, F. slightly deeper in tone, with old gold shading near the cadmium yellow beard. A vigorous grower and reliable bloomer. **\$7.50**

MME. LOUISE AUREAU (Cayeux 1935) M. 38". A charmingly unusual plicata. S. soft heliotrope on translucent silvery ground, the color deepens at the margins. F. silvery white, exquisitely sanded and veined at the edges with deeper tones of heliotrope. A most outstanding introduction of unusual and lovely coloring. **\$20.00**

Dykes Medal, 1934.

NARANJA (Mitchell 1935) M. 38". A deep rich yellow self with a distinctly orange cast in the falls; the buds are decidedly orange. The flowers are large and of good form and the stalks tall and straight. A strikingly beautiful flower. **\$15.00**

THE RED DOUGLAS (J. Sass 1937) M. 40". A dark red self of fine proportions, well distributed large flowers on tall widely branched stems. Widely advertised as the best dark red in commerce. We have not bloomed it and will describe it more fully next year. **\$25.00**

SIEGFRIED (H. P. Sass 1936) M. 42". A new iris of entirely different coloring and marking than anything we have grown. A large ruffled flower of smooth texture with widely flaring falls. The color effect is soft yellow buff, with a hint of peach. The standards are lightly marked heliotrope and the falls are flushed and dotted near the haft with the same shade. A lovely iris indeed **\$30.00**

SAHARA (Pilkington 1936) M. 40". A superb primrose self of clear coloring, perfect form and great refinement. It is a strong grower and has tall strong stems which are low and widely branched. Its clear coloring will make it very valuable in the garden. **\$10.00**

Dykes Medal, Eng., 1935.

General Iris List for 1937

Time of bloom is indicated by V. E., very early; E., early; M., medium; L., late; and V. L., very late.

Height is given in inches, immediately after the name of the flower; 40" means 40 inches.

"S." means standards; "F." means falls; "A.M." is Award of Merit; "C.M." is Certificate of Merit; "H.M." is Honorable Mention; "A.I.S." is American Iris Society; "R.H.S." is Royal Horticultural Society; "S.N.H.F." is Societe Nationale D'Horticulture De France.

ALICE HARDING (Caycux 1933) M. 40". A soft-toned satiny yellow of clear coloring and splendid substance. S. primrose yellow, F. same tone flushed buff at base. Rich orange beard. Very well branched. One of the best of the recent introductions. **\$7.50**

Dykes Medal, 1933.

ALTA CALIFORNIA (Mitchell 1931) M. 40". An excellent yellow of smooth finish. S. clear yellow, F. deep golden yellow, flushed bronze at the throat. Stalk tall and well branched. Does well in cold climates. **\$.75; 3 for \$2.00**

AMIGO (Williamson 1934) M. 38". A firm, finely finished dark bicolor. S. light lavender; F. deep hyacinth violet. A very rich color combination. The stalk is well branched and the flowers very large. **\$8.00**

ANNE-MARIE CAYEUX (Cayeux 1928) M. 38". Without doubt, one of the finest blends in existence, as to form, color and substance. S. metallic blue on soft gray; S. rose, shot gray. Opal is a good description in one word. **\$.50**

C.M., S.N.H.F.

ASHTORETH (Beaudry 1930) M. 42". A large flower of lustrous yellow on tall, marvelously branched stalks. S. domed, F. wide and flaring. As fine as any yellow of medium tones. **\$.65**

H.M., A.I.S., 1930.

ATTYE EUGENIA (Snow 1936) M. 38". This fine novelty was the admiration of all who saw it in bloom in our garden last year. The flower is large and very heavy textured, of a smooth soft ivory, greatly enriched by a bright gold beard. The stalk is well branched and the growth rapid. An attractive variety. **\$6.50**

AUBADE (Connell 1931) M. 36". A large flower with luminous finish. S. pure yellow, F. pale yellow flushed rose. A flower of distinction and beauty. **\$1.00**

AVONDALE (H. Sass 1934) M. 38". A large rich bronze bicolor on tall stalks which are well branched; the flower is richly colored, smooth, rounded and velvety. **\$3.00**

BLACK WINGS (Kirkland 1931) M. 38". A magnificent iris that is outstanding and different. S. dark blue, F. midnight blue with a frosty black luster, evenly laid over the entire petal. Opening buds velvety black. A vigorous grower and deliciously fragrant. **\$.60**

A.M., A.I.S., 1933.

BLACKAMOOR (J. Sass 1932) M. 40". A massive, rich, blue purple self. A brilliant blue beard contributes to its color depth. Free blooming and hardy. **\$.50**

H.M., A.I.S., 1931.

BLUE DUSK (Reibold 1936) M. 38". A deep blue of marvelous color value; a Gaudichau seedling, but much bluer. S. soft satiny blue, F. dusky blue with rich velvety finish, soft blue beard and golden heart. Described by Mrs. Lothrop in A.I.S. Bulletin for October, 1935. **\$2.50**

BLUE MONARCH (J. Sass 1928) M. 38". An exquisite deep-toned violet blue self of much merit. The stalk is well branched and the plant very vigorous and hardy. **\$1.50**

H.M., A.I.S., 1935.

BLUE PETER (White 1936) M. 40". A magnificent rich blue purple bicolor with large flowers measuring 6 inches on tall, well branched stems. S. rich violet blue, F. prune purple with black sheen. Blue Peter is the blue flag hoisted on merchant vessels indicating the ship is ready to sail. **\$7.50**

BLUE TRIUMPH (Grinter 1934) M. 42". The finest pale blue we have ever seen. The flowers are large and flaring, of exceptionally heavy substance with a smooth velvety finish. The stalk is very tall and widely branched and carries from 12 to 15 flowers which bloom over a long period of time. This has been rated from 92 to 98. An iris of superlative beauty. **\$6.50**

H.M., A.I.S., 1933.

BLUE VELVET (Loomis 1929) M. 44". As years pass and bring many fine iris to our gardens, we have lost some of our enthusiasm for former favorites. We have never apologized for Blue Velvet. It is a blue of rarely beautiful coloring. A rich, dark blue of unequalled velvety appearance. The best Dominion seedling in our judgment. **\$.50**



MOROCCO ROSE
Loomis 1937



JASMANIA * Ayres 1936

BUECHLEY'S GIANT (Buechley 1933) M. 40". A very large flower of two tones of blue. S. clear pale blue; F. a deep blue, widely flared and of firm texture. A worthy addition to the blue shades. \$.50

BROWN BETTY (White 1935) M. 40". A new type of blend of lovely coloring and effective garden value. S. sand

colored flushed rose, F. soft brown flushed eopery pink. The flower is large and well formed. One of the best efforts of this distinguished hybridizer. \$3.50

BRUNHILDE (Salbaeh 1934) M. 40". A truly beautiful iris of high quality, outstanding because of its intense color and fine finish. The only color of its kind that we have seen. A pure, rich violet blue, intensified by the rich blue beard. Finely branched and hardy. \$5.00

BURNING BRONZE (Ayres 1934) M. 40". A cool, stately dark red self of excellent form and smooth shimmering finish. The stems have a grace and dignity quite different from other varieties. Dark reds usually give a somber garden effect, but an intense bronze suffusion gives this a color rarely vital and alive. Highly recommended. \$6.50

H.M., A.I.S., 1933.

CALIFORNIA GOLD (1933) L. 42". A very tall deep golden yellow self of exceptional merit. The flowers are very large and well formed and the rich coloring is held to the end of the bloom. \$7.00

CAPRI (Schreiner 1936) M. 30". A clear warm yellow, the falls overlaid taffy gold. A splendid variety for foreground planting as it harmonizes with almost every color. \$6.00

CHEERIO (Ayres 1934) M. 40". One of the most beautiful bicolors in existence. S. beautiful lustrous tan; F. brilliant, glowing velvety red. The flowers are finely formed and hold their color well. The plant is very strong and vigorous and dominates the garden when in bloom. "A flame in the garden," commented one visitor. This described it better than anything we could say. \$6.50

CHROMYLLA (Loomis 1931) E. 40". A lovely soft-toned yellow; large flowered and beautifully shaped, of a uniform shade of lemon chrome. The flower is smooth with the finish and texture of a magnolia blossom. The flowers are well distributed on strong stalks and hold their color well. \$.65

H.M., A.I.S., 1931.

A.M., A.I.S., 1932.

CINCINNATI (Ayres 1936) M. 42". Dr. Ayres has always referred to this variety as his larger and taller Venus de Milo. It is a large, smooth warm white of fine flaring form and stately carriage. The beard is soft yellow. The stalks are tall and well branched and carry as many as fifteen flowers. \$5.00

CLARA NOYES (H. Sass 1931) M. 36". A melting blend of yellow, orange and apricot. S. soft yellow flushed Etrusean red; F. yellow ground flushed Pompeian red and veined a darker red. A new and intriguing color, making a brilliant spot in the garden. \$.50; 3 for \$1.00

H. M., A.I.S., 1931.

A.M., A.I.S., 1932.

CLARIBEL (J. Sass 1936) M. 40". A handsome large pliatea with pure white flowers, marked deep blue. The stalks are tall and well branched and the variety is perfectly hardy. It will probably supersede Los Angeles in cold climates. \$10.00

COPPER LUSTRE (Kirkland 1934) M. 40". A striking gold and copper blend, unlike anything else in commerce. The flowers are large and well formed and sparkle in the sunlight like a new penny. **\$12.50**

H.M., A.I.S., 1935.

CORALIE (Ayres 1932) M. 38". The loveliest color we have seen in an iris. The broad standards are rose-pink flushed lavender, the falls a glowing shade of wine red. The pure golden beard enhances the beauty and adds to the dazzling effect of this fine variety. **\$5.00**

H.M., A.I.S., 1932.

Dykes Medal, 1933.

CROWN JEWEL (Nicholls 1934) M. 36". Hard to describe accurately. S. deep yellow flushed orange; F. same yellow flushed dull red. An unusual bit of brilliant coloring. **\$2.00**

CRYSTAL BEAUTY (J. Sass 1935) M. 40". A large, dazzling white iris of very pure tones. The flower is graceful and rounded and well placed on tall, well branched stalks. Very fast grower and increases well. **\$4.00**

CYRUS THE GREAT (Kirkland 1934) E. 42". A large dark blue iris of striking appearance. The flowers are gracefully formed for all their great size. Blooms with Andrew Jackson and Desert Gold and makes a fine planting with them. **\$1.50**

DARK KNIGHT (Salbach 1934) M. 40". A large flower of rich coloring. S. blackish red-purple; F. dark carmine overlaid velvety black. As dark as Black Wings, but of an entirely different color effect. **\$4.00**

DAUNTLESS (Connell 1929) M. 40". A very fine red self. Standards and falls are of the same shade, but the heavy velvety quality of the falls make them appear darker. A vigorous grower and profuse bloomer. **\$.50; 3 for \$1.00**

Dykes Medal, 1929.

DAY DREAM (Sturtevant 1932) M. 38". A beautifully colored blend. S. shimmering pink suffused pale yellow; F. lilac pink. Beard golden yellow. **\$.35**

DEPUTE NOMBLOT (Day-pue-tay' Nōme-blow) (Cayeux 1929) M. 48". A really magnificent iris of great beauty of coloring, form and carriage. The flowers are very large and the stems tall and widely branched. S. copper red flushed golden bronze; F. wide and spreading of a rich shade of claret crimson; the flower is lightly dusted with gold and sparkles in the sunlight. **\$.50**

Dykes Medal, 1930. S.N.H.F., 1930.

DESERET (Thorup 1936) M. 40". This striking variegata has proved to be the best of its type we have seen. Of luxuriant habits of growth and bloom and clear coloring. The standards are a clear rich yellow, well arched and firm. F. same color, with much velvety red brushed evenly on all but edges of petals. Gay and exciting as a gypsy carnival. **\$7.50**

DESERT DAWN (Andrews 1931) L. 38". A late blooming iris of great charm. A lavender and yellow blend with the golden center extending almost to the tip of the standards and falls. An improvement on Candlelight with larger flowers and taller stalks and much hardier. **\$.50**

DESERT GOLD (Kirkland 1930) E. 30". An early blooming yellow of large size and fine form and substance. The flower is a pure yellow, luminous and fragrant, with a brilliant gold beard. **\$.35; 3 for \$1.00**

A.M., A.I.S., 1932.

BLUE TRIUMPH * Grinter 1934





MISSOURI » Grinter 1933

DIRECTEUR PINELLE (Cayeux 1932) M. 42". A splendid dark bronze red. S. clear coppery wine red; F. semi-flaring, velvety garnet red with an almost black luster. The stalks are tall, strong and widely branched. A strikingly handsome iris and one of Cayeux's best. **\$10.00**

C.M., S.N.H.F., 1932.

DOG ROSE (Insole 1930) M. 42". This lovely pink increases in favor each year. The flowers are large, oval shaped, of good substance, of a delicate shade of pink with a heavy golden beard. This variety is a prolific bloomer and the stalks are covered with many fine blooms. A superb sort. Strongly recommended. **\$.50; 3 for \$1.00**

Silver Medal, London, 1929.

DOUGLAS (J. Sass 1932) M. 36". A huge heliotrope and violet bicolor which gives the effect of a blend. S. pinkish lavender; F. violet shading to lavender-violet at the edge. A unique and attractive flower. **\$1.00**

DYMIA (Shuber 1936) M. 38". A new name among hybridizers. Mr. Shuber, of Clinton, Iowa, who produced some delightful blues, with the old Blue Boy as one of the parents. Dymia (Dark Plum Blossom) is a very large, very dark purple self, almost black, with a dark blue beard which harmonizes beautifully with the falls and intensifies the coloring. An iris of great charm and garden value. **\$5.00**

EASTER MORN (Essig 1931) M. 40". A grand white iris of a warmer tone than Purissima, deepened by the brilliant beard and faint veining at the throat; the flowers are large and heavy textured and the shape similar to Santa Barbara.

A.M., A.I.S., 1933.

\$1.00

ECLADOR (Cayeux 1932) L. 40". Without doubt, one of the finest of yellows. Standards butter yellow, broad and ruffled; F. semi-flaring of same shade, with velvety blaze in center of petal. Because of its form, Eclador is different from the usual iris bloom; it reminds me of a canary with deeper yellow wings. Highly recommended. **\$4.00**

C.M., H.N.S.F., 1932.

Dykes Medal, 1932, France.

ECLAT (Gage 1934) M. 34". A dainty iris of rather small proportions of pink and copper blending; the flower is very attractive and when unfolding resembles a rosebud. An ideal cut flower. **\$1.00**

EILAH (Loomis 1935) M. 40". A beautiful deep yellow self almost as large as W. R. Dykes, but perfectly hardy and a reliable bloomer. An exceptionally fine yellow and a worthy addition to our list of novelties. **\$10.00**

EL CAPITAN (Mohr 1929) M. 40". One of the older varieties but more popular than ever. Huge flowers on tall, well-branched stems which carry a large number of blooms. Color, a light violet self. **\$.35; 3 for \$1.00**

EL TOVAR (H. P. Sass 1933) L. 33". A richly colored variegata. S. brown shaded honey in center; F. long and flaring, velvety red brown with a black flush. Should be planted with bright yellow else it gives a somber effect.

H.M., A.I.S., 1932.

\$5.00

ELLA WINCHESTER (Grinter 1935) M. 38". A truly beautiful iris named in honor of the late Mrs. Charles L. Winchester, wife of the president of the J. B. Lyon Co., publishers of Flower Grower. The flowers are very large, of a clear intense red with a smooth velvety finish. The petals are one color, without venation and the effect unusually lovely. Very outstanding is this new red. Vigorous and a sure bloomer. **\$12.00**

EREBIAN (Loomis 1931) M. 40". A rich deep Bordeaux red self with a heavy gold beard which intensifies the velvety texture of the falls. This iris has an exquisite finish and refinement of texture seldom found in even the newest introductions. The stalk is very well branched. **\$.35**

H.M., A.I.S., 1930.

EROS (Mead 1934) M. 38". A lovely example of softly blended tones whose garden effect is pale coral pink. The flowers are smoothly finished and have much soft gold at the throat; the stalks are tall and a little highly branched, but this is offset by its glorious color. **\$4.50**

Award of Merit, A.I.S., 1934.

ETHEL PECKHAM (Williamson 1932) M. 36". A large flower of brilliant red tones; S. arching of clear red with a slight blue flush; F. drooping, very broad and long and of a rich deep red shade. One of the best of the so-called red tones.

H.M., A.I.S., 1932

\$3.50

BLUE VELVET » Loomis 1929





GARDEN MAGIC » Grinter 1936

ETHELWYN DUBUAR (Lapham 1932) M. 38". A large well-proportioned clear pink iris of fine form and finish. Its lovely tones are well brought out by the dainty lemon beard. It holds its color well and is a strong grower. **\$.75**

EVOLUTION (Cayeux 1929) M. 40". A coppery bronze and blue blend. S. frilled pale bronze; F. slightly deeper in tone, with a brilliant blue blaze in the center. The color scheme is very lovely, and in our opinion, it is the best of all the blends of this type. **\$.30; 3 for \$.75**

FASCINATION (Cayeux 1927) M. 46". Unquestionably one of the best pinks. Flowers of enormous size, of a pure clear color, satiny texture and great substance. Of rampant growth. **\$.35; 3 for \$1.00**

FORTUNIO (For-toon-e-o) (Cayeux 1930) L. 38". A charming iris of unusual form. The flowers are medium sized and flare widely and there are many flowers on the stalk; an azure blue self, faintly shaded lilac. One of the best for group planting. **\$.60**

FRAGONARD (Frá-go-nár) (Cayeux 1928) M. 38". A luscious shade of clear rose pink. The flower has great appeal in the garden and is particularly good combined with pale blue tones. **\$.35**

FRIVOLITE (Free-vo-letay) (Caycux 1930). M. 40". A live pink similar in coloring to the Lady Ashtown Rose. It's a clear shade of brilliant light pink whose fresh coloring sets

it quite apart. Combined with some of the clear red shades a fine color effect is achieved. A free bloomer and lovely and arresting in a mass. **\$.60**

GARDEN MAGIC (Grinter 1936) M. 40". We have introduced some fine iris for Mr. Grinter and firmly believe some feat of magic must be responsible for the smooth, lacquered finish and lack of veining which characterizes his seedlings. This variety is probably the finest of all reds. A striking self of about the shade of the falls of the famous Shirvan. A seven-inch blossom with wide velvety falls and arched standards of a rich glowing velvety red with rich orange beard, fragrant, well branched and hardy. Only a few plants available. **\$40.00**

GENEVIEVE SEROUGE (Cayeux 1933) M. 42". Tall and stately of growth, this blend of soft pastel shades is hard to describe. S. tawny yellow softly flushed pale blue; F. soft lilac suffused flax blue, edged soft yellow. The flower is very large and frilled. A medley in soft tones of great charm.

Special Award, Paris Iris Commission, 1932. **\$3.00**

GILEAD (Andrews 1931) M. 40". A bronze gold blend of even coloring. The ground color is a clear buff, overlaid deep amber. It looks exactly like the crystalline amber coating on the winter buds of the Balm of Gilead Tree and is most attractive. **\$.35; 3 for \$1.00**

H.M., A.I.S., 1932.

GLORIOLE (Gage 1932) M. 42". A fine blue self, overlaid glistening white. The large flowers have slightly flaring falls and domed standards and the extra heavy texture enables them to withstand wind, rain and sun. An outstanding variety. **\$9.00**

H.M., A.I.S., 1933

A.M., A.I.S., 1935.

GOLDEN FLARE (Insole 1932) M. 36". The delight and admiration of visitors to our garden; a yellow ground, flushed flame red which lends a garden effect even more striking than that of the brilliant Lux. A most intriguing sort. **\$1.50**

GOLDEN HIND (Chadburn 1934) M. 38". The sensation of the Chelsea show three years ago. The large flowers are a dazzling buttercup yellow, with a faint orange tinge and the flower is greatly enriched by a vivid orange beard. The stems are strong and widely branched. **\$15.00**

Dykes Medal, English Iris Show, 1934.

GOLDEN LIGHT (H. Sass 1933). M. 38". A vivid cinnamon colored blend with a faint pink suffusion flushed deep orange at the center of the heart; the flower is large and ruffled and makes a brilliant note of color in the garden. **\$3.00**

GU DRUN (Dykes 1931) M. 36". Perhaps the most admired iris in our garden last blooming season. We had heard the flowers were too large for the stalk, but this was not apparent in our two plantings. The huge flower is long and well proportioned, of a dazzling warm white, with a soft gold dusted finish. One we wouldn't be without. **\$2.50**

Dykes Medal 1931.

HAPPY DAYS (Mitchell 1934) M. 40". An immense clear yellow, with an unusually glistening finish. S. pinard yellow, F. a shade deeper, the beard a rich orange yellow; many large flowers which do not fleck or fade. **\$7.50**

H.M., A.I.S., 1935.

HELIOS (Hay'-lee-os) (Cayeux 1929) M. 44". An enormous flower, the standards of which are pure lemon yellow and falls of the same color, smoothly finished and reticulated soft violet. A beauty and one of our favorites. **\$.50**

Special Award, Paris Iris Commission, 1930.

HERMENE (Parker 1933) M. 40". A tall, soft rose pink iris with much gold at the throat. Of very fine garden value because the color carries well and harmonizes with many other varieties. The flower is long, about 6 inches in length, and the stalk stout and well branched. **\$.35; 3 for \$1.00**

HERMITAGE (Kirkland 1931) M. 40". A rich soft rose self, touched lightly on the falls with frosty blue. Difficult to describe accurately, but an iris of much beauty, fine growth and splendid carriage. **\$.35; 3 for \$1.00**

H.M., A.I.S., 1930.

HUGUETTE (Millet 1930) M. 44". A huge flowered velvety blue; the stalk is tall and well branched and the falls are widely flaring. Stock very limited. **\$.50**

IMPERIAL BLUSH (H. J. Sass 1933) M. 42". A large fragrant blush pink with faint creamy undertone. The plant is vigorous and the stalks very tall and they carry the many blooms gracefully. One of the loveliest of light shades. **\$1.25**

INDIGO BUNTING (Ayres 1933) M. 40". A dark blue similar to the old favorite Mme. Gaudichau in coloring, but more velvety and holds its color better. S. arched of dark blue; F. semi-flaring, deep velvety blue. **\$3.00**

ITASCA (Kleinsorge 1934) M. 36". A pure amethyst self of rich coloring. The flowers are well rounded, with broad petals and smooth finish with no veining. A distinct and beautiful color. **\$8.00**

JASMANIA (Ayres 1935) M. 42". A tall deep yellow of unusual hue. The flowers are large and jauntily poised on the stalk. The falls are broad and semi-flaring and are lightly touched pale brown on the haft and have a slight touch of lavender blue in the center. One of the best looking varieties we have had in a long time. Jasmania is the name of a fete in India where all participating wear yellow costumes. **\$25.00**

JEAN CAYEUX (Zhan Ka-yuh') (Caycux 1931) M. 38". The most outstanding color introduction of recent years. The flowers are semi-flaring and slightly frilled, of a pale Havana brown, shot with a golden glint and a light touch of bright blue at the end of the beard brings out its delicate beauty. An enchanting color. **\$2.00**

C.M., S.N.H.F., 1931.

Dykes Medal, France, 1931.

JEB STUART (Wash 1932) M. 40" A rich brownish-red with copper lighting. S. domed, F. dark and velvety, intensified by the rich orange beard. Stalk tall and widely branched. **\$5.00**

H.M., A.I.S., 1933.



MINISTRE FERNAND DAVID » Cayeux 1930

JERRY (Lapham 1934) M. 38". A distinct and beautifully finished iris of great brilliancy. S. rich light red; F. deeper red with heavy velvety finish. The garden effect is a glowing ruby red. Stalks medium tall and well branched. Holds its color well. **\$1.50**

JOLLY ROGER (Nicholls 1934) M. 36". A velvety indigo purple. The flowers are shapely and clean cut and nicely arranged on well branched stalks. The beard is bright golden yellow. A rich color note in the garden. **\$3.00**

JOYANCE (Mrs. Dykes 1932) M. 38". A huge creamy white flower with soft golden heart and fine gold veins at the throat. The flowers have excellent substance and good form and are well distributed on well branched tall stalks. **\$1.75**

JUNALUSKA (Kirkland 1934) M. 40". A novelty unlike anything we have grown before. Its color is its great distinction, but its fine form and poise are notable, too. S. a copper and rose suffusion threaded with gold; F. bright red flushed copper. The stalk is tall and graceful and the blooms last a very long time. A most effective garden iris of great beauty. **\$7.50**

JOYCETTE (J. Sass 1931) M. 42". One of the best of the newer reds. The flower is large, a self tone of bright clear red, with no blue tones. Very fragrant. **\$2.50**

H.M., A.I.S., 1932.



BURNING BRONZE > Ayres 1935

KALINGA (Kleinsorge 1934) M. 44". A very large cream-colored self with beautiful gold beard. The huge flowers flare widely and the stalks are as perfectly branched as any we have seen. Many flowers blooming at the same time on the tall stalks made this an object of great admiration in our garden last year. Highly recommended. **\$3.50**

KENWOOD (Ayres 1932) M. 36". A rich variegata of clear shades of velvety red and soft buff. S. pale lustrous buff; F. deep maroon. The colors are soft and pleasing. Quite distinct. **\$.60**

KING JUBA (H. Sass 1931) M. 38". A fine variegata of clean sparkling colors. S. pure vivid yellow; F. velvety garnet red. The form is very good and the plant is a rapid increaser. Try this with Numa Roumestan. **\$.35**
H.M., A.I.S., 1932.

KING MIDAS (Mead 1929) M. 36". An extremely beautiful variegata blend. S. golden buff flushed brown; F. velvety brown flushed and edged buff. The distinct orange beard contrasts well with the blended colors. A color combination of great charm and beauty. One of the very best blends. **\$.30**

K. V. AYRES (Ayres 1932) M. 42". A huge flower whose coloring is the despair of the descriptionist. A soft coffee color, tinged lavender and cream with a lustrous pink overglow. The stalk is very tall and the symmetrical flowers are large and well placed on the widely branched stems. A very strong grower and heavy bloomer. **\$3.00**
H.M., A.I.S., 1933.

LADY PARAMOUNT (White 1934) M. 40". A splendid new yellow of Dykes parentage. A glowing primrose yellow self. The flowers are gracefully carried on tall stems and the foliage pale green and luxuriant. Tested for hardiness in Illinois for two years with slight protection. **\$5.00**
H.M., A.I.S.

LARGO (Ashley 1932) M. 40". An iris of great delicacy of coloring which it retains throughout the blooming period. S. soft chrome yellow, ruffled and arched; F. rose, paling at the ruffled edges. The flower has a very heavy substance, quite unexpected because of its dainty coloring. **\$.50**

LEGEND (Wareham 1932) 38". A velvety claret crimson self with a brilliant gold beard which sets off the rich beauty of the flower effectively. **\$.65**

LUCREZIA BORI (Schreiner 1935) M. 40". This first seedling offered by Mr. Schreiner caused much favorable comment in Nashville at the A.I.S. meeting. Similar in form to its seed parent, Nebraska, it is a very long flower of rich golden yellow coloring with a deep orange beard. It is very fragrant and a good grower. **\$15.00**

LUX (Looks) (Caycux 1931) M. 38". An unusually lovely and vivid color effect. S. apricot suffused bright old gold; F. semi-flaring raspberry red, with a golden sheen paling to rose at the edge; the finest landscape variety we have. **\$1.00**
C.M., S.N.H.F., 1931.

M. A. PORTER (Lap. 1931) M. 38". An excellent deep blue purple iris of very velvety finish. The growth is heavy and the bloom prolific. **\$.50**

MARCO POLO (Schreiner 1936) 36". A lustrous clear toned bicolor with rich rose standards and velvety crimson falls. Gives the effect of a clear red iris with bright orange beard. Good branching and well placed blooms. **\$12.50**

MARIAN LAPHAM (Lap. 1934) M. 38". A clear rich pink toned iris of excellent flaring form. The stalk is well branched. In our garden it has proved to be the best of the pink strain originated by this well known breeder. **\$1.00**

MME. DE BEAUMARCHAIS (Millet 1932) M. 38". A splendid iris, but little known in this country as yet, but well worth a place in any garden. A very rich deep crimson, flushed brown at the haft, with rose shading on the falls. A large flower on tall stalks. **\$1.00**

MARQUITA (Mar-kee-ta) (Caycux 1931) M. 38". A Helios seedling, resembling its parent in form. S. clearest ivory flushed yellow; F. the same color with brilliant ruby lines running evenly from base to apex. An absolutely new color break and very outstanding. We know of no other iris so different in form and coloring, and its garden effect is lovely. **\$3.00**

MARY GEDDES (Washington 1931) M. 38". A beautiful blend of rare and unusual coloring. S. salmon flushed yellow; F. same shade overlaid Pompeian red. The tall stalks are low and widely branched. A stunning variety and a new color note. **\$1.50**
A.M., A.I.S., 1933
Dykes Medal, 1936.

SPRING MAID * Loomis 1932





WASATCH » Thorup 1935

MARY SENNI (Millet 1931) M. 42". A beautiful mauve blend. S. mauve flushed lilac; F. mauve, flushed blue at the edges. Exceptionally heavy substance and fine form. The golden beard brings out the delicacy of its color; must be seen to be appreciated. \$.50

MEPHISTO (May-feestō) (Cayeux 1930) M. 40". A huge blue black of splendid form and intensely deep coloring; the velvety finish extends evenly over the flower, giving it great richness of texture. \$.75

MINISTRE FERNAND DAVID (Mee-ncestr Fair-nan Dâ-veed) (Cayeux 1930) M. 40". A massive flower of superb form and coloring. S. silky red purple; F. velvety glowing dark red. A much improved Germaine Perthuis of richer coloring and much larger size. \$.75

C.M., S.N.H.F., 1930.

MIRADOR (Nicholls 1934) M. 38". A large and outstanding variegata. S. deep yellow; F. red purple of even coloring. The bloom stalk is very tall, which is unusual for a variegata, and the branching habits are good. \$5.00

MISSOURI (Grinter 1933) M. 40". In our opinion, the finest medium toned blue in existence. The very large flowers are a medium lavender-blue of exceptionally pure tone; F. very broad and flaring, of a slightly deeper shade of blue with a heavy velvety surface. This iris has a texture and finish superior to Sensation, already famous for these qualities so desirable in an iris. A truly great iris. \$4.50

H.M., A.I.S., 1933.

A.M., A.I.S., 1935.

MODOC (Essig 1929) M. 36". A dusky beauty, handsome and distinct. S. deep purple; F. dark velvety purple. Very effective in the border. \$.50

MOHRSON (White 1935) 30". At last a hardy seedling of the famous Wm. Mohr. It is taller, larger and a sure bloomer. The enormous flowers are a rich violet closely veined a darker shade, they are smoothly finished and have ruffled edges. A stunning flower. \$5.00

MOONGLO (Williamson 1935) M. 32". An outstanding soft yellow blend with exceptionally heavy substance. The flowers are very large. S. soft yellow flushed violet; F. deeper yellow overlaid violet. Beard deep orange. The plant is vigorous and very floriferous. \$5.50

H.M., A.I.S., 1935.

MRS. J. L. GIBSON (Gibson 1930) M. 38". A great iris. A large flowered deep blue purple self of exceptional form, with a glowing velvety finish. One of the best of the Dominion derivatives. \$3.00

NARAIN (Shuber 1936) M. 38". For sheer beauty of coloring, this lovely blue was desired by all who saw it last year. The flower is large and flaring, with broad petals of a pure rich shade of blue, similar to the old Blue Boy, but with a smooth finish like silk; it has a soft creamy throat and blue beard tipped soft yellow. The kind of an iris you will always want to keep in your garden. Its name means "water sprite." \$7.50

NARONDA (Hall 1934) M. 44". A satiny dark blue self of medium size and of very pleasing form and rich coloring, the coloring heightened by a prominent gold beard. Free flowering and vigorous with very well branched stalks. \$4.00

NENE (Nen) (Cayeux 1928) M. 42". A gigantic flower, 9 inches in length. S. lilac; F. light red with lighter margin. An impressive variety which does not flop, but stands up until the end of the blossom. \$.50

IRIS BED AND
SPRUCE TREES





DEPUTE NOMBLOT • Cayeux 1929



ZAHAROON • Dykes 1927



GUDRUN » Dykes 1931

NEON (Salbach 1934) M. 40". As one might infer from its name, this is one of the brightest varieties listed. S. bronzy gold; F. velvety carmine with bright gold beard and golden haft. A good example of candelabrum branching, it carries a good quota of both buds and blossoms. **\$4.00**

NINGAL (Ayles 1932) M. 38". A large blend of shimmering buff and lustrous blue. F. buff tinged blue; S. buff overlaid coerulean blue. **\$.50**

NO-WE-TA (H. Sass 1932) M. 36". One of the most exquisite flowers imaginable. A delicate shade of rose, flushed cream and yellow at the center. The entire flower is softly frilled. There is no variety which surpasses this for dainty coloring and garden effect. **\$.65**

NORDIC (Kirkland 1934) M. 40". An unusual flower of brilliant coloring. The stem is tall and the bloom large and well formed. S. golden tan. F. bright violet-red. Plant growth vigorous. A fine massing variety. **\$1.00**

NURMAHAL (Nicholls 1931) M. 38". A rich deep brown of good substance. S. dark bronze; F. blackish brown, broad and velvety. Low and well branched. **\$.50**

ORIANA (H. Sass 1933) E. 32". A pure white of beautiful form. The flowers are large and the plant hardy and prolific. A splendid variety for the front of the border. **\$1.50**

OXHEART (Nicholls 1934) M. 38". A strawberry red with large circular falls and standards of the same shade; velvety with beard in harmony. Good form. **\$1.50**

PALE MOONLIGHT (Essig 1934) M. 40". Fine stately flowers of clear light blue carried on sturdy stems. The standards are long and the falls long and flaring, and the beard bright orange. Carries many enormous blooms open at one time. **\$1.00**

PARTHENON (Connell 1934) M. 40". A smooth warm white with pale gold style arms, venations and beard. Tall and widely branched. S. high and arching; F. ovate and flaring. An exceptionally hardy and fine garden iris. **\$2.00**

PERSIA (Ayles 1929) M. 42". We believe this is now the best liked of all blends as it does well in all climates and holds its colors well. S. smoky blue; F. rich purple blue in the center, shaded lighter at the edge. The many flowers are borne on superbly branched stalks. The bloom has a silken texture and is aptly named, as its coloring is that of a rich Persian rug. Highly recommended.

\$.50; 3 for \$1.00

PHEBUS (Fa-buss) (Cayeux 1930) M. 38". A lovely lemon yellow self of the type so valuable in the landscape picture. The flowers are well rounded and smooth, of fine clear coloring and most gracefully poised on the stalks. An exceptionally meritorious kind. **\$.50**

PINK SATIN (J. Sass 1930) M. 42". The clearest pink we have seen. A pink self with fine large flowers on widely branched stems. It has a rich satiny sheen which suggested its name. Not a deep pink, but medium tone of pure color. **\$.60**

PLURABELLE (Cayeux 1933) M. 40". An exquisite blend of striking appearance. S. wide, golden yellow, F. plum red, softer at edges of petals. The tall stalk has many branches with several flowers open at one time. **\$5.00**

C.M., S.N.H.F.

PRESIDENT LE BRUN (Cayeux 1933) M. 36". A brilliant blend of King Tut coloring, but much larger and taller. S. golden copper, F. velvety garnet, most vivid in the sun. **\$5.00**

C.M., S.N.H.F.

PRESIDENT PILKINGTON (Cayeux 1929) M. 46". A very large flower of a glorious blend. S. lustrous buff with faint blue suffusion; F. wide and flaring, lavender blue with a wide buff margin. A magnificent iris, vigorous and sturdy and outstanding as to color. **\$.75; 3 for \$2.00**

C.M., S. N. F. Special Award, Paris, 1931.

PURPLE GIANT (Gage 1933) M. 32". Enormous dark blue flowers of fine form and finish, with many flowers open at one time. A splendid variety for massing. **\$3.00**

PURISSIMA (Mohr-Mitchell) M. 44". A large well-formed pure white iris of good shape and perfect form. Not hardy in all climates, but we have wintered it successfully for a number of years, with slight protection. **\$.30**

RED COMET (McKee 1936) M. 38". A large, deep copper red self with mahogany undertone. The blooms have fine form and good substance. S. domed, F. semi-flaring, well rounded and of lustrous deep velvet, lit up by a deep gold beard. Very profuse bloomer and nicely placed on a well branched stalk. **\$15.00**

H.M., A.I.S., 1935.

RED DOMINION (Ayres 1931) M. 40". One of the most beautiful and outstanding kinds we have grown. The flowers are large, of flaring form and the characteristic Dominion velvety finish. S. clear lustrous red, slightly frilled; F. horizontal and velvety. A glowing oxblood red. The opening bud is like a rosebud. **\$.75; 3 for \$2.00**

H.M., A.I.S., 1931.

RED RADIANCE (Grinter 1931) M. 38". A deeper red than Dauntless and proving to be one of our best reds. S. pure glowing red; F. same shade and flushed with velvety black. A beautiful red in the garden. **\$1.25**

RED ROBE (Nicholls 1931) M. 36". A rich ruby red; its blooms are large with broad circular petals of good substance. S. deep red-violet; F. deeper in shade and rich and velvety. Low and well branched. **\$1.25**

RHADI (Rha-dii) (Mrs. Dykes 1929) M. 38". A flower of rare and unusual coloring. S. creamy white, shaded blue gray; F. blue with bronze shading and brown reticulations on haft. Unusually attractive and unique. **\$.40**

Silver Gilt Medal, England, 1928.

ROBERT (Ayres 1933) M. 38". A smooth, heavy textured yellow of medium tone. The flowers are large and well placed on tall stalks. A soft suffusion of sky blue gives the effect of a blue and yellow blend. Very outstanding. **\$4.00**

ROSE DOMINION (Connell 1931) M. 38". This variety has the good substance of its Dominion parent and is of a clear shade of rose, but the deep velvety flush on the falls gives it the effect of a rose bicolor. It is of flaring form and the soft gold beard brings out its color. **\$.85**

ROSE PETAL (Murrell 1929) M. 42". A rich, bright pink self. The flowers are large and it stands up well in any weather. This variety is much in demand because of its remarkable growing habits; it grows and blooms luxuriantly. **\$.50**

ROYAL BEAUTY (McKee 1932) M. 40". A handsome blue bicolor of regal carriage and one of the best we grow. S. clear intense blue of medium tone; F. deeper in color, of brilliant velvety blue. The stalks are tall and widely branched with many flowers open at one time **\$1.00**

H.M., A.I.S., 1931

A.M., A.I.S., 1932

RUSTY GOLD (Andrews 1931) M. 38". A brilliant orange bronze blend, with a tarnished gold finish, flushed copper. Its vivid coloring makes it invaluable for landscape purposes. Hardy and vigorous. **\$.50**

SEDUCTION (Cayeux 1933) M. 38". The best plicata of its coloring we have seen. The flower is of beautiful form and substance. A pure waxy white, with the standards finely veined pale lilac; the falls are dotted the same color on the haft, the beard is white lightly tipped yellow. A lovely flower. **\$5.00**

SHAH JEHAN (Neel 1932) L. 38". A fascinating iris of rich Oriental coloring. S. erect and pointed; buff suffused smoke gray fading to almost white as the flower opens fully. The falls are deep plum red with a lavender buff edge rimmed white. One of the most interesting new irises we have seen in a long time. **\$2.00**

Bronze Medal, English Iris Society, 1933.

EILAH » Loomis 1935



**Jean
Cayeux**

Cayeux
1931



SHINING WATERS (Essig 1931) M. 40". A lovely medium blue self. It is like the reflection of the blue sky in water. The bloom stalk is very tall and firm. The flowers which are large and rounded, have a firm waxlike texture and perfect finish; beautiful orange beard. A most outstanding introduction.
A.M., A.I.S., 1935. **\$1.50**

SHIRVAN (Loomis 1932) M. 38". A most strikingly handsome iris which stands out in the garden as if a light were turned on it. S. palest tan; F. semi-flaring, a rich red brown, with all the velvety finish which its Dominion ancestry carries with it. It has all the rich finish of the lovely Shirvan rug and the contrast in colors is unequalled in any iris we grow.
\$1.00

SIERRA BLUE (Essig 1932) M. 48". An enormous lavender blue self, with smooth lacquered finish and deep orange beard. The falls flare widely and are well poised on the widely branching stalks. A superior variety.
Dykes Medal, A.I.S., 1935. **\$2.00**

SIR KNIGHT (Ashley 1934) M. 40". One of the finest of the late introductions; a huge violet self with a rich orange beard. This iris is very fragrant and possesses a wonderful sheen and iridescence.
\$5.00

SIR LAUNCELOT (J. Sass 1935) M. 32". A lovely golden brown of rare coloring and rich garden effect. S. haze; F. velvety claret brown with rich golden haft and beard. **\$10.00**

SNOW KING (H. Sass 1935) M. 42". A huge pure white of notably fine form. S. broad and arching, F. broad and flaring, beard soft yellow. It is especially outstanding because of its superb branching and poise. As fine an iris as we have ever listed.
\$13.50

SNOW SHADOW (Nich. 1934) M. 34". A large shapely pure white, falls flushed coerulean blue with blue beard. Flaring falls, heavy substance, well branched and fragrant.
\$4.00

SPOKAN (J. Sass 1933) M. 38". Soft clear brown overlaid red brown; F. deep oxblood red shaded blackish brown. Yellow haft and deep orange beard. The flowers are very large and carried on well-branched stalks.
\$10.00

SPRING MAID (Loomis 1932) M. 46". A stately pink blend of fresh coloring. The flowers are large and rounded, of clear rose pink with honey yellow flush through the center. Stems very tall and well branched. Its great garden value is unquestioned and at early twilight it is charming. **\$.65**
H.M., A.I.S.

SUMMER CLOUD (Kirkland 1931) M. 36". An altogether delightful iris appropriately named. S. pale blue; F. deep blue. One must see this iris to appreciate its charm. It is in our list of prime favorites. **\$.50**

SUMMER TAN (Kirkland 1935) M. 38". A most unusual golden tan blend and one of the most attractive varieties in our garden. S. light golden tan; F. slightly darker, flushed olive with a velvety finish. Of rare coloring, vigorous and hardy.
\$3.50

SUNMIST (Nicholls 1935) M. 36". A large glittering warm white, with a rich yellow center which feathers into the falls and the beard is soft yellow. It is tall and well branched and fine in every way. We highly recommend it. **\$4.00**

SWEET ALIBI (White 1935) M. 42". A beautiful self of palest primrose yellow. The flowers are unusually large and heavy textured, with a smooth, lustrous finish. The stalks are symmetrically branched and the flowers are well poised.
\$3.50

CHROMYLLA
Loomis 1931





JUNALUSKA » Kirkland 1934

O golden days, O woodland ways,
 And sunny meadows teeming
 With treasurers rare, most royal fare,
 For bard's or lover's dreaming.
 O silvery stream, with glint and gleam
 Where clipping boughs are laving,
 The current lags, where Sweet Blue Flags
 By ripples stirred are waving.

W. B. HUNT: *Blue Flags*

THE BLACK DOUGLAS (J. Sass 1934) M. 38". A huge very deeply colored dark iris. S. dark violet; F. blackish violet; beard deep blue tipped yellow. A fine acquisition.

\$5.00

TENAYA (Essig) M. 38". One of the best of the rich, dark-toned varieties. S. deep purple with blue reflections. F. deep velvety raisin purple. A vigorous and hardy plant with excellent habits.

\$1.00

THEODOLINDA (Ayres 1932) M. 42". A hardy plicate of huge size. S. arched, etched blue on the margin. F. broad and straight with rich blue marking. Many smooth heavy textured flowers on widely-branched stems.

\$1.25

THURATUS (H. P. Sass) M. 38". One of the darkest of all irises. A long flower of blackish purple, showing crimson tones when the sun shines. While the flowers are large they are well finished.

\$.35

TINT O' TAN (Ayres 1933) M. 40". A combination of bronzy tan and straw yellow coloring. The flowers give a brown effect and arc well placed on 40-inch stems, with a long period of flowering, from midseason to late.

\$10.00

TRAILS END (Williamson 1934) M. 38". A distinct blend which resembles no other. S. soft citron yellow overlaid soft orange red; F. deep orange red with yellow reverse. A strong grower and profuse bloomer. Its color is its outstanding quality; it instantly attracts the eye.

\$4.00

UKIAH (Essig 1934) M. 36". A fine dark iris of red and brown tones with standards of silky texture and velvety dark red brown falls. Beard and center of old gold. A rich and beautiful iris of unusual distinction.

\$3.50

VALOR (Nicholls 1932) M. 50". A very beautiful and outstanding variety and one of the most admired in our garden last year. S. blue violet, domed and firm; F. rich blue violet shading to raisin purple at the edges. A stately and glowing purple with every good quality. We recommend it highly.

H.M., A.I.S., 1934.

\$.50

VENUS DE MILO (Ayres 1931) M. 40". A superb white Dominion seedling. The flowers are of rich creamy white, smooth finish and fine gold beard. One of the finest originations of this famous hybridizer and in our opinion, the best white in the lower price range.

H.M., A.I.S.

\$.50

VIOLET CROWN (Kirkland 1931) L. 40". A stunning iris of unusual and most attractive shimmering pale violet shades; it is a self, but the falls are slightly deeper than the standards. The form is perfect and the flower lasts a long time. One of the finest iris we have ever grown. Highly recommended.

\$.75

VISION (Ve-zcc-o') (Cayeux 1933) M. 38". An unusually fine flower with honey yellow standards and velvety garnet red falls and brilliant gold beard. The stalk is symmetrically branched and the plant vigorous. This is not a dull variegata blend, but a clear sparkling true variegata.

\$5.00

Certificate of Merit, Paris, 1932.

WAMBLISKA (J. Sass 1930) M. 40". A white of huge proportions, heavy texture and pure white coloring, with a soft lustrous blue sheen at the center and pale yellow beard. The flower is crinkled and stands all kinds of weather well. Wambliska is Indian for White Eagle. **\$.50**

H.M., A.I.S., 1931.

WAR EAGLE (J. Sass 1933) M. 40". S. bright red purple; F. red purple with velvety black shading, brown stripes on haft. The flower is very large and in effect a rich, glowing red purple. **\$10.00**

WASATCH (Thorup 1935) M. 40". The largest flowered iris we have grown and one of great charm and beauty. It is a huge glistening white plicata evenly marked with clear blue. The plicata marking is most pronounced in the bud and the open flower has no dark brown marking on it. S. broad and arched; F. broad and straight hanging. The blooms are of heaviest texture and well placed on strong branching stems. Named for the range of mountains to the east of Salt Lake City. A truly remarkable flower. **\$6.50**

WELCOME (Reibold 1936) E. 44". A fine soft toned yellow of smooth finish and graceful shape. S. and F. rich pinard yellow with orange beard. The stalk is very well branched and carries many flowers of very large size, and delightful fragrance. It blooms luxuriantly over a long period. Highly recommended. **\$10.00**

WILLIAM MOHR (Mohr 1925). Probably the most remarkable hybrid ever raised. The ground color is pale lilac, the standards are flushed darker and the whole flower is veined dark violet. The flower has great substance.

A.M., Chelsea, 1930.

\$.25

WILLIAM R. DYKES (Dykes 1927) M. 38". A large medium yellow self of perfect shape and heavy texture. S. tall, dome shaped and frilled; F. of great thickness and the entire flower is crinkled, giving it an effect of much richness. Should be protected in open garden. The pollen is fertile and the parent of some of our best yellows. **\$1.00**

WINNESHIEK (Egelberg 1931) M. 40". An excellent iris of darkest hue and fine form. The effect is that of a very rich dark blue, with a pearly gray suffusion. An unusual iris of high grade. **\$.75**

ZAHARON (Mrs. W. R. Dykes 1927) M. 40". An extra strong and vigorous plant, and in our opinion, one of the best blends in commerce. The flowers are large and an exquisite blend of amber, buff, yellow, fawn and palest violet, with strong suffusion of rose. Plant near delicate colors. **\$.75; 3 for \$2.00**



*In their gowns of crinkled silk,
Golden banded, ranked in order,
Brilliant as the sunset fire is,
Black as bull's blood, white as milk,
Stand within our garden border
Troops of Iris.*

SUSAN O. MOBERLY.

**President
Pilkington**

Cayeux
1931



Suggestion for the Beginner

- It is unnecessary for the new gardener to start growing iris by selecting varieties that have been discarded by most modern growers. Here is a Quality Gardens suggestion for the beginner; it contains a wide variation of clear colors and lovely blends. Many of the highest rating varieties of comparatively recent years are in this list.

Alta California

President Pilkington

Clara Noyes

Desert Gold

Dog Rose

El Capitan

Evolution

Farandole

Gilead

Henri Riviere

Hermene

Honeydrop

Indian Chief

Los Angeles

Morning Glory

Mrs. Valerie West

Persia

Pluie D'or

Rameses

Selene

Shasta

Spring Maid

Talisman

Any ten, selecting one only of each variety, postpaid for \$2.75, all for \$4.50

We have only 25 of the following collection for sale; it is, without doubt, the best collection we have ever seen offered.

Crystal Beauty

Eros

Genevieve Serouge

Sunmist

Trail's End

and the exquisite

MISSOURI

Postpaid for

\$15⁰⁰

For the advanced amateur or show bench.

Attye Eugenia

Burning Bronze

Cheerio

Wasatch

Coralie

Dymia

Cincinnati

Postpaid for

25⁰⁰

A WELL SELECTED HEMEROCALLIS COLLECTION

Dr. Regal, May

Sovereign, June

Cressida, late June

Calypso, July

D. D. Wyman, August

**W. H. Wyman, late August
and September.**

Postpaid for

\$3⁰⁰



Fine Tall Bearded Varieties at Low Prices

30 cents each, or 3 of the same variety for 75 cents

- BLUE HILL.** Clean crisp pure blue
COLUMBINE. Ruffled pure white.
DON JUAN. Huge purple bicolor.
GRACE STURTEVANT. Dark velvety maroon, gold beard.
GRAND MONARCH. Dark red of fine form.
HENRI RIVIERE. Lilac and lemon yellow bicolor.
LOS ANGELES. Lovely waxy white, blue markings.
MAGENTA. Amethyst self, unusual coloring.
MARY ELIZABETH. Large rose red self. Very fine.
MRS. VALERIE WEST. Floriferous bronze and crimson.
- MORNING GLORY.** Very tall, large flowered red; extra.
NUMA ROUMESTAN. Fine dark maroon self, good form.
NUSKU. Soft rose self.
SACRAMENTO. Huge pure white edged red purple.
SAN FRANCISCO. Dykes medal plicata, white feathered blue.
SIR MICHAEL. Lavender standards and deep purple falls.
SENSATION. Pure large blue self. Extra good.
TALISMAN. Floriferous rose and yellow blend.
MME. SEROUGE. Midnight blue self.
YVES LASAILLY. White with blue blaze on falls.



25 cents each, or 3 of the same variety for 60 cents

- BLUE BANNER.** Clear electric blue, paler edge.
CAMELAIRD. Gold washed purple on fall.
CYDALIZE. Yellow plicata marked brown.
ELIZABETH EGELBERG. Tall fine branched rose pink.
ENCHANTMENT. Very large, well branched colorful red.
FARANDOLE. Large flowered rose with French gray edge.
FRIEDA MOHR. The finest of all pink bicolors.
GABRIEL. Well branched brilliant medium blue.
HONEY DROP. Rich blend of henna, copper and biscuit.
- INDIAN CHIEF.** S. pinkish red, F. velvety crimson.
KING TUT. Flaming red brown.
MARQUISETTE. Shrimp pink self.
PLUIE D'OR. French Dykes medal, yellow self.
RAMESES. Dykes medal winner; lovely rose blend.
SELENE. Tall large flowered cream white.
SACHEM. Tall velvety red and sand bicolor.
WACONDA. Rich fuchsia colored self of fine form.



15c each, or 3 of the same variety for 30 cents

- ALLURE.** Dainty pink and yellow blend.
ASIA. Silvery gray and rose.
CARDINAL. Rich glowing cardinal red.
CASSANDRE. Very large dark red.
COPPERSMITH. Tall glowing crimson.
DOLLY MADISON. Delicate gray and gold blend.
GERMAINE PERTHUIS. Rich red purple of heavy texture.
MARY BARNETT. Extra fine light blue self.
MIDGARD. Ruffled pink and rose blend.
MT. ROYAL. Royal purple self; extra fine.
- OPHELIA.** Gold, biscuit and blue blend.
POLICHINELLE. Rose and gray bicolor; unusual.
RHEA. Tall, large flowered rose red.
S. de L. MICHAUD. Incomparable big light blue.
SNOW WHITE. Fine flower and profuse bloomer.
ST. CECELIA. Dainty pure white etched pink.
TAJ MAHAL. Pure white self of sturdy growth.
THAIS. Huge pure light orchid pink.
TRUE DELIGHT. White etched rose pink.
WEDGEWOOD. A pure blue of rare beauty.
WHITE AND GOLD. Clear white with rich gold beard.

If ordering late, please name substitutes; if ordering three, do not order one of three kinds, but three of one kind for the group price.



Special Dwarf Offer

We are closing out our fine dwarf collection with the exception of those retained for our own private garden. It consists of every good dwarf in commerce and many that are not, some valued at 50 cents each. A splendid opportunity to stock the rock garden or border. 25 plants, various colors and types, all named but unlabelled, postpaid for \$2.00.



A Select List of Intermediate Irises

Intermediate iris in height and season comes between the dwarfs and the tall bearded varieties. They are rich colored and smooth of finish; lovely with tulips and early spring bulbs.

- ABELARD** (H. P. Sass 1934) 26". A lustrous brown and heliotrope blend, with very large blooms. **\$1.00**
- ALICE HORSFALL** (H. P. Sass 1932) 30". Huge velvety dark red. One of the best. **\$.35**
- BUTO** (J. Sass 1930) 26". Dusky midnight blue. **\$.25**
- CHALLENGER** (J. Sass 1930) 28". Large flowered violet self. **\$.25; 3 for \$.50**
- COSETTE** (H. P. Sass 1936) 26". The first pure white of free flowering habits in this class. Of unusually fine substance. **\$3.00**

- CRYSORO** (Nicholls 1933) 24". Large flowered dark yellow. **\$.25**
- DOXA** (H. P. Sass 1928) 26". A buff and olive blend of heavy substance. **\$.25**
- GENTIUS** (H. P. Sass 1934) 26". A beautiful variety; rich royal purple of fine form. One of the best. **\$.35**
- GOLDEN BOW** (H. P. Sass 1925). The finest intermediate in commerce, in our opinion. A deep golden yellow of fine form, heavy velvety texture and large flowered. A free bloomer and increases rapidly. **\$1.00**
- RED ORCHID** (J. Sass 1934). Dark and velvety red violet, with gold beard. **\$.50**
- SAPPHIRE NIGHT** (Nich. 1934). Deep indigo blue of fine finish. **\$.50**

Table Irises . . .

Ideal for cutting, this type has well formed little flowers on thin wiry stems, is free flowering and grows rapidly.

- IVORY & GOLD.** Well branched creamy white with rich gold beard. **\$.25**
- KINGLET.** Golden yellow self of flaring form. **\$.35**
- PEWEE.** A very small pure white, many flowers on stalk. **\$1.00**
- SISKIN.** A lovely deep yellow self. **\$1.00**
- WESTWAYS.** Exquisite wistaria violet with blue patch on fall. **\$1.00**
- WARBLER.** A clean clear yellow of exceptionally fine form. **\$.35**
- TITMOUSE.** Pale amber yellow edged Hortense violet. **\$.35**





INDIAN CHIEF » Ayres 1929

Remontants - Fall Blooming Iris

- This type of iris blooms in the early spring and again in the fall. In order to secure good results we use a quick-acting fertilizer in midsummer and see to it that they have plenty of irrigation and cultivation. Not all the varieties can be depended upon in the north, but all that we list have bloomed in our gardens, but not every year. They are well worth the extra effort required to grow them well.

AUTUMN ELF (Brown 1933). A charming little iris which blooms during July and August, and during the fall months. S. olive cream, domed and ruffled; F. lavender with cream edge, ruffled and widely flared. **\$1.00**

AUTUMN FROST (Schreiner 1934). A white of Moonlight form, with yellow veining on falls. Blooms freely in fall. **\$5.00**

AUTUMN HAZE (H. P. Sass 1934). A tall bearded fall blooming sort. S. wine purple; F. velvety manganese violet. Very large flowers on well-branched stems. **\$3.50**

AUTUMN KING (H. P. Sass 1924). A huge blue purple bicolor. Good in spring as well. **\$.15; 3 for \$.25**

AUTUMN KING JR. (H. P. Sass 1926). A rich and velvety deep blue purple and one of the most reliable bloomers. **\$1.00**

AUTUMN QUEEN (H. P. Sass 1933). A beautiful pure white about 20 inches tall; blooms in August and again in the fall. One of the best. **\$.25**

CRYSORO (Nicholls 1931) E. 22". Equally good in fall or spring. Large flowers of rich golden yellow; prolific bloomer. **\$.25**

DORCAS HUTCHINSON (H. P. Sass-McDade 1933). Beautiful violet self. Of good height and size. Fragrant. **\$.50**

EQUINOX (Auten 1932). The most dependable fall bloomer. Rich violet bicolor, very large, tall and well branched. **\$.50**

ELEANOR ROOSEVELT (H. P. Sass-McDade 1933). Deep velvety blackish purple with a silky sheen. The most beautiful of all fall bloomers. A prolific bloomer. **\$.50**

FRANKLIN ROOSEVELT (J. Sass-McDade 1933). A red purple self with a velvety blaze on fall. **\$5.00**

FROST QUEEN (H. P. Sass 1933). Similar to the well known Fairy in size and coloring. A dependable fall bloomer. **\$1.00**

GOLDEN HARVEST (J. Sass 1929). A rarely beautiful fall bloomer. S. olive tinted blue at haft; F. citron yellow. A delightfully gay note in the fall garden. **\$.75**

JEAN SIRET (Andre 1930). A dwarf ever-blooming iris which resembles the tall bearded W. R. Dykes in form and coloring. A little garden gem. **\$.35**

LAURA HUTCHESON (H. P. Sass 1933). A small flowered variety of deep blue, reliable bloomer and fine for cutting. Most attractive. **\$.50**

LIEUTENANT DE CHAVEGNAC (Andre 1930). Deep red violet self, velvety. **\$.25**

MARTIE EVEREST (Kirkland 1933). A clear sparkling blue similar to Corrida in color, very tall and well branched. **\$5.00**

OCTOBER BLAZE (McDade 1935). Fine red purple similar in coloring to Indian Chief. Late. **\$2.00**

OCTOBER OPERA (H. P. Sass 1932). Velvet red purple self like the old tall bearded Opera. One of the very best. **\$1.00**

OLIVE WHITE (H. P. Sass 1930) 18". A dependable fall bloomer of fine form, of deep cream color, with pale green veining. Very fine. **\$.15; 3 for \$.30**

SEPTEMBER SKIES (H. P. Sass 1933) 16". A clear purple self of rich coloring. A dependable fall variety. Increases rapidly. **\$.30**

SOUTHLAND (H. P. Sass 1934). An equally fine intermediate and fall bloomer. A deep lemon chrome self. Flowers large and of heavy substance. S. domed; F. flaring. 24" tall. **\$3.00**

ULTRA (H. P. Sass 1930) 14". A lovely shade of ultramarine blue. **\$.25**

Five Beautiful Fall Bloomers, Reliable Bloomers

Postpaid for

\$ 3.50

AUTUMN ELF
AUTUMN HAZE
CRYSORO
DORCAS HUTCHESON
FROST QUEEN

Heemerocallis . . .

A Select List of the New Day Lilies

Once established Heemerocallis thrive and the clumps grow larger year after year. They thrive in full sun or partial shade and like a moist location. Rotted manure should be thoroughly mixed with the soil when planting.

APRICOT (Yeld) 24". Fragrant apricot-orange. Late May and June; excellent with iris. \$.35

AUREOLE 36". Brilliant yellow tinged orange. Late May and June. \$.50

BAY STATE (Betscher 1929). A stately tall pure deep yellow of fine form. Blooms mid-July. 4 ft. \$1.00

CALYPSO (Burbank) 38". Clear lemon yellow of large size which blooms in the evening. July and early August. \$.75

CINNABAR (Stout) 30". Deep yellow marked soft brown with recurving petals. \$2.00

CISSIE GUISEPPI (Perry) 36". A deep copper colored beauty with pale yellow throat. Reverse of petals marked red and soft green. Mid-July to mid-August. \$3.00

CRESSIDA (Betscher). Rounded blossoms of deep orange. June. \$1.00

DAWN (Perry) 40". Huge bell-shaped flowers of light rose, marked deeper on tips of petals, soft yellow throat. July and August. \$4.00

D. D. WYMAN (Betscher) 38". Beautiful golden yellow, with tawny markings. August. \$1.00

DR. REGAL 24". One of the earliest to bloom. Deep orange. Fine with blue iris. \$.25; 3 for \$.50

FLAVA 36". Clear lemon yellow flowers with a delightful fragrance. This variety blooms in May and June. We use it about the pool. \$.25

FLORHAM 36". Very large flowers of deep golden yellow. Fragrant and floriferous. May and June. \$.35

GEORGE YELD (Perry) 44". The largest flowered variety we grow. A beautiful blend of orange apricot flushed soft terra cotta red. Distinct and beautiful. \$1.00

GOLD DUST 30". Empire yellow; one of the earliest. \$.35

GOLDEN BELL (Ruys) 36". Very large well-formed flowers of pale orange with fluted petals. July-August. \$1.50

GOLDEN DREAM (Betscher) 36". A dream of golden beauty. Rich golden orange of beautiful form. Late July. \$1.50

GOLDENI (Betscher) 36". A smooth rich orange with rose undertone which blooms freely in late July. \$1.00

GRAMINEA. Dainty little pointed flowers of pure orange which bloom in late May on 18-inch stalks. Fine for rock garden. \$2.00

HARVEST MOON (Betscher) 36". Beautiful clear orange flowers with slender graceful petals. July. \$1.50

HYPERION (Mead) 40". Sent as a gift by the late Mr. Mead soon after he introduced it, it has been one of the most beautiful flowers in our garden. Large canary yellow flowers on fine straight stalks; fine substance and smooth finish. A.M., Royal Hort. Society, 1931. July and August. \$1.50

IMPERATOR (Perry) 48". One of the famous Perry hybrids with wide, pointed flowers of a soft rich orange, lined buff and copper. Very distinct. July-August. \$2.00

J. A. CRAWFORD (Betscher) 48". Flowers of large size of blended apricot and yellow of an unusual tone. One of the best varieties. July-August. \$1.00

JUNE BOISSIER (Perry) 42". Tall, strong, well branching stalks carry many large flowers of a brilliant shade of bronze-orange with a band of soft crimson and yellow base. One of Perry's finest. July-August. \$6.00

LADY FERMOY HESKETH (Perry) 48". Broad flowers of clear canary yellow flushed apricot; stalks tall and strong. The flower has a lustrous finish. \$4.50
A.M., Royal Horticultural Society, 1931.

LEMONA, BETSCHER (Betscher 1928). An exquisite shade of pale lemon yellow, very large flowers. July. \$.75

LUTEOLA MAJOR 38". Tall well-formed stalks with fine open flowers of deep orange yellow. One of our favorites. \$.75

MANDARIN (Farr). Clear lemon yellow with soft green flush at center of flower; pointed petals. \$.50

MARGARET PERRY (Perry) 48". Well branched stalks with brilliant orange red flowers lined soft yellow and yellow at base. Very decorative and floriferous. July-August. \$2.00

MAY SADLER (Perry) 28". An unusual color combination. Rich deep red, with brown overlay, with soft yellow throat. Petals marked orange. July-August. \$4.50

MIKADO (Stout) 30". Brilliant orange yellow with a zone of soft deep red which lightens as it reaches the throat. Increases rapidly and the bloom is abundant. \$1.50

CRESSIDA
and
OPHIR

MODESTY (Betscher). A rarely lovely kind. A large flower of pure soft yellow with a raised midrib and reflexed petals. June-July. **\$1.50**

MOONSTONE (Perry) 40". A charming flower of bright red and buff with cream colored cup; fluted petals and long season of bloom. June-August. **\$2.00**

MRS. A. H. AUSTIN (Betscher) 40". One of the largest Hemerocallis and one which blooms over a long period. A fine deep golden yellow of thick texture. Very desirable. **\$1.00**

OCHRALEUCA 40". Pale yellow evening bloomer. July. **\$.50**

OPHIR (Farr). A fine large, deep golden yellow on stout well-branched stems; the petals are broad and firm textured. One of the best of the older varieties. **\$1.00**

ORANGE MAN 18". Medium sized flowers of clear orange with brown on the reverse of petal. May-June. **\$.75**

PALE MOON (Cleveland). Lustrous pale yellow of excellent form and strong growing habit. **\$1.50**

RADIANT (Yeld). Deep orange yellow of splendid texture. The flower is large and of fine form. A distinct variety. July-August. **\$1.50**

REGINALD PERRY (Perry) 36". Pale yellow with apricot flush on tip of petals, shading to buff in throat. The flower gives an effect of cream and apricot. Lovely and effective. June-July. **\$4.50**

ROYAL 36". A smooth golden yellow with delightful fragrance. A Japanese variety. **\$1.00**

SIR MICHAEL FOSTER (Willie Mueller 1904). One of the best; clear apricot yellow flower with 6" spread. 4 ft. July to August. **\$2.50**

SIR WILLIAM (Perry) 38". A large flower of bright brownish red, with a distinct yellow midrib. Makes a brilliant garden subject. July-August. **\$3.00**

SOVEREIGN 30". A rich orange yellow of medium height. A.M., Royal Horticultural Society. **\$1.00**

SOUDAN (Stout) 40". A lovely pure yellow of rounded form and smooth texture. July. **\$3.00**

SUNNY WEST (Sass) 50". The most satisfactory variety we have grown, as well as one of the most beautiful. Enormous flowers of thick leathery substance and smooth finish of a pure shade of canary yellow. The last to bloom. Late July to mid-September. **\$3.50**

SUNSET (Perry) 36". Lovely flowers of soft copper shading to soft rose, with yellow midrib on petals, with yellow and copper sepals. July-August. **\$3.00**

THE GEM (Betscher) 36". An early blooming variety of a rich shade of yellow. June. **\$.75**

THUNBERGI 36". A sweetly scented evening bloomer. July and August. **\$.50**

VESTA (Stout) 28". A lustrous orange yellow, flushed light red. July-August. **\$3.00**



VISCOUNTESS BYNG (Perry). One of the loveliest of all. Large open flowers of silvery tone, overlaid pale copper, on very tall stalks. Long blooming season. July and August **\$3.75**

WAUBUN (Stout) 36". Soft cadmium yellow, outer half of petals flushed terra cotta, broad petals of the recurving type. July-August. **\$3.00**

WINSOME (Yeld) 36". A dainty ivory colored bloom of great charm; fragrant. June-July. **\$1.50**

WOODLOT GOLD (Cleveland). A large crinkled flower of soft golden yellow. 3 ft. July and August. **\$1.75**

W. H. WYMAN (Betscher 1928). A pale glistening lemon yellow; latest of all; blooms well into September. 4 ft. **\$1.00**

Hemerocallis will be shipped in spring and fall months, and the foregoing prices are for the fall of 1937 and the spring of 1938. Order for \$2.00 or more sent postpaid; for less add 25 cents for postage or you may have it sent express collect.

TERMS OF SALE . . . BUSINESS POLICIES, Etc.

Please Read Carefully Before Ordering

PLEASE ORDER EARLY: To prevent disappointment in case the variety is sold out. Orders are filled in rotation, as received. Special shipping dates may be asked when ordering.

STOCK: All orders will be filled with strong rhizomes grown in our own plantings and they will be freshly dug. We do not buy plants for resale.

TIME OF SHIPMENT: Orders will be filled beginning about July 1st. July and August are the best months for planting in the northern section of the United States.

TERMS: Cash with order, please. Reservations will be made and plants sent C.O.D. if order is accompanied by 25% deposit.

POSTAGE: Prepaid on orders for \$2.00. For less, add 25 cents or you may have them shipped express collect if you wish.

WE GUARANTEE stock to be true to name, vigorous and healthy when received. If not satisfactory, please return at once and adjustment will be cheerfully made or money refunded. After safe delivery we assume no responsibility for what may happen thereafter, as we cannot assume risks covering successful culture of plants after they have passed beyond our control.

PRICE OF CATALOG: Our catalog will be sent free on request for two years. After that we will send it to those who have ordered, and others may have it on request accompanied by 35 cents in stamps. We regret we cannot send it free indefinitely, but rapidly rising costs of material and labor make it impossible to do this.

DISCOUNT: A 10% discount will be given for cash on all orders received up to June 20th, except on bargain lists, clearance lists and collections.

A Quality Gardens planting of Depute Nomblot, Blue Velvet, Grace Sturtevant, Sir Michael, and in the distance, Spring Maid. . . One-year plants.



Join the
AMERICAN IRIS SOCIETY

\$3.00 A YEAR



Four Bulletins each year.
Checks payable to the
American Iris Society
should be sent to

B. Y. MORRISON, Secretary, A. I. S.
821 Washington Loan and Trust Bldg.
WASHINGTON, D. C.

