

Historic, archived document


Do not assume content reflects current scientific knowledge, policies, or practices.

GREEN'S

**NURSERY
COMPANY**
Rochester N.Y.



“It's not a Home until it's Planted”



A
NEW PEACH
"The Rochester"

EARLIEST
REESTONE
YELLOW
PEACH

NEW CATALOG
GREEN'S NURSERY CO.

ROCHESTER, N. Y.

COPYRIGHT, 1921, BY GREEN'S NURSERY CO.

GREEN'S NURSERY COMPANY

GROWERS OF

TREES, PLANTS AND VINES

ROCHESTER, N. Y.

Dear Friend;

Here's Green's catalog for 1925. We hope it looks like a good old friend to you. When we sent it we felt that it was going to a most valued friend.

After all, it is the fine, strong, vigorous things we grow and send our customers that make our friends, and it is our host of friends that is our greatest asset. Big, fruit-laden trees, fragrant blooming roses, majestic shade or ornamental trees, climbing, protecting vines bear testimony, almost everywhere to the careful nurturing received early in life in Green's Nurseries.

This year, to an enviable reputation for wonderful growing qualities, careful grading and perfect packing; to our low prices we have added new, most unusual liberal sales terms. Look for these first in our catalog on page two and we feel certain that you'll be pleased.

Our terms of purchase we are certain will insure your order to us and prompt you to send it early.

Very truly yours,

MHG/M

GREEN'S NURSERY COMPANY



Nearly 50 Years of Good Reputation

Takes Time to Build a Reputation

It is often said "it takes years to build a good reputation but only a day to break it down."

The good reputation of Green's Nursery Company has been 47 years in building. It has stood the test of time with thousands of people in all parts of the world. Mr. Charles A. Green, the founder of this Company, is known to many thousands of people as one of the nation's leading horticulturists. He is known, too, for having been the first to start a service of supplying reliable nursery stock **direct from Nursery to grower.**

It is not so easy to conduct a business with folks who are hundreds and even thousands of miles away. You can be misunderstood and have no opportunity to explain, if your customer is many miles away.

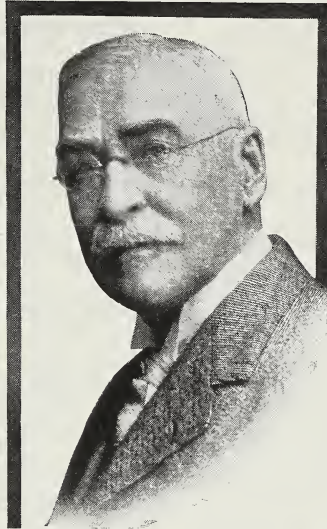
Yet we've continued to make friends. Year by year our patronage grows. Each year we make more friends so that they number many thousands, in every state. They write us how well pleased they are. In glowing words of praise they tell of their supreme satisfaction and encourage us to even better our service.

The Simple Ways by Which We Please

To us the whole plan of our service is direct, simple and founded on common sense.

First, we grow only the best, in ways that 47 years' experience has taught. We take pains, that is, we're terribly careful. We select from *our own grown stock* only the strongest, hardiest and best rooted. Extreme carefulness in dozens of operations guide us in grading and tagging varieties. We try to make no mistakes and we rarely do.

We love plants and trees and shrubs, so we pack and ship



CHARLES A. GREEN, Founder

them only as one can who has such a feeling for the lovely, living things he handles.

We sell at lowest possible prices on the smallest margin of profit. We believe in a small profit on a large number of sales.

That's one reason why Green's Nursery Co. is one of the oldest successful nurseries in America.

We sell only direct to purchaser. We have no agents and pay no commissions. There's only one small profit in anything you buy from Green's Nursery Co.

More Than a Fruit House

Due to the very high excellence of our fruit trees and small fruits, we have for years enjoyed a most enviable reputation for high quality, true-to-name, vigorous growing fruits. Ask any backyard orchardist or big fruit grower about Green's Trees and he'll become enthusiastic about their reliability, strong growing tendencies.

It is perhaps because of this wonderfully fine name for our fruits that many people overlook our big business and splendid reputation on shrubs, ornamental trees, vines,

roses, etc. Many thousands of people have found Green's good name justified in other nursery stock besides fruit trees.

Isn't it perfectly natural to suppose that this would be true? Whatever we offer in our catalog *must* be good. It is our own grown stock. We could not afford to offer it unless every plant, shrub, tree or vine could uphold and help build up the good name of Green's Nursery. You are more than safe, certain to be highly pleased, if you make your **entire nursery stock purchases** from this catalog.

By ordering **all your trees, plants and vines** from us you will be saved considerable time and inconvenience both in the ordering and in the receiving of the goods, and the responsibility for their arrival in good condition will not be a divided responsibility.

Old Customers Prove Green is Reliable

Trees Bought Eight Years Ago Prove True to Name

Please send me your catalog of fruit trees and ornamentals. I bought some trees of you eight years ago and they have just come into bearing this fall. They are a fine lot of trees and true to name.

CHARLES R. BEGOR,
Moriah Centre, N. Y.

Twenty Years a Customer—Always True to Name

It has been my pleasure to send you orders during the past twenty years. During that entire time everything has been true to name and every tree and plant has lived. I have also given your name to others who have ordered and have been satisfied in every instance, which I consider an unequalled record. I wish you could have seen the dwarf trees set out in Delaware in 1919. When we left there in 1922 they were more than wonderful.

L. JONES COMSTOCK,
Elmer, N. J.

If Green Sells You a Northern Spy Apple Tree It Will be a Northern Spy

The trees and plants you sent me arrived in first-class shape. Not a limb was damaged and everything you sent me is positively growing fine. I think that was the best lot of nursery stock I ever saw. A man up here told us if we wanted good trees that would grow and be true to name we should buy Green's trees. He said: "If Green sells you a Northern Spy apple tree it will bear Northern Spy apples." If anyone ever asks me where to get good, dependable nursery stock, my answer will be Green's Nursery Company, because they deliver the goods. The strawberry plants I got will have berries this year. When your new catalog comes out next year do not forget to send me a copy as I am going to order some more plants.

ALEXANDER SALT,
Lehighton, Pa.

Never Lost a Tree—Always True to Name

I have never lost any trees all the years I have been buying of you. They always proved true to name.

GEORGE C. JONES,
Waltham, Mass.

Father Advises Five Sons to Plant Green's Trees

I am sending you an order for fruit trees for three of my sons. I have five sons and they are all farmers and they all plant Green's trees because their father's long experience with Green's fruits has convinced them there is none better. My first fruit trees, bought nearly forty years ago, were bought of C. A. Green, and in all that time I have received but one tree that was not true to name—surely a record.

JONATHAN HAY,
Ashville, O.



Green's New Liberal Terms

Our New Policy

For 47 years, Green's Nursery Co. has had the same terms of purchase.

Everybody paid cash with order. Everybody paid their own transportation charges. These were our only terms on big or small orders, to the humble individual or the million dollar corporation.

This year we introduce a new policy. Here are our terms in detail.

Prepayment of Transportation Charges on Orders of \$10 or More

If your order is for \$10 or more, you do not have to pay any transportation charges if shipment is made to Pennsylvania, New York, Massachusetts, Ohio, Connecticut, Indiana, Illinois, Michigan, Wisconsin, Iowa, West Virginia, Virginia, Kentucky, Maryland, Delaware, New Jersey, Rhode Island, Vermont, New Hampshire, Maine and District of Columbia. We prepay all transportation charges to these states if the order amounts to \$10 or more.

To all other states and on smaller orders, we prepay transportation charges only on parcel post size trees offered on page 47.

If your order is for \$10 or more, going to any of the above states, or if it is for parcel post size trees, you know exactly the *total delivered cost*.

Trees by Parcel Post—Postpaid

If you live in a distant state to which we do not prepay transportation charges, you will undoubtedly be interested in the special grade of trees and plants that we offer by parcel post, postpaid, on page 47.

Liberal Discounts for Cash with Order

Cash orders save bookkeeping and special record keeping. Early orders help us greatly to avoid the rush at the end of the season, although we ship only on date specified or when we think the proper time, if you do not specify. Early orders also assure you getting everything you order, because they are reserved for you before the large drain on our stock is made.

8 Per Cent Discount for Cash with Orders Sent Before March 1st

This is a banker's regular interest for a year and a third. It's worth saving. Make your order out early and mail it with your remittance.

6 Per Cent Discount for Cash with Orders Sent Before April 1st

Can you afford to lose a full year's banker's interest? Send your order and remittance promptly.

3 Per Cent Discount for Cash with Orders After April 1st

The customer who sends cash with the order is entitled to some discount over one whose order is sent C. O. D. Because of our very low prices we cannot extend credit. Our terms are either cash with order or cash on delivery.

We Ship C. O. D. if Desired

This is how we show our faith in you and our firm belief in what we offer. You can order at catalog prices any time (the earlier the better for you and us). Pay for the goods to the mailman, expressman or freight agent. Of course no discount is allowed on C. O. D. orders.

If your order is for \$10 or more and going to any of the states listed above in our "free transportation offer," we prepay the transportation charges whether cash is sent with order or goods sent C. O. D. You pay only catalog prices for the nursery stock.

Green's Guarantee

Delivery—We guarantee delivery in good condition. If the customer will notify us immediately that shipment arrived in unsatisfactory condition because of delay in transit or other cause, we will be pleased to make immediate adjustment.

True to Name—No human caution could be more exacting than ours. If any of Green's trees prove untrue to name, we will gladly replace the items or refund the purchase price. Obviously we cannot assume further responsibility than that.



A Block of Two-Year-Old Apple Trees. Note the Clean Straight Trunks and Well Shaped Heads

Information for Customers

WHEN TO PLANT—Planting can be done any time the trees and bushes are dormant and the ground not frozen. In most states the spring planting season begins March 1st and extends until June 1st, and the fall planting season begins October 1st and extends until December 1st.

HOW TO PLANT—Complete planting directions will be sent with your order. If planting directions are desired before shipment we will be glad to send them to you on application.

WHEN TO ORDER—It is best to order early and thus avoid the possibility of our being sold out of some of the varieties you want. The time of shipment can be safely left to us as we keep track of weather conditions throughout the country and ship each order so as to reach our customers at the very best time for planting in that locality. If it is necessary that an order arrive on a certain date, please note it on your order sheet and we will ship to arrive as near to that date as possible.

CLUB ORDERS—It is advisable to order all your wants at one time. This will save you time in handling and planting. If your wants are but few, get your good friend or neighbor to join with you in ordering. We will tie and tag each person's order separately and bundle all together in one package and ship to whatever address you desire.

HOW TO SEND MONEY—An express money order, postal money order or bank draft is the best form of remittance. You can send your personal check if you so desire. It is not safe to send silver or bills except in a registered letter.

SPECIAL QUOTATIONS ON LARGE QUANTITIES—Write us for special prices on large orders. Be sure to state the number of each variety wanted and the size of the trees desired.

State of New York

DEPARTMENT OF FARMS AND MARKETS

Division of Agriculture

Certificate of Inspection of Nursery Stock

This is to certify That the nursery stock of **Green's Nursery Company** of Rochester, County of Monroe, State of New York, was duly examined in compliance with the provisions of Article 14 of the Farms and Markets Law, and was found to be apparently free from any contagious or infectious disease or diseases, or the San Jose scale or other dangerously injurious insect pest or pests. This certificate expires September 1, 1925.

BYRNE A. PYRKE,
Commissioner.

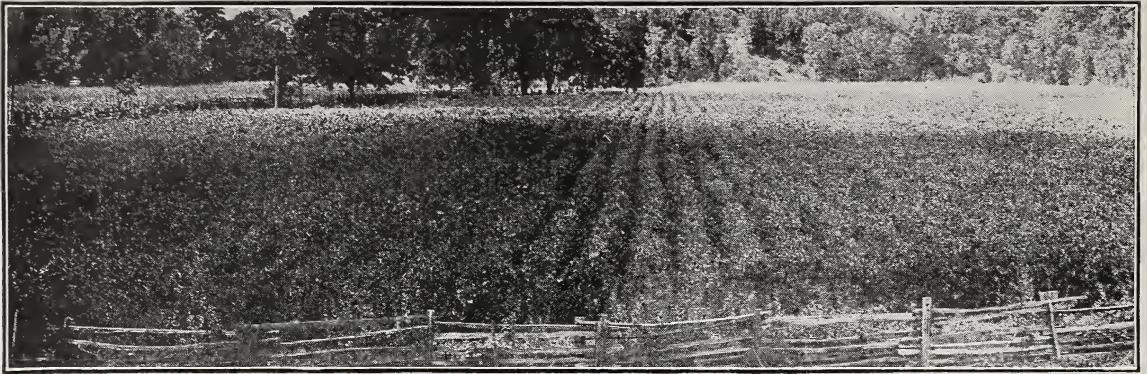
By Geo. G. Atwood, Director Bureau of Plant Industry.
Dated, Albany, N. Y., September 10, 1924.

Age of Bearing—Distance to Plant—Number Per Acre

As the age of bearing depends so much upon variety, soil, climatic conditions and care given, this can only be an approximate table under average conditions. To ascertain the number of trees or plants required for any given space, multiply the length of the space by the breadth to ascertain the number of square feet contained therein. Then multiply the distance apart you intend to set your rows by the distance between each tree or plant in the row to get the number of square feet each tree or plant will take. Divide the number of square feet in the given space by the number of square feet each tree will require and the result is the quantity of trees or plants required for that given space. Example: Given space 20 feet by 10 feet. Asparagus set 2 feet by 1 foot. 20 feet by 10 feet equals 200 square feet. 2 feet by 1 foot equals 2 square feet. 200 divided by 2 equals 100 roots.

	Age of Bearing	Distance Apart	Number per Acre
Apples, Std.	3 to 6 years	35 x 35 ft.	35
Apples, Dwf.	2 years	10 x 10 ft.	435
Apricots	3 years	15 x 15 ft.	193
Asparagus	2 years	Field 4 ft. x 18 in.	7,260
		Garden 2 x 1 ft.	21,780
Blackberries	1 year	8 x 6 ft.	907
Cherries	3 to 4 years	Sours 15 x 15 ft.	193
		Sweets 20 x 20 ft.	108
Currants	2 years	4 x 4 ft.	2,722
Gooseberries	2 years	4 x 4 ft.	2,722
Grapes	2 years	8 x 8 ft.	680
Horseradish	1 year	3 x 1 ft.	14,520
Peaches	2 years	15 x 15 ft.	193
Pears, Std.	3 to 4 years	20 x 20 ft.	108
Pears, Dwf.	2 years	10 x 10 ft.	435
Plums	3 to 4 years	20 x 20 ft.	108
Quinces	4 to 5 years	10 x 10 ft.	435
Raspberries	1 year	6 x 4 ft.	1,815
Rhubarb	1 year	4 x 3 ft.	3,630
Sage	1 year	3 x 3 ft.	4,840
Strawberries	1 year	Field 4 x 1 ft.	10,890
		Garden 2 x 1 ft.	21,780

Please Use Order Blank Enclosed



A Block of Young Peach Trees Ready for Budding



A Field of One Year Old Cherry Trees at Green's Nurseries



A Block of California Privet on One of Green's Nursery Farms—We Grow Thousands of These Every Year

We Grow Our Own Trees

Buy Direct from the Grower

APPLES

THE apple is without doubt the most important orchard fruit in the country. A recent census made by the United States Department of Agriculture reveals the fact that in spite of the steadily increasing demand for the fruit, the number of old trees dying out is far in excess of new ones being planted. The farsighted orchardist who takes advantage of this fact and plants apple trees now will reap rich rewards for his farsightedness. Apples do well on almost any good average soil that will produce a good crop of corn or potatoes. They are usually planted 35 feet apart each way.

There are over two thousand recognized varieties of apples. Unfortunately, however, many of these are not worthy of serious consideration, being lacking in one or more of the essential characteristics of a good apple.

The varieties offered in this catalog are a selected list of varieties, the result of nearly fifty years careful study and investigation on our part. They are dependable varieties of known and recognized value.

The descriptions of varieties given herewith apply both to standard and dwarf trees. The only difference is in growth of tree, age of bearing and size of fruit. Dwarf trees are lower-growing, come into bearing earlier and as a rule produce fruit of a larger size.

Prices of Standard Apple Trees

ALL VARIETIES EXCEPT CORTLAND

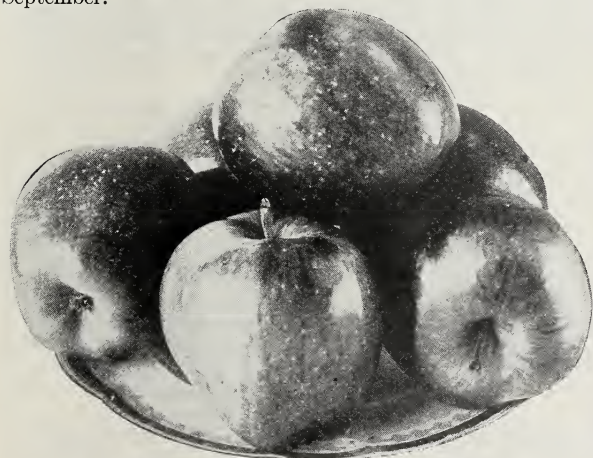
Size	Age	Height	Grade	Each	10	100
Largest	2 yrs. old	6 to 7 ft.	XXX	.95	\$8.50	\$65.00
Medium	2 yrs. old	5 to 6 ft.	XX	.85	7.50	55.00
Smaller	2 yrs. old	4 to 5 ft.	X	.70	6.00	40.00

RATES—Less than ten Standard Apple Trees at each rates. Ten to fifty at ten rates. Fifty or more at hundred rates.

TERMS—8 per cent discount on orders received with cash before March 1st. 6 per cent discount before April 1st. 3 per cent after April 1st. We pay transportation charges on orders of \$10.00 or more to nearby states. See page 2.

SUMMER APPLES

RED ASTRACHAN—The best general-purpose midsummer apple both for home use and for market. Excellent for cooking, and when fully ripe very desirable for eating fresh out of the hand. Skin a pale yellow striped and splashed with deep crimson and covered with a distinct bluish bloom. Brisk subacid in flavor. Very good in quality. The tree is medium in size, a reliable cropper, moderately productive, very hardy and bears the fourth year. Ripens in July and keeps until September.



Delicious Apples—All the Name Implies

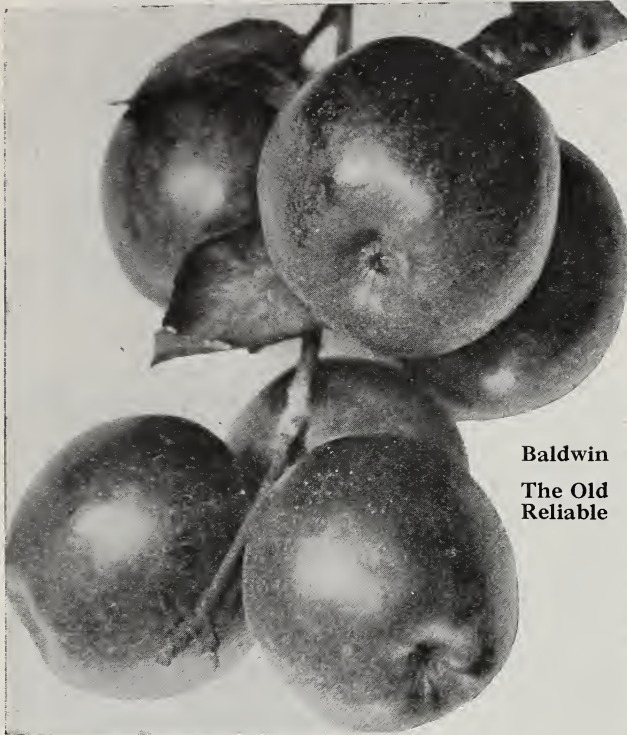
YELLOW TRANSPARENT—One of the best of the extra early apples. Unexcelled for pies, tarts and apple sauce. Skin smooth, waxy, a pale yellowish-white in color. Sprightly subacid in flavor and of good quality. The tree is medium in size and often used as a filler. A reliable cropper, yielding good crops annually, or nearly so. On account of its extreme hardness can be planted in northern localities where less hardy varieties would not succeed. Bears third or fourth year. Ripens in late July and continues in season until September.

AUTUMN APPLES

GRAVENSTEIN—In some localities known as Green Newton. A variety of excellent quality. For culinary purposes unexcelled by any variety of its season. The skin is slightly rough and of an orange-yellow color, overlaid with broken stripes of light and dark red. Sprightly subacid in flavor. The trees grow rather large, come into bearing early, are quite productive and are pretty reliable croppers. Moderately hardy. The fruit ripens about the middle of September and continues in season till early November.

OLDENBURG—Often called Duchess of Oldenburg, or just Duchess. One of the very hardiest varieties, highly esteemed for home use on account of excellent culinary qualities. A pale yellow skin almost covered with splashes and stripes of bright red. Some people think it is too acid for a good dessert apple, but in our opinion it can be eaten out of the hand with enjoyment if allowed to fully ripen on the tree. As the tree is somewhat of a dwarfish nature, it is often used as a filler in orchards of larger-growing varieties. Comes into bearing about the fourth year and produces heavy crops biennially with lighter crops alternating. In season late August and September, but it may be used for culinary purposes before it is fully ripe.

For prices of Dwarf Apple Trees see page 10



Baldwin
The Old
Reliable

WINTER APPLES

BALDWIN—Due to its dependability, desirable season, good size, attractive color and good quality, Baldwin is the leading commercial variety for New York, New England, and certain parts of Canada, Ohio, and Michigan. Every orchard in the Baldwin belt should have at least a few trees of this grand "old reliable" variety. Large, strong, vigorous trees, producing an abundance of large to very large apples of a bright red color, with yellowish, crisp, tender, very juicy flesh. Agreeably subacid in flavor. Very good in quality. Rather slow to come in bearing, but rapidly makes up for lost time when it begins bearing. Long-lived. Ripens in November and lasts until April in common storage and to May or later in cold storage. See illustration in colors on inside back cover.

BLENHEIM—Often called Blenheim Orange. Fruit large to very large, yellow, more or less washed and striped with red, attractive in appearance and of excellent quality. Sprightly subacid. The fruit is desirable both for home and market uses, but the variety is usually unsatisfactory for commercial planting because it is not a good keeper. In season from October to December, but often may be kept till midwinter or later.

DELICIOUS—Sometimes called Stark's Delicious. A really delicious apple with a distinct flavor all its own. A high quality apple. Fruit large, somewhat conical in shape, tapering at the base into five distinct knobs. Its beautiful crimson color and unique shape make it an ideal apple for the fancy or box trade. Sells readily for high prices at the fruit stands. The flesh is crisp and juicy. Mild in flavor, but not a sweet apple. Has a decided aroma which is very pleasing. The tree is hardy, vigorous and productive. Bears about the fourth year. In season from November until May. See illustration in colors on inside back cover.

FAMEUSE—Probably better known as "Snow." Not as desirable as some for culinary uses, but one of the finest apples for dessert. It is a moderate grower, producing rather heavy crops of medium size fruit almost annually. Skin bright red deepening to almost purplish-black in some specimens. Its white, tender, exceedingly crisp flesh and mild subacid flavor make it an apple long to be remembered by those who have tried it. Hardy—succeeds well in the north. Ripens in November and keeps until January.

GRIMES GOLDEN—An apple of very high quality, probably the highest of any of the yellow varieties. Desirable for both dessert and culinary uses. Does not develop in size and quality as well in the north as it does in more southern latitudes, and generally is not considered a good commercial apple for the more northern states. It is, however, worthy of consideration for the home garden. Fruit medium in size, of a golden-yellow color with crisp, yellow, tender, moderately juicy flesh. Rich subacid in flavor. A moderately vigorous grower and an almost annual bearer. Good cropper. In season from November to January.

HUBBARDSTON—By many known as Hubbardston Nonesuch. Identical we believe with American Blush. Considered one of the most profitable varieties of its season, ripening as it does between the perishable early autumn varieties and the late-ripening winter apples. A vigorous grower and an early bearer, yielding heavy crops every other year. In some places it is an almost annual bearer. Fruit is large with mottled red and yellow skin often flecked and veined with russet. The flesh is firm, rather fine-grained, tender and moderately crisp. Its flavor is considered by many authorities as very good, but in this respect we do not consider it equal to some of the more highly flavored varieties like Cortland, McIntosh and Delicious. In season from October to January.

JONATHAN—A very beautiful apple of a brilliant red color, highly flavored and of excellent quality for either dessert or culinary uses. At its best it is one of the most desirable varieties for the fancy trade at the holiday season. Grown extensively and at its best in the middle west, but does not attain its usual size farther east. Under favorable conditions the tree is a reliable cropper, bearing good crops biennially. Comes into bearing about the fourth year and is a moderate grower. Fruit medium to rather small in size, of a brilliant red color with flesh that is very crisp and tender. Full of juice that has a decided snap and sparkle. In season from November to January or later.

STANDARD APPLE COLLECTION

10 Standard Trees, 5 to 6 feet High, for \$6.40

1 Duchess of Oldenburg	1 Rome Beauty
1 Wealthy	1 Jonathan
1 McIntosh	1 Stayman's Winesap
1 Gravenstein	1 Yellow Transparent
1 Delicious	1 Transcendent Crab

All Medium Size, XX Grade

Catalog Price \$7.50 COLLECTION PRICE \$6.40

We pay transportation charges. See page 2



THE NEW CORTLAND APPLE

Winner of the Wilder Medal

To this remarkable new variety, originated at the New York agricultural experiment station, has been given the highest honors obtainable in the horticultural world. At its annual meeting in November, 1923, the American Pomological Society awarded to Cortland the Wilder silver medal for new fruits. To qualify for a Wilder medal a new fruit must exhibit superiority to all existing varieties with which it will compete and must show promise of commercial possibilities in the future.

Origin of Cortland Apple

Twenty-five years ago at the New York agricultural experiment station at Geneva, New York, flower buds of Ben Davis were hand pollinated with pollen from McIntosh blossoms. That was in 1898 and during the winter of 1899 eleven seeds obtained from the resulting fruit germinated and grew into trees large enough to set in the nursery that spring. In due time these young seedlings were moved to the orchard and there first bore fruit in 1911, although fruit from the budded stock had been obtained five years before. All but three of the original seedlings were quickly discarded. The seedling that was later to be called Cortland was propagated by budding to increase the supply of stock and was named Cortland and sent out for trial in all parts of the country in 1915.

Possesses Desirable Characteristics of Both Parents

Cortland more nearly combines the good qualities and eliminates the weakness of both parents than had even been hoped for by those responsible for this remarkable variety. From the Ben Davis side of the family it derives one of its most notable and valuable characteristics, namely, its ability to hang to the tree. To the credit of Ben Davis must also be entered its ability to stand handling. Those who grow Cortland testify that it handles as well as Baldwin. For its high quality Cortland must look to the McIntosh side of the house. The taste can hardly be distinguished from that of McIntosh, but is even richer if that be possible.

Description of Cortland

The fruit of Cortland is as large or larger than that of McIntosh, round to somewhat conical in shape. In color it is a bright red blushed with darker red splashed and striped with carmine and more or less overlaid with a deep purplish bloom. The flesh is white often with a pinkish tinge, fine, crisp, tender, juicy, subacid and aromatic. The trees are large, vigorous, upright-spreading, very hardy, productive and healthy. Flower bloom in midseason. Fruits about three weeks later than McIntosh.

Origin of Green's Cortland Trees

When we decided to grow this valuable new variety we were confronted with the problem of securing enough buds to permit propagating in large quantities. On the recommendation of Professor U. P. Hedrick of the New York agricultural experiment station, we secured our buds direct from Mr. William Hotaling of Kinderhook, New York. Mr. Hotaling, as testified to by Professor Hedrick, secured his original trees direct from the station grounds. We visited the orchards of Mr. Hotaling and found these original trees in fruiting and the buds from which our trees are propagated are cut direct from these bearing trees. We guarantee absolutely that all the trees grown in our nursery and offered for sale by us are the true Cortland grown from buds secured from bearing trees.

Cortland Cannot be Surpassed

Professor U. P. Hedrick, head of the New York agricultural experiment station at Geneva, has this to say about Cortland: "The Cortland cannot be surpassed by apples grown anywhere

in the world, and apple growers in New York and New England have an opportunity to specialize in a distinctive fruit that will bring renown and profit to the industry of the region."

Hangs Well to Tree

A prominent fruit grower writes in "The Rural New Yorker" as follows: "I visited the Cortland and McIntosh orchard of Mr. William Hotaling on September sixth and he was picking his McIntosh. Exactly four weeks later we were again in the vicinity and this time the Cortland apples were just ready to pick. The Cortland apples were hanging tenaciously to the trees. Under one tree that was carrying between three and four bushels of fruit were lying five or six apples, while other varieties nearby were dropping badly, due to the twenty-mile wind that was whipping through the orchard. The few Cortland apples that were on the ground had the stems torn out. In other words, the Cortlands that had dropped had been literally torn from the trees by the whipping of the wind."

Prices of Cortland Apple Trees

Size	Age	Height	Grade	Each	10
Largest	2 yrs.	6 to 7 ft.	XXX	\$2.00	
Medium	2 yrs.	5 to 6 ft.	XX	1.50	
Smaller	2 yrs.	4 to 5 ft.	X	1.00	
Largest	1 yr.	3 to 5 ft.	XXX	1.50	\$13.50

Orchard Planters—Write for special prices on One-Year-Old Cortland Apple Trees in quantities for orchard planting.

Note—Owing to our limited supply of Two-Year-Old Cortland Trees, we can sell only one two-year tree to a customer.



One of the Bearing Cortland Apple Trees from which Our Buds were Secured. The Shape of this Tree is due to the fact that most of the Top Branches were Cut Away for Bud Wood

See illustration of Cortland in colors on back cover.



McIntosh—Unsurpassed in Quality

WINTER APPLES—Cont'd

McINTOSH—In our opinion not equalled in quality and flavor by any other variety with the exception of the Cortland, its progeny, which it resembles very much. Due to its very high quality and its exceedingly attractive appearance, it commands a ready sale and a fancy price in all the large eastern markets. Has held the record for high price for years in the Boston, New York, and Chicago markets. Rapidly making a place for itself as one of the leading if not the leading commercial apple of the east. The fruit is very attractive in appearance, of bright deep red color, which in highly colored specimens is almost purplish-red overspread with a thin lilac bloom. Fruit above medium in size, with white, firm, very crisp flesh, fine-grained, tender, very juicy. Sprightly subacid in flavor with a characteristic perfume and aroma. The tree is rather a strong grower, very hardy and healthy. Comes into bearing about the fourth year and is a reliable cropper, yielding good crops biennially and sometimes annually. We recommend it highly to eastern orchardists. In season from October to December or later. See illustrations in colors on inside back cover.

NORTHERN SPY—An old-time favorite with a distinct flavor all its own that appeals to those who like a brisk, spicy apple that is not actually sour. One of the leading commercial varieties. The fruit is large and attractive, being of a bright red color overspread with a delicate bloom. The flesh is very juicy, crisp, tender and most excellent for either dessert or culinary uses. It is ready for use in November and retains its crispness and high flavor remarkably well until the close of the season in March and April. It is not a good variety for evaporating because it is too tender and juicy. It comes into blossom remarkably late. On this account its blossoms sometimes escape destruction by late frosts when earlier-blooming varieties are much injured. Usually it is rather slow in coming into bearing, although under favorable conditions it has been known to yield profitable crops in seven years. Usually reliable cropper, yielding moderate to heavy crops biennially or almost annually. See illustration in colors on inside back cover.

PUMPKIN SWEET—Generally known in central and western New York as Pound Sweet. One of the best sweet apples of its season for baking and for canning or stewing with quinces, but generally it is not valued for dessert because it is rather coarse and has a peculiar flavor. Fruit very large, quite yellow in well colored specimens, streaked over the base with whitish scarf skin and sometimes faintly bronzed on the exposed cheek. The tree is a strong grower, long-lived and fairly hardy. A pretty reliable cropper, yielding good crops biennially. In season from early October to January.

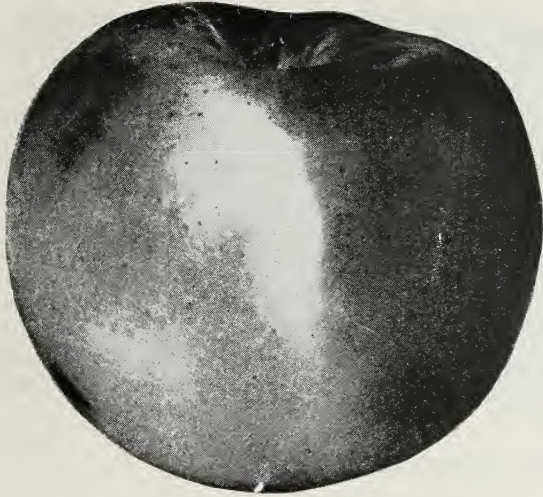
RHODE ISLAND GREENING—Commonly called by the simple name Greening. As a cooking apple it is unsurpassed and as a dessert fruit of its season has few equals. It is a good variety to grow with Baldwin in commercial orchards, because, being a little earlier in season, it can be picked and marketed before it is necessary to pick Baldwin. The fruit is large, yellowish-green, often with a dull blush. To some tastes it is rather acid, but the tenderness of its very juicy flesh, the sprightliness of its abundant juice and the delicacy of its rich flavor are not excelled by many varieties we now possess. It does not come into bearing young but is long-lived, productive and a reliable biennial cropper. In season from October to January or early February.

ROME BEAUTY—A medium to large apple, yellowish, more or less mottled with bright red. It is thick-skinned, stands handling well and is a good keeper. It has an established reputation in market and sells at a good price. As compared with Baldwin it is not quite as good in quality either for dessert or culinary uses, but the tree comes into bearing at a much earlier age and under right conditions is more nearly an annual bearer. Can be grown successfully except along the Canadian border, but is at its best in New Jersey and along the Ohio river. Flesh is firm, crisp and juicy. Commonly good but not of high quality. Ripens in November and keeps until April or May.



Rhode Island Greening—The Pie Apple de luxe

We give a liberal discount for cash. See page 2.



Winter Banana—An Apple with a Distinctive Banana Flavor

WINTER APPLES—Cont'd

ROXBURY RUSSET—The most popular russet apple. An excellent keeper, of good size, with a russet-brown skin and a bronze blush in highly-colored specimens. Flesh is tinged with yellow or greenish, firm, somewhat coarse, moderately tender and crisp. Sprightly subacid in flavor. Good to very good in quality. A biennial bearer and under favorable conditions a reliable cropper. In season from December to July.

STAYMAN'S WINESAP—At its best in the middle west and south, but can be grown successfully in almost any apple section. Fruit medium to large in size, yellowish, striped and splashed with dull red in color, and with a firm, crisp, yellow flesh, mildly subacid in flavor. Good quality. Comes into bearing about the fourth year and is a reliable annual cropper, alternating heavy with light crops. In season from December to May.

TOMPKINS KING—More often known as King or King of Tompkins County. Were the tree hardier, healthier, longer-lived and more productive, this variety would be grown much more extensively in commercial orchards. As it is it ranks fourth in commercial importance in New York state. The excellence in quality of the fruit, its very large size and attractive appearance make it worthy of consideration for the home orchard. As a rule the tree does not come into bearing very young, but with maturity usually becomes a regular bearer, yielding moderately heavy crops almost annually. Skin fine yellow, mottled and washed with orange red, splashed with bright carmine. Flesh yellow, crisp, tender, juicy and subacid in flavor. In season from October to January.

TRANSCENDENT CRAB—This for many years has been one of the most popular of the crab apples. The fruit is medium to rather large, skin clear bright yellow with red cheek overspread with bloom. Flesh yellow, crisp, juicy, somewhat astringent and subacid in flavor. Very good for culinary uses. A good grower, hardy, and usually very productive. In season from late August to middle of September or later.

WAGENER—At its best it is an apple of superior excellence.

The fruit is medium to large in size, of a beautiful bright red, with some contrasting pale yellow. It has a fine texture, high flavor and excellent quality. Very desirable for culinary uses, but especially esteemed for dessert. It is a reliable cropper, yielding rather heavy crops biennially or almost annually. Apt to overbear and should be thinned. On account of its dwarfish habit and early bearing, is recommended as a filler to plant between rows of longer-lived varieties. In season from October to February or later.

WEALTHY—This variety is particularly valuable for cold climates because the tree is very hardy. It is a good thrifty grower when young, but with maturity it becomes a moderate or rather slow grower, forming a medium sized rather dwarfish tree. In commercial orchards planted largely as a filler between rows of stronger growing varieties. Fruit above medium to large, yellow marked with narrow stripes and splashes of red, very attractive. Flesh whitish, sometimes stained with red, crisp, tender, very juicy, agreeably subacid, rated good to very good in quality. In season from October to January.

WINTER BANANA—An exceedingly attractive yellow apple, grown extensively by western fruit growers to meet the demand of the fancy trade. Is well adapted to all sections of the Middle West, Central Atlantic and New England states except in extreme northern latitudes. Fruit large, clear pale yellow with beautiful pinkish red blush. Has a distinct banana flavor and aroma, of good dessert quality but too mild to excel for culinary uses. A good grower, comes into bearing young and is almost an annual bearer. Moderate to rather heavy crops. A good keeper. In season from mid-November to the first of April. See illustration in colors on inside back cover.

NEW LIBERAL TERMS

See Page Two

Transportation paid on orders of \$10.00 or more to nearby states

8 Per Cent discount on orders sent with cash before March 1st

6 Per Cent discount on orders sent with cash before April 1st

3 Per Cent discount on orders sent with cash after April 1st

Goods sent C. O. D. if you prefer

Thanks for Good Packing and Fine Trees

The goods I ordered from you have been delivered in first-class shape. Thanks for the good packing and the fine, robust trees and shrubs. I feel that I shall get great pleasure and profit from them and they will encourage me to further orders in the future.

MRS. CARL E. MYERS,
Atlanta, Ga.

We ship goods C. O. D. See page 2

DWARF APPLE TREES

OUR dwarf apple trees are grown on Doucin roots and are really semi-dwarf trees, being neither as small as the extremely dwarf trees grown on Paradise roots, or as large as those on standard roots. Depending upon variety, they average in size with the peach or plum. This makes them extremely desirable for the city or village garden, where space is limited. Dwarf apple trees usually commence bearing fruit the second year after planting and bear abundantly. The fruit borne on dwarf trees is as a rule larger than that on standards and is of the same color, quality, flavor and season of ripening. Their low-growing habit permits easy picking without the use of long ladders, which is a distinct advantage. The usual distance for garden planting is 10 feet apart each way, but dwarf apple trees can be planted in hedge rows, the same as dwarf pears, and can be set as near together as 4 to 5 feet. When planted in this way the trees grow only in two directions. They make a beautiful, ornamental and profitable hedge row. Dwarf apple trees are a boon to people who have gardens of a limited size. Dwarf apples should be pruned quite severely early each spring. They thrive best when well headed back.

Prices of Green's Dwarf Apple Trees

Size	Age	Height	Grade	Each	10
Largest	2 yrs.	4 to 5 ft.	XXX	\$1.25	\$10.00
Medium	2 yrs.	3 to 4 ft.	XX	1.00	9.00
Smaller	2 yrs.	2 to 3 ft.	X	.80	7.00

RATES—Less than ten dwarf apple trees at each rates. Ten or more at ten rates.

TERMS—8 per cent discount on orders received with cash before March 1st. 6 per cent discount before April 1st. 3 per cent after that date. We pay transportation charges on orders of \$10.00 or more to nearby states. See page 2.

List of Varieties We Can Supply in Dwarf Apple Trees

Baldwin
Delicious

McIntosh
Oldenburg

Red Astrachan
Wealthy

Winter Banana
Yellow Transparent

Note—Descriptions of these varieties will be found on preceding pages. Dwarf apple trees produce fruit of the same color, quality and flavor as standard trees. The season of ripening is the same, but dwarf trees come into bearing earlier, do not grow as tall and the fruit as a rule is larger in size.



A Two-year-old Dwarf Apple Tree

Green's Fruit Garden

Here is something that will delight not only the village and city planter but the farmer's wife as well. Start a fruit garden. You may say you have not room in your vegetable garden for fruits, but you have room by adopting the following plan: Plant a row of fruit trees through the center of your garden. Plant the trees 4 to 5 feet apart. You will be astonished at the amount of fruit you will get from this one row of fruit trees, but you must not crowd other rows alongside this row. You must give the sun a chance to get at your garden row on two sides. You must keep these trees pruned each year so that they will not spread too widely or too highly. We suggest for this garden row three peach trees, two dwarf apple trees, three dwarf pear and two cherry trees.

Such a row of fruit trees and plants has delighted C. A. Green's home more than almost anything else for the past thirty years. You can plant vegetables in this fruit garden between the rows of fruit trees and plants.

DWARF FRUIT TREE COLLECTION

4 Dwarf Trees, 4 to 5 feet high, for \$3.50

1 McIntosh Dwarf Apple

1 Bartlett Dwarf Pear

1 Delicious Dwarf Apple

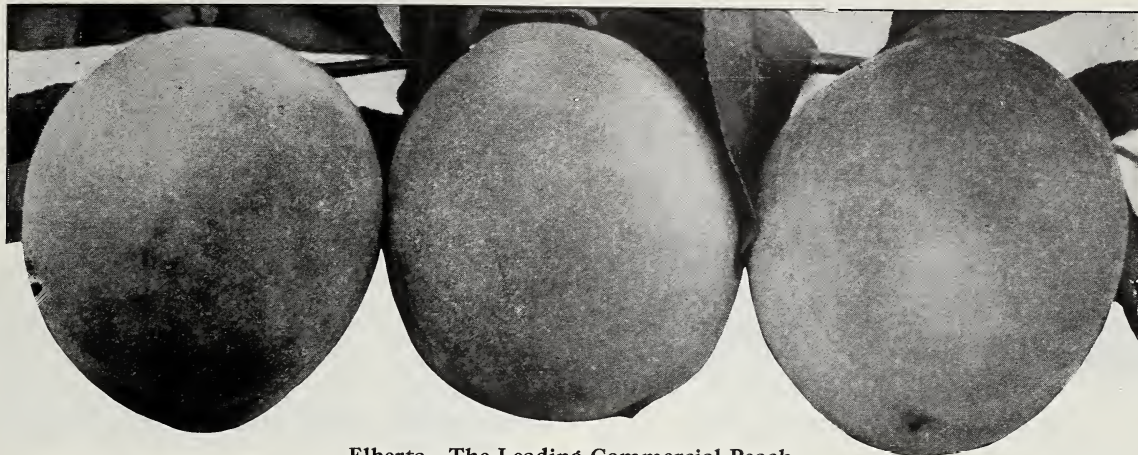
1 Clapp's Favorite Dwarf Pear

All Largest Size, XXX Grade

Catalog Price \$4.20

COLLECTION PRICE \$3.50

We pay transportation charges to nearby states. See page 2.



Elberta—The Leading Commercial Peach

PEACHES

SECOND in commercial importance comes the peach. Despite the rapidly increasing demand for this fruit, new orchards are not being planted as rapidly as old ones are dying off, and orchardists should take full advantage of this by planting more peach trees. Peach trees make very desirable fillers in an apple orchard. They come into bearing very young and they will pay for the care and maintenance of the apple trees and net a handsome profit besides; and by the time the apple trees need the room, they will have borne a full crop and can be dug up without loss. Peaches prefer a good sandy loam, but will do well on almost any soil except a heavy clay. They are usually planted 15 feet apart each way.

This is a selected list of varieties—the cream of hundreds of varieties—all thoroughly tried and tested and found to be possessed with the essential characteristics of a good peach.

Prices of Green's Peach Trees

ALL VARIETIES EXCEPT WILMA

Size	Age	Height	Grade	Each	10	100
Largest	1 yr.	4½ ft. and up	XXX	\$.85	\$6.50	\$50.00
Medium	1 yr.	3½ to 4½ ft.	XX	.75	5.50	40.00
Smaller	1 yr.	About 3 ft.	X	.60	4.00	30.00

RATES—Less than ten peach trees at each rate. Ten to fifty at ten rates. Fifty or more at hundred rates.

TERMS—8 per cent discount on orders received with cash before March 1st. 6 per cent discount before April 1st. 3 per cent discount after April 1st. We pay transportation charges on orders of \$10.00 or more to nearby states. See page 2.

BELLE OF GEORGIA (White, Freestone)—A creamy white peach with a beautiful crimson cheek, grown largely as a commercial peach in the south. Trees hardy, vigorous, and very productive. Of good quality, but in our opinion not equal in flavor to Champion. Ripens here in August.

CARMAN (White, Freestone)—One of the most profitable peaches of its class and season. Does well on soils and in climates where others would not succeed. The color is a brilliant red splashed with darker red on a creamy-white background. Very good in quality. Ripens here about the middle of August.

CHAMPION (White, Freestone)—This is considered the highest in quality of all the white-fleshed peaches. In addition to its tender flesh, juiciness and pleasant flavor, it has a peculiar honeyed sweetness that gives it individuality. It is vigorous, healthy and productive, but on some soils is apt to produce fruit not fully up to standard in size or color. The skin is creamy-white with splashes of carmine and darker red. Ripens in late August or early September.

Rochester Peach Bears Next Year

The Rochester peach tree, which I bought of you in the spring of 1922, has eleven fine peaches on it this year (1923), sweet and juicy, in spite of one of the driest summers in fifty years. Your Carman peach tree had four peaches, same age.

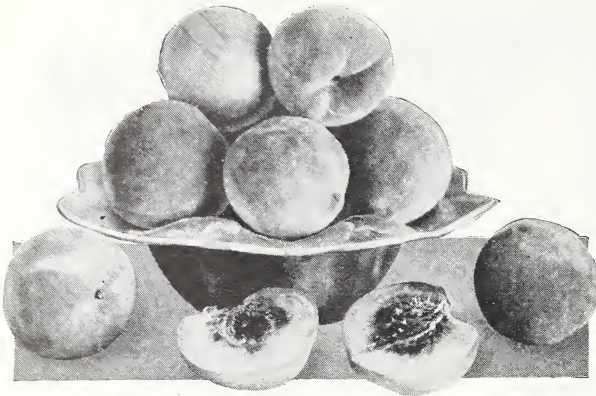
EUGENE E. SWEENEY,
Mamaroneck, N. Y.

I Certainly Must Commend You on the Nice Way You Pack

Received your fall catalog and as a result you will find attached my check for \$36.45 and order covering same. The fruit trees, shrubs and evergreens that I ordered from you last spring arrived in excellent condition and are growing nicely. I certainly must commend you on the nice way you pack. I would not know differently if I had not ordered a small shipment from another nursery at the time I placed my last order with you.

W. J. BETCHER,
Gibsonia, Pa.

Do not overlook our liberal terms on page 2.



Crawford's Early—An Old Favorite

PEACHES—Continued

CROSBY (Yellow, Freestone)—A remarkable peach for growing in sections too far north for other varieties. Often called "frostproof" on account of its extreme hardness. Besides hardness, the tree has vigor, health and productiveness. The quality of the fruit is excellent. The rich yellow flesh is delicious to the taste either as a dessert or culinary fruit. Yellow, blushed with dull red. Often handsome under favorable conditions, but apt to run small in size and less attractive in appearance in soils to which it is not perfectly suited. An ideal home sort. Ripens here in September, following quickly after Early Crawford.

ELBERTA (Yellow, Freestone)—Deservedly, Elberta is the peer of all commercial peaches. It leads all other varieties in number of trees planted in America and is the most popular peach in the markets. The two characteristics that enable Elberta to hold first place undisputed are its ability to do well in almost any soil or climate and its fruitfulness. Added to these great points of superiority are its healthiness, large size, vigor, early bearing, and longevity in tree, and large, handsome, well-flavored fruit which ships and keeps remarkably well. A beautiful, large, golden-yellow peach, with a brilliant red cheek, firm, juicy, rich and sweet. While possibly not quite as high in flavor as Rochester or Early Crawford, a peach of excellent quality, prized for dessert, canning and culinary uses. A peach whose place would be hard to fill with any other variety, for no other peach has yet been introduced that will fill the requirements of a commercial peach with such success as the Elberta. Ripens here early in September.

PEACH COLLECTION

10 Trees, 3½ to 4½ feet High, for \$4.00

3 Rochester 3 Elberta
2 J. H. Hale 2 Green's Selection

All Medium Size, XX Grade

Catalog Price \$5.50 COLLECTION PRICE \$4.00

EARLY CRAWFORD (Yellow, Freestone)—This peach has all the characteristics that gratify the taste: richness of flavor, pleasant aroma, tender flesh and abundant juice. Unapproached in quality by any other variety except Rochester, its offspring. Fruit very large, golden-yellow blushed with dark red. The flesh is a beautiful marbled-yellow rayed with red at the pit and perfectly free from the stone. The trees are all that could be desired in health, vigor, size and shape, but do not bear as heavily as some varieties and are somewhat tardy in bearing. An excellent home orchard variety. Ripens here in late August or early September.

FITZGERALD (Yellow, Freestone)—A large, handsome, yellow peach resembling the Early Crawford very closely, but ripening a few days earlier. Trees are very hardy and moderately productive. The fruit is of excellent quality, firm, tender and sweet. A fine variety for the home orchard. Ripens here in late August or early September.

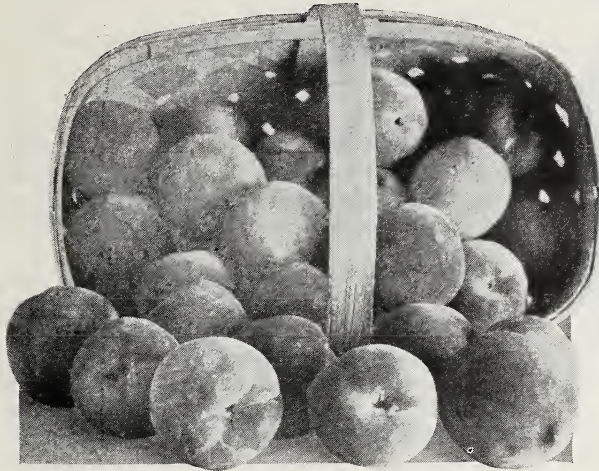
GREENSBORO (White, Freestone)—One of the leading white-fleshed peaches, principally because of its great productiveness and early bearing. The fruit is large and showy but not equal in quality to Champion. Well thought of by fruit dealers, not only on account of its attractiveness but because the fruits carry well and keep long. Skin is a creamy-white blushed and striped with dark red. Ripens here in July.

J. H. HALE (Yellow, Freestone)—A notable variety of recent introduction, unusually large in size of fruit and very handsome. Largely advertised as a rival to Elberta for commercial honors, but reported in many sections as not prolific enough to compete with that grand old variety. Of a deep golden-yellow color overlaid with bright carmine. Flesh firm, fine-grained and good in quality. An excellent shipper. Should at least be in every home orchard. Ripens here in late August or early September.



J. H. Hale—Large and Luscious

Don't forget that we pay transportation charges. See page 2



Rochester—The Most Delicious Peach of All

PEACHES—Continued

LATE CRAWFORD (Yellow, Freestone)—A peach of high quality and richness in flavor that ought long to remain one of the treasures of the home garden. The trees are hardy, vigorous and healthy, but it had to give way as a commercial peach to Elberta because it lacks somewhat in productiveness and is a little tardy in coming into bearing. Fruit large and very handsome, deep yellow blushed and splashed with dark red. Ripens here the last of September.

NIAGARA (Yellow, Freestone)—A handsome yellow peach with a beautiful red cheek, thick and firm in flesh, with a rich, sweet flavor. Lacks in productiveness in some localities, but where it proves productive is one of the best varieties for general market. Should be in every home collection. Ripens here the middle of September.

ROCHESTER (Yellow, Freestone)—A remarkable new early peach which seems to combine the high quality of the Early Crawford with the productiveness of the Elberta. Generally recognized as the best early variety. Coming into the market as it does about two weeks ahead of Early Crawford, it commands not only the highest price but a ready sale. An early bearer, often producing fruit the year after planting. Not only an ideal home orchard variety but an excellent commercial peach as well. Makes a great combination with Elberta. We recommend it very highly. It is being planted largely here in Western New York and fruit growers report it as being a very profitable variety. The fruit is large, yellow mottled with red in color, with thick, firm, juicy flesh, rich and sweet in flavor. The trees are hardy, vigorous and productive. Ripens here the middle of August. See illustration in colors on inside front cover.

WILMA (Yellow, Freestone)—A new variety of great promise. Fruit growers have long wanted a good productive yellow peach a little later in season than Elberta. Wilma seems to be that variety. It is about ten days later than Elberta. The trees are vigorous, productive and very hardy. The fruit is large, handsome and of good quality, yellow mottled and blushed with bright dark red with tender, juicy flesh of good flavor and quality. Ripens here about the middle of September. Owing to our limited supply of Wilma we cannot supply more than 2 trees to any customer. Prices—Largest size, 1 yr., 4½ ft. and up, \$1.00 each; Medium size, 1 yr., 3½ to 4½ ft., 85 cents each.

ASSORTED FRUIT TREE COLLECTION

10 Trees, Medium Size, XX Grade, for \$8.30

1 Early Richmond Cherry 1 McIntosh Dwarf Apple
 1 Montmorency Cherry 1 Delicious Dwarf Apple
 1 Black Tartarian Cherry 1 Rochester Peach
 1 Bartlett Dwarf Pear 1 Elberta Peach
 1 Duchess Dwarf Pear 1 York State Prune

All Medium Size, XX Grade

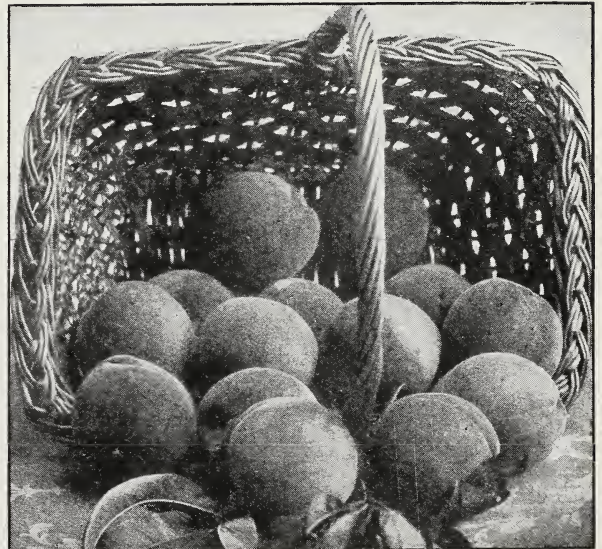
Catalog Price \$9.75 COLLECTION PRICE \$8.30

YELLOW ST. JOHN (Yellow, Freestone)—An exceptionally fine variety for the home orchard. Fruit medium size, sweet, rich and delicious. Trees vigorous and hardy. Not productive enough for a good commercial peach. Ripens here in August.

ADDITIONAL VARIETIES

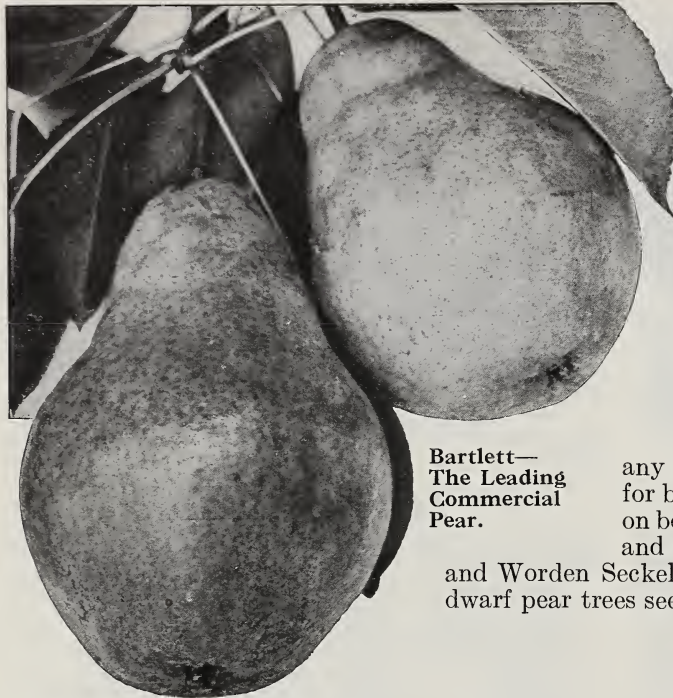
Besides the varieties described above, we can furnish in limited quantities the following:

Beer's Smock:	Yellow—freestone.	September.
Heath Cling:	White—clingstone.	October.
Iron Mountain:	White—freestone.	September.
Mountain Rose:	White—freestone.	Early August.
Prolific:	Yellow—freestone.	September.
Stump:	White—freestone.	Late September.
Triumph:	Yellow—freestone.	July.



Late Crawford

See page 47 for trees by parcel post



**Bartlett—
The Leading
Commercial
Pear.**

PEARS

YEARS of experience, careful investigation and thorough testing have developed this list of selected varieties. They are the cream of the hundreds of varieties known to mankind. We recommend all of them to you without hesitation.

Nearly all of these varieties do well on both standard and dwarf roots. The descriptions apply to both except that the dwarfs are naturally lower-growing trees. They also come into bearing sooner and the fruit as a rule is of larger size. Standard Pear trees are usually planted 20 feet apart each way and dwarfs 10 feet apart each way. Pear trees do well on almost any type of soil but seem to prefer a heavy clay land for best results. We can furnish all varieties described on both standard and dwarf sorts except Bosc, Kieffer and Sheldon which are grown only on standard roots and Worden Seckel which we offer only as a dwarf. For prices of dwarf pear trees see page 16.

Prices of Green's Standard Pear Trees

ALL VARIETIES EXCEPT BOSC

Size	Age	Height	Grade	Each	10	100
Largest	2 yrs.	6 to 7 ft.	XXX	\$1.55	\$13.80	\$100.00
Medium	2 yrs.	5 to 6 ft.	XX	1.40	11.50	80.00
Smaller	2 yrs.	3 to 5 ft.	X	1.15	9.75	65.00

RATES—Less than ten standard pear trees at each rates. Ten to fifty at ten rates. Fifty or more at hundred rates.

TERMS—8 per cent discount on orders received with cash before March 1st. 6 per cent discount before April 1st. 3 per cent discount after April 1st. Transportation charges paid on orders of \$10.00 or more to nearby states. See page 2.

SUMMER PEARS

BARTLETT—The most popular pear both for home use and market, a leader among canning pears, commands top prices. Should be in every garden and orchard. Large, golden yellow with reddish blush on the sunny side. Flesh tender, melting and juicy, with a delicious musky flavor. Tree vigorous, an erect grower, bears abundantly. Ripens in September.

CLAPP'S FAVORITE—The most productive pear in cultivation. Very good for the home garden and a desirable commercial variety. Large, long, pale lemon color richly flushed with russet red on the exposed side. Flesh fine-grained, juicy, melting and buttery. A good grower and hardy. Ripens here in August about ten days ahead of Bartlett.

WILDER EARLY—One of the very earliest pears, it always finds a ready sale in the market and is largely grown by commercial orchardists. Of medium size, pale yellow shaded with russet red, flesh melting and delightful, with a small core. The trees are good bearers, bearing annually. Ripens in early August. This variety was introduced by Charles A. Green several years ago.

AUTUMN PEARS

ANJOU (Buerre d'Anjou)—A large greenish pear, shaded with russet-crimson. The flesh is buttery and melting with a sprightly vinous flavor. Trees are vigorous and productive. One of the best varieties for late fall and early winter use. Ripens in October and keeps until midwinter.

GARDEN COLLECTION

Special Collection Price \$7.50

10 Blower Blackberry	1 Concord Grape
10 Cuthbert Raspberry	1 Niagara Grape
1 Worden Grape	5 Rhubarb
100 Palmetto Asparagus	

Catalog Price \$8.50 COLLECTION PRICE \$7.00

For Prices of Dwarf Pear Trees see page 16



NEW LIBERAL TERMS

See Page Two

Transportation paid on orders of \$10.00 or more to nearby states.

8 per cent discount on orders sent with cash before March 1st

6 per cent discount on orders sent with cash before April 1st

3 per cent discount on orders sent with cash after April 1st

Goods sent C. O. D. if you prefer

AUTUMN PEARS—Cont'd

BOSC (Buerre Bosc)—Without a doubt the highest quality and best-flavored pear of all. Should be in every home garden. Very large, having a distinct gourd shape—roundish at the blossom end with a long, thin, tapering neck. Beautiful golden russet color. Flesh fine-grained, juicy and melting, very delicious and highly flavored. In great demand at fancy fruit stores, often selling as high as 25 cents apiece. We grow it as a standard tree only as it does not do well grown as a dwarf. The tree is a moderate grower, fairly erect and rather productive. Ripens here in late September or early October.

Price of Bosc Pear Trees

Size	Age	Height	Grade	Each	10
Largest	2 yrs.	6 to 7 ft.	XXX	\$2.00	\$19.00
Medium	2 yrs.	5 to 6 ft.	XX	1.50	14.00
Smaller	2 yrs.	3 to 5 ft.	X	1.25	11.00

DUCHESS (Duchess d'Angouleme)—This variety does exceptionally well when grown as a dwarf on quince roots, and we advise our customers to plant dwarf trees of Duchess in preference to standard trees. As a dwarf it is an all round, profitable, market variety, very prolific and a dependable cropper. It is an early bearer, often fruiting the season after planting. The fruit is very large, larger on dwarf than on standard trees. The color when fully ripe is bright golden yellow with a blush on one side and sometimes slightly russeted. Flesh white, juicy, and of good quality. An excellent keeper. On dwarf roots it is an excellent commercial variety. In season here in October.

BUSH FRUIT COLLECTION

1 Caco Grape	10 Herbert Raspberry
1 Worden Grape	5 Blowers Blackberry
1 Niagara Grape	5 Diploma Currant

Catalog Price \$4.55 COLLECTION PRICE \$3.75

KIEFFER—A very profitable market variety on account of its great productiveness and its excellent keeping and shipping qualities. While only fair in quality, it is an excellent canner and is in great demand for this purpose. The fruit is large, golden yellow sometimes tinted with red on the exposed cheek. The trees are strong, vigorous growers and very healthy. Ripens in October and November. Grown only as a standard tree as it does not do well on dwarf roots.

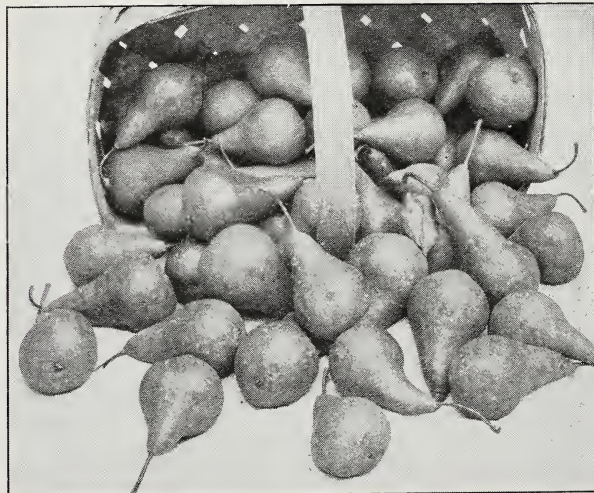
SECKEL—The small size and peculiar, rich, juicy flavor of this variety make it the most desirable variety for pickling and preserving. It is generally conceded to be the sweetest of all pears and is greatly prized as a dessert fruit to eat fresh out of the hand. Although small in size it is very attractive in appearance, being of a russet-yellow color with a bright red cheek. It is very prolific. Every home orchard should have a tree or two of this excellent variety. In season in September and October.

SHELDON—A pear of unusually good quality and high flavor. Large, round, greenish-yellow in color, covered with light russet. It is very juicy, melting and has a tasty flavor. The tree is a fine grower and a good bearer. It is not recommended as a commercial variety as the fruit has a tendency to drop before ready to pick. Grown only as a standard tree as it does not grow successfully on dwarf roots. In season here in October and November.

WORDEN SECKEL—An improved Seckel. Equal in quality to its famous parent, which it much resembles in flavor. It is fully as luscious, more juicy, and with an aroma equally as rich and inviting. The fruits are beautifully smooth and regular, golden yellow with a russet-red cheek. The trees make more rapid and upright growth and excel the Seckel in productiveness. The fruit will average half again as large. Ripens in October and will keep until Christmas. We offer it on dwarf roots only.

LATE AUTUMN AND WINTER PEARS

LAWRENCE—A long-keeping winter pear that should be planted more extensively. The fruit is medium to large, golden yellow, melting and aromatic. The trees are moderate growers but abundant bearers. A profitable market variety. Ripens in November.



Bosc—Unexcelled in Flavor and Quality

See Our Liberal Terms on page 2

DWARF PEAR TREES

DWARF pear trees are particularly valuable for the city or village garden where space is limited, as they can be grown very closely together and permit a large assortment of varieties to be planted in a very small area. The dwarfish habit of the trees permits easy picking from the ground without the use of ladders. The trees come into bearing sooner than standards, usually bearing the second season after planting. The color, quality and flavor of the fruit is identical with that produced on standard trees, but is as a rule larger in size. The trees are very productive, hardy and vigorous. Dwarf pear trees are grown on quince roots and should be planted deep enough to cover the junction of pear and quince 2 or 3 inches. The side branches should not be removed higher than a foot from the ground, but the tops and ends of the branches should be pruned severely every spring, removing one-half or nearly all the past season's growth. Dwarf pears are usually planted 10 feet apart each way. For a description of varieties see the preceding pages devoted to standard pears. We grow all varieties on quince (dwarf) roots except Sheldon, Bosc and Kieffer. The Duchess seems to do remarkably well on quince roots and many profitable orchards of Duchess dwarf pears have been planted throughout the country. We recommend Duchess very highly as a commercial variety if planted as a dwarf.

Prices of Green's Dwarf Pear Trees

Size	Age	Height	Grade	Each	10	100
Largest	2 yrs.	4 to 5 ft.	XXX	\$.85	\$7.50	\$50.00
Medium	2 yrs.	3 to 4 ft.	XX	.75	6.35	40.00
Smaller	2 yrs.	2 to 3 ft.	X	.60	4.60	35.00

Note—We can supply Worden Seckel only in the Medium and Smaller sizes. Worden Seckel is a slow grower in the nursery row.

RATES Less than ten dwarf pear trees at each rates. Ten to fifty at ten rates. Fifty or more at hundred rates.

TERMS—8 per cent discount on orders received with cash before March 1st. 6 per cent discount before April 1st. 3 per cent discount after April 1st. We pay transportation charges on orders of \$10.00 or more to nearby states. See page 3.

THE DWARF PEAR HEDGE

Plenty of Fruit—Small Cost—Takes up Little Room

Our C. A. Green several years ago planted a row of dwarf pear trees across the center of his vegetable garden. These trees were planted only three feet apart. They have thrived amazingly and have borne bountiful crops each year. When in bloom they make an extremely ornamental hedge row and attract wide attention. A vast amount of fruit can be grown on a single row of dwarf pears. The trees of course do not grow as large as when planted farther apart, as this close planting permits them to grow in two directions only. Many others have followed Mr. Green's example and advice. Read below what they have to say about a dwarf pear hedge.



A Hedge Row of Fruit Trees at Our Nurseries

WOULD NOT TAKE \$1000 FOR HIS DWARF PEAR HEDGE

Dear Mr. Green:

Santa Fe, New Mexico.

I accepted your advice twelve years ago and planted a hedge of dwarf pear trees around my garden. They have lived and have been bearing fruit abundantly every year. I would not take \$1000 for these 120 dwarf pear trees, planted with space on either side of the hedge for sunshine and ventilation.

Charles A. Sirinfo.

MAKES A GOOD WINDBREAK

Mr. C. A. Green:

I ordered fifty dwarf pear trees and planted them six feet apart. They have grown rapidly, make a good windbreak and bore some fruit this year. I got the idea from your suggestion and would not take \$100 apiece for the trees.

George W. Hauman, Pa.

DWARF PEAR COLLECTION

10 Dwarf Trees, 3 to 4 feet High, for \$5.35

2 Clapp's Favorite 2 Seckel
3 Bartlett 3 Duchess

All Medium Size, XX Grade

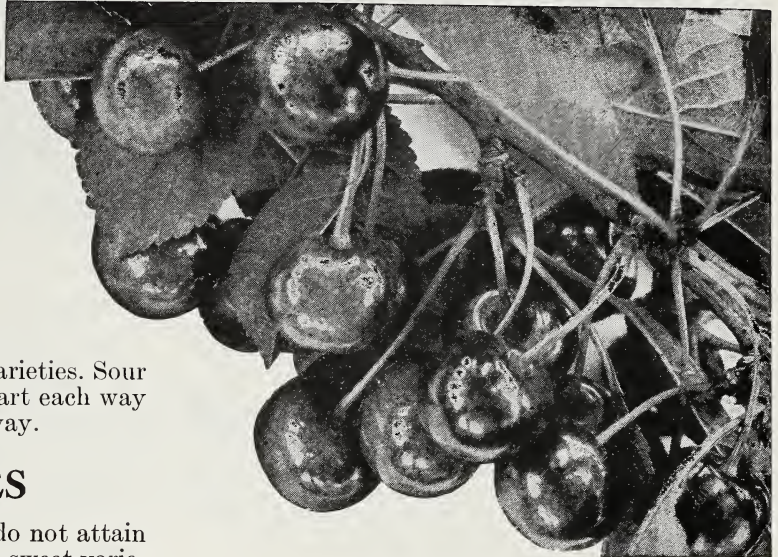
Catalog Price \$6.35 COLLECTION PRICE \$5.35

See page 2 for our new liberal terms.



CHERRIES

DUE to the rapidly increasing demand for fruit juices, cherries are becoming more profitable every year. Orchardists who plant cherries now can with reasonable assurance look forward to big returns on their investment. Cherries are easy to grow and very prolific. Plant them in sandy or gravelly loam for best results, although they will be quite successful anywhere if the roots are not wet. Practically no pruning is necessary except for the formation of a head. Every home garden should have at least a tree or two of both the sweet and sour varieties. Sour varieties are usually planted 15 ft. apart each way and sweet varieties 20 ft. apart each way.



Montmorency—The Leading Commercial Cherry

SOUR CHERRIES

Sour cherries are of slower growth, do not attain so large a size and are more hardy than sweet varieties. As a rule they are more profitable commercially than the sweets.

Prices of Green's Sour Cherry Trees

Size	Age	Height	Grade	Each	10	100
Largest	2 yrs.	5 to 6 ft.	XXX	\$1.45	\$11.50	\$90.00
Medium	2 yrs.	4 to 5 ft.	XX	1.25	10.35	80.00
Smaller	2 yrs.	3 to 4 ft.	X	1.05	8.60	70.00

RATES—Less than ten cherry trees at each rate. Ten to fifty at ten rates. Fifty or more at hundred rates.

TERMS—8% discount on orders received with cash before March 1st. 6% discount before April 1st. 3% after that date. Transportation charges paid on orders of \$10.00 or more to nearby states. See page 2.

EARLY RICHMOND—The best of the early sour varieties.

While not in as great demand for canning as Montmorency, it makes a good canned product and is used largely to extend the canning season on account of its earliness. Medium size, light red changing to dark red, tender, juicy and of good quality. Vigorous, healthy and fruitful. Ripens in June.

ENGLISH MORELLO—The standard late sour cherry, the best of its season. A little too acid to eat fresh out of hand, but one of the best for culinary uses. Cooked the fruit has a rich, dark, wine color, very attractive in appearance, and a most pleasant, sprightly, aromatic flavor. The fruit is very dark red, becoming almost black in color. The trees are hardy and very dwarfish in habit. Ripens in August.

MONTMORENCY—The most popular sour cherry grown in

America—at least three-fourths of all the sour cherry trees grown are of this variety. It leads in demand for this fruit in the markets, for the cannery and for home use as a culinary cherry. It is surpassed by no other sour cherry in vigor, health and productiveness. The preserved product, whether canned at home or commercially, is attractive in appearance and very good. For any and all purposes to which sour cherries are put Montmorency may be recommended as the best. The fruit is about average in size, rather dark red, tender, juicy and of very good quality. Hardy and very productive. Ripens last of June.

UNITED STATES DEPARTMENT OF AGRICULTURE ADVISES YOU TO BUY YOUR TREES DIRECT

This is what they say—"If the farmer makes his purchases direct from the nurseryman he will save the expense of the agent and is less liable to mistakes and injury that may occur through repeated handling." United States Department of Agriculture, Farmers' Bulletin No. 113.

Please read our liberal terms on page 2 before ordering.

SWEET CHERRIES

SWEET cherries are strong and vigorous growers, making large, open, spreading heads or tops, are better suited to the purpose of shade, and produce large, heart-shaped, sweet fruit. Often called Oxheart cherries.

Prices of Green's Sweet Cherry Trees

Size	Age	Height	Grade	Each	10	100
Largest	2 yrs.	6 to 7 ft.	XXX	\$1.45	\$11.50	\$90.00
Medium	2 yrs.	5 to 6 ft.	XX	1.25	10.35	80.00
Smaller	2 yrs.	3½ to 5 ft.	X	1.05	8.60	70.00
Largest	1 yr.	4 ft. and up	XXX	1.25	10.50	
Medium	1 yr.	3 ft. and up	XX	1.00	8.50	

RATES—Less than ten cherry trees at each rates. Ten to fifty at ten rates. Fifty or more at hundred rates.

TERMS—8% discount on orders received with cash before March 1st. 6% discount before April 1st. 3% after that date. Transportation charges paid on orders of \$10.00 or more to nearby states. See page 2.

BLACK TARTARIAN (Black)—The favorite home garden sweet cherry. Best for table use. Produces immense crops of heart-shaped cherries, bright, glossy, purplish black. Flesh tender, juicy, rich, and of best quality. Ripens middle of June.

GOVERNOR WOOD (Light Red)—We highly recommend this variety for the home garden on account of its earliness, beautiful appearance and delicious flavor. Large, beautiful, yellowish-white tinted with shades of crimson, with conspicuous russet dots. The flesh is tender, juicy, with an abundance of colorless juice and a flavor that has given it a reputation of being one of the best in quality. Ripens in June.

NAPOLEON (Light Red)—Sometimes called Royal Ann.

By virtue of its large size, handsome appearance and high quality, probably the leading sweet variety. Extremely popular as a canning cherry and very good for all culinary uses. Color bright red on a yellowish background. The flavor is rich and sweet, which, with the abundant juice and firm, crackling flesh, makes it a most delicious and refreshing cherry for dessert and home uses. Ripens in July.

WINDSOR (Dark Red)—The leading late sweet cherry. The hardest of the sweet varieties. Large, very dark red, with firm, tender, juicy flesh. Prolific and of excellent quality. Ripens in July.

PLANT TREES

If you would make your home attractive have an orchard or fruit garden. The man who plants trees gets his pay day by day and at the same time builds a monument which will stand long after he is dead.



Napoleon or Royal Ann

WE GROW OUR OWN TREES ON OUR OWN FARMS

We have received letters from our patrons and prospective patrons, stating that they had been advised by tree agents and others of our competitors that we did not grow any of our trees but bought them of other nurseries. In contradiction of this statement, we want to say, that with the exception of a few varieties, we grow everything we sell, and it is grown on our own farms.

We have three farms southwest of this city. The first one contains 134 acres. The next contains 70 acres, and the third contains 100 acres. A short distance west of Rochester we have four separate small farms totaling in all 50 acres.

We do not grow everything on one farm, because different kinds of trees require different soil. For instance, a peach tree grows best on a light soil and a pear tree on a heavy soil, and we grow only that class of tree on each soil that is best adapted to that particular soil.

On these farms we have houses for 20 families, and the nearest village to one of our farms is made up almost entirely of our employees. We have extensive buildings for storage and other purposes, which we are constantly enlarging to meet our requirements.

So if anybody tries to persuade you that we do not grow our own trees, we would like to have you invite them to visit us, and we will prove to them that we do grow our own trees.

A liberal discount for cash with order. See page 2.



Shropshire Damson—Excellent for Preserves

PLUMS

PLUMS are easy to grow and do well on any land that is not too wet. The fruit should be thinned as practically all varieties overbear, and if all the fruit is left on the tree the limbs may break and the fruit be small.

This is a selected list of varieties chosen for the size, appearance and flavor of their fruit and the hardiness and strong-growing characteristics of the trees.

Our plums are all grown on plum roots and are hardier and longer lived than those on peach roots. Plant plum trees 20 feet apart each way.

Prices of Green's Plum Trees

Size	Age	Height	Grade	Each	10	100
Largest	2 yrs.	6 to 7 ft.	XXX	\$1.25	\$10.50	\$75.00
Medium	2 yrs.	4½ to 6 ft.	XX	1.00	8.50	65.00

RATES—Less than ten plum trees at each rates. Ten to fifty at ten rates. Fifty or more at hundred rates.

TERMS—8% discount on orders received with cash before March 1st. 6% discount before April 1st. 3% after that date.

Transportation charges paid on orders of \$10.00 or more to nearby states. See page 2.

BRADSHAW (Purple)—Sometimes called Niagara. Probably the most largely planted plum in the East. The trees are large, hardy, bear regularly and heavily and are robust, well-formed and healthy. The fruit is of good quality, large, attractive, and keeps and ships well, especially if picked when a little green. Skin a dark reddish-purple. Flesh yellow, juicy, sweet and pleasant. Semi-freestone. Ripens in August.

BURBANK (Red)—One of the leading Japanese varieties. The fruit of this plum is very large—often 5 to 6 inches in circumference—and of a very attractive cherry red color. A good keeper and shipper. Its yellow flesh is meaty, firm, juicy and sweet. The tree is very vigorous and spreading and needs close pruning. Ripens in late August. In addition to our regular grades of two-year-old trees we can furnish Burbank in one-year trees, largest size, 4 ft. and up, at \$1.00 each; 10 for \$8.50; 100 for \$65.00. Medium size, 3 ft. and up, 75 cents each; 10 for \$6.50.

GERMAN PRUNE (Purple)—German Prune reproduces itself very close to type from the seed. As a result of this many strains of the old German Prune have been developed. York State Prune is the most desirable of all and is the only strain we offer. See description of York State on the following page.

GUEII (Purple)—Sometimes called Blue Magnum Bonum.

Not a high quality plum but a money-maker as it bears early and abundantly and comes on the market earlier than other good shipping plums. Dark purplish black with thick bloom. Flesh yellow, sweet and of fair quality. Trees large, hardy, healthy, and vigorous. Ripens in early September.

SPECIAL PLUM COLLECTION

10 Medium Size—4½ to 6 feet—Trees for \$7.00

2 Burbank	2 Lombard
2 Bradshaw	1 Shropshire Damson
2 York State	1 Yellow Egg

Catalog Price \$8.50. Collection Price \$7.00

We pay transportation charges. See page 2 for details.

PLUMS—Continued

LOMBARD (Purple)—A great favorite as it adapts itself to widely different soils and climates and does well where other varieties would not thrive. Robust, healthy, productive and a regular bearer. Extremely hardy. Not of the very highest quality, but does very well for canning, cooking and preserving. Skin dark purplish red overspread with a thick bloom. Flesh yellowish, firm and sweet. Freestone. Ripens in late August.

MONARCH (Purple)—A very handsome, large, rich, purple plum that has attained popularity more quickly than any other plum of recent introduction. Flesh golden yellow, juicy and sweet. Trees hardy and productive. Ripens in October.

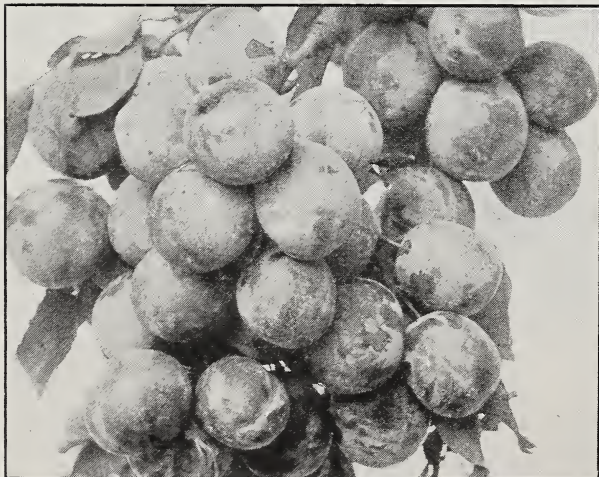
SHIPPERS (Shipper's Pride) (Purple)—Quite popular with many fruit growers here in the East, but in our opinion not large enough or high enough in quality to rank it with one of the leaders. Color, purplish black overspread with thick bloom. Flesh greenish yellow, firm and sweet. Keeps well and ships a very long distance. Trees hardy and productive. Ripens in September.

SHROPSHIRE (Shropshire Damson) (Purple)—This grand old variety is the best known of the Damsons and is greatly prized both for canning and preserving. Enormously productive, vigorous, hardy and healthy. Dark purplish black overspread with thick bloom, with golden flesh, juicy, agreeably tart and of good quality. Ripens in October.

YELLOW EGG (Yellow)—An extremely large and handsome yellow plum worthy of consideration by either the amateur or commercial fruit grower. Golden yellow covered with thick bloom. Flesh firm, sweet, rather juicy. Only fair in quality and is prized more for culinary use than for eating out of the hand. Trees large, vigorous, hardy and very productive. Ripens in late August.

START RIGHT

The first cost of the trees is the smallest part of the expense and yet it is the most important. In buying Green's trees you know you are starting right. Nearly fifty years of successful tree growing has given us an experience that should and does make Green's trees superior.



Bradshaw—Best for eating fresh out of Hand



York State—The Leading Commercial Prune

YORK STATE PRUNE (Purple)—A superior strain of the German Prune. Known in some sections as Felleberg or Italian prune. The most widely grown of all plums. In our opinion the most profitable prune for orchard purposes and a variety that should be in every home garden. It is finely flavored whether eaten out of hand, stewed or cured as a prune. In cooking it changes to a dark wine color, very attractive in appearance, with a most pleasant sprightly flavor. The trees are large, hardy, productive, well formed and bear regularly. Purplish black overspread with a thick bloom. Flesh yellow, juicy and of best quality. Freestone. Keeps and ships well. Ripens here in September.

JOIN OUR CAMPAIGN

Did you ever stop to think that

No matter how valuable your land—no matter how much it cost per acre—

No matter how much you weed, dig, hoe, or cultivate—

No matter how deep you plow, or how much you disc or harrow—

No matter how much the sun shines, or how much it rains, how much you irrigate or water—

No matter how ideal the weather conditions, how much you fertilize or manure—and every one of these things represents real cash money—it is all lost and wasted and the effort is for nothing, if in the first place you don't have the right kind of trees. Good trees cost the least and are the smallest investment you put into any field or garden. It's the smallest initial expense and counts for the most.

Join our campaign for good trees today. All we ask of you is one tree order to let us prove what our trees are, and we will make you a life customer.

Good trees are exactly like pure-breed live stock. Like begets like. You can't get good crops from poor, inferior, weak trees, any more than you can get good live stock from poor, inferior, ill-shaped, crooked-backed, low grade, stunted live stock parents.

When you want to head any of your herds, you always pick out the best. You don't want weaklings. It is exactly the same with trees.

You can't afford to take a chance buying the cheap kind.

Your order will be sent C. O. D. if you prefer.



APRICOTS

THE apricot is a cross between the peach and the plum. In shape and color it resembles the peach, but in texture and smoothness of its skin it is more like the plum. Apricots have a delicious flavor and in addition to being very desirable for eating fresh, they are much prized for canning and drying. The trees usually begin to bear two years after planting. Plant 15 feet apart each way.

Prices of Green's Apricot Trees

Size	Height	Grade	Each	10
Largest	4 to 5 ft.	XXX	\$1.25	\$10.50
Medium	3 to 4 ft.	XX	1.00	8.50

RATES—Less than ten apricot trees at each rates. Ten or more at ten rates.

ROYAL—There are several varieties of apricots but they are all very much alike in general characteristics. We offer only this variety as we consider it the best. Large, roundish-

oval; pale orange with faintly tinged red cheek. Flesh yellow, firm, sweet, highly flavored, slightly sub-acid, good quality, rich and juicy. Ripens late in July.

QUINCES

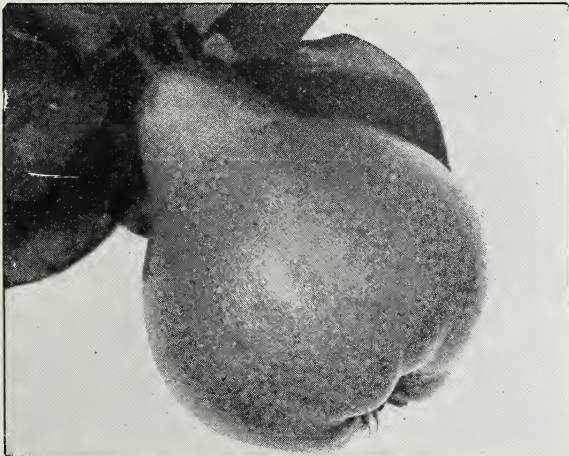
QUINCES ought to be grown more largely as there is no finer fruit for jellies, preserves and canning. They are easy to grow and need little attention and find a good sale in all local markets. Plant quinces 10 feet apart each way.

Prices of Green's Quince Trees

Size	Age	Height	Grade	Each	10
Largest	2 yrs.	4 to 5 ft.	XXX	\$1.55	\$14.00
Medium	2 yrs.	3 to 4 ft.	XX	1.25	11.00

RATES—Less than ten quince trees at each rates. Ten or more at ten rates.

TERMS—8% discount on orders received with cash before March 1st. 6% discount before April 1st. 3% after that date. Transportation charges paid on orders of \$10.00 or more to nearby states. See page 2.



Orange Quince—Excellent for Jellies and Preserves

ORANGE—We offer only this variety of quince as we consider it by far the best. There are several strains of this old-fashioned Orange quince and we are propagating from the most desirable strain. The fruit is large, roundish, bright golden yellow, cooks tender and is of excellent flavor. An excellent variety for baking and preserving. The trees are vigorous and productive. Ripens in late September or early October.

IN FORTY YEARS TIMES CHANGE GREEN'S QUALITY DOES NOT

Enclosed find check for \$12.55 for which please send me the nursery stock as per enclosed list, together with the premium as per catalog. Practically all the fruit trees I have purchased in the past forty years have been bought from you, and I have never been disappointed. In 1920 I picked more than two barrels of apples per tree from trees planted eight years.

J. G. ULMER, Norton, Mass.

YOU HAVE YOUR COMPETITORS BEAT A MILE

I am enclosing a small order and a check for \$9.75. Wish you would send the order at the proper time.

Want to thank you for the fine trees you sent me last year. Yours was one of several lots and must say you have your western competitors beat a mile. My requirements are not very large, but I will know where to buy in the future.

C. C. WEBER, Cincinnati, O.

Read page 2 for our new liberal terms.



NUTS

PLANT your waste land to nut trees as an investment for future generations. They require practically no attention and can be grown on land too rough to otherwise develop. The nuts are always in great demand and considering the cost of operation they are even more profitable to grow than apples. The wood of the nut trees is exceedingly valuable and always in great demand.

BLACK WALNUT (Common Strain)—A fast-growing tree prized not only for its heavy crops of large, nutritious nuts, but also for its exceedingly valuable wood, in great demand by furniture makers and gunsmiths.

Prices of Common Black Walnut Trees—4 to 5 feet, 85 cents each, \$7.50 per 10; 5 to 6 ft., \$1.00 each, \$9.00 per 10; 6 to 8 ft., \$1.50 each, \$14.00 per 10.

BLACK WALNUT (Coyle Strain)—We offer a superior seedling of the common black walnut propagated from a tree discovered on our nurseries that for many years has produced nuts which average from 25 to 50 per cent larger than any other black walnut ever seen by us. We consider it a remarkable strain both in size of nuts and quality of meats.

Price of Coyle Strain of Black Walnut—3 to 4 feet high, \$1.25 each.

BUTTERNUT—This rapid-growing, lofty-spreading tree is one of our finest native trees. Valued for its tropical appearance and beautiful wood. Produces large crops of long, nutritious nuts, greatly prized for home uses and in good demand by bakers and confectioners. Bears early.

Prices of Butternut Trees—4 to 5 feet, \$1.00 each; \$9.00 per 10.



A Dish of English Walnuts



One Corner of a Block of Our Fruit Trees. Note the Clean Straight Trunks and Well Shaped Tops

ENGLISH WALNUT—A fine, lofty-growing tree with handsome, spreading head. Produces large crops of thin-shelled, delicious nuts, which are always in demand at good prices. We offer a hardy seedling strain grown from nuts secured from a successful grove a few miles from Rochester. The trees are grown here and have been thoroughly acclimated to our cold winters. Will do well in climates not too severe for peaches.

Prices of English Walnut Trees—2 to 3 ft., \$1.75 each; \$16.00 per 10. 4 to 5 ft., \$2.50 each.

ENGLISH FILBERT (Hazelnut)—A low-growing bushy tree, producing abundant crops of roundish, tender nuts of nice flavor, greatly prized for home use and used extensively in the manufacture of candy. Will grow in almost any location but prefers a rather moist soil such as can be found along brooks or streams. Nuts larger and of better quality than the native American Filbert.

Prices of English Filbert Trees—2 to 3 feet, 75 cents each; \$6.50 per 10.

AMERICAN FILBERT—The common native Hazelnut.

A low growing shrubby tree, 10 to 15 feet high, used largely for ornamental purposes. Make very attractive hedges. In the fall the trees produce abundant crops of delicious nuts.

Prices of American Filbert Trees—2 to 3 feet high, 75 cents each; \$6.50 per 10.

JAPAN WALNUT (Siebold)—This is a very hardy variety, will stand 20 degrees below zero without injury, a rapid-growing, handsome tree which bears young and abundantly. The shell is but a little thicker than that of the English walnut, the meat of which comes out whole and is of excellent quality. This variety begins to bear when two or three years old.

Prices of Japan Walnut Trees—4 to 5 feet, \$1.00 each; \$9.00 per 10.

We offer a liberal discount for cash with order. See page 2.



Worden (Black)

Lucile (Red)

Niagara (White)

Concord (Black)

GRAPES

NO fruit requires less attention or bears more heavily. A small arbor takes up almost no room, yet it can produce many splendid bunches of grapes. The rapidly increasing demand for grape juice has made the commercial growing of grapes exceedingly profitable. Grapes are usually planted 8 feet apart each way.

Prices of Green's Extra Size Two Year Old Vines

ALL VARIETIES EXCEPT CONCORD AND CACO

40 cents each, 10 for \$3.75, 100 for \$25.00

RATES—Less than ten grape vines at each rates. Ten to fifty at ten rates. Fifty or more at hundred rates.

TERMS—8% discount on orders received with cash before March 1st. 6% discount before April 1st. 3% after that date. Transportation charges paid on orders of \$10.00 or more to nearby states. See page 2.

AGAWAM (Red)—An excellent keeper that may be kept in common storage until January. Large in both bunches and berries, dull purplish red, rich, sweet and of a decidedly foxy flavor. Vigorous and moderately productive. Ripens here last of September.

BRIGHTON (Red)—A very handsome dark red grape of high quality that should be in every home garden. Not generally recommended as a commercial variety as it will not ship to distant markets. Vigorous, productive and easy to grow. Ripens here about the middle of September.

CAMPBELL'S EARLY (Black)—The characteristics which give this grape its merit are high quality, freedom from

foxiness, small seeds, earliness of maturity, large size and attractive appearance both of bunch and berry, hardness and good keeping qualities. Unfortunately it is somewhat capricious as to soils and for this reason is not generally rated as a good commercial sort. Ripens here first of September.

CATAWBA (Red)—Of all the grapes grown in New York Catawba is the best keeper, lasting until March or later. Because of its fine quality it often brings a higher price than other varieties. Berries and bunches of medium size, dull, purplish red. Vines vigorous, hardy and productive. Ripens here last of September.

Remember that we pay transportation charges. See page 2.



GRAPES—Continued

CONCORD (Black)—Without any question the leading commercial grape on the continent. Due to its high degree of fruitfulness and its great adaptability to various soils, it can be produced so cheaply that no other grape can compete with it in the markets. Blossoms late and therefore seldom suffers from spring frosts. Grape juice is made almost entirely of Concord. Vines hardy and healthy. Bunches and berries of fair size, glossy black with abundant bloom, and of good quality. Ripens here middle to last of September.

Prices of Extra Size Two-year-old Concord Vines—30 cents each; 10 for \$2.50; 100 for \$15.00.

CACO (Red)—This new red grape has the most delicious flavor and is of the highest quality of any grape that we have ever tested. It is one of the earliest grapes in ripening. It has a peculiar characteristic not common to other grapes in that on account of its being so rich in sugar and excellent in flavor, it can be eaten with enjoyment fully two weeks in advance of its being fully ripe. In appearance it is the most beautiful of hardy grapes, wine red in color with abundant bloom. The berries are unusually large, bunches of good size, compact and of good form. The vines are very strong, vigorous growers, hardy, healthy and prolific. This variety is a cross of the two well-known grapes, Catawba and Concord, and is said by expert grape growers to have all the good qualities of both these varieties without the defects of either. Ripens here early in September. See illustration on back cover.

Prices of Extra Size Two-year-old Caco Grape Vines—85 cents each; 10 for \$7.50.

DELAWARE (Red)—A rich and delicately flavored little red grape that is generally recognized as the standard of quality to judge other grapes by. An exceptionally desirable variety for home gardens on account of its compact habit of growth. Commands a premium in all the markets, often selling for twice the price of Concord. Very hardy. Ripens here about the middle of September.

DIAMOND (White)—(Moore's Diamond). The best white grape for the home garden. Unsurpassed in quality and beauty. Early, hardy, vigorous and productive. A very profitable commercial variety that would take first place among the white grapes as a commercial sort were it not for the fact that Niagara is even more productive. Should be in every home garden collection. Ripens here about the middle of September.



Mr. Green Inspecting Our Field of 1-year-old Grape Vines

CACO BEATS THEM ALL

Green's Nursery Co.: I owe you a report on Caco grapes which you kindly sent me in 1919. They exceed the Concord in growth and are about equal to that variety in fruitfulness, but in appearance and flavor they certainly beat them all. I expect great results from them when they reach their age of full capacity. Thus far I can only say that the Caco seems destined to hold a position among the red grapes as enviable as is that of Concord among the blues.

J. A. Bischoff, Holyoke, Mass.

LUCILE (Red)—Recommended where an extra hardy grape is desired and for localities where the season is short. Its foxy flavor, which condemns it to some, is considered an asset by many who like this foxy taste. Exceedingly productive, even more so than Concord. Large in both bunch and berry and very attractive in appearance. Quality considered fair to good. Ripens here early in September.

McPIKE (Black)—Noteworthy because of the extra large size of the berries. Not as high in quality as Worden or as productive as Concord. A good variety for the home garden. Vines vigorous, hardy and productive. Ripens here early in September.

MOORE EARLY (Black)—The best early black commercial grape, ripening as it does two or three weeks ahead of Concord. Vines vigorous, hardy and moderately productive. Bunch and berry medium to large. Fair to good in quality. Ripens here first of September.

NIAGARA (White)—The leading commercial white grape, not as high in quality as Diamond but more productive. In great demand. Holds the place among white grapes that Concord holds among blacks. Bunches and berries large and handsome, compact, and of good quality. Vines vigorous, hardy and very productive. Ripens with Concord about the middle of September.

WORDEN (Black)—This is a seedling of the Concord and while its berries and bunches are larger and the fruit is of better quality, it is not as good a keeper and does not ship as well to distant markets. It is a superior variety for home use and for nearby markets, and on account of its high quality and large size usually brings a higher price than Concord. For home use we know of no grape of greater value. Fruit ripens one or two weeks earlier than Concord. Ripens here early in September.

ADDITIONAL VARIETIES

In addition to the above described selected varieties we can furnish vines of the following kinds, which, while they do well in some localities, can hardly be rated as selected varieties:

Eaton—Black
Lindley—Red Wing—Red

SPECIAL GRAPE COLLECTION

10 Strong 2-year Vines for \$3.00

1 Caco (Red) 2 Worden (Black)
1 Lucile (Red) 2 Niagara (White)
4 Concord (Black)

Catalog Price \$3.63. Collection Price \$3.00

Buy direct from us and save agents' commissions.



CURRANTS

CURRANTS are always in good demand, for on account of the large amount of pectin they contain they are especially desirable for making jellies, jams, preserves, pies, tarts, etc. They are easily grown and every home garden should contain at least a dozen or two bushes of the leading varieties. Plant 4 feet apart each way.

Prices of Green's Strong Two Year Old Currant Bushes

ALL VARIETIES EXCEPT PERFECTION

30 cents each, 10 for \$2.50, 100 for \$20.00

RATES—Less than ten at each rates. Ten to fifty at ten rates. Fifty to three hundred at hundred rates.

DIPLOMA—A variety of our own introduction that received the World's Fair Diploma at the Pan-American Exposition in 1901. In our opinion it is the best of all the red varieties. We have fruited it largely at our fruit farms and have found it an exceedingly profitable currant. Recommended by the New York Agricultural Station as a variety well worth planting. Fruit very large, light red, sweet and unusually juicy. The bushes are strong, vigorous growers and exceptionally productive.

FAY'S PROLIFIC—This is an excellent red variety. Berries are above average in size, of excellent flavor and not very acid. The clusters are long-stemmed which makes them easy to pick. Universally recommended by those who have had experience with it.

PERFECTION—This is an upright, strong grower, thickly covered with clusters of large fruit. In color it is a beautiful bright red, the berries averaging larger than most varieties, the clusters averaging longer, and the size of the berries is maintained to the end of the bunch. It has a rich, mild, sub-acid flavor with plenty of pulp and few seeds.

Prices of Strong Two-year-old Perfection Currant Bushes—40 cents each, 10 for \$3.50, 100 for \$30.00.



Diploma—A Prize Winner

RED CROSS—A strong growing and exceedingly productive red currant. The clusters are long, with berries of medium size and of bright red color. This variety is unusually sweet for a currant, requiring less sugar in canning than other varieties.

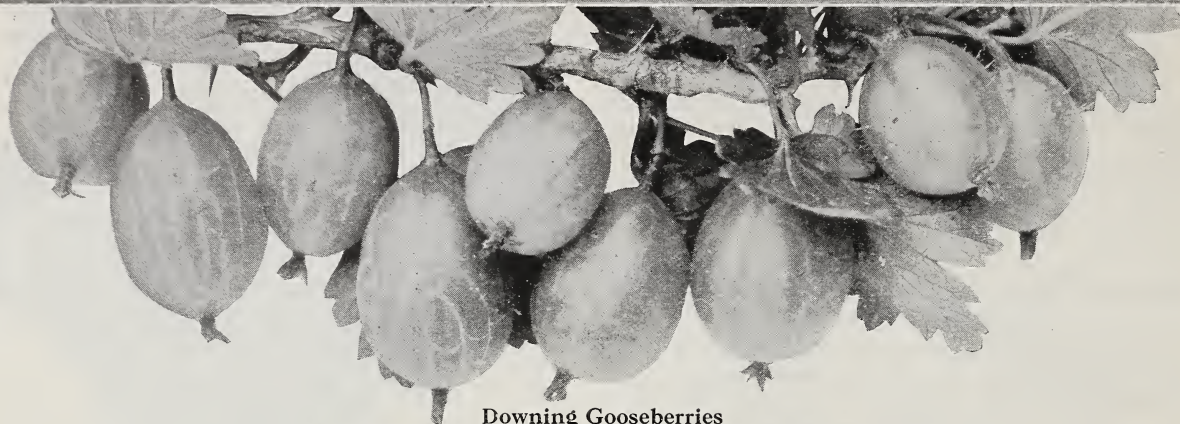
WILDER—This is an excellent variety for the home garden. Few varieties equal it in productiveness and long-keeping qualities. Berries are bright red in color, large in size with good-sized clusters.

WHITE GRAPE—This is the best of all white currants. It is an excellent dessert variety because of its mildly acid flavor and large, handsome clusters of golden green or white berries. It is very prolific.



Planting Currant Cuttings at Our Nursery

Avoid mixtures by securing trees direct from our nursery.



Downing Gooseberries

GOOSEBERRIES

AN exceedingly profitable fruit when properly handled. The market is rarely oversupplied, as gooseberries can be gathered and marketed through a very long season. Every home garden should have a dozen or two bushes as gooseberries are very easy to grow, and the fruit is extremely desirable for cooking and other culinary uses. Plant gooseberries 4 feet apart each way.

CHAUTAUQUA—An excellent variety for the home garden.

Large, greenish yellow, of excellent quality, sweet and high-flavored. Vigorous, upright bushes, hardy and productive. Prices of strong two-year-old bushes, 50 cents each, 10 for \$4.50.

DOWNING—The most profitable commercial variety on account of its great productiveness and remarkable shipping qualities. The fruits are large, pale green, and of excellent quality both for dessert and cooking. The bushes are vigorous, upright growers, keeping the fruit free from the ground. Mildew proof. Free from spines, it can be easily harvested by

stripping the branches with gloved hands. The winnowing of the leaves can be done by an ordinary fanning mill, the same as beans. We recommend planting them between the rows of trees in an orchard. They will pay the expenses of bringing the orchard to maturity. Prices of strong two-year-old bushes, 35 cents each, 10 for \$3.00, 100 for \$25.00.

RED JACKET (Josselyn)—A large, bright red gooseberry of the best quality that can be planted with entire confidence. Vigorous, upright, hardy and very prolific. Prices of strong two-year-old bushes, 50 cents each, 10 for \$4.50.

BLACKBERRIES

THE ideal crop for obtaining money returns from poor lands. Will do well where other fruits could not hope to succeed. Plant 6 feet apart in rows 8 feet apart. Canes should be pinched back early when they are 3 to 4 feet high and only three canes should be allowed to a hill.

Prices of Green's Strong One Year Bushes

20 cents each, 10 for \$1.15, 100 for \$8.00, 1000 for \$50.00

RATES—Less than ten blackberry bushes at each rates. Ten to fifty at ten rates. Fifty to three hundred at hundred rates. Three hundred or more at thousand rates.

TERMS—8% discount on orders received with cash before March 1st. 6% discount before April 1st. 3% after that date. Transportation charges paid on orders of \$10.00 or more to nearby states. See page 2.

BLOWERS—A large, clean, bright berry of exceptionally good quality, with no perceptible core when fully developed. This is a first-class shipper, standing up well in the market for several days. The season of ripening is from the middle of July until frost, with the bulk of the crop maturing in August. The bushes are upright growers, are very hardy and enormously productive.

ELDORADO—An early to medium season berry of great merit. The bushes are hardy, vigorous and very productive. The berries are large, jet-black, borne in large clusters and ripen well together. They are sweet and melting, have no hard core and keep for 8 or 10 days after picking without

quality impaired. We consider this the best variety for home and market use.

GREEN'S HARDY—A new variety originated by the superintendent of our nurseries. At Green's Fruit Farm we have found it to be the most prolific of any variety we have tested. The bushes are extra strong, upright growers and very hardy. The berries are very large, jet-black, of excellent quality and tender to the core.

SNYDER—A very popular early variety, possibly the hardest of all, and very productive. The berries are of medium size, sweet, melting and delicious.

It pays to send your order early. See new terms, page 2.

RASPBERRIES

RASPBERRIES probably rank first of all the bush fruits in commercial importance. They do well in almost any soil and require but little care and attention. They are usually planted 4 feet apart in rows which are 6 feet apart. The old wood should be cut out as soon as it has fruited, and with the red varieties the suckers should be thinned out each spring to 5 or 6 on each hill. Black and purple varieties should be pinched back early when the canes are about 2 feet high.

Prices of Green's Strong One Year Old Bushes—Tip and Sucker Plants

ALL VARIETIES EXCEPT SYRACUSE AND LATHAM

20 cents each, 10 for \$1.00, 100 for \$6.50, 1000 for \$45.00

RATES—Less than ten raspberry bushes at each rate. Ten to fifty at ten rates. Fifty to three hundred at hundred rates. Three hundred or more at thousand rates.

TERMS—8% discount on orders received with cash before March 1st. 6% discount before April 1st. 3% after that date. Transportation charges paid on orders of \$10.00 or more to nearby states. See page 2.

COLUMBIAN (Purple)—At Green's Fruit Farm we have found this variety to be the most profitable of all. A strong grower and unexcelled for productiveness. An excellent shipper and in great demand for canning. Very large, dark reddish purple, rich, juicy and delicious. Ripens in midseason.

One of the fields of Columbian, from which our plants are taken, two acres in extent, yielded this past season 5144 quarts, selling for \$1,028.80. Expenses for picking, boxes, etc., were \$228.00, netting \$800.80, or \$400.40 per acre. A farmer nearby sold his entire crop of wheat from 40 acres for \$900.00. Mr. Adrian Voogdt, Sodus, N. Y., a year or two ago, picked 8350 quarts from two acres of Columbian and sold them for \$1,947.00. Mr. Henry Du Bois of the same place a year ago sold his crop from three acres for \$2,596.00 and the year previous for \$2,450.00.

CUTHBERT (Red)—An old favorite, probably the best known of any. Canes tall, vigorous and very productive. Berries large, handsome, rich crimson. A good shipper and of the best quality. Season medium to late.

HERBERT (Red)—This is probably the hardiest and most beautiful red raspberry grown. It originated at Ottawa, Canada, and has withstood without injury 40 degrees below zero. The cane of the Herbert is very strong and vigorous, the leaves large and healthy. Fruit oblong, very bright red, and probably the largest of all red raspberries except Syracuse. It is firm, sweet, subacid, juicy and of good flavor. Quality very good. Season begins a few days before Cuthbert. An exceptionally fine variety both for garden and commercial planting.

LATHAM (Red)—A new variety of great promise. It has been predicted by authorities that the Latham will soon take first place as a commercial sort, among the red varieties at least. Is being tested on the grounds of the New York Agricultural Station at Geneva, N. Y., and is very highly recommended by them. It is a splendid, strong-growing variety and produces immense quantities of bright red, extra large berries from June until freezing weather. Reports received from the cold northwestern states indicate that this is an extremely hardy variety. **Prices of strong one-year-old bushes of Latham, 35 cents each, 10 for \$3.00.**

PLUM FARMER (Black)—In our opinion the best of the black cap varieties. At Green's Fruit Farm it has not been surpassed in size or productiveness by any other black variety. Ripens early and quickly. Berries large, thick-meated, firm and of excellent quality. A profitable early market variety. Sells for the highest prices.

SYRACUSE (Red)—A new variety recently introduced by us. We consider it the very best red sort for the home garden and nearby market. Somewhat capricious as to soils, but on a good, rich garden soil it produces an abundance of extra large, bright red berries of exceptionally high quality and most delicious flavor. Grown under favorable conditions we know of no other berry that will approach it in size or quality of fruit. It bears during a long season, being almost everbearing in this respect. Hardy here in western New York. Not as good a shipper as Columbian, but sufficiently firm for nearby market trade. Unfortunately this variety does not reproduce itself abundantly and bushes for transplanting will always be considerably higher in price than other varieties. **Prices of strong one-year bushes of Syracuse, 50 cents each, 10 for \$4.50.**

A COMPLETELY SATISFIED PLANTER

You will recall that I purchased 25 Syracuse red raspberry bushes from you a year ago last April, also the same number this spring. Those purchased in 1921 bore wonderfully this last summer in spite of the dry season, and I do not think you have half told the good qualities of this wonderful berry, as to size, taste, etc.

The Montmorency cherry tree, purchased and set out on April 29, 1922, bore that year and also this year, and I feel sure some of the apple and pear, also plums, will bear in 1924, they have had such strong, vigorous growth. Wishing you every success which you surely deserve for the way you treat your patrons, I remain,

F. A. MASON,
Deer Park Avenue, Babylon, N. Y.



Syracuse—Large and Luscious

It pays to send your order early. See new terms, page 2.



STRAWBERRIES

IF shipping facilities are near at hand strawberries may be made to pay big profits, \$400 to \$500 per acre being not uncommon. As a matter of fact a patron wrote us not long ago that his strawberry plants were making for him \$1,000 per acre. Planted between the rows of trees in a young orchard they will often pay all expenses of bringing the orchard into profitable fruiting and net a handsome profit besides. All the varieties we offer are perfect-flowering and do not require another variety planted near them to make them productive. For garden culture set plants in rows 2 feet apart with plants 1 foot apart in the row. For field culture space rows 4 feet apart and plants 1 foot apart in row.

Prices of Green's Strawberry Plants

	10	100	1000
Kellogg's Premier	\$.60	\$3.00	\$12.00
Corsican	.75	3.50	13.00
Cooper	.85	4.00	15.00

RATES—Ten to fifty strawberry plants at ten rates. Fifty to three hundred at hundred rates. Three hundred or more at thousand rates.

TERMS—8% discount on orders received with cash before March 1st. 6% discount before April 1st. 3% after that date. Transportation charges paid on orders of \$10.00 or more to nearby states. See page 2.

COOPER (Perfect-flowering)—Midseason. A new variety introduced three years ago and very highly recommended by those who have tested it. Plants extra large, strong growers, of a decidedly upright habit of growth, and exceedingly productive. The berries are often referred to as the "biggest berries grown," are of a beautiful bright red color, firm and deliciously sweet in flavor. The picking season extends over several weeks. Gives great promise of taking place as one of the leading berries of its season. We have fruited it at Green's Fruit Farm for two seasons and have planted of it heavily as we are convinced that it is one of the most profitable varieties.

CORSICAN (Perfect-flowering)—Midseason. We consider this not only the finest home garden berry but the best commercial variety as well. At Green's Fruit Farm no other berry brings us such big profits. The plants are exceedingly vigorous and healthy, resisting disease, drought, weeds and even neglect of cultivation. The berries are large, bright red, firm, juicy and of exceedingly high quality and flavor. Exceedingly productive. Always brings a high price in the market. You will not make any mistake in planting this fine variety either for home use or for commercial purposes.

KELLOGG'S PREMIER (Perfect-flowering)—Early. Unquestionably the best extra-early variety known. In all soils and climates it will be found producing enormous crops of uniformly large, deep red berries, which have made this variety famous with growers everywhere. It is a strong pollinizer and the plants grow large and root deeply, making it extremely vigorous and a splendid drought resister.

THE POOR MAN'S BERRY

When our Mr. Chas. A. Green lost all he had in the panic that followed the Civil War and moved back onto the farm it was the strawberry that paid expenses while his other fruits were coming into bearing. He always refers to it as the poor man's berry because it brings ready cash at a much needed time and enables a person without a great deal of capital to "carry on" until other fruits begin to show returns.



Corsican—Our Favorite

STRAWBERRY COLLECTION

100 Strong Plants for \$3.00

25 Cooper 50 Corsican
25 Kellogg's Premier

Catalog Price \$3.50 Collection Price \$3.00

Order promptly and save money. Terms on page 2.



ASPARAGUS

RIGHTFULLY called the "vegetable aristocrat." No vegetable that we know of has its rich, refined, delicious flavor. You never will really know how delicious this vegetable can be until you go out into your own patch and within a short time after cutting, dish out the long, big stalks of this vegetable delicacy. Our booklet, "How to Plant and Prepare Your Asparagus," will be sent free on application. Set roots for garden culture in rows 2 feet apart and 1 foot apart in the row. For field culture the rows are usually 4 feet apart with the roots 18 inches apart in each row.

Prices of Green's Two Year Old Roots

ALL VARIETIES EXCEPT WASHINGTON

	10	100	1000
Extra size	\$.60	\$3.50	\$12.00
Small size	.30	1.75	7.00

RATES—Ten to fifty at ten rates. Fifty to three hundred at hundred rates. Three hundred or more at thousand rates.

TERMS—8% discount on orders received with cash before March 1st. 6% discount before April 1st. 3% after that date. Transportation charges paid on orders of \$10.00 or more to nearby states. See page 2.

CONOVER'S COLOSSAL—Large, a strong grower, productive and of fine quality.

PALMETTO—The most popular variety both for home garden and commercial planting. Larger, more productive and earlier than Conover's Colossal.

WASHINGTON—A new rust-resistant variety of great promise that is being planted largely in this vicinity. The stalks are large, dark green, with a heavy purple overtone. The tips are tight and firm and do not open out until well out of the ground. Prices of strong two-year roots: 10 for \$1.25, 100 for \$7.00, 1000 for \$25.00.

RHUBARB (Pieplant)

The first thing in the spring to furnish material for pie and sauce. Its health-giving, tonic properties make it invaluable as a spring regulator. Easy to grow. Should be in every home garden. Plant in rows 4 feet apart with roots 3 feet apart in row.

MYATT'S LINNAEUS—The best variety for general use. Stems large, tender and of refined flavor. Yields abundantly. Prices of strong two-year roots: 45 cents each, 10 for \$3.00, 100 for \$15.00.

ONLY PLACE TO GET THE VERY BEST

My brother, the late Judge Reed S. Nichols, some years ago bought all of his trees and some small fruit from you, and always told me that Green's was the only place in the United States to get the very best, which on several occasions I found to be true. I have recently bought a large farm and have decided to improve it, therefore want to start right, and am enclosing my first order to you (\$101.00).

J. B. NICHOLS, Danville, Ky.

A CUSTOMER SINCE 1885

I am a customer of yours of nearly forty years' standing. I dealt with you in the 80's and visited your country place in 1885. Some years I am unable to order, but I order whenever I can. It helps to keep off old age to see your glowing pages and to turn over fresh earth.

T. C. ROBINSON, Wiarton, Ontario, Canada.

SAGE

HOLT'S MAMMOTH—Forms a dense mass of beautiful, light green leaves used extensively for flavoring dressings and sauces. Set plants 3 feet apart each way.

Strong Transplanted Roots: 35 cents each, 10 for \$3.00, 100 for \$15.00.

HORSE RADISH

ENGLISH or COMMON—The variety in general use. Will stand a great deal of hardship and persist in soil year after year. Does best in deep, rich, cool soil. As high as ten tons have been received from an acre. Plant in rows 3 feet apart and 1 foot apart in row.

Strong Sets: 10 for \$1.00, 100 for \$6.00.



Mr. Green Inspecting a Field of Our Rhubarb

Read page 2 for our new liberal terms.



An excellent foundation planting of evergreens. The tall-growing ones are Pyramidal Arborvitae and the dwarf globe-shaped ones Dwarf Mugho Pine. A few well placed evergreens will add beauty and value to your home, too.

EVERGREENS

DUE largely to their regular and very pleasing outlines and the fact that they retain their foliage and color all the year around, evergreens have become exceedingly popular for private and public plantings. Their varied shades of blue, silver and green permit a most attractive combination of colors. Planted about the foundations of a home they hide the sharp outlines of the dwelling and form a very pleasing and striking background for shrubs and perennials, and in winter give an appearance of coziness and warmth not attained by any other class of trees.

RATES—Less than ten at each rates. Ten to fifty at ten rates. Fifty or more at hundred rates.

ARBORVITAE

AMERICAN ARBORVITAE (White Cedar)—A beautiful pyramidal-shaped tree, which grows to a height of 40 feet when allowed to develop fully. Its deep green foliage is feathery and spraylike, becoming more dense after each shearing. It stands trimming well and for this reason is widely used for hedges and screens. 6 to 8 feet high. By annual shearing a hedge of arborvitae can be kept at almost any height desired. It is hardy and dependable in almost any situation, but does best on a cool, moist soil. For a close compact hedge trees should be set 15 inches apart.

Prices—18 to 24 inches, \$1.50 each; 10 for \$12.50.
2 to 3 feet, 2.00 each; 10 for 17.50.

PYRAMIDAL ARBORVITAE—An extremely narrow pyramidal-shaped evergreen with spraylike foliage identical in character with the American arborvitae or white cedar. The growth is close, compact and regular. The beautiful dark green color is retained all winter. It requires little space and therefore is very desirable for planting near the house in foundation plantings. Planted singly or in groups of two or three on either side of the entrance or at the corners of the buildings and lawn it breaks the sharp outlines and gives an extremely pleasing and ornamental effect and makes an attractive background for other evergreens and ornamental shrubs. When fully matured it reaches a height of 10 to 15 feet, but can be kept at almost any height desired by annual pruning in late August or September.

Specimens 18 to 24 inches high, balled and burlapped, \$4.00 each.

SIBERIAN ARBORVITAE—A dwarf conical-shaped evergreen with a broad globe-shaped base abruptly tapering to a rather blunt point. The foliage is dark green, heavy and deeply crested. Grows 6 to 8 feet in height at maturity, but can be kept lower by pruning. Much sought for foundation plantings and frequently for hedges. Makes a very desirable combination with the taller-growing pyramidal arborvitae. Originated in the famous royal gardens of England, but named Siberian on account of its extreme hardiness.

Specimens 18 to 24 inches high, balled and burlapped, \$3.50 each.

PINE

DWARF MUGHO PINE—A dwarf globe-shaped evergreen never growing over 4 to 5 feet high. By annual shearing of the new growth it can be kept as small as desired. A true dwarf grower, many stemmed, compact, with good dark green foliage which is retained throughout the winter. Excellent for planting in front of taller evergreens in foundation plantings, borders, etc. Its usefulness is almost unlimited.

Specimens 18 to 24 inches high, balled and burlapped, \$4.60 each.

A PAYING INVESTMENT

For every \$100 invested in a selected and well placed evergreen windbreak, \$2,000 is added to the value of your farm in ten years.

"There is no improvement which can be made on a farm for so little money that will add so much value as evergreen windbreaks," says Stewart Stockdale, a prominent stockman of Franklin county, Iowa. In his case he states that money could not buy his windbreaks. —From *Successful Farming*.

We allow a liberal discount for cash with order. See page 2.



EVERGREENS—Continued

JUNIPERS

PFITZER'S JUNIPER—A low, broad, pyramidal-shaped evergreen with graceful and very beautiful lacey foliage of a healthy blue-green color. The branches grow horizontally from the stem, forming a flat spreading top. Height 6 to 8 feet, but can be kept smaller by annual pruning. The handsomest of the Chinese junipers and the most satisfactory in this climate. Originated near Berlin, Germany.

Specimens 18 to 24 inches high, balled and burlapped, \$5.00 each.

SILVER CEDAR (*Juniperus Virginiana Glauca*)—This beautiful silvery-blue cedar is of exquisite color and is a distinct addition to any planting. It never grows very large, not over 15 to 20 feet, and can be kept even smaller if desired. It is narrow, compact and symmetrical in shape and very desirable for foundation plantings, borders, groups or as individual specimens. In the fall months the berries begin to appear, some of them being clear sky-blue, others darker and silver colored. The berries are borne abundantly and make a great attraction for the song birds.

Specimens 18 to 24 inches high, balled and burlapped, \$4.00 each.

SPRUCE

COLORADO BLUE SPRUCE—A magnificent tree with a silvery-blue sheen that makes it a striking object in any landscape. Its conspicuous blue color makes it a very desirable tree for group planting. Grows 20 to 30 feet at maturity, but can be kept at almost any height by annual pruning.

Specimens 18 to 24 inches high, balled and burlapped, \$6.00 each.

COLORADO GREEN SPRUCE—When seeds of the Colorado Blue are planted in the nursery, 75 per cent of the trees are green and the balance various shades of blue. We select the blue specimens to offer as Colorado Blue and the balance are sold as Colorado Green Spruce. These green specimens make exceedingly attractive trees having all the characteristics of the Colorado Blue except color. Specimens 18 to 24 inches high, balled and burlapped, \$3.00 each.

I NEVER LOST ANY TREE OR SHRUB BOUGHT FROM GREEN'S NURSERY CO.

I want to tell you how much I appreciate the fine stuff you sent me in my order. I never got from any place such perfect stock and I never lost any trees or shrubs I bought from you. I loaned your catalog to a friend who wants to plant a pear hedge.

MRS. FLORA G. WHITESIDE, Youngstown, O.

CAREFUL PACKING OF FIRST-CLASS STOCK

The trees and shrubs, about sixty in all, were received in the finest condition. My wife and I want to congratulate you on your splendid packing and method of shipment. Upon planting, our friends and neighbors remarked that they were the hardiest and finest they had ever seen. I again want to thank you for your kindness and the most careful packing of the first-class stock I received. I wish you continued success and prosperity and will always give your name to prospective buyers.

SILAS Y. WILSON, Linwood, N. Y.

NORWAY SPRUCE—The time-honored Christmas tree, universally used for this purpose. A tall, graceful, picturesque tree reaching a height of 60 feet at maturity. Pyramidal in shape with broad, drooping branches at the base. Foliage deep green with light brown cones 5 to 7 inches long in the fall. Hardy and well adapted to planting over a wide range of territory. Stands pruning well and is universally used for hedges and screens. 6 to 8 feet tall. Planted largely for protection as a windbreak around orchards, farmhouses and other buildings, and often planted as line fences to separate fields. Fruit growers report that an orchard protected by such a windbreak will yield double the crop of sound fruit of one left exposed to bleak and cutting winds of winter. As a windbreak Norway Spruce are usually planted 10 feet apart. At this distance they will make a windbreak in 6 years. If quicker results are required space trees 5 feet apart and at the end of 5 years take out every other tree and plant elsewhere. For a low growing sheared hedge set trees 15 inches apart.

Prices—

12 to 18 inches, 85 cents each; 10 for \$7.50; 100 for \$65.00.

18 to 24 inches, \$1.25 each, 10 for 10.00; 100 for 90.00.

2 to 3 feet, 1.50 each; 10 for 13.50.

3 to 4 feet, 2.50 each; 10 for 22.50.

Balling and Burlapping—Norway spruce and American arborvitae will, upon request, be balled with sphagnum moss and burlapped for the following additional charge: 18 to 24 inch size, 10 cents each; 2 to 3 foot size, 18 cents each; 3 to 4 foot size, 25 cents each.



Norway Spruce in Winter

Buy direct from us and save agents' commissions.



HEDGES, SCREENS AND WINDBREAKS

HEDGES—Leaving the question of beauty aside, hedges are far superior to fences because they get better each year, while fences need painting and repairing every few years and ultimately must be replaced. What to use for a hedge depends entirely upon your taste. For formal treatment, demanding a regular outline, we recommend California Privet and Dwarf Barberry, for decorative effect one of the flowering kinds like Althea, Spiraea Van Houttei, Deutzia Crenata, Japan Quince, Multiflora Rose, Bush Honeysuckle, Mock Orange, Snowberry, Indian Currant, Hydrangea and Ostrich Plume. For a hedge 2 to 3 feet high we suggest Dwarf Barberry; from 3 to 4 feet high, California privet; from 4 to 6 feet, the above named flowering shrubs; from 6 to 8 feet, American Arborvitae and Norway Spruce.

SCREENS—For this purpose almost any of the Ornamental Trees and Evergreens are desirable, but those most universally used are the American Arborvitae, Norway Spruce, Lombardy Poplar and Carolina Poplar.

WINDBREAKS—To be effective both summer and winter, windbreaks demand the use of evergreens. American Arborvitae and Norway Spruce will be found the most desirable for this purpose.

As California Privet, Dwarf Barberry and Multiflora Rose are the most popular and extensively used hedge plants, we describe them under this heading.

RATES—Less than ten at each rates. Ten to fifty at ten rates. Fifty or more at hundred rates.

CALIFORNIA PRIVET—An almost evergreen shrub of dense, shapely habit with shining dark green foliage and a few minute flowers in June. Universally popular as a hedge plant because it stands trimming well and can be kept at any height or in any shape desired. The most desirable shrub for a hedge 4 to 5 feet high. Usually planted in single rows 10 inches apart, but where a broad hedge is desired can be set in double rows—the rows one foot apart with the bushes one foot apart in each row, but alternated or staggered so as to come 6 inches apart in the hedge. Untrimmed, California privet grows upright to 8 to 12 feet and makes a very desirable bush for planting alone or in groups.

Prices—

12 to 18 inches, 15 cents each; 10 for \$1.00; 100 for \$ 5.00.
 18 to 24 inches, 25 cents each; 10 for 1.40; 100 for 6.00.
 2 to 3 feet, 30 cents each; 10 for 1.85; 100 for 8.00.
 3 to 4 feet, 40 cents each; 10 for 2.75; 100 for 12.00.

DWARF BARBERRY (Barberry Thunbergii)—A very attractive dwarf shrub, barely 3 feet high under the best conditions. Dense in growth yet graceful on account of its drooping branches. Its yellow flowers are borne on long stems

followed by scarlet berries in great profusion, clinging through most of the winter. The leaves color to scarlet and gold in the autumn. Very desirable for planting as single specimens and used extensively in foundation plantings or in borders planted in front of taller-growing shrubs. Very desirable for planting in corners where sidewalks meet. For a hedge not over 2 or 3 feet high this makes a very desirable shrub. Very hardy. As a hedge set bushes 2 feet apart.

Prices—

12 to 18 inches, 30 cents each; 10 for \$2.75; 100 for \$25.00.
 18 to 24 inches, 50 cents each; 10 for 4.50; 100 for 40.00.

MULTIFLORA ROSE—Known to many as Live Forever.

A strong-growing, hardy species, 4 to 5 feet high, very desirable for a hedge or mass planting. Bugproof and very easy to grow. Produces a great abundance of medium size, double flowers, mottled pink and white in color. When in bloom a hedge of Multiflora is a sight never to be forgotten. Plant 15 inches apart in a hedge. We have at our nurseries a hedge 2,000 feet long of this splendid rose. It was planted ten years ago and has never failed to produce annually a mass of bloom. Hundreds of visitors are attracted by this beautiful hedge and come in for a closer inspection. Two-year-old bushes will bloom the first season planted.

Prices—Strong two-year bushes, 30 cents each; 10 for \$2.50; 100 for \$20.00.



Hedge of California Privet

PLANTS AND SHRUBS SECOND TO NONE

Permit me at this time to thank you for the courteous treatment you have accorded me, also to express my utmost satisfaction with the splendid stock you have sent me in the course of the past five years. I have found your trees and plants to be second to none, as is proven by the fact that I have lost only one tree during the aforementioned five years. Your motto, "Green's Trees Grow," is indeed well chosen. Enclosed please find my fall order and check in payment.

WM. C. H. UNGERER, Glen Burnie, Md.

A TREE EXPERT CHOOSES GREEN'S TREES

I am a tree expert and have been called upon several times to plant your trees and shrubs and have always found them of the highest quality.

ARTHUR W. WENZEL, Pittsburgh, Pa.

Remember that we pay transportation charges. See page 2.



ORNAMENTAL TREES

IMAGINE if you can what a bleak and barren place this country of ours would be without shade and ornamental trees. Have you ever noticed that the homes which look the most attractive to you invariably are those with a few well-placed ornamental trees around them? There is a growing appreciation for trees. More people are learning to know and love them every day. It is well recognized that shade trees around the farm and city home not only add to its beauty and comfort, but greatly increase the value of the property. Truly "It's not a home until it's planted."

RATES—Less than ten at each rates. Ten to fifty at ten rates. Fifty or more at hundred rates.

AMERICAN ELM—In our opinion the handsomest and most dignified of all the native trees. Probably more largely planted and better known than any other. A tall-growing stately tree reaching 60 feet, with a wide arching top and vase-like form. Extensively used for street planting, where its wide-sweeping branches form perfect Gothic arches over the streets. Prices—6 to 8 ft., \$1.00 each; 8 to 10 ft., \$1.75 each.

AMERICAN LINDEN (Basswood)—A tall-growing, stately tree, growing 60 to 80 feet tall, with large shining green leaves and light yellow fragrant flowers in July. A splendid tree for lawn or street planting. Valuable for its beautiful white wood. Price—5 to 6 ft., \$1.55 each.

BECHTEL CRAB—A handsome bush or little tree seldom over 20 feet in height. One of the finest for lawn decoration. Produces in profusion double, delicate pink flowers resembling at a distance dainty little roses. Blooms when young and is very fragrant. Price—3 to 4 ft. high, \$1.45 each.

CATALPA SPECIOSA—One of the most showy flowering trees, noted for its fast and vigorous growth. Fine for lawn and street planting. Large heart-shaped leaves with clusters of white flowers tinged with violet and dotted with purple and yellow. Its long, narrow "beans" in autumn are unique. Used extensively for fence posts and railroad ties. Its wood though soft is very durable. Grows to a height of 60 feet. Very hardy. Prices—5 to 6 ft. high, 75 cents each; 6 to 8 ft., \$1.00; 8 to 10 ft., \$1.50 each.

CATALPA BUNGEI—A beautiful umbrella-shaped tree about 8 to 10 feet high with large heart-shaped leaves laid with shingle-like precision, forming an even, compact dome-shaped head. Hardy, unique and handsome. Very useful in formal plantings. Price—6 to 8 ft. high, \$3.00 each.

ENGLISH OAK—The Royal Oak of England. A spreading, long-lived tree 60 feet or more at maturity, with dark green leaves smaller than those of our native species. Well adapted for lawn and public grounds. Price—4 to 5 ft. \$1.50 each; 5 to 6 ft. \$2.00 each.

MOUNTAIN ASH—A handsome little lawn tree growing 20 to 30 feet high, with long, dark green foliage and clusters of bright red berries. Price—5 to 6 ft., \$1.15 each.

CAROLINA POPLAR—A very rapid-growing tree, giving shade in a very short time. Very easy to transplant and does well on any kind of soil. Desirable for roadside planting, in parks and along rivers and streams for the protection of the banks. Used extensively for screens to hide in attractive buildings. Attains a height of 60 feet at maturity. Bright, heart-shaped, glossy green leaves, silvery white underneath.

Prices—

5 to 6 ft., 50 cents each, 10 for \$ 4.50, 100 for \$35.00
6 to 8 ft., 75 cents each, 10 for 7.00, 100 for 50.00
8 to 10 ft., \$1.25 each, 10 for 10.00, 100 for 60.00

LOMBARDY POPLAR—A tall, narrow, tapering tree, 60 feet high at maturity, a striking feature in any landscape. Fine for planting in groups, along driveways, or to make boundary lines. Sometimes used for tall screen hedges.

Prices— 5 to 6 ft., 75 cents each, 10 for \$6.50
6 to 8 ft., \$1.00 each, 10 for 9.00

PURPLE-LEAVED PLUM (Prunus Pissardi)—A handsome, showy little tree 20 feet in height with striking pinkish-purple leaves in the spring that deepen in color as the season advances. Small, white, single flowers. Very striking and ornamental for lawn planting. Price—5 to 6 ft., \$1.50 each.

GOLDEN WILLOW—A very showy, yellow-barked tree reaching a height of 60 feet at maturity. A handsome tree at all seasons, but particularly conspicuous in winter and early spring before the leaves appear. Price—4 to 5 ft. high, 85 cents each.

ASH-LEAVED MAPLE—A very hardy, fast-growing tree about 60 feet high, planted extensively in the west for timber and windbreaks because it endures both drought and cold unusually well. Easily distinguished by its greenish yellow bark. Bright green leaves which turn to yellow in autumn. Prices—5 to 6 ft., \$1.15 each; 6 to 8 ft., \$1.75 each.

NORWAY MAPLE—Without a doubt one of the most desirable shade trees for street and lawn planting. Of fairly rapid growth, reaching a height of 60 feet at maturity. Sturdy, compact and vigorous, forming a rounded head of stout branches and broad, deep green leaves. Prices—6 to 8 ft. high, \$3.00 each; 8 to 10 ft. \$3.75 each.



Catalpa Bungei—Along Driveway

Liberal discount for cash with order. See page 2.



Norway Maple

ORNAMENTAL TREES, Cont'd

SILVER MAPLE—The fastest growing of the maples, very valuable where immediate shade is required. Grows to a height of 60 feet, forming a large, spreading head, with bright green leaves, silvery white on the underside. Does equally well in well-drained or low, swampy locations. Prices—6 to 8 ft., \$1.50 each; 8 to 10 ft., \$2.25 each.

SUGAR MAPLE (Rock Maple)—One of the most useful of all our maples, excellent for street and lawn planting and used extensively in the production of maple sugar. A tree of magnificent proportions often 80 feet in height, straight, spreading and symmetrical in shape. Long-lived. It roots deeply, allowing the grass to grow close about its trunk. Dark green leaves turning to scarlet and gold in autumn. Price—6 to 8 ft., \$2.00 each; 8 to 10 ft., \$3.00 each.

DOUBLE WHITE THORN (Hawthorne)—The famous May Thorn of England. Low, dense little tree about 20 feet in height. A mass of clustered, double, rose-shaped white flowers in May, followed by a display of showy scarlet fruits which remain a long time. Makes a pleasing flowering hedge. Price—3 to 4 ft., \$2.50 each.

RUSSIAN MULBERRY—A very hardy, low-growing tree 20 to 30 feet high with beautifully cut foliage and an abundance of fruit which attracts the birds. Not one of the edible varieties. Prices—4 to 5 ft., \$1.00 each; 10 for \$9.00.

WHITE HORSE CHESTNUT—A large tree of regular outline, 60 to 80 feet tall, completely covered in May with great upright spikes of white flowers. Satisfactory either as a street or lawn tree, particularly desirable where dense shade is required. Prices—3 to 4 ft., 85 cents each; 4 to 6 ft., \$1.15 each.

Trees and Shrubs for Special Purposes

FOR FOUNDATION PLANTINGS

Tall-growing for Corners and Heavy Planting, 8 ft. and up.

Shrubs

Althea	Snowball
Golden Elder	Golden Spiraea
Hydrangea Arborescens	Mock Orange
Hydrangea P. G.	High Bush Cranberry
Bush Honeysuckle	

Evergreens

Pyramidal Arborvitae	Colorado Blue Spruce
Silver Cedar	Colorado Green Spruce

Medium Height for Base Planting, 4 to 8 ft.

Shrubs

Deutzias—all varieties	Spiraea Callosa Rosea
Golden Bell	Spiraea Van Houttei
Japan Quince	Golden Spiraea
Lilacs	Weigelia
Spiraea Billardi	

Evergreens

Siberian Arborvitae	Pfitzer's Juniper
---------------------	-------------------

Dwarf-growing for "Front Line Planting," 2 to 5 ft.

Shrubs

Spiraea Anthony Waterer	Snowberry
Dwarf Barberry	Indian Currant

Evergreens

Dwarf Mugho Pine

FOR PARTIALLY SHADED PLACES

Shrubs

Dwarf Barberry	Bush Honeysuckle	California Privet
Golden Bell	Snowball	Weigelia
Indian Currant	High Bush Cranberry	Mock Orange
	Snowberry	

Evergreens

American Arborvitae	Dwarf Mugho Pine	Pfitzer's Juniper
---------------------	------------------	-------------------

FOR MOIST PLACES

Shrubs

Golden Elder	Snowball	Spiraea Billardi
--------------	----------	------------------

Trees

American Elm	Golden Willow	Maples—all varieties
American Linden	Lombardy Poplar	Mountain Ash

Evergreens

American Arborvitae

FOR DRY PLACES

Shrubs

Dwarf Barberry	Bush Honeysuckle	Indian Currant
California Privet	Deutzias—all varieties	Yucca (Perennial)

Evergreens

Pfitzer's Juniper Dwarf Mugho Pine

Trees

Mountain Ash

Buy direct from our nursery and save money.



ORNAMENTAL SHRUBS

NO other class of ornamentals plays such an important part in the decorative scheme for the home grounds. Without shrubs the foundation planting would lose all its bloom and fragrance. In our descriptions we endeavor to give the height of each variety at maturity and the time of blooming in this latitude. From these descriptions you will know that the dwarf-growing varieties should be planted in front of those of taller habits and can plan a continuous succession of bloom from early spring until winter.

ALTHEA (Rose of Sharon)—This beautiful shrub is of unusual value due to its habit of blooming late in the season after other shrubs are through flowering. Blooms in August and September and continues in flower until cut off by the frost. Very hardy, erect, compact, reaching 8 to 10 feet at maturity. Bell-shaped flowers of striking colors. Used extensively as a flowering hedge. We can furnish double-flowering varieties in the following colors: white, red, purple, rose with darker center, white with dark center. In single-flowering sorts we can supply white and rose. Order by color and state whether single or double sorts are wanted. Strong bushes, 2 to 3 feet high, 55 cents each. Extra size, 3 to 4 feet, 85 cents each.

BUTTERFLY BUSH—While properly classed as a shrub, the top of the Butterfly Bush usually freezes back in the winter and new growth starts from the roots in the spring like perennials. Should be cut down and covered with straw over winter. Bushes grow from 3 to 4 feet tall and are crowned with long racemes of lilac-colored flowers in July. Its honeyed fragrance attracts the butterflies and as many as fifty have been counted on one bush at one time. Strong bushes, 2 to 3 foot size only, 55 cents each.

CALIFORNIA PRIVET—For description see page 32.

DEUTZIA CANDIDISSIMA—A strong-growing shrub 6 to 8 feet high with bell-shaped, pure white, double flowers in June. The flowers are borne in erect panicles 2 to 4 inches long and are so perfect in shape they are frequently used as cut flowers. Strong bushes, 2 to 3 feet high, 55 cents each. Extra size, 3 to 4 feet, 85 cents each.

DEUTZIA CRENATA ((flore pleno)—This variety has very full, bell-shaped, double flowers, white tinged with rose. They are produced in great profusion in racemes 4 to 5 inches long. Blooms in June. Grows 6 to 8 feet tall. Strong bushes, 2 to 3 feet high, 55 cents each. Extra size, 3 to 4 feet, 85 cents each.

DEUTZIA PRIDE OF ROCHESTER—An early and large-flowering variety that blooms in May. Flowers white and bell-shaped. Grows 6 to 8 feet tall. One of the most popular of the Deutzias. Strong bushes, 2 to 3 feet high, 55 cents each. Extra size, 3 to 4 feet, 85 cents each.

DWARF BARBERRY—For description see page 32.

GOLDEN BELL (Forsythia Viridissima)—A harbinger of spring. One of the earliest flowering shrubs, blooming with the crocuses. Its striking yellow flowers, appearing as they do before the leaves, brighten up the garden at a time when other flowers are scarce. Grows 5 to 7 feet high. Not entirely hardy and it is best to give it some slight protection in winter in northern latitudes. Strong bushes, 2 to 3 feet high, 55 cents each. Extra size, 3 to 4 feet, 85 cents each.

GOLDEN ELDER—Planted among shrubs of green foliage this golden-leaved Elder forms a pleasing contrast, adding tone and character to the planting. The flowers are white,

in flat-topped cymes, in early summer. Grows naturally 6 to 8 feet high, but should be pruned back severely each spring to secure denser and brighter foliage. Strong bushes, 2 to 3 feet high, 55 cents each. Extra size, 3 to 4 feet, 85 cents each.

HYDRANGEA ARBORESCENS—One of the finest of the Hydrangeas, growing 6 feet high, and bearing in July, August and September, a profusion of large clusters of snow-white flowers resembling the familiar Snowball in appearance. The blossoms are smaller and more refined than those of the *Paniculata Grandiflora*. Very desirable for a flowering hedge. Strong bushes, 2 to 3 feet high, 55 cents each. Extra size, 3 to 4 feet, 85 cents each.



Althea (Rose of Sharon)

Read our new liberal terms on page 2.



ORNAMENTAL SHRUBS, Cont'd

HYDRANGEA PANICULATA GRANDIFLORA (Bush

Form)—In our opinion no other shrub gives quite the "value received" of this hardy hydrangea. It is easy to grow, never fails to bloom the first season planted and produces in abundance immense clusters of greenish white flowers which gradually change to white and later to delicate pink. Normally grows 7 feet high, but severe pruning each spring greatly increases the size of the flower heads. Blooms in August and September, and if the flowers, which keep for an extremely long time, are allowed to dry on the bush, they turn to a bronzy green and are valuable for winter decoration in the home. Makes a very beautiful flowering hedge. See illustration on front cover. Prices of Bush Form Hydrangea, P. G.—18 to 24 inches high, 55 cents each, 10 for \$5.00; 2 to 3 feet, 75 cents each, 10 for \$7.00; 3 to 4 feet, 90 cents each, 10 for \$9.00.

HYDRANGEA PANICULATA GRANDIFLORA (Tree

Form)—We train the bush hydrangea to single stems, which form small compact miniature trees very much like the tree rose in appearance. Same characteristics as the bush form except shape.

Prices of Tree Form Hydrangea, P. G.—2 to 3 feet, \$1.50 each, 10 for \$14.00; 3 to 4 feet, \$1.75 each, 10 for \$16.50.

PINK BUSH HONEYSUCKLE—A handsome shrub growing

6 to 8 feet high, bearing in abundance pretty pink flowers in late spring. Literally covered in summer and autumn with a mass of showy orange and scarlet berries. Makes a very pretty flowering hedge. Strong bushes, 2 to 3 feet high, 55 cents each. Extra size, 3 to 4 feet, 85 cents each.

WHITE BUSH HONEYSUCKLE—Identical to the pink

variety except that the flowers are a creamy white. Strong bushes, 2 to 3 feet high, 55 cents each. Extra size, 3 to 4 feet, 85 cents each.

INDIAN CURRANT (Coral Berry)—A desirable shrub for

shady places. Grows 3 to 5 feet tall, producing inconspicuous rose-colored flowers in June and July. Its dull red, coral-like berries cling in great profusion along the under side of the branches. One of the showiest of the berried shrubs. Fine as a hedge. Strong bushes, 2 to 3 feet high, 55 cents each. Extra size, 3 to 4 feet, 85 cents each.

JAPAN QUINCE—Completely covered with dazzling scarlet

flowers in May, this grand old shrub is a striking object to behold. The fruits which follow later on are quince-shaped and quite fragrant. With stout branches armed with fine thorns it makes not only a desirable flowering hedge, but a defensive one as well. Grows naturally 6 to 8 feet high, but bears any amount of shearing. Prices—2 to 3 foot size only, 75 cents each.

LILACS

LILAC-ALBA—Common White Lilac. Heart-shaped foliage and splendid panicles of pure white, single flowers in May. Strong bushes, 2 to 3 feet high, 55 cents each; extra size, 3 to 4 feet high, 85 cents each.

LILAC-CHARLES X—Loose trusses of single flowers of a reddish purple. Grows 6 to 8 feet high. Price of Strong Bushes—2 to 3 feet high, \$1.15 each.

LILAC-LUDWIG SPAETH—Large trusses of dark purplish blue, single flowers. Grows 6 to 8 feet high. Price of Strong Bushes, 2 to 3 feet high, \$1.15 each.

LILAC-MADAM CASIMIR PERIER—Medium sized, clusters of double white flowers. Dwarf grower. Price of Strong Bushes, 2 to 3 feet high, \$1.15 each.

LILAC-MARIE LEGRAYE—Large clusters of single white flowers. Grows 6 to 8 feet high. Price of Strong Bushes, 2 to 3 feet high, \$1.15 each.

LILAC-PRESIDENT GREVY—Large, full clusters of double, pale wistaria violet flowers. Grows 6 to 8 feet high. Price of Strong Bushes, 2 to 3 feet high, \$1.15 each.

LILAC-VILLOSA—A bushy lilac rarely over 6 feet high with rosy pink flowers late in the spring. Prices—2 to 3 foot size only, \$1.15 each.

LILAC-VULGARIS—Common Purple Lilac. Probably the best known of any of the lilacs. Heart-shaped foliage and splendid typical, lilac flowers in May, which are delightfully fragrant. Grows 8 to 12 feet high. Strong bushes, 2 to 3 feet high, 55 cents each. Extra size, 3 to 4 feet, 85 cents each.

LILAC-FRENCH VARIETIES—ASSORTED COLORS—

In addition to the above named varieties we have an assortment of unnamed French Lilacs in the following colors: Double-flowering in purple, red, white, pink and blue. Single-flowering in purple, red and white. Order by color. Prices of Strong 2 to 3 foot Bushes, \$1.00 each.

LILAC-FRENCH VARIETIES—MIXED COLORS—We

have a few hundred extra nice bushes of the large flowering French varieties on which the designating labels have been lost. The bushes are warranted No. 1 in quality, but we cannot guarantee color or whether double or single flowers. Desirable for mass planting where color is not paramount. We offer them at a much reduced price. Strong, 3 to 5 foot bushes, 75 cents each, 10 for \$6.50.



Snowball Bush

Transportation charges paid by us. See page 2.



Spiraea Van Houttei—The Most Popular Shrub

SHRUBS—Continued

SNOWBALL (Guelder Rose)—A well-known favorite shrub with globular clusters of white flowers the latter part of May, followed by showy clusters of scarlet fruits. Grows 8 to 10 feet high. Prices—2 to 3 foot size only, 75 cents each.

SNOWBERRY—A slender, medium-growing shrub, which does well in any soil and will flourish under trees and in densely shaded places where little else will grow. Leaves are dark green and slender, small rose-colored flowers in June and July. Clusters of attractive milk-white berries which last until late in winter. Grows 3 to 5 feet high. Very attractive as a hedge. Strong bushes, 2 to 3 feet high, 55 cents each. Extra size, 3 to 4 feet, 85 cents each.

SPIRAEA ANTHONY WATERER—A dwarf variety growing 2 to 3 feet high and covered with large heads of crimson flowers. Very desirable for planting in front of taller-growing shrubs. If the flowers are removed as they fade it will cause the plant to keep up a continuous bloom until late in the fall. Strong bushes, 12 to 18 inches high, 75 cents each.

SPIRAEA BILLARDI—An erect-growing shrub with dense spikes of rose-pink flowers in July and August and again in the fall. Grows 4 to 6 feet high. Does well in moist places. Strong bushes, 2 to 3 feet high, 55 cents each. Extra size, 3 to 4 feet, 85 cents each.

SPIRAEA CALLOSA ROSEA—A free-blooming variety, producing large panicles of deep, rosy blossoms nearly all summer. Grows 4 to 6 feet high. Strong bushes, 2 to 3 feet high, 55 cents each. Extra size, 3 to 4 feet, 85 cents each.

GOLDEN SPIRAEA—A rapid-growing variety with masses of snowy white flowers in June. Young foliage bright yellow, changing to golden browns in autumn. Very desirable for group planting. Grows 8 to 10 feet high. Strong bushes, 2 to 3 feet high, 55 cents each. Extra size, 3 to 4 feet, 85 cents each.

SPIRAEA VAN HOUTTEI—Better known and more largely planted than any other shrub. An extremely graceful shrub with long, drooping branches completely covered with flat clusters of white flowers in May and June. When in blossom a hedge of Spiraea Van Houttei is a sight long to be remembered. Cannot be too highly recommended. We consider it the best general purpose shrub. Grows 6 to 8 feet high. Strong bushes, 2 to 3 feet high, 55 cents each. Extra size, 3 to 4 feet, 85 cents each.

OUR NEW LIBERAL TERMS

We pay all transportation charges on orders amounting to \$10.00 or more sent to nearby states. See page 2 for list of states.

We allow the following discounts on orders sent with cash—

8 per cent before March 1st
6 per cent before April 1st
3 per cent thereafter

We ship C. O. D. if desired

See page 47 for trees and bushes that can be sent by parcel post.

Your order will be sent C. O. D. if you wish. See page 2.



Weigela



Blossom of Butterfly Bush



Golden Leaved Elder

SHRUBS—Continued

MOCK ORANGE (Syringa)—One of the best known shrubs with a wealth of very fragrant white blossoms in May and June. Derives its name from its blossoms which resemble orange blossoms. Grows 8 to 10 feet high. Strong bushes, 2 to 3 feet high, 55 cents each. Extra size, 3 to 4 feet, 85 cents each.



Mock Orange (Syringa)

GOLDEN SYRINGA—A compact, dwarf-growing shrub with very brilliant yellow foliage and white flowers in May and June. Retains its color all season and is very valuable for creating pleasing and striking contrasts with green-leaved shrubs. Grows 2 to 3 feet high. Prices—12 to 18 inch size only, 75 cents each.

HIGH BUSH CRANBERRY—Sometimes called Tree Cranberry. An upright and spreading shrub with smooth, light grey branches and broad, rough leaves. Produces flat heads of white flowers 3 to 4 inches across in May and June, followed by scarlet fruits which remain on the branches and keep their bright scarlet color until the following spring. Grows 8 to 10 feet high. Strong bushes, 2 to 3 feet high, 55 cents each. Extra size, 3 to 4 feet, 85 cents each.

WEIGELA—One of the most charming of all the shrubs, growing 6 to 8 feet high, with a profusion of trumpet-shaped flowers in May and June. We offer them in three colors, red, pink and white. Order by color. Pink and White Weigelas. Strong bushes, 2 to 3 feet, 55 cents each. Extra size, 3 to 4 feet, 85 cents each.

Red Weigelas—Strong bushes, 2 to 3 foot size only, 75 cents each.

SHRUB COLLECTION

10 Flowering Shrubs for \$4.50

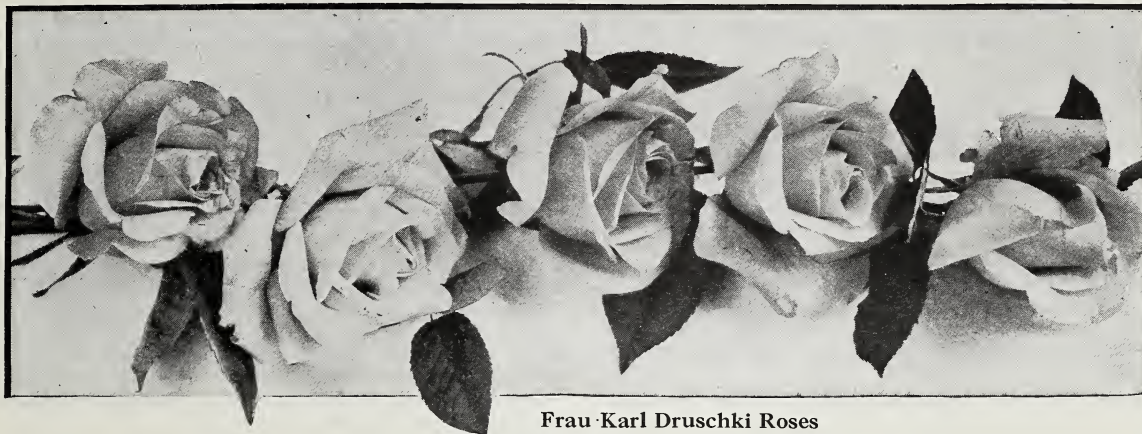
All Strong 2 to 3 feet high

1 Golden Bell	1 Mock Orange
1 Dwarf Barberry	1 Indian Currant
1 Deutzia Pride of Rochester	1 Spiraea Billardi
1 Hydrangea P. G.	1 Golden Spiraea
2 Spiraea Van Houttei	

Catalog Price \$5.50

COLLECTION PRICE \$4.50

Buy direct from our nursery and save money.



Frau Karl Druschki Roses

ROSES

PROBABLY no other class of ornamentals gives quite as much "value received" as roses. Very often the blooms of the first season repay the planter many times over for the time and money expended. Roses are easy to grow provided a few simple cultural rules are followed. They prefer a sunny, open location not too exposed to the assaults of unchecked gales. The soil should be thoroughly broken up and raked fine to the depth of eighteen inches. Well rotted animal manure, thoroughly pulverized, should be mixed with the soil in considerable quantity, even up to one-third the total bulk of soil in the beds. The following list includes the best varieties selected by vote of the rose growers in the United States as the most satisfactory for the garden. Our roses are all two years old, field grown, budded stock, that will bloom this season. In planting set the bud two inches below the ground level. Cut back bush roses in the spring from four to six eyes, according to size of plant. Heavier canes can stand more severe pruning.

RATES—Less than ten at each rates. Ten or more at ten rates.

HYBRID TEA ROSES

The Everblooming or Hybrid Tea Roses, commonly called Monthly Roses, are the most popular for the garden because of their long blooming season, beginning in June and continuing until frost. Hardy in the United States with winter protection, which is simply earth hilled 8 to 12 inches high around the bushes.

Prices of Hybrid Tea Roses—Strong Two-year-old Bushes 95 cents each, 10 for \$9.00.

COLUMBIA—One of Ophelia's daughters or sports, full petalled, rose pink buds, deepening as the blossom opens, held erect on long, sturdy stems. Very vigorous, intensely fragrant and an excellent keeper, lasting 3 or 4 days as a cut flower.

DUCHESS OF WELLINGTON—Large, well-formed, semi-double, saffron yellow buds, opening well. The most dependable yellow rose, fragrant, absolutely to be depended upon to produce flowers all during the season.

GRUSS AN TEPLITZ—Dark, rich crimson, the freest of bloomers and one of the favorites among the reds. Strong, tall canes with a continuous succession of bloom, a heavy grower that does well in the herbaceous border.

EDWARD MAWLEY—A perfectly formed rose of deep, blackish crimson. Strong grower, fragrant and free of bloom.

LOS ANGELES—A luminous flame pink overlaid with translucent golden yellow deep at the base. A long, pointed bud opening to a most perfect flower of indescribable beauty with full reflexed petals.

MRS. AARON WARD—Very double, pointed buds of deep Indian yellow, vigorous and compact in growth, floriferous with a rich, bronzy green foliage.

OPHELIA—Delicate salmon flesh shaded with rose. A variety that has made such an enviable record that it heads the list of garden roses. Long, pointed buds on stiff stems. Free blooming with beautiful foliage.

RADIANCE—This rose stands high among amateur growers because of its vigorous growth, hardiness and continuous production of lovely, light silver pink flowers with a deeper pink on the reverse side of the petal. Upright and disease resistant, flowering under all weather conditions.

RED RADIANCE—As good as its parent, Radiance, in habit of blossom and growth. Lovely deep red with an intense fragrance.

SUNBURST—A handsome, long, yellow bud, opening to cup-shaped flower of light sulphur yellow. Plant strong and spreading with few thorns.

Don't overlook our new liberal terms. See page 2

**BUSH ROSE COLLECTION**

6 Strong Two-year Bushes for \$4.00

1 Frau Karl Druschki	1 Radiance
1 Magna Charta	1 Sunburst
1 Gruss an Teplitz	1 Multiflora

Catalog Price \$5.05 COLLECTION PRICE \$4.00

HYBRID PERPETUAL ROSES

Hybrid Perpetual Roses are not as free-blooming as the Hybrid Teas, but are completely hardy and of vigorous growth. They bloom tremendously in June and sometimes sparingly until autumn.

Prices of Hybrid Perpetual Roses—Strong Two-year-old Bushes, 95 cents each, 10 for \$9.00.

FRAU KARL DRUSCHKI (Snow Queen)—An ideal, hardy, pure snow white rose. Perfect in flower, strong in growth and very free-flowering.

GENERAL JACQUEMINOT—An old favorite and one of the best known of all roses. Brilliant scarlet crimson.

MADAM PLANTIER—Large, white, double flowers, wonderful fragrance, produced in abundance early in the season.

MAGNA CHARTA—Large flowers of rose carmine, very fragrant and free on strong plants.

PAUL NEYRON—Probably the largest rose in existence, fragrant, cream pink blossoms on long stems.

MOSS ROSES

Moss Roses bloom but once a season, but the flowers remain in bloom a long time. Much admired for the beautiful moss covering of the buds.

Price of Moss Roses—Strong Two-year-old Bushes, 95 cents each; 10 for \$9.00.

WHITE MOSS—Pure white flowers of medium size, full, free and vigorous.

PINK MOSS—Fragrant, rosy pink buds crested, with rich green moss.

RED MOSS—Large red flowers of great beauty heavily mossed with a deep green.

POLYANTHA ROSES

This class does equally well indoors and can be dug up and potted in the fall and kept in bloom all winter.

Prices of Polyantha Roses—Strong Two-year-old Bushes, 95 cents each; 10 for \$9.00.

WHITE BABY RAMBLER—Compact bush 1½ to 2 feet high, with clusters of small white flowers.

CRIMSON BABY RAMBLER—A bush form of the Crimson Rambler. Prices—Strong Two-year Bushes.

TWO GOOD TEA ROSES

Prices of Tea Roses—Strong Two-year-old Bushes, 95 cents each; 10 for \$9.00.

MME. F. KRUGER—An old favorite with creamy yellowish pink buds. free bloomer on long slender stems with dainty foliage.

WILLIAM R. SMITH—One of the most perfectly formed roses in existence, long, white, slightly tinged pink buds, opening slowly, with most perfect foliage, a splendid keeper.

HARDY CLIMBING ROSES

The Climbers or Ramblers not only afford a burst of bloom upon trellises, over fences and hedges, against the porch or the home, but having attractive foliage they are an object of beauty and ornament even when not in bloom.

Prices of Hardy Climbing Roses—Strong Two-year-old Bushes, 70 cents each; 10 for \$6.50.

CLIMBING AMERICAN BEAUTY—One of the best climbing roses. Healthy, vigorous growth, making 10 foot shoots. A lovely, deep, rich, rose pink bloom of splendid form on a long stem.

CRIMSON RAMBLER—Unusually vigorous. Produces a great profusion of medium size, double, red blossoms.

DOROTHY PERKINS—Full, double, shell pink flowers in large clusters, very attractive.

DR. VAN VLEET—Lightest shell pink to silver flesh. Double.

EXCELSA—Red Dorothy Perkins. Very double, crimson, produced in large clusters.

HIAWATHA—Single crimson flowers with white base.

PAUL'S SCARLET CLIMBER—The brilliant, vivid scarlet which this rose maintains until the petals fall puts it in a class by itself. Good-sized flowers, freely produced in clusters of from 3 to 20, literally cover the plant with bloom. Strong and perfectly hardy.

SILVER MOON—A beautiful, semi-double, pure white rose four inches in diameter, with a cluster of prominent yellow stamens in the center which greatly add to its attractiveness.

TAUSENSCHON (Thousand Beauties)—Varies in color. A beautiful combination of colors, including several shades of pink. Semi-double.

VEILCHENBLAU (Blue Rambler)—Double flowers of light lilac, fading to light purple and blue.

WHITE DOROTHY—A rose that has gained great popularity. A duplicate of Dorothy Perkins except in color.

YELLOW RAMBLER—Lovely yellow buds, which fade to creamy white as the flower opens. Strong and hardy.

CLIMBING ROSE COLLECTION

6 Strong Two-year-old Bushes for \$3.00

1 Climbing	1 Dorothy Perkins (Pink)
1 American Beauty	1 White Dorothy
1 Crimson Rambler	1 Dr. Van Vleet
1 Multiflora (Bush)	

Catalog Price \$3.80 COLLECTION PRICE \$3.00

For Description of Multiflora Rose see page 32



PERENNIALS

AS the trees and shrubs make the setting for the house, so the perennials form the nucleus of the flower garden. A well arranged, hardy border adds interest and delight to every home. Beginning to flower in the early spring and continuing until frost without special care other than good soil and occasional cultivation, they produce a mass of color and an unfailing supply of flowers for cutting.

The growing popularity of perennials is due to their loveliness plus their hardiness, for they withstand zero weather with only a protection of leaves. A yearly mulch of well-rotted manure or a liberal scattering of bone meal is gratefully received if the soil is poor.

These old-fashioned flowers may be effectively combined with shrubs by using them in the foreground, but the favorite combination is with annuals either in a garden or a border planting. In case of the latter, the ornamental grasses, yucca, hollyhocks and belladonna larkspur are used as a background to the lower-growing perennials and annuals.

We offer only strong, field grown plants that will bloom the first year with either spring or fall planting, spring preferred.

Prices of strong plants (except where otherwise noted)—30 cents each, 10 for \$2.50.

RATES—Less than ten at each rate. Ten or more at ten rate.

ANCHUSA (Dropmore)—This is one of the choicest hardy border plants, growing from 4 to 6 feet with good culture. It is fully covered with pure blue flowers an inch in diameter, which are of a surpassing beauty and loveliness. It flowers in May, lasting about two months in bloom.

ANEMONE (Pink)—Same as white anemone except soft rose pink flowers.

ANEMONE (White)—One of the most desirable fall blooming perennials. Tall, pure white blooms with deep yellow stamens, producing a succession of flowers during September and October. 18 to 24 inches high.

CANTERBURY BELL (Campanula Medium)—With its handsome spikes of bell-shaped flowers of porcelain-blue, rose-pink, and white, the Canterbury Bell makes a gorgeous showing in the garden in July. Plants 2 to 3 feet high.

COLUMBINE (Aquilegia—Long-spurred Hybrid)—An old garden favorite. Thrives well in shady places where most plants cannot grow. One of the most beautiful of hardy plants, producing an abundance of graceful, peculiar-shaped flowers with long slender spires. A most varied and delicate combination of colors, blue, white, yellow, pink, cream, lavender, red, scarlet and orange mixed together. Height, 2 to 4 feet.

COREOPSIS (Lanceolata Grandiflora)—A beautiful, hardy border plant that grows 15 to 18 inches high and produces its bright, golden yellow flowers from June until frost.

FOX GLOVE (Digitalis Gloxinaeflora)—An old time favorite. Tall spires, 4 to 6 feet high, of inflated, bell-shaped flowers in shades of white, rose and purple mixed together. Beautifully spotted. It makes a fine background for lower-growing plants.

GOLDEN GLOW (Rudbeckia Laciniata)—Tall-growing, hardy perennial about 6 feet high. Produces a multitude of large, double, golden yellow flowers in August and September.

HARDY ASTER (Michaelmas Daisy)—Among the showiest of our late-flowering, hardy plants, giving a wealth of blooms in summer and late fall. Easy to grow and very popular. We offer a fine collection in mixed colors.

HARDY CHRYSANTHEMUMS (Pompons)—The well deserved popularity of this hardy plant is largely due to its abundance of beautiful flowers in the dull November days when every other hardy plant has succumbed to the frost. They can be had indoors, either cut or as potted plants. As cut flowers they have no equal for lasting qualities, remaining fresh for several weeks. We offer a fine collection of Pompon varieties in four distinct colors, white, red, pink and yellow. Order by color.

HEMEROCALLIS—Lovely, yellow day lilies, hardy, succeeding everywhere. One of the most popular perennials and should be included in every garden. 12 to 18 inches high.

HEPATICA (Liver Leaf)—A very hardy, native, spring-flowering plant, which thrives well in extremely shady places. One of the very earliest to bloom in the spring. We offer them in mixed colors of light blue, pink and white.

HEUCHERA SANGUINEA—Lovely, coral pink bells on slender stems, producing flowers throughout the season. About 6 to 8 inches high.

HOLLYHOCKS—Unrivalled favorites everywhere. No perennial garden is complete without a few. Planted in the back of the hardy border, massed in fence corners or scattered among the shrubbery, they produce a bold and showy effect hard to duplicate. Their towering spikes, 4 to 6 feet high, are a mass of flowers all summer. We offer a fine collection of double sorts in four distinct colors, pink, white, yellow and scarlet. Order by color.

Value of Home Increased by Green's Shrubs

In the spring of 1918 we ordered from you one of your collections of shrubs. They thrived well and when they bloomed they beautified the place to such an extent that the valuation was increased from \$2,200 to \$5,000 when we sold in the summer of 1920. We have now bought another place and we want to beautify that too. Enclosed please find our order.

ERNEST L. REYNOLDS,
Milford, Conn.

We pay transportation charges to nearby states. See page 2



Perennial Phlox

PERENNIALS—Continued

IRIS—Four colors of this most desirable and most easily grown, hardy plant. A mass of bloom in May and June. Roots should barely be covered with soil. Yellow, purple, blue and bronze. Order by color. Grows 18 to 24 inches high.

LARKSPUR (Delphinium Belladonna)—Plants 2 to 3 feet high, bearing mammoth spikes of skyblue flowers. Cut back reverely after flowering to produce a succession of bloom.

OSTRICH PLUME (Ornamental Grass)—Long, narrow, green leaves, 4 to 6 feet long, with white stripes along center. Beautiful plumes resembling ostrich plumes when dry.

OXSLIP (Primula Primrose)—Large, bright yellow flowers produced in great profusion in early spring.

SHASTA DAISY (Chrysanthemum Maximum)—Large snow-white flowers with bright yellow centers borne on long stiff stems from June to September. Plants 1 to 2 feet high.

YUCCA (Filamentosa)—A subtropical plant, resembling the century plant in foliage. Long, narrow, green leaves with tall spikes 3 to 5 feet high, of large, bell-shaped, white blossoms resembling the lily.

PHLOX COLLECTION

10 Strong Plants for \$2.00

2 Mrs. Jenkins 2 Sir Edward Landseer
2 Rhineland 4 Green's Mixture

Catalog Price \$2.60 COLLECTION PRICE \$2.00

HARDY PHLOX

Unsurpassed for brilliant, bold color effect. Very effective when planted in a border of hardy perennials or in large groups on the lawn. Desirable for planting in front of tall-growing shrubs. They bloom in July and August at a time when few other plants are in flower, but by pinching back the first buds the blooming period can be extended until frost. Watering them in periods of drought is well worth while as the size of the bloom is greatly increased.

Prices of strong plants (except where otherwise noted)—35 cents each, 10 for \$3.00.

RATES—Less than ten at each rate.

ATHIS—Deep, clear, salmon pink. Large and strong.

LA VAGUE—Clear, silvery rose.

MRS. JENKINS—Immense panicles of pure white flowers.

PANTHEON—Cerise-salmon, white center, branching spikes.

PERCHEAU d'ISLAND—Deep red.

RHINELANDER—Salmon pink with claret eyes.

SIR EDWIN LANDSEER—Very bright crimson. Free grower.

GREEN'S MIXTURE—We offer in addition to the above named varieties, our own mixture of unnamed sorts, ranging in color from pure white to dark red, and including almost all shades and combinations of colors. Very desirable for mass planting where distinct colors are not required. Prices of strong plants—25 cents each, 10 for \$2.00.



Iris

See our new liberal terms on page 2



A Border Planting of Peonies

PAEONIES

THE most magnificent of all the perennials. The blooms are of great size and of a wide range of colors. In bloom from the middle of May until the first of July. They last well and are excellent for cutting. Plant the roots in deep, rich soil, setting them not more than 3 inches deep. The first year the blooms are not always true to type as even the most perfect double types will ordinarily produce single blooms the first season after planting.

Prices of strong roots (except where otherwise noted)—75 cents each, 10 for \$7.00.

RATES—Less than ten at each rate.

DELACHEI—Large, medium compact, rose type. Violet crimson slightly tipped with silver. Strong, erect, medium height, very free bloomer. Late midseason.

DORCHESTER—Large, compact, rose type. Pale hydrangea pink. Fragrant. Medium dwarf. Upright free bloomer. Late.

EDULIS SUPERBA—Large, loose, flat crown. Bright mauve pink. Collar striped with narrow lilac. Fragrant. Strong, upright, very free bloomer. Early.

ELLA CHRISTINE KELWAY—Large, cup-shaped, rose type. Lilac white guards, cream white central petals, crimson carpels and stigmata. Fragrant. Medium height. Strong grower. Midseason.

FELIX CROUSSE—Bright ruby red, large, compact. A strong grower with long stems. Midseason.

FESTIVA MAXIMA—Very large, globular, rose type. Pure white center prominently flecked with crimson. Outer petals sometimes faint lilac white on first opening. Very tall, strong, vigorous grower. Early.

GREEN'S MIXTURE—In addition to the above named varieties we have a mixture of red, white and pink unnamed sorts, which are very desirable for mass planting where separate colors are not required. **Prices of strong roots—50 cents each, 10 for \$4.50.**

PAEONY COLLECTION

6 Choice Peonies for \$4.00

1 Delachei	1 Ella Christine Kelway
1 Dorchester	1 Festiva Maxima
1 Edulis Superba	1 Green's Mixture

Catalog Price \$4.25 **COLLECTION PRICE \$3.60**

PERENNIAL COLLECTION

12 Strong Plants for \$3.00

1 Larkspur	1 Hardy Chrysanthemum
1 Fox Glove	1 Oxslip
1 Canterbury Bell	1 Shasta Daisy
1 Coreopsis	1 Hardy Aster
1 Columbine	1 Hepatica
1 Hollyhock	1 Golden Glow

Catalog Price \$3.60 **COLLECTION PRICE \$3.00**

We allow a discount for cash with order. See page 2



GLADIOLI

No garden is complete without some of these glorious, summer-flowering bulbs. Any good garden soil will grow gladioli if fully exposed to the sun. If your soil is heavy or stiff, work in a liberal amount of well-rotted manure in the fall. Planting can be done as soon as the frost is fully out of the ground in the spring. Set bulbs two to four inches deep and four inches apart. After the blooming season is over they should be lifted carefully, shaken free of earth and allowed to dry in the sun for a day or two. Then cut off the stalks close to the bulbs and store them away in a cool, dry place in open boxes or shallow baskets.

Prices of strong bulbs (except where otherwise noted)—12 cents each, 10 for \$1.10, 100 for \$8.00.

RATES—Less than ten at each rate. Ten to fifty at ten rate. Fifty or more at hundred rates.

AMERICA—Beautiful, soft flesh pink faintly tinged with lavender.

AUGUSTA—Lovely, pure white with blue antlers.

CHICAGO WHITE—Pure white with lavender stripes on lower petals.

CRACKER JACK—Dark red, throat spotted with yellow and maroon.

MRS. FRANCIS KING—Pure light scarlet. Flowers large.

MRS. FRANK PENDLETON, JR.—Delicate salmon pink with blood red blotch in throat.



A Blossom of Dahlia



A Bunch of Gladiolus Blossoms

SCHWABAN—Pure canary yellow shaded with sulphur color. The golden yellow throat is slightly blotched with dull carmine.

PRIMULINUS HYBRIDS—A new, distinct, small-flowered type. We offer a mixture of beautiful shades of yellow and orange.

GREEN'S MIXTURE—In addition to the above named varieties we offer a mixture of unnamed varieties of all colors and descriptions. Very desirable for mass planting where separate colors are not desired. Prices—7 cents each, 10 for 60 cents, 100 for \$4.60.

DAHLIAS

This good, old-fashioned, fall-blooming plant has increased so rapidly in popularity that it now holds a place second to no other plant in the garden. Owing to its free-growing habit it requires little care and is very easily grown. The blossoms are of all conceivable shapes and colors. We can furnish the following colors: purple, red, rose pink, yellow, white, lavender, orange, variegated, red and yellow, lavender and white. Please specify color when ordering, or if you prefer you can leave the selection of colors to us and we will be glad to see that a desirable collection of colors is sent you. **Strong bulbs 35 cents each, 10 for \$3.00.**

GLADIOLI COLLECTION

10 Choice Bulbs for 90 Cents

1 America	1 Mrs. Francis King
1 Augusta	1 Mrs. Frank Pendleton, Jr.
1 Cracker Jack	1 Primulinus Hybrid
1 Chicago White	1 Schwaban
	2 Green's Mixture

Catalog Price \$1.10 COLLECTION PRICE 90 cents

Buy direct from our nursery and save money



ORNAMENTAL VINES

A HOME planting is seldom complete without at least a few ornamental vines. They add a certain charm and grace not obtained from any other source. Vines keep the home cool in summer and furnish protection and shade to the porch, arbor and pergola. When planted close to a building the top soil should be replaced to the depth of a foot or two with rich garden soil, as the soil immediately about the foundation of a house is usually subsoil thrown up in the digging of the cellar.

Prices of Strong Two-year-old Vines (except where otherwise noted)—55 cents each, 10 for \$5.00.

RATES—Less than ten at each rates. Ten or more at ten rates.

BOSTON IVY (Ampelopsis Veitchii or Japan Ivy)—It is a rapid grower and clings to brick or stone walls without artificial fastening. The foliage is handsome dark green in summer, changing to crimson and yellow in autumn. It is a little tender while young and requires protection the first winter, but once established there is no further risk. Price, Strong Vines—85 cents each, 10 for \$8.00.

CLEMATIS JACKMANNI—A large-flowering variety, the flowers often 4 to 6 inches in diameter, intense violet-purple with a rich, velvety appearance. It blooms continually from July until frost. Prices—85 cents each, 10 for \$8.00.

CLEMATIS PANICULATA—A rapid-growing vine, with handsome, clean, glossy foliage and medium sized, star-shaped, fragrant, white flowers in September when few other vines are in blossom. Very attractive and probably the most largely planted of all the vines.

DUTCHMAN'S PIPE—A very rapid-growing vine, which on account of its very large heart-shaped leaves is desirable when dense shade is required. Obtains its name from its peculiar brownish flowers, resembling in shape a miniature pipe. Prices—\$1.15 each, 10 for \$10.00.

HALL'S JAPAN HONEYSUCKLE—One of the most popular of all the climbing vines, which in addition to its ordinary uses as a climber is valuable for covering banks, bare spaces, etc., where grass will not grow. Flowers white, changing to yellow, very fragrant and in bloom the whole season.

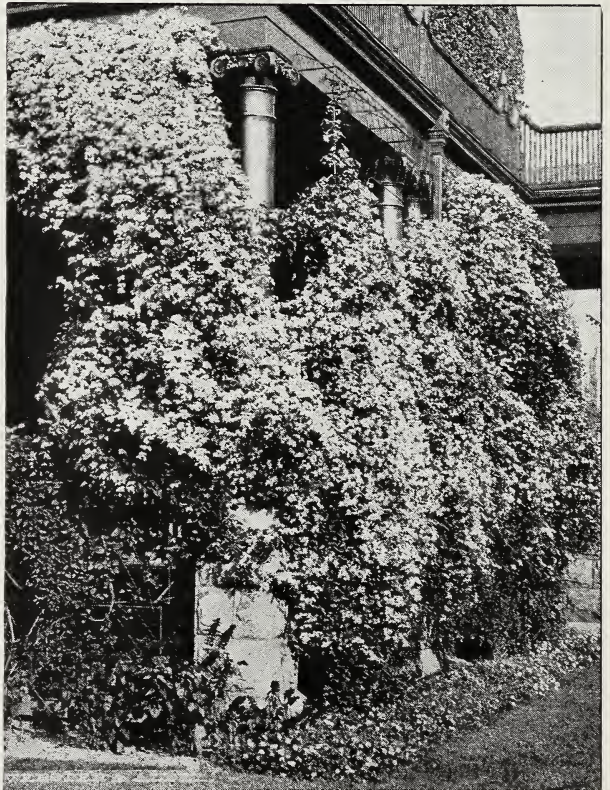
TRUMPET VINE—A grand old favorite. Showy, orange-scarlet flowers and evergreen leaves. A strong grower often over 30 feet tall. Fine for training on walls, trellises, trunks of trees and arbors.

VIRGINIA CREEPER (American Ivy or Woodbine)—The well-known native ivy with five-parted leaves that change to scarlet in fall. Blue-black berries. Hardy and quick-growing. Requires artificial support on walls.

PURPLE WISTARIA—Very desirable for heavy trellises and pergolas, also attractive if trained to old trees. Pea-shaped, purple flowers in dense, pendant clusters sometimes a foot long. Blooms in May.

WHITE WISTARIA—A white-flowering form of the Purple Wistaria. Same as above except in color of blossom.

BLUE WISTARIA—Probably the best of the Wistarias. It flowers while very young and produces abundant, loose clusters of deep blue flowers, sometimes two feet long. Blooms in May.



Clematis Paniculata

NEW LIBERAL TERMS

See Page Two

Transportation paid by us

Liberal discount for cash with order

Goods sent C. O. D.

Read our new liberal terms on page 2



Trees by Parcel Post—Postpaid

We offer a special grade of trees and shrubs by parcel post, postpaid, for the benefit of:

1. Customers living in distant states to which we do not pay transportation charges. See page 2 for a list of our "prepay" states.
2. Customers who live far away from a railroad where it is inconvenient to have things come by freight or express.
3. Customers whose orders amount to less than \$10.00, who are not entitled to our transportation charges paid offer, but who are desirous of having the transportation charges included in the purchase price.

The "parcel post size" plants and vines are in most instances the same size as those sent by freight or express. The trees and bushes, however, while first class in every respect, are not as large or as tall as our regular grades offered elsewhere in the catalog. We are restricted by parcel post regulations in the size of the trees and shrubs that can be sent by parcel post, so please do not order any items or sizes not offered on this page. Prices on this page include postage.

PRICES—INCLUDING POSTAGE

STANDARD APPLE TREES

Following Varieties Only

Baldwin	Jonathan	Rome Beauty
Banana	McIntosh	Wealthy
Delicious	Northern Spy	Yellow Transp.
Gravenstein		

Strong Trees, 3 to 4 feet high, 65 cents each

Cortland

Strong Trees, 3 to 4 feet high, \$1.50 each

DWARF APPLE TREES

Following Varieties Only

Baldwin	Oldenburg	Winter Banana
Delicious	Red Astrachan	Yellow Transp.
McIntosh	Wealthy	

Strong Trees, 2 to 3 feet high, 75 cents each

PEACH TREES

Following Varieties Only

Carman	Elberta	Rochester
Champion	J. H. Hale	

Strong Trees, 2 to 3 feet high, 50 cents each

STANDARD PEAR TREES

Following Varieties Only

Bartlett	Bosc	Clapp's Favorite
----------	------	------------------

Strong Trees, 3 to 4 feet high, \$1.00 each

DWARF PEAR TREES

Following Varieties Only

Anjou	Clapp's Favorite	Seckel
Bartlett	Duchess	Worden Seckel

Strong Trees, 2 to 3 feet high, 65 cents each

PLUM TREES

Burbank Only

Strong Trees, 3 to 4 feet high, 65 cents each

CHERRY TREES

Following Varieties Only

Black Tartarian	Napoleon
-----------------	----------

Strong Trees, 3 feet high, 90 cents each

CURRENT BUSHES

Diploma	Red Cross	Wilder
Fays	White Grape	

Medium Size, 2 year, 20 cents each, 10 for \$1.75

Perfection, 30 cents each, 10 for \$2.75

GOOSEBERRY BUSHES

Downing Only

Medium Size, 2 year, 25 cents each, 10 for \$2.25

RASPBERRY BUSHES

Columbian	Herbert	Plum Farmer
	Cuthbert	

Strong Bushes, 15 cents each, 10 for \$1.25

Syracuse, 40 cents each, 10 for \$3.75

For larger size trees and bushes (by freight and express) see preceding pages of catalog

Please do not order by parcel post *items* or *sizes* not offered on pages 46, 47 and 48



TREES BY PARCEL POST—Continued

GRAPE VINES

Agawam	Diamond	Moore's Early
Brighton	Eaton	Niagara
Campbell's Early	Lindley	Wing
Catawba	Lucile	Worden
Delaware	McPike	

Medium Size, 2 year, 30 cents each, 10 for \$2.75

Concord, 20 cents each, 10 for \$1.75
Caco, 75 cents each, 10 for \$7.00

BLACKBERRY BUSHES

Blowers	Eldorado	Green's Hardy
	Snyder	

Strong Bushes, 15 cents each, 10 for \$1.25

STRAWBERRY PLANTS

Cooper,	85 cents per 10, \$4.00 per 100
Corsican,	75 cents per 10, \$3.50 per 100
Kellogg's Premier,	60 cents per 10, \$3.00 per 100

ASPARAGUS ROOTS

Conover's Colossal	Palmetto
Strong, 2 year No. 1, 65 cents per 10, \$4.00 per 100	
Light, 2 year No. 2, 35 cents per 10, \$2.25 per 100	

Washington, Strong, 2 year No. 1, \$1.30 per 10, \$7.50 per 100

RHUBARB

Strong Roots, 35 cents each, 10 for \$3.00

SAGE

Strong Roots, 35 cents each, 10 for \$3.00

ORNAMENTAL TREES

Following Varieties Only

Bechtel's Crab	2 to 3 feet high,	\$1.35 each
Catalpa Speciosa,	3 to 4 feet high,	.50 each
White Horse Chestnut,	18 to 24 inches high,	.60 each
Carolina Poplar,	3 to 4 feet high,	.45 each
Lombardy Poplar,	3 to 4 feet high,	.45 each

NUT TREES

English Walnut,	12 to 18 inches high,	\$1.00 each
Japan Walnut,	12 to 18 inches high,	.60 each
Black Walnut (Common Strain),	12 to 18 inches high,	.50 each
English Filbert (Hazelnut),	12 to 18 inches high,	.50 each
Butternut,	12 to 18 inches high,	.50 each

EVERGREEN TREES

Norway Spruce, 12 to 15 inches high, \$.85 each

HEDGES

California Privet, 12 to 18 inches high, 15 cents each, 10 for \$1.00
Dwarf Barberry, 12 to 15 inches high, 30 cents each, 10 for \$2.75

SHRUBS

Altheas	Indian Currant
Butterfly Bush	Lilac Alba
Deutzia Candidissima	Lilac Vulgaris
Deutzia Crenata	Snowball
Deutzia Pride of Rochester	Snowberry
Golden Bell (Forsythia)	Spiraea Billardi
Golden Elder	Spiraea Callosa Rosea
High Bush Cranberry	Golden Spiraea
Pink Bush Honeysuckle	Spiraea Van Houttei
White Bush Honeysuckle	Mock Orange
Hydrangea Arborescens	Weigela
Hydrangea P.G. (bush form)	

Strong Bushes, 18 to 24 inches high, 50 cents each

Spiraea Anthony Waterer	Golden Syringa
Lilacs—French—Assorted Colors	Japan Quince

Strong Bushes, 18 to 24 inches high, 75 cents each

Lilac—Villosa	Lilac—Mad. Casimer Perier
Lilac—Charles X	Lilac—Marie Legraye
Lilac—Ludwig Spaeth	Lilac—Pres. Grevy

Strong Bushes, 18 to 24 inches high, \$1.25 each

BUSH ROSES

Crimson Baby Rambler	Magna Charta
Frau Karl Druschki	Mme. F. Kruger
Gen. Jacqueminot	Moss (all colors)
Gruss an Teplitz	Paul Neyron
Madam Plantier	White Baby Rambler

Strong 2 year Bushes, 75 cents each

Columbia	Ophelia
Duchess of Wellington	Radiance
Edward Mawley	Red Radiance
Los Angeles	Sunburst
Mrs. Aaron Ward	Wm. R. Smith

Strong 2 year Bushes, \$1.00 each

CLIMBING ROSES

Climbing American Beauty	Paul's Scarlet Climber
Crimson Rambler	Silver Moon
Dorothy Perkins	Tausendschon
Dr. Van Vleet	Veilchenblau
Excelsa	White Perkins
Hiawatha	Yellow Rambler

Strong 2 year Bushes, 75 cents each

Multiflora, Strong 2 year Bushes, 40 cents each

See preceding pages for larger size trees and bushes by freight and express.



TREES BY PARCEL POST, POSTPAID—Continued

ORNAMENTAL VINES

Clematis Paniculata Trumpet Vine Wistarias (all colors)
Hall's Japan Honeysuckle Virginia Creeper

Strong Vines, 55 cents each

Boston Ivy, 85 cents each
Clematis Jackmanni, 85 cents each
Dutchman's Pipe, \$1.15 each

PERENNIALS

Anchusa Hardy Aster Iris (all colors)
Anemone Hardy Chrysanthemum Larkspur
Canterbury Bell Hemerocallis Ostrich Plume
Columbine Hepatica Oxslip
Coreopsis Heuchera Sanguina Shasta Daisy
Fox Glove Hollyhocks Yucca
Golden Glow

Strong Plants, 35 cents each, 10 for \$3.00

PAEONIES

Named Varieties, 75 cents each, 10 for \$7.00
Green's Mixture, 50 cents each, 10 for \$4.50

PHLOX

Named Varieties, 45 cents each, 10 for \$4.00
Green's Mixture, 35 cents each, 10 for \$3.00

BULBS

Gladioli—Named Varieties, 12 cents each, 10 for \$1.10
Gladioli—Green's Mixture, 7 cents each, 10 for 60 cents
Dahlias—All colors, 40 cents each, 10 for \$3.75

COLLECTIONS

The following collections can be sent by parcel post, postpaid, for following prices—

Bush Rose Collection, page 40, for \$4.25
Garden Collection, page 14, for \$7.25
Grape Collection, page 24, for \$4.00
Climbing Rose Collection, page 40, for \$3.25
Gladioli Collection, page 44, for \$1.00
Strawberry Collection, page 28, for \$3.25
Phlox Collection, page 42, for \$2.10
Paeony Collection, page 43, for \$4.25
Perennial Collection, page 43, for \$3.25
Bush Fruit Collection, page 15, for \$4.00

INDEX

	<i>Page</i>		<i>Page</i>		<i>Page</i>
Anchusa	5	Gladiolus	44	Paenies	43
Anemone	41	Golden Glow	41	Parcel Post	46
Apples	5	Gooseberries	26	Peaches	11
Apricots	21	Grapes	23	Pears	14
Asparagus	29	Hardy Aster	41	Perennials	41
Blackberries	26	Hardy Chrysanthemum	41	Phlox	42
Bulbs	44	Hedges	32	Pieplant	29
Canterbury Bell	41	Hemerocallis	29	Plums	19
Cherries	17	Hepatica	41	Quinces	21
Columbine	41	Heuchera Sanguina	41	Raspberries	27
Coreopsis	41	Hollyhocks	41	Roses	39
Currants	25	Horseradish	29	Rhubarb	29
Dahlias	44	Iris	42	Sage	29
Dwarf Apples	10	Larkspur	42	Shasta Daisy	42
Dwarf Pears	16	Nuts	22	Shrubs	35
Evergreens	30	Ornamental Shrubs	35	Strawberries	28
Foxglove	41	Ornamental Trees	33	Vines	45
Garden Roots	29	Ornamental Vines	45	Yucca	42
		Ostrich Plume	42		
		Oxslip	42		

Prices on pages 46, 47 and 48 are only for smaller size trees and bushes that can be sent by parcel post. For larger sizes by freight and express see body of catalog.

**GREEN'S
NURSERY
COMPANY**
ROCHESTER, N. Y.



2

1

3

5

4


- No. 1. NORTHERN SPY, NOTED FOR QUALITY AND BEAUTY.
- No. 2. BALDWIN, SUPERIOR RED WINTER.
- No. 3. MCINTOSH, BRINGS HIGHEST MARKET PRICE.
- No. 4. BANANA, HIGH QUALITY, LONG-KEEPING, DELICIOUS.
- No. 5. DELICIOUS, WINTER. SUPERIOR QUALITY.



The New
CORTLAND APPLE

The American Pomological Society awarded to the Cortland the Wilder Silver Medal for new fruits. To qualify for a Wilder Medal a new fruit must exhibit superiority to all existing varieties with which it will compete. We predict the Cortland will soon be the leading apple in the United States.

Green's Nursery Company
Rochester, New York



The New
CACO RED GRAPE

This new red grape has the most delicious flavor and highest quality of any grape that we have ever tested. Experts claim Caco equals in quality and melting texture the finest varieties grown under glass.

