

Historic, archived document

Do not assume content reflects current scientific knowledge, policies, or practices.



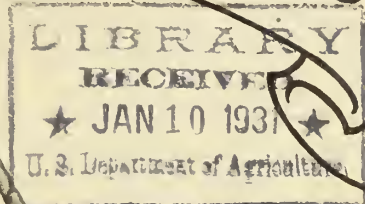
TOWNSEND'S

20TH Century
1931

Catalog

STRAWBERRIES

AND HOW TO GROW THEM



HOWARD SUPREME

The Ideal Berry.

A berry perfect in every sense of the word—Something far ahead of any in cultivation.
(For History and Breeding, see page 31.)

Registered in United States Patent Office 1930. Originated by Everett C. Howard of Belchertown, Mass., year 1909.
E. W. TOWNSEND & SONS, Sole Distributors, under contract with said Everett C. Howard.

IN INTRODUCING this variety, which is possibly the best variety of strawberries, of the standard class ever offered the public, we deeply appreciate the honor of being selected by Mr. Howard as being the introducers and sole distributors of this grand variety which is sure to mean millions of dollars in extra profits to the strawberry growers throughout the country.

In practically every case where HOWARD'S SUPREME has been tested (and it has been grown by a good many Experiment Stations from 10 to 15 years), it has proven not only equal to Premier, but in practically every instance has proven better in every respect. HOWARD'S SUPREME can only be appreciated when seen growing and fruiting.

Some of its outstanding features:

In plant growth it is truly a wonder. Strong, healthy, vigorous grower. Plants upright, with strong fruiting stems. Foliage simply beautiful. Season early to late, being a long crop variety that holds size well throughout the season.

In size it is large to extra large, most berries

being of a uniform size and shape. In color it is a deep red through and through. In quality it is equal to any variety on the list. Some of the Horticulturists who have grown it for years claim that it is equal to Marshall. In firmness it is classed as the very best.

Will equal Premier (Howard 17) in productiveness, and in many states has proven from 15 to 25 per cent more productive than Premier.

For further descriptions we refer to Mr. Howard, the originator, and several of the leading Horticulturists of the different states.

We were very fortunate in having our stock of HOWARD'S SUPREME grown under irrigation this year. We have a fine stock of these plants, as will be seen from illustration on back page.

Everyone who receives this catalog—that is interested in Strawberries—should place order for at least 25 to 100 plants of this variety; also same amount of Jupiter, for we consider this pair the greatest introduction ever made to the strawberry world. For Prices, see page 30.

E. W. TOWNSEND & SONS, Salisbury, Maryland

Jupiter

PAT. PENDING

—MEDIUM EARLY STRAWBERRY

Originated by the late Oliver C. Cordury of Salisbury, Md., at his trial grounds at Laurel, Del., year 1925.



Large and Attractive.

The JUPITER is a scientific cross between Premier and Gandy. In plant growth it shows more like Gandy. Also the fruit resembles the Gandy both in color and quality. But in season of ripening and in productiveness it resembles the Premier. The foliage is very strong and upright, holding the loads of fruit well off the ground. It will nearly equal Premier in productiveness, and the years that we have had it under test it has made a fine healthy growth of plants each year.

After making the successful cross, Mr. Cordury gave us over his entire lot of seedlings to propagate, stating that he did not have the time to give same proper attention. There were several good seedlings from this cross, but the one chosen and now being introduced as JUPITER, showed so much better than any of the others that we have discarded them. JUPITER will equal Gandy in size. A rich bright red color that is almost identical with Gandy. Firm as Gandy, with the deep red color inside same as found in Premier. The blossoms are well supplied with pollen, making it an ideal variety to plant with imperfect sorts of its season, and for this reason we have selected it as a proper mate for our Howard's Supreme.

Being that we are introducing this variety before having it tested by the various State Experimental Stations (as this process greatly delays the introduction—and we believe that it is too good to be kept from the public any longer), we are introducing it with the following Guarantee:

That it is a strong healthy plant grower and not subject to rust. That it is well above the average in productiveness. That fruit is a bright

rich shiny red in color. Large to extra large in size. Firm enough to make a long distance shipper. That the flavor is mild and sweet enough to suit most tastes. That it will make a strong pollinizer for any medium early imperfect sort. If planted on good soil and given good cultivation with proper seasons, it fails to make good any of the above points we will gladly refund the purchase price. We take all the chance in this our new introduction. And predict that it will prove to be one of our big winners in a short time.

12 Plants, \$2.65; 25 plants, \$4.00; 50 plants, \$6.00; 100 plants, \$10.00.

Laceyville, Pa., April 25, 1930.

E. W. Townsend & Sons Nurseries,
Salisbury, Maryland.

Gentlemen:

From fifteen hundred of Townsend's plants I picked fifty bushels of fine berries besides those preserved for our family use. I am planning for another bed the coming Spring.

Very truly yours,

MRS. F. M. JOHNSON.

Copyrighted 1930 by E. W. Townsend & Sons.

TOWNSENDS PLANTS BEST HE EVER BOUGHT. MR. BELL HAS BEEN A CUSTOMER OF OURS FOR NEARLY A QUARTER OF A CENTURY

From Chas. J. Bell, Tenn., writes Oct. 9th, '30.—The 5000 plants purchased last spring have come through the worst drouth ever experienced here. I have a perfect bed and prospects for a beautiful crop.

Your plants have always been superior to any plants I have ever grown. And I never fail to speak a good word for you.

Our 1931 Message

THE Year 1930, will probably go down in history as the most disastrous year any of the farmers now living have ever experienced. Taking the country over, it has been extremely hot and dry. Practically all crops have been injured from fifty to seventy-five per cent. The Strawberry crop has been one of the worst failures of any, owing to the fact that plants will not take root during extremely dry weather.

We have branches in other states, besides our big plant here in Maryland. And they have all fared practically the same. We will have less than one-fourth of a crop of strawberry plants, and most varieties can be sold only in small lots. We were fortunate in having our "Howard's Supreme" plants under irrigation—that is, most of them—and we have an ideal bed of these plants.

We are very sorry to be compelled to advance our prices at a time like this, when we know that our good friends and customers have been "hard hit," as well as ourselves.

But even at the prices which we are quoting we cannot realize fifty cents on the dollar of what we have invested in our crops. We have cut corners everywhere possible in order to make the prices. We have cut down our Catalogue. We will do no advertising. Many of our employes have volunteered a cut in their salaries, in order to "do their bit."

And even though the price of plants is advanced, we do not feel that our customers can afford not to buy plants this year. With the drought so severe the country over, the acreage cut so much, there is sure to be an unheard-of demand for berries for the next few years at least. And a small acreage planted this spring is sure to repay big dividends.

There seems little need that I should advise all our customers to place their orders as soon as possible this time. I am sure they all realize this importance. Late orders will not be filled. There is absolutely less than one-fourth enough plants grown to fill the demand.

Thanking you for your many past favors, and hoping that Nineteen Thirty-One will be a prosperous year for you all. I am sincerely yours,

E. W. TOWNSEND, SR., President.

Fruitland

(PERFECT FLOWERING)

—The New Extra Early Strawberry introduced the past season. Originated by a Mr. Hurley, in Wicomico County, Maryland, being a chance seedling, and for the past several years has been grown by several of our leading berry growers in this County, with excellent results.

Season—Very early to ripen. Fruit large to extra large. Firm enough to be classed as a good shipper. Color bright red with a heavy double green calix that resembles the Big Joe. Flavor extra good, being mild and sweet. Berries round to top shape, being very uniform in size. Exceedingly productive. Is one of the very best plant makers on average soil. Plants dark green throughout the growing and fruiting season and not subject to rust. FRUITLAND is a perfect flowering variety, has an extra large bloom that carries an abundance of pollen, which makes it extremely valuable to plant with other varieties of its season, and especially along with such varieties as Howard's Supreme. We fruited



**Fruitland
Will
Demand
Top Prices
in the
Market.**

it again the past spring, and it was equal in every respect to any early variety on our grounds, and surpassed most of them. And never failed to sell for at least \$1.00 per crate more over Premier.



Aberdeen

(PERFECT FLOWERING)

A big money-maker for the market gardener. Last spring was our first year to fruit ABERDEEN. It surpassed our expectations in every way. In productiveness it led all other varieties.

The size was medium to large, averaging about same as Premier. While we have seen it listed as a moderately firm berry, it showed on our grounds to be very firm, the color a rich bright red of uniform size. The fruiting season lasting about three weeks beginning a few days later than Premier. A mighty fine hardy plant to grow, and we feel reasonably sure that most growers will find it a profitable addition to their list. Prof. Watts in his

article in Market Growers Journal, August 1st, 1930, states that in Pennsylvania it ranked first, Premier second and Wm. Belt third.

NOTE—Premier is the most extensively grown berry in Pennsylvania. And it takes a real berry to take first place over it with the Pennsylvania growers.

May Queen

MAYQUEEN was originated in 1924 by E. W. Townsend, Sr., being a scientific cross between Premier and Townsends Big Late. Was introduced Spring 1928.

MAYQUEEN is a late variety that shows the blood of both parents. The foliage resembles Big Late: makes just a good fruiting row of large stalky plants that hold the fruit well off the ground. The fruit is large to extra large, firm, and of the very highest quality. Color a bright rich red all over. A heavy green calix makes it a real show berry. In productiveness it is just all any one could wish for. And the size is held up well throughout the season. You will find this a most valuable variety to plant with "TOWNKING." And these two will make a pair worthy of a place in any growers garden. We have only a few thousand MAYQUEEN plants to offer this season. We prefer to sell these in small lots so as to get as good distribution as possible. for it is sure to become a winner wherever a good late variety is wanted that carries both Quality and Quantity.



Heavy Producers of Fine Quality Berries.

PREMIER (Howard 17)

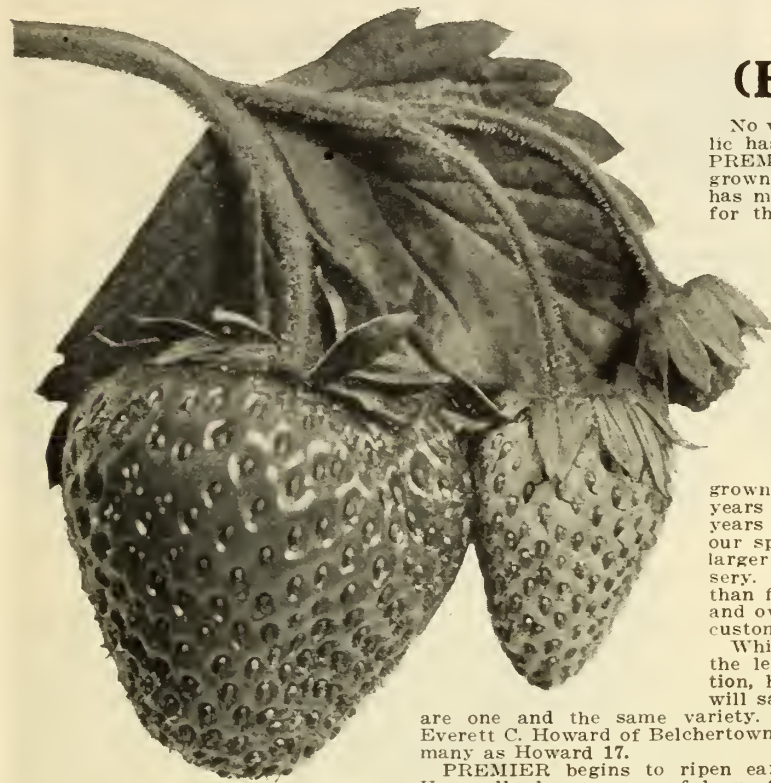
No variety ever introduced to the public has received as much praise as the PREMIER. No variety has ever been grown in such quantity, and no variety has made anything like as much money for the growers. And while there are now being introduced some marvelous varieties, which are almost sure to take the place of the PREMIER, it is going to be hard parting between growers and their old friend PREMIER.

PREMIER has paid off thousands and thousands of old mortgages; purchased and paid for new homes, new barns, automobiles by the million, and the many other needy things too numerous to mention. And we predict that it will be grown in a large way for a great many years to come. For the past twelve years we have made PREMIER plants our specialty. We have grown them in larger quantities than any other nursery. We have shipped them to more than fifty thousand different customers, and over and over year after year these customers come back for more.

While PREMIER is too well known by the leading growers to need a description, however for the new beginner we will say that PREMIER and Howard 17

are one and the same variety. The variety was originated by Everett C. Howard of Belchertown, Mass., and has become known by many as Howard 17.

PREMIER begins to ripen early. Covers a very long season. Unusually large crops of large to very large berries, uniform in size and color.



Foliage strong and healthy, and not subject to disease. Grows well on any good rich garden soil in any part of the country.

Last PREMIER has never been known to miss a single crop from late frost. Blooms seem to be more hardy than most varieties. When you plant PREMIER you plant frost protection also.

When you send Townsend your order for PREMIER plants you get the best it is possible to grow. There will not be one-half enough PREMIER plants grown this time to fill all orders. While we planted a very large acreage, something over 100 acres, to PREMIER, we have less than one-third of a crop. We have made the price just as low as possible, and would advise our friends placing their order soon as possible, as that will be the only way to get plants at any price.

Blakemore

PERFECT
FLOWERING

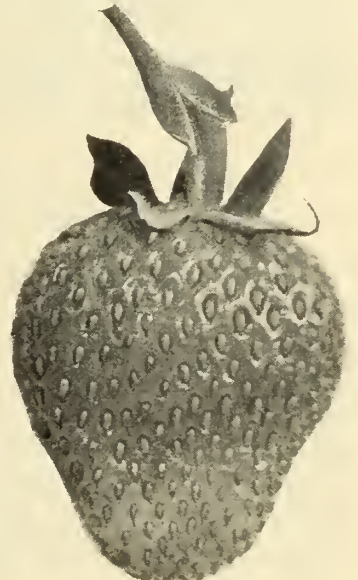
Blakemore is an origination of Professor Beatty of the U. S. Department of Agriculture, Washington, D. C. It has been tested pretty thoroughly in most of the strawberry growing states, and every Station that we have had reports on speak very favorably of it.

Said to be a cross between Premier and Missionary. In plant growth it resembles the Missionary very much, being a strong grower of small size plants. The fruit is bright red, shading to a darker red

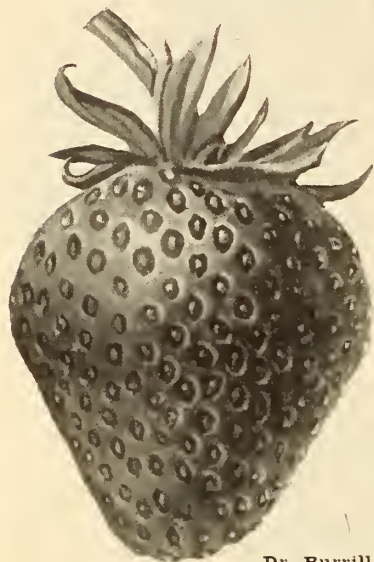
when thoroughly ripe. Size medium, of a round to conical shape. Red to the center without green tips. Flavor excellent and very firm. In productiveness it can be classed with such varieties as Dunlap, which has always been first in this respect. Our stock of plants are from the original source, and have been both State and Federal inspected this season, and we hold a clean certificate.

It is our opinion that BLACKEMORE will be more valuable to the growers south of the Mason and Dixon line, as we do not believe it will equal such varieties as Premier, Aberdeen, Jupiter, Fruitland or Howard's Supreme in the Middle or Northern States.

THE DESCRIPTIONS in our catalogue of the leading standard varieties and **NEWER VARIETIES** are the true description, as we have found them on our own trial grounds; together with the descriptions sent in to us by our thousands of customers, and the various **EXPERIMENTAL STATIONS** throughout the country. We recommend all our customers trying out a few new varieties each year, which will show the steady progress being made in the developing of better fruits for the table or market.



Early and Medium Early Varieties



Dr. Burrill.

fruit stands in the Northern markets from Thanksgiving to March 15th every year. Large blood red juicy berries that sell from 50 cents to over \$1.00 per quart. It is the berry that put Florida on the map as a strawberry state. We introduced this variety to the State of Florida in 1908. Since that time we have shipped probably 100,000,000 plants into that State, and to date it is growing stronger than ever. Few varieties have been sent out that has kept the faith so long a time. We begin to ship plants into Florida about October 1st for the main crop of fruit, and again shipping starts in January for plant propagating for those wishing to grow their own stock plants.

COOPER (Per).—Medium Early. Large to extra large. Irregular in size and shape. Quality fair. Productive. Fair plant maker. Moderately firm. Lots better varieties.

Senator Dunlap (DR. BURRILL) Per.—The Dunlap is an old time favorite in many sections of the country. Not suited for the Southern States. A great plant maker and a great yielder when the season is not too dry. Fruit medium in size, dark red in color, and of good quality. A little soft for long distance shipping. There are lots better varieties at this time. We can see no difference in this variety and Senator Dunlap.

SUCCESS —Very early, medium to large in size; quality ordinary; suitable for home garden or nearby market; very productive. Lots of better early varieties.

HEFLIN EARLY —Originated in Virginia, and grown quite extensively in that state up to a few years ago. We have some trade that still demand it. Fruit medium in size, poor in quality; very productive; a good plant maker.

KLONDYKE (Per).—Improved strain. Same as the old standard except improved thru plant selection. One of the most valuable varieties for the South and Southwestern States. Townsend's strain of Klondyke plants has been known for over twenty years as the best money could buy. And will produce from two to three times as much fruit as the common grown Southern Klondyke. Many of the largest Associations send to us every year for Good Klondyke plants.

ST. LOUIS This is an extra early berry of Southern origin. Large size and very productive. Color light red. Lasts only a short time. Where an extra large early berry is wanted, especially for the Southern States, we recommend St. Louis for trial. Not recommended for long distance shipping.

TOWNSEND'S SELECT MISSIONARY

—Townsend's Select Missionary is the one ideal variety for Southern growers. It is this variety that you see on the fancy



Townsend's Select Missionary.

ONE ORDER OF OUR PLANTS WILL BE CONVINCING

(FINDS LUCKY STRIKE BEST EVERBEARING STRAWBERRY)

From Mr. and Mrs. Losgrove of N. J. Sept. 20th, 1930.—We bought our first plants from you three years ago, getting some Lucky Strikes to try out. We have ordered some of these plants every year since. And last spring as you increased the price on the Luckies, we split our order and took 2500 each Mastodon and Luckies. We paid \$30.00 per 1000 for the Luckies, and \$12.50 for Mastodon, trying to save a little money. Last week we picked 800 quarts from the 2500 Lucky Strike plants, and less than 10 quarts from the Mastodon. We are getting fifty cents per quart at our road stand and could get more if we asked for it. We want to set 50,000, all Luckies, next spring, and will not fuss about the price.

TOWNKING DID FINE

From Thomas Horton, N. Y.—Townking plants purchased last year did fine. They truly are beautiful berries. Will want more next spring.

TOWNSEND'S PLANTS BEST BUY IN THE UNITED STATES

From Gustave Schnepf, L. I., N. Y. written Aug. 17th, 1930.—Getting plenty berries from the Lucky Strike and Mastodon plants. I am the only one around the neighborhood getting plenty berries.

I am well pleased and you will get all the orders around here next time I am sure. I have bought a good many plants from all over the United States. You have them all beat.



BIG JOE

BIG JOE

as the name implies, is a berry of extra large size. Color very bright with an attractive green cap. The texture is one of the best, giving excellent shipping results. For the home or commercial purposes BIG JOE will be found giving

satisfaction; for over 20 years BIG JOE has been the leading medium late strawberry in the eastern half of the country, and has produced record-breaking crops wherever grown. In size and productiveness BIG JOE is second to but very few varieties, always bringing top price on the market. It is a strong hearty plant grower and free from disease, such as rust or leaf spot, and a great money maker for most growers. Likes a mellow springy soil.

Medium Late Varieties

AROMA (Per) — Medium late. A good standard variety for most sections, especially popular in the Southwestern States. Fruit medium to large, moderately productive and of good quality; firm enough to ship well. Usually a profitable variety when season is not too dry. Owing to the short root system, Aroma fails to produce in a very dry season.

BURGESS (Per) — A medium to late variety, that has proven successful in the Southern States. Large to very large, firm, and of good quality. Very productive. A very good plant maker on most soils.

GIBSON (Parson's Beauty) Per — A valuable variety in some localities but not a universal favorite. Never plant in the Southern States. Fruit large and good eating quality, but very soft flesh. Suitable in the North for home use or local market.

SAMPLE (Imp) — A good old-time medium to late variety. Fruit large, very uniform in size and color when well pollinized with such varieties as Townking, Big Joe or Ford. Quality ordinary. Much better varieties.

REGULAR SHIPPING SEASON OCTOBER 15th to MAY 10th ON STRAWBERRY PLANTS

But in order to accommodate a few of our customers who ask for shipments to be made during last part of August and September, we have planned to grow a small acreage under irrigation to take care of these orders. Customers will kindly add 25 per cent to list price on all orders to be shipped in August and September. From May 15th to August 15th we have no plants to ship.

NUMBER OF PLANTS REQUIRED To Set an Acre at a Given Distance Apart

Rows	Plants
24 inches apart	12 inches in row.....20,000
30 inches apart	12 inches in row.....17,000
36 inches apart	12 inches in row.....14,000
42 inches apart	12 inches in row.....12,000
36 inches apart	18 inches in row..... 9,500
42 inches apart	18 inches in row..... 8,000
48 inches apart	18 inches in row..... 7,000
48 inches apart	24 inches in row..... 6,000
48 inches apart	36 inches in row..... 5,000
24 inches apart	24 inches in row.....11,000
30 inches apart	30 inches in row..... 7,000

For hill culture rows should be either 24 inches, 30 inches, or 36 inches, and plants set 18 inches in row.

For matted row system, rows should be either 42 or 48 inches; plants set 18 inches to 24 inches in row.



For TOWNKING PRICES, see Page 30.

Again TOWNKING heads the list of all late to very late varieties. Townking has been given a thorough test in every strawberry producing state. In every section it has more than made good our claims. When we introduced "Townking" several years ago, we had faith enough in it to send it out on a Guarantee that it prove as represented or we would refund the purchaser's money. We have sold millions of plants in all sections, and have never been called upon to return the first dollar.

We could fill a book twice the size of this if we were to publish all the good things said about Townking.

Here is what one of our New York customers says of it, and he pretty well describes it—sufficiently so that we are using his description this time:

"Townking stands in a class by itself. It is the most perfect strawberry I have ever seen. As well as the most beautiful strawberry I have ever seen. In size, color, shape, carrying quality as well as ability to produce, it is perfect. I have never failed to produce a big paying crop from Townking plants. In plant growth it is the most beautiful of all varieties. I have grown it on all kinds of soil without any rust even in the wettest seasons.

"Fruit stems are extra large, holding the fruit well off the ground. Has plenty good strong foliage to shade the great loads of fruit. I have never grown any Chesapeake that will equal it in size, and the only way Chesapeake will touch Townking is in eating quality, as I do not believe any variety is better to eat than Chesapeake. The flavor of Townking is a soft, rich, mild, aromatic, sweet flavor just suiting the taste of the average strawberry lover."

Mr. Day of Lakeville, Conn., writes Townking by far surpasses any other variety, and suits his trade best.

Another New York grower writes that he has discarded all other varieties.

Still another rural New York grower writes: "I have at last found my Ideal strawberry. I have been growing Chesapeake for years—thought it almost perfect. But Chesapeake is nothing by the side of Townking."

Townking produces largest crops for our Pennsylvania customer—produced more than one quart of finest berries per plant.

Gross sales from less than one acre—another Pennsylvania grower—over \$1700.00 first year fruited, and \$1450.00 second year, without proper care for plants.

A good customer from Shelbyville, Ind., grew



TOWNKING
The New Late
Berry—The Money-Makers

Townking that measured over five inches around, and says they were simply delicious.

Mr. Simpson of Maryland states that he has never grown any strawberries that equal Townking. There are thousands more singing the praise of Townking—all the same tune. Take this tip if you are not already growing Townking—GROW THEM.

TOWNSENDS PLANTS 100% PERFECT

From Jacob Wallace, N. Y., Aug. 11th.—I am writing about my order of plants received last spring, Premier variety. I have never seen such strong growing plants as you send out. Some neighbors advised me to buy our own state plants as I would not get good plants from Maryland. I sure have the laugh on them now. My plants are 100% perfect. And I have not seen another bed half as good.

2593 Main St., Hartford Conn., April 16, 1930.

E. W. Townsend & Sons Nursery,

Salisbury, Maryland.

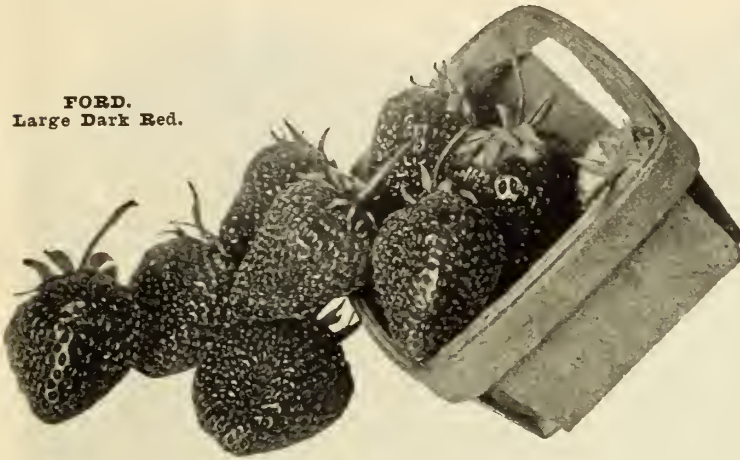
Gentlemen:

My order of plants received in fine order, and I want to thank you for your careful attention given my order. If they do not grow, it will be no fault of yours.

Very truly yours,

A. A. SHAW.

FORD.
Large Dark Red.



Late to Very Late Varieties

BOOSTER (Per).—Very late, of medium size, good quality; very firm and sweet. Recommended for home use or market. Moderately productive. Hails from Bridgman, Mich.

GANDY —Gandy is a very late variety and well known to most growers. Excellent quality. Very firm, and classed as one of the best shippers on the list. Gandy must be planted on low springy soil to do its best. When conditions are right Gandy is a valuable variety, as it has size, quality and appearance.

Lupton —A very large handsome berry and an excellent shipper. Compares in size with Chesapeake. Very attractive in appearance and a good seller on all markets. Makes plenty of strong vigorous plants. Not quite as productive as Chesapeake, but will hold size longer and nearly every berry good perfect one.

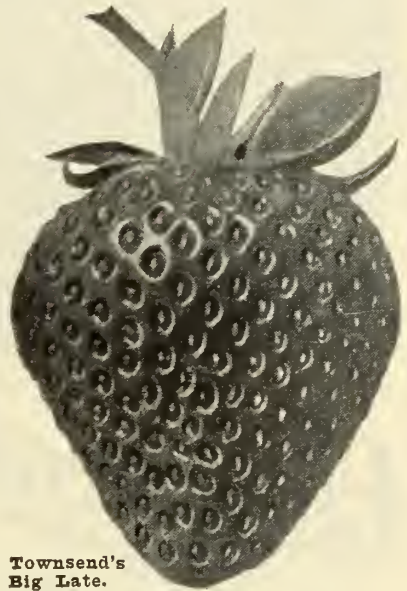
MASCOT (Per).—One of the very latest varieties. A strong grower of medium size, healthy plants. Very productive, and firm enough for a distant shipper. Fruit extra large, of the Gandy type.

TOWNSEND'S BIG LATE —A Townsend Introduction — introduced by us Spring, 1911, Big Late has been grown in every section where strawberries are grown and has proven itself a great money maker for the average grower. I have never tasted a better berry. It is surely the aristocrat of the standard varieties for quality. Plants are strong, erect, and hold the berries off the ground like cherries. No garden is complete without this grand variety. Fruit medium to large, bright velvet red and every berry looks like it has been varnished. Very few varieties equal it in production.

FORD —Ford is a Townsend production, and one of which we are proud. Ford, like Premier, is frost resistant, and has made hundreds of our customers big money when other late varieties were killed. A strong hardy plant grower on all soils. Fruit very large, firm and of good quality, and ranks with the very best in production. Ford will make too many plants if not restricted, and for this reason should be set wide in the rows and grown in narrow matted rows or in hills. We have never seen a rust blemish on any Ford plant in ten years growing it, and never heard of a crop failure. Plant Ford and you will not go astray.

WORLD'S WONDER Where an oversized berry is wanted World's Wonder will fill the bill. One of the largest and ugliest berries on the list. I have seen these berries as large as 10 inches around, seven berries filling a quart basket. The flavor is very mild and sweet; flesh soft, suitable only for home use or local market. Very productive and a good grower. We sell millions of these plants every year.

Wm. Belt —A very large dark red berry with excellent quality; very productive. A leader in some localities. Greatest trouble it rusts bad in wet seasons, and for this reason is giving way to better varieties.



Townsend's
Big Late.

Branchland, W. Va.,
March 21, 1930.

E. W. Townsend & Sons Nurseries,
Salisbury, Maryland.

Gentlemen:

Received my plants, and they are doing fine considering the very dry weather, and if I loose any, it will be no fault of the plants.

Very truly yours,

ORA ADKINS.

Oswego, N. Y., April 26, 1930.

E. W. Townsend & Sons Nurseries,
Salisbury, Maryland,

Gentlemen:

Enclosed find order for 3,000 Ford plants. The Premier plants ordered from you three years ago have done fine. I am a well pleased "Townsend Customer."

Very truly yours,

L. B. STORR.



Chesapeake

One of Our Big Specials

Lockport, New York, May 3, 1928.

Dear Sirs:—I have been handling strawberries for the past 50 years—and no man can raise better plants than the 30,000 Chesapeake you shipped me. Please accept my thanks for the fine plants and good treatment received from you. My friends will give you some nice orders next year, as they all admired my plants.

I remain yours,

R. H. YOUNG.

CHESAPEAKE —Still the favorite late berry with a majority of growers. For the past ten years we have made the growing of Chesapeake plants a specialty, every year increasing our acreage and every year finding ourselves sold out before the end of the season. Last year we had forty acres of Chesapeake plants all well set and a particular fine lot of plants. Yet we did not have enough. This time we have planted fifty acres, and the plants are all extra fine but not as heavy set as last year. **BOOK YOUR ORDER EARLY.** We are now booking orders for Chesapeake plants, before our Catalogue is given to the printers. Lots of our customers will have no other late variety, and they are always early in placing their orders, so as to be sure of getting TOWNSEND'S CHESAPEAKE PLANTS. To most of our customers and friends Chesapeake needs no description, but for those who are new in the business we briefly describe it as follows:

QUALITY comes first with Chesapeake. It is simply delicious.

COLOR: A beautiful rich glossy red.

SIZE: Berries are very large and hold their size well.

FIRMNESS: Firm enough to be classed as a good shipper.

HEALTHY: One of the cleanest, healthiest plants on the list.

PRODUCTIVENESS: There are very few late varieties that will outyield it. Sets just enough fruit to mature all to good size.

PROFITABLE: You will always find Chesapeake quoted on the market at the top figure.

GREATEST WEAKNESS: On some soil Chesapeake will not make the desired number of plants wanted. Plant on rich or medium rich springy soil and it will afford plenty plants to make a good matted row.

**Everbearing
Varieties**



LUCKY STRIKE THE ARISTOCRAT OF ALL THE
EVERBEARING STRAWBERRIES

After the Introduction of the Mastodon, there was so much attention being paid to that berry, and such wonderful claims being made that we lowered our price on the LUCKY STRIKE to correspond with Mastodon. Thousands of our customers have tested both varieties side by side and have found LUCKY STRIKE to equal Mastodon in practically every respect, and to greatly surpass it on quality.

We have been very modest in our claims for LUCKY STRIKE. Our customers have done most of the boosting. We do claim that it is the most worthy Everbearing Strawberry that has ever come to our attention both as an everbearer and a spring crop. In a test plot Spring 1928 LUCKY STRIKE was given the highest award on the three main qualities that go to make up a strawberry—namely Quality of Fruit, Size and Beauty, as well as Productiveness. In this test plot were all the very best late and midseason sorts. When I tell you that LUCKY STRIKE is not only the best Everbearing Strawberry, but the best variety for spring crop that we have tested on our farms in the past thirty years, I am speaking the truth as I have found it, and am not making this claim in order to sell any more LUCKY STRIKE plants. As we have not one-tenth enough of these plants this year to fill our orders.

PRICES OF LUCKY STRIKE PLANTS

25 Plants	50 Plants	100 Plants	200 Plants	250 Plants	300 Plants	400 Plants	500 Plants	1000 Plants
\$2.00	\$3.00	\$5.00	\$9.50	\$12.00	\$14.00	\$16.00	\$18.00	\$30.00

Mastodon

Townsend's
Genuine
100 Per Cent
Mastodon

There's a Reason Why Our Customers Increase Their MASTODON Planting Each Year

We do not have to tell our customers how good MASTODON is, or put on a circus style of advertising in order to sell all the plants we can grow.

We have never made claims as big as some growers do, such as 18 berries fill a quart, and lots of other stuff. But our customers come back year after year and buy our plants, telling us that we produce the best MASTODON plants they have ever seen. Season 1929 we had sixty acres planted to MASTODON. Long before the season was over we were returning money and turning down orders by the hundred of thousands of plants.

Growers who bought MASTODON in hundred lots three years ago are now buying them in lots of several thousand.

Crop of MASTODON plants are very short this year, owing to the extremely hot and dry season. This applies to all other varieties of everbearing plants, as well as most of the standard varieties.



PROGRESSIVE Everbearing —Was the first real everbearing strawberry

and for a long time was highly advertised and spoken of. Since the introduction of such varieties as Lucky Strike and Mastodon it is not so largely planted. Fruit is small to medium size, of excellent quality. Recommended only for home use at this time. It is a good strong grower and produces a good quality of berries on good rich moist garden soil.

Money Saving Collections for the Home Gardens

A Favorite Garden Collection No. 6

Will furnish all the fruit that you wish for the table; canning; preserving; with an **extra surplus** to sell. These varieties are noted for their producing qualities, fruiting from early to late.

100 PREMIER Extra Early.....	} ONLY \$6.85
100 BIG JOE Medium Late.....	
100 TOWN KING Very Late....	
50 MASTODON Everbearing....	
Catalogue Value.....	Free Delivery \$7.60

Home Garden No. 7

This Garden consists of varieties that will produce a wonderful crop of Big Red Berries from early in the spring, and will also give you extra fruit on the Everbearing the following fall. An extraordinary value. Perfectly hardy, will fruit anywhere.

50 Blakemore	\$1.50	} ONLY \$5.85
50 Lupton80	
50 Aberdeen	1.50	
50 Big Joe80	
25 Lucky Strike Everbearing. 2.00		
CATALOGUE VALUE.....	\$6.60	Free Delivery

Townsend's Own Choice Strawberry Collection No. 11

We are making this collection of 500 plants owing to the fact that thousands of our customers each year send in their order and leave the selection to us. We at all times give extra value in making these collections, selecting varieties adapted to their soil and climate, saving our customers a considerable amount of money each year. Where no special varieties are wanted, we advise this collection for all. Kindly advise us if for home use or market purpose, or both.

100 Best Extra Early
100 Best Early
100 Best Medium to Late
100 Best Late
100 Best Very Late
CATALOGUE VALUE \$7.00
Two Collections:
1000 Plants \$8.00
Free Delivery.



A Garden Fit For a King, No. 5

ALL NEW VALUABLE VARIETIES

100 MASTODON Everbearing.....	} Special Collection Price \$9.85
100 TOWNKING Very Late.....	
100 ABERDEEN Medium Late.....	
100 PREMIER Extra Early.....	
100 BLAKEMORE Medium Early.....	
CATALOGUE VALUE, \$11.30	FREE DELIVERY

Our Spare Time Garden, No. 10

PRODUCES FROM EXTRA EARLY TO VERY LATE

We have combined these fine varieties for the man or woman who has a little spare time during the day for outdoor work. With a little attention and proper care one can realize a tremendous profit from this Garden, and will in no way interfere with your regular work. A garden that will produce fine rich red berries that will be easy to dispose of.

200 PREMIER	} Special Price \$8.25
200 DR. BURRELL.....	
200 BIG JOE or GIBSON.....	
200 TOWNKING	
200 FORD or GANDY.....	
CATALOGUE VALUE, \$11.25	FREE DELIVERY



The Women Folks Are Making A Success in Growing Strawberries.

A Garden of Big Berries, No. 1

These varieties are of the very best quality and will please you in every respect; a collection exceptionally fine for shortcake and canning; covers season of ripening from early to late.

100 PREMIER Extra Early.....	} SPECIAL PRICE \$5.00
100 ABERDEEN Medium Early.....	
100 BIG JOE Medium Late.....	
100 CHESAPEAKE Very Late.....	
CATALOGUE VALUE . . . \$5.90	Free Delivery.

“What One Neighbor Tells Another Sells Townsend’s Plants”

The many millions of plants purchased from us are never sold by us. They sold themselves. Once our plants are started in a section of the country, they sell themselves by one neighbor telling another of the wonderful plants we send out. More than ninety per cent of our business comes from repeat orders, and from new business where our friends and customers have recommended our plants. This makes us doubly anxious to please our old friends.

For thirty-one years we have kept the faith of our customers. It has always been our aim to keep a step ahead of our nearest competitors. By originating and introducing new varieties. By using the most up-to-date methods in growing our crops as well as handling the crop after it is grown and getting it into the hands of our customers in the best order possible.

The Townsend’s Plant Farms contains nearly 2,000 acres of the most ideal soil in the country for growing strong, healthy plants. We have an organization not surpassed by any in the country for handling this immense business.

Some of the varieties that we originated and introduced to the public. In 1908 we introduced the Missionary variety to the Southern states. This variety has made millions of dollars to the Florida growers, say nothing of what it has meant to the rest of the Strawberry world. It was as predicted by us at the time—the one ideal strawberry for the South. Next we originated the Townsend’s Big Late. This variety has made good in almost every section where a late variety was wanted. Later we originated the Ford, which has won thousands of friends owing to its good quality, high productiveness, and being almost frostproof. Next the World’s Wonder, a late variety, was introduced as being the largest late variety of strawberries. Following this we introduced “Townking,” which today stands at the top of the list as the best late variety of strawberries. “May-queen” followed, being our own origination. And which gives promise of being a valuable late variety. In the Everbearing class, we have originated one worthwhile variety. That is our “Lucky-Strike.” In our opinion, this is the most valuable variety of strawberries ever sent out, not only as an ever-bearer but as a producer for the spring crop.

But after introducing all the above good varieties, which have meant so much to the Strawberry World, we were not satisfied. And this time we are offering the supreme efforts of the leading Horticulturist of the United States. A man who has already given to the strawberry

world the most popular of all varieties of strawberries. Namely, the HOWARD 17 (versus Premier). Mr. Everett C. Howard, of Belchertown, Mass., is the man. And the new introduction which we have the honor to introduce under a contract with Mr. Howard. The variety being patented under the patent laws of the United States. A law recently passed by the Congress and Senate of the United States and signed by President Hoover in May, 1930. This patent protects the originator, the introducer, as well as the public for a period of seventeen years.

This variety is rightfully named “HOWARD’S SUPREME.”

This variety has been under test since 1909 with the various State Colleges and bears the endorsements of many of the leading Horticulturists of the country.

Howard’s Supreme has won the praise of all who have eaten it. Quality equal to the grand old marshall. Experts have classed it not only the best for home use, but that it is sure to become a great favorite with the commercial growers. Owing to its firmness, great productiveness, as well as one of the very best hardy growers. From the various reports at hand it would seem that it is not particular as to soil or climate. We therefore recommend it for trial to all our friends. And predict a great future for Howard’s Supreme.

JUPITER is being introduced this time as an ideal mate for Howard’s Supreme. We have great faith in this variety, and any one can test it out on our guarantee to be as represented. There is no plant catalogue that has ever carried so valuable a list of varieties as this one. With such varieties to select from as Howard’s Supreme, Jupiter, Fruitland, Aberdeen, Premier, Blakemore in the early to medium varieties, and with “Townking,” Mayqueen, Chesapeake, Ford and Biglate as late varieties, success is almost assured from the start. Many of these varieties are patented and copyrighted under the laws of the United States and can be secured only from our nurseries. This means your protection as well as ours. Under the new law just passed by Congress and signed by President Hoover, it is impossible for the “Jip” nurseryman or dealer to advertise our new introductions and fill the orders with any kind of a variety he can secure. The new law making it possible for any grower to patent his originations of plants, same as is the custom with manufactures to patent their inventions for protection. We shall always strive to keep these varieties in stock, true to name, grown right, and priced right.

Newark, Ohio, August 17, 1929.

Gentlemen:—Your Raspberry stock sent us year 1928 was received in fine condition, and we were more than pleased with the results of the NEW KATHERINE variety, as it gave us a nice crop of berries, and at this writing is loaded with berries and blossoms. We are selling direct to our friends who are only too glad to get berries of extra quality, and willing to pay a fancy price for them. You may look for another order from us next spring.

MR. M. S. ETTERS.

Franklyn Furnace, Ohio, April 7, 1930.

E. W. Townsend & Sons Nurseries,
Salisbury, Maryland,
Gentlemen:

Received the 1900 plants in fine order, do not think I will lose a single plant. I want to thank you for the fine plants as well as lots of extras.

Very truly yours,

MR. EUGENE STEWART.



RASPBERRIES

One Setting Is Good for Years; Therefore Demand **THE BEST STOCK** When Starting Your Young Fields

RED RASPBERRIES

The Red Raspberries fill in very nicely on the small fruit farm. Coming into bearing just after the Strawberry crop is over, and before the Black caps start, they are very easily grown. With rather stiff land their home, where they will produce great quantities of berries the following summer after set. Plants should be set 3 feet in the row, spacing the rows 6 feet apart, where they may be allowed to make a hedgelike growth, producing more fruit each year as the new canes form. One setting is good for several years.

Complete Cultural Guide sent with each order.

New Varieties

THE CHIEF (New Introduction). Originated by the Minnesota State Fruit Breeding Farm, being a selection from among 4,000 seedlings of the Latham. It possesses many of the good qualities of the Latham, some of them to even a greater degree than the parent. The main point of difference being in season of ripening, **CHIEF IS TEN TO TWELVE DAYS EARLIER TO RIPEN** than Latham, thus giving us a profitable berry for early market. Close inspection work has found the Chief so resistant to mosaic that fruit growers can plant this variety and be sure of having healthy plants. It is also free from mildew and other diseases, making it an outstanding early red Raspberry.

Prices: 6 Plants, \$1.50; 12 Plants, \$2.25; 25 Plants, \$3.75.

VIKING (New Red). Originated at Vineland, Ontario. A cross of the Marlboro and Cuthbert. Has been successfully grown both in Canada and the United States, and has proved a wonderful productive variety of the very highest quality. Price: 6 Plants, \$1.75; 12 Plants, \$2.50; 25 Plants, \$4.50.

Rathman (New Red). Fruit of bright red color; fine quality; vigorous grower and heavy producer; same season as Cuthbert. Fruit much larger and more productive than the Cuthbert. A trial planting will convince you of the money-making qualities of this new Red.



VIKING — The New Red Raspberry With Outstanding Merits.

Everbearing Reds

KATHERINE Everbearing Red — Recently introduced — The best Red Everbearing Raspberry that we have ever grown. Like its parent (The St. Regis) it is a persistent producer from early spring to late fall. Berries very large and of firm quality. Prices—12 for \$2; 25, \$4; 50, \$6; 100, \$8.

St. Regis Everbearing Red—Market gardeners and fruit growers are making plenty of money from St. Regis, which will produce a crop 80 days after setting, and also another fine crop in September. It succeeds on all soils, light or heavy. Canes absolutely hardy, producing large quantities of delicious fruit; a valuable variety for market or home garden.

For Prices RASPBERRY PLANTS,
See page 29.

TOWNSEND'S RED RASPBERRY
PLANTS ARE PROFIT MAKERS

Towaco, N. J., March 15, 1929.

Gentlemen:—We wish to thank you for the fine looking Raspberry Plants received from you. Healthier looking stock I have never seen, and if we do not make a success with them it will not be your fault. I have recommended you to Mr. Sewell, who is ordering 2,000 LATHAM from you today.

Yours truly,

MR. N. LARSON.

Red Raspberry Varieties Continued Next Page.

Red Raspberries Continued

LATHAM RED—Hardy, vigorous grower; productive; long fruiting season. A sensational new variety. A new Red Raspberry that is winning great merits wherever it is grown, its merits having spread throughout the Middle and Eastern States. The high yielding ability is due largely to its resistance to mosaic and other raspberry diseases. It is known for its hardiness and producing an abundance of the highest quality fruit: ripens evenly and holds up well throughout the season. Everyone interested in raspberries should give this variety a trial, as the northern agricultural colleges speak very highly of it.

CUTHBERT RED—An old-standing variety that can be depended on for a good crop of fine fruit, in most sections

of the country. Bushes hardy and vigorous; does best in sandy loam. Berries retain their brightness long after picked; therefore affording long distance shipping.

Herbert Red—Rich highly flavored berries; being recognized as the most hardy variety ever introduced; being grown extensively in the Northern States.

King Red—One of the earliest varieties of Reds; plants very hardy and a wonderful producer of firm red berries of the highest quality: very easily picked and ripens about one week ahead of any other variety. Going into the market when prices are at the highest—a profitable variety to plant.

Black Raspberries

Complete Cultural Guide of Small Fruit Plants Sent With Each Order, or Will Gladly Mail to Anyone Asking for It

CUMBERLAND—In hardiness and productivity it is unexcelled by any other variety; in spite of the enormous size the fruit is very firm and will stand long shipments. Bush very healthy and vigorous, well adapted to supporting their large crop of berries; midseason variety.

Honey Sweet—Best variety for home use; fruit large and of a sugary flavor.

BLACK DIAMOND—A very hardy and prolific northern variety, grown extensively for local markets, owing to its high quality, flavor and attractive fruit.

Logan—The new Black Cap which is becoming the leading commercial variety. Growers in Ohio and Eastern Half of States have practically given up all other varieties of Black Caps. In comparison with Cumberland it is more disease-resistant; larger berry; earlier; better flavored and more productive. We invite your order early as our stock of this variety is limited.

PLUM FARMER—Is considered by large growers to be the best early Black Cap variety. Strong, vigorous, upright grower; healthy and very productive. Will withstand drought and cold. Berries very juicy, large and attractive. This variety will please you.

Purple Raspberries

Fibrous-Rooted Plants that will please you.

The Purple Raspberries are produced in the same way as the Black Caps and are grown extensively in the home garden, as they are unexcelled for canning, making jams or serving for dessert.

COLUMBIAN PURPLE Leading commercial variety of the purple type berries, fairly firm, dark purple, and a sprightly flavor; vigorous and productive.

Cardinal Purple—This new variety is not only a novelty but a berry of great merit. It has a growth of 10 feet and produces in proportion, pure flavored berries of a choice purple. We recommend this for every backyard grower. You will be pleased.

TRANSPLANTED

RASPBERRIES — BLACKBERRIES — DEWBERRIES

We have grown this year a nice supply of vigorous, stocky transplants, of the leading varieties suite for the garden, of Raspberry, Blackberry and Dewberry Plants. This stock was transplanted last spring using strong No. 1 canes, and have been grown by us throughout the summer and fall, making an extra large plant that will fruit much earlier after setting and giving a larger crop the first season picked. Our customers wishing to get an advanced start in their garden will find this stock just the thing. For Prices see Transplanted Stock in Price List on Page 29.

Grape Vines

Plant Grape Vines for PLEASURE and PROFIT

No home planting is complete without Grape Vines, and lots of ready cash can be made on the farm by planting a thousand vines in some out-of-the-way place that is not paying expenses. Just try it. The Grape is easily grown and produces large returns for the time and effort expended. Our long growing season here on the Eastern Shore produces vines with a vigorous root system, which makes our vines transplant easily, and assures our customers of getting strong healthy fruit canes in a very short time after setting.

AGAWAM—Red. A large grape, ripening with Concord. Sweet, with rich aromatic flavor. A rank grower, and very productive. One of the most reliable of Rogers Hybrids.

Catawba —Red. One of the latest grapes, and for this reason should be planted in every garden and every vineyard to prolong the season. Size large, firm and sweet.

CONCORD —Comes first with everybody. It is a sure, hardy grower, and a great producer on any soil or climate. You can make no mistake in planting largely to Concord. If you are in a hurry to grow some grapes, order some of our bearing age Concord, and you will have only a few months to wait. Color blue, bunches very compact, second early. The most extensively planted grape in America. (See inside back cover page for Concord bearing-age vines.)

Delaware —Red. The standard of excellence. Bunch and berry medium compact. Flesh juicy, very sweet. Ripens early. Vines very hardy and productive. Requires good, rich soil.

MOORE —Black. A seedling of the Concord, but ripens a little earlier. Bunches very large. Will equal Concord in quality. Valuable for garden and vineyard.

Niagara —White. A magnificent grape, and very valuable for both garden and vineyard. Berries large, with tough skin, quality very good. Ripens fairly early. Rank grower; very productive. Popular North and South.

WORDEN—Black. A Concord seedling. Ripens a little ahead of Concord. Good quality and productive. Extra good for home use.



Our Special No. 8 Vineyard Collection

Each and every home should have a few Grape Vines; and to help anyone who is not familiar with the varieties, we will select vines for you that will prove satisfactory in your section.

- | | |
|---------------------------------|-------------------------|
| 2 Best 2-year Black Grapes..... | } SPECIAL PRICE, \$2.25 |
| 2 Best 2-year Blue Grapes..... | |
| 2 Best 2-year Red Grapes..... | |
| 2 Best 2-year White Grapes..... | |

CATALOGUE VALUE, \$2.70 — FREE DELIVERY

The FIVE NEW GRAPES With Outstanding Quality

CACO —The new red grape that is giving promise of becoming the leading Red variety. On our farms this year it was an outstanding variety, both as to flavor and size of fruit—holding fruit well after ripening. Price—2-yr. vines, 60c each; 3-yr. vines, \$1.10 each.

FREDONIA —Originated at N. Y. State Agr. Exp. Sta. Black; ripens very early; berries large, juicy and sweet, borne in large compact clusters; bunches are compact and very attractive. Price—2-yr. vines, 75c each; 3-yr. vines, \$1.25 each.

ONTARIO **WHITE.** Follows Portland very closely in ripening. An excellent blending of acid and sugar; hence the taste is sprightly and yet sweet. Vines strong, vigorous growers and very productive. Another of the N. Y. State Agr. Station's originations. Price—2-yr. vines 75c each; 3-yr. vines, \$1.25 each.

PORTLAND —New white grape developed by N. Y. State Experiment Station. Ripens earlier than any other known grape. Berries large and have that beautiful yellow color like the Niagara. Contains so much sugar that it can be eaten long before it is fully ripe. Price—2-yr. vines, 75c each; 3-yr. vines, \$1.25 each.

SHERIDAN Is the most promising new grape for commercial growers to compete with California vineyards. It is a late bluish black grape; large and more attractive than Concord, and is superior in keeping qualities. Fruit is produced in large handsome clusters, and many of them on each vine. We recommend this Grape to all our customers in the Middle Atlantic. Price—2-yr. vines, 75c each; 3-yr. vines, \$1.25 each.

BEARING AGE GRAPES

We have a considerable number of calls from our customers wanting bearing-age vines other than Concord, which we have been growing for several years. This year we top-pruned and reset a supply of 3-Year stock under irrigation. They produced a nice crop of fruit in the Nursery row this summer and we are passing them along under our Bearing-Age Vines. Stock that will produce results the first year set. We can furnish all varieties at 2½ times the Two-Year Size prices.

Townsend's Blackberry Plants

FROM ROOT CUTTINGS

We do not sell any sucker plants, as our experience with them is far from satisfactory—when compared with plants grown from Root Cuttings, which produce much stronger canes, and far better quality fruit. Demand the best and order **Root Cuttings of Blackberry Plants** from Townsend's. Our stock is well rooted and will please you. Let us reserve your order for Spring Plants.

ALFRED —Recent introduction: midseason fruiting, extremely large big black berries, practically free from seeds and coreless; very sweet and juicy.

SNYDER —One of the old favorites that is popular on account of its high quality and early ripening.

EARLY HARVEST —Earliest to ripen and most productive of the early varieties, and demands the top of the market. We offer only selected strain of this variety.

ELDORADO —Most valuable variety for market or home use. Rich flavor with but little core. Finest quality of the Blackberry family.

Macatawa —The large jet black berries are sweet, juicy, entirely coreless, almost seedless.

BEST OF ALL —(Known as Russell B. B. in N. J.) A new Blackberry that has been grown in the sandy soil section of New Jersey and, as stated by the N. J. Agric. Station, is very resistant to Orange Rust; outyielding all other blackberries that have been tried there. It will pay the Blackberry grower

(See Page 29 for Prices on B. B. Plants)

to order some of these plants, in which our stock is being supplied you direct from original plant.

MERSEREAU —Early, very hardy; needs no protection whatever; canes strong and upright in growth; exceptionally sweet in flavor; without core. Not quite as early as Early Harvest.



Alfred.

Dewberries, Selected Varieties

Young Dewberry or Youngberry

This is not a novelty but a genuine money-making variety. Said to be a cross between the Loganberry and the Dewberry. A strong hardy plant grower. Should be grown in rows 8 feet wide each way. Will produce great quantities of large size good quality fruit. Color a dark wine, with a pleasing taste. Sells for big money on all markets that have received the fruit. Can be grown in any part of the country. Strictly hardy. Set plants this spring and harvest a full crop the following summer. Fruits a long season and is worthy a trial. Price of plants: 6 for 2.50; 12, \$4.50; 25, \$8.00; 100, \$25; More than 100 plants at 100 rate.



Young Dewberry.

Folks are just beginning to realize the great value of dewberries both for profit and home consumption. Their large size and sweet flavor combined with their soft texture make them unexcelled. They can be planted in any soil, but prefer light sandy soil; placing them in rows 4 feet apart, spacing them 3 feet down the rows. They have a trailing habit, but can be cut off each year after fruiting and will produce new wood each year, which will increase in production for several years after setting with very little attention.

AUS-LU —That is a cross between the Austin and Lucreatia made on our farms and has the habit of both parents. One of the largest and sweetest dewberries grown as well as the most prolific. Easily grown and with a light mulch; is hardy in the Northern states. Ripens very early.

Austin —This variety is earlier than the Lucreatia but somewhat softer; is a good variety for the market gardener, bringing the attractive early prices. Fruit is very large and productive.

Lucreatia —The standard variety for the South, also largely planted in the North as it is very hardy; fruit large and firm; will stand long distance shipping. Ripens one week later than Austin.

SEE PAGE 29 FOR DEWBERRY PRICES

TOWNSEND'S CHOICE ASPARAGUS

Being the first vegetable to come in the Spring always brings a high price on the markets. Stocks being delicious and very healthful, every garden should have a generous supply, and when properly set and cared for will last a lifetime. Set in trenches 10 inches deep and 4½ feet apart; spacing in rows by spreading out 12 to 15 inches apart, cover with about 4 inches of soil and work additional soil around plants as they grow out. Very easily grown and any surplus can readily be sold to the neighbors. Big profits are being made on beds of no more than one-half acre. (5000 plants will set an acre.)

MARY WASHINGTON —A strain selected from the Washington variety; much heavier stocks and greater producer than the original Washington variety. Practically frost-resistant.

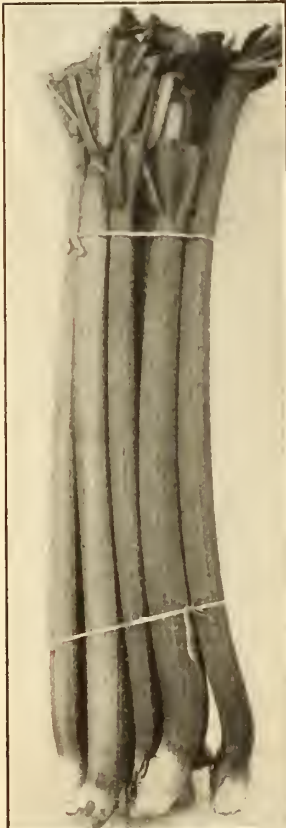
Martha Washington —A heavy yielding strain producing uniform long tender shoots; grows very rapidly. An excellent variety for market gardener or home use.

PALMETTO —An old variety; preferred by many commercial growers; stocks very large, tender and juicy.

Barr's Mammoth —A variety of exceptionally fine quality. Stocks of great size; very juicy and of excellent flavor.



Mary Washington.



Myatt's Linnaeus Rhubarb.

PEDIGREED WASHINGTON —A new strain from the Mary Washington, having been selected for its large stocks of bluish green, and rust-resistance qualities. One of the best varieties of Asparagus.

Prices of Asparagus Roots

	Extra Strong Selected Crowns—One, Two and Three-Year Sizes			
	25.	100.	250.	1000.
Mary Washington, 1 year.....	\$.75	\$1.75	\$3.50	\$10.00
Mary Washington, 2 year.....	1.00	2.50	5.00	16.00
Mary Washington, 3 year.....	1.50	3.00	6.00	20.00
Martha Washington, 1 year.....	.75	1.75	3.50	10.00
Martha Washington, 2 year.....	1.00	2.50	5.00	16.00
Martha Washington, 3 year.....	1.50	3.00	6.00	20.00
Pedigreed Washington, 1 year.....	1.00	2.50	5.00	16.00
Pedigreed Washington, 2 year.....	1.50	3.00	6.00	20.00
Palmetto, 1 year.....	.50	1.50	3.00	8.00
Palmetto, 2 year.....	.80	2.00	4.00	12.00
Barr's Mammoth, 1 year.....	.50	1.50	3.00	8.00
Barr's Mammoth, 2 year.....	.80	2.00	4.00	12.00

500 Plants at 1000 rate. Ask for special prices on lots of 5000 or more.
Asparagus by Parcel Post, add 10c for each 25 plants for postage.

Asparagus Seed

(One ounce will plant 60 feet of drill; 5 lbs. per acre)

Three pounds of seed will produce enough roots to transplant one acre.

	1 lb.	3 lbs.	5 lbs.	10 lbs. and up.
Mary Washington	\$1.50	\$3.75	\$5.75	\$1.00
Martha Washington	1.50	3.75	5.75	1.00
Palmetto	1.00	2.75	4.00	.75

CHOICE RHUBARB

Myatt's Linnaeus —Large tender and fine, one of the very best to plant; makes good sauce and pies.

Plants 20 each; \$2.00 doz.; \$8.00 per 100. Prepaid.
QUEEN—Extra strong grower of large stocks of a pink color; for cooking in any way its quality is unsurpassed. Plants 20c each; \$2.00 doz.; \$8.00 per 100. Prepaid.

"Walks and Talks with Berries"

COMPLETE CULTURAL GUIDE ON SMALLFRUITS SENT FREE WITH EVERY ORDER

THERE are so many different methods of growing Strawberries that it is useless to set down any special rule for our customers. Most any soil that will grow good garden truck will produce good berries. Strawberries usually grow well after garden crops, also Potatoes, Soy Beans and Cow Peas. It is best to plow land late in the fall or very early in spring, and work over lightly with smoothing harrows just before plants are set.

Any method of setting plants is all right, just so the roots are set straight and same depth they were grown. Every plant should be practically level with the soil after being set out. Often and very shallow cultivation is the rule, keeping all weeds and grass out during the entire growing season.

PREPARING THE SOIL

I am a believer in fall plowing for strawberries as well as for other truck crops. For the following reasons—First: Fall plowed land throws up near the surface lots of insects and their eggs that are freed out during the winter, and which can not harm the coming crops. Second: Land plowed in the fall can be got into a better mechanical condition in the spring, and will hold more moisture during summer months than spring plowed soil. When the land is plowed in the fall we top work it with harrows in spring. Do not replot unless the soil is a kind that runs together hard during winter. In this case it is often better to replot in spring.

Thousands of times I am asked as to best fertilizer and methods of applying same for strawberries on a soil that has already been made rich by growing other crops. Land that has been heavily broadcasted the year before and some other truck crop grown will be in ideal condition to plant strawberries the following spring.

Where this kind of a site is not handy and the soil needs manuring, the next best way is to broadcast the land before harrowing in spring. Any good home raising manure that is not too coarse will be better than any fertilizer. Namely: Fine manure from the cow barn, hog pens, chicken house, wood ashes, any the above by themselves or a mixture, will do the trick without any commercial fertilizer.

Next—If none of this is handy, we must look to commercial fertilizer. My first choice is raw bone meal. I name this because it will not injure the plants even if applied directly under them. (It is very slow in showing results.) Bone acts slow but will come along in time to produce a good fruit bud and is sure to be profitable. Where bone is used in spring application I recommend a balanced fertilizer as a top dressing in September. This should be applied when vines are dry and brushed off the plants, preferable just before a rain. When the fall application is made, I do not like to follow this with a spring application, as some growers prefer. My reason for fertilizing in September is to grow a better fruit bud and crown, and to leave off the spring application because it makes the fruit soft. No variety will stand long distance shipping when a heavy application of high grade nitrogen fertilizer has been used in the spring. It is a little different on the old bed that has been carried over for one season. The old plants need a little nourishment in order to produce sufficient foliage to shade the berries, but a 4-8-4 mixture and a light application is sufficient.

METHODS OF SETTING PLANTS

There are lots of methods and ways that are good. Just so the roots are placed in the ground in a fan shape the same depth they grew, and the earth is well packed around the plant leaving it practically level with the ground, it is well done. No matter if a horse drawn transplanter be used, or a garden spade, or trowel. In setting our hundred of acres we still bend our backs and set every plant by hand with a garden trowel. If the soil is in good condition also the "back," a man with a good dropper can set an acre or 8,000 plants in a day. This is the usual day's work on our farms.

We start the fine twelve-tooth cultivator (Planet Jr.) in a week after plants are set, keeping the ground stirred with this every week during spring

and summer. When plants are set for hill culture they can be cultivated each way. When this plant is adopted a Kruegers Runner Cutter should be used. This tool cuts off all surplus runners and leaves a 14-inch hill of plants; usually about eight to ten plants grow up in this stool. Clean cultivation can be given the field without very much hand work, and the fruit is fifty per cent larger than when grown in the wide matted rows. And in most cases and with most varieties the hill system will produce more quarts.

30 x 30 inches each way it requires 7,000 plants to set an acre. When set in rows 42 inches apart and plants set 18 inches in the rows, it requires 8,000 plants to set an acre. When the matted row system is used the beds should not be allowed to mat too thick or the fruit will be small and disappointing. Chesapeake or "Townking" and some few other varieties can be grown in matted rows and almost left to themselves and will produce large handsome fruit. Mastodon or Lucky Strike everbearing do much better in hills. **THE KRUEGERS RUNNER CUTTER CAN BE PURCHASED FROM OUR NURSERY ONLY. WE ARE SOLE DISTRIBUTORS AT THE REASONABLE PRICE OF ONLY \$8.00.**

AS TO MULCHING STRAWBERRIES FOR WINTER PROTECTION

Most any good straw material will do. Do not apply too heavily, usually one inch thick is sufficient, and this should be raked between the rows very early in spring. When the mulching is left between the beds it protects the fruit from sand and keeps the moisture near the top.

TIME TO PLANT STRAWBERRIES

Early spring is the only real time, and the earlier the better, as a freeze after setting plants does not injure them.

HOW TO PLANT

If you order all perfect flowering varieties plant them in large plots just as they come. But if you order part imperfect flowering you should plant every third or fourth row to some perfect flowering sort of the same season (and there are some mighty fine imperfect sorts that should not be overlooked).

Following each variety of strawberries in our price list, you will note we have abbreviated the perfect and imperfect flowering varieties; namely, Per. and Imp., which will help our customers when ordering Imperfect varieties to following the above planting instructions.

WHY EVERY HOME SHOULD HAVE A STRAWBERRY BED

I have never yet met a person who did not like Strawberries. Strawberries are much better gathered fresh from the vines. Little money is needed to start a bed.

The small kiddies, and the women folks will be glad to do most the hoeing and pulling grass.

The kids especially like this, as they get all the big juicy berries they can eat while they are at work (when the big Everbearing varieties are planted).

Many women are making their own spending money by planting an Everbearing Strawberry Garden every year. Returns come in quick after planting, and the profits are big.

Good Strawberry patches help keep the boys and girls on the farm.

Any good garden soil will produce Strawberries successfully.

Nothing will help sell a farm like a good Strawberry patch.

Plant Strawberries between the rows of young trees. They will pay all the cost of bringing the young orchard into bearing.

If you are convenient to a good road you should grow several varieties of Strawberries, enough to cover the entire season from June 1st to November 15th; also other small fruits and flowers.

The roadside stand makes a dandy market for fruits and flowers. TRY IT.

Selected

Hardy

MARYLAND GROWN

Cabbage Plants

FIELD GROWN—
WINTER HARDENED



A Trial Order Will Convince You of Our Quality.

This year we have grown on our Farms in Maryland a stock of five million Winter Hardened Cabbage plants, which will be ready for shipment February the 15th, making daily shipments until April the 25th. We have had a favorable growing season in maturing these plants, and with our rigid selection in sending only a well balanced plant to our customer, that they will please all who receive them, maturing a crop from a week to ten days ahead of the average plant sent out.

Our Plants Free From Disease

Due to the clean cultivation given our Cabbage plants during growing season, and the rotation of crops in preparing our fields for the growing of these plants, we have failed to find any of the diseases that generally prevail in the Cabbage Growing Sections of the South. With the help of our State Inspectors we are constantly watching for any disease that might give our customers trouble after setting, and have found them free from all disease in every inspection made.

Order Early

Our customers have found in our plants a dependable quality they have been looking for, and each year we find they increase their orders. Last year the demand was so great we were compelled to return a considerable number of orders unfilled, as we do not ship any plants other than grown on our own farms, under our own supervision. These plants are selected in the field, and again at our packing house. An order will convince you that our plants are unequal in size, root system and excellent crowns. Again we advise you to place order as early as possible.

COPENHAGEN MARKET—Planted with Early Jersey Wakefield—when the Wakefield is ready for market, the heads of this strain will be equally as good. If, however, the Copenhagen Market is allowed to grow another ten days the yield per acre in tonnage will be almost double. It will remain longer on the field without bursting than any other early sort.

EARLY JERSEY WAKEFIELD—One of the earliest varieties of pointed head type, and extensively planted for early market. The plants we offer of this excellent variety will please the most critical trade. They are well hardened and should produce a crop ten days earlier than southern plants.

GOLDEN ACRE—An early round-head variety of excellent quality. Has few outer leaves, permitting close planting. It is a splendid variety for the market gardener.

SUCCESSION—Is a large, solid, flat head variety that matures a little later than the Copenhagen Market, but makes an enormous yield, and is said to be one of the surest headers.

DANISH BALLHEAD—Large heads, round and very solid. We are listing this variety for the benefit of our customers in the extreme north, where it can be grown through the summer months with wonderful success.

CABBAGE PLANT PRICES

50 Plants, 60c; 100 Plants, 85c; 200 to 400 Plants, 60c per 100; 500 to 900 Plants, 50c per 100; 1,000 Plants or over, 45c per 100.

Larger quantities of 10,000 or more, write for Special Prices.

If plants are wanted by Parcel Post, use same rate as for Strawberry Plants, found on page 28.

Belvidere, N. J., March 12, 1930.

E. W. Townsend & Sons,
Salisbury, Md.

Dear Sirs:—Book us for an additional 12,000 Early Jersey Wakefield. The last 15,000 being such stocky plants has encouraged us to set more. Please get these off at once, by Express. You will receive an order from my neighbor who saw my first lot of plants received from you.

E. R. WILLIAMS.

Lebanon, Penna., May 28, 1930.

Gentlemen:—I have been purchasing my plants in the south during the past few years, and gave you a trial order this year. When your plants came and comparison made of the plants I had been getting, I was convinced that I had been getting my plants from the wrong place. Your plants, although set out nearly two weeks later than a shipment received from _____, are now much larger and a perfect stand. Quite a few growers have asked me where I received these plants, and I am pleased to tell them of you; for we are in need of such plants that you send out—if we are to make any money from Early Cabbage.

Sincerely yours,

F. F. STEWART.

Terre Haute, Ind., March 25, 1930.

Gentlemen:—Please accept our thanks for the extra fine lot of Cabbage Plants sent us this year. We have them all set out and growing nicely. You can rest assured of our future orders.

R. C. McDONALD.

Hartford, Conn., April 6, 1930.

Dear Sirs:—To say that I am more than pleased with my Cabbage Plants is putting it mildly. The plants arrived in wonderful condition, and I notice that you were quite generous in your count. Your plants will be recommended to my friends.

FRANK ARTMORE.

FRUIT TREES

We Recommend Express or Freight Shipments on Fruit Trees



Kieffer Pear.

Pear Trees

	Each	10	100	1000
3 to 4 ft., 2 year.	\$.60	\$5.00	\$40.00	\$300.00
4 to 5 ft., 2 year.	.70	6.00	50.00	400.00
5 to 6 ft., 2 year.	.80	7.00	60.00	500.00

BARTLETT—Season last of August to September 15th. Good strong grower, flesh is white, fine grained, luscious, large and buttery, has a rich melting flavor and is very sweet.

CLAPP'S FAVORITE—Summer. Fruit large, lemon color, spotted with brown dots; flesh fine, rich and sweet. A very good one.

DUCHESS—Strong grower, productive, not subject to blight. Fruit large, light green patched with russet, melting, juicy, sweet and good. October and November.

KIEFFER—Prolific. Abundant and regular bearer. Good shipper. Fruit large, color yellow with red cheek. Will produce ten bushels of pears to the tree when ten years old, begins fruiting successfully when 3 years old. October.

SECKEL—Medium size; skin rich yellowish brown with deep brownish red cheek when fully ripe; flesh very fine grained; sweet, exceedingly juicy melting butter. One of the richest and highest flavored pears known. Summer.

Cherry Trees

	Each	10	100
3 to 4 feet, 2 year.	\$.70	\$6.00	\$50.00
4 to 5 feet, 2 year.	.80	7.00	60.00
5 to 6 feet, 2 year.	.90	8.00	70.00

Sweet Cherries

BLACK TARTARIAN—Black; very large; rich and sweet; productive. Ripens last of June.

GOVERNOR WOOD—Yellow with red cheek; tender; rich; delicious; very fine; large; roundish; depresses at stem; productive. Early.

YELLOW SPANISH—Ripens early in June. Fruit large; color yellow. Tree vigorous grower.

Sour Cherries

EARLY RICHMOND—Medium to large; dark red; juicy; good flavor. June.

ENGLISH MORELLO—Large size; color dark red; quality very good. Late.

MONTMORENCY—Medium to large; dark red; juicy; good flavor. Late.

Plum Trees

	Each	10	100
3 to 4 feet, 1 year.	\$.50	\$4.00	\$30.00
4 to 5 feet, 2 year.	.60	5.00	40.00
5 to 6 feet, 2 year.	.75	6.00	50.00

ABUNDANCE—Fruit very large and showy; flesh light yellow; exceedingly juicy, tender and sweet. A good market variety.

BURBANK—Fruit very large; dark velvet red; flesh juicy and pleasant. Ripens middle of August. Productive.

GREEN GAGE—Skin pale green; excellent; an old standard variety.

GERMAN PRUNE—Dark purple or blue; juicy; rich; of best quality. September.

SHROPSHIRE DAMSON—Medium size fruit; produced in thick clusters or groups; tree a strong grower; and very productive of dark purple colored plums. October.

Quince Trees

	Each	10
2 year 4 to 5 feet.	\$.75	\$6.00

CHAMPION—Tree strong grower; produces a good crop every year. Fruit is large and of good quality. Cooks as tender as an apple. October.

BOURGEAT—Large, golden yellow, fine quality, tree healthy, a good one.



Montmorency Cherries.

APPLES



Delicious Apple.

	Each	10	100
1 Year, 2 to 3 feet....	\$.35	\$3.00	\$25.00
1 Year, 3 to 4 feet....	.40	3.25	27.50
2 Year, 4 to 5 feet....	.50	3.75	30.00
2 Year, 5 to 6 feet....	.55	4.75	35.00

One to four trees or plants of one variety sold at the each rate; 5 to 30 of one variety at the ten rate; 30 to 250 of one variety at the 100 rate; 250 or more at the 1,000 rate.

BALDWIN—Large, roundish, skin deep red; flesh juicy, crisp, sub-acid, good flavor; very vigorous and productive. The best all-round winter apple for New England and Northern States. Splendid keeper. December to March.

DELICIOUS—Winter apple. Keeps well, color red and yellow; fine grained, and quite juicy; flavor slightly acid, but very good. A good apple for either home use or market.

GRIMES GOLDEN—Very large, skin golden yellow; flesh tender and crisp. A very good fall apple. September to January. Grown in all sections of the country.

ROME BEAUTY—Large; roundish, slightly conical, with bright red on a pale yellow ground; fine grained, juicy, good quality.

YORK IMPERIAL—A very good one; trees come into bearing early, and bear a good crop each year. Skin bright yellow covered with bright red and striped, very large. Suitable to any part of the country.

STAYMAN'S WINESAP—Also a seedling of Winesap; dark red, firm flesh, fine grained, crisp, sub-acid; quality best; strong grower.

McINTOSH RED—A choice variety of the Fameuse type. A good annual bearer. Fruit above medium to large, highly perfumed; flesh snow white, crisp, very tender, slightly aromatic, sub-acid.

WINTER BANANA—Fruit medium to large, smooth and handsome, golden-yellow usually shaded with red blush. One of the best dessert apples.

PEACHES

	Each	10	100
2 to 3 feet High.....	\$.25	\$2.00	\$12.00
3 to 4 feet Sturdy.....	.30	2.50	15.00
4 to 5 feet Trees.....	.40	3.50	18.00

BELLE OF GEORGIA—Ripens the first to fifteenth of August. Fruit is large, white with red cheek; flesh white, firm, of excellent flavor. Tree a rapid grower and very productive. One of the very best market sorts, Freestone.

CARMAN—A very hardy peach, ripening about the middle of July; skin pale yellow, with blush on sunny side; flesh white, tender, sweet and melting. Ships well. Best early market peach.

CRAWFORD'S EARLY—Freestone. Large, oblong, yellow with deep red cheek; flesh yellow, juicy and rich, excellent flavor.

CRAWFORD'S LATE—Ripens after Elberta. Freestone. High quality and very large size; flesh deep yellow; skin yellow with a broad dark red cheek.

ELBERTA—Midseason. A valuable large peach, of good quality; fruit large, yellow with red cheek; juicy and extremely high flavored; flesh yellow; freestone. The leading market variety. Ripens here about the middle of August.

GREENSBORO—Ripens from June 25th to July 10th. Large; white with a red cheek; rich and melting; juicy; tree a strong grower.

GOLDEN JUBILEE—A new variety originated by the New Jersey Experimental Station, and is of Elberta type, ripening with Carman and Belle of Georgia. Freestone.

J. H. HALE—One of the best sorts for market or garden. Fruit is very large, round, quality excellent. Skin yellow finely colored, flesh yellow, sweet and melting. Ripens just before the Elberta. A very good one.

ROCHESTER—Has the habits and characteristics of the Crawford; but fully two weeks earlier; yellow freestone; good size; very sweet; fine flavor. Requires only half the usual amount of sugar for canning. Ripens middle July.



Elberta Peaches.

Coniferous Evergreens

All Coniferous Evergreens are Dug with a Ball of Earth and Wrapped in Burlap



This photograph has been specially prepared by us for the convenience of our customers in selecting their Evergreens. The following is a key to each variety as per number listed on ball and burlap of each tree: (1) George Peabody Golden Arborvitae; (2) Norway Spruce; (3) Globe Arborvitae; (4) Pyramidal Arborvitae; (5) Tom Thumb Arborvitae; (6) Blue Spruce; (7) Savin Juniper; (8) Juniper, Stricta; (9) Juniper, Pfitzeriana; (10) Japanese Yew; (11) Juniper, Horizontalis; (12) Juniper, Tamariscifolia; (13) Dwarf Boxwood, Suffruticosa; (14) Hemlock Spruce; (15) Abelia Grandiflora; (16) Globe Privet; (17) Standard Privet; (18) Irish Juniper; (19) Arborvitae, Aurea Compacta; (20) Biota Orientalis; (21) Retinospora Squarrosa Veitchi; (22) Biota Aurea Nana; (23) Retinospora Plumosa; (24) American Arborvitae; (25) Euonymus Japonica; (26) Chinese Arborvitae; (27) Boxwood, Sempervirens. We will be glad to quote on any stock shown above not listed in our catalogue.

ARBORVITAE

AMERICAN ARBORVITAE (*Thuja occidentalis*)—Rather dwarf habit of growing. Its foliage or leaves are flat instead of needle-like, and set on edge, color bright green. One of the most extensively planted of all evergreens. 12 to 18 inch size, 1.50 each.

GLOBE ARBORVITAE (*Thuja globosa*)—A variety that is very handsome. In shape it is absolutely round or globular. Very dense in growth, and does not require shearing. 12 to 18 inch size, \$1.50 each.

PYRAMIDAL ARBORVITAE (*Thuja pyramidalis*)—Its tall slender habit makes it splendid for formal use; a dense dark green columnar form. 12 to 18 inch size, \$1.50 each.

GOLDEN ARBORVITAE (*Biota aurea nana*)—Conical form, very dense and compact. During spring and summer it presents the most cheerful bright-yellow-green imaginable, changing to old gold in autumn. 12 to 18 inch size, \$2.00 each.

COMPACTA ARBORVITAE (Dwarf)—Dense little trees with light green foliage; neat and attractive; useful for beds, borders, cemeteries or low growing hedges. 12 to 18-inch size, \$2.00.

SPRUCE

NORWAY SPRUCE (*Picea excelsa*)—Perfectly hardy. Makes a beautiful compact growth. A choice evergreen and more extensively planted than any other variety of evergreen. 12 to 15 inch, 65c each; 15 to 18 inch, 85c each.

COLORADO BLUE SPRUCE (*Pungens glauca*)—Tall conical tree with worlds of horizontal branches. Color of foliage silver-blue, but not near as distinguished as Koster's Blue Spruce in color. 12 to 15 inch size, \$2.00 each.

HEMLOCK SPRUCE (*Tsuga canadensis*)—A graceful tree. Hardy, fine for most situations. Branches droop, making a striking appearance. 12 to 15 each size, 85c each.

JUNIPERS

IRISH JUNIPER—The trees form low, dense cones of silvery green. No lawn is complete without at least one of these trees. 15 to 18 inch size, 85c each.

JUNIPER PFITZERIANA—Its sweeping, gray-green branchlets give this broad, bushy type value for mixed planting. 12 to 18 inch spread, \$1.50 each.

JUNIPER (stricta)—The most beautiful and valuable Juniper. Of broad pyramidal habit, densely clothed with bright metallic blue foliage. As hardy as an oak. 12 to 18 inch size, \$2.00 each.

Evergreens will be shipped by Express or Freight, depending on size of order and distance.

RETINOSPORAS

RETINOSPORA PLUMOSA—Soft deep green, plume-like foliage. Strong grower.

RETINOSPORA PLUMOSA AUREA (Golden plume-like)—Soft light green, plume-like foliage, distinctly tipped with yellow.

RETINOSPORA SQUARROSA VEITCHI (Japanese retinospora)—Foliage silver blue. Stands clipping when used in hedges or for formal specimens.

Prices on Retinosporas Listed: 15 to 18 inch size, \$1.25 each.

Broad Leaved Evergreens

Leaves on Broad Leaved Evergreens are similar to leaves on any kind of trees except that they are more apt to be darker green and cling to the branches all winter long, therefore, they gain the name evergreen. Such evergreens are very beautiful, especially when planted with other varieties with needle type leaves.

BUSH ARBUTUS (*Abelia grandiflora*)—Dwarf; glossy foliage. Flowers continuously from July till frost; arbutus-like pink. Use in masses. 15 to 18 inch size, 75c each.

AZALEA (amoena)—A dense dwarf-growing evergreen shrub with slender branches and semi-double flowers of bright, cheerful, rosy purple; produced in such great numbers as to literally envelop the bush in April. 10 to 12 inch size, \$1.75 each.

AZALEA (hinodegiri)—Holds foliage during winter, blooms beautiful red flowers in early April completely covering bush. 10 to 12 inch size, \$2.25 each.

BOXWOOD (*Buxus sempervirens*)—Specially desired for planting as individual specimens on lawns or in tubs. Trimmed as pyramidal form. 8 to 10 inch size, balled and burlapped, 65c each.

Shade and Ornamental Trees



Japanese Blood Leaf Maple.

SHADE TREES

NORWAY MAPLE (*Acer platanoides*)—A large, handsome tree of spreading, rounded form, with broad, deep, green foliage. Very hardy, and extensively planted. 6 to 8 feet, \$1.75 each.

ORIENTAL PLANE—Has a very wide round topped head, thick branches, rapid grower. A good one for either street or lawn planting. 6 to 8 feet, \$1.25 each.

SILVER MAPLE (*Acer dasycarpum*)—Produces a quick shade. The leaves on top are light green, underneath the leaves are same shade as bright silver, and as the summer breeze approaches them, the silver and green flashes are very attractive. Extensively planted. 6 to 8 feet, 75c each.

ORNAMENTAL and WEEPING TREES

CATALPA BUNGEI (Umbrella Tree)—A pleasing lawn tree of formal appearance; no lawn is complete without this tree. Dwarf habit of growing. 5 to 6 feet stems, \$1.25 each, or \$2.25 per pair.

JAPANESE BLOOD LEAF MAPLE—Leaves extremely bright red, also bark of the tree is red. Grows in shrub form, not for shade. Unquestionably, as an ornament for the lawn, it is without an equal. 1½ ft. size, \$3.00; 2 ft. \$4.00.

JAPANESE WEEPING CHERRY—This tree is produced by grafting a weeping variety on a natural cherry stock which has attained a height of about 5 or 6 feet. Blooms early in spring. It makes a wonderful sight when in bloom. 5 feet stems, \$1.25 each.

LOMBARDY POPLAR—Makes fast growth, does not spread, a tall spire-like tree, altogether planted at the entrance of driveways, and to mark boundary lines. Unsurpassed for its purpose. 8 to 10 feet, 85c each.

WISCONSIN WEEPING WILLOW—Forms a large round headed tree, one of the most elegant of all weeping or pendulous trees. Will thrive in any locality. 6 to 8 feet, 85c each; 8 to 10 feet, \$1.00 each.

ORNAMENTAL FLOWERING TREES

BECHTEL'S DOUBLE FLOWERING CRAB—Succeeds well in most soils. Flowers profusely in May. Tree appears to be covered with small delicate pink double roses of delicious fragrance. A moderate grower. 3 to 4 feet, 75c each.

RED FLOWERING DOGWOOD (*Cornus florida rubra*)—A variety of the well-known flowering dogwood, with rosy-pink flowers. Blooms May and June. \$2.25 each.

WHITE FLOWERING DOGWOOD—Similar to the red in habit and growth but has white flowers instead of red. 65c each.

DOUBLE WHITE FLOWERING PEACH—Tree a stronger grower than Red Flowering Peach. Foliage very light green. During autumn months changes to cream white. Branches are white which makes this type very noticeable wherever planted. Early in spring the tree is covered with large double white blooms. 3 to 4 feet, 75c each.

DOUBLE RED FLOWERING PEACH—Foliage similar to other varieties of peach except leaves are smaller and darker green in color. Branches bright red, very ornamental in the winter. In early spring before leaves appear the branches are literally covered with bright red blooms about double the size of the regular peach bloom in commercial orchards. Very attractive for any lawn or garden. 3 to 4 feet, 75c each.

PLUM, PURPLE-LEAVED (*Prunus Pissardi*)—Produces an abundance of pretty pink flowers in May. No fruit. Can be set alone if desired. However, more appropriately planted when set with flowering shrubs. Foliage purple and very attractive. 4 to 5 feet, 85c each.

DOUBLE FLOWERING PLUM (*Prunus triloba*)—Produces double pink flowers in May about an inch in diameter, resembling a little rose. Usually grows to a height of about six feet. Very attractive. 3 to 4 feet, 75c each.

TULIP POPLAR—One of the grandest of our native trees, of tall, pyramidal habit, with broad, glossy, fiddle-shaped leaves and beautiful, tulip-like flowers; allied to the Magnolia. 5 to 6 ft. \$1.50.



Silver Maple.

ROSES

That Will Give You a Wealth of Bloom

Note.—Customers wanting Rose Bushes by mail, refer to Parcel Post rates on page 28.

TEA AND HYBRID TEA ROSES



Columbia.



Mrs. Aaron Ward.

2-year plants, 75 each; \$6.00 for 10.

COLUMBIA (HT.)—Lively, bright pink, sweetly scented flowers of exquisite shape and strong, stiff petals, deepening in color as they expand. Free flowering, good growth, and healthy foliage.

HADLEY (HT.)—A rich crimson-red flower with velvety texture, lovely form, and perfume. Moderate in growth and bloom.

KAISERIN AUGUSTE VICTORIA (HT.)—Well-formed, creamy buds which develop slowly to blooms of absolutely perfect form, snowy white with a slight tint of lemon at center; fragrant.

LADY HILLINGDON (T.)—Clear apricot-yellow. Buds of remarkable quality and elegance.

LA FRANCE—Rich satiny peach, changing to deep rose. Large. Sweetest of all everblooming.

LOS ANGELES—Flame pink. Buds long and pointed. Beautiful from the opening of the bud until the last petal drops.

MME. EDOUARD HERRIOTT—This is the Daily Mail Rose, made famous when it won the London Daily Mail Gold Cup, for the finest Rose at the famous London Rose Show. Color coral red, shaded with yellow and bright rosy scarlet.

MISS LOLITA AMOUR (HT.)—Burnished buds and creamy copper flowers with a reddish orange tinge; fully double, cupped, and fragrant.

MRS. AARON WARD—Dark yellow, almost orange. A beautiful variety.

OPHELIA—Cream white.

PREMIER—Deep pink, fragrant and thornless.

RADIANCE (HT.)—Lovely light silvery pink flowers, with beautiful suffusion of deeper color. It may be relied upon to produce flowers under all conditions.

RED RADIANCE—A rose of merit, one that should be in every garden, flowers a deep red globular shape, a rose of true color, flowers hold their color until the last petal drops; it does not fade.

SOUVENIR DE CLAUDIUS PERNET—A most vigorous grower of erect branching habit; long pointed buds of exquisite shape, carried on long, stiff stems. Very large, full flowers with elongated deep petals. Color, striking sunflower-yellow, deeper in the center, without any color blending, and which is retained without fading in the warmest weather.

HYBRID PERPETUAL ROSES

2-year plants, 75c each; \$6.00 for 10.

The most satisfactory all-around class for sections where winters are cold, because with a cover of earth over the whole plant they will stand severe freezing weather. Hybrid Perpetual Roses are vigorous and free blooming.

AMERICAN BEAUTY—Strictly a Hybrid Tea Rose, but usually classed as a Hybrid Perpetual owing to its vigorous growth. Beautiful carmine-red blooms, very large and double.

FRAU KARL DEUSCHKI—A pure white variety with immense long buds and perfectly double flowers. Especially fine for bedding. It is the largest and strongest of all white Roses.

GENERAL JACQUEMINOT—Everybody who loves roses will place this variety high on the list of extra-desirable kinds; a bright crimson with a delightfully sweet fragrance.

PAUL NEYRON—Luminous cerise-red. One of the largest roses under cultivation. It is a strong, healthy grower with clean foliage of a rich green shade. An excellent Hybrid Perpetual Rose.

ULRICH BRUNNER—Immense big blooms of a bright cherry-red shade with a lovely rich fragrance. Very free flowering and one of the finest for cutting. Ideal for trailing on a pillar.

CLIMBING ROSES

2-year plants, 60c each; \$5.00 for 10.

CLIMBING AMERICAN BEAUTY—Rich rosy crimson, sweet-scented flowers on a strong-growing climbing vine. Blooms profusely.

DOROTHY PERKINS—Beautiful shell-pink flowers with a fine fragrance. Borne in magnificent clusters.

DR. W. VAN FLEET—Probably the best climbing Rose, with attractive flesh-pink flowers. Very showy.

EXCELSA—A red Dorothy Perkins with fine large, double flowers.

GARDENIA—Of exceedingly vigorous growth, with small yellow buds opening to creamy white.

MARY WALLACE—Of rampant growth, with long pink buds. Blooms freely on long stems.

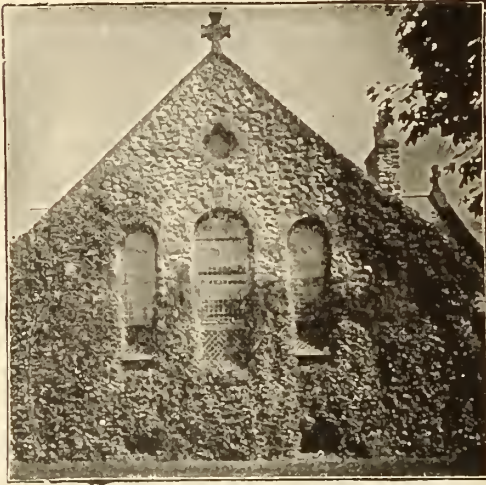
PAUL'S SCARLET—The most intense red Rose that grows. By far the finest climbing Rose in existence. Never fades out in the hottest sun, retaining its vivid brilliant red color at all times.

SILVER MOON—Large, semi-double flowers, primrose in the bud, changing to white with rosy anthers in the center.



Souvenir De Claudius Pernet.

Vines and Hedge Plants



Boston Ivy.

VINES

BOSTON IVY (*Ampelopsis Veitchii*)—The well known and much used vine for covering walls, brick work and where a climbing plant is used, foliage dark green, turning to scarlet in the fall of the year. 2 years, 50c each.

CLEMATIS PANICULATA (Japanese Clematis)—Flowers white, star-shaped, produced during the summer and fall upon long shoots. In addition to its profusion of fragrant flowers the foliage is handsome. Strong plants, 40c each.

CLEMATIS JACKMANNI (Large Flowering Clematis)—Large and intense violet-purple; free and abundant bloomer. Strong plants, 60c each.

LONICERA (Honeysuckle)—Their twining qualities are all that can be desired, but the delightful fragrance of their flowers makes their strongest bid for favor. The Honeysuckle perfume is remembered and loved throughout the world. 2 year, 35c each.

VAR. HALLEANA—Color, an intermingling of white and yellow; extremely fragrant and most satisfactory. This variety is most often found growing on porch trellises or used as a covering for unsightly fences. 2 year, 35c each.

CHINESE WISTERIA—A very strong grower; it climbs high and twines tightly. Flowers sky blue in

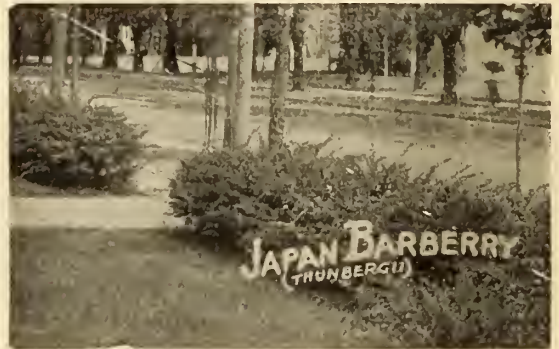
drooping clusters in early spring. Strong plants, 50c each.

DUTCHMAN'S PIPE (*Aristolochia Siphon*)—Brownish, pipe-shaped flowers. Highly useful for its large leaves which make a perfect screen for porches. A native climber of quick growth. Strong plants, 75c each.

HEDGING

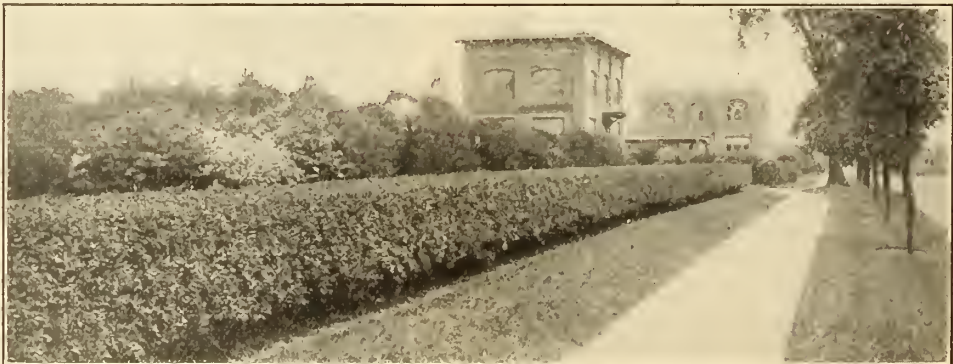
CALIFORNIA PRIVET—This beautiful hedge plant has a larger leaf than Amur Privet, and is very beautiful in summer and fall, lending itself admirably to shearing. However, we do not consider it as useful for planting in the South as Amur River because it loses some of its foliage in the winter, whereas, Amur River Privet will look pretty the year round. 12 to 18 inch, 60c for 12; \$1.00 for 25; \$1.75 for 50.

AMUR RIVER PRIVET (*L. Amurensis*)—Most popular and best hedge for the North. Very beautiful evergreen, dense in growth, dark green, very compact, and establishes a very good hedge in one year. Very hardy and well adapted to general planting. Exceedingly beautiful and permits shearing to any height or shape. 12 to 18 inch, \$1.20 for 12; \$2.25 for 25; \$4.00 for 50.



RED BARBERRY—A fine, low-growing highly-colored shrub for planting around the house, as a hedge, or as specimen. Leaves small, bright green, changing in fall to scarlet; berries red and will remain on well into the winter. 1 year plants, 55c each.

BARBERRY THUNBERGI (Japan Barberry)—For hedges or group planting, this plant is very largely used. Will stand any amount of clipping and will thrive in shady places. Perfectly hardy everywhere. In the autumn turns to a brilliant crimson and the abundant bright scarlet berries add color all winter. 12 to 18 inch size, 15c each; 40c for 3.



California Privet.

Hardy Perennial Plants

Many gardeners prefer to start with perennial plants instead of sowing seed, as in that way a showy, colorful display may be had more quickly. All plants supplied by us have been grown carefully and are sure to give entire satisfaction. They will be shipped directly from the Nursery at the proper time for planting. If Perennial Plants are wanted by mail, see page 28 for Parcel Post rates.

Perennial Prices: 25c each; 3 for 65c.



Hardy Carnation.

ACHILLEA : Milfoil

PTARMICA (The Pearl)—Pure white, double flowers produced on sturdy plants all during the summer. Grows 2 feet tall.

ANCHUSA : Bugloss

DROPMORE—A tall growing stately perennial with large, brilliant blue flowers during June. Grows 6 to 8 feet tall.

AQUILEGIA : Columbine

HYBRIDS—A foremost strain with beautiful large flowers in many exquisite colors and color combinations. Blooms during May and June.

HARDY ASTERS

ANITA BALLARD—A double-flowered variety with clear Petunia-violet blooms. Very showy and strong growing.

BLUE GEM—The flowers of this variety are quite large and double. They are a blue shade of great richness.

CLIMAX—Majestic spikes crowned by light lavender-blue flowers. 5 feet.

MRS. RAYNOE—The deepest red of all perennial Hardy Asters.

MIXED—A complete mixture of all colors. Showy and free blooming.

CAMPANULA

SINGLE MIXED—Mostly grown as biennials with large, bell-shaped blooms during July. Height, 2 to 3 feet.

CALYCANTHEMA MIXED—The beautiful Cup-and-Saucer Canterbury Bells in rose, pink, and blue. Blooms during July.

COREOPSIS

LANCLOLATA—One of the showiest of all perennials, with large, golden yellow blooms all during the summer. Grows 2 feet tall and provides a wonderful bit of yellow color to combine with blue Delphiniums and others.

CARNATION Hardy Grenadin

These excellent hardy Carnations bloom very profusely during summer and fall.

GIANT WHITE—Fine large double white flowers borne very freely on fine strong stems.

GIANT PINK—This is a particularly popular color. Blooms very profusely.

GIANT RED—Adds a good shade of color to the perennial bed or rock garden.

CHRYSANTHEMUM

VICTORIA—Large white double flowers in great profusion.

GOLDEN QUEEN—Beautiful golden yellow flowers. Always double.

AUTUMN GLOW—Bronzy red.

OLD HOMESTEAD—The flowers are a bright clear pink. Blooms freely.



Chrysanthemum.

DELPHINIUM

ENGLISH HYBRIDS—All those who have seen this strain are unanimous in proclaiming it unusually fine. It includes a wide range of colors. The flowers come double, semi-double, and single. Very showy.

BELLADONNA—Fine showy plants, producing an abundance of sturdy, long flower-spikes closely set with large, single, sky-blue blooms. The plants grow 4 feet tall.

BELLAMOSUM—An excellent strong-growing, free-blooming variety. Grows 4 feet tall and has large, single, dark blue flowers.

FOXGLOVE : Digitalis

GLOXINIA-FLOWERED—One of our most showy biennials, with large bell-shaped blooms on tall spikes. Includes many colors.

FUNKIA : Plantain Lily

UNDULATA VARIEGATA—Creamy white foliage marked with bright green. Light blue flowers.

SUBCORDATA—Magnificent for shaded or semi-shaded locations,

bearing large white flowers during the summer; 2 feet tall. Showy leaves.

GYPSOPHILA Baby's Breath

PANICULATA—Dainty small white blooms during August and September on plants 2 feet tall. Excellent for cutting.

HOLLYHOCKS

DOUBLE MIXED—A marvelous strain of Hollyhock with fully double flowers placed closely together on stems 6 to 8 feet tall.

LUPINUS

American gardeners never have come to realize as yet the value of Lupines in the perennial garden. The plants thrive in a rich sandy soil and make a wonderful showing, particularly if planted in masses. Blooms from June until August, growing 2 to 4 feet tall.

BLUE **WHITE** **ROSE**

PYRETHRUM Persian Daisy

SINGLE MIXED—Lovely large Daisy-like blooms in white, pink, rose, and crimson, borne during the spring and fall. 2 to 3 feet tall.

STOKESIA

CYANEA, BLUE—Blue Cornflower-like blooms during July and August. Grows 2 feet tall.

TRITOMA : Red Hot Poker

PFITZERI—The blooms are crowded into a solid spike of a bright orange-red color. Blooms during the summer; 2 to 3 feet tall.

VERONICA

LONGIFOLIA SUBSESSILIS—Blue flowers from July to September. Very handsome; 2 feet tall.

VIOLA

Tufted Pansies and Violets

JERSEY GEM—Rich violet blooms borne very profusely.

PRINCE OF WALES—A large Violet with deep purple blooms.



Shasta Daisy.

HARDY FLOWERING SHRUBS

ALL FIELD GROWN PLANTS THAT WILL PLEASE YOU



Snowball Hydrangea.



Butterfly Bush.



Althea.



Deutzia.

ALTHEA, or ROSE OF SHARON—Familiar shrubs, deserving more popularity than they receive. Their abundance of bloom comes at a comparatively flowerless time, from July to September. There is a wide diversity of color in the flowers of different varieties, though all of the plants are of the same upright character. 35c each.

BUDDLEIA (Butterfly Bush)—A very strong grower; free flowering, with large graceful panicles of purple flowers; blooming the entire summer. We recommend this shrub most highly. 35c each.

ALMOND, FLOWERING—A dwarf growing, early blooming shrub. Flowers resemble small roses, borne all along the stems in great profusion in the early spring. We can furnish pink or white, specify color desired when ordering. 50c each.

DEUTZIA (Pride of Rochester)—Popular because of its blossoms, which are large, double white, tinted rose on under side. Shrub large, blooms early. Very desirable. 35c each.

FORSYTHIA, or GOLDEN BELL—The earliest blooming of all shrubs. Plants a mass of golden fringe-shaped blooms before the leaves appear. 35c each.

FLOWERING QUINCE (Cydonia Japonica)—One of the most popular shrubs. The variety we offer has bright red flowers which appear very early in the spring before the leaves force, literally covering the plant. Blossoms hold on for a long time. 50c each.

MOCK ORANGE (Philadelphus)—An old favorite with grandmother. A vigorous growing shrub attaining a height of 8 feet. Used extensively as hedge or specimen plant. Literally covers itself in spring with white blossoms. 40c each.

HYDRANGEA PANICULATA GRANDIFLORA (Pee Gee Hydrangea)—The exceedingly well known variety. Its large conical heads of white flowers become pink and red with age. Should have plenty of water during flowering season and cut back severely every year in order to produce large flowers. 50c each.

HYDRANGEA ARBORESCENS GRANDIFLORA (Snowball Hydrangea)—Its large clusters of pure white flowers, average 4 and 5 inches in diameter, appear from the middle of May to September. This sort does well in partial shade. 50c each.

CORAL BERRY, or INDIAN CUREANT—A small shrub attaining a height of 4 feet; graceful arching habit of growth. Produces red berries in profusion in early autumn which hang on until spring. 40c each.

SNOWBERRY—An upright low-growing shrub with pink flowers in July, which is valued for its waxy, showy white berries in fall. Very effective in mass in the shrubby border. 40c each.

SPIREA VAN HOUTTE—The most popular variety of Spirea. Forms a graceful pendulous hush, surpasses all other varieties, with its superb beauty and gracefulness. Pure white flowers, fine for hedges or for specimen planting. 35c each.

SPIREA ANTHONY WATERER—The well known variety, used a great deal for edging and massing, in constant bloom from early summer until late fall. Beautiful heads of red flowers. 50c each.

WEIGELA ROSEA—The prettiest of the Weigelas in our section. Literally covered with trumpet-shaped blossoms, pink color; branches drooping. 40c each.

Parcel Post Rates on Strawberry Plants

	Zones 1-2.	Zone 3.	Zone 4.	Zone 5.	Zone 6.	Zone 7.	Zone 8.
100 Plants.	\$.10	\$.14	\$.21	\$.28	\$.35	\$.43	\$.50
200 Plants.	.13	.20	.33	.46	.59	.73	.86
300 Plants.	.16	.26	.45	.64	.83	1.03	1.22
400 Plants.	.21	.36	.65	.94	1.23	1.53	1.82
500 Plants.	.26	.46	.85	1.24	1.63	2.03	2.42
600 Plants.	.20	.52	.97	1.42	1.88	2.33	2.78
700 Plants.	.31	.56	1.05	1.54	2.03	2.53	3.02
800 Plants.	.36	.66	1.25	1.84	2.44	3.03	3.62
900 Plants.	.38	.70	1.33	1.96	2.59	3.23	3.86
1000 Plants.	.41	.76	1.45	2.14	2.84	3.53	4.22
2000 Plants.	.56	1.06					

On all orders of 500 plants or more, the rate is cheaper by Express after the Third Zone.

The above postage rates insure all mail shipments.

Parcel Post Rates on Grape Vines, Raspberries, Blackberries, Rose Bushes and Ornamental Vines

	Zones 1-2.	Zone 3.	Zone 4.	Zone 5.	Zone 6.	Zone 7.	Zone 8.
1 to 2	\$.07	\$.08	\$.09	\$.10	\$.11	\$.13	\$.14
3 to 6	.09	.12	.17	.22	.27	.33	.38
6 to 12	.11	.16	.25	.34	.43	.53	.62
12 to 20	.16	.26	.45	.64	.83	1.03	1.22
20 to 25	.21	.36	.65	.94	1.23	1.53	1.82
25 to 35	.26	.46	.85	1.24	1.63	2.03	2.42
35 to 50	.36	.66	1.25	1.84	2.43	3.03	3.62
50 to 75	.46	.86	1.65	2.44	3.23	4.03	4.82
75 to 100	.56	1.06	2.05	3.04	4.03	5.03	6.02

Ornamental Hedges, Shrubs and Perennials wanted by Parcel Post add 3c a plant extra over the above postage rates.

Townsend's 1931 Price List

IMPORTANT NOTE: Parcel Post Orders must contain additional remittance for postage as shown on table at bottom of page 28. If not included we will ship by express.

PRICES NOT PREPAID—All F. O. B. Salisbury, Md. 500 or more of a variety at 1,000 rates; less quantities of each variety at prices listed below.

FOR STRAWBERRY PLANT PRICES SEE NEXT PAGE

	12 Plants	25 Plants	50 Plants	100 Plants	250 Plants	1000 Plants
BLACK RASPBERRIES						
Black Diamond No. 1 Tips, 1-yr.....	\$0.75	\$1.25	\$2.25	\$4.00	\$8.00	\$25.00
Cumberland No. 1 Tips, 1-yr.....	.75	1.25	2.25	4.00	8.00	25.00
Cumberland Transplants, 2-yr.....	1.50	2.40	4.25	7.60
Honey Sweet No. 1 Tips, 1-yr.....	1.00	2.00	3.50	6.00	12.00
Logan No. 1 Tips, 1-yr.....	1.00	2.00	3.50	6.00	12.00	40.00
Plum Farmer No. 1 Tips, 1-yr.....	.75	1.25	2.25	4.00	8.00	25.00
Plum Farmer Transplants, 2-yr.....	1.50	2.40	4.25	7.60
PURPLE RASPBERRIES						
Cardinal No. 1 Tips, 1-yr.....	1.00	2.00	3.50	6.00	12.00	40.00
Cardinal Transplants, 2-yr.....	1.60	2.65	4.75	8.60
Columbian No. 1 Tips, 1-yr.....	1.00	2.00	3.50	6.00	12.00	40.00
Columbian Transplants, 2-yr.....	1.60	2.65	4.75	8.60
RED RASPBERRIES						
Chief.....	1.75	3.00	See page	14 for de	scription
Cuthbert No. 1, 1-yr.....	1.00	2.00	3.50	6.00	12.00	40.00
Cuthbert Transplants, 2-yr.....	1.60	2.65	4.75	8.60
Herbert No. 1, 1-yr.....	1.00	2.00	3.50	6.00	12.00	40.00
King Red No. 1, 1-yr.....	1.00	2.00	3.50	6.00	12.00	40.00
Latham No. 1, 1-yr.....	1.00	2.00	3.50	6.00	12.00	40.00
Latham Transplants, 2-yr.....	1.60	2.65	4.75	8.60
Rathman (New) No. 1, 1-yr.....	1.00	2.00	3.50	6.00	12.00	40.00
Katherine Everbearing, 1-yr.....	1.00	2.00	3.50	6.00	12.00
Katherine Transplants, 2-yr.....	1.60	2.65	4.75	8.60	12.00	40.00
St. Regis Everbearing No. 1, 1-yr.....	.85	1.60	3.00	5.00	10.50	32.50
St. Regis Transplants, 2-yr.....	1.50	2.40	4.25	7.60
Viking.....	1.75	3.00	See Page	19 for de	scription	of Viking
BLACKBERRIES (From Root Cuttings)						
Alfred No. 1, R. C.....	1.50	3.00	5.00	9.00	20.00	60.00
Blower No. 1, R. C.....	1.00	1.75	3.00	5.00	11.50	40.00
Crystal White No. 1, R. C.....	1.50	3.00	5.00	9.00
Early Harvest No. 1, R. C.....	1.00	1.75	3.00	5.00	11.50	40.00
Eldorado No. 1, R. C.....	1.00	1.75	3.00	5.00	11.50	40.00
Macatawa No. 1, R. C.....	1.50	3.00	5.00	9.00	20.00	60.00
McDonald No. 1, R. C.....	.75	1.25	2.25	4.00	8.00	25.00
Mesereau No. 1, R. C.....	1.00	1.75	3.00	5.00	11.50	40.00
Snyder No. 1, R. C.....	1.00	1.75	3.00	5.00	11.50	40.00
Russell's, or Best-of-All (New Rust-Resistant) No. 1, R. C.....	1.50	3.00	5.00	9.00	20.00
DEWBERRIES (Selected Strong Rooted Tips)						
Aus Lu (New), 1-yr.....	2.00	4.00	7.50	10.00	20.00	60.00
Austin, 1-yr.....	.75	1.00	1.50	2.50	4.00	15.00
Lucreatia, 1-yr.....	.75	1.00	1.50	2.50	4.00	15.00
Youngberry (New), 1-yr. (6 Plants, \$2.50).....	4.50	8.00	15.00	25.00
TRANSPLANTED BLACKBERRIES and DEWBERRIES						
Alfred, B. B.....	2.50	4.00
Early Harvest, B. B.....	2.50	4.00
Austin, D. B.....	1.50	2.00
Lucreatia, D. B.....	1.50	2.00

GRAPE VINES

TWO-YEAR SIZE		TWO-YEAR SIZE	
Top and Root Pruned, Ready to Set			
Agawam, Red	Delaware, Red	Moore's Early, Black	
Catawba, Red	Niagara, White	Worden, Black	
1 Vine.....	\$.35	25 Vines.....	\$ 5.00
3 Vines.....	.90	50 Vines.....	10.00
6 Vines.....	1.55	100 Vines.....	18.00
12 Vines.....	3.00	1000 Vines.....	150.00
For Three-Year Vines Double These Prices			

The FOUR NEW Grapes With Outstanding Quality

TWO-YEAR SIZE	TWO-YEAR SIZE
For descriptions, see page —	
Caco, New Red.....	\$.60 each
Portland, New White.....	.75 each
Fredonia, New Early Black.....	.75 each
Ontario, New White.....	.75 each
Sheridan, New Black.....	.75 each
(Customers wanting 3-year size, add 50c to above prices on each vine)	

CONCORD, The Standard Black Grape

1-Year	2-Year	1-Year	2-Year
1 Vine... \$.20	\$.25	50 Vines..	3.50
6 Vines... .70	.80	100 Vines..	6.00
12 Vines... .95	1.20	500 Vines..	20.00
25 Vines... 2.00	2.25	1000 Vines..	40.00
			55.00

FRESH DUG STOCK

We furnish only fresh stock dug direct from the fields in which your order is filled; being superior in quality to cold storage stock, having been dug in fall and stored over winter.

Shipments by Mail

Customers wishing any plants on this page; sent Parcel Post; Postage rates can be found on page 28.

SPRING, 1931

Regular Shipping Season
October 15th to May 10th**STRAWBERRIES**

FALL, 1931

August and September de-
livery, add 25 per cent to
this price.**Townsend's Special Wholesale Prices Direct to Growers!***More Than a Quarter Century Direct Selling
One Price to All - - A Square Deal to Everyone***Extra Early**

	Per 12	Per 25	Per 50	Per 100	Per 250	Per 500	Per 1000
4 JUPITER (p)	\$2.50	\$4.00	\$6.00	\$10.00	\$25.00	\$50.00	\$100.00
5 BLAKEMORE (p)	1.00	1.50	2.00	3.50	5.50	10.00	10.00
2 FRUITLAND (p)	1.00	1.50	2.00	3.50	5.00	10.00	10.00
6 Heflin Early (p)	1.00	1.50	2.00	3.50	5.50	10.00	10.00
6 PREMIER (p)60	.80	1.30	2.35	4.00	7.00	7.00
6 ST. LOUIS (p)60	.80	1.30	2.35	4.50	8.00	8.00
6 SUCCESS (p)60	.80	1.30	2.35	4.50	8.00	8.00
6 TOWNSENDS MISSIONARY (p)40	.60	1.00	1.90	3.00	5.00	5.00

Medium Early

1 HOWARD'S SUPREME (I)	2.50	4.00	6.00	10.00	25.00	50.00	100.00
3 ABERDEEN (p)	1.00	1.50	2.00	3.50	5.50	10.00	10.00
6 COOPER (p)	1.00	1.50	2.00	3.50	5.50	10.00	10.00
6 DUNLAP (p)60	.80	1.30	2.35	4.00	7.00	7.00
6 Dr. Burrill (p)60	.80	1.30	2.35	4.00	7.00	7.00
6 KLONDYKE (p)60	.80	1.30	2.35	4.00	7.00	7.00

Medium Late

7 AROMA (p)60	.80	1.30	2.35	4.00	7.00	7.00
7 BIG JOE (p)60	.80	1.30	2.35	4.00	7.00	7.00
7 BURGESS (p)60	.80	1.30	2.35	4.00	7.00	7.00
7 GIBSON (p)60	.80	1.30	2.35	4.00	7.00	7.00
7 SAMPLE (I)60	.80	1.30	2.35	4.50	8.00	8.00

Late to Very Late

9 TOWNSEND BIG LATE (I)60	.80	1.30	2.35	4.50	8.00	8.00
9 BOOSTER (p)60	.80	1.30	2.35	4.50	8.00	8.00
10 CHESAPEAKE (p)60	.80	1.30	2.35	4.00	7.00	7.00
9 FORD (p)	1.00	1.50	2.00	3.50	5.50	10.00	10.00
9 GANDY (p)60	.80	1.30	2.35	4.00	7.00	7.00
9 LUPTON late (p)60	.80	1.30	2.35	4.00	7.00	7.00
9 MASCOT (p)	1.00	1.50	2.00	3.50	5.50	10.00	10.00
4 "MAYQUEEN" (I)	2.00	3.00	4.00	7.00	10.00	20.00	20.00
8 "TOWNKING" (p)	1.00	1.50	2.00	3.50	5.50	10.00	10.00
9 WM. BELT (p)	1.00	1.50	2.00	3.50	5.50	10.00	10.00
9 WORLD'S WONDER (p)	2.00	3.00	4.00	7.00	10.00	20.00	20.00
Surplus Plants40	.70	1.00	1.75	3.00	5.00	5.00

Everbearing

11 "LUCKY-STRIKE" (p)	2.00	3.00	5.00	12.00	18.00	30.00	30.00
11 MASTODON (p)	1.50	2.50	3.00	6.00	9.50	18.00	18.00
11 Progressive (p)	1.50	2.50	3.00	6.00	9.50	18.00	18.00

CASH DISCOUNTS

All orders for \$25.00 or more received in January, cash with order, 10% discount.

All orders for \$25.00 or more received in February, cash with order, 5% discount.

Orders booked when one-fourth of amount is sent with order but no Discount.

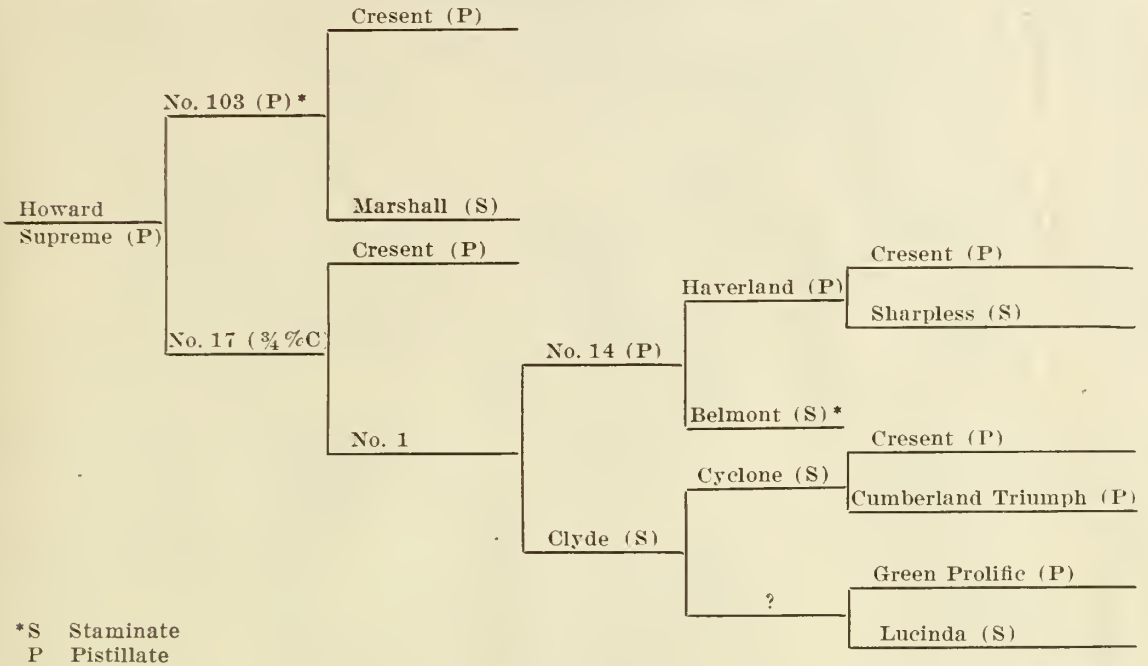
WE DO NOT MAKE SHIPMENTS C. O. D. unless one-fourth the amount accompanies the order.

SPECIAL DISCOUNT*Every Order Received Amounting to \$100 or More Will Receive Free:
50 HOWARD SUPREME and 50 JUPITER, value \$12.00.

WARNING—Place orders early.

Pedigree of Howard Supreme As Furnished by the Originator

BREEDING OF HOWARD'S SUPREME



HOWARD SUPREME carries 60% of crescent blood, which dominated all markets from 1875 to 1890, giving better seedlings to the world than any other variety ever originated.

History and Breeding of Howard's Supreme Strawberry

This new pistillate seedling was originated in 1909, at Belchertown, Massachusetts, by Everett C. Howard, Junior member of the firm of A. B. Howard & Son, Horticulturists, in their experimental and trial grounds.

The Senior member, the late Arthur B. Howard, originated the Howard No. 17 versus The Premier in 1904, and many other fruits and flowers, during nearly a life time spent in plant breeding and improvement.

Howard Supreme was produced in their greenhouse, using Howard's No. 103 as the mother plant, in 1907.

Pollen was applied by a camel's hair brush from the now famous Howard's No. 17 to make the cross.

The following spring the seeds were sown in their greenhouse and the new seedlings fruited for the first time in their trial beds in 1909.

This new variety was the most striking and distinct of any of the lot of 1000 seedlings fruiting at the time from 10 various crosses.

The mother plant, No. 103, was a seedling of the Crescent crossed by the Marshall.

In many ways the No. 103 was a wonder, especially in productiveness, size, quality, color, and firmness.

In fact it was too productive, and after a number of years trial it failed to hold its seedling vigor, and thus it failed to carry out its immense loads of fruit.

This seedling was never named or introduced. However the originators saw great possibilities in the variety for breeding purposes and as such it was largely used by them.

The Howard 17 was also a seedling of the Crescent crossed by another one of the Howard seedlings, the No. 1.

The Howard No. 1 was a berry of many desirable qualities, especially strong healthy foliage, beautiful in appearance and extra fine quality of berry.

The No. 1 was produced by crossing still another one of the Howard seedlings, the No. 14, with pollen from the Clyde.

The Clyde was a seedling of the Cyclone which in turn was a seedling of the Crescent.

The No. 14 was a seedling of the Haverland crossed by the Belmont.

The No. 14 was a berry that possessed many very desirable qualities, such as strong healthy foliage, fine quality berries of good size and color and withal productiveness.

The Haverland was a seedling of the Crescent.

The various seedling strawberries mentioned in the breeding of Howard Supreme should have been introduced, for they were berries that were well above the average of strawberry introductions, but the originators were looking for the Ideal Berry—a berry perfect in every sense of the word, something far ahead of any in cultivation!

The originators are proud of the fact that Howard Supreme carries blood of so many of the leading strawberries of America and Europe; that the pedigree of its ancestral breeding dates back to the first great American strawberry, the Hovey, in 1834, and to the British Queen in 1840! And also the fact that Crescent blood has entered so largely into the breeding of this seedling, for no less than four times was the famous Crescent used as a mother plant to help produce the royal lineage that has been brought down to date and united in the Howard Supreme.

Thus the Howard Supreme carries 60 per cent of Crescent blood.

"The Crescent has been grown more than any other variety except the Wilson. Between 1875 and 1890 it dominated all markets."

"It is a very prepotent variety, a larger number of valuable varieties are descendants of the Crescent than any other sort."

(Signed) EVERETT C. HOWARD.



A Field of Howard's Supreme Strawberry Plants

These plants will be used to fill your orders this season.

What Some of the Leading Horticulturists Think of it.

PROF. WM. P. BROOKS, of the Massachusetts Station, writes:

I have grown Howard's Supreme for 10 or 12 years, and regard it as a very valuable sort. I regard it as being superior to Premier in shape, color, and quality.

PROF. STANLEY JOHNSON, Michigan State College, writes:

We have grown Howard's Supreme and found it to be very productive, a good plant maker. Fair in quality and attractive. On the whole it is a promising variety.

PROF. O. C. ROBERTS, Amherst, Mass., writes:

For the past three years we have grown Howard's Supreme, with forty different varieties—each year the Howard's Supreme has exceeded the yield of Howard 17 (Premier) by more than 15 per cent. It is among the best in plant making. Berries large and firm, with a rich color. Without question it excels any variety we have under observation.

PROF. GEO. L. SLATE, Geneva Station, N. Y., writes:

We have grown Howard's Supreme since 1920, and during that period it has been among the best varieties. Plants vigorous and productive; resistant to leaf spot, and more resistant to drought than the average variety. Fruit very attractive, juicy, firm, pleasantly sprightly. Good to very good in quality. Well worthy of a trial. And I am glad to know that it is to be introduced.

PROF. J. GOURLEY, Wooster Station, Ohio, writes:

We have been growing Howard's Supreme for a good many years. Have always been well pleased with it. Better than Howard 17, being strong, vigorous grower. Berries large, firm, deep red in color through and through. An excellent canning variety. Also good for market as well as home use. Glad to know it is to be introduced. Too good to remain in trial grounds so long.

PROF. GEO. M. DARROW, Dept. of Agriculture, Washington, D. C., writes:
Howard's Supreme particularly good with us.

I urge every one of our customers to try a few of these plants along with Jupiter, this season. I have great faith in them.—E. W. T., Pres.