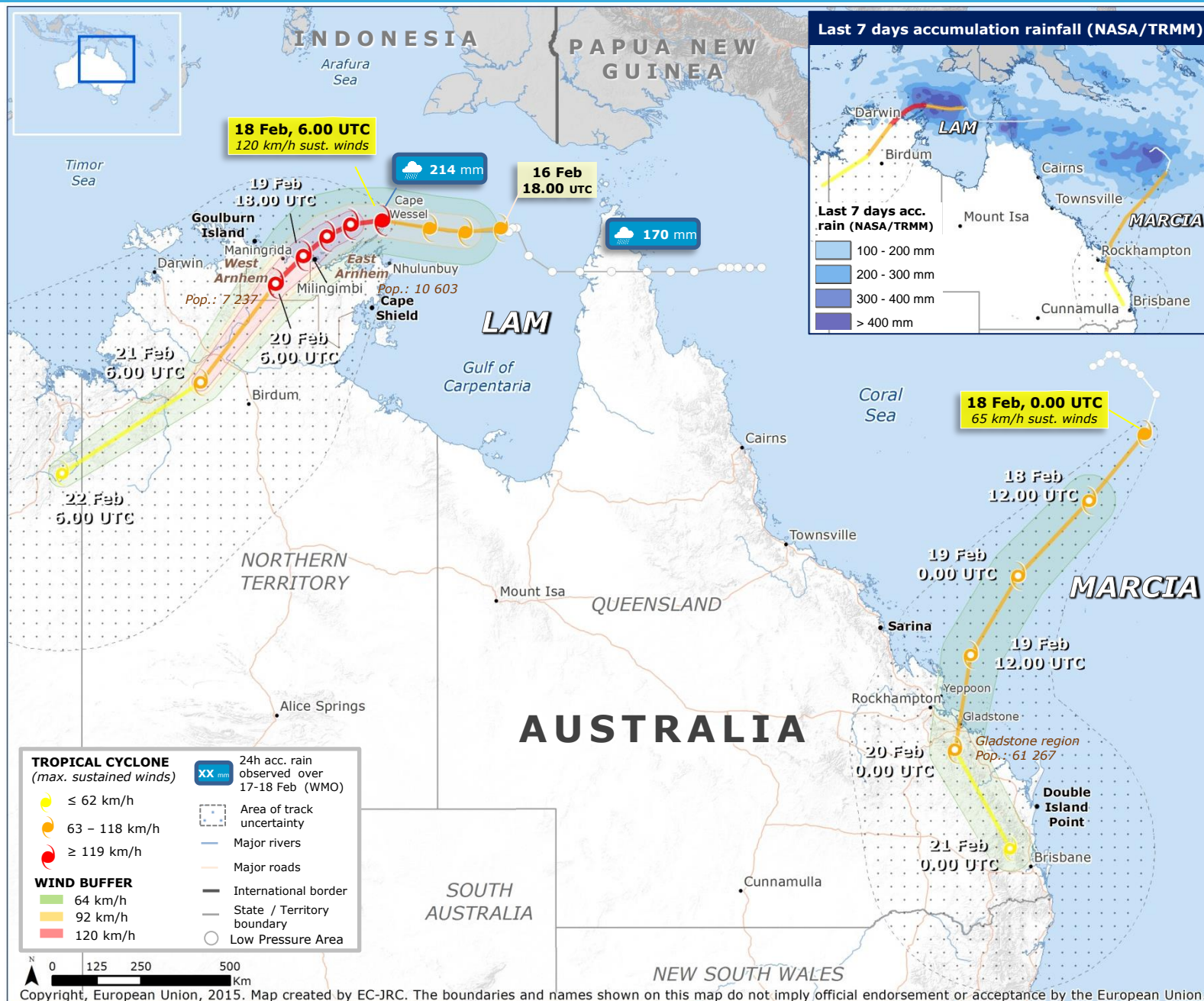


18 February 2015: Australia – Tropical Cyclones



SITUATION

TROPICAL CYCLONE LAM

- LAM moved south of Cape Wessel in the morning of 18 February, with max. sustained winds of 120 km/h; then it continued moving west-southwest, towards western Arnhem, intensifying and becoming a Severe Tropical Cyclone.
- In the next 24 h it is forecast to continue intensifying, reaching the coast near Milingimbi late on 19 February.
- As of 18 February, 12.00 UTC (Australian Bureau of Meteorology, BOM), the Tropical Cyclone Warning Zone is from Goulburn Island to Cape Shield. Very strong winds, heavy rains and storm surge may affect these areas on 18-20 February.

TROPICAL CYCLONE MARCIA

- MARCIA (previously THIRTEEN) is moving over the Coral Sea, towards eastern Queensland, intensifying.
- It is forecast to reach the area near Gladstone on 19 February, slightly intensified. As of 18 February 12.00 UTC (BOM), the Tropical Cyclone Warning Zone is from Sarina to Double Island Point. Heavy rains, strong winds and storm surge may affect these areas on 19-20 Feb.

Tropical Cyclones in Australia: in Australia, the Tropical Cyclones usually occur from November to April. See the Tropical Cyclones of the 2013-14 season in the image below.

Sources: GDACS (1, 2), JTWC, BOM, Australian Bureau of Statistics, Media (1,2)

Tropical Cyclones in the Australian region November 2013 – April 2014

