

## **Historic, archived document**

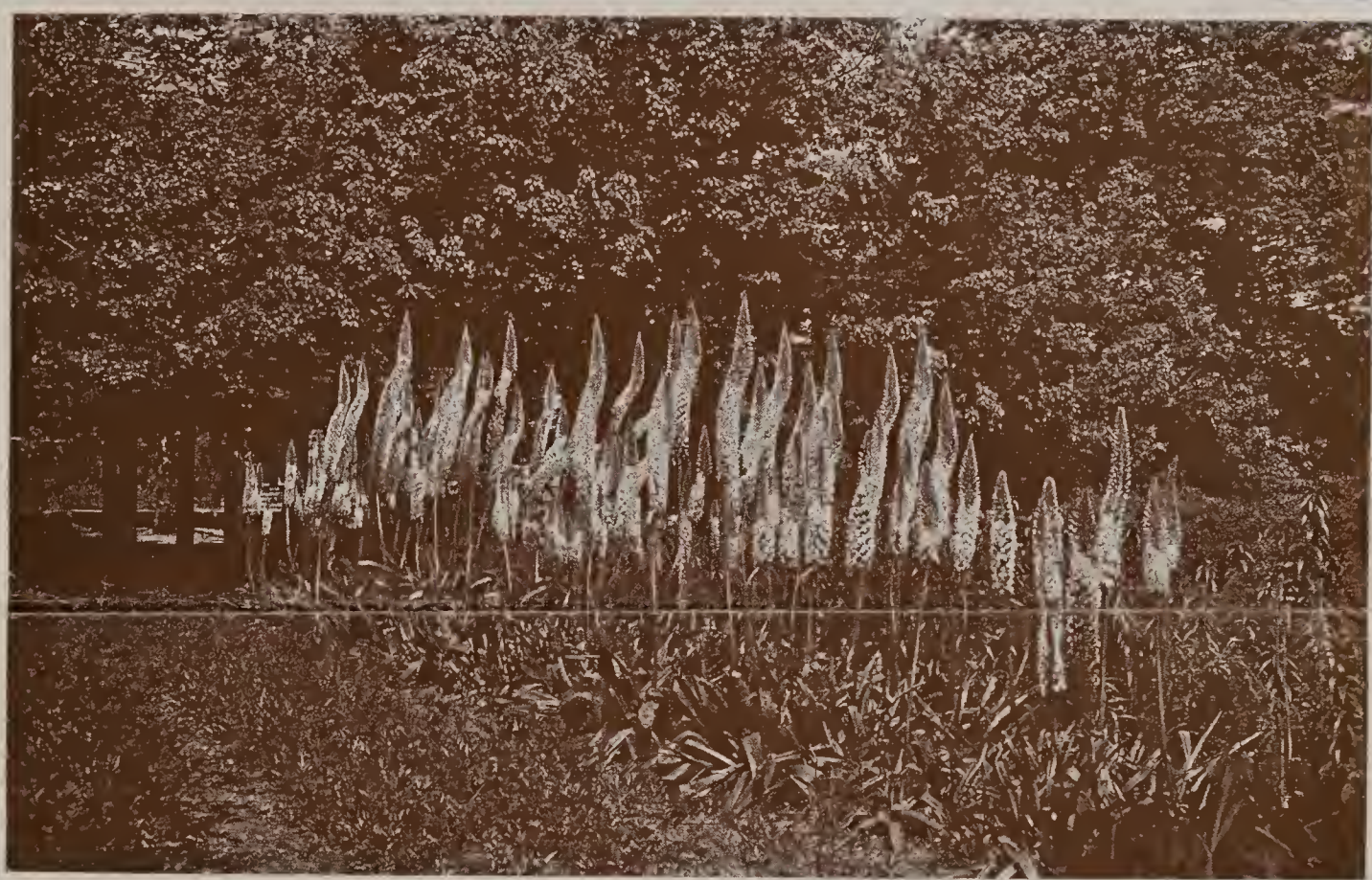
Do not assume content reflects current scientific knowledge, policies, or practices.



65,57

1933

LIBRARY  
RECORDED  
★ OCT 21 1933 ★  
U. S. Department of Agriculture



EREMURI (*Foxtail Lilies*)

## *Eremuri*

FOXTAIL LILIES, GIANT ASPHODELS

A WELL grown clump of Eremuri may justly be regarded as an achievement to be proud of. The great flower stalk, often eight feet tall and more, rises from a crowded tuft of long, narrow leaves, and is crowned by a flower spike two to three feet long, composed of closely set bell shaped flowers, star-like in effect, in soft tones of rose, yellow, salmon and white.

When the gigantic flowering is over, the plant disappears entirely, but reappears very early in the spring, when it is advisable to protect the young flower spike from late frosts.

To fill the great bare space left when the plants go to rest, Gypsophilas may be planted near at hand and kept staked until the Eremuri die down, when they may be allowed to fall forward in their place. Some of our clients have most successfully planted them on the north side of evergreens.

In winter a mulch of wood ashes over the crown is a safeguard, or a box may be filled with leaves and inverted over it. These plants enjoy a rich soil with an admixture of sharp sand, and a well drained sunny situation. Once established they should never be moved, for the roots are exceedingly brittle and liable to injury.

**JOHN SCHEEPERS, INC.**  
522 FIFTH AVENUE, NEW YORK CITY

---

SPECIALISTS IN HIGHEST QUALITY FLOWER BULBS FOR OVER A QUARTER OF A CENTURY

---

*Numerous Gold Medals and other Highest Awards for Excellence of Material and for Merit, including the President Coolidge Gold Medal for Highest Achievement, the Gold Medal awarded us by Her Majesty, Queen Wilhelmina of the Netherlands and the Gold Medal of the Garden Club of America.*



## EREMURI

(FOXTAIL LILIES)

IT has not been until this year that the finest varieties of these GARDEN ARISTOCRATS have become more reasonably priced.

Plant a few clumps in your garden. They will give your Hardy Border character at a time of the year when flowers of the heights of the Eremuri are absent in your garden.



### FINEST VARIETIES

**BUNGEI.** A vigorous, citron-yellow, reaching 4 feet in height. Extremely handsome; flowers in July.

Extra selected, specimen roots .....Each, \$2  
Selected roots .....Each, \$1.50

**ELWESII.** Enormous spike of softest pink; broad green foliage. A vigorous and distinct form of E. Robustus. Height 10-12 feet. June flowering.

Extra selected, specimen roots .....Each, \$4  
Selected roots.....Each, \$2.50

**ELWESII ALBUS.** Same habits as Elwesii but of pure white. Very beautiful. June flowering.

Extra selected, specimen roots .....Each, \$5  
Selected roots .....Each, \$3

**HIMALAICUS.** Pure white, close furnished spike. Height 6-8 feet. June flowering.

Extra selected, specimen roots .....Each, \$3  
Selected roots .....Each, \$2

**HIM-ROB.** A seedling from E. Himalaicus, crossed with E. Robustus. In vigor close to

the latter parent, but a paler silvery pink. June flowering.

Extra selected, specimen roots .....Each, \$4  
Selected roots.....Each, \$2.50

**ROBUSTUS.** Rosy pink. Beautiful and vigorous. Height 8-10 feet. June flowering.

Extra selected, specimen roots .....Each, \$4  
Specimen roots .....Each, \$2.50

**SHELFORDI.** Coppery yellow or orange. Height 6 feet. A most beautiful and attractive plant. July flowering.

Extra selected, specimen roots .....Each, \$5  
Selected roots .....Each, \$3

**WAREI.** The general color effect of the densely clothed spikes is salmon-buff, but a close inspection reveals shades of yellow, pink and orange. Unusually vigorous grower. Height up to 8 feet. July flowering. A most beautiful variety which has become a great favorite.

Extra selected, specimen roots .....Each, \$5

A COLLECTION of one extra selected, specimen root each of the above eight varieties, total eight roots. Special price ..... \$27.50  
Collection as above, but smaller selected roots. Special price ..... \$19.00

# To JOHN SCHEEPERS, Inc.

Date.....

Please ship for my account the following  
**EREMURI:** *Each*

|  |        |
|--|--------|
| ..... <i>Bungei</i> , Extra selected .....     | \$2.00 |
| ..... <i>Bungei</i> , Selected .....           | 1.50   |
| ..... <i>Elwesii</i> , Extra selected .....    | 4.00   |
| ..... <i>Elwesii</i> , Selected .....          | 2.50   |
| ..... <i>Elwesii albus</i> , Extra selected... | 5.00   |
| ..... <i>Elwesii albus</i> , Selected .....    | 3.00   |
| ..... <i>Himalaicus</i> , Extra selected ..... | 3.00   |
| ..... <i>Himalaicus</i> , Selected .....       | 2.00   |
| ..... <i>Him-Rob</i> , Extra selected .....    | 4.00   |
| ..... <i>Him-Rob</i> , Selected .....          | 2.50   |
| ..... <i>Robustus</i> , Extra selected .....   | 4.00   |
| ..... <i>Robustus</i> , Selected .....         | 2.50   |
| ..... <i>Shelfordi</i> , Extra selected .....  | 5.00   |
| ..... <i>Shelfordi</i> , Selected .....        | 3.00   |
| ..... <i>Warei</i> , Extra selected .....      | 5.00   |

.....Collection of 8 varieties. One  
each of extra selected specimen roots listed  
above. Special price.....\$27.50

.....Collection of 8 varieties. One  
each of smaller selected roots listed above.  
Special price.....\$19.00

Name .....

Supt. or Gardener.....

Street .....

City ..... State.....

**FLOWER BULB SPECIALISTS**

*Postage  
Will be Paid  
by  
Addressee*

No.  
Postage Stamp  
Necessary  
If Mailed in the  
United States

**BUSINESS REPLY CARD**

FIRST CLASS PERMIT NO. 5892, SEC. 510, P. L. & R. NEW YORK, N. Y.

**JOHN SCHEEPERS, Inc.**

**522 FIFTH AVENUE**

**NEW YORK, N. Y.**



THE response to our circular (in actual colors) on Daffodils, Tulips, Lilies, etc., was so enthusiastic that we have decided to extend the privilege of ordering these fine bulbs at the unusually reasonable prices quoted therein, as long as our present supply of High Quality Bulbs lasts.

If you have not yet availed yourself of this opportunity, you may do so now, and we will furnish the finest material to help you make your spring garden beautiful.

JOHN SCHEEPERS, INC.

