

Historic, Archive Document

Do not assume content reflects current scientific knowledge, policies, or practices.



LIBRARY
RECEIVED
★ JAN 10 1931 ★
U. S. Department of Agriculture.

A CATALOG of Choice
PEONIES-IRISES
and other High Class
ORNAMENTALS



BRAND PEONY FARMS, Inc.
BOX 408
FARIBAULT, MINNESOTA



Georgiana Shaylor we have always considered one of the very finest of all peonies. We think it Mr. Shaylor's masterpiece and believe it should rate up with the best peonies rating 9 or better. See page 13.



IN every part of the world where beautiful flowers are loved and admired Brand's American Peonies are known and grown.





A. M. Brand in the Peony Fields

BRAND'S
Peonies ~ Irises ~ Lilacs
and Other Flowers and Shrubs

NOTICE—Be sure to address all communications meant for us to BRAND PEONY FARMS, Inc., as there are three other nurseries in Faribault and our mail is apt to go to some other nursery here if not properly addressed.

Brand Peony Farms, Inc.

Box 408

Faribault, Minnesota

Rules of Business

Many mistakes will be avoided if you read this page carefully before making out your order.

Our Guarantee. We guarantee our stock to be true to name. Should a mistake occur and a customer receive a root that eventually proves not true to name, we will replace this root with one that is true and the customer may retain the root first received. We fill all orders personally and we take great pride in sending out satisfactory roots. After you receive our shipment, we want you to report at once anything that is not satisfactory and we will make proper adjustment. After your roots are planted, we cannot assume further responsibility for them.

Prices and Discounts. We offer a discount to those who send cash with their order. Do not take a discount on our new varieties that are listed at \$50.00 each. Neither should you take a discount on Irises as we make a special price when three roots of one variety are ordered. No discount should be taken on collections of peonies as our offer is below our regular prices. Except for Iris and Collections of peonies, you may select \$11.00 worth of roots for \$10.00; \$27.50 worth for \$25.00; \$57.50 worth for \$50.; and \$120.00 worth for \$100.00. You will note that we do not offer to pay transportation either by post or express, but these discounts that we offer will more than pay the transportation charges.

How to Remit. Make remittances by either Post Office Money Order, Bank Draft, Registered Letter, or Personal Check payable to the **Brand Peony Farms, Inc.** Address your letter to **Brand Peony Farms, Inc.**, Box 408, Faribault, Minnesota.

Transportation. We do not pay transportation charges either by parcel post or express unless so stated. But the discounts which we allow will more than pay Postage or Express. Orders of from one to six plants can generally be shipped cheaper by post than by express. If your order calls for one or two roots, remit twenty-five cents for postage and boxing. If more than two roots are ordered, allow ten cents per root if you wish post shipment. Otherwise we will send your order by express.

Substitutions. We do not substitute without permission. If you send in an order late in the season, it often saves delay in shipping if you give us permission to substitute if we are unable to supply all the stock your order calls for. If the choice is left to us, we will use a variety of equal or better value of the same color.

Special Delivery Letters. Although our office is located almost a mile from the Post Office, we call for our mail four or five times each day. Special Delivery Letters are placed in our box and not delivered to our office. Consequently the price of a special delivery stamp is wasted on letters sent to us.

How to Address Us. In writing to us be sure that you address your letter to the **Brand Peony Farms, Inc.**, Box 408, Faribault, Minnesota. There are other companies here with the word Brand in their name, but we are the only peony company. In order for mail to reach us without any delay you should address us properly.

BRAND PEONY FARMS, Inc.

Box 408—FARIBAULT, MINN.

Introduction

WE DEBATED for a long time this summer as to the kind of catalog we should issue. We considered three kinds, a very small and inexpensive catalog giving prices and not descriptions, a larger and somewhat more costly book with abbreviated descriptions, and the expensive book you are receiving with full descriptions and much information concerning planting, care of stock, etc. Wishing to curtail expense, we tried hard to make ourselves believe that one of the cheaper books would do. But it has always been our policy to give our customers the very best service of which we were capable, and we could not bring ourselves to do otherwise now.

We want to assure you also, that we are not only sending you a valuable catalog, but we shall continue to furnish the very best quality of stock. Our peony roots will be of the size and quality that have brought us so many compliments in the past, that we have been proud to designate as "Brand Divisions."

Our prices may be slightly higher in a few cases than you will find quoted in some other price lists; but in comparing the offerings of different nurseries, you should consider the sort of stock you are assured of receiving as well as the price. Poor stock is dear at any price. Then, too, we think that the service we give more than makes up for any small difference in price that there may be. We are not only sending you the valuable catalog, but we have in store for every customer sending us an order amounting to five dollars or more the sixty-four page Manual which you will find described elsewhere.



Home of A. M. Brand with field of Seedling Peonies in foreground

Size of Root to Plant

OUR many years of work in growing and handling all kinds of Nursery Stock has given us worlds of practical experience, which we are now applying for the benefit of our customers in our peony business. This broad experience, we believe, adds value to our opinion in regard to the best kinds of roots to plant, and the proper handling of these roots before they reach our customers.

Perhaps the best way to make clear the kind of roots which we recommend, is to make mention of the kinds we do not advise.

We do not believe in planting ONE YEAR ROOTS. All good Nurserymen will tell you that everything that they line out in their nursery rows has a general root pruning before it is planted. All the little fibrous roots are removed, and the old root is trimmed back. We treat our peony roots in the same manner. People who do not understand propagating rules are pleased when they receive stock that is covered with little fuzzy roots. These little feeding roots range in size from a hair to a lead pencil. It is impossible to straighten them all out as they were growing before they were disturbed. If peonies are planted with these rootlets left on, the soil is forced down upon them, and they are planted criss cross, and the result is a deplorable root system. These rootlets have already lost much of their vitality before replanting takes place, and they should be removed, if for no other reason than this. Then when these rootlets have been removed, you have a small three to five eye division left.

Neither do we favor planting TWO OR THREE YEAR OLD CLUMPS. Many people think it is necessary to plant large clumps in order to get quick blooming returns, but we know from experience that these large clumps will prove disappointing if planted. A two or three year old clump has many roots, and there is no way to get the soil packed firmly about all its parts so as to bring about the vigorous growth that comes from the division. We cannot recommend a root to our friends who purchase of us if we would not plant that same kind of root in our own fields.

We have tried out, in our own plantings, roots that we have mentioned and we have definitely concluded that the 3 to 5 EYE DIVISION is really the best size of root to recommend to the majority of our customers. We always make these divisions by dividing not younger than a two-year-old plant, and not older than a three-year-old. The roots from this division are so few that the soil can be brought into direct and firm contact with every part. The root is properly pruned and new feeding roots begin to form soon after the root is planted; and these new roots grow on without being disturbed, so that by the time your plant is a three-year-old it has reached its greatest perfection. It is during this third season of blooming that you get those uniformly perfect blossoms that all peony lovers look forward to. The 3 to 5 eye division is really a selected yearling, trimmed up as a real Nurseryman would trim it ready for planting.

Although the divisions that we send out this fall will no doubt produce some bloom next season, you should not depend upon these flowers as being typical of the variety. For this reason you cannot judge whether a variety is true to name or not until after it has bloomed the second season. Therefore, you should not be too hasty in deciding whether or not a variety is true to name.

How to Plant and Care for Peonies

Read Before Planting

JUST as soon as your Peony roots arrive, open the package, wash off the packing material from the roots, and if they seem at all dry place the roots in water for at least 24 hours. This insures perfect growth. Remove all labels before planting.

Have your soil thoroughly prepared. Plant in a good mellow soil with the top of the buds or eyes from two to three inches below the surface level. This is very important. Peonies planted too deep do not bloom. Peonies planted too shallow are apt to have the crown hurt by the winter, which causes them to die.

The directions given here show very plainly how deep to plant. Dig a hole two feet in diameter and from one to one and a half feet deep. Now place enough loose soil back into the hole so that when you have tramped it down hard, and have placed the peony root in the hole, it will rest on the bottom from two to three inches below the level of the ground. Hold the division erect in the center of the hole with one hand and with the other draw in the soil. Then pack it firmly about the root with hands and feet, until the hole is filled up so that just the eyes show. Then fill in the balance of the hole, and firm lightly. For the first winter mound up the loose dirt over the hole from four to six inches, and above this mound (just before winter sets in) place a mulch of two inches of some coarse litter. Always mulch peonies the first winter wherever the soil heaves in the winter time. Remove the mulch and mound of dirt in the spring.

The peony does best where it is given horse cultivation, and the finest blooms are generally to be had on plants set three years. Where peonies have to be planted on a lawn or in a border where they cannot be cultivated with a horse, keep the soil well stirred about the plants, preferably with a fork.

Where extra fine specimens are wanted, remove soil before planting to a depth of two and a half feet. Fill in with well rotted cow manure to a depth of a foot when well tramped down. Wet this down heavily. Cover and tramp down so that there is at least six inches of dirt above the manure. Plant roots on this.

Do not use much manure about the plants after planting unless the soil is poor. And then do not let the manure come in direct contact with the roots or tops.

On cutting the flowers, always leave at least two leaves on each stem. After the blooming season, the remains of any blossoms that have not been out may be trimmed off. Don't cut the tops off your plants after they have bloomed, wait until after the first of September.

Late Fall Orders

Sometimes late in the shipping season the desire comes to plant peonies and an order is sent in.

We like to fill these late orders as promptly as possible, but occasionally we find we are entirely sold out of some variety that the order contains. As we do not substitute without permission, we are obliged to write to our customers for their permission to substitute, thus causing delay in filling the order. If a second or third choice had been made in the original order we could have filled it immediately.

So in sending in orders late in the season, if you will make a second choice, it will help us greatly in giving you prompt service. Or if you give us permission to substitute, we will give you a variety as good as that ordered, if not better.

Fall Planting

A very large part of peony planting is done in the fall. Many writers of popular articles on the peony advise early planting and mention September and October as the only months suitable for the work. As a result, a large number of our customers ask for September first shipment. We want to emphasize the fact here that our many years of experience have convinced us that the importance of early planting is very much over-estimated.

Each fall we make several plantings at considerable intervals as we get roots enough ahead to make a good planting. Often the last planting is made just before the final freeze-up. The next season we notice that those that were planted early the preceding fall show a little stronger growth than those that were planted later. But in the second growing season there is no perceptible difference either in size of plant or amount of bloom. And when the early and late fields are dug at the end of two or three years there is found no difference in size or quality of roots.

Now we fill our fall orders at the earliest possible date, but a few facts about our work will show that it is impossible for us to ship all of our fall orders in time for September planting. We begin to dig for our trade as early as the roots are in proper condition, that is when they have become dormant. This date depends upon growing conditions during the summer and may be anywhere from August 15, to September 10. After the roots are dug they must be taken to the packing room, cleaned, divided and stored in properly labeled stalls. Not until all this is done can we begin to fill orders. But when we do begin we push the work as fast as we can considering the facts that only selected workers can be used and that they must have our personal supervision. We generally are filling orders on the day they are received by October 10. We trust, however, that our customers will be patient, if they do not always receive their orders as early as they would like, remembering that late planting is not a serious disadvantage, and that when their shipment is received it will consist of roots handled in the best possible way, the real Brand divisions, upon which we pride ourselves.

Spring Planting

WE ARE frequently asked if we agree with the statement so often made that peonies should never be planted in the spring. Our answer is an emphatic NO. However, a warning should be given in connection with this answer. Roots intended for spring planting should be dug in the fall and held in a dormant state under proper conditions of temperature and moisture until they are planted in the spring. Most nursery stock of all kinds is stored in the fall and planted in the spring.

We have erected a costly storage building providing ideal conditions for holding stock through the winter. We always carry over many roots both for our spring trade and our own planting. Customers who desire to plant in the spring may be assured that roots which have been stored here will be received in the spring in the same condition as those sent out in the fall and will give practically the same results.

Why Our List is Small

OUR LONG acquaintance with the peony has given us definite ideas of what constitutes a really good variety. In making out the list which we are offering, we are passing on the results of our experience to our customers, hoping to insure them against possible disappointment.

During these years of labor with the peony we have tried out many hundreds of varieties of both European and American origin and from this large list we have rigorously excluded any that did not meet our ideas of merit. We must have dependable varieties; strong, vigorous growing, free blooming peonies that we can pass on to our customers without any hesitancy and with our assurance of satisfaction.

In order to accomplish this, it has been necessary to eliminate from our list a great many varieties. We are now growing a number of varieties for further observation before we feel ready to pass them on to our customers.

The longer one grows peonies, the more critical he becomes. Although a peony of fair quality may look good to the novice, he will soon become more critical, and in the end none but the best will satisfy him. We wish to give permanent pleasure to our customers, and for this reason, we have included in our list only those peonies which we consider worthy of a place even in our own garden.

On going over our list you will find that very few of the varieties we offer rate below 8.0. Those contained in our list that have a lower rating than 8 will, we feel sure, eventually receive a higher rating since they are surely worthy of it. We have reference to the varieties Mme. de Verneville, Edulis Superba, Chas. McKellip and Archie Brand.

Raising peonies has never been a hobby with us. For the past 61 years it has been a part of our main business. During the first few years of this period it was the interesting part; during the past few years it has been the absorbing part of our work. The final thought that we should like to leave with our reader is embodied in our favorite slogan: "A peony once planted lasts a lifetime. Why not plant the best?"

First Year Bloom

DO NOT ATTEMPT to judge your peonies by their first year's bloom. Occasionally a customer writes us that some root which he purchased the previous year has bloomed and that it is some inferior variety which we have sent him and is not true to name.

In answering such letters we do not like to insist that the customer is mistaken as this might give the impression we do not wish to correct the error. "Do not judge your plants by the first year's bloom." It is better for your plant if you remove the buds the first season and let the entire strength go to the roots.

Our Peony Manual



OUR Peony Manual, published in 1928, created an unexpected interest. The popularity of the peony has increased tremendously in the last fifteen or twenty years. This new enthusiasm has brought hundreds of inquiries to our office concerning the history of the peony, the modern types, the choice of varieties, the best methods of cultivation, etc. In our sixty-four page manual we answered these questions and gave also many other facts concerning our own work with the flower that has absorbed so much of our time and interest during the last thirty odd years.

The new manual contains seventy-two pages. The following are some of the questions we answer in it:

- Why do my peonies not bloom?
- Why do some peonies in a row do well while others fail to bloom?
- What are the "world's best peonies?"
- Why are some peonies so much more expensive than others?
- Why buy the new peonies?
- What harm does the ant do?
- What diseases has the peony?
- How shall these be treated?
- How often shall I fertilize my peonies?
- What are the best fertilizers?
- What peony supports do you advise?
- What markers do you use?
- How can I produce and exhibit "Show blooms?"
- What are the best varieties to raise for the cut flower business?
- What are the best varieties to plant in the South?
- Why join the American Peony Society?

Free to every customer who sends us an order amounting to \$5.00 or more.

Read What Some of Our Customers Have Written to Us About Our New Book

Lincoln, Nebraska

Dear Sirs: This is to let you know that I received your Peony Manual for which I waited so long, and perhaps a little impatiently. However, it was well worth waiting for. I have read it through and want to say whole heartedly that it is the most practical and most complete book of its kind that I have ever seen, and many thanks for it. It seems to me that Brands are giving more than their share to the Peony world.

New York, N. Y.

Your Peony Manual is a revelation. It is highly interesting and I am enjoying every page of it. For me it is a text book.

Quincy, Illinois

Gentlemen: Your Peony Manual just received and I wish to express my appreciation, not only for the Manual itself which covers the peony question so thoroughly but for the work, time and thought a busy man has given this book in order to produce such a complete masterpiece.

I feel sure that the Manual will be thankfully received by all peony lovers and that your efforts will not be wasted.

The peony roots received from you this fall were just as represented and first class in every respect, and The Brand Peony Farms will receive any future orders I may have.



Our First Field of Seedling Peonies

Our Prices

IN READING through our catalog, it will be noticed that we list no peony for less than \$1.00. There are several reasons why we cannot handle 50c and 75c roots and make a fair profit. In the first place it takes expert labor to divide peonies and such labor deserves good wages, hence we divide with larger divisions, which decreases the cost of labor and gives more satisfactory roots. Then we include in our list only really desirable varieties. It will be noticed that very few in the list are rated below 8 and we consider that these few deserve and will in the future receive a higher rating. If we wanted to work off undesirable stock we could sell it cheaper in order to get rid of it. But we want our customers to plant peonies that will give them permanent pleasure and that they will not wish to discard when they come to know peonies better. We believe that our plan of giving good sized divisions of varieties selected for real merit means true economy to our customers. For this reason, we are designating the size of our root, **A Brand Division**.

Many people before making their purchases last year wrote to us to ask just how large our divisions were. We promise to send to our customers a root containing from three to five or more eyes. But not long ago we received the following letter which will probably give you a better idea of the kind of root you may expect:

"I find you are much too modest in your description of your Peony divisions. Anyone who has not purchased a "Brand Division" will not understand from your description what a fine root he may expect to receive. You may rest assured that the Brand Peony Divisions will be recommended to all my flower loving friends."

Our List

Addielanthea (Brand). 8.8 White. This is a peony of the rose type. It is creamy white with base of center petals yellow. The guard petals are prominently flecked with crimson, and the crown petals slightly so. It is a fine peony. In our estimation it belongs in a class with *Enchantresse* and *Grace Loomis*. **A Brand Division \$5.00.**

Adolphe Rousseau (Dessert & Mechin). 8.5. Red. This variety is one of the very best of the early dark reds. The blooms vary with the seasons, and some times they vary on the same plant. Some times the flower is loosely built and at other times it is quite double. The petals are very large, long, broad, and of good substance. The plant is very tall with heavy dark foliage. The flowers are of great size, held well erect, and extremely showy. This is a magnificent landscape variety and also a wonderful show flower. The color is a deep rich velvety maroon red showing stamens. **A Brand Division \$1.50.**

Alba Sulfurea (Calot). 7.6. Yellow. A large medium compact bomb developing into a crown. Guard petals prominent and milk-white. Collar and center sulphur, fading to sulphur white. Late mid-season. Fragrant. Plant of medium height. Up to the time of the introduction of *Primevere*, this was the best yellow peony and even now is a very fine thing to have. **A Brand Division \$1.00.**

Albert Crousse. (Crousse). 8.6. Crousse gave to the world many great peonies, three of which he considered good enough to bear the name Crousse. *Albert, Felix, and Marie* are three exceptionally fine peonies. *Albert Crousse* is a beautiful soft shell pink. The petals are narrow, and very compactly arranged in so symmetrical a way as to give the flower a distinctly globular form. At Duluth, Minnesota, where the peony grows to perfection, *Albert Crousse* is always one of the outstanding, late mid-season varieties. **A Brand Division \$1.00.**

Alex D. Vories. (Vories). Red. The plant is very tall with strong upright stems. The blooms are large, loosely built with broad petals of a pleasing American Beauty shade. The plant is so tall and the blooms held so well above the foliage that the variety makes a wonderful landscape sort. A very showy peony. **A Brand Division \$5.00.**

Alsace Lorraine. (Lemoine). 8.8. White. Of all peonies this is one of the daintiest and most refined. There are larger and more robust varieties but there are few that are prettier. The flowers are of beautiful form, the petals are long, cupped at the end, and of exquisite shape. The color is a rich creamy white mellowing to just a suggestion of brownish yellow at the center, the same color that makes *Solange* such a fascination. The plant is of medium height. The stems stiff and upright. Very floriferous. This is a wonderfully beautiful flower. **A Brand Division \$2.50.**

A. M. Slocum. (Franklin). 9.0. White. This is one of Mr. Franklin's recent introductions. It is a large loosely built flower, rose-type showing stamens. This variety is almost pure white with a few central petals edged crimson. It is a strong upright grower and blooms profusely.

A Brand Division \$4.00.

A. P. Saunders. (Thurlow). 8.6. Delicate pink. This variety is one of the late delicate pinks that fade to an almost pure white. It is a large, loosely built flower of true rose-type. The outside petals which are very large and of splendid substance enclose a ball of shorter petals which gradually unfold and develop into one of the most beautiful flowers that we have in our entire range of varieties.

A Brand Division \$10.00.

Archie Brand. (Brand). 7.5. Pink. We receive more compliments on this variety from all over the country than on any other one variety. Those who have purchased this peony express their surprise at its low rating. We believe that Archie Brand deserves a rating of 8.5 and when the next Symposium is taken we believe that you will find it around this mark.

Archie Brand is a large, round, full rose-type blossom of an even shade of sea shell pink. The foliage and stems are light green and very clean in appearance. The buds as they develop are very attractive, enormous in size, and beautiful as they open. As the flower just opens, it is at its most beautiful stage. The petals of good length are then banked in a compact mass with four distinct corners to the bloom which gives a very pleasing effect. The guards then begin to fall away leaving a great round ball of bloom in the center. This variety becomes coarse when heavily fertilized. It does best on clay soil.

A Brand Division \$1.00.

Arlequin. (Dessert). 8.1. Pink. This is one of the new varieties coming from Dessert. Like many choice varieties, it is more or less variable on young plants and one must wait for full development of the plant before its blooms become fixed in type. Guards a deep violet-rose, with lighter shadings and splashes of white. It has quite a distinct color of a lighter shade of violet-rose, noticeable salmon shadings at the base of petals. Mid-season.

A Brand Division \$3.00.

Asa Gray. (Crousse). 8.1. Pink. When grown in a soil that is suitable to it, and well grown, this is beautiful peony. It seems to do best in heavy dark loams. The flowers are large and of true rose-type. The guard petals are salmon pink, thickly marked with minute specks of deeper pink. It is a variety that is easily identified, a prolific bloomer, and fragrant. Probably the most beautiful of all the speckled varieties.

A Brand Division \$1.00.

Assmanhausen (Goos and Koenemann). A good peony sent out by this great German firm a few years ago. Opens an immense white with delicate pink tintings. Stems tall, strong and erect. A splendid flower and very desirable as a landscape sort.

A Brand Division \$4.00.

Auguste Dessert. (Dessert). 8.7. Red. This is one of the best of all the later peonies sent out by Dessert. This variety was considered of such excellence by the originator that he gave it his own name. We give Dessert's own description. "Flower cup-shaped of fine form, with rounded petals, very brilliant, velvety crimson, carmine, with silvery reflex and often streaked white; very large silvery border; visible stamens inter mixed with the petals in many flowers. A superb variety, awarded certificate of merit at the Paris show, June 2, 1920." We consider this variety and Elisa the two best of the later varieties sent out by Dessert. A brilliant light red that is very distinct in form and a most desirable sort.

A Brand Division \$5.00.

Augustin D'Hour. (Calot). 7.8. This peony is mid-season and of bomb type. It is an extremely large, showy flower. Its primary petals are narrow and built up close and high. It is a very deep, rich, brilliant solferino red, with slight silvery reflex. It makes a splendid cut flower, and although it rates below 8, we feel that it has a place in any large collection.

A Brand Division \$1.00.

Avalanche. (Crousse). 8.7. White. A large, compactly built, globular cone shaped flower. The blossom develops a distinct creamy white color which surrounds a center of delicately tinted lilac-white petals with a few wide petals edged with tracings of carmine. Plant of medium height, strong, upright and a profuse bloomer. A splendid flower for landscape effect. A wonderful show flower. At the National show held at Ontario this variety was awarded first as the best specimen bloom in the show. Avalanche and Albatre are one and the same.

A Brand Division \$1.00.

Aviateur Reymond. (Dessert). 8.0. Red. A large beautiful flower, rather open or semi-double. The color is a bright cherry red, shaded garnet and amaranth. Very showy.

A Brand Division \$2.00.

Ball O' Cotton. (Franklin). 8.8. White. We can use all the good new whites in peonies that we can get and this is one of the good ones. Ball O' Cotton is one of the finest new whites that has been brought out in some time. The flowers are globular in form, entirely transformed, and of the purest white. Ball O' Cotton wherever shown has caused very favorable comment and is now looked upon as an outstanding white. At the Northwestern Peony and Iris show in 1927 held at Fairbault, the largest and finest show ever put on by this association, it won first prize in the class of twenty best blooms of white.

A Brand Division \$5.00.

Baroness Schroeder (Kelway). 9.0. White. This is considered one of the finest peonies grown. When the last Symposium was taken, this variety received a rating of 9.0 after seventy-nine people had voted. When the buds first open, they are a delicate blush, but the flower soon fades to a milky-white. This is a variety that should be found in every collection. It comes into bloom late, after most of the white peonies are gone.

A Brand Division \$1.50.

Benjamin Franklin (Brand). 8.1. Red. An unusually tall dark red variety which resembles Adolphe Rousseau very much in color and make up, but it is a much stronger plant and a much more profuse bloomer than that desirable variety. The stems are long, strong, and heavy, holding the blooms well above the plants. This makes the variety very desirable for landscape effect. Each stem carries a single blossom, which makes it also a very desirable cut flower variety. This is a good dark red which we do not think is fully appreciated. We would class it as the best midseason very dark red peony for cut flower or landscape purposes. You will not be disappointed if you have a Ben Franklin in your collection.

A Brand Division \$1.00.

Bishop Burke (Vories). Red. A very strong plant of medium height that holds its bloom erect. The flower is of medium size and of a very pleasing shade of rose red. This is a different red from any other we know of. The variety is very desirable, both as a landscape and show flower.

A Brand Division \$12.00.

Blanche King (A. M. Brand 1925). Deep Pink. There is a constant search going on among peony lovers for a good, deep pink. The old variety, *Edulis Superba*, has the desired color but it is very early. We have practically this same color in our new variety, *Blanche King*.

This is a large, round rose type flower of brilliant, glowing, deep pink. It holds its color in the field, but shows unusually well when cut in the bud and opened inside. This variety received an Award of Merit at the London, Ontario, National Peony Show in 1922.

A Brand Division \$50.00.

Brand's Magnificent (Brand). 8.2. Red. We have produced many very fine reds, and of these, this is one of the very best. The plant is of medium height, comes into bloom mid-season, and is a wonderfully profuse bloomer. The blossoms are semi-rose, and the flower looks more like an American Beauty Rose than a peony. The color is a deep, dark red with a bluish cast. This variety carries more blue in it than any other good peony. The petals are large like those of a rose. We consider this a wonderful flower because of its beautiful form, its free blooming, its broad symmetrically-arranged petals, and its magnificent color effect. At the National Show held at Des Moines, this variety appeared in the collection winning the gold medal. In the class calling for ten named varieties, it appeared in the collections winning both first and second prizes.

A Brand Division \$2.00.

Candeur (Dessert). 8.4. Pink. A large globular rose-type flower showing stamens. A very beautiful delicate pink, slightly tinged lilac-rose, fading to iridescent white; center petals flecked carmine. A very vigorous grower with clean light green foliage.

A Brand Division \$2.50.

Charles McKellip (Brand). 7.8. Red. This is a large, loosely-built, semi-rose, deep red peony. We think it is the most perfect in form of all the deep red varieties. It is especially beautiful in the bud. This is one of the varieties whose good qualities are impressing themselves more and more upon the public. When the next Symposium is taken, we feel quite sure that it will rate above 8.5. It comes into bloom just after Mary Brand, and we believe it is as good a red.

A Brand Division \$1.50.

Cherry Hill (Thurlow). 8.6. Red. A very tall growing semi-double bright dark red that is early, and splendid as a landscape variety. The color is a deep garnet, with a sheen so rich that the variety is very noticeable among all other reds. Blooms are somewhat small, and irregular in shape until the plant becomes well established, when they become perfect in form and of good size and wonderful in color. Awarded a silver medal by the Massachusetts Horticultural Society.

A Brand Division \$3.00.

Chestine Gowdy (Brand). 8.4. Pink. This is a striking specimen of the cone-shaped peony. The broad outer petals are silvery pink. These inclose a zone of fine, irregularly shaped, closely set petals, of deep rich cream, which in turn surround a prominent cone of broad pink petals, splashed and tipped with crimson. Its varied coloring has repeatedly caused it to be singled out for special admiration from a group of the finest varieties. This is a late variety with delicate fragrance. It is a very thrifty variety and a profuse bloomer. Becoming in great demand as a late pink cut flower. **A Brand Division \$1.00.**

Claire Dubois (Crousse). 8.7. Pink. Occasionally, as one walks through a field of many different varieties of peonies, he comes to a sort that so far as its all-around good qualities are concerned, stands head and shoulders above its neighbors. Such a flower is Claire Dubois. A late flower of immense globular form, with long incurved petals of a uniform shade of clear violet rose, tipped silvery white. It has that same wonderful attractiveness possessed by Mons Jules Elie. They are much the same in color but Claire Dubois is late where Mons Jules Elie is early. The best cut flower of its color in its season. **A Brand Division \$1.00.**

Clemenceau (Dessert). 8.5. Pink. We were not much impressed with Clemenceau when we first bloomed it. Although a very robust grower and free bloomer, it seemed a trifle lacking in color. But the longer we grew it the better we like it. For several years we have had it from four year plants and it has come truly wonderful. The flowers are produced in great quantity on a tall, thrifty plant and are of immense size. If you like the Sarah Bernhard type of flower you will be delighted with Clemenceau as there is quite a resemblance between the two. Very late. **A Brand Division \$3.00.**

Commander (A. M. Brand 1928). Red. This is a very large, high built flower and very compact in its make-up. It is best described as a cone shaped, rose type peony. The color is a true self Solferino red. Though it comes very late in the season, it is a remarkably sure bloomer, which cannot be said of most late varieties. We consider this a real acquisition to our wonderful list of Brand's reds. **A Brand Division \$5.00.**

Cornelia Shaylor (Shaylor). 9.1. Pink. A variety that is beginning to attract a good deal of attention. The variety is so good that we marked it as a coming flower the first time we saw it. A large, late variety, on heavy stems with dark luxuriant foliage. The blooms are high built with a great dome of compact petals in the center surrounded by broad prominent guard petals of pale rose, a collar of flesh white, and a darker rose-like center.

We consider this one of the very best of Mr. Shaylor's entire list of flowers. **A Brand Division \$10.00.**

Coronation (Kelway 1902). 8.5. White. Very beautiful in the bud which is tinted a delicate pink. Opens into great creamy white flowers with pale pink guard petals. Golden light radiates from base of petals. Bloom very symmetrical in form. Beautiful. Late mid-season. **A Brand Division \$2.50.**

Couronne D'Or (Calot). 8.1. White. This is a reliable flower in all respects. It is unlike all other whites, and can easily be identified in any collection. The outer petals are pure white. A ring of yellow stamens is found around a tuft of center petals that are tipped carmine. This variety comes into bloom just before Marie Lemoine. It belongs in the class of peonies that can always be recommended. **A Brand Division \$1.00.**

Crystal Lake (Franklin). New, not rated. Dark Rose. Large flower, semi-rose type. Very large petals of good substance with stamens showing prominently between. If you need a good deep pink, Crystal Lake is a splendid variety. **A Brand Division \$2.00.**

David Harum (Brand). 8.4. Red. This is one of our newest reds. The flowers are very large with prominent guard petals surrounding a great ball of closely packed petals of the same shade. The entire flower is an even shade of soft Tyrian-rose. An upright growing plant with very strong stems that hold their great blooms erect. One of the very best landscape reds. This variety appeared in five prize-winning collections at the National Show held at Des Moines in 1924.

A Brand Division \$4.00.

Desire (Brand). 8.5. Pink. A very large flower rather loosely built with long broad petals with stamens showing. Color a delicate lilac pink fading lighter towards the edges. Desire is a very beautiful flower but you must not judge its worth by a single season's performance. It is at its best on a plant three or more years old. Then you see beautiful pink petaloids bordered with distinct golden edges, which fairly illuminate the flower and make of it a thrice wondrous beauty.

A Brand Division \$3.00.

Duchess de Nemours (Calot). 8.1. White. A beautiful early almost pure white with shadings of green at the base of the petals. Blossom cup-shaped with marked crown effect. Duchess de Nemours, although a comparatively old variety, is unexcelled for beauty of form, purity of color, and all-around general goodness. We think it should be in every planting, but since it is an old variety we seldom list it with our collections as most people who have ever made a purchase of peonies already have it. A splendid cut flower.

A Brand Division \$1.00.

E. B. Browning (Brand). 9.2. White. In the vote taken by the American Peony Society, E. B. Browning was one of the group of four flowers that stood ninth highest on the entire list, stamping it as one of the world's greatest peonies. To produce the best results, this variety must be grown in rich, well-drained soil. This is a very late variety, coming into bloom with Marie Lemoine. For this reason, we do not recommend it to our southern customers. It has had some undeserved adverse criticism. If this variety has not been more than satisfactory to anyone who has planted it, it is because it was planted in soil not suitable to the variety, or it did not receive heavy cultivation. It will do well in any heavy black soil. The flowers of this variety are very large, and semi-rose type. The buds are often as large as the expanded blooms of other fair-sized varieties. The bud opens slowly, and as the petals unfold, a delicate pink coloring appears; the inner surface of the petals being washed with the most delicate pinkish canary. The perfume of the flower is strong and sweet. The variety is so late that it is not always seen in peony shows. **A Brand Division \$3.50.**

Edulis Superba. 7.6. Pink. We do not believe that justice was done this grand old variety in the Symposium that placed its rating at 7.6. No flower with as many good qualities as this one has should rate below 8.0, and we think when another vote is taken that it will advance to this figure. It is the first good early deep pink. It is sometimes open for Decoration Days with us in Minnesota. The flowers are large, borne profusely on tall strong stems. A loose, crown type flower, of a beautiful deep pink. One of the greatest of all cut flowers in its color and season. **A Brand Division \$1.00.**

Edwin C. Shaw (Thurlow). 9.1. Pink. A large cup-shaped flower produced on strong stems. The outer petals are broad and rounded with carmine tracings, the inner petals gradually growing smaller and shorter to the center. The color is a clear shell pink.

Ever since we first grew the Thurlow seedlings, we have been very much impressed with their almost universally outstanding qualities. At first we thought President Wilson the outstanding peony of the lot, but after several years of careful comparison have come to the conclusion that we like E. C. Shaw even better. It is our first choice of the Thurlow peonies, anyone of which is first class. One of the very finest of peonies.

A Brand Division \$10.00.

E. J. Shaylor (Shaylor). 8.7. Pink. A very solid, globular bloom in a deep rose pink, shading lighter at the tips of the petals. A distinct band of petals edged and tipped with gold surrounds the central petals of the flower. A very pretty flower that is produced on stems of medium height. Late mid-season.

A Brand Division \$6.00.

Elisa (Dessert). Pink. Not yet rated. One of Dessert's varieties the stock of which is very scarce. The flowers are large, rather open, with long narrow petals that form a cupped center. The color is a soft shade of bright pink, with a very distinct shading of salmon at the base of the petals which enlivens the flower and makes it very beautiful. We consider this the very best of the later Dessert Peonies and a desirable variety. Very choice. **A Brand Division \$7.50.**



Ella Christiansen

Ella Christiansen (A. M. Brand 1925). Pink. Although not so deep a pink as *Blanche King*, *Ella Christiansen* is so far removed from the delicate pinks in coloring as to be a real acquisition to the garden. The flower is very large, both on the plant in the field, and also when handled as a cut flower. As a bloomer, it is probably the most profuse of all this list of seedlings. The flower is exceedingly large. The petals, long and narrow, are heavily serrated on the edges. The flower opens cup-shaped at first and then flat. As a field flower, *Ella Christiansen* received unbounded praise from every visitor as it has an irresistible appeal. We think more and more of it every year. **A Brand Division \$50.00.**

Elwood Pleas (Pleas). 8.7. Pink. A large to very large flower of true rose-type. It opens flat. There are many years when *Elwood Pleas* is one of the most pleasing pinks that we have. The plant is strong and sturdy, of medium height with rich healthy foliage that reaches to the ground making the variety a most desirable landscape sort. The blooms are fine in form and of a shade of pink that is very pleasing. Late mid-season. Very fragrant. *Elwood Pleas* took first at the Cleveland National Show for best six blooms of deep pink. **A Brand Division \$1.00.**

Enchantresse (Lemoine). 8.9. White. Here is another great show variety. The bloom is creamy white with crimson tracings. It is a very large, compact, globular flower. The plant is tall, and a vigorous grower. Altogether, this is a charming variety. **A Brand Division \$2.50.**

Eugene Bigot (Dessert). 8.3. Red. The color of this peony is a deep purple amaranth. The flower is compact with large petals. It is a free bloomer. It is a very late variety, and if you wish to extend your blooming season, you should select this variety for your collection. **A Brand Division \$1.00.**

Eugene Verdier (Calot). 8.3. Pink. We are sending out the genuine *Eugene Verdier*. There has been a good deal of mix-up in this variety, as *L'Indispensable* is often sold under this name. The outer guard petals are lilac white, but the total color effect is pale hydrangea pink. This is a great show flower. **A Brand Division \$2.00.**

Eugenie Verdier (Calot). 8.6. Pink. This is an ideal pink variety. It comes into bloom early mid-season and is semi-rose in type. It opens a fresh delicate hydrangea pink with primary petals lighter, and the center a flushed crimson. The fragrance is good and the variety is very desirable. **A Brand Division \$1.00.**

Eunice Shaylor (Shaylor). 8.9. Flesh Pink. This is a mid-season semi-double variety that is beautiful on matured plants. The outer guard petals are a light pink. The center petals are a flesh white with a circle of golden stamens arranged around the center tuft. A good show flower. **A Brand Division \$6.00.**

Exquisite (Kelway). 8.5. Pink. A large size flat flower of a bright, warm pink, long narrow pointed petals. On well established plants. It produces splendid flowers. Very fragrant. Mid-season to late. **A Brand Division \$3.00.**

Fanny Crosby (Brand). 7.7. Yellow. *Fanny Crosby* is an early yellow peony that is growing more and more in favor as it becomes better known. The plant is strong, thrifty, and very floriferous. The strong, straight stems hold the blooms erect and as the side buds are in bloom almost with the main flower it makes a very pretty landscape sort. Flowers are of medium size. A central globe of deep yellow incurved petals that some seasons are heavily tipped with white are surrounded by very prominent large light pink guard petals which gives the bloom a wonderful setting.

So far there are three good yellow peonies, *Primevere*, *Laura Dessert*, and *Fanny Crosby*. One year one of these may be the best, the next year it may be another, and still another year the third. They are all different in season of blooming so we need all three. **A Brand Division \$2.50.**

Fannie Lee (Vories). Red. A beautiful plant that produces a profusion of medium sized flowers of a beautiful shade of *American Beauty Red*. Like all the others of the *Vories* seedlings, this variety has a splendid strong robust growth and makes both a good show and a good landscape sort. **A Brand Division \$6.00.**

Faribault (Brand). 8.2. Pink. This variety was displayed as a seedling a few years ago in our own city. We took about seventy-five blooms in a large vase. When the citizens in the show room came in to see the flowers in the evening they greatly admired this large vase of flowers under artificial light. When they found it was a seedling and had not been named they suggested we name it *Faribault* in honor of the city. This is a splendid late variety coming into bloom with *Marie Lemoine*. The color is a deep rose with a silver sheen. The collar petals are a trifle lighter than the guards. The center petals are silver tipped. The total color effect of a number of blooms is that of blending shades of rose. The fragrance is mild. The stems are long and very strong. It is a free bloomer with large sized blossoms. *Faribault* is fast becoming known as a late deep pink cut flower sort. It is a very profuse bloomer and we find it a wonderful moneymaker as a cut flower. **A Brand Division \$1.00.**

Felix Crousse (Crousse). 8.4. Red. A deep rose-red flower of medium size. A very profuse bloomer. The flower consists of a central bomb of narrow incurved petals surrounded by broad prominent guard petals of the same color as the center. There is an entire absence of stamens. This variety is one of the greatest of all cut flower reds. *Felix Crousse* is also a wonderful show flower, there seldom being a show of any size in which it is not found among the winning reds. **A Brand Division \$1.00.**

Festiva Maxima (Meillez). 9.3. White. This is the most all around popular white peony. It is the oldest of our real good sorts. The flowers are large, the petals of the purest white are broad, rounding, and of wonderful substance. The blossom is true rose type with great broad guards surrounding an inner tightly built up mass of rich white petals almost as large. Bright carmine flakes on the edge of the central petals. This flower is admired by everyone who sees it and should be found in every collection. **A Brand Division \$1.00.**

Flowers Macbeth (Sass). 9.2. Pink. Very large cup-shaped flowers opening out flat. Color a soft blush pink at the center fading lighter towards the edges. Form very fine. This variety was first shown at the National Show in Des Moines, Iowa, and merits were such that it received a Certificate of Merit. An exceptional vase of 20 blooms of it was shown in the light pink class and here it was awarded first prize over many fine entries. A new sort of exceptional merit. **A Brand Division \$12.00.**

Frances Willard (Brand). 9.1. White. This variety is listed among the World's 26 Most Beautiful Peonies. It is a perfectly-formed flower. The petals are of varying sizes, forming a very large rounding flower, often having a raised cup-shaped center inclosing golden stamens. It opens an exquisite blush white, with an occasional carmine touch, changing on the lawn to pure white. Although delicate in appearance, it is of good substance and an excellent cut flower. Altogether, it is a wonderful combination of strength and delicacy. It is found among the winning classes in every show room. **A Brand Division \$2.50.**

Frances Shaylor (Shaylor). 8.6. Creamy White. This is a distinct variety. The guard petals are a pure white, very large and surround a symmetrical dome of narrow incurved petals of creamy white, in which are mingled partially transformed petals edged with gold. This gives the entire flower a yellowish cast and makes it a beautiful flower. Mid-season.
A Brand Division \$3.00.

Frankie Curtis (Vories). 9.3. White. This flower resembles very much Mons. Jules Elie. Where Mons. Jules Elie is a pink, this is an almost pure white. It is a large flower with a slight tracing of pink on the central petals.

The guards are large and very prominent and are surmounted by a great ball of narrow petals gathered together in perfect chrysanthemum like form. A very distinct peony.
A Brand Division \$15.00.

Galathee (Lemoine). 8.1. Pink. A large, full, double flower, rose type. Color fleshy white. Fragrance pronounced and pleasant. A tall, strong grower. One of the very good late ones.
A Brand Division \$2.50.

General Gorgas (Vanleeuwen 1924). Cup-shaped flowers. Large petals. Pure white. Some of the petals edged or flecked crimson. Strong, tall, straight stems. A very strong flowering sort.

Originator's Description. **A Brand Division \$6.00.**

Georgiana Shaylor (Shaylor). 8.9. Pink. This, we think is Mr. Shaylor's greatest flower. For years we have been of this opinion and have never changed our mind. If Mr. Shaylor had never produced another peony, his name would still have lived among peony lovers because of this one variety. When the time comes for Georgiana Shaylor to bloom I take an hour off and go down into the field where the three year olds of Georgiana are. There I stand spellbound before hundreds of great blooms of as beautiful a flower as was ever produced.

A Brand Division \$3.00.

Germaine Bigot (Dessert). 8.5. Pink. A clear rose type with lighter flesh colored tints in the center with many petals marked with large blotches and stripes of crimson. Plant medium dwarf, stems strong and erect. A remarkable show flower because of the shapeliness of the bloom and its remarkably brilliant markings. Mid-season.
A Brand Division \$1.50.

Gigantea (Calot). 8.2. Pink. A brilliant rose pink of almost a uniform color except for the edges of the guards and collar which are tipped with silvery white. A tall, early free bloomer that always attracts very much attention. A pleasant spicy fragrance. The stock of this variety is scarce.

A Brand Division \$1.00.

Ginette (Dessert). 8.6. Pink. Large, imbricated cup-shaped flower. Very soft flesh pink, shaded salmon. Frequently flecked carmine. Fragrant. Free bloomer in clusters.

A Brand Division \$2.00.

Grace Loomis (Saunders). 9.2. White. One of the very best and choicest of all white peonies. Tall, strong, light green stems hold erect large, pure rose shaped, cream tinted white blooms of the most perfect form. One of the very finest of show flowers, and a good flower in the field.
A Brand Division \$10.00.

Grace Ott (Gumm). 8.8. Red. A beautiful tall, erect, free, blooming, mid-season variety that produces flowers of beautiful form of the most brilliant dark crimson.

This we consider one of the coming reds and a flower that will pay taking note of.
A Brand Division \$8.00.

Grandiflora (Richardson). 8.8. Pink. A very large flower of true rose type. In form this is one of the most beautiful of all peonies. Seen from a distance, it immediately catches the eye because of the wonderful perfection of the flower. A rather flat bloom, very large with a very graceful and beautiful arrangement of the petals. A soft shell pink, shading to white with faint shadings of rose.

Grandiflora is a very late variety. We consider it the best of all the very late pinks. When one thinks that the peony season is finished he can still go out and cut fine blooms of this most beautiful variety.
A Brand Division \$1.00.

Gretchen (G. & K.). Soft flesh-pink. It opens as a flat flower and then develops into crown type. The guard petals are large and enclose a narrow collar of smaller petals which in turn surrounds a crown of broad petals.

A Brand Division \$4.00.

H. A. Hagen (Richardson). 8.2. Pink. Deep rose-pink with a few inconspicuous, narrow creamy petals; a fresh, bright color. Very late, but comes out well and one of the good peonies.

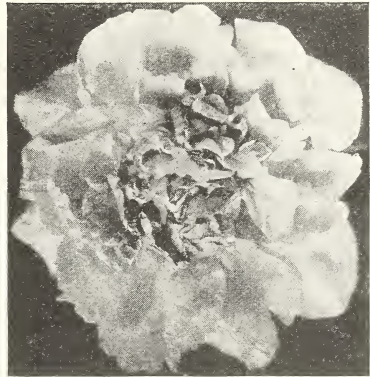
A Brand Division \$2.50.

Hasina Brand (A. M. Brand 1925). Pink. A flower of beautiful form and great size. The plant is very tall and strong, which enables it to hold its great blooms erect. The color is a glistening, flesh pink with a salmon reflex shading deeper towards the base of the petals, which gives it a very distinct color. As it fades, it resembles Solange in color and has often been mistaken in our show room for a perfectly formed specimen of this flower. But Solange sometimes fails to develop its flowers at all and often produces imperfect bloom, while Hasina Brand comes good every year. This is one of the very best of this list of seedlings.

A Brand Division \$50.00.

Hazel Kinney (A. M. Brand 1925). Delicate pink. I can still remember this beautiful flower as it appeared on the plant the first time it bloomed. The form of the flower was so superb and the color so pure that it impressed itself upon me as a flower of great promise. In this I have never been disappointed. Hazel Kinney makes a great show flower when displayed by the side of the very best. It is true rose type in form. The color is a delicate, clear hydrangea pink. The plant is of medium height and the foliage light green and clean. Late mid-season. A prolific bloomer.

A Brand Division \$50.00.



Helen Wolaver

Helen Wolaver (Brand). 7.9. Pink. We do not recommend this variety to those who are buying peonies for the first time. To those who have peonies, we heartily recommend Helen Wolaver. We know of no other peony that resembles it. This variety was on display in the "Hundred Class" at the Des Moines Show that won the gold medal. The exhibitor told us at the time it was really a \$50.00 peony if it came good every year. If you have a collection you cannot afford to do without Helen Wolaver. It resembles a rose much more than a peony. The flower is very late, and does not come to perfection until the plant is about four years old, when the results are wonderful. The flowers are of medium size and rose type. The guard petals are prominent, stiff, and of a sea shell pink more or less splashed with a deeper pink. The outer petals are drawn away leaving a compact rosebud shaped mass of petals in the center. It is rose scented.
A Brand Division \$1.00.

Henry Avery (Brand). 8.8. Light pink. With a stock of sufficient size to permit of a satisfactory judging of the merits of this variety, we have come to the conclusion that in Henry Avery, we have one of the very choicest of peonies. The plant is of medium height and mid-season in period of blooming. Flowers large to very large. General color effect, pinkish creamy white. Guard petals are large and prominent, enclosing a great ball of large rose-type petals of the same even color as the guards. Between the guards and the central petals is a very distinct collar running from an inch to an inch and a half in width, of deep bright yellow petals. This collar gives the flower a very striking appearance, as the petals are a real deep yellow. Fragrance, delicate and very pronounced. If you are looking for something very refined in beauty, you will not be disappointed in Henry Avery. In writing up the Boston Show of 1924 for Peony Bulletin No. 22, Prof. Saunders says of this variety: "In several places in the hall, there were impressive blooms of Henry Avery, which struck me as one of the best Brand varieties I had ever seen on the exhibition table."

A Brand Division \$3.50.

Henry M. Vories (Vories). Pink. A large, flat flower, of true rose type. The petals are long, broad, and of great substance. A beautiful light salmon pink, with darker shadings of pink at the base of the petals. A tall growing variety with strong stiff stems. Very late.

This variety was shown at the Peoria National Show in 1926, where the wonderful condition in which the variety was shown and the beauty of the flowers themselves called forth much favorable comment. **A Brand Division \$10.00.**

H. F. Reddick (Brand). 7.7. Red. This is one of our best dark reds. It is of medium height, and mid-season. The flowers are large, semi-rose, and brilliant with gold stamens showing among the petals. Its fine habit of growth, its beautiful blossoms, and its profuse blooming habit, make it a variety which every collector should have. This variety and Ben Franklin will produce the most cut flowers of any reds we know of. At the Peony and Iris growers' convention held in Chicago in the fall of 1926, several prominent growers stated that they considered H. F. Reddick one of the very finest of all red peonies.

A Brand Division \$1.00.

James Boyd (ThurLOW 1919). 8.9. Flesh, changing to nearly white, tinted at base of petals with yellowish salmon. Guard petals notched at tips, giving a fringed effect. Very fragrant. Late.

A Brand Division \$7.00.

James Kelway (Kelway). 8.7. White. This variety received a rating of 8.7 when the last symposium was taken, after 49 people had voted. This fact, alone, places it among the good varieties. The flower is very large, loose and semi-rose in type. It opens a rose white changing to milk white with base of the petals tinged yellow. The fragrance is strong and pleasing. When James Kelway comes good it is one of the most outstanding flowers in the entire list. At the Philadelphia National Show held in 1925 a great vase of James Kelway was the sensation of the show.

A Brand Division \$1.00.

James R. Mann (ThurLOW 1920). 8.7. Pink. Large, deep, rosy pink, with one or two crimson streaks in the center of the flower and an occasional marking on back of guard petals. Central petals incurved, giving a very graceful effect. Mid-season.

A Brand Division \$10.00.

Jeannot (Dessert). Pink. 9.2. This flower, one of Dessert's last productions, is of unusually high quality. In the first symposium it received a rating of 8.9 with nine votes while four years later when peony lovers had become better acquainted with it, its rating based on eighteen votes rose to 9.2. This speaks very highly of the variety. A large, high built, round flower of rose type with a cupped center. Color a delicate lavender pink, with salmon pink shadings at the base of the petals. Several years ago while making a tour of Eastern Peony Gardens, the writer first saw Jeannot. It was on three year plants. Although I saw no name I was very much impressed with this flower as it was unquestionably a very choice variety. I inquired the name and found that it was Jeannot. Absolutely first class.

A Brand Division \$6.00.

Jubilee (Pleas). 8.9. White. This variety produces very large, flat, ivory-white flowers. The petals are long and narrow, loosely arranged. The feathery effect produced is very attractive. Everyone who is familiar with peonies knows that Jubilee is a fine flower. Its only defect is a weak stem, but one can well afford to furnish support to so beautiful a flower.

A Brand Division \$2.00.

Judge Berry (Brand). 8.6. Pink. This immense, delicate pink flower is the very best of its season. It comes so early that it is seldom seen on exhibition. However, at the Des Moines show it appeared in five of the winning collections. The bud is pink, and as the petals open farther and farther, it becomes a flat pink disc, of surpassing beauty. It is often seven or eight inches in diameter. The petals are narrow, long and fringed, with some stamens intermingled. The flower has a pleasing fragrance. Coming at the very beginning of the peony season, when most varieties are of small or medium size, this immense flower has a peculiar distinction, and will be wanted by every peony buyer who wishes a really good early pink. The demand for this variety is so great that we never have a large stock on hand.

A Brand Division \$4.00.



Judge Berry

June Day (Franklin). 9.0. Pink. Mr. A. B. Franklin of Minneapolis, Minnesota, has produced some very choice peonies, peonies as good in quality as the best. We have been watching Mr. Franklin's peonies for some years and have been adding the different varieties to our collection as we became acquainted with them. Of these peonies, we think June Day one of the very best. It is a flower of striking beauty, rose type, light flesh in color with lavender shadings on the edge of the central petals. Pleasing fragrance. An upright grower with dark green foliage. We like it very much. Mid-season. **A Brand Division \$5.00.**

Karl Rosefield (Rosefield). 8.8. Red. This is a brilliant and striking variety. It comes into bloom early mid-season. The flowers are very large, semi-rose type, and slightly fragrant. Karl Rosefield and Richard Carvel are our two best sellers among the reds. Both varieties are very desirable for cut flower purposes.

A Brand Division \$1.50.

Katharine Havemeyer (ThurLOW). 9.0. Originator's description: "Large, rose-type, flesh pink in color; guard petals broad and rounded, somewhat notched at the ends. Center petals narrow and fringed. Full, high center. Sweet fragrance. Mid-season to late. Honorable Mention, American Peony Society, London, Ontario, 1922." The ThurLOWS have put out several very fine peonies and we think Katharine Havemeyer one of the finest of these. In our show room last season we had many blooms from two year plants that showed up wonderfully well. We consider it an extraordinary variety.

A Brand Division \$12.00.

Kelway's Glorious (Kelway). 9.8. White. Although not as symmetrical a flower as Le Cygne, we believe this wonderful variety is in every respect as good and that it is entitled to just as high a rating. At the St. Paul show in 1926 Kelway's Glorious was shown in perfection and such flowers we never saw before.

The flowers are of the largest size, the petals very long and so constructed that the entire bloom seems a great downy ball of the most exquisitely delicate snow white lace. Probably no peony embodies great size with perfection of beauty to a greater extent than does this variety.

A Brand Division \$8.00.

Kelway's Queen (Kelway). 8.8. Pink. There has been a great deal of trouble about Kelway's Queen. The stocks of it have been badly mixed up and several spurious sorts have been sent out under the name. But there is never any mistake as to its genuineness after one once sees it. It is a distinct peony, both in the flower itself and also in the appearance of the plant. We have the true variety and guarantee our stock of it to be absolutely true. It is rose type. A large compact flower of uniform mauve, with center flecked crimson. A tall, strong grower, very profuse bloomer. Late mid-season. One of Kelway's very best. A very distinct color in peonies, a great show flower.

A Brand Division \$8.00.

Koenig's Winter (G. and K. 1912). Pink. Perfectly formed bloom of very highest quality. Large, full, and compact. Soft lilac with light silvery shadings. Tall, strong stems.

A Brand Division \$3.00.

Lady Alexandra Duff (Kelway). 9.1. Pink. One of the largest and most beautiful of all peonies. An immense, loosely built flower with great broad rounded petals so exquisitely arranged as to make a flower of most ravishing beauty. In color it is a lovely French White. This flower looks white but when closely scrutinized it shows the white tinted with the most delicate pink imaginable. When not disbudbed, the central flower is loosely double of a rather flattened, circular form, with the central petals touched with carmine. It is a beautifully formed flower and sweet scented. The plants are exceedingly free flowering and very showy. The side flowers, which open after the central flower, come semi-double saucer shaped and show stamens. Taken all in all this is positively one of the most beautiful of all peonies, and should we be asked to name the twelve most beautiful peonies Lady Alexandra Duff would be one of the twelve.

A Brand Division \$2.00.

Lady Kate (Vories). Not rated yet. Pink. A large, flat, rose type flower of most perfect form. In color it is a uniform light mauve that is very beautiful. The plant is very tall with strong stiff stems that carry the great flowers well and make of it a wonderful landscape sort. This is the latest of the Vories varieties. It was won two first prizes at the Philadelphia show, where it was first shown.

A Brand Division \$10.00.

LaFayette (Dessert). 7.8. Pink. Rose type, mid-season. The flowers are large, last well, and the petals are beautifully fringed; the color—a lovely shade of salmon-pink with touches of heliotrope and a delicate tinting of cerise in the reflex, giving it a striking and beautiful effect. It is one of Dessert's late productions. Very attractive. We often wonder why there is not a greater call for this very desirable peony. Its color is really different from that of any other peony as it has so much of the salmon in it. When the year comes that it is really good, it is a wonder.

A Brand Division \$1.00.

La Fee (Lemoine). 9.2. Pink. A scarce variety which is seldom seen in any garden. Plants tall with but few stalks to the plant. Long narrow sharply pointed foliage. Flowers of the very largest, loosely built with long narrow petals sharply notched at the edges. Guards mauve-rose. Collar creamy white. A beautiful mottling of different shades of pink. One of the most striking of all peonies both in the field and in the show room. It is hard to find healthy stock of this variety but starting with two small plants several years ago and being careful of our stock, we have worked up a small stock of very choice plants perfectly clean which we offer this fall.

A Brand Division \$7.00.

La France (Lemoine). 9.0. Pink. A flower that gives wonderful results in our soil and climate. Blooms very large of true rose type. Color a true uniform apple blossom pink, with crimson splashes on the guards. Plant robust with tall strong stems which support well the enormous blooms. In the years when La France is at its best, no flower in the pinks outranks it in the shows. We consider it one of the ten greatest of all peonies.

A Brand Division \$4.00.

Lake O' Silver (Franklin). Pink. This is a light pink silver-tipped variety, with golden anthers prominently showing throughout the flower. The bloom is very large, often seven to eight inches in diameter on established plants. It is an extremely free bloomer. Very desirable. A variety of remarkable landscape value.

A Brand Division \$3.00.

La Lorraine (Lemoine). 8.6. Pink. La Lorraine is a large flower nicely rounded in form with great broad petals beautifully arranged. The color is a soft even shade of creamy pink. We think this is a flower that is not really appreciated. In our opinion it is one of the choicest of all peonies and we believe it should rate well above nine. This was the judgment formed by us when we first saw the flower and we have never had reason to change our opinion since. We have seen blooms of La Lorraine so beautiful that when shown together with magnificent blooms of Le Cygne, Therese, Kelway's Glorious and Mme. Jules Dessert they showed up just as well as these wonderful sorts. In fact, we think La Lorraine as good a flower as any of these.

A Brand Division \$5.00.

La Perle (Crousse). 8.5. Pink. If we were selecting 25 peonies for our own planting, we could not do without La Perle. When the flower first opens, it is a beautiful soft shade of pink which gradually fades to almost a pure white. Remarkably beautiful both in the opening bud and in the full open bloom. The writer will never forget great vases of La Perle which graced the show room of the National Show at Cleveland. It seemed the most beautiful flower in the entire show.

A Brand Division \$1.00.

La Rostere (Crousse). 8.3. White. This is a striking variety. The flowers are large and produced in clusters. They are straw-yellow at the center shading to a creamy white border. The fragrance is pleasing. The flower is loose, showing yellow stamens, a band of which light up and give a yellowish cast to the entire flowers.

A Brand Division \$1.00.

Laura Dessert (Dessert). 8.8. Yellow. This peony, Premeve, and Fanny Crosby are the three finest yellow peonies grown. The flower is round, of rose type. Guard petals creamy white enclosing a dome like center of pure canary yellow. Like Fanny Crosby, the plant is an upright grower and holds its blossoms erect, giving it good landscape value. Like all yellows, it must be developed inside away from the sun to preserve its color.

A Brand Division \$6.00.

Laura Vories (Vories). Not rated yet. Pink. This is another of the new Vories seedlings and like all the rest of these famous new peonies the plant is strong and robust. The flowers are large, delicate flesh-white in color, shading to a deeper pink in the center, with a few central petals edged crimson. A beautifully formed peony.

A Brand Division \$10.00.

Laverne Christman (A. M. Brand 1925). This flower resembles Therese very much in color, form, and general make-up of the flower. It is a large flower of rose type, loosely formed, with long, broad, petals. In color it is a deep, rose pink, shading lighter towards the ends of the petals. The plant is tall and vigorous. It received an Award of Merit of the American Peony Society, St. Paul, 1923.

A Brand Division \$50.00.

Le Cygne (Lemoine). 9.9. White. Le Cygne is a flower of the true rose type and perfect in form. It is a large creamy white with no tracings of color. Its stems are strong, of medium height and each one produces a perfect bloom. The flowers are delightfully fragrant. Le Cygne is the highest rated peony and it surely deserves the rating accorded it. It comes into bloom early mid-season.

A Brand Division \$8.00.

Libellule (Dessert). "Not rated yet. Pink. Very excellent flower, flesh color, slightly shaded and splashed carmine, straw and salmon at base; very pleasant fragrance." (Introducer's description).

A Brand Division \$5.00.

Lillian Gumm (Gumm). Pink. A new flower of very outstanding qualities. A flower is indeed good when it is repeatedly singled out from hundreds of varieties in the field. We recently had about twenty plants of Lillian Gumm growing in a field of about two acres which contained many different varieties of the best sorts. When this variety came into bloom there was something so attractive and distinct about its color that it was always singled out as one of the most beautiful peonies in the entire field.

Lillian Gumm is a very large flower, globular in form, rose type, with great broad petals, and a cupped center. The color is a uniform apple blossom pink with more brilliant shadings at the base of the petals. We believe this to be one of the truly coming flowers.

A Brand Division \$5.00.

Livingstone (Crousse). 8.1. Pink. This is a deep pink that comes into bloom just before Grandiflora. The blossoms are very large, compact, and of perfect rose type. The center petals are flecked with carmine. It does not have the fragrance of Grandiflora, but is an extra good peony. Livingstone is one of the most satisfactory of the late pink peonies. It is a remarkably beautiful variety that seems to come good every year which is a very desirable quality.

A Brand Division \$1.00.

Longfellow (Brand). 9.0. Red. We believe that practically everyone considers that, in color, Longfellow is the best of all red peonies. At the Des Moines show, it appeared in seven of the winning collections. In the class calling for twenty red blooms of one variety, we were first with Longfellow. At the Minneapolis show held a few days later, this variety again won first in the same class. It is as striking in the field as in the show room, since it neither fades nor turns dark as do most reds.

A Brand Division \$2.50.

Lora Dexheimer (Brand). 8.4. Red. The splendid habit and bright color of this plant have marked it, with us, as of exceptional merit, since we first selected it from the seed bed in 1904. Each succeeding year has added to our good opinion of it. The color of this variety is an intense flaming crimson. It comes into bloom early mid-season. This is a variety that ranks with Longfellow. Reports come to us from all parts of the country regarding the wonderful qualities of Lora Dexheimer.

A Brand Division \$1.50.

A PEONY, ONCE PLANTED, LASTS A LIFE TIME. WHY NOT PLANT THE BEST?

Lorch (Goose & Koenemann). 8.7. White. The outer petals are very large, pure snow-white incurving over a pale lemon and cream center, with pale crimson tracings on edge of center petals. The habit of the plant is good, the large flowers are nicely placed and held well up. The blooms are not only of splendid color but are also of most beautiful form. This is one of the very best of the Goose and Koenemann varieties and is truly a most beautiful peony. Not a rapid multiplier although seemingly a good plant so we seldom have any of the stock for sale. **A Brand Division \$5.00.**

Lord Kitchner (Renault). 7.6. Red. Bomb type. A very early bright red, guard petals prominent, enclosing a medium sized loosely arranged bomb of the same color. Valuable because early. **A Brand Division \$1.00.**

Loveliness (Hollis). 8.8. Pink. This variety bears very large, flat, hydrangea pink flowers that develop blooms of wonderful beauty. It is Hollis' best peony. The plants are tall and heavily foliaged, with stems strong enough to hold the immense blooms erect. The flowers which are a uniform shade of pink, make wonderful show flowers. During the season of 1927, Loveliness was one of the very best flowers that we had. It showed up well wherever it was located in our fields. We wonder that so beautiful a flower is so seldom seen in gardens. **A Brand Division \$2.00.**

Luetta Pfeiffer (Brand 1916). 8.7. Pink. Luetta Pfeiffer is a very large semi-double, pinkish white. The foliage is large and clean, the stems are long and stout, and the blooms, which are of the very largest size, are produced in great profusion. The petals are long, broad, of great substance, a pure hydrangea pink interspread with just enough golden stamens to make the flower fascinating and very beautiful. In season it is early. **A Brand Division \$4.00.**

Luella Shaylor (Shaylor). White. Mid-season. This is another very fine Shaylor variety that carries so much yellow in the white as to give the entire flower a distinct yellow cast. A wonderfully rich appearing flower. **A Brand Division \$8.00.**

Mabel L. Franklin (Franklin). 9.0. Pink. The outer petals are a light pink with the extreme center petals a darker pink. Near the crown of the flower there are intermingled short, creamy petals that add greatly to its beauty. A light margining of lavender is to be found on the inner petals. Delightfully fragrant. We consider this one of the four best of all of Mr. Franklin's fine new seedlings. It is a large, beautiful brilliant pink with wonderful show flower possibilities. A real acquisition to a growing list of good peonies. **A Brand Division \$5.00.**

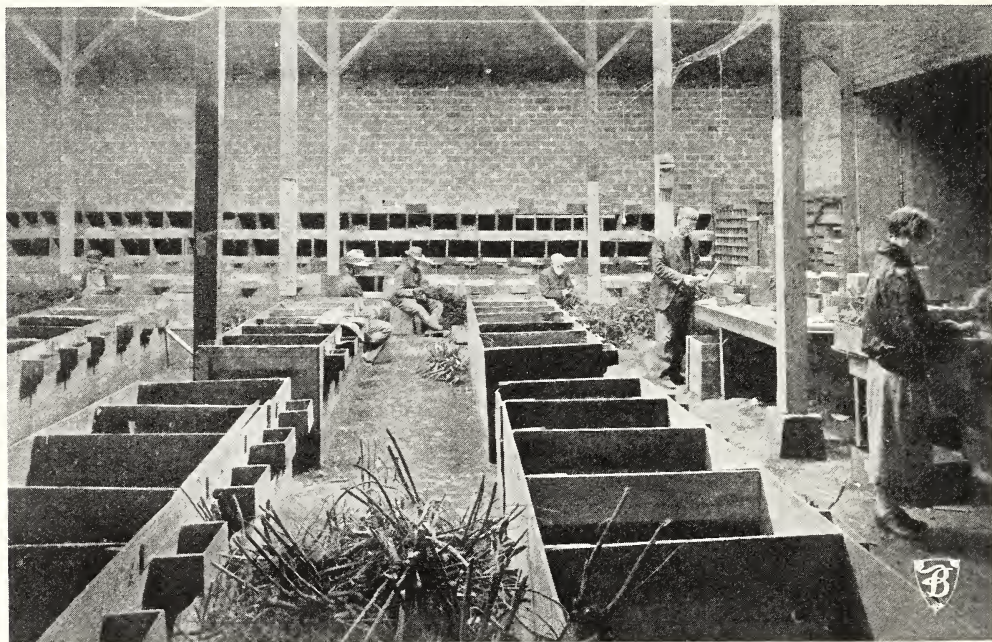
Madelon (Dessert 1922). Pink. A beautiful silvery pink among the latest of Dessert's originations. Petals imbricated and slightly touched with carmine. A splendid late variety. **A Brand Division \$10.00.**

Marie Lemoine (Calot). 8.5. White. This variety has the most pleasing and pronounced fragrance of any peony. It is a sulphur-white, occasionally showing a carmine tip. It is one of the most beautiful of all peonies. It is very late, and for this reason it should be in every collection. It lies between Eugenie Verdier and Marie Lemoine as to which is Calot's masterpiece. This variety usually has a poor-looking root. When we are filling our orders, we always have a feeling that it will not please our customers; but when this variety comes to bloom, it will give complete satisfaction, and you will forget that the root did not look quite up to standard when you planted it. **A Brand Division \$1.00.**

Marguerite Gerard (Crousse). 8.4. Pink. This variety is one of the most admired of Crousse's productions. It produces a large, flat-shaped flower with broad petals. The color is a delicate hydrangea pink which changes, as the flower ages, to a creamy white. Many of the central petals, and sometimes the guards have minute dark charming flecks on the tips. This flower creates a wonderful effect in the field or garden. It is essentially a garden flower as it shows up best on the plant. Its color is very pleasing in itself but this combined with the wonderful attractiveness of its form makes of it an outstanding variety as it opens on the plant in your garden. **A Brand Division \$1.00.**

Marguerite Gaudichau (Millet). 8.1. Pink. A late tall growing beautiful light pink. Petals incurved are interspersed with yellow stamens. Petals are jagged giving a carnation-like appearance. Withal a very delicate and beautiful peony. **A Brand Division \$1.00.**

Marie Crousse (Crousse). 8.9. Pink. This is a very attractive flower. The blooms are of a very delicate shell pink bordering on salmon. The stems are stiff and upright. The flower is fragrant and comes into bloom mid-season to late. A splendid variety that is distinct in color from any other pink you might have in your garden. Marie Crousse is a most desirable sort for distant effect. It is such a clear pure self color that it easily catches the eye, even when blooming in the midst of a hundred different pinks. **A Brand Division \$2.00.**



A Portion of Our Retail Peony Room

Marie Jacquin (Verdier). 8.3. White. A flower with the purest white guards; then a collar of yellow stamens which surround a row of shorter pure white petals, which in turn enclose a tuft of yellow stamens, giving the flower a pronounced water-lily effect. This is one of the most dainty peonies in the entire list. Its stems are erect and a clean light green as is also the foliage. The flowers are held perfectly erect. The flower is semi-double and on young plants if often comes a beautiful single.

A Brand Division \$1.50.

Martha Bulloch (Brand). 9.1. Pink. Very tall, very large, late. Martha Bulloch is one of the greatest of all peonies. We must judge peonies not alone by individual taste but by performance over a long period of time. The great peonies receive the awards at the large shows. The Northwest Peony Show is staged alternate years in St. Paul and Minneapolis. Outside of the National Show it is the largest Peony Show in America taken one year after another. Here one sees peonies in all varieties staged in number one shape and condition by expert showmen. The class that brings out the best flowers in this show is the class that calls for a display of ten vases one each of ten varieties, three blooms to a vase. Into this class go the ten best vases of each exhibitor. Martha Bulloch is almost invariably in the exhibit that wins first.

Bright old-rose pink, with center of lighter rose and pink. Rose like fragrance, tall straight stems and blooms immense in size. The most beautiful peony of its size.

A Brand Division \$8.00.

Mary Brand (Brand). 8.7. No red peony ever attained such favor so quickly as has Mary Brand. This variety is always found among the winning reds in every show room. It comes into bloom with Frances Willard. Its color is so distinct that it is easily recognized by amateurs, no matter how many times they pass it in our fields. A rose type peony showing stamens. It is a red in which there is little trace of purple. One of the most satisfactory reds as a cut flower as it will last a week and hold right up stiff, if cut in the bud. This is such an outstanding red that we placed it in our collection No. 1.

A Brand Division \$2.00.

Mary B. Vories (Vories). White. A large rose type flower showing a few stamens. Opens out a large round cup shaped flower, flat on the top. A pure white flower with just an occasional faint tracing of carmine. Late. Very strong stems.

A Brand Division \$8.00.

Mary P. King (Franklin). 8.7. Pink. This is one of the good new varieties sent out in recent years. We first noticed it in the show room of the Northwestern Show three years ago and have had it under constant study since. We can recommend it as very desirable.

Large, semi-double, crown-type. Uniform light rose pink, shaded deeper at the center and with crimson markings. Fine.

A Brand Division \$3.00.

Mary Woodbury Shaylor (Shaylor). 9.0. Pink. A very large flower of the most refined beauty, borne erect on very strong dwarfish stems. The outer petals are a delicate light shell pink with central petals a yellowish creamy white tinted salmon. Very fragrant and a most beautiful sort. Mid-season.

A Brand Division \$5.00.

Midnight (Brand). 7.3. Dark red. This peony is often called the "BLACK PEONY." It is almost as dark as Mons. Martin Cahuzac, which is considered the darkest red. It is medium early and comes into bloom before Longfellow. The flowers are large, and are borne on long stiff stems. If you wish a very dark red peony, you should order this variety.

A Brand Division \$1.00.

Milton Hill (Richardson). 9.0. Pink. This is a very beautiful flower of a delicate shade of salmon pink, resembling Walter Faxon. When this variety is shown in first class form it is impossible to beat it in the show room in its color. This variety received a rating of 9.0 with sixty-three people voting. We are never able to supply the demand for roots. If you wish to include Milton Hill in your order, you should reserve your stock of this variety.

A Brand Division \$2.50.

Minnie Shaylor (Shaylor). 8.9. Pink. Semi-double, large, mid-season. A rather openly built flower, consisting of several rows of fluffy, crepe like petals of clear, light pink, serrated at the tips of the central petals. Stamens very prominent, carpels green with pink base. A beautiful flower that will rank among the very best.

A Brand Division \$15.00.

Miss Salway (Kelway). 7.8. Pink. The true Miss Salway is one of the most refined and beautiful peonies we have and it is unfortunate that its low rating of 7.8 was given it when many had the old variety Solfatarre which they had bought for Miss

Salway. The true variety is a crown type flower, with guards and center a delicate flesh pink with a creamy white collar of irregularly notched smaller petals. Sweetest of fragrance and in every way a most desirable flower.

A Brand Division \$5.00.

Miss Leonie Calot (Calot). 8.1. Pink. Typical rose type. Very delicate, rose-white, center of deeper shading, slight carmine tips. Fine form, medium height, rather spreading habit. Late mid-season. This is a great favorite with many admirers. The late Henry S. Cooper of Kenosha, Wisconsin, who had in his large collection only what he thought the very best in peonies, thought most highly of this beautiful variety which he listed under the name of Mons. Chas. Leveique. The writer has always thought it one of the most beautiful of peonies. It is not so large a flower as many but for real beauty there are none prettier.

A Brand Division \$1.00.

Mme. Auguste Dessert (Dessert 1899). 8.6. Rose. Very large flower, semi-rose type. Uniform violet rose, petals slightly flecked crimson. Erect, medium height, free bloomer. Early mid-season.

A Brand Division \$2.00.

Mme. de Verneville (Crousse). 7.9. White. We feel that this variety has altogether too low a rating. The flower is large, very full, and bomb type. The guard petals are sulphur white, but the center petals are rose white with carmine touches. The flower is of good substance. The stems are long and strong. It is an ideal cut flower. The fragrance is pleasing. It comes into bloom after Festiva Maxima, and we feel that it is superior in beauty. This variety is listed in our Collection 4 as it makes a perfect combination for the other two listed.

A Brand Division \$1.00.

Mme. Edouard Doriat (Dessert-Doriat). 8.6. White. A loosely globular flower of large size with beautiful rounded petals, lightly tipped and penciled crimson on the edges. The outer petals reflex about a cupped center, with stamens visible among the petals. We have watched this variety now for five years and we believe it one of the very best flowers that have come to us from Europe in late years.

A Brand Division \$10.00.

Mme. Emile Galle (Crousse). 8.5. Pink. The blooms of this variety are large, compact, and flat rose type. The color is a delicate sea shell pink with touches of helio'rope and lavender. The plant is medium tall, strong, and a free bloomer. This variety is extra fine in the bud. It comes into bloom with the very late ones of which it is one of the best. If this were a new variety, it would easily command a price of \$50.00, as it possesses all around good qualities and is of such exquisite beauty. This variety is often mistaken for Tourangelle.

A Brand Division \$1.00.

Mme. Emile Lemoine (Lemoine). 8.9. White. A rare and beautiful peony. A strong grower and free bloomer. Flowers very large and uniform in shape and size. The plant is rather tall with strong erect stems. The blooms are true rose type with some stamens intermingled. The bloom is very perfect in form, with large rounded rose like petals of a tender glossy white overlaid with a sheen of delicate satiny pink, covered with minute dots of deeper pink. Petals of great substance. A wonderful peony. You will find this remarkable peony in our Collection No. 1.

A Brand Division \$1.50.

Mme. Gaudichau (Millet). 8.8. Red. This variety is a strictly first class red. The color is a very dark crimson, and resembles M. Martin Cahuzac. The flowers are large, loose, and stand the sun remarkably well. It comes into bloom late mid-season. Although this variety resembles Mons Martin Cahuzac in color, it is a much prettier plant. The stems are red and the foliage of the plant both in the spring and again in the fall is of a dark reddish color.

A Brand Division \$3.50.

Mme. Jules Dessert (Dessert). 9.4. Pink. This is one of the finest of all peonies. The flowers are very large, well-formed, with long, broad petals. The blooms are held rigidly erect on good straight stems of medium height. The color is a creamy white, but lighted with buff and salmon shades. A few golden stamens also show to add beauty to an already beautiful flower. We have always found this variety hard to divide. Anyone who receives a root with two large eyes and plenty of root system, should be pleased. Mme. Jules Dessert is always among the main prize winners at the great shows.

A Brand Division \$2.50.

Mme. Manchet (Dessert). 8.5. Pink. Large, imbricated, very full flower. Silver lilac, shaded purplish pink at the base of petals. Very late. There is always a demand for the good deep pinks. Mme. Manchet is one of the best. It makes a wonderful showing in mass planting as its color is very striking and its production of bloom very great.

A Brand Division \$2.00.



A field of two year Mons. Jules Elie—Brand Peony Farms, Inc.

Monsieur Dupont (Calot). 8.3. This is one of the old standard peonies that can always be recommended. The flower is a glistening ivory white, with center petals bordered with carmine. Golden stamens are mingled with the petals throughout the flower. It is deliciously fragrant. It is wonderfully prolific, and an annual bloomer. It comes into bloom just before Couronne d'Or. It is one of the very best white peonies.

The plant is very tall. The flowers large, and almost perfectly round open out cup shaped and give a very desirable landscape effect.

A Brand Division \$1.00.

Mons. Jules Elie (Crousse). 9.3. Pink. One of the largest and most beautiful of peonies. In fact it is the largest of the Globe type varieties. An immense self colored flesh pink shading just a trifle deeper towards the base of the petals. Great prominent broad guard petals enclose an immense ball of incurved narrower petals of the same color, all covered with an intense silvery sheen. In our opinion one of the best of all the globe type peonies. This variety resembles a great Chrysanthemum. A long keeper as a cut flower. On the Chicago market it is the greatest early pink cut flower sort.

A Brand Division \$1.50.

Mons. Martin Cahuzac (Dessert). 8.8. This variety is a shade darker than Midnight or Prince of Darkness. If you wish the darkest red peony grown, this is the one to order. Flowers medium to large in size, rose type with stamens. Color a deep maroon red. One of the most sought after of all peonies.

A Brand Division \$2.50.

Mont. Blanc (Lemoine). 8.4. The stocks of this variety have become very badly mixed up in trade and many do not have the true variety. We have gone to considerable expense to true our stock up so that we know we have nothing but the genuine. Milk white with center slightly tinted rose. A large, very compact globular flower borne on stiff medium height stems. Very fine.

A Brand Division \$2.00.

Mr. L. Van Leewen (Nieuwenhuzgan). Red. Outer petals very large and cupped, center petals forming a beautiful rose bed center. A very tall robust grower and most profuse bloomer. Flowers very large and of the color of the Red Radiance Rose. This flower took first at the Ft. Wayne National Show as best vase of twenty red in the show. Very striking.

A Brand Division \$7.00.

Mrs. A. G. Ruggles (Brand). 8.3. Pink. This flower resembles Therese. When we have had the two varieties growing in the same row and in bloom at the same time, critical visitors have taken all the plants for Therese. Mrs. A. G. Ruggles should be disbudded in order to give the best blooms. Occasionally there is a year when Mrs. A. G. Ruggles is disappointing and then there are years when it is simply wonderful. In 1926 it was the finest flower we had in our entire fields.

A Brand Division \$2.50.

Mrs. A. M. Brand (A. M. Brand 1925). Pure white. This flower first attracted our attention as a two year old because of the remarkable, uniformly large pure white blooms which it bore and the clean, thrifty light green stalks and luxuriant foliage it produced. Blooms were out in the bud and taken inside to be developed and it showed up in remarkable form. The flower opens out a pure, glistening white of pure rose type, a large flat flower with prominent guards and petals of wonderful substance. This variety received the Gold Medal of the American Peony Society, St. Paul, 1923. This is a very late variety.

A Brand Division \$50.00.

Mrs. Charles Gilbert (Shaylor). Pink. The large, loose flower of this variety is the exact color of Therese, but later in season of blooming of that great variety. A flower of remarkable delicacy of coloring and at the same time beautiful form.

A Brand Division \$5.00.

Mrs. C. S. Minot (Minot). 9.2. Pink. A very large flower, late. Guard petals large, flesh pink with coppery tints on outer surface; center incurved flesh white darkening to cream pink, with a few golden stamens showing and at times an occasional purple blotch. Semi-dwarf, strong stiff stems. An unusually good flower. We class it as one of the very best.

A Brand Division \$20.00.

Mrs. Deane Funk (A. M. Brand). Not rated. Pink. A large flower of a peculiarly beautiful formation. The broad guards and half of the petals turn outward, gracefully downward, and then up. Then comes a distinct band of golden

stamens such as you find in Phyllis Kelway. The stamens light up the entire flower and these in turn inclose a rose bud cup-shaped center of large incurving petals. The color is really a Walter Faxon pink. It is magnificent in the show room, holds up well as a cut flower, and it is also a beautiful flower in the field. We consider this one of the five or six best seedlings we have ever produced.

A Brand Division \$50.00.

Mrs. F. A. Goodrich (A. M. Brand 1925). Pink. Our estimation of this peony is constantly rising. It is a large, deep pink flower with great broad petals of splendid substance, arranged in the most perfect form in true rose type. Mr. Goodrich selected this flower in our fields to be named for his wife. It received an Award of Merit, London, Ontario, 1922. Its season of bloom is very late and fragrant.

A Brand Division \$50.00.

Mrs. Frank Beach (A. M. Brand 1925). Ivory White. A very large, flat, perfect rose type flower with long, narrow, lacinated petals with the same lacy effect seen in the great variety Jubilee. The blooms are as large as those of Jubilee, but are borne finely erect on rather dwarfish plants with very strong stems. We consider Jubilee one of the finest of peonies, but it is handicapped by a weak stem. Mrs. Frank Beach is a glorified Jubilee. It opens a deep cream and fades but little even when developed in the field. This variety, like Le Cygne develops a flower true to type even on a yearling plant. It blooms profusely as a two year old. It received an Award of Merit, American Peony Society, London, Ontario, 1922. Late mid-season, sweetly fragrant.

A Brand Division \$50.00.

Mrs. Harriet Gentry (A. M. Brand 1925). White. One of the most refined flowers in this entire list. Another white of most perfect rose type. The petals, very large and of the purest glistening white, are arranged in wonderful perfection. Anyone who has ever seen a perfect specimen of that wonderful flower, Mirlille has a fair idea of what Mrs. Harriet Gentry is. It invariably blooms well with flowers of the utmost beauty, while Mirlille gives perfect bloom so seldom that we do not recommend it.

A Brand Division \$50.00.

Mrs. John M. Kleitsch (A. M. Brand 1925). Pink. This is the flower that claimed everyone's attention the third day of the St. Paul-Minneapolis National show. The variety is very late and the buds taken to this show were cut and taken with us in the car the evening we drove up to St. Paul. The first day they just started to open, the second day they were about half out, but on the third day they were in full bloom and at that time the most marvelous vase of peonies in the whole vast room. The color is a violet rose with a distinct lavender cast. The petals are long, broad, pointed, and of great substance. The form of the flower is most pleasing and perfect. It is a wonderful flower of true rose type. Very late, fragrant. This variety took first as the best flower in the entire show at the 1928 Northwest and Peony Iris show.

A Brand Division \$50.00.

Mrs. Romaine B. Ware (A. M. Brand 1925). Pink. This is one of the most delicately beautiful peonies ever sent out. It was first selected from the seed bed because of the striking beauty of its form. It has a true rose bud effect in the center and the petals radiating from this in peculiar fashion give a pleasing and striking effect to the entire bloom. On my trip East this June on returning from the National show at Boston, I stopped overnight with my good friend Harry F. Little. Mrs. Romaine B. Ware was in full bloom. Of this wonderful flower Mr. Little said, "I think this one of the daintiest of all peonies in its perfect beauty." The flower is exquisitely delicate. It is medium size and of rose type. The plant is of medium height and a very profuse bloomer. Mid-season, fragrant.

A Brand Division \$50.00.

Moonbeam (Kelway). 7.5. White. A most beautiful variety, very distinct in form. Flat, saucer-shaped flower, with small tuft in the center. Color, soft pearl-white, slightly shaded rose.

A Brand Division \$2.00.

Myrtle Gentry. (A. M. Brand 1925). Pink. This variety produces a plant of splendid growth and clean appearance. It holds its beautiful great flower erect and well above the foliage. The beautifully formed flowers are of the largest size, of perfect rose form, with great broad nicely rounded petals of wonderful substance. The color is a beautiful pink, with tints of flesh and salmon. While all of these new seedlings have a pleasing odor this one is the sweetest of all. It has the fragrance of a tea rose. Awarded Silver Medal at St. Paul Show in 1923.

A Brand Division \$50.00.



Myrtle Gentry

Nina Secor (Secor). 9.0. White. Flowers medium to large, borne on tall graceful light green stems with rather narrow clean light green foliage. Bloom absolutely pure white and of true rose type. Built high with a cupped rose bud center. Very fragrant. This is one of the very best pure whites, much on the style of Kelway's Glorious.

We have been watching this flower at the large shows for several years and have been much impressed with its wonderful qualities. Now that it has come into bloom on old established plants in our own fields we are still more impressed with it and are not afraid to venture that its rating will climb still higher. One of the very choicest of all whites.

A Brand Division \$7.00.

Nymphaea (Thurlow). 8.8. White. Large flat flowers with wide, silky petals of delicate creamy white, notched at tips and edges somewhat rolled; yellow stamens in center reflect a golden light throughout whole flower. Fragrant. Mid-season. We like Nymphaea very much. It is one of those peonies that remind you of a water-lily only it is much larger, and much more beautiful than any water-lily we have ever seen. A very refined flower and a real addition to our growing list of good peonies.

A Brand Division \$2.00.

Octavie Demay (Calot). 8.5. Pink. This is a very early flesh pink. The collar has ribbon-like white petals, with the center a deeper pink than the guard petals. A rather dwarfish plant but still an excellent cut flower as the foliage comes clear to the ground. In the delicate pinks this is the best early cut flower.

A Brand Division \$1.00.

Officialis Rubra. 8.6. Red. A large, round bloom of vivid crimson. This is the deep bright red peony of the old time garden. Earliest of all good peonies. Very desirable in this latitude, as it is generally in bloom on Memorial Day. The red "piney" of our grandmother's gardens.

A Brand Division \$1.00.

Opal (Pleas). 8.5. Pink. The guard petals of this flower are a delicate pink, fading to white, while the center is opal pink. The plant is tall and vigorous, and blooms profusely. We think this one of the daintiest and most beautiful of all the Pleas peonies, a peony that should be in every collection of any size.

A Brand Division \$2.00.

Perrette (Dessert). 8.3. White. A beautiful flower borne in clusters. White, slightly tinged flesh and straw-yellow. Pleasant fragrance. This is a variety that has to be seen to be appreciated.

A Brand Division \$2.00.

Philippe Rivoire (Riviere). 9.2. Red. A very fine bright crimson. Beautiful in form of flower and splendid in growth of plant. The most fragrant of the red peonies. Mid-season. A splendid show flower. Entirely void of stamens. This is the most distinct in color of all the reds. It is not a bright red like

Mary Brand or Longfellow and yet it shows an absence of the purple in the red which is so objectionable. The form of the flower is beautiful in the extreme and this combined with its uniform soft color makes a flower that is loved by all who see it. The true stock is very scarce and much spurious stock is on the market. Our stock is absolutely true.

A Brand Division \$12.00.

Philomele (Calot). 7.7. Rose. Medium size flower. Flat crown type. Guards bright violet rose, anemone center of amber yellow petals, changing to cream; as the flower develops, a crown of bright rose appears in the center. Mid-season. A strong, free bloomer, very desirable. A peony with much deep yellow in its make-up. A very striking landscape sort.

A Brand Division \$1.00.

Phoebe Cary (Brand). 8.8. Pink. We consider this a second Martha Bulloch. The variety was introduced in 1907, but was so good that before we were aware of it, almost our entire stock was gone. The stock which we had for sale last year was exhausted before the shipping season was over, and we were obliged to refund on late orders. This variety is of a true rose type. The petals are large, broad, and of good substance. It is slightly cupped. The color is a beautiful rose pink, with the center slightly deeper in shade. The fragrance is pleasant. It is a late blooming variety, coming in season with Marie Lemoine. The plant is tall, with an abundance of clean, light green foliage.

A Brand Division \$3.00.

Phyllis Kelway (Kelway). 8.8. Pink. A very large, loosely built flower of the most exquisite beauty. Color a deep lavender with long rays of lighter lavender playing the length of the petals through the deeper colors. A row of broad petals surrounds a loosely built cup-shaped center of long narrow petals intermingled with conspicuous yellow stamens. The stems are long and erect. Blossoms held erect, and as the rays of sunlight play through the shadings of the flower it is one of the most brilliant and striking peonies in the entire list. We consider Phyllis Kelway one of our choicest sorts.

A Brand Division \$6.00.

Pierre Duchartre (Crousse). 8.2. Pink. A beautifully formed globular flower that resembles La France so much that some years it is taken for that wonderful variety. The flower is of beautiful symmetrical form with great broad rounded petals, of true rose type. The color is a pale lilac flesh with glossy reflex, bordered with silver. We have always considered this a peony that was not fully appreciated and a much better peony than its rating would indicate. It is a peony that is in a class with Reine Hortense, Livingstone, La Perle, etc., and should find a welcome into every garden of any size.

A Brand Division \$1.00.

President Coolidge (A. M. Brand 1928). Pink. The cry is often raised, "Why bring out new peonies? You can't get something decidedly new all the time and why bring out something a little different from what we already have?" There is a place and a big place for every good new peony. For there is no good new peony that looks enough like some other one to a real



Some of our new seedlings not yet introduced

peony lover, to bar it from being introduced. But here is a peony that anyone will note as different, quite different from any other peony that we know of. It is as distinct as Mrs. Romaine B. Ware is from other peonies. As a seedling in the seedbed it was noted as a flower of fine color and beautiful form. It was also noted that it had a peculiar way of carrying its bloom that gave it a wonderful landscape effect. This same characteristic has marked the variety wherever it has been planted. The flowers are large and of a beautiful, rather uniform, lavender pink. The petals are very large, rounded and arranged with beautiful regularity like those of a great rose. The guards are prominent and stand out from the balance of the flower, making it very attractive from a distance. The entire flower finishes in the center with a striking rose bud effect. The blooms are held on very strong stems which carry them well above the foliage. This is a late variety and is remarkable both as a show flower and a landscape variety.

A Brand Division \$50.00.

President Wilson (Thurlow). 9.3. Pink. A large flower carried on very stout stems of medium length. A very pleasing soft pink changing to shell pink, with the guards sometimes showing crimson markings.

Examining a private show of wonderful peonies staged by Mr. E. C. Shaw, from his great collection of peonies, where only the very best were on display, I was asked to pick out the vase of flowers that I thought the best without looking at the labels. I did so, and my choice fell on a vase of President Wilson. One of the great peonies.

A Brand Division \$20.00.

Pride of Essex (Thurlow). 8.9. Light Pink. This is a delicate light pink giving bloom in mid-season. The plant is tall, vigorous, and free blooming. The flower is large loose, and rose type. A very fine variety.

A Brand Division \$3.00.

Primevere (Lemoine). 8.6. Yellow. This is a fine yellow peony. The guard petals are a creamy white, inclosing a central ball of sulphur yellow. If cut in the bud, as it begins to open, and developed inside away from the sun, the flowers will hold a clear yellow color, which is very beautiful.

L. D. \$2.50.

Rachel (Lemoine). 8.3. Pink. This variety must not be confused with the one bearing the same name originated by Terry. This is a tall-growing variety, with long, straight stems. The color is a beautiful clear shade of soft pink with salmon shadings. It comes into bloom late mid-season.

A Brand Division \$3.00.

Raoul Dessert (Dessert). 9.0. Pink. Large, high built globular flower with long broad petals. Flowers perfect in form and of a pleasant fragrance are borne on tall stout stems on a thrifty plant. The color is much on the order of Walter Faxon and Souv. de Louis Bigot only the color is more brilliant and the shadings more marked. A much better plant and performer in the field than either.

A Brand Division \$6.00.



Reine Hortense

Reine Hortense (Calot). 8.7. Pink. This is a show flower and is usually found in the winning classes. This variety is sometimes sold under the name of President Taft. It is a tall-growing variety, producing lots of large perfectly-formed flowers on long stiff stems. The color is a uniform hydrangea pink, minutely splashed on a white background. It is also prominently flecked with crimson. It is a truly wonderful flower. We are seldom able to supply the demand.

A Brand Division \$1.50.

Renee Marie (Dessert). 8.4. White. A pretty flower. Very elegant in form, soft flesh pink, shaded salmon, fading to silvery white and flecked with carmine. Good strong stems. Very erect in growth. A free mid-season bloomer.

A Brand Division \$3.00.

Rev. H. Tragett (A. M. Brand 1928). White. A very large flower of true rose type. The great blooms are of the most perfect form and look like great balls of snow, they are so round and of such a pure white. The plants are dwarf with strong stems and hold the great white blooms straight up. The plants are of very sturdy growth and all come to an even height. When planted in a row they present a surely remarkable sight when in bloom. The blooms are so profuse that they cover the whole plant in a solid mass of white. As a rule the bloom is a pure white, although occasionally a faint trace of red shows on an inner petal. The bloom is globular in form with great broad snow white petals of great substance. Something very distinct in a white peony.

A Brand Division \$10.00.

Richard Carvel (Brand). 8.8. Red. What Mons. Jules Elie is to pinks, this variety is to the early crimsons. On account of its extra early blooming qualities, large size, and splendid qualities, this variety has already become a well-established favorite. The demand is increasing from year to year. We advise those who wish to purchase this sort, to get their order in early. A single plant on the lawn is attractive and delightful. It is beautiful and lasting, and on account of its delicate fragrance, is valuable as a cut flower. The best of all early dark reds. The odor of most reds is offensive, but the odor of Richard Carvel is pleasant and pronounced, a very rare quality in a red flower.

A Brand Division \$3.00.

Rosa Bonheur (Dessert). 9.0. Pink. This is a very fine flower, coming into bloom mid-season. The color is a light violet rose, with guard petals flecked crimson. It is an erect, medium strong grower. The flowers are large, flat, and of rose type.

A Brand Division \$2.50.

Rosette (Dessert). 8.8. Pink. Pretty flower of fine shape like a Captain Christy rose, silvery flesh shading to a salmon at base of petals and flecked crimson on the edges. A splendid variety of erect habit.

A Brand Division \$3.00.

Ruth Brand (Brand). 7.9. Pink. This variety is one of the good early pinks. The flower is very large, bomb type. The guard petals are prominent and inclose a grand ball of compact center petals. The color is uniform soft lavender pink splashed with a deeper lavender. The stems are tall, fine, and graceful holding but a single bloom. It comes into bloom early mid-season. This is a splendid variety to cut. It has a delicate and pleasing fragrance. We know of no other pink that has the delicate blending of color that is shown in this flower.

A Brand Division \$1.00.

Sarah Bernhardt (Lemoine). 9.0. Pink. Here is another variety that is always found in the show room. It is such a well-known peony that it seems unnecessary for us to say that it should be in every garden. It is semi-rose in type. It comes into bloom late mid-season. The color is an apple blossom pink with each petal silver tipped. The fragrance is agreeable.

A Brand Division \$1.50.

Shaylor's Dream (Shaylor). 8.5. Pink. Variable flower in its habit as is Marie Jacquin. On young plants not thoroughly established it is apt to come a single, but as the plant ages and becomes established the blooms become a true semi-double of great beauty. The outer petals are a delicate flesh pink with cream white center petals. The petals are long and fringed and are illuminated with a rich golden reflection from many conspicuous yellow stamens. Flower of great delicacy and beauty. We paid \$50.00 for a very small one eye division as a start.

A Brand Division \$5.00.

Silvia Saunders (Saunders). 8.7. A beautiful little flower that reminds one more of a semi-double wild prairie rose than it does of a peony. The semi-double blooms open out flat slightly cupped like a saucer. Around the saucer's edge are a double row of wide rounded rose colored petals which in turn surround a central cluster of short stamens with delicate light green carpels, tipped bright pink. A wonderful bloomer and one of the most delicately beautiful of all peonies. A masterpiece.

A Brand Division \$10.00.



Twenty Acres of Two Year Olds in Full Bloom. Brand Peony Farms, Inc.

Solange (Lemoine). 9.7. Pink. The color of this variety is a deep orange salmon, or Havana-brown at the heart overlaid with a delicate, tender, rich cream. This variety comes into bloom mid-season, is rose type, and a splendid variety.
A Brand Division \$5.00.

Souvenir de Louis Bigot (Dessert). 9.1. Salmon pink. The color of this variety is a brilliant rose, slightly tinged carmine at the base, turning to a salmon pink. It resembles Walter Faxon in color but stands up in the field much better than that variety.
A Brand Division \$3.00.

Standard Bearer (Hollis). 8.5. Pink. The color of this variety is a light violet rose. It resembles Mons. Jules Elie. The plant is medium tall, the stems are strong and stiff, and the variety is a very free bloomer.
A Brand Division \$2.00.

Strassburg (Goos & Koenemann). 8.4. Pink. Rose. Very large bloom of exquisite form. Flowers very large, loosely built, semi-rose. The petals are very large and broad and of a delicate lilac-rose color. This German firm has sent out many beautiful peonies, all of which are distinct, and of their entire list, this is one of the best. The stock of this variety is very scarce.
A Brand Division \$2.00.

Therese (Dessert). 9.8. Pink. A very large somewhat loosely built flower with long narrow pointed petals. The plant is of medium height with strong stems. As a rule, it will produce large typical flowers, even on one year plants, if they are allowed to bloom. The plant is wonderfully productive of blooms of the largest size and most ravishing beauty. Beholding Therese for the first time, people stand spellbound before its revelation of beauty. It can truly be said that there is no peony more beautiful and that it stands the equal of Le Cygne, Solange, and Kelway's Glorious. The color is a uniform light violet rose shading to lilac white at the center. With seventy-one voting, this variety rated 9.8.
A Brand Division \$3.50.

Thomas C. Thurlow (Thurlow). 9.1. Pink. Another of the Thurlow seedlings so many of which are exceedingly good. It is a large loosely built semi-rose flower with long delicate salmon flesh colored petals changing to pinkish white. Guards prominent and reflexed surround a collar of wide petaloids with finely lacinated tips, some of which are edged bright yellow. The central petals are broad and long and develop into a crown which also is edged yellow. A most beautiful peony.
A Brand Division \$20.00.

Tourangelle (Dessert). 9.4. Pink. Rose type, late mid-season. This is a vigorous grower, bearing large high built flowers, with a cupped center. In color it is a delicate pearly white, suffused with shades of most delicate salmon and La France rose. There is always a question in one's mind after becoming acquainted with the good peonies as to which are really the best. We unhesitatingly pronounce this one of the very best.
A Brand Division \$2.50.

Venus (Kelway). 8.3. Pink. This variety is especially good for a cut flower. Both the buds and foliage are clean. The flowers are of medium size, compact and pale hydrangea pink. The petals are large. This is a tall-growing variety, and a very free bloomer. It always pleases.
A Brand Division \$1.00.

Victoire de La Marne (Dessert). 8.2. Red. Mid-season. A large globular flower of a brilliant dark crimson with a silver reflex. A strong vigorous grower with good stems. A loosely formed flower, of intense color that is very striking. No matter what critics may say of the color of this flower it is one of the flowers that always attract much attention both in field and show room and a flower that is almost universally admired.
A Brand Division \$2.50.

Single Peonies

Albiflora (The Bride) (Dessert 1902). 8.4. White. Very large, single white, with long yellow stamens. Fragrant. Tall, very early. Free blooming in clusters. A third larger bloom than the ordinary Albiflora. Identical with La France.
A Brand Division \$1.00.

Avant Garde (Lemoine). 8.6. A Wittmanniana hybrid. This variety produces a wonderfully beautiful, crinkled bloom. The color is a blending of white and shell pink. This variety is rare and if you wish a root, you should order early. Avant Garde and La Printemps come into bloom before any of the Chinois peonies.
A Brand Division \$5.00.

Victory Chateau Thierry (A. M. Brand 1925). Pink. In 1923 we wrote of this wonderful sort. "Occasionally there appears in a bed of seedling peonies some flower so beautiful, either in form or color or both, that the plant breeder recognizes at once a masterpiece. Such a flower was Victory Chateau Thierry. I first noticed its immense, pure, clean, pink buds just before they opened in the seed bed. The next morning I was up long before the sun to see the opening flower. When my eyes rested upon the five immense half opened blooms, I realized that then and there a mile stone was passed in the history of the peony. When noon came and four of these great blooms were fully open, I knew for a certainty that another peony, a great pink, had come to take its station with Le Cygne, Solange, Therese and Lady Alexandra Duff." This flower is one of the earliest of good peonies and so early that we have never been able to take it to a National Show. In 1927 it bloomed in perfection and in our own show easily outclassed anything in the room, although it was shown alongside of the world's highest ranking peonies. We kept the buds in storage in our refrigerator and brought fresh bloom into the show room every other day. This variety produces a very large flower with immense broad, evenly arranged rounded petals of great substance. Its petals remind one of the great petals of Lady Alexandra Duff. A bright clear pink. This is one of those outstanding flowers of which we have so few in peonies. It is a flower that will take its place by the side of Le Cygne.
A Brand Division \$50.00.

Walter Faxon (Richardson). 9.3. Pink. This remarkable flower is at its best in the show room. If cut in the bud, and held in a dark cool room for a day or two, and then brought into the light, it develops into a flower of wonderful coloring and exquisite beauty. In color it is the most vivid of all the pinks, the only "real pink" as someone has said. A glance over a show room will disclose every vase of the flower to one who has once become acquainted with its color. The flowers are medium size and attractive form. In the fields it does not hold up as well as Souv. de Lois Bigot, which in color approaches it nearer than any other variety. For show purposes or home decoration, it is unique.
A Brand Division \$3.00.

W. F. Christmas (Franklin). 8.8. Pink. This is a beautiful flesh pink. The flowers are of fine form, very large and double. It is a rose type, and fragrant.
A Brand Division \$2.50.

Winnifred Domme (Brand). 8.3. Scarlet Red. No matter how many good reds you may have in your collection, there is still room for Winnifred Domme. Nearly every red has a trace of purple or blue in it, but this is a red with the purple almost entirely eliminated. It is the nearest scarlet of all peonies. The plant is dwarfish; but the stems are strong and erect, producing a single bloom each. When the next symposium is taken, we believe this variety will be rated in the 9 class. One of our good customers writes the following: "I should like to tell you about Winnifred Domme in my garden this year. My planting has all the reds I know anything about from Philippe Rivoire clear down the line, including all your own, and throughout its blooming season, Winnifred Domme was the best red of them all and at all times, morning, noon and evening. This was not only my own judgment, but that of all who saw my garden. I only wish Winnifred Domme had the height of Longfellow."
A Brand Division \$1.50.

Wm. Penn (Brand). 7.9. Pink. This is a variety that produces such gigantic blooms that the strong stems of the plant need support to keep the blossoms from the ground. If well supported it is a splendid variety for landscape work. The color is a light rose, changing to a more delicate rose at the edge of the petals. The edge of the petals are notched. The plant is of medium height, a strong grower and a lavish bloomer. One of the sweetest perfumed of all peonies.
A Brand Division \$1.00.

Darkness (Brand 1913). Red. Single, large. Color very dark maroon with darker markings in lower half of petals which surround a bold cluster of golden stamens. Tall, strong stems. Good bloomer. Very early. An exceptionally good cut flower. Its charm of blending colors and its delightful fragrance make it particularly choice for cut flowers.
A Brand Division \$2.00.

Departing Sun. Red. There are two peonies named Departing Sun, one a single and the other a Japanese. This is the single. A splendid single of a bright attractive red. The petals have a great deal of substance and hold up well after cutting. Many singles do not hold their shape well after cutting but Departing Sun does. A very striking cut flower single.
A Brand Division \$3.00.

Edith West (Brand 1920). White. This variety resembles Albiflora. It comes into bloom after Albiflora has gone. The flower is not quite as large, but the petals have more substance and the plant does not have the sprawling habit of Albiflora.
A Brand Division \$2.50.

Flanders Fields (A. M. Brand 1928). Red. Eight years ago one of our seedling beds came into bloom for the first time and we noticed among the many different seedlings in bloom a red that always caught the eye. Even at a distance of twenty rods from the bed this one plant, because of the brilliance of its color stood out from all the others. The next season it was just as noticeable. That second fall this plant was lifted and divided and put through a three year test and this season completes its second three year test. Every year and in every way it has proven a splendid flower.

It is a single of the most brilliant red. Two rows of petals surround a large prominent center of golden stamens. The petals stand out flat and are of great substance and rich and velvety in appearance.
Only twenty plants will be sold this season.
A Brand Division \$10.00.

Harriet Olney (Brand 1920). Pink. Flowers large, petals long, broad and shapely. Color a soft rose, combining attractively with the prominent yellow center. Stems of medium length and perfectly straight hold the large flower erect. Mid-season. Very good.
A Brand Division \$2.50.

Krinkled White (A. M. Brand 1928). White. A sister seedling of Flanders Fields and like that beautiful variety a single. Found in the same seed bed with Flanders Fields it has gone through the same tests and we are most thoroughly convinced of its value. The flower is first noticeable in the bud which resembles very much the bud of a pale pink tulip just ready to burst. The bud is comparatively small and beautiful in effect. As it opens and expands it develops into a large flower with great broad pure white petals that are wrinkled like crepe paper. This gives it a most beautiful effect. Stems tall, straight, slender but strong and a clean light green. A splendid show flower and a splendid field flower. Award of merit, Des Moines National Show.
A Brand Division \$10.00.



Laciniata

Laciniata. Bright scarlet. If you wish a splendid peony that will give you bloom about two weeks earlier than *Officinalis Rubra*, you must have this variety. It comes with bloom as early as the finely cut-foliaged peony, *Tenuifolia*. The foliage of this variety is not so fine as that of *Tenuifolia*, but is distinctly different from the *Chinensis* varieties. It is not so hard to propagate as *Tenuifolia*, and we feel that it is just as satisfactory. The stock is very scarce, and you will find it listed in very few catalogs.
A Brand Division \$3.00.

La Nuit (Shaylor). A very rich dark carmine with an intense velvety sheen. Stems slender but erect and of medium height. Flowers of medium size very pretty and last long in the sun.
A Brand Division \$2.00.

La Jour (Shaylor). 8.6. White. Very large, in fact the largest single white peony. An immense flower of the purest white with great heavy petals and an immense tuft of golden stamens in the center. A strong upright growing plant that holds its great blooms well erect when the side buds have been disbudded. This and *Krinkled White* are the two best white singles.
A Brand Division \$3.00.

L'Etincelante (Dessert). 8.4. Dark Pink. Very large flowers decidedly cupped shaped with great broad petals of deep bright pink heavily margined with silver and with a large center of bright yellow stamens. A tall thrifty plant that is a wonderful landscape variety.
A Brand Division \$2.00.

Madeline Gauthier (Dessert). 8.5. Light Pink. Early mid-season. Dessert has given us several of the very best Single Peonies and this is one of them. *Madeline Gauthier* is a beautiful flesh pink of most perfect form.
A Brand Division \$3.00.

Mafking (Kelway). 8.2. A very large mid-season flower with smooth cupped guards of dark ruby red; center a great tuft of golden stamens with ruddy filaments; carpels nearly white. Wild mint-like fragrance. A tall free blooming bright dark red.
A Brand Division \$3.00.

Marguerite Dessert (Dessert 1913). 8.5. Pale pink. A medium sized flower. Petals resemble those of the double variety, *Asa Gray*. Central tuft of golden stamens. A desirable variety.
A Brand Division \$3.00.

Mellen Knight (Brand 1920). Red. A tall, straight growing plant with dark reddish stems, which are strong enough to hold the flowers well up. The petals, long, narrow, and evenly rounded on the edges, give the flower a beautiful appearance, both on close examination and from a distance. Color, a bright, rich crimson. Extra good.
A Brand Division \$2.00.

Perle Blanche (Dessert). 8.4. Large, early mid-season. A single that is very valuable for landscape effect because of its erect habit and beautiful white flowers with their great round white petals contrasting so beautifully with an immense central cushion of golden stamens.
A Brand Division \$2.00.

Pride of Langport (Kelway 1909). 8.9. Pink. An immense flower of brilliant, soft peach-pink. Wonderfully beautiful. This variety will retain its color in the sun almost a week after it opens. This is the finest light single.
A Brand Division \$4.00.

President Lincoln (A. M. Brand 1928). Red. We believe this red seedling stands head and shoulders above any red seedling that has yet been produced. The plant is tall with straight stiff stems that hold the bloom well erect. The blossom is very large, opens out flat with two rows of great long broad petals of great substance, inclosing a large ball of golden stamens. The color is the most dazzling of deep brilliant red. We have not tried *President Lincoln* as a show flower, but as a field flower out in the burning sun it is the greatest single we have ever seen. We can offer only ten roots of this variety for sale this season.
A Brand Division \$100.00.

Schwindt (Goos & Koenemann). Not yet rated. Pink. This is a large silvery pink, finely formed. Blooms in clusters. Beautiful variety. Excellent for landscaping. Stock scarce.
A Brand Division \$3.00.

Watteau (Goos & Koenemann). Not yet rated. White. Large snow white guard petals. Center flesh with a mass of golden stamens. Resembles *Albiflora*, the *Bride*, but comes into bloom much later.
A Brand Division \$3.00.

Japanese Peonies

Akashigata (Japan). Bright Rose. This is a new Japanese variety which has not yet been rated. We have grown it for about five years and we consider it a very satisfactory variety. The guard petals are a bright rose surrounding a heavy center of filamental petals of bright pink bordered with gold.

A Brand Division \$2.00.

Alma (Shaylor). 8.5. Pink. The guard petals of this variety are a delicate pale pink, enclosing a mass of incurved golden petaloids. This variety resembles a *Chrysanthemum* with incurved petals.

A Brand Division \$1.50.

Altar Candles (Pleas). 8.0. Flesh pink. A very nicely shaped flower, consisting of an evenly formed row of delicately colored flesh pink petals, which surround a center of completely transformed narrow filamental petals that are a uniform cream-white when the flower opens. Very floriferous and one of the most dependable Japanese Peonies.

A Brand Division \$1.50.

Aureolin (Shaylor). 8.9. This variety comes nearest, perhaps, to being the long-sought-for yellow peony. The center of transformed petaloids which is surrounded by broad guard petals, is deep sulphur yellow and holds its color well. Much of the stock offered for sale is far from vigorous, but flowers produced on well grown stock are very beautiful.

A Brand Division \$4.00.

Exquisite (Japan 1912). 8.9. White. A single row of pure white guard petals surround a large center of white filamental petals bordered with yellow. A splendid variety.

A Brand Division \$3.00.

Flamboyant (Japan). 8.5. Violet Crimson. A large flower with very uniform shaped petals, of a color just a trifle lighter in shade than King of England. The center is full of partially transformed stamens, light yellow edged with gold and red of the shade of the outer petals. Also known as *Kame-No-Kegoromo*. A splendid flower.

A Brand Division \$2.50.

Fuji-Zomo-Gorono (Japan). A great delicate colored pink that is very scarce. We purchased our original stock some years ago and we have been building it up ever since, not caring to offer much of it for sale until our stock was larger. Just a very few roots are offered this season. A wonderful pink.

A Brand Division \$5.00.

Fuyajo (Japan). 9.2. We first saw this grand Japanese variety at the National Peony Show at Cleveland, Ohio, and were very much impressed with its beauty. A single row of rich, dark mahogany red petals surround a full center of broad petaloids of the same dark rich color as that of the outer petals. A very striking variety.

A Brand Division \$5.00.

Kame-No-Kezoromo. Same as Flamboyant.

King of England (Kelway). 8.6. Red. This is a very fine Japanese peony. The petals are large and of great substance. It is beautiful in form as the petals are uniformly rounded. Its color is a rich uniform shade of deep red. The center is a large tuft of long self colored petaloids, prominently edged with gold.

A Brand Division \$3.00.

Mikado (Barr). 8.6. Dark Red. We consider this one of the best of the red Japanese peonies. This variety was first exhibited in America by the Japanese Government in its exhibit at the Chicago World's Fair in 1893. This is a large cup shaped flower with a single row of wide dark crimson petals, encircling a filigree cushion of golden petaloids, crimson edged and golden tipped.

A Brand Division \$5.00.

Ohanagasa (Japan). This is a splendid Japanese flower with a distinct color effect. The guards are rich violet red and the stamens are cream white, rose red, and gold.

A Brand Division \$3.00.

Princess Duleep Singh (Kelway). 8.7. The guard petals are broad and of a soft shade of deep wild rose. The center is a spherical tuft of partially transformed rose and gold stamens. The flower is large and holds up well as a cut flower. The plant itself is attractive, being strong and tall with dark green foliage.

A Brand Division \$3.00.

Rashomon (Japan). 8.7. This is a variety that attracts very much attention in our field, not only because of the beauty of the flower, but on account of the pleasing appearance of the plant. The foliage is a clear glossy green. The leaves are pointed and crinkled. The plant is very symmetrical and one of the best peonies for landscape planting. The blossom is large, the outer row of petals a deep rose red surrounding a large tuft of crinkled golden filamental petals.

A Brand Division \$3.00.

Some-ga-Noka (Japan). 9.0. You will note by the rating that *Some-ga-Noka* has the highest rating of any of the red Japs. The guard petals are a rich dark, velvety red. The center is a ball of golden yellow stamens partially transformed and streaked red. This dark red and King of England which is brighter are two splendid red Japanese varieties for any garden.

A Brand Division \$5.00.

Taiho (Japan). Not rated. Pink. This is one of the new Japanese varieties imported from Japan. It is not sufficiently distributed as yet to receive a rating by members of the American Peony Society. The guard petals are broad and of a clear soft pink with a large center tuft of creamy yellow. It is one of the fine pink Japanese.

A Brand Division \$2.00.

Toro No Maki (Japan). 9.0. White. This variety is one of the finest of all the Japanese peonies. It comes into bloom mid-season. A double row of lilac white guard petals surround a center amber yellow. A very striking variety in the field and as a cut flower.

A Brand Division \$5.00.

Torpilleur (Dessert 1913). 8.0. Rose Red. This variety produces a large fine flower held rigidly erect on long stiff stems. The guard petals are deep rose red with center petals of the same color tipped with cream. A splendid variety, distinctly different from all other Japs.

A Brand Division \$2.50.

White Queen (Wallace). A beautiful white with broad guards surrounding a center ball of wholly transformed filamental petals. These center petals are a bright canary yellow when they first open but gradually fade to white. Carpels light green.

A Brand Division \$3.00.

Yeso (Japan). 7.7. Here is another good white variety that makes an excellent landscape flower. The outer petals first open a flesh-white and then fade to a pure white. The center is a cushion of fully transformed petaloids of sulphur-yellow which also fade to white. Carpels are a light green, tipped pink.

A Brand Division \$1.50.



A Drive Through the Peony Fields

Our Collections

If you are just beginning to know peonies, trust the judgment of experts and buy collections.

If you are a "peony fan," look over our collections and you will be almost sure to find one or more that will appeal to you.

We have given a great deal of time and thought to making our collections and we believe that among them will be found combinations to suit every taste, every garden, and every pocketbook.

Our collections do not contain peonies we wish to discard. Every peony in every collection has been chosen with a definite purpose in mind.

All roots in every collection are large three to five or more eye divisions. We are so proud of the quality of roots that we send out that we call them

Brand Divisions

12 Good Peonies for \$10.00. Collection I

This collection of peonies is made up for the flower lover who must count the cost. We do not believe you could purchase twelve better all around peonies for the money.

This collection contains early, mid-season, and late varieties. It gives you bright red, deep red, rose red, light pink, deep pink, white, white with carmine splashes, yellow, and yellow with pink combinations.

Variety	Season of Blooming and Color	Price
Alba Sulphurea	Mid-season. Creamy yellow.	\$1.00
Ben Franklin	Early. Dark red.	1.00
Festiva Maxima	Early. White splashed crimson.	1.00
Felix Crousse	Late mid-season. Rose red.	1.00
La Perle	Late mid-season. Light pink.	1.00
Livingstone	Late. Deep pink.	1.00
Mary Brand	Mid-season. Deep red.	2.00
Mme.EmileLemoine	Late mid-season. White.	1.50
Mons. Jules Elie	Early. Rose pink.	1.50
Octavie Demay	Early. Light pink.	1.00
O mcinalis Rubra	Very early. Bright red.	1.00
Philomele	Mid-season. Yellow and pink.	1.00
	Regular Price.	\$14.00
	Collection Price.	\$10.00

Four Early Flowering Varieties. Collection II

Regular Price \$6.50

Collection Price \$5.50 Postpaid

Do you wish four excellent peonies to brighten your garden early in the peony season? If so, the following varieties are the ones to order.

Richard Carvel is the best early red on the market. This variety is wonderfully fragrant and is a strong, upright grower, and a very free bloomer.

Mons. Jules Elie is found among the world's twenty-six best peonies. This is also a fragrant variety and truly a wonderful lilac pink.

Mme. De Verneville is a fitting companion for Richard Carvel and Mons. Jules Elie. This is a splendid early white with center tinted blush. Same type as Richard Carvel and Mons. Jules Elie.

Edulis Superba is a deeper pink than Mons. Jules Elie. This variety is recognized as the Decoration Day deep pink. It is also one of the most fragrant of all peonies.

All four varieties will be in bloom for you at the same time, although Richard Carvel will head the list.

Four Mid-season Varieties. Collection III

Regular Price \$8.00

Collection Price \$6.50 Postpaid

Three from this list rate 9.0 and belong in the world's twenty-six best peonies.

Sarah Bernhardt is found among the prize winning peonies in every show room. It is not only a fine show flower but an excellent garden variety. In color it is a deep pink tipped silver. The flower is unusually large but not coarse. It is delightfully fragrant and truly a great flower.

Reine Hortense is the only variety in this combination that falls a little below the nine mark. Notwithstanding it is among the outstanding light pink peonies and is worthy of a place in any garden. In color it is hydrangea pink with center petals splashed crimson. It is sometimes called President Taft.

Longfellow and Philippe Rivoire are the only two red peonies that rate 9 or above. In Longfellow we have the best red for color. Most peonies turn black when exposed to the hot sun but this is not true of Longfellow. In a large planting of red peonies it is this splendid variety that stands out so distinctly from all others.

Baroness Schroeder is classed as a white but it often opens a blush pink which soon fades to white. This is considered one of the very best of Kelway's productions. When the last symposium was taken it maintained a rating of 9.0 after seventy-nine people had cast their votes.

The four peonies in this list will give you bloom at the same time and will closely follow the varieties in the previous collections.

Four Very Late Blooming Varieties. Collection IV

Regular Price \$5.50

Collection Price \$4.50 Postpaid

Marie Lemoine is probably the most fragrant of all peonies and is among the latest to flower. Our roots are free from disease and this variety will be sure to give satisfaction. This is a beautiful creamy white.

Grandiflora is a very late soft shell pink. When you think the peony season is over, you can go into your garden and cut beautiful large blooms of this great flower.

Eugene Bigot must be in your garden if you wish one of the very latest good reds. Most red peonies have an unpleasant odor but this variety has a pleasing fragrance. The stems are stiff and straight and for this reason it is a desirable cut flower.

Mme. Manchet is a deep rose late pink showing purple shadings at the base of the petals. The plant has splendid habit of growth. It is a heavy blooming variety and for a very late deep pink we can recommend this variety to go with Grandiflora.

Special Offer. Collection V

Combination of Collections II, III, and IV which sell separately for \$16.50 for \$15.00.

Nine of the World's Best. Collection VI

Regular Price \$55.50

Collection Price \$50.00 Postpaid

For color effect this is a well balanced collection.

For quality you can't beat it.

For price it is moderate.

For quality of roots leave this to us.

- | | |
|------------------------------|---|
| 9.9 Le Cygne | Highest rated peony. Early white. |
| 9.7 Solange | Distinct coloring which is difficult to describe. |
| 9.8 Kelway's Glorious | A pure feathery white. |
| 9.0 Longfellow | Best red for color. |
| 9.2 Philippe Rivoire | Highest rated red showing no stamens. |
| 9.3 Walter Faxon | A distinct salmon pink. |
| 9.0 Phyllis Kelway | Everyone likes this semi-double pink with its beautiful golden collar of stamens. |
| 9.2 La Fee | One of the very finest pink peonies. |
| 9.8 Therese | Wonderful light pink. |

The World's Best Peonies

WE RECEIVE many letters asking us to give a list of the world's best peonies. We think that some reply to such letters should find a place in this catalog. However, taste in flowers is a very personal matter, and we feel that the composite judgment of a number of peony enthusiasts would have more value than our own individual opinion. Fortunately we are able to give a list for which we can share responsibility with the members of the American Peony Society.

At several times this society has sent a list of all the well known peonies, both old and recent introductions, to a number of its members and asked that they give a grade on a scale of 10 to each variety with which they are familiar, thus indicating their personal estimate of its worth. From the responses received tables have been compiled and printed in the bulletins of the society. In these symposiums the originator of each variety, the number of votes received, and the average of these votes are given.

We feel that for an average to have any real value it should be based upon a considerable number of votes. Having this in mind we have examined the symposiums carefully, and find that twenty-six varieties, each having at least twenty votes, have received an average of 9 or over. We print this list below, together with the rating received, the name of the originator, and the year of introduction. These varieties, according to the judgment of a number of people much interested in the peony, are the world's masterpieces. Fifteen of them came to us from France, and four from England. The other eight originated in America, four being Brand peonies.

Name of Variety	Rating	Originator	Date	Name of Variety	Rating	Originator	Date
Baroness Schroeder	9.0	Kelway	1889	Mary Woodbury Shaylor	9.0	Shaylor	1916
E. B. Browning	9.2	Brand	1907	Milton Hill	9.0	Richardson	1891
Festiva Maxima	9.3	Meillez	1851	Mons. Jules Elie	9.2	Crousse	1888
Frances Willard	9.1	Brand	1907	Philippe Rivoire	9.2	Rivoire	1911
Kelway's Glorious	9.8	Kelway	1909	Phyllis Kelway	9.0	Kelway	1908
Lady Alexandra Duff	9.1	Kelway		Raoul Dessert	9.0	Dessert	1910
La Fee	9.2	Lemoine	1906	Rosa Bonheur	9.0	Dessert	1905
La France	9.0	Lemoine	1901	Sarah Bernhardt	9.0	Lemoine	1906
Le Cygne	9.9	Lemoine	1907	Solange	9.7	Lemoine	1907
Longfellow	9.0	Brand	1907	Therese	9.8	Dessert	1904
Mme Jules Dessert	9.4	Dessert	1909	Souvenir De Louis Bigot	9.1	Dessert	1913
Mrs. Edward Harding	9.3	Shaylor	1918	Tourangelle	9.4	Dessert	1910
Martha Bulloch	9.1	Brand	1907	Walter Faxon	9.3	Richardson	1904

An examination of the list will answer the question so often asked "Why not be satisfied with the good old varieties which can be bought so cheap instead of paying high prices for the new introductions?" Of the twenty-six varieties in the list, it will be noted, all but five, Baroness Schroeder, Festive Maxima, Milton Hill, Mons. Jules Elie, and Lady Alexandra Duff, originated after 1900. The exact date for Lady Alexandra Duff is not known but as my father received one from Kelway before 1900 we have placed it in this list. Three of the five we believe will maintain the reputation gained; but Festiva Maxima and Mons. Jules Elie, although fine when first opened, do not hold their beauty, and we anticipate that in later votes they will drop at least into the 8 to 9 list.

There are quite a number of new introductions that were not well enough known at the time of the last symposium to receive twenty votes, but that we feel sure will be included in the honor list when the next vote is taken. We cannot conclude this topic without mentioning a number of these.

Two Thurlow introductions almost qualified for the list in the last vote. President Wilson, introduced in 1918, received nineteen votes averaging 9.3. E. C. Shaw, put out the next year, had an average of 9 with fifteen votes.

Of Brand varieties Mrs. A. M. Brand, which was not sold until 1925, received an average of 9.6 on five votes. This peony, as well as a number of our other recent introductions, will, we feel confident, make the honor roll when they become more widely known.

Mabel Franklin, introduced by Franklin in 1920, received an average of 9 on the thirteen votes cast.

Frankie Curtis, put out by Vories in 1904, received an average of 9.3 on five votes.

Grace Loomis, a Saunders peony introduced in 1920, received sixteen votes averaging 9.2.

In conclusion we can only say that we believe that the list of "the world's best peonies" is changing rapidly. We predict that a list of the twenty-six peonies having the highest rating in a symposium compiled in 1950 will differ as much from the one compiled from the 1926 symposium as that list differs from one that could have been compiled in 1900.

Read Our Paragraph Page 9 on Size of Root That Constitutes a "Brand Division."

SPECIAL OFFER

World's 26 Best Peonies for

\$95.00

All Brand Divisions

Read our paragraph page 9 on size of root that constitutes a "Brand Division"

A. M. Brand Seedlings

IN THE production of new varieties of merit we take justifiable pride in the success we have already attained. With the high standard of perfection already established, the production of an outstanding variety in this day and age is no small achievement. Nevertheless, our success in this direction has been most gratifying, as attested by thousands who have had the opportunity to make critical observation of our productions in comparison with the finest varieties now in commerce.

Among our early seedlings are to be found several that have taken rank among the very finest peonies grown. In the American Peony Society's recent symposium, twenty-six varieties received twenty votes or more, and rated between 90 and 100. Of these varieties, which may be called the world's highest rated peonies, four were originated by us. These four are Longfellow, Frances Willard, E. B. Browning, and Martha Bulloch.

Three years ago we sent out an entirely new set of seedlings, some thirteen, most of which, we believe, will rank as high as any of our previous introductions, and some of them even higher. These new seedlings have been in our testing grounds for fifteen years now, have been thoroughly tested out, and we are convinced that every variety is a first class peony.

We exhibited twenty-two of these new ones five years ago at the St. Paul National Show, and the exhibit was considered so uniformly first class that we were awarded the Society's Gold Medal and its Silver Medal. This was the first time in the history of the Society that one originator was ever awarded at the same time both a silver and a gold medal on a display of new varieties. We were awarded the Society's Gold Medal on our Mrs. A. M. Brand, a wonderful great white, and the Society's Silver Medal on our Myrtle Gentry, a beautiful delicate pink much after the color of Tourangelle. These two flowers happened to be just in the pink of the show condition and on the day the medals were awarded. But we, who have watched these new seedlings of ours bloom in the fields for more than fourteen years, feel that in every one of the thirteen we have a flower that is entitled to a gold medal.

These varieties are: Blanche King, Ella Christiansen, Hansina Brand, Hazel Kinney, Laverne Christman, Mrs. A. M. Brand, Mrs. F. A. Goodrich, Mrs. Frank Beach, Mrs. Harriet Gentry, Mrs. John M. Kleitsch, Mrs. Romaine B. Ware, Myrtle Gentry, Victory Chateau Thierry, Mrs. Dean Funk, and President Coolidge. We are now booking orders for this list of new peonies at the uniform price of \$50.00 per root, for delivery during the fall shipping season.



We here repeat the picture of Old Billy, our old grey horse who has spent so many years among the Peonies. Billy is now around twenty-six years of age. He is still with us although he no longer works. For two years now he has spent his summers in the pasture and his winters in a good, big stall in a warm stable where he has nice corn fodder, bright alfalfa hay, and ground feed, all he can eat. He will be with us as long as he does not object to such treatment. Evidently for some years yet.



A Small Section of One of Our Two-Year Old Iris Fields

Selected Iris

Why the Iris is so Popular

EVERY garden must have iris nowadays. There are many reasons for the increasing demand for the iris. In the first place, the flowers are as beautiful as the rarest orchids. Their form is perhaps more distinctive and their coloring more varied. Many new varieties have been brought out the last few years, and they have given us new colors and wonderful new combinations of color. In a field of iris all shades, from the palest lavender to the deepest purple, and from the most delicate cream to the deepest gold, may be seen. Then there are pure white, delicate blue, and deep blue, pink, rose, maroon and bronze. Now, if ever, the flower justifies its name, iris, the rainbow.

Then it comes when the garden needs color. The blooms of the early spring bulbs have gone, the tulips are passing, and the peonies have not yet come. If varieties are well chosen and plants are suitably located and grouped, the iris furnishes a show which, while less gorgeous than that of the peony, is more varied and delicate in coloring.

There are some very practical reasons for the great popularity of the iris. It is cheap. New varieties are so quickly produced from seed and they multiply so rapidly that even the recent varieties do not long remain expensive, and the large stocks of the good old sorts make them very cheap. It brings quick results. Plants set out this year will blossom next, and they will soon form big clumps. Then, too, the rules for growing iris successfully are few and easily followed.

CULTIVATION. Iris should be planted in a sunny location. The soil should be dry and well drained. Unlike the wild flag, the garden iris cannot stand water around the roots. It should not be planted deep. The bulb, or rhizome, should be just below the surface of the ground. The roots should be spread out and the soil packed around them. No fertilizer should touch the rhizomes. A very little, well rotted manure may be applied to the surface of the ground. Bone meal and finely ground limestone are good fertilizers.

Iris soon forms big clumps with masses of rhizomes and roots, which are likely to rot. It is hard to keep grass out of these clumps. For these reasons iris should be taken up, divided, freed from grass roots, and reset once in four or five years. The best time to do this, as well as to make new plantings, is soon after the blooming season. July and August are probably the best months for planting iris but it may be planted any time during the year when not in bloom or when the ground is not frozen.

ROOT ROT. The only disease that the iris grower has to contend with is rot. It generally appears in warm wet seasons. The best way to avoid rot is to look around and fine some old plaster, perhaps where a house is being torn down. Pulverize this and scatter it liberally in the trenches in which the plants are to be set. It will not hurt the plants.

SUGGESTIONS FOR PLANTINGS. The sunny side of a shrubbery hedge is a good place for iris. Unlike the peony, it is not likely to suffer from being robbed of moisture and food by the larger plants. It is especially beautiful with lilacs or Spirea Van Houttei as a background. All these bloom at the same time. The colors of the lilac harmonize with those of the iris and the white of the Spirea brings out their beauty.

As was suggested in the talk about peony planting, iris is a good companion for the peony in a hedge which borders a walk or drive. At first the two flowers may be alternated. Then, when the peonies have come to need all the space, the border may be widened and the iris moved to the front.

Clumps of iris are useful to give color in an herbaceous border. After the blooming season the ragged tops of the leaves may be trimmed off and the foliage of the surrounding plants will partially cover them. They will thus not be unsightly in the border.

For large grounds extensive plantings of iris will give wonderful effects. It may be planted in beds as borders of walks, drives or pools. Or beds may be arranged to form an iris garden, which will be a joy for a month or more.

In all plantings, large or small, the best results will be obtained by planting groups of one variety together, groups being so arranged as to harmonize with each other. For this reason we are offering a very low price on three of a kind.

Alabaster. A large beautiful almost pure white. One of the very best of all the new whites. **\$2.50.**

Alcazar (Vilm). 8.9. One of the handsomest of bearded irises. S. light, bluish violet, overlaid bronze; F. deep reddish purple, heavily reticulated bronze at the haft; yellow beard. 42 inches. **35c**

Alvarado (Mohr). A fine cross between Conquistador and Lent A. Williamson. A tall vigorous grower, with large blooms of deep rich purple. **\$1.00**

Amas (From Foster). Broad standards of light hyssop. Violet falls smooth petunia violet, broad and well expanded. **35c**

Ambassador (Vilm). 9.4. Truly one of the most beautiful of all the irises. In richness of coloring, fine form, and habit of growth it is one of the world's best. S. smoky, reddish violet. F. dark velvety purple-maroon. Very rich. **75c**

Amber (Dykes). This variety is called the best yellow Iris to date. Uniform citron-yellow, with delicate bronze markings on the haft. **\$2.00**

Anna Farr (Farr). 8.4. A large flower with broad petals of good substance. Standards and falls purest white flushed violet blue. A most beautiful sort. **50c**

Anne Leslie (Sturtevant). 8.3. Standards white, faintly flushed rose; Falls dahlia-carmine. 30 inches. A beautiful landscape Iris that gives a red and white color effect. **50c**

Ann Page (Hort). 8.6. A beautiful lovely pale blue Iris that is rated as one of the best in its color. Standards long, conical, and of a uniform light wisteria violet. Falls Bradley's violet. A fine Iris that resembles Crusader. **\$1.00**

Apache (Farr). This new Iris of Mr. Farr's brings to us a new and interesting color, Indian Red, that is very taking and distinct. Standards coppery purple; Falls dark crimson-brown with heavy light brown reticulations on the haft. 20 inches. Strong grower. **\$1.50**

Aphrodite (Dykes). A clear bright violet-pinkself, with no veinings to spoil its beautiful pure color. This is the best of all the so-called pink Irises. 4 feet. **\$2.00**

Argynnis (Longfield). A beautiful Iris granted an award of merit by the American Iris Society. A tall true variegata that is distinct in its coloring. Standards strontian-yellow, narrowly margined Aniline yellow. Falls a solid, dark violet-carmine. Late mid-season. 40 inches. **\$1.00**

Asia (Yeld). 9.2. Standards pale lavender; Falls light violet purple. Both standards and falls are of immense size and the flower taken all in all is one of our very finest Iris and by many said to be the finest Iris grown. **\$1.00**

Aurea (Jacques). 7.4. A yellow self. A beautiful even shade of Empire yellow. One of the very old Irises and yet so good as to be still classed among the best. **25c**

Azure (Bliss). 8.2. A very rich purple bicolor of the type of Perfection. S. lavender blue; F. rich violet blue. Very free flowering and desirable. **35c**

Ballerine (Vilm). 9.4. One of the highest rated and finest of the lavender bicolors. S. very broad and waved at the edges, pearl blue F. manganese-violet. Very large, 48 inches. One of the great Irises both in garden and show room. **75c**

Beau Ideal (Sass). Among the most striking of new Irises introduced in recent years. Both standards and falls white with a wide border of rich petunia-violet. The Sass Brothers have brought out several wonderful new Plicatas and this is the outstanding one of the lot. **\$1.00**

Ben Bow (Bliss). 8.3. Standards and falls a deep, bluish violet with slight ruffled effect beard white, tipped orange. 36 inches. Very free flowering. **75c**

Bluet (Sturtevant). 7.2. A beautiful blue Iris of medium size that makes a wonderful showing when planted in a mass. Both S. and F. are pale Wisteria violet. Fine for landscaping. 24 inches. **35c**

Brandywine (Farr). 9.1. This is generally regarded as the best of all of Mr. Farr's Irises. Standards and falls are a light hyssop-violet, the entire flower lit up by a prominent bright orange beard. Flower large and of fine form. **\$1.00**

Bruno (Bliss). A Dominion Seedling. Blooms very large of beautiful form and of great substance. Standards are a light purple with a flush of yellow at the base Falls a rich velvety deep violet. One of the greatest of all Irises and now much used in producing new Iris. **\$3.50**

Cardinal (Bliss). One of the most superb flowers of the Dominion family. S. lavender overlaid with rose F. a rich raisin-purple, very broad and rounded, and of most striking appearance. A wonderfully rich Iris. **\$5.00**

Celeste (Lemon 1855). 7.1. One of the old Irises rated low, but notwithstanding that we like it for it is one of those good varieties that one can depend on. A lovely pale Verbena-violet with marked streaks and splashes of white. **35c**

Clematis (Bliss). 7.8. A very unique and most dependable Iris. A light lavender-violet. Resembles a Japanese Iris or a six petaled clematis, as the petals all reflex horizontally as do the petals of these flowers. Very hardy, thrifty, and attractive. **25c**

Cluny (Vilmoren). 8.6. An early, very tall variety, with large flowers. S. Wisteria-violet F. delicate, bluish-violet. Of the finer Irises this is one of the most dependable in this climate. **35c**

Colonol Candelot (Millet). 8.0. A medium sized Iris with flowers of a very striking color. S. bronze, splashed with reddish lavender, F. dark velvety, crimson, slightly reticulated with white at throat. 33 inches. An iris with lots of red in it. **50c**

Crusader (Foster). 8.7. This has always been one of our favorite Irises. One should be careful in growing it. Wants a dry location and a little careful winter protection, and then the perfection of this flower will repay one many times. Clear, light blue standards with a blue-violet falls. 42 inches. One of the finest blue-lavenders. **75c**

Dalila (Denis). 8.0. A small flowered Iris that grows 24 inches high and is very beautiful when grown in mass. S. creamy yellow; F. a plum red. A very striking contrast in colors and a very desirable Iris. **35c**

Dejazet (Vilmoren). 8.3. The flowers are very large, distinct and very rich in coloring. Plant grows to about 18 inches with short stems heavily covered with bloom. S. ruffled, smoky rose-orange; F. pure reddish-violet. **50c**

Dimity (Bliss 1919). 8.3. S. white, slightly veined mauve; F. wide and long with finely veined lavender on the upper half. 36 inches. An Iris that is different. **50c**

Dolly Madison (Williamson). Flowers very large, often 4½ inches high by 5 inches wide. It is a seedling of Lent A. Williamson and carries the good sturdy qualities of that parent together with even greater size. In going through a most complete collection of the best Iris last year I think this was our favorite. An immense mauvette-lilac pink of most outstanding quality. Without question one of the best new things. **\$12.00**

Dominion (Bliss). 9.1. We paid \$45.00 for our first rhizome of this wonderful Iris, and were never sorry we did so, as we consider it the first distinct advance toward better Iris produced

in many years. S. bluish-violet; F. rich, indigo-purple. A wonderful Iris of the most perfect form, great size, and gorgeous coloring. **\$5.00**

Dora Langdon (Bliss). 8.1. Well branched variety. 30 inches. S. delicate lavender with slight suffusion of yellow; F. intense red-lilac, fading to yellow on the edges and at the base. **50c**

Dr. Hidershide (Pfeiffer). A dark blue heavily branched. A fine almost uniform dark blue that shows up wonderfully in mass either in field or inside. **50c**

Dream (Sturtevant). 8.5. A very graceful tall growing variety of vigorous growth and a good bloomer. A uniform soft violet. A most delicate and pleasing color. Well branched stalk. 40 inches. **75c**



Dream

Duke of York (Perry). A flower of great size. Plant vigorous, grows well. Branched stems over 4 feet high. S. broad, cupped, bluish lavender; F. drooping, same color as standards; lit up by a bold orange beard. **\$1.00**

Edith Scoville (Pfeiffer 1928). Self color. Standards and falls a rich uniform purple wine color; beard bright yellow. 30 inches. A very hardy thrifty Iris that is wonderfully profuse and splendid in both field and show room. **\$1.00**

E. H. Jenkins (Bliss). A splendid flower both in the garden and in the show room. S. light violet; F. litho purple, shading lighter towards the edges. Low, well branched, many in flowers bloom at one time. 45 inches. **\$1.00**

Esplendido (Mohr). A very large Iris, borne on tall well branched stems. A rich red-purple bicolor of great size. Something quite distinct. **75c**

F. B. Schermerhorn (Pfeiffer). A lavender blue self. Another very satisfactory new Iris that shows up unusually well inside when displayed in large masses. **50c**

Flammenschwert (G. & K.). Considered by many as the best of the blended bicolors, better even than Marsh Marigold, The Inca, Maori King, etc. S. a bright Empire yellow; F. rich velvety deep brown, with an intense yellow border. Very brilliant and striking. **50c**

Firmament (Groschner). Intermediate. Two shades of light lavender-blue. One of the early flowering varieties. It is nice to plant with such kinds as Ingeborg, Dorothea, Kochii, etc. Vigorous grower. Large attractive blooms. 24 inches. **50c**

Folkwang (Goos & K.). S. light bright pink; F. Clare-red with brownish-yellow veining. A wonderful blending of colors. One of the very best of the many real good Irises sent out by this famous firm. **\$1.00**

Fritzyof (Goos & K.). General effect light purple. S. lavender; F. soft purple. Tallest of the intermediates. **35c**

Fro (Goos & K.). A brilliant rich colored variegata that is one of the most desirable in its color class. S. Empire Yellow; F. rich velvety Bordeaux, narrow yellow border. 24 inches. **50c**

Geo. Tribolet (Williamson). A magnificent Iris with deep violet standards and velvety red purple falls. 40 inches. For real quality and richness of color this is an Iris hard to beat. **\$3.00**

Geo. Yeld (Perry). S. light apricot, shaded rose; F. rose-crimson, edged buff. 40 inches. A most beautiful and attractive Iris. **\$1.50**

Georgia Farr. 8.3. General effect pink. S. and F. phlox purple, with light center, white beard tipped orange. **35c**

Gold Crest (Dykes). A beautiful blue violet with white beard tipped orange. **35c**

Gold Imperial (Sturtevant). One of the finest of all yellow Irises. A pure yellow self of beautiful clear coloring. A lemon-crome-yellow of beautiful form on a thrifty vigorous plant. One of the few good yellows to date. **\$1.50**

Grace Cameron (Pfeiffer 1929). Standards and falls beautiful uniform shade of dark lavender, falls slightly reticulated violet at the base, standards incurved and ruffled. Stout erect stem. 24 inches. Beard yellow tipped white. Pleasing fragrance. **\$1.00**

Harriet Presby (Presby). A tall vigorous variety with stalks that often measure over 50 inches. S. and F. soft petunia violet; white beard tipped orange. General effect reddish. **\$2.00**

Her Majesty. The old standard pink. Very thrifty, stands all kinds of neglect and adverse conditions and still lives and does well. S. clear rose-pink; F. same color heavily veined crimson. **25c**

Ingeborg (Goos & K.). 79. Very early intermediate. Pure clear white. 18 inches. Very desirable for an early white. **25c**

Imperator (Cayeux). Large, late flowering with cupped standards and straight hanging falls of raisin purple. Strong superb plant. 40 inches. Very rich. **75c**

Iris King (Goos & K.). 80 S. a buff-yellow; F. velvety garnet brown, shaded ox-blood red with an intense well defined yellow border. A brilliant Iris. 24 inches. **25c**

Isolene (Vilmoren). S. pinkish buff-tinged cinnamon; F. mauve with yellow tinting at center. Three feet. The straight hanging falls makes the flower look long. A most beautiful Iris but in the north must be well drained and lightly mulched for winter. **35c**

Japanesque (Farr). S. white with streaks of lavender flecked violet; F. deep violet with lavender edge. The six petals of this flower stand out horizontally like those of a Japanese

Iris and thus give quite a different flower from most other Irises. Very nice. **35c**

Jean Chevreau (Cayeux). Beautiful new Iris. S. primrose-yellow shading to buff; F. cream stippled and edged red; yellow beard. An odd colored but beautiful flower. **\$1.00**

Kathryn Fryer (Fryer). 8.1. Mr. Fryer gave us two great Blended Bicolors; W. J. Fryer and Kathryn Fryer. We think Kathryn the better of the two. A very tall late blooming Iris that is very thrifty and always there. S. clear sulphur yellow; F. rich violet-carmine, with a lighter border. Good enough for any garden. **25c**

Katherine E. Lees (Pfeiffer). White and delicate lavender, standards ruffled; fragrant, tall grower. Very beautiful flower. **50c**

King Karl (Sass). A heavily ruffled richly colored plicata. Ground color cream, deeply frilled, and dotted with a rich brown. The best of the Sass Plicatas. Award of Merit by American Iris Society. **\$2.00**

Kochii. A wild Iris from southern Europe. Very early, hardy, and profuse bloomer. 12 to 18 inches. A uniform rich dark blackish purple. Everybody likes it. **25c**

Lady Byng (Bliss). A dark lavender like Mlle. Schwartz, only darker. Same fine form as Susan Bliss of which it is a sister flower. Profuse bloomer. **50c**

Lent A. Williamson (Williamson). 9.0. A tall vigorous growing flower of great size and good substance. S. very broad, campanula violet; F. broad and drooping, rich violet purple; yellow beard. A great Iris. **35c**

Lona (Sass). Another of those beautiful richly colored ruffled Plicatas of which Sass has given us so many good ones. A soft buff, heavily marked purple at the edges. 30 inches. Very striking. **\$1.50**

Lord of June (Yeld). 9.1. Irises may come and go but I believe we shall always keep Lord of June and class it as one of the great Irises. S. broad and floppy, light chicory-blue; F. large broad, lavender-violet. Several great blooms open at once. Will always be a great Iris. **50c**

Magnifica (Vilmoren). 8.7. Standards white flushed with violet blue; falls long, drooping, deep reddish violet, reticulated chestnut. Great large blooms on tall strong well branched stems. 40 inches. **75c**

Majestic (Bliss). 8.8. A dominion seedling. Very large flowers of fine form and lasting quality. Standard round, light lavender to mauve shaded bronze at base; falls straight hanging, rich raisin-purple. Free bloomer, stout stems; 36 inches. **\$1.50**

Marsh Marigold (Bliss). 8.7. One of the brightest of all the variegatas. Standards golden yellow falls deep purple-brown, with an intense bright yellow margin. 30 inches. Late. **25c**

Mary Barnett (Crumbler). Princess Beatrice is one of the very fine Irises and Mary Barnett is an improved Princess Beatrice. The flower is like Princess Beatrice but larger and has a great golden beard so intense in its brilliancy that it lights up the entire flower. **\$3.00**

Mary Gibson (Perry). 8.4. Standards light bronze overlaid old rose falls old rose suffused bronze prominent orange beard. A beautiful free growing Iris. **\$1.50**

Mary Orth (Farr). 8.1. Standards light blue violet falls velvety dark blue violet, flaring. 30 inches. A fine blue bicolor that is called one of Mr. Farr's best. **\$1.00**

Medrano (Vilmoren). 8.4. Standards coppery red-purple falls rich dark maroon-purple. Crest heavily flecked orange beard. A very rich and distinct color. An odd and attractive Iris that adds greatly to any collection because of its dark colors which contrast strikingly with the lighter varieties. **35c**

Midwest (Sass). A pretty white Plicata, beautifully ruffled, of large size, and pleasing form. Standards flushed and dotted purple falls clear white at center, heavily bordered with the same purple. 30 inches. **35c**

Mildred Presby (Farr). Standards ivory white falls rich pansy violet, faintly edged lavender white. A very beautiful bicolor. Another of the best of the Farr Irises. **\$1.00**

Mme. Chereau (Lemon 1844). 7.4. An old Iris. Grandmother had it in her garden years and years ago and it is a good Iris still. We simply won't drop it from our list. There is a place for it in every garden. Standards and falls both white, beautifully frilled with a wide border of clear blue. 36 inches. **25c**

Mme. Chobaut (Denis). 8.5. An outstanding Iris as to color. Standards white suffused pale yellow, shading to wine-red falls white edged with lilac and reticulated Prussian red at haft. Vigorous grower. An unusual color combination. **35c**

Mme. Henry Cayeux (Cayeux). A beautiful new Iris of the Ambassadeur type. Standards reddish, violet purple falls rich dark, reddish-purple, lighter at edges. 42 inches. **\$2.50**

Monsignor (Vilmoren). 8.4. One of the very hardest and most robust of Irises. S. light bluish violet F. same color as standards, overlaid with deep, velvety, brownish purple. A most reliable Iris. **25c**

Morning Splendor (Shull). When everything is considered we think there is no greater, no finer Iris than Morning Splendor. In size, form, color, substance it is everything one would desire. Standards Petunia violet falls velvety raisin purple. Very tall and free blooming. Fragrant. Long recognized as the leading American Iris. **\$1.50**

Mother of Pearl (Sturtevant). S. and F. light bluish lavender with a faint creamy undertone. Large flowers of beautiful form. A general favorite. **50c**

Mrs. Alan Gray (Foster). 7.6. Pink. Another of the rugged Irises that no matter how bad the weather may be is always with us. General color effect lilac pink. 30 inches. Vigorous grower. **25c**

Mrs. A. M. Brand (Fryer). An almost pure white. Mr. Fryer brought out several very fine whites and we think this is the best of them. **50c**

Mrs. Marion Cran (Perry). One of the very finest of the soft rose pink. Flowers large, profuse, of fine shape. A brilliant light rose. If a real pink is desired this is the one. **\$3.00**

Marjorie Tinley (Perry). Enormous flowers borne on strong branching stems over 4 feet high. S. broad incurved, soft lavender blue F. deeper shade of same color with a very showy orange beard. Falls are held out horizontally and this gives the flower a beautiful form. **\$1.50**

Mrs. Tinley (Bliss). High widely branched grower. An early variety producing abundant large self colored blooms of soft lavender to pleroma-violet. **75c**

Mr. Valerie West (Bliss). Dominion seedling. We think this the greatest of all the Bliss Irises. Falls of enormous size and great substance, rich deep crimson brown standards large, lavender shot with bronze. Strong stem. 40 inches. Well branched. Far and away better than the average run of the good Dominion seedlings. **\$20.00**

Nimbus (Shull). An iris that we have always thought very much of. A large Iris of good color and fine stately form. S. arched light lobelia-violet with a narrow darker edge F. velvety deep purple. 36 inches. A very rich dark Iris. **\$1.00**

Opera (Vilmoren). 8.7. A very bright violet-red bicolor that everybody admires. So much so that we sell out every year long before the season is over. S. bright purple F. rich deep red purple. 32 inches. **50c**

Parc de Neuilly (Verdier). 8.1. A large late rich dark self that has become because of its many good qualities one of the most desirable of Irises for general use. Arched and slightly ruffled standards and large drooping falls are a uniform deep violet. **25c**

Peerless (Dykes). A wonderful mahogany-red flower of most perfect form of very large size. S. very broad, erect, reddish violet. F. long and straight hanging, deep purple-red, with very rich golden beard. One of the masterpieces among Irises. **\$10.00**

Perfection (Barr). 7.8. One of the old kinds that we still like very much for it has many good qualities. S. light lavender violet often blotched with the color of the deeper falls F. horizontal velvety, dark madder violet. 36 inches. Robust plant, erect, very profuse. **25c**

Phyllis Bliss (Bliss). 8.9. A beautiful rosy lavender self Standards are arched falls are drooping, both are a soft light lavender, shaded lighter at the haft. 36 inches. This variety carries a delicate lavender tint in general effect, while the color tone of its sister Iris Susan Bliss is pink. **\$1.00**

Pioneer (Bliss). An immense great red-purple of beautiful form. S. large bright ampara-purple F. very broad and of great substance, warm deep pansy purple. Wonderful great flower. **\$1.50**

Prairie Gold (Sass). A beautiful deep rich yellow. 32 inches. Not a tall flower but wonderful for landscape effect. Mr. Sass considers this as fine an Iris as he has ever sent out. **\$1.50**

Princess Beatrice (Barr). 9.5. The stock of this variety is much confused with that of Pallida Delmatica. But the true variety is one of the finest of Irises. A tall strong grower. A light lavender-violet with a satiny texture. **50c**

Princess Wenonah (Pfeiffer 1929). Standards and falls beautiful uniform shade of light lavender, similar in color to Caroline Stringer. Prominent yellow beard. Extra strong heavy stiff stem well branched. 30 inches. General effect pink. Splendid Iris. **\$5.00**

Prospero (Yeld). 8.1. An enormous flow on a strong stem 4 feet tall, S. deep lavender F. Anthracene Violet. Probably the hardest and most thrifty of all the large Irises. **50c**

Queen Caterina (Sturtevant). 9.0. Because of its fine color combined with beautiful form this is one of the finest of Irises. S. domed F. well rounded and drooping, both a pale lavender violet. Very beautiful. **50c**

Ramona (Mohr). A wonderful blending of colors hard to describe. A petunia violet flushed crimson brown with orange buff haft. Fragrance of mignonette. **\$1.00**

Rhein Nixe (Goos & K.). 8.2. General effect white and light purple. S. white F. pansy violet, bordered bluish white, flaring haft reticulated olive. 36 inches. An indispensable Iris. **25c**

Rheintraube (Goos & K.). Where one wants a medium toned blue for mass effect in the garden this is the variety. Rheintraube will make the finest blue mass planting. **50c**

Rodney (Bliss). A free flowering pallida of uniform Dauphus violet. The flowers have fine form and good smooth texture. 40 inches. **25c**

Rose Madder (Sturtevant). 8.2. General effect rosy purple. S. light purple with dark narrow margin F. darker and very rich, beard orange. Fragrant. 40 inches. Beautiful. **\$1.00**

Roseway (Bliss). Standards and falls violet rose vivid orange beard. General color effect very pink. 30 inches. **25c**

Ruth Pfeiffer (Pfeiffer). Another of Mr. Pfeiffer's light shades of which he has brought out so many good ones. A soft blending of white and lavender in beautiful combination. Tall, fragrant, very profuse. Praised by Mr. F. X. Schriener in his 1929 Iris book as one of the best of its color. **50c**

Robert A. Wallace (Perry). 8.2. S. rich violet F. very rich deep purple, almost black purple striking orange beard. Rich like Archeveque but better in every way. Approaches in quality Germaine Perthuis and Peerless. An exceptionally large, tall, free flowering dark Pallida of good form and substance. \$2.50

Seminole (Farr). 8.3. S. dark violet rose F. velvety crimson with bright orange beard. Effect a brilliant velvety reddish crimson. Like Opera but larger and better. Mr. Farr's best Iris and the best Iris of its color so far. 35c

Shekinah (Sturtevant). 8.8. S. clear light yellow, deepening at base F. pale yellow deepening to the center to the orange beard bronze reticulations at the haft lighter in color than amber. A beautiful medium sized flower of slightly ruffled effect, and one of the very best of the tall light yellows. 35c

Sherwin Wright (Kohankie). 7.8. A pure golden yellow. About the brightest of the all yellows. This flower created a real sensation when first brought out. A medium sized flower. 24 inches. One of the best for yellow mass. 35c

Simone Vaissiere (Millet). 9.2. S. lavender blue F. horizontal violet-blue red brown and white reticulations orange beard. On the order of Lord of June but standards of better substance, and more brown in the falls. A wonderful Iris in every way. \$1.00

Solana (Shull). 8.2. S. clear lemon yellow F. rich Bordeaux; yellow beard. Very free flowering, branching stems. A richly colored yellow variegata. 32 inches. \$1.00

Souv. de Mme. Gaudichau (Millet). 9.0. S. very rich deep blue-purple F. deeper shade almost black purple beard blue, tipped yellow. A wonderful Iris, an Iris that has about all the good qualities that one would look for in an Iris. Has won more high awards than most any other Iris. 36 inches. 75c

Steepway (Scott). 8.2. A fine purple tinted flower, slightly flushed peacock-blue, apricot and pale green with an orange beard. A tall free flowering variety with wonderful color tints. 42 inches. 75c

Susan Bliss (Bliss). 8.6. Rich rose-pink self with a delicate purple sheen pale orange beard. A free flowering, vigorous, rapid increaser, though rhizomes are small. A pink Iris of fine form and rare beauty. 38 inches. \$1.00

Sweet Lavender (Bliss). 8.7. An Iris of distinct pleasing character S. lavender F. a deeper rose lavender. Large flowers on well branched stems. 36 inches. 50c

Taj Mahal (Sturtevant). 8.3. Generally a pure white with large petals of greatest substance. Tall stems, low and widely branched. Probably the best white. 36 inches. \$1.25

Tenebrae (Bliss). 8.8. A dark colored Dominion seedling of dependable growth. S. violet purple, darker at the center F. velvety blackish purple center of flower flushed straw yellow. \$2.00

Trianon (Vilmorin). S. pale buff with just a touch of rose F. same shade, deepening to grayish lavender, reticulated reddish-brown at base orange beard. A distinct delicate color. 35c

Trojana (Species). 8.1. A large flower of drooping habit, borne on low widely-branched stalks. S. light lavender-violet F. amethyst-violet, veined darker. 36 inches. 35c

True Charm (Sturtevant). A beautiful Plicata of a beautiful form truly its own. Flowers white with the margin delicately etched with blue-lavender. A vigorous hardy plant and good grower. 40 inches. 75c

Valerie Mayet (Denis). 8.5. A medium sized flower borne on a tall, high-branched stalk that has a wonderful rich red color tone. S. rosy purple, flushed ochraceous-orange F. velvety dahlia-purple bright beard. 50c

Virginia Moore (Shull). 8.1. A tall self yellow that when it was introduced was far and away the finest, largest, and best yellow. A beautiful bright chrome-yellow. 50c



Iris in Full Bloom—Brand Peony Farms

Some Entirely New Irises

SEVERAL years ago while on a trip to Washington, D. C., I first heard of the Danenhauer Irises. I was told that Mr. Lee Danenhauer had produced several new Irises of striking merit. Hearing the same thing in several different quarters my curiosity was aroused and on my next trip East I ran down to May's Landing, New Jersey, to see Mr. Danenhauer and his Iris. I was surprised at the extent of his hybridizing work, and was certainly pleased with the results of his labors. So impressed was I with several of his seedlings that I made arrangements with him for considerable stock of his very best varieties with the understanding that when they had been tried out by ourselves they were to be introduced by us. We have now had them under test several seasons and are more than pleased with them. They are all remarkable Iris.

Bronze Sphinx (Danenhauer 1929). A large and beautiful ruffled bronze with base of falls heavily reticulated brown. Standards cupped and beautifully frilled. A wonderfully profuse bloomer. Stems of strong medium height covered with many blooms open at once. **\$5.00**

A RED IRIS

Gobelin Red (Danenhauer 1929). Another absolutely new color.

This Iris is actually ox blood red, contrasting sharply with the known "red Iris" by reason of its complete lack of red purple in its makeup. It is being used as a foundation on which to develop a race of fine reds and it is an outstanding thing of beauty in this garden. A bench has been placed under the apple tree near the original plant, by request.

The flowers are of medium size, but very finely formed and carried. The blooming period is usually long. Stems and leaves are thin, strong, and erect.

This variety alone is reward enough for ten years' effort to this end, and its selection represents the choice among a number of real red Iris. **\$20.00**

Manon Lescaut (Danenhauer 1929). One of those indescribable things called plicata, but which are not. The standards are cream, delicately edged with violet, a fine line divides a cream white center, then a wider area overlaid with violet. The fall is much the same except for the unusual cream and purple beard. The flower is enriched with red brown colorings in the throat. The plant is very strong and develops rapidly carrying lavish bloom. **\$5.00**

Naiad Atlanta (Danenhauer 1929). Color an entirely flesh pink effect with true pink standards. Standard, light Congo pink 7'd. Fall, Congo pink cast Argyle purple 65'b.

The very finest of our hybrids blooming in 1926 and highly rated by qualified visiting judges.

A beautiful flesh pink flower of medium size, carried at varying heights throughout the plant on strong, straight stalks of varying length, distributing the bloom throughout the plant in an effective manner.

The plant is foliated with straight leaves, its growth is vigorous and its stems carry a very large number of blooms.

After watching Naiad slowly unfold for the first time on the morning of May 26, 1926, the surprise and enthusiasm of a prominent visitor led him to offer a very substantial check for the original entire plant but it remained intact and is now available to all. **\$7.50**

Penn Treaty (Danenhauer 1929). A cross between Ambassador and Sou. de Mme. Gaudichau and inherits very rich qualities from both parents. A deep rich velvet or blackish violet. Of perfect form and very thick texture. S. Dauphins violet; falls deep blackish violet.

Of all the Irises we have in our garden Penn Treaty is undoubtedly the richest in color. We class it as one of the very greatest and most beautiful of all Irises. **\$10.00**



One Year Irises With Other Flowers Mixed In



Another Field of Choice Irises—Brand Peony Farms

Bargain Prices on a Few Varieties of Good Iris

We have checked our fields of Iris carefully this season and we find many good Iris that we are willing to pass on at a very low price. New Iris is introduced so rapidly that some of the old must be discarded if we keep pace with the new. These varieties give a wide range of color and they will please those who are making a first planting of Iris.

PRICE

Three of any **one** variety for 60 cents.

Six of any **one** variety for \$1.00.

Twelve of any **one** variety for \$1.50.

Do not select three different varieties for 60 cents. Our prices apply only when the specified number of one kind is ordered.

NOTE—Do not ask us to send you half the number. If you do not have room for twenty-five get some friend to purchase with you.

Bargain List I

We will send a strong rhizome of each of the twenty-five varieties postpaid to one address for \$3.25. Every variety will be labeled.

Bargain List II

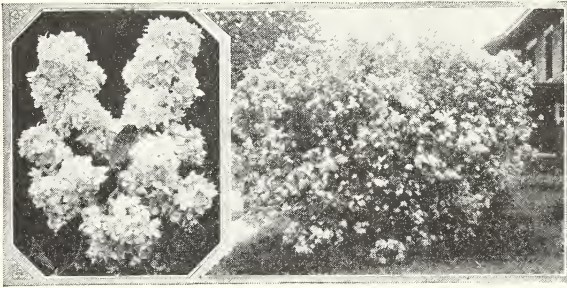
If you do not care to keep the names of your iris and we are saved the time and expense of labeling we will send you twenty-five Iris, all colors, all different, postpaid for \$2.75.

American Black Prince	Deep velvety purple.
Aurea	Rich chrome yellow.
Caprice	Reddish purple.
C. A. Pfeiffer	Pansy violet.
A. P. Connell	Violet purple.
Darius	Canary yellow.
Dorothea	Milky white, tinged lilac.
Flavescens	Creamy yellow.
Florentina Alba	Early white, tinted lavender.
Hiawatha	Lavender and royal purple.
Lohengrin	Soft mauve.
Mandalisca	Rich lavender violet.
Miss Eardley	Standards golden yellow; F. rich red.
Mrs. Andrist	Standards pure white; F. rich violet purple.
Mrs. Darwin	Standards a pure white; F. white veined lavender
Mrs. Naegali	Large pure white.
Nine Wells	Light lavender violet with deep purple falls.

Nokomis	Pale lavender white.
Ossian	Yellow and soft rose.
Princess Vic. Louise	Sulphur yellow and rich plum.
Quaker Lady	Smoky lavender.
Queen of May	Soft lilac rose.
Rose Unique	Delicate blush rose.
Sylvia Lucus	Delicate lavender blue.
W. F. Christman	White and purple.

Lilacs

A WONDERFUL improvement has taken place in the lilac of late years. A few years ago we had only the common purple, and the common white, and the Purple Persian. These were all good enough in their way. But improvement comes in all things and it has surely come in the lilac. A few years ago we had but the three old common sorts; we now have nearly 200 varieties, many of which are truly marvelous. These new lilacs have come to us mostly from Victor Lemoine and Son of France. We have kept in close touch with all these new varieties as they have come out. We have made a practice of planting ten of a variety into our trial garden to have for observation and from which to get a supply of propagating wood. In this trial garden we now have over 150 different kinds which come into bloom about Decoration Day and continue for about two weeks. This garden not only affords a place where we make a study of the different varieties, but where our friends also come to spend some time viewing the best that the world affords in lilacs.



These new lilacs come both single and double in many different shades and blendings of shades of four different colors, white, blue, pink and red. Some of the panicles are almost round while others are long and cone shaped; some are compact, and others are more or less open and feathery.

OWN ROOT LILACS. The named lilac as sold is propagated in several ways: From cuttings, which is not practical; by budding or grafting onto the root of the common lilac which is not desirable, as the common lilac will sucker badly from the roots and smother the graft out; by grafting onto privet which also is not entirely desirable as most people plant too shallow. Shallow planting causes the privet root to either sucker badly and smother out the lilac top or the privet root will kill out in the north on account of tenderness. Having all these things in mind, we prefer to employ our own method of propagating and have our lilacs grown entirely on their own roots. This gives to our customer the only really satisfactory lilac to plant.

Remember that our lilacs are all on their own roots, are grown by us, and guaranteed true to name.

White Varieties

Marie Le Graye. Single. Pure creamy white. When this good single French Lilac first came to us it created a sensation. The panicles are very large and rather openly built. The individual petals and florets are very large. The plant is a young profuse bloomer, often blooming as a two year old. It produces an immense quantity of bloom which sells very readily at a good price as a cut flower. Own root plants, 2 to 3 feet, \$1.00.

Mme. Lemoine. Double. One of the best of the double whites. Bush grows a foot taller than that of Mme. Casimer Perrier and the bloom is a pure snow white without tinge of cream. Foliage dark green. Panicles large, long, erect; individual florets, large. One of the very good dependable whites. **Strong, 2 to 3 feet, own root plants. \$2.00.**

Mme. Casimer Perier. Double. Creamy white. This is a very thrifty growing variety that produces a profusion of large sized panicles of very double creamy white flowers. The bush is medium height, compact, with bright light green foliage. This is a splendid variety, but we have worked up a large stock, so we are making a special price. Everyone should plant one of these beautiful lilacs. **Own root plants 2 to 3 feet, \$1.00.**

Mont Blanc. Single white. This beautiful lilac is one of the very best of the single whites, if not the best of all. The plant

is compact and shapely in growth, with clean foliage. The panicles are large, rather compact, and of beautiful form. The florets are immense in size. Color a clear creamy white. Probably the best single white. **Own roots, 2 to 3 feet, \$2.00.**

Mme. Abel Chatney. Beautiful great round globe-shaped buds like Lily-of-the-Valley, which open very slowly into a very large bloom of pure white. A sort very much admired. **Own root plants, 2 to 3 feet, \$2.00.**

Blue Varieties

Alphonse Lavalle. Double. A tall robust growing variety that makes a very shapely bush. Panicles long, broad, shapely, and compact. Opens an intense blue, but as the florets develop it changes into a beautiful shade of lilac. A wonderful bloomer. Splendid sort. **Own root plants, 2 to 3 feet, \$2.00. 3 to 4 feet, \$3.00.**

Monument Carnot. This is one of the greatest of all lilacs. The bush grows very tall with great heavy light green leaves. The panicles are of the greatest size from nine inches to a foot long. The florets are large and semi-double. A clear light

blue of a most pleasing shade. The finest of all light blue lilacs. Our stock is limited. **Own root plants, 2 to 3 feet, \$2.50. 3 to 4 feet, \$3.50.**

President Grevey. Double. Light blue. In this variety the panicles are very double, symmetrical, of great size and pleasing appearance. The color is a clear soft delicate blue. President Grevey is one of the older sorts and still one of the most desirable of all varieties. **Own root plants, 2 to 3 feet, \$2.00. 3 to 4 feet, \$3.00.**

Pink Varieties

Senator Volland. Double, very floriferous. A very pretty lilac with a large bloom that is somewhat open. When in the bud the reverse of the petals shows a very distinct bright touching of pink which continues to show as the florets open and gives a very dainty effect to the bloom. Center of florets pinkish light lilac. Very dainty in its beauty. **Strong own root plants, 2 to 3 feet, \$2.00. 3 to 4 feet, \$3.00.**

Grace Orthwaite. Single. A beautiful single lilac that has the most real pink about it of any variety we know of. A very

profuse bloomer, the bush being just one pink mass when in bloom. A real pink. **Own root plants, 2 to 3 feet, \$3.00.**

William Robinson. Double. As a rule people like this variety unusually well, and always pick it out as one of the best. Panicle very compact and almost round. The bloom when the florets are just about to open gives a very striking pinkish red effect which gives place to a lavender as the florets open and their reverse side turns back. Very much admired. **Own root plants, 2 to 3 feet, \$2.00. 3 to 4 feet, \$3.00.**

Red Varieties

Charles Joly. Double. Purple red. Charles Joly is one of the very best of the double dark reds. Bush medium both in size and height with limbs growing very upright. Blooms rather large, are held erect and make a very striking appearance as they show well above the foliage. This we consider the best of our entire list of double reds. **Own root plants, 2 to 3 feet, \$2.00. 3 to 4 feet, \$3.00.**

Charles Tenth. Single. One of the most dependable of the single red lilacs. A very thrifty growing bush that begins blooming very young and produces large quantities of large, nicely shaped panicles. **Own root plants, 2 to 3 feet, \$1.00. 3 to 4 feet, \$1.50.**

Leon Simon. Single. A broad spreading upright bush. Panicles of medium length, very compact, and of a deep wine red. Deeper in color than Charles Tenth. **Own root plants, 2 to 3 feet, \$2.00.**

Ludwig Spaeth. Single. Dark reddish purple. This is one of the oldest varieties that we have among the better lilacs and it is still one of the most striking and best. Panicles very long,

narrow and perfectly cylindrical. As the plant ages the bloom becomes profuse. Blossoms produced well on the outside of the foliage which makes it very showy. Mr. Root, of Springfield, Ohio, who has one of the finest collections of lilacs in this country, says of Souv. de Ludwig Spaeth. "Out of all my lilacs it is one of the very best." **Own root plants, 2 to 3 feet, \$2.00.**

Philomon. A very strong growing lilac that is one of the most floriferous of all the purplish red varieties. Panicles literally cover the bush when in bloom. Panicles large, compact, pure purplish red. **Own root plants, 2 to 3 feet, \$2.00, 3 to 4 feet \$3.00.**

Volcan. One of the most robust and shapely growing of all of the best lilacs. As near a true deep red as we have. Panicles which are very long, large, and shapely, come up well above the foliage. These panicles look rather open as they are in the bud stage but as they develop they open into one of the finest, most shapely, and largest of all these lilacs. We have but a few plants in this variety for sale as the demand for it is so great from people who see it on our grounds when in bloom that we seldom have any left. **Own root, 2 to 3 foot plants, \$2.00. 3 to 4 feet. \$3.00.**

Lavender and Lilac Varieties

Charles Sargent. Double. Medium tall growing variety. Very shapely and vigorous plant. Color a beautiful light lavender. Very double flower with florets with long narrow pointed petals. **Own root plants, 2 to 3 feet, \$2.00.**

Maurice de Vilmoran. Double. One of the truly great lilacs. The demand is so great we seldom have any to offer. But we will have a limited number of plants for sale this season. A tall upright grower. Panicles very long and nicely formed. Color a soft lilac with lavender shadings. One of the very choicest. **Own root plants, 2 to 3 feet, \$3.00.**

Mme. Leon Simon. Double. Strong foliaged and strong upright growing plant. Panicles long, beautifully formed and held well up. Buds swell very large before they open and are a deep reddish pink on the reverse side. Florets open like little roses of a deep bluish lavender. **Strong own root plants, 2 to 3 feet, \$2.00.**

President Carnot. Double. One of the most profuse blooming of all. Panicles very large and regular in form, rather oblong and compact. Florets in the bud very large. Back of floret deep reddish blue, center bluish violet. Plant very vigorous and one of the most dependable bloomers. **Own root plants, 2 to 3 feet, \$2.00.**

Other Lilacs

President Hayes. Single. A very decided improvement on the Persian Lilac. Bush strong and robust with splendid foliage, very floriferous, and with immense panicles of bloom of a deep even lilac color. **Strong own root plants, 2 to 3 feet, \$2.00.**

Persian Lilac. Single. Color mostly Lilac. One of the most graceful of all shrubs for landscape planting. Exceedingly fine for planting as individual shrubs and in great masses. There is no shrub that makes a finer tall hedge than does the Persian Lilac. Our Persian Lilac stock has a slight mixture in it and because of this we are offering it very cheap. **Strong, 2 to 3 feet, 75c. 3 to 4 feet, \$1.00. Where ordered in lots of 25 and up for hedging, price 30c each; for 2 to 3 feet and 50c each for 3 to 4 feet.** This 3 to 4 foot grade is an extra select grade, very heavy.

If a tall hedge or screen is wanted nothing is more beautiful than Persian Lilac.

Lilac Japonica. The Japanese Tree Lilac. Can be grown in either tree or shrub form. We grow it as a shrub. Grows into a beautiful tall shrub or if trimmed into tree form, as a still taller tree. Beautiful smooth bark, leaves large and thick. Covered with great feathery plume-like creamy white blossoms late in the season after the other lilacs are gone. Fits into a yard planting either as a medium sized tree or as a very large shrub. Very hardy. **Own root, 2 to 3 feet, \$2.00. 3 to 4 feet, \$3.00.**

Villosa (Specie). White tinted pink. This is a most desirable lilac, not only on account of the beauty of the great feathery lacy-like panicles of bloom but also on account of the beauty of the plant itself. This variety is very robust and grows into a great shrub 8 to 10 feet tall. Its leaves are large, heavy and beautiful in appearance. It comes into bloom about a week after the regular lilac season is over, thus prolonging the season. **Strong own root plants, 2 to 3 feet, \$1.00.**

Special Lilac Offers

Anyone choosing lilacs from the above list may choose \$25.00 worth for \$20.00.

Congo. Immense, single, wine-red. This is the best Lilac of its color. I have asked many Lilac experts for their choice of the twelve most beautiful Lilacs and almost without exception, Congo is one of the first named. **2 to 3 feet, \$5.00.**

President Grevey. Large, lacy bloom, very near blue. **2 to 3 feet, \$2.00.**

Marie Legraye. Large, open, single, pure white. **2 to 3 feet, \$1.00.**

Charles X. Profuse single, purple-red. **2 to 3 feet, \$1.00.**

One each of the four varieties, **2 to 3 feet, \$7.00.**



A Last Look at the Peonies as We Near the End of the Book

BEGINNERS' LILAC COLLECTION

There are many who are just about to start a collection of good lilacs. They are not familiar with varieties and so do not know what kinds to buy. To help such people out we are offering the following Beginners' Collection of four first class lilacs. All strong, 2 to 3 feet high.

1 Mme. Casimer Perier.....	Double White	2 to 3 feet	\$1.00
1 Senator Volland.....	Double Pink	2 to 3 feet	2.00
1 Charles X.....	Single Purple Red	2 to 3 feet	1.00
1 President Grevey.....	Double Blue	2 to 3 feet	2.00

All own root, all for **\$5.00**, Express Collect.

\$6.00

Improved Philadelphus

(Mock Orange or Sweet Syringea)

There has been wonderful improvement made of late years in that grand shrub, the Philadelphus, or as it is better known to us, the Sweet Syringea or Mock Orange.

The Lemoines of France, the same men who produced the most of our new Lilacs, are the ones who have produced these beautiful new Philadelphus.

The older varieties of Philadelphus are single. These new ones come in singles, semi-doubles and doubles. They are more beautiful than the older sorts in that their blooms are larger, are borne in greater profusion and are of more exquisite form. These different Philadelphus may be selected as to their final growth in sizes to suit almost any want. Some varieties are real dwarf, others are of medium height, while still others grow into plants eight or ten feet high. The most of them are very sweet scented and often a single bush covered with its beautiful bloom will scent the air of an entire city block.

Avalanche. Five feet. Pure white. Grows into a very attractive bush about five feet high. The branches are very slender and graceful, and when in bloom this is a wonderful shrub. The medium sized single florets literally cover the branches from top to bottom, making an absolute snow ball of the plant.

The slender branches become so heavily laden with bloom that they bend over in all directions. We think this a very beautiful sort. **Strong 2 to 3 foot plants, 75 cents.**

Bouquet Blanc. This variety forms an upright, shapely bush with dark rich foliage. Flowers come in clusters, are large, pure white, and quite double. Very sweet scented. One of the hardiest and most dependable bloomers. Extra choice. **Strong 2 to 3 foot plants, 75 cents.**

Dame Blanche. A very profuse blooming sort which produces large, semi-double flowers that are a rich creamy white. The bush grows about four feet high, is very shapely, and works nicely into border planting, into hedge work, or as a single specimen. **Strong 2 to 3 foot plants, 75 cents.**

Mt. Blanc. A tall growing variety that works wonderfully well into a hedge to grow on a line between lots. Flowers large, pure white, and semi-double. Produced in wonderful profusion. One of the most prolific bloomers of all. **Strong 2 to 3 foot plants, 75 cents.**

Pyramidal. A very nice shrub that takes up but very little space because of its narrow upright growth. Nice to plant in corners about the house. Blooms large, semi-double, pure white, and very fragrant. Grows about four feet high. **Strong 2 to 3 foot plants, 75 cents.**

Virginal. Double. White. Ever-blooming. Taken all in all this is the most sensational of all the Philadelphus. In fact, we think it the most valuable acquisition to the flower garden made in recent years. The bush is a moderately strong grower, with us attaining a height of between six and seven feet. Rather of an open sparsely foliaged plant which permits its wonderful blooms to be all the better displayed. Flowers pure white, double, and often two inches in diameter. Begins to bloom about June 15 with us and gives a heavy crop of bloom for about three weeks. Then it rests a few weeks and then starts to bloom again and keeps it up with a small amount of bloom until frost. **Strong 2 to 3 foot plants, \$1.00 each.**

Special Price. We will send all six of the above named Philadelphus to one address for **\$3.75** Express Collect.



Philadelphus

Oriental Poppies

When it comes to real gorgeousness, something that reminds one of the warm, extravagant colors of the east, nothing in all the world of flowers can compare with the Oriental Poppy. They come with the early peonies and give to the garden a touch no other flower can give.

The Oriental Poppy blooms, ripens its seed pods, and then the top dies to the ground. The root remains perfectly dormant for several weeks and then starts a new growth. It is during this dormant period that it is most safely moved. This is generally during late August and September. We fill all our oriental poppy orders during this period. Please do not order Oriental Poppies after September 30.

Beauty of Livermore. A splendid Oriental Poppy with good stiff stems. Immense deep red flowers. Blooms later than Wurtembergia. **\$1.00**

Lula A. Neeley. When this wonderful poppy first came out it sold for \$15.00 a root. Stout stems, medium sized cup shaped brilliant red flowers. **\$1.50**

Mrs. Perry. Where the red or orange will not blend well with other flowers use Mrs. Perry a beautiful large salmon pink. **\$1.00**

Olympia. A new semi-double poppy bright scarlet in color. Very nice. **\$1.00**

Orange Queen. An early variety. Blooms of greatest size. Stout straight stems. Brilliant deep orange. **\$1.00**

Princess Victoria Louise. Large, soft lilac rose. One of the finest named sorts. Beautiful. **\$1.00**

Wurtembergia. We think this the best red oriental poppy of all. It has the beautiful red color together with immense size and a richness seldom seen in any flower. **\$2.00**

Prices are for strong field grown roots.

1 strong root, each of the above, 7 beautiful varieties for \$5.00.



A Planting Scene on the Brand Farms in the Fall

Dielytra

The Dielytra or old-fashioned Bleeding Heart was, in our grandmother's time, one of the best known and best liked of flowering plants. Every old-fashioned garden had one of these plants, but its great value in the modern perennial border is far from appreciated.

Its graceful foliage is a beautiful green and the plant itself gives beautiful masses of soft greenery all summer. Its long swaying sprays of bright rose, heart-shaped flowers cover the plant. These come two weeks before Iris and give color to the the garden when it is much needed.

The Dielytra is as hardy as the peony, a single plant living and developing for many years. For all these reasons, every border should have these invaluable plants scattered through it at frequent intervals. There should be a Bleeding Heart season as well as an Iris, Peony, or a Phlox season.

Note that we make a special offer on six of these plants.

A Brand root 75 cents or 6 for \$3.75.



Hardy Phlox, Europe

Hardy Perennial Phlox

There is no flower that fits into the late color scheme of the garden as well as the perennial phlox. They begin to bloom in the middle of the season and carry loads of the most brilliant color far into the fall or until touched with frost.

They come in many colors from the purest white, through the many shades of pink, lavender, red, purple, to the deepest crimson. For best results the soil should have well rotted manure worked into it and the planting should be in a fairly sunny location, and during dry spells a thorough soaking of water should be given. Once planted they will do well for from four to five years without replanting.

If the first flower spikes are cut off as soon as the flowers fall and the plants are well watered a second setting of bloom will come on and continue late into the fall.

Fall planted Phlox should be planted in October except in extreme Northern points, and except to our very northernmost customers we will not send Phlox unless specially instructed, except during October. We will begin our Phlox shipments right after October 1st. As soon as plants are received remove all packing material and stand the roots in water for at least two hours, then plant in well prepared soil, forming the soil well about the roots with **strong** pressure of the foot. Immediately after planting put a light mulch about, but not over the plants. When the ground has frozen for winter put a 2-inch mulch of coarse hay, straw or similar material over and all about the plants. Throw a few limbs on this mulch to hold in place.

Our collection is made up from the best of the standard sorts to which we are constantly adding the choicest of the new varieties as they come out.

NOTE—When you order phlox from us you get a real Brand Peony Farms plant. Our phlox plants are of the same quality as our Brand Division peony roots. Our plants are selected No. 1 one year field grown plants.

Do not compare our prices for our phlox plants with cheaper prices where orders are filled with plants commonly called Baby Phlox Plants.

Prices for Phlox, All Postpaid

Except as Otherwise Noted

1 Phlox any one variety	\$.35
3 Phlox all one variety	1.00
6 Phlox all one variety	1.75
12 Phlox all one variety	3.00

We are offering our Phlox in two equally good collections. We have tried to arrange the varieties in each collection so that one is as desirable as the other. Each collection consists of twelve first class sorts made up of all seasons and all colors. We will send either collection postpaid for \$3.25, or the two to one address for \$6.00. Or you may make up your own twelve from the entire twenty-four varieties, one of a kind, or as you desire. **12 for \$3.50, Postpaid.**



Siebold

B Compte

Thor

Von Hochberg

Collection 1

Athis. A very tall growing phlox. Very hardy. A beautiful salmon pink.

Eclairer. A purplish crimson with white aureole. One of the phlox that seldom kills out.

Europe. A large beautifully formed flower with great white florets with carmine eye.

Elizabeth Campbell. A very large, soft, even, salmon pink with distinct lighter halo. One of the most sought after of all.

Frau Von Lassberg. The purest snow white in cultivation large open truss, wonderful cut flower.

R. P. Struthers. Rosy carmine with claret eye. Wonderful variety as it stands up so well in hot sun.

Rynstrom. Very large trusses of rosy-pink flowers. Shade of Paul Neyron Rose. Very free flowering.

Siebold. Orange scarlet with red eye. Very thrifty, profuse bloomer. Immense spikes and many of them.

Sir Edwin Landseer. A very profuse blooming bright crimson. One of the most showy of phlox.

Thor. Great trusses and immense florets. Deep salmon pink with aniline red eye. A charming variety.

Von Hochberg. A medium tall growing, very thrifty sort. Deep brilliant red. One of the very best of the red Phlox.

Widar. Very large individual florets of lavender purple with large white center. Large panicles; very attractive.

Collection 2

B. Compte. A brilliant rich satiny red. One of the most striking of all phlox.

Baron Von Dedem. Bright orange-scarlet with trusses and individual flowers of immense size.

Beacon. A fine brilliant bright cherry red. Trusses of most beautiful form.

Frau Anton Buchner. A pure white that looks very rich. A strong plant that produces flowers of great size and perfect form.

Independence. A white with compact panicles; tall; good to use in outer border.

Jules Sandeau. A very large flowering pure pink. One of the finest.

Milly Von Hoboken. A pure soft pink self color. Grows tall, thrifty and branching. Large well shaped flowers. A splendid new one.

Pantheon. A clear deep carmine-pink with a faint halo. One of the varieties that can be depended on.

Prof. Virchow. Large, flat flowers; bright carmine overlaid with orange scarlet.

Miss Lingard. An early white phlox with waxy leaves and glistening petals. The cut and come again phlox. Very much used by florests for cut flowers.

Riverton Jewell. A beautiful mauve-rose, made very striking by a large brilliant carmine-red eye.

Special French. A wonderful blush pink with a salmon eye. A profuse blooming attractive new phlox with immense trusses.

New Phlox

Africa. A brilliant deep carmine purple with a blood red eye.

Brilliant. A very bright attractive scarlet red. Very showy.

Commander. A new phlox of exceptional size. Strong and very thrifty. Brilliant cherry red with conspicuous dark eye.

Count Zeppelin. Very fine pure glistening white with a vermillion-red eye. No fading.

Deutschland. Flowers of moderate size of an intense fiery scarlet. The most dazzling phlox we have ever seen.

Enchantress. Salmon pink, deeper color, and stronger grower than Elizabeth Campbell.

Flora Reidy. A new phlox, a splendid white of beautiful rich color and most perfect form.

Mrs. Scholten. A free flowering phlox with very large trusses. Rich velvety deep salmon pink.



Peonies Do Well in California. A Scene at Los Gatos

DELPHINIUM

The Delphinium or Perennial Larkspur is one of the indispensable flowers to our flower garden. No garden is quite finished without it as it works nicely into so many places. It starts blooming in June and continues throughout the season until frost, if, as soon as the first bloom falls, the old spike is cut off and the root well watered. New shoots will soon appear and the second crop of blooms will soon follow. The Delphinium should be planted in full sun in mellow soil, enriched with well-rotted manure. Water as soon as planted.

We have coming on in our fields for this fall's sales a fine lot of well rooted plants that will all bloom this season. When in bloom we will go through our different beds and mark the choice and the extra choice blooming spikes. This work will be done personally so that people ordering can depend on getting stock that is worth while. This is the only way one is sure of getting real good Delphinium. The seed from which these stocks are grown is the very finest we could procure in America and in England, and purchasers can be sure of choice Delphinium. The plants will be strong rooted, one year field grown. We will make a uniform price for the different strains according to selection.

These plants will be of the following strains:

Blackmore and Langdon Strain. Tall graceful spikes of bloom, covered from top to bottom with captivating blooms in charming color combinations. All the clear shades of blue with many delightful opaline variations, with bees of contrasting colors.

Vanderbilt Hybrids. Immense flower stalks with great heads of bloom tapering to the tip. Nearly all flowers open at once and exhibit the greatest combination of colors.

Wrexham Strain (Hollyhock Delphinium). The chief distinguishing features of the "Hollyhock" Delphiniums are the extraordinary length and the tapering and spire-like shape of the spikes; the indescribably rich and varied tints; the very remarkable extension of the flowering period.

Prices: Plants not selected, just as they run, all colors: 50c each; 12 for \$5.00.

Choice Selected, any strain: \$1.00 each; 12 for \$10.00.

Choice Extra Selected, any strain: \$2.00 each; 12 for \$20.00.



Delphinium, Perennial Larkspur



Dream—one of Miss Sturtevant's finest Irises. One has to search far before one finds a better Iris. Tall, stately, refined. A beautiful, soft, even, pleasing color. See page 33.



Seminole we think the best of all the Irises the late Mr. Farr brought out. It would be classed as a red Iris although it is not really red, but that is the general effect when one views it in the field. A flower of good medium size, many open at once, produced on a good stem that holds the flowers well erect. It is a splendid flower for landscape and field effect as it has a very rich and striking reddish color.

Each 35c; 6 for \$1.80; 12 for \$3.00.



BRAND PEONY FARMS, Inc.

BOX 408

FARIBAULT, MINNESOTA