

Mb

Q1
482
G3
P19
1796
[1.8]
Hf
48-48
CNHRB

Inhalt

des drey und vierzigsten Hefts.

- Tab. 1. *Scarabaeus ater* Fabric.
— 2. *Scarabaeus bimaculatus* Fabric.
— 3. *Scarabaeus granarius* Fabric.
— 4. *Scarabaeus sanguinolentus*. Panzer.
— 5. *Scarabaeus quadripustulatus* Fabric.
— 6. *Scarabaeus plagiatus*. Fabric.
— 7. *Hister maior* Fabric.
— 8. *Hister laevis* Rossi.
— 9. *Opatrum agaricola* Fabric.
— 10. *Opatrum tibiale* Fabric.
— 11. *Scarites arenarius* Fabric.
— 12. *Tenebrio obscurus* Fabric.
— 13. *Tenebrio Molitor* Fabric.
— 14. *Tragosita caerulea* Fabric.
— 15. *Clerus quadrimaculatus* Fabric.
— 16. *Tillus elongatus* Fabric.
— 17. *Hispia bipustulata* Fabric.
— 18. *Apate Capucinus* Fabric.
— 19. *Apate limbarus* Fabric.
— 20. *Paederus fulgidus* Fabric.
— 21. *Paederus orbiculatus* Fabric.
— 22. *Noctua lunaris* Fabric.
— 23. *Noctua gothica* Fabric.
— 24. *Noctua Signa* Vienn.

1871

1871

1871

1871

1871

1871

1871

1871

1871

1871

1871

1871

1871

1871

1871

1871

1871

1871

1871

1871

1871

1871

1871

1871

1871

1871

1871



Scarabaeus ater Fabr.

J. St. fec.



SCARABAEVS ater.

Der ganz schwarze Dungkäfer.

Scarabaeus ater: scutellatus thorace inermi, capite tuberculis tribus: medio subcornuto, elytris striatis laevissimis. *Fabric.* Ent. Syst. T. II. n. 80. p. 26.

Panzer Ent. germ. I. n. 12. p. 4.

Habitat in stercore animalium.

Exemplum huius Scarab., quod amicissimo et Faunulae meae fautori benignissimo Cl. *Hellwig* debeo, ex toto *ater* utraque cum pedibus fuerat.

a Magnitudo naturalis. b Eadem aucta.

DSI



Scarabaeus bimaculatus Fabr.



SCARABAEVS bimaculatus.

Der zweysleckigte Dungkäfer.

Scarabaeus bimaculatus: scutellatus thorace inermi capite subtrituberculato, elytris striatis: macula baseos rufa. *Fabric.* Mant. Inf. T. I. n. 67. p. 8. Ent. Syst. T. II. n. 82. p. 26.

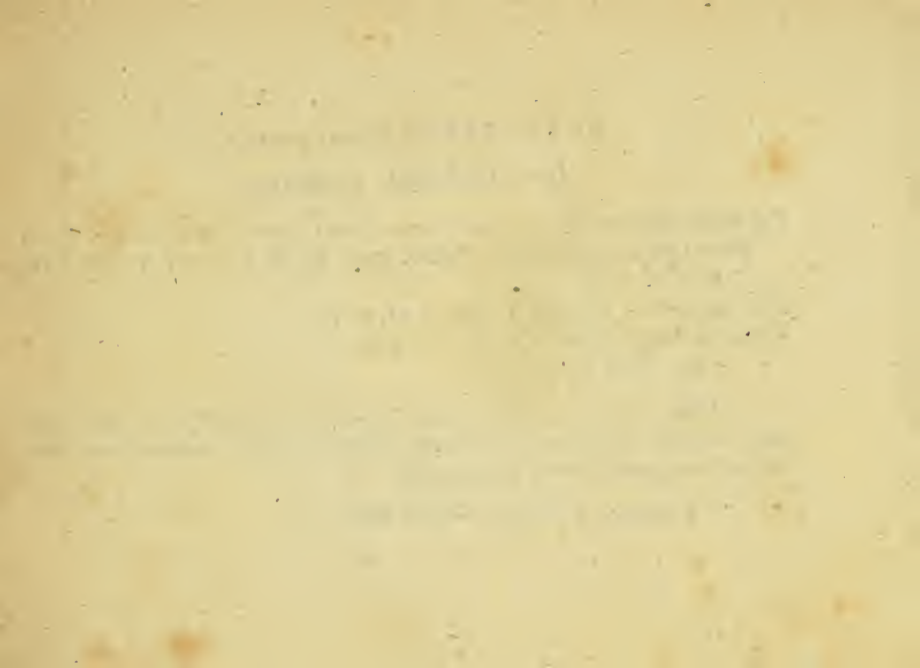
Rossi Faun. etrusc. ed *Hellw.* T. I. n. p. 11. p. 5.

Panzer im Naturf. XXIV. n. 2. p. 3. tab. I. fig. 2.

- - Ent. germ. I. n. 15. p. 4.

Habitat in stercore. Mera varietas *Sc. terrestris* F. ex observat. *Cl. Hellwig.* Ast mirum, *Sc. terrestrem* F. quotannis copiose provenire, nullumve vero huius varietatis vestigium apud nos reperiri posse.

a Magnitudo naturalis. b Eadem aucta.





Scarabaeus granarius Fabr.

J. St. fec.



SCARABAEVS granarius.

Der Waizenkornähnliche Dungkäfer.

Scarabaeus granarius: scutellatus niger thorace mutico, clypeo tuberculo folitario, elytris postice testaceis. *Fabric.* Syst. Ent. n. 16. p. 56. Spec. Inf. T. I. n. 70. p. 17. Mant. Inf. T. I. n. 77. p. 9. Ent. Syst. T. I. n. 92. p. 29.

Scarabaeus granarius. *Linn.* Syst. Nat. n. 23. p. 547. ed. XIII. n. 23. p. 1548.

Herbst Nat. d. Käf. II. n. 94. tab. 12. fig. 10.

Panzer Ent. germ. I. n. 26. p. 7.

Habitat in ligno putrido et locis suffocatis. *Schäffer* Ic. tab. 144. fig. 5.
huc nullo modo admittenda.

a Magnitudo naturalis. b Eadem aucta.





Scarabaeus sanguinolentus Miki.

J. St. fec.



SCARABAEVS fanguinolentus.

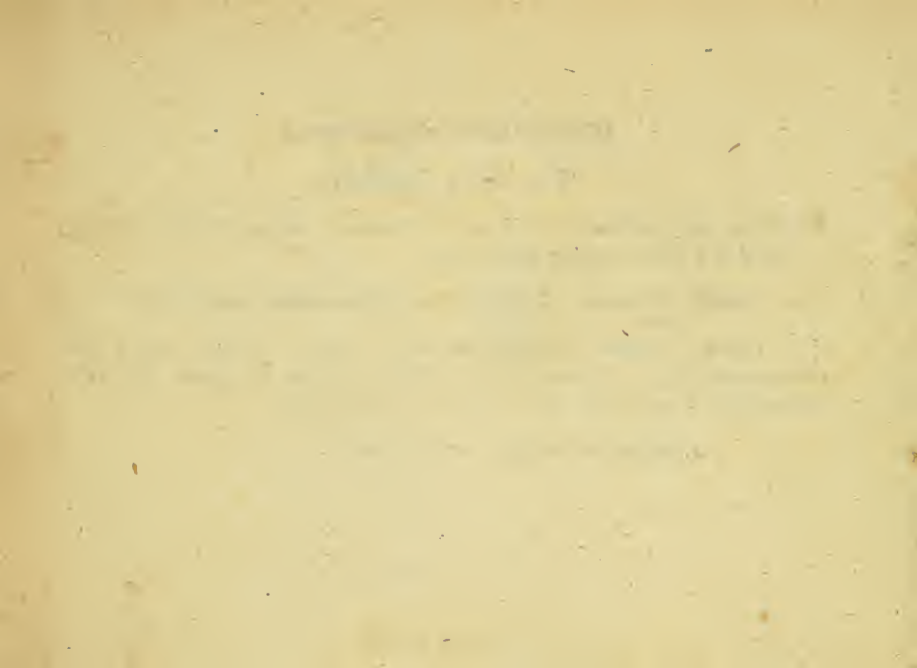
Der blutige Dungkäfer.

Scarabaeus fanguinolentus: scutellatus thorace inermi, capite subtuberculato, elytris striatis postice maculis duabus rufis.

Habitat in stercore. Captus a I. Sturm Faun. insect. germ. pictore.

Parvus. Clypeus rotundatus tuberculis obsoletis. Thorax inermis ater, nuditus, immaculatus. Elytra striata atra nitida, postice maculis duabus rufis: maiori terminatrici. Corpus subtus atrum. Pedes nigri tarsi fuscis.

a Magnitudo naturalis. b Eadem aucta.





Scarabaeus quadripustulatus Fabr.



SCARABAEVS quadripustulatus.

Der vierblatterichte Dungkäfer.

Scarabaeus quadripustulatus: scutellatus muticus oblongus niger, thorace immaculato, elytris maculis duabus rubris, pedibus nigris. *Fabric.* Ent. Syst. T. I. n. 116. p. 36.

Scarabaeus quadrimaculatus. *Linn.* Syst. Nat. n. 84. p. 558. ed. XIII. n. 84. p. 1551. Fn. Suec. n. 398.

Scarabaeus quadrimaculatus. *Herbst.* Nat. d. Käf. II. n. 166. tab. 18. fig. 10.

Panzer Ent. germ. I. n. 39. p. 10.

Habitat in stercore. Cf. ea quae ad *Scarab. quadrimac.* *Fabric.* in Faun. germ. XXVIII. 10. secundum monita Cl. Cl. *Hellwig* et *Schneider* collegi.

a Magnitudo naturalis. b Eadem aucta.





Scarabaeus plagiatus Fabr.

J. St. fec.



SCARABAEVS plagiatus.

Der purpurfärbig gestreifte Dungkäfer.

Scarabaeus plagiatus: scutellatus muticus niger, elytris plaga rufescente. *Fabric:*
Syst. Ent. n. 71. p. 19. Spec. Inf. T. I. n. 87. p. 21. Mant. Inf. T. I. n. 96. p.
11. Ent. Syst. T. I. 119. p. 37.

Scarabaeus plagiatus. *Linn.* Syst. Nat. n. 85. p. 539. ed. XIII. n. 85. p. 1552.
Panzer. Ent. germ. I. n. 42. p. 11.

Habitat in stercore. Magnitudo *Sc. subterranei F.* cui demta plaga rufescen-
te admodum similis. Deprehendi quandoquidem iniquunt plagae defectu, quare huius
varietas nonnullis est.

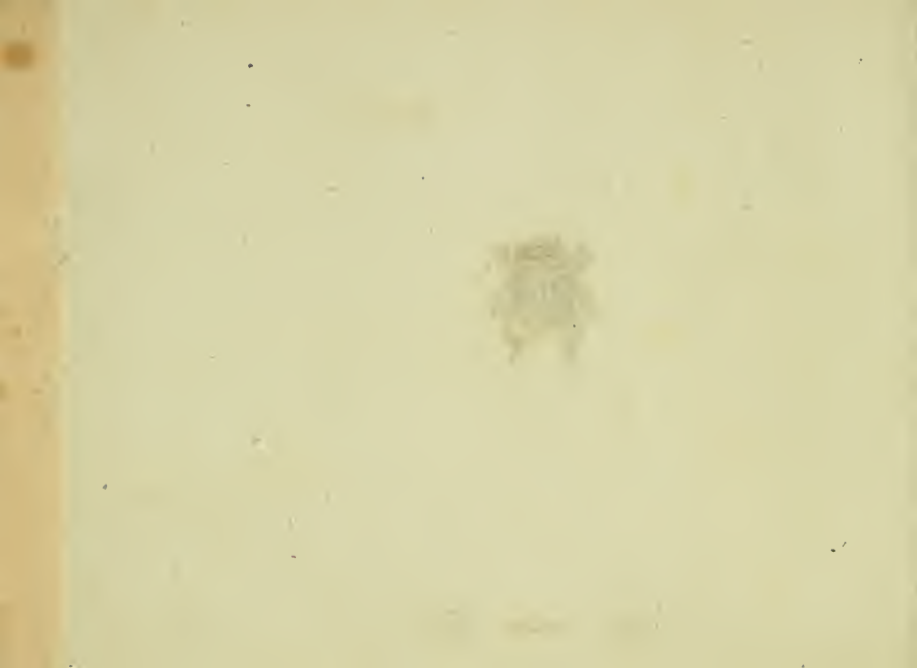
a Magnitudo naturalis. b Eadem aucta.





Hister maior Fabr.

J. St. fec.



HISTER maior.

Der grose Stutzkäfer.

Hister maior : ater elytris substriatis, thoracis marginibus ciliatis. *Fabrici* Syst. Ent. n. 1. p. 52. Spec. Inf. T. I. n. 1. p. 60. Mant. Inf. T. I. n. 1. p. 32. Ent. Syst. T. I. n. 1. p. 72.

Hister maior. *Linn.* Syst. Nat. n. 2. p. 566. ed. XIII. n. 2. p. 1609.

Panzer Ent. germ. I. n. 1. p. 20.

Germaniæ nostræ, et quidem animalculorum huiusmodi proventu feracissimæ regioni, puta Austriam, omnino indigenus *Hister maior* *Linn.* est, rarioribus etenim insectis facile adnumerandus. Post *Oliverium* figuram apprime curatam hic sistere forsam haud potuissem, nisi benevolentiaë sæpius laudati Amici et Faun. germ. Promotoris ingenui, Cl. *Helwigii* insectum adeo rarum carumve deberi, grato animo hic profitendi, mihi fuisset concessum. Ut vero eo melius differentia inter verum *Histerem maiorem* *L. et F.*, et inter *alium*, qui abhinc multo tempore, ast perperam, loco huius venditabatur, patefcatur, hunc hic loci associandum necesse duxi. Notandum, quod *Voetius* nusquam *Hist. maior* *L.* delineaverit.





Hister laevis Rossi.

J. St. fer



HISTER laevus.

Der Stutzkäfer mit der linken größern Kinnlade.

Hister laevus: ovatus ater glaber, elytris margine striatis, thorace antice foveola impresso, mandibula sinistra longiori. *Rossi* Faun. etrusc. ed. *Hellw.* T. I. n. 63. p. 28. tab. II. fig. 1. 2.

Habitat in Austria.

Defectu non tantum ciliarum thoracis, magnitudine maiori, figura magis rotundata, nitore magis opaco, ab antecedente distingendus, sed et caractere prorsus peregrino, verum constanter ab Illustr. *Rossio* animadverso, *mandibula sinistra valde longiori dextra.*





Opatrum agaricola Fabr.



OPATRUM agaricola.

Der Erdstaubkäfer in den Blätterpilzen.

Opatrum agaricola: nigrum thorace laevi, elytris striatis. *Fabric.* Mant. Inf. T. 1.
n. 8. p. 51. Ent. syst. T. I. n. 14. p. 91.

Opatrum agricola. *Herbst* Archiv. IV. n. 3. p. 35.

Herbst Nat. d. K. V. n. 14. tab. 52. fig. 9.

Panzer Ent. germ. I. n. 5. p. 36.

Habitat in fungis putridis, Agaricis, Boletis tempore autumnali. Deprehendi saepius gregarie in cyathis Pezizar. Nomen Agricola in *Agaricolam* mutavi, et sic in appellationem magis vitae generi huius Opatri convenientem. Videtur, quo cum aliis consentio, *Opatr. Agaric.* limites generis sui, ob characteres minus convenientes, transgressum fuisse.

a Magnitudo naturalis. b Eadem aucta.

Drey und vierzigstes Heft.





Opatrum tibiale Fabr.

J. St. fec.



OPATRVM tibiale.

Der Erdstaubkäfer mit den dreyseitigen Schienbeinen.

Opatrum tibiale: nigrum elytris punctato subrugosis, tibiis anticis compresso triangularibus. *Fabric.* Spec. Inf. T. I. n. 7. p. 90. *Mant.* Inf. T. I. n. 7. p. 51.
Ent. syst. T. I. n. 13. p. 91.

Panzer Ent. germ. I. n. 4. p. 36.

Habitat in fabulosis Germaniae borealis. Rugae longitudinaliter elevatae, quas figura monstrat, in speciminibus meis vix adeo manifestae apparent.

a Magnitudo naturalis. b Eadem aucta. c Antenna. d Pes anticus, aucta.





Scarites arenarius Fabr.

J. St. fœ.



1875

SCARITES arenarius.

Der Sand Schlupfkäfer. Attelabe laboureur. Degeer.

Scarites arenarius: piceus tibiis anticis palmato digitatis. *Fabric.* Syft. Ent. n. 3. p. 249. Spec. Inf. T. I. n. 4. p. 314. Mant. Inf. T. I. n. 6. p. 206. Ent. Syft. T. I. n. 9. p. 96.

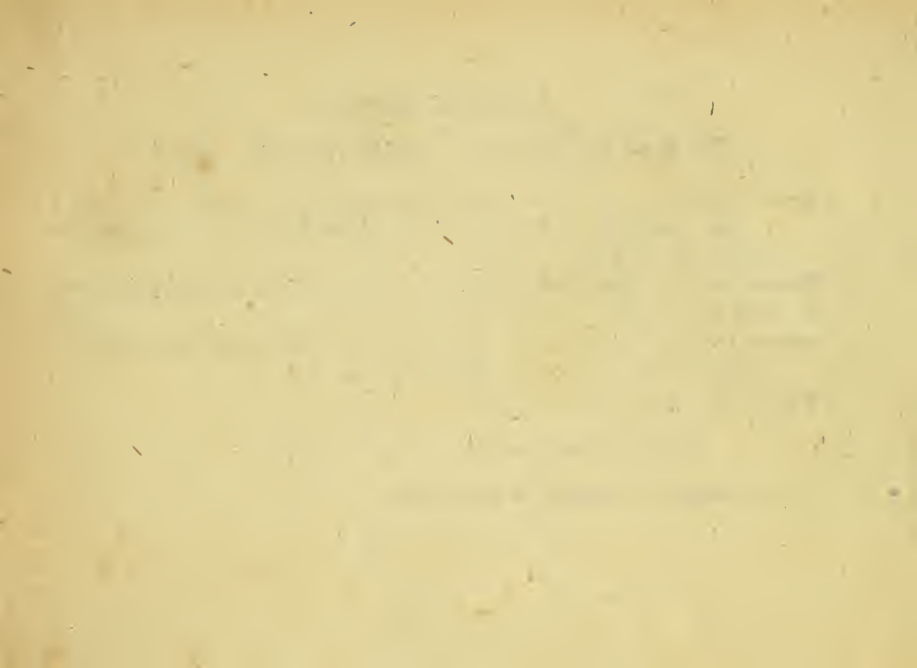
Tenebrio Fosfor. *Linn.* Syft. Nat. n. 7. p. 675. ed. XIII. n. 7. p. 1994. Fn. Suec. n. 817.

Attelabus fosfor: niger nididus, elytris fulcatis, tibiis anticis palmato spinosis. *Degeer* Inf. IV. n. 1. p. 350. tab. 30. fig. 1. 2.

Panzer Ent. germ. I. n. 1. p. 37.

Habitat in campis arenosis.

a Magnitudo naturalis. b Eadem aucta.





Tenebrio Molitor Fabr:



TENEBRIO Molitor.

*Der gemeine Mehlkäfer. Der europäische Müllerkäfer. Der Müller.
Der Mehlwurm. Le Tenebrion à neuf stries lisses. Geoffr. Tenebrion
de la farine. Degeer. Blatta frumentacea. Sitophagus. Blatta
mollis. Dalechamp. Vermis farinarius. Rai.*

Tenebrio Molitor: oblongus piceus, elytris striatis. *Fabric. Syst. Ent. n. 2. p. 255.*
Spec. Inf. T. I. n. 2. p. 322. Mant. Inf. T. I. n. 4. p. 211. Ent. syst. T. I.
n. 6. p. 111.

Tenebrio Molitor. Linn. Syst. Nat. n. 2. p. 647. ed. XIII. n. 2. p. 1995. Faun.
Suec. n. 875.

Geoffr. Inf. T. I. n. 6. p. 349.

Degeer Inf. T. V. n. 3. p. 34. tab. 2. fig. 4.

Frisch Inf. III. p. 1. tab. 1.

Panzer Ent. germ. I. n. 3. p. 40.

Habitat in pistrinis et apud piftores in farina eiusdemque ciftis, doliis, et furfuribus. Larva pallida glabra segmentis tredecim mollis. Lufciniae has avidiffime legunt, quibus facile capiuntur et educantur. A morbis familiaribus eas liberant. Variat imago elytris ferrugineis, et nitidis et opacis.



Tenebrio obscurus Fabr.

THE UNIVERSITY OF CHICAGO

TENEBRIO obscurus.

Der dunkelfärbige Mehlkäfer.

Tenebrio obscurus: oblongus niger obscurus, thorace quadrato, elytris substriatis.

Fabric. Ent. syst. T. I. n. 5. p. 111.

Mus. Dr. Hellwig.

Panzer Ent. germ. I. n. 2. p. 40.

Habitat - - - - -





Tragosita caerulea Fabr.

Jac. Sturm fec.



[Faint, illegible text, possibly a title or description]

TRAGOSITA caerulea.

Der blaue Kneipkäfer.

Tragosita caerulea: caerulea nitida capite linea impressa. *Fabric.* Ent. Syft. T. I.
n. 1. p. 115.

Panzer Ent. germ. I. p. 365.

Mus. Dn. Hellwig.

Habitat in Galliae pane diutius asservato. *Fabric.* In Austriae nemoribus
legit. Variat colore viridi.

a Magnitudo naturalis. b Eadem aucta.





Clerus quadrimaculatus Fabr.

Jac. Sturm. fec.



CLERVS quadrimaculatus.

Der vierfleckigte Ameisenkäfer.

Clerus quadrimaculatus: niger thorace rubro, elytris punctis duobus albis. *Fabric.*

Mant. Inf. T. I. n. 7. p. 125. Ent. Syst. T. I. n. 7. p. 207.

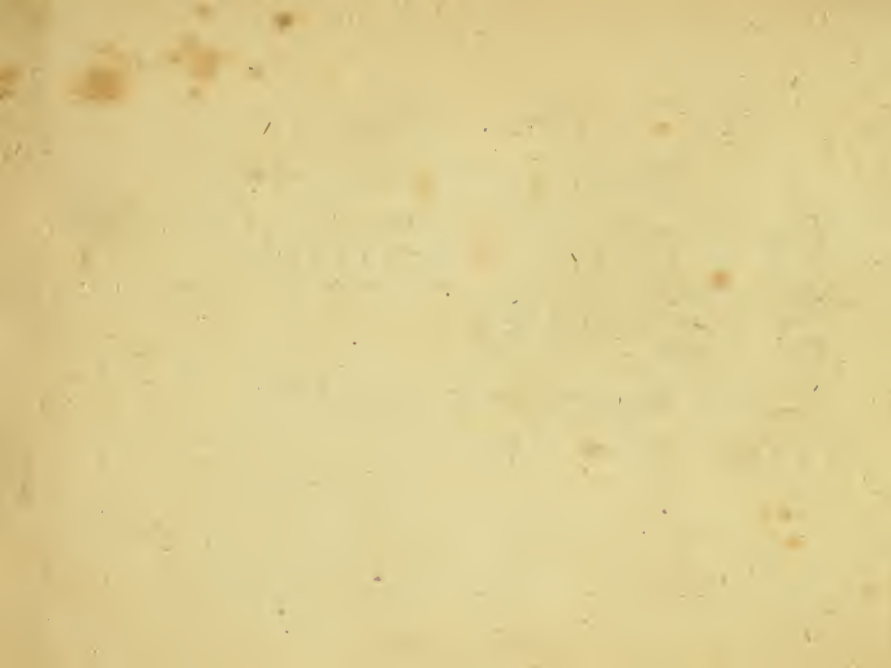
Attelabus quadrimaculatus. *Schaller* act. nat. cur. hal. T. I. p. 288.

Panzer Ent. germ. I. n. 3. p. 85.

Mus. Dn. Hellwig.

Habitat in pinetis halensibus, qua detexit Cl. *Schaller*.

a Magnitudo naturalis. b Eadem aucta.





Tillus elongatus Fabr.

Jac. Sturm fec



TILLVS elongatus.

Der Rauchkäfer mit dem rothen Bruststück.

Tillus elongatus: ater thorace villoso rufo. *Fabric.* Ent. syst. T. II. n. 1. p. 77.

Lagria elongata. *Fabric.* Syst. Ent. n. 6. p. 125. *Spec. Inf. T. I. n. 8. p. 160.*

Mant. Inf. T. I. n. 8. p. 93.

Chrysomela elongata: atra thorace rubro subvilloso. *Linn.* Syst. Nat. n. 122. p. 603.
ed. XIII. n. 221. p. 1729.

Panzer Ent. germ. I. n. 1. p. 201.

Mus. Dn. Hellwig.

Habitat in floribus, rarior.

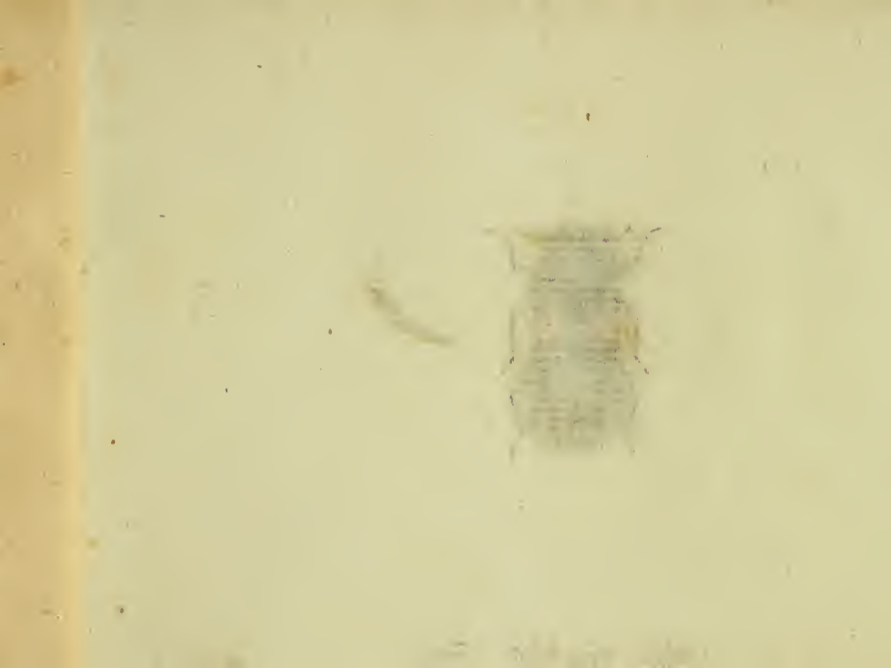
a Magnitudo naturalis. b Eadem aucta.





Hispa bipustulata Fabr.

Jac. Sturm fec.



HISPA bipustulata.

Der zweygefleckte Stachelkäfer.

Hispa bipustulata: antennis ferratis hirta atra, elytris macula baseos rufa. *Fabric.*
Spec. Inf. T. I. n. 8. p. 82. Mant. Inf. T. I. n. 6. p. 47. Ent. Syst. T. II. n.
3. p. 71.

Melyris bimaculatus: niger villosulus, elytris basi macula sanguinea. *Rossi* Faun.
etrusc. ed. *Hellwig* T. I. n. 86. p. 38. tab. VII. fig. 14. *

Mus. Dn. Hellwig.

Habitat in floribus in Germania nostra quoque, ast rarior.

Minus commode *Hispa bipustulata Fabric.*, quam vix alioquin inter *Hispas*
queras, a *Cl. Rosio*, in *Melyridis* speciem transmutatur: verum aequae aegre fer-

rem, si illi locus inter *Lagrias* detur, quibuscum aequè iniuriose militaret. Quid enim obstat, quo minus cum *Cleris* combinaretur, habitu formae haud id contradicente, fabrica antennarum haud aliena, non *ferrata*. Respondetur!

a Magnitudo naturalis. b Eadem aucta. c Antenna lente aucta.



Apate Capucinus Fabr.

Sec. Sturm fec.



APATE Capucinus.

*Der Capuciner. Der Kaputzkäfer. Der rothe Splintkäfer.
Le Bostriche. Geoffr.*

Apate Capucinus: niger elytris abdomineque rufis, thorace emarginato retuso. *Fabric*
Ent. syst. T. II. n. 7. p. 362.

Bostrichus Capucinus. *Fabric*. Syst. Ent. n. 1. p. 59. Spec. Inf. T. I. n. 1. p. 67.
Mant. Inf. T. I. n. 1. p. 36.

Dermestes Capucinus. *Linn*. Syst. Nat. n. 5. p. 562. ed. XIII. n. 1. p. 1600. Fn.
Succ. n. 416.

Geoffr. Inf. T. I. n. 1. p. 302. tab. 5. fig. 1. a. b.

Sulzer abgek. Gesch. d. Inf. p. 21. tab. 2. fig. 31.

Lepech. Tageb. II. p. 207. tab. 11. fig. 31.

Gmelin Wurmtröckn. p. 45. n. 1. tab. 2. fig. 12.

Herbst Nat. d. K. V. n. 1. tab. 46. fig. 7.

Schäffer Ic. Inf. Ratisb. tab. 189. fig. 1.

Harrer Besch. d. Schäff. Inf. 1. B. n. 49. p. 55.

Rossi Faun. etrusc. ed. *Hellw.* T. I. n. 87. p. 39. tab. 5. fig. 3.

Panzer Ent. germ. I. n. 2. p. 233.

Habitat in truncis arborum exficcatis, afferibus. Magnitudine variat et colore.

Variat elytris etiam totis nigris, varietas a nemine, quod sciam, observata. Inveni plures totos nigros (abdomine excepto in nonnullis rufo) una cum aliis iam cognitis in trunco *Quercus* emortuae, mens. Apr. *Rossi*.

Hoc insectum, exemplum antennarum dignitatis in diiudicandis speciebus laesae, sistit. Quaeritur, missis his, quousque id inter *Apates* species, sibi sat insidiosae locum vindicans, tolerari debeat? —

a Magnitudo naturalis. b Eadem aucta.



Apate limbatus Fabr.

J. St. fec.



APATE limbatus.

Der gesaumte Splintkäfer.

Apate limbatus: ater elytris integris pallidis: margine omni nigro. *Fabric.* Ent.

Syst. T. II. n. 13. p. 363.

Herbst Archiv. IV. n. 7. p. 24. tab. 20. fig. 11.

— Nat. d. Käf. V. n. 3. tab. 48. fig. 3. e.

Panzer Ent. germ. I. n. 5. p. 284.

Habitat. in ligno antiquo curioso.

Dermeft. domestic. *Linn.* non aufim cum nostro coniungere, eoque minus *Geoffr.* ab illo adductum. Variat elytris absque omni nigredine, et margine exteriori tantum nigris; thorace dorfo tantum nigro et ambitu testaceo.

a Magnitudo naturalis. b Eadem aucta.



Paederus fulgidus Fabr.



PAEDERVS fulgidus.

Der schimmernde Traubenkäfer.

Paederus fulgidus: ater nitidus elytris plantisque testaceis, capite punctulato. *Fabric.*

Ent. syst. T. II. n. 6. p. 537.

Staphylinus fulgidus. *Fabric.* Mant. Inf. T. I. n. 14. p. 220.

Staphylinus fulgidus. *Paykull.* Monogr. staph. n. 14. p. 22.

Panzer Ent. germ. I. n. 7. p. 363.

Habitat in floribus et in quisquiliis.

Conf. quae Illustr. *Fabric.* sub *Staphyl. fulgid.* in Ent. syst. T. II. n. 25. p. 526. protulit, et annon iure aliquo hariolandum, utramque descriptionem unum idemque insectum demonstrare.

a Magnitudo naturalis. b Eadem aucta.

THE UNIVERSITY OF CHICAGO

PHYSICS DEPARTMENT

REPORT OF THE PHYSICS DEPARTMENT
FOR THE YEAR 1954-55

CHICAGO, ILLINOIS

1955



Paederus orbiculatus Fabr.

J. St. fr.



PAEDERVS orbiculatus.

Der Traubenkäfer mit dem kreisrunden Bruststück.

Paederus orbiculatus: filiformis niger, capite orbiculato. *Fabric.* Ent. syst. T. II.
n. 9. 538.

Staphylinus orbiculatus. *Paykull.* Monogr. staph. n. 26. p. 35.

Panzer Ent. germ. I, n. 10. p. 363.

Habitat in Austria.

a. Magnitudo naturalis. b. Eadem aucta.

1875

1875

1875

1875

1875

1875

1875



Noctua lunaris Fabr:

J. St. fec.



NOCTVA lunaris.

Die Truffeicheneule. Die Eidexeneule. La Lunaire. Devill.

Noctua lunaris: cristata alis incumbentibus dentatis fuscescentibus in medio griseis: puncto atro lunulaque fusca. *Fabric. Mant. Inf. T. II. n. 135. p. 153.*

Ent. syst. T. V. n. 178. p. 63.

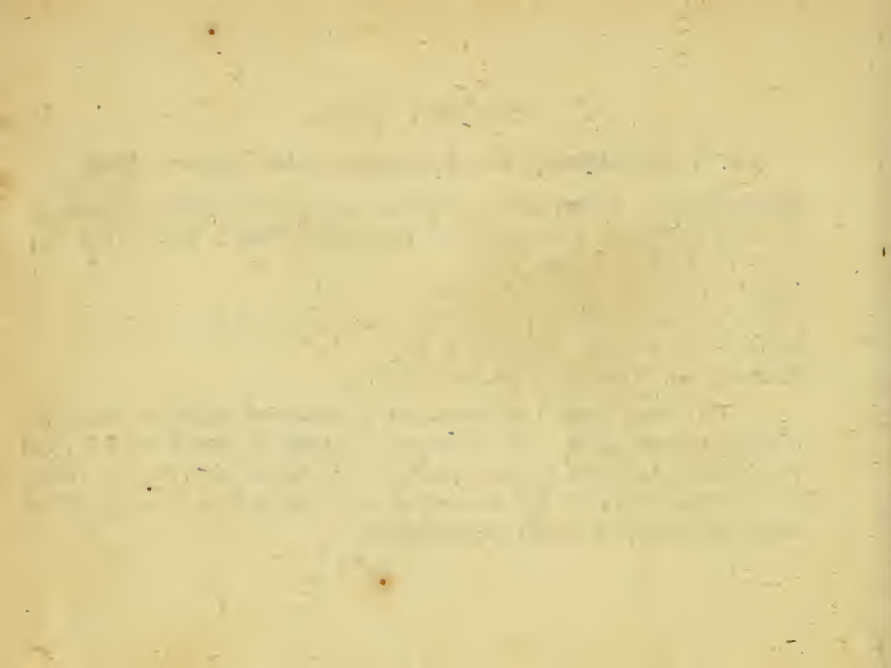
Syst. Verz. d. W. Schm. n. 1. p. 94.

Noctua Augur. Esper. eur. Schm. tab. 87. fig. 4—6. tab. 88.

Hübner Beytr. I. p. 16 fig. 1. tab. 2. fig. 1.

Borkhaus. eur. Schm. IV. Th. n. 368. p. 799.

Die Raupe dieser Eule findet man im Julius und August auf Eichen und zuweilen auch auf Espen. Zur Verwandlung begiebt sie sich in die Erde, und verfertigt sich darinn ein leichtes Gespinnst; doch kan sie auch der Erde entbehren. Die Eule entwickelt sich gemeinlich im folgenden Mai, wenn die Eichen blühen, um welche sie bey Tage herumfliegt.





Noctua gothica Fabr:

J. St. sc.



1870

NOCTVA gothica.

Die Klebkrauteule. Die gothische Schrifteule.

Noctua gothica: cristata alis deflexis: anticis fuscescentibus; arcu punctoque medio atris. *Fabric. Spec. Inf. T. II. n. 102. p. 229. Mant. Inf. T. II. n. 199, p. 164. Ent. syst. T. V. n. 249. p. 85.*

Noctua Nun atrum: *Fabric. Mant. Inf. T. II. n. 142. p. 155.*

Pbalaena Noctua gothica. *Linn. Syst. Nat. n. 159. p. 851. ed. XIII. n. 159. p. 2568. Fn. Suec. n. 1192.*

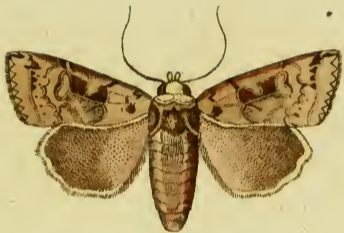
Syst. Verz. d. W. Schmett. n. 9. p. 78.

Esper eur. Schm. tab. 76. fig. 1. 2.

Knoch. Beytr. III. p. 86. tab. 4. fig. 4. 5. 6.

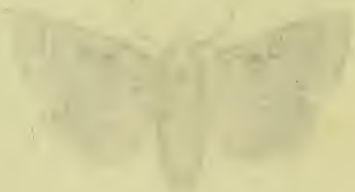
Borkhausen eur. Schm. IV. Th. n. 192. p. 484.

Die Raupe findet man im Juni und Julius an Eichen, Heckenkirschen (*Lonic. Xylost. L.*) Geißblatt (*Lonic. Caprifol. L.*) je länger je lieber, (*Lonic. Peryclym. L.*) an verschiedenen Arten des Labkrautes (*Galium L.*) vorzüglich aber am Klebkraut (*Galium Aparine L.*). Herr Knoch fütterte sie auch mit Weiden. Sie begiebt sich zur Verwandlung in die Erde und wölbet sich eine Höhle, welche sie mit ihrem Saft ausleimt. Die Chrysalide ist braunroth und hat am Schwanzende zwey kleine Spitzen. Die Eule entwickelt sich im Frühlinge des folgenden Jahres.



Noctua sigma .

J. St. sc.



NOCTVA Sigma.

Die Gartenmeldeneule. Das doppelte Dreyeck.

Noctua Sigma: spirilingus cristata, alis deflexis: superioribus moschatinis ☐ fusco nigro inscriptis. *Knoch. Beytr. III. p. 94. tab. 4. fig. 7.*

Syst. Verz. d. W. Schmelt. n. 8. p. 78.

Borkhausen eur. Schm. IV. Th. n. 193. p. 489.

Die Raupe dieser Eule lebt an verschiedenen Kuchengewächsen, als an Mangold, Sallat, Gartenmelde, und andern. Sie erscheint im August, und überwintert als Raupe unter breitblättrigten Gewächsen, so daß man sie im Frühlinge erwachsen findet. In der Jugend ist diese Raupe grün. Im April begiebt sie sich zur Verwandlung in die Erde und wird eine dunkelbraune Chrysalide, aus welcher sich im Junius oder Julius die Eule entwickelt. *Borkh.*

Wenn man gleich die *Fabric. Noctua Signum* für die nehmliche mit der hier abgebildeten *N. Sigma* zu halten geneigt scheint, auch *Fabricius* selbst das nehmliche Citat aus dem *Wiener Verz.* anführt, so halte ich doch diese Muthmaßung deswegen für unzulänglich, weil ich die *Fabric. Charactere* seiner *N. Signum*, nicht auf die *N. Sigma* des *Wiener Verz.* passend finde..





-
- Tab. 1. *Chrysomela tenebricosa* Fabric.
— 2. *Chrysomela coriaria* Fabric.
— 3. *Chrysomela goettingensis* Fabric.
— 4. *Chrysomela metallica* Fabric.
— 5. *Chrysomela lamina* Fabric.
— 6. *Chrysomela gemellata* Roffi
— 7. *Chrysomela haemoptera* Fabric.
— 8. *Chrysomela violacea* Fabric.
— 9. *Chrysomela varians* Fabric.
— 10. *Chrysomela Centaurii* Fabric.
— 11. *Chrysomela cerealis* Fabric.
— 12. *Chrysomela fastuosa* Fabric.
— 13. *Chrysomela praetiosa* Fabric.
— 14. *Chrysomela Armoraciae* Fabric.
— 15. *Chrysomela Cochleariae* Fabric.
— 16. *Galleruca Vitellinae* Fabric.
— 17. *Endomychus coccineus* Hellwig.
— 18. *Endomychus quadripustulatus* Hellwig.
— 19. *Spondylis buprestoides* Fabric.
— 20. *Syrphus conopseus* Fabric.
— 21. *Syrphus gibbosus* Fabric.
— 22. *Musca maculata* Fabric.
— 23. *Musca meditabunda* Fabric.
— 24. *Musca rufifrons* Fabric.

1871

1872

1873

1874

1875

1876

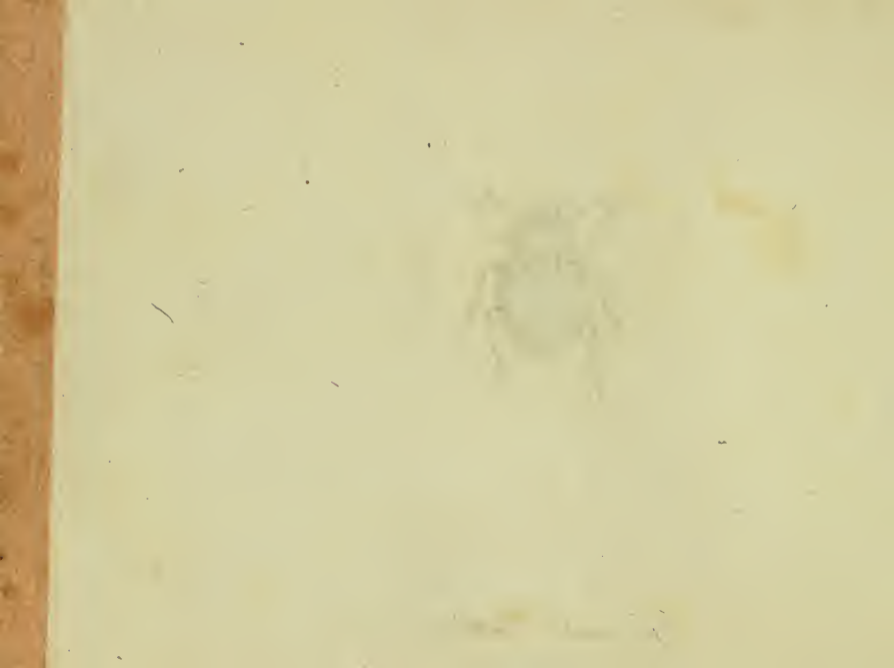
1877

1878

1879



Chrysomela Tenebricosa Fabr.



CHRYSOMELA tenebricosa.

*Der flügellose Blattkäfer. Der dunkelschwärzlichte Blattkäfer. Der
kuglichte Blattkäfer. La Chrysomele à un seul etui. Geoffr.*

Chrysomela tenebricosa: aptera ovata atra antennis pedibusque violaceis. *Fabric.*
Syst. Ent. n. 1. p. 94. Spec. Inf. T. I. n. 1. p. 116. Mant. Inf. T. I. n. 1.
p. 66. Ent. syst. T. I. n. 3. p. 308.

Tenebrio laevigatus. *Linn.* Syst. Nat. n. 29. p. 678. ed. XIII. n. 91. p. 1667.
Geoffr. Inf. T. I. n. 19. p. 265.

Herbst Archiv. IV. n. 1. p. 51. tab. 23. fig. 1.

Sulzer Kennz. d. Inf. p. 18. tab. 7. fig. 53.

Schäffer Elem. ent. tab. 1. fig. 6.

— — *Ic.* Inf. Ratisb. tab. 26. fig. 1.

Harrer Besch. d. Schäff. Inf. 1. B. n. 104. p. 102.

Rossi Faun. etrusc. ed. *Hellw* T. I. n. 186. p. 79.

Panzer Ent. germ. I. n. 156. cum icone.

Vier und vierzigstes Heft.

Habitat in sylvaticis montosis locis apricis in *Galio Mollug. L.*
Acu transfixa humorem effundit sanguineum, qui ad tincturam videtur idoneus, et
si vivens carboni accenso admoveatur, colorem induit magis purpureum. *Rossi l. c.*



Chrysomela coriaria Fabr.

10710

Act
fi v

CHRYSOMELA coriaria.

Das lederartige Goldhähnchen.

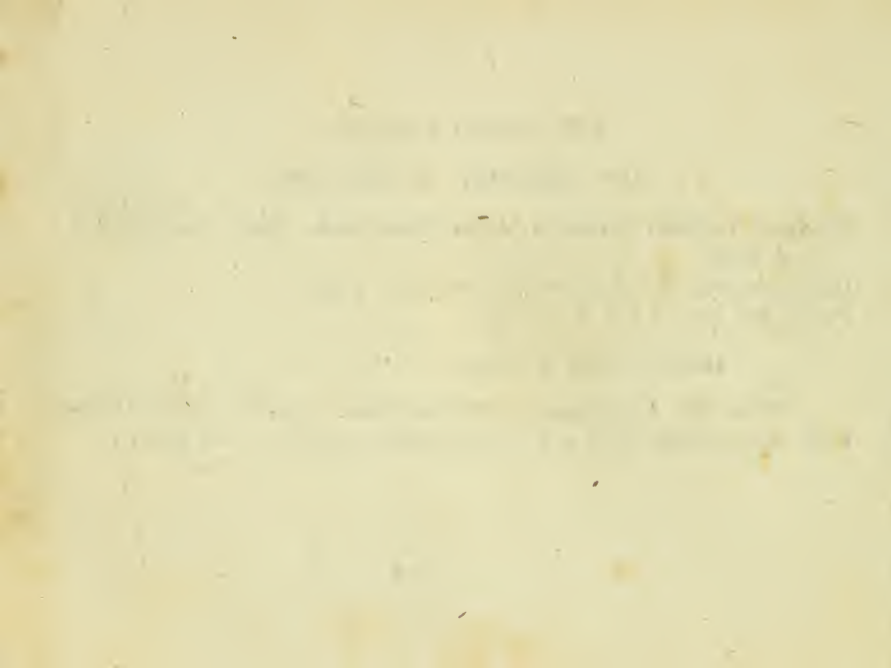
Chrysomela coriaria: ovata atra pedibus totis violaceis. *Fabric.* Ent. syst. T. I.
n. 6. p. 309.

Chrysomela coriaria. *Laichard.* Inf. tyr. I. n. 2. p. 143.

Panzer Ent. germ. I. n. 2. p. 156.

Habitat in pratis siccioribus.

Similis *Chr. tenebricosae*. F. est triplo minor. Cum *Chr. göttingensi* olim
a *Cl. Fabric.* (Mant. Pl. I. n. 3. p. 67.) in unam coacta fuit, nunc separata.





Chrysomela göttingensis Fabri

J. St. fecit



[Faint, illegible handwritten text]

CHRYSOMELA goettingensis.

Das göttingſche Goldbäbchen.

Chryſomela goettingenſis: ovata atra pedibus violaceis: plantis rufis. *Fabric.* Syſt.

Ent. n. 2. p. 94. Spec. Inf. T. I. n. 2. p. 116. Mant. Inf. T. I. n. 3. p. 67.

Ent. ſyſt. T. I. n. 8. p. 309.

Chryſomela goettingenſis. *Linn.* Syſt. Nat. n. 4. p. 586. ed. XIII. n. 4. p. 1667.

Degeer Inf. T. V. n. 8. p. 298.

Panzer Ent. germ. I. n. 3. p. 156.

Habitat vulgaris in plantis, non raro tempore verno ſub lapidibus reperitur, quo hybernat.

Quae vulgo hoc nomine innotuit eadem eſt, quam hic ſiſto, quamvis cum aliis incertus haeream, an eadem ſit, quae b. a *Linne* hoc nomine deſcripſerit, et au pro peculiari ſpecie ſalutanda. —



Chrysomela metallica Fabr.

Jac. Stora fec.



Scarabaeus sacer L.

CHRYSOMELA metallica.

Das metallfärbige Goldhähnchen.

Chrysomela metallica: ovata aenea nitida antennis pedibusque testaceis. *Fabric.*

Ent. syst. T. I. n. 17. p. 311.

Herbst Archiv. IV. n. 26. p. 55. tab. 23. fig. 14.

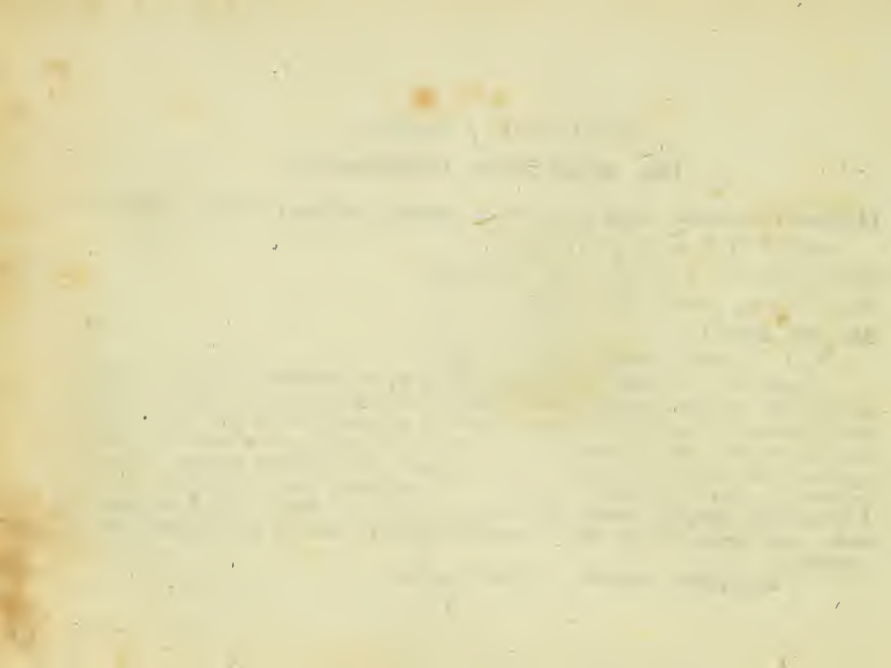
Panzer Entom. germ. I. n. 8. p. 157.

Mus. Dn. Hellwig.

Habitat Brunsvigiae.

Veram hic delineasse *Chr. metallic.* F. proprio specimine, quod *Cl. Hellwig* benevole eo sine concessit testor. Interim adnotandum, *Cl. Fabric.* pedes huius *Chrysom.* sub eadem inscriptione, *testaceos* et *piceos* nuncupasse, quos eadem tinctura metallica, aut si mavis paullo laetiori, qua totum animalculum a natura coloratum est, cerno coloratos. Macula frontalis nigra quidem apparet, sed in cadavere, ut mos est, ferme obsoleta est. Thorax nullo modo incrassatus, hinc *Laichardingii Chrysom. metall.* alia videtur, quamvis *Cl. Herbst.* cum sua coniunxerit, quam tamen nostram esse, suadet huius pictura, caeteris paribus haud contemnenda.

a Magnitudo naturalis. b Eadem aucta.





Chrysomela lamina Fabr.



CHRYSOMELA lamina.

Das bronzefärbige Goldhäbchen.

Chrysomela lamina: viridi aenea thorace glaberrimo margine incrassato, elytris punctato-friatis. *Fabric. Ent. Syst. T. I. n. 18. p. 311.*

Chrysomela bulgarensis. Schrank. inf. austr. n. 127.

Chrysomela bulgarensis. Herbst Archiv. IV. n. 25. p. 55. tab. 23. fig. 13.

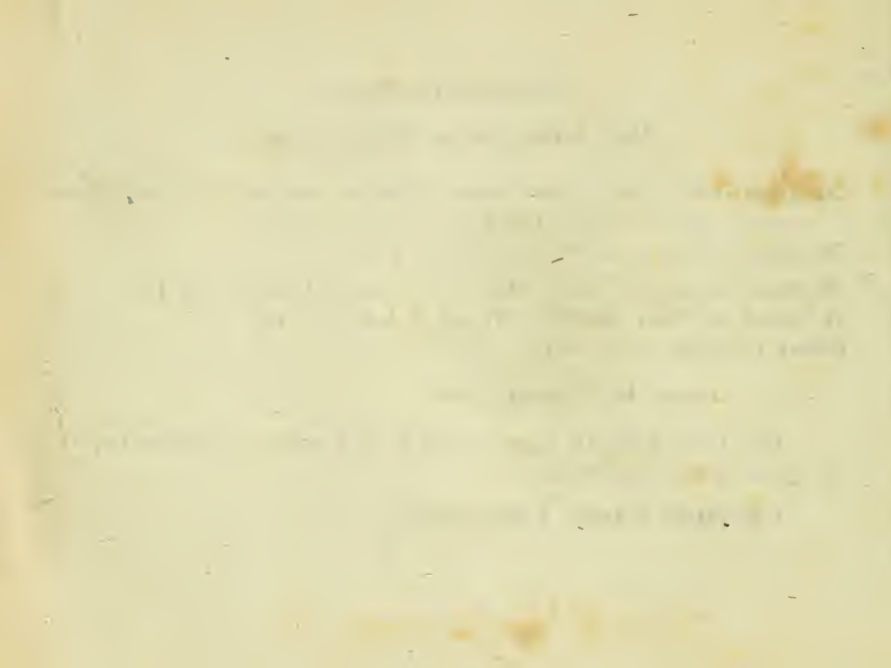
Chrysomela metallica. Laichard. tyr. Inf. T. I. n. 3. p. 144.

Panzer Ent. germ. I. n. 7. et 9.

Habitat in Germaniae plantis.

Patiore iure *Laichard.* Chryf. metall. ad hanc quam ad antecedentem, ut ego quidem arbitror, referenda.

a Magnitudo naturalis. b Eadem aucta.





Chrysomela gemellata Rossi.

J. St. f. c.



CHRYSOMELA gemellata.

Das paarweise punktirte Goldhähnchen. La Chrysomele à stries jumelles. Devill.

Chrysomela gemellata: viridis, punctis elytrorum per strias gemellas digestis. *Devill. Ent. I. n. 68. p. 138.*

Chrysomela gemellata. Rossi Faun. etrusc. ed. Hellwig. T. I. n. 72. p. 367.

Chrysomela didymata. Scriba. Journ. III. n. 192. p. 294.

Mus. Dn. Hellwig.

Hanc Chrysomelam nostram et quoque Germaniam patriam sibi vindicasse, in litteris testatus est *Cl. Hellwig*. Nil habeo quod addam iis, quae laudatus *Vir. l. c.* iam iam erudite super hanc Chryf. exposuit.

a Magnitudo naturalis. b Eadem aucta.

THE HISTORY OF THE

REIGN OF KING CHARLES THE FIRST

BY JOHN BURNET

IN TWO VOLUMES

LONDON, Printed by J. Sturges, at the Black-Swan in St. Dunstons Church-yard, 1724.

IN TWO VOLUMES

THE SECOND VOLUME

CONTAINING THE HISTORY OF THE

REIGN OF KING CHARLES THE FIRST

BY JOHN BURNET



Chrysomela haemoptera Fabr.

1771. fcc



CHRYSOMELA haemoptera.

Das rothgeflügelte Goldhähnchen. La Chrysomele violette. Geoffr.

Chrysomela haemoptera: ovata violacea plantis alisque rubris. *Fabric.* Syft. Ent. n. 11. p. 96. Spec. Inf. T. I. n. 18. p. 118. Mant. Inf. T. I. n. 23. p. 68. Ent. syft. T. I. n. 37. p. 315.

Chrysomela haemoptera. *Linn.* Syft. Nat. n. 11. p. 587. ed. XIII. n. 11. p. 1672. Fn. Suec. n. 512.

Chrysomela tota violacea. *Geoffr.* Inf. T. I. n. 6. p. 258.

Chrysomela violacea. *Schaller* in act. soc. nat. cur. hal. I. n. 21. p. 170.

Panzer Ent. germ. I. n. 13. p. 158.

Habitat in Salicibus, Arundine.

Caute atque circumspecte de controversa hac specie, quisque, cui certa veritas cordi est, Entomologus, sententiam suam ferre tenetur. Hinc problematice,

et meam, suafu et indultu *Cl. Hellwig.* in hac pictura propono, nullumque aliudve nomen admitto, de quo incertus forsan haeserim, an tolerandum. Tot et enim notae sunt Chrysomelae, *alis rubris et coleoptris violaceis*, ut, quot ferme sint auctores, tot adumbratae atque venditae sunt *Chrysomelae haemopterae*. Inter tantum vero strepitum, Chrysomelarum, medum auctorum, consultum mihi id actum videtur, sententiam equidem ferre suam, sed non strenue defendere istam.

Schallerus, si veram noverit *Chrysom. haemopteram L.* certo noverit et nostram, quod suadet eiusdem descriptio.. Legi quoque meretur, quod caute *Cl. Hellwig* apud *Rossi* p. 79. monuit.



Chrysomela violacea. Fabr.

C. St. fec.



CHRY SOMELA violacea.

Das violette Goldbähnchen.

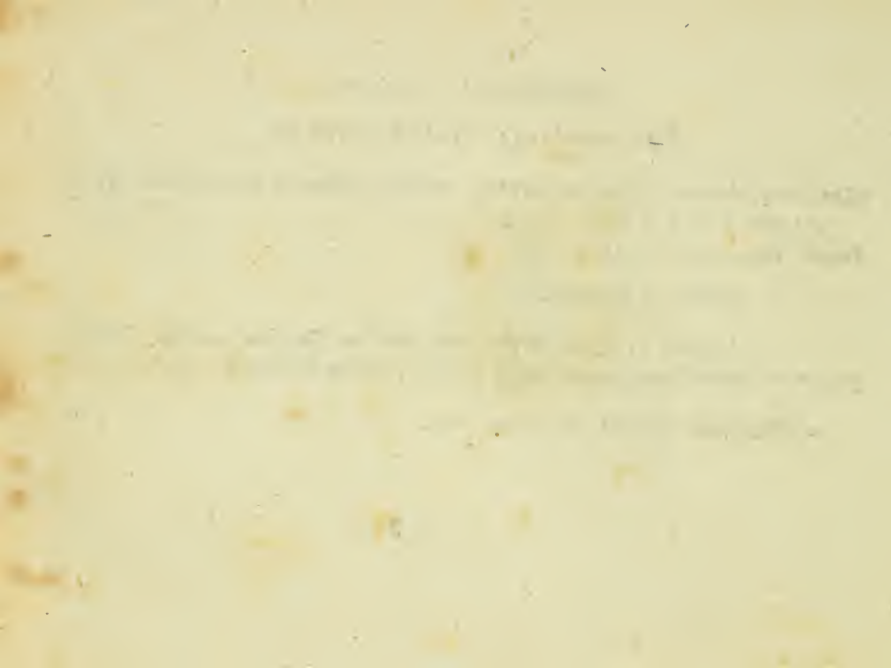
Chrysomela violacea: subrotunda cyanea, antennis pedibusque concoloribus. *Fabric.* Ent. syst. T. I. n. 39. p. 315.

Panzer Ent. germ. I. n. 15. p. 159.

Habitat in Salicibus.

Vulgaris et saepe saepius cum affinibus *Chrysom.* confusa species, quacum et *Schallerianam* praecedentem coniuxit, aet invita natura, *Cl. Fabricius.*

a. Magnitudo naturalis. b. Eadem aucta.





Chrysomela varians Fabr.

J. St. fca



CHRYSOMELA varians.

Das wandelbare Goldbäbnchen. Chrysomele violette de Millepertuis. Degeer.

Chrysomela varians: ovata caerulea s. aenea, antennis pedibusque nigris. *Fabric.* Mant. Inf. T. I. n. 24. p. 68. Ent. syst. T. I. n. 38. p. 315.

Chrysomela Hyperici. Degeer. Inf. T. V. n. 312. tab. 9. fig. 13.

Chrysomela varians. Schaller in act. soc. nat. cur. hal. T. I. n. 20. p. 271.

Panzer Ent. germ. I. n. 15. p. 159.

Habitat in Hypericis.

Si quae alia maxime proteiformis incedit haec Chrysomela. Variat enim clytris caeruleis, aeneis, violaceis, auratis, cyaneis, obscuris.

Illustr. Fabricius figuram quidam allegat, quam Schallero tribuit, quae vero, cum nullibi in act. hal. occurrat, ad *Degeereum*, quem passim habet, transmittenda.

a. Magnitudo naturalis. b. Eadem aucta.



Chrysomela Centaurii Fabr:

13c. fcc.

CHRYSOMELA Centaurii.

Das Goldlähnchen auf dem Tausendguldenkraut.

Chrysomela Centaurii: ovata cuprea nitens subtus viridi-aenea pedibus cupreis.

Fabric. Mant. Inf. T. I. n. 25. p. 68. Ent. syst. T. I. n. 40. p. 15.

Chrysomela Centaura. *Herbst* Archiv. IV. n. 27. p. 58. tab. 23. fig. 15.

Panzer Ent. germ. I. n. 16. p. 159.

Habitat in Germaniae Centaureo et Mentha.

Cl. Schrank ante plures annos, quod nondam e memoria excidit, hanc pro *Chrysem. Menthae* sua benevole concessit.

Quod in *Ent. germ.* l. c. olim secundam illustr. *Fabricium* divinavi, se ipsa nunc se probavit, siquidem nunc facile demonstrare poterit, *Chrysomel. Centaurii* F. optime inter Varietates *Chrysomel. variantis* F. militare posse.

a. Magnitudo naturalis. b. Eadem aucta.



Chrysomela cerealis Fabr.

Jac. Sturm fec.

CHRYSOMELA *cerealis*.

Das Kornähren-Goldhähnchen. Der Saatblattkäfer. L'Arlequin dorée. Geoffr.

Chrysomela cerealis: ovata aurata, thorace lineis tribus, coleoptrisque quinque caeruleis. *Fabric.* Syst. Ent. n. 33. p. 100. *Spec. Inf. T. I. n. 45. p. 124.*

Mant. Inf. T. I. n. 57. p. 71. Ent. syst. T. I. n. 76. p. 323.

Chrysomela cerealis. Linn. Syst. Nat. n. 17. p. 588. ed. XIII. n. 17. p. 1674.

Geoffr. Inf. T. I. n. 14. p. 262.

Schäffer Ic. Inf. Ratisb. tab. 1. fig. 3.

Harrer Besch. d. Schäf. Inf. 1 B. n. 119. p. 113.

Panzer Ent. germ. I. n. 30. p. 162.

Habitat in Gramine, spicis fecalinis, Spartio scopario L. aliisque plantis.





Chrysomela fastuosa Fabr.

Jac. Sturm. fec.



CHRY SOMELA fastuosa.

Der Blaustrich. Das Blaustrichkäbnchen. Le petit vertubleu. Geoffr.

Chrysomela fastuosa: ovata aurea, coleoptris lineis tribus caeruleis. *Fabric. Syst.*

Ent. n. 36. p. 101. *Spec. Inf. T. I.* n. 48. p. 124. *Mant. Inf. T. I.* n. 60.

p. 71. *Ent. syst. T. I.* n. 80. p. 324.

Chrysomela fastuosa. Linn. Syst. Nat. n. 18. p. 688. ed. XIII. n. 18. p. 1674.

Geoffr. Inf. T. I. n. 12. p. 261.

Scopol. carn. n. 231. *absque ic.*

Schrank. inf. austr. n. 175.

Laichard. inf. tyr. T. I. n. 15. p. 157.

Herbst Archiv IV. n. 15. p. 53. tab. 23. fig. 6.

Schäffer Ic. Inf. Ratisb. tab. 21. fig. 7.

Harrer Besch. d. Schäff. Inf. I. B. n. 120. p. 113.

Panzer Ent. germ. I. n. 31. p. 162.

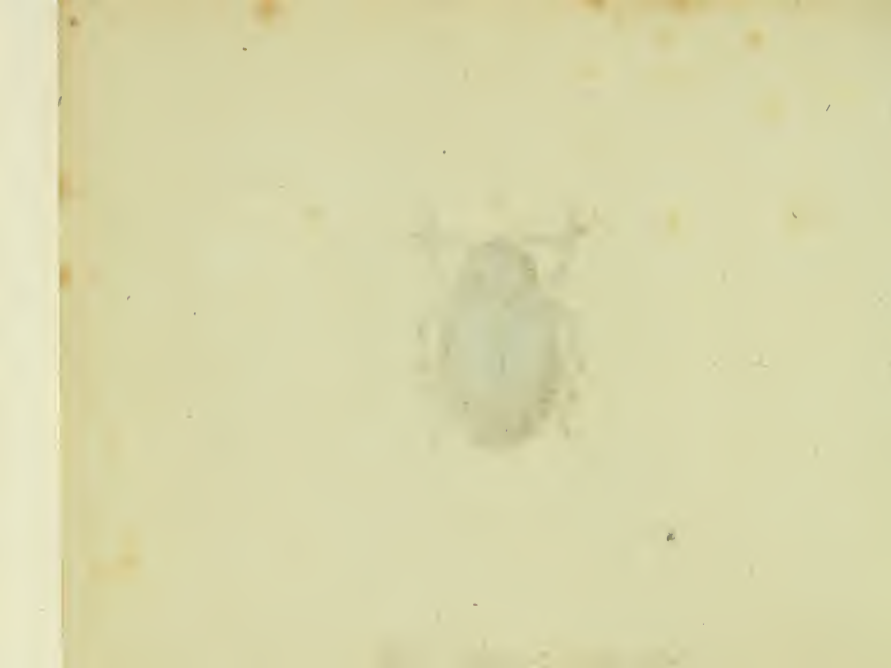
Habitat in Gramine, Rubo idaeo, Vrtica, Lamio, Galeopside in
montosis, saepius pervulgaris.

Variat lineis tribus aureis, loco caeruleis, quae sexus manifestatio est.

a. Magnitudo naturalis. b. Eadem aucta.



Chrysomela praeclorosa Fabr.



CHRY SOMELA praetiosa.

Das prächtige Goldhähnchen.

Chrysomela praetiosa: ovata thorace globoso elytrisque laevissimis, corpore cyaneo. *Fabric.* Ent. syst. T. I. n. 85. p. 324.

Panzer Ent. germ. I. n. 34. p. 162.

Mus. Dn. Hellwig.

Habitat in Germaniae plantis.

Confer quae cl. *Schneider* Magaz. II. p. 218. de ea habet.

a. Magnitudo naturalis. b. Eadem aucta.





Chrysomela armoraciae Fabr.



CHRYSOMELA Armoraciae.

*Das Meerrettig-Goldhähnchen. Der gemeine Blatkäfer
auf den Weiden.*

Chrysomela Armoraciae: ovata caerulefcens nitida fubtus nigra. *Fabric. Syft.*
Ent. n. 50. p. 107. Spec. Inf. T. I. n. 66. p. 127. Mant. Inf. T. I. n. 84.
p. 73. Ent. fyft. T. I. n. 112. p. 350.

Chrysomela Armoraciae. Linn. Syft. Nat. n. 16. p. 588. ed. XIII. n. 16. p. 1673.
Fn. Suec. n. 515.

Chrysomela caerulea Salicis. Degeer Inf. T. V. n. 24. p. 318. tab. 9. fig. 24. a. b.
Scriba Journ. III. n. 196. p. 295.

Roefel Inf. Bel. II. Scar. 3. tab. 1.

Herbst Archiv. VI. VII. n. 58. p. 162. tab. 44. fig. 3. c. d.

Panzer Ent. germ. I. n. 53. p. 166. et n. 6. p. 172.

Habitat in Salicibus, Armoracia, Ranunculis frequens.

Variat caerulea, atro-caerulea, violacea, virescens.

Dubia mihi erat, ut et aliis, haec Chrysomela. Elytris nullo modo striatis, antennisque basi rufis optime distinguitur. *Cl. Herbst.*, figura sua non satisfacit, quam non adduxissem, nisi descriptio supplevisset, quod huic deest.

a. Magnitudo naturalis. b. Eadem aucta.



Chrysomela Cochleariae Fabr.



CHRYSOMELA Cochleariae.

Das Löffelkraut - Goldbähnchen.

Chrysomela Cochleariae: ovata caerulescens subtus nigra, elytris striatis. *Fabric.*

Ent. syst. T. I. n. 113. p. 330.

Panzer Ent. germ. I. n. 54. p. 166.

Habitat in plantis tetradynamis.

Curatius examinata, propter elytrorum strias nunc *Linneanum nomen* apud praecedentem rectius stabit, quam apud praesentem, quae pariter colore degenerat.

a. Magnitudo naturalis. b. Eadem aucta.



Galleruca Vitellinae Fabr.



GALLERVCA Vitellinae.

Das kupferfarbige Sab'weiden - Goldhähnchen. Das Weiden - Goldhähnchen. Chrysomele bronzée du Saule. Degeer.

Galleruca Vitellinae: caerulea aut viridis, elytris punctato-striatis, ano rufo.
Fabric. Syst. Ent. n. 55. p. 104. Spec. Inf. T. I. n. 78. p. 130. Mant. Inf. T. I. n. 101. p. 74. Ent. syst. T. II. n. 22. p. 18.

Chrysomele Vitellinae. Linn. Syst. Nat. n. 23. p. 589. ed. XIII. n. 23. p. 1676. Fn. Suec. n. 519.

Degeer Inf. T. V. n. 27. p. 323.

Panzer Ent. germ. I. n. 7. p. 171.

Habitat frequens in Salicibus. Larvae dum pascuntur, per lineas parallelas dispositae.

Post omnem conatum adhuc controversa species; nec Gallerucis commode inferi potest, quum vera Chrysomele sit. Quoties cum aliis confusa fuerit, vide apud *Herbst Archiv. IV. p. 55. n. 26. et Hellwig Ross. p. 83.* nec non apud alios. Dubito an nomen *Linn.* huc pertineat. *Illustr. Fabric. Chrysomele. vulgatissim.* huius varietatem censet, quod repugnat naturae.

a. Magnitudo naturalis. b. Eadem aucta.





Endomychus coccineus Fabr.

J. St. fec



[Faint, illegible text at the bottom of the page, possibly a signature or a title.]

ENDOMYCHUS coccineus.

Der scharlachbrothe Stockkäfer. Chrysomele rouge à quatre taches noires. Degeer.

Endomychus coccineus: thorace marginato sanguineo, macula nigra: elytris sanguineis, maculis duabus sanguineis. *Panzer* Ent. germ. I. n. 1. p. 175.

Panzer im Naturf. XXIV. n. 20. tab. 1. fig. 20.

Galleruca coccinea. Fabric. Ent. Syst. T. II. n. 31. p. 20.

Chrysomele coccinea. Fabric. Syst. Ent. n. 59. p. 105. Spec. Inf. T. I. n. 83. p. 131. Mant. Inf. T. I. n. 109. p. 75.

Chrysomele coccinea. Linn. Syst. Nat. n. 43. p. 592. ed. XIII. n. 43. p. 1683. Fn. Suec. n. 532.

Chrysomele quadrimaculata. Degeer Inf. T. V. n. 10. p. 301. tab. 9. fig. 1.

Habitat sub corticibus arborum.

a. Magnitudo naturalis. b. Eadem aucta.





Endomychus quadripustulatus Fabr.

1 St. fec.

ENDOMYCHUS - quadripustulatus.

Der vierblatterichte Stockkäfer.

Endomychus quadripustulatus: nigra thoracis margine elytrorum maculis duabus pedibusque rufis. *Panzer*. Ent. germ. I. n. 2. p. 175.

Galleruca quadripustulata. *Fabric*. Ent. syst. T. II. n. 33. p. 20.

Mus. Dn. Heliwig.

Habitat in Germaniae Lycoperdis.

Cognomen *quadripustulatae* haecce *Endomych*. spec. vix ac ne vix demereri videtur, quippe *maculis* nullis rufis ornatam videmus. Mihi, saltem quoad hunc exemplum, quod ex benevolentia optimi *Hellwig* coram habeo, elytra rufa sunt, *fascia medio lata fusca*. Videtis eundem Cl. virum apud *Rossi* n. 202. p. 85.

a. Magnitudo naturalis. b. Eadem aucta.





Spondylis buprestoides Fabr.



SPONDYLIS buprestoides.

Der Prachtkäferartige Waldkäfer.

Spondylis buprestoides: ater thorace subgloboso. *Fabric.* Syst. Ent. n. 1. p. 159.
Spec. Inf. T. I. n. 1. p. 203. Mant. Inf. T. I. n. 1. p. 127. Ent. syst. T. I.
n. 1. p. 38.

Attelabus buprestoides: ater, elytris nervosis, thorace subgloboso. *Linn.* Syst.
Nat. n. 3. p. 621. ed. XIII. n. 1. p. 203. Faun. Suec. n. 644.

Cerambyx maxillofus. *Degeer* Inf. T. V. n. 21. p. 84. tab. 3. fig. 21.

Frisch Inf. XIII. p. 23. t. 19.

Devill. Ent. I. n. 10. p. 221.

Voet. Coleopt. II. tab. 41. fig. II.

Panzer Ent. germ. I. n. 1. p. 281. cum ic.

Habitat in sylvis tempore aestivo.

THE UNIVERSITY OF CHICAGO

DEPARTMENT OF CHEMISTRY

RESEARCH REPORT NO. 100

BY

ROBERT M. HAYES

CHICAGO, ILLINOIS



Syrphus conopseus Fabr.

Jac. Sturm. fec.

SYRPHVS conopseus.

Die stechfliegenartige Schwebfliege.

Syrphus conopseus: antennis setariis nudis niger, thorace lineis lateralibus, abdomine fasciis tribus flavis. *Fabric.* Syst. Ent. n. 26. p. 768. *Spec. Inf.* T. II. n. 38. p. 429. *Mant. Inf.* T. II. n. 45. p. 338. *Ent. Syst.* T. VI. n. 69. p. 297.

Musca conopsea. *Linn.* Syst. Nat. n. 21. p. 982. ed. XIII. n. 21. p. 2868.

Reaum. Inf. T. IV. tab. 33. fig. 12. 13.

Habitat in floribus.

Recedere a consueto habitu Syrphorum, atque a familiari huic generi fabrica antennarum omnino videtur.

a. Magnitudo naturalis. b. Eadem aucta.

THE UNIVERSITY OF CHICAGO

PHYSICS DEPARTMENT

MEMORANDUM FOR THE RECORD

DATE: [illegible]

TO: [illegible]

FROM: [illegible]

SUBJECT: [illegible]

[illegible text]



Syrphus gibbosus Fabr.

SYRPHVS gibbosus.

Die Höcker - Schwebfliege.

Syrphus gibbosus: antennis setariis tomentosus fuscus, abdomine subglobofo atrox
cingulis quatuor albis, squamis halterum buccatis. *Fabric. Ent. syst. T. VI.*
n. 121. p. 311.

Musca gibbosa. *Lin. Syst. Nat. n. 49. p. 987. ed. XIII. n. 49. p. 2874.*

Nemotelus. *Schäffer Ic. Inf. Ratisb. tab. 200. fig. 1.*

Habitat in floribus rarior.

Longe admodum distat a Syrphorum caractere, hinc proprium genus, iam
praeclare id *Illustr. Fabric.* monente, exposcere videtur.

a Magnitudo naturalis. b Eadem aucta. c. Caput. d. Antenna aucta.





Musca maculata Fabr.

Jac. Sturm fec.



M V S C A m a c u l a t a .

Die gefleckte Fliege.

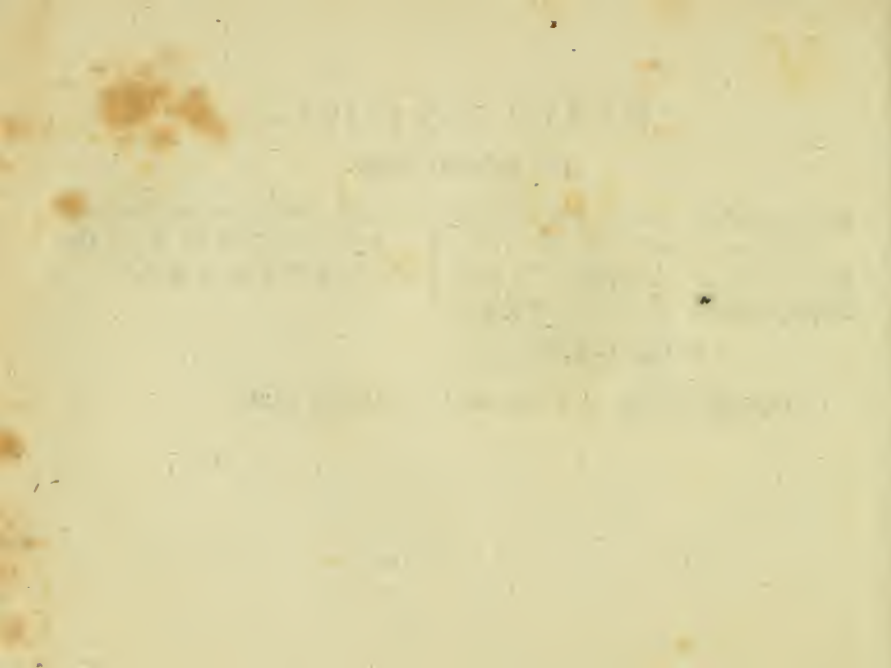
Musca maculata: antennis plumatis cinerea, thorace abdomineque maculis numerosis atris. *Fabric.* Mant. Inf. T. II. n. 8. p. 342. Ent. syst. T. VI. n. 8. p. 314.

Musca maculata. *Linn.* Syst. Nat. n. 70. p. 990. ed. XIII, n. 70. p. 2841.

Musca maculata. *Scop.* carn. n. 870.

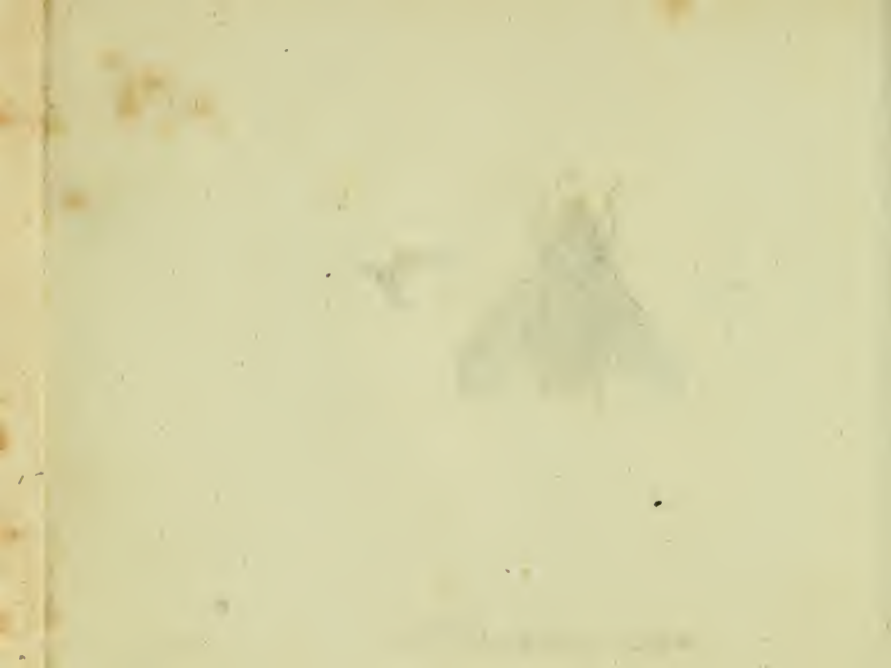
Habitat in floribus.

a. Magnitudo naturalis. b. Eadem aucta. c. Antenna aucta.





Musca meditabunda Fabr.



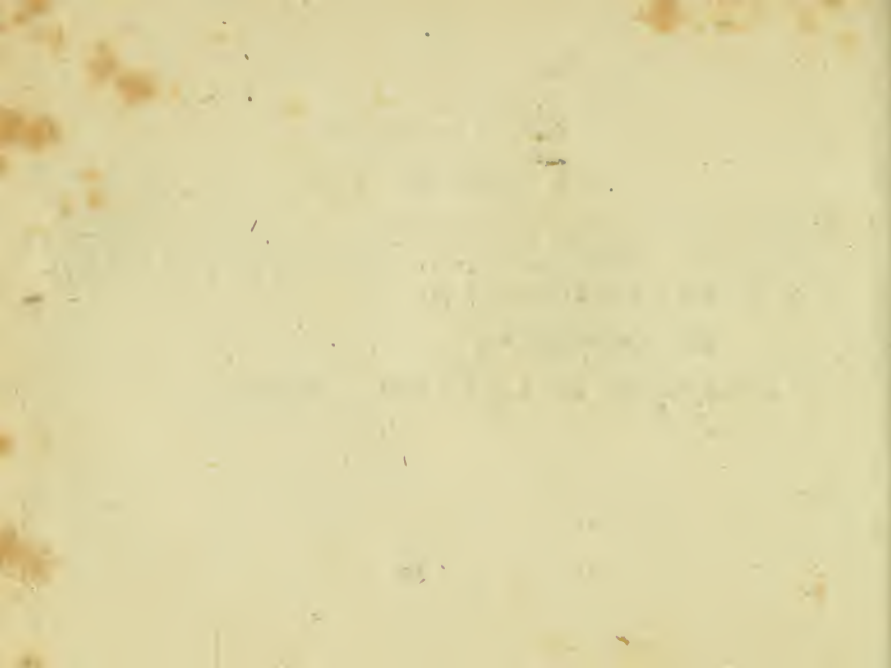
MVSCA meditabunda.

Die vierfleckigte Fliege.

Musca meditabunda: antennis plumatis pilosa obscura, abdomine cinereo: punctis quatuor fuscis. *Fabric. Spec. Inf. T. II. n. 46. p. 444. Mant. Inf. T. II. n. 54. p. 347. Ent. syst. T. VI. n. 43. p. 322.*

Habitat rarior apud nos.

a. Magnitudo naturalis. b. Eadem aucta. c. Antenna aucta.





Musca rufifrons Fabr.



[Faint, illegible text, possibly a signature or date]

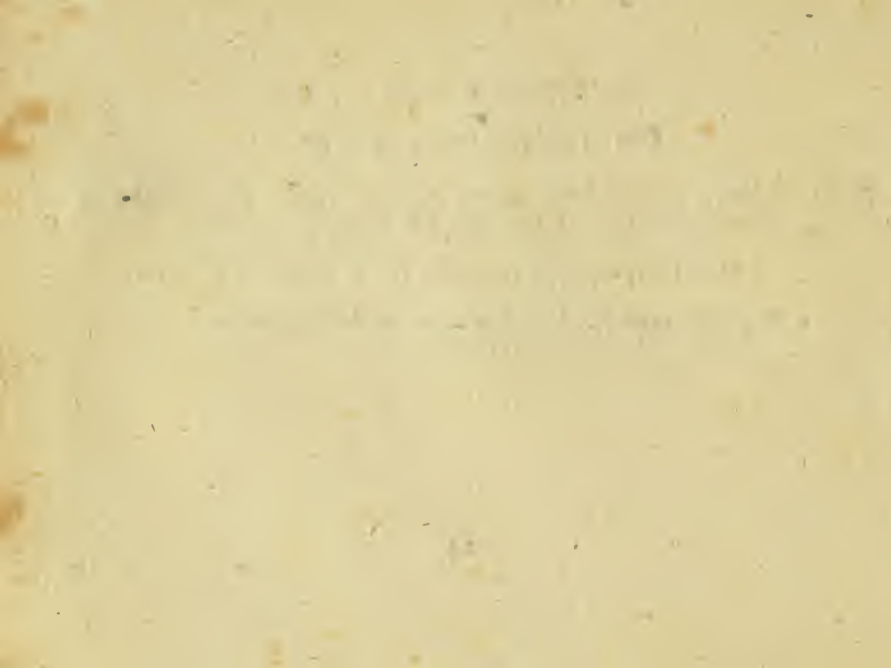
MUSCA rufifrons.

Die rothgestirnte Fliege.

Musca rufifrons: antennis setariis cinerea capite ferrugineo, punctis duobus nigris, alarum costa nigra. *Fabric. Ent. syst. T. VI. n. 142. p. 346.*

Haud infrequens apud nos primo vere in regionibus sylvaticis.

a. Magnitudo naturalis. b. Eadem aucta. c. Antenna aucta.







- Tab. 1. *Crioceris brunnea* Fabric.
— 2. *Crioceris meridigera* Fabric.
— 3. *Crioceris duodecimpunctata* Fabric.
— 4. *Crioceris quatuordecimpunctata* Fabric.
— 5. *Clytra cyanea* Schneider.
— 6. *Clytra bucephala* Schneider.
— 7. *Saperda punctata* Fabric.
— 8. *Saperda testacea* Fabric.
— 9. *Leptura unipunctata* Fabric.
— 10. *Leptura meridiana* Fabric.
— 11. *Leptura humeralis* Fabric.
— 12. *Dryops futuralis* Panzer
— 13. *Tenthredo miliaris* Panzer
— 14. *Ichneumon denigrator* Fabric.
— 15. *Ichneumon defertorius* Panzer
— 16. *Anthrax Beelzebul* Fabric.
— 17. *Anthrax Daemon* Panzer.
— 18. *Syrphus bicinctus* Fabric.
— 19. *Syrphus apiformis* Fabric.
— 20. *Syrphus fcalaris* Fabric.
— 21. *Syrphus impiger* Rossi
— 22. *Syrphus coarctatus* Panzer
— 23. *Afilus Diadema* Fabric.
— 24. *Afilus punctatus* Fabric.

dafs die *Soperda flavimana* (Fn. Inf. Germ. XXXV. 15.) und der *Staphylinus impressus* (XXXVI. 21.) welche ich für neu gehalten hätte, beyde schon und zwar jene von Hrn. Schrank — Naturforscher XXIV. 77. 36. — dieser aber von Hrn. v. Paykull. — in dem, seiner Moöogr. Carab. Suec. angehängten Nachtrage zur Monogr. Staphyl. n. 34. 35. beschrieben sind. Ich stelle dieses hier anzuzeigen, mit der Bitte an alle Besitzer der Fauna, in ihren Exemplaren das: *Staph. flavimana* Cr. in *S. rufimana* Schr. und *Staph. impressus* Cr. in *St. cinctus* Payk. umändern und obige Citate beyfügen zu wollen. Uebrigens werden Sie ohne Zweifel Hrn. Dr. Panzer für die Abbildung dieser beyden Insecten dennoch Dank wissen, und nicht ungern erfahren, dafs das letztere auch unserm Vaterlande angehöre.

Christian Creutzer.

Obiger Berichtigung füge ich auch gegenwärtige bey, die ich bey dieser Gelegenheit nicht umgehen will, indem ich die Freunde der deutschen Insectensammler, der in dem 40sten Hefte unter nr. 22. abgebildeten und beschriebenen Spinne, Benennung, *Aranea cingulata* in *Aranea fenica* Fabric. umzuwachen.

Panzer.



Cricoceris brunea Fabr.



CRIOCERIS brunnea.

Der rothbraune Schnurkäfer.

Crioceris brunnea: ferruginea antennis pectore abdominisque basi nigris, thorace cylindrico utrinque impresso. *Fabric.* Ent. syst. T. II. n. 17. p. 7.

Panzer. Ent. germ. I. n. 2. p. 167.

Mus. Dn. Hellwig.

Hanc Criocerid. coram habuisse *b. a. Linne*, cum conderet suam *Chrysom. merdig.*, eiusdem huius descriptio in Fauna Suec. data, docet: quare *Crioceris brunnea*, pro vera *Chrysom. merdig. Linn.* tradenda, et *Crioceris merdigera* pro huius varietate, quamvis inique, habenda. — Quaeritur annon *Crioceris unicol.* Ent. germ. n. 4., s. *Crioceris Convallariae Harrer*, s. *Criocer. rufipes Herbst.* cum nostra in unam iungenda possit?

Habitat in plantis.

a. Magnitudo naturalis. b. Eadem aucta.

Fünf und vierzigstes Heft.





Crioceris merdigera Fabr.

Jac. Sturm fec.



CRIOCERIS merdigera.

Der Lilienchnurkäfer. Das Lilienbähnchen. Petit Scarabé des
Lis Reaum. Le Criocere rouge du Lis. Geoffr.

Crioceris merdigera: supra rubra thorace cylindrico utrinque impresso. Fabric.
Syst. Ent. n. 10. p. 120. Spec. Inf. T. I. n. 19. p. 152. Mant. Inf. T. I. n. 25.
p. 88. Ent. syst. T. II. n. 19. p. 6.

Chrysomela merdigera. Linn. Syst. Nat. n. 97. p. 599. ed. XIII. n. 147. p. 1720.

Chrysomela merdigera. Linn. Faun. Suec. n. 563. Var.

Geoffr. Inf. T. I. n. 1. p. 239.

Degeer Inf. T. V. n. 43. p. 410.

Reaum. Inf. T. III. P. I. p. 282. tab. 17. fig. 1. 2.

Scop. carn. n. 112. ic. 112.

Sulzer abgek. G. d. I. p. 34. tab. 3. fig. 14.

Schäffer Ic. Inf. Ratisb. tab. 4. fig. 4.

— Elem. Ent. tab. 52.

Harrer Besch. d. Schäff. Inf. 1. B. n. 166. p. 142.

Voet. Coleopt. II. tab. 29. fig. 1.

Panzer Ent. germ. I. n. 3. p. 167.

Habitat in Lilio albo L. frequens.

a. Magnitudo naturalis. b. Eadem aucta.



Crioceris duodecimpunctata Fabr.



Scarabaeus sacer L.

CRIOCERIS duodecimpunctata.

*Der zwölfpunktige Schnurkäfer. Das Zwölfpunkthähnchen. Le
Criocere rouge à points noirs. Geoffr.*

Crioceris duodecimpunctata. thorace cylindrico rubra, elytris punctis sex nigris.

Fabric. Syft. Ent. n. 11. p. 120. Sp. Inf. T. I. n. 20. p. 153. Mant. Inf. T. I.
n. 26. p. 88. Ent. fyft. T. II. n. 20. p. 7.

Chrysomela duodecimpunctata. *Linn.* Syft. Nat. n. 110. p. 601. ed. XIII. n. 148.
p. 1721. Fn. succ. n. 568.

Geoffr. Inf. T. I. n. 2. p. 240. tab. 4. fig. 5.

Scop. carn. n. 115. ic. 115.

Frisch Inf. P. XIII. p. 29. tab. 28.

Schäffer ic. Inf. Ratisb, tab. 4. fig. 5.¹

Harrer Besch. d. Schäff. Inf. I. B. n. 168. p. 143.

Panzer Ent. germ. I. n. 5. p. 168.

Habitat in Asparago.

a Magnitudo naturalis. b Eadem aucta.



Crioceris quatuordecimpunctata Fabr.

des. Sturm fec.



Scarabaeus (Cyclophorus) punctatus L.

CRIO CERIS quatuordecimpunctata.

Der vierzehnpunktige Schnurkäfer.

Crioceris quatuordecimpunctata: thorace cylindrico fulvo: punctis quinque nigris, elytris flavis: punctis septem. *Fabric.* Gen. Inf. Mant. p. 222. Spec. Inf. T. I. n. 21. p. 153. Mant. Inf. T. I. n. 27. p. 88. Ent. syst. T. II. n. 21. p. 7.

Attelabus quatuordecimpunctatus. *Scop.* carn. n. 114. ic. 154.

Panzer Ent. germ. I. n. 6. p. 168.

Habitat in plantis.

a. Magnitudo naturalis. b. Eadem aucta.

THE HISTORY OF THE
CITY OF BOSTON

FROM THE FIRST SETTLEMENT
TO THE PRESENT TIME
BY
NATHANIEL BENTLEY
VOLUME I
FROM THE FIRST SETTLEMENT
TO THE YEAR 1630



Clytra cyanea Schneider.



CLYTRA cyanea.

Der himmelblaue Sägekäfer. La Melolouthe bleuette. Geoffr.

Clytra cyanea. Schneider N. Mag. II. n. 12. p. 193.

Clytra cyanea: cyanea thorace pedibusque rufis. *Panzer* Ent. germ. I. n. 12. p. 191.

Cryptocephalus cyaneus. Fabric. Syst. Ent. n. 20. p. 109. Sp. Inf. T. I. n. 30. p. 143. Mant. Inf. T. I. n. 39. p. 82. Ent. syst. T. II. n. 52. p. 63.

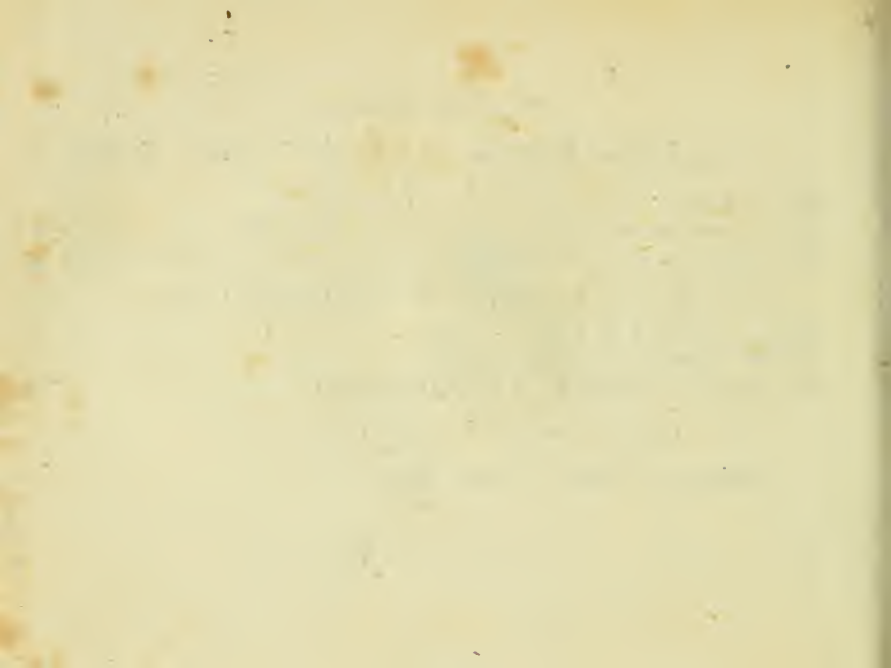
Geoffr. Inf. T. I. n. 4. p. 197.

Schäffer Ic. Inf. Ratisb. tab. 51. fig. 5.

Harrer Besch. d. Schöff. Inf. I. B. n. 143. p. 129.

Habitat in Polygono Perficariae L.

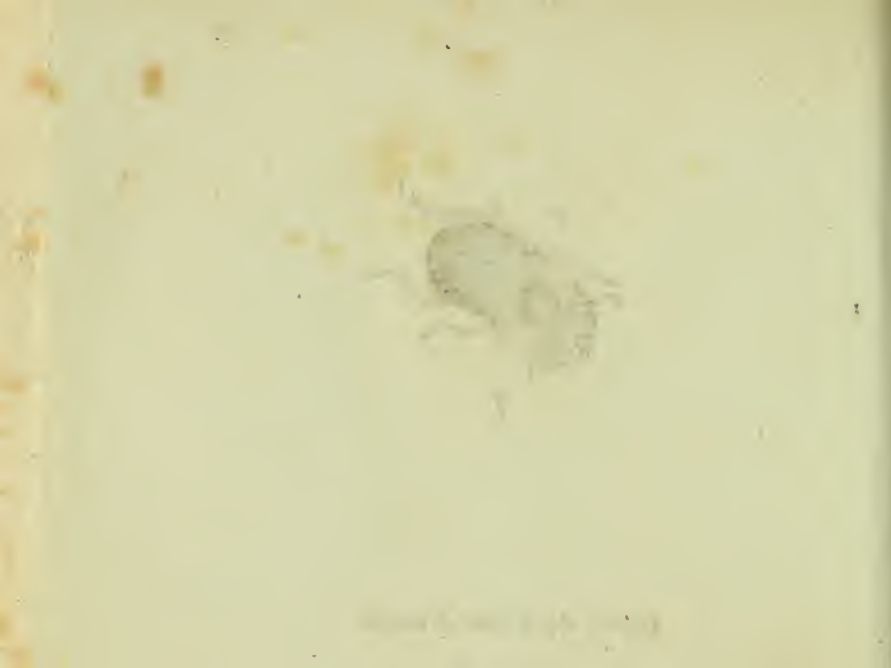
a. Magnitudo naturalis. b. Eadem aucta.





Clytra bucephala Schneider.

sc. Sturm fec



CLYTRA bucephala.

Der ochsenkopffartige Sägekäfer.

Clytra bucephala. Schneider N. Mag. II. n. 16. p. 194.

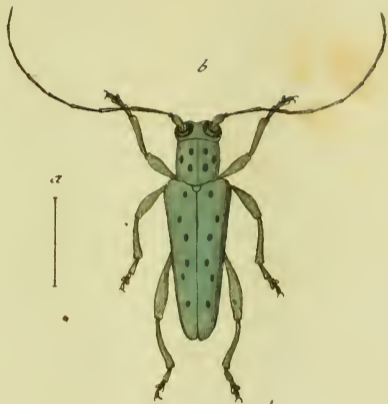
Clytra bucephala: cyanea ore thoracis marginibus pedibusque rubris. *Panzer* Ent. germ. I. n. 13. p. 191.

Cryptocephalus bucephalus. Fabric. Mant. Inf. T. I. n. 41. p. 82. Ent. syst. T. II. n. 54. p. 63.

Cryptocephalus bucephalus. Schaller in act. nat. cur. hal. T. I. p. 276.

Habitat in Anthyll. vulneraria L.

a. Magnitudo naturalis. b. Eadem aucta.



Saperda punctata Fabr.

Jac. Sturm fec.

SAPERDA punctata.

Der punktirte Schneckenkäfer.

Saperda punctata: viridis punctis nigris numerosis, antennis mediocribus. *Fabric.*
Syst. Ent. n. 14. p. 137. Spec. Inf. T. I. n. 20. p. 234. Mant. Inf. T. I. n.
29. p. 150. Ent. syst. T. II. n. 39. p. 315.

Cerambyx punctatus: thorace mutico subcylindrico, totus viridis punctis nigris,
antennis mediocribus. *Linn.* Syst. Nat. n. 7. p. 1067. ed. XIII. n. 202. p. 1839.

Sulzer abgek. Gesch. d. Inf. tab. 5. fig. 10.

Panzer Ent. germ. I n. 13. p. 258.

Habitat in Germaniae Pomona.

Vlla haud quaevis ex Schäfferi Icon. figura equidem mihi videtur admittenda.
Sulzeri figura a me adducta, omnino sistit Saperdam nostram, si excipis duataxat

punctorum in elytris [situm ut plurimum variabilem. — *b. a. Linné* quoque iure me ad-
duxisse nullus dubito, quamvis incertus sim, num *Illustr. Fabric.* *Saperda punctata*
etiam nostra sit. Puncta *numerosa* neque, neque pedes nigros detegere potui.

a. Magnitudo naturalis. b. Eadem aucta.



Saperda testacea Fabri.



[Faint, illegible text, possibly a signature or title]

SAPERDA testacea.

Der gelblicht braune Schneckenkäfer.

Saperda testacea: thorace cylindrico nigra, elytris testaceis. *Fabric. Spec. Inf.*
T. I. n. 23. p. 235. *Mant. Inf.* T. I. n. 34. p. 150. *Ent. syst.* T. II. n. 46.
p. 316.

Panzer Ent. germ. I. n. 18. p. 259.

Habitat in dumetis apud nos haud infrequens.

a. Magnitudo naturalis. b. Eadem aucta.

Handwritten title or header at the top of the page.

Main body of handwritten text, consisting of several lines of cursive script.

Handwritten text at the bottom of the page, possibly a signature or date.



Leptura unipunctata Fabr.



[Faint, illegible handwritten text]

LEPTVRA unipunctata.

Der einpunktige Schmalbock.

Leptura unipunctata: nigra elytris rufis, puncto medio nigro. *Fabric. Mant.*

Inf. T. I. n. 1. p. 157. Ent. syst. T. II. n. 1. p. 339.

Panzer. Ent. germ. I. n. 1. p. 268.

Habitat in Saxonia, et Vienn. Austr. ubi haud infrequens.

THE UNIVERSITY OF CHICAGO
LIBRARY

100 EAST EAST
CHICAGO, ILL. 60607
TEL. 773-936-3000
WWW.CHICAGO.EDU

UNIVERSITY OF CHICAGO



Leptura meridiana Fabr.

Jes. Sturm sculp.



LEPTVRA meridiana.

Der Mittagschmalbock. Die Meridiana. Lepture meridienne. Degeer.

Leptura meridiana: thorace subspinoso, elytris fastigiatis, pectore nitente. *Fabric.* Ent. syst. T. II. n. 11. p. 341.

Stenocorus meridianus. *Fabric.* Syst. Ent. n. 1. p. 178. *Spec. Inf.* T. I. [n. 1. p. 225.
Mant. Inf. T. I. n. 1. p. 143.

Cerambyx meridianus. *Linn.* Syst. Nat. n. 47. p. 630. ed. XIII. n. 47. p. 1861.
Fn. Suec. n. 648.

Degeer Inf. T. V. p. 305.

Schrank. inf. austr. n. 257. *

Scop. carn. n. 155. *absque ic.*

Laichard. inf. tyr. II. n. 2. p. 133. *

Schäffer. Ic. Inf. Ratisb. tab. 3. fig. 13. tab. 279. fig. 3.

Harrer Besch. d. Schäff. Inf. 1 Th. n. 330. p. 302.

Panzer Ent. germ. I. n. 7. p. 269.

Habitat in floribus, dumetis, hortis, non raro.

Cl. Herbst. Rhag. cantarin., Laichard. Leptura splendens, Schrank. Ceramb. chrysoaster, et Geoffr. p. 226. n. 7. tab. 4. fig. 1. sine dubio cum hac nostra Leptura coniungenda.



Leptura humeralis Fabr.

J. St. c.



LEPTVRA humeralis.†

Der Schmalbock mit dem rothen Schulterfleck.

Leptura humeralis: nigra humeris abdomineque ferrugineis. - *Fabric*, Mant. Inf.

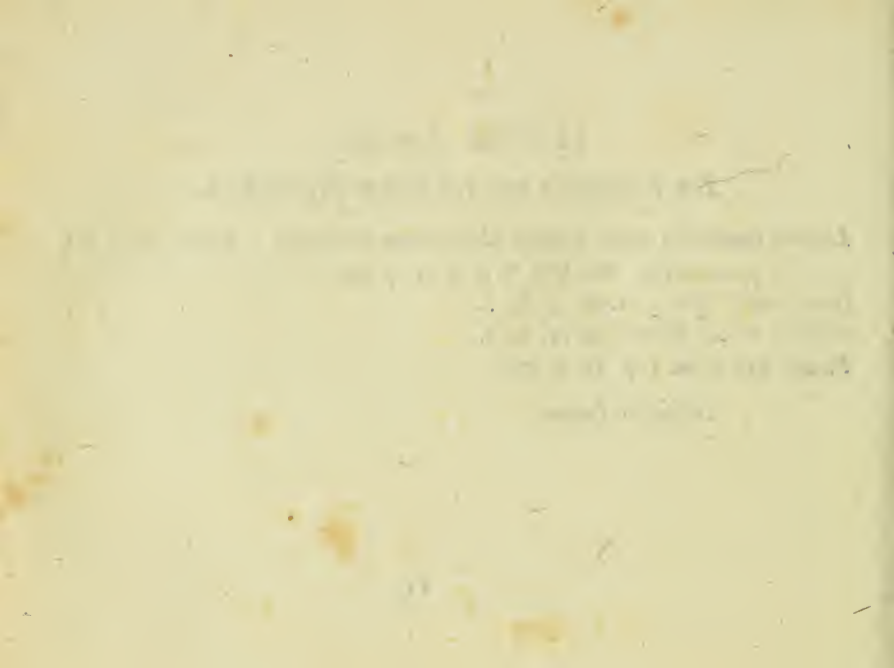
T. I. n. 14. p. 158. Ent. syst. T. II. n. 19. p. 343.

Naturforsch. XIX. p. 73. tab. 4. fig. 5.

Schäffer Ic. Inf. Ratisb. tab. 79. fig. 7.

Panzer Ent. germ. I. n. 13. p. 270.

Habitat in Quercu.





Dryops suturalis Mihi.

Jan. 1811



DRYOPS *suturalis*.

Der schwarze Steinkäfer mit der gelben Naht.

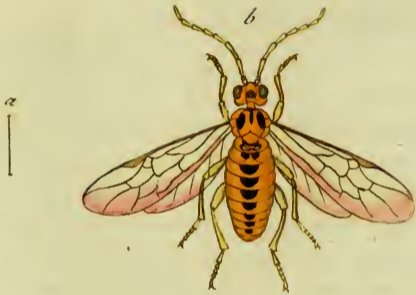
Dryops suturalis: elongata livida, elytris atris basi suturaque testaceis.

Habitat Goettingae. *Dn. Persoon.*

Huius generis videtur. Caput transversum obscure fuscum s. atrum, fronte, ore, palpisque ferrugineis. Oculi laterales nigri. Antennae filiformes subterratae, articulis ut plurimum aequalibus: articulo primo secundo ultimoque acuto testaceis, reliquis intermediis nigris. Thorax transversus obscure fuscus s. ater, margine laterali rotundatus, immarginatus, punctatus, fossulisque tribus excavatus: quarum una in medio dorso, altera ad basin utrinque sita. Scutellum atrum triangulare. Elytra atra nitida punctato striata, vittaque suturali testacea, quae vero haud ad apices excurrit: utrinque margo lateralis in primis basin versus flavicans. Pedes pallidiores testacei. Corpus subtus lividum s. obscure testaceum.

a. Magnitudo naturalis. b. Eadem aucta.





Tenthredo miliaris Mihi.

Sec. Sturm fœc.



TENTHREDO miliaris.

Die Hirsekorn Blattwespe.

Tentredo miliaris: antennis septemnodis flava, abdomine linea longitudinali punctorum nigrorum, alis puncto flavo.

Semel capta in Rosa eglanteria d. 20. Jun. 1796.

Statura *T. viridis* F. *ast* duplo minor. Caput flavum, macula frontali nigra, binisque minoribus supra antennis fuscis. Antennae septemnodes flavae, articulo primo et secundo, reliquisque supra nigris. Oculi nigri. Thorax flavus, maculis duabus lateralibus, lineolaque dorsali atris. Scutellum flavum margine postico fuscescente: huic subiacent corpuscula duo opposita candicantia elevata grano Milii haud abfimilia, primo abdominis segmenta contigua, quod singulare, cum nunquam talia in aliis huius generis speciebus me observasse memini. Abdomen flavum glabrum segmentis linea longitudinali punctorum nigrorum, excepto ultimo unicolore. Pedes pellidiores s. testacei. Alae hyalinae flavicantes, ad marginem crassiores puncto calloso flavo. Corpus subtus flavum glabrum nitidum.

a. Magnitudo naturalis. b. Eadem aucta.





Ichneumon denigrator Fabr.

J. P. ...



ICHNEVMON denigrator.

Die schwarze Schlupfwespe mit dem scharlachrothen Unterleibe. *L'ichneumon noir à ventre couleur de cerise.* Geoff.

Ichneumon denigrator: ater alis nigris: lunula hyalina; abdomine coccineo. Fabric. Syst. Ent. n. 48. p. 315. Spec. Inf. T. I. n. 70. p. 265. Ent. Syst. T. III. n. 112. p. 161.

Ichneumon denigrator. Linn. Syst. Nat. n. 28. p. 934. ed. XIII. n. 28. p. 2691. Fn. Suec. n. 1604. *.

Geoffr. Inf. T. II. n. 96. p. 352.

Sulzer abgek. Gesch. d. Inf. tab. 26. fig. 16.

Schäffer Ic. Inf. Ratisb. tab. 20. fig. 4. c.

Habitat in fylvis et in hortis.

a. Magnitudo naturalis. b. Eadem aucta.

Director of the

Department of the Interior

Washington, D.C.

Dear Sir:

I have the honor to acknowledge the receipt of your letter of the 10th inst. in relation to the matter mentioned therein. The same has been referred to the proper authorities for their consideration and they will advise you as soon as a decision has been reached.



Videntorius
Ichneumon desertorius Mihi.

1. St. fem.



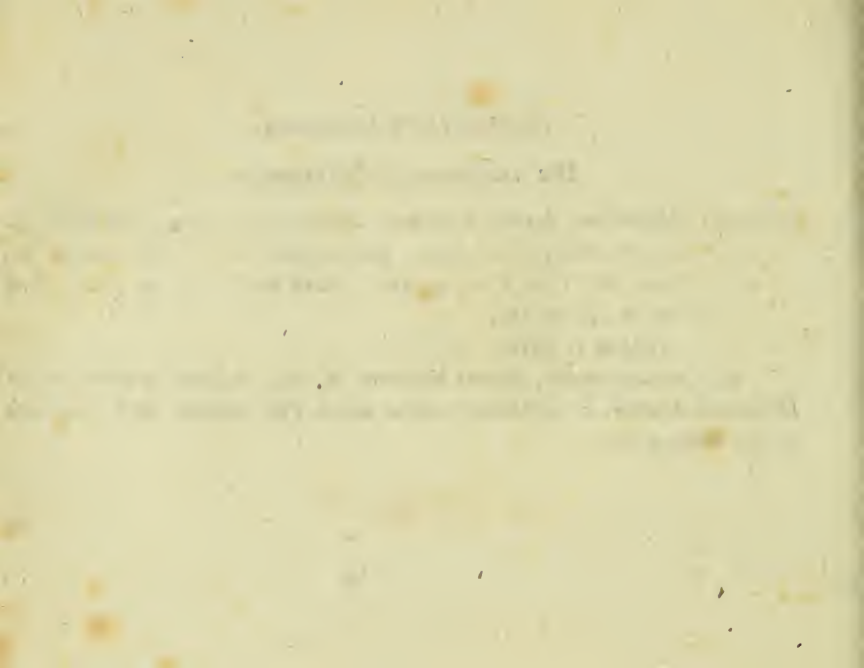
ICHNEVMON bidentorius.

Die zweyzahnige Schlupfwespe.

Ichneumon bidentorius: scutello flavicante, thorace submaculato, abdominis segmento secundo tertioque basi flavis, pedibus rufis. *Fabric. Syst. Ent. n. 21. p. 331. Spec. Inf. T. I. n. 21. p. 424. Mant. Inf. T. I. n. 26. p. 262. Ent. Syst. T. III. n. 47. p. 145.*

Habitat in sylvis.

Mas thorace mutico, femina bidentato insignis. Deleatur in tabula nomen *Ichneumon. desertor.* et substituatur rectius nomen *Fabricianum*, quod tabula iam excusa, detegere licuit.





Anthrax Beelzebul Fabr.

J. St. jec.



[Faint, illegible handwritten text]

ANTHRAX Beelzebul.

Die Beelzebul unter den Mobrenfliegen.

Anthrax Beelzebul: nigra abdominis segmentis margine ferrugineis, alis dimidiato-fuscis. *Fabric. Ent. syst. T. VI. n. 14. p. 260.*

Habitat in pratis tempore aestivo.

a. Magnitudo naturalis. b. Eadem aucta.

THE HISTORY OF THE

REIGN OF KING CHARLES THE FIRST

BY JOHN BURNET

IN TWO VOLUMES

LONDON

Printed by J. Sturges, in Strand

1724



Anthrax Daemon Mihi.

J Sl fec

ANTHRAX Daemon.

Der Daemon unter den Mobrenfliegen.

Anthrax Daemon: pilosa atra, abdomine cingulis duabus remotis caerulefcentibus, alis atris margine tenuiori sinuato hyalino.

Semel captus in Rib. Grossul. ineunte vere 1796.

Omnino simllis *A. maura* F. est triplo minor. Corpus totum atrum pilosum. Thorax margine laterali albidus. Abdomen cingulis duobus albo-coerulefcentibus, quorum alterum ad basin, alterum pone medium situm. Alae fusco-atrae, margine tenuiori hyalino sinuato. Pedes nigri.

a. Magnitudo naturalis. b. Eadem aucta.

THE HISTORY OF

THE CITY OF BOSTON

FROM THE FIRST SETTLEMENT TO THE PRESENT TIME

BY

JOHN HUTCHINGS

IN TWO VOLUMES

VOLUME I

FROM THE FIRST SETTLEMENT TO THE YEAR 1700

BOSTON: PUBLISHED BY G. B. LEECH, 15 NASSAU ST. 1856



Syrphus bicinctus Fabr.



Faint, illegible text at the bottom of the page, possibly a signature or a date.

SYRPHVS bicinctus.

Die zweygegürtelte Schwebefliege.

Syrphus bicinctus: antennis setariis elongatis niger, thoracis lateribus punctis abdomineque cingulis duobus flavis. *Fabric.* Syst. Ent. n. 21. p. 767. *Spec. Inf.* T. II. n. 30. p. 427. *Mant. Inf.* T. II. n. 34. p. 337. *Ent. syst.* T. VI. n. 54. p. 293.

Musca bicincta. *Linn.* Syst. Nat. n. 38. p. 985. ed. XIII. n. 38. p. 2872. *Fn.* *Succ.* n. 1805.

Degeer Inf. T. VI. n. 16. p. 126. tab. 7. fig. 16.

Rossi Faun. etrusc. II. n. 1489. p. 287.

Habitat in floribus, dumetis, et hortis.

a. Magnitudo naturalis. b. Antenna aucta.

1877

1877

...

...

...



Syrphus apiformis Fabr.



[Faint, illegible text at the bottom of the page, possibly a signature or a title.]

SYRPHVS apiformis.

Die bienenartige Schwebefliege.

Syrphus apiformis: antennis setariis tomentosus thorace nigro: punctis lineolisque albis, abdomine flavo cingulis nigris. *Fabric. Ent. syst. T. VI, n. 80. p. 300.*

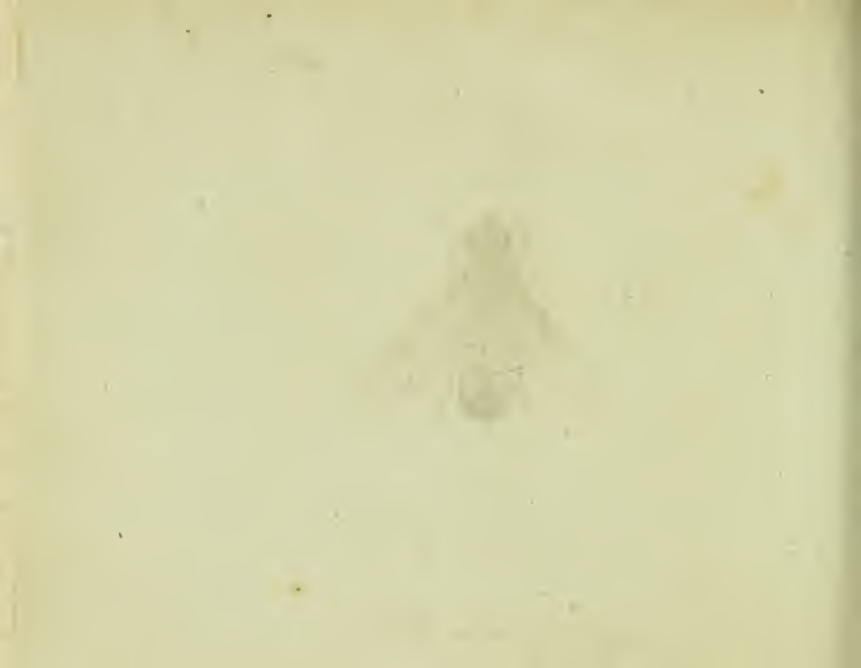
Habitat in Carinthiae montibus. *Dn. Lib. Bar. de Hohenwartb.*





Syrphus scalaris Fabr.

ae. Sturm fec.



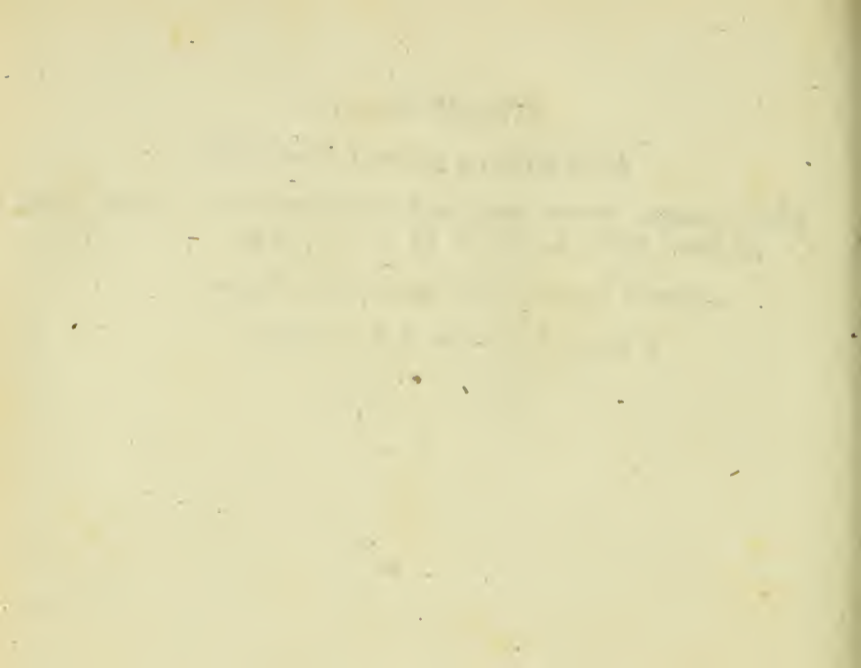
SYRPHVS scalaris.

Die Stufenartig gefleckte Schwebefliege.

Syrphus scalaris: antennis setariis nudiusculus aeneus nitens, abdomine maculis sex fulvis. *Fabric.* Ent. syst. T. VI. n. 112. p. 308.

Habitat in Menthis aquaticis tempore aestivo frequens.

a. Magnitudo naturalis. b. Eadem aucta.





Syrphus impiger Rossi.

J. St. fec.



SYRPHUS impiger

Die schnelle Schwebefliege.

Syrphus impiger: antennis setariis ater, thorace, aeneo fusco, abdominis apice, tibisque aureo-tomento flavis. *Rossi* Faun. etrusc. II. n. 1463. p. 289.

Habitat et apud nos in regionibus sylvaticis.

Diutius collegeram saepiusque varia huius Syrphi exempla, cum posthaec innotuerat nomen et adumbratio absoluta in Fauna etrusc.: accedit quod et ipse *Cl. Rossi* exemplar suppeditabat, quo facto, non amplius supererat dubium, unum idemque meum Syrphum esse cum *Rossiano*.

a. Magnitudo naturalis. b. Antenna setaria aucta.



Syrphus coarctatus Mihi.

J. St. fsc.



SYRPHVS coarctatus.

Die zusammengezogene Schwebefliege.

Syrphus coarctatus: antennis setariis nudus, abdomine clavato nigro: fasciis quatuor flavis, prima interrupta retroflexa, scutello ferrugineo.

Habitat in Carinthiae montibus. *Dn. Lib. Bar. de Hohenwarth.*

Statura S. vesiculof. Caput atrum nitidum, linea utrinque inter oculos et antennis, et alia supra os transversa flavis. Antennarum clava fusca. Oculi fasci. Thorax ater nitidus linea laterali flava. Scutellum ferrugineum. Abdomen nigrum, nitidum, clavatum, hinc basi angustatum, fasciis quatuor flavis: primum segmentum linea utrinque laterali obliqua in dorso subcoeunte; secundum, tertium, quartum fascia supra et infra flava: reliqua immaculata. Clava halterum flava. Subtus thorax lineola flava terminatus. Alae hyalinae fuscae, ad marginem crassiolem strigata obscura fusca. Pedes simplices: femora flava medio nigra, tibiae flavescens.

a. Magnitudo naturalis. b. Antenna aucta.





Afilus Diadema Fabr.

Jan. 17. 1761. 100



ASILVS Diadema.

Die königliche Raubfliege.

Asilus Diadema: ater alis nigris, fronte alba. *Fabric.* Spec. Inf. T. II. n. 11. p. 462. *Mant.* Inf. T. II. n. 12. p. 358. *Ent. syst.* T. VI. n. 16. p. 379.

Habitat in Austriae et Bavariae montibus.

a. Magnitudo naturalis. b. Caput auctum.





Atilus punctatus Fabr.

Jac. Sturm fecit



ASILVS punctatus.

Die punctirte Raubfliege.

Asilus punctatus: hirtus, thorace cinereo pubescente, abdomine atro: punctis tribus marginalibus albis, maculisque duabus dorsalibus rufis. *Fabric. Spec. Inf. T. II. n. 15. p. 463. Mant. Inf. T. II. n. 17. p. 359. Ent. syst. T. VI. n. 23.*

Habitat in Austria, et Bavaria.

Utramque Asili speciem ante aliquot annos ab amico emi, qui in hisce terris eam collegerat.

Secundum Cl. *Fabric.* puncta tria alba marginalia adsunt, ast quatuor conspiciuntur.







Tab. 1. *Tenthredo furcata* Deviller.

— 2. *Philanthus arenarius* Fabric.

— 3. *Crabro palmatus* Panzer.

— 4. *Crabro patellatus* Panzer.

— 5. *Crabro vexillatus* Panzer.

— 6. *Crabro alatus* Panzer.

— 7. *Crabro zonatus* Panzer.

— 8. *Crabro ferripes* Panzer.

— 9. *Crabro dentipes*, Panzer.

— 10. *Crabro vagus* Fabric.

— 11. *Crabro frontalis* Panzer.

— 12. *Crabro petiolatus* Panzer.

— 13. *Hylaeus floriformis* Fabric.

— 14. *Hylaeus arbutorum* Panzer.

— 15. *Andrena hirtipes* Fabric.

— 16. *Andrena plumipes* Panzer.

— 17. *Andrena equestris* Panzer.

— 18. *Mutilla maura* Fabric.

— 19. *Mutilla fellata* Panzer.

— 20. *Mutilla Ephippium* Fabric.

— 21. *Nemotelus uliginosus*, Fabric.

— 22. *Nemotelus marginatus* Fabric.

— 23. *Bombyx mendica* Mas Fabric.

— 24. *Bombyx mendica* Femina Fabric.



12
|



Tenthredo furcata Devill.

Jac. Sturm fec.

TENTHREDO furcata.

Die gabelförmige Blattwespe. La Fourchue. Devill.

Tentredo furcata: antennis ciliatis exarticulatis, furcatis in mare, capite thoraceque nigris, abdomine flavescente. *Deville*. Ent. T. III. n. 19. p. 86. tab. 7. fig. 16. 17.

Habitat in ericetis, aridis.

Feminae magnitudo *Tentred. ciliaris* *Dev.* l. c. n. 15. Antennae ciliatae. Alae fuscescentes. Abdomen flavescens. Maris antennae duplici ramo instructae, ramis valde ciliatis. Primo intuitu quatuor antennis creditur. Ramis apice unitis. Antennae spatium ellipticum formant. Femina minor, sed similiter colorata. *Deville*. l. c. — Addo, —

Caput, thorax, scutellum atra nitida. Thoracis nigredo ad basin abdominis usque protenditur. Labium ciliatum. Os flavescens. Pectus nigrum. Pedes flavi:

Sechs und vierzigstes Heft.

femora basi nigra. Ciliae rachi antennarum bifariam insident, et fasciculatim (4-5) e tuberculis, quos aegre pro articulis habeo, prodeunt. Radix antennarum globosa superne truncata. Feminam nondum vidi.

a Magnitudo naturalis. b Eadem aucta. c Antenna aucta.



Philanthus arenarius Fabr.



PHILANTHVS arenarius.

Die Sand - Blumenhorneise.

Philanthus arenarius: niger abdomine fasciis quatuor flavis: segmento primo punctis duobus. *Fabric. Ent. syst. T. III. n. 5. p. 290.*

Philanthus arenarius. Fabric. in Schneid. prompt. I. n. 6. p. 28.

Crabro arenarius. Fabric. Mant. Inf. T. I. n. 20. p. 297.

Sphex arenaria. Linn. Syst. Nat. n. 31. p. 946. ed. XIII. n. 121. p. 2764. Faun. Suec. n. 1660.

Göze im Naturf. II. Tab. II. fig. II.

Habitat in arenosis ad margines sylvarum.

Cui paullo curatius exemplar meum *Phil. aren. F.* cum descriptione a b. *Linne* in Faun. Suec. I. c. data conferre continget, in nullius aut saltem levioris momenti differentias incidet. Variat enim haecce *Philanthi* species punctis frontis

coalitis, inde frons flava. Puncta duo scutellaria in lineam saepe conflunt; et abdominis segmenta quinque, loco quatuor, sexum forsan manifestant. Addendum:

Antennae supra nigrae infra flavae, articulo ultimo toto flavo. Caput, thorax, abdomen, punctis impressis scabra. Pedes flavi: femora primi et secundi parvis supra macula baseos, tertii vero apicis nigra. Alae hyalinae flavicantes, nervo in parte antica crassiori flavo. Figura II. a b. *Goezio* l. c. data, *Philantho arenar.* F. adeo similis, ut facile cum hoc coniungi possit.

a Magnitudo naturalis. b Eadem aucta. c Caput cum antennis auctum.



Crabro palmatus Miki.

Jac. Sturm fec.



CRABRO palmatus.

Die Horneise mit dem handförmigen Schildchen.

Crabro palmatus: ater thorace maculato: abdomine fasciis flavis, secunda tertiaque interruptis, tibiis anticis clypeis orbiculatis punctatis, ano bispinoso.

Habitat in graminosis, in umbelliferis. Hanc, et plerasque sequentes species, debeo amico meo coniunctissimo *Dn. Christiano Schwarz*, quem toties assiduam comitem in colligendis pro *Fauna germanica* entomis, cum debita honoris nuncupatione iam iam declaravi.

Caput atrum striatum pubescens. Oculi pallescentes. Antennae ferratae, acuminatae, nigrae ut in *Crabr. cribrar. fem.*, articulo primo maximo conico puncto utrinque flavo. Labium argenteo villosum nitens. Thorax ater, stigma antica interrupta lineolaque loco scutelli flavis. Punctum ante alas callosum nigrum. Alae hyalinae flavicantes, margine antico crassiori nigro. Abdomen atrum niti-

dum fasciis sex flavis, secunda tertia interruptis, reliquis integris subrepandis. Ultimum segmentum bispinosum. Pedes flavi ferrati, femoribus nigris incrassatis. Femora antica flavo nigroque varia, clypeo membranaceo suborbiculato flavo, albo punctato. Corpus subrus atrum nitidum, lineola angusta flava subrepanda: reliquum immaculatum.

- a Magnitudo naturalis. b Eadem aucta. c Caput cum antennis auctum.
d Pes anticus cum clypeo auctus.



Crabro patellatus Nishi.

Jac. Sturm fec.



CRABRO patellatus.

Die Horneise mit dem Knieschildartigen Schildchen.

Crabro patellatus: ater thorace immaculato, abdomine fasciis flavis, anticis tribus interruptis, tibiis anticis clypeis striatis punctatis.

Habitat in floribus in regione hypicidinarum. *Dn. Schwarz.*

Caput atrum leviter striatum pubescens. Antennae medio ferratae, uncinatae, acuminatae, nigrae, subtus flavae: articulo primo longissimo subclavato. Labium argenteo-nitidulum, stigmaque inter oculos antennisque argenteo-villosa. Os palpique nigri. Thorax ater immaculatus, postice valde rugosus, punctoque ante alas calloso flavo. Alae flavicantes, margine crassiori flavo. Abdomen glabrum atrum, nitidum, thorace longe angustius, fasciis quinque flavis: prima, secunda, tertiaque interruptis: hae tres fasciae anteriores maculas potius, quam fascias referunt. Femorum anticorum clypei nigro fusci, certo situ albicantes, margine striati,

medio punctis adpersi. Femora intermedia flavo lineata, tibiis flavis, subtus lineata atra: postica nigra immaculata, tibiis flavis, apice macula fusca. Corpus subtus atrum nitidum. In aliquot exemplis subtus abdomen punctis duobus flavis pictum.

Affinitas summa cum *Spege peltaria* Schreber. Naturf. XX. n. 3. p. 98. tab. II. fig. 6. haud deneganda.

a Magnitudo naturalis. b Eadem aucta. c Pes anticus cum clypeo auctus.



Crabro vexillatus Mihi.

Jac. Sturm fec.



[Faint, illegible text, possibly a title or description]

CRABRO vexillatus.

Die Horneise mit dem Fahnenartigen Schildchen.

Crabro vexillatus: ater thorace submaculato, abdomine fasciis flavis, anticis tribus interruptis, tibiis anticis clypeis membranaceis concavis.

Habitat in saxosis, rupestribus, in floribus. *Dn. Schwarz.*

Caput atrum triangulare, superne foveolatum, postice attenuatum, pilis albicantibus adpersum. Labium prominens retusum, argenteo nitidulum. Oculi fusci, Antennae haud uncinatae, sed filiformes, nigrae, subtus flavae, articulo primo longissimo: quas et oculos utrinque interiacet striga longitudinalis villosa-argentea. Thorax ater punctis impressis plurimis scabriusculus, antice utrinque puncto flavo. Punctum ante alas callosum nigrum, puncto flavo. Alae fuscae. Scutellum nigrum immaculatum. Abdomen glabrum atrum punctatum, fasciis sex flavis, prima, secunda, tertia interruptis: anus seu ultimum segmentum flavicans puncto

oblongo excavato. Femora primi paris flava incrassata, macula laterali nigra, tibiis pallido flavis dilatatis immaculatis, clypeo terminali subquadrato membranaceo apice fuscescenti: femora secundi tertiique paris, clavata, nigra, interiori latere lineola flava, tibiis subserratis flavis, macula fusca. Abdomen subtus atrum nitidum basi flavum.

a Magnitudo naturalis. b Eadem aucta. c Pes anticus cum clypeo auctus.



Crabro alatus Mihi.

ser. 1810m 31



1847 - 1850 - 1851

CRABRO alatus.

Die Horneise mit dem Flügelartigen Schildchen.

Crabro alatus: ater thorace maculato, abdomine fasciis flavis, anticis tribus interruptis, tibiis anticis alatis.

Habitat in saxosis herbidis in umbelliferis. *Dn. Schwarz.*

Caput atrum pilosum. Oculi oblongi nigri. Labium strigaque inter oculos et antennas argenteo nitida. Os flavum. Antennae filiformes, ultra medietatem flavae, demum nigrae: articulo primo maximo toto flavo. Thorax ater punctatus pilosus maculatus: antice maculis quatuor collaribus, punctoque ante alas calloso flavis: scutellum nigrum maculis duabus strigaque utrinque laterali flavis, cui subjacent aliae duae lineolae transversae angustae flavae. Abdomen glabrum nitidum punctulatum, fasciis sex flavis, prima, secunda, tertiaque interruptis: fasciae anticae tres potius tot geminas maculas mentiuntur. Pedes flavi, femoribus pilosis in-

crassatis superne parum fuscescentibus, tibiisque leviter ferratis: primi paris articulus tarforum primus in alam membranaceam lanceolatam dilatatus, nervo medium percurrente subtus rufo colore inprimis conspicuo. Abdomen subtus nigrum nitidum segmentis margine apicem versus subflavicantibus. Alae hyalinae flavicantes, margine antico crassiori punctoque flavo.

a Magnitudo naturalis. b Eadem aucta. c Pes anticus auctus. :



Crabro zonatus Mihi.



CRABRO zonatus.

Die gegürtelte Horneise.

Crabro zonatus: ater thorace maculato, abdomine fasciis sex flavis prima interrupta.

Habitat in saxosis herbidis. *Dn. Schwarz.*

Caput grandiusculum atrum pilosum. Oculi magni fusci. Labium strigaeque inter oculos et antennas argenteo-nitida. Antennae subtus ferratae nec uncinatae, articulo primo maximo toto flavo, reliquis supra nigris, subtus parum flavicantibus. Thorax niger, striga antica interrupta, puncto baseos marginali, punctoque ante alas calloso, lineolaque loco scutelli flavis. Abdomen atrum nitidum basi pubescens, fasciis sex flavis, prima interrupta. Pedes flavii, femoribus anticis subtus striga, mediis linea marginali, posticis totis nigris. Pectus pube argentea villosum. Abdomen subtus glabrum nitidum.

a Magnitudo naturalis. b Eadem aucta. c Antenna aucta.



Crabro ferripes Mihi.

Jac. Stur. del.



CRABRO ferripes.

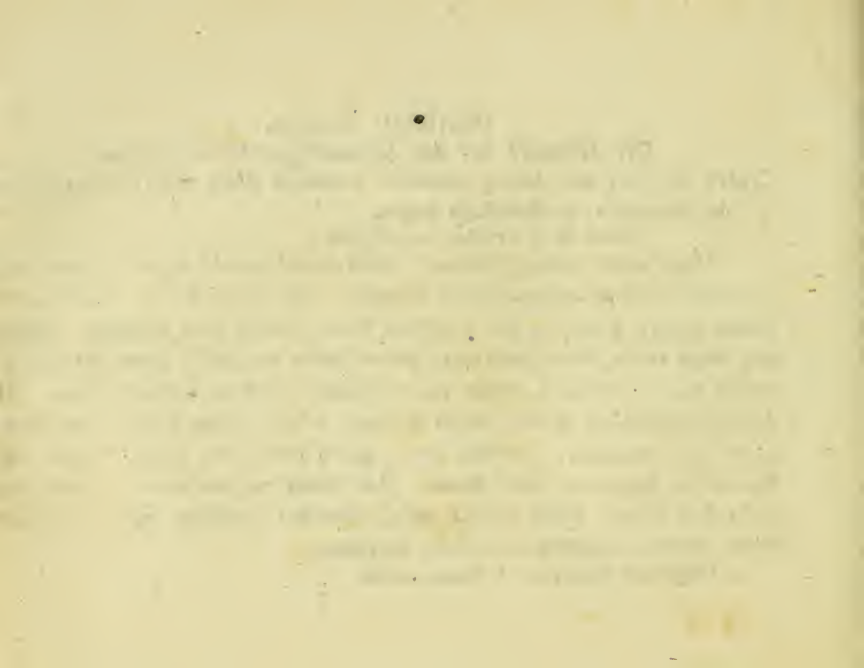
Die Horneise mit den sägenartiggezähnten Füßen.

Crabro ferripes: ater thorace maculato, abdomine fasciis flavis, tribus interme-
diis interruptis, pedibus flavis ferratis.

·Lectus in pratensibus umbelliferis.

Caput atrum planum glabrum. Oculi magni globosi nigri. Labium striga-
que inter oculos et antennas villosa argentea. Mandibulae fuscae. Antennae fili-
formes nigrae, articulo primo longissimo flavo, macula fusca marginali. Thorax
ater striga antica ciliata interrupta, puncto baseos marginali, punctoque ante alas
calloso flavis. Scutellum nigrum punctis duobus lineolaque transversa flavis. Ab-
domen subpetiolatum glabrum atrum nitidum, fasciis quinque flavis: prima integra
apice fusco marginata, secunda, tertia, quarta interruptis, quinta integra. Anus
seu ultimum segmentum totum flavum. Alae fuscae margine antico crassiori fusco.
Pedes flavi ferrati, subtus macula fusca, femoribus incrassatis nigris. Abdomen
subtus nitidum, segmentis apicis fusco marginatis.

a Magnitudo naturalis. b Eadem aucta.





Crabro dentipes Mihi.

J. St. fec.

CRABRO dentipes.

Die Horneise mit den zahnartig gezackten Füßen.

Crabro dentipes: ater thorace maculato, abdomine fasciis flavis, primis tribus interruptis, pedibus flavis denticulato-spinosis.

Habitat in saxosis herbidis. *Dr. Schwarz.*

Affinis *Crabr. ferrip.* aet pictura thoracis abdominisque, et magnitudine differt. Caput, labium, antennae ut in *Crabr. ferrip.* Thorax ater antice punctis duobus, (raro 4) punctoque utrinque baseos marginali flavis. Scutellum lineola flavâ. Punctum ad basin alarum callosum obscure fuscum. Abdomen subsessile atrum glabrum nitidum, fasciis quinque flavis, prima, secunda, tertiaque interruptis: fascia secunda reliquis latior, potius maculam geminam refert. Pedes flavi spinuloso-denticulati, secundi paris subtus macula nigra, femoribus nigris immaculatis. Alae

obscura-hyalinae, margine antico crassiori fuscescenti. Abdomen subtus glabrum nitidum, segmentis subtus fusco marginatis. Variat magnitudine et abdomine subtus immaculato.

a Magnitudo naturalis. b Eadem aucta.



Crabro vagus Fabr.

J. St. fce.



CRABRO vagus.

Die herumschweifende Horneise.

Crabro vagus: niger abdomine fasciis tribus flavis: primis interruptis, tibiis flavis.

Fabric. Syst. Ent. n. 8. p. 375. Spec. Inf. T. I. n. 10. p. 471. Mant. Inf.

T. I. n. 16. p. 296. Ent. syst. T. III. n. 17. p. 298.

Sphex vaga. Linn. Syst. Nat. n. 36. p. 946. ed. XIII. n. 117. p. 2764. Fn. Suec.
n. 1661.

Habitat in dumetis floribundis.

Nec ipse quidem b. *Scopoli* Sphegem vagam, quam inter insecta carniolica enumeravit, cum Linneana eiusdem nominis combinare voluit. Hinc iniuste *Scopol.* ab entomologis huc adducitur. Figura *Scopol.* 785. satis abundeque probat, longe aliud insectum ab illo sub hacce nomenclatura adumbratum fuisse.

Quem hic delineandum curavi Crabronem exacte cum *Sphege vaga* Linn. convenire videtur, sicuti cum illo, quem illustr. *Fabricius* hocce nomine illustravit.
a Magnitudo naturalis. b Eadem aucta.





Crabro frontalis Mihi.

Jac. Sturm fec.



CRABRO frontalis.

Die Horneise mit der gezeichneten Stirn.

Crabro frontalis: ater thorace maculato, abdomine maculis quatuor fascisque, albis, fronte U flavo inscripto.

Habitat in pratis umbellatis.

Caput atrum pubescens. Frons plana. Labium nigrum ciliatum lineola transversa alba: cui infidet utrinque inter oculos et antennis alia lineola longitudinalis alba, quae cum subiacente labiari, litteram U exacte fistit. Oculi laterales fusci oblongi. Antennae nigrae subtus rufae, articulo primo maximo nigro, subtus macula alba. Thorax ater antice lineola subinterrupta, punctoque ante alas scutelloque albis: punctum ad basin alarum callosum fuscum macula alba. Abdomen petiolatum, glabrum, atrum, nitidum, segmento secundo tertioque utrinque macula,

ultimoque lineola transversa albis. Pedes rufi, femoribus macula supra nigra. Alae obscuro hyalinae, margine antico crassiori nigricante. Abdomen subtus glabrum atrum, nitidum, immaculatum.

a Magnitudo naturalis. b Eadem aucta. c Caput cum antennis auctum.



Crabro petiolatus Mihi.



CRABRO petiolatus.

Die gestielte Horneise.

Crabro petiolatus: ater thorace maculato, abdomine maculis quatuor flavis, pedibus ferrugineis.

Habitat in floribus, tempore aestivo. *Dn. Schwarz.*

Caput atrum, punctatum. Frons plana. Labium nigrum, medio denticulis tribus, intermedio maiori. Mandibulae pilis ferrugineis hirtae. Oculi laterales fuscii. Linea utrinque inter oculos et antennis flava. Antennae ferrugineae, supra nigrae, ante apicem unicolores. Thorax ater punctatus, antice lineola interrupta, punctoque ante alas, scutelloque flavis. Abdomen petiolatum atrum, glabrum, nitidum, apice pubescens, maculis quatuor flavis. Alae fuscae, margine crassiori, punctoque calloso ferrugineo. Pedes ferruginei, femoribus apice nigris. Abdomen subtus atrum nitidum immaculatum.

a Magnitudo naturalis. b Eadem aucta.

1870



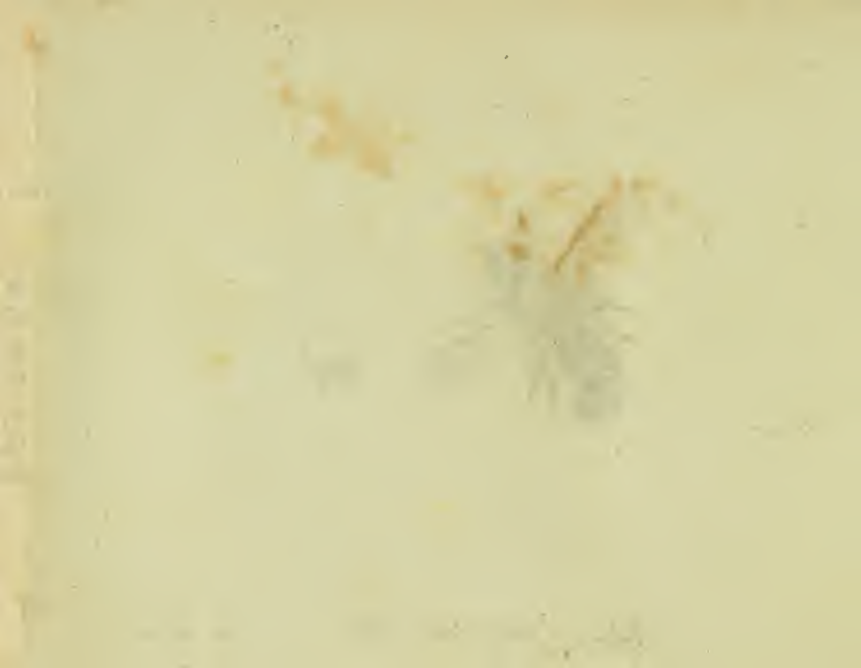
Faint, illegible text, likely bleed-through from the reverse side of the page.

1870



Hylaeus florisonnis Fabr.

J. St. fec.



HYLAEVS floriformis.

Die Blumenschläferin.

Hylaeus floriformis: hirsuta, abdomine cylindrico incurvo, ano bidentato. *Fabric.*
Ent. syst. T. III. n. 5. p. 304.

Apis floriformis. *Fabric.* Syst. Ent. n. 55. p. 387. Spec. Inf. T. I. n. 76. p. 486.
Mant. Inf. T. I. n. 88. p. 305.

Apis floriformis: nigra abdomine subcylindrico incurvo, ano bidentato, tibiis
posticis apice spinosis. *Linn.* Syst. Nat. n. 13. p. 954. ed. XIII. n. 13. p. 2773.
Fn. Suec. n. 1704.

Scop. carn. n. 796. ic. 796.

Pernoctat in floribus.

Anus quidem bifidus, seu denticulis duobus apice truncatis terminatus, at
subtus denticulo tertio pariter obtuso, eoque latiori armatus est, qui absque ullo
dubio eo fine illinc positus, ut intra illos denticulos sponte ab animali intrudi possit.

a Magnitudo naturalis. b Eadem aucta.





Hylaeus arbustorum Mihi.

des. Mihi. sc.



[Faint, illegible text, possibly a signature or name]

HYLAEVS arbuſtorum.

Die Blumenbiene in den Baumſchlängen.

Hylaeus arbuſtorum: cinerea, abdomine cylindrico faſciis ſex albis, antennis flavis ante apicem nigris, pedibusque flavis.

Habitat in arbuſtis tempore aeſtivo. *Dn. Schwarz.*

Caput protenſum ſupra infraque nigrum albido villoſum. Labium obtuſum ſupra lineola flava. Oculi laterales oblongi fuſci. Antennae cylindricae flavae ante apicem, articuloque primo et ſecundo nigris. Thorax cinereo pubeſcens ater immaculatus. Abdomen cylindricum nigrum pubeſcens, faſciis ſex albis. Pedes flavi, femoribus baſi fuſcis, apice ſpinofis. Pectus cinereo pubeſcens. Corpus ſubtus glabrum ſegmentis margine parum fuſcis. Alae hyalinae, margine antico craſſiori obſcure fuſco, lineola calloſa flava.

a Magnitudo naturalis. b Eadem aucta.

MEMORANDUM

TO : [Illegible]

FROM : [Illegible]

SUBJECT : [Illegible]

[Illegible]

[Illegible]

[Illegible]

[Illegible]

[Illegible]

[Illegible]

[Illegible]

[Illegible]



Andrena hirtipes Fabr:

Jac. Sturm, fec.

1871



ANDRENA hirtipes.

Die wollenfüßichte Waldbiene.

Andrena hirtipes: cinereo villosa, abdomine atro: fasciis quatuor albis, pedibus posticis rufo hirsutissimis. *Fabric. Ent. syst. T. III. n. 24. p. 312.*

Andrena Visnaga. Ross. Faun. etrusc. II. n. 397. p. 97.

Habitat apud nos rarior in campis et pratis umbellis abundantibus.

Fide tantum illustr. *Fabric.* nomine Rossiano hic usus sum, quamvis incertus haereo, an iure adduxerim.

Tibiae posticae rufo-hirsutissimae, punctatae, aë multo magis quam in *Andr. succincta Fabr.* Fasciae abdominales saepius detritae inveniuntur. Abdomen apice margine laterali albidus.

a Magnitudo naturalis. b Eadem aucta. c Caput cum antennis auctum.

THE UNIVERSITY OF CHICAGO

DEPARTMENT OF CHEMISTRY

REPORT OF THE CHEMISTS EMPLOYED IN THE INVESTIGATION OF THE

CAUSE OF THE EXPLOSION AT THE UNIVERSITY OF CHICAGO

ON JANUARY 11, 1937

BY THE CHEMISTS EMPLOYED IN THE DEPARTMENT OF CHEMISTRY

AND BY THE CHEMISTS EMPLOYED IN THE DEPARTMENT OF PHYSICS

AND BY THE CHEMISTS EMPLOYED IN THE DEPARTMENT OF METALLURGY

AND BY THE CHEMISTS EMPLOYED IN THE DEPARTMENT OF MINERALOGY

AND BY THE CHEMISTS EMPLOYED IN THE DEPARTMENT OF BOTANY

AND BY THE CHEMISTS EMPLOYED IN THE DEPARTMENT OF ZOOLOGY

AND BY THE CHEMISTS EMPLOYED IN THE DEPARTMENT OF AGRICULTURE

AND BY THE CHEMISTS EMPLOYED IN THE DEPARTMENT OF GEOLOGY



Andrena plumipes Miki.



[Faint, illegible text, possibly a signature or title]

ANDRENA plumipes.

Die federfüßichte Waldbiene.

Andrena plumipes: flavo hirsuta, abdomine nigro fasciis tribus albis interruptis, pedibus posticis flavo hirsutissimis.

Habitat in floribus.

Antennae nigrae basi attenuatae. Caput nigro hirsutum, vertice calvo. Oculi cinerei nigro maculati. Os ferrugineo hirtum. Mandibulae prominentes. Thorax ater, pallide flavo-villosus immaculatus. Abdomen nigrum nitidum pilosum, fasciis tribus albis interruptis. Pedes nigri flavo hirsuti, tibiis posticis elongatis, flavedine hirsuta undique cinctis. Corpus subtus flavo-villosum. Poilen flavum corpori huius Andrenae ubique imprimis lanuginae flavae pedum copiose adhaeret. Alae hyalinae flavescentes, nervo antico crassiori nigro.

Hirsuties pedum posteriorum in *Andrena plumiped.* haud adeo densa est, ac in antecedenti, cui externo lateri duntaxat adhaeret, cum in hac, pedes undique illa vestiuntur.

a Magnitudo naturalis. b Eadem aucta.



Andrena equestris Mihi.

Jac. Sturm fec.



ANDRENA equestris.

Die scharlachbrothe Waldbiene.

Andrena equestris: cinereo pubescens atra, abdomine nigro basi coccineo, pedibus hirsutis pallide flavis.

Habitat Mannhemii. *Dn. Ioseph Baader.*

Caput atum cinereo-villosum, fronte pilis albis canescenti. Antennae nigrae. Oculi cinereo-fulci. Thorax ater immaculatus pubescens. Abdomen compressum, subnudum, nitidum: segmento primo rufo antice nigro, secundo toto rufo immaculato, tertio nigro ast margine postico, maculaque medio rufis, quarto et quinto nigro, margine flavo-pubescenti. Pedes pallide flavi, hirsuti, tibiis apice spinosis: femora clavata nigra, tibiis posticis densa lanugine flavis. Corpus subius aeqe hirsutum. Alae flavicantes nervo crassiori flavo, apice obscurae.

a. Magnitudo naturalis. b Eadem aucta.

1870

1870

1870

1870

1870

1870

1870

1870

1870

1870



Mutilla maura Fabr.

MVTILLA maura.

Die Mobren - Mutille.

Mutilla maura: nigra abdomine maculis quatuor albis, thorace rufo. *Fabric.*
Syft. Ent. n. 10. p. 398. Spec. Inf. T. I. n. 10. p. 495. Mant. Inf. T. I. n. 11.
p. 312. Ent. syft. T. III. n. 12. p. 369.

Mutilla maura. *Linn.* Syft. Nat. n. 6. p. 967. ed. XIII. n. 6 p. 2806.

Per illustri de *Schreber* debeo hanc *Mutillam*, quam ipse in Germania nostra primus detexit.

Figura, quam *Cl. Cyrillo* in Ent. neapol. tab. 4. de hac *Mutilla* dedit, non satisfacit, hinc huc adducere nolui. Variat capite nigro, fascia, frontali ex pilis alba. *R. f.* Faun. etrusc. II. n. 940.

a Magnitudo naturalis. b Eadem aucta.

THE HISTORY OF

THE CITY OF BOSTON

FROM THE FIRST SETTLEMENT TO THE PRESENT TIME

BY

JOHN HUTCHINGS

IN TWO VOLUMES.

VOLUME I.

BOSTON: PUBLISHED BY G. B. LEECH, 15 NASSAU ST. N. Y.

1856.



Mutilla sellata Mihi.

J. H. fec.



MVTILLA fellata.

Die ungesügelte Sattel - Mutille.

Mutilla fellata: nigra, abdomine puncto fasciaque albis, thorace pedibusque rufis.

Habitat ad arborum radices.

Caput nigrum. Antennae nigrae basi rufae. Thorax rufus immaculatus. Abdomen ovatum nigrum, macula basios fasciaque postica albis. Pedes obscure rufi. Alae nullae.

a Magnitudo naturalis. b Eadem aucta.

1875

1875

1875

1875



Mutilla Ephippium Fabr.

Jes. Sturm fec.



[Faint, illegible text or signature]

MVTILLA Ehippium.

Die geflügelte Sattel - Mutille.

Mutilla Ehippium: hirta nigra thoracis dorso rufo. *Fabric.* Ent. Syst. T. III.
n. 18. p. 370.

Rossi Faun. etrusc. Mant. n. 333. p. 148.

Semel capta in sylva prope urbem.

Variat colore rufo thoracis, nunc magis, nunc minus supra dorsum postice extenso, et abdominis apice modo incurvato; acutiusculo, modo magis obtuso, uti etiam magnitudine minori. *Rossi* l. c.

a Magnitudo naturalis. b Eadem aucta.

THE UNIVERSITY OF CHICAGO

PHYSICS DEPARTMENT

RECEIVED

NOV 10 1954

PHYSICS DEPARTMENT

UNIVERSITY OF CHICAGO

PHYSICS DEPARTMENT

UNIVERSITY OF CHICAGO

PHYSICS DEPARTMENT

UNIVERSITY OF CHICAGO



Nemotelus uliginosus Fabr.

J. St. fec.



NEMOTELVS uliginosus.

Die Sumpf-Stiletfliege. La Nemotele à bande. Geoffr.

Nemotelus uliginosus. niger abdomine niveo apice atro. *Fabric.* Ent. Syst. T. VI.
n. 1. p. 269.

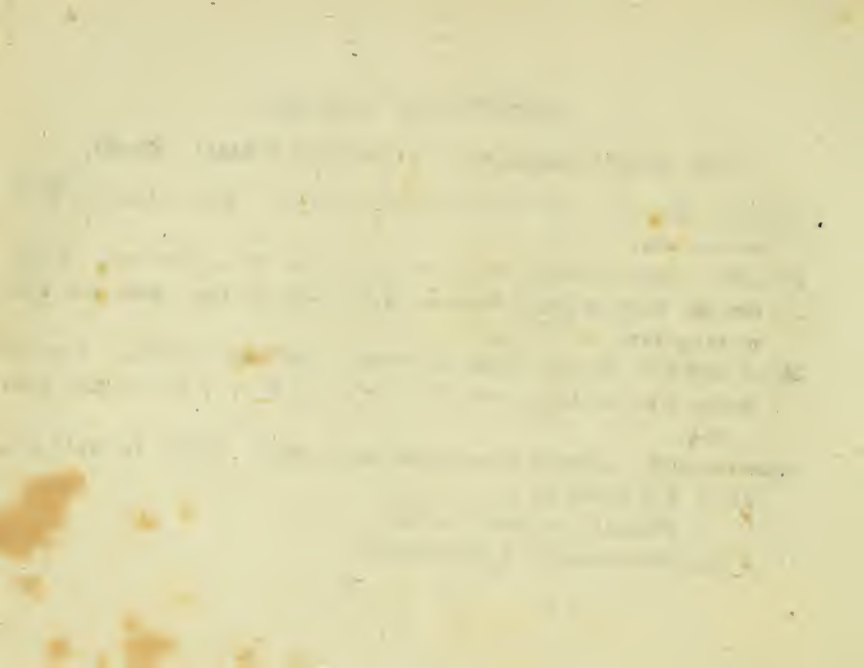
Stratiomys mutica: scutello inermi atra, abdomine niveo, apice atro. *Fabric.*
Gen. Inf. Mant. p. 305. Spec. Inf. T. II. n. 14. p. 419. Mant. Inf. T. II.
n. 20 p. 332.

Musca uliginosa: antennis clavatis mucronatis, abdominis dorso albo: segmentis
duobus penultimis striga alba. *Linn.* Syst. Nat. n. 22. p. 983. ed. XIII. n. 22.
p. 2336.

Nemotelus niger, abdomine niveo, fasciis duabus nigris. *Geoffr.* Inf. T. II. n. 1.
p. 543. Tab. XVIII. fig. 4.

Habitat in uliginosis, turfosis.

a Magnitudo naturalis. b Eadem aucta.





Nemotelus marginatus Fabr.

J. St. fr.



NEMOTELVS marginatus.

Die gerändete Stiletfliege. La Nemotele noire a ventre tacheté de blanc. Geoffr.

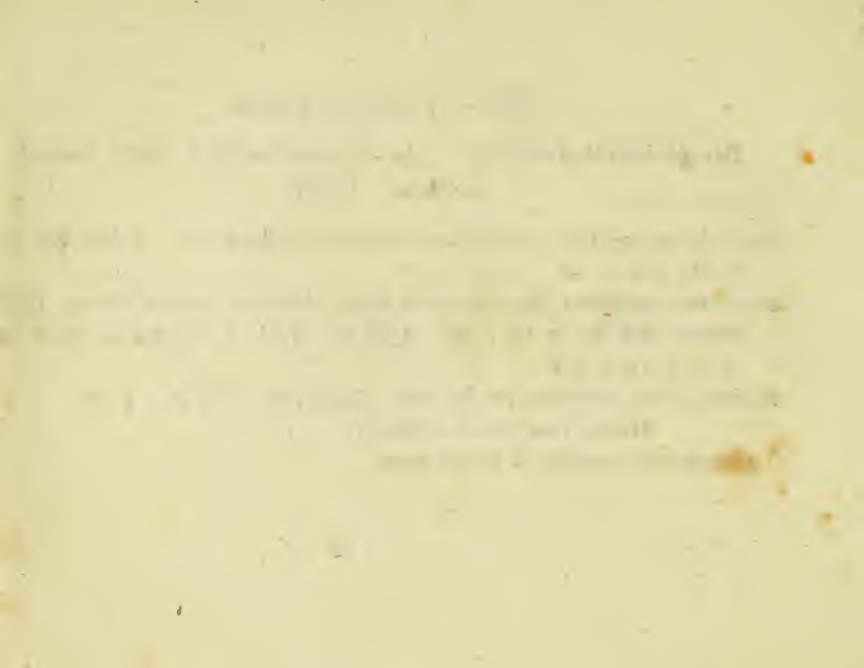
Nemotelus marginatus: niger abdominis margine tibiisque albis. *Fabric. Ent. syst.*
T. VI. n. 3. p. 270.

Stratiomys marginata: scutello inermi nigra, abdominis margine tibiisque albidis.
Fabric. Syst. Ent. n. 10. p. 761. Spec. Inf. T. II. n. 13. p. 419. Mant. Inf.
T. II. n. 19. p. 332.

Nemotelus niger abdomine punctis albis. *Geoffr. Inf. T. II. n. 2. p. 543.*

Habitat cum *Nemot. uligin.* F.

a Magnitudo naturalis. b Eadem aucta.





Bombyx mendica Mas Fabr.

J. St. sc.



1850

BOMBYX mendica. Mal.

Der Frauenmünzspinner. Die Mausmotte. Der Bettler. Das Männchen. La Chenille de la Vigne, ou du coq de jardins. Reaum.

Bombyx mendica: alis deflexis nigro punctatis, femoribus anticis luteis. Fabric.
Mant. Inf. T. II. n. 129. p. 123. Ent. syst. T. IV. n. 139. p. 452.

Bombyx cinerea: alis subreversis cinereis: anticis punctis quatuor atris subocellariis. Fabric. Mant. Inf. T. II. n. 74. p. 115.

Phalaena Bombyx mendica. Linn. Syst. Nat. n. 47. p. 822. ed. XIII n. 47.
p. 2423 Fn. Suec. n. 1127.

Syst. Verz. der W. Schm. n. 3. p. 54.

Knoch. Beitr. III. p. 47. tab. II. fig. 3 — 13.

Reaum. Inf. T. I. p. 95. tab. 2. fig. 16. 17. tab. 1. fig. 5. 6.

Borkhaus. eur. Schm III. n. 71. p. 229.

Die Raupe, welche vorzüglich im Herbst gemein ist, bedient sich sehr vieler Pflanzen zur Nahrung. Sie lebt auf der Heide, dem Augentrost, Bingeikraut, spitzigem Wegerich, Taubenneffeln, Sauerampfer, Weinlaube, Frauenmünze u. a. m. Sie kommt im Julius gewöhnlich aus dem Ey, und erreicht ihre vollkommene Größe im September oder October. Sie spinnt sich sehr selten noch das nehmliche Jahr ein, gewöhnlich überwintert sie, und tritt ihre Verwandlung erst im künftigen Frühling an. Zur Verwandlung spinnt sie in einer Höhle in der Erde, oder auf der Oberfläche derselben unter Blättern ein leichtes bräunliches Gewebe, in welches sie ihre Haare einspinnt. So lebhaft die Raupe ist, so träge ist die Puppe. Sie äuffert beynahe gar kein Zeichen des Lebens. Der Spinner entwickelt sich gewöhnlich im Junius.



Bombyx mendica fem. Fabr.

BOMBYX mendica. Femina.

*Der Frauenmünzspinner. Die Hausmotte. Die Bettlerin.
Das Weibchen.*

Bombyx mendica. Fabric. 1. c.

Phalaena Bombyx mendica. Linn. 1. c.

Wohnt bey seinem Männchen.

THE UNIVERSITY OF CHICAGO

DEPARTMENT OF CHEMISTRY
57 SOUTH EAST ASSEMBLY AVENUE
CHICAGO, ILLINOIS 60607

RECEIVED
JAN 10 1964

1964





- Tab. 1. *Scarabæus scybalarius* Fabric.
— 2. *Scarabæus conflagratus* Fabric.
— 3. *Scarabæus terrestris* Fabric.
— 4. *Scarabæus erraticus* Fabric.
— 5. *Scarabæus conspurcatus* Fabric.
— 6. *Scarabæus luridus* Fabric.
— 7. *Scarabæus contaminatus* Fabric.
— 8. *Scarabæus variegatus* Herbst.
— 9. *Scarabæus nigripes* Fabric.
— 10. *Scarabæus rufipes* Fabric.
— 11. *Scarabæus lutarius* Fabric.
— 12. *Scarabæus scrofa* Fabric.
— 13. *Scarabæus asper* Fabric.
— 14. *Melolontha atra* Fabric.
— 15. *Melolontha horticola* Fabric.
— 16. *Melolontha fruticola* Fabric.
— 17. *Melolontha floricola* Fabric.
— 18. *Melolontha agricola* Fabric.
— 19. *Ichneumon vespoides* Panzer.
— 20. *Tiphia tripunctata* Rossi.
— 21. *Vespa phalerata* Panzer.
— 22. *Mafaris crabroniformis* Panzer.
— 23. *Philanthus pictus* Panzer.
— 24. *Philanthus semicinctus* Panzer.





Scarabaeus scybalarius Fabr.

Jac. Sturm fec.



SCARABAEVS *scybalarius*.

Der Kotb.-Dungkäfer.

Scarabaeus scybalarius: scutellatus thorace inermi, capite tuberculis tribus: medio acuto, elytris testaceis striatis. *Fabric* Spec. Inf. T. I. n. 60. p. 16.
Mant. Inf. T. I. n. 65. p. 8 Ent. syst. T. I. n. 77. p. 25.

Scarabaeus foetidus. *Herbst* Archiv IV. n. 17. p. 7. tab. 19. fig. 6.

Panzer Ent. germ. I. n. 10. p. 3.

Habitat in stercore humano, bovino.

Nulla equidem mihi alia figura nota, quae *Sc. scybal.* F. repraesentet, quam supra commemorata *Herbst.*, quamvis haec *ab aliis* ad alium Scarab. transfertur.

In meis exemplis elytra omnino striis crenatis distinguntur.

a. Magnitudo naturalis. b. Eadem aucta.

Sieben und vierzigstes Heft.





Scarabaeus conflagratus Fabr.

sc. Sturm fec.



[Faint, illegible text or signature]

SCARABAEVS conflagratus.

Der gefleckte Kotb-Düngkäfer.

Scarabaeus conflagratus: scutellatus ater, thorace inermi immaculato, elytris striatis griseis: macula nigra. *Fabric.* Ent. syst. T. I. n. 85. p. 27.

Herbst Nat. d. Käf. T. II. tab. 12. fig. 2! et 7?

Voet. Coleopt. T. I. n. 146. p. 21.

Panzer Ent. germ. I. n. 20. p. 6.

Habitat in stercore.

Demta elytrorum macula omnino *Sc. scybal* *F.* refert, hinc iure huius varietas a nonnullis habetur.

a Magnitudo naturalis. b Eadem aucta.





Scarabaeus terrestris Fabr.

J. St. fec.



SCARABAEVS terrestris.

Der Erd-Dungkäfer.

Scarabaeus terrestris: scutellatus thorace inermi, capite tuberculis tribus aequalibus, elytris striatis obscurioribus. *Fabric.* Ent. syst. T. I. n. 78. p. 25.

Panzer Ent. germ. I. n. 11. p. 4.

Habitat in stercore, viis.

Caute ab affinibus distinguenda species.

a Magnitudo naturalis. b Eadem aucta.

THE UNIVERSITY OF CHICAGO

PHILOSOPHY DEPARTMENT

PHILOSOPHY 101: INTRODUCTION TO PHILOSOPHY

LECTURE 1: THE PHENOMENON OF CONSCIOUSNESS

PROFESSOR JOHN D. GIBSON

WEDNESDAY, 10:00 AM

1000 UNIVERSITY DRIVE

CHICAGO, IL 60607



Scarabaeus erraticus Fabr.



SCARABAEVS erraticus.

Der herumschweifende Dungkäfer.

Scarabaeus erraticus: scutellatus thorace inermi laevi, capite tuberculo unico, elytris fuscis. *Fabric.* Syst. Ent. n. 53. p. 16. Spec. Inf. T. I. n. 66. p. 17. Mant. Inf. T. I. n. 72. p. 9. Ent. syst. T. I. n. 86. p. 27.

Scarabaeus erraticus. *Linn.* Syst. Nat. n. 29. p. 548. ed. XIII. n. 29. p. 1548. Fn. Suec. n. 383.

Panzer Ent. germ. I. n. 21. p. 6.

Habitat in stercore, viis.

Villam ex Herbstianis, propter elytrorum maculas, figuram, haud huc referre malui.

a Magnitudo naturalis. b Eadem aucta.





Scarabaeus conspurcatus Fabr.

J. St. fec



[Faint, illegible text at the bottom of the page, possibly a signature or a title.]

SCARABAEVS conspurcatus.

Der beschmutzte Dungkäfer.

Scarabaeus conspurcatus: scutellatus thorace inermi: marginibus lateralibus albidis, capite tuberculato, elytris striatis griseis fusco-maculatis. *Fabric.* Syft. Ent. n. 54 p. 16. *Spec. Inf. T. I. n. 67. p. 17.* *Mant. Inf. T. I. n. 73. p. 2.* Ent. syft. T. I. n. 87. p. 28.

Scarabaeus conspurcatus. *Linn.* Syft. Nat. n. 34. p. 549. ed. XIII. n. 34. p. 1545. *Herbst* Nat. d. K. II. n. 92. p. 140. tab. 12. fig. 8.

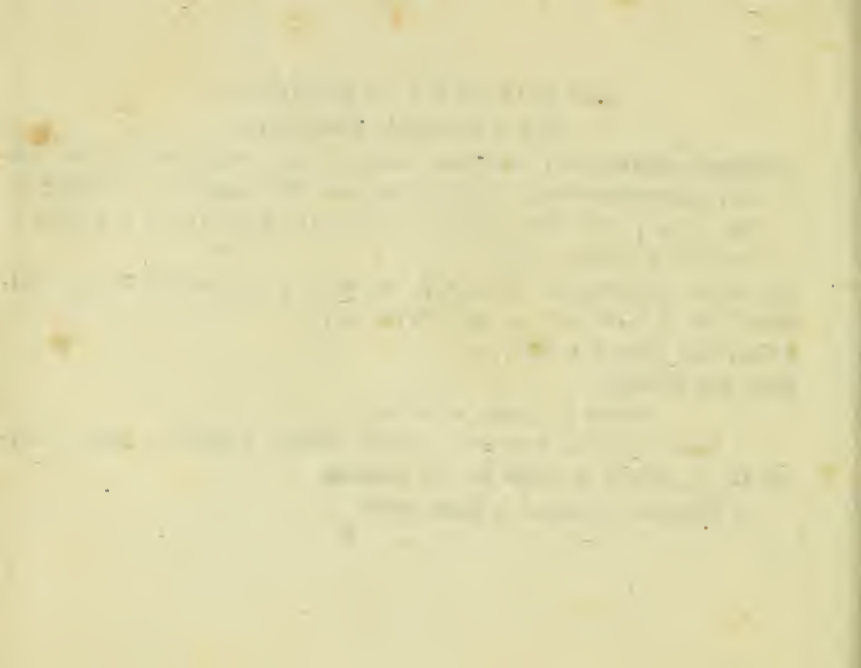
Panzer Ent. germ. I. n. 22. p. 6.

Mus. Dn. Hellwig.

Habitat in stercore animalium.

Donec innotescat verus atque genuinus *Scarab. conspurcat. Linn.*, noster cum Cl. Cl. *Hellwig et Herbst* pro illo tradendus.

a. Magnitudo naturalis. b. Eadem aucta.





Scarabaeus luridus Fabr.



SCARABAEVS luridus.

Der gewürfelte Dungkäfer.

Scarabaeus luridus : scutellatus capite tuberculato ater, elytris griseis nigro striatis. *Fabric.* Syst. Ent. n. 69. p. 29. Spec. Inf. T.I. n. 69. p. 17. Mant. Inf. T. I. n. 76. p. 9. Ent. syst. T. I. n. 91. p. 29.

Scarabaeus interpunctatus. *Herbst* Archiv. IV. n. 26. p. 8. tab. 19. fig. 11.

Scarabaeus luridus. *Herbst* Nat. d. K. II. n. 160. p. 264. tab. 18. fig. 3.

Voet Coleopt. I. n. 144. tab. 21. fig. 144.

Schäffer Ic. Inf. Ratisb. tab. 26. fig. 8.

Harrer Besch. d. Schöff. Inf. 1. B. n. 9. p. 14.

Roff. Faun. etrusc. ed. *Hellw.* T. I. n. 14. p. 6.

Panzer Ent. germ. I. n. 25. p. 7.

Habitat primo vere in stercore bovino.

Plurimis varietatibus ludere haecce species videtur, quas nosse omnino interest, ut repetitis examinibus observatio Cl. *Hellwig.* corroboretur.

a Magnitudo naturalis. b Eadem aucta.



Scarabaeus contaminatus Fabr.



[Faint, illegible text, likely a species name or description]

SCARABAEVS contaminatus.

Der besfekte Dungkäfer.

Scarabaeus contaminatus: scutellatus muricus ater, elytris striatis griseis: signaturis fuscis. *Fabric.* Ent. syst. T. I. n. 11. p. 35.

Herbst Nat. d. K. II. n. 167. p. 273. tab. 18. fig. 11.

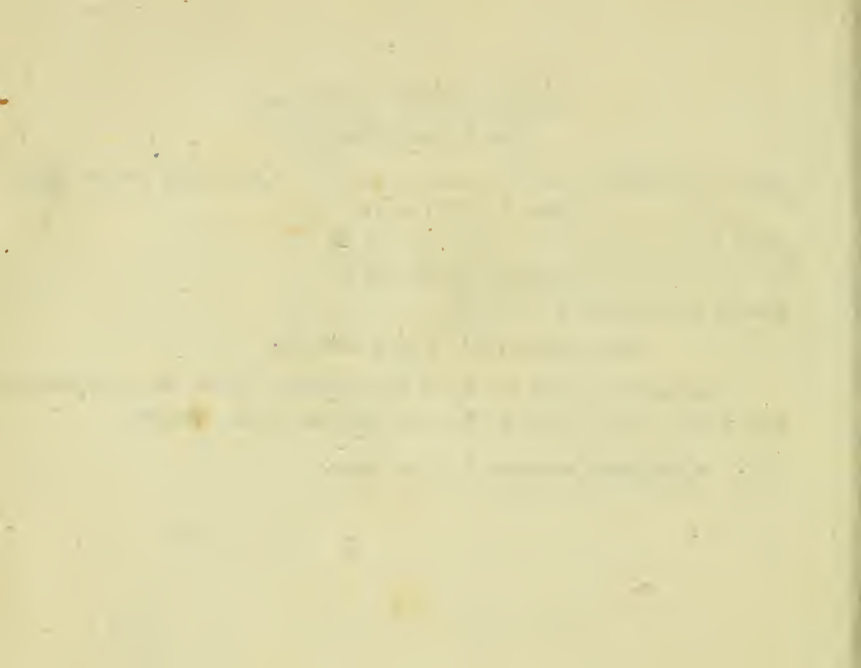
— — Archiv. IV. n. 28. p. 9. tab. 19. fig. 13.

Panzer Ent. germ. I. n. 37. p. 10.

Habitat primo vere in stercore animalium.

Variat haecce species tum copia signaturarum in elytris, tum earundem nexu, situ. Elytra profus absque ulla signatura observavit illustr. *Fabric.*

a Magnitudo naturalis. b Eadem aucta.





Scarabaeus variegatus Herbst.

1. St. fec.



SCARABAEVS variegatus.

Der bunte Herbstfche Dungkäfer.

Scarabaeus variegatus: scutellatus muticus niger, elytris apice luteo striatis

Herbst Nat. d. K. II. n. 161. p. 266. tab. 18. fig. 4.

Herbst Archiv. IV. n. 27. p. 9. tab. 19. fig. 12.

Habitat in stercore.

Elytra grisea striata signaturis basi connexis. Varietas *Scar. luridi* F. ex observat. *Cl. Hellwig*.

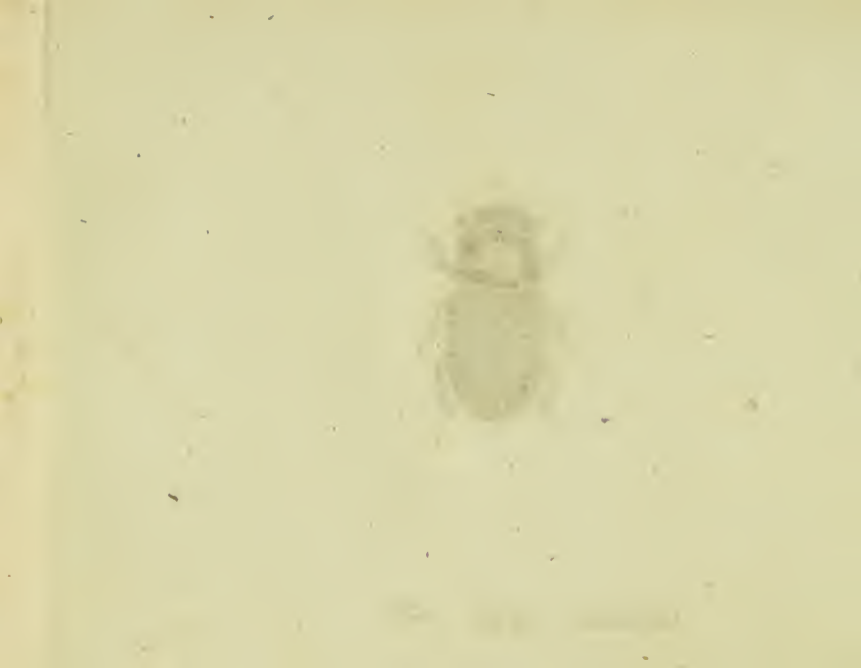
a Magnitudo naturalis. b Eadem aucta.





Scarabaeus nigripes Fabr.

J. St. jrc.



SCARABAEVS nigripes.

Der schwarzfüßichte Dungkäfer. La Scarabè gaget. Geoffr.

Scarabaeus nigripes : scutellatus muticus niger, thorace subpunctato, elytris striatis, pedibus nigris. *Fabric.* Ent. syst. T. I. n. 111. p. 35.

Scarabaeus rufipes. *Linn.* Syst. Nat. n. 86. p. 559. ed. XIII. n. 86. p. 1552. Fn. Suec. n. 403.

Scarabaeus Arator. *Herbst* Archiv. IV. n. 30. p. 9.

Scarabaeus rufipes. *Herbst* Nat. d. Käf. II. n. 174. p. 282. tab. 19. fig. 3.

Geoffr. Inf. T. I. n. 21. p. 83.

Panzer Ent. germ. I. n. 35. p. 3.

Habitat in stercore.

Varietas *Sc. luridi* *Fabr.* ex observ. *Cl. Hellw.*

a Magnitudo naturalis. b Eadem aucta.

Sieben und vierzigstes Heft.



Scarabaeus rufipes Fabr. -

J St fec.

SCARABAEVS rufipes.

Der rothfüßichte Duugkäfer.

Scarabaeus rufipes: scutellatus muticus ater, thorace glabro nitido, elytris striatis pedibus rufis. *Fabric.* Ent. Syst. T. I. n. 110. p. 34.

Scarabaeus oblongus. *Herbst* Nat. d. Käf. II. n. 159. p. 261. tab. 18. fig. 2.

Scarabaeus oblongus. *Scop.* carn. n. 19. ic. 19.

Voe! Coleopt. I. n. 143. tab. 21. fig. 143.

Panzer Ent. germ. I. n. 34. p. 9.

Habitat in stercore.

Scarabaeus rufipes Fabric. caute a *Sc. rufiped.* *Herbst* distinguendus, utpote hic, haud tamen ille pro varietate *Sc. lurid. F.* salutandus.

a Magnitudo naturalis. b Eadem aucta.



Scarabaeus lutarius Fabr.

SCARABAEVS lutarius.

Der rothgefleckte Dungkäfer.

Scarabaeus lutarius: scutellatus mucicus niger, elytris striatis piceis. *Fabric.* Ent.
syst. T. I. n. 112. p. 35.

Panzer Ent. germ. I. n. 36. p. 10.

Mus. Dn. Hellwig.

Habitat in stercore.

a Magnitudo naturalis. b Eadem aucta.

THE UNIVERSITY OF CHICAGO

PHYSICS DEPARTMENT

REPORT ON THE PROGRESS OF WORK

BY

ROBERT S. SHULL

PH.D. 1934



Scarabaeus Serofa Fabr.

J. est. fec.



SCARABAEVS Scrofa.

Der Ferkel Dungkäfer.

Scarabaeus Scrofa: scutellatus muticus oblongus niger, elytris fuscis substriatis.

Fabric. Mant. Inf. T. I. n. 99. p. 11. Ent. syst. T. I. n. 123. p. 38.

Panzer Ent. germ. I. n. 44. p. 11.

Habitat in stercore.

a Magnitudo naturalis. b Eadem aucta.

1870

1871

1872

1873

1874

1875

1876

1877

1878

1879



Scarabaeus asper Fabr.

SCARABAEVS asper.

Der Dungkäfer mit dem runzlichtem Bruststücke.

Scarabaeus asper : scutellatus muticus capite thoraceque transversim fulcatis, elytri striatis. *Fabric.* Syst. Ent. n. 77. p. 19. Spec. Inf. T. I. n. 94. p. 22, Mant. Inf. T. I. n. 103. p. 11. Ent. syst. T. I. u. 128. p. 39.

Herbst Archiv. IV. n. 25. p. 8. tab. 19. fig. 10. a. b.

— *Nat. d. Käf.* II. n. 170. p. 278. tab. 18. fig. 14.

Panzer Ent. germ. I. n. 49. p. 12. —

Primo vere per aera volitat.

a Magnitudo naturalis. b Eadem aucta.

THE HISTORY OF THE

REIGN OF KING CHARLES THE FIRST

BY JOHN BURNET
OF THE UNIVERSITY OF OXFORD
IN TWO VOLUMES
THE SECOND VOLUME
LONDON, Printed by J. Sturges, at the Black-Swan in St. Dunstons Church-yard, 1680.

THE HISTORY OF THE

REIGN OF KING CHARLES THE FIRST

BY JOHN BURNET

OF THE UNIVERSITY OF OXFORD

IN TWO VOLUMES

THE SECOND VOLUME



Melolontha atra Herbst.

J. St. jér.



MELOLONTHA atra.

Der schwarze Maykäfer.

Melolontha atra: clypeo reflexo villosa nigra antennis ferrugineis. *Fabric. Ent.*
syst. T. II. n. 13. p. 158.

Melolontha atra. *Herbst Nat. d. K.* III. n. 37. p. 84. tab. 24. fig. 1.

Panzer Ent germ. I. n. 6. p. 222.

Mus. Dn. Hellwig.

Habitat in Germania.



Melolontha horticola Fabr.

pl. 10. fig. 2



MELOLONTHIA horticola.

Das Rosenkäferchen. Der Iobanniskäfer. Der Gartenkäfer. Der Heckenkäfer. Der Weinblattkäfer. Le petit Hanneton à corcelet verd. Geoffr.

Melolontha horticola: capite thoraceque caeruleo pilosis, elytris testaceis, pedibus nigris. *Fabric. Syst. Ent. n. 28. p. 37. Spec. Inf. T. I. n. 41. p. 42. Mant Inf. T. I. n. 50. p. 22. Ent. syst. T. II. n. 68. p. 171.*

Scarabaeus horticola. Linn. Syst. Nat. n. 59. p. 554. ed. XIII. n. 59. 1559. Fn Suec. n. 391.

Geoffr. Inf. T. I. n. 8. p. 75.

Voet. Coleopt. II. Tab. tit. fig. 6. ed. nostr.

Herbst Nat. d. Käf. III. n. 64. p. 111. tab. 25. fig. 1.

Schäffer Ic. Inf. Ratisb. tab. 53. fig. 4.

Harzer Besch. d. Schäff. Inf. 1. B. n. 26. p. 32.

Panzer Ent. germ. I. n. 14. p. 223.

Habitat in Rosa, Salice, apud nos ubique in dumetis. Variat thorace viridi et caeruleo, elytris testaceis et nigris, pedibus nigris, et viridiaeneis.



Melolontha fruticola Fabr.



MELOLONTHA fruticola.

Der Saat Maykäfer.

Melolontha fruticola: capite thoraceque caeruleo pilosis, elytris lividis, clypeo antice reflexo. *Fabric. Mant. Inf. T. I. n. 56. p. 23. Ent. syst. T. II. n. 73. p. 172.*

Melolontha segetum. Herbst Archiv. IV. n. 10. b. p. 15. tab. 19. fig. 24.

Melolontha campestris. Herbst Archiv. IV. n. 10. c. tab. 19. fig. 25.

Melolontha fruticola. Herbst Nat. d. K. III. u. 52. p. 103. tab. 24. fig. 12. 13.

Panzer Ent germ. I. u. 16. p. 224.

Habitat in spicis secalinis frequens. Faemina macula quadrata nigra scutellam cingente distinguitur a mare.

THE HISTORY OF THE
CITY OF BOSTON

From its first settlement in 1630 to the present time
including a description of the city and its environs
and a history of the various churches and societies
connected with it



Melolontha floricola Fabr.

J. St. fec



[Faint, illegible text, possibly a signature or title]

MELOLONTHA floricola.

Der oesterreichische Maykäfer.

Melolontha floricola: cyanea nigra glabra elytris rufis, abdomine punctis fasciculatis albis, clypeo reflexo *Fabric* Ent syst. T. II. n. 70. p. 171.

Melolontha austriaca *Herbst*. Archiv IV. n. 12. p. 16. tab. 19. fig. 26.

Herbst. Nat. d. Käf. III. n. 49. p. 98. tab. 24. fig. 8.

Panzer Ent. germ. I. n. 15. p. 224.

Habitat in Austria.

MEMORANDUM

TO : THE SECRETARY OF DEFENSE

FROM : THE SECRETARY OF THE ARMY

SUBJECT: [Illegible]

[Illegible]

[Illegible]

[Illegible]

[Illegible]



Melolontha agricola Fabr.

J. S. fca.



Small, faint text or markings at the bottom of the page, possibly a signature or a date, which is illegible due to fading.

MELOLONTHA agricola.

Der Acker-Maykäfer. L' Arlequin velu. Geoffr.

Melolontha agricola: thorace villoso, elytris lividis, limbo fasciaque nigris, clypeo apice reflexo. *Fabric. Syst. Ent. n. 29. p. 37. Spec. Inf. T. I. n. 44. p. 43.*

Mant. Inf. T. I. n. 57. p. 23. Ent. syst. T. II. n. 74. p. 173.

Scarabaeus agricola. Linn. Syst. Nat. n. 58. p. 553. ed. XIII. n. 58. p. 1659.

Geoffr. Inf. T. I. n. 17. p. 81.

Scarabaeus cyathiger. Scop. carn. n. 6. ic. 6.

Voet. Coleopt. I. n. 67. tab. 8. fig. 67.

Schäffer Ic. Inf. Ratisb. tab. 63. fig. 1.

Herbst Nat. d. K. III. n. 51. p. 101. tab. 24. fig. 10. 11.

Panzer Ent. germ. I. n. 17. p. 224.

Habitat in fruticibus, et in graminosis, raro.





Ichneumon vespoides Mihi.

Dr. Shaw fecit.



ICHNEUMON vespoides.

Die wesenartige Schlupfwespe.

Ichneumon vespoides: nigra, abdomine basi segmentisque omnibus, secundo excepto, fascia flava marginali.

Sphex vespoides. Scop. carn. n. 789. ic. 789.

Schiffer Ic. Inf. Ratisb. tab. 128. fig. 5.

Habitat in dumetis floribundis apud nos non rarior.

Descriptio *b. Scopol.* absoluta. Addo: Frons flava, macula media quadrata nigra. Thoracis lineola flava, laterales supra alas, punctaque postica duo flava, saepe desunt. Abdominis segmentum primum fascia plerumque interrupta, secundum punctis postico duobus flavis marginalibus saepius distinguitur. An huius generis?

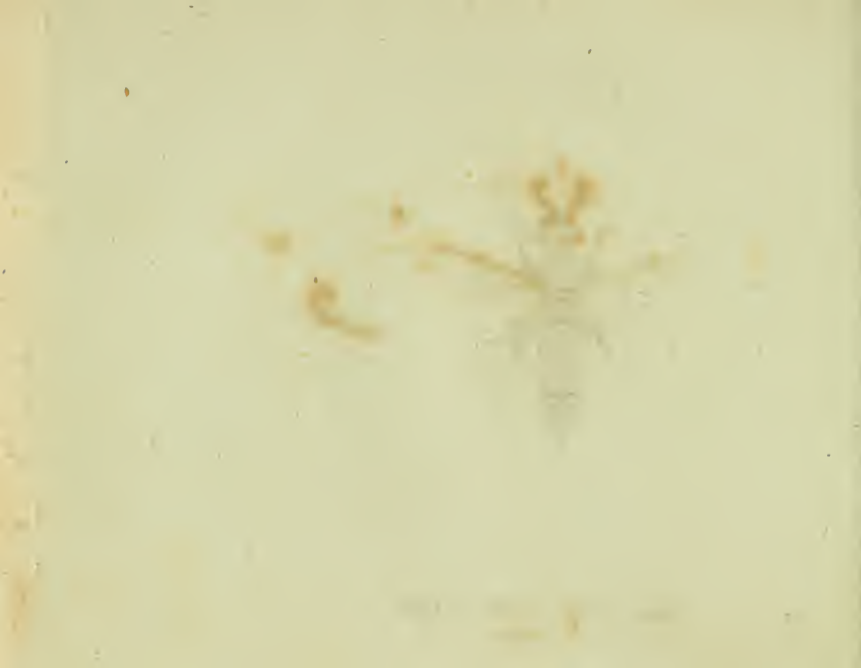
a Magnitudo naturalis. b Eadem aucta. c Caput antice visum, auctum.





Tiphia tripunctata Rossi.

Jac. Stenon f. sc.



TIPHIA tripunctata.

Die dreipunktirte Raubwespe.

Tiphia tripunctata : nigra thoracis lobo antico rufo, abdomine rufo, apice atro, punctis utrinque tribus albis. *Roff.* Faun. etrusc. T. II, n. 831. p. 69. tab. 6 fig. 10.

Habitat in sylvaticis, rarior apud nos.

a Magnitudo naturalis. b Eadem aucta. c Antenna aucta.



Vespa phalerata Mihi.

VESPA phalerata.

Die geschmückte Wespe.

Vespa phalerata: atra thorace variegato, scutello quadrimaculato, abdomine segmentis margine flavis, ano bispinoso.

Semel capta ruri mens. Jun. 1796.

Parva. Labium pubescens flavum truncatum. Mandibulae tridentatae flavae apice fuscae. Caput nigrum. Antennae nigrae articulo primo maximo subtus flavo. Oculi fusci antice posticeque macula flava semicirculari supraorbitali. Frons atra lineola supra labium verticali flava. Thorax ater punctatus, sub lente pubescens, margine antico interrupte, puncto utrinque laterali callosoque alarum flavis. Scutellum maculis quatuor, lineola sub maculis, punctoque utrinque infra lineolam flavis. Abdomen subpetiolatum glabrum nitidum: segmento primo re-

motissime. Margines fere omnium segmentorum, imprimis primi et secundi flavo emarginati. Abdomen bispinosum. Pedes flavi, femoribus basi nigris. Corpus subtus atrum nitidum glabrum, segmentis margine parum flavicantibus. Alae hyalinae infuscaetae, nervo antico crassiori nigricante.

a Magnitudo naturalis. b Eadem aucta. c Caput cum antennis auctum.

c Segmentum ultimum abdominis bispinosum auctum.



Masaris crabroniformis Mithi.



MASARIS crabroniformis.

Die borneisenartige Drahtwespe.

Masaris crabroniformis: atra antennis clavatis nigris, abdominis segmento secundo maculis duabus, tertio quarto fasciis, sexto puncto solitario flavis.

Semel capta ruri menses Junio 1796.

Huius generis videtur. Caput rotundatum atrum nigrum punctatum. Labium truncatum atrum immaculatum pubescens. Frons supra antenas subtusque iis puncto utrinque opposito flava. Vertex planus ater punctatus pubescens. Antennae distantes nigrae, clavatae, articulo ultimo flavo, sub squamula e media fronte prodeuntes. Oculi laterales ovaes reniformes. Thorax ater punctatus pubescens, lobo antico subquadrato, margine antico utrinque acuto flavo. Scutellum atrum immaculatum. Abdomen atrum glabrum nitidum margine laterali pilosum: segmento pri-

mo immaculato, secundo maculis duabus, tertio quarto fasciis subrepandis, quinto immaculato, sexto puncto dorsali flavis. Anus acuminatus inermis. Femora clavata nigra immaculata, tibiis anticis incrassatis apice intus spinosis, extus macula flava: mediis et posticis basi flavo annulatis. Alae albae, nervo antico crassiori nigro ad apicem nedum excurrente. Corpus subtus atrum nitidum, abdomine utrinque punctis tribus flavis. In quibusdam collectionibus haec *Mafaris* nomine *Scoliae prismae Fabric.* insignis.

a Magnitudo naturalis. b Eadem aucta. c Caput cum antennis auctum.



Philanthus pictus Michx.



[Faint, illegible handwritten text]

PHILANTHVS pictus.

Die gemahlte Blumenwespe.

Philanthus pictus: thorace maculato, abdomine fasciis sex flavis, anticis duabus interruptis.

Schäffer Ic. Inf. Ratisb. tab. 85. fig. 1. 2. et tab. 238. fig. 7.

Habitat in Carinthiae montosis. *Dn. Lib. Bar. de Hobenwarth.*

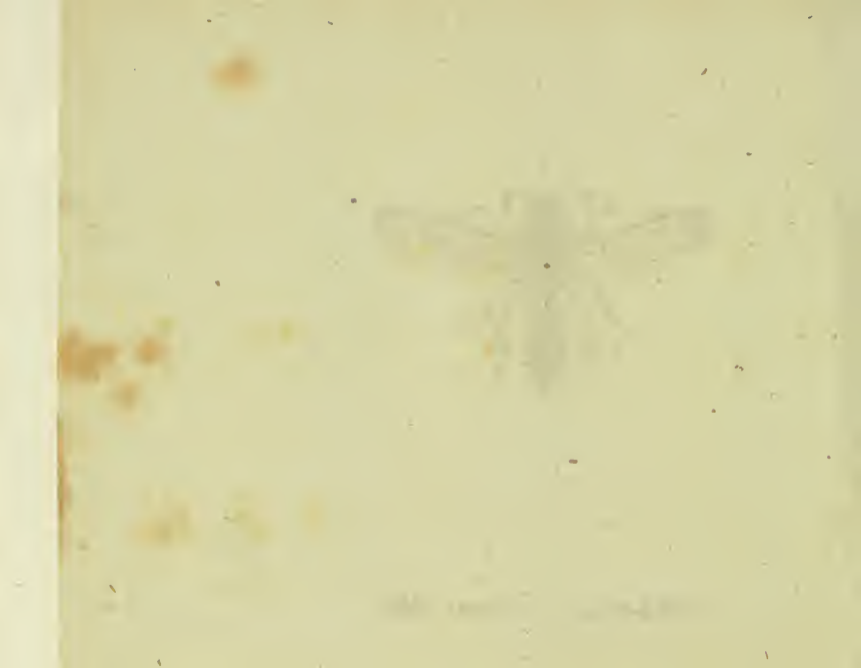
Antennae nigrae, articulo primo concolori, medio frontis insertae contiguae, vix capite longiores. Caput magnum atrum pubescens. Labium triangulare flavum. Mandibulae edentulae fuscae apice nigrae. Os fuscum. Frons supra labium utrinque macula triangulari, interque antenas alia macula verticali tricuspidata flava. Oculi magni prominuli fusci pone macula flava. Thorax ater pubescens linea marginis antici, punctoque sub alis antequae alas, lineolaque loco scutelli flavis. Abdomen atrum nitidum punctis plurimis impressum, segmentis omnibus flavo fasciatis,

anticis duobus interrupte flavis. Pedes flavi femoribus apice nigris, tibiis secun-
di et tertii paris dentatis. Alae fuscae, apice nigrae, nervo antico crassiori
nigro. Corpus subtus atrum. Abdomen flavum medio fuscum.

a Magnitudo naturalis. b Eadem aucta. c Caput cum antennis auctum.



Philanthus semicinctus Mthi.



PHILANTHVS semicinctus.

Die halbgeürtelte Blumenwespe.

Philanthus semicinctus: niger thorace immaculato, segmento tertio fascia interrupta, secundo macula dorsali, quinto et sexto punctis duobus flavis.

Schäffer Ic. Inf. Ratisb. tab. 262. fig. 1. 2?

Habitat in Carinthiae montosis. *Dn. Lib. Bar. de Hobenwarth.*

Caput nigrum pubescens. Labium maculis tribus flavis basi connexis, medio punctis duobus nigris. Antennae nigrae, articulo primo concolori. Oculi fusci prominuli. Thorax ater punctatus leviter pubescens immaculatus, scutello concolore. Abdomen atrum punctis plurimis impressis exasperatum. Segmentum primum globosum immaculatum atrum, secundo lineola dorsali, tertio fascia interrupta flava, quartum immaculatum, quintum et sextum utrinque puncto flavo. Anus niger. Pe-

des flavi, femoribus nigris apice flavis, tibiis secundi et tertii paris margine laterali denticulato spinosis. Alae hyalinae albae apice fuscae, margine antico crassiori nigricante. Corpus subtus atrum immaculatum.

a Magnitudo naturalis. b Eadem aucta.





- Tab. 1. *Scarabaeus foetens* Fabric.
— 2. *Scarabaeus fordidus* Fabric.
— 3. *Scarabaeus merdarius* Fabric.
— 4. *Scarabaeus quisquilinus* Fabric.
— 5. *Scarabaeus Lemur* Fabric.
— 6. *Scarabaeus Coenobita* Fabric.
— 7. *Scarabaeus Sacer* Fabric.
— 8. *Scarabaeus laticollis* Fabric.
— 9. *Scarabaeus Schäfferi* Fabric.
— 10. *Scarabaeus flavipes* Fabric.
— 11. *Scarabaeus ovatus* Fabric.
— 12. *Clytra tridentata* Schneider.
— 13. *Clytra humeralis* Schneider.
— 14. *Clytra longimana* Schneider.
— 15. *Clytra Scopolina* Schneider.
— 16. *Crioceris bimaculata* Fabric.
— 17. *Cerambyx crinitus* Schneider.
— 18. *Lamia atomaria* Fabric.
— 19. *Lamia varia* Fabric.
— 20. *Lamia curculionoides* Fabric.
— 21. *Lamia fuliginator* Fabric.
— 22. *Lamia rufipes* Fabric.
— 23. *Lamia lineata* Fabric.
— 24. *Lamia vittigera* Hellwig.



Scarabaeus foetens Fabr.



SCARABAEVS foetens.

Der stinkende Dungkäfer.

Scarabaeus foetens : scutellatus thorace inermi, capite tuberculis tribus medio acuta,
elytrorum limbo ferrugineo. *Fabric.* Mant. Inf. T. I. n. 63. p. 8. Ent. syst.

T. I. n. 75. p. 24.

Herbst Nat. d. Käf. II. n. 109. p. 173. tab. 12. fig. 5.

Panzer Ent. germ. I. n. 9. p. 3.

Habitat in stercore.

Varietas *Sc. fimetar* *Fabr.* a nonnullis habetur.

a Magnitudo naturalis. b Eadem aucta.

Acht und vierzigstes Heft.

THE UNIVERSITY OF CHICAGO

PHYSICS DEPARTMENT

PHYSICS 311

LECTURE 10

10.1

10.2

10.3

10.4

10.5



Scarabaeus foveolatus Fabr.

SCARABAEVS *fordidus*.

— *Der schmutzige Dungkäfer.*

Scarabaeus fordidus: scutellatus capite tuberculato, thorace nigro margine pallido puncto nigro, elytris griseis. *Fabric.* Syft. Ent. n. 56. p. 16. Spec. Inf. T. I. n. 68. p. 17. Mant. Inf. T. I. n. 75. p. 9. Ent. Syft. T. I. n. 90. p. 29.

Herbst Archiv. IV. n. 13. p. 6. Tab. 19. fig. 3.

— *Nat. d. K.* II. n. 93. p. 146. Tab. 12. fig. 9

Schröffer Ic. Inf. Ratisb. Tab. 74. fig. 3

Harrer Besch. d. Schöff. Inf. I. B. n. 8. p. 13.

Panzer Ent. germ. I. n. 24. fig. 7.

β *Scarabaeus quadripunctatus*. *Panzer* im *Naturf.* XXIV. n. 4. p. 4. Tab. I. fig. 4.

Habitat in stercore, primo vere.

Scarab. quadripunct. *Vldm.* nov. Spec. Inf. n. 2. olim im *Naturf.* l. c. pro peculiari specie proposita, omnium, et nunc et meo, consensu nil nisi mera varietas *Sc. fordid.* F. habenda.

a Magnitudo naturalis. b. Eadem aucta.

THE HISTORY OF THE

REIGN OF

CHARLES THE FIRST

BY

JOHN BURNET

OF THE SOCIETY OF THE SACRAMENTS

IN TWO VOLUMES

LONDON

Printed by J. Sturges, in Pall-mall

1724



Scarabaeus merdarius Fabr.



[Faint, illegible text, possibly a signature or title]

SCARABAEVS merdarius.

Der Dungkäfer im Menschenkoth.

Scarabaeus merdarius: scutellatus muticus elytris testaceis futura nigra. *Fabric.*

Syst. Ent. n. 73. p. 19. Spec. Inf. T. I. n. 90. p. 21. Ent. Syst. App. VI. p. 435.

Scarabaeus merdarius. *Linn.* Syst. Nat. n. 82. p. 558. ed. XIII. n. 82. p. 15. Faun.

Suec. n. 396.

Scarab. itericius. *v. Moll.* Nat. Br. I. n. 13. p. 168.

Schaller. in act. nat. cur. hal. I. n. 7. p. 244.

Herbst. Nat. d. K. II. n. 162. p. 268. tab. 18. fig. 5.

Panzer Ent. germ. I. app. p. 364.

Habitat in stercore humano, bovino.

Clypeus saepius tuberculatus. Sutura elytrorum haud semper adeo manifeste
atra ut in *Sc. quisquilio*, interdum concolor.

a Magnitudo naturalis. b, Eadem aucta.

THE HISTORY OF THE

REIGN OF KING CHARLES THE FIRST

By JOHN BURNET, BISHOP OF SALISBURY.

IN TWO VOLUMES.

LONDON, Printed by J. Sturges, in the Strand, 1724.

1724.

1724.

1724.

1724.

1724.

1724.



Scarabaeus quisquilius Fabr.



SCARABAEVS quisquilius.

Der Kebricht - Dungkäfer. Scarabe des Immondices. Degeer.

Scarabaeus quisquilius: scutellatus muticus ater, elytris lividis futura nigra. *Fabric.*

Syst. Ent. n. 72. p. 28. Spec. Inf. T. I. n. 91. p. 21. Ent. Syst. T. I. n. 124. p. 38.

Scarabaeus quisquilius. *Linn.* Syst. Nat. n. 83. p. 558. ed. XIII. n. 83. p. 1551.

Faun. Suec. n. 397.

Degeer Inf. T. IV. n. 18. p. 158.

Scop. carn. n. 29. ic. 29.

Herbst. Archiv. IV. n. 23. p. 7. tab. 19. fig. 8.

— *Natur. d. K.* II. n. 171. p. 279. tab. 18. fig. 15.

Roff. Faun. etrusc. ed. Hellw. I. n. 23. p. 10.

Panzer. Ent. germ. I. n. 46. p. 12.

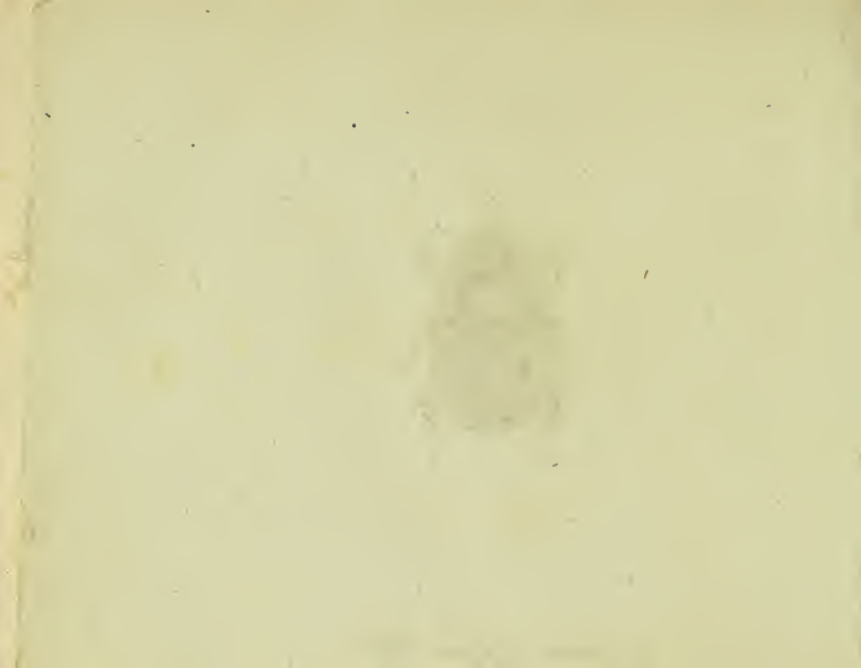
Habitat frequens in stercore bovino.

a. Magnitudo naturalis. b. Eadem aucta.



Scarabaeus Lemur Fabr.

J. St. fec



SCARABAEVS Lemur.

Der Lesksche Dungkäfer.

Scarabaeus Lemur: excavellatus thorace quadridentato cupreo, clypeo postice transverse carinato, elytris testaceis. *Fabric. Spec. Inf. app. p. 495. Mant. Inf. T. I. n. 127. p. 13. Ent. Syst. T. I. n. 158. p. 48.*

Scarabaeus quadrituberculatus v. Laichard. inf. tyr. I. n. 16. p. 23.

Scarabaeus quadrituberculatus v. Moll. Nat. Br. I. n. 21. p. 175.

Scarabaeus decempunctatus. Schaller in act. nat. cur. hal. I. p. 237.

Herbst. Nat. d. K. II. n. 128. p. 215. tab. 16. fig. 9.

Panzer im Naturf. XXIV. n. 6. p. 5. tab. I. fig. 6.

— *Ent. germ. I. n. 53. p. 13.*

Habitat in stercore bovino et humano.

a Magnitudo naturalis. b. Eadem aucta.

1867

1867

Faint, illegible text, possibly bleed-through from the reverse side of the page.



Scarabaeus Coenobita Fabr.

Jac. Sturm f. a.



SCARABAEVS Coenobita.

Der Kloster - Dungkäfer.

Scarabaeus Coenobita: exscutellatus thorace natico retuso viridi, capitis cornu basi dilatato apice nutante. *Fabric.* Ent. Syst. T.I. n. 191. p. 58.

Voet Coleopt. I. n. 20. tab. 25. fig. 20. 22.

Herbst. Archiv. IV. n. 40. p. 11.

— *Nat. d. K.* II. n. 121. p. 202. tab. 14. fig. 7. 8.

Panzer Ent. germ. I. n. 59. p. 15.

Habitat in stercore.

a Magnitudo naturalis Mas. b Eadem aucta. c. Caput auctum Feminae.

THE UNIVERSITY OF CHICAGO
LIBRARY

THE UNIVERSITY OF CHICAGO
LIBRARY
1200 EAST 58TH STREET
CHICAGO, ILLINOIS 60637
TEL: 773-936-3000
WWW.CHICAGO.LIBRARY.EDU



Scarabaeus sacer Fabr.

Jar. Sturm fec.



SCARABAEVS Sacer.

Der heilige Dungkäfer.

- Scarabaeus Sacer*: exscutellatus clypeo sexdentato thorace inermi crenulato, tibiis posticis ciliatis, elytris laevibus. *Fabric.* Syst. Ent. n. 109. p. 28. Spec. Inf. T. I. n. 139. p. 31. Mant. Inf. T. I. n. 259. p. 16. Ent. syst. T. I. n. 205. p. 62.
- Scarabaeus Sacer*: *Linn.* Syst. Nat. n. 18. p. 545. ed. XIII. n. 18. p. 1554. Mus. Lud. Ulr. 18. Amoen. Acad. V. tab. III. fig. 120. 14.
- Voet.* Coleopt. I. n. 39. 40. tab. 27. fig. 39. 40.
- Schäffer.* Ic. Inf. Ratisb. tab. 201. fig. 3.
- Harrer* Besch. d. Schäff. Inf. I. B. n. 17. p. 22.
- Herbst.* Nat. d. K. II. n. 197. p. 304. tab. 20. fig. 2.
- Panzer* Symb. ent. I. tab. 5. fig. 3. 4. 5.
- Ent. germ. I. n. 67. p. 17.

In Germania australi raro, in stercore bovino.

THE HISTORY OF THE
CITY OF BOSTON

From its first settlement in 1630 to the present time, the city of Boston has been the seat of a government of the people, and has been the cradle of the American Republic. It has been the birthplace of many of the great men of the country, and has been the scene of many of the great events of our history. It has been the center of our commerce, and has been the seat of our industry. It has been the seat of our education, and has been the seat of our religion. It has been the seat of our art, and has been the seat of our science. It has been the seat of our music, and has been the seat of our drama. It has been the seat of our poetry, and has been the seat of our prose. It has been the seat of our philosophy, and has been the seat of our law. It has been the seat of our medicine, and has been the seat of our agriculture. It has been the seat of our commerce, and has been the seat of our industry. It has been the seat of our education, and has been the seat of our religion. It has been the seat of our art, and has been the seat of our science. It has been the seat of our music, and has been the seat of our drama. It has been the seat of our poetry, and has been the seat of our prose. It has been the seat of our philosophy, and has been the seat of our law. It has been the seat of our medicine, and has been the seat of our agriculture.

By JOHN W. COOPER, Esq.



Scarabaeus laticollis Fabr.

Per Sturm fecit



SCARABAEUS laticollis.

Der breitbalsichte Dungkäfer. Le Hottentot. Geoffr.

Scarabaeus laticollis: exscutellatus muticus niger, clypeo sexdentato, elytris sulcatis. *Fabric.* Syst. Ent. n. 110. p. 31. *Mant. Inf. T. I. n. 160. p. 16. Ent. Syst. T. II. n. 206.. p. 62.*

Scarabaeus laticollis. *Linn.* Syst. Nat. n. 38. p. 549. ed. XIII. n. 38. p. 1554.
Geoffr. Inf. T. I. n. 2. p. 89.

Sulzer abgek. Gesch. d. Inf. Tab. I. fig. 3.

Voet. Coleopt. I. tab. 27. fig. 41.

Herbst Nat. d. Käf. II. n. 198. p. 307. tab. 20. fig. 6.

Panzer symb. ent. tab. 6. fig. 6. 7.

— *Ent. germ. I. n. 63. p. 17,*

Habitat in stercore.

a Magnitudo naturalis. b Capitis clypeus auctus.

THE HISTORY OF THE

REIGN OF KING CHARLES THE FIRST

BY JOHN BURNET

IN TWO VOLUMES

VOLUME I

1685

Printed by J. Sturges, in Pall-mall



Scarabaeus Schaefferi Fabr.



SCARABAEVS - Schäfferi.

*Der Schäfferskäfer. Das Langbein oder der Stelzenkäfer. Le Boufier
araignée. Geoffr.*

Scarabaeus Schäfferi: exscutellatus muticus, thorace rotundato, clypeo emarginato, clytris triangulis, femoribus posticis elongatis dentatis. *Fabric. Syst. Ent.* n. 117. p. 29. *Spec. Inf. T. I. n. 148. p. 32.* *Mant. Inf. T. I. n. 169. p. 17.*
Ent. syst. T. II. n. 220. p. 66.

Scarabaeus Schäfferi. Linn. Syst. Nat. n. 41. p. 550. ed. XIII. n. 41. p. 1556.

Geoffr. Inf. T. I. n. 9 p. 92.

Scop. carn. n. 24. ic. 24.

Voet. Coleopt. I. n. 17. tab. 25. fig. 17.

Schäffer Abhandl. I. 148. tab. 3. fig. 20.

— — *1c Inf. Ratisb. tab. 3. fig. 8.*

Acht und vierzigstes Heft.

Harrer Besch. d. Schäff. Inf. 1 B. n. 19. p. 24.

Herbst Nat. d. K. II. n. 201. p. 313. tab. 20. fig. 3.

Panzer Ent. germ. I. n. 70. p. 18.

Habitat in stercore, in montosis, editioribus.



Scarabaeus flavipes Fabr.

210



SCARABAEVS flavipes.

Der rundbrüstige Dungkäfer. Le Boufier fauve. Geoffr.

Scarabaeus flavipes: exscutellatus muticus nigricans thoracis marginibus, elytris pedibusque flavescens. *Fabric. Spec. Inf. app. p. 495. Mant. Inf. T. I. n. 177. p. 18. Ent. syst. T. I. n. 233. p. 70.*

Geoffr. Inf. T. I. n. 6. p. 90.

Scarabaeus thoracocircularis. Laichard. Inf. tyr. I. n. 17. p. 24.

Schäffer Ic. Inf. Ratisb. tab. 74. fig. 6.

Harrer Besch. d. Schäf. Inf. I. B. n. 21. p. 26.

Herbst Archiv IV. n. 46. p. 12. tab. 19. b. fig. 19.

— *Natur. d. K. II. n. 202. p. 316. tab. 20. fig. 7.*

Panzer Ent. germ. I. n. 73. p. 18.

Habitat in stercore bovino.

a Magnitudo naturalis. b Eadem aucta.

DECLARATION

I, the undersigned, do hereby certify that

the following is a true and correct copy of the original as the same appears in the records of the

County of _____ State of _____

_____ Clerk of the County

Witness my hand and seal this _____ day of _____ 19____



Scarabaeus ovalis Fabr.

J. St. fec.



SCARABAEVS ovatus.

Der eyrunde Dungkäfer.

Scarabaeus ovatus: exscutellatus muticus niger, thorace rotundato subaeneo, elytris abbreviatis. *Fabric.* Syst. Ent. n. 124. p. 70, Spec. Inf. T. I. n. 158. p. 34. Mant. Inf. T. I. n. 180. p. 18. Ent. syst. T. II. n. 237. p. 70.

Scarabaeus ovatus. *Linn.* Syst. Nat. n. 46. p. 551. ed. XIII. n. 46. p. 155.

Herbst Archiv. IV. n. 55. p. 12. tab. 19. fig. 18.

— *Nat. d. Käf.* II. n. 204. p. 320. tab. 20. fig. 9.

Panzer Ent. germ. I. u. 75. p. 19.

Habitat in stercore animalium frequens.

a Magnitudo naturalis. b eadem aucta.

1870

1870

1870

1870

1870



Clytra tridentata Schneider.

5075



CLYTRA tridentata.

Der dreyzackige Sägekäfer. La Melolonte lifette. Geoffr.

Clytra tridentata: caerulefcens, elytris testaceis puncto humerali nigro. *Schneider* N. Magaz. II. n. 10. p. 191.

Cryptocephalus tridentatus. *Fabric.* Syst. Ent. n. 5. p. 106. Spec Inf. T. I. n. 8. p. 139. Mant. Inf. T. I. n. 9. p. 79. Ent. syst. T. II. n. 14. p. 55.

Chrysomela tridentata. *Linn.* Syst. Nat. n. 73. p. 596. ed. XIII. n. 9. p. 1701. Fn. Suec. n. 546.

Geoffr. Inf. T. I. n. 3. p. 196.

Degeer Inf. V. n. 36. p. 333. tab. 10. fig. 10.

Scop. carn. n. 200. ic. 200.

Schäffer Ic. Inf. Ratisb. tab. 36. fig. 13. tab. 77. fig. 5.

Harver Besch. d. Schäf. Inf. 1 B. n. 138. p. 125.

Panzer Ent. germ. I. n. 4. p. 189.

Habitat in Lonicera Xyloft. L. et in spicis fecalinis.

a Magnitudo naturalis. b Eadem aucta.



Clytra humeralis Schneider.

106. fcc



PLATE I. Scarabaeus (Cetonia) caryocera.

CLYTRA humeralis.

Der Schneidersche Sägekäfer.

Clytra humeralis: viridiaenea elytris testaceis, puncto humerali nigro, mandibulis exsertis. *Panzer*. Ent. germ. I. n. 5. p. 189.

Clytra humeralis. *Schneider* N. Magaz. II. n. 11. p. 192.

Habitat in Austria. Varietas antecedentis videtur, aucta duplo maior et mandibulis forcipatis exsertis gaudet.

a Magnitudo naturalis. b Eadem aucta.





Clytra longimana Schneider.

J. St. J.



CLYTRA longimana.

Der langarmigte Sägekäfer. Gribouri à pattes longues.

Clytra longimana: obscure aenea, elytris testaceis, puncto bascos nigro. *Schneider*
N. Magaz. II. n. 10. p. 191. n. 9: p. 191.

Cryptocephalus longimanus. *Fabric*. Syst. Ent. n. 11. p. 107. Spec. Inf. T. I. n.
16. p. 140. Mant. Inf. T. I. n. 19. p. 80. Ent. syst. T. II. n. 25. p. 58.

Chrysomela longimana. *Linn*. Syst. Nat. n. 95. p. 599. ed. XIII. n. 19. p. 1703.

Hübner im Archiv VI. 1. tab. 31. fig. 1 — 4.

Schäffer Ic: Inf. Ratisb. tab. 62. fig. 7.

Harrer Besch. d. Schöff. Inf. I B. n. 142. p. 129.

Panzer Ent. germ. I. n. 10. p. 190.

Habitat in Trifolio montano, et Euphorb. Cypariff. Larva faccata.
a Magnitudo naturalis. b Eadem aucta.

THE HISTORY OF THE

REIGN OF KING CHARLES THE FIRST

By JOHN BURNET

IN TWO VOLUMES

LONDON, Printed by J. Sturges, at the Black-Swan in St. Dunstons Church-yard, 1724.

MDCCXXIV.



Clytra Scopulina Schneider

Ed. St. J. 1850



CLYTRA Scopolina.

Der Scopolische Sägekäfer.

Clytra Scopolina: nigra thorace rufo, elytris rufis, fasciis duabus cyaneis, pedibus nigris. *Schneider* N. Mag, II. n. 4. p. 189. var. *Clytr. quadrimac.*

Cryptocephalus Scopolinus. *Fabric.* Syst. Ent. n. 30. p. 111. Spec. Inf. T. I. n. 44. p. 145. Mant. Inf. T. I. n. 58. p. 83. Ent. syst. T. II. n. 79. p. 68.

Chrysomela Scopolina. *Linn.* Syst. Nat. n. 81. p. 697. ed. XIII. n. 58, p. 1703.

Panzer im Naturf. XXIV, n. 23. p. 17. tab. I. fig. 23.

— Ent. germ. I. n. 14. p. 191.

Habitat in dumetis primo vere.

THE UNIVERSITY OF CHICAGO

PHYSICS DEPARTMENT

MEMORANDUM FOR THE RECORD

DATE: [illegible]

TO: [illegible]

FROM: [illegible]

SUBJECT: [illegible]

[illegible text follows]

Very truly yours,



Crioceris bimaculatâ Fabr.



Scarabaeus sacer

CRIOCERIS bimaculata.

Der Schnurkäfer mit zwey Flecken auf ieder Flügeldecke.

Crioceris bimaculata: thorace rufo, elytris testaceis, maculis duabus atris. *Fabric.*

Ent. syst. T. II. n. 50. p. 12.

Galleruca quadrimaculata. *Fabric.* Ent. syst. T. II. n. 35. p. 20.

Chrysomela quadrimaculata. *Fabric.* Mant. Inf. T. I. n. 111. p. 75.

Chrysomela quadrimaculata. *Linn.* Syst. Nat. n. 77. p. 596. Fn. Suec. n. 571.

Panzer im Naturforsch. XXIV, n. 21. p. 15. tab. I. fig. 21.

— Ent. germ. I. n. 14. p. 169.

Habitat in floribus.

a Magnitudo naturalis. b Eadem aucta.

THE HISTORY OF THE

REIGN OF KING CHARLES THE FIRST

IN WHICH IS CONTAINED THE

REIGN OF KING CHARLES THE FIRST

FROM HIS MARRIAGE TO HIS DEATH

BY JOHN BURNET

IN TWO VOLUMES

LONDON, Printed by J. Sturges, at the

Sign of the Sun in St. Dunstons Church

1704

IN TWO VOLUMES



Cerambyx crinitus Schneider

J. St. f. sc.



[Faint, illegible text, possibly a signature or date]

CERAMBYX crinitus.

Der borstige Bokkäfer.

Cerambyx crinitus: thorace spinoso, elytris laevibus rufis fasciis tribus glaucis, antennis longis. *Panzer* Ent. germ. I. n. 13. p. 249.

Habitat in Germania. *Dn. Schneider.*

C. fascicul. F. paullo maior. Antennae corpore longiores pilosae fusco ferrugineae. Caput et thorax ferruginea. Thorax spina acuta prominente. Elytra pallidiora apice omnino integra dorso laevia fasciis tribus glaucis subrepandis, margine pilosa. Pedes rufi.

a Magnitudo naturalis. b Eadem aucta.





Lamia atomaria Fabr.

Pl. Tab. 12.



LAMIA atomaria.

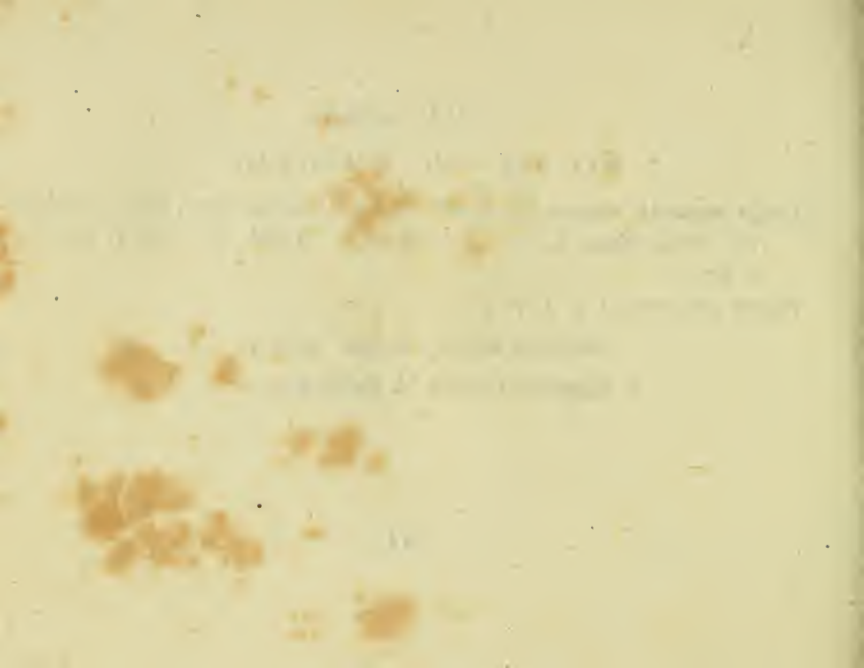
Der bestaubte Zauberkäfer.

Lamia atomaria: thorace spinoso tuberculatoque cinerea, elytris fusco-variis punctis elevatis nigris scabris, antennis longis. *Fabric.* Ent. syst. T. II. n. 17. p. 271.

Panzer Ent. germ. I. n. 3. p. 250.

Habitat in aedibus, in ligno antiquo.

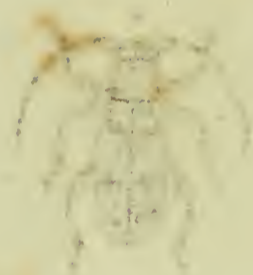
a Magnitudo naturalis. b Eadem aucta.





Lamia varia Fabr.

Jac. Sturmi sculp.



LAMIA varia.

Der bunte Zauberkäfer.

Lamia varia: thorace spinoso tuberculatoque, corpore nigro cinereoque vario, femoribus clavatis, antennis mediocribus. *Fabric.* Ent. syst. T. II. n. 18 p. 271.

Cerambyx varius. *Fabric.* Mant. Inf. T. I. n. 2. p. 130.

Ross. Faun. etrusc. I. ed. *Hellw.* n. 360. p. 153.

Panzer Ent. germ. I. n. 4. p. 250.

Habitat in sylvaticis montosis.

a Magnitudo naturalis. b Eadem aucta.

1870

October 1, 1870

Dear Mother
I received your letter of the 29th and was
glad to hear from you. I am well and
hope these few lines will find you the same.
I have not much news to write at present.

Yours affectionately

John Smith



Lamia curculionoides Fabr.



LAMIA curculionoides.

*Der rüsselkäferartige Zauberkäfer. Der sechsaugichte Bockkäfer.
La Lepture aux yeux de Paon. Geoffr.*

Lamia curculionoides: thorace mutico fusca, thorace coleoptrisque oculis quatuor
atris. *Fabric.* Syst. Ent. n. 20. p. 175. *Spec. Inf.* T. I. n. 28. p. 221. *Mant.*
Inf. T. I. n. 34. p. 159. *Ent. syst.* T. II. n. 60. p. 282.

Cerambyx curculionoides. *Linn.* Syst. Nat. n. 64. p. 634. ed. XIII. n. 64. p. 1836.
Geoffr. *Inf.* T. I. n. 5. p. 210.

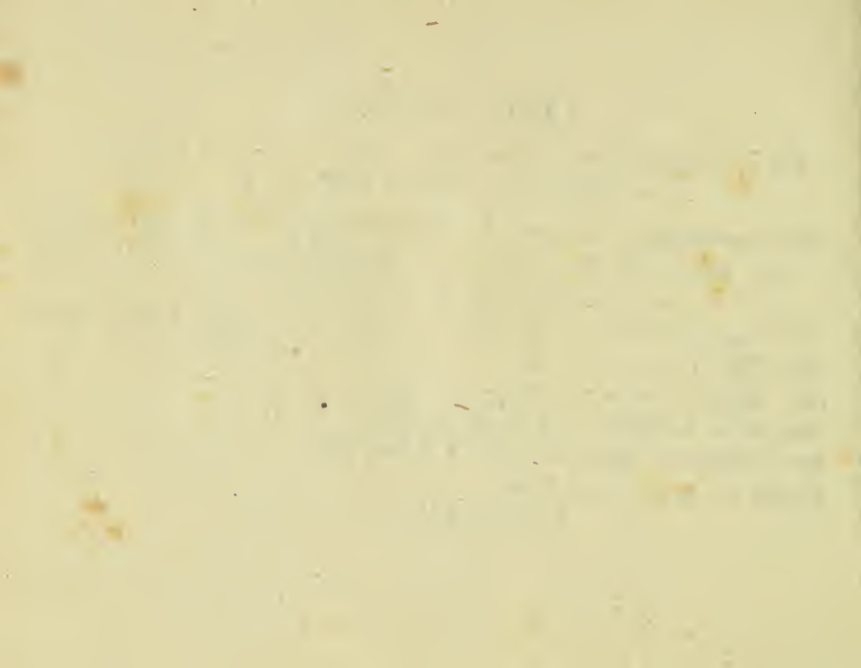
Voet *Coleopt.* T. II. n. 104. tab. 21. fig. 104.

Schaeffer *Ic. Inf. Ratisb.* Tab. 39. fig. 1. tab. 153. fig. 5.

Harrer *Beschr. d. Schäff. Inf.* 1 Th. n. 338. p. 207.

Panzer *Ent. germ.* I. n. 8. p. 251.

Habitat in sylvaticis.





Lamia Fuliginator Fabr.



LAMIA Fuliginator.

Der Schlotfeger. Le Capricorne ovale cendre. Geoffr.

Lamia Fuliginator: thorace subspinoso nigra, elytris cinerascensibus antennis brevibus. *Fabric.* Syst. Ent. n. 23. p. 175. Spec. Inf. T. I. n. 34. p. 222. Mant. Inf. T. I. n. 44. p. 140. Ent. syst. T. II. n. 72. p. 286.

Cerambyx Fuliginator. *Linn.* Syst. Nat. n. 43. p. 539. ed. XIII. n. 43. p. 1834. *Geoffr.* Inf. T. I. n. 8. p. 205.

Voet. Coleopt. II. n. 30. tab. 8. fig. 30.

Panzer Ent. germ. I. n. 10. p. 254.

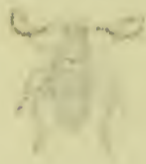
Habitat in montosis sylvaticis. Variat aetate tota nigra.





Lamia rufipes Fabric.

J. St. f.



LAMIA rufipes.

Der rothfüßigte Zauberkäfer.

Lamia rufipes: thorace spinoso nigra, elytrorum scutura alba, antennarum basi
pedibusque rufis. *Fabric.* Ent. syst. T. II. n. 83. p. 288.

Voet. Coleopt. II. n. 31. tab. 9. fig. 31.

Panzer Ent. germ. I. n. 12. p. 254.

Habitat in Quercu.





Lamia lineata Fabr.

J St. fec



LAMIA lineata.

Der linirte Zauberkäfer.

Lamia lineata: thorace spinoso atra, elytris marginibus lineisque duabus utrinque
coeuntibus albis. *Fabric.* Mant. Inf. T. I. n. 55. p. 141. Ent. syst. T. II. n.
85. p. 289.

Lamia Scopoli. *Herbst* Archiv. V. n. 12. p. 91. tab. 25. fig. 11.

Panzer Ent. germ. I. n. 15. p. 255.

Habitat in montosis et sylvaticis editioribus.

1871

1871

1871

1871

1871

1871

1871

1871

1871

1871

1871

1871

1871

1871



Lamia vittigera Hellw.

J. St. fce



LAMIA vittigera.

Der gebänderte Zauberkäfer.

Lamia vittigera: thorace spinoso oleagineo-fusca, futura, vittisque tribus albis a capite ad apicem elytrorum ductis. *Roff. faun. etrusc. I. ed. Hellw. n. 369. p. 159. Lamia Molitor etrusca.*

Habitat in Germania.

Distincta ab antecedenti species.

London, 17th March 1872

Dear Sir,
I have the pleasure to acknowledge the receipt of your letter of the 14th inst. in relation to the above-named matter, and in reply to inform you that the same has been forwarded to the proper authorities for their consideration.

I am, Sir, very respectfully,
Yours faithfully,
[Signature]





