

Historic, archived document

Do not assume content reflects current scientific knowledge, policies, or practices.

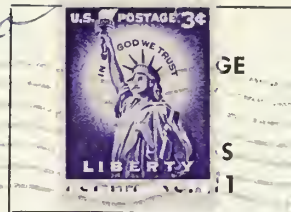
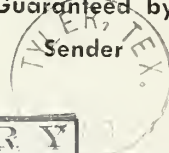
2
Roses

**THE BEST OF THE
OLD, NEW AND
PATENTED VARIETIES**

ROSEMONT NURSERIES

D. L. THOMPSON, Owner - - - Tyler, Texas

Return Postage
Guaranteed by
Sender



**LIBRARY
RECEIVED
★ FEB 15 1960 ★
U. S. Department of Agriculture**

1959/60

DEPARTMENT OF AGRICULTURE
LIBRARY
WASHINGTON 25, D. C.
OFFICIAL BUSINESS
POSTER

PENALTY FOR PRIVATE USE TO AVOID
PAYMENT OF POSTAGE, \$300
(GPO)

U. S. DEPARTMENT OF AGRICULTURE

U. S. DEPT. OF AGRICULTURE
LIBRARY DIVISION
PHOTOGRAPHY



PRESIDENT HERBERT HOOVER

See description under Hybrid Tea Inside

\$1.10 each; 3 for \$2.85; dozen \$10.50



CECILE BRUNNER



Select List of Old-Fashioned Tea Roses

The Tea Roses we have today are descendants of *Rosa indica odoratissima*, originally a native species of South China. They are nicknamed Tea Roses because they have the odor of crushed tea leaves. They succeed in Florida and the Gulf Coast sections where other kinds fail. For Rose satisfaction in these sections, plant more Tea Roses.

Due to crop failure, our list of Tea Roses is quite limited this year. We hope to have a much better selection of varieties next season.

Price, \$1.50 each; 3 for \$3.75

- Bon Silene.** Bud well formed; flower large, double, fragrant deep rose or rosy crimson. Vigorous; profuse, constant bloom.
- Duchesse de Brabant.** Soft rosy pink blooms that deepen to bright rose. Large, double, slightly fragrant.
- Freiherr von Marschall.** Medium-sized, long-pointed bud; flower large, full, double, very lasting, dark carmine-red. Foliage blood-red when young. Vigorous grower.
- Lady Hillingdon.** Clear golden yellow. A very thrifty grower and free bloomer.
- Mrs. Dudley Cross.** Full, pale chamois-yellow, edged in autumn with rose and carmine. Good grower and bloomer.
- Princesse de Sagan.** Introduced 1887. Velvety crimson shaded purplish.
- Snowflake.** Pure white; profuse and continuous bloom. Very vigorous.
- White Maman Cochet.** Creamy white, flushed rose on edges.
- William R. Smith.** Best of all Teas for cutting! Large double flowers of softly diffused blush pink on long stiff stems.

Floribunda or Hybrid Polyantha Roses

This is not any particular strain of Roses, but rather a new group derived from various sources. They are strong growers, more cold-resistant than Hybrid Teas; the flowers are single to very double, borne in huge clusters throughout the season. They are most effective planted all one color in mass plantings or as informal borders and hedges.

Price, except as noted, best-grade 2-yr. plants, \$1.10 each; 3 for \$2.85; \$10.50 per doz.

- Betty Prior.** Carmine and pink single blooms rampant all season. (3-3½ ft.) One of the best! \$1.25 each; 3 for \$3.15. Formerly Patented. (See picture)
- Donald Prior.** Huge clusters of bright scarlet flushed crimson semi-double flowers on strong stem. Formerly patented. Now only \$1.35 each; 3 for \$3.50. (See picture)
- D. T. Poulsen.** Semi-double, bright blood red. Fragrant.
- Ellen Poulsen.** Bushy, low-growing (24 to 28 in.), large double clusters of bright cherry-pink blooms. Excellent!
- Else Poulsen.** Flowers medium size, semi-double, open, very lasting, slightly fragrant, bright rose-pink, borne in clusters on long stems. (See picture)
- Eutin.** Bud pointed-globular; flower double, cupped, glowing carmine-red; cluster to 100 on long, strong stem. Very vigorous (2-3 ft.) continuous bloom. \$1.25 each; 3 for \$3.15. (See picture)
- Floradora.** One of the most satisfactory of the Floribundas. An eye-catching orange-red. Always in bloom. Height 24 to 30 inches; ideal for cutting. \$1.25 each; 3 for \$3.15. (See picture)
- Gruss an Aachen.** Large, double flowers of Hybrid Tea quality, in clusters. Salmon-yellow, fading to flesh-pink. Dwarf.
- Improved Lafayette.** Semi-double open, slightly fragrant; deep glowing red, suffused vivid crimson. Vigorous; bushy. Special price for six—\$5.00.
- Mrs. R. M. Finch.** Large, impressive clusters of double rosy pink flowers. Blooms profusely and persistently. Special price for six—\$5.00.
- Permanent Wave.** Large, semi-double flowers of bright cochineal-crimson; blooms in clusters. Edges of petals wavy, producing a very decorative effect. (See picture)
- Red Ripples.** Semi-double, open flowers with wavy petals of yellow and carmine, blooming in im-

All \$1.25 Roses or any 3 for \$3.50; \$13.50 per dozen

Price, except as noted, best-grade 2-year plants, \$1.10 each; any 3 for \$2.85; \$10.50 per dozen; \$85.00 per 100

- Ami Quinard.** Buds large; velvety maroon-crimson flowers, with blackish luster. Vigorous grower. (See picture)
- Antoine Rivoire.** Rosy flesh, double flowers shade into carmine with slight yellow base. \$1.25 each; 3 for \$3.15.
- Better Times.** Bud long pointed; flower high centered, very large, double, bright cerise. \$1.35 each; 3 for \$3.50.
- Betty Uprichard.** Large, both semi-double and double, and extremely fragrant. Salmon-pink with reverse carmine and copper. Foliage light green glossy. As easy to grow as Radiance.
- Blanche Messigny.** Creamy yellow. Large, very double, very fragrant. Has definite Tea tendencies.
- Briarcliff.** Very large, moderately fragrant, rose-pink at center, passing to a lighter shade on the outer petals. (See picture)
- Caledonia.** Flowers white, large, double high centered, slightly fragrant.
- Christopher Stone.** Scarlet-crimson, without a trace of blue. Intensely fragrant. Very beautiful.
- Comtesse Vandal.** Orange-copper bud opens into high-centered, brilliant salmon-pink flower. Excellent for cutting. \$1.35 each; 3 for \$3.50.
- Condesa de Sagato.** A two-color beauty from Spain. Oriental-red and yellow. Flower large and double. Free bloomer.
- Crimson Glory.** Best-loved red Rose in the world! Perfectly shaped, deep velvety crimson flowers, very double and fragrant. \$1.35 each; 3 for \$3.50. (See picture)
- Dainty Bess.** Soft rose-pink, single flowers with maroon stamens. Excellent bloomer. (See picture)
- Dame Edith Helen.** Very large, double, cupped, old rose fragrance, glowing pink; long, strong stem. Foliage leathery. Vigorous.
- Eclipse.** Rich golden yellow buds of exquisite form, extremely long pointed. Good bushy plant. \$1.35 each; 3 for \$3.50.
- Edith Nellie Perkins.** Orient-red, shaded cerise-orange; inside salmon-pink.
- Editor McFarland.** Large, fragrant, glowing pink flowers, suffused yellow.
- E. G. Hill.** Immense; dazzling scarlet, shading to deep pure red. Vigorous.
- Elizabeth of York.** Bud large, pointed cerise; flower semi-double (27 petals), high-centered, very fragrant, cerise-pink. Foliage dark, glossy.
- Etoile de Hollande.** Bright red, almost unfading \$1.25 each; 3 for \$3.15.
- Francis Scott Key.** Extremely large and very double, deep pure red blooms, shading to cerise. A thrifty dependable Rose.
- Golden Dawn.** Sunflower yellow, flushed old rose. \$1.25 each; 3 for \$3.15.
- Golden Talisman.** Yellow sport of Talisman, with its parent's good cutting quality and pleasing fragrance.
- Hinrich Gaede.** Bud pointed, nasturtium-red; flower very large, double, high centered, orange-yellow with red glow. Delightful raspberry fragrance. Vigorous. \$1.35 each, 3 for \$3.50.
- Kaiserin Auguste Viktoria.** Bud is cream-white, but the open bloom is snow-white with a tint of lemon at the center. One of the best white Roses. \$1.25 each; 3 for \$3.15.
- Konigin Luise.** Very large and double. White blooms. High-centered, slightly fragrant.
- Luxembourg (Grande Duchesse de Luxembourg).** Among the most beautiful and best of the deep yellow orange Roses. Very desirable for the South. (See picture)
- McGredy's Ivory.** Bud long pointed; flower very large, double, fragrant, creamy white. \$1.25 each; 3 for \$3.15.
- McGredy's Sunset.** Long-pointed bud opens into fragrant flower. Chrome-yellow at base, shading to bright scarlet; reverse clear buttercup-yellow. \$1.35 each; 3 for \$3.50. Formerly Patented.
- McGredy's Yellow.** Bud long pointed; flower very large, double, fragrant, Glossy, dark, bronzy foliage. A superior yellow! Vigorous.
- Mme. Joseph Perraud.** The long-pointed, opening buds have delightful glowing yellow sunset shades that change to nasturtium-buff as the fragrant flowers slowly unfold. \$1.35 each; 3 for \$3.50.
- Mrs. Pierre S. du Pont.** Beautiful fragrant blooms of reddish golden yellow on a low, spreading plant. Unusually free blooming. \$1.25 each; 3 for \$3.15.
- Nigger Boy.** Long-pointed bud opening into a high-centered; very fragrant, very velvety blackish maroon flower with as many as 56 petals. Continuous and profuse bloom. Low growing, excellent in mass plantings. \$1.35 each; 3 for \$3.50. Special price for six—\$5.95.
- Picture.** Very double, reflexed petals of velvety clear rose-pink. Free blooming and vigorous. \$1.25 each; 3 for \$3.15.
- Poinsettia.** Bud long pointed; flower large, double, open, slightly fragrant, bright unfading scarlet. Foliage glossy, vigorous, compact.
- President Herbert Hoover.** The large, semi-double blooms are a combination of cerise-pink, flame, scarlet and yellow; the outside petals become slightly lighter as the flower ages and in the cool days of autumn have splashes of red. (See cover)
- Radiance.** One of the leading Roses for the South or for any part of the country. Rose-pink with lighter pink on the reverse. The fragrant blooms are carried on strong, upright stems.
- Red Radiance.** Great globes of deep rose-red. Needs no introduction.
- Rex Anderson.** Delicate ivory-white flowers of enormous size, double and of perfect shape. \$1.35 each; 3 for \$3.50. Formerly Patented.
- Rouge Mallerin.** Brilliant red buds, opening to glowing scarlet. (See picture)
- Shell Pink Radiance (Mrs. Chas Bell).** Shell-pink buds that open into globe-shaped flowers of the same color, with shading of salmon. A sport of Radiance and like it except more delicate coloring.
- Soeur Therese (Sister Therese).** A favorite yellow Rose in the South. Big plants with quantities of shapely, golden blooms. Dependable.
- Sterling.** Large, open, semi-double, fragrant, brilliant pink blooms on long stems. \$1.25 each; 3 for \$3.15.
- Talisman.** Rich golden yellow and copper; double, lasting. Extremely fragrant. Strong growth and free-blooming qualities. Our most popular multicolor Rose.
- Texas Centennial.** Bud long pointed; flower double, well formed, vermilion-red with some gold, center lighter; very long stem. Vigorous. \$1.35 each; 3 for \$3.50.
- The Doctor.** Enormous, semi-double flowers; cupped, fragrant, satiny pink, \$1.25 each; 3 for \$3.15.
- White Radiance.** A sport of Red Radiance. Very large, double, fragrant white, tinted shell-pink in center. Foliage rich green, soft, glossy.

EVERBLOOMING CLIMBING ROSES

Price, except as noted, best-grade, 2-yr. plants, \$1.10 each; 3 for \$2.85; \$10.50 per doz.

- Blaze, R.E.P. LC.** Intense, brilliant scarlet blooms appear in many clusters in Spring. More recurrent than old type Blaze.
- Cl. Briarcliff.** Sport of Briarcliff. Large, fragrant bloom of rose-pink. \$1.25 each; 3 for \$3.15.
- Climbing Caledonia.** Climbing form of the well-known white rose that has long been a favorite. \$1.25 each; 3 for \$3.15.
- Cl. Cecile Brunner.** Climbing sport of Cecile Brunner. Large clusters of miniature seashell-pink flowers. Good grower. \$1.50 each; 3 for \$3.75.
- Cl. Dainty Bess.** Like its parent Dainty Bess, except in habit of growth.
- Cl. Etoile de Hollande.** Dark velvety red. \$1.25 each; 3 for \$3.15.
- Cl. Kaiserin Auguste Viktoria.** White. One of our best white climbers. (See picture)
- Cl. Perle d'Or (Cl. Yellow Cecile Brunner).** Yellow to salmon-pink, clusters of double intensely fragrant baby roses.
- Cl. Poinsettia.** Large, double, slightly fragrant blooms of bright unfading scarlet. A strong climber.
- Cl. President Hoover.** Climbing sport of the well-known President Herbert Hoover, and identical in bloom.
- Cl. Radiance.** Sport of Radiance with all its good qualities.
- Cl. Red Radiance.** Sport of Red Radiance with a flower like its parent.
- Cl. Red Talisman.** Climbing sport of bush Red Talisman. Free bloomer.
- Cl. Souv. de la Malmaison. CB.** Very large, double, very fragrant blooms of creamy flesh with rosey center. Introduced 1893. \$1.50 each; 3 for \$3.75.
- Cl. Talisman.** An excellent bloomer. Making a beautiful show when established. Vigorous.
- Golden Climber (Mrs. A. C. James).** Long-pointed bud opening into a large, fragrant, sunflower-yellow bloom. Vigorous grower. Free seasonal bloom when established. \$1.50 each; 3 for \$3.75.

ROSEMONT SELECT HYBRID TEA ROSE BUSHES



ELSE POULSEN



CECILE BRUNNER



All \$1.10 Roses or any 3 for \$2.85; \$10.50 per dozen
All \$1.25 Roses or any 3 for \$3.15; \$12.50 per dozen
All \$1.35 Roses or any 3 for \$3.50; \$13.50 per dozen

Price, except as noted, best-grade 2-year plants, \$1.10 each; any 3 for \$2.85; \$10.50 per dozen; \$85.00 per 100

Ami Quinard. Buds large; velvety maroon-crimson flowers, with blackish luster. Vigorous grower. (See picture)
Antoine Rivoire. Rosy flesh, double flowers shade into carmine with slight yellow base. \$1.25 each; 3 for \$3.15.
Better Times. Bud long pointed; flower high centered, very large, double, bright cerise. \$1.35 each; 3 for \$3.50.
Betty Uprichard. Large, both semi-double and double, and extremely fragrant. Salmon-pink with reverse carmine and copper. Foliage light green glossy. As easy to grow as Radiance.
Blanche Messigny. Creamy yellow. Large, very double, very fragrant. Has definite Tea tendencies.
Briarcliff. Very large, moderately fragrant, rose-pink at center, passing to a lighter shade on the outer petals. (See picture)
Caledonia. Flowers white, large, double high centered, slightly fragrant.
Christopher Stone. Scarlet-crimson, without a trace of blue. Intensely fragrant. Very beautiful.
Comtesse Vandal. Orange-copper bud opens into high-centered, brilliant salmon-pink flower. Excellent for cutting. \$1.35 each; 3 for \$3.50.
Condesa de Sastago. A two-color beauty from Spain. Oriental-red and yellow. Flower large and double. Free bloomer.
Crimson Glory. Best-loved red Rose in the world! Perfectly shaped, deep velvety crimson flowers, very double and fragrant. \$1.35 each; 3 for \$3.50 (See picture)
Dainty Bess. Soft rose-pink, single flowers with maroon stamens. Excellent bloomer. (See picture)
Dame Edith Helen. Very large, double, cupped, old rose fragrance, glowing pink; long, strong stem. Foliage leathery. Vigorous.
Eclipse. Rich golden yellow buds of exquisite form, extremely long pointed. Good bushy plant. \$1.35 each; 3 for \$3.50.
Edith Nellie Perkins. Orient-red, shaded cerise-orange; inside salmon-pink.
Editor McFarland. Large, fragrant, glowing pink flowers, suffused yellow.
E. G. Hill. Immense, dazzling scarlet, shading to deep pure red. Vigorous.
Elizabeth of York. Bud large, pointed cerise; flower semi-double (27 petals), high-centered, very fragrant, cerise-pink. Foliage dark, glossy.
Etoile de Hollande. Bright red, almost unfading \$1.25 each; 3 for \$3.15.
Francis Scott Key. Extremely large and very double, deep pure red blooms, shading to cerise. A thrifty dependable Rose.
Golden Dawn. Sunflower yellow, flushed old rose. \$1.25 each; 3 for \$3.15.
Golden Talisman. Yellow sport of Talisman, with its parent's good cutting quality and pleasing fragrance.
Hinrich Gaede. Bud pointed, nasturtium-red; flower very large, double, high centered, orange-yellow with red glow. Delightful raspberry fragrance. Vigorous. \$1.35 each, 3 for \$3.50.
Kaiserin Auguste Viktoria. Bud is cream-white, but the open bloom is snow-white with a tint of lemon at the center. One of the best white Roses. \$1.25 each; 3 for \$3.15.
Konigin Luise. Very large and double. White blooms. High-centered, slightly fragrant.
Luxembourg (Grande Duchesse de Luxembourg). Among the most beautiful and best of the deep yellow orange Roses. Very desirable for the South. (See picture)
McGregory's Ivory. Bud long pointed; flower very large, double, fragrant, creamy white. \$1.25 each; 3 for \$3.15.
McGregory's Sunset. Long-pointed bud opens into fragrant flower. Chrome-yellow at base, shading to bright scarlet; reverse clear buttercup-yellow. \$1.35 each; 3 for \$3.50. Formerly Patented.
McGregory's Yellow. Bud long pointed; flower very large, double, fragrant, Glossy, dark, bronzy foliage. A superior yellow! Vigorous.
Mme. Joseph Perraud. The long-pointed, opening buds have delightful glowing yellow sunset shades that change to nasturtium-buff as the fragrant flowers slowly unfold. \$1.35 each; 3 for \$3.50.
Mrs. Pierre S. du Pont. Beautiful fragrant blooms of reddish golden yellow on a low, spreading plant. Unusually free blooming. \$1.25 each; 3 for \$3.15.
Nigger Boy. Long-pointed bud opening into a high-centered, very fragrant, very velvety blackish maroon flower with as many as 56 petals. Continuous and profuse bloom. Low growing, excellent in mass plantings. \$1.35 each; 3 for \$3.50. Special price for six—\$5.95.
Picture. Very double, reflexed petals of velvety clear rose-pink. Free blooming and vigorous. \$1.25 each; 3 for \$3.15.
Poinsettia. Bud long pointed; flower large, double, open, slightly fragrant, bright unfading scarlet. Foliage glossy, vigorous, compact.
President Herbert Hoover. The large, semi-double blooms are a combination of cerise-pink, flame, scarlet and yellow; the outside petals become slightly lighter as the flower ages and in the cool days of autumn have splashes of red. (See cover)
Radiance. One of the leading Roses for the South or for any part of the country. Rose-pink with lighter pink on the reverse. The fragrant blooms are carried on strong, upright stems.
Red Radiance. Great globes of deep rose-red. Needs no introduction.
Rex Anderson. Delicate ivory-white flowers of enormous size, double and of perfect shape. \$1.35 each; 3 for \$3.50. Formerly Patented.
Rouge Mallerin. Brilliant red buds, opening to glowing scarlet. (See picture)
Shell Pink Radiance (Mrs. Chas Bell). Shell-pink buds that open into globe-shaped flowers of the same color, with shading of salmon. A sport of Radiance and like it except more delicate coloring.
Soeur Therese (Sister Therese). A favorite yellow Rose in the South. Big plants with quantities of shapely, golden blooms. Dependable.
Sterling. Large, open, semi-double, fragrant, brilliant pink blooms on long stems. \$1.25 each; 3 for \$3.15.
Talisman. Rich golden yellow and copper; double, lasting. Extremely fragrant. Strong growth and free-blooming qualities. Our most popular multicolor Rose.
Texas Centennial. Bud long pointed; flower double, well formed, vermilion-red with some gold, center lighter; very long stem. Vigorous. \$1.35 each; 3 for \$3.50.
The Doctor. Enormous, semi-double flowers; cupped, fragrant, satiny pink. \$1.25 each; 3 for \$3.15.
White Radiance. A sport of Red Radiance. Very large, double, fragrant white, tinted shell-pink in center. Foliage rich green, soft, glossy.

Price, \$1.50 each; 3 for \$3.75

Bon Silene. Bud well formed; flower large, double, fragrant deep rose or rosy crimson. Vigorous; profuse, constant bloom.
Duchesse de Brabant. Soft rosy pink blooms that deepen to bright rose. Large, double, slightly fragrant.
Freiherr von Marschall. Medium-sized, long-pointed bud; flower large, full, double, very lasting, dark carmine-red. Foliage blood-red when young. Vigorous grower.
Lady Hillingdon. Clear golden yellow. A very thrifty grower and free bloomer.
Mrs. Dudley Cross. Full, pale chamois-yellow, edged in autumn with rose and carmine. Good grower and bloomer.
Princesse de Sagan. Introduced 1887. Velvety crimson shaded purplish.
Snowflake. Pure white; profuse and continuous bloom. Very vigorous.
White Maman Cochet. Creamy white, flushed rose on edges.
William R. Smith. Best of all Teas for cutting! Large double flowers of softly diffused blush pink on long stiff stems.

EVERBLOOMING CLIMBING ROSES

Price, except as noted, best-grade, 2-yr. plants, \$1.10 each; 3 for \$2.85; \$10.50 per doz.

Blaze, R.E.P. LC. Intense, brilliant scarlet blooms appear in many clusters in Spring. More recurrent than old type Blaze.
Cl. Briarcliff. Sport of Briarcliff. Large, fragrant bloom of rose-pink. \$1.25 each; 3 for \$3.15.
Climbing Caledonia. Climbing form of the well-known white rose that has long been a favorite. \$1.25 each; 3 for \$3.15.
Cl. Cecile Brunner. Climbing sport of Cecile Brunner. Large clusters of miniature seashell-pink flowers. Good grower. \$1.50 each, 3 for \$3.75.
Cl. Dainty Bess. Like its parent Dainty Bess, except in habit of growth.
Cl. Etoile de Hollande. Dark velvety red. \$1.25 each; 3 for \$3.15.
Cl. Kaiserin Auguste Viktoria. White. One of our best white climbers. (See picture)
Cl. Perle d'Or (Cl. Yellow Cecile Brunner). Yellow to salmon-pink, clusters of double intensely fragrant baby roses.
Cl. Poinsettia. Large, double, slightly fragrant blooms of bright unfading scarlet. A strong climber.
Cl. President Hoover. Climbing sport of the well-known President Herbert Hoover, and identical in bloom.
Cl. Radiance. Sport of Radiance with all its good qualities.
Cl. Red Radiance. Sport of Red Radiance with a flower like its parent.
Cl. Red Talisman. Climbing sport of lush Red Talisman. Free bloomer.
Cl. Souv. de la Malmaison. CB. Very large, double, very fragrant blooms of creamy flesh with rosey center. Introduced 1893. \$1.50 each; 3 for \$3.75.
Cl. Talisman. An excellent bloomer. Making a beautiful show when established. Vigorous.
Golden Climber (Mrs. A. C. James). Long-pointed bud opening into a large, fragrant, sunflower-yellow bloom. Vigorous grower. Free seasonal bloom when established. \$1.50 each; 3 for \$3.75.
Marechal Niel. Bud large, full, pointed; flower large, double, very fragrant. The favorite yellow Rose of the South. \$2.00 each; 3 for \$5.00.
Mermaid. Large, single, open, pale sulphur-yellow; amber stamens. Foliage deep varnished green. \$1.50 each; 3 for \$3.75.
New Dawn (Everblooming Dr. W. Van Fleet). Double, blush-pink flowers on long stems. Dark glossy foliage. \$1.35 each; 3 for \$3.50.
Souv. de Claudius Denoyal. Long pointed bud opens into very large, double, cupped rich vermilion bloom. Fragrant blooms all summer.
White Dawn. Gardenia-like, fragrant, white blooms in clusters. Very vigorous climber with recurrent, abundant flowering habit. \$1.35 each; 3 for \$3.50.

Select List of Old-Fashioned Tea Roses

The Tea Roses we have today are descendants of *Rosa indica odoratissima*, originally a native species of South China. They are nicknamed Tea Roses because they have the odor of crushed tea leaves. They succeed in Florida and the Gulf Coast sections where other kinds fail. For Rose satisfaction in these sections, plant more Tea Roses.

Due to crop failure, our list of Tea Roses is quite limited this year. We hope to have a much better selection of varieties next season.

Price, \$1.50 each; 3 for \$3.75

Bon Silene. Bud well formed; flower large, double, fragrant deep rose or rosy crimson. Vigorous; profuse, constant bloom.
Duchesse de Brabant. Soft rosy pink blooms that deepen to bright rose. Large, double, slightly fragrant.
Freiherr von Marschall. Medium-sized, long-pointed bud; flower large, full, double, very lasting, dark carmine-red. Foliage blood-red when young. Vigorous grower.
Lady Hillingdon. Clear golden yellow. A very thrifty grower and free bloomer.
Mrs. Dudley Cross. Full, pale chamois-yellow, edged in autumn with rose and carmine. Good grower and bloomer.
Princesse de Sagan. Introduced 1887. Velvety crimson shaded purplish.
Snowflake. Pure white; profuse and continuous bloom. Very vigorous.
White Maman Cochet. Creamy white, flushed rose on edges.
William R. Smith. Best of all Teas for cutting! Large double flowers of softly diffused blush pink on long stiff stems.

Floribunda or Hybrid Polyantha Roses

This is not any particular strain of Roses, but rather a new group derived from various sources. They are strong growers, more cold-resistant than Hybrid Teas; the flowers are single to very double, borne in huge clusters throughout the season. They are most effective planted all one color in mass plantings or as informal borders and hedges.

Price, except as noted, best-grade 2-yr. plants, \$1.10 each; 3 for \$2.85; \$10.50 per doz.

Betty Prior. Carmine and pink single blooms rampant all season. (3-3½ ft.) One of the best! \$1.25 each; 3 for \$3.15. Formerly Patented. (See picture)
Donald Prior. Huge clusters of bright scarlet flushed crimson semi-double flowers on strong stem. Formerly patented. Now only \$1.35 each; 3 for \$3.50. (See picture)
D. T. Poulsen. Semi-double, bright blood red. Fragrant.
Ellen Poulsen. Bushy, low-growing (24 to 28 in.), large double clusters of bright cherry-pink blooms. Excellent!
Else Poulsen. Flowers medium size, semi-double, open, very lasting, slightly fragrant, bright rose-pink, borne in clusters on long stems. (See picture)
Eutin. Bud pointed-globular; flower double, cupped, glowing carmine-red; cluster to 100 on long, strong stem. Very vigorous (2-3 ft.) continuous bloom. \$1.25 each; 3 for \$3.15. (See picture)
Floradora. One of the most satisfactory of the Floribundas. An eye-catching orange-red. Always in bloom. Height 24 to 30 inches; ideal for cutting. \$1.25 each; 3 for \$3.15. (See picture)
Gruss an Aachen. Large, double flowers of Hybrid Tea quality, in clusters. Salmon-yellow, fading to flesh-pink. Dwarf.
Improved Lafayette. Semi-double open, slightly fragrant; deep glowing red, suffused vivid crimson. Vigorous; bushy. Special price for six—\$5.00.
Mrs. R. M. Finch. Large, impressive clusters of double rosy pink flowers. Blooms profusely and persistently. Special price for six—\$5.00.
Permanent Wave. Large, semi-double flowers of bright cochineal-crimson; blooms in clusters. Edges of petals wavy, producing a very decorative effect. (See picture)
Red Ripples. Semi-double, open flowers with wavy petals of oxblood-red to carmine blooming in immense clusters.
Rosenelfe (Rose Elfe). Tiny, La-France pink hybrid tea-like blooms of lasting beauty cluster on long strong stem. Very vigorous. Excellent for cutting. \$1.25 each; 3 for \$3.15. Special price on six—\$5.95. Postpaid.
Summer Snow. Large cluster of clear snow white blooms. Slightly fragrant and very prolific. Formerly patented. Now only \$1.35 each; 3 for \$3.50 (See picture)

Bright, clear yellow is unfringed from bud through maturity. Tall, upright (4 ft.). Our best yellow! \$2.50 each; 3 for \$6.60.

California. HT. Plant Pat. 449. Bud long pointed; flower large, semi-double, fragrant, an even shade of ruddy gold. \$1.50 each; 3 for \$3.90.

Carrousel. Grandiflora. Plant Pat. 1066. Extremely vigorous and disease-resistant. Profuse, fragrant and long lasting blooms of dark red. New type Grandiflora. Height 4-5 ft. A.R.S. rating 9.2. \$2.00 each; 3 for \$5.25.

Charles Mallerin. HT. Plant Pat. 933. Deep, rich, velvety, blackish-red. Very fragrant. Never fades to blue. Vigorous and disease resistant. \$2.50 each; 3 for \$6.60.

Charlotte Armstrong. HT. Plant Pat. 455. Cerise to spectrum-red. Large, beautifully formed, high-centered blooms open from extra long, slender, blood-red buds. Won highest score in fourteen official test gardens of All-America Rose Selections. Outstanding. \$2.25 each; 3 for \$6.00.

Chrysler Imperial. HT. Plant Pat. 1167. Bud long, tapering, maroon-red; flower very large double, high-centered, vivid crimson-red with darker overtones. \$2.50 each; 3 for \$6.60.

Circus. Flor. Plant Pat. 1382. Bright yellow with touches of orange, scarlet, and red. The brightest spot in your garden and so good for cutting! No wonder it was the only A.A.R.S. Selection for 1956. \$2.50 each; 3 for \$6.60.

Cl. Crimson Glory. CHT. Plant Pat. 736. Sport of Crimson Glory and like it except for its vigorous climbing habit. \$2.50 each; 3 for \$6.60. (See picture)

Cl. Peace. CHT. Plant Pat. 932. A strong climbing form of Peace with the same long-stemmed, yellow flowers flushed pink. \$2.25 each; 3 for \$6.00.

Cl. Picture. CHT. Plant Pat. 524. Sport of Picture. Very double, reflexed petals of velvety clear rose-pink. Foliage glossy, dark. Excellent cut flower. Continuous bloomer. \$2.50 each; 3 for \$6.60.

Diamond Jubilee. HT. Plant Pat. 824. High centered bud, opening to a large, double, cupped flower of buff-yellow, with orange-buff center. Another very desirable All-America Selection. \$2.25 each; 3 for \$6.00. (See picture)

Dream Girl. LC. Plant Pat. 643. Beautiful large, double flowers with very spicy fragrance, unfading coral-pink in color. Very vigorous climber. \$2.25 each; 3 for \$6.00. (See picture)

Fashion. Flor. Plant Pat. 789. Clusters of coral-peach flowers like miniature Hybrid Teas. Vigorous, bushy growth. \$2.00 each; 3 for \$5.25. (See picture)

Forty-Niner. HT. Plant Pat. 792. Large, open, double blooms, borne singly. Striking oriental-red, changing to cherry-red; reverse side of petals deep chrome-yellow to straw-yellow, washed with pink. Very vigorous upright grower; excellent bloomer. \$2.25 each; 3 for \$6.00. (See picture)

Golden Anniversary. HT. Plant Pat. 806. Sport of Good News. Beautifully formed flowers of a fine deep gold flushed apricot at times. This is one yellow Rose which is truly remarkable in that it is well branched and very vigorous. \$1.75 each; 3 for \$4.65.

Goldilocks. Flor. Plant Pat. 672. Clusters of medium-sized, double, yellow flowers. Vigorous, bushy; strong fragrance. Continuous bloomer. A very satisfactory yellow Floribunda. \$1.75 each; 3 for \$4.65. (See picture)

Good News. HT. Plant Pat. 426. Very large, globular silvery pink with apricot glow. \$2.00 each; 3 for \$5.25. (See picture)

Happiness. HT. Plant Pat. 911. Brilliant red! Does not blue. Flowers of fine form and splendid for cutting. Strong, healthy. \$2.00 each; 3 for \$5.25.

AMERICAN ROSE SOCIETY

Take advantage of the many opportunities made available to members of the American Rose Society.

WRITE FOR DETAILS:

THE AMERICAN ROSE SOCIETY
4048 Roselea Place
COLUMBUS 14, OHIO

\$1.75 each; 3 for \$4.65.

Helen Traubel. HT. Plant Pat. 1028. Magnificent buds of light apricot blending into sparkling pink open into large open flowers of fine form. Has pleasing fragrance. Strong and sturdy grower; prolific bloomer. \$2.75 each; 3 for \$7.20.

High Noon. CHT. Plant Pat. 704. A vigorous, upright pillar. Brilliant lemon-yellow, double, loosely cupped blooms with spicy fragrance. Leathery, glossy foliage. \$2.50 each; 3 for \$6.60. (See picture)

Horace McFarland. HT. Plant Pat. 730. Bud mahogany-red; coppery orange flower, very double (40 to 50 petals) and spicily fragrant. \$2.00 each; 3 for \$5.25.

Jiminy Cricket. Flor. Plant Pat. 1346. Tangerine red and pinkish orange team up on buds and blooms of this All America Winner of 1955. Clusters in constant bloom all season. \$2.00 each; 3 for \$5.25.

Katherine T. Marshall. HT. Plant Pat. 607. Bud deep salmon-pink; flower large, deep rose-pink. Long strong stem. \$1.85 each; 3 for \$4.85.

Lavender Pinocchio. Flor. Plant Pat. 947. Produces large clusters of 4-inch blooms in a new, truly lavender color. About 3 feet tall. \$2.00 each; 3 for \$5.25. (See picture)

Lowell Thomas. HT. Plant Pat. 595. Large very double, high centered, clear canary-yellow. Strong, compact, upright. \$2.25 each; 3 for \$6.00.

Ming Toy. Flor. Plant Pat. 900. Small 2 in. flowers, very double (50 petals) of deep rose-pink bloom in profuse clusters. Vigorous, upright. \$1.50 each; 3 for \$3.90.

Mirandy. HT. Plant Pat. 632. Large double, with sweet spicy fragrance; garnet-red. \$2.25 each; 3 for \$6.00.

Mission Bells. HT. Plant Pat. 923. Large, double, high-centered blooms of salmon-pink; moderately fragrant. \$2.00 each; 3 for \$5.25.

Mojave. HT. Plant Pat. 1176. A blend of salmon, apricot and orange. Flowers are produced on individual stems. Vigorous. A fine rose in the orange color range. \$2.75 each; 3 for \$7.20. (See picture)

New Yorker. HT. Plant Pat. 823. A large, sparkling, red, red Rose, delightfully fragrant. A profuse bloomer from early spring until cold weather. Long stems. \$2.50 each; 3 for \$6.60.

Nocturne. HT. Plant Pat. 713. Large, semi-double to double, fragrant, cardinal-red shaded to crimson. \$2.25 each; 3 for \$6.00.

Peace. HT. Plant Pat. 591. Large, striking flower of canary-yellow, pale gold, deep yellow, pearl-white, often edged apple-blossom. Rates as the best Rose in America. \$2.50 each; 3 for \$6.60. (See picture)

Queen Elizabeth. Grandiflora. Plant Pat. 1259. Fragrant, rose pink buds blend into satin pink blooms. Resistant to black spot. Very vigorous. \$2.50 each; 3 for \$6.60. (See picture)

Pinocchio. Flor. Plant Pat. 484. Blooms small, salmon flushed gold. \$1.75 each; 3 for \$4.65.

President Eisenhower. HT. Plant Pat. 1217. Large blooms of rich unfading uniform rose-red with lasting brilliance. Come singly on strong stems. It is admirably free and continuous in bloom on upright, bushy 3-ft. plants. Fragrant. \$2.25 each; 3 for \$6.00.

Red Pinocchio. Flor. Plant Pat. 812. A bright red form of the popular Pinocchio. \$1.75 each; 3 for \$4.65. (See picture)

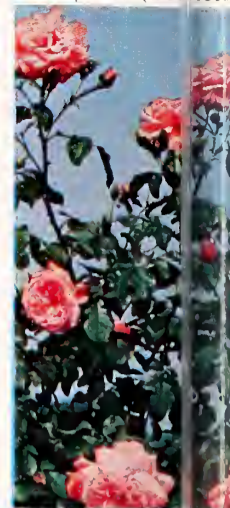
Rose of Freedom. HT. Plant Pat. 791. Very large, double, fragrant flower of currant-red changing to rose-red. \$2.00 each; 3 for \$5.25.

Show Girl. HT. Plant Pat. 646. Large semi-double, cupped, fragrant, deep pink. \$2.25 each; 3 for \$6.00. (See picture)

Suzon Lotthe. HT. Plant Pat. 934. Pale to bright pink blend. Wonderfully double blooms, high-centered large and extremely large. Long-lasting as cut flowers. \$2.00 each; 3 for \$5.25. (See picture)

red to pink. \$2.25 each; 3 for \$6.00.

Vogue. Flor. Plant Pat. 1028. Hybrid-Tea-like coral. Blooms fragrant. Re-tall make excellent 3 for \$5.25. (See picture)



DREAM GIRL
Plant Pat. 643
\$2.25 each; 3 for \$6.00



926. Miniature Hy-
 ers of vivid cherry-
 clusters; extremely
 plants 2½ to 3 feet
 edges. \$2.00 each;
 e)

RED PINOCCHIO

Plant Pat. 812 ©

\$1.75 each; 3 for \$4.65



\$6.00



DIAMOND JUBILEE

Plant Pat. 824

\$2.25 each; 3 for \$6.00

©



LAVENDER PINOCCHIO

Plant Pat. 947

\$2.00 each; 3 for \$5.25

©

PEACE

Plant Pat. 591

\$2.50 each; 3 for \$6.60



FORTY-NINER

Plant Pat. 792

\$2.25 each; 3 for \$6.00



VOGUE

Plant Pat. 926

\$5.00 each; 3 for \$15.25



ROSEMONT'S Patented Everblooming ROSES



MOJAVE
Plant Pat. 1176
2.75 each; 3 for \$7.20



QUEEN ELIZABETH
Plant Pat. 1259
Each \$2.50, 3 for \$6.60



GOOD NEWS
Plant Pat. 426
\$2.00 each; 3 for \$5.25



SUZON LOTTHE
Plant Pat. 934
\$2.00 each; 3 for \$5.25



SHOW GIRL
Plant Pat. 646
\$2.25 each; 3 for \$6.00



CLIMBING HIGH NOON
Plant Pat. 704
2.50 each; 3 for \$6.60



FASHION
Plant Pat. 781
\$2.00 each; 3 for \$5.25

Buccaneer. Grandiflora. Plant Pat. 1119. Large, very double blooms on long strong stems appear in clusters in profusion. The bright, clear yellow is un fading from bud through maturity. Tall, upright (4 ft.). Our best yellow! \$2.50 each; 3 for \$6.60.

California. HT. Plant Pat. 449. Bud long pointed; flower large, semi-double, fragrant, an even shade of ruddy gold. \$1.50 each; 3 for \$3.90.

Carrousel. Grandiflora. Plant Pat. 1066. Extremely vigorous and disease-resistant. Profuse, fragrant and long lasting blooms of dark red. New type Grandiflora. Height 4-5 ft. A.R.S. rating 9.2. \$2.00 each; 3 for \$5.25.

Charles Mallerin. HT. Plant Pat. 933. Deep, rich, velvety, blackish-red. Very fragrant. Never fades to blue. Vigorous and disease resistant. \$2.50 each; 3 for \$6.60.

Charlotte Armstrong. HT. Plant Pat. 453. Cerise to spectrum-red. Large, beautifully formed, high-centered blooms open from extra long, slender, blood-red buds. Won highest score in fourteen official test gardens of All-America Rose Selections. Outstanding. \$2.25 each; 3 for \$6.00.

Chrysler Imperial. HT. Plant Pat. 1167. Bud long, tapering, maroon-red; flower very large double, high-centered, vivid crimson-red with darker overtones. \$2.50 each; 3 for \$6.60.

Circus. Flor. Plant Pat. 1382. Bright yellow with touches of orange, scarlet, and red. The brightest spot in your garden and so good for cutting! No wonder it was the only AAIRS Selection for 1950. \$2.50 each; 3 for \$6.60.

Cl. Crimson Glory. CHT. Plant Pat. 736. Sport of Crimson Glory and like it except for its vigorous climbing habit. \$2.50 each; 3 for \$6.60. (See picture)

Cl. Peace. CHT. Plant Pat. 932. A strong climbing form of Peace with the same long-stemmed, yellow flowers flushed pink. \$2.25 each; 3 for \$6.00.

Cl. Picture. CHT. Plant Pat. 524. Sport of Picture. Very double, reflexed petals of velvety, clear rose-pink. Foliage glossy, dark. Excellent cut flower. Continuous bloomer. \$2.50 each; 3 for \$6.60.

Diamond Jubilee. HT. Plant Pat. 824. High centered bud, opening to a large, double, cupped flower of buff-yellow, with orange-buff center. Another very desirable All-America Selection. \$2.25 each; 3 for \$6.00. (See picture)

Dream Girl. LC. Plant Pat. 643. Beautiful large, double flowers with very spicy fragrance, un fading coral-pink in color. Very vigorous climber. \$2.25 each; 3 for \$6.00. (See picture)

Fashion. Flor. Plant Pat. 789. Clusters of coral-peach flowers like miniature Hybrid Teas. Vigorous, bushy growth. \$2.00 each; 3 for \$5.25. (See picture)

Forty-Niner. HT. Plant Pat. 792. Large, open, double blooms, borne singly. Striking oriental-red, changing to cherry-red; reverse side of petals deep chrome-yellow to straw-yellow, washed with pink. Very vigorous upright grower; excellent bloomer. \$2.25 each; 3 for \$6.00. (See picture)

Golden Anniversary. HT. Plant Pat. 806. Sport of Good News. Beautifully formed flowers of a fine deep gold flushed apricot at times. This is one yellow Rose which is truly remarkable in that it is well branched and very vigorous. \$1.75 each; 3 for \$4.65.

Goldilocks. Flor. Plant Pat. 672. Clusters of medium-sized, double, yellow flowers. Vigorous, bushy; strong fragrance. Continuous bloomer. A very satisfactory yellow floribunda. \$1.75 each; 3 for \$4.65. (See picture)

Good News. HT. Plant Pat. 426. Very large, globular silvery pink with apricot glow. \$2.00 each; 3 for \$5.25. (See picture)

Happiness. HT. Plant Pat. 911. Brilliant red! Does not blue. Flowers of fine form and splendid for cutting. Strong, healthy. \$2.00 each; 3 for \$5.25.

AMERICAN ROSE SOCIETY
Take advantage of the many opportunities made available to members of the American Rose Society.
WRITE FOR DETAILS:
THE AMERICAN ROSE SOCIETY
4048 Roseloa Place
COLUMBUS 14, OHIO



GOLDILOCKS
Plant Pat. 672
\$1.75 each; 3 for \$4.65

Heart's Desire. HT. Plant Pat. 501. Bud long pointed; large, high-centered, fragrant flower of uniform crimson. \$1.75 each; 3 for \$4.65.

Helen Traubel. HT. Plant Pat. 1028. Magnificent buds of light apricot blending into sparkling pink open into large open flowers of fine form. Has pleasing fragrance. Strong and sturdy grower; prolific bloomer. \$2.75 each; 3 for \$7.20.

High Noon. CHT. Plant Pat. 704. A vigorous, upright pillar. Brilliant lemon-yellow, double, loosely cupped blooms with spicy fragrance. Leathery, glossy foliage. \$2.50 each; 3 for \$6.60. (See picture)

Horace McFarland. HT. Plant Pat. 730. Bud mahogany-red; coppery orange flower, very double (40 to 50 petals) and spicily fragrant. \$2.00 each; 3 for \$5.25.

Jiminy Cricket. Flor. Plant Pat. 1346. Tangerine red and pinkish orange team up on buds and blooms of this All America Winner of 1955. Clusters in constant bloom all season. \$2.00 each; 3 for \$5.25.

Katherine T. Marshall. HT. Plant Pat. 607. Bud deep salmon-pink; flower large, deep rose-pink. Long strong stem. \$1.85 each; 3 for \$4.85.

Lavender Pinocchio. Flor. Plant Pat. 947. Produces large clusters of 4-inch blooms in a new, truly lavender color. About 3 feet tall. \$2.00 each; 3 for \$5.25. (See picture)

Lowell Thomas. HT. Plant Pat. 595. Large very double, high centered, clear canary-yellow. Strong, compact, upright. \$2.25 each; 3 for \$6.00.

Ming Toy. Flor. Plant Pat. 900. Small 2 in. flowers, very double (50 petals) of deep rose-pink bloom in profuse clusters. Vigorous, upright. \$1.50 each; 3 for \$3.90.

Mirandy. HT. Plant Pat. 632. Large double, with sweet spicy fragrance; garnet-red. \$2.25 each; 3 for \$6.00.

Mission Bells. HT. Plant Pat. 923. Large, double, high-centered blooms of salmon-pink; moderately fragrant. \$2.00 each; 3 for \$5.25.

Mojave. HT. Plant Pat. 1176. A blend of salmon, apricot and orange. Flowers are produced on individual stems. Vigorous. A fine rose in the orange color range. \$2.75 each; 3 for \$7.20. (See picture)

New Yorker. HT. Plant Pat. 823. A large, sparkling, red, red Rose, delightfully fragrant. A profuse bloomer from early spring until cold weather. Long stems. \$2.50 each; 3 for \$6.60.

Nocturne. HT. Plant Pat. 713. Large, semi-double to double, fragrant, cardinal-red shaded to crimson. \$2.25 each; 3 for \$6.00.

Peace. HT. Plant Pat. 591. Large, striking flower of canary-yellow, pale gold, deep yellow, pearl-white, often edged apple-blossom. Rates as the best Rose in America. \$2.50 each; 3 for \$6.60. (See picture)

Queen Elizabeth. Grandiflora. Plant Pat. 1259. Fragrant, rose pink buds blend into satin pink blooms. Resistant to black spot. Very vigorous. \$2.50 each; 3 for \$6.60. (See picture)

Pinocchio. Flor. Plant Pat. 484. Blooms small, salmon flushed gold. \$1.75 each; 3 for \$4.65.

President Eisenhower. HT. Plant Pat. 1217. Large blooms of rich un fading uniform rose-red with lasting brilliance. Come singly on strong stems. It is admirably free and continuous in bloom on upright, bushy 3-ft. plants. Fragrant. \$2.25 each; 3 for \$6.00.

Red Pinocchio. Flor. Plant Pat. 812. A bright red form of the popular Pinocchio. \$1.75 each; 3 for \$4.65. (See picture)

Rose of Freedom. HT. Plant Pat. 791. Very large, double, fragrant flower of current-red changing to rose-red. \$2.00 each; 3 for \$5.25.

Show Girl. HT. Plant Pat. 646. Large semi-double, cupped, fragrant, deep pink. \$2.25 each; 3 for \$6.00. (See picture)

Suzon Lotthe. HT. Plant Pat. 934. Pale to bright pink blend. Wonderfully double blooms, high-centered and extremely large. Long-lasting as cut flowers. \$2.00 each; 3 for \$5.25. (See picture)



DREAM GIRL
Plant Pat. 643
\$2.25 each; 3 for \$6.00



LAVENDER PINOCCHIO
Plant Pat. 947
\$2.00 each; 3 for \$5.25



PEACE
Plant Pat. 591
\$2.50 each; 3 for \$6.60



VOGUE
Plant Pat. 926
\$2.00 each; 3 for \$5.25



RED PINOCCHIO
Plant Pat. 812
\$1.75 each; 3 for \$4.65



DIAMOND JUBILEE
Plant Pat. 824
\$2.25 each; 3 for \$6.00



FORTY-NINER
Plant Pat. 792
\$2.25 each; 3 for \$6.00



CLIMBING CRIMSON GLORY
Plant Pat. 736
\$2.50 each; 3 for \$6.60

if not supported, take root where they touch the ground and thus "ramble."
 A Pillar Rose does not climb or "ramble" for its canes are too stiff.
 Some are strong and self-supporting; others require some support.

Price, except as noted, best-grade, 2-yr. plants, \$1.25 each; 3 for \$3.15.

American Pillar. L. C. Immense clusters of single, carmine-pink, white-eyed flowers with prominent golden stamens. A solid mass of blooms in late June.

Jacotte. L.C. Large flowers of deep coppery yellow, tinted orange. Blooms profusely May-June. Fragrant.

Mary Wallace. L.C. Very large, semi-double, warm rose-pink blooms profusely seasonally. Famous dooryard rose.

Paul's Scarlet Climber. Semi-double flower in large clusters; flaming scarlet with a crimson shade. None better. An excellent pillar Rose. \$1.10 each; 3 for \$2.85.

Seven Sisters (R. Multiflora platyphylla). Introduced 1817. Large trusses of 1½-inch flowers in shades ranging near white through the lilac, rose and dark carmine tones all blooming at once. Reaches climbing size.

Silver Moon. L.C. Large, creamy-white, slightly fragrant flowers in clusters. Profuse June blooms.

BANKSIA, CHEROKEE AND MISCELLANEOUS ROSES

Price, except as noted, best-grade, 2-yr. plants, \$1.50 each; 3 for \$3.75

White Banksia. Introduced 1807. Produces great masses of fragrant small, double, white flowers early in the Spring. Charming old roses for the South. Easily grown and extremely long lived.

Also Yellow Banksia. But not fragrant. \$2.00 each; 3 for \$5.00. State color.

Cherokee, Pink or White. Well known for two centuries.

American Beauty. HP. Both buds and blooms are very large, deep carmine, shaded Neyron-rose. Free blooming and extremely fragrant. Excellent for cutting. \$1.10 each; 3 for \$2.85; \$10.50 per dozen.

Belle of Portugal. HG. Long-pointed bud, large, double flower (6 in. dia.) of light flesh-pink. Climbs to 20 ft. Continuous Spring bloom. Not hardy north.

Frau Karl Druschki (White American Beauty). HP. Snow-white, large and full, at times tinged flesh or light pink, but it soon becomes white. \$1.10 each; 3 for \$2.85.

Louis Philippe China. Deep purplish, scarlet-red, medium sized blooms. Very hardy old hedge rose. Blooms profusely.

Paul Neyron. HP. Very double, carried on long stems; clear pink shading to rose. Half a dozen of the large blooms will fill an ordinary basket. \$1.10 each; 3 for \$2.85.

Rosa Viridiflora (Green Rose). Green blooms of narrow leaves. A novelty; good for greenery in your arrangements. \$1.25 each; 3 for \$3.15.



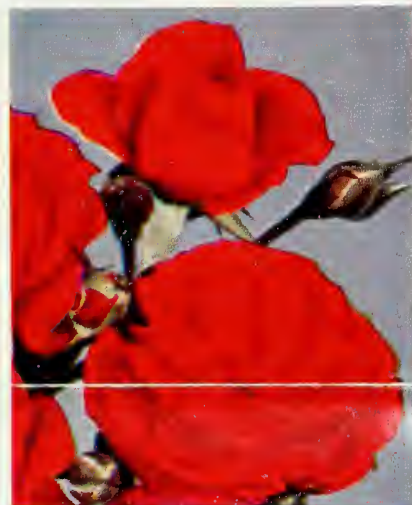
CL. K. A. VIKTORIA

OFFER NO. 2 FAITHFUL TEN

Here is a rose garden to delight the Amateur. All varieties are easily grown and are excellent for cutting purposes.

Betty Uprichard . . .	\$ 1.10
Briarcliff	1.10
Coledonio	1.10
Editor McFarland . . .	1.10
E. G. Hill	1.10
Etoile de Hollande . . .	1.25
Luxembourg	1.10
Radiance	1.10
Red Radiance	1.10
Saeur Therese	1.10
Total	\$11.15

Complete Rose Garden
prepaid for only \$9.00



FLORADORA

EVERBLOOMING POLYANTHA OR BABY ROSES

The origin of the Polyantha is not clear. It is believed to have come from the Multiflora ramblers; hence the misleading names sometimes applied to them "Baby Ramblers." They are not ramblers in any sense of the word, but very dwarf, bushy plants, blooming in large clusters of tiny flowers. Excellent for mass planting or dwarf, informal hedges and borders.

Price, except as noted, best-grade 2-yr. plants, \$1.10 each; 3 for \$2.85;
\$10.50 per doz.

Cecile Brunner. The true Sweetheart Rose. Sprays of rosy pink buds open into shell-pink flowers. \$1.50 each; 3 for \$3.75. (See picture)

Chatillon Rose. Semi-double, fragrant, bright pink blooms in large clusters.

Gartendirektor Otto Linne. Double, dark carmine-pink, yellowish base, blooms in clusters of 30 or more. Bushy and vigorous.

George Elger (Yellow Baby Rambler). Like famous yellow Sweetheart rose except color is coppery to clear yellow. Height to 15 inches.

Gloria Mundi. The prettiest orange-scarlet Baby Rose we know. A deserving winner of medals.

Ideal. Velvety crimson trusses of fragrant flowers.

Katharina Zeimet. Large clusters of 25-50 small flowers. One of the best white Baby Roses.

Peach Blossom. Clusters of 6-12 orange-red buds open into semi-double 2-inch blooms of soft carmine-rose. Bush dwarf and vigorous.

Perle d'Or. Dainty, pointed, salmon-orange buds; double, lasting, intensely fragrant, salmon-pink flowers borne in large clusters. Like Cecile Brunner in form and growth.

Tip-Top (Baby Doll). Tyrian-rose at edge of dainty blooms, passing to white and pale yellow.



EUTIN



LUXEMBOURG



ROUGE MALLERIN



CRIMSON
GLORY

BRIARCLIFF



Hardy Climbers, Ramblers and Pillar Roses

A Climbing Rose is a plant that, if given support, grows higher and higher, starting each year from or near the top of the previous year's growth.

A Rambler, properly speaking, has long, thin, pliable branches which if not supported, take root where they touch the ground and thus "ramble."

A Pillar Rose does not climb or "ramble" for its canes are too stiff. Some are strong and self-supporting; others require some support.

Price, except as noted, best-grade, 2-yr. plants, \$1.25 each; 3 for \$3.15.

American Pillar. L. C. Immense clusters of single, carmine-pink, white-eyed flowers with prominent golden stamens. A solid mass of blooms in late June.

Jacotte. L.C. Large flowers of deep coppery yellow, tinted orange. Blooms profusely May-June. Fragrant.

Mary Wallace. L.C. Very large, semi-double, warm rose-pink blooms profusely seasonally. Famous dooryard rose.

Paul's Scarlet Climber. Semi-double flower in large clusters; flaming scarlet with a crimson shade. None better. An excellent pillar Rose. \$1.10 each; 3 for \$2.85.

Seven Sisters (R. Multiflora platyphylla), Introduced 1817. Large trusses of 1 1/2-inch flowers in shades ranging near white through the lilac, rose and dark carmine tones all blooming at once. Reaches climbing size.

Silver Moon. L.C. Large, creamy-white, slightly fragrant flowers in clusters. Profuse June blooms.

BANKSIA, CHEROKEE AND MISCELLANEOUS ROSES

Price, except as noted, best-grade, 2-yr. plants, \$1.50 each; 3 for \$3.75

White Banksia. Introduced 1807. Produces great masses of fragrant small, double, white flowers early in the Spring. Charming old roses for the South. Easily grown and extremely long lived.

Also Yellow Banksia. But not fragrant. \$2.00 each; 3 for \$5.00. State color.

Cherokee, Pink or White. Well known for two centuries.

American Beauty. HP. Both buds and blooms are very large, deep carmine, shaded Neyron-rose. Free blooming and extremely fragrant. Excellent for cutting. \$1.10 each; 3 for \$2.85; \$10.50 per dozen.

Belle of Portugal. HG. Long-pointed bud, large, double flower (6 in. dia.) of light flesh-pink. Climbs to 20 ft. Continuous Spring bloom. Not hardy north.

Frau Karl Druschki (White American Beauty). HP. Snow-white, large and full, at times tinged flesh or light pink, but it soon becomes white. \$1.10 each; 3 for \$2.85.

Louis Philippe China. Deep purplish, scarlet-red, medium sized blooms. Very hardy old hedge rose. Blooms profusely.

Paul Neyron. HP. Very double, carried on long stems; clear pink shading to rose. Half a dozen of the large blooms will fill an ordinary basket. \$1.10 each; 3 for \$2.85.

Rosa Viridiflora (Green Rose). Green blooms of narrow leaves. A novelty; good for greenery in your arrangements. \$1.25 each; 3 for \$3.15.



CL. K. A. VIKTORIA

OFFER NO. 2 FAITHFUL TEN

Here is a rose garden to delight the Amateur. All varieties are easily grown and are excellent for cutting purposes.

Betty Upprichard	\$ 1.10
Briarcliff	1.10
Caledonia	1.10
Editor McFarland	1.10
E. G. Hill	1.10
Etoile de Hollande	1.25
Luxembourg	1.10
Radianca	1.10
Red Radinca	1.10
Saeur Therese	1.10
Total	\$11.15

Complete Rose Garden
prepaid for only \$9.00



FLORADORA

EVERBLOOMING POLYANTHA OR BABY ROSES

The origin of the Polyantha is not clear. It is believed to have come from the Multiflora ramblers; hence the misleading names sometimes applied to them "Baby Ramblers." They are not ramblers in any sense of the word, but very dwarf, bushy plants, blooming in large clusters of tiny flowers. Excellent for mass planting or dwarf, informal hedges and borders.

Price, except as noted, best-grade 2-yr. plants, \$1.10 each; 3 for \$2.85; \$10.50 per doz.

Cecile Brunner. The true Sweetheart Rose. Sprays of rosy pink buds open into shell-pink flowers. \$1.50 each; 3 for \$3.75. (See picture)

Chatillon Rose. Semi-double, fragrant, bright pink blooms in large clusters.

Gartendirektor Otto Linne. Double, dark carmine-pink, yellowish base, blooms in clusters of 30 or more. Bushy and vigorous.

George Elger (Yellow Baby Rambler). Like famous yellow Sweetheart rose except color is coppery to clear yellow. Height to 15 inches.

Gloria Mundi. The prettiest orange-scarlet Baby Rose we know. A deserving winner of medals.

Ideal. Velvety crimson trusses of fragrant flowers.

Katharina Zeimet. Large clusters of 25-50 small flowers. One of the best white Baby Roses.

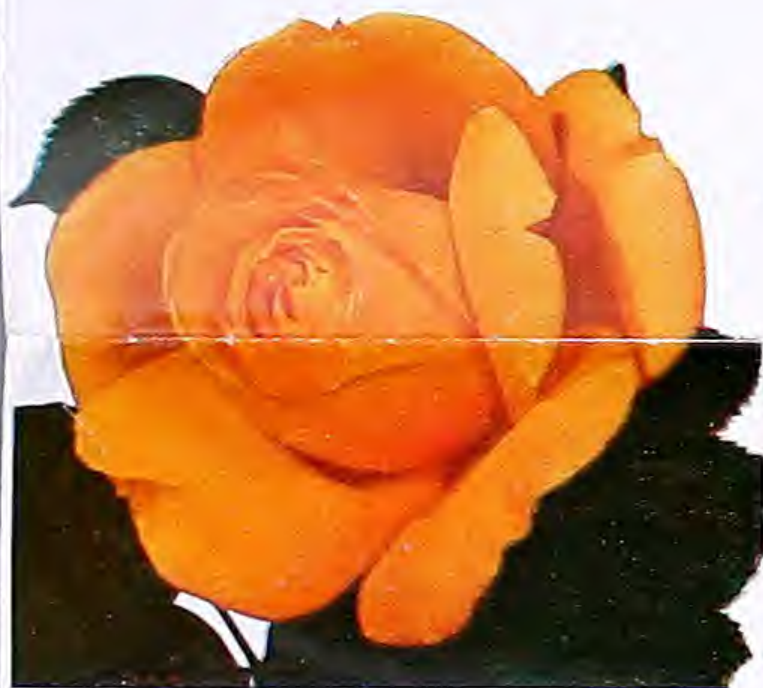
Peach Blossom. Clusters of 6-12 orange-red buds open into semi-double 2-inch blooms of soft carmine-rose. Bush dwarf and vigorous.

Perle d'Or. Dainty, pointed, salmon-orange buds; double, lasting, intensely fragrant, salmon-pink flowers borne in large clusters. Like Cecile Brunner in form and growth.

Tip-Top (Baby Doll). Tyrian-rose at edge of dainty blooms, passing to white and pale yellow.



EUTIN



LUXEMBOURG

ROUGE MALLERIN



CRIMSON
GLORY



BRIARCLIFF



VARIETIES AVAILABLE FOR SHIPMENT — FALL AND SPRING SEASON 1959-60

From

ROSEMONT NURSERIES

TYLER, TEXAS

1959 A J
FEB 1
U. S. Department of Agriculture

ITEMS LISTED WITH PRICE AND DESCRIPTION IN THIS FOLDER:

American Beauty, HP
 American Pillar, LC
 Ami Quinard, HT
 Antoine Rivoire, HT
~~Belle of Portugal, HG~~
 Better Times, HT
 Betty Uprichard, HT
 Blaze, LC
~~Bon Silene, OFT~~
 Briarcliff, HT
 Buccaneer, Grandiflora, Patented
 Caledonia, HT
 Carrousel, Grandiflora, Patented
 Cecile Brunner, Polyantha
 Charles Mallerin, HT., Patented
 Chrysler Imperial, HT., Patented
 Circus, Floribunda, Patented
 Comtesse Vandal, HT
 Condesa de Sastago, HT
 Cl. Briarcliff, CHT
 Cl. Crimson Glory, CHT, Patented
 Cl. Etoile de Hollande, CHT
 Cl. Peace, CHT., Patented
~~Cl. Perle d'Or, CPolyantha~~
 Cl. Poinsettia, CHT
 Cl. President Herbert Hoover, CHT
 Cl. Radiance, CHT
 Cl. Red Radiance, CHT
 Cl. Talisman, CHT
 Crimson Glory, HT
 Dainty Bess, HT
~~Duchesse de Brabant, OFT~~
 Eclipse, HT
 Edith Nellie Perkins, HT
 Editor McFarland, HT
 Else Poulsen, Floribunda
 Etoile de Hollande, HT
 Eutin, Floribunda
 Fashion, Floribunda, Patented
 Floradora, Floribunda
 F. Niner, HT., Patented, \$2.50 each; 3 for \$6.60.
 Francis Scott Key, HT
 Frau Karl Druschki, HP
~~Friedrich von Marschall, OFT~~
 George Elger, Polyantha
 Golden Climber, LC
 Golden Dawn, HT
 Golden Talisman, HT
 Goldilocks, Floribunda, Patented
 Gloria Mundi, Polyantha
 Gruss an Aachen, Floribunda
 Happiness, HT, Patented
 Helen Traubel, HT., Patented
 High Noon, LC., Patented
~~Hillich Gaede, HT~~

Ideal, Polyantha
 Improved Lafayette, Floribunda
 Jiminy Cricket, Floribunda, Patented
 Kaiserin Auguste Viktoria, HT
 Katharina Zeimet, Polyantha
 Katherine T. Marshall, HT, Patented
 Konigin Luise, HT
 Lowell Thomas, HT
 Luxembourg, HT
~~Marechal Niel, Noisette~~
 Mary Wallace, LC
 McGredy's Ivory, HT
 McGredy's Sunset, HT
~~Mermaid, Hbe~~
 Mirandy, HT, Patented
~~Mme. Joseph Perraud, HT~~
 Mojave, HT., Patented
~~Mrs. Dudley Cross, OFT~~
 Mrs. Pierre S. duPont, HT
 Mrs. R. M. Finch, Floribunda
 New Dawn, LC
 New Yorker, HT., Patented
 Nocturne, HT., Patented
 Paul Neyron, HP
 Paul's Scarlet, LC
 Peace, HT., Patented
 Peach Blossom, Polyantha
 Perle d'Or, Polyantha
 Permanent Wave, Floribunda
 Picture, HT
 Poinsettia, HT
 President Eisenhower, HT., Patented
 President Herbert Hoover, HT
~~Princess de Sagan, OFT~~
 Queen Elizabeth, Grandiflora, Patented
 Radiance, HT
 Red Pinocchio, Floribunda, Patented
 Red Radiance, HT
 Red Ripples, Floribunda
 Rouge Mallerin, HT
 Shell Pink Radiance, HT
 Show Girl, HT., Patented
 Soeur Therese, HT
 Sterling, HT
 Summer Snow, Floribunda
 Talisman, HT
 Texas Centennial, HT
 The Doctor, HT
 Vogue, Floribunda, Patented
 White Banksia
~~White Maman Cochet, OFT~~
~~White Radiance, HT~~
~~William R. Smith, OFT~~
 Yellow Banksia

ITEMS NOT LISTED IN THIS FOLDER:

All Varieties Generally Good in United States:

AZTEC, HT, Plant Pat. 1648. Deep, scarlet-orange. Vigorous (2-3 ft.), spreading. \$2.75 each; 3 for \$7.20.
~~BARONESS HENRIETTA SNOY, OFT., Large double, flesh-color inside, carmine-pink outside. \$1.50 each; 3 for \$3.75.~~

BLANCHE MALLERIN, HT. Plant Pat. 594. Pure white. Very vigorous. \$2.00 each; 3 for \$5.25.
 CHARLOTTE ARMSTRONG, HT. Cerise to spectrum-red. Formerly patented. \$1.35 each; 3 for \$3.50.

- CL. CHARLOTTE ARMSTRONG, CHT. Plant Pat. 523. Climbing form of the bush. Climbs to 15 feet. \$2.50 each; 3 for \$6.60.
- CL. CHRYSLER IMPERIAL, CHT. Plant Pat. 1528. An eye-catching climber with its huge red, fragrant blooms. \$2.75 each; 3 for \$7.20.
- CL. FORTY-NINER, CHT. Plant Pat. 1094. Same unique red and yellow blooms as the bush. \$2.50 each; 3 for \$6.60.
- ~~CL. LOUIS PHILIPPE, C~~ China. Deep purplish red. Profuse bloom. \$1.50 each; 3 for \$3.75.
- CL. QUEEN ELIZABETH, C. Grandiflora. Plant Pat. 1615. Climbing form of the bush. Excellent for cuttings. \$2.75 each; 3 for \$7.20.
- CL. SUMMER SNOW. CFlor. Large clusters of snow-white. Vigorous everblooming climber (8-10 ft.). Formerly patented. \$1.35 each; 3 for \$3.50.
- CL. SUNBURST, CHT. Splendid yellow climbing form of bush. \$1.10 each; 3 for \$2.85.
- CONFIDENCE. HT. Plant Pat. 1192. Large blooms of soft peach and pink. Upright, bushy, 4 ft. \$2.50 each; 3 for \$6.60.
- COCORICO. Floribunda. Plant Pat. 1193. Bud pointed; flower large, single, geranium-red. Upright. 3 ft. \$2.00 each; 3 for \$5.25.
- CORAL PILLAR. CHT. Large, double, very fragrant, geranium-pink. Very vigorous. \$1.35 each; 3 for \$3.50.
- CRIMSON ROSETTE. Floribunda. Plant Pat. 901. Coiled "rosette" shape; deep red, very double. Height 3 ft. Clusters. \$1.50 each; 3 for \$3.90.
- DR. W. VAN FLEET. LR. Bud pointed, flower large, fragrant, cameo-pink fading flesh-white. Height 15-20 ft. \$1.25 each; 3 for \$3.15.
- EL CAPITAN. Grandiflora. Plant Pat. 1796. New rose for 1960. Big, handsome plant of cherry-red blooms. \$3.00 each; 3 for \$7.95.
- FIRST LOVE, HT. Plant Pat. 921. Long, pointed buds of soft dawn pink. Fine for cutting. \$2.25 each; 3 for \$6.00.
- FRED HOWARD, HT. Plant Pat. 1006. Flower large, double, high centered, slightly fragrant, golden orange shaded pink. \$2.00 each; 3 for \$5.25.
- FUSILIER. Floribunda. Plant Pat. 1709. Brilliant orange-red with unusual frilled edge. Very vigorous (2-3 ft.). \$2.50 each; 3 for \$6.60.
- GOLD CUP. Floribunda. Plant Pat. 1683. The only clear yellow floribunda that has won an AARS award! Bushy (2 ft.). \$2.50 each; 3 for \$6.60.
- GOLDEN GIRL. Grandiflora. Plant Pat. Applied For. A clear yellow beauty. Strong growing. \$3.00 each; 3 for \$7.95.
- ~~GOLDEN OPHELIA, HT.~~ Golden YELLOW in center, paling slightly on outer petals. \$1.10 each; 3 for \$2.85.
- ~~GOLDEN RAPTURE, HT.~~ Clear golden yellow flowers of fine form, old rose fragrance, wonderful for cutting. \$1.25 each; 3 for \$3.15.
- GOLDEN SALMON, Polyantha. Large, pure, unfading orange in huge trusses. Bushy. \$1.10 each; 3 for \$2.85.
- GOLDEN SCEPTER, HT. Plant Pat. 910. Flower large, double, fragrant, deep yellow. \$1.85 each; 3 for \$4.85.
- GOLDEN SHOWERS, LC. Plant Pat. 1557. Pillar type with large fragrant clear yellow blooms. (6-10 ft.) \$2.75 each; 3 for \$7.20.
- GOOD NEWS, HT. Very large, globular, silvery pink with apricot glow. Formerly patented. \$1.35 each; 3 for \$3.50.
- GREEN FIRE, Floribunda. Plant Pat. 1776. Flower large, semi-double, bright yellow; cluster. \$2.50 each; 3 for \$6.60.
- HEAT WAVE, Floribunda. Plant Pat. 1786. Large, double, orange-scarlet flowers. \$2.75 each; 3 for \$7.20.
- IRENE OF DENMARK, Floribunda. Plant Pat. 889. "Sweet-heart" type rose in clear frosty white. Excellent bloomer. \$1.75 each; 3 for \$4.65.
- ISOBEL HARKNESS, HT. Plant Pat. 1650. Large, double, fragrant, bright yellow flowers with strong stems. Upright (3 ft.). \$2.75 each; 3 for \$7.20.
- IVORY FASHION, Floribunda. Plant Pat. 1688. Ivory-colored flowers, long golden stamens. Upright (2-3 ft.). \$2.75 each; 3 for \$7.20.
- KORDES PERFECTA, HT. Plant Pat. 1604. Sheer Perfection! Exciting new rosy pink and cream colored blooms. Very vigorous, upright (3-4 ft.). \$3.50 each; 3 for \$9.20.
- LADY ELGIN, HT. Plant Pat. 1469. Lovely soft jeweler's gold buds opening to golden-orange and apricot blossoms with reddish veins. Extremely bushy and vigorous (4-5 ft.). \$2.50 each; 3 for \$6.60.
- LAVENDER GIRL, Floribunda. Plant Pat. 1672. Miniature hybrid tea-like blooms in clusters. A true lavender color at last! Low growing (2 ft.). \$5.00 each; 3 for \$12.75.
- LITTLE DARLING, Floribunda. Plant Pat. 1851. A darling bud which opens to rose-pink tones, melting into butter-cup yellow. Very vigorous (4-5 ft.). \$2.00 each; 3 for \$5.25.
- LOVE SONG, HT. Plant Pat. 1360. A very large glowing pink rose with a reverse of yellow that holds its color. Medium grower (2-3 ft.). \$2.50 each; 3 for \$6.60.
- MA PERKINS, Floribunda. Plant Pat. 1143. Exquisite blooms of sparkling coral-shell-pink. \$2.00 each; 3 for \$5.25.
- MASQUERADE. Floribunda. Plant Pat. 975. Bright yellow blooms turning salmon-pink and then turning dark red, with several colors visible at once in a cluster. \$2.00 each; 3 for \$5.25.
- McGredy's Scarlet, HT. Flower large, double, velvety crimson scarlet; base orange. \$1.10 each; 3 for \$2.85.
- MIDNIGHT, HT. Plant Pat. 1542. Velvety deep black-red flowers on long strong stem. \$2.75 each; 3 for \$7.20.
- MONTEZUMA. Grandiflora. Plant Pat. 1383. Perfect long-pointed, orange-scarlet buds open to salmon-orange blooms on long stems. \$2.75 each; 3 for \$7.20.
- ORANGE SWEETHEART, Floribunda. Plant Pat. 1155. Flowers large, double, orange pink in clusters. Upright, bushy, profuse bloom. \$2.00 each; 3 for \$5.25.
- PINK BOUNTIFUL. Floribunda. Plant Pat. 601. Buds are tinted deep reddish pink, and unfolds into buff-salmon-pink. \$1.75 each; 3 for \$4.65.
- PINKIE, Floribunda. Plant Pat. 712. Perfect little pink buds and blooms. Low growing (2 ft.). \$2.00 each; 3 for \$5.25.
- PINK PEACE, HT. Plant Pat. 1759. A descendant of Peace. Huge satiny pink blooms with wavy petals pencilled in cream. \$3.00 each; 3 for \$7.95.
- PINK ROSETTE, Floribunda. Plant Pat. 902. Large clusters of pink rosettes. Medium height. \$1.50 each; 3 for \$3.90.
- PINOCCHIO. Floribunda. Blooms small, salmon flushed gold. Formerly patented. \$1.35 each; 3 for \$3.50.
- ROSLYN, HT. Bud long pointed, deep orange; flower semi-double, golden yellow. \$1.10 each; 3 for \$2.85.
- ROUNDELAY, Grandiflora. Plant Pat. 1280. Glowing red flowers that are long lasting when cut. \$2.50 each; 3 for \$6.60.
- RUBAIYAT, HT. Plant Pat. 758. Long, graceful buds of brilliant red on long stems. \$1.85 each; 3 for \$4.85.
- RUBY LIPS. Floribunda. Plant Pat. 1775. Profuse clusters of brilliant red blooms. \$2.50 each; 3 for \$6.60.
- ~~SLEIGH BELLS, HT.~~ Plant Pat. 1004. Flower large, double, very fragrant white, center creamy. Vigorous. \$2.00 each; 3 for \$5.25.
- STAR FIRE, Grandiflora. Plant Pat. 1742. A currant-red bloom that stays bright and colorful. \$3.00 each; 3 for \$7.95.
- STARLET, Floribunda. Plant Pat. 1694. Perfectly shaped flowers of clear yellow borne singly and in clusters. \$2.50 each; 3 for \$6.60.
- SUNBURST, HT. Bud long pointed; double flower of variable deep cadmium-yellow to orange. \$1.25 each; 3 for \$3.15.
- SUN KING, HT. Plant Pat. 1342. Flower large, double, high centered, fragrant, bright lemon-yellow. \$2.50 each; 3 for \$6.60.
- TAPESTRY, HT. Plant Pat. 1812. Large blooms of mingled colors of flame, yellow and copper. Low, bushy (2 ft.). \$3.00 each; 3 for \$7.95.
- TEXAN, Floribunda. Plant Pat. 1471. Tall robust plant which produces large long-stemmed blooms, rich bright red. \$2.50 each; 3 for \$6.60.
- TIFFANY, HT. Plant Pat. 1304. Large, double flowers of silvery pink flushed golden yellow at the base. Very fragrant; 3-4 feet. \$2.75 each; 3 for \$7.20.
- TORCH SONG, HT., Plant Pat. 1760. Large blooms of blood-orange-red. \$2.50 each; 3 for \$6.60.
- VALENTINE, Floribunda. Plant Pat. 1029. Large clusters of bright red flowers. Low growing. \$2.00 each; 3 for \$5.25.
- WHITE KNIGHT, HT. Plant Pat. 1359. AARS award winner. White satiny flowers on long stems. Ideal for cutting. \$3.00 each; 3 for \$7.95.
- YELLOW PINOCCHIO, Floribunda. Plant Pat. 992. Produces great masses of apricot-yellow blooms. 3 feet. \$1.50 each; 3 for \$3.90.

ORDER SHEET

Please Do Not Write Here

PLANTING INSTRUCTIONS INCLUDED WITH EVERY ORDER

ROSEMONT NURSERIES

D. L. THOMPSON, OWNER TYLER, TEXAS

ORDER No. DATE SHIP

YOUR NAME DATE POSTOFFICE STREET ADDRESS OR ROUTE AND BOX NO. COUNTY STATE SHIPPING POINT EXPRESS OFFICE FREIGHT PARCEL POST AMOUNT ENCLOSED \$ CASH DRAFT CHECK STAMPS

If sold out of any item, may we substitute? (Write "Yes" or "No")

Table with 5 columns: QUANTITY, NAMES OF TREES OR PLANTS, EACH, DOZEN, TOTAL PRICE

WE PREPAY ALL ORDERS AMOUNTING TO \$4.00 OR MORE WE GUARANTEE OUR ROSES TO LIVE

FROM

ROSEMONT NURSERIES

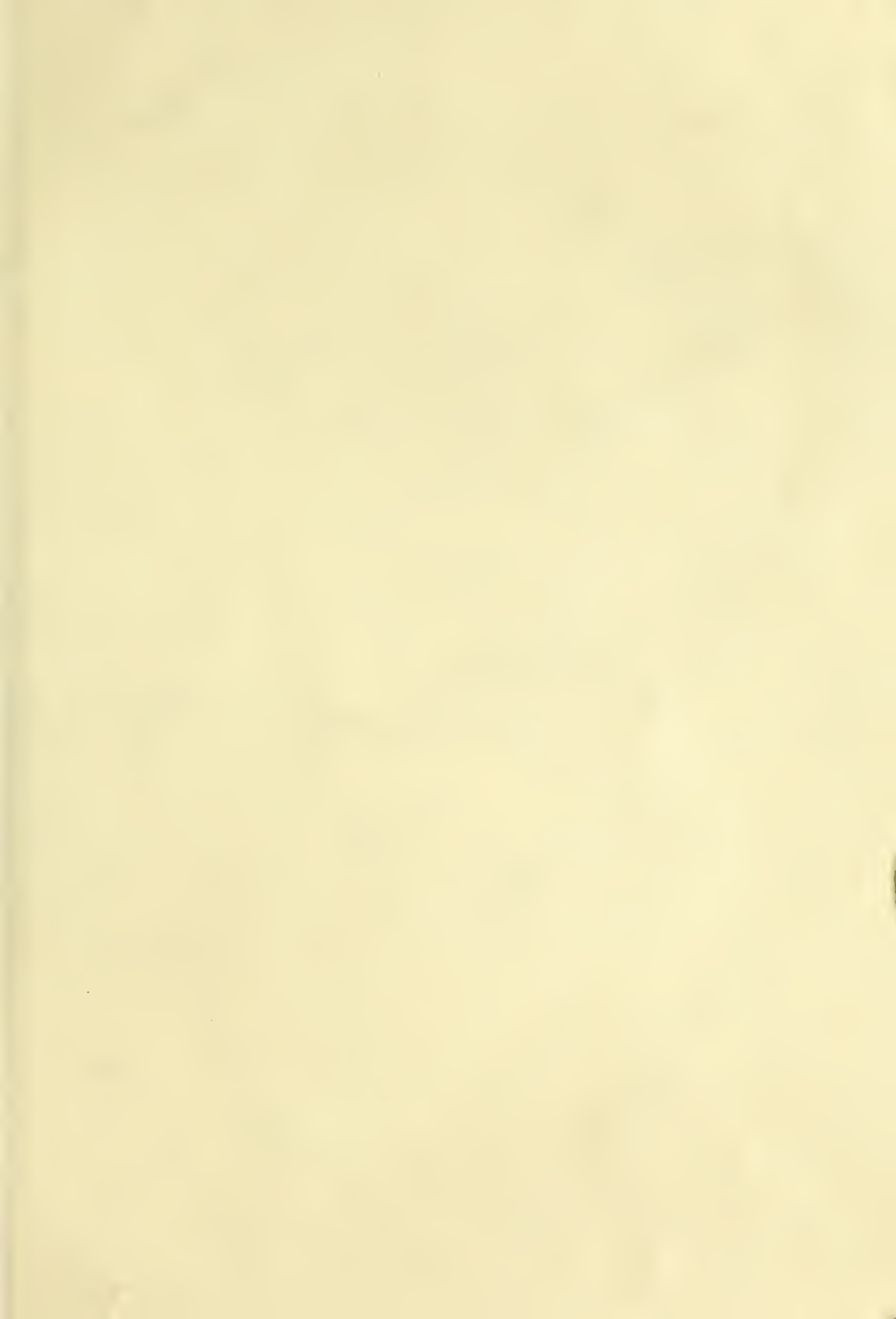
D. L. THOMPSON, OWNER

P. O. BOX 839

TYLER,

TEXAS







PERMANENT WAVE

OFFER NO. 1

Formerly Patented Floribundas at Special Prices.

Betty Prior	\$1.25
Donald Prior	1.35
Permanent Wave	1.10
Summer Snow	1.35
Total	<u>\$5.05</u>

Special Price

Shipped prepaid for only \$4.50.
6 each of above varieties (24 plants)
shipped prepaid for \$24.95.



DONALD PRIOR



BETTY PRIOR



SUMMER SNOW



DAINTY BESS



AMI QUINARD

Rosemont's Liberal Guarantee

**WE prepay
shipping charges
on orders
amounting to \$4.00
or more**

We ship only best-grade, 2-year plants at prices as reasonable as possible under present costs of production. Rosemont Roses have bloomed profusely one year before being shipped you; with proper care they will begin blooming early the first summer.

All roses shipped from Rosemont are guaranteed to live and bloom as described in this folder. Exceptions: Climbers and Ramblers which bloom second or third season after planting. If any fail after normal care, report by July 31, 1959, for FREE replacement.

We do not ship outside Continental U.S.A.

NOTICE
**Free replacement
made if report in by
July 31, 1959**