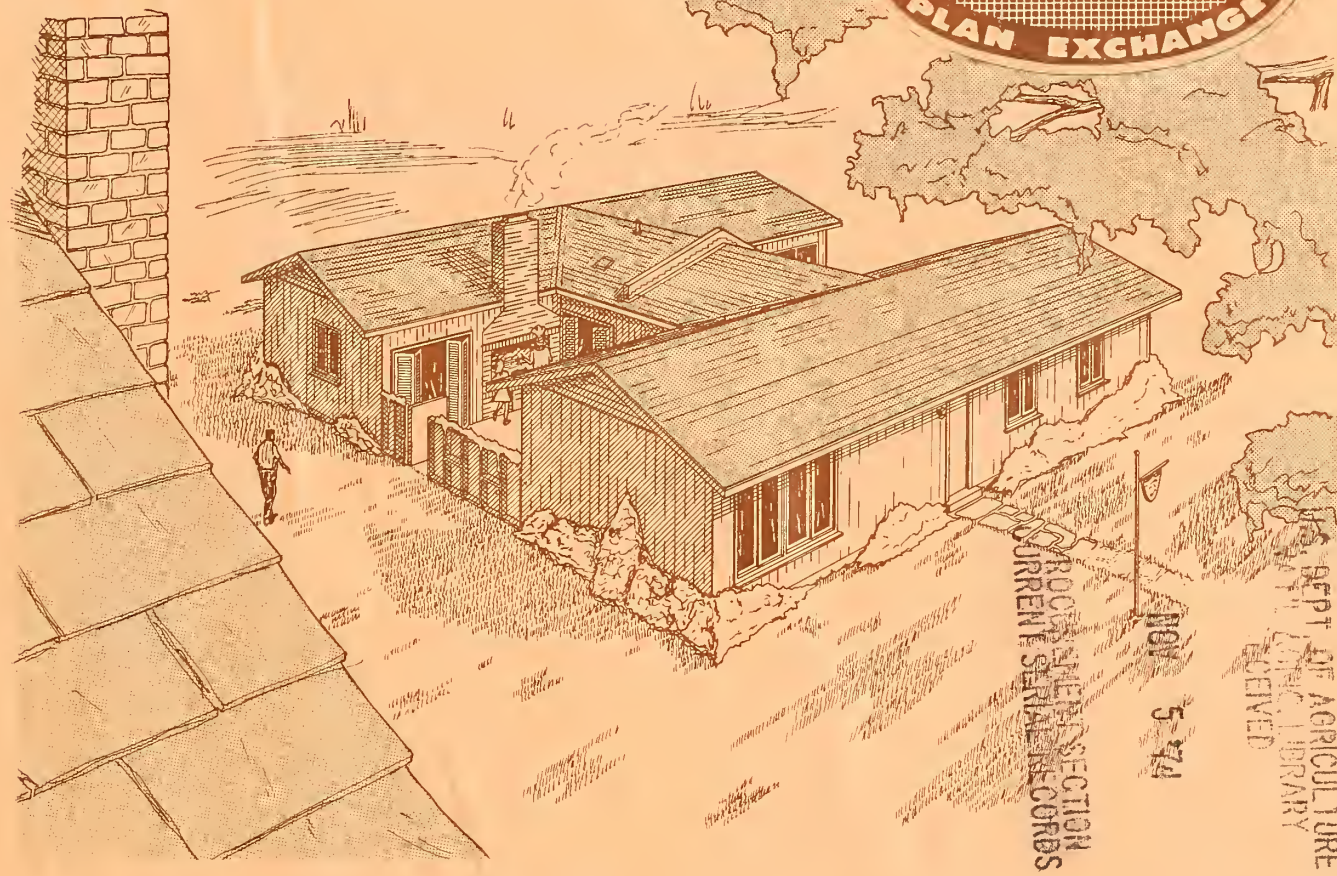


g 84m  
sp. 3  
1  
Ag 84M

# 2 - Bedroom DUPLEX

# 128

**COOPERATIVE FARM BUILDING**  
**Plan No. 7200**  
 (3 SHEETS)  
**PLAN EXCHANGE**



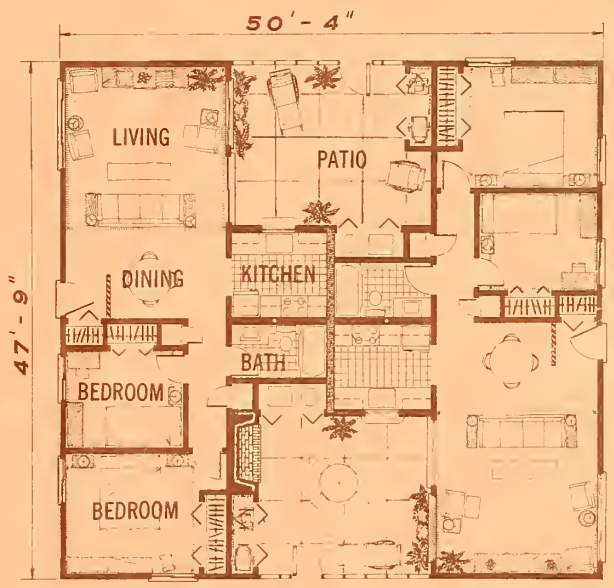
This duplex design is the next best thing to a single family house. It works equally well for a young family or an elderly couple.

The two identical units are divided by a concrete block firewall furred with gypsum board. This wall separates the kitchen and bath area of each unit, which combined, forms a central "core" of plumbing and utilities.

The entrance is visually screened from the dining area and has a generous coat closet.

The living and dining areas can be specially separated by furniture but are combined to form one large area for special entertainment needs.

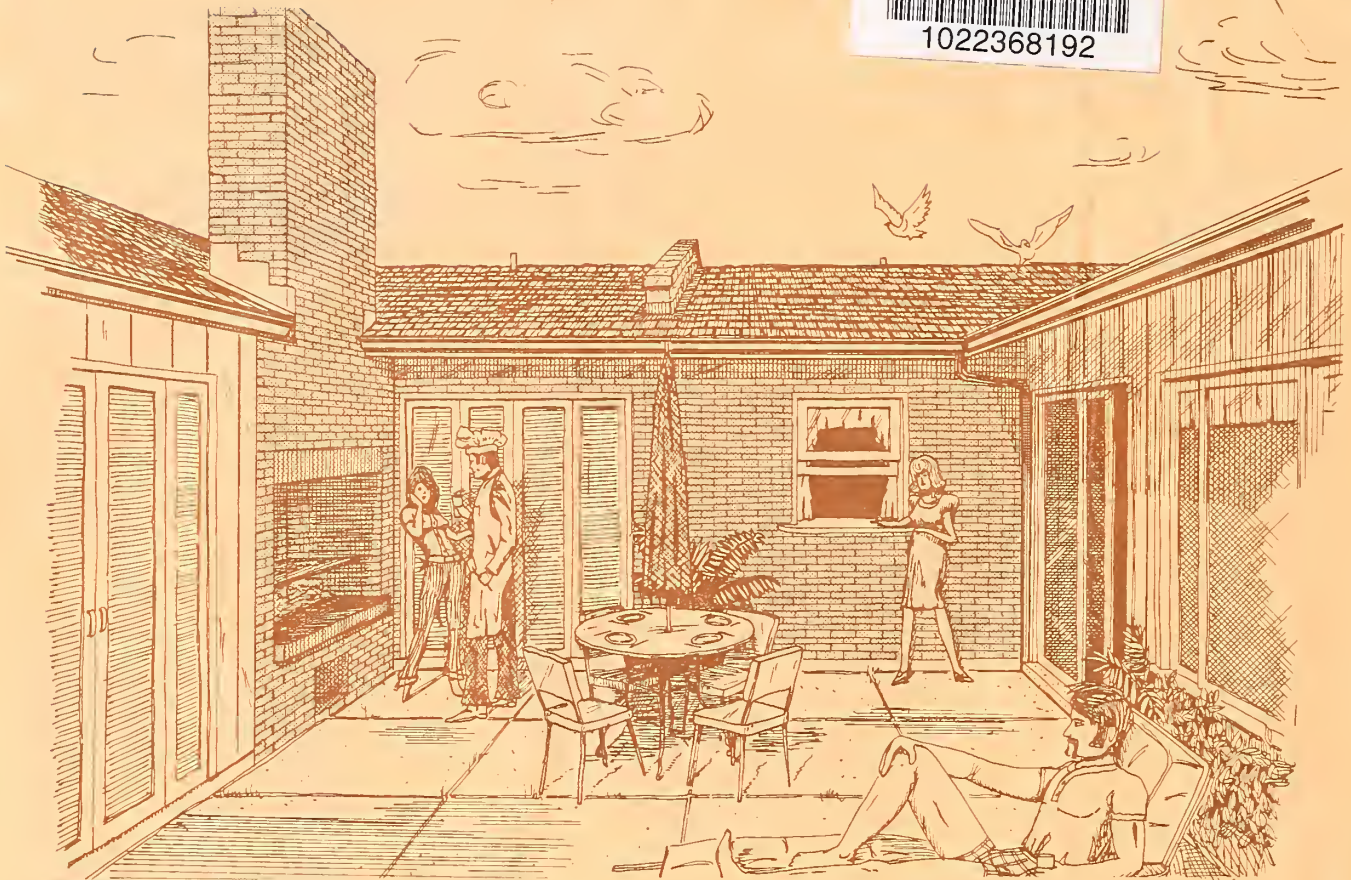
The kitchen is compact yet contains plenty of needed storage space and ample room to perform daily kitchen chores. It may be left open to the dining area or screened by an accordion door. The window over the sink provides a passthrough for serving the patio or it may be used by mother to watch the children at play on the patio.



PLAN

Washington, D.C.

Issued July 1974



PERSPECTIVE OF PATIO

The bathroom's location provides easy access from all parts of the house.

The bedrooms are more than adequate and the placement of the closets provides sound insulation from adjoining areas.

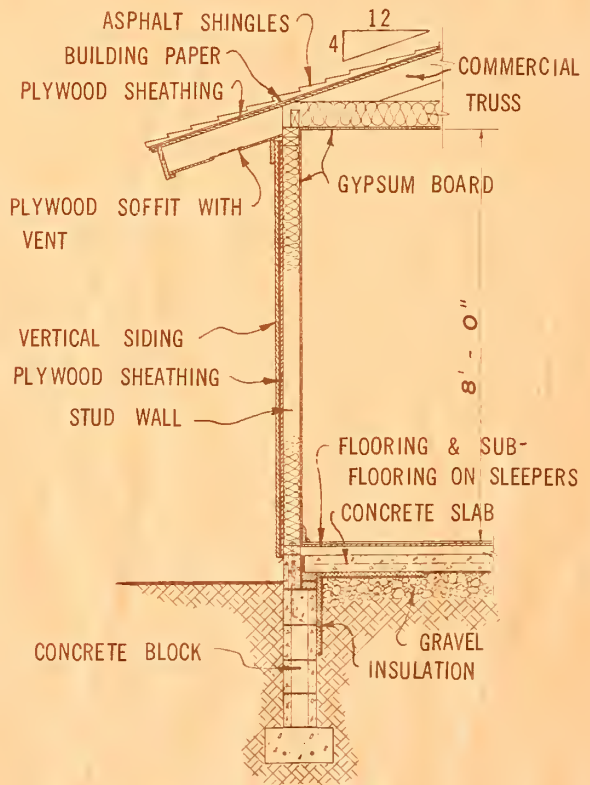
Storage of linen or equipment is provided in the hall as well as on the patio.

The patio becomes a visual extension of the living room via the large window and the sliding glass doors. This area can be used for barbecues, fair weather entertainment, sunbathing, or a small playground for the kids. It can be visually separated from the public by a fence, yet still retain it's open-air quality. A built-in barbecue or fireplace is optional.

Complete working drawings may be obtained from the extension agricultural engineer at your State university. There may be a small charge to cover cost of printing.

If you do not know the location of your State university, send your request to Agricultural Engineer, Extension Service, U.S. Department of Agriculture, Washington, D.C. 20250. He will forward your request to the correct university.

ORDER PLAN NO. 7200, TWO-BEDROOM DUPLEX.  
 USDA, National Agricultural Library  
 NAL Bldg  
 10301 Baltimore Blvd  
 Beltsville, MD 20705-2351



TYPICAL WALL SECTION



