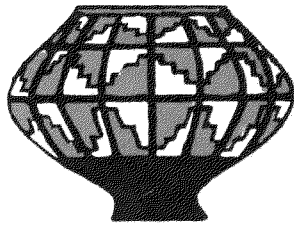


旅順博物館陳列品圖錄



旅 順 博 物 館
列 品 圖 錄



昭 和 二 十 年 刊 行

序 言

旅順博物館ハモト關東都督府滿蒙物産館ト稱シ大正六年四月其創設ヲ見タルモノニシテ翌七年十一月本館ノ成ルニ及ビ博物館ト改稱シ次デ同八年四月都督府ノ改制ト共ニ關東廳ノ名稱ヲ冠シ爾來十有餘年ヲ經シガ昭和九年十二月關東州廳ノ分立ニ伴ヒ茲ニ所在地名ヲ冠シ旅順博物館ト稱名スルニ至レルモノナリ。

本館ハ露國統治時代ニ將校集會所トシテ起工ヲ見タルモ半成ノ儘ナリシヲ其後大正五年工費約三十萬圓ヲ投ジ二歳ヲ閱シ同七年竣工シタルモノニシテ延坪總數一千五百餘坪ヲ數フルモノナリ。

本館ハ滿洲蒙古及支那本土ニ於ケル考古及風俗參考品ヲ主體トシ其ノ標本總數三萬餘點ヲ蒐藏スルモノナルモ輒近東亞ニ於ケル考古學ノ趨勢ハ本館ヲシテ益々考古學的博物館トシテ其態容ヲ定メントスルノ機ニアリ。本館曩ニ東亞考古學會ト提携シテ我ガ關東州内ニ於ケル貔子

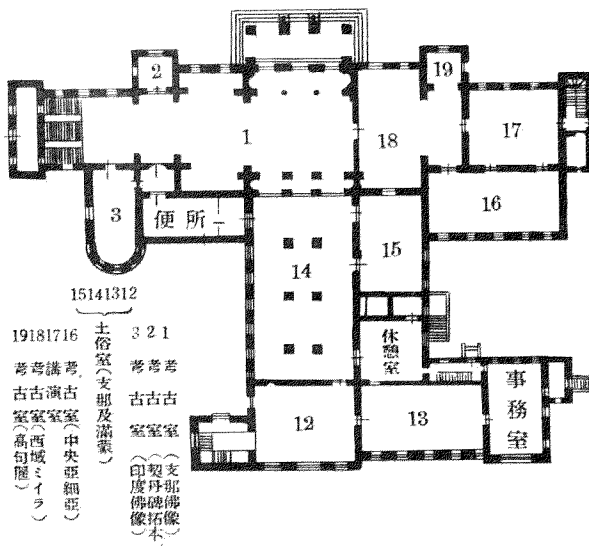
窩(昭和二年)牧羊城(昭和三年)南山裡(昭和四年)等ノ先史及原史時代ノ遺跡ヲ調査シ東亞考古學ノ發達ニ貢獻セシメタルコトハヒトシク學界周知ノ事項ナリ。他方、州内牧城驛沙崗屯發見ノ漢墓(昭和七年及九年)ノ如キモ亦益々本館ノ考古學的地位ヲ向上セシムルモノト云フベシ。

本館藏品ノ増加ニ關シテ特ニ記スベキハ考古部ニ於イテ篤志ノ士ノ厚意ニ俟ツ所多ク就中、大谷光瑞師ノ中央亞細亞及印度ニ於イテ蒐集セラレタル遺品竝ニ南滿洲鐵道會社ヨリ滿洲及蒙古發見ノ多數品目ノ交付ヲ受ケタルコトナリ。

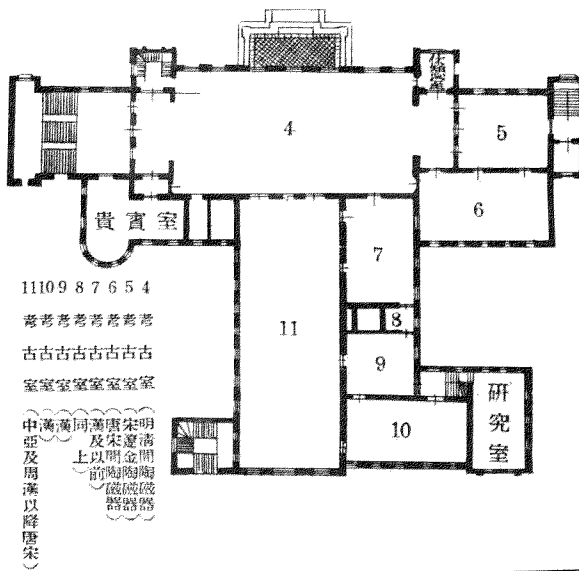
本圖録ハ固ヨリ其集録スル所ハ列品ノ一部ニ過ギズ且ツ取捨宜シキヲ得ザルモノアリト雖モ亦以テ列品ノ概觀ヲ得ルニ庶幾カラムカ、乃チ此ノ序ヲ作り我ガ博物館ノ由來ヲ略敘シテ、之ヲ卷首ニ掲グト云爾。

昭和十二年四月

圖面平室列陳下階館物博順旅



圖面平室列陳上階上同





館物博順旅

旅順博物館列品圖錄目次

第一 滿洲發見品

(A) 先史時代及漢以前時代

第一 滿洲旅順方家屯南山裡發見石鏃及骨角器

第二 滿洲各地發見石器

(1) 滿洲撫順烽火臺附近發見打石斧

(2) 滿洲大連濱町貝塚發見石庖丁

(3) 滿洲旅順大臺山發見石庖丁

(4) 滿洲鐵嶺附近發見石斧

第三 滿洲大連濱町貝塚發見石器

(1) 有孔圭形石器 (2) 有孔石劍 (3) 大形扁平石斧

第四 滿洲貔子窩發見遺物

(1) 單砣子發見有孔石斧石劍及石鏃

(2) 高麗寨發見鬲形土器破斧

第五 滿洲貔子窩單砣子發見彩色土器

第六 滿洲貔子窩高麗寨發見甗形土器

第七 滿洲旅順雙砵子山石塚發見鳥頭形石器

第八 滿洲旅順附近發見土器

(1) (4) 旅順老鐵山石塚發見土器

(2) (3) 旅順方家屯南山裡發見土器

第九 滿洲旅順牧羊城官屯子河附近發見劍柄形銅器

第一〇 滿洲旅順牧羊城官屯子河附近發見甕棺

第一一 滿洲旅順附近發見銅劍

(1) 旅順柏鼠子附近發見銅劍

(2) 旅順牧羊城南山裡于家屯發見銅劍

(3) 旅順南山裡刁家屯發見銅劍

(4) 旅順南山裡劉家屯發見銅劍

第一二 滿洲各地發見錢貨

(1) 旅順營城子雙臺溝發見明刀錢

(2) 貔子窩發見明刀錢

(3) 普蘭店附近發見明刀錢

(4) 奉天潘建臺發見明刀錢

(5) 熱河省灤平發見明刀錢

(6) 普蘭店三官廟發見布錢

- (7) 旅順南山裡發見布錢及圓錢
(8) 貔子窩發見一刀錢

(B) 漢 時 代

第一三 滿洲旅順南山裡發見方格文土器

第一四 滿洲旅順牧羊城址發見半瓦當

第一五 滿洲各地發見墓甌

第一六 滿洲旅順方家屯南山裡墳墓發見銅製遺物

(1) 銅製熊脚 (2) 小形鳥形銅器

(3) | (5) 小形獸面金具 (6) 四葉座金具

第一七 滿洲古墳發見鏡鑑

(1) 遼陽發見漢日光鏡

(2) 蘆家屯貝墓發見內行花文日光鏡

第一八 滿洲旅順南山裡古墳發見各種青銅遺物

第一九 滿洲旅順南山裡古墳發見獸環壺

第二〇 滿洲旅順南山裡貝墓發見瓦製博山爐

第二一 (1) 滿洲旅順南山裡古墳發見瓦製扁壺

(2) 滿洲海城附近古墳發見着彩鼎形土器

第二二 漢代明器

(1) 滿洲營口附近古墳發見瓦甎

(2) 滿洲旅順南山裡古墳發見瓦甎

第二三 滿洲旅順附近營城子壁畫古墳模型

第二四 滿洲牧城驛附近營城子壁畫古墳壁畫一部

第二五 滿洲牧城驛附近營城子壁畫古墳壁畫一部

第二六 (1) 滿洲牧城驛附近營城子壁畫古墳發見瓦匱

(2) 同 上發見瓦匱

第二七 (1) 滿洲牧城驛營城子第一號墓發見瓦屋

(2) 同 上第二號墓壁畫古墳發見瓦甎

第二八 滿洲牧城驛附近營城子第二號墓發見着彩瓦燈

第二九 滿洲牧城驛附近營城子第二號墓發見着彩瓦屋

第三〇 滿洲牧城驛附近營城子第二號墓發見瓦燈

第三一 (1) 滿洲牧城驛營城子第一號墓發見瓦犬

(2) 同 上發見瓦猪

第三二 滿洲旅順附近南山裡古墳發見瓦屋

第三三 滿洲熊岳城貝墓發見土偶

第三四 滿洲蘆家屯貝墓發見土偶

第三五 滿洲遼陽太子河北發見古墳石室

(C) 渤海及唐時代

第三六 滿洲吉林省東京城址發見陶製小像

第三七 滿洲旅順鴻臚井碑(拓本)

(D) 遼金元時代

第三八 滿洲熱河省建平縣發見古銀銅假面

第三九 滿洲熱河省赤峯附近發見古銀銅假面

第四〇 滿洲鞍山附近古墳發見畫像石

第四一 (1) 滿洲發見雙魚銅鏡(周椽 = 三斤八兩遼東路云々ノ刻銘アリ)

(2) 滿洲熱河省凌源發見小形石彫動物

第四二 滿洲熱河錦州兩省發見鷄冠壺

第四三 滿洲吉林省石碑嶺金完顏婁室墓發見遺物

第四四 滿洲吉林省石碑嶺金完顏婁室墓發見遺物

第四五 滿洲吉林省高麗城址附近發見金銅製假面

第四六 滿洲熱河省凌源發見內府在銘大壺

第四七 滿洲熱河省凌源發見乾統九年造石經幢殘缺

第四八 滿洲金州發見石經幢

第四九 滿洲金州發見百戶張成墓碑

第二 蒙古發見品

先 史 時 代

第五〇

(1) 內蒙古小庫倫發見多頭環狀石斧

(2) 同 上發見有孔石斧

第五一

內蒙古達拉民安發見打石斧

第五二

內蒙古小庫倫發見鬲形土器

第五三

(1) 內蒙古小庫倫發見四耳付土器

(2) 同 上發見鬲形土器

第三 支那發見品

(A) 漢及漢以前時代

第五四 支那甘肅省發見彩色土器

第五五 支那河南省彰德府安陽縣殷墟發見白色土器破片

第五六 支那河北省易縣發見半瓦當

第五七 支那河北省易縣發見有紋平瓦

第五八 支那河北省易縣發見有紋瓦壺

第五九 支那發見銅戈、銅斧等

第六〇 支那發見銅戈

第六一 支那發見各種玉器

(1) | (5) (7) (8) 佩玉 (6) 圭形玉器 (9) 有頭玦狀玉器

第六二 支那發見各種玉器

(1) (2) 穀璧 (3) 琿玉 (4) 佩璜

第六三 支那發見玉器

(1) (2) 有孔玉刀 (3) 玉戚

第六四 支那發見方格蟠虵文鏡

第六五 支那發見細線地內行花文鏡

第六六 支那發見尙方作竟方格規矩鏡

第六七 支那發見饕餮文銅鼎

第六八 支那發見銅豆

第六九 支那發見夔鳳饕餮紋彝

第七〇 (1) 支那發見有脚銅甗

(2) 支那發見銅匱

第七一 支那北疆(綏遠式)發見銅壺

第七二 支那北疆發見各種小形青銅遺物

第七三 支那北疆發見各種小形青銅遺物

第七四 明器馬像

第七五 支那發見彩壺

第七六 支那河南省發見大形紋甗

第七七 支那河南省發見大形畫像甗

第七八 支那發見紋甗

(B) 六朝唐宋及以降時代

第七九 支那河南省發見石佛像頭部

第八〇 支那唐代明器牛像

第八一 支那陝西省西安府唐代金銅釋迦立像

第八二 支那唐代石彫佛立像

第八三 支那唐代武平二年在銘石彫三尊佛

第八四 支那河北省房山雲居寺石經

第八五 支那河北省發見石彫仁王像

第八六 支那山西省太原宋代木彫菩薩立像

第八七 支那唐宋代白釉長頸壺

第八八 (1) 支那宋代繪高麗壺

(2) 同 上陶枕

第八九 (1) 支那明代萬曆年款五彩水盤

- 第九〇 支那清代各種鼻煙壺 (2) 支那清代康熙三彩水盤

第四 中央亞細亞發見品

- 第九一 支那新疆省吐魯番唐代墳墓發見高昌國人男子木乃伊
- 第九二 支那新疆省吐魯番唐代高昌國人墳墓發見人首蛇身圖
- 第九三 (1) 支那新疆省喀喇和卓發見高昌國延和九年麴氏墓表
(2) 同 上發見高昌國延昌二十年解氏墓表
- 第九四 (1) 支那新疆省喀喇和卓發見高昌國延昌四年張氏墓表
(2) 同 上發見高昌國延壽十一年侯氏墓表
- 第九五 (1) 支那新疆省喀喇和卓唐代墳墓發見木心男子騎馬土偶
(2) 同 上發見男子武裝土偶
- 第九六 支那新疆省吐魯番唐代墳墓發見男子武裝木偶
- 第九七 (1) 支那新疆省喀喇和卓唐代墳墓發見木心男子騎馬土偶
(2) 同 上發見男子土偶
- 第九八 (1) 支那新疆省吐魯番唐代墳墓發見女子土偶頭部
(2) 同 上發見女子騎馬土偶
- 第九九 支那新疆省吐峪溝發見土製彩畫壺

第一〇〇 支那新疆省吐峪溝發見陶瓶

第一〇一 支那新疆省發見石膏製佛像

第一〇二 支那新疆省和闐發見陶製小像

第一〇三 支那新疆省和闐發見陶製小像

第一〇四 支那新疆省和闐發見陶製小像

第一〇五 支那新疆省庫木吐喇千佛洞發見唐塑像頭部

第一〇六 支那新疆省發見唐塑像頭部及陶製小像頭部

第一〇七 支那新疆省木頭溝發見唐塑像破片

第一〇八 支那新疆省吐魯番荒城內發見紋甗

第一〇九 支那新疆省吐峪溝發見手紋甗

第一一〇 支那新疆省木頭溝發見唐宋間壁畫斷片

第五 印度發見品

第一一一 (1) 印度犍駄羅發見石彫釋迦說法像

(2) 同 上發見石彫釋迦說法像

(3) 同 上發見石彫釋迦說法像

第一一二 (1) 印度犍駄羅發見石造佛塔一部

(2) 印度犍駄羅發見石彫釋迦成道佛

第一一三

(1) 印度犍駄羅發見石彫釋迦說法像

(2) 同 上發見釋迦降誕及諸天禮拜像

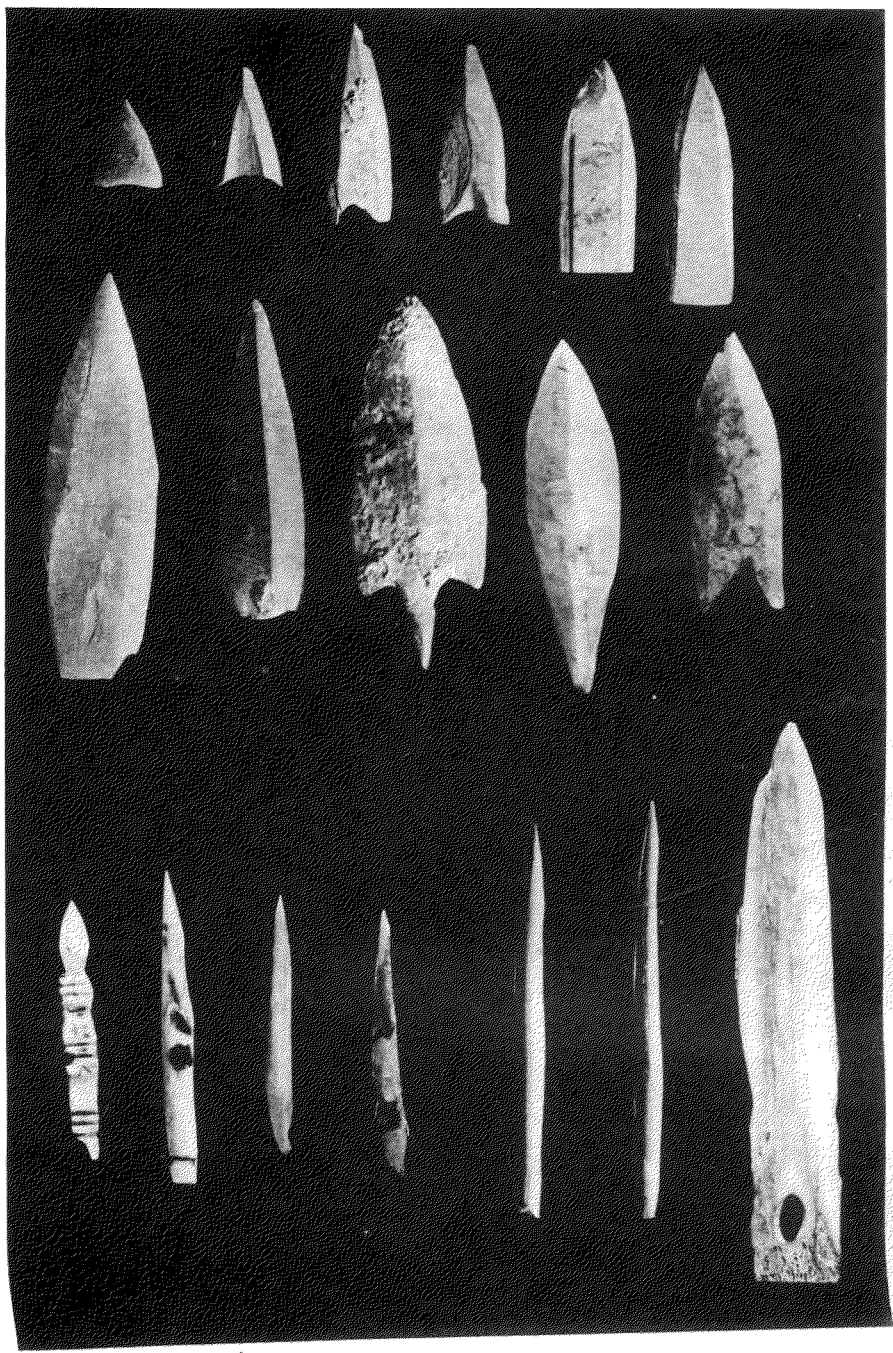
(3) 同 上發見石彫斷片

第一一四

印度犍駄羅發見石彫佛頭

第一一五

印度摩訶菩提道場佛陀伽伽發見石造釋迦觸地印像



II

第
二



3



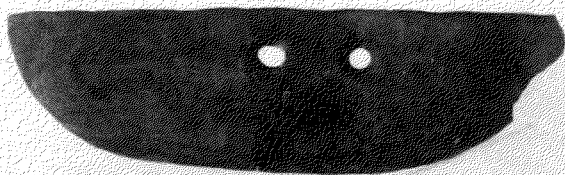
2



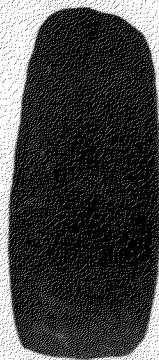
1



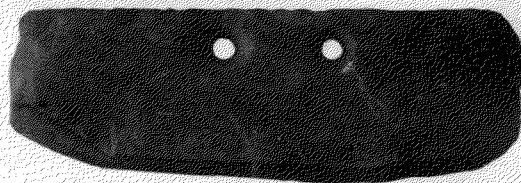
7



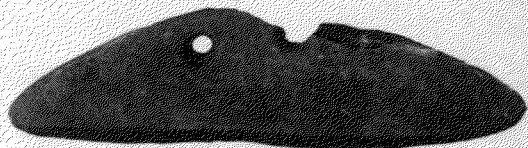
4



8



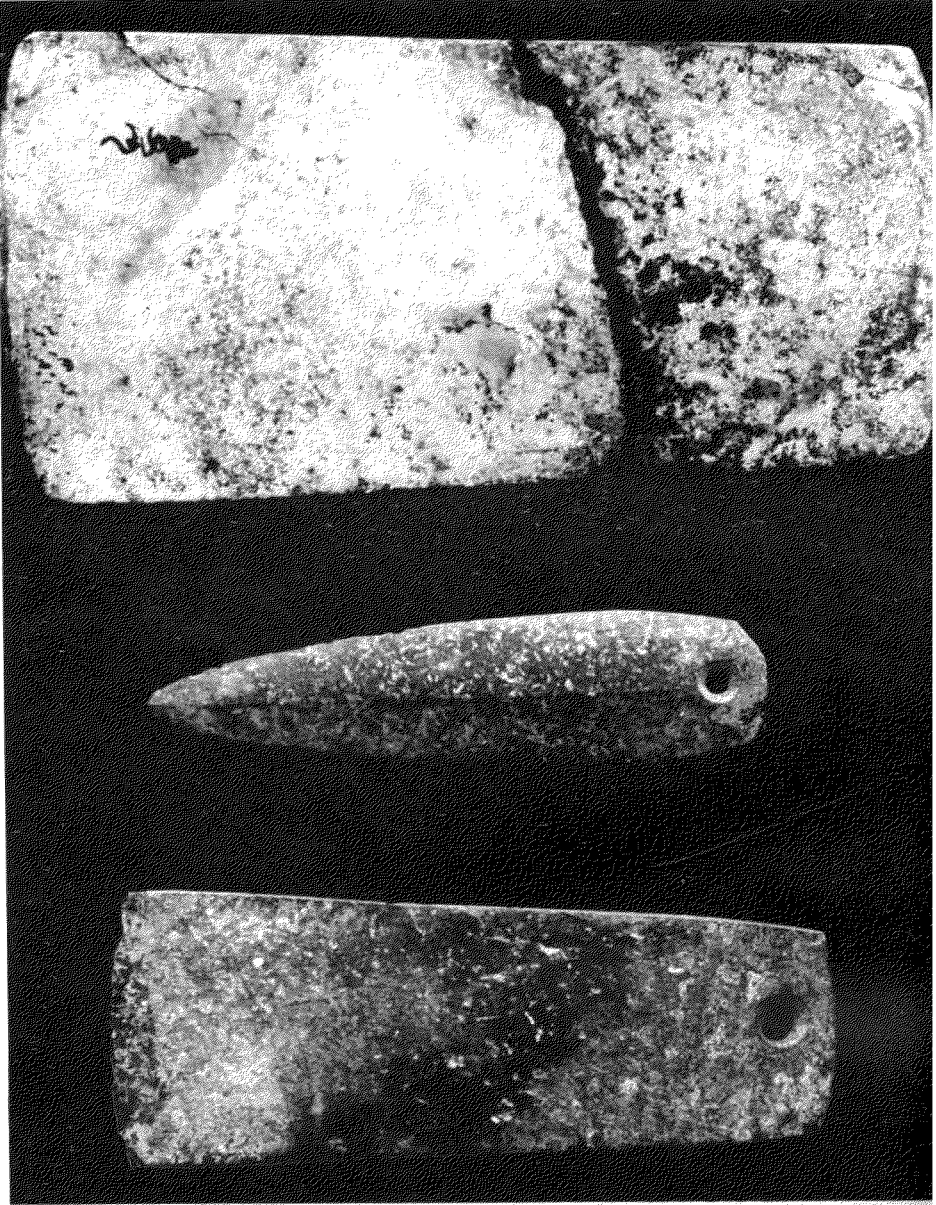
5

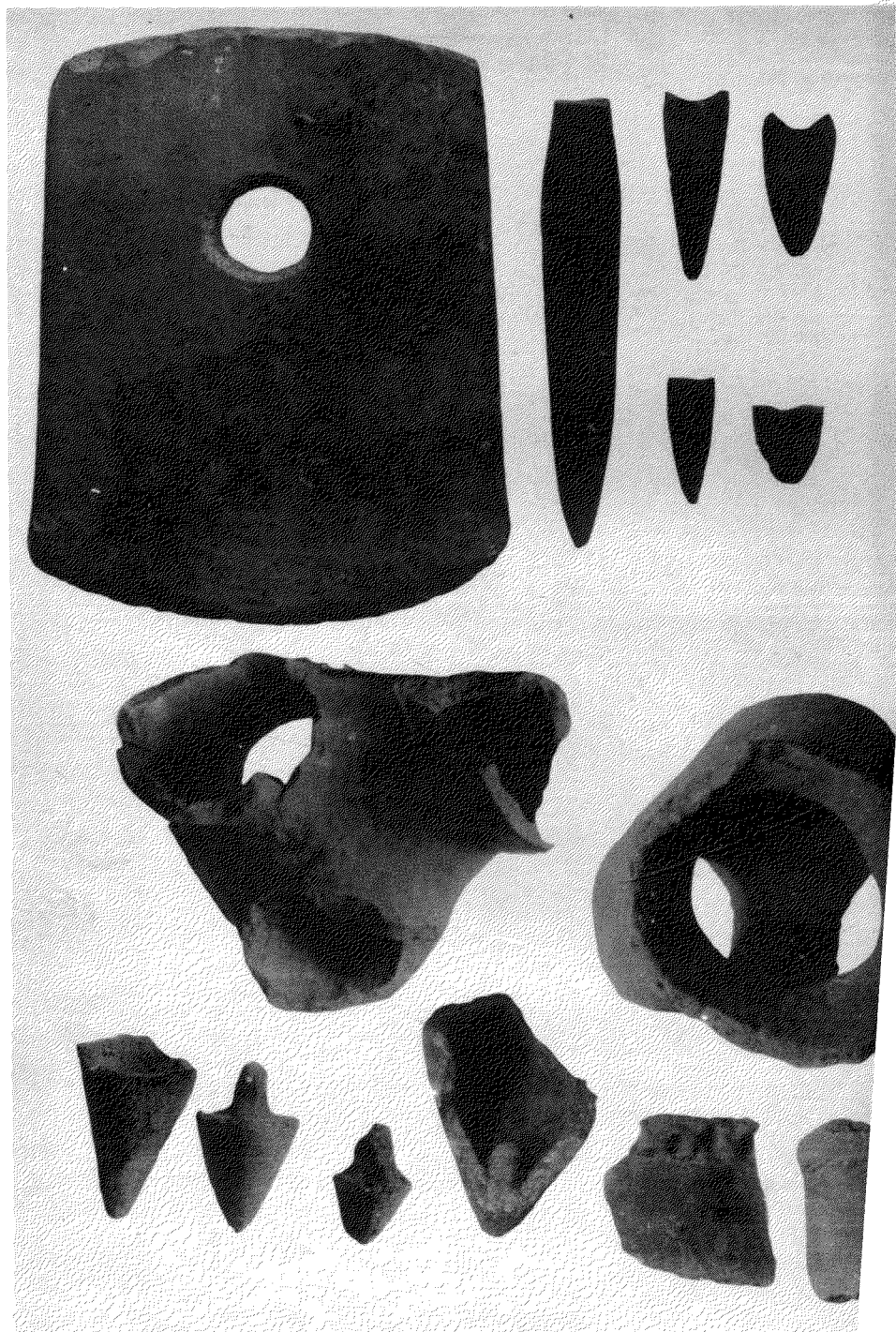


6

III

第
三





V



約
1/4



約
1/3

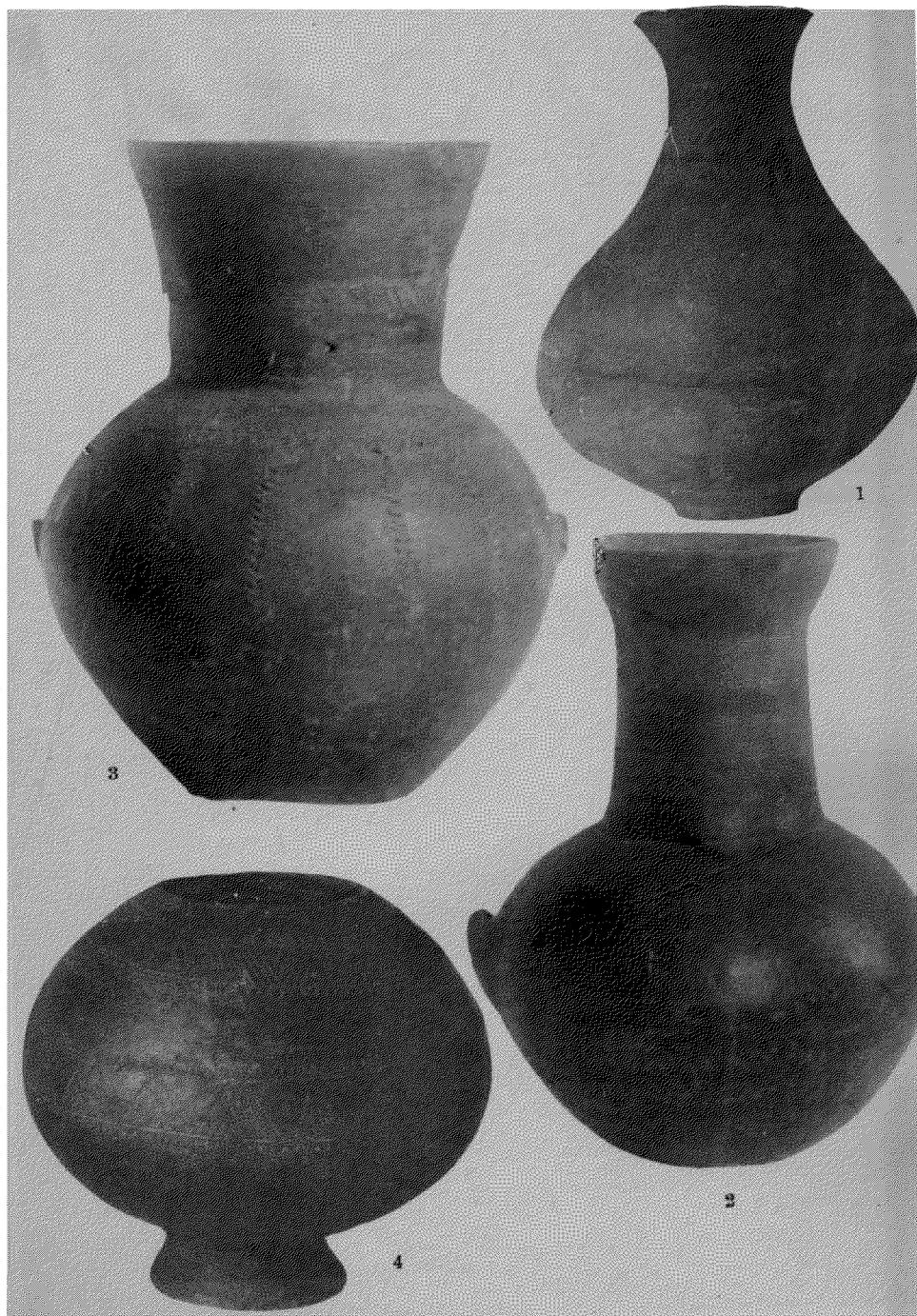


VII

第七



約
4%









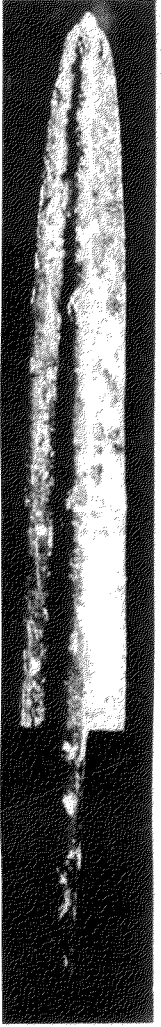
4



3



2



1

約 1/6

XII

5

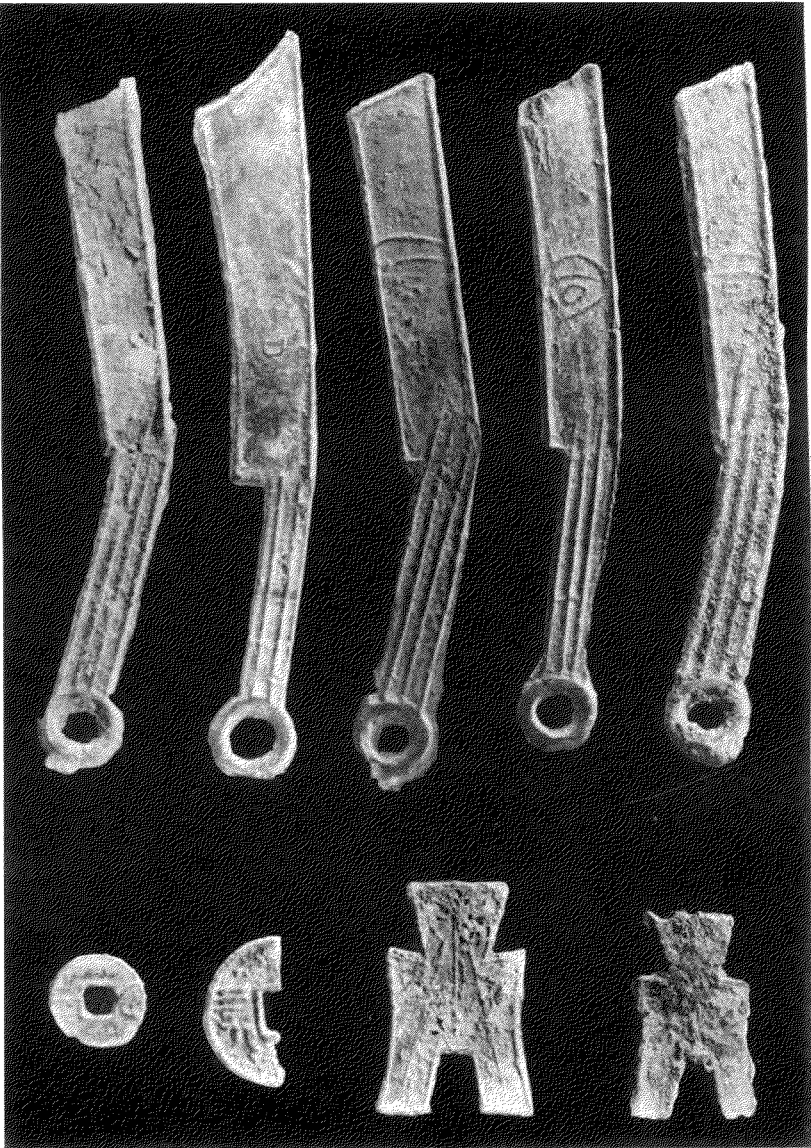
4

3

2

1

第一二



9

8

7

6

約
略

Handwritten signature or note at the bottom left corner.

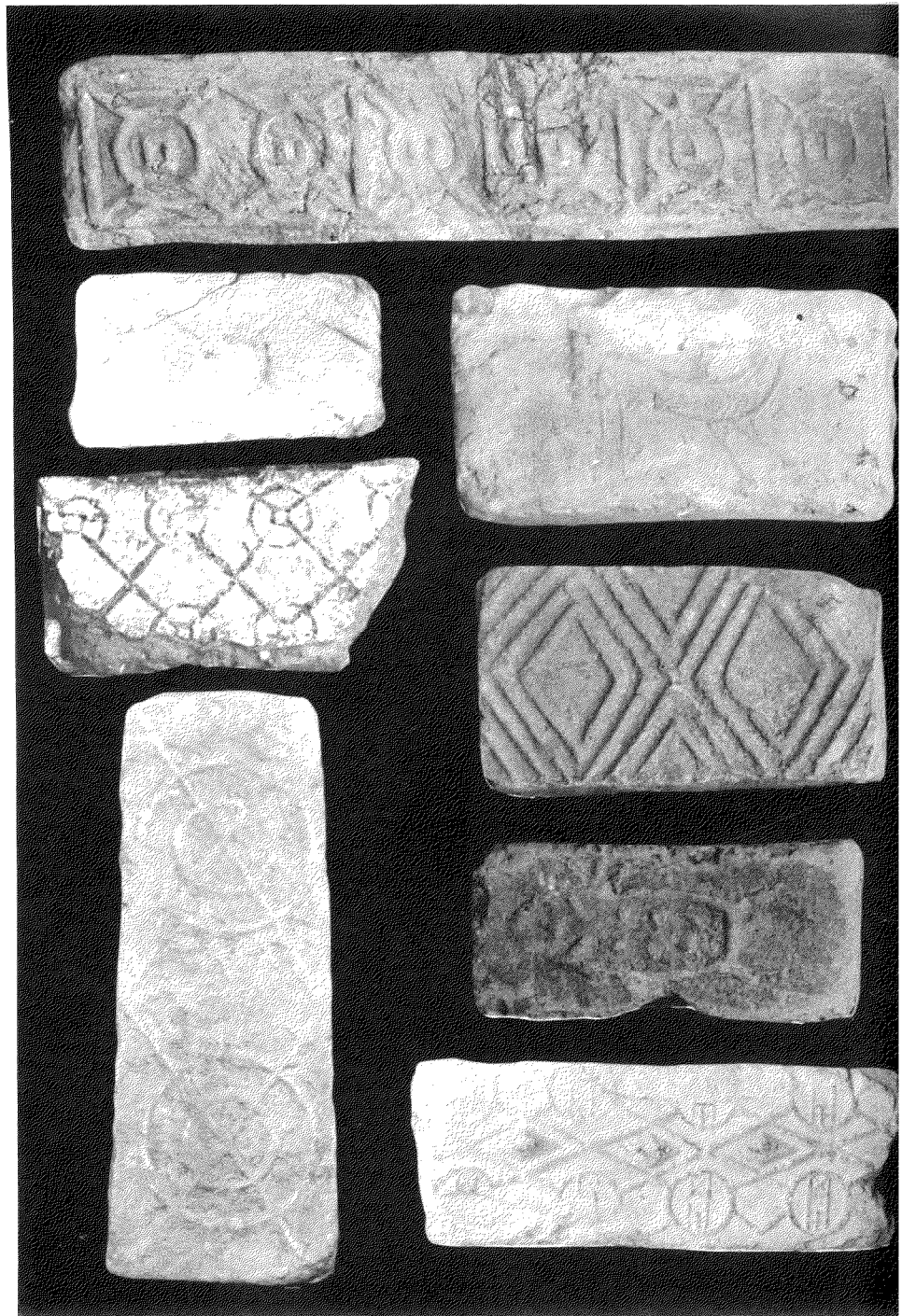
XIII

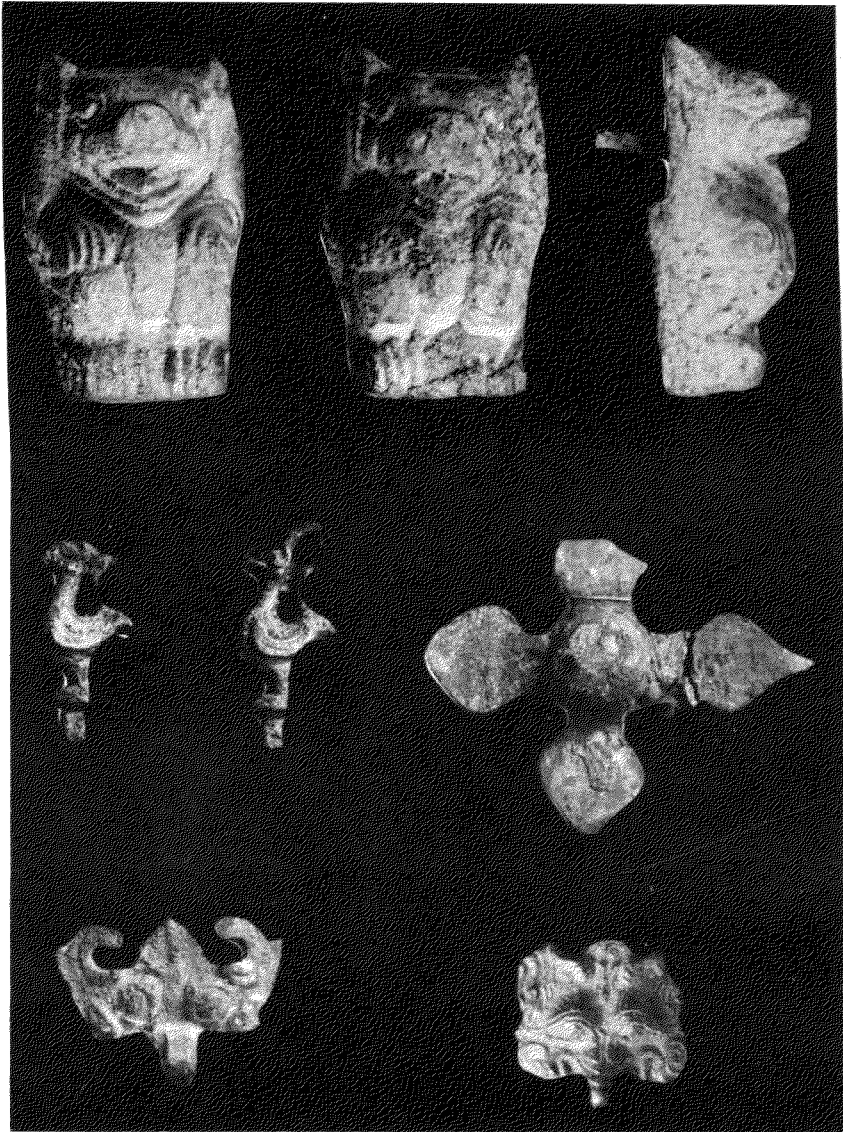
第一三





五
一
三





2

4

3

5

約
½

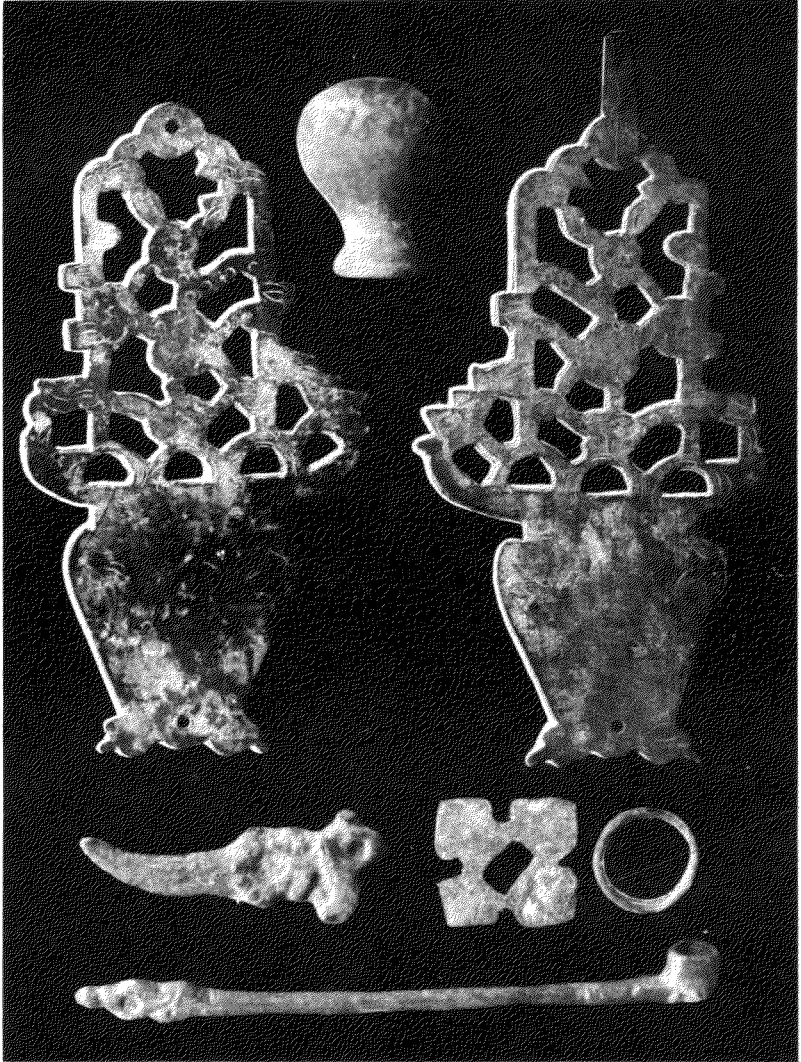


1



2

3



XIX

第一九



約
長





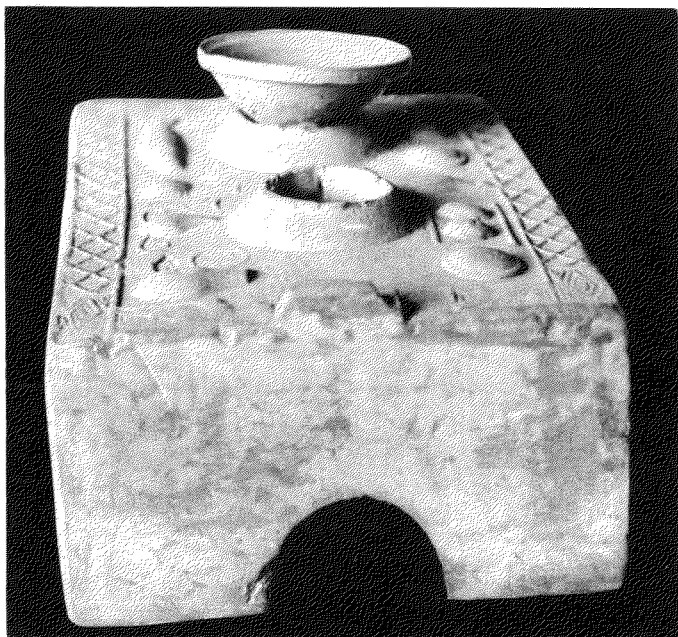
1

約
1/2

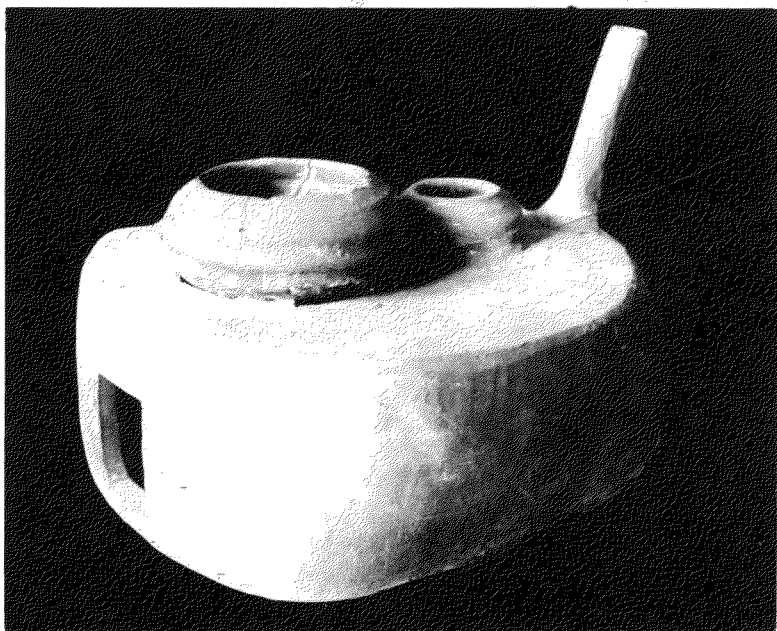


2

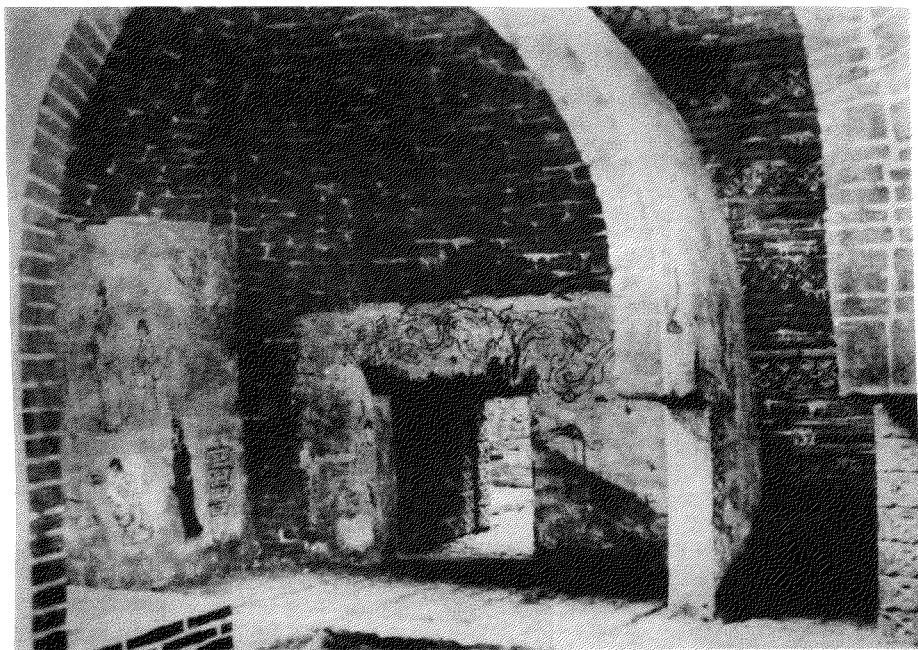
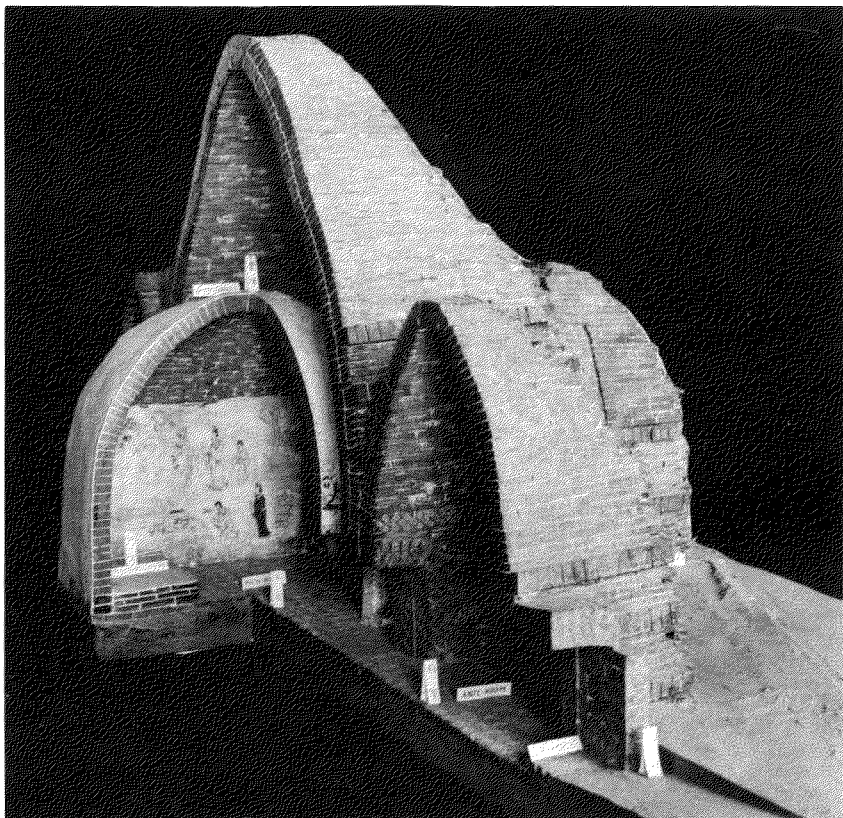
約
1/3

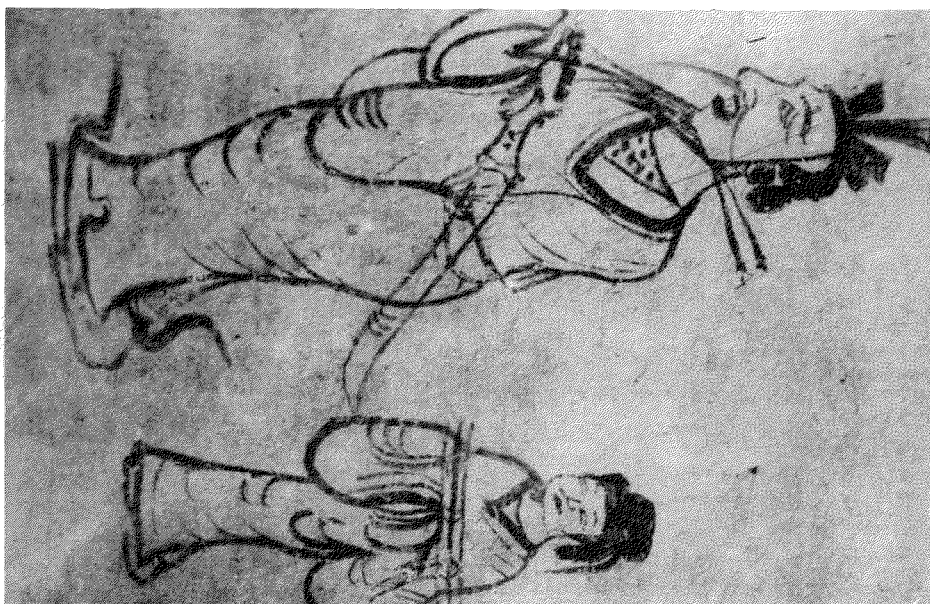


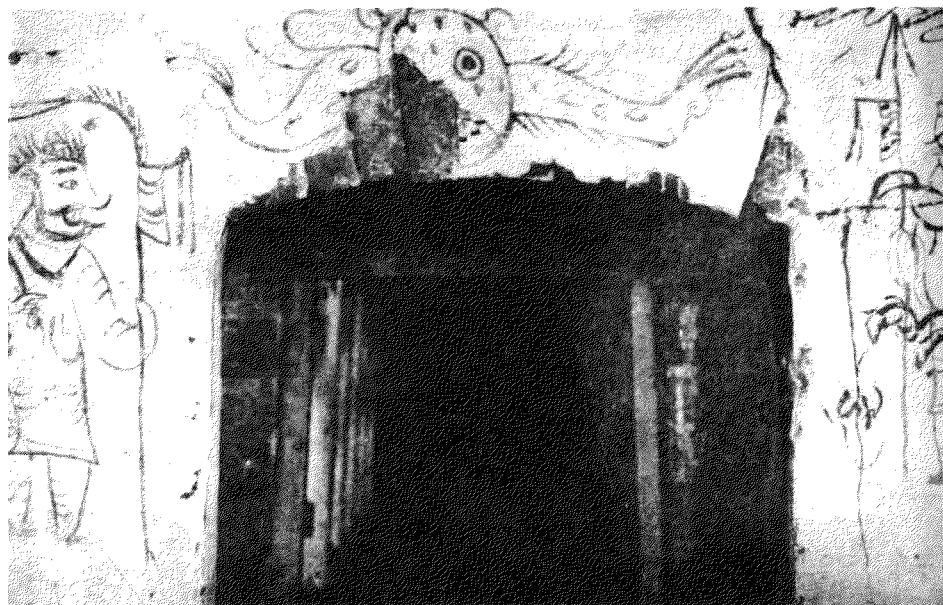
約
1/3



約
1/2











XXVIII





XXX

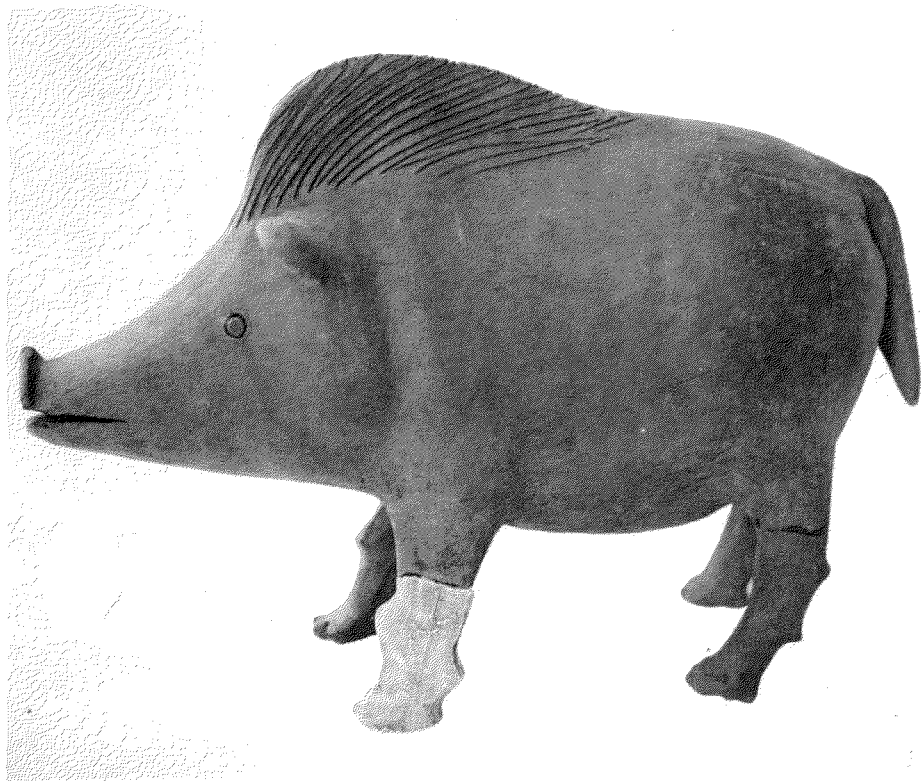
第三〇



約
1/3

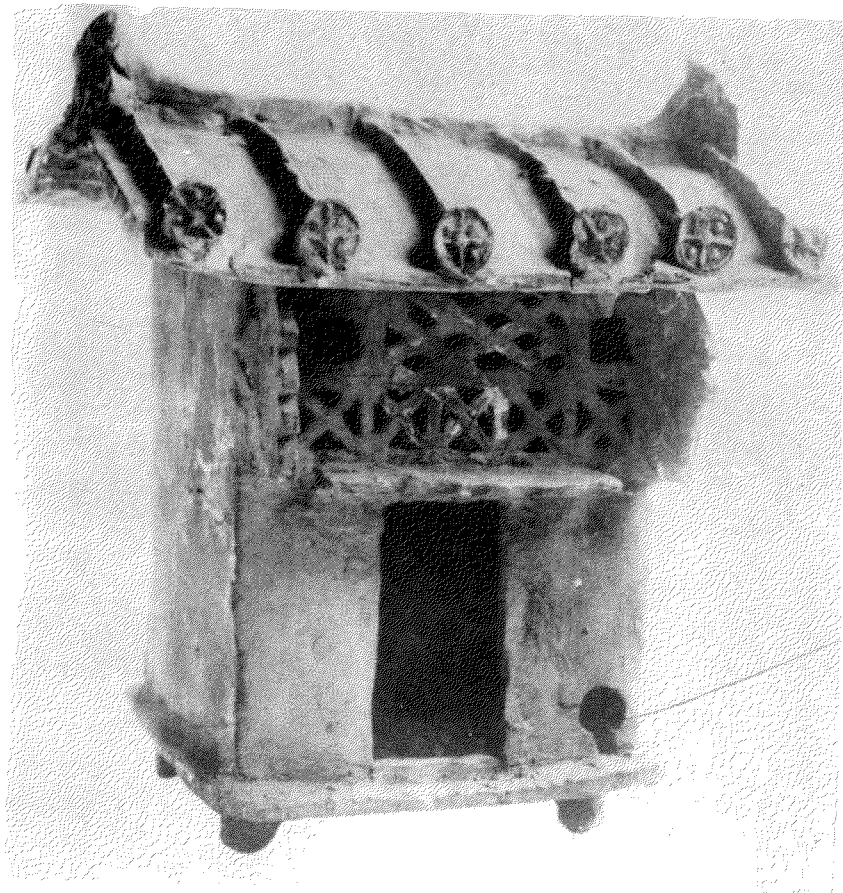
XXXI

第三
一

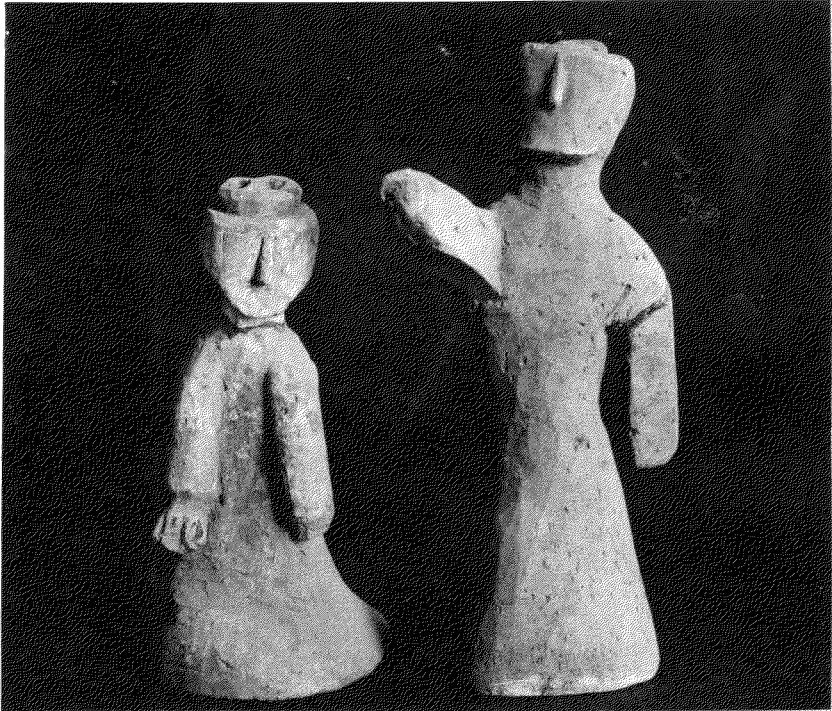


XXXII

第
三
二



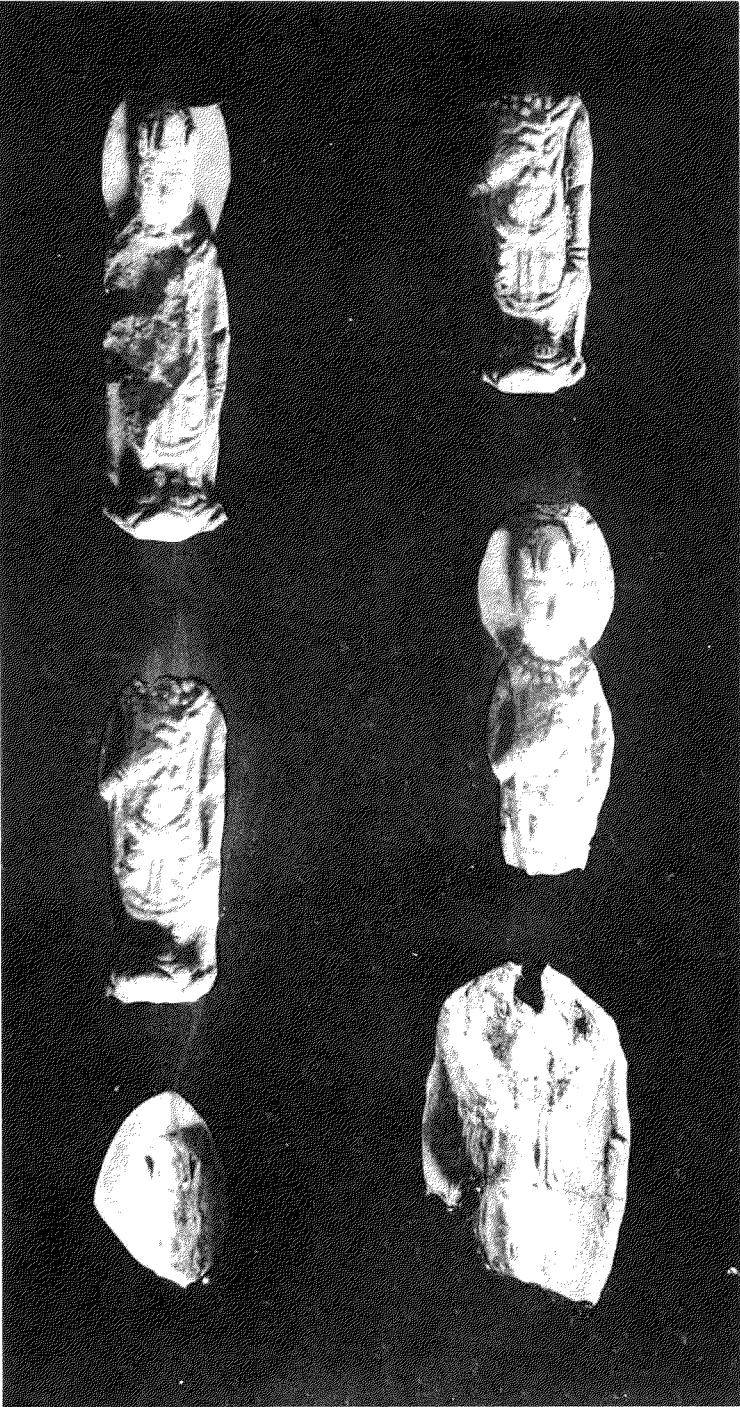
約
1/4





約
½



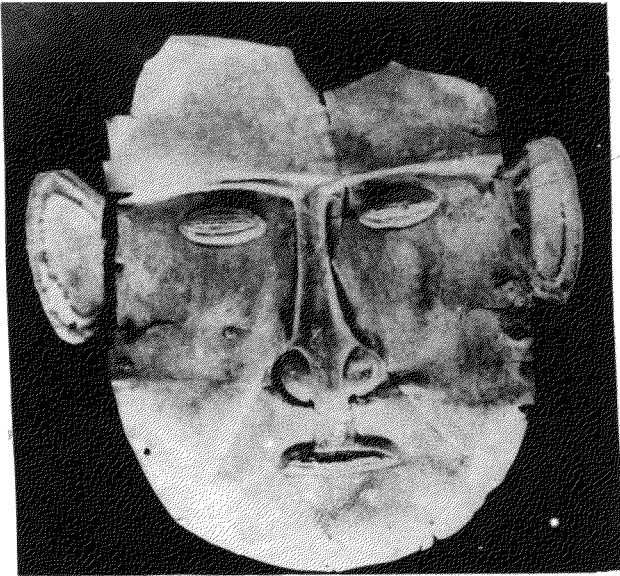




約
五

XXXVIII

第三八



約
1/3

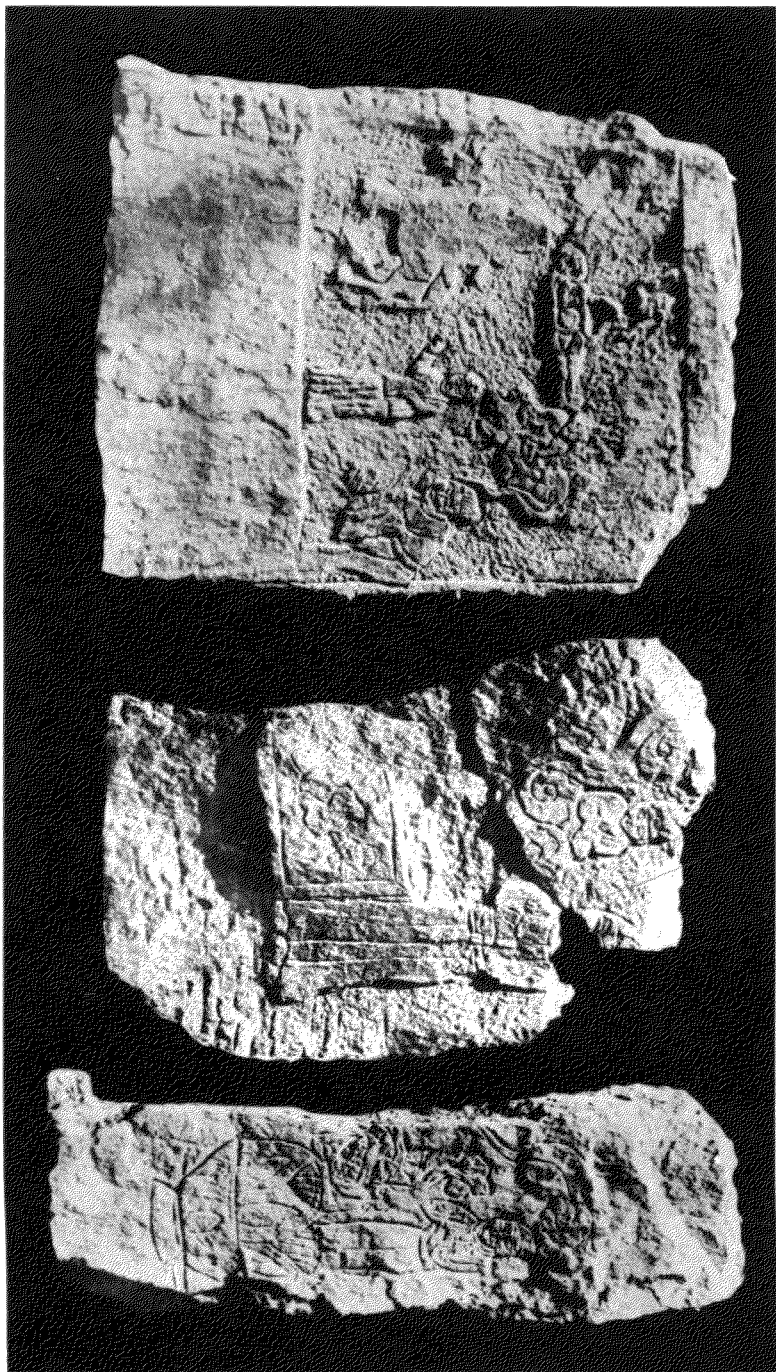
Handwritten signature or mark at the bottom left corner.

XXXIX

第
三
九



約
寫



XLI

第 一 四

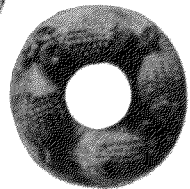
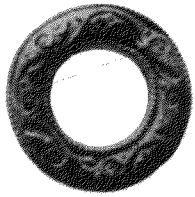
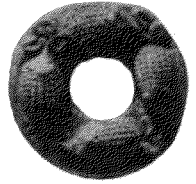
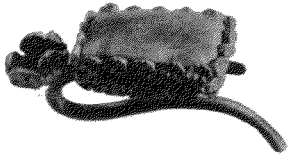
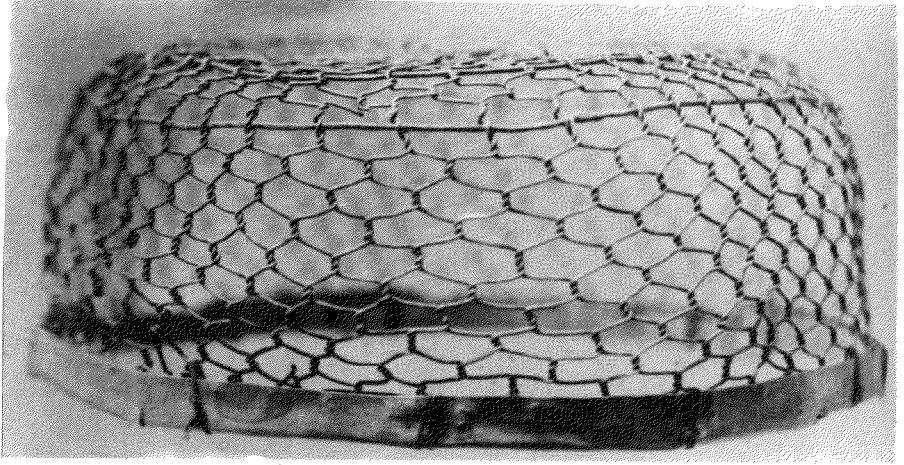


約 孫



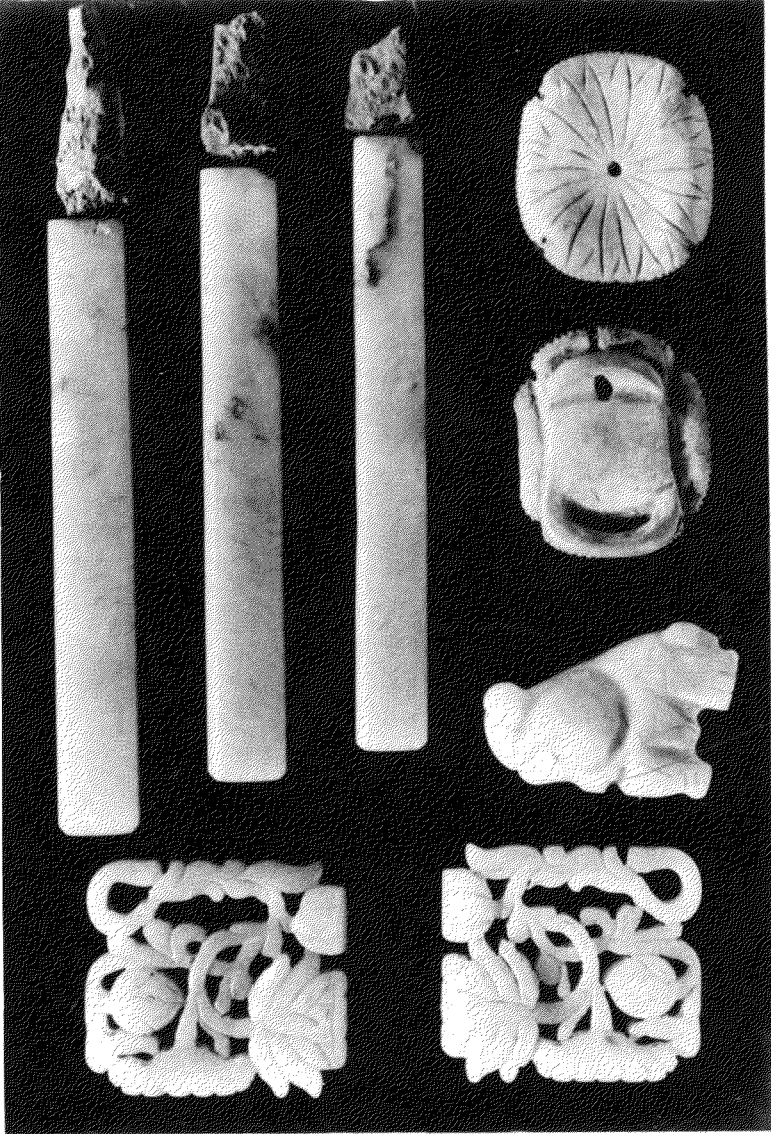
約 孫



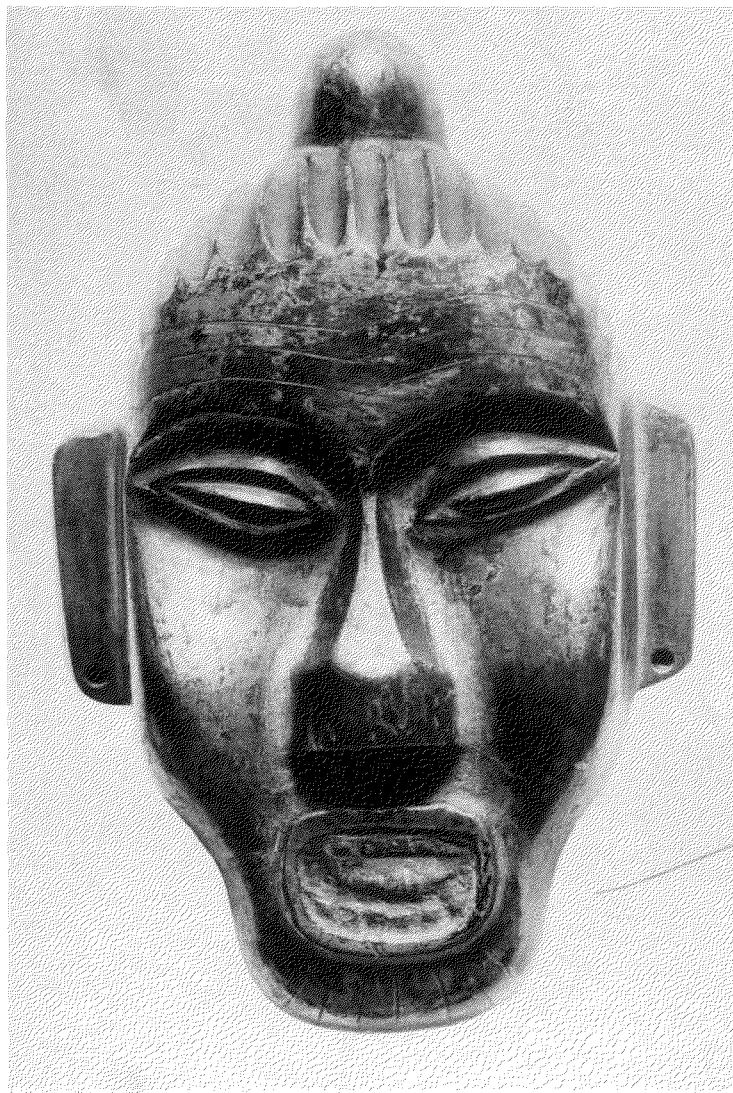


XLIV

第
四
四



約
片



約
3/5

XLVI

第
四
六



XLVII

第
四
七



約
1/4

XLVIII

第
四
八

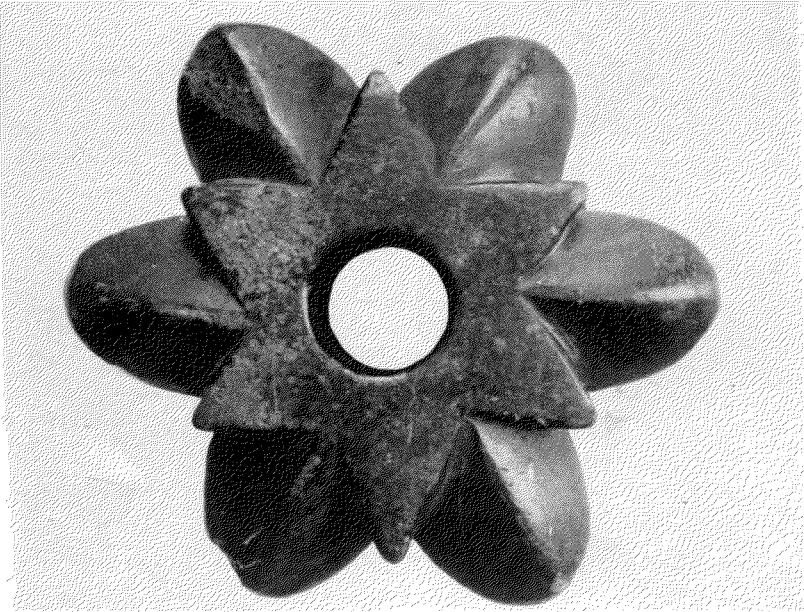


約
1/2

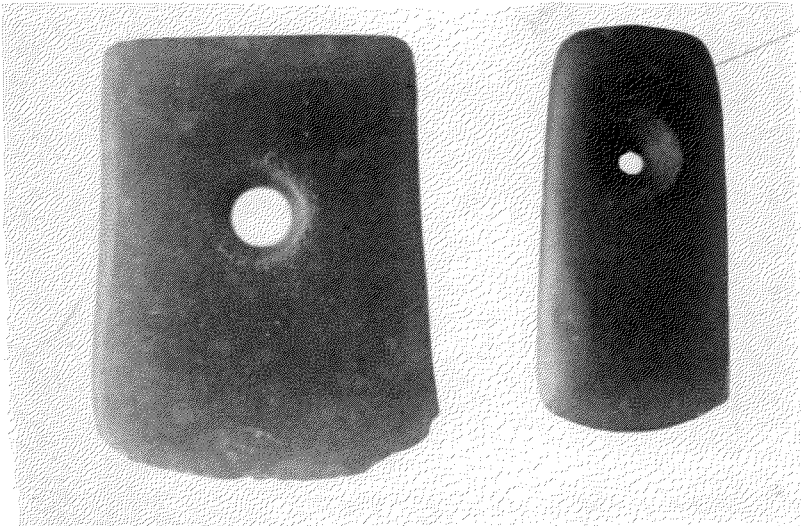


L

第五〇

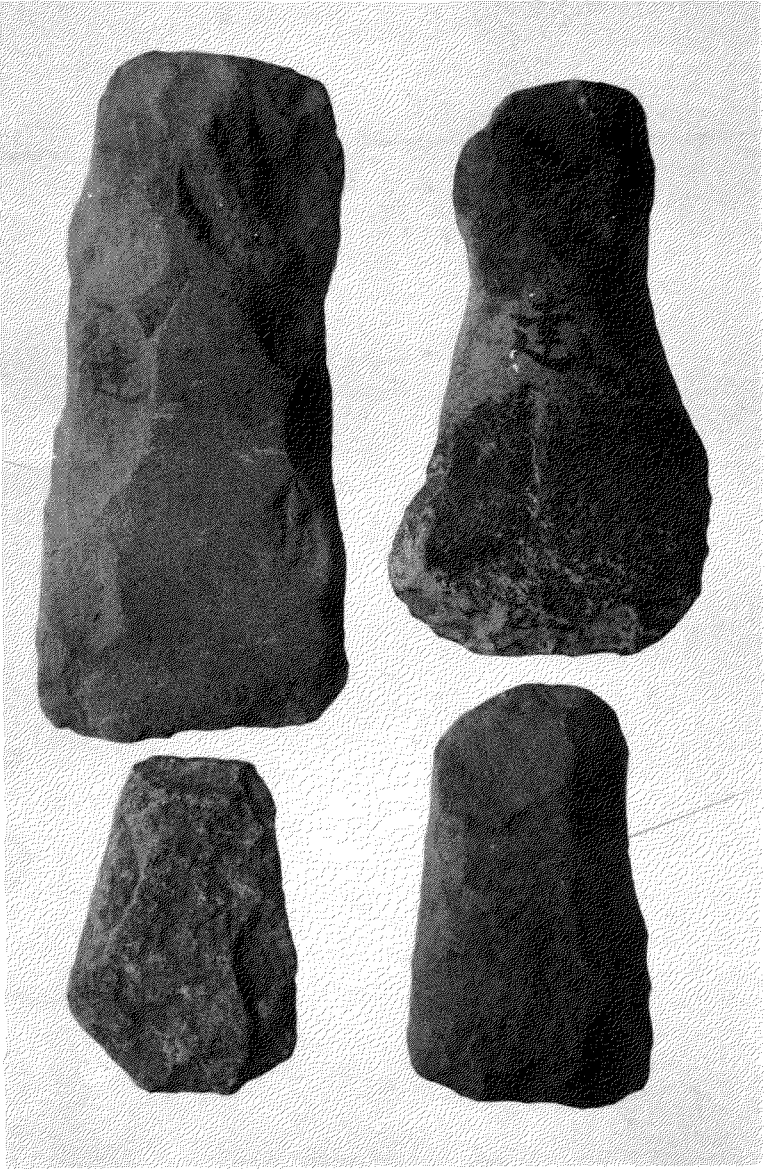


1



2

約
1/2



LII

第五二



約
½

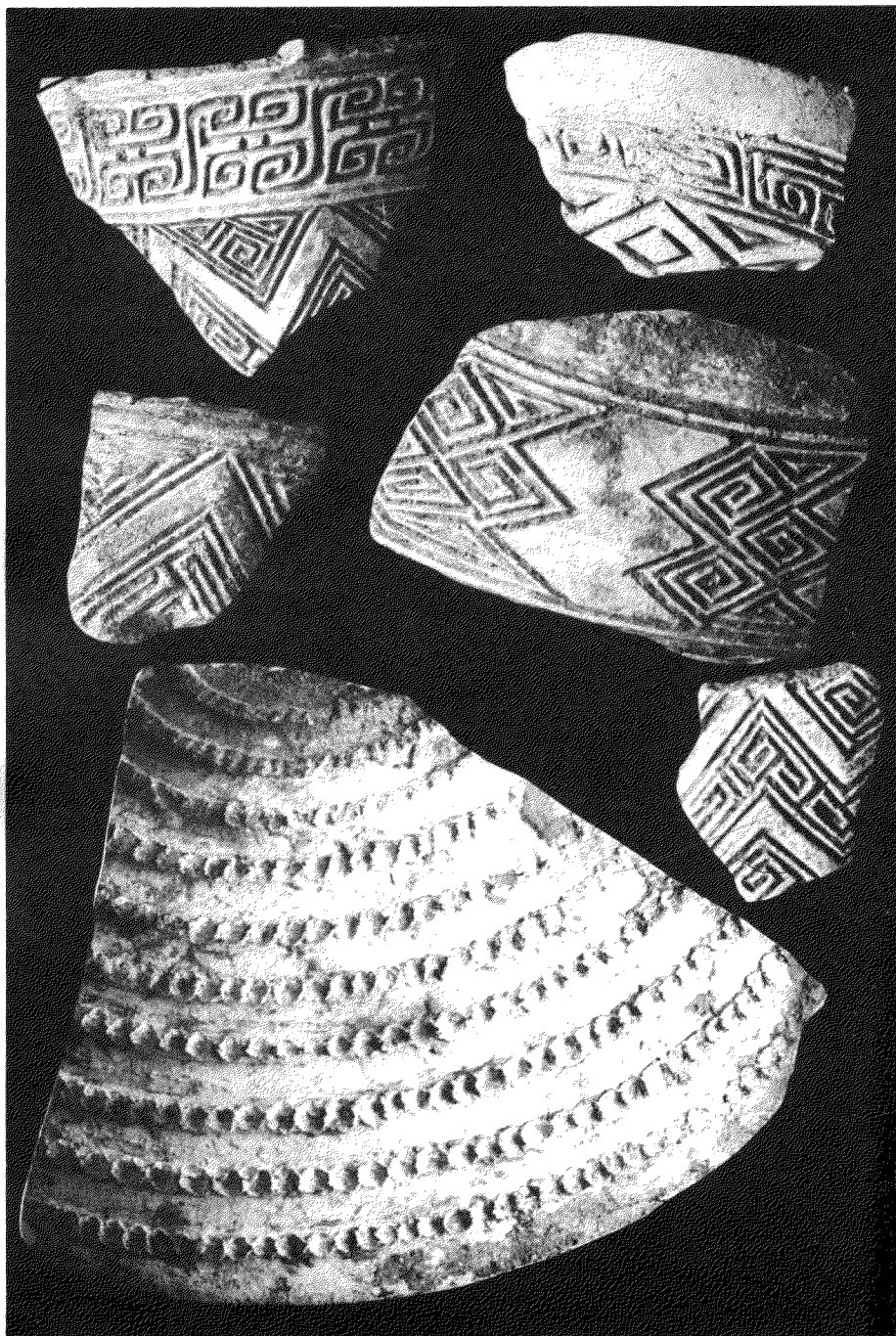


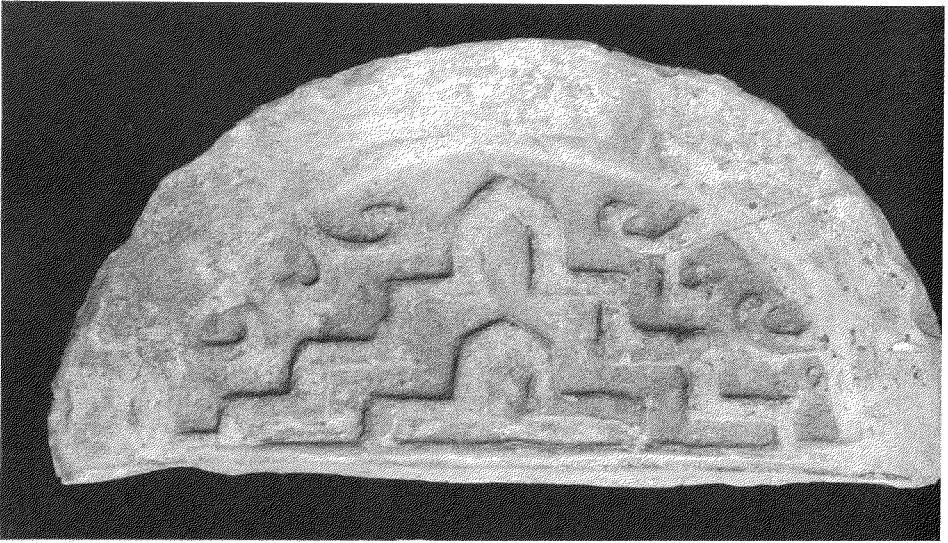
1

2

約
¼







LVII

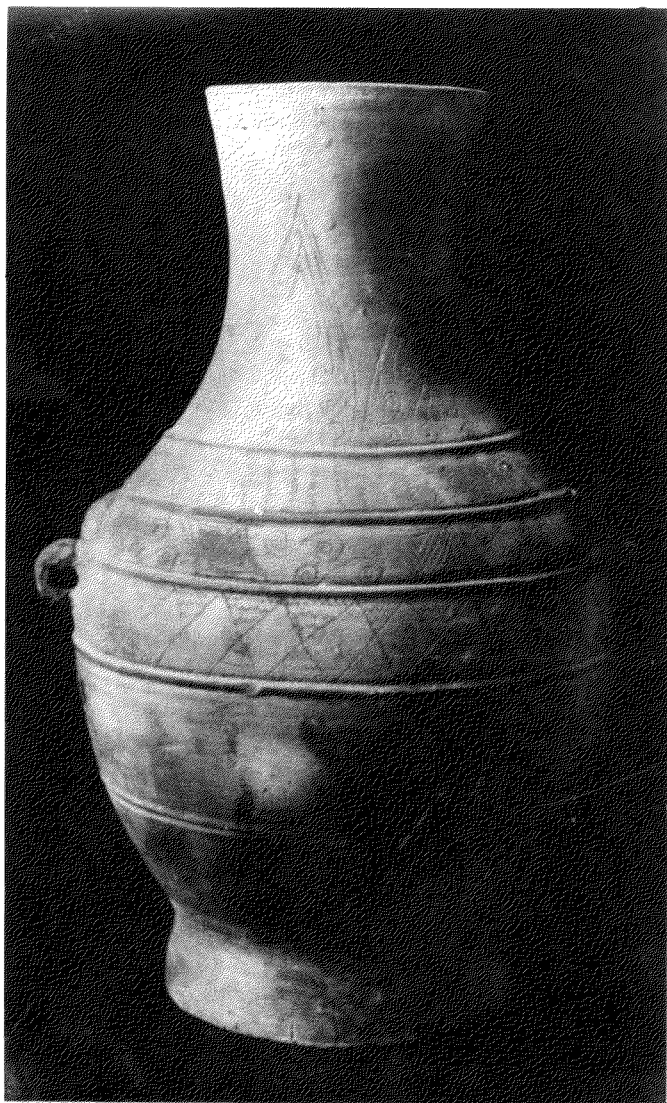
第五七



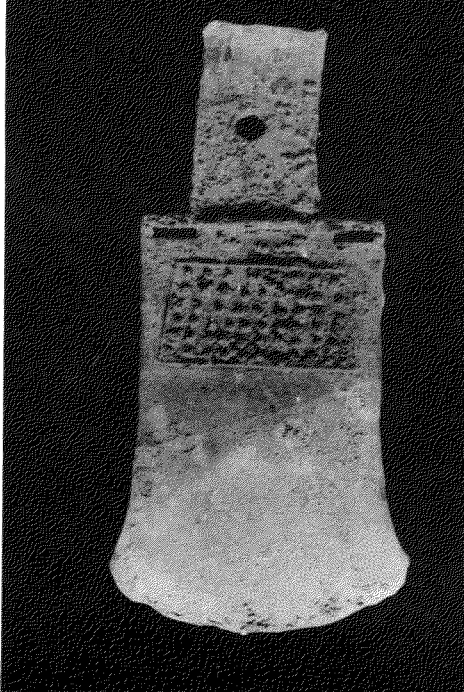
約
寫

LVIII

第五八



約
1/2



LX

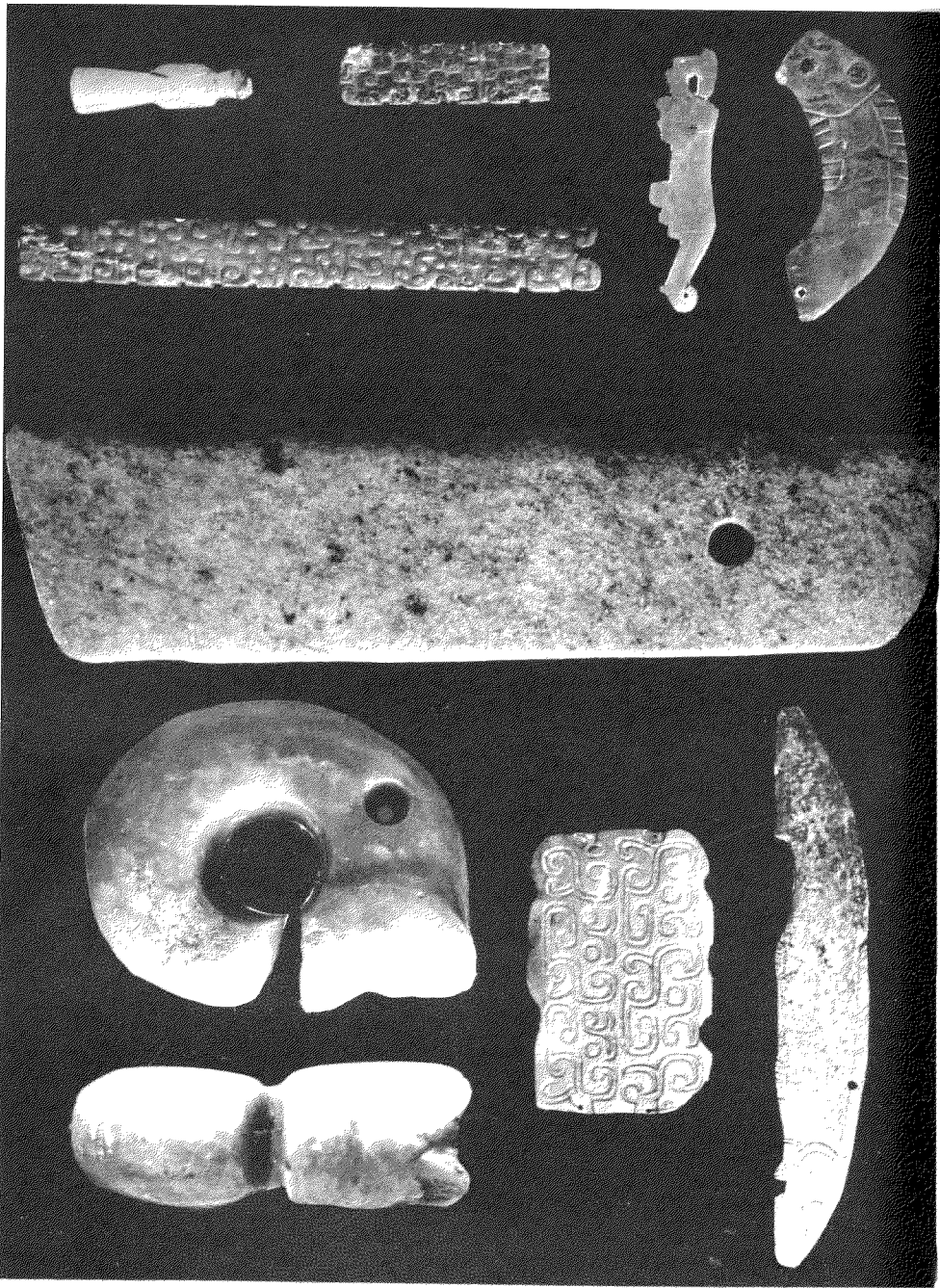


5

3

2

1

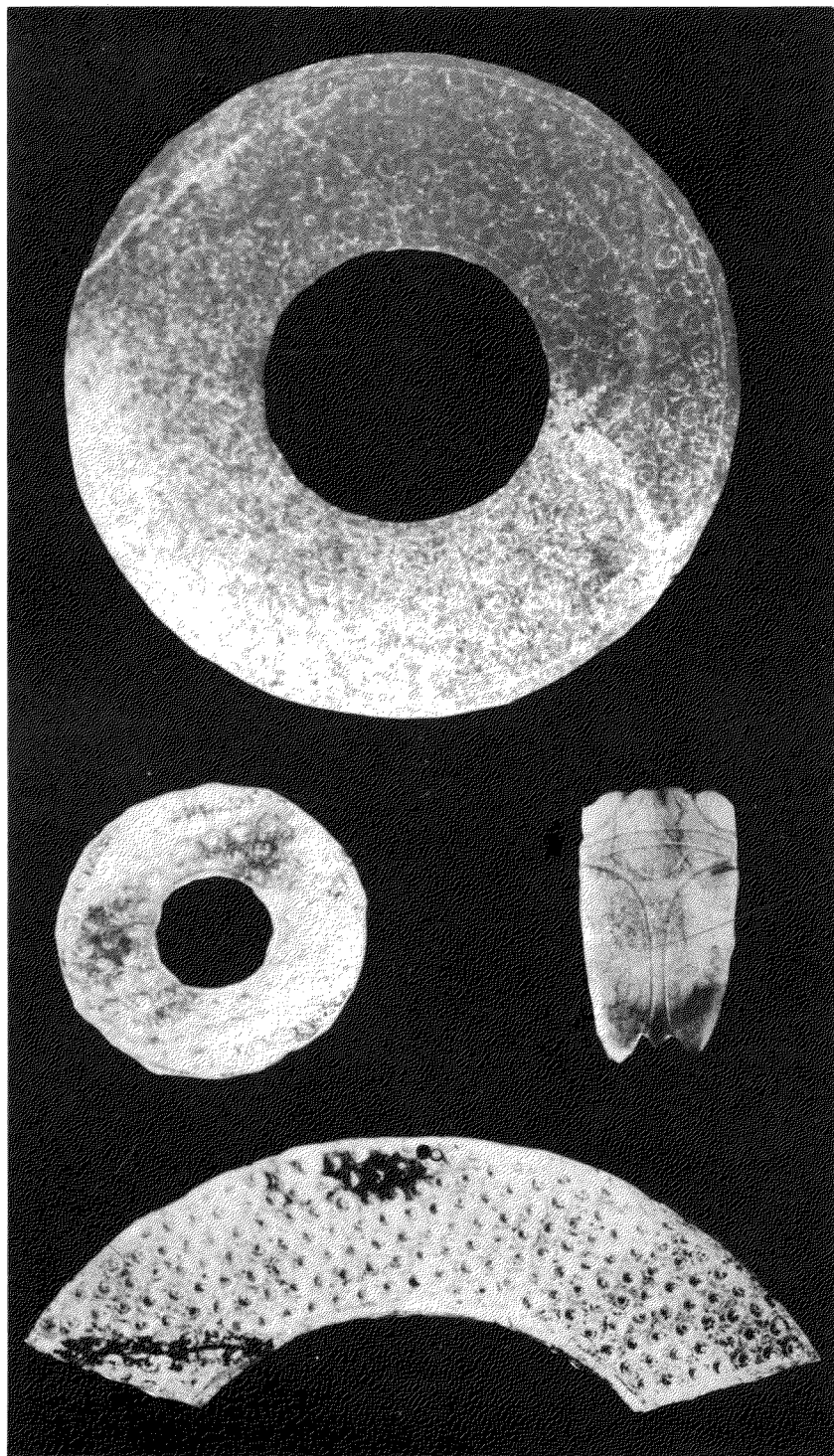


9 (初見)

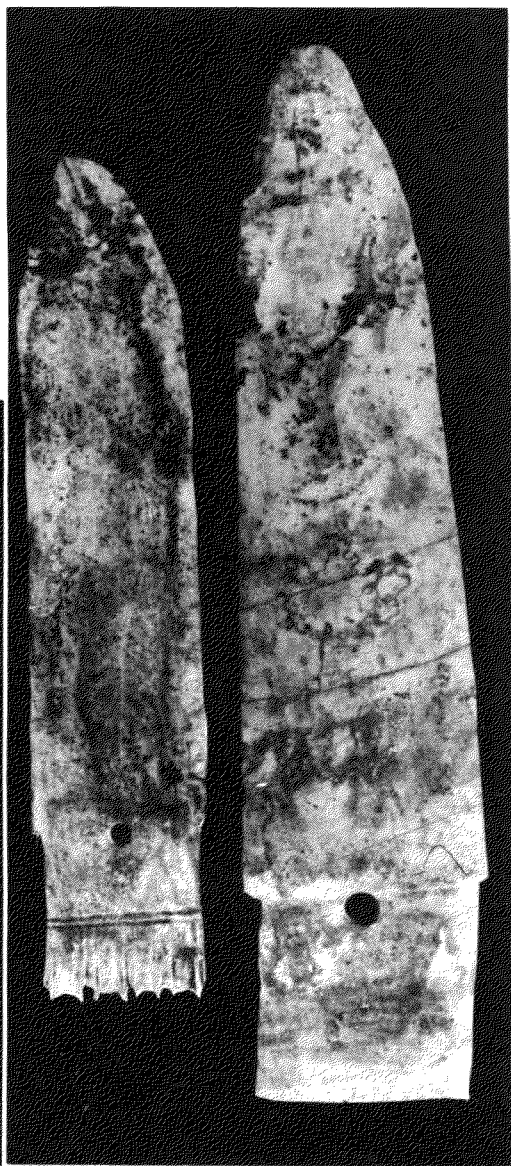
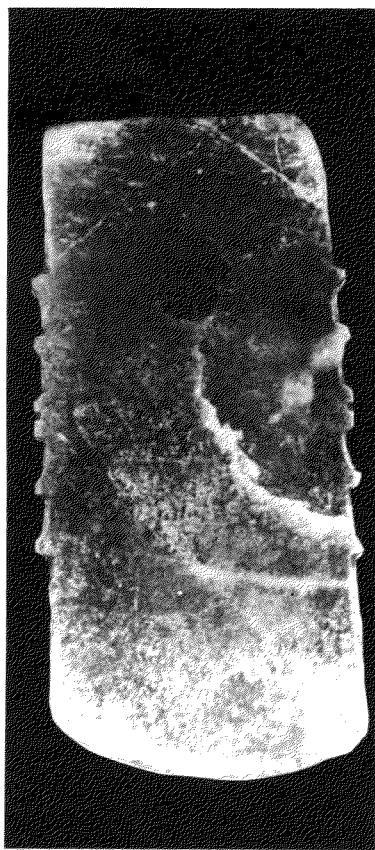
9

7

3/6 和



LXIII



LXIV

第
六
四



LXV

第
六
五





LXVII

第六七



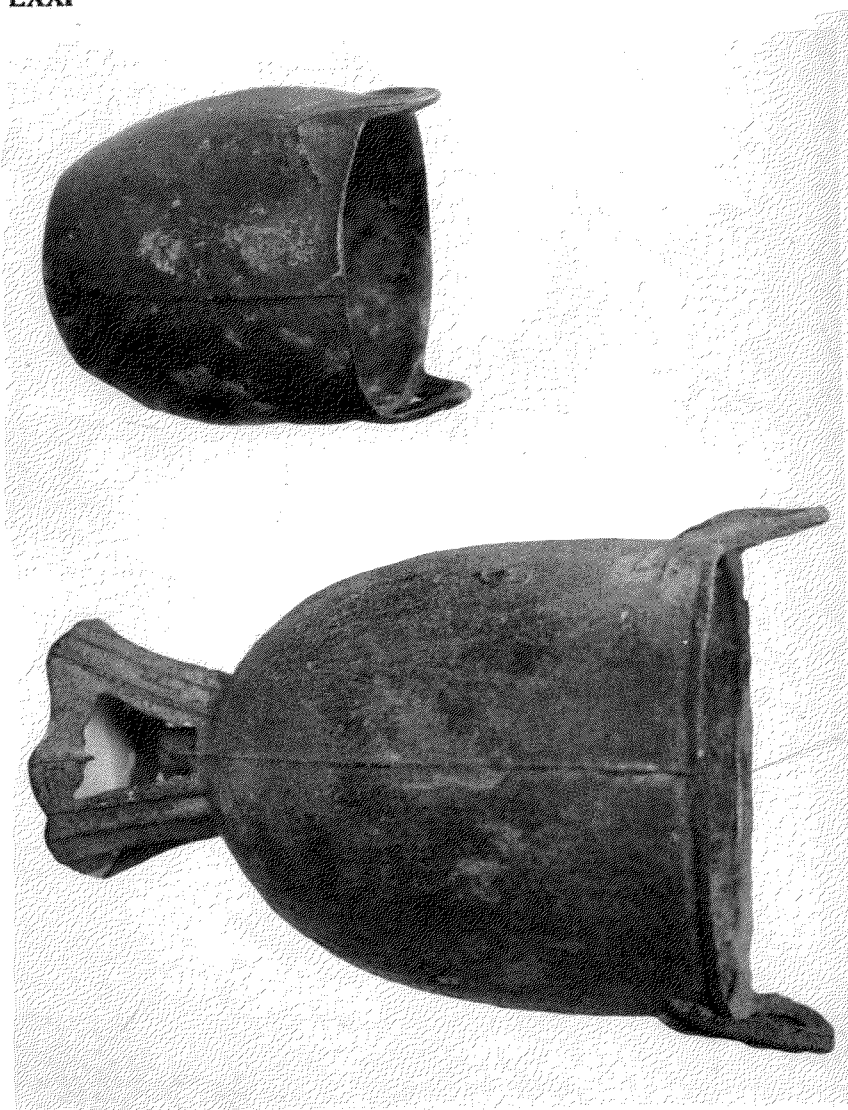
約
¼

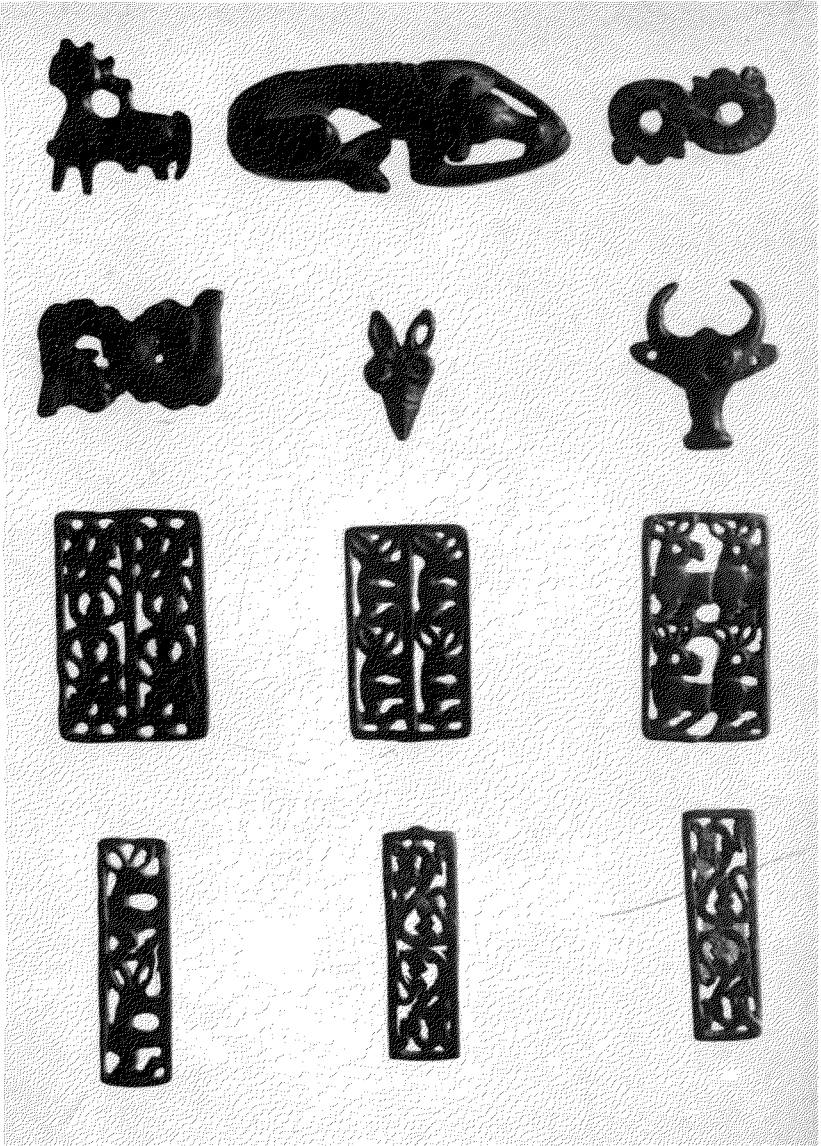
LXVIII



約
1/5









LXXIV

第七四



約
1/7

LXXV

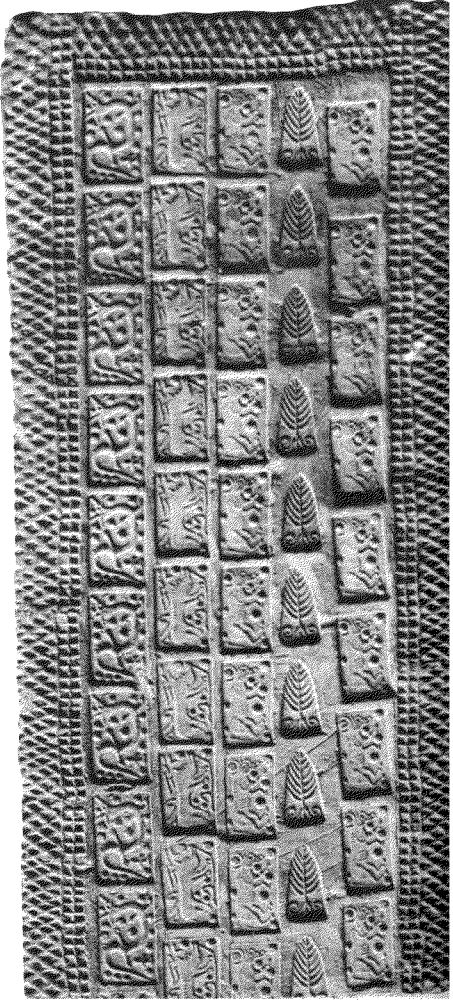
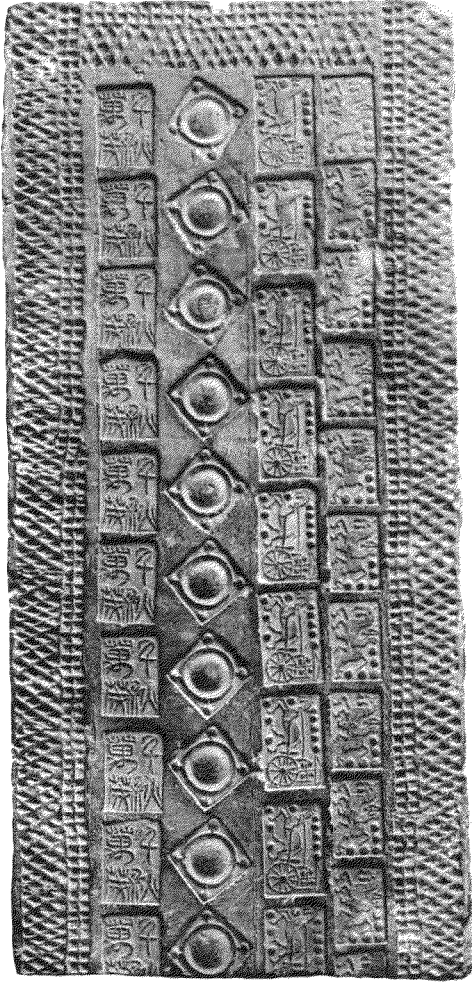
第七五



約
1/4

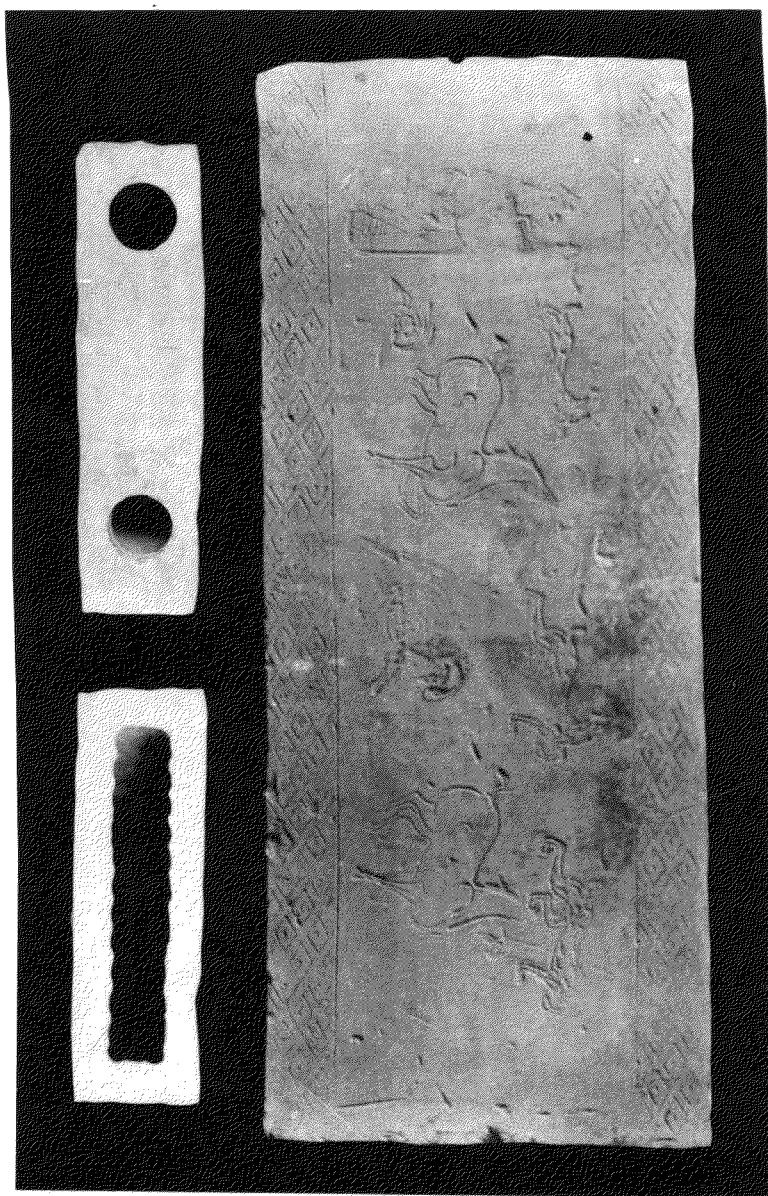
LXXVI

第七六



LXXVII

第七
七



約
1/4

LXXVIII

第七八

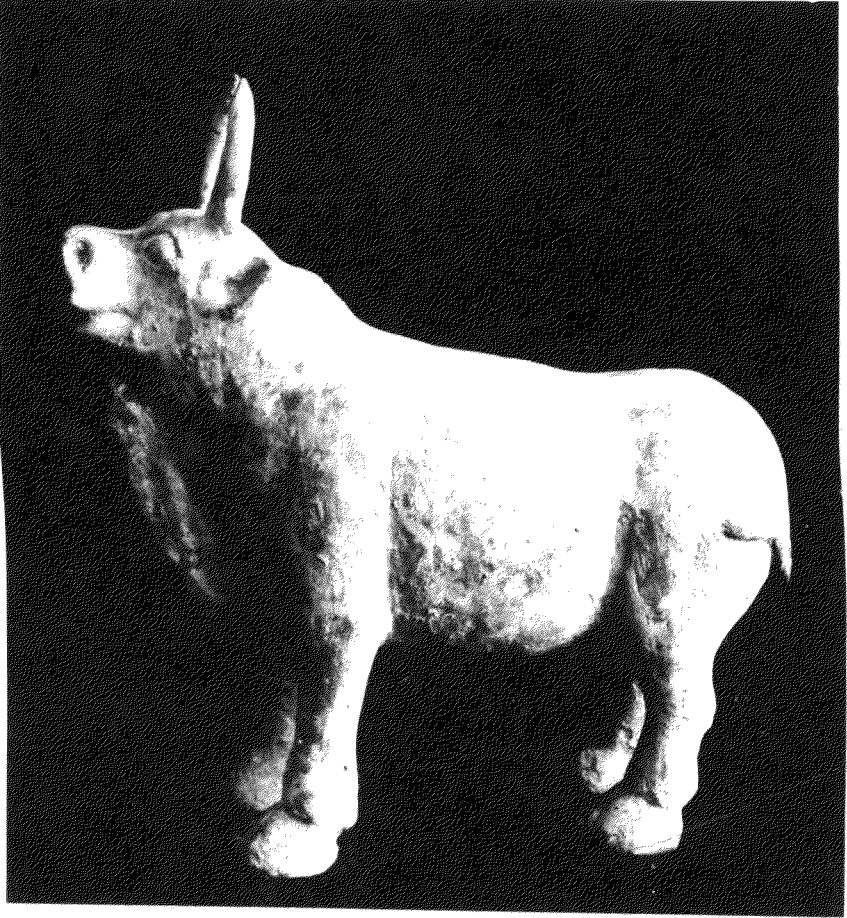


約
分



LXXX

第八〇



約
五

LXXXI

第八
一



約
1/37

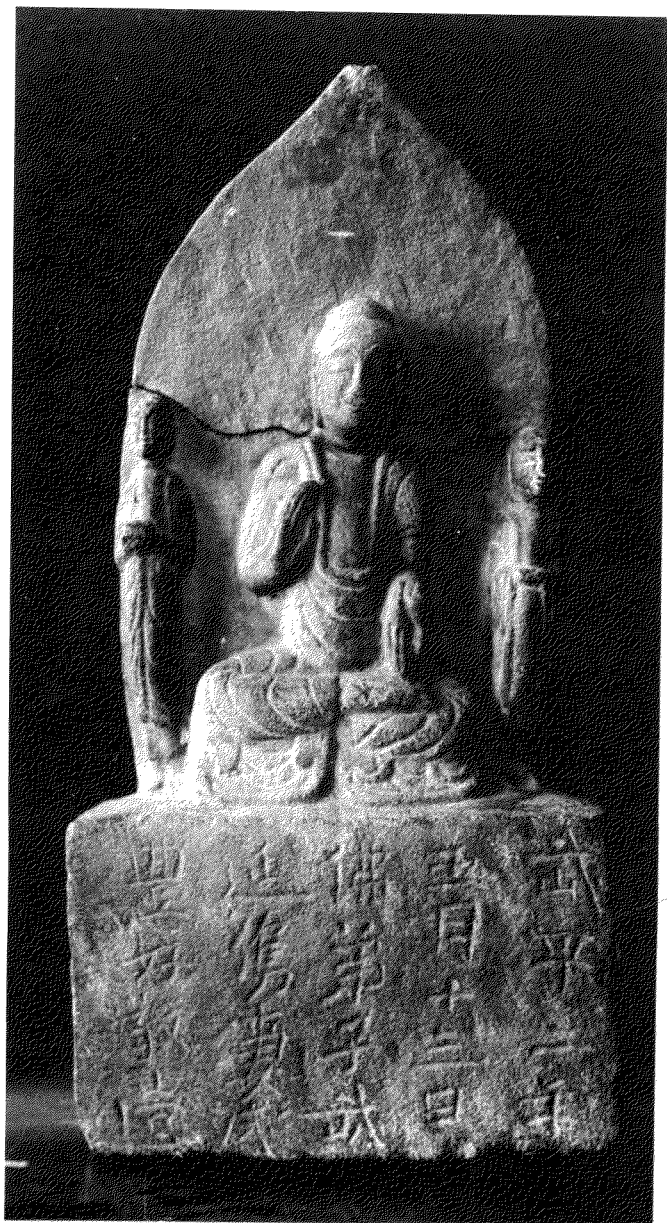
LXXXII

第
八
二



LXXXIII

第
八
三



約
1/3

咸前... 乃... 難... 有... 貞...
 此... 經... 為... 未... 未...
 充... 經... 今... 世...
 願... 勿... 輕... 聞...
 八... 年... 歲... 次... 甲... 午...
 卯... 十五... 日... 乙...

佛... 善... 提... 明... 行... 大... 乘... 法... 中... 若... 善...
 佛... 羅... 華... 等... 天... 游... 經... 帝... 釋... 及... 餘...
 來... 及... 文... 殊... 師... 利... 以... 眾... 其... 上...
 人... 演... 說... 一... 切... 諸... 天... 為... 作... 摩...
 大... 利... 益... 勿... 德... 元... 電... 余... 時... 以... 佛...
 十... 大... 十... 世... 界... 文... 殊... 師... 利... 以... 佛...
 如... 是... 如... 是... 說... 般... 若... 波... 羅... 蜜... 經...
 何... 以... 故... 无... 相... 法... 中... 不... 可... 說...
 請... 大... 菩... 薩... 及... 四... 阿... 羅... 漢... 等...
 時... 請... 大... 菩... 薩... 及... 四... 阿... 羅... 漢... 等...

LXXXV

第八五



約
½

LXXXVI

第八六



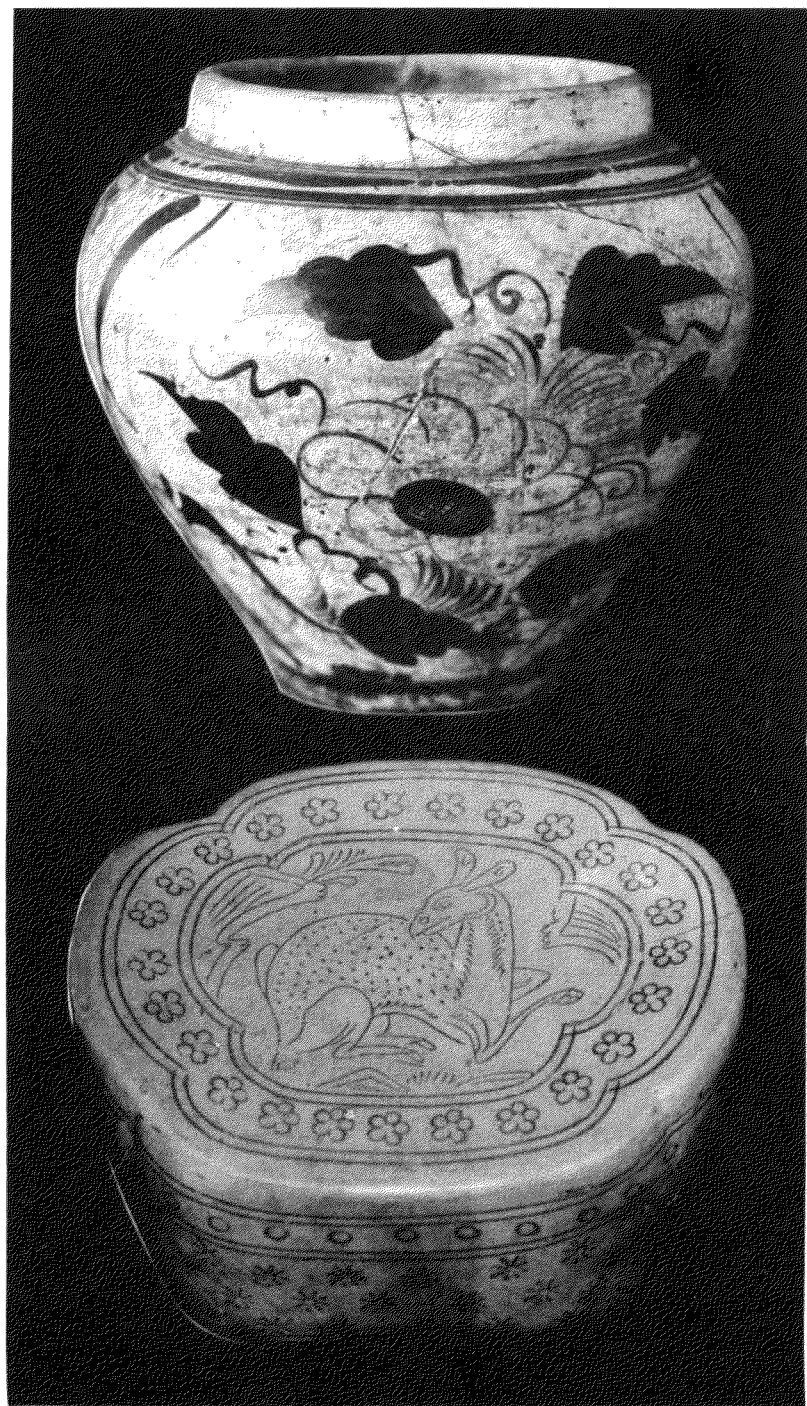
約
1/12

LXXXVII

第
八
七

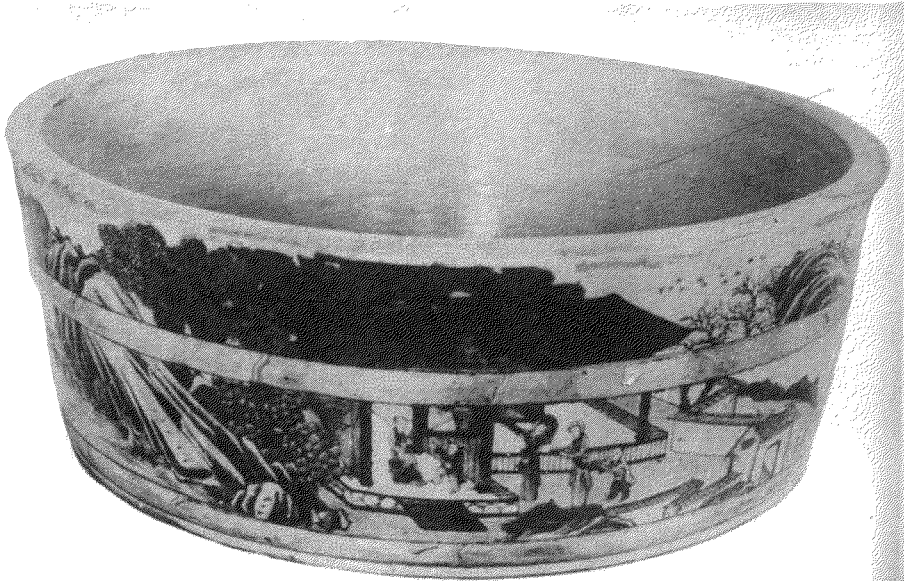


約
五





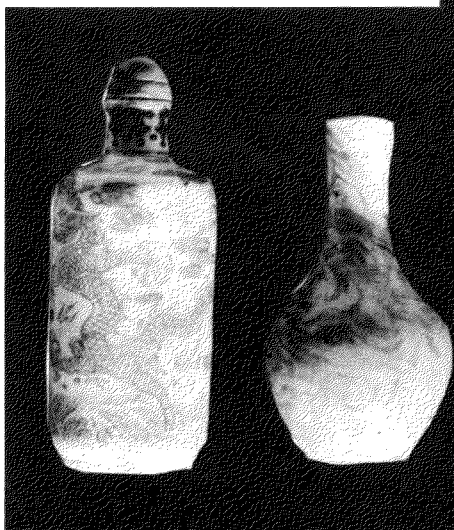
1



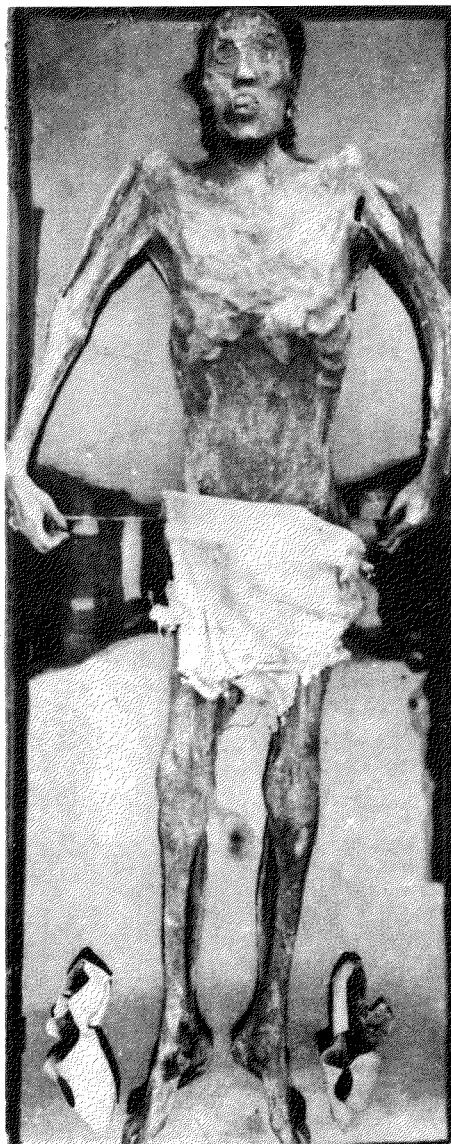
2

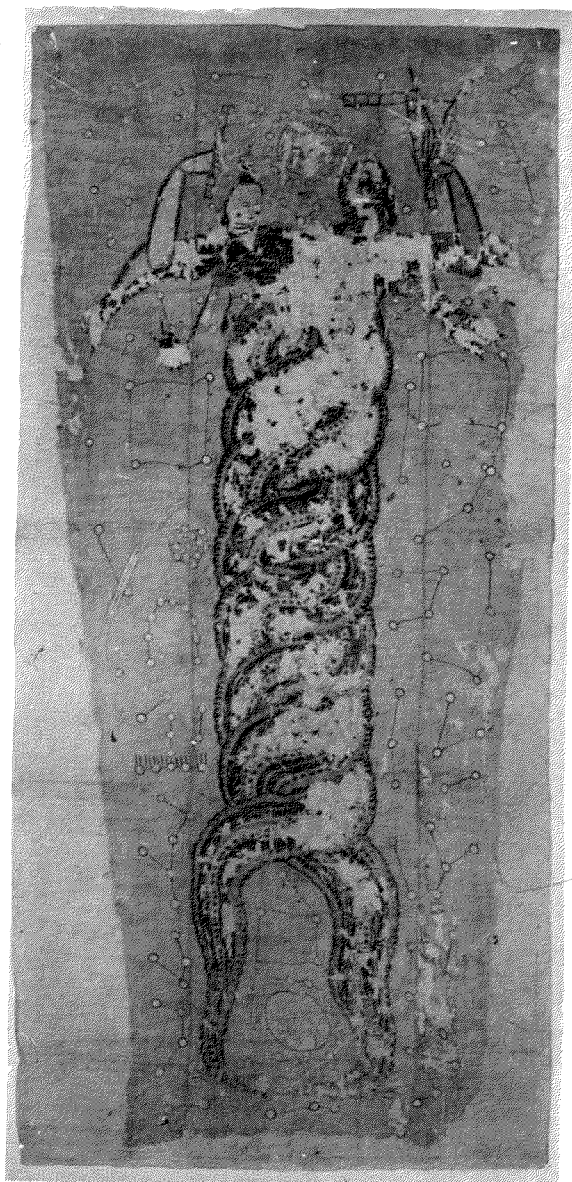
XC

第九〇



XCI





延和九年庚午歲
 月十一日新除麻門
 子弟將遷壑中
 即將追贈壑中
 軍趨孝高之墓表

1

之墓表	郭恩子妻	十五日	庚午	歲

2

約
1/3

延昌四年甲申歲
 三月己未朔十七日
 乙亥肅州將軍護
 明威將軍逕逕郡徐
 寧固妻金氏之

1

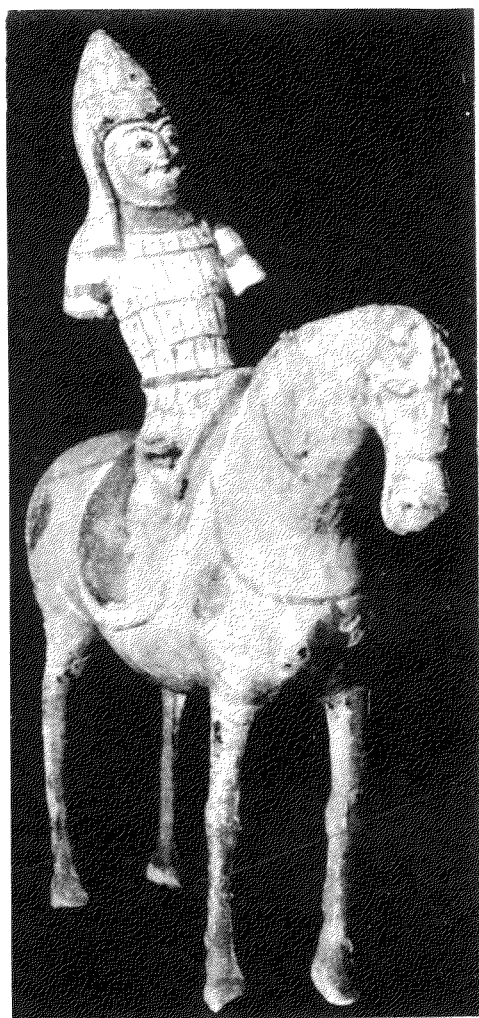
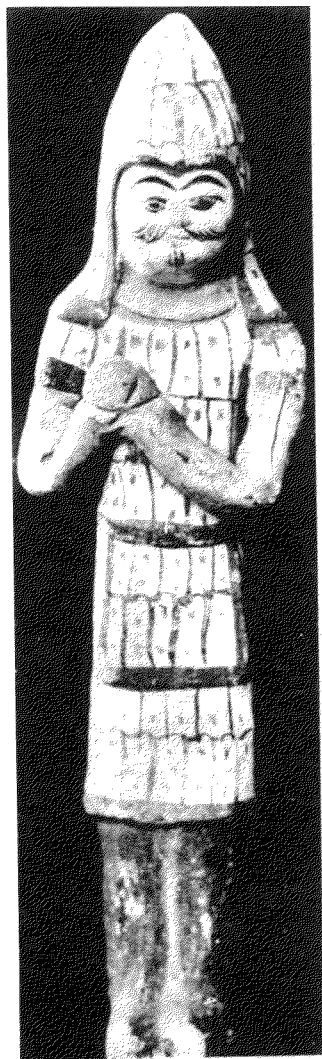
壽
 甲午五月
 九日
 領兵將逕兵部
 侯慶伯春

2

約

XCV

第九五



1

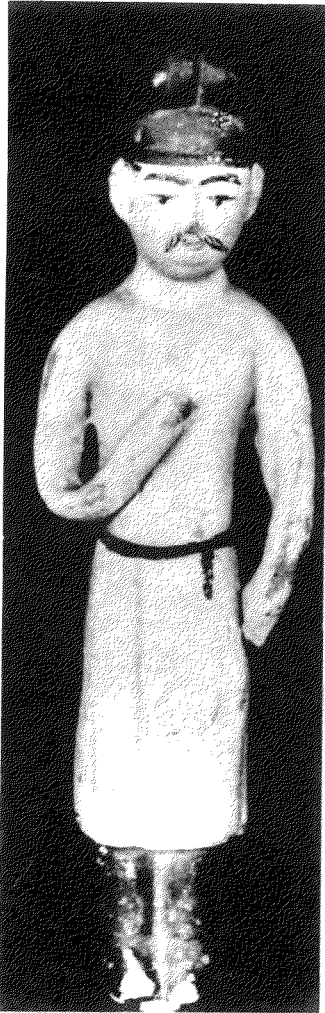
約
35



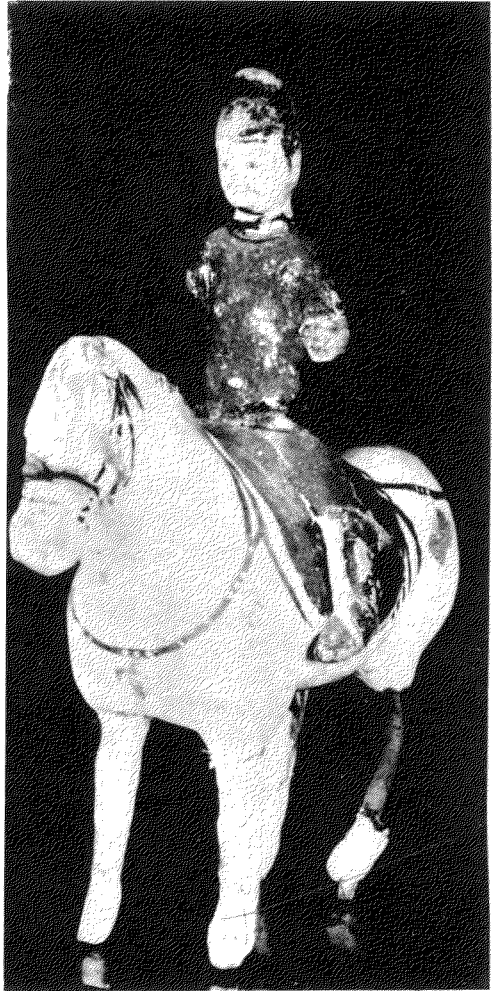
2



1



2



1

約
反

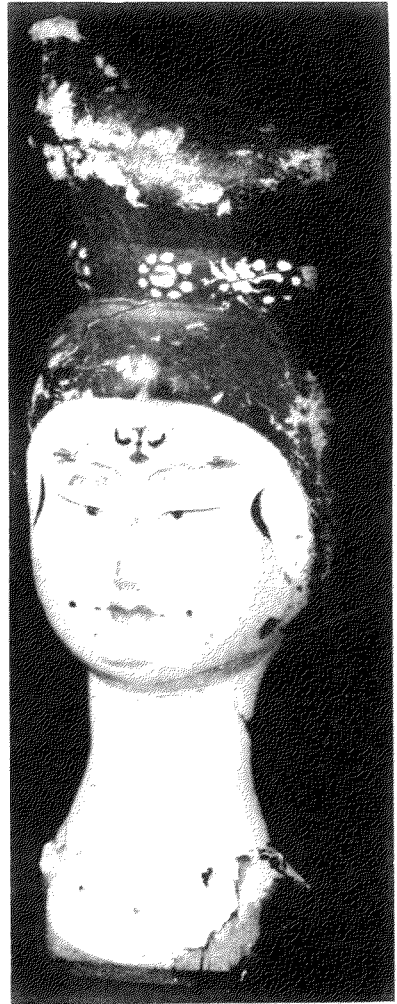
XCVIII

第九八

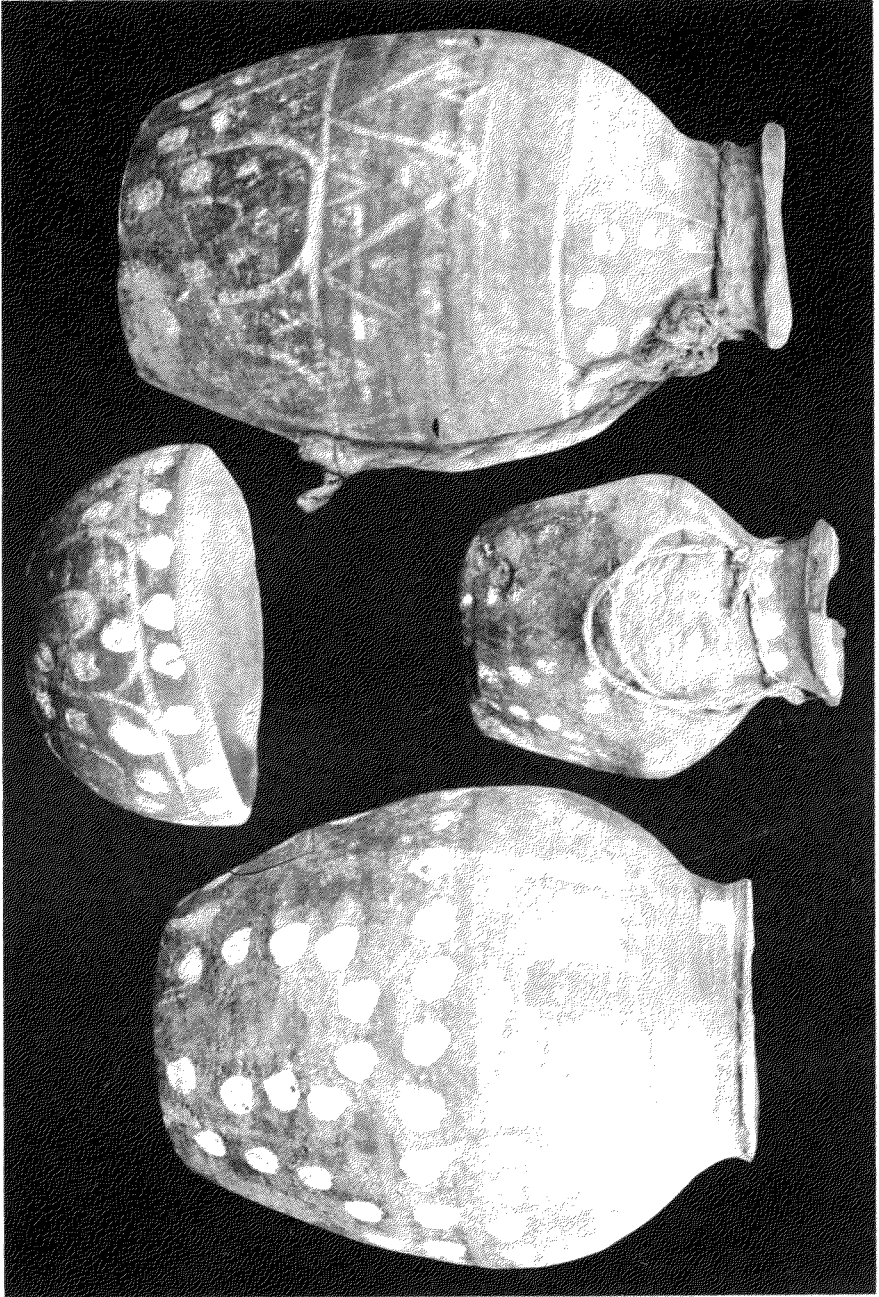


2

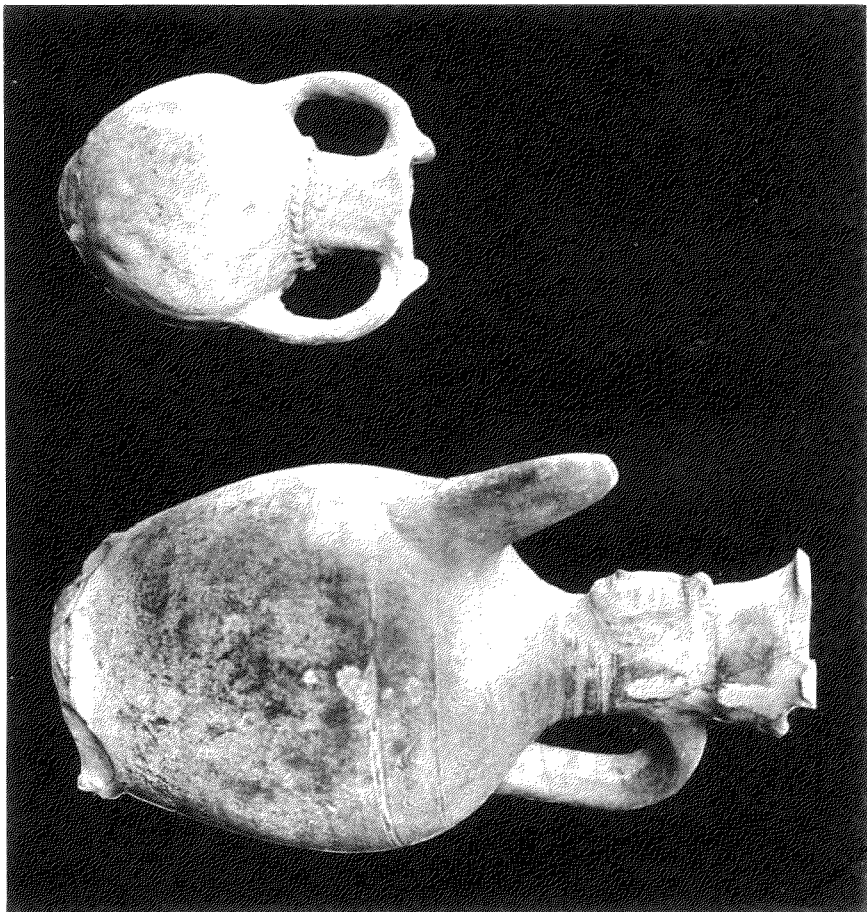
約
1/4



約
1/4



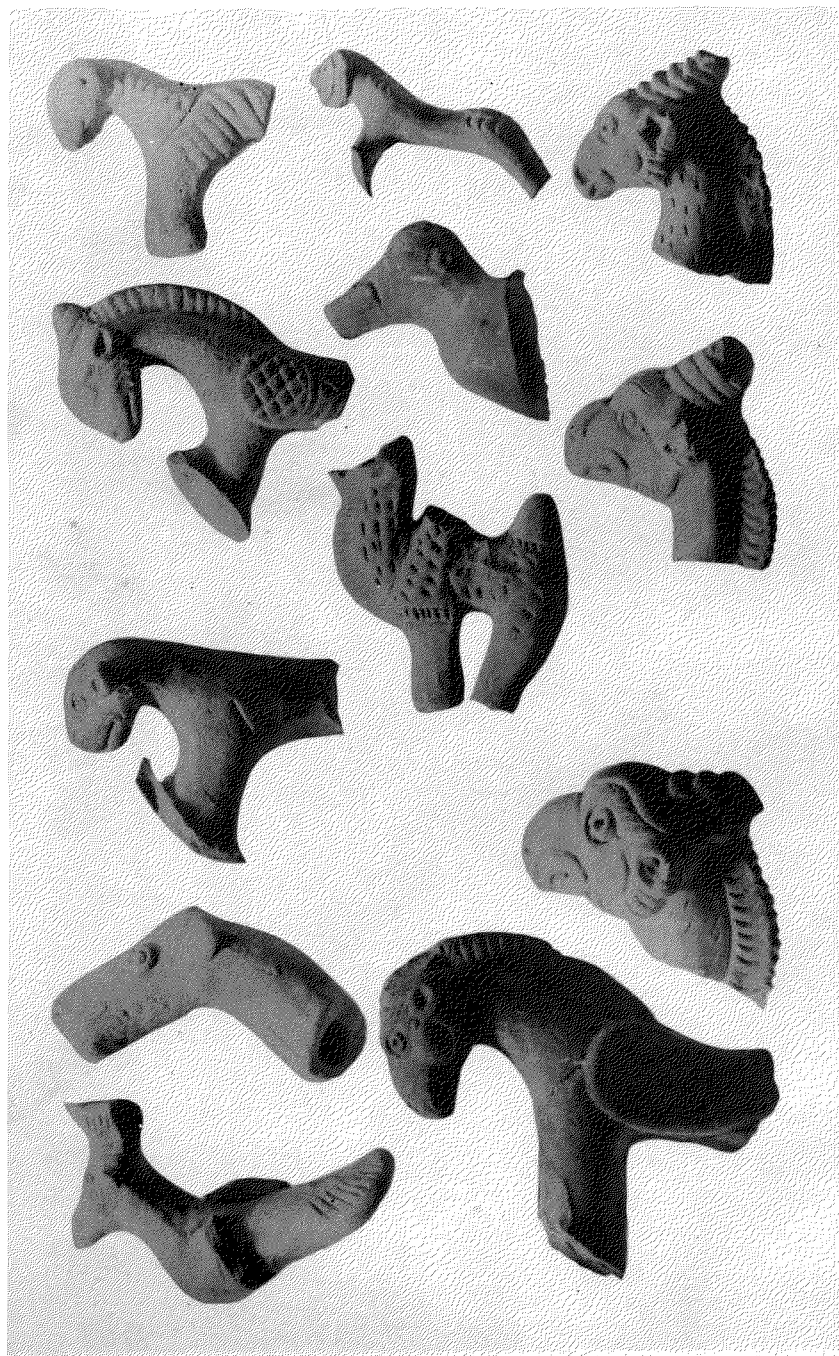
C

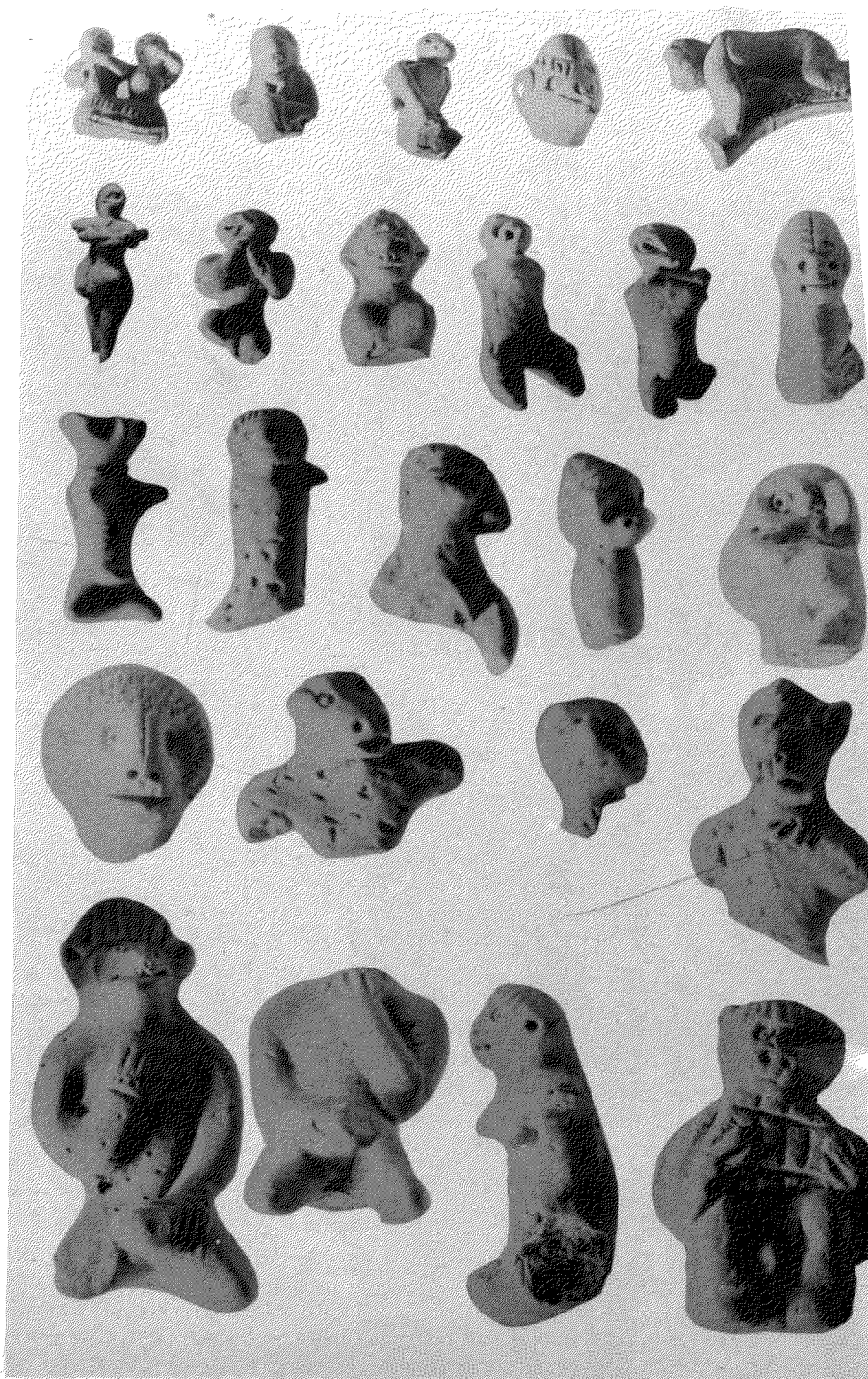


物 六





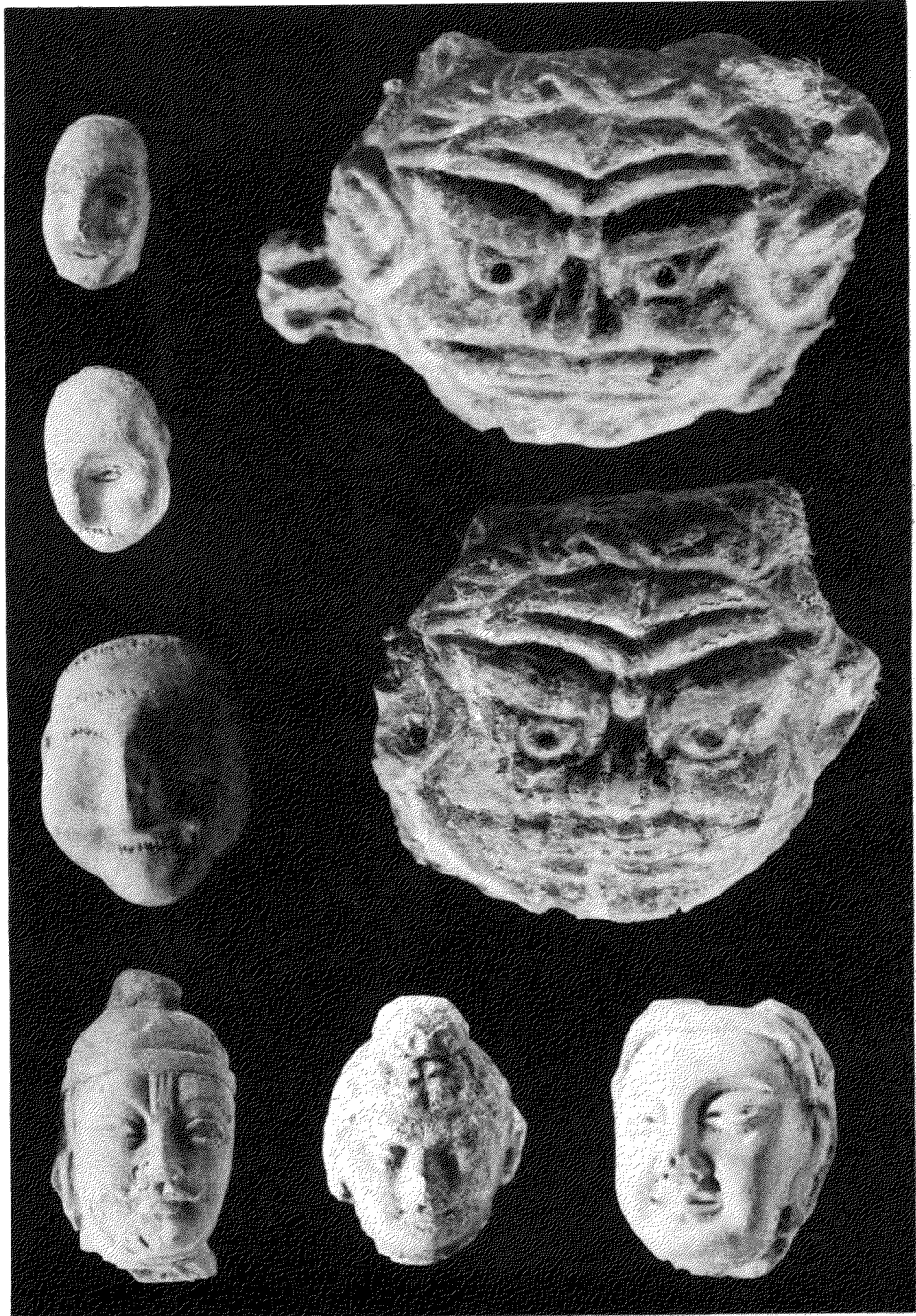




CV

第一〇五











CX

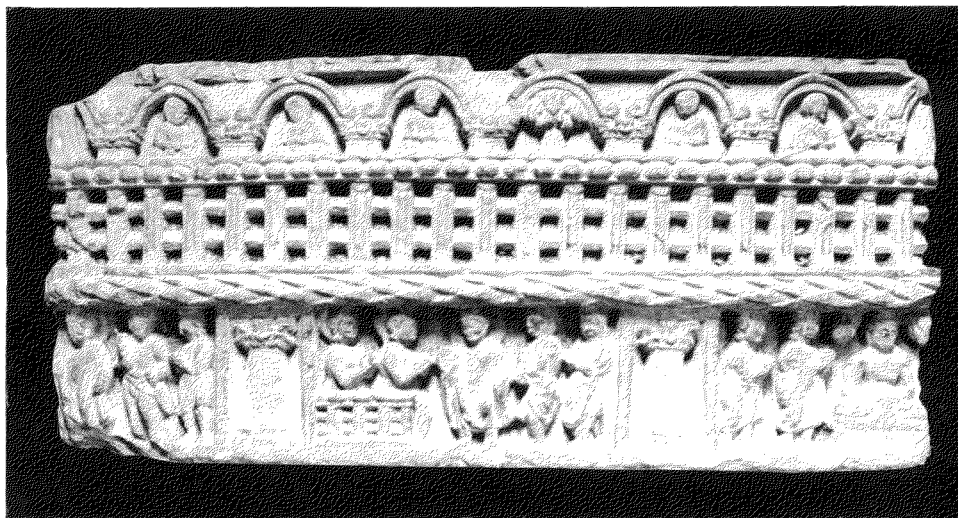
第一〇



約
1/7



1



2

CXIII

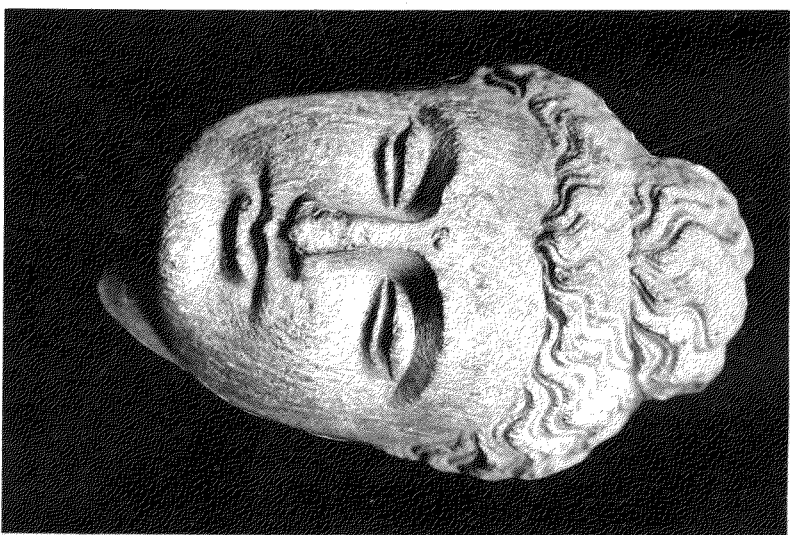
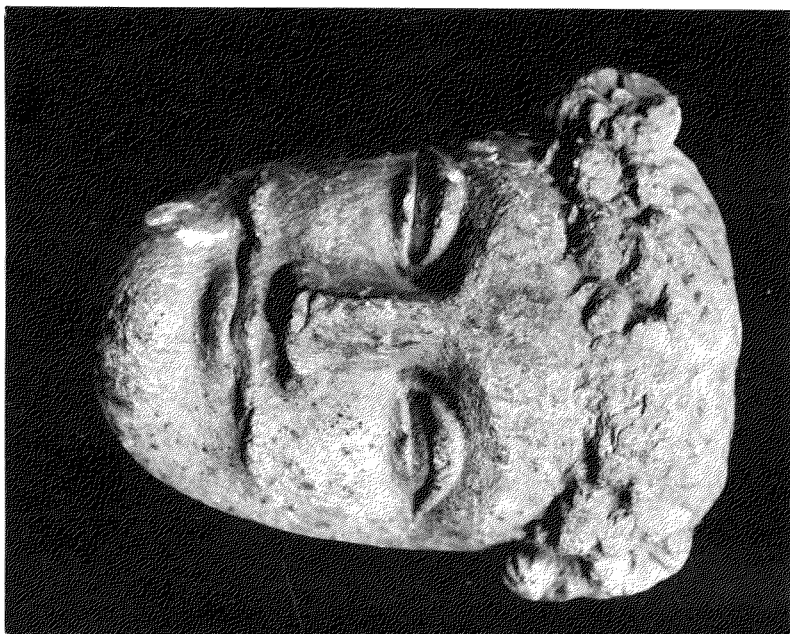
三十一第



約
1/5

CXIV

第一一四



約
3/6

CXV

第一一五



約
1/12

PART I. OBJECTS FOUND IN MANCHURIA.

(A) Prehistoric and Pre-Han Periods

- I Stone Arrow-heads and Bone objects found at Nan-san-li (南山裡), near Ryojun. (旅 順)
- II (1)-(3) Stone axe found at Fu-shun (撫 順).
(4) (5) Stone knife found at Hamacho (濱 町), Dairen.
(6) Stone knife found at Daitai-san, (大臺山), near Ryojun.
(7) (8) Stone axe found at Tieh-lung (鐵 嶺).
- III Stone implements found at Hamacho, Dairen.
- IV (1) Perforated flat axe, stone arrow-heads at Tan-to-tzu (單砣子), Pi-tzu-wo (貔子窩).
(2) Fragments of the Li-shaped vases found at Kao-li-chai (高麗寨), Pi-tzu-wo.
- V Painted Pottery found at Tan-t'o-tzu (單砣子), Pi-tzu-wo.
- VI Yen-shaped (甌 形) Vase found at Kao-li-chai (高麗寨), Pi-tzu-wo.
- VII Battle Axe form Shuang-t,o-tzu-shan (雙砣子山) near Ryojun.
- VIII Pottery Vases found near Ryojun.
- IX Bronze Dagger-hilt found at Kuan-t'un-tzu (官屯子), Mu-yang-ch'êng (牧羊城), near Ryojun.
- X Jar-coffin found at Mu-yang-ch'êng.
- XI Bronze Daggers found near Ryojun.
- XII Ancient coins, Ming knife-money (明刀錢), Spade-money (布 錢), 1-tao coin (一刀錢) found in Manchuria.

(B) Han Dynasty

- XIII Pottery with square design, found at Nan-san-li (南山裡), near Ryojun.
- XIV Semi-circular tiles found at Mu-yang-Castle (牧羊城), near Ryojun.
- XV Tomb bricks found in South Manchuria.

- XVI** Bronze objects excavated from a Han tomb at Nan-san-li, Ryojun.
- XVII** Bronze mirrors found in South Manchuria.
- XVIII** Bronze objects found at Nan-san-li.
- XIX** Pottery with rings form animal heads, excavated from a Han tomb at Nan-san-li
- XX** Earthen Censer (Po-shan-lu) (博山爐) excavated from a Han tomb at Nan-san-li.
- XXI** (1) Flat-bottle from a Han tomb at Nan-san-li.
 (2) Painted Cauldron of bowl shape with two upright handles and three feet, found near Hai-ch'êng (海城), South Manchuia.
- XXII** (1) Model kitchen-stove from a tomb at Ying-K'ou, (營口).
 (2) Clay model kitchen-stone from a tomb at Nan-san-li.
- XXIII** A model of the Han tomb of Fresco-paintings, Ying-ch'êng-tzu (營城子) near Ryojun.
- XXIV** Fresco-paintings of the tomb at Ying-ch'êng-tzu near Ryojun.
- XXV** Fresco-paintings of the tomb at Ying-ch'êng-tzu (營城子) near Ryojun.
- XXVI** (1) Animal shaped Pottery from No. 2 Tomb at Ying-ch'êng-tzu.
 (2) Clay model box from No. 2 Tomb at Ying-ch'êng-tzu, near Ryojun.
- XXVII** Clay model house and kitchen-stove found from a tomb at Ying-ch'êng-tzu.
- XXVIII** Painted Clay Candle stick found in No. 2 tomb at Ying-ch'êng-tzu.
- XXIX** Painted Clay model house found in No. 2 tomb at Ying-ch'êng-tzu.
- XXX** Clay candle stick found in a tomb at Ying-ch'êng-tzu.
- XXXI** (1) Clay model dog from No. 1 tomb at Ying-ch'êng-tzu.

(2) Clay model pig found in No. 1 tomb at Ying-ch'êng-tzu.

- XXXII** Clay model house, from Nan-san-li, near Ryojun.
- XXXIII** Terra-cotta mortuary figurines from a tomb at Hsiung-yüeh-ch'êng (熊岳城), South Manchuria.
- XXXIV** Terra-cotta mortuary figurines from a tomb at Lu-chia-t'un (蘆家屯), South Manchuria.
- XXXV** Stone-chambered tomb from an ancient tumulus at Liaoyang (遼陽), South Manchuria.

(C) Pohai and T'ang periods

- XXXVI** Terra-cotta figurine of Buddha from Tung-ch'ing-ch'êng (東京城) site, Manchuria.
- XXXVII** Rubbing of the inscription on the memorial stone (A.D. 714) from Ryojun.

(D) Liao chin and the later periods.

- XXXVIII** The ancient silver masks found in Jê-ho-shêng (熱河), Manchuria.
- XXXIX** Old masks of silver gilt from Jê-ho-shêng, Manchuria.
- XL** The tomb stones with figures of Deities, sacred animals, from the stone chambered tomb at An-shan (鞍山), South Manchuria.
- XLI** (1) Mirrow with figures of two carps with inscription Chin period.
(2) Stone animal figure, from Jeho, Manchuria, Liao period.
- XLII** Glazed potteries, so called 'Kei Kan Ko', from Manchuria, Liao period.
- XLIII** Relies found in the tomb of 'Wan-yen-lou-shih (完顏婁室), (Dead A.D. 1130), Shih-pei-ling (石碑嶺) near Hsin-ching, (新京) Manchuria.
- XLIV** Relics found in the tomb of Wan-yen-lou-shih, near Hsin-ching Chin period.
- XLV** Gilt bronze funeral Mask from the ruins of a Corean Castle (高麗城址), in chi-lin (吉林) Manchuria.

- XLVI** Huge glazed pottery with inscription 'Naifu' (內 府) from Jê-ho-shêng, Manchuria
- XLVII** Stone pagoda, Dated 1109, found in Jê-ho-shêng Manchuria, Liao period.
- XLVIII** Stone pagoda with inscription of Sanskrit character, from Chin-chou (金 州) near Dairen, Liao or Chin periods.
- XLIX** Tomb-stone of 'Chang-ch'êng (張 成) Dated 1294, with inscription of the Yüan and 'Japanese War 1231 (元寇役), from Chin-chou (金 州), near Dairen.

PART II. OBJECTS FOUND IN MONGORIA.

Prehistoric Period.

- L** (1) 6-Headed stone axe found at Hsiao-k'u-lun (小庫倫).
(2) Perforated stone axe found at Hsiao-k'u-lun.
- LI** Stone axes found at Ta-la-ming-an (達拉民安).
- LII** Li-shaped (鬲 形) Vase found at Hsiao-k'u-lun.
- LIII** (1) Polished red pottery with four handles, at Hsiao-k'u-lun.
(2) Li-shaped Vase.

PART III. OBJECTS FOUND IN CHINA.

(A) Han and Pre-Han Periods.

- LIV** Painted pottery Vases from Kan-su (甘 肅) China.
- LV** Fragments of white pottery with incised ornaments found in the site of the ancient Capital of the Yin period (殷墟), at An-yang (安 陽), Ho-nan (河 南) in China.
- LVI** Semi-circular tiles, from I-chou (易 州) in China, Pre-Han period.
- XVII** Tile with thunder design, from I-chou (易 州), in China.
- XVIII** Pottery with design, from I-chou, in China.
- LIX** Bronze Ko and Axe, from in China, Chou period.
- LX** Bronze Ko, from in China, Chou period.

- LXI** (1-8) Jade scepter, Pendants, Human form, etc.
 (9) Jade ring with head.
- LXII** Jade objects, (1,2) Pi with grain pattern, (3) Jade for stuffing the mouth, (4) huang.
- LXIII** Jade knife and Axe, Chou period.
- LXIV** Bronze mirror, Chin style.
- LXV** Bronze mirror, Chin style.
- LXVI** Bronze mirror, Han Period.
- LXVII** Yen-shaped (甗形) bronze Vase.
- LXVIII** Tou-shaped (豆形) bronze Vase, Han period
- LXIX** Quadragular wine Vase I-chou period.
- LXX** (1) Bronze model kitchen-stone.
 (2) I-Shaped (匱形) bronze Vase.
- LXXI** Bronze Vase, so called Sui-yuan style (綏遠式), from Northern Territory of China.
- LXXII** Small bronze pendants, Sui-yüan style.
- LXXIII** Small bronze pendants, from Northern Territory of China.
- LXXIV** Terra-cotta model of a horse, Han period.
- LXXV** Painted pot, in China.
- LXXVI** Huge tomb-brick, with design, from Ho-nan in China
- LXXVII** Huge tomb-brick with Figures of animals and man, from Ho-nan.
- LXXVIII** Tomb-brick with relief inscription, from China.
- (B) Six Dynasties and the Later periods.**
- LXXIX** Stone head of Buddha, from Ho-nan, Western Wei period.
- LXXX** Terra-cotta model of a bull, T'ang period.
- LXXXI** Huge gilt bronze statue of Buddha, from hsia-hsi-shêng (陝西省)
- LXXXII** Stone sculpture of Buddha, T'ang period.
- LXXXIII** Stone sculpture of the three Buddhas, dated 571, six Dynasties.
- LXXXIV** Fragments of the stone stupa, from Yün-chü-ssü (雲居寺), Fang-shan (房山) in China, T'ang period.

- LXXXV** Stone sculpture of the dera King, from Ho-pei-shêng in China, T'ang period.
- LXXXVI** Wooden statue of Bodhisattra, from Shan-hsi-shêng, China.
- LXXXVII** White-glazed long necked Vasen with relief ornaments.
- LXXXVIII** (1) Earthenware, so called Yegorai (繪高麗) type, Sung period.
 (2) Earthenware head rest, Sung period.
- LXXXIX** (1) Coloured bowl, Wan-li (萬曆) Era, Ming period.
 (2) Coloured bowl, K'ang-hsi (康熙) Era, Ch'ing period.
- XC** Snuff bottles, Ch'ing period.

PART IV. OBJECTS FOUND IN CENTRAL ASIA.

- XCI** (1) Mummy of a civil officer from the T'ang tomb at Turfan (吐魯番), Hsin-chiang (新疆), in China.
 (2) Mummy of a military officer from the T'ang tomb at Turfan, China.
- XCII** Picture of Gods having Human head and Snake body, found at the T'ang tomb, Kao-chang-kuo (高昌國), in China.
- XCIII** (1) Epitaph-brick, dated the 5th year of Yen-ho (延和) (A.D. 610), found at Karakhoja (哈喇和卓).
 (2) Epitaph-brick, dated the 20th year of Yen-ch'ang (延昌) (A.D. 580).
- XCIV** (1) Epitaph-brick, dated the 4th year of Yen-ch'ang (延昌) (A.D. 564).
 (2) Epitaph-brick, dated the 11th year of Yen-shou (延壽) (A.D. 634), from Karakhoja.
- XCV** (1) Clay figurine of a man on horse-back, from Karakhoja, T'ang period.
 (2) Clay figurine of a standing man in armour.
- XCVI** Wooden figurine of a standing man in armour, from Karakhoja.
- XCVII** (1) Clay figurine of a man on horse-back, from Karakhoja.
 (2) Clay figurine of a Standing man.

- XCVIII** (1) Female Clay figurine, from Turfan.
 (2) Clay figurine of a woman on horseback, from Karakhoja.
- XCIX** Painted wooden potteries, from Toyuk (吐峪溝).
C Clay pots, from Toyuk.
CI Clay Hanging-Buddhas, from Toyuk.
CII Small terra-cotta figurines, from Kho-tan (和闐).
CIII Small terra-cotta figurines, from Kho-tan.
CIIV Small terra-cotta figurines, from Kho-tan.
CV Clay head of a Buddha, from Kumutura (庫木吐喇).
CVI Terra-cotta and clay head of Buddhas.
CVII Clay head of a Buddha, from Murtuk (木頭溝).
CVIII Pare-tiles, from Turban.
CIX Pare-tiles, with impress of the palm, from Toyuk.
CX Fresco painting, from Murtuk, T'ang to Sung periods.

PART V. OBJECTS FOUND IN INDIA.

- CXI** Chlorite-schist relief of a Buddha, from Gandhara (犍駄羅) India.
- CXII** (1) Chlorite-schist relief of a Worshipper, from Gandhara.
 (2) Chlorite-schist relief of a Buddha, from Gandhara.
- CXIII** Chlorite-schist reliefs, from Gandhara.
- CXIV** Chlorite-schist head of a Buddha, from Gandhara.
- CXV** Diorite statue of Sakya-muni from Bodhi-Gaya, India.

