

## **Historic, Archive Document**

Do not assume content reflects current scientific knowledge, policies, or practices.



6213

LIBRARY  
RECEIVED  
★ APR 20 1929 ★  
U. S. Department of Agriculture.



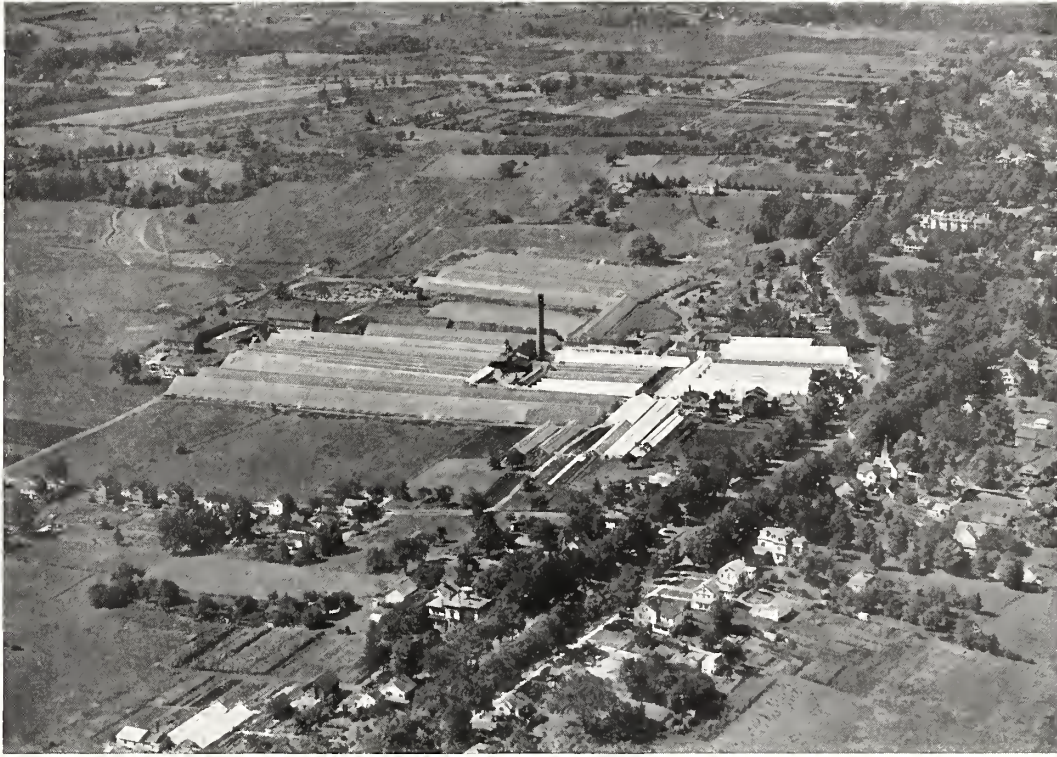
L. G. Transfer

**A. N. PIERSON, Inc.**  
**CROMWELL, CONN.**

**1929**







*A bird's-eye view of our lower plant taken from an airplane. It shows in the distance a small portion of our nursery, which comprises over 150 acres, planted chiefly to evergreens*

WHOLESALE TRADE-LIST ✓



NINETEEN TWENTY-NINE ✓

**A. N. PIERSON**

INCORPORATED ✓

CROMWELL, CONNECTICUT



*Grafted Roses for Florists' Planting  
Palms, Ferns, Ornamental Plants ✓ Evergreens of All Types  
The Largest Production in New England*



TALISMAN

©ClA A 8869

*JR*

FEB 16 1929



# TALISMAN

This new Rose, which we have color-plated in an attempt to bring to you a semblance of its beauty and its distinctiveness, is another Montgomery creation, and we believe one of the finest that has ever been known, judging by its popularity with the flower-buying public and by its growth and production, so necessary to the commercial Rose-grower.

The parentage of this Rose is Ophelia × Souvenir de Claudius Pernet, and the characteristics of both parents are plainly evident to the Rose-man.

To describe it is to praise it, and that we do not wish to overdo. From our last season's catalogue we quote a few paragraphs that were true then and just as true today.

We have 25,000 plants of the variety growing on our place, and it is one of the freest-growing, easiest handling varieties that we have ever had growing in the greenhouse benches. The color is very hard to describe. It is a combination of yellow and copper, suffused with pink in the bud. If you can remember the color of Irish Fireflame, you will have something with which to compare the bud color of Talisman.

The Rose carries an average of twenty-five petals (we counted one yesterday that had thirty-five, another that had twenty-three, and we think twenty-five good-sized petals is a fair average).

It is amply double to be a good commercial cut-flower Rose, and yet a Rose of this petalage will open freely and easily, being in the open form somewhat similar to Butterfly—although the petal is larger and heavier than the petals of Butterfly.

As the flower opens, as with all Roses carrying these yellow and copper shades, it changes color and the half-open color carries a decidedly old-rose pink above the yellow base, and as this fades to lighter pink, the deeper pink that is in the original flower becomes more intensified, probably by contrast. It is a very charming color but one that it is almost impossible to describe accurately and that is entirely distinct from anything we now have in commerce for cut-flower purposes.

To add a few facts is only fair. It will show less brilliancy of color during dark weather. There are often malformed flowers from the heavy bottom canes, and these should be pinched and allowed to branch, which they do freely.

As a seedling from Souvenir de Claudius Pernet, there has been some question as to its action on various root-stocks. It does equally well on Manetti or Odorata, but there is no die-back which is so characteristic of Pernet no matter which root-stock is used. It does well on Multiflora japonica out-of-doors and experts have pronounced it, after thorough trial, one of the finest of our garden Roses. It has won gold medals many times but the Coolidge Medal won at the New York Show is the finest tribute of them all.

## TALISMAN IS A REAL ACQUISITION TO THE LIST OF CUT-FLOWER ROSES

We can supply both young stock for greenhouse growing and plants for outside planting as listed below.

From 2¼-inch pots:	From 3-inch pots
\$45 per 100	\$60 per 100
\$400 per 1,000	From 4-inch pots
\$375 per 1,000 in quantity from 3,000 to 7,000	\$75 per 100
\$350 per 1,000 in quantity from 7,000 up	

One-year plants from 4-inch pots, on Multiflora japonica, in December, 1928, for outside planting, \$1 each, \$10 per doz., \$75 per 100

(Not to be confused with the ideal size offered on page 11)





Just a corner of our section of Talisman planted in June and photographed in early September, which shows its wonderful free-growing habit



# GREENHOUSE ROSES

TO BE a success under glass, a variety must produce flowers that will be of a pleasing color under both natural and artificial light. It must be productive, for it occupies space that is valuable, and it is to be regretted that the list of greenhouse Roses is limited by these conditions. Of the hundreds of new Roses that are originated, very few become recognized as worthy of being classed among greenhouse varieties.

This list of greenhouse varieties of forcing Roses, we believe, covers all the sorts commonly grown in quantity, and these are, in our opinion, the best Roses in existence.

We grow grafted Roses, for greenhouse planting, in large quantities. This season we shall graft about 1,000,000. We do not grow own-root Rose plants. With few exceptions, these Roses are better grafted on Manetti stock than when grown on their own roots. Stronger plants, increased production, and flowers of better quality are obtained from the grafted plant. Making a comparison between grafted and own-root Roses, both subjects being selected as fair samples, the grafted plant at once shows a superiority which it maintains.

We can fill your retail orders for Rose plants. We have built for ourselves a reputation for producing the best Rose stock that can be grown. That reputation is ours to maintain. For private work, we advise the use of plants from 3-inch pots, shipped when ready for planting, or at least a month before needed if they are to be repotted into 4-inch pots. When you wish us to repot your order, allow four weeks for the shift from 2 $\frac{1}{4}$  to 3-inch pots, and six weeks for the shift from 3 to 4-inch pots. After May 1 we are usually able to fill orders for any varieties listed from 3-inch pots.

## ORDER YOUR ROSES NOW

HAVE THEM THE SIZE YOU WANT THEM WHEN YOU ARE READY FOR THEM

### PRICES OF ALL GREENHOUSE ROSES

Grafted only:	<i>unless otherwise specified:</i>	Each	Doz.	100	1,000
From 2 $\frac{1}{4}$ -inch pots		\$0 40	\$4 50	\$25 00	\$230 00
From 3-inch pots		50	5 00	30 00	
From 4-inch pots		60	6 00	40 00	

Three or more of a variety at dozen rate, 25 or more at 100 rate, 250 or more at 1,000 rate. Packing charge, \$10 per 1,000. No packing charge made on prepaid orders. We quote special prices on larger quantities.

WE DO NOT OFFER GRAFTING SCIONS OR OWN-ROOT PLANTS



### BRIARCLIFF

One might almost say the Universal Rose. There has never been in commerce a variety in its color that has had the same recognition. Briarcliff has supplanted Columbia entirely, and, without a doubt, there are more grown today than of any Rose except, perhaps, Premier and its sports.



*TEMPLAR* is the most fragrant Rose we know. It has made good and is today the standard by which red Roses are judged.



## TEMPLAR

(MONTGOMERY COMPANY)

In color, *Templar* is a clear, even shade of red that does not change to blue or purple as the flower ages. It is a color that holds well at all times and at all seasons. The stem is good. It does not make, as a rule, extra-long grades without pinching, due to the number of flower-shoots made, but it does, when pinched, show the Premier characteristic of making low growths above the pinch.

*Templar* has made a good record for those who planted it and has filled a long-felt want. A red Rose that is commercially profitable, *Templar* has proven itself to be the variety needed to fill the gap and has put red Roses in the class with other much-used colors.

This ability to grow and to produce in winter is its strongest point. At no time will this Rose stop growing freely. It has proven the most prolific red Rose of the greenhouse forcing varieties, producing a big cut of uniformly good, fragrant, salable blooms.

## COMMONWEALTH

In color, Commonwealth may be described as deep pink. It may be compared to Premier, but is several shades darker and much brighter in color. In habit of growth it is strong and vigorous. Commonwealth breaks freely from the bottom and from the hard wood. It makes a big plant—compared with existing greenhouse sorts. The foliage is hard and leathery. Commonwealth makes good stems. At no season will Commonwealth fail to produce good bloom. While it requires extra heat in December, January, and February, it will amply repay this in quality of bloom and, for the remainder of the year, will cut a quality superior to any in its color. The blooms are large and nicely formed. The petals are hard and do not bruise easily in shipping. It has excellent keeping quality and holds its color well. Commonwealth is an all-season Rose. It is slow in winter, but the best Rose we have ever grown in summer. The value of this variety for summer quality is being recognized, many preferring to rest and cut back during winter rather than to keep going with the extra heat that would be needed, and to crop Commonwealth for Easter and the months to follow.

BUTTERFLY. See Mme. Butterfly

## MME. BUTTERFLY

A sport of Ophelia which carries on so many of the excellent qualities of its parent that it is, without doubt, the most widely grown and the most popular Rose of its type. The color is similar to Ophelia—shell or flesh-pink with the Ophelia shadings deepened and intensified. A real commercial sort, good from the grower's standpoint. A good Rose to ship, a good Rose from the retailer's standpoint, and a popular Rose with the public. In growth Mme. Butterfly is surpassing the parent and this feature alone recommends it to all. Foliage, stem, and flower are all Ophelia—improved and glorified.

## PREMIER

This Rose retains its clear shade of rose-pink throughout the season. Premier is widely grown in larger quantities than other greenhouse varieties. It is a free, easy grower, requires considerable pinching to produce long stems, but can be cropped better, perhaps, than any of the other varieties generally grown. It is at its best as a Christmas and midwinter Rose, but is good at all times. This large-flowering Rose is a favorite with the grower and the flower-buyer.

## DOUBLE WHITE KILLARNEY

The leading and best white Rose ever grown, when quality of bloom is considered. There have been many sports of White Killarney, but this Rose, known as the Budlong strain, has shown superiority to the other sports in every respect, and it is recognized today that Double White Killarney means the Budlong strain. It is pure white, and the flowers are of great substance.

## MATCHLESS

This lovely, deep pink sport of Premier was originated by Duckham-Pierson Co. in 1926. In color and form of bud, Matchless is an improvement over Premier, and it is the equal of the parent in health and production. It lacks the size of Premier in the flower, and the general growth, in proportion to the flower, is considerably lighter.



COMMONWEALTH ROSE

## MRS. F. R. PIERSON

Introduced by The F. R. Pierson Co., of Tarrytown, N. Y. As a commercial red Rose, Mrs. F. R. Pierson is hard to equal when at its best. It is a sport of Premier, and it possesses many of the characteristics of the parent, but does not have the same strength of plant that Premier shows where not well handled. As a fancy Rose for the holiday trade, it is beautiful if brought to maturity under ideal conditions and not grown as warm as Premier. "A crimson Rose flooded with sunshine" was the introductory description. It is all of that, and, done well, it is a wonderful Rose, and we have done it well.

## ROSE HILL and SCOTT'S COLUMBIA

For the purpose of comparison with Briarcliff, we have planted a block of Rose Hill and Scott's Columbia. We will graft either of these varieties if our customers wish them at the same price as Briarcliff.





## PREMIER SUPREME

To those who have gone from Columbia to Briarcliff, and those who went from Ophelia to Butterfly, the casting aside of a parent for an offspring is not a new story, and yet how few of the sports really do become lasting in the cut-flower industry. Premier Supreme is not a novelty of the year. It has had a good, fair trial throughout the country, and has not been found lacking in the essentials of a good Rose, and the merits of this sport have now become known. It is better in color than Premier, and, while not as double, is more perfect in form and will open better. In growth it is lighter in about the same proportion as the flower is lighter in petalage. It is as free, if not more prolific, than its parent, and lacks the malformed flowers and heavy off-colored buds. A better Premier that will rapidly replace the parent. And it may safely be said that it is as much better than Premier as Briarcliff is an improvement on Columbia.



### RAPTURE

This Rose, sent out by the Rowayton Greenhouses, is a sport from Mme. Butterfly, or at least from a sport of Ophelia, grown by this firm, that was so close to Butterfly as to make it almost indistinguishable. In practically all respects Rapture is a rose-pink Butterfly with, under good conditions of growth, a slight increase in petalage. It has not been quite as good a grower as the parent, but as the season has advanced it has shown improvement in this respect. It is somewhat closer jointed and does not tend to as long stems, but this is compensated for by the fact that the trade likes the Rose for its coloring, and it sells at a slightly higher price on the market. There is room for Butterfly and for Rapture. They are enough different to be distinct and both good enough to deserve general culture.



## CROMWELL GARDENS' IDEAL SIZE ROSES



The ideal Rose plant for outdoor gardens is grafted on a life-giving stock that will make strong root-growth below ground, thus insuring a vigorous development of wood above ground.

**Cromwell Gardens' Ideal Roses** are grafted on seedling Multiflora japonica stocks in the greenhouse two winters before their sale, grown in 4 or 4½-inch pots, and held cold and dormant during the winter preceding shipment. They are well established, all ready to put in the ground and start growth. They will bloom in a short time because there has been no setback from the transplanting, nor have they lost any feeding-roots.

**Cromwell Gardens' Ideal Roses** are different from ordinary pot-grown sorts; they do not have heavy roots twisted into pots, but have a potful of fibrous roots, ready to produce a free growth in a shorter time than field-grown plants.

**Cromwell Gardens' Ideal Roses** will be ready to ship as soon as weather conditions permit planting, but we advise avoiding the late frosts by planting after May 1.

## GARDEN ROSES

Cromwell Gardens' Ideal Size, from 4½-inch pots, well established—ready May 1. 60 cts. each,  
\$7 per doz., \$50 per 100, except where noted

**Briarcliff.** Pink.

**Double White Killarney.** White.

**Mme. Butterfly.** Light pink, tinted gold at base.

**Premier.** Rose-pink.

**Premier Supreme.** Bright rose-pink.

**Rapture.** Highly colored Butterfly.

**Templar.** Bright red.

**Souvenir de Claudius Pernet.** Golden yellow. Strong plants from 4½-inch pots, \$1 each, \$10 per doz., \$75 per 100.

**Talisman.** \$1.75 each, \$18 per doz., \$125 per 100.



FRIENDLY RIVAL

## NEW CHRYSANTHEMUMS

Rooted cuttings, \$2 per doz., \$15 per 100, \$140 per 1,000; from 2¼-inch pots, \$2.50 per doz., \$18 per 100

**Crystal Queen.** (Smith, 1928.) An early white which somewhat resembles Smith's Advance but is stronger in growth with heavy stem. Planted May 15; buds selected July 15 to 20 were matured and cut September 23, producing flowers 6½ inches in diameter. Height 4 feet. C. S. A. Certificate.

**Friendly Rival.** (Smith, 1928.) Finest yellow ever produced, considering its size, color, stem, and foliage, and its flowering period, which is Thanksgiving and later. It is the brightest yellow of its season.

**Governor Green.** (Smith, 1928.) Named in honor of Michigan's present Governor. A very large crimson with reverse of petals old-gold. Heavy stem and wonderful foliage. The best flowers are from buds selected August 15 which are fully developed October 15. 4½ feet. This variety will be a strong competitor in the market with California-grown stock. C. S. A. Certificate.

**Rose Marie.** (Smith, 1928.) Blooms of a very pleasing shade of pink, much the same as Smith's Enchantress. Buds reserved August 5 to 15 are ready to cut by the end of September. In form same as Smith's Advance, 5½ inches in diameter, and 5 feet tall from May 20 planting. C. S. A. Certificate.

**Smith's Challenge.** (Smith, 1928.) A superb white, maturing the last of November, of the best incurved form, much the same as December Glory but larger. Very strong stem. Select bud September 20. Height 4½ feet.

**Woolf's Pink.** (Smith, 1928.) A pink of perfect incurved form. The upper surface of the petals is violet-pink and the reverse lighter, presenting a flower similar to that of Dr. Enguehard in color and form. Matures October 10 from buds selected August 20; 3½ feet tall from late May planting. C. S. A. Certificate.



## CHOICE GENERAL-PURPOSE CHRYSANTHEMUMS

We grow Chrysanthemums for the cut-flower market and we grow a lot of them. We buy the new ones and give them a chance to show merit, but we do not aim to keep in this list a variety that cannot be grown well by the average grower. If a variety needs special treatment or nursing to make it produce blooms that will sell, we don't grow it. We have not kept in this list those varieties which cannot be finished well with average treatment, and it is from this list that the customer with the small greenhouse, who wishes bloom for personal pleasure, should make his selection of the large-flowered sorts. This applies not only to the New General-Purposes Varieties but to the following General-Purpose List:

Rooted cuttings, \$1 per doz., \$6 per 100, \$50 per 1,000; from 2¼-inch pots, \$1.25 per doz., \$8 per 100, \$75 per 1,000

**Chadwick Supreme.** Color similar to Pacific Supreme; reflexed bloom. A sport of W. H. Chadwick. In bloom from November 20 to December 1.

**Chattanooga.** An exceedingly pure white Chrysanthemum, somewhat resembling Towantic, but later and not as tall in growth. Matures December 1 and later from buds selected September 20. Height 4 feet from June planting. C. S. A. Certificate.

**Clara B. Ford** (Mrs. Henry Ford). A closely incurved yellow, much the same form and color as Major Bonaffon. It is a strong, upright grower, maturing November 20. Select bud September 20.

**December Beauty.** A massive incurved Japanese much the same in form as well-grown Jeanne Nonin. Growth vigorous yet short-jointed, attaining 3½ feet from June 20 planting. Fully developed December 10 to 15 and the supply continues until Christmas and after from the later buds. White with light pink shading which is more pronounced at the center of the blooms.



Gladys Pearson Chrysanthemums



Merida Chrysanthemum

They may be planted the second or third week of July and grown natural, selecting the late bud, which appears in September, or when planted in June, stop August 10 to 25, allowing one or more breaks to continue. This will give buds September 30 to October 10 and flowers December 10 to 30. This variety is so double on the late buds that any attempt to secure them prior to late September will result in malformed flowers. By far the largest and finest December-flowering variety.

**Distinction.** Wonderful bright pink with perfect incurved form and strong, upright stem with good foliage. A good pink to plant for Thanksgiving, maturing November 25.

**Gladys Pearson.** A new shade for Thanksgiving use, maturing November 20 to 25. The upper surface of the petals is apricot and the reverse buff, which illuminates, under artificial light, to bright orange. Strong grower (5 feet from June planting). Date of bud, September 30.

**Golden Chadwick.** When high-class blooms are the object, this variety reigns supreme. Its rich yellow color, combined with the good characteristics of the Chadwicks, places it as one of the best late yellows.

**Indian Summer.** In color, the groundwork is yellow, but into this are blended the terra-cotta and salmon shades, with a tinge of bronze. The color of autumn foliage during Indian Summer in a measure describes the coloring. It is a sport of Golden Chadwick.

**Mefo.** The irregularly incurved petals are loosely and very artistically arranged to form blooms 7 by 6 inches. Its color is creamy white and blooms from late buds show slight traces of pink. Grows 4 feet high; matures November 15. Beautiful foliage. Select bud about September 15. C. S. A. Certificate.

**Merida.** A late yellow shading to orange, with strong, upright growth and stiff, wiry stems. Those partial to Golden Eaton will be pleased with this variety. Matures November 20 and later. Select bud September 20 to 25. Height 4 feet.



CHOICE GENERAL-PURPOSE  
CHRYSANTHEMUMS, continued

**Mrs. R. M. Calkins.** A very bright yellow, as intense as the variety Mari-gold. An improved Golden Chadwick, and in comparison is brighter in color, has shorter outer petals, and is more globular in form, with a stronger and harder stem. Matures November 25 to 30. Select bud September 20. C. S. A. Certificate.

**Rosa Raisa.** (Smith.) A wonderful light rose-pink of an even shade throughout, with perfect, incurved form. Strong, upright stem with foliage larger than the average. Matures November 15 and can be held for Thanksgiving. One of the very best commercial varieties. Height 4½ feet. Select bud September 20.

**Sylvan Tints.** Wonderful variety for Thanksgiving and later. The upper surface of the petals is cardinal and the reverse side tan color. Loosely incurved form. Height 4 feet. Date of bud, September 30.

**W. H. Chadwick.** For the markets that want select stock, this variety stands alone. Slightly pinkish when grown cool, it is even more charming than when pure white.



Mrs. R. M. Calkins

GENERAL-PURPOSE VARIETIES

Rooted cuttings, 75 cts. per doz., \$4 per 100, \$35 per 1,000; from 2¼-inch pots, \$1 per doz., \$6 per 100, \$55 per 1,000

**Charles Razer.** An excellent white variety that has many admirers and is largely planted. Blooming date, November 1.

**Favorite.** A beautiful, glistening snow-white variety. Especially valuable as it comes in a trifle before T. Eaton finishes. Has a good stem, nice foliage, and is an easy grower. Select bud September 5.

**Golden Glow.** Owing to the ease with which this variety can be brought into late bloom at a desired date, it has become very popular. Clear yellow in color.

**J. W. Prince.** Those who fail to secure sufficient pink in Chieftain should consider this dark pink sport from that variety. Height 4 feet. Date of bud, August 25.

**Oonto.** A white Japanese incurved of large size with strong, rigid stem and perfect foliage. Blooming date, October 15. Height 4 feet. Best bud, August 30.

**Silver Sheen.** Pure white, incurved form, maturing October 20, to follow Smith's Advance. Has wonderful keeping qualities. We recommend this variety to those who do not like Oonto as a second early. Select bud August 30.

**Sun Glow.** An early, bright yellow of the Major Bonaffon type, maturing October 25. Exceptionally fine stem with the foliage extending to the bloom. Produces an exceedingly high percentage of perfect blooms.

**Unaka.** A strong grower with perfect stem and foliage. A fine incurved bloom of a pleasing shade of pink. Matures the first week in October.



Silver Sheen



## NEW POMPON CHRYSANTHEMUMS

Rooted cuttings, \$1.50 per doz., \$8 per 100, \$75 per 1,000; from 2¼-inch pots, \$2 per doz., \$12 per 100

**Gold Mine.** Very bright yellow blooms 1¼ inches in diameter and of the true Pompon type, but of a high, rounded form and too large to be included in the Button section. Ready to cut October 25. Height 2 feet. C. S. A. Certificate.

**Greta.** A pure white Pompon maturing immediately after Irene and Minong (October 20). Very free-flowering, with strong, upright growth. C. S. A. Certificate.

**Orange Prince.** Very striking orange in color, blending beautifully with reds and yellows. Grows 3 feet high from early June plantings. Ready to cut October 25. C. S. A. Certificate.

**Pagosa.** A late dark pink, in general character similar to Usona and Olivia but darker pink, much the same as Thanksgiving Pink, and later than either. Not ready to cut until December 5.



Chicago Pearl

## CHOICE POMPON CHRYSANTHEMUMS

Rooted cuttings, \$1 per doz., \$6 per 100, \$50 per 1,000; from 2¼-inch pots, \$1.50 per doz., \$8 per 100, \$75 per 1,000

**Chicago Pearl.** This new variety has proven to be the finest white Pompon we have ever grown. Its bloom is almost ideal in form and pure white in color. The general plant habit is good, the sprays are large, and the flowers carried well apart. Season November 15 to 25.

**New York.** Coming into flower November 1, this bronze variety has been the most called for of any of the many sorts we have been growing. It is a seedling from Hilda Canning, as are Louise Davenport and Sarah Townsend, and is the first of a wonderful succession of bronze Pommoms. With us, it holds in its glory until Louise Davenport comes into flower and takes its place.

**November Gold.** A strong-stemmed, upright grower of the large-flowered type. Too large to be classed as a true Pompon but perfect in form and a bright golden yellow in color. The best formed flower and the richest colored of all our yellow Pommoms. Comes November 5 to 10. Makes from three to five large, strong sprays per plant with usual culture.

**Usona.** A bright pink Pompon maturing November 20 to 25 just in time for Thanksgiving. Very productive with strong upright growth. Height 2½ feet.



Rowerna. See page 16

## GENERAL LIST of POMPON CHRYSANTHEMUMS

Rooted cuttings, 75 cts. per doz., \$4 per 100, \$35 per 1,000; from 2¼-inch pots, \$1 per doz., \$6 per 100, \$50 per 1,000

**Betty Watkins.** (A. N. Pierson, Inc.) One of our seedlings which we have been growing for a number of years and has proved to be one of the best varieties. The flowers are golden bronze 1½ inches in diameter, and carried well upon strong, sturdy stems. This variety makes nice sprays. Ready for cutting November 15.

**Ermalinda.** (Smith.) Flowers of fine form and very double, old-rose with silvery sheen which is enhanced under artificial light 1¾ inches in diameter. Strong, upright growth. Height 3½ feet. Matures October 25.

**Frank Wilcox.** Golden bronze coming into bloom late; makes a very fine pot-plant and is excellent for cutting for Thanksgiving either in sprays or disbudded. Plants tend to overbud in small pots which will be outgrown when planted. This variety has been sold under the names of Souvenir d'Or and Mrs. F. Beu. Matures November 20.

**Ida.** By far the best true yellow of its date blooming October 15. Fine producer per plant with good stems.

**Irene.** True Pompon type, maturing exceptionally early when planted under glass. A pure white which carries its flowers on an upright wiry stem. Irene has also proven to be an excellent variety when planted outdoors and one of the best hardy whites blooming before frost.





Single Chrysanthemums

niece for a single and we class it as the equal of any single-flowered variety in commerce. It is good for exhibition for the high-class storeman and for the grower who retails.

**Dusky Maid.** Deep, rich, golden bronze having several rows of petals. Strong grower, maturing late; in fine shape to cut for Thanksgiving Day.

**Golden Mensa.** A yellow sport of Mensa, having all the good qualities of the parent. Like Mensa from early plantings it is a tall grower but it makes strong stems which carry the bloom well. It will be found in nearly every collection of good singles.

**Mensa.** One of the most popular singles. It is a pure white variety and is carried on strong, straight stems, among the finest of its class. This variety also packs well for a single. Matures November 10 to 15.

**Mrs. E. D. Godfrey.** A lovely shade of light pink; very strong-growing variety. Late blooming, coming for Thanksgiving Day.

### ANEMONE CHRYSANTHEMUMS

Rooted cuttings, 75 cts. per doz., \$4 per 100, \$35 per 1,000; from 2 1/4-inch pots, \$1 per doz., \$6 per 100, \$50 per 1,000

**Blanche.** The improved Garza. A very attractive flower and a good grower.

**Sunshine.** A bright golden yellow, late-flowering variety that has, for the past two seasons, been grown extensively. It is the finest of all the Anemone-flowered varieties with the average grower. It matures late, coming the last of November. Semi-dwarf, strong-stemmed, making a well-formed plant.

### QUANTITY RATE ON CHRYSANTHEMUMS

Three of a variety at dozen rate; 25 of a variety at 100 rate; 250, when not over 5 varieties or less than 50 of a variety are ordered, at 1,000 rate.

### POMPON CHRYSANTHEMUMS, continued

**Leroy.** A very fine blush-pink variety coming into bloom about November 20. A good clean grower of medium height, making attractive flowering sprays.

**Lorraine Meech.** Distinctly a novelty. Color a dull crimson with a golden bronze reverse. The petals curl just enough to show both colors which gives a very pleasing contrast. When fully open, a small yellow center shows, but this should, nevertheless, be classed as a Pompon. Growth is very good; foliage dark green right up to the bud. In bloom November 20 to 30.

**Rowenna.** (Smith.) A very fine late Pompon coming into bloom at Thanksgiving. In color a medium shade of bronze. Grows to a height of 3 feet.

**Unalga.** An intense yellow even brighter than Christmas Gold. Reaches a diameter of 3 1/4 inches when disbudded but may also be grown naturally to sprays to advantage, producing eight to ten flowers 2 1/4 inches in diameter. Matures November 25 and later. Upright growth with rigid stems, 2 1/2 feet high.

### SINGLE CHRYSANTHEMUMS

No collection of the "Queen of the Autumn" will be complete without the single-flowered varieties. Nearly all of the so-called "singles" have several rows of petals and some of the finest colors of the Chrysanthemum family are exemplified by the single sorts. Our list of these has been cut to meet the requirements of the commercial needs, but here again it is a survival, not alone of the unlike, but also of the best. Grow some singles and you will be forever a lover of the type.

### GENERAL COLLECTION OF SINGLES

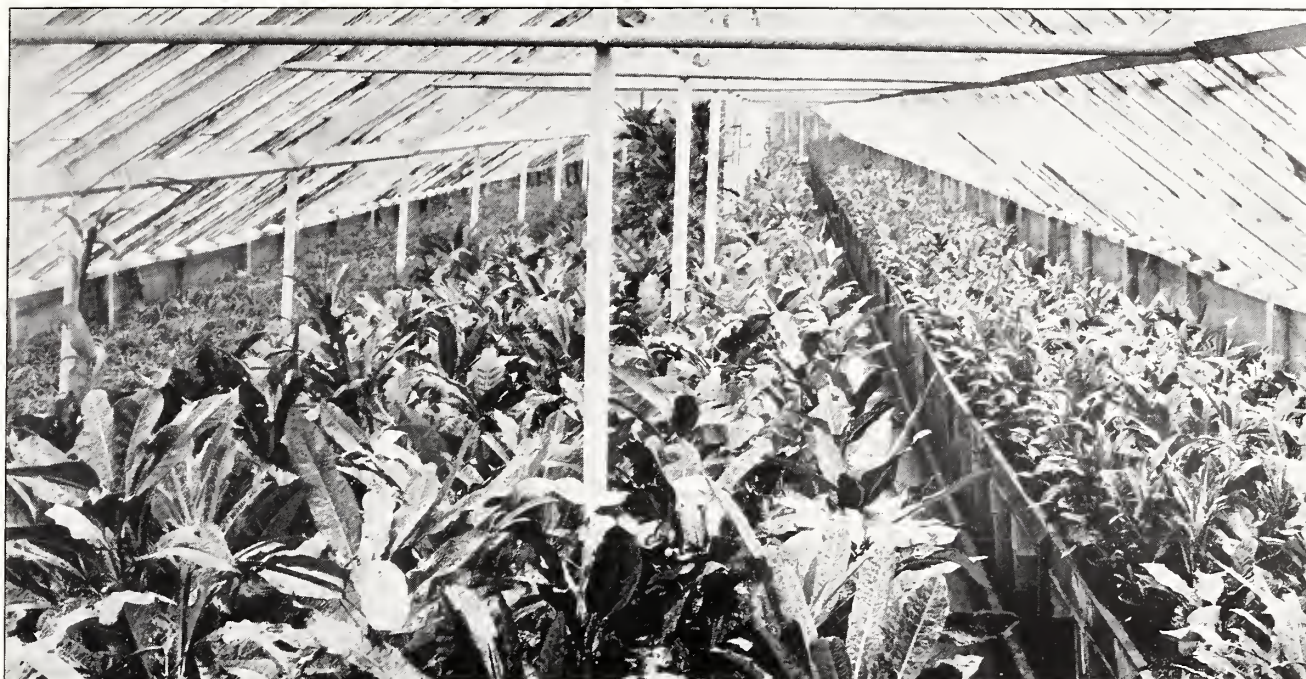
Rooted cuttings, 75 cts. per doz., \$4 per 100, \$35 per 1,000; from 2 1/4-inch pots, \$1 per doz., \$6 per 100, \$50 per 1,000

**Elizabeth McDowell.** This orange-bronze single we believe to be the finest of all the single-flowered seedlings that we have raised. Not only is the color wonderfully fine in daylight, but the richness is greatly enhanced by artificial light. The plant is strong-growing and makes strong stems which carry the flowers well. These are well divided in the clusters. It packs



Sunshine Chrysanthemums





We grow one house of Crotons to be used in made-up baskets for holidays and as specimen plants

## FOLIAGE PLANTS

Foliage and Flowering Plants for the holidays, both Christmas and Easter, are a big item in our industry, and the plant trade is so intermingled with those plants known as "decorative" that it is impossible to class them other than as one department. The quantities which are annually grown are large, and truck delivery has made the handling of this class of plants much more satisfactory than in the days of all express service. Inside of truck delivery range we can provide quality in stock and excellent service.

### AGLAONEMA

**Cummutatum.** A fine decorative plant with thick, leathery foliage, oblong leaves marked with spots of pale green and white.

	Each
4-inch pots . . . . .	\$0 75
5-inch pots . . . . .	1 25

### ASPIDISTRA

**Green Leaf.** We have a fine stock of this variety. The plants are clean, with plenty of new leaves.

	Each
6-inch pots, 8 to 12 leaves . . . . .	\$1 50
6-inch pots, 12 to 15 leaves . . . . .	2 00

### CROTONS

Nothing can excel the beauty of coloring that is found in these plants. They are beautiful as pot plants for the conservatory, for decorative and exhibition purposes, and are now used extensively as bedding plants for which purpose they are exceptionally well adapted. Our stock includes the best varieties obtainable.

	Each	Doz.
3-inch pots . . . . .	\$0 50	\$6 00
4-inch pots . . . . .	1 00	12 00
5-inch pots . . . . .	1 50	
10-inch tubs, made-up specimens . . . . .	10 00	

### DIFFENBACHIA

**Baumanni.** Foliage dark green, profusely spotted with blotches of white.

	Each
4-inch pots . . . . .	\$1 00
5-inch pots . . . . .	1 50
6-inch pots . . . . .	2 00



*Dracaena massangeana*





Decorative plants of many types we grow in quantity, but none nicer than *Dracæna Massangeana*, shown on the right. *Diffenbachia Baumanni* on the left

## DRACÆNA

<b>Amabilis.</b> Foliage bright glossy green, marked pink and creamy white when in good color.	Each	
5-inch pots . . . . .		\$2 00
<b>Kelleriana.</b> Different from all other <i>Dracænas</i> . Of free-branching habit, forming graceful specimens. Color dark green, spotted with creamy white.	Doz.	100
3-inch pots . . . . .	\$4 50	\$35 00
4-inch pots . . . . .	6 00	50 00
<b>Lord Wolseley.</b> Red leaf; good color.	Each	
5-inch pots . . . . .		\$1 50
6-inch pots . . . . .		2 00
<b>Mme. Eugene Andre.</b> One of the best varieties, heavy bronzy foliage, turning to an intense brilliant rosy crimson.	Each	
5-inch pots . . . . .		\$1 50
6-inch pots . . . . .		2 00



*Pandanus Veitchi*

## DRACÆNA, continued

<b>Massangeana.</b> The variety with the golden stripe down the center of the leaf. The best of all <i>Dracænas</i> for the house.	Each	
5-inch pots . . . . .		\$1 50
6-inch pots . . . . .		2 00
7-inch pots . . . . .		3 00
<b>Terminalis.</b> One of the most popular bright red varieties.	Each	
5-inch pots . . . . .		\$1 50

## FICUS

<b>Elastica</b> (Rubber Plants). Good clean leaves.	Each	Doz.
5-inch pots . . . . .	\$1 00	\$10 00
<b>Pumila (repens).</b> A very useful trailing vine, good for hanging-baskets, etc. Small, dark green foliage.		100
3-inch pots . . . . .		\$35 00
4-inch pots . . . . .		50 00

## MARANTA

<b>Oppenheimiana tricolor.</b> A beautiful variety with green leaves having white and pink markings.	Each	
3-inch pots . . . . .		\$0 75
4-inch pots . . . . .		1 25

## PANDANUS

<b>Veitchi.</b> One of the choicest plants for the house. Broad green leaves beautifully striped with creamy white. We can supply them in good color.	Each	
4-inch pots . . . . .		\$1 00
5-inch pots . . . . .		1 50
6-inch pots . . . . .		2 00
7-inch pots . . . . .		3 00





Just a corner of a house of Sansevierias, of which we have, this season, 25,000 plants, making possible the selection of the size and the quality you want

### PEPEROMIA

*Argyraea*. A pretty, dwarf, ornamental foliage plant, the thick leaves being bright green, veined silvery white. Exceedingly useful as a pot plant for the window.

	Each
4-inch pots . . . . .	\$0 50
5-inch pots . . . . .	75
6-inch pots . . . . .	1 00

### SANSEVIERIA

*Zeylanica*. A fine variegated plant with thick, leathery leaves of upright growth.

	Each
4-inch pots . . . . .	\$0 75
5-inch pots . . . . .	1 25
6-inch pots . . . . .	2 00
8-inch tub specimens . . . . .	5 00

*Zeylanica laurenti*. This variety, in addition to the variegation shown in the ordinary sort, has a band of yellow on each edge of the leaves, which adds greatly to its decorative effect.

	Each
4-inch pots . . . . .	\$0 75
5-inch pots . . . . .	1 50
6-inch pots . . . . .	2 50
7-inch pots, made-up, well established . . . . .	3 50
8-inch tubs, made-up specimens . . . . .	5 00

### HARDY ENGLISH IVY · HEDERA

This well-known, popular evergreen vine is invaluable for covering walls, etc., and makes an excellent ground-cover in shady places where grass will not grow. Very desirable for cemetery work and for edgings of window-boxes. Nice bushy plants with long runners.

	Each	Doz.	100
4-inch pots . . . . .	\$0 40	\$4 50	\$35 00



*Sansevieria zeylanica laurenti*





In the Adiantum family, nothing equaled Glory of Lemkesi in the Farleyense type. Our new Fern, Joan Baer, is coming on and appears to equal it in every way and to better it in many

## FERNS · ADIANTUM

**Cuneatum croweanum.** The hardiest of the Maidenhair Ferns, and very suitable for pot culture or for growing in the bench for cut-fronds. Ready June 1.

	Each	100
3-inch pots	\$0 25	\$20 00
4-inch pots	50	50 00

**Californica.** Best variety for cutting fronds. Ready June 1.

	Each	100
3-inch pots	\$0 25	\$20 00
4-inch pots	50	50 00

**Gloriosa lemkesii.** An improved Farleyense Fern. A valuable sport of the Glory Fern, producing larger and heavier fronds, on tall wiry stems. In habit it is more robust and as easy to grow as Gloriosa. It does not require the heat so necessary to the Farleyense. The young fronds com-

**Gloriosa lemkesii, continued**

bine beautiful pink tints which shade to a luxurious green in the mature frond. Cut, they are very desirable for decorative purposes.

	Each	Doz.	100
3-inch pots, ready in August		\$7 50	\$50 00
4-inch pots, ready in August	\$1 25		100 00
5-inch pots	\$1.50 and	2 00	
6-inch pots	3 00		

**Wrightii.** A strong-growing Maidenhair. Popular as a variety for cutting fronds. Produces large dark green fronds nearly 2 feet long.

	Each	100
3-inch pots	\$0 35	\$25 00
4-inch pots	50	50 00



In the house in the south range, this wonderfully fine block of Birds-Nest Ferns





This house of Cibotiums is always full of nice specimens, and the young stock is even now ready to take the place of those that go

### ASPLENIUM

**Nidus-avis** (Birds-Nest Fern). A useful Fern, having broad, heavy, serviceable fronds arranged in a whorl, giving it the name Birds-Nest Fern.

	Each	100	
3-inch pots . . . . .			\$35 00
4-inch pots . . . . .		\$1 00	75 00
5-inch pots . . . . .		1 50	

Shall also have a fine stock of 2 and 2¼-inch pots ready in September. Write us for prices.

### BOSTON and DWARF BOSTON FERNS

A fine stock of good bushy plants. The most popular house plant and very widely used for interior decoration and porch work in summer, as it does well in partial shade.

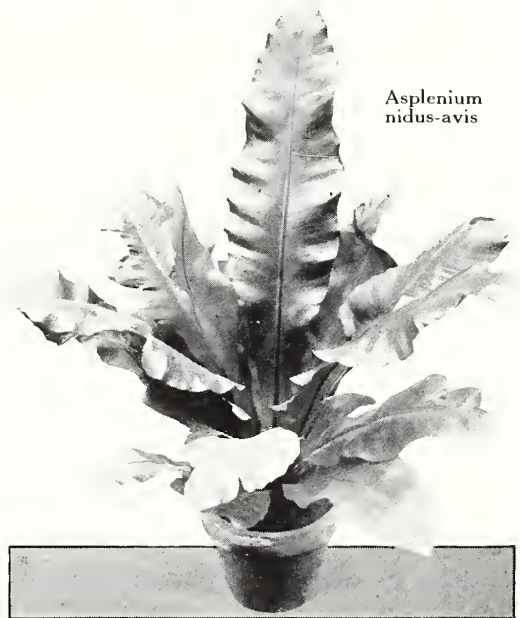
	Each	Doz.	100
5-inch pots . . . . .	\$1 00	\$10 00	\$80 00
6-inch pots . . . . .	1 50		
7-inch pots . . . . .	2 50		
8-inch pots . . . . .	3 00		

### CIBOTIUM

**Schiedei**. A very desirable plant. Has long, graceful fronds of light green. One of the most attractive Ferns.

	Each	
6-inch pots . . . . .	\$2 50	
7-inch pots . . . . .	4 00	
8-inch tubs. Ready June 1 . . . . .	6 00	
10-inch tubs. Ready September 1 . . . . .	\$7.50 and 10 00	

Asplenium nidus-avis



### SELAGINELLA

**Caulescens**. A good plant for baskets, etc. Each 100  
 3-inch pots . . . . . \$0 35 \$35 00  
 4-inch pots . . . . . 50

**Denticulata (Lycopodium)**.  
 6-inch pans . . . . . 50

**Emmeliana**. Compact plants.  
 3-inch pots . . . . . 3 00 25 00



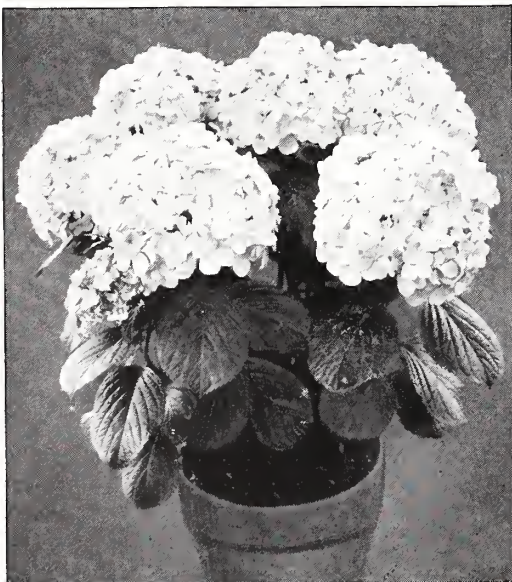
# FLOWERING PLANTS FOR EASTER



Bermuda Easter Lilies

## EASTER LILIES

We grow our usual quantity of 40,000 Lilies in pots for Easter, and endeavor to force only the choicest variety so as to have them in the best of condition for Easter sales. Let us quote you on your requirements for next Easter, if you are within trucking distance from Cromwell.



Hydrangea

## BOUGAINVILLEA GLABRA SANDERIANA

This fine, free-flowering Easter plant has again regained its old popularity. We are growing a large quantity and can supply fine stock of this variety in bush form as well as standard shapes. Shall have good plants in 6, 7, and 8-inch pots. Our Easter Price-List will include these plants.

## GARDENIAS

Our stock of *Gardenia veitchii*, which is the best forcing variety, has been selected year after year with increased production and the health of the plant in view. Lovers of the *Gardenia* are everywhere but success with the culture of the plant is a matter of training and experience. Clean, healthy stock for spring delivery. We do not grow *Gardenias* into finished pot-plants. This stock is for planting.

	Doz.	100	1,000
From 2 1/4-inch pots . . . . .	\$2 00	\$15 00	\$125 00
From 3-inch pots . . . . .	3 00	25 00	

Refer to Terms of Sale for packing charges

## GENISTA CANARIENSIS

A well-known plant grown for Easter and spring flowering. Has clear, bright yellow flowers. Usually grown as a finished plant into compact form.

## HYDRANGEAS

We have a splendid stock of the following varieties which we offer in bloom for Easter and Mother's Day.

Avalanche	General deVibraye	Helge
Lancelot	Mme. E. Chautard	Trophee

## BABY RAMBLERS

For Easter and Mother's Day we shall have the following varieties in good strong plants, full of flowers, in 5 and 6-inch pots:

**Ellen Poulsen.** Rose-pink.  
**Ideal.** Deep velvety red.  
**Miss Edith Cavell.** Scarlet.  
**Orleans.** Bright pink.  
**Rudolph Kluis.** Large flowers of clear bright pink.  
**Triomphe Orleanais.** Bright cherry-red.

## RAMBLERS (CLIMBING ROSES)

Tied in globe and fan shapes. We shall have nice plants of *Dorothy Perkins*, *Tausendschön*, *Excelsa*, and *Hiawatha*—ranging in size from 6-inch pots to 10-inch tubs.

## SPIRÆA

A popular Easter-flowering plant in white and several shades of pink. We shall have the following varieties to offer in 6 and 7-inch pots.

- America.** Lilac-rose.
- Gladstone.** The best white.
- Peach Blossom.** Rosy pink.
- Princess Mary.** Pink.
- Queen Alexandra.** Large; pink.



Baby Rambler Roses

Write for our Special Easter Price-List which will be ready about March 1





Two houses devoted to growing *Ardisia crenulata* give us 4,000 finished plants for Christmas yearly, probably the largest stock anywhere, and, we think, the best that can be grown

## CHRISTMAS PLANTS

### ARDISIA

**Crenulata.** One of the hardiest and best keeping plants we have to offer for Christmas. Clusters of bright red berries make this plant very popular for the holidays. We can offer well-berried plants for delivery after Sept. 1 in 5, 6, and 7-inch pots. Write us for prices.

### CYCLAMEN

When finished, they are one of our finest house plants and continue in flower for a long time. We have used the best seed obtainable, and our next spring's plants are coming nicely. We hope to be able to send out as fine Cyclamen as we have previously. For November and December delivery, we can furnish Cyclamen plants in bud and bloom at the following prices: \$1.50, \$2, and \$3 each; specimen plants up to \$7 each.



A house of well-finished Cyclamen





Two houses of Heather to finish for sale came in from this field which was photographed in early September



Erica (Heather)

good many years we have selected our own seed of this variety, saving only the healthiest and strongest plants for this purpose, and endeavoring by this method to produce the best possible plants for the holiday season.

### ERICA (Heather) *Fall delivery*

**King Edward VII.** Dark pink. Flowers between Christmas and Easter, according to culture. Of the same class as Felix Faure and President Carnot. We shall be pleased to quote prices on this variety.

**Melanthera.** The well-known Christmas-flowering white Heather. The flowering branches are much used in fine floral sprays. Will be ready after November 1 in 5, 6, and 7-inch pots.

**Ovata.** This pink, early-flowering variety is very useful for making up in baskets and hampers.

### POINSETTIAS (Oak-leaf)

We shall grow for July, August, and September the usual quantity of Poinsettias. From 2¼-in. pots, \$15 per 100, \$130 per 1,000.

For December delivery, we offer finished plants, in pans made-up with 3, 6, 10, and 12 flowers. These will be included in our Christmas Price-List.

### SOLANUM

Cleveland Cherry

We grow a quantity of this very popular Christmas plant each year. For a



Poinsettia





Begonia Melior grown for Christmas sales

## BEGONIA

**Melior.** In general character of flower, very similar to Glory of Cincinnati. It produces an abundance of flowers evenly distributed over the plant, which is compact in form. It is in this respect a decided improvement on Cincinnati. We shall grow our usual quantity of Melior and offer them in 5, 6, and 7-inch pots.

## OTAHEITE ORANGES

A popular Christmas plant with large fruits, well colored. Ready for delivery after October 15. Let us quote on your Christmas requirements.

## FANCY POTTERY

Beautiful combinations of assorted foliage and berried plants made up in fancy crockery. Different styles and shapes. Made up early and well established by Christmas. Price from \$2 to \$10 each.

## PANS, MADE-UP

A nice combination of colored plants used. These Pans are made up early and will be well-established by Christmas. We shall have several sizes from a 6 to a 12-inch bulb-pan, ranging in price from \$1.25 to \$7.50 each.



**Baskets,** filled artistically with assorted flowering, foliage, and berried plants. A good assortment of hampers and handle baskets used. Made to sell from \$3 to \$10 each.





Our Kentias are nearly all home grown



Phoenix canariensis

## PALMS

*Good, Clean, Home-Grown Stock*

### PHENIX CANARIENSIS

*A splendid lot of plants, established in new tubs*

	Each
11-inch tubs, 3½ to 4 feet high . . . . .	\$10 00
12-inch tubs, 4 to 4½ feet high . . . . .	12 50
12-inch tubs, 4½ to 5 feet high . . . . .	15 00

### PHENIX ROEBELII

*Perfect plants in fine condition*

	Each
5-inch pots . . . . .	\$1 50
6-inch pots . . . . .	2 00
7-inch pots . . . . .	3 00
9-inch tubs (specimens) . . . . .	\$5.00 and 6 00

### KENTIA BELMOREANA

*Single plants*

	Each
5-inch pots, 22 to 24 inches high . . . . .	\$1 50
5-inch pots, 24 to 26 inches high . . . . .	2 00
6-inch pots, 26 to 28 inches high . . . . .	2 50
6-inch pots, 28 to 30 inches high . . . . .	3 00
7-inch pots, 32 to 36 inches high . . . . .	4 00





Kentia forsteriana

KENTIA BELMOREANA

Made-up plants

	Each
7-inch pots, 32 to 34 inches high . . . . .	\$6 00
7-inch pots, 34 to 36 inches high . . . . .	7 50
8-inch tubs, 42 to 45 inches high . . . . .	10 00
8-inch tubs, 46 to 50 inches high . . . . .	12 50

KENTIA FORSTERIANA

Made-up plants

	Each
7-inch pots, 30 to 32 inches high . . . . .	\$5 00
7-inch pots, 34 to 36 inches high . . . . .	6 00
8-inch tubs, 38 to 42 inches high . . . . .	8 00
8-inch tubs, 42 to 46 inches high . . . . .	10 00
10-inch tubs, 48 to 52 inches high . . . . .	15 00
10 inch tubs, 52 to 54 inches high . . . . .	20 00
10-inch tubs, 56 to 60 inches high . . . . .	25 00
10-inch tubs, 60 to 66 inches high . . . . .	30 00
12-inch tubs, 72 to 78 inches high . . . . .	\$35 and 40 00

KENTIA FORSTERIANA

Single plants (5 and 6 le.ve.)

	Each
5-inch pots, 24 to 26 inches high . . . . .	\$1 50
6-inch pots, 26 to 30 inches high . . . . .	2 50
7-inch pots, 40 to 44 inches high . . . . .	5 00



Phoenix Roebelenii

Why not come to Cromwell and make your own selection of plants? If the trip is made by train, notify us by wire and we shall gladly meet you at Meriden or Hartford.

## BEDDING PLANTS

The growing of Bedding Plants is one of our important specialties, and a department is devoted solely to the production of a superior grade of plants for bedding out. No effort is made to present a comprehensive assortment, but the varieties offered will, we believe, include all those of recognized merit for summer bedding. March, April, May, and June delivery.

### ACHYRANTHES

These useful foliage plants are each season attaining greater popularity for edging, ribbon effects, and carpet-bedding. They may be sheared to any desired form and are more serviceable than coleus.

Rooted cuttings, \$2 per 100, \$15 per 1,000; from 2¼-inch pots, 75 cts. per doz., \$5 per 100, \$40 per 1,000; 3-inch pots, \$1.50 per doz., \$10 per 100.

**Brilliantissima.** Light red; very brilliant. Dwarf, compact grower.

**Lindenii.** Clear, dark red foliage. Tall-growing plant.

**Panache de Bailey.** A new and desirable variety of compact growth. Foliage green and yellow, crimson veinings, predominating color yellow.

### AGERATUM (Floss Flower)

Rooted cuttings, \$2 per 100, \$15 per 1,000; from 2¼-inch pots, 75 cts. per doz., \$5 per 100, \$40 per 1,000; 3-inch pots, \$1.50 per doz., \$10 per 100.

**Fraseri.** A splendid variety which flowers freely under conditions that merely produce foliage in older varieties. Color bright blue; semi-dwarf habit, similar to Princess Pauline. Undoubtedly the best variety for bedding.

**Perfection.** A more moderate-growing variety; the deepest blue in color.

**Stella Gurney.** Bright blue; vigorous growth.

### ALTERNANTHERA

Bright foliage plants of dwarf habit. Used extensively for edging and design bedding.

From 2¼-inch pots, 75 cts. per doz., \$5 per 100, \$40 per 1,000.

**Aurea nana.** Bright yellow foliage; the most compact and the best variety in its color.

**Paronychioides.** A most desirable kind of dwarf habit; orange-red and crimson, shaded green.

### COLEUS

Rooted cuttings, \$2 per 100, \$15 per 1,000; 2¼-inch pots, \$3.50 per 100, \$30 per 1,000.

**Anna Pfister.** Bright yellow, marked crimson. Neat and compact in growth; very desirable for dwarf edging or carpet bedding.

**Beckwith's Gem.** Center velvety maroon, bordered with red; the edge is green, changing to creamy yellow at the point of the leaf.

**Duneira.** A magnificent Coleus, standing the sun as well as Verschaffeltii. Color various shades of crimson.

**Firebrand.** Bright maroon.

**Golden Bedder.** Golden yellow; the old original, true to name.

**John Pfister.** Bright crimson, edged with gold. Compact in growth. Companion variety to Anna Pfister.

**Lord Alverstone.** Velvety plum, with yellow, green and pink markings. A handsome combination, and has a constitution that will resist sun-scald and drought.

**Lord Palmerston.** Deep maroon center with dark crimson venation.

**Queen Victoria.** Cardinal-red with golden border.

**Verschaffeltii.** Standard crimson.

### FANCY COLEUS

Rooted cuttings, \$2 per 100, \$18 per 1,000; 2¼-inch pots, \$4 per 100, unless noted.

**American Beauty.** Red, green, and yellow.

**Blizzard.** Deep maroon, edged with green.

**Brilliance.** A combination of red and gold. Rooted cuttings, \$3 per 100, \$25 per 1,000; from 2¼-inch pots, \$6 per 100, \$50 per 1,000.

### FANCY COLEUS, continued

**Defiance.** Bright red with golden yellow border.

**Hurricane.** Light reddish center, mottled with maroon, edge of leaf green.

**Neptune.** Green with mottling of red.

**Prince Edward.** Reddish center, shading deep crimson, edge of leaf green.

**Saboni.** Red, with faint edging of yellow.

**Salvador.** Deep velvety crimson with prominent vermilion center effectively bordered with light green.

### GERANIUMS

In bud and bloom ready for May and June delivery. 4-inch pots \$25 per 100; 4-inch pots, selected, \$30 per 100.

#### RED

**Alphonse Ricard.** Bright vermilion-scarlet; large florets and immense trusses. Without doubt the finest bedding variety in its color.

**S. A. Nutt.** Considered one of the best dark red Geraniums, and is more generally used both as a pot plant and for bedding than any other kind. The color is a handsome, dark, velvety scarlet, with maroon shading; a vigorous, clean, compact grower.

#### SALMON

**Beaute Poitevine.** A great favorite and conceded to be one of the best of the semi-double bedders among the light salmon shades; the color is a beautiful shade of pink, delicately shading to white; large, splendid trusses.

### PARLOR IVY

A trailing vine, not hardy. Valuable for vase work and window-boxes.

	Doz.	100	1,000
Rooted cuttings		\$2 00	\$15 00
2¼-inch pots	\$0 75	5 00	40 00
3-inch pots	1 00	8 00	75 00

### HELIOTROPE

The fragrant Heliotrope is a universal favorite for bedding purposes or for growing in pots. The following varieties are of the heavy-trussed type.

From 2¼-inch pots, \$1 per doz., \$6 per 100, \$50 per 1,000; 3-inch pots, \$1.50 per doz., \$10 per 100, \$85 per 1,000; 4-inch pots, \$20 per 100.

**Centefleur.** Rich, deep, violet-blue, with white eye; flowers large; free and very vigorous. A very desirable variety.

**La Duse.** A mammoth-flowering kind, bearing enormous, deep blue trusses; very free-flowering. An unusually fine bedding variety.

### SALVIA (Scarlet Sage)

Rooted cuttings, \$2 per 100, \$15 per 1,000; 2¼-inch pots, 75 cts. per doz., \$5 per 100, \$40 per 1,000; 3-inch pots, \$1 per doz., \$7 per 100, \$60 per 1,000.

**America.** A new bedding or pot variety that will supersede Zurich and other dwarf kinds on all-round merit. The growth is vigorous and healthy, but dwarf and compact.

**Bonfire.** A compact variety, growing to a height of about 2 feet. Heavy flower-spikes of brightest scarlet.

**Zurich.** All extremely free-flowering, dwarf variety. The plants commence to bloom early and continue until checked by frost. Very bright scarlet.

### VINCA VARIEGATA (Trailing)

Very valuable for window-boxes, etc. This is the most popular climbing plant with variegated foliage. 4-inch, selected, \$3 per doz., \$25 per 100.





LOOKING AHEAD. 160,000 trees for sale in 1930

The introduction to this nursery section was written last season. It still holds true, and this photograph of the big farm at North Cromwell, sloping off southeast to the Connecticut River, seen in the distance, is proof of progressive and forward-looking management

## *The Largest Evergreen Production in New England*

**T**HE fame of our gigantic rose operations somewhat obscures general knowledge of the fact that our Evergreen plantings and output are also enormous, and second only to the roses in bulk and importance.

Visitors are constantly amazed to see the great quantity and variety of the stock in our nurseries. The uniform quality of the plants is so striking that one man is reported to have said that they all looked as if they had been cast from the same mold.

Skilfully propagated from selected trees in order that they may be true to type and uniform in quality, carefully cultivated when small, and trained to the proper shape by judicious shearing, the fields of Evergreens in the neighborhood of Cromwell truly make an impressive sight.

We have endeavored to grow only those types and varieties which are perfectly adapted to the climate and conditions of New England. This effort insures the continued growth and prosperity of our products after leaving our fields, either for immediate use or for growing on in the nurseries of our customers.

Intended for the wholesale trade only, we exert ourselves to produce vigorous stock of the right sizes, in quantities that mean something. Our plantings extend over 150 acres in the fertile Connecticut valley, undoubtedly affording the largest production of choice young Evergreens in New England.

Consequently, we can supply many varieties by the thousand and five thousand. Such sorts are marked with an asterisk (\*) in the lists on the following pages:





A field of *Juniperus pfitzeriana*; 7,000 salable plants in this block

ABIES concolor. <i>White Fir; Colorado</i>	Each	10	100
<i>Silver Fir. 15 to 18 inches</i>	\$2 00	\$17 50	\$150 00
<i>Veitchi. 1½ to 2 feet</i>	1 75	15 00	
ARBORVITÆ. See Thuja.			
BIOTA. See Thuja.			
HEMLOCK. See Tsuga.			
JUNIPERUS chinensis. <i>Chinese Juniper.</i>			
1½ feet	1 25		
<i>chinensis albo-variegata. White-tipped</i>			
<i>Chinese Juniper. 15 to 18 inches</i>	1 50	12 50	

* <i>Juniperus chinensis pfitzeriana. Pfitzer's</i>	Each	10	100
<i>Juniper. One of the most important</i>			
<i>evergreens in cultivation. Greatly</i>			
<i>in demand for landscape planting</i>			
<i>and for decorative effects generally,</i>			
<i>being so distinct in its habit that</i>			
<i>nothing can take its place. Our</i>			
<i>plants are exceptionally uniform in</i>			
<i>size and are grown to perfection.</i>			
1½ to 2 feet	\$1 75	\$15 00	\$125 00
2 to 2½ feet	2 50	22 50	200 00



This block of 5,000 salable *Juniperus sabina* will please the buyer who wants real value and perfect specimens





Koster's Blue Spruce from our own grafting. This block contains 5,000 trees

	Each	10	100		Each	10	100
<i>Juniperus chinensis procumbens.</i> Gray Carpet Juniper. 2 feet	\$2 50	\$22 50		<i>Juniperus virginiana.</i> Red Cedar. 2 to 3 feet	\$1 75	\$15 00	\$125 00
<i>communis.</i> Common Juniper. 12 to 15 inches	1 25	10 00		<i>virginiana cannarti.</i> Cannart Red Cedar. 3½ to 4 feet	4 00	35 00	
* <i>communis aurea.</i> Common Golden Juniper. A very reliable dwarf Juniper especially valuable for its striking color effect and consequently in great demand. We have an unusually fine stock of it. 15 to 18 inches	1 50	12 50	\$100 00	<i>virginiana elegantissima.</i> Gold-tip Red Cedar. 2 feet	2 25	20 00	
<i>communis depressa plumosa.</i> 15 to 18-inch spread	2 00	17 50	150 00	<i>virginiana glauca.</i> Blue Virginia Cedar. 1½ to 2 feet	1 75	15 00	
<i>communis hibernica.</i> Irish Juniper. 1½ to 2 feet	1 25	10 00	75 00	<i>virginiana Kosteri.</i> Koster's Red Cedar. 2-foot spread	2 25	20 00	175 00
2 to 2½ feet	1 50	12 50	100 00	<i>virginiana tripartita.</i> Fountain Red Cedar. 2 to 3 feet	2 50	22 50	
<i>communis oblonga pendula.</i> Weeping Juniper. 18 inches	1 00	9 00	75 00	<i>PICEA canadensis (alba).</i> White Spruce. 1½ to 2 feet	1 25	10 00	
<i>communis suecica.</i> Swedish Juniper. 1½ to 2 feet	1 25	10 00		<i>excelsa.</i> Norway Spruce. 15 to 18 inches	75	7 00	50 00
* <i>horizontalis (prostrata).</i> Creeping Juniper. One of the best types for mass planting on rough banks and in rockeries and other inhospitable places. A very useful type. 15 to 18 inches	1 00	9 00	80 00	2½ to 3 feet	1 50	12 50	100 00
<i>horizontalis douglasi.</i> Waukegan Juniper. 1½ to 2 feet	1 50	12 50	100 00	<i>pungens.</i> Colorado Spruce. 15 to 18 in.	1 25	10 00	75 00
<i>japonica.</i> Japanese Juniper. 1½ to 2 feet	2 00			<i>pungens glauca.</i> Colorado Blue Spruce. 12 to 15 inches	1 50	12 50	
* <i>sabina.</i> Savin. A fine utility variety succeeding in almost all soils. Especially recommended for use in front of taller Evergreens and for masses at the corners of steps and in odd nooks about the building. Very useful. 12 to 15 inches	1 25	11 00	100 00	<i>pungens kosteri.</i> Koster's Blue Spruce. 15 to 18 inches	7 50	60 00	500 00
18 to 24 inches	1 50	13 50	125 00	<i>PINUS densiflora.</i> Japanese Red Pine. 1½ to 2 feet	1 25	10 00	85 00
<i>sabina tamariscifolia.</i> Tamarix Savin. 15 to 18 inches	1 75	15 00		2 to 2½ feet	1 50	12 50	100 00
<i>scopulorum.</i> Colorado Juniper. 2 feet	1 75	15 00		<i>montana.</i> Swiss Mountain Pine. 15-inch spread	1 25	11 00	
				* <i>montana mughus.</i> Mugbo Pine. One of the best of the Pine family for general landscape use, having a fine, compact, very dwarf habit which it retains indefinitely. Very useful for rough banks and rockeries and unusually ornamental. 12 to 15-inch spread	1 50	12 50	100 00
				15 to 18-inch spread	1 75	15 00	125 00
				<i>strobis.</i> White Pine. 3 to 4 feet	1 75	15 00	
				<i>sylvestris.</i> Scotch Pine. 2 to 2½ feet	1 50	12 50	100 00
				3 to 4 feet	1 75	15 00	125 00
				<i>PSEUDOTSUGA douglasi.</i> Douglas Spruce. 1½ to 2 feet	1 50	12 50	100 00
				2 to 2½ feet	2 00	17 50	150 00





These 8,000 Douglas Spruce are ready for planting

<b>RETINOSPORA (Chamæcyparis) filifera.</b>	Each	10	100
<i>Thread-branched Cypress.</i> A very graceful medium-sized tree which is perfectly hardy in the most extreme exposures, either of heat or cold, and consequently one of the nurseryman's most useful items.			
*15 to 18 inches	\$1 50	\$13 50	\$125 00
1½ to 2 feet	1 75	16 00	150 00
<b>filifera aurea. Golden Thread-branched Cypress.</b>	12 to 15-inch spread	1 50	13 50

<b>Retinospora pisifera. Sawara Cypress.</b>	Each	10	100
15 to 18 inches	\$1 00	\$9 00	\$75 00
1½ to 2 feet	1 50	12 50	100 00
2½ to 3 feet	2 50	22 50	200 00
<b>pisifera aurea. Golden Sawara Cypress.</b>			
15 to 18 inches	1 00	9 00	75 00
1½ to 2 feet	1 50	12 50	100 00
2 to 2½ feet	2 00	17 50	150 00
2½ to 3 feet	2 50	22 50	200 00
<b>pisifera argentea (lutescens). Dwarf Yellow Plume Cypress.</b>	12 to 15 in.	1 25	10 00



This nice block of 4,000 Retinospora pisifera aurea is but a part of our stock of this popular Evergreen





The most-called-for and, perhaps, the best of the Thujas. This is part of 120,000 of this variety in our nurseries. Of these 20,000 are from 2½ to 3 feet high

	Each	10	100
<i>Retinospora pisifera nana</i> . Dwarf Cypress. 12 to 15-inch spread	1 25	\$11 00	\$100 00
<i>*pisifera plumosa</i> . Plume Cypress. One of the most beautiful of the commoner and most popular Evergreens on account of its soft, plummy foliage and splendid habit.			
15 to 18-inch spread	1 25	\$11 00	\$100 00
1½ to 2 feet	1 50	13 50	125 00
2 to 2½ feet	2 00	17 50	150 00
<i>*pisifera plumosa aurea</i> . Golden-Plume Cypress. A golden leaved type of the preceding and valuable for same reasons and especially so for its pleasing contrasting color.			
15 to 18 inches	1 25	11 00	100 00
1½ to 2 feet	1 50	13 50	125 00
2 to 2½ feet	2 00	17 50	150 00
<i>pisifera squarrosa sulphurea</i> . Sulphur Plume Moss Cypress.			
12 to 15 inches	1 00	7 50	
<i>pisifera squarrosa Veitchi</i> . Veitch Moss Cypress. 12 to 15 inches	1 00	7 50	60 00
<b>TAXUS canadensis</b> . Canada Yew.			
15 to 18 inches	1 65	15 00	125 00
<i>cuspidata</i> . (Spreading Form.) Japanese Yew. 1½ to 2 feet	2 00	17 50	150 00
<i>cuspidata nana</i> . Dwarf Japanese Yew. 12 to 15 inches	2 50	22 50	200 00
<b>THUJA batemani</b> . 1½ feet	2 50	22 50	
<i>*occidentalis</i> . American Arborvitæ. Widely planted and one of the indispensable Evergreens. Much used for hedges, windbreaks and utility purposes generally because of its ability to withstand much abuse. It makes noble specimen plants. 1½ to 2 feet	1 00	8 50	75 00
2 to 2½ feet	1 25	11 50	100 00
3 to 4 feet	2 00	17 50	150 00
<i>occidentalis columbia</i> . Columbia Arborvitæ. 1½ to 2 feet	1 75	15 00	125 00
2 to 2½ feet	2 00	17 50	150 00
<i>Thuja occidentalis caucasica</i> . 15 to 18 in. 2 feet	\$1 35	\$12 50	\$100 00
<i>occidentalis compacta</i> . Parsons' Arborvitæ. Very useful globe type for formal effects. Slow-growing, permanent, and always in heavy demand. Very fine plants.			
12 to 15 inches	1 00	8 50	75 00
15 to 18 inches	1 50	12 50	100 00
<i>occidentalis douglasi aurea</i> . Douglas Golden Arborvitæ. 15 to 18 inches	1 00	9 00	75 00
1½ to 2 feet	1 50	12 50	100 00
<i>occidentalis douglasi spiralis</i> . 1½ to 2 ft. 2 to 2½ feet	1 50	12 50	100 00
2½ to 3 feet	1 75	15 00	125 00
2½ to 3 feet	2 00	17 50	150 00
<i>*occidentalis ellwangeriana</i> . Tom Thumb Arborvitæ. Useful for its dwarf, slow growth retaining its proportions and dimensions for a long time, making it suitable for picture effects. 15 to 18 inches	1 00	8 50	75 00
1½ to 2 feet	1 50	12 50	100 00
<i>occidentalis filiformis</i> . Thread-leaf Arborvitæ. 15 to 18 inches	2 00		
<i>occidentalis globosa</i> . American Globe Arborvitæ. 12 to 15 inches	1 00	8 50	75 00
15 to 18 inches	1 50	12 50	100 00
<i>occidentalis hoveyi</i> . Hovey Arborvitæ. Curious dwarf form with strangely folded branches and strict pyramidal form. Popular and very much in demand. 12 to 15 inches	1 00	8 50	75 00
15 to 18 inches	1 50	12 50	100 00
<i>occidentalis lutea</i> . George Peabody Arborvitæ. 15 to 18 inches	1 25	10 00	
<i>occidentalis pyramidalis</i> . American Pyramidal Arborvitæ. 1½ to 2 feet	1 50	13 50	125 00
2½ to 3 feet	2 00	17 50	150 00
<i>*occidentalis reidi</i> . Reid Arborvitæ. Another useful variant making a graceful spreading bush valuable for pictorial effects. 15 to 18 inches	1 00	8 50	75 00
1½ to 2 feet	1 50	12 50	100 00





*Thuja occidentalis wareana* (Siberian Arborvitæ) of which there are 10,000 available in the 1½ to 2-foot size

<i>Thuja occidentalis rosenthalii</i> . Rosenthal	Each	10	100	<i>TSUGA canadensis</i> . Canada Hemlock	Each	10	100
<i>Arborvitæ</i> . 1½ to 2 feet	\$1 50	\$13 50	\$125 00	1½ to 2 feet	\$2 00	\$17 50	\$150 00
2 to 2½ feet	2 00	17 50	150 00	2 to 2½ feet	2 25	20 00	175 00
<i>occidentalis vervæneana</i> . Vervæne Ar-				2½ to 3 feet	2 50	22 50	200 00
<i>borvitæ</i> . 1½ to 2 feet	1 25	11 00	75 00	3 to 4 feet	4 00	35 00	300 00
2 to 2½ feet	1 50	13 50	125 00	<i>caroliniana</i> . Carolina Hemlock.			
<i>occidentalis wareana</i> . Siberian Arbor-				1½ to 2 feet	2 00	17 50	
<i>borvitæ</i> . 1½ to 2 feet	1 00	9 00	75 00	<i>diversifolia</i> . Japanese Hemlock.			
2 to 2½ feet	1 50	12 50	100 00	15 to 18 inches	1 75	15 00	
<i>orientalis</i> (Biota). Oriental Arborvitæ.				Our fall price-list of nursery stock will be ready Sept. 1. Write us if you do not receive a copy.			
1½ to 2 feet	85	7 50	70 00				



Canadian Hemlocks have been, and always will remain, a popular evergreen. There are 17,000 here from 1½ to 4 feet high, and thousands coming on to follow them





Rhododendron carolinianum

## EVERGREEN SHRUBS

ANDROMEDA. See Leucothoe and Pieris.	Each	10	100			
AZALEA kaempferi. Torch Azalea. 15 to 18 inches		\$2 25				
Azaleas, Deciduous. See Deciduous Shrubs.						
DAPHNE cneorum. Rose Daphne. 6 to 8 inches		75	\$6 00	\$50 00		
ILEX glabra. Inkberry. 1½ to 2 feet		1 25	10 00	90 00		
LEUCOTHOE catesbaei. Drooping Leucothoe. 12 to 15 inches		60	5 00	40 00		
PIERIS floribunda. Mountain Andromeda. 12 to 15 inches	Each	10	100	\$1 75	\$15 00	\$125 00
KALMIA latifolia. Mountain Laurel. 1½ to 2 feet		1 25	10 00	85 00		
2 to 2½ feet		1 75	15 00	125 00		
RHODODENDRON carolinianum. Carolina Rhododendron. 15 to 18 inches		2 00	17 50	150 00		
catawbiense. Catawba Rhododendron. 1½ to 2 feet		2 25	20 00	175 00		
maximum. Rosebay Rhododendron. 1½ to 2 feet		2 00	17 50	150 00		
2 to 2½ feet		2 50	22 50	200 00		

## DECIDUOUS ORNAMENTAL TREES

ACER dasycarpum. Silver Maple. 10 to 12 feet	Each	10	100	\$2 00	\$17 50	
dasycarpum wieri laciniatum. Wier's Cut-leaf Silver Maple. 8 to 10 feet		2 00	17 50			
palmatum atropurpureum. Blood-leaf Japanese Maple. 12 to 15 inches		2 50	22 00	\$200 00		
ARALIA spinosa. Devil's Walking-stick. 4 to 5 feet		30	2 50			
CATALPA bignonioides nana (bungei). Umbrella Catalpa. 5-foot stem		1 00	9 00			
speciosa. Western Catalpa. 6 to 8 feet		1 00				
CERASUS. See Prunus.						
CERCIS. See Shrubs.						
CORNUS florida. White-flowering Dogwood. 5 to 6 feet		1 25	10 00			
8 to 10 feet		2 25	20 00	175 00		
10 to 12 feet		3 00	27 50	250 00		
CRATÆGUS oxyacantha splendens. Paul's Double Scarlet Thorn. 4 to 5 feet		1 50	13 50			
KOELREUTERIA paniculata. Golden Rain Tree. 4 to 5 feet		50				
MALUS atrosanguinea. Carmine Crab. 3 to 4 feet		75	5 00			
floribunda. Japanese Flowering Crab. 3 to 4 feet		75	5 00			
floribunda purpurea. Purple Crab. 3 to 4 feet		75	5 00			





Native Dogwood that has been collected and then grown in the nursery. There are 3,000 2-year heads ready to go in 1929. Then following are 10,000 for 1930 and 10,000 recently transplanted from the wilds. This is, undoubtedly, one of the largest plantings of Dogwood in the country, but Dogwood (*Cornus florida*) is one of our finest native ornamental trees and very much in demand.

<i>Malus halliana parkmani.</i> Parkman Crab. Each 10 100	<i>Prunus sieboldi rosea.</i> Japanese Pink- Each 10 100
2 to 3 feet . . . . . \$0 75 \$5 00	flowering Cherry. 4 to 5 feet . . . \$3 50 \$32 50
<i>ioensis plena.</i> Bechtel Crab. 2 to 3 ft. 50 4 00	<i>subhirtella pendula.</i> Weeping Japanese
3 to 4 feet . . . . . 75 5 00	Cherry. 3 to 4 feet. Low grafted . . 3 00
<i>scheideckeri.</i> Scheidecker Crab.	<b>SALIX</b> <i>babylonica.</i> Babylon Weeping
3 to 4 feet . . . . . 75 5 00	Willow. 8 to 10 feet . . . . . 1 50 12 50
<b>PLATANUS</b> <i>orientalis.</i> European Plane	<b>SORBUS</b> <i>aucuparia.</i> European Moun-
Tree. 7 to 9 feet . . . . . 1 50 12 50 \$100 00	tain-Asb. 7 to 8 feet . . . . . 1 00 9 00 \$75 00
<b>POPULUS</b> <i>nigra italica.</i> Lombardy Poplar.	8 to 10 feet . . . . . 1 50 12 50 100 00
10 to 12 feet . . . . . 1 00 8 50	<b>ULMUS</b> <i>americana.</i> American Elm.
<b>PRUNUS</b> <i>cerasifera pissardi.</i> Purple-	6 to 8 feet . . . . . 1 00
leaf Plum. 3 to 4 feet . . . . . 40 3 50 30 00	

## VINES AND CLIMBING PLANTS

<b>AKEBIA</b> <i>quinata.</i> Five-leaved Akebia. Each 10 100	<b>Euonymus</b> <i>radicans carrieri.</i> Glossy Win-
2-year . . . . . \$0 35 \$3 00	tercreeper. 3-year, heavy . . . \$0 25 \$2 00 \$18 00
<b>AMPELOPSIS</b> <i>veitchi</i> ( <i>tricuspidata</i> ).	<i>radicans minimus</i> ( <i>kewensis</i> ). Baby
Japanese Creeper. 2-year, heavy . . 30 2 50 \$20 00	Wintercreeper. Strong 2-year . . . 35 3 00 25 00
<b>ARISTOLOCHIA</b> <i>sipho.</i> Dutchman's	<i>radicans variegatus.</i> Variegated Leaf
Pipe. 1½ to 2 feet . . . . . 50 4 00	Wintercreeper. 3-year, extra-heavy . 25 2 00 18 00
<b>CELASTRUS</b> <i>orbiculatus.</i> Oriental Bitter-	<i>radicans vegetus.</i> 2-year, heavy clumps . 30 2 50 20 00
sweet. 2 to 3 feet . . . . . 25 2 00 15 00	<b>HEDERA</b> <i>helix.</i> English Ivy. 4-inch pots . 40 3 75 35 00
<i>scandens.</i> American Bittersweet.	<b>LONICERA</b> <i>japonica halliana.</i> Hall's
2 to 3 feet . . . . . 25 2 00 15 00	Japanese Honeysuckle.
<b>CLEMATIS</b> <i>paniculata.</i> Sweet Autumn	2-year, No. 1 . . . . . 25 2 00 15 00
Clematis. 2-year . . . . . 30 2 50 20 00	<b>SCHIZOPHRAGMA</b> <i>hydrangeoides.</i>
<b>EUONYMUS</b> <i>radicans.</i> Wintercreeper.	Japanese Hydrangea Vine. 3-year . 1 25 10 00 80 00
2-year . . . . . 25 2 00 18 00	3-inch pots . . . . . 30 00
	<b>WISTERIA</b> <i>sinensis.</i> Chinese Wisteria.
	3 to 4 feet . . . . . 35 3 00 25 00





Azaleas, especially the native varieties, are among the finest of our ornamental shrubs

## DECIDUOUS SHRUBBERY

<b>ACANTHOPANAX</b> ( <i>aralia</i> ) <b>pentaphyllum.</b> <i>Five-leaf Aralia.</i>	Each	10	100		<b>BUDDLEIA</b> <i>dauidi veitchiana.</i> <i>Veitch Butterfly Bush.</i> 3 to 4 feet	Each	19	100
1½ to 2 feet	\$0 20	\$1 80	\$15 00		\$0 25	\$2 25	\$20 00	
2 to 3 feet	25	2 25	20 00		<b>CALLICARPA</b> <i>purpurea.</i> <i>Chinese Beauty Berry.</i> 1½ to 2 feet	30	2 50	20 00
<b>AMYGDALUS</b> ( <i>Prunus</i> ) <b>persica.</b> <i>Double White-flowering Almond.</i>					<b>CERCIS</b> <i>canadensis.</i> <i>American Redbud.</i> 1½ to 2 feet	25		
1½ to 2 feet	40	3 50	30 00		<b>chinensis</b> ( <i>japonica</i> ). <i>Chinese Redbud.</i> 12 to 15 inches	40	3 50	
<i>Double Pink-flowering Almond.</i>					<b>CORNUS</b> <i>alba sibirica.</i> <i>Coral Dogwood.</i> 2 to 3 feet	20	1 75	15 00
1½ to 2 feet	40	3 50	30 00		3 to 4 feet	25	2 25	20 00
<b>AZALEA</b> <i>arborescens.</i> <i>Sweet Azalea.</i>					<i>alba spaethi.</i> <i>Spaethi Dogwood.</i> 1½ to 2 feet	30	2 50	
1 to 1½ feet	1 50	12 50			<i>alternifolia.</i> <i>Pagoda Dogwood.</i> 2 to 3 feet	30	2 50	
<b>calendulacea</b> ( <i>lutea</i> ). <i>Flame Azalea.</i>					<b>mas aureo elegantissima.</b> <i>Variegated Cornelian Cherry.</i> 1½ to 2 feet	30	2 50	20 00
15 to 18 inches	1 50	12 50			<b>paniculata.</b> <i>Gray Dogwood.</i> 2 to 3 feet	20	1 75	15 00
1½ to 2 feet	1 75	15 00	125 00		<b>stolonifera flaviramea.</b> <i>Golden-twigged Dogwood.</i> 2 to 3 feet	25	2 00	15 00
<b>nudiflora.</b> <i>Pinxter Bloom.</i>					<b>DEUTZIA</b> <i>gracilis.</i> <i>Slender Deutzia.</i> 10 to 12 inches	25	2 00	
15 to 18 inches	1 25	10 00			<b>lemoinei.</b> <i>Lemoine Deutzia.</i> 1½ to 2 ft.	35	3 00	20 00
1½ to 2 feet	1 75	15 00	125 00		<b>scabra crenata fl.-pl.</b> <i>Double-flowering Deutzia.</i> 2 to 3 feet	20	1 75	15 00
<b>poukhanensis.</b> 12 to 15 inches	2 00	17 50	150 00					
<b>viscosa.</b> <i>Swamp Azalea.</i> 1½ to 2 feet	1 25	10 00						
2 feet	1 75	15 00	90 00					
<b>yodogawa.</b> <i>Yodogawa Azalea.</i>								
1½ to 2 feet	1 75	15 00	125 00					
<b>BERBERIS</b> <i>thunbergi.</i> <i>Japanese Barberry.</i> 1 to 1½ feet		1 50	8 00					
1½ to 2 feet		1 75	10 00					



DECIDUOUS SHRUBS / A. N. PIERSON, Inc., Cromwell, Conn.

Deutzia scabra crenata magnifica. 3 to 4 feet	Each	10	100
	\$0 25	\$2 25	\$20 00
scabra crenata, Pride of Rochester. Large-flowered Deutzia. 2 to 3 feet	20	1 75	15 00
3 to 4 feet	25	2 25	20 00
scabra crenata rosea fl.-pl. Double Pink-flowering Deutzia. 2 to 3 feet	20	1 75	15 00
3 to 4 feet	25	2 25	20 00
EUONYMUS alatus. Winged Euonymus. 2 to 3 feet	40	3 50	
FORSYTHIA intermedia. Border Golden Bell. 3 to 4 feet	20	1 80	15 00
intermedia spectabilis. Shouy Border Golden Bell. 3 to 4 feet	30	2 50	20 00
suspensa. Weeping Golden Bell. 2 to 3 feet	35	3 00	
HALESIA tetraptera. Great Silver Bell. 2 to 3 feet	40	3 50	



Philadelphus Virginal

HAMAMELIS virginiana. Witch Hazel. 2 to 3 feet	Each	10	100
	\$0 30	\$2 50	
HYDRANGEA arborescens grandiflora. Hills of Snow. 2 to 3 feet	35	3 00	\$25 00
paniculata. Panicle Hydrangea. 3 to 4 feet	35	3 00	25 00
paniculata grandiflora. Peegee Hydrangea. 3 to 4 feet	35	3 00	25 00
ILEX verticillata. Common Winterberry. 1 1/2 feet	35	3 00	
LIGUSTRUM amurense. Amur Privet. 2 to 3 feet		1 50	8 00
ibolium. Ibolium Privet. 2 to 3 feet		1 50	10 00
ibota. Ibota Privet. 2 to 3 feet		1 00	7 00

LONICERA fragrantissima. Winter Honeysuckle. 2 to 3 feet	Each	10	100
	\$0 25	\$2 25	\$20 00
morrowi. Morrow Honeysuckle. 2 to 3 feet	25	2 00	15 00
PHILADELPHUS, Avalanche. 2 to 3 ft.	30	2 50	20 00
gordonianus. Gordon Mock Orange. 3 to 4 feet	30	2 50	20 00
grandiflorus. Big Scentless Mock Orange. 2 to 3 feet	22	1 80	15 00
3 to 4 feet	25	2 25	20 00
lemoinei. Lemoine Mock Orange. 2 to 3 feet	30	2 50	20 00
Virginal. 2 to 2 1/2 feet	50	4 00	35 00
PHYSOCARPUS opulifolius (Spiraea opulifolia). Ninebark. 2 to 3 feet	25	2 00	15 00
PRUNUS triloba. Flowering Plum. 2 to 3 feet	50	4 00	35 00
RHODORA canadensis. Rhodora. 12 to 15 inches	1 00	7 50	
STEPHANANDRA flexuosa. Culeaf Stephanandra. 1 1/2 to 2 feet	25	2 00	
SPIRÆA arguta. Garland Spirea. 2 to 3 feet	30	2 50	
billardi. Billard Spirea. 3 to 4 feet	25	2 25	\$20 00
bumalda, Anthony Waterer. 1 to 1 1/2 feet	25	2 00	15 00
japonica (callosa). Japanese Spirea. 1 to 1 1/2 feet	25	2 25	20 00
opulifolia. See Physocarpus.			
prunifolia. Bridal Wreath. 2 to 3 feet	30	2 50	
thunbergi. Thunberg Spirea. 2 to 3 feet	30	2 50	
vanhouttei. Van Houtte Spirea. 3 to 4 feet	25	2 00	18 00
SYMPHORICARPOS racemosus. Common Snowberry. 2 to 3 feet	25	2 00	18 00
vulgaris. Coral Berry. 2 to 3 feet	20	1 75	15 00
SYRINGA japonica. Japanese Tree Lilac. 3 to 4 feet	40	3 50	
josikæa. Hungarian Lilac. 2 to 3 feet	35	3 00	25 00
persica. Persian Lilac. 2 to 3 feet	30	2 50	22 00
villosa. Late Lilac. 3 to 4 feet	40	3 50	30 00
vulgaris. Common Lilac. 2 to 3 feet	25	2 25	20 00
Common White Lilac. 1 1/2 to 2 feet	25	2 25	20 00
HYBRID LILACS. 2 to 3 feet	40	3 50	
Charles Joly. Double. Very dark reddish purple.			
Charles the Tenth. Single. Reddish purple.			
Michel Buchner. Double. Lilac.			
President Grevy. Double. Blue.			
Volcan. Single. Rich dark purple.			
VIBURNUM cassinoides. Witbe-rod. 1 1/2 to 2 feet	Each	10	100
	\$0 20	\$1 80	\$15 00
2 to 3 feet	25	2 00	18 00
dentatum. Arrow-wood. 2 to 3 feet	30	2 50	20 00
opulus. European Cranberry Bush. 2 to 3 feet	35	3 00	
opulus nanum. Dwarf Cranberry Bush. 8 to 10 inches	30	2 50	22 00
WEIGELA amabilis. Rose Weigela. 2 to 3 feet	30	2 50	20 00
Eva Rathke. Red-flowering Weigela. 2 to 3 feet	30	2 50	
hybrida nana variegata. Variegated-leaf Weigela. 1 1/2 to 2 feet	30	2 50	20 00
rosea. Pink Weigela. 2 to 3 feet	30	2 50	20 00
YUCCA filamentosa. Adam's Needle. 3-year, extra-heavy	30	2 50	
ZANTHORHIZA apiifolia. Yellow-root. 10 to 12 inches	25	2 00	15 00





*Thuja occidentalis pyramidalis*, *Juniperus virginiana elegantissima*, *Juniperus virginiana glauca*, *Thuja occidentalis rosenthali*

**“Let Us Transplant Them First.”** If we were to use a slogan for the Lining-out Department of our nursery, it would be the above, because we have a principle that must be maintained in the nursery as elsewhere. We want to give you your money’s worth and a real article. Let us stand the first transplant losses—they are always the greatest. We give you real planting stock when we sell these sizes. Maybe they will cost more, but they will be worth more and worth what we ask for them. We can produce more than we can plant and will expect to have this lining-out stock to offer yearly. The accompanying five photographs show what we grow and how we grow it. Let us sell you real transplanted evergreens to plant in your nursery.



Left to right: *Juniperus communis hibernica*, *Retinospora pisifera plumosa aurea*, *Thuja occidentalis rosenthali*, *Retinospora pisifera plumosa*, *Thuja occidentalis pyramidalis*



*Thuja occidentalis vervæana*, *Thuja occidentalis hoveyi*, *Thuja occidentalis douglasi*





*Thuja occidentalis pyramidalis*, *Retinospora pisifera*, *Thuja occidentalis Douglasi aurea*, *Thuja occidentalis Ellwangeriana*

## PIERSON'S "IDEAL" LINING-OUT STOCK

	100	1,000		100	1,000
<i>ABIES frazeri</i> . 10 to 12 in., twice trans.	\$25 00	\$200 00	<i>PSEUDOTSUGA Douglasi. Douglas Spruce.</i>		
<i>JUNIPERUS chinensis</i> . 5 to 6 in., twice trans.	15 00	100 00	8 to 10 in., twice trans.	\$15 00	\$100 00
<i>communis aurea</i> . 10 to 12 in., twice trans.	25 00	200 00	10 to 12 in., twice trans.	25 00	200 00
<i>communis depressa plumosa</i> .			<b>THUJA occidentalis.</b> 10 to 12 in., twice trans.	20 00	150 00
10 to 12 in., twice trans.	30 00	250 00	12 to 18 in.	25 00	200 00
<i>communis suecica</i> . 10 to 12 in., twice trans.	30 00	250 00	<i>occidentalis caucasica.</i>		
<i>horizontalis douglasi. Waukegan Juniper.</i>			10 to 12 in., twice trans.	30 00	250 00
12 to 15 in., twice trans.	30 00	250 00	<i>occidentalis compacta.</i> 7 to 9 in.	25 00	200 00
<i>sabina</i> . 8 to 10 in.	25 00	200 00	10 to 12 in., twice trans.	30 00	250 00
10 to 12 in., twice trans.	30 00	250 00	<i>occidentalis douglasi aurea.</i>		
<i>virginiana</i> . 10 to 12 in., twice trans.	12 00	100 00	10 to 12 in., twice trans.	30 00	250 00
<b>PICEA canadensis. Black Hills Spruce.</b>			<i>occidentalis ellwangeriana.</i>		
10 to 12 in., twice trans.	25 00	200 00	8 to 10 in., twice trans.	25 00	200 00
<i>excelsa</i> . 8 to 10 in., twice trans.	20 00	150 00	<i>occidentalis globosa.</i> 8 to 10 in., twice trans.	30 00	250 00
12 to 15 in.	25 00	200 00	<i>occidentalis hoveyi.</i> 10 to 12 in., twice trans.	30 00	250 00
<b>PINUS densiflora.</b> 10 to 12 in.	15 00	100 00	<i>occidentalis pyramidalis.</i> 7 to 9 in.	20 00	150 00
12 to 18 in., twice trans.	25 00	200 00	12 to 15 in., twice trans.	30 00	250 00
<i>montana mughus.</i> 6 to 9 in., twice trans.	25 00	200 00	<i>occidentalis reidi.</i> 7 to 9 in.	25 00	200 00
9 to 12 in.	30 00	250 00	10 to 12 in., twice trans.	30 00	250 00
<i>nigra (austrica).</i> 8 to 10 in.	25 00	200 00	<i>occidentalis umbraculifera.</i>		
12 to 18 in., twice trans.	30 00	250 00	8 to 12 in., twice trans.	30 00	250 00
<i>sylvestris.</i> 12 to 15 in., twice trans.	25 00	200 00	<i>occidentalis vervæneana.</i>		
<i>thunbergi.</i> 12 to 15 in., twice trans.	25 00	200 00	10 to 12 in., twice trans.	30 00	250 00
<b>RETINOSPORA pisifera (Chamæcyparis).</b>			<i>occidentalis wareana (sibirica).</i> 8 to 10 in.	25 00	200 00
10 to 12 in., twice trans.	25 00	200 00	10 to 12 in., twice trans.	30 00	250 00



*Thuja umbra culifera*, *Juniperus stricta*, *Juniperus communis depressa plumosa*, *Thuja occidentalis pyramidalis*











# TERMS OF SALE

THIS LIST CANCELS ALL PREVIOUS QUOTATIONS

*This is a Wholesale Catalogue and we do not solicit orders at these prices from parties not in the trade*

**Printed Stationery.** Use printed stationery to protect yourself from being confused with retail buyers, or state clearly why you should be entitled to buy at wholesale prices.

**Terms.** Cash, unless special arrangements are made for credit. Bills for plants are payable 30 days from date of shipment where credit has been allowed. If unpaid, interest will be charged at  $\frac{1}{2}$  per cent per month.

**Parcel Post Shipments.** We ship rooted cuttings by parcel post on orders calling for small quantities, until May 1, after which date we use slatted crates which are necessary in order to prevent heating and loss in transit. These must be shipped by express.

**Cash Discounts.** We do not allow cash discounts, but on prepaid orders we do not charge for packing, the cash discount formerly allowed being approximately the amount added to charge orders for packing.

**Non-Warranty.** We endeavor to keep varieties true to name, but do not guarantee this, nor do we in any way guarantee the success of the grower purchasing the stock offered in this Catalogue. In the event of stock not being true to name, our liability is limited to the invoice value at time of shipment.

## PARCEL POST CHARGES

On all charge orders, the actual parcel post cost will be added to the invoice. Paid orders will be shipped by express unless the remittance includes postage at the following estimated rates:

Rooted Cuttings, east of the Mississippi River: 100 or less, 10 cents; for each additional 100, 5 cents. West of Mississippi River: 100 or less, 20 cents; for each additional 100, 10 cents.

All plants from pots in any quantity will be shipped by express. If desired by parcel post, we can remove the soil and pack lightly. This we advise in the case of small lots of new Chrysanthemums, especially where the customer wishes larger and better than rooted cuttings and wants to keep the expense down to the minimum. We do not guarantee safe delivery of anything. If you wish your parcel post shipment insured, we will insure it at your expense at the following rates, which must be included in your remittance:

Value up to \$5.00 . . . . .	\$0 05	Value up to \$50.00 . . . . .	\$0 10
Value up to 25.00 . . . . .	08	Value up to 100.00 . . . . .	25

PLUS REGULAR POSTAGE

We deliver to a common carrier in good condition. We do not guarantee safe arrival; your claim for damage is against the carrier.

## PACKING CHARGES

A charge for packing is made on all plants or cuttings shipped by express or parcel post. We do not charge for either boxes or packing on orders which are prepaid in full.

Rooted Cuttings: 300 or less, 30 cts.; over 300, 5 cts. per 100 additional.  
Plants from  $2\frac{1}{4}$ -inch pots: Minimum charge up to 100 plants, 50 cts.; over 100, 40 cts. per 100.  
Plants from 3-inch pots: Minimum charge, 50 cts.; 50 or more plants, \$1 per 100.  
Plants from 4-inch pots: Minimum charge, 50 cts.; 50 or more plants, \$1.50 per 100.

## FOR GRAFTED ROSES

Plants from  $2\frac{1}{4}$ -inch pots: Minimum charge, 50 cts.; in quantity, \$1 per 100.  
Plants from 3 and 4-inch pots: Minimum charge, 50 cts.; 50 or more plants, \$1.50 per 100.



---

**A. N. PIERSON, Inc.**  
*Florists and Nurserymen*  
CROMWELL, CONN.

---