

GLAMs and Wikidata/Wikibase

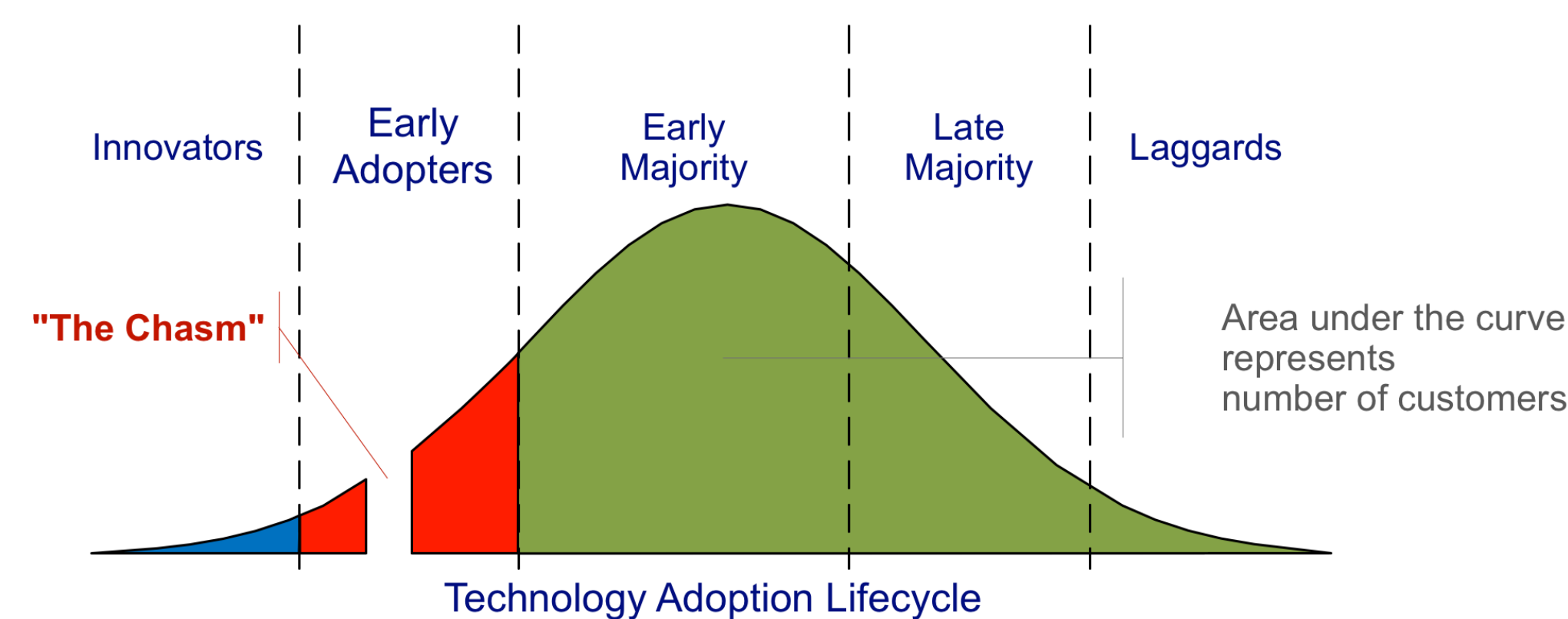
Bart Magnus (Beireke1)
PACKED/VIAA

Where it started

What	Who
data donations	museums
image donations	performing arts
trainings	archives
edit-a-thons	universities
...	...

Where are we now?

- Cultural policy attention
- Moving away from early adopter phase



By Craig Chelius [CC BY 3.0]

What's next: Wikibase?

Why?

- 1) Data that are out of scope for Wikidata
- 2) Data models / thesauri incompatible to Wikidata

Challenges

- User-friendly image batch upload
- Write Quickstatements to Wikibase (OpenRefine?)
- Automatic import of (some) Wikidata properties and triples into Wikibase

Is Wikibase an answer to the needs of GLAMs beyond the scope of Wikidata?



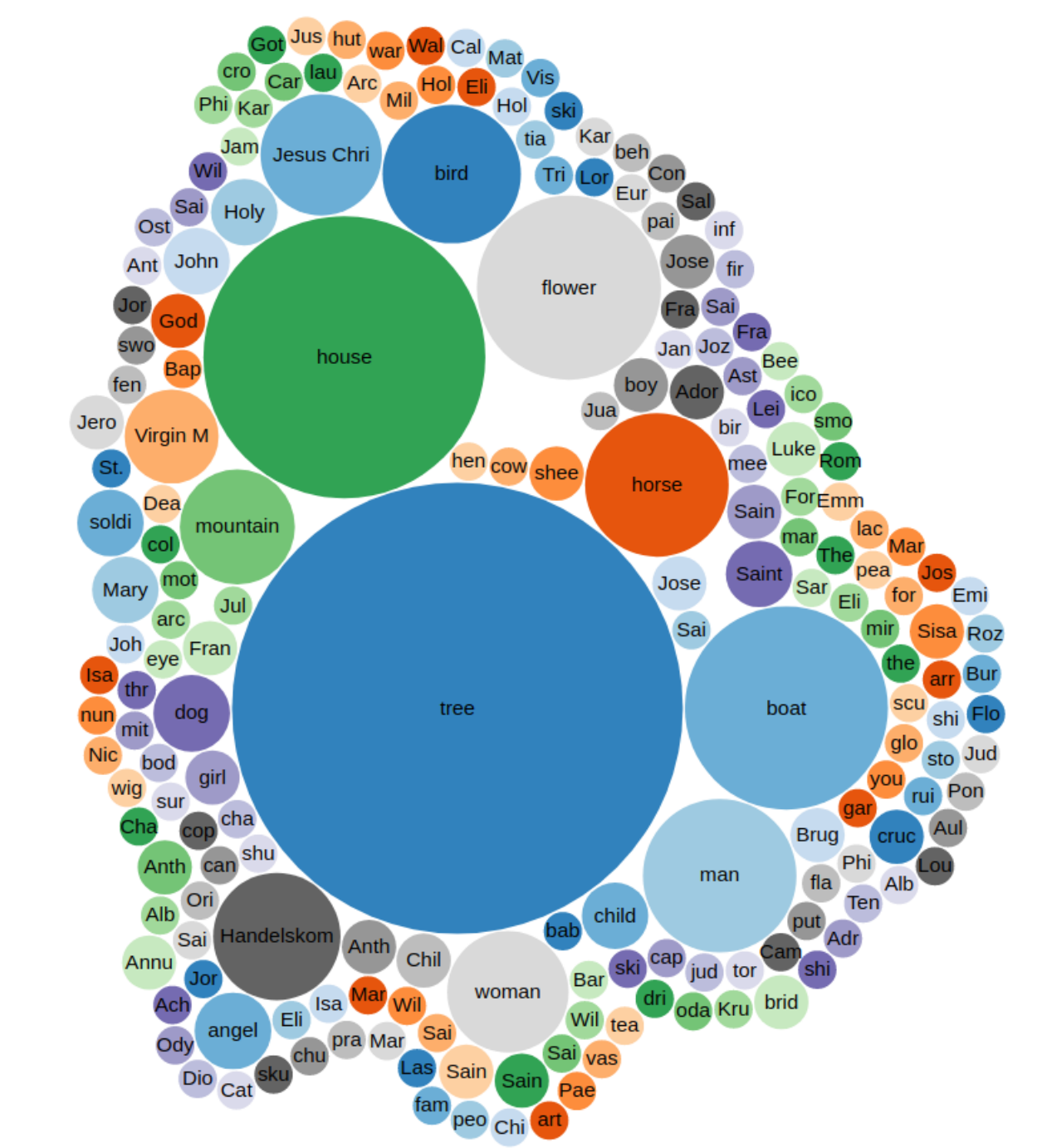
work with museums

and

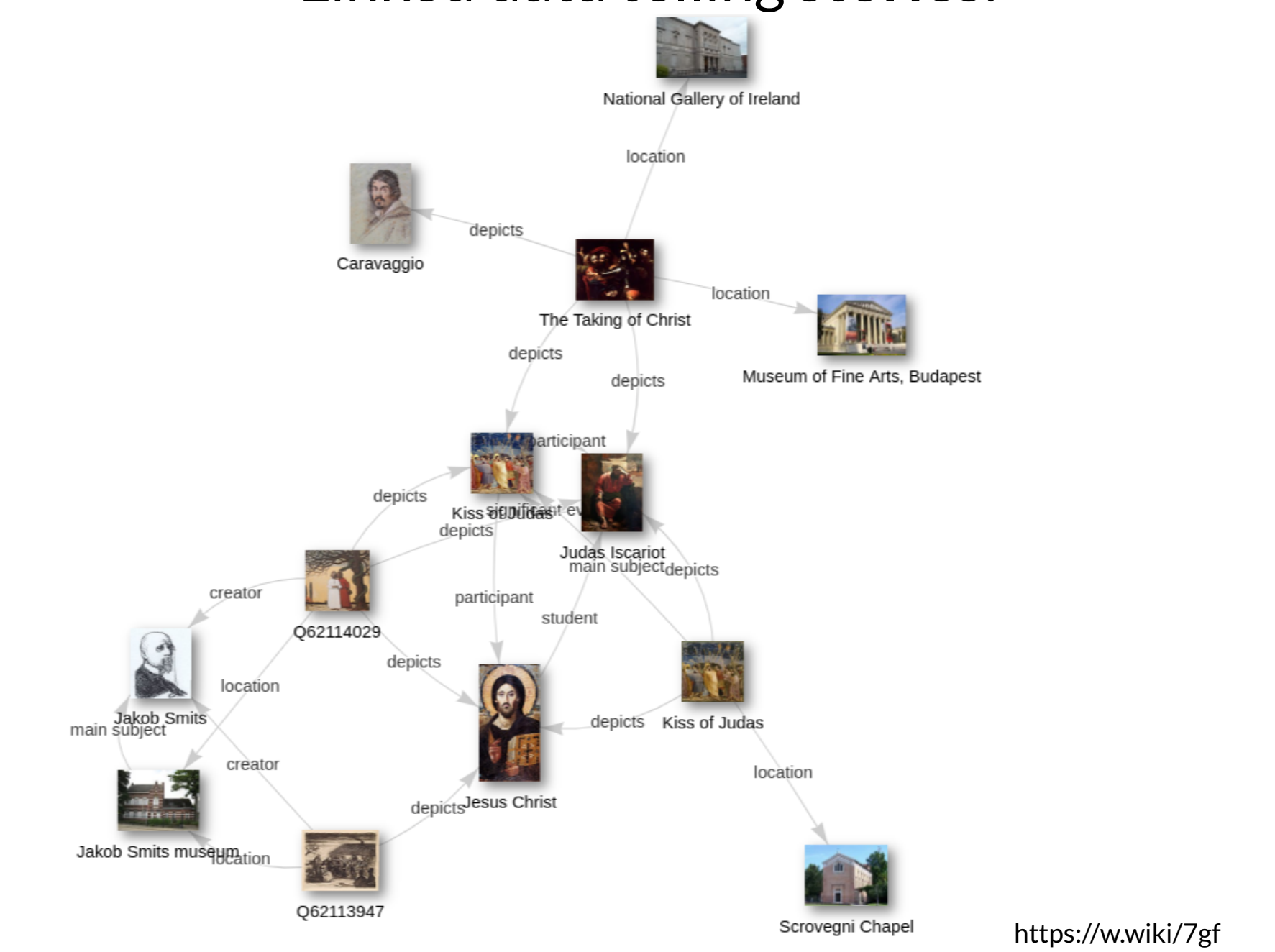


in the performing arts

Depicted in artworks from Groeningemuseum (Brugge):



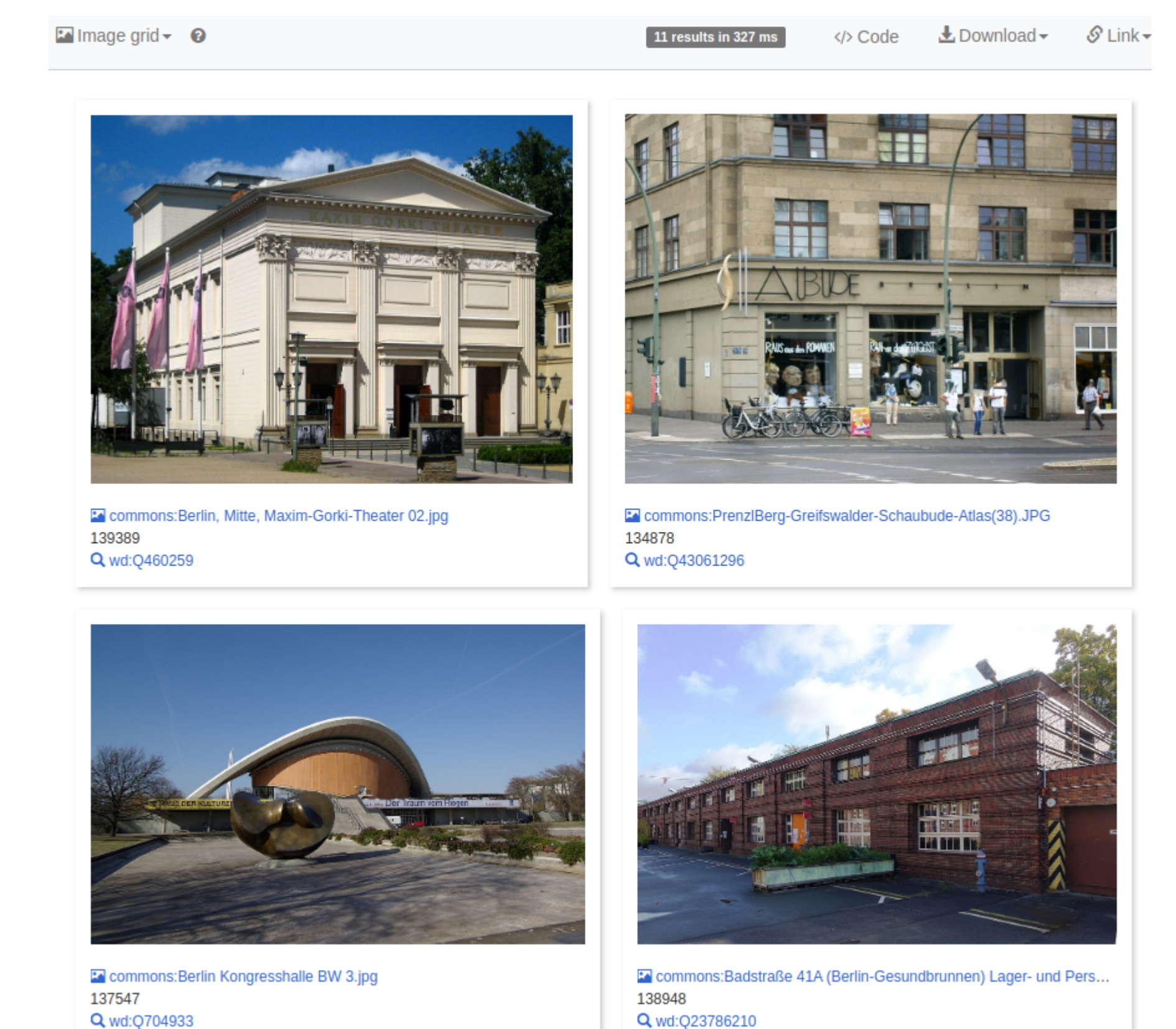
Linked data telling stories:



Enriched data: photos of performing arts venues:

```

1 #defaultView:ImageGrid
2 SELECT ?work ?Flanders_Arts_Institute_venue_ID ?image WHERE {
3   ?work wdt:P3820 ?Flanders_Arts_Institute_venue_ID.
4   OPTIONAL { ?work wdt:P18 ?image }
5   ?work wdt:P131 wd:Q64
6 }
    
```



Contact

Beireke1
Telegram: Bart M
E-mail: bart@packed.be