

Historic, Archive Document

Do not assume content reflects current scientific knowledge, policies, or practices.

6273

Brand's

PEONIES
FRENCH LILACS
PHILADELPHUS

LIBRARY
RECEIVED
★ MAR 14 1932 ★
U. S. Department of Agriculture

and Other Choice Ornamentals



MARY BRAND

BRAND PEONY FARMS

(Incorporated)

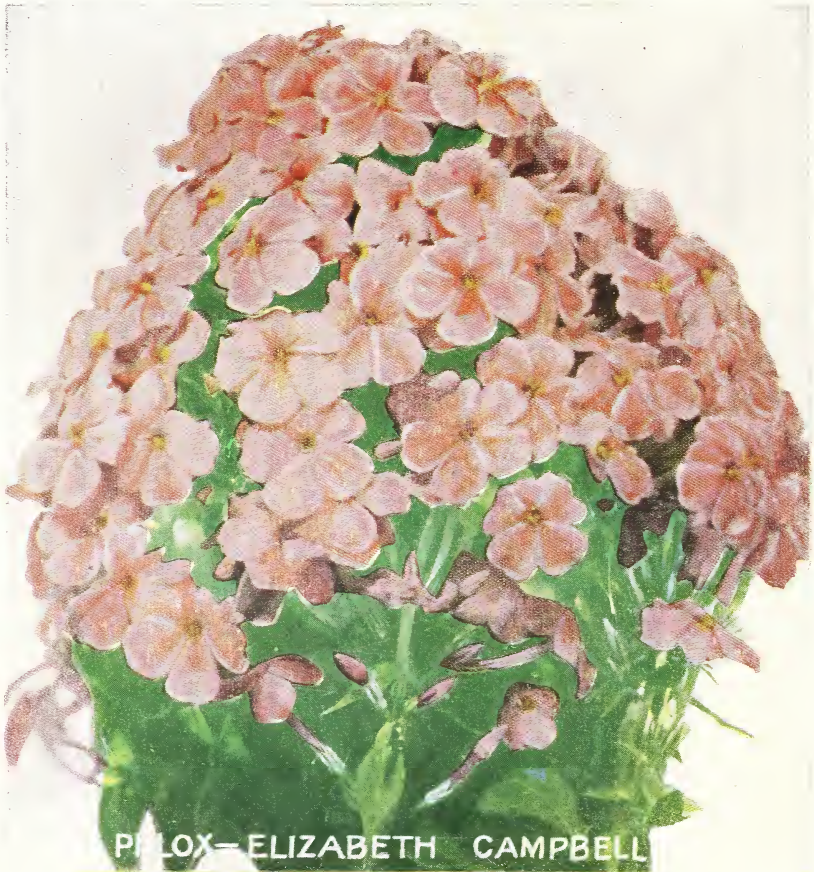
BOX 408

Faribault, Minnesota

For description of
Red Leaved
Japanese Barberry
shown at right
See page 31.



For description of Elizabeth Campbell Phlox shown below.
See page 26.



Introduction

THIS catalog is sent to our flower loving friends to call their attention both to our spring offering of peonies and to our other specialties in the line of choice ornamentals. These last include not only old-time favorites but many very desirable novelties in the line of trees, shrubs, perennials, and bulbs.

For many years we have been the largest growers in the world of choice peonies for an exclusive retail trade. Our plantings cover fifty acres of choice peonies grown chiefly for the retail trade. It is our policy, as our former customers will testify, to send out peony roots that are so good that they will give the utmost satisfaction.

Of late years we have taken up a number of other specialties. Among these we wish to call especial attention to the new varieties of Philadelphus, recently introduced from France, and our very choice selection of hybrid lilacs, most of which also came from France. To these, as well as to our other specialties, which you will find described in this catalog, we have given the same care both in growing and in handling, that has given our peonies their wide and favorable reputation. We guarantee that our stock shall be received in such a condition that it will give the very best of results if properly planted and cared for.

Peonies

We offer for spring shipment only the following list of strictly choice peonies. These roots were all dug in November and are now in storage. They are all large roots selected for the most exacting retail trade. As a rule we can start our shipments safely by March 15th. However, you should reserve your selection early.

Our Prices and Our List

ADOLPHE ROUSSEAU (Dessert & Mechin). 8.5. Red. This variety is one of the very best of the early dark reds. The blooms vary with the seasons, and some times they vary on the same plant. Some times the flower is loosely built and at other times it is quite double. The petals are very large, long, broad, and of good substance. The plant is very tall with heavy dark foliage. The flowers are of great size, held well erect, and extremely showy. This is a magnificent landscape variety and also a wonderful show flower. The color is a deep rich velvety maroon red showing stamens. A Brand Division \$1.50.

A. J. DAVIS. (Brand). Red. A. J. Davis is another good red that resembles Adolphe Rousseau in a good many ways except in color. Where Rousseau is a deep red Davis is a lighter and brighter red. The plant is tall, the flowers are loosely built, and held erect. It also is a fine landscape variety. The flowers are large to very large. Rose type showing stamens. A very good variety. A Brand Division \$1.00.



Archie Brand

ALBERT CROUSSE. (Crousse). 8.6

Crousse gave to the world many great peonies, three of which he considered good enough to bear the name Crousse. Albert, Felix, and Marie are three exceptionally fine peonies. Albert Crousse is a beautiful soft shell pink. The petals are narrow, and very compactly arranged in so symmetrical a way as to give the flower a distinctly globular form. At Duluth, Minnesota, where the peony grows to perfection. Albert Crousse is always one of the outstanding, late mid-season varieties.

A Brand Division \$1.00.

ARCHIE BRAND. (Brand). 7.5. Pink.

We receive more compliments on this variety from all over the country than on any other one variety. Those who have purchased this peony express their surprise at its low rating. We believe that Archie Brand deserves a rating of 8.5 and when the next Symposium is taken we believe that you will find it around this mark. When the last Symposium was taken, this variety could not be rerated as the committee decided that all peonies that had been voted on by twenty or more people should not be included in the new vote. Archie Brand is a large round, full rose-type blossom of an even shade of sea shell pink. The foliage and stems are light green and very clean in appearance. The buds as they develop are very attractive, enormous in size, and wondrously beautiful as they open. As the flower just opens, it is at its most beautiful stage. The petals of good length are then banked in a compact mass with four distinct corners to the bloom which gives a very pleasing effect. The guards then begin to fall away leaving a great round ball of bloom in the center. This variety becomes coarse when heavily fertilized. It does best on clay soil.

A Brand Division \$1.50.

BARONESS SCHROEDER (Kelway). 9.0.

White. This is considered one of the finest peonies grown. When the last Symposium was taken, this variety received a rating of 9.0 after 79 people had voted. When the buds first open, they are a delicate blush, but the flower soon fades to a milky-white. This is a variety that should be found in every collection, and for this reason you will find it listed in our Collection as A. It comes into bloom late, after most of the white peonies are gone.

A Brand Division \$1.50.

BRAND'S MAGNIFICENT. (Brand). 8.2.

Red. We have produced many very fine reds, and of these, this is one of the very best. The plant is of medium height, comes into bloom mid-season, and is a wonderfully profuse bloomer. The blossoms are semi-rose, and the flower looks more like an American Beauty Rose than a peony. The color is a deep, dark red with a bluish cast. This variety carries more blue in it than any other good peony. The petals are large like those of a rose. We consider this a wonderful flower because of its beautiful form, its free blooming, its broad symmetrically-arranged petals, and its magnificent color effect. At the National Show held at Des Moines, this variety appeared in the collection winning the gold medal. In the class calling for ten named varieties, it appeared in the collections winning both first and second prizes.

A Brand Division \$4.00.

CHARLES McKELLIP. (Brand). 7.8. Red.

This is a large, loosely-built, semi-rose, deep red peony. We think it is the most perfect in form of all the deep red varieties. It is especially beautiful in the bud. This is one of the varieties whose good qualities are impressing themselves more and more upon the public. When the next Symposium is taken, we feel quite sure that it will rate above 8.5. It comes into bloom just after Mary Brand, and we believe it is as good a red.

Charles McKellip was voted on in the first general Symposium and then received its low rating of 7.8. It was a comparatively new flower at that time and had not been talked about very much, but did receive more than 20 votes. All varieties that received 20 votes or more in that Symposium were not voted upon in the next symposium which accounts for its present low rating. Five years from the taking of the last symposium the next general symposium will be taken and then we prophesy that Charles McKellip will come into its own. At Duluth, Minnesota, where as fine peonies as can be grown in the entire world are produced, and where the reds come simply gorgeous, Charles McKellip is the finest red of all.

A Brand Division \$2.00.

CHESTINE GOWDY (Brand). 8.4. Pink.

This is a striking specimen of the cone-shaped peony. The broad outer petals are silvery pink. These inclose a zone of fine, irregularly shaped, closely set petals, of deep rich cream, which in turn surround a prominent cone of broad pink petals, splashed and tipped with crimson. Its varied coloring has repeatedly caused it to be singled out for special admiration from a group of the finest varieties. This is a late variety with delicate fragrance. It was the first prize peony at the National Peony Show held in Cleveland, Ohio, as the best peony introduced since 1910. A very thrifty variety and a profuse bloomer. Becoming in great demand as a late pink cut flower.

A Brand Division \$1.00.

COURONNE D'OR. (Calot). 8.1. White.

This is a reliable flower in all respects. It is unlike all other whites, and can easily be identified in any collection. The outer petals are pure white. A ring of yellow stamens is found around a tuft of center petals that are tipped carmine. This variety comes into bloom just before Marie Lemoine. It belongs in the class of peonies that can always be recommended. You will find this variety in our Collection A.

A Brand Division \$1.00.

DAVID HARUM. (Brand). 8.4. Red. This

is one of our newest reds. The flowers are very large with prominent guard petals surrounding a great ball of closely packed petals of the same shade. The entire flower is an even shade of soft Tyrian-rose. An upright growing plant with very strong stems that hold their great blooms erect. One of the very best landscape reds. This variety appeared in five prize-winning collections at the National Show held at Des Moines in 1924. This unusual red is found in our Collection E. A Brand Division \$7.00.

DELICATISSIMA. (Origin unknown). 7.6.

Pink. Rose-type. Color delicate salmon-pink. Delicatissima although rating below 8.0 still in our opinion is a pretty fair peony and we should not like to drop it from our list. The plant is medium tall with strong thrifty stems and clean light green foliage. It blooms profusely, and the flowers are of great keeping quality after cut and in storage. This fact makes of it a splendid commercial cut flower. A Brand Division \$1.00.

DUCHESS DE NEMOURS. (Calot). 8.1.

White. A beautiful early almost pure white with shadings of green at the base of the petals. Blossom cup-shaped with marked crown effect. Duchess de Nemours, although a comparatively old variety, is unexcelled for beauty of form, purity of color, and all-around general goodness. We think it should be in every planting, but since it is an old variety we seldom list it with our collections as most people who have ever made a purchase of peonies already have it. A splendid cut flower.

A Brand Division \$1.00.

E. B. BROWNING (Brand). 9.2. White.

In a vote taken by the American Peony Society, E. B. Browning was one of the group of four flowers that stood ninth highest on the entire list, stamping it as one of the world's greatest peonies. To produce the best results, this variety must be grown in rich, well-drained soil. This is a very late variety, coming into bloom with Marie Lemoine. For this reason, we do not recommend it to our southern customers. It has had some undeserved adverse criticism. If this variety has not been more than satisfactory to anyone who has planted it, it is because it was planted in soil not suitable to the variety, or it did not receive heavy cultivation. It will do well in any heavy black soil. The flowers of this variety are very large, and semi-rose type. The buds are often as large as the expanded blooms of other fair-sized varieties. The bud opens slowly, and as the petals unfold, a delicate pink coloring appears; the inner surface of the petals being washed with the most delicate pinkish canary. The perfume of the flower is strong and sweet. The variety is so late that it is not always seen in peony shows, but appeared in the prize-winning collection at Des Moines in 1924. When we looked for an outstanding white for our Collection E we chose this variety.

A Brand Division \$5.00.

EDULIS SUPERBA Pink. 7.6. We do not

believe that justice was done this grand old variety in the Symposium that placed its rating at 7.6. No flower with as many good qualities as this one has should rate below 8.0, and we think when another vote is taken that it will advance to this figure. It is the first good early deep pink. It sometimes opens for Decoration Day with us in Minnesota. The flowers are large, borne profusely on tall strong stems. A loose, crown type flower, of a beautiful deep pink. One of the greatest of all cut flowers in its color and season.

A Brand Division \$1.00.

ENCHANTERESSE (Lemoine) 8.9. White.

A very tall growing variety with clean light green stems and foliage. Blossoms are of the very largest, pure rose type, petals broad, long, and notched at the edges. Guards a pure creamy white splashed with crimson with occasional faint tracings of crimson on the central petals. Wondrously beautiful in the bud stage especially when the great pure white buds hang suspended half opened for several days. When it does finally open, it becomes an immense chaste creation of almost unbelievable beauty. We understand that this is not a good flower for the south as it is very late and does not open well, but the farther north it is grown, the better it becomes. As grown with us, it is rated far too low. It is surely entitled to a rating of 9.2.

A Brand Division, \$4.50.



E. B. Browning

ENCHANTMENT (Hollis) 8.0. Pink.

We believe that this variety has been somewhat overlooked and that it is a much better peony than it has generally been considered. It attracted a great deal of attention in our show room and almost every order that we took while this variety was at its best called for a root. The flower is large and flat, of semi - rose form in which the stamens are clearly visible. The color is a uniform hydrangea-pink. It comes into bloom late mid-season.

A Brand Division \$1.00.

EUGENE BIGOT. (Dessert) 8.3. Red.

In color this peony is a very bright dark red. The color is so brilliant in effect that Eugene Bigot always catches the eye even from a long distance and among other good reds of its season. This is the true test of desirable color in a red. The blooms are of medium size, showing stamens. Very late, in season with Rubra Superba. Very desirable as a cut flower red for the home market because of its lateness.

A Brand Division \$1.00.

EUGENIE VERDIER (Calot) 8.6. Pink.

A tall growing, very large flat flower of a light hydrangea-pink, the petals being lighter towards the outside and gradually growing deeper in color towards the center with a few flecks of crimson on the central petals. This is one of the greatest peonies. The plants are very thrifty and tall, the blooms are immense in size, and are borne profusely. It is a flower beautiful and striking in the field and wonderful as a cut flower. See Collection A.

A Brand Division \$1.00.

FANNY CROSBY (Brand) 7.7. Yellow.

Fanny Crosby is an early yellow peony that is growing more and more in favor as it becomes better known. The plant is strong, thrifty, and very floriferous. The strong straight stems hold the blooms erect and as the side buds are in bloom almost with the main flower it makes a very pretty landscape sort. Flowers are of medium size. A central globe of deep yellow incurved petals that some seasons are heavily tipped with white are surrounded by very prominent large light pink guard petals which gives the bloom a wonderful setting.

So far there are three good yellow peonies, Primevere, Laura Dessert, and Fanny Crosby. One year one of these may be the best, the next year it may be another, and still another year the third. They are all different in season of blooming so we need all three.

A Brand Division \$3.50.

FELIX CROUSSE (Crousse) 8.4. Red.

A deep rose red flower of medium size. A very profuse bloomer. The flower consists of a central bomb of narrow incurved petals surrounded by broad prominent guard petals of the same color as the center. There



Frances Willard

is an entire absence of stamens. This variety is one of the greatest of all cut flower reds. Felix Crousse is also a wonderful show flower, there seldom being a show of any size in which it is not found among the winning reds.

A Brand Division \$1.00.

FESTIVA MAXIMA (Meillez) 9.3. White.

This is the most all around popular white peony. It is the oldest of our real good sorts. The flowers are large, the petals of the purest white are broad, rounding, and of wonderful substance. The blossom is true rose type with great broad guards surrounding an inner tightly built up mass of rich white petals almost as large. Bright carmine flakes on the edge of the central petals. This flower is admired by everyone who sees it and should be found in every collection. See our Collection A.

A Brand Division \$1.00.

FRANCES WILLARD (Brand). 9.1. White.

This variety is listed among the World's 26 Most Beautiful Peonies. It is a perfectly-formed flower. The petals are of varying sizes, forming a very large rounding flower, often having a raised cupshaped center inclosing golden stamens. It opens an exquisite blush white, with an occasional



Judge Berry

carmine touch, changing on the lawn to pure white. Although delicate in appearance, it is of good substance and an excellent cut flower. Altogether, it is a wonderful combination of strength and delicacy. It is found among the winning classes in every show room. Found in our Collections B and E. A Brand Division \$2.50.

GEORGIANA SHAYLOR (Shaylor) 8.9.

Pink. This, we think, is Mr. Shaylor's greatest flower. For years we have been of this opinion and have never changed our mind. If Mr. Shaylor had never produced another peony, his name would still have lived among peony lovers because of this one variety. When the time comes for Georgiana Shaylor to bloom I take an hour off and go down into the field where the three year olds of Georgiana are. There I stand spellbound before hundreds of great blooms of as beautiful a flower as was ever produced. A Brand Division \$3.00.

HELEN WOLAVER (Brand) 7.9. Pink.

We do not recommend this variety to those who are buying peonies for the first time. To those who have peonies, we heartily recommend Helen Wolaver. We know of no other peony that resembles it. This variety was on display in the "Hundred Class" at the Des Moines Show that won the gold medal. The exhibitor told us at the time it was really a \$50.00 peony if it came good every year. If you have a collection you cannot afford to do without Helen Wolaver. It resembles a rose much more than a peony. The flower is very late, and does not come to perfection until the plant is about four years old, when the results are wonderful. The flowers are of medium size and rose type. The guard petals are prominent, stiff, and of a sea-shell pink more or less splashed with a deeper pink. The outer petals are drawn away

leaving a compact rosebud shaped mass of petals in the center. It is rose scented.

A Brand Division \$1.00.

JAMES KELWAY (Kelway) 8.7. White.

This variety received a rating of 8.7 when the last symposium was taken, after 49 people had voted. This fact, alone, places it among the good varieties. The flower is very large, loose and semi-rose in type. It opens a rose white changing to milk white with base of the petals tinged yellow. The fragrance is strong and pleasing. When James Kelway comes good it is one of the most outstanding flowers in the entire list. At the Philadelphia National Show held in 1925 a great vase of James Kelway was the sensation of the show.

A Brand Division \$1.50.

KARL ROSEFIELD (Rosefield) 8.8. Red.

This is a brilliant and striking variety. It comes into bloom early mid-season. The flowers are very large, semi-rose type, and slightly fragrant. Karl Rosefield and Richard Carvel are our two best sellers among the reds. Both varieties are very desirable for cut flower purposes. This good red is listed in our Collection A.

A Brand Division \$1.50.

LADY ALEXANDRA DUFF (Kelway) 9.1.

Pink. One of the largest and most beautiful of all peonies. An immense, loosely built flower with great broad rounded petals so exquisitely arranged as to make a flower of most ravishing beauty. In color it is a lovely French White. This flower looks white but when closely scrutinized it shows the white tinted with the most delicate pink imaginable. When not disbudded, the central flower is loosely double of a rather flattened, circular form, with the central petals touched with carmine. It is a beautifully formed flower and sweet scented. The plants are exceedingly free flowering and very showy. The side flowers, which open after the central flower, come semi-double saucer shaped and show stamens. Taken all in all this is positively one of the most beautiful of all peonies, and should we be asked to name the twelve most beautiful peonies Lady Alexandra Duff would be one of the twelve. A Brand Division \$2.00.

LAFAYETTE (Dessert) 7.8. Pink. Rose

type, mid-season. The flowers are large, last well, and the petals are beautifully fringed; the color—a lovely shade of salmon-pink with touches of heliotrope and a delicate tinting of cerise in the reflex, giving it a striking and beautiful effect. It is one of Dessert's late productions. Very attractive. We often wonder why there is not a greater call for this very desirable peony. Its color is really different from that of any other peony as it has so much of the salmon in it. When the year comes that it is really good, it is a wonder.

A Brand Division \$1.00.

LA FRANCE (Lemoine) 9.0. Pink. A flower that gives wonderful results in our soil and climate. Blooms very large of true rose type. Color a true uniform apple blossom pink, with crimson splashes on the guards. Plant robust with tall strong stems which support well the enormous blooms. In the years when La France is at its best, no flower in the pinks outranks it in the shows. We consider it one of the ten greatest of all peonies.

A Brand Division \$5.00.

LA PERLE (Crousse) 8.5. Pink. If we were selecting 25 peonies for our own planting, we could not do without La Perle. When the flower first opens, it is a beautiful soft shade of pink which gradually fades to almost a pure white. Remarkably beautiful both in the opening bud and in the full open bloom. The writer will never forget great vases of La Perle which graced the show room of the national show at Cleveland. It seemed the most beautiful flower in the entire show. When we selected varieties for our Collection A, we include La Perle.

A Brand Division \$1.00.

LE CYGNE (Lemoine) 9.9. White. There are several peonies that when the year comes that they are at their best are unsurpassed in their perfection of form and their general all around beauty. Le Cygne is such a flower. Among the true whites, it lies between Le Cygne and Kelway's Glorious as to which is the most beautiful flower. Le Cygne is purer in its whiteness and more perfect in the arrangement of its petals and in its general form. Kelway's Glorious, although an immense flower in size, still has such a daintiness of construction that its appeal is irresistible. So it is a matter of taste only as to which flower is the better. Le Cygne is a flower of the purest white with no tracings of color. Its form is absolutely perfect. An immense flower of true rose type that as a rule is a wonderful show flower. Early to mid-season in blooming. The great blooms are held erect on strong stems of medium height. Produces large typical blooms on one year plants. One of the greatest of all show flowers.

A Brand Division \$8.00.

LILLIAN GUMM (Gumm). Pink. A new flower of very outstanding qualities. A flower is indeed good when it is repeatedly singled out from hundreds of varieties in the field. We recently had about twenty plants of Lillian Gumm growing in a field of about two acres which contained many different varieties of the best sorts. When this variety came into bloom there was something so attractive and distinct about its color that it was always singled out as one of the most beautiful peonies in the entire field.

Lillian Gumm is a very large flower, globular in form, rose type, with great broad

petals, and a cupped center. The color is a uniform apple blossom pink with more brilliant shadings at the base of the petals. We believe this to be one of the truly coming flowers.

A Brand Division \$10.00.

LONGFELLOW (Brand) 9.0. Red. We believe that practically everyone considers that, in color, Longfellow is the best of all red peonies. At the Des Moines show, it appeared in seven of the winning collections. In the class calling for twenty red blooms of one variety, we were first with Longfellow. At the Minneapolis show held a few days later, this variety again won first in the same class. It is as striking in the field as in the show room, since it neither fades nor turns dark as do most reds. See Collection D and E.

A Brand Division \$3.50.

LORA DEXHEIMER (Brand) 8.4. Red. The splendid habit and bright color of this plant have marked it, with us, as of exceptional merit, since we first selected it from the seed bed in 1904. Each succeeding year has added to our good opinion of it. The color of this variety is an intense flaming crimson. It comes into bloom early mid-season. This is a variety that ranks with Longfellow. Reports come to us from all parts of the country regarding the wonderful qualities of Lora Dexheimer. We believe eventually that its rating will be as high as that of Philippe Rivoire. You will receive this variety in our Collection A.

A Brand Division \$2.00.

LOUISA BRAND (Brand) 7.8. Pink. This is a very late pink, which opens a bluish-white that gradually fades to pure white. As the blossom opens, it resembles a pink water lily. The plant is tall with clean foliage and is a good bloomer. This variety is much under rated. It is a very late flower that is in bloom with Grandiflora. Occasionally a year comes when it is not good, but as a rule it is an exceedingly refined and beautiful flower in every way, and of exceptional value because it comes into bloom so late. We know that if you purchase a root of this variety you will not be disappointed when it comes to bloom for you.

A Brand Division \$1.00.

MME. CALOT (Meillez) 8.1. Pink. The demand for this variety is very great because it is a good cut flower sort. The blossoms are large, borne erect on strong stiff stems. The flower is globular with very prominent guard petals of a delicate flesh pink enclosing a compact mass of delicate creamy white petals tipped with crimson and surrounded and intermingled with petals of delicate canary yellow tipped with white. One of the older peonies but one of the very choice ones. An early flower much used as a commercial cut flower sort.

A Brand Division \$1.00.

MME. DE VERNEVILLE (Crousse). 7.9.

White. We feel that this variety has altogether too low a rating. The flower is large, very full, and bomb type. The guard petals are sulphur white, but the center petals are rose white with carmine touches. The flower is of good substance. The stems are long and strong. It is an ideal cut flower. The fragrance is pleasing. It comes into bloom after Festiva Maxima, and we feel that it is superior in beauty. This variety is listed in our Collection C as it makes a perfect combination for the other two listed. **A Brand Division \$1.00.**

MME. EMILE GALLE (Crousse). 8.5.

Pink. The blooms of this variety are large, compact, and flat rose type. The color is a delicate sea shell pink with touches of heliotrope and lavender. The plant is medium tall, strong, and a free bloomer. This variety is extra fine in the bud. It comes into bloom with the very late ones of which it is one of the best. If this were a new variety, it would easily command a price of \$50.00, as it possesses all around good qualities and is of such exquisite beauty. This variety is often mistaken for Tourangelle. **A Brand Division \$1.00.**

MME. LEONIE CALOT (Calot) 8.1. Pink.

Typical rose type. Very delicate, rose-white, center of deeper shading, slight carmine tips. Fine form, medium height, rather spreading habit. Late mid-season. This is a great favorite with many admirers. The late Henry S. Cooper of Kenosha, Wisconsin, who had in his large collection only what he thought the very best in peonies, thought most highly of this beautiful variety which he listed under the name of Mons. Chas. Leveique. The writer has always thought it one of the most beautiful of peonies. It is not so large a flower as many but for real beauty there are none prettier. **A Brand Division \$1.00.**

MARTHA BULLOCH (Brand) 9.1. Pink.

This is the most striking of our peonies. The mammoth pink flowers, often nine to twelve inches across, are borne on strong, stiff stems high above all other flowers in the field. As it nods at the beholder, it seems to say, "Match me if you can." It surpasses everything of its color for landscape effects, but its beautiful shadings and delicate structure are best exhibited by a single bloom in a crystal vase. It is a great show flower. In the Minneapolis show last summer, this variety won both first and second in the color class ceiling for six pink blooms of one variety; although it had Therese as a competitor. At Flushing, N. Y., it won the silver trophy offered by the Flushing Garden Club. It was the production of this flower that really induced us to embark in the peony business as a specialty. We had some beautiful blooms from three year old Martha Bullocks

in the cellar. They looked so wonderful that we thought it might be well to take them to the Minnesota Peony show sponsored by the State Horticultural Society. It was in 1913, and we had never been to a peony show before. We carried our blooms in large flower boxes 60 miles to the show at St. Paul. When we entered the show room and saw wonderful vases of Therese, Solange, Mme. Jules Dessert, and such flowers in full bloom, our heart sank. We did not think we had anything that could compare with such flowers. But we opened up our boxes. The first box happened to contain Martha Bulloch. When I lifted the wax paper from the large blooms and the great pink faces looked at me from out the box, just as perfect as when placed there in the early morning, some five hours before. I was no longer doubtful. Those Martha Bullocks were the sensation of the show. They were an inspiration to me and at that moment my mind centered on the peony. It has been my main vocation ever since. See Collection E. **A Brand Division \$8.00.**

MARY BRAND (Brand) 8.7. No red peony

ever attained such favor so quickly as has Mary Brand. This variety is always found among the winning reds in every show room. It comes into bloom with Frances Willard. Its color is so distinct that it is easily recognized by amateurs, no matter how many times they pass it in our fields. A rose type peony showing stamens. It is a red in which there is little trace of purple. One of the most satisfactory reds as a cut flower as it will last a week and hold right up stiff, if cut in the bud. This is such an outstanding red that we placed it in our Collection A and E. **A Brand Division \$2.00.**

MILTON HILL (Richardson) 9.0. Pink.

This is a very beautiful flower of a delicate shade of salmon pink, resembling Walter Faxon. When this variety is shown in first class form it is impossible to beat it in the show room in its color. This variety received a rating of 9.0 with 63 people voting. We are never able to supply the demand for roots. If you wish to include Milton Hill in your order, you should reserve your stock of this variety. **A Brand Division \$5.00.**

MONSIEUR DUPONT (Calot) 8.3. This is

one of the old standard peonies that can always be recommended. The flower is a glistening ivory white, with center petals bordered with carmine. Golden stamens are mingled with the petals throughout the flower. It is deliciously fragrant. It is wonderfully prolific, and an annual bloomer. It comes into bloom just before Couronne d'Or. It is one of the very best white peonies. The plant is very tall. The flowers large, and almost perfectly round open out cup shaped and give a very desirable landscape effect. See Collection A. **A Brand Division \$1.00.**

MONS. JULES ELIE (Crousse) 9.3. Pink.

One of the largest and most beautiful of peonies. In fact it is the largest of the Globe type varieties. An immense self colored flesh pink shading just a trifle deeper towards the base of the petals. Great prominent broad guard petals enclose an immense ball of incurved narrower petals of the same color, all covered with an intense silvery sheen. In our opinion one of the best of all the globe type peonies. This variety resembles a great Chrysanthemum. A long keeper as a cut flower. On the Chicago market it is the greatest early pink cut flower sort. You will find this variety listed in our Collection A and C.

A Brand Division \$1.50.

MONS. MARTIN CAHUZAC (Dessert) 8.8.

This variety is a shade darker than Midnight or Prince of Darkness. If you wish the darkest red peony grown, this is the one to order. Flowers medium to large in size, rose type with stamens. Color a deep maroon red. One of the most sought after of all peonies.

A Brand Division \$3.00.

OCTAVIE DEMAY (Calot) 8.5. Pink. This

is a very early flesh pink. The collar has ribbon-like white petals, with the center a deeper pink than the guard petals. A rather dwarfish plant but still an excellent cut flower as the foliage comes clear to the ground. In the delicate pinks this is the best early cut flower. We think so well of this variety that we gave it a place in our Collection A.

A Brand Division \$1.00.

OFFICINALIS RUBRA. 8.6. Red. A large,

round bloom of vivid crimson. This is the deep bright red peony of the old time garden. Earliest of all good peonies. Very desirable in this latitude, as it is generally in bloom on Memorial day. The red "piney" of our grandmother's gardens. As good as the new varieties and earlier. Nothing to take its place.

A Brand Division \$1.00.

Opal (Pleas) 8.5. The guard petals of this

flower are a delicate pink, fading to white, while the center is opal pink. The plant is tall and vigorous, and blooms profusely. We think this one of the daintiest and most beautiful of all the Pleas peonies, a peony that should be in every collection of any size.

A Brand Division \$2.00.

PHYLLIS KELWAY (Kelway) 8.8. Pink

A very large, loosely built flower of the most exquisite beauty. Color a deep lavender flesh with long rays of lighter lavender playing the length of the petals through the deeper colors. A row of broad petals surrounds a loosely built cup-shaped center of long narrow petals intermingled with conspicuous yellow stamens. The stems are long and erect. Blossoms held erect, and as the rays of sunlight play through the shadings of the flower it is one of the most brilliant and striking peonies in the entire list. We consider Phyllis Kelway one of our choicest sorts.

A Brand Division \$8.00.



Richard Carvel

PIERRE DUCHARTRE (Crousse) 8.2.

Pink. A beautifully formed globular flower that resembles La France so much that some years it is taken for that wonderful variety. The flower is of beautiful symmetrical form with great broad rounded petals, of true rose type. The color is a pale lilac flesh with glossy reflex, bordered with silver. We have always considered this a peony that was not fully appreciated and a much better peony than its rating would indicate. It is a peony that is in a class with Reine Hortense, Livingstone, La Perle, etc., and should find a welcome into every garden of any size.

A Brand Division \$1.50.

PRESIDENT WILSON (Thurlow) 9.3. Pink.

A large flower carried on very stout stems of medium length. A very pleasing soft pink changing to shell pink, with the guards sometimes showing crimson markings.

Examining a private show of wonderful peonies staged by Mr. E. C. Shaw, from his great collection of peonies, where only the very best were on display, I was asked to pick out the vase of flowers that I thought the best without looking at the labels. I did so, and my choice fell on a vase of President Wilson. One of the great peonies.

A Brand Division \$30.00.

PRIMEVERE (Lemoine) 8.6. Yellow. This

is a fine yellow peony. The guard petals are a creamy white, inclosing a central ball of sulphur yellow. If cut in the bud, as it begins to open, and developed inside away from the sun, the flowers will hold a clear yellow color, which is very beautiful.

A Brand Division \$2.50.

PRINCE OF DARKNESS (Brand) 7.5. Red.

This is a rich, dark maroon peony, of typical semi-rose type. It is a free bloomer. Its blossoms open early and last long. It is excellent for landscape effect and for cutting. It is a question as to which is the better peony, Midnight or Prince of Darkness. Both varieties should be in every large collection. A Brand Division \$1.00.

REINE HORTENSE (Calot) 8.7. Pink.

This is a show flower and is usually found in the winning classes. This variety is sometimes sold under the name of President Taft. It is a tall-growing variety, producing lots of large perfectly-formed flowers on long stiff stems. The color is a uniform hydrangea pink, minutely splashed on a white background. It is also prominently flecked with crimson. It is a truly wonderful flower. We are seldom able to supply the demand. A Brand Division \$1.50.

RICHARD CARVEL (Brand) 8.8. Red.

What Mons. Jules Elie is to pinks, this variety is to the early crimsons. On account of its extra early blooming qualities, large size, and blending qualities, this variety has already become a well-established favorite. The demand is increasing from year to year. We advise those who wish to purchase this sort, to get their order in early. A single plant on the lawn is attractive and delightful. It is beautiful and lasting, and on account of its delicate fragrance, is valuable as a cut flower. The best of all early dark reds. The odor of most reds is offensive, but the odor of Richard Carvel is pleasant and pronounced, a very rare quality in a red flower. This variety is listed in our Collections B, C and E.

A Brand Division \$3.50.

SARAH BERNHARDT (Lemoine) 9.0.

Pink. Here is another variety that is always found in the show room. It is such a well-known peony that it seems unnecessary for us to say that it should be in every garden. It is semi-rose in type. It comes



Walter Faxon

into bloom late mid-season. The color is an apple blossom pink with each petal silver tipped. The fragrance is agreeable. See Collection D. A Brand Division \$2.00.

SHENANDOAH (Brand). Red. If you are looking for a late, fragrant variety, this is the one to order. The flowers are large and very double. It comes into bloom with Rubra Superba and is a profuse bloomer. Our stock of this variety is not large, and if you wish a root in your collection, you should order early.

A Brand Division \$1.00.

TOURANGELLE (Dessert) 9.4. Pink. Rose

type, late mid-season. This is a vigorous grower, bearing large high built flowers, with a cupped center. In color it is a delicate pearly white, suffused with shades of most delicate salmon and La France rose. There is always a question in one's mind after becoming acquainted with the good peonies as to which are really the best. We unhesitatingly pronounce this one of the very best.

A Brand Division \$3.00.

WALTER FAXON (Richardson) 9.3. Pink.

This remarkable flower is at its best in the show room. If cut in the bud, and held in a dark cool room for a day or two, and then brought into the light, it develops into a flower of wonderful coloring and exquisite beauty. In color it is the most vivid of all the pinks, the only "real pink" as someone has said. A glance over a show room will disclose every vase of the flower to one who has once become acquainted with its color. The flowers are medium size and attractive form. In the fields it does not hold up as well as Souv. de Lois Bigot, which in color approaches it nearer than any other variety. For show purposes or home decoration, it is unique.

A Brand Division \$4.00.

WINNIFRED DOMME (Brand). 8.3. Scar-

let Red. No matter how many good reds you may have in your collections, there is still room for Winnifred Domme. Nearly every red has a trace of purple or blue in it, but this is a red with the purple almost entirely eliminated. It is the nearest scarlet of all peonies. The plant is dwarfish; but the stems are strong and erect, producing a single bloom each. When the next symposium is taken, we believe this variety will be rated in the 9 class. One of our good customers writes the following: "I should like to tell you about Winnifred Domme in my garden this year. My planting has all the reds I know anything about from Philippe Rivoire clear down the line, including all your own, and throughout its blooming season, Winnifred Domme was the best red of them all and at all times, morning, noon and evening. This was not only my own judgment, but that of all who saw my garden. I only wish Winnifred Domme had the height of Longfellow."

A Brand Division \$3.00.

Collections

We realize that it is difficult for those not well acquainted with the peony to make a suitable selection for a planting. Descriptions found in catalogs are confusing and the real beauty of any peony cannot be conveyed by printer's ink. For this reason, we are making up a number of collections that we know will give lasting satisfaction. All roots in these collections are extra large divisions, and if they are planted early we think the majority of them will give some bloom even this first season. By the second year they will bloom profusely.

Our Collection "A" for \$12.00

RED

- 8.1—Ben Franklin.
- 8.4—Lora Dexheimer.
- 8.8—Karl Rosefield.
- 8.7—Mary Brand.

PINK

- 8.5—La Perle.
- 8.6—Eugenie Verdier.
- 8.5—Octavie Demay.
- 9.3—Mons. Jules Elie.

WHITE

- 9.0—Baroness Schroeder.
- 9.3—Festiva Maxima.
- 8.1—Couronne d'Or.
- 8.3—Mons. Dupont.

One of our customers in Memphis, Tennessee, wrote as follows on May 19, 1928: "Three years ago I ordered Festiva Maxima, Mons. Jules Elie, and Ben Franklin. The first spring they all had from one to three blooms on each plant; the second spring they had from two to four blooms, but this spring I never saw such a wonderful display. It looked as if each one was trying to out do the other. The Festiva Maxima and Mons. Jules Elie were wonderful, but my favorite was Ben Franklin. It was such a deep, dark glorious red." All three of these varieties are found in the above collection with nine others equally desirable.

Our Collection "B" for \$10.00

If you have room in your planting for three fine Brand peonies at a reasonable price, we offer the following for \$10.00.

8.8—Richard Carvel.

8.5—Henry Avery.

9.1—Frances Willard.

Richard Carvel is the best early red on the market. This variety comes into bloom about two days after the old fashioned red, *Officinalis Rubra*. It is very fragrant and is a valuable sort to grow for cut flowers. On June 8, 1928, we received a letter from a customer in Montezuma, Iowa, reading as follows: "With Richard Carvel, Karl Rosefield, and Fanny Crosby a bower of beauty and Frances Willard and Chestine Gowdy giving promise of bloom, I am reminded that I need a new catalog, as each plant that blooms makes me want more."

Our Collection "C" for \$5.00

In this collection we offer three varieties, a red, a pink, and a white, that come into bloom at the same time. These three peonies are among the very earliest varieties, and they make a beautiful group. They are all of the same type and all have a pleasing fragrance.

8.8—Richard Carvel.

9.3—Mons. Jules Elie.

7.9—Mme. de Verneville.

As we have said before, Richard Carvel is the best early red on the market. Mons. Jules Elie belongs in the list of the world's 26 best peonies. Mme. de Verneville makes a much better cut flower than Festiva Maxima, and should, we believe, have a much higher rating. This list of peonies if purchased separately amounts to \$6.00. We offer the three for \$5.00 as a collection.

Our Collection "D" for \$6.00

In Collection D we have included three excellent late peonies. Each one rates 9 and belongs in the world's 26 best peonies. If purchased separately, this list amounts to \$7.00. We offer the three for \$6.00.

9.0—Longfellow.

9.0—Sarah Bernhardt.

9.0—Baroness Schroeder.

Special Offer for \$10.00

Collections C and D will furnish a fine succession of bloom, the three peonies in Collection D following those in Collection C. You may purchase the two collections for \$10.00.

Our Collection "E" for \$35.00

Collection of 10 fine Peonies.

Four out of these 10 rate 9 or above and belong in the world's 26 best.

Every peony in the list rates above 8.4.

Richard Carvel is considered the best early red.

Almost everyone concedes Longfellow the best red for color.

One grower writes of Frances Willard as follows: "It takes a good flower to fully deserve to be named after so fine a character as Frances Willard. This tall strong growing plant producing large yet delicate white fragrant flowers, is a fitting memorial to this woman, who always stood for purity."

The same grower also writes: "It speaks well for American production that in one year three such flowers as Elizabeth Barrett Browning, Martha Bulloch and Frances Willard should have been produced. Browning must be classed as a white peony of regal size and quality. The petals are so packed that all of them cannot fully open, some remaining crinkled. Still it is a dependable bloomer and because it is later it does not come in competition with Mrs. Edward Harding. At its blooming time it is the best pure white and has a sweet fragrance."

Judge Berry is to the pinks what Richard Carvel is to the reds, the best early pink on the market.

If you are looking for something very refined in beauty, you will not be disappointed in Henry Avery. In writing up the Boston Show of 1924 for Peony Bulletin No. 22, Prof. Saunders says of this variety: "In several places in the hall, there were impressive blooms of Henry Avery, which struck me as one of the best Brand varieties I had ever seen on the exhibition table."

We have always considered Georgiana Shaylor the best of Mr. Shaylor's originations.

The list of peonies if purchased separately amounts to \$43.50. We are offering the entire collection for \$35.00.

RED

- 8.7—Mary Brand.
- 8.8—Richard Carvel.
- 9.0—Longfellow.
- 8.4—David Harum.

PINK

- 9.1—Martha Bulloch.
- 8.5—Henry Avery.
- 8.9—Georgiana Shaylor.
- 8.6—Judge Berry.

WHITE

- 9.2—E. B. Browning.
- 9.1—Frances Willard.

Final Collection

As a rule when our orders are all filled in the spring we find we have a number of good peonies still left in our storage room. We make our planting early and we do not care to bother with the few roots that we often have left. This spring we are going to offer 10 good named peonies, our selection, all named, for \$6.00. All roots in these collections will be our regular large divisions. Every root sells separately for at least \$1.00 and more expensive roots will no doubt be included. These collections will not be sent out until our regular orders have all been filled.

Iris

We have built up our collection of Iris during the last few years until we now have one of the largest in the country. We have not added the new Iris as they come out indiscriminately to our list, but we have worked along the line of testing things out, retaining what we thought desirable and discarding the undesirable. In this way we believe our list covers only sorts that are best for our customers.

All of our customers have our Catalog No. 10. This catalog contains practically a complete descriptive list of all the varieties we will offer this season.

We urge all those who desire to purchase Iris this season to send in their orders early but to order for July planting. We do not send out Iris in the spring as the rhizomes are not in nice shape to ship until our shipping season is over. Spring planted Iris do not give any bloom that amounts to anything the first year. July planted Iris are much nicer and easier to handle and give full bloom the following spring after July planting. You can plant Iris during the early fall months, but we urge our customers to order early for July shipment. By planting in July your stock will have several months in which to make growth before cold weather begins. Your winter loss will thus be lessened.

We start our first Iris shipments promptly the first week in July and we hope our Iris friends will place their orders early this spring. If you have misplaced your catalog No. 10, giving full description of our Iris, send for another copy.

Lilacs

A WONDERFUL improvement has taken place in the lilac of late years. A few years ago we had only the common purple, and the common white, and the Purple Persian. These were all good enough in their way. But improvement comes in all things and it has surely come in the lilac. A few years ago we had but the three old common sorts; we now have nearly 200 varieties, many of which are truly marvelous. These new lilacs have come to us mostly from Victor Lemoine and Son of France. We have kept in close touch with all these new varieties as they have come out. We have made a practice of planting ten of a variety into our trial garden to have for observation and from which to get a supply of propagating wood. In this trial garden we now have over 150 different kinds which come into bloom about Decoration Day and continue for about two weeks. This garden not only affords a place where we make a study of the different varieties, but where our friends also come to spend some time viewing the best that the world affords in lilacs.

These new lilacs come both single and double in many different shades and blendings of shades of 4 different colors, white, blue, pink and red. Some of the panicles are almost round while others are long and cone shaped; some are compact, and others are more or less open and feathery.

OWN ROOT LILACS. The named lilac as sold is propagated in several ways: From cuttings, which is not practical; by budding or grafting onto the root of the common lilac which is not desirable, as the common lilac will sucker badly from the roots and smother the graft out; by grafting onto privet which also is not entirely desirable as most people plant too shallow. Shallow planting causes the privet root to either sucker badly and smother out the lilac top or the privet root will kill out in the north on account of tenderness. Having all these things in mind, we prefer to employ our own method of propagating and have our lilacs grown entirely on their own roots. This gives to our customer the only really satisfactory lilac to plant.

Remember that our lilacs are all on their own roots, are grown by us, and guaranteed true to name.



A List of Our Improved French Lilacs

ALPHONSE LAVALLE. Double. A tall robust growing variety that makes a very shapely bush. Panicles long, large, shapely, and compact. Opens an intense blue, but as the florets develop it changes into beautiful shade of lilac. Splendid sort. Own root plants. 18 to 24 inches \$2.00; 2 to 3 feet \$3.00.

CHARLES JOLY. Double. Purple red. Chas. Joly is one of the very best of the double dark reds. Bush medium both in size and height with limbs growing very upright. Blooms rather large are held erect and make a very striking appearance as they show well above the foliage. Splendid double red. Own root plants. 18 to 24 inches \$2.00; 2 to 3 ft. \$3.00.

CHARLES TENTH. Single. One of the most dependable of the single red lilacs. A very thrifty growing bush that begins blooming very young and produces large quantities of large nicely shaped panicles.

Own root plants, 18 to 24 inches \$1.00; 2 to 3 ft. \$1.50.

CHARLES SARGENT. Double. Medium tall growing variety. Very shapely and vigorous plant. Color a beautiful light lavender. Very double flower with florets with long narrow pointed petals. Own root plants, 2 to 3 ft. \$3.00.

ELLEN WILMOT. Double. A large bush with very stout limbs and large thick light green leaves. The flowers come in immense panicles of creamy white, made up of double florets almost twice the size of those of any other double white. In our estimation the greatest double white lilac and one of the three or four finest of all lilacs. Own root plants, 18 to 24 inches \$5.

JEAN BART. Single. A very pretty flower borne in great masses all over the bush. A true lilac color with intense shadings of pink. Strong own root plants, 2 to 3 ft. \$1.00; 3 to 4 ft. \$1.50.

LILACS—(Continued)

LA TOUR DE AUVERGNE. Single. An immense bloomer on small bushes. Panicle of medium size, erect, with very large individual florets. Color a bright pink with shadings of darker pink. One of the most pleasing of all pink lilacs. Own root plants, 18 to 24 inches \$1.50; 2 to 3 feet \$2.00; 3 to 4 feet \$2.50.

LEON GAMBETTA. Double. Were I to choose 12 of the best lilacs I would place Leon Gambetta among the first twelve. One of the very choicest of lilacs. Panicles rather globular in form; in the bud a bright pink opening to a whitish lavender. Florets resemble small roses. Extra fine. Only 20 plants to spare. Own root plants, 2 to 3 ft. \$5.00 each.

LEON SIMON. Double. Strong foliaged and strong upright growing plant. Panicles long, beautifully formed and held well up. Buds swell very large before they open and are a deep reddish pink on the reverse side. Florets open like little roses of a deep bluish lavender. Strong own root plants, 2 to 3 ft. \$3.00.

MARIE LE GRAYE. Single. Pure creamy white. When this good single French Lilac first come to us it created a sensation. The panicles are very large and rather openly built. The individual petals and florets are very large. The plant is a young and profuse bloomer, often blooming as a two year old. It produces an immense quantity of bloom which sells very readily at a good price as a cut flower. Own root plants, 18 to 24 inches \$1.00; 2 to 3 feet \$1.50.

MME. CASIMER PERIER. D o u b l e. Creamy White. This is a very thrifty growing variety that produces a profusion of large sized panicles of very double creamy white flowers. The bush is medium height, compact, with bright light green foliage. Own root plants, 18 to 24 inches \$1.50; 2 to 3 ft. \$2.00.

MME. LEMOINE. Double. One of the best of the double whites. Bush grows tall; foliage dark green. Panicles large, long, erect; florets very large and pure snow white. Own root plants, 2 to 3 feet \$2.00.

MONT BLANC. Single White. This beautiful lilac is one of the very best of the single whites, if not the best of all. The plant is compact and shapely in growth, with clean foliage. The panicles are large, rather compact, and of beautiful form. The florets are immense in size. Color a clear creamy white. Very choice own root plants, 18 to 24 inches \$2.00; 2 to 3 ft. \$3.00.

MONUMENT CARNOT. This is one of the greatest of all lilacs. The bush grows very tall with great heavy light green leaves. The panicles are of the greatest

size from nine inches to a foot long. The florets are large and semi-double. A clear light blue of a most pleasing shade. The finest of all light blue lilacs. Our stock is limited. Own root plants, 18 to 24 inches \$2.50; 2 to 3 feet \$3.50; 3 to 4 feet \$5.00.

PHILOMON. Single. Bush thrifty, rather spreading with large light green foliage. Panicles large, compact and conical. Color deep purple red. Own root plants, 2 to 3 feet \$2.00; 3 to 4 feet \$3.00.

PRESIDENT CARNOT. Double. One of the most profuse blooming of all. Panicles very large and regular in form, rather oblong and compact. Florets in the bud very large. Back of floret deep reddish blue, center bluish violet. Plant very vigorous and one of the most dependable bloomers. Own root plants, 18 to 24 inches \$2.00; 2 to 3 feet \$3.00; 3 to 4 feet \$4.00.

PRESIDENT GREVEY. Double. Light Blue. In this variety the panicles are very double, symmetrical, of great size and pleasing appearance. The color is a clear soft delicate blue. President Grevey is one of the older sorts and still one of the most desirable of all varieties. Own root plants, 18 to 24 inches \$1.25; 2 to 3 feet \$2.00; 3 to 4 feet \$2.50.

PRESIDENT HAYES. Single. A very decided improvement on the Persian Lilac. Bush strong and robust with splendid foliage, very floriferous, and with immense panicles of bloom of a deep even lilac color. Strong own root plants, 2 to 3 feet \$2.00.

RUBRA DE MARLY. Single. This lilac in color is very much like the beautiful old lilac of our grandmother's garden. But there is a decided tinge of pink to it. Its panicle is larger, and it is a tremendous annual bloomer. Own root plants, 2 to 3 feet \$1.00; 3 to 4 feet \$1.50.

SENATOR VOLLAND. Double, very floriferous. A very pretty lilac with a large bloom that is somewhat open. When in the bud the reverse of the petals shows a very distinct bright touching of pink which continues to show as the florets open and gives a very dainty effect to the bloom. Center of florets pinkish light lilac. Very dainty in its beauty. Strong own root plants, 18 to 24 inches \$2.00; 2 to 3 feet \$3.00; 3 to 4 feet \$4.00.

WALDECK ROUSSEAU. Double. We have seen the most of what are called the best lilacs and we do not hesitate to pronounce this one of the best. Panicles compact, globular, florets large and very double. A delicate lavender pink, fading to lavender white in center. Only a very few plants. Own root plants, 18 to 24 inches \$4.00; 2 to 3 feet \$5.00.

WILLIAM ROBINSON. Double. As a rule people like this variety unusually well, and always pick it out as one of the best. Panicle very compact and almost round. The bloom when the florets are just about to open gives a very striking pinkish red effect which gives place to a lavender as the florets open and their reverse side turns back. Very much admired. Own root plants, 18 to 24 inches \$2.00; 2 to 3 feet \$3.00; 3 to 4 feet \$4.00.

VILLOSA (Specie). White tinted pink. This is a most desirable lilac, not only on account of the beauty of the great feathery

lacy-like panicles of bloom but also on account of the beauty of the plant itself. This variety is very robust and grows into a great shrub 8 to 10 feet tall. Its leaves are large, heavy and beautiful in appearance. It comes into bloom about a week after the regular lilac season is over, thus prolonging the season. Strong own root plants, 2 to 3 feet \$1.25 each.

VIRGINAL. Single. A tall growing variety that produces a very large open panicle of a rich creamy white color. Strong own root plants, 2 to 3 feet \$2.00.

Improved Philadelphus

(Mock Orange or Sweet Syringa)

There has been wonderful improvement made of late years in that grand shrub, the Philadelphus, or as it is better known to us, the Sweet Syringea or Mock Orange.

The Lemoines of France, the same men who produced the most of our new Lilacs, are the ones who have produced these beautiful new Philadelphus.

The older varieties of Philadelphus are single. These new ones come in singles, semi-doubles and doubles. They are more beautiful than the older sorts in that their blooms are larger, are borne in greater profusion and of most exquisite form. These different Philadelphus may be selected as to their final growth in sizes to suit almost any want. Some varieties are real dwarf, others are of medium height, while still others grow into plants eight or ten feet high. The most of them are very sweet scented and often a single bush covered with its beautiful bloom will scent the air of an entire city block.

ALBATRE. This is a very showy variety with large, dense panicles of double pure white flowers. The plant is compact, bushy, and of medium height. When fully grown this variety is about 5 feet high. Strong 18 to 24 inch plants, 60 cents each.

AVALANCHE. Five feet. Pure White. Grows into a very attractive bush about five feet high. The branches are very slender and graceful, and when in bloom this is a wonderful shrub. The medium sized single

florets literally cover the branches from top to bottom, making an absolute snow ball of the plant. The slender branches become so heavily laden with bloom that they bend over in all directions. We think this a very beautiful sort. 18 to 24 inch plants, 60 cents. Strong 2 to 3 ft. plants, 75 cents.

BANNIERE. A tall shrub with long branches covered with a profusion of large semi-double snow white flowers. Extra fine and very early. The foliage is large and dark green. 18 to 24 inch plants. 75 cents each.



Mock Orange or Sweet Syringa

PHILADELPHUS—(Continued)

BOUQUET BLANC. This variety forms an upright, shapely bush with dark rich foliage. Flowers come in clusters, are large, pure white, and quite double. Very sweet scented. One of the hardiest and most dependable bloomers. Extra choice. 18 to 24 inch plants, 60 cents each.

DAME BLANCHE. A very profuse blooming sort which produces large semi-double flowers that are a rich creamy white. The bush grows about four feet high, is very shapely, and works nicely into border planting, into hedge work, or as a single specimen. 18 to 24 inch plants, 60 cents each.

FAVORITE. This variety produces very large flowers fully three inches across. These flowers are single, pure white with a bunch of golden stamens in the center. The bush is an upright grower with rich glossy foliage. A marvelous flower. 18 to 24 inch plants, 75 cents each.

GLACIER. We consider this variety one of the very best of the newest sorts. The flowers are wonderfully attractive in appearance. The blooms are produced in large clusters of 6 to 8, are double, and of a rich cream color. Grows about five feet high. One of the choice kinds. 18 to 24 inch plants, 75 cents each.

MT. BLANC. A tall growing variety that works wonderfully well into a hedge to grow on a line between lots. Flowers large, pure white, and semi-double. Produced in wonderful profusion. One of the most prolific bloomers of all. 18 to 24 inch plants, 60 cents each.

NORMA. A strong growing variety that reaches a height of 8 feet. If it could be said that any one of these wonderful Philadelphus was more beautiful than the

others, it would in our estimation be said of Norma. The flowers are of great size, single, with a rich waxy like appearance. 18 to 24 inch plants, 60 cents each.

OPHELIA. A rather dense growing bush with long branches that arch gracefully under their great loads of bloom. The flowers are of medium size and run from semi-double to full double. Pure white with crinkled petals. Grows about four feet high. Strong 18 to 24 inch plants, 60 cents each.

PAVILLION BLANC. Beautiful flowers of the purest white, sweetly fragrant. Grows into a nice shapely bush about 5 feet high, of the most striking of all the Philadelphus. 18 to 24 inch plants, 85 cents each.

PYRAMIDAL. A very nice shrub that takes up but very little space because of its narrow upright growth. Nice to plant in corners about the house. Blooms large, semi-double, pure white, and very fragrant. Grows about four feet high. 18 to 24 inch plants, 60 cents each.

VIRGINAL. Double. White. Everblooming. Taken all in all, this is the most sensational of all the Philadelphus. In fact, we think it the most valuable acquisition to the flower garden made in recent years. The bush is a moderately strong grower, with us attaining a height of between six and seven feet. Rather of an open sparsely foliaged plant which permits its wonderful blooms to be all the better displayed. Flowers pure white, double and often two inches in diameter. Begins to bloom about June 15 with us and gives a heavy crop of bloom for about three weeks. Then it rests a few weeks and then starts to bloom again and keeps it up with a small amount of bloom until frost. Strong 2 to 3 ft. plants, \$1.00 each; 3 to 4 ft. \$1.25 each.

Special Philadelphus Collection

These new Philadelphus lend themselves wonderfully well to group planting. A collection of all varieties would be most interesting. For this reason we are offering the entire list as our first collection.

Albatre	18 to 24 inch.....	\$0.60	Mont. Blanc	18 to 24 inch.....	.60
Avalanche	18 to 24 inch.....	.60	Norma	18 to 24 inch.....	.60
Banniere	18 to 24 inch.....	.75	Ophelia	18 to 24 inch.....	.60
Bouquet Blanc	18 to 24 inch.....	.60	Pyramidalis	18 to 24 inch.....	.60
Dame Blanche	18 to 24 inch.....	.60	Pavillion Blanc	18 to 24 inch.....	.85
Favorite	18 to 24 inch.....	.75	Virginal	2 to 3 foot.....	1.00
Glacier	18 to 24 inch.....	.75			\$8.90

One fine strong plant of each

\$7.75

6 plants of any one variety for the price of 5.

Special Philadelphus Offer of Six for \$3.50

Albatre	18 to 24 inch.....	\$0.60	Pyramidal	18 to 24 inch.....	.60
Avalanche	18 to 24 inch.....	.60	Virginal	18 to 24 inch.....	1.00
Bouquet Blanc	18 to 24 inch.....	.60			
Norma	18 to 24 inch.....	.60			\$4.00



Walter Faxon

1928

PEONIES

Manual of the AMERICAN PEONY SOCIETY

CHECK LIST OF CHINESE PEONIES IN COMMERCE

THE following Check List contains, separately grouped, all varieties of Double, Single, and Japanese herbaceous peonies of the *albiflora* group offered in commerce at the time of this Manual's compilation, 1926 to the spring of 1928. Only catalogues of the leading domestic growers and reliable foreign producers have been used in the work.

All varieties which have been rated by the American Peony Society are accorded their symposium rating. Those rated lower than 7.5 have been recommended for discard by the Board of Directors, and the word "discarded" follows the names of all such varieties that are still offered in commerce. It is hoped that before long such varieties will disappear from all worthy catalogues.

Those that are rated 8.0 and better, together with a few between 7.5 and 8.0 which were selected by vote of the Directors, are described in the alphabetical list beginning on page 79. Such varieties are marked with an asterisk (*) before the name. With these varieties there are also brief descriptions of novelties (introductions since 1920), which have not yet been rated. Some of these novelties have already shown outstanding merit, while a few will doubtless find their way to the discard before long.

A peony introduced previous to 1920, which has no rating, can be considered of questionable quality with very few exceptions. An old variety which has no rating can generally be considered as worthless, even if it has not been officially discarded by the American Peony Society.

A great effort has been made to obtain dates of introduction in all cases, and they are only omitted when the search has been futile.

It will be understood, therefore, that the Society does not endorse all peonies mentioned in this list. Only those which appear in the list of descriptions carry such an endorsement. While there may be worthy varieties among the newer introductions, the merits of many of them are not sufficiently well known to warrant description.

The color designations have been taken from catalogues and

Dear Peony Customer:

We are sending you our Spring Catalog for 1911. In it you will find described a list of the different peonies we have in storage to send out to customers this spring. The peonies described were divided especially for a very critical retail trade and are all absolutely large selected roots.

You favored us with a nice order for peonies last fall but it may be that you would like to add to your list this spring. If so, you will find we have some very choice varieties.

We wish to call attention in particular to the colored insert which you will find enclosed. If you read this insert, you will see that it is a sample page taken from the New Peony Manual just published by the American Peony Society. The advertising matter on the last page of the insert tells all about the book, what it costs, and how to procure it. We should like to see all of our customers to purchase a copy of this book as we consider it worth far more than the price asked for it. It should be in the library of every peony lover.

We also wish to call attention to the color picture of the peony, Walter Faxon. This is as accurate a color picture of a peony as we have ever seen, and it is certainly very beautiful. Walter Faxon is without exception the finest of all peonies if properly handled. We have a splendid lot of large selected roots of this variety in storage for spring shipment. Walter Faxon would make a splendid addition to your garden.

Yours truly,

BRAND PEONY FARMS, INC.



ALICE HARDING. (Lemoine, 1922.) 9.5 (11 votes).*

Double type; large; midseason. Broad, evenly rounded guard-petals of delicate flesh-pink, flushed darker on the reverse, surround a cupped center of long, irregular petals of creamy white; stamens concealed in the collar; center-band petals minutely marked with crimson. Medium height; fairly floriferous. Stems and foliage good.

A flower of refined form and texture, with delicate coloring and sweet fragrance. On June 8, 1922, this variety received the special prize, offered by Mrs. Edward Harding, and awarded by the Société Nationale d'Horticulture de France, for the best French seedling peony. It is said that Lemoine considers this his best introduction. It is certainly a very beautiful flower.

ALMA. (Shaylor, 1916.) 8.5.

Japanese type; medium size; midseason. Light pink, darker on the edges and in the middle of the petals, paling to white at base; center of incurved, narrow, canary-yellow petaloids and greenish yellow carpels; fragrance poor. Medium height; fairly floriferous; strong stems and good foliage.

An attractive but somewhat irregular flower which is often spoiled by extra pink petals or "feathers" in the center.

ALSACE-LORRAINE. ăl-săss-lör-rain'. (Lemoine, 1906.) 8.8.

Double type; large; late midseason. Petals rounded and cupped at the tips, not pointed, of waxy texture, symmetrically arranged in circular form, pure white, tinted with cream and buff in the center; strong, bitter fragrance. Medium height; floriferous; stems willowy. Foliage scant and clean.

A peony of fine form and unusual color, excellent growth and blooming qualities.

"A free bloomer on healthy plants."—*Little*.

"I should call it medium size rather than large."—*Thurlow*.

"Not as good a grower as many others but a beautiful flower. Inclined to sprawl. Odor unpleasant."—*Boyd*.

ALTAR CANDLES. (Pleas, 1908.) 8.0.

Japanese type; small; midseason. Cupped, flesh-pink guards surrounding a center of narrow, wax-white petaloids, tipped with red, and greenish carpels with ruddy tips; not fragrant. Medium height; blooms freely; stems and foliage good.

Pretty flowers borne in clusters of charming color effect, but they lack size and distinction.

"Think this is rated much too high."—*Fewkes*.

AMANDA YALE. (Brand, 1907.) 8.2.

Double type; large; midseason. Pale flesh-white, darker on the guards, which are cupped at first and irregularly reflexed later; collar of shredded petals and stamens, later developing an irregular crown of long, crimson-striped petals surrounded by a belt of shorter ones

The Peony Manual Is Just Out!

PEONIES, edited by James Boyd, 336 pages, 8 colored illustrations, 33 halftones, bound in blue and gold, published by the *American Peony Society*, 1928.

Completed after three years' intensive work by the Editor and numerous assistants, the long-awaited Peony Manual is now ready for distribution. Much traveling, many conferences, checking and rechecking of material, and volumes of correspondence were required to produce this book, which is the most complete and authoritative work on the Peony in existence.

Its main features include:

1. A check list of all Peonies in active commerce, giving the correct spelling of the names, the introducer and date, color and synonymy.
2. Official descriptions of all Peonies rated 8 or over and a few rated under 8.
3. Instructions for propagation and cultivation.
4. Scientific treatment of Peony diseases.
5. Exhaustive treatises on breeding Peonies and care of seedlings.
6. All the authentic information available about Tree Peonies.
7. A careful review of all Peony species.
8. Biographical, Historical, and Bibliographical section of great value.
9. Thorough and helpful indexes.

The Peony Manual may be obtained through book-dealers, commercial growers, or direct from the Secretary of the American Peony Society at \$6 per copy, postpaid.

Members of the American Peony Society whose dues are paid for the current year will be supplied by the Secretary at the rate of \$5 per copy. Membership in the American Peony Society for one year and one copy of the Peony Manual, \$8. Orders should be accompanied by Bank Draft, Post Office or Express Money Order made payable to the order of the American Peony Society and addressed to

W. F. CHRISTMAN, *Secretary*,
3839 Russell Avenue, North, Minneapolis, Minn.

MR. W. F. CHRISTMAN, *Secretary*, AMERICAN PEONY SOCIETY
3839 Russell Ave., North, Minneapolis, Minn.

I am not a member of the American Peony Society. For enclosed \$_____ send at once _____ copies of "Peonies," Manual of the American Peony Society, at \$6.

I am a member of the American Peony Society. For enclosed \$_____ send at once _____ copies of "Peonies," Manual of the American Peony Society, at \$5.

I desire to become a member of the American Peony Society. For enclosed \$_____ please enroll me as a member for _____ years, with dues of \$3 a year paid, and send at once _____ copies of "Peonies," Manual of the American Peony Society, at \$5.

Name _____

Street _____

City and State _____

Ornamental Trees

BIRCH (Cut Leaf Weeping). The Cut Leaf Weeping Birch is the finest and most graceful of all the weeping trees. A most beautiful tree with cut leaves, long slender pendulous weeping branches, and white bark.

Note: In shipping out Cut Leaf Weeping Birch trees we always ball and burlap the roots the same as we do those of an evergreen. 6 to 8 foot trees, \$3.50 each.

MOUNTAIN ASH (European). A fine ornamental tree for the lawn, forming almost without pruning, a magnificent, fairly dense, well shaped head, which is covered from mid-summer till mid-winter with large clusters of beautiful scarlet berries, giving a brilliant color to the landscape. The foliage is very handsome. It is one of the choicest trees and deserves extensive planting.

5 to 6 foot trees, 75c each; 6 to 8 foot, \$1.00; 8 to 9 foot trees, \$1.25. 6 trees for the price of 5.

MAPLE (Norway). A handsome tree with a compact rounded head of broad spreading branches, attaining a height of 75 feet. Foliage broad, deep green, and very dense. Makes one of the finest and most shapely shade and ornamental trees we have. Absolutely hardy in Minnesota.

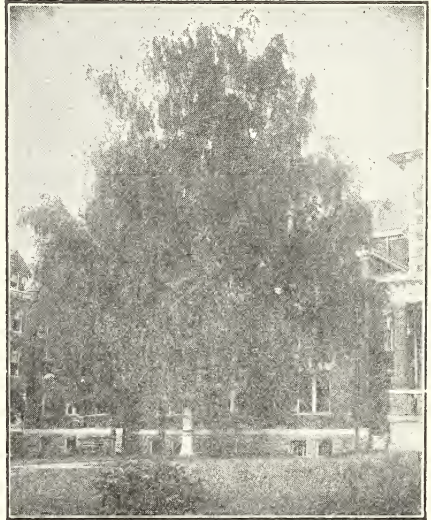
5 to 6 foot trees, \$1.00; 6 for \$5.00.
6 to 8 foot trees, \$1.50; 6 for \$7.50.

MAPLE (Schwedlerii). Red leaved maple. In early spring for about a month while the trees are growing, the leaves are a bright red, from which color they gradually change to a purplish green. In autumn they turn to a beautiful yellow. One of the most beautiful of trees. Absolutely hardy in Minnesota.

6 to 7 foot trees, \$2.00 each; 6 for \$10.00.

PYRAMIDAL ARBOR VITAE. A beautiful and upright growing form of the Arbor-Vitae. A superb evergreen, nice to plant in tubs to grow on each side of the porch entrance. A tree 8 feet high will not be over 18 inches in diameter.

Fine 2½ to 3 feet trees balled in dirt \$3.00 each; \$5.00 for 2.



Weeping Birch



Pyramidal
Arbor Vitae

Dwarf Juneberries

A very desirable fruit for garden planting. The fruit of the Juneberry resembles very much the blueberry and is used in the same way as that fruit in canning, sauce, and making pies. Fruit round, black, with a heavy blue bloom. Runs from a quarter to a half inch in size. Borne in great clusters all over the bushes which grow to a height of two feet. 12 bushes make a nice planting, also makes a very nice ornamental shrub.

Three strong plants \$1.00; 12 for \$3.00.



Juneberries

Dwarf Apple Trees

ANOKA. This is a natural dwarf apple tree. Most of the Dwarf Apples offered in commerce are produced by grafting or budding the standard apple of any variety onto some kind of root that

acts as a check on the growth of the top and dwarfs it. This is not desirable. But with the Anoka, it is different. It is a dwarf in itself and produces a dwarf top when propagated on the regular root used in producing the standard apple tree.

Anoka is a new apple produced by that plant wizard of South Dakota, Prof. Niels Hansen. The tree bears very young, often producing apples on two year old trees in the nursery row and is a heavy and annual bearer. The fruit has much the appearance of Duchess but is larger and a little more oblong, and does not show quite so much color. It ripens very early beginning around August 15. The flavor is mild and very fine. We like it much better than Yellow Transparent.

The Fargo, N. D., Experimental Station reports on four trees sent it in the spring of 1920 (1 year trees). In the fall of 1922 the following report was made. "This spring two of the four trees blossomed, one produced 23 apples, the other 26."

Two years ago we purchased two trees from Prof. Hansen and this last year one of the little trees then only a three year old produced 14 great large apples and the other 12. Neither of the trees are over 5 feet tall.

This is just the apple for people getting along in years to plant as they will bear in two years and they are also just the apple to plant in the back yard or in any little nook or corner when room is scarce.

Nice 2 to 3 ft. trees, 60c each; 6 for \$3.00.



Anoka Apple

Ornamental Shrubs

ALMOND (Double Flowering). Pink. A beautiful May flowering shrub that grows four feet high. Should be planted in a sunny place. Does especially well planted close to the south side of buildings. The branches are covered just as the leaves begin to come, with small very double rose-like flowers that are deep pink. Very showy. One of our most beautiful shrubs. All our Almond are either on their own roots or are budded on the root of the wild plum. This makes them absolutely hardy. One of these should be in every yard. Fine 2-stock.

1st to 24 inch 50c; 2 to 3 foot 75c; 3 to 4 ft., \$1.00.



Double Flowering Almond

BEAUTY BUSH (Kolkwitzia Amabilis). An exceedingly handsome shrub that has come to us from the wilds of central China. The foliage and habit are attractive even when the bush is out of bloom. It is hardy with us here in Minnesota. It grows 6 to 9 feet high when fully grown and as far through. Erect growing, with twiggy branches, producing long arching limbs, covered in early spring when the Iris are in bloom with clusters of small, tubular flowers of Weigela type flowers, but is far more beautiful than any Weigelia and is destined to become one of our greatest shrubs.

Strong 2 year field grown plants \$2.00 ea.

BERBERIS THUNBERGII (Japanese Barberry). This Barberry is not subject to rust. One of the best all around shrubs for the Northwest, thriving under all conditions. Slender, graceful branches with fine bright green foliage, turning to brilliant crimson and orange in fall. Branches are covered with small yellow flowers in June, followed by scarlet berries that stay on the bushes almost all winter. This is the best low hedge for the Northwest.

12 to 18 inches, each 20c; 12 for \$2.00; 100 for \$13.00.

A lighter hedging size 9 to 10 inch, 100 for \$5.00.

BITTERSWEET. Handsome, glossy foliage and large clusters of beautiful orange-crimson fruit retained all winter, its graceful sprays of berries making winter house decorations. It is perfectly hardy. Strong 2-year field grown plants 35 cents.

BUTTERFLY BUSH. A rapidly growing shrub that produces long, graceful branches, which terminate in tapering panicles of beautiful lilac-colored flowers that are borne in great masses all over the bush thruout the summer. It is perfectly hardy, thrives in all soils, grows vigorously from 2 to 3 feet high, and blooms the first season from spring planting. The flowers are extremely beautiful. The flowers are borne in dense cylindrical spikes, which, under liberal cultivation, are from 12 to 15 inches long and about three inches in diameter. They are fragrant. The plant will grow to be a large bush in a single year.

Splendid plants, 40 cents each; 10 for \$3.50.

CURRANT (Alpine). A shrub that is almost ever-green. A low compact shrub for planting individually in shady places. Also one of our best hedge plants and especially desirable for hedge planting where there is shade. White flowers followed by red berries.

12 to 18 inches each, 20 cents; 50 for \$ 8.00.

18 to 24 inches each, 30 cents; 50 for \$10.00.

CORNUS SIBERICA (Red Siberian Dog-wood). Tall, spreading shrub, which is extremely hardy, and splendid for hedges or groups of shrubbery. Panicles of white flowers in June are followed by clusters of berries. Its chief beauty, however, is in its bark, which turns bright crimson as autumn approaches. Planted extensively for winter effect.

3 to 4 feet, each 40c.

ELDER, GOLDEN (Sambucus Aurea). A very striking shrub similar to the common American Elder in appearance with the exception of the color of the leaves, which are a beautiful bright gold from their first appearance in the spring until they drop in the fall. The best of our golden leaved shrubs.

2 to 3 feet, 50 each; 6 for \$2.50.

HIGH BUSH CRANBERRY. A large growing shrub that resembles very much the bush of the snowball. Leaves redden up in the fall and are very beautiful. The white flowers are not of great beauty but they are followed by a profusion of bright red berries in large clusters which hang on way



Bittersweet

into the winter and make a wonderful lawn ornament. These berries are fine for culinary purposes and make a jelly that looks and tastes exactly like that of the marsh-cranberry.

Nice bushes 50c each; 12 for \$5.00.

HONEYSUCKLE (Upright Pink Tartarian). A favorite shrub, that is absolutely hardy even in dry states like the Dakotas and Montana. Grows from 8 to 10 feet high, is splendid for individual shrub planting where a tall shrub is wanted. Fine to use as a screen to shut off the vegetable garden or unsightly buildings. Covered with a myriad of light pink blooms.

3 to 4 feet, 40c each; 10 for \$4.50.

HYDRANGEA ARBORESCENS (Hills of Snow). This is the early blooming outdoor Hydrangea. It comes into bloom just after the early spring flowers. The branches are well clothed in large, beautiful deep green leaves and each branch is terminated with a great glistening snow white bloom of immense size. Does best in partial shade. One of our best shrubs.

....Strong 2 ft. plants, 50c each; 10 for \$4.50.

HYDRANGEA PANICULATA GRANDIFLORA. The most beautiful and striking of all flowering shrubs. Bears immense clusters of creamy white flowers in August, turning to bright pink and rose, and finally to bronze in September. Grows 3 to 4 feet high, does well in sunny locations. Valuable for specimen planting and for borders, and should be in every garden. Should be cut back in spring before growth starts. The flowers dry like everlasting and can be kept indoors all winter. The plants are as hardy as the oak.

18 to 24 inches, 50c each; 10 for \$4.50.



Hydrangea, P. G.



Snowball

SPIREA, ANTHONY WATERER. One of the finest flowering shrubs of low, dwarf growth. In constant bloom from June to September. Flowers of bright rose are borne in broad flat clusters, completely covering the bush. The best shrub for low borders and hedges. 12 to 18 in. each 40c.

SPIREA AUREA. A beautiful tall growing Spirea covered from early spring until late fall with deep yellow leaves. This added to the pronounced yellow bark of the shrub makes it a very attractive plant on the lawn or about the house.

3 to 4 feet, 35c each; 6 for \$1.75.

SPIREA COLLOSA ROSEA. A very dwarf grower, not more than 24 inches high, covered with large flat clusters of white flowers which stay on nearly all summer. Foliage and growth similar to Anthony Waterer. 15 to 18 in. each, 35c; 10 for \$2.00.

SPIREA FROEBELL. A dwarf plant similar to Anthony Waterer but a little taller, with broader leaves. Bright crimson flowers during July and August. The tips of the leaves are a reddish purple. Very hardy. 18 to 24 inch, each, 30c; 10 for \$2.50.

SPIREA SORBIFOLIA. A splendid Spirea growing to a height of about five feet covered with large, clean bright green leaves that resemble the leaves of the Mountain Ash. Produces a world of great white feathery blooms about six inches long by four inches in diameter. A splendid Spirea to plant about the house.

3 to 4 feet, each 30c; 6 for \$1.50.

LILAC. The old fashioned common white and purple Lilacs work wonderfully well into hedges. In fact, a lilac hedge is one of the hardiest and prettiest of all hedges.

Nice hedging size plants of either color, 25 for \$5.00; 100 for \$16.00.

PRUNUS TRILOBA (Double Flowering Plum)

The favorite spring flowering shrub in Minnesota, and one of the finest in cultivation. It is of dwarf tree habit, every branch completely covered with small double pink flowers, in May, before the leaves appear. Should not be planted among other shrubs. We consider the Double Flowering Almond, the Bechtel Crab, and the Prunus Triloba the three most beautiful of the early flowering shrubs that can be grown in the Northwest.

2 to 3 feet, each 50c; 3 to 4 feet, each 75c.

PERSIAN LILAC. The Persian lilac with its fine foliage and slender limb growth makes a very graceful shrub to work into plantings immediately about buildings. It is much better for such work than the others with their stiffer habit of growth. Panicles of medium size. Color purple.

Strong 2 to 3 feet, 40c each; 3 to 4 feet, 75c; 4 to 5 feet, \$1.00.

PURPLE LEAVED PLUM. We have long needed a purple leaved shrub that was hardy to set off our planting in the North. This splendid ornamental shrub is absolutely hardy here. The leaves are an intense deep purple from early spring until late fall. In the spring it is covered with beautiful white plum-like blossoms. Grows to be a fair sized tree. Very hardy and ornamental.

4 to 5 foot, each 75c.

SNOWBALL. That good old bush that hardly seems to need description so well known is it. A tall growing, absolutely hardy shrub covered in late May with great masses of snowball-like blooms.

Strong 2 to 3 ft. plants, each 50c; 3 to 4 ft. 75c.



Spirea Anthony Waterer

SPIREA VAN HOUTTEI. One of the finest shrubs ever produced. Its good qualities and beauty cannot be exaggerated. Very graceful, with lovely foliage growing four to six feet tall; extremely hardy everywhere. In May and June the whole bush is simply covered with small clusters of minute white flowers. For lawn and cemetery planting and for hedges, it cannot be equalled. It is the most popular shrub in all America.

Strong Hedging size 25 for \$4.00; 50 for \$7.50; 100 for \$12.00.

2 to 3 feet, 25c each; 50 for \$10.00; 100 for \$18.00.

3 to 4 feet, Extra Select, 50c each; 10 for \$4.00.



Spirea Van Houttei

Flowering Crabs

It will bring great pleasure to many people to learn that those of us who live in the middle Northwest and in similar climates are now able to grow in our yards and gardens beautiful flowering crabs. The most of the flowering crabs which show up so beautifully, in warmer and some respects more favored climates will not do well with us.



Flowering Crab

That such a condition of affairs might not continue Prof. Niels Hansen of Brookings, S. D., a wizard of Horticulture, set about the production of a line of absolutely hardy ornamental crabs. That he has succeeded is attested to by the many beautiful and hardy sorts which he has brought out. These crabs of Hansens which we offer below are all absolutely hardy and will do well in the Northernmost limits for hardy apple tree growth both in the United States and Canada.

All varieties listed are very beautiful while in bloom. The trees are all very ornamental as lawn or garden trees after the bloom is gone and several of them set fruit which is very fine to eat or work up into sauce or jelly.

FLOWERING CRABS—(Continued)

BEAUTY CRAB. A beautiful crab raised from seed received from the Botanical Gardens at Petrograd, Russia. Probably the brightest in color of all these crabs. A brilliant solid cherry red all over with orange red underneath. Dots distinct, few white. Makes a bright red sauce like that of the Hyslop without the astringency of the Hyslop. A beautiful tree and beautiful fruit, hence the name Beauty.

BECHTEL'S (Double Flowering Crab). Without exception probably the most beautiful of all flowering crabs. A double form of the native wild crab. Grows about 10 feet high. A hardy tree that during blooming season is covered with masses of beautiful double pinkish lavender flowers that look like pink roses. The perfume is simply exquisite.

2 to 3 feet, 75c each; 3 to 4 feet \$1.00 each.

CATHAY. A round-topped dwarfish tree with much promise as an ornamental lawn tree. In bloom the tree is one immense bouquet of very large white flowers. The flowers are two and one-half inches in diameter, and occasionally come double. The tree is mainly for ornament but produces a fair fruit of a clear yellow one and one-half inches in diameter.

DOLGO. A beautiful upright very thrifty growing tree with nice clean light green foliage. Covered in spring with large pinkish white blooms which are followed by a wonderful crop of long conical shaped fruits which ripen in the fall and take on the most brilliant deep crimson color. These fruits hang on until late in the fall and make of the tree a marvelous ornament. The Dolgo is one of the greatest jelly crabs ever produced. The jelly gets the beautiful color

of the peel of the crab and it will make the firmest of jelly after the fruit is dead ripe.

HOPA. One of the most beautiful of the purely ornamental flowering crabs. The wood of the tree is a purple red. The inner bark is still redder. The new leaves are red, and the flowers as they appear in great profusion over the entire tree are red. Following the red bloom appear little crabs which are red all summer long. Absolutely hardy. The fruit is too small to be of value for eating but its bright red color make the tree a beautiful ornament for the yard.

NIEDSWETZKYANA. A beautiful crab found growing wild in the mountains between western China and Turkestan. Purple-red branches, leaves, stems, bark, buds, and fruit. Flowers intense red. Hardy in protected places in the north. Very satisfactory through the South and East.

4 to 5 feet, \$2.00 each.

OLGA. A cross between the Russian Apple and the Siberian Crab. A vigorous stocky grower with strong forks. Extremely productive. Fruit is one and one-half inches in diameter. A solid cherry red in color with many large white dots overlaid with a heavy blue bloom. Flesh is yellowish white, crisp, juicy, acid, and of good quality. The fruit makes splendid sauce of a deep salmon red. A splendid ornamental and fruiting tree.

RED TIP. A cross between the Minnesota wild crab apple and Niedswetzkyana. The fruit is small and of no value, but the tree is very beautiful as a lawn tree because of the red tipped young leaves which make it very noticeable and attractive from an ornamental standpoint.

Price of all Flowering Crabs listed except where otherwise noted, in nice 4 to 5 foot trees at \$1.50 each or any 3 of the \$1.50 trees for \$4.00.

Special Flowering Crab Offer

1 Beauty	\$1.50
1 Bechtel	1.00
1 Ca+hay	1.50
1 Dolgo	1.50
1 Hopa	1.50
1 Niedzwetskyana	2.00
1 Olga	1.50
1 Red Tip	1.50

\$12.00

8 Beautiful Flowering Crab Trees
one of each as above for.....

\$10.00

Roses

If one wishes roses all summer long, he should purchase the Hybrid Tea Roses. Buy strong 2 year old No. 1 field grown roses such as we supply, plant them early in the spring and with good care one can have an abundance of bloom from early summer until it freezes in the fall.

Two years ago the American Rose Society took a vote of its membership as to the 12 most beautiful and popular of all the Hybrid Tea Roses and over 1200 votes were cast. The list of 12 roses which we offer below were selected as the 12 best Hybrid Tea Roses. We are offering this list of 12 best roses in a strong 2 year No. 1 field grown bush for 70¢ each or we offer the list of 12, one of each for \$6.60.

COLUMBIA. Flowers of beautiful form, light pink, darker in colors as they age. Flower very large and borne on a strong healthy plant on good stems for cutting.

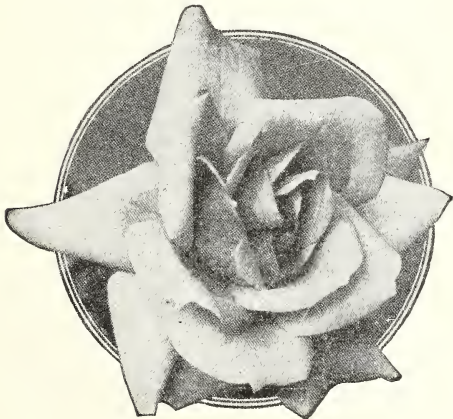
DUCHESS OF WELLINGTON. A beautifully formed flower of medium size of a most fetching saffron yellow color. Plant strong and stems nice for cutting. Very profuse bloomer.

GRUSS AN TEPLITZ. A large, strong plant, bearing clusters of beautiful bright crimson flowers continuously. One of the most freely blooming of all.

KAISERINE AUGUSTE VICTORIA. An exquisitely formed flower of pure white, tinted lemon yellow in the center. A well tried variety always liked.

LOS ANGELES. Tints of flame-pink, gold, and other rich and indescribable shades enter into the make up of this wonderful variety. Very fragrant.

MME. BUTTERFLY. A flower of a peculiar beauty of form that appeals to everyone. A splendid bloomer of good sized flowers on good cutting stems. Color light bright pink shaded yellow.



Ophelia



Columbia

MME. EDOUARD HERRIOT. Wonderful orange-red buds opening into shrimp pink flowers of most brilliant shadings. One of the most showy of all roses.

MRS. AARON WARD. Bush low and spreading, covered with beautiful little flowers of buff-yellow and fawn. Very free bloomer.

OPHELIA. Beautifully formed flowers of a delicate pale pink and gold changing to white in warm weather.

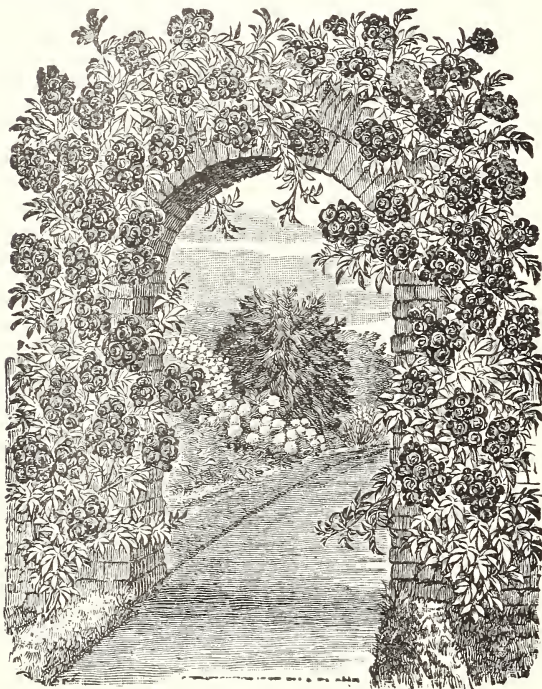
RADIANCE. A splendid even shade of clear red, without a trace of any other color. Retains its vivid color for a long time after being cut. One of the greatest bloomers, being constantly in bloom from early summer until freezing weather. One of the best outdoor hardy roses grown.

RED RADIANCE. If possible a better rose than its parent Radiance. Bears big globular deep rose red flowers all summer long on strong stems.

SOUV. DE CLAUDIUS PERNET. A beautiful sulphur yellow. Wonderful in the bud just about to burst and wonderful in the open flower.

Climbing and Pillar Roses

CLIMBING AMERICAN BEAUTY. A large very fragrant flower of bright carmine-red. Beautiful shape. Flowers produced in the greatest profusion. One of the very best climbers.



Paul's Scarlet Climber

Price of all climbing roses, strong two year old No. 1 field grown plants 60c each; 5 for \$2.75.

Hybrid Perpetual Roses

FRAU KARL DRUSCHKI. A very vigorous growing variety producing very large pure white blooms. Regarded as the best Hybrid Perpetual white.

GENERAL JACQUEMINOT. A rich, deep crimson rose of delightful fragrance. Produces a profusion of bloom in early summer. One of the favorite roses.

MRS. JOHN LAING. Plants grow erect with beautiful soft pink cup shaped flowers. A most fragrant sort and a continuous bloomer.

PAUL NEYRON. Another of the old time universally favorite roses. Very large, profuse, rich rose pink. Does well everywhere.

PERSIAN YELLOW. An Austrian Briar Rose producing small semi-double, deep yellow flowers along the branches in late spring. One of the old favorites.

PRINCE CAMILLE DE ROHAN. Flowers are a very dark red, almost a maroon. Blooms of medium size, very double and sweet scented. Every one likes it.

Price of strong 2 year No. 1 plants of the above roses 60c each; 6 for \$3.25.

DOCTOR VAN FLEET. One of the greatest new roses of the day. A new type of climber and very hardy. Flowers when full open are four inches or more in diameter. Color is a beautiful shade of flesh-pink, center built high, petals undulated and cupped. A splendid cutting variety with stems 12 to 18 inches long.

DOROTHY PERKINS. A beautiful shell pink with flowers borne in large clusters of small very sweet scented bloom. This variety undoubtedly is the hardiest and thriftiest of all the small pink ramblers.

EXCELSA. A red rambler that is a great improvement over the Crimson Rambler which often becomes unsightly because of mildew on the leaves. Nearly evergreen and absolutely hardy. Flowers very double, produced in great clusters of from 30 to 40 blooms. One of the greatest of the hardy climbers.

PAUL'S SCARLET CLIMBER. An intense scarlet shaded crimson. A wonderful rose for growing on trellis or pergola. Won a Gold Medal of the American Rose Society as the best new climber. Flowers very large and borne in great profusion. Without doubt the finest and best of all scarlet climbers.



Frau Karl Druschki

Hybrid Rugosa Roses

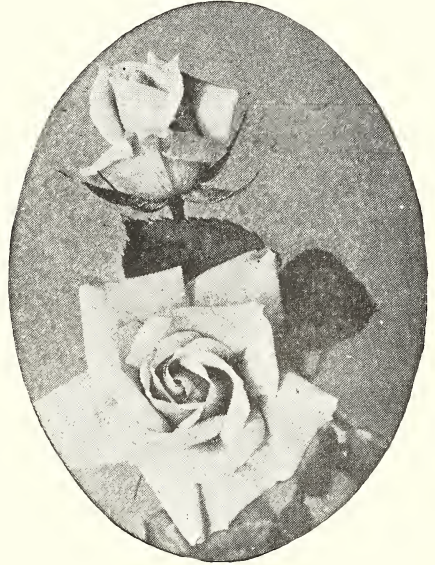
Rugosa and Hybrid Rugosa Roses are very desirable where extremely hardy roses are demanded. These roses are also in great demand because of the luster and beauty of their foliage, working exceedingly well into hedge and mass plantings. Varieties listed are doubles.

CHAS. F. WORTH. A splendid free blooming crimson. Large flowers in great profusion.

BLANCHE DE COUPERT. The best double white among the Rugosas. Free flowering.

F. J. GROOTENDORST. Flowers which are of an intense bright red come in clusters like those of the Crimson Rambler but they resemble the hardy red carnation. In continuous bloom all summer. So far the very best rose for the far north.

HANSA. Probably the best known of all the Rugosas. A very large semi-double flower, reddish violet in color. Very satisfactory.

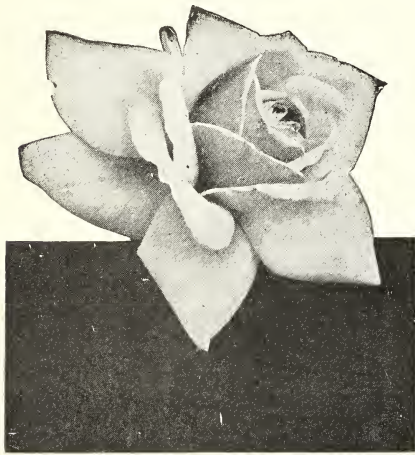


Blanche de Coupert

MRS. ANTHONY WATERER. A bright red Rugosa that is very desirable. Flowers are very large and of perfect form. A splendid sort.

NEW CENTURY. A beautiful flesh pink that works in very nicely with the other Rugosas listed.

Price of above Rugosa Roses all in strong field grown 2 year No. 1 plants, 50c each; one of each of the 6 kinds for \$2.50.

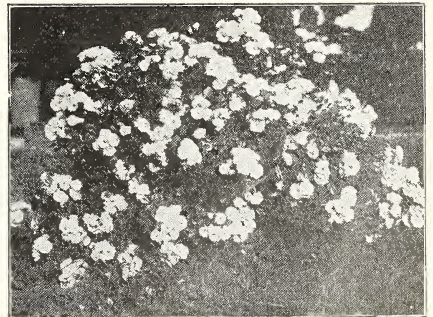


Mrs. Anthony Waterer

Hugonis Rose

In the Hugonis Rose we have one of the finest floral introductions of recent times. This rose comes to us from China and is perfectly hardy, growing on our grounds in the most exposed places without any winter protection. The bush throws up many branches to a height of 6 to 8 feet, sending slender sprays in all directions which arch gracefully beneath great loads of bright yellow single flowers of the most exquisite beauty.

Strong 2 year No. 1 plants 80c each; 6 for \$4.20.



Hugonis Rose



Hardy Phlox Europe

Hardy Phlox

There is no flower that fits into the late color scheme of the garden as well as the perennial phlox. They begin to bloom in the middle of the season and carry loads of the most brilliant color far into the fall or until touched with frost.

We are offering 12 wonderful varieties this spring. The plants we send out will be direct from the field and are not to be compared with small pot grown stock.

Price of Phlox except where noted:

25c each; 12 assorted \$2.50; 12 all one kind, \$2.00.

One each of the 12 kinds, \$2.50, postpaid.

B. COMPTE. A solid uniform color of brilliant rich purple red.

ECLAIREUR. A purplish crimson with white aureole. One of the Phlox that seldom kills out.

EUROPE. A large beautifully formed flower with great white florets with carmine eye.

ELIZABETH CAMPBELL. A very large soft even salmon pink with distinct lighter halo. One of the most sought after of all. 35c each; 12 for \$3.50.

MISS LINGARD. The earliest to bloom, sweetly fragrant, glistening white with pale lavender eye. Extra long spikes. Cut and come again.

MRS. JENKINS. An early free blooming

pure white. Flowers large and very pretty. A tall variety.

RHEINLANDER. Large florets and immense truss. A beautiful salmon pink with prominent red eye.

RYNSTROM. Very large trusses of rosy-pink flowers.

SIEBOLD. Orange scarlet with red eye. Very thrifty, profuse bloomer.

THOR. Great trusses and immense florets. Deep salmon pink with aniline red eye. A charming variety.

VON HOCHBERG. A medium tall growing, very thrifty sort. Deep brilliant red.

WIDAR. Very large individual florets of lavender purple with large white center. Large panicles; very attractive.



Siebold

B Compte

Thor

Von Hochberg

Delphinium

The Delphinium or Perennial Larkspur is one of the indispensable flowers to our flower garden. No garden is quite finished without it as it works nicely into so many places. It starts blooming in June and continues throughout the season until frost. We have some very choice strains which we are offering very cheap in half dozen and dozen lots.



Delphinium

“THE GLORY OF PUGET SOUND STRAIN.”

All shades of blue, the majority double with mauve or pink inner petals. Large, very fine. Grown by thousands of enthusiastic flower lovers throughout the world, who pronounce them the finest ever seen. They won the highest prizes in the strongest competition last year at Madison Square Gardens, New York City.

6 for \$1.75; 12 for \$3.00, postpaid.

PURE WREXHAM STRAIN. Years of careful selection have made of this strain something marvelous. Mostly blues and lavenders in all shades. Very large and most of them are double.

6 for \$2.00; 12 for \$3.50, postpaid.

WREXHAM STRAIN EXTRA SELECT. This is a still finer selection than the preceding strain. Better colors, larger, and better flowers.

6 for \$4.00; 12 for \$6.50, postpaid.

“VANDERBILT STRAIN WHITES.” Mostly whites with some of the lighter shades of lavender. A very fine strain carrying many odd shades we did not dream of a few years ago.

6 for \$1.75; 12 for \$3.00, postpaid.

“VANDERBILT STRAIN BLUES.” Another nice strain coming mostly in blue and the different shades of this color. This also is a very nice strain of Delphinium. Quite different from the other strains.

6 for \$1.75; 12 for \$3.00, postpaid.

Lilies

TIGER LILY (Splendens). The single variety.

This is the hardiest of all lilies. When once planted they will grow on for a hundred years in the same place without moving. Orange-red flowers, spotted purple on reflexed petals. Very late for a lily, blooms in September. Plant bulbs from 8 to 9 inches deep.

First size bulbs...25c each; 10 for \$2.00

Mammoth bulbs...35c each; 10 for \$3.00

TIGER LILY (Flora Pleno). Double Tiger Lily.

This lily is almost identical with the single form except that it is just a trifle lighter in color. A wonderful pretty lily and the only true double. Handle same as the single.

First size bulbs...30c each; 10 for \$2.50

Mammoth bulbs...40c each; 10 for \$3.50



Tiger Lilies

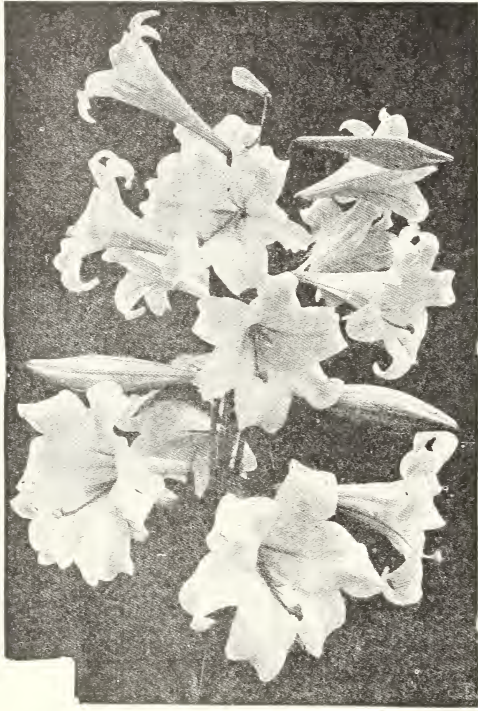
Regal Lily

Most varieties of lilies do best when planted in the fall but there are some sorts that do best when planted in the spring. These varieties are the Regal Lily and the Tiger Lily.

REGAL LILY. This beautiful lily is the most popular of all lilies in America. It is a perfectly hardy lily, makes a very vigorous growth, thrives best in a rich leafy loam, but will grow in any good average soil that is well drained. It has long, slender, strong flower stems which grow from 3 to 5 feet tall and are covered with dense narrow foliage. A very profuse bloomer of long funnel shaped blooms. General color effect white, shading gradually on the inside to a golden throat. On the outside shading back from a pure white through pink to brown. Fragrance very pleasant. Blooms in July. Plant bulbs 8 to 10 inches deep. Bulbs delivered either in September, October or in the spring.

Strong first size bulbs, 50c each; 3 for \$1.40.

Gladioli



Regal Lilies

Standard Gladioli Varieties

ALICE TIPLADY. (Primulinus). An orange-salmon; flowers unusually large for this class, and beautifully ruffled. A color everybody likes.

No. 1 bulbs—Each, 8c; Doz. 70c; 100, \$5.00.

ANNA EBERIUS. (Diener). Deep Rhodamine-Purple. Entirely self color, except for deep amaranth purple blotch on lower petals. A great deep purple cut flower.

No. 1 bulbs—Each, 10c; Doz. 85c; 100, \$7.00

BARON HULOT. (Lemoine). A rich, deep, indigo blue. An old variety but still the best of its color.

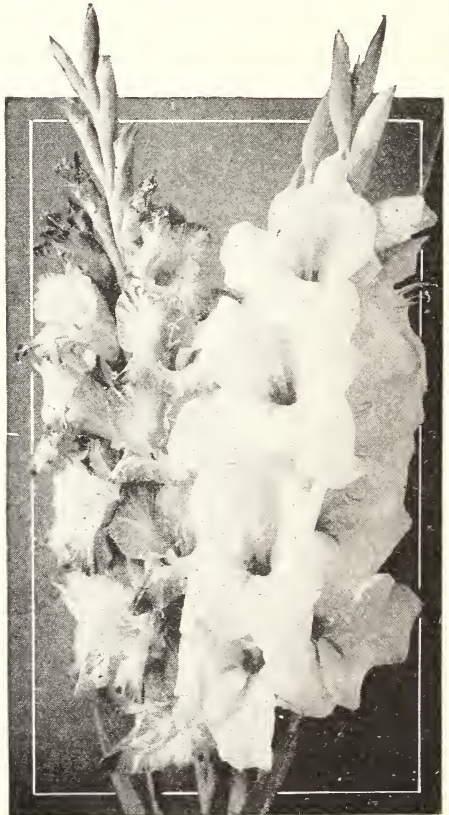
No. 1 bulbs—Each, 10c; Doz. 85c; 100, \$7.00

BREAK O'DAY. (Bill). Very early. Massive spikes with several open at once. A soft LaFrance pink flushed over a cream ground and shading deeper at edge of petals. The finest extra early gladiolus.

No. 1 bulbs—Each, 25c.

CAPTAIN BOYNTON. (Boynton). White, suffused lavender, blotched deeper lavender. (First Class Certificate).

No. 1 bulbs—Each, 15c; Dozen, \$1.25.



Mrs. Dr. Norton

No. 1 Bulbs
Each Doz. 100

CARMEN SYLVIA. (Prestgard). One of the very best of the whites. Pure white with slight violet markings deep in throat. Many open at once.....10c 85c \$7.00

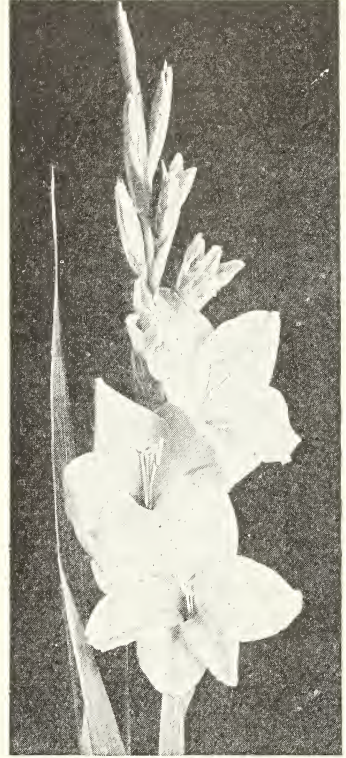
CATHERINE COLEMAN. (Coleman). A LaFrance pink overlaid with geranium pink. Base of lower petals blotched amaranth purple. Extra fine..20c

CRIMSON GLOW. (Betcher). Deep scarlet red. A touch of primrose yellow in the throat, overlaid with a deeper red blotch. Very large and thrifty. One of the best reds.....10c 85c 7.00

Dr. F. E. BENNETT. (Diener). Peach red, overlaid with flame - scarlet. Throat speckled with ruby and white. One of the most popular of the new glads50c

E. J. SHAYLOR. (Kunderd). A deep rose pink. Throat of lower petals delicately penciled with rose-red. Has received several certificates of merit. Edge of petals beautifully ruffled. One of the best varieties yet produced. Much in demand as a cut flower10c 85c 7.00

ELF. (Diener). Opens from a lemon yellow bud to a pure white flower with delicate lemon yellow tip. Flowers are large and spikes perfect. Very small bulbs will produce large blooms. A great cut flower sort10c 85c 7.00



Carmen Sylvia



Crimson Glow

EVELYN KIRTLAND. (Austin). Tall growing. Rosy pink, darker at the edges dimming to shell pink at the center. Brilliant scarlet blotches on the lower petals.....10c 85c 7.00

GOLDEN MEASURE. (Kelway). Very tall, strong stem. A pure yellow with flowers of immense size. A splendid variety.....15c 1.50

GOLDEN DREAM. (Groff). A well formed flower. Many open at once on a long straight spike. A clear deep yellow. The best yellow to date75c

GIANT NYMPH. (Coleman). An immense spike with flowers nicely arranged. Very large, wide open flowers. One of the greatest show flowers. LaFrance pink, with creamy yellow throat15c 1.25

GLENDALE. (W. B. Davis). A rich self color a trifle darker than the American Beauty rose. An unusually good cut flower as it has great keeping qualities10c

HALLEY. Chiefly grown because of its extreme earliness, which makes it very valuable as a cut flower. Large beautiful salmon-pink with creamy white blotch in the throat.....06c 50c 4.00

GLADIOLI—(Continued)



Los Angeles

Each Doz. 100

JACK LONDON. (Diener). A light salmon with vermilion stripes, and a canary yellow throat with ruby stripes. A very profitable cut flower.....10c 85c

JENNY LIND. (———). A shrimp pink, deepening to geranium pink at edge of petals. Flowers tubular, ruffled, and edges rolled back. A very beautiful variety20c

LE MARECHAL FOCH. One of the earliest. A beautiful soft flesh pink tinged with lavender. The flower is twice the size of America. Unusually fine.....06c 50c 4.00

LONGFELLOW. (Prestagard). This is one of the greatest pink gladioli ever sent out. Stems strong and straight. Flowers a clear LaFrance pink. Are wide open, of fine form, perfectly arranged on the spike. Often eight are open at once. Wonderful50c

LOS ANGELES. (Houdyshel). A shrimp pink with an orange carmine throat. This variety is called the cut and come again gladiolus. A most beautiful new one.....15c 1.25 10.00

Each Doz. 100

MAIDENS BLUSH. (Gruellman's). Flesh pink, delicately flaked with pale old-rose; throat suffused with mallow pink. Very dainty and decorative flower06c 50c 4.00

MARY PICKFORD. (Kunderd). A most beautiful flower. Color a delicate creamy white. Throat soft sulphur yellow with stem and calyx white. We think this one of the finest.....10c 85c

MRS. DR. NORTON. (Kunderd). Very delicate pink shading to a deeper pink, daintily flaked with a still different pink. Throat light yellow striped with tyrian-rose. One of the finest of all.....10c 85c

MRS. F. C. PETERS. (Fisher). A beautiful amaranth pink with a large purplish blotch in the throat. A most popular gladiolus sometimes described as orchid colored.....10c 1.00 7.00

MRS. FRANCES KING. A large bright pure scarlet flower with long straight spikes. Flowers well arranged and of splendid substance. A grand commercial cutting sort.....05c 40c

MRS. FRANK PENDLETON. (Kunderd). A beautiful salmon-pink with a large rich deep maroon blotch on the three lower petals. A great favorite10c 85c 7.00



Mary Pickford

GLADIOLI—(Continued)

	Each Doz.	100
MRS. H. E. BOTHIN. (Diener). Delicate geranium pink, heavily ruffled with a flame-scarlet throat. Nothing lovelier in Gladiolus.....	15c	1.50
MRS. J. K. ARMSBY. (Diener). Coral pink with delicate touches of bright red near the edges. Cream throat, dotted with ruby. Very large and many open at once.....	12c	1.20
MRS. K. PRESTAGARD. (Prestagard). One of the greatest white Gladiolus ever brought out. A large pure white of most beautiful form. Many out at once	25c	
MRS. LEON DOUGLAS. (Diener). Begonia-rose striped with brilliant scarlet. The size of the flowers are immense. The stems are very strong and carry many open flowers at once. One of the greatest of all show Gladiolus	12c	1.20
MURIEL. (Pfitzer). A true lilac, a trifle darker on edge of petals. Petunia violet blotch on lower petals. One of the most beautiful of Gladiolus. Good long spikes with many perfect blooms out at once.....	08c	75c
1910 ROSE. A rose-pink shading to a pure rose-red. A fine very early flower that is in great demand and as a cut flower.....	05c	50c 4.00
PINK WONDER. (Kemp). An immense flower, ground color white with beautiful stippled pink edge. A very showy flower.....	10c	85c
RICHARD DIENER. (Diener). Another flower of which we must say "One of the finest of all Gladiolus." A great ruffled pale geranium pink. Flowers are of beautiful form, well arranged on the stem and many open at once. Magnificent.....	15c	1.50
ROSE ASH. Soft, old-rose tones, fading to ashes of roses on the outer edge of petals. This flower has taken people by storm and is in great demand as a cut flower.....	10c	85c
SHEILA. (Coleman). A flower very pretty, exceedingly striking in color. A coral-red with flesh pink throat. Primrose blotch on lower petals	08c	75c
SOUVENIR. (Gravereau). A pure intense golden yellow Primulinus. The best of all yellow Primulinus. Received First Class Certificate, Haarlam Holland 1921. Extra fine.....	10c	85c
W. H. PHIPPS. (Diener). A great LaFrance pink overlaid with light rose salmon, shading lighter towards the center. Flowers of the largest size and often 12 perfect blooms are out at once with the bottom bloom in as perfect condition as the top one. The last word in a pink Gladiolus	25c	
WILBRINK. (Hopman). One of the earliest. A pale pink with upper petals tinted slightly darker. Lower petals blotched purple on yellowish ground. Strong thrifty variety much used as a cut flower.....	05c	50c 3.50

Red Barberry

This is a wonderful improvement over the regular Barberry Thunbergii of which it is a sport. The leaves come a deep rich red and remain so all summer long making of it one of our very finest ornamental plants. The foliage remains true to color and stays on the plant way into the late fall.

Strong 15 to 18 inch plants, 75c each; 2 to 3 feet select, \$1.00 each.

Our Peony Manual

Our new Peony Manual was off the press the first of November and copies were mailed out promptly to our 1928 customers. We still have a number of these books left and we will send a copy again this year free to all new customers sending us an order for peonies amounting to \$5.00 or more.

The book is well illustrated and covers the following topics:

Growth in the Popularity of the Peony.
 The American Peony Society.
 The World's Best Peonies
 Rating of Peonies.
 History of the Peony.
 Growing and Care of Seedling Peonies.
 Historical Table of Peonies.
 New Peonies Originated by A. M. Brand.
 Why a New Variety is Expensive.
 Our Method of Digging Peonies.
 Our Method of Handling the Roots that we Send Out.
 When to Plant Peonies.
 Size of Root.
 Culture of The Peony.
 Why Peonies Fail to Bloom.
 How and When to Divide Peonies.
 Peony Types.
 Japanese Peonies.
 Single Peonies.
 September 1st Planting.
 Preparing Peonies for Exhibition.
 Why the Same Variety Does Not Prove a Winner Every Year.
 Peonies For the Cut Flower Trade.
 Peony Diseases.
 Peony Pests.
 Peony Markers.
 Peony Supports.
 Suggestions For Peony Plantings.
 Peonies For the North.
 Peonies For the South.
 Our Annual Peony Show.
 Faribault Peony Festival.
 Future of the Peony.
 List of Fifty of the Best Inexpensive Peonies.
 List of Sixty More Expensive Sorts.

Read What Our Customers Have Written to Us About This New Book

Lincoln, Nebraska, Dec. 12, 1928.

Dear Sirs: This is to let you know that I received the Peony Manual for which I waited so long, and perhaps, a little impatiently. However, it was well worth waiting for. I have read it through and want to say wholeheartedly that it is the most practical and most complete book of its kind that I have ever seen, and many thanks for it. It seems to me that Brands are giving more than their share to the Peony world.

Yours truly,
 J. W. BERNSTEIN.

St. Paul, Minn., Dec. 6, 1928.

Dear Mr. Brand: Just as your new peonies are getting better so your new Peony Manual is likewise better. The addition of color makes it very much more attractive and brings out the delicate coloring of your special varieties. I do not see how it could be made better. You have used appropriate paper, excellent illustrations from photographs made by real artists, and the text is full and complete.

With all compliments of the season, I am,
 Yours very truly,
 R. S. MACKINTOSH.

Rock Port, Mo., Nov. 26, 1928.

Dear Mr. Brand and Miss Gentry:
 We are just in receipt of your Peony Manual, and it is almost as good as another visit to Faribault. It is very complete, and filled with the intimate things that one wishes to know about peonies, and so should be a very popular book.

Yours truly,
 W. W. HOLLIWAX,

Quincy, Illinois, Nov. 27, 1928.

Gentlemen: Your Peony Manual just received and I wish to express my appreciation, not only for the Manual itself, which covers the peony question so thoroughly but for the work, time and thought a busy man has given this book in order to produce such a complete masterpiece.

I feel sure that the Manual will be thankfully received by all peony lovers and that your efforts will not be wasted.

The peony roots received from you this fall were first class in every respect, just as represented, and the Brand Peony Farms will receive any future orders I may have.

Wishing you every success, I remain,
 Yours very truly,
 L. C. REED.

ORDER SHEET

BRAND PEONY FARMS

Peonies, Iris, Improved French Lilacs and Improved Philadelphia

Box 408

FARIBAULT, MINNESOTA

Read This. As a rule any shipment can go cheaper by Post than by Express. If you order either one or two roots, you should allow 25 cents for your shipment. If your order calls for a greater number of roots, we will send your order Post Paid if you will state in your order that you will send us the postage after you receive your package.

DO NOT WRITE IN THIS SPACE

Peony Order No.....

Iris Order No.....

Lilac or Philadelphia No.....

Date Received

Amount Received

Date.....

Name Miss, Mrs.
or Mr.

Street Address or
Rural Route

Post Office..... State.....

Shipping Address if not
the same as Post Office.....

Amount Enclosed \$.....

Check or Draft
Money Order
Cash

QUANTITY	VARIETY	Price Each		Total
Amt. Forwarded				



GRUSS AN TEPLITZ

See page 23 for our collection of the World's best
12 Roses.



Lilac

*We have over 150 varieties of
the best French Lilacs.*



Beauty Bush



Mock Orange

It is
Our Constant Aim

to have always on hand the most desirable of all the new introductions in the lines which we carry.

The most of these new things are tried out in our own trial gardens before being offered to the public and only those things which we ourselves think desirable are offered.



**Brand
Peony Farms**

(INCORPORATED)

Faribault, Minnesota