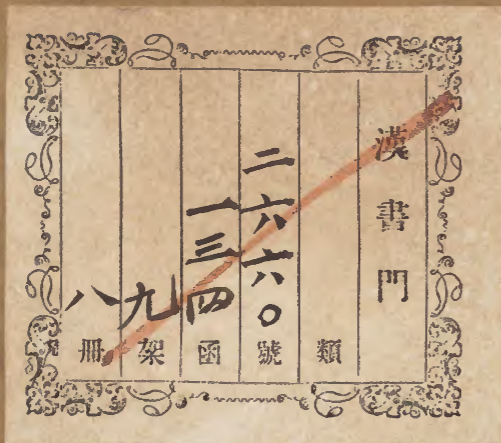
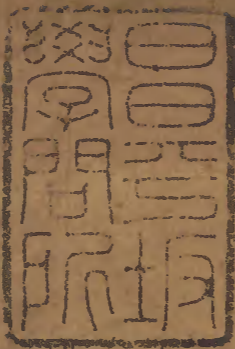
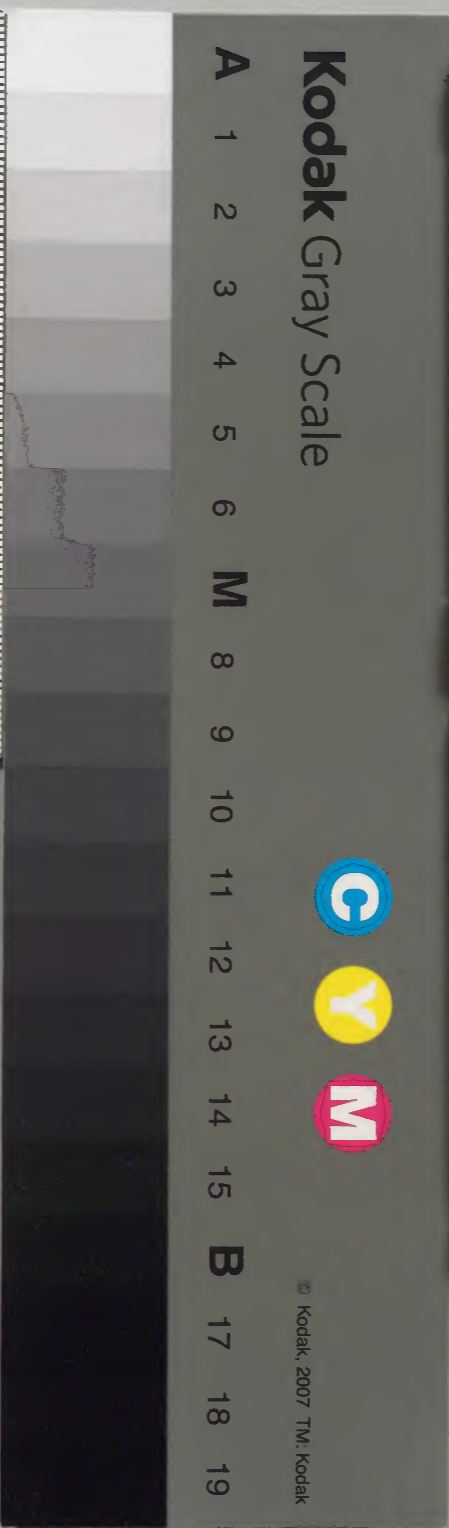


錢錄

十六



內閣文庫			
番號	漢	2660	
冊數		8	(8)
函號		295	70

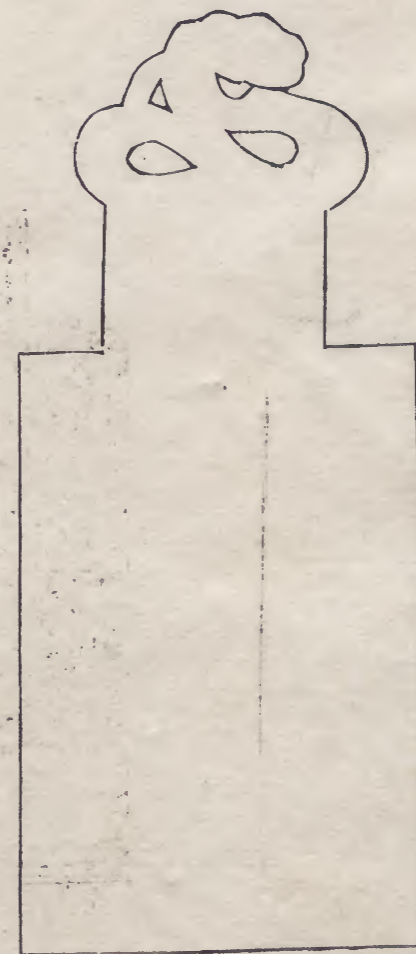
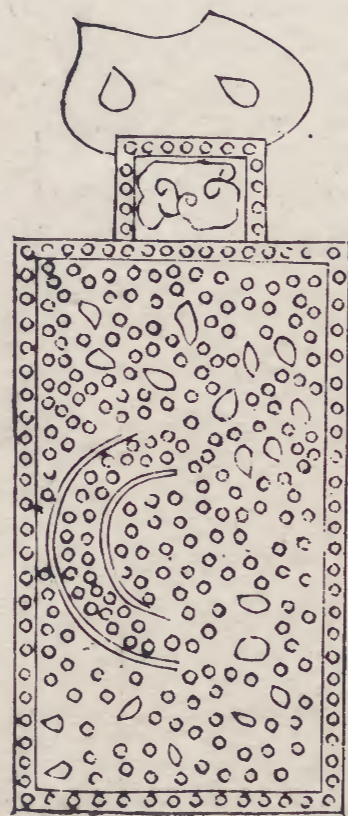
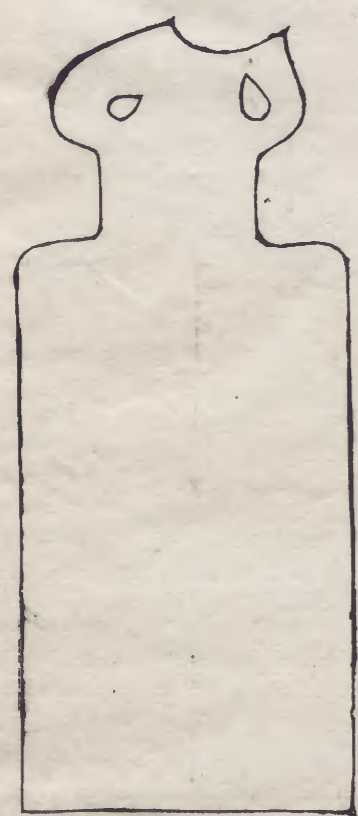


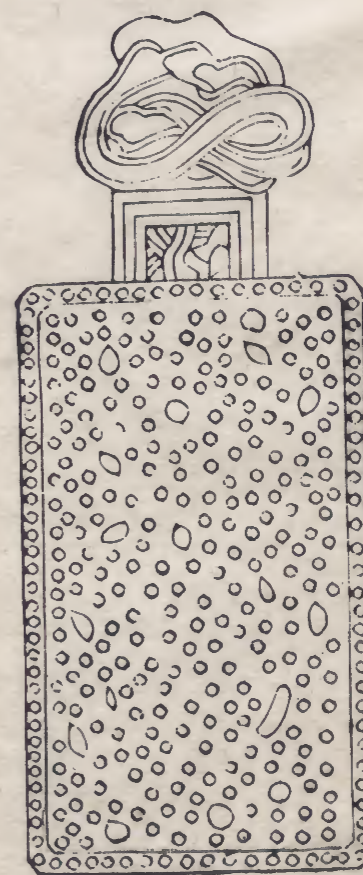
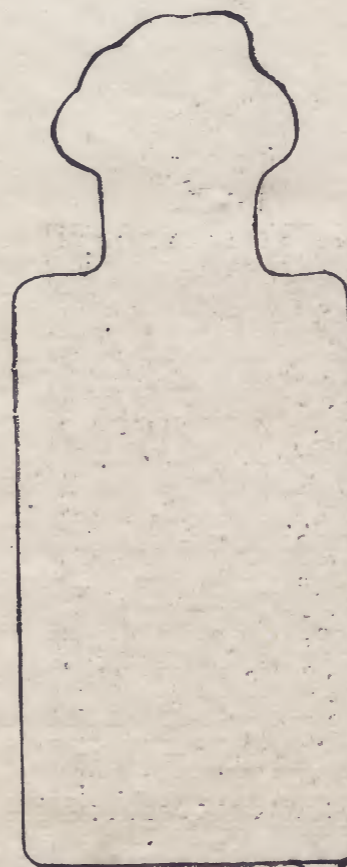
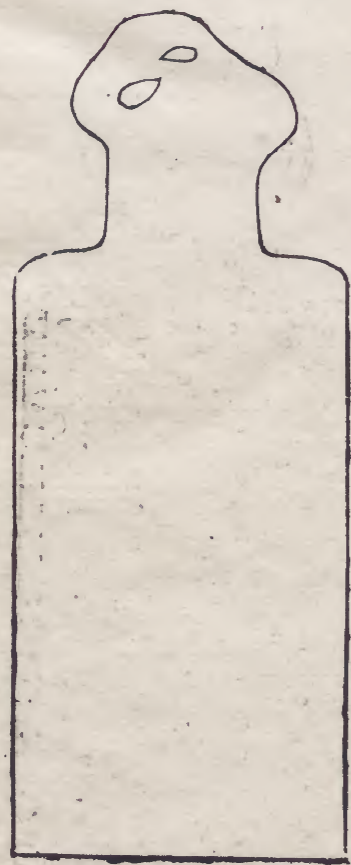


欽定錢錄卷十六

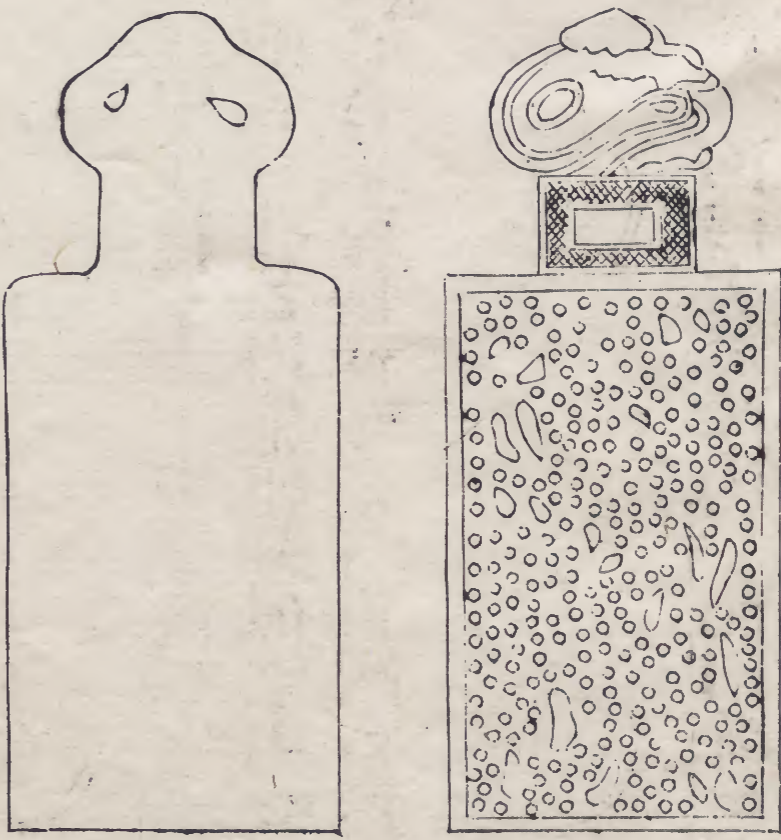


錢錄卷十六





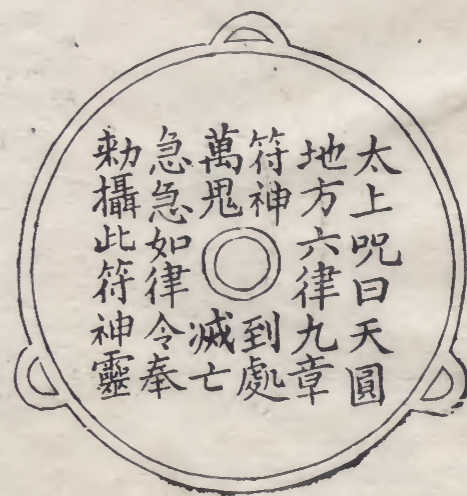
右五錢並見博古圖錄謂是厭勝錢今仍之



右辟邪錢中作符篆上下書福德二字一面作立獸如辟邪又方園各一孔蓋以施組紉佩之用祓除不祥西京雜記史良娣合采宛轉絲繩繫身毒國寶鏡卽此義也



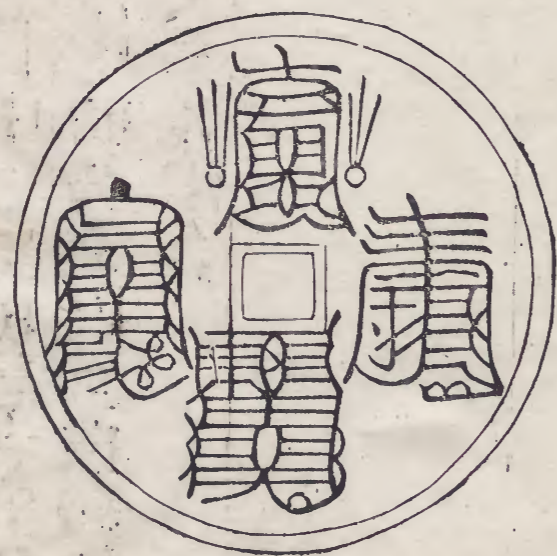
右辟兵錢一面曰去災除凶一面曰辟兵莫當旁作星文繞之務成子所謂瑒瑒如玉連連如珠者耶



右太上咒字錢道家有太上太初太始太素太清諸名號
按雲笈七籤太上者大道君誕於西那天鬱察山浮羅嶽
丹元之阿云云其說至為虛誕此錢稱太上是也背上書
符一人作叱鬼狀二人俯而聽命外為三孔取其可繫用
以作耳



右虎符錢按道家有神虎上符消魔智慧經其釋文曰神者靈也虎者威也上者太上符者信也銷魔者滅鬼也智者日中之星也慧者宜以生生為急也此錢面文書符上作虎頭背文揚旗按劔勢若擒捕鬼物上麗以星文與釋文本義俱合



右符印錢背文為星官又肖生一人跽而供花隨以一鶴



右符印錢背文為星官又肖生一

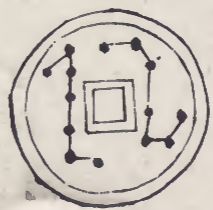


天罡天罡
斬邪滅亡
吾有令劍
斬鬼不存
急急如律
令上清攝



神清神清
捉鬼降妖
此符到處
威鬼不存
急急如律
令雷電

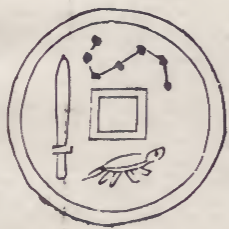
右天罡錢漢書玉衡杓建天之綱也又晉書北落西南一星曰天綱參同契注天綱即北斗也道家以禮斗為修攝而白玉蟾琅書序云作為符圖印訣罡咒之文此錢文蓋罡咒耶



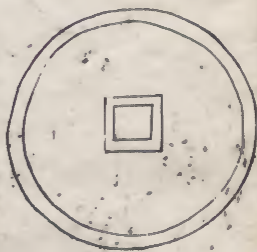
右北斗錢一面作七星文凡二面曰大泉五十用新莽錢文也舊譜謂蓄之僻水



右北斗錢一面作七星又龜劔各一一面曰大泉五十與前同



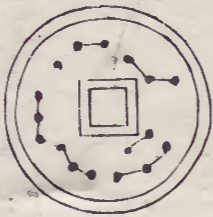
右北斗錢與前品同背文曰永通萬國用後周宣帝錢文也洪志又謂之元武錢



右北斗錢文作九星其二麗於旗蓋北斗原九星七見二
隱道家謂內輔一星外輔一星見之者吉又交劍上舉又
一人帶劍屹立洪志謂之青溪宅錢緣南齊書祥瑞志所
載齊世祖於青溪宅得錢一枚文與此合也



右北斗錢一面為七星紫繞中作交劍下為龜蛇糾結之
狀蓋元武象北辰方位也一面為十二地支並肖生為之



右北斗錢洪志有之引顧烜說云此錢面文為北斗軒轅
之象背文為立戟龍鳳之形謂之北斗星錢亦謂軒轅錢



右星官錢一面作星官符印朱雀龜蛇之象一面文曰皇帝萬歲其制亦出於道家為祈祝製也



右一品楷書本命星官四字按道家有祭星法常以其受生所直之日祈請司命諸詳於洞章諸篇下作星官一蓋南極北極中央一鼎旁作龜鶴皆道家養生之說著之錢文亦祈壽之意一面為十二屬



右一品與前同亦作星官狀下為鼎旁有一龍取象辰位也一面為一人跌坐一人執杖侍蓋南極老人之義

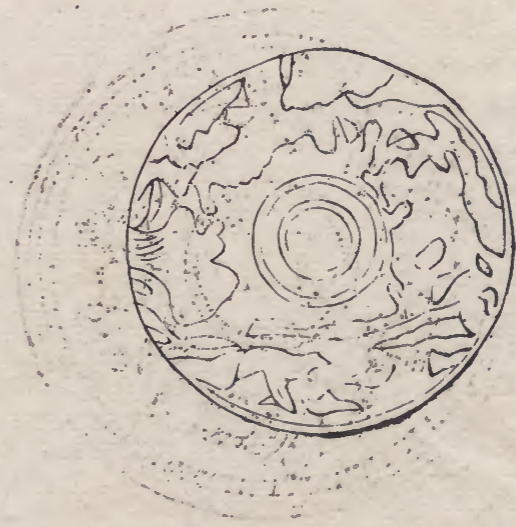


右一品一面作星官又龜鶴各一上為玉兔一面作水紋
篆書凡四可辨者萬國二字



右支錢一面為十二屬一面作樹下一人跌坐前一獸為
俯伏狀

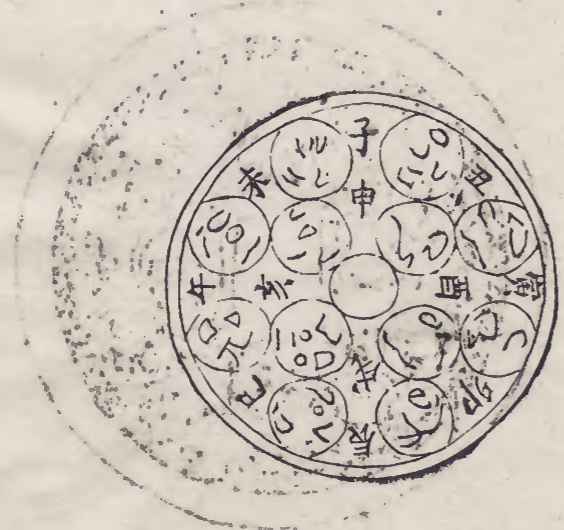
右支錢二前一品背文闕湛不甚可辨下仿佛作龜鶴形



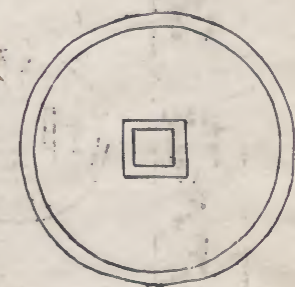
金銀卷一

錢錄卷一

三



右支錢二亦有十二屬特錯綜參伍與他品異前一品無字背文為神仙龜鶴之象後一品背文全蝕不可辨

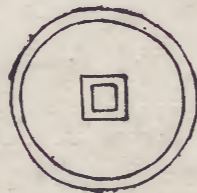


右四神錢朱雀元武青龍白虎並肖生爲之



右一種亦肖生洪志並謂是四神錢一面曰永安曰五男
意如諺稱永保平安者而李孝美謂篆文如後魏永安五

銖此錢蓋爲祈祝用不必泥永安二字遂謂後魏紀元年
號也



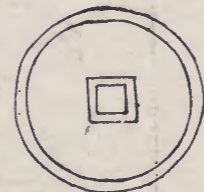
右一種作兔犬各一亦地支所屬也



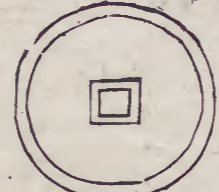
右一種右文卓劔左文爲龜蛇各一背文大泉五十與前
北斗錢同



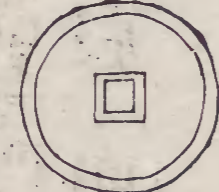
右三辰錢日月各一又為北斗七星元門寶海經曰陽精為日陰精為月分日月之精為星辰一面曰常平五銖用北齊宣帝錢文也



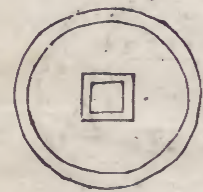
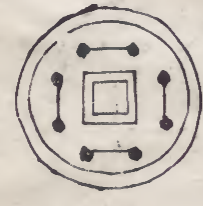
右日月錢日東月西作麗天之象



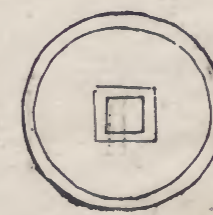
右明月錢如篆書明月二字



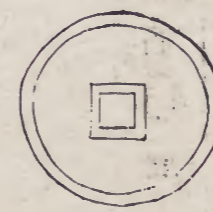
右星月錢作月從星狀



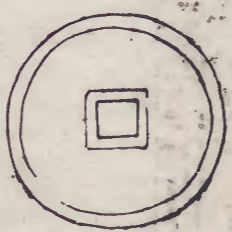
右雙星錢穿四圍俱作二星連珠洪志謂之八星錢



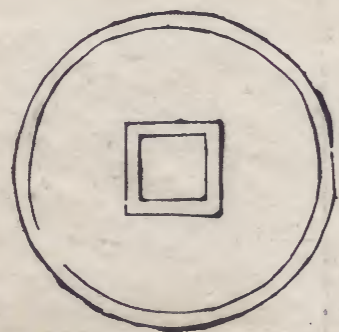
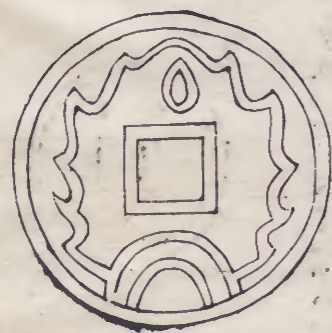
右雙星錢二星在穿上



右三星錢穿上下俱作三星連珠洪志謂之柄文錢



右七夕錢牽牛織女取會合意也亦見洪志引舊譜謂穿上為花穿下為草

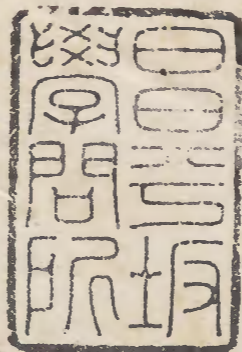


右一品穿下規作半月形有光燄燄騰上如火珠



右一品為八卦位列一如文王後天圖外環以十二屬一面為星官符印亦道錄也

欽定錢錄卷十六



文政三

