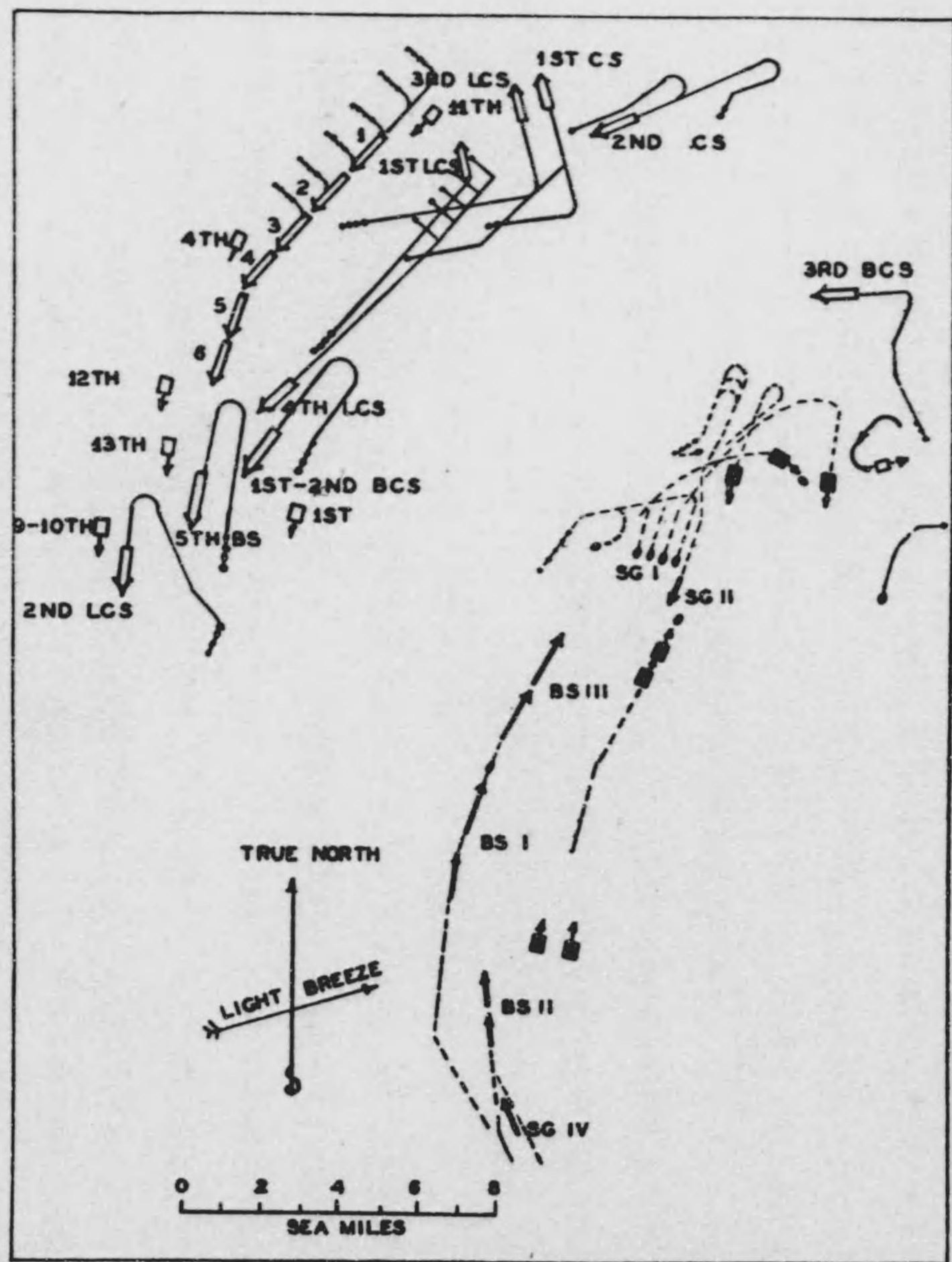


力部隊が續航スルナラバ敵ノ南翼ヲ包圍シ確實ニ敵ノ退路ヲ遮斷スルト云フ好條件下ニ堂々反航戰ヲ行ヒ得タデアラウ。ソレ故ニ得體ノ知レナイ一部隊ガアツタカラトテソレガ「ジェリコー」ノ南西方展開發令ヲ阻止スル理由トハナラヌノデアアル。

第二ニハ「ドイツ」主力部隊ノ所在ガ判ラヌノニ果シテ展開ヲ實施シ得ルヤ否ヤノ問題デアアル。之ニ對スル吾人ノ答解ハ「彼ノ第一任務ハ大艦隊ノ展開デアアル」ト斯ウ至極簡單デアアル。六個戰艦小隊ノ展開ハ勿論簡單デアラウ。然シナガラ戰艦々隊ニ屬スル多數ノ巡洋艦ヤ驅逐艦ヲ翼側ニ於ケル適當ナル戰闘位置ニ就カセルコトハ一層困難デアリ巡戰艦隊ノ各部隊ヲ適當ナル戰闘位置ニ就カセルコトハ視界ガ狭バマリツ、アルカラ極メテ困難ナ作業デアアル。著者ハ「ジァットランド」ニ於ケル大艦隊ヨリモ一層小サイ一ノ艦隊ガ展開スルノヲ戰術指揮官タル一士官ノ旗艦ノ司令塔ヨリ屢々視察シタ經驗ガアルガソレカラ類推スレバ「ジァットランド」ニ於テアレ程ノ大部隊ヲ秩序正シク展開サセルコトノ如何ニ困難デアアルカラ充分ニ理解スルコトガ出來ルノデアアル。一度展開ガ開始サルレバ「ジェリコー」ハ重荷ヲ肩カラ卸シタモ同様デアリ又各級指揮官トテモ「ジェリコー」ガ果シテ何方ニ展開スルカ一切不明デアツテアレヤコレヤト想像シテ苦心スルヨリモ一般方針ニ準據シテ行動スル方ガ遙ニ氣樂デアアルニ相違ナイ。一度戰闘列ヲ形成スルコトガ出來レバ「ジェリコー」ハ入手スル情報ニ依ツテ大海艦隊主力部隊ニ對抗センガ爲適當移動スルコトモ出來ルシ又「ヘルゴランド」ニ向ツテ百五十度附近迄逐次戰闘列ノ變針ヲ行フコトモ出來ルノデアアル。斯ク言ハハ或ハ「何故ニ最初カラ百五十度ニ變針セヌカ」ト云フ疑問ガ起ルカモ知レヌガ之ニ對スル答解ハ二段ニ分レル第一段ハ斯様ニスレバ少シク運動ガ困難トナリ時間ヲ要スルデアラウト云フノデアリ第二段ハソウスレバ「ドイツ」ノ戰闘列ニ對シテ各戰艦小隊ノ先頭ヲ指向スルコトニナリ全戰艦群ノ全砲力ヲ發揮スル所以デアナイ。然シ展開針路ヲ百八十度又ハ百九十度トシテモ決シテ「イギリス」ニ不利デハナカツタト思フ。

第四十六圖

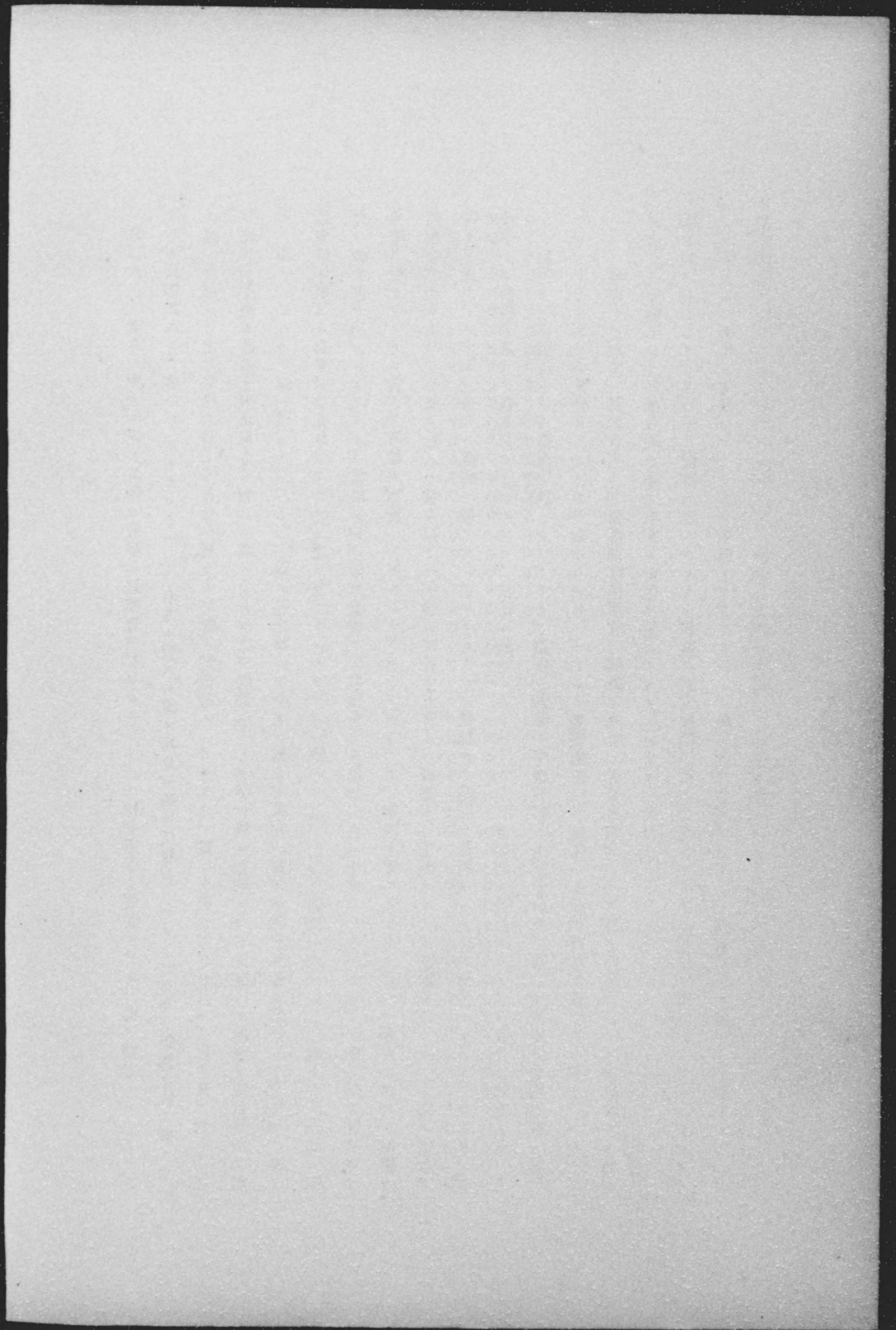


SKETCH XI. Figure 40 revised on assumption Jellicoe deployed to course 224° at 5:55.

第三ニハ「東方ニ對スル視具合ハ射撃ニ好都合デアツタカ」ト云フ相當重要ナ問題デアル。此ノ問題ニハ「チャン
ス」ガ大部加入シテ來ル。「ジェリコー」ハ「南方ニ對スル視具合ガ最モ良好デアルコトヲ自身ノ觀測ニ依リ確メタ」
ト述ベテ居ル。之ハ午後六時三十五分ニ於ケル射撃ハ絶對的ニ「イギリス」側ニ有利デアツタコトヲ以テ良ク判ル。之
ニ反シテ午後五時五十分東方ニ對スル視具合ガ之ト同様「イギリス」側ニ有利デアツタコトモ的確ニ証明サレテ居
ル。即チ「ドイツ」側ハ僅ニ一三、〇〇〇碼ノ距離ニアツタニ拘ラズ西方ニ對スル視具合ガ惡ク「イギリス」側ノ
巡戰群ニ對スル射撃効果絶無デアツタガ之ニ反シテ「イギリス」側ハ一三、〇〇〇碼及一六、五〇〇碼カラ二分間ニ四
發ノ命中彈ヲ得タノデアツタ。當時ニ於テ最モ重要ナル着眼點ハ夕陽ガ二百八十度ニ在リ「ドイツ」側ハ低キ眩惑的ナ
光線ヲ受ケツ、之ニ向ツテ射撃ヲ實施シナケレバナラヌコトデアツタ。斯様ニ視具合カラ言ヘバ東方ニ對スル射撃ハ
好都合デアツタ。ソレ故ニ吾人ハ益々以テ「午後五時五十分ニハ南西方ニ展開スルノガ至當デアツタ」ト云フ信念ヲ
固クスルモノデアル。吾人ハ當時ニ於ケル「ジェリコー」ノ觀點カラ情況ヲ分析スルコトニ努力シタノデアツタ。其ノ後
獲得シタ情報ニ基イテ彼是言フノデハナイ。當時ニ於ケル「ジェリコー」ガ如何ニ苦心シタカヲモ充分ニ考察シ其ノ苦
心ヲ解消スル手段トシテ本提案ヲ試ミタノデアアル。第四十六圖ハ午後五時五十分針路二百二十四度ノ展開信號ガ實行
サレタナラバドンナ具合ニナツタカラ圖示シタモノデアアル。巡戰艦隊ノ各部隊ハ午後六時迄展開ヲ行ヒ得ナカツタデア
ラウト推定シテ左様ニ圖示シタ。勿論或部隊指揮官ハ信號ヲ適時ニ受領出來ズシテ運動ガ遲延スルコトガアルカモ知レ
ヌガソレハ圖示シタ午後六時十分ノ情況ニ變化ヲ生ズルモノデハナイ」云々。

要スルニ「ジェリコー」ハ「當時入手シタダケノ情報デ右方展開ヲ行ハナケレバナラヌ充分ノ理由ガアツタ」ト云フノ
ガ「フロスト」中佐ノ主張デアリマシテ至極尤モデアリマス。然ルニ「ジェリコー」ハ戰略的ニ極メテ不利ナルトコロ
ノ左方展開ヲ敢テシタノデアリマス。其ノ模様ハ次講デ申述ベルコトニ致シマス。

(第二講終)
皇紀二五九六年三月二十八日



附録第一

「ジアットラント」海戦當日ニ於ケル英獨艦隊編制

Grand Fleet (英)

Battle Fleet

Admiral Sir J. R. Jellicoe, Commander in Chief

Vice Admiral Sir C. E. Madden, Chief of Staff

Iron Duke (Capt. F. C. Dreyer)

Attached ships: destroyer Oak, flotilla leader Abdiel (fitted as a mine layer), light
cruiser Active (Capt. P. Withers).

4th Battle Squadron

Benbow (F.)

Vice Admiral Sir D. Sturdee, Commander of Squadron

Attached: light cruiser Blanche (Capt. J. M. Casement).

4th Division (Vice Admiral Sir D.
Sturdee)3rd Division (Rear Admiral
A. F. Duff)

Benbow (F.) (Capt. H. W. Parker)

Superb (F.) (Capt. E. Hyde-Parker)

Bellerophon (Capt. E. F. Bruen)

Royal Oak (Capt. C. Maclachlan)

Temeraire (Capt. E. V. Underhill)

Canada (Capt. W. C. M. Nicholson)

Vanguard (Capt. J. D. Dick)

1st Battle Squadron

Marlborough (F.)

Vice Admiral Sir Cecil Burney, Second in Command,

Grand Fleet

Captain E. P. F. G. Grant, Chief of Staff

Attached: light cruiser Bellona (Capt. A. B. S. Dutton).

6th Division (Vice Admiral Sir
Cecil Burney)5th Division (Rear Admiral E. F. A.
Gaunt)

Marlborough (F.) (Capt. G. P. Ross)

Colossus (F.) (Capt. A. D. P. R.

Revenge (Capt. F. B. Kiddle)

Pound)

Hercules (Capt. L. Clinton-Baker)

Collingwood (Capt. J. C. Løyt)

Agin-court (Capt. H. M. Doughty)

Neptune (Capt. V. H. G. Bernard)

St. Vincent (Capt. W. W. Fisher)

2nd Battle Squadron

King George V (F.)

Vice Admiral Sir T. H. M. Jerram, Commander of Squadron

Attached: light cruiser Boadicea (Capt. L. C. S. Woolcombe).

1st Division (Vice Admiral Sir T. H. M. Jerram)

King George V (F.) (Capt. F. L. Field)

Ajax (Capt. G. H. Baird)

Centurion (Capt. M. Culme-Seymour)

Erin (Capt. The Hon. V. A. Stanley)

2nd Division (Rear Admiral A. C. Leveson)

Orion (F.) (Capt. O. Backhouse)

Monach (Capt. G. H. Borrett)

Conqueror (Capt. H. H. D. Tothill)

Thunderer (Capt. J. A. Fergusson)

3rd Battle Cruiser Squadron

Rear Admiral The Hon. H. L. A. Hood, Commander of Squadron

Invincible (F.) (Capt. A. L. Cay)

Indomitable (Capt. F. W. Kennedy) Inflexible (Capt. E. H. F. Heaton-Ellis)

Attached: light cruiser Chester (Capt. R. N. Lawson) and Canterbury (Capt. P. M. R. Royds)

1st Cruiser Squadron

Rear Admiral Sir Robert Arbuthnot, Commander of Squadron

Defence (F.) (Capt. S. V. Ellis)

Warrior (Capt. V. B. Molteno)

Duke of Edinburgh (Capt. H. Blackett) Black Prince (Capt. T. P. Bonham)

2nd Cruiser Squadron

Rear Admiral H. L. Heath, Commander of Squadron

Minotaur (F.) (Capt. A. C. S. H.

Hamshire (Capt. H. J. Savill)

D'Aeth)

Shannon (Capt. J. S. Dumaresq)

Dochrane (Capt. E. La T. Leatham)

4th Light Cruiser Squadron

Commodore C. E. Le Mesurier, Commander of Squadron

Calliope (F.) (Commodore C. E. Le Mesurier)

Constance (Capt. C. S. Townsend)

Comus (Capt. A. G. Hotham)

Caroline (Capt. H. R. Crooke)

Royalist (Capt. The Hon. H. Meade)

Destroyer Flotillas

12th Flotilla

Flotilla leaders Fualknor (Capt. A. J. B. Stirling) and Marksman (Comdr. N. A. Sullivan)

Obedient, Meanad, Opal, Mary Rose, Marvel, Menace, Messus, Narwhal, Mindful, Ouslaught, Munster, Nonsuch, Noble, Mischief

2th Flotilla

Light cruiser Castor (Commodore J. R. P. Hawksley) and flotilla leader Kempenfelt (Comdr. H. E. Sullivan)

Ossory, Mystic, Moon, Morning Star, Magic, Mounsey, Mandate, Marne, Minion, Manners, Michael, Mons, Martial, Milbrook

4th Flotilla

Flotilla leaders Tipperary (Capt. C. J. Wintour) and Broke (Comdr. W. L. Allen) Achates, Porpoise, Spitfire, Unity, Garland, Ambuscade, Ardent, Fortune, Sparrowhawk, Contest, Shark, Acasts, Christopher, Owl, Hardy, Midge, Ophelia

Battle Cruiser Fleet

Vice Admiral Sir David Beatty, Commander in Chief

Captain R. W. Bentick, Chief of Staff

Lion (F.) (Capt. A. E. M. Chatfield)

1st Battle Cruiser Squadron (Rear Admiral O. de B. Brock)

2nd Battle Cruiser Squadron (Rear Admiral W. C. Pakenham)

Princess Royal (F.) (Capt. W. H. Cowan)

New Zealand (F.) (Capt. J. F. E.

Queen Mary (Capt. C. I. Prowse)

Green)

Tiger (Capt. H. B. Pelly)

Indefatigable (Capt. C. F. Sowerby)

5th Battle Squadron

Rear Admiral H. Evan-Thomas, Commander of Squadron

Barham (F.) (Capt. A. W. Craing)

Valiant (Capt. M. Woolcombe)

Warspite (Capt. E. M. Phillpotts)

Malaya (Capt. The Hon. A. D. E. H. Boyle)

1st Light Cruiser Squadron

Galatea (F.) (Commodore E. S.

Phaeton (Capt. J. E. Cameron)

Alexander-Sinclair)

Cordelia (Capt. T. P. H. Beamish)

Inconstant (Capt. B. S. Thesiger)

2nd Light Cruiser Squadron

Southampton (F.) (Commodore W. E. Goodenough)

Birmingham (Capt. A. A. M. Duff)

Nottingham (Capt. C. B. Miller)

Dublin (Capt. A. G. Scott)

3rd Light Cruiser Squadron

Rear Admiral T. D. W. Napier, Commander of Squadron

Falmouth (F.) (Capt. J. D. Edwards) Yarmouth (Capt. T. D. Pratt)
 Birkenhead (Capt. E. Reeves) Gloucester (Capt. W. F. Blunt)

Destroyer Flotillas

1st Flotilla

Light cruiser Fearless (Capt. C. D. Roper)
 Acheron, Ariel, Attack, Hydra, Badger, Goshawk, Defender, Lizard, Lapwing

13th Flotilla

Light cruiser Champion (Capt. J. U. Farie)
 Nestor, Nomad, Narborough, Obdurate, Petard, Pelican, Nerissa, Onslow, Moresby,
 Nicator

Part of 9th Flotilla

Lydiard, Liberty, Landrail, Laurel

Part of 10th Flotilla

Moorsom, Morris, Turburent, Termagant

Seaplane Carrier

Engadine (Lieut. Comdr. C. G. Robinson)

High Seas Fleet (獨)

Battle Fleet

Vice Admiral Reinhard Scheer, Chief of the Fleet
 Captain Adolph von Trotha, Chief of Staff
 Friedrich der Grosse (F.) (Capt. T. Fuchs)

Squadron III

König (F.)

Rear Admiral Behncke, Chief of Squadron
 Captain von Gagern, Staff Officer

Division V (Rear Admiral Behncke)

König (F.) (Capt. Bruninghaus)

Grosser Kurfürst (Capt. E. Goette)

Markgraf (Capt. Seiferling)

Kroprinz (Capt. C. Feldt)

Division VI (Rear Admiral Nordmann)

Kaiser (F.) (Capt. F. von Kayserling)

Prinz Regent Luipold (Capt. K.
Henser)

Kaiserin (Capt. Sievers)

Squadron I

Ostfriesland (F.)

Vice Admiral Ehrhard Schmidt, Chief of Squadron
 Captain W. Wegener, Staff Officer

Division I (Vice Admiral Schmidt)

Ostfriesland (F.) (Capt. von Natzmer)

Thuringen (Capt. H. Küsel)

Helgoland (Capt. von Kameke)

Oldenburg (Capt. Höpfner)

Division II (Rear Admiral Engelhardt)

Posen (F.) (Capt. Lange)

Rheinland (Capt. Rohardt)

Nassau (Capt. H. Klappenbach)

Westfalen (Capt. Redlich)

Squadron II

Deutschland (F.)

Rear Admiral Mauve, Chief of Squadron
 Captain Kahlert, Staff Officer

Division III (Rear Admiral Mauve)

Deutschland (F.) (Capt. H. Meurer)

Pommern (Capt. Bölken)

Schlesien (Capt. F. Behncke)

Division IV (Rear Admiral F. von
Dalwigk zu Lichtenfels)

Hannover (F.) (Capt. W. Heine)

Schleswig-Holstein (Capt. Barrentrapp)

Hessen (Capt. R. Bartels)

Torpedo-Boat Flotillas

Commodore Michelsen, First Leader
Rostock (F.) (Capt. O. Feldmann)

Flotilla I (Lieut. Comdr. C. Albrecht, Chief of Flotilla)

Half Flotilla I (Lieut. Comdr. C. Albrecht)
G39 (F.), G40, G38, S32

Flotilla III (Commander Hollmann, Chief of Flotilla)
S35 (F.)

Half Flotilla V (Lieut. Comdr. Gautier) Half Flotilla VI (Lieut. Comdr.
V71 (F.), V73, G88 Karlowa)
S54 (F.), V48, G42

Flotilla V (Commander Heinecke, Chief of Flotilla)
G11 (F.)

Half Flotilla IX (Lieut. Comdr. Hofer) Half Flotilla X (Lieut. Comdr. F.
V2 (F.), V4, V6, V1, V3 Klein)
G8 (F.), G7, V5, G9, G10

Flotilla VII (Commander von Koch, Chief of Flotilla)
S24 (F.)

Half Flotilla XIII (Lieut. Comdr. Half Flotilla XIV (Comdr. H.
G. von Zitzewitz) Cordes)
S15 (F.), S17, S20, S16, S18 S19 (F.), S23, V189

Scouting Forces

Vice Admiral Hipper, Chief of Scouting Forces
Captain E. Raeder, Staff Officer

Scouting Group I

Vice Admiral Hipper, Chief of Scouting Forces
Captain E. Raeder, Staff Officer
Lutzow (F.) (Capt. Harder)

Derfflinger (Capt. Hartog) Motke (Capt. von Karpf)
Seydlitz (Capt. M. von Egidy) Von der Tann (Capt. Zenker)

Scouting Group II

Rear Admiral Boedicker, Leader of Group
Commander Stapenhorst, Staff Officer

Frankfurt (F.) (Capt. T. von Trotha) Elbing (Capt. Madlung)
Pillau (Capt. Mommsen) Wiesbaden (Capt. Reiss)

Scouting Group IV

Commodore von Reuter, Leader of Group

Captain H. Weber, Staff Officer

Stettin (F.) (Capt. F. Rebensburg)

Munchen (Capt. O. Boker) Stuttgart (Capt. Hagedorn)
Frauenlob (Capt. G. Hoffmann) Hamburg (Capt. von Gaudecker)
(The Hamburg is the Flagship of Captain
Bauer, leader of Submarines, but is
attached to the Scouting Group IV for
tactical purposes.)

Torpedo-Boat Flotillas

Commodore Heinrich, Second Leader

Regensburg (F.) (Capt. Heuberer)

Flotilla II (Capt. Schuur, Chief of Flotilla)
B98 (F.)

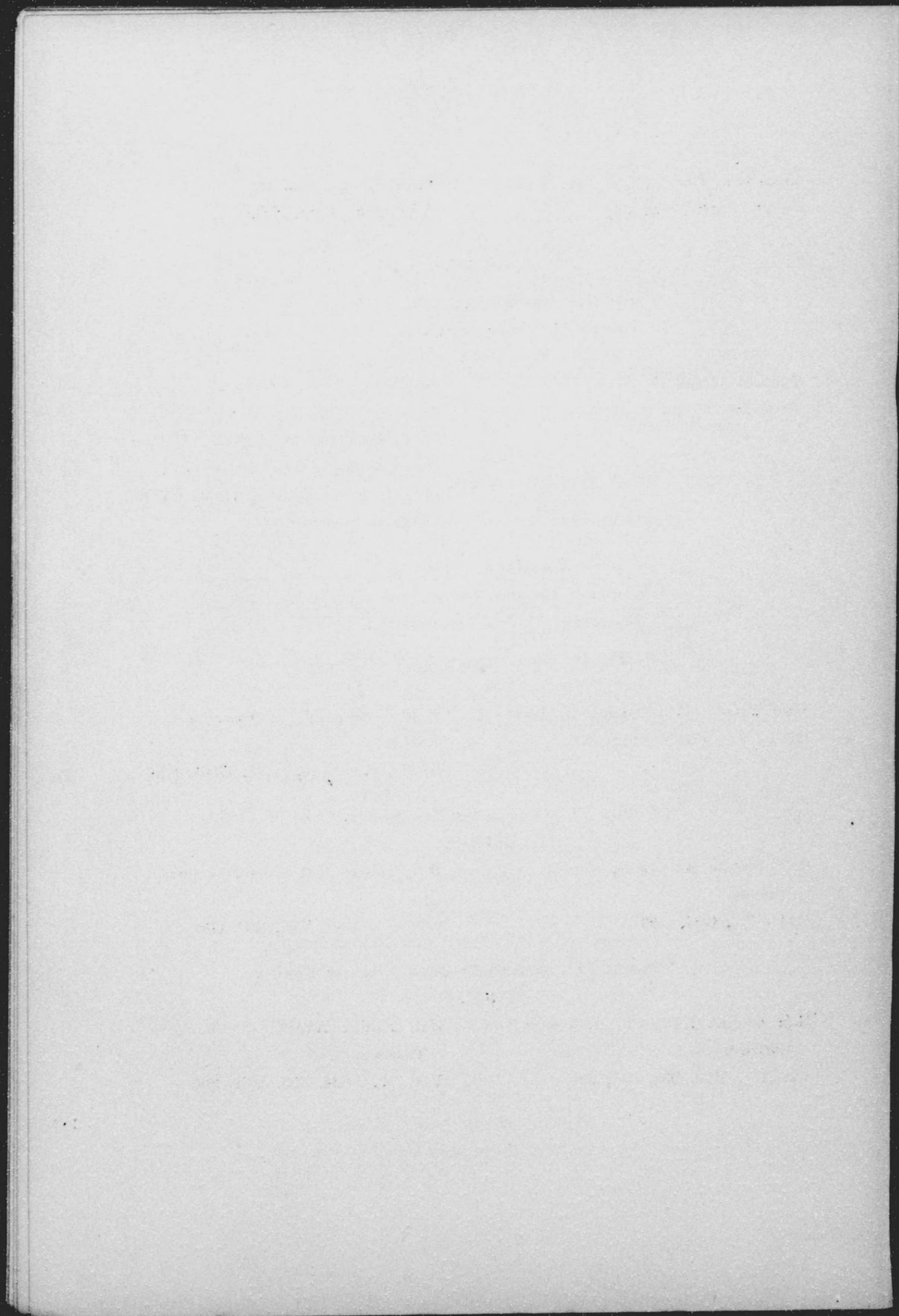
Half Flotilla III (Commander Boest) Half Flotilla IV (Commander A.
G101 (F.), G102, B112, B97 Dithmar)
B109 (F.), B110, B111, G103, G104

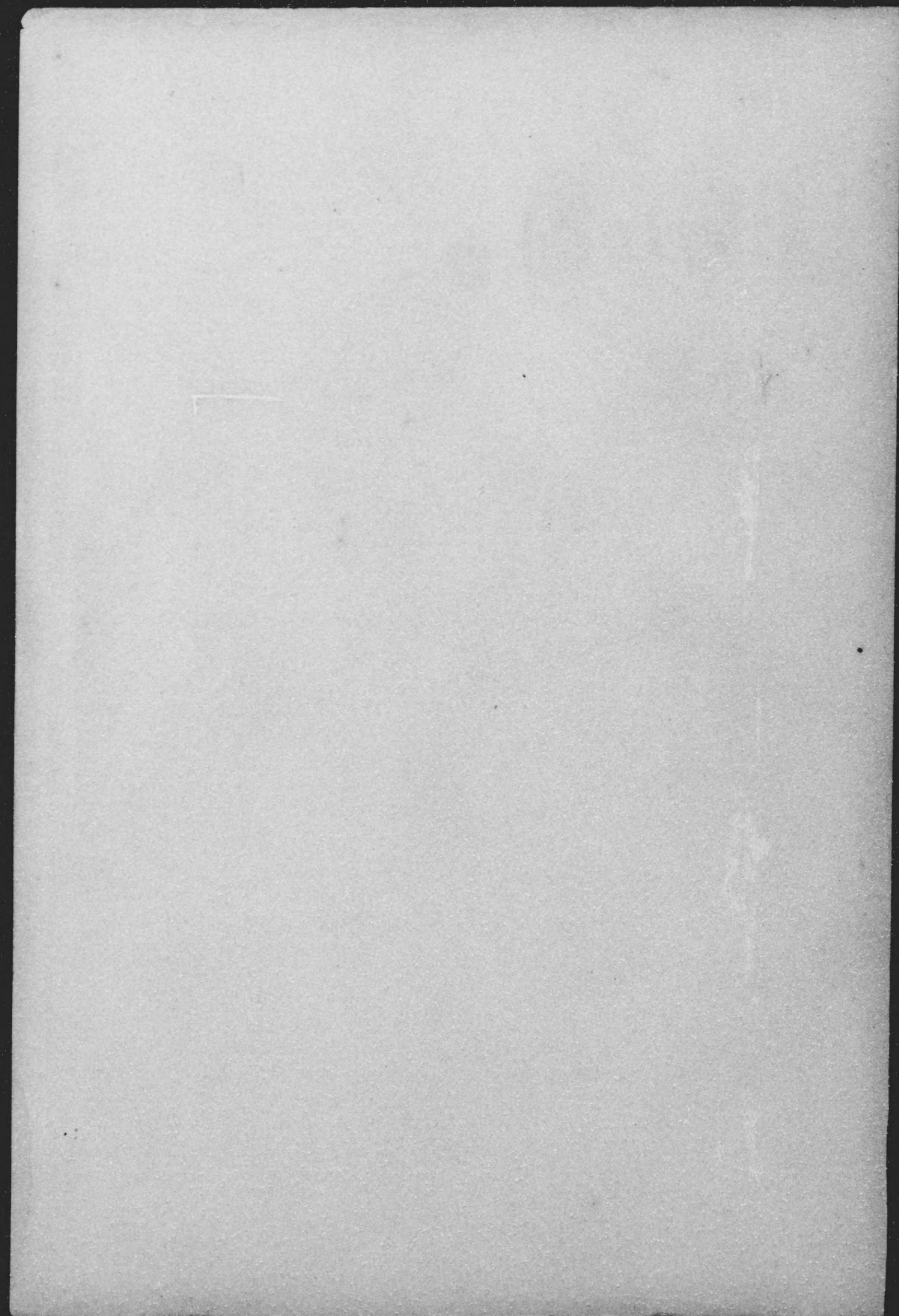
Flotilla VI (Commander Max Schultz, Chief of Flotilla)
G41 (F.)

Half Flotilla XI (Lieut. Comdr. Half Flotilla XII (Lieut. Comdr.
Rumann) Lahs)
V44 (F.), G87, G86 V69 (F.), V45, V46, S50, G37

Flotilla IX (Commander Gehle, Chief of Flotilla)
V28 (F.)

Half Flotilla XVII (Lieut. Comdr. Half Flotilla XVIII (Comdr.
Ehrhardt) Tillesen)
V27 (F.), V26, S36, S51, S52 V30 (F.), S34, S33, V29, S35





AI-4A

-88

