

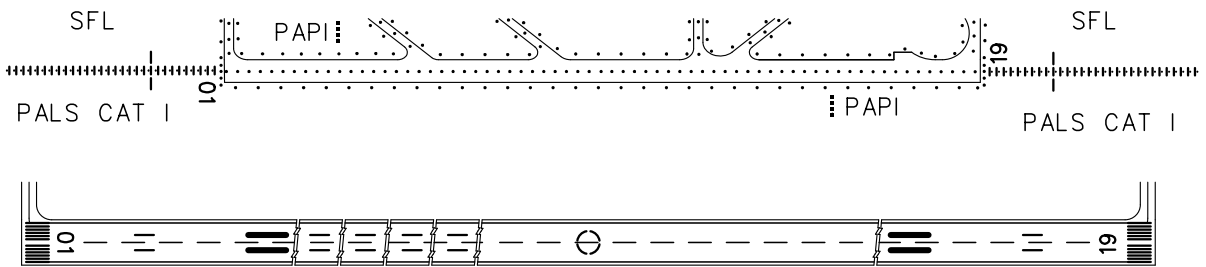
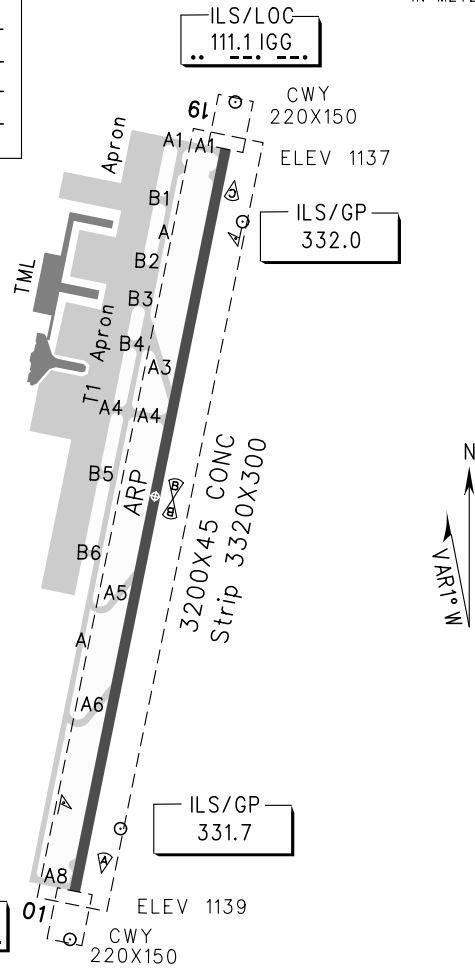
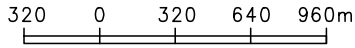
ATIS 127.05
 TWR 118.3(118.05)
 GND 121.6(121.65)

ZUGY GUIYANG/Longdongbao
 N26° 32.2'E106° 48.0' ELEV 1139m

AERODROME CHART

RWY	Direction	Bearing strength (PCN)	
01	011°	TWYs B, B1-B6:	PCN 70/R/B/W/T
		TWYs A3, A5, A6, A8:	PCN 69/R/B/W/T
		RWY:	PCN 68/R/B/W/T
19	191°	TWY A:	PCN 67/R/B/W/T
		TWYs A1, A4:	PCN 65/R/B/W/T

BEARINGS ARE MAGNETIC
 ALTITUDES, DISTANCES,
 ELEVATIONS AND HEIGHTS
 IN METERS



TAKE-OFF MINIMA(WITH RELIABLE ALTN)(m)				LIGHTS	
RWY	ACFT Type	REDL	NIL(Day only)	RWY01	RWY19
01/ 19	2 TURB ENG or 3&4 ENG	RVR400	RVR500	PALS CAT I SFL PAPI REDL RCLL	PALS CAT I SFL PAPI REDL RCLL
	Other	VIS1600			
Note: Ceiling more than 100m for 1 ENG aircraft					

Changes: PCN.