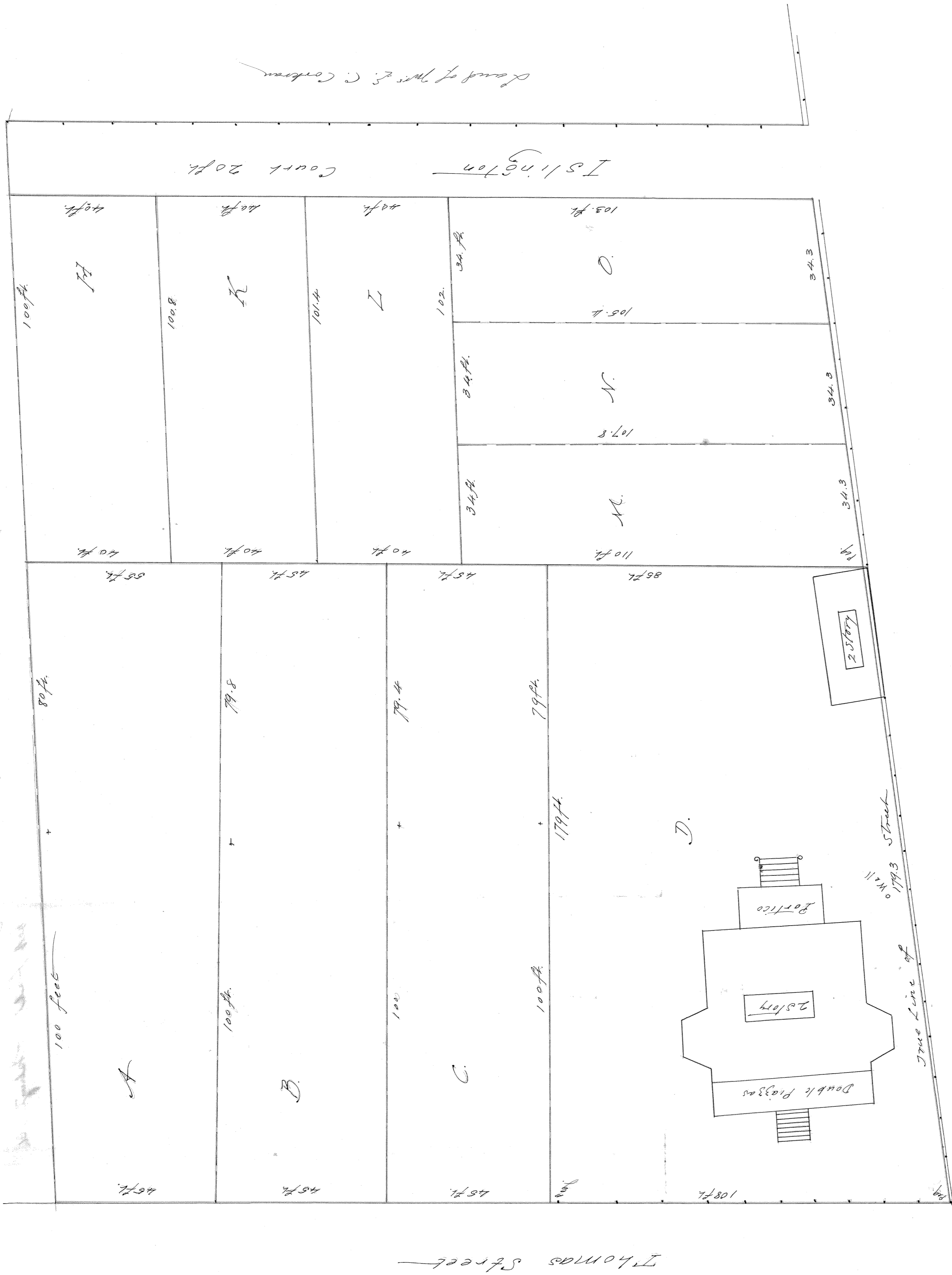


Land Late of the Rev. Bishop Bower



PLAN

of thirteen lots of land situated on the south side of Cannon and the west side of Thomas Street, Cannonborough

Charleston, Meek divided & shown at the request of A. G. Magrath Esq. (Signed) Robt. K. Payne

Sept. 21. 1849.

Scale 20 ft. per inch

Note: Instead of 13 lots there are only 10 the land was first formed for 13 from A. to G and afterwards changed leaving only E, F, and G, by a different division of the land. This plan is a correct copy taken of the original by Robt. K. Payne

Charles Portner Nov. 10. 1852.

P. M. C. office Plat Book 1-49, 99

Land of Mrs. E. C. Corbourn

Islington Court 20 ft.

Thomas Street