

Historic, Archive Document

Do not assume content reflects current scientific knowledge, policies, or practices.

62.09

Bulbs

and flower seeds
for Fall Planting

California Wild
Flower Seeds

LIBRARY
RECEIVED

NOV 15 1929 ★

Department of Agriculture



**Successful
Gardens
for 1928-29**

Theodore Payne

*Seedsman, Nurseryman
Landscape Architect*

**345 South Main Street
2969-99 Los Feliz Blvd**

Los Angeles

Please Read Before Ordering

HOW TO ORDER. Write plainly your name, town, county and state, giving street numbers and postoffice box when expedient. Send all money by postoffice or express money order, bank draft or check, and small sums by registered letter. Postage stamps received in sums up to one dollar.

NOTE. Postage is prepaid only on orders amounting to One Dollar or more. Add 10c for postage on orders less than One Dollar.

ORDER EARLY. Orders will be filled in the order of receipt, and certain varieties may be sold out if orders are too long delayed.

FOR QUICK REFERENCE to items listed in this catalog, refer to index on page 47.

Send for this book

General Seed and Plant Catalog. Contains a complete list of choice vegetable and flower seeds with special instructions for growing under California conditions. Contains the largest number of varieties of tree, shrub and palm seeds on the Pacific Coast and a very complete list of fine roses, flowering plants, ornamental trees and shrubs and fruit trees. Sent free upon request.

Mrs. BULLARD'S New Hybrid WATSONIAS

ORIGIN AND HISTORY

THE WATSONIA is a native of South Africa, where about thirty species are found. It was named in honor of Sir William Watson, M.D., 1715-1787, professor of botany at Chelsea, England. It belongs to Iridaceae or the Iris family, and is sometimes known by the common name of Bugle Lily, but the name *Watsonia* is now preferred.

Watsonia angusta, a species with orange scarlet flowers, has been grown in California for a long time. Later on came *Watsonia merriana*, a pink-flowered species, and *Watsonia ardernei* (*W. merriana alba*), the White *Watsonia*. It is from this source that the present wonderful colors and types of flowers have been developed, for which full credit is due to Mrs. J. H. Bullard of Los Angeles.

In 1904 Mrs. Bullard, being an enthusiastic amateur horticulturalist, became interested in the culture and development of the *Watsonia*. Having in her garden some plants of *Watsonia angusta* and *Watsonia ardernei*, she cross-pollinated these two. The seeds



General Pershing

produced from this cross were carefully saved and planted. The young plants grew and in due course of time (about three years) they flowered, producing several new shades, of which five were selected and grown separately. Of these, she named one Ansonia, after her own son Anson. Clementina and Rose were named after sisters. Alberti was named after a musician. While the fifth was given the name of Madame Modjeska in honor of the great tragedienne, who was an intimate friend of Mrs. Bullard's family. These five varieties were described and placed on the market for Mrs. Bullard by Theodore Payne in 1912 and 1913, and were described in the fall bulb catalogues for those years, constituting the first introduction of hybrid Watsonias to the public.

Mrs. Bullard continued crossing and selecting her hybrids, and new colors appeared, among which were many delightful shades of pink, rose, salmon, buff, lilac, mauve, magenta cream and white. A marked improvement in the shape and size of the flowers also appeared; some being distinctly star-shaped, others cup-shaped, and many with large open flowers with broad petals. In some instances the flowers were arranged closely and evenly on the spike, while in others they were placed loosely on the stems, producing a graceful, airy effect. There also appeared quite a difference in the growth and habit of the plants some being tall, others medium, and some decidedly dwarf. The time of blooming also varied, some varieties flowering early, many coming in at the same time, and others were distinctly late bloomers.



Examples of the many types of flowers to be found in the Bullard Hybrid Watsonias



Fanny Lyon

To some it may seem strange that Mrs. Bullard, starting with only two colors, scarlet and white, was able to produce such a great number of shades. This, however, is more easily explained when it is remembered that the White *Watsonia* (*W. ardernei*) is simply a white-flowered form of *Watsonia merriana*, a pink-flowered species. Thus, though Mrs. Bullard only had the scarlet and white flowered plants in her garden, the latter had the pink blood of *W. merriana* in its veins, which is responsible for the great variety of colors in her hybrids.

In 1918, seven more varieties were offered for sale by Theodore Payne, and in 1919 another five were added, making a total of twelve new varieties, namely: Aurora, Edward D. Sturtevant, Estrella, Eunice, Harry Johnson, Hazel, Victory, James MacGillivray, J. J. Dean, Marion Welsh, Fanny Lyon, and Theodore Payne. These varieties, together with many later introductions of Mrs. Bullard's, have been grown extensively by Theodore Payne and now constitute the largest stock of named hybrid *Watsonias* in the world.



Harry Johnson

General Description

The *Watsonia* is closely related to the *gladiolus* and is similar in some respects, such as the shape and size of the bulb, foliage, and general habit of growth. In the *Watsonia*, however, the plants grow taller, ranging from three to six feet in height. The flowers are smaller, but produced in much greater numbers, and are more delicate and graceful both in color and form. The flowers, instead of all facing one way as in the *gladiolus*, are arranged on the spike in such a way as to face in opposite directions.

After the main spike has blossomed, several smaller side spikes are produced, and it is quite common to have a total of fifty to sixty flowers on a single stem. Thus the flowers appear over a much longer period than the *gladiolus*, thereby giving the *Watsonia* a decided advantage both in the garden and when used as a cut flower. In the latter use they have a remarkable lasting quality, it being not at all unusual for them to stand for a period of ten days in water when properly cared for.

Cultural Notes

The *Watsonia* is just as easy to grow as the *gladiolus*, and will succeed in any good garden soil, to which should be added a liberal dressing of well-rotted manure. The bulbs may be planted any time from the end of August to the early part of November. Prepare the ground by spading to a depth of ten or twelve inches. Plant the bulbs eight to ten inches apart and about five inches deep in light soils, or four inches deep in heavy soils. The plants will bloom the following spring. In the eastern states, *Watsonias* may be grown in pots and used for forcing.

Named Varieties

America. An exquisite shade of soft rose pink, faintly flushed with lilac and salmon. Large bold flowers with broad, slightly crinkled petals. The upper blossoms frequently come with eight instead of six petals; medium height. Each, \$1.00; dozen, \$10.00.

Ansonia. One of Mrs. Bullard's earliest productions. Rose pink with salmon and lilac tints, large star-shaped flowers with pointed petals; blossoms arranged loosely and gracefully on tall stems. Each, 50c; dozen, \$5.00; hundred, \$35.00.

Aurora. A brilliant orange scarlet. The flowers are of fine texture, somewhat cup-shaped, and arranged closely on the stems. An early blooming variety of rather dwarf habit and one of the best for forcing. Each, \$1.00; dozen, \$10.00.

Bessie Schubert. Tyrian pink with lighter shadings and darker on outside of tube. The flowers open well and are loosely and gracefully arranged on tall stems; late bloomer. Each, \$1.00; dozen, \$10.00.

Bullard's White. Pure white, large flowers with broad petals, early and profuse bloomer; the best white variety; excellent for forcing. Each, 35c; dozen, \$3.50; hundred, \$25.00.

Clementina. One of Mrs. Bullard's earliest productions. A beautiful salmon rose with violet and orange shadings, darker in the throat. A profuse and continuous bloomer, the flowers arranged closely on the stems; of medium height. Each, 25c; dozen, \$2.50; hundred, \$18.00.

Cream Cup. As the name implies, the flowers are cup-shaped and of a creamy white. Fine as a cut flower, adding much to a bouquet of mixed colors. Each, 50c; dozen, \$5.00; hundred, \$35.00.

Diana. Flowers rich lilac-mauve, borne profusely, making a decided showing in the garden and as a cut flower. An early flowering variety and one of the best for forcing. A favorite with everyone. Each, 75c; dozen, \$7.50; hundred, \$55.00.

Edward D. Sturtevant. A wonderfully vivid shade of orange scarlet. The flowers are large and well formed, with long, somewhat pointed petals, of the finest texture; plants of medium height. One of the most desirable varieties for all purposes, having a long blooming season and making a gorgeous display in the garden. Excellent for cutting. Each, 50c; dozen, \$5.00; hundred, \$35.00.

Estrella. A very distinct variety with beautiful star-shaped creamy white flowers, arranged loosely and gracefully on slender, airy stems, producing a delightful effect in the garden and also when cut for bouquets. The plants grow four to five feet high. Each, 75c; dozen, \$7.50; hundred, \$55.00.

Eunice. Flesh color, tinted with salmon, a delightful shade. The flowers are star-shaped, exquisitely formed, loosely and gracefully arranged on the stems. Medium height. Each, 50c; dozen, \$5.00; hundred, \$35.00.

Fanny Lyon. Apricot buff, an exquisite shade. Flowers large, borne gracefully on long stems five to six feet high. A profuse and early bloomer, making a gorgeous display in the garden. Each, 50c; dozen, \$5.00; hundred, \$35.00.

General Pershing. La France pink with salmon tints, a delicate and alluring shade. Immense flowers with broad rounded petals; medium height. Each, 75c; dozen, \$7.50; hundred, \$55.00.

Harriott. Strawberry pink, with delicate violet shadings. A unique and attractive color combination. Flowers with long, well-formed, somewhat pointed petals; medium height. Each, 75c; dozen, \$7.50; hundred, \$55.00.

Harry Johnson. Salmon pink with orange and purple tints, a very striking color effect. The flowers are large, with broad, rounded, well-formed petals. An early bloomer of medium height. Each, 35c; dozen, \$3.50; hundred, \$25.00.

Hazel. Coral pink with darker stripe through center of each petal and extending down into the throat. Flowers star-shaped; medium height. Each, 50c; dozen, \$5.00; hundred, \$35.00.

Herbert Hoover. A magnificent flower, brilliant salmon pink with orange shadings. Large flowers with long, slightly pointed petals; early and profuse bloomer; medium height. Each, 75c; dozen, \$7.50; hundred, \$55.00.

J. J. Dean. Rich rose color with violet tints and dark throat. Flower large and well formed, with broad petals, arranged rather closely on the stems. A profuse bloomer, making a splendid display in the garden and one of the best for cutting. Each, 25c; dozen, \$2.50; hundred, \$18.00.

James MacGillivray. Begonia rose with coral tints and dark throat, a pleasing color combination, especially attractive under electric light. The flowers are of medium size, well formed, with pointed petals, and arranged closely and evenly on the spike. A late variety, flowering very profusely; medium height. Each, 50c; dozen, \$5.00; hundred, \$35.00.

Madame Modjeska. Rich deep magenta. Flowers well formed, with broad petals, quite distinct. One of Mrs. Bullard's early introductions. Each, 50c; dozen, \$5.00; hundred, \$35.00.

Los Angeles. Lilac pink with darker markings toward edge of petals; large cup-shaped flowers; tall grower. Each, 50c; dozen, \$5.00; hundred, \$35.00.

Marion Welsh. Orange vermilion with dark throat, a very brilliant shade. Flowers large, with long, pointed petals, well formed and arranged very evenly on the stem. A very free bloomer and one of the very best. Each, 50c; dozen, \$5.00; hundred, \$35.00.

Mauve. Clear lilac mauve with darker stripe through center of each petal. Immense flowers with broad petals. A late blooming variety of medium height; one of the very best and most distinct of the collection. Each, \$1.00; dozen, \$10.00.



Theodore Payne

Mrs. Ella Birney. Rose color with white markings in throat; cup-shaped flowers; tall grower and profuse bloomer. Each, 35c; dozen, \$3.50; hundred, \$25.00.

Pearl Dickel. White with cream and very faint markings, broad rounded petals; medium height. Late bloomer. Each, 75c; dozen, \$7.50; hundred, \$55.00.

Roberto. A delicate shade of rose pink, with coral stripe through center of each petal; lilac-rose on reverse side of petals and outside of tube. A large, bold flower with broad petals; tall grower. Each, 75c; dozen, \$7.50; hundred, \$55.00.

San Diego. Light salmon pink with darker shadings and dark stripe through center of petals; medium height. Each 50c; dozen, \$5.00; hundred, \$35.00.

Santa Ana. Light salmon-orange with darker shading in throat and flame scarlet on the outside of the tube. A unique and distinct shade. Large flowers with pointed petals, arranged rather evenly on the stems and facing upwards. Tall grower and late bloomer. Each, \$1.00; dozen, \$10.00.

Smoke. Salmon rose overlaid with smoky violet and coral red in throat and outside of tube; a very unusual color combination; oblong, somewhat pointed petals; medium height. Each, \$1.00; dozen, \$10.00.

Theodore Payne. An indescribably delicate shade of salmon-pink. Very large star-shaped flowers of exquisite texture, loosely and gracefully arranged on tall stems. A late bloomer; one of the very best. Each, \$1.00; dozen, \$10.00.

Victory. Coral pink with scarlet shadings and dark stripe through center of petals, white markings in throat. Medium sized flowers, arranged regularly on the stems; dwarf habit, late bloomer. Each, 75c; dozen, \$7.50; hundred, \$55.00.

White Star. Pure white star-shaped flowers, arranged loosely and gracefully on long, airy stems. Each, \$1.00; dozen, \$10.00.

Woodrow Wilson. Fiery scarlet; large flowers with pointed petals. The most brilliant of all. Medium height. Each, \$2.50.

Mixed Varieties

Mrs. Bullard's Hybrids Special Mixture. A well-balanced mixture made up largely of named varieties. Each, 35c; dozen, \$3.50; hundred, \$25.00.

Mrs. Bullard's Hybrids Mixed. A general mixture of different colors, containing some of the older sorts and many unnamed seedlings. Each, 20c; dozen, \$2.00; hundred, \$18.00.



Marion Welsh

Choice Bulbs

for Fall and Winter Planting



Narcissus "Golden Spur"

NARCISSUS

The Narcissus is one of our most beautiful spring flowering bulbous plants, and thrives well in California. Some very desirable effects can be had by planting them in solid beds, and also by planting them among shrubbery and allowing them to become naturalized. They may be planted from the first of October to the middle of January, in any good garden soil, covering the bulbs to the depth of about 5 inches. The polyanthus varieties, of which the Chinese Lily is the best known, also succeeds well in water.

SINGLE NARCISSUS With Long Trumpets or "Daffodils"

Emperor. Pure yellow, of immense size. Each 20c; doz., \$2.00; 100, \$14.00.

Empress. White perianth with golden yellow trumpet. Each, 20c; doz., \$2.00; 100, \$14.00.

Glory of Leyden. Deep yellow, large. Each, 20c; doz., \$2.00; 100, \$14.00.

Glory of Sassenheim. White perianth, large, deep yellow trumpet. Each, 25c; doz., \$2.50; 100, \$18.00.

Golden Spur. Large, deep golden yellow, early, fine for forcing. Each, 20c; doz., \$2.00; 100, \$14.00.

King Alfred. (Novelty.) Flowers of great substance, clear golden yellow, tall vigorous grower. Each, 25c; doz., \$2.50; 100, \$18.00.

Madame de Graaff. Pure white perianth, soft primrose trumpet shading to white. Each, 15c; doz., \$1.50; 100, \$10.00.

Van Waverens' Giant. (Novelty.) The largest Narcissus ever grown. A grand flower, perianth primrose with bright yellow trumpet. Each, 35c; doz., \$3.50; 100, \$25.00.

SINGLE NARCISSUS

With Large Cups

Barri Conspicuus. Primrose yellow, crown orange scarlet. Each, 15c; doz., \$1.50; 100, \$10.00.

Sir Watkin. Large, perianth light yellow, cup golden yellow tinted with orange. Each, 20c; doz., \$2.00; 100, \$12.00.

With Small Cups

Poeticus Ornatus. "Pheasant's Eye." Pure white, cup edged with scarlet. Each, 10c; doz., \$1.00; 100, \$7.50.

POLYANTHUS NARCISSUS

Paper White Large Flowering. Pure white. Each, 10c; doz., \$1.00; 100, \$7.50.

Grand Monarque. White, lemon cup. Each, 15c; doz., \$1.25; 100, \$9.00.

Grand Soleil D'Or. Yellow with orange cup. Each 20c; doz., \$2.00; 100, \$12.00.

Chinese Sacred Lily. White with yellow cup. Large bulbs. Each, 20c; doz., \$2.00.



Chinese Sacred Lily

POETAZ HYBRIDS

This class of bunch-flowering Narcissus is the result of crossing the *Narcissus poeticus* and some of the polyanthus varieties. The flowers are large, more or less of the *Poeticus* shape, but produced several on a stem. They are of remarkably good substance, lasting well when cut.

Aspasia. Pure white, yellow eye; large flowers, four to five on a stem. Each, 20c; doz., \$2.00; 100, \$12.00.

Elvira. Pure white, yellow eye; large flowers, three to four on a stem. Each, 15c; doz., \$1.50; 100, \$10.00.

JONQUILS

Much prized for cut flowers, on account of their fragrance and graceful forms. They are easily forced, and also grow well in the open ground. Plant in any good garden soil, covering the bulbs to a depth of about four inches.

Campernelle Regulosus. Clear yellow. The largest variety. Each, 15c; doz., \$1.25; 100, \$9.00.

TULIPS

For many years it was considered almost impossible to grow tulips successfully in Southern California, but of late years it has been demonstrated that the late flowering varieties can be grown here with the very best of results. A shady or partially shady situation is preferable, and they thrive best in a sandy soil, well enriched with plenty of rotten manure. The bulbs should be covered about five inches deep, and may be planted from October to January, though early planting is advisable.

DARWIN TULIPS

Bleu Aimable. Soft bluish lilac, very large flower. Each, 10c; doz., 90c; 100, \$6.00.

Clara Butt. Soft salmon rose, long stems. Each, 5c; doz., 60c; 100, \$4.00.

Calliope. Soft rose, margined pink. Each, 10c; doz., \$1.00; 100, \$7.00.

Dream. Beautiful lilac. Each, 10c; doz., \$1.00; 100, \$7.00.

Euterpe. Mauve lilac. Each, 5c; doz., 60c; 100, \$4.00.

Flamingo. Beautiful shell pink, white center. Each, 10c; doz., \$1.00; 100, \$7.00.

Glow. (Claude Gilot.) Vermilion scarlet, white base with blue markings. Each, 10c; doz., \$1.00; 100, \$7.00.

Gretchen. Soft blush, early. Each, 10c; doz., 90c; 100, \$6.00.

King Harold. Deep purple red. Each, 10c; doz. 90c; 100, \$6.00.

La Tulipe Noire. (The Black Tulip.) Immense flower of unique color. Each, 10c; doz., \$1.00; 100, \$7.00.

Madame Krelage. Soft rose, margined blush. Each, 10c; doz., \$1.00; 100, \$7.00.

Massachusetts. Soft rose, tinted carmine, white base. Each, 10c; doz., \$1.00; 100, \$7.00.

Mr. Farncombe Sanders. Dark rosy red, long stems. Each, 10c; doz., 80c; 100, \$5.00.

Pride of Haarlem. Old rose, immense flower. Each, 10c; doz., 80c; 100, \$5.00.

Prince of the Netherlands. Deep cerise rose, margined pink, pale blue center, large flower. Each, 15c; doz., \$1.25; 100, \$9.00.

Professor Rauwenhof. Bright cherry red, shaded salmon; fine for forcing. Each, 10c; doz., \$1.00; 100, \$7.00.

Psyche. Soft rose, inside silvery rose, base tinted blue. Large flowers on long stems. Each, 10c; doz., \$1.00; 100, \$7.00.

Rev. Ewbank. Heliotrope lilac, with paler edge. Each, 10c; doz., 80c; 100, \$5.00.

Darwin Fine Mixed. Each, 5c; doz., 60c; 100, \$4.00.

BREEDER TULIPS

On account of their large size and unique colorings, these Tulips are now in great demand; we cannot recommend them too highly. They require the same treatment and bloom about the same time as the Darwin Tulips.

Bronze Queen. Soft buff, inside tinged golden-bronze. Each, 10c; doz., \$1.00; 100, \$7.00.

Dom Pedro. Coffee brown, shaded maroon, inside rich mahogany. A magnificent flower. Height 25 in. Each, 15c; doz., \$1.50; 100, \$10.00.

Fairy. (Panorama.) Terra cotta and bronze, large flower. Each, 15c; doz., \$1.50; 100, \$10.00.

Feu Ardent. Brilliant carmine red, long stems. Each, 20c; doz., \$2.00; 100, \$12.00.

Godet Parfait. Bright violet with white base. Height 30 in. Each, 20c; doz., \$2.00; 100, \$12.00.

Jaune D'Oeuf. (Sunrise.) Golden yellow, shaded apricot. Each, 10c; doz., \$1.00; 100 \$7.00.

MacMahon. Bronze violet, margined bronze yellow, immense flower. Each, 20c; doz., \$2.00; 100, \$12.00.

Medea. Crushed strawberry, shaded heliotrope, yellow center. Flower of immense size. Each, 10c; doz., \$1.00; 100, \$7.00.

Prince of Orange. (Sunset.) Terra-cotta with orange edge, extra fine. Each, 20c; doz., \$2.00; 100, \$12.00.

Velvet King. Velvety purple with yellow base. large flowers. Extra fine for forcing. Height 24 in. Each, 20c; doz., \$2.00; 100, \$12.00.

Yellow Perfection. Bronze yellow shaded deep golden yellow. Height 24 in.. Each, 15c; doz., \$1.25; 100, \$9.00.

Breeder Tulips. Fine mixed. Each, 10c; doz., \$1.00; 100, \$7.00.

LATE OR COTTAGE TULIPS

A very desirable class of late flowering tulips, being similar to the Darwin and Breeder tulips in type of flower and culture only blooming much later in the season. The flowers are large and the colors are especially attractive when used as a cut flower. The *Gesneriana Major* is the large, late, scarlet tulip seen in many of the floral stores late in the spring and so greatly admired.

Bouton D'Or. Pure yellow. Each, 10c; doz., 90c; 100, \$6.00

Gesneriana Spathulata Major. Crimson scarlet with blue black center, sweet scented. Each, 10c; doz., 90c; 100, \$6.00.

Gesneriana Lutea. Beautiful golden yellow. Each, 10c; doz., 90c; 100, \$6.00.

Inglescombe Pink. (*Salmon Queen*.) Rosy pink, tinted salmon. Each, 10c; doz., 90c; 100, \$6.00.

Inglescombe Scarlet. Intense scarlet, black base. Each, 10c; doz., 90c; 100, \$6.00.

Inglescombe Yellow. Large canary yellow. One of the best. Each, 10c; doz., 90c; 100, \$6.00.

Maiden's Blush. (*Picotee*.) White margined rose, recurved petals. Each, 10c; doz., 80c; 100, \$5.00.

Moonlight. Pale yellow, large flower. Each, 10c; doz., \$1.00; 100, \$7.00.

Mrs. Moon. Rich deep yellow, pointed reflexed petals. Each 15c; doz., \$1.25; 100, \$9.00.

The Fawn. Rosy fawn color, shaded blush. Each, 10c; doz., 90c; 100, \$6.00.

Late Tulips Mixed. A fine mixture of the above varieties. Each, 5c; doz., 60c; 100, \$4.00.

TULIPA CLUSIANA

"THE LADY TULIP"

Introduced by us a few years ago, this charming little species from the Mediterranean region has done so remarkably well here in Southern California that we feel we cannot praise it too highly. The plant grows 12 to 18 inches high and the flower is white with a dark base, flushed red on the outside and deliciously fragrant. It is the easiest of all bulbs to grow, will thrive in full sun or partial shade, and is not particular as to soil; every bulb will throw a perfect flower. A splendid subject for beds, borders and rock gardens or for planting in any unused corner. Each, 10c; doz., \$1.00; 100, \$7.50.

RANUNCULUS

Ranunculus are strikingly beautiful flowers of all shades of color from bright red to pink, yellow and white; very free flowering, pretty for beds and borders, and also useful for cut flowers. They should be planted in rich, well-drained, sandy soil, six to eight inches apart and two inches deep.

Giant French mixed. Each, 5c; doz., 60c; 100, \$4.00.

Mammoth Bulbs. Each, 10c; doz., 90c; 100, \$6.00.

Red Shades. Each, 10c; doz., \$1.00; 100, \$7.00.

Yellow Shades. Each, 10c; doz., \$1.00; 100, \$7.00.

New Florentine Strain. Very large flowers, mostly light shades. Each, 15c; doz., \$1.50; 100, \$10.00.

OXALIS

Charming little plants with pretty clover-like foliage and flowers of various colors; desirable for pots, hanging baskets, window boxes, small beds and borders. For planting in the open ground, place the bulbs four inches apart and two inches deep in any good soil.

Doz., 35c; 100, \$2.50.

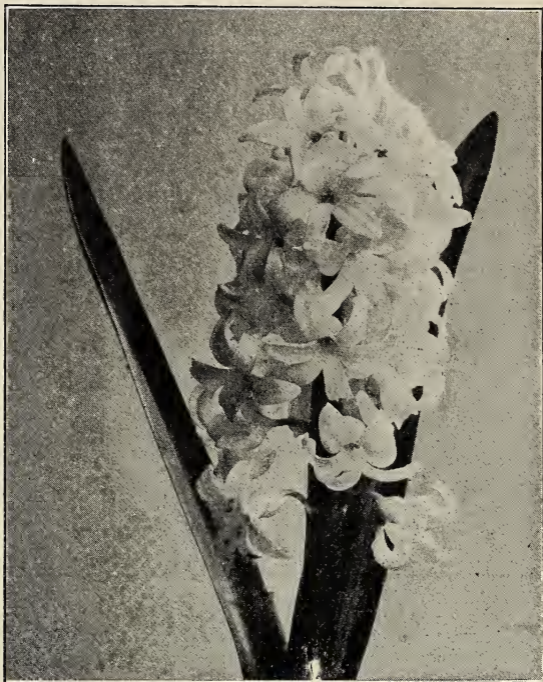
Grand Duchess, White. Large, pure white, on single stems.

Grand Duchess, Pink. Large, bright pink, on single stems; compact grower.

Grand Duchesses, Lavender. Large, lavender changing to old rose; on single stems.

Bermuda Buttercup. Large flowers, bright buttercup yellow, produced in great abundance; on long stems, several flowers on a stem. Excellent for hanging baskets.

Bowiei. Large, brilliant rose pink. Extra fine, especially desirable for hanging baskets. Each, 5c; doz., 50c; 100, \$3.50.



Hyacinth "L'Innocence"

HYACINTHS

Hyacinths may be grown in the open ground, in pots, or in glasses, and can be planted from the beginning of October until the end of December. For the open ground, plant in light rich soil, covering to the depth of 4 to 5 inches.

For pots, plant one in a 5-inch pot, pressing the earth down firmly and leaving one-third of the bulb exposed; then place the pots on the north side of a building or in a cellar and cover with a layer of sand, earth or leaf mould to the depth of about 8 inches; after 4 or 5 weeks unearth the pots and gradually inure to the light.

For glasses, fill the glass with water so as to nearly touch the base of the bulb; place in a cellar or dark place for a few weeks until the roots have grown half way to the bottom of the glass; the water should be changed frequently, care being taken not to injure the roots. A piece of charcoal placed in the water will help to keep it pure.

NAMED SINGLE HYACINTHS

Each, 30c; doz., \$3.00; 100, \$22.00

Gigantea. Light pink, very large truss.

La Victorie. Bright carmine rose, very large truss.

Queen of the Pinks. Bright rosy pink, enormous truss.

Albertine. Pure white, early.

La Grandesse. Pure white, extra large.

L'Innocence. Pure white, large truss.

Grand Maitre. Deep porcelain blue, large spike.

King of the Blues. Rich dark blue.

Queen of the Blues. Pale azure blue, large spike.

City of Haarlem. Bright yellow.

SINGLE BEDDING HYACINTHS

Dark Red. Dark Blue. Pure White. Rose and Pink. Light Blue. Mixed Colors. Each, 15c; doz., \$1.50; 100, \$10.00

HYACINTHUS CANDICANS

Often called "Summer Hyacinth." An interesting plant from South Africa with flower stems 2 to 4 feet high, each bearing 20 to 30 large white bell-shaped flowers. The blossoms appear in summer or early fall at a time when very few bulbous plants are in bloom and are very fragrant. Very effective planted in groups. Each, 25c; doz., \$2.50.



Anemone De Caen

ANEMONES

Anemones are valuable for bedding on account of their neat, compact habit, and brilliant colored flowers. Plant any time from October to March in light, well-drained, sandy soil, placing them about six inches apart, and covering to a depth of three inches.

St. Brigid. The celebrated Irish strain of semi-double anemones, mixed colors. Each, 10; doz., \$1.00; 100, \$7.00.

De Caen. Single, splendid mixture of all the best colors. Each, 10c; doz., 80c; 100, \$5.00.

ANTHOLYZAS

Interesting plants from tropical and South Africa which thrive well in our Southern California Gardens. Plant the bulbs in September or October in any good garden soil placing them 8 to 12 inches apart and two to three inches deep.

Antholyza aethiopica. Especially valuable for winter flowers, coming into bloom in January and February. The plants grow 3 to 4 feet high with rich green, handsome foliage and red-yellow flowers. Each, 10c; doz., \$1.00; 100, \$7.50.

Antholyza watsonioides. Flowers cinnamon-colored, in shape like a watsonia but with a longer and more curved tube. The plants grow 5 to 6 feet high and the flowers appear in late spring and early summer. Each, 10c; doz., \$1.00; 100, \$7.50.

WATSONIAS

A beautiful flower from South Africa, and one which thrives remarkably well in our climate; plants grow from three to five feet high, and produce great spikes of large flowers, which are especially valuable for cutting, lasting a long time in water. The plants succeed best in a rich loam, with liberal dressing of well-rotted manure.

O'Brieni. Pure white. The plants grow 4 to 5 feet high and produce long spikes of large flowers. Very desirable for cutting purposes. Each, 5c; doz., 50c; 100, \$3.50.

Angusta. Bright scarlet; 2½ to 3½ feet. Each, 15c; doz., \$1.50; 100, \$10.00.

Giant Lilac. Soft lilac, very large. Plants grow 4 to 5 feet high. Each, 15c; doz., \$1.50; 100, \$10.00.

Marginata. "Long-Spiked Watsonia." A magnificent species quite distinct from all other Watsonias, having very broad, rich, dark green foliage from which rise slender, graceful flower stems six feet high. The flowers are a delicate shade of lilac, exquisitely shaded with pink, and are arranged closely around the stem, forming a dense spike 1½ to 2½ feet in length. The plant makes a grand display in the garden and as a cut flower for tall vases is invaluable. Each, 50c; doz., \$5.00; 100, \$30.00.

HARDY IRIS

Commonly called Flag Lilies. As the name implies, they are very hardy, requiring little attention after once being established and giving a great show of color over a long season. For beds or borders they are especially desirable, the wide selection in colors making it possible to blend them with any color scheme. They may be planted in any good soil, ten to twelve inches apart and two to three inches deep; a good mulch of well rotted dairy fertilizer before the flowering season helps to increase the size and number of flowers.

- Albicans. Pure white. Each, 10c; doz., \$1.00; 100, \$7.00.
 Aurca. Deep yellow, tall grower. Each, 50c; doz., \$5.00.
 Archeveque. Dark velvety purple. Each, 35c; doz., \$3.50.
 Arnols. Rosy bronze and velvety purple. Each, 35c; doz., \$3.50.
 Caterina. Light blue, large flowers. Each, 25c; doz., \$2.50.
 Isoline. Pale lilac and yellow. Each, 35c; doz., \$3.50.
 Kochii. Rich claret purple. Each, 15c; doz., \$1.50.; 100, \$10.00.
 Lohengrin. Mauve and chinese violet. Each, 25c; doz., \$2.50.
 Lorely. Yellow and blue. Each, 25c; doz., \$2.50.
 Mesopotamica. Soft blue and violet purple. Tall grower and early bloomer. Each, 75c.
 Niebelungen. Fawn yellow and violet purple. Each, 35c; doz., \$3.50.
 Pallida Dalmatica. Lavender. Each, 25c; doz., \$2.50.
 Prosper Laugier. Light bronze red and velvety purple. Each, 35c; doz., \$3.50.
 Queen of May. Soft rose-lilac. Each, 25c; doz., \$2.50.
 San Gabriel. Flowers very large, lavender and rosy mauve, fragrant. Grows 4 to 5 feet high; early and free bloomer. One of the finest irises ever grown. Each, \$1.50.
 Siwas. Violet-blue and violet-black. Each, 25c; doz., \$2.50.
 Iris ochroleuca. White and yellow, tall grower. Each, 35c; doz., \$3.50.
 Iris fimbriata. "Orchid Flowering Iris." Flowers pale lilac and yellow, beautifully blended. Thrives best in partial shade. Each, 50c.

MIDWINTER IRIS

Iris stylosa. A beautiful species forming large clumps with leaves 2 feet long. Flowers lilac blue, produced in great profusion during the winter. Each, 25c; doz., \$2.50.

DUTCH IRIS

A new race resembling the well known Spanish Iris but of much more vigorous growth and flowering fully two weeks earlier. The flowers, which are very large, are of remarkable substance and produced in many beautiful shades of blue, purple, lavender and white with very conspicuous orange blotches on the wide falls. They require the same treatment as Spanish Iris.

Each, 15c; doz., \$1.25; 100, \$9.00

- Anton Mauve. Pearl blue, large flower.
 Der Kinderen. Dark blue and yellow.
 Frans Hals. Falls pale primrose, standards pale blue.
 Hobbema. Falls primrose yellow, standards pale blue.
 J. Wisenbruch. Pale mauve.
 Rembrandt. Falls deep blue with orange blotch, standards dark blue.
 Choice Mixed. All colors.

SPANISH IRIS

Spanish Iris succeed remarkably well in California, and are of the easiest culture. The bulbs may be planted from October to December, in any good, light soil, three to four inches deep and six inches apart. The flowers are on long stems and are almost equal to orchids for richness and variety of color. They last a long time in water and are largely grown by florists for cut flowers.

Each, 10c; doz., \$1.00; 100, \$7.00

- Blanche Fleur. White, large flower.
 Cajanus. Golden yellow; strong grower, long stems.
 Formosa. Dark violet blue with orange blotch.
 King of the Blues. Dark blue, extra fine.
 Louise. Pale blue and white.
 Reconnaissance. Deep bronze with golden blotch.
 Choice Mixed. All colors.

IRIS FILIFOLIA

- Imperator. Deep blue, large flower on strong stems, extra fine for cutting. Each, 15c; doz., \$1.50; 100, \$10.00.
 Celestial. Sky blue, extra fine. Each, 15c; doz., \$1.25; 100, \$9.00.



Longiflorum giganteum "Easter Lily"

LILIES

In the following list will be found many beautiful species, suitable for many uses. For planting singly or in small groups in shady or partially shaded corners or under trees, they add an interest and charm to a garden that is hard to equal. They require a good rich soil with thorough drainage and should be planted four to five inches deep.

Auratum. "Golden Banded Lily." White spotted crimson, with a distinct golden stripe running through each petal. Each, 35c; doz., \$3.50.

Candidum. "Annunciation Lily." "Madonna Lily." Large pure white, fragrant flowers. An old favorite and one of the hardiest of lilies. Each, 35c; doz., \$3.50.

Henryi. A splendid lily from Central China; easily grown. The plants grow from 4 to 8 feet high, producing up to 20 large blossoms with recurved petals; color bright orange yellow, slightly spotted with reddish brown. Each, 35c; doz., \$3.50.

Humboldtii magnificum. "Humboldt's Lily." A magnificent California Lily growing from 5 to 8 and sometimes 10 feet high. Flowers large, often 5 to 6 inches in diameter, deep orange with many small maroon spots, each spot surrounded by a crimson ring. Long-lived, easily grown and free blooming. Each, 35c; doz., \$3.50.

Longiflorum giganteum. "Easter Lily." Large, trumpet-shaped, pure white flowers; very fragrant. Largely grown for Easter trade. Each, 35c; doz., \$3.50.

Pardalinum. "Leopard Lily." Flowers earlier than *L. Humboldtii*, reddish orange dotted with maroon, of easy culture. Each, 25c; doz., \$2.50; 100, \$18.00.

Parryi. "Lemon Lily." A rare California species. Flowers large on leafy stems; trumpet shaped, lemon-yellow; very fragrant. Grows 2 to 4 feet high. Each, 50c; doz., \$5.00.

Regale. "Regal Lily." A beautiful lily from Western China which succeeds well in California. The plants grow 3 to 5 feet high, with large trumpet-shaped flowers 4 to 6 inches in length. Color, inside of flower bright canary yellow, shading to white toward the edge of petals; outside of flower white tinged with purple; very fragrant. Easily grown and very hardy. Each, 35c; doz., \$3.50.

Speciosum rubrum. "Red Japan Lily." Large flowers with reflexed petals, white, heavily spotted with crimson; very fragrant. Blooms in July and August. Each, 35c; doz., \$3.50.

AMARYLLIS

These beautiful summer and fall flowering plants are of easy culture, and thrive in a sunny situation. Do not cover more than one inch above the crown of the bulbs. They succeed best when the bulbs are undisturbed—this is especially true of *Amaryllis belladonna*—but when moving becomes necessary the best time is as soon as the bulbs have flowered.

Amaryllis Belladonna major. "Belladonna Lily." Large rose pink flowers. Blooms in July and August. Each, 25c; doz., \$2.50.

Amaryllis Belladonna minor. Flowers more erect than the preceding. Rose pink with white throat. Blooms in September and October. Each, 35c; doz., \$3.50.

Amaryllis formosissima. "Jacobean Lily." Rich velvety crimson, very showy. Each, 20c; doz., \$2.00.

Amaryllis Johnsonii. Flowers very large, red striped with white in center of petals. Each, 50c; doz., \$5.00.

Amaryllis Vittata Hybrids. A great variety of shades, mostly white grounds marked with pink, scarlet, crimson or maroon; very large flowers; extra fine. Each, 75c; doz., \$7.50

AGAPANTHUS

"Blue African Lily"

A hardy evergreen plant with long, glossy green leaves. In spring and early summer the plant throws up tall, slender flower stalks 2 to 3 feet high, crowned with large umbels of from 30 to 90 sky-blue lily-like flowers. *Agapanthus* should be planted in a location where they will not be disturbed for a number of years, and the flowers will increase each season.

Agapanthus umbellatus. "Blue African Lily." Each, 35c; doz., \$3.50.

MONTBRETIA

The *Montbretia* is one of the most brilliant of the summer flowering bulbous plants, making a gorgeous display in the garden during July and August. The blooms are produced in many-flowered, graceful, arching sprays, and are very desirable for cutting, lasting a long time in water. The plant is of easy culture, thriving in any soil in a sunny location. Plant the bulbs from November to January, 6 inches apart and about 3 inches deep.

Aurantiaca. Deep orange yellow. Each, 15c; doz., \$1.50; 100, \$10.00.

Germania. Red and yellow. Each, 15c; doz., \$1.50; 100, \$10.00.

Golden West. Pure golden yellow, tall branching spikes, extra fine. Each, 20c; doz., \$2.00; 100, \$12.00.

Fire King. Glowing scarlet red, large flowers, extra fine. Each, 20c; doz., \$2.00; 100, \$12.00.

LEUCOJUM VERNUM

"Spring Snowflakes"

Charming little plants with long, slender stems and small pendant flowers; white, tipped with green. The plants bloom very early, making a display in the garden when few other flowers are in bloom. The flowers are also useful for cutting, lasting a long time in water. The plants will thrive in full sun or partial shade, and are excellent for naturalizing among trees or shrubbery. Plant the bulbs any time from September to end of November, in any good soil, placing them 4 to 5 inches apart and 4 inches deep. Each, 10c; doz., 90c; 100, \$6.00.

IXIAS

Beautiful plants from South Africa, with flowers of many different colors. The plants grow 1 to 2 feet high, with grass-like foliage and slender stems; valuable for cutting, and also making a brilliant display in the garden. Plant from October to December in a sunny location, 3 to 4 inches apart and 3 inches deep.

Extra choice mixed. Each, 5c; doz., 60c; 100, \$4.00.

CALLA LILIES

White. (*Richardia Aethiopica*.) "Lily of the Nile." The common Calla Lily. Each, 15c; doz., \$1.50.

Yellow. (*Richardia Elliottiana*.) One of the finest introductions for many years. Flowers fully as large as the white variety, but deep golden yellow; foliage dark green, faintly spotted with white. Each, 35c; doz., \$3.50.

CALOCHORTUS

"Mariposa Lily" or "Butterfly Tulip." The flowers are of the most varied and showy colors and resemble a tulip in form. Among the most beautiful of our native plants. The following species grow best in a rather heavy loam, but must have good drainage. Plant four to five inches deep.

Calochortus albus. "Fairy Bell" or "Lantern of the Fairies." Pendant globular flowers, pearly white, fine for fern beds and shady banks. Each, 5c; doz., 50c; 100, \$3.50.

Calochortus amabilis. "Golden Lily Bell." Pendant globular flowers, clear yellow. Useful for shady banks. Each, 5c; doz., 50c; 100, \$3.50.

Calochortus catalinae. "Common Mariposa Lily." Large handsome flowers, white or lilac with a large maroon spot at base of each petal. Height 1 to 2 feet; blooms several weeks before other Mariposas. Each, 10c; doz., \$1.00; 100, \$7.00.

Calochortus clavatus. "Large Yellow Mariposa Lily." Large flowers, sometimes 4 to 5 inches across, shaped like a broad based bowl; deep rich yellow, the lower half covered with stiff yellow hairs; zigzag stems 2 to 3 feet high. Each, 15c; doz., \$1.50.

Calochortus kennedyi. "Desert Mariposa Lily." A rare species from the desert side of our mountains. Plants grow 5 to 10 inches high and produce from 2 to 4 flowers on a stem. Color brilliant vermilion, sometimes with a black band on lower part of petals. Each, 20c; doz., \$2.00.

Calochortus luteus. "Yellow Mariposa Lily." Flowers yellow with penciled lines radiating from the base to center of petals. Each, 10c; doz., \$1.00; 100, \$7.00.



Calochortus plummerae

Calochortus plummerae. "Late Flowering Mariposa Lily." Large flowers, rich lavender purple, lined with long yellow, silky hairs. Grows 2 to 3 feet high and will succeed in almost any soil; flowers in early summer. Each, 15c; doz., \$1.50; 100, \$10.00.

Calochortus splendens. "Lilac Mariposa Lily." Flowers clear lilac, 2 to 3 inches across, lower part of the petals covered with long cob-webby hairs. Each, 10c; doz., \$1.00; 100, \$7.00.

Calochortus venustus oculatus. White or pale lilac with reddish purple spot on the upper portion of each petal. The easiest kind to grow. Each, 5c; doz., 50c; 100, \$3.50.

Calochortus venustus citrinus. Similar to the preceding, but light yellow. Each, 10c; doz., 70c; 100, \$4.00.

Calochortus venustus El Dorado. Various shades of pink, rose, lilac, purple and white. Each, 10c; doz., 90c; 100, \$6.00.

Calochortus vesta. Very large, white flushed with lilac or rosy purple and red at center. One of the very best and of easy culture. Each, 10c; doz., 90c; 100, \$6.00.

Calochortus, choice mixed. Each, 5c; doz., 50c; 100, \$3.50



Gladiolus "Golden Measure"

GLADIOLUS

The gladiolus is one of the most popular of spring and summer flowering plants, both for making a display in the garden and also for cut flowers. Where space is not available for solid beds, they are most attractive lined along a fence or walk and can also be planted in open bays between shrubbery with very pleasing results. Being very hardy and free flowering, they give a wonderful show of brilliant color with very little care.

The bulbs can be planted at intervals from the middle of November until April, thus supplying a succession of flowers. In locations where there is no danger from cold they can be had in bloom by Christmas by planting during the latter part of August. For this

purpose either bulbs which have been kept in cold storage or bulbs which blossomed early in the spring and have been dormant for a few months should be used.

Gladioli thrive in any good garden soil. Prepare the ground by spading to a depth of ten to twelve inches. Plant the bulbs eight to ten inches apart and three to four inches deep. Covering the surface with a mulch of well rotted manure will be found very beneficial.

Alice Tiplady. Primulinus hybrid. New, one of the most beautiful Gladioli ever introduced. Color, orange salmon and flame pink, a shade now in great demand in flowers. Excellent for cutting. Each, 10c; doz., \$1.00; 100, \$7.00.

America. Soft flesh pink. Each, 10c; doz., 80c; 100, \$5.00.

Anna Eberius. Deep velvety purple. Each, 10c; doz., \$1.00; 100, \$7.00.

Arlon. Primulinus hybrid. Yellow, shaded with pink and copper, extra fine. Each, 25c; doz., \$2.50; 100, \$15.00.

Baron Hulot. Violet blue. Each, 15c; doz., \$1.50; 100, \$10.00.

Byron L. Smith. Lavender pink on white ground; color equal to an orchid, extra fine. Each, 20c; doz., \$2.00; 100, \$12.00.

Crimson Glow. Dark red. Each, 10c; doz., \$1.00; 100, \$7.00.

David Starr Jordan. Flame color overlaid with scarlet, immense flower. Each, 35c; doz., \$3.50.

E. J. Shaylor. Deep, rich rose with ruffled petals. A vigorous grower, producing a tall stem with many flowers open at one time. Each, 10c; doz., \$1.00; 100, \$7.00.

Evelyn Kirtland. Coral pink. Each, 10c; doz., \$1.00; 100, \$7.00.

Golden Measure. Rich yellow, extra fine. Each, 15c; doz., \$1.50; 100, \$10.00.

Halley. Salmon pink. Each, 10c; doz., 80c; 100, \$5.00.

Herada. Deep mauve. Each 10c; doz., \$1.00; 100, \$7.00.

Jack London. Light salmon with orange flame stripes; tall spikes. Each, 20c; doz., \$2.00; 100, \$12.00.

Lily White. Snow white. Each, 10c; doz., \$1.00; 100, \$7.00.

Le Marechal Foch. Rich pink, very large flowers. Each, 10c; doz., \$1.00; 100, \$7.00.

Los Angeles. New, shrimp pink tinted orange. The most beautiful gladiolus yet produced, and the nearest to an ever-blooming variety. Each, 20c; doz., \$2.00; 100, \$12.00.

Mrs. H. E. Bothin. Geranium pink with flame scarlet center, distinctly ruffled. Each, 20c; doz., \$2.00; 100, \$12.00.

Mrs. Frank Pendleton. Salmon pink with blood red blotch on lower petals. Each, 10c; doz., 80c; 100, \$5.00.

Mary Pickford. Creamy white, throat sulphur yellow. Each, 10c; doz., \$1.00; 100, \$7.00.

Prince of Wales. Salmon shaded apricot, extra fine. Each, 10c; doz., \$1.00; 100, \$7.00.

Rose Ash. Corinthian-red shading to ashes of roses, lower petals shaded light yellow. Each, 20c; doz., \$2.00.; 100, \$12.00.

Virginia. Glowing scarlet. Each 10c; doz., \$1.00, 100, \$7.00.

Souvenir. Primulinus hybrid. Rich canary yellow, tall graceful spike. Each, 25c; doz., \$2.50.; 100, \$15.00.

Superb Mixture of all Shades. Each, 10c; doz., 80c; 100, \$5.00.

Primulinus Hybrids. A splendid mixture, mostly in tones running from pale yellow to apricot, buff, pink, and scarlet. The flowers are of good size, slightly hooded, and produced on tall, graceful stems, especially desirable for cutting. Each, 10c; doz., 80c; 100, \$5.00.

BABY OR DWARF GLADIOLUS

Apollo. Orange salmon. Each, 10c; doz., \$1.00.

Brilliant. Rich scarlet. Each, 10c; doz., 80c.

Blushing Bride. Flesh, crimson throat. Each, 10c; doz., 80c.

Peach Blossom. Soft pink. Each, 10c; doz., 80c.

SPARAXIS

Charming little plants with showy flowers in many beautiful shades, ranging from white to cream, flesh pink, deep pink, rose, scarlet, crimson, lilac, mauve, purple and violet. Very effective when planted in masses. Plant in a sunny location in good garden soil, any time from September to end of November, 3 to 4 inches apart and 3 inches deep.

Extra choice mixed. Each, 5c; doz., 60c; 100, \$4.00.

FREESIAS

A very popular flower and one which does remarkably well in our climate. The bulbs can be planted from August to the middle of November, three or four inches apart and three inches deep. They bloom in February and March; the flowers, which are very fragrant, are largely used for cutting, and last a long time in water.

Purity. Pure white. Doz., 30c; 100, \$2.00.

Purity. Pure white. Mammoth bulbs. Each, 5c; doz., 40c; 100, \$3.00.

Fischerii. Improved pure white. Each, 10c; doz., 80c; 100, \$5.00.

New Rainbow Freesias. Various shades of pink, rose, lilac purple, yellow and lavender. Each, 10c; doz., 80c; 100, \$5.00.

California. Bright golden yellow, large flowers; strong grower with long stems, one of the very best. Each, 10c; doz., \$1.00; 100, \$7.50.

Carmencita. New, orange salmon with buff shading on lower petals. Each, 10c; doz., \$1.00; 100, \$7.50.

General Pershing. Very large open flowers, pink and yellow suffused with bronze, extra fine. Each, 10c; doz., 90c; 100, \$6.00.

Amethyst. Rich amethyst blue, strong grower. Each, 15c; doz., \$1.25; 100, \$9.00.

Aurora. Yellow suffused with orange, large flowers. Each, 10c; doz., \$1.00; 100, \$7.50.

Ilena. Deep rosy lavender with orange blotch on lower petals; very attractive. Each, 15c; doz., \$1.25; 100, \$9.00.

Mrs. Marc Peter. Deep rose and salmon. Each, 15c; doz., \$1.50; 100, \$10.00.

Olivette. New, bright carmine red, with yellow throat. Each, 15c; doz., \$1.25; 100, \$9.00.

BABIANAS

Sometimes called "Blue Freesia." A charming little plant of about the same habit as the freesia and very desirable for beds or borders; flowers rich deep blue and fragrant. Plant any time from August to end of November in good soil three or four inches apart and two inches deep.

Blue. Each, 5c; doz., 50c; 100, \$3.50; 1000, \$30.00.

BRODIAEA

Beautiful native bulbs of easy culture; will thrive in any good garden soil; plant 2 to 3 inches deep.

Brodiaea capitata. "Cluster Lily" or "Wild Hyacinth." Flowers in clusters, violet or light blue, grows from 1 to 2 feet high. Each, 5c; doz., 40c; 100, \$3.00.

Brodiaea coccinea. "Floral Firecracker." A striking and beautiful plant, with long slender stems, headed with numerous tubular, bright crimson flowers, which are tipped with pale green. Very effective for planting in fern beds and will succeed well in shade or full sunlight. Each, 10c; doz., \$1.00.

Brodiaea grandiflora. "Harvest Brodiaea." A late flowering species. It grows from 6 inches to 1 foot high, with 5 to 10 large flowers on a stem, of a rich violet purple shade. Each, 5c; doz., 50c; 100, \$3.50.

Brodiaea lactea. "White Brodiaea." White flowers, sometimes pale lilac. Each, 5c; doz., 50c; 100, \$3.50.

Brodiaea laxa. "Ithuriel's Spear." A magnificent species, growing from 1 to 2 feet high. The flowers are very large, violet purple, and from 10 to 30 on a stem. Each, 5c; doz., 50c; 100, \$3.50.

SCILLA CAMPANULATA

"Wood Hyacinth" or "Blue Bell." A charming flower resembling the hyacinth but smaller and more graceful. While it will grow in the full sun, it succeeds best in shade or partial shade. A splendid subject for naturalizing in woods or under trees, the bulbs multiply and come up thicker each year. Plant from October to December, about three inches deep and five to six inches apart.

Excelsior. Rich blue, large bells, extra fine. Each, 10c; doz., 80c; 100, \$5.00; 1000, \$40.00.

Blue Queen. Porcelain blue, tall grower. Each, 5c; doz., 50c; 100, \$4.00.

BEGONIA, TUBEROUS ROOTED

Valuable as pot plants, also for planting out in sheltered places. The bulbs should be started in small pots using a mixture of loam, leaf mold and sand.

Single, Rose, Orange, Yellow, Salmon, Crimson, or mixed. Each, 35c; doz., \$3.50.

BLEEDING HEART

(*Dicentra spectabilis*)

The Bleeding Heart is an old-fashioned favorite garden flower. The plants attain a height of 1½ to 2 feet, with graceful stems and fern-like foliage. The flowers are heart-shaped, pendant, and of a delicate shade of rosy pink. Should be planted in a moist, shady situation; an excellent subject for the fern bed, also very desirable for forcing, and makes an attractive pot plant. Each, 75c; doz., \$7.50.

TRITONIA CROCATA

Sometimes called "Red Freesia." A beautiful little flower of the same habit as the freesia and excellent for beds and borders. The flowers are rich orange scarlet with a transparent blotch at the base of each petal. Plant any time from August to end of November, three to four inches apart and two inches deep. Each, 5c; doz., 60c; 100, \$4.00.

CALADIUM ESCULENTUM

A very ornamental plant commonly known as "Elephant Ear." Large, handsome leaves, often 3 feet long by 3 feet wide, very effective on a lawn; requires plenty of water. Each, 25c; per doz., \$2.50.

MUSCARIA

Heavenly Blue. "Grape Hyacinth." Sky blue. Very fine for a low bed or border. Each, 5c; doz., 60c; 100, \$4.00.

ORNITHOGALUM ARABICUM

Commonly called the "Star of Bethlehem." Throws up a tall stem with a cluster of star-shaped flowers; pure white with dark centers. Excellent for cutting, lasting a long time in water. Each, 10c; doz., 90c; 100, \$6.00.

TUBEROSE

Double Pearl. White. A well-known and justly popular flower. Each, 10c; doz., \$1.50.

MISCELLANEOUS BULBS

Chlidanthus fragrans. Flowers resemble the *Amaryllis*; clear rich yellow, very fragrant. Each, 15c; doz., \$1.50.

Lily of the Valley. Each, 10c; doz., \$1.00; 100, \$7.00.

Scilla peruviana (*S. clusii*). "Hyacinth of Peru." "Cuban Lily." Large spike of bright blue flowers. Desirable for pot culture or for planting out in the garden. Each, 25c.

Triteleia uniflora. "Spring Star Flower." Pale blue. Each, 5c; doz., 50c.; 100, \$3.50.

Zephyranthes candida. "Zephyr Flower" or "Fairy Lily." White, free flowering. Each, 5c; doz., 50c; 100, \$3.50.

Radio Garden Talks

Interesting and instructive talks are given every Tuesday afternoon at four o'clock over Station KNX, in Hollywood, by our Mr. Dewey R. Kruckeberg. An endeavor is always made to be of the greatest service possible through these radio talks, giving information and suggestions on how to make the garden attractive.

Listen In

Quarter Century Anniversary

1903 - 1928



NINETEEN HUNDRED AND TWENTY EIGHT marks our Twenty-Fifth year of establishment in Los Angeles and it is with great pleasure that we acknowledge a sincere and keen appreciation of that support given us by garden lovers all over the world which has made possible a continuous and sustained growth from the day of our opening.

Where one plant grew before, there are thousands growing now, each in its allotted space in the garden plan and we feel a deep sense of gratification in having helped to make these many gardens more beautiful . . . ever before us is the urge to bring more and more people into the fraternity of the soil, that they may learn of the wholesome enjoyment which comes from creating beauty upon the barren spots of the earth.

Having taken for an objective the conservation of California's native vegetation it is with a great deal of pride that we point out the remarkable progress made in the past quarter century. The seeds of our wild flowers, thought of and handled in ounces twenty-five years ago, are now well into the hundreds of pounds . . . the native shrubbery and trees, grown and not too frequently used in lots of fifty and one hundred, are now produced by the thousands without fear of surplus.

Twenty-five years of adherence to an idea has done much toward perpetuation through conservation of our natural beauty of foliage and flower and promises an early acceptance of a clearly defined style for the California garden, in the same sense as the existing styles for the English or Italian garden.

A continuance of the uniform high quality seeds and plants, helpful planning and planting service and unfailing courtesy is assured to all, old friends or new, and we shall strive to merit the faith we have earned

THEODORE PAYNE

*Seedsman, Nurseryman
Landscape Architect*

345 South Main Street

LOS ANGELES

2969-2999 Los Feliz Blvd

NOW is the TIME TO SOW Flower SEEDS for Winter and Spring

ACROCLINIUM. "Everlasting Flower." Annual.
roseum. Bright rose. Pkt., 10c.
album. White. Pkt., 10c.
Mixed. Pkt., 10c.

ALYSSUM. "Sweet Alyssum." Annual.
maritimum. White, 6 to 9 inches. Pkt., 10c; oz., 40c.
Little Gem. Dwarf, 4 to 6 inches. Pkt., 10c; oz., 60c.
Carpet of Snow. Very dwarf. Pkt., 10c; oz., 75c.
Lilac Queen. Lilac, very dwarf. Pkt., 15; oz., \$1.00.

NEW GIANT SNAPDRAGONS (*Antirrhinum maximum*)

A new race of Giant Snapdragons producing flowers of enormous size on long spikes. Invaluable for cutting and also for display in the garden.

Apple Blossom. Delicate pink, white throat. Pkt. 25c.
Canary Bird. Canary yellow. Pkt. 25c.
Copper King. Coppery scarlet. Pkt. 25c.
Gotelind. Light copper, old rose throat. Pkt. 25c.
Maralda. Coppery carmine. Pkt. 25c.
Nymph. Rosy lilac, white throat. Pkt. 25c.
Old Gold. Rich golden yellow. Pkt. 25c.
Purple King. Deep velvety purple. Pkt., 25c.
The Rose. Rich rose pink. Pkt. 25c.
Wallflower. Brownish orange and copper red. Pkt. 25c.
New Giant Mixed. Pkt., 25c.

ANTIRRHINUMS or SNAPDRAGONS Tall Large Flowered each, per pkt., 10c.

Cardinal. Dazzling scarlet.
Golden King. Large, clear yellow.
Lilac Queen. White, suffused with pale lilac.
Moonlight. Golden apricot and old rose.
Orange King. Orange scarlet, pink throat.
Othello. Deep claret color.
Princess Patricia. Pale rose overlaid chamois.
Queen Victoria. Very large pure white.
Rose Queen. Soft rose.
Venus. Pink on white ground, white throat.
Tall Large Flowered, Mixed. Pkt., 10c.

SPECIAL OFFER. Full collection of the above ten varieties, one packet of each, for 85 cents.

ANTIRRHINUMS or SNAPDRAGONS. Intermediate Varieties

Amber Queen. Canary yellow, shaded chamois pink.
Bonfire. Orange buff shaded scarlet.
Cottage Maid. Coral pink with white throat.
Empress. Rich velvety crimson.
Golden Queen. Pure golden yellow.
Mauve Beauty. Rosy mauve.
Old Rose. Soft pink, suffused with terra cotta.
Purity. Pure white.
Silver Pink. Pearly pink, extra fine.
The Fawn. Terra cotta pink suffused yellow.
The above varieties, each, per pkt., 10c.
Intermediate, Mixed. Pkt., 10c.

SPECIAL OFFER. Full collection of the above ten varieties, one packet of each, for 85 cents.

ARCTOTIS GRANDIS. Annual forming large, bushy, much branched plants, 2 to 3 feet high. Flowers large, white on the upper surface, the reverse of petals pale lilac-blue. Of easy culture and remarkably free flowering. Pkt. 10c.

BELLIS PERENNIS. "Double Daisy."

Fine Mixed. Pkt., 10c.
Monstrosa. A new strain of strong, robust growth, with abundance of immense, very double flowers. Rose, red, white or mixed. Each, pkt., 15c.

BRACHYCOME IBERIDIFOLIA. "Swan River Daisy."

Annual 1 to 1½ feet, forming a close, compact plant, with immense numbers of large single blue or white flowers, in bloom nearly all the year.
Blue. Pkt., 10c.
Mixed. Pkt., 10c.

BROWALLIA ELATA. Annual, 1 to 1½ feet high. A charming plant for beds and borders, with rich blue flowers, especially valuable in California for winter and spring blooming. Sow the seed in August or September in seed boxes and transplant. Pkt., 15c.



Centaurea imperialis

CALCEOLARIA HYBRIDA GRANDIFLORA. Large flowered tigered and spotted, superb mixed. Pkt., 50c.

CALENDULA. Double "Pot Marigold."

Meteor. Yellow, striped orange. Pkt., 10c; oz., 40c.

Orange King. Deep orange. Pkt., 10c; oz., 50c.

Lemon Queen. Sulphur yellow. Pkt., 10c; oz., 40c.

The Ball. Extra fine, orange passing to a lighter shade toward the center. Pkt. 25c.

CALLIOPSIS. Annual.

Bicolor. Golden yellow with black centers. Pkt., 10c; oz., 50c.

Golden Wave. Deep golden yellow. Pkt., 10c; oz., 50c.

Fine Mixed. Pkt., 10c; oz., 40c.

CAMPANULA MEDIUM. "Canterbury Bells."

Single, Blue, Rose, White or Mixed. Each, pkt., 10c.

Double, Blue, Rose, White or Mixed. Each, pkt., 15c.

Cup and Saucer. Blue, Rose, White or mixed. Each per pkt., 15c.

CANDYTUFT. Old-fashioned, free-flowering annual.

Carmin. Bright rosy carmine. Pkt., 10c; oz., 50c.

Crimson. Dark crimson. Pkt., 10c; oz., 50c.

Empress. White, long spikes. Pkt., 10c; oz., 60c.

Flesh Pink. A beautiful shade. Pkt., 10c; oz., 50c.

Lilac. Rosy lilac. Pkt., 10c; oz., 50c.

Rose Cardinal. Pkt., 10c; oz., 60c.

Choice Mixed. Pkt., 10c; oz., 40c.

CENTAUREA CYANUS. "Cornflower."

Double Blue. Pkt., 10c; oz., 70c.

Double Rose. Pkt., 10c; oz., 70c.

Double Mixed. Pkt., 10c; oz., 60c.

CENTAUREA IMPERIALS. Royal Sweet Sultan.

Amaranth Red, Brilliant Rose, Delicate Lilac, Deep Lavender, White, Purple. Each, pkt., 10c.

Mixed Colors. Pkt., 10c; oz., 75c.

CHRYSANTHEMUM. Annual Varieties.

- Northern Star. Large, white with soft yellow zone and dark eye. Pkt., 10c.
 Morning Star. Beautiful pale yellow. Pkt., 10c.
 Evening Star. Golden Yellow, large. Pkt., 10c.
 Burrigeantum. White and red. Pkt., 10c.
 W. E. Gladstone. Rich crimson. Pkt., 10c.
 Single Mixed. Pkt., 10c; oz., 50c.
 Coronarium. Double yellow. Pkt., 10c.
 Coronarium. Double White. Pkt., 10c.

CINERARIA HYBRIDA GRANDIFLORA. For a partially shaded spot these wonderful flowers are in a class by themselves. They require a rich light soil with plenty of leaf mold.

Payne's Large Flowered, extra choice mixed. This is without doubt the finest strain offered in the United States. The plants are of neat, compact habit, producing immense flowers with a large percentage of blue shades. Pkt., 50c.

Azure Blue, Royal Blue, Old Rose, Matador, brilliant scarlet. Each, pkt., 50c.

Stellata and Cruenta Hybrids. Especially desirable for making a display in the garden. Forms large plants 2 to 3 feet high, covered with hundreds of star-shaped flowers. The seed is carefully selected and will be found to contain a large percentage of blue and pink shades. Pkt., 25c.

CLARKIA. A free flowering annual of very easy culture. The plants reach a height of three to four feet and are literally covered with flowers in the blooming season.

- Salmon Queen. Double, salmon pink. Pkt., 10c.
 Scarlet Queen. Double scarlet. Pkt., 10c.
 Choice Mixed. Pkt., 10c.

COREOPSIS LANCEOLATA. A perennial with large showy bright yellow flowers in great abundance. Height two feet; fine for cutting. Pkt., 10c.**CYCLAMEN.** Giant English. Plants are robust in growth with rich heavy foliage and large flowers. A great improvement on the old giant cyclamen. Mixed colors, per pkt., 25c.**DELPHINIUM.** "Perennial Larkspur." Beautiful summer flowering plants. Long spikes of showy flowers that are ideal for cutting. Plants reach a height of three to five feet.

- Belladonna. Light blue. Pkt., 25c; $\frac{1}{8}$ oz., 60c.
 Bellamosa. Dark blue. Pkt., 25c; $\frac{1}{8}$ oz., 60c.
 Belladonna Hybrids. All shades of blue. Pkt., 25c; $\frac{1}{8}$ oz., 75c.
 Gold Medal Hybrids. All the richest shades of blue. Pkt., 15c.
 Chinense, Blue Butterfly. Salvia blue. Pkt., 15c.
 Chinense, Tom Thumb. Dwarf, ultramarine blue, extra fine. Pkt., 25c.

DIANTHUS CHINENSIS. "China Pinks." Charming free flowering annual, growing about a foot high. Brilliant colored flowers that are very effective when planted thickly in beds.

- Heddewigi. Single, fine mixed. Pkt., 10c.
 Hybridus. Double mixed. Pkt., 10c.

DIGITALIS. "Foxglove." An old-fashioned perennial flower with long spikes of tubular flowers. Height three to five feet. A universal favorite.

- Gloxiniaeflora. Fine mixed. Pkt., 10c.
 The Shirley. New, very large. White and shell pink to deepest rose beautifully spotted. Pkt., 25c.

DIMORPHOTHECA AURANTIACA. "African Orange Daisy." Annual, flowering in a very short time from seed.

- Deep Orange. Pkt., 10c; oz., \$1.50.
 Hybrida. Splendid new hybrids; colors range from white, lemon yellow, golden yellow, orange to salmon. Pkt., 15c.

ERYSIMUM PEROFSKIANUM.

Annual, 1 to 1½ feet high, resembles the wallflower and produces in winter and spring great quantities of orange colored flowers; very effective when planted in masses. Pkt., 10c; oz., 60c.

ERYNGIUM AMETHYSTINUM. "Sea Holly."

Perennial, 2 to 3 feet, producing in summer quantities of steel blue thistle-like flowers. Sow the seed in summer or early fall in seed boxes and transplant. Pkt., 15c.



Eschscholtzia californica

ESCHSCHOLTZIA CALIFORNICA. "California Poppy." A well known native flower of California. Fine for sowing on hillsides, in parkways or in the garden. Flowers profusely, the blooms often measuring three inches across.

Yellow, Orange, White, or Mixed. Each, pkt., 10c; oz., 35c.

Burbank's Crimson-flowering. Crimson. Pkt., 10c.

Rose Cardinal. White, with rose on outside of petals. Pkt., 10c.

Carmine King. Carmine rose. Pkt., 10c.

Golden West. Canary yellow, with orange blotch at base of each petal. Pkt., 10c.

Mandarin. Inside of petals rich orange, outside orange-scarlet. Pkt., 10c.

Mikado. Brilliant orange-crimson. Pkt., 15c.

Orange Flame. New, orange scarlet. Pkt., 25c.

Scarlet Beauty. New, deep scarlet. Pkt., 25c.

Tango. New, bronzy red and terra cotta. Pkt., 25c.

The Geisha. Gold and orange crimson. Pkt., 15c.

Vesuvius... Wallflower red. Pkt., 15c.

New Hybrids mixed. Pkt., 15c.

FREESIA HYBRIDA RAGIONIERI. Exquisite shades of rose, pink, blue, purple, violet, yellow, orange and brown, often delicately veined and spotted. Pkt., 15c.

GEUM COCCINEUM, MRS. BRADSHAW. Perennial. Large, double, bright-scarlet flowers. Pkt., 15c.

Geum, Lady Stratheden. New; flowers large, deep, rich golden yellow. Pkt., 25c.

GODETIA. Annual, 1 to 2 feet high, with large, showy flowers, valuable for sowing in partially shaded places.

Duchess of Albany. Pure white. Pkt., 10c.

Crimson Glow. Rich deep crimson. Pkt., 10c.

Lady Albemarle. Large, brilliant crimson. Pkt., 10c.

Lady Satin Rose. Bright carmine. Pkt., 10c.

Hybrids. Mixed colors. Pkt., 10c; oz., 50c.

GOMPHRENA GLOBOSA. "Globe Amaranthus." Annual, everlasting flower. Mixed colors. Pkt., 10c.

Two Wonderful Delphiniums

Blackmore & Langdon Giant Hybrids. The celebrated English strain, large flowers and splendid range of colors. Packet, \$1.00.

Giant Hollyhock Strain. Flowers large, double, and closely packed on long stems; splendid mixture. Packet, \$1.00.

- GYPSOPHILA ELEGANS.** Annual. Flowers white. Pkt., 10c; oz., 40c.
Paniculata. Perennial. Small white flowers. Pkt., 10c.
- HEUCHERA SANGUINEA.** "Coral Bells."
 Perennial, with heart-shaped leaves from which rise numerous slender graceful stems about 1 foot high bearing quantities of small coral-red bell-shaped flowers. Very effective for borders and rock gardens. Sow in seed boxes early in the fall and transplant. Pkt., 15c.
- HOLLYHOCK.** A great favorite among the old-fashioned perennials, the plants reaching a height of six feet. A summer bloomer that is most attractive when planted along a fence or against a building.
 Chater's superb strain, finest double. Newport pink, salmon, rose, scarlet, yellow or mixed. Each, per pkt., 15c.
 Single. Choice mixed. Pkt., 10c.
- LARKSPUR.** A free flowering annual reaching a height of three feet. Very attractive when planted in beds, furnishing a brilliant show of color in the garden and also a fine cut flower.
 Tall, Stock-flowered, Branching, Double. Azure blue, dark blue, shell pink, lustrous carmine, white or mixed. Each, pkt., 10c; oz., 60c.
 Tall, Exquisite Pink. New. Pkt., 25c.
 Dwarf Rocket. Mixed colors. Pkt., 10c; oz., 60c.
- LINARIA MAROCCANA.** Annual, 12 to 15 inches high. Very pretty sown in masses. Mixed. Pkt., 10c; oz., \$1.00.
- LINUM GRANDIFLORUM RUBRUM.** "Scarlet Flax." Annual, 1 to 2 feet high. Pkt., 10c; oz., 35c.
- LUPINUS. ANNUAL VARIETIES MIXED.** 1 to 3 feet high. Well known free flowering plants. Pkt., 10c.
 Hartwegi. Annual, 2 to 3 feet. Long spikes of large flowers. Sky blue, dark blue, pink, white, or mixed. Each, per pkt., 15c.
- LUPINUS ARBOREUS, SNOW QUEEN.**
 Perennial, 4 feet. A magnificent variety, producing long spikes of pure white flowers. Sow in fall either in the open ground where the plants are to remain, or in pots, and afterwards transplant. Pkt., 15c.
 New Hybrids. A splendid new strain, producing large flowers in different colors. Pkt., 15c.
 polyphyllus roseus. Rosy pink, extra fine. Pkt., 15c.
- MIGNONETTE.** An old-fashioned annual. Very popular for its fragrance. Height twelve inches.
 Large Flowering. Sweet scented. Pkt., 10c; oz., 30c.
 Mchet. Of dwarf pyramidal habit. Very fragrant. Pkt., 10c; oz., 50c.
 Allen's Defiance. A large variety with immense spikes. Pkt., 10c; oz., 60c.
 Goliath. Bright red, large spikes. Pkt., 10c; oz., \$1.00.
- MYOSOTIS.** "Forget-me-not." Perennial, 6 to 10 inches, succeeding best in a shady, moist situation. Sow the seed in the fall in seed boxes and transplant.
 alpestris. Bright blue. Pkt., 10c.
 Royal Blue. Indigo blue, extra fine. Pkt., 15c.
- NEMESIA.** A beautiful annual of recent introduction. The plants reach a height of twelve inches and the flowers appear during winter.
 New Hybrids. Pkt., 25c.
 Orange, Rose, Scarlet. Each per pkt., 25c.
 Dwarf Blue Gem. Very desirable for beds. Pkt., 25c.
- NIGELLA DAMASCENA.** "Love-in-a-Mist." Annual.
 Miss Jekyll. Cornflower blue. Pkt., 10c.

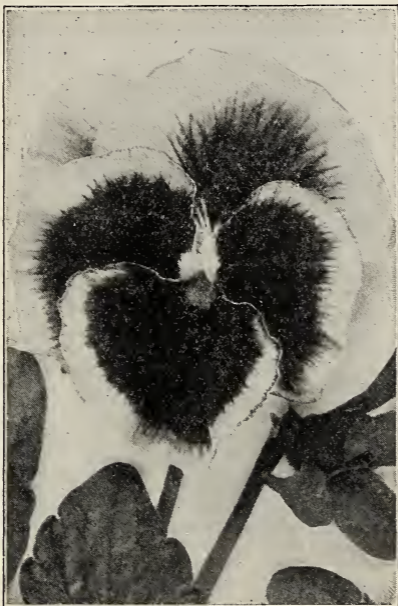
New Calendula "Campfire"

This is the very latest development in the Calendula. Large flowers borne on long, stout stems, brilliant orange with scarlet sheen and full yellow center. The best forcing variety for florists. Packet, \$1.00.

PANSIES

As a bedding or border plant there is no equal for pansies. Their velvety texture and exquisite colorings, coupled with their hardiness and profuse flowering capacity, give them a decided preference where a low growing plant is desired.

PAYNE'S ROYAL EXHIBITION PANSY. This is undoubtedly the most superb strain of Pansies ever offered on this coast. The plants are of vigorous growth and are particularly free flowering. The blossoms are very large and of fine, velvety texture, including all the richest shades, many of them exquisitely blotched, spotted and margined. Pkt., 25c; $\frac{1}{8}$ oz., \$1.25.



Payne's Royal Exhibition Pansy

Bugnot's Superb Blotched. Extra large, rich colors, each petal having a broad, deep blotch, many of them beautifully lined or penciled. Pkt., 50c.

Cassiers' Large Flowered Blotched. A splendid strain; flowers beautifully blotched, of richest shades. Pkt., 25c.

Masterpiece. "Fringed Pansy." A grand new class, each petal being conspicuously waved or curled, giving the flower a double or globular appearance. Rich colors, mostly of the dark, velvety shades. Pkt., 25c.

Steele's Mastodon. Immense flowers, mixed colors. Pkt., 25c; $\frac{1}{8}$ oz., \$1.25.

Giant Trimardeau. Large flowered, mixed colors. Pkt., 15c.

English Show or Faced Pansy. Mixed colors. Pkt., 15c.

GIANT PANSIES, SEPARATE COLORS The following varieties, per pkt., 15c; $\frac{1}{8}$ oz., 65c.

Giant Bridesmaid. White and shining rose, beautifully blotched.

Giant Bright Blue. Ultramarine blue.

Giant Dark Blue. Darkest blue.

Giant Golden Yellow, Five Spotted, a beautiful flower of Cassier type.

Giant Golden Queen. Pure yellow.

Giant King of the Blacks. Velvety black.

Giant Light Blue. Pale blue.

Giant Lord Beaconsfield. Violet, upper petals shading to white.

Giant Madame Perret. Beautiful wine shades on white ground.

Giant Peacock. Royal purple, shot with peacock blue.

Giant Snowflake. Pure white.

Giant mixed.

PENTSTEMON. A free flowering perennial, growing from two to three feet high and producing great quantities of white, pink, red and purple flowers. A favorite.

Large Flowered Mixed. Pkt., 15c.

PHLOX DRUMMONDI GRANDIFLORA. Annual.

Large flowered, primrose, flesh pink, scarlet, crimson, lilac, violet with white eye, or mixed. Each, per pkt., 10c.

PHLOX DECUSSATA. "Perennial Phlox." Very charming owing to its many and varied colors. All colors, mixed. Pkt., 15c.

POLYANTHUS. (*Primula elatior*.)

Perennial, 6 to 8 inches; succeeding best in a partially shaded place and flowering during winter and early spring. Sow the seed in spring or early fall in seed boxes and transplant. Large flowered choice mixed. Pkt., 15c.

Giant Munstead Strain. Very large flowers in beautiful light shades. Pkt., 25c.

POPPIES. ANNUAL SORTS. Showy flowers for beds or borders and very effective when sown on vacant ground for quick effects. Many beautiful varieties are listed below.

Shirley. Choice mixed. Pkt., 10c; oz., 50c.

Shirley, Blue Shades. Grey-blue. Pkt., 15c.

Shirley, American Legion. New, brilliant orange scarlet. Pkt., 25c.

Shirley, Apricot Shades. Pkt., 15c.

Barr's Double Queen. Select strain of double Shirley. Mixed colors. Pkt., 25c.

Tulip. Single, dazzling scarlet. Pkt., 10c; oz., 50c.

Flanders Poppy. Single flaming red flowers. Pkt., 15c; oz., 75c.

El Dorado. A lovely new strain of the Shirley type, producing large double flowers measuring about 3 inches across. The colors range from palest pink through shades of rose and salmon to rosy scarlet. Pkt., 25c.

Ranunculus Flowered. Double flowers, about 2 inches in diameter and of every imaginable shade. Pkt., 10c; oz., 50c.

Carnation Flowered. Large double fringed. White, rose, scarlet, or mixed. Each, per pkt., 10c; oz., 40c.

PRIMULA MALACOIDES. Very desirable for outdoor culture; prefers a partial shade and a light rich soil. Flower an attractive shade of delicate lilac. Pkt., 25c.

PRIMULA OBCONICA GIGANTEA. A charming little perennial plant for pot culture. Blooms quickly from seed and produces many flowers. Choice mixed, per pkt., 25c.

PRIMULA KEWENSIS. Yellow, very desirable for outdoor culture. Pkt., 25c.



Shirley Poppies



Primula malacoides

PRIMULA SINENSIS FIMBRIATA. "Chinese Primrose."

Winter blooming greenhouse plants of exceptional merit owing to their striking color effects.

Bright Rose. Large. Pkt., 25c.

Defiance. Rich red, with dark eye. Pkt., 25c.

Holborn Blue. A unique shade. Pkt., 25c.

Snow Queen. Pure white, extra fine. Pkt., 25c.

Choice Mixed. Pkt., 25c.

PRIMULA SINENSIS STELLATA. "Star Primroses." A

new strain of *Primula*, though the flowers are slightly smaller than *P. sinensis fimbriata*, the plants are of more robust growth and produce flowers much more freely.

Choice mixed. Pkt., 25c.

RHODANTHE. "Everlasting Flower." Annual. Pink, white, crimson, mixed. Pkt., 10c.

SCHIZANTHUS. One of the daintiest of the annual flowering plants, ideally suited for bedding and border work. The flowers literally cover the plant during the blooming season.

Wisetonensis. Large flowers. White, dotted rose. Pkt., 15c.

SILENE PENDULA COMPACTA. Annual, forms compact little plants about 6 inches high, flowers rose-colored; useful for edgings, etc. Pkt., 10c.

STATICE MACROPHYLLA. Perennial, large, handsome foliage and immense heads of deep blue flowers. The finest of all *Statice*. Pkt., 10c; oz., 60c.

Latifolia. "Sea Lavender." Perennial, large panicles of small lavender blue flowers. Pkt., 10c; oz., \$1.50.

Perezi. Perennial. Deep blue. Pkt., 10c; oz., \$2.00.

Caspia. Perennial. Pale blue, extra fine. Pkt., 10c; oz., \$2.00.

Sinnata. Annual. Blue. Pkt., 10c; oz., 60c.

Bonduelli. Annual. Yellow. Pkt., 10c; oz., 60c.



Nice Giant Stocks

NICE GIANT STOCKS

The Nice Giant strain forms well branched plants about 2 feet high, producing spikes of large double flowers not tightly clustered but borne along the entire stem. They are very graceful and especially desirable for cutting. The plants are extremely free flowering, continuing in blossom for a long time.

- Beauty of Nice. Delicate flesh pink. Pkt. 15c; $\frac{1}{8}$ oz. 65c.
 Belle d'Naples. Old rose. Pkt., 15c; $\frac{1}{8}$ oz., 75c.
 Cote d'Azur. Deep lilac. Pkt., 15c; $\frac{1}{8}$ oz., 75c.
 Heatham Beauty. New, deep rose shading to pale pink, and chamois toward center, large spike, extra fine. Pkt., 25c; $\frac{1}{8}$ oz., \$1.00.
 Madame Joseph Paquet. New, deep cream-color overlaid chamois. Pkt., 25c; $\frac{1}{8}$ oz., \$1.00.
 Queen Alexandra. Lilac rose. Pkt., 15c; $\frac{1}{8}$ oz., 65c.
 Queen of the Belgians. Silvery lavender, very large spike, extra fine. Pkt., 25c; $\frac{1}{8}$ oz., \$1.00.
 Snowdrift. New, improved pure white, extra fine. Pkt., 25c; $\frac{1}{8}$ oz., \$1.00.
 Souvenir de Monaco. Crimson. Pkt., 15c; $\frac{1}{8}$ oz., 75c.
 Souvenir de Monte Carlo. Cream color. Pkt., 15c; $\frac{1}{8}$ oz., 75c.
 Summer Night. Deep purple, large spike. Pkt., 15c; $\frac{1}{8}$ oz., 75c.
 Nice Giant. All colors mixed. Pkt., 15c; $\frac{1}{8}$ oz., 50c.
 Nice Giant, Payne's Special Mixture of Pastel Shades. Pkt., 25c; $\frac{1}{8}$ oz., \$1.00.

GIANT STOCKS—BISMARCK

This class of Giant-Ten-Week Stocks is of great merit and only needs a trial to be thoroughly appreciated by every flower grower. The plants grow from 2 to 2½ feet high and are of branching habit, producing numerous large spikes measuring 12 to 16 inches long. White, cream-color, chamois, flesh pink, rose, blood red, lilac, deep purple, or mixed. Each, pkt., 25c.

PAYNE'S SPENCER SWEET PEAS

The Spencer Sweet Peas have large, round, open flowers of extraordinary size, often 2 inches across, with wavy standard and wide-spreading wings, a large number of the flowers coming four on a stem. This class has now superseded the old large flowered type of sweet peas and there has been great improvement in the varieties in the last few years. We have discarded many of the older varieties for newer and better ones. The following list contains the very best varieties of each color to date.

- Barbara. Salmon pink. Pkt., 10c; oz., 40c.
- Crimson King. Rich deep crimson. Pkt., 10c; oz., 40c.
- Edna May Improved. Pure white. Pkt., 10c; oz., 40c.
- Elfrida Pearson. Shell pink. Pkt., 10c; oz., 40c.
- Fiery Cross. Brilliant orange cerise. Pkt., 10c; oz., 40c.
- Hawlmart Pink. Bright rose pink. Pkt., 10c; oz., 40c.
- Hercules. Rosy pink, large. Pkt., 10c; oz., 40c.
- Illuminator. Brilliant orange scarlet. Pkt., 10c; oz., 40c.
- Margaret Atlee. Rich pink. Pkt., 10c; oz., 40c.
- Matchless. Cream. Pkt., 10c; oz., 40c.
- Mrs. Tom Jones. Delphinium blue. Pkt., 10c; oz., 40c.
- Picture. Pink on cream ground. Pkt., 10c; oz., 40c.
- R. F. Felton. The best lavender. Pkt., 10c; oz., 40c.
- Rosabelle. Light rose pink, very large. Pkt., 10c; oz., 40c.
- Royal Purple. Deep rich purple. Pkt., 10c; oz., 40c.
- Royal Scott. Orange scarlet. Pkt., 10c; oz., 40c.
- Tangerine Improved. Glowing orange. Pkt., 10c; oz., 40c.
- The Cardinal. Poppy scarlet. Pkt., 10c; oz., 40c.
- Warrior. Deep rich maroon. Pkt., 10c; oz., 40c.
- Wedgewood. Light blue, extra. Pkt., 10c; oz., 40c.
- Spencer Mixed. Pkt., 15c; oz., 30c; ¼ lb., \$1.00.

SPECIAL OFFER.—Six varieties in separate packets for 50c.

WINTER FLOWERING SPENCER SWEET PEAS

A new race of Sweet Peas, having the large waved flowers of the Spencer type, but flowering fully two months earlier; they also continue in flower for a much longer period. For Christmas flowering sow in September; later sowing may be made up until March.

One can make no mistake in planting Sweet Peas, as they combine the four requisites of the ideal flower—beauty, exquisite fragrance, wonderful colors and hardiness. They are easy to grow, making an ideal plant for covering fences or trellis work, and they are very appealing as a cut flower. Sow the seed in drills about two inches deep in good rich soil and water frequently with a fine spray.

- All White. Pure white. Pkt., 25c; oz., \$1.00.
- Amethyst. Royal purple. Pkt., 25c; oz., \$1.00.
- Aviator. Crimson scarlet. Pkt., 25c; oz., \$1.00.
- Eldorado. Rich salmon orange. Pkt., 25c; oz., \$1.00.
- Fair Maid. Blush and salmon. Pkt., 25c; oz., \$1.00.
- Glitters. Glowing scarlet cerise. Pkt., 25c; oz., \$1.00.
- Grenadier. Dazzling scarlet. Pkt., 25c; oz., \$1.00.
- Harmony. Clear lavender. Pkt., 25c; oz., \$1.00.
- Hercules. Rosy pink, very large. Pkt., 25c; oz., \$1.00.
- Miss Louise Gude. Brilliant pink. Pkt., 25c; oz., \$1.00.
- Mrs. Kerr. Salmon buff. Pkt., 25c; oz., \$1.00.
- New Blue. Deep blue. Pkt., 25c; oz., \$1.00.
- Rose Charm. Bright rose. Pkt., 25c; oz., \$1.00.
- Rose Doré. Rose pink, suffused orange. Pkt., 25c; oz., \$1.00.
- Sweet Lavender. Pure lavender. Pkt., 25c; oz., \$1.00.
- Zvolanek's Rose. Rose pink, extra fine. Pkt., 25c; oz., \$1.00.
- Early Choice Mixed. Pkt., 25c; oz., 75c.

SPECIAL OFFER.—Five varieties Payne's New Winter Flowering Sweet Peas in separate packets for \$1.00.

SWEET WILLIAM. An old-fashioned perennial, producing a great display of showy and varied colored flowers. Height twelve inches. A universal favorite.

Auricula-flowered. Beautifully ringed and margined, mixed colors. Pkt., 10c.

Newport Pink. Bright pink. Pkt., 15c.

Single, all colors mixed. Pkt., 10c.

Double, all colors mixed. Pkt., 15c.

Annual Sweet William. A new strain flowering in a short time from seed. Mixed colors. Pkt., 10c.

VIOLA CORNUTA. "Tufted Pansies." The flowers are not as large as the pansy but are borne in greater profusion, creating a solid mass of color when planted in beds.

Admiration. Dark blue. Pkt., 15c; $\frac{1}{8}$ oz., 75c.

Papilio. Delf blue. Pkt., 15c; $\frac{1}{8}$ oz., 75c.

Lutea splendens. Clear yellow. Pkt., 15c; $\frac{1}{8}$ oz., 75c.

Mixed Colors. Pkt., 15c; $\frac{1}{8}$ oz., 75c.

VISCARIA. Free flowering annual growing about 1 foot high. Very effective for planting in masses making a great display for many months. The flowers come in various shades of pink, rose, carmine, blue and white.

Cardinalis. Bright carmine. Pkt., 10c.

Oculata Coerulea. Blue. Pkt., 10c.

Oculata Mixed. Pkt., 10c.

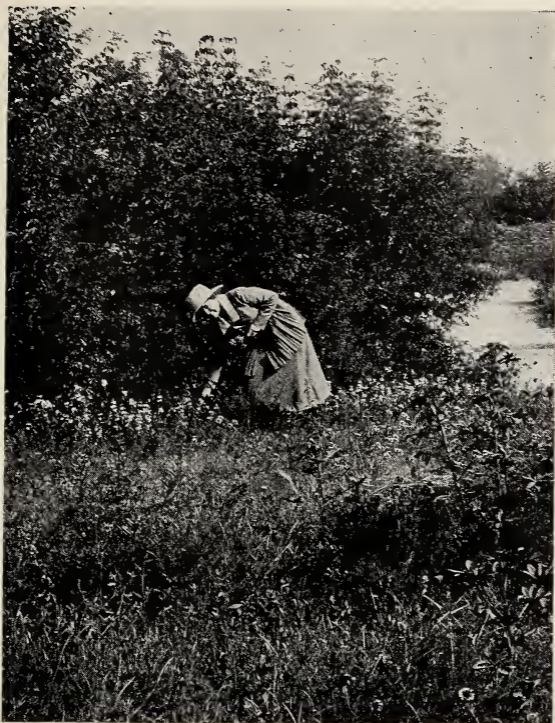
Oculata, dwarf, Loyalty. Blue. Pkt., 15c.

WALLFLOWER. Winter Flowering. Mixed colors. Pkt., 25c.

NOTE.—For a complete list of Flower Seeds, also full descriptions of the kinds listed here, and cultural directions, send in your name now to receive our 1929 General Catalog, ready January 1.



Sweet Pea "Fair Maid"



California Wild Flower Seeds

There is nothing that gives a greater charm and interest to a flower garden than a planting of California Wild Flower Seeds. In their natural state they are indeed beautiful and when brought under cultivation they not only equal their imported rivals in point of size, color and foliage but have also that added attraction of bringing romance and sentiment into the garden—they mean something more than just beautiful flowers. They are easily grown and require a minimum of water and care. Plant California Wild Flower Seeds this year.

Abronia umbellata. "Sand Verbena." Annual, low trailing habit. Flowers rose-color, resembling a verbena. Thrives best in sandy soil. Pkt., 10c; oz., 70c.

Abronia villosa. "Desert Sand Verbena." Annual of low trailing habit. Flowers lavender pink. Found abundantly on the sands at Palm Springs and other places on the desert. Pkt., 10c; oz., 70c.

Agoseris major. "Morning Radiance." Annual, 8 to 12 inches high. Flowers large, on single stems, deep golden yellow. The blossoms open at daylight but close about noon. In the early morning sunlight they present a brilliant display. Pkt., 15c; ¼ oz., \$1.00.

Amsinkia douglasiana. "Woolly Breeches." Annual, 1 to 3 feet high. Small orange colored flowers produced in great quantities. Often seen in great masses producing a vivid patch of color on the hillsides. Pkt., 15c; oz., \$1.00.

Antirrhinum coulterianum. "White Snake Dragon." Annual, 3 to 5 feet high. Small white flowers in spikes often 2 feet long. Pkt., 15c.

Antirrhinum glandulosum. "Pink Snapdragon." Perennial, 3 to 5 feet high, branching from a stout woody base. Flowers rose pink in long spikes. Pkt., 15c.

Aquilegia truncata. "Columbine." Perennial, 2 to 3 feet high. Flowers scarlet tipped with yellow. Succeeds best in a moist, shady place. Pkt., 15c; $\frac{1}{8}$ oz., 75c.

Argemone platyceras hispida. "Prickly Poppy." Annual, 1½ to 3 feet high. Flowers white with yellow center. Pkt., 10c.

Baeria gracilis. "Sunshine." Annual, 4 to 8 inches high. Golden yellow, star-shaped flowers. Pkt., 10c; oz., \$1.00.

Calandrinia menziesii. "Red Maids." Annual, of spreading habit; flowers rose-red, opening in the sunlight. Pkt., 15c; $\frac{1}{4}$ oz., 50c.

Castilleja californica. "Indian Paint Brush." Perennial, 1 to 2 feet high. Flower bracts deep scarlet. Pkt., 15c.

Cirsium coulteri. "Scarlet Thistle." Biennial, 5 to 8 feet high. A showy plant with whitish green foliage and large crimson-scarlet flowers. Pkt., 15c; oz., \$2.00.

Clarkia concinna "Red Ribbons." Annual, 8 inches to 2 feet high. Flowers rose-pink with crimson sepals. Prefers a shady spot. Pkt., 10c; oz., \$1.00.

Clarkia elegans. "Clarkia." Annual, 3 to 6 feet. A slender growing plant; flowers purple with white and crimson stamens. Thrives best in shade. Pkt., 10c; oz., 40c; lb., \$5.00.

Collinsia bicolor. "Innocence." Annual, 1 to 2 feet high. Flowers white, lilac and rose-purple. Prefers a shady situation. Pkt., 10c; oz., 35c; lb., \$4.00.

Collinsia grandiflora. "Blue Collinsia." Annual 6 to 10 inches high. Flowers deep violet blue. Prefers a shady situation. Pkt., 10c; oz., 50c.

Coreopsis douglasii. "Yellow Daisy." Annual, 6 to 12 inches. A graceful little plant with bright yellow daisy-like flowers. Pkt., 15c; oz., \$1.50.



Collinsia bicolor. "Innocence"

Coreopsis maritima. "Sea Dahlia." Perennial, 2 to 2½ feet high. Flowers large, light canary yellow. Pkt., 15c.

Coreopsis stillmani. "Yellow Mountain Daisy." Annual, 9 to 12 inches high. Bright yellow, daisy-like flowers. Pkt., 15c; oz., \$1.50.

Delphinium cardinale. "Scarlet Larkspur." Perennial, 3 to 6 feet. Long spikes of bright scarlet flowers. Pkt., 10c; oz., \$2.00.

Delphinium parryi. "Blue Larkspur." Perennial 1 to 3 feet high. Flowers large rich blue. Pkt., 15c; ⅛ oz., 75c.

Dendromecon rigidum. "Tree Poppy." Perennial shrub, 4 to 8 feet high. Bright yellow flowers, 3 inches or more in diameter. Seed is hard to germinate. Pkt., 15c; ¼ oz., \$1.00.

Dicentra chrysantha. "Golden Ear Drops." Perennial, 3 to 5 feet high. Finely cut glaucous foliage and rich yellow flowers. Pkt., 15c; ¼ oz., \$1.00.



Dodecatheon clevelandi—"Shooting Star"

Dodecatheon clevelandi. "Shooting Star." Perennial, 1 to 1¼ feet high. Flowers in shape like a cyclamen, delicate lilac and white. Pkt., 15c; ¼ oz., \$1.00.

Emmenanthe penduliflora. "Whispering Bells." Annual, 1 to 2 feet high. Produces large quantities of bell-shaped, pendulous flowers, cream-colored or yellow. Pkt., 10c; oz., \$2.00.

Encelia californica. "Bush Sunflower." Perennial shrub, 2 to 6 feet high; found on dry banks, blooming in spring and early summer. Flowers bright yellow dark centers. Pkt., 10c.

Erysimum asperum. "Wild Wallflower." Perennial, 2 to 4 feet high. Long spikes of large, orange-colored, fragrant flowers. Pkt., 15c; oz., \$1.50.

Eschscholtzia californica. "California Poppy." Annual, 1 to 1½ feet. The most noted of California Wild Flowers. Orange-yellow, with a beautiful glossy sheen. Pkt., 10c; oz., 35c; lb., \$3.00.

Floerkea douglasii. "Meadow Foam." Annual, of low spreading habit; flowers cream-colored. Prefers a moist location. Pkt., 10c; oz., 50c.

Frasera parryi. Perennial, 1½ to 2½ feet high. Produces loose clusters of star-shaped flowers, brown, yellow and green, mottled and blended. Pkt., 15c.

Gilia abrotanifolia. Annual, 1½ to 2½ feet high. Large heads of very pale blue flowers. Pkt., 10c; oz., 40c; lb., \$5.00.

Gilia achillaefolia. "Blue Gilia." Annual, 1 to 1½ feet high. Small violet-blue flowers in dense heads on graceful, slender stems. Pkt., 10c; oz., 35c; lb., \$4.00.



Godetia grandiflora "Farewell to Spring"

Gilia aurea. "Yellow Gilia." Annual, 4 to 10 inches high. A pretty little plant with thread-like stems and yellow flowers. Found in sandy washes. Pkt., 15c.

Gilia capitata. "Large Blue Gilia." Annual, 1½ to 2½ feet high. A slender, somewhat branched plant, with finely cut foliage and light blue flowers. Blooms later than *Gilia achillae-folia*. Pkt., 10c; oz., 40c; lb., \$5.00.

Gilia californica. "Prickly Phlox." Shrub, 2 to 4 feet high. Prickly needle-like leaves. Fragrant phlox-like flowers of a delicate rose pink color. Pkt., 25c.

Gilia dianthoides. "Fringed Gilia," or "Ground Pink." Annual, 2 to 6 inches high. An exquisite little plant with minute leaves and phlox-like flowers, rose colored or lilac with yellowish throat. Pkt., 15c.

Gilia tricolor. "Birds' Eyes." Annual, 9 to 12 inches. Flowers pale lilac, yellow toward the center, with five purple spots. Pkt., 10c; oz., 40c; lb., \$5.00.

Godetia amoena. "Farewell to Spring." Annual, 1 to 2 feet high. A slender growing plant, usually found on shady banks. Flowers lilac-crimson or red-pink, often with a dark center. Pkt., 10c; oz., 60c; lb., \$7.00.

Godetia bottae. "Farewell to Spring." Annual, 2 to 3 feet high. Flowers pale rose or lilac. Prefers a partially shady place. Pkt., 10c; oz., 70c; lb., \$8.00.

Godetia grandiflora. "Farewell to Spring." Annual, 1 to 2 feet high. Flowers large, delicate pink, marked with rich crimson. Pkt., 10c; oz., 60c; lb., \$7.00.

Godetia viminea. "Farewell to Spring." Annual, 1 to 2 feet high. Upper half of petals lilac with darker blotch; lower half white, often with lilac ring at base; very attractive. Pkt., 10c; oz., 80c; lb., \$9.00.

Helianthus annuus. "Sunflower." Annual, 5 to 8 feet high. Flowers yellow with dark brown centers. Pkt., 10c; oz., 60c.

Lasthenia glabrata. "Lasthenia." Annual, of spreading habit; golden yellow daisy-like flowers. Grows in moist places. Pkt., 15c; oz., \$1.50.

Lathyrus laetiflorus. "Wild Pea." Perennial climber. Flowers in loose clusters, white or flesh-color veined with purple. Pkt., 10c; oz., 60c.

Lathyrus splendens. "Pride of California." A perennial climbing pea. Flowers large, deep, rich crimson. Pkt., 15c.

Layia elegans. "Tidy Tips." Annual, 1 to 2 feet. A yellow daisy, edged with white or cream color. Pkt., 10c; oz., \$1.00.

Layia glandulosa. "White Daisy." Annual, 9 to 15 inches high. Flowers, clear glistening white, with yellow centers. Grows in sandy soil. Pkt., 15c; oz., \$2.00.

Linanthus densiflorus. "California Phlox." Annual, 1 to 2 feet high. Flowers in crowded clusters; pink and purple with yellow throat. Pkt., 10c; oz., 60c; lb., \$7.00.

Linum lewisii. "Blue Flax." Perennial, 1 to 2 feet high from a woody base. Flowers large sky blue. Pkt., 15c.

Lupinus affinis. "Blue Lupine." Annual, 1 to 2 feet. Flowers blue and purple. Pkt., 10c; oz., 35c; lb., \$4.00.

Lupinus arboreus. "Yellow Tree Lupine." Shrubby perennial, 4 to 10 feet high. Flowers rich sulphur yellow. Pkt., 15c; oz., 75c.

Lupinus brittoni. "Britton's Bush Lupine." Shrubby perennial 4 to 5 feet high. Flowers in long racemes, deep, rich purple. Pkt., 25c; oz., \$1.50.

Lupinus chamissonis. "Beach Lupine." Perennial, 2 to 3 feet high. Long racemes of flowers, light blue or lavender. Grows in pure beach sand. Pkt., 15c.

Lupinus cytisoides. "Canyon Lupine." Perennial, 4 to 6 feet high. Flowers in long racemes, deep pink or rose purple and very showy. Pkt., 15c; oz., \$1.00.

Lupinus densiflorus. "White Lupine." Annual, 1 to 1½ feet high. A stout, branching plant with rich green foliage and white flowers in dense whorls. Pkt., 15c; oz., 70c.

Lupinus densiflorus. (Blue-flowered form.) A form of the preceding with blue flowers. Pkt., 15c; oz., 70c.

Lupinus formosus. "Beautiful Lupine." Perennial, of spreading habit, 1 to 2 feet high. Flowers purple, blue or lilac. Pkt., 15c.

Lupinus hirsutissimus. "Hairy Lupine." Annual, 1½ to 2½ feet high. Flowers large, deep reddish purple. Pkt., 15c; oz., \$1.00.

Lupinus longifolius. "Blue Bush Lupine." Shrubby perennial, 3 to 4 feet high. Long spikes of light blue flowers. Very valuable for covering dry slopes. Pkt., 15c; oz., \$1.00.

Lupinus menziesii. "Yellow Lupine." Annual, 1 to 2 feet high. Flowers rich yellow. Pkt., 15c; oz., 70c.

Lupinus nanus. "Dwarf Blue Lupine." Annual, 10 to 15 inches high. A very showy plant; flowers rich blue and white, fragrant. Pkt., 10c; oz., 40c; lb., \$5.00.

Lupinus paynei. "Payne's Tree Lupine." Shrubby perennial, 4 to 8 feet high. Flowers fragrant, in long racemes, various shades of blue, lavender, lilac, pink, purple and white, all with a beautiful yellow blotch on the standard. Foliage silvery grey. Pkt., 25c.

Malacothrix californica. "Wild Marigold." Annual, 6 to 12 inches high. Flowers large, resembling a calendula or marigold, cream and yellow, beautifully blended. The blossoms are on single stems and open at daylight but close later in the day. They are produced in great numbers and present a wonderful sight in the early morning sunlight. A pretty little plant doing especially well in sandy soil. Pkt., 15c; ¼ oz., \$1.00.

Malacothrix glabrata. "Desert Marigold." Annual, 6 to 12 inches high. Flowers large, creamy yellow. Pkt., 15c; ¼ oz., \$1.00.

Mentzelia laevicaulis. "Blazing Star." Biennial, 3 to 4 feet high. Flowers 3 to 4 inches in diameter, opening in the late afternoon, pale yellow. Grows in gravelly soil. Pkt., 15c; oz., \$1.50.

Mentzelia lindleyi. "Blazing Star." Annual, 2 to 3 feet. Showy yellow flowers. Pkt., 10c; oz., 40c; lb., \$5.00.

Mimulus brevipes. "Yellow Monkey Flower." Annual, 1 to 1½ feet high. Flowers large, clear canary yellow. Pkt., 15c.

Mimulus cardinalis. "Scarlet Monkey Flower." Perennial, 1 to 3 feet. Flowers bright scarlet; grows in wet places. Pkt., 15c.

Mimulus fremonti. "Pink Monkey Flower." Annual, 4 to 6 inches high. Flowers large, deep rose pink. Grows in sandy places. Pkt., 15c.

Mimulus lewisii. "Large Pink Monkey Flower." Perennial, 1 to 2 feet. Large rose pink flowers. Grows in wet places. Pkt., 15c.

Monardella lanceolata. "Poleo." Annual, 1 to 2½ feet high. Of branching habit, with light green, lanceolate leaves and many large heads of violet-purple flowers. Grows especially well in sandy soil, and flowers abundantly in June and July. Pkt., 15c; oz., \$1.00.

Nemophila aurita. "Trailing Nemophila." Annual, stems 1 to 3 feet long generally trailing over underbrush on shady banks. Flowers purplish violet. Pkt., 15c.

Nemophila insignis. "Baby-Blue-Eyes." Annual, 4 to 8 inches high. A charming little plant of spreading habit, with clear, azure blue flowers. Prefers shade or partial shade. Pkt., 10c; oz., 35c; lb., \$4.00.

Nemophila maculata. "Spotted Nemophila." Annual, 4 to 8 inches. White with large deep purple blotch on each petal. Does well in shady places. Pkt., 10c; oz., 35c; lb., \$4.00.

Oenothera bistorta vietchiana. "Sun Cups." Annual, of low trailing habit. Flowers large, bright yellow. Grows in sandy places. Pkt., 15c; oz., \$1.50.

Oenothera hookeri. "Yellow Evening Primrose." Biennial, 3 to 6 feet. Flowers large, light yellow. Pkt., 10c; oz., 60c.

Oenothera trichocalyx. "White Evening Primrose." Biennial, 1 to 1½ feet high. Large white flowers. Grows in sandy soil. Pkt., 15c; ¼ oz., \$1.00.



Lupinus Paynei "Payne's Tree Lupine"

- Orthocarpus purpurascens*. "Owl's Clover" or "Pink Paint Brush." Annual, 4 to 10 inches high. Rose, pink or purplish lilac shading to cream-color at center. Pkt., 10c; oz., \$1.50.
- Papaver californicum*. "Western Poppy." Annual, 1 to 2 feet. Flowers orange-scarlet with pale yellow center. Pkt., 25c.
- Pentstemon antirrhinoides*. "Yellow Pentstemon." Perennial shrub, 3 to 4 feet high. Flowers large, bright yellow. Pkt., 15c.
- Pentstemon centranthifolius*. "Scarlet Bugler." Perennial, 2 to 4 feet high. Rich vermilion colored flowers. Pkt., 15c.
- Pentstemon heterophyllus*. "Violet Beard Tongue." Perennial, 1½ to 2 feet high. Flowers trumpet shaped, royal purple marked with pink. Pkt., 15c.
- Pentstemon palmeri*. "White Pentstemon." Perennial, 1½ to 2½ feet high. Flowers large, creamy white shaded with pink. Pkt., 15c.
- Pentstemon spectabilis*. "Blue Pentstemon." Perennial, 4 to 7 feet high. Flowers in long spikes, and the richest combination of blue and royal purple. Pkt., 10c; oz., \$1.00.
- Phacelia campanularia*. Annual, 1 to 1½ feet high. Flowers intense bright blue. Pkt., 15c; oz., \$1.00.
- Phacelia grandiflora*. "Large Flowered Phacelia." Annual, 1 to 3 feet high. Large saucer-shaped flowers, lavender, beautifully veined with violet. Pkt., 10c; oz., 70c; lb., \$8.00.
- Phacelia parryi*. "Parry's Phacelia." Annual, 1 to 1½ feet high. Flowers saucer-shaped, deep violet, generally with five yellow spots. Pkt., 10c; oz., 70c; lb., \$8.00.
- Phacelia tanacetifolia*. "Wild Heliotrope." Annual, 1½ to 2½ feet high. Flowers lavender blue. Pkt., 10c; oz., 35c; lb., \$4.00.
- Phacelia visida*. "Sticky Phacelia." Annual 1 to 2 feet high. Flowers saucer-shaped, rich salvia blue. Pkt., 10c; oz., 70c; lb., \$8.00.
- Phacelia whitlavia*. "Wild Canterbury Bell." Annual, 1 to 1½ feet high. Large bell-shaped flowers hanging in open, airy clusters; color violet purple. Pkt., 10c; oz., 60c; lb., \$7.00.
- Platystemon californicus*. "Cream Cups." Annual, 6 to 10 inches high. Cream colored flowers. Pkt., 10c; oz., \$1.50.
- Ranunculus californicus*. "California Buttercup." Perennial, 1 to 1½ feet high. Flowers golden yellow. Generally found on grassy slopes on the north side of the foothills. Pkt., 15c.
- Romneya coulteri*. "Matilija Poppy." Perennial, 6 to 10 feet high. Blossoms often 6 or 7 inches in diameter, pure glistening white with bright yellow centers. Pkt., 15c.
- Salvia carduacea*. "Thistle Sage." Annual, 1 to 2 feet high. Pale lavender flowers. Pkt., 10c; oz., 70c; lb., \$8.00.
- Salvia columbariae*. "Chia." Annual, 9 to 15 inches high. Flowers in whorls, deep purple. Pkt., 15c; oz., \$1.00.
- Silene laciniata*. "Indian Pink." Perennial, 1 to 3 feet. Flowers bright scarlet. Pkt., 15c.
- Sisyrinchium bellum*. "Blue Eyed Grass." Perennial, 8 to 15 inches high. Flowers bright blue with yellow centers. Pkt., 15c; oz., \$1.50.
- Trichostema lanatum*. "Romero" or "Woolly Bluecurls." Shrubby perennial, 4 to 6 feet high. Flowers blue. Pkt., 15c.
- Verbascum virgatum*. "Mullein." Biennial, 5 to 6 feet high. Flowers in long spikes, rich yellow. Pkt., 10c.
- Verbesina encelioides*. "Crownbeard." Annual, of branching habit, 2 to 5 feet high. Flowers large, resembling a coreopsis, orange yellow, very showy. Pkt., 15c.
- Zauschneria microphylla*. "California Fuchsia." Perennial, 1 to 1½ feet high. Scarlet trumpet-shaped flowers. Useful for covering dry banks. Pkt., 15c.

Every Tuesday at Four

Interesting and helpful talks on the hows, whens and where of gardening, over Radio Station KNX, in the Heart of Hollywood, given by our Mr. Dewey R. Kruckeberg.

Listen In



Roadside Planting of Wild Flowers

California WILD FLOWER SEED in Special MIXTURES

As a result of our twenty-five years of effort in bringing before the public the beauty of California Wild Flowers there is now a considerable demand for these seeds. It is a regrettable fact that some seed stores have resorted to the practice of selling garden varieties of flowers as wild species. Some of these are cultivated forms of wild flowers, greatly changed, and in many cases much inferior to the original types and others are not native species at all. The No. 1 Mixture has been imitated with an inferior mixture of such flowers and sold at a price at which the true native species could not be furnished. In buying your seeds, be sure of getting the true wild species.

INSIST ON PAYNE'S MIXTURES

We particularly recommend these mixtures for sowing on unused pieces of ground, parkings, vacant lots, etc. The No. 1 Mixture has an established reputation, as the many letters of praise we have received will prove. It contains twenty distinct species mixed in their right proportions and will produce a succession of bloom for a long period. In ordering mention the number of the mixture desired.

Payne's Mixture. No. 1. General mixture of annual wild flower seeds. This mixture is made up of those kinds which will give a succession of flowers for a long period and will succeed under ordinary conditions. Pkt., 10c; oz., 50c; $\frac{1}{4}$ lb., \$1.50; lb., \$5.00.

Payne's Mixture. No. 2. Mixture of annual wild flower seeds for sowing in shady places. Pkt., 10c; oz., 50c; $\frac{1}{4}$ lb., \$1.75; lb., \$6.00.

Payne's Mixture. No. 3. Mixture of annual wild flower seeds in orange, yellow and cream shades. Pkt., 10c; oz., 60c; $\frac{1}{4}$ lb., \$2.00; lb., \$7.00.

Payne's Mixture. No. 4. Mixture of annual wild flower seeds in blue, purple and lavender shades. Pkt., 10c; oz., 50c; $\frac{1}{4}$ lb., \$1.75; lb., \$6.00.

Surprise Garden Mixture

For those who wish quantities of flower seeds for sowing on vacant ground and desire a less expensive mixture than the No. 1 Mixture of California Wild Flower Seeds, we have prepared a Surprise Garden Mixture which we are confident will be found superior to any such mixture offered by other firms. It is not a mixture of wild flowers, but of garden annuals, with a few wild species added. It contains a large number of different kinds, all of them quite hardy and varieties that will grow with the least amount of care and produce quantities of flowers for a long period. Indeed, there are so many kinds appearing in endless succession that it is a continual surprise from the time the first plant begins to blossom. We recommend it for vacant lots and unused pieces of ground. Pkt., 10c; oz., 35c; $\frac{3}{4}$ lb., \$1.20; lb., \$4.00.

Special Souvenir Collection of California Wild Flower Seeds

This collection contains twelve choice species in separate packets, all annuals of easy culture, including California Poppies, Baby Blue-Eyes, Blue Lupines, Blazing Stars, Wild Heliotrope, Blue Gilia and six others equally beautiful.

Mailed to any part of the world

\$1.00

How to Sow Wild Flowers

Cultural Notes. In sowing California wild flower seeds follow nature as closely as possible, scatter the seeds broadcast over the ground and let them come up after the rains commence. Wherever practicable it is best to work up the surface of the ground and pulverize with a fine rake; afterwards the seeds can be scattered broadcast over the ground. A very good time is just before a rain, or even while it is raining, if it can be so arranged. They require practically no further attention, and will succeed with an average amount of rainfall without artificial irrigation. In dry years, of course, watering would be beneficial, and in cases where very quick results are desired, frequent waterings will produce a quicker growth. The seeds can also be sown later on in the season, up to about February, and if sprinkled frequently many species will flower quite profusely.

In the eastern states the seed should be sown in spring after danger of frost is over. Most species will prove successful there, and be highly prized.

Naturalistic Gardens

The charm of a California landscape is measured by the number of natural flowers and shrubbery that abound upon it. Barren slopes or open areas can be treated economically and attractively with the native vegetation where an alternative would be difficult to contemplate. Owners of acreage for subdivision will find that a planting of wild flowers will stimulate interest in their holdings, enabling a quicker and more favorable disposal and costing considerably less than a mediocre campaign of advertising. Estimates furnished and correspondence invited.

New Wild Flower Booklet

A new and enlarged edition of "California Wild Flowers; Their Culture and Care," will be ready for distribution early in 1929. Many new species and illustrations, together with detailed information on their culture and adaptability to given locations, will be the feature of this new booklet and it will prove an invaluable reference to those interested in the native flora of California. Price 25c, postpaid.

NOTE. We ask indulgence from the many people who have sent for this book, the delay having been occasioned by our inability to obtain photographs of rare species for illustrations.

THE *Native* TREES AND SHRUBS of CALIFORNIA

Their adaptability and attractiveness for use in the average city garden



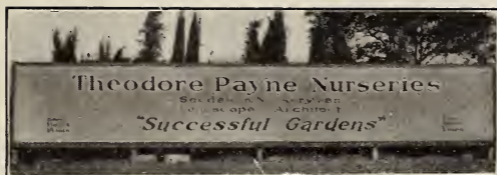
IN considering the native plants of California one is liable to be prejudiced by reason of associating the native vegetation as seen in the wild with what one may expect in the garden. It must be remembered that every plant is a native of somewhere and many of the most commonly used and admired are the result of many years of isolation from their native environment, and that it is only within this past thirty years



The use of native trees in hillside planting eliminates the possibility pictured in the illustration. They not only live but thrive under these rigorous conditions.

that any attempt was made to isolate and scientifically propagate the native plants of California. A native plant in its native environment and one that has been isolated and scientifically propagated are two distinct and hardly comparable plants, whether their nativity be China, South Africa or California. It must be readily conceded that California has a generous share of the world's plants that she can call her own and the major portion of their development for use in domestic gardens has come about within the last ten years. A comparison of a native plant in its native environment with one of nursery origin will prove enlightening and very gratifying. Anyone contemplating planting will do well to investigate their possibilities before making any definite plan.

Use California Native Plants for a truly California Garden



INDEX

BULBS

Agapanthus	18	Leucojum	18
Amaryllis	18	Lily of the Valley.....	23
Anemones	15	Lilies, assorted.....	17
Antholyzas	15	Montbretia	18
Bablanas	22	Muscaria	23
Begonias	23	Narcissus	10-11
Brodiaea	22	Ornithogalum	23
Caladium	23	Oxalis	13
Calla	18	Ranunculus	13
Calochortus	19	Scilla	22-23
Chlidanthus	23	Sparaxis	21
Freesias	22	Triteleia	23
Gladolus	20-21	Tritonia	23
Hyacinths	14	Tuberoses	23
Hyacinthus	14	Tulips	12-13
Iris	16	Watsonia Hybrids.....	3 to 9
Ixias	18	Zephyranthes	23
Jonquils	11		

FLOWER SEEDS

Acroclinium	26	Gomphrena	29
Alyssum	26	Gypsophila	30
Antirrhinum	26	Heuchera	30
Arctotis	26	Hollyhock	30
Bellis	26	Larkspur	30
Brachycome	26	Linaria	30
Browallia	26	Linum	30
Calceolaria	27	Lupins	30
Calendula	27-30	Mignonette	30
Calliopsis	27	Myosotis	30
Campanula	27	Nemesia	30
Candytuft	27	Nigella	30
Centaurea	27	Pansies	31
Chrysanthemum	28	Pentstemon	32
Cineraria	28	Phlox	32
Clarkia	28	Polyanthus	32
Coreopsis	28	Poppies	32
Cyclamen	28	Primula	32-33
Delphinium	28-29	Rodanthe	33
Dianthus	28	Schizanthus	33
Digitalis	28	Silene	33
Dimorphothea	28	Statice	33
Erysimum	28	Stocks	34-35
Eryngium	28	Sweet Peas.....	35
Eschscholtzia	29	Sweet William.....	36
Freesia	29	Violas	36
Geum	29	Viscaria	36
Godetia	29	Wallflower	36

California Wild Flowers, separate species.....	37 to 43
California Wild Flowers, prepared mixtures.....	44-45
California Native Shrubs and Trees.....	46



Complete Garden Service

Landscape Department

Complete facilities for planning and planting of grounds of any size, type or location are at the disposal of architect or builder in either an advisory or constructive capacity. Creation of true California gardens a specialty. Suggestive plans and estimates cheerfully furnished.

Trees and Shrubs

A very complete assortment of trees, shrubs and flowering plants is on display at 2969-2999 Los Feliz Boulevard, between Hollywood and Glendale. An advisory service here is a feature that will be found of great help to the amateur gardener. Ten acres of plants and flowers are on display at all times and dependable information is given freely and cheerfully.

California Native Plants

All of the better known and many of the rare species carried in stock for immediate planting. Being natives of California they are hardy, easily grown and require little water or care after becoming established. They are indispensable in hillside planting. Given the same care they are superior to the imported tree or plant in point of foliage and flower, and they will flourish where the other will perish, without care.

Radio Garden Talks

Interesting and instructive talks are given every Tuesday afternoon at four o'clock over Station KNX in Hollywood. An endeavor is always made to be of the greatest service possible through these radio talks, giving information and advice on the many problems that confront the home gardener. Listen in.

Be Sure

A knowledge both practical and scientific, acquired in thirty-five years of experience with plants and planting in California, is back of every item in this catalog—it is your guarantee of a Successful Garden.

Theodore Payne

SEEDSMAN, NURSERYMAN
LANDSCAPE ARCHITECT

345 South Main Street
Vandike 6481

2969-99 Los Feliz Blvd
OLympia 3609

Los Angeles, California