

Historic, archived document

Do not assume content reflects current scientific knowledge, policies, or practices.

62.73



TULIP-TIME AT WEISER PARK

1934

FARR'S

1934

Hardy Plant Specialties

FOR FALL PLANTING



*Hemerocallis, Holland Bulbs, Irises, Lilacs, Peonies, Phlox
Poppies, and Tree Peonies*





Partial view of the Farr Display Garden with Garden-house in the background. The 20,000 Tulips in 120 varieties are the early May feature

The FARR Display Garden

Includes 5 acres, with a Bulb-Garden, a Perennial Garden, a Rock-Garden, a Rose-Garden, a Lilac-Garden, a Tree Peony Garden, an Iris-Garden, a Peony-Walk, and many other attractive features. These various Gardens permit pleasant and definite study and selection of 1,000 or more plant varieties. The Gardens are open to visitors at all daylight hours. Visitors are not approached unless a desire for service is indicated.

THREE TYPES OF FARR SERVICE

1. **The Mail Order Department** serves through the medium of this Catalog and personal correspondence.
2. **The Landscape Department** furnishes plans and estimates for the complete garden. See page 3.
3. **The "Cash & Carry" Department** furnishes top-quality plants quickly, freshly, and economically.



During Tulip-time at Weiser Park this touch of Holland is a feature

To You—Our Employers

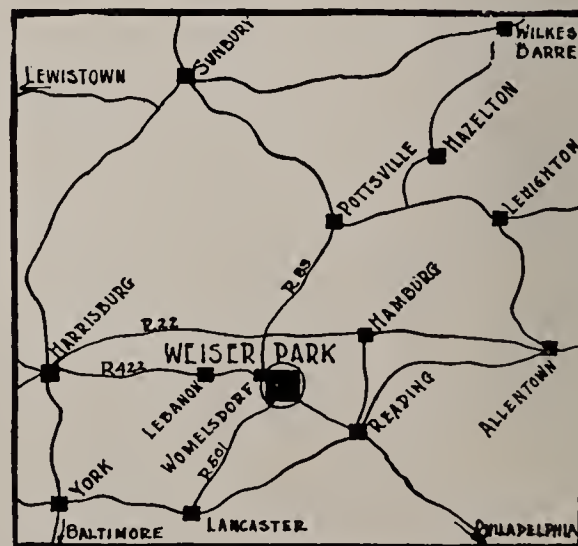
Since we began to sell plants, in 1908, we have regarded our customers as our employers and have tried to please them all accordingly.

For 26 years we have tried to fill every one of a half million orders in a manner which would encourage the customer to order again and to recommend us to friends.

Our reward has been in proportion to our efforts. We have never been unemployed, in spite of wars or depressions, and now, at the close of a gratifying spring season, we are again and especially reminded to thank you all.

Being duly grateful, you can rest assured that we will continue to regard you as our employers. We will continue to do our level best for you.

Let us know if or whenever we fail to please. We are not perfect and plants are not a "cast-iron" product to handle, but we really want our nursery to continue a healthy growth and improvement and can only do so by meriting, inviting, and receiving your coöperation.



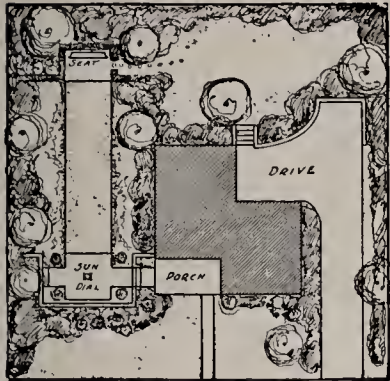
Location of Weiser Park

Farr Landscape Service

Design

An incorrect planting arrangement can reduce \$200 worth of plants to a \$50 appearance and will detract from the property, while a skilled arrangement of \$100 worth of plants can easily create a \$500 atmosphere of improvement.

The aim and problem is not to plant plants but to beautify the premises. When furnishing the home it is not a question of ac-



quiring as many pieces of furniture as economically as possible, but of combining good taste with beauty, comfort, and utility. The same principle applies to planting the home-grounds.

Even though you may desire to carry out only a small part of your general planting-scheme each year, it will repay you to work according to well-defined and definitely drawn-up plans.

Farr Landscape Service includes design, selection, estimate, delivery, and planting by trained and experienced personnel. You can delegate all details to our Landscape Department with the confidence that thousands of others have done so before you and that each operation is handled in a manner which will encourage continued business and recommendation to your friends. By this service you avoid "the wrong plant in the wrong place."

Call or write us for a personal interview, when our service may be more carefully explained. No charge; no obligation; no continuous solicitation.

Maintenance

Proper pruning, spraying, and feeding are as important to your garden as is regular lubrication to your car. The longer the postponement, the greater the cost.

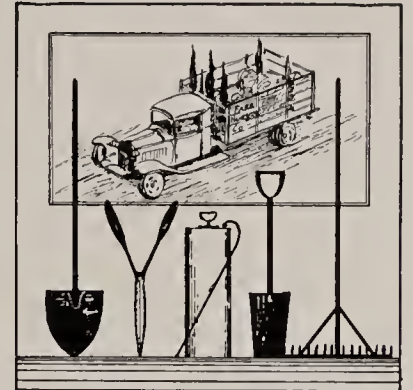
Improper work is worse than none at all. It requires skill, experience, and training to know, for example, just where and how to prune a plant so that its growth will be improved instead of retarded for several years.

Improper spraying cannot always be detected until it is too late to spray again, or until the plants are ruined.

To provide a dependable maintenance service, we furnish our nursery and planting foremen for this purpose during the summer and winter months. Each of these men is a full-fledged foreman with from 5 to 16 years' experience. Any one of them can accomplish two or three times as much in a day as the inexperienced, and you will know that the work has been done correctly.

Our 128 acres of nursery operations enable us to maintain a permanent organization. You can count on us for experienced service. Write, phone, or call for further information, without charge or obligation.

The various services, in both design and maintenance, performed by our organization must of necessity be governed by the distance from Weiser Park, by the size of the job, and the total amount involved.



The Bausher Rock-Garden. Partial views of the extensive rock-garden recently designed, developed, and maintained on the premises of Mr. and Mrs. Solon D. Bausher, Reading, Pa., by the Farr Landscape Department



Soudan



Cinnabar



Mikado



Wau-Bun



Vesta

Dr. A B Stout's New Hemerocallis

Dr. Stout's Collection

A strong field-grown division of each of these 5 Hemerocallis amounting to \$14 for

\$12.50

Complete

Parcel Post paid, if cash with order

Hemerocallis • The Dependable Lily

Anyone who has tried lilies, other than Regal and Madonna, knows of their mysterious disappearances and the succession of disappointments which they bring.

Now comes the hybridist with a new race of Day-Lilies which approach the beauty and fragrance of the bulb lily and comprise the hardiest plant on the garden list.

These new Day-Lilies are being hybridized by Dr. Stout of the New York Botanical Gardens. Varying sizes, seasons, and shades of red, pink, orange, and yellow to cream are included. A selected group of varieties will produce bloom from early May throughout summer and early fall, when the garden is, otherwise, very much at a standstill.

Grow Hemerocallis

WHY?

For rare beauty, rich coloring and charming grace of form.

For fragrant display and long-lasting cut-flowers from early May until mid-August.

For unsurpassed hardiness and freedom from disease and insect pests; in most any soil and climate.

For clean and decorative foliage from spring until winter.

In the place of lilies which have failed you.

HOW?

Holes large enough to amply accommodate the roots. Spread roots and work soil around them. Set a bit deeper than ground-mark level of nursery row.

WHERE?

In the perennial background or shrub foreground.

As specimens or in beds and masses by themselves; along pools and streams; in sun or semi-shade; in damp or dry locations; in sand or clay.

Anna Betscher. (Betscher.) July, August; 3'. A smooth, open, large, light golden yellow flower, deepening in tone at center, with broad, glistening and overlapping segments. \$1.50 each, \$12.50 for 10.

Apricot. (Yeld.) May, June; 2'. Broad, widely open segments of a distinct rich apricot. A fine, early, free-blooming variety. 50 cts. each, \$4 for 10.

Cinnabar. (Stout.) July; 2½-3'. Fine delicate shade of brownish red; sepals and petals strongly gold-glistening; throat is cadmium-yellow; outer half of petals sprinkled with rich fulvous red. Bloom spreads 5" and is recurving. Up to 18 flowers on one stem. \$2 each, \$17.50 for 10.

NOTE.—Dr. Stout's Hemerocallis are not to be introduced until there are enough plants to support a comparatively low price. Mikado, Soudan, Vesta, and Wau-Bun were catalogued first, and accordingly sold so heavily that it is now apparent they should have been withheld for several more years. Cinnabar, named later, was consequently withheld and the resultant supply permits a lower price.

Dumortieri. May, June; 12". Orange-colored flowers, shaded brown on the outside. The plants, which are dwarf in habit, flower freely early in the season. 50 cts. each, \$4 for 10.

Estmere. (Yeld.) Flowers are medium full, widely spreading, and pale yellowish orange. The somewhat slender scapes spread and bend gracefully from the crown, bringing the flowers into various levels with the greater number in the outer rim of the dome of foliage. The time of blooming conforms closely to the other Day-Lilies, but in some cases the plants may flower in the early days of May. \$2 each, \$17.50 for 10.

Hemerocallis, continued

- Flava Major.** June, July; 2½'. Large, handsome and very sweet-scented. Free flowering. 35 cts. each, \$3 for 10.
- Fulva Clon. maculata** (Tawny Day-Lily). July; 3'. Coppery orange, shaded crimson. Good for naturalizing. 35 cts. each, \$3 for 10.
- Gold Dust.** May, June; 2'. A neat, elegant, early and low grower. Empire yellow, reverse bronze. \$1 each, \$8.50 for 10.
- Golden Bell.** (Wallace.) June, July; 3'. Trumpet-shaped, pale apricot-orange flowers, very full and of fine substance. \$2 each.
- Gypsy.** (Betscher.) Late July; 4'. Scapes and foliage coarse. Flowers are light orange, full, but not extra large. \$1 each, \$8.50 for 10.
- Kwanso fl.-pl.** June-August; 3½'. Large, double, coppery orange flower of great garden value. 35 cts. each, \$3 for 10.
- Middendorffi.** Early June; 1½-2'. Semi-dwarf. Fragrant, pure orange flowers. A fine comparison for late iris. 35 cts. each, \$3 for 10.
- Mikado.** (Stout.) June, July; 3'. Flowers of a striking color, the large spot of mahogany-red in each petal contrasting sharply with the rich orange of the rest of the flower. \$3 each.
- Mrs. A. H. Austin.** June, July; 3'. Bright golden yellow, paler at edge; large, smooth, overlapping segments. \$1 each, \$8.50 for 10.
- Ophir.** (Farr.) July to early August; 50". Mr. Farr's best Hemerocallis. Dark golden yellow flowers 5" across, on stems 3½-4' high. One stem frequently carries 25 or more successively opening giant golden Lilies. Award of Merit, Royal Horticultural Society of England, 1931. \$1 each, \$8.50 for 10.
- Royal.** July, August; 3-4'. Splendid, yellow, medium-sized flowers. \$1 each, \$8.50 for 10.
- Sir Michael Foster.** June, July; 3'. The clear yellow flowers, with long, trumpet-shaped throats, measure 5-6" across. \$1 each, \$8.50 for 10.
- Sirius.** Mid-June; 32". Flowers medium full, of nearly 5 inches spread, rich orange with fulvous tinge. Award of Merit, 1931. \$1.50 each, \$12.50 for 10.
- Sovereign.** June; 20". Semi-dwarf in habit, with pale chrome-yellow flowers, shaded brown on outside. Neat foliage. Award of Merit, R. H. S., 1931. \$1 each, \$8.50 for 10.
- Soudan.** (Stout.) 2½-3'. Resembles the early Lemon Day-Lily (*H. flava*) but blooms in July. The broad-petaled flowers of clear Empire yellow have wavy margins. Very floriferous and an excellent summer sort. \$3 each.
- Tangerine.** June; 20". Semi-dwarf; early flowering. Rich orange. Award of Merit, R. H. S., 1931. \$1 each, \$8.50 for 10.
- Vesta.** (Stout.) July; 30". Deep orange flowers with a glistening gold sheen. Open flowers have a spread of more than 4". Semi-dwarf habit, with fine foliage. Flower-stems about 8" above the foliage level. Holds up well in hot weather. \$3 each.



The Stout Hybrid Hemerocallis have the added advantage of staying open at night, as cut-flowers or in the garden

Wau-Bun. (Stout.) June, July; 3'. Large flowers of light cadmium-yellow, slightly sprinkled with faint traces of fulvous red, abundantly gold-glistening. Petals are large and broad, with ends slightly twisted, a pleasing characteristic found in no other Day-Lily. \$3 each.

NOTE. In fairness to all concerned we must announce that none of the more recent Stout Hybrids, such as Bijou, Charmaine, Taruga, Theron, Vulcan, etc., will be sold until our stock has increased to the point which permits acceptance of all orders at a price not exceeding \$3. This will not occur before 1936.

New Book on Hemerocallis

Dr. A. B. Stout, Director of New York Botanical Gardens and Hemerocallis Hybridist, has just published a very interesting and valuable book on Day-Lilies. He gives full descriptions of the various species and practical points on their use and culture. The book contains a number of colored and half-tone plates. Something you will need for reference. 120 pp.

Price, \$3.00 postpaid

Send cash with order to The Macmillan Company
New York City



The Hemerocallis is one of the most hardy and dependable perennials, regardless of soil, weather, or insect conditions

Oriental Poppies

Their desirability requires no emphasis and their culture is limited to average care. Successful shipment can be made only during August which is their peculiar dormant period. As a cut-flower it is necessary to "seal" the stem-tips promptly with flame or scalding water.



- Beauty of Livermere.** The finest darkest crimson with black blotch. Fine flowers freely produced. 50 cts. each.
 - Edna Perry.** Large, soft salmon-pink flowers. 35 cts. each.
 - Joyce.** A soft shade of cerise; quite distinct. 35 cts. each.
 - Lula A. Neeley.** Good strong stems support giant flowers of brilliant and lasting ox-blood-red. This variety is becoming a most popular Poppy in America. 75 cts. each.
 - Perry's White.** The flowers are a fine satiny white with a crimson-maroon blotch at the base of each petal. 50 cts. each.
 - Royal Scarlet.** Brilliant scarlet with black blotches. 35 cts. each.
- COLLECTION:** One each of above (total \$2.80) for \$2.50 "net." Parcel Post prepaid if cash with order

Farr's Holland Bulbs for 1934

This Bulb List includes only the varieties which are most liked and most ordered by visitors to our Annual Bulb Display, in Weiser Park. More than 100 old and new varieties of Tulips, Narcissi, Hyacinths, etc., have failed to survive our "Display Test" and have been discarded. You can order from this list of bulbs with the assurance that EVERY variety is outstanding and superior.

When to Plant:

Plant bulbs in this list during October and November—anytime before the ground freezes; for Tulips, the later the better.

How to Plant:

Plant bulbs in sandy, well-drained soil to a depth equal to three times their own diameter, excepting *Lilium candidum*, shallower and

Tulipa Clusiana, deeper. Cover beds with straw or hay, but not before ground is solidly and permanently frozen for winter. Remove this mulch in spring when bulb-leaves appear.

Where to Plant:

In beds by themselves; in the vacant spaces of perennial beds and borders; similarly in rockeries; in front of shrub and foundation plantings; in fact, any place where room exists and soil permits.

DARWIN TULIPS

Darwin Tulips are superior as cut-flowers, ideal for colorful contrasts in beds and borders, by themselves, or in shrubbery foregrounds here and there. Groups and masses of 25 or more bulbs of one color produce most striking and beautiful effects. They are noted for their splendid form, exquisite colors, tall stems, and giant blooms.

6 bulbs or more of one variety at 12 rate; 25 or more at the 100 rate.
We prepay Parcel Post or Freight charges on Holland bulbs.

Figure following name of variety indicates height.

Afterglow. 26. Bright rosy orange, edged salmon. 85 cts. per doz., \$5.50 per 100.

Baronne de la Tonnaye. 26. Vivid rose, edged blush. 75 cts. per doz., \$5 per 100.

Bartigon. 26. Early. Showy, fiery red. 75 cts. per doz., \$5 per 100.

Bleu Aimable. 25. Wide steel-blue blooms. 90 cts. per doz., \$6 per 100.

Clara Butt. 23. Favorite salmon-pink. 75 cts. per doz., \$5 per 100.

Dream. 26. Soft, even blue-mauve. 75 cts. per doz., \$5 per 100.

Farncombe Sanders. 25. Large; intense brilliant scarlet. 75 cts. per doz., \$5 per 100.

King Harold. 24. Ox-blood-red; massive. 75 cts. per doz., \$5 per 100.

La Tulipe Noire. 25. Nearest to black. 85 cts. per doz., \$5.50 per 100.

Pride of Haarlem. 26. Rosy carmine; extra fragrant. 75 cts. per doz., \$5 per 100.

Rev. Ewbank. 24. Mauve, shaded dove-gray. 75 cts. per doz., \$5 per 100.

Sundew. 24. Soft crimson; saw-tooth fringes. 90 cts. per doz., \$6 per 100.

The Bishop. 30. Giant violet-blue. Note height. \$1.50 per doz., \$10 per 100.

Yellow Darwin (Inglescombe Yellow). 23. Golden yellow. 75 cts. per doz., \$5 per 100.

Zulu. 27. Velvety purple-black. 90 cts. per doz., \$6 per 100.

Zwanenburg. 28. The only low-priced pure white. \$1 per doz., \$7 per 100.

Superfine Mixed. Balanced mixture; all colors. Top-size bulbs, 70 cts. per doz., \$4 per 100.

New Giant Darwins

Taller, stronger-stemmed and larger blooms than any varieties on regular list.

Burgemeester Sandberg. Glossy dark maroon, edged darker. \$1.15 per doz., \$8 per 100.

Mesdag. Deep lilac-pink, edged lighter. \$1.15 per doz., \$8 per 100.

Princess Mary. Vivid rosy red, edged lighter. \$1.50 per doz., \$10 per 100.

Rembrandt Tulips

Prettily marked and painted into beautiful and interesting combinations.

Superfine Mixed Rembrandts. All colors; balanced mixture. Top-size bulbs. 85 cts. per doz., \$6 per 100.

Parrot Tulips, Mixed

Grotesque, ragged, interesting shapes and color combinations. They blend well in mixture and we offer them in balanced colors. Parrot Tulips have small bulbs but large blooms. 75 cts. per doz., \$5.25 per 100.

New Parrot Tulip, Fantasy

The sensational Parrot Tulip at New York and Philadelphia flower shows. \$2 per doz., \$12 per 100.



An extensive group of Blue Aimable Tulips in the Farr Display Garden



Tulips in the Rockery and Garden House Section of the Farr Display Garden. Foreground variety is Farncombe Sanders. Place orders by mail, telephone, or in person

Single Early Tulips

EARLIEST OF TULIPS

All varieties in this list may be used with equal success for bedding or for forcing. Stems 10 to 16 inches high. Bloom in late April. Plant 4 to 5 inches deep, 5 to 6 inches apart.

6 bulbs or more of one variety at 12 rate; 25 or more at the 100 rate. We prepay freight charges on bulbs.

- Belle Alliance.** 12. Clear, deep scarlet; sweet-scented. 85 cts. per doz., \$5.50 per 100.
- Chrysolora.** 13. Pure golden yellow. 85 cts. per doz., \$5.50 per 100.
- Couleur Cardinal.** 13. Rich crimson. Strong stem. 85 cts. per doz., \$5.50 per 100.
- Flamingo.** 13. Beautiful pink and white. 90 cts. per doz., \$6 per 100.
- General de Wet.** 16. Brightest and best orange. 90 cts. per doz., \$6 per 100.
- Joost Van den Vondel.** 13. Cherry-red, feathered white. 90 cts. per doz., \$6 per 100.
- Keizerskroon.** 16. Popular red- and- yellow Tulip. 90 cts. per doz., \$6 per 100.
- Lady Boreel.** 11. Long, white blooms. 90 cts. per doz., \$6 per 100.
- Pink Beauty.** 13. Flesh-color, deepening to bright cherry-pink. 90 cts. per doz., \$6 per 100.
- Rising Sun.** 16. Deep yellow. 90 cts. per doz., \$6 per 100.
- White Hawk.** 13. Globular; white; crinkled petals. 85 cts. per doz., \$5.50 per 100.
- Wouverman.** 13. Dark claret-purple. 90 cts. per doz., \$6 per 100.
- Superfine Mixture.** All colors; balanced mixture. Top-size bulbs. 70 cts. per doz., \$4 per 100.

Lily-flowered Tulip, Sirene

Satiny rose blooms with long, recurved petals that produce a lily effect. 85 cts. per doz., \$5.50 per 100.

Cottage Tulips

SINGLE OR MAY-FLOWERING

Cottage Tulips are fine for naturalizing in permanent borders as they come up and bloom year after year. They originated in England among the English cottages. Tall and late. Bloom with Darwins.

- Argo.** 24. Golden yellow, shaded salmon. 85 cts. per doz., \$5.50 per 100.
- Carrara.** 26. Giant, cup-shaped white. \$1.15 per doz., \$8 per 100.
- Diamond.** 24. Old-rose, tinged mauve. 85 cts. per doz., \$5.50 per 100.
- Dido.** 24. Long, slender; salmon-orange. 90 cts. per doz., \$6 per 100.
- Dulcinea.** 24. Robust; round; orange-red. 85 cts. per doz., \$5.50 per 100.
- Glare of the Garden.** 18. Shapely; vivid scarlet. 90 cts. per doz., \$6 per 100.

- Grenadier.** 24. Large; brilliant orange-red. 90 cts. per doz., \$6 per 100.
- Inglescombe Yellow** (Yellow Darwin). 23. Large; globular; yellow. 75 cts. per doz., \$5 per 100.
- John Ruskin.** 18. Bronze-rose and yellow. 85 cts. per doz., \$5.50 per 100.
- Lemon Queen.** 26. Tall. Lemon-yellow. 90 cts. per doz., \$6 per 100.
- Moonlight.** 24. Oval; canary-yellow. 85 cts. per doz., \$5.50 per 100.
- Mrs. Dames.** 22. Deep golden yellow. 85 cts. per doz., \$5.50 per 100.
- Mrs. Moon.** 24. Slender; rich yellow. 85 cts. per doz., \$5.50 per 100.
- Picotee** (Maiden's Blush). 20. White, tipped rose. 85 cts. per doz., \$5.50 per 100.
- Triton.** 24. Glowing carmine, yellow base. 75 cts. per doz., \$5 per 100.
- Superfine Mixture.** All colors; balanced mixture. Top-size bulbs. 70 cts. per doz., \$4 per 100.

Double Early Tulips

Stems 12 to 15 inches high. Bloom during late April. Alternate rows of Single and Double Early Tulips are very effective.

- Couronne d'Or** (Crown of Gold). 13. Yellow and orange. 90 cts. per doz., \$6 per 100.
- Murillo.** 13. Light pink, flushed cream-white. 85 cts. per doz., \$5.50 per 100.
- Rubra Maxima.** 13. Brilliant dark red. 90 cts. per doz., \$6 per 100.
- Schoonoord.** 13. Pure white. 90 cts. per doz., \$6 per 100.
- Tournesol** (Double Keizerskroon). 11. Red and yellow. 90 cts. per doz., \$6 per 100.
- Vuurbaak.** 12. Dazzling scarlet. Strong stem. 85 cts. per doz., \$5.50 per 100.
- Superfine Mixture.** All colors; balanced mixture. Top-size bulbs. 70 cts. per doz., \$4 per 100.



If you cannot visit the Farr Tulip Display, be assured that your order will be equally appreciated and handled in a manner which will encourage you to order again

YOU will find ample opportunity to pay considerably more but you cannot obtain any better bulbs than the selected top-grade quality which we have handled exclusively since 1908, and which are again featured in this issue of our Catalog.

Breeder Tulips

Breeder Tulips have artistic tones of bronze, terra-cotta, orange, and brown. They are vigorous growers, producing blooms of enormous size. In height and season they are identical with Darwins and are well combined with them.

Bacchus. 33. Bluest of all Tulips; giant size. 90 cts. per doz., \$6 per 100.

Cardinal Manning. 26. Wine-red, flushed brown. 85 cts. per doz., \$5.50 per 100.

Copernicus. 29. Dark coppery bronze, shaded old-rose. 90 cts. per doz., \$6 per 100.

Dom Pedro. 30. Coffee-brown, edged golden brown. 90 cts. per doz., \$6 per 100.

Feu Ardent. 28. Large, eup-shaped, brilliant scarlet bloom. 90 cts. per doz., \$6 per 100.

Jaune d'Œuf. 29. Rosy lilac, broadly edged yellow. 90 cts. per doz., \$6 per 100.

Louis XIV. 28. Purple, bronze, and brown. 75 cts. per doz., \$5.25 per 100.

Lucifer. 30. Bold; fiery orange. 90 cts. per doz., \$6 per 100.

Medea. 24. Rosy carmine, tinged salmon. 90 cts. per doz., \$6 per 100.

Panorama. 26. Giant; reddish mahogany. 75 cts. per doz., \$5.25 per 100.

Prince of Orange. 25. Golden orange. 90 cts. per doz., \$6 per 100.

Velvet King. 26. Glossy dark purple-violet. 85 cts. per doz., \$5.50 per 100.

Superfine Mixture. Includes all colors; balanced mixture. Top-size bulbs. 70 cts. per doz., \$4 per 100.

Triumph Tulips

Triumph Tulips have larger blooms and taller stems than the Darwins and bloom earlier.

Algiba. Clear heliotrope color. 90 cts. per doz., \$6 per 100.

Early Wonder. Fine pink. Very tall. Very showy. 90 cts. per doz., \$6 per 100.

Lord Carnarvon. Pink, white base and white edged. 90 cts. per doz., \$6 per 100.



Another section of the West Display Garden which now includes a collection of Tree Peonies and Hybrid Lilacs

Giant-flowering Tulips

Classed as late-flowering, the flowers are of immense size and the stems tall and strong.

Betsy Ross. Opens white, changes to deep carmine. \$1.50 per doz., \$10 per 100.

Black Eagle. Deep, glittering velvety purple. \$1.50 per doz., \$10 per 100.

Capablanca. Old-rose; largest flower of all. \$1.50 per doz., \$10 per 100.

Marquis. Clear dark blue; closed flower. \$1.50 per doz., \$10 per 100.

Nobility. Pure cerise. Extra-fine. \$1.50 per doz., \$10 per 100.

Silver Moon. Long, pure white blooms. \$1.50 per doz., \$10 per 100.

Sulphur Gem. Soft sulphur-yellow; stamens and base yellow. \$1.50 per doz., \$10 per 100.

Clusiana Tulip

The "Candy Stick" Tulip which is so strikingly attractive in rock-gardens. White, with pink stripes. **Plant twice as deep as other Tulips.** Cover with leaves after ground freezes and until Tulips begin to sprout. Use in groups of 6 to 12 for best effects. The base of slightly overhanging rock is an ideal location. \$1 per doz., \$7 per 100.

Various Bulbs

Parcel Post Paid

Chionodoxa (Glory-of-the-Snow). Easily naturalized. Dark blue flowers with white eyes; 6 to 10 on a stem 4 to 6 inches high. Splendid for borders and rockeries. 50 cts. per doz., \$3 per 100.

Eranthis hyemalis (Winter Aconite). Bright yellow flowers in early spring, like buttercups in the snow. 60 cts. per doz., \$3.50 per 100.

Lilium candidum (Madonna Lily). Very fragrant, pure white, trumpet-shaped flowers in late June. Mammoth bulbs, 40 cts. each; 5 or more at 35 cts. each; 25 or more at 30 cts. each.

Lilium regale. A magnificent Lily with very large flowers of waxy white, shaded pink, tinged with canary-yellow at the base. Height 4 to 5 feet. Large-size bulbs for immediate bloom, 35 cts. each; 5 or more at 30 cts. each; 25 or more at 25 cts. each.

Lily-of-the-Valley (*Convallaria majalis*). Mature potted clumps. 25 cts. each; 5 or more at 18 cts. each; 25 or more at 15 cts. each.

Muscari botryoides, Heavenly Blue (Grape Hyacinth). Lovely in masses. The most vigorous and effective bulb for naturalizing. 60 cts. per doz., \$3.50 per 100.

Scilla sibirica. Rich blue flowers. Culture the same as crocuses. 60 cts. per doz., \$3.50 per 100.

Snowdrops, Single. The very first spring bloomers. 60 cts. per doz., \$3.50 per 100.

Snowdrops, Double. 75 cts. per doz., \$5 per 100.

Crocuses

No. 1 Grade

We make a specialty of **Top-size Bulbs** which means more blooms per bulb. Effective in foreground of tulip-beds, in the rockery, and along borders.

King of the Whites. Large, snowy white blooms. 65 cts. per doz., \$4 per 100.

Mammoth Yellow. Very showy. 65 cts. per doz., \$4 per 100.

Maximilian. Porcelain-bluc. 65 cts. per doz., \$4 per 100.

Purpurea Grandiflora. Dark purple. 65 cts. per doz., \$4 per 100.

Mixed Crocuses. All colors mixed. Top-size bulbs. 50 cts. per doz., \$3 per 100.



Crocuses in Mrs. Aaron Ward's garden, Roslyn, L. I., N. Y., before the leaves of the trees appear

WE PAY THE PARCEL POST OR FREIGHT CHARGES ON ALL HOLLAND BULB ORDERS



"This is a picture of Grand Maitre Hyacinths from bulbs bought of you last October. These blue Hyacinths, planted in front of yellow forsythia, were very beautiful."—Mrs. Minor S. Jameson, 13 Oxford St., Chevy Chase, Md.

Hyacinths by Color

SPECIAL PRICES

Your selection of colors in same size bulbs, either Red, Pink, Blue, Yellow, or White, no intermediate shades. This enables us to use left-over named varieties, at lower prices.

18 cts. each; 6 or more, one color, at 14 cts. each; 25 or more, one color, at 13 cts. each.

Specify colors when ordering

Hyacinths

Culture is similar to other bulbs. Plant 6 inches apart and cover with 5 inches of light soil. Setting the bulbs on a layer of sand improves the bloom. They are best in beds and other formal arrangements.

We specialize in the largest grade of Hyacinths. If the blooms produced are not of the largest you have ever seen, your money will be refunded.

PRICES: 20 cts. each; 6 or more of one kind at 16 cts. each; 25 or more of one kind at 15 cts. each. Parcel Post paid.

SINGLE RED AND ROSE

General De Wet. Large; soft pink.
Queen of the Pinks. Bright rosy pink.
Roi des Belges. Dark red.

SINGLE BLUE

Enchantress. Porcelain-blue.
Grand Maitre. Compact; sky-blue.
King of the Blues. Late. Rich dark blue.

SINGLE YELLOW

Yellow Hyacinth bulbs are small.
Yellow Hammer. Pure bright yellow.
King of the Yellows. Deep yellow.

SINGLE PURE WHITE

La Grandesse. Large; perfect; pure white.
L'Innocence. Fine. Pure white.



One of many effective combinations in the Farr Display Garden: *Plox subulata*, Tulip, Early Wonder and *Viburnum Carlesi*

Daffodils and Narcissi

Where space is limited, plant in the border; where there is a stretch of meadow or orchard land, they can be naturalized in quantity.

All Farr Named Narcissi are Double-Nose Mother Bulbs, the best obtainable

Emperor. 18. Popular. Lasting, large, deep yellow sort. \$1.50 per doz., \$10 per 100.

Empress. 18. Popular. Yellow cups; white petals. \$1.50 per doz., \$10 per 100.

Incomparabilis, Sir Watkin. 18. Large orange-stained cup; sulphur petals. \$1.50 per doz., \$10 per 100.

King Alfred (King of the Daffodils). 20. Giant golden yellow. \$2.25 per doz., \$14 per 100.

Poeticus Ornatus. 15. Early. Short yellow and scarlet cup; petals white. \$1.15 per doz., \$8 per 100.

Poeticus Recurvus (Pheasant's Eye). 15. Pure white petals; small yellow cup, edged red. Excellent for naturalizing. Real Poet's Narcissus. \$1 per doz., \$7 per 100.

Poetaz, Laurens Koster. 20. White petals; yellow cup; 6 to 8 blooms per stem. Like Paper-white Narcissi but hardy. \$1 per doz., \$7 per 100.

Poetaz, Yellow King. 20. Uniform deep yellow; clustered like Laurens Koster. \$1 per doz., \$7 per 100.

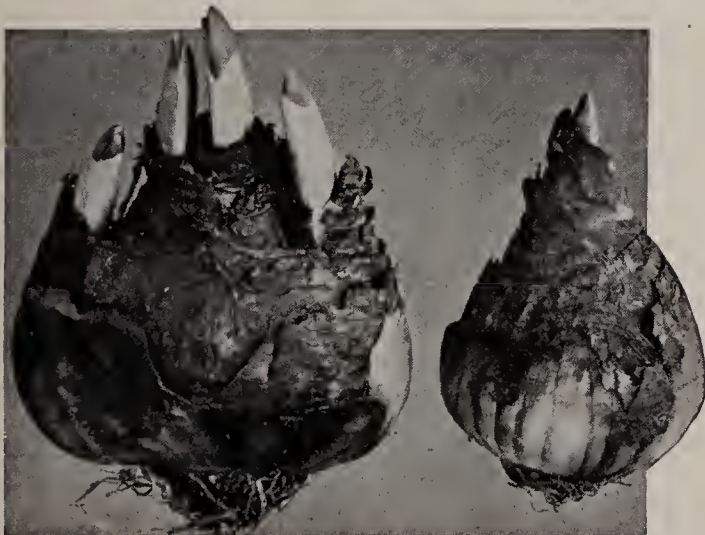
Van Waveren Giant. 22. Largest of all Daffodils. \$2.15 per doz., \$13 per 100.

Mixed Narcissi. Our mixture includes various types and is excellent for mass display and naturalizing. Only No. 1 bulbs of various types are included. 75 cts. per doz., \$5 per 100.

Farr's Double-Nose Narcissi give more than double satisfaction

ROYALTY DAFFODIL COLLECTIONS:

12 each of Emperor and Empress for \$2.75
25 each of Emperor and Empress for \$4.75
Parcel Post Paid



Two types of Narcissus bulbs, showing Farr's "Mother Bulb" in comparison with the ordinary first-size bulb. We buy the best Narcissus and Tulip bulbs obtainable. Bulb at left will have 4 flowers; bulb at right will have 1 flower.

3% discount for cash with order or pay in November. We pay the Parcel Post or Freight charges on all Holland bulb orders.



Our present low prices on Irises permit them to be used lavishly for extensive and massed color effects. Here is an example in the gardens of Mrs. O. M. Godfrey, North Andover, Mass.

Tall Bearded Irises

Descriptions include colors, height, and season of bloom. E indicates Early; EM, Early Midseason; M, Midseason; LM, Late Midseason; L, Late. Figures indicate height in inches.

PRICES. All varieties 25 cts. each; 2 or more plants of the same variety at 20 cts. each; 5 or more plants of the same variety at 18 cts. each; 25 or more at 16 cts. each. Strong, healthy, true-to-name, Farr Quality plants. Clumps, containing 3 or 4 divisions at double price.

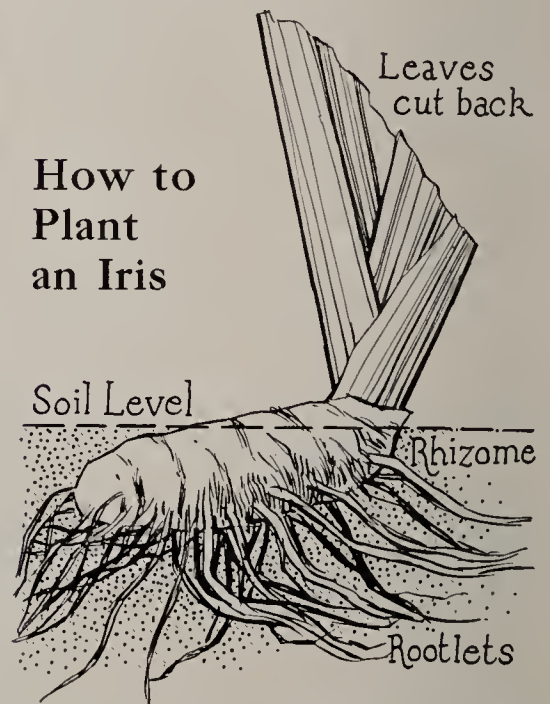
Alcazar. M. 40. Violet and purple.
Ambassadeur. L. 42. Purple and maroon.
Anna Farr. L. 36. White, frilled light blue.
Apache. LM. 22. Distinct coppery red.
Archeveque. LM. 24. Velvety violet-purple.
Asia. L. 50. Lavender and violet-purple.
Ballerine. L. 40. Pearl-blue and violet.
Blanche. M. 36. Large; tall; clear white.
Bruno. L. 40. Dark purple.
B. Y. Morrison. L. 33. Violet and purple.
Cardinal. M. 40. Lavender and prune-purple.
Cattleya. M. 27. Bright, clear pink.

Cecil Minturn. M. 30. Large; free; rose-pink.
Dream. EM. 36. A solid, clear, soft pink color.
Duke of Bedford. M. 36. Violet-black-purple.
Edouard Michel. L. 30. Deep red.
Fairy. LM. 36. White, suffused blue.
Flammenschwert. M. 36. Yellow and brown.
Georgia. E. 30. Soft cattleya-rose.
Gold Imperial. M. 33. The finest deep yellow.
Halo. LM. 36. Blue and violet.
Iris King. L. 24. Yellow and maroon.
Isoline. LM. 36. Lilac and rose.
Jacquesiana. M. 30. Bright coppery crimson and rich maroon.
Juniata. LM. 48. Clear blue. Flowers large and fragrant; foliage long and drooping.
Kashmir White. M. 48. A beautiful pure white.
Kochii. E. 15. Darkest scarlet-purple.
Lady Byng. L. 35. Pale lavender suffused rose; yellow beard.
La Neige. L. 24. Ivory-white.
Lent A. Williamson. M. 42. Violet and purple.
Lord of June. M. 40. Large; violet-blue.
Magnifica. LM. 40. Violet and reddish violet.
Ma Mie. LM. 30. White, edged blue.
Mary Barnett. M. 40. Best light blue.
Mildred Presby. LM. 30. White and purple.
Morning Splendor. L. 42. Red-purple.
Myth. M. 36. Large; clear blue.
Opera. L. 33. Red-lilac and purple.
Pallida Dalmatica. L. 40. Lavender-blue.
Princess Beatrice. M. 40. Deep, clear lavender.
Princess Victoria Louise. LM. 30. Yellow and plum.
Quaker Lady. M. 35. Standards smoky lavender shaded yellow; Falls ageratum blue and old gold.
Queen Caterina. L. 38. Pale lavender.
Queen of May. LM. 30. Pink.
Reverie. L. 40. Cream and rose.
Rhein Nixe. L. 30. White and blue.

Roseway. L. 36. Tall; red-pink.
Ruby Perry. L. 36. Uniform dark rose.
Seminole. LM. 30. Rich velvety crimson.
Shekinah. L. 36. Lemon-yellow.
Souv. de Mme. Gaudichau. M. 40. Rich purple.
Steepway. M. 48. Reddish fawn and brown.
Sweet Lavender. L. 42. Rose-lavender.
Taj Mahal. M. 38. Uniform pure white.
Titan. M. 48. Violet-blue.
Tom Tit. M. 24. Neat; deep blue.
White Knight. L. 24. White.
Wyomissing. LM. 28. Cream-white and pink.
Zua. E. 12. Ruffled; white.



Princess Beatrice



This drawing shows how an Iris plant should be prepared for planting. We cut back the foliage to about 6 inches before shipping. Spread the roots evenly in all directions and work the soil between and around; then firm with the hands or feet. Continue this process until about two-thirds of the rhizome is covered; leave the remainder exposed to the sun and air.



Japanese Irises JUNE JULY

For Early Fall Planting

Japanese Irises thrive anywhere except when planted late in fall or where water will cover their crowns. They increase into large and permanent clumps of profuse and colorful garden and cut-flower bloom after peonies fade and before phlox begins.

Northern orders received after early September will be held for early spring shipment unless no guarantee is desired.

NOTE. Our prices are based on supply, not on quality of bloom. A 35-ct. sort may be superior to a 50-ct. one.

	Each
Azedo. Double; velvety dark purple.....	\$0 35
Blue Flag. Double; dark purple.....	50
Eleanor Parry. Double; claret-red, veined white and blue.	50
Gold Bound. Double; pure white; gold center.....	35
Granite. Single; granite-blue, finely veined.....	50
Gypsy. Double; gray base; heavy maroon shades and veins.....	50
Hana-Gosho. Single; dark claret.....	50
Hatsu-Shino. Single; rosy lavender, shaded blue.....	50
Kanran. Double; tall; white, veined violet.....	50
Kyodaisan. Tall single; rose and red.....	35
Minerva. Single; dark pink veined white.....	35
Olympia. Single; white, veined blue.....	35
Osho-Kun. Tall; double; Tyrian blue, veined white.....	50
Oyedo. Single; dark purple.....	35
Red Riding Hood. Single; amaranth, veined white.....	35
Schichiuwka. Single; ruby-crimson, shaded white.....	35
Shadow. Single; even reddish purple.....	35
Sinjo-no-hara. Double; purple, splashed white.....	50
T. S. Ware. Double; reddish violet, veined white.....	35
Tsurugi-no-mai. Very tall; double; suffused pink and blue.....	50
Warai-Hotei. Double; gray and violet, veined blue.....	1 00
White Waterfall. Tall; double; silvery white.....	50
Mixed. Seedlings from a famous collection, including wide range of types and colors in a group of 10 or more. Not less than 10 sold. PRICES: 10 at 18 cts. each; 25 at 15 cts.	

QUANTITY RATES ON JAPANESE IRIS

- 2 or more plants of one 35-ct. variety at 30 cts. each.
- 5 or more plants of one 35-ct. variety at 25 cts. each.
- 2 or more plants of one 50-ct. variety at 40 cts. each.
- 5 or more plants of one 50-ct. variety at 35 cts. each.

Siberian Iris MAY JUNE

The neatest and most dependable of the small-flowered Irises. Narrow, grassy foliage, with tall stems.

	Each
Emperor. 4'. Clear deep blue.....	\$0 25
Grandis. 3'. Violet, reticulated white.....	25
Lactea. 3'. Milky white.....	25
Perry's Blue. 4'. Bright China-blue.....	25
Purple King. 3'. Darkest purple.....	25
Snow Queen. 3'. White.....	25



Iris sibirica, Perry's Blue

Miscellaneous Irises MAY JUNE

Including only the generally hardy and practical varieties of various species, after discarding more than 50 others. This group extends the Iris season dependably.

Aurea. (Beardless.) Mid-June; 36". Deep golden yellow.	Each
Plant only in early spring.....	\$1 00
Cristata. The "Perennial Iris." Mid-May; 4". Amethyst-blue; fragrant. Creeping habit and gem for rockery....	35
Fulvala. (Beardless.) Mid-June. Grassy foliage. Vivid red.	50
Hexagona Lamancea. (Beardless.) Early June. Vivid soft blue.....	35
Kochii. (Bearded.) Early May. Darkest scarlet-purple..	25
Lord Wolsely. (Beardless.) Mid-June; 38". Rich deep violet.....	35
Pseudacorus. June; 48". Yellow Water Iris.....	25
Semele. (Pogocyclus.) Early May. Veined purple and bronze.....	50
Shiraz. (Pogocyclus.) Early May. Lighter than Semele..	50
Versicolor. Blue Water Iris. June; 30".....	25

NOTE. Usual quantity rates are applicable.

Dwarf Irises APRIL

First of the Irises to bloom; late April and early May, before and with tulips. Splendid for rockeries, borders, and massing. Multiply into colonies. Plants prefer sun and drainage.

	Each
Alba. White.....	\$0 25
Atroviolacea. Deep violet-purple.....	25
Blue Bird. Blue and violet.....	25
Blue Stone. Violet-blue and purple.....	25
Cærulea. Even sky-blue.....	50
Compacta. Violet and dark blue.....	25
Cyanea. Red-purple.....	25
Excelsa. Clear yellow.....	25
Florida. Cream-yellow.....	25
John Foster. White; late and tall.....	25
Kurdistan. Distinct dark purple.....	50
Lurida. Dark bronzy red.....	25
Lutea. Creamy yellow.....	25

Quantity Rate on all 25-ct. Varieties of Iris

- 2 or more of one kind at 20 cts. each
- 5 or more of one kind at 18 cts. each
- 25 or more of one kind at 16 cts. each



Tree Peonies at the Arnold Arboretum, Boston, Mass. Following are the names of the owners of a dozen gardens, selected at random, which include comprehensive collections of Farr's Tree Peonies: Mrs. Warren Bicknell, Cleveland, Ohio; Mrs. Henry Burden, Cazenovia, N. Y.; D. M. Blair, Richmond, Va.; Mrs. W. S. Carpenter, Jr., Wilmington, Del.; Mrs. William K. Du Pont, Wilmington, Del.; Mrs. Henry Ewing, Lookout Mountain, Tenn.; Mrs. Mary Healy, Stamford, Conn.; Mrs. Louise J. Kinney, Louisville, Ky.; John H. Perry, Irvington, N. Y.; Mrs. Arthur Scott, Media, Pa.; Sunken Gardens, Harrisburg, Pa.; Dorothy T. Vogdes, Bala Cynwyd, Pa.; Mrs. Arthur Bailey, Paxtang, Pa.

Culture and History of Tree Peonies

History and Sentiment

Tree Peonies are so named because they are hardwood shrubs like lilacs, azaleas, and the like. A more proper name might be "Shrub" Peonies, but Chinese written records term them "Tree Peonies" back to 536 A. D. when they were the exclusive property of the Emperor. Japan imported them in 924 A. D., has made the most improvements since then, and leads the world in production today. England imported its first Tree Peony in 1787. Some American plants are known to be at least 50 years old.

Permanence

A Tree Peony in Norfolk, England, when 80 years old, had a spread of 15 feet, was 4 to 8 feet high, and bore 400 blooms, each 8 to 9 inches in diameter. Many Farr customers have reported 100 blooms per plant on specimens purchased since 1913. The average rate of hardwood growth appears to be from 2 to 6 inches per year. Plants should last at least one's lifetime. Development is most rapid during the first 10 years. Three-year plants bear 2 to 4 blooms, 6-year plants from 10 to 30 blooms, depending on cultural conditions.

How to Plant

Your Tree Peony wants to live for 100 years. Therefore, dig a hole about 2 feet wide and 2 feet deep. Thoroughly mix

3 pounds of Vigoro with the soil. Refill the hole with firmed soil to a depth where tips of roots will rest, leaving the nursery-row ground-marking about an inch lower than the top-level of the hole. Spread the roots and continue to "firm" the soil while adding it.

Apply a 4-inch mulch of clean straw or hay around the plants and slightly beyond the root-radius, after the ground is permanently frozen, for the first winter. Leave branch-tips exposed. Apply a half-inch layer of hydrated lime to top surface each spring for ideal results.

Feed, cultivate and water the plants conscientiously, and your Tree Peonies will be a constantly increasing source of pride and enjoyment throughout your lifetime.

Where to Plant

A location sheltered from prevailing winter winds is the first preference. They prefer limed soil, good drainage, and sunlight, remembering that partial shade will protect blooms from the sun; as background to perennial beds and rock-gardens; along the foundation of buildings or walls; in beds or as specimens and accent plants by themselves. In combination with "pre-Peony" bloomers, such as tall late Tulips, Lilacs, early Irises, *Rosa hugonis*, Azaleas, Spireas, etc., allow 2 feet of unobstructed clearance around Tree Peonies so that pruning against overcrowding may be postponed for many years. While they may spread as much as 10 to 15 feet in a hundred years, 4 feet apart is a good rule if planted by themselves.

Which to Plant

Our list of Tree Peonies now available follows. Descriptions are intentionally modest and limited because every variety is desirable and beautiful. Effusive descriptions would be merely so much reiteration. All you need do is select the color you prefer, with the assurance that your garden will be graced by what will probably be your most-prized garden possession.

There is no practical difference between the bloom season and growth-rate of these varieties except that Moutan is exceptionally early and most rapid growing while the yellows are the very last to bloom and the slowest in growth.

Tree Peony Prices

Do not accept price as the criterion of beauty but rather as based upon the supply available. If you derive satisfaction from exclusiveness, the "yellows" may be worth \$1,000.00 to you because there are hardly 100 plants in the United States today, but a price of \$50.00 does not necessarily claim that they are ten times as beautiful as \$5.00 sorts—only that they are much scarcer and much harder to produce and that deep yellow is an otherwise unattainable color in Peonies.

Tree Peony prices are based entirely upon supply and not on size of plants or respective merit of bloom. Moutan and Iro-no-Seki are the best "buys" on the 1934 list since our prices are based on adequate stock. All plants are returnable at our expense if in any way unsatisfactory.

Large, Strong Plants

The following prices apply on 2- to 4-year-old plants which have already bloomed in our nursery. Many of them are "parent" plants which have been cut back for propagation purposes. If they appear stubby when received, remember (a) that you are receiving a "parent" plant; (b) that cutting back produces bushy plants; (c) that the stubbiness will disappear when spring growth develops; (d) that the roots have been unmolested and will produce that many more bloom-sprouts for next spring; (e) that there will be no loss of time or bloom because, whether cut back or not, the shock of transplanting most any plant does not permit bloom the same spring it is received.



Tree Peony, Moutan has been the "Emperor's Flower" and "King of Flowers" in China since 600 A. D. It is now available to the average American garden at the lowest prices ever applied



Evidence of the early age at which Tree Peonies bloom. Note size of blooms

Tree Peony List

	Each
Akashi-gata. Semi-double; salmon.....	\$10 00
Banksi. Double; pink with darker shades.....	6 00
B. H. Farr. Single; vivid orange-scarlet.....	10 00
Gosho-Kazura. Single; shell-pink.....	6 00
Haku-raku-ten. Semi-double; pure white.....	10 00
Hana-guruma. Semi-double; rose-pink.....	6 00
Hana-no-Tsukasa. Semi-double; lavender.....	6 00
* Iro-no-Seki. Semi-double; shell-pink.....	5 00
Iwato-kagami. Double; clear pink.....	6 00
Kamada-Fuji. Double; flesh.....	6 00
Kin-Fukurin. Single; light orange-scarlet.....	7 50
La Lorraine. Double; pure golden yellow.....	65 00
Michishiba. Single; rose-pink.....	6 00
* Moutan. Single; red. (See specimen offer.).....	5 00
Nippon-ko. Semi-double; pink.....	6 00
Ruriban. Semi-double; purple.....	10 00
Shiko-den. Double; deep rose-pink.....	7 50
Shuchiuka. Semi-double; flesh, darker center.....	6 00
Souv. de Maxime Cornu. Double; yellow and burnt-orange.....	30 00
Tama-fuyo. Single; clear pink.....	6 00
Tama-Usagi. Single; pure white.....	10 00
Tsukasa-jishi. Single; rosy lavender.....	6 00
* 1 Iro-no-Seki and 1 Moutan for	7 00

Specimen Moutans

Moutan blooms are single, exotic, vivid purple-red, with crepe-paper petals and golden stamens in the center. The earliest, most vigorous, and most free-blooming of all Tree Peonies.

Moutan is the Wild Tree Peony of Thibet and is easier to propagate than its hybrid descendants. With us, it now exists in ample quantity as part of our ambition to make Tree Peonies available to average gardens. Our stock is the largest in the Occidental world and we offer them in specimen sizes, accordingly.

These specimens are 6 to 10 years old and have borne from 20 to 100 blooms each. They will produce equal and improving results for customers after one summer's root-growth, following transplanting. All specimens are heavily rooted and heavily branched. Prices include careful packing.

- 2 to 2½-ft. specimens at **\$6.00 each**
- 2½ to 3-ft. specimens at **\$7.00 each**
- 3 to 3½-ft. specimens at **\$8.00 each**



The Peony Walk at Weiser Park is becoming more beautiful each year as the plants become older and larger. Each plant, of more than 200 different varieties, is plainly staked by name. Bloom between June 3 and 19.

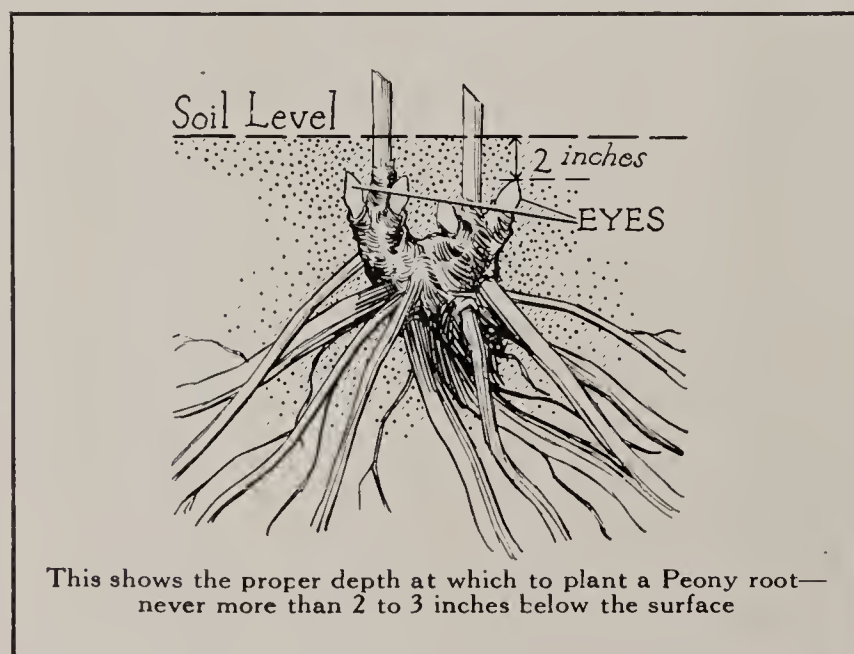
PEONIES • Massive, Immaculate, Colorful, Fragrant

Why Plant Peonies? A well-selected collection of Peonies produces magnificent, colorful, and fragrant bloom of perfect detail for more than a month. Individual blooms last two weeks if cut early and handled properly. A plant lasts a lifetime and can be divided repeatedly. Peonies will withstand abuse and neglect and will liberally reward average attention. Insect pests do not bother Peonies.

How to Plant. The illustration below is self explanatory. Prepare holes and feed as for Tree Peonies. See page 12. Plant from 3 to 4 feet apart. Avoid manure.

Where to Plant. Plant in average soil, with good drainage and at least half-time sunlight, in beds or rows by themselves; here and there in perennial backgrounds or shrubbery foreground; along walls, walks, borders, etc. Acquire a collection as a hobby.

When to Plant. In very early spring before sprouts appear or in fall from late August until the ground freezes.



Farr's Master Peony List

The following list has been arranged so that selection can be made to suit individual preferences as to color, price, season, rating, etc. We have already discarded more than 500 varieties. You can select from this remaining list with 100 per cent assurance of satisfaction from any variety chosen.

Prices apply to 1-year plants or equivalent strong 4 to 7-eye divisions. Clumps, containing 3 or 4 divisions, if desired, at double the price of divisions. Prices are based upon supply available and not necessarily upon merit, and a 75-ct. variety may be every bit as desirable as a \$10.00 sort.

We guarantee trueness to name and top-quality roots. Returnable at our expense if otherwise.

KEY TO DESCRIPTIONS

Time of blooming indicated thus—E., Early; E.M., Early Midseason; M., Midseason; L., Late. X. indicates most pronounced fragrance; 8.7, 9.7, etc., indicate grade of merit given by American Peony Society.

White

	Large Divisions
8.7 Albatre. L.X. Compact; white, flecked red.....	\$0 75
8.8 Alsace Lorraine. L. Large; tall. Cream-white..	1 50
8.6 A. P. Saunders. L.X. Large; delicate flesh-white.	3 00
9.0 Baroness Schroeder. L.X. Flesh-white.....	75
8.1 Couronne d'Or. L.X. White; golden stamens....	75
8.9 Enchanteresse. L. Creamy white, flecked crimson	2 00
9.3 Festiva Maxima. X. Popular early white.....	75
9.8 Kelway's Glorious. M.X. Magnificent glistening white.....	2 00
9.1 Lady Alexandra Duff. M.X. Blush-pink to white.	1 00
9.9 Le Cygne. M.X. Perfectly formed ivory-white...	2 00
Marcelle Dessert. M. White, splashed lilac.....	75
8.3 Mons. Dupont. M.X. Glistening ivory-white....	1 00
9.3 Mrs. Edward Harding. L.M. Large; pure white.	2 50
9.1 Sarah Thurlow. L. Pearl-white.....	2 00
9.4 Tourangelle. M.X. Pearl-white and salmon....	1 50



A rare collection of Farr's Peonies artistically arranged along the walk, against a background of shrubbery

Cream and Yellow Peonies Large Divisions

- 8.1 **Duchesse de Nemours.** E. Creamy white.....\$0 75
- 8.8 **Laura Dessert.** E.M. Canary-yellow..... 2 00
- 8.8 **Nymphæa.** M. Creamy white; yellow stamens... 1 50
- 8.6 **Primevere.** M.X. Cream, deep yellow center... 1 50

Flesh

- 9.0 **Bayadere.** M. Large; flesh and creamy white... 1 50
- 8.9 **Eunice Shaylor.** M. Flesh-color; yellow stamens. 1 50
- 8.9 **James Boyd.** M. Fragrant; flesh-color and salmon 1 50
- 8.6 **La Lorraine.** M. Creamy white, tinted pink..... 1 50
- 8.5 **Octavie Demay.** E.X. Dwarf; white and pink... 1 00
- 8.9 **Pride of Essex.** M. Flesh-pink..... 2 00
- 9.1 **Rose Shaylor.** M.X. Delicate flesh-white..... 5 00
- 8.5 **Shaylor's Dream.** M. Flesh-white..... 2 00
- 9.7 **Solange.** L.M. Distinct creamy salmon..... 1 50

Light Pink

- 8.6 **Albert Crousse.** L.X. Large; compact salmon-pink..... 75
- 8.1 **Asa Gray.** M.X. Pink, powdered with deeper dots. 75
- 9.1 **Cornelia Shaylor.** L. Delicate flesh and shell-pink 2 00
- 9.1 **Elizabeth Barrett Browning.** X. Shell-pink to white. Very late..... 2 00
- 8.3 **Eugene Verdier.** L.X. Shell-pink, tinted cream.. 75
- 8.6 **Eugenie Verdier.** M.X. Taller; rose-pink..... 1 00
- 8.9 **Georgiana Shaylor.** L.M. Large; light rose-pink. 1 50
- 8.8 **Grandiflora.** X. Silvery pink. Best late variety.. 1 50
- 9.0 **Katherine Havemeyer.** L.M. Large; rose-pink.. 2 00
- 8.8 **Kelway's Queen.** M.X. Globular; rose-pink... 3 00
- 9.2 **La Fee.** E.X. Large; light rose-pink..... 2 00
- 9.0 **La France.** X. Large; rosy white. Very late..... 2 00
- 8.8 **Loveliness.** L. Uniform pale hydrangea-pink.... 2 00
- 9.0 **Mabel L. Franklin.** M. Brilliant rose-pink..... 2 00
- Marguerite Gerard.** M. Pale pink to white..... 75
- 9.0 **Mary W. Shaylor.** L.M. Delicate, clear pink.... 2 00
- 9.0 **Milton Hill.** L.M. Delicate salmon-pink..... 2 00
- 8.5 **Opal.** M. Opalescent pink..... 75
- 8.8 **Phœbe Carey.** L. Large; soft rose-pink..... 2 00
- 9.0 **Phyllis Kelway.** M. Large; loose; pink-white.... 2 00
- 9.3 **President Wilson.** L.X. Very large; pink..... 3 00
- 8.7 **Reine Hortense.** M.X. Large; tall; perfectly formed pink..... 75
- 8.8 **Rosette.** E. Silvery salmon-flesh..... 1 50
- 9.1 **Souv. de Louis Bigot.** L.M. Silvery salmon-pink. 1 50
- 9.8 **Therese.** M.X. Soft, clear pink. Note rating.... 1 50

Deep Pink Large Divisions

- 8.6 **Claire Dubois.** L. Deep, silvery rose-pink.....\$0 75
- 7.6 **Edulis Superba.** E.X. Popular early pink..... 75
- 9.1 **Edwin C. Shaw.** M.X. Clear shell-pink..... 2 00
- 8.7 **E. J. Shaylor.** L.M. Rose-pink, edged gold..... 2 00
- 8.7 **James R. Mann.** M. Rosy pink, flecked crimson 1 00
- 8.4 **Lamartine.** (Lem.) L. One of the best dark pinks 2 00
- La Perle.** M. Deep hydrangea-pink..... 75
- 9.1 **Martha Bullock.** L.X. Exquisite, deep rose-pink. 2 00
- 8.5 **Maud L. Richardson.** L.X. Lilac-rose..... 1 50
- 9.2 **Mons Jules Elie.** X. Fine early dark pink..... 75
- 9.0 **Sarah Bernhardt.** L.X. Apple-blossom-pink.... 1 00
- 8.5 **Standard Bearer.** E. Larger and taller Mons. Jules Elie..... 1 50
- 9.3 **Walter Faxon.** M. Salmon-rose..... 2 00
- 8.2 **Wiesbaden.** E. A distinct pink..... 1 00

Red

- 8.7 **Auguste Dessert.** M. Cup-shaped; crimson-carmine..... 2 00
- 8.0 **Aviateur Reymond.** M. Lively cherry-red..... 1 00
- 8.4 **David Harum.** L.M. Tall; distinct; bright red... 2 00
- 8.4 **Felix Crousse.** L.M. Vigorous; bright red..... 75
- 8.2 **Francois Rousseau.** E. Lively velvety red..... 1 00
- 9.0 **Longfellow.** L.M. Brilliant cherry-red..... 1 50
- 8.4 **Lora Dexheimer.** M. Distinct. Bright crimson.. 1 00
- Mr. L. Van Leeuwen.** E. New. Largest red Peony 2 00
- 9.2 **Philippe Rivoire.** M.X. Brilliant crimson..... 2 00
- 8.8 **Richard Carvel.** X. Best early crimson-red.... 2 00
- 8.3 **Victoire de la Marne.** M. Distinct light red.... 1 00

Deep Red

- 8.5 **Adolphe Rousseau.** E. Rich dark red..... 75
- 8.2 **Grover Cleveland.** M.X. Vigorous. Dark crimson 1 00
- 8.8 **Karl Rosenfield.** E.M.X. Vigorous. Dark crimson 75
- 8.7 **Mary Brand.** M. Vivid, clear dark crimson..... 1 00
- 8.8 **Mons. Martin Cahuzac.** M. Black-red..... 1 50
- 8.4 **William F. Turner.** E. Dark crimson..... 2 00

Early Peonies

- Officinalis albo-plena.** Old-fashioned early white... 2 50
- Officinalis, Anomala.** Single; red. Lacy foliage..... 1 50
- Officinalis roseo-plena.** Old-fashioned early pink... 1 00
- Officinalis rubro-plena.** Old-fashioned early red.... 1 00
- Officinalis tenuifolia fl.-pl.** Fern-leaved early double red..... 3 00

Superfine Mixed Peonies. This mixture, caused by moving, discarding, and transplanting, includes all types and colors of Peonies. An excellent opportunity for cut-flower investment or garden display. **PRICES: 5 or more roots at 20 cts. each; 25 or more at 15 cts. each; 50 or more at 12 cts. each; 100 or more at 10 cts. each.** All shipments by Express or Freight, charges collect.



Paeonia albiflora

Mixed Peonies

Including a wide range of types and colors. Top grade, 3 to 5-eye divisions. Not less than 5 sold. **25 at 15 cts. each; 10 at 18 cts. each; 5 at 20 cts. each.**

Quantity Discounts on Peonies

10% Discount on Peony orders exceeding.....	\$4.99
12% Discount on Peony orders exceeding.....	\$9.99
15% Discount on Peony orders exceeding.....	\$24.99

1-cent Sale on Peonies

These Peonies are anything but inferior. See the ratings, as applied by the American Peony Society.

We do, however, have too many of them and instead of selling them to a comparatively few wholesale buyers, we will give our retail customers the opportunity for good-will-making bargains.

For every plant ordered from the following list, you can have another, **of the same variety FOR 1 CENT MORE.** Example: 2 Albatres for 76 cts.; 4 Albatres for \$1.52; 6 Albatres for \$2.23, etc.

Sale List of Peonies

- Adolphe Rousseau. E. Rich dark red.
- Albatre (Avalanche). L. Large; compact; white.
- Albert Crousse. M. Large; compact; salmon-pink.
- Claire Dubois. L.M. Violet-rose, tipped silver.
- Duchesse de Nemours. E. Sulphur-white.
- Edulis Superba. E. Large; loose; pink; fragrant.
- Eugene Verdier. L. Pink, yellow, salmon-white.
- Felix Crousse. L.M. Vigorous. Bright red.
- Festiva Maxima. E. White, flecked crimson.
- Geraldine. (Jap.) Bright rose, white-tipped staminodes.
- La Perle. M. Deep hydrangea-pink; fragrant.
- Marcelle Dessert. M. White, splashed lilac.
- Marguerite Gerard. M. Pale pink to white.
- Mons. Jules Elie. Large; early pink.
- Nymphé. Large; flat; white, yellow stamens.
- Reine Hortense (President Taft). M. Hydrangea-pink.
- Yeso. (Jap.) M. Flesh-white, canary-yellow center.

"Good-Will" Collections

Any 10 of the above Peonies, in 10 varieties, your selection, for \$4, Parcel Post prepaid. Any 5 for \$2.35, Parcel Post prepaid.

NOTE. On other orders from this Catalog, customer pays transportation.

Single and Japanese Peonies

Single Peonies resemble wild roses, having a collar of petals around a ball of fine golden stamens; Japanese Peonies are similar except that the stamens are larger and frequently varicolored, forming most unusual and attractive combinations.

S. indicates Single; J., Japanese

	Each
8.7 Albiflora. (S.) Like a white water-lily.....	\$2 00
8.3 Alma. (J.) Lighter than Ama-no-sode.....	1 00
9.2 Ama-no-sode. (J.) Pink, with golden center....	4 00
8.1 Cathedral. (J.) Pink, with large, red-tipped stamens.....	1 00
Dai-jo-kuhan. (S.) Pink, with golden stamens..	75
Fu-ji-mine. (J.) White, with yellow petaloids...	1 00
Fusyama. (J.) Flesh-pink, gold center.....	1 00
9.2 Fuyajo. (J.) Mahogany-red, chamois center....	2 00
Geraldine. (J.) A smaller but more vigorous Cathedral.....	75
8.0 Gypsy. (J.) Early; bright red, with red center tipped gold.....	75
8.4 L'Etincelante. (S.) Silvery pink; golden stamens	75
8.1 La Fraicheur. (S.) Rose-pink; golden stamens...	75
Major Loder. (S.) Pink, edged flesh; golden stamens.....	1 00
8.7 Margaret Atwood. (J.) Largest white; golden center.....	1 00
8.6 Mikado. (J.) Dark crimson, golden center.....	75
Montebank. (J.) White, with golden center....	1 00
Nymphé. (S.) Flesh-color, with golden stamens.	75
8.2 Ohirama. (J.) Light rose, with golden center....	1 00
Oimatsu. (J.) Flesh-color, with golden center...	75
8.9 Pride of Langport. (S.) Pink, with long golden stamens.....	2 00
Shi-pen-kue. (S.) Deep pink, with golden center.....	2 00
9.0 Some ganoko. (J.) Darker and larger Mikado.....	2 00
Tamate-Boku. (J.) Most famous pink Jap.....	10 00
8.9 Tokio. (J.) Large; clear pink, centered gold.....	3 00
9.0 White Lady. (S.) Large; white....	1 00
8.7 Yeso. (S.) Very prolific white, with golden chestnut-bur center.....	75



Japanese Peony, Ama-no-sode

Phlox for Fall, 1934

Phlox are generally conceded to be among the "Best 10 Perennials," and there is no question about their being one of the very best summer-blooming perennials.

Phlox cultural requirements are few but vitally essential for good results, and good Phlox results will lift any garden out of the general summer bleakness too often noticed.

First, and most important, keep Phlox well fed. They are especially heavy feeders. Use commercial fertilizers, of which Vigoro is one of the best. Manure may cause blight.

Second, avoid heavily shaded locations and mix sand with a heavy soil. Avoid late fall (after November 1) planting in northern states.

Third, spray regularly with Pomo-Green Nicotine (75 cts. per pound) to prevent and cure Mildew and Red Spider.

Fourth, cut faded blooms so that seeds will not drop and develop into wild and parent killing seedlings; also to encourage a later crop of bloom.

Fifth, apply lawn sprinkler during bloom season, one-half day each week. Use Farr-bred plants and order early. Good Phlox plants are scarce, cost money to grow and pack, and are well worth our price, which is not the highest or the lowest.

NOTE. The following list is based on our 29 years of experience with 140 varieties of Phlox. It also closely follows the List of Best Phlox included in recent Phlox Bulletin by A. M. S. Pridham, Cornell University.

Height is indicated by "Low," "Medium," and "Tall."

Season is indicated by "Early," "Midseason," and "Late."

PRICES: All varieties, 35 cts. each; 3 of a kind for 90 cts.; 5 or more of one kind at 25 cts. each; 25 or more of one kind at 20 cts. each

B. Comte. Deep, rich ox-blood-red. Fine. Tall. Late bloomer.

Bridesmaid. White with red eye. Tall and vigorous. Midseason.

Eclairer. Carmine with light eye. Medium. Late.

F. A. Buchner. Large-flowered pure white. Grows slowly. Medium. Midseason.

Feuerbrand. Cerise and vermilion, flamed orange. One of the largest flowered of the orange-reds. Medium. Midseason.

F. G. von Lassburg. White. Trusses large and stems good; free blooming. Tall and fine for border, background. Midseason.

F. R. Gross. Alabaster-white, with blood-red eye. Medium. Midseason.

Gen. Chanzy. Brilliant scarlet. Medium. Midseason.

Imperator. Purple-crimson, blood-red center. Tall. Midseason.

Josephine Gerbeaux. Pure white with a very large rose center. Beautifully blended. Medium. Midseason.

Jules Sandeau. Rosy pink. Long-lasting bloom period. Low.

La Vague. Mallow-pink with carmine eye. Profuse. Low. Midseason.

Le Mahdi. Metallic bluish violet; large. Medium. Midseason.

Miss Lingard. Early, free, and everblooming; crispy and neat white. Medium.

Rheinlander. Large heads of salmon-pink intensified by scarlet eye. Medium. Midseason.

Richard Strauss. Very dark violet-amaranth. Medium. Midseason.

Rijnstroom. Rose-salmon, curled florets. Fairly tall and an abundance of stems. Midseason.

R. P. Struthers. Lively carmine with claret-red eye. Vigorous; free. Tall. Midseason.

Sir Edwin Landseer. Very bright crimson. Free grower. Medium. Midseason.

Thor. Deep salmon-pink, with red eye. Pyramid-shaped panicle. Exceptionally trouble-free. Medium. Midseason.

Widar. Reddish violet, with white eye. Dense, oval panicle. Medium. Midseason.

"SELECTED" PHLOX COLLECTION: Any 10 plants from above list, your selection, for \$3, plus Parcel Post at cost, after plants arrive, or Parcel Post Prepaid if cash with order.

SUBULATA. Creeping Phlox; Mountain Pinks. Three colors—Alba, white; Lilacina, light blue; Rosea, pink. 25 cts. each; 5 or more of a kind at 18 cts. each; 25 or more of a kind at 14 cts. each.



This field of Farr Phlox shows the type of plant and bloom produced by our methods of growing

Philadelphus (Mock Orange)

There is a great variation, both in the habit of growth of the different Philadelphus and in their form of bloom. There are dwarf varieties, with slender, arching branches and small foliage; others have very large foliage and vigorous, upright habit of growth, forming larger shrubs; but all are refined and beautiful, and the different species and varieties can be grouped together most effectively. At Highland Park and in the Arnold Arboretum, the collection of Philadelphus is second in importance only to that of the lilacs.

PRICES: All varieties in bushy specimen, 3 to 4-foot size, 50 cts. each; 5 or more of one kind at 40 cts. each. F.O.B. our station.

Albatre. Large, full double, pure white flowers produced in dense panicles. Dwarf to medium grower; extremely floriferous.

Argentine. Erect-growing shrub, with clusters of very large, double, pure white flowers more than 2 inches across, of regular form and having imbricated petals. Medium height.

Aurea. A variety of moderate growth, with golden foliage and small white flowers.

Avalanche. Large, fragrant flowers on slender, gracefully arching branches. Medium height.

Bouquet Blanc. A very handsome, large, double or semi-double flowering variety, producing tall erect growth. Strong plants.

Glacier. Strong, erect grower. The clusters of double white flowers, set in panicles, have the appearance of one enormous double flower. Medium height.

Norma. Large, single, or semi-double, fragrant white flowers in May and June. Tall.

Pavillon Blanc. Of vigorous growth, with large white flowers in clusters.

Rosace. Large, semi-double flowers of creamy white, passing to pure white. Extremely fragrant and of upright growth.

Sirene. Well-expanded flowers of great size, faintly shaded pink in the center; small foliage.

Splendens. Large, white, semi-double, fragrant flowers in clusters.

Virginal. Large, semi-double, white flowers produced intermittently all summer. Medium grower.

Voie Lactee. Snow-white flowers with conspicuous golden stamens. Vigorous grower, having quantities of immense flowers. Late blooming. Tall, bushy habit.



A collection of French Hybrid Lilacs will give more real garden pleasure than almost any other shrub that you can grow. The picture is from the garden of George Staplin, Jr., Mannsville, N. Y. Plants by Farr. See Mr. Staplin's testimonial below. Recently acquired and complete collections of Farr Lilacs are attracting thousands of visitors for the city of Gloversville, N. Y., and Reading Museum, West Reading, Pa.

Hybrid Lilacs—Sentiment . Fragrance

Why Plant Hybrid Lilacs?

Because common and old-fashioned Lilacs usually do not bloom for many years after transplanting, and until they attain mature age and large size. French Hybrids bloom when 18 inches tall, or immediately after they recover from the shock of transplanting. They also bloom more freely and more abundantly than the older sorts, and are every bit as hardy and vigorous. By comparison, they bear myriads of giant trusses, and include a wide range of colors. They require less attention than roses, evergreens, or fruit trees.

How to Plant

Plant similar to tree peonies, except **more deeply than any other shrubs**, so as to encourage thrifty plants and new shoots—as much as 4 to 5 inches deeper than nursery-row ground-markings. Avoid 99 per cent of transplanting failures by planting deeply and watering the plants copiously during the fall or summer after transplanting. Let water slowly trickle to the roots, or sprinkle for a half day at a time; daily drenchings do more harm than good. The water must soak to a 2- to 3-foot depth.

Feed and cultivate for perfection. Spray with Sunoco Spray Oil (1 part to 15 parts water) during late winter if any signs of scale are found. Trim and thin immediately after they bloom, if at all. Cut back when transplanting, for the immediate welfare as well as future bushiness of the plant. Add a half-inch layer of hydrated lime to the feeding area once a year for ideal results.

When to Plant

Lilacs sprout unusually early in spring. The spring shipping season is, therefore, short and orders should be placed early for shipment between March 1 and April 15. The fall season begins after frosts cause dormancy, during October, and continues until the ground freezes permanently in December.

Where to Plant

Plant in a sunny and drained location, not in full shade or soggy places. All Hybrid Lilacs are equally hardy as far north as Alaska, and different varieties require identical culture. They prefer cold winters.

The Test of 17 Years

In 1917, after visiting Highland Park, Rochester, N. Y., I thought I would have a Lilac-garden of my own. The next spring I bought several varieties. Later, I was given your address by the Assistant Superintendent of Parks at Rochester and have since been buying of your firm until I have 119 varieties of Lilacs, mostly from your nursery, and am more than well pleased with them and your dealing with us. Nearly all have bloomed the same or the next year after I received them.—GEORGE STAPLIN, JR., Mannsville, N. Y.

Six-Point Guarantee

Every Lilac we ship is guaranteed to be (1) full size; (2) true to name; (3) strong and huskily branched; (4) liberally and fibrously "own rooted"; (5) free of blight and pests; (6) received in fresh, carefully packed, undamaged condition.

Farr's List of Master Lilacs

Selected from Mr. Farr's collection of several hundred varieties, and from collections by Highland Park, Arnold Arboretum, John Wister, Dr. J. Horace McFarland, Koster, Lemoine, Turbat, etc.

Our Display Garden includes a specimen plant, each, of the following varieties. Visitors invited. Bloom, about May 15

How to Use Lilacs

Conventional and tasteful use and locations for Lilacs include hedges, borders, beds, along foundations, and as specimens. Gardeners are beginning to realize that a Lilac hedge not only serves the double purpose of bloom and screen but frequently costs no more than a privet or barberry hedge since it requires many less plants. For hedge, plant 3 to 5 feet apart; for other purposes, plant 8 to 12 feet apart, depending on space available and combinations desired.

"The Best Dozen Lilacs"

Prof. Sargent, of the Arnold Arboretum, used to say "the best dozen Lilacs are those which happen to be in the best bloom this year." Undoubtedly, he evolved this reply out of desperation because all Lilacs are beautiful, and the bloom on the same plants varies from year to year, according to the culture they receive, weather conditions, and the age of the plants. We have, accordingly, discontinued "setting up" a list of the Best Dozen. Even twin brothers will not agree on such a list.

What is more important is to remember that all Lilacs will thrive with little attention and are beautiful, if conscientiously cultivated, as they come into maturity.

KEY TO DESCRIPTIONS

E., indicates Early bloom; E.M., Early Midseason; M., Midseason; L.M., Late Midseason; L., Late.

S. indicates Slow growth; A., Average growth, and V., Vigorous growth.

Lilac Quantity Discounts

10 per cent on orders exceeding.....	\$9.99
15 per cent on orders exceeding.....	24.99
20 per cent on orders exceeding.....	49.99

Lilac prices are F. O. B. Weiser Park.
Shipment by Express or Freight

Single Lilacs—Own Roots

Bleautre. E.M., A. Deepest powder-blue.

	Each		Each
2-3'.....	\$1 00	4-5'.....	\$2 00
3-4'.....	1 50		

Charles X. M., A. Bluish violet-red.

	Each		Each
3-4'.....	\$1 00	5-6'.....	\$2 25
4-5'.....	1 50		

Christopher Columbus. L., S. Deep sky-blue. 2-3', \$1.50 each.

Comte de Montebella. M., A. Even-toned; shapely; light sky-blue. 2-3', \$2 each.

Congo. M., A. Bright wallflower-red.

	Each		Each
2-3'.....	\$1 50	3-4'.....	\$2 00

De Mirabel. L., S. Distinct dark blue-violet.

	Each		Each
2-3'.....	\$1 50	3-4'.....	\$2 00

Decaisne. (Decorative.) L.M., A. Clear, lightest blue.

	Each		Each
2-3'.....	\$1 00	4-5'.....	\$2 00
3-4'.....	1 50		

Diderot. L., S. Extra large; rich claret-red.

	Each		Each
2-3'.....	\$1 50	4-5'.....	\$2 50
3-4'.....	2 00		

Edmond Bossier. L., S. Deeply cupped; dark red.

	Each		Each
3-4'.....	\$1 50	4-5'.....	\$2 00

Hugo Koster. E.M., A. Light lilac-blue. 4-5', \$2 each.

Jan van Tol. M., A. Claimed to be the largest trussed white.

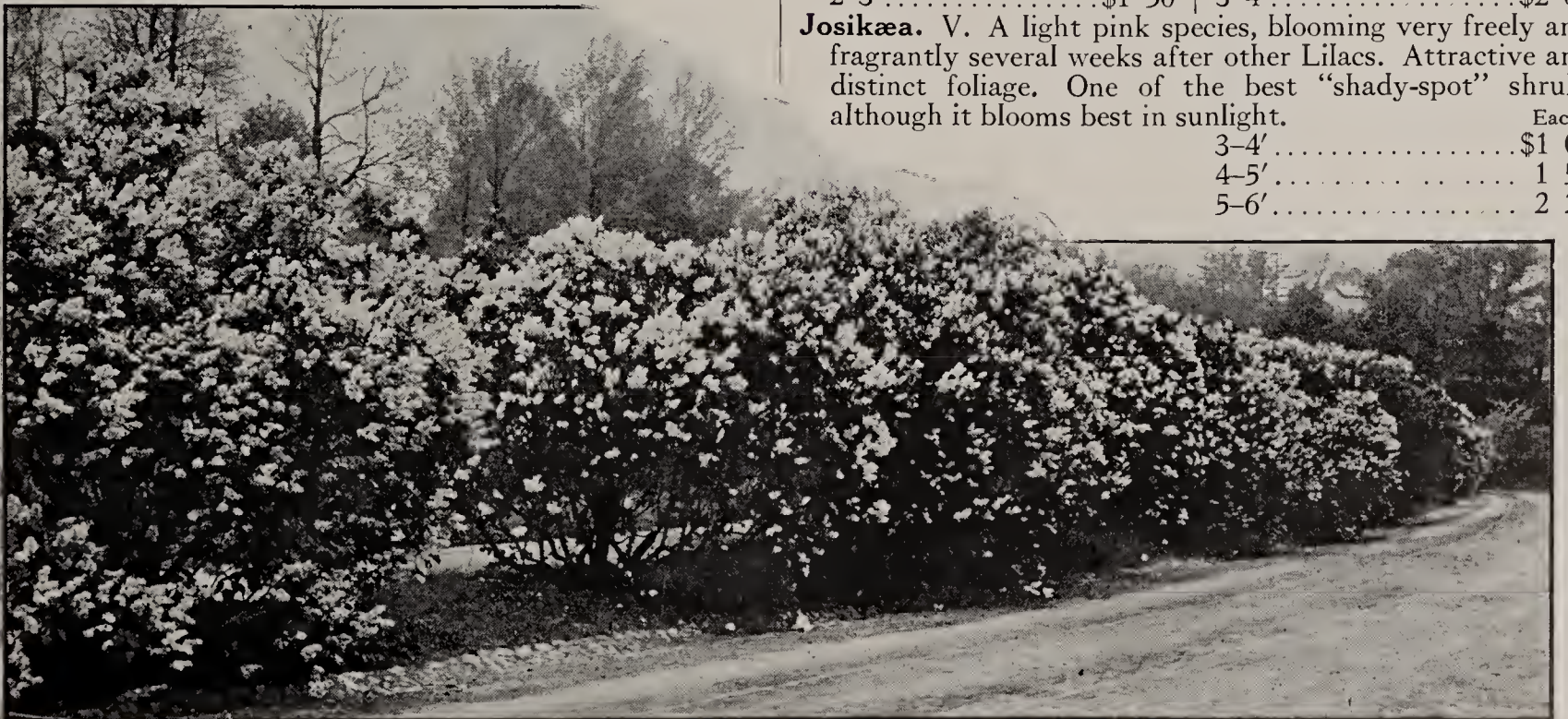
	Each		Each
18-24".....	\$1 00	2-3'.....	\$1 50

Japonica. A species developing into a large tree-like bush 30-40' high. Plume-like panicles of creamy white. The real Tree Lilac.

	Each		Each
2-3'.....	\$1 50	3-4'.....	\$2 00

Josikæa. V. A light pink species, blooming very freely and fragrantly several weeks after other Lilacs. Attractive and distinct foliage. One of the best "shady-spot" shrubs although it blooms best in sunlight.

	Each
3-4'.....	\$1 00
4-5'.....	1 50
5-6'.....	2 25



Lilacs in the Arnold Arboretum



Truss of Single Lilac, Lucie Baltet

SINGLE LILACS, continued

Lamartine. V. Very free-blooming and fast-growing pink Lilac. Extra-early species.

	Each		Each
2-3'	\$0 75	4-5'	\$1 50
3-4'	1 00	5-6'	2 00

Lucie Baltet. L.M., A. Coppery pink. Distinct from all Lilacs.

	Each		Each
2-3'	\$1 50	3-4'	\$1 85

Ludwig Spaeth. L., A. Best-known dark red. 2-3', \$1 each.

Macrostachya. M., A. Tenderest pink; extra fragrant. 18-24", \$2 each.

Marceau. New. Larger and darker than Congo. Deeply cupped. True stock imported from France. 18-24", \$4 each.

Massena. New. Larger and darker than Marceau. Massena and Marceau exceed all single reds. Our stock and descriptions are from the introducer, E. Turbat & Co., France.

	Each		Each
18-24"	\$4 00	2-3'	\$5 00

Mirabeau. Like Lamartine, but darker.

	Each		Each
3-4'	\$1 00	5-6'	\$2 00
4-5'	1 50		

Mme. F. Morel. L., V. Extra free, large, and long-stemmed; lilac-pink.

	Each		Each
3-4'	\$1 50	5-6'	\$3 00
4-5'	2 00		

Monge. This variety and Congo are the most preferred of the generally known single reds.

	Each		Each
18-24"	\$1 50	2-3'	\$2 00

Mont Blanc. L.M., A. Giant pure white.

	Each		Each
3-4'	\$1 50	4-5'	\$2 00

Persica rubra (Persian Lilac). M., V. Free, loose-trussed, pink species.

	Each		Each
2-3'	\$0 75	4-5'	\$1 50
3-4'	1 00		

President Lincoln. M., A. Our favorite dark clear blue. 3-4', \$2 each.

Reaumur. L.M., V. Dark satiny carmine.

	Each		Each
2-3'	\$1 50	4-5'	\$2 25
3-4'	1 85		

Ronsard. V. Early species. Blue with white eye.

	Each		Each
4-5'	\$2 00	5-6'	\$2 50

Vestale. M., A. Stately, hyacinth-trussed white.

	Each		Each
3-4'	\$2 00	4-5'	\$2 50

Volcan. L., S. Dark ruby-red.

	Each		Each
3-4'	\$1 50	4-5'	\$2 00

Double Lilacs—Own Roots

Adelaide Dunbar. L.M., A. Compact; irregular; slender; red.

	Each		Each
2-3'	\$2 00	4-5'	\$3 00
3-4'	2 50		

Alphonse Lavallee. M., A. Slender; long-stemmed; blue-violet. 5-6', \$2.50 each.

Acubifolia. L., S. Lilac, fading blue. Leaves green and yellow. 4-5', \$2.50 each.

Belle de Nancy. M., V. Free-blooming; extra fragrant; lively pink.

	Each		Each
2-3'	\$1 00	4-5'	\$2 00
3-4'	1 50	5-6'	2 50

Berryer. V. Long-trussed mauve; earliest double.

	Each		Each
2-3'	\$1 00	4-5'	\$2 00
3-4'	1 50	5-6'	2 50

Carmen. M. Early, plump mauve-pink.

	Each		Each
3-4'	\$1 50	4-5'	\$2 00

Charles Joly. L., V. Old favorite deep red.

	Each		Each
2-3'	\$1 00	4-5'	\$2 00
3-4'	1 50	5-6'	2 50

Charles Sargent. L.M., A. Heavily spurred and incurved; violet-blue.

	Each		Each
2-3'	\$1 00	4-5'	\$1 85
3-4'	1 35	5-6'	2 50

Condorcet. M., V. Billowy trussed; ashy blue. 4-5', \$2 each.

De Saussure. M., A. Compact; slender; dark purple-red fading to light red.

	Each		Each
2-3'	\$1 50	4-5'	\$2 50
3-4'	2 00		

Lilac prices are F. O. B. Weiser Park. Shipment by Express or Freight



A Collection of Farr's French Hybrid Lilacs gives real garden pleasure

DOUBLE LILACS, continued

Paul Thirion. M., A. Best claret-red; long stems.			
	Each		Each
2-3'.....	\$1 50	4-5'.....	\$2 50
3-4'.....	2 00		
President Fallieres. L., V. A darker Leon Gambetta.			
	Each		Each
2-3'.....	\$1 00	4-5'.....	\$2 00
3-4'.....	1 50		
President Grevy. L.M., V. Compact; long-stemmed; soft blue.			
	Each		Each
3-4'.....	\$1 50	4-5'.....	\$2 00
President Loubet. E.M., A. Extra dark red.			
	Each		Each
2-3'.....	\$1 00	3-4'.....	\$1 50
President Poincare. M., V. Giant; compact; varicolored and distinct; red and blue.			
	Each		Each
3-4'.....	\$1 50	5-6'.....	\$2 50
4-5'.....	2 00		
President Viger. L.M., A. Long trusses; ashy blue.			
	Each		Each
3-4'.....	\$1 50	5-6'.....	\$2 50
4-5'.....	2 00		
Rene Jarry-Desloges. E.M., V. Plump and massive; blue.			
	Each		Each
3-4'.....	\$1 50	4-5'.....	\$2 00
Thunbergi. L., V. One of the longest trussed Lilacs. Rich red and blue.			
	Each		Each
2-3'.....	\$1 50	4-5'.....	\$2 50
3-4'.....	2 00		
Vauban. E., V. Extra free-blooming; pink and blue.			
	Each		Each
4-5'.....	\$2 00	5-6'.....	\$2 50
Victor Lemoine. M., A. Unusually compact; azure-blue.			
	Each		Each
3-4'.....	\$1 50	4-5'.....	\$2 00
Viviand Morel. M., A. Clear deep violet-blue, white eye.			
3-4', \$1.50 each.			
Waldeck Rousseau. L., A. Pink with white center.			
	Each		Each
3-4'.....	\$1 50	4-5'.....	\$2 00
William Robinson. L.M., V. Compact; pink, fading blue.			
	Each		Each
3-4'.....	\$1 50	5-6'.....	\$2 50
4-5'.....	2 00		

Mixed Unnamed French Hybrids for Hedges. Mixture includes strays and discards. Any hybrid is better than the common Lilac, and the prices afford exceptional and economical opportunity for a Lilac hedge or border above the ordinary. 2-3', \$1 each, 5 or more at 75 cts., 25 or more at 65 cts.; 3-4', \$1.25 each, 5 or more at \$1, 25 or more at 75 cts.; 4-5', \$1.50 each, 5 or more at \$1.25, 25 or more at \$1.

Farr Selection Lilac Collections

Those who order these Lilac Collections, of Farr selection, will receive good named varieties which, if ordered specially, would cost from 20 to 50 per cent more. Colors will be well assorted. Plants returnable at our expense if not satisfactory.

- No. 1. Four French Lilacs** in 4 named varieties, 3-4', Farr selection, for \$5.
- No. 2. Eight French Lilacs** in 8 named varieties, 3-4', Farr selection, for \$10.

NEW YORK AGRICULTURAL EXPERIMENT STATION OF GENEVA, NEW YORK

H. G. SEYLER,
Farr Nursery Company, Weiser Park, Pa.
My Dear Mr. Seyler:—The Lilacs arrived in fine shape and are all resting in their proper places. Please accept our thanks for the promptness used in filling this order, and also for the fine plants. They are excellent specimens, with exceptionally fine roots. Thanking you again for your promptness, I am,
Very truly yours,
L. M. VAN ALSTYNE.

NOTE. This order included 86 plants in 62 varieties.

Which to Plant

Because we have discarded more than 100 lesser varieties of Lilacs, you can order from our remaining list, according to your price and color preference, with the assurance that every variety here offered is a "master" Lilac. All varieties are equally hardy. Type, color, bloom season, and rate of growth, as indicated, are the basis for selection.

LILACS IN NEBRASKA

The new Hybrid Lilacs (Leon Gambetta and President Grevy) that I got from your Company are sure the finest Lilacs that I have ever seen in any Lilac collection. I have 32 different kinds of Hybrid Lilacs that I have gotten from your Nurseries, and they have all been very fine.—DR. ALFRED N. HAGEN, Nebraska.

FOR 19 YEARS

I have been and am very much pleased with your service since 1915. Have had all kinds of plants and shrubs from you. The Lilacs are a wonder to the town; trees are covered with blossoms. One thing above others I like—if things are not satisfactory, you make them so.—MRS. F. R. COUGHRAN, Massachusetts.

WONDERFUL PLANTS

Have been enjoying the Lilacs so much and know next year they will be beautiful. Iris ready to bloom. You sent me such wonderful plants.—MRS. ROBERT CAMPBELL, Georgia.



Double Lilac, Mme. Casimir-Perier

Sales House of Farr Nursery Co., located 14 miles west of Reading, Pa., on Route 422. At left is shown the entrance to the west display garden which contains many desirable shrubs, evergreens, and hardy plants.



TERMS AND SIX-MONTH GUARANTEE

Six-Month Guarantee

Besides guaranteeing trueness to name and safe arrival, we will replace *without charge*, F. O. B. Nursery, any failures within six months after planting, if you think we or the plants were in any way at fault, provided the account is settled within regular 30-day terms and report of failure is made within the six-month period. You are to be the sole judge as to whether or not we should replace without charge. Please do not hesitate to report the slightest possible experience which might discourage your continued patronage or the recommending of Farr plants to your friends.

Cash Discounts

We allow a discount of 3 per cent for payment with mail order before plants are dug; 2 per cent for payment within 10 days after plants are shipped or called for.

Charge Accounts

We are glad to extend 30-day terms to established accounts; also to open new accounts, *via* references, if order amounts

to \$10 or more. On first orders for less than \$10, please send cash with order, less 3 per cent.

Quantity Rates

The 10-rate is applicable on 5 or more plants of a single variety; the 100 rate on 25 or more. Five or 25 different irises, peonies, etc., are not priced at the quantity rate; they must be of the same single variety; *i.e.* 5 Iris Seminole or 25 Peony Festiva Maxima.

Shipping Methods

Farr plants are specially and freshly dug for each order, and shipping seasons are limited to spring and fall, when plants are leafless or dormant, without recourse to cold-storage methods.

Orders should be placed during winter and early spring for shipment or delivery when the ground opens; or during summer and early fall for shipment as soon as plants become dormant. Prices are F.O.B. Weiser Park and delivery or shipping costs will be added to invoice or collected at destination.



This picture presents a view of the Tulip garden to the west of the Sales House. In spring this is aglow with Tulips, Narcissi, and other spring flowers. Evergreens and flowering shrubs form the borders.

TRI-OGEN, Insect Spray and Fungicide

This complete Rose-Garden Spray Treatment—Tri-Ogen—offers the first definite mildew and black-spot control combined with an insecticide. It kills all insects, including the sucking and leaf-eating types. It remains on foliage, repelling subsequent attacks.

IN FOUR SIZES

A. Small Kit (makes 16 qts.)	\$1 50	C. Large Kit (makes 32 gals.)	\$6 00
B. Medium Kit (makes 64 qts.)	4 00	D. Estate Kit (makes 128 gals.)	20 00

Tri-Ogen has been officially adopted for the Garden of 6,000 Roses at the Century of Progress Exposition, Chicago.



Flowering Shrubs are important at Weiser Park. This block of Philadelphus Virginal is a part of the 30-acre shrub section, where 122 varieties of flowering shrubs are getting a good start in life.

The Farr Evergreen plantings cover 20 acres, and include 86 varieties which are "quality grown." Your selection will be dug while you wait, or will be tagged and delivered later. Our Landscape Department protects you against "the wrong tree in the wrong place."



FARR NURSERY AND LANDSCAPE COMPANY

William Penn Highway (Route 422)
between Reading and Lebanon

WEISER PARK, PENNSYLVANIA

Telephone: Womelsdorf 43R2



Trumpet Narcissi

For complete list of Holland Bulbs
see pages 6, 7, 8, and 9



Bed of Single Tulips



Specimens of Farr's Hyacinths