

# Discover Structured Data on Commons

for you and your partners

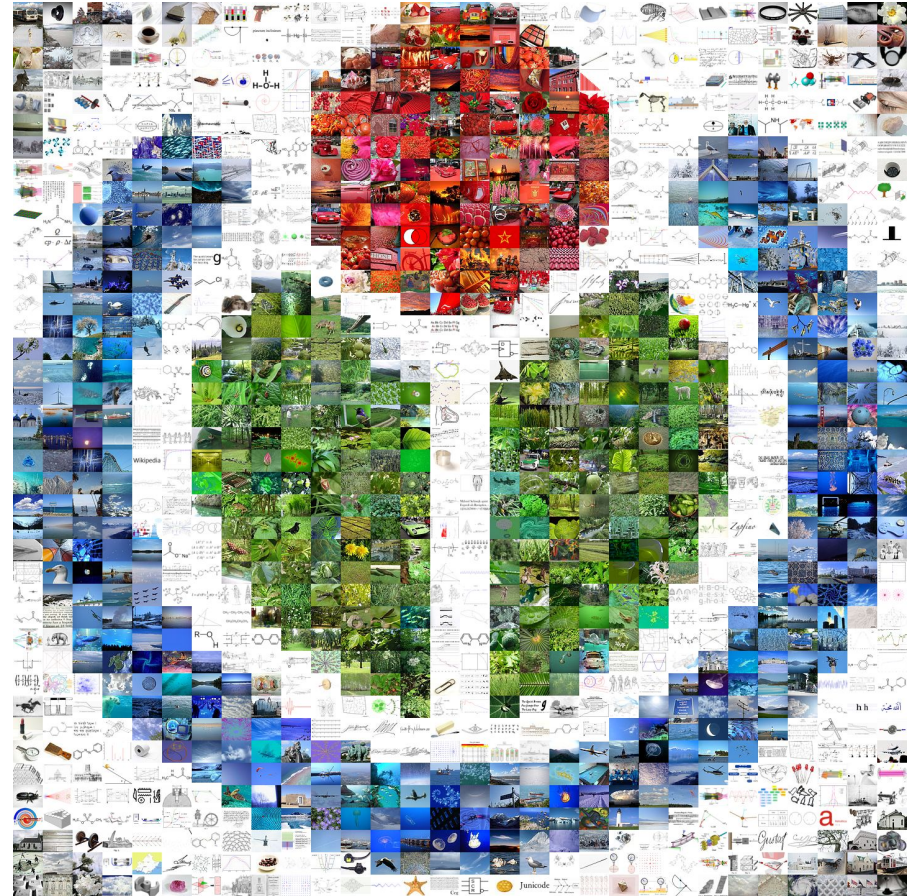
Alicia Fagervig  
Wikimedia Sverige  
alicia.fagervig@wikimedia.se



February 19, 2021  
Wikimedia Wikimeet India 2021

# Wikimedia Commons

- Over 68 million files since 2007.
- A small part is used on Wikipedia, Wikidata and other Wikimedia projects.
- Making the files more visible and reusable is a challenge.
- One way to discover them is by browsing the categories.



# Wikitext and search

- Wikitext and templates – often confusing for contributors, not standardized.
- A barrier to search and discovery.
- Find all paintings by a particular artist in a certain museum's collection? Sometimes there's a category, often there is not.
- Files that are not included in that category are hard to discover.
- A very granular category system is hard to maintain.

## Category:Paintings by Ivan Shishkin in the Yekaterinburg Museum of Fine Arts



Categories (+): [Paintings by Ivan Shishkin by museum](#) (-) (±) (↓) (↑)  
[Paintings in the Yekaterinburg Museum of Fine Arts by artist](#) (-) (±) (↓) (↑)  
[Russian paintings in the Yekaterinburg Museum of Fine Arts](#) (-) (±) (↓) (↑) (↑) (+)

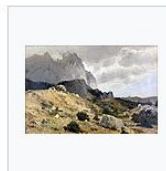
From Wikimedia Commons, the free media repository  
[Wikidata item not found.](#)

### Media in category "Paintings by Ivan Shishkin in the Yekaterinburg Museum of Fine Arts"

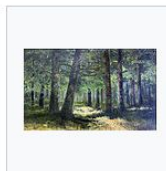
The following 7 files are in this category, out of 7 total.



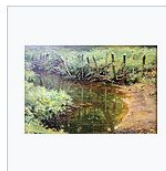
1880er Ivan Shishkin  
Wald anagoria.JPG  
3,784 × 2,875; 3.8 MB



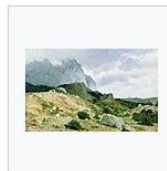
1889 Shishkin Felsige  
Landschaft  
anagoria.JPG  
4,752 × 3,168; 10.99 MB



1890er Ivan Shishkin  
Wald anagoria.JPG  
5,163 × 3,168; 12.8 MB



1895 Shishkin Damm  
anagoria.JPG  
4,752 × 3,168; 11.59 MB



Скалистый берег  
(Шишкин).jpg  
1,921 × 1,200; 401 KB



Тропинка в лесу  
1880-е (Шишкин).jpg  
740 × 563; 104 KB



Этюд к картине  
Рубка леса  
(Шишкин).jpg  
2,000 × 1,195; 2.06 MB

# Structured Data on Commons (SDC)

- Developed since 2019.
- Add machine-readable, structured data to files on Wikimedia Commons.
- Less intimidating to editors – every piece of information has its own field.
- Powered by Wikidata – Wikidata item IDs instead of strings.
- Multilingual.
- More accessible to developers.

① Structured data labels link to their respective Wikidata pages and will open in a new window. ✕

## Items portrayed in this file [Edit](#)

*depicts*

🔍 Search to add items

from Wikidata ...

[Frederick Coburn](#)

✓ Prominent

## digital representation of [Edit](#)

[Frederick Coburn](#)

[Mark as prominent](#)

## creator [Edit](#)

[Jakob Smits Museum](#) ①

[Mark as prominent](#)

— object has role: photographer

— subject has role: image file

— employer: Jakob Smits Museum

## copyright status [Edit](#)

copyrighted, dedicated to the public domain by copyright holder

[Mark as prominent](#)

## copyright license [Edit](#)

CC0

[Mark as prominent](#)

+ [Add statement](#)

# SDC for Commons users

- More powerful search capabilities.
- Language-agnostic search.
- Categories are named in English – a barrier to entry for users who prefer using other languages.
- Annotating content of images with *depicts* is more sustainable than trying to create – an maintain! – categories for every possible keyword combinations in the world.

## Media in category "19th-century portrait paintings with cats"

The following 23 files are in this category, out of 23 total.



Friedrich Overbeck - 010.jpg  
1,256 × 1,701; 152 KB



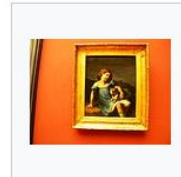
Friedrich Overbeck - Portrait of the Painter Franz Pforr - WGA16794.jpg  
827 × 1,125; 285 KB



Shakhovskay by Fedor Tulov.jpg  
450 × 550; 22 KB



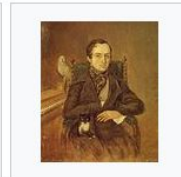
Louis-Léopold Boilly - Gabrielle Arnault as a Child - WGA02351.jpg  
782 × 1,050; 117 KB



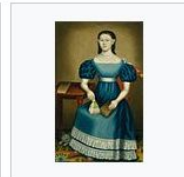
LOUVRE Museum (Louise Vernet enfant) by Gericault, Paris.jpg  
3,648 × 2,736; 2.05 MB



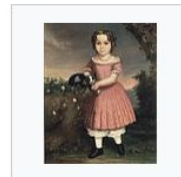
Autoportrait-Dumoulin-IMG 5525.JPG  
2,985 × 3,869; 1.93 MB



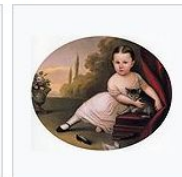
Vladimir Odoevsky by A. Pokrovsky.jpg  
801 × 958; 113 KB



Erastus Salisbury Field - Margaret Gilmore.jpg  
939 × 1,504; 206 KB



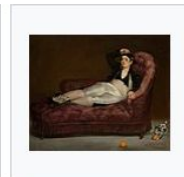
Brooklyn Museum - Portrait of a Child Holding a Cat - Charles Winter.jpg  
617 × 768; 79 KB



Young Girl with Cat 1867.jpg  
896 × 735; 359 KB



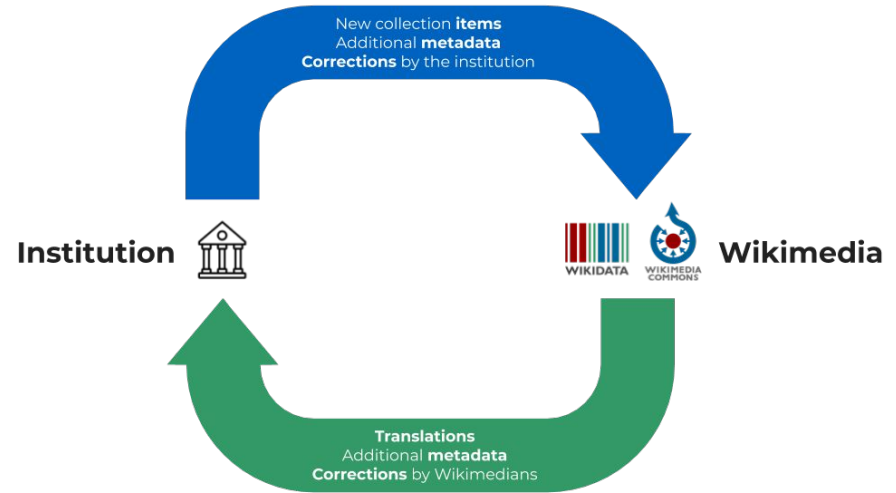
Édouard Manet - Femme au chat (Portrait de Madame Manet).jpg  
1,576 × 2,012; 275



Édouard Manet - Reclining Young Woman in Spanish Costume - 1961.18.33 - Yale

# SDC for GLAM partners

- How will SDC influence how the Wikimedia movement works with GLAM partners?
- It's still quite new, and tools have to be developed.
- Easier for GLAMs that donate media to follow and review the changes that have been made to "their" files.
- *Roundtripping* – enriched information imported back into the institution's own collections management system.

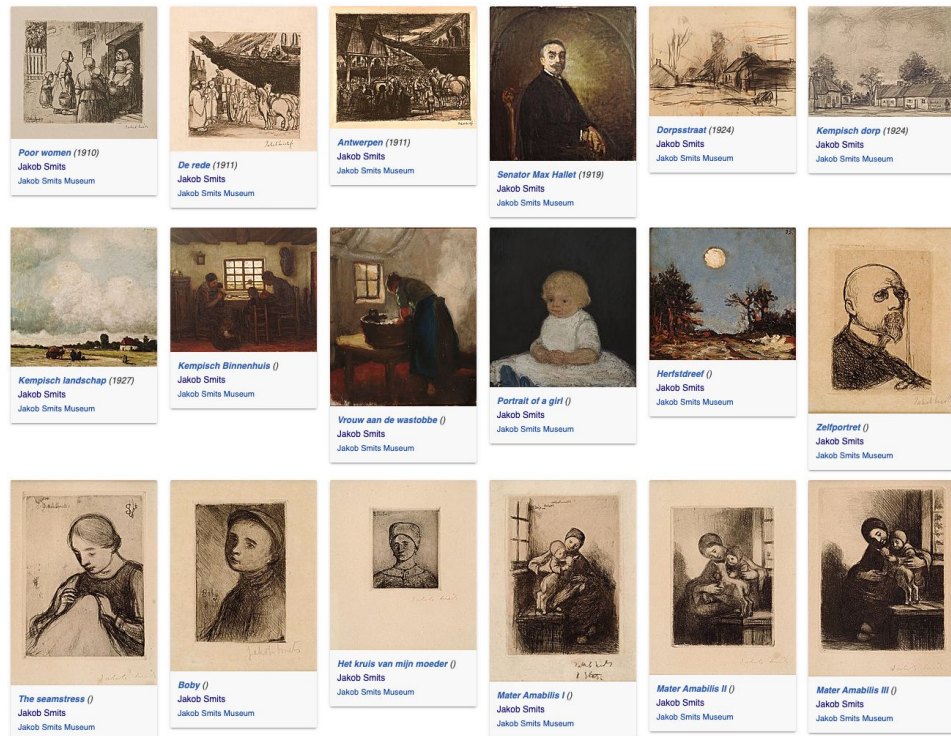


Metadata roundtripping of GLAM data  
Sandra Fauconnier, CC-BY-SA-4.0.

# Data from a small GLAM – Jakob Smitsmuseum

- SDC can make Wikimedia Commons more attractive for large GLAMs, as it makes our platforms more compatible with their own specialized systems...
- ...but also for small institutions that lack the resources to publish their collections online.
- Jakob Smitsmuseum – a small museum in Belgium that shared their digitized artworks and metadata on Wikimedia Commons and Wikidata.
- Better searchability and visibility thanks to community engagement.

<https://diff.wikimedia.org/2019/12/04/how-we-helped-a-small-art-museum-to-increase-the-impact-of-its-collections-with-wikimedia-projects-and-structured-data/>



# Wikimedia Sverige's work

- We are planning a series of workshops (in first half of 2021) with GLAM institutions to introduce them to SDC (and contributing their content to the Wikimedia platforms).
- In collaboration with local Wikimedia affiliates (you're welcome get in touch with us!), which have existing contact networks and knowledge about their local GLAMs experiences and needs.
- Realize the opportunities for SDC.
- Improve data on Commons.
- Make Commons and SDC more accessible to organizations and individual contributors.
- Deepen existing partnerships between affiliates and GLAMs, and initiate new ones.



# Some questions...

Have you edited  
SDC?

How could SDC  
benefit your GLAM  
partnerships?

What tools do you  
and your partners  
need?

What tools have  
you used?

How to handle  
object vs. digital file  
distinction?

What  
documentation do  
you and your  
partners need?

Thank you!



WIKIMEDIA  
SVERIGE