

Historic, archived document

Do not assume content reflects current scientific knowledge, policies, or practices.

WYATT'S

BULBS and SEEDS

FOR FALL AND WINTER
PLANTING



Job P. Wyatt & Sons Company

SEEDSMEN

RALEIGH, NORTH CAROLINA



HARDY ANNUALS and PERENNIALS FOR FALL SOWING

Most perennials and a good number of our most popular annuals should be planted during the early fall and winter months. The varieties listed below are perfectly hardy and produce best results planted at this time of the year. We offer only new crop "Tested Seeds" and you are thereby assured of an excellent stand of your favorite flowers.



Long Spurred Columbine



Mixed Foxgloves

	Price Per Packet
ALISSUM—Saxatile compactum 2 inches	\$0.10
ANEMONE—Giant Blue 4 feet	.15
AQUILEGIA—Columbine—Chrysantha. Pale yellow. 2 feet	.10
AQUILEGIA—Wyatt's Long Spurred Hybrids Mixed 3 feet	.15
ARABIS—Rock cress. Pure white 2 inches	.10
ASTER—Hardy Mixed Michaelmas Daisy. Blue and lavender shades	.10
BACHELOR'S BUTTON—(ragged Robin) Mixed colors 2 feet	.10
HELLIS—Wyatt's Double Mixed English Daisies	.10
CAMPANULA—Carpatula Blue	.10
CANTHARUS—Gibraltar. Beautiful lilac flowers. 12 inches	.15
CANTHARUS—Sempervirens. Pure white. 10 inches	.15
CANTHARUS—Single Mixed colors 3 feet	.10
CANTHARUS—Double Mixed	.10
CARNATION—(Columbine) Everblooming Mixed. A beautiful hardy carnation. Large attractive flowers in many shades. 2 feet	.15
CERASTIUM—Tomentosum (Snow-In-Summer) 2 inches	.10
CHRYSANTHEMUM—Wyatt's Hardy Oriental Large double Japanese variety. Flowers in many colors	.25
CHRYSANTHEMUM—Single yellow flowers 2 feet	.10
DELPHINIUM—Gold Medal Hybrid. Very choice	.15
DELPHINIUM—Belladonna Dark Blue 3 feet	.10
DELPHINIUM—Belladonna Light Blue 3 feet	.10
DIANTHUS—Phenacis Double Mixed (Double Scotch Pink) 12 inches	.10
DIANTHUS—Deltoides (Mildew Pink) 6 inches	.20
DIANTHUS—(Foxglove) Mixed colors. A very fine mixture of Foxgloves containing many new varieties 2 feet high	.10
DUSTA MILLER—White foliage plant 1 foot	.10
GAILLARDIA—Grandiflora Mixed. Also called blanket flower. Height 2 feet	.10
GAPSOPHILA—Paniculata (Hardy Baby's Breath) White 2 feet	.10
GAPSOPHILA—Bipens (Crawling Baby's Breas) 1 foot	.15
HIBISCUS—Midway Marvels Mixed colors. Very fine 1 foot	.10

	Price Per Packet
HOLLYHOCK—Single Mixed. Selection of best single hollyhocks in mixture. 5 to 7 feet	\$0.10
HOLLYHOCK—Wyatt's Special Mixture of Double Hollyhocks	.10
LARKSPUR—Wyatt's Giant Double. Exquisite Pink	.10
LARKSPUR—Wyatt's Giant Double. Blue Spire. Dark blue	.10
LARKSPUR—Wyatt's Giant Double. Azure Blue. Light blue	.10
LARKSPUR—Wyatt's Giant Double. Carmine King Red	.10
LARKSPUR—Wyatt's Giant Double. Deep Rose	.10
LARKSPUR—Wyatt's Giant Double. White Spire. White	.10
LARKSPUR COLLECTION—1 of each of 6 above colors	.50
LARKSPUR—Tall Double Mixed	.10
LINUM—Perenne Blue Hardy flax. blue flowers 1 ft	.10
LUPINUS—Polyphyllus (Mixed Perennial Lupinus) 1 foot	.10
MARGHERITA—(Pavotaria) A perennial usually treated as an annual	.10
PANSY—Wyatt's Super Giants Mixed. Extremely large handsome flowers	.25
PANSY—Wyatt's Exhibition Mixed	.25
PANSY—Giant Tricolor Mixed	.10
PHLOX—Decussata (Perennial Phlox) Mixed colors 3 feet high	.25
PHLOX—Drummond Mixed colors	.10
PINKS—Double Mixed	.10
PINKS—Single Mixed	.10
POPPIES—Shirley Mixed	.10
PORTULACA—Double Mixed 4 inches	.10
PORTULACA—Single Mixed 4 inches	.10
SALVIA—Pinnatifida Perennial Sage. Pale Blue 2 feet	.15
STACHYS—Comastria (Bluebonnet or Cushion Flower) 2 feet. Beautiful lavender blue flowers	.15
SHASTA DAISY—2 1/2 feet high	.10
SNAPDRAGON—Tall Large Flowering Mixed	.10
SWEET ROCKET—(Eschscholus) Choice Mixed 2 feet	.10
SWEET PEA—(Perennial) Lathyrus latifolius Mixed	.10
SWEET WILHELM—Single Mixed 1 1/2 feet	.10
SWEET WIVELSTEED—This new race of hardy plants is a cross between Dianthus Alwaydii and Sweet William. A wealth of color and long remaining in bloom	.15
FORENSIA FOURNIERI—Volvozia blue flowers with dark blotches and yellow throat	.15
TRIFOLIUM VARIA—(Blue Bell) 1 foot	.10
VERBENA—Mammuth Mixed	.10
VIOLA ODORATA—Sweet Scented Violet 10 inches	.15
VIOLA CORNUTA—Tufted Pansy 10 inches	.15
WALLFLOWER—New Hardy Silberman Gargoyl. orange flower and grow 1 1/2 inches high	.10
WALLFLOWER—Single Mixed 1 1/2 to 2 feet	.10



Double Hollyhocks



Phlox Decussata

GIANT FLOWERING PANSY PLANTS

12 for 50c; 50 for \$1.25; 100 for \$2.00, postpaid.

SPENCER GIANT ORCHID FLOWERING SWEET PEAS

Plant Sweet Peas in a cold frame or in any good garden soil. Work the soil to a depth of 18 inches and fertilize with Bone Meal this fall and bloom early in the spring. We have selected and offer the following varieties for size, length of stem and good coloring in the richest flowering series. 1 ounce will sow 15 to 20 ft. Cover seeds about 1 inch.

- AMBITION—New Blue lavender (Extra)
- ORANGE PICTURE—Clear sunproof orange
- ERISON KING—Deep crimson
- ROYAL SUEDE—orange scarlet
- GEORGE SHAWNER—Salmon rose
- ROYAL PURPLE—4 1/2 ft purple
- MRS. TOM JONES—Azule blue
- BOUQUET CREAM—Deep primrose
- MISS CALIFORNIA—Cream pink
- ASTA OEN—Lavender
- WARRIOR—Maroon chocolate
- FLORIDA PEARSON—Shell pink
- QUEEN—Bright rose
- KING—White
- VALTIE—White pink pointer
- MARY PHOENIX—cream pink
- HAWAIIAN PINK—Rose pink
- TANGERINE—orange
- COMMANDER GODSALL—Deep blue

Prices: Any above varieties of Giant Spencer Sweet Peas, Packet 10c; ounce 20c; 1/2 lb. 60c; lb. \$2.00, postpaid.

WYATT'S SPENCER RAINBOW MIXTURE
This superb mixture is properly blended and contains all colors besides many new varieties. No other mixture can be had than Wyatt's Spencer Rainbow Mixture of Sweet Peas. Packet 10c; ounce 15c; 1/2 lb. 50c; lb. \$1.75, postpaid.

LEPID SPENCER SWEET PEAS—A mixture of dwarf varieties. Packet 10c; ounce 25c; 1/2 lb. 75c.

GRANDIFLORA SWEET PEAS—The most fashionable collection of sweet peas. The flowers are not nearly so large as the Grandiflora variety. Packet 5c; ounce 15c; 1/2 lb. 35c; lb. \$1.00, postpaid.



Giant Spencer Sweet Peas

JOB P. WYATT & SONS CO.

RALEIGH, NORTH CAROLINA

WYATT'S "WONDERLAWN" LAWN GRASS FOR AMERICA'S FINEST LAWNS

BUILDING A PERMANENT LAWN

Harrow or rake the surface to the finest possible condition and roll until all elevations and depressions have been removed. Rake the seeds in lightly, following with a roller, a firmly rolled surface being absolutely necessary; small areas may readily be packed firm by the back of a spade. In the South we often have trouble in getting good lawns because it has been found that no one grass will give satisfactory results at all seasons and on all soils. By the use of WYATT'S "WONDERLAWN" LAWN GRASS SEED a rich, velvety lawn can be made and maintained. One pound will sow a space 10 by 20 feet or 200 square feet. 75 to 90 pounds to an acre.

WYATT'S "WONDERLAWN" LAWN GRASS

You will find something different in this Wyatt's "Wonderlawn" Lawn Grass and as the name implies it will produce a wonderful lawn and give entire satisfaction in the Southern States. It is a properly blended mixture of grasses adapted to our Southern soil and climate. All the grasses used in this "Wonderlawn" mixture are field ripened, sun cured and double processed. By double processed we mean that all the weed seeds, chaff, dirt and other impurities have been removed.

Prices: WYATT'S "WONDERLAWN" LAWN GRASS, 1/2 lb. 20c; 1 lb. 45c; 5 lbs. \$2.00; 10 lbs. \$3.50; 25 lbs. \$7.25; 100 lbs. or over at 27c lb. Postage or freight prepaid.

SHADY NOOK LAWN GRASS

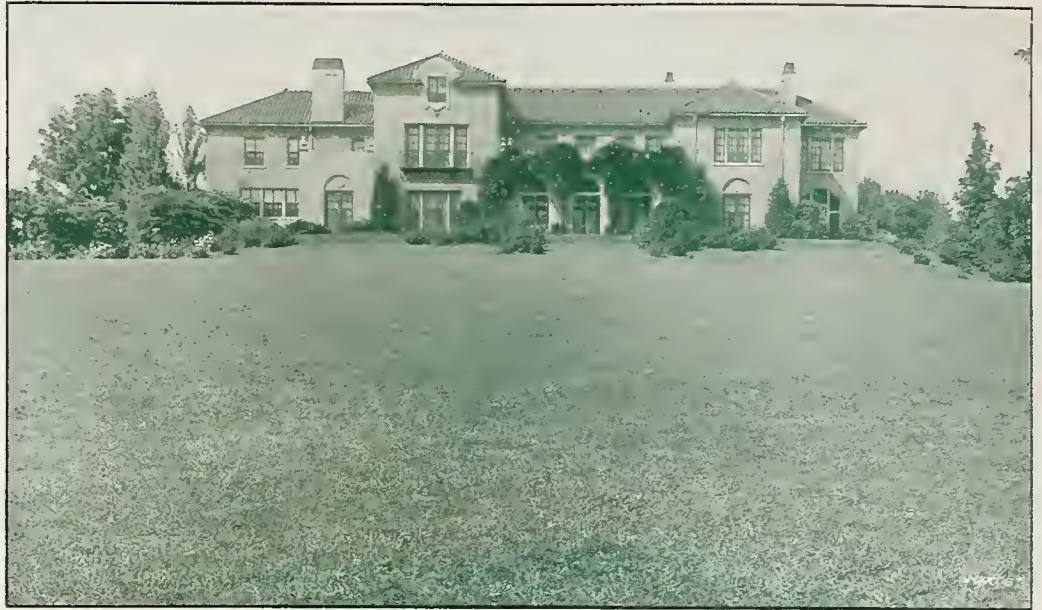
For shady places under trees you will find our Shady Nook Lawn Grass very satisfactory. In order to have a good lawn in damp and especially shady spots, a frequent application of agricultural lime is advised to prevent the soil from becoming sour. Prices: SHADY NOOK LAWN GRASS, 1/2 lb. 25c; 1 lb. 50c; 5 lbs. \$2.25; 10 lbs. \$4.00; 25 lbs. \$9.00; 100 lbs. \$32.00, postage or freight prepaid.

WHITE DUTCH CLOVER FOR LAWNS

We use this clover in our lawn grass mixtures, but some of our customers prefer an additional supply of clover. Prices: 1/2 lb. 30c; 1 lb. 55c; 5 lbs. \$2.50; 10 lbs. \$4.50, postpaid.

ITALIAN RYE GRASS (Domestic)

This is used both for pasture and lawns although you will have better results with Wyatt's "Wonderlawn" Lawn Grass for a permanent lawn. Sow 1 lb. to 150 square feet of lawn and 50 lbs per acre for pasture. Prices: 1 lb. 20c; 5 lbs. 75c; 10 lbs. \$1.35, postpaid. Not prepaid, 25 lbs. at 9c lb.; 50 lbs. at 8c lb.; 100 lbs. at 7 1/2c lb.



TRY SOME OF THESE INTERESTING AND UNUSUAL BULBS

SCILLAS—BLUEBELLS

SCILLA SIBERICA—Beautiful hardy Spring bulbs, producing in profusion masses of exquisite rich blue flowers. 6 bulbs 30c; 50c per dozen; \$3.50 per 100.

ALBA—The new white flowering variety, very beautiful. 6 bulbs 30c; 50c per dozen; \$3.50 per 100.

ROSEA—Pink. 6 for 30c; 12 for 50c; 100 for \$3.50, postpaid.

ANEMONES (WINDFLOWER)

These popular flowers of French origin are exceedingly useful as a decorative plant for house or garden and fine for cutting. 1/2 dozen 35c; 60c per dozen; \$4.50 per 100.

ERANTHIS WINTER ACONITE

Attractive little plants with beautiful golden flowers. They thrive best in most places under trees. 12 for 50c; 100 for \$3.00, postpaid.

SNOWDROPS

In the early Spring months there is nothing more beautiful than a sheet of the snowy, graceful blossoms of the Snowdrops.

SINGLE SNOWDROPS—6 bulbs 25c; 40c per dozen; \$3.00 per 100, postpaid.

SNOWFLAKES (LEUCOJUM)—Dainty, white, bell-shaped, pendant flowers attractively tipped with green and gracefully arranged on a nodding stem 12 to 15 inches in length. 3 for 25c; 12 for 65c; 100 for \$4.50, postpaid.

GRAPE HYACINTHS

These very curious and pretty little Hyacinths are perfectly hardy and of the easiest culture.

BLUE GRAPE HYACINTHS—6 bulbs 25c; 45c per dozen; \$3.50 per 100, postpaid.

WHITE GRAPE HYACINTHS—6 bulbs 25c; 45c per dozen; \$3.50 per 100, postpaid.

FREESIAS

One of the most beautiful of flowers for indoor culture possessing peculiar grace of form and a most delightful fragrance. They grow extremely well in pots of Bulb Fibre or Black soil.

Amethyst, Lavender Rosa Bonheur, Rose
Daffodil, Yellow Purity, White
Mixed Colors

Prices: 6 bulbs 25c; 12 bulbs 45c; 25 bulbs 85c; 100 bulbs \$3.00, postpaid.

OXALIS

Charming little half trailing or bush plants particularly adapted for pot culture and hanging baskets, the foliage alone is very attractive and when in flower they are exceedingly pretty.

BERMUDA BUTTERCUP—The flowers are of the purest bright buttercup yellow. 5c each; 40c doz.; \$3.00 per 100.

GRAND DUCHESS—Extremely free flowering. Prices for either White, Pink or Lavender 5c each; 40c per doz.; \$3.00 per 100.

CHIONODOXA

An early Spring flowering bulb for beds or borders. Deep blue with white in center. Price: 6 for 25c; 12 for 45c; \$3.25 per 100.

RANUNCULUS BULBS

Beautiful little dwarf plants producing double flowers in many colors. Plant in a half shady place. 1/2 dozen 30c; 50c per dozen; \$3.75 per 100, postpaid.

FRITILLARIA

The quite large, bell-shaped blooms are curiously marked in contrasting colors. There are bright purple and bronze tints; also white ones, all of them marked with contrasting colors, including green. 25c each; 3 bulbs 65c; 6 bulbs \$1.25; 12 bulbs \$2.25, postpaid.

IXIAS

For pot or outdoor culture the Ixias are very desirable. They have long slender spikes or bloom. 12 for 50c; 100 for \$3.50.

DUTCH IRIS

This is a giant-flowering strain of the Spanish Iris, blooming two weeks earlier. Their large showy blooms are carried upright on stiff, but slender stems. They are delicately sweet scented and besides their value to the garden they are highly prized for cut-flowers.

IMPERATOR, Blue D. HARINGH, White
YELLOW QUEEN, Yellow

Prices: 3 bulbs, 25c; 12 bulbs 75c; 25 bulbs \$1.25; 100 bulbs \$3.75, postpaid.

MIXED DUTCH IRIS—Prices: 6 bulbs 35c; 12 bulbs 65c; 25 bulbs \$1.15; 100 bulbs \$3.50, postpaid.

SPANISH IRIS

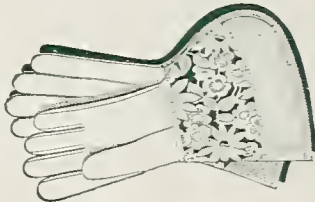
One of the most inexpensive of bulbous flowers; easy to grow and most attractive for mass planting in borders and beds as well as for cutting.

KING OF THE YELLOWS, KING OF THE WHITES
A. VON HUMBOLT, Clear Blue

Prices: 6 bulbs 35c; 12 bulbs 65c; 25 bulbs \$1.15; 100 bulbs \$4.00, postpaid.

MIXED SPANISH IRIS including many different sorts. Prices: 3 bulbs 20c; 12 bulbs 85c; 25 bulbs \$1.00; 100 bulbs \$3.50, postpaid.

National
Eezy Wear
Garden Gloves



Soft as kid—strong as leather.
Washable. Three sizes: Small, Medium, Large. All 85c per pair, postpaid.

SPECIAL COLLECTION

This is the most unusual offering of bulbs ever made. In order that you might acquaint yourself with these unusual and attractive flowers we make this special offering.

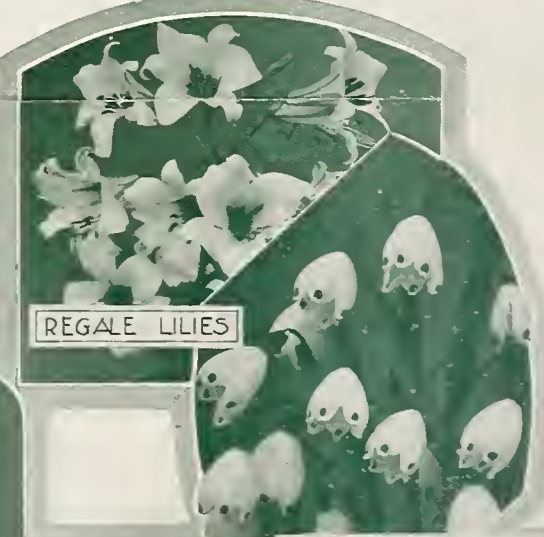
We'll send you—

3 Anemone
3 Eranthis
3 Snowdrops
3 Blue Grape Hyacinths
3 Ranunculus
3 Ixias
3 Bluebells
3 Chionodoxa
3 White Grape Hyacinths

27 bulbs in all—a \$1.50 value for only **\$1.20** POSTPAID



WHITE SCILLAS



REGALE LILIES



ANEMONES MIXED



AURATUM LILIES



WHITE CALLA LILIES



FRITILLARIA MIXED

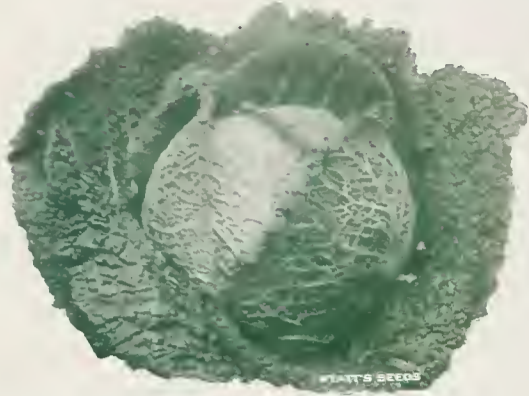


BLUE GRAPE HYACINTHS

SINGLE SNOWDROPS

WYATT'S TESTED VEGETABLE SEEDS

FOR FALL and WINTER PLANTING



Drumhead Savoy Cabbage No. 170

BEETS

Beets sown early in the fall often make one of the most valuable garden or truck crops. Plant one ounce to 50 ft. of drill or 6 to 8 lbs. to an acre. We offer only stocks from the best French and American growers.

WYATT'S CAROLINA MARKET—Smooth globe shaped, beautifully uniform deep blood red variety best for fall sowing. Prices: Packet 10c; ounce 15c; ¼ lb. 35c; 1 lb. \$1.00; 5 lbs. \$4.00, postpaid.

CROSBY'S EGYPTIAN—Extra good early variety medium size globe shaped. Prices: Packet 5c; ounce 10c; ¼ lb. 25c; pound 85c; 5 lbs. \$3.50, postpaid.

DETROIT DARK RED—Standard for all truckers. Old favorite. Prices: Packet 10c; ounce 15c; ¼ lb. 35c; 1 lb. 90c; 5 lbs. \$3.75, postpaid.

CABBAGE

This is one of our most valuable crops. Can be planted almost any time and yields an abundance of food for ourselves as well as our stock. We list the best winter varieties. Sow in open beds and transplant 18 inches apart in rows 2½ ft. apart.

EARLEY JERSEY WAKEFIELD—The most popular variety. Small pointed heads. Earliest. Prices: Packet 10c; ounce 20c; ¼ lb. 50c; 1 lb. \$1.75; 5 lbs. \$7.00; 10 lbs. \$12.50, postpaid.

LARGE CHARLESTON WAKEFIELD—Slightly larger and later than Jersey Wakefield. Prices: Packet 10c; ounce 20c; ¼ lb. 50c; 1 lb. \$1.75; 5 lbs. \$7.00; 10 lbs. \$12.50, postpaid.

WYATT'S ALL-HEAD—The best second early cropper. A sure header and money maker. Prices: Packet 10c; ounce 20c; ¼ lb. 50c; 1 lb. \$1.75; 5 lbs. \$7.00; 10 lbs. \$12.50, postpaid.

LARGE LATE FLAT DUTCH—The best large type for fall and winter planting. Prices: Packet 10c; ounce 20c; ¼ lb. 50c; 1 lb. \$1.75; 5 lbs. \$7.00; 10 lbs. \$12.50, postpaid.

DRUMHEAD SAVOY—The medium small heads are tight-leaves wrinkled. Most cold resistant. Best flavored. (See illustration.) Prices: Packet 10c; ounce 25c; ¼ lb. 60c; 1 lb. \$2.00; 5 lbs. \$8.50, postpaid.

CARROTS

This crop is becoming more and more popular. A nutritious food recommended by dieticians everywhere and most delicious. The following varieties are early and are best for fall sowing. Sow in drills 1 ounce to 100 ft. or use 3 pounds to the acre.

CHANTENAY—Deep orange coloring; half long. Prices: Packet 5c; ounce 10c; ¼ lb. 35c; 1 lb. 90c, postpaid.

DANVER'S HALF LONG—Smooth tapering half-long variety. Good coloring. Prices: Packet 5c; ounce 10c; ¼ lb. 35c; 1 lb. 90c, postpaid.

SCARLET NANTES—Good early variety. Grows 6 to 7 inches long; smooth. Prices: Packet 10c; ounce 15c; ¼ lb. 40c; 1 lb. \$1.25; 5 lbs. \$5.00, postpaid.

Each year an increased number of fall gardens is planted. More and more people are turning their gardens into well-planned business propositions—Records from these customers show that a small garden can be made to produce great quantities of the very best food.

Plant a garden this fall.

We are listing on this page vegetables that should be in every fall and winter garden. Always remember that Wyatt's Seeds have been tested and are sure to grow.

KALE

One of the hardiest salad crops. Sow 1 oz. to 75 ft. drill or 3 to 4 lbs. to the acre. Kale prefers strong or well manured land. Sow at intervals of 10 days for a succession of tender salad for home or market.

EXTRA DWARF BLUE CURLED SCOTCH—Very compact, low growing plants with beautifully curled leaves of a bluish green color. Prices: Packet 5c; ounce 10c; ¼ lb. 30c; 1 lb. \$1.00; 5 lbs. \$3.50, postpaid.

DWARF GREEN CURLED SCOTCH—Prices: Packet 5c; ounce 10c; ¼ lb. 25c; 1 lb. 75c; 5 lbs. \$3.00, postpaid.

SIBERIAN OR GERMAN—Prices: Packet 5c; ounce 10c; ¼ lb. 25c; 1 lb. 75c; 5 lbs. \$3.00, postpaid.



Wyatt's Southern Giant Curled Mustard No. 485

MUSTARD

Sow 1 ounce to 100 ft. drill or plant 1½ to 2 lbs. to the acre. **WYATT'S FORDHOOK FANCY**—Best variety for home or market. Upright growth and beautifully curled. Prices: Packet 5c; ounce 10c; ¼ lb. 25c; 1 lb. 75c; 5 lbs. \$3.00, postpaid.

SOUTHERN GIANT CURLED—The plants resemble Fordhook Fancy. Prices: Packet 5c; ounce 10c; ¼ lb. 20c; 1 lb. 65c; 5 lbs. \$2.25, postpaid.

CHINESE BROAD LEAF—Large round leaves—dark green—not curled. Prices: Packet 5c; ounce 10c; ¼ lb. 20c; 1 lb. 65c; 5 lbs. \$2.25, postpaid.

ONIONS

Onions are rapidly becoming one of the South's surest winter money crops. They are cold and disease resistant and seldom, if ever, are troubled with insect pests. Sow onion seeds in beds and transplant or sow in rows in the field and thin out to 4 inches apart.

Wyatt's Onions are especially grown for Wyatt customers by experts in Italy. Our Prizetaker is the best all-round onion in the world. Use 4 lbs. per acre in 30 inch rows.

WYATT'S PRIZETAKER—The best all-round onion in cultivation. Beautiful copper color, good keeper, hardy and often reach 1¼ lbs. per bulb. Prices: Packet 10c; ounce 20c; ¼ lb. 45c; 1 lb. \$1.50; 5 lbs. \$7.00; 10 lbs. \$12.50, postpaid.

WHITE PORTUGAL OR SILVERSKIN—Packet 10c; ounce 20c; ¼ lb. 60c; 1 lb. \$2.00; 5 lbs. \$8.50, postpaid.

YELLOW GLOBE DANVERS—Prices: Packet 5c; ounce 15c; ¼ lb. 45c; 1 lb. \$1.50; 5 lbs. \$6.50, postpaid.

LARGE RED WEATHERSFIELD—Prices: Packet 5c; ounce 15c; ¼ lb. 45c; 1 lb. \$1.50; 5 lbs. \$6.50, postpaid.

ONION SETS

WHITE SILVER SKINS **RED WEATHERSFIELD**
YELLOW DANVERS

Prices: Pint 20c; quart 35c, postpaid. Not prepaid. Peck (8lbs.) \$1.25; bushel (32 lbs.) \$4.00.

PRICES SUBJECT TO CHANGE

SPINACH

WYATT'S RE-SELECTED BLOOMSDALE SAVOY SPINACH—Prices: Packet 5c; ounce 10c; ¼ lb. 15c; 1 lb. 40c; 5 lbs. \$1.25, postpaid.

VIRGINIA SAVOY—Prices: Packet 5c; ounce 10c; ¼ lb. 15c; 1 lb. 35c; 5 lbs. \$1.25, postpaid.

BROAD-LEAVED FLANDERS—Prices: Packet 5c; ounce 10c; ¼ lb. 15c; 1 lb. 40c; 5 lbs. \$1.25, postpaid.

TURNIPS

PURPLE TOP WHITE GLOBE
POMERANIAN WHITE GLOBE
LARGE WHITE NORFOLK
EARLY WHITE EGG
YELLOW OR AMBER GLOBE
EARLY WHITE FLAT DUTCH
SOUTHERN SEVEN TOP
PURPLE TOP RUTABAGA

Prices all above varieties of Turnips—5c pkt.; 10c per oz.; ¼ lb. 20c; 1 lb. 65c; 5 lbs. \$2.50, all postpaid.

TURNIP COLLECTION

3 Varieties 5 Full Ounces
Regular 50c Value

FOR ONLY

25c
POST PAID

HERE IS
WHAT YOU
GET

- 1 oz. White Egg
- 1 oz. Seven Top
- 1 oz. Purple Top White Globe
- 1 oz. Wyatt's Japanese
- 1 oz. Purple Top Yellow Rutabaga

ALL FOR ONLY

25c POST PAID



ROSES FOR YOUR GARDEN

Fall is the best time to plant roses. This fine stock is shipped dormant direct from the field. All strong 2-year field grown plants. All prices on roses are postpaid. No roses or other plants shipped C. O. D.

AUTUMN—Burnt orange, shaded red. A charming new rose. \$1.00 each; 6 for \$5.00.

BETTY UPRICHARD—Salmon pink to carmine. 75c each; 6 for \$4.00.

BRIARCLIFF—Deep rosy pink. Excellent and very hardy. 75c each; 6 for \$4.00.

ETOILE DE HOLLANDE—Popular, bright red. 75c each; 6 for \$4.00.

LOS ANGELES—Coral pink, shaded gold. 75c each; 6 for \$4.00.

MRS. AARON WARD—Indian yellow, suffused salmon. Hardy. 75c each; 6 for \$4.00.

RADIANCE—Most popular pink rose. Most dependable. 75c each; 6 for \$4.00.

RED RADIANCE—Most popular red rose. Most dependable. 75c each; 6 for \$4.00.

SENSATION—Scarlet and maroon. Fine. 75c each; 6 for \$4.00.

SOUV. DE CLAUDIUS PERNET—Most popular yellow rose. 75c each; 6 for \$4.00.

TALISMAN—Immensely popular, red and gold. \$1.00 each; 6 for \$5.00.

FRAU KARL DRUSCHKI—White—popular. 60c each; 6 for \$3.25.

HARDY CLIMBING ROSES

CLIMBING AMERICAN BEAUTY—Brilliant scarlet. 65c each; 3 for \$1.75.

GARDENIA—Best climbing yellow. 75c each; 3 for \$1.75.

MME. GREGOIRE STAECHLIN (The Spanish Beauty)—Eright clear pink—very handsome. Highly recommended. \$1.00 each; 3 for \$2.50.

SILVER MOON—Beautiful single white. 60c each; 3 for \$1.50.

SPECIAL COLLECTION OF 6 MAGNIFICENT ROSES

One strong 2-year old plant of each:
Pink Radiance, Red Radiance, Sensation, Souvenir de Claudius Pernet, Talisman and Frau Karl Druschki. Each labeled and well packed. Value \$1.60—All for \$3.50, postpaid.

PECAN TREES

Nothing increases the value of property so much as a tree—and no tree so much as a Pecan tree. Send us your order for Pecan trees this fall. Fall and winter is the best time to plant. We can supply trees from the South's finest stocks of budded and grafted Pecans. Each tree is carefully dug after orders are received and reach their destination in perfect condition.

We offer the following leading varieties:

	Schley	Stuart
		Success
Sizes	One	Five
5 to 6 ft.	\$1.25	\$5.50
7 to 8 ft.	\$1.75	\$7.50

Express or freight collect.



The Beautiful Radiance