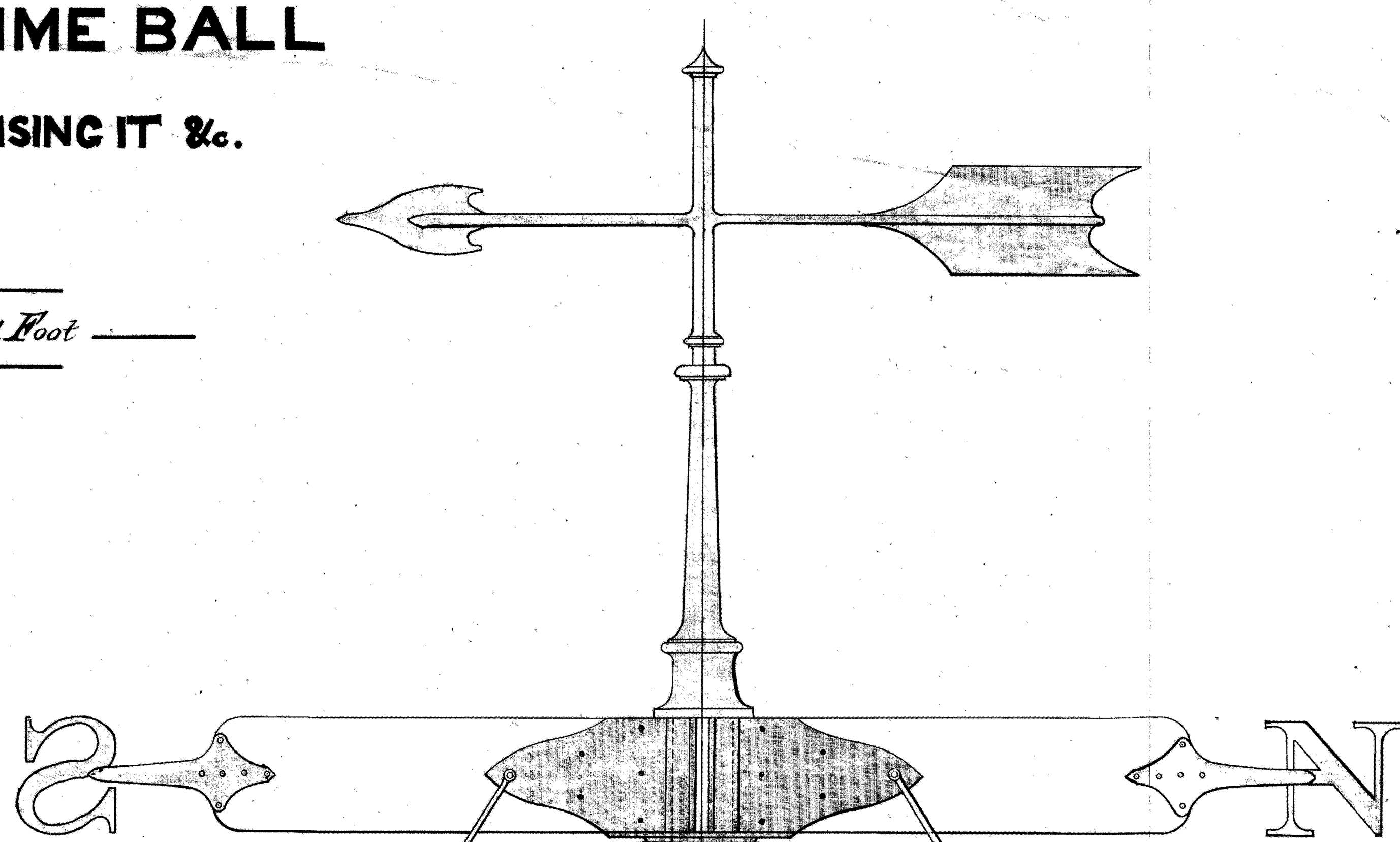
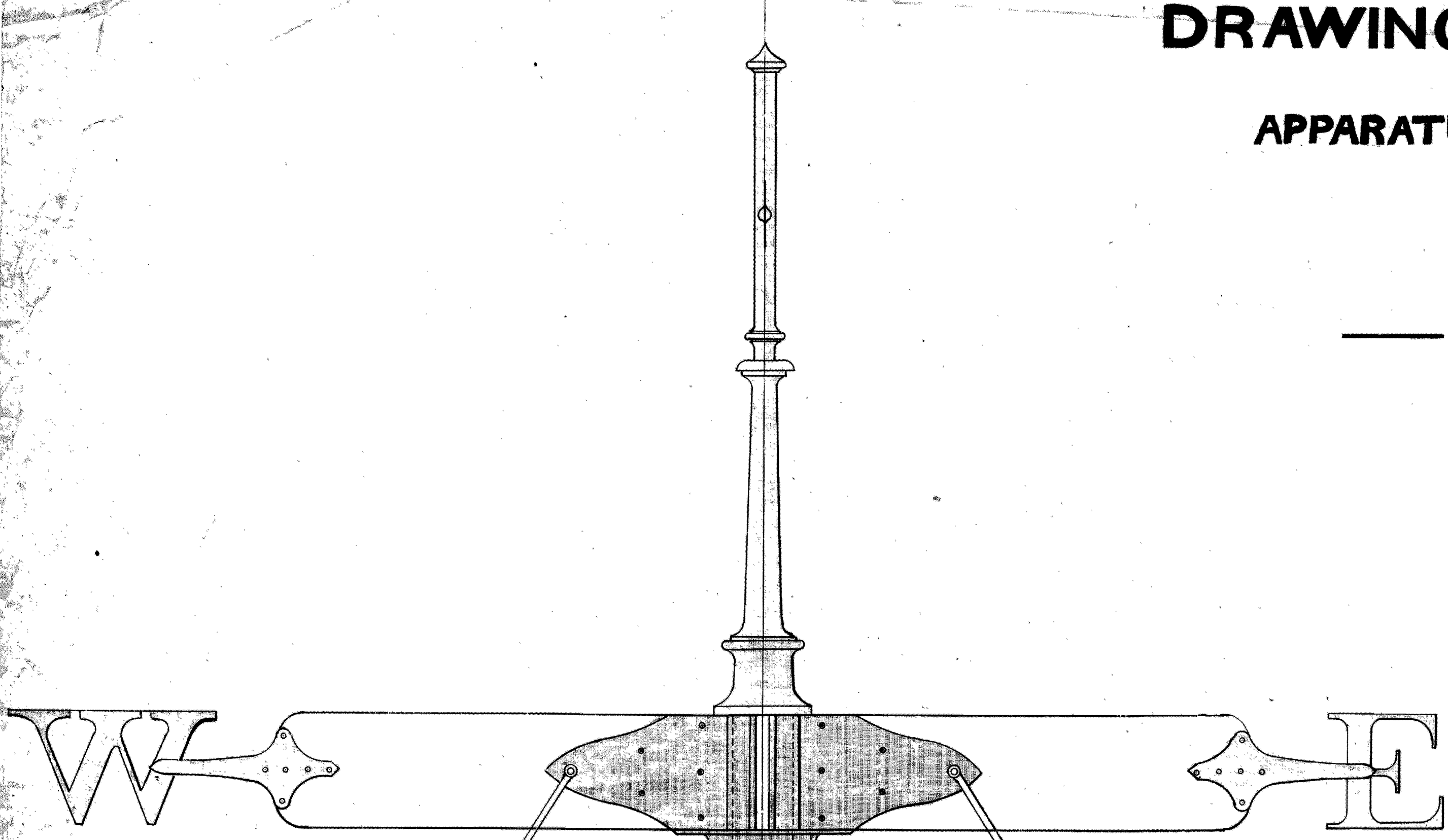


DRAWING OF TIME BALL

SHEWING
APPARATUS FOR RAISING IT &c.

Scale 1 1/2" = 1 Foot

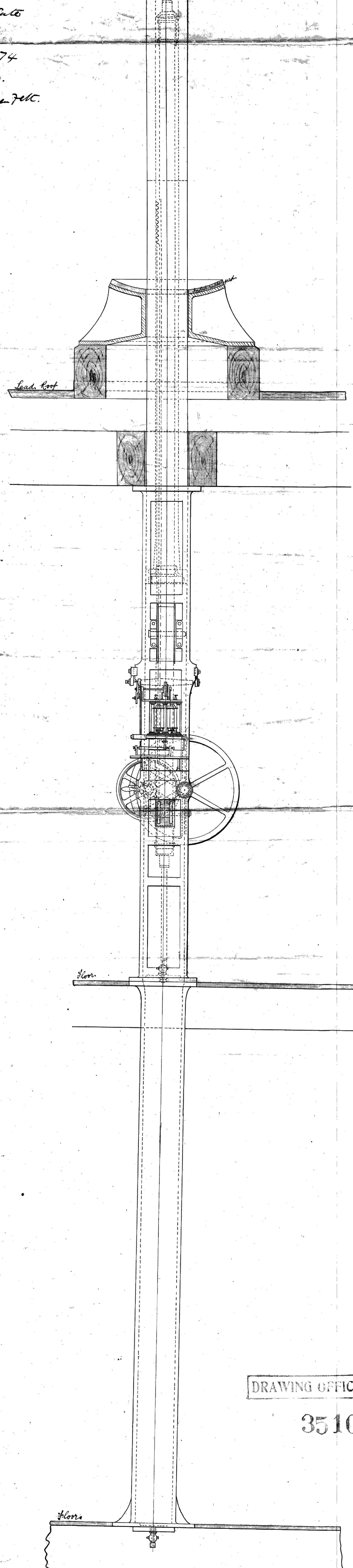
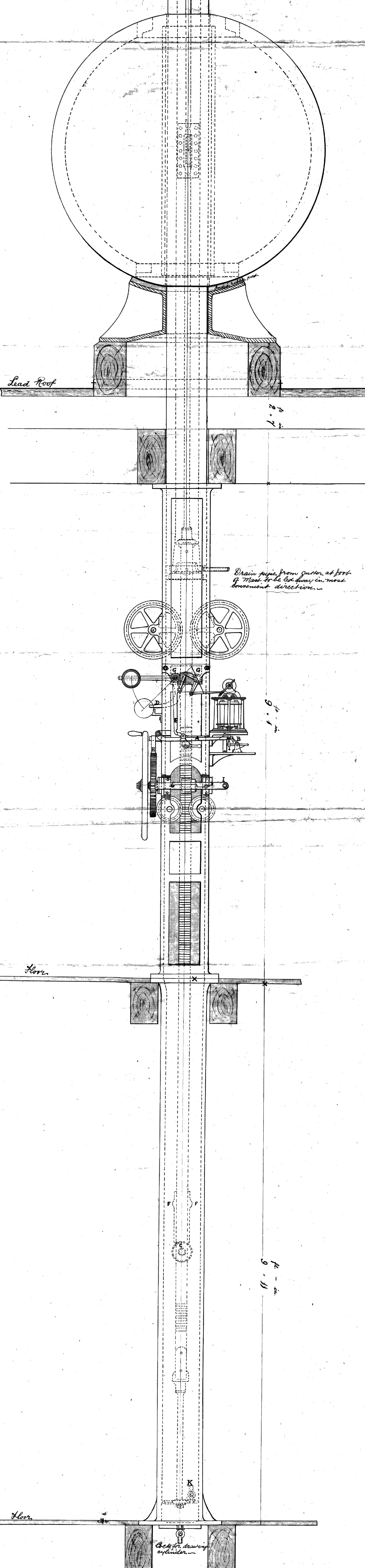


Before raising the Time Ball - The Trigger lever A must be raised, vice position, till caught by the Trigger B, as shown in the Drawing - The Ball must then be raised, until the Roller C on the rack rest, by coming in contact with the Cam lever, D, has moved it back half - paces for the Lever B (on the same, spindles) to be caught back by the Rail on the Trigger lever - The Ball must then be gently lowered, about 2 inches, until the Catcher E, on the rack rest, rest on the Cylinder, catched at G. G. (to insure, that it may be necessary to lift the Ball, H, out of the toothed wheel.) The Vision must then be thrown, out of gear, with the rack by the Clutch handle, I - The Ball will then be ready to be lowered, by the Electric Clock -

The amount of air, cushioning to break the fall of the Ball is regulated by the Cock K, fitted in the piston, the opening of which, should be adjusted, so as to allow the Ball to fall gently, on the Buffer - Should the Ball, at any time fall too freely, a milder mixture, consisting of 1/2 a pint of Linseed, oil & 1/2 lb of tallow or 2 oz of Olive oil may be poured in on the top of the Piston - Any of this Composition or any dirt that may accumulate below the Piston, can be removed, by taking off the Bonnet on the bottom of the Cylinder -

12. Queens Lane's gate
London S.W.

30th May 1874
P. Sisson's Bar.
R. W. 7 Fran. 744.



3510 1/75

1/75

DRAWING OFFICE

3510

3510