

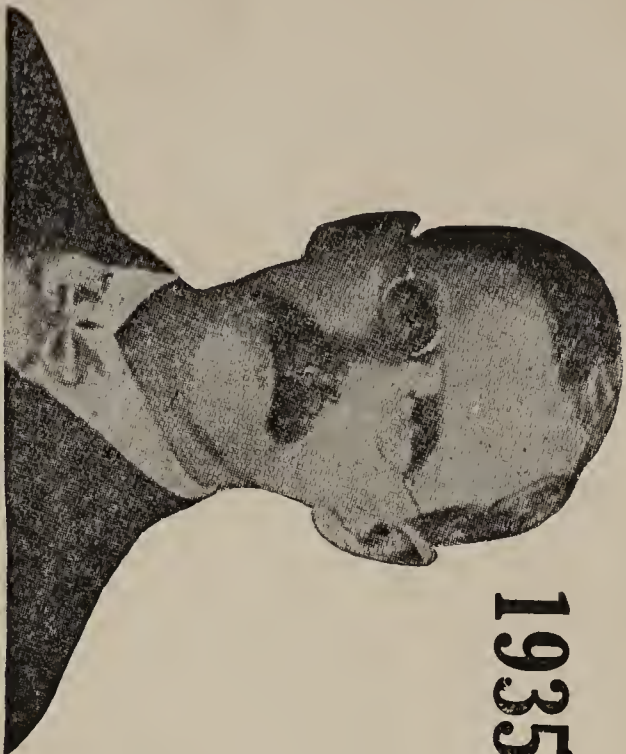
## **Historic, archived document**

Do not assume content reflects current scientific knowledge, policies, or practices.



5000

1935



**J. K. ALEXANDER**

The World's Largest Dahlia Grower

**ALEXANDER'S DAHLIAS**

449 CENTRAL STREET

EAST BRIDGEWATER, MASS.

RETURN POSTAGE GUARANTEED

*Miss M...*

*E. C. Quichter*

*To U. S. Department of Agriculture*

*Washington,*

*D. C.*



SEC. 562 P. L. & R.

U. S. POSTAGE

PAID

East Bridgewater, Mass.  
Permit No. 2



# INSTRUCTIONS — INFORMATION

## Please Read Before Ordering

**REMITTANCES** — May be made by Check, Post Office or Express Money Order, or Registered Letter, and if for less than \$1.00 can be made in U. S. stamps. Coin and currency should be sent by registered letter. Customers residing outside the United States please do not send Foreign stamps or currency—a Post Office order is preferable. All unpaid orders will be sent C. O. D. unless satisfactory arrangements can be made when the order is given.

**GUARANTEE** — I wish it distinctly understood that although I take all possible pains, I will not be responsible beyond the purchase price. I guarantee every root and plant I send out to be just as represented, absolutely true-to-name, reach its destination safely in good growing condition. I will cheerfully replace anything that fails to prove otherwise, and will appreciate your calling my attention to it.

**NAME AND ADDRESS** — Please remember to write your name, street and number, Post Office, County, State and Country if Foreign, as plainly as possible. Post Office Box or R. F. D. number if you have one. This will avoid delays and chances for errors.

ALWAYS ADDRESS

**J. K. ALEXANDER, The Dahlia King**  
or **HONEST JOHN**

**499 Central St., EAST BRIDGEWATER, MASS.**

## THE CULTURE OF THE DAHLIA

Success Will Follow If You Observe These Instructions

**PLANTING.** Plant roots in hills or drills, laying flat down, 6 inches deep. Do not stand the root on end. If you stand the root on end, having the sprout near the top of the ground, all the new roots which will form will grow near the top of the ground and when you have a dry spell your plant becomes stunted, whereas, if the roots were planted flat down 6 inches deep, no matter how dry the season, the roots would receive sufficient moisture to keep them growing. If planting with manure, cover manure an inch or so before planting roots; fertilizer should be thoroughly worked into the soil. Either fertilizer or manure will burn the sprout; be sure to cover with soil.

By planting the root first, then covering an inch or so with soil and applying your fertilizer or manure, your plant receives the entire benefit of the dressing. The dressing is above the root and every rain carries the food down to the roots, whereas, if your dressing is below the root, each rain takes your dressing further away from your plant.

**CULTIVATION.** Cultivation is the principal requirement of the Dahlia—the most important of all operations to insure success. Keep the soil well cultivated and free from weeds; never allow the soil to crust.

Be sure your friends get all my catalogs, as I guarantee all my stock to grow true to name, or stock is cheerfully replaced free of all expense.

I have been in the Dahlia and Plant growing business for over 48 years and at one time had over 40,000 customers and have shipped bulbs all over the world.

I shall only issue a folder this Spring on account of hard times, so send all orders from this. If interested in Hardy Plants, I will send you my 1933 Catalog for prices will be the same as then.

## NEW AND RECENT INTRODUCTIONS FOR 1935

The six for \$25.00; value \$29.00

### BISHOP FRANCIS JOSEPH SPELLMAN

This is one of my new Seedlings, named after one of the most interesting persons for whom I have named a Dahlia for many years, Bishop Francis Joseph Spellman, formerly of Whitman, Mass.

The flower is 6-8 inches in diameter, pure white and stands erect on top of stiff wire stems and is as pure white as the one it is named for, as the Bishop is one of the finest types of men to be found throughout the world and I am proud to get a confirmation through his sister of Abington, Mass., to name such a fine Dahlia for him.

I have only a limited amount of this beautiful Dahlia to offer to my customers and if you will order early you will be sure to get this new Dahlia this Spring. It is well worth \$10.00 to any one but I am offering it for \$5.00 Net.

**J. K. ALEXANDER, JR.** The largest crimson-red Hybrid Decorative ever offered, having a fleck of orange in the center of each petal. This blooms 12-14 inches without disbudding. \$3.00.

**MANOMET.** One of the best Cactus Dahlias that I have had the pleasure of growing. It is a very beautiful orange spotted darker, very large, going to twelve inches, and grows four canes. The flowers are held on good long stems well above the foliage. It is a very fine keeper as I have had it in vases five days without changing water. \$7.50 each.

**MRS. J. K. ALEXANDER.** The best clear buttercup-yellow dahlia ever introduced. A 14-16 inch flower, free flowering, long stems, and is a REAL dahlia, a noble flower. \$3.00 each.

**PRES. FRANKLIN DELANO ROOSEVELT.** This is a formal Decorative that has a certificate of merit from Storr's. A Chinese red with fawn edge and cream reverse, making the blooms very striking. The flowers are very large and deep, going eight inches without disbudding and holds its size all season. The blooms are held well above the foliage on good stiff stems. It is a profuse bloomer and should be disbudded, and it can be grown then to eight canes without reducing the flowers to less than nine to ten inches. The foliage is perfect. Insects do not like it. \$7.50 each.

**RIPPLES.** This is an informal Decorative. A very large flower of eight inches without disbudding. The rose-pink colored blooms are held on very long stems way above the foliage. It is a great bloomer and has fine foliage. I have a large stock of this so will let it go for \$3.00 each. A bargain.

## NEW AND UP-TO-DATE LARGE-FLOWERING DAHLIAS FOR 1935

Some of the World's Best Dahlias ever introduced  
31 New and recent introductions, regular price \$33.50  
The entire collection for \$25.00 postpaid

**ADELPHION.** Decorative. Pink and lavender, fine with long stems, one of the best cut-flower varieties. \$1.00 each.

**ALTA NEVADA.** Decorative. Deep rose with glowing tangerine color, on long wire stems, nothing ever, better grown, \$3.00 each.

**ALYCE MARIE GALVIN.** Decorative. White with faint tones of cameo-pink, a twelve-inch flower. \$3.00 each.

**CANARY CUP.** Decorative. Soft yellow. \$1.00 each.

**DWIGHT W. MORROW.** Decorative. A giant red, the richest of its color, six inches deep, a ten-inch flower. \$1.00 each.

**ELIZA LONDON SHEPARD.** Decorative. A brilliant golden orange-apricot, one of the best grown, \$1.00 each.

**GOV. ALVAN T. FULLER.** Decorative. A deep rose-pink, one of the very best Dahlias ever introduced, three feet high. 50c each.

**JACK O'LANTERN.** Decorative. Brilliant scarlet, like a bon-fire, nothing better grown. \$1.00 each.

**KENTUCKY.** Decorative. Same shape as Jersey Beauty, only a deep golden-salmon pink and yellow. 50c each.

**LA TOREADOR.** Decorative. A brilliant red, fine large blooms. \$1.00 each.

**LILLIAN GUNTNER.** Decorative. Deep orange and apricot shades, one of the best bloomers ever introduced. \$1.00 each.

**MABLE GOODACRE.** Decorative. Soft pink and salmon suffused with orange, a fine large bloomer. \$1.00 each.

**OUR COUNTRY.** Decorative. Deep purple tipped white, an old timer, but nothing better of its color grown. \$1.00 each.

**POLAR STAR.** Decorative. One of the best white Peony Dahlias ever offered. 50c each.

**RED KING.** Decorative. A clear scarlet, very fine. \$1.00 each.

**ROCKY LEDGE.** Decorative. One of the best yellows grown. \$1.00 each.

**SALMON SUPREME.** Decorative. Glistening salmon-orange-pink, with long stems and a fine flower. 50c each.

**SANHICAN'S BEAUTY.** Decorative. Deep rose, resembling a huge rose in flower, wonderful in bloom. \$1.00 each.

**SANHICAN'S KING.** Decorative. One of the dark shades. 50c each.

**SANHICAN'S MONARCH.** Decorative. Deep tyrian rose shading lighter, a fine flower. 50c each.

**SANHICAN'S PEACH.** Decorative. California peach with a clear peach-cheek glow. 50c each.

**SARAH JANE.** Decorative. A clear yellow, 9-10 inch flower and very beautiful. \$3.00 each.

**SATAN H. C.** Exquisite coloring of flaming red with a slight touch of gold in center, giving a red effect, a large, fine and strong flower. \$3.00 each.

**SNOW BOY H. C.** One of the clearest white flowers grown, fine for cutting purposes. 50c each.

**THE COMMODORE.** Decorative. A clear lemon-yellow, large. \$1.00 each.

**THE EMPEROR.** Decorative. Deep crimson. a strong grower. 50c each.

**TREASURE ISLAND.** Decorative. Bright apricot-red with gold and rose shading, a large dwarf. 50c each.

**WANDA MILLER.** Decorative. Deep purple tipped white. \$1.00 each.

**WESTERN GIANT.** Decorative. Bright orange tints of gold. 50c each.

**W. H. T.** Decorative. Old-rose-pink, a beautiful large flower. \$1.00 each.

**YORK & LANCASTER.** Decorative. Bicolor of red and white, very large. \$1.00 each.

This grand list of **SUPERB NEW DECORATIVE DAHLIAS** is without an equal, all large-flowering and are held erect on strong stems, growing 8-12 inches in diameter. **FOURTEEN** of the finest Dahlias ever grown for \$2.00 each: \$20.00 prepaid for the collection. Try some of them and you will come back next Fall telling me what beautiful Dahlias you had the past season.

**ASBURY PARK.** Autumn tints having a coppery-salmon effect.

**AVONELLA.** New. Amaranth purple with a sheen of rose-purple reverse, a large and fine flower and form.

**CITY OF NEW YORK.** A large reddish-salmon.

**HAROLD SMITH.** One of the largest deep yellow ever offered.

**HAWAIIAN NIGHT.** A large bright deep red with yellow cast.

**JEAN KEEPER.** Brilliant rose-pink, large.

**JOHN DRUREY.** Salmon buff with soft yellow shades.

**KAWEAH.** Deep rose-cerise, fine, center of petals shading to a rich velvety-cardinal.

**MARY GERALDINE.** Rose-red tipped white, large.

**OMAR KHAYYAM.** A large Chinese red shading to bright orange.

**PENN CHARTER.** Clear golden-yellow tinted apricot.

**PRINCE OF PERSIA.** A rich glowing crimson, more like the petals of a rose when in flower.

**SHAHRAZAD.** An outstanding deep pink, type and shape of Jane Cowl, very large.

**VERCHIE HANCOCK.** One of the very best new introductions ever offered, the color is a little lighter than Judge Marean, a bright orange suffused red and lemon, a very large bloom, one of my own introductions.

This collection of large-flowering **Decorative Dahlias** all outstanding varieties, nothing better ever offered.

\$1.00 each, \$10.00 doz., or the 29 for \$20.00 Postpaid.

**ALTA RAY.** Salmon-orange.

**AUTUMN BEAUTY.** A clear golden-yellow

**AZTEC GLORY.** Large clear picric-yellow.

**BEATRICE TAYLOR.** Empire yellow.

**DONNA CALIFORNIA.** Rose-pink suffused lavender.

**DOROTHY STONE.** A large brilliant pink.

**FRANK GALVIN.** A delicate pink.

**FRANK MILLER.** Very large picric-yellow.

**GRACE CURLING.** A clear Cattleya lavender, one of the best.

**HERALD TRIBUNE.** White with a faint shading of pink.

**JIM MOORE.** Primrose-yellow shading to gold.

**JUDGE LEON McCORD.** A deep gold, reverse old-rose.

**KEMP'S VIOLET WONDER.** A rich naphthalene violet, large.

**KING MADAS.** Golden yellow.

**MARDI GRAS.** A bold flower, American Beauty shade.

**MARSHALL'S GLORY.** A large rose-crimson.

**MARVEL.** A beautiful orange shade.

**MRS. ADA R. SHERMAN.** Scarlet with yellow tips.

**MRS. EDNA B. CHAMPLIN.** Deep rhodamine pink, very large.

**MRS. E. L. TROTTER.** Dark crimson, flecked.

**MRS. J. M. SHAFER.** One of the finest pinks ever introduced.

**MRS. JOHN CARVER.** A fine pink.

**QUEEN OF THE GARDEN BEAUTIFUL.** Primrose yellow.

**SIDNEY P. MITCHELL.** A rich velvety red.  
**SIR JOHN CARLIN.** Royal purple, large.  
**THE SURPRISE.** Rose shade, fine.  
**WM. G.** A large scarlet red.  
**WILLIAM SELTSAM.** Crimson-red.  
**YANKEE QUEEN.** A large true pink.  
 These are recent introductions of some of the very best large-flowering Decorative Dahlias ever offered. This is the best list of 69 Dahlias of its class I have ever been able to offer in my forty-seven years' experience with Dahlias, etc. These bloom from 8-12 inches in diameter and are 50c each, \$5.00 per doz. or I will send the entire collection of 69 for \$25.00 postpaid.

**ALICE GREEN.** Golden Autumn shade.  
**ALICE M. ALEXANDER.** An opal-red, very rich.  
**ALMA ALEXANDER.** Deep Orange.  
**AMUN RA.** Coppery bronze.  
**BARBARA REDFERN.** Burnished copper shading to gold.  
**BECKETT'S ORIENTAL.** Red and yellow.  
**BETTY ALEXANDER.** A beautiful Persian lilac.  
**BROCKTON BEAUTY.** A large lavender.  
**CATHERINE ALEXANDER.** A little lighter than old rose.  
**CHARLOTTE ALEXANDER.** White with vein of purple at tips. a fine flower.  
**CHEMAR'S CHARM.** A light Autumn pink shade.  
**CHEMAR'S PURITY.** Almost pure white.  
**CLARENCE FARGO.** Pink and yellow combination.  
**COQUETTE.** One of the most beautiful red and gold combinations, a fine large flower.  
**C. T. HARDWICK.** Blush lavender with white tip.  
**DAD.** A large red, fine, dwarf grower.  
**DOROTHY ALEXANDER.** Rich apricot yellow.  
**EASTERN STAR.** Saffron yellow.  
**EDWARD THOMAS BEDFORD.** Large rich purple, one of the best.  
**ELITE GLORY.** Large brilliant rich crimson, fine.  
**FAITH GARIBALDI.** Silvery pink, large and fine.  
**FORT WASHINGTON.** A large deep velvety maroon.  
**FRED TENNANT.** Burnt orange.  
**GILDA GRAY.** Pure lilac shading to deep Tyrian rose.  
**GLORY OF MONMOUTH.** Rich eosine-pink.  
**GRAF ZEPPELIN.** A large pure white.  
**HARRIET THOMPSON.** Brilliant orange-buff, reverse Oriental red.  
**HARRY MAYER.** Pale rosaline purple and lavender.  
**IDA PERKINS.** Large pure white, fine.  
**IDA TARBELL.** Deep crimson, large and fine.  
**JACQUES FUTRELLE.** Light greenish-yellow, large.  
**JANE COWL.** Bronze buff and old gold, fine and large.  
**JERSEY EMPRESS.** Large blooms of Anthracene violet, fadeless.  
**JERSEY FIANCEE.** Rose pink.  
**JERSEY TRIUMPH.** Bright copper flushed salmon.  
**JERSEY TRIUMPH.** Bright copper flushed salmon.  
**JUDGE MAREAN.** Red and yellow, suffused pink.  
**KATHLEEN NORRIS.** A true rose pink, one of the best and large.  
**MARGARET K. ALEXANDER.** Buff and burnt orange, large.  
**MARMION.** A large pure golden-yellow with bronze shadings.  
**MONMOUTH CHAMPION.** A beautiful orange-scarlet, very large.  
**MORDELLA.** Bright clear apricot-buff.  
**MRS. A. B. SEAL.** Pure glowing old rose shading to violet-rose.  
**MRS. A. E. WHEELER.** Fuchsia color.  
**MRS. ELMER O. DREW.** Rich purple-maroon.  
**MRS. GEORGE SKEEN.** Shrimp pink, large.  
**MRS. JOHN L. EMERSON.** Deep orange suffused red and yellow, fine.  
**MRS. R. T. EDWARDS.** Pink, reverse plum.  
**NANAQUAKET.** Amaranth pink, large and one of the best grown.  
**NELLIE KNAPP.** Clear white, fine flower.  
**POLAR SNOW.** Large pure white, full to center,  
**PRIDE OF FT. MORGAN.** Crimson red,





**PRIDE OF STRATFORD.** Cadmium orange, large.  
**ROBERT SCOTT.** Apricot yellow.  
**ROBERT TREAT.** American Beauty rose, large.  
**RODMAN WANAMAKER.** Yellow, bronze and salmon-pink, a fine flower.  
**ROSE ALEXANDER.** Deep chrome orange, edge of petals tipped white.  
**ROSE FALLON.** Deep old gold, large.  
**SALEM PRIDE.** Rhodamine purple flecked white, large and one of the best flowers grown.  
**SANHICAN'S BLUEBIRD.** A light violet blue.  
**SANHICAN'S QUEEN.** Apricot and carmine-rose.  
**SOMERSET.** Salmon and old gold shades, a fine flower.  
**SPIRIT OF ST. LOUIS.** Deep American rose shading purple.  
**SUSAN R. ALEXANDER.** Antimony yellow, a fine flower and large.  
**TOMMY ATKINS.** Fiery scarlet.  
**TRENTONIAN.** Immense brown coppery bronze.  
**WALKOVER PRINCE.** Nopal red, each petal flecked deep orange. This is a noble flower, always full to center, a whale.  
**YANKEE KING.** A deep strawberry pink.  
**Standard List of forty-four select large-flowering Decorative Dahlias.** This is one of the best offers ever made for this class of Dahlias. 25c each, \$2.50 doz. or the 44 all labelled, true to name for \$7.00 postpaid.  
**AVALON.** Pure yellow.  
**BASHFUL GIANT.** Apricot with golden shadings.  
**BERTHA HORNE.** Deep orange yellow tinted apricot.  
**BONNIE BRAE.** Peach and cream.  
**CATHERINE WILCOX.** White with petals tipped cerise.  
**CHAMPAGNE.** A delightful Autumn shade.  
**DELLA V. POTTER.** A light salmon-pink.  
**DR. TEVIS.** Salmon-rose.  
**EDITH BERYL.** Empire yellow to jasper pink with pale yellow shadings.  
**ELEANOR GRANT.** Almost white.  
**ELINOR VANDERVEER.** Rose pink, fine.  
**ELIZABETH SLOCOMBE.** A large rich purplish-garnet.  
**F. L. MILLIS.** Yellow shading to orange.  
**GEORGE H. CARR.** Purplish magenta.  
**GLORY OF NEW HAVEN.** A pinkish-mauve almost lavender.  
**HELVELLA.** Rose-pink.  
**H. MAIER.** Primrose yellow.  
**JERSEY BEACON.** Chinese scarlet, large.  
**JERSEY BEAUTY.** True pink, a fine flower.  
**JERSEY IDEAL.** A lavender-pink.  
**JUDGE ALTON PARKER.** Golden buff.  
**JUNIOR.** Pure lavender.  
**KING OF AUTUMN.** Rich Autumn shades.  
**KING OF THE GARDEN.** Pink and gold.  
**MARGARET MASSON.** Rose pink.  
**MARGARET WOODROW WILSON.** Opalescent pink, large.  
**MILLIONAIRE.** Delicate lavender.  
**MINA BURGLE.** Brilliant scarlet.  
**MRS. CARL SALBACH.** Mauve pink.  
**MRS. EDITH HAYWARD.** Lemon yellow.  
**MRS. IDA DE VER WARNER.** Deep mauve pink, large and fine.  
**MRS. JOHN T. SCHEEPER.** Large canary-yellow tipped old rose.  
**MRS. LOUISE FINGER.** Pure white.  
**PRIDE OF CALIFORNIA.** Crimson red.  
**PRIVATE BYRON STREETER.** Deep purple.  
**RALPH BLODGETT.** Cornelian red blending to yellow, center tipped orange and white.  
**ROMAN EAGLE.** Burnished copper.  
**ROSA NELL.** Bright rose.  
**ROSE K. DARNELL.** Rose.  
**SAGAMORE.** Golden yellow.  
**SOUV. DE G. DOAZON.** Orange-red.  
**SWIFT.** Lemon-yellow.  
**WILLIAM H. SLOCOMBE.** Pale yellow.  
**YELLOW MONS. LE NORMAND.** Golden yellow with reddish stripes.

## CACTUS DAHLIAS FOR 1935

This collection of fine Cactus Dahlias are some of the best grown. I will ship the 20 postpaid for \$7.00.

- ALICE WHITTIER. Primrose or sulphur-yellow. 50c each.  
ANDREAS HOFER. Light pink, center white. 50c each.  
BETTY IVINS. A lovely salmon shade. 50c each.  
BRIDES' BOUQUET. Clear pure white. 25c each.  
CHEMAR'S MASTERPIECE. A large orchid-pink. 50c each.  
CIGARETTE. Soft red tipped white. 50c each.  
COUNTESS OF LONSDALE. Salmon, rose and pink. 25c each.  
EDNA FERBER. Coral shading old gold, large. 50c each.  
ELKRIDGE. Splendid pure white. 50c each.  
FLYING AMBASSADOR. A large white. 50c each.  
JEAN HARE. Apricot buff tipped golden bronze. 50c each.  
JERSEY RADIANCE. Bright glowing salmon. 50c each.  
MAMMOTH. A purple crimson. 50c each.  
MARJORIE CASTLETON. Rose-pink tipped white. 25c each.  
MRS. C. B. BENEDICT. A clear light yellow. 25c each.  
MRS. C. H. BRECK. Creamy yellow with shadings of rose and pink. 35c each.  
MRS. ETHEL F. T. SMITH. A large white shading to lemon-yellow. 35c each.  
MT. SHASTA. Cream white shaded pink. 25c each.  
ROYCROFT. A golden-bronze. 50c each.  
SAMUEL T. ALEXANDER. Japan Rose. 75c each.

## POMPON DAHLIAS FOR 1935

This is the finest list of Pompon Dahlias I have been able to offer for twelve years and as a collection they are the finest I know of and I will ship the 35 varieties, all different, for \$10.00 postpaid. Worth \$11.65.

- ACHILLES. Flesh color. 25c each.  
BACCHUS. Clear bright red, full. 25c each.  
BELLE OF SPRINGFIELD. A fine red, small. 25c each.  
BIT O'LILAC. Lilac. 35c each.  
BRONZE BEAUTY. Soft orange-buff. 35c each.  
DARKNESS. A dark maroon. 25c each.  
DAYBREAK. Flesh with soft pink tips. 25c each.  
DEE DEE. Lavender, small. 35c each.  
DEW DROP. Light pink edged darker. 25c each.  
FASHION. Orange, large. 25c each.  
FRAU DE KNOBLE. A fine, delicate flesh color over-laid lavender. 35c each.  
GRUSS AM WEIN. Crushed strawberry, very fine. 35c each.  
HAZEL. Buff to brown. 35c each.  
JESSICA. Yellow edged red. 25c each.  
JOAN. Orange-red, fine. 50c each.  
JOE FETTE. Pure white, good stems. 25c each.  
JOHNNIE PEPPIN. Dark crimson-red. 35c each.  
JONKEER VON CITTERS. Yellow tipped orange. 35c each.  
KITTY C. Red, fine. 35c each.  
LEADER. A clear yellow, tipped rose-purple. 50c each.  
LITTLE BEAUTY. Soft pink and white. 35c each.  
LITTLE BEESWING. Golden yellow tipped cherry-red. 35c each.  
LITTLE DAVID. Deep orange. 35c each.  
LITTLE HERMAN. Red and white variegated. 25c each.  
LITTLE JENNIE. Soft primrose. 25c each.  
MADELINE PRIMROSE. Yellow edged purple. 35c each.  
MARY MUNNS. Fuschia, dark orchid sheen. 50c each.  
NETTIE. Pink. 35c each.  
OLD GLORY. Red and pink, fine. 50c each.  
PEGGY ANN. Yellow shaded amber. 35c each.  
REGULUS. Cerese-purple. 35c each.  
SNOWCLAD. Standard white. 25c each.  
SPY. Scarlet. 35c each.  
VARIEGATED QUEEN. Red and white, fine. 35c each.  
YELLOW GEM. A perfect yellow, a neat flower. 35c each.

## GENERAL LIST OF POMPONS

I will ship this fine collection of 6 fine Pompons for 75c postpaid.  
15c each, \$1.50 dozen.

- AMBER QUEEN. Clear amber shaded apricot.
- CHALLENGE. Red and white.
- GOLDEN GEM. Yellow and white, very attractive.
- GOLDEN QUEEN. Pure yellow, fine.
- PRINCE CHARMING. Purple.
- RAPHAEL. Dark maroon.

## SHOW DAHLIAS FOR 1935

This collection of 24 Show and Fancy Dahlias for \$3.00.  
15c each, \$1.50 per dozen.

- A. D. LIVONI. Soft pink.
- ARABELLA. Sulphur-yellow tipped pinkish-white.
- D. M. MOORE. Nearly black, a deep maroon.
- FREDERICK SPITTEL. Vermilion-scarlet, tipped white.
- GLORIE DE GUISCARD. Orange-red, yellow, pink and white.
- IMPERIAL. Deep purplish-maroon.
- JAMES VICK. Purple-crimson.
- LES AMOURS DE MADAM. Pale rose striped scarlet.
- LUCY FAUCETT. Pale yellow striped pink.
- MAUDE ADAMS. Snow white overlaid pink.
- MAYOR DUNN. A clear scarlet.
- MISS HELEN HOLLIS. Deep scarlet.
- MRS. CLARA D. ANDERSON. Purple crimson.
- MRS. DEXTER. Salmon.
- POLLY SANDALL. Bronze-yellow veined pinkish-white.
- PRINCESS VICTORIA. Yellow.
- RED HUSSAR. Cardinal red.
- ROBERT BROOMFIELD. White.
- ROSE. Deep pink.
- STORM KING. White.
- STRADELLA. Deep purple-crimson.
- VIVIAN. White edged rose-violet.
- WHITE SWAN. White.
- YELLOW DUKE. Yellow, large.

## SINGLE AND PEONY-FLOWERED DAHLIAS

This select list of Peony-Flowered and Single Dahlias, 15 for \$3.00  
or 25c each, \$2.50 per dozen postpaid.

- ACHIEVEMENT. Col. Single. Crimson, white collar.
- BESSIE SEABURY. Peony. White with Mallow-pink.
- BLACK BIRD. Single. Deep maroon.
- COLTNESS. Single Seedlings. Dwarf, all colors.
- ELLEN E. KELLEY. Peony. Soft yellow.
- E. T. TITUS. Peony. A clear yellow.
- GEISHA. Peony. Yellow and vermilion-red.
- JEANIE PRESTON. Peony. Yellow overlaid Japan-rose.
- LATONA. Peony. Soft salmon.
- MME. VAN BYSTEIN. Peony. Light lavender-blue.
- MRS. M. W. CROWELL. Peony. Soft amber.
- MRS. R. FORBES. Single. Pink.
- PHENOMENE. Peony. Salmon.
- PURPLE QUEEN. Single. Purple.
- WENETCHE QUEEN. Peony. Soft pink.

## MINIATURE OR ART DAHLIAS FOR 1935

These are all dwarf growers but very beautiful for cut-flowers,  
a new type of Dahlias, 5 for \$2.50 postpaid.

- ELIZABETH PAPE. Miniature Cactus. Pink and white. 50c each.
- GARDEN GLOW. Decorative. A reddish salmon. \$1.00 each.
- GARDEN LOVE. Decorative. Old rose and salmon. 50c each.
- IRENE. Decorative. Deep orange. 50c each.
- PINK PEARL. Decorative. Bright pink, fine. 50c each.

**TO ANY CUSTOMER** sending in a \$10.00 to \$14.00 order, I will send free one of my new J. K. Alexander, Jr., 12-14 inches in diameter, the largest crimson-red Hybrid Decorative ever offered, having a fleck of orange in center of each petal. This is even better than Satan and it sells for only \$3.00 per root and is worth \$10.00 to any Dahlia Grower.

**TO ANY CUSTOMER** sending in an order for \$15.00 or over, I will send free a bulb of my new Dahlia Mrs. J. K. Alexander, a 14-16 inch bloom and flowers as free as a Pompon Dahlia, and is the most beautiful yellow ever introduced and sells for \$3.00 per root.

## MIXED DAHLIAS

This mixture of some of the best named varieties without labels, all large-flowering, all different, and which sell, under names, at \$2.50 to \$5.00 per doz. I will send 12 fine bulbs, all colors, for \$2.00 postpaid.

Regular mixed, all types, all colors, a fine mixture of 12 all different, for \$1.00 postpaid.

## DAHLIA SEED

I offer this year seed carefully selected from the best varieties and all types. If you are interested in growing Dahlias in new forms and new colors, you cannot do better than to get a packet of seed. One package will produce 15 to 20 plants.

**SPECIAL SEED.** I have selected and reserved some hand-pollinised seed and can supply a limited number of packets of this seed, being personally selected from my best and largest varieties. I highly recommend these seed. \$2.00 per package of 50 seeds.

**SPECIAL MIXED SEED.** 50 seed selected from all large-flowering varieties, Dec., H. C., and Peony-flowered. \$1.00 per package. flowers. Price 50 cents per package.

**SELECT MIXED SEED.** 50 seed from some very select flowers. Price 50 cents per package.

## DAHLIA CUTTING KNIVES

Many of my customers have asked me what kind of knife I use in separating my clumps of Dahlias, so thinking it will make it convenient for my customers, I am offering the knives we use to separate the Dahlia clumps. 50 cents, prepaid.

## DAHLIA LABELS

Dahlia Labels, Painted, with Wires, 3½-inch iron wire, 75 cents per 100, prepaid; \$3.00 per 1,000, prepaid; 3½-inch, copper wire, 75 cents per 100, prepaid; \$4.00 per 1,000, prepaid.

Dahlia Labels, with Wires, 3½-inch, iron wire, 50 cents per 100, prepaid; 3½-inch copper wire, 50 cents per 100, prepaid; \$3.50 per 1,000, prepaid. Not less than 600 at 1,000 rates.

## WOODEN PLANT LABELS

For any kinds of plants. These are plain labels to be used either in pots or out of doors, with one end pointed.

Plant Labels, 4-inch, plain, 50 cents per 100, prepaid; \$2.00 per 1,000, prepaid. 5-inch, plain, 60 cents per 100, prepaid; \$3.00 per 1,000 prepaid. 6-inch, plain, 75 cents per 100, prepaid; \$4.00 per 1,000, prepaid. Not less than 600 at 1,000 rates.

## GLADIOLI

The Gladioli are without an equal either for bedding or borders. As a cut flower they are far superior to any other Summer bloomer, either for lasting qualities or for the various uses for which they can be employed. If planted by the last of May, they will bloom by the first to the middle of August, if cared for properly.

**The way to Plant**—Dig the row or bed from eight to ten inches deep, then spread a liberal amount of good fertilizer in the bottom of the row or bed, then rake it in thoroughly before planting your bulbs from four to six inches deep.

## NEW AND CHOICE GLADIOLI FOR 1935

This collection of 25 all different, all large-flowering varieties.

1 each for \$1.50 or 12 each of the 25 for \$15.00 postpaid.

5c each, 50c doz.—10c each, \$1.00 doz.—15c each, \$1.50 doz.  
6 at doz. rates.

- AFLAME. Silvery flame red. 10 cents.  
AIGRETTA. A clear white. 15 cents.  
ALBANIA. Pure glistening white. 5 cents.  
BERTY SNOW. Soft lilac-pink. 10 cents.  
BETTY NUTHALL. Coral-pink and pale yellow throat. 10 cents.  
DR. F. E. BENNETT. Scarlet. 5 cents.  
FONTAINE. Pink and yellow. 10 cents.  
GIANT NYMPH. Coral pink. 5 cents.  
GOLDEN DREAM. Golden yellow. 5 cents.  
HENRY C. GOEHL. White, crimson blotch. 15 cents.  
JACK LONDON. Fine salmon. 10 cents.  
LONGFELLOW. La France pink. 15 cents.  
MARIE KUNDERD. White. 5 cents.  
MRS. FREDERICK C. PETERS. Rose violet. 5 cents.  
MRS. LEON DOUGLAS. Light red. 5 cents.  
MYSTIC. Bright rose pink. 5 cents.  
NORA. Beautiful light lavender blue. 10 cents.  
PANSY FACE. Deep violet blue. 10 cents.  
PRINCE OF INDIA. Smoky old rose. 15 cents.  
RED CANNA. Brilliant red. 5 cents.  
ROMANCE. Deep orange-salmon. 5 cents.  
SCARLET PRINCEPS. Flaming scarlet red. 5 cents.  
SCARLET WONDER. A fine scarlet-red. 5 cents.  
SEABROOK GEM. Rose-pink. 10 cents.  
WINE KING. Deep wine-colored. 10 cents.

## STANDARD GLADIOLI AT DEPRESSION PRICES

5c each. 50c per doz. postpaid, or one each of the 18 large flowering Gladioli for 75c, or 12 each for \$7.00 postpaid.

- CARMEN SYLVA. Snow white.  
DR. VAN FLEET. Deep rose pink.  
GOLD. Pure golden yellow.  
GOLDEN MEASURE. Golden yellow.  
HALLEY. Delightful salmon rose.  
HERADA. Pure mauve.  
INDEPENDENCE. Deep crimson pink.  
JOE COLEMAN. Popular red.  
MAGIC. Lavender blue, with large purple throat blotches.  
CRACKER JACK. Deep crimson.  
CRIMSON GLOW. Crimson.  
METROPOLITAN. Light crimson scarlet.  
MRS. DR. NORTON. White Edged La France pink.  
MRS. FRANK PENDLETON, JR. Salmon pink, with blood-red blotch.  
PINK WONDER. Fine pink.  
PRINCE OF WALES. Delicate coral pink.  
PRINCEPINE. Carmine red with white blotch.  
WILLBRINK. Flesh pink, creamy blotch.

## PRIMULINUS HYBRIDS

It is within this type of Gladioli we find the most varied and beautiful tints—the reds, yellows, oranges, saffrons, pinks and some wonderful color combinations not found in the large flowering varieties. This type of Gladioli is becoming very popular. This fine collection of 12 orchid flowering Gladioli for 35 cents or 12 of each kind for \$3.50 postpaid.

- ALICE TIPLADY. Large bloom, orange saffron color.  
ALTAIR. Salmon saffron.  
BLUSH QUEEN. Blush pink.

- DOROTHY WHEELER.** Pure delicate rose pink.  
**FLAMING SWORD.** Bright orange red.  
**GOLDEN TING.** Golden orange shade.  
**HARMONY.** Deep red.  
**JEWEL.** Clear salmon pink with a clear golden throat.  
**MAIDEN'S BLUSH.** Delicate shade of pink.  
**MIDSUMMER DREAM.** Lively light crimson.  
**MYRA.** Deep salmon over yellow ground.  
**SOUVENIR.** Purest golden yellow.  
**MIXED PRIMULINUS HYBRIDS.** They are among the earliest of the Gladoli to blossom, flowering ten days to two weeks before most all others. 25 cents per dozen; \$2.50 per hundred postpaid.  
**ALEXANDER'S SELECT MIXED.** Nothing better ever offered. Blooming size 35 cents per dozen; \$3.00 per 100; \$25.00 per 1000 postpaid.  
**GRAND MIXTURE.** This is a field mixture of all varieties, a most attractive mixture. 35 cents per dozen; \$2.50 per 100; \$20.00 per 1000 postpaid.

## HARDY PERENNIAL PHLOX

Among hardy herbaceous plants, none are more showy or more easily grown than the Phlox. They are very desirable planted in groups. Individual clumps throughout perennial beds make a very satisfactory display, while mass plantings of one color make the most effective showing.

12 different varieties without names, all different, regular value \$3.50 for half price, \$1.75 postpaid.

## JAPANESE IRIS — IRIS KAEMPFERI

The Japanese Iris is without doubt the king of all Iris. If grown in a favorable location, the flowers will attain a size of from eight to twelve inches across and stand over four feet from the ground.

They should be planted in a location that has plenty of moisture but which is well drained, especially in Winter. Standing water during the Winter months will probably kill the plants. They should be planted in the Spring or early Fall and if properly cared for, will give excellent results the following season.

They start blooming the last of June at a time when cut flowers are most appreciated in the garden, and continue for about six weeks. When used for cut flowers they should be cut in the bud and allowed to open in water.

Order by name or number.

Double, six-petal Japanese Iris. 25c each or the 6 for \$1.25 postpaid. Each one labelled with its name or number.

- No. 6—**GENJIYAMA.** Standards and falls rich dark purple.  
 No. 16—**GOLD BOUND.** Pure white with gold-banded center.  
 No. 1—**KAGARIBI.** Lavender, except a yellow spot in the center of each petal.  
 No. 4—**KUMA-FUNGIN.** Purple blue, stigmas lighter.  
 No. 12—**MANADZURA.** White, veined with blue.  
 No. 3—**TEMPLETON.** Violet blue mottled pink and white.  
 Single three-petal Japanese Iris. 15c each or the 6 for 75c postpaid.  
 No. 2—**OTOMENEWOODE.** Royal purple.  
 No. 9—**WASI-BAURI.** Pure white, veined violet blue.  
 No. 71—**WHITE SWAN.** White petals, golden bar in center.  
 No. 15—**YEZONISHITAI.** Falls red-lavender shaded purple.  
 No. 38—**KBATA.** Standards and falls purple blue.  
 No. 37—**KOHIO-HARE.** Light lavender ground mottled and veined purple.

## JAPANESE IRIS IN MIXTURE

Without names, all colors, \$1.50 per doz. \$10.00 per 100.  
 Not less than six at these prices.

## GERMAN IRIS OF EXCEPTIONAL MERIT

A superb collection of 63 wonderful named Iris for \$6.00 postpaid, or 15c each, \$1.50 doz. or three for 40c, postpaid.  
 Twelve distinct varieties of Mixed German Iris for \$1.00 postpaid.

