

Historic, Archive Document

Do not assume content reflects current scientific knowledge, policies, or practices.

52.37

LIBRARY
RECEIVED
★ MAY 1 1928 ★
U. S. Department of Agriculture

Dahlias & Gladioli

1928

FREDERICK
DAHLIA
GARDENS
Frederick, Maryland



GARDENS AT
BRADDOCK
HEIGHTS
MARYLAND



Special Information

Ored Early—As orders are filled in rotation, ordering early will insure the reservation of varieties that later may be sold out.

Terms—Cash with order unless parties are known to us. No goods sent C. O. D. unless 50 percent. of purchase price accompanies order.

Remittances should be made by bank draft, postoffice money order, or registered letter, payable to Frederick Dahlia Gardens.

Prices quoted are for divided field grown tubers.

We do not substitute unless requested to do so.

All tubers are guaranteed to be healthy and true to name. Having not control over them after delivery, we cannot warrant them to live and thrive.

Instructions how to grow dahlias accompany every shipment.

Time of Shipment—Tubers will be shipped after May 1st unless otherwise notified. All retail orders shipped prepaid.

Name and Address should be written plainly and forwarded to

FREDERICK DAHLIA GARDENS

Frederick, Maryland

Abbreviations: C. signifies Cactus; Dec., Decorative; H. C. Hybrid Cactus; P. Peony, and S. Show.

GREETINGS

1928

OUR 1928 CATALOGUE brings greetings to you, and we take this opportunity to express our deep appreciation for your liberal patronage during the past. We trust that you as well as our newer customers will enjoy the greatest possible success with your Dahlia Gardens this season.

We have one of the largest and best collections of Dahlias in the East. Our roots are all field grown, without being forced or over-fertilized—grown as you grow them. Our stock has been selected from the finest American and European varieties. We specialize in the latest novelties, which in our estimation, are unexcelled.

Thanking you in advance for any orders you may favor us with, which we assure you, will be given our personal attention.

Sincerely yours,

FREDERICK DAHLIA GARDENS.



Beauty From Bulbs

And as it rose and blossomed to the sight,
Its absolute perfection seemed divine!
I placed it in the earth—this bulb of mine—

* * *

And from its narrow prison-house of night
It struggled forth to reach the air and light;

FREDERICK DAHLIA GARDENS

— A —

Alex. Kennedy (Stredwick) C. Deep crimson, extra large flower on strong stem. Tuber75
Attraction (Harnsveld) H. C. Lavender pink, large flowers on strong upright stem. First class certificate at Haarlem and Amsterdam. Tuber75
Augustus R. Johnston (Broomall) Dec. Yellow buff, salmon center, fine stem and strong grower. Tuber	1.50
Alex Waldie (Broomall) Dec. One of the most beautiful decorative dahlias, flowers large, held well above foliage on fine stems, coloring being unsurpassed, a creamy ground overlaid with a delicate salmon-pink. Tuber	1.50
Amun Ra—The Sun God (Seal) Dec. An immense decorative of an entirely new formation, resembling the glorious setting sun. The outer petals of the mammoth blooms are of gorgeous shades of copper and orange, shading the gold and amber, and keeping in the large full center to a rich dark, reddish bronze. This new metallic coloring appeals to all, as it is the color so generally used at the present time. The stems are wonderful, erect and stout and hold the immense blossoms well above a strong vigorous plant. The blossoms keep for days cut and last indefinitely on the bush. Tuber ...	1.00
Azalea (Boston) Dec. A big bloom formed of many rows of long narrow florets, giving it an unusually attractive as well as uncommon shape. Color soft creamy yellow, outer row of petals tinged pink. Tuber50
Arctic, P. Fine white. Tuber75

— B —

Bashful Giant (Marean) Dec. One of the largest flowering dahlias ever produced, the gigantic blooms are excellent for exhibition where size is one of the requisites. It is also of great merit for its beautiful color, being apricot with golden shading. Flowers produced on stout stems. Tuber	1.50
Barbara Fritchie, P. Our new seeding. Color superb orchid lavender. Very large flowers on long stems. Stock limited. This dahlia was christened by the Governor of Maryland, October 1, 1923, naming it in memory of the heroine of John Greenleaf Whittier's war poem. Tuber	2.00
Breezelawn Dec. Intense fiery scarlet. Tuber75
Billionaire (Stillman) Dec. Superb golden orange. Tuber75

FREDEICK DAHLIA GARDENS

Bianco (Harnsveld) H. C. Lavender pink, true hybrid cactus type. Tuber50
Break O' Day (Maytrott) H. C. Delicate sulphur yellow shading sulphur white at the tips. Tuber50
— C —	
Carouso (Stillman) H. C. Mammoth flower, color yellow, pink and salmon blended together in a most unique manner, good grower, with stems that hold flowers well above the foliage. Tuber	1.50
Copper King (Mirean) Dec. Most wonderful flower of enormous size held erect on straight strong stems, color coppery shades. This dahlia was to be sold by Scheepers for \$50 in 1923. Tuber	5.00
Cambria (Burrell) Dec. Massive full flowers, with broad petals of rich rose pink, lighter towards center. Long stiff stems. Tuber	1.50
Cigarette (Boston) H. C. Variegated variety, the color is creamy white heavily edged with red and orange, but not two flowers are alike. Long strong stems, and good form. Tuber.....	1.50
Catherine Wilcox (Marean) Dec. Rich lavender, shading to white. Tuber75
City of Portland (Chamberlin) P. The best and largest clear yellow peony dahlia we have found producing Exhibition blooms from early to late on erect stems. Tuber	1.00
Califernia Superba (Boston) Dec. The flower is composed of narrowpetals of a delicate shade of pink without any blue tone and shades gradually to a white center. The petals are long and narrow and form a bloom of unusual depth. Can be grown ten inches in diameter and is of exquisite coloring. Tuber	2.00
Champagne (Boston) Dec. The color of th's dahlia is a delightful, warm autumn shade, varying from burnished copper to a dull golden champagne flower and chamois. Stem is heavy and holds the massive flower absolutely upright; the bushes are plentiful producers of blooms. It is grown very successfully in the East. Tuber	1.50
Charm (Marean) Dec. One of the most admired dahlias, color is a pleasing combination of burnt orange shading to yellow, a real autumn dahlia. Tuber	1.00
Chipata H. C. Amaranth red; large flower. Tuber50
Cardinal P. Dec. Maroon purple with long stem. Tuber50

FREDERICK DAHLIA GARDENS

Colossal Peace (Maytrott) H. C. Creamy white and violet rose.
Tuber75

— D —

Dr. Marshall Howe (Broomall) Dec. Large pink edge of flowers shaded darked flowers from 9 to 11 ins., grows very large. Tuber 1.00

Dakota (Marean) Dec. Flame color; large flower on strong stem; vigorous grower; splendid for garden or exhibition. Tuber 1.00

Dorothy Robbins Dec. Color, peach red suffused apricot. A fine grower of very good form, flowers averaging 6 to 8 inches. As a cut flower it is one of the best keepers. Tuber 1.00

Dark Days (Marean) Dec. An enormous flower held straight upon long stem, of dark velvety red. A splendid exhibition variety. Tuber 5.00

Dr. Tevis (Pelicano) Dec. This famous prize winner is a beautiful shade of soft salmon rose, suffused with old gold, shading to a golden apricot in the center. One of the largest grown, immense flowers being held erect on fine long vigorous stems. Tuber75

Daddy Butler (Boston) H. C. This is a large hybrid cactus of truest form for exhibition. The many petals are perfectly rolled. The color is of the American Beauty rose shades, or rosy carmine and the reverse of the petal is a lighter tint, giving a variation of color. Stem is perfect and it is a profuse bloomer; an exceptionally fine keeper when used as a cut flower. Tuber 1.00

Dorothy Durnbaugh (Broomall) C. Fine deep pink Tuber 1.00

Dutchess of Brunswick P. Apricot and reddish brown. Tuber50

— E —

Elite Glory (Kennedy) Dec. These were certainly wonderful with us, every admirer of the large and beautiful dahlia should have this, most sensational dahlia of the year. Monstrous flower of brilliant rich red shadings. Blooms and foliage are gigantic in size. Tuber 5.00

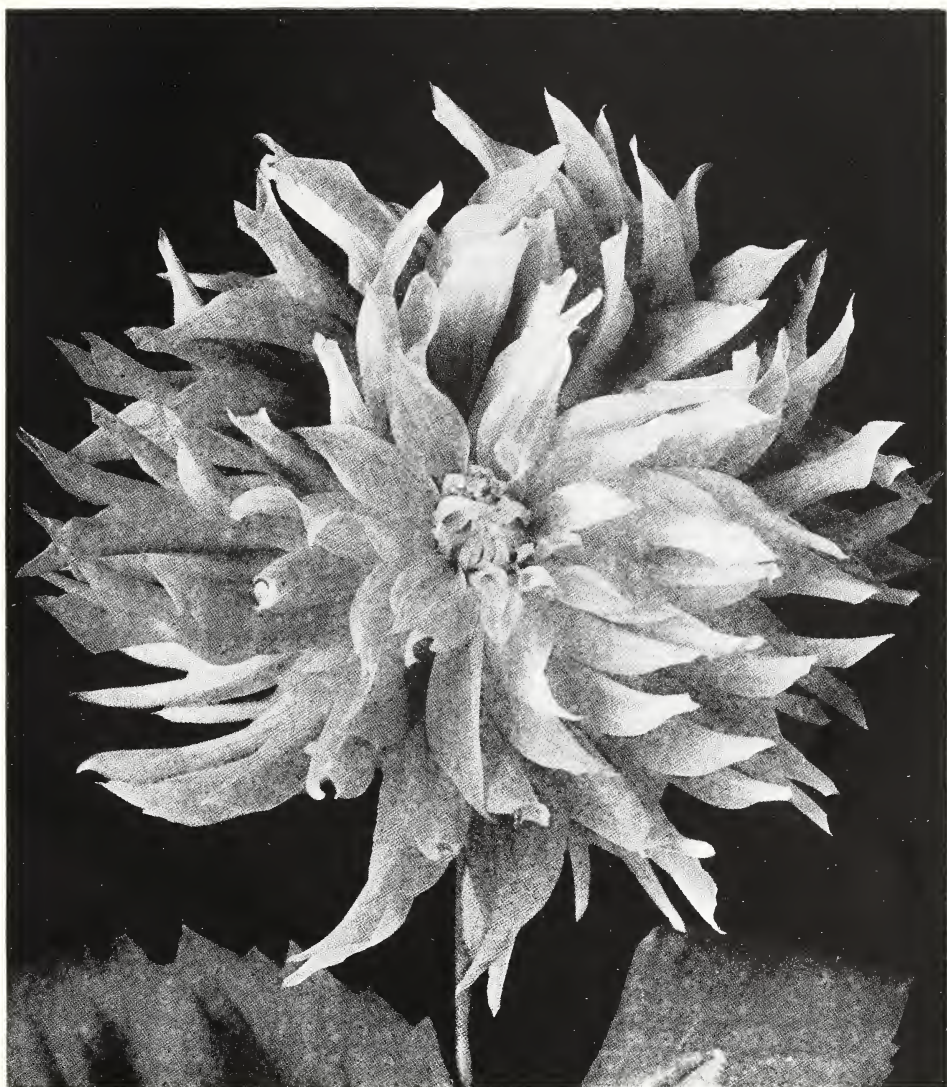
E. P. O'Connar, (Marean) Dec. Beautiful flower carried on stems. Color opalescent pink with distinct reverse of strong straight stems; color a most pleasing shade of straw and autumn vigorous and free bloomer. Tuber 6.00

Ebenezer (Vincent) H. C. Amaranth purple blended with tyrian rose, reverse of petals mallow purple; free flowing, good stems. Tuber 1.50

Embassador (Boston) Dec. Immense blooms with cane stems,

FREDERICK DAHLIA GARDENS

Color, deepest shade of red or maroon. Tuber75
Etandard De Lyon C. (Rivaire) Large, massive, yet graceful blooms. Color, reddish violet overlaid Tyrian rose. Tuber50
Earl William (Doolittle) Dec. Giant flowering dahlia, color of a brilliant crimson and white well distributed. Free bloomer; one of the finest and most attractive dahlias ever introduced. Tuber	1.50
E. T. Bedford (Marean) Dec. Fine exhibition flower of purple with a lighter shading, giving it the appearance of a silvered purple tone. Profuse bloomer. Tuber	1.50
Emily D. Renwick (Stout) Dec. Iridescent rose. The entire stock of this decorative dahlia was sold by Mrs. Stout and the proceeds used in casting a medal in the name of Emily D. Renwick, which is awarded annually by the Garden Club of Aermica for achievement. This is the finest dahlia to grow where quantities of flowers are needed for a rose-colored scheme. Awarded a special prize for artistic beauty at San Francisco Show, 1924. Tuber50
Elsie Daniels (Meachen & Sherman) H. C. An especially fine type of exhibition hybrid cactus, extremely full center of creamy white shading to a lilac pink on outer row of petals. The low growing bushes are wonderful producers of large flowers on straight stiff stems. Tuber	3.00
Elise Oliver (Boston) H. C. A large creamy pink flower with long rolled petals, much admired good stems, and profuse bloomer. Tuber	1.50
Eliza Clarke Bull (Boston). Dec. It gives us great pleasure to recommend this beautiful pure white dahlia. It is large and regularly formed and stood the acid test of the extreme heat and drought last summer, producing our largest flowers in the very hottest weather that did not burn a particle right out in the open field. Bushes of medium height, generous bloomer and keeps its center throughout the whole of the blooming season. Tuber	3.50
Esther Hunt (Boston) H. C. The large blooms are composed of long, well rolled petals with serrated tips. Even when the flower has faded and the outer petals are falling this Hybrid Cactus never shows center. The vivid colored flowers of Oriental orange make a striking display. Exceptionally fine long stems. Tuber	1.50
— F —	
Firelight (Marean) Dec. Beautiful large flower carried on stiff stems, base yellow, points of petals tipped red, very fine. Tuber	1.50



Cactus Dahlia—Rollo Boy Prize Winner

FREDERICK DAHLIA GARDENS

F. W. Fellows (Stredwick) C. The best all around cactus in my opinion for garden or exhibition. Orange color; large, perfect flowers. No garden complete without this fine variety. Tuber75
Francis Lobell (Waite) H. C. Mallow pink, shading to white in center, wonderfully free bloomer, flowers large and held erect on perfectly rigid stems. Baskets of this variety exhibited at the various Eastern shows attracted a great deal of attraction. Fine keeping qualities. Tuber	1.50
Futurity (West) Dec. An especially fine and popular dahlia, with exception that it is a poor root producer. Color, crimson pink or lilac rose, underlaid with soft yellow. Size, stem and bush are fine. Tuber75
Faith Garibaldi (Boston). Dec. A deep rose colored decorative shading lighter on the outer petals. A flower of great depth as well as large size, held up straight on long stiff stalk. Always several splendid flowers on a bush, perfect closed center, begins blooming early and continues until frost. Fine keeper for exhibition purposes. Tuber	3.00
— G —	
George Walters (Carter) H. C. An immense flower of a pleasing shade of salmon-pink, gradually becoming yellow at the base of the petals. Early and free flowering. Always a prize winner. Tuber50
Geshia Pf. (Harnsveld) Orange, red, with yellow center. This variety is so well known and popular that no garden is complete without it. Tuber75
Gladys Sherwood (Broomall) H. C. Pure white, large flowers often 9 inches in diameter, without disbudding, very free flowering, strong stems. A prize winner every time. Tuber	1.00
Gloriana (Hodgens) Dec. Immense, flowers of pure gold color, slightly reddish towards center. Long leafless stems. None better for exhibition or cutting. Tuber75
Golden West (Broomall) H. C. A popular cut flower variety, very free flowering and a great keeper when cut. Color deep yellow overlaid with orange. Good stems. Tuber50
Golden West (Burbank) H. S. Large and distinct, high full center, with petals notched at tips. Color, a clear primrose yellow. Tuber35
Grace Allen Fay (Broomall) Dec. Rosy crimson, shading darker in the center. Large, well formed flowers on good stems. Tuber	2.00

FREDERICK DAHLIA GARDENS

Giant Ruby (Greinberg) Dec. An extremely vivid red, classed as among the very best of red dahlias, exhibition type of flower, full center and good stem. Tuber.....	2.00
Golden Gate (Burbank) C. Bronze yellow. Tuber50
Gen. Joffre Dec. Pink shading to white in center. Tuber50

— H —

Helen Keller (Broomall) P. Beautiful pink peony, very large. Tuber	1.00
Hal Curtis (Boston) p. Old gold and salmon. Tuber75
Honesty c. Pink with white center. Excellent garden variety. Long stiff stems. Free flowering. Tuber35
Hercules (Marean) Dec. Quilled of enormous size, the beautifully colored flowers carried proudly on long stout stems; color tangerine and deep yellow; the reverse of the petal is shaded tangerine, and they are so placed that they blend in a most attractive way with the deep yellow of the flower. Exceptionally free floomer and attracted the attention of every visitor at our field. Tuber	1.00
Helen Durnbaugh C. (Broomall) Pink and white. Tuber.....	.75

— I —

Insulinde (Harnsveld) Dec. Colossal flowers of a rich golden orange color. Form of flower everything that could be desired. Fine for cutting and exhibition, as it can be grown immense. One of the very finest dahlias ever produced. Tuber	1.00
Islam Patrol (Davies) H. C. Very dark, velvety scarlet, tipped and flushed with gold. One of the outstanding California dahlias at all the Eastern exhibitions held this season. Wonderful long stem, especially fine keeper for exhibition purposes. Winner of many prizes in California. Tuber	2.00

— J —

Jersey's Weder (Waite) Dec. Apricot orange slightly suffused on the reverse with light mallow purple, long stems, very large flower, one of the largest. Tuber	5.00
Judge Duncan Dec. Beautiful crimson maroon. Tuber	1.00
John Lewis Childs (Boston) Dec. One of the most variable dahlias. Yellow, splashed and striped with brilliant scarlet, generally tipped white. Like most bi-color dahlias it seems	

FREDERICK DAHLIA GARDEN

times throws flowers of one color. Large flowers on good stems. Tuber	1.00
Jeppa Dec. Dark salmon rose combined with apricot and gold flowers. Long stiff stems. Tuber	1.00
J. K. R. Borreal Dec. Beautiful old gold buff. One of the finest dahlias. Tuber75
Jane Selby (Boston) Dec. Delicate amuve pink. Good bloomer and fine stems. Tuber75
J. Harrison Dick C. An exhibition variety of the highest class. A pleasing shade of canary yellow, shading through orange, lavender and pink to its outer edges of petals. Tuber75
John H. Slocombs Dec. This is a wonderful immense dahlia in size, of a deep red suffused with a velvety sheen. Blooming freely, often measuring eight inches in size on very long stems. Tuber75
Jersey's Monarch (Waite) Dec. Very large deep flowers of a beautiful shade of salmon shading to yellow at base of petals, excellent for exhibition on account of its long stiff stems. Tuber	4.00
GALLY THREE	
Jersey's Sovereign (Waite) Dec. A flower that is hard to describe, of medium size with very dark vigorous foliage and long stiff stems, of a beautiful salmon-orange that blends so well with autumn foliage, profuse bloomer. Visitors to the field and at exhibitions were always attracted to this beautiful dahlia. Tuber	2.50
Jersey's Beauty (Waite) Dec. Probably the most talked of dahlia during the season of 1923. It is still in a class by itself. A perfect bloom of Erosine pink, carried high above the foliage on a long wiry stem, a perfect true pink; wonderful keeper when cut, therefore good as an exhibition variety or for commercial purposes. Awarded too many prizes and medals to enumerate. It is truly the "beauty of the dahlia world. Tuber	1.50
Jersey's Queen (Waite) Dec. A pastel shade of old rose that is a joy to behold; flowers of large size held well above the foliage on long, stiff stems. Ideal for exhibition as it is a fine keeper. Certificate of Merit A. D. S., 1922. Tuber	1.50
Judge Alton B. Parker (Marean) Dec. A wonderful exhibition variety, of true decorative form, very large flowers grow freely on strong stems; color golden buff. Tuber	1.50

FREDERICK DAHLIA GARDENS

Judge Marean (Marean) Dec. Very large flower of perfect type and difficult to describe, produced on strong, stiff stems. A blending of glowing salmon, pink, red, iridescent, orange, yellow and pure gold. One of the most beautiful dahlias ever created, and should be in every garden. Tuber.....	1.00
Junior (Seal) Dec. An enormous flower of purse lavender. This huge blossom is a seedling of The Millionaire, but has greater width, if not so full. A useful dahlia in competition in the "Largest Dahlia Class." One of the most talked about dahlias exhibited at the American Dahlia Society's exhibition in New York, September, 1923. Tuber	1.00
Jean Chazot or Gay Paree (Cayeux) H. C. An autumn tinted cactus dahlia; the color is a golden bronze heightened by a suffusion of nasturtium red. A joy to anyone who is wise enough to select it. Extremely free bloomer. Good stems. Tuber	1.00
Jersey's Beacon (Waite). Dec. A decided novelty of Chinese scarlet with a paler reverse, giving a two-toned effect. An exhibition flower of vigorous growth, excellent stem. Awarded silver medal for best new seedling at exhibition of New York Horticultural Society, 1924. Tuber	2.50
Jersey's Jewel (Waite) Dec. Very large long-petaled flowers of a beautiful mallow pink, fine stem. Splendid exhibition variety, especially for "Largest Class Entries." Certificate A. D. S., 1923. Med. tall) Tuber	2.50
— K —	
King George, the Fifth. This new dahlia was named and christened by special permission from His Majesty, King George, of England, by the British Ambassador and the Lady Isabella Howard. This variety is a hybrid of the decorative type of deep rich red, shading to a velvety shade, with long wiry stems and blossoms, 6in. in diameter. Stock Limited. Tuber	25.00 Net
Kailf (Englehardt) H. C. One of the best in its color. The flowers are large and of perfect form, long stem and free flowering. Tuber75
King of The Autumn (Harnsveld) Dec. Beautiful autumn shade. Color buff-yellow suffused terra-cotta. Very free flowering, long stems, excellent for cut flower and garden decorations. Tuber50
Kiwanis (Vincent) H. C. Pale green yellow, deeper yellow at center. Free flowering, good stem. A. D. S. Certificate of Merit, Storrs, Conn., 1923. Tuber	1.00

FREDERICK DAHLIA GARDENS

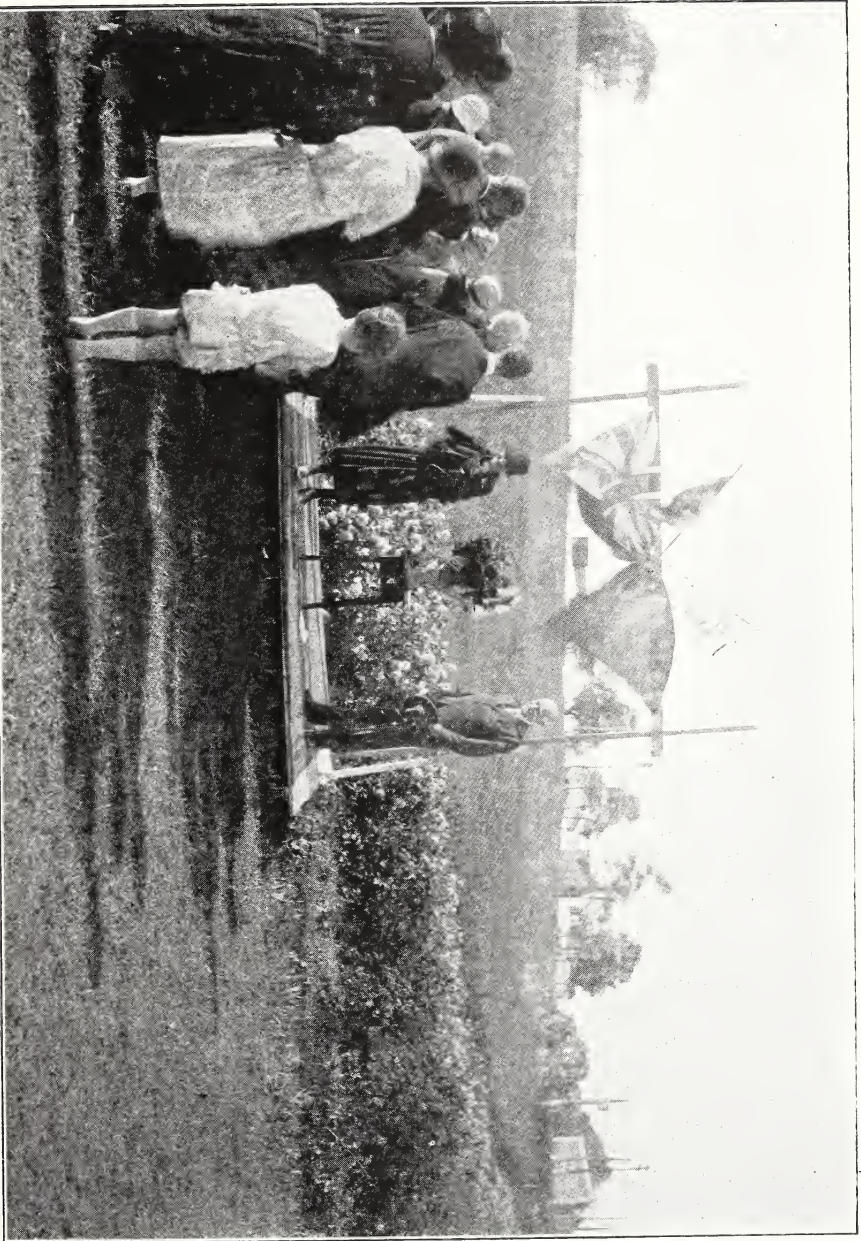
King of Commerce Dec. Autumn tints, long stems. Tuber50
Kitty Dunlap (Boston) Dec. A delightful shade of American Beauty; petals broad but have a slight tendency to roll, the long stems are practically without leaves and we recommend it highly for both exhibition and commercial purposes, as it is a fine keeper. If this dahlia did not have all these admirable qualities, the coloring alone would make it popular. Tuber	1.00
King Albert P. (Ballego) Beautiful dark violet. One of the finest garden varieties. Large blooms on long stems. Tuber75
— L —	
Little Jewel (Pompon Decorative). This dainty little gem is in a class by itself, a most perfect Pompon Decorative. It is of graceful habit of growth, extremely free flowering, a miniature decorative in form, and of a beautiful blossom pink in color. As a cut flower for table decoration, a dozen flowers interspersed with a few fern fronds will outclass any other Dahlia for the purpose. Tuber50
Lady Helen (Stillman) H. C. A flower of fine form and beauty, tall grower, long stems carrying bloom well out from foliage, pinkish old rose with white shadings. Tuber	1.00
Lake Erie (Stillman) Dec. Very large lavender, decorative, blossoms eight to ten inches. Tuber	1.00
La Favorita (Lohrmann) H. C. Large flowers of a beautiful orange salmon color. Free flowering. Good stem. Tuber....	.50
La mascotte (Boston) Dec. Superb shading of lavender and white. Tuber	1.00
Le Grand Manitou (Charmert) Dec. A giant of excellent form; color, Bishop's violet mottled and striped French purple; some blossoms self-colored. Tuber50
Laddie (Broomall) Dec. Soft yellow shaded orange, the brilliant orange tint in the depth of the flower gives it a glowing appearance that is fascinating. Large flowers are produced in profusion and are held erect on strong stems, a most desirable cut flower. Tuber75
Lady Betty (Marean) Dec. One of the daintiest dahlias in existence, profuse bloomer of a creamy white with a pinkish suffusion spread like a haze over the flower. Tuber.....	1.50
Liberty Bond (Broomall) Dec. A blending of buff, bronze and salmon shades, difficult to describe, resulting a flower of sur-	

FREDERICK DAHLIA GARDEN

dahlia is its most prominent feature. The petals are big and loose. Color, old rose with touch of lilac. Tall bush and fine stems. Tuber 1.50

— P —

Pear Snow (Marean) Dec. The greatest pure white dahlia ever produced, fine type, giant flower on strong straight stems. This variety was exhibited at The American Dahlia Society's show and created a sensation, listed by Scheepers for \$50 in 1923. Tuber	1.00
Paul Michael (Michael) Dec. In the largest flower class this variety is hard to beat. Color, pure gold, shading to orange-buff at center. Tuber	1.00
President Wilson (Jones) Dec. No flower attracted so much attention in our gardens last year as this variety. The color is vermilion red tipped white, a most striking combination of colors; flowers of perfect form, large size on stiff stems. Plants only	2.00
Pride of California (Lohrmann) Dec. One of the best red decaratives. A robust grower and very free flowering. The large deep red flowers are borne high above the foliage on long stiff stems. A good keeper when cut. Tuber.....	.50
Patrick O'Mara (Vincent) Dec. Soft orange buff slightly tinged with rose. Good for cutting. Flowers 5 to 6 inches. Tuber75
Princess Pat (McWhriter) Dec. A charming flower of old rose, sometimes splashed with red. Blossoms large and carried on excellent stems. Tuber75
Pink Flamingo (Ansarge) Dec. A dahlia of fine form, but sometimes showing an open center. Color, violet rose, overlaid Tyrian rose. Tuber35
Papillon (Boston) H. C. This dahlia does exceptionally well in the East; it is a beautiful shade of old rose with golden lights, but decidedly different in coloring from George Walters, which it greatly resembles. Fine stems. Tuber	1.50
Peg O' My Heart (Marean) P. Color is an old rose with a slight shading of golden yellow, an extremely attractive flower, very profuse bloomer on long wiry stems. Tuber	1.00
Pride of The Garden Dec. Deep canary yellow, petals tipped white. (Stillman) Tuber	1.50
Pink Perfection Dec. Beautiful shade of old rose pink. Tuber....	.75
Princess Mary Dec. Vivid live pink margined blush. Tuber50



Lady Isabella Howard, wife of the British Ambassador, christening the Frederick Dahlia Garden's new Dahlia, "King George the Fifth".

FRFDERICK DAHLIA GARDENS

Mrs. Carl Salbach (Salbach) Dec. A prize winner every time. The color is a beautiful shade of pink. The flowers are perfectly formed, and are held high up above the foliage on long stiff stems. Awarded gold medal by the Colifornia Dahlia Society, also Certificate of Merit by the A. D. S., Storrs, Conn., 1919. Tuber75
Mrs. Ethel F. T. Smith (Broomall) H. C. One of the largest dahlias grown, without disbudding one can easily get blooms 9-10 inches in diameter. The color is creamy white, shading to lemon yellow towards the center; good stem. Tuber...	1.00
Mrs. W. E. Estes (Estes) H. C. Pure white, flowers of great size and depth, stems hold flowers well up above foliage. (Estes) Tuber	1.00
Mrs. Warnaar H. C. Creamy white and apple blossom pink. Fine exhibition variety. Long stems. (Harnsveld) Tuber...	.75
Mrs. C. H. Breck (Titus) H. C. Soft yellow, deeply suffused carmine. A favorite. Tuber35
Mme. Butterfly Dec. (Maytrott) Violet rose shadings. Golden yellow at base. A superb dahlia. Tuber75
Mable Thatcher (Marean) Dec. Large flowers of a pale yellow shade, borne on strong stiff stems. An immense exhibition dahlia and a profuse bloomer. Med. Tuber.....	1.50
Mephistopheles (Marean) Dec. As an exhibition flower this dahlia has no peer; enormous blooms held perfectly erect on gigantic stout stems; will keep for four days at an exhibition and continue to grow. Color is ruby-red showing an infinitesimal golden yellow point at the very end of the petals, thereby greatly enhancing its effectiveness. Tuber ...	1.00
Mrs. H. Pitman (Broomall) Dec. Large flowers of a beautiful cream shading to pink, medium tall growth, free flowering. Tuber	1.00
Millionaire (Stillman) Dec. Gold Medal dehlia of the daintiest coloring. Most delicate lavender with a faint pink cast overshading it. The immense flower of unusual depths, stands erect on its stems. This is one of the largest dahlias grown. Tuber75
Mr. Crowley (Broomall) Dec. One of the most exquisite dahlias on the market, attracting immediate attention wherever exhibited. A bright, glowing shade of salmon pink, base of petals yellow, foliage extra good in color and substance, plant is of dwarf habit. In order to obtain the best results with this dahlia, remove the crown buds and all but one of	

FREDERICK DAHLIA GARDENS

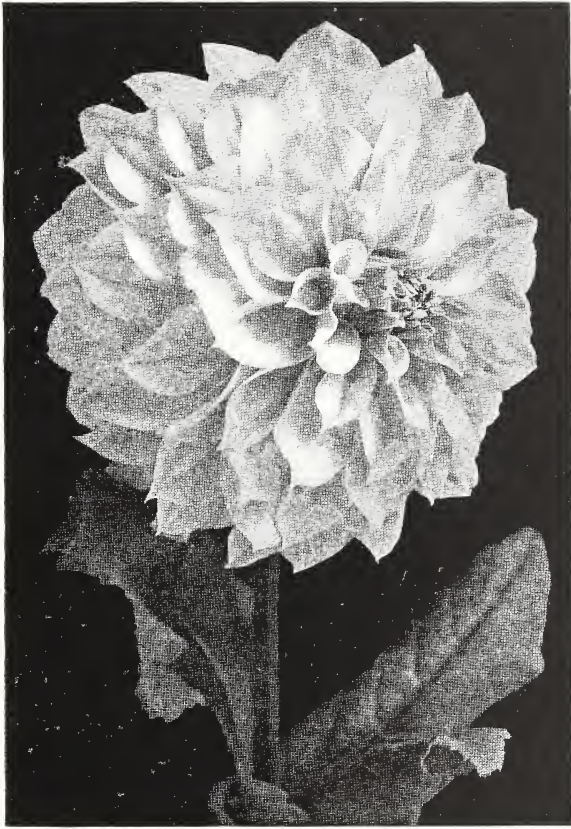
- the buds on the branches, as they are borne on close terminal clusters. When this is done, flowers can be cut with very long stems. Tuber 1.00
- Mrs. E. L. Lindsay (Broomall)** Dec. Scarlet and gold; the gorgeous coloring of the well-known Geisha, reproduced in an enormous decorative; color varies on different blooms, but the two colors are always in evidence. Fine for exhibition on account of its size and fine stems. Tuber 1.50
- Mrs. George W. Elkins, Jr. (Root)** Dec. The flowers are very large (eight to nine inches in diameter) and of different decorative type, always full to the center and held on good strong stems. The color is a beautiful old gold, suffused salmon pink with faint reflex of rosy pink. It is a perfect garden and exhibition dahlia of exceptional keeping qualities. Cert. of A. D. S. and Dahlia Society of California. Tuber 1.00
- Mrs. John M. Root (Root)** H. C. An enormous flower of pure canary yellow. One of the largest dahlias ever produced. The petals are long, broad and slightly twisted, giving the flower great diameter and depth. Vigorous grower. Winner of numerous awards. Tuber 3.00
- Mrs. John Scheepers (Marean)** Dec. Upon opening, the flowers are clear, canary yellow which is gradually changed to a beautiful delicate shade of pink suffusion on the outer petals. Tuber 1.00
- Mrs. I. De Ver Warner (Marean)** Dec. A blossom of soft orchid coloring seldom appearing in the gay garb of the dahlia family. For its charming color, large blooms, and for its very long, strong, wiry stems this variety immediately attracts attention wherever grown or exhibited. It is a refined deep mauve pink, beautifully formed, exquisite shade, and acknowledged by all dahlia experts who have had the pleasure of growing it to be one of the finest dahlias ever produced. Grows equally as well in California as in the East. A large exhibition variety that is a free bloomer. Tuber ... 1.00
- Myra Valentine (Mills)** Dec. One of the most satisfactory dahlias on the market today. Of a golden bronze color, it holds its head up in the air on a three-foot stem. A vigorous grower, free bloomer of exhibition variety. Tuber 1.50
- Mariposa (Boston)** H. C. One of the very finest dahlias ever introduced. One of our customers reported that he cut sixty-one flowers from a single plant of this variety. Color is a delightful shade of true pink which is intensified by a deeper colored center, a faint violet suffusion adding to the effect. The veining of the petals heightens the beauty and increases novelty of coloring. One of the gigantic Californ-

FREDERICK DAHLIA GARDENS

ians which has depth as well as diameter. An absolutely firm, stiff stem which rises clear above the foliage. A center which is regular and perfect throughout the season. Tuber	1.50
Mrs. Joshiah T. Marean (Marean) P. The flowers are extra large size, carried on wiry stems; color is a beautiful old rose, with golden shadings at base of petal. Profuse bloomer and vigorous grower. Tuber	2.50
Miss Mary Bester. Our new seedling. An enormous hybrid cactus of great depth. The center is picric yellow. Each petal gradually blending toward the outer edge to old rose and creamy yellow. The center is full throughout the season. Stems long and stiff. Plants are medium in height and produce flowers early and constantly. Stock limited	5.00
Mrs. Edwards (Marean) H. C. Of fine type held on strong straight stems. Color orchid, vigorous grower and free bloomer in allways. Tuber	3.50
Margaret Masson (F. & M.) Dec. A 1924 introduction that is getting more popular each year, invariably a winner in any class calling for "Best Decoratives." Color a beautiful, silvery rose-pink, flower of great depth and size, wonderful exhibition variety on account of its good keeping qualities. Certificate of Merit of Dahlia Society of N. J., and is still included on the list of one of the best growers in the state, as one of the "Five best dahlias on the market." Free bloomer and stem stiff. Tuber	2.50
Mrs. Eleanor Martin (Pelicano) Dec. A California dahlia that does exceptionally well in the East, of a wonderfully rich coloring entirely different from anything else on the market. The color has been well described as "Mullberry." The petals are a peculiar rose shade with a reverse of violet. Stems long and stiff, profuse bloomer. Tuber	2.50
— N —	
New Moon (Burns) H. C. Canary yellow, tipped white, a beautiful flower and always remarked upon in our garden, fine stem, profuse bloomer. Tuber	1.00
Nobolis (Boston) H. C. Startling combination of scarlet and white, with white predominating, large bold blossoms on robust stem, a beauty which differs from 'Earle Williams.' Tuber	1.00
— O —	
Osam Shudow (Boston) Dec. The formation of this very large	

FREDERICK DAHLIA GARDENS

<p>passing beauty. The floral rays are long, plenty and unusually wide and thick, thus producing a flower immense in size, full in form, and irresistible in its rich charming color. A vigorous, profuse flowering with a wealth of foliage. A long keeper when cut. Tuber</p>	1.00
Laird P. Dark velvet red. Tuber75
Lavenderia (Burbank) Dec. Fine lavender. Tuber75
La Grosse Bete (Marean) Dec. An enormous flower held straight upon strong stems, of a cerise self color, a strong grower and a splendid exhibition variety. Tuber	1.00
Lenore (Vincent) Dec. A fine form lemon yellow with a pretty rosy reflex good for cutting. Tuber50
Lady Jane (Marean) H. C. Beautiful large flower carried on purple. Very fine. Tuber	3.00
— M —	
<p>Margaret Woodrow Wilson, (F. & M.). A large decorative Dahlia having broad petals well placed, terminating in points, making a very thick flower. Color, opalescent pink (meaning the reverse of petals are so colored as to reflect a pink tone to the whole flower). Flowers held well out of dark green foliage on perfect stems. Medium height plant. Awarded Cert. of Merit by Dahlia Society of New Jersey, 1925. Tuber</p>	5.00
<p>Marion Weller (Marean) Dec. True of type, extra large flowers carried on long stout straight stems; color a most pleasing shade of soft pink, should be in every collection, very much admired in our garden. Tuber.....</p>	2.00
<p>Mandalay (Jost) H. C. Yellow ground overlaid with coppery bronze, one of the best very free flowering a stunning hybrid cactus which fairly glistens. Tuber</p>	1.00
<p>Mr. H. C. Dresselhuyts (Ballego) Dec. In color, a beautiful soft pink overlaying white, as the flower expands the pink suffuses and blends with the white, making it more lovely, its stem is slender, strong and upright, will hold up as a cut flower for most a week, looks like a tea rose. Tuber.....</p>	.75
<p>McGregor (Mastick) H. C. Large full flowers on strong stems, color spectrum red, free flowering. A. D. S. Certificate of Merit, 1922. Tuber</p>	1.50
<p>Merritt (Vincent). Large flowers of a light green yellow, shading to lemon yellow at center, free flowering, strong erect stems. A. D. S. Certificate of Merit, Storrs, Conn., 1923. Tuber</p>	2.50



Jersey's Beauty (Waite). Dec.

FREDERICK DAHLIA GARDENS

Pride of San Francisco (McWhirter) Dec. Another bedding variety when grown naturally, but nice stems can be produced by disbudding. A beautiful combination of salmon pink, suffused soft rose, shading to gold at base of petals. Tuber.....	1.50
Pcp Stewart (F. & M.) Dec. Giant decorative. This is a remarkable flower of great size. In the young state the petals appear rosy pink but as it matures the flower undergoes a complete transformation, toning out into a most exquisite shade of the purest lilac-pink. We can recommend it as one of the finest Dahlias of its kind in existence. It is a wonderful grower, with splendid stem. Awarded Certificate of Merit, trial gardens, Dahlia Society of New Jersey, scoring 90 points. Tuber	2.50
Paradise (Boston) H. C. A bold massive flower of the well-known George Walters type. Coloring decidedly different, being a creamy old rose suffused with gold, so blended as to give a striking brown tone. Vigorous grower, stem stiff; fine for exhibition. Tuber	1.50

—Q—

Queen of The Garden Beautiful (Dec.) This is really the largest dahlia ever introduced. It is an enormous light yellow. The stems are huge stiff canes which support the big flowers. Winner of the S. W. Heller Memorial Prize at the Palace Show, 1925. Tuber	6.00
--	------

— R —

Rose Fallen (Marean) Dec. Most wonderful flower of enormous size, held erect on straight, strong stiff stems; this magnificent bloom is a beautiful color of deep Old Gold of the finest type. This variety created a sensation when exhibited at the Dahlia show of the A. D. S. and was, without a question, the finest Dahlia in the show. No Dahlia collection should be without this famous novelty. Tuber	3.00
Red Cross (Anderson) H. C. Old gold shading yellow and suffused scarlet. Very striking. Of good substance and form. Tuber75
Redman Wanamaker (Peacock) Dec. P. The buds are pale yellow as is each petal as it first expands, but it quickly develops into a golden bronzy salmon pink and finally into a beautiful bright shade of Orchraceous salmon, with a reflex of spinel pink. The flowers are of a splendid texture with a lumatic sheen. The plant is a profuse bloomer and they are a gorgeous sight with the many shades and tints of autumn so harmoniously blended. Tuber	3.00
Rotarian (Vincent) H. C. Tyrian Rose and amaranth purple,	

FREDERICK DAHLIA GARDENS

- shading to pansy purple in center; free flowering, good stem. A. D. S. Certificate of Merit, Storrs, Conn., 1923.
Tuber 1.50
- Robert Treat (Mueller)** Dec. This dahlia is unlike any other existing variety in color, of a brilliant American Beauty rose shade, exhibition type, stiff upright stems, plants are strong growers of widespreading habit, producing 12 to 16 perfect blooms during the season. Awarded the Robert Treat Hotel silver cup at the exhibition of The Dahlia Society of New Jersey, 1923, for the best new dahlia exhibited. Awarded the Garden Magazine Sweepstake prize, New York, 1924, for the best dahlia ever before exhibited at an A. D. S. show. Special silver medal of Penn. Hort. Society, 1924.
Tuber 1.00
- President Harding** P. Dec. One of our own latest introductions in dahlias. One of the most beautiful and graceful of the decoratives. A glowing coral pink, with lavender and cream shading. The flower is a giant and long stiff stems. Stock limited. Tuber 2.50
- Resplendent (Bromall)** C. Bright pink, with white tips; beautiful in color and shape; the coloring of the flower is unsurpassed. Tuber75
- Rookwood (Boston)** Dec. This dahlia is of an entirely new shade of rose, similar to the Mrs. Charles Russell rose, pure bright cerise rose, without the faintest touch of magenta, and is as beautiful under artificial light as the Russell rose. Flowers are large, with a good depth, and are held aloft on splendid stems. The bushes grow low and spreading and are always a mass of blooms. Tuber 2.50
- Royal Gold** Dec. A striking shade of golden amber. Center of flower is deeper gold. Very beautiful, large flowers, profuse bloomer, fine stems. Tuber75
- Ruth Van Fleet (H. C.)** Clear light canary yellow. The stems are extra long, often measuring 16 inches. The flowers are extremely large, measuring from 6 to 8½ inches in diameter and are held perfectly erect on its stiff, long stems. Tuber50
- Ruth C. Gleadell (Seal)** H. C. Yellow, shading to apricot and bronze. Tuber50
- Roman Eagle (F. & M.)** A flower that is typically an Autumn shade, which has helped make the dahlia "King of the Autumn Season." Large exhibition decorative of a flaming, brilliant, burnished copper; one of the most admired dahlias in our field as well as at all the Eastern shows. Flowers

FREDERICK DAHLIA GARDENS

held well above dark green foliage on stiff stems. Medium height plants, profuse bloomer. Awarded Certificate of Merit by Dahlia Society of N. J., 1925, with a score of 89. Tuber	3.00
Rosa Nell (Bromall) Dec. Clear bright rose color, flowers very large, fine for exhibition, good keeper, one of the best shaped decorative dahlias in existence, is a rare color, and attracts immediate attention wherever seen. Tuber	1.00
Rollo Boy (Pelicano) H. C. This Dahlia won first prize for the Largest Dahlia and also First Prize for the Best Dahlia at the Palace Hotel Dahlia Show. The picture does not do this Dahlia justice. Rollo Boy has proven a great success as a prize-winner with both local and eastern growers. This is a Hybrid Cactus of great size with every flower carried perfectly erect on a strong stem. A delicate shade of amber shading to old gold. The plants require little attention as regards to thinning. This variety being in every way one of the most striking advance yet made on the Hybrid Cactus section. It is a conspicuous garden plant and if desired for exhibition it is largest in this section. Stock limited. Tuber	2.00
— S —	
Senorita (Lohrman) H. C. A very rich velvety crimson, each bloom held erect on a strong stem, wonderful exhibition flower. Tuber	1.50
Snowdrift (Broomall) Dec. Large white decorative. The large flowers are perfect in form, with broad waxy, pure white petals. A splendid keeper. Fine for exhibition. Tuber	1.00
Scuv. De Gustave Douzon (Braunt) Large flowers of orange red. Free flowering, good stems. Tuber25
Sagamore (Kirby, 1924) "The Golden Beauty" Dec. This new dahlia is a wonderful commercial and exhibition variety. Color, amber gold, elusively shaded with a warm salmon rose and orange buff. An open, strong grower with erect stems, good keeping qualities and of uniform large size. You will be delighted with Sagamore and will find it a wonderful prize winner as well as a profitable cut flower. Tuber	2.50
Silence (Marean) Dec. Very large, very fine, well formed flower of a golden shade, carried on strong, straight stem, average height six feet, extra strong field grown. Tuber	1.50
Shower of Gold (Boston) Dec. This large decorative is a brilliant yellow, deepening to soft apricot towards the center. A new type with slightly fluted petals. Very strong stem and blooms freely. One of the best cut flowers. Tuber75

FREDERICK DAHLIA GARDENS

Susan G. Tevis (Boston) Dec. This decorative has a distinctively new color tone, best described as a shade of lilac with a bluish sheen. The blossoms are regularly formed of narrow, flat, pointed petals. It is a very large graceful bloom of fine depth. A very vigorous grower of darke, bronze foliage, which makes a striking contrast to the dark lilac flowers. Very fine stem. Tuber	2.00
Siskiyou (Broomall) H. C. Pink tinged mauve. One of the very largest flowers ever originated, it has created a sensation wherever exhibited. Flowers held perfectly erect and long stiff stems. Tuber	2.50
Susan Coe P. Old rose and yellow. Tuber	1.00

— T —

The Giantess (Marean) Dec. A very pleasing shade of amber on fine stems, neck slightly turned, an immense thick bloom. Tuber	2.00
The Mahdi P. A very large fancy peony of good form, of a rich blood red mottled and streaked with creamy white and yellow. A very attractive flower. Tuber50
Trentonian Fisher & Masson) Dec. Rich, copper brown, with a flash of russet; well formed blossoms, produced on splendid stem; an outstanding variety. Tuber	2.00
The Emperor (Marean) Dec. A maroon dahlia of the finest type, made up of long flat petals, color does not spot under any weather conditions and flower is of enormous size, borne on long stiff stems. An exhibition variety of exceptional merit. Tuber	1.50
The Grizzly (Burns) Dec. One of the very best. A great dark, velvety maroon beauty. Wonderful prize-winning dahlia. Flowers of immense size held high above the fine foliage on extra strong long stems, making a fine showing. Tuber....	.75

— U —

U. S. A. (Stillman) H. C. Color rich glowing orange. A beautiful flower of enormous size that attracts great attention in the garden. A sure prize winner. A. D. S. Certificate of Merit, Storrs, Conn., 1921. Tuber	1.00
Uncle Sam (M. & S.) P. Color orange buff at base of petals, shading to bittersweet pink at tips, all overlaid with a beautiful golden sheen. Center petals mustard yellow streaked with deep rose pink and beautifully curled and twisted. One of the largest flowers in existence. Tuber	1.50

FREDERICK DAHLIA GARDENS

— V —

Violetta (Waite) H. C. Large flowers of a peeuonia violet color produced on top of stout stems, a very choice and greatly mired variety. Stock limited. Tuber	1.50
Venus (Marean) Dec. Soft shade of creamy white with lavender suffusion, low-growing bush, flowers carried well above the foliage, on long, straight stems, a profuse bloomer, excellent as a cut flower as well as exhibition. Fine keeper. Tuber...	.75

— W —

William Slocombe (Slocombe) Dec. A fine large flower, well formed of a beautiful shade of canary yellow, shading to deep yellow towards the center. A general favorite on account of its sturdy stem. Tuber	1.00
Wizard of Oz (Doolittle) Dec. One of the finest dahlias in existence, of a salmonrose color shading to amber towards center; wonderful bloomer; plants covered with flowers; strong stems; a large exhibition dahlia of decorative cactus type. Tuber	1.50
World's Best White (Murphy) Dec. As the name indicates, one of the best white decorative dahlias ever produced, fine stem, free bloomer, full to the center; excellent for exhibition. Tuber	2.50
White Sister (Stout) Dec. A beautiful, white decorative dahlia has attracted the attention of expert dahlia growers for the past two years on account of its beauty and size. A free bloomer, producing flowers on very stiff stems. A prize winner wherever exhibited. Stock limited. Tuber	2.50
White Court (Murphy) H. C. No. 855. An exquisitely beautiful white Hybrid Cactus, petals are a wavy, waxy white, exceptionally fine for exhibition, the longer it is cut the larger it grows. Stem stiff. One bloom of this variety exhibited by us at the New York show was the center of admiration. It also created a sensation at the exhibition held at Ocean House, Swampscott, Mass., next door to the President's summer home after which it was named. Tuber	5.00

— Y —

Yellow King H. C. Pure yellow, shading to a lighter yellow. (Harnsveld) Tuber35
Ysleta (Broomall) Dec. A very difficult dahlia to describe, color being a blending of salmon, orange and coppery tints, the fully opened flower resembling the Herriot Rose; might also be called flame color; very unique and beautiful. Tuber.....	1.00

FREDERICK DAHLIA GARDENS

Yellowstone P. Color, pure canary yellow. Here is a flower that should be in every Dahlia lover's collection. The form, color and size are perfectly lovely. This Dahlia should be seen to form an idea of its beauty. Price 2.00

G L A D I O L I

NOTE—We supply all varieties in strictly selected No. 1 bulbs.

Alice Tiplady. Rich orange saffron, 15c. each; \$1.50 per dozen; \$10.00 per hundred.

America. Soft flesh pink, orchid like, 7c. each; 75c. dozen; \$4.50 per hundred.

Halley. Large flowers; delicate salmon pink, early; 7c. each; 75c. per dozen; \$5.00 per hundred.

Le Marechal Foch. Soft flesh pink color, 15c. each; \$1.25 per dozen; \$10.00 per hundred.

Mrs. Francis King. Bright scarlet or flame, 7c. each; 75c. per dozen; \$5.00 per hundred.

Mrs. Frank Pendleton. Lovely salmon pink with brilliant deep red blotches in throat, 10c. each; \$1.00 per dozen; \$7.00 per hundred.

Panama. Rich rose pink, 8c. each; 85c. per dozen; \$6.00 per hundred.

Peace. Immense pure white with a touch of carmine in lower petals. 10c. each; \$1.00 per dozen; \$7.00 per hundred.

Schwaben. Clear canary yellow with blotch of garnet in throat, 8c. each; 85c. per dozen; \$4.50 per hundred.

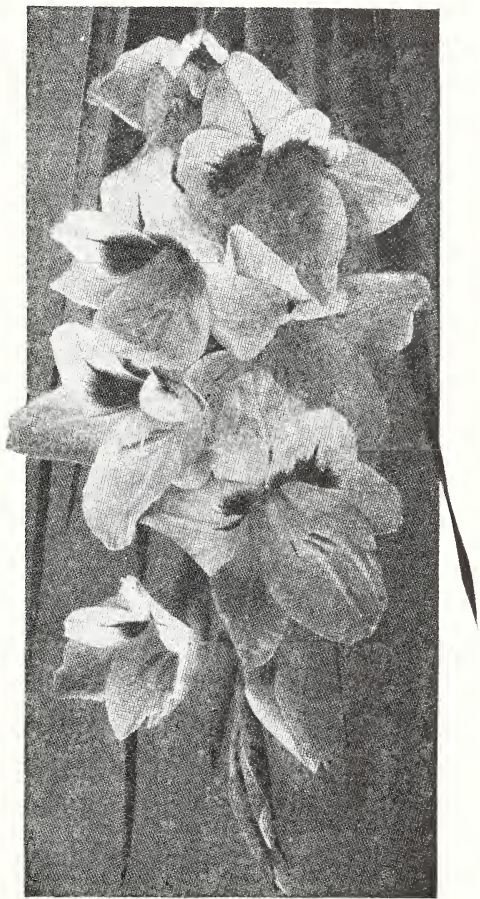
Wilbrink. Color, delicate pink shade, 10c. each; \$1.00 per dozen; \$7.00 per hundred.

Evelyn Kirtland. A large wide open flower; has pink, shading to shell pink in throat; spikes are long and graceful; one of the best for cutting, 15c. each; \$1.25 per dozen.

Gretchen Zang. A fitting companion to Evelyn Kirtland. The blooms are different in form, but large and sparkling, of the most beautiful soft, melting shade of pink, blending into scarlet on lower petals, spike tall and graceful, 12c. each; \$1.25 per dozen.

Herada. Very large flowers of pure mauve, with deeper markings in the throat, on tall, straight spikes, an unusual color and very effective cut flower, 10c. each; \$1.00 per dozen; \$10.00 per hundred.

Baron Hulat or Blue Kin. A really fine blue gladiolis, in color a rich, royal violet-blue, very effective when cut, and used in connection



with a yellow variety, 15c. each; \$1.50 per dozen; \$10.00 per hundred.

Mrs. Dr. Norton. Magnificent show flower; exceptional and delicately beautiful color, pale flesh-pink, with primrose center, tinted rosy on lower petals, 25c. each; \$1.50 per dozen.

L'Immaculee. A favorite pure white, for cutting; splendid spikes 10c. each; \$1.00 per dozen.

Niagara. A charming variety of a delicate cream yellow, lightly washed and splashed with rosy carmine in throat, beautiful as a cut flower, 10c. each; \$1.00 per dozen; \$7.00 per hundred.

Purple Glory. (Kunderd.) Tyrian-rose, suffused amaranth-purple; slightly flaked; very dark, velvety purple in the throat. One of the greatest show varieties, and the most popular of all the "Glory" group. 35c. each; \$1.00 for 3; \$3.50 per doz.

Orange Glory. (Kunderd.) Peach-red, suffused orange-scarlet; throat blotched carmine, with creamy white stripes in lower petals. Very large flowers, heavily ruffled. A strong, vigorous grower, very prolific, usually throwing two to four spikes to the bulb. The broad, rich foliage makes this a fine landscape variety. All in all, this is one of the outstanding varieties of the famous "Glory" race. 10c. each; 25c. for 3; \$1.00 per dozen.

Marshall Fock. (Kunderd.) La France-pink, overlaid geranium-pink, blotched scarlet-red in the throat. Many large and beautifully ruffled flowers open at one time on a strong sturdy stem. A glorious flower. 20c. each; 50c. for 3; \$2.00 per dozen.

Rose Glory. (Kunderd.) Eosine-pink, shading to Hermosa-pink; lower petals marked amaranth and rhodamine-purple. A very beautiful and popular variety and one of the best of Kunderd's Glory family. 15c. each; 40c. for 3; \$1.50 per dozen.

Golden Measure. (Kelway.) A clear straw-yellow, with lower petals suffused amber-yellow—almost a true self absolutely free from blotch or markings. It is a very strong tall grower, with fine foliage and a large bloom-spike. A very fine show variety. 15c. each; 40c. for 3; \$1.50 per dozen.

Maiden's Blush. Delicate shell-pink. 10c. each; \$1.00 per dozen.

DAHLIA DONT'S

DON'T work the soil until it is dry enough to pulverize.
DON'T be afraid to work it deep and fine.
DON'T plant before soil is nice and warm.
DON'T plant vertical; plant as near horizontal as possible.
DON'T water when planting, or later, unless absolutely necessary.
DON'T let the soil harden; keep it worked.
DON'T let more than one sprout grow.
DON'T forget to stake plants before they grow up.
DON'T fail to fertilize when buds begin to show.
DON'T allow the old bloom to remain on plants.
DON'T fail to BOOST the dahlia; and—
DON'T buy from anyone just because they are cheap, as you
DON'T know what you are getting! Finally—
DON'T forget to read everything in this catalog.

COLLECTIONS

To those not acquainted with the various classes and varieties of dahlias I will make up collections of one dozen roots, my own selection, and named varieties, for \$5.00, \$10.00, \$15.00, \$25.00 and to \$100.00. Or if you wish to send me the amount of money you want to invest in a collection, I will send you in return a collection of dahlias that cannot fail to give you satisfaction.

TRY ONE AND BE CONVINCED

OUR GREAT "SURPRISE" COLLECTION.

Wonderful value. Six grand dahlias our own selection, enabling us to give you exceptional quality. Guaranteed to surprise you. The six prepaid for \$5.00.

SPECIAL NOTICE



OUR GARDENS, office and residence are located at Braddock Heights, Maryland, on the South side of the National Highway. Easily reached by motor car, five miles from Frederick, and Twenty-one miles from Hagerstown. Also reached by Hagerstown and Frederick Electric Railway; station at gardens.

A cordial invitation is extended to all flower lovers to visit our Trial Gardens during August, September and October.

Address all correspondence to
FREDERICK DAHLA GARDENS
Frederick, Maryland