

Historic, Archive Document

Do not assume content reflects current scientific knowledge, policies, or practices.



THE W. L. CRISSEY ALPINE GARDENS

MAIL ADDRESS: R. F. D. 1, BORING, OREGON

GARDENS ON BASE LINE ROAD
(NEAR PORTLAND)

☞☞☞

Perennials - - - Irises
Gladioli

Specializing in Choice Alpines

☞☞☞

Fifteenth Annual Catalog
1928



Phlox Subulata

Special Collections

Convenient and Economical

For **SUNNY** Exposure

14 Fine Rock Plants for \$3.00

- Achillea Ageratifolia—White flowers.
- Aster Sub-Coerulescens—Lavender.
- Chrysanthemum Maximum Arcticum—White.
- Dianthus Caesius—Pink
- Dianthus Deltoides—Deep rose.
- Golden Thyme—Ornamental foliage.
- Hypericum Repens—Golden yellow.
- Iris Pumilla—Purple.
- Phlox Subulata—Lilac.
- Silene Shafta—Rose—late bloomer.
- Sedum Acre—Yellow.
- Sedum Hispanicum—One of finest.
- Sedum Spurium Coccineum—Red.
- Veronica Spicata Nana—Rich blue.

For **SHADED** Situation

12 Splendid Rock Plants for \$3.00

- Aubretia—An exquisite trailer.
- Campanula Carpatica—Soft blue.
- Erinus Alpinus—Dainty foliage rosettes.
- Heuchera Sanguinea—"Coral Bells"
- Linaria Cymbalaria—Lavender flowers.
- Mossy Saxifrage—Pink bloom.
- Mossy Saxifrage "Beauty of Ronsdorf"—Red.
- Myosotis—"Forget-me-not."
- Saxifrage Umbrosa—Charming pink flowers.
- Stachys Corsica—A rare Alpine—White.
- Iris Cristata—Delicate lavender.
- Polemonium Reptans—Blue bells.

CAN YOU USE BOTH COLLECTIONS?

Both Will Be Sent for \$5.75—a \$7.20 Value

Quantity	Name of Bulb or Plant	Price

PLEASE READ THIS WHEN YOU ORDER

Send remittance or bank reference with order. Please do not send orders under \$1.00.

Customers in Oregon and Washington will please include 10 per cent for transportation charges—if the package is light, extras will be added to more than compensate for this. If you prefer, package will be sent, charges collect.

Packages will be sent to other states with charges collect, either by express or parcels post, as you may specify.

This method is more satisfactory than attempting to quote postpaid prices, which must necessarily mean extremely small plants in many instances.

Six plants of a sort at the dozen rate; 50 of a sort at the hundred rate.

The greatest care is taken to supply stock true to name and effort is always made to satisfactorily adjust any error in this regard, but in accordance with the custom of the trade, no guarantee is given.

Make remittance to

W. L. CRISSEY
R. F. D. 1, Boring, Oregon

If you have friends interested in gardening and are inclined to send their addresses, I shall be most appreciative.

Name	Address	City or Town

DON'T OVERLOOK A GENEROUS PLANTING OF THE WONDERFUL NEW VIOLA "JERSEY GEM." IT IS SUPERB.

33 $\frac{1}{3}$ Per Cent On All

My new gardens
of the old, and very few
so you may deduct a third
the one exception of

KEEP THIS CATALOG

As no formal fall list will be issued, a number of bulbs, peonies, lilies, etc., properly planted only in the fall have been included in this booklet, and it can be used in making up your fall orders. Or you can order these items in the spring, and they will be billed when delivered in autumn.

Fifteenth Annual Catalog

THE W. L. CRISSEY

ALPINE GARDENS

1928

MY GARDENS this year are going to be more interesting than ever before, for many strangers, from many lands, have been admitted during the past season, and each is awaiting the opportunity to add his share of charm through pleasing foliage, attractive flower, or appealing fragrance. Friends who have bought from me in previous years will find it worth while to go through this booklet carefully to familiarize themselves with the newer offerings. Those who receive the catalogue for the first time will discover that it lists abundant material for handsome and unusual perennial borders, or for rock gardens.

A New Location

By March 1 (and earlier if weather conditions permit the advantageous moving and planting of my stock) my main gardens will occupy a tract mid-way between the Ruby Golf Links and the "Twelve Mile Corner," on the south side of the Base Line Road, that splendid paved highway which leads east from Portland. This location will be extremely convenient for visitors.

Distant Customers

For those who cannot visit my gardens, this booklet must serve as a guide. Where no mention is made of special exposure or soil, it is understood that the plants are thriving under ordinary conditions—a sunny place, and soil such as would produce vegetables satisfactorily. Good drainage is the primary requisite for success, and particularly with most rock plants. When shade or some other special condition is advisable, this will be especially mentioned in the description.

Planting on the Pacific Slope

In spring, from February 1 to April 1, is really the best time to plant perennial and rock plants, though many move easily at a later date. Early October is the ideal fall planting time, but many extensive plantings are made as late as December if the weather is favorable. It is a good plan to place your order early, with instructions to ship at the proper time.

"Can You Ship to New York?"

Special care is taken in packing plants for long journeys, with the result that most satisfactory reports have come from the points of destination. It is suggested that very early spring planting is advantageous, and mid-March to April 1 is an excellent date for eastern shipments if weather conditions are even remotely favorable. An excellent plan is to get the plants early, giving them the protection of a cold-frame until they can be set outside. The plants then remain practically dormant in the frame until you are ready to use them. Our own growing season is well advanced by April.

W. L. CRISSEY ALPINE GARDENS

And When You Make Up Your Order

Don't get just one plant of a sort unless your space is very limited. Plants are sociable, just like folks, and they enjoy company. Have at least a few modest masses of one sort and color, then the single specimens if you wish.

Consult Your Own Preferences

Half the fun of gardening comes from experimenting for yourself, perhaps an occasional indulgence in friendly rivalry with a gardening neighbor to see which can get something different and unique. The effect you get may not be perfect the first year, but in the fall you can do a little juggling. Again, you may achieve an arrangement so beautiful as to surprise yourself and your friends.

Cut Flowers for Home or Party

Bulbous irises, peonies, gladioli and numerous perennials afford quantities of flowers from spring until autumn, and these may be had at most reasonable prices at the gardens. The drive over the Base Line Road is a pleasure rather than a task.

Few Fastidious Plants Are Offered

Realizing that the average gardener is most interested in plants which do not require pampering, my lists include a sparse half-dozen subjects even approaching the difficult. It is my ambition to add a limited number of the capricious ones a little later, for enthusiastic rock-gardeners are always anxious to obtain something out-of-the-ordinary, and to try their skill in growing it to perfection.

Why I Specialize on Alpines

Rock gardening has gained such tremendous popularity that I might almost say I am specializing in Alpines in self-defense, so insistent has been the call for them. I find them by far the most interesting things that I have ever grown. Their infinite variety; their prodigal display of soft or brilliant color when in flower; the beauty and diversity of their foliage, which ranges through many gradations of green and gray and bronze, and is often of evergreen character; the graceful manner in which they mask the surface of a wall or tumble in abandon about the miniature valleys and cliffs of the rock garden—all these pleasing qualities give rock plants a fascination all their own.

Building the Rock Garden

Authorities are one in saying that the man-made rock garden should duplicate, as nearly as possible, the natural out-cropping of rock as found on hill or mountain side. In many locations a comparatively few rocks, well placed, will give an excellent effect. Liberal pockets of earth and generous planting spaces are just as necessary as rocks, for after all it is the plants which are of paramount importance.

Rock Walls

The prevailing impression is that the solid cement wall has greater strength, but the fact is that the properly constructed rock wall, laid without mortar and thus affording perfect drainage, will have equal or greater strength and be more satisfactory in every way, to say nothing of its picturesque possibilities when suitable plants are introduced in the crevices of the rocks, to fall gracefully over the wall. These are properly planted when the wall is being built, as then the roots can more easily be brought in contact with the earth back of the wall.

Rock Plants Without Rocks

If you want to find out for yourself just how charming Alpines are, but have no rockery, I must tell you confidentially that most of my own are grown in prim beds

without a rock in sight, and there is no reason why you can't do the same thing, provided soil and exposure are suitable. Many varieties of Dianthus, Veronicas, dwarf Irises, etc., are admirably adapted to border the taller perennials.

FOR CONVENIENCE

And because it is hard to arbitrarily divide rock plants and general garden perennials, all are included under the listing of perennials.

An (R) will designate those especially suited to the rock garden. Special lists will be found on pages 34 and 35.

PERENNIALS

A garden of perennials grows more beautiful year by year, and they present such an infinite variety in flower and plant that every taste can be suited. I'm going to urge, if your space permits, that several plants of a sort be used in your garden (except the larger plants, where perhaps a single one may be very effective) rather than just one plant each of many kinds. I think you'll be better pleased with the result.

And please order and plant early if possible—early planting is one of the greatest factors of success. Besides, in some of the rarer things, stock is limited.

Each Dozen

ACAENA GLABRA: (R) A pretty little plant resembling a tiny rose-bush. More remarkable for foliage than flowers. 5 inches.....	.30	3.00
ACAENA MICROPHYLLA: (R) Bronze foliage which soon forms a close mat with heads of dark red spines in pleasing contrast. 2 inches.....	.35	3.50
ACHILLEA AGERATIFOLIA: (R) Rosettes of silver gray foliage, hugging the ground. Flowers white, 9 inches.....	.35	3.00
ACHILLEA MILLEFOLIUM ROSEUM: (R) The heads of rosy pink flowers are borne from mid-summer until late fall, 18 inches....	.35	3.00
ACHILLEA SERICEA: (R) Arching fronds of gray-green, heads of brilliant yellow flowers. 8 inches25	2.50
ACHILLEA SETACEA: (R) Fern-shaped, aromatic foliage, large heads of deep yellow flowers. Give it plenty of room. 1 foot.....	.25	2.50
ACHILLEA TOMENTOSA: (R) Woolly green leaves and golden yellow flowers. Excellent for carpeting effect. 9 inches.....	.25	2.50
ACONITUM WILSONI: A soft blue "Monkshood" that is as handsome as delphiniums in the garden. Fall blooming. 5 feet.....	.40	4.00
AJUGA GENEVENSIS: (R) Bronze foliage, spikes of clear blue flowers. Excellent for shade. Handsome, but a spreader.....	.25	2.50
ALLIUM CYANIUM: (R) A dwarf form with pendant heads of light blue in May and June	.30	3.00
ALLIUM STELLATUM: (R) Rose-pink flowers on 18 inch stems30	3.00
ALSTROMERIA AURANTIACA: "Peruvian Lily." Large lily-like flowers of orange, streaked with red, and borne in umbels. Requires slight protection in cold climates. A fine cut flower. 3 feet.....	.35	3.50
ALSTROMERIA: Similar to the above, but lemon color35	3.50

W. L. CRISSEY ALPINE GARDENS

Each Dozen

ALYSSUM ROSTRATUM: (R) A very robust sort with masses of golden bloom for weeks. 15 inches25	2.50
ALYSSUM SAXATILE CITRINUM: (R) Masses of pale yellow flowers give this variety an individual charm.....	.25	2.50
ALYSSUM SAXATILE COMPACTUM: (R) Deep yellow flowers. A favorite in all rock gardens. 1 foot.....	.25	2.50
ANCHUSA—DWARF: Flowers are a medium shade of brilliant blue. 15 inches.....	.25	2.50
ANCHUSA ITALICA-DROPMORE: Deep blue flowers like a giant forget-me-not, borne abundantly in late spring. A mass of this is especially fine in the garden. 4 feet.....	.35	3.50
ANDROSACE PRIMULOIDES: (R) Rosettes of silky foliage and rosy lilac flowers combine to make this an unusually attractive subject for the rock garden. A top dressing of gravel or stone chips to keep the foliage off the moist winter earth is almost essential.....	.75	7.50

ANEMONE

Anemone Dichotoma: (R) Charming white flowers. 1 foot. Likes a little shade and increases fast35	3.00
Anemone Huphensis: (R) NEW. Plants only 15 inches high, the flowers of delicate pink but half the size of the well-known Japanese anemones. An introduction from China.....	.40	4.00
Anemone Japonica "Louise Uhink": Very large semi-double pure white flowers. Handsomest anemone in my gardens. 3 feet.....	.50	5.00
Anemone Japonica "Max Vogel": Huge flowers of lavender-pink. Semi-double. These are twice the size of the ordinary type. 3 feet50	5.00
Anemone Japonica: "Queen Charlotte." Well named, as this plant is really a queen among fall perennials, and magnificent en masse. Lavender-pink, semi-double flowers from August until frost. Half shade is a requirement for finest display.....	.35	3.50
Anemone Japonica Rubra: Rose red. 2 feet..	.50	5.00
Anemone Japonica "Whirlwind": Pure white flowers, at same prices as Queen Charlotte.	.35	3.50
Anemone Rivularis: (R) White flowers, the outside violet. A very distinct form. 1 foot40	4.00
Anemone St. Brigid's: (R) Some single, some double, the colors embracing white and many shades of blue, pink and red. Fine for cutting. They bloom for many weeks.....	.25	2.50
—————		
ANTENNARIA UMBRINELLA: (R) Forms an attractive mat of silver gray. Flowers white. 3 inches.....	.35	3.50
AQUILEGIA: Mrs. Scott-Elliott hybrids. These are from the English originator, an absolutely unexcelled strain with long spurred flowers of delicate colors.....	.30	3.00
AQUILEGIA ALPINA: (R) A dainty plant, but 10 inches tall when in flower. The color is a clear blue and white. Short spurs.....	.35	3.50

R. F. D. 1, BORING, OREGON

	Each Dozen	
AQUILEGIA ALPINA SUPERBA: (R) A finer form of the well-known alpina. 1 foot..	.50	5.00
AQUILEGIA OXYSEPALA: (R) A very new, dwarf, early flowering sort with pretty blue and white flowers. 1 foot.....	.50	5.00
ARABIS ALBIDA ROSEA: (R) These come in varying shades of pink. 1 foot.....	.35	3.50
ARABIS ALBIDA VARIEGATA: (R) Leaves of clear cut green and white. Very striking. 6 inches50	5.00
ARABIS ALPINA: (R) Forms a complete carpet of pleasing dull green foliage, covered in early spring with snow-white flowers.....	.25	2.00
ARABIS ALPINA FLORA PLENA: (R) The double form. Just as free flowering as the single, but more desirable in many locations, as it does not increase so fast.....	.30	3.00
ARABIS AUBRIETIOIDES: (R) A charming pink form. 6 inches.....	.35	3.50
ARENARIA BALEARICA: (R) Of the most intense green, this plant soon covers a shady, moist spot most pleasingly. Tiny white flowers35	3.00
ARENARIA CAESPITOSA: (R) Might be called an emerald green moss. Likes a sunny site. Small white flowers.....	.35	3.00
ARENARIA MONTANA: (R) A plant of slender, graceful growth, its dark green stems smothered in white flowers in late spring. Most desirable in every way.....	.35	3.50
ARMERIA LAUCHLEANA: (R) A profusion of pink flowers on 15 inch stems.....	.25	2.50
ARMERIA VULGARIS: (R) Grasslike foliage with pretty rose flowers on 9 inch stems. Fine for edging or rockery.....	.25	2.50

ARTEMISIA

There is considerable dispute about the classification of *Artemisia Canadensis* and *Frigida*, and I'm not at all positive that these I offer are correct—but they are good looking.

	Each Dozen	
Artemisia Canadensis: (R) "Silver Mist" aptly describes this thoroughly unusual and delightful plant. Cut it back several times a season if you want it particularly fine.....	.50	5.00
Artemisia Frigida: (R) Another silver-foliaged plant that is extra fine.....	.30	3.00
Artemisia Lactiflora: In late August and September its fleecy white plumes are most decorative in the garden. The hawthorne fragrance is very marked. Fine informal hedge or screen. 6 feet.....	.35	3.50
Artemisia Pedemontana: Conspicuous and effective as a silvery foil for other plants. Combine with pink or red flowers. 2 feet....	.35	3.50
ASCLEPIAS TUBEROSA: Flat heads of brilliant orange flowers in midsummer. 18 inches30	3.00
ASPERULA ODORATA: (R) For a half shady place, this fragrant plant with its sprinkling of white starry bloom is very welcome.....	.30	2.50

ASTERS—Perennial

(“Michaelmas Daisies”)

Do not confuse these with the annual bedding asters. The perennials are robust growers, the taller sorts especially good for planting at the back of borders or at the edge of a bit of woodland. Their masses of flowers in the autumn give one of the finest effects imaginable.

Each Dozen

Beauty of Ronsdorf: (R) Imagine graceful 15 inch stems bearing quantities of light purple flowers with golden centers (each flower as large as a silver dollar), each stem a bouquet in itself, and you will realize that this is very much out of the ordinary.....	.40	4.00
Climax: Large light blue flowers with orange centers. One of the very best. 4 feet.....	.25	2.50
Elta: NEW. Double flowers of pale lilac, a very handsome sort.....	.35	3.50
Erica: Tall mauve. Extra good for cutting.....	.35	3.50
Feltham Blue: Rich blue. very free flowering and early. 4 feet.....	.25	2.50
Gracillimas: Latest of all. Tiny white flowers, changing to blue. Fine for cutting. Seldom seen. 2 feet.....	.35	3.50
Japanese Aster “Mauve Cushion”: (R) The plant does not exceed nine inches in height and is covered in late fall with rosy lavender flowers. Do not expect this fine variety to be thoroughly effective until established a year..	.25	2.50
Maggie Perry: Lavender flowers, large and of unique form, hard to describe but making it one of the handsomest sorts yet introduced. 3 feet35	3.50
Mrs. Raynor: Deep rose. Always attracts attention in the garden. 4 feet.....	.35	3.50
Old English Aster: A most unusual and dainty sort from an old English garden. The very double white flowers resemble the pyrethrum and are exceedingly attractive. 2½ feet.....	.30	3.00
Praecox: Heliotrope purple, glowing orange center. 4 feet.....	.25	2.50
Praecox Major: Similar to preceding, but 6 feet tall25	2.50
Robinson V. C.: Mauve flowers in graceful sprays. Double. 4 feet.....	.40	4.00
Roseum Superbum: Almost a red. Very free flowering and handsome. 5 feet.....	.35	3.50
St. Edgwin: Beautiful soft pink flowers, borne in graceful sprays. 3 feet.....	.35	3.50
Sub-Coerulescens: (R) Violet blue flowers in June and July, 12-inch stems. Choice cutting material25	2.50
Special—One each of the 16 asters listed above, amounting regularly to \$5.05 for \$4.25.		

ORDER EARLY

Shipment can be made at any desired time, but it will insure you against disappointment if the order is booked while stocks are complete. This is particularly true of rare Alpines.

ASTILBES (Spireas)

Each Dozen

These charming plants prefer light shade and must have ample water and fertility. Then they reward with fleecy plumes of various fetching pink shades. 2 feet..... .50 5.00

America: Deep pink.

Queen Alexandra: Light pink.

Reubens: Deep rose.

Princess Mary: Soft pink.

AUBRETIAS ("Rock Cress")

All Especially Fine for the Rockery

Each Dozen

Aubretia: (R) New large-flowered hybrids. The range of color includes lavender, purple, mauve, rose and crimson. Plant with your double Arabis and pale yellow alyssum, or let the Aubretia fall over the rocks in colorful curtains. Trailing..... .35 3.50

Aubretia Bougainvillae: (R) A delightful rosy mauve shade, calling to mind that gorgeous vine of the tropics, from which this Aubretia takes its name..... .40 4.00

Aubretia "Crimson King": (R) The richest of its color yet attained..... .40 4.00

Aubretia Hendersonii: (R) A rich violet color, with large flowers..... .35 3.50

AURICULA: (See Primulas).

BELLIS PERENNIS MONSTROSA: (R) A giant type of the early flowering English daisy, in cheerful mixture of white and pink, the latter predominating. Six inches. Often blooms in February..... .25 2.50

BELLIS ROTUNDIFOLIA CAERULESCENS: (R) A good looking midget, the flowers white, tinted lilac. Likes a warm site. 3 inches35 3.50

BELLIUM MINUTUM: (R) A tiny daisy from Greece. It blooms for weeks at a time. 3 inches25 2.50

BETONICA GRANDIFLORA: (R) Rather coarse but effective. Light magenta flowers. 15 inches25 2.50

BLEEDING HEART: (See Dicentra Spectabilis).

CALAMINTHA ALPINA: (R) All summer long the small violet flowers adorn the slender shoots of this easily grown plant. 8 inches.. .25 2.50

CALANDRINA UMBELLATA: (R) A brilliant trailer for dry-sandy soil. The small flowers are a bright, satiny magenta. Call it crimson if you prefer that color..... .25 2.50

SPRINKLED LIBERALLY OVER THE ROCKERY

Grape Hyacinths (Muscari) are delightful. Put six to twelve bulbs in a group, and occasionally even more. They do not interfere with the other plants, and give a note of spring color most welcome at that season. A whole hundred costs only \$5.00.

CAMPANULAS (Bell Flowers)

Each Dozen

Campanula Barbata: (R) The handsome pale blue flowers are borne from May to July. Rather stony soil suits it best. May be biennial in some climates.....	.35	3.50
Campanula Bellandi Mirandi: (R) A novelty, with bells of silvery blue. Very profuse flowering. 3 inches.....	.75	7.50
Campanula Carpatica Grandiflora: (R) Free-flowering, robust and good looking. The variety offered is a soft blue. Deserves generous planting25	2.50
Campanula Carpatica "Isabel": (R) Extremely large and wide-open flowers of light blue....	.40	4.00
Campanula Carpatica "Riverslea Beauty": (R) Much larger than the type and these particular plants bear white flowers.....	.35	3.50
Campanula Glomerata: (R) Shakes its deep purple bells from stems a foot tall. Blooms in June25	2.50
Campanula Latifolia: The flowers vary from pale lavender to violet, and hang like bells from a central stalk 18 inches or more in height. Long blooming period. Increases fast.....	.30	3.00
Campanula Leutweinii: The graceful bells vary from lavender to purple and are pendant from a branched flower stalk which rises perhaps two feet from a basal leaf-tuft.....	.40	4.00
Campanula Muralis: Many consider this the finest of all campanulas for the rockery. Both dainty and graceful. Small blue flowers in great profusion.....	.50	5.00
Campanula Persicifolia "White Peach Bells": In even a modest mass, the purity and grace of these flowers are irresistible. 2 feet.....	.25	2.50
Campanula Persicifolia "Blue Peach Bells": A fitting companion to the white variety.....	.25	2.50
Campanula Portenschlagiana: (R) An exquisite plant, half trailing, under an awful name. Bells of soft blue. 1 foot.....	.35	3.50
Campanula Pyramidalis "Blue Chimney Bell Flower": An impressive flower stalk 4 to 6 feet tall, carries great numbers of the handsome blue blossoms. Small plants.....	.25	2.50
Very large50	5.00
Campanula Rotundifolia "Scotch Hare Bells"; (R) Small blue bells on slender stems have long made this plant a favorite. Blooms early and late30	3.00
Campanula Sarmatica: (R) A rare form. It is a vigorous grower. 1 foot. Blue.....	.50	5.00
Campanula Siberica: (R) An especially airy arrangement of violet bells on much branched stems two feet in height. The main plant but a few inches tall.....	.50	5.00
Campanula Turbinata: (R) Close mats of foliage, with close-set blue saucers of flowers.....	.35	3.50

R. F. D. 1, BORING, OREGON

Each Dozen

CANTERBURY BELLS: Our old friends, universally admired. Biennials. Pink.....	.20	1.75
Mixed—blue, pink and white.....	.15	1.50
CARNATION—HARDY ENGLISH BORDER: These come from the most expensive seed from specialists in Great Britain.....	.40	4.00
CENTAUREA DEALBATA: Beautiful long-stemmed flowers of lavender rose, very lasting cut. Little known but attractive in foliage and flower. 4 feet.....	.40	4.00
CENTAUREA MACROCEPHALA: A very striking plant with bloom like a huge yellow thistle. The brown buds are very ornamental. 3 feet25	2.50
CERASTIUM BIEBERSTEINI: (R) Pure white flowers, wooly white foliage. A refined "Snow in Summer," and said not to spread. 9 inches30	3.00
CERATOSTIGMA PLUMBAGINOIDES: (R) (See Plumbago Larpentae).		
CHEIRANTHUS ALLIONII "The Fairy Wall Flower": (R) The flowers of brilliant orange are delightfully fragrant, and best of all, they are borne in profusion all summer. Equally indispensable in the perennial garden and rockery. 1 foot.....	.25	2.00
CHEIRANTHUS LINIFOLIUS: (R) New species with lilac-mauve flowers30	3.00
CHELONE BARBATA "Shell Flower": Graceful racemes of small pink or red flowers, springing from a tuft of glossy foliage 3 feet25	2.50

CHRYSANTHEMUMS

These are the last flowers to give a real display in the garden and are doubly acceptable on that account. We all know their possibilities in bowl or basket, for the house.

All sorts listed below are 25 cents each; a dozen of a single sort \$2.50—except where specially noted.

Golden Climax: Small brilliant yellow pompon.

Hilda Channing: Charming bronze pompon.

Indian: Soft shade best described as old red.

Iva: Bronze, pompon type.

Magenta Queen: Free flowering and handsome.

Marie Antoinette: Very free blooming deep pink.

Miss Helen Borman: Japanese Anemone type, a circle of terra cotta bronze petals surrounding the crested center of pale buff. I am not sure that this is hardy in cold climates. 35c each, \$3.50 dozen.

Mrs. Harrison Craig: Yellow overlaid with orange-crimson. Very early. Unique. 35c each, \$3.50 dozen.

Normandy: Large light pink, extra early. Finest of all.

Regal Bronze: Unfortunately I have not the true name of this variety, so use one of my own making for identification. By far the finest outdoor bronze I have found. Full of life. Early. 35c each, \$3.50 dozen.

Each Dozen

Chrysanthemum Maximum Arcticum: (R) The white flowers, like small Shasta daisies, appear in late fall. The plant grows very low and compact. 1 foot25	2.50
--	-----	------

W. L. CRISSEY ALPINE GARDENS

Each Dozen

Chrysanthemum Maximum—Zawadsky: (R) A dwarf form of the Shasta Daisy with pale pink flowers in mid-summer..... .40 4.00

SPECIAL

One plant each of the 12 named chrysanthemums, regularly amounting to \$3.45, will be sent for \$3.00.

CISTUS "Sunset": (R) A very high class novelty. The bushes attain a height of 18 inches and bear crimson flowers. This year, small plants only..... .50 5.00

CLEMATIS TANGUTICUS: An extremely robust vine with deep golden flowers..... 1.00

COLUMBINES: (See Aquilegia).

DELPHINIUM: Improved Belladonna. Much larger and finer than the old Belladonna, but with the same heavenly blue found in no other flower. 6 feet..... .50 5.00

DELPHINIUM: Choicest English exhibition strains: These are raised from the most expensive imported seed, and include single and double flowers in all the exquisite shades that place the delphinium in a class alone. Lighter shades predominate. A very large stock enables me to name the low price of..... .50 5.00
A limited number of particularly fine ones at \$1.00 each, \$10.00 the dozen.

DIANTHUS

Each Dozen

Dianthus Allwoodi: These are of English origin, and the sort I offer is a brilliant cerise. Flowers for a very long period. Single. 15 inches .35 3.50

Dianthus Alpinus: (R) Likes a little lime in loose loam. Large flowers of brilliant rose. Rewards a little pampering..... .50 5.00

Dianthus Arenarius: (R) As indicated by the name, a sandy soil suits this pink admirably. Flowers white, deeply fringed and fragrant. Rather late bloomer..... .25 2.50

Dianthus Arvenensis: (R) A diminutive form of Dianthus Caesius, very neat and attractive. Flowers pink, on 3-inch stems..... .35 3.50

Dianthus Barbatus: The Sweet Williams are among the handsomest flowers of the garden, and used effectively in large rockeries as well.

Hunt's Perfection: Extra large heads, each individual flower with white margin. The plants I offer are very strong..... .25 2.00

Roseus Splendens: This is that lovely pink you have often admired..... .25 2.00

Dianthus Caesius: (R) A wonderful garden pink, with very erect stems and small single flowers in varying shades of pink. The foliage is itself most ornamental. Much used for rockeries. The handsomest hardy pink in my gardens. 9 inches35 3.50

Dianthus Campestris: Of unusual, upright and slender habit. Flowers a soft pink. 1 foot.. .25 2.50

R. F. D. 1, BORING, OREGON

Each Dozen

Dianthus Caucasicus: A vigorous pink trailer resembling <i>Deltoides</i> . 3 inches.....	.25	2.50
Dianthus Deltoides: (R) Tiny flowers of deep rose color completely cover the plant in spring. Try a dozen in border or rock garden.....	.25	2.50
Dianthus "Gladys Cranfield." The finest hardy pink ever introduced. Makes a large plant and produces freely its huge single blooms of delicate pink, with a central zone of velvety crimson. 18 inches. Extra strong plants....	.75	7.50
Dianthus Kamtschaticus: (R) A trailing rock pink of recent introduction, most remarkable for the freedom with which it produces its large deep rose blossoms. With me it bloomed for five months.....	.35	3.50
Dianthus Neglectus: (R) Many call this the handsomest of rock pinks. A striking cherry red is the color. Gritty soil and perfect drainage50	5.00
Dianthus Pallens: This plant comes from Asia. The flowers are pale pink or cream. 1 foot..	.40	4.00
Dianthus Plumarius: (R) Just the well-known, old-fashioned garden pinks, saturating the spring air with their fragrance and casting enchantment over the garden in general. Pink or white, as you prefer. \$15.00 the 100.....	.25	2.50
Dianthus—Selected Rock Hybrids: (R) Resembling <i>Dianthus Deltoides</i> , but with considerable variation in foliage and flower. Very low growing, with dainty little blossoms....	.25	2.50
Dianthus Sundermannii: Pure white flowers. Much admired when blooming in my gardens for the first time last season. 1 foot.....	.40	4.00

DICENTRA SPECTABILIS: "Bleeding Heart." Well-known favorite with drooping racemes of pink flowers. 2 feet. I offer large 2-year plants	1.00	10.00
DORONICUM: Flowers like a huge yellow daisy, 3 inches across, on 15-inch stems. One of the earliest glints of sunshine in the garden25	2.50
DRABA ALTAICA: (R) A little alpine with white flowers. 2 inches.....	.25	2.50
DRACOCEPHALUM NUTANS ALPINUM: (R) Pleasing blue flowers appearing in late summer. 9 inches.....	.30	3.00
DRYAS SUNDERMANNI: (R) Moss-like tufts bearing handsome white flowers in the spring. 4 inches.....	.35	3.50
EDELWEIS: (See <i>Leontopodium Alpinum</i>).		
EPILOBIUM NUMMULARIFOLIUM: (R) This might be properly called a bronze carpet. It hugs the ground like paper on a wall. Flowers insignificant. Most unusual.....	.35	3.50
ERICA CARNEA ROSEA: (R) A charming pink heather which on the Pacific Coast blooms from November to March, even under snow. Questionably hardy in very cold climates. 1 foot. Splendid shrub to use as a group in the rock garden. Plant early.....	1.00	10.00
Smaller plants75	7.50

W. L. CRISSEY ALPINE GARDENS

Each Dozen

ERIGERON ELIATOR: The pretty lavender flowers are produced all summer. 15 inches. This variety is new and very desirable.....	.35	3.50
ERIGERON MUCRONATUS: (R) Small daisy-like flowers of pale pink, 6-inch stems. Free and persistent flowering.....	.30	3.00
ERIGERON MULTIRADIATUS ROSEA: (R) New. Dwarf habit, attractive pink blossoms30	3.00
ERINUS ALPINUS: (R) 4 inches would cover the height of the leafy rosettes and delicate lavender flowers. A choice Alpine.....	.25	2.50
ERINUS ALPINUS ALBUS: (R) A white form of the above. Both sorts are grateful for afternoon shade, and cannot tolerate poor drainage30	3.00
ERINUS ALPINUS CARMINEUS: (R) The red flowers are a decided departure from type. Charming rosettes of foliage. 6 inches.....	.35	3.50
ERIOPHYLLUM CAESPITOSUM: (R) "Oregon Sunshine." Of course the flowers are a rich yellow. Foliage of soft gray-green. Likes full sun. 8 inches. Superior for the rockery, but effective anywhere and especially in very poor soil.....	.25	2.50
ERPETION RENIFORME: (R) "Australian Violet." A diminutive violet of purple and white. Always exciting admiration. Hardy only in mild climates. Light shade.....	.35	3.50
ERYNGIUM OLIVERANUM: From a cluster of glossy leaves rises a branched stem some four feet in height. The thistle-like flowers, which are very numerous, assume an amethyst sheen40	4.00
Specimen clumps	1.50	
ERYNGIUM ZABELI: A much bolder type than the preceding, forming specimen clumps 3 feet in height. Small plants.....	.40	4.00
Specimen clumps	2.00	
ERYSIMUM HELVETICUM: (R) Low growing, the foliage a cheerful green. Flowers yellow35	3.50
ERYSIMUM PULCHELLUM: (R) A new dwarf species, forming close mats of dark green, later eclipsed with yellow bloom. Sandy soil.....	.35	3.50
EULALIA JAPONICA GRACILIS: An ornamental grass that is the climax of grace. Forms handsome clumps. Dark green.....	.25	2.50
EULALIA JAPONICA VARIEGATA: A heavier leaf than the preceding. and variegated with creamy stripes. 5 feet.....	.25	2.50
FORGET-ME-NOTS: (See Myosotis).		
GAILLARDIA "CRIMSON GLOW": Rich crimson predominates in this. 2 feet. Constant bloomer25	2.50
GALEGA OFFICINALIS: A profusion of lavender flowers and fern-like foliage make this worth-while in any garden. Yes, it is a good cut flower, too. 3 feet.....	.25	2.50
GENISTA NIGRICANS: (R) Of stocky habit with a profusion of golden flowers. 2½ feet. Suited to the rock garden of moderate size...	1.25	

R. F. D. 1, BORING, OREGON

	Each Dozen	
GENISTA OVATA: (R) Slender, graceful branches are sprinkled with the golden flowers in spring. 3 feet. A rock subject.....	.75	
GENISTA PROSTRATA: (R) A trailing broom which is a gem for the rock garden of moderate size. Bright yellow flowers.....	.50	5.00
GERANIUM SANGUINEUM: (R) Single pink flowers abundantly borne. Makes a large plant. 1 foot.....	.35	3.50
GERARDIA HYBRIDS: Resembling a small penstemon, this fine plant blooms all summer and fall. The colors are varying shades of red and pink, in mixture only. 2 feet. May not be hardy everywhere, but has withstood zero temperatures here.....	.30	3.00
GEUM CILIATUM: (R) The most attractive feature of this plant is the feathery seed-pods which are an ornament to the garden for a long time. 8 inches.....	.35	3.50
GEUM "LADY STRATHEDEN": Rich orange flowers, a decided novelty in this popular plant. Double, free flowering.....	.30	3.00
GEUM "MRS. BRADSHAW": Brilliant orange scarlet flowers resembling small roses, cover the plant all summer. You'll be delighted with a liberal planting of these.....	.25	2.50
GRAPE HYACINTHS: (See Muscari).		
GYPHOPHILA ACUTIFOLIA: "Baby Breath." Tiny white flowers, fragrant and earlier than <i>Paniculata</i>25	2.50
GYPHOPHILA PANICULATA: Dainty white flowers in misty masses. Adds grace and lightness to any flower arrangement. 3 feet. Large plants35	3.50
GYPHOPHILA REPENS ROSEA: (R) A fine trailing plant, for rockery or wall. Delicate rose colored flowers. Truth compels the statement that the color is so delicate that it is sometimes almost white.....	.30	2.50
HARPALIUM RIGIDUM: Long, golden petals around a brown center, like a refined and glorified sunflower. 6 to 8 feet. Try it against lattice or garage.....	.25	2.50
HARPALIUM RIGIDUM "DANIEL DEWAR": Handsome flowers of stiff semi-quilled formation—color rich golden yellow. Very upright growth. 3 feet.....	.25	2.50
HEATHER: (See <i>Erica</i>).		

THE HELENIUMS

These are magnificent for generous use in the early autumn garden. All grow about 4 feet tall and are excellent to cut. Bloom well the first year.

	Each Dozen	
Autumn Queen: Old gold, reverse of petals copper25	2.50
Autumnal Rubrum: A novelty. Almost ox-blood red35	3.50
Hoopesi: This is an earlier blooming kind, with flowers from May until late summer. Clear golden yellow.....	.35	3.50
Riverton Beauty: Clear lemon yellow.....	.25	2.50
Riverton Gem: Rich copper bronze.....	.25	2.50
Special: The collection of five Heleniums for \$1.25. Six plants of each for \$6.50.		

HELIANTHEMUMS

The "rock roses" are among the most effective plants employed in the rock garden, semi-shrubby and evergreen, and with a wealth of beautiful flowers. They vary from those of trailing habit to a height of perhaps 9 inches.

	Each Dozen	
Clear Lemon Yellow—single.....	.50	5.00
Double Red Flowers.....	.50	5.00
Delicate Pink—Single50	5.00
Rich Orange with Burnt Orange Center.....	.50	5.00

HELIANTHUS ANGUSTIFOLIUS: Of particularly graceful habit, and latest of all its family to bloom. Slender brilliant yellow petals surround a black disc. 6 ft..... .35 3.00

HELIANTHUS "SOLEIL D'OR": Like Golden Glow, but superior in habit and especially suitable for informal hedging. With tall, perennial stems, the purple and gold is a good contrast

HEMEROCALLIS "GOLD DUST": These are also known as day lilies. Deep yellow, fragrant flowers. 15 inches..... .25 2.50

HERNIARIA GLABRA: (R) A brilliant green carpeting plant of extreme daintiness..... .35 3.50

HEUCHERA SANGUINEA "CORAL BELLS": (R) Delicate red flowers on 12-inch stems. Nothing daintier in the garden. Large 2-year plants..... .35 3.50

HOLLYHOCK: Chater's double rose-pink. Unequaled for the back of border, to plant against a porch or lattice..... .25 2.50

Double Scarlet

Double Yellow

"Queen of Sheba"—English novelty, chamois rose, fringed

HUTCHINSIA ALPINA: (R) Shining green leaves which form a dark mat studded with little white blooms. Excellent as a cover for choice spring bulbs. 3 inches..... .35 3.00

HYACINTHUS CANDICANS: A summer-flowering bulb. A spike three feet tall, with pendant bells of creamy-white, rises from a cluster of bold drooping leaves..... .25 2.50

HYPERICUM CALYGINUM: (R) A half shrubby little plant about 8 inches in height, bearing golden yellow flowers in spring. Evergreen in this climate..... .35 3.50

HYPERICUM FRAGILE: (R) Trailing, and good, whether in leaf or flower. Bright yellow blossoms on 6-inch stems..... .35 3.50

HYPERICUM MOSERIANUM: Taller than the preceding varieties, being sometimes 18 inches in height. Spreads rapidly..... .30 3.00

IF YOU ARE IN DOUBT AS TO SELECTION OF PERENNIALS

I shall be very glad to make selections for you, to any amount desired, but will ask that you send information as to sun or shade, and whether particularly desired for garden effect or cutting. I'll do my best to please you.

Each Dozen

HYPERICUM POLYPHYLLUM: (R) Very similar to <i>Hypericum Repens</i> , and equally fine foliage35	3.50
HYPERICUM REPENS: (R) A multitude of slender stems, clothed with pretty leaves and terminating in golden yellow flowers, make this one of the most satisfactory rock garden subjects. Evergreen. 6 inches.....	.35	3.50
IBERIS TENOREANA: (R) An improved perennial candytuft, completely smothered with rose lavender flowers about Decoration Day. Evergreen. 9 inches. Will do best if planted early.....	.30	3.00

IRISES—Germanica

No other hardy plant is getting quite so much attention nowadays as the Iris, and if you have seen an Iris-bordered path in June, flaunting its regal purple and delicate lavender and rich bronze in the spring sunshine, or have had the privilege of viewing a collection which included some of the magnificent new introductions from France and England and our own American originators, you will admit there is ample reason.

Iris increase rapidly and soon form handsome clumps. They are transplanted in early spring or early fall with equal certainty of thriving in their new locations, but fall planting gives greater assurance of flowers the first season. The roots should not be set too deep—a couple of inches of soil to cover is sufficient. They require good drainage and prefer full sunshine. Manure is particularly distasteful to them and often fatal, but bone-meal and air-slaked lime are excellent. June is the month of most prolific bloom.

Each Dozen

Afterglow: Grayish lavender merging into soft yellow. Much admired. A generous increaser	.50	5.00
Alcazar: Standards light blue violet, falls rich purple50	5.00
Ambassadeur: Standards smoky lilac—falls deep purple maroon of velvety texture. Massive flowers75	7.50
Archeveque: Velvety violet purple, distinctive in any collection.....	.25	2.50
Caterina: Huge flowers of soft, silvery lavender, on very tall stems. Delicious fragrance. Multiplies slowly30	2.50
Cluny: Delicate bluelilac, the falls lightly striped with brown.....	1.00	
Crimson King: Very early and rich in coloring. In sunlight has a crimson cast.....	.30	2.50
Crusader: A beautiful intense clear blue, the standards a little lighter than the falls. Free blooming	1.50	
Dejazet: Bronze-rose is the general effect of this unusual flower.....	.50	5.00
Flavescens: Soft, sulphur yellow throughout. Free bloomer20	1.50
Fro: Standards orange, falls mahogany. The best of its coloring.....	.25	2.25
Germanica: A rich deep purple flower, large and early. Especially good for naturalizing. \$6.00 the hundred20	1.25

W. L. CRISSEY ALPINE GARDENS

Each Dozen

Gold Crest: Flowers a bright violet blue, with brilliant orange beard in striking contrast. One of the finest.....	1.00	10.00
Goliath: Standards an olive-tan, falls reddish purple. Subdued coloring, but very pleasing. Seldom seen50	4.50
Her Majesty: Impression given by this flower is a deep pink. Plant with Queen of May.....	.20	1.50
Isolene: Standards silvery lilac, falls purplish old rose. As fine as it is unique.....	.35	3.00
Juniata: Clear deep blue, tall and vigorous.....	.25	2.00
Kathryn Fryer: Standards yellow, the falls velvet maroon. Many flowers on tall stems. Very brilliant. Late	1.00	10.00
Kharput: A lovely combination of violet and reddish purple25	1.50
King of Iris: Standards clear yellow, falls maroon margined gold. Striking.....	.25	2.00
Kochii: Extremely early, very deep claret purple. Buds are coal black.....	.25	2.00
Lent A. Williamson: Standards soft violet, falls royal purple with velvety texture. Tall and large75	7.50
Leonidas: A beautiful combination of light and deeper blue.....	.30	2.50
Liberty: Rich blue, a trifle darker than Juniata. Plant the two together, with Pallida Dalmatica, if you want something fine.....	.25	2.50
Lord of June: Standards lavender blue, falls light violet blue. A frequent prize winner.....	.75	7.50
Loreley: Standards light yellow, falls purple merging into canary. Standards are often splashed with purple. Very gay.....	.25	1.50
Magnifica: Standards light purple, falls deep purple. Massive flower. One of the much-discussed new ones.....	2.00	
Ma Mie: White, suffused with the daintiest blue25	2.25
Mauvine: Standards mauve, falls a few shades darker35	3.00
Maori King: Standards bright yellow, falls crimson, bordered gold. Late and dwarf. Excellent to use in front of taller sorts.....	.25	2.00
Monsignor: Standards satiny violet, falls crimson purple, margined lighter.....	.25	2.00
Mrs. Alan Gray: Delicate orchid pink, frequently blooming a second time in the fall.....	.25	2.00
Nibelungen: Standards fawn with olive tint; falls purple, edged with fawn.....	.20	1.25
Pallida Dalmatica: Big flowers of lovely silvery lavender. Tall. One of the very best for massing25	2.00
Parisiana: Standards lavender pink, falls cream, stippled and suffused with lavender.....	.35	3.00

Why Not Have Two Gardens

Plant rows of flowers in the back yard or vegetable garden, to be used exclusively for cutting. The more ornamental planting about the house may then be left undisturbed to beautify the grounds.

R. F. D. 1, BORING, OREGON

	Each Dozen	
Pauline: Tall claret red.....	.25	2.50
Perfection: Standards old blue; falls deep velvety purple. Particularly fine form.....	.25	2.00
Princess Victoria Louise: Standards are primrose, falls plum, margined primrose.....	.20	1.75
Prosper Laugier: A fine bronze, with large flowers30	2.50
Quaker Lady: A demure combination of smoky lavender and mother of pearl tints.....	.25	2.00
Queen Caterina: A truly patrician flower of palest lavender, overlaid with a marked sheen. Exquisite	1.00	10.00
Queen of May: If you are fond of pink effects, try a mass planting of this beautiful sort. With <i>Iberis Tenoreana</i> (page 14). It is something to rave over.....	.20	1.25
Red Cloud: When the sun is on this iris, it is almost crimson25	2.50
Rhein Nixe: Standards purest white, falls deep violet bordered with white.....	.25	2.00
Souvenir de Mme. Gaudichaux: A uniform shade of dark blue-purple, lit at the center by the vivid gold of its beard. Many consider this the best iris ever introduced.....	2.00	
Standard Bearer: Rich claret shade, tall and free blooming. A fine accent for the garden, particularly when a half dozen or more plants are employed.....	.50	4.00
White Knight: Standards and falls both of pure milk white.....	.40	3.50
Zua: Lavender, the flowers most distinctive on account of their crinkled texture, like crepe. Early75	

THE BULBOUS IRISES

These spring from bulbs like onions, and bloom after the German irises. The bulbs of all are properly planted in August or very early September, at which time they are dormant, but it is suggested you place your order in the spring, and I will see that the bulbs are forwarded at the right time. On the Pacific Coast it is quite feasible to plant these up to February 15, for it does not seem to harm them to move with growth considerably advanced.

They will be listed in the order of their blooming. Generous planting is essential to the best effect. The small sized bulbs listed will probably not bloom the first year, but make fine blooming bulbs for the following season. Not less than 50 of a kind will be sold in these small sizes.

HOLLAND OR DUTCH IRISES

Charming cut flowers. A dozen makes an attractive clump.

	Dozen 100	
Albert Cuypp: White standards, falls orange merging into canary yellow. First size bulbs	1.00	5.00
Bulbs $\frac{1}{4}$ to $\frac{1}{2}$ inch in diameter.....	1.50
Anton Mauve: Standards light lilac, falls rich golden yellow with cream border. General effect, a lovely grayish lilac. Same price as Albert Cuypp.		

W. L. CRISSEY ALPINE GARDENS

Dozen 100

David Terniers: Lilac standards, falls rich yellow. Same price as Albert Cuyt.

Rembrandt: Standards deep clear blue, falls deep yellow widely margined with blue, an effect much like a handsome peacock feather. First size bulbs 1.50 9.00
Small bulbs 3.00

SPANISH IRISES

King of the Blues: Brilliant blue, with yellow lip. Exquisite for cutting. First size bulbs.. 1.00 5.00

ENGLISH IRISES

These noble flowers are later than the Spanish. Varieties include the following:

Dozen 100

Princess Dagmar: A lovely lilac and white. First size bulbs 1.00 6.00
Small bulbs for second year blooming..... 2.00

Coeur Cardinal: Intense deep blue. First size bulbs 1.50 10.00

Bleu Celeste: Rich deep blue. First size bulbs.. 1.50 10.00

Rosa Bonheur: Rosy lilac and white. First size bulbs 1.50 9.00

A limited number of each of the following varieties can also be furnished. Order early if interested. The price, \$1.50 the dozen:

Grand Lilac John Decker Tricolor

SPECIAL

One dozen each of all the bulbous irises listed, 12 dozen in all, for \$14.00 postpaid. This is enough to make a real showing in your garden.

IRIS SIBERICA

The Siberian Irises have slender, rush-like foliage, and look particularly graceful when bordering a pool or stream.

The flowers are daintily constructed and not large, but generously produced. Plant in spring or early fall. Later blooming than the Germanica.

Each Dozen

Blue King: A deep rich blue. 2 feet..... .25 2.50

Distinction: Light blue, conspicuously veined. The flowers are so handsome and so different from other varieties that they well merit their name. 2½ feet..... 1.00 10.00

Perry's Blue: Very large for this type of iris, a charming blue, flowers held well above the foliage 1.00 10.00

THE JAPANESE IRISES

These unfold their regal flowers, often 8 and 10 inches across, in July. They range through delicate lavenders to richest purple, some are pure white marked with gold, others are daintily veined with contrasting color. They must have good drainage and sun.

Each Dozen

I offer only in high-class mixture as yet; some of the flowers with three petals, others with six, but all attractive in the extreme..... .25 2.50

MISCELLANEOUS IRISES

Each Dozen

- IRIS ARENARIA:** (R) From Hungary. Yellow flowers. 6 inches. Light sandy soil suits it best50 5.00
- IRIS CRISTATA:** (R) This graceful miniature iris should be established in a position with afternoon shade, and rather light soil. Increases fast and bears delicate lavender flowers in abundance. Very much at home in the rock garden25 2.50
- IRIS GRACILIPES:** Louise Beebe Wilder calls this "The most precious of all the dwarfs for the rock garden." Slender foliage and fragile-appearing blossoms of lavender in profusion. 1 foot. Light shade..... 1.00
- IRIS HOOKERI:** (R) Blue flowers. 18 inches50 5.00
- PSEUDO ACORIS:** Foliage two feet and more in length, almost tropical in its luxuriance. Small flowers of brilliant yellow. Succeeds in either marshy or well drained situation. Superior as a background in the border..... .25 2.50
- PUMILLA:** The dwarfest and earliest of all irises. This sort has rich purple flowers. 6 inches is the height, making the plants particularly fine for rock gardens or bordering taller irises25 2.50
- Atroviolacea:** Deep purple.
Cyanea: Purple.
Fairy: Light blue.
Florida: Clear yellow.
Orange Queen: Deep yellow.
- IRIS TECTORUM:** (R) The celebrated roof iris of Japan. Violet-purple..... .50 5.00
- IRIS TRICUSPIS:** Large rich purple. Very rare. Small plants..... 1.00
-
- JAPANESE ANEMONE:** (See "Anemones").
- JAPANESE IRISES:** See page 18.
- JASIONE HUMILIS:** (R) The flowers resemble brilliant blue scabiosas and are supported on 12-inch stems above a basal tuft of healthy green. Bloom for several months... .50 5.00
- LAVANDULA DELPHINENSIS:** A rare species, shrubby and about 2 feet tall, with soft blue flowers..... .50 5.00
- LAVANDULA PURPUREA NANA:** (R) A dwarf lavender, with same delicious fragrance as its huskier relative. Very desirable..... .30 3.00
- LAVANDULA VERA (LAVENDER):** What can be more delightful than this occupant of old English gardens, with its sweetly scented flower spikes and association of sentiment? Did you know it makes a fine hedge? 3 feet. Strong plants..... .30 3.00
 Specimens (to nearby points only)..... 1.25
- LEONTOPODIUM ALPINUM:** (R) The famed Edelweis of the Alps. A tuft of rather woolly leaves, the flowers white. Not at all difficult to grow in well drained, sunny situation50 5.00
- LEUCOJUM VERNUM:** Snow-flake. The fragrant, drooping flower resembles the snow-drop, but bolder. Thrives best in light rich soil. This is a bulb, for fall planting. Naturalizes well..... .25 2.50

W. L. CRISSEY ALPINE GARDENS

Each Dozen

LIATRIS PUNCTATA: (R) A unique American Alpine, doubly valuable because it blooms in late fall. The rose-colored spikes verge on the magenta, and are very numerous and striking50 5.00

LILIES

These are properly planted in the fall. I offer the following sorts and suggest placing your order in the spring, for shipment at just the proper time. Planting a half-dozen or more bulbs in a clump gives best display. Each Dozen

Lilium Candidum: Also called Madonna Lily or St. Joseph's Lily. Blooms in early summer. Pure white and highly perfumed..... .35 3.50

Lilium Elegans: Handsome orange flowers. This variety is exceptionally hardy and prolific.... .30 3.00

Lilium Pardalinum. Orange flowers of graceful shape on rather slender stems..... .25 2.50

Lilium Regale: Handsomest of all hardy lilies. Its long, creamy trumpet with pink shading, its clear yellow throat and delicious fragrance, make a flower long remembered. Fine bulbs .75 7.50

Lilium Tigrinum: Old-fashioned, striking tiger lily. A bold clump with proper shrubbery or other background cannot be surpassed..... .25 2.50

LINARIA ANTICARIA: (R) A dwarf Alpine species with yellow flowers: 6 inches..... .30 3.00

LINARIA CYMBALARIA: (R) Pale purple flowers, neat trailing habit. At its best in light shade..... .25 2.50

LINARIA DALMATICA "The Nymph": NEW. A tremendous advance over the older sort. Like a huge yellow snapdragon. Very free flowering. Inclined to spread when thoroughly established..... .40 4.00

LINARIA ORGANIFOLIA: (R) Few plants flower more abundantly than this. Clear lavender the color. 6 inches..... .35 3.50

LINARIA PURPUREA: (R) A slender, graceful plant some 15 inches in height, with many delicate flowers of pale purple..... .35 3.50

LINUM NARBONENSE: (R) Of angular, picturesque growth, the flowers an exquisite shade of blue. Long blooming..... .40 4.00

LINUM PERENNE: (R) "The Blue Sky Flower." Dainty foliage and dainty azure flowers throughout the summer give this plant more than ordinary interest..... .25 2.50

LOBELIA CARDINALIS: Flowers of the most intense red approaching vermillion. Succeeds best in semi-shady, moist location. 3 feet35 3.50

LUPINUS LYALLI: (R) A rare gem from the Cascade Mountains of Oregon. The silver foliage is a foil for the soft-blue flowers. 6 inches. Likes dry, sandy location..... .50 5.00

LUPIN—ENGLISH HYBRIDS: Noble perennials 2 feet tall, with flowers of blue, yellow, rose and other beautiful shades. In mixture. Small plants—to flower this year..... .35 3.50

R. F. D. 1, BORING, OREGON

Each Dozen

- LYCHNIS ALPINA:** (R) The extremely dainty pink flowers rise from grass-like tufts of foliage and appear in May and June. 4 inches. A moist sandy soil is congenial..... .35 3.50
- LYCHNIS CHALCEDONICA:** Vivid orange scarlet flowers in heads resembling the Sweet William, attract attention in any garden..... .25 2.50
- LYCHNIS VISCARIA SPLENDENS PLENA:** (R) This plant will be noticed in any rock garden, no matter how choice the other occupants may be. Clear cerise flowers on 8-inch stems form a perfect mound of arresting color. The plant itself is a low tuft of grassy leaves. Stock limited..... .35 3.50
- MALVASTRUM COCCINEUM:** (R) Gray-green foliage on trailing branches, flowers like small salmon-orange single roses. Native to hot, dry region, and best adapted to rock garden35 3.50
- MICHAELMAS DAISIES:** (See Asters).
- MIMULUS LUTEUS:** (R) More robust than the preceding. 2 feet. Bright yellow flowers. A shady moist spot suits it..... .25 2.50
- MONARDA DIDYMA:** "Bergamot" is the popular name of this, and the variety is Cambridge Scarlet. A very showy plant with crimson flowers of fantastic form. Use it as an informal hedge between you and your neighbor25 2.50
- MUSCARI (GRAPE HYACINTHS):** (R) These fall-planted bulbs are best set in August or September, and naturalize splendidly under trees (not evergreens, but apple or maple), and are suited to the rock garden as well, where they soon form most satisfying colonies. The brilliant blue flowers make a striking display for some weeks in the spring. The price is \$1.00 the dozen, or \$5.00 for a whole hundred.
- MYOSOTIS ALPESTRIS "VICTORIA":** (R) This bright blue for-get-me-not is of dwarf habit and very free flowering..... .25 2.00
- MYOSOTIS "Royal Blue":** (R) Rich, deep blue. Vigorous and free flowering..... .25 2.00
- NEPETA MUSSINI:** (R) Tumbling masses of gray-green foliage as a foil for the clouds of lavender flowers. Nothing more satisfactory for liberal use in the rock garden or border. 1 foot25 2.50
- NIEREMBERGIA FILICAULIS:** (R) Pretty white flowers pencilled with purple. Slender, drooping branches. Prefers a heavy soil, and will not stand very cold winters..... .40 4.00
- ONOPORDON BRACTEATUM:** A huge silver thistle from Central Asia, succeeding best in a dry, sunny spot, where it reaches a height of 8 to 10 feet. Use it as a background for delphiniums if you want something impressive. It's a biennial..... .25 2.50

PAPAVER (Poppies)

	Each Dozen	
Orientalis Pink: The finest of this color that it has been my good fortune to see. Lasts well in water if cut just as expanding.....	.40	4.00
Orientalis Scarlet: Immense flowers of vivid scarlet. They are often 8 to 10 inches across. Set in early spring or late August.....	.25	2.50
Pilosum: (R) An orange beauty. 1 foot.....	.25	2.50
Rupifragum: (R) A bit of orange silk wafted to American gardens from the Pyrenees Mountains in Spain. 1 foot. Likes hot, dry situation. Always in bloom if not allowed to seed	.35	3.00

PENSTEMON

Penstemon Barbata "Huntington's Shell Pink": Tubular flowers of soft pink hang gracefully from three foot stalks. A real addition to the perennial border.....	.35	3.50
Penstemon Glaber: (R) A slender plant usually not exceeding a foot in height, with blue flowers shading into violet. Excellent.....	.30	3.00
Penstemon Gloxinoides: While not hardy, these can be used for summer bedding everywhere with magnificent effect. They are perennial in mild regions. I offer two sorts, each absolutely true to color and with extremely large flowers. Plant 2 feet apart, and in sun. Red or pink.....	.20	2.00
Penstemon Menziesii: (R) A shrubby sort about 8 inches in height, native to the slopes of Mt. Hood. Handsome, glossy foliage, and attractive flowers of rose or rosy purple. Superior for the rock garden.....	.75	7.50
Penstemon Murryanus: Tubular flowers of scarlet and amber, loosely placed on slender spikes. 3 feet25	2.50
Penstemon Ovatus Douglasi: (R) The plant itself is a low cluster of burnished green leaves; the flowers deep, rich blue, changing to mauve as they age. They are borne in profusion on stems varying from a foot high in their mountain habitat, to perhaps three feet in exceptionally rich garden soil. An exquisite subject for either rock garden or perennial border. Give sunny exposure. Fine blooming size plants50	5.00
Penstemon Rattani Minor: (R) Found on Mt. Hood at elevation of 6000 feet. Shining green leaves in pleasantly spreading tufts. Soft blue or mauve flowers. 4 inches.....	.50	5.00
Penstemon Smalli: A basal tuft of rather large leaves, with a 3 foot stalk supporting dainty bells of white, tinged lavender.....	.25	2.50

THOSE GIANT JAPANESE ANEMONES

Don't overlook these remarkable novelties. They come in both pink and white, and are among the very few plants which succeed best in rather a shaded position. True perennials, of course.

PEONIES

Every year I become a stronger "peony fan," with fresh admiration and enthusiasm for these big balls of fragrance and beauty. A fine peony is really an investment, growing handsomer each year of its establishment, absolutely hardy and permanent. Peonies are properly planted only in the fall, but if you will include them in your spring order the plants will be sent at just the right time. In planting, the new shoots, or "eyes," should not be covered with more than 2 inches of soil, and the earth beneath made very firm to prevent sinking. Bone meal is the ideal fertilizer.

The quotations are for strong divisions, none with less than three sprouts, many with six or more. Double flowers unless particularly specified as single.

PEONIES—DOUBLE SORTS Each

- Alexander Dumas:** Bright pink and cream shades and the unusually long blooming period of this sort, make it of extraordinary value in the garden. Early..... .75
- Baroness Schroeder:** Big globular flower of soft flesh-white. Late mid-season..... 2.00
- Felix Crousse:** Bright red, large and full. Mid-season 1.00
- Festiva Maxima:** Large and handsome white flower, showing splashes of crimson in the center. Early75
- Karl Rosenfield:** A huge globe of dark crimson. Extra. Mid-season 3.00
- Lora Dexheimer:** Intense flaming crimson. Late mid-season 4.00
- Marguerite Gerard:** Flesh pink, fading to white. Just a few stamens in the center. Extra large. Late 2.00
- Mary Brand:** An immense flower of vivid crimson, with a very delightful fragrance. Blooms in clusters. Mid-season..... 2.50
- Monsieur Jules Elie:** Pale lilac rose, with lighter collar. Early and fine..... 1.25
- Solange:** Compact, globular flower, a combination of white delicately tinged lilac, with flesh and apricot tones toward center. One of the handsomest of all..... 7.00
- Triumph de L'Exposition de Lille:** Light shell pink, splashed with violet rose. Mid-season.. .75

PEONIES—SINGLE, SEMI-DOUBLE AND JAPANESE TYPES

These blooms lend themselves to most artistic cut-flower arrangements, and are equally admired on the plants.

- Albiflora, the Bride:** A single row of broad white petals encircles a mass of golden stamens. A vigorous grower and a free bloomer..... 1.75
- Ama No Sode:** Bright rose pink, merging into lighter tone at margin. A very large flower. One of the very finest Japanese peonies.....10.00
- Gypsy (Japanese):** Dark Tyrian rose. A large, loose, artistic flower. Mid-season..... 3.00
- Goldmine:** A beautiful deep rose Japanese peony, with center of rich gold..... 3.50
- Marie Jacquin:** A lovely semi-double flower much resembling a white water lily. Borne in clusters 1.50

W. L. CRISSEY ALPINE GARDENS

	Each Dozen
Mikado: Crimson petals surround a mound of golden petaloids. Very large. Japanese, of course	3.00
Pride of Langport: An exquisite single pink, brilliant yet soft in color.....	7.50
Yeso: An attractive white flower, sometimes tinged pink. Japanese.....	2.00
Fuyajo (Japan): Dark maroon with velvety sheen. Two rows of guard petals. Conspicuous petaloids striped crimson and white.	10.00

I HAVE OTHER PEONIES

Perhaps but a few of some of the choicer sorts, but decidedly worth seeing at blooming time, to make selection for your own garden. Early June in normal seasons.

PERUVIAN LILY: (See *Alstromeria*).

PHLOMIS ALPINA: (R) The flowers are in whorls, the foliage bold. A plant that is seldom seen..... .35 3.50

PHLOX DECUSSATA (Hardy Phloxes)

Phloxes were always an important feature of old-fashioned gardens, and they're equally indispensable now. No other perennial is quite so valuable for mid-summer flower masses, and the plants thrive equally in full sun or half shade. They like rich soil. If possible, plant at least a half dozen of one sort, for massing is essential to get the finest effect. Most of them are pleasingly fragrant.

	Each Dozen
Mrs. Jenkins: Late blooming, fine white.....	.25 2.50
Mrs. W. E. Fryer: Pure white, extra large truss of flowers25 2.50
Miss Lingard: Extra early white, often blooming several times in a season.....	.25 2.50
Orange Scarlet: A dozen of these would arrest attention in any border. The color is dazzling	.25 2.50
Pantheon: Deep true pink. Immense flowers and truss. Best of all for garden effect.....	.25 2.50

PHLOX AMOENA: (R) Only 4 in. high, suited to rockery or the garden. Bright pink flowers entirely cover the plant in late spring..... .25 2.50

PHLOX SUBULATA "MOSS PINK": (R) A trailing plant which soon forms a mat of bright green, changing to a solid rug of color when in flower. Lilac—especially good..... .25 2.50
 Pink
 .25 2.50 |

White

 .25 2.50 |

PHLOX SUBULATA "VIVID": (R) Brilliant rose pink, blooms several weeks later than others. Does not spread. Extra choice .35 3.50

PHYSALIS FRANCHETI "Chinese Lantern Plant": The seeds are produced in brilliant orange capsules about the size of an egg. These dry for effective winter decorations. 18 inches

 .25 2.50 |

PHYSOSTEGIA: Like a huge heather. Blooms in midsummer and is valuable for cutting. 3 feet. There are two sorts:
 Soft lavender pink..... .25 2.50
 White

 .25 2.50 |

PHYSOSTEGIA VIRGINICA "Vivid": A month later than the ordinary pink, and deeper color

 .35 3.50 |

R. F. D. 1, BORING, OREGON

	Each Dozen	
PHYTEUMA NIGRICANS: (R) Red flowers of curious shape. A rare sort.....	.60	6.00
PHYTEUMA WAGNERI: (R) Crowded heads of blue flowers. Sun and a gritty soil suit phyteumas. Another rare plant.....	.50	5.00
PLATYCODON GRANDIFLORA: Called the "Chinese Balloon Flower" because the buds look like balloons. Handsome bell-shaped flowers in blue and white, appearing all summer. 18 inches. Large roots.....	.35	3.50
PLATYCODON MARIESII: Like preceding, but more dwarf35	3.50
PLUMBAGO LARPENTAE (Syn Ceratostigma Plumbaginoides): (R) Said to have been discovered on the walls of Peking, this Chinese plant is invaluable in the rock garden, as it introduces a note of intense blue in the fall, when that color is scarce indeed. Fine autumn foliage35	3.00
POLEMONIUM HUMILE: (R) A true Alpine with pale blue flowers on stems a few inches in height30	3.00
POLEMONIUM REPTANS: (R) Fern-shaped leaves, and qualities of delicate blue bells in May. 8 inches. Use it as an edging or in the rock garden.....	.25	2.50
POLYGONUM VACCINIIFOLIUM: (R) A rare prostrate shrub from the high Himalayas. Once established, the spikes of small pink flowers are freely produced. It is ideal for falling over a wall. Fine autumn tints. A very few plants at.....		1.00
POPPIES: (See Papaver).		

POTENTILLAS

Alpina: (R) Handsome, small foliage, yellow flowers. 4 inches tall.....	.35	3.50
Aurea: (R) A rock plant with pretty yellow flowers. 6 inches.....	.35	3.50
Bicolor: Effective combination of red and yellow. 15 inches.....	.35	3.50
Cinerea: (R) A little gem, but an inch high, with lovely yellow flowers.....	.35	3.50
Nepalensis Willmottiae: (R) Robust sort growing 18 inches tall, flowers cerise and remarkable for being produced all summer.....	.35	3.00
Rupestris: (R) Another fine rock subject. White. Very choice. 1 ft.....	.35	3.50

HARDY PRIMULAS (Primroses)

These prefer half-shaded situations.

Each Dozen

Algida: Pale purple flowers in very early spring. From Siberia.....	.50	5.00
Auricula (Swiss Primrose): (R) Glossy leaves of leathery texture serve as a base for the numerous flower stems on well-established plants. A great variety of rich, velvety colors, usually with contrasting throats.....	.50	5.00
Bulleyana: (R) Rich apricot yellow, on whorled spikes. 2 feet.....	.50	5.00
Cashmiriana: Globular flower-heads of dark lilac, borne on stems from 6 inches to 1 foot.....	.40	4.00
Columnae: Yellow flowers. 6 inches.....	.40	4.00

W. L. CRISSEY ALPINE GARDENS

Each Dozen

Denticulata: A vigorous sort with round heads of flowers ranging from pale lavender to deep purple. 1 foot.....	.40	4.00
Denticulata Rosea: Flowers in shades of rose	.40	4.00
Japonica Alba: (R) This means flowers of light shades, not necessarily white. Imposing two-foot stems carry them.....	.35	3.50
Japonica Rosea: (R) Very strong growing. Flowers of varying shades of pink and rose are borne in whorls on 2-foot stems.....	.50	5.00
Pannonica: This Hungarian sort is yellow. Blooms in late spring. 6 inches.....	.50	5.00
Paxiana: Tall and very showy sort from China. Flowers bluish lilac. Very rare.....	1.00	
Pulverulenta: Of most amiable disposition and imposing appearance. With ample moisture and rich ground it grows two to three feet tall. The flowers of soft rich red are borne in successive whorls.....	.50	5.00
Vulgaris (English): (R) In varying shades of yellow, rich red, maroon, etc., many showing distinct eyes of contrasting color. Nothing could be prettier in early spring than a generous border of these flowers.....	.25	2.50
Vulgaris Double Lavender: (R) Exquisite very double flowers borne in greatest profusion when the plant is established. The stock of these is very limited.....	.75	7.50
Vulgaris Double White: (R) The same price.		
<hr/>		
PRUNELLA GRANDIFLORA: (R) Cheerful carmine flowers. 4 inches. Light shade is appreciated by this plant.....	.25	2.50
PRUNELLA WEBBIANA: (R) These make charming little mounds of color 6 inches high, ranging from pale rose to deep purple.....	.30	3.00
PULMONARIA ANGUSTIFOLIA AZUREA: (R) The rather hairy leaves hug the ground, the gentian blue flowers rise on stems approximating 8 inches. It asks a cool home, with plenty of moisture.....	.35	3.50
PYRETHRUM: "Persian Daisy." The flowers are supported on 2-foot stems and appear about Decoration Day. They last exceedingly well. In mixture of white, pink and red.....	.25	2.50
Splendid imported double types.....	.40	4.00
ROCK ROSE: (R) See Helianthemum.		
ROSA LA MARNE: (R) Single roses of a delightful pink cover the bush all summer and late into the fall. The vigor of the plant goes into flowers rather than the bush, which is not over 15 inches tall. Particularly fine for the rockery	1.50	
RUDBECKIA FULGIDA: Bright golden flowers with black centers. Blooms abundantly all summer. No other plant gives such display over so long a season. 2 feet. Plants to bloom this summer.....	.30	3.00
RUDBECKIA PURPUREA: Big rose-colored daisies with a large brown central cone. Unique and decorative, 4 feet.....	.40	4.00
RUDBECKIA (Unidentified): Brilliant golden petals, central black cone. The flowers are very freely produced, for a long period, on loosely branched stems. 3 feet tall. One of the very finest border perennials.....	.35	3.50

SALVIAS (Perennial) Each Dozen

Azurea: True azure blue flowers, on airy stems 3 feet tall, make this a decided addition to the autumn display.....	.25	2.50
Farinacea: From August until frost spikes of soft old-blue, and even a light frost is not discouraging to this sturdy plant. They are exquisite for a slender vase.....	.35	3.50
Glaboso: White flowers, boldly arranged, convert the plant into a bush of snow in early summer. 3 feet.....	.30	3.00
Pratensis: (R) Dwarf, rarely exceeding a foot, with rose or purple flowers.....	.35	3.50
Turkestanica: No other flower is like this. Pink and white flowers, arranged in whorls.....	.25	2.50
Virgata Nemorosa: Handsome border plant, some 3 feet tall, with rich purple flowers and bracts25	2.50
Virgata Nemorosa Alba: (R) A white form of the above, about half the size.....	.25	2.50

SANTOLINA CHAMAECYPARISSUS: (R) Often called "Lavender Cotton." Strong growing plant of special value for the large rockery, where it soon forms an imposing mound of silvery foliage. 2 feet.....	.25	2.50
SAPONARIA OCYMOIDES: (R) Trailing plant for border or rockery. A sheet of rose color in May and June.....	.25	2.50
SAPONARIA VERSICOLOR: Somewhat more slender than Ocymoides, and flowers vary considerably in tint. 9 inches.....	.30	3.00
SATUREIA MONTANA: (R) Tiny bushes of aromatic foliage, covered in spring with white flowers25	2.50

SAXIFRAGES (R)

Until my offerings of these are more extended, I shall make no attempt to classify them with botanical precision. All are splendid for the rockery. Most of them prefer sun, with moderate moisture.

Aeizoon, Encrusted: Rosettes of fleshy leaves with silvered edges. White flowers. 6 to 8 inches35	3.50
Aeizoon Rosea, Encrusted: Rose pink flowers are a pleasing variation from most of the Aeizoon class50	5.00
"Beauty of Ronsdorf," Mossy: Mounds of bright green are practically obscured by the deep red flowers in early spring. Light shade....	.40	4.00
Macnabiana, Encrusted: 15-inch stems with white flowers. Autumn foliage shows handsome tints.....	.50	5.00
Megesea: Broad leaved and evergreen, umbels of soft rose flowers in very early spring. Half shade35	3.50
Mossy Saxifrage, Pink: The green rosettes are very ornamental, the pink flowers a finishing touch. Light shade.....	.35	3.50
Pyramidalis, Encrusted: The finest of this class. Two foot flower stems bearing hundreds of tiny white blooms.....	.50	5.00
Umbrosa: The rosettes of fleshy green leaves, much-branched red stems terminating in pink blossoms, make a most attractive sight. Requires considerable shade.....	.25	2.50

W. L. CRISSEY ALPINE GARDENS

Each Dozen

SCABIOSA COLUMBIANA: A great improvement on the well-known *Caucasica*. The plant is compact and covered throughout the entire summer with lavender flowers tinged mauve. Particularly fine for cutting. 2 feet..... .40 4.00

SCILLA CAMPANULATA: The strain offered bears spikes a foot in length, gracefully bedecked with drooping bells. They naturalize perfectly and should be planted by the hundred if space permits. Plant in early September.

	Dozen	100
Mixed blue and white.....	.75	4.00
Mixed blue, white and pink.....	.85	5.00

(The pink is charming and rarely seen—available only in this mixture, which is a real color harmony).

SEDUMS (R)

These plants have fleshy leaves, are mostly evergreens, and thrive in well-drained, sunny places, making effective subjects for the rock garden, and the more robust growers are fine ground covers.

Each Dozen

- | | | |
|--|-----|------|
| Acre "Golden Moss": Bright green foliage, and equally brilliant yellow flowers. Creeping | .25 | 2.50 |
| Album: Vividly green, at blooming time sprinkled with white stars. Will crowd out choicer small plants, so place accordingly. 3 inches tall | .25 | 2.50 |
| Arboreum: A bushy sort some 9 inches tall. Blush flowers..... | .25 | 2.50 |
| Dasyphyllum: Glaucous, bead-like foliage, pinkish-white flowers. 2 inches..... | .50 | 5.00 |
| Fabaria: Large flowered. Rose..... | .35 | 3.50 |
| Hispanicum: One of the loveliest, with its bluish-gray mats of foliage. Creamy blossoms | .25 | 2.50 |
| Kamtschaticum: 4 or 5 inch stems clothed with cheerful green foliage, are topped with orange flowers..... | .35 | 3.50 |
| Lyidium Roseum: Low and flat, pink flowers.. | .25 | 2.50 |
| Oregonum: Noticeably fleshy shoots, native to Oregon, and ranking among the most attractive | .25 | 2.50 |
| Pruniatum Forsterianum: Golden yellow flowers, trailing habit..... | .35 | 3.50 |
| Reflexum: Vigorous trailing growth. Yellow flowers. Sun or light shade..... | .25 | 2.50 |
| Repliesiana: Upright growth, very attractive. 9 inches | .25 | 2.50 |
| Rupestre: A British species with bright yellow flowers | .25 | 2.50 |
| Sarmentosum: A light green sort from China. Creeping. Pale yellow flowers..... | .25 | 2.50 |
| Sexangulare: Gives an impression of slenderness and grace. 3 inches..... | .30 | 3.00 |
| Spurium: Green foliage, pink flowers. 6 inches | .25 | 2.50 |
| Spurium Coccineum: Crimson flowers in July and August. Foliage assumes reddish tones in autumn | .25 | 2.50 |
| Stahli: Vivid green in midsummer, generously touched with bright red. 3 inches..... | .35 | 3.50 |
| Stolonifera: Flower lavender-pink, leaves noticeably flat. 6 inches..... | .25 | 2.50 |

SEMPERVIVUMS (R)

All have rosettes of succulent foliage, from which spring rather fantastic spikes of flowers. Each Dozen

- Sempervivum Arachnoides:** (R) "The Cob-web Houseleek." A conspicuous silvery web envelops the plant..... .50 5.00
- Sempervivum Glaucum:** (R) The rosettes are a refreshing light green, the flowers pink..... .50 5.00

SHASTA DAISY: Single white flowers, 4 inches in diameter, with yellow centers. Fine cutting material, and good looking in the garden. 2 feet..... .25 2.50

SILENES (R)

These are very numerous and varied. All are of easy culture, and admirable for the rock garden, though *Silene Acaulis* is a shy bloomer in most gardens.

- Acaulis:** "The Cushion Pink" of the Alps. A mound of light green 2 inches in height, studded with bright pink flowers..... .50 5.00
- Asterias:** Large scarlet heads. 18 inches..... .25 2.50
- Campanula:** Bell shaped flowers of green-white. 9 inches..... .35 3.50
- Carmanica:** A novelty for the rock garden with red flowers..... .35 3.50
- Maritima:** White flowers of quaint appearance, glaucous foliage. Blooming period long. 4 inches25 2.50
- Orientalis Compacta:** Glaucous leaves, deep rose flowers in small heads. 2 feet. Dainty indeed, but said to be a biennial..... .25 2.00
- Otites:** The plant itself is a low mound of foliage. The white flowers tinged with green are small, but profuse and gracefully borne. 15 inches..... .25 2.50
- Portensis:** The white flowers seem to float on delicate stems, usually disappearing at mid-day to be replaced next morning with numerous fresh ones. The effect is unusually light and pleasing. 15 inches..... .30 3.00
- Saxifraga:** Neat bushy little plants, perhaps a foot across and 8 inches high. White flowers .25 2.50
- Shafta:** Lovely subject for the rockery or border. The habit is trailing, the flowers a soft purplish-rose, and they come in late summer.... .25 2.00
- Venosa:** Curious rather than beautiful. Flowers somewhat resemble small balloons of greenish-white. 6 inches..... .25 2.50

SISYRINCHUM IRIDIFOLIUM (Satin Flower): (R) The plant itself looks exactly like an iris, but the flowers are distinct, in color cream with purple striping. A decided novelty for a semi-shaded spot..... .40 4.00

SPIREA FILIPENDULA HEXAPETALA: (R) Finely cut foliage with clusters of pretty, creamy flowers on 15-inch stems..... .35 3.50

SPIREA FILIPENDULA ULMARIA PLENA: Fern-like foliage, very good in itself, and in addition tall sprays of small white flowers. 2 feet. A very uncommon plant... .40 4.00

W. L. CRISSEY ALPINE GARDENS

Each Dozen

STACHYS CILIATA: (R) Bright green leaves variegated with white. The plant soon forms a nice clump and is particularly adapted to shady places. There are two colors of the flowers, and they are available separately; the lavender is really the more attractive. 6 inches.		
Lavender Stachys.....	.25	2.00
White Stachys.....	.25	2.00
STACHYS CORSICA: (R) A rare little carpeting plant, with tiny mimulus-like flowers of blush-white. Only 2 inches tall.....	.35	3.50
STACHYS LANATA "LAMB'S EARS": (R) The chief charm of this plant is its velvety foliage of pale gray-green. Especially good with lavender or mauve flowers.....	.25	2.50
STELLARIA GRAMINEA AUREA: (R) This forms an absolutely prostrate mat of yellow-green foliage. Should be planted where it will not encroach upon delicate neighbors.....	.25	2.50
STOKESIA CYANEA: Large aster-like flowers of lavender-blue, generously produced.....	.25	2.50
SWEET WILLIAMS: (See Dianthus Barbatus).		
SYNTHYRIS RENIFORMIS: (R) This most attractive plant is a native of the Cascade Mountains of the Pacific Northwest. It likes shade and leaf-mold. 6 inch spikes of soft blue35	3.50
SYNTHYRIS ROTUNDIFOLIA: (R) A dainty midget for shaded portions of the rock garden, or naturalizing in woods. Lavender flowers appear in very early spring. 3 inches. At its best in colonies of 10 to 50 plants.....	.25	2.50
TALINUM CALCYNUM: (R) A new hardy succulent, succeeding best in dry sunny location. Rose colored flowers float on airy ten inch stems, appearing only in the afternoon, but continuously borne throughout the summer. This is good.....	.35	3.50
TEUCRIUM FLAVUM: An unusual plant. Hardy only in milder sections. Yellow flowers. 2 feet.....	.40	4.00
THALICTRUM ADIANTIFOLIUM: The leaves are just like a fine maidenhair fern, with one important difference—when cut for bouquets they last several days in perfect condition. The flower is inconspicuous. 2-year plants50	5.00
THALICTRUM AQUILEGIFOLIUM: Feathery lavender flowers in June and July. Like half shade. 5 feet.....	.30	3.00
THALICTRUM DIPTEROCARPUM: Small lavender flowers arranged in a perfect shower on very tall and much branched stems. A well-grown plant will attain a height of 6 feet. A sensation wherever shown.....	.50	5.00

THYMUS (Thyme)

Deliciously aromatic foliage is a feature of most of these. But they have good looks to recommend them besides. A sunny spot for them, please.

Each Dozen

Albus: (R) Creeping stems and tiny foliage, white flowers25	2.50
Azoricus: (R) Rare creeping sort.....	.35	3.50

R. F. D. 1, BORING, OREGON

	Each	Dozen
Citriodorus: (R) Delicious lemon scent. 8 inches	.25	2.50
Citriodorus Argenteis: (R) Silver leaved. 8 inches	.25	2.50
Citriodorus Aureis: (R) Golden leaved. 8 inches	.25	2.50
Lanuginosus: (R) Woolly leaved thyme, especially fine to fall over a dry wall. Trailing...	.25	2.50
Serphyllum: (R) Trailing, with pinkish-lavender flowers	.25	2.50
Serphyllum Albus: (R) Same, with white flowers	.25	2.50
Serphyllum Coccineus: (R) With crimson-purple flowers	.25	2.50
<hr/>		
TRITOMA—EXPRESS HYBRIDS: Luxuriant clumps of rush-like foliage of tropical appearance. Majestic spikes of orange and yellow flowers. 4 and 5 feet.....	.35	3.50
TRITOMA HYBRIDA ELEGANS MULTICOLOR: The last word in these gorgeous flowers. The handsome spikes range in color from cream through rose, salmon and orange to red. This year, small plants only.....	.35	3.50
TUNICA SAXIFRAGA: (R) A splendid filler and softener for the rock garden. The low clump of grassy foliage is quite obscured by the cloud of pale pink flowers resembling a miniature "baby-breath." Blooms all summer. Use generously.....	.25	2.50
TUNICA SAXIFRAGA ALBA: (R) Just a variation from the well-known pink sort. Flowers are white.....	.25	2.50
VERBASCUM PANNOSUM: The gray green leaves are of heavy, rich texture like velvet and very large and imposing. Bright yellow flowers are borne on a 6-foot stalk. For back of the border or a bold clump on the lawn it would be just the thing.....	.25	2.50

VERONICAS

The veronicas include some of the most delightful blues found in the garden. They are easily grown.

Bachhofeni: One of the very handsomest of this very large family. The azure flowers are arranged on loose spikes which grow from 18 inches to 2 feet tall.....	.35	3.50
Corymbosa Stricta: (R) Dense heads of dark blue. 9 inches.....	.35	3.50
Elegantissima: Beautiful rose flowers.....	.40	4.00
Gentianoides: (R) Pale blue flowers in early summer. 18 inches.....	.35	3.50
Incana: (R) Silvery foliage, deep blue flowers. 8 inches	.30	2.50
Longifolia Subsessilis: Two foot spikes of bright blue flowers from summer until fall. Good cutting material, and fine in the garden as well	.25	2.50
Pinnata: Finely divided, dainty leaves, with flowers of pale blue. Erect habit. 2 feet...	.35	3.50
Prenja: (R) This is seldom catalogued in America, but is a charming plant for rockery or perennial border. 9 inches. Soft blue is the color. Blooms with the irises and is a fine foreground for them.....	.35	3.50
Repens: (R) Only an inch tall, starred with azure blue flowers.....	.25	2.50

W. L. CRISSEY ALPINE GARDENS

Each Dozen

"Royal Blue": (R) Grows a foot tall and bears gentian blue flowers.....	.35	3.50
Rupestris: (R) A gem, with evergreen trailing foliage, and charming blue flowers in the utmost profusion.....	.25	2.50
Rupestris Rosea: (R) A pale pink form of the well-known Rupestris, which will be a real novelty in most rock gardens.....	.50	5.00
Saxatilis: (R) Mats of evergreen foliage, with intense blue flowers in the spring. 2 inches	.35	3.50
Spicata: Blue flowers of varying shades. 12 to 20 inches25	2.50
Spicata Alba: (R) 9 inch spikes of snowy white	.30	3.00
Spicata Nana: (R) Rich blue, the plants seldom exceeding 9 inches in height. Fine for rockery	.25	2.50
Spicata Rosea: (R) Spikes of rose flowers. 1 foot25	2.50

VIOLA GRACILIS—"G. WERMIG": (R) Deep purple, in form and color a close approach to the true violet. The plant soon forms a broad mat and blooms prodigally for six months of the year if the withered flowers are sheared. Unequaled for rich bedding effects, bordering a walk or drive.....	.25	2.00
--	-----	------

VIOLA—"JERSEY GEM": (R) NEW. This novelty has created a sensation throughout this country and Europe. In shape and color the flower resembles an immense violet, but to enhance its beauty the petals are noticeably ruffled or fluted. The flowers are borne from very early summer until very late fall. In cool weather, the stems are 6 inches long. It is supreme as a bedding or bordering plant. Full sun or light afternoon shade. 25c each, \$2.50 dozen, \$15 the hundred.

VIOLET—CALIFORNIA: Strong growing, with rich green leaves and large single violets of delicious scent.....	.25	2.50
---	-----	------

ZAUSCHNERIA CALIFORNICA: (R) Vivid scarlet flowers make this trailing plant wonderfully attractive in late summer and fall. Sometimes called "The trailing fuschia." Succeeds well in hot, rather dry place.....	.50	5.00
---	-----	------

SHRUBS

Only a few of these are offered. Most of them are too large to be sent to advantage to other than nearby points. Where small sizes are mentioned, they can be included with distant shipments when desired. Each Dozen

BUDDLEIA MAGNIFICA: "Butterfly Bush." Racemes of delightfully fragrant purple flowers in late summer, very attractive to the butterflies. Should be cut back within three feet of the ground in early spring. Flowers first season.		
Small plants.....	.25	3.00
Large50	5.00

Each Dozen

- COTONEASTER MICROPHYLLA:** One of the best of low-growing, evergreen shrubs. Horizontal branches are filled with bright red berries in winter.
 Small plants..... .50 5.00
 Large 1.00 10.00
- DAPHNE CNEORUM:** One of the finest shrubs for the rock garden. The flowers are pink with exquisite fragrance. 18 inches. Stocky plants. 6 inches tall..... 1.50
- LEYCESTERIA FORMOSA:** A very unusual shrub from the Himalayas. Creamy-white flowers and glossy-black fruits. The bark is vivid green in winter. For mild regions only. 6 feet..... 1.00
- LILAC:** Old-fashioned purple, of delicious scent and tender memories. Very large and heavy plants, for delivery in Portland only..... 1.00 10.00
- LILAC "PRESIDENT GREVY":** One of the very choicest French sorts. Double blue. Strong bushes. 3 feet tall..... 2.50
- PYRACANTHA COCCINEA:** A superb evergreen reaching a height of 10 feet or more and bearing large clusters of orange scarlet berries, which persist throughout the winter. Fast growing. Best planted against house or trellis.
 Very small bushes..... .50 5.00
 1 foot in height..... 1.00 10.00
 Specimen plants to..... 5.00
- ROSA HUGONIS:** From Northern China. The habit is drooping, each branch clothed its entire length with sulphur yellow single roses in May. It attains height of 6 feet. The handsomest shrub of recent introduction. 1-year plants in fall only..... .50 5.00
- SPIREA—VAN HOUTTE:** Gracefully drooping branches covered with clusters of small white flowers to their tips. Six feet tall. Sometimes called "Bridal Wreath."
 Small, stocky bushes..... .30 3.00
 Large bushes..... 1.00 10.00

CLIMBING ROSES

- American Pillar:** Strong growing, with huge clusters of single pink roses with yellow centers. These are followed by handsome scarlet seed pods. Extra heavy plants..... .75 7.50
- Dorothy Perkins:** Well-known variety, with fleecy clouds of miniature pink roses, each perfectly double. Dainty. Heavy plants..... .50 5.00
- Silver Moon:** As indicated in the name, this is a pure white single rose of exquisite shape. The foliage is very dark and glossy. Strong bushes .75 7.50

SHRUBS FOR THE ROCK GARDEN

The very low growing ones and those of slender growth will be found in the perennial list, as follows:

- Daphne Cneorum
- Erica Carnea Rosea
- Genista Ovata
- Genista Prostrata
- Helianthemums
- Penstemon Menziesii
- Polygonum Vacciniifolium
- Rosa La Marne

Cotoneaster Microphylla is splendid for the large rock garden.

LIST OF ROCK PLANTS

DESIGNED FOR READY REFERENCE

Description of these may be located either in the perennial list (where they appear in alphabetical sequence) or through the index in the back of this booklet.

Most of them like sun. Those marked LS do well in lightly shaded position, while S indicates deeper shade.

- | | |
|-----------------------------|-----------------------------|
| Acaena Glabra | Dianthus—All Sorts |
| Acaena Microphylla | Draba Altaica |
| Achillea Ageratifolia | Dracocephalum Nutans |
| Achillea Millefolium | Alpinum |
| Roseum | Dryas Sundermanni |
| Achillea Sericea | Edelweis |
| Achillea Setacea | Epilobium |
| Achillea Tomentosa | Nummularifolium |
| S Ajuga Genevensis | Erica Carnea Rosea |
| Allium Cyanium | Erigeron Mucronatus |
| Allium Stellatum | Erigeron Multiradiatus |
| Alyssum Rostratum | Rosea |
| Alyssum Saxatile | LS Erinus Alpinus |
| Citrinum | LS Erinus Alpinus Albus |
| Alyssum Saxatile | LS Erinus Alpinus Carmineus |
| Compactum | Eriophyllum Caespitosum |
| Androsace Primuloides | LS Erpetion Reniforme |
| LS Anemone Dichotoma | Erysimum Helveticum |
| LS Anemone Huphensis | Erysimum Pulchellum |
| Anemone Rivularis | Genista Nigricans |
| Anemone St. Brigids | Genista Ovata |
| Antennaria Umbrinella | Genista Prostrata |
| LS Aquilegia Alpina | Geranium Sanguineum |
| LS Aquilegia Alpina Superba | Geum Ciliatum |
| Aquilegia Oxysepala | Grape Hyacinths |
| Arabis Albida Rosea | Gypsophila Repens |
| Arabis Albida Variegata | Rosea |
| Arabis Alpina | Helianthemums |
| Arabis Alpina Flora Plena | Herniaria Glabra |
| Arabis Aubretioides | LS Heuchera Sanguinea |
| S Arenaria Balearica | LS Hutchinsia Alpina |
| Arenaria Caespitosa | Hypericum Calycinum |
| Arenaria Montana | Hypericum Fragile |
| Armeria Lauchleana | Hypericum Polyphyllum |
| Armeria Vulgaris | Hypericum Repens |
| Artemisia Canadensis | Iberis Tenoreana |
| Artemisia Frigida | Iris Arenaria |
| LS Asperula Odorata | LS Iris Cristata |
| Aster Beauty of Ronsdorf | LS Iris Gracilipes |
| Aster Mauve Cushion | Iris Pumilla |
| LS Aubretias | Iris Tectorum |
| LS Auriculas | Jasione Humilis |
| Bellis Perennis Monstrosa | Lavandula Purpurea Nana |
| Bellis Rotundifolia | Leontopodium Alpinum |
| Caerulescens | Liatrus Punctata |
| Bellium Minutum | Linaria Anticaria |
| Betonica Grandiflora | LS Linaria Cymbalaria |
| Calamintha Alpina | Linaria Organifolia |
| Calandrina Umbellata | Linum Narbonense |
| LS Campanulas | Linum Perenne |
| Cerastium Bieberstini | Lupinus Lyalli |
| Ceratostigma | Lychnis Alpina |
| Plumbaginoides | Lychnis-Viscaria |
| Cheiranthus Allionii | Splendens Plena |
| Cheiranthus Linifolius | Malvastrum Coccineum |
| Chrysanthemum | LS Mimulus Luteus |
| Maximum Arcticum | Muscari |
| Chrysanthemum | LS Myosotis Alpestris |
| Maximum Zawadsky | "Victoria" |
| Cistus "Sunset" | Nepeta Mussini |

Nierembergia Filicaulis	Satureia Montana
Papaver Pilosum	Saxifrage Aeizoon
Papaver Rupifragum	Saxifrage Aeizoon Rosea
Penstemon Menziesii	LS Saxifrage Mossy
LS Penstemon Ovatus	LS Saxifrage Megesea
Douglasi	Saxifrage Macnabiana
Penstemon Rattani Minor	Saxifrage Pyramidalis
Phlomis Alpina	S Saxifrage Umbrosa
Phlox Amoena	Scilla Campulata
Phlox Subulata	Sedums
Phyteuma Nigricans	Sempervivums
Phyteuma Wagneri	Silenes
Plumbago Larpentae	LS Sisyrinchium Iridifolium
Polemonium Humile	Spirea Filipendula
LS Polemonium Reptans	Hexapetela
Polygonum Vacciniifolium	LS Stachys Ciliata
Potentillas	Stachys Corsica
LS Primulas	Stachys Lanata
LS Pulmonaria Angustifolia	Stellaria Graminea Aurea
Azurea	LS Synthyrus Reniformis
LS Prunella Grandiflora	LS Synthyrus Rotundifolia
LS Prunella Webbiana	Talinum Calcynum
Rosa La Marne	The Thymes
Salvia Praetensis	Tunica Saxifraga
Santolina	Veronicas
Chamaecyparissus	Violas
Saponaria Ocymoides	Zauschneria Californica
Saponaria Versicolor	

GLADIOLI

No mid-summer flowers are quite so satisfactory in every respect as the "glads." Given half a chance, the plump brown bulbs are sure to send up one or two spikes of handsome bloom. In the perennial border, in front of shrubbery, as rows in the vegetable garden to furnish cut flowers for the house, or used in large beds for noble display, they are equally effective. As cut flowers they retain their beauty a week or more. Wonderfully artistic arrangements are possible through the use of heavy glass frogs in bowls of pottery or crystal.

The desirability of gladiolus bulbs does not depend upon size, but rather upon the conditions under which they are produced and cured. My own bulbs are not large but they are full of vitality and will give you the finest of flowers. Bulbs slightly undersize are always to be preferred to extra large ones. Give a location in full sunshine, plant the bulbs 5 to 6 inches deep, anytime after the ground can be nicely worked until the first of June. Fairly early planting gives best spikes.

Each Dozen

Alice Tiplady: A glowing saffron-orange makes this one of the most striking flowers among the dainty Primulinus Hybrids..... .10 1.00

<p>Anna Eberius: Deep, velvety purple with magenta cast. One of the finest dark ones and very popular. 20c each, \$2.00 the dozen.</p>

Bengal Tiger: Old rose ground with barbaric striping in darker shades. A high-class exhibition variety of recent introduction..... .20 2.00

Butterfly: Brilliant salmon, throat doubly blotched with deep maroon, the whole appearance reminding one of a butterfly in flight. Extra fine in garden masses. \$7.00 a hundred .10 1.00

W. L. CRISSEY ALPINE GARDENS

Each Dozen

- Cameo:** "Doesn't that remind you of a handsome old cameo?" It does. The flowers are large, many open at a time. Unique..... 1.00 10.00
- Catharina:** A soft gray blue, with deep blue blotch in throat. Distinctive..... .20 2.00
- Charlemagne:** A French kind of exceptional coloring. Sunrise red with darker pencilings. Very tall and vigorous..... .25 2.50

Crimson Glow: The color is extra fine, the size of the flower immense—6 inches in diameter is not unusual. 10c each, \$1.00 the dozen, \$7.00 the hundred.

- David Starr Jordan:** One of the best early reds. Usually each spike has several branches, materially prolonging the display in the garden.. .25 2.50
- Dorothy Wheeler:** Delicate rose pink Primulinus type15 1.50

E. J. Shaylor: Large flowers of deep rose color. It has an award of the British Horticultural Society to its credit—you know it's good. 15c each, \$1.25 the dozen, \$8.00 the hundred.

- Etendard:** Brilliance and delicacy combine in this sort, with blush petals displaying two vivid crimson blotches outlined in clearest yellow. From France20 2.00
- Evelyn Kirtland:** A grand coral pink, enhanced by deeper shade on lower petals. Finely shaped flowers on long spike..... .15 1.25
- Flora:** Clear light yellow. Large flowers of excellent substance. Tall..... .15 1.50

Gold Drop: A clear yellow "Prim" of very large size. If you like soft pastel shades for your house, plant these generously. 10c each, \$1.00 the dozen, \$6.00 the hundred.

- Golden Measure:** The finest large flowered, rich yellow gladiolus achieved. Tall and robust, often throwing two spikes from a single bulb25 2.50
- Golden West:** An orange-red, much like a tiger lily15 1.50
- Halley:** Coral pink and early. The yellow throat has light red lines. \$5.00 hundred..... .10 .75
- Herada:** Clear mauve, as charming as it is unusual. The flowers are large..... .10 1.00
- J. A. Carbone:** One of the largest and finest orange pinks50 5.00
- Jack London:** Light salmon with orange flame stripes. The flowers are big, the spike long. .25 2.50

At Both the Chicago and New York Flower Shows

Plants from my garden, expressed especially for that purpose, were featured in exhibit rock gardens done by customers in those cities. Distance is no bar to successful shipment.

London Smoke: In this we find those dull, lovely ashes of roses shades which are so unique and so strongly appealing to the discriminating taste. Try a few in a room with oriental coloring. 15c each, \$1.50 the dozen, \$10.00 the hundred.

Maiden's Blush: A delicate pink Primulinus largely grown for the florists.....	.15	1.50
Maude Fay: Clear Cattleya pink, like a huge orchid25	2.50
Mephistopheles: Rather a startling combination of red, yellow and black.....	.30	3.00
Mrs. H. E. Bothin: Pale pink with crimson throat, the petals heavily ruffled. This flower never fails to arrest attention.....	.25	2.00
Mrs. William Kent: Fawn shading into rose. Strong growing.....	.25	2.50
Mrs. Frank Pendleton: Pink with crimson blotch, like an immense Lady Washington geranium	.10	1.00
Mrs. Frederick Peters: Largest and finest lavender on the market.....	.25	2.50
Mrs. Leon Douglas: Originator describes this as begonia rose, striped with scarlet. It is extra fine30	3.00
Mrs. John R. Walsh: A pink and crimson flower of such vigor, size and beauty that it is in a class of its own.....	.40	4.00
Muriel: Finest blue of all for garden effect. It is wonderfully good looking when cut, as well	.25	2.50
Myra: Giant "Prim" in tones of soft yellow and pink15	1.25
Pola Negri: Apricot flushed with pink, an exquisite combination.....	.50	5.00
Primulinus Hybrids: Soft yellows in combination with orange, pink, terra cotta, rose and similar shades make these distinct. Flowers are of moderate size, hooded in shape and often heavily ruffled. The strain offered is a superior one with many choice named ones in it. Plant generously (not less than 50 if you have the room) and arrange in clear glass bowls. \$5.00 hundred75
Prince of India: The aristocrat of the garden. A background of ashes of roses, markings of dull blue and smoke-gray combine in subtle harmony50	5.50
Purple Glory: A magnificent flower of very deep reddish purple and velvet texture.....	.25	2.50
Red Amaryllis: Deep crimson flower of immense size. Always a center of attraction at exhibits, where almost every order taken includes it20	2.00
Rose Ash: Ashes of roses, the softest and most pleasing shade imaginable. As distinctive as it is good looking.....	.25	2.50
Violet Glory: Deep violet flowers with ruffled petals25	2.50

W. L. CRISSEY ALPINE GARDENS

Each Dozen

White Glory: A distinct blue marking in the throat gives pleasing emphasis to the white ruffled petals25	2.50
Named Mixed: Made up of remnants and accidental mixtures, many extremely desirable sorts are embraced in this. An exceptional value. \$3.50 hundred.....		.50

Note—The size and beauty of the flower does not depend on the size of the bulb. Some varieties just naturally produce larger bulbs than others.

Harvesting Your Gladiolus Bulbs

About November 1 dig your bulbs, cutting the tops off right at the bulb. Dry in shady, airy place for a few days, then twist off the old last year's bulb, which is of no further use. The little bulbs, if of valuable varieties, are put in paper bags and kept to plant like peas in the spring. The large bulbs are dried a few days longer, then stored in cool dry place, free from frost, in open boxes or trays.

PACKING PLANTS FOR SHIPMENT

Packed with care in damp moss, plants usually reach their destination as fresh as when dug. They are sent with equal success to customers on the Pacific and the Atlantic Coast. Parcel post for small packages, express for the larger ones.

INDEX

Acaena	3
Achillea	3
Aconitum Wilsoni	3
Ajuga Genevensis	3
Allium	3
Alstromeria	3
Alyssum	4
Anchusa	4
Androsace Primuloides	4
Anemones	4
Antennaria Umbrinella	4
Aquilegia	4-5
Arabis	5
Arenaria	5
Armeria	5
Artemisia	5
Asclepias Tuberosa	5
Asperula Odorata	5
Asters	6
Astilbe	7
Aubretia	7
Auricula—See Primula	25-26
Bellis	7
Bellium Minutum	7
Betonica Grandiflora	7
Bleeding Heart—See Dicentra	11
Buddleia Magnifica	32
Calamintha Alpina	7

R. F. D. 1, BORING, OREGON

Calandrina Umbellata	7
Campanula	8
Canterbury Bells	9
Carnation	9
Centaurea	9
Cerastium Biebersteini	9
Ceratostigma Plumbaginoides—See Plumbago	25
Cheiranthus	9
Chelone Barbata	9
Chrysanthemum	9-10
Cistus "Sunset"	10
Clematis Tanguticus	10
Columbines—See Aquilegia	4-5
"Coral Bells"—See Heuchera	14
Cotoneasters	33
Daphne Cneorum	33
Delphinium	10
Dianthus	10-11
Dicentra Spectabilis	11
Doronicum	11
Draba Altaica	11
Dracocephalum Nutans Alpinum	11
Dryas Sundermanni	11
Edelweis—See Leontopodium	19
Epilobium Nummularifolium	11
Erica Carnea Rosea	11
Erigeron	12
Erinus	12
Eriophyllum Caespitosum	12
Erpetion Reniforme	12
Eryngium	12
Erysimum	12
Eulalia Japonica	12
Forget-me-Not—See Myosotis	21
Gaillardia	12
Galega Officinalis	12
Genista	12-13
Geranium Sanguineum	13
Gerardia	13
Geum	13
Gladioli	35-38
Grape Hyacinths—See Muscari	21
Gypsophila	13
Harpalium	13
Heather—See Erica	11
Helenium	13
Helianthemum	14
Helianthus	14
Hemerocallis	14
Herniaria Glabra	14
Heuchera Sanguinea	14
Hollyhocks	14
Hutchinsia Alpina	14
Hyacinthus Candicans	14
Hypericum	14-15
Iberis Tenoreana	15
Iris	15-19
Japanese Anemone	19
Jasione Humilis	19
Lavandula	19
Leontopodium Alpinum	19
Leucojum Vernalis	19
Leycesteria Formosa	33
Liatris Punctata	20
Lilacs	33
Lilies	20
Linaria	20
Linum	20

W. L. CRISSEY ALPINE GARDENS

Lobelia Cardinalis	20
Lupinus	20
Lychnis	21
Malvastrum Coccineum	21
Michaelmas Daisies—See Asters	6
Mimulus Luteus	21
Monarda	21
Muscari	21
Myosotis	21
Nepeta Mussini	21
Nierembergia Filicaulis	21
Onopordon Bracteatum	21
Papaver	22
Penstemon	22
Peonies	23-24
Peruvian Lily—See Alstromeria	3
Phlomis Alpina	24
Phlox	24
Physalis Francheti	24
Physostegia	24
Phyteuma	25
Platycodon	25
Plumbago Larpentae	25
Polemonium	25
Polygonum Vacciniifolium	25
Poppies—See Papaver	22
Potentilla	25
Primula—Primroses	25-26
Prunella	26
Pulmonaria Angustifolia Azurea	26
Pyracantha Coccinea	33
Pyrethrum	26
Rock Plant List	34-35
Rock Rose—See Helianthemum	14
Rosa La Marne	26
Roses	26-33
Rudbeckia	26
Salvia	27
Santalina Chamaecyparissus	27
Saponaria	27
Satureia Montana	27
Saxifrages	27
Scabiosa Columbiana	28
Scilla Campanulata	28
Sedums	28
Sempervivum	29
Shasta Daisy	29
Shrubs	32-33
Silene	29
Sisyrinchium Iridifolium	29
Spirea	7-29-33
Stachys	30
Stellaria Graminea Aurea	30
Stokesia Cyanea	30
Sweet Williams—See Dianthus Barbatus	10
Synthyris	30
Talinum Calcynum	30
Teucrium Flavum	30
Thalictrum	30
Thymes	30-31
Tritoma	31
Tunica Saxifraga	31
Verbascum Pannosum	31
Veronicas	31-32
Violas	32
Violet—California	32
Zauschneria California	32



Order Early

Shipment can be made at any desired time, but it will insure you against disappointment if the order is booked while stocks are complete. This is particularly true of rare Alpines.

*Japanese
Anemones*

Please Read This When You Order

Send remittance or bank reference with order. Please do not send orders under \$1.00.

Customers in Oregon and Washington will please include 10 per cent for transportation charges—if the package is light, extras will be added to more than compensate for this. If you prefer, package will be sent, charges collect.

Packages will be sent to other states with charges collect, either by express or parcels post, as you may specify.

This method is more satisfactory than attempting to quote postpaid prices, which must necessarily mean extremely small plants in many instances.

Six plants of a sort at the dozen rate; 50 of a sort at the hundred rate.

The greatest care is taken to supply stock true to name and effort is always made to satisfactorily adjust any error in this regard, but in accordance with the custom of the trade, no guarantee is given.

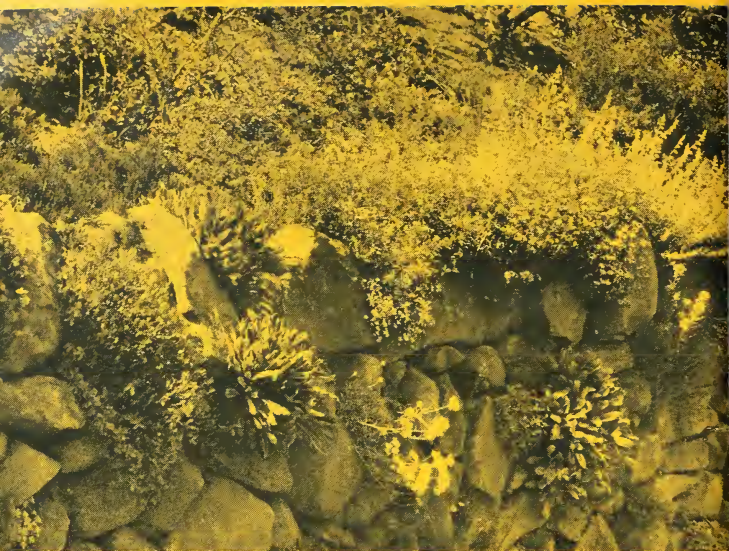
Make remittance to

W. L. Crissey

R. F. D. 1, Boring, Oregon

Long Distance Phone: Farmers 343, Gresham Exchange

Telegraph Address: Care Gresham Telephone
Exchange, via Portland, Oregon



Two Base Line Gardens

MUCH new fall planting has been done at my Rockwood place, ten miles east of Portland on the Base Line Road. These gardens will be retained until the summer only.

The main stock of the home gardens near Dodge Park, however, is being transferred to a location on the south side of the Base Line about two miles farther east than Rockwood, and visitors are invited to come there from March on.

This move has been made for the greater convenience of customers. East Stark Street leads directly into the Base Line, as does East Burnside. The permanent location of the new gardens is very near the well-known "Twelve Mile Corner."

