

Historic, archived document

Do not assume content reflects current scientific knowledge, policies, or practices.



Established 1875

Over 350 Acres

SPRING 1955

LIBRARY
RECEIVED
★ FEB 4 - 1955
U. S. Department of Agriculture

80 Years In Same Location

143 YEARS IN SAME FAMILY

**WHOLESALE
TRADE LIST**

OF THE

OLDEST NURSERY

IN

INDIANA

★★★

C. M. HOBBS & SONS, INC.

BRIDGEPORT, INDIANA

— Telephones —

Indianapolis: BELmont 1812

Plainfield 2644

TERMS AND CONDITIONS OF SALE

The prices named in this list cancel all previous quotations. Being based on current market conditions, they are subject to change without notice, and may be increased to include any Federal or State taxes levied on sales or any increase in the cost of labor or materials caused by Federal or State legislation or regulation. All sales are made with the understanding that we shall not be liable in event of crop loss, or of damage from other causes over which we have no control.

All goods are forwarded at purchaser's risk.

Claims for errors, deductions, etc., must be made with in ten days after goods arrive at destination to receive attention.

Terms of Payment—Account due 30 days from invoice date. These terms are offered only where satisfactory credit arrangements have been made. All accounts not paid promptly on the due date draw 6 per cent. interest from that date.

C. O. D. Shipments—Orders for C. O. D. shipments should be accompanied by cash for one-third of the amount of the order to insure acceptance.

Non-Warranty and Liability—We give no warranty, expressed or implied, as to the growth or productiveness of the Nursery Stock that we sell, our only guarantee being that it will be in good condition at the time that it leaves our hands. We exercise the greatest care to keep our varieties pure and true to name and hold ourselves in readiness to replace at all times, on proper proof, any Nursery Stock that may prove otherwise or to refund the amount paid, but it is mutually agreed that we shall at no time be liable for any amount greater than the amount originally paid for said Nursery Stock.

NOTE: We accept all orders subject to crop conditions and on condition that same shall be void should injury befall our stock from hail, fire, frost, error in count or other causes beyond our control. All orders are accepted for non-performance if labor shortages or delay in transportation should prevent us from making delivery.

Packing—The prices in this list do not include packing. All orders for forwarding by freight or express, except car-load lots, are carefully packed in boxes or bales for which a charge is made sufficient to remunerate for cost of materials and time. No charge is made for loading in bulk, in cars or trucks, but all trucks should carry sufficient tarpaulins to properly cover the stock.

Boxing Charges—Charges are made as low as possible for well-made boxes, paper lined:

30 x 30 x 10.....	\$8.50	24 x 24 x 8.....	6.50
30 x 30 x 8.....	7.50	24 x 24 x 6.....	5.50
Casket Boxes	3.50		

Bales \$1.00 to \$6.00, depending on size.

Location and Shipping Facilities—Nurseries and office are located in the center of Indiana, 6 miles directly west of Indianapolis on concrete road, U. S. 40. Hourly bus service from Indianapolis. Switch from main line Pennsylvania Railroad to our loading dock.

Truck Deliveries—Several responsible contract freight truck lines operate through Bridgeport with proper connections for transfers to many points, particularly in Illinois, Indiana, Iowa, Kentucky, Michigan and Ohio. Rates in most instances are the same as local freight rates.

Where customers wish to send their own trucks for bulk loading, it is advisable to give us three or four days advance notice so that we may have the material ready when the truck arrives and avoid delay.

Care should also be taken that all trucks carry sufficient tarpaulins to properly cover the stock.

EVERGREENS

(To string B & B stock, 10c extra)

ARBOR VITAE

	1 to 4	5 to 24	25 to 100
	Each	Each	Each
AMERICAN DARK GREEN			
15 to 18 inch	2.00	1.75	
18 to 24 inch	2.25	2.00	1.75
2 to 2½ feet	2.75	2.50	2.25
2½ to 3 feet	3.50	3.25	
3 to 3½ feet	4.00		
3½ to 4 feet	5.00		

GLOBE

10 to 12 inch	2.00	1.75
12 to 15 inch	2.25	2.00
15 to 18 inch	2.50	

ORIENTALIS

18 to 24 inch	2.00
2 to 2½ feet	2.25
2½ to 3 feet	2.50
3 to 3½ feet	3.00
3½ to 4 feet	4.00
4 to 4½ feet	5.00

ORIENTALIS COMPACTA

18 to 24 inch	2.25
2 to 2½ feet	2.50
2½ to 3 feet	3.00

PYRAMIDALIS — Special, Extra Heavy Plants of Fine Quality

	1 to 4	5 to 24	25 to 100
	Each	Each	Each
18 to 24 inch	2.25	2.00	1.75
2 to 2½ feet	2.75	2.50	2.00
2½ to 3 feet	3.50	3.25	3.00
3½ to 4 feet	4.50		
4 to 4½ feet	4.75		
4½ to 5 feet	5.25		
5 to 6 feet	5.75		

SIBERIAN

12 to 15 inch	1.75	
15 to 18 inch	2.00	1.75
18 to 24 inch	2.50	2.25
2 to 2½ feet	3.00	2.75
2½ to 3 feet	3.50	

BIOTA

AUREA NANA

12 to 15 inch	2.00	1.75	1.50
15 to 18 inch	2.50	2.25	2.00
18 to 24 inch	3.00	2.75	2.50
2 to 2½ feet	3.50	3.25	3.00



BIOTA AUREA NANA

Specimen plants of golden foliage—growing to about 5 feet in height.

JUNIPER

	Each	5 to 24 Each
ASHFORDI		
18 to 24 inch	1.75	
2 to 2½ feet	2.25	
BURKI		
18 to 24 inch	3.00	
2 to 2½ feet	3.50	3.25
2½ to 3 feet	4.25	4.00
3 to 3½ feet	5.00	
3½ to 4 feet	6.00	
CANNARTI		
2 to 2½ feet	4.00	
2½ to 3 feet	4.75	4.50
3 to 3½ feet	5.25	5.00
3½ to 4 feet	5.75	5.50
4 to 4½ feet	6.50	6.25
4½ to 5 feet	7.50	
5 to 6 feet	9.00	
COLUMNARIS		
2 to 2½ feet	3.50	
2½ to 3 feet	4.50	4.25
3 to 3½ feet	5.00	4.75
3½ to 4 feet	5.50	5.25
4 to 4½ feet	6.25	
4½ to 5 feet	7.25	
5 to 6 feet	8.50	

WHOLESALE PRICE LIST — SPRING 1955

JUNIPER (Continued)

	Each	5 to 24 Each
DEPRESSA PLUMOSA		
15 to 18 inch	3.25	
18 to 24 inch	3.75	
2 to 2½ feet	4.50	
FASTIGIATA		
18 to 24 inch	1.75	
2 to 2½ feet	2.25	
GLAUCA		
2 to 2½ feet	4.00	
2½ to 3 feet	4.75	
3 to 3½ feet	5.25	
3½ to 4 feet	5.75	
4 to 4½ feet	6.50	
HETZI		
15 to 18 inch	2.50	2.25
18 to 24 inch	3.00	2.75
2 to 2½ feet	4.00	
2½ to 3 feet	4.50	



JUNIPER KETELEERI

A beautiful evergreen to use for a hedge as well as a specimen.



JUNIPER CANNARTI

Well sheared and carefully grown to assure you the finest.

JUNIPER (Continued)

	Each	5 to 24 Each	25 to 100 Each
KETELEERI—Special, Early Heavy Shearing Assures Bushy Plants			
2 to 2½ feet	3.50	3.25	3.00
2½ to 3 feet	4.50	4.25	3.75
3 to 3½ feet	5.00	4.75	
3½ to 4 feet	5.50	5.25	
4 to 4½ feet	6.00		
4½ to 5 feet	7.00		
5 to 6 feet	8.00		

	Each	5 to 24 Each	25 to 100 Each
MASCULA — Special, Heavy Plants			
2 to 2½ feet	3.50	3.25	3.00
2½ to 3 feet	4.50	4.25	4.00
3 to 3½ feet	5.00	4.75	4.50
3½ to 4 feet	5.50	5.25	
4½ to 5 feet	7.00		
5 to 6 feet	8.00		

MEYERI

12 to 15 inch	2.50
15 to 18 inch	3.00
18 to 24 inch	3.50



JUNIPER PFITZER

A favorite of many—a spreading type for foundation, corner and entrance plantings.

	Each	Each 5 to 24	Each 25 to 100
PFITZER			
15 to 18 inch	3.25	2.75	2.50
18 to 24 inch	4.00	3.50	3.25
2 to 2½ feet	4.75	4.50	
			5 to 24
PFITZER BLUE			
		Each	Each
15 to 18 inch		3.50	
18 to 24 inch		4.25	
2 to 2½ feet		5.00	
PFITZER COMPACTA			
15 to 18 inch		3.75	
18 to 24 inch		4.50	
2 to 2½ feet		5.25	
PYRAMIDIFORMA (DUNDEE)			
2 to 2½ feet		3.50	3.25
2½ to 3 feet		4.50	4.25
3 to 3½ feet		5.00	
3½ to 4 feet		5.50	
4 to 4½ feet		6.25	
4½ to 5 feet		7.25	
5 to 6 feet		8.00	

JUNIPER (Continued)

	Each	5 to 24 Each
SARGENTI		
15 to 18 inch	3.25	
18 to 24 inch	4.00	
SCHOTTI		
2½ to 3 feet	4.50	
3 to 3½ feet	5.00	4.75
3½ to 4 feet	5.50	5.25
4 to 4½ feet	6.00	
4½ to 5 feet	7.00	
STRICTA		
12 to 15 inch	2.00	1.75
15 to 18 inch	2.25	2.00
18 to 24 inch	2.50	2.25
2 to 2½ feet	2.00	
SWEDISH		
18 to 24 inch	1.75	1.50
2 to 2½ feet	2.25	2.00
2½ to 3 feet	2.75	
VON EHRON		
15 to 18 inch	3.00	
18 to 24 inch	3.50	
2 to 2½ feet	4.50	
2½ to 3 feet	5.50	

PINE

MUGHO		
10 to 12 inch	2.50	
12 to 15 inch	3.00	
15 to 18 inch	3.50	
SCOTCH		
2 to 3 feet	5.00	
3 to 4 feet	6.50	
WHITE		
2 to 3 feet	5.00	

SPRUCE

NORWAY		
18 to 24 inch	2.50	
2 to 2½ feet	3.00	

TAXUS

BROWNI		
15 to 18 inch	5.50	
18 to 24 inch	6.75	
CAPITATA		
15 to 18 inch	5.00	
18 to 24 inch	5.50	
2 to 2½ feet	8.00	
2½ to 3 feet	10.00	
3 to 3½ feet	13.00	
3½ to 4 feet	15.00	

WHOLESALE PRICE LIST — SPRING 1955

CUSPIDATA

	Each	5 to 24 Each
15 to 18 inch	4.50	
18 to 24 inch	6.00	
2 to 2½ feet	7.50	

HATFIELD

15 to 18 inch	4.25	4.00
18 to 24 inch	5.00	4.75
2 to 2½ feet	6.00	5.75

HICKSI

15 to 18 inch	4.00	3.75
18 to 24 inch	4.75	4.50
2 to 2½ feet	5.50	

HONNEWELLIANA

15 to 18 inch	5.25	
18 to 24 inch	6.50	

INTERMEDIA

12 to 15 inch	4.75	
15 to 18 inch	5.50	
18 to 24 inch	6.75	
2 to 2½ inch	7.50	

OVATA

15 to 18 inch	4.25	
18 to 24 inch	5.00	

TSUGA (Hemlock)

18 to 24 inch	4.00	
2 to 2½ feet	5.00	
2½ to 3 feet	6.00	
3 to 3½ feet	7.00	
3½ to 4 feet	8.50	
4 to 4½ feet	10.00	

BROADLEAF EVERGREENS

BARBERRY

JULIANAE

12 to 15 inch	(B & B) 1.75	
15 to 18 inch	(B & B) 2.00	
18 to 24 inch	(B & B) 2.25	
2 to 2½ feet	(B & B) 2.50	

MENTORENSIS

	Each	5 to 24 Each	25 to 100 Each
12 to 15 inch70	.65	.60
15 to 18 inch80	.75	.70
18 to 24 inch	1.00	.85	.80
2 to 2½ feet	1.25	1.15	1.00

EUONYMUS

COLORATUS

	Each	5 to 24 Each
15 to 18 inch (B & B 50c extra)	1.65	
18 to 24 inch (B & B 60c extra)	2.00	



EUONYMUS PATENS AND EUONYMUS RADICANS ERECTUS

Fine for fillers with evergreens or to made a low hedge.

EUONYMUS (Continued)

	Each	5 to 24 Each
PATENS (UPRIGHT DWARF)		
12 to 15 inch	(B & B) 2.00	1.75
15 to 18 inch	(B & B) 2.50	2.25
18 to 24 inch	(B & B) 3.00	2.75
RADICANS ERECTUS		
12 to 15 inch	(B & B) 1.75	1.50
15 to 18 inch	(B & B) 2.25	2.00
18 to 24 inch	(B & B) 2.75	
VEGETUS (SPREADING)		
12 to 15 inch (B & B 50c extra)	1.25	1.15
15 to 18 inch (B & B 50c extra)	1.75	1.60

ILEX

OPACA

2 to 3 feet(B & B) 7.50

ROTONDIFOLIA

15 to 18 inch(B & B) 4.50

18 to 24 inch(B & B) 5.50

MAHONIA AQUIFOLIA

15 to 18 inch(B & B) 3.00

18 to 24 inch(B & B) 3.50

VIBURNUM

BURKWOODI

18 to 24 inch(B & B) 2.50

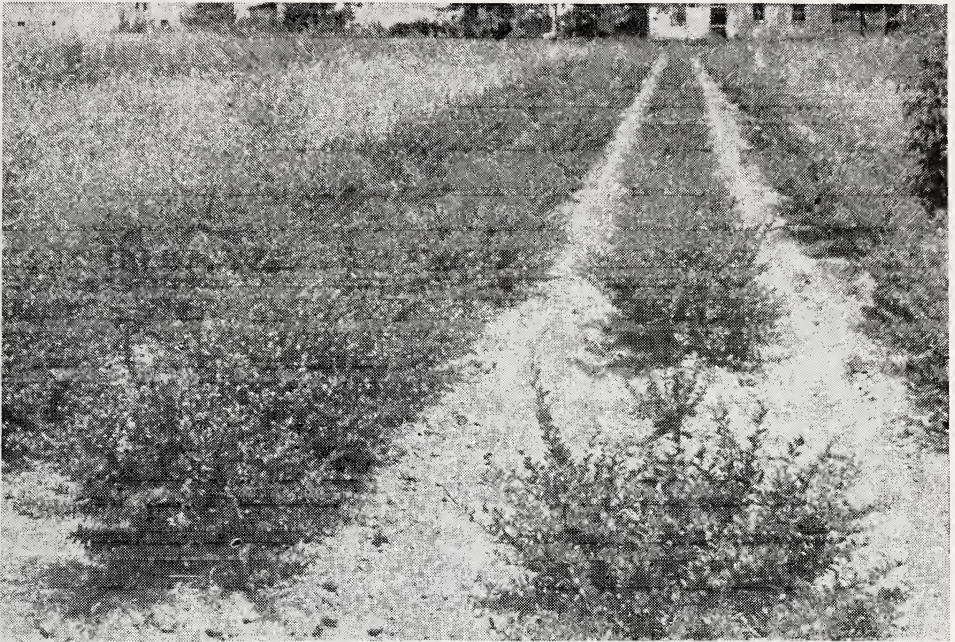
2 to 3 feet(B & B) 3.00

RHYTIDOPHYLLUM

15 to 18 inch(B & B) 2.50

18 to 24 inch(B & B) 3.00

2 to 3 feet(B & B) 3.50



BARBERRY MENTORENSIS

Bushy plants to use for hedges or specimens.

CONTAINER GROWN PLANTS

ONE GALLON CANS

	Each	5 to 49 Each
AZALEA	2.25	
EUONYMUS VEGETUS	1.50	1.35
MAHONIA	1.75	
RHODEDENDRON	3.25	
Catawbiense Grandiflora (L lac)		
Dr. H. C. Dresselhuys (Red)		
Rosem Elegans (Rose)		

TWO GALLON CANS

ILEX OPACA	2.00
PYRACANTHA	
Lalandi	1.75
Thornless	2.00

ORNAMENTAL DEPARTMENT

(ALL TREES LISTED OVER 8/10 FEET HAVE BEEN ROOT PRUNED WITHIN LAST TWO AND THREE YEARS.)

BALLED AND BURLAPPED CHARGES

2 to 3 feet	\$.90
3 to 4 feet	1.25
4 to 5 feet	1.50
5 to 6 feet	2.00
6 to 8 feet	2.75
8 to 10 feet	3.75
1¼ to 1½ inch caliper	4.50
1½ to 2 inch caliper	5.75
2 to 2½ inch caliper	7.00
2½ to 3 inch caliper	8.25
3 to 3½ inch caliper	13.00
3½ to 4 inch caliper	18.00

DECIDUOUS TREES

ASH

	Each	5 to 49 Each
AMERICAN WHITE		
5 to 6 feet	1.50	
6 to 8 feet	2.00	
8 to 10 feet	2.25	
1¼ to 1½ inch	2.75	
1½ to 2 inch	3.50	
GREEN		
5 to 6 feet	1.50	
6 to 8 feet	2.00	
8 to 10 feet	2.25	
EUROPEAN MOUNTAIN (Orange Berries in Fall)		
5 to 6 feet	2.00	
6 to 8 feet	2.50	
8 to 10 feet	3.00	

BIRCH (Cut Leaf Weeping)

5 to 6 feet (B & B \$1.00 extra)	2.50
6 to 8 feet (B & B \$1.50 extra)	3.50
8 to 10 feet (B & B \$2.00 extra)	4.00
EUROPEAN CLUMP — 3 STEM	
4 to 5 feet	2.50

CORNUS FLORIDA (Dogwood)

WHITE FLOWERING		
2 to 3 feet (B & B)	3.00	2.50
3 to 4 feet (B & B)	3.75	3.50
4 to 5 feet (B & B)	5.00	4.25
5 to 6 feet (B & B)	6.00	5.25
RUBRA RED		
2 to 3 feet (B & B)	4.00	
3 to 4 feet (B & B)	5.50	
4 to 5 feet (B & B)	7.00	

WHOLESALE PRICE LIST — SPRING 1955

CHINESE CHESTNUT

	Each	5 to 49
		Each
3 to 4 feet	2.50	
4 to 5 feet	3.00	
5 to 6 feet	3.50	
6 to 8 feet	4.25	
8 to 10 feet	5.00	

ELM (CHINESE)

5 to 6 feet	1.25
6 to 8 feet	1.50
8 to 10 feet	2.25
1¼ to 1½ inch	3.00
1½ to 2 inch	4.00

FLOWERING CHERRY

KWANZAN

3 to 4 feet	2.50
4 to 5 feet	3.00
5 to 6 feet	3.50

WEEPING

4 to 5 feet	4.50
-------------------	------

FLOWERING CRAB

ALDENHAM, ATROSANGUINEA, DOLGA, ELEYI
 FLORIBUNDA, HOPA, RED SILVER, SPECTABILIS,
 VON ESSELTINE, No. 804 and No. 821

1 YEAR: (3 to 5 feet)	1.00
2 YEAR:	

	Each	5 to 49	49 to 100
		Each	Each
In variety, 3 to 4 feet	1.00	.80	.75
In variety, 4 to 5 feet	1.25	1.10	1.00
In variety, 5 to 6 feet	1.50	1.35	1.25
In variety, 6 to 7 feet	2.00	1.75	1.50

2 YEAR. Almey, Sargenti, Zumi Calicarpa

3 to 4 feet	1.50
4 to 5 feet	1.75

BECHTEL'S DBL. FLG.

2 to 3 feet	1.00
3 to 4 feet	1.25
4 to 5 feet	1.50

FLOWERING PEACH (Red)

3 to 4 feet	1.25
5 to 6 feet (Pink and Red)	1.75

HACKBERRY

5 to 6 feet	2.00
6 to 8 feet	2.50
8 to 10 feet	3.00
1½ to 2 inch	6.00

HONEY LOCUST

	Each	5 to 49 Each
THORNLESS		
5 to 6 feet	2.00	
6 to 8 feet	2.25	
8 to 10 feet	3.00	
1¼ to 1½ inch	3.75	
8 to 10 feet (Special)	7.00	
MORAINÉ (Thornless) No Seed Pods (Patented)		
5 to 6 feet Whips	3.00	
6 to 8 feet	4.00	
8 to 10 feet	5.50	

HORNBEAM (Pyramidal)

3 to 4 feet (B & B)	5.00
4 to 5 feet (B & B)	6.50

LINDEN[®] (American)

5 to 6 feet	2.00
6 to 8 feet	2.50

MAGNOLIA

LENNEI	
3 to 4 feet (B & B)	6.50
NIGRA	
2 to 3 feet (B & B)	5.00
RUSTICA RUBRA	
2 to 3 feet (B & B)	5.00
SOULANGEANA	
2 to 3 feet (B & B)	5.00
3 to 4 feet (B & B)	6.00
4 to 5 feet (B & B)	7.50
5 to 6 feet (B & B)	8.50
STELLATA	
2 to 3 feet	7.50

MAPLE

CRIMSON KING	
5 to 6 feet	3.00
6 to 8 feet	4.00
JAPANESE RED LEAF (Dwarf Ornamental)	
12 to 15 inch (B & B)	3.00
15 to 18 inch (B & B)	4.00
NORWAY	
6 to 8 feet	3.50
8 to 10 feet	4.00
RUBRUM	
5 to 6 feet	2.75
6 to 8 feet	3.50
8 to 10 feet	4.50
1¼ to 1½ inch	5.50

WHOLESALE PRICE LIST — SPRING 1955

		Each	5 to 49 Each
SCHWEDLERI			
5 to 6 feet	3.00		
6 to 8 feet	4.00		
		5 to 24 Each	25 to 100 Each
SOFT MAPLE			
5 to 6 feet	1.50	1.35	1.00
6 to 8 feet	1.75	1.65	
6 to 10 feet	2.25	2.15	
		Each	5 to 49 Each
SUGAR			
6 to 8 feet	3.50		
8 to 10 feet	4.00		
1¼ to 1½ inch	5.00		
1½ to 2 inch	6.00		

MIMOSA

3 to 4 feet	1.00
4 to 5 feet	1.50
5 to 6 feet	2.00
6 to 8 feet	2.75

OAK

PIN (Palustris)	
5 to 6 feet	3.00
6 to 8 feet	3.75
8 to 10 feet	4.75
SCARLET	
5 to 6 feet	3.00
6 to 8 feet	3.75

POPLAR (Lombardy)

5 to 6 feet75	.60
6 to 8 feet85	.75
8 to 10 feet	1.00	.90
10 to 12 feet	1.25	
1½ to 2 inch	1.75	

PRUNUS (Flowering Plum)

CISTENA		
2 to 3 feet	1.00	
3 to 4 feet	1.25	
4 to 5 feet	1.50	
NEWPORT		
3 to 4 feet	1.25	1.15
4 to 5 feet	1.50	1.35
5 to 6 feet	2.00	1.75
6 to 7 feet	2.50	
TRILOBA		
2 to 3 feet	1.00	
3 to 4 feet	1.25	
4 to 5 feet	1.50	
5 to 6 feet	2.00	



PRUNUS NEWPORT

Many fine specimen trees with excellent color of foliage.

RED BUD

2 to 3 feet	Each	1.25
3 to 4 feet		1.50
4 to 5 feet		2.00
5 to 6 feet		2.50
6 to 7 feet		3.00

5 to 24
Each

SYCAMORE (Common)

5 to 6 feet	2.00
6 to 8 feet	2.25
1¼ to 1½ inch	3.50
1½ to 2 inch	5.00

1.75
2.00

SWEET GUM (Liquidamber)

3 to 4 feet (B & B)	3.00
4 to 5 feet (B & B)	4.00
5 to 6 feet (B & B)	5.00
8 to 10 feet (B & B)	10.00
1¼ to 1½ inch (B & B)	13.00
1½ to 2 inch (B & B)	15.00
2 to 2½ inch (B & B)	17.00
2½ to 3 inch (B & B)	19.00

WHOLESALE PRICE LIST — SPRING 1955

THORN (Crataegus)

	Each	5 to 49 Each
CORDATA (Washington Hawthorne)		
2 to 3 feet (B & B)	3.50	
3 to 4 feet (B & B)	5.00	
4 to 5 feet (B & B)	6.00	
CRUSGALLI (Cockspur Thorn)		
2 to 3 feet (B & B)	3.50	
3 to 4 feet (B & B)	5.00	
4 to 5 feet (B & B)	6.00	
5 to 6 feet (B & B)	7.50	
TOBA		
4 to 5 feet (B & B)	6.00	
5 to 6 feet (B & B)	7.50	

TULIP TREE

4 to 5 feet	2.25
5 to 6 feet	2.50

WILLOW

NIOBE

3 to 4 feet75
4 to 5 feet	1.00

PUSSY

3 to 4 feet75
4 to 5 feet	1.00
5 to 6 feet	1.25

THURLOW

4 to 5 feet	1.00	
5 to 6 feet	1.25	1.00
6 to 8 feet	1.50	1.25
8 to 10 feet	2.00	1.50
10 to 12 feet	2.50	

WISCONSIN

4 to 5 feet75
5 to 6 feet	1.00
6 to 8 feet	1.50
8 to 10 feet	2.00

TREE WISTERIA

No. 1 two-year Heads (B & B)	7.00
------------------------------------	------

ORNAMENTAL SHRUBS

BALLED AND BURLAPPED CHARGES

18 to 24 inch	\$.75
2 to 3 feet90
3 to 4 feet	1.25
4 to 5 feet	1.50
5 to 6 feet	2.00

ALMONDS, PINK

	Each
12 to 18 inch60
18 to 24 inch75
2 to 3 feet90
3 to 4 feet	1.15

ALTHEA—RED, WHITE, PINK, BLUE

2 to 3 feet75
3 to 4 feet90

ARALIA PENTAPHYLLA

12 to 18 inch50
18 to 24 inch60
2 to 3 feet75

BARBERRY MENTORENSIS (See Broadleaf Evergreens)

BARBERRY

	Each	5 to 24 Each	25 to 100 Each
RED LEAF			
10 to 12 inch45	.40	
12 to 15 inch50	.45	.40
15 to 18 inch60	.55	.50
18 to 24 inch75	.70	.65
THUNBERGI			
10 to 12 inch40	.35	
12 to 15 inch45	.40	.35
15 to 18 inch55	.50	.45
18 to 24 inch70	.65	.60

BEAUTY BUSH (Kolkwitzia)

	Each
12 to 18 inch60
18 to 24 inch75
2 to 3 feet90
3 to 4 feet	1.10

BUDDLEIA

EMPIRE BLUE, CHARMING, ROYAL RED, WHITE CLOUD

No. 160
-------------	-----

CALYCANTHUS

2 to 3 feet90
-------------------	-----

WHOLESALE PRICE LIST — SPRING 1955

CARAGANA ARBORESCENS

	Each
12 to 18 inch50
18 to 24 inch60

CORNUS (Dogwood)

CORNUS PANICULATA

12 to 18 inch50
18 to 24 inch60

SANGUINEA

18 to 24 inch60
2 to 3 feet70
3 to 4 feet85

SIBERICA (Red Branched)

12 to 18 inch50
18 to 24 inch60
2 to 3 feet70

STOLONIFERA

12 to 18 inch50
18 to 24 inch60
2 to 3 feet70

CORYLUS (Purple Filbert)

18 to 24 inch90
2 to 3 feet	1.10

AMERICANA

3 to 4 feet	1.25
-------------------	------

COTONEASTER

	Each	5 to 24 Each	25 to 100 Each
ACUTIFOLIA			
18 to 24 inch75		
2 to 3 feet	1.00		
APICULATA			
12 to 15 inch (B & B)	2.00	1.50	1.00
15 to 18 inch (B & B)	2.50	2.00	1.50
18 to 24 inch (B & B)	3.00	2.50	2.00
2 to 2½ feet (B & B)	3.50	3.00	2.50
2½ to 3 feet (B & B)	4.00	3.50	
DIVARICATA			
15 to 18 inch (B & B)	1.50		
18 to 24 inch (B & B)	1.75	1.50	
2 to 3 feet (B & B)	2.50	2.25	
3 to 4 feet (B & B)	3.00		

CYDONIA JAPONICA RUBRA (Red)

	Each
12 to 18 inch60
18 to 24 inch75
2 to 3 feet90

CRIMSON KING (Special)

18 to 24 inch	1.00
---------------------	------



COTONEASTER APICULATA

In sizes from 15 inches to 3 feet. A low shrub to use with evergreens
Glossy foliage, red berries.

DEUTZIA		Each
CRENATA		
2 to 3 feet80
3 to 4 feet95
GRACILIS		
12 to 15 inch80
15 to 18 inch90
LEMOINE		
2 to 2½ feet85
P. OF R.		
18 to 24 inch70
2 to 3 feet80
3 to 4 feet95
EUONYMUS		
ALATUS		
15 to 18 inch		1.00
18 to 24 inch		1.20
2 to 3 feet		1.35
ALATUS COMPACTA		
	Each	5 to 24 Each
12 to 15 inch85	.80
15 to 18 inch	1.00	.90
18 to 24 inch	1.25	1.15
EUONYMUS PATENS (See Broadleaf Evergreens)		
EUONYMUS VEGETUS (See Broadleaf Evergreens)		
		Each
EXOCHORDA		
2 to 3 feet85

WHOLESALE PRICE LIST — SPRING 1955

FORSYTHIA

	Each
FORTUNEI, SPECTABILIS, SUSPENSIA, SPRING GLORY	
18 to 24 inch60
2 to 3 feet70
3 to 4 feet85
4 to 5 feet	1.00

HONEYSUCKLE

FRAGRANTISSIMA, ROSEA, ZABELI	
12 to 18 inch50
18 to 24 inch60
2 to 3 feet70
3 to 4 feet85
4 to 5 feet (Rosea and Zabeli only)	1.00

HYDRANGEA

ARBORESCENS	
12 to 18 inch50
18 to 24 inch70
P. G.	
10 to 12 inch35
12 to 18 inch50
2 to 3 feet85

KERRIA JAPONICA

12 to 18 inch70
18 to 24 inch85
2 to 3 feet95

LILAC

COMMON PURPLE	
18 to 24 inch75
2 to 3 feet90
3 to 4 feet	1.15
4 to 5 feet	1.35
COMMON WHITE	
18 to 24 inch80
2 to 3 feet	1.00
3 to 4 feet	1.25
PERSIAN PURPLE	
18 to 24 inch60
2 to 3 feet75
3 to 4 feet	1.00
4 to 5 feet	1.25
NAMED FRENCH VARIETIES (Red, Purple, Pink, White, Blue)	
18 to 24 inch	1.25
2 to 3 feet	1.50
3 to 4 feet	2.00

MAHONIA (See Broadleaf Evergreens)

PHILADELPHUS

AUREA	
12 to 15 inch	1.25
15 to 18 inch	1.45

CORONARIUS

	Each
12 to 18 inch50
18 to 24 inch60
2 to 3 feet70

LEMOINE

12 to 18 inch50
18 to 24 inch60
2 to 3 feet70

VIRGINAL

12 to 18 inch50
18 to 24 inch60
2 to 3 feet70
3 to 4 feet85

5 to 49	50 to 100
Each	Each

AMUR RIVER NORTH (One and Two YEAR)

12 to 18 inch15	.12
18 to 24 inch20	.17
2 to 3 feet (2-year only)25	.20
3 to 4 feet (2-year only)30	.25

IBOLIUM (One and Two Year)

12 to 18 inch15	.12
18 to 24 inch20	.17
2 to 3 feet25	.20
3 to 4 feet30	.25

IBOTA (One and Two Year)

	Each
12 to 18 inch30
18 to 24 inch40
2 to 3 feet50
3 to 4 feet60

REGELS

12 to 18 inch45
18 to 24 inch60
2 to 3 feet75

RHAMNUS CATHARTICA

12 to 18 inch80
18 to 24 inch95
2 to 3 feet	1.10

RHODOTYPOS (White Kerria)

KERRIODES

18 to 24 inch65
2 to 3 feet80

RHUS (Sumac)

CANADENSIS

18 to 24 inch60
2 to 3 feet70
3 to 4 feet85

COTINUS (SMOKE TREE) Special, Bushy Plants, Extra Quality

	Each	8 to 49 Each
2 to 3 feet85	.75
3 to 4 feet	1.00	.90
4 to 5 feet	1.25	1.15
5 to 6 feet	1.50	1.35

WHOLESALE PRICE LIST — SPRING 1955

SNOWBERRY

VULGARIS (Indian Currant)

Each

18 to 24 inch50
2 to 3 feet60

SPIREA

ANTHONY WATERER

10 to 12 inch50
12 to 18 inch60
18 to 24 inch75

FROEBELI

10 to 12 inch40
12 to 18 inch50
18 to 24 inch65

THUNBERGI (Early White)

12 to 18 inch50
18 to 24 inch60

VAN HOUTTEI

12 to 18 inch40
18 to 24 inch50
2 to 3 feet60
3 to 4 feet70

TAMARIX

4 to 5 feet90
-------------------	-----

VIBURNUM (Snowball)

AMERICANUM

18 to 24 inch75
2 to 3 feet90
3 to 4 feet	1.10
4 to 5 feet	1.25

VIBURNUM BURKWOODI (See Broadleaf Evergreens)

CARLESI

15 to 18 inch (B & B)	2.50
18 to 24 inch (B & B)	3.00

DENTATUM

18 to 24 inch65
2 to 3 feet75
3 to 4 feet	1.00

DILATATUM

2 to 3 feet	1.00
-------------------	------

JUDDI

15 to 18 inch (B & B)	2.50
-----------------------------	------

LANTANA

18 to 24 inch85
2 to 3 feet	1.00

LENTAGO

2 to 3 feet	1.00
3 to 4 feet	1.25
4 to 5 feet	1.50

PLICATUM

18 to 24 inch85
2 to 3 feet	1.00

VIBURNUM (Continued)

	Each
SIEBOLDI	
18 to 24 inch85
2 to 3 feet	1.00
STERILE (Common Snowball)	
18 to 24 inch75
2 to 3 feet85
3 to 4 feet	1.00
TOMENTOSUM	
18 to 24 inch85
2 to 3 feet	1.00
3 to 4 feet	1.25

WEIGELA

BRISTOL RUBY (Patented)	
12 to 18 inch75
18 to 24 inch85
2 to 3 feet	1.00
3 to 4 feet	1.25
EVA RATHKE	
2 to 3 feet90
ROSEA	
12 to 18 inch50
18 to 24 inch60
2 to 3 feet75
3 to 4 feet90

WITCH HAZEL

12 to 18 inch50
18 to 24 inch60
2 to 3 feet75
3 to 4 feet90

ROSES

HYBRID TEA ROSES (Northern Grown)

	Each	Per 10	Per 25
EVERBLOOMING , strong 2-year No. 1 plants, bloom first year	\$.95	9.00	21.25
RED: Ami Quinard (darkest red); Christopher Stone; Crimson Glory; E. G. Hill; Etoile de Hollande; Grauss au Teplitz; Grenoble; McGredy's Scarlet; Margaret McGredy; Red Radiance.			
PINK: Countess Vandal; The Doctor; Editor McFarland; Edith Nellie Perkins; Picture; Pink Radiance			
WHITE: K. A. Victoria; McGredy's Ivory.			
YELLOW: Eclipse; Golden Rapture; Joanna Hill; McGredy's Yellow; Mrs. E. P. Thom; Mrs. P. S. du Pont; Soeur Therese.			
MULTI-COLOR: Autumn, Condessa de Sastago; Duq de Penaranda; President Hcoover; Talisman; Sam McGredy.			

PATENTED HYBRID TEA ROSES

Charlotte Armstrong (brilliant red)	\$ 1.50
Charles Mallerin (dark crimson)	1.80
Chrysler Imperial (deep red)	1.70
Confidence (light pink to yellow)	1.60
Forty-Niner (multi-color)	1.75
Fred Howard (rich yellow)	1.75
Golden Scepter (golden yellow)	1.50
Helen Traubel (luminous apricot)	1.70
Lowell Thomas (double canary yellow)	1.35
Mirandy (dark, red-black shading)	1.40
Mojave (apricot orange)	1.80
New Yorker (velvety scarlet)	1.25
Nocturne (cardinal red-shaded crimson)	1.35
Peace (golden yellow-shaded pink)	1.50
President Eisenhower (rose red)	1.70
Show Girl (deep pink)	1.40
Sutter's Gold (yellow-shaded orange and red, very fragrant)	1.40
Tallyho (bright pink to crimson)	1.40
Tiffany (pale pink)	1.80
Tom Breneman (coral pink)	1.60

	Each	Per 10	Per 25
CLIMBING ROSES	\$.75	\$ 7.00	\$15.00
American Beauty (red); Blaze (red); Countess Vandal (multi-color); Doubleloon, (copper and yellow); New Dawn (pink); Pauls Scarlet (one of the best); Silver Moon, (white); E. P. Thom (yellow); White Dawn.			

PATENTED CLIMBING ROSES

	Each
Crimson Glory	1.75
Dr. J. H. Nicholas (deep rose pink)	1.50
Goldilocks	1.75
Peace	1.35

	Each	Per 10	Per 25
POLYANTHA ROSES	\$.95	9.00	21.25
Else Poulsen (rose pink); Golden Salmon; Ideal (red); Lafayette (red) Alain (carmine red).			

ROSES (Continued)

PAENTED FLORIBUNDA ROSES

	Each
Betty Prior (red, turning pink)	1.10
Chatter (brilliant red)	1.10
Fashion (coral, overlaid with gold)	1.40
Goldilocks	1.10
Jiminy Cricket (apricot orange)	1.75
Ma Perkins (red and yellow, turning pink)	1.50
Pink Bountiful (begonia pink)	1.35
Pinocchio (salmon pink)	1.10
Red Pinocchio	1.10
Summer Snow (snow white)	1.10
Vogue (cherry coral)	1.40
World's Fair (deep crimson to scarlet)	1.10

GRANDIFLORA ROSES (Patented)

Queen Elizabeth (pure pink)	1.90
-----------------------------------	------

VINES

	Each	5 to 49 Each	50 to 100 Each
Ampelopsis (Boston Ivy)	\$.60	\$.55	\$
Celastrus Scandens (Bittersweet)50		
Clematis	1.00		
Mme. Andre (red); Henryi (white); Jackman (purple)			
English Ivy (Pots)70		
Halls Honeysuckle50	.45	.35
Purple Wisteria Grafts	1.00		
Silver Lace Vine75		

FRUIT DEPARTMENT

APPLE, Two Year, All Budded Trees

	Each	Per 10
XXLarge Size	1.00	9.00
11/16 and up85	7.50
9/16 to 11/1675	6.50
7/16 to 9/1655	5.00

↳ Benoni	↳ Hyslop	↳ Rome Beauty Dbl. Red
↳ Cortland	↳ Ida Red	↳ Staymans
↳ Delicious Dbl. Red	↳ Jonathan Red	↳ Staymans Dbl. Red
↳ Delicious Yellow	↳ Lodi	↳ Summer Rambo
↳ Duchess Dbl. Red	↳ Maiden Blush	↳ Turley
↳ Golden Sweet	↳ McIntosh Red	↳ Wealthy Red
↳ Grimes	↳ Northern Spy Red	↳ Winesap
↳ Grimes Top Worked 10c per tree extra	↳ Northwestern Greening	↳ Yellow Transparent
	↳ Polly Eades	↳ York Imperial Dbl. Red

	Per 10	Per 100
ONE YEAR (4 to 5 feet)	7.50	65.00
		Each

↳ DWARF APPLE..... 2.00

APRICOT (Coffing)

	Each
11/16	1.10
9/16	1.00

CHERRY, Sour, Two Year, Montmorency

	Each	Per 10
XXX	1.60	15.00
XX	1.40	13.00

CHERRY, Sour, One Year, Early Richmond

	Per 10	Per 100	Per 1000
11/16	11.00	100.00	900.00
9/16	10.00	90.00	
7/16	7.50	70.00	
5/16	5.00	40.00	

PEAR, Two Year

	Each	Per 10	Per 100
↳ ANJOU, BARTLETT, DUCHESS, ↳ FLEMISH BEAUTY, KIEFFER, SECKEL			
XX, large size	1.25		
11/16 and up	1.00	9.00	80.00
9/1690	8.00	70.00
7/1675	6.50	55.00

PLUM, Two Year

	Each	Per 10
↳ BRADSHAW, BURBANK, GERMAN PRUNE, LOMBARD, SHROPSHIRE, ↳ REINE CLAUDE, STANLEY PRUNE		
XX Large size	1.25	11.50
11/16 and up	1.10	10.00
9/16	1.00	9.00
7/1690	8.00

PEACH

↘ CHAMPION, ELBERTA, GOLDEN JUBILEE, HALE HAVEN,
 ↘ J. H. HALE, RED HAVEN, SHIPPER LATE RED

	Each
11/1690
9/1680
7/1670
5/1660

GRAPES, Two Year, No. 1

↘ Agawam20
↘ Brighton25
↘ Caco25
↘ Catawba20
↘ Concord (\$15.00 per 100)20
↘ Delaware25
↘ Fredonia20
↘ Niagara20
↘ Worden20

CURRANTS, Two Year, No.1

	Each	Per 10	Per 100
↘ Fays35	2.50	20.00
↘ Red Lake50	4.00	25.00

GOOSEBERRIES, Two Year, No. 1

	Each	Per 10
↘ Downing50	4.50

RASPBERRIES

	Per 25	Per 100
↘ Cumberland (black)	2.00	6.50
↘ Indian Summer (red, everbearing) Transplants, heavy	3.00	
↘ Latham (red) Transplants, heavy	3.00	11.00

BLUEBERRIES

↘ RANOCAS, JERSEY, CONCORD
 4-year (in pcts) Each 1.50

BLACKBERRIES

	Per 10	Per 25	Per 100
↘ Eldorado	1.50	2.50	7.00

ASPARAGUS

THREE YEAR, No. 1, heavy

	Per 10	Per 25	Per 100
Washington	1.00	2.00	5.00

RHUBARB

	Each	Per 10
McDonald (heavy)55	5.00
Victoria (Heavy)20	1.50
Chipman (heavy)55	5.00

STRAWBERRIES

(APRIL 1)

	Per 25	Per 50	Per 100	Per 500	Per 1000
Blakemore, little tart, large splendid bearer.....	\$ 1.00	\$ 1.50	\$ 2.50	\$10.00	\$17.50
Dunlap, sweet, medium size					
Dorsett, large good bearer					
Fairfax, good table berry					
Premier, good size, good canner					
Robinson, especially good for freezing					
Tennessee Beauty, midseason, glossy red, good for freezing					

EVERBEARING VARIETIES:

Gem, large, good quality, plant maker.....	1.50	2.25	3.00	12.50	22.50
Streamliner, excellent quality	1.50	2.25	3.00	12.50	22.50
			Per 25	Per 50	Per 100
Red Rich Everbearing, Patent No.993, large firm, good color, excellent flavor, perfect for freezing			4.00	7.00	12.00

PEAT MOSS

15 bushel bale	\$5.00
One-half bale	3.25
One-fourth bale	2.25



Look for This Sign 6 Miles West of Indianapolis on U. S. 40

