



LIBRARY NEWSLETTER

U. S. DEPARTMENT OF AGRICULTURE

LINCOLN BRANCH
Rudge & Guenzel Bldg.
Lincoln, 1, Nebraska

Vol. 3, No. 1

January 1944

PERIODICAL CIRCULATION

This is a list of the periodicals currently received in the Lincoln Branch. As we are revising our circulation list at this time, we should like to know which periodicals you wish to receive regularly. Magazines will be routed only to those responding to this request, so if you are receiving periodicals now, let us know if you wish to continue to see them.

For the information of the Department personnel not now on our circulation list, the procedure for routing periodicals is as follows. A routing slip is attached to each magazine noting the names and addresses of all the people receiving that publication. The first person receiving the magazine may keep it for THREE DAYS and then send it on to the next person on the list. This procedure continues until every one has seen the publication, and the last person on the list returns it to the Library. Please place the date and your initials beside your name before passing the periodical on.

Many of our periodicals have long circulation lists, and although an effort is made to supply a periodical for each twenty readers some magazines are old before their circulation is completed. In order to improve our periodical service to you we should like to make the following suggestions:

1. Request only as many periodicals as you can read and pass on promptly.
2. If there are titles on this list which appear to be of interest, but with which you are not familiar, ask us to send you a copy for examination before requesting them on circulation.
3. Instruct someone in your office to send periodicals on in your absence, writing "return later" after your name.
4. Be sure that all periodicals received are sent on to the next borrower within THREE DAYS, or sooner if possible.
5. Check the BIBLIOGRAPHY OF AGRICULTURE regularly for titles of interest and request these from the Library.
6. If it is necessary for you to see a magazine as soon as it is published, you will probably find it more satisfactory to purchase a personal subscription.
7. In checking this list indicate the number of people in your office who wish to see each periodical regularly.
8. Notify us promptly upon leaving the employ of the Department of Agriculture and of any change of address.

Check this list to indicate the titles you wish to have sent to you and return it to the Library NOT LATER THAN FEBRUARY 10, 1944.

THESE MAGAZINES ARE ISSUED MONTHLY UNLESS OTHERWISE NOTED.

- After the War (N.Y. Univ. Inst. on Post-war Reconstruction)
- Agricultural and Industrial Progress in Canada
- Agricultural Engineering
- Agricultural Extension Service News (Nebr. Ext. Serv.)
- Agricultural Leaders' Digest. Nine times yearly
- Agricultural News Letter. Bi-monthly. (DuPont de Nemours, E. I. & Co.)
- Agricultural Prices (BAE)
- Agricultural Research Bulletin (Swift & Co.)
- Agricultural Situation. (BAE)
- Agriculture in the Americas (Of. For. Agr. Relations)
- American Bee Journal
- American Cattle Producer
- American Economic Review. Quarterly
- American Egg and Poultry Review
- American Farm Bureau Federation. Official News Letter. Irregular.
- American Forests
- American Home
- American Journal of Public Health and the Nation's Health
- American Midland Naturalist. Bi-monthly
- American Naturalist. Bi-monthly
- American Nurseryman. Semi-monthly
- American Photography.
- American Political Science Review. Bi-monthly
- American Society of Agronomy. Journal.
- American Society of Civil Engineers. Proceedings. Ten issues yearly
- American Society of Farm Managers and Rural Appraisers. Semi-annually
- American Academy of Political and Social Science. Annals. Bi-monthly
- Appraisal Journal. Quarterly
- Better Crops With Plant Food. (Am. Potash Inst.)
- Better Homes and Gardens
- Bibliography of Agriculture (USDA Library)
- Biological Abstracts
- Botanical Gazette. Quarterly
- Boyce Thompson Institute for Plant Research, Inc. Contributions. Quarterly.
- Bread and Butter. Weekly
- Breeder's Gazette
- Capper's Farmer
- Cattleman
- Chemurgic Digest. Semi-monthly. (Natl. Farm Chemurgic Council)
- Child, The
- Children's Bureau Publications. Irreg.
- Climatological Data for Colorado (Also for Kansas, Montana, Nebraska, North Dakota, South Dakota, Wyoming)
- Colorado Conservation Comments. Quarterly. (Colo. Game and Fish Commission)
- Colorado Farm Bulletin. Quarterly. (Colo. Agr. Expt. Sta.)
- Colorado Wool Grower and Marketer Commodity Distribution Series. Irreg. (FDA)
- Congressional Record. Daily when Congress is in session
- Conservation Volunteer. Bi-monthly. (Minn. Conservation Dept.)
- Consumer Reports
- Consumers' Guide (USDA)
- Cooperative Digest
- Country Book. Quarterly
- Country Gentleman
- Crop Production. (BAE)
- Crops and Markets. Quarterly. (BAE)
- Current Farm Economics. Bi-monthly. (Okla. Agr. Expt. Sta.)
- Dairy Situation (BAE)
- Dakota Farmer. Bi-weekly.
- Dakota Zephyr. Quarterly. (So. Dak. SCS and Ext. Serv.)
- Demand and Price Situation. (BAE)
- Domestic Commerce (U. S. Dept. of Commerce)
- Ecological Monographs. Quarterly
- Ecological Society of America. Bulletin Quarterly
- Ecology. Quarterly
- Economic Annalist. Quarterly
- Economic Geography. Quarterly
- Electricity on the Farm
- Engineering News Record. Weekly
- Experiment Station Record (U. S. Off. of Expt. Sta.)
- Extension Service Review (U. S. Ext. Serv.)
- Facts for Farmers
- Family Dollar, The. Quarterly
- Farm Credit Journal. Quarterly
- Farm Credit News. Quarterly
- Farm Economics. Irreg. (Cornell Univ.)
- Farm Implement News. Bi-weekly
- Farm Income Situation. (BAE)
- Farm Journal and Farmers' Wife

- Farm Labor Report (BAE)
 Farm Machinery and Equipment
 Farm Research, Quarterly. (N.Y. Agr. Expt. Sta., Geneva & Cornell)
 Farm Safety Review. Bi-monthly. (Natl. Safety Council Inc.)
 Farm Science Reporter. Quarterly. (Iowa State College)
 Farmer, The. Bi-weekly
 Farmer-Stockman
 Farmers' Digest
 Farmers' Elevator Guide
 Farmers Union Herald
 Fats and Oils Situation, The (BAE)
 Federal Register. Daily except Sundays, Mondays and days following legal holidays.
 Feed Situation (BAE)
 Fertilizer Review. Quarterly. (Natl. Fertilizer Assn.)
 Food Information Calendar. Weekly. (U. S. Off. of Information)
 Food Trade Letter. Irreg. (War Food Administration)
 Foreign Agriculture (Off. of Foreign Agr. Relations)
 Foreign Crops and Markets (Off. of For. Agr. Relations)
 Fortune
 Fruit Situation, The. Irreg. (BAE)
 Furrow, The. Bi-monthly. (John Deere Plow Co.)
 Gleanings in Bee Culture
 Harvester World (International Harvester Co.)
 Herbage Abstracts. Bi-monthly
 Highways: Current Literature. Weekly. (Bur. of Public Roads)
 Hoard's Dairyman. Semi-monthly
 Hygeia
 Illinois Farm Economics (Ill. Univ.)
 Independent Woman. (Natl. Fed. of Business & Professional Womens Clubs)
 Indians at Work. Bi-monthly (Off. of Indian Affairs)
 International Labour Review
 Iowa Farm Economist (Iowa State College)
 Journal of Agricultural Research. Semi-monthly. (USDA)
 Journal of Farm Economics. Quarterly.
 Journal of Forestry
 Journal of Home Economics. Ten times yearly.
 Journal of Land and Public Utility Economics. Quarterly.
 Journal of Wildlife Management. Quarterly
 Kansas Agricultural Situation. Irreg. (Kan. Agr. Expt. Sta.)
 Kansas Farmer. Bi-weekly.
 Kansas Fish and Game (Kan. Forester & Game Commission)
 Labor Information Bulletin (U. S. Dept. of Labor)
 Land, The. Quarterly. (Friends of the Land)
 Land Policy Review. Quarterly. (FAE)
 List of Selected United States Government Publications. Semi-monthly.
 Livestock and Wool Situation (BAE)
 Livestock, Meats and Wool, Market Reviews and Statistics. Weekly. (War Food Admin.)
 Living Wilderness (Wilderness Society)
 Manpower Review (War Manpower Commission)
 Marketing and Transportation Situation (BAE)
 Michigan Agricultural Experiment Station. Quarterly Bulletin. Quarterly.
 Midwest Wool Growers News (Midwest Wool Marketing Cooperative)
 Montana Farmer. Bi-weekly
 Monthly Checklist of State Publications. (Library of Congress)
 Monthly Labor Review. (Dept. of Labor)
 Monthly List of Available Publications of USDA
 Monthly Review of Agricultural and Business Conditions in the Ninth Federal Reserve District
 Monthly Review of Agricultural and Business Conditions in the Tenth Federal Reserve District
 Monthly Weather Review (U.S. Weather Bureau)
 National City Bank of New York
 National Food Situation (BAE)
 National Grange Monthly
 National Wool Grower
 Nation's Agriculture
 Nature Magazine
 Nebraska Farmer. Bi-weekly
 News for Farmer Cooperatives (Farm Credit Admin.)
 North Dakota Agricultural Experiment Station Bimonthly Bulletin. Bi-monthly
 North Dakota Outdoors (N.D. Game & Fish Dept.)
 North Dakota Union Farmer. Bi-weekly
 Nutrition. Quarterly (Quaker Oats Co.)
 Nutrition News Letter (Food Distribution Admin.)
 Outdoor Nebraska. Quarterly. (Nebr. State Game, Forestation & Park Comm.)

Parks and Recreation. Bi-monthly
 Personnel. Bi-monthly
 Personnel Administration. Ten times yearly
 Personnel Journal
 Photogrammetric Engineering. Quarterly
 Pittman-Robertson Quarterly. Quarterly. (U.S. Fish and Wildlife Service)
 Poultry and Egg Situation (DAE)
 Practical Home Economics. Eleven times yearly
 Public Administration Review. Quarterly
 Public Health Reports. Weekly. (U.S. Public Health Service)
 Public Policy Digest of the National Planning Association. Ten times yearly
 Public Roads. Quarterly. (Bur. of Public Roads)
 Public Welfare in South Dakota (S. D. Dept. of Social Security)
 Rural Electrification News (REA)
 Rural Sociology. Quarterly
 Safety Bulletin (U.S. Compensation Commission)
 Science. Weekly
 Science News Letter. Weekly
 Scientific Agriculture
 Scientific Monthly
 Seed World. Bi-weekly
 Social Security Bulletin (U.S. Social Security Board)
 Soil Conservation (SCS) (SCS personnel receive this from their Information Division)
 Soil Science

Wyoming Wild Life
 Your Farm

South Dakota Business Review. Quarterly. (Univ. of So. Dak.)
 South Dakota Conservation Digest (S.D. Game & Fish Dept.)
 South Dakota Union Farmer. Bi-weekly
 Successful Farming
 Survey Graphic
 Survey Mid-Monthly
 Survey of Current Business (U.S. Dept. of Commerce)
 Survey of Current Business. Weekly. (U. S. Dept. of Commerce)
 Swift & Company Agricultural Research Bulletin. Irreg.
 Think (Natl. Business Machines)
 Through The Leaves. Bi-monthly (Great Western Sugar Company)
 United Nations Review
 University of Nebraska News. Irreg.
 USDA Summary. Irreg. (USDA)
 Vegetable Situation. Irreg. (DAE)
 Vital Speeches of the Day. Bi-weekly
 Wallaces' Farmer and Iowa Homestead. Bi-weekly
 War Letter for Agriculture. Irreg. (USDA)
 Western Farm Life. Bi-weekly
 Western Livestock Journal. Weekly
 Wheat Situation (DAE)
 Wheat Studies of the Food Research Institute. Bi-monthly.
 Wildlife Review. Irreg. (U.S. Fish and Wildlife Service)
 Wood Preserving News. (Amer. Wood Preservers Assn.)
 Wyoming Stockman-Farmer

UNITED STATES DEPARTMENT OF AGRICULTURE
 LINCOLN BRANCH LIBRARY
 Rudge & Guenzel Building
 Lincoln, 1, Nebraska

Penalty for Private Use to Avoid
 Payment of Postage, \$300



LIBRARY NEWSLETTER

U.S. DEPARTMENT OF AGRICULTURE

LIBRARY SERIAL RECORD
★ FEB 25 1944 ★
U.S. DEPARTMENT OF AGRICULTURE

LINCOLN BRANCH

Rudge & Guenzel Bldg.
Lincoln, 1, Nebraska

February 1944

INTRODUCING FORM AD-245

In order to save your time and ours we are encouraging the use of Form AD-245 in requesting publications from the Library. This is a standard U.S.D.A. form and can be obtained from your regional supply center on regular requisition. The Lincoln Branch also has a small supply for distribution.

This form may be used to request both books and periodical articles and should contain the following information:

For Books:

1. Call number when readily available

This is given for most of the titles listed in the NEWSLETTER and for all entries in the BIBLIOGRAPHY OF AGRICULTURE.

2. Author
3. Title

For Periodical Articles:

1. Author (of article requested)
2. Title (of article requested)
3. Name of periodical
4. Volume and number of periodical
5. Inclusive pages of article
6. Date of periodical

Please give all the information you have, but do not hesitate to send in a request if you know only the title or the author and subject. Continue to send your requests for information on subjects by memorandum or card. Room, telephone, and table number are not necessary for field request, but be sure to give your address.

A copy of AD-245 is attached. These come in pads of one hundred and we suggest that you send a request for your supply today. The request blank in the NEWSLETTER will be discontinued after this number.

SELECTED LIST OF RECENT ACCESSIONS

Waring, P. Alston and Teller, Walter Nagnes. **ROOTS IN THE EARTH, THE SMALL FARMER LOOKS AHEAD.** 202 p. illus. New York and London, Harper & Brothers, 1943. 30 W232.

William Clayton Pryor, Head, Section of Educational Relations, Soil Conservation Service, Washington, D. C. reviews this book in the February issue of SOIL CONSERVATION. He writes in part:

"...This is not to say that ROOTS IN THE EARTH is merely interesting--it is one of the most searching books about America that I have read for quite a while...

"Mr. Waring and Mr. Teller discuss the fundamental problems--social, economic, agronomic, and political--which beset the great majority of American farmers, the men and women who operate the country's 'family-size' farms--the men and women who have roots in the earth because they love their land.

"They discuss these problems and their causes and effects, with frank particularity, and tell what they think is necessary to solve the problems. Because these authors are farmers, and therefore know from hard experience what they are writing about, what they say has the solid sound of fact rather than the hollow note of theory...

"Mr. Waring and Mr. Teller profess to have 'no blueprint for the agriculture of the future,' but they leave the reader with a pretty clear idea of what will have to be done. At times they paint a dark picture, but they point out the way to the ultimate achievement of the goal, a sound productive, and permanent agriculture that will give the great army of American live-on-the-farm farmers a chance at a decent life...

"It is a book for all Americans who want America to move forward instead of backward, and become a better place for people to live in."

See Mr. Pryor's complete review on page 190 of the February 1944 issue of SOIL CONSERVATION.

AGRICULTURAL ECONOMICS

Barger, Harold and Landsberg, Hans H. AMERICAN AGRICULTURE, 1899-1939. A STUDY OF OUTPUT, EMPLOYMENT AND PRODUCTIVITY. 440 p. National bureau of economic research, inc. 281.12 B23

"This volume presents new indexes of output, employment and output per worker in agriculture over four decades. The changing composition of the output of American farms is reviewed, and developments at home and abroad which have influenced consumption of foods and fibers are examined. This leads to a study of the sources of the nation's food supply, and of the trend in per capita calorie consumption. In addition, data for vitamin and mineral consumption, based upon the disappearance of food materials, are published for the first time."

CONCRETE

U. S. Bureau of reclamation. CONCRETE MANUAL. A manual for the control of concrete construction. 4th ed. 476 p., illus. Denver, Colorado, October 1942.

DEMOBILIZATION

U. S. National resources planning board. AFTER THE WAR--1918-1920. Military and economic demobilization of the United States, its effect upon employment and income. 45 p. charts. June, 1943.

ENGINEERING HANDBOOK

Urquhart, Leonard Church. CIVIL ENGINEERING HANDBOOK. 2nd ed. 877 p. New York, McGraw-Hill Book Company, Inc., 1940. 290 Ur 60 Ed. 2

Contents.--Surveying, by Raymond E. Davis.--Railway and highway engineering, by John B. Babcock, 3d.--Mechanics of materials, by Jesse B. Kommers.--Hydraulics, by Horace W. King.--Stresses in framed structures, by Leonard C. Urquhart.--Steel design, by Carlton T. Bishop.--Concrete, by Solomon C. Hollister.--Foundations, by Clement C. Williams.--Sewerage and sewage disposal, by Richard G. Tyler.--Water supply and purification, by Harold E. Babbitt.--Index.

FARM ANIMALS

Chapman, Paul W. VICTORY BARNYARD; how to produce your own meat, eggs, milk, and poultry. 221 p. illus. New York, McGraw-Hill book company, inc., c1943. 40 C362V.

"Here are simple yet explicit directions for the care, housing, feeding and processing of chickens, pigs, pigeons, squabs, goats, rabbits, and cows. Line drawings and diagrams are included in the text to illustrate simple and inexpensive means for housing the various animals."

FARM CREDIT

U. S. Bureau of Agricultural Economics. AGRICULTURAL FINANCE REVIEW. Volume 6, 1943. 95 p. Nov. 1943. 1.9 Ec78Af Vol. 6, 1943.

"An annual review of current developments and research in the field of farm credit, farm insurance, and farm taxation."

FISH

FISHES OF THE MIDDLE WEST. 44 p., illus. U. S. Dept. of the Interior, Fish and Wildlife Service Bulletin no. 34. 1943. 156 C76 no. 34.

FOOD

Hendrickson, Roy F. FOOD "CRISIS". 274 p. Doubleday, Doran and Company, inc. 1943. 389 H38.

The Directory of the U.S. Food Distribution Administration discusses our food problem and presents his view of the situation including distribution, rationing, military needs, price stabilization and subsidies.

Stanford University. Food research institute. WAR-PEACE PAMPHLETS. 3 nos. 1942-1943. 280.9 L532.

No. 1. Farnsworth, Helen C. Wartime food developments in Germany. September 1942.

No. 2. Brandt, Karl. Fats and oils in the war. June 1943.

No. 3. Davis, Joseph S. Food as an implement of war. The responsibilities of farmers. November 1943.

GARDENING

Burdett, James H. VICTORY GARDEN MANUAL. 128 p. Chicago, Ziff-Davis Publishing Co., c1943. 91.15 B892.

This is the official manual of the National Garden Bureau written by the Director of the Bureau. It is concise and easy to understand and contains many of the latest scientific discoveries in nutrition and horticulture.

Here are four other books to help you with your victory garden program:

Bailey, L. H. GARDENER'S HANDBOOK, successor to The gardener; brief indications for the growing of common flowers, vegetables and fruits in the garden and about the home. Macmillan, 1942. 90.02 B15G.

Kains, M. G. FOOD GARDENS FOR DEFENSE. Greenberg, c1942.

Nissley, Charles H. HOME VEGETABLE GARDENING. Rutgers University Press, 1943. 91.15 N63.

Rockwell, F. F. ROUND THE YEAR IN THE GARDEN: A seasonable guide and reminder for work with vegetables, fruits, and flowers, and under glass. Macmillan, 1939.

HYDRAULICS

U. S. Bureau of reclamation. HYDRAULIC AND EXCAVATION TABLES. 8th ed. 173 p. Washington, U. S. Govt. print. off., 1940. 156.85 H99 Ed.8.

MATHEMATICS

Page, Edward Lupton. TECHNIDATA HAND BOOK. Engineering, chemistry, physics, mechanics, mathematics. Definitions, laws, theory, formulas and tables, condensed for ready reference. New York, The Norman W. Henley publishing company, 1942. 330 P14.

MEDICAL ECONOMICS

DeKruif, Paul Henry. KAISER WAKES THE DOCTORS. 158 p. Harcourt, 1943. 448 D364.

"An enthusiastic account of the medical care of employees which Henry Kaiser has sponsored and Dr. Sidney Garfield developed first at the Coulee Dam and later at Kaiser's California shipyards. The author pays tribute to

the vision and the ability of both men, and sees in their work an agreement for group medicine, paid for by the patients, and free of government control." Shadid, Michael A. A DOCTOR FOR THE PEOPLE; the autobiography of the founder of America's first co-operative hospital. New York, The Vanguard Press, 1939. 120. Sh12.

This is the story of the co-operative hospital at Elk City in western Oklahoma where two thousand families pay \$25 a year and receive complete medical, surgical, and dental care for each member of the family.

POST WAR PLANNING

National Planning Association. Pamphlets. 5 nos: Washington, D. C. 1943-1944. 280.9 N2153

No. 24. Reconversion of industry to peace. 24 p. November 1943

No. 23. Bruner, J. S. Public thinking on post-war problems. 36 p. October 1943.

No. 25-26. Black, J. D. World needs for U. S. food and fiber. 70 p. November 1943.

No. 28. Benedict, M. R. Farm people and the land after the war. 26 p. November 1943.

No. 29. Food for Europe after victory. 42 p. January 1944.

PRUNING

Bailey, L. H. THE PRUNING-MANUAL, being the eighteenth edition, revised and reset, of the pruning-book, which was first published in 1898. 407 p., illus. New York, The Macmillan Company, 1943. 90.12 B15 Ed. 18.

Discusses tree-surgery, the handling of street and ornamental trees as well as fruit trees.

RED RIVER VALLEY

Pritchett, John Perry. THE RED RIVER VALLEY 1811-1849; a regional study. 295 p., illus. New Haven, Yale University Press, 1942. 134 P93.

"This is the story of the country drained by the Red River of the North.. This volume covers the colonization of the Red River Valley, the early years when it attracted the attention of French, English, Canadians, and Americans.. The book is almost wholly devoted to the years from 1811 to the middle of the century, and particularly to the vital decade from 1811 to 1821, when the future control of the Red River country was largely decided."

SEEDS

SEED TRADE 1944 BUYERS GUIDE. 242 p., illus. Published by Seed World.

SOCIAL SECURITY

Beveridge, Sir William. SOCIAL INSURANCE AND ALLIED SERVICES. Report by Sir William Beveridge. American edition. 299 p. tables. 1942. New York, The Macmillan company. 284.6 B46.

The Beveridge report on social security for England.

Canada. Special Commission on Social Security. REPORT ON SOCIAL SECURITY FOR CANADA. Prepared by I. B. G. Marsh for the Advisory Committee on Reconstruction. 145 p. tables. 1943. Ottawa, Edmond Cloutier.

SUBSIDIES

National Farmers Union. THE FARMER ABOUT SUBSIDIES. 31 p. illus. 1944. The National Farmers Union, Denver, Colo.

TREES

Collingwood, George Harris. KNOWING YOUR TREES. 213 p., illus. Washington, D.C. The American forestry association [1941].

Contains descriptions of 101 trees each one of which is typical of its species. Photographs taken in winter and summer show each tree, its leaf, bark, flower and fruit. The text is briefly and simply written and describes the botanical features of each tree, its range and habits, its uses and economic importance.

WATER LAW

U. S. National Resources Planning Board. STATE WATER LAW IN THE DEVELOPMENT OF THE WEST. Report to the Water Resources Committee by its subcommittee on state water law. 138 p. June, 1943. 173.2 N214St1.

WESTERN AMERICA

Hafen, LeRoy R. and Rister, Carl Coke. WESTERN AMERICA, THE EXPLORATION, SETTLEMENT AND DEVELOPMENT OF THE REGION BEYOND THE MISSISSIPPI. 698 p. illus. New York, Prentice-Hall, Inc., 1941. 135 H11.

A history concerned primarily with the problems of conquest and settlement of the West. The authors write on early explorations, colonization, Indian wars, territorial conquests, border traders and trappers, the livestock industry, reclamation, agrarianism and the rise of a regional culture.

*** LOST ***

Do you have any of the magazines listed below? None of these has been returned to the Library from circulation and all are many months overdue. If you have any of these in your office, or at home, will you return them, please? Many of our periodicals are bound and we need these missing numbers to complete our files.

Agricultural Engineering, April 1943
and June 1943
Agricultural Leaders' Digest, Febr. 1943
American Forests, Sept. 1942 and
February 1943
Better Homes and Gardens, July 1943
and August 1943
Boyce Thompson Inst. Contributions.
Jan.-Mar. 1942
Consumer Reports, June 1943
Country Gentleman, April 1943
Farmers Digest, July 1943
Fortune, April, May & June 1943
Herbage Abstracts, June 1942
Journal of Forestry, November and
December 1942
Journal of Wildlife Management,
July 1943

Personnel Administration, Jan., Febr.,
March, April, May, August 1943
Personnel Journal, Jan., Febr., March,
April, Sept., Oct. 1943
Public Administration Review,
Winter, 1943, Spring 1943
Science News Letter, Sept. 11, Sept. 18,
Sept. 25, 1943
Scientific Agriculture, June 1943
Soil Science, Nov., Dec. 1942,
Jan., March, June, July 1943
Successful Farming, June 1943
Vital Speeches of the Day, March 1,
March 15, April 1, April 15, May 1,
June 1, June 15, 1943

PERIODICAL CIRCULATION

Have you returned your 1944 periodical list? We are now revising our periodical circulation and unless we receive your list your name will automatically be dropped from our routing list. If you failed to receive the January 1944 NEWSLETTER, which listed the periodicals now being received by the Lincoln Branch, let us know and we will send you a copy.

U. S. Department of Agriculture Library
Lincoln Branch
Rudge & Guenzel Building
Lincoln, 1, Nebraska

_____ Date

Librarian:

Please send me the following:

I should also like to have material on the following subject:

_____ Name

_____ Agency & Title

_____ Address

Vol. 3, No. 2

HOW TO BOOK LOANS. 1. Books, pamphlets and other printed material except current
USE THE periodicals are loaned to any Department of Agriculture employee for per-
LIBRARY iods varying from one week to one month, depending upon the type of ma-
terial and the demand for it. 2. The loan period on current periodicals
is three days. 3. Books may be renewed unless there are others waiting to use
them. 4. The loan period begins the day the book reaches the borrower's office.
5. Requests for loans need not be limited to the titles listed in the NEWSLETTER.
Check the BIBLIOGRAPHY OF AGRICULTURE for current material on agriculture and re-
lated subjects. If we do not have the title desired we will try to borrow it from
another library. 6. Library material weighing four pounds or less may be returned
to the Library under frank. Any single book, regardless of weight, may be mailed
under frank. 7. We frequently have long waiting lists for the publications noted
in the NEWSLETTER. Names are added in the order received.

* * * * *

UNITED STATES DEPARTMENT OF AGRICULTURE
LINCOLN BRANCH LIBRARY
Rudge & Guenzel Building
Lincoln, 1, Nebraska

Penalty for Private Use to Avoid
Payment of Postage, \$300



LIBRARY NEWSLETTER

U. S. DEPARTMENT OF AGRICULTURE

LINCOLN BRANCH
Rudge & Guenzel Bldg.
Lincoln, 1, Nebraska

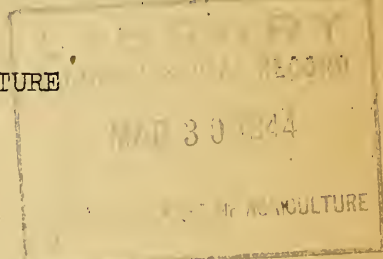
Vol. 3, No. 3

March 1944

CORRESPONDENCE COURSES

The Library has received an Announcement of GRADUATE SCHOOL CORRESPONDENCE COURSES for USDA employees. The courses have been developed in response to widespread demand and after a careful check of field personnel interests. Courses may be entered at any time and the following are now available.

- 332C. THE DEPARTMENT OF AGRICULTURE--ITS ORIGIN, STRUCTURE AND FUNCTIONS
- 414C. FEDERAL PERSONNEL PROCEDURE
- 422C. METHODS OF CONVEYING IDEAS
- 513C. STATISTICAL METHODS IN BIOLOGY AND AGRICULTURE
- 514C. LEAST SQUARES
- 581C. COMPARATIVE WORLD AGRICULTURE
- 626C. FEDERAL ADMINISTRATIVE MANAGEMENT
- 355C. FEDERAL GOVERNMENT ACCOUNTING
- 410C. FEDERAL AUDITING PROCEDURE
- 419C. VOCABULARY BUILDING
- 663C. LEGAL ASPECTS OF INVESTIGATIONS--CRIMINAL EVIDENCE AND PROCEDURE



For information on these courses see the Announcement mentioned above which we will be glad to send you on loan, or you may write your regional personnel office or the Graduate School, U. S. Department of Agriculture, Room 1031 South Agriculture Building, Washington 25, D. C.

Interesting reference materials to be used with the Graduate School courses are available from the Lincoln Branch. Here are a few of the titles and there are many others.

- Bartelt, E. F. ACCOUNTING PROCEDURE IN THE UNITED STATES GOVERNMENT PUBLIC ADMINISTRATIVE SERVICES. 325 B282
- Blanchard, W. O. and Visher, S. S. ECONOMIC GEOGRAPHY OF EUROPE. 278 B59
- Harding, T. Swann. SOME LANDMARKS IN THE HISTORY OF THE DEPARTMENT OF AGRICULTURE. 1940. 1.90 A2 Ag8 No. 2
- Mosher, W. E. and Kingsley, J. D. PUBLIC PERSONNEL ADMINISTRATION. 249.3 M85
- O'Brien, James C. YOUR FEDERAL CIVIL SERVICE. 249.3 Ob6
- O'Rourke, L. J. SELF AIDS IN THE ESSENTIAL OF GRAMMATICAL USAGE 200 Or6 (1939)
- Selko, Daniel T. THE FEDERAL FINANCIAL SYSTEM. 284 Se43
- Webster, Noah. DICTIONARY OF SYNCNYMS. 200 W39Sy
- Whitbeck, R. H. ECONOMIC GEOGRAPHY. 278 W58

SELECTED LIST OF RECENT ACCESSIONS

CATTLE INDUSTRY. WYOMING

- Spring, A. W. SEVENTY YEARS. A panoramic history of the Wyoming Stock Growers Association interwoven with data relative to the cattle industry in Wyoming. 273 p. Wyoming Stock Growers Association, 1943. 43 Sp8.

An account of early livestock range detectives, outlaws, trail drivers, cattle kings, and ranchmen governors. The book stresses the part played by the Wyoming Stock Growers Association in the development of the cattle industry in Wyoming.

FOOD

Black, J. D. FOOD ENOUGH. 269 p. Lancaster, Pennsylvania, The Jaques Cattrell Press, c1943.

A clearly written account of the food situation as it has developed in this war, covering military requirements, lend-lease, relief, and civilian needs, and measures which should be taken to meet these requirements.

GROUP DISCUSSION

Lindstrom, David E. CONDUCTING GROUP DISCUSSION. 16 p. Springfield, Ill., Illinois State Library, 1943.

A pamphlet on the importance, purpose, and methods of conducting group discussions. There is a selected bibliography.

IRRIGATION

U. S. Bureau of reclamation. MEASUREMENT OF IRRIGATION WATER. 5th ed. 51 p. Washington, U. S. Govt. print. off., 1940. 156.85 M46 Ed.5

Discusses weirs, submerged orifices, current meter gaging stations, parshall flumes. There are ten tables dealing with measurement of irrigation water.

LOG SCALING

McIntyre, R. W. and others. LOG SCALING. 157 p. illus. Portland, Oregon, and San Francisco, California, The Timberman, 1936. 99.4 L82.

In this volume information has been "gathered together to form the first and only complete treatise on log scaling offered the lumber industry."

PHOTOGRAPHY

Fraprie, F. R. and Jordan, F. I., editors. THE AMERICAN ANNUAL OF PHOTOGRAPHY, 1944. 206 p. Boston, American Photographic publishing co., 1943.

PHYSICS

Lindsay, R. B. STUDENT'S HANDBOOK OF ELEMENTARY PHYSICS. 382 p. New York, The Dryden Press, c1943. 334 L64

This book "is divided into three major sections: (1) A primer of the essentials of elementary physics; (2) an illustrated dictionary of the terms most commonly encountered in elementary physics; and (3) an appendix that offers formulas, mathematical and physical tables, and cultural stimulation as well."

POSTWAR FINANCE

Chase, Stuart. WHERE'S THE MONEY COMING FROM, problems of postwar finance. 179 p. New York, The Twentieth Century Fund, 1943. 280.12 C38W.

Mr. Chase is concerned with the need for a new way of regarding financial problems. He analyzes the nature of money and of the national debt, and traces briefly the economic history of the country before the depression, during the depression and during the war. For the postwar period, he advocates planning and a "compensatory economy" based on private business underwritten by government.

This is the third volume in the series entitled "When the War Ends". The first two titles are THE ROAD WE ARE TRAVELING: 1914-1942 and GOALS FOR AMERICA: A BUDGET OF OUR NEEDS AND RESOURCES.

POSTWAR PLANNING

Manitoba. University. THE MIDCONTINENT AND THE PEACE. THE INTERESTS OF WESTERN CANADIAN AGRICULTURE IN THE PEACE SETTLEMENTS. The Midcontinent and the Peace no. 2. 27 p. The University of Manitoba and the University of Minnesota in cooperation with the University of Minn. press, 1944.

RABBITS

Vail, Edward L., and McKenny, F. D. DISEASES OF THE DOMESTIC RABBITS. 28 p. illus. 1943. U. S. Dept. of the Interior, Fish and Wildlife Service, Conservation bulletin no. 31. 156 C76 no. 31.

RUBBER

Knorr, K. E. RUBBER AFTER THE WAR. 46 p. Food Research Institute, Stanford University. Febr. 1944. 280.9 L532 no. 4 (War-Peace pamphlet no. 4)

SWINE

Fairbanks, B. W. FEEDING THE SWINE THAT WILL HELP FEED THE NATION. 15 p. illus. 1943. Illinois Farmer's Institute, Springfield, Illinois. 389.7 F15.

UNITED NATIONS RELIEF AND REHABILITATION ADMINISTRATION

National Planning Association. UNRRA: GATEWAY TO RECOVERY. 84 p. National Planning Association. Febr. 1944. 280.9 N2153 No. 30-31.

"This pamphlet does not recommend policy. Rather it reports on the facts available to date--February 15th--on UNRRA's organization and on its purposes, with an objective estimate of the outlook for effective implementation of its aims."

SELECTED STATE PUBLICATIONS

CATTLE

Lasley, John F. and Bogart, Ralph. SOME FACTORS INFLUENCING REPRODUCTIVE EFFICIENCY OF RANGE CATTLE UNDER ARTIFICIAL AND NATURAL BREEDING CONDITIONS. 56 p. illus. Sept. 1943. Missouri agricultural experiment station research bulletin. 100 M693 (r) 376.

Stanley, E. B. and Bell, C. L. CATTLE FATTENING PROJECT 1942-1943, Salt River Valley Experimental Farm. 4 p. May, 1943. Arizona agricultural experiment station mimeographed report. 100 Ar4(m) 56.

Stanley, E. B. CATTLE FATTENING PROJECT, 1941, 1942. 4 p. table. May, 1942. Arizona agricultural experiment station mimeographed report. 100 Ar4(m) 45.

Stanley, E. B. and Rigden, J. T. THE CATTLE RANCHING INDUSTRY IN ARIZONA. 12 p. March, 1943. Arizona agricultural experiment station mimeographed report. 100 Ar4(m) 54.

Tretsven, J. O. DAIRY CALVES AND HEIFERS, THEIR CARE AND MANAGEMENT. 19 p. illus. Jan. 1943. Montana agricultural extension service bulletin. 275.29 M76C 215.

Trimberger, George W. and Davis, H. P. CONCEPTION RATE IN DAIRY CATTLE BY ARTIFICIAL INSEMINATION AT VARIOUS STAGES OF ESTRUS. 14 pp. Neb. Agr. Exp. Sta. Research Bulletin 129. April 1943. 100 N27(r) 129

CROPS

Brandon, J. F., Robertson, D. W., Binkley, A. M. and Kreutzer, W. A. FIELD BEAN PRODUCTION WITHOUT IRRIGATION IN COLORADO. 22 p., illus. Sept. 1943. Colo. Agr. Expt. Sta. Bul. 482. 100 C71S(b) 482.

Fluharty, L. W. and Hays, J. C. WILD-HAY-MANAGEMENT PRACTICES IN MODOC COUNTY. 34 p. illus. July, 1943. California agricultural experiment station. 100 C12S(b) 679.

Garver, S., Slatensek, J. M., and Kiesselbach, T. A. SWEETCLOVER IN NEBRASKA. 47 p. illus. Dec. 1943. Nebr. Agr. Expt. Sta. Bul. 352. 100 N27(b) 352.

Stroud, Rufus. FIELD-CROP EXPERIMENTS AT THE CONSERVANCY DISTRICT SUBSTATION, 1938-1942. 28 p. illus. April, 1943. New Mexico agricultural experiment station bulletin. 100 N47S(b) no. 304.

Swanson, A. F. and Laude, H. H. BARLEY PRODUCTION IN KANSAS. 38 p., illus. Oct. 1943. Kans. Agr. Expt. Sta. Bul. 318. 100 K13S(b)318.

DISEASES AND PESTS

Briggs, H. M. and Smith, H. C. PHENOTHIAZINE FOR CONTROL OF STOMACH WORMS IN SHEEP. 8 p. February, 1943. Oklahoma agricultural experiment station bulletin 100 Ok4(b) no. 263.

Farley, Herman. DISEASES OF FEEDER CATTLE IN KANSAS. 14 p. Dec. 1942. Kansas Agricultural experiment station circular. 100 K13S(c) 214.

Schuster, Max L., Forsyth, Dwight D. and Harrar, J. G. INFLUENCE OF CERTAIN DISEASES AND THRESHING INJURY ON FLAX STANDS IN WASHINGTON. 4 p. illus. March, 1943. Washington agricultural experiment station V circular. 100 W27E(vc) no.8.

FARM BUILDINGS

- Eudaly, E. R., Bentley, M. R. DAIRY BARN PLANS. 15 p. plans. 1943. Texas agricultural extension service bulletin. 275.29 T312 B-59.
- Promersberger, W. J. INSULATING FARM BUILDINGS. 11 p. illus. June, 1943. North Dakota Agr. Exp. Sta. Bulletin. 100 N813(b) no. 325.
- Wooley, J. C. FARM BUILDING REPAIR. 20 p. illus. Sept. 1943. Missouri agricultural experiment station circular. 100 M693(c) 279.

FARM MACHINERY

- Ferguson, John M. HOME-MADE FIELD ENSILAGE HARVESTER. 12 p. illus. April, 1943. Kansas Agricultural extension service circular. 275.29 K13E(c) 165.
- Jones, Mack M. and Hightower, Lloyd E. FARM TRACTORS, THEIR CARE, OPERATION AND MAINTENANCE. 36 p. illus. May, 1943. Missouri agricultural experiment station bulletin. 100 M693(b) no. 468.
- McCuen, G. W. and Silver, E. A. COMBINE HARVESTER INVESTIGATIONS. 22 p. illus. charts. July, 1943. Ohio agricultural experiment station bulletin. 100 Oh3S (b) no. 643.
- Mervine, E. M. and Barmington, R. D. MECHANICAL THINNING OF SUGAR BEETS. 18 p. illus. March, 1943. Colorado Agricultural experiment station bulletin 100 C71S (b) no. 476.
- Monson, O. W. RENTAL CHARGES FOR FARM MACHINERY. 8 p. tables. February, 1943. Montana agricultural extension service circular. 275.29 M76Ci 133.
- Thompson, Ned O. SHARING FARM MACHINERY. 14 p. tables. Jan. 1943. Arizona agricultural experiment station bulletin. 100 Ar4(b) no. 187.
- Tucker, E. A. and Nelson, Peter. DETERMINING RATES FOR MACHINE RENT AND CUSTOM WORK. 8 p. Tables. March, 1943. Oklahoma agricultural experiment station circular. 100 Ck4C no. 110.

IRRIGATION

- Christiansen, J. E. IRRIGATION BY SPRINKLING. 124 p. illus. and tables. October 1942. California agricultural experiment station bulletin. 100 C12S(b) no. 670.
- Code, W. E. USE OF GROUND WATER FOR IRRIGATION IN THE SOUTH PLATTE VALLEY OF COLORADO. 44 p., illus., map. Sept. 1943. Colo. Agr. Expt. Sta. Bul. 483. 100 C71S(b) 483.

JOB ANALYSIS

- Carter, R. M. LABOR SAVING THROUGH FARM JOB ANALYSIS I. DAIRY BARN CHORES. 66 p. illus. June, 1943. Vermont Agr. Expt. Sta. bulletin. 100 V59(b) 503.
- Pond, Esther. HELPS FOR STUDYING MOTION AND THE TIME IN HOUSEHOLD TASKS. 5 p., processed. Washington agricultural extension service mimeo 211. 275. 29 W27P (mim) 211.
- Pond, Esther. EVERY MOTION COUNTS WHEN THERE'S WORK TO BE DONE. 3 p., processed. Washington agricultural extension service mimeo. 210. 275.29 W27P(mim) 210.

PASTURES

- Bracken, A. F. and Evans, R. J. PASTURES. 48 p. illus. June, 1943. Utah agricultural college extension service. 275.29 Ut1(ns) 120.
- Trowbridge, E.A. and Dyer, A. J. GOOD PASTURE AND ROUGHAGE IN FATTENING CATTLE. 12 p. illus. April, 1943. Missouri agricultural experiment station bulletin. 100 M693(b) no. 466.

SOILS

- Myers, H. E., Hallsted, A. L. and others. NITROGEN AND CARBON CHANGES IN SOILS UNDER LOW RAINFALL AS INFLUENCED BY CROPPING SYSTEMS AND SOIL TREATMENT. 52 p. tables. July 1943. Kansas agricultural experiment station technical bulletin. 100 K13S(t) 56.
- Salter, F. J. SOIL TESTING AS A GUIDE TO SOIL MANAGEMENT. 4 p. Aug. 1939. Ohio Agricultural extension service. 275.29 Ch3S(b) no. 190.

TERRACING

- Nelson, Peter and Tucker, E. A. FARM TERRACING COSTS. 8 p. Jan. 1944. Oklahoma Agric. Expt. Sta. Bul. B-276. 100 Ok4(b) B-276.

U. S. DEPARTMENT OF AGRICULTURE PUBLICATIONS

- AGRICULTURE WHEN THE WAR ENDS, U. S. Department of Agriculture, Interbureau Committee on Postwar Programs. 57 p. Processed. Oct. 15, 1943. 1.90 C2In8Pag
Prepared by a special group of technical workers in the USDA, consisting of representatives from BAE, SCS, FS, REA, FSA, BHN and HE.
- DEVELOPMENTS IN RESEARCH OF REVEGETATION, compiled by D. A. Savage... 18 p. type-written 1942. 1.965 F2D49.
A summary of regrassing investigations conducted in the Southern Great Plains compiled from formal reports presented on October 14, 1942 at the meeting of the Revegetation and Stubble Mulch Committee at Woodward, Oklahoma.
- FERTILIZER CONSUMPTION IN 1941 AND TRENDS IN USAGE, by A. L. Mehring and Grace P. Vincent. 55 p. tables. Oct. 1943. Circular 689. 1 Ag84C.
- A GRAPHIC SUMMARY OF FARM ANIMALS AND ANIMAL PRODUCTS. (Based largely on the Census of 1940). 88 p. maps and charts. Dec. 1943. Miscellaneous publication 530. 1 Ag84M.
- GROWING BARLEY FOR MALT AND FEED, by H. V. Harlan and G. A. Wiebe. 19 p. illus. Rev. Nov. 1943. Farmers' bulletin 1 Ag84F 1732, rev.
- GROWING VEGETABLES IN TOWN AND CITY, by Victor R. Boswell and Robert E. Wester. 39 p., illus. Jan. 1944. Miscellaneous publication no. 538. 1 Ag84M
- HEDGE PLANTS FOR THE NORTHERN GREAT PLAINS, by Thomas K. Killand. 11 p. illus. June, 1942. Farmers' bulletin 1898. 1 Ag84F.
- MOBILIZATION GUIDE. How to mobilize your community to make food fight for freedom. 11 p., processed. 1943. U. S. War Food Administration. 1.9424 A2M71.
- PRACTICAL IRRIGATION, by M. R. Lewis. 69 p., illus. Jan. 1943. Farmers' bulletin. 1922. 1 Ag84F.
- RANGE AND LIVESTOCK PRODUCTION PRACTICES IN THE SOUTHWEST, 21 p. illus. November, 1943. Miscellaneous publication 529. 1 Ag84M.
- RURAL LEVEL OF LIVING INDEXES FOR COUNTIES OF THE UNITED STATES, 1940, by Margaret Jarman Hagood. 43 p. tables. Oct. 1943. U. S. Dept. of Agr. Bureau of Agricultural Economics.
- SAGEBRUSH BURNING... GOOD AND BAD, by Joseph F. Pechanec and George Stewart. 32 p. illus. Jan. 1944. Farmers' Bulletin 1948. 1 Ag84F.
- SAMPLING FLEECES FOR DETERMINING AVERAGE WOOL FINENESS by John I. Hardy and Harold W. Wolf. 8 p. tables. Sept. 1943. Circular 680. 1 Ag84C.
- SCHOOL LUNCH RECIPES. 48 p. recipes. Dec. 1943. Miscellaneous publication 537. 1 Ag84M.
- SOYBEAN AND KOREAN LESPEDEZA HAYS COMPARED WITH ALFALFA FOR WINTERING BEEF CALVES, by Earl W. McComas, M. W. Hazen and James E. Comfort. 8 p. tables. Jan. 1942. Circular 629. 1 Ag84C.
- SOYBEANS AND SOYBEAN PRODUCTS AS FOOD. 14 p. illus. Dec. 1943. Miscellaneous publication 534. 1 Ag84M.
- STUMPAGE AND LOG PRICES FOR THE CALENDAR YEAR, 1942. Compiled by Henry B. Steer. 128 p. tables. Jan. 1944. Statistical bulletin 79. 1 Ag84S.
- TOOL KIT FOR THE FOOD FIGHTS FOR FREEDOM PROGRAM. 13 nos. 1943. U. S. War Food Administration. 1.9424 A2F73.
- A VICTORY GARDENER'S HANDBOOK ON INSECTS AND DISEASES, by W. H. White and S. P. Deolittle. 30 p., illus. Febr. 1944. Miscellaneous publication. 1 Ag84M 525.
- WHAT POST-WAR POLICIES FOR AGRICULTURE? 13 p. The Farmer and the War, No. 7. 1 Ag84FW no. 7.
- DIAGNOSING BEE DISEASES IN THE APIARY, by C. E. Burnside and A. P. Sturtevant. 34 p. illus. July, 1936. Circular 392. 1 Ag84C.
- FARM ADJUSTMENTS AND INCOME ON TYPICAL CORN BELT FARMS, by Wylie D. Goodsell. 59 p. tables. Nov. 1943. Circular 688. 1 Ag84C.
- FARM BOOKKEEPING AND THE FEDERAL INCOME TAX. 14 p. (ct. 1943 (revision) Bureau of Agricultural Economics and Extension Service.
- THE FARM REAL ESTATE SITUATION 1942-43. By M. M. Regan, Fred A. Clarenbach and A. R. Johnson. 46 p. tables. October, 1943. Circular 690. 1 Ag84C.

TRAVEL LIBRARIES

Several travel libraries are now available for circulation and others are being assembled. Let us know if you wish to have one visit your office.

A description of the travel libraries will be found in the NEWS-LETTER for October 1943. If you do not have a copy of this issue write to the Library for information.

Are you planning your victory garden or a garden program? If so you will want to see our new VICTORY GARDEN packet which is now ready for circulation.

REQUEST FORM AD-245

Have you requested your supply of form Ad-245? Last month we introduced this form to be used in requesting books and periodicals from the Lincoln Branch. AD-245 is to be used in place of the request blank which formerly appeared here.

As we are now using the Ad-245 as a charge record it saves us a great deal of time if all requests come to us on this form. Otherwise it is necessary for us to transfer your request to the form before the book or periodical can be sent. In the interest of better service to you, we earnestly request your cooperation in the use of form AD-245.

These may be secured from your regular supply center or from the Lincoln Branch.

HOW TO USE THE LIBRARY BOOK LOANS. 1. Books, pamphlets and other printed material except current periodicals are loaned to any Department of Agriculture employee for periods varying from one week to one month, depending upon the type of material and the demand for it. 2. The loan period on current periodicals is three days. 3. Books may be renewed unless there are others waiting to use them. 4. The loan period begins the day the book reaches the borrower's office. 5. Requests for loans need not be limited to the titles listed in the NEWSLETTER. Check the BIBLIOGRAPHY OF AGRICULTURE for current material on agriculture and related subjects. If we do not have the title desired we will try to borrow it from another library. 6. Library material weighing four pounds or less may be returned to the Library under frank. Any single book, regardless of weight, may be mailed under frank. 7. We frequently have long waiting lists for the publications noted in the NEWSLETTER. Names are added in the order received.

UNITED STATES DEPARTMENT OF AGRICULTURE
LINCOLN BRANCH LIBRARY
Rudge & Guenzel Building
Lincoln, 1, Nebraska

Penalty for Private Use to Avoid
Payment of Postage, \$300

263
exp 5

LIBRARY NEWSLETTER

LIBRARY
CURRENT SERIAL RECORD
AGRICULTURE

U. S. DEPARTMENT OF AGRICULTURE

U. S. DEPARTMENT OF AGRICULTURE

LINCOLN BRANCH
Rudge & Guenzel Bldg.
Lincoln, 1, Nebraska

April 1944

Vol. 3, No. 4

SIGNED REVIEW

Holbrook, Stewart Hall. BURNING AN EMPIRE, the story of American forest fires. 229 p. Macmillan. 1943. 99.51 H69.

"Burning an Empire" is a book every conservationist should read. When North America was first settled the greatest single obstruction to agriculture was the trees that grew on the land. The plentifulness of our original forests and the desire of the settlers to dispose of them to make room for corn and wheat fields contributed to a great deal of carelessness on their part with the use of fire in clearing the land. It was very easy for them to let fires burn, with little thought of the future. It is not surprising that enormous forest fires developed

Individual burns frequently extended over a million acres and consumed not only the forest lands but farms, cities, and their inhabitants. Perhaps the first catastrophe to occur was the "Miramichi" fire that swept the Miramich Valley of New Brunswick in 1825. In 1871 a total of 1,152 people lost their lives in a 1,280,000 acre forest fire in Wisconsin, commonly referred to now as the "Peshtigo disaster." The Hinckley fire in 1894 that occurred in Minnesota, the enormous fires that occurred in the Douglas fir region in 1902 and the 1910 Montana and Idaho fires, and the more recent disaster in Minnesota in 1908 which destroyed the city of Cloquet, are all vividly described in this book. These great fires still occur, as is demonstrated by the Tillamwok burn of 1933.

The author outlines in rather vivid manner the influence that these and many thousands of other fires have had upon the American way of life and the destruction of wildlife, forests, and soil. His chapter on a "Long Hard Row", which points out the difficulties that have been encountered in the development of organizing fire protection, leads soil conservationists to believe we conservationists have had a fairly easy time in awakening our public to the necessity of doing something about soil erosion.

We have realized that there is little to be gained from improved crops, herds, farm machinery, and refinements in tillage practices unless some control of soil erosion is applied at the same time. In the same way, foresters realize that before a silviculture, intensive management plans, and effective utilization can be accomplished it is necessary to first eliminate the greatest danger, that of destruction by fire, before the refinements of forestry practice can be followed.

In the foreword Col. Greeley has this to say: "The annals of these conflagrations with their burden of human suffering will be a powerful force in public education on the duty everyone of us shares to keep fire out of the woods,"

Holbrook has a number of conservation books and articles to his credit. He has always been considered to be a forceful writer on these subjects and the manner in which he has handled "Burning an Empire" will probably be considered one of his best. -- Ross A. Williams, Chief, Regional Forestry Division, Soil Conservation Service.

SELECTED LIST OF ACQUISITIONS

CROPS

Hutcheson, T. B., Wolfe, T.K., and Kipps, M. S. THE PRODUCTION OF FIELD CROPS; a textbook of agronomy. 445 p. 1936. New York, McGraw-Hill Book Company, Inc. 64 H97

The first section of the book is general, giving information which may apply to numerous crops. The following sections are devoted to specific crops, as Cereal or grain crops, Legumes for seed, Forage crops, Root crops, Tubers.

FEEDS AND FEEDING

Ball, Smeeter and Carroll, W. E. PRINCIPLES OF FEEDING FARM ANIMALS. 395 p. 1937. New York, Macmillan. 389.7 B87

The first part of the book discusses the scientific aspect of the subject. Also included are rather definite rules regarding the feeding of different classes of live stock. The chapters are arranged by the use of each of the principle feeds for the different species and classes of livestock rather than by the feeding of the different classes of farm animals. For example, the use of corn is given in the rations of growing cattle, colts, pigs, and lambs; fattening cattle, hogs, and sheep; breeding cattle, horses, hogs, and sheep; dairy cows; and work horses.

Sheets, Earl Wooddell. FEEDING FARM LIVESTOCK. 192 p. 1940. Union Stock Yards, Chicago, Ill., Breeder Publications. 389.7 Sh3.

"Studying the composition of feeds, and the proportion in which they are digested by different classes and ages of animals under various conditions" have resulted in definite principles of feeding. Requirements of the animal body, composition and digestibility of feeds, handy information and reference tables are some of the subjects treated in this book.

FOOD

Bennett, M. K. FOOD FOR POSTWAR EUROPE: HOW MUCH AND WHAT? 100 p. 1944. Stanford University, California, Food Research Institute Stanford University. 280.9 L532 no. 5.

This is No. 5 in the War-Peace pamphlets published by the Food Research Institute. It deals with 1. The question how much food and feed and what will Europe need from oversea's supply the year after hostilities cease in Europe? and 2. Factual background for discussion of the question.

MIGRATION

Lange, Dorothea. AN AMERICAN EXODUS, A record of human erosion, by Dorothea Lange and Paul Schuster Taylor. 158 p., illus. New York, Reynal & Hitchcock. 283 L26.

A pictorial record of the migration westward, 1939 style.

MILK

Ross, Harold E. THE CARE AND HANDLING OF MILK. 417 p. 1939. New York. Orange Judd Publishing Co., Inc. 44 R73C

Chemical and bacteriological examination, food value, grades, cooling, inspection of milk, dairy buildings, milk plant operation, transportation and distribution are covered in this book, which also contains many tables and illustrations.

PHILOSOPHY

Stockberger, Warner W. AS I SEE IT; observations of a civil servant. 50 essayettes of 150 words. 50 p. 1941. Washington, Graduate School of the United States Department of Agriculture. 1 Ag84As Ed. 2

Each essay presents a philosophy of work, particularly for people in the Government service. Dr. Stockberger was the Department's first Director of Personnel, from 1925 to 1938. Subjects are from Allegiance of position through Perspective through Voluntary cooperation.

RURAL SOCIOLOGY

Gee, Wilson. THE SOCIAL ECONOMICS OF AGRICULTURE. 720 p. 1942. New York, The Macmillan company. 281.2 G27So

This book deals both with the economic and the social aspects of agriculture; farm management, farm labor and wages, farm finance, rural physical equipment, the farmer's standard of living, rural population trends, are among the subjects considered.

Woffter, T. J., Jr. and Winston, Ellen. SEVEN LEAN YEARS. 187 p., illus. 1939. Chapel Hill, The University of North Carolina Press. 281.12 W37

"It is, therefore, the primary objective of this book to give consideration to rural problems in terms of human elements as well as in terms of production, prices, and markets." A summary of the outstanding facts regarding the underprivileged people in the agricultural world, written from a human standpoint.

SHEEP

Herlacher, Levi Jackson and Hammonds, Carsie. SHEEP. 348 p. 1942. Danville, Ill. The Interstate. 45 H78S

The contents range from planning for the sheep enterprise and choosing the breed, through feeding and managing, fattening commercial lambs, preventing and controlling parasites and diseases, to producing and handling wool, marketing lambs and sheep, and fitting and showing. Each chapter is arranged along the following lines: typical problems to be solved, solving the problems, and Farming Studies, whereby one may check the practices followed on the farm with those suggested in the book.

WORDS

Phyfe, William Henry P. 20,000 WORDS OFTEN MISPRONOUNCED; a complete handbook of difficulties in English pronunciation, including an unusually large number of proper names, words and phrases from foreign languages. 791 p. 1937. New York, G. P. Putnam's sons. 200 P56

This is a selected list of words which are apt to be mispronounced. Diacritical marks indicate the proper pronunciation. How do you pronounce milch, Stalin, hustle, leeward (how does a sailor pronounce it?), corral, route?

SELECTED STATE PUBLICATIONS

FEEDS AND FEEDING

McCall, Ralph, and others. APPARENT DIGESTIBILITY AND NUTRITIVE VALUE OF SEVERAL NATIVE INTRODUCED GRASSES. 30 p. Oct. 1943. Mont. Exp. Sta. Bull. 100 M96(b) no. 418.

Thalman, R. R. THE GRAIN SORGHUMS FOR FATTENING CATTLE. 18 p. tables. June 1943. Nebr. Agr. Expt. Sta. Bul. 347. 100 N27(b) 347.

IRRIGATION

Peterson, Arthur W. A FARM MANAGEMENT SURVEY OF PUMP IRRIGATED FARMS IN BUFFALO COUNTY. 28 p. tables. Jan. 1944. Nebr. Agr. Expt. Sta. Bul. 100 N27(b) 358.

MILK

Riddell, W. H. and Rowe, C. F. STEPPING UP WARTIME MILK PRODUCTION. 6 p. illus. June, 1943. Arizona agricultural extension service. 275.29 Ar4(f) W-23

SOYBEANS

Gross, D. L. SUCCESS WITH SOYBEANS. 11 p. March 1944. Neb. Agr. Coll. and U.S.D.A. Coop. Ext. work. 275.29 N272Ex D-15.

Koehler, Benjamin. SOYBEAN DISEASES. 4 p., proc. April, 1943. Illinois Agr. Expt. Sta. Ag cir. 1140. 275.29 I162Pag

Woodworth, C. M. VIKING SOYBEANS. 4 p., proc. July, 1943. Illinois Agr. Expt. Sta. AG 1163. 275.29 I162Pag Ag1163

U. S. DEPARTMENT OF AGRICULTURE PUBLICATIONS

- A B C's OF MENDING; by Clarice L. Scott and Bess Viemont Morrison. 23 p. illus. Sept. 1943. 1 Ag84F no. 1925 Rev. 1943.
- DEMOCRACY MEANS ALL OF US. 30 p. August, 1943. U. S. War Food Administration NFC-6. 1 F733N NFC-6
- EFFECTIVENESS OF WOOD PRESERVATIVES IN PREVENTING ATTACK BY TERMITES, by Thomas E. Snyder and James Zetek. 24 p. illus. Sept. 1943. 1 Ag84C no. 683.
- THE FOOD WE LIVE BY. 14 p. illus. June, 1943. Food Distribution Administration NFC-5. 1 F733N NFC-5
- GUIDE TO RANGE FORAGE APPRAISAL, by J. L. Lantow. 7 p. Oct. 1943. U.S.D.A. Soil Conservation Service, Regional Bull. 1.9608 R26 no. 91. (Albuquerque Reg.)
- INCREASED FEED PER COW; its effect on wartime beef cattle production and range forage management; by G. W. Collier. 7 p. U.S.D.A. Soil Conservation Service Regional Bull. 1.9608 R26 no. 83 (Albuquerque Reg.)
- INSECTICIDES AND EQUIPMENT FOR CONTROLLING INSECTS ON FRUITS AND VEGETABLES; by N. F. Howard and C. A. Weigel, C. M. Smith and L. F. Steiner. 52 p. illus. Nov. 1943. 1 Ag84M 526
- LIST OF SIREs PROVED IN DAIRY HERD IMPROVEMENT ASSOCIATIONS, 1943. 97 p. May, 1943. Miscellaneous publication. 1 Ag84M no. 522.
- PROTECT TERRACE OUTLETS WITH GRASS FOR FOOD PRODUCTION. 8 p. illus. Nov. 1943. AWI 79. 1 Ag84AW 79.
- MORMON CRICKETS AND THEIR CONTROL. 17 p., illus. Sept, 1943. Farmers' bulletin 1928. 1 Ag84F 1928.
- SEWING MACHINES: CLEANING AND ADJUSTING, by Helen S. Holbrook and Albert V. Krewatch. 23 p. illus. August, 1943. Farmers' Bulletin. 1 Ag84F No. 1944.
- STATEMENT OF APPROACH ON RANGE CONSERVATION. 11 p. Oct. 1943. U.S.D.A. Soil Conservation Service, Regional Bull. 1.9608 R26 no. 90 (Albuquerque Region)
- TECHNIQUES OF FISHPOND MANAGEMENT, by Lawrence V. Compton. 22 p. illus. Nov. 1943. Miscellaneous Publication. 1 Ag84M no. 528.
- TREAT SEED GRAIN, by Johnson, A. G. and others. 12 p. illus. Feb. 1944. U.S.D.A. Mis. Pub. 1 Ag84M 219; rev.

DIRECTIONS FOR USING FORM AD-245

A correctly completed AD-245 for the book reviewed on the first page of this issue should look like this:

Your name and address

For John Doe BUREAU FSA Rock Springs Wyo.	CALL NO. 99.51 H69	U.S. DEPARTMENT OF AGRICULTURE LIBRARY REQUEST AUTHOR (SURNAME FIRST) Holbrook, Stewart H.			
	TITLE Burning an empire				
	PERIODICAL				
	VOL.	NO.	PAGE	DATE	1943
CHARGED			RETURN TO		

A correctly completed AD-245 for a magazine article should look like this:

Your name and address →

CALL NO. 6 F2278	U. S. DEPARTMENT OF AGRICULTURE LIBRARY REQUEST AUTHOR (SURNAME FIRST) Kugler, J. H.
FOR John Doe BUREAU FSA Rock Springs Wyo.	TITLE "America's favorite food" - ice cream
	PERIODICAL West. Livestock Jour.
	VOL. 22 NO. 12 PAGE 131-133 DATE Jan. 1944
CHARGED RETURN TO	

A correctly completed AD-245 for a State or USDA publication should look like this:

Your name and address →

CALL NO. 275.29 1162Pag 1140	U. S. DEPARTMENT OF AGRICULTURE LIBRARY REQUEST AUTHOR (SURNAME FIRST) Koepler, Benjamin
FOR John Doe BUREAU FSA Rock Springs Wyo.	TITLE Soybean diseases
	PERIODICAL Illinois Agr. Exp. Sta. AG cir.
	VOL. NO. PAGE DATE Apr. 1943
CHARGED RETURN TO	

The call number is the number by which a book is filed in the Library. It is given for publications listed in the NEWSLETTER. If this call number is known, it makes for quicker service in locating a book. There has been some confusion in putting it on the AD-245 with number in the Periodical section; this place is for the issue number of the magazine, when known.

The question has been asked if it is necessary to send an AD-245 for each publication wanted, instead of listing several requests on one AD-245. Yes, it is, because the AD-245's are used in the circulation file as charge records. Each publication must have its own charge.

Be sure and include your name and address. Without them we do not know where to send the material.

It is not necessary to send a letter of transmittal with the AD-245's.

Previous information about the AD-245 was in the February issue of the NEWSLETTER. If all points have not now been covered, send in any questions.

 ' This year it will be more important
 ' than ever to preserve the food that
 ' is grown this summer for consump-
 ' tion next winter. There will be
 ' packets available on various methods
 ' of preservation - canning, freezing,
 ' dehydration. We anticipate many re-
 ' quests for these packets, which will
 ' be sent out in the order in which
 ' the requests are received, so come
 ' early and avoid the late rush.
 ' -----

HOW TO USE THE LIBRARY BOOK LOANS. 1. Books, pamphlets and other printed material except current periodicals are loaned to any Department of Agriculture employee for periods varying from one week to one month, depending upon the type of material and the demand for it. 2. The loan period on current periodicals is three days. 3. Books may be renewed unless there are others waiting to use them. 4. The loan period begins the day the book reaches the borrower's office. 5. Requests for loans need not be limited to the titles listed in the NEWSLETTER. Check the BIBLIOGRAPHY OF AGRICULTURE for current material on agriculture and related subjects. If we do not have the title desired we will try to borrow it from another library. 6. Library material weighing four pounds or less may be returned to the library under frank. Any single book, regardless of weight, may be mailed under frank. 7. We frequently have long waiting lists for the publications noted in the NEWSLETTER. Names are added in the order received.

UNITED STATES DEPARTMENT OF AGRICULTURE
 LINCOLN BRANCH LIBRARY
 Rudge & Guenzel Building
 Lincoln, 1, Nebraska

Penalty for Private Use to Avoid
 Payment of Postage, \$300.

serve
716
3



LIBRARY NEWSLETTER

U. S. DEPARTMENT OF AGRICULTURE

LIBRARY
CURRENT SERIAL RECORD

MAY 16 1944

U. S. DEPARTMENT OF AGRICULTURE

Vol. 3, No. 5

LINCOLN BRANCH
Rudge & Guenzel Bldg.
Lincoln, 1, Nebraska.

May 1944

A SELECTED BOOKS

American can company. CANNED FOOD REFERENCE MANUAL. 552 p. 1943. New York.

American can company. 389.3 Am33c

A book for those who deal with commercially canned food. The first part deals with can manufacture, nutritive values of canned foods, public health aspects, and regulations and laws. The appendix of well over a hundred pages has informative tables of commercially canned foods; proximate composition; mineral components; iodine, sulfur, purin content; vitamin and caloric values of some foods.

Anderson, Arthur L. SWINE ENTERPRISES. 458 p. 1938. Chicago. Lippincott. 46An2

Consider not only the breed of hog, but also how hogs fit into the farming program. Hog houses, both central and movable; feeds and crops; and marketing are issues treated herein. Tables in the back give analyses of feeds, converting feeds to corn equivalents, and cost of one pound of grain at a given price per bushel.

Bush, Carroll D. NUT GROWER'S HANDBOOK. 189 p. 1941. New York. Orange Judd Publishing Co., Inc. 94.6 B96.

Nut trees have other uses besides their fruit. Various kinds of nuts are discussed in this book, and there are chapters on "pollination", "planting, and pruning", and "from tree to table."

Chapman, Paul W. BETTER RURAL CAREERS. 264 p. 1942. Research Associates, Chicago 249.3 C36

This popularly written book not only discusses various types of farming but also includes the various ramifications of processing, transportation, or industrial uses of crops, and the scientific aspects of agriculture.

Cook, G. C. FARM MECHANICS TEXT AND HANDBOOK. 554 p. 1939. Danville, Ill. The Interstate printers and publishers. 58 C772.

A "how" book about farm tools; wood work - cutting rafters; rope work - knots, splicing, making halters and slings; harness work; concrete; sheet metal work - soldering tin; farm forge work; farm home conveniences and sanitation; rural electrification; - a coverage as inclusive as the farm.

Duffee, F. W. FARM GASOLINE ENGINES. 84 p. University of Wisconsin, rev. 1942. 58 D87F

Well illustrated with diagrams is the information here given about prime movers, cells, ignition systems, magnetos, carburetion, lubrication, power transmission, repair, and other items connected with this useful equipment.

Edwards, Everett E., ed. JEFFERSON AND AGRICULTURE. 92 p. U. S. Bureau of agricultural economics, 1943. 1.90 A2Ag8 no. 7.

Two hundred and one years ago last April 13, Thomas Jefferson was born. Among the many good ideas which he bequeathed to us, was his interest in agriculture. The original of the Garden Book which he kept is in the Massachusetts Historical Society. Jefferson shared his knowledge and his seeds. Read what he wrote friends as he sent them seeds for millet, strawberries, Persian melons, or succory.

Howard, Joseph K. MONTANA, HIGH, WIDE AND HANDSOME. 347 p. 1943. New Haven Yale Univ. Press. 138 H832

This is a history of Montana with an agricultural background. The Indians tried out the various plants and used them according to their merits - food, poison, paint, etc. The white man came and tried to make the land produce for his specific interests, for rancher, for farmer, for miner. Drought and wind came. Now planning has come, with the work of the Farm Security Administration, the Soil Conservation Service, the Agricultural Adjustment Administration. Montana has space to offer aviation, which brings more people. What will the future bring?

Northeastern lumber manufacturers assn., inc. STANDARD GRADING RULES FOR NORTHERN WHITE PINES ... AND NORWAY PINE ... 20 p. 1943. New York. 99.76 N816S

Yard and industrial sizes; standard sizes for dressed lumber; measurement and tally; definitions of defects; inspection rules, with examples are available in this small booklet.

Pearson, E. S. and Wishart, G. "STUDENT'S" collected papers. 224 p. London. University college. 251G692

"Student" is the pseudonym under which William Sealey Gosset wrote. He was a brewer and so was interested in both industry and agriculture. This book is for those who like statistics. It is a collection of "Student's" papers on the application of statistical method in these fields. Sample chapters: On testing varieties of cereals; mathematics and agronomy; yield trials.

Prentice, E. Parmalee. FOOD, WAR AND THE FUTURE. 164 p. 1944. New York. Harper & brothers. 389 P91F

Is the world's food supply sufficient for its population? This book discusses the adequacy of the world's food supply in relation to increasing population pressures. It is a reminder of the relation of food needs to modern wars. The discussion of the state of agriculture and especially the effectiveness of agricultural education is challenging. Mr. Prentice has also written FARMING FOR FAMINE and HUNGER AND HISTORY.

Society of American foresters. FORESTRY TERMINOLOGY; A GLOSSARY OF TECHNICAL TERMS USED IN FORESTRY. 84 p. Washington. Author. 1944. 99.01 Sol

When you need to know what confounding means, or what the parts of a fire are, or why a certain tree is called a whip, you can readily find out in this guide to the technical language used by foresters.

Southern pine association. SOUTHERN PINE BARNs AND IMPLEMENT SHEDS.

This folder has explicit information about gothic, gambrel, and gable roof barns, and implement sheds; size, mow capacity, a material list, diagrams, and specifications are given for the various designs.

Stone, Archie A. FARM MACHINERY. 524 p. 1942. New York. John Wiley & sons, inc. 58 St7.

All the way from pre-planting through cultivating and harvesting, machinery is

used on the farm. This is a helpful book in the diagnosis of machinery trouble, in giving directions for repair and maintenance, and in supplying pointers on construction and operation. It is well illustrated.

SELECTED GOVERNMENT PUBLICATIONS

CORN

"Every bomb dropped on Germany and every shell fired in the Pacific contains some refined corn. ...
Corn fights --- and it has no substitute!"

COMPARISON OF CORN AND CORN-MOLASSES MIXTURE FOR FATTENING BEEF CALVES BEFORE AND AFTER WEANING, by M. W. Hazen and James E. Comfort. 11 p. tables. Dec. 1943. Technical bulletin. 1 Ag84Te 862.

Dungan, G. H., and others. ILLINOIS HYBRID CORN TESTS, 1943. 20 p. Febr. 1944. Ill. Agr. Expt. Sta. Bul. 100 I1S(b) 500.

FOR MORE FEED--FOR LAND'S SAKE USE--SEEDINGS IN CORN. Folder. Jan. 1944. Mich. Ext. Serv. 275.29 M58(f) 66.

Grafius, J. E. and Hehn, E. R. SOUTH DAKOTA CORN PERFORMANCE TEST, 1943. 24 p. tables. March, 1944. So. Dak. Agr. Expt. Sta. Cir. 50. 100 So82(c) 50.

Jugenheimer, R. W. and others. KANSAS CORN TESTS. 1943. 36 p. tables. Jan. 1944. Kansas. Agr. Expt. Sta. Bul. 100 K13S(b) 323.

Richey, Frederick D. CORN CULTURE. 26 p. Nov. 1933. U.S.D.A. Farmers' Bul. 1 Ag84F No. 1714.

Richey, Frederick D. THE WHAT AND HOW OF HYBRID CORN. 14 p. Jan. 1935. U.S.D.A. Farmers' Bulletin. 1 Ag84F No. 1744.

Robinson, Joe L. and Reiss, Francis. THE 1943 CORN YIELD TEST. 51 p. Febr. 1944. Iowa Agr. Expt. Sta. Bul. 100 Io9(pb) P58.

STRAINS OF THE EUROPEAN CORN BORER IN THE UNITED STATES, by K. D. Arbuthnot. 20 p. charts. March, 1944. Technical bulletin. 1 Ag84Te 869.

DISEASES AND PESTS

Farley, Herman. DISEASES OF FEEDER CATTLE IN KANSAS. 16 p. Febr. 1944. Kansas Agr. Expt. Sta. Circ. 100 K13S(c) 220.

Henderson, W. J. DISEASES OF CUCUMBER AND MELONS AND THEIR CONTROL. 9 p. May, 1943. Colo. Ext. Serv. Circ. 275.29 C71D D-45.

Henderson, W. J. DISEASES OF FRUIT AND FRUIT TREES. 12 p. May, 1943. Colo. Ext. Serv. Circ. 275.29 C71D D-43.

MANAGEMENT OF SHEEP ON RANGE INFESTED WITH ORANGE SNEEZEWEED by C. W. Doran and J.T. Cassady. 28 p., illus. January 1944. Circular. 1 Ag84C 691.

KEEPING RANGE LAMBS FREE FROM INTESTINAL WORM. 4 p. Jan. 1944. Mont. Agr. Expt. Sta. War Circ. 100 M76(wc) 5.

McMahan, V. K. BRUCELLOSIS OF CATTLE. 16 p. April, 1944. Kansas Agr. Expt. Sta. Circ. 100 K13S(c) 222.

PREVENTION OF LOSSES FROM COCCIDIOSIS (SCOURS) IN FEED LOT LAMBS. 3 p. Montana Agr. Expt. Sta. War Circ. 100 M76(wc) 4.

Sandhouse, H. A. and Cross, Floyd C. MASTITIS IN DAIRY CATTLE. Folder. May, 1943. Colo. Agr. Ext. Service Circ. 275.29 C71C 1876.

FEEDS AND FEEDING

Bray, Charles I. FEEDING RICE AND RICE BY-PRODUCTS TO SWINE. 23 p. illus. Dec. 1943. Louisiana Agr. Expt. Sta. Circ. 100 L93(c) 33.

Fellhauer, Tony and Wheeler, S. S. WARTIME FEEDING OF LIVESTOCK AND FORAGE PRODUCTION. 16 p. illus. April, 1944. Wyo. Agr. Ext. Serv. Circ. 275.29 W99C 84.

Harris, Lionel, Davis, H. P. and Swanson, Paul. SUGAR BEET TOPS AS A FEED FOR DAIRY CATTLE. 8 p. tables. Dec. 1943. Nebr. Agr. Expt. Sta. Bull. 353. 100 N27(b) 353.

MAKING GRASS SILAGE BY THE WILTING METHOD. 4 p. 1944. Leaflet. 1 Ag84L 238.

SINGLE GRAINS AND GRAIN MIXTURES AS SUPPLEMENTS TO ALFALFA HAY AND SILAGE FOR MILK PRODUCTION, by J. R. Dawson and others. 11 p., tables. Febr. 1944. Circular. 1 Ag84C 696.

SWINE RATIONS. 2 p. processed. March, 1943. Nebr. Ext. Serv. Circ. 275.29 N272Ex 246.

Thalman, R. R. CORN AND ALFALFA SUBSTITUTES FOR FATTENING CATTLE. 40 p., tables. January, 1944. Nebr. Agr. Expt. Sta. Bulletin 355. 100 N27(b) no. 100

Thalman, R. R. PASTURE VS. DRY LOT FOR FATTENING CATTLE. 20 p. tables. Jan. 1944. Nebr. Agr. Expt. Sta. Bul. 100 N27(b) 354.

Wallis, G. C. VITAMIN-D DEFICIENCY IN DAIRY COWS. Symptoms, causes and treatment. 16 p., illus. March, 1944. So. Dak. Agr. Expt. Sta. Bul. 100 So82(b) 372.

FOOD CONSERVATION

Eckblad, Inez M. DRYING FRUITS AND VEGETABLES. 6 p., illus. May, 1943. Colo. Ext. Serv. Cir. 275.29 C71D D-47.

Eckblad, Inez M. HOME CANNING OF FRUITS. 14 p., illus. May, 1943. Colo. Ext. Serv. Circ. 275.29 C71D D-41.

Eckblad, Inez M. HOME CANNING OF VEGETABLES. 19 p., illus. May, 1943. Colo. Agr. Ext. Serv. Circ. 275.29 C71D D-40.

Sheets, Olive. HOW DEHYDRATION AFFECTS THE NUTRITIVE VALUE OF FRUITS AND VEGETABLES. 4 p. Oct. 1943. Miss. Agr. Expt. Sta. Circ. 100 M36(c) 113.

USE AND CARE OF A PRESSURE COOKER. 2 p. July, 1943. Nebr. Agr. Ext. Serv. Cir. 11-218. 275.29 N272Ex 11-218.

GARDENS

GOOD SEED POTATOES GIVE BEST RESULTS, by R. J. Haskell and R. R. Pailthorp. 5 p. folder. Febr. 1944. AWI 1 Ag84Aw 88.

PRODUCTION OF CARROTS, by R. E. Wester and S. P. Doolittle. 4 p., illus. Febr. 1944. Leaflet. 1 Ag84L 125.

PRODUCTION OF PEPPERS, by J. H. Beattie and others. 7 p., Jan. 1944. Leaflet.
1 Ag84L 140 Rev. 1944.

Snyder, Leon C. LENGTHENING THE GARDEN SEASON AND INCREASING VEGETABLE YIELDS.
19 p. Charts, April, 1944. So. Dak. Agr. Expt. Sta. Bul. 374. 100 So82(b) 374.

Somers, Lee A. SHALL WE GROW DRY BEANS? 5 p., proc. Mar. 1943. Ill. Ext. Service
275.29 I162Ph H321.

POULTRY

Bird, H. R. and Burkhardt, G. J. FACTORS AFFECTING THE NUTRITIVE VALUE OF SOYBEAN
OIL MEALS AND SOYBEANS FOR CHICKENS. 52 p. tables. Sept. 1943. Maryland Agr.
Expt. Sta. Bul. 100 M36S(ba) A-27.

Mussehl, F. E. EFFECT OF MANGANESE AND IODINE ADDITIONS IN A SPECIFIC RATION FOR
LAYING HENS. 4 p. 1944. Nebr. Agr. Expt. Sta. Circ. 100 N27(c) 76.

Parker, Jesse E. and McSpadden, B. J. PASTURES FOR GROWING PULLETS. 14 p. illus.
Jan. 1944. Tenn. Agr. Expt. Sta. Bul. 100 T25S(b) 188.

Payne, Loyal F. and Gish, Clarence L. GRASS AND ALFALFA AS SILAGE, FORAGE AND MEAL
FOR POULTRY. 46 p., illus. Dec. 1943. Kansas Agr. Expt. Sta. Bul. 320.
100 K13S(b) 320.

SOIL

DISKING SAVES THE TOPSOIL IN FOREST PLANTING. 1 p., proc. April, 1944. Lake
States Forest Expt. Sta. Tech. Note. 1.9 F7625T 218.

INVESTIGATIONS IN EROSION CONTROL AND RECLAMATION OF ERODED LAND AT THE BLACKLAND
CONSERVATION EXPERIMENT STATION, TEMPLE, TEXAS, 1931-41, by H. O. Hill and others.
109 p., illus. charts and tables. Jan. 1944. Technical bulletin 1 Ag84Te 859.

Norman, A. G. ORGANIC MATTER IN IOWA SOILS. 21 p. illus. Nov. 1943. Iowa Agr.
Expt. Sta. Bul. 100 Io9(pb) P57.



REFERENCE QUESTIONS

We have heard of people who believe the answers are disclosed in crystal balls, but the answers to our reference questions are acquired from authentic sources. In April we ranged from the location of Princeton University to the annual precipitation in certain towns in states in our region.

What would YOU like to know now?

PERIODICALS

The following are more recent acquisitions and they were not listed in the January Newsletter. Will those of you who would like to receive any of them on circulation send in an AD-245 with your name and address, and the name of the periodical as usual, and add "for circulation."

Borden's Review of Nutrition Research, published by the Borden company. (Reviews and summaries of research information concerning nutrition and foods.)

Food and Nutrition News, published by the National Live Stock and Meat Board.

Meal Planning Guide, published by the Home Economics Institute.

Plant Disease Reporter, issued by the Plant Disease Survey, Bureau of plant industry, soils, and agricultural engineering.

HOW TO USE THE LIBRARY

BOOK LOANS. 1. Books, pamphlets and other printed material except current periodicals are loaned to any Department of Agriculture employee for periods varying from one week to one month, depending upon the type of material and the demand for it. 2. The loan period on current periodicals is three days. 3. Books may be renewed unless there are others waiting to use them. 4. The loan period begins the day the book reaches the borrower's office. 5. Requests for loans need not be limited to the titles listed in the NEWSLETTER. Check the BIBLIOGRAPHY OF AGRICULTURE for current material on agriculture and related subjects. If we do not have the title desired we will try to borrow it from another library. 6. Library material weighing four pounds or less may be returned to the Library under frank. Any single book, regardless of weight, may be mailed under frank. 7. We frequently have long waiting lists for the publications noted in the NEWSLETTER. Names are added in the order received.

* * * * *

UNITED STATES DEPARTMENT OF AGRICULTURE
LINCOLN BRANCH LIBRARY
Rudge & Guenzel Building
Lincoln, 1, Nebraska

Penalty for Private Use to Avoid
Payment of Postage, \$300



LIBRARY NEWSLETTER

U. S. DEPARTMENT OF AGRICULTURE



Vol. 3, No. 6

LINCOLN BRANCH
Rudge & Guenzel Bldg.
Lincoln, 1, Nebraska

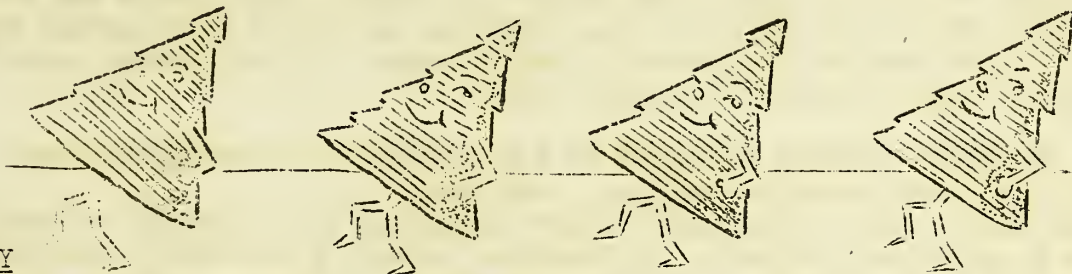
CURRENT SERVICE WELDED

JUL - 1 1944

U. S. DEPARTMENT OF AGRICULTURE

June 1944

SELECTED BOOKS



FORESTRY

Allen, Shirley W. INTRODUCTION TO AMERICAN FORESTRY. 402 p. 1938. New York, McGraw-Hill book company, inc. 99 A15

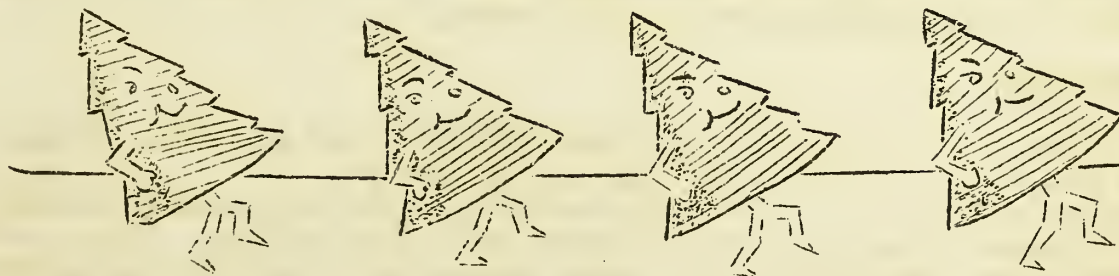
What a forest is, and what forestry is, forestry that starts with a forest, and forestry that starts with bare ground, defending the forest from its various attackers, harvesting the crop and products, is all good readable information in this illustrated book.

Brown, H. P. and Panshin, A. J. COMMERCIAL TIMBERS OF THE UNITED STATES, THEIR STRUCTURE, IDENTIFICATION, PROPERTIES, AND USES. 554 p. 1940. New York, McGraw-Hill book company, inc. 99.31 B81c

How a tree grows, identification anatomically and by non-mechanical features, minute structure of various woods are informatively presented. Description of wood by species is a very useful section, in each case general characteristics and properties, and uses (boxes, kitchen cabinets, ladder rails, musical instruments, toys) are given. The book is helpfully illustrated.

Westveld, R. H. and Peck, R. H. FORESTRY IN FARM MANAGEMENT. 339 p. 1941. New York, John Wiley & sons, inc. 99.55 W52

Trees as a farm crop is the idea behind this book. Local problems as well as fundamental principles of farm forestry are analysed. A useful table giving soil requirements, competitive ability, natural regenerativeness, wind firmness, insect and disease susceptibility is an example. Trees are valuable to farmers not only for uses of the wood itself, as for fuel and lumber, but also for soil and water conservation.





"Some little bug
is going to find you some day."



Graham, Samuel A. PRINCIPLES OF FOREST ENTOMOLOGY. 410 p. 1939. 2d ed. New York, McGraw-Hill book company, inc. 423 G762 Ed. 2

The effect of insects on trees is often detrimental, and control of the insects a problem. Factors of temperature, light, moisture, and climate as well as nutrition affecting insects, and methods of control, both direct and indirect, are dealt with here. There are also chapters on insects which attack different parts of the tree, as leaf-eating insects, pests of living trees, and of dying trees and logs, sap-sucking insects, etc.

Herrick, Glenn W. INSECTS INJURIOUS TO THE HOUSEHOLD AND ANNOYING TO MAN. 478 p. 1940. New York, Macmillan company. 423 H432

Flies, fleas, mosquitoes, ants; insects injurious to clothes or to food; insects as parasites, as pests, as invaders; insects wood-boring, insects poisonous and their relatives, are here recorded as to their structure, life history, domicile, and control.

Muenschler, Walter C. WEEDS. 577 p. 1935. New York, Macmillan company. 79 M88

Weeds in pastures, hay fields, cultivated fields, grain fields, how they are disseminated and methods of controlling them take up the first section of this book. In the second section, the weeds are arranged according to family; here is to be found collected information on specific weeds, as location, description (illustration) and control.

Washburn, F. L. INJURIOUS INSECTS AND USEFUL BIRDS, SUCCESSFUL CONTROL OF FARM PESTS. 453 p. 1925. 2d ed. Philadelphia, J. B. Lippincott company. 423 W27

Insects friendly and not so friendly, rodents and other four-footed beasts, and birds, from time to time are in the farmer's thoughts as well as in his orchard or in his crops. Some are to be treated with kindness, others are to be treated with sprays, fumes, or retaliatory processes. Help is in this book.

ELECTRIFICATION

Schaenzer, J. P. RURAL ELECTRIFICATION. 266 p. 1940. Rev. ed. New York, Bruce publishing company. 335 Sch 1

A great deal of useful information is in this book. Wiring materials, maintenance, repair; wiring the farm, the home, the barn and outbuildings; farm electric lighting plants; ensilage cutters; feed grinders; wood sawing; hay hoisting and baling; farm water supply; milking and dairy equipment; laundry, kitchen and household equipment. Illustrated.

FARM BUILDINGS

Carter, Deane G., and Foster, W. A. FARM BUILDINGS. 404 p. 1941. 3d ed. New York, John Wiley and sons, inc. 296 F81 Ed. 3

Types of materials and structural requirements, cost and quantity calculations, and arrangement and location are general items treated first. Then come the specific uses, as dairy barns, special purpose barns, poultry houses, swine houses, silos, storage, and last - farm houses.

FOOD

Adams, R. L. FARM PROBLEMS IN MEETING FOOD NEEDS. 32 p. 1942. Berkeley, University of California press. 389 Ad 1
As it is essential that we produce much of the food for the needs of others as well as for ourselves, it is helpful to have information not only on our own potentialities, but also on the situation in Great Britain and in Germany, as the problems in these two countries vitally affect us. Specific information is here in brief.

Duncan, A. O. FOOD PROCESSING; A GUIDE TO SELECTING, PRODUCING, AND STORING THE FAMILY FOOD SUPPLY. 544 p. 1943. Atlanta, Turner E. Smith & company. 389.1 D91

What the family food requirements are and the planning, producing and processing therefor; frozen foods; canned foods; dehydrated foods; dairy and poultry foods; and meat, all of which require some kind of processing, are subject matter for this volume. Many useful tables and illustrations are included.

HORSES

Gay, Carl W. PRODUCTIVE HORSE HUSBANDRY. 335 p. 1932. 4th ed. Chicago, J. B. Lippincott company. 42 G252

Types and breeds, and production take up the first two-thirds of this book; this is followed by a section on man's care of the horse (that is, feeding, stables, harness), and the service which the horse gives to man (compared with motor power).

SOILS

Worthen, Edmund L. FARM SOILS, THEIR MANAGEMENT AND FERTILIZATION. 515 p. 1941. 3d ed. New York, John Wiley & sons, inc. 56.7 W89. Ed. 3

The soil requirements of different crops, control of the water supply, the various phases of tillage and the implements used, several chapters on fertilization, and sections on soils for specific uses as field, pasture, garden, or fruit, are to be found in this well arranged book which emphasizes the what, when, and how angle.

SELECTED GOVERNMENT PUBLICATIONS

CROPS

Decker, S. W., Elmer, O. H. and Dean, Geo. A. POTATO PRODUCTION IN KANSAS. 52 p. illus. Febr. 1944. Kansas Agr. Expt. Sta. Bul. 100 K13S(b) 322

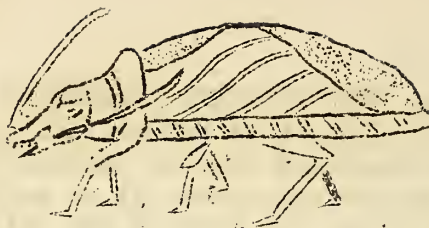
Hoppert, E. H. NEW VARIETIES OF TOMATOES FOR NEBRASKA AND THEIR CULTURE. 5 p., proc. Febr. 1944. Nebr. Agr. Ext. Serv. Circ. 275.29 N272Ex 1266, rev. 1944.

REPORT ON AGRICULTURAL RESEARCH FOR THE YEAR ENDING JUNE 30, 1943. PART I, PROJECT REPORTS, PUBLICATIONS, STAFF, FINANCIAL STATEMENT. PART II, IOWA CORN RESEARCH INSTITUTE, EIGHTH ANNUAL REPORT. 298 and 79 pp. Iowa Agr. Expt. Sta. Report on agricultural research. 100 Io9 (rep) part I and part II.

ONION-SET PRODUCTION by J. C. Walker and others. 21 p: illus. May 1944. Farmers' Bulletin. 1 Ag84F 1995.

COMPARISON OF WINTER WHEAT VARIETIES GROWN IN COOPERATIVE PLOT AND NURSERY EXPERIMENTS IN THE HARD RED WINTER WHEAT REGION IN 1943, by K. S. Quisenberry. U. S. Bureau of Plant Industry, Soils and Agricultural Engineering. Lincoln, Nebraska, 1944. 1.9 P6917Co (NOT FOR PUBLICATION WITHOUT PERMISSION)

DISEASES AND PESTS



- Fenton, F. A. and Whitehead, F. E. CONTROL OF WHEAT INSECTS. 46 p. illus. Jan. 1944. Okla. Agr. Expt. Sta. Bul. B-275. 100 Ok4(b) B-275.
- Henderson, W. J. CONTROL OF THE DISEASES OF BARLEY, WHEAT, OATS, CORN, SORGHUMS, ALFALFA, AND FLAX. 16 p. May 1943. Col. Sta. Coll. Ext. Service. 275.29 C71D D-44.
- Koehler, Benjamin. ANTHRACNOSE, a serious disease of broomcorn in Illinois. 5 p., proc. Jan. 1943. Illinois Agr. Expt. Sta. AG1121. 275.29 I162Pag.
- Livingston, J. E. REDUCE BLACK STEM RUST OF WHEAT, OATS, BARLEY, RYE. 12 p. folder. illus. Nebr. Agr. Ext. Service Circ. 275.29 N272Ex 1802.
- McCampbell, S. C. PEST CONTROL ON THE HOME FRONT. 16 p. Feb. 1943. Col. State Col. Ext. Service. 275.29 C71D D-39.
- Mills, H. B. THE WHEAT STEM SAWFLY IN MONTANA. 7 p. Jan. 1944. Montana Agr. Expt. Sta. War Circ. 100 M76(wc) 6.
- Neiswander, C. R. THE RING-LEGGED EARWIG. 14 p., illus. Jan. 1944. Ohio Agr. Expt. Sta. Bul. 648. 100 Oh3S(b) 648.
- Spawn, Gerald B. TILLAGE METHODS IN GRASSHOPPER CONTROL. 2 p., proc. Nov. 1943. So. Dak. Agr. Expt. Sta. Entomology Pam. 6. 100 So82(e) 6.
- Swain, R. B. NATURE AND EXTENT OF MORMON CRICKET DAMAGE TO CROP AND RANGE PLANTS. 44 p. Tech. Bulletin. 1 Ag84Te 866.
- Walkden, H. H. HESSIAN FLY CONTROL IN NEBRASKA. 11 p. illus. Mar. 1944. Nebraska Agr. Exp. Sta. Bulletin 360. 100 N27(b) 360.
- Wallis, R. L. CONTROL OF THE MEXICAN BEAN BEETLE IN IRRIGATED DISTRICTS IN THE WEST. 12 p. Apr. 1944. Circular. 1 Ag84C no. 675.

FARM EQUIPMENT

- Asmus, H. FARM HORSESHOEING. 28 p., illus. rev. June 1943. N. Y. (Cornell) Agri. Ext. Service. Bulletin. 275.29 N48E 323.
- COST, DISTRIBUTION AND UTILIZATION OF FARM MACHINERY IN IOWA, by E. O. Heady and others. 38 p. tables. Oct. 1943. Iowa Agr. Expt. Sta. Research bulletin 100 Io9(r) 323.
- Cox, Maurice B. HIGH-LIFT POWER BUCK RAKE. 11 p. illus. March, 1944. Okla. Agr. Expt. Sta. Bul. 100 Ok4(b) B-280.
- Jones, M. M. SAVING GASOLINE ON THE FARM. 4 p. Nov. 1943. Missouri Agr. Expt. Sta. Circ. 100 M693(c) 282.
- Larsen, L. F. POWER BUCK RAKES. 20 p., illus. Jan. 1944. So. Dak. Agr. Expt. Sta. Circ. 49. 100 So82(c) 49.

- MAINTENANCE TIPS FOR YOUR ELECTRIC FARM EQUIPMENT, by General Electric. 15 p. illus.
- Rensberg, R. E. HOME REPAIR OF ELECTRICAL EQUIPMENT. 14 p., illus. July 1943. N. Y. (Cornell) Agr. Ext. Service. Bulletin. 275.29 N48E 621.
- Wright, F. B. CARE OF ELECTRIC MOTORS. 8 p., illus. Nov. 1942. N. Y. (Cornell) Agri. Ext. Service. Bulletin. 275.29 N48E 541.

FOOD PRESERVATION

- COMMUNITY CANNING CENTERS. 99 p. illus. Apr. 1944. Miscellaneous publication. 1 Ag84M 544.
- Davis, E. CANNING FRUITS AND VEGETABLES. 17 p. rev. Jan. 1944. Wash. Agri. Ext. Service. Bulletin. 275.29 W27P 183.
- Davis, E. DRYING FRUITS AND VEGETABLES AT HOME. 15 p. illus. rev. June 1943. Wash. Agri. Ext. Service Bulletin. 275.29 W27P 188.
- Dawson, R. M. DRYING VICTORY GARDEN FOOD. Folder. June 1943. N.D. Agr. Ext. Service. Spec. Circular 275.29 N812(s) A-49.
- Dawson, R. M. SALTING AND BRINING VEGETABLES. Folder. June 1943. N. D. Agr. Ext. Service. Spec. Circular. 275.29 N812(s) A-50.
- Knowles, D. PRESERVATION OF FRUITS AND VEGETABLES IN COLD STORAGE LOCKERS. 12 p. Rev. Mar. 1943. N. D. Agr. Ext. Service. Circular. 275.29 N812 169.

FORESTRY

- THE APPLICATION OF SAMPLE LOG SCALING IN REGION ONE, by Lawrence W. Zach. 10 p., processed. Nov. 1943. Northern Rocky Mountain Forest and Range Experiment Station Research Note. 1.9622 N3R31. No. 31.
- Den Uyl, Daniel. WINDBREAKS FOR PROTECTING MUCK SOILS AND CROPS. 12 p., illus. July, 1943. Indiana Agr. Expt. Sta. circular. 100 In2P(c) 287.
- GASOLINE REQUIREMENTS OF SMALL SAWMILLS. 1 p., proc. April, 1944. Lake States Forest Expt. Sta. Tech. Note. 1.9 F7625T 223.
- A NEW TREND IN SMALL SAWMILL OPERATION. 1 p., proc. April, 1944. Lake States Forest Expt. Sta. Tech. Note. 1.9 F7625T 216.
- Rockwell, Frank I. PLANTING WINDBREAKS. 7 p., illus. March, 1943. So. Dak. Extension Service Circular. 275.29 So85(c) 397.
- WARTIME HARVESTS FROM FARM WOODLANDS. 7 p. illus. Jan. 1944. AWI-80. 1 Ag84Aw 80.

GRASSES

- ALFALFA HAY AS THE ROUGHAGE IN CATTLE-FATTENING RATIONS by J. H. Knox and P. E. Neale. 14 p. illus. Dec. 1943. New Mexico. Agr. Expt. Sta. Bulletin. 100 N47S(b) 310.
- Costello, D. F. JUDGING CONDITION AND UTILIZATION OF SHORT-GRASS RANGES ON THE CENTRAL GREAT PLAINS. 21 p. illus. Mar. 1944. Farmers' Bulletin. 1 Ag84F No. 1949.

MISCELLANEOUS

Gaston, H. P. HOW TO GET THE FARM HELP YOU NEED; HOW TO KEEP THE FARM HELP YOU GET. Folder. Feb. 1944. Michigan Ext. Service. Ext. Folder. 275.29 M581(f) 70.

YOUR COUNTRY'S ARMED FORCES NEED MILKWEED FLOSS; how YOU can help. Folder. Illus. Apr. 1944. AWI. 1 Ag84AW 94.

MANUSCRIPT BIBLIOGRAPHIES

In 1926 the Department of Agriculture Library published a very useful list of manuscript bibliographies and manuscript indexes available in the various offices of the Department. There are many of these manuscript bibliographies in offices of the Department and they have proved very valuable in war-related projects. The Department Library is compiling a record of all such lists, both in Washington and in the field. If you have such a bibliography or list and will so notify this Branch, we shall be glad to send you a form on which to fill in the desired information as to scope, etc. concerning the bibliography or index which you file.

HOW TO BOOK LOANS. 1. Books, pamphlets and other printed material except current periodicals are loaned to any Department of Agriculture employee for USE THE periods varying from one week to one month, depending upon the type of LIBRARY. material and the demand for it. 2. The loan period on current periodicals is three days. 3. Books may be renewed unless there are others waiting to use them. 4. The loan period begins the day the book reaches the borrower's office. 5. Requests for loans need not be limited to the titles listed in the NEWSLETTER. Check the BIBLIOGRAPHY OF AGRICULTURE for current material on agriculture and related subjects. If we do not have the title desired we will try to borrow it from another library. 6. Library material weighing four pounds or less may be returned to the Library under frank. Any single book, regardless of weight, may be mailed under frank. 7. We frequently have long waiting lists for the publications noted in the NEWSLETTER. Names are added in the order received.

* * * * *

UNITED STATES DEPARTMENT OF AGRICULTURE
LINCOLN BRANCH LIBRARY
Rudge & Guenzel Building,
Lincoln, 1, Nebraska

Penalty for Private Use to
Avoid Payment of Postage, \$300

16
3



LIBRARY NEWSLETTER

U. S. DEPARTMENT OF AGRICULTURE

Vol. 3, No. 7

LINCOLN BRANCH
Rudge & Guenzel Bldg.
Lincoln, 1, Nebraska

July 1944

SELECTED BOOKS

COOPERATION

Alanne, V. S. FUNDAMENTALS OF CONSUMER COOPERATION. 107 p. 1941. 280.2 N815 Ed.7
Here is not only the origin and history of consumer cooperation, but information on how to organize and administer consumer cooperatives, on various types, on federations, and on consumer and producer cooperation. This is a very helpful book.

Boyle, George. DEMOCRACY'S SECOND CHANCE; land, work and co-operation. 177 p. 1941. New York, Sheed & Ward, 280.2 B692
Home production, credit unions, return to the land and cooperatives point the way to a solution of America's economic and social problems according to this writer who is connected with the Antigonish movement in Canada.

FARM POLICY

Schultz, Theodore W. REDIRECTING FARM POLICY. 75 p. 1943. New York, Macmillan company. 281.12 Sch82
The tug of war over parity prices is one over false issues, according to this author. The purpose of this book is to get the interested public, farm leaders, and others back to a consideration of real policy issues. We must understand what prices are for, and how they function in the management of farm resources, incomes, and the distribution of food.

FORESTRY

U. S. Dept. of Agriculture. Forest Service. CHECK LIST OF THE NATIVE AND NATURALIZED TREES OF THE UNITED STATES, INCLUDING ALASKA. 325 p. 1944
This list supersedes Sudworth's 1927 check list. This is a temporary mimeographed edition; it will later be published in book form.

MARKETING

Phillips, Charles F. MARKETING. 781 p. 1938. Boston, Houghton Mifflin company. 280.3 P542
Herein is a broad picture of how goods are marketed. Specific items are the marketing of farm products used as raw material, cooperative marketing, wholesaling, retail field, the independent store, the chain store, and a section on marketing problems.

RABBITS

Ralston Purina Co. MARKETING YOUR RABBITS. 51 p. illus. 1942. St. Louis, Mo. 40.2 R13
Rabbits are produced for meat, fur, laboratory purposes, breeding stock, and wool. There are new opportunities for both the part time and the commercial business. Specific information on marketing and breeds is contained in this booklet.

REPORTS

Rhodes, Fred H. TECHNICAL REPORT WRITING. 125 p. 1941. New York, McGraw-Hill book company, inc. 238 R34

Now is the time for all good men to be aware of writing reports. This book deals not only with style and correct usage, but also with graphs, statistical methods, and the like.

WATER SUPPLY

Wright, Forrest B. RURAL WATER SUPPLY AND SANITATION. 288 p. illus. 1939. New York, John Wiley & sons, inc. 292 W93

This book is on the practical side. The aim has been to present the subject matter from the simpler to the more complex tasks, with the result that one should be able to not only construct but to repair plumbing and sewage-disposal systems.

WILD FOWL

McAtee, W. L. WILD FOWL FOOD PLANTS; THEIR VALUE, PROPAGATION, AND MANAGEMENT. 141 p. illus. 1939. Ames, Iowa, Collegiate press, inc. 463.82 M11W

Those interested in wild fowl, and those interested in ponds on the land will find information to their liking in this book. Various food and planting suggestions, construction of ponds, and control of undesirable plants and animals (as mosquitoes) are given.

MISCELLANEOUS

McWilliams, Carey. WHAT ABOUT OUR JAPANESE-AMERICANS? 31 p. 1944. Public Affairs Committee Pamphlet. 280.9 P964 no. 91.

National Planning Association. CLOTHING AND SHELTER FOR EUROPEAN RELIEF. 47 p. May, 1944. Washington, D. C., National Planning Association. 280.9 N2153 no.34.

SELECTED GOVERNMENT PUBLICATIONS

* * * * * NATIONAL FARM SAFETY WEEK JULY 23-29 * * * * *

Brink, Wellington. WATCH YOUR STEP; FARM SAFETY FOR NATIONAL DEFENSE. 32 p. 1942. Miscellaneous Pub. 1 Ag84M 481

Leatherman, Martin. FIREPROOFING FABRICS. 9 p. illus. 1938 rev. Farmers' Bul. 1 Ag84F 1786

SAFETY CHECK LIST FOR WOMEN AND GIRLS DOING FARM WORK FOR THE FIRST TIME. Folder 1943. AWI. 1 Ag84 Aw31.

SAFETY FIRST IN KANSAS FARMING. 63 p. illus. Kansas State safety council.

SAFETY FOR THE U. S. CROP CORPS. 15 p. 1943. AWI. 1 Ag84 Aw42.

START THEM RIGHT. Folder, 1943. AWI. 1 Ag 84 Aw45.

U. S. Soil conservation service. Safety and health section. SAFETY AND HEALTH HANDBOOK. 126 p. illus.

Valgren, V. N. FIRE SAFEGUARDS FOR THE FARM. 22 p. 1930. Farmers' Bul. 1 Ag84F 1643.

DISEASES AND PESTS

- Afanasiev, M. M. and Morris, H. E. DISEASES OF SUGAR BEETS IN CROP ROTATIONS AT THE HUNTLEY BRANCH STATION, HUNTLEY, MONTANA FROM 1936 to 1941. 23 p., Nov. 1943. Montana Agr. Expt. Sta. Bul. 100 M76(b) 419.
- Brown, Charles C. CONTRIBUTION TOWARD A HOST INDEX TO PLANT DISEASES IN OKLAHOMA. 38 p. Nov. 1943. Okla. Agr. Expt. Sta. Mimeo. Circ. 100 Ok4M M-104.
- Ferguson, G. R. CONTROL OF CORN EARWORM ON SWEET CORN. 3 p., illus. May, 1943. Oregon Agr. Expt. Sta. Circular of Information. 100 Or3C 312
- VICTORY GARDEN INSECT GUIDE. 16 p., illus. May, 1944. AWI. 1 Ag84Aw 95

FARM ECONOMICS

- Anderson, Harry G. FARM OUTLOOK AND ECONOMIC PROBLEMS FOR 1944. 16 p. charts. Febr. 1944. North Dakota. Agr. Ext. Service Cir. 275.29 N812 181
- Hill, E. B. FARMERS AND THE INCOME TAX. 24 p. Feb. 1944. Mich. Agri. Ext. Serv. Bulletin. 275.29 M58(b) 257.
- Kuhlman, G. W. and Mumford, D. Curtis. RENTING FARM MACHINERY. 3 p. April, 1943. Oregon Agr. Expt. Sta. Circular of Information. 100 Or3C 306
- Pine, W. H. and Blecha, Frank. KANSAS FARM LABOR. 11 p. illus. 1944. Kansas Agr. Ext. Serv. Circ. 176. 275.29 K13E(c) 176
- White, Bennett S. HOW FARMERS ARE USING THEIR MONEY. 9 p. Address. 1.941 A2W58

FEEDS AND FEEDING

- Ewalt, H. P. FEEDING GRAIN TO DAIRY COWS ON IRRIGATED LADINO CLOVER AND GRASS PASTURE. 5 p. April, 1943. Oregon Agr. Expt. Sta. Circular of Inform. 100 Or3C 310.
- Guilbert, H. R. and Goss, H. DIGESTION EXPERIMENTS WITH RANGE FORAGES AND FLAX HULLS. 10 p. Jan. 1944. Calif. Agr. Expt. Sta. Bul. 100 C12S(b) 684
- Johnson, I. B. and Johnson, Leslie E. FATTENING RANGE LAMBS ON SOUTH DAKOTA FEEDS. 19 p., illus. March, 1944. So. Dak. Agr. Expt. Sta. Bul. 100 So82(b) 373.
- Tolman, Walter and Ensminger, M. E. MINERAL NEEDS OF LIVESTOCK. 4 p. illus. Wash. Agr. Ext. Circ. 275.29 W27P(c) 71.
- Ward, W. G. and Warner, E. D. KANSAS SHEEP FEEDERS. Folder, plans. Jan. 1944. Kans. Agr. Ext. Serv. Cir. 275.29 K13E(c) 170

FISH PONDS

- Aldrick, A. D., Baumgartner, F. M. and Irwin, W. H. FISH PRODUCTION IN FARM PONDS. 8 p., illus. April, 1944. Oklahoma Agr. Expt. Sta. Circ. 100 Ok4C C-115
- Davison, Verne E. and Johnson, J. A. FISH FOR FOOD FROM FARM PONDS. 22 p. illus. Rev. April, 1944. Farmer's bulletin. 1 Ag84F 1938. Rev. 1944.

FOOD PRESERVATION

- FREEZING MEAT AND POULTRY PRODUCTS FOR HOME USE. Folder. 1944. AWI. 1 Ag84Aw 75
- HOME CANNING OF FRUITS AND VEGETABLES. 16 p. charts. May, 1944. AWI 1 Ag84Aw 93
- Price, F. E. and Kirk, Dale E. CONSTRUCTION AND OPERATION OF A HOME ELECTRIC FOOD DEHYDRATOR. 6 p. plans. April, 1943. Oregon Agr. Expt. Sta. Circular of Information. 100 Or3C 309

FORESTRY

- HIGHLIGHTS OF THE FOREST SITUATION ON THE NATIONAL FORESTS OF WESTERN MONTANA. 18 p. charts. April, 1944. Northern Rocky Mountain Forest and Range Experiment Station Statistical Service. 1.9622 N3F761 no. 18
- Siggers, Paul V. THE BROWN SPOT NEEDLE BLIGHT OF PINE SEEDLINGS. 36 p. illus. May 1944. Technical bulletin. 1 Ag84Te 870

GRASS

- Hanson, N. S. and Lawritson, M. N. PENNYCRESS AND PEPPERGRASS, Enemies of the Dairyman. 4 p., illus. April, 1944. Nebr. Agr. Ext. Service Circular. 275.29 N272Ex 162.
- Hilton, J. H., Wilbur, J. W. and Mott, G. O. ALFALFA-BROMEGRASS MAKES GOOD PASTURE. 5 p. Jan. 1944. Indiana Agr. Expt. Sta. Circ. 100 In2P(c) 290.
- Law, Alvin G. ALFALFA IN EASTERN WASHINGTON. 4 p. March, 1943. Wash. Agr. Expt. Sta. V circ. 100 W27E(vc) 7
- Staten, Hi W. and Elwell, Harry M. WEEPING LOVEGRASS IN OKLAHOMA. 22 p. illus. June, 1944. Okla. Agr. Expt. Sta. Bul. 100 Ok4(b) 281.
- Wenger, L. E. BUFFALO GRASS. 78 p. illus. Dec. 1943. Kans. Agr. Expt. Sta. Bul. 100 K13S(b) 321.

GRAZING

- Ewalt, H. P. ROTATIONAL GRAZING OF IRRIGATED PASTURE. 4 p. April, 1943. Oregon Agr. Expt. Sta. Circular of Information. 100 Or3C 311.
- Hormay, August L. MODERATE GRAZING PAYS ON CALIFORNIA ANNUAL-TYPE RANGES. 8p. illus. June, 1944. Leaflet. 1 Ag84L 239.

POULTRY

- AGENCIES TO CONTACT IN CASE OF POULTRY TROUBLES ATTRIBUTED TO FEED, DISEASE, OR MANAGEMENT. 3 p., Nov. 1943. Okla. Agr. Expt. Sta. Cir. M-103. 100 Ok4M M-103
- Cook, J. E. A BACKYARD POULTRY HOUSE. Folder, illus. May 1943. N.D. Agr. Ext. Service. Spec. Circular. 275.29 N812(s) A-46
- Evans, Robert John and Carver, J. S. DEFLUORINATED ROCK PHOSPHATE MAY REPLACE BONE MEAL IN LAYING RATIONS. 4 p. March, 1943. Wash. Agr. Expt. Sta. V. Circ. 100 W27E(vc) 6
- Goodearl, George P. COMPARISON OF PROSO MILLET AND YELLOW CORN FOR FEEDING LAYING HENS. 23 p. Dec. 1943. No. Dak. Agr. Expt. Sta. Bul. 100 N813(b) 329
- Roberts, C. A. and Polk, H. D. CONSTRUCTION AND OPERATION OF THE SUMMER EGG COOLER. 11 p. illus. May, 1943. Mississippi Agr. Expt. Sta. Bul. 100 M69(b) 388

Ward, W. G. and Seaton, M. A. KANSAS POULTRY EQUIPMENT. 3 p. plans. Rev. June, 1942. Kansas Agr. Ext. Serv. Circ. 145. 275.29 K13E(c) 145.

Warren, D. C. DEVELOPING EARLY-FEATHERING STRAINS IN HEAVY BREEDS OF POULTRY. 4 p., illus. April, 1944. Kansas Agr. Expt. Sta. Cir. 100 K13S(c) 224.

SOIL

Bennett, Hugh H. THOMAS JEFFERSON SOIL CONSERVATIONIST. 14 p., illus. April, 1944. Miscellaneous Pub. 1 Ag84M 548

Brandon, J. F. DRY LAND ROTATION AND TILLAGE EXPERIMENTS AT THE AKRON (COLORADO) FIELD STATION. 53 p., illus. May, 1944, Circular. 1 Ag84C 700

Gieseke, L. F. SOILS OF BROADWATER COUNTY, SOIL RECONNAISSANCE OF MONTANA; preliminary report... Mar. 1944. Montana Agr. Expt. Sta. Bulletin 100 M76(b) 421

Gieseke, L. F. SOILS OF MEAGHER COUNTY, SOIL RECONNAISSANCE OF MONTANA; preliminary report. Feb. 1944. Montana Agr. Expt. Sta. Bulletin 100 M76(b) 420

SOYBEANS

Kaufert, F. H., and Blew, J. Oscar. EXPERIMENTS WITH PRESERVATIVES FOR SOYBEAN GLUE AND SOYBEAN-GLUED PLYWOOD. 14 p. tables. March, 1944. U. S. Forest Serv., Forest Prod. Laboratory 1.9 F761R R1447

PROCESSING SOYBEANS FOR OIL AND MEAL. 8 p. May, 1944. Bureau of Agricultural and Industrial Chemistry AIC. 1.932 A2Ag82 45.

SOIL CONSERVATION AIDS SOYBEAN PRODUCTION. 8 p. illus. April, 1944. AWI-92. 1 Ag84Aw92.

SWINE

Carter, D. G. SELF-FEEDERS FOR HOGS. 16 p. illus. Dec. 1943. Ill. Agr. Ext. Service. Circular 275.29 I16C 562

Culbertson, C. C. THE SUBSTITUTION OF WHEAT FOR CORN IN THE RATION OF GROWING AND FATTENING PIGS. 2 p. proc. Iowa Agr. Ext. Service AH circ. 275.29 Io9Ah AH-363

Wheeler, S. S. WAR TIME FEEDING AND MANAGEMENT OF HOGS. 44 p. illus. Feb. 1944. Wyoming Agr. Expt. Sta. Bulletin. 100 W99(b) 265

* * * * *

CALL NUMBERS

* Some of you who enjoy receiving the Bibliography of Agriculture each month *
* select material which you wish from it. Occasionally we find the item num- *
* ber from the Bibliography put on the AD-245 in place of the call number. *
* For example, the Bibliography entry 12245, WENGER, L. E., Buffalo grass, *
* Kansas Agri. Expt. Sta. Bul. 321, 78 p. 1943, 100 K13S; - this is the *
* 12245th item listed in the Bibliography since January 1944. The call num- *
* ber, by means of which a book is located in the Library, is given last, -- *
* in this case it is 100 K13S. If the publication is in a series, as in *
* this example, the number of the series would also be necessary (Bul. 321). *
* Your material can go out on an earlier mail if we can start with the call *
* number instead of having to go to the Bibliography to obtain it. *
* * * * *

BEAMED TO BORROWERS

BORROWERS--ALL USDA employees in Kansas, Nebraska, South Dakota, North Dakota, Montana, Wyoming are "registered borrowers" of the Lincoln Branch Library. ITS services are YOURS.

- LOAN PERIODS--
1. Usual--two weeks; renewable upon request if not needed elsewhere.
 2. Limited--Dependent on circumstances. These may be books in unusual demand, or books borrowed on inter-library loan whose date limit is set by the loaning library. Watch the date.
 3. Maximum--One month; renewable, if not requested, for one additional month ONLY.
 4. Current periodicals--Three days per person.

OVERDUES--You don't like to receive them and we don't like to send them. Return your material on time, or ask for a renewal. It will save our time for you.

REQUESTS--These need not be limited to titles listed in the NEWSLETTER. Check the BIBLIOGRAPHY OF AGRICULTURE for current material on agriculture and on related subjects. If we do not have the title desired, we shall try to borrow from another library.

BEST SELLERS--We frequently have long waiting lists for publications listed in the NEWSLETTER. Names are added in the order received.

LEST WE FORGET--The fellows on the end of the list would also like the information while it is current. Look at the periodicals soon after they arrive. If you are going to want more than three days to assimilate the contents which interest you, add your name to the end of the list, send the material along, and it will come to you again.

UNITED STATES DEPARTMENT OF AGRICULTURE
LINCOLN BRANCH LIBRARY
Rudge & Guenzel Building
Lincoln, 1, Nebraska

Penalty for Private Use to
Avoid Payment of Postage, \$300



LIBRARY NEWSLETTER

U. S. DEPARTMENT OF AGRICULTURE

LINCOLN BRANCH
Rudge & Guenzel Bldg.
Lincoln, 1, Nebraska

Vol. 3, No. 8

August 1944

SELECTED BOOKS ON THE SUBJECT OF SOILS

- Ayres, Quincy Claude. SOIL EROSION AND ITS CONTROL. 365 p. 1936. New York, McGraw-Hill book company, inc. 56.7 Ay7
- Bear, Firman E. SOILS AND FERTILIZERS. 374 p. 1942. New York, John Wiley & sons, inc. 56.7 B38
- Bennett, Hugh Hammond. SOIL CONSERVATION. 993 p. 1939. New York, McGraw-Hill book co., inc. 56.7 B43S
- Bennett, Hugh Hammond. THIS LAND WE DEFEND. 107 p. 1942. New York, Longmans, Green and co. 56.7 B43T
- Bunce, Arthur C. THE ECONOMICS OF SOIL CONSERVATION. 227 p. 1942. Ames, Iowa. The Iowa State College Press. 56.7 B88
- Burges, Austin Earle. SOIL EROSION CONTROL; a practical exposition of the new science of soil conservation for students, farmers, and the general public. 187 p. 1937. Atlanta, Ga., T. E. Smith & company. 56.7 B912
- Emerson, Paul. PRINCIPLES OF SOIL TECHNOLOGY. 402 p. 1936. New York, Macmillan co. 56 Em3P
- Etcheverry, Bernard Alfred. IRRIGATION PRACTICE AND ENGINEERING. 3 vols. 1933. New York, McGraw-Hill book company, inc. 55 Et1 Ed. 2
- Faulkner, Edward H. PLOWMAN'S FOLLY. 161 p. 1943. Norman, University of Oklahoma press. 56.7 F27
- Glinka, K. D. THE GREAT SOIL GROUPS OF THE WORLD AND THEIR DEVELOPMENT. 135 p. 1935. Ann Arbor, Michigan, Edwards brothers, inc. 56.1 G49Ty
- Gustafson, Axel F. HANDBOOK OF FERTILIZERS, THEIR SOURCES, MAKE-UP, EFFECTS AND USE. 172 p. 1939. New York, Orange Judd pub. co., inc. 57 G97
- Gustafson, Axel F. SOILS AND SOIL MANAGEMENT. 424 p. 1941. New York, McGraw-Hill book co., inc. 56.7 G97S
- Harding, Sidney Twichell. WATER RIGHTS FOR IRRIGATION; principles and procedure for engineers. 176 p. 1940. Stanford University, Calif., Photolith reproduction by the Stanford university press. 55 H21W
- Hogentogler, C. A. ENGINEERING PROPERTIES OF SOIL. 434 p. 1937. New York, McGraw-Hill book co., inc. 56 H67

- Hulbert, Archer Butler. SOIL; its influence on the history of the United States with special reference to migration and the scientific study of local history. 227 p. 1930. New Haven, Yale University press. 56 H873
- Jacks, G. V. VANISHING LANDS; a world survey of soil erosion. 332 p. 1939. New York, Doubleday, Doran & company, inc. 56.7 J13V
- Jenny, Hans. FACTORS OF SOIL FORMATION; a system of quantitative pedology. 281 p. 1941. New York, McGraw-Hill book co., inc. 56.1 J45
- Kellogg, Charles Edwin. THE SOILS THAT SUPPORT US; an introduction to the study of soils and their use by men. 370 p. 1941. New York, The Macmillan company. 56 K29
- Lord, Russell. BEHOLD OUR LAND. 310 p. 1938. Boston, Houghton Mifflin co. 56.22 L88
- Lyon, Thomas Lyttleton. THE NATURE AND PROPERTIES OF SOILS; a college text of edaphology. 499 p. 1943. New York, The Macmillan co. 56 L99N Ed 4
- Millar, Charles Ernest. FUNDAMENTALS OF SOIL SCIENCE. 462 p. 1943. New York, J. Wiley & sons, inc. 56 M613
- Pacific Coast Borax company. BORON IN AGRICULTURE. 62 p. 1944. New York, Pacific coast borax company. 57.6 P11
- Robinson, Gilber Wooding. SOILS, THEIR ORIGIN, CONSTITUTION AND CLASSIFICATION. 442 p. 1936. New York, D. Van Nostrand co., inc. 56.1 R55 ed. 2
- U. S. Department of Agriculture. Yearbook. SOILS AND MEN. 1232 p. 1938. Washington Gov. print. off. 1 Ag84Y 1938
- Waksman, Selman Abraham. HUMUS; origin, chemical composition, and importance in nature. 494 p. 1936. Baltimore, The Williams & Wilkins company. 56 W13H
- Weeks, David. AMERICAN IRRIGATION POLICIES. 26 p. 1933. New York, American council, Institute of Pacific relations. 55 W412
- Willcox, Oswin William. ABC OF AGROBIOLOGY; the quantitative science of plant life and plant nutrition for gardeners, farmers and general readers. 323 p. 1937. New York, W. W. Norton & company, inc. 56.6 W66
- Wolfanger, Louis A. THE MAJOR SOIL DIVISIONS OF THE UNITED STATES; a pedologic-geographic survey. 150 p. 1930. New York, John Wiley & sons, inc. 56.22 W83
- Worthen, Edmund L. FARM SOILS, THEIR MANAGEMENT AND FERTILIZATION. 515 p. 1941. New York, John Wiley & sons, inc. 56.7 W89 Ed 3

SELECTED GOVERNMENT PUBLICATIONS

CROPS

Litzenberger, S. C. COMPANA AND GLACIER BARLEY. 17 p., illus. Apr. 1944. Mont. Agr. Expt. Sta. Bul. 100 M76(b) 422.

VARIETIES OF FARM CROPS FOR MONTANA, 1944. 32 p. April, 1944. Mont. Agr. Expt. Sta. Circ. 100 M76(c)-177.

DISEASES AND PESTS

Bakke, A. L. CONTROL AND ERADICATION OF EUROPEAN BINDWEED. 21 p. illus. May, 1944. Iowa Agr. Expt. Sta. Bul. P. 100 Io9 P61.

Drake, C. J., Decker, G. C. and Harris, H. M. THE EUROPEAN CORN BORER AND ITS CONTROL. 13 p. illus. April, 1944. Iowa Agr. Expt. Sta. Bul. P. 100 Io9 P60.

Eichmann, R. D. CORN EARWORM. 3 p. processed. April, 1943. Wash. Agr. Expt. Sta. Mimeograph Circular. 100 W27Mc 5.

Eichmann, R. D. SQUASH BUG. 3 p. proc. April, 1943. Wash. Agr. Expt. Sta. mimeograph circular. 100 W27Mc 7.

Eichmann, R. D. TOMATO INSECTS. 4 p. processed. April, 1943. Wash. Agr. Expt. Sta. Mimeograph Circular. 100 W27Mc 4.

Livingston, J. E. FUNGICIDES RECOMMENDED FOR THE CONTROL OF DISEASES IN NEBRASKA. 13 p. 1944. Nebr. Agr. Ext. Service Circ. 275.29 N272Ex 1803.

Olston, T. M. BLOAT IN DAIRY CATTLE. 11 p. illus. June, 1944. So. Dak. Agr. Expt. Sta. Cir. 100 So82(c) 52.

Tate, H. Douglas and Gates, Doris B. THE MOSQUITOES OF NEBRASKA. 27 p. June, 1944. Nebr. Agr. Expt. Sta. Research bulletin. 100 N27(r) 133.

FARM MANAGEMENT

Brodell, A. P. & Jennings, R. D. WORK PERFORMED AND FEED UTILIZED BY HORSES AND MULES. 26 p. maps. Processed. June, 1944. Bureau of Agricultural Economics F. M. 1.941 L6F22 no. 44.

Doll, R. J. PLANNING THE FARM BUSINESS IN SOUTH CENTRAL KANSAS. 32 p. tables. March, 1943. Kansas Agricultural experiment station bulletin. 100 K13S(b) 312.

Kelley, M.A.R. FARM FENCES. 60 p. illus. Revised. May 1944. Farmers' bulletin. 1 Ag84F 1832

Ruden, W. L. and Filley, H. C. FARM SIZE AND ITS RELATION TO VOLUME OF PRODUCTION, OPERATING COSTS, AND NET RETURNS; CENTRAL AND SOUTHERN NEBRASKA, 1930-1939. 19 p. tables. Dec. 1943. Nebr. Agricultural Expt. Sta. Bul. 349. 100 N27(b) 349.

Ruden, Walter L. FARM SIZE AND ITS RELATION TO VOLUME OF PRODUCTION, OPERATING COSTS AND NET RETURNS--SOUTHEASTERN NEBRASKA, 1930-39. 16 p. Charts, graphs and tables. June, 1943. Nebraska Agricultural experiment station bulletin. 100 N27(b) no. 346.

FARM PURCHASE

ABOUT THAT FARM YOU'RE GOING TO BUY. 12 p. illus. May, 1944. U. S. Farm Credit Adm. circular. 166.2 C4926 E-29.

Johnson, O. R. SOME CONSIDERATIONS IN BUYING A FARM. 22 p. Nov. 1943. Missouri Agr. Exp. Sta. Circ. 100 M693(c) no. 281.

Lundy, Gabriel. FARM MORTGAGE EXPERIENCE IN SOUTH DAKOTA, 1910-40. With special reference to three townships in each of the counties of Brookings, Clark, Haakon, Hyde and Turner. 31 p. charts, tables. June, 1943. South Dakota agricultural experiment station bulletin. 100 So82(b) 370.

FEEDS AND FEEDING

Haag, J. R. MINERALS FOR FARM ANIMALS. 11 p. June, 1943. Oregon Agr. Expt. Sta. Cir. 100 Or3(c) 153.

Wilbur, J. W., Waugh, R. K. and others. ALFALFA-BROME GRASS SILAGE FOR DAIRY COWS. 8 p. illus. June, 1943. Purdue (Indiana) agricultural experiment station circular. 100 In2P(c) 285.

FOOD--PREPARATION AND PRESERVATION

Doremus, Mabel and Runnalls, Mary E. PEPPING UP WARTIME MEALS. 16 p. illus. Nov. 1943. Nebr. Agr. Ext. Service. Circular. 275.29 N272Ex 9961.

EGG DISHES FOR ANY MEAL. 16 p. recipes. June, 1944. AWI. 1 Ag84Aw 89.

HOW TO PREPARE VEGETABLES AND FRUITS FOR FREEZING. Folder, Table. May, 1944. AWI. 1 Ag84Aw 100.

PICKLE AND RELISH RECIPES. 16 p. July, 1944. AWI. 1 Ag84Aw 103.

Woodroof, J. G. and Atkinson, J. K. PRESERVING SWEET POTATOES BY FREEZING. 26 p. illus. March, 1944. Georgia Agr. Expt. Sta. Bul. 100 G29S(b) 232.

LAND VALUES

Anderson, Norris J. WHAT PRICE FOR THIS LAND? 16 p. charts. June, 1943. South Dakota agricultural experiment station bulletin. 100 So82(b) 368.

Salter, Leonard A., Jr. IS A LAND BOOM COMING? 4 p. proc. May, 1944. Wisconsin Agr. Extension Service Special Circular. 275.29 W27S.

LAWS

Bishop, L. C., comp. WYOMING IRRIGATION LAWS, 1943. 128 p. 1943.

Whitcomb, W. O. and Kruse, Albert H. MONTANA SEED LAW (as amended 1939). 16 p. August 1943. Mont. Agr. Expt. Sta. Circ. 100 M76(c) 176.

PASTURE

Brown, E. Marion. IMPROVE PERMANENT PASTURES WITH LESPEDEZA, PHOSPHATE, LIME, AND SUPPLEMENTARY GRAZING. 8 p. illus. Febr. 1944. Missouri Agr. Expt. Sta. Circ. 100 M693(c) 285.

Rather, H. C. and Harrison, C. M. ALFALFA AND SMOOTH BROMEGRASS FOR PASTURE AND HAY. 20 p. illus. April, 1944. Michigan Agr. Expt. Sta. Circular bulletin. 100 M58S(cb) 189.

RABBITS

- Chapman, M. P. and Long, Jay. RABBIT PRODUCTION FOR MEAT. 31 p. illus. June 1943. Oregon Agr. Expt. Sta. Circ. 100 Or3(c) 155.
- Cline, L. E. RAISING RABBITS IN NEVADA. 48 p., illus. Oct. 1943. Nevada Agr. Ext. Ser. Bul. 92. 275.29 N41E(b) 92.
- Thompson, Willard C. RAISING RABBITS FOR HOME USE. 13 p. illus. May, 1943. New Jersey agricultural experiment station circular. 100 N46S(c) 462.

SOIL

- Edwards, M. J. & Ableiter, J. K. SOIL SURVEY, BILLINGS COUNTY, NORTH DAKOTA. 111 p. illus. map. 1 So32F.
- Klemme, A. W. SOIL TREATMENT TO IMPROVE PERMANENT PASTURES. 7 p. illus. March, 1944. Missouri Agr. Expt. Sta. Circular. 100 M693(c) 289.
- Van Doren, C. A. and Stauffer, R. S. EFFECT OF CROP RESIDUE ON RUNOFF AND EROSION. 2 p., proc. June, 1943. Illinois Agr. Expt. Sta. AG1159. 275.29 1162Pag.

SOYBEANS

- Carl, Flora L. and Jopling, Letha K. SOYBEANS IN FAMILY MEALS. 12 p. Nov. 1943. Missouri Agr. Ext. Service Cir. 275.29 M69C 500.
- COOKING WITH SOYA FLOUR AND GRITS. 24 p. Apr. 1944, rev. AWI 1 Ag84Aw 73, rev.
- Currey, E. A. EDIBLE SOYBEANS: STONEVILLE, 1943. 1 p. Dec. 1943. Miss. Agr. Expt. Sta. Service Sheet. 100 M69. 369.

MISCELLANEOUS

- Aronovsky, S. I., Talburt, W. F. & Lathrop, E. C. INFORMATION ON NGRESEAL--A NEW CORK SUBSTITUTE. 16 p. illus. Tables. May, 1944. Bureau of Agricultural and Industrial Chemistry AIC-44. 1.932 A2Ag82 44.
- Batjer, L. P. HARVEST SPRAYS FOR THE CONTROL OF FRUIT DROP. 16 p. tables. September, 1943. Circular. 1 Ag84C no. 685.
- Coghill, Robert D. THE BACKGROUND OF PENICILLIN PRODUCTION. 14 p. April, 1944. Bureau of Agricultural and Industrial Chemistry AIC 1.932 A2Ag82 49.
- Curry, A. S. IRRIGATING THE HOME GARDEN. 8 p. illus. March, 1944. New Mexico Agr. Expt. Sta. Bul. 100 N465(b) 313.
- Dewey, Lyster H. FIBER PRODUCTION IN THE WESTERN HEMISPHERE. 95 p. illus. Aug. 1943. Miscellaneous publication. 1 Ag84M no. 518.
- Errington, Paul L. AN ANALYSIS OF MINK PREDATION UPON MUSKRATS IN NORTH-CENTRAL UNITED STATES. 126 p. illus. June, 1943. Iowa agricultural experiment station research bulletin. 100 Io9 (r) no. 320.
- Hilbert, G. E., Dimler, R. J., & Rist, C. E. WHEAT FLOUR--A POTENTIAL RAW MATERIAL FOR THE EXPANDED PRODUCTION OF STARCH AND SIRUPS. 10 p. 1944. Agricultural research administration AIC. 1.932 A2Ag82 AIC-50.
- JOINT STATEMENT ON SOCIAL SECURITY BY AGRICULTURE, BUSINESS AND LABOR. 35 p.. National planning ass'n. Planning pamphlet. 280.9 N2153 no. 33.

BEAMED TO BORROWERS

BORROWERS--ALL USDA employees in Kansas, Nebraska, South Dakota, North Dakota, Montana, Wyoming are "registered borrowers" of the Lincoln Branch Library. ITS services are YOURS.

- LOAN PERIODS--
1. Usual--two weeks; renewable upon request if not needed elsewhere.
 2. Limited--Dependent on circumstances. These may be books in unusual demand, or books borrowed on inter-library loan whose date limit is set by the loaning library. Watch the date.
 3. Maximum--One month; renewable, if not requested, for one additional month ONLY.
 4. Current periodicals--Three days per person.

OVERDUES--You don't like to receive them and we don't like to send them. Return your material on time, or ask for a renewal. It will save our time for you.

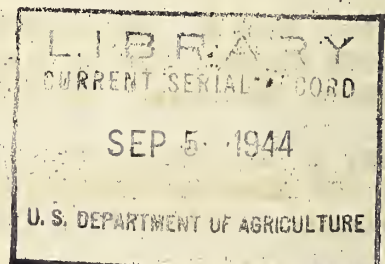
REQUESTS--These need not be limited to titles listed in the NEWSLETTER. Check the BIBLIOGRAPHY OF AGRICULTURE for current material on agriculture and on related subjects. If we do not have the title desired, we shall try to borrow from another library.

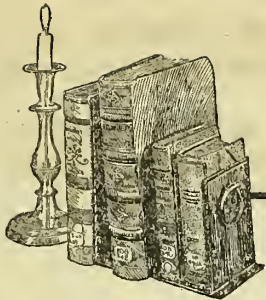
BEST SELLERS--We frequently have long waiting lists for publications listed in the NEWSLETTER. Names are added in the order received.

LEST WE FORGET--The fellows on the end of the list would also like the information while it is current. Look at the periodicals soon after they arrive. If you are going to want more than three days to assimilate the contents which interest you, add your name to the end of the list, send the material along, and it will come to you again.

UNITED STATES DEPARTMENT OF AGRICULTURE
LINCOLN BRANCH LIBRARY
Rudge & Guenzel Building
Lincoln, 1, Nebraska

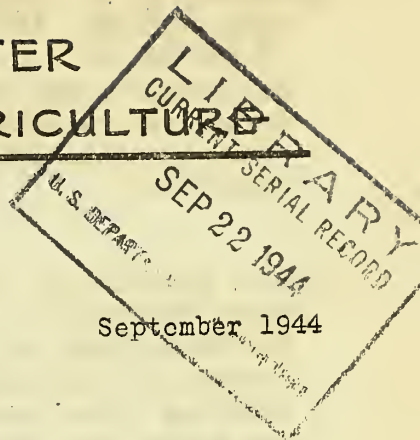
Penalty for Private Use to
Avoid Payment of Postage, \$300





LIBRARY NEWSLETTER

U. S. DEPARTMENT of AGRICULTURE



LINCOLN BRANCH
Rudge & Guenzel Bldg.
Lincoln, 1, Nebraska

September 1944

Vol. 3, No. 9

SELECTED BOOKS

DISEASES

Conn, George H. SOME COMMON DISEASES OF CATTLE. 176 p. 1943, New York, Orange Judd publishing co., inc. 41 C763S

"There are many diseases affecting cattle which the owner may be confronted with at any time. In order to render helpful assistance to his veterinarian and to be of the greatest usefulness in giving first-aid and in carrying out the instructions that must be employed in giving proper care, the cattle owner should have certain knowledge, which the author has attempted to give in this book." Diseases, symptoms, and care are given.

Dykstra, R. R. ANIMAL SANITATION AND DISEASE CONTROL. 558 p. 1942, Danville, Ill., Interstate printers - publishers. 41 D99

Contents of this book are some factors of animal health (food, vitamins, air), of animal disease (domestication, insects), disease control (quarantine, disinfection, cleanliness), infections, parasites, non-infectious ailments, infectious and communicable ailments, parasites, miscellaneous information; also livestock sanitary bureaus, boards, and commissions, and the veterinarian.

Hermes, William B. MEDICAL ENTOMOLOGY, WITH SPECIAL REFERENCE TO THE HEALTH AND WELL-BEING OF MAN AND ANIMALS. 582 p. 3d ed. 1939, New York, Macmillan co. 422 H422M

Some of the diseases which occur in man and in animals can be traced back to insects. If you are interested in what cockroaches, lice, gnats, mosquitoes, flies (horse, house, and louse), fleas, ticks, and mites can do, here is your way to find out.

FERTILIZERS

Beaumont, Arthur B. ARTIFICIAL MANURES, OR THE CONSERVATION AND USE OF ORGANIC MATTER FOR SOIL IMPROVEMENT. 155 p. 1943, New York, Orange Judd publishing co., inc. 57.4 B38

How soil is made and various kinds of soils are given preliminary consideration. Then manures of all kinds, composts and artificial manures for various uses are taken up.

Collings, Gilbert H. COMMERCIAL FERTILIZERS; THEIR SOURCES AND USES. 480 p. 3d ed. 1941. Philadelphia, The Blakiston Co. 57.2 C69 Ed. 3

This book on fertilizer has grown out of the teaching experience of an agronomist. It covers the origin and development of the use of commercial fertilizers; the source, production, manufacture and use of various nutrients; and fertilizers carrying various elements. Principles underlying the purchase and the use of fertilizers, and their influence on germination and seedling growth are discussed.

Gustafson, A. F. HANDBOOK OF FERTILIZERS; THEIR SOURCES, MAKE-UP, EFFECTS, AND USE. 4th ed. 172 p. illus. 1944, New York, Orange Judd publishing co., inc. 57 G97 Ed. 4

Requirements for plant growth, and effects of fertilizers on crops and soils; fertilizer materials, - nitrogenous - phosphatic-potash; fertilizers, factory-mixed and home-mixed; fertilizers, - purchase and use, are the contents of this book.

MISCELLANEOUS

Eckles, Clarence H. DAIRY CATTLE AND MILK PRODUCTION. 3d ed. 520 p. 1944, New York, Macmillan co. 43 Ec5 Ed. 3.

The dairy type; selection of breeds, of individual cows, of sires; various breeds, and breeding; calf and heifer raising; care and management; ailments; feeding; silos; stables; manure. The contents reveal the comprehensive coverage given this subject. This is a revised edition of an old stand-by.

Haystead, Ladd. MEET THE FARMERS. 221 p. 1944. New York, G. P. Putnam's sons. 281.12 H33

The farmers are a good percentage of our population, and non-farm people but connected with agriculture represent an additional number. The average farmer or the typical farmer is a most difficult man to find, inasmuch as the crops produced and the geographical conditions differ in various localities. In this readably written book, one meets the farmers and their problems from one end of the country to the other.

Hedges, C. C. and Brayton, H. R. APPLICATION OF CHEMISTRY TO AGRICULTURE. 238 p. 1938, New York, D. Appleton-Century Co. 395 H35

How the seed germinates, the growth and composition of the plant, the source of its food (the air and the soil) the effect of fertilizers and composition of the food received by the plant, and protection against insects and fungus diseases are to be found in this book which might be considered under the topic of care and handling of plants.

Lilienthal, David E. TVA; DEMOCRACY ON THE MARCH. 248 p. 1944 New York, Harper & Brothers. 280.002 L62T Ed. 2

This book "is about real things and real people; rivers and how to develop them; new factories and new jobs and how they were created; farms and farmers and how they came to prosper and stand on their own. ... It is a story of the people and how they have worked to create a new valley. ... A thousand valleys over the globe and our valley here are in this way the same: everywhere what happens to the land, the forests, and the water determines what happens to the people. ... This is a book about tomorrow."

Raper, Arthur F. PREFACE TO PEASANTRY; A TALE OF TWO BLACK BELT COUNTIES. 423 p. illus. 1936. Chapel Hill, University of North Carolina press. 281.019 R 18
"Tools would wear out and men die, but the land would remain and support whoever was resourceful enough to acquire it or fortunate enough to inherit it." Such was the philosophy that cleared more and more land for the predominant crop of cotton, which was planted year after year. This book is about the destruction of the soil and its result on the people, both white and black, in two counties of Georgia.

Robbins, Wilfred W. and Ranaley, F. PLANTS USEFUL TO MAN. 2d ed. illus. 1937. Philadelphia, P. Blakiston's son & co., inc. 452.8 R53 Ed. 2

The mustard family includes cabbage, brussel sprouts and turnips; there is a connection between rhubarb, buckwheat, and bindweed; onions and asparagus are relatives of the lily family; while the cereal grains are of very old lineage.

Much absorbing information is in this book of crop plants commonly found in orchard, garden, or field. History, varieties, cultivation, structure, and uses are given, as well as numerous illustrations and many maps.

USDA. Vol. 1-2, 1942-1943. 1 Ag84U

This book is all of the issues of USDA through 1943 bound in one volume. Do you remember reading about the appointment of so-and-so, or about the organization of this agency, or about that program? Here is a book about the Department, full of choice items wherever you dip into it.

Wilcox, Earley V. MODERN FARMERS' CYCLOPEDIA OF AGRICULTURE. 497 p. illus. 1944. New York, Orange Judd publishing co., inc. 30.1 W65M
Observations and experience of skilled farmers plus systematic tests in scientific investigations form the base for this book. There are eight parts: Field crops; Garden crops; Fruits and nuts; Beef cattle and dairying; Other live stock; Poultry; Drainage, fertilizers, irrigation, soils, etc.; Miscellaneous. Sorghums, as an example of field crops, includes general comments, different varieties, seeding, harvesting, uses. The information on sheep comprises breeds and breeding, shelter, feeds and feeding, diseases. As the title implies, the contents are of cyclopedic nature.

SELECTED GOVERNMENT PUBLICATIONS

CARE AND UPKEEP

- HOW TO MAKE YOUR ELECTRIC CORDS LAST LONGER. Folder. Mar. 1943. AWI 1 Ag84 Aw20.
HOW TO MAKE YOUR IRONING EQUIPMENT LAST LONGER. Folder. Nov. 1942. AWI 1 Ag84Aw11.
KEEP FARM EQUIPMENT IN GOOD WORKING ORDER. Folder. Jan. 1943. Louisiana Agr. Ext. Serv. Wartime Leaflet. 275.29 L93W 5.
Nettles, W. C. LONGER LIFE FOR FENCE POSTS. Folder. June, 1944. So. Car. Agr. Ext. Serv. Circ. 275.29 So8E 262.
TAKE CARE OF VACUUM CLEANERS AND CARPET SWEEPERS. Folder. Jan. 1943. AWI 1Ag84 Aw 19.

FARMING

- IMPROVING FARM TENURE IN THE MIDWEST, problems and recommended policies. 169 p. June, 1944. Ill. Agr. Expt. Sta. Bul. 100 I16S(b) 502.
Nichols, Ralph R. and King, Morton B., Jr. SOCIAL EFFECTS OF GOVERNMENT LAND PURCHASE. 55 p.-June, 1943. Miss. Agr. Expt. Sta. Bul. 100 M69(b) 390.
Nodland, Truman R. KNOW YOUR FARM BUSINESS. Chart. June 1944. Minnesota Agr. Ext. Service Pamphlet. 275:29 M66P 138.
Rusk, H. P. and Shoemaker, Warren W. POSTWAR PROBLEMS FACING AGRICULTURE AND BUSINESS. 20 p. June, 1944. Ill. Agr. Ext. Service circular. 275.29 I162C 582.

FEEDS AND FEEDING

- Beeson, W. M., Fountaine, F. C. and Lampman, C. E. MINERALS FOR LIVESTOCK. 16 p. Febr. 1943. Idaho Agr. Ext. Serv. Bul. 275.29 Id13 145.
Bohstedt, Gus. POOR HAY TO BLAME FOR MANY SPRING AILMENTS OF FARM ANIMALS. 2 p. Wisc. Agr. Ext. Serv. Special circular. 275.29 W75S.

FORAGE FOR FALL FEEDING. Folder. Sept. 1943. AWI 1 Ag84 Aw 62.

Garrett, O. F. and Bosshardt, D. K. EFFECT OF FEEDING SILAGES ON CERTAIN PROPERTIES OF MILK... 30 p. March, 1944. New Jersey Agr. Expt. Sta. Bulletin 100 N46S 710.

Price, W. V., Bohstedt, G. and Rupel, I. W. WHEY AS A LIVESTOCK FEED. 6 p., proc. April 1943. Wisc. Agr. Ext. Serv. Stencil circular. 275.29 W75B 233.

Tretsven, J. O. GOOD HAY MAKES MORE MILK. 8 p. April, 1944. Mont. Agr. Ext. Serv. Circ. 275.29 M76Ci 147.

Wallis, G. C. VITAMINS D AND A IN ALFALFA HAY. 11 p. June, 1944. So. Dak. Agr. Expt. Sta. Cir. 100 So82(c) 53.

HOME MAKER HELPS

Scott, Clarice L. MAKE-OVERS FROM COATS AND SUITS. 16 p. illus. 1944. Miscellaneous publication. 1 Ag84M 545.

Brooks, Charlotte P. EVERYDAY CARE OF FURNITURE. 5 p., processed. August, 1943. Vermont Agri. Ext. Service Brieflet. 275.29 V592E 680.

Post, Kenneth. CARE OF PLANTS IN THE HOME. 18 p. illus. Sept. 1943. New York (Cornell) Agr. Ext. Serv. Bul. 275.29 N48E 623.

Comstock, Ruth B. PARTIAL COVERS TO PROTECT CHAIRS. 12 p., illus. Sept. 1943. New York (Cornell) Agr. Ext. Serv. Bul. 275.29 N48E 625.

Knowles, Elaine. A SIMPLE WAY TO IRON A SHIRT. Var. pag. illus. Dec. 1943. New York (Cornell) Agr. Ext. Serv. Bulletin. 275.29 N48E 629.

TAKE CARE OF THE WOOL YOU HAVE. Folder. Mar. 1943. AWI 1 Ag84Aw 26.

LIVESTOCK

Clark, R. T. and others. PERFORMANCE-TESTING OF BEEF CATTLE. 12 p., illus. Sept. 1943. Montana Agr. Expt. Sta. Bul. 100 M76(b) 417.

KNOW YOUR COWS. Folder. Aug. 1943. Iowa Agr. Ext. Serv. Pamphlet. 275.29 Io9Pa 72.

LIST OF SIRES PROVED IN DAIRY HERD IMPROVEMENT ASSOCIATIONS, 1944. 234 p., Aug. 1944. Miscellaneous publication. 1 Ag84M 547.

\$1,000,000 HOLD-UP EACH YEAR BY CATTLE GRUBS. Folder. Nebr. Agr. Ext. Serv. CC. 275.29 N272Cc 76.

ROBBED BY CATTLE GRUBS OF BEEF, LEATHER, MILK. Folder, illus. Jan. 1943. Iowa Agr. Ext. Serv. Pam. 275.29 Io9Pa 55.

SEPTEMBER IS NUTRITION MONTH

Bennett, Katharine E. HOME CHEESE MAKING. 2 p. Calif. Agr. Ext. Ser. H. D. 275.29 C122 H.D. 485.

Fenton, Faith. THE COOKING OF FROZEN FOODS. 31 p. illus. recipes. Dec. 1943. New York (Cornell) Agr. Ext. Service Bulletin. 275.29 N48E 628.

Roskelley, R. W. HOW RURAL PEOPLE IN COLORADO MEET A "YARDSTICK OF GOOD NUTRITION". 23 p. April 1944. Colo. Agr. Ext. Serv. Circ. 275.29 C71C 380-A.

Straszheim, Marie and Oberhelman, Lois. YEAST BREADS MADE AT HOME. 15 p. illus.
Indiana Agr. Ext. Service Bulletin. 275.29 In2E 297.

TOMATOES ON YOUR TABLE. 20 p. recipes. July, 1944. U.S.D.A. AWI. 1 Ag84Aw 104.

SLAUGHTERING, ETC.

FARMER GRADES HIS MEAT. 21 p. Sept. 1943. AWI 1 Ag84Aw 69.

Frost, J. T. MEAT ON THE FARM. Dressing, cutting and curing. 11 p. illus. Febr.
1944. Indiana Agr. Ext. Serv. Bul. 275.29 In2E 307

Loeffel, Wm. J. HOG SLAUGHTERING AND PORK CUTTING. 31 p. illus. Oct. 1943. Nebr.
Agr. Ext. Circ. 247. 275.29 N272Ex 247.

PROTECT HOME-CURED MEAT FROM INSECTS. Folder. Oct. 1943. AWI 1 Ag84Aw 32.

SMOKE HOUSES AND HOG SLAUGHTERING EQUIPMENT. Folder. Sept. 1943. AWI 1 Ag84Aw68.

MISCELLANEOUS

Burdick, R. T. and others. BUYING A FARM IN COLORADO. 15 p. April 1944. Colo.
Agr. Expt. Sta. Bul. 100 C71S(b) 485.

Harness, George. FARM SECURITY ADMINISTRATION REHABILITATION LOAN EXPERIENCE IN
FIVE MISSOURI COUNTIES (June 1942). 34 p. Febr. 1944. Missouri Agr. Expt.
Sta. Bulletin. 100 M693(b) 476.

Johnson, Gale D. and Brownlee, O. H. FOOD SUBSIDIES AND INFLATION CONTROL. 53 p.
1944. Iowa State College Wartime Farm and Food Policy Pamphlet 281.9 W265 no. 10.

Paul, Benson H. and Baudendistel, Martin E. A FIELD METHOD OF DETERMINING SPECIFIC
GRAVITY BY USE OF INCREMENT CORES OR AUGER CHIPS. 5 p. charts. Dec. 1943.
Forest products laboratory Mimeo. 1.9 F761R 1587.

PLOWING

PLOW YOUR GARDEN THIS FALL. Folder. Nebr. Agr. Ext. Serv. CC. 275.29 N272Cc 73.

WINTER PLOWING CONTROLS WILD GARLIC. Folder. Jan. 1944. Indiana Agr. Ext. Serv.
Leaflet. 275.29 In21L 257.

TOOLS FOR THE FARM

Nebraska agricultural extension service. THE AGRICULTURAL ENGINEER, Information
series. 275.29 N272 Age # _____

1. Keeping the farm car and truck battery on the job.
2. Homemade attachments and convertible machines for bindweed cultivation.
3. Siphon tube irrigation.
4. Homemade sweep for tricycle-type tractor.
5. A handy welding jig.
6. Engine cooling systems.
7. Improved land leveler.
8. Nebraska type auto hay sweep.
9. Overshot hay stacker.
10. Auto, truck or tractor hitch for horse type buck rake.
11. Tandem mower hitches.
12. Two-rake tractor hitch.
14. Homemade windrowers.
15. Backboards as labor savers for stacking hay.
16. Rates of flow for irrigation siphon tubes.

* * * * *

PACKAGES -- POSTAGE?

Public law 364 requires that packages weighing more than four pounds shall not be admitted to the mails under the penalty privilege. There are two exceptions but they do not apply to library material. It was formerly possible to mail a single book weighing over four pounds under frank. Now, packages under four pounds may be mailed under the penalty privilege; packages over four pounds need postage. There is a book rate which may be found to be advantageous. Information concerning it can be obtained from the Postmaster.

* * * * *

BEAMED TO BORROWERS

BORROWERS-- ALL USDA employees in Kansas, Nebraska, South Dakota, North Dakota, Montana, Wyoming are legitimate borrowers of the Lincoln Branch Library. ITS services are YOURS.

- LOAN PERIODS -
1. Usual--two weeks; renewable upon request if not needed elsewhere.
 2. Limited--Dependent on circumstances. These may be books in unusual demand, or books borrowed on inter-library loan whose date limit is set by the loaning library. Watch the date.
 3. Maximum--One month; renewable, if not requested, for one additional month ONLY.
 4. Current periodicals--Three days per person.

OVERDUES--You don't like to receive them and we don't like to send them. Return your material on time, or ask for a renewal. It will save our time for you.

REQUESTS--These need not be limited to titles listed in the NEWSLETTER. Check the BIBLIOGRAPHY OF AGRICULTURE for current material on agriculture and on related subjects. If we do not have the title desired, we shall try to borrow from another library.

BEST SELLERS--We frequently have long waiting lists for publications listed in the NEWSLETTER. Names are added in the order received.

LEST WE FORGET--The fellows on the end of the list would also like the information while it is current. Look at the periodicals soon after they arrive. If you are going to want more than three days to assimilate the contents which interest you, add your name to the end of the list, send the material along, and it will come to you again.

LIBRARY NEWSLETTER

U. S. DEPARTMENT OF AGRICULTURE



Vol. 3, No. 10

LINCOLN BRANCH
Rudge & Guenzel Bldg.
Lincoln, 1, Nebraska

October 1944

SELECTED NEW BOOKS

AGRICULTURE ABROAD

Farnsworth, Helen C. LIVESTOCK IN CONTINENTAL EUROPE DURING WORLD WAR II. 63 p.
Food Research Inst., Stanford Univ., California. (War-Peace Pamphlets No. 6),
1944, 280.9 L532 No. 6

Prewar production of major food animals, prewar trade position, shortage of feed and possibilities of adjustment, wartime changes in animal numbers and production, and summary and outlook is the bird's-eye view of the situation given in this pamphlet.

Lowdermilk, Walter C. PALESTINE, LAND OF PROMISE. 236 p. illus. 1944, New York, Harper & Brothers. 280.185 L95

In 1938 Dr. Lowdermilk was sent by the Department of Agriculture to make a soil survey of the old countries of the Near East. He gives here an inspiring account of what reclamation can accomplish toward a new and productive economy as evidenced by work already done in the land of Palestine.

FARMING

Felker, James. THE APPRENTICE FARMER. 32 p. 1944, Akron, Goodyear tire and rubber co. 282.2 F33

The Goodyear Tire & Rubber Company owned some land in Arizona. They found some young men whose goals were farms of their own. Result: the young men were enrolled as apprentices, trained in methods of farm operation, and by successive stages brought to farm ownership. The first apprentices started in 1937, in 1943 seven had completed the first full cycle of the plan and received 15-year contracts to purchase 80-acre farms. This is the story.

Greenberg, David B. and Corbin, C. SO YOU'RE GOING TO BUY A FARM. 140 p. 1944, New York, Greenberg. 31.3 G82

How much land do I need? What help can I get in financing? Where shall I look, and for what specifically? How to judge and compare farms. Buying a going farm. What should I know about soils, about fertilizers? These are some of the topics discussed for the aid of the contemplative buyer.

Tornborough, Bert V. FARM BOOKKEEPER WITH INCOME TAX GUIDE. 128 p. illus. 1942, New York, Orange Judd publishing co., inc. 30.61 T63

Purpose of farm bookkeeping, requirements that a system should meet, choice of methods, reporting on a cash or on an accrual basis, accounts from sale of various produce, expense accounts, and much other useful information together with sample forms are given in this book.

LIBRARY
SERIALS
LOAD

OCT 20 1944

FOOD PRESERVATION

Swank, Edith Elliott. STORY OF FOOD PRESERVATION. 96 p. illus. 1943. H. J. Heinz company. 389.3 Sw2

In the old days, man was a food gatherer; he caught the bear for food and clothing; he grubbed for greens. Gradually he learned to preserve by cooking, drying seeds and grains, by hanging meat out to freeze, or by storing nuts. He has been learning constantly through the ages. This is a very interesting booklet from then to now.

Taylor, Demetria M. COMPLETE BOOK OF HOME CANNING, INCLUDING PRESERVING, PICKLING, DEHYDRATION AND JELLY-MAKING. 164 p. 1943, New York, Greenberg. 389.3 T21

In addition to the usual fruits and vegetables there are directions for canning meats, poultry and fish, for dehydrating, and for preparing fruits and vegetables for sharp-freezing.

PEOPLE

Laird, Donald A. TECHNIQUE OF HANDLING PEOPLE. 139 p. 1943, New York, McGraw-Hill Book Co., Inc. 140 L14T

Rare is the person who works by himself; most people work in contact with their fellows. Better work and better relations result when one person knows how to get along with another. This book is about ideas which are commonly known but sometimes forgotten. Illustrations of their practical applications inspire one to try them out.

Wissler, Clark. MAN AND CULTURE. 365 p. 1938, New York, Thomas Y. Crowell Company. 280 W76.

A community's culture may be observed in different patterns, which may in turn be interpreted as expressions of human behavior. We recognize the culture of a strange people more easily than our own. How culture traits are acquired and spread, the individual and the race, the domestication of man and its consequences are interesting population questions.

MISCELLANEOUS

Barnes, Richard H. and Maack, J. E. REVIEW OF THE LITERATURE ON THE NUTRITIVE VALUE OF SOYBEANS. 63 p. illus. 1943, Minneapolis, University of Minnesota. 389.1 B26.

Nutritive value of soybean protein for rats, for swine, for ruminants, for chickens, for man; lipids and carbohydrates; minerals; and vitamins are the contents of this study which attempts to analyse this subject matter as it appears today. Two hundred and twenty-four items are listed in the bibliography.

Baver, L. D. SOIL PHYSICS. 370 p. illus. 1940, New York, John Wiley & sons, inc. 56.43 B32

Mechanical composition of soils, physical characteristics of soil colloids, soil consistency, soil structure, soil water, soil air, soil temperature, physical properties of soil and tillage, and physical properties of soils in relation to runoff and erosion are the chapter headings of this book.

Baxter, Dow Vawter. PATHOLOGY IN FOREST PRACTICE. 618 p. illus. 1943, New York, John Wiley & sons, inc. 464.07 B33P

Here is a book for those planning or directing forestry programs. It will be especially helpful to those who seek to understand conditions which favor tree damage by disease. Much attention is given to the relation between site and disease.

Beck, Frank Victor. FIELD SEED INDUSTRY IN THE UNITED STATES; AN ANALYSIS OF THE PRODUCTION, CONSUMPTION AND PRICES OF LEGUMINOUS AND GRASS SEEDS. 230 p. illus. 1944, Madison, University of Wisconsin press. 61 B38.
Development of the grass seed industry; economics of production, distribution, and consumption of seed crops; seasonal and geographic pattern of seed sales; price trends; prices of seeds in relation to other farm prices; and factors affecting seed prices are the contents of this book, which has many maps and a generous inclusion of tables and charts.

SELECTED GOVERNMENT PUBLICATIONS

BEEES

Adams, R. L. and Todd, F. E. COST OF PRODUCING EXTRACTED HONEY IN CALIFORNIA. 34 p. tables. Jan. 1939. Technical bulletin. 1 Ag84Te no. 656.

Bisson, Charles S. and others. INVESTIGATIONS ON THE PHYSICAL AND CHEMICAL PROPERTIES OF BEESWAX. 24 p. tables. March, 1940. Technical bulletin. 1 Ag84Te No. 716.

Scullen, Herman A. and Vansell, George H. NECTAR AND POLLEN PLANTS OF OREGON. 63 p., illus. Oct. 1942. Oregon Agr. Expt. Sta. Bull. 100 Or3(b) 412.

DISEASES AND PESTS

Jenkins, Lee, Brown, Harry E., and others. CODLING MOTH CONTROL. 18 p. illus. December, 1942. Missouri agricultural experiment station bulletin. 100 M693(b) no. 459.

Linsley, E. G. and Michelbacher, A. E. INSECTS AFFECTING STORED FOOD PRODUCTS. 44 p. illus. March, 1943. California agricultural experiment station bulletin. 100 C12S(b) no. 676.

Lyle, Clay. SAVE THE CORN FROM WEEVILS. 5 p. folder, illus. September 1943. Miss. Agr. Ext. Serv. Leaflet. 275.29 M68Ex 59.

Miller, W. T. THE HOTIS TEST FOR THE DETECTION OF MASTITIS BACTERIA IN MILK. 7 p., illus. June, 1943. Circular. 1 Ag84C no. 672.

Tate, H. Douglas and Whelan, Don. B. CONTROLLING STORED-GRAIN PESTS ON NEBRASKA FARMS. 10 p. illus. November, 1943. Nebraska agricultural experiment station circular. 100 N27(c) 74.

FARM ANIMALS

Baker, Marvel L. WINTERING STEER CALVES. 31 p. tables. Dec. 1943. Nebr. Agr. Expt. Sta. Bul. 350. 100 N27(b) 350.

BIGGER LITTERS--GREATER RETURNS. 4 p. illus. Oct. 1943. Mont. Agr. Ext. Serv. Circ. 275.29 M76Ci 141.

Brown, George A. SELECTION AND CARE OF THE FARM SHEEP FLOCK. 47 p. illus. October, 1942. Michigan agricultural extension service. 275.29 M58(b) 242.

Loeffel, Wm. J. A MANUAL FOR HOG RAISERS. 48 p. illus. Nov. 1943. revision. Nebraska agricultural experiment station circular. 100 N27(c) 40.

Loeffel, Wm. J., Derrick, W. W., and Peters, Matilda. WEIGHT OF PIGS AS IT AFFECTS GAINS AND CARCASS QUALITIES. 19 p. illus. Dec. 1943. Nebraska agricultural experiment station bulletin. 100 N27(b) 351.

FEEDS AND FEEDING

- Baker, Marvel L. and others. DRIED BEET PULP FOR FATTENING STEERS. 10 p. June, 1944. Nebr. Agr. Expt. Sta. Bul. 100 N27(b) 359.
- Ellenberger, H. B. MEETING THE PROTEIN REQUIREMENTS OF DAIRY COWS. 11 p. tables. March, 1943. Vermont Agricultural experiment station pamphlet. 100 V59(p) no.1.
- Forbes, E. B. CONDITIONS AFFECTING THE DIGESTIBILITY AND THE METABOLIZABLE ENERGY OF FEEDS FOR CATTLE. 34 p. tables. Sept. 1943. Pennsylvania Agr. Expt. Sta. Bul. 452. 100 P38(b) 452.
- North, Mack O. THE INFLUENCE OF PROTEIN CONCENTRATES UPON THE QUALITY OF MEAT IN TURKEYS. 24 p. tables. Sept. 1943. Wyoming agricultural experiment station bulletin. 100 W99(b) 264.
- Werner, George and Bohstedt, Gus. WHAT TO FEED TO GET THE MOST MILK. 4 p. revised October, 1943. Wisconsin agricultural extension service special circular. 275.29 W75(sc).

FOOD

- EAT A GOOD BREAKFAST TO START A GOOD DAY. Folder. August 1944. AWI. 1Ag84Aw 107.
- Etchells, John L. and Jones, I. D. PRESERVATION OF VEGETABLES BY SALTING OR BRINING. 14 p. illus. September, 1943. Farmers' Bulletin. 1 Ag84F no. 1932.
- POTATOES IN POPULAR WAYS. Folder, recipes. Febr. 1944. AWI. 1 Ag 84Aw 85.

HOME CARE OF ILLNESS

- THE HOMEMAKER AS A NURSE. 8 p. leaflet. Sept. 1943. Minn. Agr. Ext. Serv. Home demonstration leaflet. 275.29 M66H 1.
- THE HOMEMAKER PRACTICES COMMON NURSING PROCEDURES. 8 p. leaflet. October 1943. Minn. Agr. Ext. Serv. Leaflet. 275.29 M66H 2.
- Przyluska, Wanda and Hellner, Ann M. HOME CARE OF THE SICK AND FIRST AID IN INJURIES AND ACCIDENTS. 40 p. illus. June, 1942. Ohio agricultural extension service. 275.29 Oh3S(b) no. 88.

POULTRY

- Claybaugh, J. H. PRACTICAL POULTRY EQUIPMENT. 16 p. illus. plans. Oct. 1943. Nebraska agricultural extension service circular. 275.29 N272Ex 1441.
- Harper, James A. and Walker, Clyde. THE HOME UNIT POULTRY HOUSE. 12 p. illus. Nov. 1943. Oreg. Agr. Extension service. 275.29 Or32B 625.
- Headley, F. B. RELATIVE COST OF PRODUCING LARGE AND SMALL TURKEYS. 15 p. Oct. 1943. Nevada Agr. Expt. Sta. Bul. 167. 100 N41S(b) 167.
- Payne, Loyal F. CULLING POULTRY. 31 p., illus. Nov. 1943. Kansas Agr. Expt. Sta. Cir. 216. 100 K13S(c) 216.

SCHOOL LUNCHEES

- HANDBOOK FOR WORKERS IN SCHOOL-LUNCH PROGRAMS, WITH SPECIAL REFERENCE TO VOLUNTEER SERVICE. 30 p. August, 1943. Food Distribution Administration. NFC. 1 F733N NFC-3.

MAKING SCHOOL LUNCHES EDUCATIONAL. 27 p., illus. 1944. U. S. Office of education, Nutrition education series, Pamphlet no. 2. 156.3 N95 no. 2

MENU-PLANNING GUIDE FOR SCHOOL LUNCHES, based on FDA Requirements for Type A and Type B lunches. 29 p. Sept. 1943. War Food Administration NFC-10. 1 F733N NFC-10.

SEED

Musser, H. B. and Thornton, J. K. ALFALFA VARIETIES AND SEED SOURCES. 5 p. tables. Dec. 1943. Pennsylvania Agr. Expt. Sta. Bul. 100 P38(b) 459.

Musser, H. B. and Thornton, J. K. LOCAL, DOMESTIC AND FOREIGN RED CLOVER SEED. 16 p., Nov. 1943. Pennsylvania Agr. Expt. Sta. Bul. 100 P38(b) 458.

SEWING

Brekke, J. A. CARE OF THE SEWING MACHINE. Folder, illus. Mar. 1943. N.D. Agr. Ext. Service. Spec. Circular. 275.29 N812(s) A-41.

Callahan, E. M. THE PAPER DRESS FORM. 7 p. illus. Jan. 1944. Ohio Ext. Service. Bulletin. 275.29 Oh35(b) 247.

Lane, Lucy R. YOUR SEWING MACHINE. 4 p. illus. Sept. 1943. Oregon Extension service. 275.29 Or32B 624.

Rocke, Helen. FALL AND WINTER CLOTHES. 15 p., illus. Aug. 1943. Nebr. Agr. Ext. Service Cir. 470. 275.29 N272Ex 470.

Sommerfeld, Edna. REPAIRING A MAN'S SHIRT. 6 p. illus. processed. June, 1943. Vermont Agr. Extension service. 275.29 V59(br) 679.

Wiggins, M. C. YOUR WARDROBE NEEDS - TAILORING COATS. 20 p. illus. Mar. 1943. Kan. Agr. ext. service. Bulletin. 275.29 K13E(b) 89.

SOIL

Felber, I. M. and Gardner, V. R. EFFECT OF A HYDROPHILIC COLLOID OF HIGH VISCOSITY ON WATER LOSS FROM SOILS AND PLANTS. 30 p. illus. Jan. 1944. Mich. Agr. Expt. Sta. Technical bulletin. 100 M58S(t) 189.

McCall, Kenneth D. GROWTH OF IRRIGATION IN SCOTT COUNTY, KANSAS. 31 p., charts. August 1944. Report of the Kansas state board of agriculture. 2 K13R no. 262.

Scherer, Oliver J. NARRATIVE DESCRIPTION OF SOUTH DAKOTA LAND FORMS WITH REFERENCE TO GROUND WATER. 48 p., processed. 1943. U. S. Soil Conservation Service, Lincoln, Nebraska. 1.9607 N16.

WHEAT

Bonnett, O. T. PRAIRIE, A NEW VARIETY OF SOFT RED WINTER WHEAT FOR ILLINOIS. 1 p., proc. June, 1943. Ill. Agr. Expt. Sta. AG1155. 275.29 I162Pag.

Dungan, George H. WINTER WHEAT VARIETIES IN ILLINOIS. 4 p. Sept. 1943. Ill. Agr. Expt. Sta. - Ext. Serv. Circ. 275.29 I162C 563.

Woodward, R. W. and Tingey, D. C. CACHE, A BEARDLESS, SMUT-RESISTANT WINTER WHEAT. 10 p. n.d. Utah Agr. Expt. Sta. Bul. 100 Utl(b) 312.

WE THOUGHT YOU'D LIKE TO KNOW

how Form AD-245 has been being filled out, so we recorded those which came in on the last Newsletter through September 30. The score came out as follows: 44% were correct; 17% were asked for by letter instead of on Form AD-245 (probably some people were out of the form); 10% gave no call number; 18% had the call number in the wrong place (most any place); 11% had the borrower's name and address in the wrong place; 4% omitted the series number (you wouldn't want to receive a file of Farmers' Bulletins when you wished to read only Number 1921); 4% had the series number in the wrong place. This adds to more than 100 because in some cases the same AD-245 had more than one score on it. We are including information which may be helpful on Form AD-245 in the BEAMED TO BORROWERS section.

BEAMED TO BORROWERS

BORROWERS--ALL USDA employees in Kansas, Nebraska, South Dakota, North Dakota, Montana, Wyoming are welcome to use the Lincoln Branch Library. ITS services are YOURS.

FORM AD-245--This is used when requesting material. The Library uses it as a charge record. It may be procured from your supply center. Give Call No. (all of the number given at the end of the Newsletter entry); your name, agency, and address (in the section marked "For", "Bureau", etc.); author (of book or article); title (of book or article); name of periodical and what information you have as to vol., no., page and date. "Charged" and "Return to" should be left blank.

- LOAN PERIODS - 1. Usual--two weeks; renewable upon request if not needed elsewhere.
- 2. Limited--Dependent on circumstances. These may be books in unusual demand, or books borrowed on inter-library loan whose date limit is set by the loaning library. Watch the date.
- 3. Maximum--One month; renewable, if not requested, for one additional month ONLY.
- 4. Current periodicals--Three days per person.

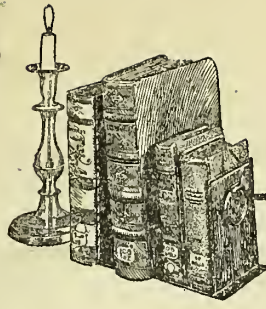
OVERDUES--You don't like to receive them and we don't like to send them. Return your material on time, or ask for a renewal. It will save our time for you.

REQUESTS--These need not be limited to titles listed in the NEWSLETTER. Check the BIBLIOGRAPHY OF AGRICULTURE for current material on agriculture and on related subjects. If we do not have the title desired, we shall try to borrow from another library.

BEST SELLERS--We frequently have long waiting lists for publications listed in the NEWSLETTER. Names are added in the order received.

LEST WE FORGET--The fellows on the end of the list would also like the information while it is current. Look at the periodicals soon after they arrive. If you are going to want more than three days to assimilate the contents which interest you, add your name to the end of the list, send the material along, and it will come to you again.

916
3



LIBRARY NEWSLETTER

U. S. DEPARTMENT OF AGRICULTURE

LIBRARY
NOV 15 1944

LINCOLN BRANCH
Rudge & Guenzel Bldg.
Lincoln, 1, Nebraska

Vol. 3, No. 11

November 1944

SELECTED BOOKS ON THE SUBJECT OF FARM ANIMALS

- Anderson, Arthur L. SWINE ENTERPRISES. 458 p. 1938. Chicago, J. B. Lippincott co. 46 An2
- Baker, Eustace Thurman. THE HOME VETERINARIAN'S HANDBOOK. 191 p. 1943. New York, The Macmillan co. 41 B173H
- Biester, Harry Edward. DISEASES OF POULTRY. 1005 p. 1943. Ames, Iowa, The Iowa State college press. 41 B475
- Brumley, Oscar Victor. A TEXT-BOOK OF THE DISEASES OF THE SMALL DOMESTIC ANIMALS. 597 p. 1938. Philadelphia, Lea & Febiger. 41 B836T Ed. 3.
- Bull, Sleeter. PRINCIPLES OF FEEDING FARM ANIMALS. 395 p. 1937. New York, The Macmillan co. 389.7 B87.
- Card, Leslie E. FARM POULTRY PRODUCTION. 245 p. 1942. Danville, Illinois, The Interstate. 47 C173 Ed. 3
- Chapman, Paul Wilber. VICTORY BARNYARD. 221 p. 1943. New York, McGraw-Hill book company, inc. 40 C362V.
- Conn, George Harold. SOME COMMON DISEASES OF CATTLE. 176 p. 1942. New York, Orange Judd pub. co. 41 C763S 1943.
- Dale, Edward Everett. COW COUNTRY. 265 p. 1943. Norman, University of Oklahoma press. 43 D15C.
- Dale, Edward Everett. THE RANGE CATTLE INDUSTRY. 216 p. 1930. Norman, University of Oklahoma press. 43 D15
- Dykstra, Ralph. ANIMAL SANITATION AND DISEASE CONTROL. 558 p. 1942. Danville, Illinois; The Interstate. 41 D99
- Eckles, Clarence Henry. DAIRY CATTLE AND MILK PRODUCTION. 520 p. 1944. New York, The Macmillan co. 43 Ec5 Ed. 3.
- Gay, Carl W. PRODUCTIVE HORSE HUSBANDRY. 335 p. 1932. Chicago, J. B. Lippincott co. 42 G252.
- Hagan, William Arthur. THE INFECTIOUS DISEASES OF DOMESTIC ANIMALS. 665 p. 1943. Ithaca, N. Y., Comstock pub. co., inc. 41 H123I

- Horlacher, Levi Jackson. SHEEP. 348 p. 1942. Danville, Illinois, The Interstate. 45 H78S.
- Hurd, Louis M. PRACTICAL POULTRY-FARMING. 454 p. 1943. New York, The Macmillan co. 47 H93
- Jull, Morley Allan. SUCCESSFUL POULTRY MANAGEMENT. 467 p. 1943. New York, McGraw-Hill book co, 47 J94S
- Knandel, H. Clyde. PROFITABLE POULTRY KEEPING. 462 p. 1943. New York, Orange Judd pub. co. 47 K72
- Lush, Jay Laurence. ANIMAL BREEDING PLANS. 437 p. 1943. Ames, Ia., The Iowa State college press. 40 L972 1943.
- Morrison, F. B. FEEDS AND FEEDING, abridged. 503 p. 1941. Ithaca, N. Y., The Morrison pub, co. 389.7 M833A Ed. 7
- Morrison, F. B. FEEDS AND FEEDING - A HANDBOOK FOR THE STUDENT AND STOCKMAN. 1050 p. 1936. Ithaca, N. Y., The Morrison pub. co. 389.7 M833
- Peters, Walter H. LIVESTOCK PRODUCTION. 450 p. 1942. New York, McGraw-Hill book co., inc. 40 P44
- Rice, Victor Arthur. BREEDING AND IMPROVEMENT OF FARM ANIMALS. 750 p. 1942. New York, McGraw-Hill book co., inc. 40 R36 Ed. 3
- Ross, Harold Ellis. CARE AND HANDLING OF MILK. 417 p. 1939. New York, Orange Judd pub. co., inc. 44 R73C
- Sheets, Earl W. FEEDING FARM LIVESTOCK. 192 p. 1940. Chicago, Breeder publications, 389.7 Sh3
- Smith, William W. PORK PRODUCTION. 575 p. 1937. New York, The Macmillan co. 46 Sm6
- Taylor, John Collins. BACKYARD POULTRY KEEPING. 147 p. 1943. New Brunswick, Rutgers university press. 47 T21
- Wall, John F. A HORSEMAN'S HANDBOOK ON PRACTICAL BREEDING. 327 p. 1942. Washington, D. C., American remount association. 42 W152H.
- Waugh, Frank Albert. HOME PORK PRODUCTION. 134 p. 1942. New York, Orange Judd pub. co. 46 W35
- Winter, Alden Raymond. POULTRY, SCIENCE AND PRACTICE. 739 p. 1941. Chicago, J. B. Lippincott company. 47 W732

SELECTED GOVERNMENT PUBLICATIONS

CLOTHING

- Marshall, Sue. CLEANING, DYEING AND REMODELING CLOTHING. 16 p. illus. May, 1944. Ark. Agr. Extension Service. 275.29 Ar4 311.
- Smith, Margaret. MAKING A DRESS AT HOME. 24 p. illus. May, 1944. Farmers' bulletin. 1 Ag84F 1954
- Sommerfeld, Edna. BUYING AND MAKING CHILDREN'S UNDERWEAR. 9 p., illus. Proc. April, 1944. Vermont Agr. Ext. Serv. Brieflet. 275.29 V592E 701.
- Sommerfeld, Edna. RE-USING YARN AND REPAIRING KNITTED GARMENTS. 15 p. illus., processed. Vermont Agr. Ext. Service brieflet. 275.29 V59(br). 684.
- Walker, Anna D. CLOTHING PROBLEMS IN WARTIME. 4 p. illus. Febr. 1944. So. Dak. Agr. Extension Service Leaflet. 275.29 So85E 85

FARM FOOD PREPARATION

- CURING PORK COUNTRY STYLE. Folder. October, 1944. AWI. 1 Ag84Aw 108.
- Hussemann, Dorothy and Weckel, K. G. HOW TO PASTEURIZE MILK AT HOME. Folder, illus. June, 1944. Wisconsin Agr. Ext. Serv. Special Circ. 275.29 W75S.
- Murray, D. L. MAKING BUTTER ON THE FARM. Folder. May 1943. N. D. Agr. Ext. Service. Spec. Circular. 275.29 N812(s) A-45

FARMS AND FARMING

- Johnson, O. R. ESTABLISHING DISCHARGED SERVICE MEN AND WAR WORKERS ON FARMS. 11 p. June, 1944. Missouri Agr. Expt. Sta. Circular. 100 M693(c) 293
- Miller, Frank and Ruden, W. L. COST OF OPERATING MACHINERY ON NEBRASKA FARMS. 30 p. charts. August, 1944. Nebr. Agr. Expt. Station Bulletin. 100 N27(b) 366
- SHALL I BE A FARMER? 32 p. July 1944. AWI. 1 Ag84Aw 105.

FEEDS AND FEEDING

- Draper, C. I. THE NUTRITIVE VALUE OF CORN OIL MEAL AND FEATHER PROTEIN. 21 p. May, 1944. Iowa Agr. Expt. Sta. Research Bulletin. 100 Io9(r) 326.
- Headley, F. B. WHEAT AND BARLEY COMPARED AS FEEDS FOR SWINE. 8 p. Oct. 1943. Nevada Agr. Expt. Sta. Bul. 166. 100 N41S(b) 166.
- PLAN YOUR LIVESTOCK FEED PROGRAM NOW. Folder. Nov. 1943. No. Dak. Agr. Ext. Serv. Special Circular. 275.29 N812Sa A-65

- Stanley, E. B. and Robinson, Max E. PASTURE STUDIES WITH CALVES ON WINTER FORAGE CROPS AT CASA GRANDE, ARIZONA. 18 p. tables. July, 1942. Arizona agricultural experiment station mimeographed report. 100 Ar4(m) 47
- Taylor, Bruce R. and Darlow, A. E. SUBSTITUTING GROUND WHEAT FOR ALL THE CORN AND PART OF THE PROTEIN SUPPLEMENT IN FATTENING BEEF CALVES. 4 p. Proc. April, 1944. Oklahoma Agr. Expt. Station Mimeog. Circular no. 125. 100 Ok4M 125.
- Tomhave, A. E. and Hoffman, Edmund. A PRELIMINARY INVESTIGATION ON THE USE OF CERTAIN DRIED VEGETABLE WASTES AS POULTRY FEEDS. 32 p. April, 1944. Del. Agr. Expt. Sta. Bul. 100 D37S 247
- Trimberger, George W. and Davis, Herbert Perry. PROTEIN SUPPLEMENTS IN DRY CALF STARTERS FOR CALVES ON LIMITED QUANTITIES OF MILK. 24 p. August, 1944. Nebr. Agr. Expt. Sta. Research Bulletin. 100 N27(r) 134.

FERTILIZER

- Noll, Charles F. and others. PASTURE FERTILIZATION. 27 p. illus. Jan. 1944. Pennsylvania Agr. Expt. Sta. Bul. 100 P381 460
- Tobey, Elmer R. COMMERCIAL FERTILIZERS, 1943. 59 p. Oct. 1943. Maine Agr. Expt. Sta. Official Inspections no. 189. 100 M28S 189

FORESTRY

- Champion, F. J. WOOD'S TECHNOLOGICAL COMING-OF-AGE. 8 p. illus. Dec. 1943. U. S. Forest Service, Forest Products Laboratory R1442. 1.9 F761R R1442
- Korstian, Clarence F. FORESTRY ON PRIVATE LANDS IN THE UNITED STATES. 234 p., illus. June, 1944. Duke Univ. School of Forestry Bulletin. 99.9 D88 No. 8
- SOME PLAIN FACTS ABOUT THE FORESTS. 22 p. Apr. 1944. Miscellaneous publication. 1 Ag84M 543

HOME MORALE

- Majors, Elta. FAMILY GAMES. 7 p. June, 1944. Alabama Agr. Ext. Serv. Circular. 275.29 A11C 292
- Stott, Leland H. MORALE IN THE HOME. 14 p. illus. Oct. 1943. Nebr. Agr. Ext. Serv. Circ. 275.29 N272Ex 5-105

HOUSEHOLD CARE AND REPAIR

- Day, Florence P. FEATHERS AND PILLOWS. Folder. Aug. 1943. No. Dak. Agr. Ext. Serv. Special Circular. 275.29 N812Sa A-57
- Fitzgerald, Madonna and Woodruff, Louise. SMALL REPAIRS AROUND THE HOUSE. 16 p. illus. Nov. 1943. Missouri Agr. Extension service manual. 275.29 M69Ma 31.

HOUSEHOLD EQUIPMENT, ITS CARE AND REPAIR. 36 p. illus. Oct. 1943. Kan. Ext. Service. Bulletin. 275:29 K13E(b) 90

HOUSEHOLD EQUIPMENT, ITS CARE AND SIMPLE REPAIR. 36 p. illus. June 1943. Tennessee Agricultural Ext. Serv. Publication. 275.29 T25 273.

Nelson, K. Lorette. STREAMLINING HOUSEKEEPING. 7 p., illus. May, 1944. So. Dak. Agr. Ext. Serv. Circ. 275.29 So85(c) 410

Promersberger, W. J. and Grottodden, Ole. VEGETABLE KEEPER FOR HEATED BASEMENTS. Folder. Sept. 1943. No. Dak. Agr. Ext. Serv. Special Circ. 275.29 N812Sa A-60

Smith, Elmer H. THE CARE AND REPAIR OF ELECTRICAL WIRING DEVICES. 12 p. illus. June, 1943. Kansas agricultural extension service circular. 275.29 K13E(c) no. 162

STOVE WOOD SPLITTING MACHINE. Folder. Plans, Oct. 1943. No. Dak. Agr. Ext. Serv. Special Circular. 275.29 N812Sa. A-64

Stratton, Gladys E. CLEANING UPHOLSTERY AT HOME. 11 p., illus. Processed. November 1943. Connecticut Agr. Ext. Serv. 275.29 C76Wi

POULTRY

Godfrey, A. B. and Zumbro, P. B. DIRECTORY OF U. S. REGISTER OF MERIT SIRES AND DAMS QUALIFYING UNDER THE NATION POULTRY IMPROVEMENT PLAN. 57 p. tables. Nov. 1943. Miscellaneous publication. 1 Ag84M 539

Hart, C. P. BROODER FUEL SUBSTITUTES. 5 p. proc. Febr. 1944. Rhode Island Agr. Expt. Sta. Misc. Pub. 100 R34M 19

Moore, O. K. and Mehrhof, N. R. FEEDING AND MANAGING POULTRY UNDER WAR-TIME CONDITIONS. 14 p. tables. Jan. 1943. Florida agricultural extension service. 275.29 F66(b) 118

MORE EGGS IN FALL AND WINTER. Folder, illus. Aug. 1943. Iowa Agr. Ext. Serv. Pamphlet. 275.29 Io9Pa 73

Polk, H. D. INSTALLATION AND USE OF GAS-HEATED BROODERS FOR CHICKS. 2 p. illus. Miss. Agr. Expt. Sta. Information sheet. 100 M69In 309

RECIPES

HOME PREPARATION OF VELVA FRUIT--A NEW FROZEN FRUIT DESSERT. 3 p. proc. July, 1944. U S. Bureau of agricultural and industrial chemistry AIC 1.932 A2Ag82 53.

Phipps, Hazel. ATTRACTIVE WAYS TO SERVE CANNED MEAT. 6 p. 1944. Texas Agr. Ext. Serv. Circ. 275.29 T312C C-212

SHEEP DISEASES

McDonald, M. H. and Eveleth, D. F. YEAR-ROUND PROGRAM FOR CONTROLLING INTERNAL PARASITES OF SHEEP. Folder. June, 1944. No. Dak. Agr. Ext. Serv. Spec. Circ. 275.29 N812Sa A-77

Newsom, I. E. and Cross, Floyd. LAMB DISEASES IN COLORADO FEEDLOTS. 44 p. illus. Jan. 1943. Colo. Agri. Expt. Sta. Bulletin. 100 C71S(b) 474.

WE THINK YOU'D LIKE TO KNOW

that correctly-filled-out AD-245's increased from 44% to 64%. May the increase grow. The next largest figure was for items which were asked for by letter instead of on Form AD-245. Forms are procurable from your supply center.

CHRISTMAS IS COMING

As is customary at this season, bulk shipments of books, pamphlets, etc., will be withheld from the mails December 1-26. If you are in a hurry for any of the publications listed herein, send in quickly, as requests waiting on December 1 must be placed on file. It may be that during this period, others in your office will read books which you have requested; in this case, will you please notify us so that we may add the number to the circulation statistics.

As the December Newsletter will not appear until after the holiday, we take this opportunity to send you Christmas Greetings from your Branch Library.

BEAMED TO BORROWERS

BORROWERS--ALL USDA employees in Kansas, Nebraska, South Dakota, North Dakota, Montana, Wyoming are welcome to use the Lincoln Branch Library. ITS services are YOURS.

FORM AD-245--This is used when requesting material. The Library uses it as a charge record. It may be procured from your supply center. Give Call No. (all of the number given at the end of the Newsletter entry); your name, agency, and address (in the section marked "For", "Bureau", etc.); author (of book or article); title (of book or article); name of periodical and what information you have as to vol., no., page and date. "Charged" and "Return to" should be left blank.

- LOAN PERIODS - 1. Usual--two weeks; renewable upon request if not needed elsewhere.
- 2. Limited--Dependent on circumstances. These may be books in unusual demand, or books borrowed on inter-library loan whose date limit is set by the loaning library. Watch the date.
- 3. Maximum--One month; renewable, if not requested, for one additional month ONLY.
- 4. Current periodicals--Three days per person.

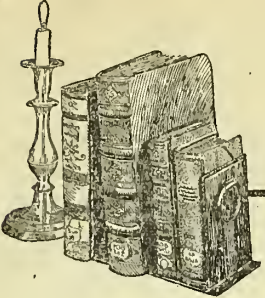
OVERDUES--You don't like to receive them and we don't like to send them. Return your material on time, or ask for a renewal. It will save our time for you.

REQUESTS--These need not be limited to titles listed in the NEWSLETTER. Check the BIBLIOGRAPHY OF AGRICULTURE for current material on agriculture and on related subjects. If we do not have the title desired, we shall try to borrow from another library.

BEST SELLERS--We frequently have long waiting lists for publications listed in the NEWSLETTER. Names are added in the order received.

LEST WE FORGET--The fellows on the end of the list would also like the information while it is current. Look at the periodicals soon after they arrive. If you are going to want more than three days to assimilate the contents which interest you, add your name to the end of the list, send the material along, and it will come to you again.

16
3



LIBRARY NEWSLETTER

U. S. DEPARTMENT of AGRICULTURE



LINCOLN BRANCH
Rudge & Guenzel Bldg.
Lincoln, 1, Nebraska

Vol. 3, No. 12

December 1944

SELECTED NEW BOOKS

DISEASES

Chester, K. Starr. NATURE AND PREVENTION OF PLANT DISEASES. Illus. 584 p. Philadelphia, Blakiston company, 1942. 464 C42
Economic importance of a disease, and the crop in which it occurs have led to a consideration of major diseases of leading crops. The effects of environments in influencing plant diseases are also emphasized. Prairie crops of grains and grasses are included.

Seiffert, Gustav. VIRUS DISEASES IN MAN, ANIMAL AND PLANT. 332 p. New York, Philosophical Library, 1944. 448 Se43Ae
A survey of the present status of virus investigation is given in this book. Variola and vaccine hoof and mouth disease, trachoma, measles, grippe, cattle plague, infectious anemia, pox of cold blooded animals, virus diseases in insects, and methods of investigation are included.

FARM ANIMALS

Chapman, Paul W. CHICKEN RAISING MADE EASY. Illus. 151 p. New York, Macmillan company, 1943. 47 C362
Chickens for broilers and fryers, or pullets and hens for eggs and meat are two separate enterprises either or both of which may be included in a production program. Various problems are considered in the sequence in which they will be encountered. House plans are for flocks of from 4 to 24 hens. Emphasis is placed on healthy poultry.

Ewing, P. V. ed. GOLDEN HOOF; A PRACTICAL SHEEP BOOK. Illus. 256 p. Chicago, Breeder publications, 1943. 45 Ew5 1943.
In order to make this a really practical book, each chapter has been written by a specialist on that subject; many shepherds have contributed from their experience. The farm flock, range sheep production, equipment for sheep, the wool crop, lambing time, types and breeds, selling purebred sheep, opportunities are some of the subjects offered.

FINANCE

Murray, William G. AGRICULTURAL FINANCE, PRINCIPLES AND PRACTICE OF FARM CREDIT. 328 p. Ames, Iowa, Iowa State College press, 1941. 284.2 M96
Principles of farm credit, - as income analysis, natural hazards (illustrated by conditions in the Great Plains), short-term credit, payment terms, interest rates take up the first part of the book; the second part analyses various lending agencies, as insurance companies, merchants, various banks (commercial, federal land, joint stock land, cooperatives, etc.) considering such features as historical development, loan procedure, objectives.

Stettinius, Edward R., Jr. LEND-LEASE, WEAPON FOR VICTORY. Illus. 358 p. New York, Macmillan company, 1944. 280 St43.

"Lend-Lease is a new and important development in the foreign policy of the United States. The American people have a right to know how it came into being, what it is, and how it works." In telling the story of Lend-Lease to Congressional committees, Mr. Stettinius had an opportunity to look back over the road that had been traveled and from his experiences he has written a most interesting book.

LAND

Graham, Edward H. NATURAL PRINCIPLES OF LAND USE. 274 p. illus. New York, Oxford university press, 1944. 282 G76.

"It is easy to look to immediate gain, forgetful of the long-time advantage." The relation of living things to the land; the study of living things (vegetation, animals); the study of the land (landscapes, types, use classifications); land use for farms, forests, range, wildlife; water; control; human welfare are subjects here discussed.

Lowdermilk, W. C. CONQUEST OF THE LAND THROUGH SEVEN THOUSAND YEARS. 72 p. Washington, D. C., 1944. 1.96 L22C

Based on a series of lectures which the author has given throughout the United States concerning findings of his survey of land use in the Old World as such might be helpful to agriculturists of this country, this publication is issued in the hope that it may be helpful to those who wish to give lectures on soil conservation against a background of examples of land wastage. Slides may be used with this if desired.

MISCELLANEOUS

International labour office. CO-OPERATIVE ORGANIZATIONS AND POST-WAR RELIEF. 173 p. Montreal, Author, 1943. 280.2 In84Cop

The nature of the co-operative association and structure of the co-operative movement, a survey of the manifold types of co-operative organization and information on number, size, geographical distribution, the possible role of the co-operative movement in the immediate post-war problem of relief are subjects taken up in this book.

Malin, James C. WINTER WHEAT IN THE GOLDEN BELT OF KANSAS; A STUDY IN ADAPTATION TO SUBHUMID GEOGRAPHICAL ENVIRONMENT. 290 p. Lawrence, Univ. of Kansas press, 1944. 30.9 M292

From wayback to winter wheat production in 1855, through the soft winter wheat boom era 1872-1882, and the emergence of the hard winter wheat regime, 1883-1902, this book is a study of the development of this crop in the upper Kansas river locality. It is the struggle for finding crops and varieties adapted to this environment and the search for better methods of tillage and more suitable implements. Humor is not lacking.

National farm chemurgic council. NEW FIELDS FOR AMERICAN AGRICULTURE. illus. 53 p. Columbus, Ohio, National farm chemurgic council [1942]. 77 N21N

"A big field of small items" is the title of the first of these two papers which deal with new agricultural crops which may be developed in the line of plants producing essential oils and drugs, for example, Pyrethrum. Information as to climatic requirements, soil, cultivation and propagation, care, harvesting and uses is given. There are various crops, as the Russian rubber-bearing dandelion on which we have been dependent on foreign sources which can be raised in this country.

SELECTED GOVERNMENT PUBLICATIONS

DISEASES

- Durrell, L. W. and Cross, Floyd. SELENIUM POISONING OF LIVESTOCK. 7 p., illus. June, 1942. Colo. Agr. Extension Service. 275.29 C71E 382-A
- Olson, T. M. and Skelton, F. M. MASTITIS (GARGET) IN DAIRY CATTLE. 12 p., illus. August, 1944. So. Dak. Agr. Expt. Sta. Circ. 100 So82(c) 54.
- PULLORUM DISEASE. 1944. Folder. Mont. Agr. Ext. Serv. Circular. 275.29 M76C1 150

FARM FINANCE

- FARM BOOKKEEPING AND THE FEDERAL INCOME TAX. 16 p. 1944. Miscellaneous publication. 1 Ag84M 554.
- Mendum, Samuel W. USEFUL RECORDS FOR FAMILY FARMS. 29 p., Nov. 1944. Farmers' bulletin. 1 Ag84F 1962

FARM MACHINERY

- Johnson, G. I. BETTER THE TRACTOR, THE BETTER THE JOB. Folder. Georgia Agr. Ext. Service. Circular. 275.29 C29C. 324
- Johnson, G. I. KEEP THE COMBINE TURNING. Folder. Georgia Agr. Ext. Service. Circular. 275.29 G29C 326
- Johnson, G. I. MAKE MOWERS MOW. Folder. Georgia Agr. Ext. Service, Circular. 275.29 G29C 327
- Johnson, G. I. POINTERS ON HARROWS. Folder. Georgia Agr. Ext. Service. Circular. 275.29 G29C 323
- Smith, L. J. and Trenary, O. J. THE JEEP AS A FARM TRUCK-TRACTOR FOR THE POST-WAR PERIOD. 20 p., illus. May, 1944. Washington Agr. Expt. Station Bulletin. 100 W27E(b) 445
- 20 TIPS ON FARM MACHINERY. Folder, illus. Dec. 1943. Iowa Agr. Ext. Serv. Pamphlet. 275.29 I09Pa79
- Wilson, J. B. COST PER HOUR OF USING FARM MACHINERY. 4 p. Jan. 1943. Ala. Ext. Circ. 275.29 A11C no. 238

FARMING

- Cooper, Martin R. GETTING STARTED IN FARMING. 34 p., illus. Nov. 1944. Farmers Bulletin. 1 Ag84F 1961.
- Gross, D. L., Lawritson, M. N. and Janike, E. W. GREATER PRODUCTION THROUGH BETTER PRACTICES. 15 p., Jan. 1944. Nebr. Agr. Extension service CC. 275.29 N272Cc 77
- Titus, Harold. PLEASE! NO MORE CRACKPOT LAND SCHEMES FOR VETERANS. Reprint from the Saturday Evening Post, November 18, 1944.
- U. S. Bureau of Agri. Economics. LET'S TALK ABOUT WHEN JOE COMES HOME AND COMES BACK TO THE FARM. 6 p. 1944. DS series. 1 Ag86DS 24.

FOOD PRESERVATION

Harris, J. H. WINTER STORAGE OF VEGETABLES. 2 p. August 1944. North Carolina Agr. Ext. Service. Miscellaneous pamphlet. 275.29 N811M 88

Hubbard, S. C. and Cole, W. R. CANNING CHICKEN, raw pack method. 2 p., processed, 1943. Mass. Agr. Extension Service Special circular. 275.29 M381Sc 106:

Isaac, E. E. HOME STORAGE OF VEGETABLES. 6 p. 1944. Montana Agr. Extension Service Circ. 275.29 M76Ci 154

Smith, Harry H. CURING MEAT. 8 p, May, 1944. Colo. Agr. Ext. Serv. 275.29 C71D D-50

HOME CARE

DRY-CLEANING AT HOME. 4 p. June, 1943. Utah Agr. Ext. Service N. S. 275.29 Utl(ns) 95

Morrison, Bess Viemont and Ekstrom, Irma. CARPET AND RUG REPAIR. 16 p., illus. 1944. Farmers bulletin. 1 Ag84F 1960

Rockwell, Frank I. ATTRACTIVE FARM HOMES. 24 p., illus. June, 1944. So. Dak. Agr. Ext. Serv. Circ. 275.29 So85(c) 412

LAND

Geiszler, B. N. NORTH DAKOTA SOIL CONSERVATION DISTRICTS. Folder. Illus. May, 1944. No. Dak. Agr. Ext. Serv. Special Circ. 275.29 N812Sa A-76

Harper, Horace J. IMPROVEMENT OF FLOOD DAMAGED LAND IN EASTERN OKLAHOMA. 28 p., illus. Oct. 1944. Okla. Agr. Expt. Sta. Bull. 100 Ok4(b) 282

Magistad, O. C. and Christiansen, J. E.. SALINE SOILS, THEIR NATURE AND MANAGEMENT. 32 p., illus. Sept. 1944. Circular. 1 Ag84C 707

Miller, L. B. and Bauer, F. C. SOIL TREATMENTS FOR WINTER WHEAT. 211 p., illus. 1944. Ill. Agr. Expt. Sta. Bulletin. 100 I16S(b) 503.

U. S. National resources planning board. LAND CLASSIFICATION IN THE UNITED STATES. 151 p., illus. 1941. 173.2 N214Lac

LIVESTOCK

Bayles, J. J., Jones, H. H., Jones, J. M. and Barnes, G. W. WINTER FEEDING BULL CALVES. 3 p., July, 1944. Texas Agr. Expt. Sta. Progress Rpt. 100 T31P 900

Loy, H. W. and others. QUALITY OF BEEF. 85 p. Aug. 1944. Kans. Agr. Expt. Sta. Tech. Bul. 100 K13S(t) 58

Taylor, Bruce R. TWO LEVELS OF WINTERING CHOICE STEER CALVES AND THEIR EFFECT ON SUBSEQUENT GAINS ON GRASS, AND ON GRASS FOR 90 DAYS FOLLOWED BY FULL-FEEDING. 3 p. Okla. Agr. Expt. Sta. Mimeo. Circ. 100 Ok4M 126

POULTRY

Cushman, H. E. PARASITE-FREE POULTRY PAY LARGER PROFITS. Folder. 1944. Mont. Agr. Ext. Serv. Circ. 275.29 M76Ci 151

FOWL PARALYSIS. Folder. 1944. Mont. Agr. Ext. Serv. Circular. 275.29 M76Ci 149

Ward, W. G. and Payne, L. F. KANSAS POULTRY COTTAGE. Folder, plans. Jan. 1944.
Kansas Agr. Ext. Serv. Circ. 275.29 K13E(c) 171

SWINE

THE MONTANA SELF-FEEDER. Folder. Plans. 1944. Mont. Agr. Ext. Serv. Circ.
275.29 M76Ci 152

Morrill, C. C. and Graham, Robert. HOG CHOLERA. 16 p., illus. 1944. Ill. Agr.
Ext. Serv. Circ. 275.29 I162C 578

Patty, Ralph L. SELF FEEDERS FOR SWINE. 20 p., plans. 1944. So. Dak. Agr.
Ext. Serv. Circ. 275.29 So85(c) 404

Ward, W. G. and Warner, E. D. KANSAS PORTABLE FARROWING HOUSE. Folder, plans.
Jan. 1944. Kans. Agr. Ext. Serv. Circ. 275.29 K13E(c) 169

TREES

Timm, J. L. CHRISTMAS TREE PRODUCTION IN WESTERN MONTANA IN 1943. 2 p. Sept. 1944.
Northern Rocky Mt. Forest and Range Expt. Station Research Note. 1.9622 N3R31 34

U. S. Forest Service. Lake States Forest Experiment Station. QUICK FIELD CALCU-
LATOR OF VOLUME AND GROWTH OF TREES. 2 p. August, 1944. Technical notes.
1.9 F7626T 225

WHEAT

Atkins, I. M., Quinby, J. Roy and Dunkle, P. B. WICHITA WHEAT. 2 p. May 1944.
Texas Agr. Expt. Sta. Progress Rpt. 100 T31P 891

Quisenberry, K. S., Webster, O. J. and Kiesselbach, T. A. VARIETIES OF WINTER
WHEAT FOR NEBRASKA. 20 p. illus. August, 1944. Nebr. Agr. Expt. Sta. Bul.
100 N27(b) 367

MISCELLANEOUS

Babcock, Glen E. and Smith, Allan K. EXTENDING PHENOLIC RESIN PLYWOOD GLUE WITH
CORN GLUTEN AND SOYBEAN MEAL. 6 p. Bureau of Agr. and Industrial Chemistry
AIC. 1.932 A2Ag82 65

A BRIEF REVIEW OF FOOD AND NUTRITION IN FIVE COUNTRIES (Five lectures by delegates
to the United Nations food conference) 28 p. Jan. 1944. War. Food Adm. 1F733N

Fenn, Geraldine G. DEVELOPMENT OF HOME ECONOMICS STANDARDS THROUGH 4-H JUDGING
WORK. 19 p., illus. May, 1944. So. Dak. Agr. Ext. Serv. Circ. 275.29 So85(c)
409.

Grimes, W. E. POSTWAR PLANNING AT THE COMMUNITY LEVEL. 10 p. August, 1944. Kan.
Agr. Expt. Sta. Circ. 100 K13S(c) 225.

McNamara, Robert L. and Mangus, A. R. PREPAYMENT MEDICAL CARE PLANS FOR LOW-INCOME
FARMERS IN OHIO. 29 p. Oct. 1944. Ohio Agr. Expt. Station Bull. 100 Oh3S(b)653

PATENT MANUAL FOR EMPLOYEES OF THE UNITED STATES DEPARTMENT OF AGRICULTURE, 1944.
41 p., illus. October, 1944. Miscellaneous publication. 1 Ag84M 551

U. S. Geological Survey. GEOLOGY OF DAM SITES ON THE UPPER TRIBUTARIES OF THE
COLUMBIA RIVER IN IDAHO AND MONTANA. PART 2. HUNGRY HORSE DAM AND RESERVOIR
SITE, SOUTH FORK FLATHEAD RIVER, FLATHEAD COUNTY, MONTANA. 116 p. 1944.
Water Supply Paper. 407 G29W 866-B

Sachs

 *
 * YOU MAY BE *
 *
 * in Agricultural Adjustment Agency, Bureau of Agricultural Economics, *
 * Bureau of Animal Industry, Bureau of Entomology and Plant Quarantine, *
 * Bureau of Plant Industry, Farm Credit Administration, Farm Security *
 * Administration, Forest Service, Office of Distribution, Soil Conser- *
 * vation Service, or Solicitor's Office. You may be among the 516 *
 * people in Montana, Wyoming, North or South Dakota, Nebraska, Kansas, *
 * who are actively using your Branch Library; this figure is 54% of *
 * those receiving the Newsletter. We at the Library are always glad *
 * to hear from or see you. If you perhaps are in the 46%, we should *
 * be just as glad to see or hear from you. *
 *

BEAMED TO BORROWERS

BORROWERS--ALL USDA employees in Kansas, Nebraska, South Dakota, North Dakota, Montana, Wyoming are welcome to use the Lincoln Branch Library. ITS services are YOURS.

FORM AD-245--This is used when requesting material. The Library uses it as a charge record. It may be procured from your supply center. Give Call No. (all of the number given at the end of the Newsletter entry); your name, agency, and address (in the section marked "For", "Bureau", etc.); author (of book or article); title (of book or article); name of periodical and what information you have as to vol., no., page and date. "Charged" and "Return to" should be left blank.

- LOAN PERIODS -
1. Usual--two weeks; renewable upon request if not needed elsewhere.
 2. Limited--Dependent on circumstances. These may be books in unusual demand, or books borrowed on inter-library loan whose date limit is set by the loaning library. Watch the date.
 3. Maximum--One month; renewable, if not requested, for one additional month ONLY.
 4. Current periodicals--Three days per person.

OVERDUES--You don't like to receive them and we don't like to send them. Return your material on time, or ask for a renewal. It will save our time for you.

REQUESTS--These need not be limited to titles listed in the NEWSLETTER. Check the BIBLIOGRAPHY OF AGRICULTURE for current material on agriculture and on related subjects. If we do not have the title desired, we shall try to borrow from another library.

BEST SELLERS--We frequently have long waiting lists for publications listed in the NEWSLETTER. Names are added in the order received.

LEST WE FORGET--The fellows on the end of the list would also like the information while it is current. Look at the periodicals soon after they arrive. If you are going to want more than three days to assimilate the contents which interest you, add your name to the end of the list, send the material along, and it will come to you again.

