

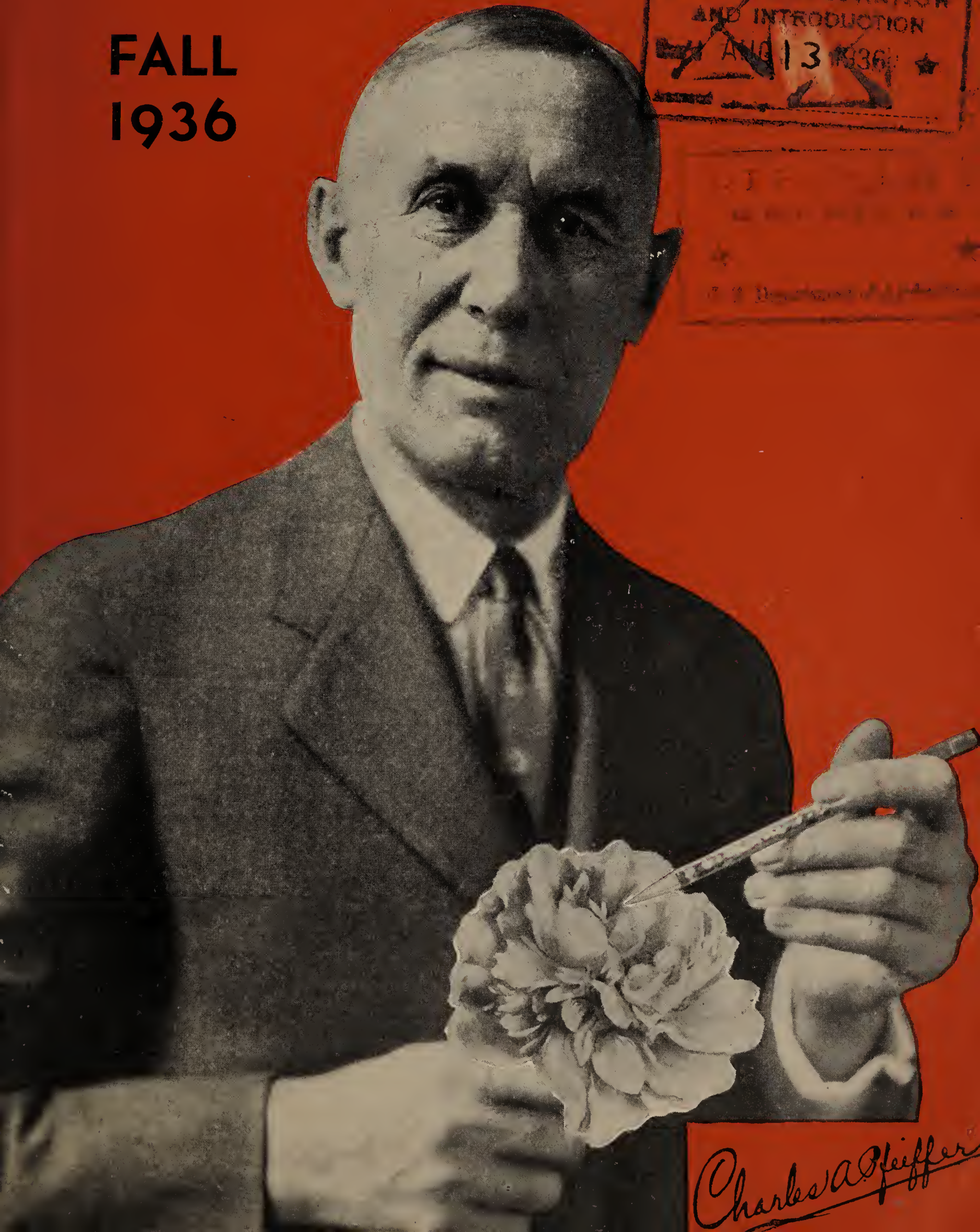
Historic, archived document

Do not assume content reflects current scientific knowledge, policies, or practices.

243

Pfeiffer's FLOWER BOOK

FALL
1936



PLANT EXPLORATION
AND INTRODUCTION
AUG 13 1936

[Faint, illegible text]

Charles A. Pfeiffer



The home of C. A. Pfeiffer above, at Winona, is surrounded by the flowers he loves. It is here that he likes to meet his friends and customers who come to Winona.



The home of L. E. Pfeiffer, son of C. A. Pfeiffer, at the foot of the beautiful hills of the upper Mississippi on Highway No. 14.

Grow Pfeiffer's Prize Winning Flowers

Our Nursery located in Winona in the Upper Mississippi Valley has now been an established concern for 27 years. When we first started growing Peonies and Iris it was only a hobby after business hours. The demand for Peonies and Iris grown by Pfeiffer increased, and after a few years the hobby became The Pfeiffer Nursery. We now have more than 100 acres of rich valley land exclusively devoted to the growing and propagating of roots, bulbs and plants for the retail and wholesale trade. Nature has given us a most marvelous combination of rich loam soil and ideal growing conditions for the production of sturdy plants, together with winters of sufficient severity to test their hardiness to the utmost. Every plant sent out from our Nursery is as sturdy and healthy as a lifetime spent in propagating, growing and shipping plants with a reputation for giving satisfaction can make it.

Because of the foregoing statements, we urge you to **grow Pfeiffer's Prize-Winning Flowers** for greater pleasure and pride in your garden. When you plant any kind of flowers it is well to set out only select hardy stock that will fully reward your efforts.

INDEX WHERE TO FIND THINGS IN THIS BOOK

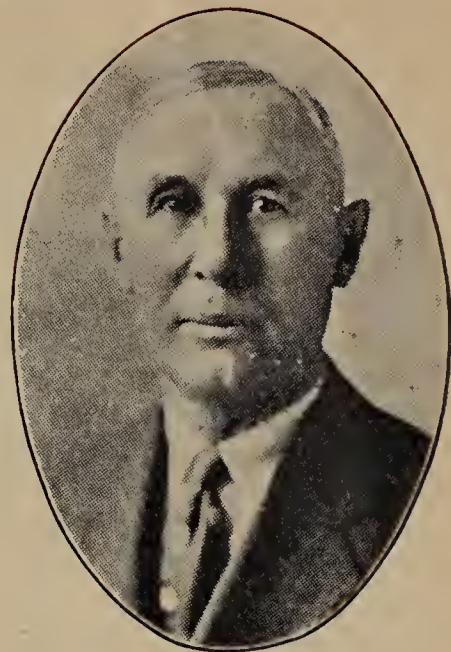
	Page
How to Plant Peonies.....	4
Peony Listings.....	5, 6, 7, 8, 9, 10
Peony Bargains.....	11
How to Plant Iris.....	12
Iris Listings.....	13, 14, 15, 16, 17, 18
Iris Bargains.....	19
Hardy Perennials.....	20, 21, 22, 23
Rock Garden Plants.....	24 and 25
Tulips.....	26 and 27
Hyacinths.....	28
Other Dutch Bulbs.....	28
Narcissus.....	28
Lilies.....	29
How and When to Order.....	30
Free Offer.....	30
Planting Chart.....	30
Hardy Phlox.....	31
\$1.00 Bargains.....	32



L. E. PFEIFFER

Son of C. A. Pfeiffer, who has been in this business 27 years with his father, working and helping to increase the Pfeiffer reputation for quality.

OUR NEW MESSAGE to all FLOWER LOVERS



C. A. PFEIFFER

Founder of the Pfeiffer Nursery. Specialist in the propagation of Peonies, Iris and Gladiolus bulbs.

"Pfeiffer's Quality" has gained a national reputation. Orders from our patrons have been more plentiful this past season due to their success with Pfeiffer propagated bulbs and roots.

Volume production has brought better quality at lower prices. It has made it possible for us to lower prices on many varieties and to offer many attractive bargains in our various flower collections. Pfeiffer Quality is further assured by the fact that roots and bulbs are shipped as soon as they are dug.

The location of the Nursery at Winona is especially favorable as the soil of the Mississippi Valley is such a combination of soils that plants grown here do well in practically all soils. They grow fast and are unusually hardy since the winter seasons are severe and the growing season short. These conditions are responsible in part for the excellent success flower lovers in all parts of the country have had with Pfeiffer's Prize-Winning Quality Stock.

We have a limited supply of some varieties. We urge you to send your order in early, as they will be snapped up quickly because of the low prices.

Charles A. Pfeiffer

PLEASE READ THIS

SHIPMENTS will be made after July 4th on Iris. Peonies, Lilies, Phlox, miscellaneous Perennials we begin shipments September 1st. Narcissus and other Dutch bulbs after September 15th. Shipments on all of the foregoing will continue until the middle of November when the ground freezes in Minnesota.

TRANSPORTATION. In the U. S. Prepaid Express or Parcel Post, whichever we deem most expedient. Be sure and state your Express Office if different from Postal address.

No Orders Accepted for Less than \$1.00

TERMS. Cash with order, either check, draft or money order. If personal check, please enclose necessary amount extra for exchange.

OUR GUARANTEE. We guarantee all plants and bulbs to be absolutely true to name, up to size and first class quality in every respect. We guarantee all stock to reach you in first class condition, and everything is prepaid to your door. If the package is damaged in transit, please have your Express Agent or Postmaster make a note to that effect on receipt of stock.

With normal care and weather conditions you will have excellent results from all plants and bulbs listed herein, but we cannot be responsible for loss by conditions over which we have no control, such as hail, wind, drought, pestilence, floods, or winter killing.

We will replace free of charge anything which proves to be wrongly named, but we cannot be held liable beyond this.

PEONIES

How and When to Plant

The peony is a useful and versatile plant in either the large or small garden. It is a fine specimen plant (some are delicately scented and lovely for bouquets); it is ideal for massing, for borders, for cover in front of shrubbery; and it is one of the very best low hedging plants.

Peonies give color and variety to any scheme of landscaping. They are a boon to the beginner, especially, for with very little skill or effort they produce a profusion of bloom.

Hardy and Long Lived

Peonies are easy to grow, perfectly hardy and when established in the garden, become a permanent fixture in the landscape. They are hardy in almost any climate and any soil, are easily established and require a minimum of care. They are almost, but not quite, immune from plant diseases and insect pests.

Planting and Cultivation

Peonies require a reasonably fertile, well drained soil and should have full sun at least part of the day. If planted in a shady place, plants are apt to be spindling, and will not produce typical bloom. If possible, plant them in an open space away from trees and shrubbery, in the open sunlight. Plant so that the buds or eyes are about two inches below the surface of the ground. (See illustration on this page.) Deep planting is detrimental to their blooming habit, and sometimes the cause of their not blooming at all. Space the plants about three feet apart. For hedge plant 24 inches apart.

FERTILIZING

A little bone meal or prepared fertilizer scattered around the plant, not in contact with the stems or roots,

but worked into the soil is beneficial for better blooms. NEVER LET FERTILIZER OF ANY KIND COME IN CONTACT WITH THE ROOTS.

SIZE OF ROOTS

After many years of growing Peonies, we have found by experience that a plant with 3 to 5 strong, well developed buds or eyes, and a properly balanced root system will produce the best results in the shortest time.

TIME OF PLANTING

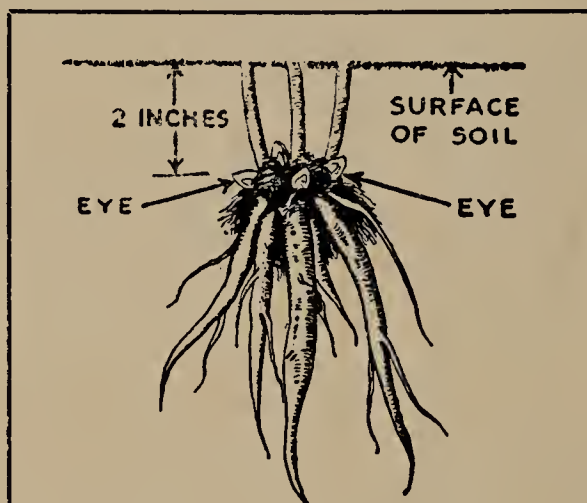
Peonies planted in September and October become established before winter sets in, and will usually bloom in the spring. We advocate fall planting for the amateur grower; but they can be successfully planted in the spring providing the plants are dug in the fall and kept in a dormant condition over winter. Place the plants in your garden where they can remain permanently for eight or ten years. Cover lightly with straw or coarse hay after the ground freezes, the first fall.

ABOUT ANTS AND BEES

When the buds begin to swell in the spring, they are frequently covered with ants and bees; but do not become alarmed, as all these insects are after is the honey that exudes from the buds, and they will not cause any injury.

BLOOMING

While many Peonies will bloom the first year, most varieties will not reach their full normal development, or produce typical bloom, until their third year. In cutting bloom, be sure to leave part of the foliage on the plant for the future development of the roots and buds.



HOW TO PLANT PEONY ROOTS

Make hole deep enough and wide enough to accommodate the roots. Plant so that the "eyes" are NOT more than two inches below the surface. TOO DEEP PLANTING IS OFTEN THE REASON WHY PEONIES DO NOT BLOOM.



Pfeiffer's PEONIES

IN ALPHABETICAL ORDER

PEONY RATINGS

The figures at the right in the Peony descriptions are the official ratings given by the American Peony Society; 10 points being perfect. Any Peony rating 7.0 is good, over 8.0 very good, and over 9.0 exceptionally good.

- ADOLPHE ROUSSEAU 8.5** (Dessert, 1890). Garnet-red. One of the darkest and most brilliant velvety reds, with large, shell-like petals on tall, stiff stems. Early midseason; an extra fine landscape variety. **75c each**
- ALBA SULPHUREA, 7.6** (Calot, 1860). White. **50c each**
- ALBATRE 8.7** (Crousse, 1885). White. Very large. Fragrant, strong grower and profuse bloomer. Late midseason. **50c each**
- ALBERT CROUSSE 8.6** (Crousse, 1893). Very large, compact, bomb type flower. Delicate seashell-pink with crimson flecks. An excellent standard variety. **50c each**
- ALSACE-LORRAINE 8.8** (Lemoine, 1860). Creamy white. Very large, creamy white flowers, center delicately tinted with brownish yellow. Pointed petals resembling a water lily. Tall. Vigorous grower. Late. **50c each**
- ANN PFEIFFER** (Pfeiffer, 1932). Double deep rose; fragrant; mammoth size, blooms 8 to 10 inches in diameter; medium tall; midseason; good blooms. **\$1.50 each**
- ARCHIE BRAND 7.5** (Brand 1913). Deep seashell-pink. Very large, bomb-shaped flower of an even seashell-pink with silvery border; delicately scented like a rose. Profuse bloomer. Medium early. **50c each**
- ARMANDINE MECHIN.** Beautiful dark red Peony of perfect form. One of the old standard varieties. **\$1.00 each**
- ASA GRAY 8.1** (Crousse, 1886). Lilac-pink. Large, compact, pale lilac flower of semi-rose type. Prolific bloomer, fragrant, striking appearance. Medium early. **50c each**
- AUGUSTIN D'HOOR 7.8** (Calot, 1867). Red. Extremely large, showy bloom of very deep brilliant or solferino-red, silvery reflex; bomb type. Medium early. **50c each**



MONS JULES ELIE



MEDALS AWARDED TO PFEIFFER'S PEONIES

- AURORE 8.0** (Dessert, 1904). Milky white. Extra large, flat loose bloom, semi-rose type. Fragrant and fine. Late. **50c each**
- AVALANCHE 8.7** (Crousse, 1886). Pure snow-white. Fragrant, waxy, snow-white blooms opening like a rosebud. Center petals edged with carmine. Strong, tall, midseason variety. Very free bloomer. **50c each**
- BAYADERE 8.5** (Lemoine, 1910). Pure white. Large globular flowers of creamy white with a golden heart. Midseason. **50c each**
- BARONESS SCHROEDER 9.0** (Kelway, 1880). Flesh-white. Plume-shaped flower with irregularly shaped petals. Fragrant; strong, tall grower and free bloomer. Midseason. Regarded as one of the world's best white peonies. **50c each**
- BEN FRANKLIN 8.1** (Brand, 1907). Crimson-red. Tall. Medium early. **50c each**
- BLANCHE KING** (Brand, 1925). Deep pink, wonderful size, and a true rose type, holding its color in the field. Wonderful exhibition flower. **\$4.00 each**
- CHARLES McKELLIP 7.8** (Brand, 1907). Crimson. Probably the most perfectly formed bright red Peony, especially beautiful in the bud and when half open. Semi-rose type. Midseason. **50c each**
- CHARLES VERDIER.** Deep rose. Free and reliable bloomer. **50c each**
- CHERRY HILL 8.6** (Thurlow, 1915). Deep garnet-red. One of the earliest red Peonies. Beautiful sheen, long stiff stems. Semi-rose type. **75c each**
- CHESTINE GOWDY 8.4** (Brand, 1913). Silvery pink. A late midseason variety; fragrant. **50c each**
- CLAIRE DUBOIS 8.7** (Crousse, 1886). Satin pink. Very large rose type flower, uniform soft pink, borne on strong stiff stems. One of the best late varieties. **50c each**
- COURONNE D'OR 8.1** (Calot, 1873). Late white. **50c each**
- DELACHEI 7.1** (Delache, 1856). Red; large, compact rose type. Late midseason. **50c each**
- DELICATISSIMA 7.5.** Delicate pink; rose type flower; fragrant, free bloomer. Early. **50c each**
- DUCHESS DE NEMOURS 8.1** (Calot, 1856). Sulphur-white. Free bloomer and a vigorous grower Early. **50c each**
- E. B. BROWNING 9.2** (Brand, 1907). White. A tall, commanding white rose type; soft pink in the bud. A very attractive flower. Very large and late bloomer. **75c each**
- E. C. SHAW 9.1** (Thurlow). Pink. Fragrant; late midseason; medium height. Strong stems and excellent foliage. **\$2.50 each**
- EDULIS SUPERBA 7.6** (Lemoine, 1824). Bright rose pink. Very fragrant. Early. Usually called the Decoration Day Peony. Excellent cut flower variety. **50c each**
- ELAINE** (Pfeiffer, 1932). Double, medium tall, delicate pink flecked crimson in the center; midseason; fragrant. **\$1.00 each**
- ELWOOD PLEAS 8.7** (Pleas, 1900). Light shell-pink. Large size, flat, full double, light pink blooms in clusters, opening several on a stalk. Robust grower. Late midseason. **75c each**



LUETTA PFEIFFER—THIS BEAUTIFUL PEONY FREE WITH ALL PEONY ORDERS OF \$2.50 OR OVER

- GRANDIFLORA 8.8** (Richardson, 1883). Shell-pink. Very large, flat rose type, with fine, lacy petalage. Very late.....**50c each**
- HANSINA BRAND 9.1** (Brand, 1925). Medium to deep pink, long, erect stem. A remarkable and distinct Peony. Given an award of merit at the London, Ont., International Show...**\$2.50 each**
- HAZEL KINNEY 9.0** (Brand, 1925). Light flesh-pink; large. Midseason.....**\$3.00 each**
- HELENE WILLIAMS** (Pfeiffer, 1932). Hydrangea pink; medium early; fragrant, profuse bloomer.....**50c each**
- HENRY AVERY 8.8** (Brand, 1907). Light pink. Large crown type; flesh-pink with clear yellow petals forming a collar around a rose-pink center. Good bloomer; erect. Midseason..**75c each**
- H. F. REDDICK 7.7** (Brand, 1913). Dark crimson with gold stamens; beautiful. Profuse bloomer. Midseason.....**50c each**
- IRENE COE** (Pfeiffer, 1932). Semi-double, seashell pink; fragrant; good bloomer.....**50c each**
- JEANNOT 9.2** (Dessert, 1918). Flesh-pink. Globular rose type, pink with lavender tint. Late. A fine landscape plant.....**\$1.00 each**

- ENCHANTERESSE 8.9** (Lemoine, 1903). Late white **\$1.00 each**
- ETTA 8.0** (Terry). Pale pink. Very large, rose type, fragrant, even pink blooms. Very late.....**50c each**
- EUGENE VERDIER 8.3** (Calot, 1864). Hydrangea-pink. Very large, compact, typical rose type. Outer guard petals lilac-white. Fragrant; very erect, dwarf habit, with strong stems; free bloomer. Late. This variety should not be confused with Eugenie Verdier or L'Indispensable. We have the genuine Eugene Verdier.....**50c each**
- EUGENIE VERDIER 8.6** (Calot, 1864). Pale hydrangea-pink. Collar lighter, center deeper, flecked crimson. Large, medium compact rose type, tall, free bloomer. Midseason. Distinct from Eugene Verdier.....**50c each**
- EUNICE SHAYLOR 8.9** (Shaylor). Double type; midseason. Outer petals cupped and wavy, pale rosy flesh color deeply flushed with rose toward the base; tall, fragrant and free blooming.....**\$2.00 each**
- FANNY CROSBY 7.7** (Brand, 1907). Soft pink guard petals, canary yellow center. Midseason.....**50c each**
- FELIX CROUSSE 8.4** (Crousse, 1881). Rich red. Large, globular flowers are a rich, brilliant, effective red. Rose type. Late midseason.....**50c each**
- FESTIVA MAXIMA 9.3** (Miellez, 1851). White. Extra large rose type. Pure white with carmine flecking in the center. Fragrant; early; most popular all-white Peony...**50c each**
- FRANCES HERNDON** (Pfeiffer, 1932). Deep rose; fragrant, yellow stamens showing through the petals; medium tall; free bloomer; midseason.....**50c each**
- FRANCES WILLARD 9.1** (Brand, 1907). Creamy white, large flower with cup-shaped center, enclosing golden stamens. Very fragrant. Midseason.....**75c each**
- FRANCOIS ROUSSEAU 8.2** (Dessert, 1909). Brilliant red. Rose-shaped, showing stamens among the petals. Early.....**75c each**
- GEORGIANA SHAYLOR 8.9** (Shaylor). Pale rose-pink with lighter center. The flowers are large with extremely broad petals; midseason. One of Shaylor's best.....**75c each**
- GOLDEN DAWN 8.6** (Gumm, 1923). Ivory-white with yellowish center. Very fragrant. Much like Primevere..**\$1.50 each**
- GROVER CLEVELAND 8.2** (Terry, 1904). Dark crimson. Very large, compact rose type; medium height. Late midseason.....**50c each**
- JUBILEE 8.9** (Pleas, 1908). White. Very large, flat rose type, white shading to rose; distinct and strong.....**50c each**
- JUDGE BERRY 8.6** (Brand, 1901). Soft pink. Very large, flat semi-rose type. Bud opens pink, the petals open farther and farther back until it becomes a great flat disk of variegated pink and white blooms of surpassing beauty. 7 to 8 inches in diameter. Very early, with a delicate fragrance.....**50c each**
- JUNE DAY 9.0** (Franklin). Light pink, deepening toward center of flower. Rose type. Some of the central petals edged with lavender. Delicate rose fragrance. Midseason...**\$1.00 each**
- KARL ROSEFIELD 8.8** (Rosefield, 1908). Rich crimson. Large semi-rose type. Tall, strong plant. Midseason.....**50c each**
- KELWAY'S GLORIOUS 9.8** (Kelway, 1909). White. Very large, full double rose type; free bloomer. A really fine white Peony.....**\$1.50 each**
- LA FRANCE 9.0** (Lemoine, 1901). Rose-white. Very large, compact rose type, guard petals splashed crimson. Very fragrant; strong, tall, free bloomer. Late.....**\$1.00 each**
- LA FEE 9.2** (Lemoine, 1906). Mauve-rose. Very large, compact crown type flowers. Very fragrant; tall and vigorous. Early midseason.....**\$1.00 each**
- LADY ALEXANDRA DUFF 9.1** (Kelway, 1902). Flesh-pink. Very large, flat, semi-rose flowers, distinctly striped with carmine. Strong and vigorous; profuse bloomer. Midseason.....**75c each**
- LA LORRAINE 8.6** (Lemoine, 1901). Creamy white. Large globular blooms. Tall grower, free bloomer. Midseason.....**\$1.50 each**
- LA PERLE 8.5** (Crousse, 1885). Pink. Very large, compact globular flowers, flecked carmine. Fragrant. Strong grower. Midseason.....**50c each**
- LAURA DESSERT 8.8** (Dessert, 1913). Creamy white. Large full flower, cream-white guards, bright canary-yellow center.....**\$1.50 each**
- LE CYGNE 9.9** (Lemoine, 1907). Milk-white. Large semi-rose type, perfectly formed, globular flowers. Petals very much incurved, very fragrant, erect, medium tall, stiff stems. Free bloomer. Midseason. The finest white in existence **\$2.00 each**
- LEONA CAUSTIN** (Pfeiffer, 1932). Semi-double, deep rose-pink; large bloom; medium tall, free bloomer; midseason.....**50c each**

LILLIAN GUMM 8.8 (Gumm, 1921). Deep rose-pink; very fine fragrance. One of the very largest Peonies. Late midseason. \$1.00 each

LIVINGSTONE 8.1 (Crousse, 1879). Pale lilac-rose. Large full blooms, silver tipped; upright, erect grower. Late. Extragood variety. 50c each

LORA DEXHEIMER 8.4 (Brand, 1913). Flaming crimson. Immense semi-rose blooms, stiff stems; prolific. Early. 75c each

LONGFELLOW 9.0 (Brand, 1907). Brilliant cherry; golden stamens surround the center. Good bloomer. Late midseason. One of the finest reds in existence. \$1.00 each

LOUIS VAN HOUTTE 6.9 (Calot, 1867). Carmine-rose. Semi-rose type, silver tipped with fiery reflex. Fragrant. Midseason. 50c each

LOVELINESS 8.8 (Hollis, 1907). Pink. Very large, flat, hydrangea-pink flowers. Strong, upright stem. Late bloomer. \$1.00 each

LUETTA PFEIFFER 8.7 (Brand, 1916). A beautiful semi-double pinkish white, often 8 to 10 inches in diameter. These immense flowers are borne on long, stiff, upright stems. The blooms are made up of large, pure glistening petals, interspersed with golden stamens. Petals are edged and blotched with stripes of brilliant carmine. It is a very early, profuse and dependable bloomer. Fragrant. It opens a light pink and gradually fades to the daintiest pink, and then almost white. The foliage of the plant is a shiny dark green. \$1.00 each

MARCELLA DESSERT 8.2 (Dessert, 1899). Creamy white, lightly spotted with lilac, center flecked crimson; crown type. Midseason; fragrant. 50c each

MARCHIONESS OF LANSDOWNE 8.6 (Kelway). Brilliant rose-pink with a slight salmon suffusion. Large double flat bloom; midseason; medium height, free blooming \$3.00 each

MARIAN PFEIFFER (Pfeiffer, 1925). Brilliant bright double red without a trace of magenta or purple. An outstanding red with a decidedly spicy rose geranium fragrance. Rose type; tall, profuse bloomer. \$1.00 each



A FIELD OF REINE HORTENSE

MARIE JACQUIN 8.3 (Verdier). Pale pink, becoming white with creamy tones resembling a water lily. Midseason. \$1.00 each

MARIE CROUSSE 8.9 (Crousse, 1892). Pale lilac-rose. Enormous full globular flowers on long, strong stems. Midseason. 50c each

MARIE LEMOINE 8.5 (Calot, 1869). Pure white. Large, very compact, rose type, center cream-white. Fragrant. Medium height. Extra strong stems. Very late. 50c each

MARTHA BULLOCH 9.1 (Brand, 1907). Rose-pink. Enormous, cup-shaped blooms often 10 inches across. Outer petals shading to silvery shell-pink, stalk strong and erect. Fragrant. Gigantic size and exquisitely beautiful. \$1.00 each

MARY BRAND 8.7 (Brand, 1907). Vivid crimson. Golden stamens through the center; very fragrant. One of the best of all reds. Immense heads of bloom. 50c each

MARY WOODBURY SHAYLOR 9.0 (Shaylor). Pink. The guard petals are shell-pink and the center a creamy yellow. Dwarf grower with stiff stems. Profuse bloomer. 75c each

MILTON HILL 9.0 (Richardson, 1891). Shell-pink. Large, flat flower of perfect rose shape. Strong medium height with sturdy stems. Late. 75c each

MISS HENNINGER (Terry). Cream-white, with very long, open petals, giving it the chrysanthemum effect so much desired in Peonies. Strong grower and free bloomer. Midseason. Buds show a trace of flesh-pink but mature bloom is pure white. 50c each

MME. AUGUSTE DESSERT 8.6 (Dessert, 1899). Violet-rose. Semi-rose type, large, perfect flower tinged with carmine. A good, free blooming, early midseason variety. . . . \$1.00 each

MME. CALOT 8.1 (Meillez, 1856). Hydrangea-pink. Large, globular rose type. Early, profuse bloomer. Very fragrant. 50c each

MME. DE VERNEVILLE 7.9 (Crousse, 1885). Pure white. Center tipped carmine. Very large, full bomb shape; medium height. Strong grower and exceptionally free bloomer. Fragrant. Early. 50c each

MME. EMILE LEMOINE 8.9 (Lemoine, 1899). Large, full blooms of soft flesh-pink. Tall, strong stems. Midseason. 50c each

MME. JULES DESSERT 9.4 (Dessert, 1909). White, shaded with buff and salmon tints; large flower. Medium height, strong grower. Midseason. A superior variety. . . . \$1.00 each

MODELE DE PERFECTION 7.8 (Crousse, 1875). Violet-rose; large, compact flower, very symmetrical. Medium dwarf plant. Free bloomer. Late. 75c each

MONS. DUPONT 8.3 (Calot, 1872). Creamy white. Well formed, cup-shaped bloom, center splashed with crimson and showing stamens. Tall, erect, fragrant. Late midseason. 50c each

MONS. JULES ELIE 9.2 (Crousse, 1888). Lilac-pink. Enormous full flower, crown type, resembles a chrysanthemum; glossy lilac-pink with a silvery sheen. Early bloomer. Very fragrant. One of the highest rated of the older varieties. 50c each

MONS. MARTIN CAHUZAC 8.8 (Dessert, 1889). Dark red. Medium to large, globular rose type; medium height. Early midseason. The darkest Peony grown. \$1.00 each



CLAIRE DUBOIS

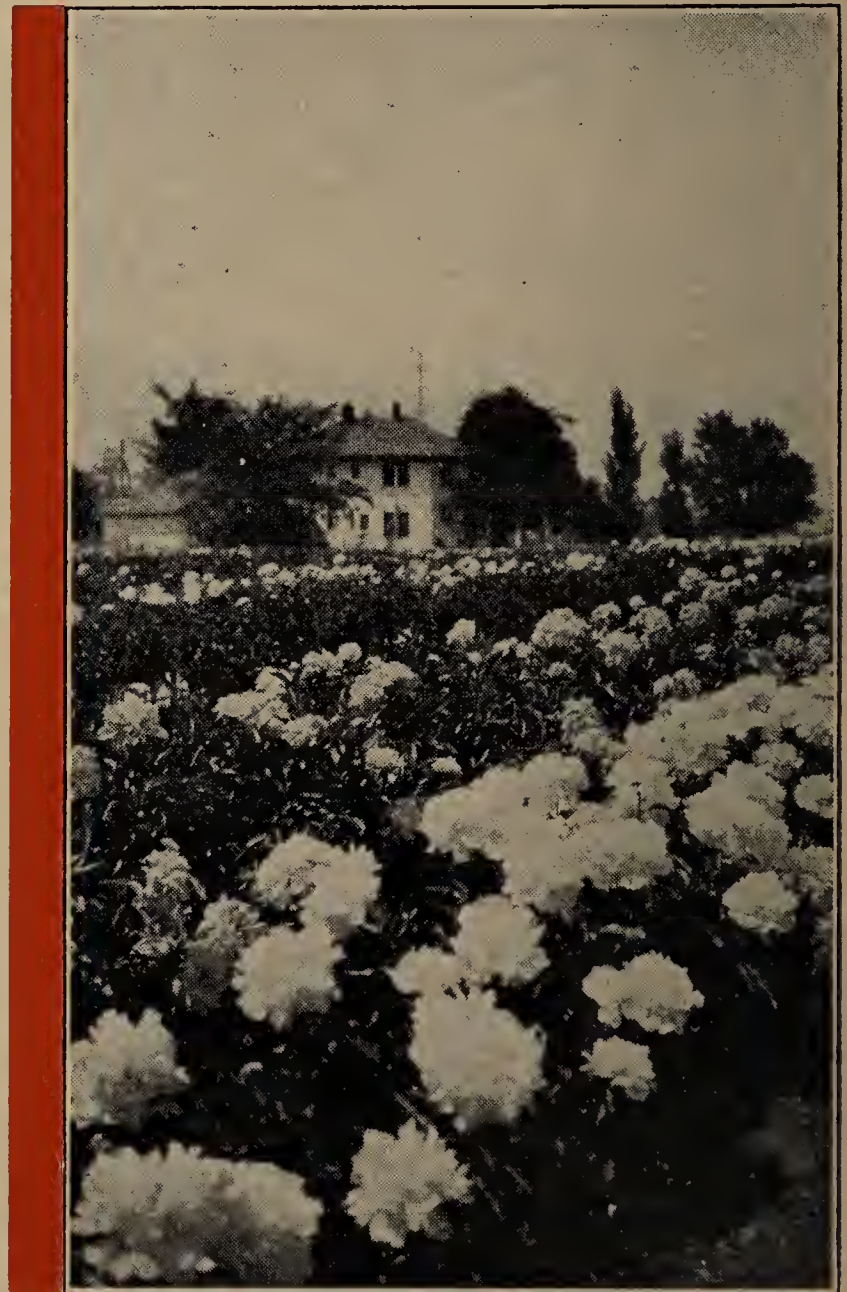


MRS. FRANK BEACH

- ROSA BONHEUR 9.0** (Dessert, 1905). Light rose. Very large, flat flowers, borne in clusters. Rose type. Midseason. Extra fine\$1.00 each
- ROSE HERE 7.4** (Brand, 1907). Bright crimson; strong grower, free bloomer. Early\$1.00 each
- ROSETTE 8.8** (Dessert, 1918). Silvery flush, shaded salmon at base of petals, flecked crimson; shaped like a rose. A splendid early variety of erect habit\$1.00 each
- RUBRA SUPERBA 7.2** (Richardson, 1871). Rich red. Large, full double blooms; fragrant. One of the really good late varieties.50c each
- RUTH MARKLE** (Pfeiffer, 1932). Double light pink; tall; fragrant; good propagator. Late.....75c each
- SARAH BERNHARDT 9.0** (Lemoine, 1906). Apple-blossom-pink, tipped silver large size flowers in huge clusters. Magnificent.....75c each
- SISTER ANNIE 7.7** (Brand, 1907) Pink suffused with deep rose. Flat rose type with stamens showing their petals. Tall, stout stems; midseason...50c each
- SOLANGE 9.7** (Lemoine, 1907). The color of this variety is a cream-white with a suffusion of buff and pale salmon-pink. Double type. Very large and late. Compact, globular form, opening slowly and not acquiring full development for several days. An excellent exhibition variety.....\$1.00 each

- MOSES HULL 8.2** (Brand, 1907). Deep rose-pink. Very large, loose, cupped tufted petaloids, somewhat mottled. Delicate fragrance. Midseason.....50c each
- MRS. A. G. RUGGLES 8.3** (Brand, 1913). Light pink. Large, semi-double type. Petals long and fringed. Late. Strong grower and a wonderful flower.....\$1.00 each
- MRS. A. M. BRAND 9.6** (Brand, 1925). Beautiful pure white, of immense size, exquisite form. Good, strong stems, healthy light green foliage. Awarded the gold medal at the 1925 American Peony Show in St. Paul.....\$3.00 each
- MRS. CAREW 7.8** (Brand, 1907). Delicate pink. Large, full flower. Midseason.....50c each
- MRS. FRANK BEACH 9.0** (Brand, 1925). Beautiful creamy white flower like Jubilee. Dwarfish grower. Late. Given an award of merit at the London, Ont., International Show.\$2.00 each
- MRS. JOHN M. KLEITSCH 9.0** (Brand, 1925). Deep lavender-pink, broad, stiff petals and a color not duplicated by any other Peony.....\$2.00 each
- MYRTLE GENTRY 9.1** (Brand, 1925). Large flowers of delicate salmon-pink. Tall, erect grower and a regular and profuse bloomer. Very fragrant. Awarded the American Peony Society's silver medal at St. Paul, 1925.....\$2.00 each
- NINA SECOR 9.0** (Secor). Pure white. Beautiful clear white of large size and splendid form. Very late.....\$1.50 each
- OFFICINALIS ROSEA**. Deep rose-pink. Similar to the *Officinalis Rubra*.....50c each
- OFFICINALIS RUBRA**. The old deep bright red Peony of the old-time garden. Very early.....\$1.00 each
- PFEIFFER'S PRIDE**. Late double rose type of fine form; outer petals a peculiar shade of light pink, shading deeper to the center, with a ring of yellow stamens surrounding a tuft of deeper pink blotched with crimson. Strong, stiff stems of medium height; pleasing fragrance. A really fine new Peony.....\$1.50 each
- PHOEBE CARY 8.8** (Brand, 1907). Shell-pink, loosely formed blooms of exquisite loveliness, deeper center. Fragrant. Very late.....\$1.00 each
- PHILIPPE RIVOIRE 9.2** (Rivoire, 1911). Very dark crimson. Large, well-formed, cup-shaped flowers of rose type. Strong grower. Fragrant. Early. A very striking and large bloom.\$2.00 each
- PHILOMELE 7.7** (Calot, 1861). Old rose, collar of buff petals.50c each
- PHYLLIS KELWAY 9.0** (Kelway, 1908). Very large, rose-pink paling to white in center, showing many stamens. Floriferous. Midseason.....\$1.00 each
- PIERRE DUCHARTRE 8.2** (Crousse, 1895). Deep pink. Large, compact, globular blooms. Rose type. Fragrant.50c each
- PRIDE OF ESSEX 8.9** (Thurlow, 1916). Deep flesh-pink.\$1.00 each
- PRIMEVERE 8.6** (Lemoine, 1907). Buff with sulphur-yellow center. Large, flat flower. Tall, strong and free bloomer. Very fragrant. Midseason. Nearest approach to a yellow Peony.....\$1.00 each
- REINE HORTENSE 8.7** (Calot, 1857). Soft pink. Semi-rose type, center of flower prominently flecked crimson. Mid-season. Extra fine.....75c each
- RICHARD CARVEL 8.8** (Brand, 1913). Bright crimson. Large, bomb type; tall, profuse bloomer. Very fragrant. A magnificent early crimson Peony.....\$1.00 each

- SOUV. DE L'EXPOSITION UNIVERSELLE 7.6** (Calot, 1867). Violet-rose, silvery reflex on tips. Large, flat flower; fragrant. Free bloomer. Late mid-season50c each.
- SOUVENIR DE LOUIS BIGOT 8.8** (Dessert, 1913). Bengal rose. Very large. Convex bloom with fringed petals. Rose type. Midseason. Brilliant and beautiful.....\$1.00 each
- SUZETTE 8.2** (Dessert, 1911). Bengal rose. Slightly shaded carmine-purple with silvery reflex and golden stamens. Medium size, strong, stout stems. Midseason50c each



LOOKING ACROSS A PEONY FIELD TOWARD L. E. PFEIFFER'S HOME

JAPANESE PEONIES



CUPS AWARDED
TO PFEIFFER PEONIES

- PRAIRIE AFIRE** (Brand). Prairie Afire is a new and entirely distinct break in color in Japanese Peonies. The guards are broad and a soft creamy rose with good substance. These surround a great ball of brilliant fiery red staminodes. The flower should be cut in the bud and developed inside when the result is simply marvelous. \$10.00 each
- BOBBIE BEE** (Hollis, 1907) Carmine-red, with gold center. \$1.00 each
- CROWN ON CROWN**. Shades of pink. 50c each
- DAYBREAK**. Pale rose. 75c each
- FUYAJO 9.2** (Origin unknown). Medium size; midseason. Dark purplish crimson guard petals of smooth texture and heartshaped outline; center a cluster of dark old rose petaloids heavily tipped with pale buff or cream. Carpels green; tipped pink and white; slightly fragrant. Tall; floriferous; strong stems. Foliage ruffled and tinged with red. \$1.00 each
- GERALDINE** (Kelway). Carmine-violet. 50c each
- GOLDEN BEAUTY** (Pfeiffer, 1932). White guard petals, bright yellow center, yellowish green carpels; dwarf habit. Excellent landscape variety. \$1.50 each
- GOLD MINE 8.2** (Hollis, 1907). Medium size; midseason. Dark rose-pink of irregular, cupped form; center of narrow whitish petaloids stained light pink and tipped with yellow; carpels ruddy green with pink tips and yellow base; poor fragrance. Medium growth; fairly floriferous; stiff stems. \$1.00 each

PFEIFFER PEONIES (continued)

- THERESE 9.8** (Dessert, 1904). One of the French masterpieces. Second highest rated Peony; and considered one of the world's finest varieties. The flowers are of enormous size, and true rose type, with delicate fragrance. Color rich satiny pink with a lighter center. The plant is of vigorous growth, and very free blooming. With us always blooms the first year from planting. Medium height, strong stems. Heavy foliage. \$1.00 each
- TOURANGELLE 9.4** (Dessert, 1910). Pearly white, overlaid with delicate mauve and shade of the LaFrance rose. Very full, large, flat rose type flowers. Strong grower, free bloomer. Late midseason. One of the desirable varieties. . . \$1.00 each
- UMBELLATA ROSEA 7.4** (Dessert, 1895). Violet-rose, shading to amber-white center. Large, informal rose type. Fragrant Strong and free bloomer. Very early. . . 50c each
- VENUS 8.3** (Kelway, 1883). Pale hydrangea-pink. Tall, free bloomer. Extra fine for cut flowers. Midseason. . . 50c each
- VICTOIRE DE LA MARNE 8.2** (Dessert, 1915). Amaranth-red, silvery reflex. Very attractive, globular bloom of great size. \$1.00 each
- VIRGINIA MARY** (Pfeiffer, 1932). Full double, dark rose pink, rose type; early; excellent cut flower variety. . . . 50c each
- WALTER FAXON 9.3** (Richardson, 1904). Vivid salmon-shell-pink of a luminous intensity, unique in Peonies. This remarkable variety is at its best in the show room. The flowers are double, of medium size and attractive form; mildly fragrant. Fairly floriferous; good stems and foliage. \$1.00 each
- W. F. CHRISTMAN 8.8** (Franklin). Flesh-pink. An attractive flower, full rose type. Fragrant. Strong, sure bloomer. Midseason. \$1.00 each

- GYPSY**. Dark tyrian rose. \$1.00 each
- LEMON QUEEN**. Cream-white. 50c each
- LABOLAS 7.6** (Kelway). Dark crimson. 50c each
- MIKADO** (Japan, 1893). A fine exhibition and garden variety, considered one of the best red Peonies of its type. Medium size; midseason; center broad and flat staminodes stained dark rose-red, edged with pale yellow-buff. Very floriferous. \$1.00 each
- MRS. MAC** (Franklin). Delicate pink, typical Japanese blooms flecked with deeper tones of pink. A splendid Peony. \$2.50 each
- RASHOEMON 8.7** (Japan). This is a variety that attracts very much attention in the field, not only because of the beauty of the flower but on account of the pleasing appearance of the plant. The foliage is a clear, glossy green, with crinkled and pointed leaves. The blooms are large, the outer row of petals a deep rose-red surrounding a large tuft of crinkled golden filamental petals. \$1.00 each
- TAKARADAMA** (Origin unknown). Large, late white, central petaloids yellow. \$2.00 each
- TOKIO 8.9** (Origin unknown). Very large; midseason. Cupped, waving guard petals of dull rose-pink; center of large loose staminodes, narrow at the base with wide tips tinted pale yellow. Very tall, vigorous; fairly floriferous; strong stiff stems. Dark broad foliage. \$1.00 each

SINGLE PEONIES

- ALBIFLORA, THE BRIDE 8.4** (Dessert, 1902). Single white. Very large, fragrant, with long, yellow stamens. Very early, free blooming and tall. \$1.00 each
- BALLIOL** (Origin unknown). Single red. \$1.00 each
- BLUSHING BRIDE** (Pfeiffer, 1932). Single delicate pink, fading to white; early; rather dwarf; free bloomer; good size flower. \$2.00 each
- DUCHESS OF BEDFORD** (Kelway). Single pink. \$2.00 each
- FLAMING YOUTH** (Pfeiffer, 1932). Single, crimson; early; robust grower, profuse bloomer, wonderfully fine variety for landscaping. . . . 75c each
- LULU WILSON** (Pfeiffer, 1932). Single, very large, light pink, profuse bloomer; medium height, earliest of all. 50c each
- MARGUERITE DESSERT 8.5** (Dessert, 1913). Very large; midseason. White, thickly powdered with pale rose-pink dots; small clusters of golden yellow stamens in center; carpels tipped red; fragrance faint but pleasing. Tall. Very floriferous; strong stems and foliage. \$1.00 each
- NELLIE 8.6** (Kelway). Medium to large; midseason; two rows of undulated petals, rose-pink at first, fading almost white; small tuft of yellow stamens in center; carpels ruddy green, dark rose tips and pink kernels at base. Dwarf; floriferous; stiff stems; blooms in clusters. Foliage narrow and wavy. \$1.00 each
- PRIDE OF LANGPORT 8.9** (Kelway, 1909). This fine variety carries the highest rating of all the pink singles. The guard petals are large and well rounded, surrounding a center of long, yellow stamens, light green, tipped pink. It is a tall and vigorous grower with small, wiry stems that carry the flowers in clusters. The soft, pleasing pink color and delightful habit of growth make this a very desirable variety. \$1.50 each
- SETTING SUN** (Pfeiffer, 1932). Single, dark crimson, profuse bloomer; medium height; early. \$1.00 each
- VENISE** (Dessert, 1913). Single pink. \$1.00 each

See Page 11 for
SPECIAL
PEONY BARGAINS



JAPANESE PEONY



PHOTOGRAPH OF ONE OF OUR FIELDS

STANDARD PEONIES at Popular Prices

Any of
the following varieties

35c EACH

Your Choice, any 4 for . . . \$1.00

Your Choice, any 12 for . . . 2.50

Your Choice, any 25 for . . . 4.50

ACHILLE, Blush White
ALEXANDRE DUMAS, Salmon-Rose
CANDIDISSIMA, White
COMTE D'OSMONT, White
DUC DE WELLINGTON, Creamy White
FARIBAULT, Deep Rose
FLORAL TREASURE, Lilac-Rose
FRAGRANS, Deep Rose
HARRIET FARNSLEY, Flesh-Pink
JEANNE D'ARC, Pink and White
LADY BRAMWELL, Pink
LA ROSIERE, White
LA TULIPE, Blush White
LA SUBLIME, Crimson
L'INDISPENSABLE, Pink
MEISSONIER, Red

MME. CROUSSE, White
MME. EMILE GALLE, Shell-Pink
MARECHAL VAILLANT, Light Red
MIDNIGHT, Deep Maroon
NIGRICANS, Red
OLD SILVER TIP, Soft Madder Rose
OCTAVIE DEMAY, Pale Pink
PAPILLIONACEA, Pink
POTTSI, Red
PRINCE OF DARKNESS, Dark Maroon
PRINCE IMPERIAL, Red
PURPUREA SUPERBA, Carmine-Rose
QUEEN VICTORIA, White
RACHEL, Garnet-Red
SUSAN B. ANTHONY, Creamy Pink
WM. PENN, Rose

SIZE OF ROOTS

All Peony roots that we send to our patrons are strong 3 to 5-eye divisions or more, regardless of the price paid, either individual roots or in group collections. These divisions are made from young, vigorous, healthy 3-year clumps, that have bloomed profusely for two years. You can not buy better roots at any price.

Sometimes our patrons want divisions with 8 to 10 eyes, but nothing is gained by planting these large divisions, as we have learned by many years experience that a Peony with three well developed buds or eyes and a properly balanced root system, will prove superior to the larger divisions, and give better results in less time.

We receive hundreds of letters every year from our patrons, expressing their pleasure and satisfaction with the large size and fine quality of Pfeiffer's Fine Peonies.

Eight Superior Peony Bargains

BARGAIN NO. 1

"Standard Collection"

Early Varieties

EDULIS SUPERBA, Rose Pink
 RACHEL, Garnet Red
 COMTE D'OSMONT, Cream White
 SUSAN B. ANTHONY, White
 LA PERLE, Light Pink

All 5 postpaid . . . **ONLY \$1.00**

BARGAIN NO. 2

"Standard Collection"

Late Varieties

RUBRA SUPERBA, Rich Red
 CHESTINE GOWDY, Silvery Pink
 SOUV. DE L'EXPOSITION, Rose Pink
 MME. EMILE GALLE, Shell Pink
 COURONNE D'OR, White

All 5 postpaid . . . **ONLY \$1.00**

BARGAIN NO. 3

Extra Good Varieties

(Early Group)

AVALANCHE, Pure White
 KARL ROSEFIELD, Rich Crimson
 MONS. JULES ELIE, Rose Pink

All 3 postpaid . . . **ONLY \$1.00**

BARGAIN NO. 4

Extra Good Varieties

(Late Group)

MARIE LEMOINE, Pure White
 MARY BRAND, Vivid Crimson
 CLAIRE DUBOIS, Satin Pink

All 3 postpaid . . . **ONLY \$1.00**

BARGAIN NO. 5

Seven Fine, High Rated Varieties

TOURANGELLE, Delicate Mauve
 REINE HORTENSE, Apple Blossom Pink
 MARIE CROUSSE, Lilac Rose
 ELWOOD PLEAS, Shell Pink
 FRANCES WILLARD, Large White
 LONGFELLOW, Cherry Red
 LUETTA PFEIFFER, Pinkish White

All 7 postpaid . . . **ONLY \$5.00**

BARGAIN NO. 6

Super De Luxe Collection

MRS. FRANK BEACH, Pure White
 MYRTLE GENTRY, Delicate Salmon Pink
 MRS. JOHN M. KLEITSCH, Lavender Pink
 PFEIFFER'S PRIDE, Light Pink
 LAURA DESSERT, Best Yellow
 MONS. MARTIN CAHUZAC, Deep Red
 WALTER FAXON, Salmon Pink
 THERESE, Rich Satiny Pink

All 8 postpaid . . . **ONLY \$10.00**

BARGAIN NO. 7

Five Extra Fine Single Peonies

ALBIFLORA, White
 FLAMING YOUTH, Crimson
 LULU WILSON, Light pink
 SETTING SUN, Dark Red
 NELLIE, Rose Pink

All 5 postpaid . . . **ONLY \$3.00**

BARGAIN NO. 8

Six Popular Japanese Peonies

GERALDINE, Carmine
 GOLD MINE, Dark Rose Pink
 LEMON QUEEN, Cream White
 LABOLAS, Dark Crimson
 MIKADO, Rose Red
 TAKARADAMA, White

All 6 postpaid . . . **ONLY \$4.00**

PFEIFFER'S IRIS

The Perennials of Unusual Blendings of Color and Beauty

Irises are undoubtedly one of the most popular of all the hardy perennials. No other perennials available to our gardens combine so many good qualities. They are inexpensive, extremely hardy, may be grown under a great variety of conditions with a minimum amount of care, and they have a wonderful range of colors from the lightest pale yellow to rich gold and deep bronze, delicate pale blues, and lavenders to dark blue and violet to deepest purple, light pink to claret and deep maroon, all the shades of lavender, mauve, violet and pure white, with an endless array of combination colors.

Irises are easy to grow and can be planted almost any time the ground is not frozen. They will do best in a sunny, well drained location in a medium loose, mellow soil. Irises must be planted shallow; many people plant too deep and the plants rot. The rhizome or fleshy part of the root should be just under the surface of the ground. If your location is a low spot where water will stand, it is advisable to make raised beds, so the water cannot stand around the roots. Good drainage is necessary. If the soil is sour, an application of hydrated lime is advisable. Never use manure.

A WORD ABOUT PLANTS AND PRICES

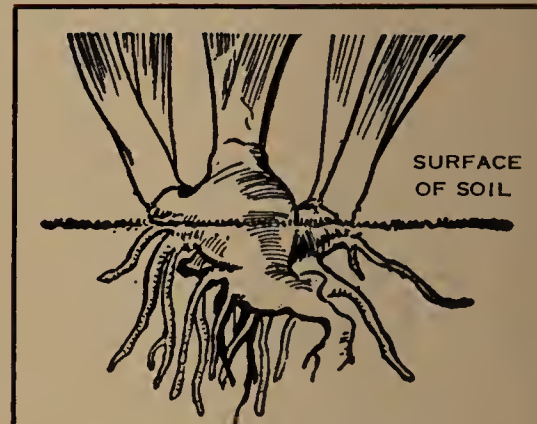
Our prices are based on strong, single divisions, and we always send out the best plants available. It should be understood that while we strongly advise planting in July and August, the plants are not as large or well developed as they are in the fall, but it is to your advantage to have the plants make their growth in your garden rather than in our own. For southern states, better results might be obtained if Irises are planted in September or October.

MASS PLANTING ADVISABLE

An Iris display in the garden is much more effective if they are planted in groups of from three to a dozen plants of each variety, and to stimulate an interest for mass planting, we are making attractively low prices by the dozen on many varieties.



A BEAUTIFUL IRIS BORDER



HOW TO PLANT IRIS ROOTS

Set plants in light, well drained soil where water will not stand. The rhizome or fleshy part of the root should be at the ground level. If soil is sour, ground limestone is beneficial. Use no fertilizer.

COLLECTIONS

Largely for the benefit of the beginner in Iris growing we are offering some exceptional collections and combinations listed on another page. For the Iris fancier who wants the best and knows just what he or she wants, we have a list of varieties that will appeal to you.

GUARANTEE

All plants are guaranteed to be true to name, vigorous and healthy when received. If found to be otherwise, we will either replace with true stock or refund your money. Mistakes are made, but not intentionally.

Prices include prepayment of postage in the United States only.

A FEW REMARKS ABOUT IRIS ROT Please Read Carefully

The development of root rot in bearded Iris is a condition that at times all Iris growers have to contend with. Some of the causes of this condition are too deep planting of the rhizomes, especially early in the spring, water standing around the plants, hot and humid atmosphere, abnormal cold weather in winter without any snow protection.

THE REMEDY: Make raised beds or ridges, so water cannot stand around the plants, plant very shallow, the top of the rhizome should be at the surface of the ground. Next, if rot should develop, scrape the soil from around the rhizome, clean out the rotted parts, sprinkle with powdered sulphur, let the sun shine on the rhizome and you will soon be rid of rot.

A light covering of straw or coarse hay put on after the ground freezes, will help to carry your plants safely through the winter.

Follow above instructions and you will have little, if any, trouble with rot.

Pfeiffer's list of Prize-winning and standard varieties of Iris

In the list following, the letter "S" means "Standards" or upright petals; the letter "F" means the "Falls" or drooping petals.

- ABENDA**, (Perry). S. light lilac-pink, tinted buff; F. cherry red in color. An excellent landscape variety. 36 inches. **20c each; 3 for 50c**
- ALABASTER** (Andrews, 1926). A very fine white flower of good form and texture. **25c each; 3 for 60c**
- ALLURE** (Murrell, 1927). Very dainty and pleasing effect; rich canary-yellow overlaid with pink. Flowers beautifully formed with ruffled standards. **25c each**
- ALVARADO** (Mohr-Mitchell, 1926). 40 inches. Deep rich purple blooms; seedling of Lent A. Williamson and Conquistador. Tall vigorous grower. **25c each; 3 for 60c**
- ANN FARR** (Farr). S. white, bordered pale blue; F. pure white, pale blue markings at base. **25c each; 3 for 60c**
- ANN PAGE**. Large pale lavender blue. **20c each; 3 for 50c**
- BALDWIN** (H. P. Sass, 1926). One of the best of the dark blue purples, a huge manganese violet self with an electric sheen in the falls on 46 inch well branched stems. **35c each**
- BANDOLLERO**. Beautiful light blue; large flower. **20c each; 3 for 50c**
- BEAU SABREUR** (Williamson, 1930). S. yellow beautifully flushed purple; F. oxblood red, slightly paler at the edges. Beautiful flower of good substance. **25c each**
- BLUE VELVET** (Loomis, 1929). Deepest dark velvety blue. One of the best of the Dominion seedlings. Large flowers of heavy substance on rigid stems, finely branched. Standards and falls same shade. **60c each**
- BRUNO** (Bliss, 1922). S. rose tinted, shading to yellow at the base; F. deep rich velvety red-purple of exceptional size and substance. Very distinct. 3 feet. **25c each; 3 for 60c**
- BUECHLEY'S GIANT** (Buechley, 1932). One of the largest and best formed; form and habit perfect. Improved Lord of June. S. erect and beautifully formed. F. flaring. Height in proportion to size of the flower. **\$1.00 each**
- BUTO** (Sass, 1927). A very large, rich velvety deep royal purple flower of perfect form and fine satiny texture. Very early. **25c each**
- CANDLELIGHT** (Andrews, 1926). Large flowers of pale pinkish lavender illuminated by a golden glow, producing a soft color effect. A very tall and vigorous growing plant. The highest rated of any exhibition Iris and truly a most outstanding variety. No real Iris lover should be without this variety. **20c each**
- CANOPUS** (Bliss, 1919). Dominion seedling. S. reddish violet; F. rich pansy-violet marked with red-brown on cream base. Yellow beard. Large flower of pleasing fragrance. Strong, branching spikes. 33 inches. **20c each; 3 for 50c**
- CARDINAL** (Bliss, 1919). One of the rich flowers of the Dominion race. S. distinctive shade of lavender, overlaid rose; F. a rich velvety prune-purple of wonderful glossy texture. Stock of this variety is very scarce. **25c each**
- CAROLINE E. STRINGER** (Sass, 1925). Large, delicately rose-flushed flower of exceptional substance. 33 inches. **20c each; 3 for 50c**
- CHALLENGER** (Jacob Sass, 1930). Huge variety; dark purple with blackish violet falls. Vigorous and free blooming. **25c each**
- CHASSEUR**. Fine yellow. **20c each; 3 for 50c**
- CHESTNUT** (Sass, 1930). S. crimson-drab-ruffled; F. cream dotted petunia-violet; very fine. **25c each**
- CHIEF** (Sass, 1926). Dark royal purple, flowers exceptionally large; fine low growing Iris effective in mass plantings. 24 inches. **25c each; 3 for 60c**
- CINNABAR** (Williamson, 1928). A splendid violet-purple bicolor; one of the very best of the Williamson introductions. Large flower of fine form. 42 inches. **25c each; 3 for 60c**
- CITRONELLA**. Lemon yellow and morocco red. **25c each; 3 for 60c**
- CLARA NOYES** (H. P. Sass, 1931). One of the finest blended types; general effect yellow, orange and apricot. Flowers well spaced and well carried on a tall stem. A very beautiful intriguing new color. **75c each**
- CONCHOBAR** (Bliss, 1921). Red purple. A rival to Bruno. **50c each; 3 for \$1.25**
- CORONATION** (Moore, 1927). This is the yellow Iris all of us have been looking for. Standards, falls, beard and stamens are golden yellow. The same color as Sherwin Wright, except for a little lighter on the tips of the falls. The flowers are as large as Monsignor, and of good substance. It is a long and profuse bloomer, and is strong and hardy. Height 3 to 4 feet. It attracts immediate attention even in a large field of Iris. We believe that this is the best large dark yellow Iris on the market, and that a great future is ahead of it. **25c each**
- CRIMSON GLOW** (Millet, 1924). Brilliant crimson-rose in color with the flowers large and well shaped. Orange beard with broad falls and frilled standards. Very free flowering and a wonderful variety for landscape effect. **25c each; 3 for 60c**
- CRUSADER**. Deep violet blue. **20c each; 3 for 50c**



FREDA MOHR

DAUNTLESS (Connell, 1929). One of the best red Irises. Blooms very large on tall, stiff stems. The plant is a vigorous grower and prolific bloomer. One of the most beautiful introductions of recent years. **75c each**

DEESSE (Cayeux, 1926). 36 inches. One of the finest Iris. The falls are a very brilliant red tone, with lavender standards. **50c each**

DEPUTE NOMBLOT (Cayeux, 1929). Copperish bronze and crimson, all flushed golden bronze; a really magnificent Iris. Flowers large and well proportioned on very tall and widely branched stems. The world's greatest Iris. **75c each**

DOLLY MADISON (Williamson, 1927). 36 inches. Large flowers. 4½ inches high and 5 inches wide. Mauve standards arching and shading yellow at the base. Broad, flaring falls of lilac, maroon veined. Beard bright orange. Very free flowering, distinct in form and an exceptionally robust variety. One of the finest introductions of recent years. **25c each**

DON JUAN (Cayeux, 1928). Enormous flowers of splendid shape and heavy texture. S. light rosy lilac shaded to bronze; F. extremely flaring, bright red, shading lighter at the edge. Foliage is very heavy and tall growing. **35c each**

DR. CHAS. H. MAYO (Fryer, 1923). 40 inches. This is Fryer's finest introduction. A beautiful soft pink toned Iris. It is very fragrant, early, has a long flowering season and a very rugged constitution. **25c each; 3 for 60c**

DUKE OF BEDFORD. Velvety black purple. **20c each; 3 for 50c**

EL CAPITAN (Mohr-Mitchell, 1926). S. and F. blush violet. Majestic flowers with flaring falls are beautifully posed on a noble spike. **50c each**

ELIZABETH EGELBERG. Flowers are carried on a strong, stiff stem that starts branching near the ground and carries as many as nine open flowers at one time. Standards broad and overlapping, a beautiful blend of pink and lavender. Falls flaring almost horizontal, aconite-violet. The general effect being a beautiful mauve-pink. 48 inches. **25c each**

ELSINORE (Hall, 1925). 3 feet. Flowers of primrose-yellow bordered with purple. **25c each; 3 for 60c**

ESPLENDIDO (Mohr, 1924). A very large, red-purple bicolor, with beautifully branched stems. **20c each; 3 for 50c**



EUPHONY

EUPHONY (H. P. Sass, 1929). Ruffled standards of the richest copper tinted heliotrope; F. old gold tinged with violet; very tall. **25c each**

FRIEDA MOHR (Mohr-Mitchell, 1926). It is a pink bicolor with deep lilac-rose falls and standards of pinkish lilac. It far exceeds any other Iris of similar color, in size, shape, vigor of growth, and brilliancy of color. Selected from all the other Mohr seedlings to bear the name of the originator's wife. An outstanding variety among the new introductions and for many years to come it will be one of the very finest of Iris. 42 inches. **25c each**

GAVIOTA. Creamy white, edged yellow. **20c each; 3 for 50c**

GERMAINE PERTHUIS (Millet, 1924). S. violet-purple; F. deeper violet lighted with a prominent yellow beard. The flower is of unequalled velvety appearance and deliciously scented. A decedent of Mme. Gaudichau. **25c each; 3 for 60c**

GLAMOUR (Bliss, 1922). 36 inches. A very fine Dominion seedling. S. mauve tinted heliotrope; F. red-purple. A very handsome variety. **20c each; 3 for 50c**

GLEAM (Nicholls, 1930). Very lovely pale self blue. Tall. **25c each**

PRIZE WINNING IRISES

The quality of our plants is unsurpassed. At the Minneapolis Iris Show held in Minneapolis, June 2nd and 3rd, 1932, under the auspices of the Minnesota Horticultural Society at the Northwestern National Bank Building, we made twenty-three entries and won twenty-one prizes, fourteen firsts, six seconds and one third, besides the Sweepstakes for the most prize points scored, and the silver loving cup shown on the left for the most comprehensive display at the show. This we did after carrying the flowers 143 miles in an automobile. When you get plants from Pfeiffer's you get these prize-winning strains at no additional cost to you.



Medals and Cups that Pfeiffer's Iris have won at different shows staged by the Minnesota Peony and Iris Society and held in St. Paul and Minneapolis.

PFEIFFER'S IRIS

GOBELIN RED (Danenhauer, 1929). Beautiful oxblood-red with standards lighter in color than the falls. If the flowers were larger it would be classed as one of the best reds. **50c each**

INDIAN CHIEF (Ayres, 1929). S. pinkish red; F. deep rich velvety red. Flowers immense, well formed, of heavy substance. One of the best introductions of recent years. **30c each**

JACQUARD (Ayres, 1927). A glowing dark reddish purple. Very floriferous. **25c each**

JAPANESE. Lavender white and deep violet. **20c each; 3 for 50c**

JERRY. A new red-toned Iris that is perfect in every way, an outstanding Topham introduction. **\$3.00 each**

JULIA MARLOWE (Shull, 1924). 40 inches. Very large flowers with violet standards and rains-purple falls of Magnifica shape. The colors produce a glowing pink and red effect in the sun. Strong, well branched stalks. **25c each; 3 for 60c**

KING TUT (Sass, 1926). Large flowers of striking beauty. S. deep reddish brown; F. deep chestnut-red illuminated with orange. **30c each**

KING JUBA (H. P. Sass, 1931). A clear colored large variety, the brilliant contrast between the yellow standards and wide solid deep velvety red falls, making this a striking and much admired Iris. Large flowers on 36 to 40 inch stems. **65c each**

KLAMATH (Kleinsorge, 1929). S. bronze tinted violet; F. deep prune-purple, paling at the edge. Good form and substance. **30c each**

LABOR (Cayeux, 1926). Dark violet overlaid with a copper and bluish sheen. Very beautiful and strong grower. **20c each**

LARGO (Ashley, 1930). S. yellow, shading to light yellow at base, dotted brown; F. citron-yellow shading to dark yellow overlaid mauve and lined with brown. Bright beard in the center. **\$1.25 each**

LE CORREGE (Vilmorin, 1927). Large flowers, very fragrant. Wonderful brilliant red bicolor. **25c each**

LOS ANGELES (Mohr-Mitchell, 1927). Giant white flowers of fine shape and great substance. The standards faintly edged pale blue, 42 inches. **50c each**

MAGENTA (Cayeux, 1927). Beautiful bright amethyst in color. A beautiful flower. Strong plant. **40c each**

MAGNIFICA. Extra large, fragrant pink and red violet. **20c each; 3 for 50c**

MAGNIFICENT (Fryer, 1923). S. ampero-purple; F. Rood's violet. Reticulated brown and yellow at base. Conspicuous orange beard. F. very large and long. 30 inches. **25c each; 3 for 60c**

MAJESTIC. Lavender mauve with a light bronze base. **20c each; 3 for 50c**

MARY BARNETT (Cumbler, 1926). A fine new Iris described as a larger Princess Beatrice with a glorious golden beard whose reflection pervades the whole bloom. Free flowering and very vigorous. **20c each; 3 for 50c**

MEDRANO. Reddish copper and crimson purple. **20c each; 3 for 50c**

MELDORIC (Ayres, 1930). Magnificent blue-black colossal flowers of the darkest hue. Brilliant orange yellow beard adds to the contrast. **\$2.00 each**

MIDWEST PINK (Pfeiffer, 1923). Blended pink. **20c each; 3 for 50c**

MINISTRE FERNAND DAVID (Cayeux, 1930). Large flower, perfect shape and substance; S. bright reddish purple; F. velvety dark reddish purple. A much improved Germaine Perthuis. **\$1.25 each**

MME. DURRAND (Den.). Iridescent buff and purple blend, fragrant; needs protection in the North. Tall; midseason. **25c each**

MOA (Bliss, 1919). Enormous flowers with pure violet arching standards and broad falls of a deep velvety pansy-violet. It is the tallest of the Dominion race. Very free flowering with individual flowers of great substance. A magnificent Iris. **35c each**

MONTEREY (M. & M., 1929). Dark bronze-red-violet bicolor. The velvet falls are distinctly marked with lighter shades. **35c each**

MRS. EDWARD HARDING (Perry, 1925). 48 inches. Large, well formed flowers with standards of violet-purple and falls of dark velvet violet-purple overlaid black, bronze-yellow beard. A tall beautiful Pallida variety. **30c each**

MRS. VALERY WEST (Bliss, 1925). 36 inches. The large standards are lavender shot with bronze, and the falls deep, rich velvety red-purple. The flowers are very large and finely held on a strong stem. This is one of the strongest growing and most vigorous of the Dominion seedlings. **40c each**

NEBRASKA (H. P. Sass, 1929). The latest yellow Iris to bloom. S. ruffled apricot yellow; F. same color with brown veinings. Dark yellow beard. Large flower. **35c each**

NELLIE GRAY. Tall lavender. **20c each; 3 for 50c**

NENE (Cayeux, 1928). Considered the largest Iris; flowers are enormous, over 9 inches in length and well placed on a strong heavy stem; S. soft rose-lilac; F. vinous red lighter at the margin. A very imposing variety. **90c each**

NEOLA (J. Sass, 1932). A beautiful brown toned blend unlike any other dwarf. S. violet; F. deep brown yellow beard. Good sized bloom. **25c each**

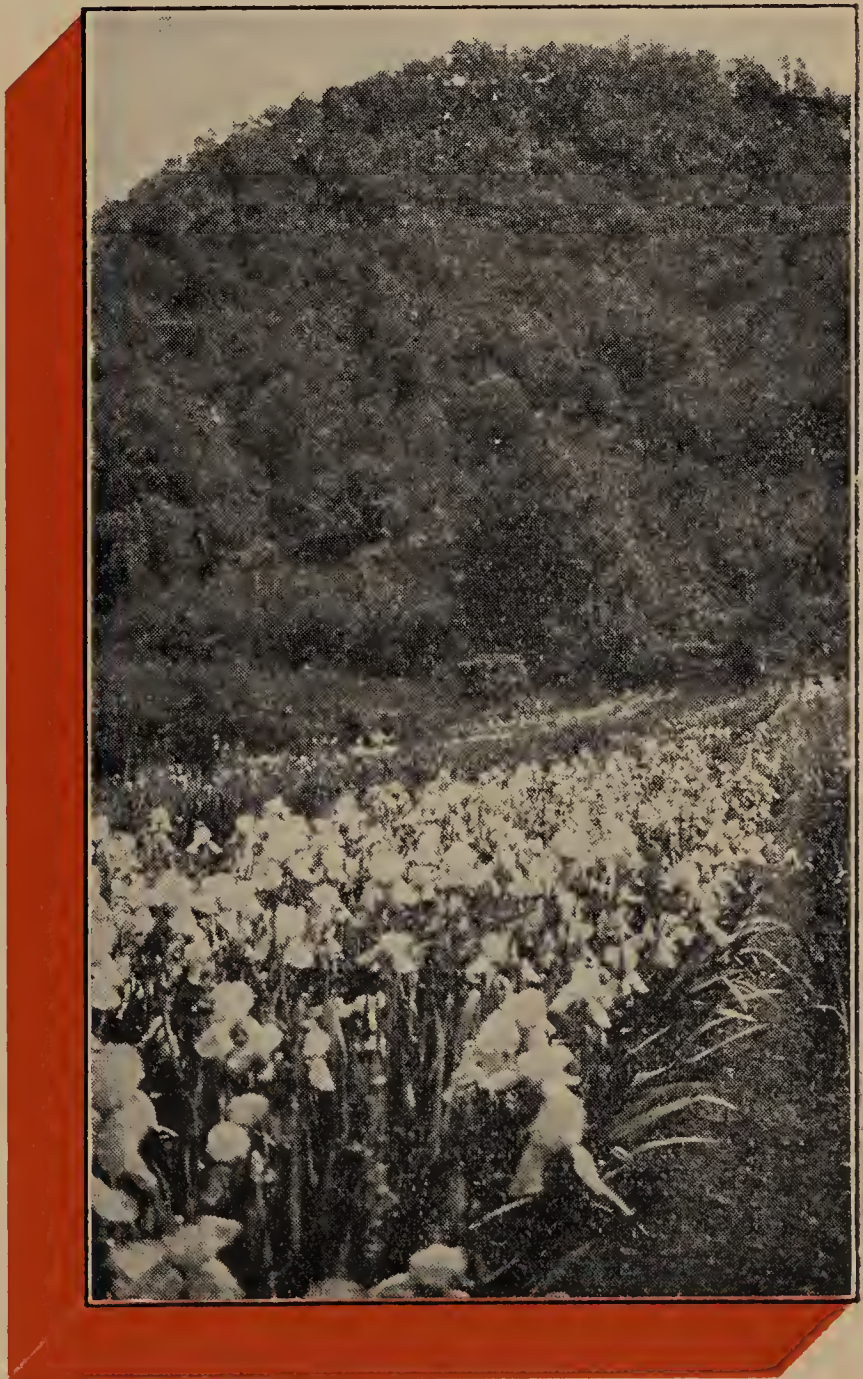
NUMA ROUMESTAN (Cayeux 1928). Rich coppery red with an orange beard. Produces a bright red effect in mass. **30c each**

OCHRACEA (Denis 1919). This flower has been sold under the name of Sunset and Ochrasea Caerulea, but is recognized by the American Iris Society as Ochracea. S. yellowish buff of real old gold, finely arched and of great substance; F. coppery yellow heavily suffused blue-violet in the center of the segments and reticulated and dotted brown at the haft with a prominent yellow beard. A flower of wonderful color, strong growing, free flowering, sweetly scented and late. 30 inches. **25c each; 3 for 60c**

OLD GOLD (Sass, 1929). A flower of fine form and substance of a distinctive old gold blend; standards ruffled. Late. **25c each; 3 for 60c**

OMAHA (Sass, 1926). A very distinctive Iris of a coppery pink and brownish cinnamon; large blooms. **25c each**

OPERA. Bright, rich pansy violet. **20c each; 3 for 50c**





IRIS FIELD ONE YEAR AFTER PLANTING

- PALEMON.** Lilac and deep lilac purple.....20c each; 3 for 50c
- PEACHES** (Sass, 1931). Peach-apricot and orange.....50c each
- PEERLESS** (Dykes, 1924). 38 inches. A magnificent mahogany-red flower of perfect form and very large. A brilliant rich gold beard lights up the whole flower. It takes a plant of two years growth to give characteristic bloom because the stems are so tall and thick and the flowers so large and of great substance.35c each
- PINK OPAL** (Sass). Fine pink much like Pink Satin. Tall and lovely....75c each
- PINK SATIN** (Sass, 1930). One of the most exquisite Iris on the market. Clear pure pink with large, finely shaped flowers, well placed on the stem. The best pink Iris up to date.....\$1.00 each
- PLUIE D'OR** (Cayeux, 1928). Pure golden yellow self color, stems widely branched with many flowers of good size and texture. One of the best yellows...25c each
- PRINCE CHARMING.** White, frilled and edged pink.....25c each
- PRAIRIE GOLD** (Sass, 1926). Very fine flower of uniform rich yellow coloring.25c each; 3 for 60c
- PRINCESS WENONAH** (Pfeiffer, 1929). S. and F. beautiful uniform shade of light lavender, similar in color to Caroline Stringer. Quite prominent yellow beard. Extra strong, heavy, well branched. 30 inches.....20c each; 3 for 50c
- PURISSIMA** (Mohr-Mitchell, 1927). A pure white Iris of great size, fine form and substance. Its vigor and tall, well-branched stems make it one of the finest white Irises in commerce. Needs extra winter protection in colder states of the North.40c each
- QUIVERA** (Jacob Sass, 1932). Unique beauty; buff pink standards with orange vinaceous striped pink; yellow glow at the center, striped with brown hafts and bright yellow beard. Medium size blooms.....40c each
- RAFFET.** Violet with darker violet veinings.....20c each; 3 for 50c
- RAMESES** (H. P. Sass, 1929). A vigorous healthy grower and free bloomer. In color, pink and rose toned blend. S. light russet; F. flaring to drooping, tourmaline pink. 36-inch, well branched stem.....50c each
- RED WING.** (Sass, 1928). 36 inches. A gigantic flower. General color effect in bronzy red. The flower is of perfect shape and is carried on tall, stiff stems. A great acquisition.....50c each
- ROMOLA** (Bliss, 1924). One of the very best of the Dominion seedlings, the blooms are very large, gracefully formed and delicately toned. S. pale lilac tinged pale ivory-yellow at the base; F. velvety red-violet. A free flower, strong grower, with well branched spikes. About 42 inches.....25c each; 3 for 60c
- ROSE MARIE** (Cayeux, 1928). A late blooming Iris with flaring falls. S. light violet; F. purplish red and gracefully frilled.....35c each
- RUTH PFEIFFER.** White and delicate lavender. Color somewhat similar to Katharine E. Lees, different in form and a few days later, larger bloom, tall and fragrant. Praised by Mr. F. X. Schreiner in his 1929 Iris book as "One of the finest of its kind".....20c each; 3 for 50c
- R. W. WALLACE** (Perry, 1923). 42 inches. A beautiful rich deep purple Iris. Taller and darker colored than Germaine Perthuis. Strong and vigorous. A magnificent Pallida.....25c each; 3 for 60c
- SAN FRANCISCO** (Mohr, 1927). One of the finest Iris in cultivation. Tall, well branched stems. No other Plicata approaches it in size and grandeur. Both standards and falls distinctly edged with lavender-blue. Needs covering in severe climates.50c each
- SELENE.** Silvery lustered white, large flower of Moonlight type, but much improved. Early to midseason. Tall.....50c each
- SENSATION** (Cayeux, 1925). Flowers of immense size, perfect in form and of exceptionally strong texture. A self color of clear cornflower-blue. The falls are horizontal and stand out clearly.....40c each
- SIR MICHAEL** (Yeld, 1925). S. clear iridescent lavender-blue; F. deep rich purple, suffused red-brown. The flowers are large and massive with a remarkable rich blending of colors in the velvety falls. 48 inches.....35c each

SNOW WHITE (Sturtevant, 1926). 36 inches. A handsome new white Iris with pale green markings, of good form, size and substance. It is larger and much taller than White Knight, which is making it a very popular white Iris. It is very floriferous and a strong, vigorous grower.....25c each

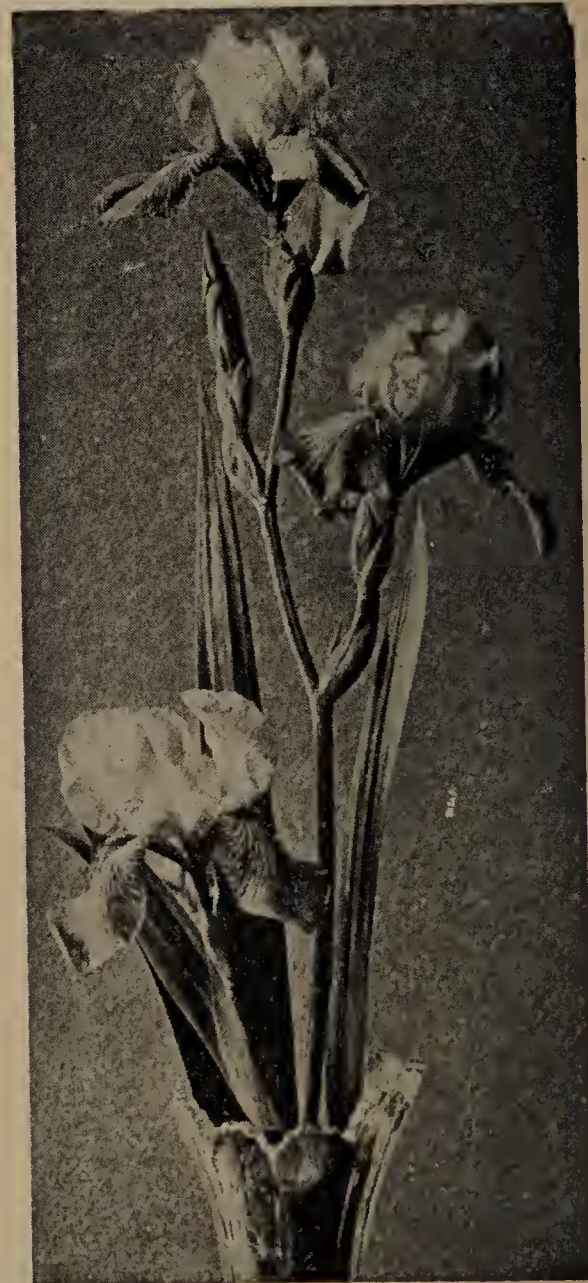
SOUVENIR DE LOETITIA MICHAUD (Millet, 1923). 48 inches. Standards and falls of lobelia-blue with golden yellow veins on a white ground at the haft. Enormous blooms of perfect shape and substance on tall, well branched stalks. It is perfectly hardy, a strong grower and a free bloomer. Worthy of its high rating.25c each; 3 for 60c

SWAZI (Bliss, 1922). A Dominion seedling. S. bluish violet; F. velvety blackish violet. Magnificent flower and a vigorous plant. 36 inches. Stock limited.....50c each

TAJ MAHAL. Fine tall white.....20c each; 3 for 50c

TAPESTRY. A subtle blend of monster size, smoky mulberry in general color effect; center of the fall intensely colored, passing out to the smoky tones of the standards.....75c each

THE SORCERER (Dr. Floore). Very much like Mme. Gaudichau but a bit larger and with a little more luster..50c each



TAPESTRY

THURASTUS (Sass, 1931). Blackest purple self color. One of the darkest, and very striking, showing rich crimson tones when the sun shines on it. **50c each**

VALENCIA (Mohr-Mitchell, 1926). 30 inches. A beautiful bright orange-buff color. Flowers of good form and substance. Very hardy and prolific **20c each; 3 for 50c**

VESPER GOLD (Wilson). Translucent honey colored self. Midseason, tall. **20c each; 3 for 50c**

WAMBLISKA (Jacob Sass, 1931). The largest, tallest, and finest of the really hardy blue white Irises, snowy glittering white standards with a blue tint at the heart of the flower. Clear snow white falls with pale yellow beard. 38 to 40 inches. **50c each**

WEDGEWOOD. A true self blue; extra good. **20c each; 3 for 50c**

WHITE KNIGHT. Snowy white. **20c each; 3 for 50c**

WHITE QUEEN (Geylenkek). Syn., Queen Mary. A small, white flower, with throat and beard greenish white. A prolific bloomer, several days earlier than White Knight. 30 inches. **20c each; 3 for 50c**

WINNISHEIK (Egelberg, 1931). An excellent blue Iris of the darkest hue, that holds its color fine. The flowers are large, of firm texture and slightly frilled **\$1.00 each**

WM. MOHR (Mohr, 1925). 32 inches. This is a remarkable Iris. The ground color is pale lilac, standards are flushed darker, the whole flower is beautifully veined manganese violet. The flower has great substance, reported quite hardy, but we advise covering lightly for safety. **35c each**

YOLANDE. Large flowered bright blue. Midseason; medium height. **20c each; 3 for 50c**

ZUA. Crinkled pearly white; early. **20c each; 3 for 50c**

ZUNI. A glorious glowing red-brown overlaid with a coppery suffusion. Early and free flowering. The falls are a brilliant red in the sunlight. Large in size, well branched. 40 inches in height. **75c each**



IRIS DRIVE THROUGH TWO YEAR FIELD

SIBERIAN AND BEARDLESS IRIS

- ORIENTALIS**, Blue-purple. **15c each; 2 for 25c**
- SIBIRICA BLUE**, Blue and white. **15c each; 2 for 25c**
- SNOW QUEEN**, White. **15c each; 2 for 25c**
- SUPERBA**, Early purple. **15c each; 2 for 25c**
- PERRY'S BLUE**, Blue. **15c each; 2 for 25c**
- DOROTHYK. WILLIAMSON**, Roy. purp. **25c each; 3 for 60c**
- EMPEROR**, Fine, tall dark blue **25c each; 3 for 60c**
- SHELFORD GIANT**, Canary-yellow. **\$1.00 each**

DWARF VARIETIES

- ATROVIOLACEA**, Early reddish purple. . **10c each; 3 for 25c**
- AZUREA**, Clear blue. **10c each; 3 for 25c**
- COERULEA**, Sky blue. **10c each; 3 for 25c**
- CYANEA**, Dark purple. **10c each; 3 for 25c**
- DWARF FAIRY**, White splashed violet. **10c each; 3 for 25c**
- FLORIDA**, Soft yellow. **15c each; 2 for 25c**
- MOROCCAIN**, Darkest purple. **10c each; 3 for 25c**
- ORANGE QUEEN**, Clear deep yellow. . **25c each; 3 for 60c**
- SCHNEE KUPPE**, White. **10c each; 3 for 25c**



PINK OPAL

The most beautiful of all the newer pink Iris. A strong robust grower.

Magnificent IRISES

All Properly Labeled, for
ONLY 15c EACH or 2 of
any one variety listed on
this page **FOR 25c**

1 EACH OF ANY 12 VARIETIES LISTED ON THIS PAGE,
YOUR SELECTION, FOR.....\$1.00

3 EACH OF ANY 12 VARIETIES LISTED ON THIS PAGE,
YOUR SELECTION, FOR.....\$2.50

1 EACH OF ANY 25 VARIETIES LISTED ON THIS PAGE,
YOUR SELECTION, FOR.....\$2.00

3 EACH OF ANY 25 VARIETIES LISTED ON THIS PAGE,
YOUR SELECTION, FOR.....\$5.00

AFTERGLOW, Self Blue
ALCAZAR, Blue Violet and Purple Bronze
AMBER, Yellow
AMBASSADEUR, Reddish Violet, Purple Maroon
AMERICAN BLACK PRINCE, Velvety Dark Purple
APHRODITE, Clear Bright Violet-Pink Self
ARAPAHOE, Lavender Purple
ARIEL, Light Violet
ASIA, Lavender and Violet Purple
AURIFERO, Tall, Rosy Lavender, Golden Beard
BLUE JAY, Clear Bright Blue
BRENTNIS, Lavender and Pansy Violet
B. Y. MORRISON, Lavender Violet
CAVALIER, Violet and Blue Purple
CECIL MINTURN, Pink
CHALICE, True Yellow Self
CHICOREE, Dark Blue
CORRIDA, Sky Blue Self
DAMOZEL, Rose Lavender
DEJAH, Silver Blue and Mauve
DIMITY, White and Mauve
DONALD MAXSON, Heliotrope and Wine
DREAM, Extra Fine Lilac Pink
DR. HIDERSHIDE, Dark Blue
DUKE OF YORK, Blue Mauve
EDITH SCOVILLE, Purple Wine
ELDORADO, Yellow Bronze and Purple
EMMA BEAL, Dark Blue
EVADNE, Rich Velvety Rose Violet
E. W. ROENING, Fawn and Heliotrope
F. B. SCHERMERHORN, Fine Lavender Blue
FLAMMENSCHWERT, Golden Yellow
FLAVESENS, Pale Yellow
FLORENCE IRENE, Rose Pink
FORTUNA, Reddish Purple
FRANKLIN BEYNON, Light Pink
GEO. J. TRIBOLET, Velvety Blackish Red Purple
GOLD IMPERIAL, Extra Fine Clear Lemon Yellow
GRACE CAMERON, Dark Lavender
HALO, Clear Blue
HARMONY, Rich Purple Blue
HELEN FRANCES, Tall, Deep Lavender
HILTON LUCAS, Lavender and Violet
IMPERATOR, Deep Red Violet
JUBILEE, Yellow and Creamy White
KATHERINE E. LEES, Fragrant White and Lavender
LADY BYNG, Pale Lavender
LADY LUCK, Beautiful Deep Purple, Early
LENT A WILLIAMSON, Extra Fine large Violet Purple
LILIAN ROSE, Dainty Pink
LOIS, Light Blue
LORD OF JUNE, Large Pale Lavender Violet
MA MIE, Clear White Frilled Violet Blue
MARY GARDEN, Spotted Pale Yellow
MARY GIBSON, Rose Violet and Buff
MARY ORTH, Violet Blue
MIDGARD, Lovely Combination of Yellow and Pink
MIDWEST, Ruffled, Flushed and Dotted Purple
MILDRED PRESBY, White With Rich Pansy Violet
MLLE. SCHWARTZ, Tall Mauve
MME. CHOBAUT, White Shading Yellow and Lilac



SIR MICHAEL

MME. HENRI CAYEUX, Reddish Violet-Purple
MONSIGNOR, Violet and Purple
MORNING SPLENDOR, Fine Petunia Violet
MOTHER MACHREE, Gray and Blue
MOTHER OF PEARL, Pale Blue Lavender
MRS. A. K. LODGE, Pink
MRS. CUTHBERTSON, Rosy Purple
PARC DE NEUILLY, Deep Violet
PONGEE, Light Buff Color
PRIMROSE, Amber Yellow
PRINCESS BEATRICE, Light Blue Self
PRINCESS OSRA, Beautiful White, Dotted With Lavender
PROSPER LAUGIER, Bronze Red and Purple
PROSPERO, Pale Lavender and Deep Red Purple
QUAKER LADY, Smoky Lavender
QUEEN ALEXANDRIA, Purplish Lilac
QUEEN CATERINA, Lavender Blue
QUEEN OF MAY, Rose Pink
RAMONA, Violet
RHEIN NIXE, White and Blue Bicolor
ROSE SALTERN, White and Blue
ROSEWAY, Purple, Orange Beard
SALONIQUE, Cream and Red Purple
SEMINOLE, Dark Violet Rose Red
SHEKINAH, Pale Lemon Yellow
SHERWIN WRIGHT, Golden Yellow
SOUV. DE MME. GAUDICHAU, Fine Violet Purple
SUSAN BLISS, Extra Fine Clear Pink
SWEET LAVENDER, Pale Lavender
TENEBRAE, Rich Violet Purple
TROADES, Rose and Bright Crimson
TROPIC SEAS, Tall Vigorous Deep Blue Purple
TROSTRINGER, Lovely Soft Pink
VALERY MAYET, Coppery Rose and Red Brown
VIOLACEA GRANDIFLORA, Rich Blue
W. H. ELLER, Pale Yellow
YELLOW MOON, Light Creamy Yellow
ZWANENBURG, Cream and Maroon

SIX Beautiful IRIS BARGAINS

Surprise Collection No. 1

This collection is a veritable treasure house of beautiful colors. It will be a real surprise and a delight to you to see the rainbow of colors when the Iris in this collection bloom for you. The colors range from pure white to the deepest purple, from clear yellow to dark maroon, from dainty pink to deep wine red, and all shades and colors in between. The plants will be unlabeled but we guarantee every one to be a different variety, the total retail value of this collection last year was over \$5.00.

30 Varieties, All Different
Unlabeled. Postpaid **ONLY \$1.00**

Iris Bargain No. 2 Superfine Collection

This collection consists of twelve outstanding varieties, each one an entirely distinct color. All superfine, prize winners regardless of the present low price.

AMBASSADEUR, Purple Maroon
CINNABAR, Violet Purple
CORONATION, Golden Yellow
FREIDA MOHR, Pink Bicolor
IMPERATOR, Red Violet
MIDWEST PINK, White With Pink Edgings
MME. HENRI CAYEAUX, Reddish Violet Purple
PRINCESS WENONAH, Lavender Pink
SOUV. DE MME. GAUDICHAU, Deep Violet
TENEBRAE, Violet Purple
TROPIC SEAS, Deep Blue
WHITE KNIGHT, Pure White

All 12 postpaid . . . **ONLY \$1.00**

Iris Bargain No. 3 Popular Collection

This collection is made up of 12 extra fine varieties in a wide range of colors. We are sure you will be pleased with this select list of beautiful Irises.

ASIA, Lavender and Violet
BRENTHIS, Lavender Violet
GEO. J. TRIBOLET, Velvety Deep Red Purple
GOLD IMPERIAL, Rich Yellow
HARMONY, Deep Purple-Blue
MA MIE, Clear White, Frilled Blue
MIDWEST, Ruffled Rose
MORNING SPLENDOR, Raisin Purple
PRIMROSE, Amber Yellow
PROSPERO, Lavender Purple
ROSEWAY, Purple, Orange Beard
SUSAN BLISS, Clear Pink

All 12 postpaid . . . **ONLY \$1.00**

Iris Collection No. 4

PRIZE WINNING COLLECTION

The varieties in this collection are among the world's best Iris, regardless of price. An unusually attractive offer at low cost.

BLUE VELVET, Darkest Velvety Blue
LOS ANGELES, Giant White, Edged Blue
PINK OPAL, Beautiful Pink
MRS. VALERY WEST, Lavender and Red Purple
SIR MICHAEL, Blue and Purple
PLUIE D'OR, Golden Yellow
ELIZABETH EGELBERG, Dark Pink Blend
THURASTUS, Blackest Purple
MONTEREY, Bronze Red Bicolor
CLARA NOYES, Yellow Orange and Apricot
INDIAN CHIEF, Velvety Red
NUMA ROUMESTAN, Rich Coppery Red
WAMBLISKA, Pale Blue White
CARDINAL, Lavender and Prune Purple
ALABASTER, Pure White
VALENCIA, Orange Buff

All Varieties Properly
Labeled. All 16 postpaid **ONLY \$5.00**

Iris Bargain No. 5 Siberian Collection

ORIENTALIS, Blue Purple
SIBERICA BLUE, Blue and White
SNOW QUEEN, White
SUPERBA, Early Purple
PERRY'S BLUE, Blue
EMPEROR, Dark Purple
DOROTHY K. WILLIAMSON, Royal Purple

One Each of Above Seven
Varieties. Postpaid **ONLY \$1.00**

Three Each of Above
Seven Varieties. Postpaid **ONLY \$2.00**

Iris Bargain No. 6 Rock Garden Collection

One Plant Each of the Nine Varieties of
Dwarf Iris listed on Page 17

\$1.00 postpaid

Three Plants Each of the same

Only \$2.00 postpaid



Hardy Perennial Flowers

Achillea (Milfoil)

BOULE DE NEIGE (Ball of Snow). Small, white flowers, wonderful for cutting to fill in with other flowers. Blooms in June.....20c each; \$2.00 per dozen

THE PEARL. Pure white flowers borne in the greatest profusion on strong, erect stems. 2 feet high.....20c each; \$2.00 per dozen

Aquilegia (Columbine)

ALPINA. A dwarf variety, useful in the rockery. All colors mixed.....20c each; 3 for 60c; \$2.00 per dozen

LONG-SPURRED MIXED HYBRIDS. This is the most admired type of Columbines. Flowers of large size in a great variety of charming tones and colors. Mixed colors.....25c each; 3 for 65c; \$2.50 per dozen

Artemisia

SILVER KING. A plant of rare beauty and charm for landscaping or cutting. It thrives in ordinary soil, growing to a height of about 3 feet. The stems are well-branched and thickly covered with silver colored foliage.....25c each; 3 for 60c; \$2.00 per dozen

Astilbe

JAPONICA. This is one of the few attractive perennials that thrive either in moderate shade or in the open. Perfectly hardy. Large, plummy heads of pink; flowers in June or July. 3 to 4 feet.. .30c each; \$3.00 per dozen

Boltonia

ASTEROIDES. Grows to 6 or 7 feet in height and produces an amazing number of small, daisy-like, white flowers in late fall. Fine for cutting.....20c each; \$2.00 per dozen

LATISQUAMA. Slightly more upright in growth than Asteroides, with larger flowers of lavender-pink.....20c each; \$2.00 per dozen

Campanula

MEDIA. The well known Canterbury Bells, Biennial. Its numerous branches crowded with deep bells. Blooms in July. 2 to 3 feet. Very showy for the garden; fine for cutting. Mixed colors, Rose, White and Blue...20c each; \$2.00 per dozen

CLEMATIS RECTA. A shrubby Clematis, growing about 3 feet in height. Blooms early in June. Covered with panicles of creamy white flowers that are fine to mix in bouquets.....50c each

COREOPSIS LANCEOLATA GRANDIFLORA. A beautiful hardy border plant, grows 18 to 24 inches high and produces its bright yellow flowers in great profusion. By cutting off old flowers, will bloom until fall.....20c each; \$2.00 per dozen

Dicentra (Bleeding Heart)

SPECTABILIS. An old-fashioned favorite. Its long racemes of graceful, heart-shaped, pink flowers are always attractive. Flowers in May. 18 to 30 inches. Heavy roots.....50c each

DICTAMNUS—GAS PLANT. The Dictamnus is one of the most satisfactory hardy plants in cultivation, both on account of splendid flowers and its rich, durable foliage. Pink or white.....50c each

Digitalis (Foxglove)

Extremely effective when planted in masses in the border. Biennial. However, renews itself from self sown seed and may be treated as a perennial. Mixed colors.....15c each; \$1.50 per dozen

Hermerocallis

(THE NEW DAY LILIES)

Well known family resembling Lilies in character and bloom, usually sweet scented and bearing a great quantity of various shades of yellow flowers during long periods of summer. Very showy in the garden. 2 to 4 feet in height.

NEWER VARIETIES

CRESSIDA. Deep orange with blooms rather star shaped. Early flowering, of medium height.....**75c each**

D. D. WYMAN. Very large flower of golden yellow, with a tawny splash across each petal. Midsummer....**\$1.00 each**

GOLDENI. One of the most distinct in the list, a very rich orange-sherbet, with salmony undertone. Very free producer of flowers, medium in height.....**\$1.00 each**

MANDARIN. Clear lemon yellow, with greenish cast in the heart of each blossom. Very tall, wide open, recurved type of flower.....**75c each**

MIKADO. Bright orange, with the central zone of each petal blotched ruddy purple-red. A striking and wholly different sort.....**\$2.00 each**

MRS. A. H. AUSTIN. Extra fine deep golden orange, one of the very largest, very heavy texture. Midsummer, lasting over a long period.....**\$1.00 each**

MRS. W. H. WYMAN. A lovely, glistening pale lemon yellow, with delicately curved petals. The latest of all. **75c each**

OPHIR. Dark golden yellow, on stems that reach 42 inches. Of true lily form. A fine and contrasting companion to the variety Mandarin.....**\$1.00 each**



MEMORIAL DAISIES

OLDER KINDS

DR. REGEL. Handsome, rich orange-yellow. Flowers in May. Very fragrant; fine for cutting, 1½ feet. **35c each**
\$3.00 per doz.

FLAVA (Lemon Lily). Sweet scented; clear full yellow. Flowers in June. 2½ feet. **25c each**
\$2.40 per doz.



BLEEDING HEART

GOLD DUST. A lighter shade of yellow than Dr. Regel, and a few days later to bloom. 2 to 2½ feet.....**30c each; \$2.50 per dozen**

THUNBERGI. A tall growing late variety, blooms in July. Flowers are of large size and lemon-yellow color.....**35c each; \$3.00 per dozen**

Hermerocallis Bargain

One Each

of Dr.Regel, Flava, Gold Dust, Thunbergi

Only \$1.00 postpaid

3 of each of these 4

Postpaid Only \$2.00

Daisies

MEMORIAL DAISY (Leucanthemum). A very hardy and early flowering Daisy. Flowers not so large as Alaska or Shasta, but its extreme earliness (usually before Memorial Day), makes it a desirable variety.....**20c each; \$2.00 per dozen**

PAINTED DAISY (Pyrethrum roseum hybridum). One of the choicest of the perennials. The fernlike foliage is attractive when the plants are not in bloom, and the flowers range from white, through shades of pink to deep cerise. Fine for cut flowers in May and June...**25c each; \$2.50 per dozen**

ALASKA DAISY (Shasta Daisy). Large pure white flowers with yellow center.....**20c each; \$2.00 per dozen**

Funkia

PLANTAIN LILY. Habit of growth somewhat like the Hemerocallis. Perfectly hardy. Lavender flowers in September. 2 feet.....**25c each**

Gaillardia

BLANKET FLOWER. Flowers in different combinations of yellow, orange and maroon-red. Blooms all summer. Fine for cutting.....**20c each; 3 for 50c**

Culture of Oriental Poppies

There is nothing more brilliantly attractive—more strikingly noticeable in any garden—than a clump of Oriental Poppies.

Many times I had bought plants, only to have them die, and many times I had planted seed—but with very little success—simply because I did not know how to care for them. Finally I bought plants in the dormant season and set them out. After becoming established in their new home they made wonderful growth in the fall.

Oriental Poppies are quite hardy, and stay green most of the winter under a light covering, which they should have. When spring comes the plants make rapid growth and very soon big fat buds appear. In a few days, these buds burst into a radiant brilliance, to my joy and satisfaction.

Do not buy Poppies in the spring and expect them to do their best. Buy them in their dormant season, in August or early September—carefully plant them—let them get their roots firmly established—the little feeding roots active and ready for quick work in the spring, and you will have glorious Poppies in your garden and a trilling satisfaction in your heart.

From "The Flower Grower," Albany, N. Y.



GOLD MEDAL
Hybrid Delphinium

Delphinium (Perennial Larkspur)

Indispensable to the herbaceous garden. Their long, showy spikes of flowers bloom from June until frost in the fall; and furnish the most satisfactory blues to any color scheme.

BELLADONNA. The most continuous blooming of the Delphiniums. Color is a clear turquoise-blue. Very beautiful and fine for cutting. 2-year clumps. .20c each; \$2.00 per dozen

BELLAMOSA. The dark blue form of the popular Belladonna. 2-year clumps.20c each; \$2.00 per dozen

CHINESE BLUE. A very pretty variety with fine, feathery foliage and intense gentian-blue flowers in open panicles. 2-year clumps.20c each; \$2.00 per dozen

CHINESE WHITE. A pure white form of the above. 2-year clumps.20c each; \$2.00 per dozen

GOLD MEDAL HYBRIDS. These are in all shades of blue and purple. Mixed colors only. .25c each; \$2.50 per dozen

WREXHAM HYBRIDS. An extra fine strain of large flowering Delphiniums. Mixed colors only. 2-year clumps.50c each; \$5.00 per dozen

New Oriental Poppies

These Poppies are the regal representatives of the popular Papaver family.

EDNA PERRY. Bright lovely pink.50c each

HENRI CAYEAUX. Deep old rose, shaded into wine color. An unusual and very beautiful poppy quite unlike any other. Should be protected from hot afternoon sun.50c each

LULU NEELEY. Considered the best red that Dr. Neeley has introduced. Beautiful deep dark red, an outstanding Poppy.50c each

WURTEMBURGIA. Enormous cerise-scarlet flowers often 10 inches in diameter; one of the most outstanding reds.50c each

PROSERPINE. Chinese red, decidedly black center. Very fine.75c each

ORIENTALE. Brilliant, showy scarlet; flowers in May and June. Very showy. Must be transplanted when dormant in August and September.20c each; \$2.00 per dozen

Lily-of-the-Valley

A liberal top dressing of well-decayed manure will be well repaid in the size of bloom and length of stem of these sweetly scented flowers. Clumps.25c each; \$2.00 per dozen

Liatrix (Blazing Star)

A perfectly hardy perennial, doing well in any kind of soil. Rich purple flowers on stout stems, flowering during July and August.20c each; \$2.00 per dozen

Lychnis

A fine old-fashioned flower bearing large heads of bright red flowers that are very striking. These combined with Achillea and blue Delphinium make an ideal patriotic bouquet on July 4th. Blooms early July. 2 to 4 feet.20c each; \$2.00 per dozen

Delphinium Collection

Strong 2 year clumps

3 Belladonna
3 Gold Medal Hybrids

6 Plants, ONLY \$1.00 postpaid

Monarda or Bergamot

Showy plants growing from 2 to 3 feet high with aromatic foliage and producing their bright flowers in July and August.

DIDYMA CAMBRIDGE SCARLET. Brilliant crimson scarlet.20c each; \$2.00 per dozen

DIDYMA ROSEA. Similar to above, but with rose colored flowers. 3 feet.20c each; \$2.00 per dozen

PHLOX (See Page 31.)

PENTSTEMON GRANDIFLORA. Wisconsin's most handsome and decorative wild flower. Easily grown in almost any soil. The flower spikes grow 2 to 3 feet tall, of dainty lavender-blue, and are unlike anything else in the garden. Blooms in May and June. Fine for cut flowers. Plant in an open sunny place.25c each; 3 for 65c; \$2.50 per dozen

RANUNCULUS, YELLOW BUTTERCUP. Well known double yellow Buttercup. Effective either as a cut flower or grouped in the hardy border. Free bloomer, in May and June.20c each; \$2.00 per dozen

SPIREA FILIPENDULA. Numerous corymbs of white flowers, 15 to 24 inches high, in June and July. Pretty fernlike foliage.25c each; \$2.50 per dozen

TRITOMA PFITZERI. Rich orange scarlet blooms on stems 2 to 3 feet high. Blooms in August to October. Requires protection in northern states.20c each; \$2.00 per dozen

YUCCA FILAMENTOSA. The bayonet-like leaves are dark green, growing into large clumps. The flower spikes are 4 to 6 feet tall, with drooping creamy white flowers. 25c each



Heuchera (Coralbells)

ALBA. Delicate creamy white flowers on a 12-to-18 inch stem. Flowers in June.20c each; \$2.00 per dozen

ROSEA. Light rose-colored flowers on stems 16 to 24 inches. Very delicate and attractive.50c each



BRISTOL FAIRY GYPSOPHILA
(Baby's Breath)

Gypsophila (Baby's Breath)

Invaluable for cutting to fill in with bouquets. Also fine for filling in bare places in the border. The plant forms a dense, spreading bush, covered with tiny, white flowers. Roots.25c each; \$2.50 per dozen

BRISTOL FAIRY. A double Gypsophila of great vigor producing large panicles of flowers, and blooming more or less continuously all summer if the early bloom is cut. 2-year roots. \$1.00 each

"Glads" and Dahlias

If you are interested in fine Gladiolus and Dahlias, be sure your name is on our mailing list to receive a copy of our Spring Folder. (See order blank.)

We grow "Glads" by the millions—nearly 40 acres again this year—including all of the good standard varieties and many of the newer and better kinds.

Our planting of Dahlias includes most of the better and standard new giant and semi-cactus varieties, and other types as well.

Write and have your name put on our mailing list to receive our Spring Folder.

Perennial Collection

All Strong Clumps or Plants

- 1 Belladonna Delphinium
- 1 Gold Medal Hybrid Delphinium
- 1 Memorial Daisy
- 1 Heuchera Rosea (Coral Bell)
- 1 Oriental Poppy, Orientale
- 1 Astilbe (pink)
- 1 Achillea, the Pearl
- 1 Monarda Rosea
- 1 Spirea Filipendula
- 1 Baby's Breath
- 1 Bleeding Heart
- 1 Coreopsis

1 each above for

ONLY \$2.00 postpaid

3 each above for

ONLY \$5.00 postpaid



Rock Garden Plants

This form of a flower garden is increasing in popularity by leaps and bounds.

It is not necessary to own a large estate to have a rockery or rock garden, as they can be built to fit the small home grounds as well, proper consideration being given to the location. The best site is on sloping ground where there is good drainage but with a little care they can be built on the level or any place available. A sunny situation is best as most rock plants are sun loving.

ARABIS alpina (Rock Cross). Heads of white flowers in April. One of the earliest to flower. Plant in a well-drained spot. Trim back after flowering to keep foliage neat and attractive. 25c each; 3 for 65c; \$2.50 per dozen

ARMERIA lauchiana (Sea Pink or Thrift). A low growing mat of dark green foliage with rose-colored flowers on 6-inch stems. Free bloomer. June to end of season. 30c each; 3 for 65c; \$3.00 per dozen

CAMPANULA carpatica (Harebell). A pretty species growing in compact tufts. Eight inches high. Flowers clear blue. Blooms June to October. 25c each; 3 for 65c; \$2.50 per dozen

DIANTHUS caesius (Cheddar Pink). Close growing tufts of grayish leaves that are ornamental in the rockery even when not in flower. Clove-scented single pink flowers. June. 6 to 8 inches high. Free bloomer. 25c each; 3 for 65c; \$2.50 per dozen

DIANTHUS deltoides (Maiden Pink). Small rose flowers in profusion, with pretty green foliage. June. 6 to 8 inches. 25c each; 3 for 65c; \$2.50 per dozen

DWARF ALPINE ASTER. Fine for rock garden or hardy border. 6 to 10 inches high, flowers bluish purple, in May and June. 20c each; 3 for 50c

GYPSOPHILA repens (Creeping Gypsophila). A very attractive creeping plant for the rockery, with a profusion of white flowers in July and August. Only a few inches high but will cover a space of 18 to 20 inches. 25c each; 3 for 65c; \$2.50 per dozen

LINUM alpinum (Flax). For the rock garden in full sun. Prostrate branches of fine foliage and pale blue flowers all summer. 25c each; 3 for 65c; \$2.50 per dozen

NEPETA Mussini (Catnip). Gray foliage and lavender-blue flowers. Low growing but rather long, trailing branches, especially attractive in the rockery. 25c each; 3 for 65c; \$2.50 per dozen

PHLOX subulata (Moss Pink). Low growing Phlox, flowering in May. Valuable in the rock garden. White, rose and lavender. Any of the above Phlox. 25c each; 3 for 65c; \$2.50 per dozen

SAPONARIA ocymoides (Rock Soapwort). A showy, dwarf, trailing plant for the rock garden or rock walls. Pink flowers. May and June. 25c each; 3 for 65c; \$2.50 per dozen

THYMUS serpyllum (Mother of Thyme). Creeping plant with fragrant leaves and pink flowers. For crevices in walls and steps and dry sunny places in the rock garden. 25c each; 3 for 65c; \$2.50 per dozen

TUNICA, Saxifrage. Has small pink flowers in great profusion. 6 inches high. Fine for rock work. 20c each; \$2.00 per dozen

VERONICA teucrium (Speedwell). Intense deep blue flowers on prostrate stems, flowers in June. 30c each; 3 for 65c; \$2.50 per dozen

VIOLA, Jersey Gem. Sweet scented violet-colored flowers are borne on stems that stand up in all kinds of weather. Fine for the border or rockery. 25c each; 3 for 65c; \$2.50 per dozen

VIOLA lutea. Clear yellow flowers. 25c each; 3 for 65c; \$2.50 per dozen

VINCA minor (Periwinkle). Trailing plant with oval dark green leaves and blue flowers. 25c each; 3 for 65c; \$2.50 per dozen

Sedum, Stonecrop

Sedums vary widely in form of growth, flowers and foliage, are easy to grow, and the low growing varieties are especially useful in the rock garden.

SEDUM acre (Golden Moss). Low growing green fleshy leaves, covered with star-shaped yellow flowers useful for covering dry bare places20c each; 3 for 50c

S. album. Somewhat like Acre in style and growth, but the leaves have a bluish cast and the growth is heavier. Flowers are nearly white. Rampant grower.20c each; 3 for 50c

S. Ewersi. Blue-Gray foliage and dull rose-colored flowers in summer. 6 inches. For clefts in the rockery.20c each; 3 for 50c

S. kamschaticum. Orange-yellow flowers, with prostrate green foliage, turning golden in autumn 20c each; 3 for 50c

S. reflexum. Light green fleshy leaves touched with bronze in the fall. Yellow flowers.20c each; 3 for 50c

S. sarmentosum (String Sedum). Spreading light green foliage and greenish yellow flowers. Requires good drainage. Attractive growing over the face of a rock. Vigorous grower.20c each; 3 for 50c

S. [spectabile (Showy Stonecrop). Grows from 12 to 18 inches tall. Useful in the rockery and valuable in the perennial border. Pink flowers in September. Will do well in either sun or shade.20c each; 3 for 50c

S. spectabile, Brilliant. Similar to the preceding variety but flowers are dark rose or red color.20c each; 3 for 50c

S. stoloniferum coccineum. Dark rose-colored flowers and foliage has a reddish tinge during summer.20c each; 3 for 50c

Sempervivum

SEMPERVIVUM arachnoideum (Cobweb Houseleek). Medium sized green rosettes of leaves connected by fine silvery, weblike hairs, hence the name. Star-shaped, rose colored flowers.20c each; 3 for 50c

S. arenarium. Tiny rosettes of green leaves, in bunches. Spreads readily. Fine for small rock garden.20c each; 3 for 50c

S. brownii. Brownish rosettes with maroon tips giving a little different color effect.20c each; 3 for 50c

S. doellianum. Hairy rosettes of green leaves, tinted red at the tips. Red flowers. June and July.20c each; 3 for 50c

S. globiferum. Fattened rosettes 2 or 3 inches across with pale yellow flowers in June.20c each; 3 for 50c

S. tectorum (Hen and Chickens). Broad rosettes of green with reddish tips, flowers pale red.20c each; 3 for 50c

ROCK GARDEN Collection of SEDUMS

1 Each of all Nine varieties
of Sedums, labeled. \$1.80
Value, Postpaid for ONLY

\$1.25



PHLOX SUBLATA

WHAT OTHERS SAY ABOUT PFEIFFER PLANTS

ARKVILLE, N. Y.

Dear Sir:
I want to let you know the Iris I ordered last fall from you are beautiful. Dauntless, Gobelin Red and Indian Chief I believe are the first red Iris in this section. One neighbor is telling the other, and they have stopped to see the red Iris. They are a real sensation. I can recommend your Iris and Peonies to anyone, they are true to name and color. Mrs. W. F.

SYLACAUGA, ALA.

Gentlemen:
The Peonies arrived in perfect condition and are much the finest roots I have ever received. Thank you for your prompt service and fine plants. Mrs. C. H.

NEW ROCKFORD, N. D.

Dear Sirs:
Received the Peony roots in fine shape, and am thanking you for being so prompt. Mrs. K. N.

DALLAS, TEXAS

Dear Sir:
The bulbs I have purchased from you have given splendid returns, so I am enclosing another order. T. E.

UNION CITY, TENN.

Gentlemen:
The plants received and want to tell you how pleased I am with them. They are just about the nicest Iris ever received from any nursery, and I've ordered from lots of places. Many thanks for the extras. B. J.

LOGAN, UTAH

Gentlemen:
Our Peonies purchased from you several years ago are very lovely. We are hoping to buy some new ones this fall, and should like to receive your price list. Mrs. D. F.

POTTSTOWN, PA.

Dear Sirs:
Shipment arrived safely and consisted of the finest quality rhizomes I ever laid eyes on. Please accept my thanks for the extra stock. N. W.

RICHMOND, CALIF.

Gentlemen:
Received my order of bulbs today. Very much pleased with them all. Thank you kindly until next year. Mrs. V. M.



TULIPS

Tulips and other Dutch bulbs can be planted any time in the fall before the ground freezes, but October and November are the two best months. Plant Tulips in beds or borders 4 to 5 inches deep and about 6 inches apart. A light covering of straw or hay is advisable in the northern states but do not put this on UNTIL AFTER THE GROUND IS FROZEN SOLID.

Darwin Tulips

Darwin Tulips are beautifully outlined, cup-shaped and carried on tall, stiff stems. They are unexcelled either as bedding Tulips or for cut flowers. The colors vary from jet black, crimson, scarlet and purple to lilac, mauve, pink, yellow and all the intermediate blended and pastel shades.

The bulbs furnished on the following list are Super-Quality, top size bulbs that are sure to please you.

	Doz.	100
BARONNE DE LA TONNAYE , Vivid rose . . .	\$.60	\$4.00
BARTIGON , Fiery red60	4.00
CLARA BUTT , Rosy purple60	4.00
FARNCOMBE SANDERS , Bright red60	4.00
INGLESCOMBE YELLOW , Finest yellow60	4.00
KING HAROLD , Dark red60	4.00
LA TULIPE NOIRE , The true black tulip60	4.00
LE NOTRE , Lively rose60	4.00
PETRUS HONDIUS , Soft rosy carmine60	4.00
PRIDE OF HAARLEM , Carmine-rose70	4.50
PRINCESS ELIZABETH , Vivid rose pink60	4.00
PROF. RAUWENHOF , Pale rosy red60	4.00
REV. H. EWBANK , Heliotrope-lilac60	4.00
WHITE QUEEN , Nearly pure white75	5.00
WM. COPLAND , Lilac-rose60	4.00
WM. PITT , Fiery red60	4.00

Three Each of the Preceding 16 Varieties,
Labeled, Postpaid for \$2.25.

Twelve Each of the Preceding 16 Varieties,
Labeled, Postpaid for \$8.50.

Breeder Tulips

Because of their immense size, their rare colorings and their complete dependability, Breeder Tulips are rapidly becoming more popular every year. They are the parent Tulip that the many colors of Darwins have been developed from. They bloom in May about the same time as the Darwins. The colors include many found in no other flower, such as browns, bronzes, purples, blue-blacks, deep mauves, dull gold and dark lilac, all exquisitely blended.

	Doz.
BRONZE QUEEN , Bronzy yellow-apricot	\$.70
CARDINAL MANNING , Violet and rose-bronze70
CITY OF HAARLEM , Brilliant carmine85
DOM PEDRO , Coffee-brown85
FAIRY (Panorama) , Mahogany70
LOUIS XIV , Purple, flushed golden bronze70
ORANGE BEAUTY , Beautiful orange85
VELVET KING , Velvety purple80
VULCAN , Violet, bordered orange90

Three Each of the Preceding 9 Varieties,
\$1.65, Postpaid

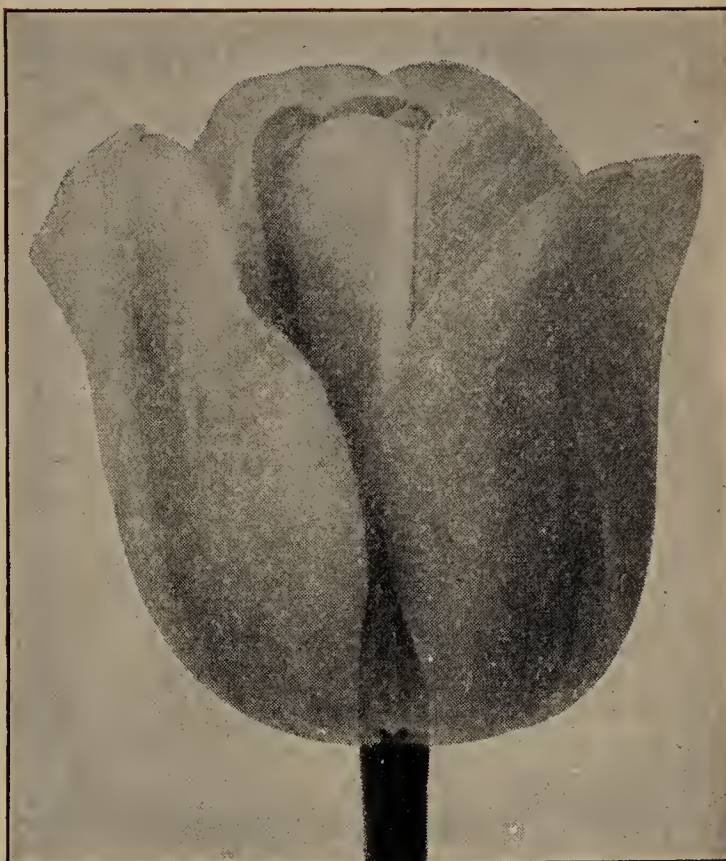
Twelve Each of the Preceding 9 Varieties,
\$6.50, Postpaid.

TULIP BARGAIN

Mixed Darwins

This Collection is made up of 14 named varieties, and is not the usual cheap mixture sold by most seed houses. The colors included in it are dark red, bright pink, yellow, black, light pink, bright red, lavender, violet and many others. Truly a wonderful Collection. The bulbs are all good size, suitable for outdoor planting, and every one should give you a good blossom.

30 bulbs, \$1.00
65 bulbs, 2.00
100 bulbs, 3.00
ALL POSTPAID



DARWIN TULIP

May-Flowering or Cottage Tulips

	Doz.
Gesneriana Lutea, Golden yellow, sweet scented.....	\$.70
Gesneriana Spathulata, Bright scarlet.....	.80
John Ruskin, Salmon-rose, yellow margin.....	.75
Orange King, Beautiful orange.....	.75
Picotee (Maiden's Blush), White, pink margin.....	.75

THREE EACH OF THE PRECEDING 5 VARIETIES, LABELED, POSTPAID FOR \$1.00.
TWELVE EACH OF THE PRECEDING 5 VARIETIES, LABELED, POSTPAID FOR \$3.50

Early Double Tulips

	Doz.
Azalea, Rose, very fine.....	\$.80
Murillo, White, tinged rose.....	.75
Rubra Maxima, Crimson-scarlet.....	.75
Salvator Rosa, Deep rose and white.....	.80
Tearose, Primrose yellow.....	.75
Titian, Orange-red, yellow edged.....	.85

THREE EACH OF THE PRECEDING 6 VARIETIES, LABELED, POSTPAID FOR \$1.25.
TWELVE EACH OF THE PRECEDING 6 VARIETIES, LABELED, POSTPAID FOR \$4.50.

Parrot or Dragon Tulips

	Doz.
Crimson Beauty, Dazzling dark red.....	\$.80
Lutea Major, Splendid yellow.....	.80
Markgraaf, Yellow and red.....	.80

THREE EACH OF THE PRECEDING 3 VARIETIES, FOR 65c.
TWELVE EACH OF THE PRECEDING 3 VARIETIES, FOR \$2.25.

Early Single Tulips

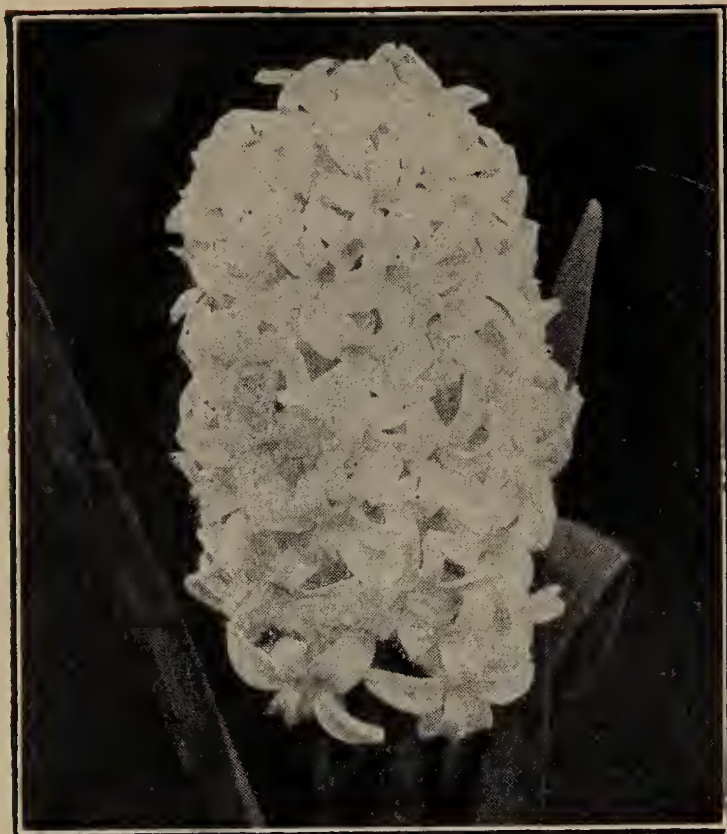
	Doz.
Cramoisi Brilliant, Brilliant crimson.....	\$.70
Diana, Pure white.....	.75
Ibis, Deep rose.....	.70
Keizerskroon, Scarlet, broad yellow edge.....	.85
Yellow Prince, Pure yellow, shaded orange.....	.80

THREE EACH OF THE PRECEDING 5 VARIETIES, FOR \$1.00.
TWELVE EACH OF THE PRECEDING 5 VARIETIES, FOR \$3.50.



A TULIP FIELD IN BLOOM AT PFEIFFER'S

**See
 Page 30
 for Bulb
 Planting
 Chart**



HYACINTH

Other Dutch Bulbs

	Doz.	100
CHIONODOXA, Deep blue	\$.40	\$3.00
CROCUS, Fine mixed.....	.35	2.50
MUSCARI, HEAVENLY BLUE (Blue Grape Hyacinth).....	.35	2.50
SCILLA SIBIRICA, Clear deep blue.....	.35	2.50
SNOWDROPS, Single.....	.40	3.00

Pfeiffer's Dutch Hyacinths

The varieties or colors listed below have been selected for their free flowering qualities, and are especially suited for outdoor planting.

	Each	Three	Doz.
BLUE.....	\$.15	\$.40	\$1.50
PURPLE.....	.15	.40	1.50
WHITE.....	.15	.40	1.50
RED.....	.15	.40	1.50
PINK.....	.15	.40	1.50
YELLOW.....	.15	.40	1.50

NARCISSUS

FOR OUTDOOR PLANTING

Also called Daffodils and Jonquils. The colors are mostly yellow or white and combinations of both. The varieties we offer are hardy, and should be planted outdoors. The blooming season in northern states is April and May, making them a welcome addition when flowers are scarce. The stock we offer is all strictly first class, and at prices you will not find duplicated elsewhere.

	Doz.	100
Barri Conspicuous, Yellow, cup stained orange-scarlet.....	\$.50	\$3.00
Emperor, Primrose, yellow trumpet..	.60	4.50
Empress, White, yellow trumpet.....	.60	4.50
King Alfred, All yellow, large trumpet	1.00	7.50
Laurens Koster (poetaz). Creamy white with orange-yellow cup. Five or more blooms per stem.....	.60	4.50
Poeticus Cassandra, Large pure white	.60	4.50
Poeticus Recurvus, White, recurved petals.....	.50	3.00
Sir Watkin, Sulphur-yellow perianth, deep yellow cup tinged with orange	.60	4.00
Spring Glory, Large yellow trumpet, white perianth.....	.80	6.50
Sulphur Phoenix, Double creamy white.....	.60	4.50



KING ALFRED

Narcissus Bargain

20 MIXED NARCISSUS BULBS
2 Each of the 10 Varieties Listed

Postpaid for \$1.00

100 MIXED NARCISSUS BULBS
10 Each of the 10 Varieties Listed

Postpaid for \$4.50

PLEASE WRITE YOUR NAME PLAINLY

From

Post Office

County

State

PLACE
STAMP
HERE

The Pfeiffer Nursery

Winona,

Box 327

Minnesota

IMPORTANT

**Before sealing be sure your name and
address are written plainly.**

Pfeiffer's Fine Hardy Garden LILIES

Lilies are becoming more popular every year, and are as easy to grow as other hardy garden flowers.

Should be planted on well drained ground, all Lilies should be planted rather deep, 4 to 8 inches, depending on the size of bulb. All Lilies listed below survived the most severe winter on record.

For best results plant all Lilies in the fall.

BROWNI. Creamy-white, trumpet streaked reddish-brown on the outside of petals, 3 to 4 feet high**\$1.50 each**

CANDIDUM (Madonna Lily). Clear waxy white, fragrant flowers. Bulbs should be planted in August or early September to insure the necessary fall growth which this variety needs. Large bulbs**25c each; 5 for \$1.00**

CANADENSE (The Meadow Lily of Canada). Graceful bells, minutely spotted, varying from red to yellow. June-July**25c each; 3 for 60c**

CONCOLOR. Star-shaped flowers; orange red, slightly spotted.**25c each**

ELEGANS. Flowers held erect on the stem. Orange, slightly spotted. 1 to 2 feet. June.....**20c each; 2 for 35c**

ELEGANS ALICE WILSON. A yellow flowered variety of the well known Elegans family.....**50c each**

HANSONI. A choice Korean species bearing many handsome yellow flowers with thick petals. Hardy and easily grown, but prefers partial shade. 3 to 4 feet. June.....**50c each; 3 for \$1.25**

HENRYI (The Golden Speciosum). Its exotic charm, rich color, hardiness and dependability place it high among the favorite garden Lilies. Tall grower, excellent for cutting. Blooms in August. Large bulbs.....**25c each; 3 for 65c**
Extra Size.....**40c each; 3 for \$1.00**

PARDALINUM GIGANTEUM (The Sunset Lily). This magnificent new Oregon Lily is winning fame both in America and abroad. Under favorable conditions the plant grows 6 to 9 feet tall. The stout stems clothed in luxuriant foliage hold their heads of gorgeous bloom aloft. Color, sunset red, spotted at base of petals. This Lily is wonderfully vigorous and of easy culture. Plant 8 to 10 inches deep, early in the fall, to insure bloom the following spring. July. Strong bulbs.....**75c each**

PHILIPPINENSE FORMOSANUM. Late flowering. One of the most beautiful of the trumpet-flowered Lilies, also the latest to bloom. Long, slender tube, white inside, streaked with chocolate outside. Spicy fragrance. Plant 8 inches deep in rich leaf mold soil, in a sunny location. September.**35c each**

PHILIPPINENSE FORMOSANUM. (Price's variety). A summer bloomer, much earlier than above.....**35c each**

REGALE (Regal Lily). White, shading to yellow in the center, and tinted pink on the outside. Blooms in July. 2 to 3 feet. Large bulbs.....**25c each; 5 for \$1.00**

SPECIOSUM RUBRUM. Rosy pink with white edge. 3 to 4 feet.....**50c each**



REGAL LILY

LILY COLLECTION

1 Regale.....	\$.25
1 Umbellatum.....	.20
1 Tiger (single).....	.20
1 Henryi.....	.25
1 Tenuifolium.....	.20
1 Philippinense (Price's).....	.35
	<hr/>
	\$1.45

1 EACH, VALUE \$1.45

Postpaid, ONLY \$1.00

3 EACH OF ABOVE ONLY \$2.50

SUPERBUM. A beautiful native American Lily; tall and vigorous, bearing many recurving flowers; yellow, spotted maroon. 4 to 7 feet. Late July. Good bulbs**25c each; 3 for 60c**

TENUIFOLIUM. (Coral Lily). Small, bright scarlet flowers on slender stems. 1 to 2 feet. June-July. Pleasing fragrance.**20c each; 2 for 35c**

TIGRINUM (Tiger Lily). The old-fashioned Tiger Lily of our gardens. Orange spotted purple. Large bulbs.....**20c each; 2 for 35c**

TIGRINUM FLORE PLENO (The Double Tiger Lily). A double form of the above Lily of a softer color and flowers a little later.....**30c each; 3 for 75c**

UMBELLATUM (Candlestick Lily). Orange-red flowers in upright umbels; resembles Elegans, but grows taller and is a few days later. Large bulbs.....**20c each; 2 for 35c**

WILLMOTTIAE. Showy orange-red flowers with recurved petals; graceful and free flowering. 3 to 4 feet....**50c each**

PLANT EXPLORATION
AND INTRODUCTION
AUG 13 1936

\$1.00
BARGAINS

PEONY Bargain No. 3

"EXTRA GOOD VARIETIES"

3 Early Varieties \$1.00

(See Page 11 for Description)

Delphinium Bargain

3 GOLD MEDAL HYBRIDS 3 BELLADONNA

Six 2 year Plants \$1.00

(See Page 22 for Description)

PEONY Bargain No. 1

"STANDARD COLLECTION"

Five Early Varieties \$1.00

(See Page 11 for Description)

Iris Bargain No. 2

"SUPERFINE COLLECTION"

12 Varieties, properly labeled, \$1.00

(See Page 19 for Description)

Phlox Bargain

"SEVEN VARIETIES"

All Different \$1.00

(See Page 31 for Description)

Lily Bargain

SIX FINE HARDY VARIETIES

all different, properly labeled, \$1.00

(See Page 29 for Description)

Iris Bargain No. 1

"RAINBOW COLLECTION"

30 Different Varieties . . \$1.00

(See Page 19 for Description)

Darwin Tulip Bargain

14 VARIETIES MIXED

30 Bulbs \$1.00

(See Page 27 for Description)

Hemerocallis Bargain

(YELLOW DAY LILY)

4 Fine Varieties \$1.00

(See Page 21 for Description)

Narcissus Bargain

20 NARCISSUS BULBS MIXED

2 Each of 10 Varieties . . \$1.00

(See Page 28 for Description)

ANY FOUR \$1.00
BARGAINS \$3.50
FOR

Select any four of these \$1.00 Bargains (\$4.00 total) and send only \$3.50. Or Four of any one Bargain at \$3.50. Your order will be sent Postpaid.

THE PFEIFFER NURSERY
WINONA, MINNESOTA