

# Wikimedia LEADS - Appendix - 6 Ws



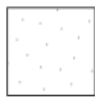
## What

A linked open data «data space» for learning for the Wikimedia Movement:

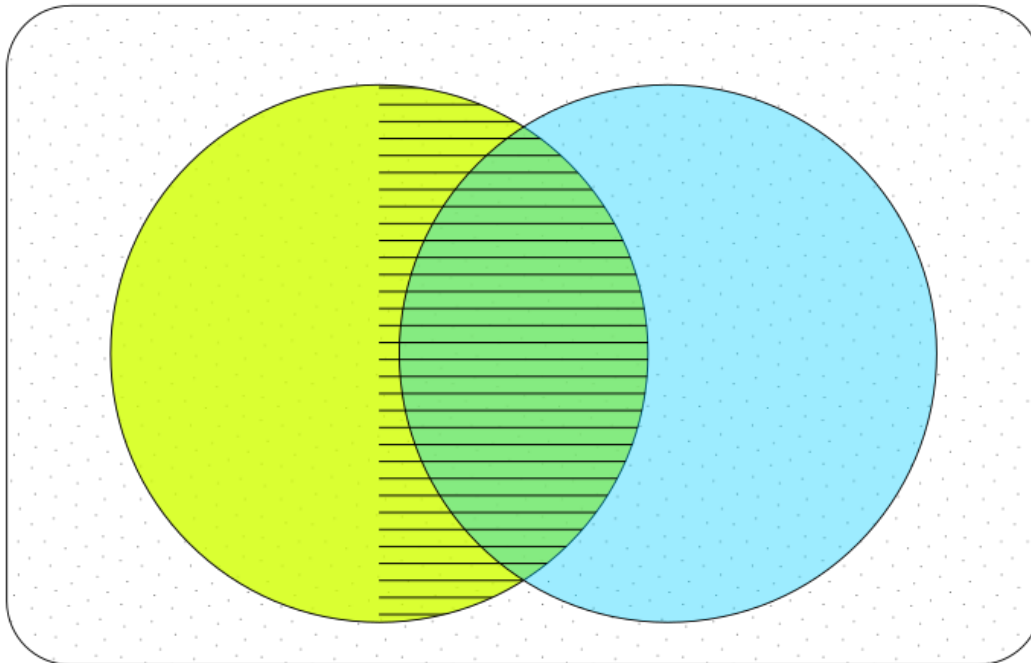
- based in Wikibase, as linked open data (LOD)
- modeling practices (*a repeatable approach to doing something with a specific objective in mind*), how to handle a specific aspect of human endeavor, as LOD
- modeling capacities, what is needed to know for adopting a practice, as LOD
- modeling stackable credentials designs, what you need to learn to acquire a capacity, as LOD
- offering courses specified by credentials
- issuing earned digital signed certificates
- to support the lifelong learning cycles of persons and communities.

## Who

- Funding: [NGI Zero Commons Fund](#), managed by the [NLnet foundation](#), with [financial support](#) from the [European Commission's Next Generation Internet](#)
- Developed by:
  - LaOficina Producciones Culturales
  - with the support of [Metadev S.L.](#)
- Target users: Wikimedia Movement contributors and collectives like:
  - GLAM Wiki
  - Wiki Learn
  - Capacity Exchange, Let's Connect...
  - [Wikimedia Foundation](#)
  - WM WMF affiliates
  - and no affiliates
- In relation with the European Union



# the human knowledge



**Europeanana**

**open GLAM**



**Wikimedia**

**GLAM Wiki**

## Why

- To create a new kind of knowledge, models, as a basis for future and unpredictable applications,
- using LaOficina own **very small GLAM** digital archive project as driver,
- while meeting [Wikimedia Movement 2030 strategy](#) recommendations and
- meeting European Union decisions and recommendations.

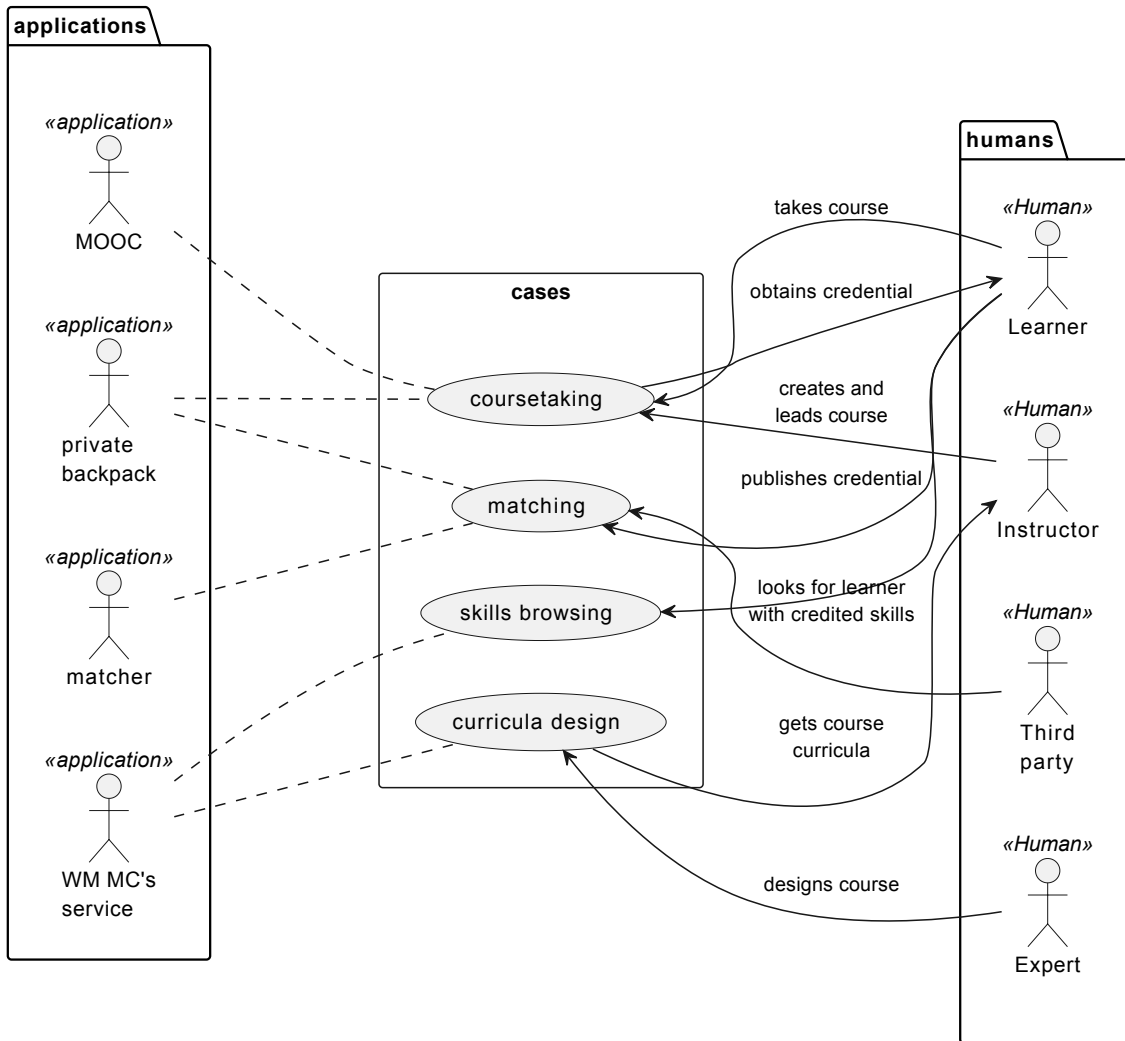
## How

- Funded by [NGI Zero Commons Fund](#), managed by the [NLnet foundation](#), with [financial support](#) from the [European Commission's Next Generation Internet](#)
- Work packages:
  - WP1 Project management and coordination
  - WP2 Wikibase metamodeling
  - WP3 Modeling
  - WP4 very small GLAM Pilot
  - WP5 Software development
- Addressing real world needs for:
  - Wikimedia Movement
  - European Union
  - through the GLAM Wiki and very small GLAM entities communities
- Developing new kinds of knowledge:
  - types:
    - practices: generalization of the SEMAT Essence kernel
    - credentials designs: based in W3C Verifiable Credentials and ELM
  - methodology:
    - compiling a reference about how to handle a specific aspect of human endeavor, into a practice;
    - the writing of a practice includes identifying the competences required;
    - for each identified competence you can design a (learning) credential;

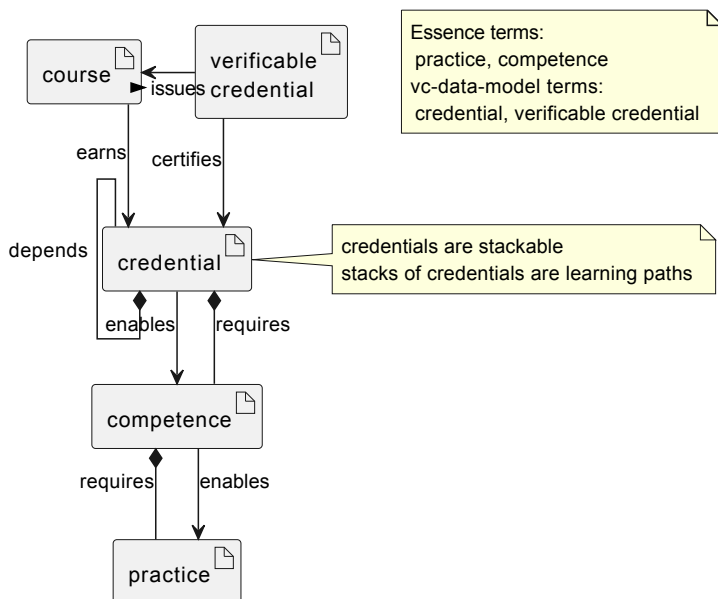
- from credentials, learning courses are specified, written and taken;
- with courses, people can learn and earn digitally verifiable certificates and
- finally, with certificates people can match to work together.

## figures

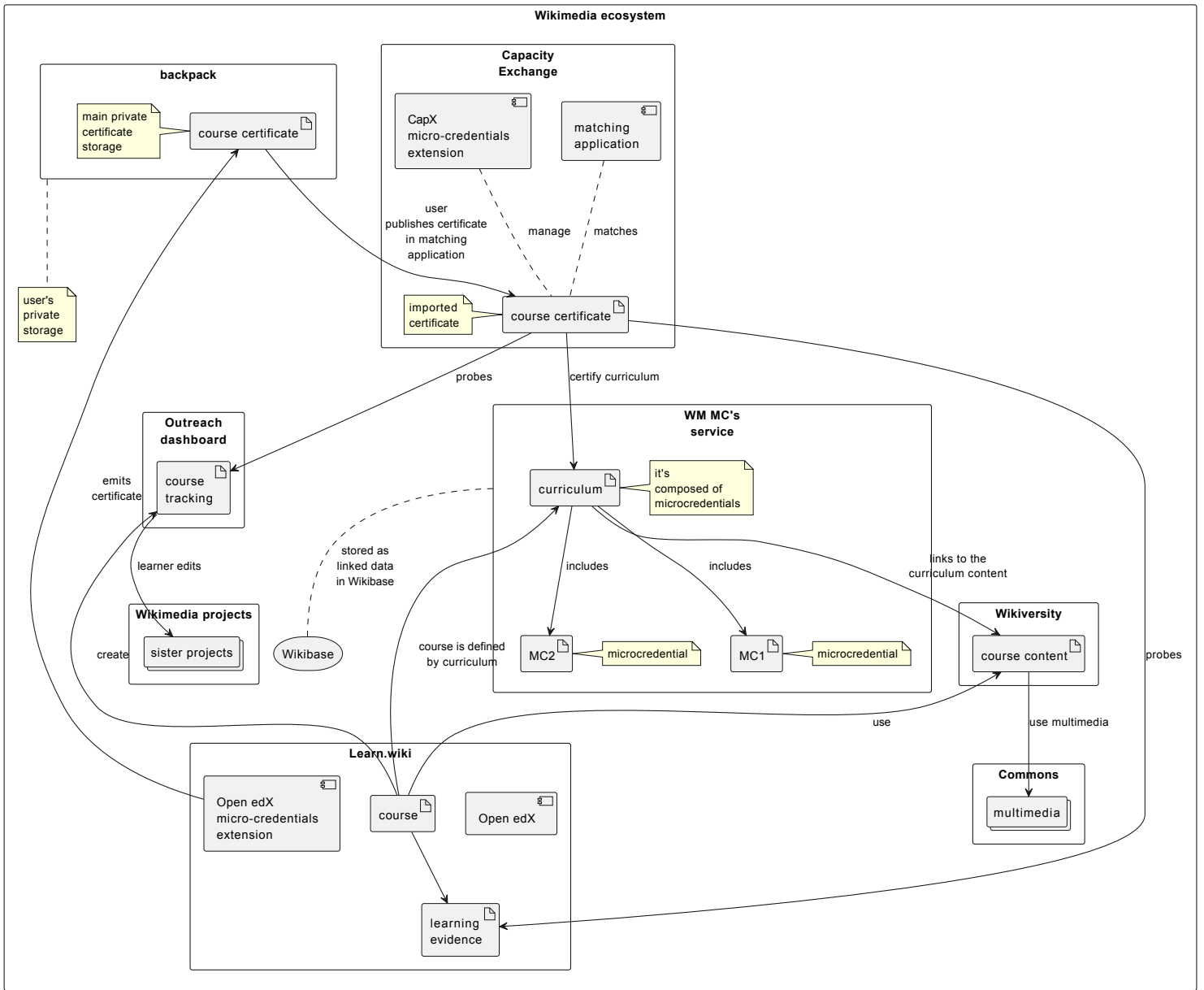
Use cases in a Wikimedia micro-credentials ecosystem



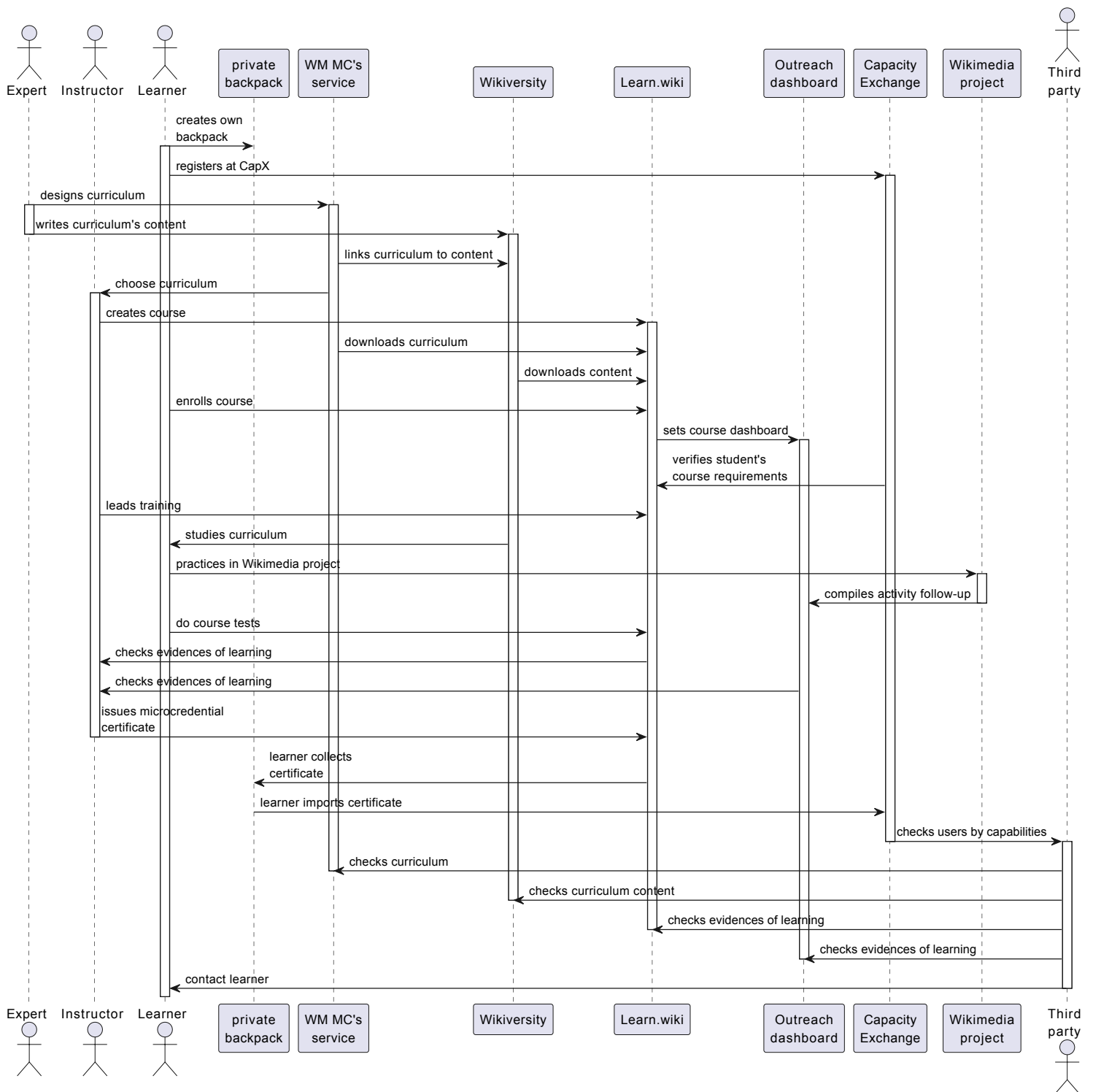
Wikimedia LEADS basic information architecture



Wikimedia micro-credentials architecture



## Interactions in a Wikimedia micro-credentials ecosystem



### When

- 1 year after the project approval.
- And, hopefully, renewed in the future.

### Where

- Teams based in Spain,
- funding from European Union
- and a worldwide base of users, hosted by the Wikimedia software and services ecosystem.