

World | Temperature anomalies in March 2024

According to Copernicus Climate Change Service/ECMWF, **March 2024** was the **warmest** March since 1850 when records began. It marks the tenth consecutive month where temperatures have been hotter than ever recorded for the respective time of year.

The global surface air temperature in **March 2024** was **0.73°C** above the average temperature in March for the **1991-2020 reference period**.

Source: [Copernicus Climate Change Service \(C3S\): Surface air temperature for March 2024](#)

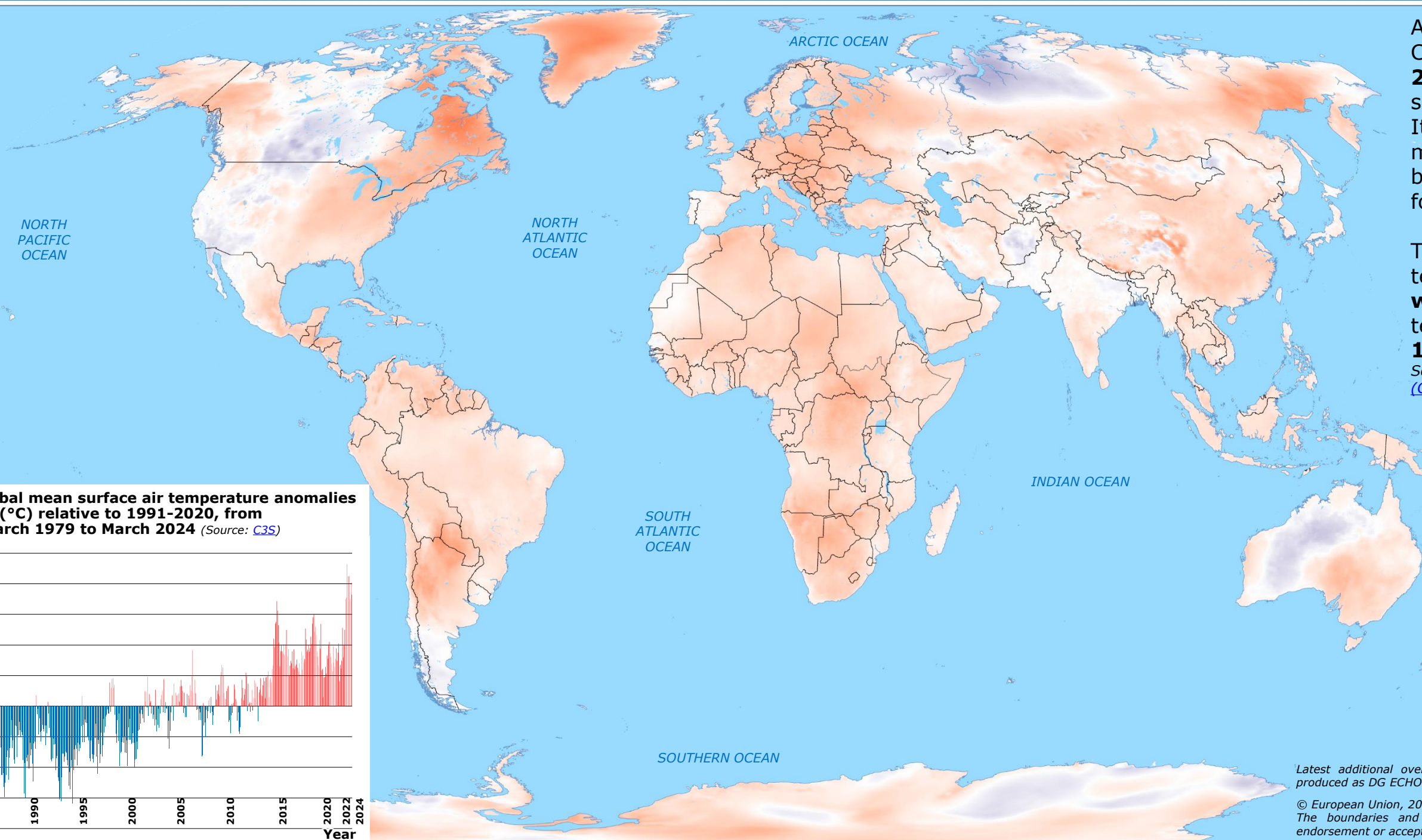
Surface air temperature anomalies* (°C) in March 2024
Source: C3S



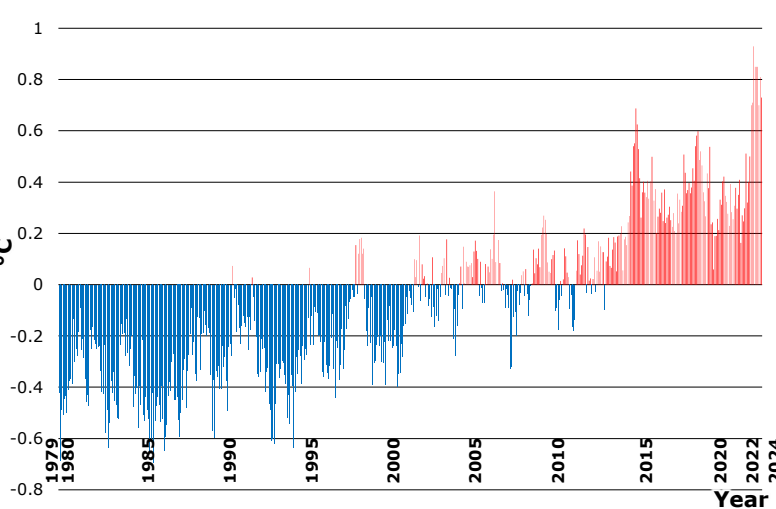
*Relative to the 1991-2020 reference period

Latest additional overview maps on Global temperature anomalies have been produced as DG ECHO Daily Maps, available on the ERCC Daily Map [Portal](#).

© European Union, 2024. Map produced by the JRC. The boundaries and the names shown on this map do not imply official endorsement or acceptance by the European Union.

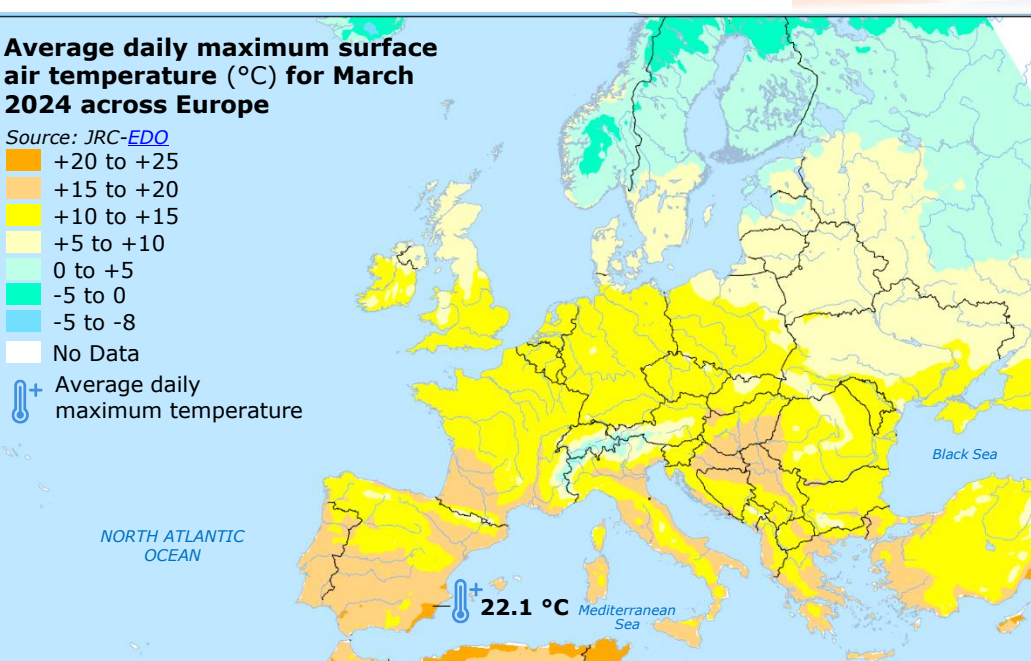


Monthly global mean surface air temperature anomalies (°C) relative to 1991-2020, from March 1979 to March 2024 (Source: C3S)



Average daily maximum surface air temperature (°C) for March 2024 across Europe

Source: JRC-EDO
 +20 to +25
 +15 to +20
 +10 to +15
 +5 to +10
 0 to +5
 -5 to 0
 -5 to -8
 No Data
 + Average daily maximum temperature



Arctic ice coverage in March 2024

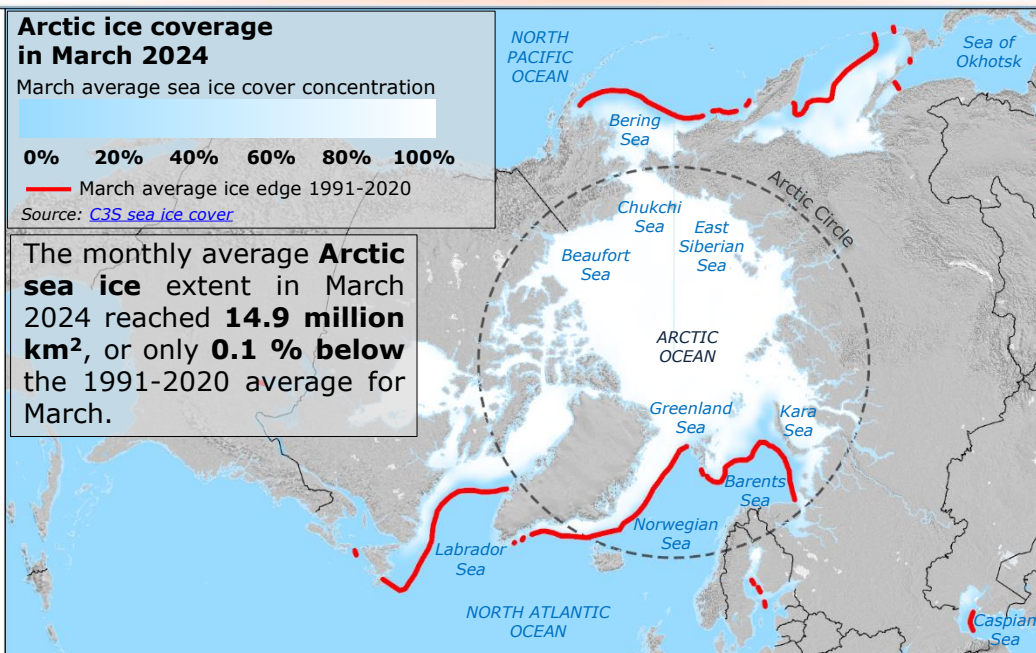
March average sea ice cover concentration

0% 20% 40% 60% 80% 100%

— March average ice edge 1991-2020

Source: C3S sea ice cover

The monthly average **Arctic sea ice** extent in March 2024 reached **14.9 million km²**, or only **0.1 %** below the 1991-2020 average for March.



Antarctic ice coverage in March 2024

March average sea ice cover concentration

0% 20% 40% 60% 80% 100%

— March average ice edge 1991-2020

Source: C3S sea ice cover

■ Ice shelf in Antarctica

In March 2024, the **Antarctic sea ice** extent reached **3.5 million km²**, or **20% below** the 1991-2020 average for March.

