

## **Historic, archived document**

Do not assume content reflects current scientific knowledge, policies, or practices.



# EARL MAY'S

## Farm Seed Catalog

SPRING 1936



**TIMOTHY**

New crop, fancy Iowa grown. Timothy Seed — See Page 7 for complete description.

Only **\$1.65** Bu.

F. O. B. Shenandoah

**SWEET CLOVER**

Fancy, dependable, re-cleaned, double scarified WHITE BLOSSOM. Strictly new crop seed. Seed sample enclosed. Fully described on Page 16.

Only **\$3.25** Bu.

F. O. B. Shenandoah

**FARM BELT ALFALFA**

Hardy, Nebraska-Iowa-Dakota, etc., seed of high purity and germination. See sample enclosed. Page 5 describes this lot fully.

Only **\$10.25** Bu.

F. O. B. Shenandoah

**CLOVER Medium Red**

New crop home grown seed. The kind that you want to sow for best results. See sample enclosed. Described on Page 7.

Only **\$12.00** Bu.

F. O. B. Shenandoah

**KOREAN Clover or Lespedeza**

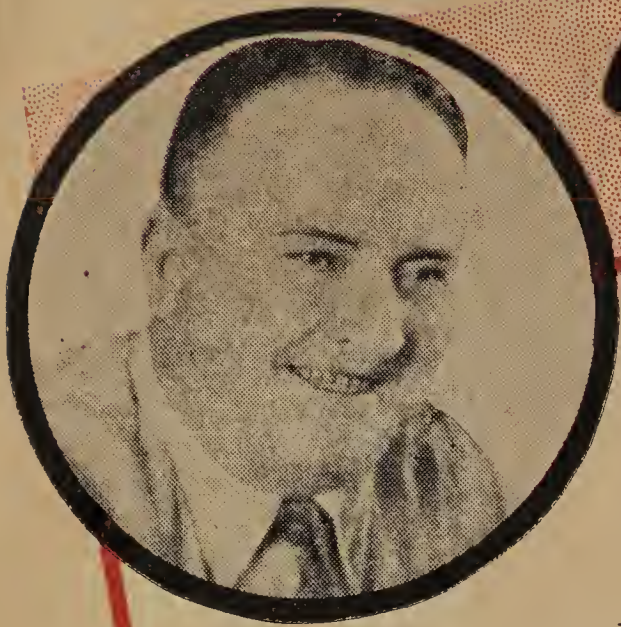
Grows on sour, acid soils. A big value in new crop highest quality seed. Described on Page 6.

Only **\$1.65** Bu.

F. O. B. Shenandoah

# MAYWORTH-FARM SEED

## Friends



The prices farmers receive for the products they have to sell are the highest this spring they have been for a good many years. My seed prices this year considering quality are very low.

I do not know how long I can keep these low prices on seed. Last fall when crops were moving from the farmer producers I purchased hundreds and hundreds of lots of high-quality seed. Then we were able to secure the lowest prices on the crop. I am passing along to you the benefit of these savings. You will find lowest prices on splendid lots of high-quality tested seed.

The Alfalfa seed crop was only two-thirds that of last year. Alsike and Red Clover, one of the smallest crops on record. Another light crop of Sweet Clover, too. Generally speaking, there was a big production of grasses. In spite of short crops of many items, prices average way

under last year which means the early buyers are going to get in on these low prices and get the top qualities of seed. We believe that by seeding time many markets will have made considerable advances so we urge you to purchase now at the lowest possible prices we expect to offer you this year.

I will appreciate your order and I will see that you get seed exactly as described that is adapted to your territory. Tell your friends and neighbors about the special bargains that Earl May has in farm seed for you early buyers.

Your sincere friend,  
EARL E. MAY.

## EVERY LOT OF SEED TESTED

I have a trained analyst in charge of my Seed Laboratory. We must ship good seed to our customers or our business would not increase. We can not afford to guess at the quality of our seed. We must know. Therefore, every lot of seed which comes into our seedhouse is tested with painstaking accuracy. It is thoroughly analyzed for appearance, purity and germination. The seed must show satisfactory tests or it is not shipped.

The secret of our success and increasing farm seed business is in the care given to the selecting, cleaning and analyzing of every lot of seed.

Plant the best quality seed for biggest crops and biggest profits.

## Free

## FARM SEED SAMPLES

I will be glad to send you liberal samples of any of our farm seeds without charge and without obligation. You may look them over and test them any way you wish in your own home. Show them to your friends and neighbors and get them to come in with you on these big savings.



This is a corner of our farm and test plot, showing different varieties of corn. Clovers, alfalfas, etc., are in the same test but not in the picture.

# OF QUALITY

## Let Me Help You with Your Seeding Problems

Perhaps you may be undecided just what you should sow. You may desire further information on some crops. We will be glad to try and help you. My Seed Department has experts who have spent years in the seed business and know from the practical farming standpoint just what is the best thing to do. No charge for this service. Just write me anytime you feel we can help you.

### Earl's EASY PAYMENT PLAN FOR FARM SEEDS

I will accept your orders of Farm Seeds with payment of only  $\frac{1}{4}$  down. I will tag and hold your seed for you up until March 1st without extra charge for service or storage. Furthermore, I guarantee the price against our decline and protect you against advance until the 1st of March.

### Prices Not Guaranteed Against Advance

We expect the demand for seed to be the biggest it has ever been and have prepared millions of pounds of seed for your requirements. However, when lots are sold out, undoubtedly prices will have to advance, so I urge you to order early and get the benefit of these special low prices.

All Prices Are F.O.B. Shenandoah, Iowa

### Mail Orders Filled Carefully

My special guarantee of quality gives you the opportunity to get your seed tested any way you see fit and if it isn't entirely satisfactory, we will cheerfully refund your money. I can give you careful selection and prompt shipment, too, from Shenandoah, Iowa, on mail orders if you want your seed shipped.



This is part of the crowd at the jubilee. Nearly 100,000 people were in town who were interested in the Horticultural and Agricultural exhibits in the big tent seen in the background.

that gives you RESULTS  
for LESS MONEY

### My Gold Seal GUARANTEE

I guarantee the vitality, description, origin and purity of our seeds to be as represented in this catalog and on the analysis tag, to the full amount of the purchase price as received by the customer in an original branded bag. It is mutually agreed that in no case The Earl E. May Seed Company be liable for more than the amount actually paid for the seed.

## Shop and Save

### In Your Nearest Earl May's Store

For your convenience in getting your seed I have selected several large trading centers in the Farm Belt where I will have stores so that you can get your seed when you are ready for it. Be sure and mail your order in now and get your seed later on at your nearest Earl May's Store. Add 15c per bushel on Sweet Clover, Timothy and Mixtures and Korean; 25c per bushel on Alfalfa, Red Clover and Alsike; 25c per hundred on Fodder and Forage Crops and Grasses, for extra transportation if you wish to get your seed at your nearest Earl May's Store.

Maryville, Mo., 420 N. Main St.  
Columbus, Neb., 1268 27th Ave.  
Falls City, Neb., 1512 Stone St.  
Lincoln, Neb., 1427 "O" St.  
Norfolk, Neb., 435 Norfolk Ave.  
Omaha, Neb., 12th and Douglas  
South Omaha, Neb., 4722 So. 24th St.  
Atlantic, Iowa, 515 Chestnut St.  
Boone, Iowa, 705 Story St.  
Cedar Rapids, Iowa, 220 First Avenue, N. E.  
Cherokee, Iowa, 115 S. 2nd St.  
Council Bluffs, Iowa, 535 W. Broadway  
Davenport, Iowa, 314-316 W. 2nd St.  
Des Moines, Iowa, 217 W. Walnut  
Ft. Dodge, Iowa, 517 Central Ave.  
Marshalltown, Iowa, 131 E. Main St.  
Mason City, Iowa, 211 N. Federal Ave.  
Ottumwa, Iowa, 217 E. Main St.  
Sioux City, Iowa, 411 Pearl St.  
Waterloo, Iowa, 320 W. 4th St.

# ALFALFA

## The Greatest Legume of All

Alfalfa is the greatest legume of all. Without doubt it has made more money for the farmers who raise it than any other crop. During the drought years alfalfa definitely and absolutely proved itself the greatest drought-resisting legume that could be sown. It's chinch bug proof. It's the best all-round farm crop for hay, pasture and soil building.

Make a firm seed bed by using a packer or a roller, sowing from 15 to 20 pounds per acre. West of the Missouri River less seed per acre is needed.

Cut your alfalfa when about one-tenth of the bloom appears. This keeps your planting vigorous and healthy and gives you at least 3 cuttings of hay per season and sometimes 4.

Registered  
Certified  
**BLUE  
TAG  
GRIMM**

### The Last Word in the Hardest of All Alfalfas

Genuine pedigree Registered Grimm from Idaho and Utah, grown at a high altitude under the worst weather conditions imaginable. The pure quill, 99 1/4 % pure, noxious weed free, of the highest germination. Only \$14.50 per bushel in the sealed bushel bag. Certificate on each bag, too.

Only  
**\$14<sup>50</sup>** PER BU.

## Lot Black Hills Dakota No. 12 ALFALFA *Extra Fancy*

My seed buyers selected this lot of seed for you as one of the finest lots of Dakota No. 12 Alfalfa they've ever seen.

### Seed of Quality

You can depend on Lot "Black Hills" because it has quality. It's hardy, golden colored, big, plump seed. Has been triple re-cleaned. For those who want to be sure of an alfalfa stand that will last many years, Lot "Black Hills" Dakota No. 12 Alfalfa will appeal. You are fully protected by my guarantee when you buy this lot as it's sold to you with the understanding that it must please you in every way or the seed may be returned for a full refund, including all transportation charges.

**\$11<sup>65</sup>**  
PER BU.

## HARDEST KNOWN MAYWORTH GRIMM

Sealed  
in Bushel  
Bags for  
Your  
Protection

Mayworth Grimm Alfalfa is the hardest of all. Grown in the cold, frigid climates of the Northwest, it has to be hardy to survive.

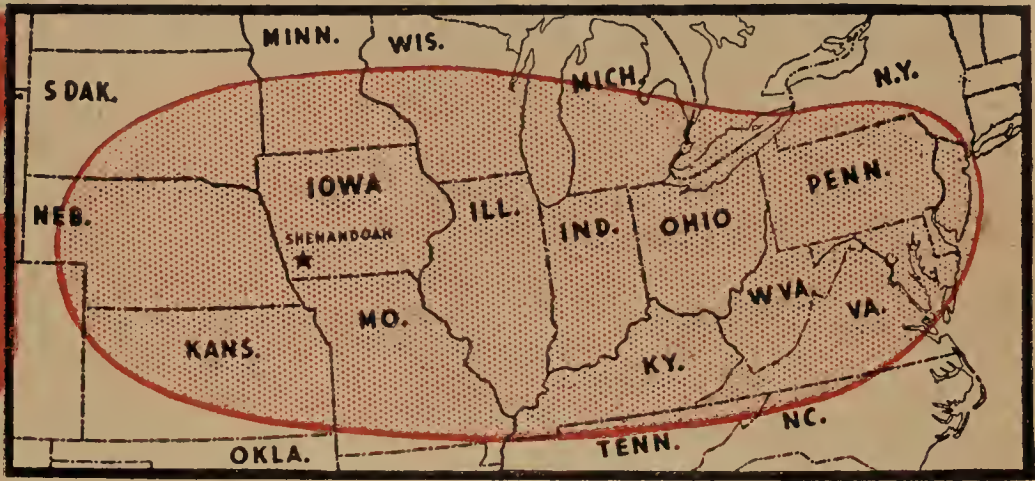
My stock of Mayworth Grimm Alfalfa is descended direct from the originator's seed. Grimm cannot be told simply by looking at the seed but an expert can tell it growing on the farm because of the great variety of color and by examining the root system and other characteristics.

That's why we personally go to the farmers in the growing sections where Grimm Alfalfa seed is produced and select the seed by checking up on the pedigree and studying carefully the coloring of the bloom, the root system and the general hardy characteristics of the plant. Use only 12 to 15 pounds per acre. **Sealed bushel bags, only.....**

**\$12<sup>25</sup>**  
PER BU.

# MAYWORTH Farm Belt Alfalfa

*Hardy  
Heavy Yields  
Low Priced*



Hundreds of thousands of pounds and thousands of acres were seeded to our Mayworth Farm Belt Alfalfa last year, both the Hardy Common and the Grimm. It is giving wonderful results. Farm Belt Alfalfa is seed produced in Iowa; Nebraska and Northern Kansas. It has to be hardy to survive the summers and winters we've had the last few years.

I recommend our Farm Belt Alfalfa for sowing in all of the central states, including Nebraska, Kansas, Iowa, Missouri, Illinois, Indiana, Ohio, Kentucky, Southern Wisconsin and Minnesota and other states of similar latitude. If you wish to keep your land in alfalfa longer than three or four years, then I would recommend the Grimm.

No need for you to sow higher priced alfalfas when you can get high yields, long life and lowest prices on our Farm Belt Mayworth quality. Every bushel of Farm Belt Alfalfa is put up in my Mayworth branded bushel bags and is guaranteed to be satisfactory or you may return the seed for a full refund.

## LOT HARDY FARM BELT ALFALFA

The origin or territory where alfalfa seed is produced is very important. Southern seed from Oklahoma, Arizona and California looks well but will not stand our climatic conditions. Don't be fooled and judge seed merely by its looks. Judge it mostly on the basis of its origin, freedom from obnoxious weeds and its growing ability.

You will like Lot "Hardy" because it is Iowa, Nebraska and Northern Kansas grown seed of high purity, strong germination, and absolutely free from bothersome weeds, such as Canada thistle, quack grass, etc. It's the kind you can sow on your farm and be proud of year after year.

**Only**  
**\$10.25**  
PER BU.

## LOT FARM BELT GRIMM

This is the Grimm made of all the lots of hardy, desirable, fine leaved, heavy stooling Grimm Alfalfa produced in Iowa and Nebraska. Adapted for seeding everywhere. The lowest priced high-quality Grimm Alfalfa seed.

**\$11.75**  
PER BU.

## LOT "DRY LAND" Nebraska Grown Alfalfa MAYWORTH

My buyers in Central Nebraska ran on to some especially fine lots of seed. I have put these in our Lot "Dry Land." "Dry Land" is an extra selected lot of new crop Nebraska Grown Alfalfa, golden colored, plump seed. The germination is of the highest and, of course, being Mayworth Quality, is the finest that you can secure.

**\$10.75**  
PER BU.

# 2 GREAT ALFALFAS

## Lot "DEPENDABLE"

### Dakota No. 12, Choice Quality

Lot "Dependable" is a real bargain. It is clean and will grow well. It is extremely hardy and withstands very unfavorable conditions. It will do what any other seed will do. Then why so cheap in price you ask? It's merely a matter of appearance. It doesn't look so nice because of the weathering and discoloration that occurred when the seed was harvested.

### An Economical Seeding

For the man who wants to practice the strictest economy this is the seed. Customers who have used similar seed tell us that they get just as good results from it as from much higher-priced seed. Not as large berries and weather stained but priced very low so you can make your seeding at about two-thirds its usual cost.

**\$9.50**  
PER BU.

## Lot "FULL VALUE"

### Hardy Northern Grown

ALFALFA \$ **7.50**  
PER BU.

In buying alfalfa seed in Minnesota, North and South Dakota, Nebraska, Iowa, Kansas, Colorado, Idaho and Montana we have some lots which will not go into our Mayworth grade on account of color due to unfavorable weather, size of berry, and general appearance. These lots are cleaned just as well as modern cleaning machinery can do it and are put all together in this hardy lot of low priced seed.

### More Seed per Pound

The berry is smaller which means you get more to the pound. Many of them are badly weather stained and the general appearance is not as good as our Mayworth Quality. Many farmers know that if the seed is hardy, and this is, and if the germination is 80% or more, and this is, that they can save money by purchasing this lot and making a seeding. No need to put on more seed per acre because the berries being smaller gives you more seed per pound. Try Lot "Full Value" for an economical seeding of alfalfa.

# ALSIKE CLOVER

MAYWORTH  
BRAND

## MAYWORTH ALSIKE CLOVER Grows with Wet Feet

Alsike, you know, is the only clover that will grow on low, wet land, land that is slightly sour, and still last year after year. Our Alsike is genuine northern grown seed from Minnesota. It's triple cleaned and thoroughly tested so you can depend upon it growing and thriving in your territory.

**\$13.00**  
PER BU.

## LOT

### "THRIFT" ALSIKE

I was able to secure some very nice lots of Alsike that had small amounts of Timothy and Red Clover mixed in with the Alsike. You know, many of these natural mixtures are produced in the Alsike territory. They grow together in the same field. Of course, these lots of seed are purchased at lower prices than the pure quill. That's the reason I'm able to offer you this lot of Alsike Clover Lot "Thrift" way below the market. Contains about 75% pure Alsike, balance Red Clover and Timothy. Special price,

**\$11.50**  
PER BU.

# Lot "SOUR-LAND" KOREAN CLOVER

Has been thoroughly tried and tested all over the country. No soil has yet been found that will not grow Korean Clover, whether wet or dry, rich or poor, sour or sweet. A life-saver for the fellow with hilly, poor, worn-out land. Thousands of such farms are being reclaimed by growing Korean Lespedeza.

### For Hay, Pasture and Soil Building

Korean Clover is an annual or one-year crop. Generally re-seeds in the southern half of Iowa and Southeastern Nebraska, also Kansas, Missouri and Illinois without difficulty. Should be sown early in March or April. A firm seed bed is best. Many tell me they've sown it just by throwing it on the ground in March without any cultivation and had success. Experiment stations say it doesn't cause bloat. Makes valuable pasture, and hay in feed value almost equal to alfalfa. Its greatest value is as a permanent pasture either alone or mixed with other grasses. Farmers report doubling the corn yield following a crop of Korean. No need to lime when you sow it. One bushel sows 2 acres. 25 lbs. per bu.

Only  
**\$1.65**  
PER BU.

Ask for my  
bulletin on  
"Growing  
Korean  
Clover."

**Greatest Crop  
Grown for Poor,  
Worn-out Land  
IT NEVER  
FAILS**



# 3 FINE LOTS OF RED CLOVER

## Home Grown Seed at Low Prices

### MAYWORTH Extra Fancy RED CLOVER

You can absolutely depend on this seed. It's sure growing and safe to sow. It's fine appearing seed, bright, clean and highly colored. Great, big, plump berries that cannot help being satisfactory. I think this is a fine lot of Red Clover that everybody who wants clover seed should sow.

As you know, Red Clover production in the Central West last year was very short. Be sure and get new grown seed that will grow like this. Usual guarantee. Tried and tested.

**\$12.00**  
A BUSHEL

### LOT "BIG CROP"

In cleaning our many small lots of Home Grown Red Clover we find not all of them will go into our Extra Fancy Mayworth Quality Seed. In some the seeds are smaller. Some lots will have a sprinkling of foxtail which is impossible to clean out 100%. The germination is satisfactory on this fine lot of seed. Some of the fields producing this seed may have a trace of sweet clover. All of these reasons are why I can offer you such an extraordinary bargain in tested, re-cleaned red clover. For those who want to build up the soil and get a good hay crop, Lot "Big Crop" is the answer.

**\$10.25** PER BU.  
Specially Priced At Only BAGS FREE

### MAYWORTH Mammoth Red Clover

As usual, the seed crop of Mammoth Red Clover is very short. However, I secured a dandy lot of seed from some of our farmer friends in Southern Minnesota before the general seed shortage was known. Therefore, I can offer you this seed, extra fancy quality, at about \$2.00 per bushel under the market. I absolutely guarantee this lot to be free from Canada thistle, quack grass, and other troublesome weeds. The quality is high. It is only the price that is low.

**\$12.75** PER BU.  
ONLY BAGS FREE

## TIMOTHY

### Fine, Clean, High Germinating Seed

There was an extremely large Timothy seed crop last year. On this account a few unscrupulous dealers may offer you seed that has not been thoroughly re-cleaned in order to get you a low price. You are taking a chance when you sow such seed on account of noxious weeds it may take you years to get rid of.

My buyers were out in Southwest Iowa this year and selected the better lots for our use. I think truly we have the "cream of the crop" and it's priced exceedingly low, too. Compare my quality and prices with others.

Extra fancy highest quality seed, **\$1.80** PER BU.

### LOT "ECONOMY" My Best Timothy Value

In cleaning our many lots of country run Timothy we will find a few which are completely hulled. This, of course, is no fault in the seed as it grows just as well, if not better than bright Timothy with the hull on. It does hurt its appearance for our extra fancy grade. I offer you Lot "Economy" at

**\$1.65** PER BU.  
ONLY

## Bargains in High Quality TIMOTHY MIXTURES

**Natural Mixtures Are Those Which You Will Find Growing Together and Which Are Harvested Together.**

We are able to secure many of these natural mixtures at prices below the market for unmixed seed. Therefore, we are able to save you considerable money on these splendid hay and pasture combinations. Many farmers for years have been depending upon us for high-quality mixed seed such as Timothy Alsike, Timothy Red Clover, etc.

### Timothy Alsike Mixture

Timothy and Alsike are the old standbys. They are very successful. Timothy keeps the Alsike up and is more productive on higher ground. Alsike is a legume which builds up the soil and it, of course, makes the hay of richer quality. Both of these make a tremendous growth on lower land.

This is a natural mixture, the two seeds growing together in the field. This extra rich seed contains from 20% to 30% Alsike and has been thoroughly re-cleaned. Our money-saving price, **\$3.45** ONLY PER BU.

### Timothy Red Clover Mixture

On rolling land and high ground Timothy Red Clover is the old standby. Farmers have learned to depend on a sowing of this mixed seed and they get a meadow that will last several years. A very rich mixture containing from 20% to 30% Clover, balance Timothy ..... **\$3.45** ONLY PER BU.

### Alsike Timothy Red Clover Mixture

Our two most valuable clovers that fit practically all kinds of soil in a rich mixture with Timothy. Another value that early purchasing in the producing sections enables us to offer you at the lowest possible prices. This seed has been thoroughly re-cleaned, is of strong germination and high purity, and I feel confident a seeding of this type will give you splendid results. 20-30% clovers. Use one bushel to about four acres... **\$3.45** ONLY PER BU.

# Earl E. May LOW

*Priced to make your dollar go further*

## GUARANTEE

We guarantee the vitality, description, origin and purity of our seeds to be as represented on this wholesale price list and analysis tags to the full amount of the purchase price, if received by the customer in original branded bags. It is mutually agreed that in no case shall the Earl E. May Seed Company be liable for more than the amount actually paid for the seed. Order quick.

PRICES:—These prices are subject to change without notice. F. O. B. Shenandoah. Bags Free.

ALFALFA, HARDY NORTHERN GROWN (60 lbs. per bu.) Per Bu.	
Farm Belt Alfalfa, Extra Fancy Mayworth.....	\$10.25
Farm Belt Grimm, Extra Fancy Mayworth.....	11.75
Dakota No. 12, Mayworth, Extra Fancy.....	11.65
Dakota No. 12, Choice.....	9.50
Cossack, Mayworth, Extra Fancy, So. Dakota Grown.....	12.50
Nebraska, dry land Mayworth, Extra Fancy.....	10.75
Nebraska, Choice.....	7.50
Earl May's Mayworth Mont. Grimm, sealed bags, Extra Fancy.	12.25
Registered Grimm.....	14.50

CLOVERS (60 lbs. per bu.)	
Medium Red, Home grown Mayworth, Extra Fancy.....	12.00
Medium Red Clover, Choice.....	10.25
Mammoth Red, Mayworth, Extra Fancy.....	12.75
Alsike Clover, Mayworth, Extra Fancy.....	13.00
Alsike Clover, Fancy.....	11.50
White Dutch Clover, Mayworth.....	15.00
Korean Clover (25 lbs. per bu.) Mayworth.....	1.65
Harbin Lespedeza..... 5 lbs. \$2.00; 10 lbs. 3.75, Postpaid	
Lespedeza-Sericea..... Per 100 lbs.....	24.00

SWEET CLOVER, HULLED and SCARIFIED (60 lbs. per bu.)	
Giant White, Biennial, Choice.....	2.70
Giant White, Biennial, Fancy.....	3.25
Giant White, Biennial, Mayworth, Extra Fancy.....	3.50
Yellow Blossom, Biennial, Mayworth, Extra Fancy.....	3.85
Grundy County, Dwarf White, Mayworth, Extra Fancy.....	3.85
Unhulled White (30 lbs. per bu.).....	1.50
Unhulled Yellow Blossom (30 lbs. per bu.).....	1.60

TIMOTHY and TIMOTHY MIXTURES (45 lbs. per bu.)	
Timothy, Fancy Iowa Grown.....	1.65
Timothy—Iowa's Finest—Mayworth Extra Fancy.....	1.80
Timothy Red Clover, 20-30% Clover.....	3.45
Timothy Alsike No. 1, 20-30% Alsike.....	3.45
Alsike Timothy Red Clover, 20-30% Clovers.....	3.45
Heidelberg Mixture, Alfalfa, Red Clover, Alsike and Timothy. About 30% Clovers.....	3.45

SPECIAL PASTURE MIXTURES (45 lbs. per bu.)	
Mayworth Hay and Pasture Mixture, 50% Clovers.....	4.65
"Hurry Up" Pasture Mixture (25 lbs. per bu.).....	1.50
Hog Pasture Mixture.....	1.50

QUICK PASTURE Per 100 lbs.	
Sudan Grass, Heavy New Crop.....	\$ 3.25
Rape, Genuine Dwarf Essex.....	5.50

GRASSES	
Brome Grass.....	14.50
Kentucky Blue Grass, Extra Heavy.....	13.00
Canadian Blue Grass.....	21.00
Meadow Fescue, English Blue Grass.....	8.50
Red Top, Solid Fancy Seed.....	9.00
Orchard Grass.....	13.00
Rye Grass.....	5.50
Reed Canary Grass.....	27.00
Crested Wheat Grass.....	45.00

# EARL E. MAY SEED

*It pays to INOCULATE*

## INOCULATE with Genuine Nitragin

Often the lack of inoculation of a legume crop means the difference between failure and success. Almost always the crop can be improved by inoculation. Tests have definitely proven that yields may be improved as much as a half a ton per acre by inoculating alfalfa. Sweet Clover grows more vigorously, provides more pasture and is higher in protein content when inoculated.

Don't take chances on sowing uninoculated legumes. The cost per acre is so small it is the cheapest insurance you can take out. Good seed and good inoculation insures you of the best crops and biggest yields.

We have only the one inoculation—the only and original **Nitragin**. Every can is dated for your protection so you can be assured of absolutely fresh, live bacteria. **Nitragin** has the legume count shown on each can. Billions and billions of little, live, vigorous bacteria working in the soil to give you these increased yields. Handy to use—directions on each can.

Be sure and tell on what seed you want to use inoculation.

**Inoculation Prices—See Next Page**



CLOVER

ALFALFA

These two pictures show the difference between seed which is inoculated before sowing and seed which is uninoculated, proving that seeds need inoculation to give the biggest and most vigorous growth.

# FARM SEED PRICES

Every pound Double Tested.

<b>FODDER and FORAGE CROPS</b>	<b>Per 100 Lbs.</b>	
Sweet Stalked Sorgo, Hegari.....	\$ 3.00	
Early Amber Cane (fodder only).....	2.75	
Mixed Fodder Cane.....	2.50	
Feterita.....	3.75	
White Kaffir.....	3.00	
German Millet.....	2.40	
Yellow Milo Maize.....	3.50	
Grohoma.....	4.00	
<b>SOY BEANS</b>	<b>Per Bu.</b>	
Manchu and Illini.....	\$ 1.35	
Virginia and Early Black Wilson.....	1.55	
<b>FULGHUM OATS (32 lbs. bu.)</b>	<b>.75</b>	
<b>SEED CORN, shelled and graded (56 lbs. per bu.)</b>	<b>3.00</b>	
Krugs Dent	St. Charles Red Cob White	Golden King
Reid's Imp. Yel. Dent	Pride of the North	Iowa Silver Mine
Boone Co. White	Silver King	Minnesota No. 13
May's Yellow Rose.....		3.25
<b>SEED POTATOES, CERTIFIED</b>	<b>Per 100 lbs.</b>	
Early Ohios and Irish Cobblers.....	\$ 2.00	
Katahdin and Warba.....	3.25	

## SEEDING TABLE

SEED	Weight per Bu.	Pounds per Acre	Time of Seeding
Alfalfa.....	60 lbs.	12-20	Mar. to June—Aug., Sept.
Alsike Clover.....	60 lbs.	6-8	Jan. to April—Aug. to Oct.
Blue Grass (Lawns: 1 lb. to 200 sq. ft.).....			
Blue Grass (Pastures).....	14 lbs.	20-35	Feb. to May—Aug. to Oct.
Brome Grass.....	14 lbs.	18-22	Feb. to May—Sept. & Oct.
Cane, Fodder (2-row corn planter).....	50 lbs.	12-20	May to July.
Cane, Fodder (Drilled).....		40-50	
Cane, Fodder (Broadcast).....		50-75	
Corn, Field.....	56 lbs.	7-10	May to July.
Clover, Korean.....	25 lbs.	15-25	Feb. to May.
Clover, Red.....	60 lbs.	8-10	Jan. to Apr.—Aug. to Oct.
Clover, White. (Lawns: 1 lb. 400 sq. ft.).....			
Clover, White.....	60 lbs.	4-6	Feb. to June—Aug. to Oct.
Kaffir Corn, Milo Maize & Feterita (2-row corn planter).....	56 lbs.	10-12	May to July.
Kaffir Corn, Milo Maize & Feterita (Broadcast or Drilled).....		20-30	
Lespedeza, Harbin (Drilled).....	25 lbs.	5-8	Feb. to May.
Lespedeza, Harbin (Broadcast).....		15-25	
Meadow Fescue.....	24 lbs.	25-35	Mar. to May—Aug. to Sept.
Millet, German (Broadcast).....	50 lbs.	40-50	May to July.
Orchard Grass.....	14 lbs.	20-25	Mar. to May—Aug. to Oct.
Pasture Mixture.....	45 lbs.	12-15	Feb. to May—Aug.
Rape, Dwarf Essex.....	50 lbs.	6-10	Mar. to July.
Red Top.....	14 lbs.	8-10	Feb. to June—Aug. to Oct.
Reed Canary Grass.....	14 lbs.	5-8	Mar. to May—Sept. to Nov.
Rye Grass.....	24 lbs.	25-35	Feb. to June—Aug. to Oct.
Sorgo, Atlas & Hegari (2-row corn Planter).....	50 lbs.	10-15	May to July
Sorgo, Atlas & Hegari (Drilled or Broadcast).....		40-50	
Soy Beans (2-row corn planter).....	60 lbs.	12-15	May to Aug.
Soy Beans (Double Rowed).....		25-30	
Soy Beans (Drilled).....		60-75	
Soy Beans (Broadcast).....		100-120	
Sudan Grass.....	50 lbs.	20-35	May to July.
Sweet Clover, Hulled & Scarified.....	60 lbs.	12-20	Feb. to June—Aug. & Sept.
Sweet Clover, Unhulled.....	30 lbs.	20-30	Dec. to Feb.
Timothy.....	45 lbs.	8-12	Feb. to May—Aug. to Oct.
Timothy Mixtures.....	45 lbs.	10-12	Feb. to May—Aug. & Sept.



## INOCULATOR PRICES

When Ordering, Always Specify Name of Seed

Alfalfa, All Clovers

Size	All Postpaid
1/2 bu. ea. ....	\$0.35
1 bu. ea. ....	.60
2 1/2 bu. ea. ....	1.25

LESPEDEZA Unhulled or Hulled

Size	All Postpaid
1 bu. ea. ....	\$0.35
2 bu. ea. ....	.60
5 bu. ea. ....	1.25

Soy Beans, Cow Peas, Lima Beans

Size	All Postpaid
1 bu. ea. ....	\$0.35
2 bu. ea. ....	.60
5 bu. ea. ....	1.25
10 bu. ea. ....	2.00
25 bu. ea. ....	3.75

Garden Size NITRAGIN for Garden Peas, Beans, Sweet Peas, Lima Beans and Lupines Inoculates from 1 oz. to 8 lbs. seed  
Postpaid Price.....25c each

## Horn Lawn or Farm Seed Sower

The back and forth movement of the sowing arm gives even, uniform distribution of seed. Sows 50 acres a day, is easily and quickly adjusted to the correct amount. The sack is of heavy fabric, provided with wide shoulder straps and holds 1 1/2 bushels. Price, prepaid, 90c.

## Cyclone Seeder

The seed is evenly distributed by the rotary throwing blades which are turned by a crank. Holds 1 1/2 bushels. Sows all kinds of grain, grass and clover seed accurately. Has instant shut-off and automatic feed adjustment. Price, \$2.50 each, postpaid, or \$2.25, not prepaid.

## FERTILIZERS

### for Gardens, Lawns and Flowers

Fertilize your lawn, also your garden, flowers, trees and shrubs with our concentrated fertilizers. Use bonemeal for flowers. Half sheep manure and half bonemeal for lawns, 100 lbs. for 2,000 square feet.

<b>NON BURNING BONE-MEAL</b>	<b>WEED FREE SHEEP MANURE</b>
5 lbs. .... \$0.50	5 lbs. .... \$0.40
10 lbs. .... .85	10 lbs. .... .65
25 lbs. .... 1.00	25 lbs. .... .75
50 lbs. .... 1.50	50 lbs. .... 1.25
100 lbs. .... 2.50	100 lbs. .... 2.00

5 and 10 lb. lots POSTPAID. Larger quantities F.O.B. Shenandoah.

## KENTUCKY BLUE GRASS

This is the best known grass of North America. For pastures and for lawns it is unsurpassed. Lawns should have a little blue grass sown on them each year to keep them fresh, healthy and green. Pastures, too, need an abundance of good blue grass seed put on them from time to time in order to keep up their health, vigor, and carrying capacity.

Fortunately, I made arrangements with the largest handlers of blue grass in the country to take over a good share of their extra heavy, new crop, re-cleaned seed of highest germination. That is why I can make you such extremely low, money-saving prices on my Mayworth Quality Kentucky Blue Grass. Priced extremely low at less than one-half last year's price, **\$13<sup>00</sup>** per 100 lbs.

### English Blue Grass

Also Called Meadow Fescue

Throughout the northern part of the United States this is a fine crop. It will grow 3 to 4 feet in height, good for both hay and pasture. On wet land it's especially valuable. Grows fast; keeps down coarse grasses; will stand more tramping than Kentucky Blue Grass or Timothy. It can be pastured closely. Anywhere Timothy does not do well it should be sown. Use **\$8<sup>50</sup>** 15 to 20 pounds per acre, per 100 lbs.

### Rye Grass

Probably the most valuable quick-growing one-year grass. It makes a full crop the same year it is sown. Will grow up to 3 feet in height and under favorable conditions will produce from 2 to 3 tons per acre. It should be in all pasture mixtures and good lawn mixtures to provide quick green growth. I advise using plenty of this seed wherever you want quick results. Sow 20 pounds per acre **\$5<sup>50</sup>** alone, per 100 lbs., only.

## RED TOP

Easiest Grass to Grow

Red Top grows anywhere but thrives on medium to heavy soils. Poor soils grow Red Top even after other grasses fail. On rich land it makes a luxuriant growth. It will grow under dry conditions and is the best grass for wet land or poorly drained soil. Red Top is a great preventer of erosion as it makes a very thick sod.

Every farm needs Red Top growing on it some place. Red Top is also an important part of finer lawn mixtures.

It only takes 6 to 8 pounds per acre. My seed is solid fancy seed that has been hulled and gives you the most for your money. It is strictly new crop and is sold subject to your test and approval. **\$9<sup>00</sup>** per 100 lbs.....**ONLY**

### Orchard Grass

Orchard Grass is an important hay and pasture grass. Makes a thick sod, grows well with Red Clover and other legumes. It is the best grass to grow in shady places. It is nutritious, palatable, and a high producer. It prevents erosion, too. Not a lawn grass. We have the finest, highest quality of new crop, bright, fancy seed and we're offering it at only, **\$13<sup>00</sup>** per 100 lbs.

### White Dutch Clover

This is the well-known White Dutch Clover for pastures and lawns, also known as White Clover. It is the hardiest of all clovers and accommodates itself to all manner of soils. Endures the extreme heat and dryness of summer better than blue grass. Will not tramp out. Prevents the soil from washing away. It adds much to the value of any pasture. Being a perennial, one seeding lasts for many years. Sow 3 to 5 pounds per acre.

**\$15<sup>00</sup>**

per bushel

**\$7<sup>65</sup>**

per half bushel

**\$3<sup>90</sup>**

per fourth bushel

## Dwarf Essex RAPE

### "PIG SALAD" Greatest Annual Hog Feed

One of the cheapest and best pork producers you can sow. Our Rape is the genuine Imported Dwarf Essex, the variety that is preferred in the Farm Belt. You can seed Rape at less than 50c per acre and each acre will put from 10 to 100 times that amount of pork on your hogs at the going market price. Sow your hog lots and waste places to Rape and lay aside a small patch of land for Rape Hog Pasture. **\$5.50** per hundred pounds. Special, 12-lb. bag, enough for 1½ acres.

**\$1<sup>00</sup>**  
Only Postpaid

## REED CANARY GRASS NOW ECONOMICAL TO SOW

Prices are extremely low now on the famous Reed Canary Grass. In the northern part of Iowa, Minnesota, Wisconsin, Illinois and on low ground every place else, the famous Reed Canary Grass is the grass for you to sow. The price has been high. **Now the seeding cost per acre is extremely low.** You can make a seeding as low as \$1.50 per acre and get started growing this wonderful hay crop.

Experience has proven that it pays to prepare a good seed bed for Reed Canary. Sow early in the spring and cover later. Extremely hardy and little danger of loss by freezing after growth has started. It is well adapted for growing on well drained mineral soils. It may be sown with grain crops on land where these crops can be grown to advantage. Use 5 to 8 lbs. per acre.

### Extra Fine for Pasture

Reed Canary starts early in the spring and continues growing later in the fall than any other grasses. Try Reed Canary Grass this year. 5 lbs., **\$1.75**; 10 lbs., **\$3.25**, postpaid. 25 lbs., **\$6.95**; 100 lbs., **\$27.00**. F. O. B. Shenandoah, Iowa. Bags free.

## CRESTED WHEAT GRASS

### Especially Adapted to the Great Plain States

Makes an early, rapid growth and has an extensive root system. Is a hardy, permanent plant comparing favorably with Brome Grass in its yields. Wheat Grass has a tendency to become dormant during hot, dry periods, but suffers no permanent injury, growth being resumed upon the arrival of cool days of autumn, and continues far into the late fall season. It is one of our most promising dry-land grasses for Colorado, Kansas, Nebraska, the Dakotas, and Montana. Sow on a firm seed bed early, without a nurse crop, in close drills covering one-half inch deep, at the rate of 10 to 12 pounds per acre. **\$45.00** per hundred pounds. A 10-lb. bag, **\$4.95**, postpaid.

Many  
Customers say  
"Earl's GREATEST  
BARGAIN"

## HEIDELBERG MIXTURE

Red Clover, Alsike, Alfalfa and Timothy

The finest hay mixture I can offer you. It inoculates the soil for alfalfa seeding later. Many agricultural authorities recommend the sowing of mixed seeds so you will be sure of having a stand of part of them. This combination has proven extremely satisfactory for those who wish an economical seeding but at the same time want a heavy yielding hay crop. As a feed it's very rich in protein. Cheaper than you can mix the seeds yourself. About 30% clovers.

Only **\$3.45** PER BU.

## Lespedeza Sericea "SOUR LAND" ALFALFA

### A New Perennial Lespedeza

A new wonder clover for poor land. Grows everywhere. Thrives on thin soil, sour soil, acid soil and soils where other legumes cannot be grown. It is a great drought resister, too. Makes a heavy growth without lime or fertilizer. Has an enormous root system that enriches the soil. It is a perennial similar to alfalfa in its habits of growth. It is now being grown in Missouri, Kansas, Illinois, Indiana, Ohio, and Southern Iowa. Gives two cuttings of hay in one season, yielding 2 to 4 tons per acre.

Its feeding value is equal to alfalfa. Sericea is relished by all livestock, makes a greater pasture crop. Our Sericea Lespedeza is scarified, just like sweet clover, so it will germinate quickly. You must sow it on a firm seed bed. Sow 10 to 15 pounds per acre broadcast—or solid drilled; or drilled in rows, at the rate of 4 to 5 pounds per acre. Cover seed about one-fourth inch deep. You can sow in the spring, the same as alfalfa or sweet clover, or in the fall during the month of August.

100 lbs.

**\$24.00**

F. O. B.  
Shenandoah

10 lbs. **\$2.95**

Postpaid

5 lbs. **\$1.50**

Postpaid

## MAYWORTH HAY and PASTURE MIXTURE

I believe this is the best and most economical permanent pasture mixture for you to sow. Sow 15 pounds per acre as early as possible, either with or without a nurse crop.

Mayworth is a perfectly balanced combination of legumes and grasses, to produce a quicker permanent hardy growth that will last many years; 50% legumes, including Alfalfa, Alsike, Red Clover, Sweet Clover and the new Korean. Balance of the mixture is Timothy, Kentucky Blue Grass, Rye Grass, Red Top and Meadow Fescue. This splendid mixture is already prepared out of natural mixed lots of clean seed and thus comes a lot cheaper than you buying the seed and mixing it yourself. A bushel weighs 45 pounds but is enough for 3 to 4 acres.

Mayworth Hay and Pasture Mixture will give you two big cuttings of hay each year and abundant pasture besides, or heavy pasture your livestock will have a hard time keeping down throughout the entire season. It builds up the soil because it is over half legumes and clovers. It prepares your land for alfalfa, the greatest protein crop of all, as there is a generous amount of alfalfa seed in this mixture.

It can be sown any time of the year from the first of February to the first of August and starts right out producing hay or pasture for you the first season. I believe the earlier you sow it, though, the better results and thicker stand you will have.

**\$4.65**  
PER BU.

## BROME GRASS

The Great Drought Resisting Grass of  
the Great Plain States

For years Brome Grass has been prominent in the semi-arid regions of Western Nebraska, Kansas, South Dakota, North Dakota, and other states with similar weather conditions. It is a grass that flourishes there and must be a drought resister in order to survive. Brome has wonderful feeding value. It is one of the greatest hay and pasture grasses grown in the West. Farmers in other parts of the Farm Belt have found that Brome Grass is just as good for them. It grows on any and every kind of soil, high or low, rich or poor, and makes a heavy sod. The grass is very nutritious and high in feeding value. Makes a wonderful yield of excellent hay. Our seed is clean and free from bad weeds. Sow about 20 pounds per acre with a hand seeder.

Brome is a great addition to any hay and pasture mixture seeding but because of the size of the seed, (Brome is quite large and light); it must be seeded separately, so order your Brome Grass when you order your mixed pasture and hay grasses.

### Starts Early, Grows Late

You will notice Bromes in a pasture greening up earlier than most of the grasses and late in the fall it's still producing for you. It is a perennial grass that's easy to grow. Sow either in the spring or fall on a good seed bed. Harrow to cover well but not too deep. Prices are only about one-half what they were a year ago, so I advise you to get your orders in to me right away if you want to be sure of getting this seed. We had to turn down our customers last spring when we ran out.

Per hundred pounds Only **\$14.50**

# SEED POTATOES

**RED RIVER VALLEY GROWN**  
*Highest Quality*

Red River Minnesota and Dakota grown seed potatoes are the finest in the country. They produce larger yields and a better quality potato. Farmers in the southern half of the Farm Belt should plant nothing but Red River Valley grown seed stock. The seed I offer you is clean, thrifty and selected from extra heavy yielding fields. Last year, those of you who had the best quality of Northern grown seed such as I offer, raised good potatoes and those who planted poor home grown seed had indifferent yields and poor success.

## CERTIFIED SEED POTATOES

Certified stock means that these potatoes come sealed in the 100 pound bag. They are free from disease; have been inspected and guaranteed that they come from a section of Minnesota or North Dakota along the Red River and is the pure quill seed stock.

**EARLY OHIO.** This is the earliest and best, most popular potato variety grown in the Central West today. It is a good keeper; popular with the home cooks and one that you can depend on year after year, to give you heavy yields. Shallow eyes, pink skin, white flesh, no waste in peeling. These mature about two weeks earlier than southern grown seed.

**IRISH COBBLER.** The Irish Cobbler is a white, smooth skinned potato, shallow eyes and is good for baking, cooks dry, and mealy; is a wonderful keeper. The plant is a thrifty, vigorous grower. Matures only 3 to 6 days after the Early Ohio.

Above Varieties **\$1.20** Per Bu. **\$2.00** Per 100 Lb. Bag

**NEW EARLY WARBA.** The new earliest of all potatoes originated in Minnesota. Very high yield. Tubers short, round and blocky with a creamy white skin and shallow pink eyes. Disease resistant. A wonderful home and market potato. A week or ten days earlier than Early Ohio.

### CERTIFIED SEED

**85c** per 25 lb. sack | **100 lb. bag \$3.25**



The Newest and Best **POTATO—** Introduced by the U. S. Government

## KATAHDIN

**85c** Per 25 lb.

Many potato raisers throughout the Farm Belt tried a peck or two of the Katahdin last year. Those who raised it were certainly impressed by its quality and heavy yield.

Mrs. J. S. Hamm of Shambaugh, Iowa, had a fine exhibit of Katahdin Potatoes at our Horticultural Show. They yielded at the rate of 350 bushels per acre; ran very uniform in size and are a wonderful keeping variety. The characteristic of the Katahdin is its uniform, oblong shape; very, very shallow eyes; light firm skin and solid, all white, mealy flesh. It is a real prize winner. Housewives like it because there is no waste in peeling.

Stocks of genuine certified Katahdin Potatoes are scarce. I have taken the entire output of one grower. Put up in 25 lb. sacks, with the certified tag on each sack, as long as they last, I offer them at **85c** per 25 lb. sack, bags free. Order early as the supply is limited.

**\$3.25**

Per 100 Lb. Bag



## FULGHUM OATS

**Extra Early, High Yielding Variety**

As more and more farmers try Fulghum, they are discarding other varieties of early oats and using it exclusively. A few years ago, M. A. McNeal of Watson, Missouri, got me to try Fulghum and I placed Fulghum with several of my customers for them to report to me what it did. The results were almost beyond belief. If Fulghum is planted early, either in February or early March, it will mature early and give yields as high as 100 to 120 bushels per acre on good corn land. It is adapted to Northeast Kansas, Northern Missouri, Southern Iowa and Southeastern Nebraska. Try it—raise a few acres of this remarkable oat this year.

Per Bu. **75c** 10 Bushels **73c** Per Bu. 25 Bushels **70c** Per Bu.

## COSSACK ALFALFA

Mayworth Quality

The extra hardy Alfalfa that came from Siberia. Equally as hardy as Grimm. I think it does better on higher ground than the Grimm. Variegated blossoms and heavy stooling crowns. Makes an abundance of fine leafy hay. Put up in the sealed bushel bag.

Per Bu. only **\$12.50**

## GROHOMA

One of the newer and better varieties of grain sorghum, is Grohoma. Stems are moderately juicy and slightly sweet. Its value is in its immense yields—it sometimes produces 100 bushels of grain. It grows four to six feet tall; heads are 15 to 18 inches in length and makes it a very palatable livestock feed.

Per 100 lbs. **\$4.00**

# CROPS of Special VALUE



## Earl's Annual Hog Pasture Mixture

Many farmers require a mixed seeding for their hog lots and hog pastures. We have developed our Annual Hog Pasture Mixture for those who want the best combination of annuals at the lowest price. Earl's Hog Pasture Mixture is a quick-growing combination of Rape, Sudan, Millet, etc. Your hogs will put on pork at all seasons of the year if pastured on this mixture. Sow it in the waste places, hog lot, and your hog pasture.

**\$1.50**  
Per Bu.

## HARBIN LESPEDEZA

Harbin is an early strain of Korean which shows a great deal of promise in the northern states. Harbin has been successfully grown in Minnesota, Wisconsin, and even Southern Canada. It is primarily a pasture crop and, of course, is a legume so it builds up the soil at the same time it is providing lots of rich, nutritious pasture. Harbin, same as Korean, shows no tendency to bloat livestock. Harbin is an annual that sprouts, produces a crop, reseeds, and dies all in the same year. The reseeding keeps the crop coming on year after year where it is grown. Sow 5 pounds to the acre drilled in rows for seed cultivation, and a half bushel to the acre for abundant pasture.

5 lbs., \$2.00 } Post-  
10 lbs., \$3.75 } paid | Bushel (25 lbs.) . . . **\$8.75**

## HEGARI

Hegari is an annual crop used for its grain and silage and fodder properties. It should not be sown until the weather is warm. It is also known as "Sweet Sorgho," having a sweet stalk that is relished by livestock. Hegari is a white seeded grain sorghum of which the seed is very similar to Atlas or White Kaffir. It produces very heavy yields of grain, fodder and ensilage under favorable conditions.

It has yielded under average conditions, 10 to 12 tons of silage per acre, 6 to 8 tons of dry fodder per acre, 40 to 60 bushels of threshed grain per acre and being drought resistant, grows in dry, arid territories, too. It matures a trifle earlier than Atlas Sorgho. It can be fed as threshed grain, headed grain, dry fodder, or ensilage. Grain makes a splendid feed for chickens. Use 12 to 15 pounds in a two-row corn planter, or 25 to 30 pounds per acre when splitting the corn rows with a corn planter. Drill with an eight-inch grain drill, about 40 pounds per acre, and broadcast, 50 to 75, per 100 lbs. . . . . . **\$3.00**

## FODDER CANE

Cane is one of our greatest forage crops. It should be sown a little later than corn. The thicker the seeding, the finer the stem and the better feed. Ten pounds is generally the amount drilled in with a two-row corn planter per acre, and 40 pounds drilled with a grain drill, and 50 to 75 pounds broadcast. Fodder Canes are very important in the western part of the Farm Belt on account of the great amount of feed which they give in a very short time. We have Early Mixed Fodder Cane for you. Per 100 lbs. only. . . . . . **\$2.50**

## Feterita

Feterita has rather slender stems, five to seven feet high, slightly juicy and sweet. The grains are bluish-white; is used primarily for a grain crop, matures about one week before Milo. Per 100 lbs. . . . . . **\$3.75**

## Yellow Milo

Milo seems to be practically disease free. The yield is generally from 25 to 30 bushels to the acre. The stems are stout, rather pithy; makes wonderful chicken feed as well as feed for other livestock. Per 100 lbs. . . . . . **\$3.50**

## White Kaffir

The earliest maturing Kaffir. Yields of 75 bushels to the acre have been reported of this variety. Sow same amount per acre as Cane. Cultivated row growing is best. Per 100 lbs. . . . . . **\$3.00**

## German Millet

In Asia this Millet is used for human food. In this country, it's one of our most important hay crops. It grows under extremely difficult conditions, matures early, and is drought resisting. The Golden or German Type Millet is a selected type which gives extra good yields of both feed and seed. Sow the seed after the ground warms up. Can probably be seeded as late as the middle of July in this territory. Under favorable circumstances a hay yield can be taken 40 to 50 days after seeding. We recommend 50 pounds to the acre broadcast or drilled. Relished by cattle and sheep, or if cut just after blooming, will make good horse feed, too, if fed in connection with other roughage. Per 100 lbs. . . . . . **\$2.40**

# Earl's HURRY-UP PASTURE MIXTURE

Hurry-Up is blended to meet the requirements of those who must have pasture quickly the first year and who want something that carries over into the second year, too. Hurry-Up is made up of one-half Rye Grass, a very nutritious and palatable grass which lasts one year, plus one-fourth Sweet Clover, and one-fourth Korean. The Korean sprouts and gives abundant growth the first year and in the southern half of the Farm Belt carries over until the second year and actually thickens up the second year in good shape. The Sweet Clover is a biennial which grows abundantly and vigorously the first year and provides heavy pasturing the second year, too. Sow about 20 pounds to the acre early in the spring. It should be disced in, setting the disc knives quite straight where you are thickening up an old pasture or reseeding partial stands. By itself for a new seeding, sow on a firm, well prepared seed bed.

**\$1.50**  
Per Bu.  
of 25 lbs.

# SEED CORN

# LOW PRICES

## My Seed Corn GUARANTEE

I guarantee my seed corn to germinate. No. 1 quality seed, ear selected, stock butted and tipped, shelled and carefully graded. Test it yourself. You are the judge and if not entirely satisfied send it back for full refund.

Sacks free. F. O. B. Shenandoah. See pink price sheet for prices.

The seed corn situation is more critical now than it has been for several years. Most of the late planted corn never matured last year and seed could not be saved from it. Throughout the North Central states, wet, rainy weather in October left the corn with the highest moisture content in years.

Fortunately we were able to secure corn that had been carefully dried out and selected before the early freezes and that had been planted early and was early matured.

All the seed corn I offer you this year is selected from fields that were big profit makers for their owners.

Do not figure seed corn on the basis of price per bushel, but think of seed corn on the basis of how much does it cost per acre and how much will it yield per acre. The extra yield that you get from seed corn properly selected and properly taken care of is worth more than the few cents additional per acre that good seed corn costs. You are not interested in corn for show purposes but you are interested in more bushels of good corn per acre. We help you produce corn at a lower cost per bushel. Try the Yellow Rose.

### How We Prepare Our Corn

My corn is selected from heavy producing strains that are true to type. After being selected in the field, it is brought in and dried, then carefully tipped, butted and shelled. All the small and weak kernels, if any, are taken out so that every kernel left has strong germination. Nothing but finest, first grade seed stock is offered you. We have seed corn suitable for northern Iowa, Minnesota and South Dakota, as well as Missouri, Iowa, Nebraska and Illinois and other states.

My Mayworth Seed Corn is all guaranteed to germinate 90%, most of it runs 94% to 96%. It is absolutely No. 1 quality stock, carefully graded, put up in bags furnished free of charge. Write for samples and prices.



### Krug's High Yielding Dent

Krug's ranks right along with Yellow Rose but is a trifle earlier. Those who have planted Krug's Dent know that it outyields most other varieties. The ears are somewhat smaller and smoother than ordinary Reid's Yellow Dent and there are many on each stalk. The ears are exceptionally firm and solid with a deep kernel. \$3.00 per bu.

### Improved Reid's Yellow Dent

The old standby throughout the Corn Belt. Our stock is carefully selected for uniform, even maturity. Deep kernels, slightly rough. Matures in 110 days at Shenandoah. \$3.00 per bu.

### St. Charles (Red Cob, White)

Pure white deepkerneled corn with a small red cob. A vigorous grower. Good for both shucking out and ensilage. Our stock was grown near Shenandoah so it will normally mature in southern Iowa very nicely. \$3.00 per bu.

### Boone County White

Also called Johnson County White. A large type white variety, ears 11 inches long, carrying eighteen to twenty-two rows of kernels. A big corn and a big yielder. 110-120 days. \$3.00 per bu.

### Iowa Silver Mine

The most widely known white corn, popular in eastern Nebraska, grows big and matures early on rich soil yet gives good results on thinner land. Matures in about 100 days. \$3.00 per bu.

**May's** **YELLOW ROSE**

**\$ 3<sup>25</sup> PER BU.**

Those of you who have been following our Seed Corn efforts during the past ten years know that I have featured Yellow Rose. It has been selected and bred up for a good many years. The color is a beautiful golden, and the body of the kernel having a deeper rose yellow color. Matures in about 110 days and dries out wonderfully with maturity. Has a very small cob so that even in wet years the corn matures and dries out perfectly here at Shenandoah.

Here are its good points: High yields per acre, heavy percentage of shelled corn, beautiful golden yellow (as beautiful as the Yellow Rose) small cob so that the corn matures and dries out even in bad seasons. I sincerely recommend this corn to you and I am confident if you want to try a new strain of heavy yielding corn, you will find May's Yellow Rose will give you improved quality and yield.



# EARL MAY'S

OCEAN  
FRESH

# FISH

FRESH  
FROZEN

## GUARANTEED TO REACH YOU FRESH FROZEN

Who is there who doesn't like tasty, delicious, salt water, ocean fresh fish? Here's your chance to get these ocean fresh, frozen fish delivered to your door by parcel post.

### 5-lb. Box DRESSED HADDOCK

Five pounds of the finest recleaned white-meated, flaky, delicious Fresh Haddock, only ..... **\$1.00** Post Paid

### COMBINATION BOX—3 Kinds 15 pounds, 3 varieties

You get 5 pounds each of the highest-quality Dressed Haddock, Pollock Fillets, and Ocean Tenderloin. Ocean Tenderloin is a very delicious, different tasting fish I know you will enjoy. All 3 kinds, a total 15 pounds of fish, only ..... **\$2.19** Post Paid

### DRESSED HADDOCK BOX

15 pounds

A 15-lb. box of thoroughly cleaned, fresh frozen, white-meated, tasty, delicious, Fresh Haddock Fish, Rich in Iodine Only ..... **\$2.29** Post Paid

### 5-lb. Box POLLOCK FILLETS

Many think the Pollock has a superior flavor to the Haddock. These Pollock Fillets, or steaks, are tasty, tender, delicious, and melt in your mouth. 5 lbs., only ..... **\$1.00** Post Paid

Thousands of my customers have marvelled at the freshness and high quality of these fine ocean fresh fish and splendid fresh oysters at my stores. Now you can have this same wonderful quality delivered to you by parcel post. I guarantee these fish to be frozen, fresh, and in perfect condition when received by you.

I deliver these prepaid to your door by parcel post anywhere in Iowa, South Dakota, Nebraska, Missouri, Kansas; in Minnesota as far north as Minneapolis and St. Paul, and 50 miles into western Illinois. Order quickly.

## EARL E. MAY SEED COMPANY

TUNE IN TO  
KMA DAILY

EARL E. MAY, President  
Shenandoah, Iowa

TUNE IN TO  
KMA DAILY



# 90 DAY CORN

# SUDAN GRASS

**MINNESOTA 13.** Early yellow corn popular in Minnesota, Dakota, Iowa, etc. Excellent for hogging down or feeding. 90 days.

**GOLDEN KING.** Ripens in 90 to 100 days. Early, yet main crop and is adapted to northern Iowa, northern Nebraska and southern Minnesota, also, other sections having similar growing seasons. The most remarkable yielder, being rather large for an early variety and from 15 to 20 rows on each ear. Kernels are good depth, stalks are medium height and well rooted.

**PRIDE OF THE NORTH.** (90 day Yellow.) This well known variety is good for hogging down or for forage. It matures two weeks earlier than any of the other yellow dents except Golden King.

**SILVER KING.** Or Wisconsin No. 7. Early white variety, good medium size, deep grained and an extremely heavy yielder. Silver King is the best early maturing white corn.

**ABOVE VARIETIES, \$3.00 PER BU.**

"20 acres of Sudan Grass will make more pasture during the hot summer months than 640 acres of native grass."—U. S. D. A. Bulletin.

Sudan is a great annual hay and pasture crop. As a hay crop, will yield as much as 10 tons per acre under favorable conditions. One of our greatest drought-resisting crops. In dry weather sow Sudan and get tremendous yields of hay and pasture.

Sow Sudan after the ground warms up in the spring. Put on from 25 to 35 pounds per acre. Get it covered from one-half inch to an inch in depth. Figure on each acre of Sudan carrying 3,000 pounds of livestock all summer long. Sudan gives you two big cuttings of hay per season. Relished by all kinds of livestock, cattle, horses, hogs, sheep, and even chickens.

The Sudan Grass seed crop last fall was a big one. However, some of the seed was of inferior quality and poor germination. We passed this kind of seed up and are able to offer you only the finest quality of new crop seed, highest purity and germination. The lowest price in four years on Sudan Grass.

**\$3.25** per Hundred Pounds  
Order Quick

*A Money  
Maker*

# SOY BEANS

The Soy Bean is  
the most productive of  
any legume for this territory.

Makes a wonderful hay of high protein content. The seed is good for human food, particularly for diabetics. Ground Soy Beans make wonderful hog feed and, of course, there is always a market for Soy Beans for oil crushing purposes. The manufactured articles which can be made out of pressed Soy Beans are very, very numerous and some factories have already been established for the purpose of using Soy Beans commercially.

Soy Beans are very easy to grow. Even on poor soil they make a satisfactory growth, provided they are inoculated. The seed bed should be well prepared by plowing and working with a disc harrow until a firm seed bed with about two or three inches loose and mellow soil is secured. It is best after preparing the ground to let it lie fallow for two or three weeks and then give another good discing and harrowing so as to have the land free from weeds.

When the beans are about four inches high, it is advisable to harrow again to destroy any further weed growth. Drilling with a two-row corn planter requires about 15 pounds of seed per acre; splitting the corn rows, one-half bushel to the acre, and drilled with a grain drill, about one bushel to one

bushel and a peck. If a broadcast seeding is made, we recommend one and one-half bushels to two bushels per acre.

Always inoculate a seeding of Soy Beans. You will have increased vigor of growth and inoculation helps build up the soil and the protein content of the beans and hay. Hogs eat Soy Beans readily.

Soy Beans may be cut for hay any time after the setting of leaves until they begin to turn yellow. Plant at corn planting time.

**MANCHU.** This is the earliest and best main crop yellow Soy Bean. Yellow Soy Beans are best for hogging down, for oil and for feed mixing. This is the best all-around type of all. A good hay bean, too. Matures beans in 105 days. \$1.35 per bu.

**ILLINI.** The smallest yellow Soy Bean. Use about one-fourth less seed per acre when sowing this variety; especially recommended for hay. Matures beans in 110 days. \$1.35 per bu.

**EARLY BLACK WILSON.** One of the finest hay beans. Tall growing; heavy foliage producer. Matures beans in about 110 to 115 days. \$1.55 per bu.

**VIRGINIA.** One of the highest yielding hay beans. Grows tall and leafy. The seed is brown. Matures beans in 120 to 125 days. \$1.55 per bu.

## Feeding Value of Soybean Hay

Under tests, dairy cows fed Soy Bean straw alone produced 12 per cent more milk and 14 per cent more butterfat than corn stover. It is extremely rich in protein. Practically equals Alfalfa.

Soy Beans also may be very satisfactorily used for silage, the best results being obtained when mixed with corn and sorghums. It is best to grow the beans separate and mix them while cutting for the silo. Soy Beans may be planted with corn in the same hill or in alternate rows. In this manner, they may be hogged off or harvested for silage.

# SWEET CLOVER the WONDER CROP

For Fertilizing  
pasture and  
**MONEY  
MAKING**

You know that all agricultural authorities universally recommend the increased use of sweet clover on farms throughout the country.

## Most Productive Legume Crop Known

There is no other crop that gives such tremendous amounts of high protein pasture and hay over such a wide range of soil and climatic conditions. It grows with equal vigor and success in such widely scattered states as Iowa, Nebraska, Kansas, Missouri, Dakota, Minnesota, Kentucky, New York and many others.

Have you a field that is run down, thin, or in poor physical condition? You can build up soil and top soil with my Double Scarified Mayworth Quality Sweet Clover.

## Greatest Legume Pasture

Sweet Clover will carry more cattle to the acre than any other legume crop. A good stand of my Sweet Clover will support two or more head of cattle for each acre of land. It is four or five times as productive as blue grass. Sweet Clover starts early in the spring. Put your livestock on it as soon as it has a growth of five or six inches. Your livestock simply can't keep ahead of it. It is better to graze Sweet Clover quite closely than it is to let it grow up big and coarse. It's good for cattle, horses, sheep, hogs and every other kind of livestock.

## Method of Sowing

Most people sow Sweet Clover early in the spring with oats, spring wheat, barley or flax or on winter wheat. Fifteen pounds per acre is ordinarily sown with a common broadcast seeder and dragged, harrowed or rolled in. Along with the other legumes, Sweet Clover likes best a compact, fine seed bed.

If you wish to sow unhulled seed on the winter frozen ground, sow 20 pounds per acre during the months of December, January or February.

## Unhulled White Blossom Sweet Clover

Sow Sweet Clover Nature's way during the winter right on the snow or frozen ground. The freezing and thawing prepares the seed for quick growth in the spring and covers the seed about the right depth.

### Extra Nice Seed

My Unhulled seed is clean, top-quality throughout. The supply is limited so order early and sow early. Special price,

<b>\$1.50</b>	Per Bushel of 30 Pounds	Yellow Unhulled, Per Bu.	<b>\$1.60</b>
---------------	-------------------------------	--------------------------------	---------------

## MAYWORTH White Blossom Sweet Clover

### Giant Biennial White ONLY

This is the most popular seed of all. I consider it a privilege to offer you this remarkable value in double scarified seed of high purity and strong germination. You make a big saving on every bushel you buy now at this low price. It is true economy and genuine thrift to buy the finest quality of seed. Only **\$3.50 PER BU., BAGS FREE.**

**\$3.50**  
Per Bu.

BAGS  
FREE

## LOT "SILVER" White Blossom Sweet Clover

A big bargain in double scarified and double re-cleaned White Blossom Sweet Clover. Many dealers would offer this lot as their best. Possibly you couldn't tell the difference between this lot and our Mayworth Extra Fancy Quality. The extra saving in the price, however, is passed right along to you. Save \$1.00 to \$1.50 per bushel by ordering Lot "Silver." Remember, I guarantee that you will be satisfied with this seed or no trade. Price, PER. BU., BAGS FREE.....

**\$3.25**

## LOT "BARGAIN"

A real buy in Sweet Clover for those who purchase seeds on the basis of results rather than appearance. The seed is well re-cleaned, scarified, and the germination is guaranteed satisfactory. Not as nice looking as our best grade as the seed runs a little smaller and the color is not so uniform. It is tested and labeled under the rigid requirements of the Iowa Seed Law and is tested for satisfactory purity and germination. It's a real bargain at this low price. PER BU.....

**\$2.70**

## MAYWORTH YELLOW Blossom Sweet Clover LOT "GOLD"

Many farmers prefer the Yellow Blossom Biennial Sweet Clover because of its finer stems and more leafy growth. Doesn't grow as tall as the White Blossom but spreads more so you get just as much feed per acre. This is a very fine dependable lot of seed. I have only three cars to offer you at this price. When this lot is gone, it will probably be all we can secure as this is the best quality double scarified seed. Special price, PER BU., BAGS FREE.....ONLY

**\$3.85**

## GRUNDY COUNTY Dwarf White Sweet Clover

Considered by many the best sweet clover for hay, pasture and soil building. Very similar to the Yellow Blossom except it branches even more and possibly carries more leaves.

My buyers in the sweet clover producing districts this fall selected this fine lot of seed. In my opinion this is the best value, quality and price considered, that we can possibly offer. Big, plump, even, uniform sized berries, wonderfully colored and matured well. Practically every seed will grow as it is double scarified like the rest of our sweet clovers. Free from bad weeds, of course. PER BU. ....

**\$3.85**