

Historic, archived document

Do not assume content reflects current scientific knowledge, policies, or practices.

62.61
E A S T E R
A P R I L 21 S T

Spring, 1935

M O T H E R ' S D A Y
M A Y 12 T H

FOUNDED 1897

S. S. Skidelsky & Co.

37-39 West 28th Street — New York, N. Y.
Phones BOgardus 4-6976-6977

HIGHEST QUALITY
BULBS • PLANTS
SEED SPECIALTIES
AND SUNDRIES

LILIES — ONE OF OUR SPECIALTIES



LILIUM HARRISI FOR THANKSGIVING

Confidence . . .

The priceless treasure—only an established reputation can secure. That we are proud possessors of the confidence of our public is amply proved by our growing number of friends.

For thirty-eight years S. S. Skidelsky & Co. has consistently striven to win and to hold that confidence.

To insure our future success, our past record must be sustained or bettered.

Gratitude for your confidence in this organization can dictate no other course.

No "Call" for it? Maybe they don't know what you have. Don't go to "Seed" waiting for takers. "Fertilize" your sales-staff! "Cultivate" your sluggish accounts! Make business! Yours too will bloom if you put the right stuff into it.

START RIGHT. BUY QUALITY BULBS, PLANTS, SEEDS

From

S. S. SKIDELSKY & CO.

Per SIDNEY H. SKIDELL

OUR TERMS

All bills are subject to 2 per cent discount within ten days from invoice date. Sixty days net. Sight draft, plus interest, thereafter.

Shipments are forwarded by best carrier, in our judgment at time of delivery, unless otherwise specified by customer.

First-class stock is carefully packed when shipment is made, and we hold good order receipt from the transportation company. Our responsibility ceases thereafter. If the stock reaches you in bad condition, notify agent and bring claim against the delivery company for damage caused by their negligence, as no allowance for this cause can or will be made by us.

We endeavor to send out only the best quality of **Bulbs, Plants, Seeds** and **Cuttings**, but under no circumstances do we guarantee results of crops. If goods are not acceptable under these conditions, they must be returned to us at once.

Bulbs, whether shipped on arrival or placed in cold storage for later delivery, may be examined at time of arrival if desired, but no claims will be entertained at a later date.

As to all items other than **Bulbs**, claims must be made within five days after receipt or they cannot be recognized.

S.S.S. SEED SPECIALTIES

THE MOST SUCCESSFUL OF THE NEWER NOVELTIES AND NECESSITIES FOR THE SUCCESSFUL FLORIST

Our seed isn't the cheapest—the best never is. Don't let cheap prices fool you. Our packets are full sized. Save money on your seed bill. Send cash with order and deduct 5 per cent.

SEED INSURANCE

FIRST—Buy good seed. Then, use Formaldehyde Dust as insurance to get it all up and keep it up. Absolutely and harmlessly controls damping-off of seedlings. Directions with order. 5 lbs. \$2, 25-lb. drums \$5.50, 50-lb. drum \$9.

AMARANTHUS

Burbank's Molten Fire. An exceptionally showy plant. Pkt. 50c.,
1/4 oz. \$1.00.

ANTIRRHINUM (Snapdragon)

Where price is \$1.00 per packet, we offer 3 for \$2.50, 5 for \$3.50

Where price is \$1.50 per packet, we offer 3 for \$4.00, 5 for \$6.50

Where price is \$2.00 per packet, we offer 3 for \$5.00, 5 for \$7.50

	Pkt.
Allman's Pink. Briarcliff color.....	\$1.00
Afterglow. Beautiful bronze.....	1.00
Bertha Baur. Clear orchid.....	2.00
Cheviot Maid. Fine Winter blooming pink.....	1.00
Cheviot Maid Supreme. Darker and taller than its parent....	1.00
New Cincinnati. Rose pink, tall.....	1.50
Ceylon Court. Excellent yellow.....	1.00
Coate's Yellow Perfection. Exhibition Winter bloomer.....	1.50
Dawn. Winter blooming light bronze.....	1.00
Emily (Improved Golden Pink Queen).	1.00
Empress. Red.....	1.00
Happiness. Immense pink.....	1.00
Helen. Light bronze.....	1.00
Judd's Early Columbia	1.00
Judd's Early Premier	1.00
Lucky Strike. White, excellent Winter bloomer.....	1.50
Mrs. W. W. Thomson. Winter pink.....	1.00
New Deal. Very early, fragrant, golden bronze.....	2.00
Nicholson's Yellow. Striking, bright yellow.....	1.50
Penn-Orange. Tangerine.....	1.00
Prosperity. White, excellent Winter bloomer.....	2.00
Philadelphia Pink75
Radiance. Most prolific and earliest Winter pink.....	1.50
Roman Gold. Light copper.....	1.00
Rose Orange. Burnt orange, prolific all Winter.....	1.00
Rose Queen. Dark pink, Winter bloomer.....	1.00
Sonny. Dark seedling of Cheviot Maid.....	1.50
Sunburst Improved	1.00
Sunshine. Excellent yellow.....	1.00
Sun Tan. Rosy tan, yellow tip.....	1.00
Terry's Surprise. Bright exhibition pink.....	1.50
Velvet Beauty. Rich red.....	1.50
White Rock	1.00
Winter Helen. Lovely salmon pink.....	1.00

ASPARAGUS

	1000	5000	10,000
Plumosus nanus (Greenhouse grown).....	\$2.50	\$9.50	\$17.00
Plumosus nanus (Lathhouse grown).....	1.25	5.00	9.00
Sprengeri	1.00	4.50	8.00

ASTERS

See page 2



ANTIRRHINUM

BEGONIA

	Pkt.
Carmen (Gracilis). Dark bronze foliage, bright rose flowers. 1/64 oz. \$2.00	\$1.00
Christmas Cheer (Semperflorens). Crimson..	1/32 oz. \$2.50, 1.00
Erfordi. Rosy carmine.....	1/32 oz. \$2.00, .50
Luminosa (Gracilis). Red.....	1/32 oz. \$2.00, .50
Prima Donna. Carmine rose.....	1/32 oz. \$3.50, 1.00

BROWALLIA

	Pkt.
Speciosa Major. Flowers the size and color of single Violets. For pot plants and bedding. Sow early Fall for indoor bloom- ing, and February and later for outdoor work.	1/32 oz. \$1.25 \$0.50

CANDYTUFT

	Pkt.	Oz.
Giant Hyacinth-flowered White.	\$0.25	\$0.75
Umbellata. Pink, rose, lavender.....	.15	.40

PRICES SUBJECT TO CHANGE WITHOUT NOTICE

S. S. SKIDELSKY & CO.

S. S. S. SEED SPECIALTIES



ASTER, AMERICAN BEAUTY

ASTERS

S. S. S. FLORIST SPECIAL WILT-RESISTANT STRAINS

Pkt. ¼ oz. Oz.

CALIFORNIA GIANT CURLED AND INTER-LACED. An ideal cut flower Aster. This new variety produces immense flowers on 20 to 24 in. stems without disbudding.			
Imperial. The same color as Heart of France. Intense brilliant red with bright yellow center. Wilt-resistant.	\$0.50	\$0.85	\$2.50
Apple Blossom, Rose, Light Blue, Dark Purple, White, Mixed (Untreated)	.35	.75	2.00
SUNSHINE, New California Giant Improved. Some flowers have twisted and some have quilled petals. All have a cushion center of lovely yellow, giving them a two-toned effect. A fine novelty cut flower.			
White, Enehantress Pink, Lavender, Purple, Deep Rose, Mixed (Untreated)	.50	1.50	5.00
QUEEN OF THE MARKET. Standard early Aster of branching habit, blooming in July.			
Blush Pink, Crimson, Scarlet, Dark Blue, White	.25	.50	1.50
Mixed	.25	.35	1.25
EARLY ROYAL BRANCHING. Large blooms, following Queen of the Market.			
Shell Pink, Deep Rose, Azure Blue, Lavender, Purple, White, Mixed	.25	.50	1.50
AMERICAN BEAUTY. An Aster of real merit for late crop. Large, double flowers, long, heavy stems. September until frost.			
Shell Pink, Carmine, Crimson, Purple, White	.35	.75	2.50
Mixed	.30	.65	2.25
GIANT LATE AMERICAN BRANCHING. The standby as the standard late crop. A great improvement over the original by continued selection.			
Dark Lavender, Purple, Shell Pink, Deep Silvery Rose, White	.25	.50	1.50
Sensation (scarlet)	.40	.75	2.25
Mixed	.25	.40	1.25

CALCEOLARIA

One of our leading specialties. The foremost Calceolaria growers use our seed. (Names on request).

Hybrida grandiflora	\$1.00
Hybrida multiflora nana. Smaller flowers than Grandiflora and dwarf, but the amount is unsurpassed and the colors more brilliant	1.00
Multiflora nana, Golden Tiger. Golden yellow flowers, freckled with dark brown dots.	1.00

CALENDULA

Pkt. ¼ oz. Oz.

Ball's Apricot. Gold improved orange	\$0.50	\$0.75	\$2.50
Masterpiece. Long-stemmed orange with dark center	.50	.75	2.50
2 ozs. of above \$4.00			
Sunshine, or Chrysantha. Clear light yellow, globular form	.35	.65	2.00
Sensation. Bright orange, scarlet sheen	.35	.65	2.00

CELOSIA SPICATA

Grows 3 feet. Freely produces slender silver plume 4 inches long, ½ inch in diameter, with bright carmine tip. Pkt. 50c.

CENTAUREA

Pkt. Oz.

Cyanus, Double. Blue, rose	\$0.15	\$0.40
Gymnocarpa (Dusty-miller)	.15	.50

CINERARIA

Pkt. Oz.

Cremer's Prize Strain. The finest yet produced. Small flowering, small foliage that is wiltproof, tremendous head of flowers of the brightest colors like the Grandiflora	.1/32 oz. \$4.50,	1/16 oz. \$8.00,	1.50
Hybrida grandiflora. Semi-dwarf mixed			1.00
Multiflora nana (Potsdam)			1.00

June 18, 1934.

The Cineraria and Calceolaria seed that we had from you last year were the finest that we have ever grown.

G. VAN BOCHOVE & BRO., Kalamazoo, Mich.



CALCEOLARIA

PRICES SUBJECT TO CHANGE WITHOUT NOTICE

S. S. SKIDELSKY & CO.

S. S. S. SEED SPECIALTIES

CLARKIA ELEGANS

	Pkt.	Oz.
Vesuvius. Fiery scarlet and rose	\$0.15	\$0.60

COSMOS

	Pkt.	Oz.
Double Extra Early Flowering, Crested	\$0.35	\$2.00
Single Mammoth, Early Flowering15	.40
Giant Lady Lenox. Late15	.25

All above in Pink, White, Crimson, or Mixed

CYCLAMEN SEED (Binnewies Strain)

We are still maintaining our reputation as the largest distributor of the best seed obtainable.

	100	1000
Salmon Color, Dark (Perle of Zehlendorf or Glory of Wandsbek)	\$1.50	\$12.00
Salmon Color, Light (Rose of Zehlendorf or Rose of Wandsbek)	1.50	12.00
Bonfire. Brilliant salmon	2.00	15.00
Salmon Scarlet (America Improved)	2.00	16.00
Orange Beauty. Orange vermilion, very fine	2.00	16.00
Pink Pearl. Novelty salmon pink	2.00	16.00
Mozart	2.25	16.50
Salmon Rose Improved	1.50	12.00
New Ruffled	1.50	12.00
Rococo	1.25	11.00
Saffron Red	1.25	11.00
Saffron Red, Silver Edged	1.25	11.00
Lavender, Bright Red, Dark Red, Pure Rose, White with Carmine Eye, Pure White, Rose of Marienthal (soft rose with carmine eye). Each	1.25	10.00

250 of a variety at 1000 rate. Write for quantity price on 5000 or more

DAHLIA

	Pkt.	1/4 oz.	Oz.
New Coltness Hybrids. Excellent for pot plants, bedding, baskets, etc. Dwarf single flowers of the most brilliant shades; bloom a few months after sowing	\$0.50	\$0.85	\$2.50



CREMER'S PRIZE STRAIN CINERARIAS (See page 2)



CYCLAMEN

DAISY (Bellis Perennis)

	Pkt.	Oz.
Longfellow. Pink	\$0.25	\$1.50
Snowball25	1.50
Monstroza. Pink, white, red and mixed35	2.00
Shasta Daisy, Alaska25	1.00

DELPHINIUM

	Pkt.	Oz.
Belladonna. Light turquoise blue. This strain is far superior to the usual	\$0.50	\$2.00
Bellamosum. Dark blue50	2.00
Wrexham Hollyhock Strain. Best of the Giant Hybrids	1.00	6.00

DIDISCUS

	Pkt.	1/4 oz.	Oz.
Coerulea (Blue Laceflower)	\$0.25	\$0.40	\$1.00

DRACAENA

	Pkt.	Oz.	1/4 lb.
Indivisa	\$0.15	\$0.40	\$1.00

EXACUM

	Pkt.	Oz.
Affine. A most useful and charming indoor pot plant. A profusion of small, light blue, fragrant flowers with yellow centers. Put two plants in a pot. It is happiest in a cool temperature with a minimum of shade	\$1.00

GYPSOPHILA

	Pkt.	Oz.
Elegans alba grandiflora	1/4 lb.	60c., \$0.15 \$0.25
Bristol Fairy and Ehrlei (See our Perennial plant catalogue).		

KALANCHOE

	Pkt.	Oz.
Globulifera, var. Coccinea. Scarlet, Bouvardialike flowers that will keep for two months. Can be had in flower for Christmas	\$1.00

PRICES SUBJECT TO CHANGE WITHOUT NOTICE

S. S. S. SEED SPECIALTIES

LARKSPUR

Pkt. Oz.

- Double Giant Imperial or Improved Upright: Blue Spire** (Oxford blue), **White Spire**, **Lilac Spire**, **Peach Blossom and Exquisite** (salmon)..... ¼ oz. 40c., \$0.25 \$1.25
Mixed..... ¼ oz. 35c., .25 1.00
Tall Double Stock-flowered: Newport Pink (lustrous carmine), dark blue, white..... .25 .75

LEPTOSYNE

Pkt. Oz.

- Stillmani.** 'Excellent golden yellow cut flower on 18 in. stems. Blooms in six weeks..... \$0.25 \$0.75

MARIGOLD

Pkt. Oz.

- DWARF FRENCH:**
Robert Beist. Large, velvety reddish brown flower, small golden center..... \$0.15 \$0.50
Signata Pumila. Golden single flowers in profusion; fine for edging..... .15 .60
Legion of Honor. (Little Brownie)..... .15 .40
TALL AFRICAN:
All Double, Lemon, Orange..... ¼ oz. 50c., .30 1.25
Guinea Gold. Brilliant orange with long, loose petals. Semi-double..... ¼ oz. 35c., .25 1.00

MIGNONETTE

Pkt. Oz.

- S. S. S. Selected]Giant Greenhouse**..... ¼ oz. \$2.00 \$1.00 \$6.00

MYOSOTIS (Forget-me-not)

Pkt. Oz.

- Early Blue Bird.** Beautiful for Winter cutting..... ¼ oz. \$1.00 \$0.50 \$3.50
Palustris. Everblooming deep blue. Dwarf..... .25 1.50
Alpestris Victoria. Dwarf globular, blue..... .25 1.25

NASTURTIUM

Pkt. Oz.

- Double, Large-flowering, Sweet-scented Golden Gleam**..... \$0.15 \$0.25
Scarlet Gleam..... ¼ oz. 50c., .35 1.50



NASTURTIUM, GOLDEN GLEAM



MARIGOLD, LEGION OF HONOR

PANSY

¼ oz. Oz.

- S. S. S. Rainbow Giants.** An exceptionally fine assortment of colors, including all the odd bronzes and showiest shades. Produces enormous flowers most freely. . . . 4 ozs. \$40.00, ¼ oz. \$1.50 \$4.00 \$12.00
S. S. S. Florists Prize Mixture. The old standby for those who want fine Pansies. Continually being re-selected and improved. . . . 4 ozs. \$25.00, ¼ oz. \$1.25, 2.00 7.00

PETUNIA

Pkt. ½ oz.

- "Victorious," Dwarf "All-double" Giant Fringed Mixed.** This is the first Petunia we have ever known to produce 100 per cent double flowers. This strain has undergone thorough tests and has come through with colors flying. Produces just what the description implies—"100 per cent All-double"..... 3 pkts. \$5.00 \$2.00
GIANT FLOWERING SINGLE:
Giants of California..... .50 \$1.50
Improved Dwarf Giants of California..... 1.00 3.00
Ruffled Monsters..... 1.00 2.00
Pride of Portland. Rose pink, fringed..... 1.00 1.50
Scarlet Beauty. Fringed..... 1.00 1.50
White Beauty. Fringed..... 1.00 1.50
Elk's Pride. Velvety purple, plain edge..... 1.00 1.50
SMALL FLOWERING SINGLE: Pkt. Oz.
Balcony Blue..... 1/16 oz. 50c. \$0.25
Rosy Morn, Improved. Pink, white throat..... .50 \$2.50
Rose of Heaven. Clear pink..... .50 1.75
GIANT DOUBLE FRINGED: Fine Mixed..... 1.00

PHLOX DRUMMONDI

Pkt. Oz.

- Grandiflora.** Finest mixed (for pots)..... ¼ oz. 35c. \$0.15 \$1.00
Nana compacta. Dwarf mixed (for bedding). ¼ oz. 50c., .35 1.80

POPPY (Iceland)

Pkt. Oz.

- El Monte.** An enchanting tangerine orange that can be brought into flower from seed in 6 months. ¼ oz. 85c. \$0.25 \$2.50

PRIMULA

Pkt.

- Chinensis Fimbriata Giant Mixed**..... 1/32 oz. \$2.00 \$1.00
Eriksoni (Malacoides Improved): New Baby, lavender; **Baby Doll,** deep pink frilled. Mixed..... 1/64 oz. \$5.00, 1.00
Obconica: Alba, Apple Blossom, Atrosanguinea (dark red), **Caerulea** (blue), **Hamburger Rose, Mueller's Rose** (dark), **Mohnstein's Red (Kermesina)**.... 1/32 oz. \$5.00, 1.00

PRICES SUBJECT TO CHANGE WITHOUT NOTICE

S. S. SKIDELSKY & CO.

S. S. S. SEED SPECIALTIES



PETUNIA

SALPIGLOSSIS

	Pkt.	Oz.
Emperor. Choice mixed.....	\$0.25	\$1.00

SALVIA

	Pkt.	Oz.
America (Globe of Fire).....	\$0.50	\$3.00
Bonfire (Clara Bedman).....	.40	1.75
Fireball. Dwarf, early.....	.50	2.00
Farinacea. Bright light blue.....	.25	1.50

SCABIOSA

	Pkt.	Oz.
S. S. S. Special Mixture.....	\$0.15	\$0.50

SCHIZANTHUS

	Pkt.	Oz.
Wisetonensis Mixed.....	\$0.25	\$0.75

SMILAX

Pkt. 15c., oz. 50c.

SNAPDRAGON

(See ANTIRRHINUM)

SOLANUM (Cleveland Cherries)

	Pkt.	¼ oz.	Oz.
Masterpiece (Hlavaceks). More compact and fruitful than the old type.....	\$0.35	\$0.50	\$1.25
Birds-eye Pepper.....	.35	.60	2.00

STATICE

	Pkt.	Oz.	Lb.
Sinuata, True Blue (Extra deep).....	\$0.15	\$0.30	\$2.50
Sinuata, White.....	.15	.25	2.00
Suworowi (Russian Rattail). Bright rose.....	.25	.80	8.00

STOCKS

	Pkt.	¼ oz.	Oz.
Double Giant Excelsior. Improved column type. Non-lateral branching. Crimson, Light Blue, Purple, Rose, Ruby, Silvery Lilac and White.....	\$1.00	\$3.00	\$10.00
Giant Imperial Bismarck Improved. White, Flesh, Rose, Lavender, Purple, Chamois.....	.35	1.00	3.50
Giant Perfection, Double Perpetual Branching (Cut-and-come-again): Sky Blue, Lilac, Rose, White.....	.35	.75	2.50

VERBENA

Pkt. ¼ oz. Oz.
GIANT FLOWERING, HYBRIDA GRANDIFLORA:

Beauty of Oxford. Shades from clear rose pink to rosy red. This is the brightest rose Verbena ever produced from seed.....	\$0.35	\$0.75	\$2.50
Etna. Garnet red, cream eye.....	.25	.50	1.60
Luminosa. Flame pink.....	.25	.50	1.60
Lucifer. Red.....	.25	.50	1.60
Giant Salmon Pink.....	.25	.50	1.60

HYBRIDA:

Blue and Purple Shades.....	.25	.35	1.00
Pink and Rose Shades.....	.25	.35	1.00
Defiance. Brilliant scarlet.....	.25	.35	1.00
Mayflower. Pink.....	.25	.35	1.00
Choice Mixed.....	.25	.35	1.00

ZINNIAS

Pkt. ¼ oz. Oz.
DAHLIA FLOWERED:

Crimson Monarch. Largest and best reds.....	\$0.25	\$0.40	\$1.25
Exquisite. Deep rose center, shading to lighter edge.....	.25	.40	1.25
Giant Attraction. Spectrum red.....	.25	.40	1.25
Golden State. Orange yellow.....	.25	.40	1.25
Oriole. Orange and gold bicolor.....	.25	.40	1.25
Polar Bear. Large pure white.....	.25	.40	1.25
Dream. Lavender to purple.....	.25	.40	1.25
Canary Bird.....	.25	.40	1.25
Old Rose.....	.25	.40	1.25
Scarlet Flame.....	.25	.40	1.25
S. S. S. Prize Mixture.....	.2080

ELEGANS, "LILLIPUT" (POMPONS). Small, double flowers:

Crimson Gem, Golden Gem, Scarlet Gem, White Gem, Salmon Rose, Mixed.....	.15	.25	.75
--	-----	-----	-----

CALIFORNIA GIANT, or MAMMOTH DOUBLE FLOWERED: Rose, Gold, Lavender, Orange, Pink Shades, Scarlet, White, Mixed.....

	.15	.25	.75
--	-----	-----	-----

PUMILA FLOREPLENO DWARF DOUBLE (Cut-and-come-again):

Snowball, Bright Scarlet, Golden Orange.....	.1550
Salmon Rose. Particularly fine for cutting.....	.1560
Mixed.....	.1540



ZINNIA

PRICES SUBJECT TO CHANGE WITHOUT NOTICE

S. S. S. SEED SPECIALTIES

SWEET PEAS

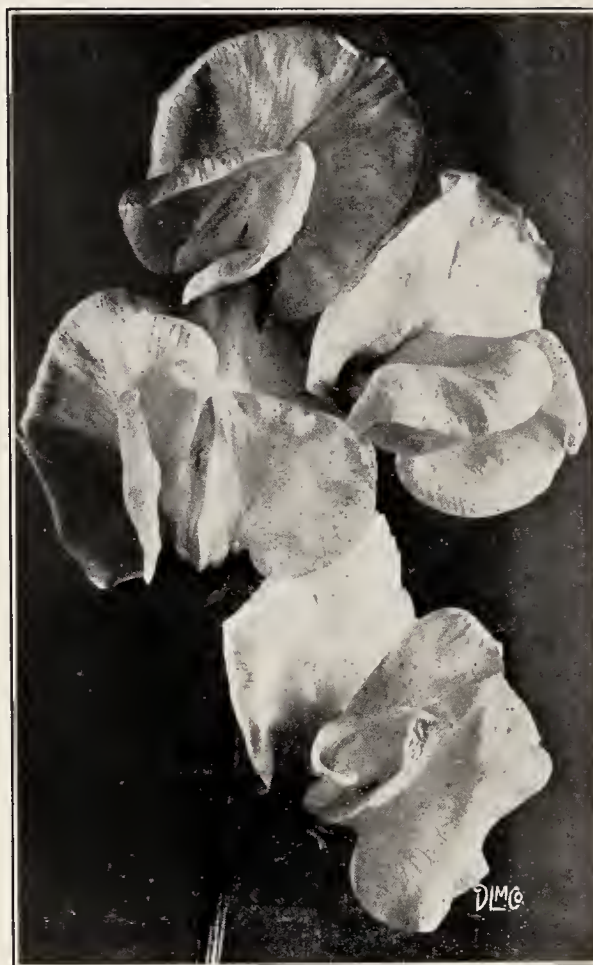
EARLY AND WINTER FLOWERING

New and Better Varieties the Progressive Grower Needs

4 ozs. or more of one variety at lb. rate; less than ¼ lb. at oz. rate.

Ask for a special price, if you are buying quantity

	Oz.	Lb.
Memory. Clear rosy lavender. Does not fade.....	\$1.50	\$18.00
Monterey. Glowing clear Geranium pink, flushed salmon and deeper toward the white base.....	1.50	18.00
Success. Deepest of the rose pinks. A very strong grower, producing fours on long stems.....	1.50	18.00
Lavanda. Finest pure clear lavender. Extremely large and waved. Perfectly spaced on long, stout stems....	.80	10.00
Exposition Pink. A knockout under artificial light. Very large, wavy and well spaced. Extremely prolific producer over a long period.....	.80	10.00
Annie Laurie. Richest tone of pure rose pink. Continuously abundant. Strong grower, long stems.....	.60	6.50
American Beauty. Rich crimson rose on white ground, strong, heavy growth, thick, long stems.....	.50	5.00
Alameda. Deep rose pink on white ground.....	.40	4.50
All White. Large waved white.....	.40	4.50
Amethyst. Royal purple.....	.40	4.50
Apollo. Large, soft salmon pink.....	.40	4.50
Ball Blue40	4.00
Ball Orange50	5.00
Ball Rose Improved50	5.00
Blanche Ferry Improved (Christmas Pink)50	5.00
Blue Bird40	4.00
Blue Bonnet. Extra large, fine deep blue.....	.40	4.00
Burpee's Lavender. Wisteria. Large, strong.....	.40	4.50
Burpee's Orange40	5.00
Chevalier. Magnificent cerise rose.....	.60	6.50
Edw. Zvolanek. Large lavender.....	.40	4.50
Eldorado. Orange.....	.40	5.00
Enchantress. Rose pink.....	.40	5.00
Flamingo. Orange salmon.....	.40	5.00
Forty-niner. True orange, long stems.....	.40	4.50
Grenadier. Dazzling scarlet.....	.50	5.00
Harmony. Lavender.....	.50	4.50
Hope. Standard black-seeded white.....	.50	5.00
Jeanne Mamitsch. Giant rose pink.....	.40	4.50
Laddie. Enormous rose pink on white ground.....	.40	4.50
Madonna. Pure white, black-seeded.....	.40	4.50
Majestic Rose. Immense brilliant, deep rose.....	.50	6.00
Melody. Rose pink, great producer.....	.50	5.00
Miss Louise Gude. Brilliant pink.....	.40	4.50
Mrs. Kerr. Rich salmon.....	.40	4.50
Mrs. Chas. Zvolanek. Clear lavender.....	.40	4.50
Mrs. Herbert Hoover. Uniform blue.....	.40	4.50
Pal. Rich rose crimson.....	.40	4.50
Rose Dore. Rose pink, suffused orange.....	.50	5.00
Snowstorm Improved. Pure white.....	.40	4.50
Snow White40	4.00
Sparkle. Clear vivid scarlet; sunproof.....	.40	4.50
Sunray. Brilliant soft cerise on cream. Orange tint....	.40	4.50
Valencia. Bright orange.....	.50	5.00
Vulcan. Vivid scarlet.....	.40	4.00
White Harmony50	4.50
Zvolanek's Rose Improved40	4.00
Zvolanek's White Rose. Best white for late planting.	.40	4.50



SWEET PEAS



VERBENA

PRICES SUBJECT TO CHANGE WITHOUT NOTICE

S. S. SKIDELSKY & CO.

S. S. S. BULB SPECIALTIES

All of our Lilies have been Government inspected. Certified to be true to name and free from disease.

For Immediate or Later Delivery

LILIUM WONDERBELL

The outstanding American grown Lily brought to light by us a few years ago. The biggest thing in Lilies since Erabu was introduced. A very strong grower, having dense foliage of deep color and exceptionally clean. Produces tremendous, waxlike flowers with a leathery texture. The count is about the same as Giganteum. Grow it like Erabu.

Get a case now as a check on the quantity you will want for next year.



6- 8, 400 per case.....	} All sizes, \$30.00 per case
7- 9, 300 per case.....	
8-10, 225 per case.....	
9-10, 200 per case.....	
10-12, 140 per case.....	

May 21, 1934.

In 1914 I gave Mr. Skidelsky, Sr., a standing order for what Lilies I grew for Easter, to stand as long as good bulbs were sent to me. That was twenty years ago, and so far, I have not received a poor case of bulbs. This year was no exception. The plants were strong and sturdy, practically free from disease and producing more flowers per bulb than we expected.

Thank you for always taking such good care of me, and I hope the order for bulbs may stand for a good many more years to come.

GEO. H. SINCLAIR, Holyoke, Mass.

LILIUM GIGANTEUM

F.O.B. New York, Chicago, Atlanta, or Louisville

Lilies will finish better this year than they have for sometime past, if bulbs are any indication of flowering. Results this year should be good. Look for the certificate of inspection on our cases.

MOUNTAIN GROWN—SOUTHERN NORTHERN GROWN

	Case
6- 8, 400 per case.....	\$17.00
7- 9, 300 per case.....	17.00
8- 9, 250 per case.....	18.00
8-10, 225 per case.....	20.00
9-10, 200 per case.....	20.00
10-11, 165 per case.....	22.00

March 27, 1934.

The Giganteum Lilies you shipped us are beautiful and just right.

A. W. RICHARDSON, Savannah, Ga.

LILIUM ERABU

F.O.B. New York and Chicago
TRUE, or S. S. S. IMPROVED STRAIN

	Case
6- 8, 400 per case.....	\$18.00
7- 9, 300 per case.....	18.50
8-10, 225 per case.....	19.50
9-10, 200 per case.....	19.50
10-11, 150 per case.....	19.50

Recent years have proven that Erabu, too, keeps well in cold storage through the season. Since it produces better than other varieties, many now prefer it.

Look for the certificate of inspection on our cases.

Oct. 19, 1934.

Was much pleased with the case of Erabu Lily bulbs, the best I ever had.

C. A. PERLEY, Winthrop, Maine.

HARDY LILIES

F.O.B. New York or Chicago

LILIUM MAGNIFICUM or RUBRUM

NORTHERN GROWN

The ideal Lily to grow for pot plants, cut flowers, corsages or design work. Excellent for growing inside or out.

	Case
8- 9, 200 per case.....	\$15.00
9-11, 130 per case.....	15.00
11-13, 90 per case.....	15.00

LILIUM AURATUM

Case

8- 9, 200 per case.....	\$15.00
9-11, 130 per case.....	15.00

Look for the Certificate of Inspection on our cases.

LILIUM REGALE (Myriophyllum)

The garden Lily everyone is talking about. Makes a regular customer of the occasional buyer. Fine for Spring sales, either as dry bulbs or out of pots. Winters very well. A welcome cut flower to fill in that gap during the Summer when good flowers are shy.

	100	1000	100	1000
5-6 in.....	\$6.00	\$55.00	\$10.00	\$90.00
6-7 in.....	7.50	70.00	12.00	115.00

LILY-OF-THE-VALLEY

The best grade of Valley is not too plentiful. Consequently our stock of unsold pips is very limited. First come, first served—and this year they are again very fine.

Let us quote on your requirements for the year, and get a sample case now.

250.....	\$10.00	500.....	\$20.00
1000.....	\$39.00—In cases of 1000 or 2000		

Oct. 25, 1934.

We are in the market for Valley as usual this Fall. Have been very well pleased with the Valley, with which you have supplied us, the last few years; therefore, would like you to quote us on the usual amount for this year.

J. L. DILLON, Bloomsburg, Pa.

(P.S.—We got the order)

PRICES SUBJECT TO CHANGE WITHOUT NOTICE

37-39 West 28th Street, New York City

S. S. S. BULB SPECIALTIES



BEGONIAS, TUBEROUS ROOTED (See page 9)



GLADIOLUS

CANNAS

STRONG AND PLUMP, TWO- TO THREE-EYE ROOTS

A few of the outstanding varieties. Can supply any others desired.

	100	1000
City of Portland. 3½ ft. Glowing pink.....	\$5.00	\$45.00
Mrs. Alfred Conard. 4 ft. Salmon pink.....	5.00	40.00
Apricot. 4 ft. Buff yellow, extra fine.....	3.00	27.50
Florence Vaughan. 4 ft. Golden yellow, dotted crimson.	3.00	27.50
Yellow King Humbert. 4 ft. Like Humbert, but golden yellow.....	3.00	27.50
Ambassador. 4 ft. Immense flowers, rich cherry red, bronze foliage.....	3.00	27.50
King Humbert. 4 ft. Orange scarlet, bronze foliage..	3.00	27.50
The President. 4 ft. Rich scarlet, best red.....	3.00	27.50

GLADIOLUS

F. O. B. New York

The kind that produce results you want again the following year. Clean, healthy bulbs, free from disease and thrip.

Varieties marked * are considered best for foreign.

	Prices per 1000	
	1st size 1½" up	2d size 1¼-1½"
* Albania (E). Popular commercial pure white...	\$16.00	\$13.00
* Apricot Glow (E). Tall apricot.....	18.00	15.00
* Betty Nuthall (L). Orange pink.....	20.00	17.50
* Berty Snow (EM). Exhibition lavender pink....	24.00	20.00
Capt. Boynton (EM). Pale lavender, purple blotch	18.00	15.00
Carmen Sylva (M). Snow white, penciled lilac...	22.00	18.00
* Dr. F. E. Bennett (E). Fine scarlet, large flowers.	20.00	17.00
* E. J. Shaylor (E). Pure rose pink, ruffled.....	16.00	13.00
* Ethelyn (E). Tall orange yellow, Grandiflora Prim.	17.00	14.00
Evelyn Kirtland (M). Tall rose pink, very fine...	18.00	15.00
* Flaming Sword (E). Tall red, many flowers....	15.00	12.50
* Giant Nymph (E). Excellent, large light pink...	16.00	13.00
* Glorianna (E). Beautiful golden salmon; tall...	18.00	15.00
Golden Dream (M). Finest large deep yellow...	15.00	12.50
* Gold Eagle (E). Yellow, ruffled Grandiflora Prim.	14.00	11.00
* Halley (E). Strawberry pink.....	15.00	12.50
* Helga (E). Salmon rose.....	16.00	13.00
* Joe Coleman (EM). Large ruffled rich red.....	18.00	15.00
* Los Angeles (E). Tall grenadine pink.....	15.00	12.50
* Mary Pickford (E). Delicate cream white.....	18.00	15.00
Mrs. Dr. Norton (M). La France pink; large....	17.00	14.00
Mrs. Francis King (EM). Scarlet.....	15.00	12.50
Mrs. F. C. Peters (M). Beautiful rose lilac.....	17.50	14.50
* Mrs. Frank Pendleton (EM). Rose pink, carmine blotch.....	16.00	13.00
Mrs. P. W. Sisson (M). Large, soft pink, 5 to 6 flowers open at once.....	20.00	17.50
Mrs. Leon Douglas (M). Giant salmon rose, striped scarlet.....	16.00	13.00
* Orange Queen (E). Apricot orange.....	15.00	12.00
Peace (L). Large white.....	14.00	11.00
* Picardy (EM). The outstanding prize winning introduction. Delicate apricot pink, extremely large, ruffled, and heavy, waxlike substance....	60.00	50.00
Pride of Wanakah (M). Fine deep rose, deeper blotch.....	15.00	12.00
Schwaben (LM). Canary yellow.....	15.00	12.00
* Souvenir (E). Deep yellow Prim.....	14.00	11.00
* Virginia (E). Deep scarlet.....	16.00	13.00
W. H. Phipps (L). Rose salmon, speckled with ruby.	20.00	17.00
* Wilbrinck (E). Light pink, sport of Halley....	16.00	13.00
Florists Mixture. Named varieties, blended to an even assortment of color.....	14.00	11.00
Garden Mixture. Fine for counter trade, as the varied types are well represented over a complete range of colors.....	11.50	9.00

E—Early; EM—Early Midseason; M—Midseason; LM—Late Midseason; L—Late.

Any sizes of any varieties, whether listed or not, gladly quoted on request.

PRICES SUBJECT TO CHANGE WITHOUT NOTICE

S. S. SKIDELSKY & CO.

S. S. S. BULB SPECIALTIES



Left—GIANT AMERICAN HYBRID.
Right—S. S. S. PRIZE FORCING STRAIN

NOTE—The smaller bulb of the S. S. S. produced the larger flower.

AMARYLLIS

S. S. S. PRIZE FORCING STOCK—For Easter and Later

A new exhibition strain that can be timed to bloom, as you would Lilies. Not to be confused with any other Amaryllis we have known to date.

While this strain does not produce so large a bulb, the flowers are huge and more abundant.

Please specify when ordering when you want them to bloom.

Guaranteed to bloom on time, if grown according to instructions sent with each shipment.

Solid red	Red with white markings
White with heavy red markings	White with pink markings
White with light red markings	White with small pink veins
\$6.00 per doz., \$50.00 per 100	

Giant American Hybrids.	100	1000
2½-3 in.	\$20.00	\$190.00
3 in.	25.00	240.00
3½ in.	30.00	275.00

CALADIUM ESCULENTUM

Elephants-ear

	100	1000
5- 7 in. circumference.	\$2.00	\$15.00
7- 9 in. circumference.	3.00	25.00
9-11 in. circumference.	6.00	50.00
11-13 in. circumference.	12.00	100.00
13-15 in. circumference.	20.00	175.00

IRIS, PEONIES, ROCK PLANTS and OTHER PERENNIALS

SPRING AND FALL DELIVERY

Get our exclusive and complete illustrated catalogue. Write for it now

PRICES SUBJECT TO CHANGE WITHOUT NOTICE

FANCY-LEAVED CALADIUMS

A strain for florists who want "something better." Fine bulbs of exhibition varieties, well ripened and carefully selected from the best Brazilian strains.

Exhibition Blue Ribbon Hybrids, Named Varieties or Mixed	100	1000
	\$12.00	\$100.00
Florists Choice Mixed.	9.00	75.00

GLORIOSA ROTHSCHILDIANA

A Gorgeous Novelty

The flowers strongly resemble the Speciosum Lily.

The profusion of brilliant yellow and red flowers compensates for their smaller size. It can be had in flower for Christmas as well as through the year. Requires three to four months to bloom.

Grows taller than Speciosum, and requires a bit higher temperature.

Large (Tubers), \$50.00 per 100; Mammoth, \$60.00 per 100

GLOXINIAS

Named Varieties and Separate Colors, or Mixed,	100	1000
2 in. up.	\$20.00	\$185.00

BEGONIAS, Tuberous Rooted

These improved varieties are enjoying the limelight. Get in line with the new fad.

Best Separate Colors or Mixed, Giant Single or Double, also Frilled, Crested or Trailing, 2 in.	100	1000
	\$12.00	\$115.00

TUBEROSES

	100	1000
Dwarf Pearl Excelsior, top size, 6-8 in. circumference.	\$5.00	\$40.00
No. 1, 4-6 in. circumference.	2.50	20.00
No. 2, 3-4 in. circumference.		9.00
Variogated, 3½-6½ in. circumference.	2.50	20.00
Albino, 3½-6½ in. circumference.	2.50	20.00

ISMENE CALATHINA · Peruvian Lily

Fine cut flowers during the Summer. An abundance of pure white waxy, fragrant blooms resembling Amaryllis.

Large Bulbs, \$12.00 per 100, \$100.00 per 1000

DIELYTRA SPECTABILIS · Bleedingheart

\$3.50 per doz., \$20.00 per 100

Place in cold storage until Spring. Force in three weeks.

SPIRAEA (Astilbe)

Queen Alexandra. Lilac.	America. Lilac rose.
Peach Blossom.	Gloria. Clear rose pink
Princess Mary. Deep rose pink.	
\$22.50 per 100, \$210.00 per 1000	

CARNATIONS

NEW VARIETIES

Introducing some British varieties of outstanding merit, that will be of outstanding merit for some years to come. This new blood has been sorely needed in this country for some time, and our guess is, that it will aid materially in bringing Carnations back to the position they rightfully deserve. These few are all we can offer this year, but we hope to be able to introduce a few each year that have proven the most successful in Europe. They are being disseminated here through Peter Beuerlein Sons, the American proving ground for Allwood's of England.

Robert Allwood. A grand scarlet of large size and excellent form, which experts describe as the finest Carnation ever raised. A very strong and quick habit of growth with erect stems and calyx that never bursts. Will outproduce Spectrum Supreme in the number of high-class flowers cut per plant. Vivid scarlet during the four seasons of the year and a good keeper.

Dimity. White, variegated deep claret, more heavily toward the edge of petals. This is a seedling from Eldora, having the strength of constitution and ease of cultivation of its parent. A heavy producer of good keeping, high class flowers, and proves popular in the New York market.

Wivelsfield Claret Improved. Preserving all the excellent qualities of its parent, with a deeper toned color. The habit of growth is stronger, making a plant double the size of its parent, with large, even flowers and rigid stems. This is undoubtedly the best variety in the claret and purple shades. The best keeping Carnation we know of and a good seller on the market.

All of above, \$30.00 per 100, \$250.00 per 1000
No restrictions

Uncle Dick (Witterstaetter). A very pleasing shade of light pink, extremely large, full-flowers of excellent quality and fragrance that seldom split, held on heavy stems. An excellent keeper and propagator. Produces more than any other Carnation of its size early and continuously.

\$12.50 per 100, \$100.00 per 1000
No propagating restrictions

Improved White Matchless (Paul F. Brigham). A sport from dark Pink Matchless, habit of growth like Matchless, but slightly heavier and decidedly healthier. The flowers are pure white and have not shown pink even through naphthalene fumigation. Flowers have more petals than pink Matchless and a high, solid center which holds together in a fully developed bloom. It has an extremely strong, spicy odor. Out of three times shown—brought—First prize at the Spring Show of Mass. Hort. Society in Boston, 1934.

Second prize at the American Carnation Society at Indianapolis, 1934.

And—Award of Merit, at Worcester, Mass.

\$9.00 per 100, \$75.00 per 1000
No restrictions

Rose Charm (Baur-Steinkamp & Co.). Rose Charm will assume the same position as to color among pink Carnations as does Briarecliff among the Roses. The bloom is of large size, of good form and fine texture. It propagates easily, makes a fine plant in the field and transplants readily. It comes into bloom quickly after benching, with good blooms on long stems. Rose Charm qualified for the Dorner Memorial Gold Medal last January. It scored 90 points at Chicago in March and won the A. C. S. Silver Medal (first prize) at Pittsburgh in November. Patented but purchasers may propagate without limit for their own planting.

\$12.00 per 100, \$100.00 per 1000

Sonny (Winfield S. Kircher). A distinct novelty. An abundant bloomer, popular with all who have seen it. The flowers are large and the long, stiff, straight stems hold the bloom perfectly erect. The pleasing color, pink markings on deep yellow ground, hold without fading until the bloom withers, and harmonizes beautifully with whatever it may be used.

Bountiful (Winfield S. Kircher). All that its name implies. A clear white with delicate pink penciling. Blooms are large and perfect, absolutely non-splitting and are borne on stiff, upright stems. The plants are compact, exceptionally strong and clean.

Above varieties, \$12.50 per 100, \$100.00 per 1000

E. H. Wilson. A large scarlet, exceptional for its bright color, extra large flower and very strong stems, and free blooming habits.

\$12.00 per 100, \$100.00 per 1000
No restrictions

Golden Wonder (Littlefield-Wyman Nurseries). The queen of yellow Carnations. Helps make profits at both ends. "It grows" better and "sells better." Easy to grow in the field or inside. Free from disease. Easy to propagate. Has a very low percentage of seconds. An exceptionally good producer. A delicate, clear yellow, pink striped, large size, well-formed, strong grower and fine shipper.

\$12.00 per 100, \$100.00 per 1000

Giant Laddie (A. A. Pembroke). Giant describes its size, and Laddie needs no introduction. A great improvement over its predecessor and parent.

\$12.00 per 100, \$100.00 per 1000

Joan Marie (Flores Gardens). A large, pure white sport of Sophelia, retaining its size and high, full center throughout the season. Splits are negligible and the flowers are held erect on sturdy stems.

\$12.50 per 100, \$100.00 per 1000

Patent restrictions against propagating have been removed

Standard Varieties

	100	1000
WHITE		
Ocean Spray (Wm. Sim Carnation Co.)	\$8.00	\$75.00
Patrician	5.00	40.00
White Betty Lou	8.00	75.00
Ivory	5.00	40.00
LIGHT PINK		
Mina Brenner (Barr-Cousins)	8.00	75.00
Laddie	10.00	90.00
Salmon Spectrum	6.00	50.00
Fairy Queen	6.00	50.00
DARK PINK		
Vivian	10.00	90.00
My Love	8.00	75.00
Pink Eldora	5.00	40.00
Sophelia	5.00	40.00
Boston Ward	5.00	40.00
Pink Abundance	5.00	40.00
Pink Matchless	4.00	35.00
RED		
Scarlet Monarch (Littlefield-Wyman)	8.00	75.00
Satellite (Baur, Steinkamp & Co.)	7.00	60.00
Woburn, Crimson	8.00	75.00
Illuminator, Cerise	6.00	50.00
Spectrum Supreme	5.00	40.00

YELLOW		
Maine Sunshine	7.00	60.00

	100	1000
VARIEGATED		
Chief Kokomo (Baur, Steinkamp & Co.). Apricot, cerise penciling	12.00	100.00
Bonanza (Wm. Sim Carnation Co.). Deep yellow, red variegation	8.00	75.00
Mary E. Sim. White, pink variegation	8.00	75.00
Eldora	5.00	45.00

250 or more at 1000 rate

Prices on unlisted varieties on request

Avoid Gray Hair

Sept. 28, 1934.
In over thirty years of growing plants under glass and using many kinds of insecticides, HITOX is absolutely the best I have tried. Its work on Red Spider is wonderful. If I could have found such a killer years ago I would not have so many gray hairs now.

A. R. PAINE, Baldwinsville, Mass.

PRICES SUBJECT TO CHANGE WITHOUT NOTICE

S. S. SKIDELSKY & CO.

CHRYSANTHEMUMS

S. S. S. Certified Stock

There is no excuse for second rate Mums. Following is a condensed representative list, from which the average grower can confidently choose his requirements. This list is based on past performances of *proven* varieties, taking into consideration *health and vigor of growth, quality and size of flowers, and acceptance of the buying public.*

There are ample varieties listed here comprising a balanced assortment in all classes. However, we will gladly send our **complete Mum list** on request. Start right. Plant **S.S.S. Certified Stock. Strong, clean and healthy** cuttings, well rooted, of **even size, when you want them**—if you place your order with **S. S. S. & Co.** Please place it early. We will both be better pleased.

DON'T BUY CHEAP STOCK—IT'S TOO EXPENSIVE

New and Recent Introductions

Listed in Order of Blooming

S.—Short; M.—Medium; T.—Tall.

Stately White (Baur-Steinkamp & Co.). Its strong growth makes 4 ft. stems possible when planted by July 15th. Incurved, of good size and pure white. Plant this to fill between Ambassador and Monument. Take terminal bud. \$5.00 per doz., \$25.00 per 100, \$200.00 per 1000.

Good News. A golden yellow sport of Detroit News and like it in every respect excepting color. The excellent substance and keeping qualities of Detroit News exist in this variety. We believe it to be the best of its season and color. \$12.00 per 100, \$100.00 per 1000.

Mrs. Wm. Thaw, Jr. (Baur-Steinkamp & Co.). This fine, large yellow won the C. S. A. Silver Cup at the Pittsburgh show last November. Grows 5 ft. tall from mid-June planting and 4 ft. from early July planting. Good stem and foliage. Blooms November 10th from terminal bud. \$5.00 per doz., \$25.00 per 100, \$200.00 per 1000.

	Ht.	Select Bud	Matures	100	1000
YELLOW					
Columbus Dispatch ...	M.	Sept. 1	Oct. 25	\$ 6.00	\$ 50.00
Helen K. Johnson. Dark yellow.....	T.	Aug. 20	Oct. 28	12.00	100.00
Mrs. Franklin D. Roosevelt. Bright yellow....	T.	Sept. 5-10	Nov. 15	8.00	75.00
Sec'y Nehrling. Bright yellow.....	M.	Aug. 15-20	Nov. 15-20	12.00	100.00
Golden Mrs. Ross	T.	Early Oct.	Thanksg.	6.00	50.00
PINK					
Evening Star	T.	Sept. 5	Nov. 1	12.00	100.00

Standard Varieties

Listed in Order of Blooming

S.—Short; M.—Medium; T.—Tall

†Suitable for pot plants.

\$3.00 per 100, \$25.00 per 1000, unless otherwise noted

	Ht.	Select Bud	Matures
YELLOW			
Yellow Frost	S.		Sept.
† Gold Lode	M.	Aug. 25	Oct. 1
Wm. Didden, sport of Indianola.....	M.	Aug. 25	Oct. 8
† Golden October	S.	Term.	Oct. 10
Celestra	M.	Term.	Oct. 10
Golden Herald. Excellent disbudded Pompon.....	M.	Aug. 25	Oct. 10-15
Mrs. H. E. Kidder	M.	Aug. 25	Oct. 25
Citronella	S.	Aug. 31	Oct. 25
Sunglow	M.	Aug. 15	Oct. 25
Smith's Superlative	M.	Aug. 25	Oct. 25
Coahoma. Bright, large.....	M.	Term.	Oct. 25
Cardonla. Deep rich.....	M.	Term.	Nov. 1-7
† Golden Glory	S.	Aug. 25	Nov. 1
Yellow Gold. Medium sized ball.....	T.	Term.	Nov. 1-15
Marie de Petrs. Incurved, golden.....	S.	Sept. 15	Nov. 15-30
Whittler	M.	Sept. 15	Nov. 15
Golden Celebration	T.	Sept. 15	Nov. 20
† Friendly Rival	M.	Sept. 10	Thanksg.
† Sungold	M.	Sept. 30	Thanksg.
Golden Pearson	M.	Sept. 30	Thanksg.
Nellie T. Ross (Incurved).....	T.	Early Oct.	Nov. 30
Golden Mistletoe	M.	Sept. 30	Dec.

June 5, 1934.

Received 'Mum cuttings and Pompons in fine condition and good plants. Many thanks.

GEO. M. COOK, Baltimore, Md.

June 5, 1934.
The Chrysanthemum rooted cuttings came in today and are the very best I ever received. Thanks.
J. F. MUNSELL, Ashtabula, Ohio.

	Ht.	Select Bud	Matures
WHITE			
Early Frost	S.		Sept. 12
Smith's Early White	T.	Aug. 10	Oct. 2
† Quaker Maid	M.	Aug. 25	Oct. 5
† Christina. Sport of Rose Chochard.....	S.	Aug. 15	Oct. 15
Ambassador. Very large.....	M.	Term.	Oct. 16-20
White Chlef	S.	Term.	Oct. 18
Silver Sheen	M.	Aug. 30	Oct. 20
Snow White	M.	Term.	Nov. 1
† Chieftain	S.	Aug. 31	Nov. 1
Betsy Ross	T.	Aug. 25	Nov. 5
Monument	M.	Sept. 10	Nov. 5-15
† Chas. Rager	M.	Sept. 15	Nov. 10
Mefo. Large.....	M.	Sept. 15	Nov. 20
Chattanooga	M.	Sept. 20	Dec. 1
December Glory	M.	Sept. 30	Dec. 1
Mistletoe Improved	M.	Sept. 30	Dec.
Smith's Late White	S.	Sept. 30	Dec. 15

	Ht.	Select Bud	Matures
PINK			
† Lustre	S.	Aug. 25	Oct. 8
Pink Chief. Very good.....	T.	Term.	Oct. 12
Justrlte	S.	Term.	Oct. 15
Rose Glory	M.	Term.	Oct. 15-20
Reality	M.	Aug. 5	Oct. 20
† Rose Chochard	S.	Aug. 15	Oct. 20
Pink Delight	T.	Sept. 10	Oct. 25
† J. W. Prince (Pink Chieftain Improved).....	S.	Aug. 30	Nov. 1
Distinction	M.	Term.	Thanksg.
Dr. Enguehardt	M.	Sept. 5	Thanksg.
Edwin Seidewitz	T.	Sept. 5	Thanksg.
† Helen Frick	M.	Sept. 10	Thanksg.
† Thanksgiving Pink. Dark.....	S.	Sept. 15	Thanksg.
Mistletoe	M.	Sept. 30	Dec.

	Ht.	Select Bud	Matures
BRONZE			
Indlanola	M.	Aug. 25	Oct. 8
Tints of Gold	S.	Aug. 15	Oct. 10
Detroit News	M.	Aug. 30	Oct. 25
Mrs. A. J. Stahelin. (Bronze, yellow reverse) \$6.00 per 100, \$50.00 per 1000	M.	Term.	Nov. 15
Oakleaf	M.	Sept. 30	Nov. 20-30
Gladys Pearson	M.	Sept. 30	Nov. 20-30
Antique (Mahogany).....	M.	Sept. 5	Thanksg.
Mistletoe	M.	Sept. 30	Dec.

	Ht.	Select Bud	Matures
RED			
† Gov. Green. Crimson, gold reverse.....	S.	Aug. 15	Oct. 15
Mrs. David F. Roy. Crimson.....	S.	Sept. 15	Nov. 15
Harvard. Crimson.....	M.	Sept. 30	Nov. 30
Garnet King	S.	Sept. 20	Nov. 20-30
Glennview. Crimson, buff reverse.....	S.	Sept. 10	Nov. 24
Grace Sturgis. Wine red, silver reverse. \$6.00 per 100, \$50.00 per 1000.....		Aug. 25	Oct. 20
Mohawk Chlef. Crimson.....	M.	Oct. 1	Nov. 30

July 23, 1934.

We have tried Hitox on Chrysanthemums and found it the most satisfactory insecticide against midge that we have ever used. Thanking you, we are,

Very truly yours,

DAUERNHEIM CORPORATION, Wantagh, New York
(signed) Mel. A. Dauernheim.

PRICES SUBJECT TO CHANGE WITHOUT NOTICE

CHRYSANTHEMUMS

Exhibition Varieties

\$6.00 per 100, \$50.00 per 1000, unless otherwise noted

	Ht.	Select Bud	Matures
Grace Sturgis. Wine red, silver reverse..	M.	Aug. 25	Oct. 20
Mrs. G. G. Mason. Blood red, golden reverse.	M.	Aug. 25	Oct. 25
Imperial Gold. Light buff.	T.	Aug. 5	Oct. 25
Golden Majestic. Light yellow.	M.	Aug. 20	Oct. 25-Nov. 1
La France. Purple.	M.	Aug. 15	Oct. 28
J. R. Booth. Yellow.	M.	Aug. 15	Nov. 1
Mrs. B. D. Spillman. Apricot orange.	M.	Aug. 20	Nov. 1
\$8.00 per 100, \$75.00 per 1000.	M.	Aug. 20	Nov. 1
Mrs. H. S. Firestone. Chamois buff.	S.	Aug. 25	Nov. 1
Mrs. Kershaw. Bronze.	S.	Aug. 15	Nov. 1
Nagirroc. Golden bronze.	M.	Aug. 15	Nov. 1
General Pershing. Pink.	M.	Aug. 20	Nov. 1

	Ht.	Select Bud	Matures
Turner, Bronze. Light bronze.	M.	Aug. 25	Nov. 15
Turner, Pink (Mrs. J. Leslie Davis).	M.	Aug. 25	Nov. 5
Turner, Wm. White.	M.	Aug. 25	Nov. 5
Turner, Yellow.	M.	Aug. 25	Nov. 5
W. H. Waite. Bronze.	S.	Aug. 15	Nov. 5
W. H. Waite Improved. Red.	S.	Aug. 15	Nov. 5
Carrie Beinecke. Golden bronze.	M.	Aug. 20	Oct. 25-Nov. 1
Vermont. Pink.	T.	Aug. 10	Nov. 1-15
Yellow Pockett.	M.	Aug. 10	Nov. 1-15
Thos. W. Pockett. Pink.	M.	Aug. 10	Nov. 1-15
Louisa Pockett. White.	M.	Aug. 10	Nov. 1-15
Pride of Tokyo. Creamy pink. A fine novelty with odd tubular petals.	T.	Aug. 25	Nov. 10

POMPONS

Choice Varieties

NEW AND RECENT INTRODUCTIONS

†Suitable for pot plants. *Desirable for disbudding.

Princeton (De Petris). A wonderful large Pompon with good stem and excellent spray formation. A beautiful, deep golden yellow suffused with orange. Matures about November 15th. A great improvement upon existing varieties of its type. Awarded the A. C. S. Silver Cup for the best Seedling Pompon for 1934. We can recommend this new Pompon as the best Pompon of its type to date, and one that is certain to become popular.

Valencia (De Petris). Single varieties are increasing in popularity, and we consider this variety the best single in existence. Vigorous growth, very productive and has a great substance. Forms strong, well-formed sprays and requires no disbudding. Matures the end of November. It is a beautiful shade of Orchid pink, which appeals to all who see it. This variety is certain to become one of the most popular wherever grown, and we recommend it very highly both as a good seller and money maker.

Campfire (De Petris). A red spray Pompon which grows somewhat tall but is very productive and an improvement upon present day varieties of this color. Matures about November 20th.

All above varieties, \$12.00 per 100, \$100.00 per 1000

Robin Hood (Baur, Steinkamp & Co.). Among the darker colored varieties this is one of our favorites. The color is rich deep red. The substance is unusually good. About the size of Nuggets. Blooms early in November. Makes fine sprays and gives heavy yield.

La Vera (Baur, Steinkamp & Co.). One of the best among the medium pinks. The bloom is well formed and slightly smaller than Doty. Blooms in early November. Branches well when topped and grows upright. Gives good yield.

Above varieties, \$5.00 per doz., \$25.00 per 100, \$200.00 per 1000

	Ht.	Type	Matures	100	1000
*Crimson Sheen. Purple amaranth.	M.	Large	Oct. 20	\$12.00	\$100.00
*Azora. Light pink.	T.	Large	Oct. 25	12.00	100.00
Joan Wells. Bronze sport of Pink Dot.	T.	Large	Oct. 25	6.00	50.00
*Bronze Ermalinda. Dark.	M.	Large	Oct. 25	6.00	50.00
*Cazlonia. Rose pink.	M.	Large	Oct. 25	6.00	50.00
Sarda. Deep pink.	M.	Large	Oct. 25	6.00	50.00
Onargo. Light bronze, cupped petals with golden reverse.	M.	Button	Nov. 1	12.00	100.00
*Thyra. Dark pink.	T.	Large	Nov. 1	12.00	100.00
*Fire Ball. Bright crimson.	T.	Large	Nov. 2	12.00	100.00
Patsy Dowd. Red.	S.	Button	Nov. 5	12.00	100.00
Golden Gimp. Bright yellow, apricot tint on reverse.	M.	Button	Nov. 5	12.00	100.00
Grenadier. Rich deep red.	M.	Large	Nov. 10	5.00	45.00
Golden Fringe. Very bright yellow.	S.	Button	Nov. 20	12.00	100.00
Joan. Orange bronze.	M.	Large	Nov. 20	6.00	50.00
Royal Queen. White.	M.	Large	Nov. 25	6.00	50.00
Thanksgiving Gem. Orange bronze.	M.	Button	Thanksg.	6.00	50.00
Bristolite. Indian yellow.	M.	Large	Thanksg.	10.00	95.00
Modena. Yellow.	M.	Lge. but.	Nov. 30	6.00	50.00
Tonquin. Rose.	M.	Large	Dec. 10	6.00	50.00

Standard Varieties

Listed in order of blooming

\$3.00 per 100, \$25.00 per 1000

†Suitable for pot plants. *Desirable for disbudding.

	Ht.	Type	Matures
YELLOW			
Gold Finch. Deep yellow.	M.	Large	Oct. 20
*Golden Herald.	M.	Large	Oct. 10-15
†Rodell.	S.	Button	Oct. 20
Yellow Dot (Jablonsky, sport of Pink Dot).	T.	Large	Oct. 25
Cora Peck Buhl.	T.	Large	Oct. 25
†Nuggetts.	S.	Button	Oct. 25
Mary Lennon Hall. Rich yellow.	T.	Large	Nov. 1
Vera Victoria.	M.	Large	Nov. 1
*Yellow Doty.	M.	Large	Nov. 1
Varsity.	S.	Button	Nov. 10
Golden Climax.	M.	Button	Nov. 15
Yuvawn.	M.	Large	Nov. 15-20
Yellow Fellow.	M.	Large	Nov. 15
Norrine.	M.	Button	Nov. 15-20
*Ball of Gold.	M.	Large	Nov. 20
*Unalga.	M.	Large	Nov. 25
Golden Sceptre.	T.	Large	Nov. 25
†Big Baby.	M.	Lge. button	Thanksg.
Lois.	M.	Large	Thks. & later
Christmas Gold.	M.	Sm. button	Dec. 1
*Gold Coin.	M.	Large	Dec. 1
Yuletide.	S.	Large	Dec. 1
Golden Nymph. Bronze, gold reverse.	M.	Sm. button	Dec. 10

WHITE

Uvalda.	M.	Large	Oct. 10
*Silver Ball.	M.	Large	Oct. 12
Irene.	S.	Button	Oct. 15-20
Snow Cloud.	M.	Large	Oct. 15
Minong.	S.	Large	Oct. 20-25
*Sea Gull.	M.	Large	Nov. 1
White Doty.	M.	Large	Nov. 1
Elora.	T.	Large	Nov. 1-10
Chicago Pearl.	M.	Large	Nov. 15
Cordova.	M.	Large	Thanksg.
Yuletide.	S.	Large	Dec. 1
Silver Star.	M.	Large	Dec. 15

PINK

†Jewell.	S.	Large	Oct. 1-15
Lilac.	T.	Large	Oct. 15
My Pride.	T.	Large	Oct. 20
†Dotson. Old rose.	S.	Button	Oct. 20
Capt. Cook.	T.	Large	Oct. 20
Pink Dot. White, pink center.	T.	Large	Oct. 25
Ermalinda. Old rose.	M.	Large	Oct. 25
Popcorn.	M.	Sm. button	Oct. 30
*Acto.	M.	Large	Nov. 1
Alice.	M.	Large	Nov. 1
*Lilian Doty.	M.	Large	Nov. 1
Usona.	M.	Large	Thanksg.
Olivia.	M.	Large	Dec.
Roselea. Bright pink, cream center.	T.	Large	Dec. 1
Pagosa. Dark.	M.	Large	Dec. 5

PRICES SUBJECT TO CHANGE WITHOUT NOTICE

S. S. SKIDELSKY & CO.

CHRYSANTHEMUMS

POMPONS, Standard Varieties—Continued

BRONZE AND ODD COLORS

Sonoma. Bronze, golden reverse.....	S.	Large	Oct. 1
†Bonibell. Orange buff.....	S.	Large	Oct. 15
Nublan. Bronze red.....	T.	Large	Oct. 15-20
Roman Bronze. Rosy bronze, sport of Capt. Cook.....	T.	Large	Oct. 20
Firebird. Red bronze.....	M.	Large	Oct. 25
Bokhara. Bronze.....	M.	Large	Oct. 25
†Wee Dot. Bronze, very small.....	S.	Sm. button	Oct. 25
Jemima. Bronze.....	M.	Lge. button	Oct. 28
*Bronze Doty.....	M.	Large	Nov. 1
Source d'Or. Bronze.....	M.	Large	Nov. 1
*Edith Newberry. Orange rust.....	T.	Large	Nov. 5
Pauline Wilcox. Bronze.....	M.	Large	Nov. 5
*Muskoka. Bronze.....	T.	Large	Nov. 10
New York. Bronze.....	M.	Button	Nov. 15
Hilda Canning. Bronze.....	T.	Button	Nov. 15
†November Bronze. Orange bronze.....	M.	Large	Nov. 15-25
Zoe. Golden bronze.....	M.	Lge. button	Nov. 20
†Legal Tender. Gold bronze.....	M.	Large	Nov. 20 & later
Gov. Lake. Reddish bronze.....	S.	Large	Thanksg.
Betty Watkins. Bronze yellow.....	M.	Large	Thanksg.
†Dorothy Turner. Bronze.....	M.	Large	Thanksg.
Bronze Usona. Orange bronze.....	M.	Large	Thanksg.
†Frank Wilcox (Mrs. Beu). Bronze.....	S.	Large	Thanksg.
†Red Wilcox (Red Beu). Reddish bronzeS.		Large	Thanksg.

ANEMONES—Continued

Standard Varieties

\$3.00 per 100, \$25.00 per 1000, unless otherwise noted

*Marletta. Soft pink, full cushion.....	M.	Oct. 20
Betty Rose. All pink.....	M.	Oct. 25-30
†*Graceland. Pure white, yellow center.....	S.	Oct. 25
†*Blanche. White.....	M.	Oct. 27
*Izola. Amaranth.....	M.	Nov. 1
†*Laelia. Rose pink.....	S.	Nov. 1
†*Stoplight. Terra cotta petals, yellow cushion.....	M.	Nov. 5
Margo. Violet petals, high yellow cushion.....	S.	Nov. 5
*Captivation. Mahogany red (Exhibition).....	T.	Nov. 10
*Susanne Miller. Yellow sport of Norma.....	T.	Nov. 10-30
†Maple Leaf. Red, yellow and bronze.....	S.	Nov. 10
Rio Rita. Yellow.....	M.	Nov. 10
*Norma. Pink petals, gold cushion.....	M.	Nov. 10-30
*Noveltie. All white, large cushion.....	S.	Nov. 15
*Bronze Groß von Oriole.....	M.	Nov. 15-20
*Adenlair. Shell pink.....	M.	Nov. 15-20
*Estrelita. All bronze, full cushion.....	M.	Nov. 15 and later
*Beautiful Lady. Pink petals, cream white cushion.....	S.	Nov. 20
*LaNona. Rose amaranth petals, buff cushion.....	M.	Nov. 20
Lida Thomas. White, yellow center.....	M.	Thanksg.
*Sunshine. Yellow.....	S.	Thanksg.
†Volunteer. Yellow.....	M.	Thanksg.
*Garza Supreme. White.....	S.	Dec.
Yellow Garza Supreme Imp.....	S.	Dec.



ANEMONE

ANEMONES

RECENT INTRODUCTIONS

*Good disbudded. †Good for pot plants.

	Ht.	Matures	100	1000
Smith's Innocence. White.....	T.	Nov. 5	\$12.00	\$100.00
Topknot. Rose petals, white cushion.....	T.	Nov. 5	12.00	100.00
*Cremona. White petals, yellow cushion.....	S.	Nov. 5	4.00	35.00
*The Titian. Crimson scarlet, bronze, red cushion.....	M.	Nov. 5	4.00	35.00
China Rose. Dragon's blood red.....	M.	Nov. 10	12.00	100.00
Orange Glow. Rich orange.....	M.	Nov. 10	6.00	50.00
Tuxedo. Pink.....	M.	Nov. 10	6.00	50.00
*Wakanda. Reddish bronze.....	M.	Nov. 10	6.00	50.00
†*Rolinda. Orange bronze.....	M.	Nov. 20-30	4.00	35.00
*Crimson Glow.....	M.	Nov. 25-30	4.00	35.00
*Maritza. Yellow, full high cushion.....	M.	Than ksg.	6.00	50.00

Singles

\$3.00 per 100, \$25.00 per 1000 unless otherwise noted

Aloma. Terra cotta, yellow center.....	M.	Oct. 15
Red Rover. Crimson orange. \$8.00 per 100, \$75.00 per 1000.....	M.	Nov. 5
*Melba. Reddish bronze.....	M.	Nov. 5
Bronze Buckingham.....	S.	Nov. 5
W. H. Buckingham. Pink.....	S.	Nov. 5
Ruth Adans. Bronze.....	S.	Nov. 5
Rich Red. \$5.00 per 100, \$40.00 per 1000.....	M.	Nov. 10
Ruth Warren Smith. Golden yellow, overlaid with red. \$5.00 per 100, \$40.00 per 1000.....	M.	Nov. 10
Elizabeth Firestone. Pink.....	M.	Nov. 15 and later
Elizabeth McDowell. Bronze.....	M.	Nov. 15
Charter Oak. Yellow.....	T.	Nov. 25
White Mensa.....	M.	Thanksg.
Golden Mensa.....	M.	Thanksg.
Christmas Cheer (Red Godfrey).....	M.	Thanksg.
Dusky Maid. Yellow.....	M.	Thanksg.
Helen Hubbard. Red.....	M.	Thanksg.
Margaret Waite. Cerise pink Godfrey.....	T.	Thanksg.
Miss Isabelle. Bronze Godfrey.....	T.	Thanksg.
Mrs. E. D. Godfrey. Light pink.....	T.	Thanksg.
Murray Hill Beauty. Old rose.....	T.	Thanksg.
Yellow Godfrey.....	T.	Thanksg.

Pot Plants

Additional to varieties through the list marked "†"

	Type	Matures
Butler's Caprice. Deep pink.....	Large	Oct.
Lilac Caprice.....	Large	Oct.
White Caprice.....	Large	Oct.
Purple Caprice.....	Large	Oct.
Yellow Caprice.....	Large	Oct.
Kathleen Thompson. Bronze.....	Large	Oct.
Benoit. Cerise pink.....	Large	Oct. 20-25
Ohio State. Yellow. \$5.00 per 100, \$45.00 per 1000.....	Anem.	Nov. 1
Savanta. White, pink tint.....	Large	Nov. 1
Greystone. Golden orange.....	Large	Nov. 10
Titian Beauty. Deep rich bronze, scarlet center.....	Anem.	Nov. 25
Patty. Pink.....	Large	Late
W. H. Lincoln. Yellow.....	Large	Late

PRICES SUBJECT TO CHANGE WITHOUT NOTICE

CHRYSANTHEMUMS HARDY VARIETIES

\$3.00 per 100, \$25.00 per 1000, unless otherwise noted

D.—Dwarf; S.—Short; M.—Medium; T.—Tall.

	Ht.	Type	Matures	100	1000		Ht.	Type	Matures	100	1000
A. Barham. Orange bronze...	S.	Dec.	Oct. 1	\$3.00	\$25.00	Jean Treadway. Pink with dark center.....	M.	Dec.	Oct. 1-10	\$6.00	\$55.00
Adelaide. Mahogany.....	M.	B'ton	Early Oct.	3.00	25.00	Little Barbee. Red.....	M.	B'ton	Oct. 15-20	3.00	25.00
Alice Howell. Orangy yellow...	M.	Sgls.	Oct. 5	3.00	25.00	Maduse. Terra cotta bronze...	M.	Dec.	Oct. 5-15	3.00	25.00
Aladdin. Bronze.....	S.	Dec.	Sept.	3.00	25.00	Metzi. Yellow.....	M.	B'ton	Oct. 15-20	3.00	25.00
Amelia (Pink Cushion). Bright pink.....	S.	Dec.	Sept.	4.00	35.00	Mrs. Calvin Coolidge. Cardinal red.....	M.	Sgls.	Oct. 15-20	3.00	25.00
Barbara Cummings. Yellow shading to bronze.....	M.	Dec.	Sept.	3.00	25.00	Mrs. J. Willis Martin. Blending of crimson and crushed Strawberry.....	M.	Dec.	Oct. 10	3.00	25.00
Carrie. Yellow.....	M.	Dec.	Early	3.00	25.00	Mrs. L. Birchard. Shell pink...	M.	B'ton	Oct. 10-15	3.00	25.00
Cavalier. Rich vermilion red...	T.	Sgls.	Oct. 15	8.00	75.00	Normandie. White.....	S.	Dec.	Sept.	3.00	25.00
Crimson Splendor. Crimson...	M.	Sgls.	Sept.	6.00	55.00	October Dawn. Shell pink....	M.	Dec.	Oct. 5-15	5.00	45.00
Daybreak. Shell pink.....	M.	Sgls.	Oct. 10-15	5.00	45.00	October Girl. Rose pink.....	S.	Dec.	Early Oct.	3.00	25.00
Dazzler. Cardinal red.....	M.	Sgls.	Oct. 10-15	3.00	25.00	Provence. Soft pink blended with yellow.....	M.	Dec.	Sept.	3.00	25.00
Donald Wells. White.....	M.	Sgls.	Sept.	3.00	25.00	R. Marion Hatton. Canary yellow.....	M.	Dec.	Oct. 1-10	5.00	45.00
Early Bronze. Bronze.....	S.	B'ton	Sept.	3.00	25.00	Ruth Cummings. Reddish bronze.....	M.	Dec.	Early Oct.	3.00	25.00
Eden. Rose pink.....	S.	Dec.	Oct. 1	3.00	25.00	Ruth Hatton. Ivory white...	S.	Dec.	Oct. 10	3.00	25.00
Evelyn. Bronze.....	M.	Dec.	Oct. 1-5	3.00	25.00	September Queen. White....	S.	Dec.	Sept.	3.00	25.00
Excelsior. Yellow.....	M.	B'ton	Oct. 15-20	3.00	25.00	Skibo. Pure yellow.....	M.	B'ton	Oct. 15	3.00	25.00
Francis Whittlesy. Rich bronze and garnet.....	S.	Dec.	Sept. 30	3.00	25.00	Sonoma. Bronze with golden reverse.....	S.	Dec.	Oct. 1	3.00	25.00
Glada. Soft pink.....	S.	Dec.	Sept.	3.00	25.00	Tasiva. White.....	M.	Dec.	Sept.	3.00	25.00
Granny Scovill. Warm coral bronze.....	D.	Dec.	Oct. 15	8.00	75.00	Vivid. Rosy crimson.....	M.	Dec.	Oct. 1-10	5.00	45.00
Grenadier (Hardy). Crimson red.....	M.	Sgls.	Oct. 5-10	5.00	45.00	Winnetka. White.....	M.	Dec.	Oct. 1	3.00	25.00
Gypsy Girl. Chestnut crimson...	S.	Sgls.	Early Oct.	3.00	25.00	Wolverine. Yellow.....	M.	Dec.	Sept.	3.00	25.00
Harvest Moon. Golden yellow...	S.	B'ton	Oct. 15-30	3.00	25.00	Yellow Gem. Canary yellow...	M.	B'ton	Oct. 5-10	3.00	25.00
Innocence. White.....	S.	Sgls.	Sept.	8.00	75.00	Yellow Normandie. Yellow...M.	Dec.	Early		3.00	25.00
Isotta. Bronze.....	M.	Dec.	Early	3.00	25.00						
Jack Bannister. Light yellow...	M.	Dec.	Oct. 10	3.00	25.00						
Jean Cummings. White.....	M.	Dec.	Sept.	5.00	45.00						

HITOX

The insecticide that kills. This double active Rotenone and Pyrethrum Spray is complete, having its own spreader. It will not stain, discolor or burn the most delicate plants or flowers. The most efficient insecticide we know of.

\$9.00 per gallon, \$3.00 per quart, \$1.75 per pint.

DAHLIAS

A Complete Descriptive Price List on Request

ROSES

FOR GREENHOUSE PLANTING

Roses grafted to your order only. We can assure you of fine stock any time from February 15th, depending on the time your order is placed. Choice scions from the best plants grafted on strong, healthy Manetti. Good Manetti is exceedingly scarce, so place your order early to be assured delivery of first-class, grafted plants.

	GRAFTED	100	1000
American Pride. The popular new white Rose....		\$30.00	\$250.00
Scions.....		12.00	100.00
Talisman		25.00	225.00
Joanna Hill		25.00	225.00
Briarcliff		25.00	225.00
Double White Killarney		25.00	225.00
Hollywood		25.00	225.00
Premier Supreme		25.00	225.00
Souvenir		30.00	275.00

OWN ROOT ROSES—In all varieties

Write for prices, stating size and quantity desired

HARDY FIELD GROWN ROSES

For Easter and Later Blooming

All the best varieties, XXX, No. 1 and Lighter Grades

Send us your list of requirements, specifying size and delivery date.

We will gladly quote.

We prefer not issuing a list at this time since many varieties are already out and our list of available good stock is diminishing rapidly.

ROSES FOR LINING OUT TO GROW ON

Send us your list. We will gladly quote on clean, strong and stocky Own Root plants. Any varieties out of 2¼ inch or 4 inch pots. Our stock and prices invariably bring repeat orders.

PRICES SUBJECT TO CHANGE WITHOUT NOTICE

DECORATIVE FOLIAGE PLANTS

Ask for Our Current Catalogue of Succulents

ASPIDISTRAS	Prices on request.	100	1000
CACTUS . Five good varieties for dish gardens or jardinières.....		\$7.50	\$65.00
CRASSULA arborescens (Jade Tree). The popular succulent for dish gardens or individual pot plants. All sizes of unrooted cuttings upward from.....			10.00
2 1/4 in., well established.....		5.00	
2 1/2 in., branched.....		9.00	
3 in.....		12.00	
<i>Prices on larger sizes of cuttings and pot plants on request</i>			
CROTONS (F.O.B. New Orleans or Florida). 2 1/2 in., assorted.....		10.00	
2 1/4 in., choice selected, high colored varieties.....		15.00	
DRACAENAS, All Varieties . Cane, Cuttings or Plants. <i>Write for prices.</i>			
EUPHORBIA splendens (Crown of Thorns), 2 1/4 in..	7.00	65.00	
FERNS . See Plants .			
FICUS elastica (Rubber Plants). Spring delivery, F.O.B. New Orleans. Beautiful stock, packed right. Mossed Rooted Layers.....	14.00	130.00	
4 in. pot grown.....	<i>Write for prices</i>		
IVY, Japanese (Small, Green-leaved). A new type of branching Ivy that produces three to six branches when pinched once. Far more effective for indoor work than the other types. R. C.....	2.00	15.00	
2 1/4 in.....	6.00	55.00	
2 1/4 in., select.....	8.00	75.00	
3 in.....	15.00		
4 in.....	25.00		
Japanese Variegated Ivy, R. C.	5.00	45.00	
Variegated Ivy (Large-leaved), R. C.....	5.00	45.00	
English, or German, R. C.	1.50	12.00	
2 1/4 in.....	7.00	60.00	
Self-branching . A new type especially adaptable to dish gardens or jardinières, making a compact, bushy plant. 2 1/4 in.....	12.00	100.00	
3 in.....	25.00		
NEPHTHYTIS liberica . Nice stock, well rooted, four to five leaves. A good substitute for Chinese Evergreen; similar and equally as hardy.....	6.00	50.00	
PACHYSANDRA terminalis, R. C.	4.50	40.00	



PHILODENDRON CORDATUM AND POTHOS AUREA (VARIEGATED PHILODENDRON)

pictured above are becoming increasingly popular and may some day replace Ivy in the home. Much more hardy and well withstands the abuse most other house plants will not take.

PANDANUS veitchi . Strong, unrooted cuttings. 100 1000			
6-8 in.....	\$5.00	\$45.00	
10-14 in.....	5.00	45.00	
15-18 in.....	7.00	65.00	
Pot-grown, perfect plants, well colored, 3 1/2 in.....	32.50	300.00	
F.O.B. Florida			
PEPEROMIA obtusifolia	7.50	65.00	
variegata	15.00	125.00	
PHILODENDRON cordatum . A novelty that has come to stay. Effective in iron stands, baskets, window boxes, wall pockets, Ivy bowls, etc. Much more hardy indoors than Ivy and well withstands the abuse most other house plants cannot take. 2 1/4 in.	8.00	70.00	
<i>Write for prices on other sizes</i>			
POTHOS aurea (Var. Philodendron).....	7.00	60.00	
VITIS rubifolia (Japanese Grape Ivy). Makes a fine pot plant and is excellent in combinations. A new idea as a filler in Poinsettias. R. C.....	6.00	50.00	

SPRING PLANTS

	—R. C.—		—2 1/4 in.—	
	100	1000	100	1000
AGERATUM, Blue Bird . A new strain of dwarf Ageratum, the flowers being larger than any other variety we know, and of much deeper color. The abundant blooms stand well up the dwarf plant.....	\$3.50	\$30.00		
fraseri . Improved.....	1.50	12.00	\$5.00	\$40.00
Cardinal Mundelein	2.00	15.00	6.00	50.00
ALTERNANTHERAS, Red and Yellow brilliantissima	1.50	12.00	4.00	35.00
.....	1.75	15.00	5.00	40.00
COLEUS, Best Standard Varieties	1.75	15.00	5.00	40.00
Brilliancy, Christmas Gem, Big Tim and Helen	3.00	25.00		
FUCHSIAS, Little Beauty, Sensation (Double), Pride of Orion	3.00	25.00	6.00	50.00
Standard Varieties, assorted	3.00	25.00	5.00	45.00
Red Cup	5.00	45.00	7.00	65.00
GERANIUMS, Palmier's Red (Ricard Improved)			7.00	65.00
Winifred Robinson . Light rose pink, sport of Irvington Beauty. Continuous, abundant bloomer.....			6.50	60.00
Summer and Later Delivery only on Rooted Cuttings				
GERANIUMS, Alphonse Ricard	4.00	30.00	6.50	60.00
Beaute Poitevine	4.00	30.00	6.50	60.00
Buchner	4.00	30.00	6.50	60.00
Fiat	4.00	30.00	6.50	60.00

	—R. C.—		—2 1/4 in.—	
	100	1000	100	1000
GERANIUMS —Continued				
Irvington Beauty	\$4.00	\$30.00	\$6.50	\$60.00
Mrs. Lawrence	4.00	30.00	6.50	60.00
Mme. E. Landry	4.00	30.00	6.50	60.00
S. A. Nutt	4.00	30.00	6.50	60.00
Red Barney	4.00	30.00	6.50	60.00
Thos. Dryden	4.00	30.00	6.50	60.00
Radio Red	4.00	30.00	6.50	60.00
Wallingford	4.00	30.00	6.50	60.00
HELIOTROPE, Giant Elsa	6.00	50.00	12.00	110.00
Centefleur	4.00	30.00	6.50	60.00
Royal Fragnans	2.50	20.00	6.00	50.00
IVY, English	1.50	12.00	7.00	60.00
Japanese (small, greenleaved).....	2.00	15.00	6.00	50.00
Select.....			8.00	75.00
German (Parlor)	2.00	15.00	6.00	50.00
LANTANAS, Dwarf Mixed			6.00	50.00
NIEREMBERGIA speciosa . A dwarf plant, literally covered with small panicles of lavender blue that blooms profusely all Summer. Considered by many preferable to Ageratum.....			6.50	60.00
PACHYSANDRA terminalis	4.50	40.00		
PELARGONIUMS (See Plants). Standard Sorts	5.00	45.00	7.00	65.00
VINCA, Variegated (Layers).....			6.00	50.00
3 in., \$10.00 per 100, \$90.00 per 1000, 1.75	15.00			

PRICES SUBJECT TO CHANGE WITHOUT NOTICE

PLANTS

All 2 1/4 inch, unless otherwise noted

	100	1000
AGATHAEA coelestis (Blue Daisy). Blue Daisy with yellow center. Flowers profusely late Fall until Spring in Carnation temperature. Excellent cut flower for centerpieces, colonial bouquets, etc. Something blue during the Winter. Add this useful cut flower to your assortment.....	\$6.00	\$50.00
ASPARAGUS plumosus . Seedlings.....	1.25	10.00
sprengeri . Seedlings.....	1.25	8.00
plumosus and sprengeri , 2 1/4 in.....	5.00	45.00
3 in.....	8.00

AZALEAS

FOR FORCING AND SPRING SALES

This season we are offering exceptionally fine plants, clean, large and well budded. Plants are very liberally graded and we are shipping exceptional value for the price. F.O.B. New York.

Write for List

100 1000

AZALEA hinodegiri . Fine strong plants for growing on.....	\$7.00	\$60.00
---	--------	---------

May, 1934.

Many thanks for your kindness and trouble in getting us these plants. They were the damnedest "best" Begonias we have ever had shipped us.

IDLE HOUR NURSERIES, Macon, Ga.

BEGONIA, Marjorie Gibbs. The first major appearance of this variety at Christmas proved its ability to be the standard Christmas Begonia in the future. The flowers are much larger, a brighter clear pink and the foliage is a fine, glossy green. It will flourish in 54 to 56 degrees, making it easier to grow than its ancestors. June delivery and later.....

.....	25.00	225.00
Lady Mac . Dark sport of Melior.....	22.50	200.00
Melior . Select plants from a select strain. May and later.....	22.50	200.00
Chatelaine	6.50	60.00
Chatelaine Supreme	6.00	55.00
Rex . Best varieties, assorted.....	10.00

July 9, 1934.

Last week I saw the stock of Melior and Lady Mac Begonias you shipped to William Slichter, and I must say they are first-class merchandise. I can now use the same as Mr. Slichter bought. Try and get this merchandise into transit this week, so it will get here before Sunday

LLOYD A. MILLER, Shillington, Pa.

July 5, 1934.

Find check enclosed for Melior and Lady Mac. I can always depend on Skidelsky for nice plants.

WM. SLICHTER, Mohnton, Pa.

BELOPERONE guttata (Shrimp Plant). A worthy novelty.....	\$12.00	\$100.00
3 in.....	25.00
BOUVARDIA humboldti , Double Pink , White , and Red . Will gladly quote. How many, what variety and color?		
BUDDLEIA asiatica . Improved.....	12.00
CALCEOLARIA, Barmi Hybrids . A new strain that surpasses anything yet offered. Flowers are a bit smaller, though much more profuse than older types, coming in a gorgeous array of colors. Holds entirely to clear shades, beautifully speckled and blotched. The foliage is darker and more glossy, being a new adjunct to the Hybrid types, forming a fine contrast in this new Calceolaria. For exhibition or commercial use, we know of no variety which can surpass the Barmi Hybrids.....	12.00	100.00
grandiflora Hybrids . Choice strain.....	10.00	90.00
stewarti , chrome yellow; lymani , cinnamon red; Pink Beauty ; medfordi , maroon.....	15.00
CALENDULA, Ball's Gold , Orange , Sensation , Masterpiece , Supreme	5.00	40.00
CHERRIES, Cleveland . Red, exceptionally fine selected strain.....	6.00	50.00

	100	1000
CINERARIAS grandiflora, Hybrids or multiflora nana (Potsdam)	\$6.00	\$50.00
Cremer's Hybrids . Large heads and small flowers, with colors of Grandiflora Hybrids. Small foliage. More pest and wilt-resistant than its parents....	6.00	50.00
CYCLAMEN . Finest plants from the best German strain seed. Assorted colors. Seedlings, 3-5 leaves.....	5.00	45.00
Seedlings, 5-8 leaves.....	7.00	65.00
2 1/4 in.....	12.00	100.00
3 in.....	15.00	145.00
<i>Prices on larger sizes in due season or on request.</i>		
DAISIES, Boston Yellow	6.50	60.00
Nicholson's Giant White	6.50	60.00
DELPHINIUM Belladonna and Bellamosum . Large, selected field grown clumps for forcing... <i>See our Perennial catalogue for other varieties and sizes</i>	8.00	70.00
DRACAENA indivisa	7.00	60.00
3 in.....	10.00
4 in.....	20.00
massangeana (See Decorative Foliage Plants).		
ERLANGEA tomentosa (Tall, Winter-flowering Ageratum).....	8.00
FERNS: Table Fern Varieties . June and later. \$3.00 per flat
Assorted Table Ferns	6.00	50.00
Boston, Dwarf Boston, Roosevelt, Teddy Jr., scotti, Verona, whitmani	6.00	55.00
Asplenium (Birdsnest) . Flats—200 seedlings.... \$7.50 each,
2 1/4 in.....	15.00
3 in.....	35.00
P. tremula and Cyrt. (Hollyfern), 2 1/4 in.....	8.00	75.00
3 in.....	16.00	150.00
GARDENIA veitchi . Popular for Spring pot plants or cut flowers.....	15.00	125.00
Grandiflora types and larger sizes of Veitchi quoted on request.		
GERANIUMS (See Spring Plants).		
GYPSOPHILA, Bristol Fairy	18.00	175.00

Write for Perennial Catalogue



BEGONIA—MARJORIE GIBBS

PRICES SUBJECT TO CHANGE WITHOUT NOTICE

S. S. SKIDELSKY & CO.

PLANTS

HYDRANGEAS



The best plants come from earliest cuttings. Order now.

The Holland varieties, introduced here recently, have made a hit wherever grown. Stockier plants, better colors, freer bloomers.

Chautard. Pink, easy forcer.
E. G. Hill. Clear pink, easy forcer.
E. Mouillere. White.
Lorelei. Carmine red.
Gertrude Glahn. Dark rose.
Goliath. Truly a giant pink.
Helge. Soft red.
M. Foch. Early deep carmine.
Otaksa. The old reliable.

Rheingold. Brilliant pink.
Splendens. Glossy clear red.
Trophee. Early red.
M. Baardse. Salmon red, excellent.
Neidersachsen. Excellent for blue.
Parsifal. Red fringed petals.
Rubis. Dark rose, beautiful.
Deutschland. Sturdy salmon pink.

Rooted Cuttings, \$5.00 per 100; 2 in., \$8.00 per 100; 3 in., \$12.00 per 100

Ami Pasquaar. Best red.
Giselher. Dark carmine red.
Hollandia. Beautiful salmon red
Nixe. Dark blood red.
Frulingserwachen. Early carmine red.

Luis Savage. Excellent dark pink.
Mein Liebling. Early dark pink.
Rochambeau. Beautiful pink.
Vulcan. Strong, deep pink.
Wilkomen. Brilliant pink, early.

Rooted Cuttings, \$8.00 per 100; 2 in., \$12.00 per 100, 3 in., \$18.00 per 100

Six new varieties imported under special permit this season from Hamburg, Germany. All show a wonderful heavy growth and are well worth a trial.

Altona	Hamburg	Munster
Europa	Kunert	Schadendorff's Perle

Rooted Cuttings, \$16.00 per 100, 2 in., \$25.00 per 100, 3 in., \$35.00 per 100

FALL DELIVERY AFTER OCTOBER 1st

	100	1000
4 in., 2 or more shoots.....	\$25.00	
5 in., 3-5 shoots.....	35.00	
6 in., 5-8 shoots.....	50.00	
7 in., 8 or more shoots.....	65.00	
8 in., 10 or more shoots.....	125.00	

JACOBINIA obtusior (Pink Hyacinth-bush). An annual attaining a height of 3 to 4 ft. from December planting. Flowers late Spring and Fall. A Celosialike flower about the size of an average Hyacinth.....\$25.00

KALANCHOE globulifera var coccinea 9.00 \$80.00
 3 in. 14.00 120.00

MARIGOLD, Lieb's Winterflowering (See **Tagetes**).

NASTURTIUM, Firefly. An excellent novelty; its double scarlet flowers extremely attractive. Beautiful when grown in miniature window boxes or pots (pinched back) with a trellis background. Also a fine thing for table cut flowers and unusually attractive when trained over the beans in the showhouse. Can be had in flower for Christmas.. 20.00

PANDANUS (See **Decorative Foliage Plants**).

PELARGONIUMS.

The Princess	Beautiful		
Edith North	Lavender Queen		
Gardener's Joy	Mrs. Loyal		
Lucy Becker	German Glory		
Dlener's Glant	Easter Greeting		
Springtime	Swablan Maid		
Prince Blsmarek	Pride of Quedlinburg		
Wurtembergia	Wolfgang Goethe	100	1000
Rooted Cuttings		\$5.00	\$45.00
2 in.....		7.00	65.00
3 in.....		10.00	90.00
4 in.....		17.00	165.00

25 at 100 rate, 250 at 1000 rate

No packing charge on Rooted Cuttings.
 5 per cent on potted plants

Orchid Edith North. Foliage and flowers the same size and shape as its parent. Darker blotches on two upper petals. Strong, upright, healthy grower and splendid bloomer. R. C..... 12.00 110.00
 2 in..... 15.00 140.00
 3 in..... 20.00 180.00

PEPEROMIA (See **Decorative Foliage Plants**).

PEONIES, GERMAN IRIS..... Write for prices.

PERENNIALS. The wide-awake florist is making money on these increasingly popular plants. Ask for our elaborately illustrated Perennial catalogue.

PHILODENDRON (See **Decorative Foliage Plants**).

POINSETTIAS, Stock Plants. California grown. For Spring delivery, F.O.B. New York, Chicago, and Pittsburgh on orders placed before March 15th. 2c. per lb. additional to these points later.

Barbara Ecke. The new variety similar in color to Mrs. Paul Ecke, branches freely and has a wiry stem. Per 100.....\$25.00, \$50.00 and 75.00

Mrs. Paul Ecke, and White..... 50.00
 Per 100.....\$15.00, \$25.00, \$35.00 and

Oakleaf, St. Louis, Henriette Ecke (double), Hollywood, Pink, True Red and Early..... 45.00
 Per 100.....\$15.00, \$25.00, \$35.00 and

2 1/4 in. plants—July and later delivery

Mrs. Paul Ecke	Hollywood
Henriette Ecke (double)	St. Louis
Oakleaf	Pink
White	

Prices in due season, or on request

PRIMULA obconica. Finest strain. June and later delivery..... 7.00 60.00
erikssoni (Malacoides Improved)..... 7.00 60.00

RESEDA alba. Similar to Buddleia, produces flowers on 15 to 18 in. stems more abundantly and earlier, with less heat. Plant 8x8 in. 12.00 100.00

SAINTPAULIA ionantha (African Violet). A fine indoor pot plant, producing large clusters of Violets in profusion all Winter. The foliage resembles that of Gloxinia (Fuzzy), but is smaller..... 18.00 150.00

SNAPDRAGON, All Varieties 5.00 45.00
 (See **Antirrhinum** under "Seed" for best greenhouse varieties).

SMILAX..... 5.00 40.00

TAGETES, Pot o'Gold (Lieb's Winterflowering Marigold). That something new and different the retail grower should have. A Winterflowering type growing about 30 in. high from October 1st planting. Blooms five weeks after planting and continues to flower until late Spring. Abundantly produces odorless, semi-double flowers about 2 in. in diameter, the outer petals being dark orange, the centers golden. Grows best in poor soil at Carnation temperature.....25 plants, \$2.00, 7.00 65.00

VINCA variegata (See **Spring Plants**).

VITIS rubifolia (Japanese Grape Ivy). See **Decorative Foliage Plants**.

PRICES SUBJECT TO CHANGE WITHOUT NOTICE

SUMMER AND FALL IMPORTATIONS, 1935

DELIVERY ON ARRIVAL UNLESS OTHERWISE NOTED

Prices where not listed will appear in due season, or will quote on request

- | | |
|-------------------|--------------------|
| Lilium Wonderbell | Lilium sinensis |
| Lilium giganteum | Lilium nobili |
| Lilium erabu | Lilium multiflorum |

F.O.B. New York or Chicago

We are now booking import orders at market prices, with a guarantee against any price decline up to date of delivery.

HARDY LILIES

Auratum, Album, Magnificum, Rubrum, Melpomene, etc.

F.O.B. New York or Chicago

LILIUM CANDIDUM

F.O.B. New York only

LILIUM HARRISI

F.O.B. New York only

See front cover. This picture was taken on December 4, 1934, at Robert M. Johnston's, Dobbs Ferry, New York, whom we have been supplying with *Harrisi* for some years past. These are the finest crop of *Harrisi* we have ever seen, and never have we seen them so fine at this early date. They averaged about three flowers per plant from 6-7 bulbs, and the first flowers were cut on Thanksgiving Day.

This is more than double the cut any grower can hope to get out of any other kind of cold storage Lilies at Christmas or later, disregarding the fact that less fuel is required to achieve better results.

We know of no more profitable crop for the retail grower.

Don't miss up on it this year. Order some **S.S.S. Harrisi** now.

6-7.....335 per case	9-11.....100 per case
7-9.....200 per case	11-13.....50 per case

CALLAS

Aethiopica, White (Home and Northwest grown). 1½-1¾ in., 1¾-2 in., 2 in. and up.

Godfrey. Pure white (Home and Northwest grown). 1-1½ in., 1½-2 in., 2 in. and up.

Elliottiana. Yellow. 2-2½ in., 2½-3 in., 3-3½ in., 3½ in. and up.



CALLAS BEING GROWN FOR S. S. S. & Co.

In the Northwest fields, experience has taught us that this section produces the best bulbs.



A BOWL OF ANEMONE DE CAEN HYBRIDS

DAPHNE CNEORUM

(See illustration on back cover)

This old-time favorite rock garden plant has definitely established itself as a new popular addition in pot plants.

Our plants are trimmed and shaped. Well finished, they form a magnificent, solid pink globe of most fragrant blossoms. Can be flowered at any time from the middle of February through the holiday season.

A quick, clean and profitable proposition for the up-to-date florist. Its garden possibilities, after flowering in the home, make it extremely desirable.

Cultural directions on request

Fall delivery and later. Write for prices

FREESIAS

Elder's White and Blanche Blue
Purity
Golden Daffodil

Marc Peters
White Star
Splendens

And all other good varieties, in all flowering sizes

ANEMONES

St. Brigid

De Caen

Chrysanthe flora

And separate colored varieties

RANUNCULUS

All the best kinds

SPIRAEAS (Astilbe)

Gloria. Clear rose pink.

America. Lilae rose.

Rubens. Deep rose.

Queen Alexandra. Lilac.

Peach Blossom.

Deutschland. White.

Gladstone. White.

Princess Mary. Deep rose pink.

PRICES SUBJECT TO CHANGE WITHOUT NOTICE

SUMMER AND FALL IMPORTATIONS, 1935



A GLIMPSE OF S. S. S. FREESIAS IN THEIR
NATIVE GLORY



SOME GRAND DAFFODILS ON A GRAND SCALE IN THE
NORTHWEST

PAPERWHITES

Domestic Paperwhites are rapidly gaining the favor, the imported kind used to have. Check the results of S. S. S. Paperwhites this past season. You will want some of the new crop.

We buy them from the source that turns out the best bulbs in the current season.

DAFFODILS

Results this year are turning out to be as fine as we have ever known from imported stock. We have no doubt that the improvements of the past several years will continue in the future.

Varieties that show the best results this year will comprise our list for next season. Among them will be

King Alfred	Sir Watkin	Glory of Sassenheim
Minister Talma	Olympia	Poeticus, Etc.

Now booking orders, subject to price when established.

IRIS

Despite the shortage this past season we made complete deliveries on all orders.

Wedgwood, Imperator, etc.

We know of no finer blue flower at this time of year. It fills that necessary color gap with a high-class flower that has yet to fail in showing a profit for the grower.

April 4, 1934.

The bulbs I bought of you last Fall all grew and not one went blind in the pots. I had trouble getting them out this year as they were frozen solid, but sold every one and did not have a plant for myself. They cleaned me out.

DON D. CROCKER, Jamestown, N. Y.

DUTCH BULBS

Why not purchase your **Tulips, Hyacinths** and other **Dutch Bulbs** from the American firm you buy **Lilies, Valley** and other imported bulbs.

Our prices this past Fall in many instances not only equaled, but were less than foreign sources, so-called direct (?) buying.

As for quality, our reputation of 38 years of square dealing stands back of our sale of these bulbs as it does every other item we sell.

Place your bulb **order** with us **early**. **It costs no more** and gives us the opportunity to **buy better** for you. We guarantee against any market decline up to time of delivery.

BUY EARLY AND WELL FROM S. S. S. & CO.

Quality—through Prosperity or Depression, has never been overproduced. It has and always will sell first in any market, and at the best price under any circumstances.

Quality is scarce—production is low.

Plant the best stock from S. S. S. & CO.—then keep it clean and well fed.

“Let's get goin'!”

PRICES SUBJECT TO CHANGE WITHOUT NOTICE

37-39 West 28th Street, New York City

INSECTICIDES and FERTILIZERS

Directions for use accompany all shipments.

Write for quantity discounts.

If you don't see what you want, ask for it.

HITOX. This double-active Rotenone and Pyrethrum Spray is complete, with its own spreader. Will not stain, discolor or burn the most delicate plants or flowers. The most efficient insecticide we can recommend. Pt. \$1.75, qt. \$3.00, gal. \$9.00.

July 20, 1934.

Want to let you know that the demonstration of the new Insecticide Hitox was very successful. It was applied to a bench of Roses which were full of Midge, and after three sprayings three days apart, we found the midge absolutely destroyed. There is no sign of any midge whatsoever now. I intend to spray my entire Roses with Hitox, and therefore would ask you to kindly send two gallons as soon as possible.

I believe that this new preparation is a godsend to the Rose grower and believe sincerely that we do not need worry any more about Rose midge.

Very truly yours,
C. F. Bertanzel,

THE WHEATLEY GARDENS, Roslyn, New York.

July 20, 1934.

Kindly be advised that we used the insecticide Hitox on several types of plants badly affected with mealy bugs, and found same satisfactory, especially so on Kentia Palms and Phoenix. We followed out your instructions carefully.

When our supply of Hitox runs out we will call on you for a new supply.

Yours very truly,

KLUGMAN & SCHNEIROW, Brooklyn, N. Y.
(Signed) B. Klugman.

Colloidal Sulphur. A general fungicide and effective contact insecticide. 6-lb. bottles \$4.00, 50-lb. kegs \$20.00, 100-lb. kegs \$38.00.

Nicofume Liquid. 8-lb. tin (1 gal.) \$10.00.

Red Arrow Insect Spray (Pyrethrum). An excellent contact insecticide. Qt. \$2.50, gal. \$9.50.

Agripax. An efficient Pyrethrum soap spray. Gal. \$3.00, 5 gals. \$12.00, 30-gal. drum \$60.00.

New Evergreen. Gal. \$12.00, 5 gals. \$50.00.

Volck. Gal. \$2.50, 5 gals. \$7.50.

Lemon Oil. Gal. \$2.50, 5 gals. \$10.00.

Lethane 420. Qt. \$6.00, ½ gal. \$11.00, gal. \$20.00.

Red A Soap (Increases efficiency of any except Arsenical Sprays) Gal. \$1.50, 5 gals. \$6.25.

Pyrethrum Powder (Pure, no filler). Non-poisonous and non-injurious to leaves or flowers, but surely destroys moths, millers, leaf rollers or any other insects it contacts. Dust it on with blower. 5 lbs. \$3.75, 10 lbs. \$7.00, 25 lbs. \$16.75.

Plantobac (Powdered Tobacco, for dusting). ¾ per cent nicotine. 100 lbs. \$3.00.

Special 3 per cent Nicotine Plantobac. Extra strong. Effective and economical for dusting over plants or soil. Will kill many soil inhabiting insects. 10 lbs. \$2.50, 25 lbs. \$5.25, 50 lbs. \$9.60, 100 lbs. \$16.30.

F. & I. Best quality shredded Tobacco stems, containing all the natural nicotine and fertilizing values. For top dressing and to improve soil texture. Kills many insects. 100 lbs. \$2.10, 500 lbs. \$8.80, 2000 lbs. \$34.00.

All above Tobacco Products, F.O.B. Yorklyn, Delaware

Baled Tobacco Stems (Prices on request).

Antipestick. Garden hose insect control. Easy, efficient and economical.

Set: Consisting of one nozzle and three sticks (cartridges) of Antipestick. \$2.00.

Arm extension. For spraying under foliage. Each 75c.

Shut-off Valve. Each \$1.50.

Nodew Sticks (Sulphur). Each 25c.

Foodndrink Fertilizer Sticks (20 in a box). Box \$1.00.

Antipestick Sticks. \$4.00 per doz.

Tat Ant Traps (Thallium Sulphate). Ants are the most efficient spreader of mealy bug. First eradicate the ants, if you expect to get rid of mealy bug. Tat Ant Traps will do it in short order. Boxes of 24 (box lots only), \$6.00 per box.

SOIL TESTING KIT

Before you buy fertilizer, test your soil to determine the amount of plant food your soil requires. Now, in ten minutes you can determine the essential plant food the soil contains—Nitrogen, Potash, Phosphorus, as well as the degree of acidity.

A complete soil testing laboratory, fitted in a durable steel kit that will last a lifetime.

Measurements: 19 in. x 6 in. x 6½ in. Weight, 12½ lbs.
\$15.00

FUMIGANTS

Cyanogas. 5 lbs. \$3.00, 25 lbs. \$10.00.

Nicofume Tobacco Powder. 10-lb. tin \$5.85.

Fumetobac (Over 2 per cent Nicotine). 50 lbs. \$7.50, 100 lbs. \$14.00.

Naphthalene Flakes. Chases every known pest. Harmless to plants. Put under pots and benches or in the walks. Spread Naphthalene flakes through your Gladiolus now. One pound to a thousand bulbs. A cheap, quick and effective way to make sure your Glads start out free from thrip. Give them a clean start. 50 lbs. \$4.25, 100 lbs. \$8.00.

FUNGICIDES

Colloidal Sulphur. 6-lb. bottle \$4.00, 25 lbs. \$12.00, 50-lb. keg \$20.00, 100-lb. keg \$38.00.

Formaldehyde Dust. Absolutely and harmlessly controls damping-off of seedlings and cuttings. 5 lbs. \$2.00, 25-lb. drum \$5.50, 50-lb. drum \$9.00.

Semesan. An effective fungicide for treating seeds and bulbs. Lb. \$2.75, 5 lbs. \$13.00.

SPRAY PUMPS AND DUSTERS

We are agents for the better makes of power or hand sprayers and dusters of all kinds. Any information regarding the type or make in which you are interested, gladly given on request.

FERTILIZERS

You can't get out what you don't put in.

Wizard Brand Concentrated Manures: Pulverized Sheep or Shredded Cow Manure.

100 lbs.	\$2.65
500 lbs.	10.00
1000 lbs.	17.00
2000 lbs.	32.00

F.O.B. Chicago

Blood and Bone. 100 lbs. \$3.00, 500 lbs. \$12.00, 1000 lbs. \$22.00, 2000 lbs. \$40.00.

Regular Bonemeal. 100 lbs. \$3.25, 500 lbs. \$12.25, 1000 lbs. \$23.00, 2000 lbs. \$44.00.

Bone Flour. Finely pulverized for immediate action. 100 lbs. \$4.00, 500 lbs. \$18.00.

Leafmold (Maplevale). 100 lbs. \$2.00.

All fertilizers packed in 100-lb. bags

Nitrophoska 15-30-15. The concentrated complete fertilizer. "Dynamite," but "Golden" when properly used. 25 lbs. \$2.75, 100 lbs. \$6.00.

Floranid (Urea). A highly concentrated fertilizer, containing 46 per cent available, nitrogen. 25 lbs. \$2.75, 100 lbs. \$9.00.

Granulated Peat Moss (Imported). \$2.50 per bale, \$2.10 per bale for 10 bales or more. F.O.B. New York.

Write for special quantity quotations on any
Insecticide or Fertilizer

PRICES SUBJECT TO CHANGE WITHOUT NOTICE

S. S. SKIDELSKY & CO.

S. S. SKIDELSKY & CO.
Tel. BOgardus-4-6976-6977

37-39 WEST 28th STREET
NEW YORK CITY, N. Y.

THIS ORDER IS SUBJECT TO OUR APPROVAL. LIKewise TO CROP CONDITIONS OR
OTHER CAUSES BEYOND OUR CONTROL. ALL TERMS AND CONDITIONS IN OUR
CATALOGUE ARE HEREBY ACCEPTED AS APPLYING TO THIS ORDER.

DATE _____

Ship by _____ P. POST BOAT
(Check which) EXPRESS RAIL FRT.
MOTOR FRT. BEST WAY

Name _____

St., P. O. Box or R. F. D. _____

Post Office _____ State _____

Ship to _____ (If other than yourself)

Shipping Point _____ (If other than Post Office)

AMOUNT ENCLOSED \$ _____

QUANTITY WANTED	ARTICLES WANTED	UNIT PRICE	TOTAL
FOLD HERE			

Signed _____

NEW ACCOUNTS DESIRING CREDIT, PLEASE GIVE 3 TRADE REFERENCES
DISCOUNT FOR CASH WITH ORDER: 5% ON SEEDS: 3% ON ALL OTHER ITEMS

FIRST CLASS
PERMIT No. 10571
(Sec. 510, P. L. & R.)
NEW YORK, N. Y.

BUSINESS REPLY ENVELOPE

NO POSTAGE STAMP NECESSARY IF MAILED IN THE U. S.

POSTAGE WILL BE PAID BY—

S. S. SKIDELSKY & CO.

37 WEST 28th STREET

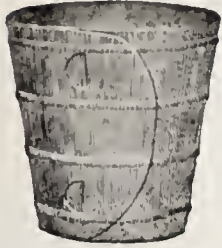
NEW YORK, N. Y.

FOLD HERE



NEPONSET WATERPROOF PAPER POTS

F.O.B., E. Walpole, Mass.



Colored Pots for Growing. Available in deep maroon or soft green. The bottoms are re-inforced with a close-fitting disk to prevent roots from growing in between sections of the base.

Prices and sizes same as Black Pots

Size	Prices per 1000	
	Red	Black
2 in. (1000 per carton)	\$3.65	\$4.25
2 1/4 in. (1000 per carton)	3.80	4.45
2 1/2 in. (1000 per carton)	4.10	4.90
3 in. (1000 per carton)	5.10	5.90
3 1/2 in. (1000 per carton)	6.60	7.75
4 in. (500 per carton)	8.00	9.00
5 in. (500 per carton)	10.50	12.00
6 in. (500 per carton)	14.00	15.50

Liberal discounts for quantity orders

Pot Covers. Various colors and designs. 250 per carton. Price per 1000: 4 in. \$19.10, 5 in. \$23.75, 6 in. \$30.25.

Plant Bands. Price per carton of 1000: 2 in. \$2.40, 3 in. \$4.10.

No orders filled for less than carton lots

WREATHS — EASELS — CROSSES

Complete Price List on Request

GALVANIZED WIRE STAKES

Write for prices, stating quantity, length and gauge wire desired. The more you use, the more money we can save you.

JAPANESE CANE STAKES (Hot Water Sterilized)

Dyed Green (2000 per bale)—Price per bale:

1 1/2 ft.	\$2.75	3 ft.	\$6.00
2 ft.	4.00	3 1/2 ft.	7.00
2 1/2 ft.	5.00	4 ft.	8.50
Natural, 6 ft.	13.50		

5 per cent discount on 10 bales up

SQUARE HYACINTH STICKS

Pointed Split Bamboo—Dyed Green

Far superior to wood. Price per bundle of 1000: 12 in. \$1.00, 15 in. \$1.25, 18 in. \$1.50, 24 in. \$2.00. *Write for quantity discounts.*

CHINESE TONKIN GARDEN STAKES

Best quality, extra fine for Dahlias, nursery stock, etc. Smooth, naturally polished, of even diameter throughout and able to withstand all weather conditions. *Write for particulars.*

INDEX

Agathaea.....16
 Ageratum.....15
 Alternantheras.....15
 Amaranthus.....1
 Amaryllis.....9
 Anemones.....18
 Antirrhinum.....1
 Asparagus.....1, 16
 Aspidistras.....15
 Asters.....2
 Astilbe.....9, 18
 Azaleas.....16
 Begonias
 Plants.....1, 16
 Tuberous bulbs.....9
 Bellis perennis.....3
 Beloperone.....16
 Bleedingheart (Dielytra).....9
 Bouvardia.....16
 Browallia.....1
 Buddleia.....16
 Cactus.....15
 Caladiums, Esculentum and
 Fancy-leaved.....9
 Calceolaria.....2, 16
 Calendula.....2, 16
 Callas.....18
 Candytuft.....1
 Cane Stakes.....3d cover
 Cannas.....8
 Carnations.....10
 Celosia.....2
 Centaurea.....2
 Cherries.....5, 16
 Chrysanthemums.....11-14
 Cineraria.....2, 16
 Clarkia.....3
 Coleus.....15
 Cosmos.....3
 Crassula.....15
 Crotons.....15
 Cyclamen.....3, 16
 Daffodils.....19
 Dahlia.....3, 14
 Daisies.....3, 16
 Daphne.....18

Delphinium.....3, 16
 Didiscus.....3
 Dielytra spectabilis (Bleeding-
 heart).....9
 Dracaena.....3, 15, 16
 Elephants-ear.....9
 Erlangea.....16
 Euphorbia.....15
 Exacum.....3
 Ferns.....16
 Fertilizers.....20
 Ficus.....15
 Foliage Plants.....15
 Forget-me-not.....4
 Freesias.....18
 Fuchsias.....15
 Garden Stakes.....3d cover
 Gardenia.....16
 Geraniums.....15
 Gladiolus.....8
 Gloriosa rothschildiana.....9
 Gloxinias.....9
 Gypsophila.....3, 16
 Heliotrope.....15
 Hydrangea.....17
 Insecticides.....20
 Iris.....9, 19
 Ismene calathina.....9
 Ivy.....15
 Jacobinia.....17
 Kalanchoe.....3, 17
 Lantanas.....15
 Larkspur.....4
 Leptosyne.....4
 Lilies.....7, 18
 Lily-of-the-valley.....7
 Marigold.....4, 17
 Mignonette.....4
 Myosotis.....4
 Narcissus, Paperwhite.....19
 Nasturtium.....4, 17
 Nephthytis liberica.....15
 Nierembergia.....15

Pachysandra.....15
 Pandanus.....15
 Pansy.....4
 Paper Pots.....3d cover
 Paperwhite Narcissus.....19
 Pelargoniums.....15, 17
 Peonies.....9
 Peperomia.....15
 Perennials.....17
 Peruvian Lily.....9
 Petunia.....4
 Philodendron.....15
 Phlox drummondii.....4
 Plants—Decorative Foliage,
 Flowering, and Miscellane-
 ous.....15-17
 Plants, Spring.....15
 Poinsettias.....17
 Poppy.....4
 Pothos.....15
 Primula.....4, 17
 Ranunculus.....18
 Reseda.....17
 Rock Plants.....9
 Roses.....14
 Saintpaulia.....17
 Salpiglossis.....5
 Salvia.....5
 Scabiosa.....5
 Schizanthus.....5
 Seeds.....1-6
 Smilax.....5, 17
 Snapdragon.....1, 17
 Solanum.....5
 Spiraea.....9, 18
 Statice.....5
 Stocks.....5
 Sweet Peas.....6
 Tagetes.....17
 Tuberoses.....9
 Verbena.....5
 Vinca.....15
 Vitis.....15
 Wire Work.....3d cover
 Zinnias.....5



DAPHNE CNEORUM

S. S. SKIDELSKY & CO.

HIGHEST QUALITY

BULBS, PLANTS, SEED SPECIALTIES AND SUNDRIES

37-39 WEST 28TH STREET, NEW YORK CITY

*PRICE IS IMPORTANT BUT QUALITY HAS HELD S. S. S. LEADERSHIP FOR 38 YEARS
WHEN BETTER GRADES ARE GROWN S. S. S. WILL SELL THEM*