

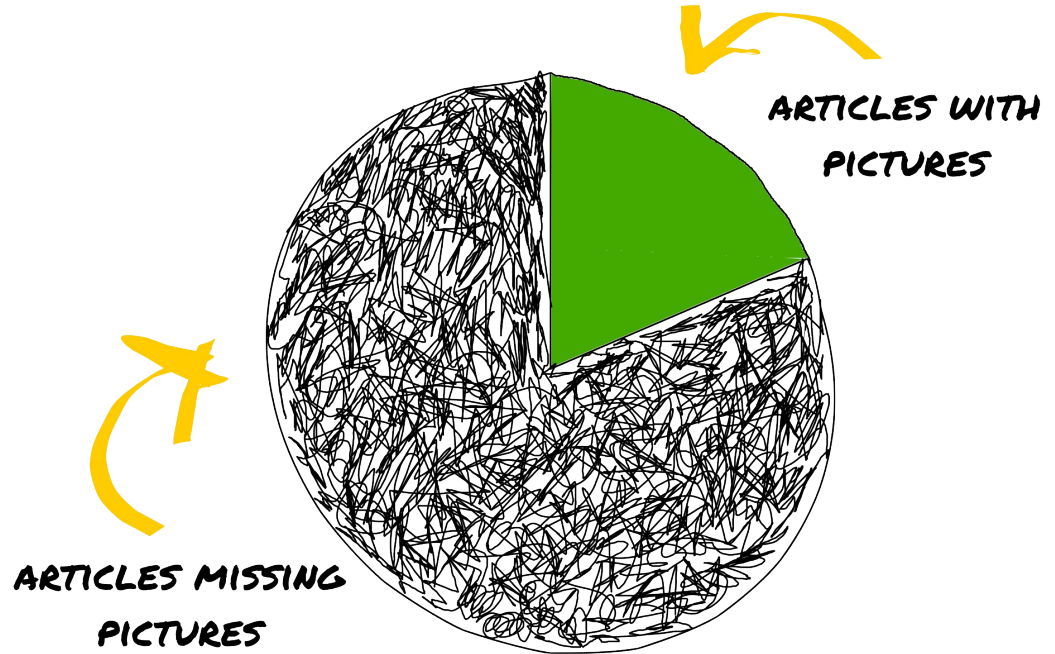
# THE VISIBILITY GAP

#VISIBLEWIKIWOMEN'S CAMPAIGN FOR VISUAL KNOWLEDGE



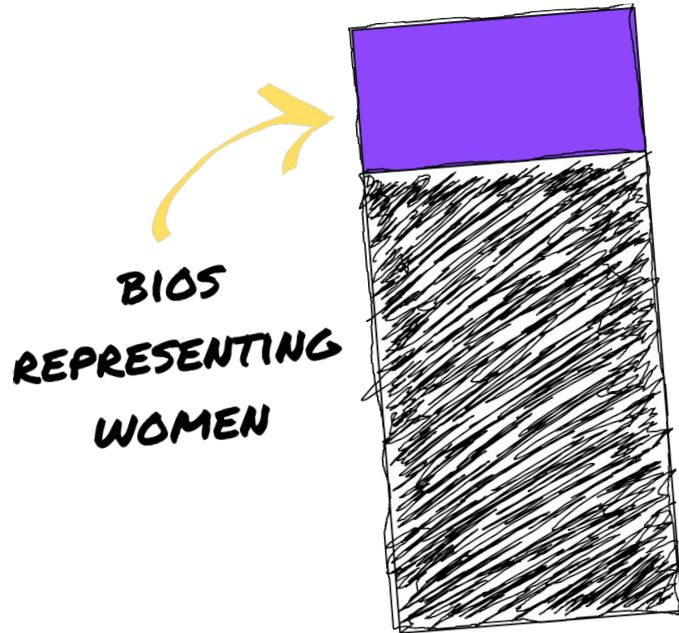
# VISUALIZING THE GENDER GAP

- LESS THAN 20% OF WIKIPEDIA ARTICLES OF IMPORTANT WOMEN HAVE PICTURES.





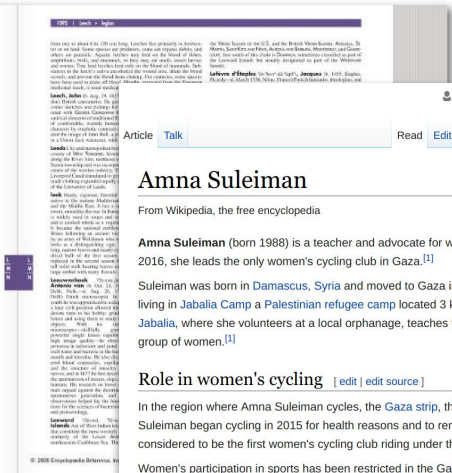
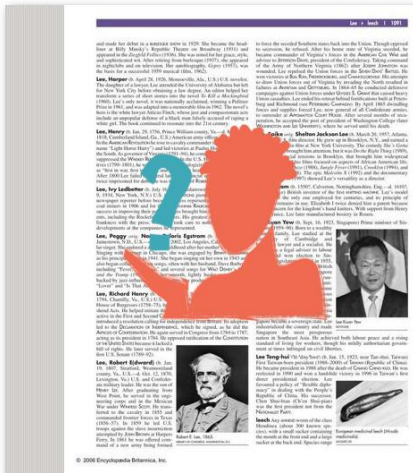
# VISUALIZING THE GENDER GAP



- LESS THAN 1/4 OF ALL WIKIPEDIA BIOGRAPHIES REPRESENT WOMEN.



# THE SPREAD OF THE VISIBILITY GAP



Seeko Talk Sandbox Preferences Beta Watchlist Contributions Log out

Read Edit Edit source View history More

Search Wikipedia

## Anna Suleiman

From Wikipedia, the free encyclopedia

**Anna Suleiman** (born 1988) is a teacher and advocate for women's cycling in Gaza. As of 2016, she leads the only women's cycling club in Gaza.<sup>[1]</sup>

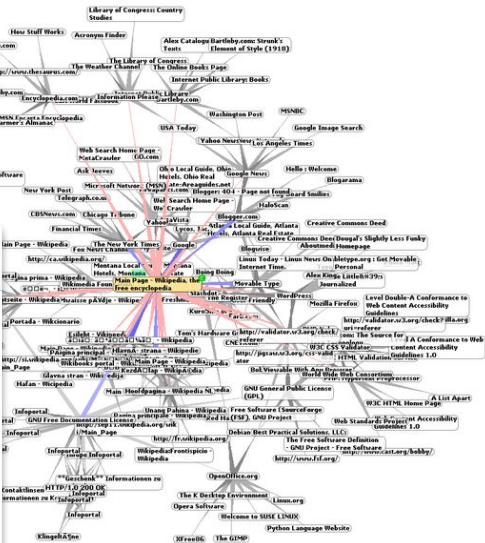
Suleiman was born in Damascus, Syria and moved to Gaza in 1990.<sup>[1]</sup> As of 2016 she was living in Jabalia Camp a Palestinian refugee camp located 3 kilometers (1.9 mi) north of Jabalia, where she volunteers at a local orphanage, teaches the Quran, and cycles with a local group of women.<sup>[1]</sup>

### Role in women's cycling

In the region where Anna Suleiman cycles, the custom is for women to not ride their bike past the age of puberty.<sup>[2]</sup> Suleiman began cycling in 2015 for health reasons, and to remind herself of better times in her childhood. Soon after, she established what is considered to be the first women's cycling club riding under the Hamas party's administration in Gaza.<sup>[1]</sup>

Women's participation in sports has been restricted in the Gaza strip since the Hamas party came to power. According to Ahmad Muheisin, an official in Gaza's youth and sports ministry office, women's cycling is considered to be a "violation" of Gazan values.<sup>[1]</sup> Some have noted that it was more common for women to ride bikes in Gaza before the mid-1980s.<sup>[1]</sup>

Suleiman advocates for women to continue riding bicycles after puberty, and has been quoted in the *New York Times* telling young women in Gaza that they should insist to their future husbands permission to cycle be a condition of their marriage.<sup>[1]</sup> In 2016 she was profiled by



Chris 73 / Wikimedia Commons  
[GFDL 1.3 U, undefined CC BY-SA 3.0]

OLD ENCYCLOPEDIAS



WIKIPEDIA



WORLD WIDE WEB

MAKING WOMEN MORE  
VISIBLE IN WIKIPEDIA  
INVOLVES MANY  
CHALLENGES...



# BIASES, STEREOTYPES



**Do women have to be naked to get into the Met. Museum?**

Less than **5%** of the **artists** in the Modern Art Sections are women, but **85%** of the **nudes** are female.

**GUERRILLA GIRLS** Box 1056 Cooper Sta. NY, NY 10276  
CONSCIENCE OF THE ART WORLD



# PRESENCE IN THE PUBLIC SPACE?

(WHERE PHOTOS ARE TAKEN)



<http://allmalepanels.tumblr.com>





# COPYRIGHT

## Non-free media information and use rationale for Vivian Maier

**Description** Self-portrait

**Source** [Vivian Maier, Her Undiscovered Work](#)

**Article** Vivian Maier

**Portion used** It represents the complete work.

**Low resolution?** It is a low resolution image.

**Purpose of use** It illustrates an educational article about a photographer that this image represents.

**Replaceable?** It is not replaceable with an uncopyrighted or freely copyrighted image of comparable educational value.







# LACK OF SOURCES

THE NEW YORK PUBLIC LIBRARY  
DIGITAL COLLECTIONS



Collections > *Women of distinction: remarkable in works and invincible in character*

## WOMEN OF DISTINCTION: REMARKABLE IN WORKS AND INVINCIBLE IN CHARACTER

About

Filters

### COLLECTION DATA

#### NAMES

Washington, Josephine Turpin, 1861- (Author)

#### DATES / ORIGIN

Date Issued: 1893

Place: Raleigh, N.C.

Publisher: L.A. Scruggs

#### LIBRARY LOCATIONS

Schomburg Center for Research in Black Culture, Manuscripts, Archives and Rare Books Division

49 results found

Sort by: [Title](#) [Date created](#) [Date digitized](#) [Sequence](#)



Fraternally L. A. Scruggs



Phillis Wheatley



Frances E. W. Harper



Hallie Quinn Brown



Mrs. N. F. Mossell



Flora Batson Bergen

digitalcollections.nypl.org - Women of distinction: remarkable in works and invincible in character



# #VISIBLEWIKIWOMEN CHALLENGE: THE IDEA

- USE MARCH 2018 TO MAKE WOMEN'S IMAGES MORE VISIBLE ON WIKIMEDIA PROJECTS
- PHOTOGRAPH, LICENSE AND UPLOAD PHOTOS OF NOTABLE WOMEN FOR USE ON COMMONS AND WIKIPEDIA.
- *WHAT IT IS*: A GENERAL THEME, WITH SUGGESTIONS AND TOOLS FOR ORGANIZING, WHICH CAN BE ADAPTED TO EACH CONTEXT.
- *WHAT IT IS NOT* (THIS YEAR): THIS YEAR, IS NOT A BIG CONTEST LIKE WIKI LOVES MONUMENTS. AND IT DOESN'T FOCUS ON LARGE-SCALE ORGANIZATIONAL IMAGE DONATIONS.



# #VISIBLEWIKIWOMEN CHALLENGE: THE TASKS

- UPLOAD IMAGES OF NOTABLE WOMEN AND THEIR WORK TO WIKIMEDIA COMMONS.
- IMPROVE DESCRIPTIONS ON WIKIMEDIA COMMONS AND WIKIDATA.
- USE IMAGES ON WIKIPEDIA ARTICLES.
- WRITE, IMPROVE AND TRANSLATE ARTICLES.





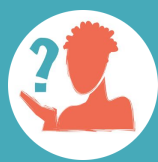
# #VISIBLEWIKIWOMEN CHALLENGE: HOW DID WE DO IT

- CREATED A GENERAL COORDINATION SCHEDULE
- TALKED WITH PARTNERS + CALL TO ACTION
- CREATED A GENERAL FRAMEWORK FOR COLLABORATION: META PAGE + CATEGORY
- CREATED A RESOURCES KIT
- MADE WORKLISTS
- AMPLIFIED THROUGH WEB + SOCIAL MEDIA CONTENT



# PARTNERS





# PARTNERS

WIKIMUJERES

ASSOCIATION CLIBRE  
#CLIBRETN

O FOUNDATION

WIKIMEDIA COMMUNITY USER GROUP BRAZIL

OPEN FOUNDATION WEST AFRICA  
#OFWAFRICA

WIKIMEDIA ISRAEL  
#WIKIMEDIAIL

WOMEN IN RED  
#WIKIWOMENINRED

GLOBAL FUND FOR WOMEN

MURJERES LATINOAMERICANAS EN WIKIMEDIA

AFROCROWD

THE BLACK LUNCH TABLE  
#BLACKLUNCHTABLE

ART + FEMINISTM  
#NOWEDITINGAF

WIKIMEDIA TUNISIE  
#WIKIMEDIATN

WIKIMEDIA URUGUAY

WIKIMEDIA ARGENTINA

WIKIMEDIA BOLIVIA

WIKIDONNE  
#WIKIDONNE



Egypt, Port Said.1880.jpg 564 x 852; 122 KB  
 Egypt, Dated 1918.jpg 564 x 932; 66 KB  
 Egyptian 'fellaheen' women ca. 1880.jpg 504 x 641; 33 KB  
 Egyptian Dancer 1902.jpg 564 x 872; 87 KB  
 Egyptian Faces of the nineteenth century.jpg 236 x 378; 22 KB  
 Egyptian Family.jpg 760 x 643; 76 KB  
 Egyptian girl.ca 1900.jpg 353 x 549; 32 KB  
 Egyptian lady in the harem 1851.jpg 1287 x 1600; 518 KB  
 Egyptian woman (1875).jpg 564 x 564; 63 KB  
 Egyptian Woman With Children.jpg 527 x 760; 40 KB  
 Egyptian women in burkas 1880.jpg 236 x 317; 19 KB  
 Egyptians 2, 1880.jpg 480 x 744; 63 KB  
 Egyptians, 1860.jpg 564 x 564; 86 KB  
 Egyptian fahala 1880.jpg 564 x 748; 48 KB  
 Eileen Heckart during opening night party at Roseland for the stage production West Side Story.jpg 759 x 760; 381 KB



El animal que prevé. Cómo el cerebro humano configura la realidad perceptual- Anna-Christina Nobre en conversación con Pablo La Padula 5760 x 3840; 7.5 MB  
 Elaine Black 'Yoneda 1906-1988 (7222966170).jpg 750 x 958; 262 KB  
 Eleanor Georgen.jpg 203 x 365; 85 KB  
 Eleanor Holgate Lattimore (1895-1970) (cropped).jpg 720 x 958; 120 KB  
 Eleanor Rathbone campaigning 1036 x 899; 89 KB  
 Eleanor Rathbone.jpg 3883 x 1111; 1.31 MB  
 Elena Barmakova (cropped).jpg 564 x 888; 88 KB  
 Elena Buglova (cropped).jpg 699 x 999; 500 KB  
 Elena Reynaga.jpg 5520 x 3680; 4.88 MB  
 Eliz.White---web (6839081234).jpg 438 x 349; 72 KB  
 Elizabeth Bay by Isabel May Hunter became Isabel May Taylor 900 x 1113; 113 KB  
 Elizabeth Emma Soyer.jpg 500 x 700; 100 KB  
 Elizabeth Stinson.png 1500 x 1100; 566 KB  
 Elke Christina Roeder (15711481054).jpg 4288 x 2848; 6.18 MB  
 ElyNey1922.tif 274 x 451; 157 KB

# +1000 IMAGES!!!

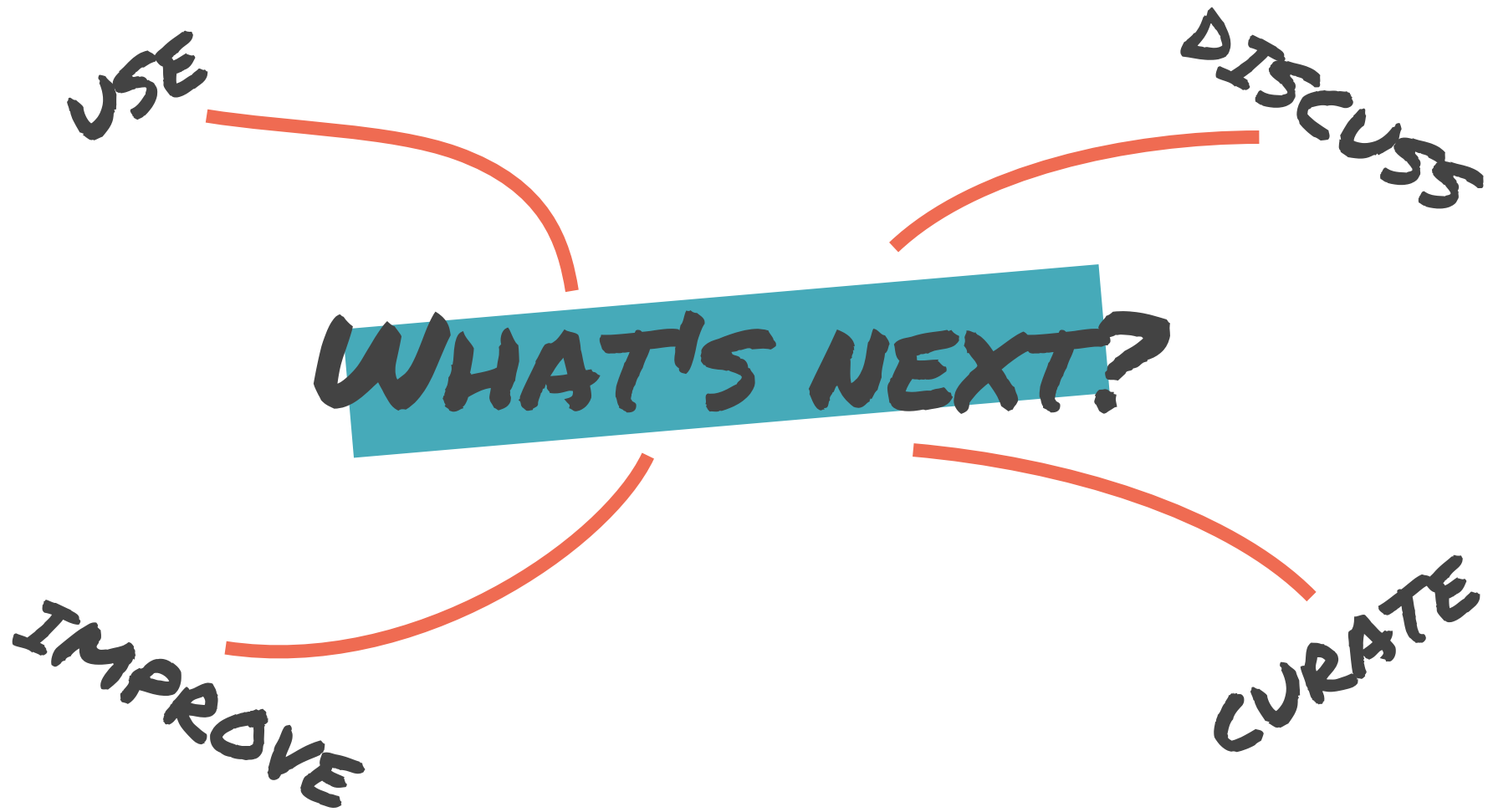


Emily Lansingh Muir.jpg 226 x 249; 18 KB  
 Emily Winfield Martin - Black Apple (7991638903).jpg 3872 x 2592; 2.33 MB  
 Emily, William and Mary Blathwayt with Mary Howey at Eagle House.jpg 357 x 263; 36 KB  
 Emine Birnur Fertekilgil (cropped).jpg 2686 x 2690; 5.04 MB  
 Emmeline Pankhurst knitting in cell.jpg 2892 x 6030; 2.03 MB  
 Entrance to the Great Temple, Luxor.jpg 2560 x 2094; 817 KB  
 Erity Teave.jpg 5520 x 3680; 4.87 MB  
 Espérance Nyirasafari.jpg 800 x 600; 78 KB  
 EvaDidur1919.tif 266 x 452; 123 KB  
 Fabiana Goyenchee.jpg 3000 x 2000; 1.66 MB  
 Fahlaha 1870.jpg 403 x 529; 28 KB  
 FannieBaker1908.tif 298 x 471; 168 KB  
 Farah Diva Urrutia.jpg 2741 x 2743; 2.59 MB  
 Farmer girl 1920.jpg 404 x 532; 38 KB  
 Fayoum. Nº 430.jpg 1600 x 1172; 407 KB



Federica Brignone of Italy 2018 PyeongChang Womens' Giant Slalom.jpg 1215 x 1215; 723 KB  
 Fellaah women, Egypt 1860.jpg 568 x 760; 84 KB  
 Female of the middle class carrying water from the Nile.1851.jpg 556 x 760; 43 KB  
 Femme Fellah du Caire, A Fellah Woman of Cairo.1851.jpg 500 x 735; 63 KB  
 Femmes arabes sur boudets 1860.jpg 2091 x 2560; 971 KB  
 Femmes Egyptiennes Allant A L'eau, ca 1880.jpg 564 x 736; 76 KB  
 Femmes sur la charette 1860.jpg 2560 x 1668; 774 KB  
 File from Flickr (30624718494).jpg 4717 x 3124; 1.3 MB  
 File from Flickr (3120161012).jpg 4928 x 3264; 1.04 MB  
 File from Flickr (4531785915).jpg 3744 x 5616; 2.28 MB  
 File from Flickr (4531791915).jpg 3744 x 5616; 2.43 MB  
 Fine Gael LGBT event (19573447385).jpg 5184 x 3456; 6.5 MB  
 Florence-Brunker.jpg 253 x 343; 52 KB  
 FlorenciaEtcheves.jpg 400 x 400; 42 KB  
 France's Instrument of Approval of the Joint Protocol (01311789) (13886283809).jpg 6779 x 4524; 17.53 MB







# JOIN US!

#VISIBLEWIKIWOMEN  
@WHOSEKNOWLEDGE

