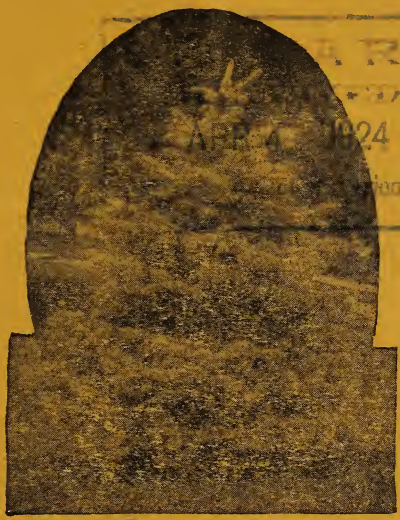


Historic, archived document

Do not assume content reflects current scientific knowledge, policies, or practices.

62.09

1924



COLORADO BLUE SPRUCE
 Favorite of All Lawn Trees

CURRENT
PRICE LIST
CASH NURSERIES

Sebastopol, Calif.

PHONE 301

WHOLESALE AND RETAIL

AGENTS WANTED

1 yr. and 2 yr. trees on 3 year whole roots

GENERAL INFORMATION

GRADING

We grade by BOTH height and caliper. Prices apply to first grade. We do not sell second and third grade trees except in 50 or more. Second grade are good enough trees for anyone but not up to first grade, the price is 10c less than No. 1. The No. 3 are smaller than the No. 2, though desired by many. They are 20c per tree less than No. 1. All grades are clean and healthy. Special prices on 1000 lots.

PRICES

12 trees for ten times the single rate; 50 at 100 rate; 500 at 1000 rate. Prices herein quoted cancel all previous prices.

DISCOUNT

When cash accompanies order in full or within ten days after placing order with our agent, we will allow 5 per cent discount or 10 per cent in stock to be selected by us. This discount not allowed on Wholesale or Special Prices.

REPLACEMENT

Our trees are sold on the basis of delivery in good condition and are thereafter at the planter's risk. If trees do not arrive in good condition, notify us within three days accompanied by STATEMENT from your Horticultural Commissioner.

RESPONSIBILITY

We exercise great care to supply only stock in good condition and true to name. Upon proper proof, any trees GROWN BY US which prove untrue to name, we will replace free of cost, but this is the extent of our responsibility. We will not be responsible for any stock we might have to purchase to fill an order in case of a shortage in our planting.

CASH NURSERIES, SEBASTOPOL, CALIF.,

IMPORTANT — Ripening Information: For your information we are arranging the follow-

ing list of fruit trees in the order in which they ripen, as follows; the first named apple, pear, etc., ripens first, etc. Should you not be acquainted with these facts, it will enable you to select varieties that will insure you a continuous supply from year to year, the last named variety being the longest keeper known. **WE LIST ONLY THE LEADING VARIETIES** and which we feel sure will give you entire satisfaction. Other varieties not listed will be supplied at the following rates:

SERVICE

We want you to feel that we are here to serve the public at all times, and whether you are a customer or not, we want you to feel free to ask for any information we may be able to supply you.

TERMS

Cash with Order. C. O. D. shipments must be accompanied by at least 25 per cent to justify us in reserving trees.

PARCEL POST SHIPMENTS

We make a specialty of mail orders and can please you in Stock and Delivery. We like to accommodate our friends but recommend you send cash in full as a C. O. D. costs you a fee of about 10c by mail and 30c if sent by express. Postage: Allow about 25c for postage and packing on orders of \$5 or less; 50c for \$10 orders, etc. Do we recommend Parcel Post shipments? We certainly do, up to 50 trees or 1,000 Berries. They travel more quickly, arrive in good shape, and more satisfactory in every way. We are an **ESTABLISHED** firm and you take no chance in sending your money. We refer you to **ANY** business house in Sebastopol. **ALL TREES** to be sent by mail will be cut back to mailing size and proper height for planting. See planting directions with every order.

ASSORTMENTS—We do not recommend one tree of a kind. Your most valued tree might die, then you would be without that variety. Where you aren't definitely fixed on any certain varie-

ties, just say 6 assorted, or 50 assorted as the case may be, and we will send you an assortment of varieties that will please you and that are suited to your section.

We accept all orders on condition that same shall be void should injury befall our stock from fire, frost, floods, drought or any other causes which could not be prevented and over which we have no control.

TERMS

GENERAL PRICE LIST OF OUR FRUIT, SHADE, ORNAMENTALS, NUTS, VINES, ROSES, ETC.

APPLES

EACH 75c; DOZ. \$8; HUNDRED \$50. Red Astrichan, Red June, Gravenstein, Jonathan, Delicious, Bellflower, Winter Banana, Hoover, Wagner, R. I. Greening Spitzenberg, Newtown Pippin Arkansas Black.

PEARS

SAME PRICE AS APPLES. Sugar Pear, Bartlett, Beurre Hardi, Winter Nellis.

CHERRIES

EACH \$1; DOZ. \$10; HUNDRED \$75. Burbank, Rockport, Gov. Wood, Black Tartarian, Bing, Morello, Royal Ann.

PEACHES

SAME PRICE AS APPLES. Mayflower, Alexandera, Strawberry, Early Crawford, Elberta, Muir, Wiley Cling, Tuscan Cling, Phillips Cling.

PRUNES

SAME PRICE AS APPLES. Sugar, Imperial, French, (French mostly planted).

NECTARINES

EACH 75c; DOZ. \$7.50.

PLUMS

SAME PRICE AS APPLES. Burbank, Santa Rosa, Green Gage, Blue Damson, Satsuma, Jefferson, Yellow Egg.

APRICOTS

SAME PRICE AS APPLES. Royal, Moorpark, Blenheim,



2-year Apple Trees

ORANGES AND LEMONS

EACH \$2.50; DOZ. \$25.

FIGS

EACH 75c; DOZ. \$7.50.

OLIVES

EACH \$1.25; DOZ. \$12.

PERSIMMONS

Large Jap Persimmons, Grafted, \$2.50 EACH;
Not Grafted \$1 EACH.

ALMONDS

SAME PRICE AS APPLES. IXL, Ne Plus,
Nonpariel.

QUINCES

Burbank. EACH 75c; DOZ. \$7.50.

POMEGRANATE

EACH 75c; DOZ. \$7.50.

SEEDLINGS

All kinds fruit tree seedlings, 25c each, \$2
per dozen, \$15 per 100, special price in 1000 lots.

SPECIALS

Introducing them for the first time. You
can not get them elsewhere. 5 trees, 1 each
for \$10.

PEACH

Improved Muir, EACH \$2.50; Nolan Cling,
EACH \$2.50.

PEARS

Mammoth Bartlett, often weighing 1 pound,
EACH \$2.50.

APPLE

Sebastopol Red, ripens August, EACH \$2.50.
Red Gravenstein reduced to \$1.

THREE IN ONE APPLE

Three varieties in one tree. Just the thing
where you have room for one tree only. EACH
\$2.50.

CHESTNUTS

Italian, EACH \$1.50; DOZ. \$15. All other
nuts not listed, same price.

WALNUTS

Frost Resistant Franquette, grafted on Black.
3 to 4 ft., \$2 each; \$20 per doz; \$150 per 100;
4 to 6 ft., \$2.50 each, \$25 per doz.; \$200 per
100. Franquette—second generation, 3 to 4 ft.
\$1.50 each, \$15 doz., \$100 per 100.

BLACK WALNUTS

3 to 4 ft. and over, each \$1; doz. \$10; 100 \$50. Smaller ones cheaper.

SMALL FRUITS

Cory Thornless Blackberry, Strong 2 yr. field grown, 50c each; \$6 doz.; Tips 35c each; doz. \$3.50; 100, \$25.

MAMMOTH—Field grown, 50c each; \$5 doz.; \$20 per 100. Tips, 30c each; \$3 doz.; \$15 per 100.

Lawton and Logan Berries same price as Mammoth.

CURRENTS

30c EACH; \$3 per DOZ.; \$20 per 100.

GOOSEBERRIES

30c EACH; \$3 per DOZ., \$20 per 100.

GRAPES

40c EACH; \$4 per DOZ.; \$30 per 100. Thompsons' Seedless, Seedless Sultana, Tokay, Muscat, Concord, Isabel, Zinfandel for wine, Malaga and others. Special price on wine grapes.

DEWBERRIES

40c each; \$4 per doz.; \$20 per 100.

RASPBERRIES

Queen and St. Regis Everbearing, 50c EACH; \$5 per DOZ. All other varieties, 30c EACH; \$3 per DOZ.

STRAWBERRIES

50c DOZ.; \$2.50 per 100; \$15 per 1,000. Brandywine, Everbearing and others.

ARTICHOKES

25c EACH; \$2 per DOZ.

ASPARAGUS

\$1 per DOZ; \$8 per 100.

RHUBARB

Strong Plants, 50c EACH; \$5 per DOZ.; \$20 per 100.

ORNAMENTALS, ROSES, ETC.

ROSES—Bush, \$1 EACH; \$10 per DOZ. La

France, (pink), Papa Gontia (red), Paul Neyron, large (pink), Bride (white), Bridesmaid (delicate pink), Cecil Brunner (baby white), Ramblers, Dorothy Perkins. Tree Roses, EACH \$2.50; DOZ. \$25. Above varieties.

CHOICE BULBS

Hyacinths, Tulip, Gladioli, 25c EACH; \$2.50 per DOZ.; Peony, \$1 EACH; \$10 per DOZ.

DAHLIAS

50c EACH; \$5 per DOZ.

VINES AND CREEPERS

\$1.25 EACH; \$12 per DOZ. Wisteria, Clematis, Quincefolia, Virginia Creeper, Honeysuckle Mattress Vine.

SHRUBS

Lilacs \$1.25 EACH; Privet Hedges \$3 per DOZ.; \$15 per 100. Barberry Purple, \$4 per DOZ.; \$25 per 100. Camellias, \$1.50 to \$10 EACH. Hydrangia, \$1.50 EACH. SNOWBALLS, \$1.50 EACH.

PALMS AND OTHER ORNAMENTALS (By Height)

\$1.50 to \$15.

COLORADO BLUE SPRUCE

\$2.50 per foot.

MONKEY PUZZLE

\$2.50 per foot.

ARAUCARIA

\$2.50 per foot.

HOLLY

\$1.50 per foot.

CEDAR DEDORA

\$2 per foot.

MONTEREY CYPRESS

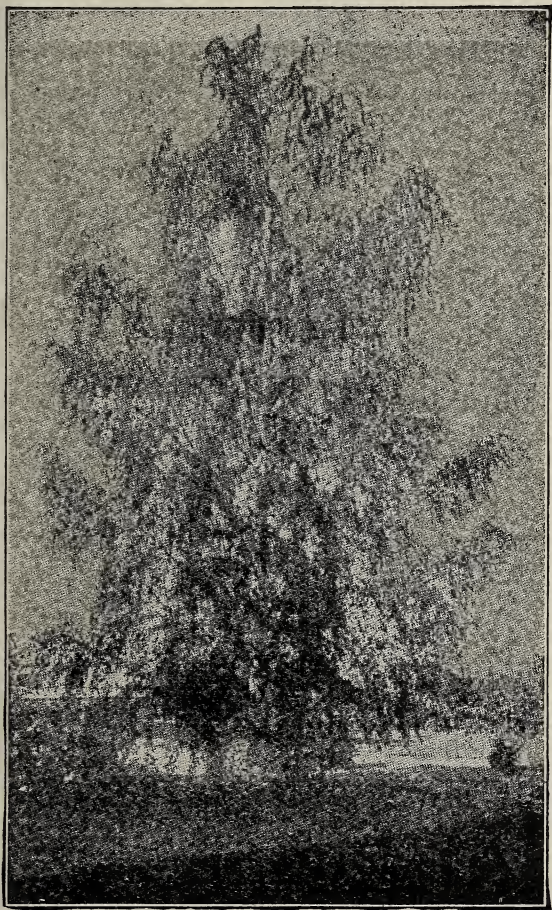
\$5 per 100; 6-12 inches.

GUM TREES

\$4 per 100.

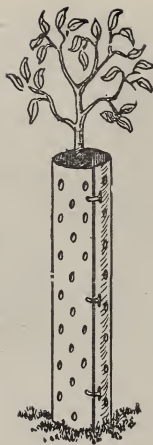
MAPLES

\$1.50 EACH; \$10 per DOZ.



Birch

Birch Most Stately and Magnificent Tree Grown.
Grows in Poorest Soils and Most Exposed Places.



Tree Protectors, \$2.50 per 100; \$15 per 1000.

BIRCH

White, \$3 EACH.

POPLAR

Carolina, \$1.50 EACH.

MULBERRIES

\$2 EACH.

WILLOW

Weeping, \$2.50 EACH

ASH

European Mountain, \$2 EACH.

PAEONIES

Assorted, EACH \$1; Named Varieties, \$1.50 EACH.

SEEDS OF ALL KINDS

Write for prices.

TOOLS, SPRAYS, ETC.

HAND GARDEN PLOWS

Complete \$6.

MAGIC WEEDERS

Each 45c Postpaid.

SPRAYS, BURLAP, TWINE, ETC.

Prices on applicatnon.

GOPHER TRAPS

Double catch, postpaid \$1.

PRUNING SHEARS

Postpaid \$1.75 to \$3.25.

HAND SPRAYS, BUCKET SPRAYS

Prices on application.

WHITE WYANDOTTE

Cockerels and Hatching Eggs.

FRESH FRUIT, BERRIES

Etc., in season.

GARDEN PLANTS

All kinds.

POSTS AND PICKETS

POTATO SEED

MILK GOATS

DYNAMITE

SAVE LABOR BY DYNAMITING

We do not ship less than 50 lbs. or multiples thereof.

Prices on application.

USED TRACTORS AND MACHINERY

Write us before buying.

PLANTING DIRECTIONS

Sent free to our customers on request.

PACKING CHARGES

Citrus Trees 45c EACH; Berries and small stuff 25c per 100; other trees \$1.00 per hundred. MINIMUM CHARGE 25c.

10-YEAR BEAN

While it is claimed it will grow up from the root year after year, we plant it annually. Very large, fine to shell and cook as a lima or butter bean, also as a dry bean. 25 seed, 25c; 1 lb. \$1 postpaid.

FACTS

1. If you were building a fine home, you would not build on a pile of egg shells, you would want a good foundation. Likewise, in planting what you hope to sometime be a fine orchard, you should use the **best** of stock as a foundation. **Few people** realize the great care, study and expense necessary in growing trees properly; they seem to think it as simple as growing beans. Cheap trees are never a bargain. The grower should insist on first class stock and be willing to pay for it.

2. We are trying to put before you in a plain, brief way, some of the essentials in properly growing nursery stock, space will not allow all details.

3. There are two ways of growing nursery stock, known as the whole-root and the piece-root systems:

First—

(a) Seed should be selected from strong, vigorous, healthy trees. (Plate 1 shows one of the large trees we select seed from.

(b) These seeds must be **properly** handled and cared for to produce a strong, vigorous seedling on which to bud or graft. Plate 2 shows a section of one of our seed-curing plots).

(c) The growing of the seedlings is another important item. They must not be stunted in the seedling rows, where they are kept for a year before transplanting to the general nursery (Plate 3 shows our one year seedlings ready for transplanting to the general nursery) where they are grown another year, when they are budded. Here the bud lies dormant or asleep until the following spring, when it starts growth and must grow another year before it is ready for market. This is known as the whole-root system, which gives you a 1-year top on a 3-year root, or in other words, it has taken three years to produce this tree.

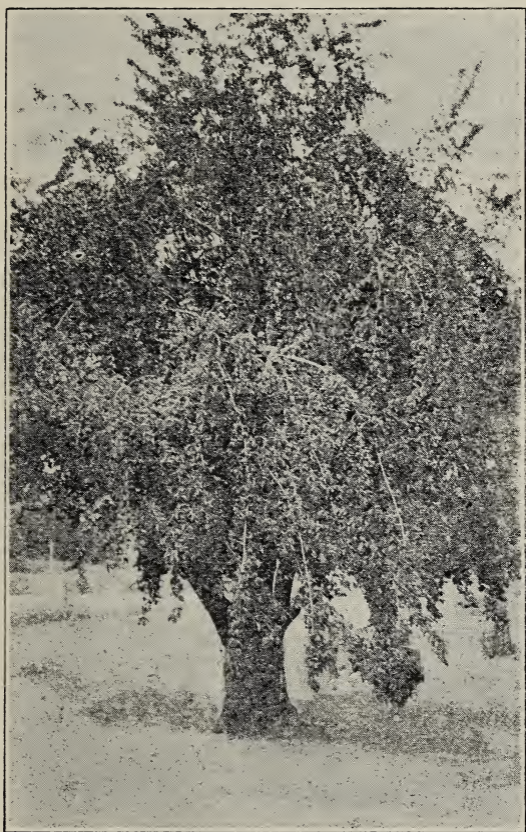


Plate I

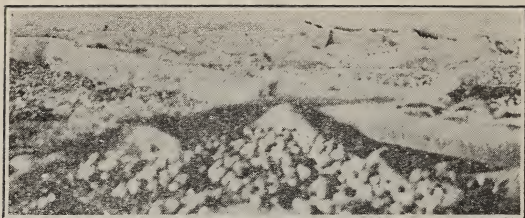


Plate 2



Plate 3

Second—

The system known as the piece-root system is simply this: **Cheap seedlings** are imported from foreign countries, and each little seedling cut up into from 3 to 5 little pieces, onto each of these little pieces is placed a graft or scion, and they are planted out in the nursery row. In six months, they are dug and sold, sometimes, having been forced with irrigation and strong commercial fertilizers, they attain a height somewhere near the standard trees, and, for this reason, bring a standard price, when they should be sold for about one-sixth that price.

4. The selection of buds and grafts being a very important matter, the buds in our nursery have been selected by the writer, personally, from healthy, vigorous and record-bearing trees, and will assure you the best that can be had.

5. If you insist on getting a piece-root tree, then insist on getting it at a piece-root price, or about one-sixth that you would pay for a tree on a 3-yr. whole-root. There are a great many hundred of thousands of piece-root trees on the market, these piece-root grafts are quite often even made up **OUTSIDE** of the country by cheap labor, and the nurseryman never sees them until they come in the spring in boxes ready to plant out.

6. Plate 4 shows you 3 trees. The one on the left is a little piece-root tree, the two on the right are 1-year trees on the 3-year whole root.

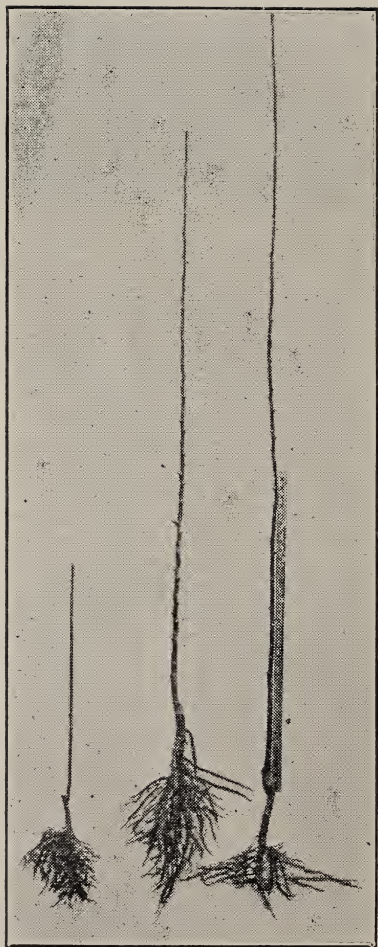
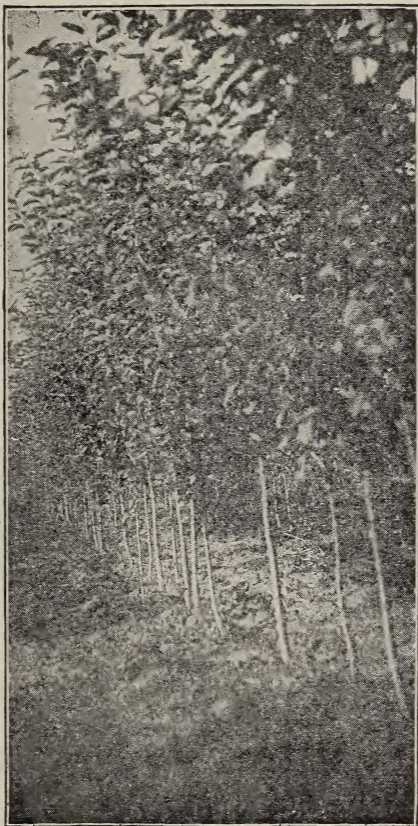


Plate 4

7. We trust you will appreciate the care, trouble and expense necessary to properly grow the kind of trees you should plant. When you



Results of 3 Years Careful Work

buy, insist on getting trees on 3-year whole-roots, and you will find our prices right. We are grow-

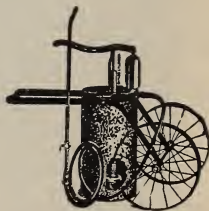
ers, and an established firm, not dealers, you take no chance in sending us your money, and you pay no dealer's profits. We sell you a good tree, worth the price asked, make our small profit, and are satisfied. We have some representatives and want more. When in doubt, ask to see his letter of authority to represent us.

8. Plant our trees then take a rest. If you plant poor stock you'll never rest, but be forever replanting and then not have anything.

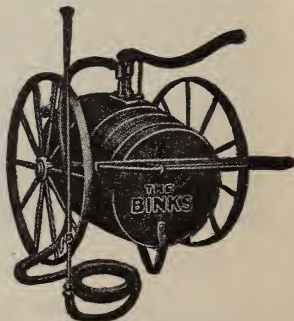
9. Remember—on orders of \$10 or over, for cash with order, or within 10 days of placing same, we allow a cash discount of 5 per cent or extra trees of our own selection, amounting to 10 per cent of order and free packing. This represents to you a profit of 8 to 15 per cent on the stock before you receive it and is an item which we find appeals to our customers.

SPRAY PUMPS

Spray Pumps recommended for small family orchards, chicken houses, etc.; 12 gallon capacity, \$30 complete.



30 gallon Spray Pump recommended where there is a larger amount of spraying to be done. \$50 complete.





Printed By the
SEBASTOPOL JOURNAL
Sebastopol, Cal.