

Historic, Archive Document

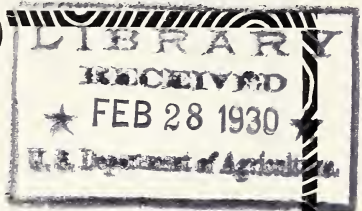
Do not assume content reflects current scientific knowledge, policies, or practices.

62,23

January 1930 Catalogue

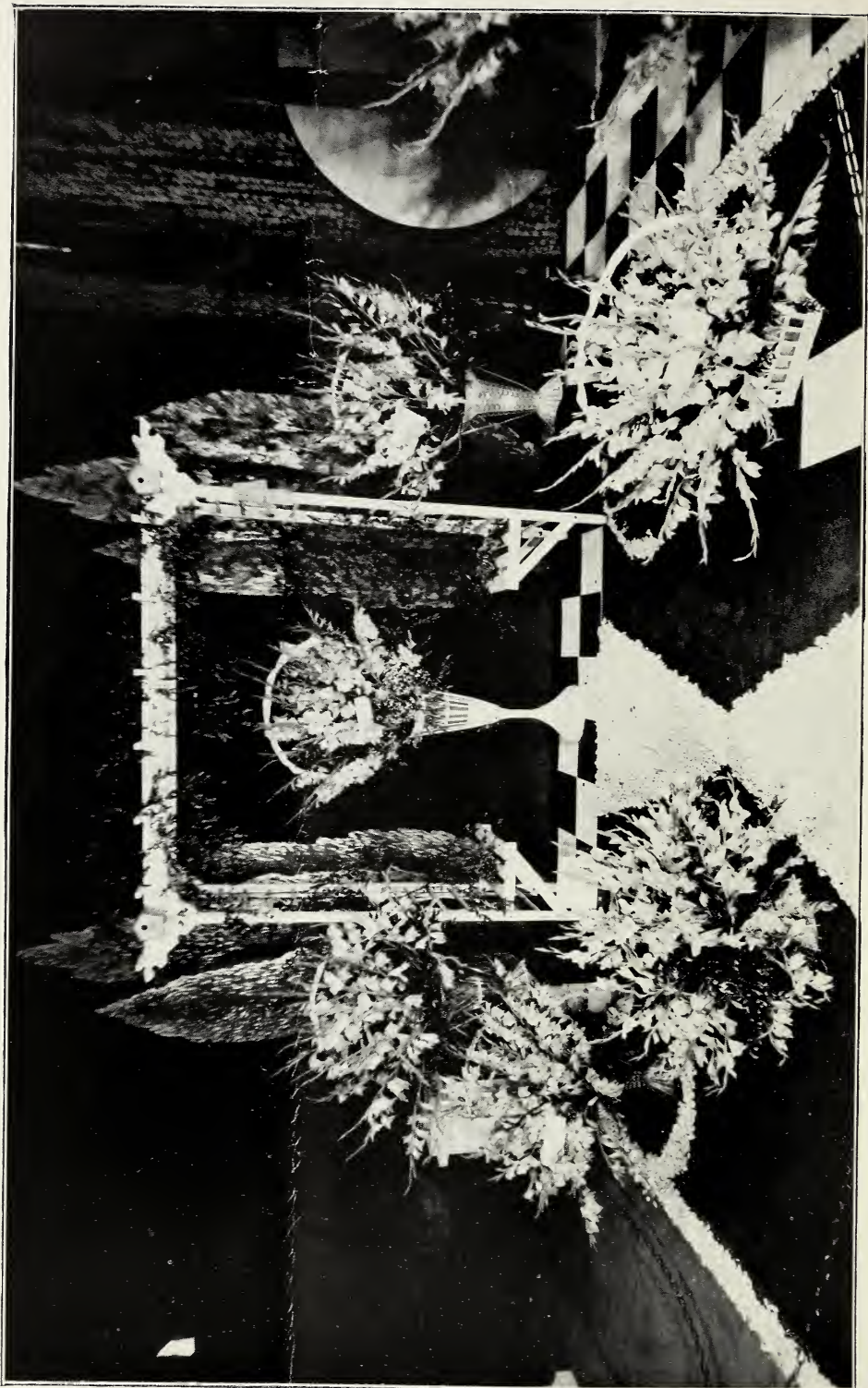


Better Blooming Bulbs
HEBERLING'S GLADIOLUS
C o r n B e l t G r o w n **S**



SUPER-BULBS
and **SUPER-BULBS** make
SUPER
FLOWERS

J. H. HEBERLING
EASTON, ILLINOIS, U.S.A.



PART OF EXHIBIT AT NATIONAL SHOW, SPRINGFIELD, ILL., AUGUST, 1929

At A. G. S. (National) Show
Springfield, Illinois, 1929

HEBERLING'S GLADIOLUS

were

Awarded ACHIEVEMENT MEDAL
for winning most points in Professional Class
106 Points

Awarded CHAMPIONSHIP MEDAL
for winning most Blue Ribbons in Professional Class
21 Firsts, 16 Seconds, and 11 Thirds

THIS means QUALITY in Bulbs
MERIT in Varieties

Why

Grown in RICH, sandy, silt loam
soil.

Good Drainage.

Plenty of Sunshine.

Adequate Moisture.

And a long growing season per-
mitting bulbs and bulblets to
mature naturally.

Hence

IT PROVES OUT

Heberling's "Better Blooming Bulbs"—"Corn Belt
Grown" have real merit which is very hard to duplicate.

Buy the Bulbs that take the Blue Ribbons, grow them
and after they bloom give me your answer. You will not
regret your choice.

Cordially yours,

J. H. HEBERLING.

Easton, Ill., U. S. A.

Super Bulbs Make Super Flowers

APPRECIATION

I take this opportunity of thanking my many hundred appreciative customers who have been so kind as to write me upon receipt of their Fall orders expressing their appreciation of the extras, liberal count and quality of stock.

I have not replied personally because it has been really impossible during the rush of the shipping season but take this opportunity to tell you I have appreciated your letters and cards very, very much indeed, and I hope that my shipments will continue to merit your approval.

Many thanks to old customers who just order year after year. Their repeat orders tell me they like them too. And to the new customers who order for the first time, just want to assure you that I stand back of my statements and stock. If orders do not measure up as they should I want to make them right.

Since Christmas is over I take pleasure in wishing you a Happy and Prosperous New Year.

Sincerely and cordially yours,

J. H. HEBERLING.

ONE "GLAD" FAN TO ANOTHER A FEW HIGH SPOTS

SOIL

Our soil is of a sandy nature but also possesses much natural fertility, and is properly a black sand and silt loam soil. This type of soil produces excellent bulbs and a good increase of stock from most varieties.

I find on light colored sand that the increase in many varieties is not more than half what it is when grown on the black sand.

The light sandy soil, however, will produce just as tall spikes when plenty of moisture is available.

I have read much of wire worms in sod land damaging bulbs and this is no doubt true in some localities, but I have grown a part of my crop on clover sod and bluegrass sod the past two years and have failed to see any bad effects from this practice. Except that the bulbs will be a little larger on the sod and just as free from disease as on any clean soil. (The main thing in harvesting clean stock is to plant clean stock.)

FERTILIZER

I use no fertilizer on my field grown stock. But each year I experiment on a few rows with several kinds of commercial fertilizer.

I have read that the application of rock phosphate has produced more bulblets and advanced the blooming date about seven days. I have no doubt this proved true where it was tried out, but I tried this in 1928 without any noticeable difference between rows of the same variety on which it was used and others on which it was not used in either earlier flowers or a greater production of bulblets.

The inference would be therefore that our soil does not need rock phosphate.

I have used fertilizer containing a material amount of potash for increase of bulblets and used it according to directions without noticeable results. May not have had right combination for my soil. Will try again.

It is my opinion that Vigoro will produce some additional top growth applied about two pounds to 100 feet of row by covering bulbs with one inch of soil and then scattering the Vigoro in the row and then completing the covering, in this way it will not wash away. It should not be put next to the bulbs however, nor should any other commercial fertilizer. However, to get much benefit of this, the plant should have an ample amount of moisture. This fertilizer might be some help to your exhibition stock.

TREATMENT FOR DISEASE

I do not pretend to be an authority on this subject, but will give you what information I can, concisely.

First, it is easier to prevent disease than it is to cure it. To prevent it, plant clean stock which has been treated before planting with Semesan, Formaldehyde, or corrosive sublimate, in new soil, and I do not believe that disease will ever trouble your garden, providing same is well drained and stock well cured before placing in storage.

It is my opinion that Formaldehyde is the best treatment to prevent scab. And I think that it will cure it, if case is not too bad. In using it, $\frac{1}{2}$ ounce to two gallons of water is good.

In using any of the three treatments I soak bulbs over night in the solution. These treatments are also used for rot.

STORAGE

I have never found disease developing in storage if stock was treated before planting and clean stock planted, and then well cured and dried before storing. Your storage should not be too damp, this might cause it. I like a temperature of 45 degree F. for storing, but some cooler or warmer will not hurt if you cannot maintain the suggested temperature.

However, look your bulbs over now and then, when in storage and stir them, changing position and letting in the air, and they are sure to come through O. K.

Please select Second Choice if possible

CUTTING BULBS

This is quite a common practice with growers and with most varieties it is successful.

I take no responsibility however, and do not recommend it, but will tell you how I have done it.

It is more often done with high priced bulbs in order that increase may be faster.

You find most large bulbs have two or more eyes after peeling off the husk. Sterilize your knife before cutting each bulb by dipping in one of three treatments for disease. After which divide the bulb leaving at least one eye to each separate part of the bulb that has the root surface.

I have grown flowers from cut bulbs without any root surface, but never from a part having root surface, but no eye.

After cutting, let the cut surface dry in the sun, and in an hour or two it is ready to plant. I do not like sulphur as a treatment, as it may cause scab when used. If you follow this practice, there is very little danger of bulb rotting. For exhibition spikes I would not cut bulb into more than two or three pieces. Each part should make a good flower spike and bulb.

PEAT MOSS AND RARE BULBLETS

I have had very good results in growing rare bulblets under a mulch of Peat Moss. Large bulbs also do well when mulched with it.

My bulblets of the rare sorts are planted in beds seven by twenty-five feet and under irrigation.

I use a sharp pointed knife to carefully remove a part of the hard shell from the bulblet and it should be done without damaging the small bulb. Then keep them in a wet cloth for a few days at about 70 degrees F. which starts them growing, and plant in rows about one inch apart and cover about one and one-half inches. Rows to be ten inches apart.

Then after they are up put on your coat of Peat Moss about one inch thick after removing all weeds and leaving the little spikes standing up through the Peat Moss. They will then keep moist and require very little weeding, and make a nice growth and increase. This protects from heat, also holds moisture.

BULBLETS

Just a word about bulblets.

The common sorts are generally planted after being soaked in water from 24 to 48 hours. Plant in flat bottom trenches about three to six inches wide and very thick. Some growers cover the bottom of the trench with bulblets and then cover about one and one-half to two inches. Early planting is considered good because of getting the Spring rains, which help germination.

In planting the rare bulblets you are, of course, anxious to get 100 per cent germination and think if you will carefully remove a part of the hard shell of the bulblet and then wrap in moist cloth and keep moist for several days or until sprouted and then plant in good seed bed about one or two inches apart and cover with one and one-half to two inches of soil. Your results will be excellent.

Do not peel until you are ready to put in moist cloth.

PLANTING

In our latitude I think April 15th the ideal time for planting for early flowers. North a little later and South may be a little earlier. And May 1st may be said to be the most popular time of planting. If you expect to exhibit flowers then you must plant accordingly, and one should make a planting of quite a number of bulbs, as the number of days from planting to blooming will vary some with the season.

After the first planting if one will make a planting about every ten days or two weeks until June 15th, they should have a garden of beauty until frost. There is about a fifty day difference between the blooming dates of the earliest varieties and the late ones. Then, if you are planting medium sized bulbs these will generally bloom from a week to ten days later than a large bulb in our latitude.

Please select Second Choice if possible

Most No. 5 bulbs will bloom and many No. 6 bulbs will bloom, but probably two to three weeks later than the large bulbs, and of course the flowers will generally not be so large.

- I plant large bulbs from three to four inches deep and from 5 to 6 inches apart. Smaller bulbs may be planted a little more shallow and a little closer together.

CUTTING

In cutting the flowers at least four leaves should be left and better to leave five or six. A long spike can be cut and still leave five or six leaves, if you will cut them in the morning when the spike is brittle, and then just scratch across the spike with the point of a knife above the fourth leaf and holding the stalk below the scratch with one hand and the spike with the other, it will break out clean and you will have five or six leaves on the bulb to mature it.

Please select second choice if possible. Thank you.

COMMERCIAL NOTES

If you are growing Glads in a small way, but expect to work into the commercial field and realize on them financially as well as enjoy their beauty, I would say, the rare ones, while they are rare, are the best buy.

True, the price is high, and will be reduced from year to year, but the increase should more than compensate for price reduction, leaving you a profit.

WHERE?

Easton is situated in Mason County, Illinois, midway between Peoria and Springfield.

It is on hard surfaced road, Route 43 which comes west from Route 24 at Mason City, Illinois.

My Gardens are one-fourth mile south of Easton on dirt road.

HELLO! (Friend Customer)

If you could walk into my place that is what I would say and you would say, "Hello, J. H."

(J. H.) Well, did you receive your order O. K.?

(F. C.) Yes.

(J. H.) Did it arrive in good condition?

(F. C.) It certainly did, well packed and wrapped to keep out the frost and arrived in A-1 condition.

(J. H.) I am mighty glad it came through O. K. That's the way we send them all out and with full insurance coverage. How did the bulbs look?

(F. C.) Look, say, they were high crowned, heavy, clean and well matured. And one thing that took my eye was the labels on the bags, every name stamped on there in ink and nothing to guess at. They were sure a fine looking lot.

(J. H.) Glad to hear that, and I want to say my instructions to my help are to send out only that kind of stock. But how were they as to size?

(F. C.) They were mostly oversize as I remember. For medium size in one variety I got all number one and two bulbs with some over count, and for six, I always got seven good bulbs and fourteen or fifteen for every dozen. One lot of medium, I got twice as many No. 5 bulbs. Guess you must have been out of the size I ordered. But I have no kick.

(J. H.) Yes, sometimes we run short in a certain size and then we have to put in the next size in the same variety, but always try to give our customers their money's worth. But we never substitute one variety for another without permission. Hope it was all right.

(F. C.) Yes, that was all right because I got my money's worth in bulbs that I ordered and then you put in a lot of extras that sure tickled me. Some I had wanted for a long time but did not feel like spending the money for right now. So I can hardly wait for Spring to come so they can get going. Those extras will add a lot of class to my garden and make some of my Glad Friends look twice when they get to blooming.

(J. H.) I am glad you liked the shipment and hope I can please you just as well next time, and by the way, if you will just drop a hint as to what varieties you would

Please select Second Choice if possible

like in extras I will try and slip at least some of them in your order. This would help me a lot too because when you are pleased we are both pleased.

(F. C.) Well, I must get going.

(J. H.) Glad you dropped in and that your order was satisfactory.

(F. C.) What pleased me most was the freedom from disease in your bulbs. Good-Bye.

(J. H.) Good-bye, and call again.

(F. C.) I sure will.

BLOOMING DATES

You will note in the description after most varieties a certain number of days is specified.

This means that for the Season of 1927, the first bloom opened that many days after planting, bulbs being planted May 1.

Some varieties have two numbers of days in the description, the second number being the time required for first flower to open the season of 1929 and planting done the last of May.

You will note that the later planted bulbs generally require fewer days to bloom, for the reason that the ground and weather are warmer which hastens the growth and development. I submit the figures for what they are worth.

The number of days required to bloom varies with the season, and the latitude, and the depth of planting, and whether planted early or late.

If you are planting 25 bulbs of one variety, it will probably require at least ten days time from the opening of the first bloom to the opening of the last, as there is always a variation in bulbs of the same size and variety.

KIND OF STOCK PLANTED

With the exception of a few large bulbs for exhibition, I plant only No. 5 and No. 6 stock, and bulblets to insure young, healthy, vigorous stock for my customers. I offer practically all virgin bulbs. Full of beauty, life and vitality. All stock treated before planting.

WHAT I HARVEST AND SHIP TO CUSTOMERS

Bulbs, plump, high crowned and clean. The kind that win the prizes. The kind you like to buy.

QUALITY

My stock is for those who are discriminating as to quality of bulb and flower.

ORIGINATIONS

I have no originations of my own to offer, but offer only the best from originators of merit and standing impartially.

DISCOUNTS (Cash With Order)

Discounts Good until March 15, 1930

Orders of \$5.00 to \$15.00, a discount of 6 per cent in bulbs of your own selection.

Orders of \$15.00 to \$50.00, a discount of 10 per cent in bulbs of your own selection.

Orders of \$50.00 to \$100.00, a discount of 15 per cent in bulbs of your own selection.

Orders of \$100.00 to \$250.00, a discount of 20 per cent in bulbs of your own selection.

Discounts after March 15, until April 15.

Orders of \$15.00 to \$50.00, a discount of 6 per cent of bulbs of your own selection.

Orders of \$50.00 to \$100.00, a discount of 10 per cent in bulbs of your own selection.

Orders of \$100.00 to \$250.00, a discount of 15 per cent of bulbs of your own selection.

Please select Second Choice if possible

After April 15th I cannot allow for discounts as it is about planting time but will do the best we can with extras as we always do, at all times liberal.

Please select second choice if possible. Thank you.

TERMS OF SALE

All stock is sold true to name and any proving otherwise will cheerfully replace or refund your money.

All stock clean and disease free.

All orders are PREPAID and INSURED.

NO orders for less than \$1.00 accepted.

You may pay 25% with order and balance cash or C. O. D. when shipped.

SHIPMENTS

Will be made as soon after March 10 as weather permits, unless you request them earlier.

EXTRAS

I take a great deal of time trying to select extras for each order that I think will be pleasing to the buyer, and generally include extras of a higher priced class than contained in the order. However, the amount of the order must determine the value of the extras. In other words, an order for \$5.00 will not receive the same value in extras as an order for \$25.00. But I try and give each more than their money's worth in proportion to the amount remitted.

Special extras are always included if you will give the name of a friend who is really interested in Glads, and their purchase with your order. But please do not send names that are not likely to result in business as dead names on a list are an extra expense. Thank you in advance for any good prospects sent in.

Please select second choice if possible. Thank you.

DESCRIPTIONS

I have tried to give them to you as they appear to me, growing in the garden, without partiality or prejudice. Some might do better in a seashore climate, and others the reverse. I am telling briefly how they grow and look in the Corn Belt, also the number of days required to bloom in our climate.

EARLY ORDERS

Some varieties are all ready sold out and do not appear in this catalogue; and others are very materially depleted and I advise EARLY ORDERS to avoid disappointment.

PRICES

Twelve at ten times single price. Three or six at dozen rates. Single bulbs, one tenth of dozen price.

First orders have pick of stock. I am expecting several rare varieties to be sold out in less than 30 days.

SIZES

LARGE (L) : 1½ inches or better.

MEDIUM (M) : 1 inch or better.

SMALL (S) : ½ inch or better.

Unless otherwise noted.

Don't Overlook DISCOUNTS.

Please select Second Choice if possible

DESCRIPTIVE PRICE LIST

	PER	BULBS		S.	BULBLETS	
		L.	M.		PER	PER
A. B. KUNDERD (K) Ruffled Cream, Fair propagator. 95 Days.	1 12	.10 .80	.60		12 100	.15 .50
A. E. KUNDERD (K) Heavily Ruffled Salmon with darker blotch in throat. Good propagator. 80 days.	1 12	.60 6.00	.40 4.00	.20 2.00	12 100	.40 2.50
AFLAME (H) Rose to Flame Red. Exhibition variety. Giant Prim.—Grand. Good propagator. 5 & 6 inch Flower. 80 days. Large, 1 ¼ inch up; Medium, ¾ inch up Small ½ inch up.	1 12	1.00 10.00	.60 6.00	.40 4.00	12 100	.75 3.50
ALICE TIPLADY (K) Bittersweet-Pink suffused scarlet, throat, Buff-yellow. Strong grower. 70 days.	12	.50	.35	.20	100	.25
ALLEN V. BUNCE (BILL) Very good orange. Grand Prim. Good Propagator. 68 days. 75 days.	1 12	.20 2.00	.10 1.00	.50	12 100	.20 1.00
ALTAIR (K) Extra tall, of finest Salmon-Saffron. 61 days.	12	.50	.30	.20	50	.20
ANNA EBERIUS (D) Velvety deep Purple a very good color and a good propagator. 73 days.	12	.55	.35	.20	100	.25
ANNIE LAURIE (B) Lovely, delicate Pink very choice. Not tall, but good florist variety. Good propagator. 80 days.	1 12	.25 2.00	.20 1.60	.10 1.00	12 100	.20 1.00
ANTONE (K) Extra fine Deep Yellow Prim, strong grower, fine spike. Good Propagator. 68 days.	1	1.50	1.00		1	.15
ANTONIA ANTONETTE (K) Salmon Pink Tall, good form, and a fair propagator. 90 days.	1	.35	.25		12	.35
APRICOT GLOW (P) Very fine. Grand Prim. Excellent propagator. Clear Apricot, tall, good exhibition type. 4 & 5 inch flowers.	1	1.00	.50	.25	12	.50
ARISTOCRAT (BILL) Pale Saffron flaked orange. Prize winner in class.	1 12	.20 2.00	.15 1.50		12 100	.20 1.00
AVE MARIA (P) Large Light Blue with small Purple blotch. Award of merit. Not prolific. 72 days.	1	5.00	4.00	3.00	1	.80
BALBOA (B) Orange Salmon, tall straight spike, with large blooms, much merit. Good propagator. 78 days. 72 days.	1 12	.30 3.00	.20 2.00	.10 1.00	12	.25
BEATRIZ MICHELENA (D) Tall, Peach Red and Orange. Large Bloom. Good propagator. 105 days. 82 days.	1 12	.15 1.50	.10 1.00	.75	12 100	.15 .60
BERTY SNOW (Scot) Lovely Lavender, 72 days.	1	1.00			12	1.00
BETTY COMPTON (D) Pink and Orchid with Purple.	12			1.00	12	.25

Please select Second Choice if possible

GLADIOLUS

Corn Belt Grown

	PER	BULBS			BULBLETS	
		L.	M.	S.	PER	
BETTY NUTHALL (S) Coral Pink, large flower, tall graceful and stately spike, very outstanding for exhibition and great commercial variety. Good propagator. 102 days. 95 days.	1 12	4.00 40.00	2.00 20.00	1.50 15.00	12 100	1.50 7.50
B. L. SMITH (K) Soft Lavender with Yellow throat. 75 days.	12	.60	.45	.25	100	.25
BLUE TRIUMPHATOR (PHITZERS) — Brought out autumn of 1928 and purchased at \$100 F. O. B. Holland with 30 % duty added. Total cost, March, 1929, \$130.00 per bulb. Pale soft, China Blue, with Silver gloss. Two lower petals overlaid with marking of Bluish Purple, ending in a graceful line. Superior in size to Pftizer's Triumph, some reaching the size of 8 inches in diameter. Long spikes with 16 to 18 buds and 5 or 6 open flowers at one time. I am now offering bulbs and bulblets of this marvelous new and rare variety for delivery, November, 1930, at which time it will be released by Federal Board. Prices are right and orders will be filled in order received. Stock very limited. 78 days. Having had many requests to list this variety, I am now offering for Fall delivery.	1	65.00	45.00	25.00	1 3 12	6.50 17.50 65.00
BOBBY (K) Rose Red with deep blotches. Very artistic flower and spike. 81 days.	1 12	.20 2.00	.10 1.00	.50	12 100	.25 .50
BREAK O' DAY (BILL) Delicate Pink. Early, good propagator. 68 days.	1 12	.10 .90	.65	.40	12 100	.15 .50
CANBERRA (ERREY) Pure Yellow, many flowers open at once. Good propagator. 76 days.	1 12	2.50	2.00 20.00	1.00 10.00	1 12	.25 2.00
CAPT. BOYNTON (B) Very fine, large commercial Lavender. Fair propagator. 76 days. 72 days.	12	1.00	.80	.50	12	.10
CALIFORNIA (KHFF) Deep Apricot with Yellow throat. Tall spike, large flower. Fairly prolific. 78 days. 68 days. Large 1 ¼ inch up; Medium, ¾ inch up; small ½ inch up.	1	1.00	.75		12	1.50
CARA MIA (Miller) Grand Prim. Lovely Pink. Very early. Good Propagator. 45 days.	1 12	2.00 20.00	1.50 15.00		12	1.50
CARMEN SYLVIA (DEC) Snow White. Tall. 82 days.	12		.40	.25	12	.10
CATHERINE COLEMAN (C) Soft Salmon with Purple mark. Tall, slow propagator. 85 days. 83 days.	1 12			.10 1.00	12 100	.20 .50
CATALINA (B) Tall spike, Pink shaded to Yellow throat. Good propagator. 82 days.	1 12	.30 3.00	.20 2.00	.10 1.00	12	.25

Because I have had so many requests for prices, I am listing this variety for Fall delivery.

Please select Second Choice if possible

Better Blooming Bulbs

HEBERLING'S

	PER	BULBS		BULBLETS	
		L.	M.	S.	PER
CHAS. DICKENS (P) Bright Radiant Purple, strong, tall spike. Good propagator. 45 days.	1	.40	.20	.10	12 .30
CHAS. LINDBERG (DEC) Red, White throat. Feathered Red. Slow Propagator. 85 days.	1	4.00			1 .50
CHATEAU THIERRY Orange Cerise with Yellow bordered Red blotch. Large wide open flowers. 74 days.	12	.55	.40	.15	100 .15
CHICAGO (K) Ruffled deep Geranium Red outstanding as a ruffled variety, slow propagator. 80 days. Large 1 1/4 inch up. Medium, 3/4 inch up. Small, 1/2 inch up.	1	3.00	2.00		1 .25 12 2.50
COLOR MARVEL (K) Plant of fine height and appearance. Large flowers. Deep Vermillion Scarlet. 80 days.	1	2.50	1.50		1 .25
COMMANDER KOEHL (P) New Scarlet Red. Very large flower and spike. Very brilliant. Offered for delivery November, 1930. One of the best in color class. Prolific. 80 days.	1	7.50	6.00	4.00	1 1.00 3 2.50 12 7.50
COPPER BRONZE (K) Grandiflorus Prim Old Copper and Bronze. Very good. Good propagator.	1 12	.20 2.00			12 .20
COPPER GOLD (K) Large, tall plant with large flowers grandly ruffled. Upper petals a Copper or Salmon Pink, and lower of rich Daffodil or Gold.				SOLD OUT	
CORONADO (B) Heavy ruffled White with Purple, lace-like throat. Poor propagator. 81 days. 75 days. Does not grow tall for me.	1	5.00	4.00	2.50	1 .35 12 4.00
CORYPHEE (P) Finest soft, clear, Rose Pink. A real beauty. Fair propagator. 82 days. 72 days.	1 12	3.00 30.00	2.00 20.00	1.50 15.00	1 .25 12 2.50
CREATORE (BILL) Rose Doree with a throat line of Carmine Red. Grand Prim. Produces tall spike.	1 12	1.00 10.00	.75 7.50	.40 3.50	12 1.00
CRIMSON GLOW (BET) Large light Red. 80 days.	12		.35	.20	50 .10
CRINKLES (K) Lovely shade of Rose. Intensely ruffled and very popular. Good propagator. 88 days.	1 12	.15 1.20	.10 .90		12 .15 100 .60
DIENER'S WHITE (D) Milk White with a faint touch of Pink in the throat. Lower petals overlaid with pale Orchid. 92 days.	12		.75	.40	25 .15
DON JUAN (K) Large Pink, somewhat similar to Marshal Foch, but tinted Blue on edge of petals. Good. 78 days.	1 12	.15 1.50	.10 1.00	.07 .70	12 .15

Please select Second Choice if possible

GLADIOLUS

Corn Belt Grown

	PER	BULBS			BULBLETS	
		L.	M.	S.	PER	
DR. CHRIST MARTZ (K) Ruffled light Blood Red. Large blooms, fair propagator. One of the best Reds. 85 days. 76 days.	1 12	.20 2.00	.15 1.00		12	.25 .75
DR. F. E. BENNETT (D) Tall, brilliant Scarlet. One of the best. Good propagator. Always a prize winner. 90 days. 86 days.	1 12	.15 1.50	.10 1.00		12 100	.15 .50
DR. MOODY (MRS. KINYON) New, early Lavender, very popular. Good propagator. Prize winner. 76 days. 74 days. Large. 1¼ inch, up. Medium, ¾ inch, up. Small, ½ inch, up.	1 12	1.25 12.50	.75 7.50	.40 4.00	12 100	1.00 5.00
DR. NELSON SHOOK (K) Deep Rose, ruffled, outstanding exhibition type. Fair propagator. 74 days. 72 days.	1	.50			15	.40
DR. VAN FLEET (K) Extra Early. Tall, lovely Rose Pink. 74 days.	12	.50	.35		100	.15
E. J. SHAYLOR (K) Deep Rose-Pink to Rose color, outer edges and buds show a distinct Rose color. Throat of lower petals delicately penciled Rose-Red 78 days.	12		.35	.20	100	.10
ELF (D) White with Lemon throat. Good propagator. 75 days.	12	.50	.35		100	.15
EMILE AUBRUN (L) Deep smoky Pink with large Cherry Red blotch. One of best smokies. Good propagator. Exhibition type. 82 days.	1 12		.15 1.50	.10 1.00	12 100	.15 .50
ETHELYN (F) Tall Golden Yellow Prim. Very good. Prolific. 78 days.	1 12	.15 1.50	.10 1.00	.07 .70	15	.10
EURYDICE (HOLLAND) Delicate Pink Prim from Holland. 73 days.	12	.80	.60	.40	20	.10
EVELYN KIRTLAND (A) A good Rose Pink. 81 days.	12	.55	.35		100	.10
EVENING GLORY (K) Tall graceful plant and flower. Throat markings same as Kunderdii Glory but color of a very fine shade of light Rose-Pink. 88 days.	1 12	.20 2.00	.15 1.50	.10 1.00	12	.20
FAY LANPIER (W) Coral luster with Cerise blending. Flowers very large, popular and prolific. 74 days. 88 days.	1 12	.10 1.00	.08 .75	.05 .50	12 100	.10 .50
FOREST SPRITE (A) Scarlet tinted Carmine bordered with creamy White. 82 days.	1 12	.25 2.00	.15 1.50	.10 .90	12 100	.20 1.50
FRANK M. SHICK (S) Clear Geranium Pink, soft Cream throat markings, large blooms and well placed. Good. 77 days. 70 days.	1 12	1.00 10.00	.65 6.50		12	.75
GALLANT LEADER (A) Large late Rose Pink, not very prolific. 80 days.	1	4.00			1	.60

Please select Second Choice if possible

Better Blooming Bulbs

HEBERLING'S

	PER	BULBS		S.	BULBLETS	
		L.	M.		PER	
GAY HUSSAR (S) Salmon Orange with Scarlet throat markings.	1	1.50			12	.75
GENESSEE (DAVIS) Cream colored prim.	12		.60	.35	12	.15
GERALDINE FARRAR (D) Lavender Blue, Popular Blue but poor propagator. 77 days.	1 12	.30	.25 2.50	.10 1.00	12	.30
GERTRUDE ERREY (E) Shell Pink with White center. Spot of deep color in the throat. Good propagator. Has merit. 76 days.	1 12	.15 1.50	.10 1.00		12 100	.10 .50
GIANT NYMPH (C) Tall straight light Pink with Creamy throat. Fine exhibition and commercial variety. Good propagator. 83 days. 78 days.	12	.60	.45	.25	30	.10
GLORIANA (BET) Tall, pure Salmon, shading to Golden throat. Grand Prim. Extra. 85 day.	1 12	.35 3.50			12 100	.15 1.00
GOLD (DEC) Fine pure Yellow. 71 days.	12	.70	.50	.25	20	.10
GOLD EAGLE (A) Deep rich Yellow, ruffled, extra, Very early. Prolific. 64 days.	1 12	.20 2.00	.15 1.50	.10 1.00	12 100	.30 1.00
GOLDEN AMBER (S) Fine Yellow prim of much merit. Good propagator. 85 days	1 12	.75 7.50	.50 5.00	.25 2.50	12	.50
GOLDEN DREAM (GROFF) Deep, pure Yellow. Tall and fine exhibition variety. Possesses merit. Very prolific. 85 days. 80 days.	1 12	.35 3.00		.20 2.00	12 100	.25 1.00
GOLDEN FRILLS (K) Deep Daffodil Yellow, intensely ruffled and prolific. 66 days. 55 days.	1 12	.20 2.00	.15 1.50	.10 1.00	12 100	.10 .50
GOLDEN GLOW (CAMERON) Fine, tall, dark Yellow. Blue ribbon award at National Show 1928. Fair propagator. Outstanding.	1	7.50	5.00		1	.75
GOLDEN MEASURE. Large Tall Yellow, one of the best. 84 days.	12	.70	.50	.30	12	.10
GRAND GUARDIAN (A) Exhibition Yellow. Good propagator.	1	5.00	3.50	2.00	12 1	5.00 .50
HALCYON (BILL) Lavender Pink. Good propagator. 77 days.	1 12	.20 2.00	.15 1.50	.10 1.00	12 100	.15 1.00
HALLEY Salmon Pink. Center paler and marked with small red stripes. 68 days.	12	.50	.25		100	.10
HEAVENLY BLUE (P) Soft Lavender Blue. Color fades when cut, but very beautiful. Fair propagator. 80 days. 74 days. Medium size, 3/4" up.	1 12		.60 6.00	.40 4.00	12	1.00
HELEN HOWARD (A) Buff flushed Coral Red and Amber throat. Tall, extra fine. 72 days.	1 12	.50 5.00			12	.50

Please select Second Choice if possible

	PER	BULBS			BULBLETS	
		L.	M.	S.	PER	
HELEN JACOBS (SALBACH, 209) Clear Jasper Pink, lower petals Straw color with Crimson stippling. Tall, straight spike of vigorous growth. The finest American introduction I have seen for 1930. I believe this variety to have every quality necessary for a great commercial variety and regard it as the equal of Betty Nuthall. Will be in great demand for many years. It is also an outstanding exhibition variety. Very prolific. 81 days.	1	5.00			1	.25
					12	2.50
HELEN PHIPPS (P) Deeper Pink than W. H. Phipps. Placement not always uniform. Fairly prolific. 90 day.	1	1.50	1.00	.75	1	.15
	12	15.00	10.00	7.50	12	1.00
HELEN WILLS (S) White with Yellow throat. Fine exhibition White. Prolific. 85 days.	1	.75	.60	.35	12	.50
	12	7.50	6.00	3.50		
HENRY FORD (D) Deep Wine Purple, flowers on opposite sides of spike. 87 days.	12	.50	.35	.15	50	.10
HENRY C. GOEHL (FIS) Pure White Dark Red blotch, tall spike and fair propagator. 82 days. 80 days.	12	1.00	.75	.40	12	.15
HERADA (D) Pure Mauve. 77 days.	12	.60	.35	.15	40	.10
HERBSTZAUBER (P) Orange Salmon, Large. When well grown much like Pfitzer's Triumph. 85 days. 82 days.	1	.40	.25	.15	12	.30
	12	4.00	2.50	1.50	100	1.50
HIGH NYE (A) Old Rose. Yellow throat. Very tall and good propagator. 6 foot glad. 84 days. 83 days.	1	.15	.10		12	.15
	12	1.50	1.00	.70	100	.60
HINEOMA (ERREY) Deep Pink ground color flaked with dark Chocolate Crimson. Large, Yellow blotched. Many open at a time. Not prolific. 90 days.					SOLD OUT	
HOLLYHOCK (K) Tall White with Red blotch in throat, resembles Hollyhock. Good propagator. 83 days.	1	.25	.20	.15	12	.25
	12	2.50	2.00			
HOMESTAKE (DEC) Deep rich Orange, unusual, fair propagator. 80 days.	1	1.00	.75	.40	12	1.00
HONEY DEW (DEC) Light Orange Yellow. Lacinated. 82 days.	1	.75	.50	.35	12	.50
HOPE HAMPTON (D) Strawberry Pink with Peach Red. Good propagator. Worth while, prolific. 85 days. 73 days.	1	.50	.35	.20	12	.35
	12	5.00	3.50	2.00	100	1.50
IDA VAN (K) Deep Salmon Red. 79 days.	12	.50	.30		100	.10
IMMENSITY (K) Tall strong plant. Bright Salmon color, very large flower. Many open at one time. 80 days.	1	.10			12	.10
	12	.90	.60	.30	100	.40
IMPRESSARIO (K) Canary Yellow, Golden Yellow throat. One of the best of Lacinated varieties. Prolific. 60 days.	1	10.00	7.50		1	.75

Please select Second Choice if possible

Better Blooming Bulbs

HEBERLING'S

	PER	BULBS			BULBLETS	
		L.	M.	S.	PER	
INDIAN SUMMER (K) Late. Bright Lavender Pink. Very tall, heavy spike. 105 days. 100 days.	1	.20	.15	.10	12	.20
	12	2.00	1.50	1.00		
IVER'L (A) A good new White with merit. Fairly prolific.	1	3.00			1	.40
IWA (BET) Clean Salmon Pink, blotched darker, outstanding. 78 days.	1	.20	.15	.10	12	.15
	12	2.00	1.50	1.00	100	1.00
J. A. CARBONE (D) Large Orange-Salmon. 88 days.	12	.80	.60	.30	15	.10
JANE ADDAMS (DEC) Lavender with Cream throat. Good grower. Excellent variety. Large flowers. Prolific. 76 days.	SOLD OUT					
J. D. OLIVER (K) Good Lavender. Tall spike. Not prolific.	1	.40	.30		12	.30
	12					
JOHN T. PIRIE (K) Shade of Brown, bordered Yellow throat. Good spikes, prolific. 78 days. 76 days.	1	.10			15	.10
	12	1.00	.80	.50	100	.40
JOHN TOLAND (S) Begonia Rose, large deep Red blotches on lower petal. Medium flower. Prolific. 82 days. 75 days.	1	.75	.50	.35	12	.75
	12	7.50	5.00	3.50		
JONKHEER VAN TETS (P) Fine large pure White. Heavy substance.	1	5.00			1	.50
JUBILEE (KEMP) Wonderful new large Lavender, flowers 5 to 7 inches. Not prolific for me. 80 days. 76 days.	1	15.00	10.00		1	.50
KARL VOLKERT (P) A very early glowing Salmon Orange of excellent substance.	12	1.00	.75	.40	12	.10
KATHERINE HESS (D) Geranium Pink with Flame shading, lighter toward center. Large flowers and long spike.	12	.80	.60	.30	20	.10
KING OF ORANGES (K) Grand Prim of rich Orange and very showy. Prolific. 75 days.	1	.30	.20	.15	12	.30
	12	3.00	2.00	1.25		
KUNDERD'S YELLOW FAVORITE (K) Rich, deep, Yellowish Fawn on back of petals. Throat fine pencil Red, one of the best commercial Yellows. A beautiful spike. Prolific. 77 days. 72 days.	1	.20	.15	.08	12	.15
	12	2.00	1.50	.75	100	.75
KUNDERD'S YELLOW WONDER (K) Fine, tall Yellow. 80 days.	1	.50	.25	.20	12	.35
	12	5.00	2.50	1.50		
LA PALOMA (DUS & GOVE) Grand Prim. Tall rich Orange. Straight spike and commands admiration. Fairly prolific. Large flowers. Much merit. 65 days.	1	5.00			1	.50
					12	5.00
LA VERNE (H) Tall, Cream colored. Grand Prim. Prolific. 85 days. 78 days.	1	.15	.10	.05	15	.10
	12	1.20	.80	.50	100	.30
LAVENDER AMERICA (K) Solid Lavender color. Not prolific. 81 days.	SOLD OUT					

Please select Second Choice if possible

GLADIOLUS

Corn Belt Grown

	PER	BULBS		S.	BULBLETS	
		L.	M.		PER	
LAVENDER ROSE (K) Delicate Rose Pink, lower petals Yellow blotched. Fairly prolific. 78 days.	1	7.50	5.00		1	.50
LAVERNA (ERREY) Clear Shell Pink with blotch of White on lower petals, large and strong. 65 days.	1	2.50	1.50	1.00	1	.25
LILY OF GOLD (K) Rich Canary Yellow, lower petals shading deeper, highly ruffled. 70 days.	1	25.00				
LINCOLN ELLSWORTH (DEC) Very large White. Throat streaked and dusted Purple, tips of petals are flaked. Tall and strong. The finest and largest blotched White I know. 6 & 7 inch flower. Not prolific. 85 days.	1	2.00	1.50		1	.20
LONGFELLOW (DEC) Popular Pink. Extra fine. Prolific. 85 days. 80 days.	1 12	.15 1.50	.12 1.00	.06 .50	15 100	.15 .50
LORICE (FIS) Fine Orange. Worthwhile.	1 12	.20 2.00	.15 1.50	.10 1.00	15	.15
LOS ANGELES (H) Beautiful Shrimp Pink. In great demand. Very prolific. 78 days.	12 100	.50 3.50	.35 2.50	.20 1.50	25 1000	.10 1.00
LOYALTY (A) Large. Ruffled deep Golden Yellow. Tall, fairly prolific. 80 days. 70 days.	1	1.50			3	.50
MABEL IRVING (B) Large Ruffled Pink. 84 days.	.50				12	.50
MADAM NORENA (DEC) Very light flesh Pink. Throat rich, clear Barrium Yellow. Prolific. 72 days. 81 days.	1	2.00	1.50	1.00	1	.15
MAGIC (K) Finest Lavender Blue. Purple throat blotched. Small spike and flower. 75 days.	12	.60	.40	.25	12	.10
MAGNA BLANCA (SALBACH NO. 820) . A very large Ivory White with heavy substance and good placement with 6 open. Very outstanding, large, tall White. Not very prolific.	1	10.00			1	2.50
MAMMOTH WHITE (U. B.) Largest pure White.	1		5.00		1	.60
MANDARIN (DEC) Deep, rich, Salmon-Orange, pinard Yellow throat, early. Unusually fine Prim.	1	.50			6	.25
MAROCCO (P) Deep rich Red. Fairly prolific. 76 days.	1	5.00			1 12	.50 3.50
MARIETTA (M) Tall, rich Salmon with blotch. Excellent commercial variety, prolific. Outstanding. 74 days. 73 days.	1 12	.10 .90	.60	.30	20 100	.10 .50
MARIGOLD (K) Deep Canary Yellow.	1	.40			12	.50
MARMORA (ERREY) Smoky Lavender with deeper throat blotch. Best in color class. Very outstanding. Prolific.	1 12	1.00 10.00		.35 3.50	12 100	.50 1.50

Please select Second Choice if possible

Better Blooming Bulbs

HEBERLING'S

	PER	BULBS		BULBLETS		
		L.	M.	S.	PER	
MARNIA (FIS) Excellent Commercial Orange. Good propagator.	1 12	.20 2.00	.15 1.50	.10 1.00	12 12	.15 1.00
MARSHALL FOCH (K) Lovely deep Pink. 82 days.	12			.25	25	.10
MARY FREY Lavender-Pink with Ruby blotch on lower petals. Fine early. Excellent commercially. Prolific. 78 days. 75 days.	1 12	1.25 12.00	.90 9.00	.60 6.00	1 12	.10 1.00
MAURICE FULD (GAGE) Large flowered light Rose Pink. Outstanding.	1	.30	.25		12	.30
MERCED (BRIGGS) Soft Salmon Pink. Good propagator.	1	.30	.20	.10	12	.25
MILADY IMOGENE (A) Clear pure White Petals daintily frilled. Prim type.	1	.75			12	1.00
MING TOY (K) Fine clear Golden Buff. Prim. 76 days.	12	.50	.35	.15	25	.10
MINUET (C) Clear Lavender, outstanding. 79 days.	1	.75	.50	.25	12	.50
MISSION BELLS (D) Orange-Pink. Grand Prim. 82 days.	1 12	.30 3.00	.20 2.00	.10 1.00	12	.25
MISS CALIFORNIA (SALBACH) Grand Prim. Very tall, straight spike with 5 to 6 large, well placed florets open. Color delicate light Pink. Outstanding and fairly prolific.	1	1.00			12	.75
MISS DES MOINES (DEC) Clear pale Lilac, shading deeper at tips of petals. Not extremely large, but has much merit. Prolific. 84 days. 85 days.	1 12	8.00	5.00	2.00	1 12	.50 4.00
MISS JOY (J. E. F.) Tall stately spike. Large soft Pink. Grand prim and very outstanding variety. Prolific. 72 days.	1 12	2.00			1 12	.25 2.00
MONARCH OF THE GLENN (ELLIS) Large Salmon. Fairly prolific.	1		5.00		1	1.00
MOORISH KING (P) Giant dark velvety, Mahogany, very heavy substance. Tall, straight spike. Flowers, very large, well formed and of excellent placement. I have never had a flower that would hold up in good condition under hot sun and heavy wind equal to this one. It is by far the best dark glad I know. Not prolific. I am now offering for sale for delivery, November 1930. Very outstanding. Stock very scarce. 85 days.	1	15.00	10.00	8.00	1 3 12	2.50 6.50 24.00
MOTHER MACHREE Smoky, soft color flamed with gold. Popular. 83 days. 80 days.	1 12	25.00	20.00	12.50	1 12	1.00 10.00
MRS. A. B. C. DOHRMAN (D) Venetian Pink overlaid with Jasper Red. 86 days.	1	.75	.50		12	.50

Please select Second Choice if possible

GLADIOLUS

Corn Belt Grown

	PER	BULBS			BULBLETS	
		L.	M.	S.	PER	
MRS. ANNA PFITZER (P) Creamy White with soft Yellow throat. Tall spike. Substance not so good. Not prolific.	1	4.00	3.00	2.00		
MRS. CALVIN COOLIDGE (K) Soft Salmon Pink with pure Yellow throat. Excellent. Prim. Prolific. 76 days.	1 12	1.50 15.00	1.00 10.00	.75 7.50	1 12	.15 1.25
MRS. DR. NORTON (K) Prize winning Pink.	12	.60	.40	.25	100	.15
MRS. F. C. HORNBERGER (H) Pure White, tall and strong. Six to eight open flowers at one time. Best commercial. Prize winner. Fairly prolific. 85 days.	1 12	.35 3.50	.25 2.50	.15 1.50	12 100	.35 1.50
MRS. F. C. PETERS (FIS) Lavender, tall strong plant. Good commercial. 93 days. 85 days.	12	.70	.45	.35	20	.10
MRS. FRANCIS KING (K) Jasper Red. Large flowers. Fine arrangement. 72 days. 86 days.	12	.50	.30	.15	75	.10
MRS. H. E. BOTHIN (D) Ruffled Rose Pink. Tall, straight spike.	12	.50	.30	.20	50	.10
MRS. J. K. ARMSBY (D) Lovely Pink. 84 day.	12	.80	.60	.30	25	.10
MRS. J. R. WALSH (D) Ruffled Rose-Pink 92 days.	12	.85	.60	.30	25	.10
MRS. K. PRESTGARD (DEC) Pure White strong and sturdy. 84 days.	1 12	.20 2.00	.15 1.50	.10 1.00	15	.15
MRS. LAURA SCHWEPPE (K) Peach blossom-Pink with dark throat. Not tall but excellent commercial variety. Prolific. A beauty for late flowers.	12	.80	.50	.25	50	.20
MRS. LEO MILLER (M) Three upper petals pale Salmon Flame, three lower petals soft creamy Yellow tint. Large flowers. 104 days.	1	100.00			1	10.00
MRS. LEON DOUGLAS (D) Begonia-Rose striped with Scarlet. One of the largest and most popular and one of the best. Prolific. Always a prize winner. 87 days. 86 days.	1 12	.10 .85	.07 60	.05 .30	15 100	.10 .35
MRS. MAUDE HAYWARD (KHFF) Large Lavender.	1	4.00				
MRS. P. W. SISSON (C) Cameo Pink many open at one time. Extra fine. 76 days. 72 days.	1 12	.35 3.50	.25 2.50	.15	12 100	.25 1.00
MRS. S. A. ERREY (ERREY) Tall massive Orange with heavy foliage. Sun sometimes fades bloom. Fairly prolific. 73 days.	1	4.00	3.00	2.00	1	.40
MRS. VAN KONYNENBURG (P) Blue-Lavender, tall fine variety. Very popular 84 days.	1 12	.60 6.00	.50 5.00	.20 2.00	12 100	.40 1.50

Please select Second Choice if possible

	PER	BULBS			BULBLETS	
		L.	M.	S.	PER	
MRS. W. E. OHMSTEAD (KHF) Buttercup Yellow, tall, many flowers open at one time. 85 days.	1	1.50	1.00	.70	12	1.50
MRS. WM. CLARK (FIS) Light Salmon Pink with small Flame Red blotch. Several open at one time. Not Tall.	12	.90	.60	.35	20	.10
1910 ROSE (K) Commercial Rose Pink, Early and fine color. Prolific. 68 days.	12	.50	.30	.15	100	.15
NANCY HANKS (S) Rich Apricot to Orange Pink with Grenadine tongue. Rapid multiplier and vigorous grower. 76 days.	1 12	.25 1.50	.15 1.00	.50	12 100	.15 .25
NEW VIOLET (KHFF) Violet of good quality. Fairly prolific. 72 days. 74 days.					SOLD OUT	
NIMROD (ERREY) Rich, deep, Coppery, Crimson, flecked with Chocolate. Tall, straight spike. Excellent. 78 days.	1 12	.25 2.50	.20 2.00	.10 1.00	12 100	.25 1.00
NIXIE (D) Jasper Pink. Very large. Prolific. 83 days. 77 days.	1 12	.25 2.50	.20 2.00	1.00	12 100	.20 1.00
ORANGE BUTTERFLY (S) A rich glowing Bronzy Orange primulinus hybrid. Many open at one time.	1	1.50	1.00	.50	12	1.00
ORANGE QUEEN Fine rich Orange Prim. No garden should be without it. 66 days. 72 days.	12	.70	.50	.25	25	.10
ORANGE WONDER (KEMP) Fine new Orange. Very large. Fairly prolific. 98 days.	1	2.00	1.50		1	.20
ORCHID LADY (S) Early Orchid Lavender. Very large.	1	1.00	.75	.50	12	.75
ORIENTAL SILK (A) A new and very attractive Glad of rich, pure, transparent Rose with fine throat marking. Spike straight. Med. size spike and flower. Very beautiful. 75 days.	1	1.00			12	1.00
OSALIN (S) Coral Pink. Very good.	1	.25			12	.20
PAISLEY (A) Tints of Rose and glints of Gold. All soft shades. Unusual and rare.	1 12	7.00	5.00		1 12	.50 5.00
PATRICIA CARTER (K) Prim. Lovely Pink. Fairly prolific. 66 days. 76 days.	1 12	.75 7.50	.50 5.00	.35 3.50	12	.75
PAULINE KUNDERD (K) Soft Salmon Rose. Possesses much quality, is not prolific.					SOLD OUT	
PAUL PFITZER (P) Tall, velvety Purple. Very popular and is in good demand. Prolific. 76 days. 75 days. Outstanding. Large: 1¼ inch up. Medium: ¾ inch. Small: ½ inch.	1 12	.35 3.50	.25 2.00	.15 1.50	12 100	.35 2.00
PEARL OF CALIFORNIA (KING) La France Pink blending to Rosy throat. Possesses much merit. Fairly prolific. 77 days. 80 days.	1 12	.75 7.50		.20 2.00	6 12	.30 .50

Please select Second Choice if possible

GLADIOLUS

Corn Belt Grown

	PER	BULBS		BULBLETS		
		L.	M.	S.	PER	
PEER GYNT (DEC) Pale Fawn color. Light Sulphur Yellow throat. A very good Glad, not outstanding in size. 90 days.	1	5.00			1	.35
PELLA (K) Very early, beautiful Rose Pink. 70 days.	12	.50	.35		25	.10
PFITZER'S TRIUMPH (P) Large, bright Salmon-Orange. Has never been surpassed in its color. Very prolific and has a great future. 81 days. 83 days. Large: 1¼ inch and up; Medium, ¾ inch and up; Small, ½ inch and up.	1 12	.50 5.00	.40 4.00	.25 2.25	12 100	.50 2.50
PHAENOMEN (P) Combination soft Pink and Yellow. Not large but very beautiful Prolific. 72 days.	12	2.00	1.00	.60	12	.15
PHILITELLA (K) Large, strong and vigorous. Deep Tyrian-Rose. 88 days. 84 days.	1	2.00	1.50	1.00	1	.25
PINK CLOUD (K) Ruffled. Unusual shade of Pink. Fairly prolific. 79 days.	1 12	.20 2.00	.15 1.50	.10 1.00	12	.25
PROF. JAMES TROUP (G) Eosine Pink, flamed, scarlet; blotched Rose Red, Grand prim. Good. 83 days. 73 days.	1 12	.25 2.50	.20 2.00	.15 1.50	12	.25
PRIDE OF PORTLAND (ELLIS) Begonia Rose. Large flowers. 80 days. 70 days.	1	3.00	2.00	1.00	1	.20
PRIDE OF WANAKAH (CHRISWELL) Rich Lavender-Rose shading much deeper in throat, excellent commercially. Prolific. 85 days. 83 days.	1 12	.15 1.50	.10 1.00		12 100	.15 .50
PUREST OF ALL (P) Large, fine pure White. Prolific.	1	.40	.30	.20	12	.35
PURPLE CHALLENGE (K) very rich Purple. Graceful spike. Fair propagator.	1	2.50	2.00		1	.25
QUEEN MARY (S) Ruffled. Strawberry Pink, Scarlet heart. Good multiplier. 76 days.	1	.75			12	.75
QUEEN OF ORANGE (K) Fine, large, light Orange, strong plant. Grand Prim. Prolific. Outstanding. 73 days.	1 12	.30 3.00	.20 2.00		12	.25
RED FIRE (K) Brilliant Fire Red 84 days	12	.90	.60	.35	15	.10
RICHARD DIENER (D) Lovely Salmon Pink with Yellow throat. Very popular, fairly prolific.	12	.75	.50	.20	20	.10
ROBERT J. KUNDERD (K) Flaming Orange Red, ruffltd, fairly prolific. 75 days.	1 12	.10 1.00	.07 .70	.05 .50	12 100	.15 .50
ROSE ASH (D) Ashes of roses. In good demand. Prolific. 86 days.	12	.50	.35	.15	100	.10
ROSE GLORY (K) Ruffled Rose-Pink. Deeper in throat. Rather short spike. 70 days.	12	.50	.35	.15	50	.10

Please select Second Choice if possible

Better Blooming Bulbs

HEBERLING'S

	PER	BULBS		S.	BULBLETS	
		L.	M.		PER	
ROSE MIST (FIS) Watermelon Red, Prim Grand. Best in color class. 85 days.	1 12			.10 1.00	12 50	.25 .50
ROSE MULBERRY (A) An improvement over Rose Ash. Very fine. Prolific. 82 days.	1 12	.50 5.00	.25 2.50	.15 1.50	12	.25
ROSE WOOD (A) Unusually dark, rich smoky Rose. Medium spike and flower. Prolific. 82 days.	1	1.00			1 12	.10 1.00
ROYAL LAVENDER New dark Lavender. 80 days.	1	1.50				
ROZAN (A) Large, vigorous, Rose-tinted Pink with 4 to 6 flowers open at a time. Prolific. 75 days.	1	3.00	2.00		1 12	.30 2.50
RUFFLED GOLD (G) Golden, ruffled Yellow and in a class by itself. Prolific. 76 days.	1 12	2.00 20.00	1.00 10.00	.75 7.50	1 12	.15 1.00
RUFFLOLACE (KEMP) White, good producer of bulblets that will grow.	1	1.00	.75	.50	12	1.00
SARABAND (S) Plum Purple, tall spike, very good.	1 12	.25 2.50			12	.25
SALBACH'S PINK (S) Tall, straight spike 5 to 7 open flowers of beautiful Geranium Pink. Prolific. 90 days.	1	5.00			1 12	.50 4.00
SALMON BUFF (K) Large Salmon-Buff, with Yellow throat. Prolific. 90 days.	12	.50	.35	.15	30	.10
SALMON GLOW (H) Orange-Salmon with Yellow throat. Prim Grand. 70 days.	1 12	.10 1.00		.25	12 100	.10 .25
SANS PARIEL (VIL) Orange Rose with White throat. Good spike.	1	.50	.35		12	.50
SANTA BARBARA (BRIGGS) Large Buff.	1	1.00	.75	.40	12	.60
SCARLET BEDDER (S) Rich glowing Scarlet. Prim-grand, outstanding, fairly prolific. 74 days.	1 12	.35 3.50	.25 2.50	.15 1.50	12	.20
SCARLET PRINCEPS (K) Bright Scarlet, short spike. Prolific. 74 days.	12	.50	.35	.15	50	.10
SCARLET WONDER (COWEE) Same as Groff's Majestic. Deepest Orange Red. Very rich, with large florets Prolific. 90 days. 85 days.	12	.60	.40	.20	50	.10
SEÑORITA (S) Orange, shading to a Salmon. Not such a tall plant but immensely rich color. Wide flowers with Scarlet tongue. Very heavy substance. Prolific. 75 days.	1 12	1.50 15.00	1.00 10.00	.75 7.50	1 12	.15 1.00
SHEILA (C) Tall early Salmon Pink. Grand Prim. 78 days.	12	.50	.35	.20	100	.10
SIDNEY PLUMMER (S) Very good Yellow Prolific.	1 12	.10 .80		.30	25	.10
SIR KARL (DEC) Geranium Pink, Cream boltch in throat. Strong grower, good multiplier.	1	.50	.35	.20	12	.40

Please select Second Choice if possible

GLADIOLUS

Corn Belt Grown

	PER	BULBS		BULBLETS		
		L.	M.	S.	PER	
ST. THOMAS (K) Very large, deep Salmon Rose-Red blooms. Fairly prolific.	1 12	.20 2.00	.15 1.50	.10 .80	12 100	.15 .40
STUTTGARDIA (P) Large brilliant Or- ange. Not prolific. 76 days.	1	4.00				
SULPHUR FRILLS (K) Tall, many medi- um sized flowers open at a time. Beauti- fully ruffled, of finest pure, soft Sulphur shade. 83 days.	1 12	.10 1.00	.70	.40	12 50	.10 .25
SUNNYMEDE (FIS) Orange Buff, attrac- tive shade. 70 days.	1 12	.10 1.00	.70	.40	12 100	.10 .50
SWEET LAVENDER. Light Lavender, deeper in throat with Purple blotch. Ear- ly. 67 days.	12	.60	.40	.20	30	.10
SWEET ROSE (K) Pure deep Rose Pink. 75 days.						
						SOLD OUT
SYLVIA WEST (ROW) White. Very rare. Medium spike. Good flower. Not prolific.	1	100.00			1	5.00
TEMPA (K) Pink ground. Old Rose. Bron- zy Lavender throat. Distinct and fine. 82 days.	12	.50	.35	.15	25	.10
THOMAS A. EDISON (D) Begonia Rose, Large. 84 days.						
						SOLD OUT
THOMAS A. EDISON (K) Ruffled dark Red. Very rich, good substance. Not pro- lific. 80 days.	1	7.00			1	.75
TOBERSUN (A) Large, clear Yellow. Tall, strong plant. Long flower head good sub- stance and fine placement. One of the best. Very outstanding. Prolific. 83 days. 84 days.	1 12	2.00 20.00	1.50 15.00	1.00 10.00	1 12	.20 2.00
TRUDEL GROTZ (P) Giant Pink, parent of Pfitzer's Triumph and very heavy substance with 4 to 6 very large, wide open flowers. Not tall. Fairly prolific. 68 days. 74 days.	1 12		.15 1.50	.10 1.00	12 50	.20 .50
TWILIGHT (K) Creamy-Buff. Ruffled. 84 days.	12	.50	.35	.20	30	.10
TYCKO ZANG (A) Large Salmon Pink. Very popular, prolific. 83 days.	1 12	.10 .50	.50	.30	25 100	.10 .25
VEILCHENBLAU (P) Fine dark Blue. One of the very best Blues. Fairly prolific. 80 days.	1 12	.60 6.00	.40 4.00	.20 2.00	12	.50
VEILED BRILLIANCE (A) Bright Pink, Creamy throat. Unusual and very good. Prolific. 75 days. 83 days.	1 12	.50 5.00		.20 2.00	12 50	.35 1.00
VICTOR (ERREY) Brilliant Scarlet. Large, one of the most striking Glads ever introduced. Very clear Scarlet with pure White throat. Very rich. Not pro- lific. 85 days.	1 12	.50 5.00	.35 3.50	.20 2.00	12 12	.40 .40

Please select Second Choice if possible

	PER	BULBS		BULBLETS		
		L.	M.	S.	PER	
VIOLET BEAUTY (K) Tall, large Cerise-Violet. 80 days.	12	.60	.40	.20	20	.10
W. H. PHIPPS (D) LaFrance Pink, flowers enormous. One of the most wonderful Glads in existence. 97 days. 88 days.	1	.20	.15	.10	15	.15
	12	1.60	1.00	.60	50	.25
WILLIAM KENT (D) Creamy Shell Pink with Golden Ochre center. Large Flowers 90 days. 83 days.	1	.25	.20	.10	15	.25
	12	2.50	2.00	1.00		
WILLIAM G. BADGER (D) Delicate Coral. Throat pale Yellow. Large flowers. 80 days. 95 days.	1	.10			25	.10
	12	.70	.50	.30	100	.25
WOTAN (D) Eosine Pink with Rose Red shadings, center of each petal striped white. 95 days.	1	.75	.50	.25	12	.75
YELLOW PERFECTION (P) Light Yellow, early and a good propagator. 70 days.	1	3.00	2.00	1.00	1	.25

ORIGINATORS NAMES

As indicated on list: Austin (A); Boynton (Boy); Betscher (Bet); Briggs (Br.) Coleman (C); Cowee (Cow); Decorah (Dec); Diener (D); Ellis (Ellis); Errey of Australia (Errey); Fischer (F); Hornberger (H); Goodrich (Good); Groff (Groff); Grossman (G); Houdyshel (Houdy); Kirchoff (Kir); Kunderd (K); Kemp (Kemp); Lemoine (L); Metzner (M); Miller (Mil.); Pfitzer of Germany (P); Rugoski (R); Salbach (Sal.); Spencer (S); William Purple (Bill); Williams (W); Velthuys (V).

See page 24
for Special Offer.

WHAT OTHERS SAY

Washington, Dec. 6, 1929.

Mr. J. H. Heberling,
Easton, Ill.

Dear Sir:

The Gladiolus bulbs which I ordered from you during your "Fall Sale" arrived today and I hasten to inform you that while I have been ordering bulbs for 15 years, these are certainly the finest, largest highest crowned and cleanest bulbs I have ever received from any one.

Your count was not only very liberal, (one or two extra in every package) but you also included several newer, high priced varieties, for which I thank you.

I am very well pleased with this trial order, and if you will send me your regular catalogue, I will send you another order before Spring.

Respectfully,

W. C. B.

Conn., Nov. 27, 1929.

J. H. Heberling,
Easton, Ill.

Dear Sir:

I arrived home last night and found that my gladiolus bulbs had arrived. I appreciated the extras which you forwarded and was especially pleased to note the size and splendid condition of all of the No. 1 bulbs.

You certainly are getting a wonderful growth and there is almost an entire absence of scab.

Hope that you are having another very successful season, and with best wishes, I remain,

Sincerely yours,

G. L. H.

Ohio, Dec. 11, 1929.

J. H. Heberling,
Easton, Ill.

Dear Sir:

Received Glad bulbs last Saturday. Were O. K. and want to say that they were sure high crowned, fine and healthy. also many thanks for the extras.

Yours very truly,

F. E. D.

Conn., Dec. 10, 1929.

J. H. Heberling,
Easton, Ill.

Dear Sir:

I received my order of Glads that you sent me today in very good condition. They were the best Glad bulbs that I ever got anywhere, they were perfect. The bulbs were high crown, the kind that I like. I often wonder how you raise them to grow that way, or is it a secret. I also wish to thank you for the count you gave me and the many extras.

Again I wish to thank you for such good bulbs, and wishing you a Merry Christmas.

Yours truly,

L. A. G.

Minneapolis, Minn., Nov. 22, 1929.

J. H. Heberling,
Easton, Ill.

Dear Sir:

Just want to let you know that I'm entirely satisfied with the results I obtained with your Gladiolus this year. All of the corms looked fine and healthy when I planted them and the flowers they produced later on in the season were positively wonderful! Certainly was tickled with the varieties I had selected.

This Fall as I dug them, I was enthused all over again. What a fine increase, I thought. Will soon have to lease a farm to take care of all the increase on the HEBERLING GLADS! In fact, my basement is congested with them now. Am really quite alarmed and all that!

Leaving all jokes aside, however, your gladioli pleased me immeasurably. Wish I could buy a carload of them, but I can't. But I will place another order with you next Spring if you'll just send your catalogue around as early as possible. That is, if I'm not sick, dead or broke by then.

Yours sincerely,

Geo. P., Jr.

New Jersey, Dec. 15, 1929.

J. H. Heberling,
Easton, Ill.

Dear Sir:

This is to advise you that the "Glads" arrived yesterday in first class condition.

I wish to thank you for the many extras which you kindly sent, they certainly are a fine looking lot of bulbs, and I think you are justified in calling them Super Bulbs. With kind regards, I am,

Yours respectfully,
W. L. W.

Canada, Dec. 4, 1929.

J. H. Heberling,
Easton, Ill.

Dear Sir:

The order received and got the surprise of my life to see so many more than ordered. Catherine Coleman bulbs like door knobs. Will expect magnificent flowers from those bulbs. I am glad to get Tobersun, as I have never seen it in real flower. Was never so much pleased with an order before. Wishing you increased sales, I remain,

Yours truly,
A. V. C.

New York, Dec. 10, 1929.

J. H. Heberling,
Easton, Illinois.

Dear Sir:

Received the package of bulblets ordered from you last Fall. Have always had exceptional luck with your bulblets. I now have some very fine bulbs of choice varieties that were grown from bulblets bought from you two years ago. Would rather buy bulblets of outstanding varieties, wait two years and have a good spike than buy No. 1 bulbs of the new varieties. My experience has been that it pays to buy bulblets from a firm that has a reputation behind it. I have never had one of your bulblets that has not been true to name when it has bloomed. Cannot say the same where I have ordered some other places and thought I was saving money.

Very truly yours,
H. N. R.

Illinois, Dec. 14, 1929.

J. H. Heberling,
Easton, Ill.

Dear Mr. Heberling:

Several days ago I received your shipment of bulbs in fine shape. Thanks for the over count, and you were certainly liberal with the extras. Another thing, you acknowledge receipt of orders, which I can't say for some other dealers.

Yours truly,
F. A. B.

Bloomington, Ill., Dec. 17, 1929.

J. H. Heberling,
Easton, Ill.

I have just received my shipment of "Victor" from you, and it is up to all my advance expectations. As a matter of fact, the stock is the best looking stock I have received from any grower this year, and you certainly have been liberal in filling the order.

Best wishes for a good business for the coming year.

Very truly yours,
Louis L.

West Virginia, Dec. 11, 1929.

J. H. Heberling,
Easton, Ill.

Dear Sir:

I received the Glad corms today, and will say they are the best I have ever bought.

Thanks a lot for the liberal count and extras. I may want some more in the Spring.

Yours very truly,
Mrs. C. J.

Oregon, Dec. 8, 1929.

J. H. Heberling,
Easton, Ill.

Dear Sir:

Received the bulbs I ordered from you and I surely appreciate your generosity in regard to count, and the very many extras which you sent.

I have never received better bulbs or bulblets from anyone who has been quite so generous as you have been.

Yours truly,
E. J.

No. 100.

\$7.00 GREAT SPECIAL \$7.00**All Hand Selected Bulblets**

2 Helen Jacobs	\$.50
12 Betty Nuthall	\$1.50
6 Dr. Moody	\$.50
2 Grand Guardian	\$1.00
3 Miss Joy	\$.50
12 Mary Frey	\$1.00
12 Oriental Silk	\$1.00
12 Senorita	\$1.25
12 Apricot Glow	\$.50
6 California	\$.50
12 Frank M. Shick	\$.75
12 Marmora	\$.50
12 Paul Pfitzer	\$.35
12 Rosewood	\$1.00
12 Tobersun	\$2.00

Total Value, \$12.85

All Prepaid for \$7.00

No. 200.

\$9.00 GRAND SPECIAL \$9.00**All Large Bulbs**

1 Aprico Glow	\$1.00
1 Betty Nuthall	\$4.00
5 Golden Frills	\$1.00
1 Mrs. Calvin Coolidge	\$1.50
1 Patricia Carter	\$.75
1 Rosewood	\$1.00
2 Annie Laurie	\$.50
3 Golden Dream	\$1.00
6 High Nye	\$.75
1 Oriental Silk	\$1.00
3 Paul Pfitzer	\$1.00
6 Salmon Glow	\$.50

Total Value, \$14.00

All Prepaid for \$9.00

RULES USED IN JUDGING

Color Classifications

Adopted by the American Gladiolus Society as recommended by the Classification Committee for use at Gladiolus Exhibitions.

The following color families will serve to properly place the different varieties in their correct classes.

PINK—All of the light tints of spectrum Red which do not have the Violet hue of Rose Pink, nor the Orange hue of Salmon Pink.

RED—All of the tints, shades and hues nearest spectrum Red which do not have the Violet hue of Rose, nor the Orange hue of Scarlet.

DARK RED—All of the dark shades of Red which do not have Violet hue enough to place them in the Purple family, nor Orange enough to be Brown.

SALMON PINK—Tints of Orange and Red Orange hues.

SCARLET—Intermediate hues of Red and Orange with enough Orange to make decidedly brilliant color.

CREAM, BUFF and FLESH—Tints of Orange-Yellow and Yellow hues.

ORANGE—Tints and shades of hues nearest Orange.

YELLOW—Tints of hues nearest the Yellow scale.

PALE VIOLET—The lighter tints of Violet which do not show the decided Red hue of Rose Pink.

Violet—Tints, shades and hues nearest Violet.

ROSE PINK—Light tints of the Violet Red hues.

ROSE—Hues of Violet Red darker than Rose pink, yet not dark enough for the Purple family.

PURPLE—Shades of Violet-Red hues too dark for the Rose family, but with more Violet factor than Dark Red family.

WHITE—Predominating color, White.

ANY OTHER COLOR—Combinations which cannot be readily placed in any of the above families; such as the "smoky" kinds and those which show about equal quantity of various colors.

GREENS and BLUES are omitted as we have no specimens which can be truly placed in these families.

As used above, **tint** means lighter than the fundamental color, while **shade** is darker.

A hue is intermediate between two fundamental colors, as a **hue Red and Orange**. In like manner we get a **Violet-Red** hue which becomes our Rose family, while the lighter tints are classed as Rose Pink and the darker shades our Purple family.

It is comparatively easy to correctly place any variety in its proper class. Just take a few specimen spikes and view them at a distance of about ten feet, and away from any confusing colors. The predominating color may then readily be determined.

Ridgway's Color Standard and Nomenclature is our Official Color Guide.

IN A GENERAL WAY THE COMMITTEE DEFINES THE DIFFERENT TYPES AS FOLLOWS:

Exhibition:

In preparing the rating schedule for the Exhibition Class we have attempted to visualize the ideal Gladiolus from a connoisseur's viewpoint.

It should have a long bud spike, many open at once, large florets, well placed, and of attractive form and pleasing color.

Commercial:

The ideal Commercial Type is that best suited to the requirements of the general florists' trade at the present time.

Please select Second Choice if possible

Primulinus Grandiflorus:

The ideal of this type combines the size and dignity of the Exhibition Type with the gracefulness and beauty of the Primulinus.

Primulinus Type:

Varieties having distinctive hooded blooms and slender stems as characteristic of the Primulinus Species.

Landscape:

This rating schedule refers to the desirability of a variety for the garden or landscape planting, disregarding its usefulness as a cut flower.

**SCALE OF POINTS TO DETERMINE VALUES OF GLADIOLUS FOR
DIFFERENT PURPOSES**

	Exhib.	Commcl.	Landscape		Prims
			Primulinus and Grand.	Garden	
Flower:					
Color	15	10	15	5	12
Surface texture	5	5	5	00	3
Effectiveness en masse	00	5	3	10	8
Size	12	6	8	5	5
Form	5	4	10	00	12
Spike					
Length of stem	5	5	5	00	5
Florescence	10	5	8		10
			Main spike	5	
			Laterals	5	
			Spikes per bulb	5	
Number open	10	10	7	00	7
Facing of bloom	8	8	6	00	5
Spacing of bloom	5	4	8	00	8
Attachment of florets to stem	00	5	00	00	00
Harmony	10	3	10	00	10
Keeping quality	5	10	5	16	5
Field Points					
Foliage	3	3	3	10	3
Vigor	4	4	4	5	4
Productiveness	3	00	3	00	3
Bulb Production	00	3	00	3	00
Cormel Production	00	3	00	00	00
Earliness	00	5	00	00	00
Precocity	00	2	00	00	00
Length of Blooming period	00	00	00	10	00
Ability of stem to support bloom	00	00	00	15	00
Plant resistance to wind	00	00	00	6	00

Please select Second Choice if possible

CULTURAL DIRECTIONS

The Way to Grow Good Glads

(As Approved by the American Gladiolus Society)

- CARE OF NEW BULBS.** When bulbs arrive, open package at once to admit air. If not wanted to plant soon, store in cool, dry place. A canned fruit cellar is just right.
- WHEN TO PLANT.** When the trees native to your vicinity are unfolding their leaves. Then all dangers of damaging frosts are past. From then until last of June.
- WHERE TO PLANT.** In beds, rows, borders, etc., and among other light rooted plants. Plant in open, sunny places not too near buildings nor close to foundations. Buildings shade and retard development, or reflect strong sunlight and burn. Lack of free drainage, sunshine and aeration as well as ingredients in mortar make unfertile and sour soils. Keep away from trees and heavy rooted shrubs especially.
- KIND OF SOIL.** A sandy-loam is best. Works freely, retains moisture, and is productive. Any good garden soil will do, but some require more work to keep loose, to keep weeds down, etc.
- HOW TO PLANT.** Manure well in the fall. In spring at planting time, use only well rotted manures or commercial fertilizers. If manures are not available, use leaves sprinkled with sheep fertilizers and some lime. Cow or hog better than chicken or horse manures. Will not burn if used heavy, and better chemical element content for flowers. Spade not less than 8 or 10 inches deep. Pulverize manures and soil **THOROUGHLY**. Open rows or trenches 6 inches deep, 18 or 20 inches apart. Set large bulbs in trenches the width of the bulbs apart. Farther apart if you care to but not closer. Smaller bulbs not set so deep. Six inches is deep planting. Slows appearance of sprout through ground but protects from late frosts, will stand heavy winds and extreme hot or rainy weather better. Cover bulbs with an inch of soil then sprinkle liberally with sheep fertilizer, bone meal or complete slaughter house tankage. Fill in rest of trench with soil and **FIRM DOWN** by walking on rows or with lawn roller to eliminate air pockets around bulbs. If soil is dry when planted, water thoroughly after planting. If planted in beds set bulbs about 6 inches apart.
- HOW TO MARK.** Put in stakes and label each variety as planted. Stakes in deep to avoid being pulled out in cultivating. Unless water-proof ink, use lead pencil for marking labels. Common ink will fade from rains and watering.
- CULTIVATING.** **Keep soil loose and free from weeds ALWAYS.** Never permit caking or crusting of soil after rains or watering. **Keep cultivating.** The more you do, the better your plants and flowers for many reasons.
- FERTILIZING.** Use plenty of sheep fertilizer. tankage or bone meal. All or each. Each has some content the others lack. Bone meal good but slow. If nitrates and ammonias are used, **BE CAREFUL.** Use them only between rows and never permit on plants. They are strong and stimulants more than foods.
- WATERING.** Water when necessary then soak them. Sprinkling has tendency to draw roots **UP** for moisture. Send the water **DOWN** to the roots. Unless very dry, once a week is usually enough.
- BLOOMS.** Cut flower spike when first bud is open. Keep spikes in water. Change water and cut end of spike off **slanting**, daily. Use a knife for all cutting. Shears crush and close channels in stem so water cannot pass through to buds. In cutting spike, leave 4 to 6 leaves on plant to mature bulbs.
- DIGGING.** Dig when foliage is turning brown, but always before freezing weather. Cut off foliage close to bulb. Dry in open air a few days, but keep from frost. Store for a few weeks, then divide new bulbs and bulblets from mother bulb and old roots. Always keep label and name with each variety. Clean up and store for winter.

Please select Second Choice if possible

STORAGE. Store in cigar or other shallow wooden boxes. Paste label on box and mark variety plainly. Do not crowd because of danger of mixing varieties. Store in a cool, dry place. A temperature of about 40 degrees F. A canned fruit cellar is exactly right if not too damp.

REMEMBER. GOOD bulbs, plenty of sun, food, water and cultivating is all you need to raise **PRIZE WINNING GLADS.**

ILLINOIS GLADIOLUS SOCIETY, Affiliated with AMERICAN GLADIOLUS SOCIETY

I suggest that all residents of Illinois, enjoying Gladiolus blooms, become members of the Illinois Gladiolus Society.

The advantages are many and the cost is small. As this organization is now affiliated with the American Gladiolus Society, your membership in the Illinois Society gives you all the local advantages and also all that can be gained by membership in the National Organization, which includes a copy of the Monthly Review published by the American Society. You may become a member of both organizations by remitting \$2.00 to,

EARL A. HOLL, Secretary, I. G. S. Pesotum, Illinois.

AMERICAN GLADIOLUS SOCIETY

To Residents of Other States

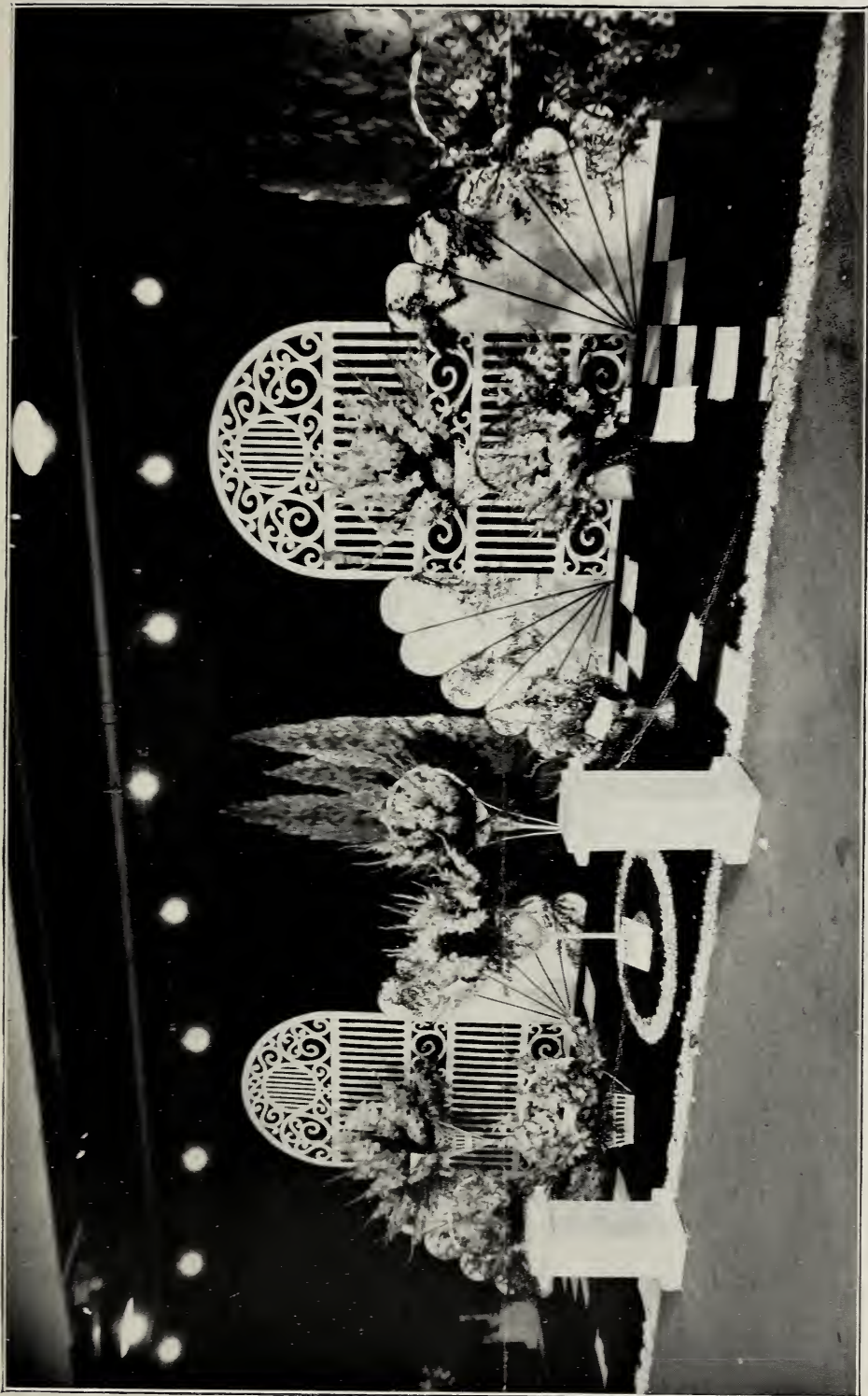
I sincerely advise becoming a member of the American Gladiolus Society either directly or through your State affiliated organization. The Monthly Review published is worth many times the cost. Remit \$2.00.

To: ROSCOE HUFF, Secretary, A. G. S., Goshen, Indiana
Order Early to Avoid Disappointment. Thank You.— J. H.

Please order
early
to
avoid
disappointment



*See discounts
on page 6.*



PART OF EXHIBIT AT NATIONAL SHOW, SPRINGFIELD, ILL., AUGUST, 1929

