

Historic, archived document

Do not assume content reflects current scientific knowledge, policies, or practices.

2,67

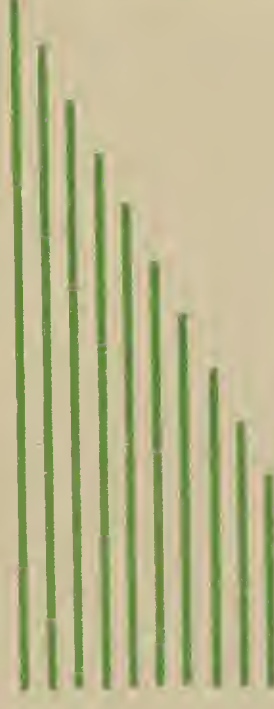
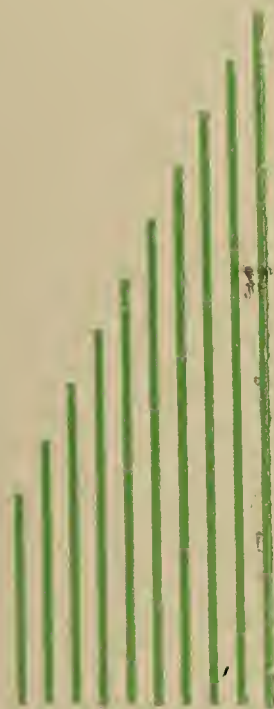
KENDAHLIA GARDENS, Inc.

SUCCESSORS TO

KENDAL DAHLIA GARDENS, Inc.



U. S. DEPARTMENT OF AGRICULTURE
 RECEIVED
 ★ APR 19 1935 ★
 U. S. Department of Agriculture



Vase of Kendal Glory

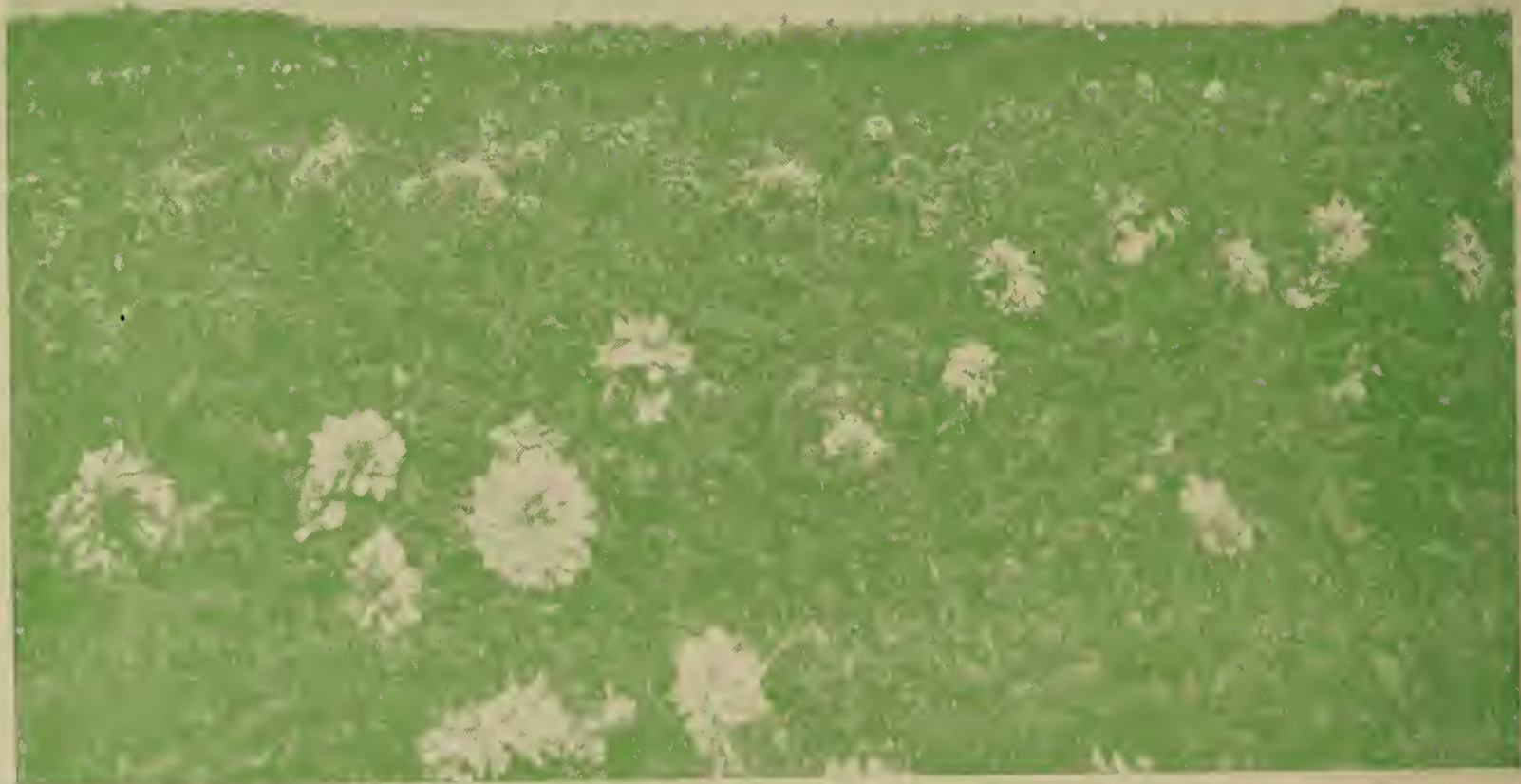
*Originator, Grower & Distributor
 Best New & Standard
 Prize-Winning Dahlias*

1935

C. W. STUART, PRES.

1636 Columbus Ave.

SANDUSKY, OHIO



A VIEW OF OUR GARDENS AT BLOOMTIME

BOUQUETS

Herewith are extracts from a few of hundreds of letters received from our customers. They tell their own story. Names of the writers may be had upon request:

Hamar, Norway (Europe), Dec. 28, 1934

"The Dahlia bulbs and seeds ordered from your gardens in the spring of 1934 through my brother living in Minnesota were received here at Hamar, Norway, April 30 in good shape except two that were spoiled * in the three weeks voyage over the ocean. The bulbs grew and developed into fine flowers of exceptional size of the most brilliant colors even though they were set out way too late for our climate here. The 100 seeds started well and made the most flowers of the most beautiful colors, just a few having single flowers. I am well pleased with the shipment and the experience with these Dahlias and thank you for your interest in my venture.

Miss _____

*The above letter was translated by a brother of the lady to whom the dahlias were sent. The dahlias which spoiled will be replaced. K. D. G.

Maquoketa, Iowa, Dec. 24, 1934

"I am enclosing a picture* of Polar Snow one of the Dahlias I got of you this spring. This Dahlia was planted six weeks later than the rest. At the time this picture was taken, October 18, it had fifteen blooms and twenty-four buds, and was 8 ft. tall. Black Jack also did good but it had just started blooming when the frost came October 28. I sure am pleased with the Dahlias I got of you so be sure and send me your catalog for I want to order some more of you this spring."

*See picture page 13. K. D. G.

Chicago, Ill., Oct. 1934

"I would like to know the proper way to keep Dahlias over the winter. I dug mine up to put them away but don't want to lose them as some of them were the envy of the neighborhood. I bought eight of them and my Cleopatra and Jane Cowl were about 7 feet tall with lots of flowers and beautiful. ***The Mrs. I de Ver Warner* did not come up at all. The Nifty was a beautiful plant having two colors and lots of flowers about five feet and bushy."

Danielson, Conn., Oct. 17, 1934

"I purchased several Dahlias from you this last season and you may be interested in a report of them. ****The Kendal Glory was most magnificent and outstanding. The Eagle Rock Jewel was a beautiful canary yellow with royal purple reverse on petals which twisted and curled and showed from the front and was a real Cactus beauty. ****I must mention your gift Dahlia to me for it was outstanding. It was kendal Marmarata. The plant grew after disbudding to 10 feet tall and such magnificent blooms. Words battle any description. Eight inch blooms and pick the blossoms and more kept coming from seemingly nowhere but there they were again. On the whole I had the best Dahlia season I have ever had. Many thanks."

KENDAL DAHLIAS GROW ANYWHERE

A Personal Message About Our Dahlias

In presenting you our Seventh Annual Catalog, we extend to all our many customers and Dahlia loving friends throughout the United States and the world our heartiest greetings and best wishes for a happy, prosperous 1935. We wish for you health, happiness and prosperity throughout the year.

We come to you this year under a new name. To clean up legal complications and clear the way for a greater, freer and fuller business activity for the future, the Kendahlia Gardens, Inc. was organized. It bought the business and assets of Kendal Dahlia Gardens, Inc. at planting time in June and will continue the business under the same management as before. Our Gardens will still be known as Kendal Dahlia Gardens and your future orders will receive the same prompt careful attention as heretofore.

1934 was a year of progress from the depression for most of us. Progress was not by leaps and bounds but it was progress toward a renewed faith in ourselves, in those around us and a realization that it was within our power, by careful living and planning, to carry on and through. Conditions on every hand point toward a stable recovery of business and living conditions that seems to insure an era of prosperity that will mean better living for all of us.

With this assurance ahead we can go ahead with confidence to acquire those things we desire with the fuller life they bring, better living and more flowers which inspire the mind and heart of all to better and finer deeds. In planting and caring for flowers you serve God.

We grew twenty-five acres of Dahlias in 1934, 120,000 hills. The weather in this section was dry during the early part of the season. Later rains brought them to a fine maturity. Conditions like these do not make large roots but they make roots that are "chuck" full of "pep" and vitality. As it has been true for seven years, it will still be true that "Kendal Dahlias Grow Anywhere."

Our costs in the production and handling of dahlias, in the preparation of our catalogs and other advertising, our office and other fixed expenses are still on an increased basis under the new improved business conditions yet our prices are reduced on about 50 per cent of our dahlias so that we bring you the cream of the



C. W. Stuart

dahlia world at prices lower than we have ever quoted. Our low prices last year brought us an increased volume of business showing that our customers appreciate the very low price of our dahlias which have an exceedingly high standard of vitality.

Our catalog brings you a selection of about 600 of the world's best known and more popular dahlias both of the standard sorts and the prize winning varieties. No other grower to our knowledge lists so many varieties in their catalog from which their customers may select. We bring you every shade and color and type of dahlia in existence. Our catalog is used by hundreds of florists, dahlia growers and greenhouses as a reference book. You should consult it often.

We have again this year combined in assorted types and colors, many collections from the popular standard and exhibition varieties of which we have large stocks and which you may buy in these collections at greatly reduced prices. These bargains are very popular, the type and colors are assorted in proper balance and will be a credit to any garden.

We are no longer growing cannas and peonies and therefore are discontinuing them from our catalog. You may still purchase tritoma or red hot poker from us as we continue to grow this very beautiful flower.

Next fall we want you to write us all about your dahlia successes, your failures and your problems and if you are visiting Sandusky or if you are passing through Sandusky from August 20th to October 20th, we shall be pleased to have you visit our Gardens. Anyone can tell you where they are.

Our 1936 catalog will be sent to you some time next year between January 15th and February 15th, 1936. Save your order until it comes.

We desire again to thank you for the splendid business which you gave us last year. It has enabled us to give you better service and cheaper prices this year. You have been very helpful in your cooperation. May we all have good luck in 1935 together.

C. W. Stuart

If you are not interested in this catalog, will you please pass it along to your neighbor?

General Information and Instruction

READ CAREFULLY

ORDER EARLY

ORDERS are reserved strictly in rotation and are forwarded when requested or as danger of frost is past. Unless otherwise instructed, roots will go forward for latitudes north of the Mason and Dixon line May 1st to 20th, except seeds which will be sent at once, and plants after May 15th unless requested sooner, at customer's risk. It will assist us materially in filling orders at the proper time if our customers will specify the approximate time they wish to have their roots shipped. For this latitude the best time is May 20th to June 15th. Planting in the South may be made earlier.

PRICES QUOTED

Prices quoted are for strong divisions of field grown roots which have not been used for propagation and include the prepayment of postage on retail orders over \$2.00. On orders of less amount than \$2.00 a charge of 10c is made for postage and packing, which please include. The same applies to green plants. We make the usual discount to the wholesale trade. On wholesale orders, forwarding charges are paid by purchaser. ..

SUBSTITUTION

We have ample stocks of most all varieties quoted to fill expected orders, but there is the possibility that some of our varieties may become exhausted; however, we do not substitute for any varieties which may be sold out unless expressly permitted to do so and if we receive your order and are out of any particular variety you select, we will refund your money unless you authorize us to send the nearest in color, habit and price to the variety ordered. Please advise a second choice in case you desire us to substitute if necessary, especially for orders late in the season.

TERMS

Unless otherwise arranged, cash must accompany all orders. If it is desired to have shipment made C. O. D., then 25 per cent of the purchase price should accompany the order. Orders will be reserved upon payment of 25 per cent cash at time order is given, balance C. O. D. when shipped. Please remit by check, money or express order or postoffice order.

GUARANTEE

While every care is exercised in digging, planting and packing, that none should be mixed, no guarantee is given other than to replace any stock that may prove not true to name. If shipment does not arrive in good con-

dition, please notify us at once, returning roots, which will be immediately replaced, and if any dahlia root does not begin to grow or show signs of growth within four weeks after planting, please return it and the same will be replaced free of charge. We recommend and use green plants of dahlias but cannot be responsible for losses in plants after they are set out. There are so many things that can happen to them not our fault or the fault of the plant, that we cannot accept the responsibility of replacing plants. However, our experience with plants is entirely satisfactory.

STATE INSPECTION

Each shipment of dahlias we make is accompanied by a certificate of the Director of Agriculture of Ohio, showing that our nursery, consisting of Perennials and Bulbs, have been inspected by a duly authorized inspector in compliance with the law and found apparently free from dangerously injurious insects and plant diseases.

CULTURAL DIRECTIONS

Sufficient cultural directions for the raising of dahlias are given toward the end of this catalog, both for seed and for roots. Read it. Full cultural instructions will also be sent out with each order.

ERRORS

In the rush of the shipping season, errors are possible to occur, and we, like all human beings, are apt to make a mistake. However, we will consider it a favor to be notified at once so that we can rectify the same. If you have a complaint, tell us first. If you like our treatment, tell others.

NEW DEAL OFFER

As an inducement for your order in 1935, if your order amounts to \$3.00 or more, you may select in addition to your order, when accompanied by cash, dahlias from our catalog to the amount of 20 per cent of the original order. For instance, with a \$5.00 order, select \$1.00 extra; with \$25.00 order, select \$5.00 worth and so on. These will be sent to you free postpaid. No extra or free extra on collections as they are priced at a great reduction already. No cash discount allowed.

FREE COURTESY EXTRA

When ordering, if you will send a few names and addresses of friends whom you think would be interested in receiving this catalog, we will remember you with an extra, our selection, for your kindness.

AND FINALLY

Be sure to sign your order, writing your name and address plainly, including street number, city, county and state; and ORDER TODAY.

KENDAHLIA GARDENS, INC. — Sandusky, Ohio

Our Own Originations

AND INTRODUCTIONS



A Spot in Our Seedling Garden Where We Develop Our Own Originations.

KENDAY GLORY C. (Kendal)—A clear rose red shading to coral. A large sized Dahlia of true cactus type. Its attractive spidery bloom of 6 to 8 inches and depth of 3 inches is well formed and well supported on long, wiry stems. Its coloring is unique and it lasts well as a cut flower or on the stalk in the garden. \$1.00 ea.

KENDAL GOLD P. (Kendal)—A golden yellow peony flower whose center is entirely covered with incurved petals. Plant is a vigorous grower covered with 5 to 8 inch flowers on good stems. 40c each.

PEARLE TEMPLIN BRADLEY F. D. Kendal-Templin-Bradley—Burnished old gold shading amber bronze to center with a flush of jasper red. Named in honor of Pearle Templin Bradley of the Templin-Bradley Company of Cleveland. Has wonderful blooms extending on long, stiff stems out of a deep green and insect resisting foliage. Toward the end of the season it is covered with a mass of bloom. It is priced to make it available to everybody. 50c each.

EDIE K.—F. D. (Kendal)—A very popular seedling in our gardens. Grows to about four feet in height, branches well, has insect resisting foliage, producing 5 to 7 inch flowers on long stems. Color, a suffusion of salmon, gold and pink. One of the first Dahlias to bloom in our gardens, it continues tight-centered until frost. Especially good for cut flowers. 50c each.

KENDAL FRAGRANCE. P.—A golden flower with just a blush of jasper red. Center covered with incurved petals. It is one of the few Dahlias which has fragrance when in full bloom. Hence its name. A good grower and a free bloomer. 35c each.

KENDAL GOLDILOCKS, PAE. (Kendal) — Long, narrow, wavy golden petals with center covered with curly petals giving the appearance of a little girl's golden curly head. Six to seven inch blooms are produced in profusion on a tall wide-spreading bush which is disease and insect resisting. Fine stems. 75c each.

KENDAL KLONDIKE GOLD. F. D. (Kendal)—Rich, yellow gold flowers, five to seven inches in diameter produced in abundance on good, strong cane-like stems. Plant grows about four feet tall, bushing well. Blooms early and till frost. We make a leader of it. 50c each.

KENDAL SWEETHEART I. D. (Kendal)—Eosine pink shading to white in the center. 6 inch flowers on good stems and the sturdy, robust bush makes this Dahlia an exceedingly popular cut flower and garden variety. It has received praise East and West. You'll like it. 50c each.

KENDAL MARMARATA F. D. (Kendal)—A lavender blue flower on a tall stately plant whose stalk and foliage have the same general coloring as the flower. Plant is upright with many branches extending out at an angle of 45 degrees. Pinching out the top bud of the main stalk, each of these lateral branches makes long stems for an 8 to 9 inch bloom which resembles the Marmarata Water Lily from which it takes its name. One of the prettiest Dahlias in our field. 75c each.

KENDAL PURPLE GIANT F. D. (Kendal)—A huge deep flower of royal purple. Plant is very vigorous and robust. Blooms early, freely and late. Full center until frost. Very showy. 75c each.

KENDAL AUTUMN GOLD F. D. (Kendal)—Color deep autumn gold. A very vigorous plant of insect and disease resisting foliage. Top or terminal bud of the main stalk should be pinched out when it shows. Many laterals will make a heavy, bushy plant, covered with 8 to 10 inch flowers from early to late season. A gorgeous flower and plant. 75c each.

KENDAL IRIDESCENT F. D. (Kendal)—Pink and gold blended, giving an iridescent coloring to a very large flower on a very vigorous, robust bush. Tendency to hard centers under some conditions, but gorgeousness of flower coloring and foliage makes it outstanding as a cut flower variety. 40c each.

ROSE O' THE LAKE F. D. (Kendal)—Color is a rich, rosy lilac-lavender. Plants strong and vigorous growing to a height of 4 to 5 feet. Foliage is heavy, leathery, and insect resisting. Flowers are 8 to 10 inches, held facing up on good, strong stems. Very good, 50c each.

PAISLEY S. (Kendal)—A single Dahlia, white background marked with red, giving the flower the pattern of a Paisley shawl. Named by a visitor in our gardens who noted the resemblance. Plant is tall, branches well, flowers prolifically. Stock limited. 40c each.

KENDAL CREAM PUFF (POM) (Kendal)—A rich creamy yellow fluffy flower aptly describes it and suggested its name. A vigorous medium sized plant producing many flowers on good stems and keeping well when cut. You'll like it. 30c each.

KENDAL DAHLIA GARDENS, — Sandusky, Ohio

DECORATIVE DAHLIAS

FORMAL DECORATIVE DAHLIAS. Fully double flowers, floral rays generally broad, either pointed or rounded at tips, with outer floral rays tending to recurve and central floral rays tending to be cupped; all floral rays in a somewhat regular arrangement.

INFORMAL DECORATIVE DAHLIAS. Fully double flowers, floral rays, generally long, twisted or pointed and usually irregular in arrangement.

ABBREVIATED "F. D." and "I. D."

Quotations of all Decorative Roots are for strong field grown divisions, each with one or more good eyes, guaranteed to grow and each root labelled.

ADALINE WINTER F. D. (Winter)—A brilliant, vermillion, carmine, oriental red Dahlia, making a good bush covered with flowers on good stems. It is one of the most dependable growers and good root makers in our gardens. 35c each, 4 for \$1.00.

ADIRONDACK SUNSET I. D. (Parkway)—A vivid scarlet with golden tips, 1934 Honor Roll Dahlia, a winning favorite by popular vote at N. Y. Botanical Gardens. Has color, form, personality and splendid growing habits. Plants only, \$5.00

AIR MAIL I. D. (Kanouse)—Nine to ten in. full, tight centered facing blooms on long cane-like stems. Color is exquisite lavender shading lighter at base of petals. A Certificate of merit Dahlia with many prize awards at Northwest shows 1933 and 1934. Wonderful cut flower \$3.00 ea.

ALASKA F. D.—A clear white Dahlia, good grower, good plant, good stems, producing flowers freely. 75c each.

ALBERT H. VESTAL I. D. (Eastman)—Color, a glowing old rose without any trace of any other color, springing up out of dark green foliage 8 in. above the plant. Petals a beautiful mass twisted and curled with a closed center throughout the season. Flowers 9 to 11 inches. Certificate of Merit American Dahlia Society Trial Gardens, 1929. 75c each.

ALEX WALDIE F. D.—A large flower with a creamy ground overlaid with delicate salmon pink, held high above the foliage on fine stems. Named after one of the foremost Dahlia growers who died in 1930. It has won high praise everywhere it has been grown or shown. 35c each, 3 for 90c.

ALICE STELLICK I. D. (Rindfleisch)—An unusually striking bicolor Dahlia, color bright crimson scarlet with glistening white stripe through center. A good grower. Hot weather makes early bloom droop. Sometime flower comes red \$2.00 each. Plants \$1.00.

ALTAMONT I. D. (Kemp)—Rose pink deepening to American Beauty rose toward the center of the flower. Full decorative type with long, slightly curled petals. It averages 8 inches and over in diameter; stands the sun well, resembling Jersey Beauty in habit; tall grower, healthy and an early and abundant bloomer. It is a splendid keeper and very satisfactory for the amateur. 50c each.

AMAZON I. D. (Ballay)—A large flower of bright coral pink, deeper at the center, with a suffusion of pale gold on inner petals on a plant which grows very erect. It attracts by the beautiful coloring and wealth of bloom. 50c ea.

AMERICAN EAGLE F. D.—A large maroon red flower growing on a vigorous five foot plant. It has good long stiff stems and is a free bloomer. 50c each.

AMUN RA F. D.—Sensational new Dahlia of distinct color and form. Color combination resembles a gorgeous setting sun. Copper, orange and gold, deepening to a reddish bronze

at the center; a giant bloom on erect stems. 40c each, 3 for \$1.00.

ANDREAS ERICSON I. D. (Fisher & Masson)—A pure white dahlia resembling Fort Monmouth in form. Won many prizes in 1930 and 1931. Flowers 10 to 12 inches in diameter on sturdy stems. \$1.50 each. Plants 75c.

ANGELO ROSSI I. D. (Redfern)—Brilliant gold as described by Mr. Redfern and golden apricot shading to a golden center as described by Derrill Hart. Tall grower and an early bloomer and another giant in the Jane Cowl color class. Won prizes in west. It grows successfully in the east. Plants only \$5.00.

ANN RUTLEDGE I. D. (Michael)—Color, Oriental Fuchsia brilliant with lavender. Giant flowers borne on strong stems. Splendid keeper, excellent for cut flowers and exhibition purposes. Prize winner in West. \$1.00 each.

ARTHUR W. GREY I. D. (Veile and Mendham)—A large, strong, broad-petaled flower of a rich salmon, apricot, flushed orange and rose. Excellent stems and foliage. 1929 Honor Roll dahlia, winning prizes east and west. \$1.00 ea.

ARCTIC SHADOWS F. D. (Harding)—A gorgeous new 1929 introduction from the original stock of Judge Josiah T. Marean. It has pure white center, shading outward pale mauve. \$1.00 each.

ASBURY PARK F. D. (Burpee)—Color, glorious autumn shade of bright strawberry-red, suffused with salmon and tinted with old gold toward the tips, giving a copper-salmon general effect. Plant grows 5½ feet tall with flowers 8 to 12 inches across on nice strong stems. Carries seven first prizes and a certificate of merit. 75c each.

ATLANTIC CITY F. D. (Burpee)—Gorgeous flowers of rich golden autumn colors shaded amber-gold, orange, salmon, bronze, blended beautifully. 5 to 7 inch flowers on 3½ to 4 ft. plants of upright growth requires no stakes. Original cut 37 flowers from one plant. 75c each.

AURORA I. D.—Tan and gold with light red reverse. A good vigorous grower, a perfect bloomer with every good quality, well known and well liked in northern Ohio. A prize winner. \$1.00 ea.

AUORE F. D.—Color, light gold. Tall growing plant branching well, producing many flowers of medium size. A good cut flower variety. 35c each, three for 90c.

AVALON I. D. (Broomall)—Clear Canary Yellow. Very distinct and pleasing, producing a good plant which bushes well and blooms freely.—Flowers are centered on long erect stems. Thin out and disbud for 8 to 9 inch flowers. One of the best of its color. 40c each.

AZTEC GLORY I. D. (Broomall)—A splendid exhibition variety of pure picric yellow with flowers of unusual form, making a very deep and shaggy flower. A low grower, yet it has excellent stems and vigorous foliage. 75c each.

BAGDAD I. D. (Redfern)—Flaming scarlet red. Winning in shows east and west. A tall sturdy grower blooming freely and holding its color in sunlight. \$1.00 each.

DECORATIVE DAHLIAS—Continued

BARBARA REDFERN I. D. (Redfern)—A 1927 and 1928 Roll of Honor Dahlia. A prolific bloomer of blooms measuring as large as 10 to 12 inches. In especial demand in many places for cut flower purposes. The face of this mammoth flower is a glistening old gold color with the reverse of the petals a delicate old rose; since the petals curl, both colors show at the same time producing a warmth and richness in decorative effect. 50c each.

BASHFUL GIANT F. D.—One of the largest Dahlias ever introduced; a great attractive exhibition flower. Color, apricot with golden suffusion and shading, with the flower slightly drooping. 40c each.

BELVIDERE F. D. (Perry)—Charming pink with just a shade of salmon and gold. Plant medium to tall, branching well, blooming freely. Flowers full centered to end of season. Good foliage, leathery and insect resisting. One of the best in our gardens. \$1.00 each.

BLACK BROOK F. D. (Winter)—Black Brook is a dwarf, growing about 18 inches high and fully covered with large rich, lilac crimson blooms. Splendid as a bedder, and can be used around a bed very much like geraniums. Very early and free. 25c each, 1 dozen, \$2.00.

BLACK JACK I. D.—Deepest dark maroon, appearing black at a distance. Bushes are very tall and filled with large, deep velvety blooms from early until late in the season. Best of its color. Won't burn, 75c each.

BOB PLEUSE I. D.—Darkest maroon boldly tipped white. Large flowers freely produced on dwarf bushes. Very popular and a good keeper. 50c each.

BONNIE BLUE F. D.—A very popular near blue Dahlia which blends nicely with almost any other color. It is a good grower, a free bloomer, and constitutes one of the best all-purpose Dahlias of medium size now grown in the garden. 25c each.

BONNIE BRAE F. D.—A real beauty; color, cream shaded to blushing pink. An exquisite color combination. It is grown and appreciated everywhere; one of the very largest and a free bloomer on long stems. 40c each.

BROCKTON BEAUTY F. D.—A huge flower of great depth and size whose color is a pinkish lavender. A profuse bloomer and wonderful keeper with fine stems. 75c each.

BRUNHILDE F. D.—A very symmetrical chestnut color Decorative Dahlia. Vigorous grower, free bloomer. 30c each.

BUCKEYE BRIDE F. D. (Golden Rule Dahlia Farms)—Geranium pink, holding a large flower at an erect angle on a stem which is long and perfect, and which keeps well when cut. Foliage successfully resists insects and mildew. High and uniform vigor. A good root maker which keeps well. Roots, \$1.00 each.

BUCKEYE KING F. D. (Peck)—A 1934 Honor Roll introduction which was outstanding at Chicago and Cincinnati. Glowing gold color having all the good qualities of its mate. Buckeye Bride. Roots, \$7.50 each, Plants, \$3.75.

CALVIN COOLIDGE, JR. F. D.—Rich rose pink, suffused salmon, with each petal edged distinctly gold. A large flower borne on long, straight stems. Vigorous grower, profuse bloomer, resembling Jersey Beauty in its habits. 50c each.

CAMDEN COURIER F. D. (Sunnyside)—Slight cadmium yellow overlaid with grenandine red, producing a shade of rich bronze. Flowers grow to 8 inches and over on sturdy, vigorous plant. 50c each.



BASHFUL GIANT
(Greatly Reduced)

CAMEO I. D. (Fisher-Masson)—A large, luscious colored flower, shading half way between old rose and salmon, but brighter. Its color is unusually unique and pleasant. A 1932 Honor Roll Dahlia awarded special Certificate of Merit in the East \$5.00 each, Plants \$2.50.

CANARY CUP I. D. (Barker)—Color, a rich canary yellow with lighter reverse. Has large size and depth and graceful stems that hold the flower upright to facing. A free bloomer and good grower under all conditions. \$1.50 ea., Plants, 75c.

CAPTAIN COSTE I. D. (Curran-Waite)—A darling big clear wax like empire yellow flower borne on long stout stems high above the foliage. A strong vigorous grower of the exhibition type with a most robust foliage for a yellow variety. \$2.00 each, Plants \$1.00.

CARMENCITA I. D.—An extra fine vigorous, free flowering Dahlia on good stems, plant rather dwarf and bushy. A giant, yellow striped red bloom of most pleasing effect. 50c each.

CASPER G. WARE F. D. (Dahliadel)—The color is a pleasing shade of bright, silvery violet rose. Of medium height, but a vigorous grower, it is an ideal flower for bedding or hedge effect, having a mass of blooms throughout the season. By disbudding and crowning out, flowers may easily reach a size of 8 to 10 inches in diameter. 50c each, 3 for \$1.35.

CATHERINE WILCOX F. D.—Large, pearly white flowers tipped with pink. Very fine for garden or cut flowers. 40c each.

CHAMPAGNE F. D.—A Prize Winner. This great big wonderful California beauty is held perfectly erect on strong straight stems. Color, warm autumn shades, burnished copper to dull golden champagne and chamois. As a cut flower, it fits into the basket with any color. 40c each.

CHAMPOEG, F. D. (Crites-Kemp)—A 1930 introduction. Yellow at center shading to salmon-pink with touch of amber-gold. An Honor Roll Dahlia, which showed good at Atlantic City, Redbank, New York and Asbury Park. A Pacific Coast origination. \$1.50 each, Plants 75c.

KENDAL DAHLIA GARDENS, — Sandusky, Ohio

DECORATIVE DAHLIAS—*Continued*

CHARLES G. REED F. D. (Ballay)—Purple-red sometimes described as petunia-red and a lively shade not far from crimson. In our gardens it was crimson, with a brush of dark maroon almost one-third the way back on the petals. It is unusually large and upright, on good stems. Flowers were full centered and plenty of them. A good vigorous bush of medium height. It is one of the best red dahlias in our garden. \$1.00 each.

CHARLOTTE ALEXANDER F. D. (Alexander)—A large orchid and white bloom produced freely on a vigorous, sturdy five and six foot plant. Stems are long, strong and cane-like. Plant insect and disease resisting. You'll like it. 75c ea.

CHARM F. D.—One of the most attractive Dahlias in cultivation. Color, a very striking combination of yellow and deep burnt orange; blooms of large size and deep full centers. 40c each.

CHEMAR'S 2406 I. D.—A very large early flowering Decorative, held facing on an 18-inch stiff stem well above the foliage. Strong, sturdy grower. Color, a different red, nearly matching Ruby Fuchsia, and with a velvety sheen. As a cut flower, will last several days. Stands the sun well in the garden. \$1.00 each.

CHEMAR'S CHARM F. D. (Chemar)—Fine, large pink Dahlia produced freely on a strong sturdy bush. Good stems and a good keeper when cut. 50c each.

CHEMAR'S EUREKA F. D. (Chemar)—A large, white decorative with the center tinted lavender. This dahlia has very fine habits being a vigorous grower and producing a number of very large blossoms on each long stiff stem 60c ea.

CHEMAR'S ORANGE BEAUTY F. D. (Chemar)—Brilliant orange shaded lighter toward center. Sport from Jersey Beauty. Exceedingly attractive with good habits of growth. 50c each.

CHEMAR'S PURITY F. D.—A most perfect white Decorative seedling from Jersey Beauty, which it resembles in everything but color. Flowers first opening show a slight trace of orange near center, which gradually changes to pure white at maturity. Scored high on trial grounds. 75c each.

CHEMAR'S U. S. A. F. D.—This Dahlia is a full center Dahlia the color of U. S. A. The blooms of this Dahlia are very deep and large with an airtight center on long, stiff stems holding the flowers erect. Color is apricot, buff, suffused gold. Good for all purposes. 50c each.

CITY OF POUGHKEEPSIE F. D.—A dainty medium sized flower of violet-purple, each petal of which has a dainty white tip. Named for the City of Poughkeepsie by its Superintendent of Parks, who originated it. A very bushy little flower, fine for cutting. 50c each.

CITY OF TRENTON I. D. (Prentice-Dahliadel)—A large flower of splendid form grown on a strong robust bush. This flower is a beautiful reddish apricot with rose suffusion and lustrous sheen. An exhibition variety on long, erect stems. Full centered flowers. Curled petals give a two-tone effect. 50c each.

CITY OF WELLSTON. F. D. (Blamer)—Color rhodamine purple. Blooms very large on strong stems. Plant vigorous, disease and insect resisting. \$1.00 each.

CLAIR DE LUNE I. D. (Cordes)—Clear Sulphur Yellow. 8 to 9 inch flowers of very pleasing form without forcing. An early and profuse bloomer. Has performed well east and west. Winning prizes as largest flower in 1930 and Achievement Medal at Los Angeles in 1931. \$2.50 each. Plants, \$1.25.

COCHEAGAN F. D.—This is one of the largest

Dahlias grown with blooms, often 12 inches in diameter of a deep shade of lemon yellow, which looks as well under electric light as in daylight. Long, strong stiff stems holding flower well above the foliage. We recommend this as one of the best yellows, although slightly drooping. 75c each.

COLOR SERGEANT I. D.—A very striking dahlia both in form and color which is a rich deep salmon bronze of one shade. Upright grower of excellent habits and perfect stem and a fine all around variety for exhibition or cutting. Prize winner at Camden, N. J. and Philadelphia shows. Roots, 75c.

COPPER KING F. D. (Marean)—Copper, yellow and light red. Sturdy grower under all conditions. Very large. 35c each.

COQUETTE I. D. (Fisher & Masson)—A thick, fluffy flower with curled and twisted petals, whose flower is a velvet, Musketeer red, blending with gold and shading to golden sunset at points. Reverse of petals gold. Flowers blooming freely stand a foot above the first pair of leaves out of dark green, leathery, insect proof foliage on rigid stems. Excellent. 75c each.

CORA BUTTERWORTH I. D. (Chapman)—Color, clear silvery yellow with long waved petals at the end of extra good stems. Winner of best undisseeded Decorative seedling prize in New York 1929 Show; and runner-up in the American Home Sweep Stakes Class. \$1.00 each.

CREOLE I. D. (Ballay)—Deep velvety maroon of very novel formation. The numerous petals are quite long and broad, pointed at the tips, with full centers. Good until very late with blooms freely produced on good stems. 75c ea.

DAKOTA F. D.—A Judge Marean introduction producing very large exhibition flowers of good form. No Dahlias in our garden last year were more thoroughly autumn in coloring of deep, rich, coral red with coppery suffusion. A good supply enables us to offer this variety very cheap. 40c each.

DELICE F. D.—A charming, clear pink decorative used by florists for years as the standard to which all other pink shades are compared. Its good stems and long keeping qualities make it very adaptable as a cut flower. 35c ea., 3 for 90c

DERRILL W. HART I. D. (Bromall-Success)—Color, Capucine yellow shading to deep red. Blooms large, well formed with good centers, held erect on fine stems. Growth very strong. One of the best of the new Dahlias. \$1.00 each.

DON WILLIAMS F. D.—A seedling from the well-known fancy variety Earl Williams, but entirely distinct in color, a soft shade of lavender pink tipped with white. 50c each.

DR. ELIAS BARTLEY F. D. (Rockville Center)—Immense perfect flower of clear orchid pink. Prize winner in Best Bloom and Best Bloom Decorative Class. A beautiful Dahlia despite its size. \$1.00 each.

DR. JOHN H. CARMAN F. D. (Derring-Do)—Color, tyrian rose, very large. It is a real specimen flower, extremely vigorous. Drought, disease and insect resisting. 75c each.

DR. TEVIS I. D.—A magnificent exhibition Dahlia, equally valuable for garden decoration and cut flower purposes. Its color is a beautiful shade of soft salmon rose suffused with old gold shading to a golden apricot center. Immense flowers of graceful and attractive form held erect on fine long stems. An early, free and continuous bloomer. 40c each, 3 for \$1.00.

DONNA CALIFORNIA I. D. (Ballay)—A beautiful rose-pink flower with touseled irregular petals. Prize winner at 1929 San Francisco Show. \$1.50 each, Plants 75c.

DECORATIVE DAHLIAS—Continued

DORIS DUDLEY F. D. (Fisher & Masson)—A full center Decorative of a bright "begonia rose," shading to gold in center of flower. An early and extremely free bloomer of medium habit of growth; plants laden with flowers from early season until frost, a great household cut flower. 50c each.

DOROTHY STONE I. D. (Fisher-Masson)—Large brilliant pink flowers, claimed to be brighter and richer in color than Kathleen Norris, and with richer substance, probably will not grow quite so large. It is a real Dahlia, with fine stem, healthy habits and sturdy. \$1.00 each.

DWIGHT W. MORROW I. D. (Dahliadel)—A gigantic red flower with heavy leathery foliage on a healthy growing plant. Winner of many prizes. Should be topped out once or twice and disbudded leaving terminal buds to bloom. \$1.50 each, Plants 75c.

EAGLE ROCK BEAUTY I. D. (Broomall)—It would be difficult to imagine a more beautiful combination of pink and cream than is displayed in this Dahlia. A giant among giants, it is in a class all its own. Vigorous in growth with good habit. Strong stems hold the flower perfectly erect; the immense blooms are full to the center. Produces in abundance until frost. 50c ea.

EAGLE ROCK FANTASY I. D. (Broomall-Success)—Giant flowers of clear mallow pink without shadings. It attains great size and depth. Winner of a Certificate of Merit and an Honor Roll Dahlia. Wins prizes consistently at all shows where it is entered. \$2.00 ea. Plants \$1.00.

EARL WILLIAMS I. D.—An essentially attractive variegated variety whose flowers are of large size, of splendid formation of a brilliant crimson scarlet color. Each petal is tipped with white. An early and free bloomer and continues to the end of the season. 50c each.

EASTERN STAR F. D. (Dahliadel)—The color of this decorative is a saffron yellow with old gold shading. The flower is of good substance and good keeping qualities with full centers, held on strong erect stems. Of excellent bush growth and free flowering, it gives 10 in. blooms without forcing and has a wonderful prize-winning record. 75c each.

EDIE K. F. D. (Kendal)—See page 3)

EDWARD THOMAS BEDFORD F. D. (New)—Gigantic flowers of a rich purple, sometimes with silver shadings. Plant grows tall, the foliage is thick and it bears many flowers, having cane-like stems. It stood the 1930 dry season well. \$1.00 each.

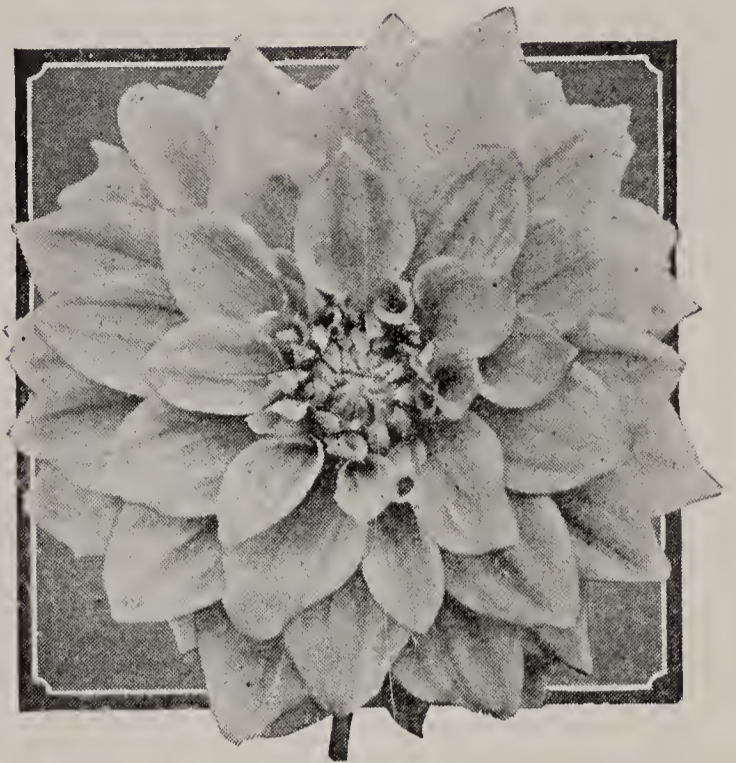
ELDORADO F. D.—Picture a comparatively low growing bush with immense golden yellow blooms, which stand up and look you in the face, and you have an Eldorado. This flowering beauty has great depth to correspond with its size, and is splendid in every way. A prize winner East and West. 50c each.

ELEANOR ROOSEVELT I. D. (Veile-Mendham)—A 1934 Honor Roll introduction commemorating the popular, purposeful First Lady of the Land. It is a clear white Dahlia of large size and no apologies will be needed in either direction for its name. We predict it a prize winner. \$7.50 each, Plants \$3.75.

ELIZA LONDON SHEPARD I. D. (Peacock)—Color, golden orange-apricot. A strong grower, healthy and resistant to insects and disease. Distinctive in color, formation and growth, giving eleven inch blooms which are deep and on good stems. 75c each.

ELLINOR VANDERVEER F. D. (Seal)—An incomparable Dahlia of exquisite beauty and of great size and depth, having every desirable quality. Color, a rich glowing satiny pink. One of the earliest to flower. 50c each.

ELITE GLORY F. D. (Kennedy)—Immense flowers of rich red, without maroon or purple shade.



ELDORADO
(greatly reduced)

It has been the sensation of the Eastern shows for four years; scored 92 at A. D. S. trial grounds, and dominates the red decorative classes wherever shown. 50c each.

ELIZA CLARKE BULL F. D. (Boston)—A wonderfully good pure white, one of the largest and deepest of its class; of perfect form with petals just sufficiently irregular to be informally artistic. 75c each.

ELIZABETH CARTERET I. D. (Lavinhtal F&M)—Color, bright cerise with silver reverse. Stems stiff and upright holding flowers well above dark green and leathery foliage, on tall plants blooming freely. Fine keeper and fine for exhibition. Winning prizes wherever shown. \$1.00 each.

ELKRIDGE I. D. (Griffith)—Large, white flowers borne on perfect stems, a vigorous grower and the flowers are produced in great freedom. 75c each.

EMPEROR F. D. (Marean)—A very deep bright rose maroon American; very large, long stems, strong grower. 50c each.

ERIE GIANT F. D. (Kendal)—Color, a very pleasing lilac purple, produced on exceedingly sturdy plants about 4 feet tall. It's large leaved, tough foliage sometimes gives the plant the name of "Leather Breeches," 10 inch bloom on good stems, not unusual. 50c each.

ETENDARD DE LYON I. D.—A most appealing artistic flower showing some of the characteristics of the hybrid cactus type. A rich rosy purple. 35c each.

FAITH GARIBALDI F. D.—A giant flower of true types, deep rose shade on long stiff stalks. Flower full centered and a good keeper after cutting. 50c each.

FIREMAN S. C. (Success)—A 1934 Honor Roll introduction awarded the American Home Achievement Medal at Boston. This much honored variety produces very large brilliant flowers of flashy Cardinal red with gold flushes and golden tips. This variety should take a top place as a prize-winner during the next few years. \$10.00 each, Plants \$5.00.

FLAMING METEOR I. D. (Barker)—This striking new California variety is a flaming orange scarlet and attracting attention everywhere. Wonderful cut flower on long, cane-like stems. Large blooms. 50c each.

KENDAL DAHLIA GARDENS, — Sandusky, Ohio

DECORATIVE DAHLIAS—*Continued*



FT. MONMOUTH
As Grown in California

FLOYD GIBBONS I. D. (Veile & Mendham)—Color, bright copper on a long-petaled very deep flower. Winner as Best Undisseminated Seeding at Asbury Park, also as Best Dahlia Originated Outside of New Jersey at the Trenton Show. A free bloomer of large spectacular flowers and a clean grower. \$1.50 ea. Plants 75c

FORDHOOK AVIATOR F. D.—A glistening carmine-crimson bloom with bronzy suffusion. Huge blooms on long stems. 50c each.

FORDHOOK BRIDESMAID I. D.—A real beauty with flowers of lovely amaranth pink, shaded white, especially toward the base of the petals. Fine strong stems and very large blooms. 75c each.

FORDHOOK CHARM I. D.—A charming flower of coral red suffused with bronze and shaded with a very delicate yellow cast, with reverse of petals old rose. 75c each.

FORDHOOK DELIGHT F. D. (Burpee) — Hermosa-pink flowers with yellow center and bright yellow tips. Large flowers on strong stems. 75c each.

FORDHOOK DREADNAUGHT I. D. — Another really large Dahlia of old rose color shading to salmon with lighter salmon and yellow suffusion toward the base of the petals. Vigorous and long stemmed. 75c each.

FORDHOOK EMPEROR I. D. (Burpee)—An impressive flower of a twany shade of copper red flushed with gold, salmon and orange, with tints of mauve on the reverse. Outstanding in the Camden, New York and Trenton 1929 Shows. Free bloomer and a fine flower. 50c each.

FORDHOOK ENCHANTRESS I. D.—Rich salmon-pink flowers shading into yellow, with centers highly suffused with salmon; beautifully formed well rounded blooms are carried on stiff stems above the foliage on medium height plants. 75c each.

FORDHOOK ERECTA I. D.—This novelty produces strong upright plants bearing a profusion of well rounded fully double blooms of bright amaranth-pink shading lighter toward the base of the petals. Awarded Certificate of Merit. 75c each.

FORDHOOK GOLDCREST F. D. — A beautiful new Dahlia with magnificent salmon-pink blooms toned with bright red and a deeper salmon reverse, with center petals a rich yellow. Awarded Certificate of Merit. 75c each.

FORDHOOK MARVEL F. D. (Burpee) — This giant in size, carrying its blooms on strong canelike stems, has been awarded two Gold Medals and a Silver Trophy, a First Prize, supreme award and a Certificate of Merit from Trial Gardens. Color is a lovely shade of peach red shading to strawberry pink, suffused with startling salmon-orange sheen of metallic lustre. 75c each.

FORDHOOK MODEL F. D.—Another Burpee variety of a lovely shade of silvery lilac with an iridescent sheen of pink. Flowers are of enormous size and well rounded. 75c each.

FORDHOOK VICTORY I. D.—Giant flowers, well formed and carried on strong sturdy stems. Color is a rich shade of tyrian rose with petals well placed and of substantial texture. 75c each.

FOREST FIRE I. D. (Dahliadel)—Scarlet flame with blushes of yellow. An artistic form that is "different" on 1934 Honor Roll. Derrill Hart said that its striking and spectacular effect "stopped the crowds" at Camden and New York. Bush is sturdy and its foliage leathery. \$10.00 each, Plants \$5.00.

FORTUNA F. D. (Ballay) — Bright rose pink flowers of exceptional size, very deep and heavy on long stems. The color varies in intensity at different seasons. Petals slightly crinkled and waxy. Grows sturdily on bush of medium height, which branches well. 75c each.

FORT WASHINGTON I. D.—A very large well formed free blooming long stemmed decorative Dahlia of a rich velvety maroon color. 75c ea.

FRANCIS LAROCCO F. D. (Rindfleisch)—Clear, crystalline canary yellow. Flowers 6 to 8 inches under ordinary conditions and the strong, sturdy, well bushed plant is covered with flowers until frost. A most dependable yellow and one of the first to bloom. It is an Honor Roll Dahlia and valuable as a garden, exhibition, and a commercial cut flower. 50c each.

F. J. MARCH I. D. or S. C. (Boston)—Pure lavender flowers growing well above a sturdy plant bushing well and having good stems. An exhibition variety producing large graceful flowers. \$1.50 each, Plants 75c.

FRANK MILLER F. D. (Burch)—Picric yellow of large size, carried on a fine, straight stem. Prize winner at the Los Angeles Show sweeping everything before it in 1928 and 1929. \$1.00 each.

FRANKLIN D. ROOSEVELT I. D. (Sagamore)—Spectrum red with perfect habit of growth and stems, 7 inch flowers. \$1.50 each, Plants 75c

KENDAHLIA GARDENS, INC. — Sandusky, Ohio

DECORATIVE DAHLIAS—*Continued*

F. D. T. F. D. (Fisher-Masson)—Large exhibition decorative, a sport of Trentonian differing in color, which is a rich tyrian-rose. Flowers are held well above the foliage on rigid stems. Prize winner with awards of merit from trial grounds. 50c each.

F. W. BUTLER F. D. (Boston)—An unusual shade of orange with exceptionally deep petals regularly formed. One of the largest of its type on excellent stems. At the 1929 San Francisco Show it was the largest perfect bloom. Stock very limited. \$1.50 each, Plants 75c.

FORT MONMOUTH I. D. (Kemp)—Rich Wine color with an underlying tone of crimson maroon and slight bluish-violet at tips of petals. Well formed, full centered and attains blooms of immense size of 12 to 14 inches in diameter, borne on long stiff stems, standing high above its dark green foliage and looking you proudly in the face. It blooms profusely from early to late. Wins prizes everywhere and was one of the sensations of our garden. 75c each.

FULL MOON F. D. (Ballay)—Canary yellow, blooms easily measuring 12 in. across, formed of very broad flat petals, terminates in a very full artistic center. Strong stems, a prize-winner East and West, winning medals as best bloom in the shows. \$3.50 each, Plants, \$1.75.

GALLI-CURCI I. D. (Lyndora)—Color brilliant salmon orange, with gold suffusion, sheen and lustre. Semi-dwarf grower with unusually large, deep blooms under ideal conditions. It is moody in our gardens but beautiful when conditions are right. 75c each.

GENERAL FOCH F. D.—A very fine red decorative, free flowering good stem. 35c each.

GIANTESS F. D.—Large bronzy buff flowers resembling Jane Cowl though earlier and not quite so large. Good grower. Vigorous plant, wonderful stems, making it a fine cut flower variety. 50c each.

GIRL OF HILLCREST I. D. or **S. C.** (Scott-Kemp)—Color is apricot-buff or a Mikado orange, the biggest flower with stems long and erect. An exhibition variety with well-formed flowers always, either early or late. \$1.50 each, Plants, 75c.

GLORY OF MONMOUTH F. D. (Kemp)—A wonderful garden and exhibition variety of Eosine pink shading to strawberry pink at center of petals, base of petals a light orange; plant semi-dwarf, wide spreading, very sturdy. Flowers 6 to 8 inches on long, very strong stems produced in great profusion, taking about ten days to open fully. Good keeper. 50c each.

GOODNIGHT I. D.—Ox blood red shaded deeper maroon. Consistent winner at Eastern shows in 1930 and 1931. Plant is of medium height. A great garden and exhibition variety. \$1.00 ea.

GOLDEN DREAM F. D. (Success)—Strontian yellow with a golden sheen of lustre, reverse of petals Brazil red. A real golden flower on good stems. Prize winner and Certificate of Merit awards. \$1.00 each.

GOLDEN ECLIPSE F. D. (Badetty)—A 1934 Honor Roll introduction with a Certificate of Merit. Color is a golden yellow with a salmon blush. Produces 8 to 10 inch flowers freely on long stems. \$7.50 each, Plants, \$3.75.

GOLDEN GOBLIN I. D. (Goodacre)—Large, rich golden blooms. Fine plant growth and form, plenty of blooms with good stems. \$1.00 each.

GOLDEN LOTUS F. D. (Barker)—Golden orange, good plant, bushes well, free flowering on good stems. It is near the top. \$1.00 each.

GRACE CURLING I. D. (1930)—Large, robust and beautiful flowers, white at base then changing to lilac-pink and rose with petals notched at



GALLI CURCI

(Photo of 10 and 8 inch Blooms)

tips. Blooms at end of season as large as first bloom and borne on perfect stems. 75c each.

GRAF ZEPPELIN F. D. (Nolet)—A pure white Honor Roll Dahlia, of tall growth with flowers of immense size, grown on long stiff stems. Was given a Certificate of Merit at Storr's Trial Gardens in 1930. 75c each.

GRANDEE I. D. (Ballay)—A 1934 Honor Roll introduction winning the American Home Achievement Medal at San Francisco. This variety produces 14 inch flowers of a bright combination of light Spanish red suffused yellow. At the shows it met every qualification necessary to win its spurs. Outstanding in every way would be a fitting description. \$10.00 ea. Plants only, \$5.00.

HALLOWEEN I. D. (Chappaqua)—Color is clear buff and the reverse is bright salmon. Petals opening and curling gives a definite two tone effect like a glorious October sunset in a sky of brilliant golden buff. Honor Roll Dahlia. \$2.00 each, Plants, \$1.00.

HARRIET HOCTOR I. D. (Alling)—A Dahlia of wonderful size and color, which is bright Mauve with Magenta shadings giving a bright purple effect. Bushes strong and healthy. A Certificate of Merit. \$1.50 each, Plants, 75c.

HARVEST MOON F. D.—A wonderful bushel dwarf Dahlia with large flowers held well above the foliage on stout stems. The broad thick petals curve back toward the stem making it almost a ball. Color, a clear deep sulphur, or primrose yellow. A prize winner with awards. 75c each.

HARRY MAYER F. D. (Reed)—A fine exhibition Dahlia having size depth, wonderful stem, full center and sturdy healthy bush growth. Its color is a beautiful silvery pink with a rose pink reverse. Very satisfactory. 50c each.

HALVELLA F. D.—A beautiful large salmon rose flower, strong grower satisfactory in every way. Very much in demand. 50c each, 3 for \$1.35.

KENDAL DAHLIA GARDENS, — Sandusky, Ohio

DECORATIVE DAHLIAS—Continued



JERSEY BEAUTY
(5 Flowers on Top Stem.)

HELEN IVINS I. D. (F. & M.)—Beautiful lively orchid lavender decorative, whose large flowers are carried on long slender stems well above the foliage, on tall growing plants. Early and free flowering. \$1.00 each.

HELEN REID F. D. (Rindfleisch)—A pure white of fine form and excellent growing habits. Outstanding Dahlia in the eastern shows. Honor Roll Dahlia. \$2.50 each, Plants \$1.25.

HERALD TRIBUNE ELITE I. D. (Kennedy)—A rich pure white flower of splendid form and wonderful keeping qualities. Blooms are held erect on fine stems. Plant a thrifty grower with dark green foliage. 75c each.

HERCULES F. D.—A giant bloomer of tangerine and deep yellow with reverse side of petals a deep tangerine. Vigorous plant of good height and flowers on good stems. 40c each.

HUNTS VELVET WONDER I. D. (Hunt-Burnett Bros.)—Another giant, a rich bright violet Bergundy. It is a 1934 Honor Roll Dahlia, which received the only special award of merit at New York, and won Best Informal Decorative Seedling at Camden, Big Flowers but good keeper. Plants only \$7.50.

IDA PERKINS F. D. (Montrose)—An all around white Certificate of Merit Dahlia with fine form and full centers on erect stems. Blooms early and continuously on plants covered with dark leathery foliage. Good for cutting. 50c each, 3 for \$1.35.

IDEAL F. D.—Pink shaded lilac; free flowering on good stems makes it an ideal cut flower. 50c each.

IMPERIAL PINK I. D. (Lyndora)—Rich bright true pink with primrose shading at center of the flower changing to a dark rose pink center. Long strong stems, tall, bushy and vigorous. It was a prize winner in 1930, 1931 and 1932 at Eastern

Shows. \$1.50 each, Plants, 75c.

INDIANA MOON F. D. (Martin)—Color, Flesh ochre, flushed pink, salmon and gold. Huge flowers of color, beauty and form on a vigorous, beautiful plant with disease and insect resisting foliage. A 1932 introduction bearing high endorsement of Eastern growers. 1930 Certificate of Merit Dahlia. \$1.00 each.

ISLAM PATROL I. D.—As name indicates the colors are velvety and flushed with gold. Plant bushes well sending out fine laterals which make good long stems for cutting. Is very showy and an exceptionally fine keeper for exhibition purposes. 75c each.

JACK O'LANTERN I. D. (Success)—A Dahlia of fine stems, profuse bloomer. Color, scarlet with reverse picric yellow. Finished flower has scarlet center with crown of amber yellow. Scored 87 at Trial Gardens, D. S. of N. J. 50c each.

JACK ROSE F. D.—An old timer; color, brilliant crimson red. Free flowering on straight stems, fine for cutting, good keeper. Has stood the test and is still liked. 25c each, 3 for 65c.

JANE COWL I. D. (Downs)—An ideal Dahlia, fairly tall with vigorous dark green leathery foliage; straight, strong stems holding monster blooms of glistening bronzy buff and salmon shades proudly aloft with a beauty that stops you and makes you look again. Introduced in 1927; it has received Awards of Merit and prizes everywhere. 50c each.

JANE DEW I. D. (Dew-Ruschmohr)—Color, mallow or true clear pink. A good grower producing Dahlias of exhibition size, a very desirable Dahlia. Prize winner. \$5.00 each, Plants, \$2.50.

JANET SOUTHWICK I. D. (Chapman)—An unusual color shading between Tyrian rose and Burgundy red. A clean growing plant with dark, heavy foliage producing exhibition size flowers on long and erect stems, \$1.50 each, Plants, 75c.

J. J. HARRISON F. D. (Winter)—One of the showiest bedders yet introduced. Named for J. J. Harrison of the Storrs Harrison Nurseries near which it was originated by Mr. H. P. Winter, whose introductions and business we purchased. Flowers are orange red and profuse on good healthy plants. 35c each, 12 for \$2.50.

JEAN KEEFER I. D.—A large rose and pink dahlia, freely produced, facing on long stems and a sturdy plant. Grows well under any condition and is fine for cut flowers. \$1.00 each.

JEAN KERR F. D.—A good commercial white dahlia much used by florists and in gardens where cut flowers are desired. Good grower, dependable and popular. 35c each.

JENNY LIND I. D. (Redfern)—An immense pink flower of a clear silvery pastel mallow shade of pink, produced on tall, clean, vigorous plants. On the "Sunkist Roll of Honor" in California it pleases East and West. \$2.50 each, Plants, \$1.25.

JEROME KERN I. D. (Veile & Mendham)—A long petaled, graceful flower with a background of shrimp pink with decided tints of gold and bronze, with an old rose reverse, giving a two-toned effect. A 1932 Honor Roll Dahlia winning prizes at Atlantic City, New York and Easton, Penn. Very impressive. \$5.00 each, Plants \$2.50.

JERSEY'S BEACON F. D. (Waite)—A universal favorite as an exhibition and garden flower; color is a Chinese scarlet with a paler reverse, giving it a two-toned effect. Flowers are large and globular in shape. The plant is a vigorous grower having splendid insect and resisting foliage. 40c each.

KENDAHLIA GARDENS, INC. — Sandusky, Ohio

DECORATIVE DAHLIAS—*Continued*

JERSEY'S BEAUTY F. D. (Waite)—This is undoubtedly the finest pink Dahlia in existence. A glorious flower of eosine pink; pleases everybody either as a garden flower, a cut flower or for exhibition purposes. Tall vigorous grower, profuse bloomer with fine stems and foliage. It leads all other varieties in sales of individual Dahlias in our garden. 40c each. ..

JERSEY'S EMPRESS I. D. (Waite)—Large blossoms of anthracene violet which does not fade. Flowers of great depth and good substance on stems which are somewhat fleshy, but hold the flowers well up. 50c each.

JERSEY'S FIANCEE I. D. (Waite)—Rose pink with the point of each floret slightly tipped gold; flowers large, stems always good. Foliage inclined to be pale, and should be sprayed. 50c each.

JERSEY'S GEM F. D. (Waite)—Superbly formed lavender pink flowers on perfect stems. A wonderful cut flower. 50c each.

JERSEY'S GLORY F. D. (Waite)—Flowers are best described as a yellow hue of orange produced on long, stiff stems, sometimes arching gracefully. The plant is a robust grower, flowers are produced freely and foliage is thick and leathery in texture. An excellent variety. \$1.00 each.

JERSEY'S IDEAL I. D. (Waite)—A charming flower of lavender pink often varying to phlox pink; vigorous grower. 50c each.

JERSEY'S JEWEL F. D. (Waite)—Large long petaled flowers of mallow pink with perfect stem. 50c each.

JERSEY'S KING F. D. (Waite)—Broad petaled flowers of begonia pink with splendid stems. A favorite everywhere it is grown. 50c each.

JERSEY'S MASTERPIECE I. D. (Waite)—Strawberry pink suffused with gold at base of the florets. A bold and upstanding variety possessing all the attributes of an exhibition Dahlia. The stems are strong and stiff, and the foliage is thick in texture. 50c each.

JERSEY'S SOVEREIGN F. D. (Waite)—An indescribable shade of salmon orange. Vigorous grower with very dark foliage. Flowers are of good size on good stems. 40c each.

JERSEY'S SWEETHEART I. D. (Waite)—A dainty medium sized flower of delicate pink shading to a white center. Very profuse bloomer. 40c each.

JERSEY'S TRIUMPH F. D. (Waite)—A seedling of Jersey's Beauty, whose color is bright copper flushed with salmon bronze. It resembles its parent in habit of growth. Introduced last year and won popularity wherever grown. 75c each.

JEWEL OF INDIA I. D. (Newsom)—Color, glowing Garnet suffused Maroon. A Pacific Coast introduction taking many prizes for its large beautiful flowers and good stems. \$4.00 each, Plants, \$2.00.

JIM MOORE I. D. (Loller)—Clear primrose yellow shading to gold with tints and blush of salmon throughout the flower. Long strong stems holding blooms facing. An Honor Roll Dahlia of 1929. Makes good everywhere. 75c each.

JOVE I. D. (Ballay)—Bronze pink, pink predominating with the bronze more marked toward the center. Flower is very large, producing 10-in. blooms under ordinary field culture. Prize winner as the largest and best Dahlia in various shows. Stems are long, strong and straight, attracting attention wherever it is shown, \$1.00 each.

JUDGE ALTON B. PARKER F. D. —Coppery-salmon with golden hue. A large perfect flower the entire season drooping slightly on good stems. A good all purpose dahlia. 40c each.



CAMDEN COURIER
As Grown in Our Garden.

JUDGE MAREAN F. D. — Another old standby that never wears out. A flaming salmon pink with a touch of watermelon red exquisitely blending to iridescent orange yellow and pure old gold. 50c each, 3 for \$1.35.

KATHLEEN NORRIS I. D.—A 1929 Fisher & Masson introduction awarded First Prize for best flower at four greatest Eastern Shows fall of 1928. Color, true rose pink, later deepening to mallow pink. Gigantic bloom, broad petals overlapping, with twisted ends. Full center, very long stem, foliage dark green and insect proof; a great bloomer and an excellent keeper. \$1.00 each.

KATHERINE COLE F. D. (McDowell)—Beautiful light pink and cream. Tips of petals are pink shading to cream with a pink center. This flower erect on long stiff stems always looks you in the eye. \$1.00 each.

KAWEAH I. D. (Meusdorffer)—Color deep cerise-rose. Blooms tremendous, attaining 15 in. and more in diameter. While large it is not coarse and takes prizes for largest bloom in all shows east or west. Flowers are held erect on stems 15 to 20 inches to first lateral. \$3.00 each, Plants, \$1.50.

KEMP'S LAVENDER F. D. (Kemp)—A bright silvery lavender Dahlia 7 to 8 inches in diameter produced profusely on a very vigorous, thrifty growing plant that bushes and branches well and which withstands insects and disease. Good stems make it a good cut flower. 40c each.

KENDAL D'OR F. D. (Kendal)—A large pure golden Dahlia of fine form on good stems. Buds, when starting to open, are tipped with pink, the flower finally emerging into gold. A good, vigorous grower it makes an ideal Dahlia for garden or cutting. 50c each.

KEMP'S VIOLET WONDER I. D. (Kemp)—A rich naphthaline violet with an underlying tone of royal purple with bluish lavender reverse. Flowers 10 inches or more in diameter with a depth of 6 to 7 inches are a perfect form and massive

KENDAL DAHLIA GARDENS, — Sandusky, Ohio

DECORATIVE DAHLIAS—*Continued*

proportions, borne on a strong, vigorous plant on stems 10 to 14 inches above the bright, green, tough leathery, insect proof foliage. Prize winner everywhere. 75c each.

KENDAL AUTUMN GOLD F. D. (Kendal)—(See page 3)

KENDAL SWEETHEART I. D. (Kendal)—(See Page 3)

KENDAL IRIDESCENT F. D. (Kendal)—(See page 3)

KENDAL MARMARATA F. D. (Kendal)—(See Page 3)

KENDAL PURPLE GIANT F. D. (Kendal)—(See page 3)

KENTUCKY F. D. (Wigginton)—A brilliant light salmon orange shading to orange yellow at the base and deepening to grenadine pink on outer petals. It is a sport of Jersey Beauty credited with all of its habits and practically blight and stunt proof. Flower is larger than Jersey Beauty and a real delight in every respect. Roots 50c.

KENTUCKY RED I. D. (White)—Flaming scarlet-red like Bagdad, stands sun without fading. A medium bush with particularly attractive foliage. A 1931 Certificate of Merit and Honor Roll Dahlia. \$2.00 each, Plants, \$1.00.

KING OF COMMERCE F. D.—Tango and gold color. Perfect flowers and stems. Medium size and an ideal cut flower, especially good for vase work. 35c each.

KING MIDAS I. D. (Peacock)—A beautiful clear golden yellow dahlia which keeps well. Grows to 12 inches in diameter and 5 inches depth. Stems are long stiff and straight. An Honor Roll dahlia in 1928 and 1929 and it won many prizes East and West. 75c each.

KING OF YELLOWS I. D. (Sagamore)—A Certificate of Merit Dahlia. Color, a beautiful but-tercup yellow. Flowers are from 8 to 10 inches with very narrow folding petals. Considered by Derrill W. Hart one of the best Yellows shown in 1934. Roots \$5.00, Plants, \$2.50.

KITTY DUNLAP F. D.—Large flowers well shaped of good substance carried on long, strong stems. Color of the American Beauty rose; a great favorite. 50c each.

KLEIN GOLD F. D. (Kendal)—Four to five inch rich light gold blooms which stud a tall, free blooming, wide bushing plant, which blooms first to last of season when bloom shows open centers. Very showy and wonderful cut flowers. 40c each.

LADY LYNDORA I. D. (Lyndora)—A Certificate of Merit Dahlia producing easily 9 inch blooms of pure pastel pink with formation, size, and stem to carry it through. Bush growth semi-dwarf with especially free blooming habits. You will like it. 75c each.

LA FIESTA I. D. (Cordes-Eastman)—Color, but-tercup yellow, penciled red. The lacy petals curl and twist giving the flower the appearance of the Chrysanthemum. Immense blooms are held well above the foliage on strong stems. Prize-winner East and West since 1931. \$3.00 each, Plants, \$1.50.

LA FRANCE F. D. (Ballay)—Pale rose pink, varying slightly from the color of the La France rose. Large blooms regularly formed. Responds especially to fertilizing, 75c each.

LILLIAN BALDWIN F. D. (Danker)—A beautiful cut flower with color between rose pink and crushed strawberry. Winner of the Darnell Cup for best keeping variety at A. D. S. Show in New York in 1926 and 1927. Certificated at A. D. S. Trial Grounds at Storrs, Conn. Fine, long, clean stems. 50c each.

LORD OF AUTUMN I. D. (Almy)—Rich, golden yellow blooms growing to 12 and 13 inches in

diameter, 6 to 8 inches deep, facing up and carried well above the plant on good strong stems and neck, up to 3 feet with disbudding. Won President's cup at Ohio Dahlia Show, Cleveland, other prizes elsewhere, and was a sensation wherever grown or shown. \$10.00. each, Plants, \$5.00.

LORELEI F. D. (Mastick)—Light rose shading white with each broad petal distinctly outlined with an edge of deep rose, reminding one of the old favorite Cottage Tulip, Picotee. Plants are free flowering, blooms are held erect on long strong stems. A favorite. \$1.00 each.

LU ANN F. D. (Pretsch) — Color, clear ivory white. This dahlia has a very vigorous plant growth, producing many flowers 8 to 10 inches and larger with dis-budding. Its foliage is leathery and insect resisting, and it is a robust grower. Scored 86 at Storrs Trial Gardens in 1930, thus receiving a Certificate of Merit. Stock very limited. \$2.50 each, Plants, \$1.25.

LYNDHURST F. D.—Deep brick red. An all round garden flower, blooming freely under most any conditions. Blooms early and until frost. 35c each.

MADAME LA ROSE F. D. (Ballay)—Rose and with a suggestion of cerise; shape, a perfect oval and full, branching well laterally. It is good both as a cut flower and a garden variety. \$1.00 each.

MAN OF WAR I. D. (Boone-Ruschmohr)—A 1934 Honor Roll Dahlia winning an American Home Achievement Medal at the West Virginia show. Flower is an outstanding dark rich Carmine red. This variety has won prizes consistently for two years and is an all-round exhibition and cut flower variety. Roots, \$7.50, Plants, \$3.75.

MARDI GRAS F. D. (Diggle)—Described by many as an American Beauty Color, but in our gardens it was more violet purple. It was large in size on fine stems and bloomed profusely. We recommend it. 75c each.

MARGARET MASSON F. D. (F. & M.)—A 1924 introduction which is becoming more popular among the best decoratives. Color is a beautiful silvery rose pink flower of great depth and size; free bloomer, wonderful exhibition variety, good keeper. Award Certificates. 50c each.

MARGARET WOODROW WILSON I. D. (F. & M.)—Another 1924 introduction making good everywhere; it is an exhibition type decorative of large size and great beauty. Color is an opalescent pink; face of petals creamy white; reverse, phlox pink. Strong upright stems; dark green foliage, medium height. Certificate Awards and a prize winner. 40c each.

MARIE HOUTMAN F. D.—Color is a light glowing gold. Plant is tall, branches well, and produces medium sized flowers on good stems. A good cut flower variety which has stood the test of time. 35c each.

MARMION F. D. (Tyler)—A massive exhibition flower of pure golden yellow with bronze suffusion on reverse of petals and a deeper bronzy tone on the high center. The stems are good, holding the immense blooms gracefully above the sturdy, well bushed plant. 75c each.

MARY BAKER I. D. (Wickersham)—Color, a clear yellow of exhibition size, produced on a strong vigorous growing plant which branches well and produces flowers on good long erect, stiff stems. \$1.00 each.

MARY ELLEN I. D. (Lord Baltimore Gardens)—A clean cut flower of burnished lavender, larger than Mrs. I. De Ver Warner, its parent, on good stems. Bushy growth is strong and vigorous and foliage is insect proof. An Honor Roll Dahlia and a prize winner in 1930, 1931 and 1932 in Eastern shows. \$1.50 each, Plants, 75c.

DECORATIVE DAHLIAS—Continued

MAY TROWER I. D. (Seal)—A huge, deep, most artistic flower ranging and varying in color from palest gold to deep golden apricot, with an occasional flower tipped white, hardly any two blooms are the same. Stems are long, stiff and rigid, holding blossoms proudly erect in spite of their great size. It is an excellent garden, exhibition and cut flower, with great depth and substance, and rich beautiful blending of colors. Prize winner, 75c each.

MILLIONAIRE F. D.—An immense flower whose color is a dainty lavender with a pink sheen overcast and shading to white in the center. A free grower and free bloomer. 40c each.

MINA BURGLE F. D.—A medium sized Dahlia of dazzling scarlet produced on a tall plant which branches well and which is covered with full centered flowers from early season until frost. A prime favorite for many years as an excellent cut flower. 40c each.

MONMOUTH BEAUTY F. D. (Kemp)—A seedling of Amum Ra whose flowers are very large and full, and a rich salmon-orange of lustrous metallic golden sheen, borne on long stiff stems high above the foliage. A sturdy grower 7 to 8 feet high and quite prolific. 75c each.

MONMOUTH CHAMPION F. D. (Kemp)—A brilliant orange flame glistening in light. One of the new favorites. A good producer of perfect blooms throughout entire season with 1929 prizes at Elizabeth and Red Bank, N. J. \$1.00 each.

MONMOUTH JEWEL F. D. (Kemp)—Color, bittersweet orange showing lemon chrome at base of petals. Plant is a vigorous grower, branching well and producing exhibition size flowers in abundance. 75c each.

MORDELLA F. D. (Kemp)—This flower, averaging 9 inches across, and held well above the foliage of long, stiff stems is of a beautiful bright shade of apricot buff. A vigorous grower and free bloomer. An Honor Roll Dahlia and prize winner. This Dahlia is of a pure autumn color, showing especially well under artificial light. 50c each.

MOTHER MACHREE I. D. (Ballay)—Cream or ivory white with a touch of pink at the center. Great big flowers on tall stalks. Stock very limited. \$1.50 each, Plants, 75c.

MRS. ALFRED B. SEAL F. D. (Seal)—A soft rich shade of absolutely pure glowing old rose without any shading. Huge flowers of great depth and substance and held proudly erect on a tall bush on long stiff stems. Tested for several seasons, is introduced and offered to the public in 1929 as one of the largest and finest pure rich growing old rose dahlias produced. A prize winner. \$1.00 each.

EIGHT GIANT DAHLIAS COLLECTION

MONMOUTH CHAMPION
ROSE FALLON
FORDHOOK AVIATOR
PRIDE OF STRATFORD
NANAQUAKET
EDWARD THOS. BEDFORD
ROMAN EAGLE
SANHICAN BLUEBIRD

No. 85—One each (value \$5.45) . . . \$4.00
No. 86—Three each (value \$16.35) . . \$10.50

MRS. CARL SALBACH F. D.—A well known California variety with long stems, known everywhere. It is largely used in decorative work; a large flower of a bright lilac pink shading lighter at base of petals, sometimes described as mauve pink. We recommend it for any garden 35c each.



POLAR SNOW
15 Blooms—24 Buds as Grown by One of Our
Iowa Customers

MRS. C. D. WALKER F. D.—Color, a pure, clear pink on white. Plant is of medium height, produces medium sized boom on good stems. It blooms early and continues until frost. A good cut flower variety. 35c each.

MRS. ELEANOR MARTIN I. D.—Mulberry, suffused with gold and gold shading, with a reverse of violet. Sunshine increases beauty of coloring. Stem is long and straight. Large bushes are well covered with blossoms. A prize winner East and West. Has been grown successfully everywhere. 50c each.

MRS. I. DE VER WARNER F. D.—Another favorite everywhere. Orchid pink. Very large, extra stem, strong grower, free bloomer. Sure to please. 35c each.

MRS. J. T. SCHEEPERS F. D. (Marean)—A grand old dahlia, one of the most beautiful grown, is perfect on stout stems. Color, canary yellow with a beautiful pink suffusion and produced with great freedom. 35c each.

MRS. ROSE K. DARNELL F. D. (Sunnyside)—A rich luminous old rose, tinted throughout on the reverse a soft tourmaline pink, an easy growing, medium height, free and open plant and a profuse bloomer with extra strong and long stiff stems. The bloom has at all times, thick, full centers. 50c each.

MRS. ROOSEVELT F. D.—A pink shading to white Decorative, blooming freely throughout the season on hardy plants bushing well. 40c ea.

KENDAL DAHLIA GARDENS, — Sandusky, Ohio

DECORATIVE DAHLIAS—*Continued*

MURPHY'S MASTERPIECE I. D. (Murphy-Success)—This variety produces monster blooms of deep dark red shading toward Garnet. A stocky grower holding its flowers erect on stiff stems. A prize winner in 1932 and 1933. It will continue to take awards. \$5.00 each, Plants \$2.50.

MYRA HOWARD I. D. (Glutzbech-Dahliadel)—Glowing combination of saffron and gold with tints of salmon, the entire effect being ochraceous orange. Fine form and color. Wonderful plant and a thrifty grower producing giant blooms on long, rigid stems. A prize winner at Eastern shows in 1931 and 1932. \$2.50 each, Plants, \$1.25.

NAGEL'S IDEAL I. D.—A Holland introduction; color, a bluish-Mauve. This plant grows very tall and produces 6 to 8 inch flowers freely on strong erect stems. Foliage is very lacey. \$1.00 each.

NANAQUAKET F. D. (Richards)—An immense bloom of a most beautiful shade of delicate orchid-pink, each petal bordered with a hair line of deeper orchid color. Grows easily from 10 to 12 inches in diameter with proper dis-budding and has good stems, a healthy grower and profuse bloomer. Height 5 feet. 75c each.

NANCY SUE LANG I. D. (Success) — Immense star-like flowers; red tipped gold, a very large and strong grower, whose habit of plant is dwarf and very robust. 75c each.

NATALIE KINGSTON I. D. (Walker)—Deep chrome yellow with great flowers 10 inches in diameter. Its great mass of foliage makes it one of the best landscape Dahlias. Won first prize at 1929 Los Angeles Dahlia Show for most perfect Decorative. \$3.00 each, Plants, \$1.50.

NATURE'S MASTERPIECE I. D.—A rich combination of old rose, cinnamon and metallic bronze blended into one color, suffused with mulberry. Large flowers on good stems. 75c each.

NELLIE AUSTIN I. D. (Sanborn)—Peach red shot with buff yellow, giving the flower a bronze effect. Blooms heavy with a small, curled, buff yellow petal, appearing at the base of each large petal. Flowers large, of perfect form, on long erect stems standing high above the foliage on a tall plant. 9 to 10-inch flowers grow easily. A prize winner wherever entered. 75c each.

NETAWAKA I. D. (Success)—Orange yellow, base shaded to a jasper red, reverse of petals bright carmine, which, because of twisted petals, is very much in evidence. Flowers are very large, borne freely on good stems on medium tall plants. \$1.00 each.

NEW DEAL I. D. (Eppler)—A 1934 Honor Roll Dahlia winning the American Home Medal at Los Angeles. Color is red with golden tips. Immense flowers are borne on good stems on a strong vigorous plant. Derrill W. Hart says this flower with its name and its own intrinsic qualities should be popular. \$10.00 each, Plants only, \$5.00.

NOBILIS I. D.—Startling combination of scarlet and white; sport of Earl Williams, which it resembles except that the white predominates. A real exhibition and commercial variety. 50c ea.

NORTH'S YELLOW I. D. Clear Sulphur yellow without shadings. Large full center blooms on long stems. A real favorite. \$1.00 each.

NOTTINGHAM BEAUTY I. D. (Kemp)—A combination of true purple with white tipped petals; thick, fluffy flowers of medium size and very strong, vigorous plants reaching a height of 8 to 10 feet. Very attractive in the garden. 50c ea.

OHIO GIANT F. D. (Winter)—A strong, vigorous growing well bushing plant, producing beautiful rosy tan flowers, 8 to 10 inches in diameter on long, stiff stems. Plants, 6 to 8 feet. Free flowering, good root maker. 75c each.

OMAR KHAYYAM F. D. (Stout-Dahliadel)—Chinese red at base of petals, shading to bright orange, tipped lighter, gives wonderful soft color effect. Tall, healthy grower, strong foliage. A fine exhibition Dahlia winning a Certificate of Merit. \$1.00 each.

ORANGE WONDER F. D. (Marshall) — Rich blending of orange salmon. A seedling from Jersey Beauty with all its characteristics. A fine exhibition flower that keeps. 75c each.

TWELVE SPECIAL GIANT DAHLIAS

Treasure Island	Minnie Eastman
Galli Curci	City of Trenton
Edna Ferber	W. H. Hogan
King Midas	Runa
Kendal D'Or	Tommy Atkin
Paul Michael	Pearle Templin Bradley

THE ABOVE WILL EXCITE THE ADMIRATION OF YOUR NEIGHBORS

No. 35—One each (value \$7.15) .. \$5.00

No. 36—Three each (value \$21.45) \$14.00

OREGON BEAUTY I. D.—Remarkable for its large size and beauty of color, an intense oriental red with golden sheen and garnet suffusion, which makes it stand out boldly in the garden among all the others. It blooms in our garden in six weeks after planting and continues until frost. 40c each.

ORIENTAL GLORY I. D. (Delight-U-Gardens)—Color is a glowing orange quite deep in center. Apparently a seedling from Jersey's Beacon. It has all the good qualities of that flower. It is a Certificate of Merit Dahlia and a 1934 Honor Roll Dahlia and a prize winner at Chicago in 1933. \$10.00 each, Plants, \$5.00.

ORINDA F. D. (Fraser)—Color, dark mauve pink. One of the sturdiest and best blooming of the new Dahlias. Winner of American Home Achievement medal best Decorative seedling, and Sweep stakes prize in the Seedling Class at the 1929 Boston Show. \$1.00 each.

ORIENTAL BEAUTY I. D. (Barker)—A clear, brilliant rose pink, a tone deeper than Delice. Petals roll showing lighter pink at the tips. Stems are good. Foliage insect and disease resisting. It has been a prize winner in Western Shows consistently since 1927. \$1.00 each.

OUR COUNTRY I. D.—A giant Dahlia on tall slender stems for blooms of its size. Petals are solid purple tipped with white for one-half to one inch. 50c each.

OYSTER BAY BEAUTY I. D. (Chemar)—Large, rich, dark velvety red flowers covering a vigorous growing plant on long stems and blooming all the season. 50c each.

PAINESVILLE F. D. (Winter)—Medium lavender and white flowers growing on a medium plant of vigorous growth with good bushing habit. It is a very popular cut flower variety where known, because of its good keeping qualities. 35c each.

PASTEL GLOW I. D. (Artland-Ruschmohr)—Color is white with mallow purple reverse showing through giving a glow of orchid-violet iridescence. It has been called the transparent Dahlia, is alluring against artificial light, a good grower. \$5.00 each, Plants, \$2.50.

PAT O'MARA F. D. (Vincent)—Large fine orange-buff lightly tinged rose flowers on straight stems. One of the older varieties that has stood the test. Fine for cutting. 40c each.

KENDAHLIA GARDENS, INC. — Sandusky, Ohio

DECORATIVE DAHLIAS—*Continued*

PAUL MICHAEL I. D.—One of the sensational large exhibition Dahlias, it always attracts attention, and has twice been awarded prizes as the largest flower at California shows. Petals quilled at base, curled and twisted; color, pure gold shaded orange buff at center. A bushy plant, blooms early, freely and continuously. 40c each.

PEARLE TEMPLIN BRADLEY F. D. (Kendal-Templin-Bradley.) (See Page 3.)

PEGGY BOONE F. D. (Winter)—A seedling of Jersey Beauty which it resembles in growth of plant as to height, bushiness and stem. Flowers are about the same size. Color is an old rose with gold sheen and gold edging of petals. Distinctive in any garden. 50c each.

PENN CHARTER F. D. (Lyndora)—A deep and massive graceful flower of clear golden yellow tinted apricot. An exhibition size Dahlia with good center and stem grown on a tall and vigorous plant with large, thick leaves. Prize winner, \$1.00 each.

PERRYITE F. D. (Winter)—Large tan and yellow flowers with a slight cast of pink the flower changing to deeper pink as it unfolds. Flowers are produced in profusion on a large and bushy plant which sends off long stems. Flowers 7 to 10 inches in diameter, on 15 to 20-inch stems, are the rule. 40c each.

PINK PERFECTION F. D.—A pink flower of giant size of the form of Hortulanus Fiet. A very perfect decorative held on stiff stems, and free flowering. It is a beautiful shade of salmon pink with old rose suffusion, illuminated by a lively golden sheen that dazzles. The plant is not tall but bushes well and the flower is held upright on wonderful stems. 40c each.

POLAR BEAR F. D.—A splendid pure white Dahlia. Very large flowers on good stems. A good bushy plant with excellent foliage. Suitable for garden or exhibition purposes. 35c each.

POLAR SNOW F. D.—One of Marean's \$50,000 white Dahlias which grows to be one of the largest, deepest and most attractive white Dahlias, if grown rightly for exhibition. 50c each.

POLAR STAR F. D.—A large, white used by florists on account of its good substance, long stems and good keeping qualities. 40c each.

POP STEWART I. D.—A remarkable flower of large size. Color, lilac lavender pink. A prize winner and recommended as one of the finest Dahlias with great stems, somewhat dwarf, but free blooming. 50c each.

PORTHOS F. D.—Sparkling deep red flowers of magnificent size and even form. A robust, healthy grower, fine stems, free and profuse bloomer. 40c each.

POTLATCH I. D.—Very large, grenadine red blended with yellow, giving rich red and gold effect. Sturdy, vigorous plant, producing many gorgeous flowers on good stems. One of the most popular dahlias in our garden. \$3.50 each.

POT OF GOLD I. D. (Chappaqua)—A large brilliant flower of clear yellow with long wavy petals, free blooming. A Certificate of Merit Dahlia. Very fine. \$3.00 each, Plants \$1.50.

PRESIDENT HOOVER I. D. (Peacock)—Color, bright, luminous peach-red blending to begonia rose with variable reserve. A strong, vigorous, early free blooming dahlia attaining under ordinary conditions a height of 6 to 7 feet. Flowers average 8 inches in diameter and 4 to 5 inches in depth. \$1.00 each.

PRIDE OF CALIFORNIA F. D.—An extra large fine flower, borne on long stems; very large and



TREASURE ISLAND
Photo from a 10 Inch Bloom

full vivid, red. Especially fine for cutting. One of the best of the red decoratives. A vigorous grower and a very free bloomer. 35c each.

PRIDE OF FORT MORGAN F. D. (Curry)—Giant intense red decorative 9 to 12 inches in diameter. A vigorous grower on a sturdy robust plant. Excellent garden and cut flower variety. 50c each.

PRIDE OF STRATFORD I. D. (Success)—A large two tone orange variety with a very deep reverse. Long sturdy stems and a free bloomer on a vigorous growing plant. 50c each.

PRIMULA REX I. D.—A giant decorative type of primrose or light cream throughout. The flowers are massive and freely produced on rigid stems. We recommend this one. 75c each.

PRINCE OF PERSIA I. D. (Newsom)—A dark, cardinal long-petaled, deep flower on long stems. A clean and vigorous grower. A recent origination in California, it wins prizes East and West wherever entered. \$1.50 each, Plants 75c.

PRINCESS JULIANA F. D.—One of the best early white Dahlias and used by florists for cut flowers and decorations. 35c each.

QUEEN OF THE GARDEN BEAUTIFUL F. D.—An enormous primrose yellow decorative. A strong vigorous grower with long, straight, tough stems. A California prize winner of pre-eminent merit and as largest flower in the show, measuring 12 inches across. A fine keeper. 50c ea.

QUEEN MARY F. D.—Color, a soft shade of pink similar to Delice, but the plant is a stronger grower. A large flower with full rounded center. 35c each.

QUEEN OF NORTH MENTOR F. D. (Winter)—A ball yellow free flowering variety, standing dry weather well. Has been much chosen as a cut flower on account of its good stems and good keeping qualities, and is an exceedingly pretty garden variety. 35c each.

KENDAL DAHLIA GARDENS. — Sandusky, Ohio

DECORATIVE DAHLIAS—Continued

RADIO I. D.—Color is a combination of blood red tipped and edged with yellow. Immense flowers held erect on rigid stems which always look you in the face. Colors resemble the well known "Geisha." Very popular. 50c each.

RED BIRD I. D. (Kendal)—A large, shaggy, crimson maroon Dahlia. Plant is tall and straight branching well and is covered with flowers from about August 20th until frost. Vigorous grower, disease and insect resisting foliage. Fine form, good stems. 50c each.

REGAL I. D. (Bessie Boston)—An immense, free blooming, bronze flower heavily suffused with full old rose shading to gold at the base of petals, giving a burnished copper effect. Plant is sturdy above medium height, well branched, producing easily 10 to 12 inch blooms. Has won medals and prizes since 1926. \$1.00 each.

RIO RITA I. D.—Geranium pink blossoms, six to eight inches in diameter on good stems, is produced freely on graceful five foot plants. A good western favorite. 75c each.

RISING SUN F. D. (DeWilde)—Color burnt orange tipped gold at the center and on the outside petals. Similar to Golden Sonne in form and habit. Medium sized flowers produced in abundance. Excellent cut flower variety for any decorative purposes. 75c each.

RIVERTON GOLDEN GLOW I. D. (Dreer)—An other Dreer introduction carrying perfection of form, fine stems on a vigorous, healthy plant, blooming early and freely throughout the season. This plant most noticeably withstands dry seasons and also comes through the first frosts without being touched, when other plants around it are hit hard. Color is a rich, deep yellow. 50c each.

ROOKWOOD I. D.—A pleasing shade of cerise rose which continues throughout the season on heavy, vigorous but dwarf plants, usually free flowering, which come into bloom early and produces perfect flowers throughout the season. 50c each.

ROBERT EMMET I. D. (Moroney-Dahliadel)—A new velvety cardinal red Dahlia of giant size and great beauty on a fine growing plant with dark green insect resistant foliage. A Certificate of Merit and a 1932 Honor Roll Dahlia. Perfect blooms on stiff stems from mid-August until frost. \$5.00 each, Plants \$2.50.

ROBERT SCOTT F. D. (Dahliadel)—Very beautiful apricot yellow with rose shadings; in our gardens for the past five years it has been unexcelled in its sturdy growth, in its large, well formed flowers, long stems and free blooming. Blooms early and continuous and attracts attention in the garden from everybody. We recommend it. 50c each.

ROBERT TREAT F. D.—American Beauty rose color, instantly attracting attention; an outstanding new variety. Plants are of profuse blooming habit; size is large and stems are long and strong. 50c each.

ROMAN EAGLE F. D.—Brilliant burnished copper. Beautiful flower and long stiff stems on a large vigorous plant bushing well. Very showy. 50c each.

RODMAN WANAMAKER I. D. (Peacock)—One of the strongest growing varieties, producing large flowers on long, strong stems. Buds are a pale yellow, but as the flower expands, it develops into a bronzy salmon pink with yellow center, which is of the true peony type. Ten-inch blooms are very usual. 75c each.

ROSE FALLON F. D. (Harding)—Giant old gold decorative, finest form and type, excellent stems which carry the enormous flowers quite erect. Most outstanding variety in 1925 New York

show. It was perfect under the conditions of our gardens. 50c each.

ROSE MARIE F. D.—Deep rose. Plants 4 to 5 feet high branching well carrying good flowers and good stems. 50c each.

GREEN PLANTS

If you want some of the new dahlias and they seem too expensive, buy plants at half price instead. Our Dahlia plants are propagated from tubers selected for their vitality and freedom from stunt or disease. All Dahlias shipped out will be made from base cuttings, started under moderate heat and when rooted are grown cool. They are hardened before shipped into strong, stocky plants and shipped in 2½-in paper pots, in specially constructed containers, securely packed, and guaranteed to reach you in good growing condition in any part of the United States.

Plants furnished for any varieties whose roots are quoted \$1.50 or more each.

Green plants ready from April 15th to June 10th.

ROSE O' THE LAKE F. D. (Kendal) See page 3.
RUNA I. D.—Color, a beautiful mauve pink of just the right tone and hue to blend well with many others; long stem, prolific habit and unusual keeping qualities; 50c each.

SAGAMORE F. D.—New exhibition variety of high rank, rare size, perfect form and good stems, always a good commercial variety, blooming freely and keeping well after cutting. Color, a pleasing shade of amber gold, deepening at center. 40c each.

SAGAMORE PRINCE F. D. (Sagamore)—A 1934 Honor Roll and Certificate of Merit Dahlia. Color is a rose-red reverse cream. Flowers are from 7 to 9 inches produced on a sturdy vigorous plant of good height, branching well, and producing flowers in abundance. \$1.50 each, Plants 75c.

SALBACH'S WHITE F. D. (Salbach)—An ivory white California variety of perfect form, large blooms of wonderful substance and profuse bloomer on splendid stems and plants. 75c each.

SANHICAN'S BEAUTY F. D. (F. & M.)—A new introduction whose petals have the texture of a rose, and whose coloring resembles the Madam Eduoard Houriet rose. It is a well formed exhibition variety with evenly massed rounding petals. Excellent for cutting on account of the long, rigid stems and gorgeous color; free bloomer. Foliage dark green and insect proof. 75c each.

SANHICAN'S BLUEBIRD F. D. (F. & M.)—A near blue bloom of gigantic proportions and perfect form, whose outer petals at maturity are bright violet blue, while the center retains the violet tint. 50c each.

SANHICAN'S MAGNATE I. D. (F. & M.)—One of the big fellows of the Dahlia kingdom. Pale amaranth pink base petals tinged with deeper shade; reverse of petals a solid claret color heavily veined. Free bloomer, stiff stems. Medium height plants, dark green foliage. A prize winner with awards. 50c each.

SANHICAN'S MONARCH F. D. (F. & M.)—A dazzling exhibition Dahlia of deep Tyrian rose color at center shading to lighter tone at point of petals. Full centers early and late. Free bloomer, having dark green foliage, black canelike stems, holding flower perfectly out of the

DECORATIVE DAHLIAS—Continued

foliage on medium tall plant. Good keeper. 50c each.

SANHICAN'S PEACH I. D. (F. & M.)—A fluffy decorative of good size, exactly the shade of a ripe California peach with real peach cheek glow. The petals are oddly twisted with staghorn tips. Rich dark green foliage; upright, straight stems; good habit of growth. 50c each.

SANHICAN'S PRINCESS F. D. (F. & M.)—A beautiful decorative suitable for cutting and indoor decoration. Color, a true shrimp pink that will blend with almost any other color. An early and profuse bloomer, medium size. Fairly stiff stems. Good habit of growth. Medium to tall plants. Certificate of Merit awards. 50c ea.

SANHICAN'S PURPLE F. D. (F. & M.)—A true purple, full centered, regularly shaped Dahlia of great keeping qualities, either on the plant, the exhibition table or in the vase. Of tall growing habit; flowers held well above the foliage on long, black, rigid stems. Foliage, dark green and leathery. 50c each.

SANHICAN'S QUEEN F. D. (F. & M.)—A Dahlia of unusual color, described as honey-dew, which is a blending of apricot with a faint blushing of carmine rose, deepening towards the center. Grows 7 to 9 inches in open field on a plant of medium height and excellent habit of growth. Most desirable for exhibition and cutting. Good keeper. 50c each.

SANHICAN'S ROSE F. D.—Clear rose pink, very large flower on good plant, very fine for cut flowers, 50c each.

SANTA BARBARA F. D. (Pelicano)—Beautiful soft rose pink. Plant tall with fine foliage, excellent carriage. Prize winner as a seedling. For 3 years carried American Home Achievement Medal, and was adjudged the best Dahlia in the 1929 San Francisco Show. \$1.50 each, Plants, 75c.

SAN MATEO F. D.—Color is deep gold striped red. Plant grows tall, branches well, and produces 5 to 7 inch flowers in abundance on good stems. A good cut flower variety and very showy. 35c each.

SEAL'S CALIFORNIAN I. D. (Seal)—Bright golden yellow at the center shading lighter toward the outer petals and tips of which are suffused very lightly with a bronze rosy pink blending beautifully. Stems are absolutely perfect, being strong, stiff and cane-like and holding the flowers in a proud and showy manner. The Dahlia is large, bold and immensely attractive. A 1929 origination winning many prizes. 75c each.

SEÑORITA I. D.—A gigantic showy flower, long pointed petals, on a fine stem. Color is velvety crimson with scarlet suffusion: one of the finest and largest from California. 40c each.

SHAHRAZAD I. D. (Newsom)—Deep pink, 10 to 12-inch flowers of great depth, named for the sultana in the Arabian Nights. Fine cane-like stems on a tall and vigorous bush. Habits similar to Jane Cowl. \$1.00 each.

SHIRLEY EILEEN SHATTUCK I. D. (Shattuck)—Beautiful lavender on long stiff stems. Free bloomer on well constructed plant. Grows to 8 inches without disbudding in open field cultivation. 50c each.

SHOWER OF GOLD F. D.—Golden bronze, petals of chrysanthemum type; long stems; much used by florists as a cut flower. A good garden variety. 40c each.

SHUDOW'S LAVENDER F. D.—A beautiful lavender of exquisite coloring, fine flowers held on long stiff stems well above the foliage. Good grower and very popular. 75c each.



THOMAS A. EDISON

12 Inch Bloom Grown in Kendal Gardens

SNOWDRIFT F. D.—This giant white bloom deserves its name. A very full deep built flower with broad waxy petals. Has a good stem by disbudding. Good bloomer and easy to grow. 40c each.

SONNY BOY I. D. (Salem)—Giant old rose, slightly striped and tinged old gold, blooms, growing and doing well under any condition. Good bush, medium height, disease resistant. \$5.00 each, Plant \$2.50.

"SONNY" MASSON I. D. (Veile & Mendham)—Brilliant intense red suffused gold. Enormous deep and wide flowers borne profusely on excellent stems on a plant whose foliage is thick and leathery. One of the large reds and on the Honor Roll. \$2.50 each, Plants \$1.25.

SOUV. DOAZON F. D.—A very large flaming scarlet red flower on vigorous, tall growing plants with good stems and excellent foliage. An early and free bloomer throughout the season with an occasional open centered bloom. 35c each.

SPITZENBURG F. D. (Travis)—A 1934 Honor Roll Dahlia awarded First Prize as the best undisseminated Dahlia at the New York show. A flower of curious color, bright rose and rose-red blush, it met all of the qualifications necessary to win. \$7.50 each, Plants \$3.75.

SPOTLIGHT I. D. (Cottage Grove)—A 1934 Honor Roll Dahlia awarded the American Home Achievement Medal at Seattle as the best undisseminated variety at Seattle. Color, sulphur yellow. It has been rated by Derrill W. Hart as one of the best all-round exhibition and cut flower varieties displayed at the shows in 1934. Roots \$7.50, Plants \$3.75.

SPOTTSWOOD BEAUTY F. D. (Kemp)—Clear Chatenay pink with slight shading of yellow at base of petals. Seven to eight inch flowers of great depth are borne on long cane-like stems high above the foliage. A remarkably strong growing plant attaining a height of seven to eight feet. Prolific bloomer and good root maker. 75c each.

KENDAL DAHLIA GARDENS, — Sandusky, Ohio

DECORATIVE DAHLIAS—*Continued*



WILLIAM H. HOGAN
Photo from a 10 Inch Bloom

SULTANA I. D. (Broomall)—Color is scarlet shading a gold. Plant grows vigorously under all conditions and the root produces fine large flowers on good stems. \$1.00 each.

SUPREME GLORY F. D. (Almy)—A huge golden yellow dahlia with reverse of petals faintly flushed with red, which won a Certificate of Merit and placed on the Honor Roll in 1930. It is a strong plant whose stems are long and stiff. Very popular in the East. \$1.50 each, Plants 75c.

SUPREME MONARCH I. D. (Almy)—A rich deep brilliant red with reverse of pearly white whose petals curling slightly gives the appearance at a little distance of a giant red bloom covered with snowflakes. The size of the bloom and plant is immense, even larger than Elite Glory of which it is a seedling. An early and profuse bloomer on stiff stems two to three feet long. \$2.50 each, Plants \$1.25.

SYLVIA F. D.—A good old pink and white; good cut flower and still retains many friends. Good stems, good keeper; easy to grow under all conditions. 25c each.

TANG I. D. (Downs) — Bright tawny orange flame flower whose long petals roiling and twisting showing a golden buff reverse gives the flower a two toned effect. Flowers are deep, full, high centered on strong stems. Plant is rugged and the dark green foliage adds to the attractiveness of the flowers. \$1.50 each, Plants 75c.

THE COMMODORE I. D. (Scott-Kemp)—A very large and spectacular, lemon yellow Dahlia overlaid with a golden sheen. Many blooms attain 14 inches across. The giant blooms are of good depth and are held high above the foliage by long stiff stems on a wide-spreading, medium height plant of sturdy growth. A Certificate of Merit Dahlia, winning prizes at Baltimore and Red Bank. \$1.50 each, Plants 75c.

THE GRIZZLY I. D.—One of the finest. Color, dark velvety crimson and maroon. An immense flower that blooms freely on good stems should be in every collection. 50c each.

THE LEMONADE F. D.—A clear lemon yellow, blooms large to very large, carried on stiff up-

right stems. Plant has good habit of growth and flower is excellent keeper when cut. 50c. ea.

THE WORLD F. D. (Dahliadel)—An unusually rich deep rosy magenta overlaid scarlet with silver shadings on edges of petals. A rich and beautiful combination. Perfect full centers. The stems are strong and erect, foliage leathery and immune to insect injury. 50c each.

THOMAS A. EDISON F. D. (Dahliadel)—A royal purple, named for the famous electrical wizard with his approval. Staghorn petal formation and insect resisting foliage, cane stiff stems, thrifty growing habits, it has been exceedingly popular since its introduction in 1930. A prize winner, it gives a good account of itself under all growing conditions and is now priced where all can afford it. 75c each.

TOMMY ATKINS I. D.—A beautiful glowing scarlet Dahlia of large size and fine form held well above the plants on long straight stems. The plants are vigorous growers and prolific bloomers. This variety calls forth admiration everywhere. . 50c each.

TREASURE ISLAND F. D. (Dahliadel)—Bright apricot with gold and rose suffusions. Grows well and produces a wealth of fine exhibition blooms. It is a free, even bloomer and a prize winner. 75c each.

TRENTONIAN F. D.—Giant blooms on extra fine stems. A plant of medium height bushing heavily and growing vigorously. Very heavy foliage. Color is a blending of reddish bronze, old gold and amber copper, and is best described as the color of "Indian Skin." A fine California autumn coloring. 50c each.

VALESKA I. D. (Ballay)—Deep lilac, unlike any other Dahlia, immense blooms of a deep rose-like formation with petals slightly curled; first class stem; luxuriant growth; prolific bloom production. 75c each.

VENUS F. D. (Marean)—Cream white tinted lavender, medium size, good stem, dwarf growth, free and profuse bloomer from early season until late with full tight centers throughout the season. 35c each.

W. I. ERWIN I. D.—One of the best lavender purple dahlias that we have ever seen. It has size, good medium stems. Blooms freely. 50c ea.

WANDA MILLER I. D.—A new Dahlia of the same color as Our Country; deep purple with white tips never sporting to solid color. Immense flowers are held erect on long, stiff stems. Early and free bloomer. 75c each.

WALDHEIM SUNSHINE I. D. (Peacock)—A giant graceful Dahlia whose color is a true, deep yellow that shows up yellow under artificial light. Good bushy growth; strong and erect stems. A sturdy grower and a free bloomer with 10 inch blooms keeping full centers to the end of the season. A high score and prize winning Dahlia, with a Certificate of Merit. 75c each.

WASHINGTON GIANT I. D. (Lee)—A 1934 Honor Roll Dahlia winning the American Home Achievement Medal at Portland where it was the sensation. Unusual in form and color which is a lavender streaked silver with silver petals throughout. Flower is large on extra strong stems and plant has good growing habit. \$7.50 each, Plants \$3.75.

WATCHUNG SUNRISE F. D. — Large globular shaped flowers with petals extending back to stem when in full bloom. The background of color is amber with here and there a faint blush of salmon, and each petal, when it unfolds, has a definite band of salmon color. It has perfect stems, good foliage and is outstanding. 75c each.

KENDAHLIA GARDENS, INC. — Sandusky, Ohio

DECORATIVE DAHLIAS—*Continued*

WATCHUNG WONDER I. D. (J. Smith)—Royal Red with a touch of Gold at center of flower, and now and then a gold petal to enhance its beauty. One of the largest dahlias. A sensation in the eastern shows. \$1.00 each.

WENOKA F. D. (Hulin) — Huge, rosy mauve blooms of great depth. One of the best new Western Dahlias and outstanding at East Lansing and New York. 1934 Honor Roll. Splendid growing habits. Plants only \$10.00 each.

WESTERN GIANT I. D.—A very large Dahlia of brilliant orange with tints of gold and salmon rose reverse. Long, erect stems hold the blooms up well. Does well under most conditions. \$1.00 each.

WHITE EMPRESS I. D. (Alling)—Ideal white, either for garden or exhibition purpose in the show room. A prize winner for the best keeper in the Shows. A free bloomer, uniform and large perfect flowers on long erect stems with excellent substance. 75c each.

WHITE WONDER I. D. (Black-Kemp)—A large white Dahlia producing frequently flowers 12 inches in diameter and 8 to 9 inches in depth. Stiff stems hold blooms well above the foliage and in profusion throughout the season. Plants, 6 feet tall, foliage very thick and leathery. \$5.00 each, Plants \$2.50.

WILLIAM AGNEW F. D.—A true old scarlet variety growing well under any condition. It is the parent of Oregon Beauty and Adaline Winter and keeps well apace with its brilliant daughters. A good cut flower as well as a good garden variety. 35c each.

WILLIAM H. HOGAN F. D. (Success)—Color, garnet red with white tips running down the center of the petals; every petal comes true to color. A prize winner and Roll of Honor Dahlia, and one of the best fancy Dahlias on the market. The habits of the plant are perfect, and

the very large blooms are carried on very long, rigid stems. 50c each.

WM. J. RATHGEBER I. D. (Parella)—A 1932 Honor Roll, red Dahlia under electric lights, but a definite rose scarlet in daylight. A seedling of Bagdad, it is a fine, upright grower. Named in honor of the Secretary of the American Dahlia Society, who died in 1932. Very striking. \$5.00 each, Plants \$2.50.

W. H. T. F. D. (McCarroll)—Rich old rose on begonia rose with mauve shades on the reverse of petals. It is a tall robust grower producing big flowers on strong stems. Petals are thick and of great substance opening back to the stem making a very deep flower. .75c each.

WIZARD OF OZ I. D.—A veritable giant of glowing amber pink or soft salmon shades. The immense blossom is held well above the foliage on a fine upright stem. In some localities it has a slight tendency toward cactus type. Valuable for exhibition as well as a cut flower. 50c ea.

WORLD'S BEST WHITE F. D.—A splendid pure white of largest size on stiff stems. A strong vigorous grower. 75c each.

YANKEE KING I. D. (Sarah Wakeman Woods)—Strawberry pink, centers spinel red with rose red reverse. Blooms very large held on a tall vigorous bush by extra long fine stems. Scored at Storrs for A. D. S. Field Day 75c each.

YELLOW BEAUTY F. D. (Waite)—A comparatively new yellow decorative, having some of the characteristics of Jersey Beauty. A Commercial Dahlia, it can be grown to exhibition size. The blooms are up to 8 and 9 inches across and 4 to 5 inches deep. Its erect position on a slender stem makes it very desirable for vase work. 75c each.

YELLOW COLOSSE F. D.—A large deep golden yellow, free flowering Dahlia with good stems and good habit of growth; much used for cut flowers. 40c each.

IMPORTANT

Do You Want Our 1936 Catalog?

HELP! HELP! HELP! If you want our 1936 catalog and have not ordered from us during the past two years, will you please write us a card or letter, telling us that you want it sent to you? We are Scotch and catalogs cost money even in the very large quantities in which we have them printed. We have a mailing list of 25,000 names and on account of death, removal, and other changes, our list requires constant revision to keep it up to date. If you like it and want it, don't forget to write. THANKS.

BOUQUETS

Herewith are extracts from a few of hundreds of letters received from our customers. They tell their own story. Names of the writers may be had upon request:

—O—

Clearfield, Pa., Jan. 7, 1935

****"The Dahlias I bought from you last spring were simply beautiful, could not have been nicer. They were admired by everyone."

—O—

—Iowa, Dec. 17, 1934

"I had last summer a wonderful display of your Dahlias and plan to buy some more this spring."

Board of Park Commissioners

KENDAL DAHLIA GARDENS, — Sandusky, Ohio



KING MIDAS. — Photo of a 12 inch Bloom.

Montgomery, Ala. Jan. 8, 1935

"I am so delighted with Dahlias from your Special Mixed Seed last year, 1934, that I wish to tell you about them and get a package of your Selected Mixed Seed for this year's trial. Twenty-two of the twenty-five seeds grew. Nine of them gave fine double blooms of various beautiful colors. Only one was single and twelve were not perfect blooms. They were a delightfully great thrill for me."

—O—

Rice Lake, Wisc. Dec. 28, 1934

"I am sending you a photograph picturing the Dahlias I raised from seed which I ordered from you. These Dahlias are pictured as they looked in my garden the past summer."

—O—

Bellevue, Ohio, Jan. 11, 1934

"The roots I got of you last year did fine."

—O—

Chicago, Ill., Jan. 14, 1935

"I had the grandest luck with the Dahlia bulbs last year. I was the envy of all the neighbors in this section of town and I want to get some more this spring. Some blooms measured from ten to twelve inches in diameter."

—O—

Tiffin, Ohio, Oct. 3, 1934

"The Dahlia roots I received from your gardens last spring are all doing fine except two. Ambassador and Ohio Glory would not grow."

*We will replace Ambassador and Ohio Glory. K. D. G.

—O—

"I was well satisfied with the Dahlias you sent me last spring as they were all beautiful."
Butte, Montana, Nov. 22, 1934

—O—

St. Paul, Minn., Oct 24, 1934

****The Eagle Rock Fantasy was a beauty. I believe it was the prize one in the garden."

KENDAHLIA GARDENS, INC. — Sandusky, Ohio

CACTUS DAHLIAS

INCURVED CACTUS DAHLIAS. Fully double flowers with the margins of the majority of the floral rays revolute for one-half or more of their length. The floral rays tending to curve toward the center of the flower.

RECURVED AND STRAIGHT CACTUS DAHLIAS. Fully double flowers with the margins of the majority of the floral rays revolute for one-half of their length or more, the floral rays being recurved or straight.

SEMI-CACTUS DAHLIAS. Fully double flowers with the margin of the majority of the floral rays revolute for less than one-half of their length.

Incurved—Recurved and Straight—Semi-Cactus

Quotations of all Cactus Roots are for strong field grown divisions, each with one or more good eyes, guaranteed to grow, each Root labeled.

A. LINCOLIN S. C. (Peacock)—A new sensational dahlia whose color is a bright spectrum, red reflex rose-red. Ideal gardening and commercial red on the order and much better than "Kalif." Early and profuse bloomer on slender, rigid stems. 75c each.

ADDA PATTERSON S. C. (Kemp)—One of the best white semi-cactus to date. Flowers pure white, averaging eight to nine inches in diameter. A beautiful growing plant reaching height of seven feet. Large blooms held well above the foliage on stiff stems growing four to five feet in length. A splendid keeper and fine for exhibition and decorative purposes. An all round white Dahlia. 50c each.

AIKO S. C. (Dahliadel)—1932 introduction. Brilliant true carmine red with silver reverse showing at tips of petals and at the center of the lower. Stems strong and graceful flowers spectacular. A 1931 Honor Roll Dahlia. \$2.00 each, Plants \$1.00.

ALICE WHITTIER S. C. (Reed)—A very delicate shade of primrose yellow, exhibition size flowers and especially deep; stiff stems and good habit of growth. Many Certificates of Awards at trial gardens and a prize winner. 50c each.

AMBASSADOR C.—A beautiful prize winning Dahlia whose color is a soft yellow center with salmon, amber and pink shading, gradually deepening toward the tips and outer floral rays. Has won prizes for the largest in the show. When originally introduced, sold for \$50.00 per root. 50c each.

AMBER GLOW C.—Buff yellow. A medium height plant growing vigorously, branching well, carrying medium sized flowers on good stems. A free, early and continuous bloomer and a good keeper. Satisfactory in every way. 35c each.

AMELIA EARHART S. C. (Cordes-Eastman)—An apricot buff primrose 1932 Honor Roll Dahlia, winning prizes at New York, Baltimore, Richmond, Atlantic City, Los Angeles as the undoubted champion exhibition flower of the year, growing to 13 inches in diameter and 8 inches in depth on a perfect plant. \$5.00 each, Plants \$2.50.

AMERICAN LEGION S. C. (American Dahlia Farm)—A big bright yellow flower winning many prizes and medals at 1931 Atlantic City show in the seedling class. Its general appearance is like Aztec Glory but a shade brighter in color. This dahlia measured 13½ inches in diameter and 9 inches in depth at the Atlantic City Show. A 1931 Honor Roll Dahlia. Roots \$2.50, Plants \$1.25.

AMERICAN TRIUMPH I. C. (Nunneville)—Color Oriental or bright clear red. It's 8 inch blooms with high full centers are held on long straight stems. A good garden and exhibition flower which requires a little attention in spraying but pays well for the trouble. \$1.00 each.

ATTRACTION S. C.—Clear lilac rose on orchid pink. Blooms erect on long bare stem; a large splendid flower of beautiful form and color and one of the most popular. 35c each.

BALLET GIRL C.—Soft orange scarlet marked with pure white. One of the best of the cactus varieties. A beautiful large flower of perfect form. Good for cutting and a good keeper. 40c each.

BERTHA HORNE S. C.—Deep orange yellow tinted with apricot, the latter predominating in many of the flowers. Bush is of large low growth, flowers being produced very freely on ideal stems. A good keeper and a standard florist's Dahlia, the country over. Certificate of Merit award. 35c each.

BETTE DAVIS S. C. (Cordes-Eastman)—A 1934 Honor Roll Dahlia. Fine deep, violet rose with deepest center never fading or blotching, it achieved medals and prizes at Baltimore, Camden, Bryn Mawr and at Los Angeles. A high, full centered flower, facing on splendid rigid stems. A prolific bloomer in size and a fine keeper. Plants only, \$5.00.

BRIDE'S BOUQUET C.—An ideal pure white cactus on extra long stems, wiry and erect. An excellent keeper and a very free bloomer. Flowers medium in size and excellent form. 35c each.

CALIFORNIA BEAUTY C.—The nearest approach to a pure copper of any Dahlia we have seen. Flower of excellent form and dainty appearance, producing most prolifically on long stiff wiry stems. The plant is of medium height, branching well; which, with its bright coppery colored flowers makes it a gem in the garden. A splendid cut flower and a good keeper. 50c each.

CHEMAR'S MASTERPIECE S. C.—A huge incurved cactus flower of orchid pink or soft orchid color. The flowers are extra large, of perfect form under most conditions, having the right tilt on extra long stems to show their beauty to the best advantage. A seedling of Mrs. I. De Ver Warner. Ten-inch flowers in abundance are not unusual. 75c each.

CIGARETTE S. C.—Creamy white, heavily edged orange with color variations. Some flowers come in orange red, no two alike. Petals are long and narrow, inclined to roll. Blooms large, of good substance, on excellent stems. Good for cutting. Plant six feet and over. 50c each.

CITY OF ROYAL OAK S. C. (Reynolds-Fraser)—A 1934 Honor Roll introduction. Color russet-salmon and an outstanding variety. One of the few novelties of the semi-cactus types introduced in 1934. Worthwhile. Roots \$7.50 each, Plants \$3.75.

CITY OF NEW YORK S. C. (Harding)—Pale golden-amber with salmon blushes and tints. Flowers freely on good stems and is an excellent keeper. The plant attains a height of about 5 ft. 75c each.

KENDAL DAHLIA GARDENS, — Sandusky, Ohio

CACTUS DAHLIAS — *Continued*



Section of Our Gardens Devoted to Plants.
Aren't They Nice?

COLONEL CHARLES A. LINDBERGH C. (Fisher & Masson)—Beautiful rose overlaid in suffusion of old ivory shading off to a pale gold at center. Reverse of petals light carmine pink, very large on rigid and straight stems with dark green foliage. Medium to tall habit of growth, a free bloomer, being one of the earliest in the field and blooming continuously until frost. An exceptionally good cut flower variety. 75c each.

CONQUISTADOR C. (Ballay)—A sturdy plant producing large, soft, creamy yellow flowers with a pink tint. One of the popular Pacific Coast productions. \$1.00 each.

COUNTESS OF LONSDALE C.—An exquisite shade of rich salmon with just a suspicion of apricot at the base of the petals. A medium growing plant branching well and the freest flowering cactus dahlia in the collection, perfect in form and good stems, a good cut flower and a good keeper. 25c each.

DADDY BUTLER S. C.—American Beauty rose shade with a lighter reverse. The petals are so rolled that much of the reverse color shows, giving the flower a very attractive two-toned effect. The plant is vigorous, the stem perfect and the bush is always covered with large per-

fect blooms which last well when cut. A wonderful exhibition and cut-flower variety. 50c ea.

EAGLE ROCK GEM C. (Broomall)—Maize yellow shading to oriental pink. Exceedingly fine shaped strong stemmed cactus Dahlia. Its form is much finer than the Ambassador and its color is very unusual and pleasing. Good habits. The flowers always stand perfectly erect and are of medium height. \$1.00 each.

EAGLE ROCK JEWEL C. (Broomall)—Cream overlaid cameo pink (shell pink), one of the most beautiful colors in any Dahlia. The large flowers are borne on strong stems. It is a vigorous grower and a free bloomer. 75c each.

EAGLE ROCK SUNSHINE S. C. (Broomall)—Rich yellow of a deeper shade than Sunny South. Very large flowers are held perfectly erect on good stems. Winner of many prizes for best in show, 75c each.

EAGLE ROCK WONDER S. C. (Bromall-Success)—Color, mars-orange shading to orange-buff with tints of gold-pink and coral-red, with the general effect of orange-apricot. A free bloomer of good form and tremendous size. Worthy of any garden. \$1.00 each.

EDNA FERBER S. C. (Fisher & Masson)—A glistening color, shading to old gold at base of petals. Named after the author of "The Show Boat," introduced in 1927. It attracts immediate attention both in the field and on the exhibition table on account of extreme beauty and size. Medium to tall habit of growth; foliage dark green and thick. A prize winner everywhere since 1927. 75c each.

ELITE GEM C (Kennedy)—A true American cactus of fine form whose color is spinel pink blush on primuline yellow at the base; reverse rosaline purple. Medium sized blooms are supported on fine stems. The plant is a vigorous grower, blooming continuously throughout the season. 50c each.

ELITE MOONLIGHT S. C. (Kennedy)—Basic color, white, shaded and tinted with lavender. Beautiful flower for art work. Winner as undis-seminated Hybrid Cactus Seedling at 1929 New York Show. \$1.00 each.

EL GRANADA S. C.—A vivid orange whose petals twist and interlace showing at the tips of a creamy yellow reverse. An absolutely stiff and faultless long stem grows well out of the foliage. High bushes are covered with large deep flowers with closed centers from early until late season. Is one of the largest semi-cactus grown and a prize winner. 50c each.

EMMA MARIE S. C.—A charming, clear pink with a creamy white center of beautiful color, perfect form and exceptional keeping qualities. It has a combination for exhibition and commercial qualities not found in many Dahlias, a robust grower, it produces deep full center blooms from six to eight inches in diameter on three to four foot stems in ordinary field culture. 40c each.

EUGENIA S. C. (Barker)—Rose pink, winning first place at Los Angeles in 1927, 1928 and 1929 Dahlia show. An outstanding flower. 75c each.

FANNIE SANDT S. C. (Veile and Mendham)—Intense unshaded Rose Pink. Huge flowers, unbeatable stems, faultless grower on a plant of very dark foliage which does not have to be sprayed for insects. A prize winner scoring 84 in the Trial Gardens in 1931. \$2.50 ea., Plants \$1.25.

FARNCOT C. (Fraser)—A plant growing to medium height producing an abundance of medium sized Aster-purple blooms tipped white. A very dainty flower good for cut flower or decoration. Price 50c.

KENDAHLIA GARDENS, INC. — Sandusky, Ohio

CACTUS DAHLIAS — *Continued*

FLORADORA C.—Deep blood red, very early. A marvel of productiveness and of exquisite form. 35c each, 3 for 90c.

FLORA C.—Pure white. Bush of medium growth covered with a mass of flowers from early until late season. 35c each.

FLORENCE LOUISE S. C.—Large, citron-yellow blooms on a well balanced plant which is sturdy, vigorous and prolific in bloom. Good, strong stiff stems and a prize winner. \$2.00 each, Plants \$1.00.

FRANCIS LOBDELL S. C. (Waite)—An old favorite with large blooms of a bright mallow-pink color shading to white. Strong, showy and free growing. Valuable both for the garden or cutting. 50c each.

FRAU O. BRACHT C. (Berger)—Color, clear, clean, graceful, large, pale primrose flower held proudly above a fine foliage on long stiff stems. A German introduction. It was the sensation of the 1930 New York Show. It is a Certificate of Merit dahlia. \$1.00 each.

FRIEDA FRANK S. C. (Burch)—Scarlet, lighter at tips with an orange reverse. It is large, has a good stem and very showy. A California introduction. Originator considers it one of his best. \$1.00 each.

F. W. FELLOWS C.—An intense coral red with a deeper suffusion at the center. For a long time it has stood foremost among the Cactus varieties. Flowers of unusual size for the long narrow petaled type. 50c each.

GENERAL BUTLER C.—A fine dark lilac cactus producing a mass of blooms on a medium height plant branching well. Blooms early and continuously. 35c each.

GENERAL FRENCH C.—A fine yellow cactus, very satisfactory as a garden and cut flower variety. Has good stems and keeps well when cut. 35c each.

GEORGE WALTERS S. C.—Pinkish salmon suffused with gold, an ideal variety of the finest type, excellent for exhibition, garden, decoration or cutting. Makes a fine bushy plant that is always full of giant blooms, every one perfect and having the best of stems. 35c each.

GERTRUDE S. C. (Brown)—Red tipped yellow. A free growing early blooming dahlia, especially good for cut flowers and garden purposes. Showy. 50c each.

GLADYS BATES S. C.—Very large perfect flowers with incurved petals of a golden-salmon, the reverse of the petals being rose, the two colors giving the effect of a golden old rose. It is an early, free and continuous bloomer with exceptionally good stems, one of the most popular varieties for garden and for cutting. A good keeper. 40c each.

GLADYS SHERWOOD S. C.—An immense glistening pure white, producing its giant flowers composed of long curling petals very freely without any forcing or disbudding. Unsurpassed for exhibition or garden displays. 50c each.

GOLDEN GATE C.—A fine yellow cactus, one of the old favorites which is still liked on account of its habit of doing well almost anywhere and under any conditions. Good sized flowers on good stems, keeping well when cut. 40c each.

GOLDEN SONNE ST. C. (De Wilde)—A Holland introduction. A good grower, early variety, producing medium sized flowers of clear golden yellow shading to soft salmon-rose. One of the best cactus cut flowers. \$1.00 each.

GOLDEN STANDARD S. C. (Downs)—Blooms are of distinctive form of golden tan blushed with tints of amber and bronze. A 1934 Honor



DAHLIAS GROWN FROM OUR SEED
By a Wisconsin Lady.

Roll Dahlia taking the President's cup at New York for best undissemated Dahlia over all competitors. Outstanding. Plants only, \$5.00.

GOLDEN WEST C.—Deep yellow overlaid orange. A large, fine flower on good stem, worthy of being in every collection. 40c each.

INKYO S. C.—A nearly black cactus that produces an abundance of dark red incurved blooms. This dahlia created much enthusiasm among those who saw it growing in our gardens. 75c ea.

TEN PRIZE CACTUS DAHLIAS

Jean Hare	Meta Scammel
Chemar's Masterpiece	Ohio Glory
New England Queen	Raven
Jersey's Radiant	Sunset Glow
Starlight	Mrs. E. F. T. Smith

A WONDERFUL COLLECTION

No. 45	One each (value \$6.10).....	\$4.00
No. 46	Three each (value \$18.30).....	\$10.50

J. H. JACKSON C.—Deep velvety crimson, almost black. A popular dark variety that is always in demand, having great merit and blooming very freely all season. 25c each.

JEAN CHAZOT OR GAY PAREE C.—An autumn tinted Dahlia of golden-bronze heightened by a suffusion of nasturtium red. A French production that is one of the best all around varieties yet produced. A free, upright grower, long, stiff, wiry stems holding the flowers well above the foliage and displaying their real beauty, it blooms early and continues in good condition until the end of the season. 40c each.

JEAN HARE S. C. (Fisher & Masson)—When first unfolding, a beautiful golden yellow turning an apricot, buff and the outer row of petals a golden row of bronze as it matures, a most attractive autumn colored Dahlia of great size and beauty. A very free bloomer, medium to tall habit of growth, perfectly stiff, upright stems having a dark green foliage. Certificate of Merit with a high score for exhibition. 75c each.

KENDAL DAHLIA GARDENS, — Sandusky, Ohio

CACTUS DAHLIAS—Continued



MRS. ETHEL F. T. SMITH
(An 8-inch Bloom and 6 Buds)

JEAN TRIMBEE S. C. (Trimbee)—Canadian introduction. Flowers very large and a beautiful rich petunia violet in color. Its 12 inch flowers are produced freely on strong vigorous bushes making it very popular among dahlia growers. \$1.50 each, Plants 75c.

JERSEY'S MAMMOTH S. C. (Waite) — Huge flowers of rich golden mahogany; truly a monster and recommended only to those who want the very largest blooms. 75c each.

JERSEY'S RADIANT S. C. (Waite)—Large flowers of bitter sweet orange, long, stiff stems. Very attractive and a great favorite. 50c each.

JESSICA DRAGONETTE S. C. (Jones-Alling)—1934, Honor Roll Dahlia. A three toned combination of Pearl, Apricot and Mauve, blending lusciously. A clean, thrifty grower and a very free bloomer. Plants only, \$5.00 each.

JOSEPHINE G. S. C. (Grosscross)—True bright rose-pink. Center petals tipped yellow. A prolific bloomer. A sturdy grower, winning Certificate of Merit at Storrs and many prizes at the shows in 1930 and 1931. We like it. 75c ea.

KALIF S. C.—Clear bright red, a truly majestic flower. Its bold giant flowers borne perfectly erect above the foliage on long straight stems. Every bloom of exceptional size. 40c each.

KARL BONAWITZ S. C. (Dahliadel)—A brilliant velvety carmine Dahlia giving stems up to 4 ft. in length with disbudding. Form, color and keeping qualities make it graceful as well as useful. Very popular. \$1.50 each, Plants 75c.

KAY FRANCIS S. C. (Eastman-Cordes)—A 1934, Honor Roll, clear golden one-tone yellow that does not burn or fade. Outstanding in prize-taking at New York, Baltimore, Bryn Mawr, Camden, Los Angeles, and the California State Show, and elsewhere. Blooms freely, early and late, always large, and full of flowers on good perfectly rigid stems. Plants only, \$5.00 each.

LADY FAIRE S. C.—An appealing mauve-pink shade throughout. An attractive and very large flower whose center is full and thick with small broadly expanded petals. Strong stiff stems holding the blooms perfectly erect above a luxuriant foliage. 50c each.

LA FAVORITA S. C.—Brilliant salmon shading to reddish salmon. A splendid semi cactus variety unexcelled in form and flowering qualities. Distinct in color and highly recommended. 35c each.

LA MEXICANA S. C.—Burnt orange turning to copper, center of flower lighter in shade and tips of petals slightly touched with gold. An exceedingly early and free bloomer. Flowers borne on splendid, stiff stems. Medium to tall habit of growth, dark green foliage. 75c each.

LAWINE C.—White, with just a suggestion of blush as the flower matures. Another old time favorite which has not lost its popularity as an all around garden and cut flower variety. Has good keeping qualities. 25c each.

LIBELLE S. C.—A purple Dahlia of medium size used very extensively in cut flower work. Plant is of medium height. A good grower which does well under most conditions. 35c each.

LOLITA VELASCO S. C.—Beautiful white. The petals are extremely long and straight, the center excellent and the size immense. Long, stiff stem, holding an American type cactus flower boldly up. A prize winner. 75c each.

MABEL S. DOUGLAS S. C. (Thompson Waite) —A huge clear pastel lavender Dahlia with orchid lights produced on long cane-like stems on a tall plant of dark green foliage. A sensation in the East. \$1.00 each.

MAE GREFE S. C.—Beautiful clear pink or blush tinted to cream on long, high stiff stems, a dependable summer bloomer. Very desirable in color and form. 50c each.

MARIAN BROMALL C (Broomall)—Pink and white, descendant of Gladys Sherwood. It is more than cactus in shape with better stems and habit than Gladys's Sherwood. Beautiful flower. 75c each.

MARGARET BOUCHON C.—Color, a beautiful shade of bright rose with a purple white center and distinct white tips. The blooms are of good size, quite regular in formation, petals very long and narrow and straight. Very popular, 40c ea.

CUSTOMERS—PLEASE NOTE

We grow a number of the new introductions we do not list. If you desire any 1934 or 1935 introduction order it from us. We will ship it to you at originator's price.

MARIPOSA S. C.—An immense flower of delicate pink shading deeper at the center. Blooms abundantly all season. Stems very long and stiff. 50c each.

META SCAMMEL S. C. (F. & M.)—Very beautiful amaranth-pink. Fine stems, and a good bloomer. The flowers grow very large on strong vigorous plants. 75c each.

MINNIE EASTMAN S. C. (Eastman) — Color, bright flame with undershadows of deep yellow. Large flowers on perfect stems. Good grower and excellent for exhibition. Won prizes at Baltimore, Washington, D. C. and Fairmount, W. Va., in 1929. 75c each.

MISS AMERICA C. (Sunnyside)—This artistic Dahlia has the warm shades of autumn colors, being a rich orange-buff, blended toward the center lemon chrome. The long petals are wavy, twisted and curling and colored on the reverse Jasper red. Stems are stiff and wiry and the large blooms have no trace of stiffness or heaviness. 50c each.

MRS. C. H. BRECK S. C.—Soft yellow, deeply suffused with carmine, giving a very pretty variegated effect. Flowers are always of perfect shape, full double to the center. Grows only to a medium height, branches well and is a splendid all around variety either for garden or decoration. Very much admired. 35c each.

MRS. EDNA SPENCER C.—Large flowers of a delicate lavender pink with white suffusion and

CACTUS DAHLIAS—*Continued*



A LINCOLN—Photo from 8 Inch Bloom

a lighter center. Is a good grower, branching well, producing splendid narrow petaled English cactus type flowers. Good for cutting and a good keeper. 35c each.

MRS. ETHEL F. T. SMITH S. C.—Creamy white shading to lemon at the center. A close resemblance in type and formation to Gladys Sherwood except that it is still larger, not quite so deep in the center. A tall, robust grower, branching freely with long stiff stems holding the flower proudly above the foliage. (See cut). 50c each.

MY MARYLAND S. C. (Downs)—Unique coloring of delicate pink with the faintest suggestion of lavender whose pointed petals whirl and twist blending the two colors. Excellent stems and leathery foliage. A Certificate of Merit Dahlia winning many prizes everywhere. \$1.00 each.

NAGEL'S ROEM C.—This is one of the most popular of Europe's recent introductions; produces large shaggy flowers of buff-yellow tipped rose, excellent stems, and one of the best keeping Dahlias when cut and continues to enlarge in water. \$1.00 each.

NEW ENGLAND QUEEN S. C. (Brown)—An orange-red semi-cactus dahlia. Especially good for cutting. Blends well with any shade of yellow, red or pink. 50c each, 3 for \$1.35.

NEW GLORY S. C.—A vigorous deep ox blood red with tips of petals blanching white facing you. Grows to large size attaining 10 inches. Plant is strong growing with stiff stems. A consistent prize winner. 75c each.

NOPAL S. C. (Barker)—Spectrum red, 6-inch

over all Decorative with curly petals and wire like stem. Keeps fine. \$1.00 each.

OHIO GLORY S. C. (Peck)—Chrysanthemum type flower facing right angles to stem. Varying between rhodamine-purple and tyrian-rose. Insect and disease resisting plant, with flowers 6 to 8 inches. Pleases everybody. 50c each.

OLYMPIC SUNSET S. C. (Lee)—A 1934 Honor Roll Dahlia. Deep, 10 inch blooms of apricot, orange and coral blending pale lemon yellow, on long, strong erect stems, which need dis-budding. Bush 6 feet, vigorous. Outstanding at Northwest Dahlia Shows. Plants only, \$5.00.

PALO ALTO S. C. (Ballay-Success)—Very large clear, bright salmon and gold blooms. A sensational prize winner in 1933 and 1934. One of the great exhibition flowers. \$5.00 each, Plants \$2.50.

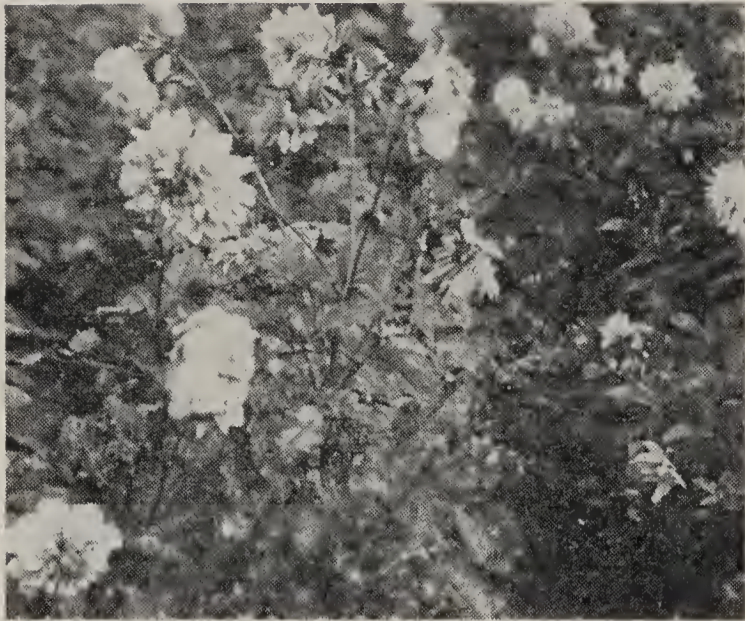
PAUL PFITZER S. C. (Berger)—Striking combination of primrose and shell pink from Germany which took prizes at New York shows last year and which is now popular throughout the entire country. Strong, vigorous four foot plants produce long stems and a dark insect resisting foliage. \$2.50 each.

PANSY G. WHITE S. C.—Pure shade of golden yellow originating in Kentucky. It is the most attractive gardening flower due to its free habits and upright growth. A Certificate of Merit from Storr's Trial Gardens, and making the Dahlia Roll of Honor were among its accomplishments for 1930. \$1.00 each.

PEARL DE LYON S. C.—White, a good cut flower variety; flowers are produced early, continuously and freely on a plant of medium height and with good stems. 25c each.

KENDAL DAHLIA GARDENS, — Sandusky, Ohio

CACTUS DAHLIAS—Continued



A SPOT IN KENDAL DAHLIA GARDENS
Note the nice Cactus at Right of Picture.

PIERROT C.—Color deep amber shaded to yellow distinctly tipped white. One of the largest and finest of the English incurved Dahlias. Habit of growth upright, holding its enormous blooms well up. Blooms very freely from early in the season until frost. 50c each.

PAPILLON S. C.—A big new, fellow whose color is a beautiful shade of old rose with golden lights. Constant bloomer on good stems. 50c each.

PROFUSION S. C. (Broomall)—A very full and double medium sized pure white flower of pleasing shape, produced in profusion from a plant which bushes well. A fine bedding variety attaining a height of three feet. \$1.00 each.

RAVEN S. C. (Ballay)—Dark maroon; slightly blended with cerise, very dark and beautiful. Early flowers are enormous and later on if all branches are allowed to bud and bloom, the flowers are so numerous as to fairly cover the bush. Plants are of medium height with good stems. 75c each.

REGENT C.—A heavy petalled cactus of heliotrope-pink. Large blooms on very long stems, being very fine for garden or for cutting. Blends well and is a good keeper. 35c each.

RHEINISHER FROHSINN C.—Color, deep rose, intermingled with white in such a manner as to give the general flower a bright rosy pink. Flowers of good size on long wiry stems, keep exceptionally well when cut and one of the most satisfactory dahlias in any garden. 50c each.

ROBERT E. LEE S. C. (Peacock)—A bright, luminous, cardinal-red flower, with reflex lighter. Growing to 10 inches in diameter on a tall sturdy plant, it is a free bloomer on rigid stems. Does not burn. A worthy flower for a worthy Southern General. 75c.

RUDY VALLEE S. C. (Bloomall-Success)—A huge apricot with a shining satiny luster. Strong plant and perfect stems. An immense magnificent Dahlia. \$2.00 each, Plants \$1.00.

SATAN S. C. (Ballay)—A flaming scarlet with salmon-orange at base of each horn like petal. Blooms are beautifully formed and the bush is a fine grower. It was a 1931 sensation on the Pacific Coast. \$3.50 each, Plants, \$1.75

SILVERADOO C. (Seal)—Immense white blooms, shading gradually to delicate silver-lavender towards center. The tall well branched bushes are always covered with huge feathery blooms

on extra long, strong stems. An Honor Roll and Certificate of Merit Dahlia, it is a prize winner as the largest Dahlia of its class. 75c ea.

SISKIYOU C.—Pink tinged mauve. An exceedingly large Dahlia invariably winning first prize whenever shown in the "largest Dahlia" class. Grows to twelve and thirteen inches with dis-budding, on stems stiff as rods. A constant prize winner. 75c each.

SPORT C. (Dahliadel)—Deep buttercup yellow with buff shadings at center. Wonderful exhibition flower, fine for cutting, a favorite in the garden. A sport of F. W. Fellows. 50c each.

SPRINGFIELD S. C.—A beautiful blending of salmon-pink and amber comparable to Countess of Lonsdale of whom it is a rival. A good, free flowering variety with good stems, valuable for cut flower and garden purposes, being a good keeper. We like it very much but would not like to say it is better than Countess of Lonsdale. 35c each.

STANDARD BEARER C.—Rich fiery scarlet. An old favorite, producing flowers prolifically on plants which branch well. Good cut flower variety and a good keeper. One of the very best. 35c each.

STAR OF BETHLEHEM S. C. (Nolet)—Large flowers of pure white, fine pointed petals with tight center, resembling a real star, on stem 18 to 24 inches in length. Plants are very free blooming, growing about 5 ft. in height and should be disbudded. It was the best white in our garden in 1930 and was a consistent prize winner in the East. \$1.00 each.

STARLIGHT S. C. (Boston)—Color is pure unshaded gold combining with everything in the average house decorations. Flowers are large and bushes are fairly tall, robust, and branching. 75c each.

SUNSET GLOW C. (Peacock)—Color, scarlet at the base and at the tips similar to Red Cross. Very free flowering on good stems. 35c each

SUNNY SOUTH S. C.—Bright clear yellow without any shadings. Flowers are enormous in size, most pleasing in form, very full and deep in the center. The plants are low growing and sturdy in habit, being two and a half to three feet. Flowers are held erect. 50c each.

TALISMAN C.—A gorgeous tense blood red flower with maroon shades. The long petal uncovering slightly shows the reverse of the tips and gives the flower a more or less buff tipped appearance. A satisfactory dahlia. 50c each.

THE EAGLE C.—Color pure silver yellow. Large exhibition Dahlia of attractive formation. Petals long and narrow, making an attractive chrysanthemum-like flower. A free bloomer and a good keeper. 40c each.

THE PERFECT WHITE S. C. (Broomall)—Color is just what its name implies. Flower very artistic in formation and satisfactory from every point of view. \$1.00 each.

THE SUN S. C. (Dudley-Ruschmore)—A large sunburst flower of bright, glowing sunlight yellow. Withstands dry weather and pests. Form similar to Edna Ferber. A 1932 Honor Roll Dahlia \$5.00 each, Plants, \$2.50.

WASHINGTON CITY S. C.—An immense white flower that has few if any equals. Flowers eight to nine inches, of purest white. Stems long and erect. 40c each.

WINTER'S WHITE S. C. (Winter)—Pure white. Large flowers on good stems on a bush that grows 6 to 7 feet tall. Good cut flower. 40c ea.

YOSEMITE S. C. (Redfern)—Large artistic flowers of amaranth pink grown on very long stems. A prolific bloomer makes it very desirable as a garden and cut flower variety. \$1.50 each. Plants, 75c.

Peony and Duplex Dahlias

PEONY DAHLIAS. Open-centered flowers with not more than THREE rows of ray florets regardless of form or number of florets, with the addition of smaller curled or twisted floral rays around the disc.

DUPLEX DAHLIAS. Open-centered flowers with only two rows of ray florets regardless of form or number of florets.

Abbreviated "P" and "Dup."

Quotations of all Peony Roots are for strong field grown divisions, each with one or more eyes, guaranteed to grow, and each Root labeled.

BILLIONAIRE P.—Color, pure gold, a wonderful variety in color, form, size and plant. A gigantic flower desired by every one who sees it. One of the most satisfactory peony Dahlias for garden or for exhibition. 40c each, 3 for \$1.00.

CATO (Dup) (Kendal)—Color, silvery pink shading gold. Tall, free flowering, very showy, and very popular in our gardens. 35c each.

CLEOPATRA (Dup)—Showy red and gold, very beautiful. Good plant, good size. Early and free flowering. 35c each, 3 for 90c.

GORGEOUS (Dup)—Well named, as it is certainly a gorgeous flower. Color, a bright yellow and scarlet blended in a most beautiful manner. Plants, profuse, blooming freely, holding its enormous blooms well out on long, bare, cane-like stems; a stunner. 40c ea., 3 for \$1.00.

HAMPTON COURT P.—One of the best. A bold flower, of a bright mauve pink. Grows tall, bushes well with long stems, and a free bloomer. 35c each, 3 for 90c.

HOR FI (Dup)—Combination of red-gold and Creamy white shades on a tall growing plant that does well wherever planted. Free flowering. 30c each, 4 for \$1.00.

IDA MAY CARLTON (Dup) (Winter)—Tyrian pink and white. Tall, hardy plant, fine stem, striking flower. 35c ea., 3 for 90c, 1 doz. \$2.50.

KENDAL FRAGRANCE P. (Kendal)—(See page 3.)

KENDAL GOLD P. (Kendal)—(See page 3.)

LADY BOUNTIFUL Pae (Schuster)—Here is an ideal salmon pink and gold bloom that grows on a tall, huge, wide spreading plant covered with gorgeous flowers on good long stems. First flowers are often full centered decoratives. Wonderful cut flowers... 40c each.

MME. AUBREY P.—A beautiful rich, deep mauve pink; outer petals are broad and flat, the center petals are quilled and rolled toward the center. A distinct and desirable novelty in true peony form, attracted much attention in our gardens last year. 40c each, 3 for \$1.00.

MME. COISSARD (Dup)—Brilliant French purple or carmine crimson, freely marked, shaded and suffused with white; a most artistic, graceful Dahlia. Its flowers are largely composed of in-

curving shell like petals. A good grower and a free bloomer. 35c each, 3 for 90c.

NIFTY (Dup) (Kendal)—American Beauty red with silver shadings, giving it a two-tone effect. Plant is of medium height, standing very erect with 15 to 18 inch laterals covered with beautiful bloom until frost. Vigorous and thrifty. 25c each, 3 for 65c.

POINSETTA (Dup) (Kendal)—One of our seedlings which grows easily 8 feet tall, branches well with long laterals, producing a number of 6 and 7 inch flowers whose color is a striking and spectacular scarlet with gold blushes. A free, early, and continuous bloomer. 50c each.

POLARIS P.—A tall growing white, producing many flowers on a vigorous growing plant of 4 to 5 feet tall with good stiff stems. A good cut flower. 35c each.

PRISCILLA P.—An American Beauty red, suffused with purple and silver shadings, giving it a triple tone effect. Plant is semi-dwarf, branches well and is a mass of bloom throughout the season. Its height and beautiful foliage makes it a good hedge. 30c each, 3 for 75c.

PRIDE OF WINTERHAVEN P. (Winter)—Coral pink, old gold and yellow. Free and early bloomer. While making a nice cut flower it is exceedingly showy in the garden with its bright autumn colors. 35c each, 3 for 90c, 12 for \$2.50.

ROSALIE STYLES P. (Peacock)—A bright Tyrian pink, tipped lighter reflex pink. Beautiful form, immense size, stiff stems. A strong, vigorous, sturdy plant, a free and continuous bloomer, strong grower, medium height, it branches and produces its giant flowers freely on long, cane like stems, making it valuable as a superb cut flower variety. 40c each, 3 for \$1.00.

SAN JOSE P. (Ballay)—Purplish crimson or bright reddish cerise, a spectacular flower. Many of its blooms are a foot across. Broad petals combined with the most numerous small circling petals around the pollinated full center complete a flower of the most perfect type of peony Dahlia. 75c each, 3 for \$2.00.

THE U. S. A. P.—A lovely flower of vivid orange on fair stems of good formation, often being hybrid in type. 50c each, 3 for \$1.35.

Ball Dahlias

BALL DAHLIAS. Fully double flowers, ball shape or slightly flattened, floral rays in spiral arrangement, blunt or rounded at tips and quilled or with markedly involute margins, two inches or more in diameter. Sometimes called "Show" Dahlias.

Abbreviated "B"

Quotations of all Ball Roots are for strong field grown divisions, each with one or more good eyes, guaranteed to grow, and each Root labeled.

A. D. LIVONI—Soft, clear pink; good vigorous plant, good stems. One of our oldest Dahlias and still a great favorite. 25c each, 3 for 65c.

AMERICAN BEAUTY—One of the very best of this type, a brilliant crimson red with French purple suffusions, a rich glowing color, 30c ea., 3 for 75c.

CUBAN GIANT—Very large ball shaped flowers of a bright maroon. Tall vigorous plants, bushing well; flowers held erect on long, straight, stiff stems. A favorite in our garden, 30c each, 3 for 75c.

DEELIGHTED B.—A novelty of the ball type pro-

ducing medium sized white flowers with an oblong opening at the center. Petals making the opening produce a miniature teethlike effect as indicated by a cartoonist showing one of our popular former presidents saying the word "delighted" Price 25c each.

D. M. MOORE—Deep dark, almost black, maroon ball dahlia with a silky sheen. Very striking and a wonderful novelty. 25c each.

DREER'S PINK B.—A plant growing about 3 feet high, bushing well, producing a profusion of honey-combed petaled pink flowers. A popular cut flower variety. 25c each.

KENDALIA GARDENS, INC. — Sandusky, Ohio

BALL DAHLIAS—*Continued*

DREER'S WHITE—A pure glistening white; large ball shaped flowers with closely quilled petals. These in a cut flower bouquet add lustre to all the colors of the other flowers and make its own white seem whiter. Easily grown; free and early flowering. 25c each, 3 for 65c.

DREER'S YELLOW—One of the best yellow show Dahlias. A good grower, early and profuse bloomer. In general form and make up it resembles Dreer's white, but larger, 30c each, 3 for 75c.

ELDORADO BALL—A golden yellow flower on a plant of medium height branching well and flowering freely. Stands heat, drought and insects. A good root maker. 25c each, 3 for 65c.

JAY SEE DEE—Beautiful soft reddish violet, striped and speckled with rich scarlet. A winner at the shows when disbudded for long stems. 25c each.

JERSEY BEACON BALL—(Peacock.) A large wonderful orange-scarlet ball form of Jersey Beacon. A profuse bloomer with good stems, making it ideal for cut flower and garden purposes. Each, 75c.

LOLO DEFERIS (Winter)—An extra fine vigorous growing Dahlia producing a profusion of very dark velvety flowers. Good stems, good foliage, and a good keeper. 25c ea., 5 for \$1.00.

MAUDE ADAMS—For forty years Maude Adams has been a model flower of the show or ball type. Clear, pure white, very effectively overlaid with a blush of clear, delicate pink. Its good sized plant, covered with a mass of bloom from early until late in the season, makes it still a favorite. 25c each, 3 for 65c.

MISS HELEN HOLLIS—A rich, deep, heavily quilled red dahlia, which sets well above the healthy dark green foliage of a tall rugged plant. One of the favorites. 25c each.

MRS. DEXTER—One of the show or ball type, with autumn colors, the bloom being a fine tan color. A good grower, free bloomer, showing up well in the garden or in the vase. 25c each, 3 for 65c.

RED HUSSAR—Clear cardinal red, one of the freest flowering Dahlias, always in bloom. 25c each, 3 for 65c.

SNOW BALL—A pure white Dahlia ideal as a cutting variety. Stems long and rigid. Flowers keep well after cutting. An early and profuse bloomer. 25c each, 3 for 65c.

STORM KING—Pure white medium-sized blooms, produced on a strong growing plant. Good cut flower variety. 25c each.

STRADELLA—Large beautiful deep purplish crimson, rounded and full. An attractive garden and cut flower variety. 25c each, 3 for 65c.

VIVIAN—Clear white heavily tipped or edged rose violet. A novelty with good qualities of growth, bloom and stem 30c each, 3 for 75c.

WHITE SWAN B.—A good cut flower, white Dahlia of the ball type. Blooms are 4 to 5 in. in diameter and freely produced on good stems. Very popular in our own gardens among many which are many times larger. 25c ea., 3 for 65c.

YELLOW DUKE—A good well-formed yellow Dahlia growing on a tall plant with long stems. Valuable for cutting. Disease and insect resistant. 25c each, 3 for 65c.

Pompom Dahlias

POMPOM DAHLIAS. Having some characteristics as Ball Dahlias but less than two inches in diameter.

Abbreviated "POM"

Quotations on all Pompom Roots are for strong field grown divisions, each with one or more good eyes, guaranteed to grow, and each Root labeled.

AIMEE—A very small pompom Dahlia of coral pink. Good stems and a free bloomer. 25c ea., 3 for 65c.

AMBER QUEEN—A rich amber shaded apricot. A distinct, attractive variety and one of the most popular pompoms grown. Its beautiful color, perfect form and long, straight stems make it very desirable. 25c each, 3 for 65c.

AMBER RED TIP (Kendal)—Name describes the color of this dainty little free flowering dahlia. Have sold hundreds in our gardens where it is quite popular. 25c each, 3 for 65c.

BELLE OF SPRINGFIELD—Color, bright red, very small and dainty. Greatly admired. 30c each, 3 for 75c.

BIT O' LILAC Pom (Kendal)—A sturdy growing plant producing a profusion of lilac blooms about 1¼ inches in diameter. Very free flowering. 25c each.

BRONZE BEAUTY—A small well-formed plant of rich golden bronze. Blooms freely on a good plant. 25c each, 3 for 65c.

CATHERINE—A well formed primrose yellow; is a sturdy grower, sending out its branches at regular intervals to form clusters of beautiful flowers especially adapted to table decoration. At one stage in its growth it resembles a miniature Chinese pagoda. 25c each, 3 for 65c.

DAISY—Color, amber and salmon. A neat and constant variety blooming profusely on compact plants. 30c each, 3 for 75c.

DARKNESS—Color, very dark maroon, almost black. A model flower in every respect and is especially desirable to mix with lighter colors; plants of good habit with blooms erect on long bare stems. 35c each, 3 for \$1.00.

DARKSOME—A popular dark-red or maroon

flower. Blooming freely on good plants. 35c each, 3 for 90c.

DEE DEE—Lilac lavender, very dainty and small. Early and free blooming. 25c each, 3 for 65c.

DR. HIRSCHBRUN—Beautiful, pleasing, soft lilac-rose. Blooming freely, 35c each, 3 for 90c.

GOLDEN QUEEN—A very good yellow pompom exceedingly tight and compact. The flower is borne on good stems and is an exceptionally free bloomer. A little larger than the average pompom. Color, the purest golden yellow imaginable. Very popular. 25c each, 3 for 65c.

GRETCHEN HEINE—Rose tinted white, each petal tipped crimson-carmine. 25c each, 3 for 65c.

IRENE—An old rose miniature of exquisite beauty and unusual appeal. A magnificent cut flower. 30c each.

JESSICA—Color, amber yellow, edged and tipped with red. One of the most popular of this class, and about the freest bloomer. Very attractive. 25c each, 3 for 65c.

JOHNNIE—A deep dark-red. Tiniest of all and none more perfect in form. A favorite with men for button-hole bouquets. 25c each, 3 for 65c.

KENDAL CREAM PUFF (Kendal)—A rich creamy yellow fluffy flower aptly describes it and suggested its name. A vigorous medium sized plant producing flowers on good stems and keeps well when cut. You'll like it. 30c each, 3 for 75c.

KLEINE DOMITEA—Pretty orange buff dahlia. Profuse bloomer on good stems makes it a favorite for table decorations. 25c each, 3 for 65c.

LITTLE BEAUTY—A small extra fine pink ball variety, fine for cutting. A model flower with closely quilled petals. 25c each, 3 for 65c.

POMPOM DAHLIAS—*Continued*

LITTLE BOBBY—A very attractive, free and continuous blooming pompom of rich plum color. With others, it assists in bringing out autumn colors. 25c each, 3 for 65c.

LITTLE DOROTHY Pom—Color is a creamy yellow splotted white, hardly any two blooms alike. A good vigorous grower producing very small dainty flowers with long stems making it fine for vase work. 25c each.

LITTLE HERMAN—Deep maroon tipped white. A very showy little flower. 25c each, 3 for 65c.

LITTLE JEWEL—A clear peach blossom, pink color, decorative with flowers averaging from one and one-half to two inches on good plants which send out flowers in profusion. Probably the best and prettiest pompom on the market today. 35c each, 3 for 90c.

MADLINE—Pale primrose edged with rosy purple, sometimes white or cream with pink tips, the leading pompom of this color. Long stems and a very fine cut flower variety. 25c each, 3 for 65c.

NERISSA—A perfect model pompom of a most beautiful shade of pink that appeals to everyone. Blooms very freely on good stems, always in demand. 35c each, 3 for 90c.

PEYTIE CONWAY Min-Dec (Eastman)—Violet rose with tiny, silver tips. 1934 Honor Roll. Perfect form and color. All purpose plant 5½ feet tall. Took "BEST" prizes at New York, Baltimore and two "Bests" at Bryn Mawr. Bantam weight champion of 1934. Originator says, hundreds of tiny blooms on a huge plant that grows 5½ feet tall. \$2.00 each.

ROSE WILMOUTH — Rose pink blooms, free

blooming on good vigorous plant. Good stems and good cut flowers. 25c each.

SAN TOY—White tipped with carmine, producing its beautiful bloom profusely on a large plant. Is probably the tallest growing pom. Very beautiful and very desirable. 25c each, 3 for 65c.

SNOWCLAD—A pure white pompom Dahlia with petals of exquisite texture; free bloomer, good keeper. 25c each, 3 for 65c.

SUNBEAM—A brilliant crimson scarlet; free bloomer excellent for cutting. Very showy. 25c each, 3 for 65c.

SUNGLOW (Kendal)—A golden sunshine glow on a well formed flower of about one inch. Plant grows about 18 to 24 inches high and is a mass of blooms. Brilliant as the sun's glow. 30c ea., 3 for 75c.

SUNSET—Orange scarlet on a vigorous growing bush of medium height, sending out good long stems covered with blooms. A rich orange yellow with bronzy orange centers. About one inch in diameter, very showy on good stems. 25c each, 3 for 65c.

TOM THUMB—Color, garnet red. One of the finest perfectly formed dahlias in the smallest class. 30c each, 3 for 75c.

YELLOW GEM—Very perfect yellow little flower blooming early and freely on good stems. 25c each, 3 for 65c.

One each of the above named pompoms except Peytie Conway, 34 in all \$6.50.

We have several other pompoms which were originated in our own gardens, but which we have not yet named, in many colors. We will be glad to send a collection of one dozen of these assorted colors for \$2.00.

Single Dahlias

SINGLE DAHLIAS. Open-centered flowers with only one row of ray florets regardless of form or number of florets.

Abbreviated "S"

Quotations of all Single Dahlia Roots for strong field grown divisions, each with one or more good eyes, guaranteed to grow, each Root labelled.

The following Single Dahlias are all vigorous plants of good stems, and plants and flowers are of good substance. While not as showy as some of the more double varieties, they attract a great deal of attention, and are to be found in many gardens. They seed easily, and when placed near double Dahlias their seed often produces fine, large double flowers.

CREAM CENTURY (Winter)—Large cream colored. 25c each, 3 for 65c.

PAISLEY (Kendal)—(See page 3.)

POINSETTA CENTURY (Kendal)—Large scarlet petals, pointed like a Poinsetta, gives this Dahlia its name. It attains a size of 6 to 7 inches in diameter, blooms freely on a good sized disease and insect resisting plant. 35c each, 3 for 90c.

PRAXATELLA (Winter)—Maroon and white. 25c each, 3 for 65c.

ROMANTIC (Winter)—Brilliant scarlet with golden disc. Very large. 25c each, 3 for 65c.

SCARLET CENTURY—A very good large single, scarlet Dahlia, similar in color to Romantic, but

not so good. 25c each, 3 for 65c.

SNOWFLAKE—Pure white, blooming freely on good stems, on a sturdy plant. 25c ea., 3 for 65c.

SUNSET CENTURY—Color, golden yellow shading crimson. Tall grower and free bloomer. 25c each, 3 for 65c.

TANGO CENTURY—Color, orange and yellow on a tall thrifty plant. Good bloomer. 30c each, 3 for 75c.

TRYMORE S.—This is the name we have given to good seedlings in assorted colors which we do not intend to name or produce. 3 for 50c.

ONE ROOT, ea., of the above 10 varieties, \$2.00.

Collarette Dahlias

COLLARETTE DAHLIAS. Open centered flowers with only one row of ray florets with the addition of one or more rows of petaloids, usually of a different color, forming a collar around the disc.

Abbreviated "Coll"

ACHIEVEMENT—Velvety maroon with white collar. 25c each, 3 for 65c.

MME. GYGAX—Bright cochineal red, primrose yellow collar. 30c each, 3 for 75c.

MAURICE REVOIRE—Crimson with white collar, a French Collarette. 25c each, 3 for 65c.

NEGRO—A red and white Collarette with blue roots. 25c each, 3 for 65c.

ROSETTE—Giant size, velvety cerise, suffused white with white collar. 25c each, 3 for 65c.

TIGER (Winter)—A very fine Collarette of bright scarlet with yellow golden collar. Free flowering and longest stems. Outstanding in all its habits. 25c each, 3 for 65c.

ONE EACH, of the six Collarettes named above, \$1.00.

KENDAL DAHLIA GARDENS, — Sandusky, Ohio

Anemone Dahlias

ANEMONE DAHLIAS. Flowers with one row of large floral rays, like the singles, but with each disc floret producing small, tubular petals.

Abbreviated "Ane"

ADA FINICH (Wouters)—Creamy white flower with small quilled petals, same color over entire center. Fine for bedding and border. Free, early and a profuse bloomer. 50c each.

GELRIA—Lemon Chrome petals at base shading to amaranth pink at center and mallow purple at tips with lemon shading to chrome, cushion splashed old-rose. 50c each.

DON'T FORGET — *New Deal Offer!*

As an inducement for your order in 1935, if your order amounts to \$3.00 or more you may select in addition to your order, when accompanied by cash, dahlias from our catalog to the amount of 20 per cent of the original order. For instance, with a \$5.00 order, select \$1.00 extra; with a \$25.00 order, select \$5.00 worth and so on. These will be sent to you free postpaid. No extra or free Roots on collections as they are priced at a great reduction already.

NEW CUSTOMERS AND OLD

We have two wonderful garden, cut flower and exhibition Dahlias that should be in every garden—Rose Fallon a giant old gold Decorative and Shirley E. Shattuck a giant lavender, both growing and blooming well under most any conditions, weather or soil. Any new customer may include these two Dahlias in their order at 75c for both, and if your order amounts to \$2.00 you may add these two for 50c. Old customers whom we appreciate, may do the same.

\$1.50 "SURPLUS DAHLIAS" COLLECTION

At planting time we usually have a surplus of some Standard Varieties more than we desire to plant. We offer from this surplus, our selection, Catalog value not less than \$3.00 to \$4.00.

12 DAHLIAS. Assorted Types and Colors, six or more Varieties. First Class Roots, unlabelled. Postpaid—\$1.50.

If you want nice flowers and are not interested in names, buy this Collection.

"KENDAL INTRODUCTORY"

Dahlia Collection

Your selection of any ten Dahlias in this catalog listed at 50 cents each.

No. 10 One each (value \$5.00)\$ 3.50

No. 11 Three each (value \$15.00)\$10.00

Postpaid—Each one labelled

NOTICE — Ohio Customers Only!

To comply with the New Ohio Sales Tax now in effect, retail purchasers from the catalog will please add 3 cents for each dollar of your purchase and fractional parts of a dollar over 70 cents; add 2 cents if the odd amount of cents is 41 cents and not more than 70 cents and add 1 cent if the odd amount of cents is 9 cents and not more than 40 cents.

The Sales Tax Applies Only to Retail Purchases.

Peoria, Ill., Nov. 4, 1934

*****"I had this tall five strong bushes Mrs. I de Ver Warner with dozens of gorgeous blooms. So many people wanted to touch them, as I had them in vases, to see if they were artificial. They were so perfect and large. Bertha Horn also did well and Adaline Winter is a lovely red."*****

—O—

Corning, N. Y., Oct. 20, 1934

"The Dahlias I ordered from you in the spring grew very good. Everyone that saw them thought they were wonderful especially Mrs. I de Ver Warner, Kendal Gold and Maude Adams. There were two that did not grow. They were Achievement and Jersey Beacon."

* We are replacing Achievement and Jersey Beacon. K. D. G.

—O—

Monticello, Ind., Aug. 7, 1934

*****"Two of the Dahlias didn't come up and the other two are doing fine. Thomas Edison and Francis Larocco* are the ones that didn't come up and Jean Kerr and Priscilla are the other two that are ready to burst into bloom. Would like to know if you rep'ace the ones that didn't come up.

* We will replace Thomas Edison and Francis Larocco. K. D. G.

KENDAHLIA GARDENS, INC. — Sandusky, Ohio

Helpful Hints in Cultivating Dahlias

KENDALIA GARDENS, INC.
SANDUSKY, OHIO

DAHLIAS are easily grown, requiring no special soil, treatment or skill to bring them to perfection. Dahlias are really an Autumn flower and should not be planted too early. For the best fall flowers they should be planted the first to the fifteenth of June. This is true for the southern and south central states, as well as for the northern states.

They are remarkably free from disease and have few special enemies.

Plant in sunny location, although they will do nicely in partial shade. They grow taller when shaded.

Prepare the soil by deep spading; if soil is sandy a shovel full of well rotted manure may be incorporated with it; if otherwise use little, if any, fertilizer before plants begin to bud. Add sand or coal ashes to heavy soil or clay mixing it in thoroughly.

Drive a stake at edge of each hole to support the plant. Lay root down flat with eye upward and next to stake, about six inches deep, and cover two inches with pulverized soil, gradually filling to level as plant progresses. Plant two to three feet apart each way. With exhibition varieties a foot farther apart will be better. When plant gets tall tie it to a stake with coarse cord or strips of cloth.

As soon as plants are large enough, pinch out the top bud just above the third or fourth set of leaves. This causes the plant to branch, so that it will not grow so tall. If you do this, stakes will not be necessary.

Cultivate well until buds appear, then stop all cultivation except light raking after each rain or watering, just enough to break the crust of ground; only be sure to do this. Clay soil requires more cultivation.

When buds appear spread manure or some good potato fertilizer around the plant and mix slightly in the soil, but do not place the fertilizer against the plant or roots, keeping it 6 to 12 inches away. The roots will hunt and find it.

In case a perfectly good root with a good eye refuses to sprout dig up the root and soak for 24 hours in fresh water; this usually will cause it to sprout in a reasonable time after replanting. If it then refuses, return it to the shipper.

Unless weather is very dry and hot, do not begin watering until buds appear, then soak the ground thoroughly (not sprinkle), about once a week or ten days. Cut off all faded flowers with as much of the stalk as you can.

For extra large blooms disbud by pinching off all buds in a cluster except the strongest one. The more laterals or "Suckers" you take off the longer the stems and the fewer the flowers and larger.

For cut flowers pick in the evening or early morning if possible; burn the ends of stems in any flame, or dip in boiling water for ten seconds; after either treatment place in cold water and put in cool place free from draft until wanted.

When frosted down in Autumn, cut stalks off at the ground and dig carefully so as not to break neck of roots, for the eyes for next season's growth are only found where the root joins the stalk. Place the dahlia in box and cover with sand and newspaper, so that the air does not reach the bulbs and dry them out, then place in coolest part of the cellar. Protect from freezing, too much moisture or too much heat. Forty to fifty degrees is a good temperature.

In the spring, when the eyes show plainly, divide the roots, being careful that each root has an eye. Then cover them up again and keep dry until planted. Do not plant the whole clump in one hill, as it will produce too many stalks and your plant is better with not more than one or two good eyes, which will produce better plants and flowers than if you plant a whole clump which produces ten to twelve stalks, none of which will mature or bloom satisfactorily on account of lack of air, circulation and food. If you are growing dahlias satisfactorily continue your present methods. If not follow the above instructions and your dahlias should do well for you.

A more complete printed instruction sheet on "How to Grow Dahlias" will be enclosed with each order of dahlias sent out or a copy of these instructions may be had upon request.

Kendal Dahlias Grow Anywhere

Growing Dahlias from Seed

DAHLIAS are easily started and grown from seed as tomatoes, cabbage or pepper, with bloom in the first season and will make as large bushes and produce as many flowers as if grown from roots. They will, at the same time, produce roots that will give you, almost invariably, the same kind of flower as the plant gave the preceding year. Roots will invariably produce the same kind of plant and flowers as produced the root; however, this is not true of seed. Seed will produce seedling Dahlias which will be entirely different varieties, and while some may resemble the parent plant, it will always be different, and in many cases the plants, foliage and flower from the seed will be so different as to have no resemblance whatever to the parent. This is because the Dahlia has been so highly developed through a long period of years from a tropical and semi-tropical plant to a plant that now produces more beautiful flowers in the north temperature zone than its original ancestors did when it was first found growing wild in Mexico and also due to the fact that the pollen from one flower is naturally dis-

KENDAL DAHLIA GARDENS, — Sandusky, Ohio

tributed over many others, resulting in a natural crossing of varieties, giving new seed an inheritance of some of the characteristics and habits of all that has gone before in its parent plants.

However, it is just this uncertainty that makes the growing of Dahlias from seeds so interesting and there is always the possibility of developing a new variety which will be superior to any we have as yet discovered. Many new varieties are produced from seed each year that are well worth while and there is considerable pleasure in discovering them. In the bulletin issued by the many Dahlia Societies and in the magazines devoted to flower culture, there is much argument and discussion about whether better Dahlia seedlings come from seed that are artificially, or hand crossed, or whether the best seedlings come from seed which are grown where the crossing or pollenization is produced naturally by the pollen being carried from one flower to another by the wind, bees, butterflies, or other insects, and the discussion still rages.

We take some seed by experimenting with hand crossing or pollenization between flowers we like, trying to produce the best characteristics of both in the seed, and we take some seed from our best flowers, relying upon the natural crossing and pollenization by the wind, bees, etc.; and while the artificial crossing is interesting, we find where we exercise great care in the selection of the parent plants, which we believe is the great essential in producing the best seed, that the result from natural crossing is entirely satisfactory, and, where we have selected our own seed, and where we have bought seed from reliable growers produced naturally, we find that those results are entirely satisfactory. While we will continue to experiment with artificial crossing, getting a great deal of satisfaction out of the experiment, we will continue to rely upon seed produced through natural crossing as well.

The seed which we offer for distribution is either grown by ourselves and selected carefully or seed grown for us by reliable growers in whom we have the greatest confidence. We plant from both of the varieties of Dahlia seed we offer. It is hard to tell which gives the best results. We find them both satisfactory. No experiment with the flowers in your garden will give you more agreeable surprises or pleasure than your Dahlia from seed. Try them in 1935.

Instructions for Planting Dahlia Seed

DAHLIA seed should be planted in shallow boxes which have been filled three-quarters full of sandy leaf mould or any good garden soil, just like you use for sowing cabbage or tomato seed, in March or April, preferably for this latitude. Smooth the surface of the soil over with a smooth board. Then place the seed about an inch apart each way or place the seed in little furrows about 1½ to 2 inches apart in the earth made by passing the sharp edge of a ruler or other similar tool on the surface and cover seed with an eighth to a quarter of an inch of sharp sand and earth equally mixed, just as you would cabbage or tomato seed. Place the seeds in a warm, moist place indoors and see that the soil is not permitted to become dry. Do not place outside unless you are in a frostless belt.

To preserve moisture, glass may be put over the boxes or flats, but if the sun shines on them, they should be protected from the sun by a single sheet of paper over the glass, otherwise too great a heat will develop between the glass and the soil and your plants will dry up. Remove the paper at night or in dark weather. Some seed will sprout in four or five days, some in ten days and they will continue to sprout for two months. Many say the slow sprouting seeds produce the finest and best Dahlias.

When the seeds are up and about one inch high, take them out and transplant them either to another box or flat, spaced three or four inches apart, or put them into three inch pots. Do this without interfering with the other seeds by using a sharp, pointed stick, driving it down into the soil next to each seedling and lift same up. In the pots they can be kept growing slowly until ready to go in the open, and when planted in the open they should be planted about one and one-half feet apart, allowing two or three feet between the rows. Transplant to the open garden only when danger of frost is over.

When transplanting to the open ground, set the plant so that it will be one and one-half to two inches lower than it was in the pot or flat, then cultivate the same as you cultivate other Dahlias, but do not stake and do not disbud. This will enable you to observe the habits of the plant under natural conditions. Those plants which do not show themselves with merit should be immediately chopped out and this will give plenty of room for the plants which are worth while.

If these instructions are followed, practically all your seeds will make large plants that will produce a profusion of blooms the first year. They will make good clumps of roots which should be lifted after the plants are cut down by frost. Mark each clump with a number and write a description of its habits of growth, flowering, stem, colors, size and variety for future reference. Do not hesitate to discard any Dahlia not worthwhile. Store the clump, from seed in a dry frost-proof ventilated cellar and after marking it is a good plan the first year to wrap the new clumps you decide to keep in newspapers and store in boxes. If your roots produce true three years without reverting or changing your new Dahlia will likely continue to prove satisfactory. For prices see bottom inside back cover.

—O—

Assurance, W. Va., Oct. 4, 1934
****"Buckeye Bride and F. W. Fellows are both wonderful. My Dahlias are beautiful this fall. My White Wonder is most excellent."

—O—

Obion, Tenn., Nov. 13, 1934
"I want to tell you about the beautiful Dahlias I grew from your bulbs. The Cocheagan was an immense thing. I cut Dahlias that measured twelve inches. The Kitty Dunlap was beautiful but not so large. They sure were fine. We were delighted with them."****

KENDAHLIA GARDENS, INC. — Sandusky, Ohio

ROOTS, HOW MANY	NAME OF DAHLIA	PRICE EACH		TOTAL	
	Forward from first page				
	TOTAL				

When ordering, write the names and addresses of a few of your friends who you think would be interested in this catalogue. We will remember you with an extra dahlia root, our selection, for your kindness.

NAME

ADDRESS

ROOTS, HOW MANY	NAME OF DAHLIA	PRICE EACH		TOTAL	
	Forward from first page				
	TOTAL				

When ordering, write the names and addresses of a few of your friends who you think would be interested in this catalogue. We will remember you with an extra dahlia root, our selection, for your kindness.

NAME

ADDRESS



SECTION SHOWING OUR SEEDLING PATCH
 NO OTHER SECTION OF OUR GARDENS IS MORE INTERESTING OR
 INSTRUCTIVE THAN OUR SEEDLING SECTION.

DAHLIA SEED

We are offering three varieties of dahlia seed. The count in all our packages will over run so that you will be sure to get the number of plants your package calls for in seed. Try them.

HAND POLLENIZED SEEDS FROM FINEST PARENTS

The hand pollenized seed which we offer have been produced by one of California's outstanding hybridizers. He used the finest parents for his hand pollenized seed and we feel perfectly free to recommend these for best results. Our customers growing these seed can feel that they will get something especially good. Package of 25 seeds, \$2.50. 50 seeds, \$4.75 100 seeds, \$8.50.

DECORATIVE MINIATURE DAHLIA SEED—Miniature dahlia seed are now becoming very popular with individuals and are taking quite a place in the Dahlia Shows. We have some miniature dahlia seeds produced by the same grower as are hand pollenized seed. Try them if you like the little fellows. Package of 25 seeds, \$1.00.

XX SELECTED MIXED—This seed is gathered from the finer and better decorative, cactus and peony types and then mixed. Particular care has been given in the selection of parent varieties in order to get the best results possible. Seeds are taken only from those flowers which are the largest, the most desirable color and the best stems. After the seed is selected it is mixed. This seed is either our own seed or is grown for us by responsible and reliable growers and will produce a large number of very fine specimens. Some of our best reports come from our XX Selected Mixed Seed. Package of 30 seeds, \$1.00; 100 seeds, \$3.00.

SEEDLING SEED—Gathered from the best types of dahlias in the Seeding Section of our Gardens. These should give a good account of themselves. Package of 40 seeds, \$1.00; 100 seeds, \$2.00.

XX SPECIAL MIXED—This seed was gathered from a selected list of decorative and cactus dahlias noted for their outstanding colors and characteristics and mixed in approximately equal quantities of seed from such parents as Elite Glory, Eagle Rock Beauty, Cigarette, Margaret, Woodrow Wilson, F. T. D., Robert Scott, Trentonian, Sagamore, Bashful Giant, Mrs. I. De Ver Warner, Faith Garibaldi, Emma Marie, Jersey's Ideal, Jersey's Beacon, Jersey's Mammoth, Judge Marean, Wizard of Oz, Jersey's Beauty, Daddy Butler, Roman Eagle, Altamont, Gladys Sherwood, The Grizzly, Amun Ra, Rookwood, Alice Whittier, Mrs. Ethel F. T. Smith, Judge Marean and others of equal or superior merit. We consider this one of the finest mixtures possible for good results.

Package of 25 seeds, \$1.00; 100 seeds, \$3.50.

DAHLIA SEED MAY BE SOWN AS LATE AS APRIL 20th FOR FLOWERS
 AND ROOTS FIRST YEAR

INVITATION TO CEDAR POINT

We desire to call the attention of our customers and friends to the announcement on the back cover of this catalog telling you of the wonderful recreational and convention and tourist facilities of Cedar Point, one of America's greatest summer resorts. Here at Cedar Point you will find bathing, boating, fishing, with fine living conditions, amidst wonderful natural surroundings. We join the Cedar Point Company in asking you to visit this wonderful summering place either for a day, a week or a season. It will be a pleasure to have you spend some time with them, and we want you to visit our Gardens, of course, while here.

Write to them for a beautiful Pictorial Folder and tell them you saw their add in Kendal Dahlia Catalog.

C. W. STUART, Pres.



CEDAR POINT

---on LAKE ERIE

QUEEN OF AMERICAN WATERING PLACES
THE FINEST BATHING BEACH IN THE WORLD
LARGEST HOTELS ON THE GREAT LAKES

Ideal Location for Conventions, Picnics and Week-End Gatherings

HOTEL RATES AS LOW AS \$2.00

All Modern Amusements and Attractions
Beautiful Airy Dining Rooms and Cafeterias Facing Lake Erie
The Finest Food at Moderate Prices

Opens Middle of June--Closes Labor Day

Located on Ohio Route No. 2; U. S. Route No. 6

ALSO REACHED BY ALL RAILROADS, INTERURBANS AND LAKE STEAMERS FROM
CLEVELAND AND DETROIT

For Further Information Address:—THE G. A. BOECKLING COMPANY,
Cedar Point, Sandusky, Ohio

