

RECEIVED  
12 AUG 1950  
LIBRARY

GENERAL HEADQUARTERS, FAR EAST COM, AND  
ADJUTANT GENERAL'S OFFICE  
RADIO AND CABLE CENTER

# INCOMING MESSAGE

*Secret*  
ROUTINE

G-4 ROUTING	
EXECUTIVE	<i>[initials]</i>
OPERATIONS	<i>JA/jlp</i>
CONST & FAC	
SUPPLY	<i>30 Jul 50</i>
PETROLEUM	
ADMINISTRATION	<i>[initials]</i>

*370, 21 UN*

FROM : CNO  
TO : COMNAVFE  
INFO : CINCFE, CINCPACFLT, COM 7TH FLT  
NR : 281448 Z

Offer of the French Govt to place French Frigate La Grandiere under OP control CINCFE for employment in Korean operations has been accepted. Ship departed Saigon 22 Jul ETA Sasebo 29 Jul. French Ministry of Marine will direct ship to report CINCFE for operational control on or before arrival.

NO SIG

INFORMATION : COMMANDER IN CHIEF, CHIEF OF STAFF, G-1, G-2, G-3, ~~G-4~~, AG, JSPOG, SIGNAL

NOTE : This msg recd direct from COMNAVFE via Courier.

16349

ROUTINE

TOO : 281448 Z  
MCN : NONE

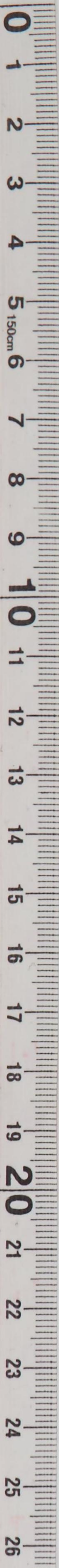
*Secret*  
CONSULT CRYPTO CENTER BEFORE DECLASSIFYING

44

Inclosure No. 1

Paraphrase not required. Handle as correspondence of classification carried hereon per paragraphs 17a(1)(2) and 4lc(2)(3) and g(1), AR 380-5, 15 November 1949.

COPY No.



GENERAL HEADQUARTERS FOR THE SOUTH PACIFIC  
COMMUNICATIONS CENTER  
P.O. BOX 243  
HONOLULU, HAWAII

INCOMING MESSAGE

*[Faint, illegible handwritten text]*

THE FOLLOWING MESSAGE WAS RECEIVED FROM THE

OFFICE OF THE CHIEF OF STAFF, U.S. AIR FORCE, WASHINGTON, D.C. ON JULY 31, 1950 AT 10:00 AM. THE MESSAGE WAS RECEIVED FROM THE

OFFICE OF THE CHIEF OF STAFF, U.S. AIR FORCE, WASHINGTON, D.C. ON JULY 31, 1950 AT 10:00 AM. THE MESSAGE WAS RECEIVED FROM THE

OFFICE OF THE CHIEF OF STAFF, U.S. AIR FORCE, WASHINGTON, D.C. ON JULY 31, 1950 AT 10:00 AM. THE MESSAGE WAS RECEIVED FROM THE

RECEIVED  
31 JUL 1950

GENERAL HEADQUARTERS, FAR EAST COMMAND  
ADJUTANT GENERAL'S OFFICE  
RADIO AND CABLE CENTER

# INCOMING MESSAGE

*Secret*  
ROUTINE

- 4 ROUTING	
C/S G-4	<input checked="" type="checkbox"/>
AC/S G-4	<input checked="" type="checkbox"/>
JA/cem	<input checked="" type="checkbox"/>
OPERATIONS	<input checked="" type="checkbox"/>
CONST & FAC	<input checked="" type="checkbox"/>
29 Jul 50	<input checked="" type="checkbox"/>
SUPPLY	<input checked="" type="checkbox"/>
PETROLEUM	<input checked="" type="checkbox"/>
ADMINISTRATION	<input checked="" type="checkbox"/>

*370.2 UN*

FROM : CNO  
TO : COMNAVFE  
INFO : CINCFE, CINCPAC, COM 7TH FLT  
NR : 281748 Z

Offer of the French Govt to place French Frigate LA Grandiere under op control. CINCFE for employment in Korean operations has been accepted. Ship departed Saigon 22 Jul ETA Sasebo 29 Jul. French Ministry of Marine will direct ship to report CINCFE for operational control on or before arrival.

NO SIG

INFORMATION : COMMANDER IN CHIEF, CHIEF OF STAFF, G-1, G-2, G-3, G-4, AG, JSPOG, SIGNAL, FEAF

NOTE : This msg passed by AG Rad Unit via Courier to COMNAVFE for action.

15616

ROUTINE  
*Secret*

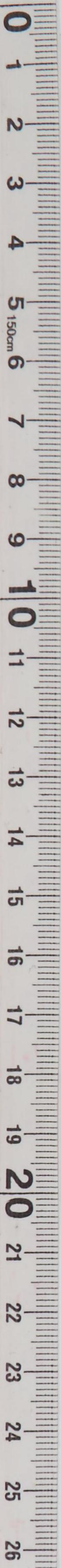
TOO : 281748 Z  
MCN : 67524

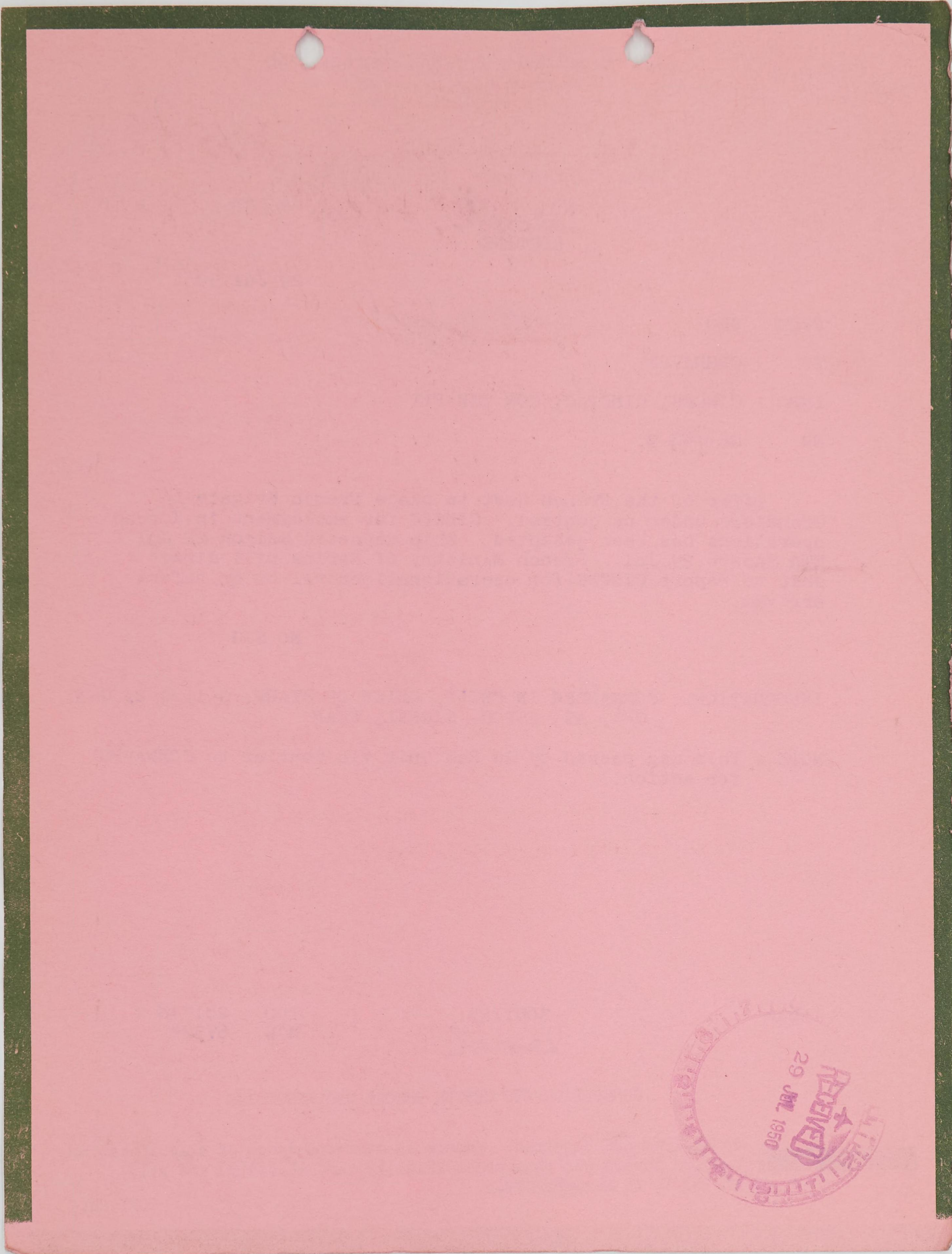
CONSULT CRYPTO CENTER BEFORE DECLASSIFYING

Inclosure No. 1

Paraphrase not required. Handle as correspondence of classification carried hereon per paragraphs 17a(1)(2) and 41c(2)(3) and g(1), AR 380-5, 15 November 1949.

COPY No. 44





LIBRARY  
RECEIVED  
29 JUL 1950

*Confidential*

GENERAL HEADQUARTERS  
FAR EAST COMMAND

OUTGOING MESSAGE

Date: 15 July 1950

*150717  
045.937  
Korea*

G-4 ROUTING

- 1* A C/S G-4
- 2* D AC/S G-4
- 3* EXECUTIVE
- 4* OPERATIONS
- CONST & FAC
- FROM: CINCFA TOKYO JAPAN
- SUPPLY
- 5* PETROLEUM
- 6*
- 7*
- 8* ADMINISTRATION

*370.210N*

- CTG 214.4 RCN AT SEA . . . . . OPERATIONAL IMMEDIATE
- CINCPAC PEARL HARBOR TH . . . . . OPERATIONAL IMMEDIATE
- COMNAVFE TOKYO JAPAN . . . . . OPERATIONAL IMMEDIATE (COURIER)
- INFO: HQ OTTAWA ONT . . . . . PRIORITY
- MEMBER CAN JOINT STAFF WASH DC . . . . . PRIORITY
- DA WASH DC . . . . . PRIORITY
- CNO WASH DC . . . . . PRIORITY
- COM SEVENTH FLT AT SEA . . . . . PRIORITY
- CTG 96.8 AT SEA . . . . . PRIORITY
- CG FEAF TOKYO JAPAN . . . . . PRIORITY (COURIER)
- CG EUSAK KOREA . . . . . PRIORITY
- CG EIGHTH ARMY YOKOHAMA JAPAN . . . . . PRIORITY (COURIER)

*OX57916*

~~CX 57912~~ CTG 214.4 Nr 132200Z NOTAL. This msg in 3 parts.

Part 1. On behalf United Nations delighted to accept force under your comd for service in repelling aggression in Korea.

Part 2. The proposed sailing schedule indicates prompt action and readiness of the RCN. Upon arrival Guam report to COMNAVFE who will issue further instructions.

Part 3. CINCPAC is hereby requested to confirm direct to you info this comd logistic support required. Signed MacArthur.

OFFICIAL:

APPROVED

K. B. BUSH  
Brigadier General, USA  
Adjutant General

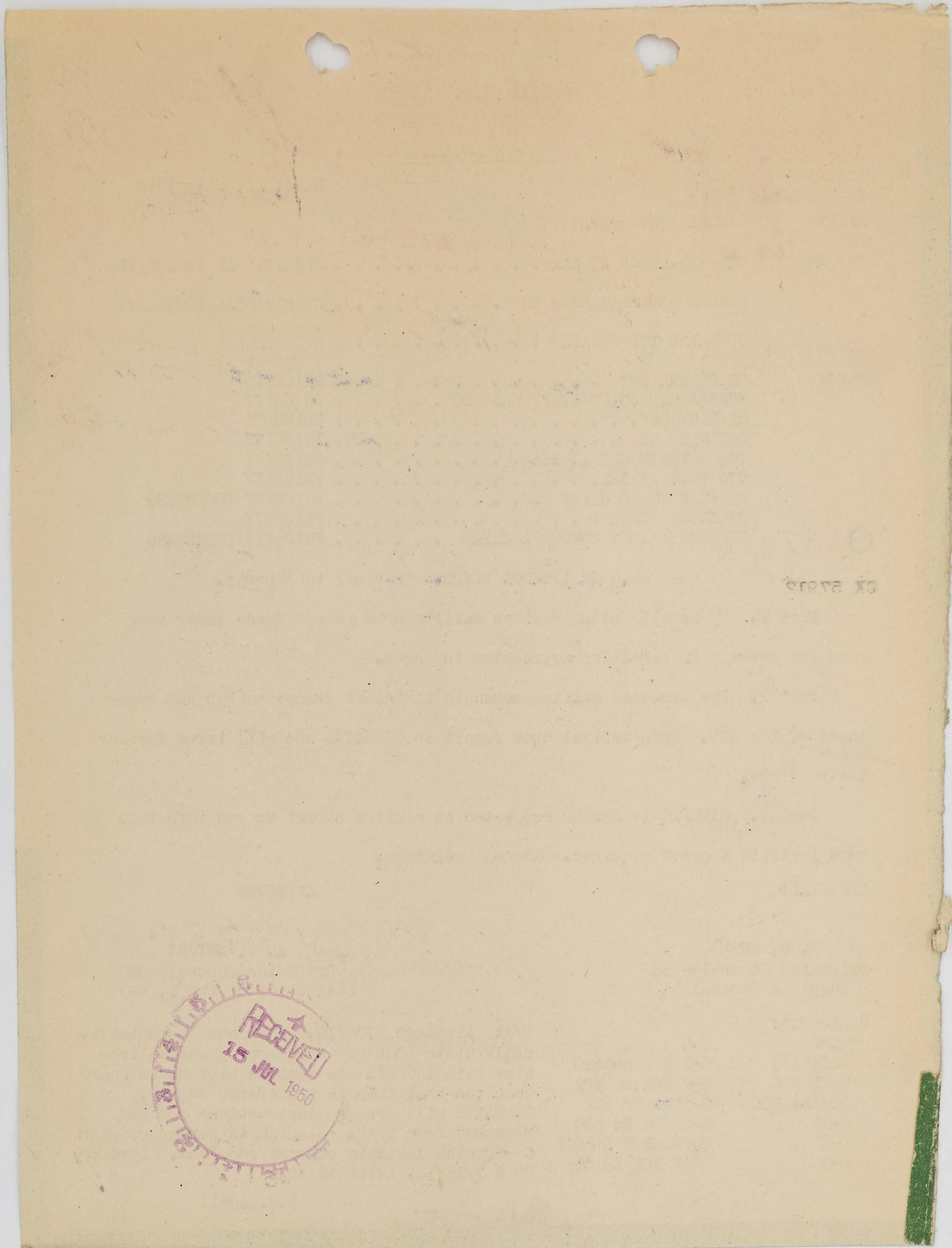
*E. K. Wright*  
E. K. WRIGHT  
Brigadier General, GSC  
Asst Chief of Staff, G-3

- Copies to:
- CinC G-4
  - CofS (3) G-1 ROK Rm 620
  - CofS ROK G-2 ROK, Rm 622
  - DCofS, FEC G-3 ROK Rm 622
  - G-1 G-4 ROK Rm 620
  - G-2 NAVFE ROK Rm 619
  - G-3 FEAF ROK Rm 619

M/R: Although CTG 214.4 RCN does not specifically state that he is reporting assume from time date 140001Z and that he will be in Pearl tomorrow that this is a dispatch report. COMNAVFE will prepare instructions for fwd movement from Guam. CINCPAC is hereby request to furnish logistic support required. Apvd by CofS 7/15/50, initials EMA.

B.B. Adell

*Confidential*



000000

RECEIVED  
15 JUL 1950

GENERAL HEADQUARTERS, FAR EAST COMMAND  
ADJUTANT GENERAL'S OFFICE  
RADIO AND CABLE CENTER

G-4 ROUTING	
<i>10</i> C/S G-4	<i>10</i>
AC/S G-4	<i>14</i>
EXECUTIVE	<i>14</i>
OPERATIONS	<i>14</i>
EFF/bdm & FAC	<i>14</i>
SUPPLY	<i>14</i>
PETROLEUM	<i>14</i>
14 Jul 50	<i>14</i>
<u>ADMINISTRATION</u>	<i>14</i>

# INCOMING MESSAGE

*071*  
*UNJ*

*Confidential*  
OPERATIONAL IMMEDIATE

*370.21UN*

FROM : CTG 214.4

TO : CINCFE (FOR GENERAL MACARTHUR COMMANDER UNITED NATIONS FORCES KOREA)

INFO : COMNAVFE, CINCPACFLT, HQ OTTAWA ONT, FLAG OFF PAC COAST, MEMBERCAN JOINT STAFF

NR : 132200 Z

Para 1. Am instructed to place the Canadian Naval Forces under my command at your disposal at 0001 Z/14 Jul for operations in furtherance of United Nations objectives relative to the invasion of South Korea.

Para 2. Propose sailing TG 214.4 Cayuga DDE 218 (CTW 214.4, Captain J V Brock in command), Sioux DDE 225 (Commander P D Taylor) and Athabaskan DDE 219 (Commander T R P Willand) from Pearl Harbor 150200 Z July to enter area of active operations at earliest date proceeding via Kwajalein, ETA 202300 Z July and Guam ETA 242300 Z July.

Para 3. For CINCPACFLT. Fuel oil, fresh water and provisions will be required at Kwajalein and Guam.

Para 4. Request further instructions and confirmation that logistic support referred to in Para (3), can be made available from sources on a repayment basis.

NO SIG

ACTION : G-3

INFORMATION : COMMANDER IN CHIEF, CHIEF OF STAFF, G-1, G-2, G-4, AG, JSPOG, PFAF, COMNAVFE, ADM DOYLE, 8 A LNO

07829

OPERATIONAL IMMEDIATE  
*Confidential*

TOO : 132200 Z  
MCN : 64472

CONSULT CRYPTO CENTER BEFORE DECLASSIFYING

72

Inclosure No. 1

Paraphrase not required. Handle as correspondence of classification carried hereon per paragraphs 17a(1)(2) and 41c(2)(3) and g(1), AR 380-5, 15 November 1949.

COPY No.





RECEIVED  
14 JUL 1950

GENERAL HEADQUARTERS, FAR EAST COM AND  
ADJUTANT GENERAL'S OFFICE  
RADIO AND CABLE CENTER

*370.21*  
*UN*  
*(new)*

# INCOMING MESSAGE

*Secret*  
PRIORITY

EFF/ws

G-4 ROUTING	
A C/S G-4	<i>(initials)</i>
D AC/S G-4	<i>(initials)</i>
9 Jul EX50 TIVE	<i>(initials)</i>
OPERATIONS	
CONST & FAC	
SUPPLY	
PETROLEUM	
ADMINISTRATION	<i>(initials)</i>

FROM : CNO  
 TO : COMNAVFE  
 INFO : CINCFE, COM 7TH FLT, CINCPACFLT  
 NR : 081745 Z

Para 1. Offer of Netherlands Govt to place HMNS Evertsen (JT-2) under op control CINCFE for employment in Korean Operations has been accepted.

Para 2. Evertsen is ex British S class destroyer. CO is L/Com D J Van Doornknk. Now enroute from soerbaya to Hong Kong for logistics ETA 120700 I.

Para 3. Evertsen does not hold US Navy crypto facilities.

Para 4. Advise desired destination routing and to whom ship should report for op control on departure Hong Kong ETD 13 Jul. Include any desired instructions regarding assignment radio call sign, radio frequencies, recognitions signals, mine or restricted areas. All for relay to ship via Netherlands Govt. Also suggest possibility relay via Wantuck AFD 125 now Hong Kong.

NO SIG

INFORMATION : COMMANDEF IN CHIEF, CHIEF OF STAFF, G-1, G-2, G-3, G-4, AG, JSPOG, FEAF, ADM DOYLE

NOTE : This msg passed by AG Radio Unit via courier to COMNAVFE for action.

05103

PRIORITY

TOO : 081745 Z  
MCN : 63596

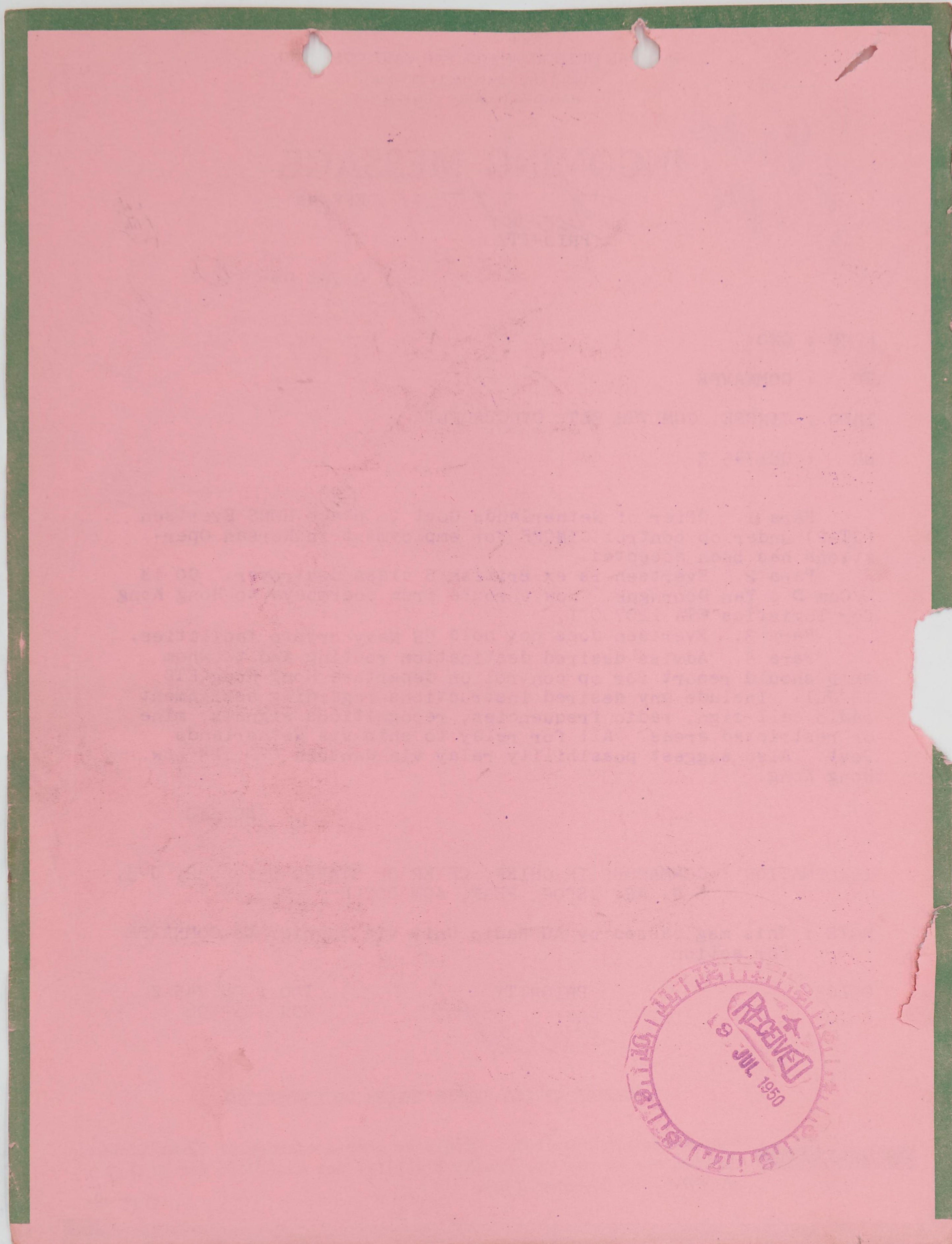
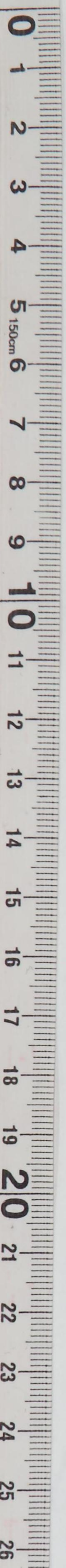
*Secret*

CONSULT CRYPTO CENTER BEFORE DECLASSIFYING

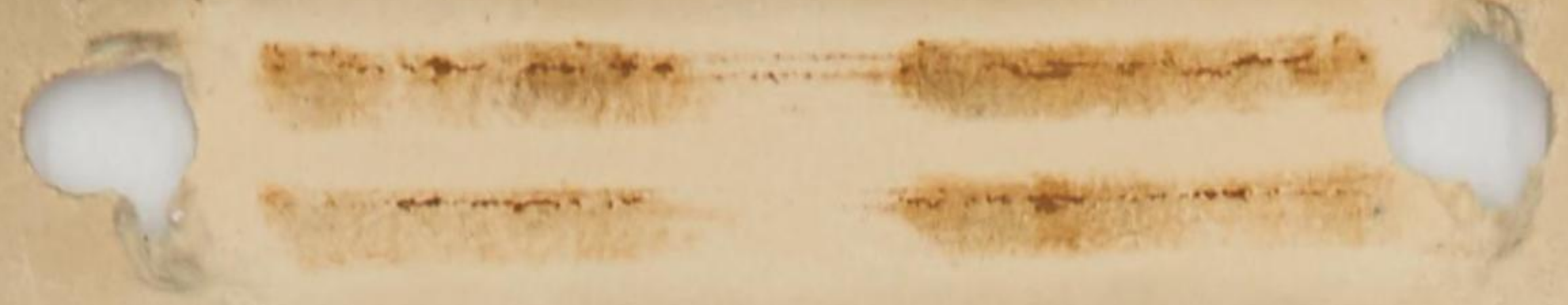
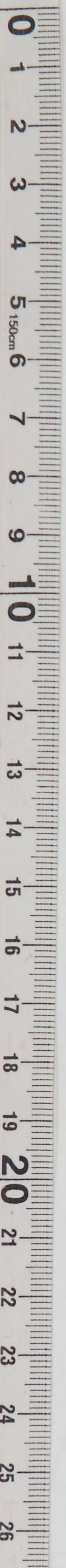
Inclosure No. 1

Paraphrase not required. Handle as correspondence of classification carried hereon per paragraphs 17a(1)(2) and 4lc(2)(3) and g(1), 72 AR 380-5, 15 November 1949.

COPY No.



RECEIVED  
JUL 19 1950  
U.S. AIR FORCE



SECRET

SECRET