

森林治水試験地氣象年表

第二十七號

昭和十四年

農林省林業試驗場

METEOROLOGICAL OBSERVATIONS

IN THE

FOREST HYDROLOGICAL STATIONS

FOR

THE YEAR 1939

PUBLISHED BY THE FORESTRY EXPERIMENTAL STATION

MINISTRY OF AGRICULTURE AND FORESTRY

MEGURO TOKYO JAPAN

1941



始



森林治水試驗地氣象年表
第二十七號 正誤表

頁	項	目	誤	正	頁	項	日	誤	正
1	凡例	第一行日	本表ハ昭和十三年中	本表ハ昭和十四年中	26	一月二十九日	蒸發量	2.8	2.8
"	九	月	42	54	"	自二月一日	氣溫最低	9.36	9.36
2	"	日	1939	1938	"	至二月五日	日照時數	10.64	10.65
"	"	氣溫較差	1.02	10.2	"	三月二十七日	"	90.8	90.8
4	"	平均氣溫	7.7	7.1	"	三月三十日	"	20.2	20.2
8	"	蒸發量	5.3	5.5	"	三月三十一日	"	9.43	9.60
9	"	日照時數	60.1	20.1	27	四月二十五日	蒸發量	9.3	9.3
"	"	日照時數總計	182.82	187.31	"	五月十五日	平均氣溫	26.5	23.6
11	"	"	235.74	182.82	"	七月二十五日	降水量	7.25	72.9
12	"	日照時數	10.93	10.96	"	八月九日	蒸發量	2.9	3.9
12	"	平均風速	3.3	2.3	"	八月十二日	平均氣溫	80.3	80.7
12	"	氣溫較差	9.8	8.9	"	八月十五日	平均氣溫	7.54	75.4
13	"	地温 0.3m	26.8	26.8	28	十一月	氣溫最低	8.5	98.5
"	"	"	27.8	26.7	"	十二月五日	平均氣溫	68.8	98.8
"	"	平均蒸發量(露天)7-21 ^h	1.0	0.9	"	十二月十二日	氣溫最低	9.67	96.7
"	"	"	1.1	1.0	"	十二月十八日	降水量最大日量	103.4	109.4
14	"	日照時數	5.11	5.17	29	三月十五日	氣溫最高	95.9	95.2
"	"	蒸發量	0.6	1.6	30	四月十九日	氣溫較差	19.4	9.4
"	"	降水量	4.9	4.1	32	九月十五日	蒸發量	15.1	5.1
15	"	平均氣溫	71.0	81.0	"	十一月十日	蒸發量	2.0	0.0
16	"	平均氣溫	107	10.9	"	十一月	平均氣溫	3.63	36.3
17	"	降水量	243.6	248.7	33	六月	平均氣溫	736.8	736.8
"	"	降水量總量(自記)	2002.3	2007.4	"	十一月	平均氣溫	745.6	745.6
"	"	"	III 25	IV 25	"	十一月	平均水蒸氣壓力	2.3	2.3
21	"	霜柱/季節(修正)10-10 ^h	163.5	163.8	"	八月	平均氣溫	17.7	17.7
22	"	降水量	9.68	96.8	"	十一月	平均氣溫	93.5	93.5
22	"	氣溫最低	70.2	70.3	"	七月	蒸發量	23.6	23.6
23	"	平均氣溫	30.9	30.7	"	四月	日照時數總計	225.96	225.96
23	"	氣溫最高	8.20	9.20	"	二月	平均蒸發量(露天)21-21 ^h	1.3	1.3
24	"	日照時數	125.10	125.13	"	十二月	平均蒸發量(霧天)7-21 ^h	0.9	0.9
25	"	日照時數總計10-10 ^h	236.4	236.4	"	十一月	"(日蔭)7-21 ^h	0.4	0.4
"	"	降水量	1	1	"	十一月	"	0.6	0.6
"	"	霧日數	4	4	"	一月	蒸發量	7.5	7.5
"	"	霜日數	45	46	34	十二月	平均氣溫	97.3	97.3
"	"	快晴日數	3	4	36	三月			

凡 例

本年表ハ昭和十三年中矢岳外九箇所ノ森林治水試験地ニ於テ施行シタル氣象
觀測ノ成績ヲ編纂シタルモノナリ

觀測ノ時刻及方法ハ各地皆一定ノ式ニ據ル、其ノ要點ヲ擧クレハ
時刻ハ中央標準時即チ東經百三十五度ノ地ノ平時ニ據リ、夜半ヲ日限トスル二
十四時制ヲ用フ

氣象觀測ハ七時、十四時、二十一時ノ三回ヲ觀測定時トス、但シ地温ノ1.2米以上ノ
深サノモノハ十四時一回、又蒸發量ハ七時、二十一時ノ二回ニ之ヲ行フ

治水試験地ニ於テ使用スル器械中、氣壓ハ山岳用水銀晴雨計、氣温、湿度ハ「フース」
型乾濕計及同型最高及最低寒暖計ニ依リ、別ニリシャール製自記器ヲ備ヘ、風速ハ
「ロビンソン」型風力計ニ自記器ヲ裝置セルモノ、風向ハ自記風信器ニ據リ、日照時數
ハ「ジョルダン」式日照計ヲ用ヒ、地温ハ鐵管式寒暖計ヲ使用ス(但シ積雪期間中ハ鐵
管ヲ指定ノ深サニ水平ニ埋メ、之ニ寒暖計ヲ挿入シテ觀測セル所アリ)

氣象表中各要素ノ記載方ニ就キ大要ヲ記スレハ

氣壓ハ耗ヲ以テ示シ、晴雨計示度ニ溫度ノ更正ノミヲ施シタルモノヲ掲ケ、其ノ
平均値ハ定時三回實測ノ平均値ヲ掲ク

氣温及地温ハ攝氏ノ度ヲ以テ示シ、氷點以下ノ度數ハ之ヲ百ヨリ減シ其ノ餘數
ヲ以テ示ス例ヘハ氷點以下五度ハ九十五度ト記スルカ如シ、氣温ノ平均値ハ氣壓
ト同シク定時三回實測ノ平均値、地温ハ0.3米ニ限リ定時三回實測ノ平均値、其ノ他
ハ十四時一回實測シタルモノヲ掲ク

氣温ノ最高及最低ハ最高及最低寒暖計ノ示度ニシテ、二十一時ニ讀取リ復度ス
ルモノトス

湿度ハ空氣中ニ水蒸氣ヲ含マサルヲ零トシ、飽和ニ達セルヲ百トシテ比例ヲ以
テ示ス、其ノ平均値ハ氣温ト同様定時三回實測ノ平均値ヲ掲ク

水蒸氣強力ハ耗ヲ以テ示シ、其ノ平均値ハ三回實測ノ平均値ヲ掲ク

降水量及蒸發量ハ耗ヲ以テ示シ、毎日ノ量ハ前日二十一時ヨリ當日二十一時ニ
至ルモノ、蒸發量月表中露天蒸發量缺測ノ日ハ日蔭蒸發量()ヲ附シテ掲ク

風速度ハ一秒钟間米ヲ以テ表シ、二十一時界限ニヨル二十四時間全程ノ平均數ヲ
示ス、最大風速度ハ實測並臨時觀測ニ據ル但シ風速ハ總テ正時前二十分間ノ平均
トス

風ノ方向ハ十六方位ヲ用ヒ、實測ニ依ル一日三回ノ統計數ヲ掲ク

雲量ハ雲全クナキヲ零、全ク天ヲ覆ヘルヲ十トスル比例ヲ以テ示シ、其ノ平均値
ハ三回ノ實測ニ依ル平均雲量ニ未滿ナル日ヲ快晴トシ、同8以上ノ日ヲ曇天トス
一日中日照全ク無カリシ日ヲ不照トス

電雷日數ハ電光又ハ微弱ナル雷鳴ノミノモノヲ省キタル日數ヲ掲ク

霧、露日數ハ微弱ナルモノヲ省キタル日數ヲ掲ク

雪、霜、霜柱日數等ハ濃淡ヲ問ハス現象アリタル日數ヲ掲ク

雨日數ハ降水量0.1耗以上ニシテ雨ノ現象アリタル日數トス

暴風日數ハ一日中ノ最大風速度十秒米以上ニ達シタル日數トス

表中×印ハ觀測ヲ缺ケルコトヲ示ス



Explanation

This meteorological table is the result of the meteorological observations made at the Yatake Forest Hydrological Station and other 9 Stations for the year 1939.

As to the time and method of observation for these stations, it is summarized as follows:—

The central standard time of Japanese Empire, i. e., the mean time for the longitude of 135° east of Greenwich is used and it is reckoned to 24 hours from the midnight, omitting the separation of A. M. and P. M., The times for the routine observation are 7^h, 14^h, and 21^h; the earth temperature for the depth of 1.2 metres or more is observed at 14^h and the evaporation of water at 7^h and 21^h.

Besides the direct observations taken thrice daily, the selfrecording instruments are equipped for important elements such as the pressure, temperature, humidity of air, the direction and speed of wind and precipitation.

For the sunshine, Jordan's recorder is used and for the observation of the earth temperature, an iron tube is buried vertically up to the nominated depth and the thermometer is hanged within it. At some places, the earth temperatures are observed for the season of lying snow by the thermometers inserted into the iron tubes buried horizontally at nominated depths.

As to the statistics, the followings are to be remarked:—

Air Pressure is given by m.m. of the mercury column and it is reduced only to 0° C; the daily mean is calculated from the direct observations.

Air Temperature and *Earth Temperature* are given by the degree of centigrade and readings below freezing point are given by numbers subtracted from 100 to avoid (-) sign; thus 95 stand for -5. The daily mean is calculated from the direct observations.

Relative Humidity is expressed by percentage to saturation; the daily mean is also taken from direct observations.

Tension of Vapour is given by m.m. of mercury column; the mean is taken from the direct observations.

Precipitation and *Evaporation* are expressed by m. m.; the daily amounts of them are those for 24 hours ending 21^h of the date. And for the missing of observations of free exposure evaporation in the monthly results, the shade evaporation is inserted with ().

Wind velocity is expressed by metres per second; the mean velocity for a day is calculated from the total course for 24 hours ending at 21^h and the *Maximum velocity* for a month is taken from the selfrecorder and it is calculated from readings for 20 minutes preceding every exact hour.

The *Direction of Wind* is taken according to the 16 cardinal points and its statistics are made from the direct observations.

The *Amount of Cloud* is given by the scale 0-10; the mean is taken from the tri-daily observations. The day on which the mean amount of cloud is less than 2 exclusive is taken as *Clear* and that on which the mean is greater than 8 inclusive as *Cloudy*.

When the sunshine recorder traces no sunshine, the day is counted to *Sunless*.

For the days with *Thunder*, the lightning only or slight thunder is omitted.

For the days with *Fog* and *Dew*, slight ones are omitted.

For the days with *Snow*, *Hoar frost*, *Ice column*, *e.t.c.* they are counted disregarding the intensities of phenomena.

For the days with *Rain*, such days on which the amount of precipitation exceeds 0.1 m.m. inclusive and the precipitation falls, partially at least, in the form of rain, are taken.

When the velocity of wind exceeds 10^m/sec, it is counted to *Gale*.

ILLUSTRATION OF SYMBOLS

- ✖ Snow
- ☁ Fog
- ⊕ Snow drift
- ⚡ Thunder storm
- ⊥ Ice column in ground
- ⊖ Hoar frost
- ⚡ Hail
- ☑ Snow lying
- ☑ Ice in water pot
- ⚡ Gale
- △ Graupel
- ☁ Dew

14.6-
138

昭和十四年氣象一覽表
SUMMARY OF THE YEAR 1939

所名 Stations	氣溫 Air Temperature			風 Wind		降水量 Precipitation		濕度 Relative Humidity		日照時數 Hours with Sunshine		平均雲量 Mean Am. of Cloud	平均蒸發量 Mean Am. of Evaporation	
	平均 Mean	高極 Max.	低極 Min.	平均 Mean	最大 Max.	方向 Dir.	全年 Annual	最大 Max.	平均 Mean	最小 Min.	總計 Total			百分率 %
矢岳 Yatake	12.9	30.8	91.5	1.4	9.9	N	2191.7	172.3	79.4	21	2009.88	45	6.3	3.1
小國 Oguni	12.2	33.9	86.1	1.3	11.1	NNW	1254.3	87.5	80.6	23	1792.94	40	6.5	3.4
高島 Takasima	14.2	36.1	93.3	2.3	7.8	NE	616.8	44.4	76.4	31	2358.74	50	6.2	2.9
智頭 Tizu	12.9	35.7	89.5	1.6	12.0	NNW	1254.5	63.3	76.7	27	2121.85	48	6.8	3.4
勝山 Katuyama	12.8	35.3	87.3	1.2	10.7	SE	2075.4	66.1	78.5	26	1952.65	44	7.1	3.7
十日町 Tōkamati	11.5	34.2	89.1	1.2	8.3	NNW	1952.6	54.2	80.4	26	1911.11	43	7.5	3.8
白河 Sirakawa	11.0	33.3	88.2	2.1	13.4	N	1337.1	72.5	74.5	26	1802.51	41	6.8	3.4
釜淵 Kamabuti	9.7	33.0	83.9	1.3	7.3	SW	2113.4	109.4	80.8	23	1855.36	42	7.2	3.1
好摩 Kōma	9.1	32.4	76.1	2.4	12.2	SW	982.8	54.1	77.0	24	2092.03	47	6.7	3.2
鷹巢 Takanosu	9.6	34.0	78.8	2.0	16.4	W	1711.6	61.0	80.3	24	1896.48	43	7.6	3.2

所名 Stations	雜象日數 Number of Days With										季節 Season (1938-1939)				
	降水 Precip.	快晴 Clear	曇天 Cloudy	不照 Sunless	暴風 Storm	電雷 Thunder	雹 Hail	霧 Fog	霜 Frost	雪 Snow	初雪日 First Snow	終雪日 Last Snow	年 Year	月 Month	日 Day
矢岳 Yatake	177	50	154	65	—	7	—	19	17	76	1938	Ⅺ	12	Ⅳ	8
小國 Oguni	140	25	135	52	1	12	—	74	22	99	1938	Ⅺ	12	Ⅲ	19
高島 Takasima	111	36	120	23	—	19	1	4	24	75	1938	Ⅺ	12	Ⅲ	20
智頭 Tizu	195	17	157	24	3	11	2	21	60	74	1938	Ⅺ	12	Ⅲ	26
勝山 Katuyama	195	31	174	51	1	31	2	8	69	76	1938	Ⅺ	12	Ⅲ	27
十日町 Tōkamati	216	33	214	55	—	24	1	5	97	39	1938	Ⅺ	13	Ⅳ	5
白河 Sirakawa	168	21	148	50	4	25	1	16	50	46	1938	Ⅺ	26	Ⅳ	6
釜淵 Kamabuti	229	24	189	47	—	11	1	15	116	68	1938	Ⅺ	11	Ⅳ	9
好摩 Kōma	170	16	137	34	5	10	1	13	87	106	1938	Ⅺ	10	Ⅳ	3
鷹巢 Takanosu	217	15	205	44	18	24	3	68	111	79	1938	Ⅺ	25	Ⅲ	27

氣象果年一覽表
NORMAL VALUES

所名 Stations	算入期間 Average For	氣溫 Air Temperature			風 Wind			降水量 Precipitation		雜象日數 Number of Days With									
		平均 Mean	高極 Max.	低極 Min.	平均 Mean	最大 Max.	方向 Dir.	全年 Annual	最大日 Max. in 24h	降水 Precip.	快晴 Clear	曇天 Cloudy	不照 Sunless	暴風 Storm	雷雨 Thunder	雹 Hail	霧 Fog	霜 Frost	雪 Snow
矢岳 Yatake	1921—1939	12.9	32.6	87.3	1.7	17.3	S	2855.8	337.9	182	42	156	64	1	13	1	38	23	66
小國 Oguni	1914—1939	12.2	34.9	85.5	1.5	15.4	SE	2222.5	252.0	170	24	164	59	1	15	0	69	31	87
高島 Takasima	—	—	—	—	—	—	—	—	—	—	—	—	—	—	—	—	—	—	—
智頭 Tizu	1919—1939	12.5	36.2	84.8	1.5	23.9	NNW	1965.1	205.8	206	21	189	46	2	12	1	30	60	63
勝山 Katuyama	1914—1939	12.6	36.6	87.0	1.2	14.8	W	2754.3	229.7	220	29	190	66	3	16	2	19	67	59
十日町 Tōkamati	1918—1939	11.3	37.8	85.6	1.2	14.3	NNE	2626.5	151.8	245	23	215	67	1	20	1	21	89	55
白河 Sirakawa	1919—1939	10.6	34.8	83.2	2.4	17.6	SSW	1456.3	149.5	172	20	177	65	9	21	2	32	67	60
釜淵 Kamabuti	—	—	—	—	—	—	—	—	—	—	—	—	—	—	—	—	—	—	—
好摩 Kōma	—	—	—	—	—	—	—	—	—	—	—	—	—	—	—	—	—	—	—
鷹集 Takanosu	—	—	—	—	—	—	—	—	—	—	—	—	—	—	—	—	—	—	—

森林治水試驗地一覽表
LIST OF STATIONS

所名 Stations	所在地 Locality	北緯 N. Lat.	東經 E. Long.	海面上ノ高 Height above M. S. L.	地上ノ高サ Height above Ground			開始年月日 Date of Commencement
					寒温計 Thermo-meter	雨量計 Raingauge	風力計 Anemo-meter	
矢岳 Yatake	熊本縣球磨郡藍田村	32° 6'	130° 46'	573m	1.4	0.2	2.4	IX, 1, 1920 (大正 9)
小國 Oguni	熊本縣阿蘇郡小國町	33° 7'	131° 4'	433	1.3	0.3	2.7	VIII, 1, 1913 (大正 2)
高島 Takasima	岡山縣上道郡高島村	34° 42'	133° 58'	43	1.3	0.3	1.7	I, 1, 1938 (昭和 13)
智頭 Tizu	鳥取縣八頭郡智頭町	35° 16'	134° 14'	227	1.4	0.2⑤	0.9	IV, 1, 1919 (大正 8)
勝山 Katuyama	福井縣大野郡勝山町	36° 4'	136° 30'	169	1.2	0.2⑥	0.2⑦	VII, 10, 1914 (大正 4)
十日町 Tōkamati	新潟縣中魚沼郡十日町	37° 8'	138° 46'	223	1.2①	0.2⑧	0.2⑧	III, 11, 1917 (大正 6)
白河 Sirakawa	福島縣西白河郡白河町	37° 6'	140° 12'	390	1.3	0.2	0.2	VIII, 1, 1919 (大正 8)
釜淵 Kamabuti	山形縣最上郡及位村	38° 56'	140° 16'	145	1.2②	0.2⑨	0.2	I, 1, 1938 (昭和 13)
好摩 Kōma	岩手縣岩手郡卷棚村	39° 52'	141° 10'	209	1.2③	0.2⑩	2.0	I, 1, 1938 (昭和 13)
鷹集 Takanosu	秋田縣北秋田郡鷹集町	40° 13'	140° 23'	30	1.3④	0.2⑪	1.8⑫	I, 1, 1938 (昭和 13)

①自一月至四月及十二月ハ 2.4m, ②自一月至三月及十二月ハ 2.35m, ③自一月至三月及十二月ハ 1.8m, ④自一月至三月及十二月ハ 2.0m, * 自記雨量計 Self Recording Raingauge ⑤自一月至三月及十二月ハ 0.9m, ⑥自一月至三月及十二月ハ 1.0m, ⑦自一月至三月及十二月ハ 1.6m, ⑧自一月至四月及十二月ハ 3.5m, ⑨自一月至三月及十二月ハ 3.15m, ⑩自一月至三月及十二月ハ 2.0m, ⑪自一月至三月ハ 2.1m, 十二月ハ 1.8m, ⑫自一月至三月ハ 2.1m, 十二月ハ 2.0m

氣象年表
ANNUAL RESULTS OF OBSERVATIONS

昭和十四年
1939

所名 矢岳
STATION YATAKE

月 Month	平均氣壓 MEAN AIR PRESSURE	平均水汽蒸氣力 MEAN VAPOUR PRESSURE	氣溫 AIR TEMPERATURE					平均濕度 MEAN RELATIVE HUMIDITY	地溫 EARTH TEMPERATURE			平均雲量 MEAN AM. OF CLOUD	日照 SUNSHINE				
			平均 Mean	最高 Max.	最低 Min.	較差 Range	平均 Mean		0.3m 平均 (Mean)	1.2m (1.4h)	3.0m (1.4h)		時數 Hours	日照 Number of Days with	不照 Sunless	<20%	≥80%
I	715.8	3.9	1.6	6.8	96.6	10.2	73.8			5.9	142.26	45	6	11	8		
II	715.4	4.5	3.4	8.4	98.5	9.9	76.2			6.9	128.55	42	5	11	7		
III	712.1	5.9	7.3	12.0	2.7	9.3	74.4			7.0	151.66	41	9	9	6		
IV	712.7	7.8	11.2	15.8	6.4	9.4	77.9			7.7	127.56	33	10	14	3		
V	710.7	9.8	15.9	21.3	10.1	11.2	75.0			7.1	205.70	48	6	11	8		
VI	708.5	13.7	18.9	22.9	14.4	8.5	83.9			7.8	131.97	31	12	16	5		
VII	710.1	18.2	23.5	27.5	18.6	8.9	85.4			5.9	228.30	53	2	4	4		
VIII	709.3	17.4	22.9	27.4	18.5	8.9	84.8			6.6	204.83	50	3	5	3		
IX	711.3	13.9	19.7	24.6	15.3	9.3	82.1			5.4	199.52	42	1	7	8		
X	713.7	10.7	14.9	20.0	10.1	9.9	83.8			6.5	146.74	42	6	10	6		
XI	715.5	8.2	10.7	16.3	5.7	10.6	82.7			5.6	148.75	47	4	7	4		
XII	718.4	4.4	4.0	9.7	98.7	11.0	72.7			2.9	194.04	62	1	2	12		
年 Ann.	712.7	9.9	12.9	17.7	8.0	9.7	79.4			6.3	2009.88	45	65	107	74		

月 Month	降水量 AMOUNT OF PRECIPITATION				類別降水回数 FREQUENCY OF PRECIP. SEPARATED BY AM.							平均蒸發量 MEAN AM. OF EVAPORATION									
	總量 Total	最大日量 Daily Max. (21-21h)	最大一時間量 Hourly Max. (自記)	二十四時間量 Am. in 24hs	≥0.1	≥1	≥5	≥10	≥30	≥50	≥100	時間量 Am. in 1h	天 Free exposure	日 In shade	露 Dew						
I	105.6	×	33.4	18	×	×	15	11	6	4	1	×	×	0.2	1.2	1.4	0.2	0.7	0.9		
II	79.1	×	22.3	11	×	×	12	10	3	3	—	×	×	0.1	1.7	1.8	0.2	0.9	1.1		
III	221.7	×	56.0	11	×	×	18	14	11	8	2	×	×	0.2	2.6	2.8	0.3	1.2	1.5		
IV	206.6	204.0	47.4	21	10.5	2	21	16	8	7	2	—	—	0.1	2.8	2.9	0.2	1.4	1.6		
V	186.2	182.4	88.4	12	10.1	12	14	10	6	5	2	1	—	0.1	4.4	4.5	0.2	2.0	2.2		
VI	450.8	568.4	172.3	26	25.7	28	16	15	12	8	6	1	14	0.1	3.3	3.4	0.2	1.4	1.6		
VII	185.9	49.9	139.5	1	32.5	1	15	13	4	2	1	1	6	0.1	4.9	5.0	0.2	1.9	2.1		
VIII	230.5	218.5	75.7	28	12.7	28	15	9	5	3	2	—	3	0.1	4.5	4.6	0.2	1.7	1.9		
IX	152.9	147.9	43.4	9	12.1	15	13	12	8	5	1	—	2	0.0	4.4	4.4	0.1	1.6	1.7		
X	226.4	226.5	121.6	16	17.1	16	14	9	8	5	1	1	8	0.0	2.7	2.7	0.1	1.1	1.2		
XI	136.1	133.4	78.7	22	20.1	22	17	12	7	2	1	1	2	0.1	2.1	2.2	0.2	1.0	1.2		
XII	9.9	9.3	7.0	23	1.6	23	7	1	1	—	—	—	—	0.2	1.9	2.1	0.2	1.1	1.3		
年 Ann.	2191.7	×	172.3	26, VI	×	×	177	132	79	54	20	8	3	×	×	0.1	3.0	3.1	0.2	1.3	1.5

月 Month	風 WIND																								
	速度 Velocity				回数 Frequency																				
I	1.5	5.0	N	19	16	23	9	7	3	5	4	—	—	—	—	2	—	—	—	—	—	—	—	—	24
II	1.6	4.0	NNE	6	12	21	9	2	4	11	5	1	—	—	—	—	—	—	—	—	—	—	—	—	17
III	1.8	7.5	SSE	11	18	18	5	4	—	20	7	4	1	—	—	1	—	—	—	—	—	—	—	—	14
IV	1.6	4.8	SE	29	9	9	13	2	5	23	12	1	—	—	—	—	—	—	—	—	—	—	—	—	14
V	1.6	5.5	SSE	11	2	5	13	3	5	10	15	7	—	—	—	—	—	—	—	—	—	—	—	—	29
VI	1.5	6.0	SSE	25	—	3	5	5	9	4	26	14	3	—	—	—	—	—	—	—	—	—	—	—	20
VII	1.4	3.6	ESE	18	—	3	1	2	1	8	35	15	2	—	—	—	—	—	—	—	—	—	—	—	26
VIII	1.3	4.9	SE	11	1	5	7	2	4	3	28	9	—	—	—	—	—	—	—	—	—	—	—	—	34
IX	1.2	3.9	SSE	16	4	5	15	—	2	2	22	9	4	—	—	—	—	—	—	—	—	—	—	—	27
X	1.1	9.0	N	16	2	15	16	5	1	5	14	2	1	1	1	—	—	—	—	—	—	—	—	—	28
XI	1.1	4.6	NW	26	7	1	6	1	—	5	11	4	1	—	—	—	—	—	—	—	—	—	—	—	31
XII	1.2	4.1	NNW	19	6	4	1	—	—	4	3	—	—	—	—	—	—	—	—	—	—	—	—	—	30
年 Ann.	1.4	9.0	N	16, X	77	112	100	33	34	100	182	66	12	2	5	—	—	—	—	—	—	—	—	—	49

月 Month	雜象日數 NUMBER OF DAYS WITH													季節(前年ヨリ本年ニ) SEASON (1938—1939)				
	雪 *	霰 △	雹 ▲	雷雨 ⚡	霧 ☁	霜 □	霜柱 ⊥	露 ⊥	吹雪 ⊥	積雪 ⊥	地震 ⊙	結氷 ⊥	快晴 ☀	曇天 ☁	暴風 ⚡	雨 ☔	初日 First day	終日 Last day
I	7	1	—	—	3	21	22	—	—	3	2	23	1	12	—	—	—	—
II	4	2	—	—	3	14	15	—	—	3	4	18	4	14	—	—	—	—
III	3	—	—	—	1	7	12	—	—	1	—	8	11	4	16	—	—	—
IV	2	—	—	—	—	3	3	—	—	—</								

氣象月表 MONTHLY RESULTS OF OBSERVATIONS

昭和十四年 1939

所名 矢 嶽 STATION YATAKE

Table for January and February 1939. Columns include Day, Air Temperature (Mean, Max, Min, Range), Humidity, Precipitation, Evaporation, Sunshine, and Wind. Rows are listed for each day of the month.

三 月 MARCH

四 月 APRIL

Table for March and April 1939. Columns include Day, Air Temperature (Mean, Max, Min, Range), Humidity, Precipitation, Evaporation, Sunshine, and Wind. Rows are listed for each day of the month.

氣象月表 MONTHLY RESULTS OF OBSERVATIONS

昭和十四年 1939

所名 矢 嶽 STATION YATAKE

Table for May and June 1939. Columns include Day, Air Temperature (Mean, Max, Min, Range), Humidity, Precipitation, Evaporation, Sunshine, and Wind. Rows are listed for each day of the month.

七 月 JULY

八 月 AUGUST

Table for July and August 1939. Columns include Day, Air Temperature (Mean, Max, Min, Range), Humidity, Precipitation, Evaporation, Sunshine, and Wind. Rows are listed for each day of the month.

氣象月表 MONTHLY RESULTS OF OBSERVATIONS

昭和十四年 1939

所名 矢 嶽 STATION YATAKE

Monthly weather data for Yatake station, 1939. Columns include Air Temperature (Mean, Max, Min, Range), Humidity, Precipitation, Evaporation, Sunshine, and Wind. Data is provided for each day from September to December.

氣象年表 ANNUAL RESULTS OF OBSERVATIONS

昭和十四年 1939

所名 小 國 STATION OGUNI

Annual weather summary for Oguni station, 1939. Includes monthly and annual averages for Air Temperature, Earth Temperature (at various depths), Sunshine, Precipitation (total and by type), Evaporation, Wind (velocity and frequency by direction), and Number of Days with various weather conditions (fog, snow, rain, etc.).

有感地震回数 Frequency of felt earthquake

氣象月表 MONTHLY RESULTS OF OBSERVATIONS

昭和十四年 1939

所名 小 國 STATION OGUNI

Table for January and February 1939. Columns include Day, Air Temperature (Mean, Max, Min, Range), Humidity, Precipitation, Evaporation, Sunshine, and Wind Speed. Rows are numbered 1-31 for each month.

三 月 MARCH

四 月 APRIL

Table for March and April 1939. Columns include Day, Air Temperature (Mean, Max, Min, Range), Humidity, Precipitation, Evaporation, Sunshine, and Wind Speed. Rows are numbered 1-31 for each month.

氣象月表 MONTHLY RESULTS OF OBSERVATIONS

昭和十四年 1939

所名 小 國 STATION OGUNI

Table for May and June 1939. Columns include Day, Air Temperature (Mean, Max, Min, Range), Humidity, Precipitation, Evaporation, Sunshine, and Wind Speed. Rows are numbered 1-31 for each month.

七 月 JULY

八 月 AUGUST

Table for July and August 1939. Columns include Day, Air Temperature (Mean, Max, Min, Range), Humidity, Precipitation, Evaporation, Sunshine, and Wind Speed. Rows are numbered 1-31 for each month.

氣象月表 MONTHLY RESULTS OF OBSERVATIONS

昭和十四年 1939

所名 小 國 STATION OGUNI

Table with columns for Air Temperature (Mean, Max, Min, Range), Humidity, Precipitation, Evaporation, Sunshine, and Wind. Rows for months I-III, IV-VI, VII-IX, X, XI, XII, and Ann.

九月 SEPTEMBER

十月 OCTOBER

十一月 NOVEMBER

十二月 DECEMBER

氣象年表 ANNUAL RESULTS OF OBSERVATIONS

昭和十四年 1939

所名 高 島 STATION TAKASIMA

Table with columns for Air Temperature (Mean, Max, Min, Range), Earth Temperature (0.3m, 1.2m, 3.0m), Sunshine (Hours, Number of Days), and Mean Am. of Cloud. Rows for months I-III, IV-VI, VII-IX, X, XI, XII, and Ann.

Table with columns for Amount of Precipitation (Total, Daily Max, Hourly Max), Frequency of Precip. Separated by Am., and Mean Am. of Evaporation. Rows for months I-III, IV-VI, VII-IX, X, XI, XII, and Ann.

Table with columns for Wind (Velocity, Frequency) and Number of Days with various weather conditions (Snow, Fog, Rain, etc.). Rows for months I-III, IV-VI, VII-IX, X, XI, XII, and Ann.

Table with columns for Number of Days with various weather conditions (Snow, Fog, Rain, etc.) and seasonal data (Season, First day, Last day). Rows for months I-III, IV-VI, VII-IX, X, XI, XII, and Ann.

有感地震回数 Frequency of felt earthquake

氣象月表

MONTHLY RESULTS OF OBSERVATIONS

昭和十四年 1939

所名 高島 STATION TAKASIMA

Table with columns for Day, Air Temperature (Mean, Max, Min, Range), Humidity, Precipitation, Evaporation, Sunshine, and Wind. Includes monthly summaries for January, February, March, and April.

氣象月表 MONTHLY RESULTS OF OBSERVATIONS

昭和十四年 1939

所名 高島 STATION TAKASIMA

Table with columns for Day, Air Temperature (Mean, Max, Min, Range), Humidity, Precipitation, Evaporation, Sunshine, and Wind. Includes monthly summaries for May, June, July, and August.

氣象月表 MONTHLY RESULTS OF OBSERVATIONS

昭和十四年 1939

所名 高島 STATION TAKASIMA

Table with columns for Air Temperature (Mean, Max, Min, Range), Humidity, Sunshine, and other meteorological data for months September, October, and November.

氣象年表 ANNUAL RESULTS OF OBSERVATIONS

昭和十四年 1939

所名 智頭 STATION TIZU

Table with columns for Air Temperature, Earth Temperature, Sunshine, Precipitation, Wind, and other meteorological data for the year 1939.

有感地震回数 Frequency of felt earthquake

氣象月表 MONTHLY RESULTS OF OBSERVATIONS

昭和十四年 1939

所名 智頭 STATION TIZU

Table with columns for Day, Air Temperature (Mean, Max, Min, Range), Humidity, Precipitation, Evaporation, Sunshine, and Wind Speed. Includes monthly and daily data for January and February.

一月 JANUARY

二月 FEBRUARY

三月 MARCH

四月 APRIL

Table with columns for Day, Air Temperature (Mean, Max, Min, Range), Humidity, Precipitation, Evaporation, Sunshine, and Wind Speed. Includes monthly and daily data for March and April.

氣象月表 MONTHLY RESULTS OF OBSERVATIONS

昭和十四年 1939

所名 智頭 STATION TIZU

Table with columns for Day, Air Temperature (Mean, Max, Min, Range), Humidity, Precipitation, Evaporation, Sunshine, and Wind Speed. Includes monthly and daily data for September, October, November, and December.

九月 SEPTEMBER

十月 OCTOBER

十一月 NOVEMBER

十二月 DECEMBER

Table with columns for Day, Air Temperature (Mean, Max, Min, Range), Humidity, Precipitation, Evaporation, Sunshine, and Wind Speed. Includes monthly and daily data for November and December.

氣象月表 MONTHLY RESULTS OF OBSERVATIONS.

昭和十四年 1939

所名 智頭 STATION TIZU

Table with columns for Day, Air Temperature (Mean, Max, Min, Range), Humidity, Wind, Sunshine, and other meteorological data for months May, June, July, and August.

氣象年表 ANNUAL RESULTS OF OBSERVATIONS

昭和十四年 1939

所名 勝山 STATION KATUYAMA

Table with columns for Month, Air Temperature, Earth Temperature (Depth), Sunshine, Precipitation, Wind, and other meteorological data for the year 1939.

氣象月表 MONTHLY RESULTS OF OBSERVATIONS

所名 勝山 STATION KATUYAMA

昭和十四年 1939

Table for January and February 1939. Columns include Day, Air Temperature (Mean, Max, Min, Range), Humidity, Precipitation, Evaporation, Sunshine, and Wind. Rows are listed for each day of the month.

一月 JANUARY

二月 FEBRUARY

三月 MARCH

四月 APRIL

Table for March and April 1939. Columns include Day, Air Temperature (Mean, Max, Min, Range), Humidity, Precipitation, Evaporation, Sunshine, and Wind. Rows are listed for each day of the month.

氣象月表 MONTHLY RESULTS OF OBSERVATIONS

所名 勝山 STATION KATUYAMA

昭和十四年 1939

Table for May and June 1939. Columns include Day, Air Temperature (Mean, Max, Min, Range), Humidity, Precipitation, Evaporation, Sunshine, and Wind. Rows are listed for each day of the month.

五月 MAY

六月 JUNE

七月 JULY

八月 AUGUST

Table for July and August 1939. Columns include Day, Air Temperature (Mean, Max, Min, Range), Humidity, Precipitation, Evaporation, Sunshine, and Wind. Rows are listed for each day of the month.

氣象月表 MONTHLY RESULTS OF OBSERVATIONS

昭和十四年 1939

所名 勝山 STATION KATUYAMA

Table with columns for Day (日), Air Temperature (氣溫), Humidity (濕度), Precipitation (降水量), Evaporation (蒸發量), Sunshine (日照時數), and Wind (平均風速). It includes monthly data for September, October, and November.

氣象年表 ANNUAL RESULTS OF OBSERVATIONS

昭和十四年 1939

所名 十日町 STATION TOKAMATI

Table with columns for Month (月), Air Temperature (氣溫), Earth Temperature (地温), Sunshine (日照), Precipitation (降水), Evaporation (蒸發), Wind (風), and Number of Days with Various Phenomena (雜象日數). It includes monthly and annual data for 1939.

氣象月表 MONTHLY RESULTS OF OBSERVATIONS

所名 十日町 STATION TOKAMATI

昭和十四年 1939

Table with columns for Day, Air Temperature (Mean, Max, Min, Range), Humidity, Precipitation, Evaporation, Sunshine, and Wind. Includes monthly and yearly summaries for January, February, March, and April.

氣象月表 MONTHLY RESULTS OF OBSERVATIONS

所名 十日町 STATION TOKAMATI

昭和十四年 1939

Table with columns for Day, Air Temperature (Mean, Max, Min, Range), Humidity, Precipitation, Evaporation, Sunshine, and Wind. Includes monthly and yearly summaries for May, June, July, and August.

氣象月表 MONTHLY RESULTS OF OBSERVATIONS

昭和十四年 1939

所名 十日町 STATION TOKAMATI

Table with columns for Air Temperature, Humidity, Sunshine, and Wind. Includes monthly data for September and October.

Table with columns for Air Temperature, Humidity, Sunshine, and Wind. Includes monthly data for November and December.

氣象年表 ANNUAL RESULTS OF OBSERVATIONS

昭和十四年 1939

所名 白河 STATION SIRAKAWA

Summary table for annual observations including average air pressure, temperature, humidity, and sunshine hours.

Table detailing precipitation amounts and frequency of precipitation events.

Table detailing wind velocity and frequency by direction.

Table detailing the number of days with various weather conditions like snow, frost, and rain.

有感地震回数 Frequency of felt earthquake

氣象月表 MONTHLY RESULTS OF OBSERVATIONS

昭和十四年 1939

所名 白河 STATION SIRAKAWA

Table for January and February 1939. Columns include Day, Air Temperature (Mean, Max, Min, Range), Humidity, Precipitation, Evaporation, Sunshine, and Wind Speed.

Table for March and April 1939. Columns include Day, Air Temperature (Mean, Max, Min, Range), Humidity, Precipitation, Evaporation, Sunshine, and Wind Speed.

氣象月表 MONTHLY RESULTS OF OBSERVATIONS

昭和十四年 1939

所名 白河 STATION SIRAKAWA

Table for May and June 1939. Columns include Day, Air Temperature (Mean, Max, Min, Range), Humidity, Precipitation, Evaporation, Sunshine, and Wind Speed.

Table for July and August 1939. Columns include Day, Air Temperature (Mean, Max, Min, Range), Humidity, Precipitation, Evaporation, Sunshine, and Wind Speed.

氣象月表 MONTHLY RESULTS OF OBSERVATIONS

昭和十四年 1939

所名 白河 STATION SIRAKAWA

Table with columns for Day (日), Air Temperature (氣溫), Humidity (濕度), Wind (風), Sunshine (日照), and other meteorological data for September and October.

Table with columns for Day (日), Air Temperature (氣溫), Humidity (濕度), Wind (風), Sunshine (日照), and other meteorological data for November and December.

氣象年表 ANNUAL RESULTS OF OBSERVATIONS

昭和十四年 1939

所名 釜淵 STATION KAMABUTI

Table with columns for Month (月), Air Temperature (氣溫), Earth Temperature (地温), Humidity (濕度), Sunshine (日照), and other annual meteorological data.

Table with columns for Month (月), Amount of Precipitation (降水量), Frequency of Precip. (降水回数), and Mean Am. of Evaporation (平均蒸發量).

Table with columns for Month (月), Wind Velocity (風速), and Frequency (回数) for various wind directions.

Table with columns for Month (月), Number of Days with Various Phenomena (雜象日數), and Seasonal Data (季節).

*有感地震回数 Frequency of felt earthquake

氣象月表 MONTHLY RESULTS OF OBSERVATIONS

昭和十四年 1939

所名 釜淵 STATION KAMABUTI

Table for January and February observations, including columns for Air Temperature (Mean, Max, Min, Range), Humidity, Precipitation, Evaporation, Sunshine, and Wind.

Table for March and April observations, including columns for Air Temperature (Mean, Max, Min, Range), Humidity, Precipitation, Evaporation, Sunshine, and Wind.

氣象月表 MONTHLY RESULTS OF OBSERVATIONS

昭和十四年 1939

所名 釜淵 STATION KAMABUTI

Table for May and June observations, including columns for Air Temperature (Mean, Max, Min, Range), Humidity, Precipitation, Evaporation, Sunshine, and Wind.

Table for July and August observations, including columns for Air Temperature (Mean, Max, Min, Range), Humidity, Precipitation, Evaporation, Sunshine, and Wind.

氣象月表 MONTHLY RESULTS OF OBSERVATIONS

昭和十四年 1939

所名 釜淵 STATION KAMABUTI

Table with columns for Air Temperature, Humidity, Sunshine, and Wind. Includes monthly and daily data for September and October.

十一月 NOVEMBER

Table with columns for Air Temperature, Humidity, Sunshine, and Wind. Includes monthly and daily data for November.

十二月 DECEMBER

Table with columns for Air Temperature, Humidity, Sunshine, and Wind. Includes monthly and daily data for December.

氣象年表 ANNUAL RESULTS OF OBSERVATIONS

昭和十四年 1939

所名 野原 STATION KOMA

Table with columns for Air Temperature, Earth Temperature, Sunshine, and Wind. Includes monthly and annual data.

Table with columns for Precipitation, Frequency of Precip., and Mean Am. of Evaporation. Includes monthly and annual data.

Table with columns for Wind Velocity and Frequency. Includes monthly and annual data.

Table with columns for Number of Days with various weather conditions and Seasonal data. Includes monthly and annual data.

*有感地震回数 Frequency of felt earthquake

氣象月表 MONTHLY RESULTS OF OBSERVATIONS

昭和十四年 1939

所名 好摩 STATION KŌMA

Table for January and February 1939. Columns include Day, Air Temperature (Mean, Max, Min, Range), Humidity, Wind Speed, Sunshine, and other meteorological data.

三月 MARCH

四月 APRIL

Table for March and April 1939. Columns include Day, Air Temperature (Mean, Max, Min, Range), Humidity, Wind Speed, Sunshine, and other meteorological data.

氣象月表 MONTHLY RESULTS OF OBSERVATIONS

昭和十四年 1939

所名 好摩 STATION KŌMA

Table for May and June 1939. Columns include Day, Air Temperature (Mean, Max, Min, Range), Humidity, Wind Speed, Sunshine, and other meteorological data.

七月 JULY

八月 AUGUST

Table for July and August 1939. Columns include Day, Air Temperature (Mean, Max, Min, Range), Humidity, Wind Speed, Sunshine, and other meteorological data.

氣象月表 MONTHLY RESULTS OF OBSERVATIONS

昭和十四年 1939

所名 舞臺 STATION KOMA

Table with columns for Day, Air Temperature (Mean, Max, Min, Range), Humidity, Precipitation, Evaporation, Sunshine, and Wind. Includes monthly totals for September, October, and November.

Table for November and December with columns for Day, Air Temperature, Humidity, Precipitation, Evaporation, Sunshine, and Wind. Includes monthly totals for November and December.

氣象年表 ANNUAL RESULTS OF OBSERVATIONS

昭和十四年 1939

所名 舞臺 STATION TAKANOSU

Table with columns for Month, Air Temperature (Mean, Max, Min, Range), Earth Temperature (0.3m, 1.2m, 3.0m), Sunshine (Hours, Number of Days with Sunless, <20%, ≥80%), and Wind.

Table with columns for Month, Amount of Precipitation (Total, Daily Max, Hourly Max), Frequency of Precip. Separated by Am., and Mean Am. of Evaporation.

Table with columns for Month, Wind Velocity (Mean, Max, Dir.), and Frequency (N, NNE, NE, ENE, E, ESE, SE, SSE, S, SSW, SW, WSW, W, WNW, NW, NNW, Calm).

Table with columns for Month, Number of Days with various weather conditions (Snow, Fog, Rain, etc.), and Seasonal statistics (First day, Last day, etc.).

有感地震回数 Frequency of felt earthquake

氣象月表 MONTHLY RESULTS OF OBSERVATIONS

昭和十四年 1939

所名 鹿嶋 STATION TAKANOSU

Table for January and February observations. Columns include Day, Air Temperature (Mean, Max, Min, Range), Humidity, Precipitation, Evaporation, Sunshine, and Wind Speed.

三月 MRCH

四月 APRIL

Table for March and April observations. Columns include Day, Air Temperature (Mean, Max, Min, Range), Humidity, Precipitation, Evaporation, Sunshine, and Wind Speed.

氣象月表 MONTHLY RESULTS OF OBSERVATIONS

昭和十四年 1939

所名 鹿嶋 TATION TAKANOSU

Table for May and June observations. Columns include Day, Air Temperature (Mean, Max, Min, Range), Humidity, Precipitation, Evaporation, Sunshine, and Wind Speed.

七月 JULY

八月 AUGUST

Table for July and August observations. Columns include Day, Air Temperature (Mean, Max, Min, Range), Humidity, Precipitation, Evaporation, Sunshine, and Wind Speed.

氣象月報 MONTHLY RESULTS OF OBSERVATIONS

昭和十四年 1939

所名 鹿 臺 STATION TAKANOSU

Table with columns for Day, Air Temperature (Mean, Max, Min, Range), Humidity, Precipitation, Evaporation, Sunshine, Wind, and other meteorological data for September, October, November, and December.

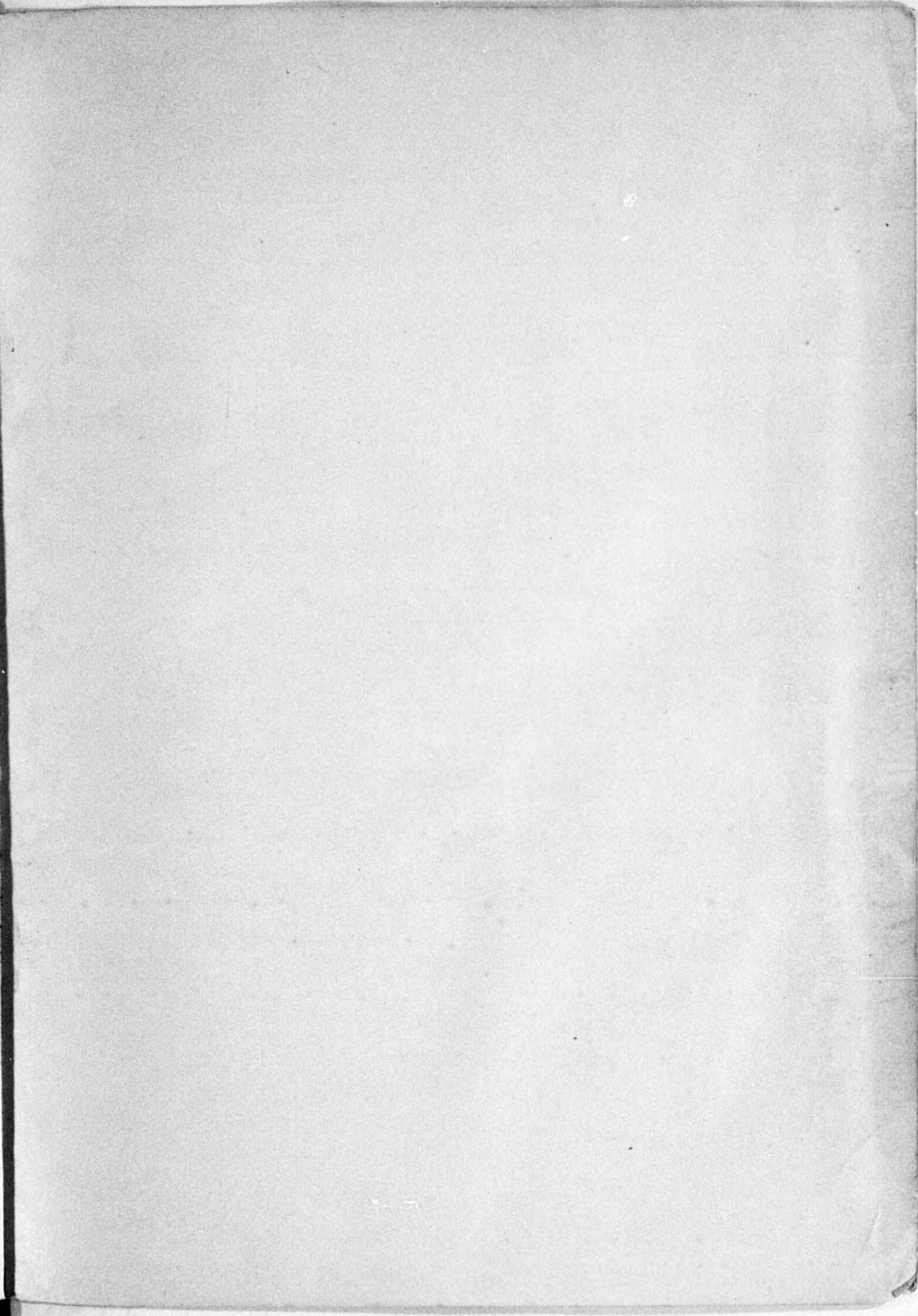
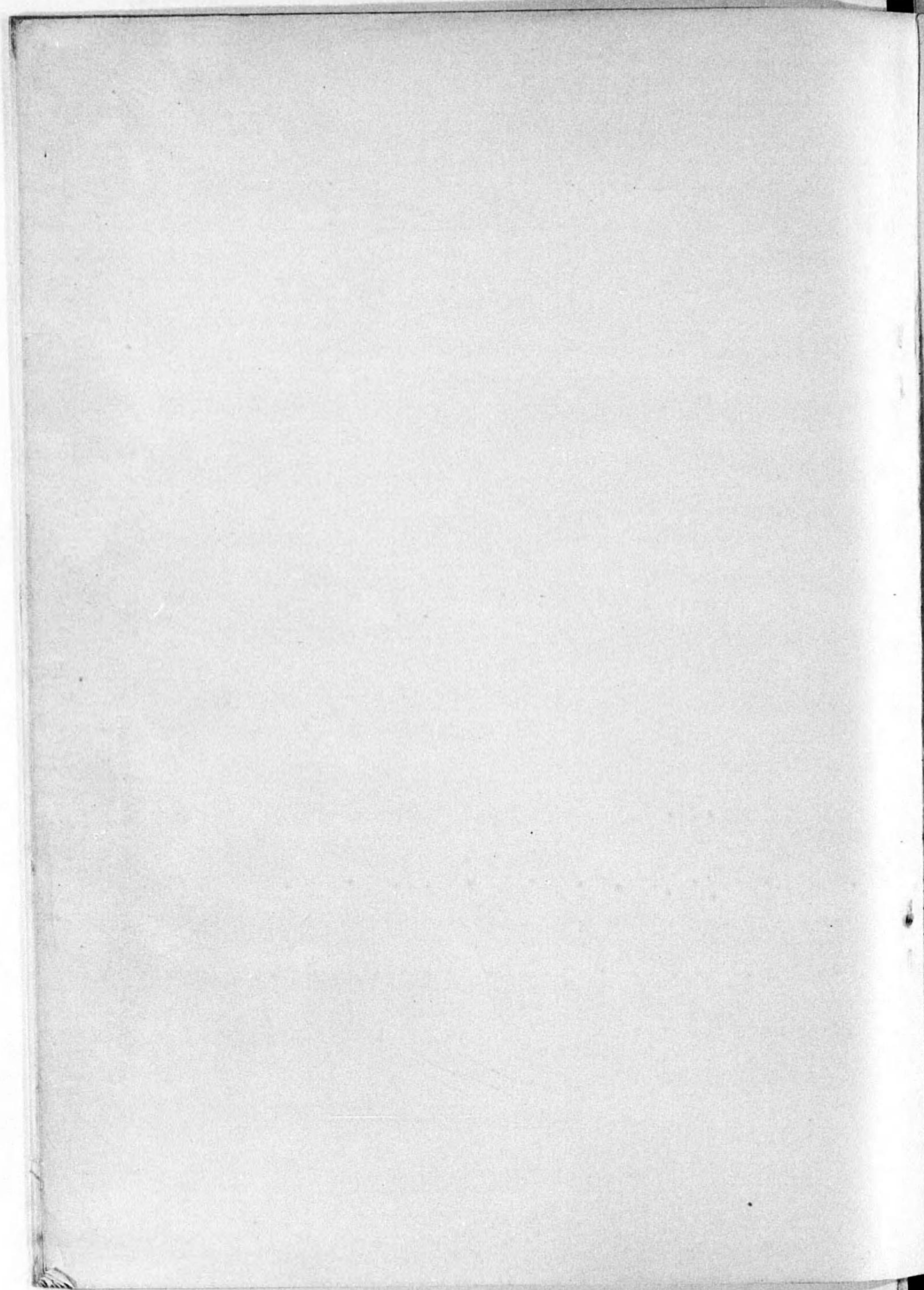
昭和十六年三月二十八日印刷 昭和十六年三月三十一日發行

農林省林業試驗場

印刷者 小西嘉三郎

印刷所 會社名 不二印刷社

東京市京橋區八丁堀四丁目五番地



14. 6二-138



1200501222563

14.6二

138

終