

WIRING DIAGRAMS

Address:

Owner:

Contractor:

Designer:

Director:

CONTENT

main page.....	1
content.....	2
specifications.....	3
building plant.....	4
distribution board.....	5
circuit 1 on building plant.....	6
circuit 2 on building plant.....	7
kitchen sockets on building plant.....	8
circuit 6 on building plant.....	9
circuit 7 on building plant.....	10
circuit 8 on building plant.....	11
bedroom sockets on building plant.....	12
kitchen ventilation on building plant.....	13
air conditioners on building plant.....	14
circuit 17 on building plant.....	15
lamps on building plant.....	16
sauna fuse box on building plant.....	17
short circuits.....	18
materials.....	19

TECHNICAL CONDITIONS

Introductionary cable: NYM 5G10

Main fuse: 3x40A

Power supply:

voltage: Y+N 230/400V

type of current: ~3 AC

frequency: 50Hz

type of power system: 3-phase

Voltage drop: 3.1%

Ground:

- missing (voltage doesn't exceed 50V)
- TN-C
- TN-C-S
- TN-S
- T-T
- I-T
- M+ and M- with grounded tap

Ground impedance: < 2 Ohm

I (breaking):

- 4.5 kA
- 6 kA
- 10 kA
- 15 kA
- 25 kA
- 60 kA
- 90 kA

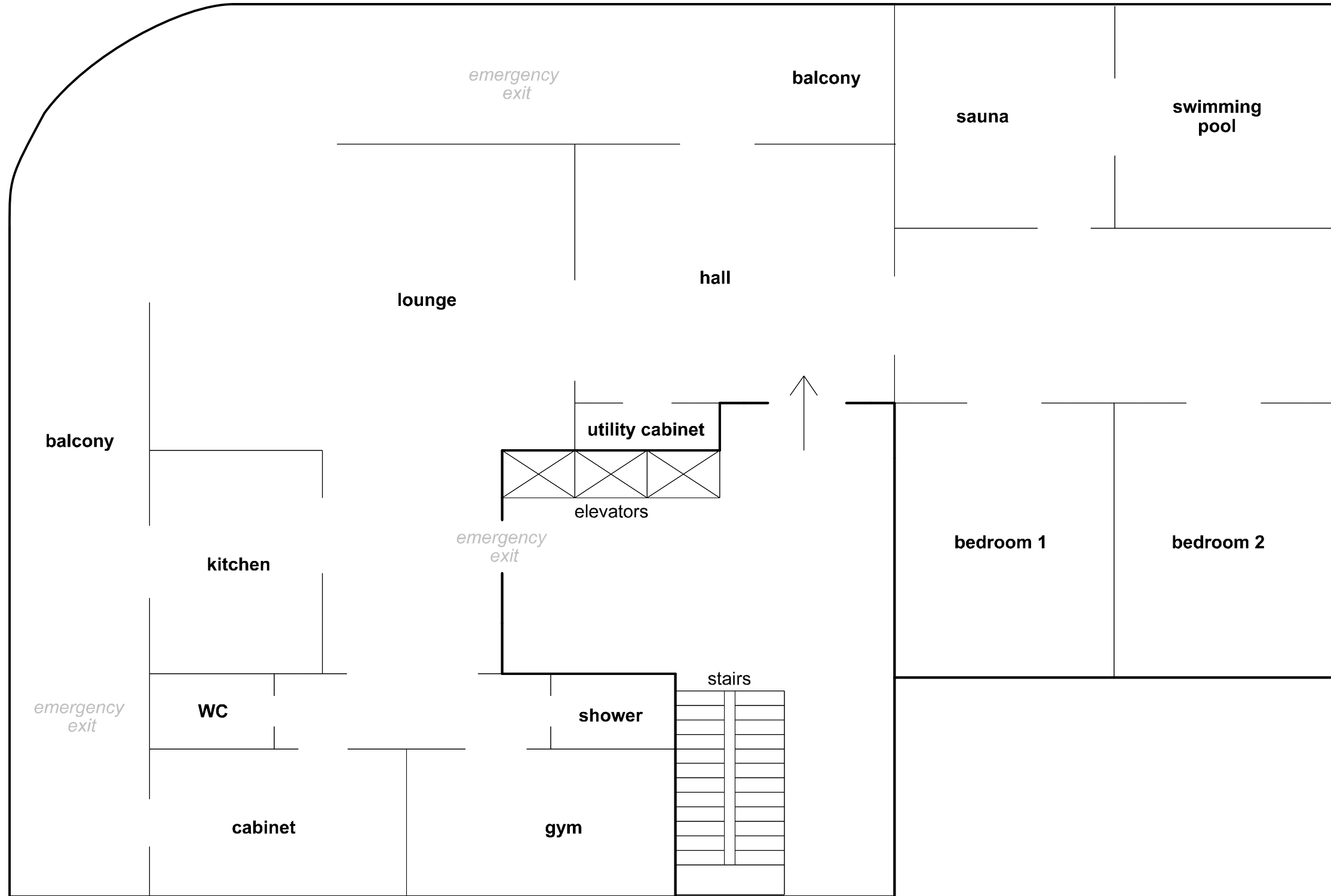
Wiring way:

- overhead powerline
- underground power cable
- cable shaft
- cables on wall surface
- cables inside the wall
- cables in cable tray
- other: _____

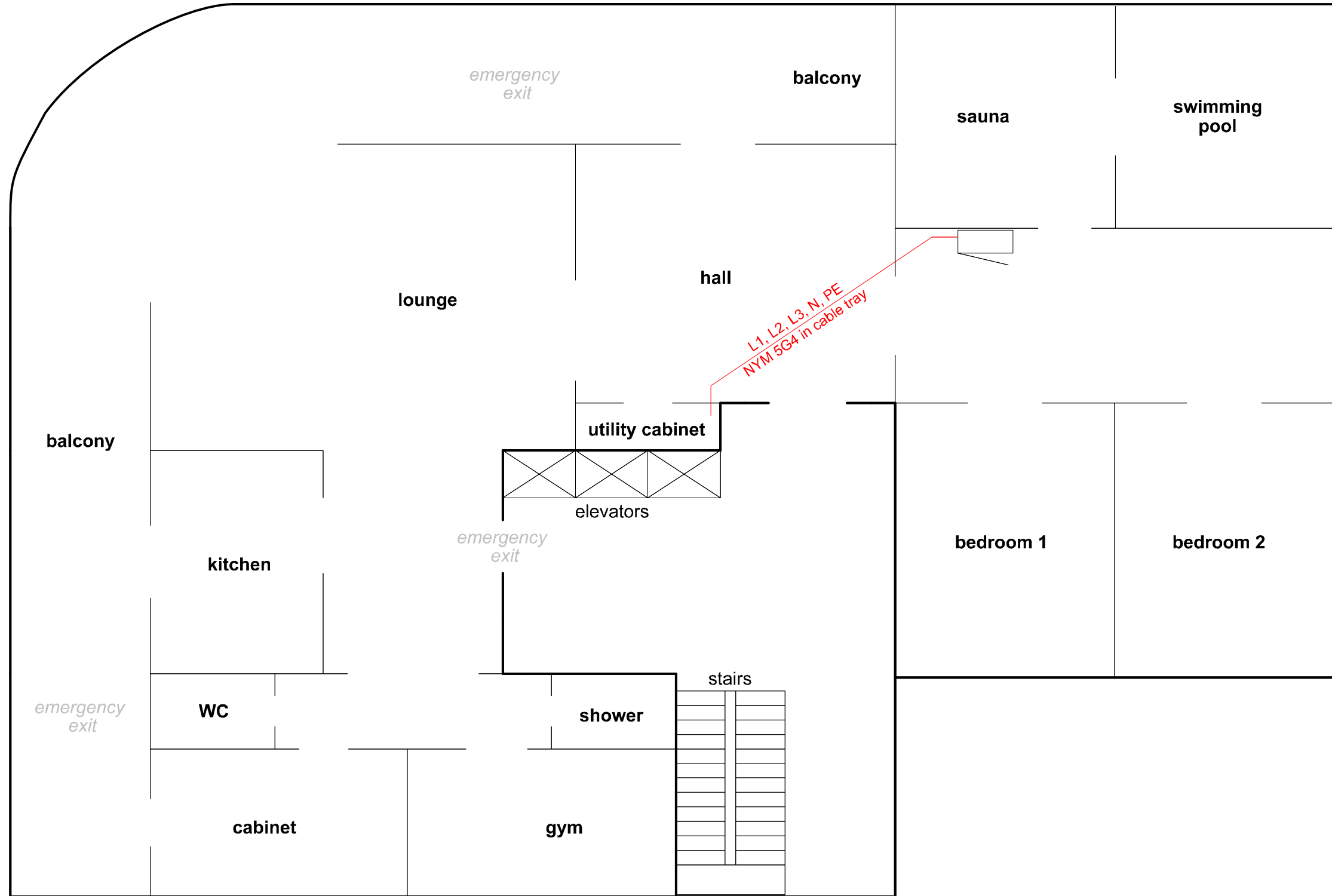
Fuse box:

- wall surface
- inside the wall
- other: utility cabinet

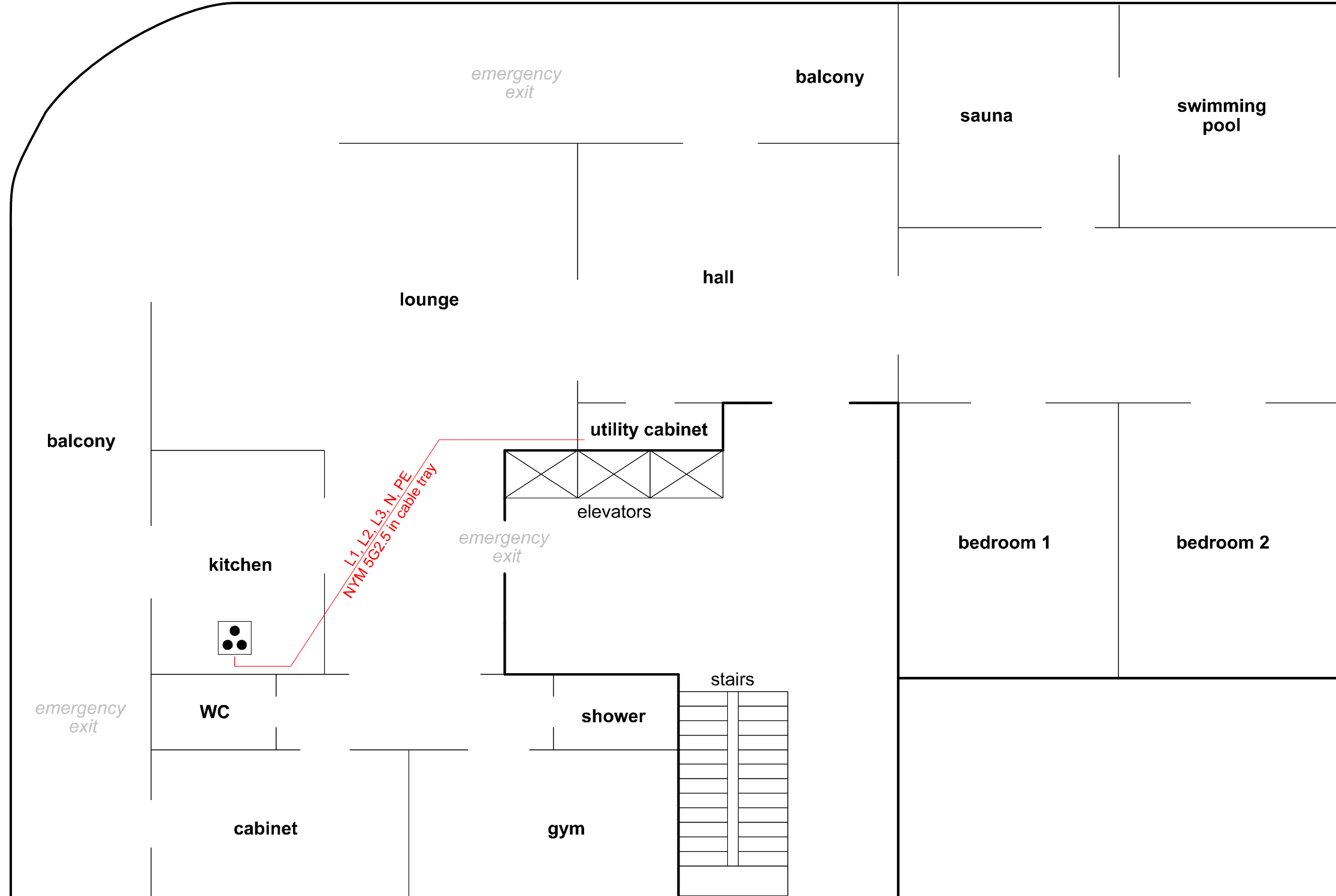
BUILDING PLANT



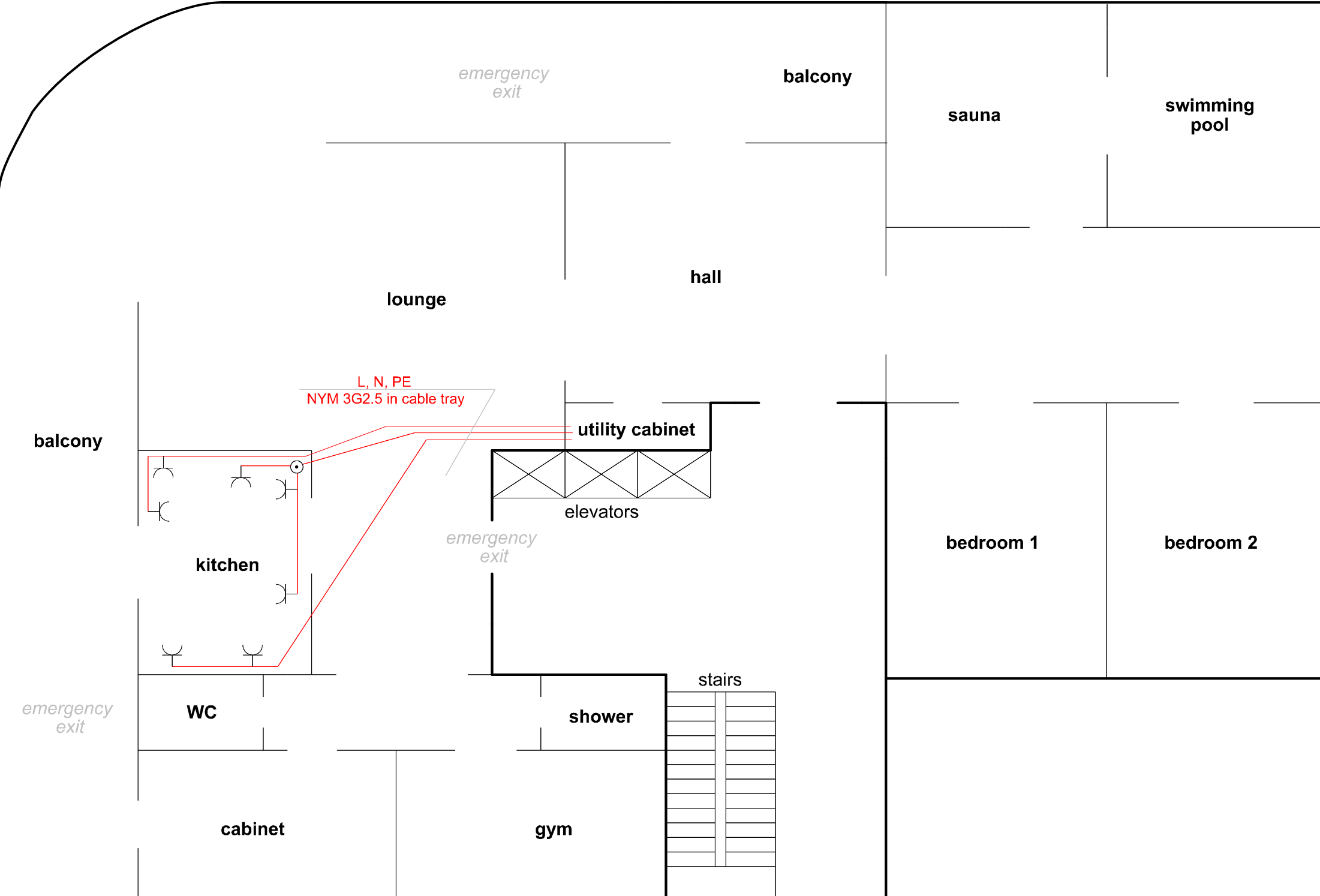
CIRCUIT 1 ON BUILDING PLANT



CIRCUIT 2 ON BUILDING PLANT



16A KITCHEN SOCKETS ON BUILDING PLAN



emergency exit

balcony

sauna

swimming pool

hall

lounge

**L, N, PE
NYM 3G2.5 in cable tray**

utility cabinet

balcony

elevators

emergency exit

kitchen

bedroom 1

bedroom 2

emergency exit

WC

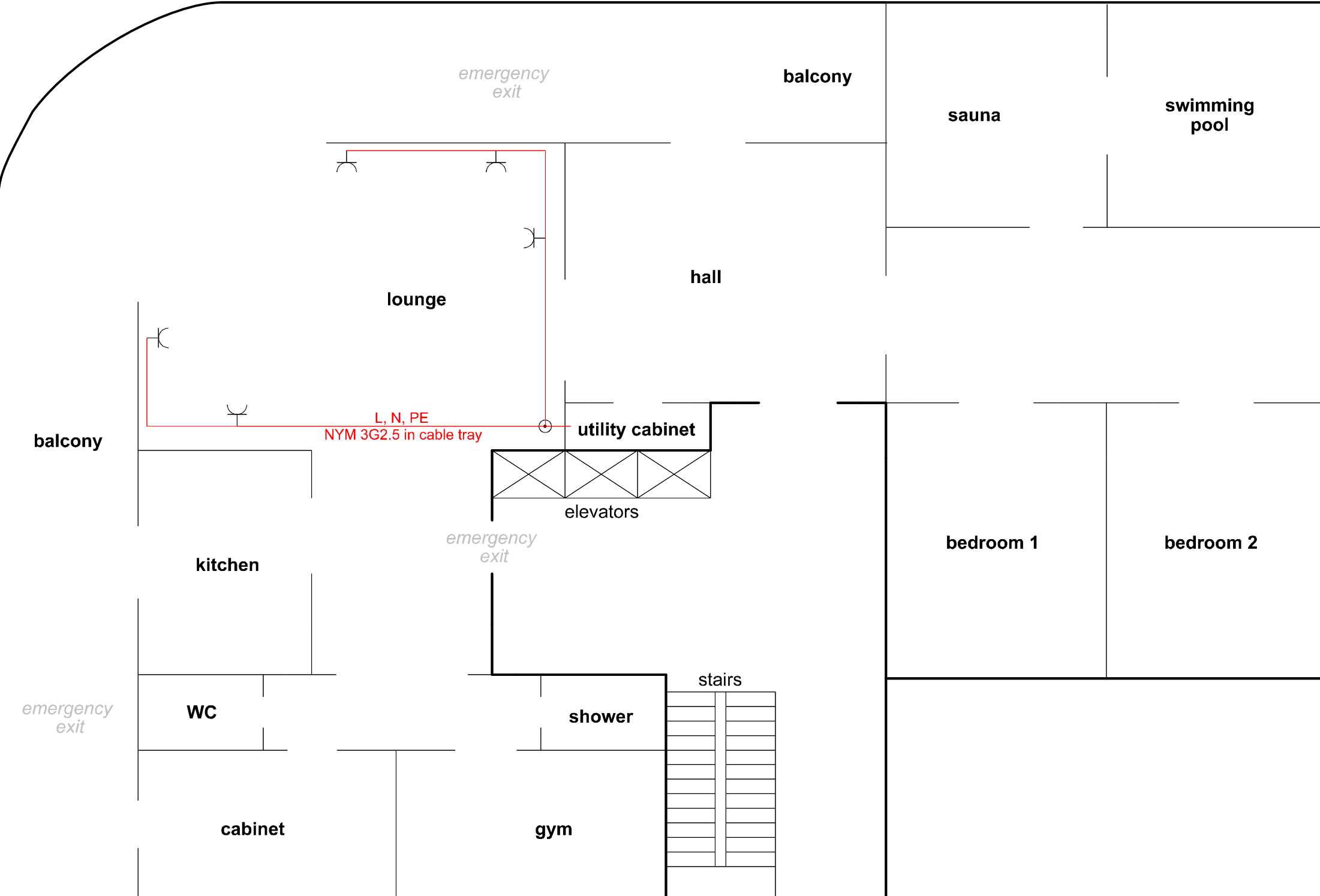
shower

stairs

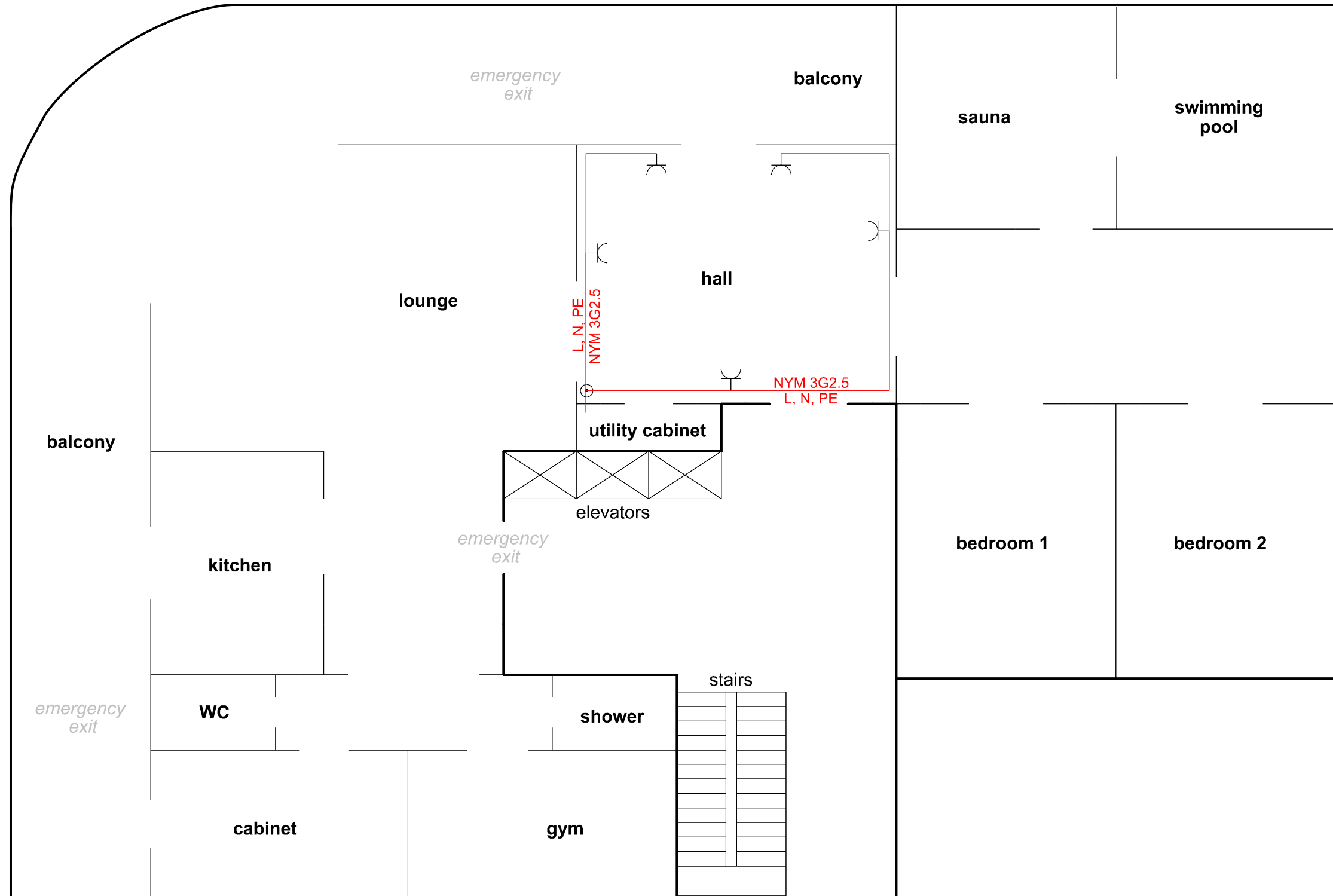
cabinet

gym

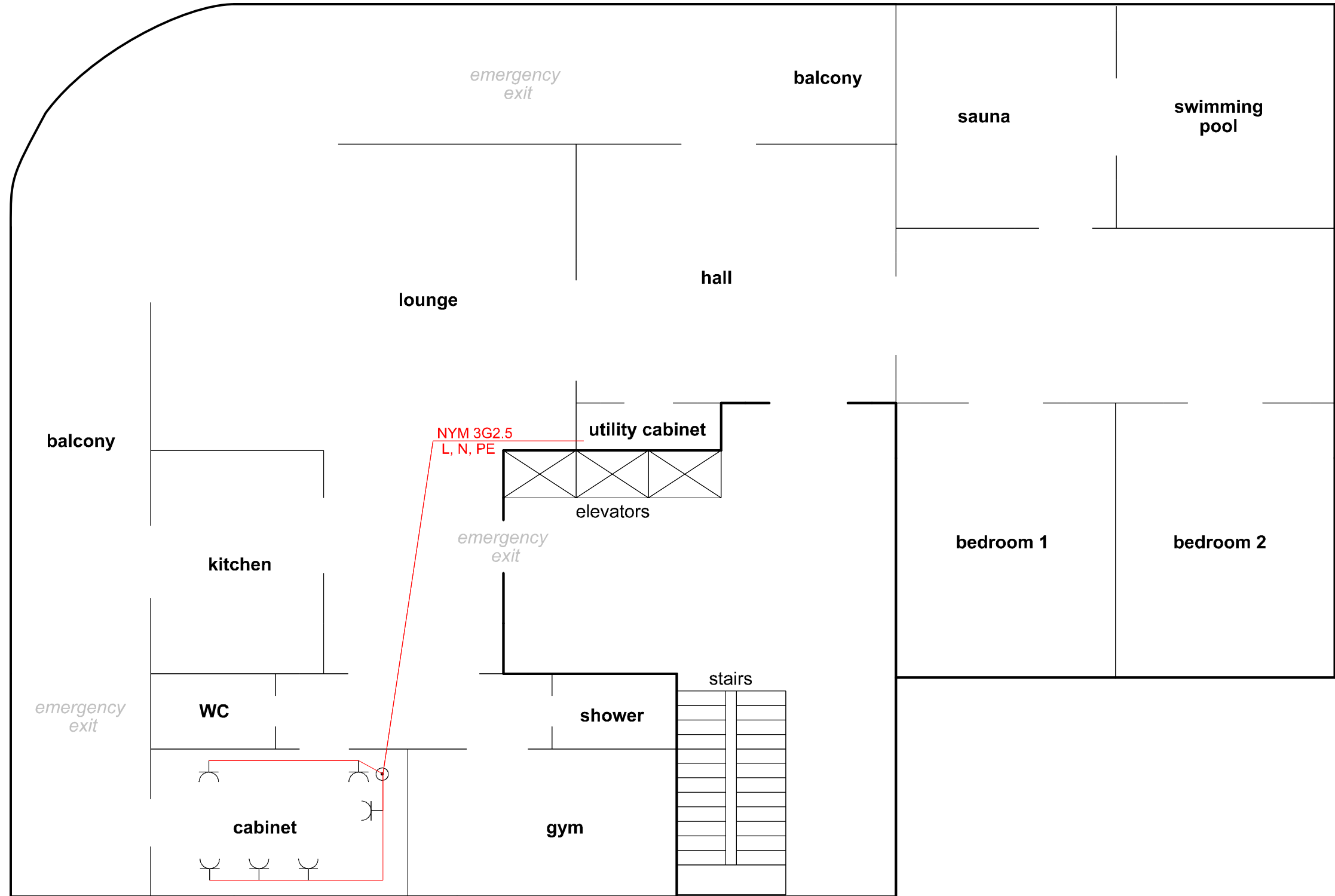
16A LOUNGE SOCKETS ON BUILDING PLANT



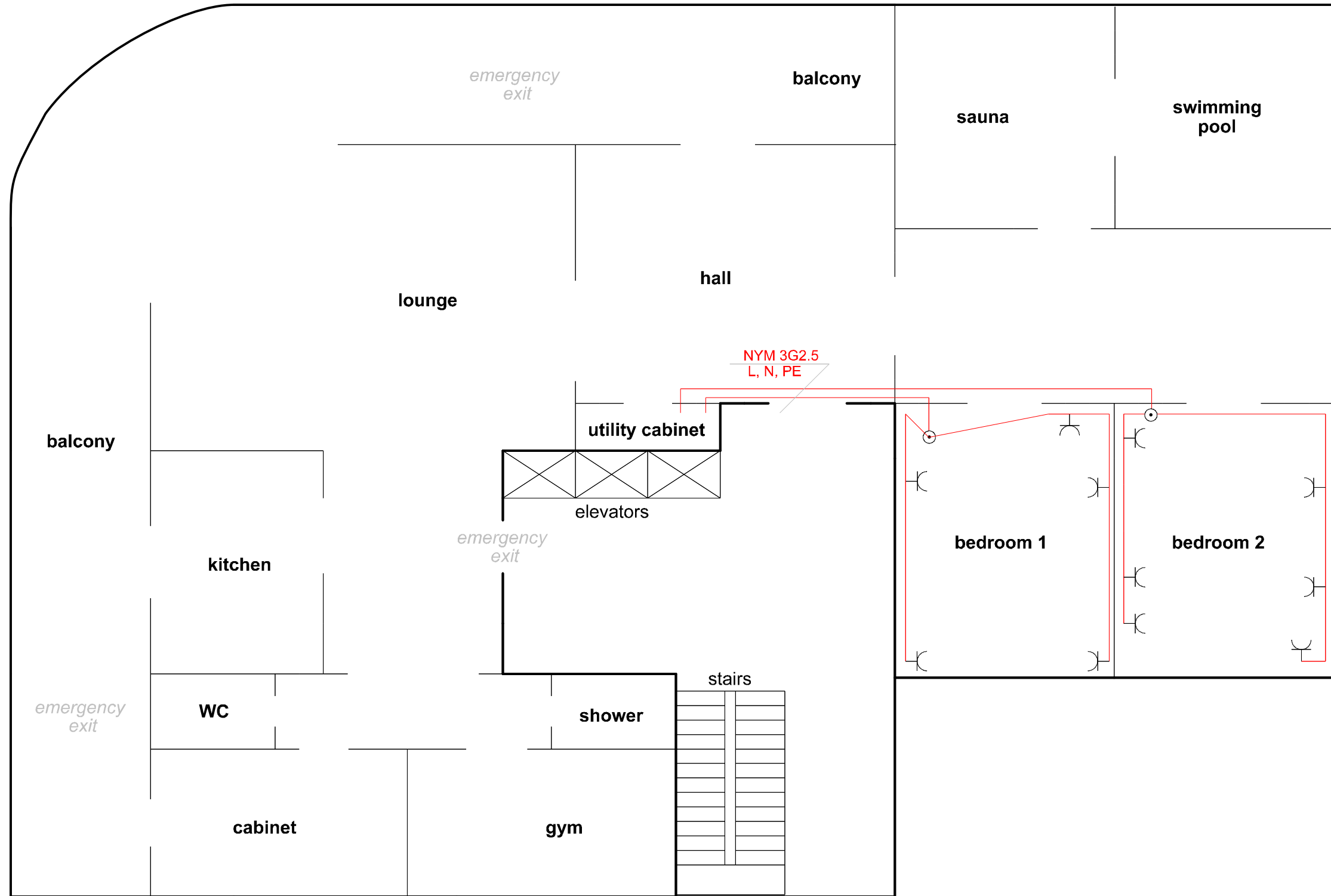
16A HALL SOCKETS ON BUILDING PLANT



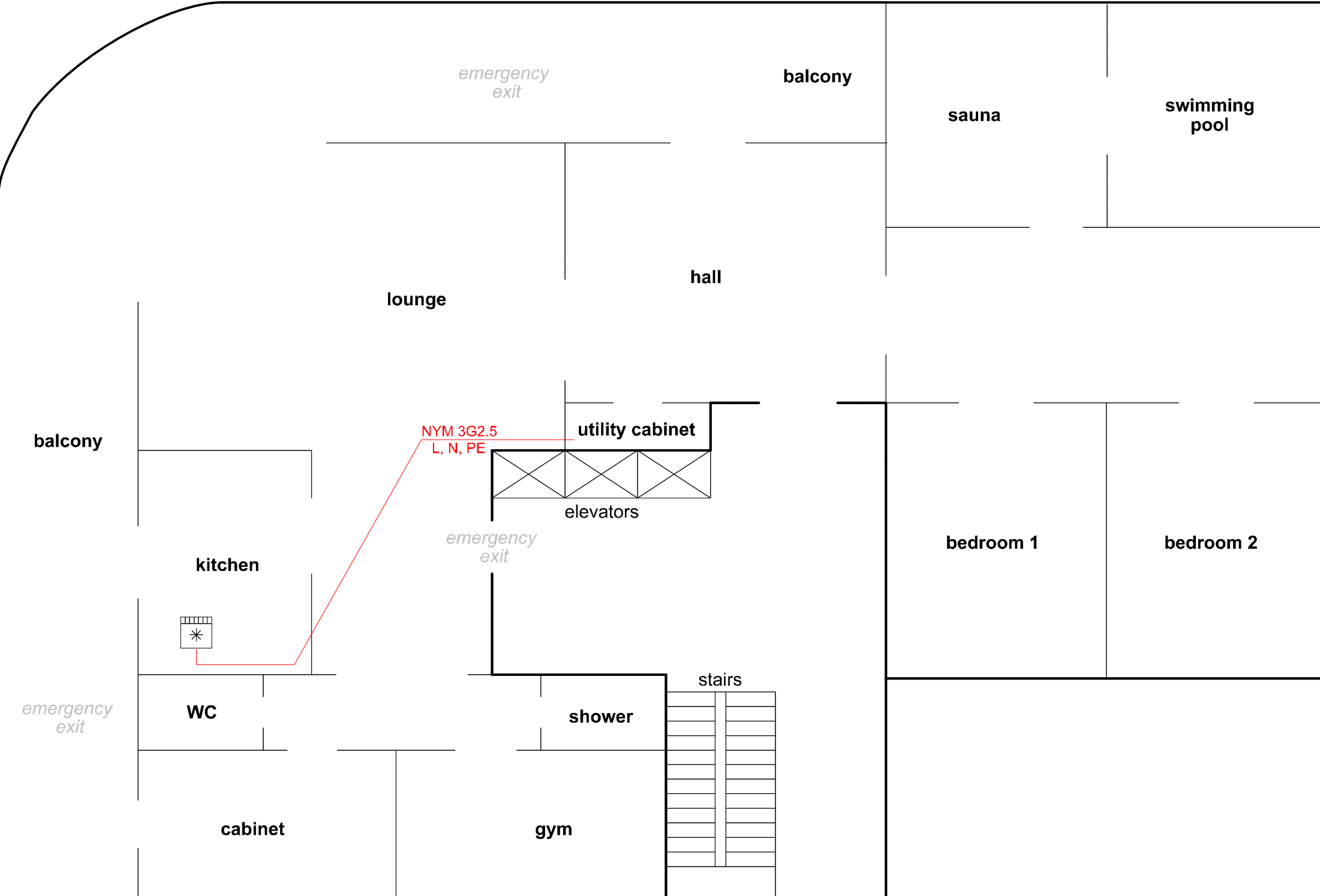
16A CABINET SOCKETS ON BUILDING PLANT



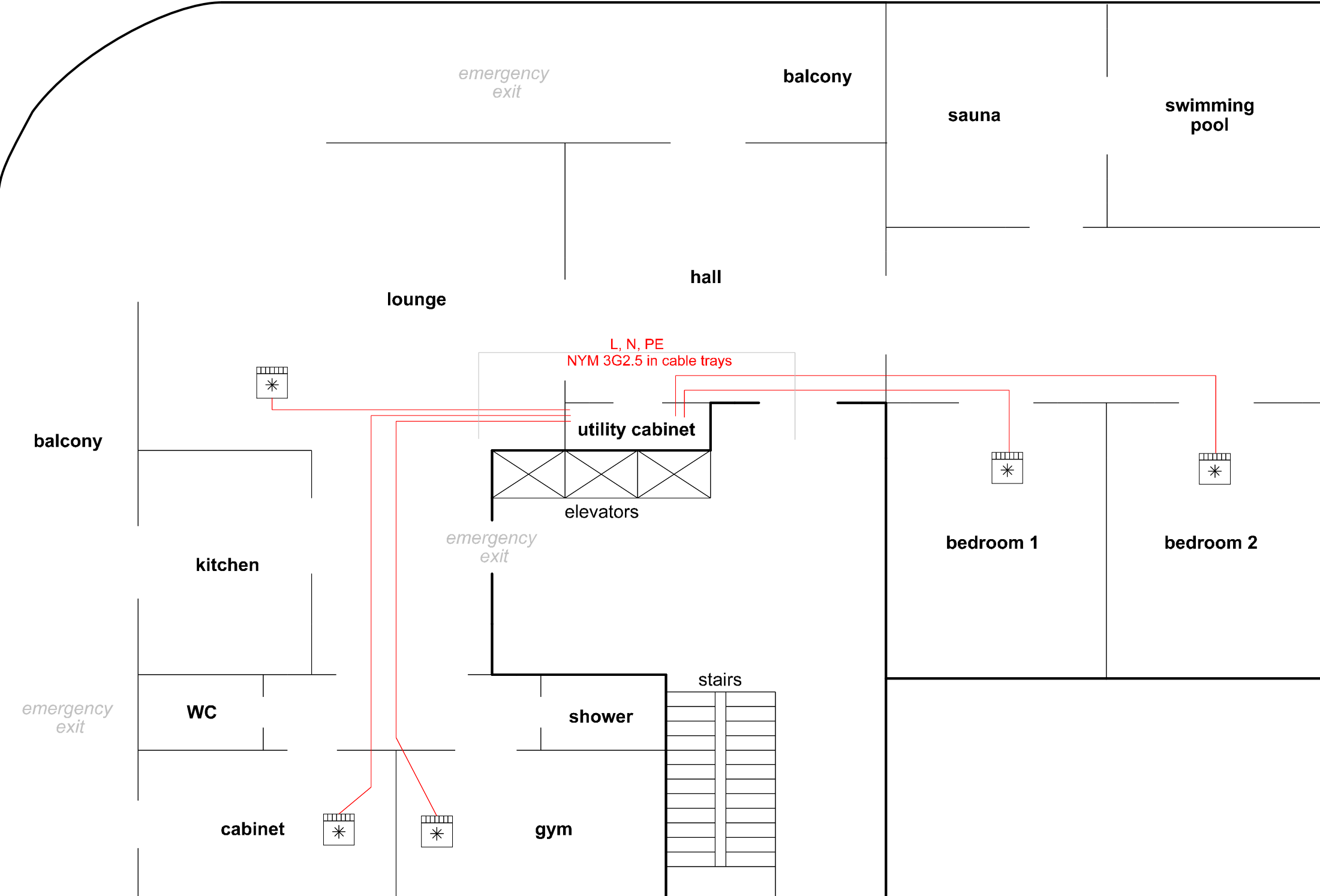
16A BEDROOM SOCKETS ON BUILDING PLANT



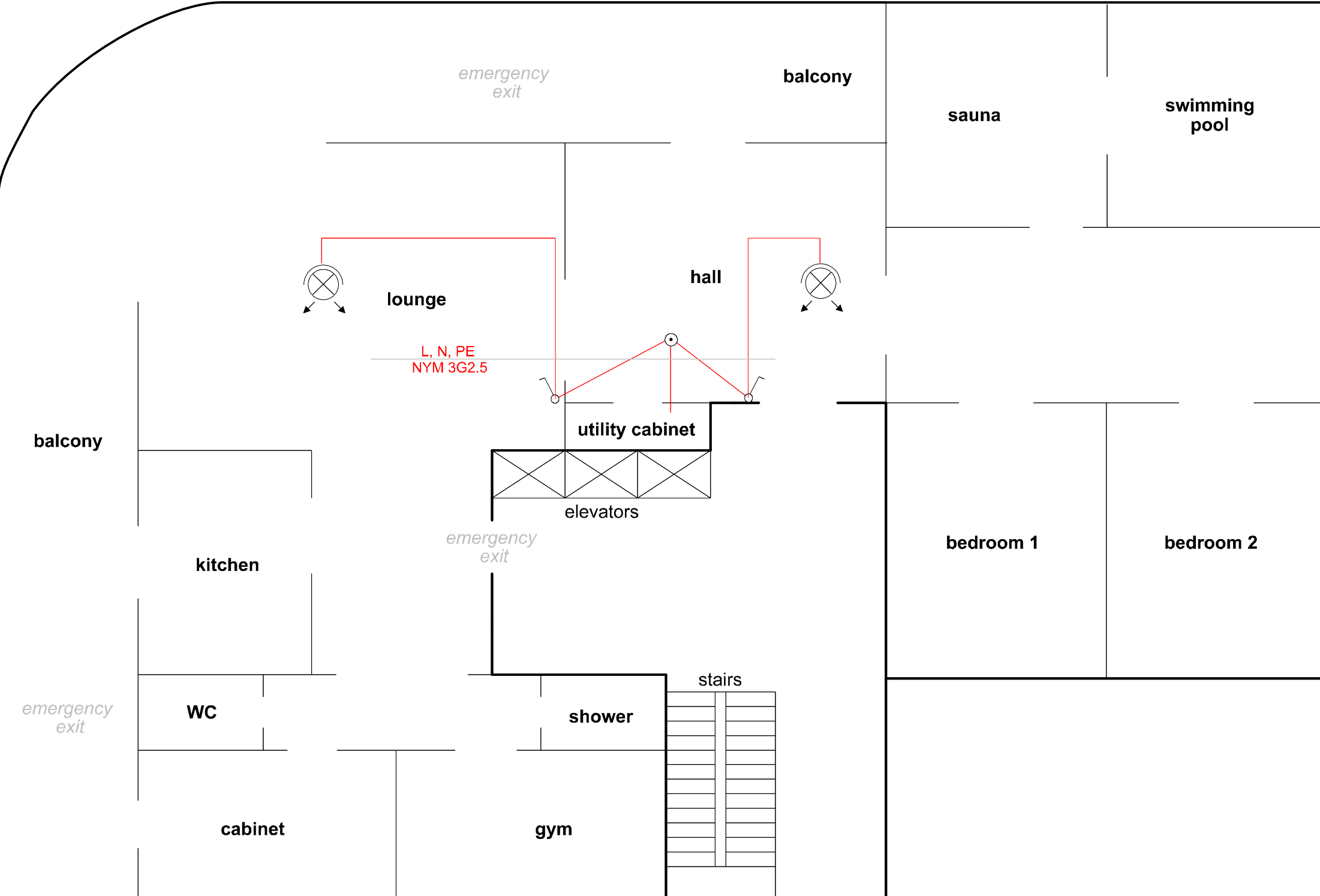
AIR EXTRACTOR ON BUILDING PLANT



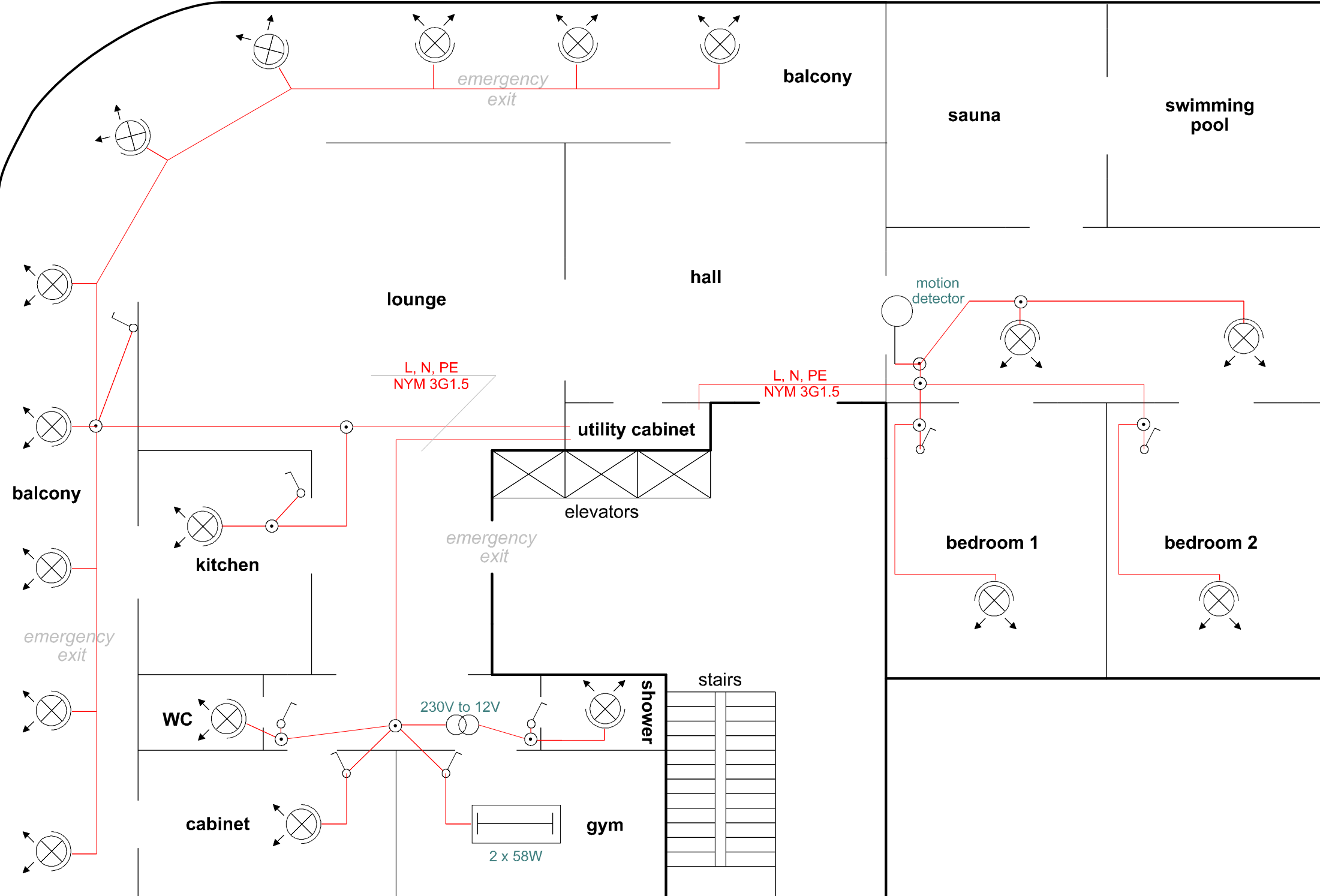
AIR CONDITIONERS ON BUILDING PLANT



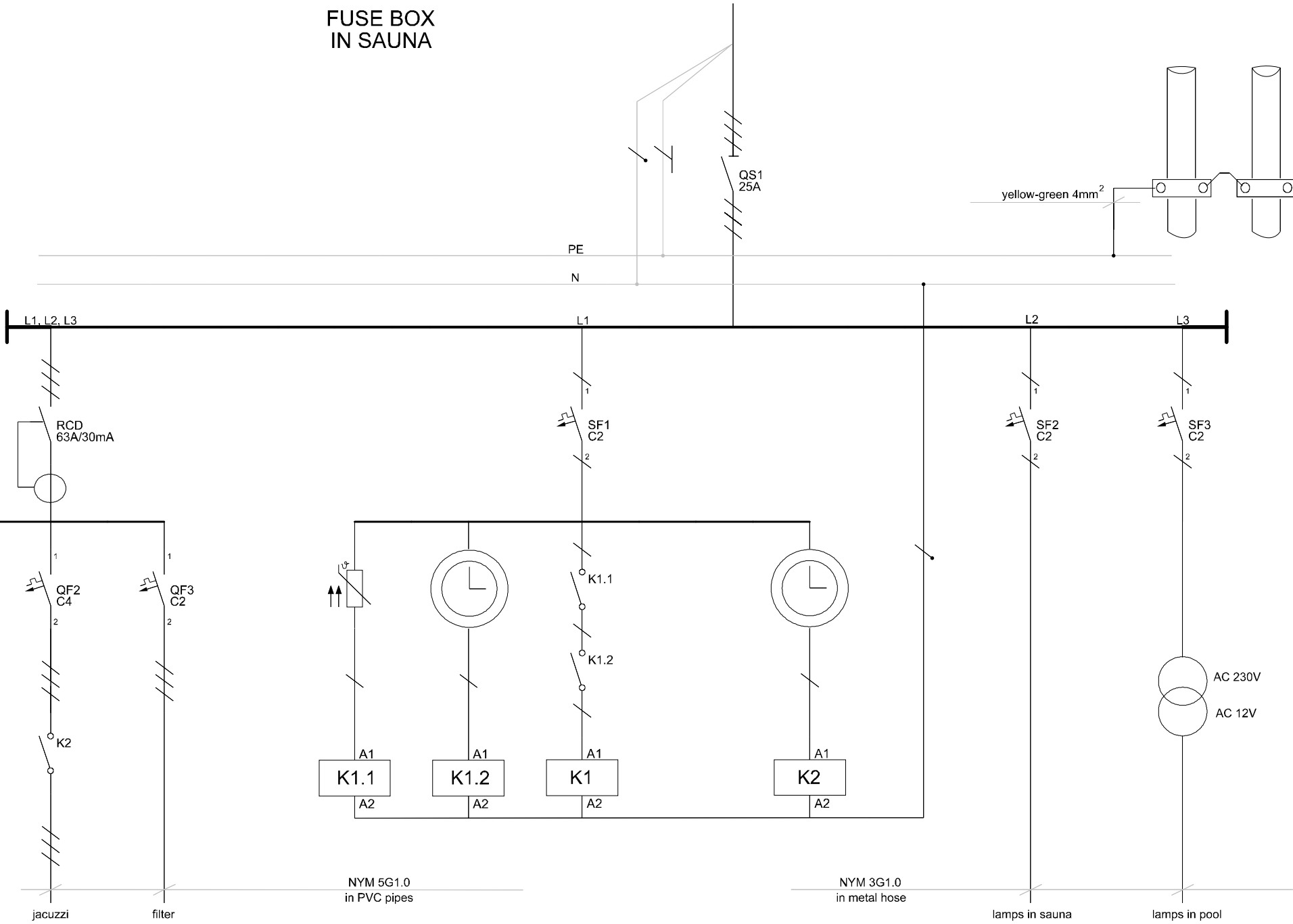
CIRCUIT 17 ON BUILDING PLAN



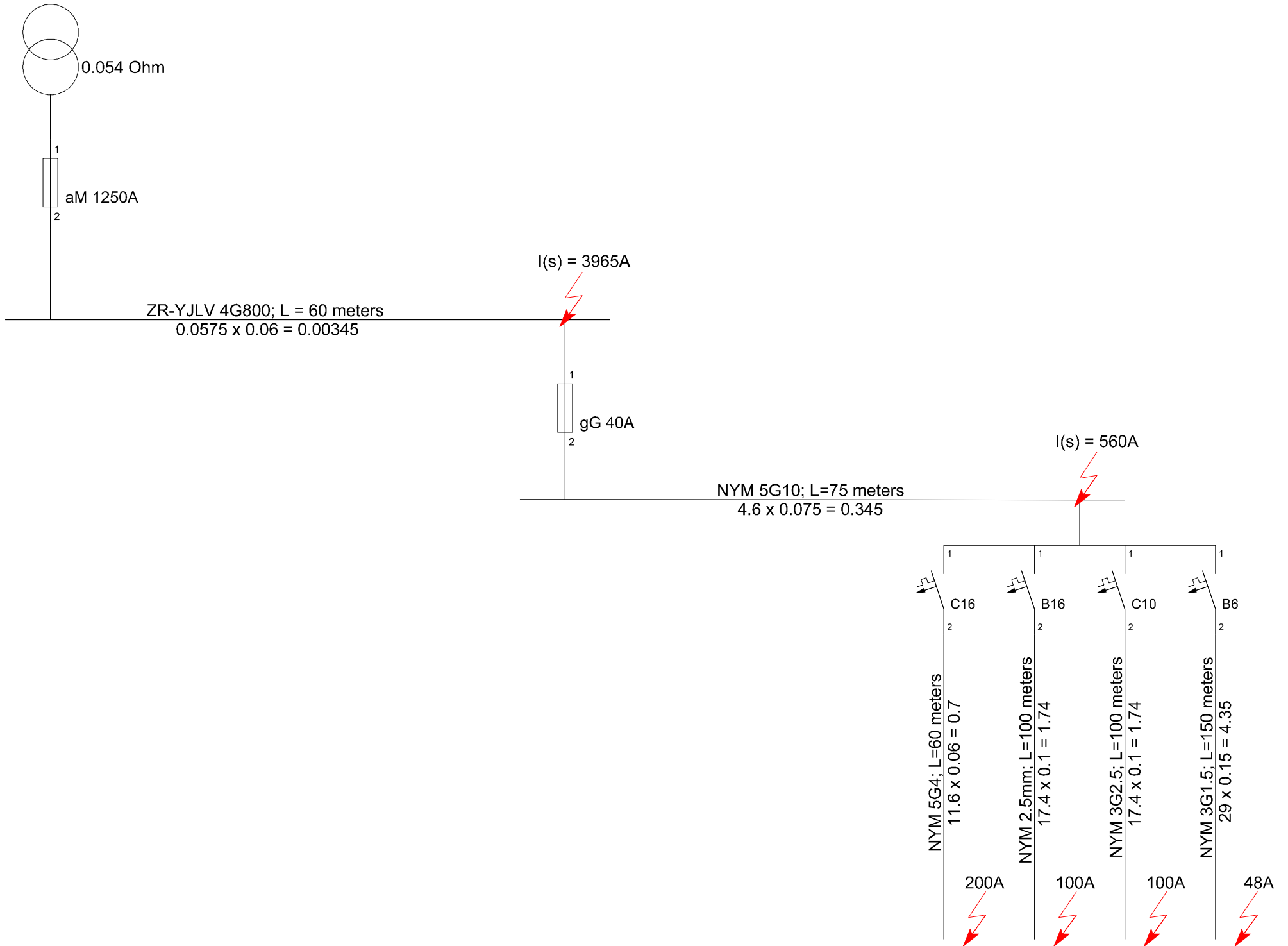
CIRCUITS 18, 19 AND 20 ON BUILDING PLANT



FUSE BOX IN SAUNA



SHORT CIRCUIT CALCULATION (FIRE SAFETY)



MATERIALS

Fuse box 51M + el.meter	1
Fuse box 42M, metal	1
Load switch 3x50A	1
Load switch 3x25A	1
Busbar N and PE 4x16 + 24x6	1
Busbar N (blue) 14 terminals	1
Busbar FORK 10mm 3-phase	60M
RCD 4-pole 30mA 25A	2
RCBO 2-pole B16/0.03	9
RCBO 2-pole C10/0.03	1
Circuit breaker 3-phase C16	1
Circuit breaker 3-phase B16	1
Circuit breaker 3-phase C10	1
Circuit breaker 3-phase C4	1
Circuit breaker 3-phase C2	1
Circuit breaker 1-phase C10	6
Circuit breaker 1-phase B6	3
Circuit breaker 1-phase C2	6
Contactor 3x16A with "AC-1" char.	1
Relay 10A, NO/NC for DIN rail	3
Digital time relay for DIN rail, 8A, NO/NC	2
Transformer for DIN rail 230V to 12V	1
Cable NYM 5G4	30 meters
Cable NYM 5G2.5	30 meters
Cable NYM 3G2.5	580 meters
Cable NYM 3G1.5	800 meters
Cable THERMFLEX180 EWKF-C 5G2.5	15 meters
copper wire, yellow-green, 6mm	200 meters
metal cable tray	250 meters
PVC pipes, 20mm	100 meters
Outlet boxes, 68mm	100
16A Schuko sockets	60
Light switches	15
Earthing busbar, 8 terminals	4
Metal collars 16mm	25
Transformer 230V to 12V for wall surface	1
Other (terminals, nails, screws, etc.)	1