













F. W. STEVENSON & CO. BROKERS. 14-16 MAHON BLDG. 1114 GOVT. ST. PRIVATE WIRES TO ALL EXCHANGES.

BANK OF MONTREAL. Established 1817. VICTORIA. Capital, all Paid-up, \$4,000,000.

N. B. MAYSMITH & Co., Ltd. MEMBERS PACIFIC COAST STOCK EXCHANGE. Will sell, subject to confirmation: 1,000 Portland Canal...

Northern Crown Bank. HEAD OFFICE WINNIPEG. President - Sir D. H. McMillan. Authorized Capital \$6,000,000.

Portland Canal! Will Buy and Sell: PORTLAND CANAL, BEAR RIVER, GLACIER CREEK, LITTLE JOE, O. K., RED CLIFF, STEWART M. & D.

MORE LIGHT ON LIFE OF OLD PRETENDER. Intrigues and Matrimonial Adventures—Visit to Rome in Search of Funds. A new volume is issued by the Historical Manuscripts Commission of the Stuart Papers preserved at Windsor Castle.

DUST NUISANCE IS CAUSE OF COMPLAINT. Street Committee Deals With Several Matters of Civic Business. The dust problem was again brought before the attention of the streets committee last night by a deputation of irate property owners from Government street south and Simcoe street.

MONGOLIAN PHEASANTS TO IMPROVE THE STOCK. Game Warden Bryan Williams Turning Down a Number on Island To-day. Provincial Game Warden A. Bryan Williams has brought two hundred Mongolian pheasants to Victoria, and is to-day turning them down in the Esquimalt and Saanich districts.

GREY SAYS CANADA IS BELLE OF THE BALL. (Special to the Times.) London, July 16.—Speaking at Liverpool prior to his departure yesterday for Canada, His Excellency Earl Grey said Canada was the belle of the ball.

GEN. FRENCH SATISFIED WITH CANADIAN MILITIA. (Special to the Times.) London, July 16.—Interviewed on his arrival from Canada, General Sir John French expressed himself as well satisfied with his inspection of the Canadian militia. He referred to the strength of the cadet movement and the spirit of loyalty, he said, was everywhere.

LIQUOR BY-LAW CASE IN COURT PROBABLE. Officers Visit Restaurants in Search of Evidence of Infractions. That the authorities intend to enforce the new liquor regulations, which went into effect yesterday, was made evident last night when certain restaurants were visited by police officers who believe they have obtained evidence that will substantiate a prosecution under the new city by-law.

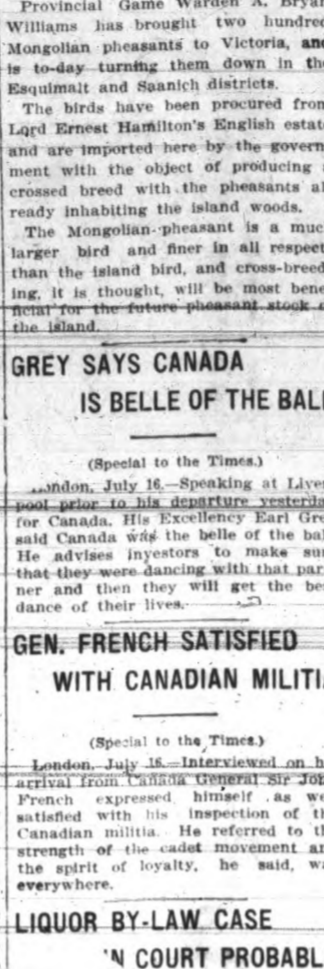
PERSONAL. P. G. Reeves, Prince Rupert, arrived in town yesterday. S. Symes-Thompson, London, Eng., is in this city on a visit.

RUSSIAN'S WOLF TEAM. A Russian named Peshenko, who is travelling by road from Krasnoyarsk to St. Petersburg with a little cart drawn by two wolves, has arrived at Omeq and says he will be in Victoria in a few days.

TOO LATE TO CLASSIFY. WANTED—Three apprentices for machine shop. Apply Victoria Machinery Depot, 127 1/2.

NEW YORK STOCKS. (Times Lease Wire.) New York, July 16.—At the opening of the stock market to-day prices changed very little. The market was generally quiet.

STUDY THIS PLAN. It's situation on the map; note the size of the lots, their proximity to the heart of the city, the Government Buildings, Empress Hotel, Beacon Hill Park, proposed site of the G. T. P. Hotel and much else that goes towards making Victoria famous, and you will agree with us in all that has been said, and you will do more, you will hasten to place your deposit on your choice. Act—and act quickly.



PRICES. Lots A and D \$1350 B and C \$1300 E and F \$1350 for the Two. Island Investment Co. Ltd. Bank of Montreal Chambers, Phone 1494.

YOUR MOWER needs sharpening. Ready for the grass. H. M. Wilson, 614. FOR SALE—2 walnut hall stands. \$125. WANTED—The last chance to read the personal advertisement about the Government's medals. J. N. Mair, 1216.

Never Again!

We feel perfectly safe in predicting that, never again, in the history of our beautiful city, will you be able to secure property, within a few minutes' walk of the Post Office, and equal to this at such a reasonable price.

6 Sure Winners 6

This Is Not A Gamble, But, A Safe Investment

Advertisement for Island Investment Co. Ltd. featuring a site plan diagram and terms of investment. Terms: 1-4 Cash, Bal. 6, 12, 18, Months at 7 Per Cent.

STUDY THIS PLAN. It's situation on the map; note the size of the lots, their proximity to the heart of the city, the Government Buildings, Empress Hotel, Beacon Hill Park, proposed site of the G. T. P. Hotel and much else that goes towards making Victoria famous, and you will agree with us in all that has been said, and you will do more, you will hasten to place your deposit on your choice. Act—and act quickly.

PRICES. Lots A and D \$1350 B and C \$1300 E and F \$1350 for the Two. Island Investment Co. Ltd. Bank of Montreal Chambers, Phone 1494.

YOUR MOWER needs sharpening. Ready for the grass. H. M. Wilson, 614. FOR SALE—2 walnut hall stands. \$125. WANTED—The last chance to read the personal advertisement about the Government's medals. J. N. Mair, 1216.

Phillips Bros. GRANITE AND MARBLE MONUMENTS. 826 View Street. Victoria, B. C. Phone B-1207. Granite and Marble Works. Monuments, Tablets, Granite Copings, etc., at lowest prices consistent with first class stock and workmanship. A. STEWART Cor. Yates and Blanchard Streets.













EXPERTS TO ADDRESS IRRIGATION CONVENTION

New Water Act Will Be Considered at Meeting at Kamloops in August

Kamloops, July 16.—At the irrigation convention that will be held at Kamloops at the beginning of August there will be gathered together many men to whom the subject of irrigation has been a keen interest.

Although the first convention of the association was held at Calgary only three years ago, the work of the convention has shown results and much has been done to advance the principle of irrigation and a closely allied subject, the conservation of water.

At previous conventions certain legislation has been asked for, and other steps taken to secure the advancement of irrigation and a fair apportionment of water to users.

LE ROI TO CLOSE

Nelson, July 15.—The management of the well-known Le Roi mine of Rossland has decided to discontinue operations indefinitely.

PRESERVE BABY'S SKIN



With CUTICURA SOAP

A lifetime of disfigurement and suffering often results from the neglect, in infancy or childhood, of simple skin affections.

While in camp discipline has been strictly maintained, although no hard sentences were handed out to any youthful offenders.

Victoria's Boy Scouts

First Camp A Decided Success

None but persons who have seen the Boy Scouts brigade at their work can form an opinion of what the members of it have accomplished.

The boys who now form the local branch, are a fine lot of youngsters. They range in age from 10 years to about 18 years and are all well built.

When Sir Robert Baden-Powell introduced this system into the school life of the boys of England he was the means of starting a revival which has taken hold firmly in every part of the British Empire.

At previous conventions certain legislation has been asked for, and other steps taken to secure the advancement of irrigation and a fair apportionment of water to users.

wished to leave camp and go to town he had to secure from the scoutmaster in charge of his company a pass which enabled him to pass the sentries on his return.

The numerous tents scattered over the plain were very attractive. As one entered the grounds he had to pass between two sentries who were stationed at the opening.

The fact that the boys defrayed every cent of the expenses in connection with the camp is very creditable.

son why he had none and proceeded to enter the grounds. But the boy in charge absolutely refused to allow him to pass and he then resorted to main strength to get through.

Each morning the scoutmasters of the various troops filed out a requisition for supplies and sent a boy to the provision tent, where the requirements were attended to.

One of the things the doctor insisted on was that after dinner the boys should not start romping or working for a full hour, in order to allow their food to properly digest.

he rations given the boys were first class and there is no wonder the light ones filled out.

The brigade at camp consisted of seven troops, with approximately 40 members in each. The troops and scoutmaster of each were: "A," A. O. Hughes; "B," Lieut. C. E. Berkeley; "C," E. A. Salfie; "D," M. S. Frampton; "E," Canon C. E. Cooper; "F," C. H.

was to be accepted from parents or friends unless they had earned it by working in some way or another.

Each morning the scoutmasters of the various troops filed out a requisition for supplies and sent a boy to the provision tent, where the requirements were attended to.

On Monday morning last the doctor deemed it advisable to move from the position where the camp was to a spot some distance further up the incline.

One of the things the doctor insisted on was that after dinner the boys should not start romping or working for a full hour, in order to allow their food to properly digest.

he rations given the boys were first class and there is no wonder the light ones filled out.

Abbey's Effervescent Salt advertisement with product image and text: 'You can't enjoy life with a torpid liver. What then? Take Abbey's Salt.'

ton, who was the organizer of this movement in this city, was the brigade chaplain, and he conducted services every Sunday, the boys having a church parade, and Dr. Bapty, who is very enthusiastic over the success of the scouts, was the medical officer.

On Monday morning last the doctor deemed it advisable to move from the position where the camp was to a spot some distance further up the incline.

One of the things the doctor insisted on was that after dinner the boys should not start romping or working for a full hour, in order to allow their food to properly digest.

he rations given the boys were first class and there is no wonder the light ones filled out.

The brigade at camp consisted of seven troops, with approximately 40 members in each. The troops and scoutmaster of each were: "A," A. O. Hughes; "B," Lieut. C. E. Berkeley; "C," E. A. Salfie; "D," M. S. Frampton; "E," Canon C. E. Cooper; "F," C. H.

The only social function held at the camp was on Wednesday evening last, when the Esquimalt troop entertained Mr. Nunn, the occasion being his birthday.

The officers commanding the scouts are to be congratulated on the success of this first camp.

The band, under the leadership of Mr. Flowerlight, is steadily increasing in numbers, and now there are fifteen youths playing in it.

LIQUOR AND TOBACCO HABITS

A. McTAGGART, M.D., C.M., 75 Yonge St., Toronto, Canada. References as to Dr. McTaggart's professional standing and personal integrity permitted by: Sir R. Meredith, Chief Justice; Hon. G. W. Ross, ex-Premier of Ontario; Rev. N. Burwash, D.D., President Victoria College; T. J. T. President of St. Michael's College, Toronto; Rev. J. E. Sweeney, Bishop of Toronto.

Notice to Contractors

SEALED TENDERS addressed to the undersigned, and marked on the envelope "Tender for Piping System," "Tender for Water System," and "Tender for Electrical and Wiring System," in the case may be, will be received at the office of the Commissioners of the Transcontinental Railway, at Ottawa, Ontario, until twelve o'clock noon of the 26th day of July, 1910.

(1) Air, steam, water and oil piping system; (2) Yard water system; (3) Pipe tunnel and wiring ducts; required in connection with the Transcontinental Railway shops east of Winnipeg. Plans and specifications may be seen in the office of Mr. Gordon Grant, Chief Engineer of the Commissioners, at Ottawa, Ont., and in the office of Mr. S. R. Poillon, District Engineer, St. Boniface, Manitoba.

Each tender must be signed and sealed by all the parties to the tender, and witnessed and accompanied by an accepted cheque on a chartered bank of the Dominion of Canada, payable to the order of the Commissioners of the Transcontinental Railway, for a sum equal to ten per cent. (10 p. c.) of the amount of the tender.

The cheques deposited by parties whose tenders are accepted will be deposited to the credit of the Receiver General of Canada as security for the due and faithful performance of the contract according to its terms.

The right is reserved to reject any or all tenders.

By order, P. E. RYAN, Secretary. The Commissioners of the Transcontinental Railway, Ottawa, Ontario.

Notice

The Woodworkers, Ltd. Have their new factory on Douglas street almost completed, and it is the best of its kind on the Canadian coast.

They manufacture everything in the Building Trade, Mantels, Showcases, Store, Bank and Office Fixtures. They can turn out 300 Doors and 100 Windows per day.

OFFICE AND MILL

2843 Douglas St. Phone 1396 CALL AND SEE THEM, THEY WILL BE PLEASSED TO SHOW YOU THROUGH THEIR PLANT.

R. MCKINNEY, Manager.

The Lansdowne Floral Gardens

THE ROSE SHOW is over, but you have a list of the best roses you saw there. We can supply them.

SEND FOR OUR CATALOGUE. The Lansdowne Floral Gardens Co. 1521 Lansdowne Rd., Victoria, B. C.



OFFERING A SUGGESTION

Is one thing, but putting it into practice is an entirely different proposition. WE SUGGEST WE DO YOUR PLUMBING

It's a good suggestion and one we can fully qualify on.

PLUMBING SUPPLIES FURNISHED BY US

Are all standard makes, while work we do is superior in every particular. Estimates given.

The Colbert Plumbing and Heating Co., Ltd

Phone 552. 755 BROUGHTON STREET.

NOTICE

NOTICE is hereby given that all persons having claims against Thomas J. Wilson, late of Victoria, B. C., decedent, are requested to send particulars of same to the undersigned on or before the 31st day of July, 1910, after which date the executor will proceed to distribute the assets of the decedent among the persons entitled thereto, having regard only to the claims of which notice is given.

Dated this 15th day of June, 1910. GEO. A. MORPHY, Executor.

NOTICE

Notice is hereby given that I intend to apply at the next sitting of the Board of Licenses, Commissioners of the City of Victoria, for a transfer of the license to J. A. Van Tassel, of the license to sell and import and export liquors by retail at the Victoria Hotel, situated at No. 21 Douglas street.

Dated the 8th day of July, 1910. JOB POSTER.



the first to pledge their support of the Mother Land and assist her against any threatening foe. Whether their support would be accepted or not, it would be very inspiring to know that there is a well-organized association of boys ready to help in any way they can.

An example of the strictness with which the orders were carried out was shown one day this week. When a boy



George Brown
Journalist and Statesman

A Character Sketch by R. E. Gosnell

The death of Goldwin Smith calls to mind the fact that his first work in Canada was done for the Toronto Globe...

Hon. George Brown has been dead these thirty years and to the present generation his name is little more than a memory to many not even that...

Now that the fierce partisan strife of Brown's days is over, that the bitter animosities and venomous acrimony of dispute have been eliminated from public life...

of public execration. That is all gone and done with. The reputation of George Brown, which, except in his immediate environment in Upper Canada, was for many years hidden in a cloud of misrepresentation and misapprehension...

Although a life-long Conservative, I have long had an admiration for his career. Perhaps the freemasonry of Journalism had something to do with it. In addition to reading much pertinent to his stormy life...

As a "boss," though not a hard taskmaster, he was severely just and not inclined to overlook lapses, mistakes, or neglect. Unsparring himself in labor, and unerring, he scarcely allowed sufficient for others less strong and less capable.

the penitentiary; he represented Bothwell, Oxford and Toronto in the old Canadian legislature—a movable feast, now at Montreal, now at Quebec, now at Bytown (Ottawa); he was premier of Canada, if only for a few days; he sank considerations of personal and political dislike to Sir John Macdonald to become a member of his government...

"little bit of England," but western Ontario is a big bit. Essex, Kent, Elgin, Lambton, Middlesex and Oxford, which were the fighting ground for a lot of political giants, such as Brown, Mackenzie, Cameron and McKellar...



GEORGE BROWN.

orally, for thirty years he was uncrowned king of the Liberal party. Privately, in a business way, his tastes ran to agriculture. The celebrated Bow Park farm, famous for its shortness, was his and of his making...

tion by population, anti-slavery, reciprocity with the United States, Confederation—which in parts for dignity and style rank with those of Webster. But as a rule he was not ornate or studied. He spoke with a quick nervous energy, at times in torrents, not always in strictly logical sequence...

arily large head and feet—oddly allied in genius—a veritable covenanted figure. As was said of another great man, he had a "porridge face," long, big, resolute, but not in the slightest degree dour. It was earnest, but luminous; kindly rather than severe; a face which his twin souls—Celt and Saxon—showed plainly together. He owed much to his ancestry. On one side he inherited sound judgment, industry, perseverance and good administrative and business ability.

It would be wholly misleading to say that he belonged to the Reform party of Upper Canada. He was the Reform party. He inspired it, dictated its policy, ruled it and won its victories for it. From about 1845, when he first got firmly in the saddle, until the time leadership was taken over by Alexander Mackenzie, the party was little more than the reflection of his views...

SUN FIRE
The oldest Insurance Office in the world
FOUNDED 1721
HOME OFFICE: LONDON, ENGLAND
Canadian Branch, Sun Building, Toronto, H. M. Blackburn, Manager
PEMBERTON & SONS, VICTORIA AGENTS.

both courses he gave offence to his friends. By the first, to the more ardent, and; by the second, to the time-serving element. It all ended in the weaker brethren of that administration escaping to the Tory camp in the guise of constitutionalists.

But, if the great leader was not always in accord with the first men of his party, he was always solid with the rank and file. The Globe was read in every household and was as much a part of the religion of these good people—especially of the Scottish element—as Holy Writ itself. In fact, it was commonly referred to as the "Grit Bible."

Geo. Brown had conspicuous faults, but faults of a virtuous kind. He had no vices. He was deeply religious, without the slightest trace of bigotry. He was often accused of being ambitious in public life, but he never solicited a public office, and never filled one that was not pressed on him.

Mr. Brown was a man deeply devoted to his family, and when away from home wrote to them daily. The inner and sweeter side of his nature is revealed in his private letters. It is a revelation to know that a man could so easily discard the mantle of a censorious Cato to prattle in baby talk and indulge his children in boyish and girlish fancies.

voted to his family, and when away from home wrote to them daily. The inner and sweeter side of his nature is revealed in his private letters. It is a revelation to know that a man could so easily discard the mantle of a censorious Cato to prattle in baby talk and indulge his children in boyish and girlish fancies.

(To be concluded.)

Sale of Business

Tenders will be received by the undersigned up to noon on Monday, July 18th, for the purchase of the business of Messrs. Waites Bros., established in 1888, as locksmiths and general repairs shop. The property and stock list can be seen upon application to me.

ROBERT S. DAY, Receiver. 620 Fort Street, Victoria.

VISIT THE BARGAIN CENTRE TO-DAY

Nothing Like It in the City

Where? Why, at the Great Clearance Sale at the Semi-Ready Wardrobe
Prices Cut to a Whisper Terms of Sale, Strictly Cash

Read the Price-List Carefully and Don't Miss This Opportunity to Replenish Your Wardrobe at Prices Never before Offered in the City

- FRENCH BALBRIGGAN UNDERWEAR, regular \$1 to \$1.50, per suit, now .90c
FANCY BALBRIGGAN UNDERWEAR, regular \$1 to \$1.50 per suit, now .90c
FINE IMPORTED MACO SOCKS, regular 20c, now .10c

- MEN'S OUTFIT SUITS, regular \$10, now \$5.95
MEN'S TWEED SUITS, regular \$10, now \$5.95
MEN'S FLANNEL SUITS, regular \$10, now \$5.95
MEN'S BUSINESS SUITS, regular \$12, now \$7.95

- FINE CAMBRIC HANDKERCHIEFS, worth 15c, now 5c
COLORED HANDKERCHIEFS, worth 15c, now 5c
WASH TIES, worth 25c and 35c, now 15c

Clothiers and Hatters B. WILLIAMS & CO.'Y Clothiers and Hatters
614 YATES STREET, VICTORIA, B. C. EXCLUSIVE AGENTS FOR SEMI-READY TAILORING

Imperial Bank of Canada

HEAD OFFICE, TORONTO. D. R. WILKIE, General Manager. CAPITAL AUTHORIZED \$10,000,000.00 CAPITAL PAID UP \$2,325,000.00 RESERVE FUND \$3,330,000.00

Among City Churches

REFORMED EPISCOPAL Church of Our Lord

Pastor's Holiday.—Rev. W. Gladstone and family are spending the weeks at Fulford Harbor. Mr. Gladstone will return each week-end in time to take charge of the services as usual on Sundays.

PRESBYTERIAN First Church

Sunday Services.—The pastor, Rev. Dr. Campbell, will preach to-morrow, both morning and evening. The Sunday school session will be held, as usual, prior to the morning service.

Methodist Metropolitan

Young Ladies' Club.—The members of the Young Ladies' Club held a very enjoyable picnic at Goldstream last Saturday afternoon. A number went out on the morning train and many others made the trip by automobile in the afternoon.

METHODIST Metropolitan

Young Ladies' Club.—The members of the Young Ladies' Club held a very enjoyable picnic at Goldstream last Saturday afternoon. A number went out on the morning train and many others made the trip by automobile in the afternoon.

LUTHERAN Grace

Conventual Church.—Thursday, the 21st inst., a congregational meeting will be held at 8 p. m. at the tent, to decide on the letting of the contract for the church building to be erected opposite the tent.

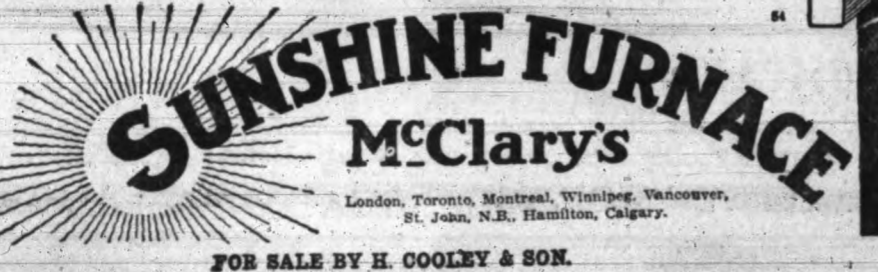
LUTHERAN Grace

A Fire-pot That Won't Crack

THE greatest strain falls midway between the top and bottom of a one-piece fire-pot, because the live coals are located at the centre of the fire. This continued strain overtaxes the expansion powers of a one-piece fire-pot and causes it to bulge out and crack at the centre, and through the cracks, dust and deadly coal gas escape and eventually pass through the registers. In self-defence, you have to buy a new fire-pot. Every



Oil Cement this joint is absolutely gas-proof, smoke-proof and dust-proof. The layer of cement acts as a 'buffer' between the two sections and allows each section to expand or contract independently of the other. This feature prevents the Sunshine fire-pot from cracking. Less than 1 per cent. of Sunshine fire-pots have been replaced. This shows conclusively that the Sunshine two-piece fire-pot will save you money, and that's the



FOR SALE BY H. COOLEY & SON.

Longfield and those who assisted him was much appreciated by those present, who passed a unanimous vote of thanks to them for their gratuitous services.

Missionary Picnic.—The members of the Mission Band and Women's Missionary Society spent a very enjoyable afternoon and evening at the Gorge on Thursday last, the occasion being their annual picnic.

James Bay Preacher for Sunday.—Rev. Wm. Elliott, B. A., of Grace church, Vancouver, will occupy the pulpit of James Bay church both morning and evening to-morrow. Mr. Elliott has exchanged pulpits with the pastor, Rev. A. N. Miller, for the month of July and will occupy the parsonage, 395 Menzies street, during that time.

BAPTIST First Church Welcome to Pastor.—A very well attended meeting was held on Thursday evening last in the Victoria hall on Blanchard street, for the purpose of extending a welcome to the new pastor, Rev. J. B. Warnicker, B.A., and Mrs. Warnicker. Dr. Wm. Russell occupied the chair and an address of welcome on behalf of the congregation was given by A. B. McNeill.

Convention.—The delegates from the 142nd annual convention of Baptist churches of British Columbia returned to the city from Vancouver this week. The convention sessions were thoroughly enjoyable and the many papers and addresses with their profit-able discussions, consisting of various church-related topics.

Ladies' Prayer Meeting.—On Tuesday afternoon at 8 o'clock the regular monthly prayer meeting of the ladies of the church and congregation will be held.

LUTHERAN Grace Conventual Church.—Thursday, the 21st inst., a congregational meeting will be held at 8 p. m. at the tent, to decide on the letting of the contract for the church building to be erected opposite the tent.

Modern Child and the Sunday School Picnic. Critical Teacher Thinks Happy Days When Everyone Was Satisfied Are Over.

Now that the annual picnics of the local Sunday schools are nearly all over for the year, readers of this page may be interested in the following selection from 'The Opinions of Mary,' by Alice A. Townley, published by Wm. Briggs. 'An' how did the picnic come off?' asked I of Mary.

As a faithful teacher in St. something's Sunday school, Mary always participates in the summer outing. This joyful event took place the other day, and I have not seen my friend since.

Indeed, it has! In my estimation the day of usefulness for the Sunday school picnic is about over. Mary spoke in the spirit of conviction of one who has considered the question in all its bearings and has come to a definite conclusion.

Words of Caution to Young Mothers. Mothers must keep guard over the health of their little ones during the summer months. Summer is an anxious time for all mothers, but more especially for young mothers. It is the most fatal time of the year for babies and young children.

NEW CHURCH New Westminster, July 15.—The Methodist church to be built by the members of the Sixth avenue Methodist congregation will be located on Sixth avenue between Eleventh and Twelfth streets.

NEW CHURCH New Westminster, July 15.—The Methodist church to be built by the members of the Sixth avenue Methodist congregation will be located on Sixth avenue between Eleventh and Twelfth streets.

Magic Baking Powder. Does not contain Alum. THE greatest strain falls midway between the top and bottom of a one-piece fire-pot, because the live coals are located at the centre of the fire. This continued strain overtaxes the expansion powers of a one-piece fire-pot and causes it to bulge out and crack at the centre, and through the cracks, dust and deadly coal gas escape and eventually pass through the registers.

MANY USES OF SAND. The sands of the sea are singularly useful. They are of primary importance in glass making. They have an important place in warfare, as a bank of sand 20 inches thick is proof against modern rifle shots.

INTEREST IN COMING GENERAL CONFERENCE. The following clipping taken from the Sunday school paper 'Onward,' which was distributed to the Methodist Sunday schools of the Dominion of Canada last Sunday, shows how great the interest is in the east regarding the meeting of the great quadrennial council of the church which meets in this city next August.

WORDS OF CAUTION TO YOUNG MOTHERS. Mothers must keep guard over the health of their little ones during the summer months. Summer is an anxious time for all mothers, but more especially for young mothers. It is the most fatal time of the year for babies and young children.

NEW CHURCH. New Westminster, July 15.—The Methodist church to be built by the members of the Sixth avenue Methodist congregation will be located on Sixth avenue between Eleventh and Twelfth streets.

NEW CHURCH. New Westminster, July 15.—The Methodist church to be built by the members of the Sixth avenue Methodist congregation will be located on Sixth avenue between Eleventh and Twelfth streets.

NEW CHURCH. New Westminster, July 15.—The Methodist church to be built by the members of the Sixth avenue Methodist congregation will be located on Sixth avenue between Eleventh and Twelfth streets.

NEW CHURCH. New Westminster, July 15.—The Methodist church to be built by the members of the Sixth avenue Methodist congregation will be located on Sixth avenue between Eleventh and Twelfth streets.

NEW CHURCH. New Westminster, July 15.—The Methodist church to be built by the members of the Sixth avenue Methodist congregation will be located on Sixth avenue between Eleventh and Twelfth streets.

NEW CHURCH. New Westminster, July 15.—The Methodist church to be built by the members of the Sixth avenue Methodist congregation will be located on Sixth avenue between Eleventh and Twelfth streets.

HIGH-PRICED AUTOGRAPHS. At a sale of autograph letters and historical documents at Sotheby's in London these prices were realized. A letter of Shelley, 1820, discussing personal, literary and political affairs £255; a remarkable series of letters from Charlotte Bronte to her friend, Miss Ellen Nussey, £10; a letter from Oliver Cromwell to his daughter, dated October 25th, 1648, £365; a letter of Georges Cadoudal, who was executed for conspiring against Napoleon, £10; a remarkable collection of historical documents relating to the historic cases of Eugene Aram, £155; a letter from Benjamin Franklin dated Philadelphia, March 14th, 1764, to Dr. Fothergill, £12; eleven autograph letters from Alexander Pope to Mrs. Judith Cowper, £75; a series of letters from William Shakespeare to Thackeray, written from America to 'Mammy' during his lecturing tour in the United States, £175; a series of letters and post cards written by Walt Whitman, \$35, and an interesting and amusing letter of Rev. R. H. Barham, author of the 'Ingoldsby Legends,' on the teaching of calligraphy, \$27.50.

Kellogg's TOASTED CORN FLAKES. Every ounce of Kellogg's carries strength and vitality. No food is better than good corn and Kellogg's is the best corn, rolled into tender flakes and cooked to a nut brown turn. THE SWEET-HEART OF THE CORN.

DINNEFORD'S MAGNESIA. The Physician's Cure for Gout, Rheumatic Gout and Gravel. The Universal Remedy for Acidity of the Stomach, Headache, Heartburn, Indigestion, Sour Eructations, Bilious Affections.

GOING AWAY? Then have your FURNITURE properly packed and shipped at a moderate charge by STILES & SHARP. Ring Up Telephone No. 210. 805 FORT STREET.

It's all in the Dust Bag. When you finish cleaning with the SANTO Vacuum Cleaner, all of the dust, dirt, grit, moths, fleas, disease germs and other objectionable material is in the dust bag of the cleaner. You simply remove the cover of the machine, lift out the bag and empty its contents into the furnace, or scald it with boiling water. The SANTO is the simplest and most effective means of cleaning known.

MAGIC BAKING POWDER. Does not contain Alum. HINTON ELECTRIC CO., LTD.



# First Offering of Lots in GRAND TRUNK PACIFIC Subdivision to Original Townsite of

The Central and Principal Divisional Point on the Grand Trunk Pacific Railway.

# WATROUS

The Central and Principal Divisional Point on the Grand Trunk Pacific Railway.



What Moose Jaw is to the Canadian Pacific Railway, Watrous will be to the Grand Trunk Pacific. Of the Great Western Provinces, Moose Jaw is the central divisional point on the Canadian Pacific Railway. Watrous is the central divisional point on the Grand Trunk Pacific. Moose Jaw now has 15,000 population, and is growing rapidly. Lots which sold in Moose Jaw a few years ago at \$100 each are to-day worth from \$1,000 to \$3,000. You can buy lots in Watrous at \$100 to \$175, and in five years they should be worth as much as are the same kind of lots in Moose Jaw to-day.

The strategic location of Watrous is such that it is certain to become an important city in Western Canada.  
 Located on the great transcontinental line of the Grand Trunk Pacific, which is to extend from the Atlantic to the Pacific, from Halifax, N. S., to Prince Rupert, B. C.  
 Watrous is the terminus of the Branch Line of the Grand Trunk Pacific to Prince Albert.  
 In the centre of the finest farming section in all Saskatchewan.  
 In direct line between Regina and Prince Albert.  
 The great central shops of the Grand Trunk Pacific are almost certain to be

located at Watrous, it being the central divisional point, with immense roundhouse and unequalled trackage facilities already located here, and being midway between Winnipeg and Edmonton, where the present shops are located. With the location of these shops at Watrous, giving employment to 300 or more men, it will mean an immediate increase in population of at least 1,500.

Watrous being the central divisional point, it is from here that the different Branch Lines to the important cities of Saskatchewan and Alberta will radiate.  
 Upon the completion of the large sanatoriums, thousands of transcontinental tourists, attracted by the lure of Little Manitou Lake, will stop off at Watrous on their way from Coast to Coast.

## LITTLE MANITOU LAKE "The Carlsbad of Canada"

Located two and a half miles from Watrous is Little Manitou Lake, one of the most remarkable mineral water lakes in the world. It has been proven that the waters of this lake are little short of marvellous in their power to cure rheumatism and skin diseases, and afford speedy and positive results in biliousness, sick headache, etc.

The following analysis of the water from Little Manitou Lake has been made by Prof. Milton Hersey, of McGill University, Montreal, Que.:

	Grains per gallon
Silica	0.69
Oxide of Iron and Aluminum	0.28
Calcium Sulphate	104.94
Magnesium Bicarbonate	62.42
Magnesium Sulphate	308.88
Potassium Sulphate	116.62
Sodium Sulphate	56.92
Sodium Chloride	1495.60

Herbert Quick, Editor of the "Farm and Fireside," one of the best agricultural papers in the United States, visited Little Manitou Lake, and writes of it as follows:

"Little Manitou Lake, full to the brim of water like that of the Hunyadi Janos, and as still and deserted by fish and fowl as the Dead Sea. The germs of legends already stir in the social soil. One may hear of Indians smitten with leprosy who came across the prairie ages ago, led by the Mani-

to, or Great Spirit, to bathe in these waters and be healed. It is so set in its devotion to the salvation of life that it refuses to drown anyone. Try to sink in it, and it spurns you forth and ejects you. Go to Little Manitou Lake with suicidal intent, and it will hold your head out of the water while it purges you of your disease."

The entire American continent will soon realize the importance of Little Manitou Lake, and large profits will be made by those far-sighted investors who buy property in Watrous. In another year Watrous and Little Manitou Lake will be visited by thousands daily instead of scores as now; and yet even now the fame of Little Manitou Lake is spreading to such an extent that on last Sunday, July 2nd, not less than 1,500 visitors were at Little Manitou Lake.

At other noted health resorts there are only mineral water springs—at Watrous there is a mineral water lake three-quarters of a mile wide and twelve miles long, with water so clear that the sandy bottom can be seen distinctly at a depth of six feet, and the water is so buoyant that a human being floats on the surface like a fishing cork. Little Manitou Lake is ideal for boating and bathing.

Property at Watrous should command even higher prices than at other well known health resorts, because this is the only resort of its kind on the American continent. There is but one Little Manitou Lake, and therefore there can be but one Watrous.

### THREE SANATORIUMS TO BE ERECTED.

Contract has been let for the erection of Manitou Lake Sanatorium which, when completed, will cost \$50,000. Work upon the building is to begin at once, and is to be pushed as rapidly as possible.

Another large sanatorium of fifty rooms is to be built at once by a Company which has been organized with a capital of \$50,000, the principal stockholders being a number of physicians of Saskatchewan.

The Provincial Government of Saskatchewan, recognizing the curative values of the waters of Little Manitou Lake, has reserved for sanatorium purposes a mile of frontage on the lake, and it is understood that a large sanatorium is to be built on this tract in the immediate future.

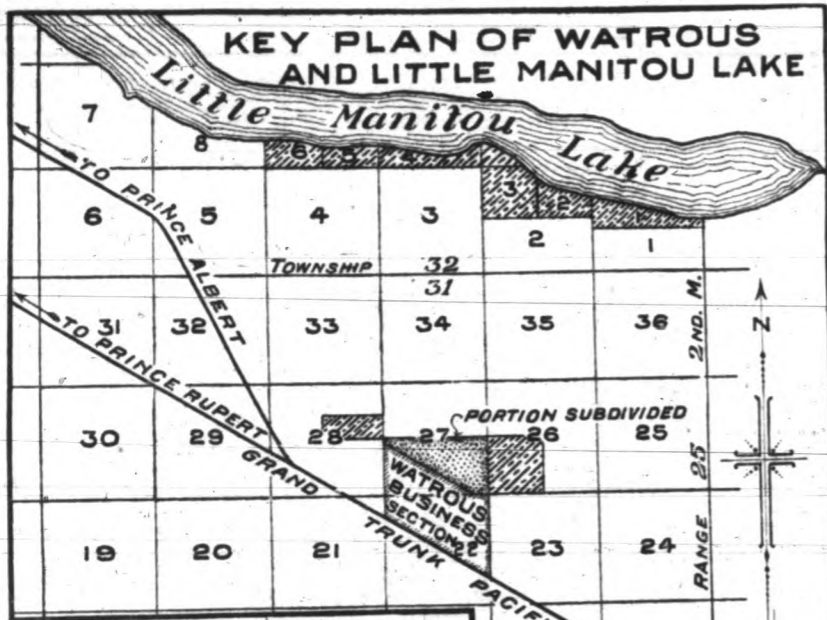
### BOTTLING AND SHIPPING WATER FROM LITTLE MANITOU LAKE.

Anticipating the enormous demand for the mineral water of this lake, as soon as its great curative powers are made known, a Company with strong financial backing has been incorporated (Manitou Mineral Water Company, Ltd., Winnipeg, Man.) and is now bottling and shipping the mineral water to all parts of the American continent. There are also two other companies being organized to bottle and ship the wonderful water from Little Manitou Lake. These water companies will be of great advertising value to Watrous, and will make this beautiful little city known throughout the American continent.



BATHING IN LITTLE MANITOU LAKE

The water is so buoyant that a human being floats on its surface like a fishing cork. Note that some of the bathers are contentedly lying in the water smoking cigars, others floating on the surface with arms crossed and feet sticking out of the water. The specific gravity of Little Manitou water is 1.06.



- KEY TO SHADED PORTIONS ON LAKE FRONT.
1. Lake View Addition.
  2. Manitou Health & Recreation Co.—Site for Sanatorium to be built by Saskatchewan physicians.
  3. MacLachlan's Subdivision, upon which is built bath houses, boat houses, etc.
  4. Reserved for Sanatorium purposes by the Saskatchewan Government.
  5. Site of Manitou Lake Sanatorium.
  6. Crystal Spring Subdivision.

### WATROUS SURROUNDED BY RICH AGRICULTURAL TERRITORY.

The territory surrounding Watrous is very fertile, being a deep loam with clay sub-soil. The major portion of the land in the vicinity is under cultivation. Wheat averages about twenty-five bushels to the acre, oats from fifty to sixty bushels.

### WATROUS WILL INCREASE RAPIDLY IN POPULATION.

A movement to organize a 10,000 club for Watrous has been started, and it is confidently expected that the Board of Trade is taking a step in this direction. Such a movement is looked upon by the residents as a step in the right direction. From the statistics of the city of 10,000 population is unquestioned. The rapidity of growth in the Western Provinces of Canada can best be judged by noting the figures which follow, showing the population of the cities named in brief, also as shown by the local census taken May 1, 1910.

Town	1901	1910
Calgary	4,061	28,500
Edmonton	2,628	25,000
Moose Jaw	1,568	15,000
Regina	2,749	15,000
Saskatoon	113	11,000

In the light of these figures can anyone doubt that Watrous, with a present population of 1,500, will have a 10,000 population in five years from now?  
 Lots similar to those water are being sold to-day in Watrous for \$100 to \$175. We worth \$500 to \$2,000 in Western Canadian cities of 10,000 population and upwards, such as Saskatoon, Regina, Moose Jaw and Edmonton.

### REAL ESTATE VALUES IN WATROUS WILL INCREASE RAPIDLY.

The co-operative spirit in Watrous is highly developed. The enthusiasm which prevails is one of the finest and best assets of the town. Watrous desires new industries, new enterprises, new citizens. The Grand Trunk Pacific Railway will co-operate in every way possible with those who wish to engage in manufacturing or any form of industrial undertaking in Watrous. Building operations are such that five lumber yards in the city do a thriving business. Three large grain elevators are located in Watrous to take care of the splendid crops produced in this locality.  
 The value of lots in Watrous is rapidly increasing. \$5,000 was recently offered for the 35 feet at the corner of Second and Main streets, but was refused. This lot originally sold for \$250.

## The More Lots You Buy in Watrous the More Money You Will Make

The amount of money you make in Watrous practically depends on the number of lots you purchase. Buy now while lots are selling at the ground-floor price, and hold them, and you are certain to make money. Buy half a dozen or more lots and ride with the wave of advancing values. Ten dollars for every dollar you invest is common in live towns in Western Canada.

If you failed to get in on the big money that was made in other Grand Trunk Pacific cities—such as Port Arthur, Fort William, Saskatoon, Prince Albert, Edmonton, Prince Rupert, or many others which might be named—here is your chance now to get in right in Watrous. The same spirit of co-operation which has been extended by the Grand Trunk Pacific to these other cities which have made good will be extended to Watrous. Watrous is destined to become the inland Prince Rupert of the Grand Trunk Pacific.

You can buy lots in Watrous on payment of one-tenth down, and one-tenth each month. Lots in Watrous will sell rapidly. The public is quick to grasp the situation and appreciate a good thing.

If you desire, we will have our representative select for you what he regards as the best lots remaining unsold at the price which you desire to pay. Lots fronting on Main street are 25x130 feet. All other lots are large, double size, 50x140 ft., which can be divided into two 25 foot lots if purchaser so desires. Choice lots can be obtained for \$100. Corner lots \$125. The price of lots fronting on Main Street is \$150, and corners fronting on Main Street \$175. All streets are 60 feet wide, excepting Main Street, which is 80 feet in width.

No interest will be charged for deferred payments, and no taxes until the year 1912. A discount of 5 per cent will be given for cash in full with order.

To insure securing choice lots, we advise that you order direct from this advertisement, using the coupon in lower right-hand corner, making remittance payable to Land Commissioner, Grand Trunk Pacific Railway Company, Winnipeg, Man. If, however, you desire further information before purchasing, then use the coupon in lower left-hand corner, mailing direct to the selling agents, International Securities Co., 649 Somerset Building, Winnipeg, Man., and you will be furnished with full particulars, maps, plats, etc. But we again repeat, our advice is to make your purchase at once.

If the selection of lots made for you by our representative is not satisfactory, all you need do is to notify us to that effect and the money which you have paid to the Grand Trunk Pacific will be refunded to you.

Safeguard your interest by using the Purchase coupon and mailing remittance today.

## Grand Trunk Pacific Subdivision Shown by Dotted Portion Immediately North of "Watrous Business Section."

Applications for purchase of town lots in Watrous are to be mailed direct and remittance made payable to

LAND COMMISSIONER  
**GRAND TRUNK PACIFIC RAILWAY CO.**  
 Somerset Building, Winnipeg, Man.

All inquiries and requests for particulars in regard to Watrous lots are to be mailed direct to the Sales Agents,

**INTERNATIONAL SECURITIES COMPANY**

649 Somerset Building, Winnipeg, Man.

In case you desire further particulars, maps, etc., before selecting lots, use coupon below:

### INFORMATION COUPON

International Securities Co.,  
 649 Somerset Building, Winnipeg, Man.

Please forward to me by return mail full particulars regarding the sale of town lots in the subdivision to the original townsite of Watrous, which is just being placed on the market.

NAME .....

ADDRESS .....

### APPLICATION BLANK FOR PURCHASE OF LOTS.

Land Commissioner, Grand Trunk Pacific Railway Company,  
 Somerset Building, Winnipeg, Man.

I hereby make application to purchase ..... lots at the price of \$..... each, and enclose herewith remittance for \$..... being one-tenth of the total purchase price. I agree to remit the same amount each month for nine consecutive months.

I desire your representative to select for me, out of the sub-division which you have just placed on the market, the original town site of Watrous, which he regards as the best lots remaining unsold at this price. This is to be clear and indisputable. No interest is to be charged on deferred payments, and no taxes until the year 1912. Please make out and forward to me your formal Application to Purchase Town Lots, which I will sign and return.

NAME .....

ADDRESS .....

We have some Choice Lots for Sale Fronting on Little Manitou Lake. Write to INTERNATIONAL SECURITIES COMPANY, 649 Somerset Building, Winnipeg, Man., for Full Particulars

If You Have a Good Buy to Offer, Advertise It in the Victoria Daily Times

LEE & FRASER Real Estate and Insurance Agents. 613 TROUNCE AVENUE. \$4500.00 will purchase a 6 roomed, modern house on Clarence Street.

THE B. C. LAND INVESTMENT AGENCY, LTD. 222 GOVERNMENT STREET. DESIRABLE LITTLE HOME. With nearly an acre of ground and trackage on E. & N. All kinds of small fruits and fruit trees.

BRITISH-AMERICAN TRUST CO., LIMITED. Cor. Broad and View Streets. MAKE YOU SELECTION AND LET US SHOW YOU. ACRE on Oak Bay avenue.....\$4,800



LIVELY MEETING AT NORTH VANCOUVER Street Grade Question Discussed—Aldermen Willing to Re-sign and Go to People

MAYOR OF NELSON WILL VETO RESOLUTION Motion Passed by City Council Requesting Fire Chief to Withdraw Resignation

Municipal Notice

Local Improvement of Dallas Road. The City Council having received a requisition under the provisions of Section 50, Sub-Section 14, of the Municipal Clauses Act, from a majority of the owners of property on Dallas road, from Simcoe street to Beacon Hill Park...

HINKSON SIDDALL & SON New Grand Theatre Building. P. O. Box 177. Phone 889

THE CITY BROKERAGE A. T. ABBEY, Manager. 115 DOUGLAS STREET.

WE TAKE PHOTOGRAPHS OF ALL THE HOUSES WE HAVE FOR SALE. Come in and see these.

207 ACRES ON SOOKE HARBOR. plenty of good water, magnificent view of Harbor, Straits and Olympic Mountains, about one half million feet good timber.

3-ROOM COTTAGE On Niagara street, with lot 45x120. Price, on terms, \$1,250.

MODERN BUNGALOW, James Bay, best locality, near car and Parliment Buildings.....\$5,000

L. U. CONYERS & CO. 650 VIEW STREET. \$2,200—Brand new cottage, 6 rooms, enamelled bath and wash basin, large lot, cement foundation, good cellar, cement walk round house, close to Oak Bay Avenue.

NEAR WILLOWS, 5-ROOM NEW COTTAGE On Cadboro Bay road, close to car line and sea. Price \$2,100, on terms.

FIVE ROOM BUNGALOW, Oak Bay, modern, only built a short time; nice lawn and vegetable garden; \$300 cash, easy terms.....\$2,600

J. STEWART YATES 22 BASTION STREET, VICTORIA. THE LAST OF THE YATES ESTATE. FOR SALE. 80 ACRES—Sooke District, just inside Sooke Harbor.

5-ROOM COTTAGE near Fire Hall, lot 60x130. Price \$2,500. Small cash payment will handle this.

NEW HOUSE, corner lot, 7 rooms, near school and car, thoroughly modern; \$500 cash, balance arranged.....\$3,850

S. A. BAIRD Real Estate, Financial and Insurance Agent. 1210 DOUGLAS STREET.

EMPIRE REALTY CO. Real Estate and Financial Agents. 612 YATES STREET. Phone 2251.

SPECIAL DETECTIVES MAY WATCH HOTELS Question is Discussed by the Board of License Commissioners of Vancouver

CORNER LOT ON GRAHAME ST., near Hillside avenue, \$225. Adjoining lot for \$75. DUNEDIN ST., seven-roomed bungalow all modern, good basement, lot 60 x 120, \$2,700.

FOR SALE. 1850 acres of land, partly fenced. A good part SEA FRONTAGE, wharf, TELEPHONE, roads, etc. 40 acres cleared, houses, 16 x 20; also 10-room house, 1 1/2 story; 500 acres good arable land; LAKE 250 feet above sea level; PROPERTY fronts on both SALT and FRESH WATER.

Vancouver, July 15.—As a result of the last meeting of the board of license commissioners it is very probable that in the near future steps will be taken which will put the hotels almost directly under the control of the police department. That is to say, the police will maintain a staff of detectives to see that there are no more infringements of the license by-laws, and when there are any such infringements the detectives will work up the evidence necessary to a conviction.

SYNOPSIS OF CANADIAN NORTHWEST LAND REGULATIONS. Any person who is the sole head of a family, or any male over 18 years old, may homestead a quarter section of available Dominion land in Manitoba, Saskatchewan or Alberta.

TOLLER & CO. Room 5. IMPERIAL BANK CHAMBERS. FOR SALE. 1850 acres of land, partly fenced. A good part SEA FRONTAGE, wharf, TELEPHONE, roads, etc. 40 acres cleared, houses, 16 x 20; also 10-room house, 1 1/2 story; 500 acres good arable land; LAKE 250 feet above sea level; PROPERTY fronts on both SALT and FRESH WATER.

J. GREENWOOD Real Estate and Timber. 875 Yates, next door to Bank of B.N.A. Phone 1425. CHEAP LOTS IN THE FAIRFIELD ESTATE. COOK STREET, big lot, 65 feet frontage.....\$1,100

North Vancouver, July 15.—A well-attended meeting of ratepayers and residents of North Vancouver was held in Larson's pavilion, to consider the much vexed street grade question. The mayor strongly urged the meeting not to discharge the committee until the difficulty was definitely settled.

Mr. Phillippe: "Will you resign your seat in the council and test this question?" Ald. Schultz: "Yes, I will. I am not afraid to go before the people; if I go down, I will go down with my flag nailed at the masthead."

CARS TURN TURTLE. Kamloops, July 15.—Three dump cars and the locomotive of the work-train engaged in the work of widening the track bed, toppled over the embankment and an employee named Nicholson had his right leg broken and the same member and the right arm and left hand badly scalded as a result.

AT CHILLIWACK By-Laws to Raise \$35,000 for the Drainage System, City Hall and Street Work. Chilliwack, July 15.—On Monday, July 12th, three proposals will be submitted to the ratepayers of the city in the form of by-laws providing for bond issues in the total sum of \$35,000, to be expended on various civic improvements.

Uncle Walt The Poet Philosopher The millionaire was searching his pockets for a dime; he said: "I'm going busted three-quarters of the time. I have my wealth invested in railways and in farms, in factories and foundries, and other false alarms; while crowds of working people are drawing bones of mine, I'm sometimes sorely puzzled to cough up for a shine."

Nelson, July 15.—Fire Chief Guthrie's resignation was the subject of an animated discussion at the city council meeting, followed by the announcement of Mayor Selous that he intended vetoing a resolution passed by a vote of three to two and which had provided that the council endeavor to retain the services of the fire chief by requesting the withdrawal of his recent resignation.

Mayor Selous stated that his preference was toward leaving the matter to stand over until a full attendance of the council. Ald. McDonald said he stood by his motion.

WOMAN INJURED. Fernie, July 15.—A very painful and serious accident happened a few nights ago to Mrs. Hughes, wife of F. Hughes, the young woman arose to open the door of the house for her husband, whose duties detained him in a...

Re Permanent Sidewalk. Notice is hereby given to all persons who may contemplate petitioning the City Council for works of Local Improvement that the form of petition must first be approved by the Streets, Bridges and Sewers Committee and the City Solicitor, otherwise the petition will not be considered.

Water Consumers' Notice The hours for sprinkling until further notice is given shall be from 5 to 9 o'clock in the morning and from 5 to 10 o'clock in the evening. Any consumer violating the water works regulation will be fined the usual penalty.

TREASURER FOR TWENTY-FIVE YEARS Members of Black Diamond Lodge I. O. O. F. Nanaimo Honor James Crossan Nanaimo, July 15.—Black Diamond Lodge No. 3, I. O. O. F., of this city, held one of its most interesting sessions Wednesday at which honor was done one of its most faithful members.

Municipal Notice

Re Petition for Local Improvement Works. The Municipal Council of the Corporation of the City of Victoria having determined that it is desirable: 1. To construct a permanent sidewalk on the north side of Johnson street west of Waddington Alley and Wharf street.

Water Consumers' Notice

The hours for sprinkling until further notice is given shall be from 5 to 9 o'clock in the morning and from 5 to 10 o'clock in the evening.

Treasurer for Twenty-Five Years

Members of Black Diamond Lodge I. O. O. F. Nanaimo Honor James Crossan Nanaimo, July 15.—Black Diamond Lodge No. 3, I. O. O. F., of this city, held one of its most interesting sessions Wednesday at which honor was done one of its most faithful members.

Water Consumers' Notice

The hours for sprinkling until further notice is given shall be from 5 to 9 o'clock in the morning and from 5 to 10 o'clock in the evening.

Treasurer for Twenty-Five Years

Members of Black Diamond Lodge I. O. O. F. Nanaimo Honor James Crossan Nanaimo, July 15.—Black Diamond Lodge No. 3, I. O. O. F., of this city, held one of its most interesting sessions Wednesday at which honor was done one of its most faithful members.

Water Consumers' Notice

The hours for sprinkling until further notice is given shall be from 5 to 9 o'clock in the morning and from 5 to 10 o'clock in the evening.

Treasurer for Twenty-Five Years

Members of Black Diamond Lodge I. O. O. F. Nanaimo Honor James Crossan Nanaimo, July 15.—Black Diamond Lodge No. 3, I. O. O. F., of this city, held one of its most interesting sessions Wednesday at which honor was done one of its most faithful members.

Municipal Notice

NOTICE IS HEREBY GIVEN, pursuant to the provisions of Section 50 of the Municipal Clauses Act, that the Municipal Council of the Corporation of the City of Victoria has by resolution passed at a meeting of the said Council held on the 11th day of July, 1910, declared that certain wooden buildings or structures, without the outbuildings thereto belonging, erected, situate and being upon the lots or pieces of land known as Lot 9, Block 7, Port property, corner of Langley and Broughton streets, old frame building; Lot 9, Block 7, Port property, Bastion street, old frame building and shed; Lot 12, Block 7, Port property, old frame building; Lot 45, Block 14, View street (one story frame building); Lot 44, Block 14, View street (two old wooden buildings); Lot 46, Block G, Fisgard street (one old frame building); Lot 32, Block G, Yates street (old frame building); and Lot 125, between Herald and Telegraph streets, west of Store street (row of cabins); the said buildings or structures and outbuildings being all within the municipal limits of the City of Victoria, are, each and every, a nuisance, and dangerous to the public health, AND IT WAS THEREBY ORDERED that the same should be pulled down and removed forthwith by the owner or owners, agents, tenants or occupiers thereof, and in case of default by the said owner or owners, agents, lessees or occupiers thereof, to comply with this order within five days after publication of this notice in the Daily Times (a daily newspaper published in the municipality of the City of Victoria) IT WAS FURTHER ORDERED that such pulling down and removal of the said buildings and structures be done at the Sanitary Officer of the said Corporation at the cost of the owner or owners of such buildings or structures, and that the incidental thereto be enforced against the owner or owners thereof by the said Sanitary Officer in an action at law in any court of competent jurisdiction.

Water Consumers' Notice

The hours for sprinkling until further notice is given shall be from 5 to 9 o'clock in the morning and from 5 to 10 o'clock in the evening.

Treasurer for Twenty-Five Years

Members of Black Diamond Lodge I. O. O. F. Nanaimo Honor James Crossan Nanaimo, July 15.—Black Diamond Lodge No. 3, I. O. O. F., of this city, held one of its most interesting sessions Wednesday at which honor was done one of its most faithful members.

Water Consumers' Notice

The hours for sprinkling until further notice is given shall be from 5 to 9 o'clock in the morning and from 5 to 10 o'clock in the evening.

Treasurer for Twenty-Five Years

Members of Black Diamond Lodge I. O. O. F. Nanaimo Honor James Crossan Nanaimo, July 15.—Black Diamond Lodge No. 3, I. O. O. F., of this city, held one of its most interesting sessions Wednesday at which honor was done one of its most faithful members.

Water Consumers' Notice

The hours for sprinkling until further notice is given shall be from 5 to 9 o'clock in the morning and from 5 to 10 o'clock in the evening.

Treasurer for Twenty-Five Years

Members of Black Diamond Lodge I. O. O. F. Nanaimo Honor James Crossan Nanaimo, July 15.—Black Diamond Lodge No. 3, I. O. O. F., of this city, held one of its most interesting sessions Wednesday at which honor was done one of its most faithful members.

Meet Opportunity Half Way by Reading the Daily Times Classified Ads.

PROFESSIONAL CARDS

ADVERTISEMENTS under this head 1 cent per word per insertion; 3 lines, 1 cent per word per insertion; 2 lines, 1 cent per word per insertion; 1 line, 1 cent per word per insertion; 1/2 line, 1 cent per word per insertion; 1/4 line, 1 cent per word per insertion; 1/8 line, 1 cent per word per insertion; 1/16 line, 1 cent per word per insertion; 1/32 line, 1 cent per word per insertion; 1/64 line, 1 cent per word per insertion; 1/128 line, 1 cent per word per insertion; 1/256 line, 1 cent per word per insertion; 1/512 line, 1 cent per word per insertion; 1/1024 line, 1 cent per word per insertion; 1/2048 line, 1 cent per word per insertion; 1/4096 line, 1 cent per word per insertion; 1/8192 line, 1 cent per word per insertion; 1/16384 line, 1 cent per word per insertion; 1/32768 line, 1 cent per word per insertion; 1/65536 line, 1 cent per word per insertion; 1/131072 line, 1 cent per word per insertion; 1/262144 line, 1 cent per word per insertion; 1/524288 line, 1 cent per word per insertion; 1/1048576 line, 1 cent per word per insertion; 1/2097152 line, 1 cent per word per insertion; 1/4194304 line, 1 cent per word per insertion; 1/8388608 line, 1 cent per word per insertion; 1/16777216 line, 1 cent per word per insertion; 1/33554432 line, 1 cent per word per insertion; 1/67108864 line, 1 cent per word per insertion; 1/134217728 line, 1 cent per word per insertion; 1/268435456 line, 1 cent per word per insertion; 1/536870912 line, 1 cent per word per insertion; 1/1073741824 line, 1 cent per word per insertion; 1/2147483648 line, 1 cent per word per insertion; 1/4294967296 line, 1 cent per word per insertion; 1/8589934592 line, 1 cent per word per insertion; 1/17179869184 line, 1 cent per word per insertion; 1/34359738368 line, 1 cent per word per insertion; 1/68719476736 line, 1 cent per word per insertion; 1/137438953472 line, 1 cent per word per insertion; 1/274877907344 line, 1 cent per word per insertion; 1/549755814688 line, 1 cent per word per insertion; 1/1099511629376 line, 1 cent per word per insertion; 1/2199023258752 line, 1 cent per word per insertion; 1/4398046517504 line, 1 cent per word per insertion; 1/8796093035008 line, 1 cent per word per insertion; 1/17592186070016 line, 1 cent per word per insertion; 1/35184372140032 line, 1 cent per word per insertion; 1/70368744280064 line, 1 cent per word per insertion; 1/140737488560128 line, 1 cent per word per insertion; 1/281474977120256 line, 1 cent per word per insertion; 1/562949954240512 line, 1 cent per word per insertion; 1/1125899908481024 line, 1 cent per word per insertion; 1/2251799816962048 line, 1 cent per word per insertion; 1/4503599633924096 line, 1 cent per word per insertion; 1/9007199267848192 line, 1 cent per word per insertion; 1/18014398537696384 line, 1 cent per word per insertion; 1/36028797075392768 line, 1 cent per word per insertion; 1/72057594150785536 line, 1 cent per word per insertion; 1/144115188301571072 line, 1 cent per word per insertion; 1/288230376603142144 line, 1 cent per word per insertion; 1/576460753206284288 line, 1 cent per word per insertion; 1/1152921506412568576 line, 1 cent per word per insertion; 1/2305843012825137152 line, 1 cent per word per insertion; 1/4611686025650274304 line, 1 cent per word per insertion; 1/9223372051300548608 line, 1 cent per word per insertion; 1/18446744102601097216 line, 1 cent per word per insertion; 1/36893488205202194432 line, 1 cent per word per insertion; 1/73786976410404388864 line, 1 cent per word per insertion; 1/14757395280808777728 line, 1 cent per word per insertion; 1/29514790561617555456 line, 1 cent per word per insertion; 1/59029581123235110912 line, 1 cent per word per insertion; 1/118059162246470221824 line, 1 cent per word per insertion; 1/236118324492940443648 line, 1 cent per word per insertion; 1/472236648985880887296 line, 1 cent per word per insertion; 1/944473297971761774592 line, 1 cent per word per insertion; 1/1888946595943523549184 line, 1 cent per word per insertion; 1/3777893191887047098368 line, 1 cent per word per insertion; 1/7555786383774094196736 line, 1 cent per word per insertion; 1/1511157276754818833472 line, 1 cent per word per insertion; 1/3022314553509637666944 line, 1 cent per word per insertion; 1/6044629107019275333888 line, 1 cent per word per insertion; 1/12089258214038550667776 line, 1 cent per word per insertion; 1/24178516428077101335552 line, 1 cent per word per insertion; 1/48357032856154202671104 line, 1 cent per word per insertion; 1/96714065712308405342208 line, 1 cent per word per insertion; 1/193428131424616810684416 line, 1 cent per word per insertion; 1/386856262849233621368832 line, 1 cent per word per insertion; 1/773712525698467242737664 line, 1 cent per word per insertion; 1/1547425051396934485475328 line, 1 cent per word per insertion; 1/3094850102793868970950656 line, 1 cent per word per insertion; 1/6189700205587737941901312 line, 1 cent per word per insertion; 1/12379400411175475883802624 line, 1 cent per word per insertion; 1/24758800822350951767605248 line, 1 cent per word per insertion; 1/49517601644701903535210496 line, 1 cent per word per insertion; 1/99035203289403807070420992 line, 1 cent per word per insertion; 1/198070406578807614140841984 line, 1 cent per word per insertion; 1/396140813157615228281683872 line, 1 cent per word per insertion; 1/792281626315230456563367744 line, 1 cent per word per insertion; 1/1584563252630460913126735488 line, 1 cent per word per insertion; 1/3169126505260921826253470976 line, 1 cent per word per insertion; 1/6338253010521843652506941952 line, 1 cent per word per insertion; 1/12676506021043687305013883904 line, 1 cent per word per insertion; 1/25353012042087374610027767808 line, 1 cent per word per insertion; 1/50706024084174749220055535616 line, 1 cent per word per insertion; 1/101412048168349498440111071328 line, 1 cent per word per insertion; 1/202824096336698996880222142656 line, 1 cent per word per insertion; 1/405648192673397993760444285312 line, 1 cent per word per insertion; 1/811296385346795987520888570624 line, 1 cent per word per insertion; 1/1622592770735919775041777141248 line, 1 cent per word per insertion; 1/3245185541471839550083554282496 line, 1 cent per word per insertion; 1/6490371082943679100167088564992 line, 1 cent per word per insertion; 1/12980742167887358200321377129984 line, 1 cent per word per insertion; 1/25961484335774716400642754259968 line, 1 cent per word per insertion; 1/51922968671549432801285508519936 line, 1 cent per word per insertion; 1/103845937342988865602561001703872 line, 1 cent per word per insertion; 1/207691874685977731205122003407744 line, 1 cent per word per insertion; 1/415383749371955462410244006815488 line, 1 cent per word per insertion; 1/83076749874391092482048801369792 line, 1 cent per word per insertion; 1/166153499688782184964096162739584 line, 1 cent per word per insertion; 1/332306999377564369928192325479168 line, 1 cent per word per insertion; 1/664613998755128739856384650958336 line, 1 cent per word per insertion; 1/1329227997510257597113691301916672 line, 1 cent per word per insertion; 1/265845599502051519422738260383344 line, 1 cent per word per insertion; 1/531691199004103039844476520766688 line, 1 cent per word per insertion; 1/106338239800820607968895345153376 line, 1 cent per word per insertion; 1/212676479601641215937790690706752 line, 1 cent per word per insertion; 1/425352959203282431875581381413504 line, 1 cent per word per insertion; 1/850705918406564863751162762827008 line, 1 cent per word per insertion; 1/1701411836813129727502255451654016 line, 1 cent per word per insertion; 1/3402823673626259455000510903308032 line, 1 cent per word per insertion; 1/6805647347252518910001021806616064 line, 1 cent per word per insertion; 1/13611294694505037820002043613232128 line, 1 cent per word per insertion; 1/27222589389010075640004087226464256 line, 1 cent per word per insertion; 1/54445178778020151280008174452928512 line, 1 cent per word per insertion; 1/1088903575604030255600163088858561024 line, 1 cent per word per insertion; 1/2177807151208060511200326177717712448 line, 1 cent per word per insertion; 1/43556143024161210240065355543542896 line, 1 cent per word per insertion; 1/87112286048322420480130711089085792 line, 1 cent per word per insertion; 1/174224572096644840960261421781715584 line, 1 cent per word per insertion; 1/34844914419328968192052284356343116928 line, 1 cent per word per insertion; 1/696898288386579363841045687126862337952 line, 1 cent per word per insertion; 1/13937965767731587276820913742536467584 line, 1 cent per word per insertion; 1/27875931535463174553641827484872935168 line, 1 cent per word per insertion; 1/55751863070926349107283654969745871328 line, 1 cent per word per insertion; 1/111503726141852698214561131394915744656 line, 1 cent per word per insertion; 1/22300745228370539642912226278983149312 line, 1 cent per word per insertion; 1/44601490456741079285824453557966289664 line, 1 cent per word per insertion; 1/892029809134821585716581111159325779328 line, 1 cent per word per insertion; 1/1784059618273643711433212222386515545664 line, 1 cent per word per insertion; 1/356811923654728742286642444477303111112 line, 1 cent per word per insertion; 1/713623847309457484573284888954606222224 line, 1 cent per word per insertion; 1/142724769461891477114656777790921244448 line, 1 cent per word per insertion; 1/28544953892378295422931335548184248896 line, 1 cent per word per insertion; 1/570899077847565908458626710916849779392 line, 1 cent per word per insertion; 1/11417981556951311717171338181836959578784 line, 1 cent per word per insertion; 1/2283596311390262343434267636338191975576 line, 1 cent per word per insertion; 1/456719262278052468686853527267673991115136 line, 1 cent per word per insertion; 1/91343852455610493737371707453534798222272 line, 1 cent per word per insertion; 1/1826877049112098747464641407107071844444448 line, 1 cent per word per insertion; 1/36537540982241974949292828141414141414144 line, 1 cent per word per insertion; 1/73075081964483949898585656282828282828288 line, 1 cent per word per insertion; 1/14615016392897799797171365656565656565656 line, 1 cent per word per insertion; 1/292300327857955995943432727272727272727296 line, 1 cent per word per insertion; 1/5846006557159119118886868686868686868688 line, 1 cent per word per insertion; 1/11692013114318237737773737373737373737376 line, 1 cent per word per insertion; 1/23384026228636475475547554755475547554756 line, 1 cent per word per insertion; 1/46768052457272950950909090909090909090912 line, 1 cent per word per insertion; 1/93536104914545901818181818181818181818184 line, 1 cent per word per insertion; 1/18707220982909183636363636363636363636368 line, 1 cent per word per insertion; 1/37414441965818367272727272727272727272736 line, 1 cent per word per insertion; 1/74828883931636735545454545454545454545472 line, 1 cent per word per insertion; 1/149657767832735471081081081081081081081088 line, 1 cent per word per insertion; 1/299315535665470942161616161616161616161616 line, 1 cent per word per insertion; 1/598631071330941884323232323232323232323232 line, 1 cent per word per insertion; 1/119726214266183768644444444444444444444448 line, 1 cent per word per insertion; 1/239452428532367537288888888888888888888896 line, 1 cent per word per insertion; 1/478904857064735074577777777777777777777792 line, 1 cent per word per insertion; 1/957809714129470149155555555555555555555584 line, 1 cent per word per insertion; 1/1915619428589402983111111111111111111111168 line, 1 cent per word per insertion; 1/383123885717880596622222222222222222222236 line, 1 cent per word per insertion; 1/766247771437761193244444444444444444444472 line, 1 cent per word per insertion; 1/1532495428589402983111111111111111111111144 line, 1 cent per word per insertion; 1/306499085717880596622222222222222222222288 line, 1 cent per word per insertion; 1/612998171437761193244444444444444444444496 line, 1 cent per word per insertion; 1/1225996342858940298311111111111111111111192 line, 1 cent per word per insertion; 1/2451992685717880596622222222222222222222184 line, 1 cent per word per insertion; 1/490398537157611932444444444444444444444368 line, 1 cent per word per insertion; 1/980797074315223868686868686868686868686736 line, 1 cent per word per insertion; 1/1961594148624477373737373737373737373737472 line, 1 cent per word per insertion; 1/392318829724849474646464646464646464646944 line, 1 cent per word per insertion; 1/7846376594496989492929292929292929292921888 line, 1 cent per word per insertion; 1/15692751988979779848484848484848484848483776 line, 1 cent per word per insertion; 1/31385503977959559696969696969696969696967552 line, 1 cent per word per insertion; 1/62771007955919119393939393939393939393965104 line, 1 cent per word per insertion; 1/1255420159118238777777777777777777777710208 line, 1 cent per word per insertion; 1/25108403182364755555555555555555555555540416 line, 1 cent per word per insertion; 1/50216806364729511111111111111111111111180832 line, 1 cent per word per insertion; 1/10043361273454902222222222222222222222236164 line, 1 cent per word per insertion; 1/20086722546909804444444444444444444444472328 line, 1 cent per word per insertion; 1/401734450938196088888888888888888888888144656 line, 1 cent per word per insertion; 1/8034689018763921777777777777777777777728912 line, 1 cent per word per insertion; 1/16069378037527835555555555555555555555577824 line, 1 cent per word per insertion; 1/32138756075055671111111111111111111111155648 line, 1 cent per word per insertion; 1/64277512150111343222222222222222222222311296 line, 1 cent per word per insertion; 1/128555024300226666444444444444444444444622592 line, 1 cent per word per insertion; 1/257110048600453332888888888888888888888124584 line, 1 cent per word per insertion; 1/51422009720090666577777777777777777777249168 line, 1 cent per word per insertion; 1/102844019440181333155555555555555555555498336 line, 1 cent per word per insertion; 1/205688038880362666311111111111111111111098672 line, 1 cent per word per insertion; 1/411376077760725332622222222222222222222197344 line, 1 cent per word per insertion; 1/82275215552015066524444444444444444444394688 line, 1 cent per word per insertion; 1/164550431040301311048888888888888888888789376 line, 1 cent per word per insertion; 1/329100862080602622097777777777777777777578752 line, 1 cent per word per insertion; 1/658201724161205244195555555555555555551157504 line, 1 cent per word per insertion; 1/131640344832241048391111111111111111112315008 line, 1 cent per word per insertion; 1/2632806896644820967822222222222222222224630016 line, 1 cent per word per insertion; 1/5265613793289641935644444444444444444449260032 line, 1 cent per word per insertion; 1/10531227586579238712888888888888888888818520064 line, 1 cent per word per insertion; 1/2106245517315847745777777777777777777737040128 line, 1 cent per word per insertion; 1/4212491034631695491555555555555555555574080256 line, 1 cent per word per insertion; 1/8424982069263390983111111111111111111148160512 line, 1 cent per word per insertion; 1/16849964138467819762222222222222222222296321024 line, 1 cent per word per insertion; 1/33699928276935639524444444444444444444192642048 line, 1 cent per word per insertion; 1/67399856553871279048888888888888888888385284096 line, 1 cent per word per insertion; 1/1347997131175445817777777777777777777777470568192 line, 1 cent per word per insertion; 1/269599426235089163555555555555555555551401136384 line, 1 cent per word per insertion; 1/53919885247017832711111111111111111111280226768 line, 1 cent per word per insertion; 1/10783977049403566422222222222222222222560453536 line, 1 cent per word per insertion; 1/2156795409880713284444444444444444444411208667104 line, 1 cent per word per insertion; 1/431359081976142656888888888888888888882241334208 line, 1 cent per word per insertion; 1/862718163952285313777777777777777777774482668416 line, 1 cent per word per insertion; 1/17254363278045706755555555555555555555896533632 line, 1 cent per word per insertion; 1/345087265560914135111111111111111111117930666432 line, 1 cent per word per insertion; 1/6901745311218282702222222222222222222215861326656 line, 1 cent per word per insertion; 1/138034906243765740444444444444444444443172253112 line, 1 cent per word per insertion; 1/276069812487531480888888888888888888886344462424 line, 1 cent per word per insertion; 1/55213962497506296177777777777777777777126888948848 line, 1 cent per word per insertion; 1/110427924990012513555555555555555555552537779769696 line, 1 cent per word per insertion; 1/220855849980025027111111111111111111115075559539393 line, 1 cent per word per insertion; 1/4417116999600500542222222222222222222210151119078798784 line, 1 cent per word per insertion; 1/8834233999200100108444444444444444444420302238155568 line, 1 cent per word per insertion; 1/176684679840020021688888888888888888884060447631136 line, 1 cent per word per insertion; 1/3533693596800400433777777777777777777781208881272272 line, 1 cent per word per insertion; 1/70673871936008008675555555555555555555162576254444 line, 1 cent per word per insertion; 1/141347743872016017351111111111111111113251525088888 line, 1 cent per word per insertion; 1/2826954877440320347022222222222222222226503051717776 line, 1 cent per word per insertion; 1/565390975488064069404444444444444444441300613515552 line, 1 cent per word per insertion; 1/11307819509761281388088888888888888888826012270311104 line, 1 cent per word per insertion; 1/2261563901952256276177777777777777777775202454022224 line, 1 cent per word per insertion; 1/452312780390451255235555555555555555551040488844448 line, 1 cent per word per insertion; 1/90462556078090251044444444444444444444208097688888 line, 1 cent per word per insertion; 1/18092511215618050888888888888888888888416195377776 line, 1 cent per word per insertion; 1/3618502243123610177777777777777777777824390755552 line, 1 cent per word per insertion; 1/7237004486247220355555555555555555555164781511104 line, 1 cent per word per insertion; 1/14474008972494440711111111111111111111329563022208 line, 1 cent per word per insertion; 1/28948017944988881422222222222222222222659126444416 line, 1 cent per word per insertion; 1/5789603588997776284444444444444444444413182488888 line, 1 cent per word per insertion; 1/1157920717799555256888888888888888888826364977776 line, 1 cent per word per insertion; 1/2315841435599111053777777777777777777752729955552 line, 1 cent per word per insertion; 1/46316828711982222107555555555555555555105459111104 line, 1 cent per word per insertion; 1/92633657423964444215111111111111111111210918222208 line, 1 cent per word per insertion; 1/185267314879288884302222222222222222222421836444416 line, 1 cent per word per insertion; 1/3705346297585777660444444444444444444484367288888 line, 1 cent per word per insertion; 1/7410692595171555320888888888888888888816734577776 line, 1 cent per word per insertion; 1/1482138518343111064777777777777777777733469155552 line, 1 cent per word per insertion; 1/2964277036686222212895555555555555555566938311104 line, 1 cent per word per insertion; 1/592855407337244442579111111111111111111338766222208 line, 1 cent per word per insertion; 1/11857108147448888515818888888888888888277532444416 line, 1 cent per word per insertion; 1/2371421629489777635777777777777777777755506488888 line, 1 cent per word per insertion; 1/474284325897955527155555555555555555551111128912977776 line, 1 cent per word per insertion; 1/948568651795911104311111111111111111112222578259

### Ross' Specials for To-day

BEACH AND PRUNE PLUMS, to-day per basket..... 35c  
 APRICOTS, exceptionally choice, per basket..... 35c  
 HOTHOUSE TOMATOES, per lb., 20c and..... 15c  
 PRESERVING CHERRIES, per lb..... 12 1/2c  
 OREGON CHERRIES, per lb..... 20c  
 TRANSPARENT APPLES, good cookers, box..... \$2.25  
 FANCY HEAD LETTUCE, per head..... 5c

#### APRICOTS FOR PRESERVING

Place orders to-day and we will deliver Monday. Per crate..... \$1.25

#### DIXIE H. ROSS & CO.

INDEPENDENT GROCERS. 1217 GOVERNMENT ST. Tel. 50, 51, 52, Liquor Department Tel. 1596.

### The Exchange

118 FORT STREET.  
 Dressers and Stands from \$10.00.  
 Book Shelves from \$4.00.  
 Camp Cots and Camp Furniture.  
 Military Bell Tents in first class repair.  
 Kitchen Chairs, Tables and Crockery.  
 Thousands of books.  
 We exchange furniture.  
 Phone 1737.

### Stewart Williams & Co.

Auctioneers and Commission Agents.  
 City Agents for the Atlas Assurance Co. of London, England.

Sales Held at Private Houses by Arrangements.  
 Cattle and Land Sales a Specialty.

#### FOR SALE PRIVATELY.

Some fine old Dresden china, several Hogarth and Botozzini prints, a set of saddle pads, a very good miniature in rose diamond frame, and a quantity of first class household furniture.

Stewart Williams, the Auctioneer

### H. Cuthbert & Co.

AUCTION DEPARTMENT.  
 Having sold by private sale through our real estate department the fine residence and grounds for many years the home of Fred Appleton, Esq., at Gordon Head, we will  
 SELL BY AUCTION  
 On

Thursday, July 21

### Furniture and Effects

Comprising:  
 BREAKFAST ROOM - Very handsome solid golden oak sideboard with beveled glass, solid golden oak dining table with extra leaves; six oak dining chairs, leather seats; hanging lamp picture, rug, Domestic sewing machine, etc.  
 DRAWING ROOM - Stuffer double-ended lounge, oak rockers, rattan easy chair, reception chairs, oak Morris chair, solid oak writing centre and occasional tables, oak Mission card table, bamboo corner and whatnot, wrought iron fire irons and fender, Brussels carpet squares, hearth-rugs, three pairs long and three pairs short muslin curtains, hanging lamps, music stand.

HALL AND LANDINGS - Hall, stair and landing carpets, dinner gong, rug and mats, hall chair, side table.

CONTENTS OF FOUR BEDROOMS, including: Three iron bedsteads, woven wire and top mattresses, blankets, sheets, feather pillows, toilet sets, three oak bureaus with beveled plate glass, and washstands, single lounge, sewing tables, carpet square, ash single bedstead and washstand

KITCHEN - Kitchen tables and chairs, large quantity of crockery and household utensils, several dozen jam jars, ice cream freezer.

OUTSIDE - Unbroken well-bred colt 2 years, two good cows in milk, single buggy, rubber tires, root chopper, hay cutter, pair of harrows, shotgun, churn, wringer, pair of scales, crowbar, hay knife, and all kinds of garden and field tools; 120 feet hose, ladders and step-ladders, etc., etc.

Sale Will Commence at 1.30 Sharp.  
 All goods to be paid for and taken away the day of or day after the sale.  
 No goods delivered during the sale.

#### HERBERT CUTHBERT, Auctioneer

Auction sales of townships and real estate subdivisions a specialty; twenty years' experience.  
 OFFICES, 415 FORT STREET.

### Read the "Times"

### We Keep Contractors Supplies of All Kinds

And are satisfied that we can offer you the highest grade materials at lowest prices. When in need call upon us.

#### B. C. HARDWARE COMPANY, Ltd.

PHONE 50 COR. BROAD AND YATES ST.

### SPECIAL TO-DAY

FINE YOUNG DUCKS, per lb..... 30c  
 FINE BROILING CHICKS, per lb..... 35c

#### Apricots Per Crate, \$1.25

Finest selection in Victoria. Better order to-day while they are at their best. Plums, Peaches - every fruit in season, properly priced for purchasers. FOR SUNDAY'S BREAKFAST why not a genuine Maitre Mowbray Pie? Each 40c and 60c.

The West End Grocery Company, Ltd.  
 1002 Government Street. Telephones 88 and 1761.

### RICE RICE RICE

Just to hand, a carload of China and Japan Rice, which we offer for a few days at live-and-let-live prices.

JAPAN, 50 lbs sack..... \$2.00 CHINA, 50 lbs mat..... \$1.75

Tel. 413. SYLVESTER FEED CO., 709 Yates.

### Arrow Brand Gilsonite Composition

Is for Concrete and Brick Walls, Iron and Wooden Structures of all kinds. For Ships, Hulls and Decks, for all kinds of Roofing, for Tin or Iron Buildings and Bridges. It is especially adapted for insulating purposes. It will stand a high degree of heat, and will not carbonize. It is proof against Acids, Alkalies, Fumes and Gases, and is particularly adapted for use on gas, oil and cyanide tanks, pipes, boilers, smelters, etc. Ask for color card.

#### PETER McQUADE & SON

SHIPCHANDLERS. Sole Agents.



### Green Room

It is a matter of exceeding gratification to learn that the Empress Theatre Stock Company will be able to remain here for four days longer than contemplated in their original engagement and that they will present two more plays for the pleasure of Victoria's theatre patrons. This company has made a host of friends during its all too short stay here, and made them solely by force of merit. It is to be regretted that this city has not yet reached the point of supporting such a company throughout a season but that time cannot be far away, and when it comes one cannot ask better fortune than the presence in Victoria of a band of players of such ability as Walter Sanford has gathered together in the Empress theatre, Vancouver.

As has been observed in these columns, the company shows a homogeneity that is not often seen in stock organizations. The long season in the sister city has developed a smoothness of interaction that is not always seen even in a troupe which is appearing night after night in the one production. There is a proper sense of proportion, a harmony and a restraint which make it a pleasure to witness a performance. The play being presented this week-end is as good a test of the company as could be had. Of a type which might easily be degenerated into melodrama, the Sandford Company keep it in true place as romantic drama, neither overdoing nor slurring the presentation in any particular.

The principals of the company are all excellent and those playing the roles are equally deserving of a meed of praise. Miss Isabelle Fletcher, the leading woman, is an accomplished actress, the wide range of whose powers is shown in the skilful delineation she has given us of characters of very divergent type. Her work is marked by a scrupulous care which is apparent and yet is invisible. It is evident, however, in the finish of her interpretation, its thorough naturalness, but at no time does her acting otherwise suggest the pains she is taking to draw the picture aright. Of the four characters in which she has been seen here individual preference singles out that of "The Girl" as most admirable, with "Storley Rosemont" next. Charles Ayres is an actor of great ability, and in the romantic parts in which he has been cast he has been a decided success. V. T. Henderson has had more variety in the characters assigned to him and in all has done well. This is equally true of Frederick Wilson. T. B. Loftus, in elderly parts, was seen in the first three productions, and it is difficult to decide between his "Tuffy" and "Ryder." Of the work of Chauncey Southern that in "The Lion

and the Mouse" was especially good. Eva Pollard is inimitable in her comedy portrayals. Tilly Armstrong, Meta Marsky, Ashley Cooper, D. M. Dunbar, Teddy MacNamara, Jack and William Pollard and the other members of the company give loyal and fully capable support.

Albini, who has been the headliner at the New Grand this week is a worthy successor to those masters of magic, Kellar and Hermann. While undoubtedly in the same class he has developed a style of his own and has improved upon some of the weird and startling tricks with which they were wont to mystify their audiences. The Grand, by the way, has been running some vaudeville bills of late of more than ordinary good character.

Musical comedy has been superseding vaudeville at Pantages for some few weeks now, and the change appears to please the patrons of that house. At every performance large houses have been the rule and these have been thoroughly amused.

Yesterday's dispatches told of a proposed increase of capital by the Shuberts, leaders of the independents, from a million to a million and a half. It is rumored in New York that Henry W. Savage, who the other day decided to book his long list of attractions through either Klaw and Erlinger or the new National Theatre Owners' Association, is about to sever relations altogether with the syndicate.

Victoria Theatre.

The final performance of "The Girl on the Golden West" will be given to-night. On Monday evening the Empress Theatre Stock Company will put on "The Man on the Box," the play in which Max Pigman made such a hit a couple of seasons ago. The company is said to be very well cast in this, and a treat is in store for theatre-goers. The bill will be repeated on Tuesday evening, and for the last two evenings of the engagement "The Fatal Wedding" will be staged.

Local patrons of the theatre who have not yet seen this sterling company should not lose the opportunity to witness one of their performances before they leave. The company is the best stock organization which has ever come to Victoria.

New Grand Theatre.

The musical railroaders, Dorsch and Russel, will at the Grand theatre next week with their intensely interesting and novel musical act with which they carry special stage scenery, mechanism and back drops, as well as original and disguised musical instruments. The story told by these two is a railroad affair. The commencement is when one man, the tramp, arrives, and while waiting for the train which has to be signalled, the signal man and the tramp pass the time entertaining each other and the audience with a splendid musical programme. They perform on everything in sight on the stage, and everything is in the shape of musical instruments.

The second act is Alice Murtlock & Company, who will appear in a tabloid drama, entitled "The Other Woman." A play of absorbing interest specially written for Miss Murtlock's talents, and admirably acted by her, with splendid support, she has during her present trip west from New York made many friends and is a general favorite along the route of the circuit.

There will be a trio of dancers here in Alaretta Symonds, who is associated this time with Ryan and Adams. Miss Symonds was out west three years ago with Virginia Belles, and may be remembered by many for her delightful stage presence and her capable acting. The dances will be solo, duet and trio with several costume changes.

Will Davis, a monologist, is billed here for the week and according to advance notices will present something that he has worked out himself, and on entirely new lines.

Lew Hoffman, the eccentric juggler, carries a line of clever work and materials for many new sleight-of-hand pieces of entertainment.

Thomas J. Price will sing as usual and the moving pictures will this week be more than ever interesting, for the film of the Victoria fire brigade, taken when the apparatus dashed down Government street, has been developed in London and returned here. It will be shown all the week at the Grand. A second picture film received is an entirely new one from London, being a series of the King's funeral pictures that have never been seen by any audience in the world. This film has never yet been unrolled for public gaze.

Pantages' Double Bill.

Another big double programme will be presented at the Pantages next week

# SAVED FROM THE KNIFE

## Appendicitis Cured By "Fruit-a-tives"

NEWBURGH, ONT., Feb. 12th, 1910.  
 "Just about a year ago, our daughter Ella (fourteen years), was taken with terrible pains in the right side. The pain was so severe that we had to carry her to bed. We at once put her under the care of a first-class doctor, who pronounced it a case of Appendicitis and advised an operation.  
 We took her to a hospital in Kingston where she was again examined by an eminent specialist. He said she had Appendicitis and must be operated on at once if we wanted to save her life. As we had taken her to Kingston to have this done, we were ready, but our daughter was afraid and cried and begged so pitifully that we postponed it for that day. Luckily for us and for her an uncle came in with some 'Fruit-a-tives' and insisted on Ella taking them. Good results were apparent, almost from the first dose, and the continuous treatment cured her.  
 'Fruit-a-tives' saved our daughter from the surgeon's knife, and to-day she is enjoying the best of health."  
 J. W. FOX, (Father)  
 LILLIAN FOX, (Mother).  
 Words cannot express the gratitude of Mr. and Mrs. Fox. And Miss Ella will always remember 'Fruit-a-tives' - the discovery of an eminent physician, and the only medicine in the world made of fruit. 50c a box, 6 for \$2.50, or trial box, 25c. At dealers, or sent, postpaid, on receipt of price, by Fruit-a-tives Limited, Ottawa.



## Bakes-Roasts-Broils-Toasts



BAKES bread, pie and cake - bakes them perfectly all through, and browns them appetizingly.  
 ROASTS beef, poultry and game with a steady heat, which preserves the rich natural flavor.  
 BROILS steaks and chops - makes them tender and inviting.  
 TOASTS bread, muffins, crackers and cheese.

No drudgery of coal and ashes; no stooping to get at the oven; no smoke, no dust, no odor - just good cooking with greater fuel economy. Irons and water in wash-boiler always hot. The

### New Perfection Oil Cook-stove

1. a Cabinet Top with shelf for keeping plates and food hot. Drop shelves for the coffee pot or saucepans, and nicked towel racks. It has long turquoise-blue enamel chimneys. The nickel finish, with the bright blue of the chimneys, makes the stove very attractive and invites cleanliness. Made with 1, 2 and 3 burners; the 2 and 3-burner stoves can be had with or without Cabinet.

CAUTIONARY NOTE: Be sure you get this stove - see that the name-plate reads "NEW PERFECTION." Every dealer everywhere; if not at your agent, write for Descriptive Circular to the nearest agency of the

#### The Imperial Oil Company, Limited.

## ROBIN HOOD FLOUR

### IS DIFFERENT

#### IT HAS ROUSED THE CURIOSITY OF THE WHOLE WEST

"Do you really think" one housewife will say to another "that this new flour can be better than the flour we are using?"  
 Madam, there is no doubt about it.  
 But there is just one way you can be convinced. You must use it yourself.

Our claims will not satisfy you, but we back up our claims in such a way that you will lose nothing by trying Robin Hood.  
 Your grocer will tell you about our guarantee which gives you back your money if you are not satisfied.



THE SASKATCHEWAN FLOUR MILLS CO. LIMITED  
 MOOSE JAW SASK.

Advertise in the Times