

Historic, Archive Document

Do not assume content reflects current scientific knowledge, policies, or practices.

1920

SPRING AND FALL

1920

ALPHA NURSERY

CATALOGUE AND PRICE LIST



Privet Hedge

GEO. G. and H. G. WIRT
ALPHA, ILLINOIS

General Information

PRICES HEREIN CANCEL ALL PREVIOUS PRICE LISTS

We have been in the Nursery business at Alpha for the past 30 years. We grow and handle only the best tested varieties adapted for the Northern Central States.

We try to serve every customer and planter of our goods so promptly, courteously and thoroughly as to assure each the profit, pleasure and satisfaction he expects.

LOCATION—We are located midway between Galesburg and Rock Island, and about midway between Galva and Burlington, on the C. B. & Q. R. R., therefore can ship in any direction.

Our grounds are located opposite the depot, our office and packing sheds adjoining the tracks, which makes delivery very convenient and without delay.

SHIPPING—We have extra good shipping facilities. Four local freights and eight express trains each day. We will ship all small packages by Express or Parcel Post, and recommend the larger packages to be sent by Express, even if the cost is a trifle more than freight, thus insuring immediate delivery.

TERMS—Cash or satisfactory references from unknown parties before shipment.

PACKING—These prices are for well packed stock, and delivered to the railroad station at ALPHA.

MISTAKES cheerfully corrected, but no claims allowed unless made within seven days after shipment is received.

GUARANTEE—We guarantee all Nursery stock to be true to name, and should any prove not, we will return the amount paid for such stock, or replace with stock that is true, but we are not liable for damages other than herein named.

REPLACING—We do so at one-half the original price on fruit trees and shrubs, providing a list of the varieties that did not grow is sent to us within four months after the stock is received. Otherwise we do not.

RATES—Six at dozen, 50 at 100 rates, unless otherwise stated. This applies to trees, plants, etc., of any one class having a common price.

SHIPPING TIME—Spring shipments start about the first week in April and continue until last of May. Fall shipment starts about the middle of October and continues until freezing weather.

NO AGENTS—We employ no agents, and therefore are not responsible to parties only purchasing stock through us.

SUBSTITUTION—We desire to follow the customer's wishes and will not substitute unless we are out of the varieties ordered, and then to our best judgment, unless advised otherwise.

DISEASE—Our stock and premises are inspected each year by a State inspector, and a certificate issued, that such are apparently free from all dangerous insects and diseases. A certificate of inspection accompanies each shipment.

PRICES HEREIN CANCEL ALL PREVIOUS LISTS



Well Rooted Trees

WE PAY THE TRANSPORTATION CHARGES on all orders amounting to \$15.00 or over, if east of Colorado. Except on large shade trees, we will use our judgment how to send the shipments.

APPLES

First size, 4 to 6 ft., 50c each; 6 or more, 45c each.

Note—We have a limited number of apple trees in smaller sizes. Write for prices, naming varieties you want.

SUMMER VARIETIES

✓ **Benonia**—Medium, roundish, pale yellow, shaded with crimson; juicy, tender, sub-acid; August.

✓ **Early Harvest**—Medium, to large, roundish, bright straw color, flesh white. July. Good quality.

✓ **Astrachan Red**—Large, roundish, nearly covered with crimson; juicy, sub-acid; tree strong, spreading grower. August.

✓ **Red June**—Medium, oblong, hardy and productive; deep red color; flesh white, with tender, rich, sub-acid. August.

✓ **Yellow Transparent**—Medium, yellow, good quality, productive, excellent; bears early. July.

✓ **Liveland Raspberry**—A very early variety of fine quality, good size, white striped and shaded crimson; a good healthy grower, very hardy.

AUTUMN VARIETIES

✓ **Aunt Hanna**—Sweet, good size, light red with stripes; very productive and hardy. November.

✓ **Dyer**—Good size, pale yellow, very tender and juicy, extra good quality. A good bearer; tree medium grower and hardy. October.

✓ **Duchess**—Large size, roundish, streaked with red and yellow, flesh white, juicy, acid. September.

✓ **Famuse (Snow)**—Medium, deep crimson; flesh snowy white, tender. Tree slow, crooked grower. October and November.

✓ **Golden Sweet**—Fruit large, pale yellow; flesh tender, sweet and rich; hardy and a good grower. August and September.

✓ **Wealthy**—Large, roundish, smooth, nearly covered with dark red; flesh white, fine, juicy, sub-acid, quality very good; good grower and productive. October.

WINTER VARIETIES

Ben Davis—Large, handsome, striped; good, hardy, vigorous and productive; late keepers, very showy. December to March.

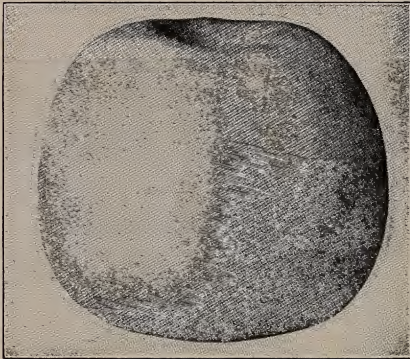
Baldwin—Medium size, red; flesh yellow, sub-acid; tree a good grower but a little tender here. December.

Black Ben Davis—Much like Gano in tree and fruit.

Domine—Medium size, greenish yellow, good quality. January.

Delicious—Fruit large, nearly covered with brilliant dark red, flesh fine grained, crisp and melting, juicy with a delightful aroma; of very highest quality. December to February.

Gano—Good size, smooth and very attractive; deep red, resembles Ben Davis, but is an improvement on that variety, being handsomer and better colored. December to March.



Grimes Golden

Grimes Golden Pippin—Medium golden yellow, with white dots. crisp, tender and juicy, excellent; tree vigorous, hardy and productive. November to January.

Jonathan—Medium, red and yellow, very showy, juicy, excellent; tree slender and spreading; bears early. November to February.

Mammoth Black Twig—Large, deep, red, sub-acid; early and abundant bearer; keeps well; tree a strong grower, resembles Winesap, but is superior in many ways, and fully one-third larger. January to April.

Northwestern Greening—Large, smooth, greenish yellow; flesh fine

grained, firm; extremely hardy and a strong, handsome grower. December to April.

Paradise Sweet—Medium size, greenish yellow, sweet, good quality. December.

Roman Stem—Medium size, yellow, of good quality, very productive; tree a slow grower when young.

Russet—Medium size; flesh greenish white, good quality; tree a good grower and hardy. January.

Salome—Medium, yellow and red, very handsome; flesh whitish yellow, tender, slightly aromatic; tree hardy, vigorous, upright grower. January to May.

Seedless—Tree a good grower and hardy; fruit medium size, yellow, with red stripes. December.

Stayman's Winesap—Fruit large, striped, nearly covered with red; flesh greenish yellow, very juicy and aromatic; very good; a strong, spreading grower; a good, early bearer; the best of our late winter apples. January to May.

Alexis, Ill.

Received my order and it was all in good condition. I want to thank you for your promptness.

OLIVE HILL

✓ **King David**—Medium size, dark red; tree hardy and good grower. December.

✓ **Tallman Sweet**—Medium, pale yellow, firm, rich and very sweet the most valuable preserving and baking apple; vigorous. October and December.

✓ **Winter Banana**—Fruit large, col or clear yellow, overspread with pink; red-blushed; flesh yellow very rich and juicy; tree subject to blight. November to January.

✓ **Winesap** — Medium, roundish, deep red, firm, crisp, juicy; excellent quality, moderate grower and good bearer; succeeds well throughout the West. December to May.

✓ **Yellow Bellflower**—Large size, pale yellow, flesh white, sub-acid; tree a good grower; rather shy bearer. December.



Stayman's Winesap

CRAB APPLE

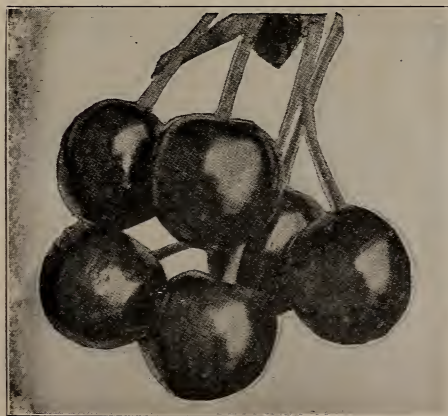
50 cents each

✓ **Hyslop**—Dark crimson, with bloom; very showy and popular.

✓ **Transcendant**—Large, yellow striped with red.

✓ **Sweet Crab**—Sweet, large size, good bearer, whitish yellow; fine for preserves and pickles. September.

CHERRIES



Cherries

4 to 6 ft., 75c each; 6 or more, 70c each

✓ **Early Richmond**—Medium, red, early, hardy, immensely productive; ripens the last of June.

✓ **Large Montmorency**—Large; fruit beautiful dark red, sub-acid; of the very best quality; ten days later than the Early Richmond; a fine shaped tree; hardy and productive.

Sweet Cherry—Light yellow red cheek; tree hardy, but uncertain bearer.

PEACHES

4 to 6 ft., 50c each; 10 or more, 45c each

Golden—Good size, golden yellow inside and out, freestone of extra good quality, very hardy and prolific; has proven one of the best here. September 15th.

J. H. Hale—It averages one-third larger than the Elberta, ripens earlier, and is much better in quality; color, golden yellow, inside and out, with a red-blushed cheek, a perfect freestone. Ripens August 25th.

Greensboro—The flesh is white, juicy and delicious quality for so early a peach. The largest and most beautifully colored of all early sorts. July.

Alexander—Medium size, nearly round; skin greenish white, nearly covered with deep red; flesh white, juicy and sweet, adhering slightly to the stone. July 20th.

Champion—Fruit large, delicious, sweet, juicy; skin creamy white, with red cheek; handsome, hardy and productive, and a good shipper; adhering slightly to the stone. August 15th.

Crosby—Freestone, medium size, bright yellow, streaked with carmine; annual bearer; hardy. September 15th.

Lemon Cling—Very large, light yellow; flesh firm, yellow and rich; the great canning peach of the South and West. August.

Elberta—Freestone, very large, yellow, with red cheek; flesh yellow, an excellent shipping variety. September 5th.

Crawford's Early—Freestone, large yellow; flesh yellow, quality good; tree good grower, but the buds are tender. September.

Late Elberta—Same as Elberta, except about 10 days later. September 15th.

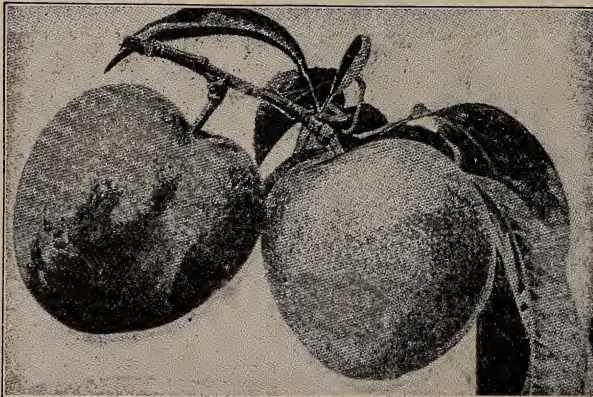
Early Elberta—Same as Elberta, except about 10 days earlier. August.



Champion Peach

PLUMS

4 to 6 ft., 75c each; 6 or more, 70c each



Red June Plum

✓ **Abundance**—Medium size, showy; beautiful amber colored, turning to a rich, cherry, highly perfumed; flesh light yellow, exceedingly juicy and tender. July.

✓ **Burbank**—Very large, redish purple; flesh yellow and solid; cling, fine quality, one of the best for canning; tree strong, spreading grower, hardy and productive; subject to rot in wet years. August.

✓ **Red June**—A vigorous, hardy, upright, spreading tree; as productive as Abundance. Fruit medium to large, deep vermilion red with handsome bloom; very showy; flesh light lemon color, slightly sub-acid, of good and pleasant quality; pit small. Early.

✓ **Green Gage**—Medium sized yellow freestone, of extra good quality; tree a slow, dwarfish grower. August.

Annawan, Ill., May 2nd, 1919

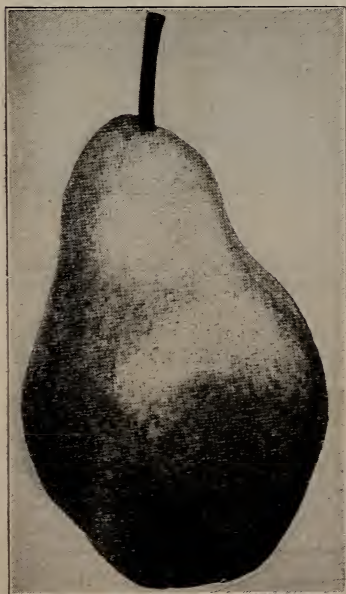
Plants came in good condition and are fine specimens; the best I have yet received from any Nursery.

MRS. ADA FITSKEE

PEARS

4 to 6 ft., 75 cents; 6 or more, 70 cents each

✓ **Bartlett**—Large size, color rich yellow, with often a beautiful blush next the sun; buttery, very juicy, and highly flavored. September.



Keifer Pear

✓ **Duchess**—Very large; dull, greenish yellow, streaked and spotted with russet; flesh white, buttery and very juicy, with a rich and very excellent flavor. October.

B. de Anjou—A large, greenish pear, shaded with russet red, flesh is high flavored, rich and vinous. Trees very productive; one of the best for late fall and early winter use. October to January.

✓ **Keifer**—A vigorous grower and an early bearer; very productive fruit, large, golden yellow, with red cheek. October.

✓ **Seckel**—Small, yellow, with crimson cheek; flesh melting sweet and aromatic; most exquisitely flavored pear known. Tree slow grower, but hardy and healthy. September.

✓ **Worden (Worden's Seckel)**—Medium size; golden yellow, with russet cheek; flesh fine grained, juicy. Tree hardy. September.

✓ **Lincoln**—A strong, tall grower; fruit yellow, sweet and fine quality. August.

✓ **Dwarf Pears**—Bartlett, Duchess, Seckel. These pears commence bearing much earlier than the standards.

Quinces—50 cents each.

CHESTNUTS

American Sweet—The nuts of this tree form quite an item in our commerce. They are sweet and delicately flavored. This chestnut is also a grand timber and ornamental shade tree. 5 to 6 ft., 60c each.

Apricots (Russian)—4 to 6 ft., 50c each.

Mulberries (Russian)—6 to 8 ft., 70c each.

GRAPES

Campbell's Early—A strong grower, an abundant bearer; bunches and berries very large, glossy black; ripens with the Moore's Early, but will hang on the vines until frost. 40c each; \$4.00 per 12.

Moore's Early—Black, bunches medium size and very compact; berries large and of excellent quality; ripens ten days before Concord which makes it very desirable for market; very hardy, well suited for the North; one of the best. 35c each; \$3.00 per 12.



Grapes in Nursery

Concord—Black, the most popular grape in America; bunches and berries large, hardy, healthy and productive. 30c each; \$3.00 per 12; \$25.00 per 100.

Agawam—Red or maroon color; berries large, of rich, peculiar aromatic flavor; ripens a week later than Concord; vine a strong, rank grower. 35c each.

Moore's Diamond—White, bunches and berries large; flesh tender, juicy, hardy, productive, early; fine quality. 35c each.

Niagara—Bunch and berries large, greenish white, changing to pale yellow when fully ripe. Quality fair. A little tender here, but hardy farther south. 35c each.

Luti—Early red, extra hardy and strong grower. 35c each.

New Boston, Ill.

We are satisfied customers of yours; thanking you for your favors.

MR. AND MRS. WM. L. OTT

CURRENTS

Large two-year, 20 cents each; \$2.00 per 12; \$15.00 per 100

✓ **Perfection**—Color bright red, extra large size; bunches very long, which makes them very easy to pick; extra good quality; a good, healthy grower. 25c each; \$2.50 per 12; \$18.00 per 100.

✓ **Cherry**—A large, red currant, good grower and very hardy; moderate productive.

✓ **Fay's Prolific**—Fruit large, bright red, bunches long, productive and hardy; moderate grower.

✓ **Black English**—Largest and best of the blacks.

✓ **White**—A good grower; berries yellowish white, sweet and mild.

GOOSEBERRIES

Two years old, 25c each; \$2.50 per 12. Good, hardy varieties

DEWBERRIES

✓ **Lucretia**—A trailing blackberry, larger and juicier than blackberries. Fruit ripens ten days before blackberries. For the best success, cover them in the fall like strawberries; in the spring take the mulching off and put it under them to keep the berries off the ground, and shorten the runners to eighteen inches. Prices, 50c per 12; \$3.50 per 100.

Prophetstown, Ill.

Received trees to-day and set them all out, and sure well pleased with them.

G. BECKER

BLACKBERRIES

✓ **Eldorado**—Among the good points of this valuable new blackberry are great productiveness, hardiness, extra fine quality, and sweetness of flavor, without core, the berries are large, jet black, borne in clusters and ripen well together; sweet, melting, rich and pleasant to the taste. Price, 50c per dozen; \$4.50 per 100; \$40.00 per 1,000.

✓ **Snider**—Very hardy and productive, of medium size. 50c per 12; \$4.00 per 100.

✓ **Blowers**—Said to be very large and hardy, but has not been well tested here. 50c per 12. \$4.50 per 100.

PIE PLANT

Linnaeus—Large, early, tender and fine, the very best of all. Large two-year-old roots, 15c each; \$1.50 per 12; good two-year roots, \$6.00 per 100.

ASPARAGUS

Conover's Colossal—Produces large, tender shoots of vigorous growth. None better. 35c per 12; \$2.00 per 100; \$4.00 per 500.

STRAWBERRIES

Senator Dunlap, 25 plants, 35 cents; 50 plants, 70 cents; \$1.00 per 100;
\$4.00 per 500; \$6.00 per 1,000

Norwood and Gandy, 50 cents per 25; \$1.00 per 50; \$1.50 per 100

For strawberry plants in the fall, write for prices. They should be planted between August 20 and September 30.



Dunlap Strawberry

The following varieties of strawberries are all perfect flowering; that is, they do not need any other variety planted near them for fertilizer. We tie all strawberries 25 in a bunch. If the plants are to be sent by mail, see parcel post rates, page 21.

Senator Dunlap—Fruit good size, regular form, beautiful bright red; glossy, firm, splendid keeper and shipper; excellent quality; one of the best for canning; ripens early and continues a long time. We consider the Dunlap the best berry that grows. It and the Gandy will cover the season from early to late.

Gandy—Extra large and handsome, firm; the very latest; most all of the crop ripens after the Dunlap.

Norwood—Extra large and of very fine quality; bright red all the way through, a strong, healthy grower; the best of the large fancy berries.

Farmington, Ill., 1919

The everbearing strawberries that I got from you two years ago were very satisfactory, especially the **Progressive**; they wintered best and had berries until November.

W. T. BELL

EVERBEARING STRAWBERRIES

50 cents per 12; 75 cents per 25; \$2.00 per 100

This kind of strawberries have proved a success. They are hardy and healthy, make a crop in June and another in the fall.

Progressive—Berries large, firm, and good quality; plant a healthy, strong grower and a good plant maker. This plant seems to be a general favorite. With us the June crop was almost as good as the standard varieties. This variety is the original everbearer and the best of all, and will give the best satisfaction.

Superb—Large size, quality medium; does well on sandy soil; medium fall bearer.

Plant them same as other varieties, cut off the blossoms up to July the first, and they will make a fair crop the first year. As soon as the berries begin to ripen put a fine mulch around the plants. The second year, after the June crop, take off the mulch and give them a good dressing of fine manure, cultivate well, then mulch heavy between the rows and close around the plants. All the varieties we offer have perfect flowers, and do not have to have other varieties near as fertilizers.

RASPBERRIES

50 cents per 12; \$3.50 per 100; \$30.00 per 1,000; except where noted

ORDER RASPBERRIES EARLY

Cumberland Raspberries

Cumberland—One of the largest black raspberries known; its immense size, firmness and great productiveness entitles it to first consideration. Unusually strong grower, throwing up stout, stocky canes; perfectly hardy. The most profitable raspberry grown for home or market use. Fruits for long season.

Plum Farmer—Black, strong, healthy grower; ripens earlier than the Cumberland and ripens its fruit in a very short time. 50c per 12; \$4.00 per 100.

Louden Red—Large size, very firm and hardy, moderate grower, the best of the reds for heavy, rich soil. Sprouts. \$2.50 per 100; \$20.00 per 1,000.

St. Regis (Everbearer)—Very early, fruit large and extra quality, good stocky grower and hardy. It is very much like the Louden except it makes a fall crop on the new canes. Red variety. \$3.00 per 100; \$25.00 per 1,000.

Cuthbert—Red, strong grower, fruit large and firm; the best for light soils; sprouts. \$2.50 per 100; \$20.00 per 1,000.

Columbian—Deep purplish red, highly flavored, extra strong canes, wonderfully productive; berries very large. There is nothing finer grown in the line of fruit than this variety for table use, canning, etc. This variety does not sprout. 90c per 12; \$1.75 per 25; \$3.00 per 50; \$4.75 per 100.

READ BEFORE ORDERING RASPBERRIES

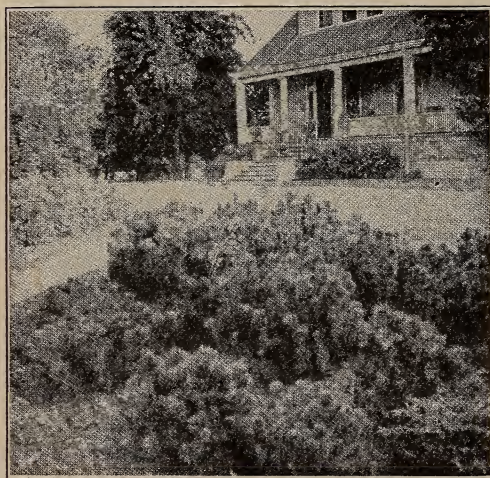
Raspberries should be the first in the fruit line to be planted in the spring. Therefore send in your order for raspberries EARLY, as they should be planted between April 1st and 15th.

Raspberries are tied 25 to the bunch, the top canes are left 6 to 10 inches long for the sole purpose of tying them in bunches, and after planting this cane generally dies, and the plant starts from the crown or root. In planting, spread the roots out good, cover the crown from 2 to 2½ inches with soil. Do not put manure next to the roots. Cultivate good for the first year, then mulch heavy along the row.

Smithshire, Ill.

Received my shipment of strawberry plants, also grapes, and wish to thank you for your promptness, also the manner they were packed, as they reached me in such good shape.

MRS. IDA WORDEN



Evergreen

EVERGREENS

Arbor Vitea—The best for hedges, or specimen planting. 2 to 3 ft., 65c each; \$6.00 per 10.

3 ft. specimens, balled and burlaped, \$1.00 each.

18 to 24 in., 50c each; \$4.50 per 10.

12 to 18 in., 35c each; \$3.00 per 10.

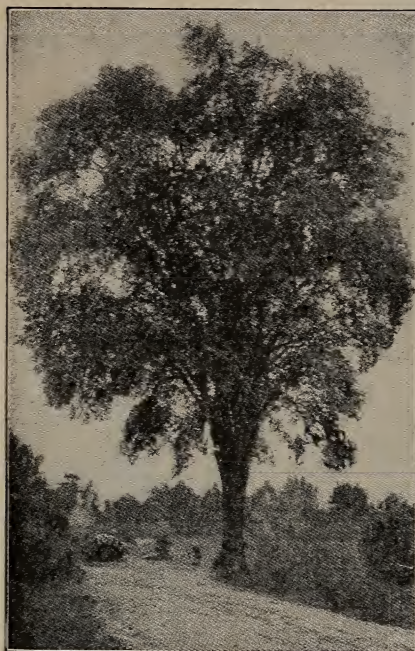
Norway Spruce—The best for windbreaks; 2 to 3 ft., 65c each; \$5.00 per 10; 18 to 24 in., 50c each; \$4.00 per 10; 12 to 18 in., 35c each; \$3.00 per 10.

White Pine—2 to 3 ft., 65c.

Koster's Blue Spruce—18 to 24 in., \$4.50 each.

ORNAMENTAL TREES

Popular Norway or Carolina—One of the most rapid growing trees, with large, deep green leaves; succeeds everywhere, especially adapted to cities, where it makes a fast growth, and resists smoke and gas. It makes a spreading head and dense shade when properly trimmed. 10 to 12 ft., 75c each; \$6.00 per 10; 8 to 10 ft., 55c each; \$5.00 per 10.



Elm

Elm—White, the noble, drooping, spreading tree of our woods; one of the grandest of park or street trees. 10 to 12 ft., \$1.00 each; \$8.00 per 10; 8 to 10 ft., 75c each; \$6.50 per 10; 6 to 8 ft., 50c each; \$4.00 per 10.

Birch, White—A tree with graceful, airy foliage and white bark; desirable for lawns; 5 to 6 ft., 50c; 6 to 8 ft., 75c; 8 to 10 ft., \$1.00.

Mountain Ash—A very pretty, small sized tree, with clusters of large orange berries in the fall; 5 to 6 ft., 50c each; 6 to 8 ft., 65c.

Soft Maple—4 to 6 ft., 40c.

Budded Box Elder—These trees were budded from old, fine specimens, that never raised seed. These trees can be depended upon to never have seed. 5 to 6 feet., 60c each.

Catalpa Speciosa—A rapid grower with large, light green leaves and white flowers in June. 10 to 12 ft., \$1.00; 8 to 10 ft., 75c; 6 to 8 ft., 45c.

Norway Maple—A native of Europe; a large, handsome tree, with broad, deep green, shining foliage. Very similar to hard maple, but faster growing. 6 to 8 ft., \$1.00 each; 8 to 10 ft., \$1.25.

Hard Maple—Spreading top and very dense shade; very desirable for street, park or lawns. 6 to 8 ft., \$1.00; 8 to 10 ft., \$1.50.

Schwedler's Maple—Leaves bright red, changing to bronze green during summer; a very attractive tree, with round spreading head. 5 to 6 ft., \$1.75.

Crab (Bechtel's Double Flowering)—A beautiful tree while in bloom; the flowers are fragrant and double, resembling miniature roses, color pink. 2 to 3 ft., 50c each.

Linden—American or Basswood (Tili Americana)—A large tree forming a broad, round-topped crown. Leaves broadly oval dark green on top and light beneath, turning yellow in autumn; creamy flowers in summer. 5 to 6 ft., 60c each.

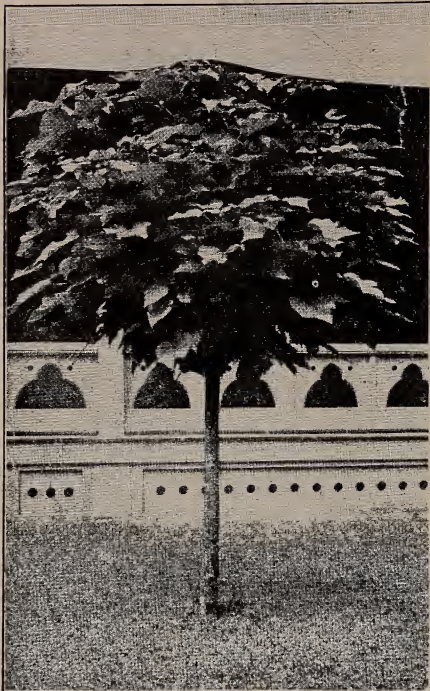
Horse Chestnut—White Flowering—A handsome tree of regular form, with showy foliage and covered in the spring with panicles of white, showy flowers marked with red. 4 to 5 ft., 60c each.

Redbud (Cercis)—Judas Tree—A medium sized tree with large irregular head shaped leaves; derives its name, Red Bud, from the profusion of delicate, reddish-pink blossoms with which it is covered in early spring before the foliage appears. 5 to 6 ft., 60c.

Catalpa Seedling—\$1.50 per 100; \$5.00 per 500. These are the hardy Speciosa. For posts they should be planted 4x4 ft., and given good cultivation for two or three years.



Norway Maple



Catalpa Bungeii

WEEPING TREES

Catalpa Bungeii (Umbrella Catalpa)—Grafted on stems six to eight feet high, it makes an umbrella-shaped top without pruning; perfectly hardy; leaves large, glossy, heart-shaped, deep green; lay like shingles on a roof. \$1.50 each.

Tea's Weeping—A variety of the well known Russian Mulberry. Forms a perfect umbrella-shaped head, with long, slender branches which droop to the ground parallel with the stem. Very beautiful and hardy. \$1.75 each.

CAMPERDOWN ELM

Leaves are large, glossy dark green. Its vigorous, irregular branches, which have a uniform weeping habit, overlap so regularly that a compact, roof-like head is formed. A strong, vigorous grower, susceptible to training into picturesque form, and considerable utility for canopy shade. The finest Weeping Elm and one of the best weeping trees. \$1.75 each.

WILLOW

Wisconsin Weeping—6 to 8 ft., 50c each.

BIRCH

Cut Leaved Weeping—Erect, stately, rapid, hardy, with long, fine pendant branches and delicately cut leaves; the trunk very white; no tree more elegant for the lawn or yard. Undoubtedly the most popular of all weeping trees. 5 to 6 ft., \$1.00 each; 8 to 10 ft., \$1.50 each.

THE BEST HEDGE AND BORDER PLANTS

Barberry (Thunberg's or Japanese)—The finest of all the Barberries, grows in compact form, spiny stems, foliage fine and dense, changing to brilliant red in fall, the clusters of red berries hanging on all winter. Much used for hedge and borders. Considered by many to be the most valuable foreign shrub grown. Not only because of its beauty, but it is also adapted to so many uses, together with perfect hardiness. For dense, low growing foundation planting, there is nothing better, and as an informal ornamental hedge, it has no equal.

This Barberry is recommended by the Government. It does not have the wheat rust, so there is no danger in planting it. We have several thousand fine, bushy plants. 24 to 36 in., 35c each; \$3.00 per 10; \$25.00 per 100; 18 to 24 in., 25c each; \$2.00 per 10; \$15.00 per 100.

Privet Amours River North—A valuable shrub for hedges and borders, color glossy green, holds its foliage almost



Barberry

the whole year; will stand trimming to almost any extent; perfectly hardy. 3 ft., 35c each; \$3.00 per 10; \$25.00 per 100; 2 to 3 ft., 30c each; \$2.00 per 10; \$20.00 per 100; 18 to 34 in., slim plants, 25c each; \$2.00 per 10; \$15.00 per 100.

American Arbor Vitea—A native of the North; very hardy and will stand shearing well any time of the year; the most popular for hedges and screens, as it keeps green the year round. 12 to 18 in. transplant, 30c each, in quantity.

HARDY, DECIDUOUS SHRUBS

In the adornment of the home grounds, hardy shrubbery has come to be recognized as indispensable, and it is a pleasure to be able to offer the quality of stock which will be found listed on the following pages. Its uses are many and varied. To set about the foundation of the house, to grow as hedges to divide properties, or as screens to hide unsightly objects, to supplement the planting of evergreens or shade trees, shrubbery has its distinctive place. The proper planting of shrubbery about the home adds to its value many times the amount expended. We quote here on shrubs large enough to give immediate effect. We also quote prices on small size shrubs.

LOW GROWING SHRUBS

2 to 3 ft., 40c each; \$3.50 per 10; 18 to 24 in., 35c each; \$3.00, per 10 except where noted



Rugosa

Rugosa, Japanese Rose—This rose is very popular, used as a shrub it is fine. The foliage is refined and charming all summer, the blossoms are large, single, produced throughout the summer, followed by large crimson fruits, perfectly hardy; color, red.

Spirea Anthony Waterer—Dwarf. This beautiful variety produces flowers of bright crimson and blossoms so freely that it may be kept flowering through the summer till late fall by trimming away the dead flowers. In growth it makes a large, round head, one to two feet high. 18 to 24 in., 45c each; \$4.00 per 10.

Deutzia (Pride of Rochester)—Blossoms in early spring, in large panicles of double white flowers. A strong, handsome grower.

White Kerria (Rhodotypos Kerrioides)—A very ornamental shrub with bright foliage and single flowers, about one and one-half inches across. In May. These are produced at the end of the branchlets and are followed by conspicuous, shining black fruits in autumn and winter.

Quince Japan (Cydonia Japonica)—The scarlet flowers are large and produced in masses. Foliage large, dark, glossy green. Good in hedges for massing in the shrubbery border.

Yacca—A tropical-looking plant, with long, narrow leaves; the flower stalks rise from the center about three feet high, and are covered with creamy, white, bell-shaped flowers, forming a perfect pyramid; perfectly hardy, the leaves staying green all winter. Strong, two-year plants, 25c each.

Butterfly Bush (Buddleia Variabilis Magnifica)—Ever-blooming. This shrub from a young plant set out in the spring will mature to full size the first summer, making a handsome bush. It produces long, graceful stems, which terminate in tapering panicles of beautiful lilac-covered flowers. Strong field grown plants, 50c each.

Weigelia (Diervilla Eva Rathke)—The hardiest of the weigelias; free flowering in June and July. Flowers crimson, very handsome and fragrant. 45 cents.

Barberry—See opposite page, under Hedges. Page 12.

Dutzia (Gracilis)—Low, bushy grower; attains the height of about 18 inches. White flowers in May.

MEDIUM GROWING SHRUBS

3 to 4 ft., 45c each; \$4.00 per 10; 2 to 3 ft., 40c each; \$3.50 per 10 except where noted



Spirea Van Houtei

Spirea Van Houtei (Bridal Wreath)—The most beautiful of all spireas, an immense bloomer; pure snow white flowers; early; hardy.

Snowberry—A very pretty bush, with clusters of rose-colored flowers early in the spring, followed by waxy white berries, which hang on through part of the winter. 3 to 4 ft. only.

Snowberry (Red Fruited)—Similar to above, except berries are bright red. 3 to 4 ft. only.

Spirea (Billardii)—Upright in habit, with red brown

branches, dull green foliage and dense spikes of pink flowers about 6 inches long. Blooms from July until frost.

Spirea (Billardii Alba)—A white-flowering form of the above.

Althea—A free flowering shrub, blooms in August and September; flowers resemble hollyhocks; color, white and purple. 2 to 3 ft., 40c each.

Almonds—Double flowering, pink and white flowers like small roses, early, profuse. 2 to 3 ft., 40c each.

Calycanthus (Sweet Scented Shrub)—The wood is fragrant, foliage rich; flowers are of chocolate color, having a peculiarly agreeable odor. Flowers in June and at intervals afterwards. 2 to 3 ft. size only.

Privet Amoor River (North)—See page 13 for sizes, prices and description.

Globe Headed Privet—These shrubs have a globe shaped head, 18 inches across, on a straight stem, very hardy, and ornamental. 3 to 4 ft. 45c each; 2 for 80c.

Golden Bell (Forsythia Suspensa)—Has yellow, bell-shaped flowers in racemes in early spring. Spreading in growth. Good, deep green foliage.

Golden Bell (Forsythia Fortunei)—Similar to above, but more upright in growth.

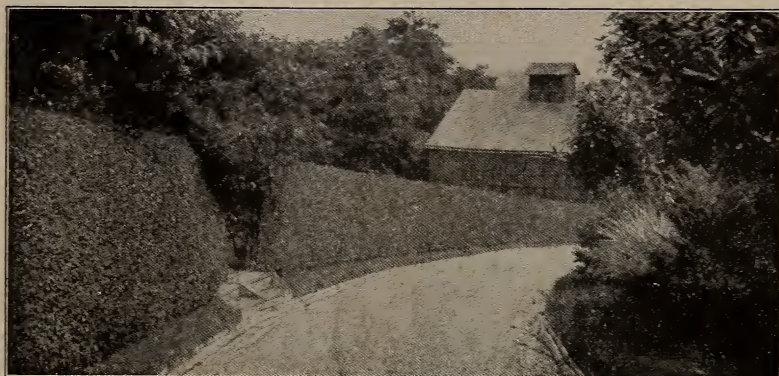
Hydrangea (Paniculata Grandiflora)—This is one of the most valuable hardy shrubs. It attains a height of three or four feet, and is perfectly hardy in all parts of the country. The flowers are borne in great panicles nearly a foot in length and change from pure white to rose and bronze. It commences flowering in July and continues until November.

Hydrangia—Tree-Shaped—Very desirable in this form, informal lines and backgrounds, or solitary. 2 to 3 ft., 50c.

Hydrangia (Aberoescens Sterilis, hills of snow)—A new variety of decided merit. Commences to bloom in July and lasts until September. Perfectly hardy.

HIGH GROWING SHRUBS

4 to 5 ft., 50c each; \$4.50 per 10; 3 to 4 ft., 45c each; \$4.00 per 10
except where noted



Amoor River Privet Hedge

Tartarian Honeysuckle (*Lonicera Tatarica*)—A very attractive useful shrub, with an abundance of fragrant flowers in the spring, and bright red fruit in autumn. Pink and white.

Dogwood (*Cornus Siberia*)—A pretty shrub with bright red bark in winter. Branches upright and spreading. Has cream colored flowers in June, and light blue berries, which makes it very attractive in autumn.

Elder (Golden)—A brilliant golden-leaved variety, very useful for contrasts and striking effects.

Fringe, Purple or Smoketree (*Rhus Continus*)—Good as a single specimen for lawns or in masses in the shrubbery border. Has yellow green flowers in June in loose panicles which become purple and plumose and give the plant a smoky appearance in late summer and early fall.

Lilac Persian—This blooms earlier than the common lilac. The flowers are pale lilac and bend the slender branches in most graceful curves. 3 to 4 ft. only.

Lilac (Purple)—A standard variety, always good, a profuse bloomer. 3 to 4 ft. only.

White—A well known white lilac, flowers slightly cream colored. 3 to 4 ft. only.

Snowball—A magnificent old favorite, tall growing shrub with very showy pure white flowers, produced in large ball.

Spirea (Golden)—Large white flowers in June, a very strong grower with bright golden leaves in spring, that darken as the season advances.

Sumac (Cut Leaf)—A very striking plant of moderate size, with deeply cut leaves resembling fern leaves, dark green above and glaucous below and turning to a rich red in autumn.

Syringa (Mock Orange)—Of vigorous habit, very hardy, with large handsome foliage and beautiful white flowers.

Cranberry (high bush) (*Virburnum opulus*)—Upright and spreading in growth, with smooth, light grey branches and broad, rough leaves. Flat heads of white flowers about 3 or 4 in. across. The clusters of decorative

fruit begin to color by the end of July and remain on the branches and keep their bright scarlet color until the following spring. 3 to 4 ft. only.

Strawberry Bush (*Euonymus Americanus*)—A pretty, upright growing shrub with good foliage, particularly handsome in fall with its scarlet berries. Yellow-red flowers in June. 3 to 4 ft. only.

ROSES

Everblooming Hybrid Perpetuals

Large two-year, field grown bushes, 50 cents each
These Roses will bloom the first year



Gruss an Teplitz

Gruss an Teplitz—Color a rich scarlet, shading to velvety crimson; very fragrant; a free, strong grower, and the most profuse bloomer known to us, being covered with flowers the whole season. The foliage is extremely beautiful, all the younger growth being of a bronzy plum color.

Frau Karl Druschki—A pure, paper-white, large sized and free flowering. The bloom is perfect in form on fine, long stems.

Prince de Rohan—Very dark, velvety crimson. A prolific bloomer and flowers are of excellent form and size.

Soleil d' Or—A fine, hardy out door rose, especially valuable because of its rare color; gold and orange yellow, varying to ruddy gold, suffused with nasturtium red.

Baby Rambler—The original dwarf form of crimson rambler. The wonderful persistency of its bloom makes it one of the choicest plants in cultivation for summer bedding, and as an edging to borders of shrubs, roses or perennials, it has no equal.

Crested Moss—Deep pink, buds surrounded with moss fringe and crest.

Rugosa—Japanese Rose. See page 13.

CLIMBING ROSES

Large two-year, field grown vines, 45c each

Climbing American Beauty—Much like the bush form of this name except it has the climbing habit.

General Jacquemont—Brilliant, velvety crimson; large, showy, and a fine grower; a magnificent variety.

Magna Charta—A general favorite, prized on account of its strong, upright growth and bright, healthy foliage, as well as for its magnificent bloom. The color is a beautiful bright pink.

Paul Neyron—Deep, shining rose, very fresh and pretty. Flowers large, often measuring five inches in diameter. The buds always develop fine, perfect roses.

American Beauty—A hardy rose, of the largest size, having the everblooming qualities of the tea roses; it is the sweetest of all roses; the color is a deep, brilliant red, shaded to a rich carmine.

Excelsa (Red Dorothy Perkins)—A radiant, blood-red cluster rose. The clusters are very large and fairly cover the vines. It is best to plant this variety where crimson Rambler is not hardy.

The Illinois Rose (*Rosa Setigera*)—Large single, pink, blossoms in July; beautiful foliage, absolutely hardy. The stems turn red in winter, which together with quantities of crimson fruits, produce a charming winter effect.

Crimson Rambler—It is a vigorous grower; flowers glowing and productive in immense panicles.

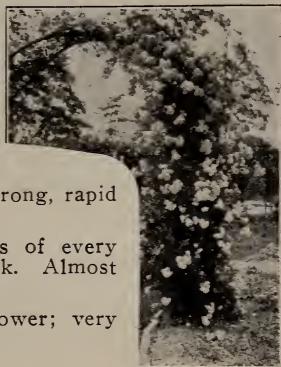
Blue Rambler (*Veilhenblau*)—The flowers are a violet blue; the buds show some red, but quickly change as they open.

Dorothy Perkins—Beautiful shell pink, full and double; large size for a cluster rose; it is a hardy, strong grower.

Prairie Queen—The flowers are very large and of peculiar globular form; bright, rosy red; changing to lighter as the flower opens. Of strong, rapid growth.

Thousand Beauties (*Tausendschon*)—Colors of every imaginable shade, from pure white to deep pink. Almost thornless.

Multiflora Rose—Double, pink; strong grower; very hardy, profuse bloomer.



Illinois Rose

CLIMBING VINES

Strong two-year, 35c each.

Honeysuckle, Scarlet Trumpet—One of the handsomest in cultivation; coral flowers; very vigorous and hardy; blooming all summer.

Honeysuckle, Hall's (*Halliana*)—A strong grower with deep green foliage, which is almost evergreen. Numerous white and yellow fragrant flowers in August and September.

Trumpet Vine (*Tecoma Radicans*)—Handsome, dark green foliage and showy clusters of orange and scarlet flowers during the summer.

Bittersweet—A native vine that is especially ornamental in fall and winter, with brilliant orange and scarlet fruit.

Chinese Matrimony Vine—A strong, hardy climbing vine. Bright, rosy purple flowers, followed by brilliant scarlet berries.

Wisteria (purple)—One of the finest climbers, of rapid growth, and perfectly hardy, with long, pendulous clusters of bluish purple. Flowers in June.

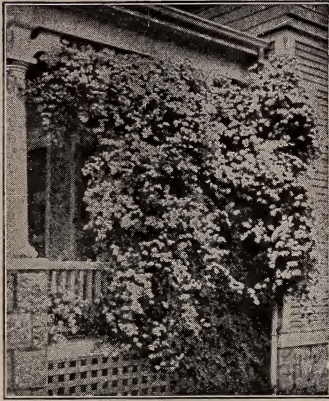
Engleman's Ivy—It is one of the finest ivies we have. The brilliant coloring of the leaves in autumn, together with perfect hardiness, makes it a valuable climber for covering brick or stone walls. Where hardiness is necessary, the Englemans will be found much superior to Boston ivy.

American Ivy—The well known native vine with the five parted leaves, that change to rich crimson in autumn; berries blue black; very rapid grower and perfectly hardy.

Joy, III.

The roses which I got from you last year were very satisfactory, and I feel that I must have some more this year.

MRS. W. H. KISTLER



Paniculata

CLEMATIS

2 years

Jackmanii—A very profuse blooming variety, with flowers from four to six inches in diameter; of an intense violet purple color, borne successively in continuous masses on the summer shoot. 75c each.

Henryii—Large, pure white flowering. 75c each.

Paniculata—New. A strong, vigorous grower; very free flowering; pure white; unusually fragrant. 50c each.

HARDY PERENNIAL PLANTS

Chrysanthemum (hardy)—They make a brilliant show in September and October. Colors, white and yellow. 15c each.

Golden Rod (Canadian)—The spray of perennial gold terminating with each year's growth, is on stems 3 to 5 feet high. September to October. 15c, two for 25c.

Golden Glow—Flowers are produced on long stems in large quantities, and resemble golden cactus dalias. 15c each.

Hibiscus "Meehan's Mallow Marvels"—A magnificent new strain of hardy mallows, which for size and profusion of bloom and richness of coloring are among the most striking and beautiful perennials that grow. Flowers 8 to 10 inches in diameter; color, red, white and pink. 30c each.

Iris—Dwarf blue. 10c each; \$1.00 per 12.

Iris—Tall, light yellow. 10c each; \$1.00 per 12.

Lily Day—Yellow. Each, 10c; 12 for \$1.00.

Lily of the Valley—Small, white flowers, very fragrant. 5c each; 40c per 12.

DesModium Penduliflorum—A shapely, pretty leaved semi-herbaceous shrub from 2 to 4 feet high; literally covered in early autumn with long, drooping racemes of magenta flowers. 18 to 24 in., 30c; \$2.50 per 10.

Blazing Star—Dazzling rosy purple spikes. Lasting a long time in July and August. 10 cents each; \$1.00 per dozen.

Bleeding Heart—Charming hardy perennial plant with much cut foliage. Flowers of interesting structure. One of the choicest members of old-fashioned gardens. 35c each; \$3.00 per 12.

See our Shrubbery Collections on page 19. We have made up two shrubbery collections, one for the small planting and one for the larger. The shrubs selected are the best for foundation, corner and to hide unsightly objects; they contain high and low growing shrubs, also a few hardy perennials. If you are thinking of beautifying your home with shrubs and flowers, we ask you to consider these two selections.

HARDY PHLOX

Phlox (hardy)—No class of hardy plants are more desirable than the hardy phlox. They flower from July to late in the fall. Colors, red, white, pink, salmon and purple. 20c each; \$2.00 per dozen.



Hardy Phlox Planting

SHRUBBERY COLLECTIONS

We do not break these collections. In ordering just give the selection number.

\$5.00—COLLECTION NO. 1—\$5.00

5 Barberry Thunbergii, 30 to 36 in.....	\$ 1.50
5 Spirea Van Houtie, 3 to 4 ft.....	2.00
2 Hydrangia P. G., 2 to 3 ft.....	.80
2 Roses, Rugosa Red, 2 to 3 ft.....	.80
2 Paeonies, Pink70
1 Yucca25

Collection Worth, \$6.05 for.....\$ 5.00

\$15.00—COLLECTION NO. 2—\$15.00

12 Barberry Thunbergii, 30 to 36 in.....	\$ 3.60
8 Spirea Van Houtie, 3 to 4 ft.....	3.20
4 Hydrangia P. G., 2 to 3 ft.....	1.60
2 Hydrangia Tree Form, 3 to 4 ft.....	1.00
2 White Snowberry, 3 to 4 ft.....	.90
2 Red Snowberry, 3 to 4 ft.....	.90
4 Roses, Rugosa Red, 2 to 3 ft.....	1.60
1 Lilac White, 3 to 4 ft.....	.50
1 Lilac Persian, 3 to 4 ft.....	.50
4 Spirea Anthony Waterer, 18 to 24 in.....	1.80
1 Snowball, 3 to 4 ft.....	.50
2 Paeonies, Light Pink.....	.70
2 Paeonies, Dark Pink.....	.70

Collection Worth, \$17.50 for.....\$15.00

THESE COLLECTIONS ARE DELIVERY TO YOUR STATION

PAEONIES

Two-year, 35c each; \$3.50 per 12
(Except where noted)

The most popular of hardy plants. The flowers are very large and attractive; hardy as an oak; once planted they will take care of themselves. The following list are all good, double flowering varieties:



Festive Maxima

Dark Pink—Yellow centre; mid-season.

Light Pink—Yellow centre; mid-season.

Grandflora—Very large, light rose colors; late.

Fletcher—Light crimson; early.

Queen Victoria—Large, double, pure white; early. A good variety.

R. D. Frances—Dark rose color; mid-season.

Juno—Large, dark red; late.

Buno—Dark crimson; very late.

Rose Fragrant—Rose scented; pink color; mid-season.

Festive Maxima—White, very large. One of the best of the white varieties; mid-season. 40c each; \$4.00 per 12.

CANNAS

Strong Bulbs. 20c each; \$2.00 per 12

Of rapid growth and tropical appearance throughout the summer. They present a mass of gorgeous colors. The following varieties are among the best.

Florence Vaughn—3 ft. Green foliage. Flowers rich golden yellow, spotted with bright red. Extra good bloomer.

Americus—3 ft. Green foliage. Flowers bright red and very large; early bloomer. A fine variety.

King Humbert—4 ft. Bronze leaves. Flowers scarlet color, very large. The best of the bronze leaved varieties.

Hiawatha—3 ft. Bronze leaved. Flowers an unusual shade of pink; a good bloomer.

Mt. Blanch—2½ ft. Green foliage. Flowers white and large; one of the best of the whites.

LAWN GRASS SEED

Blue Grass—40 cents per pound, sent prepaid. Sow one pound for three square rods. This is the best lawn grass; sow in April and rake in well.

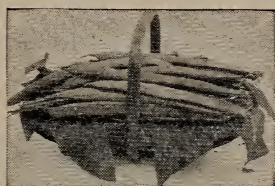
SEED DEPARTMENT

Having so many calls during the past few seasons for hardy Northern seeds, we have decided to add to our business a seed department. We are offering the most reliable and tested varieties and those that can be depended upon for the best results. Our carefully grown, hardy seeds will prove the best that money can buy.

All seeds sent prepaid anywhere in the United States at the following prices:

BEANS

Pkt. 10c; $\frac{1}{4}$ lb. 15c; lb. 45c



Golden Wax—Popular variety; the pods are long, nearly straight; golden yellow, very fleshy and wax like; a prolific yielder.

Black Wax—Known as butter beans; very early; pods round, yellowish white and fine flavor.

Kentucky Wonder—Pole bean, vigorous, very productive, bearing in large clusters; one of the best climbers.

BEETS

Pkt. 5c; oz. 10c; $\frac{1}{4}$ lb. 30c; lb. \$1.00

Early Blood—Good size; flesh deep blood red; fine for early use; also for winter.

CABBAGE

Pkt. 5c; oz. 30c; $\frac{1}{4}$ lb. \$1.00; lb. \$3.50

Early Jersey Wakefield—Very early, large size heads; one of the best early cabbages in cultivation.

Late Flat Dutch—The premium late cabbage, creamy white, fine flavor and quality; without exception the best winter keeper.



CARROTS

Pkt. 5c; oz. 10c; $\frac{1}{4}$ lb. 30c. lb. 95c

Oxheart—Popular variety, good size, flesh orange color, fine grained and sweet.

CELERY

Pkt. 5c; oz. 20c; $\frac{1}{4}$ lb. 60c; lb. \$2.00

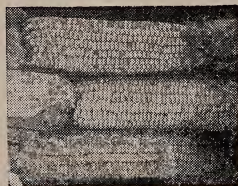
Golden Self Blanching—One of the best early self blanching. Large size, dwarf compact habit; solid, heavy ribbed stalks, which blanches to clear, creamy white.

POP CORN

White Rice—Wonderfully productive; bears three to six ears per stalk; pops out large and tender. Pkt. 10c; $\frac{1}{4}$ lb. 15c; lb. 45c.

Tom Thumb—Short, compact ears; pops very white; desirable for home use. Pkt. 10c; $\frac{1}{4}$ lb. 20c; lb. 60c.

SWEET CORN

Pkt. 10c; $\frac{1}{4}$ lb. 15c; lb. 45c

Golden Bantam—The most tender, sweetest, richest in existence. Don't fail to give this variety a trial.

Country Gentlemen—Ears of good size, produced in abundance; kernels deep and pearly white; sweet and delicious.

Stowell's Evergreen—Popular late variety, ears large size. Productive, tender and sweet; remain eatable for long time.

ONION

Pkt. 5c; oz. 20c; $\frac{1}{4}$ lb. 65c; lb. \$2.25

Red Globe—Early, large size, skin deep red; fine grained, mild and tender.

Yellow Globe—Large size, yellow variety; one of the best yielding varieties; excellent keeper.

Silver Skin—Popular variety; large, flat, mild and pleasant flavor; good winter sort.

CUCUMBER

Pkt. 5c; oz. 12c; $\frac{1}{4}$ lb. 35c; lb. \$1.10

Chicago Pickling—The best for pickles; fruit medium length; beautiful green.

Improved Early White Spine—Fruit even and good size; very productive, and keeps solid and crisp.



LETTUCE

Pkt. 5c; oz. 12c; $\frac{1}{4}$ lb. 35c; lb. \$1.10

May King—Early, heads very compact; rich and buttery flavor.

Black Seeded Simpson—Large size; stands the summer well; tender and crisp.

PUMPKIN

Small Sugar—Orange yellow, fine grained, sweet; excellent keeper. Pkt. 5c; oz. 10c; $\frac{1}{4}$ lb. 30c; lb. 95c.

Jumbo—Very large, bright golden yellow; one of the best field varieties. Pkt. 10c; oz. 20c; $\frac{1}{4}$ lb. 50c; lb. \$1.65.

MUSKMELON

Rocky Ford—Medium size, flesh greenish yellow and very deep; juicy and rich; round; good keeper. Pkt. 5c; oz. 12c; $\frac{1}{4}$ lb. 35c; lb. \$1.15.

Honey Dew—Grows to enormous size; smooth, white skin, nearly round. Sweeter than the sweetest. By all means add this to your order. Pkt. 10c; oz. 20c; $\frac{1}{4}$ lb. 60c; lb. \$2.00.



WATERMELON

Pkt. 5c; oz. 10c; $\frac{1}{4}$ lb. 30c; lb. \$1.00

Monte Cristo—Popular melon, dark green; flesh bright red, rich and crisp; long keeper and good shipper.

Cole's Early—Choice for home garden; flesh bright red, crisp, sweet and excellent flavor; medium size, thin rind.

TOMATO



Earliana—Very early; large size, bright red; very productive, smooth and solid. Pkt. 5c; oz. 30c; $\frac{1}{4}$ lb. \$1.00; lb. \$3.50.

Ponderosa—Largest fruited tomato; fine quality, irregular; very solid, purplish red. Pkt. 5c; oz. 50c; $\frac{1}{4}$ lb. \$1.85; lb. \$5.00.

Stone—Late, large, bright red, solid and firm fleshed. Pkt. 5c; oz. 20c; $\frac{1}{4}$ lb. 50c; lb. \$1.75.

PEAS

Pkt. 10c; $\frac{1}{4}$ lb. 20c; lb. 60c

Alaska—Early dwarf; pods dark green; peas bluish green when ripe. Can be shipped for long distance.

Hosford's Market Garden—Vine medium height; very productive; peas retain their color and sweetness after canning; a very desirable variety.

TURNIP

Pkt. 5c; oz. 12c; $\frac{1}{4}$ lb. 35c; lb. \$1.10

Purple Top Strap Leaf—Tops small, bulbs mostly above ground, medium size, flat, early and productive.

Purple Top White Globe—Large, flesh white, excellent quality; very desirable for table use or stock.

SQUASH

Pkt. 5c; oz. 18c; $\frac{1}{4}$ lb. 50c; lb. \$1.75

Hubbard—Flesh rich, golden color; very fine grained; sweet, good keeper.



PEPPER

Ruby King—Large size; about 4 inches long by 3 inches thick; bright ruby red; mild and pleasant. Excellent for stuffed peppers or mangoes. Pkt. 10c; oz. 60c; $\frac{1}{4}$ lb. \$2.00.

Cayenne—Pods small, cone-shaped, hot; used for making pepper sauce. Pkt. 5c; oz. 45c; $\frac{1}{4}$ lb. \$1.50.

RADISH

Pkt. 5c; oz. 10c; $\frac{1}{4}$ lb. 30c; lb. \$1.00

French Breakfast—Very early, olive shaped, quick grower; very tender and crisp; splendid variety.

New Icicle—Long variety, white sort, early, rapid grower; tender and delicious; fine grained.

Early Long Scarlet—Early, rich scarlet color; long variety; an old stand variety.

Wataga, Ill.

Gentlemen:

Enclosed find check for payment of shipment. All the stock was in excellent condition, and I was very much pleased with the quality of the plants. You may be sure that when we need more nursery stock we will remember you.

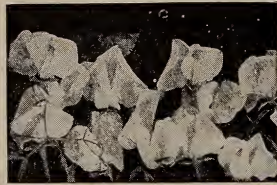
Yours respectfully,

FRANK GOLDSMITH

FLOWER SEEDS

We have added to our list a few of the most popular flower seeds. You will find our list very complete for home planting. The varieties are the best and those that give the best satisfaction.

The mixtures are made up of the best varieties, and we are sure that they will please.



Aster (Double Mammoth Choice Mixed)—A good bedder. Large beds of these flowers will greet you everywhere; good for cut flowers. Pkt. 5c.

Burning Bush—Annual Hedge plant. Color, lively green, changing to scarlet in the fall; grows freely from seed. Pkt. 5c.

Pansy (Giant Flowering Mixed)—Extra large and choice varieties. Pkt. 25c.

Pansy (Large Flowering Mixed)—Large flowers, mixture made up of choice varieties. Pkt. 10c.

Sweet Peas (Giant Mixed)—Large flowers; mixture of the best varieties. Pkt. 5c; oz. 15c.

Poppy—Mixture of all colors, and best varieties. Pkt. 5c.

Verbena (Mammoth Choice Mixed)—For bedding and borders; very beautiful; blooms freely first season for seed. Pkt. 5c.

Stocks (Mammoth Choice Mixed)—Very popular for bedding, massing or pot culture; delightful fragrance. Pkt. 5c.

Nasturtium (Tall or Climbing)—Good mixture; all colors. Pkt. 5c; oz. 15c.

Nasturtium (Dwarf)—Fine, old-fashioned flowers; good mixture. Pkt. 5c; oz. 20c.

Petunia (Double)—A mixture of the large double flowering varieties. Pkt. 25c.

Petunia (Choice Mixed)—A choice strain, including many large flowering varieties. Pkt. 5c.

Alyssum Sweet—For borders, edgings, dainty little white flowers. Pkt. 5c.

Salvia (Scarlet sage)—Blooms first year from seed; scarlet flowers. Pkt. 5c.

Quantity

Brought forward

Quantity					
	Brought forward				

1920 ORDER SHEET 1920

You will find it convenient to use this order sheet, and we will mail you more on request.

ALPHA NURSERY ALPHA, ILLINOIS

Date.....

Find enclosed..... for \$.....

Draft, Check, Money Order, Stamps, Cash

which send me by.....the trees, plants and seeds named below.

Freight, Express, Parcel Post

READ INSTRUCTIONS ON PAGE ONE AND PAGE TEN

This space for Shipping Directions only

This space for Post Office address only

Name..... Shipping Point..... Street..... State..... Via.....	Name..... Street..... Post Office..... State.....
---	--

WRITE PLAINLY

WRITE PLAINLY

PRICES IN THIS CATALOGUE CANCEL ALL PREVIOUS PRICE LISTS

Quantity	Varieties	Sizes	Price	Amount

TOTAL (OR FORWARD)

SUDAN GRASS

30c per lb.; 4 lbs. \$1.00; 10 lbs. or more, 20c lb.

Sudan Grass is an excellent annual for hay or pasture. It has about the same feeding qualities as timothy, and all stock eat it as well as clover. We cut ours three times this season, and when about one foot high the fourth time, plowed it under as fertilizer.

For pasture it is best to cut it once before turning stock on it. It is best to sow it broadcast and requires about 14 lbs. per acre. An excellent dry weather grass.

PLANTING—Cut all of the side limbs back to two or three buds and shorten the top; make the holes plenty large so as not to crowd the roots and plant 3 inches deeper than they grew in the nursery. See that the roots are well spread out; use surface soil for filling, pressing it firmly around them; do not hurry the job; do it well and success is certain. Trees and plants should not be long exposed to the sun and air. Never put manure in the holes next to the roots, it causes decay. Plant strawberries with spade or dibble; spread roots out fan shape.

Proper Distances Between Trees and Plants

Apples	30 by 30 ft.	Raspberries	2 by 8 ft.
Pears	20 by 20 ft.	Blackberries.....	2 by 8 ft.
Plums.....	16 by 16 ft.	Strawberries and Asparagus	
Peaches.....	16 by 16 ft.		18 in. in rows 4 ft. apart
Cherries	16 by 16 ft.		

The number of plants required for an acre may be ascertained by dividing the number of square feet in an acre (43,560), by the number of square feet given to each plant.

PARCEL POST—Following are the rates on 1 to 100 plants, and this is to be added to the regular catalogue price when parties wish their stock to be sent by parcel post. These rates are for a radius of 150 miles, the first and second zones, for rates in the third zone add one-third to the following rates.

Number of Plants	1	6	12	50	100
	Amt. of postage—Cts.				
Grapes	5	6	10
Blackberries	5	5	8	15	25
Raspberries	3	5	8	15	25
Gooseberries and Currants.....	5	6	10
Asparagus		5	8	20	35
Strawberries		2	4	8	12
Paonies	5	6	10
Shrubs (small size).....	5	6	12
Roses	5	6	12
Climbing Vines.....	5	6	10
Phlox	3	5	8

**Nursery Stock of Quality
that bears the
Choices.**



Office and Part of Packing Sheds

ALPHA NURSERY
ALPHA, ILLINOIS

We are members of the Henry County Farm Bureau