

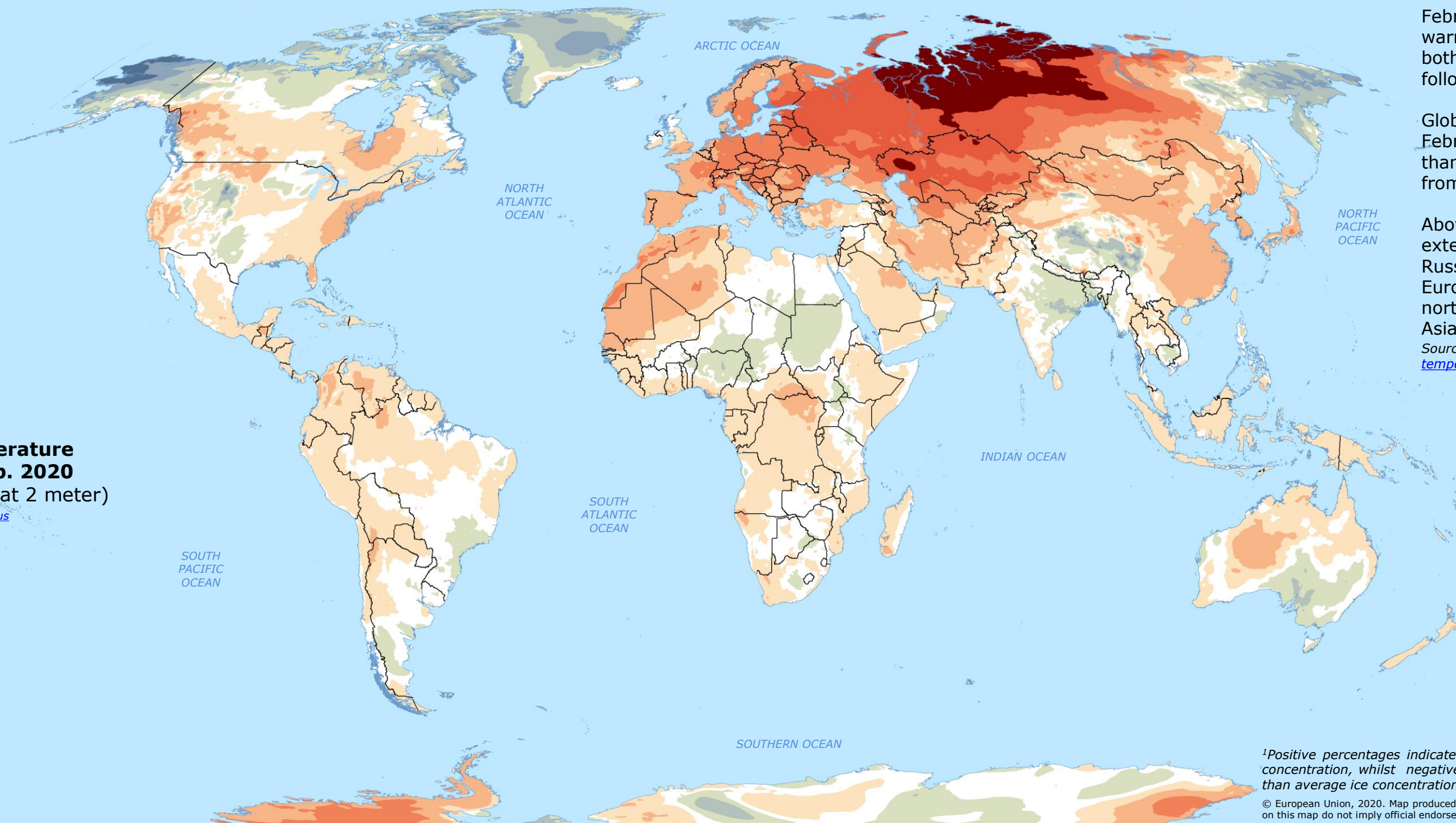
# World Temperature Anomalies in February 2020

February 2020 was the second warmest February on record, both globally and for Europe, following that of 2016.

Global temperatures in February were 0.8°C warmer than the average February from 1981-2010.

Above-average temperatures extended over most of the Russian Arctic, northern Europe, western Antarctica, north-western Africa, central Asia.

Source: [Climate Copernicus: Surface air temperature for February 2020](#)



**Surface temperature anomalies Feb. 2020**  
(°C, measured at 2 meter)

Source: [Climate Copernicus](#)

- 12 to -8
- 8 to -6
- 6 to -4
- 4 to -2
- 2 to -0.5
- 0.5 to +0.5
- +0.5 to +2
- +2 to +4
- +4 to +6
- +6 to +8
- +8 to +13

<sup>1</sup>Positive percentages indicate areas with greater than average ice concentration, whilst negative percentages indicate areas with less than average ice concentration.

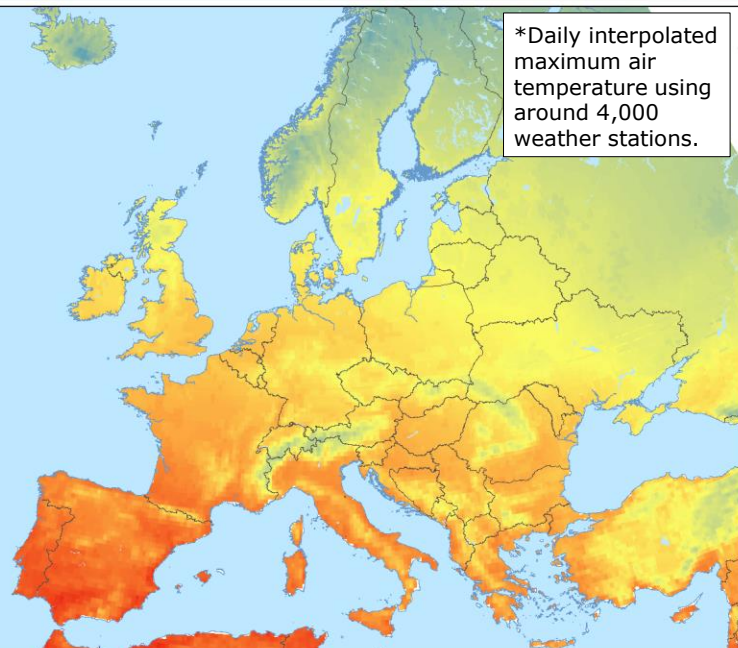
© European Union, 2020. Map produced by the JRC. The boundaries and the names shown on this map do not imply official endorsement or acceptance by the European Union.

**Maximum air temperature across Europe\* Feb. 2020**

Source: [JRC-EDO](#), [JRC-Agri4Cast](#), [JRC-MARS](#)

- +25
- +20
- +15
- +10
- +5
- 0
- 5
- 10

\*Daily interpolated maximum air temperature using around 4,000 weather stations.

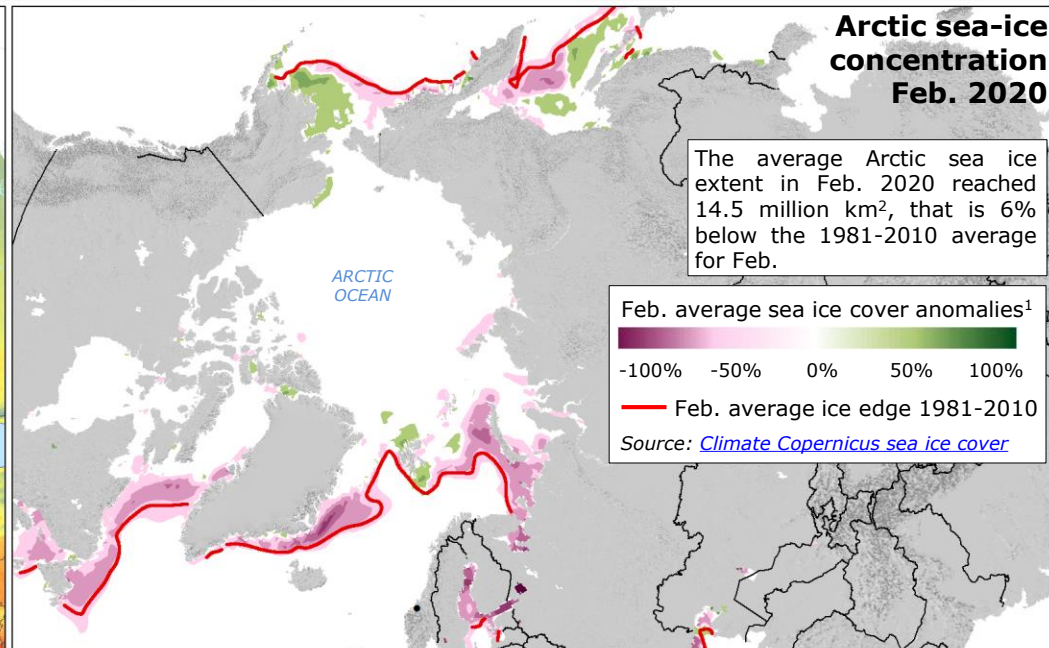


**Arctic sea-ice concentration Feb. 2020**

The average Arctic sea ice extent in Feb. 2020 reached 14.5 million km<sup>2</sup>, that is 6% below the 1981-2010 average for Feb.

- Feb. average sea ice cover anomalies<sup>1</sup>
- 100%
  - 50%
  - 0%
  - 50%
  - 100%

— Feb. average ice edge 1981-2010  
Source: [Climate Copernicus sea ice cover](#)

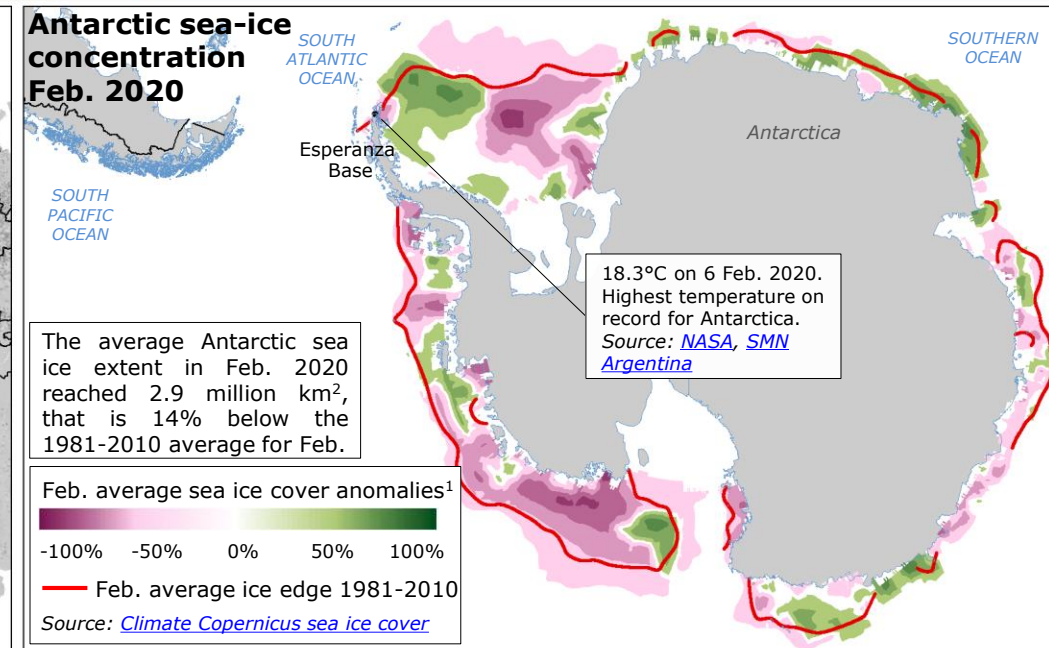


**Antarctic sea-ice concentration Feb. 2020**

The average Antarctic sea ice extent in Feb. 2020 reached 2.9 million km<sup>2</sup>, that is 14% below the 1981-2010 average for Feb.

- Feb. average sea ice cover anomalies<sup>1</sup>
- 100%
  - 50%
  - 0%
  - 50%
  - 100%

— Feb. average ice edge 1981-2010  
Source: [Climate Copernicus sea ice cover](#)



18.3°C on 6 Feb. 2020. Highest temperature on record for Antarctica.  
Source: [NASA](#), [SMN Argentina](#)