

立木材積表

外園植吾編

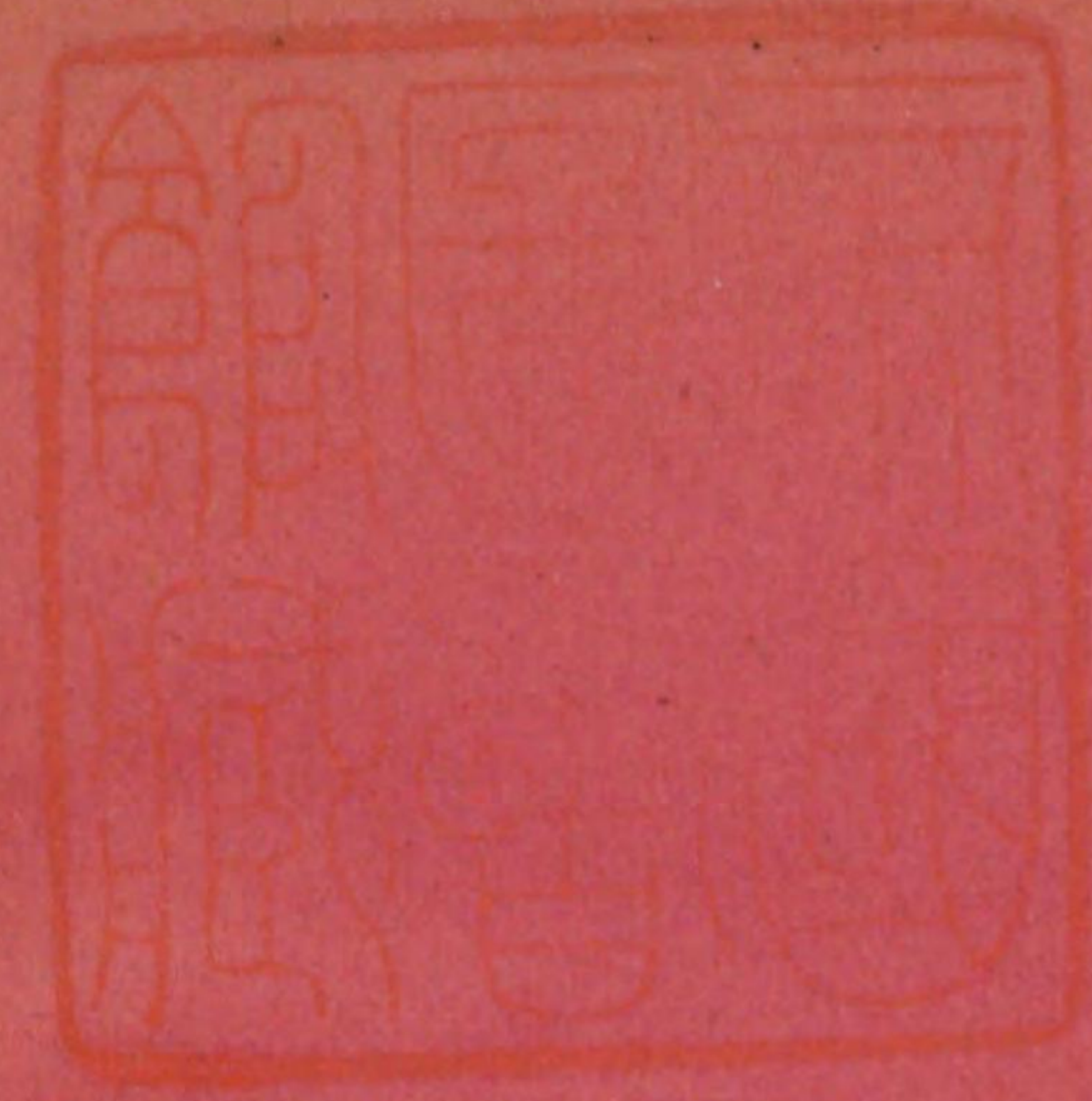
590
331

立木材積表

I メートル法	
圓積表	1
形數表	1
材積表	3
II 石數表	
係數表	27
針葉樹 (すぎ. ひのき)	29
闊葉樹 (かし. しひ. ざつ)	61
III 水平距離算出表	90
III 竹束當本數表	99

三重縣森林組合聯合會

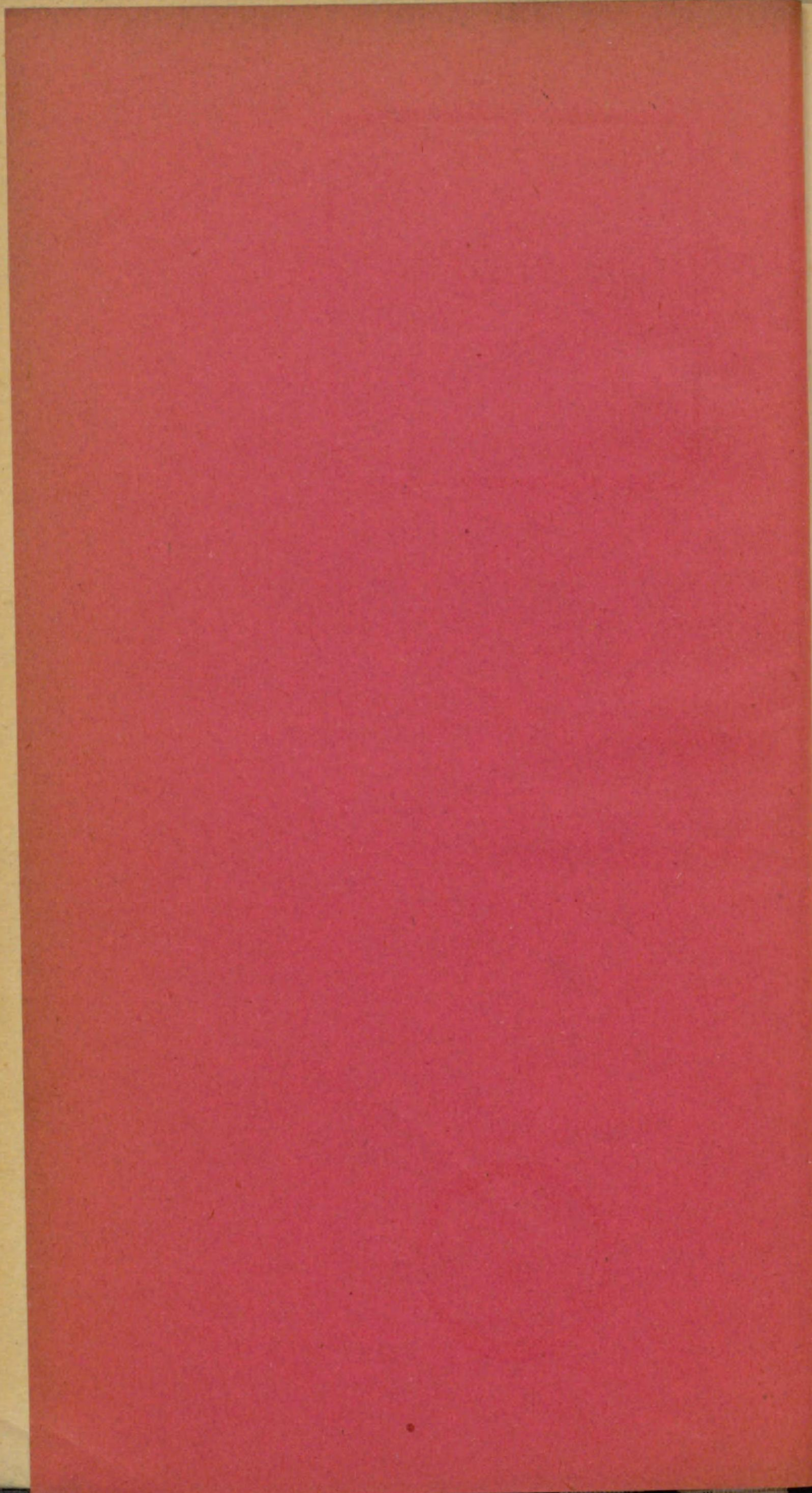
590
331



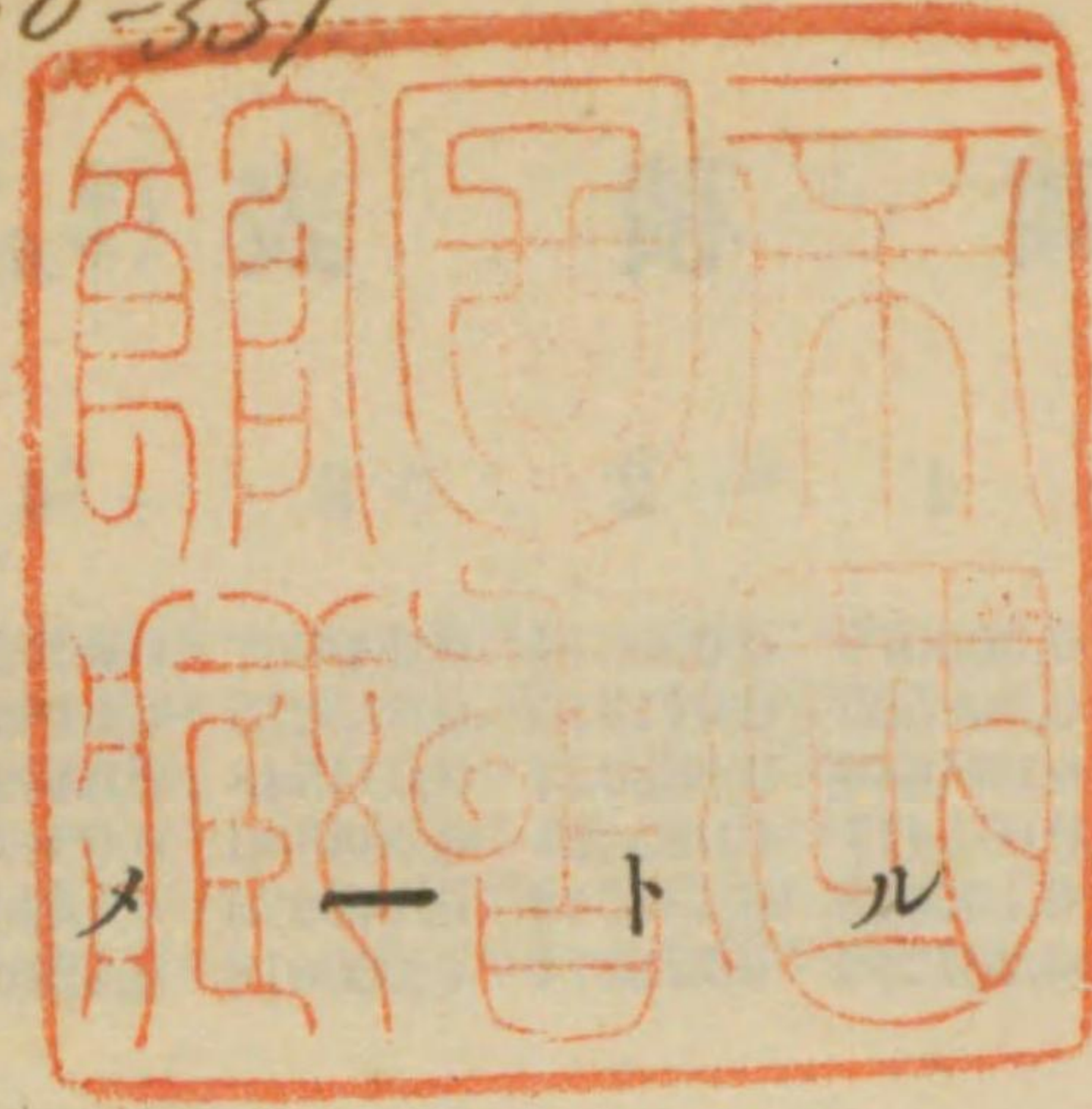
立木材積表



590
331



590-331



I ノ 一 ト ル 法

590
331

圓 積 表 (單位 平方米)

R(cm)	0	1	2	3	4	5	6	7	8	9
0		0,000079	0,000314	0,000707	0,001257	0,001963	0,002827	0,003848	0,005027	0,006362
1	0,007854	0,009503	0,011310	0,013273	0,015394	0,017671	0,020106	0,022698	0,025447	0,028353
2	0,031416	0,034636	0,038013	0,041548	0,045239	0,049087	0,053093	0,057255	0,061575	0,066052
3	0,070686	0,075477	0,080425	0,085530	0,090792	0,096211	0,101788	0,107521	0,113411	0,119459
4	0,125664	0,132025	0,138544	0,145220	0,152053	0,159043	0,166190	0,173494	0,180956	0,188574
5	0,196349	0,204282	0,212371	0,220618	0,229022	0,237583	0,246301	0,255176	0,264208	0,273397
6	0,282743	0,292246	0,301907	0,311724	0,321699	0,331830	0,342119	0,352565	0,363168	0,373928
7	0,384845	0,395919	0,407150	0,418538	0,430084	0,441786	0,453646	0,465662	0,477836	0,490167
8	0,502654	0,515299	0,528101	0,541060	0,554176	0,567450	0,580880	0,594467	0,608212	0,622113
9	0,636172	0,650388	0,664760	0,679290	0,693977	0,708821	0,723822	0,738981	0,754296	0,769768
10	0,785398	0,801184	0,817123	0,833228	0,849486	0,865901	0,882473	0,899202	0,916088	0,933131
11	0,950331	0,967688	0,985203	1,002874	1,020703	1,038688	1,056831	1,075131	1,093587	1,112201
12	1,130972	1,149900	1,168986	1,188228	1,207627	1,227184	1,246897	1,266768	1,286795	1,306980
13	1,327322	1,347821	1,368477	1,389290	1,410260	1,431387	1,452671	1,474113	1,495711	1,517467
14	1,539379	1,561449	1,583676	1,606059	1,628600	1,651298	1,674153	1,697165	1,720335	1,743661
15	1,767144									

形 數 表

H	3	4	5	6	7	8	9	10	11	12	13	14	15
f	52	52	52	53	53	53	52	52	51	51	50	49	48
H	16	17	18	19	20	21	22	23	24	25	26	27	28
f	47	47	47	46	46	45	45	45	45	45	45	45	44
H	29	30	31	32	33	34	35	36	37	38	39	40	
f	44	44	44	44	45	45	45	45	45	45	45	45	

590
331

材積表 (單位 立方米)

	6,3	9,4	12,6	15,7	18,8	22,0	25,1	28,3	31,4	S (cm)
	2	3	4	5	6	7	8	9	10	R/H(m)
R = 胸高直徑										
H = 樹高										
S = 胸高周圍 = πR	0,0005	0,0011	0,0020	0,0031	0,0044	0,0060	0,0078	0,0099	0,0123	3
G = 胸高斷面 = $\frac{\pi}{4} R^2$	0,0007	0,0015	0,0026	0,0041	0,0059	0,0080	0,0105	0,0132	0,0163	4
f = 胸高形數	0,0008	0,0018	0,0033	0,0051	0,0074	0,0100	0,0131	0,0165	0,0204	5
V = 立木材積										
$\pi = 3,14159$										
V = f.G.H $\frac{1}{100}$	0,0010	0,0022	0,0040	0,0062	0,0090	0,0122	0,0160	0,0202	0,0250	6
	0,0012	0,0026	0,0047	0,0073	0,0105	0,0143	0,0187	0,0236	0,0291	7
	0,0013	0,0030	0,0053	0,0083	0,0120	0,0163	0,0213	0,0270	0,0333	8
		0,0033	0,0059	0,0092	0,0132	0,0180	0,0235	0,0298	0,0368	9
			0,0065	0,0102	0,0147	0,0200	0,0261	0,0331	0,0408	10
				0,0110	0,0159	0,0216	0,0282	0,0357	0,0441	11
					0,0173	0,0235	0,0308	0,0389	0,0481	12
						0,0250	0,0327	0,0414	0,0511	13
							0,0345	0,0436	0,0539	14
								0,0458	0,0565	15

R(cm)																R(cm)	
		11	12	13	14	15	16	17	18	19	20	21	22	23	24	H(m)	
4	0,0198	0,0235	0,0276	0,0320	0,0368												5
5	0,0247	0,0294	0,0345	0,0400	0,0459	0,0523	0,0590	0,0662	0,0737								6
6	0,0302	0,0360	0,0422	0,0490	0,0562	0,0639	0,0722	0,0809	0,0902	0,0999	0,1101	0,1209	0,1321				7
7	0,0353	0,0420	0,0492	0,0571	0,0656	0,0746	0,0842	0,0944	0,1052	0,1166	0,1285	0,1410	0,1541	0,1678			8
8	0,0403	0,0480	0,0563	0,0653	0,0749	0,0852	0,0962	0,1079	0,1202	0,1332	0,1469	0,1612	0,1762	0,1918			9
9	0,0445	0,0529	0,0621	0,0720	0,0827	0,0941	0,1062	0,1191	0,1327	0,1470	0,1621	0,1779	0,1944	0,2117			10
10	0,0494	0,0588	0,0690	0,0800	0,0919	0,1046	0,1180	0,1323	0,1474	0,1634	0,1801	0,1977	0,2160	0,2352			11
11	0,0533	0,0634	0,0745	0,0864	0,0991	0,1128	0,1273	0,1428	0,1591	0,1762	0,1943	0,2133	0,2331	0,2538			12
12	0,0582	0,0692	0,0812	0,0942	0,1081	0,1230	0,1389	0,1557	0,1735	0,1923	0,2120	0,2326	0,2543	0,2769			13
13	0,0618	0,0735	0,0863	0,1001	0,1149	0,1307	0,1475	0,1654	0,1843	0,2042	0,2251	0,2471	0,2701	0,2941			14
14	0,0652	0,0776	0,0911	0,1056	0,1212	0,1379	0,1557	0,1746	0,1945	0,2155	0,2376	0,2608	0,2850	0,3103			15

590
331

		S (cm)																
		34,6	37,7	40,8	44,0	47,1	50,3	53,4	56,5	59,7	62,8	66,0	69,1	72,3	75,4	S (cm)		
		R																
		11	12	13	14	15	16	17	18	19	20	21	22	23	24	R		
H(m)																	H(m)	
15	0,0684	0,0814	0,0956	0,1108	0,1272	0,1448	0,1634	0,1832	0,2041	0,2262	0,2494	0,2737	0,2991	0,3257	15			
16	0,0715	0,0851	0,0998	0,1158	0,1329	0,1512	0,1707	0,1914	0,2132	0,2362	0,2605	0,2859	0,3124	0,3402	16			
17	0,0759	0,0904	0,1061	0,1230	0,1412	0,1606	0,1814	0,2033	0,2265	0,2510	0,2767	0,3037	0,3320	0,3615	17			
18		0,0957	0,1123	0,1302	0,1495	0,1701	0,1920	0,2153	0,2399	0,2658	0,2930	0,3216	0,3515	0,3827	18			
19			0,1160	0,1345	0,1544	0,1757	0,1984	0,2224	0,2478	0,2746	0,3027	0,3322	0,3631	0,3954	19			
20				0,1416	0,1626	0,1850	0,2088	0,2341	0,2608	0,2890	0,3187	0,3497	0,3822	0,4162	20			
21					0,1670	0,1900	0,2145	0,2405	0,2679	0,2969	0,3273	0,3592	0,3926	0,4275	21			
22						0,1990	0,2247	0,2519	0,2807	0,3110	0,3429	0,3763	0,4113	0,4479	22			
23							0,2349	0,2634	0,2935	0,3252	0,3585	0,3934	0,4300	0,4682	23			
24								0,2748	0,3062	0,3393	0,3741	0,4105	0,4487	0,4886	24			
									0,3190	0,3534	0,3897	0,4276	0,4674	0,5089	25			
										0,3676	0,4052	0,4448	0,4861	0,5293	26			
											0,4208	0,4619	0,5048	0,5497	27			
												0,4683	0,5119	0,5573	28			
													0,5772	29				

		R (cm)																	
		25	26	27	28	29	30	31	32	33	34	35	36	37	38	R (cm)			
		H (m)																	
H(m)																		H(m)	
7	0,1821	0,1970	0,2124														7		
8	0,2081	0,2251	0,2428	0,2611	0,2801	0,2997	0,3200										8		
9	0,2297	0,2485	0,2680	0,2882	0,3091	0,3308	0,3532	0,3764	0,4003	0,4249	0,4503	0,4764					9		
10	0,2553	0,2761	0,2977	0,3202	0,3435	0,3676	0,3925	0,4182	0,4448	0,4721	0,5003	0,5293	0,5591	0,5897			10		
11	0,2754	0,2979	0,3212	0,3454	0,3706	0,3965	0,4234	0,4512	0,4798	0,5093	0,5397	0,5710	0,6032	0,6362			11		
12	0,3004	0,3249	0,3504	0,3768	0,4042	0,4326	0,4619	0,4922	0,5234	0,5556	0,5888	0,6229	0,6580	0,6941			12		

590
331

H(m)	S (cm)																R
	25	26	27	28	29	30	31	32	33	34	35	36	37	38			
13	0,3191	0,3451	0,3722	0,4002	0,4293	0,4595	0,4906	0,5228	0,5559	0,5901	0,6254	0,6616	0,6989	0,7372	13		
14	0,3367	0,3642	0,3928	0,4224	0,4531	0,4849	0,5178	0,5517	0,5867	0,6228	0,6600	0,6983	0,7376	0,7780	14		
15	0,3534	0,3823	0,4122	0,4433	0,4756	0,5089	0,5434	0,5791	0,6158	0,6537	0,6927	0,7329	0,7742	0,8166	15		
16	0,3691	0,3993	0,4306	0,4630	0,4967	0,5316	0,5676	0,6048	0,6432	0,6828	0,7235	0,7654	0,8086	0,8529	16		
17	0,3922	0,4242	0,4575	0,4920	0,5278	0,5648	0,6031	0,6426	0,6834	0,7254	0,7687	0,8133	0,8591	0,9062	17		
18	0,4153	0,4492	0,4844	0,5209	0,5588	0,5980	0,6385	0,6804	0,7236	0,7681	0,8139	0,8611	0,9096	0,9595	18		
19	0,4290	0,4640	0,5004	0,5382	0,5773	0,6178	0,6597	0,7029	0,7475	0,7935	0,8409	0,8896	0,9397	0,9912	19		
20	0,4516	0,4885	0,5267	0,5665	0,6077	0,6503	0,6944	0,7399	0,7869	0,8353	0,8851	0,9364	0,9892	1,0434	20		
21	0,4639	0,5017	0,5411	0,5819	0,6242	0,6680	0,7133	0,7600	0,8083	0,8580	0,9092	0,9619	1,0161	1,0717	21		
22	0,4860	0,5256	0,5668	0,6096	0,6539	0,6998	0,7472	0,7962	0,8467	0,8988	0,9525	1,0077	1,0645	1,1228	22		
23	0,5081	0,5495	0,5926	0,6373	0,6836	0,7316	0,7812	0,8324	0,8852	0,9397	0,9958	1,0535	1,1128	1,1738	23		
24	0,5301	0,5734	0,6184	0,6650	0,7134	0,7634	0,8152	0,8686	0,9237	0,9806	1,0391	1,0993	1,1612	1,2248	24		
25	0,5522	0,5973	0,6441	0,6927	0,7431	0,7952	0,8491	0,9048	0,9622	1,0214	1,0824	1,1451	1,2096	1,2759	25		
26	0,5743	0,6212	0,6699	0,7204	0,7728	0,8270	0,8831	0,9410	1,0007	1,0623	1,1257	1,1909	1,2580	1,3269	26		
27	0,5964	0,6451	0,6956	0,7481	0,8025	0,8588	0,9170	0,9772	1,0392	1,1031	1,1690	1,2367	1,3064	1,3779	27		
28	0,6048	0,6541	0,7054	0,7586	0,8138	0,8709	0,9299	0,9908	1,0537	1,1186	1,1853	1,2540	1,3247	1,3972	28		
29	0,6264	0,6775	0,7306	0,7857	0,8428	0,9020	0,9631	1,0262	1,0914	1,1585	1,2277	1,2988	1,3720	1,4471	29		
30		0,7008	0,7558	0,8128	0,8719	0,9331	0,9963	1,0616	1,1270	1,1935	1,2700	1,3436	1,4193	1,4970	30		
31							1,0295	1,0370	1,1666	1,2384	1,3123	1,3884	1,4666	1,5469	31		
32												1,4332	1,5139	1,5968	32		

H(m)	R (cm)															
	39	40	41	42	43	44	45	46	47	48	49	50	51	52		
10	0,6212	0,6535	0,6865	0,7204	0,7551	0,7907	0,8270	0,8642	0,9022	0,9410	0,9806	1,0210			10	
11	0,6702	0,7050	0,7407	0,7772	0,8147	0,8530	0,8922	0,9323	0,9733	1,0152	1,0579	1,1015	1,1460	1,1914	11	

590
331

H(m)	(cm)															
	S	122,5	125,7	128,8	131,9	135,1	138,2	141,4	144,5	147,7	150,8	153,9	157,1	160,2	163,4	S
	R	39	40	41	42	43	44	45	46	47	48	49	50	51	52	R
12	0,7311	0,7691	0,8080	0,8479	0,8887	0,9306	0,9733	1,0171	1,0618	1,1075	1,1541	1,2017	1,2502	1,2997	12	
13	0,7765	0,8168	0,8582	0,9005	0,9439	0,9883	1,0338	1,0802	1,1277	1,1762	1,2257	1,2763	1,3278	1,3804	13	
14	0,8195	0,8621	0,9057	0,9504	0,9962	1,0431	1,0910	1,1401	1,1902	1,2414	1,2936	1,3470	1,4014	1,4569	14	
15	0,8601	0,9048	0,9506	0,9975	1,0456	1,0948	1,1451	1,1966	1,2492	1,3029	1,3577	1,4137	1,4708	1,5291	15	
16	0,8983	0,9450	0,9928	1,0419	1,0921	1,1434	1,1960	1,2497	1,3047	1,3608	1,4181	1,4765	1,5362	1,5970	16	
17	0,9545	1,0041	1,0549	1,1070	1,1603	1,2149	1,2708	1,3279	1,3862	1,4458	1,5067	1,5688	1,6322	1,6968	17	
18	1,0106	1,0631	1,1169	1,1721	1,2286	1,2864	1,3455	1,4060	1,4678	1,5309	1,5953	1,6611	1,7282	1,7967	18	
19	1,0441	1,0983	1,1539	1,2109	1,2692	1,3289	1,3900	1,4525	1,5163	1,5816	1,6481	1,7161	1,7854	1,8561	19	
20	1,0990	1,1561	1,2146	1,2746	1,3360	1,3989	1,4632	1,5289	1,5961	1,6648	1,7349	1,8064	1,8794	1,9538	20	
21	1,1289	1,1875	1,2476	1,3092	1,3723	1,4369	1,5030	1,5705	1,6395	1,7100	1,7820	1,8555	1,9305	2,0069	21	
22	1,1826	1,2441	1,3070	1,3716	1,4377	1,5053	1,5745	1,6453	1,7176	1,7915	1,8669	1,9439	2,0224	2,1025	22	
23	1,2364	1,3006	1,3665	1,4339	1,5030	1,5737	1,6461	1,7201	1,7957	1,8729	1,9517	2,0322	2,1143	2,1980	23	
24	1,2902	1,3572	1,4259	1,4963	1,5684	1,6422	1,7177	1,7949	1,8737	1,9543	2,0366	2,1206	2,2062	2,2936	24	
25	1,3439	1,4137	1,4853	1,5586	1,6337	1,7106	1,7892	1,8696	1,9518	2,0358	2,1215	2,2089	2,2982	2,3892	25	
26	1,3977	1,4703	1,5447	1,6210	1,6991	1,7790	1,8608	1,9444	2,0299	2,1172	2,2063	2,2973	2,3901	2,4847	26	
27	1,4514	1,5268	1,6041	1,6833	1,7644	1,8474	1,9324	2,0192	2,1080	2,1986	2,2912	2,3856	2,4820	2,5803	27	
28	1,4717	1,5482	1,6265	1,7069	1,7891	1,8733	1,9594	2,0475	2,1374	2,2294	2,3232	2,4190	2,5168	2,6164	28	
29	1,5243	1,6035	1,6846	1,7678	1,8530	1,9402	2,0294	2,1206	2,2138	2,3090	2,4062	2,5054	2,6066	2,7099	29	
30	1,5769	1,6588	1,7427	1,8288	1,9169	2,0071	2,0994	2,1937	2,2901	2,3886	2,4892	2,5918	2,6965	2,8033	30	
31	1,6294	1,7141	1,8008	1,8897	1,9808	2,0740	2,1693	2,2668	2,3665	2,4682	2,5721	2,6782	2,7864	2,8967	31	
32	1,6820	1,7693	1,8589	1,9507	2,0447	2,1409	2,2393	2,3400	2,4428	2,5479	2,6551	2,7646	2,8763	2,9902	32	
33			1,9606	2,0574	2,1565	2,2580	2,3618	2,4679	2,5764	2,6872	2,8003	2,9158	3,0336	3,1537	33	
34			2,0200	2,1197	2,2219	2,3264	2,4334	2,5427	2,6545	2,7686	2,8852	3,0041	3,1255	3,2493	34	
35									2,7325	2,8501	2,9700	3,0952	3,2174	3,3448	35	
36													3,3094	3,4404	36	

590
331

H(m)	S (cm)							R (cm)							H(m)
	166,5	169,6	172,8	175,9	179,1	182,2	185,4	188,5	191,6	194,8	197,9	201,1	204,2	207,3	
11	1,2377	1,2848	1,3328	1,3817	1,4315	1,4822	1,5338	1,5862							11
12	1,3502	1,4016	1,4540	1,5074	1,5617	1,6170	1,6732	1,7304	1,7885	1,8477	1,9078	1,9688	2,0308	2,0938	12
13	1,4340	1,4886	1,5443	1,6010	1,6586	1,7174	1,7771	1,8378	1,8996	1,9624	2,0262	2,0910	2,1569	2,2338	13
14	1,5134	1,5711	1,6298	1,6896	1,7505	1,8125	1,8755	1,9396	2,0048	2,0711	2,1384	2,2069	2,2764	2,3469	14
15	1,5884	1,6490	1,7106	1,7734	1,8373	1,9023	1,9685	2,0357	2,1042	2,1737	2,2444	2,3162	2,3892	2,4633	15
16	1,6590	1,7222	1,7866	1,8522	1,9189	1,9868	2,0559	2,1262	2,1977	2,2703	2,3442	2,4192	2,4954	2,5727	16
17	1,7627	1,8299	1,8983	1,9679	2,0389	2,1110	2,1844	2,2591	2,3350	2,4122	2,4907	2,5704	2,6513	2,7335	17
18	1,8664	1,9375	2,0100	2,0837	2,1588	2,2352	2,3129	2,3920	2,4724	2,5541	2,6372	2,7216	2,8073	2,8943	18
19	1,9282	2,0017	2,0765	2,1527	2,2302	2,3092	2,3895	2,4712	2,5542	2,6387	2,7245	2,8116	2,9002	2,9901	19
20	2,0297	2,1070	2,1858	2,2660	2,3476	2,4307	2,5153	2,6012	2,6887	2,7775	2,8679	2,9596	3,0528	3,1475	20
21	2,0848	2,1643	2,2452	2,3275	2,4114	2,4968	2,5836	2,6719	2,7617	2,8530	2,9458	3,0401	3,1358	3,2330	21
22	2,1841	2,2673	2,3521	2,4384	2,5262	2,6157	2,7066	2,7992	2,8932	2,9889	3,0861	3,1848	3,2851	3,3870	22
23	2,2834	2,3704	2,4590	2,5492	2,6411	2,7346	2,8297	2,9264	3,0247	3,1247	3,2263	3,3296	3,4344	3,5409	23
24	2,3827	2,4734	2,5659	2,6601	2,7559	2,8534	2,9527	3,0536	3,1563	3,2606	3,3666	3,4743	3,5838	3,6949	24
25	2,4820	2,5765	2,6728	2,7709	2,8707	2,9723	3,0757	3,1809	3,2878	3,3965	3,5069	3,6191	3,7331	3,8488	25
26	2,5812	2,6796	2,7797	2,8817	2,9856	3,0912	3,1987	3,3081	3,4193	3,5323	3,6472	3,7639	3,8824	4,0028	26
27	2,6805	2,7826	2,8866	2,9926	3,1004	3,2101	3,3218	3,4353	3,5508	3,6682	3,7874	3,9086	4,0317	4,1567	27
28	2,7180	2,8216	2,9270	3,0344	3,1438	3,2550	3,3683	3,4834	3,6005	3,7195	3,8404	3,9633	4,0881	4,2149	28
29	2,8151	2,9223	3,0316	3,1428	3,2506	3,3713	3,4885	3,6078	3,7291	3,8523	3,9776	4,1049	4,2342	4,3654	29
30	2,9122	3,0231	3,1361	3,2512	3,3683	3,4875	3,6088	3,7322	3,8576	3,9852	4,1148	4,2464	4,3802	4,5160	30
31	3,0092	3,1239	3,2406	3,3595	3,4806	3,6038	3,7291	3,8566	3,9862	4,1180	4,2519	4,3880	4,5262	4,6665	31
32	3,1063	3,2246	3,3452	3,4679	3,5929	3,7200	3,8494	3,9810	4,1148	4,2500	4,3891	4,5295	4,6722	4,8170	32

590
331

H(m)	S (cm)															H(m)
	R 53	54	55	56	57	58	59	60	61	62	63	64	65	66	R	
33	3,2762	3,4010	3,5281	3,6576	3,7894	3,9235	4,0599	4,1987	4,3399	4,4833	4,6291	4,7772	4,9277	5,0805	33	
34	3,3755	3,5040	3,6350	3,7684	3,9042	4,0424	4,1830	4,3260	4,4714	4,6192	4,7694	4,9220	5,0770	5,2344	34	
35	3,4747	3,6071	3,7419	3,8792	4,0190	4,1613	4,3060	4,4532	4,6029	4,7550	4,9097	5,0668	5,2263	5,3884	35	
36	3,5740	3,7102	3,8488	3,9901	4,1339	4,2802	4,4290	4,5804	4,7344	4,8909	5,0499	5,2115	5,3756	5,5423	36	
37									4,8659	5,0268	5,1902	5,3563	5,5250	5,6963	37	

H(m)	R (cm)															H(m)
	67	68	69	70	71	72	73	74	75	76	77	78	79	80		
13	2,2917	2,3606	2,4305	2,5015	2,5735	2,6465	2,7205	2,7955	2,8716	2,9487	3,0268	3,1059	3,1861	3,2673	13	
14	2,4186	2,4913	2,5651	2,6400	2,7160	2,7930	2,8712	2,9504	3,0307	3,1120	3,1944	3,2780	3,3625	3,4483	14	
15	2,5385	2,6148	2,6923	2,7709	2,8506	2,9315	3,0135	3,0966	3,1809	3,2663	3,3528	3,4404	3,5292	3,6191	15	
16	2,6513	2,7310	2,8119	2,8940	2,9773	3,0618	3,1474	3,2342	3,3222	3,4114	3,5018	3,5933	3,6861	3,7800	16	
17	2,8170	2,9017	2,9877	3,0749	3,1634	3,2531	3,3441	3,4364	3,5299	3,6246	3,7206	3,8179	3,9164	4,0162	17	
18	2,9827	3,0724	3,1634	3,2558	3,3495	3,4445	3,5408	3,6385	3,7375	3,8378	3,9395	4,0425	4,1468	4,2525	18	
19	3,0814	3,1741	3,2681	3,3635	3,4603	3,5585	3,6580	3,7589	3,8612	3,9649	4,0699	4,1763	4,2841	4,3932	19	
20	3,2436	3,3411	3,4401	3,5406	3,6425	3,7458	3,8505	3,9568	4,0644	4,1735	4,2841	4,3961	4,5095	4,6244	20	
21	3,3317	3,4319	3,5336	3,6368	3,7414	3,8476	3,9552	4,0643	4,1749	4,2870	4,4005	4,5156	4,6321	4,7501	21	
22	3,4904	3,5954	3,7019	3,8100	3,9196	4,0308	4,1435	4,2578	4,3737	4,4911	4,6101	4,7306	4,8527	4,9763	22	
23	3,6490	3,7588	3,8702	3,9831	4,0978	4,2140	4,3319	4,4514	4,5725	4,6952	4,8196	4,9456	5,0732	5,2025	23	
24	3,8077	3,9222	4,0384	4,1563	4,2759	4,3972	4,5202	4,6449	4,7713	4,8994	5,0291	5,1606	5,2938	5,4287	24	
25	3,9664	4,0856	4,2067	4,3295	4,4541	4,5804	4,7086	4,8384	4,9701	5,1035	5,2387	5,3757	5,5144	5,6549	25	
26	4,1250	4,2491	4,3750	4,5027	4,6323	4,7637	4,8969	5,0320	5,1689	5,3077	5,4482	5,5907	5,7350	5,8811	26	
27	4,2837	4,4125	4,5432	4,6759	4,8104	4,9469	5,0852	5,2255	5,3677	5,5118	5,6578	5,8057	5,9555	6,1072	27	
28	4,4436	4,4742	4,6068	4,7413	4,8777	5,0161	5,1564	5,2986	5,4428	5,5889	5,7370	5,8869	6,0389	6,1927	28	

590
331

H(m)	S (cm)																H(m)
	67	68	69	70	71	72	73	74	75	76	77	78	79	80	R		
29	4,4987	4,6340	4,7713	4,9106	5,0519	5,1952	5,3405	5,4879	5,6372	5,7885	5,9418	6,0972	6,2545	6,4139	29		
30	4,6539	4,7938	4,9358	5,0800	5,2261	5,3744	5,5247	5,6771	5,8316	5,9881	6,1467	6,3074	6,4702	6,6350	30		
31	4,8090	4,9536	5,1004	5,2493	5,4003	5,5535	5,7089	5,8663	6,0260	6,1877	6,3516	6,5177	6,6859	6,8562	31		
32	4,9641	5,1134	5,2649	5,4186	5,5745	5,7327	5,8930	6,0556	6,2203	6,3873	6,5565	6,7279	6,9016	7,0774	32		
33	5,2356	5,3930	5,5528	5,7149	5,8794	6,0462	6,2153	6,3867	6,5605	6,7366	6,9151	7,0959	7,2790	7,4644	33		
34	5,3942	5,5565	5,7211	5,8881	6,0576	6,2294	6,4036	6,5803	6,7593	6,9408	7,1246	7,3109	7,4996	7,6906	34		
35	5,5529	5,7199	5,8894	6,0613	6,2357	6,4126	6,5920	6,7738	6,9581	7,1449	7,3342	7,5259	7,7201	7,9168	35		
36	5,7116	5,8833	6,0576	6,2345	6,4139	6,5958	6,7803	6,9674	7,1569	7,3491	7,5437	7,7409	7,9407	8,1430	36		
37	5,8702	6,0467	6,2259	6,4077	6,5921	6,7790	6,9687	7,1609	7,3557	7,5532	7,7533	7,9560	8,1613	8,3692	37		
38					6,7702	6,9623	7,1570	7,3544	7,5545	7,7573	7,9628	8,1710	8,3819	8,5954	38		

H(m)	R (cm)																H(m)
	81	82	83	84	85	86	87	88	89	90	91	92	93	94	R		
13	3,3494	3,4327	3,5169	3,6021	3,6884	3,7757	3,8640	3,9534	4,0437	4,1351					13		
14	3,5350	3,6228	3,7117	3,8016	3,8927	3,9848	4,0780	4,1723	4,2677	4,3641	4,4617	4,5603	4,6599	4,7607	14		
15	3,7102	3,8023	3,8956	3,9901	4,0856	4,1823	4,2802	4,3791	4,4792	4,5804	4,6828	4,7863	4,8909	4,9966	15		
16	3,8750	3,9713	4,0688	4,1674	4,2672	4,3682	4,4704	4,5738	4,6783	4,7840	4,8909	4,9990	5,1083	5,2187	16		
17	4,1172	4,2195	4,3231	4,4279	4,5339	4,6412	4,7498	4,8596	4,9707	5,0830	5,1966	5,3114	5,4275	5,5449	17		
18	4,3594	4,4677	4,5774	4,6883	4,8006	4,9142	5,0292	5,1455	5,2631	5,3820	5,5023	5,6239	5,7468	5,8710	18		
19	4,5037	4,6156	4,7289	4,8435	4,9595	5,0769	5,1956	5,3158	5,4373	5,5601	5,6844	5,8100	5,9370	6,0654	19		
20	4,7408	4,8585	4,9778	5,0984	5,2205	5,3441	5,4691	5,5956	5,7234	5,8528	5,9836	6,1158	6,2495	6,3846	20		
21	4,8696	4,9906	5,1130	5,2370	5,3624	5,4893	5,6177	5,7476	5,8790	6,0118	6,1462	6,2820	6,4193	6,5581	21		
22	5,1015	5,2282	5,3565	5,4863	5,6178	5,7507	5,8852	6,0213	6,1589	6,2981	6,4388	6,5811	6,7250	6,8704	22		
23	5,3333	5,4658	5,6000	5,7357	5,8731	6,0121	6,1527	6,2950	6,4389	6,5844	6,7315	6,8803	7,0307	7,1827	23		
24	5,5652	5,7035	5,8434	5,9851	6,1285	6,2735	6,4202	6,5687	6,7188	6,8707	7,0242	7,1794	7,3363	7,4950	24		
25	5,7971	5,9411	6,0869	6,2345	6,3838	6,5349	6,6878	6,8424	6,9988	7,1569	7,3169	7,4786	7,6420	7,8072	25		

590
331

H(m)	S (cm)														R	H(m)
	254,5	257,6	260,8	263,9	267,0	270,2	273,3	276,5	279,6	282,7	285,9	289,0	292,2	295,3		
	81	82	83	84	85	86	87	88	89	90	91	92	93	94		
26	6,0290	6,1788	6,3304	6,4839	6,6392	6,7963	6,9553	7,1161	7,2787	7,4432	7,6095	7,7777	7,9477	8,1195	26	
27	6,2609	6,4164	6,5739	6,7332	6,8945	7,0577	7,2228	7,3898	7,5587	7,7295	7,9022	8,0768	8,2534	8,4318	27	
28	6,3485	6,5062	6,6659	6,8274	6,9910	7,1564	7,3238	7,4932	7,6644	7,8376	8,0128	8,1898	8,3689	8,5498	28	
29	6,5752	6,7386	6,9039	7,0713	7,2407	7,4120	7,5854	7,7608	7,9382	8,1176	8,2990	8,4823	8,6677	8,8551	29	
30	6,8019	6,9709	7,1420	7,3151	7,4903	7,6676	7,8470	8,0284	8,2119	8,3975	8,5851	8,7748	8,9666	9,1605	30	
31	7,0287	7,2033	7,3801	7,5590	7,7400	7,9232	8,1085	8,2960	8,4856	8,6774	8,8713	9,0673	9,2655	9,4658	31	
32	7,2554	7,4357	7,6181	7,8028	7,9897	8,1788	8,3701	8,5636	8,7594	8,9573	9,1575	9,3598	9,5644	9,7712	32	
33	7,6522	7,8423	8,0347	8,2295	8,4266	8,6261	8,8278	9,0319	9,2384	9,4472	9,6583	9,8717	10,0875	10,3056	33	
34	7,8841	8,0799	8,2782	8,4789	8,6820	8,8875	9,0953	9,3056	9,5183	9,7334	9,9509	10,1708	10,3931	10,6178	34	
35	8,1160	8,3176	8,5217	8,7283	8,9373	9,1489	9,3629	9,5793	9,7983	10,0197	10,2436	10,4700	10,6988	10,9301	35	
36	8,3478	8,5552	8,7652	8,9777	9,1927	9,4103	9,6304	9,8530	10,0782	10,3060	10,5363	10,7691	11,0045	11,2424	36	
37	8,5797	8,7929	9,0086	9,2270	9,4480	9,6717	9,8979	10,1267	10,3582	10,5923	10,8290	11,0683	11,3102	11,5547	37	
38	8,8116	9,0305	9,2521	9,4764	9,7034	9,9330	10,1654	10,4004	10,6381	10,8785	11,1216	11,3674	11,6159	11,8670	38	
39	9,0435	9,2682	9,4956	9,7258	9,9587	10,1944	10,4329	10,6741	10,9181	11,1648	11,4143	11,6665	11,9215	12,1793	39	
40												11,9657	12,2272	12,4916	40	

H(m)	R (cm)														H(m)
	95	96	97	98	99	100	101	102	103	104	105	106	107	108	
14	4,8625	4,9654	5,0694	5,1745	5,2806	5,3878	5,4961	5,6055	5,7159	5,8275	5,9401	6,0538	6,1685	6,2844	14
15	5,1035	5,2115	5,3207	5,4309	5,5423	5,6549	5,7685	5,8833	5,9992	6,1163	6,2345	6,3538	6,4743	6,5958	15
16	5,3303	5,4431	5,5571	5,6723	5,7887	5,9062	6,0249	6,1448	6,2659	6,3881	6,5116	6,6362	6,7620	6,8890	16
17	5,6635	5,7833	5,9045	6,0268	6,1504	6,2753	6,4015	6,5289	6,6575	6,7874	6,9185	7,0510	7,1846	7,3195	17
18	5,9966	6,1235	6,2518	6,3813	6,5122	6,6445	6,7780	6,9129	7,0491	7,1867	7,3255	7,4657	7,6072	7,7501	18
19	6,1951	6,3232	6,4537	6,5925	6,7278	6,8644	7,0023	7,1417	7,2824	7,4245	7,5680	7,7128	7,8590	8,0066	19
20	6,5212	6,6592	6,7986	6,9395	7,0819	7,2257	7,3709	7,5176	7,6657	7,8153	7,9663	8,1188	8,2727	8,4280	20

590
331

	S	298,5	301,6	304,7	307,9	311,0	314,2	317,3	320,4	323,6	326,7	329,9	333,0	336,2	339,3	S
(cm)	R	95	96	97	98	99	100	101	102	103	104	105	106	107	108	R
H(m)																H(m)
21	6,6984	6,8401	6,9834	7,1281	7,2743	7,4220	7,5712	7,7219	7,8740	8,0276	8,1828	8,3394	8,4975	8,6570	21	
22	7,0173	7,1658	7,3159	7,4675	7,6207	7,7754	7,9317	8,0896	8,2490	8,4099	8,5724	8,7365	8,9021	9,0693	22	
23	7,3363	7,4916	7,6485	7,8070	7,9671	8,1289	8,2923	8,4573	8,6239	8,7922	8,9621	9,1336	9,3067	9,4815	23	
24	7,6553	7,8173	7,9810	8,1464	8,3135	8,4823	8,6528	8,8250	8,9989	9,1744	9,3517	9,5307	9,7114	9,8938	24	
25	7,9742	8,1430	8,3135	8,4858	8,6599	8,8357	9,0133	9,1927	9,3738	9,5567	9,7414	9,9278	10,1160	10,3060	25	
26	8,2932	8,4687	8,6461	8,8253	9,0063	9,1892	9,3739	9,5604	9,7488	9,9390	10,1310	10,3249	10,5207	10,7182	26	
27	8,6122	8,7944	8,9786	9,1647	9,3527	9,5426	9,7341	9,9281	10,1237	10,3213	10,5207	10,7220	10,9253	11,1305	27	
28	8,9327	8,9175	9,1042	9,2929	9,4835	9,6761	9,8706	10,0670	10,2654	10,4657	10,6679	10,8721	11,0782	11,2862	28	
29	9,0446	9,2360	9,4294	9,6248	9,8222	10,0217	10,2231	10,4266	10,6320	10,8394	11,0489	11,2604	11,4738	11,6893	29	
30	9,3564	9,5545	9,7545	9,9567	10,1609	10,3673	10,5756	10,7861	10,9986	11,2132	11,4299	11,6486	11,8695	12,0924	30	
31	9,6683	9,8729	10,0797	10,2886	10,4996	10,7128	10,9281	11,1456	11,3652	11,5870	11,8109	12,0369	12,2651	12,4954	31	
32	9,9802	10,1914	10,4049	10,6205	10,8383	11,0584	11,2807	11,5052	11,7319	11,9608	12,1919	12,4252	12,6608	12,8985	32	
33	10,5260	10,7488	10,9739	11,2013	11,4311	11,6632	11,8976	12,1344	12,3734	12,6149	12,8586	13,1047	13,3531	13,6039	33	
34	10,8450	11,0745	11,3064	11,5407	11,7775	12,0166	12,2581	12,5021	12,7484	12,9971	13,2483	13,5018	13,7578	14,0161	34	
35	11,1639	11,4002	11,6390	11,8802	12,1238	12,3700	12,6186	12,8698	13,1233	13,3794	13,6379	13,8989	14,1624	14,4284	35	
36	11,4829	11,7259	11,9715	12,2196	12,4702	12,7234	12,9792	13,2375	13,4983	13,7617	14,0276	14,2961	14,5671	14,8406	36	
37	11,8019	12,0516	12,3040	12,5590	12,8166	13,0769	13,3397	13,6052	13,8732	14,1439	14,4173	14,6932	14,9717	15,2529	37	
38	12,1208	12,3774	12,6366	12,8985	13,1630	13,4303	13,7002	13,9729	14,2482	14,5262	14,8069	15,0903	15,3764	15,6651	38	
39	12,4398	12,7031	12,9691	13,2379	13,5094	13,7837	14,0608	14,3406	14,6232	14,9085	15,1966	15,4874	15,7810	16,0773	39	
40	12,7588	13,0288	13,3017	13,5773	13,8558	14,1372	14,4213	14,7083	14,9981	15,2907	15,5862	15,8845	16,1856	16,4896	40	

	R(cm)	109	110	111	112	113	114	115	116	117	118	119	120	R(cm)
H(m)														H(m)
14	6,4013	6,5193												14
15	6,7185	6,8424	6,9674	7,0935	7,2207	7,3491	7,4786	7,6092	7,7409	7,8738	8,0078	8,1430		15

590
331

		S							S									
		342,4	345,6	348,7	351,9	355,0	358,1	361,3	364,4	367,6	370,8	373,8	377,0	380,1	383,3	S		
		(cm)																
		R	109	110	111	112	113	114	115	116	117	118	119	120	121	122	R	(cm)
H(m)																H(m)		
16	7,0171	7,1465	7,2770	7,4087	7,5416	7,6757	7,8109	7,9474	8,0850	8,2238	8,3638	8,5049	8,6472	8,7908	16			
17	7,4557	7,5931	7,7318	7,8718	8,0130	8,1554	8,2991	8,4441	8,5903	8,7378	8,8865	9,0365	9,1877	9,3402	17			
18	7,8943	8,0398	8,1866	8,3348	8,4843	8,6351	8,7873	8,9408	9,0956	9,2517	9,4092	9,5680	9,7282	9,8896	18			
19	8,1556	8,3059	8,4576	8,6107	8,7651	8,9209	9,0781	9,2367	9,3966	9,5580	9,7206	9,8847	10,0501	10,2169	19			
20	8,5848	8,7430	8,9027	9,0639	9,2264	9,3905	9,5559	9,7228	9,8912	10,0610	10,2322	10,4049	10,5791	10,7547	20			
21	8,8181	8,9806	9,1447	9,3102	9,4772	9,6456	9,8156	9,9871	10,1600	10,3344	10,5103	10,6877	10,8666	11,0469	21			
22	9,2380	9,4083	9,5801	9,7535	9,9285	10,1050	10,2830	10,4626	10,6438	10,8265	11,0108	11,1966	11,3840	11,5730	22			
23	9,6579	9,8359	10,0156	10,1969	10,3797	10,5643	10,7504	10,9382	11,1276	11,3186	11,5113	11,7056	11,9015	12,0990	23			
24	10,0778	10,2636	10,4510	10,6402	10,8310	11,0236	11,2178	11,4138	11,6114	11,8107	12,0118	12,2145	12,4189	12,6250	24			
25	10,4977	10,6912	10,8865	11,0835	11,2823	11,4829	11,6852	11,8893	12,0952	12,3029	12,5123	12,7234	12,9364	13,1511	25			
26	10,9176	11,1189	11,3219	11,5269	11,7336	11,9422	12,1526	12,3649	12,5790	12,7950	13,0128	13,2324	13,4538	13,6771	26			
27	11,3375	11,5465	11,7574	11,9702	12,1849	12,4015	12,6201	12,8405	13,0628	13,2871	13,5132	13,7413	13,9713	14,2032	27			
28	11,4962	11,7081	11,9219	12,1377	12,3554	12,5751	12,7966	13,0202	13,2456	13,4730	13,7023	13,9336	14,1668	14,4019	28			
29	11,9068	12,1262	12,3477	12,5712	12,7967	13,0242	13,2537	13,4852	13,7187	13,9542	14,1917	14,4312	14,6727	14,9163	29			
30	12,3173	12,5444	12,7735	13,0047	13,2379	13,4733	13,7107	13,9502	14,1917	14,4353	14,6811	14,9288	15,1787	15,4306	30			
31	12,7279	12,9625	13,1993	13,4382	13,6792	13,9224	14,1677	14,4152	14,6648	14,9165	15,1704	15,4265	15,6846	15,9450	31			
32	13,1385	13,3807	13,6250	13,8717	14,1205	14,3715	14,6247	14,8802	15,1378	15,3977	15,6598	15,9241	16,1906	16,4593	32			
33	13,8570	14,1124	14,3702	14,6303	14,8927	15,1574	15,4245	15,6939	15,9657	16,2398	16,5162	16,7949	17,0760	17,3594	33			
34	14,2769	14,5401	14,8056	15,0736	15,3440	15,6168	15,8919	16,1695	16,4495	16,7319	17,0167	17,3039	17,5935	17,8855	34			
35	14,6968	14,9677	15,2411	15,5169	15,7953	16,0761	16,3593	16,6451	16,9333	17,2240	17,5172	17,8128	18,1109	18,4115	35			
36	15,1167	15,3954	15,6765	15,9603	16,2466	16,5354	16,8267	17,1207	17,4171	17,7161	18,0177	18,3217	18,6284	18,9376	36			
37	15,5366	15,8230	16,1120	16,4036	16,6979	16,9947	17,2942	17,5962	17,9009	18,2082	18,5181	18,8307	19,1458	19,4636	37			
38	15,9565	16,2507	16,5475	16,8470	17,1491	17,4540	17,7616	18,0718	18,3847	18,7003	19,0186	19,3396	19,6633	19,9897	38			
39	16,3764	16,6783	16,9829	17,2903	17,6004	17,9133	18,2290	18,5474	18,8685	19,1925	19,5191	19,8486	20,1807	20,5157	39			
40	16,7964	17,1060	17,4184	17,7337	18,0517	18,3727	18,6964	19,0230	19,3524	19,6846	20,0196	20,3575	20,6982	21,0417	40			

590
331

H(m)	(cm)							
	S	386,4	389,6	392,7	395,8	399,0	402,1	405,3
	R	123	124	125	126	127	128	129
16		8,9355	9,0814	9,2284	9,3767	9,5261	9,6767	9,8285
17		9,4939	9,6489	9,8052	9,9627	10,1215	10,2816	10,4428
18		10,0524	10,2165	10,3820	10,5487	10,7169	10,8863	11,0571
19		10,3851	10,5547	10,7256	10,8979	11,0716	11,2466	11,4230
20		10,9317	11,1102	11,2901	11,4715	11,6543	11,8385	12,0242
21		11,2288	11,4121	11,5969	11,7832	11,9710	12,1602	12,3510
22		11,7635	11,9555	12,1491	12,3443	12,5410	12,7393	12,9391
23		12,2982	12,4989	12,7014	12,9054	13,1110	13,3183	13,5272
24		12,8329	13,0424	13,2536	13,4665	13,6811	13,8974	14,1154
25		13,3676	13,5858	13,8058	14,0276	14,2511	14,4764	14,7035
26		13,9023	14,1292	14,3581	14,5887	14,8212	15,0555	15,2917
27		14,4370	14,6727	14,9103	15,1498	15,3912	15,6346	15,8798
28		14,6390	14,8780	15,1189	15,3618	15,6066	15,8533	16,1020
29		15,1618	15,4093	15,6589	15,9104	16,1640	16,4195	16,6771
30		15,6846	15,9407	16,1988	16,4590	16,7213	16,9857	17,2521
31		16,2074	16,4720	16,7388	17,0077	17,2787	17,5519	17,8272
32		16,7303	17,0034	17,2788	17,5563	17,8361	18,1181	18,4023
33		17,6452	17,9333	18,2237	18,5164	18,8115	19,1089	19,4087
34		18,1799	18,4767	18,7759	19,0775	19,3816	19,6880	19,9968
35		18,7146	19,0201	19,3281	19,6386	19,9516	20,2670	20,5849
36		19,2493	19,5636	19,8804	20,1997	20,5216	20,8461	21,1731
37		19,7840	20,1070	20,4326	20,7608	21,0917	21,4251	21,7612
38		20,3187	20,6504	20,9848	21,3219	21,6617	22,0042	22,3494
39		20,8534	21,1939	21,5371	21,8830	22,2318	22,5833	22,9375
40		21,3881	21,7373	22,0893	22,4441	22,8018	23,1623	23,5256

H(m)	(cm)							
	S	408,4	411,5	414,7	417,8	421,0	424,1	427,3
	R	130	131	132	133	134	135	136
16		9,9815	10,1356	10,2909	10,4475	10,6052	10,7640	10,9241
17		10,6053	10,7691	10,9341	11,1004	11,2680	11,4368	11,6068
18		11,2291	11,4026	11,5773	11,7534	11,9308	12,1095	12,2896
19		11,6008	11,7800	11,9605	12,1424	12,3257	12,5103	12,6963
20		12,2114	12,4000	12,5900	12,7815	12,9714	13,1688	13,3646
21		12,5432	12,7369	12,9321	13,1288	13,3270	13,5266	13,7277
22		13,1405	13,3434	13,5479	13,7540	13,9616	14,1707	14,3814
23		13,7378	13,9499	14,1637	14,3792	14,5962	14,8149	15,0351
24		14,3351	14,5565	14,7796	15,0043	15,2308	15,4590	15,6888
25		14,9324	15,1630	15,3954	15,6295	15,8654	16,1031	16,3425
26		15,5297	15,7695	16,0112	16,2547	16,5000	16,7472	16,9963
27		16,1270	16,3760	16,6270	16,8799	17,1347	17,3914	17,6500
28		16,3526	16,6052	16,8596	17,1161	17,3744	17,6347	17,8969
29		16,9366	17,1982	17,4618	17,7273	17,9949	18,2645	18,5361
30		17,5207	17,7912	18,0639	18,3386	18,6145	18,8943	19,1753
31		18,1047	18,3843	18,6660	18,9499	19,2359	19,5241	19,8144
32		18,6887	18,9773	19,2682	19,5612	19,8565	20,1539	20,4536
33		19,7107	20,0151	20,3219	20,6310	20,9424	21,2561	21,5722
34		20,3080	20,6217	20,9377	21,2561	21,5770	21,9002	22,2259
35		20,9053	21,2282	21,5535	21,8813	22,2116	22,5443	22,8796
36		21,5026	21,8347	22,1693	22,5065	22,8462	23,1885	23,5333
37		22,0999	22,4412	22,7851	23,1317	23,4808	23,8326	24,1870
38		22,6972	23,0477	23,4010	23,7569	24,1154	24,4767	24,8407
39		23,2945	23,6543	24,0168	24,3820	24,7501	25,1208	25,4944
40		23,8918	24,2608	24,6326	25,0072	25,3847	25,7650	26,1481

590
331

	S	430,4	433,5	436,7	439,8	443,0	446,1	449,2	
	(cm)								
R		137	138	139	140	141	142	143	
H(m)									
16	11,0853	11,2477	11,4114	11,5761	11,7421	11,9092	12,0776		
17	11,7782	11,9507	12,1246	12,2996	12,4760	12,6536	12,8324		
18	12,4710	12,6537	12,8378	13,0231	13,2099	13,3979	13,5873		
19	12,8837	13,0725	13,2627	13,4542	13,6471	13,8413	14,0370		
20	13,5618	13,7605	13,9607	14,1623	14,3653	14,5698	14,7757		
21	13,9304	14,1345	14,3401	14,5471	14,7557	14,9657	15,1773		
22	14,5937	14,8075	15,0229	15,2399	15,4583	15,6784	15,9000		
23	15,2571	15,4806	15,7058	15,9326	16,1610	16,3910	16,6227		
24	15,9204	16,1537	16,3886	16,6253	16,8636	17,1037	17,3454		
25	16,5838	16,8267	17,0715	17,3180	17,5663	17,8164	18,0682		
26	17,2471	17,4998	17,7544	18,0107	18,2690	18,5290	18,7909		
27	17,9105	18,1729	18,4372	18,7035	18,9716	19,2417	19,5136		
28	18,5738	18,8427	18,9652	18,9651	19,2371	19,5109	19,7866		
29	18,8097	19,0853	19,3629	19,6425	19,9241	20,2077	20,4933		
30	19,4583	19,7434	20,0306	20,3198	20,6111	20,9045	21,2000		
31	20,1069	20,4015	20,6982	20,9971	21,2982	21,6013	21,9066		
32	20,7555	21,0596	21,3659	21,6745	21,9852	22,2982	22,6133		
33	21,8906	22,2113	22,5344	22,8598	23,1875	23,5176	23,8500		
34	22,5539	22,8844	23,2172	23,5525	23,8902	24,2302	24,5727		
35	23,2173	23,5574	23,9001	24,2452	24,5928	24,9429	25,2954		
36	23,8806	24,2305	24,5830	24,9379	25,2955	25,6556	26,0182		
37	24,5440	24,9036	25,2658	25,6307	25,9981	26,3682	26,7409		
38	25,2073	25,5767	25,9487	26,3234	26,7008	27,0809	27,4636		
39	25,8707	26,2497	26,6315	27,0161	27,4034	27,7935	28,1863		
40	26,5340	26,9228	27,3144	27,7088	28,1061	28,5062	28,9091		

	452,4	455,5	458,7	461,8	465,0	468,1	471,2	S	
	(cm)								
R		144	145	146	147	148	149	150	(cm)
H(m)									
16	12,2471	12,4178	12,5896	12,7627	12,9369	13,1123	13,2889	16	
17	13,0125	13,1939	13,3765	13,5603	13,7455	13,9319	14,1195	17	
18	13,7780	13,9700	14,1633	14,3580	14,5540	14,7514	14,9500	18	
19	14,2340	14,4323	14,6321	14,8332	15,0357	15,2396	15,4448	19	
20	14,9831	15,1919	15,4022	15,6139	15,8271	16,0417	16,2577	20	
21	15,3903	15,6048	15,8207	16,0382	16,2572	16,4776	16,6995	21	
22	16,1231	16,3479	16,5741	16,8019	17,0313	17,2622	17,4947	22	
23	16,8560	17,0909	17,3275	17,5657	17,8055	18,0469	18,2899	23	
24	17,5889	17,8340	18,0809	18,3294	18,5796	18,8315	19,0852	24	
25	18,3218	18,5771	18,8342	19,0931	19,3538	19,6162	19,8804	25	
26	19,0546	19,2302	19,5876	19,8568	20,1279	20,4008	20,6756	26	
27	19,7875	20,0633	20,3410	20,6206	20,9021	21,1855	21,4708	27	
28	20,0644	20,3440	20,6256	20,9091	21,1945	21,4819	21,7712	28	
29	20,7809	21,0706	21,3622	21,6558	21,9515	22,2491	22,5488	29	
30	21,4975	21,7971	22,0988	22,4026	22,7084	23,0163	23,3263	30	
31	22,2141	22,5237	22,8354	23,1493	23,4654	23,7835	24,1038	31	
32	22,9307	23,2503	23,5721	23,8961	24,2223	24,5507	24,8814	32	
33	24,1847	24,5218	24,8612	25,2029	25,5470	25,8934	26,2421	33	
34	24,9176	25,2649	25,6145	25,9666	26,3211	26,6780	27,0373	34	
35	25,6505	26,0079	26,3679	26,7303	27,0953	27,4627	27,8325	35	
36	26,3833	26,7510	27,1213	27,4941	27,8694	28,2473	28,6277	36	
37	27,1162	27,4941	27,8746	28,2578	28,6436	29,0320	29,4229	37	
38	27,8491	28,2372	28,6280	29,0215	29,4177	29,8166	30,2182	38	
39	28,5819	28,9803	29,3814	29,7852	30,1919	30,6013	31,0134	39	
40	29,3148	29,7234	30,1348	30,5490	30,9660	31,3859	31,8086	40	

590
331

去 類 別

Ⅱ 石 數 表

1120	1120	1120	1120	1120
1130	1130	1130	1130	1130
1140	1140	1140	1140	1140
1150	1150	1150	1150	1150
1160	1160	1160	1160	1160
1170	1170	1170	1170	1170
1180	1180	1180	1180	1180
1190	1190	1190	1190	1190
1200	1200	1200	1200	1200
1210	1210	1210	1210	1210
1220	1220	1220	1220	1220
1230	1230	1230	1230	1230
1240	1240	1240	1240	1240
1250	1250	1250	1250	1250
1260	1260	1260	1260	1260
1270	1270	1270	1270	1270
1280	1280	1280	1280	1280
1290	1290	1290	1290	1290
1300	1300	1300	1300	1300
1310	1310	1310	1310	1310
1320	1320	1320	1320	1320
1330	1330	1330	1330	1330
1340	1340	1340	1340	1340
1350	1350	1350	1350	1350
1360	1360	1360	1360	1360
1370	1370	1370	1370	1370
1380	1380	1380	1380	1380
1390	1390	1390	1390	1390
1400	1400	1400	1400	1400
1410	1410	1410	1410	1410
1420	1420	1420	1420	1420
1430	1430	1430	1430	1430
1440	1440	1440	1440	1440
1450	1450	1450	1450	1450
1460	1460	1460	1460	1460
1470	1470	1470	1470	1470
1480	1480	1480	1480	1480
1490	1490	1490	1490	1490
1500	1500	1500	1500	1500

590
331

係 數 表

樹高	樹種	す ぎ	ひ の き	ざ つ
1.	間	0.0852	0.0660	0.3240
1.5		0.2256	0.1512	0.4572
2.		0.4140	0.2736	0.5580
2.5		0.5652	0.4332	0.6444
3.		0.7440	0.5940	0.7224
3.5		0.8760	0.7536	0.7980
4.		1.0080	0.9048	0.8724
4.5		1.1304	1.0248	0.9468
5.		1.2432	1.1772	1.0236
5.5		1.3380	1.3092	1.1016
6.		1.4412	1.4220	1.1832
6.5		1.5264	1.5360	1.2672
7.		1.6200	1.6392	1.3548
7.5		1.7148	1.7424	1.4496
8.		1.7988	1.8468	1.5480
8.5		1.8744	1.9500	1.6500
9.		1.9596	2.0436	1.7664
9.5		2.0352	2.1480	1.8732
10.		2.1288	2.2416	1.9956
10.5		2.2044	2.3364	2.1240

注 意 本係數 = 直徑(尺單位)ノ自乗ヲ乘スレバ直チニ石數ヲ得.

樹高	樹種	す ぎ	ひ の き	ざ つ
11.	間	2.2800	2.4300	2.2596
11.5		2.3544	2.5248	2.4024
12.		2.4492	2.6184	2.5536
12.5		2.5248	2.7132	2.7156
13.		2.6088	2.8068	2.8884
13.5		2.6940	2.9016	3.0672
14.		2.7696	2.9952	3.2568
14.5		2.8548	3.0804	3.4596
15.		2.9388	3.1836	3.6744
15.5		3.0240	3.2784	
16.		3.1176	3.3720	
16.5		3.2124	3.4764	
17.		3.2976	3.5700	
17.5		3.3912	3.6828	
18.		3.4764	3.7776	
18.5		3.5700	3.8808	
19.		3.6648	3.9852	
19.5		3.7680	4.0824	
20.		3.8616	4.2012	
20.5		4.0224		
21.		4.0692		

590
331

針葉樹 (すぎ、ひのき)

すぎノ部

高 胸高 直徑 寸 .5	一間	一間 半	二間	二間 半	三間	三間 半	四間	四間 半	五間	五間 半	六間	六間 半	七間	七間 半	八間	八間 半	高 直徑 胸高 寸 .5
	尺 6	9	12	15	18	21	24	27	30	33	36	39	42	45	48	51	
1.	0.001	0.002	0.005	0.006	0.007	0.008	0.010	0.011	0.012								1.
1.5	0.002	0.005	0.010	0.013	0.017	0.020	0.023	0.026	0.029								1.5
2.	0.004	0.010	0.017	0.023	0.030	0.035	0.041	0.046	0.049	0.054	0.058	0.061	0.065	0.068	0.072	0.074	2.
2.5	0.005	0.014	0.026	0.035	0.047	0.055	0.062	0.071	0.078	0.084	0.090	0.095	0.101	0.107	0.113	0.118	2.5
3.			0.037	0.052	0.067	0.079	0.091	0.102	0.112	0.121	0.130	0.138	0.146	0.155	0.162	0.168	3.
3.5			0.050	0.070	0.091	0.107	0.125	0.138	0.152	0.163	0.176	0.187	0.198	0.210	0.220	0.229	3.5
4.			0.066	0.090	0.120	0.145	0.162	0.181	0.199	0.214	0.232	0.245	0.260	0.275	0.289	0.300	4.
4.5			0.084	0.114	0.151	0.179	0.205	0.230	0.253	0.274	0.294	0.311	0.330	0.349	0.367	0.382	4.5
5.					0.186	0.218	0.252	0.282	0.311	0.334	0.360	0.382	0.404	0.428	0.449	0.469	5.
5.5					0.227	0.268	0.308	0.346	0.380	0.409	0.440	0.467	0.496	0.524	0.550	0.574	5.5
6.					0.269	0.316	0.364	0.408	0.449	0.482	0.520	0.550	0.584	0.617	0.649	0.676	6.
6.5					0.314	0.371	0.426	0.478	0.526	0.565	0.610	0.645	0.685	0.725	0.761	0.793	6.5
7.					0.365	0.430	0.494	0.554	0.610	0.656	0.707	0.749	0.794	0.840	0.882	0.919	7.
7.5					0.419	0.493	0.568	0.636	0.700	0.754	0.811	0.859	0.912	0.965	1.013	1.050	7.5
8.					0.476	0.562	0.646	0.725	0.797	0.857	0.924	0.977	1.038	1.098	1.153	1.201	8.
8.5					0.539	0.634	0.730	0.818	0.900	0.968	1.043	1.104	1.172	1.241	1.302	1.356	8.5
9.					0.602	0.709	0.817	0.916	1.008	1.084	1.168	1.236	1.313	1.390	1.458	1.519	9.
9.5					0.672	0.791	0.911	1.130	1.123	1.208	1.302	1.379	1.463	1.548	1.625	1.693	9.5
10.					0.744	0.876	1.008	1.021	1.243	1.338	1.441	1.526	1.620	1.715	1.799	1.873	10.

590
331

高 胸高直徑	九間 尺	九間 半	十間	十間 半	十一間	十一間 半	十二間	十二間 半	十三間	十三間 半	十四間	十四間 半	十五間	十五間 半	十六間	高 直 胸徑
寸 5	54	57	60	63	66	69	72	75	78	81	84	87	90	93	96	寸 5
1.																1.
1.5																1.5
2.	0.078	0.082	0.085													2.
2.5	0.122	0.127	0.133													2.5
3.	0.176	0.184	0.192													3.
3.5	0.240	0.248	0.260													3.5
4.	0.314	0.325	0.342													4.
4.5	0.400	0.415	0.434													4.5
5.	0.490	0.508	0.532	0.551	0.569	0.588	0.612	0.630	0.652	0.673	0.691	0.714	0.734			5.
5.5	0.599	0.622	0.650	0.674	0.697	0.720	0.749	0.772	0.798	0.823	0.847	0.872	0.899			5.5
6.	0.707	0.733	0.768	0.794	0.822	0.850	0.883	0.910	0.941	0.971	0.998	1.028	1.060			6.
6.5	0.829	0.860	0.900	0.932	0.964	0.996	1.036	1.068	1.104	1.140	1.171	1.202	1.255			6.5
7.	0.961	0.998	1.044	1.081	1.118	1.154	1.201	1.238	1.279	1.321	1.358	1.400	1.441			7.
7.5	1.103	1.146	1.199	1.241	1.284	1.326	1.379	1.422	1.469	1.517	1.559	1.607	1.655			7.5
8.	1.255	1.303	1.364	1.412	1.460	1.510	1.570	1.618	1.674	1.727	1.775	1.829	1.883			8.
8.5	1.417	1.472	1.541	1.595	1.650	1.704	1.772	1.826	1.888	1.949	2.004	2.065	2.126			8.5
9.	1.588	1.649	1.724	1.786	1.847	1.908	1.985	2.045	2.114	2.184	2.244	2.312	2.381			9.
9.5	1.770	1.837	1.922	1.991	2.059	2.128	2.212	2.280	2.357	2.434	2.501	2.578	2.654			9.5
10.	1.960	2.035	2.134	2.204	2.280	2.356	2.449	2.525	2.609	2.694	2.770	2.855	2.939	3.024	3.118	10.

590
331

高 胸高直徑	六間	六間半	七間	七間半	八間	八間半	九間	九間半
	尺 36	39	42	45	48	51	54	57
10.5	1.590	1.684	1.788	1.891	1.985	2.068	2.161	2.245
11.	1.752	1.847	1.961	2.075	2.177	2.268	2.381	2.462
11.5	1.908	2.016	2.144	2.269	2.381	2.482	2.593	2.693
12.	2.076	2.198	2.334	2.470	2.592	2.701	2.822	2.932
12.5	2.252	2.386	2.532	2.680	2.813	2.930	3.062	3.180
13.	2.436	2.580	2.738	2.898	3.043	3.169	3.312	3.439
13.5	2.627	2.782	2.952	3.125	3.280	3.418	3.571	3.709
14.	2.825	2.992	3.175	3.361	3.528	3.676	3.841	3.989
14.5	3.030	3.209	3.406	3.605	3.784	3.942	4.121	4.279
15.	3.243	3.434	3.645	3.858	4.050	4.219	4.410	4.580
15.5					4.325	4.506	4.710	4.891
16.					4.605	4.799	5.017	5.210
16.5					4.897	5.103	5.335	5.541
17.					5.199	5.417	5.663	5.882
17.5					5.509	5.740	6.001	6.233
18.					5.828	6.073	6.349	6.594
18.5					6.156	6.415	6.707	6.966
19.					6.494	6.767	7.074	7.347
19.5					6.840	7.127	7.451	7.739
20.					7.200	7.498	7.838	8.141

十間	十間半	十一間	十一間半	十二間	十二間半	十三間	十三間半	高 胸高直徑
60	63	66	69	72	75	78	81	寸
2.348	2.431	2.515	2.598	2.702	2.785	2.879	2.972	10.5
2.576	2.668	2.771	2.850	2.964	3.055	3.158	3.260	11.
2.818	2.917	3.017	3.118	3.241	3.342	3.454	3.566	11.5
3.067	3.176	3.284	3.394	3.529	3.637	3.760	3.882	12.
3.328	3.448	3.563	3.682	3.828	3.946	4.079	4.210	12.5
3.599	3.726	3.853	3.982	4.140	4.267	4.411	4.554	13.
3.881	4.019	4.156	4.294	4.465	4.602	4.757	4.912	13.5
4.174	4.321	4.469	4.618	4.801	4.950	5.116	5.276	14.
4.477	4.636	4.794	4.954	5.152	5.306	5.484	5.663	14.5
4.792	4.962	5.131	5.302	5.513	5.682	5.874	6.064	15.
5.118	5.299	5.480	5.662	5.887	6.068	6.268	6.476	15.5
5.454	5.647	5.840	6.034	6.275	6.467	6.683	6.901	16.
5.798	6.004	6.209	6.414	6.671	6.876	7.106	7.338	16.5
6.156	6.374	6.592	6.809	7.082	7.301	7.546	7.790	17.
6.522	6.754	6.984	7.242	7.531	7.734	7.992	8.254	17.5
6.902	7.146	7.391	7.636	7.940	8.185	8.460	8.735	18.
7.290	7.548	7.806	8.064	8.387	8.645	8.935	9.226	18.5
7.688	7.961	8.233	8.506	8.849	9.118	9.424	9.730	19.
8.098	8.384	8.671	8.958	9.317	9.602	9.925	10.248	19.5
8.521	8.822	9.125	9.426	9.803	10.105	10.444	10.783	20.

590
331

高 胸直徑	十四間 尺	十四間 半	十五間	十五間 半	十六間	十六間 半	十七間	十七間 半
	84	87	90	93	96	99	102	105
寸								
10.5	3.055	3.149	3.242	3.336	3.439	3.544	3.638	3.742
11.	3.366	3.455	3.557	3.660	3.790	3.888	4.007	4.104
11.5	3.666	3.778	3.890	4.002	4.127	4.252	4.364	4.488
12.	3.990	4.112	4.235	4.356	4.493	4.628	4.750	4.886
12.5	4.328	4.462	4.594	4.727	4.873	5.021	5.154	5.300
13.	4.681	4.826	4.968	5.112	5.270	5.430	5.573	5.732
13.5	5.048	5.204	5.358	5.513	5.684	5.856	6.011	6.182
14.	5.430	5.596	5.762	5.928	6.113	6.298	6.463	6.648
14.5	5.821	6.000	6.178	6.356	6.554	6.752	6.931	7.129
15.	6.234	6.425	6.616	6.806	7.019	7.230	7.421	7.633
15.5	6.658	6.862	7.064	7.268	7.495	7.722	7.926	8.152
16.	7.094	7.312	7.529	7.746	7.987	8.230	8.443	8.688
16.5	7.543	7.774	8.005	8.236	8.492	8.749	8.980	9.236
17.	8.009	8.254	8.498	8.744	9.017	9.289	9.534	9.806
17.5	8.485	8.744	9.005	9.264	9.553	9.841	10.102	10.390
18.	8.978	9.253	9.528	9.803	10.109	10.414	10.690	10.994
18.5	9.484	9.774	10.064	10.354	10.676	10.999	11.290	11.612
19.	10.002	10.308	10.614	10.920	11.261	11.600	11.906	12.247
19.5	10.535	10.858	11.179	11.502	11.861	12.218	12.541	12.900
20.	11.081	11.424	11.764	12.103	12.480	12.857	13.196	13.573



十八間	十八間 半	十九間	十九間 半	二十間	二十間 半	廿一間	高 胸直徑
108	111	114	117	120	123	126	
							寸
3.835							10.5
4.224							11.
4.600							11.5
5.008							12.
5.434							12.5
5.876	6.035	6.194	6.370	6.529			13.
6.336	6.503	6.680	6.869	7.040			13.5
6.815	7.000	7.184	7.387	7.572			14.
7.307	7.505	7.704	7.921	8.119			14.5
7.824	8.036	8.257	8.482	8.694			15.
8.356	8.582	8.803	9.058	9.284			15.5
8.905	9.146	9.388	9.653	9.894	10.158	10.426	16.
9.467	9.724	9.980	10.262	10.519	10.802	11.083	16.5
10.051	10.324	10.590	10.896	11.168	11.467	11.767	17.
10.649	10.938	11.226	11.544	11.833	12.151	12.468	17.5
11.269	11.575	11.880	12.216	12.521	12.856	13.193	18.
11.903	12.226	12.547	12.902	13.225	13.579	13.934	18.5
12.566	12.894	13.234	13.608	13.949	14.324	14.696	19.
13.222	13.580	13.939	14.333	14.692	15.088	15.480	19.5
13.913	14.290	14.666	15.082	15.458	15.871	16.288	20.



590
331

高 胸高直徑	八間 R	八間 半	九間	九間 半	十間	十間 半	十一間	十一間 半
20.5	48	51	54	57	60	63	66	69
21.	7.560	7.877	8.235	8.427	8.952	9.260	9.586	9.904
21.5	7.933	8.266	8.642	8.975	9.395	9.727	10.060	10.392
22.	8.315	8.664	9.058	9.408	9.847	10.196	10.544	10.894
22.5	8.706	9.072	9.485	9.850	10.308	10.673	11.038	11.404
23.	9.106	9.489	9.921	10.303	10.783	11.165	11.546	11.928
23.5	9.516	9.916	10.366	10.766	11.268	11.668	12.066	12.466
24.	9.934	10.351	10.822	11.239	11.762	12.167	12.595	13.012
24.5	10.361	10.797	11.287	11.723	12.269	12.703	13.138	13.572
25.	10.797	11.251	11.763	12.216	12.785	13.237	13.690	14.142
25.5	11.243	11.715	12.248	12.720	13.305	13.778	14.250	14.715
26.	11.697	12.188	12.742	13.234	13.843	14.334	14.826	15.309
26.5	12.160	12.671	13.247	13.758	14.391	14.902	15.413	15.916
27.	12.632	13.163	13.761	14.292	14.949	15.480	16.011	16.534
27.5	13.113	13.664	14.285	14.837	15.519	16.070	16.621	17.164
28.	13.603	14.175	14.819	15.391	16.099	16.671	17.243	17.805
28.5	14.103	14.695	15.363	15.956	16.690	17.282	17.875	18.458
29.	14.611	15.225	15.917	16.531	17.291	17.905	18.519	19.124
29.5	15.128	15.764	16.480	17.116	17.903	18.539	19.175	19.801
30.	15.654	16.312	17.053	17.711	18.526	19.184	19.842	20.289
	16.189	16.870	17.636	18.317	19.159	19.840	20.520	21.190

十二間	十二間 半	十三間	十三間 半	十四間	十四間 半	十五間	十五間 半	高 胸高直徑
72	75	78	81	84	87	90	93	
10.300	10.616	10.973	11.329	11.646	12.002	12.350	12.715	20.5
10.807	11.141	11.514	11.888	12.221	12.595	12.970	13.343	21.
11.329	11.677	12.070	12.462	12.810	13.202	13.595	13.987	21.5
11.860	12.224	12.634	13.045	13.410	13.820	14.231	14.641	22.
12.406	12.787	13.217	13.645	14.027	14.456	14.886	15.316	22.5
12.964	13.362	13.811	14.260	14.659	15.108	15.557	16.006	23.
13.531	13.948	14.416	14.885	15.301	15.769	16.237	16.706	23.5
14.114	14.549	15.038	15.527	15.961	16.450	16.938	17.426	24.
14.707	15.161	15.670	16.178	16.681	17.140	17.650	18.158	24.5
15.308	15.780	16.305	16.838	17.310	17.843	18.368	18.900	25.
15.926	16.418	16.964	17.518	18.009	18.563	19.110	19.664	25.5
16.557	17.068	17.635	18.211	18.722	19.298	19.866	20.442	26.
17.200	17.730	18.320	18.919	19.450	20.048	20.638	21.236	26.5
17.855	18.406	19.018	19.639	20.190	20.811	21.424	22.045	27.
18.522	19.094	19.729	20.373	20.945	21.589	22.225	22.869	27.5
19.202	19.794	20.453	21.121	21.714	22.382	23.040	23.708	28.
19.894	20.508	21.190	21.882	22.496	23.188	23.870	24.562	28.5
20.598	21.234	21.940	22.657	23.292	24.009	24.715	25.432	29.
21.314	21.972	22.703	23.445	24.102	24.844	25.575	26.316	29.5
22.043	22.723	23.479	24.246	24.926	25.693	26.449	27.216	30.

590
331

高 胸直徑	十六間 尺	十六間 半	十七間	十七間 半	十八間	十八間 半	十九間	十九間 半	二十間	二十間 半	廿一間	高 胸直徑
20.5	13.111	13.507	13.865	14.261	14.617	15.013	15.400	15.845	16.241	16.675	17.112	20.5
21.	13.750	14.174	14.549	14.964	15.338	15.755	16.170	16.627	17.042	17.498	17.957	21.
21.5	14.423	14.858	15.251	15.686	16.078	16.513	16.950	17.429	17.864	18.341	18.823	21.5
22.	15.097	15.553	15.965	16.421	16.831	17.287	16.743	18.245	18.701	19.204	19.704	22.
22.5	15.793	16.270	16.699	17.177	17.605	18.083	18.560	19.085	19.564	20.087	20.612	22.5
23.	16.502	17.003	17.450	17.950	18.398	18.896	19.396	19.944	20.443	20.990	21.540	23.
23.5	17.226	17.747	18.216	18.736	19.205	19.724	20.245	20.818	21.338	21.912	22.483	23.5
24.	17.969	18.512	19.001	19.543	20.033	20.575	21.118	21.715	22.258	22.855	23.453	24.
24.5	18.724	19.290	19.799	20.364	20.862	21.439	22.003	22.627	23.192	23.818	23.437	24.5
25.	19.485	20.078	20.610	21.195	21.728	22.313	22.905	23.550	24.135	25.140	25.433	25.
25.5	20.272	20.889	21.443	22.051	22.605	23.214	23.830	24.501	25.110	26.156	26.460	25.5
26.	21.075	21.716	22.292	22.925	23.500	24.133	24.774	25.472	26.104	27.191	27.508	26.
26.5	21.893	22.559	23.157	23.815	24.413	25.070	25.736	26.461	27.118	28.247	28.576	26.5
27.	22.727	23.418	24.040	24.722	25.343	26.025	26.716	27.469	28.151	29.323	29.664	27.
27.5	23.577	24.294	24.938	25.646	26.290	26.998	27.715	28.496	29.203	30.419	30.773	27.5
28.	24.442	25.185	25.833	26.587	27.255	27.989	28.732	29.541	30.275	31.536	31.903	28.
28.5	25.323	26.093	26.785	27.545	28.237	28.997	29.767	30.606	31.366	32.672	33.052	28.5
29.	26.219	27.016	27.733	28.520	29.237	30.024	30.821	31.689	32.474	33.828	34.222	29.
29.5	27.131	27.959	28.697	29.512	30.253	31.068	31.893	32.791	33.606	35.005	35.412	29.5
30.	28.058	28.912	29.678	30.521	31.288	32.130	32.983	33.912	34.754	36.202	36.623	30.

590
331

高 胸高 直徑	八間 尺 48	八間 半 51	九間 54	九間 半 57	十間 60	十間 半 63	十一間 66
30.5	16.733	17.437	18.239	18.932	19.803	20.506	21.210
31.	17.286	18.013	18.832	19.558	20.458	21.184	21.911
31.5	17.849	18.599	19.444	20.194	21.123	21.873	22.623
32.	18.420	19.194	20.066	20.840	21.799	22.573	23.347
32.5	19.000	19.798	20.698	21.497	22.485	23.284	24.083
33.	19.589	20.412	21.340	22.163	23.183	24.006	24.829
33.5	20.187	21.035	21.992	22.840	23.890	24.739	25.587
34.	20.794	21.668	22.653	23.527	24.609	25.483	26.357
34.5	21.4 0	22.310	23.324	24.224	25.338	26.238	27.138
35.	22.035	22.961	24.005	24.931	26.078	27.004	27.930
35.5	22.669	23.622	24.696	25.649	26.828	27.781	28.734
36.	23.312	24.292	25.396	26.376	27.589	28.569	29.549
36.5	23.965	24.972	26.106	27.114	28.361	29.368	30.375
37.	24.626	25.661	26.827	27.862	29.143	30.178	31.213
37.5	25.296	26.359	27.557	28.620	29.936	30.999	32.063
38.	25.975	27.066	28.297	29.388	30.740	31.832	32.923
38.5	26.663	27.783	29.046	30.167	31.554	32.675	33.795
39.	27.360	28.510	29.803	30.955	32.379	33.529	34.679
39.5	28.066	29.245	30.575	31.754	33.215	34.394	35.574
40.	28.781	29.990	31.354	32.563	34.061	35.270	36.480

十一間 半 69	十一間 72	十二間 半 75	十三間 78	十三間 半 81	十四間 84	十四間 半 87	高 胸高 直徑
21.902	22.784	23.487	24.268	25.061	25.764	26.557	30.5
22.626	23.537	24.263	25.071	25.889	26.616	27.435	31.
23.362	24.302	25.052	25.886	26.731	27.481	28.327	31.5
24.109	25.080	25.854	26.714	27.587	28.361	29.233	32.
24.868	25.870	26.668	27.555	28.455	29.254	30.154	32.5
25.639	26.672	27.495	28.410	29.338	30.161	31.089	33.
26.422	27.486	28.335	29.277	30.233	31.082	32.038	33.5
27.217	28.313	29.187	30.158	31.143	32.017	33.001	34.
28.023	29.152	30.051	31.051	32.065	32.965	33.979	34.5
28.841	30.003	30.929	31.958	33.002	33.928	34.971	35.
29.671	30.866	31.819	32.877	33.951	34.904	35.978	35.5
30.513	31.742	32.721	33.810	34.914	35.894	36.998	36.
31.366	32.629	33.637	34.756	35.891	36.898	38.033	36.5
32.232	33.530	34.565	35.714	36.881	37.916	39.082	37.
33.109	34.442	35.505	36.686	37.884	38.948	40.146	37.5
33.998	35.366	36.458	37.671	38.901	39.993	41.223	38.
34.898	36.303	37.424	38.669	39.932	41.052	42.315	38.5
35.810	37.252	38.402	39.680	40.976	42.126	43.422	39.
36.735	38.214	39.393	40.704	42.033	43.213	44.542	39.5
37.670	39.187	40.397	41.741	43.104	44.314	45.677	40.

590
331

高 胸高直徑	十五間	十五間 半	十六間	十六間 半	十七間	十七間 半	十八間	十八間 半	十九間	十九間 半	二十間	二十間 半	廿一間	高 胸直徑
	尺													
30.5	90	93	96	99	102	105	108	111	114	117	120	123	126	30.5
31.	27.338	28.131	29.001	29.883	30.676	31.547	32.339	33.210	34.092	35.052	35.923	37.418	37.854	31.
31.5	28.242	29.061	29.960	30.871	31.690	32.589	33.408	34.303	35.219	36.210	37.110	38.655	39.105	31.5
32.	29.160	30.006	30.934	31.875	32.720	33.649	34.495	35.423	36.364	37.388	38.317	39.913	40.377	32.
32.5	30.093	30.966	31.924	32.895	33.767	34.726	35.598	36.557	37.528	38.584	39.543	41.189	41.669	32.5
33.	31.041	31.941	32.930	33.931	34.831	35.820	36.719	37.708	38.708	39.800	40.788	42.487	42.981	33.
33.5	32.004	32.931	33.951	34.983	35.911	36.930	37.858	38.877	39.910	41.034	42.053	43.804	44.314	33.5
34.	32.981	33.937	34.987	36.051	37.007	38.058	39.014	40.064	41.128	42.286	43.337	45.141	45.667	34.
34.5	33.973	34.957	36.039	37.135	38.120	39.202	40.187	41.269	42.365	43.558	44.640	46.499	47.040	34.5
35.	34.979	35.993	37.107	38.236	39.250	40.364	41.378	42.492	43.620	44.849	45.963	47.877	48.434	35.
35.5	36.000	37.044	38.191	39.352	40.396	41.542	42.586	43.733	44.894	45.158	47.305	49.274	49.848	35.5
36.	37.036	38.110	39.290	40.484	41.558	42.738	43.811	44.991	46.186	47.486	48.666	50.692	51.282	36.
36.5	38.087	39.191	40.404	41.633	42.737	43.950	45.054	46.267	47.496	48.833	50.046	52.130	52.737	36.5
37.	39.152	40.287	41.534	42.797	43.932	45.179	46.314	47.561	48.824	50.199	51.446	53.588	54.212	37.
37.5	40.232	41.399	42.680	43.978	45.144	46.426	47.592	48.873	50.171	51.584	52.865	55.067	55.707	37.5
38.	41.327	42.525	43.841	45.174	46.373	47.680	48.887	50.203	51.536	52.988	54.304	56.565	57.223	38.
38.5	42.436	43.667	45.018	46.387	47.617	48.969	50.199	51.551	52.920	54.410	55.762	58.083	58.759	38.5
39.	43.560	44.823	46.211	47.616	48.879	50.266	51.529	52.916	54.321	55.851	57.239	59.622	60.316	39.
39.5	44.699	45.995	47.419	48.860	50.156	51.580	52.876	54.300	55.742	57.311	58.735	61.181	61.893	39.5
40.	45.853	47.182	48.642	50.121	51.451	52.911	54.241	55.701	57.180	58.790	60.251	62.759	63.490	40.
	47.021	48.384	49.882	51.398	52.762	54.259	55.622	57.120	58.637	60.288	61.786	64.358	65.107	

590
331

ひのきの部

(さはら)

高 胸高 直徑 寸	一間 (尺) 6	一間 半 9	二間 12	二間 半 15	三間 18	三間 半 21	四間 24	四間 半 27
1.	0.001	0.001	0.002	0.005	0.006	0.007	0.010	0.011
1.5	0.001	0.004	0.006	0.010	0.013	0.017	0.020	0.023
2.	0.002	0.006	0.011	0.017	0.024	0.030	0.036	0.042
2.5	0.004	0.010	0.017	0.028	0.037	0.047	0.056	0.065
3.			0.025	0.040	0.054	0.068	0.082	0.094
3.5			0.032	0.053	0.073	0.092	0.110	0.127
4.			0.044	0.069	0.095	0.121	0.145	0.167
4.5			0.055	0.088	0.120	0.152	0.184	0.210
5.					0.148	0.188	0.226	0.259
5.5					0.180	0.228	0.274	0.314
6.					0.214	0.271	0.326	0.373
6.5					0.251	0.319	0.383	0.438
7.					0.292	0.370	0.444	0.509
7.5					0.334	0.425	0.509	0.583
8.					0.380	0.482	0.580	0.664
8.5					0.430	0.545	0.654	0.750
9.					0.481	0.611	0.733	0.840
9.5					0.536	0.680	0.817	0.936
10.					0.594	0.754	0.905	1.025

高 胸高 直徑 寸	五間 30	五間 半 33	六間 36	六間 半 39	七間 42	七間 半 45	八間 48	八間 半 51
1.	0.012							
1.5	0.026							
2.	0.047	0.053	0.056	0.061	0.066	0.070	0.074	0.078
2.5	0.073	0.082	0.089	0.096	0.102	0.109	0.115	0.122
3.	0.106	0.118	0.128	0.138	0.148	0.157	0.167	0.175
3.5	0.144	0.161	0.174	0.188	0.200	0.214	0.227	0.239
4.	0.190	0.210	0.228	0.246	0.263	0.280	0.296	0.313
4.5	0.239	0.265	0.288	0.311	0.332	0.353	0.374	0.395
5.	0.294	0.326	0.355	0.383	0.409	0.436	0.461	0.487
5.5	0.356	0.397	0.431	0.466	0.497	0.528	0.559	0.592
6.	0.425	0.472	0.512	0.553	0.590	0.629	0.666	0.703
6.5	0.498	0.553	0.601	0.649	0.694	0.737	0.781	0.824
7.	0.577	0.642	0.697	0.754	0.804	0.854	0.906	0.956
7.5	0.662	0.737	0.800	0.864	0.923	0.982	1.039	1.098
8.	0.755	0.839	0.912	0.984	1.050	1.117	1.183	1.249
8.5	0.852	0.948	1.030	1.111	1.186	1.261	1.336	1.411
9.	0.954	1.061	1.152	1.244	1.328	1.412	1.496	1.580
9.5	1.063	1.183	1.285	1.387	1.481	1.574	1.668	1.762
10.	1.177	1.309	1.422	1.536	1.639	1.742	1.847	1.950

590
331

高 胸高 直徑	九間 (尺) 54	九間 半 57	十間 60	十間 半 63	十一間 66	十一間 半 69	十二間 72
寸5							
1.							
1.5							
2.	0.082	0.086	0.090				
2.5	0.128	0.134	0.140				
3.	0.184	0.193	0.202				
3.5	0.251	0.263	0.275				
4.	0.328	0.344	0.360				
4.5	0.414	0.436	0.454				
5.	0.510	0.536	0.559	0.583	0.607	0.630	0.654
5.5	0.619	0.652	0.679	0.708	0.737	0.766	0.794
6.	0.737	0.774	0.809	0.842	0.876	0.910	0.944
6.5	0.864	0.908	0.948	0.988	1.023	1.068	1.108
7.	1.002	1.054	1.099	1.145	1.192	1.238	1.284
7.5	1.151	1.210	1.262	1.315	1.368	1.422	1.475
8.	1.310	1.376	1.436	1.496	1.558	1.618	1.678
8.5	1.480	1.554	1.622	1.691	1.758	1.826	1.895
9.	1.656	1.741	1.817	1.892	1.969	2.045	2.122
9.5	1.847	1.940	2.024	2.110	2.195	2.280	2.365
10.	2.044	2.148	2.242	2.336	2.430	2.525	2.618

十二間 半 75	十三間 78	十三間 半 81	十四間 84	十四間 半 87	十五間 90	十五間 半 93	十六間 96	高 胸高 直徑
寸5								
1.								
1.5								
2.								
2.5								
3.								
3.5								
4.								
4.5								
5.	0.677	0.701	0.725	0.748	0.769	0.794		
5.5	0.822	0.851	0.880	0.908	0.934	0.965		
6.	0.978	1.012	1.046	1.080	1.110	1.148		
6.5	1.147	1.187	1.228	1.267	1.303	1.346		
7.	1.331	1.376	1.423	1.469	1.511	1.561		
7.5	1.528	1.580	1.633	1.687	1.734	1.793		
8.	1.739	1.799	1.859	1.920	1.974	2.040		
8.5	1.963	2.032	2.099	2.167	2.228	2.304		
9.	2.198	2.274	2.351	2.426	2.496	2.580		
9.5	2.450	2.536	2.621	2.706	2.782	2.875		
10.	2.713	2.807	2.902	2.996	3.080	3.185	3.278	3.372

590
331

高 胸高直徑	六間 (尺) 36	六間 半 39	七間 42	七間 半 45	八間 48	八間 半 51	九間 54	九間 半 57
10.5	1.570	1.694	1.808	1.922	2.036	2.152	2.255	2.369
11.	1.722	1.860	1.984	2.110	2.234	2.360	2.474	2.599
11.5	1.883	2.033	2.170	2.306	2.443	2.581	2.706	2.843
12.	2.050	2.213	2.362	2.510	2.660	2.809	2.945	3.095
12.5	2.224	2.400	2.562	2.724	2.886	3.048	3.196	3.358
13.	2.403	2.596	2.770	2.945	3.121	3.296	3.456	3.631
13.5	2.592	2.799	2.987	3.176	3.366	3.554	3.726	3.916
14.	2.787	3.011	3.213	3.415	3.619	3.823	4.008	4.211
14.5	2.990	3.229	3.446	3.663	3.883	4.102	4.300	4.517
15.	3.200	3.456	3.688	3.920	4.156	4.390	4.601	4.835
15.5					4.439	4.687	4.914	5.162
16.					4.728	4.992	5.232	5.499
16.5					5.028	5.309	5.564	5.848
17.					5.337	5.636	5.906	6.208
17.5					5.656	5.972	6.259	6.578
18.					5.984	6.318	6.621	6.960
18.5					6.321	6.674	6.994	7.352
19.					6.667	7.040	7.377	7.754
19.5					7.033	7.415	7.771	8.168
20.					7.387	7.800	8.174	8.592

十間 60	十間 半 63	十一間 66	十一間 半 69	十二間 72	十二間 半 75	十三間 78	高 胸高直徑
2.473	2.578	2.681	2.785	2.888	2.993	3.097	10.5
2.713	2.827	2.941	3.055	3.169	3.283	3.397	11.
2.968	3.092	3.217	3.342	3.466	3.590	3.715	11.5
3.230	3.366	3.502	3.637	3.773	3.908	4.044	12.
3.504	3.652	3.799	3.946	4.093	4.241	4.387	12.5
3.790	3.949	4.109	4.267	4.427	4.586	4.745	13.
4.087	4.259	4.430	4.602	4.774	4.945	5.117	13.5
4.396	4.580	4.765	4.950	5.134	5.318	5.503	14.
4.715	4.913	5.112	5.310	5.508	5.706	5.904	14.5
5.046	5.258	5.471	5.683	5.894	6.107	6.319	15.
5.389	5.616	5.842	6.068	6.295	6.522	6.748	15.5
5.743	5.984	6.226	6.467	6.709	6.950	7.192	16.
6.106	6.362	6.619	6.876	7.133	7.388	7.645	16.5
6.484	6.756	7.028	7.301	7.573	7.846	8.118	17.
6.869	7.157	7.446	7.734	8.023	8.311	8.600	17.5
7.268	7.574	7.879	8.185	8.490	8.796	9.101	18.
7.676	7.999	8.322	8.645	8.968	9.289	9.612	18.5
8.096	8.437	8.777	9.119	9.457	9.798	10.138	19.
8.528	8.886	9.245	9.602	9.961	10.320	10.678	19.5
8.974	9.350	9.727	10.105	10.482	10.859	11.236	20.

590
331

高 胸高直徑	十三間 半	十四間	十四間 半	十五間	十五間 半	十六間	十六間 半	十七間	十七間 半	十八間	十八間 半	十九間	十九間 半	二十間	高 胸高直徑
	81	84	87	90	93	96	99	102	105	108	111	114	117	120	
寸 10.5	3.200	3.305	3.398	3.512	3.617	3.720	3.835	3.938	4.063	4.168					寸 10.5
11.	3.511	3.625	3.728	3.853	3.967	4.081	4.207	4.321	4.458	4.572					11.
11.5	3.840	3.965	4.078	4.214	4.339	4.464	4.601	4.726	4.874	4.999					11.5
12.	4.180	4.316	4.438	4.588	4.723	4.859	5.008	5.143	5.306	5.442					12.
12.5	4.535	4.682	4.814	4.976	5.124	5.272	5.434	5.580	5.758	5.904					12.5
13.	4.904	5.064	5.207	5.382	5.542	5.706	5.876	6.035	6.227	6.385	6.560	6.736	6.911	7.103	13.
13.5	5.288	5.461	5.615	5.804	5.976	6.148	6.336	6.508	6.714	6.886	7.075	7.264	7.453	7.658	13.5
14.	5.688	5.873	6.040	6.242	6.427	6.612	6.815	7.000	7.220	7.405	7.609	7.812	8.015	8.237	14.
14.5	6.102	6.300	6.479	6.696	6.894	7.093	7.310	7.508	7.746	7.945	8.162	8.381	8.598	8.836	14.5
15.	6.530	6.743	6.934	7.166	7.379	7.591	7.824	8.036	8.291	8.503	8.736	8.969	9.203	9.457	15.
15.5	6.974	7.201	7.404	7.654	7.880	8.106	8.356	8.582	8.854	9.080	9.329	9.578	9.828	10.099	15.5
16.	7.433	7.674	7.891	8.156	8.398	8.639	8.905	9.146	9.436	9.677	9.942	10.208	10.474	10.763	16.
16.5	7.902	8.159	8.389	8.671	8.928	9.185	9.467	9.724	10.032	10.288	10.571	10.853	11.135	11.442	16.5
17.	8.390	8.663	8.908	9.203	9.480	9.752	10.051	10.324	10.651	10.924	11.222	11.522	11.822	12.149	17.
17.5	8.888	9.178	9.437	9.755	10.043	10.332	10.649	10.938	11.285	11.573	11.891	12.208	12.526	12.871	17.5
18.	9.407	9.712	9.986	10.322	10.628	10.933	11.269	11.575	11.941	12.246	12.582	12.918	13.254	13.621	18.
18.5	9.935	10.258	10.548	10.902	11.225	11.548	11.903	12.226	12.612	12.935	13.290	13.644	13.999	14.386	18.5
19.	10.478	10.818	11.124	11.498	11.839	12.179	12.553	12.894	13.302	13.642	14.016	14.390	14.765	15.173	19.
19.5	11.036	11.394	11.717	12.112	12.469	12.828	13.222	13.580	14.010	14.369	14.762	15.157	15.551	15.982	19.5
20.	11.612	11.990	12.329	12.744	13.121	13.498	13.913	14.290	14.742	15.119	15.534	15.949	16.363	16.816	20.

590
331

高 胸高直徑	八間	八間半	九間	九間半	十間	十間半	十一間	十一間半	十二間	十二間半	十三間	十三間半	十四間	高 胸直徑
	尺													
20.5	48	51	54	57	60	63	66	69	72	75	78	81	84	20.5
21.	7.761	8.195	8.588	9.027	9.427	9.823	10.220	10.616	11.012	11.408	11.804	12.200	12.596	21.
21.5	8.144	8.600	9.012	9.473	9.893	10.309	10.724	11.141	11.556	11.971	12.388	12.803	13.219	21.5
22.	8.537	9.014	9.447	9.929	10.370	10.806	11.242	11.677	12.113	12.548	12.984	13.400	13.856	22.
22.5	8.939	9.438	9.891	10.396	10.855	11.311	11.768	12.224	12.680	13.136	13.592	14.048	14.504	22.5
23.	9.349	9.872	10.346	10.874	11.356	11.832	12.310	12.787	13.264	13.741	14.218	14.695	15.173	23.
23.5	9.770	10.316	10.811	11.363	11.867	12.365	12.864	13.362	13.861	14.359	14.858	15.356	15.856	23.5
24.	10.199	10.769	11.283	11.862	12.386	12.907	13.427	13.948	14.468	14.989	15.509	16.030	16.550	24.
24.5	10.638	11.232	11.771	12.373	12.920	13.464	14.006	14.549	15.092	15.628	16.178	16.721	17.263	24.5
25.	11.085	11.705	12.267	12.893	13.463	14.023	14.594	15.161	15.726	16.291	16.858	17.423	17.989	25.
25.5	11.543	12.188	12.773	13.425	14.010	14.603	15.188	15.780	16.365	16.958	17.543	18.135	18.720	25.5
26.	12.009	12.680	13.289	13.967	14.576	15.192	15.801	16.418	17.026	17.643	18.251	18.868	19.476	26.
26.5	12.484	13.182	13.815	14.520	15.153	15.794	16.427	17.068	17.700	18.341	18.974	19.615	20.248	26.5
27.	12.969	13.694	14.351	15.084	15.742	16.407	17.065	17.730	18.388	19.053	19.711	20.376	21.034	27.
27.5	13.463	14.216	14.898	15.659	16.341	17.032	17.715	18.406	19.088	19.779	20.462	21.153	21.835	27.5
28.	13.966	14.747	15.455	16.244	16.952	17.669	18.377	19.094	19.802	20.519	21.226	21.943	22.651	28.
28.5	14.479	15.288	16.022	16.840	17.574	18.317	19.051	19.794	20.528	21.271	22.005	22.749	23.482	28.5
29.	15.001	15.839	16.599	17.447	18.207	18.977	19.738	20.508	21.268	22.038	22.798	23.568	24.329	29.
29.5	15.532	16.400	17.187	18.065	18.852	19.649	20.436	21.234	22.021	22.818	23.605	24.402	25.190	29.5
30.	16.072	16.970	17.784	18.693	19.508	20.333	21.147	21.972	22.787	23.612	24.426	25.251	26.066	30.
	16.621	17.550	18.392	19.332	20.174	21.028	21.870	22.723	23.566	24.419	25.261	26.114	26.957	

590
331

高 胸直徑	十四間 半 尺	十五間	十五間 半	十六間	十六間 半	十七間	十七間 半	十八間	十八間 半	十九間	十九間 半	二十間	高 直 胸 徑
20.5	87	90	93	96	99	102	105	108	111	114	117	120	20.5
21.	12.953	13.388	13.784	14.182	14.617	15.013	15.488	15.884	16.320	16.756	17.191	17.666	21.
21.5	13.592	14.050	14.466	14.881	15.338	15.755	16.253	16.669	17.126	17.584	18.041	18.539	21.5
22.	14.248	14.728	15.163	15.599	16.078	16.513	17.036	17.472	17.952	18.431	18.911	19.433	22.
22.5	14.915	15.416	15.872	16.330	16.831	17.287	17.834	18.290	18.792	19.294	19.795	20.342	22.5
23.	15.602	16.127	16.603	17.081	17.605	18.083	18.655	19.133	19.657	20.182	20.707	21.280	23.
23.5	16.304	16.853	17.351	17.850	18.398	18.896	19.495	19.994	20.543	21.091	21.640	22.237	23.5
24.	17.018	17.543	18.112	18.631	19.205	19.724	20.350	20.869	21.442	22.015	22.588	23.212	24.
24.5	17.752	18.349	18.893	19.435	20.033	20.575	21.227	21.769	22.367	22.964	23.561	24.212	24.5
25.	18.498	19.120	19.687	20.251	20.874	21.439	22.118	22.684	23.306	23.928	24.551	25.229	25.
25.5	19.253	19.898	20.490	21.075	21.728	22.313	23.018	23.610	24.255	24.908	25.515	26.258	25.5
26.	20.030	20.701	21.318	21.926	22.605	23.214	23.947	24.564	25.235	25.912	26.546	27.318	26.
26.5	20.824	21.521	22.162	22.795	23.500	24.133	24.896	25.537	26.234	26.940	27.597	28.400	26.5
27.	21.632	22.357	23.023	23.680	24.413	25.070	25.862	26.528	27.253	27.986	28.669	29.503	27.
27.5	22.456	23.208	23.900	24.582	25.343	26.025	26.848	27.539	28.291	29.052	29.761	30.627	27.5
28.	23.296	24.076	24.793	25.501	26.290	26.998	27.851	28.568	29.349	30.138	30.873	31.772	28.
28.5	24.150	24.959	25.703	26.436	27.255	27.989	28.873	29.616	30.425	31.244	32.006	32.937	28.5
29.	25.021	25.859	26.629	27.389	28.237	28.997	29.914	30.684	31.522	32.370	33.159	34.124	29.
29.5	25.906	26.774	27.571	28.359	29.237	30.024	30.972	31.770	32.638	33.516	34.333	35.332	29.5
30.	26.807	27.705	28.530	29.345	30.253	31.068	32.050	32.875	33.773	34.681	35.527	36.561	30.
	27.724	28.652	29.506	30.348	31.288	32.130	33.145	33.998	34.927	35.867	36.742	37.811	

590
331

高 胸高直徑	八間 尺	八間 半	九間	九間 半	十間	十間 半	十一間	十一間 半	十二間	十二間 半	十三間	十三間 半	十四間	高 胸高直徑
30.5	48	51	54	57	60	63	66	69	72	75	78	81	84	30.5
31.	17.180	18.140	19.011	19.982	20.852	21.734	22.605	23.487	24.358	25.240	26.110	26.992	27.863	31.
31.5	17.748	18.740	19.639	20.642	21.542	22.453	23.352	24.263	25.163	26.074	26.973	27.884	28.784	31.5
32.	18.325	19.349	20.278	21.314	22.242	23.183	24.112	25.052	25.981	26.922	27.850	28.791	29.720	32.
32.5	18.911	19.968	20.926	21.996	22.954	23.925	24.883	25.854	26.812	27.783	28.742	29.712	30.671	32.5
33.	19.507	20.597	21.586	22.688	23.677	24.678	25.667	26.668	27.657	28.658	29.647	30.648	31.637	33.
33.5	20.112	21.236	22.255	23.392	24.411	25.443	26.463	27.495	28.514	29.547	30.566	31.598	32.618	33.5
34.	20.726	21.884	22.934	24.106	25.156	26.220	27.271	28.335	29.385	30.449	31.499	32.563	33.614	34.
34.5	21.349	22.542	23.624	24.831	25.913	27.009	28.091	29.187	30.269	31.365	32.447	33.542	34.625	34.5
35.	21.982	23.210	24.324	25.567	26.681	27.809	28.923	30.051	31.166	32.294	33.408	34.536	35.650	35.
35.5	22.623	23.888	25.034	26.313	27.460	28.621	29.768	30.929	32.075	33.237	34.383	35.545	36.691	35.5
36.	23.274	24.575	25.754	27.070	28.250	29.444	30.624	31.819	32.998	34.193	35.373	36.567	37.747	36.
36.5	23.935	25.272	26.485	27.838	29.051	30.280	31.493	32.721	33.934	35.163	36.376	37.605	38.818	36.5
37.	24.604	25.979	27.226	28.617	29.864	31.127	32.374	33.637	34.884	36.147	37.394	38.657	39.904	37.
37.5	25.283	26.696	27.977	29.406	30.688	31.985	33.267	34.565	35.846	37.144	38.425	39.723	41.004	37.5
38.	25.971	27.422	28.738	30.206	31.523	32.856	34.172	35.505	36.821	38.154	39.471	40.804	42.120	38.
38.5	26.668	28.158	29.510	31.017	32.369	33.738	35.089	36.458	37.810	39.179	40.530	41.899	43.251	38.5
39.	27.374	28.904	30.291	31.839	33.226	34.631	36.019	37.424	38.811	40.216	41.604	43.009	44.396	39.
39.5	28.090	29.660	31.083	32.671	34.095	35.537	36.960	38.402	39.826	41.268	42.691	44.133	45.557	39.5
40.	28.815	30.425	31.885	33.514	34.975	36.454	37.914	39.393	40.854	42.333	43.793	45.272	46.733	40.
	29.549	31.200	32.698	34.368	35.866	37.382	38.880	40.397	41.894	43.411	44.909	46.426	47.923	

590
331

高 胸直徑	十四間 半 尺	十五間	十五間 半	十六間	十六間 半	十七間	十七間 半	十八間	十八間 半	十九間	十九間 半	二十間	高 直徑
30.5	87	90	93	96	99	102	105	108	111	114	117	120	30.5
31.	28.655	29.615	30.497	31.368	32.339	33.210	34.259	35.141	36.101	37.072	37.977	39.082	31.
31.5	29.603	30.594	31.505	32.405	33.408	34.308	35.392	36.303	37.294	38.298	39.232	40.374	31.5
32.	30.565	31.589	32.530	33.459	34.495	35.423	36.543	37.483	38.507	39.543	40.508	41.686	32.
32.5	31.543	32.600	33.571	34.529	35.598	36.557	37.712	38.683	39.739	40.808	41.804	43.020	32.5
33.	32.537	33.627	34.628	35.617	36.719	37.708	38.900	39.901	40.991	42.094	43.120	44.375	33.
33.5	33.546	34.669	35.702	36.721	37.858	38.877	40.106	41.138	42.262	43.399	44.457	45.751	33.5
34.	34.570	35.728	36.792	37.842	39.014	40.064	41.330	42.394	43.552	44.724	45.815	47.148	34.
34.5	35.609	36.802	37.898	38.980	40.187	41.269	42.573	43.669	44.862	46.069	47.193	48.566	34.5
35.	36.664	37.893	39.021	40.135	41.378	42.492	43.835	44.963	46.191	47.434	48.591	50.005	35.
35.5	37.735	38.999	40.160	41.307	42.586	43.733	45.114	46.276	47.540	48.819	50.009	51.465	35.5
36.	38.821	40.121	41.316	42.496	43.811	44.991	46.412	47.607	48.908	50.223	51.448	52.946	36.
36.5	39.922	41.259	42.488	43.701	45.054	46.267	47.729	48.958	50.295	51.648	52.908	54.448	36.5
37.	41.039	42.414	43.676	44.923	46.314	47.561	49.064	50.327	51.702	53.093	54.388	55.970	37.
37.5	42.171	43.583	44.881	46.163	47.592	48.873	50.418	51.715	53.128	54.557	55.888	57.514	37.5
38.	43.318	44.769	46.103	47.419	48.887	50.203	51.789	53.123	54.574	56.042	57.409	59.079	38.
38.5	44.481	45.971	47.340	48.692	50.199	51.551	53.180	54.549	56.039	57.546	58.950	60.665	38.5
39.	45.659	47.189	48.594	49.981	51.529	52.916	54.588	55.993	57.523	59.071	60.511	62.272	39.
39.5	46.853	48.423	49.864	51.288	52.876	54.300	56.015	57.457	59.027	60.615	62.033	63.900	39.5
40.	48.062	49.672	51.151	52.612	54.241	55.701	57.461	58.940	60.550	62.179	63.696	65.549	40.
	49.286	50.938	52.454	53.952	55.622	57.120	58.925	60.442	62.093	63.763	65.318	67.219	

590
331

潤葉樹 (かし、しひ類)

高 胸高直徑 寸	一間	一間半	二間	二間半	三間	三間半	四間	四間半
	尺 6	9	12	15	18	21	24	27
1.	0.005	0.007	0.010	0.011	0.011	0.012	0.012	0.013
1.5	0.012	0.017	0.020	0.023	0.025	0.026	0.028	0.029
2.	0.020	0.030	0.037	0.041	0.044	0.048	0.050	0.052
2.5	0.032	0.047	0.058	0.065	0.070	0.074	0.078	0.082
3.		0.083	0.092	0.101	0.107	0.113	0.118	
3.5		0.112	0.126	0.137	0.146	0.154	0.160	
4.		0.146	0.164	0.179	0.191	0.200	0.208	
4.5				0.227	0.241	0.253	0.264	
5.				0.280	0.298	0.312	0.325	
5.5				0.338	0.360	0.378	0.394	
6.				0.403	0.428	0.450	0.468	
6.5				0.473	0.504	0.528	0.550	
7.				0.548	0.584	0.613	0.637	
7.5				0.630	0.671	0.703	0.732	
8.				0.716	0.763	0.800	0.833	
8.5				0.809	0.860	0.904	0.940	
9.				0.907	0.965	1.013	1.054	
9.5				1.010	1.075	1.128	1.174	
10.				1.120	1.192	1.250	1.308	

五間	五間半	六間	六間半	七間	七間半	八間	高 胸高直徑 寸
30	33	36	39	42	45	48	
0.013							1.
0.030							1.5
0.054	0.055	0.058	0.059	0.060	0.061	0.062	2.
0.084	0.086	0.089	0.091	0.094	0.096	0.097	2.5
0.121	0.125	0.128	0.132	0.134	0.138	0.140	3.
0.166	0.170	0.175	0.179	0.184	0.187	0.191	3.5
0.216	0.222	0.228	0.234	0.240	0.245	0.250	4.
0.272	0.281	0.289	0.296	0.304	0.310	0.316	4.5
0.337	0.347	0.356	0.366	0.374	0.382	0.390	5.
0.408	0.420	0.432	0.443	0.452	0.462	0.472	5.5
0.485	0.500	0.514	0.527	0.539	0.551	0.562	6.
0.569	0.587	0.604	0.618	0.632	0.646	0.659	6.5
0.660	0.680	0.700	0.716	0.733	0.749	0.764	7.
0.758	0.781	0.803	0.823	0.841	0.860	0.877	7.5
0.863	0.889	0.914	0.936	0.958	0.978	0.997	8.
0.973	1.004	1.032	1.057	1.081	1.104	1.127	8.5
1.092	1.126	1.157	1.184	1.212	1.238	1.262	9.
1.217	1.254	1.289	1.320	1.350	1.380	1.406	9.5
1.348	1.390	1.428	1.463	1.496	1.529	1.559	10.

590
331

高 胸直徑	八間 半 尺	九間	九間 半	十間	十間 半	十一間	十一間 半
	51	54	57	60	63	66	69
寸 5							
1.							
1.5							
2.	0.064	0.065	0.066	0.067			
2.5	0.100	0.101	0.103	0.104			
3.	0.143	0.145	0.148	0.150			
3.5	0.194	0.198	0.202	0.205			
4.	0.254	0.259	0.263	0.268			
4.5	0.322	0.328	0.332	0.338			
5.	0.397	0.404	0.412	0.418	0.425	0.431	0.438
5.5	0.480	0.488	0.498	0.505	0.514	0.522	0.529
6.	0.571	0.582	0.592	0.601	0.611	0.620	0.630
6.5	0.671	0.679	0.695	0.707	0.718	0.728	0.739
7.	0.778	0.792	0.805	0.820	0.832	0.845	0.858
7.5	0.893	0.910	0.925	0.941	0.955	0.970	0.985
8.	1.016	1.034	1.052	1.070	1.087	1.104	1.121
8.5	1.147	1.168	1.188	1.207	1.226	1.246	1.265
9.	1.286	1.309	1.332	1.354	1.375	1.397	1.418
9.5	1.433	1.459	1.484	1.508	1.532	1.556	1.580
10.	1.588	1.616	1.645	1.672	1.698	1.724	1.751

十二間	十二間 半	十三間	十三間 半	十四間	十四間 半	十五間	高 直 胸 徑 高
72	75	78	81	84	87	90	
							寸 5
							1.
							1.5
							2.
							2.5
							3.
							3.5
							4.
							4.5
0.444	0.450	0.457	0.463	0.469	0.475	0.482	5.
0.538	0.545	0.553	0.560	0.568	0.576	0.583	5.5
0.640	0.649	0.658	0.666	0.676	0.685	0.695	6.
0.750	0.762	0.772	0.782	0.793	0.804	0.815	6.5
0.870	0.883	0.895	0.907	0.920	0.932	0.944	7.
0.998	1.014	1.028	1.042	1.056	1.070	1.085	7.5
1.136	1.153	1.170	1.186	1.202	1.218	1.234	8.
1.283	1.302	1.320	1.338	1.357	1.375	1.393	8.5
1.439	1.460	1.481	1.500	1.522	1.542	1.562	9.
1.603	1.627	1.650	1.672	1.694	1.717	1.740	9.5
1.776	1.802	1.828	1.852	1.878	1.903	1.928	10.

590
331

高 胸高 直徑	五間 尺 30	五間 半 33	六間 36	六間 半 39	七間 42	七間 半 45	八間 48	八間 半 51	九間 54	九間 半 57	十間 60	高 直徑 胸高
10.5	1.486	1.532	1.574	1.613	1.650	1.686	1.718	1.751	1.782	1.813	1.843	10.5
11.	1.631	1.681	1.728	1.770	1.811	1.850	1.886	1.921	1.956	1.990	2.023	11.
11.5	1.782	1.837	1.889	1.934	1.979	2.022	2.062	2.100	2.137	2.176	2.210	11.5
12.	1.940	2.002	2.057	2.106	2.155	2.202	2.245	2.286	2.328	2.369	2.407	12.
12.5	2.106	2.171	2.231	2.286	2.338	2.389	2.436	2.480	2.526	2.569	2.612	12.5
13.	2.278	2.348	2.413	2.472	2.528	2.584	2.634	2.683	2.731	2.779	2.825	13.
13.5	2.456	2.532	2.603	2.666	2.728	2.786	2.840	2.893	2.946	2.998	3.047	13.5
14.	2.641	2.724	2.798	2.867	2.933	2.996	3.055	3.112	3.168	3.223	3.276	14.
14.5	2.833	2.922	3.002	3.076	3.146	3.215	3.277	3.338	3.398	3.458	3.515	14.5
15.	3.032	3.127	3.213	3.291	3.367	3.440	3.507	3.572	3.637	3.721	3.761	15.
15.5	3.238	3.339	3.431	3.514	3.595	3.673	3.745	3.814	3.883	3.973	4.016	15.5
16.	3.450	3.557	3.656	3.745	3.831	3.914	3.991	4.064	4.138	4.233	4.279	16.
16.5	3.669	3.783	3.888	3.982	4.074	4.162	4.244	4.322	4.401	4.502	4.551	16.5
17.	3.895	4.016	4.127	4.227	4.325	4.418	4.505	4.588	4.671	4.779	4.831	17.
17.5	4.127	4.256	4.373	4.480	4.583	4.682	4.774	4.862	4.950	5.064	5.119	17.5
18.	4.366	4.502	4.627	4.739	4.848	4.953	5.051	5.144	5.237	5.358	5.416	18.
18.5	4.612	4.756	4.887	5.006	5.121	5.232	5.335	5.434	5.532	5.650	5.721	18.5
19.	4.865	5.016	5.155	5.281	5.402	5.519	5.627	5.731	5.835	5.969	6.034	19.
19.5	5.124	5.284	5.430	5.562	5.690	5.813	5.927	6.037	6.146	6.288	6.356	19.5
20.	5.390	5.558	5.712	5.851	5.986	6.115	6.235	6.350	6.466	6.614	6.686	20.

590
331

高 胸高 直徑	十 間 半 尺 63	十一間 66	十一間 半 69	十二間 72	十二間 半 75	十三間 78	十三間 半 81	十四間 84	十四間 半 87	十五間 90	高 胸高 直徑
10.5	1.872	1.901	1.931	1.958	1.987	2.015	2.041	2.070	2.099	2.126	10.5
11.	2.054	2.088	2.118	2.149	2.180	2.212	2.240	2.273	2.303	2.333	11.
11.5	2.245	2.280	2.316	2.348	2.383	2.417	2.449	2.484	2.516	2.550	11.5
12.	2.446	2.483	2.521	2.557	2.596	2.632	2.666	2.705	2.741	2.777	12.
12.5	2.653	2.694	2.736	2.774	2.816	2.856	2.893	2.934	2.974	3.013	12.5
13.	2.869	2.915	2.959	3.001	3.046	3.089	3.130	3.174	3.216	3.259	13.
13.5	3.095	3.143	3.191	3.236	3.284	3.331	3.374	3.422	3.468	3.515	13.5
14.	3.328	3.380	3.432	3.481	3.533	3.582	3.629	3.680	3.731	3.768	14.
14.5	3.570	3.625	3.682	3.734	3.790	3.842	3.893	3.948	4.002	4.055	14.5
15.	3.821	3.878	3.939	3.996	4.055	4.112	4.166	4.226	4.282	4.339	15.
15.5	4.079	4.140	4.206	4.267	4.330	4.391	4.448	4.512	4.572	4.633	15.5
16.	4.347	4.411	4.482	4.547	4.614	4.679	4.740	4.808	4.872	4.937	16.
16.5	4.623	4.691	4.767	4.835	4.907	4.976	5.041	5.113	5.181	5.250	16.5
17.	4.907	4.980	5.060	5.133	5.209	5.282	5.351	5.427	5.500	5.573	17.
17.5	5.200	5.277	5.362	5.439	5.520	5.597	5.671	5.751	5.829	5.906	17.5
18.	5.502	5.583	5.673	5.754	5.840	5.921	5.999	6.085	6.163	6.248	18.
18.5	5.811	5.898	5.992	6.078	6.169	6.255	6.337	6.427	6.514	6.600	18.5
19.	6.130	6.221	6.320	6.411	6.507	6.598	6.684	6.780	6.871	6.962	19.
19.5	6.457	6.552	6.657	6.753	6.854	6.949	7.041	7.141	7.237	7.333	19.5
20.	6.792	6.893	7.003	7.104	7.210	7.310	7.406	7.512	7.613	7.714	20.

590
331

高 胸高 直徑	五 間 寸 30	五 間 半 33	六 間 36	六 間 半 39	七 間 42	七 間 半 45	八 間 48	八 間 半 51	九 間 54	九 間 半 57	十 間 60	高 直 徑 胸高
20.5	5.663	5.840	6.001	6.147	6.289	6.425	6.551	6.672	6.793	6.949	7.025	20.5
21.	5.943	6.128	6.297	6.451	6.599	6.742	6.874	7.001	7.128	7.292	7.372	21.
21.5	6.229	6.423	6.601	6.762	6.917	7.067	7.206	7.339	7.472	7.644	7.727	21.5
22.	6.522	6.726	6.912	7.080	7.243	7.399	7.545	7.684	7.823	8.003	8.091	22.
22.5	6.822	7.035	7.229	7.405	7.576	7.740	7.891	8.037	8.183	8.371	8.462	22.5
23.	7.129	7.351	7.554	7.738	7.916	8.087	8.246	8.398	8.551	8.748	8.843	23.
23.5	7.442	7.674	7.886	8.078	8.264	8.443	8.608	8.768	8.927	9.132	9.231	23.5
24.	7.762	8.004	8.225	8.426	8.619	8.806	8.979	9.145	9.310	9.525	9.628	24.
24.5	8.089	8.341	8.572	8.780	8.982	9.177	9.357	9.530	9.702	9.926	10.034	24.5
25.	8.423	8.685	8.925	9.143	9.353	9.555	9.743	9.923	10.103	10.335	10.448	25.
25.5	8.763	9.036	9.286	9.512	9.730	9.941	10.136	10.323	10.511	10.753	10.870	25.5
26.	9.110	9.394	9.653	9.889	10.116	10.335	10.537	10.732	10.927	11.178	11.300	26.
26.5	9.464	9.758	10.028	10.273	10.508	10.736	10.947	11.149	11.351	11.612	11.739	26.5
27.	9.834	10.130	10.410	10.664	10.909	11.145	11.364	11.574	11.784	12.055	12.186	27.
27.5	10.191	10.509	10.799	11.062	11.317	11.562	11.788	12.006	12.224	12.505	12.641	27.5
28.	10.565	10.894	11.196	11.468	11.732	11.986	12.221	12.447	12.673	12.964	13.105	28.
28.5	10.946	11.287	11.599	11.882	12.155	12.418	12.661	12.895	13.129	13.431	13.578	28.5
29.	11.343	11.687	12.009	12.302	12.585	12.857	13.110	13.352	13.594	13.907	14.058	29.
29.5	11.727	12.093	12.427	12.730	13.022	13.304	13.565	13.816	14.067	14.390	14.547	29.5
30.	12.128	12.506	12.852	13.165	13.468	13.759	14.029	14.288	14.548	14.882	15.044	30.

590
331

高 胸高直徑	十間 半 尺	十一間	十一間 半	十二間	十二間 半	十三間	十三間 半	十四間	十四間 半	十五間	高 胸高直徑
20.5	7.136	7.242	7.358	7.464	7.575	7.680	7.781	7.892	7.998	8.104	20.5
21.	7.488	7.599	7.721	7.832	7.949	8.060	8.166	8.282	8.393	8.504	21.
21.5	7.849	7.965	8.093	8.210	8.331	8.448	8.559	8.681	8.798	8.914	21.5
22.	8.218	8.340	8.474	8.596	8.724	8.846	8.962	9.090	9.211	9.333	22.
22.5	8.596	8.724	8.863	8.991	9.125	9.252	9.374	9.507	9.635	9.763	22.5
23.	8.982	9.116	9.262	9.395	9.535	9.668	9.795	9.935	10.068	10.201	23.
23.5	9.377	9.516	9.669	9.808	9.954	10.093	10.225	10.371	10.510	10.650	23.5
24.	9.780	9.926	10.085	10.230	10.382	10.527	10.665	10.817	10.962	11.108	24.
24.5	10.192	10.344	10.509	10.660	10.819	10.970	11.144	11.273	11.424	11.575	24.5
25.	10.613	10.770	10.943	11.100	11.265	11.423	11.573	11.738	11.895	12.053	25.
25.5	11.041	11.205	11.385	11.548	11.720	11.884	12.040	12.212	12.376	12.539	25.5
26.	11.478	11.649	11.835	12.006	12.184	12.355	12.517	12.695	12.866	13.036	26.
26.5	11.924	12.101	12.295	12.472	12.657	12.834	13.003	13.188	13.365	13.542	26.5
27.	12.378	12.562	12.763	12.947	13.139	13.323	13.498	13.691	13.874	14.058	27.
27.5	12.841	13.032	13.240	13.431	13.631	13.821	14.003	14.202	14.393	14.584	27.5
28.	13.312	13.510	13.726	13.924	14.131	14.328	14.517	14.724	14.921	15.119	28.
28.5	13.792	13.997	14.221	14.426	14.640	14.845	15.040	15.254	15.459	15.663	28.5
29.	14.280	14.492	14.724	14.936	15.158	15.370	15.572	15.794	16.006	16.218	29.
29.5	14.777	14.996	15.236	15.456	15.685	15.905	16.114	16.343	16.563	16.782	29.5
30.	15.282	15.509	15.757	15.984	16.222	16.448	16.664	16.902	17.129	17.356	30.

590
331

高 胸直徑	八間 尺	八間 半	九間	九間 半	十間	十間 半	十一間	十一間 半
30.5	14.503	14.769	15.037	15.383	15.430	15.796	16.030	16.286
31.	14.980	15.257	15.534	15.891	16.064	16.318	16.560	16.825
31.5	15.467	15.753	16.039	16.408	16.586	16.848	17.098	17.373
32.	15.962	16.257	16.552	16.933	17.117	17.388	17.646	17.928
32.5	16.465	16.769	17.073	17.466	17.656	17.935	18.201	18.493
33.	16.975	17.289	17.603	18.048	18.204	18.496	18.766	19.066
33.5	17.494	17.817	18.140	18.558	18.760	19.056	19.339	19.648
34.	18.020	18.353	18.686	19.116	19.324	19.629	19.920	20.239
34.5	18.554	18.896	19.239	19.682	19.896	20.210	20.510	20.839
35.	19.095	19.448	19.801	20.257	20.477	20.801	21.109	21.447
35.5	19.645	20.008	20.371	20.839	21.066	21.399	21.717	22.064
36.	20.202	20.575	20.949	21.431	21.664	22.006	22.333	22.690
36.5	20.767	21.151	21.534	22.030	22.270	22.622	22.957	23.325
37.	21.340	21.734	22.129	22.638	22.884	23.246	23.591	23.968
37.5	22.191	22.326	22.731	23.254	23.507	23.878	23.493	24.621
38.	22.509	22.925	23.341	23.878	24.138	24.519	24.883	25.282
38.5	23.105	23.532	23.959	24.510	24.777	25.169	25.542	25.951
39.	23.709	24.147	24.585	25.151	25.425	25.827	26.210	26.630
39.5	24.321	24.771	25.220	25.800	26.081	26.493	26.886	27.317
40.	24.941	25.402	25.862	26.458	26.746	27.168	27.571	28.013

十二間	十二間 半	十三間	十三間 半	十四間	十四間 半	十五間	高 胸直徑
72	75	78	81	84	87	90	30.5
16.521	16.767	17.001	17.225	17.470	17.705	17.939	31.
17.067	17.321	17.563	17.794	18.048	18.290	18.532	31.5
17.622	17.884	18.134	18.373	18.634	18.885	19.135	32.
18.186	18.457	18.715	18.960	19.231	19.489	19.747	32.5
18.759	19.038	19.304	19.558	19.836	20.103	20.369	33.
19.341	19.628	19.903	20.164	20.451	20.726	21.000	33.5
19.931	20.277	20.510	20.780	21.076	21.359	21.641	34.
20.531	20.836	21.127	21.404	21.710	22.001	22.292	34.5
21.139	21.453	21.753	22.039	22.353	22.653	22.953	35.
21.756	22.079	22.388	22.682	23.006	23.314	23.623	35.5
22.382	22.715	23.032	23.335	23.667	23.985	24.303	36.
23.017	23.359	23.686	23.997	24.339	24.665	24.992	36.5
23.661	24.012	24.348	24.668	25.020	25.355	25.691	37.
24.313	24.675	25.020	25.348	25.710	26.055	26.400	37.5
24.975	25.346	25.701	26.038	26.409	26.764	27.118	38.
25.645	26.027	26.391	26.737	27.118	27.482	27.846	38.5
26.325	26.716	27.090	27.445	27.837	28.210	28.584	39.
27.013	27.415	27.798	28.163	28.564	28.948	29.331	39.5
27.710	28.122	28.515	28.890	29.301	29.695	30.088	40.
28.416	28.838	29.242	29.626	30.048	30.451	30.854	

590
331

潤葉樹 (ざつ類)

高 胸高 直徑 寸	一間	一間 半	二間	二間 半	三間	三間 半	四間	四間 半	五間	五間 半	六間	六間 半	七間	七間 半	八間	高 胸高 直徑 寸
	尺 6	9	12	15	18	21	24	27	30	33	36	39	42	45	48	
1.	0.004	0.005	0.006	0.006	0.007	0.008	0.008	0.010	0.011							1.
1.5	0.007	0.011	0.012	0.014	0.017	0.018	0.019	0.022	0.023							1.5
2.	0.013	0.018	0.023	0.025	0.029	0.032	0.035	0.038	0.041	0.044	0.047	0.050	0.054	0.058	0.062	2.
2.5	0.020	0.029	0.035	0.041	0.046	0.050	0.054	0.059	0.064	0.068	0.074	0.079	0.085	0.090	0.097	2.5
3.			0.050	0.058	0.065	0.072	0.078	0.085	0.092	0.100	0.107	0.114	0.122	0.131	0.139	3.
3.5			0.068	0.079	0.089	0.097	0.107	0.116	0.125	0.134	0.145	0.155	0.166	0.178	0.190	3.5
4.			0.089	0.103	0.115	0.127	0.139	0.151	0.163	0.176	0.190	0.203	0.217	0.232	0.247	4.
4.5					0.146	0.162	0.176	0.192	0.208	0.223	0.240	0.257	0.275	0.294	0.313	4.5
5.					0.180	0.199	0.218	0.236	0.256	0.275	0.295	0.317	0.338	0.362	0.386	5.
5.5					0.218	0.241	0.264	0.287	0.310	0.334	0.358	0.383	0.414	0.438	0.468	5.5
6.					0.260	0.287	0.314	0.341	0.368	0.396	0.426	0.456	0.487	0.522	0.557	6.
6.5					0.305	0.337	0.368	0.400	0.432	0.466	0.500	0.535	0.572	0.612	0.654	6.5
7.					0.354	0.391	0.427	0.464	0.502	0.540	0.580	0.620	0.664	0.710	0.758	7.
7.5					0.407	0.449	0.491	0.533	0.576	0.619	0.666	0.713	0.762	0.815	0.871	7.5
8.					0.462	0.511	0.558	0.606	0.655	0.706	0.757	0.811	0.868	0.928	0.991	8.
8.5					0.522	0.576	0.630	0.684	0.739	0.796	0.854	0.916	0.979	1.048	1.118	8.5
9.					0.586	0.647	0.707	0.767	0.829	0.893	0.959	1.026	1.097	1.174	1.254	9.
9.5					0.652	0.720	0.787	0.854	0.924	0.994	1.068	1.144	1.223	1.308	1.397	9.5
10.					0.722	0.792	0.872	0.947	1.024	1.102	1.183	1.267	1.355	1.450	1.548	10.



590
331

高 胸高 直徑	八間 半 尺	九間	九間 半	十間	十間 半	十一間	十一間 半
	51	54	57	60	63	66	69
寸							
1.							
1.5							
2.	0.066	0.071	0.074	0.080			
2.5	0.103	0.110	0.118	0.125			
3.	0.149	0.158	0.168	0.180			
3.5	0.202	0.216	0.229	0.245			
4.	0.264	0.283	0.300	0.319			
4.5	0.334	0.358	0.379	0.404			
5.	0.413	0.442	0.468	0.499	0.530	0.565	0.600
5.5	0.499	0.534	0.566	0.604	0.642	0.684	0.727
6.	0.594	0.636	0.674	0.719	0.764	0.814	0.865
6.5	0.697	0.746	0.792	0.844	0.898	0.955	1.015
7.	0.809	0.866	0.918	0.978	1.040	1.108	1.177
7.5	0.928	0.994	1.054	1.122	1.195	1.271	1.351
8.	1.056	1.130	1.199	1.277	1.360	1.446	1.537
8.5	1.192	1.277	1.354	1.442	1.535	1.632	1.735
9.	1.337	1.430	1.517	1.616	1.721	1.830	1.946
9.5	1.489	1.594	1.691	1.801	1.916	2.039	2.168
10.	1.650	1.766	1.873	1.996	2.124	2.260	2.402

十二間	十二間 半	十三間	十三間 半	十四間	十四間 半	十五間	高 直 胸 徑 高
72	75	78	81	84	87	90	
							寸
							1.
							1.5
							2.
							2.5
							3.
							3.5
							4.
							4.5
0.638	0.676	0.722	0.767	0.814	0.865	0.918	5.
0.773	0.822	0.874	0.928	0.985	1.046	1.111	5.5
0.919	0.978	1.040	1.104	1.172	1.246	1.322	6.
1.079	1.147	1.220	1.296	1.376	1.462	1.553	6.5
1.252	1.331	1.415	1.502	1.596	1.696	1.800	7.
1.436	1.528	1.625	1.726	1.832	1.946	2.066	7.5
1.634	1.738	1.848	1.963	2.084	2.214	2.352	8.
1.844	1.962	2.087	2.216	2.353	2.500	2.654	8.5
2.069	2.200	2.340	2.484	2.638	2.802	2.976	9.
2.305	2.450	2.606	2.768	2.939	3.122	3.316	9.5
2.554	2.716	2.888	3.067	3.257	3.460	3.674	10.

590
331

高 胸高直徑	五 間 尺 30	五 間 半 33	六 間 36	六 間 半 39	七 間 42	七 間 半 45	八 間 48	八 間 半 51	九 間 54	九 間 半 57	十 間 60	高 胸直徑
10.5	1.128	1.214	1.304	1.397	1.494	1.598	1.706	1.819	1.948	2.065	2.200	10.5
11.	1.238	1.333	1.432	1.534	1.639	1.754	1.873	1.997	2.137	2.267	2.414	11.
11.5	1.354	1.457	1.565	1.676	1.792	1.916	2.047	2.182	2.336	2.477	2.639	11.5
12.	1.474	1.586	1.704	1.825	1.951	2.088	2.230	2.382	2.544	2.698	2.874	12.
12.5	1.600	1.721	1.849	1.980	2.117	2.264	2.419	2.578	2.760	2.927	3.118	12.5
13.	1.730	1.861	1.999	2.142	2.290	2.450	2.616	2.789	2.986	3.166	3.372	13.
13.5	1.866	2.008	2.156	2.310	2.470	2.642	2.821	3.007	3.220	3.414	3.637	13.5
14.	2.006	2.159	2.320	2.484	2.656	2.842	3.034	3.234	3.462	3.672	3.911	14.
14.5	2.152	2.316	2.488	2.664	2.849	3.048	3.254	3.469	3.714	3.938	4.195	14.5
15.	2.303	2.479	2.662	2.851	3.048	3.262	3.483	3.713	3.974	4.215	4.490	15.
15.5	2.459	2.647	2.843	3.044	3.255	3.483	3.719	3.964	4.244	4.500	4.794	15.5
16.	2.620	2.820	3.029	3.244	3.468	3.711	3.963	4.224	4.522	4.795	5.109	16.
16.5	2.787	2.999	3.221	3.450	3.688	3.947	4.214	4.492	4.809	5.100	5.433	16.5
17.	2.958	3.184	3.419	3.662	3.915	4.189	4.474	4.769	5.105	5.414	5.767	17.
17.5	3.135	3.374	3.624	3.881	4.149	4.439	4.741	5.053	5.410	5.737	6.112	17.5
18.	3.316	3.569	3.834	4.106	4.390	4.697	5.016	5.346	5.723	6.009	6.466	18.
18.5	3.503	3.770	4.050	4.337	4.637	4.961	5.298	5.647	6.046	6.411	6.830	18.5
19.	3.695	3.977	4.271	4.575	4.891	5.233	5.588	5.957	6.377	6.762	7.204	19.
19.5	3.892	4.189	4.499	4.819	5.152	5.512	5.886	6.274	6.717	7.123	7.588	19.5
20.	4.094	4.406	4.733	5.069	5.419	5.798	6.192	6.600	7.066	7.493	7.982	20.

高 胸高直徑	十 間 半	十一間	十一間 半	十二間	十二間 半	十三間	十三間 半	十四間	十四間 半	十五間	高 直 胸徑 高
	63	66	69	72	75	78	81	84	87	90	
寸 10.5	2.341	2.491	2.648	2.815	2.994	3.185	3.382	3.590	3.815	4.051	寸 10.5
11.	2.570	2.734	2.906	3.086	3.286	3.494	3.712	3.941	4.186	4.446	11.
11.5	2.809	2.988	3.178	3.377	3.592	3.820	4.056	4.307	4.576	4.859	11.5
12.	3.059	3.254	3.460	3.677	3.911	4.159	4.417	4.690	4.982	5.291	12.
12.5	3.319	3.530	3.754	3.990	4.243	4.513	4.793	5.089	5.406	5.741	12.5
13.	3.589	3.818	4.060	4.315	4.589	4.882	5.185	5.504	5.846	6.210	13.
13.5	3.871	4.118	4.379	4.654	4.949	5.264	5.590	5.935	6.305	6.696	13.5
14.	4.163	4.429	4.706	5.005	5.322	5.662	6.012	6.383	6.781	7.202	14.
14.5	4.465	4.751	5.051	5.369	5.710	6.073	6.449	6.847	7.274	7.726	14.5
15.	4.779	5.084	5.405	5.746	6.110	6.499	6.901	7.328	7.784	8.267	15.
15.5	5.103	5.429	5.772	6.135	6.524	6.939	7.369	7.824	8.312	8.828	15.5
16.	5.437	5.785	6.150	6.537	6.952	7.394	7.852	8.337	8.857	9.406	16.
16.5	5.783	6.152	6.541	6.952	7.393	7.864	8.350	8.867	9.419	10.004	16.5
17.	6.138	6.530	6.943	7.380	7.848	8.347	8.864	9.412	9.998	10.619	17.
17.5	6.505	6.920	7.357	7.820	8.317	8.846	9.398	9.974	10.595	11.253	17.5
18.	6.882	7.321	7.784	8.274	8.799	9.358	9.938	10.557	11.209	11.905	18.
18.5	7.269	7.733	8.222	8.740	9.294	9.886	10.497	11.146	11.840	12.576	18.5
19.	7.668	8.157	8.673	9.218	9.803	10.427	11.073	11.757	12.489	13.265	19.
19.5	8.077	8.592	9.135	9.710	10.326	10.983	11.663	12.384	13.155	13.972	19.5
20.	8.496	9.038	9.610	10.214	10.862	11.554	12.269	13.027	13.838	14.698	20.

590
331

高 胸高直徑	五 間 30 ^尺	五 間 半 33	六 間 36	六 間 半 39	七 間 42	七 間 半 45	八 間 48	八 間 半 51	九 間 54	九 間 半 57	十 間 60	高 直 胸 徑
20.5	4.302	4.629	4.972	5.325	5.694	6.072	6.505	6.934	7.423	7.872	8.387	20.5
21.	4.514	4.858	5.218	5.588	5.975	6.393	6.827	7.277	7.790	8.261	8.801	21.
21.5	4.732	5.092	5.469	5.858	6.263	6.701	7.156	7.627	8.165	8.659	9.225	21.5
22.	4.954	5.332	5.727	6.133	6.557	7.016	7.492	7.986	8.549	9.066	9.659	22.
22.5	5.182	5.577	5.992	6.415	6.859	7.339	7.837	8.353	8.942	9.483	10.103	22.5
23.	5.415	5.827	6.259	6.703	7.167	7.668	8.189	8.729	9.344	9.909	10.557	23.
23.5	5.653	6.084	6.534	6.998	7.482	8.005	8.549	9.112	9.755	10.345	11.021	23.5
24.	5.896	6.345	6.815	7.299	7.804	8.350	8.916	9.504	10.174	10.790	11.495	24.
24.5	6.144	6.612	7.102	7.606	8.132	8.701	9.292	9.904	10.603	11.244	11.979	24.5
25.	6.398	6.885	7.395	7.920	8.468	9.060	9.675	10.313	11.040	11.708	12.473	25.
25.5			7.694	8.240	8.810	9.426	10.066	10.729	11.486	12.180	12.976	25.5
26.			7.998	8.566	9.158	9.799	10.464	11.154	11.941	12.663	13.490	26.
26.5			8.309	8.899	9.514	10.180	10.871	11.587	12.405	13.155	14.014	26.5
27.			8.626	9.238	9.876	10.568	11.285	12.029	12.877	13.656	14.548	27.
27.5			8.948	9.583	10.246	10.953	11.707	12.478	13.358	14.166	15.092	27.5
28.			9.276	9.935	10.622	11.365	12.136	12.936	13.849	14.686	15.646	28.
28.5			9.611	10.293	11.004	11.774	12.574	13.402	14.348	15.215	16.209	28.5
29.			9.951	10.657	11.394	12.191	13.019	13.877	14.855	15.754	16.783	29.
29.5			10.297	11.028	11.790	12.615	13.471	14.359	15.372	16.302	17.367	29.5
30.			10.649	11.405	12.193	13.046	13.932	14.850	15.898	16.859	17.960	30.

高 胸高直徑	十間 半尺 63	十一間	十一間 半	十二間	十二間 半	十三間	十三間 半	十四間	十四間 半	十五間	高 胸直徑
20.5	8.926	9.496	10.096	10.732	11.412	12.139	12.890	13.687	14.539	15.442	20.5
21.	9.367	9.965	10.595	11.261	11.976	12.738	13.526	14.362	15.257	16.204	21.
21.5	9.818	10.445	11.105	11.804	12.553	13.352	14.178	15.055	15.992	16.985	21.5
22.	10.280	10.836	11.628	12.359	13.144	13.980	14.845	15.763	16.744	17.784	22.
22.5	10.753	11.439	12.162	12.928	13.748	14.623	15.528	16.488	17.514	18.602	22.5
23.	11.236	11.953	12.709	13.509	14.366	15.280	16.225	17.228	18.301	19.438	23.
23.5	11.730	12.479	13.267	14.102	14.997	15.951	16.939	17.986	19.106	20.292	23.5
24.	12.234	13.015	13.838	14.709	15.642	16.637	17.667	18.759	19.927	21.165	24.
24.5	12.749	13.563	14.420	15.328	16.300	17.338	18.411	19.549	20.766	22.056	24.5
25.	13.275	14.123	15.015	15.960	16.973	18.053	19.170	20.355	21.623	22.965	25.
25.5	13.811	14.693	15.622	16.605	17.658	18.782	19.944	21.177	22.496	23.893	25.5
26.	14.358	15.275	16.240	17.262	18.357	19.526	20.734	22.016	23.387	24.839	26.
26.5	14.916	15.868	16.871	17.933	19.070	20.284	21.539	22.871	24.295	25.803	26.5
27.	15.484	16.472	17.513	18.616	19.797	21.056	22.360	23.742	25.220	26.786	27.
27.5	16.063	17.088	18.168	19.312	20.537	21.844	23.196	24.630	26.163	27.788	27.5
28.	16.652	17.715	18.835	20.020	21.210	22.645	24.047	25.533	27.123	28.807	28.
28.5	17.252	18.354	19.513	20.742	22.057	23.461	24.913	26.453	28.101	29.845	28.5
29.	17.863	19.003	20.204	21.476	22.838	24.291	25.795	27.390	29.095	30.902	29.
29.5	18.484	19.664	20.907	22.223	23.633	25.136	26.692	28.342	30.107	31.976	29.5
30.	19.116	20.336	21.622	22.982	24.440	25.996	27.605	29.311	31.136	33.070	30.

590
331

高 胸高直徑	八間 尺	八間 半	九間	九間 半	十間	十間 半	十一間	十一間 半	十二間	十二間 半	十三間	十三間 半	十四間	十四間 半	十五間	高 胸直徑
30.5	48	51	54	57	60	63	66	69	72	75	78	81	84	87	90	30.5
31.	14.400	15.349	16.432	17.425	18.564	19.759	21.020	22.348	23.755	25.262	26.869	28.533	30.296	32.183	34.181	31.
31.5	14.870	15.857	16.975	18.001	19.178	20.412	21.715	23.087	24.540	26.097	27.758	29.476	31.298	33.247	35.311	31.5
32.	15.360	16.372	17.527	18.587	19.801	21.075	22.421	23.838	25.338	26.946	28.660	30.434	32.316	34.328	36.459	32.
32.5	15.852	16.896	18.088	19.182	20.435	21.750	23.138	24.601	26.149	27.808	29.577	31.408	33.350	35.426	37.626	32.5
33.	16.351	17.428	18.658	19.786	21.079	22.435	23.867	25.375	26.972	28.684	30.509	32.397	34.400	36.542	38.811	33.
33.5	16.858	17.969	19.236	20.399	21.732	23.130	24.607	26.162	27.809	29.573	31.455	33.402	35.467	37.675	40.014	33.5
34.	17.372	18.517	19.823	21.022	22.396	23.837	25.358	26.961	28.658	30.476	32.415	34.422	36.549	38.825	41.236	34.
34.5	17.895	19.074	20.420	21.654	23.069	24.553	26.121	27.772	29.520	31.392	33.390	35.457	37.649	39.993	42.476	34.5
35.	18.425	19.639	21.025	22.296	23.753	25.281	26.895	28.595	30.394	32.322	34.379	36.507	38.764	41.178	43.735	35.
35.5	18.963	20.213	21.638	22.947	24.446	26.019	27.680	29.429	31.282	33.266	35.383	37.573	39.896	42.380	45.011	35.5
36.	19.509	20.794	22.261	23.607	25.150	26.768	28.477	30.276	32.182	34.223	36.401	38.654	41.044	43.600	46.307	36.
36.5	20.062	21.384	22.893	24.277	25.863	27.527	29.284	31.135	33.095	35.194	37.434	39.751	42.208	44.836	47.620	36.5
37.	20.623	21.982	23.533	24.956	26.586	28.297	30.104	32.006	34.020	36.179	38.481	40.863	43.389	46.091	48.952	37.
37.5	21.192	22.589	24.182	25.644	27.320	29.078	30.934	32.889	34.959	37.177	39.542	41.990	44.586	47.362	50.303	37.5
38.	21.769	23.203	24.840	26.342	28.063	29.869	31.776	33.784	35.910	38.188	40.618	43.133	45.799	48.651	51.671	38.
38.5	22.353	23.826	25.507	27.049	28.816	30.671	32.629	34.691	36.874	39.213	41.708	44.290	47.028	49.957	53.058	38.5
39.	22.945	24.457	26.182	27.766	29.580	31.483	33.493	35.610	37.851	40.252	42.813	45.464	48.274	51.280	54.464	39.
39.5	23.545	25.097	26.867	28.491	30.353	32.306	34.369	36.541	38.840	41.304	43.933	46.652	49.536	52.621	55.888	39.5
40.	24.153	25.744	27.560	29.227	31.136	33.140	35.255	37.483	39.843	42.370	45.066	47.856	50.814	53.978	57.330	40.
	24.768	26.400	28.262	29.971	31.930	33.984	36.154	38.438	40.858	43.450	46.214	49.075	52.109	55.354	58.790	

Ⅲ 水平距離算出表

説 明

本表ハ高低角1度ヨリ45.5度迄ノ間ニ於テ斜距離ヨリ水平距離ヲ算出スルニ用ウルモノトス

1. 斜距離1間ヨリ50間迄ハ本表ヲ其儘使用ス
2. 斜距離1間未滿ノモノハ本表ノ單位チーツ下ケテ使用ス
3. 斜距離50間以上ハ50間ニ對スル水平距離ト50間ヲ超ユル端數ニ對スル水平距離トヲ求メ之ヲ合計ス
4. 高低角46度以上ノ斜距離ニ對スル水平距離ハ本表末尾ノ三角函數表ノ餘弦ヲ使用シテ算出スルコトヲ得

次ニ本表ノ用法ヲ例示ス

A. 高低角30度斜距離25間ノ水平距離ヲ求ム

高低角30度ノ行ヲ下ニ進ミ斜距離25間ニ當ル所21.7ニハ即求ムル水平距離ナリ

B. 高低角25度斜距離28.4間ノ水平距離ヲ求ム

高低角25度ニ對スル斜距離28間ノ水平距離	25.4
高低角25度ニ對スル斜距離0.4間ノ水平距離	+ 0.36
	25.76

C. 高低角38.5度斜距離63.6間ノ水平距離ヲ求ム

高低角38.5度ニ對スル斜距離50間ノ水平距離	39.1
高低角38.5度ニ對スル斜距離13間ノ水平距離	10.2
高低角38.5度ニ對スル斜距離0.6間ノ水平距離	+ 0.47
	49.77

D. 高低角65度斜距離42間ノ水平距離ヲ求ム

高低角65度ノ餘弦函數0.4226ニ斜距離42間ヲ乘シ得タル數17.75間ハ即水平距離ナリ

高低角 斜距離	.5	45°	.5
1	0.7	0.7	0.7
2	1.4	1.4	1.4
3	2.1	2.1	2.1
4	2.9	2.8	2.8
5	3.6	3.5	3.5
6	4.3	4.3	4.2
7	5.0	4.9	4.9
8	5.7	5.7	5.6
9	6.4	6.4	6.3
10	7.1	7.1	7.0
11	7.8	7.8	7.7
12	8.6	8.5	8.4
13	9.3	9.2	9.1
14	10.0	9.9	9.8
15	10.7	10.6	10.5
16	11.4	11.3	11.2
17	12.1	12.0	11.9
18	12.8	12.7	12.6
19	13.6	13.4	13.3
20	14.3	14.1	14.0
21	15.0	14.8	14.7
22	15.7	15.6	15.4
23	16.4	16.3	16.1
24	17.1	17.0	16.8
25	17.8	17.7	17.5
26	18.5	18.4	18.2
27	19.3	19.1	18.9
28	20.0	19.8	19.6
29	20.7	20.5	20.3
30	21.4	21.2	21.0
31	22.1	21.9	21.7
32	22.8	22.6	22.4
33	23.5	23.3	23.1
34	24.3	24.0	23.8
35	25.0	24.7	24.5
36	25.7	25.5	25.2
37	26.4	26.2	25.9
38	27.1	26.9	26.6
39	27.8	27.6	27.3
40	28.5	28.3	28.0
41	29.2	29.0	28.7
42	30.0	29.7	29.4
43	30.7	30.4	30.1
44	31.4	31.1	30.8
45	32.1	31.8	31.5
46	32.8	32.5	32.2
47	33.5	33.2	32.9
48	34.2	33.9	33.6
49	34.9	34.6	34.3
50	35.7	35.4	35.0

附 三 角 函 數 表

角度	正弦 Sin	餘弦 Cos	正切 Tan	角度	正弦 Sin	餘弦 Cos	正切 Tan	角度	正弦 Sin	餘弦 Cos	正切 Tan
1	0.0175	0.9998	0.0175	31	0.5150	0.8572	0.6009	61	0.8746	0.4848	1.804
2	0349	9994	0349	32	5299	8480	6249	62	8829	4695	1.881
3	0523	9986	0524	33	5446	8387	6494	63	8910	4540	1.963
4	0698	9976	0699	34	5592	8290	6745	64	8988	4384	2.050
5	0872	9962	0875	35	5736	8192	7002	65	9063	4226	2.145
6	1045	9945	1051	36	5876	8090	7265	66	9135	4067	2.246
7	1219	9925	1228	37	6018	7986	7536	67	9205	3907	2.356
8	1392	9903	1405	38	6157	7880	7813	68	9272	3746	2.475
9	1564	9877	1584	39	6293	7771	8098	69	9336	3584	2.605
10	1736	9848	1763	40	6428	7660	8391	70	9397	3420	2.747
11	1908	9816	1944	41	6561	7547	8693	71	9455	3256	2.904
12	2079	9781	2126	42	6691	7431	9004	72	9511	3090	3.078
13	2250	9744	2309	43	6820	7314	9325	73	9563	2924	3.271
14	2419	9703	2493	44	6947	7193	9657	74	9613	2756	3.432
15	2588	9659	2679	45	7071	7071	1.000	75	9659	2588	3.737
16	2756	9613	2867	46	7193	6947	1.036	76	9703	2419	4.011
17	2924	9563	3057	47	7314	6820	1.072	77	9744	2250	4.331
18	3090	9511	3249	48	7431	6691	1.111	78	9781	2079	4.705
19	3256	9455	3443	49	7547	6561	1.150	79	9816	1908	5.145
20	3420	9397	3640	50	7660	6428	1.192	80	9843	1736	5.671
21	3584	9336	3839	51	7771	6293	1.235	81	9877	1564	6.314
22	3745	9272	4040	52	7880	6157	1.280	82	9903	1392	7.115
23	3907	9205	4245	53	7986	6018	1.327	83	9925	1119	8.144
24	4067	9135	4452	54	8090	5878	1.376	84	9945	1045	9.510
25	4226	9063	4663	55	8192	5736	1.428	85	9962	0872	11.434
26	4384	8988	4877	56	8290	5592	1.483	86	9976	0698	14.301
27	4540	8910	5095	57	8387	5446	1.540	87	9986	0523	19.081
28	4695	8829	5317	58	8480	5299	1.600	88	9994	0349	28.636
29	4848	8746	5543	59	8572	5150	1.664	89	9998	0175	57.290
30	5000	8660	5774	60	8660	5000	1.732	90	1.000	0000	

(說 明)

- 高低角及斜距離ヲ知ツテ水平距離ヲ求ムル場合
 $水平距離 = 斜距離 \times 餘弦$
 例 高低角30度斜距離25間ノ水平距離ヲ求ム
 $斜距離25間 = 餘弦30度ノ函數 0.8660$ ヲ乘シ得タル數21.7間
 ハ即水平距離ナリ
- 高低角及斜距離ヲ知ツテ高サヲ求ムル場合
 $高サ = 斜距離 \times 正弦$
 例 高低角30度斜距離25間ノ高サヲ求ム
 $斜距離25間 = 正弦30度ノ函數 0.5000$ ヲ乘シ得タル數12.5間
 ハ即高サナリ
- 高低角及水平距離ヲ知ツテ高サヲ求ムル場合
 $高サ = 水平距離 \times 正切$
 例 高低角25度水平距離30間ノ高サヲ求ム
 $水平距離30間 = 正切25度ノ函數 0.4663$ ヲ乘シ得タル數14.0間
 ハ即高サナリ本方法ハ樹高測定ノ際ニ應用スルコトヲ得

590

331

III 竹束當本數表 (苦竹、淡竹)

周圍胸高 <small>寸</small>	3	4	5	6	7	8	9	10	11	12
束當本數 <small>本</small>	30	16	10	6	4	3	2	1.5	1.25	1

注意 寸以下ノ端數ハ五捨六入トス

昭和五年八月十日印刷

(非賣品)

昭和五年八月十五日發行

三重縣津市下部田町

編輯者 外園慎吾

三重縣津市下部田1,619番ノ2

印刷所 三重縣印刷所

津市榮町67番屋敷

印刷人 米澤梅之助

發行者 三重縣聯合會
森林組合

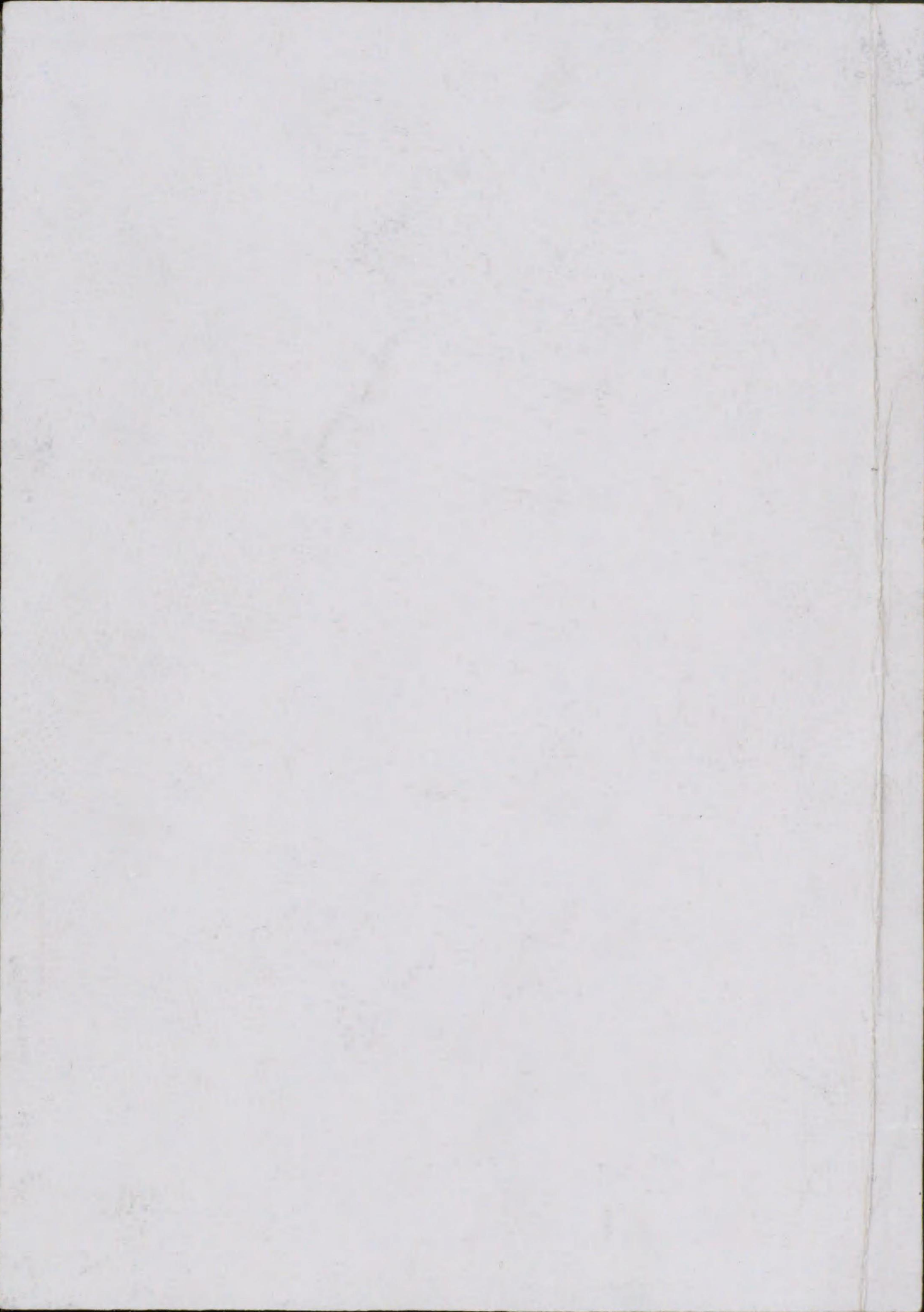
59
33

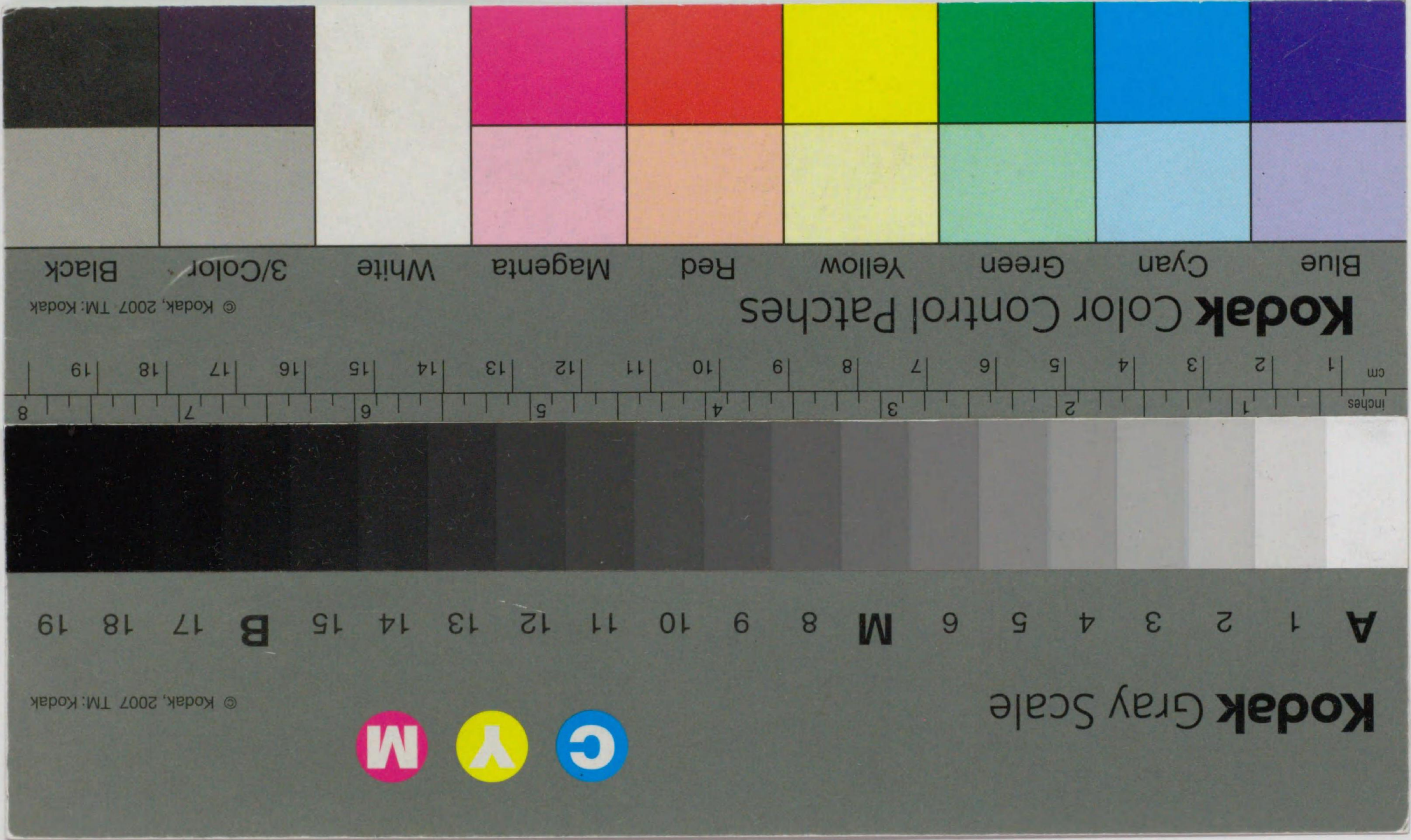
590-331



1200501525694

590
31





Kodak Color Control Patches
Blue Cyan Green Yellow Red Magenta White 3/Color Black
© Kodak, 2007 TM: Kodak

Inches 1 2 3 4 5 6 7 8
cm 1 2 3 4 5 6 7 8

A 1 2 3 4 5 6 M 8 9 10 11 12 13 14 15 B 17 18 19

Kodak Gray Scale
© Kodak, 2007 TM: Kodak

