

T796  
.C1058









# PHOTOGRAVURES

OF THE

# TRANS-MISSISSIPPI AND INTERNATIONAL EXPOSITION

HELD AT

OMAHA, NEBRASKA

JUNE 1ST TO NOVEMBER 1ST, 1898.

PUBLISHED BY

F. A. RINEHART, Official Photographer.

1898

T796  
.C1058

0913 T2  
69a45

Jan 15 1911



## “Expositions are Flash Light Photographs Illustrating the World’s Progress.”



**S**OON the Trans-Mississippi Exposition will have passed into history, renowned as the most successful undertaking in the annals of the Great West. No other Exposition had adequately displayed the resources and products of the Western States and Territories, nor had the arts, industries and civilization of this vast region found fitting illustration in the Expositions of recent years. It remained for the Trans-Mississippi Exposition of 1898 to give to the world the first true measure of progress attained. It was an artistic, industrial and financial triumph.

Omaha’s long-cherished idea of building a Western Exposition first found unanimous expression in the fall of 1895 at a meeting of the Trans-Mississippi Commercial Congress, composed of delegates from Western and Southern States. Leading citizens at once took hold of the project with great energy and earnestness. A corporation was organized, directors elected, officers appointed, plans adopted and funds raised. By December, 1896, all departments were in working order. The Congress of the United States and Legislatures of various States were appealed to for recognition and support. The federal government contributed \$200,000, covering cost of building and exhibit, and \$40,000 to defray the expenses of the Ethnological exhibit, consisting of an assembly of many Indian tribes. The State of Nebraska appropriated \$100,000; Illinois appropriated \$45,000; Iowa, \$35,000; Montana, \$30,000; Kansas,

\$30,000; Minnesota, \$20,000; Wisconsin, \$16,000; Georgia, \$10,000, and other States contributed or appropriated sums adequate for representation in State buildings or in the collective exhibits. Omaha and Douglas County contributed \$150,000, while the railroad corporations and citizens of Omaha donated money or paid stock subscriptions to the amount of \$450,000. It is estimated that over \$3,000,000 were expended in promoting and building the Exposition, which opened its gates June 1, 1898, and closed November 1, 1898. The area of the grounds was nearly 200 acres. Thirty-three states and three territories, Mexico, Hawaii and Canada were represented in the exhibits.

In transcendent beauty of architecture, landscape effects and plan of design, in character, scope and multiplicity of exhibits and in the high degree of success which attended the labors of its managers, the Trans-Mississippi Exposition ranks among the great achievements of the age.

This volume contains 64 views in photogravure portraying with fidelity the indescribable splendors of the Exposition.

Published by

F. A. RINEHART, Official Photographer.





COPYRIGHT 1898 BY F. A. RINEHART.

OPENING DAY, JUNE 1, 1898.

SEC. 1-1







COPYRIGHT 1898 BY P. A. RINEHART.

NORTH-EAST CORNER OF GRAND COURT.

900. 1-2







COPYRIGHT 1898 BY F. A. RINEHART.

GOVERNMENT BUILDING.

SEC. 1-3







COPYRIGHT 1898 BY F. A. RINEHART.

MAIN ENTRANCE TO AGRICULTURAL BUILDING.

SEC. 1-4





COPYRIGHT 1898 BY F. A. RINEHART.

SCENE IN STREETS OF ALL NATIONS.

BEC. 1-5







COPYRIGHT 1898 BY P. A. RINEHART.

GRAND COURT LOOKING WEST.

SEC. 1-6







COPYRIGHT 1898 BY F. A. RINEHART.

HAGENBACK'S—CHILDREN'S DAY.

SEC. 1-7





COPYRIGHT 1898 BY F. A. RINEHART.

GRAND COURT LOOKING SOUTH-WEST.

BEC. 1-8







COPYRIGHT 1898 BY F. A. RINEHART.

FINE ART BUILDING.

SEC. 1-9









COPYRIGHT 1898 BY F. A. RINEHART.

NEBRASKA BUILDING.

SEC. 1-10







COPYRIGHT 1898 BY F. A. RINEHART.

GRAND COURT LOOKING EAST.

SEC. 1-11







COPYRIGHT 1898 BY F. A. RINEHART.

SECTION IN FINE ART BUILDING.

SEC. 1-12







COPYRIGHT 1898 BY F. A. RINEHART.

GRAND COURT AT NIGHT.

SEC. 1-13





COPYRIGHT 1908 BY P. A. RINEHART.

MAIN ENTRANCE HORTICULTURE BUILDING.

SEC. 1-14







COPYRIGHT 1898 BY P. A. RINEHART.

SCENE ON NORTH MIDWAY.

BEC. 1-15







COPYRIGHT 1898 BY F. A. RINEHART.

MARINE BAND—GRAND PLAZA.

SEC. 1-16







COPYRIGHT 1896 BY F. A. RINEHART.

GRAND COURT FROM RESTAURANT TOWER.

SEC. 2-17







COPYRIGHT 1898 BY F. A. RINEHART.

ADMINISTRATION ARCH.

SEC. 2-18











COPYRIGHT 1898 BY F. A. RINEHART.

GOVERNMENT BUILDING AND LIFE BOAT.

SEC. 2-20







COPYRIGHT 1898 BY F. A. RINEHART.

MANUFACTURES BUILDING.

SEC. 2-21







COPYRIGHT 1898 BY F. A. RINEHART.

INTERIOR MANUFACTURES BUILDING.

SEO. 2-22







MACHINERY AND ELECTRICITY BUILDING.







COPYRIGHT 1898 BY F. A. RINEHART.

ILLINOIS BUILDING.

880. 2-24













№ 436

COL. W. J. BRYAN AND REGIMENT—MILITARY DAY.





COPYRIGHT 1896 BY P. A. RINEHART.

AGRICULTURE BUILDING.

SEC. 2-27







COPYRIGHT 1898 BY F. A. RINEHART.

WISCONSIN BUILDING.

SEO. 2-28







COPYRIGHT 1898 BY F. A. RINEHART.

LOOKING NORTH FROM ADMINISTRATION ARCH.

SEC. 2-29

















COPYRIGHT 1898 BY F. A. RINEHART.

GROUP OF ORIENTALS—STREETS OF ALL NATIONS.

SEC. 2-32







COPYRIGHT 1898 BY F. A. RINEHART

GRAND COURT AT NIGHT FROM RESTAURANT TOWER.

SEC. 3-33







COPYRIGHT 1898 BY F. A. RINEHART.

FOUNTAIN OF NAUTILUS.

SEC. 3-34





COPYRIGHT 1898 BY F. A. RINEHART.

FIRST PRIZE—FLOWER PARADE.

SEC. 3-35.







COPYRIGHT 1898 BY F. A. RINEHART.

MINNESOTA BUILDING.

SEC. 3-30





COPYRIGHT 1898 BY F. A. RINEHART.

U. S. LIFE SAVING SERVICE.—CREW.

SEC. 3-37.







COPYRIGHT 1898 BY F. A. RINEHART.

U. S. LIFE SAVING SERVICE.—FIREING THE LINE.

SEC. 3-36.







COPYRIGHT 1898 BY F. A. RINEHART.

U. S. LIFE SAVING SERVICE.—THE RESCUE.

SEC. 3-39







COPYRIGHT 1898 BY F. A. RINEHART.

U. S. LIFE SAVING SERVICE.—CAPSIZING THE BOAT.

SEC. 3-40





COPYRIGHT 1898 BY F. A. RINEHART.

U. S. LIFE SAVING SERVICE.—RIGHTING THE BOAT.

SEC. 3-41.







COPYRIGHT 1898 BY F. A. RINEHART.

ENTRANCE STREETS OF CAIRO.

SEC. 3-42





COPYRIGHT 1898 BY F. A. RINEHART. GIANT SEE SAW (225 Feet High.)



















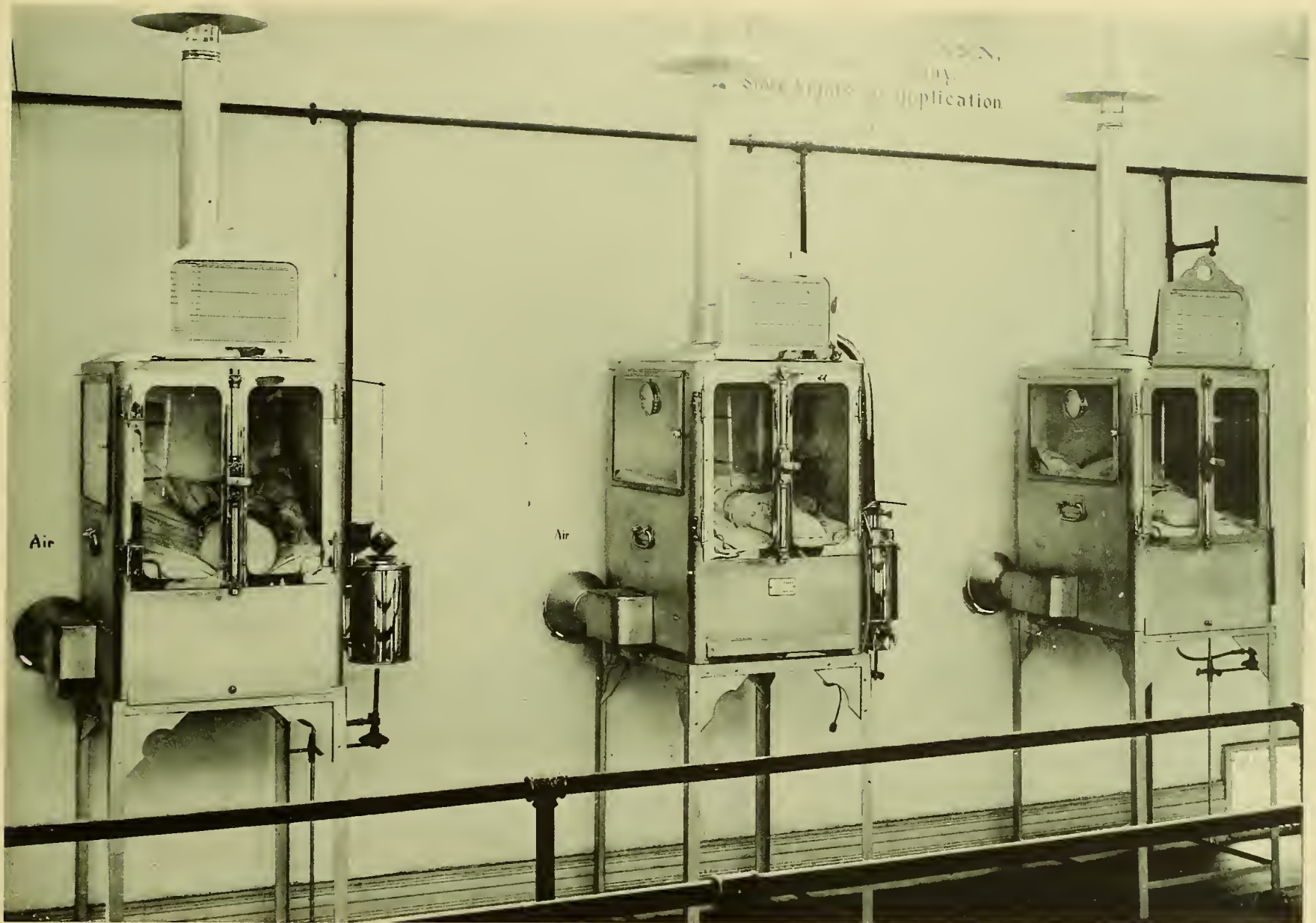
COPYRIGHT 1890 BY F. A. RINEHART.

OSTRICH FARM.

SEC. 3-46.







COPYRIGHT 1898 BY F. A. RINEHART.

INFANT INCUBATORS IN OPERATION.

SEC. 3-47.







COPYRIGHT 1898 BY F. A. RINEHART.

STATUES AND FINE ART BUILDING AT NIGHT.

SEC. 3-48.





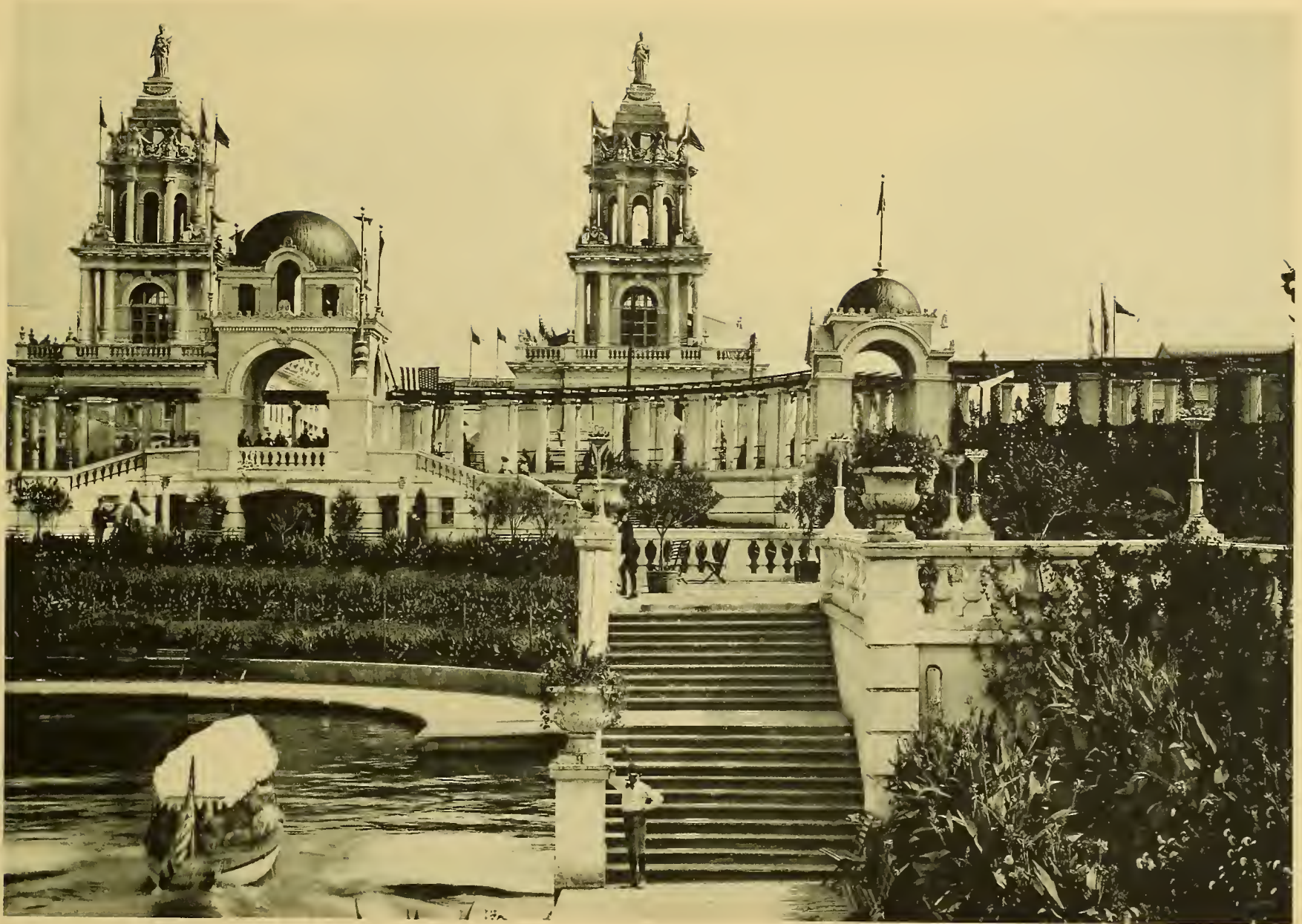
COPYRIGHT 1936 BY F. A. RINEHART.

ENTRANCE MANUFACTURES BUILDING.

SEC. 4-49







COPYRIGHT 1898 BY F. A. RINFHART

FLOWER GARDENS—EAST END OF LAGOON.

SEC 4-50







COPYRIGHT 1898 BY F. A. RINEHART.

IOWA BUILDING.

SEC. 4\*51







COPYRIGHT 1898 BY F. A. RINEHART.

INTERIOR "OLD PLANTATION"—MIDWAY.

SEC. 4-52







COPYRIGHT 1896 BY F. A. RINEHART.

ENTRANCE MACHINERY AND ELECTRICITY BUILDING.

SEC. 4-53







COPYRIGHT 1906 BY F. A. RINEHART.

THE TOWERS—NIGHT.

SEC. 4-64





COPYRIGHT 1898 BY F. A. RINEHART.

ENTRANCE FINE ARTS BUILDING.

SEC. 4-55







COPYRIGHT 1898 BY F. A. RINEHART.

SHAM BATTLE—(Indian Congress.)

SEC. 4-56







COPYRIGHT 1898 BY F. A. RINEHART.

AN ASSYRIAN OF THE MIDWAY.

SEC. 4 '57







COPYRIGHT 1898 BY F. A. RINEHART.

WEST PART OF GRAND COURT.

SEC. 4-56





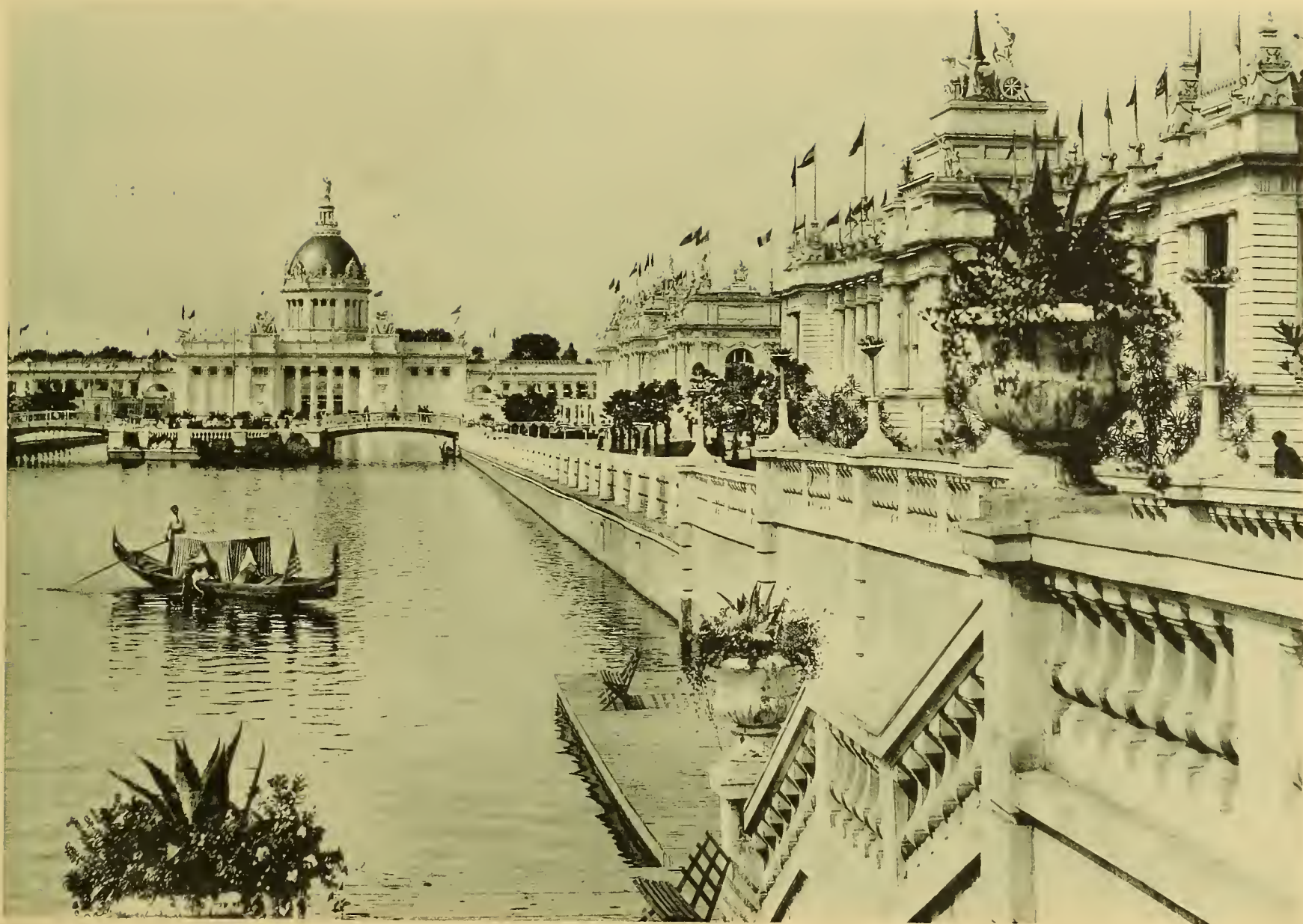
COPYRIGHT 1898 BY F. A. RINEHART.

CHIEF GOES TO WAR—SIOUX (Indian Congress.)

SEC. 4-59







COPYRIGHT 1898 BY F. A. RINEHART.

SCENE ON THE LAGOON.

SEC. 4-60





COPYRIGHT 1966 BY F. A. RINEHART.

STATUARY AND COLONNADE.

SEC. 4 '61







COPYRIGHT 1898 BY F. A. RINEHART.

PORTICO—LIBERAL ARTS BUILDING.

SEC. 4-62





COPYRIGHT 1896 BY F. A. RINEHART.

GERONIMO—FAMOUS APACHE. (Indian Congress.)

SEC. 4-63







COPYRIGHT 1898 BY F. A. RINEHART.

DANCING GIRLS OF THE MIDWAY.

SEC. 4-64











FEB 17





LIBRARY OF CONGRESS



0 019 713 604 2