

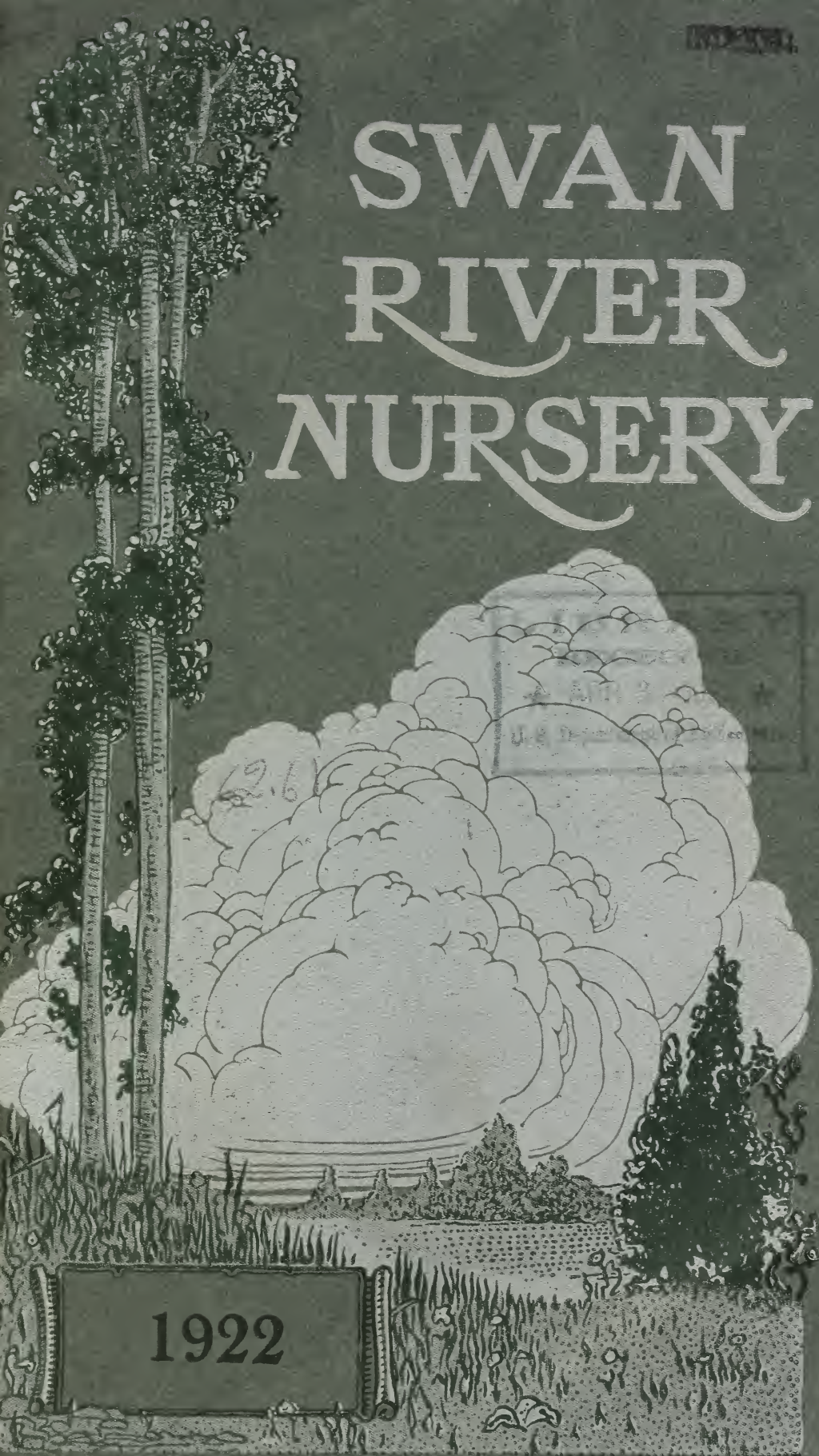
## **Historic, Archive Document**

Do not assume content reflects current scientific knowledge, policies, or practices.



IND-254

# SWAN RIVER NURSERY



1922



## AN EXPLANATION, AN INVITATION AND A FEW SUGGESTIONS

A little more than twenty-five years ago Charles Avery established the Swan River Nursery near the town of Patchogue, on Long Island, some 50 miles from New York City, on the Montauk division of the Long Island Railroad. The location was happily chosen, first because of the climatic conditions, and second because of the soil in which the trees were to be grown.

Atmospheric conditions, as well as soil conditions, have much to do with the successful development of nursery stock. Trees and shrubs demand a certain amount of moisture in the air as well as in the soil. The peculiar salty atmosphere in this location has a tendency to keep in check many of the insects and fungus diseases which injure nursery stock in other and less favored sections of the country.

Our nurseries are only a short distance from the center of the town of Patchogue; in fact, it is only a brief walk from the railroad station to our office. We shall be pleased to have customers and prospective purchasers visit the nursery at any time and make a personal selection of the trees and shrubs which they desire to possess. **WE WOULD ALSO MAKE THIS INVITATION SUFFICIENTLY BROAD TO INCLUDE ALL OF OUR FRIENDS WHETHER THEY CONTEMPLATE PURCHASING OR NOT.** We believe that only through such visits will it be possible for you to obtain a knowledge of the ideals which are constantly before us in the production of the shade trees, evergreens, shrubs, and roses that are found here. If visitors advise us a day or two in advance of their call, we will be glad to meet them at the station and place an automobile at their disposal for the time that they are with us.

We devote all of our time to this business, and all details of growing, filling orders, packing and shipping, are given personal supervision. Most visitors are interested in all the various nursery operations, but one of particular interest is in the digging and packing of evergreens. All of the trees measuring six feet or more in height, are dug with a ball of earth weighing two or three hundred pounds, which is wrapped in canvas and the entire tree and ball securely packed. This method is quite laborious, but it insures the life of the tree after shipping and transplanting, provided the specimen is given proper attention after this latter operation.

There are many other points of interest about the nursery which will be pointed out on the tour of inspection.

---

## CONDITIONS OF SALE

The prices in this list cancel all prices in previous lists.

One to five plants OF ONE KIND will be furnished at the each price.

Five to forty plants OF ONE KIND will be furnished at the ten price, when ten prices are given.

Forty to two hundred and fifty plants OF ONE KIND will be furnished at the one hundred price, when one hundred prices are given.

Delivery. No extra charges will be made for delivery to the freight offices or express offices at Patchogue. Whenever packing is necessary to save plants from being injured we only make a small charge for this to cover the cost of doing it up in a bale or box.

We operate motor trucks of different sizes and therefore can offer unlimited delivery service on Long Island and nearby points, making only a charge to cover the actual cost of such service; this of course depending on the size of the order, size of the truck load, and whether a special trip is required. Where possible we combine orders and proportionate the charges among the persons served; this makes the service much cheaper and infinitely better than the old method of shipping by freight. The motor truck is a great time-saver, for trees that are dug to-day can be delivered and planted to-morrow; it likewise removes much of the danger from damage in transit, and if trees are handled by motor truck the element of safety plays so large a part that it will amply pay the cost of the delivery service.

If desired, we will send experienced men to plant the trees and shrubs, charging for such service the actual cost only. This is really the most economical method, for an inexperienced planter is likely to lose much of the stock he received.

**Terms of Payment.** Our terms are net cash, 30 days from date of shipment. To persons of known responsibility we will extend a reasonable credit, but unknown correspondents should furnish satisfactory references.

**Guarantee.** We warrant our stock to be true to variety named, and will replace any that may prove otherwise or refund the original price, but beyond that, we assume no responsibility. We guarantee our trees and plants to be in good condition when shipped, but we do not guarantee that such stock will live and grow, as it is obviously impossible to control the after-care or the weather conditions which may surround transplanted stock.

Evergreens over six feet high are dug with a ball of earth and burlaped; with reasonable care all such trees should live and thrive, although as before mentioned, it will be impossible for us to guarantee the growth of the trees after they leave our nursery.

**Complaints.** We will gladly rectify mistakes in filling orders, provided we are notified immediately on receipt of the goods.

#### PLANTING SEASON.

**Deciduous Trees and Ornamental Shrubs.** Either Spring or Fall is usually considered a favorable time for moving trees and shrubs of this class. The digging season in the Spring begins about March 20, when the frost is nearly out of the ground, and continues till about May 20. Many trees and shrubs can be moved much later in the season by stripping off the foliage or digging them with a ball of earth. In the Fall we commence shipping about the middle of October, continuing until hard freezing of the ground in December.

**Evergreens.** Can be moved in the Spring from March until the middle of June, because they are dug with ball of earth. August, September and October are also excellent months for moving evergreens.

Respectfully yours,

## SWAN RIVER NURSERY

PATCHOGUE, L. I., N. Y.

GRACE A. AVERY, Owner

HUMPHREY R. AVERY, Mgr.

## LANDSCAPE SERVICE

If anyone contemplating planting will communicate with us, we will be glad to call on them and make suggestions as to the varieties of plants to use, without obligating them whatsoever.

We will also make a study of any estate, large or small, and present plans on its proposed layout.



*A Pleasing Effect Obtained by an Evergreen Border.*

## EVERGREENS AND CONIFERS

Evergreens are used in many ways, some of which are as follows: Specimens on a lawn, foundation plantings around houses, wind breaks, hedges and as screens for objectionable objects.

Our Evergreens are thrifty, well rooted and have been several times transplanted.

All Evergreens will be balled and burlaped without charge.

We recommend planting during April, May and June, August, September and October.

ABIES. Fir.	Each	Per 10
balsamea		
<i>Balsam Fir</i>		
2 to 3 ft.....	2.00	17.00
3 to 4 ft.....	2.50	22.50
4 to 5 ft.....	3.00	27.00
5 to 6 ft.....	4.00	36.00
6 to 7 ft.....	5.00	45.00
7 to 8 ft.....	7.00	60.00
8 to 10 ft.....	8.00	70.00

## ABIES—(Continued)

<b>brachyphyla</b>	<i>Nikko Fir</i>	Each	Per 10
4 to 5 ft.....		5.50	50.00
<b>concolor</b>	<i>Colorado Fir</i>		
2 to 3 ft.....		4.50	40.00
3 to 4 ft.....		6.00	50.00
4 to 5 ft.....		7.00	65.00
5 to 6 ft.....		9.00	85.00
6 to 7 ft. specimens.....		12.00	115.00
7 to 8 ft. specimens.....		14.00	135.00
8 to 9 ft. specimens.....		16.00	155.00
9 to 10 ft. specimens.....		20.00	195.00
10 to 12 ft.....		25.00	245.00
<b>frazeri</b>	<i>Fraser's Balsam Fir</i>		
1½ to 2 ft.....		1.60	
<b>nordmanniana</b>	<i>Nordmann's Fir</i>		
2 to 3 ft.....		4.00	35.00
3 to 4 ft.....		5.50	50.00
4 to 5 ft.....		7.00	65.00
<b>veitchii</b>	<i>Veitch's Silver Fir</i>		
2 to 3 ft.....		3.50	30.00
3 to 4 ft.....		4.50	40.00
4 to 5 ft.....		5.50	50.00
5 to 6 ft.....		6.50	60.00

## BIOTA. Chinese Arborvitae

<b>elegantissima</b>	<i>Rollinson's Golden Arborvitae</i>		
18 to 24 in.....		3.00	
2 to 2½ ft.....		4.00	
2½ to 3 ft.....		5.50	
<b>nana elegantissima</b>	<i>Berkman's Golden Arborvitae</i>		
12 to 15 in.....		3.00	
15 to 18 in.....		3.50	32.50
<b>orientalis compacta</b>	<i>Chinese Compact Arborvitae</i>		
2 to 3 ft.....		3.00	27.50
<b>orientalis pyramidalis</b>	<i>Pyramidal Chinese Arborvitae</i>		
2 to 3 ft.....		2.50	22.50
3 to 4 ft.....		3.25	27.50
4 to 5 ft.....		4.25	37.50
5 to 6 ft.....		6.25	57.50
6 to 7 ft.....		8.00	75.00
7 to 8 ft.....		10.00	95.00
8 to 9 ft.....		12.00	115.00
9 to 10 ft.....		15.00	135.00
10 to 12 ft.....		17.00	160.00
<b>orientalis</b>	<i>Rosedale Hybrid</i>		
18 to 21 in.....		2.75	
2 to 2½ ft.....		5.00	
2½ to 3 ft.....		6.00	



**BUXUS.** Boxwood (see Evergreen Shrubs)

**CEDRUS.** Cedar

	Each	Per 10
<b>atlantica glauca</b> <i>Mount Atlas Cedar</i>		
3 to 4 ft.....	5.00	
9 to 10 ft.....	18.00	
10 to 12 ft.....	20.00	

**CRYPTOMERIA.**

<b>japonica compacta</b> <i>Japanese Cedar</i>		
4 to 5 ft.....	9.00	85.00
5 to 6 ft.....	10.00	95.00
6 to 7 ft.....	12.00	110.00
7 to 8 ft.....	14.00	130.00
8 to 9 ft.....	16.00	
9 to 10 ft.....	18.00	
10 to 12 ft.....	20.00	

**CUPRESSUS.**

<b>triomphe de boskoop</b> <i>Evergreen Cypress</i>		
2 to 2½ ft.....	3.00	
2½ to 3 ft.....	3.50	30.00
3 to 3½ ft.....	4.00	35.00
3½ to 4 ft.....	4.50	40.00
4 to 4½ ft.....	5.00	45.00
4½ to 5 ft.....	5.50	50.00
5 to 5½ ft.....	6.00	55.00
5½ to 6 ft.....	7.00	65.00
6 to 7 ft.....	8.00	75.00
8 to 9 ft.....	15.00	
9 to 10 ft.....	18.00	

**JUNIPERUS.** Juniper

<b>juniperus chinensis</b> <i>Chinese Juniper</i>		
3 to 3½ ft.....	4.50	
3½ to 4 ft.....	5.00	
4 to 5 ft.....	6.00	
<b>chin. argentea</b> <i>Variegated Juniper</i>		
3 to 3½ ft.....	4.50	
<b>chin. pfitzeriana</b> <i>Pfitzer's Juniper</i>		
18 to 24 in.....	3.00	27.50
2 to 2½ ft.....	3.50	30.00
2½ to 3 ft.....	6.50	
3 to 3½ ft.....	7.50	
<b>communis</b> <i>Common Juniper</i>		
12 in. ....	1.50	13.50
15 to 18 in.....	1.75	15.00
<b>communis suecica</b> <i>Swedish Cedar</i>		
10 to 12 in.....	1.35	

JUNIPERUS. (Continued)		Each	Per 10
<b>communis aurea</b>	<i>Douglas Golden Juniper</i>		
10 to 12 in.....		1.50	13.50
12 to 15 in.....		1.75	15.00
<b>communis depressa</b>	<i>Common Spreading Juniper</i>		
15 to 18 in.....		1.50	13.50
18 to 24 in.....		2.00	
2 to 2½ ft.....		3.00	27.50
<b>com. hibernica</b>	<i>Irish Juniper</i>		
1½ to 2 ft.....		1.25	10.00
2 to 2½ ft.....		1.50	12.50
2½ to 3 ft.....		2.00	17.50
3 to 4 ft.....		3.00	27.50
4 to 5 ft.....		4.50	35.00
5 to 6 ft.....		5.50	50.00
6 to 7 ft.....		7.00	
<b>excelsa stricta</b>	<i>Greek Cedar</i>		
15 in.....		2.25	20.00
<b>japonica</b>	<i>Japanese Juniper</i>		
18 to 24 in.....		3.00	
2 to 2½ ft.....		3.50	
<b>jap. aurea</b>	<i>Golden Japanese Juniper</i>		
18 to 24 in.....		3.00	
2 to 2½ ft.....		3.50	
2½ to 3 ft.....		4.00	
<b>sabina</b>	<i>Savin Juniper</i>		
15 to 18 in.....		2.00	
18 to 24 in.....		2.50	22.50
2 to 2½ ft.....		3.00	
<b>sab. horizontalis</b>	<i>Waukegan Juniper</i>		
15 to 18 in.....		1.25	
<b>sab. tamariscifolia</b>	<i>Tamarisk-leaved Juniper</i>		
15 to 18 in.....		2.50	
18 to 24 in.....		3.50	
2½ to 3 ft.....		7.00	
<b>virginiana</b>	<i>Red Cedar</i>		
2 to 3 ft.....		2.00	18.00
3 to 4 ft.....		3.75	35.00
4 to 5 ft.....		5.00	45.00
5 to 6 ft.....		7.00	65.00
6 to 7 ft.....		9.00	85.00
7 to 8 ft.....		11.00	100.00
8 to 9 ft.....		13.00	
9 to 10 ft.....		15.00	
10 to 12 ft.....		18.00	
12 to 15 ft.....		22.00	
<b>virg. cannarti</b>	<i>Columnar Cedar</i>		
3 to 4 ft.....		5.00	45.00
4 to 5 ft.....		6.00	
6 to 7 ft.....		9.00	
7 to 8 ft.....		12.00	

JUNIPERUS. (Continued)		Each	Per 10
<b>virg. elegantissima</b>	<i>Lee's Golden Cedar</i>		
2 to 3 ft.		4.00	
3 to 4 ft.		5.00	45.00
4 to 5 ft.		6.00	55.00
5 to 6 ft.		8.00	75.00
6 to 7 ft.		10.00	
<b>virg. glauca</b>	<i>Blue Cedar</i>		
2 to 3 ft.		3.50	
3 to 4 ft.		4.50	40.00
4 to 5 ft.		5.50	50.00
5 to 6 ft.		8.00	75.00
6 to 7 ft.		10.00	90.00
7 to 8 ft.		12.00	110.00
8 to 9 ft.		15.00	140.00
9 to 10 ft.		18.00	165.00
<b>virg. globosa</b>	<i>Globe-form Juniper</i>		
2 to 2½ ft.		5.50	
<b>virg. pendula</b>	<i>Drooping Cedar</i>		
2½ to 3 ft.		4.00	
3 to 4 ft.		5.00	
5 to 6 ft.		6.00	
<b>virg. Schotti</b>	<i>Schott's Juniper</i>		
4 to 5 ft.		6.00	55.00
<b>virg. standards</b>	<i>Tree-form Cedar</i>		
4½ to 5 ft. stems, 18-24 in. crown		7.00	
5½ to 6 ft. stems, 18-24 in. crown		8.00	
5½ to 6 ft. stems, 20-24 in. crown		10.00	

**PICEA. Spruce**

<b>alba</b>	<i>White Spruce</i>		
2 to 3 ft.		1.75	16.00
3 to 4 ft.		2.50	22.50
4 to 5 ft.		3.50	
5 to 6 ft.		4.50	
6 to 7 ft.		6.00	
7 to 8 ft.		8.00	
8 to 10 ft.		10.00	
<b>Alcockanna</b>	<i>Alcock's Spruce</i>		
3 to 4 ft.		4.50	
4 to 5 ft.		6.00	
<b>excelsa</b>	<i>Norway Spruce</i>		
2 to 3 ft.		1.75	
3 to 4 ft.		2.50	22.50
4 to 5 ft.		3.50	
5 to 6 ft.		4.50	
6 to 7 ft.		6.00	
7 to 8 ft.		7.00	65.00
8 to 10 ft.		9.00	80.00
10 to 12 ft.		10.00	90.00
12 to 14 ft.		14.00	120.00

PICEA. (Continued)		Each	Per 10
<b>ex. inverta</b>	<i>Weeping Norway Spruce</i>		
3 to 4 ft.....		4.00	
4 to 5 ft.....		5.50	
5 to 6 ft.....		6.50	
<b>ex. Maxwellii</b>	<i>Maxwell's Dwarf Spruce</i>		
15 to 18 in.....		12.00	
<b>ex. pyramidalis</b>	<i>Pyramidal Spruce</i>		
3 to 4 ft.....		4.00	
6 to 7 ft.....		7.00	
<b>ex. remonti</b>	<i>Dwarf Norway Spruce</i>		
12 to 15 in.....		4.00	
15 to 18 in.....		5.00	45.00
18 to 24 in.....		6.00	55.00
2 to 2½ ft.....		7.00	65.00
2½ to 3 ft.....		9.00	85.00
<b>orientalis</b>	<i>Oriental Spruce</i>		
1½ to 2 ft.....		2.25	20.00
2 to 2½ ft.....		3.25	30.00
2½ to 3 ft.....		4.25	37.50
3 to 4 ft.....		5.00	45.00
4 to 5 ft.....		5.50	50.00
5 to 6 ft.....		6.50	
6 to 7 ft.....		7.50	
7 to 8 ft.....		8.50	
9 to 10 ft.....		10.00	
<b>polita</b>	<i>Tiger-tail Spruce</i>		
2 to 2½ ft.....		3.50	32.50
2½ to 3 ft.....		4.50	40.00
<b>pung. glauca</b>	<i>Colorado Blue Spruce</i>		
2 to 3 ft.....		4.50	
3 to 4 ft.....		6.50	
4 to 5 ft.....		8.00	
5 to 6 ft.....		10.00	
6 to 7 ft.....		12.00	
7 to 8 ft.....		15.00	
8 to 9 ft.....		18.00	
<b>pung. Kosteriana</b>	<i>Koster's Blue Spruce</i>		
2 to 2½ ft.....		6.00	
2½ to 3 ft.....		7.00	
3 to 3½ ft.....		8.00	
3½ to 4 ft.....		9.00	
4 to 4½ ft.....		10.00	
4½ to 5 ft.....		12.00	
5 to 6 ft.....		14.00	
6 to 7 ft.....		16.00	
7 to 8 ft.....		20.00	
8 to 10 ft.....		30.00	

PICEA. (Continued) Each Per 10

<b>pung. Kost. pendula</b>	<i>Koster's Weeping Blue Spruce</i>		
1½ to 2 ft.....		5.00	
2 to 2½ ft.....		6.00	
2½ to 3 ft.....		7.00	
3 to 3½ ft.....		8.00	
3½ to 4 ft.....		10.00	
4 to 4½ ft.....		12.00	
4½ to 5 ft.....		14.00	
5 to 6 ft.....		16.00	

PINUS. Pine

<b>austriaca</b>	<i>Austrian Pine</i>		
2 to 2½ ft.....		2.00	18.00
2½ to 3 ft.....		2.50	20.00
3 to 4 ft.....		3.50	30.00
4 to 5 ft.....		4.50	
5 to 6 ft.....		7.00	
6 to 7 ft.....		8.00	

<b>cembra</b>	<i>Swiss Stone Pine</i>		
1½ to 2 ft.....		3.25	
2 to 2½ ft.....		3.50	
2½ to 3 ft.....		4.00	
3 to 3½ ft.....		4.50	
3½ to 4 ft.....		5.00	
4 to 4½ ft.....		6.00	
4½ to 5 ft.....		7.00	

<b>mughus</b>	<i>Dwarf Mountain Pine</i>		
12 to 15 in.....		2.00	
15 to 18 in.....		2.50	22.50
1½ to 2 ft.....		3.00	
2 to 2½ ft.....		4.00	
2½ to 3 ft.....		5.00	
4 to 4½ ft.....		10.00	
4½ to 5 ft.....		12.00	
5 to 5½ ft.....		14.00	

<b>resinosa</b>	<i>Red Pine</i>		
2½ to 3 ft.....		2.00	18.00
3 to 4 ft.....		3.00	27.50
4 to 5 ft.....		4.00	

<b>rigida</b>	<i>Pitch Pine</i>		
2½ to 3 ft.....		2.00	18.00
3 to 4 ft.....		3.00	27.50
4 to 5 ft.....		4.00	

<b>strobis</b>	<i>White Pine</i>		
2 to 3 ft.....		1.50	
3 to 4 ft.....		2.75	25.00
4 to 5 ft.....		3.50	32.00
5 to 6 ft.....		4.50	40.00
6 to 7 ft.....		5.00	45.00
7 to 8 ft.....		7.00	65.00
8 to 10 ft.....		10.00	90.00

## PINUS. (Continued)

<i>sylvestris</i>	<i>Scotch Pine</i>	Each	Per 10
2½ to 3 ft.....		2.00	
3 to 4 ft.....		2.75	
4 to 5 ft.....		4.00	35.00
5 to 6 ft.....		6.00	55.00
6 to 7 ft.....		7.50	70.00
7 to 8 ft.....		9.00	85.00
8 to 10 ft.....		12.00	
<i>tanyosho</i>	<i>Japanese Table Pine</i>		
Specimens .....		7.00 to	12.00

## PSEUDOTSUGA. Douglas Spruce

<i>taifolia</i>			
2 to 3 ft.....		3.00	27.00
3 to 4 ft.....		4.50	40.00
4 to 5 ft.....		5.00	45.00
5 to 6 ft.....		6.00	55.00
6 to 7 ft.....		8.50	80.00
7 to 8 ft.....		11.00	100.00
8 to 10 ft.....		14.00	130.00

## RETINOSPORA. Japanese Cypress

<i>filifera</i>	<i>Thread-branched Japanese Cypress</i>		
1½ to 2 ft.....		2.50	22.50
2 to 2½ ft.....		3.50	30.00
2½ to 3 ft.....		4.00	35.00
3 to 3½ ft.....		4.50	

<i>filifera aurea</i>	<i>Golden Thread-branched Japanese Cypress</i>		
1½ ft.....		4.00	
2 ft.....		5.50	
2½ ft.....		7.00	
3 ft.....		10.00	

<i>obtusa</i>	<i>Obtuse-leaved Japanese Cypress</i>		
2 to 2½ ft.....		3.50	30.00
3 to 3½ ft.....		5.00	
3½ to 4 ft.....		5.50	
4 to 4½ ft.....		6.50	
4½ to 5 ft.....		7.50	
5 to 6 ft.....		8.50	80.00

<i>obtusa aurea</i>	<i>Golden Obtuse-leaved Japanese Cypress</i>		
4 to 4½ ft.....		7.00	
4½ to 5 ft.....		8.00	
5½ to 6 ft.....		10.50	
6 to 6½ ft.....		11.00	
6½ to 7 ft.....		12.00	
7 to 8 ft.....		14.00	

RETINOSPORA. (Continued)

<b>obt. crispis</b>	<i>Yellow Cypress</i>	Each	Per 10
1½ to 2 ft.....		3.00	27.50
2 to 2½ ft.....		4.00	
2½ to 3 ft.....		5.00	
3 to 3½ ft.....		6.00	

<b>obt. nana</b>	<i>Dwarf Obtuse-leaved Japanese Cypress</i>		
1½ to 2 ft.....		4.50	
2 to 2½ ft.....		5.50	
2½ to 3 ft.....		6.50	
3½ to 4 ft.....		7.50	
4 to 4½ ft.....		8.50	
4½ to 5 ft.....		9.50	

<b>obt. nana aurea</b>	<i>Golden Dwarf Cypress</i>		
2 to 2½ ft.....		5.50	
2½ to 3 ft.....		6.50	

<b>obt. nana gracilis</b>	<i>Dwarf Cypress</i>		
10 to 12 in.....		3.00	
12 to 15 in.....		4.00	
15 to 18 in.....		5.00	

<b>pisifera</b>	<i>Sawara Cypress</i>		
1½ to 2 ft.....		2.25	
2 to 2½ ft.....		3.00	25.00
2½ to 3 ft.....		3.50	
3 to 4 ft.....		4.50	
4 to 5 ft.....		5.50	
5 to 6 ft.....		7.00	
6 to 7 ft.....		8.00	
7 to 8 ft.....		10.00	
8 to 10 ft.....		12.00	

<b>pisif. aurea</b>	<i>Golden Sawara Cypress</i>		
1½ to 2 ft.....		2.75	25.00
2 to 2½ ft.....		3.25	27.50
2½ to 3 ft.....		4.00	35.00
3 to 4 ft.....		4.50	40.00
4 to 5 ft.....		6.00	
5 to 6 ft.....		8.00	
7 to 8 ft.....		12.00	

<b>plumosa</b>	<i>Plumed Cypress</i>		
1½ to 2 ft.....		2.25	20.00
2 to 2½ ft.....		3.00	25.00
2½ to 3 ft.....		3.50	32.50
3 to 4 ft.....		4.50	
4 to 5 ft.....		6.00	
5 to 6 ft.....		7.00	
6 to 7 ft.....		8.00	
7 to 8 ft.....		9.00	
8 to 9 ft.....		10.00	

## RETINOSPORA. (Continued)

	Each	Per 10
<b>plum. aurea</b> <i>Golden Plumed Cypress</i>		
1½ to 2 ft.....	2.25	20.00
2 to 2½ ft.....	3.00	25.00
2½ to 3 ft.....	3.50	32.50
3 to 4 ft.....	4.50	40.00
4 to 5 ft.....	6.00	
5 to 6 ft.....	7.00	
6 to 7 ft.....	8.00	
7 to 8 ft.....	9.00	
8 to 9 ft.....	10.00	

**plum. argentea** *Silver Plumed Cypress*

1½ to 2 ft.....	3.00	
2 to 2½ ft.....	3.50	

**plum. fluvescens** *Sulphur Plumed Dwarf Cypress*

1½ to 2 ft.....	3.00	
2 to 2½ ft.....	3.50	
2½ to 3 ft.....	4.00	35.00
3 to 3½ ft.....	5.00	

**plum. lutescens** *Globe Form*

10 to 12 in.....	2.00	18.00
------------------	------	-------

**squarrosa sulphurea** *Sulphur-colored Cypress*

1½ to 2 ft.....	2.50	
2 to 2½ ft.....	3.25	30.00
2½ to 3 ft.....	4.00	
3 to 3½ ft.....	4.75	

**sq. veitchii** *Blue Japanese Cypress*

1½ to 2 ft.....	2.50	
2 to 2½ ft.....	3.25	30.00
2½ to 3 ft.....	4.00	35.00
3 to 4 ft.....	5.50	50.00
4 to 5 ft.....	7.00	
5 to 6 ft.....	9.00	
6 to 7 ft.....	10.50	
7 to 8 ft.....	12.00	

SCIADOPITYS. *Umbrella Pine***verticillata** *Japanese Umbrella Pine*

1½ to 2 ft.....	4.00	
2 to 2½ ft.....	5.50	
2½ to 3 ft.....	7.00	
3 to 4 ft.....	10.00	
4 to 5 ft.....	13.00	
6 to 7 ft.....	20.00	
7 to 8 ft.....	25.00	



**TAXUS. Yew.**

		Each	Per 10
<b>baccata</b>	<i>English Yew</i>		
18 to 24 in.....		2.00	
<b>bac. elegantissima</b>	<i>Variegated Yew</i>		
12 to 15 in.....		2.75	25.00
15 to 18 in.....		3.50	32.50
18 to 24 in.....		4.50	
<b>bac. repandens</b>	<i>Spreading English Yew</i>		
12 to 18 in.....		2.50	
1½ to 2 ft.....		4.00	
2 to 2½ ft.....		5.00	45.00
<b>bac. Washingtonii</b>	<i>Washington Golden Yew</i>		
15 to 18 in.....		4.00	37.50
<b>canadensis</b>	<i>Canadian Yew</i>		
15 to 18 in.....		2.00	18.00
1½ to 2 ft.....		2.75	25.00
2 to 2½ ft.....		3.25	
2½ to 3 ft.....		4.50	40.00
3 to 3½ ft.....		5.50	
<b>cuspidata</b>	<i>Japanese Yew</i>		
1½ to 2 ft.....		3.50	30.00
2 to 2½ ft.....		4.50	40.00
2½ to 3 ft.....		5.50	50.00
3 to 3½ ft.....		6.50	60.00
3½ to 4 ft.....		8.00	75.00
4 to 4½ ft.....		10.00	
4½ to 5 ft.....		11.00	
5½ to 6 ft.....		12.00	
6 to 7 ft.....		15.00	
<b>cuspidata brevifolia</b>	<i>Dwarf Japanese Yew</i>		
15 to 18 in.....		4.00	
1½ to 2 ft.....		6.00	57.00
2 to 2½ ft.....		8.00	

**THUYA. Arborvitae**

<b>occidentalis</b>	<i>American Arborvitae</i>		
2 ft.....		1.50	12.50
3 ft.....		2.25	20.00
4 ft.....		3.00	27.50
5 ft.....		5.00	45.00
6 ft.....		6.50	60.00
7 ft.....		8.00	75.00
8 ft.....		10.00	90.00
9 ft.....		11.00	100.00
10 ft.....		14.00	125.00
12 ft.....		16.00	
<b>occ. compacta</b>	<i>Parson's Dwarf Arborvitae</i>		
15 to 18 in.....		1.80	16.00

## THUYA. (Continued)

	Each	Per 10
<b>occ. elegantissima</b>		
8 ft.....	9.00	
<b>occ. ellwangeriana</b> <i>Ellwanger's Arborvitae</i>		
2 to 2½ ft.....	3.25	30.00
2½ to 3 ft.....	3.75	35.00
3 to 4 ft.....	4.50	40.00
4 to 5 ft.....	5.50	50.00
5 to 6 ft.....	7.00	65.00
<b>occ. globosa</b> <i>Globe Arborvitae</i>		
10 to 12 in.....	1.35	
12 to 15 in.....	1.50	14.00
15 to 18 in.....	1.80	16.00
1½ to 2 ft.....	2.75	25.00
2 to 2½ ft.....	3.50	30.00
<b>occ. Hoveyii</b> <i>Hovey's Arborvitae</i>		
12 to 15 in.....	1.35	
15 to 18 in.....	1.50	
1½ to 2 ft.....	2.00	18.00
2 to 2½ ft.....	3.00	27.50
2½ to 3 ft.....	3.50	30.00
3 to 3½ ft.....	4.00	
3½ to 4 ft.....	4.50	
<b>occ. lutea</b> <i>George Peabody's Golden Arborvitae</i>		
18 in.....	1.75	
2 ft.....	2.50	
2½ ft.....	3.50	32.50
3 ft.....	3.75	35.00
4 ft.....	4.50	40.00
5 ft.....	6.00	55.00
6 ft.....	8.00	75.00
7 ft.....	9.00	
8 ft.....	10.00	
9 to 10 ft.....	12.00	
<b>occ. pyramidalis</b> <i>Pyramidal Arborvitae</i>		
2 ft.....	1.75	16.00
2½ ft.....	2.50	22.50
3 ft.....	3.00	27.00
4 ft.....	4.50	40.00
5 ft.....	6.00	55.00
6 ft.....	7.00	
7 ft.....	9.00	
<b>occ. Rosenthali</b> <i>Rosenthal's Arborvitae</i>		
1½ to 2 ft.....	3.00	27.00
2 to 2½ ft.....	3.50	32.50
2½ to 3 ft.....	4.00	36.00
3 to 3½ ft.....	4.50	40.00
3½ to 4 ft.....	5.50	

**THUYA. (Continued)**

<b>occ. semperaurea</b>	<i>Evergolden Arborvitae</i>	Each	Per 10
2 ft.....		2.00	
2½ ft.....		3.00	
3 ft.....		4.00	35.00
3½ ft.....		4.50	40.00
4 ft.....		5.50	50.00
5 ft.....		6.50	60.00
6 ft.....		8.00	72.50

**occ. spiralis** *Douglas Pyramidal Arborvitae*

3 ft.....	3.00	27.00
4 ft.....	4.00	36.00
7 ft.....	9.00	
8 ft.....	11.00	

**standishii** *Japanese Arborvitae*

2 to 2½ ft.....	2.75	
2½ to 3 ft.....	3.50	
3½ to 4 ft.....	4.50	
5 to 6 ft.....	7.00	

**occ. wareana** *Siberian Arborvitae*

1½ to 2 ft.....	2.00	18.50
2 to 2½ ft.....	2.75	25.00
2½ to 3 ft.....	3.50	30.00
3 to 4 ft.....	4.50	40.00
4 to 5 ft.....	5.50	
5 to 6 ft.....	7.00	

**TSUGA. Hemlock**

**tsuga canadensis** *Common Hemlock*

1½ to 2 ft.....	2.25	20.00
2 to 2½ ft.....	3.00	27.00
2½ to 3 ft.....	3.75	35.00
3 to 3½ ft.....	4.25	37.50
3½ to 4 ft.....	5.00	45.00
4 to 5 ft.....	6.00	55.00
5 to 6 ft.....	8.00	75.00
6 to 7 ft.....	10.00	90.00
7 to 8 ft.....	12.00	110.00

## EVERGREEN SHRUBS

In winter, when the landscape is almost shorn of its beauty, the bright, glossy foliage of evergreen shrubs make a brave display, and is, on this account, doubly valuable.

A deep, cool, moist subsoil with proper drainage is the ideal soil, and a shaded position is often preferable.

### ANDROMEDA. Fetter Bush

	Each	Per 10
<b>andromeda floribunda</b> <i>Lily of the Valley Tree</i>		
9 to 12 in.....	2.00	
12 to 15 in.....	2.75	
<b>japonica</b> <i>Japanese Fetter Bush</i>		
9 to 12 in.....	2.00	
12 to 15 in.....	2.75	
15 to 18 in.....	3.50	

### AZALEA. (Also see Deciduous Shrubs.)

<b>azalea amoena</b> <i>Pink Japanese Azalea</i>		
10 to 12 in.....	2.00	
12 to 15 in.....	3.00	
15 to 18 in.....	4.00	
18 to 21 in.....	5.00	
21 to 24 in.....	6.00	
<b>hinodegiri</b> <i>Deep Pink Japanese Azalea</i>		
10 to 12 in.....	2.00	
12 to 15 in.....	3.00	
15 to 18 in.....	4.00	
18 to 21 in.....	5.00	
21 to 24 in.....	6.00	
<b>indica alba</b> <i>White Indian Azalea</i>		
10 to 12 in.....	2.00	
<b>kaempferi</b> <i>Kaempfer's Evergreen Azalea</i> (Orange Red to Pink)		
15 to 18 in.....	2.00	18.00
18 to 21 in.....	2.50	20.00
21 to 24 in.....	3.00	27.00

### BERBERIS

<b>ilicifolia</b> <i>Holly-leaved Barberry</i>		
18 to 24 in.....	1.00	8.00
2½ to 3 ft.....	1.75	15.00
3½ to 4 ft.....	2.25	20.00

BUXUS. Boxwood		Each	Per 10
<i>rotundifolia</i> <i>Round-leaf Boxwood</i> (Pyramidal Form)			
4 to 4½ ft.	.....	12.00	
4½ to 5 ft.	.....	15.00	
5 to 5½ ft.	.....	18.00	
5½ to 6 ft.	.....	20.00	
<i>sempervirens</i> <i>Bush Boxwood</i>			
10 to 12 in.	.....	1.00	9.00
12 to 15 in.	.....	2.00	18.00
15 to 18 in.	.....	3.00	27.00
18 to 24 in.	.....	4.00	36.00
24 to 30 in.	.....	6.50	
<i>sempervirens</i> <i>Globe Form</i>			
10 to 12 in.	.....	3.00	
12 to 15 in.	.....	4.00	
15 to 18 in.	.....	5.50	
18 to 24 in.	.....	7.50	
<i>sempervirens</i> <i>Pyramidal Form</i>			
2 to 2½ ft.	.....	4.50	
2½ to 3 ft.	.....	6.00	
3 to 3½ ft.	.....	8.00	
3½ to 4 ft.	.....	10.00	
4 to 4½ ft.	.....	12.00	
4½ to 5 ft.	.....	14.00	
<i>sempervirens</i> <i>Tree or Standard Form</i>			
12 to 18 in. high, 18 in. crown.	.....	10.00	
18 to 24 in. high, 18 in. crown.	.....	12.00	
24 to 30 in. high, 24 in. crown.	.....	15.00	
24 to 30 in. high, 30 in. crown.	.....	20.00	
<i>suffruticosa</i> <i>Dwarf Boxwood</i>			
4 to 6 in.	.....	.50	4.00
6 to 8 in.	.....	.80	7.00
8 to 10 in.	.....	1.25	11.00
CALLUNA. <i>Evergreen Heather</i>			
<i>calluna alportii</i>			
10 to 12 in.	.....	1.00	
<i>nana compacta</i> <i>Dwarf Variety</i>			
6 to 8 in.	.....	1.00	
<i>carnea</i>			
10 to 12 in.	.....	1.00	
COTONEASTER			
<i>cotoneaster horizontalis</i> <i>Chinese Quince Berry</i>			
18 to 24 in.	.....	1.50	12.50
<i>horizontalis davidiana</i>			
10 to 12 in.	.....	.85	7.50
DAPHNE			
<i>daphne cneorum</i> <i>Garland Flower</i>			
15 to 18 in.	.....	2.00	

EUONYMUS		Each	Per 10
<i>japonicus</i>	<i>Evergreen Bush Euonymus</i>		
2 to 3 ft.....		2.50	
<i>carrieri</i>	<i>Carrier's Creeper</i>		
Medium plants.....		.80	6.00
Strong plants.....		1.00	9.00
<i>radicans</i>	<i>Japanese Evergreen Creeper</i>		
Medium plants.....		.40	3.50
<i>radicans variegata</i>	<i>Variegated Japanese Creeper</i>		
Medium plants.....		.40	3.50
<i>vegetus</i>	<i>Broad-leaved Evergreen Buttersweet</i>		
Medium plants.....		.80	6.00
Strong plants.....		1.00	9.00
<b>HEDERA</b>			
<i>helix</i>	<i>English Ivy</i>		
Strong plants.....		1.00	9.00
<b>ILEX. Holly</b>			
<i>aquifolium</i>	<i>English Holly</i>		
9 to 12 in.....		1.00	
12 to 15 in.....		1.50	
<i>crenata</i>	<i>Japanese Holly</i>		
12 to 15 in.....		1.75	16.00
15 to 18 in.....		2.00	
<i>opaca</i>	<i>American Holly</i>		
18 to 24 in.....		2.50	
<b>KALMIA. Laurel</b>			
<i>latifolia</i>	<i>Mountain Laurel</i>		
1½ to 2 ft.....		2.00	18.00
2 to 2½ ft.....		2.50	20.00
2½ to 3 ft.....		3.00	25.00
3 to 4 ft.....		4.00	35.00
<b>LEUCOTHOE</b>			
<i>cataebaei</i>	<i>Drooping Andromeda</i>		
12 to 15 in.....		1.50	14.00
15 to 18 in.....		1.80	16.00
18 to 24 in.....		2.25	20.00
<b>MAHONIA</b>			
<i>aquifolia</i>	<i>Oregon Grape</i>		
15 to 18 in.....		1.25	10.00
18 to 24 in.....		1.75	16.00
2 to 2½ ft.....		2.00	18.00

**PACHYSANDRA**

Each · Per 10

<b>terminalis</b>	<i>Japanese Spurge</i>		
Medium plants.....		.25	2.00
Strong plants.....		.30	2.75

**YUCCA**

<b>filamentosa</b>	<i>Adam's Needle</i>		
Medium plants.....		.75	6.00
Strong plants.....		1.00	9.00

**RHODODENDRONS**

<b>carolinianum</b>	(Collected Deep Pink Flowers)		
18 to 24 in.....		3.25	30.00
2 to 2½ ft.....		4.50	40.00
2½ to 3 ft.....		6.00	
3 to 3½ ft.....		7.00	
3½ to 4 ft.....		8.00	75.00

<b>catwabiense</b>	(Collected Deep Rose Flowers)		
2 to 2½ ft.....		3.50	
2½ to 3 ft.....		4.50	40.00

<b>maximum</b>	(Great Bay, white and pink tinged flowers)		
2 to 2½ ft.....		3.50	30.00
2½ to 3 ft.....		4.50	40.00
3 to 3½ ft.....		5.50	50.00
3½ to 4 ft.....		6.50	60.00
5½ to 6 ft.....		9.00	85.00
6 to 7 ft.....		12.00	

**HYBRID RHODODENDRONS.**

1½ to 2 ft.....	4.00
2 to 2½ ft.....	5.00
2½ to 3 ft.....	7.00
3 to 3½ ft.....	9.00
3½ to 4 ft.....	12.00
4 to 4½ ft.....	14.00

**Abraham Lincoln (Fine Red)**

1½ to 2 ft.....	
2 to 2½ ft.....	

**album elegans (Large white)**

3½ to 4 ft.....	
4 to 4½ ft.....	

**Boule de Neige (Pure White)**

	Each
1½ to 2 ft.....	5.00
2 to 2½ ft.....	6.00

**caratacus (Rich Crimson)..**

2 to 2½ ft.....	
2½ to 3 ft.....	

**Charles Dickens (Rich Crimson)**

1½ to 2 ft.....	
2 to 2½ ft.....	
2½ to 3 ft.....	

**canadidissimus (White)**

2½ to 3 ft.....	
3 to 3½ ft.....	

**everestianum (Rose Lilac)**

2 to 2½ ft.....	
2½ to 3 ft.....	

**F. D. Godman (Crimson)**

2 to 2½ ft.....	
-----------------	--

**General McIntosh (Red)**

2½ to 3 ft.....	
-----------------	--

**H. H. Hunnewell (Rich, Dark Crimson)**

2½ to 3 ft.....	
-----------------	--

**H. W. Sargent (Crimson)**

2 to 2½ ft.....	
-----------------	--

## HYBRID RHODODENDRONS (Continued)

**Ignatius Sargent (Pink)**  
2½ to 3 ft.....

**Ingersoll**  
2 to 2½ ft.....

**Kettledrum (Crimson)**  
2 to 2½ ft.....  
2½ to 3 ft.....  
3 to 3½ ft.....

**Lady Clermont (Dark Red)**  
3 to 3½ ft.....

**Lady Grey Egerton (Blush)**  
3 to 3½ ft.....  
3½ to 4 ft.....

**Lady Armstrong (Pale Rose)**  
2 to 2½ ft.....

**Mrs. Milner (Rich Crimson)**  
2 to 2½ ft.....

**Mrs. R. S. Rand (Red)**  
2 to 2½ ft.....  
2½ to 3 ft.....

**Parson's Gloriosum (Red)**  
2½ to 3 ft.....  
3 to 3½ ft.....

**Roseum Elegans (Rine Rose)**  
2 to 2½ ft.....  
2½ to 3 ft.....

## DWARF RHODODENDRONS

Each

**hirsutum (Brilliant Pink)**  
12 to 15 in..... 4.00

**myrtifolium (Lavender)**  
1½ to 2 ft..... 5.50  
2 to 2½ ft..... 6.50

**ovatum (Pink)**  
15 to 18 in..... 4.50  
18 to 24 in..... 5.50

**punctatum (Rose)**  
15 to 18 in..... 4.50

**wilsoni (Lavender)**  
1½ to 2 ft..... 5.50  
2 to 2½ ft..... 6.50  
2½ to 3 ft..... 7.50



## DECIDUOUS TREES

Nothing can be planted which will grow so well and with so little attention and care as trees. The initial cost is small and paid for many times over by the beauty, pleasure and satisfaction which they bring.

Our collection includes trees adapted for all locations, climates and soils.

## ACER. Maple

*dasyarpum**Silver Maple*

High	Caliper	Each	Per 10	Per 100
12 to 16 ft.	2 to 2½ in.	2.50	22.50	
	2½ to 3 in.	3.50	30.00	
	3 to 3½ in.	4.50	40.00	
	3½ to 4 in.	6.00		
	4 to 4½ in.	8.00		
	4½ to 5 in.	10.00		

*dasyarpum pyramidalis**Pyramidal Silver Maple*

10 to 14 ft.	1½ to 2 in.	1.75	16.00	
	2 to 2½ in.	2.50	22.50	
	2½ to 3 in.	3.50	30.00	
	3 to 3½ in.	4.50	40.00	

*platanoides**Norway Maple*

10 to 12 ft.	1 to 1¼ in.	1.50	14.00	
12 to 14 ft.	1¼ to 1½ in.	2.00	18.00	
14 to 16 ft.	1½ to 1¾ in.	2.50	22.50	200.00
	1¾ to 2 in.	3.00	28.00	250.00
	2 to 2½ in.	4.00	35.00	325.00
	2½ to 3 in.	4.50	40.00	350.00
	3 to 3½ in.	6.00	54.00	500.00
	3½ to 4 in.	7.50	70.00	650.00
	4 to 4½ in.	10.00	90.00	800.00
	4½ to 5 in.	15.00	135.00	1250.00
	5 to 5½ in.	20.00	180.00	
	5½ to 6 in.	25.00	220.00	
6 to 6½ in.	30.00			
	6½ to 7 in.	35.00		
	7 to 7½ in.	40.00		
	7½ to 8 in.	50.00		

*pla. argentea variegata* *Variegated Maple*

5 to 6 ft.	1.50	14.00
6 to 8 ft.	2.00	18.00

## ACER. (Continued)

High	Caliper	Each	Per 10	Per 100
<b>platanoides Reitenbachii</b> <i>Reitenbach's Purple-leaved Maple</i>				
12 to 14 ft.	2 to 2½ in.	5.00	45.00	
	2½ to 3 in.	6.00		
	3 to 3½ in.	7.50		
	3½ to 4 in.	10.00		
	4 to 4½ in.	12.00		
	4½ to 5 in.	16.00	150.00	
	5 to 5½ in.	20.00		
	5½ to 6 in.	25.00		
<b>platanoides Schwedleri</b> <i>Schwedler's Purple-leaved Maple</i>				
12 to 14 ft.	1½ to 2 in.	4.00	35.00	
	2 to 2½ in.	5.00	45.00	400.00
	2½ to 3 in.	6.00	55.00	
	3 to 3½ in.	7.50	70.00	
	3½ to 4 in.	10.00		
	4 to 4½ in.	12.00		
	4½ to 5 in.	16.00		
	5 to 5½ in.	20.00		
<b>platanoides Spaethi</b> <i>Spaeth's Pink-leaved Norway Maple</i>				
10 to 12 ft.	1½ to 2 in.	4.00	35.00	
10 to 16 ft.	2 to 2½ in.	5.00	45.00	
	2½ to 3 in.	6.00	55.00	
	3 to 3½ in.	7.50	70.00	
	3½ to 4 in.	10.00		
	4 to 4½ in.	12.00		
<b>pseudo-platanus</b> <i>Sycamore Maple</i>				
8 to 12 ft.	1½ to 1¾ in.	2.25	20.00	
10 to 14 ft.	1¾ to 2 in.	2.75	25.00	225.00
	2 to 2½ in.	3.75	35.00	275.00
	2½ to 3 in.	5.00		
	3 to 3½ in.	6.00		
	3½ to 4 in.	7.50		
	4 to 4½ in.	10.00		
<b>rubrum</b> <i>Scarlet Maple</i>				
10 to 12 ft.	1½ to 2 in.	3.00		
	2 to 2½ in.	3.50		
10 to 16 ft.	2½ to 3 in.	4.50		
	3 to 3½ in.	6.00		
	3½ to 4 in.	7.50		
<b>saccharum</b> <i>Sugar, Rock or Hard Maple</i>				
8 to 10 ft.	1½ to 1¾ in.	2.50	24.00	
10 to 14 ft.	1¾ to 2 in.	3.00	28.00	
	2 to 2½ in.	3.50	32.50	
	2½ to 3 in.	4.50	40.00	
	3 to 3½ in.	7.00	65.00	
	3½ to 4 in.	10.00	90.00	
	4 to 4½ in.	12.00		
	4½ to 5 in.	18.00	170.00	
	5 to 5½ in.	20.00		
	5½ to 6 in.	22.00		
	6 to 7 in.	25.00		

**ACER—JAPANESE MAPLES**

<b>japonicum aureum</b>	<i>Golden Japanese Maple</i>		
High	Caliper	Each	Per 10
1 to 1½ ft.....		2.50	
1½ to 2 ft.....		3.50	
2 to 2½ ft.....		5.00	
2½ to 3 ft.....		6.00	
3 to 3½ ft.....		7.00	
<b>polymorphum dissectum</b>	<i>Green Cut-leaf Japanese Maple</i>		
1½ to 2 ft.....		3.00	
2 to 2½ ft.....		4.00	
3 to 3½ ft.....		5.00	
<b>poly. filicilium</b>	<i>Green-leaved Japanese Maple</i>		
5 to 6 ft.....		12.00	
<b>poly. atropurpureum</b>	<i>Purple-leaved Japanese Maple</i>		
2 to 2½ ft.....		3.00	
2½ to 3 ft.....		5.00	
3 to 3½ ft.....		7.00	
3½ to 4 ft.....		8.00	
4 to 4½ ft.....		9.00	
5½ to 6 ft.....		12.00	
<b>poly. atro. dissectum</b>	<i>Purple Cut-leaved Japanese Maple</i>		
1½ to 2 ft.....		4.50	
2 to 2½ ft.....		5.00	
2½ to 3 ft.....		6.00	
3 to 3½ ft.....		7.00	
<b>poly. atro nigrum</b>	<i>Black-leaved Japanese Maple</i>		
2 to 2½ ft.....		3.00	
2½ to 3 ft.....		5.00	
3 to 3½ ft.....		7.00	
3½ to 4 ft.....		8.00	
5 to 5½ ft.....		10.00	
5½ to 6 ft.....		12.00	
6 to 7 ft.....		15.00	
<b>scolopendrifolium rubrum</b>			
2½ to 3 ft.....		5.50	
3 to 3½ ft.....		6.00	
3½ to 4 ft.....		7.50	

**AESCULUS. Horse Chestnut**

<b>hippocastanum</b>	<i>Common White-flowering Horse Chestnut</i>		
High	Caliper		
8 to 10 ft.....	1 to 1½ in.	2.50	
8 to 10 ft.....	1½ to 2 in.	3.50	32.50
	2 to 2½ in.	4.50	40.00
	2½ to 3 in.	5.50	
	3 to 3½ in.	6.00	
	3½ to 4 in.	7.00	
	4 to 4½ in.	10.00	
	4½ to 5 in.	12.00	
	5 to 5½ in.	14.00	

## AESCULUS. (Continued)

<b>hippo. rubicunda</b>		<i>Red-flowering Horse Chestnut</i>			
High		Caliper		Each	Per 10
8 to 10 ft.....	1	to 1½ in.		3.50	
8 to 10 ft.....	1½	to 2 in.		4.00	36.00
		2	to 2½ in.	5.00	
		2½	to 3 in.	6.00	
		3	to 3½ in.	7.00	

## ALIANTHUS. Tree of Heaven

<b>glandulosa</b>		<i>Chinese Tree of Heaven</i>			
6 to 8 ft.....				1.50	14.00
8 to 10 ft.....	1¼	to 1½ in.		1.75	

## ARALIA. Hercules Club

<b>spinosa</b>		<i>Angelica Tree</i>			
3 to 4 ft.....				.75	6.00
4 to 5 ft.....				1.00	9.00
5 to 6 ft.....				1.25	11.00
6 to 8 ft.....				1.50	14.00
8 to 10 ft.....				2.00	17.50

## BETULA. Birch

<b>alba</b>		<i>European White Birch</i>			
High		Caliper		Each	Per 10
6 to 8 ft.....				1.50	14.00
8 to 10 ft.....	1	to 1½ in.		2.00	18.00
10 to 12 ft.....	1½	to 2 in.		2.50	
		2	to 2½ in.	3.00	
		2½	to 3 in.	3.50	
		3	to 3½ in.	4.00	
		3½	to 4 in.	5.50	
		4½	to 5 in.	8.00	
		5	to 6 in.	10.00	
<b>alba atropurpurea</b>		<i>Purple-leaved Birch</i>			
8 to 10 ft.....	1½	to 2 in.		3.00	
	2	to 2½ in.		4.00	
<b>populifolia</b>		<i>American White Birch</i>			
6 to 8 ft.....				1.00	9.00
10 to 12 ft.....	1½	to 2 in.		2.50	
	2	to 2½ in.		3.00	
	2½	to 3 in.		3.50	
	3	to 3½ in.		4.00	
	3½	to 4 in.		5.50	
<b>rubra</b>		<i>Red Birch</i>			
10 to 12 ft.....	1½	to 2 in.		2.50	
	2	to 2½ in.		3.00	27.50
	2½	to 3 in.		3.50	
	3	to 3½ in.		4.00	
	3½	to 4 in.		5.50	

CARPINUS. Hornbeam

betulas		<i>European Hornbeam</i>		Each	Per 10
High					
3 to 4 ft.	.....			.75	7.00
4 to 5 ft.	.....			1.00	9.00
5 to 6 ft.	.....			1.25	11.50
6 to 7 ft.	.....			1.50	14.00
7 to 8 ft.	.....			2.00	18.00

CATALPA.

bungei		<i>Chinese Catalpa</i>			
4 to 6 ft. stems,	2-year head.....			2.50	22.50
4 to 6 ft. stems,	3-year head.....			3.00	27.00
4 to 6 ft.,	4-year head.....			4.00	
4 to 6 ft.,	5-year head.....			5.50	50.00
4 to 8 ft. stems (specimens)	.....	6.00 to	10.00		

speciosa		<i>Western Catalpa</i>			
10 to 12 ft.	.....	1	to 1½ in.	1.25	
		1½	to 2 in.	1.75	
		2	to 2½ in.	2.50	22.50
		2½	to 3 in.	3.00	27.00
		3	to 3½ in.	4.00	35.00
		3½	to 4 in.	5.00	45.00
		4	to 4½ in.	7.50	70.00
		4½	to 5 in.	10.00	90.00

00 04  
00 04  
00 04

**CORNUS. Dogwood**

<b>florida</b>	<i>White-flowering Dogwood</i>		
High		Each	Per 10
2 to 3 ft.....		.75	
3 to 4 ft.....		1.00	9.00
4 to 5 ft.....		1.25	10.00
5 to 6 ft.....		1.75	15.00
6 to 7 ft.....		2.00	
7 to 8 ft.....		2.75	
<b>florida rubra</b>	<i>Pink-flowering Dogwood</i>		
2 to 3 ft.....		1.75	15.00
3 to 4 ft.....		2.50	22.50
4 to 5 ft.....		3.25	30.00
5 to 6 ft.....		4.00	
6 to 7 ft.....		5.50	50.00
7 to 8 ft.....		6.50	60.00
<b>kousa</b>	<i>Japanese Dogwood</i>		
4 to 5 ft.....		1.00	9.00
5 to 6 ft.....		1.50	14.00
6 to 7 ft.....		1.75	15.00

**CRATAEGUS. Hawthorn**

<b>oxyantha</b>	<i>English White-flowering Hawthorne</i>		
4 to 5 ft.....		1.00	9.00
5 to 6 ft.....		1.50	14.00
6 to 7 ft.....		2.00	18.00
<b>oxyantha alba plena</b>	<i>Double White-flowering English Hawthorne</i>		
5 to 6 ft.....		2.50	22.50
6 to 8 ft.....		3.00	25.00
<b>oxyantha paulii</b>	<i>Paul's Double Scarlet Thorn</i>		
5 to 6 ft.....		2.50	22.50
<b>oxyantha rosea plena</b>	<i>Double Pink-flowering Hawthorne</i>		
3 to 4 ft.....		1.25	10.00
4 to 5 ft.....		2.00	18.00
5 to 6 ft.....		2.50	22.50

**FAGUS. Beech**

<b>ferruginea</b>	<i>American Beech</i>		
5 to 6 ft.....		2.50	22.50
6 to 8 ft.....		3.50	30.00
8 to 10 ft.....		6.00	50.00
10 to 12 ft.....		8.00	
<b>sylvatica</b>	<i>European Beech</i>		
4 to 5 ft.....		2.00	
5 to 6 ft.....		2.50	
6 to 8 ft.....		3.50	30.00
8 to 10 ft.....		5.00	45.00
10 to 12 ft.....		7.50	70.00

FAGUS. (Continued)

<i>sylvatica tricolor</i>	<i>Tricolored Beech</i>		
High		Each	Per 10
5 to 6 ft.....		4.00	

<i>sylvatica heterophylla</i>	<i>Fern-leaved Beech</i>		
3 to 4 ft.....		3.00	

<i>sylvatica purpurea</i>	<i>Copper Beech</i>		
3 to 4 ft.....		1.50	
4 to 5 ft.....		2.00	
5 to 6 ft.....		3.50	30.00
6 to 8 ft.....		4.50	40.00
8 to 10 ft.....		6.00	54.00
10 to 12 ft.....		10.00	

<i>syl. purpurea Riversi</i>	<i>River's Purple Beech</i>		
5 to 6 ft.....		4.00	
6 to 7 ft.....		5.00	45.00
7 to 8 ft.....		7.00	65.00
8 to 9 ft.....		9.00	
9 to 10 ft.....		10.00	
10 to 12 ft.....		14.00	

<i>syl. purpurea rosea-</i>			
<i>marginatis</i>	<i>Rose Margin Beech</i>		
4 to 5 ft.....		3.50	
5 to 6 ft.....		4.00	
6 to 7 ft.....		6.00	54.00
7 to 8 ft.....		8.00	72.00
8 to 10 ft.....		10.00	

FRAXINUS. Ash

<i>americana</i>	<i>American White Ash</i>		
10 to 12 ft.....	1½ to 2 in.	2.00	
12 to 14 ft.....	2 to 2½ in.	3.00	25.00
	2½ to 3 in.	4.00	
	3 to 3½ in.	5.00	45.00
	3½ to 4 in.	6.00	54.00
	4 to 4½ in.	7.00	

GINKGO. Maidenhair Tree

<i>biloba</i>	<i>Maiden Hair Tree</i>		
6 to 8 ft.....	1 to 1¼ in.	2.00	18.00
8 to 10 ft.....	1¼ to 1½ in.	2.50	22.50
10 to 12 ft.....	1½ to 2 in.	3.50	30.00
	2 to 2½ in.	4.50	40.00
	2½ to 3 in.	5.50	

**GLEDITSCHIA. Honey Locust**

triacanthos

*Thorned Honey Locust*

High	Caliper	Each	Per 10
4 to 5 ft.....		.75	
5 to 6 ft.....		1.00	9.00
6 to 8 ft.....		1.25	10.00
8 to 10 ft.....		1.50	12.50
	1½ to 2 in.	2.50	22.50
	2 to 2½ in.	3.50	32.50

**HALESIA. Snowdrop**

tetraptera

*Silver Bell*

2 to 3 ft.....		.75	
3 to 4 ft.....		1.00	
4 to 5 ft.....		1.25	10.00
5 to 6 ft.....		1.50	12.50
6 to 8 ft.....		1.75	

**KOELREUTERIA. Varnish Tree**

paniculata

6 to 7 ft.....	2.25
----------------	------

**LABURNUM. Golden Chair. (See Shrubs)****LARIX. Larch**

europea

*European Larch*

5 to 6 ft.....	1.00	
6 to 7 ft.....	1.25	
7 to 8 ft.....	1.50	
8 to 10 ft.....	1.75	16.00
10 to 12 ft.....	2.00	

**LIQUIDAMBAR. Sweet Gum**

stryaciflua

*Sweet Gum*

7 to 8 ft.....		2.50	20.00
8 to 10 ft.....	1½ to 2 in.	3.50	22.50
	2 to 2½ in.	4.00	
	2½ to 3 in.	4.50	

**LIRIODENDRON. Tulip Tree**

tulipifera

6 to 8 ft.....		1.75
8 to 10 ft.....	1 to 1½ in.	2.25
	1½ to 2 in.	3.00
	2 to 2½ in.	4.00
	2½ to 3 in.	5.00
	3 to 3½ in.	8.00
	3½ to 4 in.	10.00



**MAGNOLIA.**

<i>glauca</i>	<i>Sweet Bay</i>		
High	Caliper	Each	Per 10
2 to 3 ft.....		2.00	
3 to 4 ft.....		2.50	
<i>Lennei</i>	<i>Lenne's Magnolia</i>		
3 to 4 ft.....		5.00	
4 to 5 ft.....		7.00	
<i>Soulangeana</i>	<i>Soulange's Magnolia</i>		
2 to 3 ft.....		3.00	
3 to 4 ft.....		5.00	
4 to 5 ft.....		7.00	
5 to 6 ft.....		8.00	
6 to 7 ft.....		10.00	
<i>stellata</i>	<i>Starry Magnolia Semi-double</i>		
2 to 2½ ft.....		4.00	
2½ to 3 ft.....		5.00	
4½ to 5 ft.....		9.00	

**MORUS.** Mulberry. (See Fruits; also Weeping Trees)

**PAULOWNIA.** Empress Tree

<i>imperialis</i>			
12 to 15 ft.....	3 to 3½ in.	3.00	

**PLATANUS.** Plane

<i>orientalis</i>	<i>Oriental Plane, Buttonwood or Sycamore</i>		
8 to 10 ft.....	1¼ to 1½ in.	1.75	
10 to 12 ft.....	1½ to 2 in.	2.50	22.50
	2 to 2½ in.	3.50	30.00
	2½ to 3 in.	4.00	36.00
	3 to 3½ in.	5.00	45.00
	3½ to 4 in.	7.00	60.00
	4 to 4½ in.	9.00	

**POPULUS.** Poplar

<i>deltoides</i>	<i>Carolina Poplar</i>		
8 to 10 ft.....	1 to 1½ in.	1.50	12.50
10 to 12 ft.....	1½ to 2 in.	2.00	18.00
	2 to 2½ in.	2.50	20.00
<i>fastigiata</i>	<i>Lombardy Poplar</i>		
6 to 8 ft.....		.75	6.00
10 to 12 ft.....	1½ to 2 in.	2.00	
12 to 14 ft.....	2 to 2½ in.	2.50	20.00

**PRUNUS.** Plum

<i>pissardi</i>	<i>Purple-leaved Plum</i>		
3 to 4 ft.....		1.00	9.00
4 to 5 ft.....		1.25	12.00
5 to 6 ft.....		1.50	
6 to 8 ft.....		1.75	16.00
8 to 10 ft.....		2.50	

**PTELA. Hop Tree**

<i>trifoliata aurea</i>	<i>Golden Hop Tree</i>		
High		Each	Per 10.
5 to 6 ft.....		.80	

**PYRUS. Flowering Crab**

<i>angustifolia</i>	<i>Bechtel's Double Flowering Crab</i>		
2 to 3 ft.....		1.25	
3 to 4 ft.....		1.50	14.00
4 to 5 ft.....		1.75	16.00
5 to 6 ft.....		2.25	20.00

**QUERCUS. Oak**

<i>coccinea</i>	<i>Scarlet Oak</i>		
8 to 10 ft.....		2.50	22.50
<i>palustris</i>	<i>Pin Oak</i>		
8 to 10 ft.....	1 to 1½ in.	2.50	22.50
	1½ to 2 in.	3.00	27.00
	2 to 2½ in.	4.00	35.00
	2½ to 3 in.	6.00	54.00
<i>rubra</i>	<i>American Red Oak</i>		
8 to 10 ft.....		2.50	22.50

**ROBINIA. Locust**

<i>hispida</i>	<i>Rose Acacia</i>		
2 to 3 ft.....		.60	5.00
3 to 4 ft.....		1.00	9.00
<i>pyramidalis</i>	<i>Pyramidal Acacia</i>		
10 to 12 ft.....	1½ to 2 in.	2.00	
12 to 14 ft.....	2 to 2½ in.	3.00	

**SALIX. Willow**

<i>caparie</i>	<i>Pussy Willow</i>		
6 to 8 ft.....		1.00	7.50
8 to 10 ft.....	1 to 1½ in.	1.25	10.00
<i>pentandra</i>	<i>Laurel-leaved Willow</i>		
4 to 6 ft.....		.50	
6 to 8 ft.....		.75	6.50
8 to 10 ft.....		1.00	9.00
10 to 12 ft.....	1½ to 2 in.	1.50	14.00
	2 to 2½ in.	2.00	18.00
	2½ to 3 in.	3.00	
	3 to 3½ in.	4.00	
	3½ to 4 in.	5.00	
<i>regalis</i>	<i>Royal Willow</i>		
6 to 8 ft.....		1.25	11.50
8 to 10 ft.....	1½ to 2 in.	1.50	14.00

	Caliper	Each	Per 10
<b>SALIX. (Continued)</b>			
<i>vitellina aurea</i>	<i>Golden-barked Willow</i>		
6 to 8 ft.....		.75	6.50
8 to 10 ft.....	1½ to 2 in.	1.75	
<b>SORBUS. Mountain Ash</b>			
<i>aucupria</i>	<i>European Mountain Ash</i>		
8 to 10 ft.....	1 to 1½ in.	1.60	14.00
10 to 12 ft.....	1½ to 2 in.	2.00	18.00
	2 to 2½ in.	2.50	
<b>TAXODIUM. Deciduous Cypress</b>			
<i>distichum</i>	<i>Bald Cypress</i>		
3 to 4 ft.....		2.50	
4 to 5 ft.....		3.00	
5 to 6 ft.....		3.50	
6 to 7 ft.....		4.00	36.00
7 to 8 ft.....		6.00	
8 to 10 ft.....		7.00	
<b>TILIA. Linden</b>			
<i>americana</i>	<i>American Linden</i>		
10 to 12 ft.....	2 to 2½ in.	4.00	36.00
	2½ to 3 in.	5.00	45.00
	3 to 3½ in.	7.00	63.00
	3½ to 4 in.	9.00	
	4 to 4½ in.	11.00	
<i>argentea</i>	<i>White or Silver-leaved Linden</i>		
10 to 12 ft.....	2 to 2½ in.	4.50	
	2½ to 3 in.	5.50	50.00
	3 to 3½ in.	7.00	65.00
	3½ to 4 in.	9.00	
	4 to 4½ in.	10.00	
	4½ to 5 in.	12.00	
<i>dasystyla</i>	<i>Crimean Linden</i>		
	1½ to 2 in.	2.50	22.50
<i>europaea var. vulgaris</i>	<i>European Linden</i>		
8 to 10 ft.....	1½ to 2 in.	3.00	25.00
10 to 12 ft.....	2 to 2½ in.	4.25	37.50
	2½ to 3 in.	5.25	47.50
	3 to 3½ in.	7.00	65.00
	3½ to 4 in.	9.00	85.00
	4 to 4½ in.	11.00	
	4½ to 5 in.	13.50	
<i>vulgaris rubra</i>	<i>Red-twigg'd Linden</i>		
8 to 10 ft.....	1½ to 2 in.	3.00	
10 to 12 ft.....	2 to 2½ in.	4.25	37.50
	2½ to 3 in.	5.25	47.50
	3 to 3½ in.	7.00	65.00
	3½ to 4 in.	9.00	85.00
	4 to 4½ in.	11.00	105.00
	4½ to 5 in.	13.50	120.00
	5 to 5½ in.	15.00	
<b>ULMUS. Elm</b>			
<i>americana</i>	<i>American Elm</i>		
6 to 8 ft.....	1 to 1½ in.	1.25	11.50

## WEEPING DECIDUOUS TREES

In many situations where trees of large height are not wanted, weeping trees may be used successfully.

We recommend the following, all of which are valuable for decorative purposes:

### ALNUS. Alder

<i>inca pendula</i>	<i>Weeping Alder</i>		
High	Caliper	Each	Per 10
10 to 12 ft.....	2 to 2½ in.	2.50	

### BETULA. Birch

<i>alba laciniata pendula</i>	<i>Cut-leaved Weeping Birch</i>		
6 to 8 ft.....		2.50	22.50
8 to 10 ft.....	1 to 1½ in.	3.00	
10 to 12 ft.....	2 to 2½ in.	4.00	

<i>alba Youngii</i>	<i>Young's Weeping Birch</i>		
6 to 8 ft.....		4.00	
8 to 10 ft.....		6.00	
10 to 12 ft.....		8.00	
10 to 12 ft. specimens.....		10.00	

### CERASUS. Flowering Cherry

<i>chinensis flore rosea</i>	<i>Chinensis Weeping Pink-flowering Cherry</i>		
<i>pendula</i>			
4 to 6 ft. stem.....		6.00	
6 to 8 ft. stem.....		8.00	

### FAGUS. Beech

<i>sylvatica pendula</i>	<i>Green-leaved Weeping Beech</i>		
6 to 8 ft.....		5.00	
8 to 10 ft.....		8.00	
10 to 12 ft.....		10.00	
12 to 14 ft.....		12.00	

<i>syl. purpurea pendula</i>	<i>Purple-leaved Weeping Beech</i>		
3 to 4 ft. specimens.....		3.00	

### MORUS. Mulberry

<i>alba pendula</i>	<i>Tea's Weeping Murberry</i>		
4 to 6 ft. stems	2-year head	3.00	
4 to 6 ft. stems	3-year head	3.50	
4 to 6 ft. stems	4-year head	5.00	
4 to 6 ft. stems	5-year head	6.00	



**SALIX. Willow**

**babylonica**

*Weeping Willow*

High	Caliper	Each	Per 10
6 to 8 ft.....		1.50	14.00
8 to 10 ft.....		2.00	

**elegantissima**

*ThurLOW's Weeping Willow*

6 to 8 ft.....	1.50
8 to 10 ft.....	2.00

## DECIDUOUS SHRUBS

Hardy, flowering shrubs develop more quickly than any class of trees, and are, therefore, indispensable for filling a new lawn where it is desirable to get something to make a show as quickly as possible.

It is our aim to produce everything in flowering shrubbery that is useful, hardy, and worthy of cultivation.

### ALTHAEA. Rose of Sharon

<i>ardens</i> (Hibiscus)	(Double Purple)		
3 to 4 ft.....		Each .60	Per 10 5.00
5 to 7 ft.....		1.25	10.00
<i>boule de feu</i>	(Double Red)		
2 to 3 ft.....		.50	4.50
3 to 4 ft.....		.60	5.00
<i>Duchess de Brabant</i>	(Double Reddish Lilac)		
2 to 3 ft.....		.50	4.50
<i>Jeanne d'Arc</i>	(Double White)		
2 to 3 ft.....		.50	4.50
3 to 4 ft.....		.60	5.00
4 to 5 ft.....		1.00	9.00
5 to 7 ft.....		1.25	10.00
<i>Lady Stanley</i>	(White Shaded Red)		
2 to 3 ft.....		.50	4.50
<i>Meehani</i>	(Variegated Foliage)		
3 to 4 ft.....		1.25	
4 to 5 ft.....		1.50	
<i>rosea plena</i>	(Double Pink)		
2 to 3 ft.....		.50	4.50
5 to 7 ft.....		1.25	10.00
<i>rubra plena</i>	(Double Red)		
5 to 7 ft.....		1.50	14.00
<i>totus albus</i>	(Single White)		
3 to 4 ft.....		.60	5.00

### ALTHAEA. Tree Form

<i>ardens</i>	(Double Purple)		
4 to 5 ft. stems.....		1.00	
<i>Lady Stanley</i>	(White Shaded Rose)		
4 to 5 ft. stems.....		1.00	

**ALTHAEA.** (Continued)

<b>Meehani</b>	<i>Meehan's Althea</i> (Foliage variegated)	Each	Per 10
2 to 3 ft.....		1.00	
3 to 4 ft.....		1.25	
4 to 5 ft.....		1.50	

**AMELANCHIER.**

<b>botryopium</b>	<i>Dwarf Juneberry</i>		
3 to 4 ft.....		.85	8.00

**ARALIA.**

<b>spinosa</b> (See Deciduous Trees)			
<b>plentarhylla</b>	<i>Bush Aralia</i>		
2 to 3 ft.....		.60	5.50
3 to 4 ft.....		.65	6.00
<b>aronia arbutifolia</b>	<i>Red Chokeberry</i>		
3 to 4 ft.....		.80	7.50
<b>melanocarpa (rigra)</b>	<i>Black Chokeberry</i>		
2 to 3 ft.....		.60	5.50

**AZALEA.** (Also see Evergreen Shrubs.)

<b>mollis</b>	<i>Japanese Azalea</i> (May)		
15 to 18 in.....		2.00	18.00
18 to 24 in.....		2.50	
<b>rustica</b>	<i>White to Yellow</i> (May)		
18 to 21 in.....		2.50	
21 to 24 in.....		3.00	
<b>pontica</b>	<i>Hardy Ghent Azalea</i> (May) (White to Deep Crimson)		
18 to 24 in.....		2.25	
24 to 30 in.....		2.75	

**NATIVE SORTS**

<b>arborescens</b>	<i>Fragrant White Azalea</i>		
18 to 24 in.....		3.00	
2 to 2½ ft.....		3.50	
<b>calendulacea</b>	<i>Flane Azalea</i> (Yellow)		
18 to 24 in.....		3.50	
<b>canadensis</b>	<i>Canadian Rhodora</i> (Purplish-rose color)		
15 to 18 in.....		2.00	
<b>canescens</b>	<i>Fragrant Blush Azalea</i>		
18 to 24 in.....		3.00	
<b>lutea</b>	<i>Flane Azalea</i> (Lemon-Yellow)		
12 to 15 in.....		1.25	
18 to 24 in.....		2.00	

		Each	Per 10
<b>AZALEA. (Continued)</b>			
<i>nudiflora</i>	<i>Wood's Honeysuckle</i>		
18 to 24 in.....		3.00	
<i>vaseyi</i>	<i>Southern Azalea (Shell-pink)</i>		
2 to 2½ ft.....		3.50	
<i>viscosa</i>	<i>White Azalea</i>		
2 to 2½ ft.....		3.50	
<b>BACCHARIS.</b>			
<i>halimifolia</i>	<i>Gromdseel Bush (White)</i>		
4 to 5 ft.....		1.00	
<b>BERBERIS. Barberry</b>			
<i>Sieboldii</i>	<i>Siebold's Barberry</i>		
2 to 3 ft.....		.55	5.00
<i>Thunbergii</i>	<i>Thunberg's Japanese Barberry</i>		
Red berries in fall.			
12 to 15 in.....		.40	3.50
15 to 18 in.....		.50	4.50
18 to 24 in.....		.55	5.00
<i>vulgaris</i>	<i>Common European Barberry</i> (Yellow Flowers)		
2 to 3 ft.....		.50	4.00
3 to 4 ft.....		.60	5.00
<i>vulgaris purpurea</i>	<i>Purple-leaved Barberry</i>		
2 to 3 ft.....		.50	4.00
3 to 4 ft.....		.60	5.00
4 to 5 ft.....		.75	6.00
<b>CALYCANTHUS. Sweet Scented Shrub</b>			
<i>floidus</i>	<i>Carolina Allspice (Dark Maroon)</i>		
2 to 3 ft.....		.50	4.00
3 to 4 ft.....		.60	5.00
4 to 5 ft.....		.75	6.50
<b>CALLICARPUS.</b>			
<i>purpurea</i>	<i>Purple-fruited</i>		
3 to 4 ft.....		.75	6.50
<b>CEANOTHUS. New Jersey Tea</b>			
<i>americanus</i>	<i>Red-Root</i>		
1½ to 2 ft.....		.65	6.00
<b>CHIONANTHUS. White Fringe</b>			
<i>virginica</i>	<i>White Fringe</i>		
2 to 3 ft.....		1.00	9.00
3 to 4 ft.....		1.25	10.00
<b>CLETHRA. White Alder</b>			
<i>alnifolia</i>	<i>Sweet Pepper Bush (White)</i>		
2 to 3 ft.....		.70	6.00
3 to 4 ft.....		1.00	



**COLUTEA.**

<b>aborescens</b>	<i>Bladder Senna (Yellowish-red)</i>		
		Each	Per 10
4 to 5 ft.....		1.00	8.00

**CORCHORUS. Kerria**

<b>japonica</b>	<i>Single-flowering Japanese Kerria</i>		
1½ to 2 ft.....		.50	4.00
2 to 2½ ft.....		.60	5.00
2½ to 3 ft.....		.75	6.50

**CORNUS. Dogwood**

<b>aurea spaethi</b>	<i>Yellow-leaved Dogwood</i>		
2 to 3 ft.....		.75	7.00
3 to 4 ft.....		1.00	8.00
<b>sanguinea</b>	<i>European Red-branched Dogwood</i>		
2 to 3 ft.....		.40	3.50
3 to 4 ft.....		.50	4.50
4 to 5 ft.....		.60	5.50
<b>sibirica</b>	<i>Siberian Dogwood</i>		
2 to 3 ft.....		.40	3.50
3 to 4 ft.....		.50	4.50

**CRATAEGUS. Hawthorn. (See Deciduous Trees)**

**CORYLUS. (See Nut Trees)**

**CYNDONIA. Quince**

<b>japonica</b>	<i>Japan Quince (Crimson)</i>		
1½ to 2 ft.....		.40	3.50
2 to 3 ft.....		.50	4.50
3 to 4 ft.....		.75	6.00
<b>japonica mauiia</b>	<i>Dwarf Japan Quince (Orange)</i> .. . . .		
1½ to 2 ft.....		.60	5.00
2 to 3 ft.....		.75	6.50

**CYTISUS**

<b>laburnum</b>	<i>Golden Chain</i>		
2 to 3 ft.....		.50	4.00
3 to 4 ft.....		.75	6.50
<b>scoparius</b>	<i>Scotch Broom</i>		
2 to 3 ft.....		.50	4.00

**DESMODIUM**

<b>penduliflorum</b>	<i>Purple Bush-Clover</i>		
2 to 3 ft.....		.50	4.00
3 to 4 ft.....		.60	5.00
4 to 5 ft.....		.75	6.50
5 to 6 ft.....		1.00	8.00

## DEUTZIA

<b>candidissima</b>	<i>Double White-flowering Deutzia</i>		
		Each	Per 10
2 to 3 ft.....		.40	3.50
3 to 4 ft.....		.50	4.00
4 to 5 ft.....		.60	5.00
<b>creanta</b>	<i>Double Pinkish-White Deutzia</i>		
2 to 3 ft.....		.40	3.50
3 to 4 ft.....		.50	4.00
4 to 5 ft.....		.60	5.00
<b>discolor floribunda</b>	<i>White-flowering Deutzia</i>		
2 to 3 ft.....		.50	4.00
3 to 4 ft.....		.60	5.00
<b>gracilis</b>	<i>Dwarf White Deutzia</i>		
12 to 15 in.....		.50	4.00
15 to 18 in.....		.60	5.00
18 to 24 in.....		.75	6.00
<b>gracilis rosea</b>	<i>Pink-flowering Slender-branched Deutzia</i>		
12 to 15 in.....		.40	3.50
15 to 18 in.....		.50	4.00
18 to 24 in.....		.60	5.00
<b>Lemoini</b>	<i>White-flowering</i>		
2 to 3 ft.....		.55	5.00
<b>Pride of Rochester</b>	<i>Pink-flowering</i>		
2 to 3 ft.....		.40	3.50
3 to 4 ft.....		.50	4.00
4 to 5 ft.....		.60	5.00

## ELAEAGNUS

<b>longipes</b>	<i>Silver Thorn (Yellow)</i>		
2 to 3 ft.....		.50	4.00
3 to 4 ft.....		.60	5.00

## EUONYMUS

<b>alatus</b>	<i>Cork-barked Euonymus</i>		
3 to 4 ft.....		1.00	9.00
<b>americanus</b>	<i>Strawberry Tree (Red Pods)</i>		
3 to 4 ft.....		.60	5.00
4 to 5 ft.....		.75	6.50
5 to 6 ft.....		1.25	11.50
<b>europaea</b>	<i>European Burning Bush (Rose-color Berries)</i>		
5 to 6 ft.....		1.25	11.50
6 to 8 ft.....		1.50	12.50
8 to 10 ft.....		2.00	17.50
10 to 12 ft.....		5.00	40.00

## EXOCHORDA

<i>grandiflora</i>	<i>Pearl Bush (White. May)</i>		
		Each	Per 10
2 to 3 ft.....		.75	6.50
3 to 4 ft.....		1.00	
4 to 5 ft.....		1.25	
5 to 6 ft.....		1.50	
6 to 7 ft.....		1.75	16.00

## FORSYTHIA. Golden Bell

<i>fortunei</i>	<i>Fortune's Golden Bell</i>		
2 to 3 ft.....		.40	3.00
3 to 4 ft.....		.50	4.00
4 to 5 ft.....		.60	5.00
<i>intermedia</i>	<i>Golden Bell</i>		
2 to 3 ft.....		.40	3.00
3 to 4 ft.....		.50	4.00
4 to 5 ft.....		.60	5.00
5 to 6 ft.....		.75	6.50
6 to 7 ft.....		.85	8.00
<i>suspensa</i>	<i>Weeping Forsythia</i>		
2 to 3 ft.....		.40	3.00
3 to 4 ft.....		.50	4.00
4 to 5 ft.....		.60	5.00
5 to 6 ft.....		.75	6.50
6 to 7 ft.....		.85	8.00
<i>viridissima</i>	<i>Dark Green Forsythia</i>		
2 to 3 ft.....		.40	3.00
3 to 4 ft.....		.50	4.00
4 to 5 ft.....		.60	5.00

## GENISTA

<i>tinctoria</i>	<i>Dyer's Bloom (Yellow)</i>		
15 to 18 in.....		.40	3.50

## HAMAMELIS

<i>virginiana</i>	<i>Witch Hazel (Yellow)</i>		
3 to 4 ft.....		1.00	8.00
4 to 5 ft.....		1.25	10.00
8 to 10 ft.....		2.00	18.00

## HYDRANGEA

<i>arborescens sterilis</i>	<i>Hills of Snow</i>		
2 to 3 ft.....		.40	3.00
3 to 4 ft.....		.50	4.00
<i>hortensis grandiflora</i>	<i>Half-hardy Hydrangea (Pink and Blue)</i>		
15 to 18 in.....		.75	6.50

HYDRANGEA. (Continued)		Each	Per 10
<i>paniculata grandiflora</i> <i>Large-panicked Hydrangea</i>			
2 to 3 ft.		.65	6.00
3 to 4 ft.		.75	7.00
4 to 5 ft.		.85	8.00
<i>paniculata grandiflora</i> <i>Tree Form</i>			
3 to 4 ft.		1.00	9.00
4 to 5 ft.		1.25	11.50
<i>Thomas Hogg</i> <i>Half-hardy Hydrangea</i>			
15 to 18 in.		.75	6.50
<b>ILEX. Holly (Also see Evergreen Shrubs)</b>			
<i>verticillata</i> <i>Black Alder</i>			
2 to 3 ft.		.65	6.00
<b>KERRIA. (See Corchorus)</b>			
<b>LISPEDEZA</b>			
<i>bicolor</i> <i>Bush Clover (Pink-White)</i>			
2 to 3 ft.		.50	4.00
3 to 4 ft.		.60	5.00
4 to 5 ft.		.75	6.50
5 to 6 ft.		1.00	8.00
<b>LIGUSTRUM. Privet</b>			
<i>ibota</i> <i>Chinese Privet</i>			
2 to 3 ft.		.50	4.00
3 to 4 ft.		.60	5.00
<i>ovalifolium</i> <i>California Privet</i>			
2 to 3 ft.		.20	1.50
3 to 4 ft.		.30	2.00
4 to 5 ft.		.40	3.00
5 to 6 ft.		.60	5.00
6 to 7 ft.		.70	6.00
<i>ovalifolium</i> <i>Globe Form (Sheared)</i>			
1½ to 2 ft.		.75	6.50
2 to 2½ ft.		1.00	8.00
2½ to 3 ft.		1.25	10.00
<i>ovalifolium standard</i> <i>Tree Form</i>			
3 to 4 ft.		.75	6.50
4 to 5 ft.		1.00	9.00
<i>ovalifolium aureum</i> <i>Golden Privet</i>			
10 to 12 in.		.50	4.00
12 to 18 in.		.65	6.00
<i>regelianum</i> <i>Regel's Privet</i>			
2 to 3 ft.		.65	5.50
3 to 4 ft.		.75	6.50
4 to 5 ft.		1.00	9.00

**LONICERA. Bush Honeysuckle**

<b>fragrantissima</b>	<i>Fragrant Bush Honeysuckle</i> (Purplish White)		
		Each	Per 10
2 to 3 ft.....		.60	5.50
3 to 4 ft.....		.75	7.00
<b>morrowi</b>	<i>Japanese Bush Honeysuckle</i> (Yellow)		
2 to 3 ft.....		.40	3.50
3 to 4 ft.....		.50	4.00
<b>ruprechtiana</b>	<i>Manchurian Honeysuckle</i>		
3 to 4 ft.....		.60	5.50
<b>tatarica</b>	<i>Tartarican Honeysuckle</i> (Bright Pink)		
2 to 3 ft.....		.50	4.50
3 to 4 ft.....		.65	6.00
<b>tatarica alba</b>	<i>White-flowering Tartarican Honeysuckle</i>		
2 to 3 ft.....		.50	4.50
3 to 4 ft.....		.65	6.00
4 to 5 ft.....		.75	6.50

**MYRICA. Bayberry**

<b>cerifera</b>	<i>Bayberry</i>		
18 to 24 in.....		.65	6.00
2 to 2½ ft.....		.75	6.50
2½ to 3 ft.....		1.00	9.00
3 to 4 ft.....		1.25	10.00
4 to 5 ft.....		1.50	14.00

**PHILADELPHUS. Mock Orange**

<b>aurea</b>	<i>Golden Mock Orange</i>		
1 to 1½ ft.....		.55	5.00
1½ to 2 ft.....		.60	5.50
2 to 3 ft.....		.75	6.50
<b>avalanche</b>	<i>White-flowering</i>		
3 to 4 ft.....		.65	6.00
<b>coronarius</b>	<i>Common Mock Orange</i>		
2 to 3 ft.....		.40	3.50
3 to 4 ft.....		.50	4.00
4 to 5 ft.....		.60	5.00
5 to 6 ft.....		.75	6.50
<b>falconeri</b>	<i>Falconer's Mock Orange</i>		
3 to 4 ft.....		.65	6.00
<b>gordonianum</b>	<i>Gordon's Mock Orange</i>		
3 to 4 ft.....		.60	5.50
<b>grandiflorus</b>	<i>Large-flowering Mock Orange</i>		
2 to 3 ft.....		.40	3.50
3 to 4 ft.....		.50	4.00
4 to 5 ft.....		.60	5.00
6 to 7 ft.....		.75	

PHILADELPHUS. (Continued)		Each	Per 10
<i>Lemoinei erectus</i>	<i>Lemoine's Erect Mock Orange</i>		
2 to 3 ft.....		.60	5.50
3 to 4 ft.....		.75	7.00
4 to 5 ft.....		1.00	8.00
5 to 6 ft.....		1.25	10.00
<i>Mont Blanc</i>	<i>Dwarf Variety of Mock Orange</i>		
1½ to 2 ft.....		.50	4.00
2 to 3 ft.....		.60	5.50
<b>PRUNUS. Plum</b>			
<i>maritama</i>	<i>Beach Plum</i>		
2 to 3 ft.....		.65	6.00
<i>pissardi</i> (See Deciduous Trees)			
<i>triloba</i>	<i>Double-flowering Plum</i>		
2 to 3 ft.....		.50	4.00
3 to 4 ft.....		.85	8.00
<b>RIBES. Currant</b>			
<i>aureum</i>	<i>Flowering Currant</i>		
2 to 3 ft.....		.40	3.50
3 to 4 ft.....		.50	4.00
4 to 5 ft.....		.60	5.00
<b>RHODOTYPHUS</b>			
<i>rhodotyphus kerriodes</i>	<i>White Kerria</i>		
2 to 3 ft.....		.60	5.50
3 to 4 ft.....		.75	7.00
<b>RHUS. Sumac</b>			
<i>canadensis</i>	<i>Fragrant Sumac</i>		
2 to 3 ft.....		.65	6.00
<i>cotinus</i>	<i>Smoke Tree</i>		
2 to 3 ft.....		.50	
3 to 4 ft.....		.60	
4 to 5 ft.....		.75	6.50
5 to 6 ft.....		1.00	
6 to 8 ft.....		1.50	
<i>glabra</i>	<i>Smooth Sumac</i>		
18 to 24 in.....		.40	3.50
3 to 4 ft.....		.50	4.00
<i>typhina laciniata</i>	<i>Fern-leaved Staghorn Sumach</i>		
2 to 3 ft.....		.60	5.00
3 to 4 ft.....		.75	6.50

**SAMBUCUS. Elder**

		Each	Per 10
<i>canadensis</i>	<i>Common Elder</i>		
4 to 5 ft.....		.75	6.50
<i>canadensis actuiifolia</i>	<i>Cut-leaved Elder</i>		
2 to 3 ft.....		.50	4.00
3 to 4 ft.....		.60	5.00
<i>nigra aurea</i>	<i>Golden Elder</i>		
2 to 3 ft.....		.50	4.00
3 to 4 ft.....		.60	5.00

**SPIRAEA**

<i>Billardi</i>	<i>Billard's Spiraea (Rose Color)</i>		
2 to 3 ft.....		.50	4.00
<i>bumalda</i>	<i>Everblooming Spiraea (Crimson)</i>		
2 to 3 ft.....		.60	
<i>bum. Anthony Waterer</i>	<i>Crimson Spiraea</i>		
1½ to 2 ft.....		.60	5.50
2 to 3 ft.....		.75	
<i>callosa alba</i>	<i>Fortune's Dwarf White Spiraea</i>		
1½ to 2 ft.....		.60	5.50
2 to 3 ft.....		.75	
<i>douglasi</i>	<i>Deep Rose Spikes</i>		
2 to 3 ft.....		.50	4.00
<i>lanceolata</i>	(White)		
2 to 3 ft.....		.50	4.00
3 to 4 ft.....		.60	5.00
<i>opulifolia</i>	<i>Nine Bark</i>		
2 to 3 ft.....		.40	3.50
<i>opulifolia aurea</i>	<i>Golden-leaved Nine Bark</i>		
2 to 3 ft.....		.40	3.50
3 to 4 ft.....		.60	5.00
<i>prunifolia flore plena</i>	<i>Bridal Wreath</i>		
3 to 4 ft.....		.60	5.00
4 to 5 ft.....		.75	6.50
<i>Reevesiana</i>	<i>Reeve's Spiraea (White)</i>		
2 to 3 ft.....		.50	4.00
3 to 4 ft.....		.60	5.00
4 to 5 ft.....		.75	
<i>rotundifolia</i>	<i>Round-leaved Spiraea (White)</i>		
6 to 7 ft.....		1.25	10.00
<i>Thunbergi</i>	<i>Thunberg's Spiraea (Fine Foliage)</i>		
2 to 3 ft.....		.60	5.50
3 to 4 ft.....		.75	6.50

SPIRAEA. (Continued)		Each	Per 10
<i>tomentosa</i>	<i>Hardhack (Purple)</i>		
2 to 3 ft.....		.40	3.50
3 to 4 ft.....		.50	4.00
4 to 5 ft.....		.60	5.00
<i>Van Houttei</i>	<i>Van Houtte's Spiraea</i>		
2 to 3 ft.....		.40	3.50
3 to 4 ft.....		.50	4.00
<b>STEPHANANDRA</b>			
<i>flexnosa</i>	(Delicate Foliage)		
2 to 3 ft.....		.50	4.00
3 to 4 ft.....		.60	5.00
6 to 7 ft.....		1.00	8.00
<b>SYMPHORICARPUS</b>			
<i>racemosus</i>	<i>Snowberry</i>		
2 to 3 ft.....		.60	5.50
3 to 4 ft.....		.75	6.50
<i>vulgaris</i>	<i>Coral Berry or Indian Currant</i>		
2 to 3 ft.....		.40	3.50
3 to 4 ft.....		.50	4.00
<b>SYRINGA. Lilac</b>			
<i>persica</i>	<i>Purple Persian Lilac</i>		
4 to 5 ft.....		1.00	9.00
5 to 6 ft.....		1.50	14.00
<i>persica alba</i>	<i>White Persian Lilac</i>		
3 to 4 ft.....		.75	6.50
<i>vulgaris</i>	<i>Common Purple Lilac</i>		
2 to 3 ft.....		.50	4.00
3 to 4 ft.....		.75	6.50
4 to 5 ft.....		1.00	9.00
5 to 6 ft.....		1.50	14.00
6 to 8 ft.....		2.00	18.00
<i>vulgaris alba</i>	<i>Common White Lilac</i>		
2 to 3 ft.....		.50	4.00
3 to 4 ft.....		.75	6.50
6 to 7 ft.....		1.75	16.00
<b>SYRINGA. Lilac (Single and double named varieties)</b>			
Charles X.	(Single Reddish Purple)		
Jean Bart.	(Double Violet)		
Mme. Lemoine	(Double White)		
Souvenir de L. Spaeth	(Single Purple)		
<i>villosa</i>	(Single Pink)		
Marie Legraye	(Single White)		
President Grevy	(Blue)		
2 to 3 ft.....		.85	7.50
3 to 4 ft.....		1.00	9.00
4 to 5 ft.;		1.25	11.50



**TAMARIX. Tamarisk**

<b>africana</b>	<i>African Tamarisk (Pink)</i>		
		Each	Per 10
2 to 3 ft.....		.40	3.50
3 to 4 ft.....		.50	4.00
4 to 5 ft.....		.60	
<b>odessna</b>	<i>Russian Tamarisk</i>		
4 to 5 ft.....		.75	6.50

**VIBURNUM. Snowball**

<b>cassinoides</b>	<i>Withe Rod</i>		
3 to 4 ft.....		.80	7.50
<b>Carlesii</b>	<i>Bouvardia Shrub</i>		
18 to 24 in.....		2.50	20.00
2 to 3 ft.....		3.00	25.00
<b>dentatum</b>	<i>Arrow Wood</i>		
2 to 3 ft.....		.60	5.00
3 to 4 ft.....		.70	6.50
4 to 5 ft.....		1.00	9.00
<b>lantana</b>	<i>Wayfaring Tree</i>		
3 to 4 ft.....		.60	5.50
4 to 5 ft.....		.75	6.50
<b>opulus</b>	<i>High Bush Cranberry</i>		
2 to 3 ft.....		.50	4.00
3 to 4 ft.....		.65	6.00
4 to 5 ft.....		.75	6.50
<b>opulus sterillis</b>	<i>Common Snowball</i>		
2 to 3 ft.....		.50	4.00
3 to 4 ft.....		.60	5.50
4 to 5 ft.....		.75	6.50
<b>plicatum</b>	<i>Japanese Snowball</i>		
2 to 3 ft.....		.75	6.50
3 to 4 ft.....		1.00	9.00
<b>tomentosum</b>	<i>Single Japan Snowball</i>		
2 to 3 ft.....		.50	4.00
3 to 4 ft.....		.60	5.00
4 to 5 ft.....		.75	6.50

**WEIGELIA. Diervilla**

<b>Abel Carriere</b>	<i>(Rose Color)</i>		
2 to 3 ft.....		.50	4.00
3 to 4 ft.....		.60	5.00
4 to 5 ft.....		.75	6.50
6 to 7 ft.....		1.00	8.00
<b>amabilis</b>	<i>(Pink-flowering)</i>		
6 to 7 ft.....		1.00	8.00

WEIGELIA. (Continued)		Each	Per 10
<i>amabilis alba</i>	(White-flowering)		
6 to 7 ft.	.....	1.00	8.00
<i>candida</i>	(White-flowering)		
2 to 3 ft.	.....	.60	5.00
<i>Eva Rathka</i>	(Rich, Deep Scarlet)		
2 to 3 ft.	.....	.50	4.00
3 to 4 ft.	.....	.75	6.50
4 to 5 ft.	.....	1.00	9.00
<i>hortensis rubra</i>	(Rose Color)		
2 to 3 ft.	.....	.50	4.00
3 to 4 ft.	.....	.60	5.00
4 to 5 ft.	.....	.75	6.50
<i>nana variegata</i>	(Variegated foliage, pink and white flowering)		
2 to 3 ft.	.....	.50	4.00
3 to 4 ft.	.....	.60	5.00
4 to 5 ft.	.....	.75	6.50
6 to 7 ft.	.....	1.00	8.00
<i>rosea</i>	(Rose-color Flowers)		
2 to 3 ft.	.....	.50	4.00
3 to 4 ft.	.....	.60	5.00
4 to 5 ft.	.....	.75	6.50
5 to 6 ft.	.....	1.00	8.00
<i>Van Houtei</i>	(Rosy White Flowering)		
3 to 4 ft.	.....	.60	5.00
4 to 5 ft.	.....	.75	6.50
<i>Mme. Lemoine</i>	(White, with delicate blush)		
2 to 3 ft.	.....	.50	4.00

## XANTHORRIZA

<i>apifolia</i>	<i>Yellow Root</i>		
12 to 15 in.	.....	.40	3.00
15 to 18 in.	.....	.50	4.00

## SCREEN AND BOUNDARY PLANTS

<i>berberis Thunbergi</i>	<i>Thunberg's Barberry</i>		
12 to 15 in.	.....	3.50	30.00
15 to 18 in.	.....	4.50	40.00
18 to 24 in.	.....	5.00	45.00
<i>ligustrum ovalifolium</i>	<i>California Privet</i>		
1½ to 2 ft.	.....	1.00	5.00
2 to 3 ft.	.....	1.50	8.00
3 to 4 ft.	.....	2.00	10.00
4 to 5 ft.	.....	3.00	15.00
5 to 6 ft.	.....	5.00	35.00
<i>rosa rugosa</i>	<i>Wrinkled Japanese Rose</i>		
1½ to 2 ft.	.....	6.00	50.00
2 to 2½ ft.	.....	7.00	60.00
2½ to 3 ft.	.....	8.00	70.00

## ROSES

## HYBRID PERPETUALS

Sturdy, field-grown plants, \$1.00 each for less than five of a kind; five for more of a kind, \$8.00 per ten.

American Beauty (Red)	Madam Gabriel Luizet (Clear Rose)
Anne de Diesbach (Carmine)	Madam Plantier (White)
Baron de Bonstetten (Crimson)	Madam Abel Carrier (Creamy White)
Baron de Rothschild (Light Pink)	Magna Charta (Rosy Red)
Captain Christy (Flesh Color)	Margaret Dickson (White)
Capnio	Mrs. John Laing (Pink)
Clio (Flesh Color)	Mrs. Crawford (Rosy Pink)
Duke de Cazes (Red)	M. P. Wilder (Scarlet Crimson)
Fran Karl Druschki (White)	Paul Neyron (Deep Rose)
General Jacqueminot (Crimson)	Ulrich Brunner (Cherry Red)
Hugh Dickson (Brilliant Crimson)	

## HYBRID TEAS AND TEAS

Duchess of Wellington (Coppery Yellow)	La France (Silvery Rose)
Gruss on Teplitz (Velvety Scarlet)	Lady Hillingdon (Yellow)
Hadley (Fine Red)	Los Angelis (Flame Pink)
Kaiserin August Victoria (Creamy White)	Mme. Caroline Testout (Satiny Rose)
Killarney (Flesh-shaded White)	Mme. Ravery (Orange Yellow)
Killarney Brilliant (Pink)	Mrs. Aaron Ward (Yellow)
Killarney White (Pure White)	Mrs. George Sawyer (Pink)
	Sunburst (Coppery Yellow)

## MISCELLANEOUS ROSES

Hermosa (China (Bright Pink)	Soliel d'Or (Perenetiana, Coppery Yellow)
Persian Yellow (Brier, Yellow)	

## CLIMBING ROSES

Sturdy, field-grown plants, 75c each for less than five of a kind; five or more of a kind, \$6.50 per ten.

American Beauty (Red)	Hiawatha (Crimson, white center)
American Pillar (White, red margins)	Lady Gay (Cherry Red)
Baby Rambler (Dwarf, White)	Setigera—Prairie Rose (Single Deep Rose Color) 2-3 ft.
Baby Rambler (Dwarf, Red)	Silver Moon (White, yellow center)
Baby Rambler (Dwarf, Pink)	Tausendschon (White, to Deep Pink)
Crimson Rambler (Crimson)	Vielchenblau (Blue Rambler)
Dorothy Perkins (Pink)	Wichurriana—Memorial Rose (Single Waxlike flower, Evergreen foliage) 2-3 ft.
Dorothy Perkins (White)	
Dr. W. Van Fleit (Pink)	
Excelsa (Crimson)	
Flower of Fairfield (Red)	

## RUGOSA ROSES

## JAPANESE ROSES

<i>rosa rugosa</i> (Red)		
<i>rosa rugosa</i> (White)	Each	Per 10
1½ to 2 ft.....	.70	6.00
2 to 3 ft.....	.80	7.00
3 to 4 ft.....	1.00	8.00

## VINES AND CLIMBERS

## ACTINIDIA

<i>polyanna</i>	<i>Dark-leaved Silver Vine</i>	
Medium plants .....	.60	5.00
Strong plants .....	.75	6.50

## AKEBIA

<i>quinata</i>	<i>Fine-leaved Akebia</i>	
Medium plants .....	.60	5.00
Strong plants .....	.75	6.50

## AMPELOPSIS

<i>lowii</i>	<i>New Japanese Ivy</i>	
Medium plants .....	.60	5.00
Strong plants .....	.75	6.50
<i>quinquefolia</i>	<i>Virginia Creeper</i>	
Medium plants .....	.50	4.00
Strong plants .....	.65	6.00
<i>veitchi</i>	<i>Japanese or Boston Ivy</i>	
Medium plants .....	.50	4.00
Strong plants .....	.65	6.00

## ARISTOLOCHIA

<i>macrophylla</i>	<i>Dutchman's Pipe</i>	
Strong plants .....	1.00	9.00

## BIGONIA

<i>grandiflora</i>	<i>Chinese Trumpet Vine</i>	
Medium plants .....	.60	5.00
Strong plants .....	.75	6.00
<i>radicans</i>	<i>American Trumpet Vine</i>	
Medium plants .....	.60	5.00
Strong plants .....	.75	6.00

**CELASTRUS**

<b>scandens</b>	<i>False Bittersweet</i>	Each	Per 10
Medium plants	.....	.60	5.00
Strong plants	.....	.75	6.00

**CLEMATIS**

<b>jackmanni</b>	<i>Large-flowering Purple Clematis</i>		
Medium plants	.....	.75	6.50
Strong plants	.....	1.00	9.00
<b>paniculata</b>	<i>Japanese Clematis (White-flowering)</i>		
Medium plants	.....	.50	4.50
Strong plants	.....	.65	6.00

EUONYMUS (See Evergreen Shrubs)

HEDERA (See Evergreen Shrubs)

**LONICERA**

<b>japonica Halleana</b>	<i>Hall's Japanese Honeysuckle</i>		
Medium plants	.....	.50	4.00
Strong plants	.....	.65	6.00

**LYCIUM**

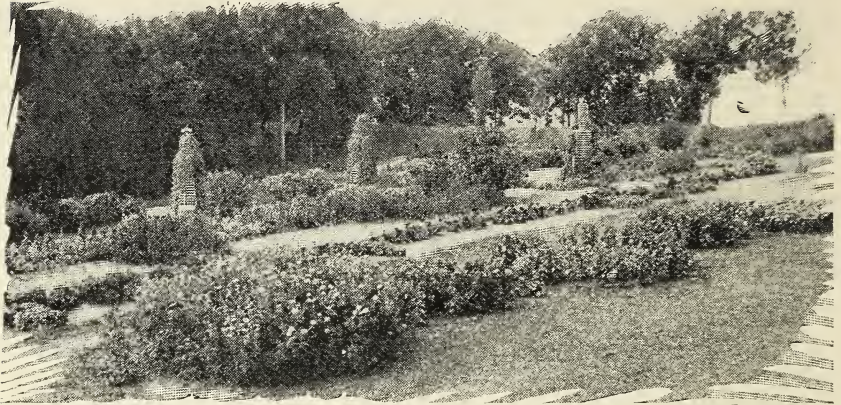
<b>vulgare</b>	<i>Matrimony Vine</i>		
Medium plants	.....	.50	4.00
Strong plants	.....	.65	6.00

**PERIPLOCA**

<b>graeca</b>	<i>Silk Vine</i>		
Medium plants	.....	.60	5.00
Strong plants	.....	.75	6.50

**WISTARIA**

<b>chinensis</b>	<i>Common Purple Wistaria</i>		
Medium plants	.....	1.00	7.50
Strong plants	.....	1.50	10.00
<b>chinensis alba</b>	<i>White Wistaria</i>		
Medium plants	.....	1.00	7.50
Strong plants	.....	1.50	10.00



*An Old-fashioned Perennial Garden.*

## PERENNIALS

It is no wonder that these grand, old-fashioned, hardy garden flowers continue to increase in popularity. There is not a time during the whole flower season in which some hardy perennial is not in bloom.

	Each	Per 10
Medium clumps .....	.25	2.00
Large clumps .....	.35 to .50	
	(except as noted)	

### ACHILLEA

*millefolium rubrum* Yarrow

Large, flat heads of bright cherry-red flowers. June until Autumn. (2 feet)

*ptarmica* (Boule de Neige) (Ball of Snow) (Double White) (2 feet)

### AGROSTEMMA

*coronaria atrosanguinea* (Mullein Pink) (Rich Crimson) (1 to 2 feet)

### AMSONIA

*salicifolia* (Color, Blue). May-July. 2 feet.

### ASTER

*grandiflorus* (Michaelmas Daisy) (Dark Violet) (October-November) (2 to 2½ feet)

*climax* (Light Lavender) (September and October)

*St. Egwya* (Bright Pink) (September and October)

*novae angliae alba* (Pure White) (September)

*patens*

*tartaricus* (Tall Michaelmas Daisy) (Dark Blue) (Late Fall) (5 to 6 feet)

**ASTIBLE**

- japonica* (White Spiraea Japonica) (1½ to 2 feet)  
*japonica* (Queen Alexandria) (Pink Spiraea Japonica) (1½ to 2 feet)

**BAPTISIA**

- australis* (False Indigo) (Purple) (June and July) (15 to 18 inches)

**CHRYSANTHEMUM**

- Autumn Glow (Red)  
 Golden Queen (Yellow)  
 Old Homestead (Buff)  
 Victory (White)

**HARDY CHRYSANTHEMUM**

- leucanthemum hybridum* (Shasta Daisy) (White) (1½ feet)  
*leucanthemum hybridum plemum* (White) (1½ feet)

**COREOPSIS**

- grandiflora* (Tickseed) (Deep Yellow) (1 to 3 feet)

**DELPHINUM**

- belladonna* (Everblooming Larkspur) (Light Blue) (2 feet)

**DIANTHUS**

- barbatus* (Sweet William) (Assorted Colors) (10 to 12 inches)  
*plumarius* (Scotch Pink) (Pink, White Maganta) (10 to 12 inches)

**DICENTRA**

- formosa* (California Bleeding Heart) (10 to 12 inches)

**EUPATORIUM**

- purpureum* (Purple Joe Pye Weed) (2 feet)

**FUNKIA**

- undulata variegata* (Variegated-leaved Plantain Lily) (Lavender Bloom) (10 to 12 inches)  
*sieboldiana* (Plantain Lily) (White) (10 to 12 inches)  
*subcordata* (White Day Lily) (12 to 15 inches)

**GAILLARDIA**

- grandiflorum* (Blanket Flower) (Dark Brown and Crimson) (2 feet)

**HELIANTHUS. Sunflower**

- decapetalus* (Perennial Sunflower) (Yellow) (3 to 4 feet)

**HEMEROCALLIS**

- thunbergiana* (Lemon Lily) (15 to 18 inches)

**HIBISCUS. Mallow**

- moschentos* (Swamp Rose Mallow) (3 feet)  
*Meehani* (Meehan's Mallow) (3 feet)  
*crimson eye* (White-Red-Eye) (3 feet)

**IBERIS**

*sempervirens* (Evergreen Candy Tuft) (White) (8 to 10 inches)

**IRIS**

*germanica* (German Fleur-de-lis) (Mixed Colors) (2 feet)

*kaempferi* (Japanese Fleur-de-Lis) (Mixed Colors) (2 to 3 feet)

**LOBELIA**

*cardinalis* (Cardinal Flower) (Fich-Firy Spikes) (2 to 2½ ft.)

**LYCHNIS**

*chalconia* (Scarlet Lychnis), (2 to 3 feet)

*flos-cuculi plenssima* (Double Ragged Robin Red) (18 inches)

**MONARDIA**

*Cambridge* (Oswego Tea) (Scarlet) (Crimson) (July) (2 to 3 feet)

**PACHYSANDRA**

*terminalis* (See Evergreen Shrubs)

**PAEONIA. Peony**

	Each	Per 10
Medium Clumps .....	.50	4.00
Strong Clumps .....	.75	6.50
Extra Large Clumps .....	1.00	9.00
<i>Duchess de Nemours</i> (Sulphur White)		
<i>festiva maxima</i> (White)		
<i>Louis Van Houtte</i> (Crimson)		
<i>magnifica</i> (Hydrangea Pink)		
<i>officinalis alba</i> —Fl. Pl. (White)		
<i>officinalis rubra</i> —Fl. Pl. (Red)		
<i>rosea plena superba</i> (Delicate Pink)		

**PHLOX**

<i>sublata</i> (Mountain Pink) (4 to 6 inches)	
<i>Elizabeth Campbell</i> (Sal. Pink) (Crimson Eye)	.35
<i>esclarmonde</i> (Soft Lilac, center shaded with white)	
<i>glow</i> (Scarlet) .....	.35
<i>Miss Lingard</i> (Pearly White)	
<i>Prof. Schument</i> (Red) .....	.35
<i>pink beauty</i> (Pale Pink)	
<i>queen</i> (Fine White)	
<i>rynstorm</i> (Bright Carmine Rose) .....	.35
<i>Tapis de Blanch</i> (Dwarf) (Pure White) .....	.35
<i>amonea</i> (Dwarf) (Pink)	
<i>exclairieur</i> (Carmine Salmon Centre).....	.35
<i>King</i> (White) .....	.35
<i>Mrs. Jenkins</i> (Pure White)	
<i>Richard Wallace</i> (White Violet Centre)	
<i>saison luival</i> (White Pink Centre) .....	.35

**PYRETHRUM. Daisy**

*uliginosum* (Giant Daisy)



**RUDBECKIA**

*laciniata flore pleno* (Golden Glow) (4 to 5 feet)

**SALVIA. Sage**

*azurea* (Rocky Mountain Sage) (Light Blue) (3 to 4 feet)

**SEDUM**

*spectabile* (Stonecrop) (Flat-Heads) (Pink) (18 inches)

**SOLIDAGO**

*canadensis* (Golden Rod) (Yellow) (2 to 3 feet)

**TRITOMA**

*uvaria grandiflora* (Flame Flower) (2 feet)

**VERONICA**

*longifolis sessilis* (Speedwell) (Blue) (16 inches)

*spicata* (Blue) (10 to 12 inches)

**VIOLA. Violet**

*cornuta*

*cornuta atro purpurea*

*odorata* (Fragrant Blue Violet)

**YUCCA (See Evergreen Shrubs)****FERNS**

	Each	Per 10
Medium clumps .....	.50	3.50
<i>aspidium acrostichoides</i> (Christmas Fern)		
<i>osmunda cinnamomea</i> (Cinnamon Fern)		

## FRUIT DEPARTMENT

### Standard Apples

	Each
5 to 7 feet high.....	1.00
6 to 7 feet high.....	1.35
6 to 8 feet high.....	1.75 to 2.00
7 to 9 feet high.....	3.00 to 5.00

### SUMMER VARIETIES

<b>Benoni</b> (Deep Red)	<b>Red Astrachan</b> (Crimson)
<b>Early Harvest</b> (Straw Color)	<b>Sweet Bough</b> (Pale Yellow)
<b>Yellow Transparent</b> (Pale Yellow)	

### AUTUMN VARIETIES

<b>Duchess of Oldenburg</b> (Yellow, Streaked with Red)	<b>Maiden's Blush</b> (Crimson Cheek)
<b>Fall Pippin</b> (Yellow)	<b>McIntosh</b> (Red)
<b>Gravenstein</b> (Striped)	<b>Wealthy</b> (Dark Red)

### WINTER VARIETIES

<b>Baldwin</b> (Bright Red)	<b>Rome Beauty</b> (Red and Yellow)
<b>Bellflower</b> (Yellow, Red Tinged)	<b>Roxbury Russet</b> (Russet)
<b>Delicious</b> (Crimson)	<b>Spitzenburg</b> (Brilliant Red)
<b>Jonathan</b> (Red and Yellow)	<b>Stayman's Winesap</b> (Bright Red)
<b>King</b> (Red)	<b>Wagner</b> (Deep Red)
<b>Newtown Pippin</b> (Yellow)	<b>Winter Banana</b> (Golden Yellow)
<b>Northern Spy</b> (Striped)	<b>York Imperial</b> (Medium White)
<b>Rhode Island Greening</b> (Greenish Yellow)	

### DWARF VARIETIES

	Each
3 to 4 feet high.....	1.25
4 to 5 feet high.....	1.50
5 to 6 feet high.....	2.25
<b>Yellow Transparent</b> (Pale Yellow)	<b>McIntosh</b> (Red)
<b>Red Astrachan</b> (Crimson)	<b>Gravenstein</b> (Striped)
<b>Baldwin</b> (Bright Red)	<b>Duchess</b> (Yellow, Streaked with Red)

### CRAB APPLES

4 to 5 feet high.....	1.00
5 to 6 feet high.....	1.25
6 to 7 feet high.....	1.75 to 2.00
<b>Hyslop</b> (Crimson)	<b>Transcendent</b> (Red)
<b>Red Siberian</b> (Yellow, Scarlet Cheek)	

**Standard Pears**

5 to 7 feet high.....	1.50
6 to 7 feet high.....	1.75
6 to 8 feet high.....	2.25
7 to 9 feet high.....	3.00 to 5.00

**SUMMER VARIETIES**

Bartlett (Blush)	Duchess d'Anjou (Yellow)
Clapp's Favorite (Pale Yellow)	

**AUTUMN VARIETIES**

Duchess de Angouleme (Green- ish Yellow)	Lawrence (Golden Yellow)
Flemish Beauty (Pale Yellow)	Seckel (Red Cheek)
Keiffer (Golden Yellow)	Sheldon (Light Russet)
	Beurre Bose (Russet)

**Dwarf Pears**

3 to 4 feet high.....	1.50
4 to 5 feet high.....	1.75
5 to 6 feet high.....	2.25
Barlett (Blush)	Duchess d'Anjou (Yellow)
Clapp's Favorite (Pale Yellow)	Seckel (Red Cheek)

**Cherries**

5 to 7 feet high.....	1.50
6 to 7 feet high.....	1.75
6 to 8 feet high.....	2.25

**SWEET VARIETIES**

Bing (Crimson)	Mercer (Dark Red)
Black Tartarian (Black)	Windsor (Black)
Governor Wood (White)	Yellow Spanish (Pale Yellow)

**SOUR VARIETIES**

Early Richmond (Dark Red)	English Morello (Dark Red)
Montmcrency (Copper)	

**Plums**

5 to 6 feet high.....	1.50
6 to 7 feet high.....	1.75
6 to 8 feet high.....	2.25
Abundance (Cherry Red)	Imperial Gage (Greenish Yel- low)
Eradshaw (Violet Red)	Lombard (Dark Red)
Burbank (Yellow and Red)	Satsuma (Purple)

**Quinces**

3 to 4 feet high.....	1.50
4 to 5 feet high.....	1.75
5 to 6 feet high.....	2.00
Champion (Pear-form, Yellow)	Orange (Round, Yellow)

## Peaches . .

4 to 5 feet high.....	.50
5 to 6 feet high.....	.75
5 to 7 feet high.....	1.00

### SUMMER VARIETIES

Belle of Georgia (White and Red Cheek)	Elberta (Red and Yellow)
Champion (White, Red Cheek)	Greenboro (Deep Marion)
Crawford's Early (Yellow, Red Cheek)	Hale (Yellow, Red Cheek)
	Mountain Rose (Large Red Cheek)

### AUTUMN VARIETIES

Crawford's Late (Yellow, Red Cheek)	Red Salway (Yellow, Red Cheek)
Iron Mountain (White)	Stump of the World (White, Red Cheek)

## Mulberries

5 to 7 feet high.....	1.75
6 to 7 feet high.....	2.00
6 to 8 feet high.....	2.50
	Russian Black (Black)

## SMALL FRUITS

### Blackberries

	Each	Per 10
Strong plants .....	.12	1.00
Erie, Kittatinny, Eldorado, Wilson's Early, Ward, Early Harvest		

### Currants

Strong plants .....	.60	5.00
Cherry, Fay's Prolific		
Extra strong plants .....	.50	3.50
President Wilder (Red), White Grape (White)		

### Gooseberries

American Varieties		
Strong plants .....	.75	6.00
Downing, Houghton		

### Raspberries

Strong plants .....	.12	1.00
Cumberland (Black Cap)	Columbia (Dark Purple)	
Cuthbert (Red)	Plum Farmer (Black)	
Golden Queen (Yellow)	Early June (New Red Variety)	
St. Regis (Red)		

## Grapes

Strong plants (2-3 yrs.) .....	.65	5.50
Extra strong .....	1.00	7.50

### BLACK VARIETIES

Campbell's Early, Delaware, Worden, Concord, Moore's Early

### RED VARIETIES

Agawan, Brighton, Lindley, Salem

### WHITE VARIETIES

Green Mountain .....	.75	
Niagara, Desmond (White) .....		

## Asparagus

		Per 100
Strong plants .....		2.00
Extra strong plants .....		2.50
Conover's Colossal, Palmetto		

## SPRAYING

For general results we recommend spraying fruit trees as follows:

- First, spray with lime sulphur solution during the winter.
- Second, spray with Pyrox after the blossoms fall.
- Third, spray with Pyrox two weeks later.

This will control the most prevalent insects and fungus diseases attacking fruit trees on Long Island.

<b>RHUBARB</b>	Each	Per 10
Strong plants .....	.25	2.00
Extra strong plants .....	.35	3.00

### STRAWBERRIES

Strong plants .....	2.50
Early .....	2.50
Mid-season .....	2.50
Late .....	4.00

### NUT TREES

<b>castanea</b>	<i>American Sweet Chestnut</i>	
5 to 6 ft.....		1.50
<b>corylus avellana</b>	<i>European Hazelnut</i>	
3 to 4 ft.....		3.50

		Each	Per 10
<i>juglans cinera</i>	<i>Butternut</i>		
5 to 6 ft.....		2.00	
<i>nigra</i>	<i>Black Walnut</i>		
4 to 5 ft.....		2.75	
5 to 6 ft.....		3.50	
<i>regia</i>	<i>English Walnut</i>		
4 to 5 ft.....		2.75	
5 to 6 ft.....		3.50	
<i>sieboldiana</i>	<i>Japanese Walnut</i>		
6 to 7 ft.....		2.00	
7 to 8 ft.....		2.50	
8 to 10 ft.....		4.00	

---

# PREFIX

Condition of Sales. 1, 2    Introductory ..... 1    Spraying ..... 5, 7

## INDEX OF BOTANICAL AND COMMON NAMES

<b>A</b>		
Abies ..... 3, 4	Chionanthus ..... 36	Garland Flower ..... 16
Acer ..... 21, 22	Chokeberry ..... 35	Genista ..... 39
Acer (Japanese) ..... 23	Chrysanthemum ..... 51	Ginkgo ..... 27
Achillea ..... 50	Clematis ..... 49	Gleditsia ..... 28
Actinidia ..... 48	Clethra ..... 36	Golden Bell ..... 39
Adam's Needle ..... 19	Clover (Bush) ..... 37, 40	Golden Chain ..... 37
Aesculus ..... 23, 24	Colutea ..... 37	Golden Glow ..... 53
Agrostemma ..... 50	Corchorus ..... 37	Golden Rod ..... 53
Akebia ..... 48	Coreopsis ..... 51	Gooseberries ..... 56
Alder ..... 32	Cornus ..... 26, 37	Grapes ..... 57
Alianthus ..... 24	Corylus ..... 57	Groundsel Bush ..... 36
Alnus ..... 32	Cotoneaster ..... 17	
Althaea ..... 34, 35	Crataegus ..... 26	<b>H</b>
Amelanchier ..... 35	Cryptomeria ..... 5	Halesia ..... 28
Ampelopsis ..... 48	Cupressus ..... 5	Hamamelis ..... 39
Amsonia ..... 50	Currants ..... 42, 56	Hawthorn ..... 26
Andromeda ..... 16	Cydonia ..... 27	Herther ..... 17
Andromeda (Droop- ing) ..... 18	Cypress ..... 5, 10, 11, 12, 31	Hedera ..... 18
Apples ..... 54	Cytisus ..... 37	Helianthus ..... 51
Aralia ..... 24		Hamemrocallis ..... 51
Aralia (Shrub) ..... 35	<b>D</b>	Hemlock ..... 15
Arborvitae ..... 4, 13, 14, 15	Daisy ..... 52	Hercules Club ..... 24
Aristolochia ..... 48	Daphne ..... 17	Hibiscus ..... 51
Aronia ..... 35	Day Lily ..... 51	Holly ..... 18, 40
Ash ..... 27	Delphinium ..... 51	Honey Locust ..... 28
Asparagus ..... 57	Desmodium ..... 37	Honeysuckle ..... 41, 49
Aster ..... 50	Deutzia ..... 38	Hop Tree ..... 30
Astible ..... 51	Dianthus ..... 51	Hornbeam ..... 25
Azalea ..... 16, 35, 36	Dicentra ..... 51	Horse Chestnut ..... 23, 24
	Dogwood ..... 26, 37	Hydrangea ..... 39, 40
	Dutchman's Pipe ..... 48	
	Dyer's Bloom ..... 39	<b>I</b>
<b>B</b>		Iberis ..... 52
Baccharis ..... 36	<b>E</b>	Ilex ..... 18, 40
Baptisia ..... 51	Elder ..... 43	Iris ..... 52
Barberry ..... 16, 36, 46	Eleagnus ..... 38	Ivy ..... 48
Bayberry ..... 41	Elm ..... 31	
Beech ..... 26, 27, 32	Empress Tree ..... 29	<b>J</b>
Berberis ..... 16, 36, 46	English Ivy ..... 18	Joe Pye Weed ..... 51
Betula ..... 24, 32	Euonymus ..... 18, 38	Juglans ..... 58
Bignonia ..... 48	Eupatorium ..... 51	Juneberry ..... 35
Biota ..... 4	Exochorda ..... 39	Juniperus ..... 5, 6, 7
Birch ..... 24, 32		
Blackberries ..... 56	<b>F</b>	<b>K</b>
Bladder Senna ..... 37	Fagus ..... 26, 27, 32	Kalmia ..... 18
Blanket Flower ..... 51	False Bittersweet ..... 49	Kerria ..... 37, 42
Bleeding Heart ..... 51	False Indigo ..... 51	Koelreutaria ..... 28
Boxwood ..... 17	Ferns ..... 53	
Buxus ..... 17	Fetter Bush ..... 16	
	Fir ..... 3, 4	<b>L</b>
<b>C</b>	Flame Flower ..... 53	Laburnum ..... 28
Callicarpus ..... 36	Fleur-de-lis ..... 52	Larch ..... 28
Calluna ..... 17	Flowering Cherry ..... 32	Larix ..... 28
Calycanthus ..... 36	Flowering Crab ..... 30	Larkspur ..... 51
Candytuft ..... 52	Forsythia ..... 39	Laurel ..... 18
Cardinal Flower ..... 52	Fraxinus ..... 27	Lemon Lily ..... 51
Carpinus ..... 25	Funkia ..... 51	Leucothoe ..... 18
Castanea ..... 57		Ligustrum ..... 40, 46
Catalpa ..... 25	<b>G</b>	Lilac ..... 44
Ceanothus ..... 36	Gaillardia ..... 51	
Cedar ..... 5		
Cedrus ..... 5		
Celastrus ..... 49		
Cerasus ..... 32		

Linden	31
Liquidamber	28
Liriodendron	28
Lispedeza	40
Lobelia	52
Locust	30
Lonicera	41, 49
Lychnis	52
Lycium	49

**M**

Magnolia	29
Mahonia	18
Maidenhair Tree	27
Mallow	51
Maple	21, 22, 23
Matrimony Vine	49
Mock Orange	41, 42
Monardia	52
Morus	32
Mountain Ash	31
Mountain Sage	53
Mulberry	32, 56
Mullen's Pink	50
Myrica	41

**N**

New Jersey Tea	36
Nuts	57, 58

**O**

Oak	30
Oregon Grape	18
Oswego Tea	52

**P**

Pachysandra	19
Paeonia	52
Paulownia	29
Peaches	56
Pearl Bush	39
Pears	55
Peony	52
Periploca	49
Philadelphus	41, 42
Phlox	52
Picea	7, 8, 9
Pinus	9, 10, 12
Plane	29

Platanus	29
Plum	29, 42, 55
Poplar	29
Populus	29
Privet	40, 46
Prunus	29, 42
Pseudotsuga	10
Ptela	30
Pyrethrum	52
Pyrus	30

**Q**

Quercus	30
Quince (Berry)	17
Quince (Flowering)	37
Quinces	55

**R**

Raspberries	56
Retinospora	10, 11, 12
Rhododendron	19, 20
Rhodotyphus	42
Rhubarb	57
Rhus	42
Ribes	42
Robinia	30
Rosa Rugosa	46, 48
Rose (Japanese)	46, 48
Rose of Sharon	34, 35
Roses	47
Rudbeckia	35

**S**

Salix	30, 31, 33
Salvia	53
Sambucus	43
Sciodopitys	12
Sedum	53
Silk Vine	49
Silver Thorn	38
Silver Vine	48
Snowball	45
Snowberry	44
Snowdrop	28
Solidago	53
Sorbus	31
Speedflower	53
Spiraea	43, 44, 51
Spruce	7, 8, 9, 10
Spurge (Japanese)	19
Stephanandra	44

Stoncrop	53
Strawberries	57
Sumac	42
Sunflower	51
Sweet Gum	58
Sweet Scented Shrub	36
Sweet William	51
Symphoricarpus	44
Syringa	44

**T**

Tamarisk	45
Tamarix	45
Taxodium	31
Taxus	13
Thuya	13, 14, 15
Tickseed	51
Tilia	31
Tree of Heaven	24
Tritoma	53
Trumpet Vine	48
Tsuga	15
Tulip Tree	28

**U**

Ulmus	31
-------	----

**V**

Varnish Tree	28
Veronica	53
Viburnum	45
Violet	53
Violet	53

**W**

Weigelia	45, 46
White Alder	36
White Fringe	36
Willow	30, 31, 33
Wisteria	49
Witch Hazel	39

**X**

Xanthorrhiza	46
--------------	----

**Y**

Yarrow	50
Yellow Root	46
Yews	13
Yucca	19





