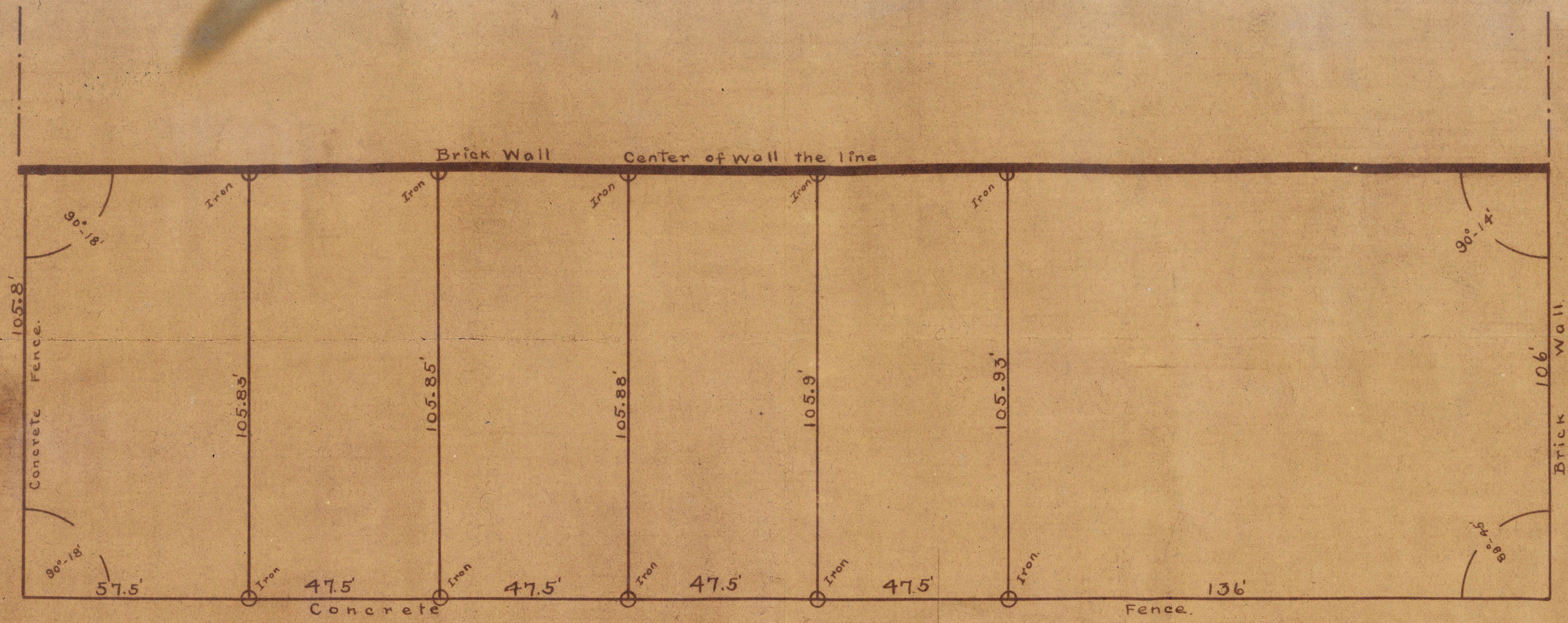


Street.

Montague



# PLAT

OF  
 Property on west side of  
 Ashley Ave. between Bull and  
 Montague Streets. Surveyed for  
 Est. F. J. Pelzer.

By  
 McCrady Bros & Cheves - Civil Engrs.  
 Charleston S. C.

April 1920                      Scale 1" = 30'.

Note: Street lines established on information from City Engineers' Office. The Western boundry being the Line of Occupation.